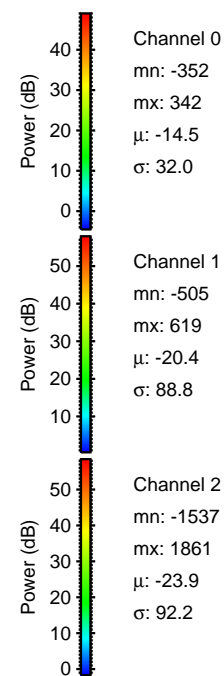
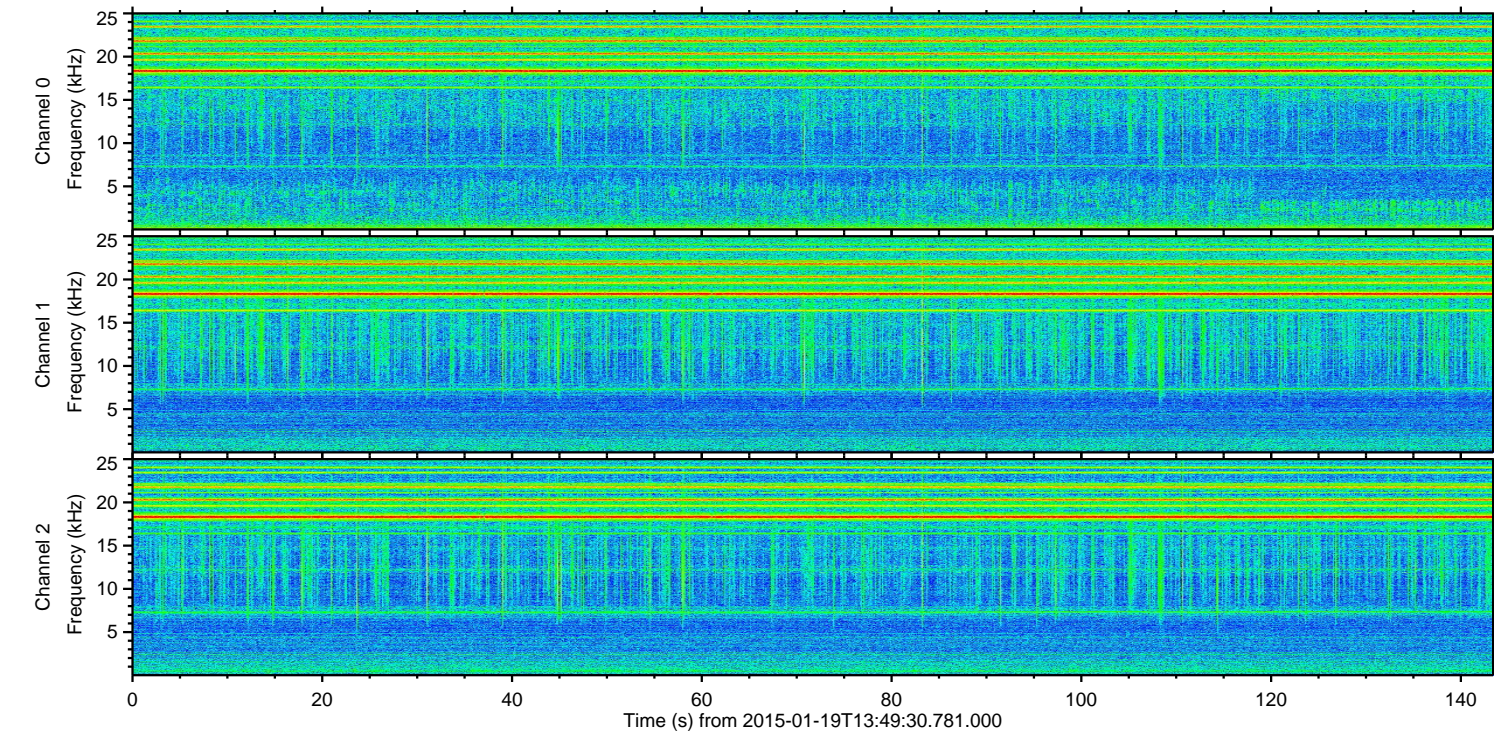
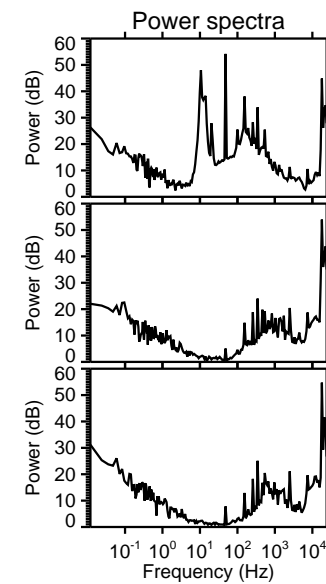
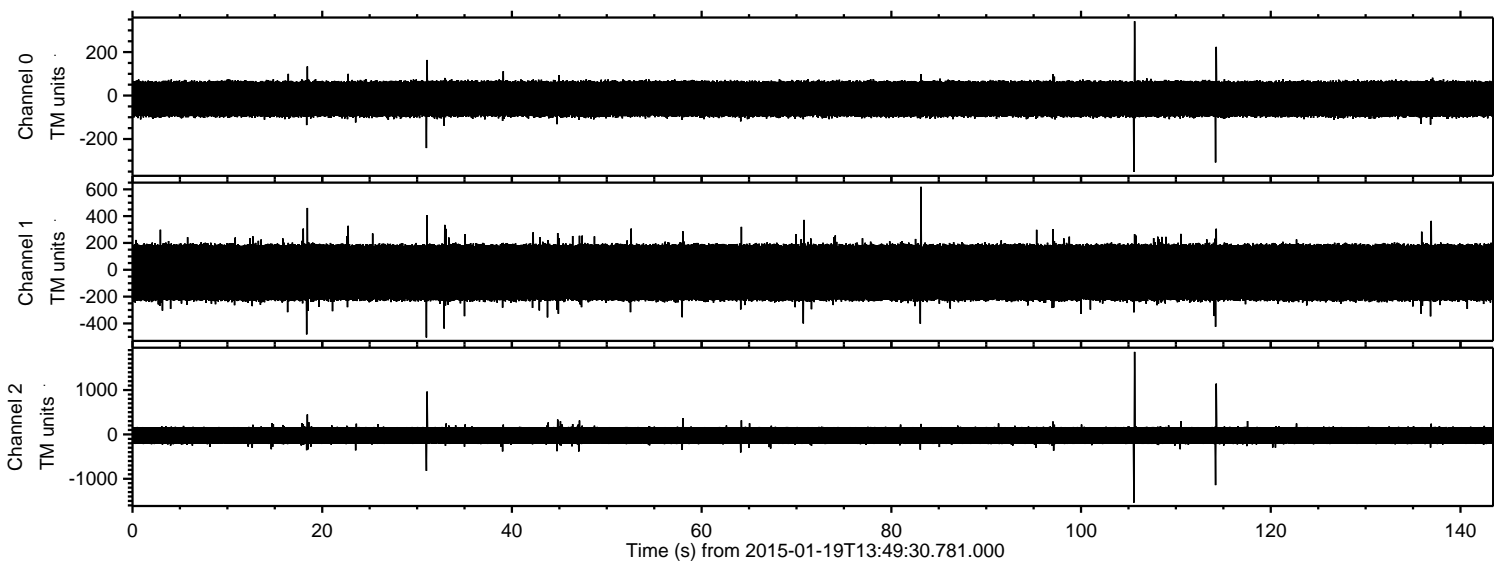


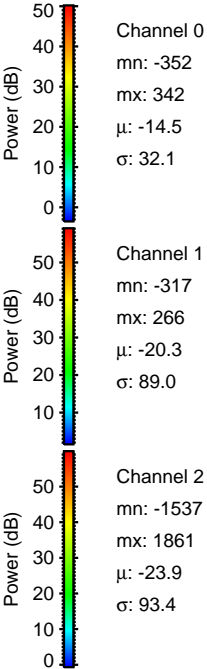
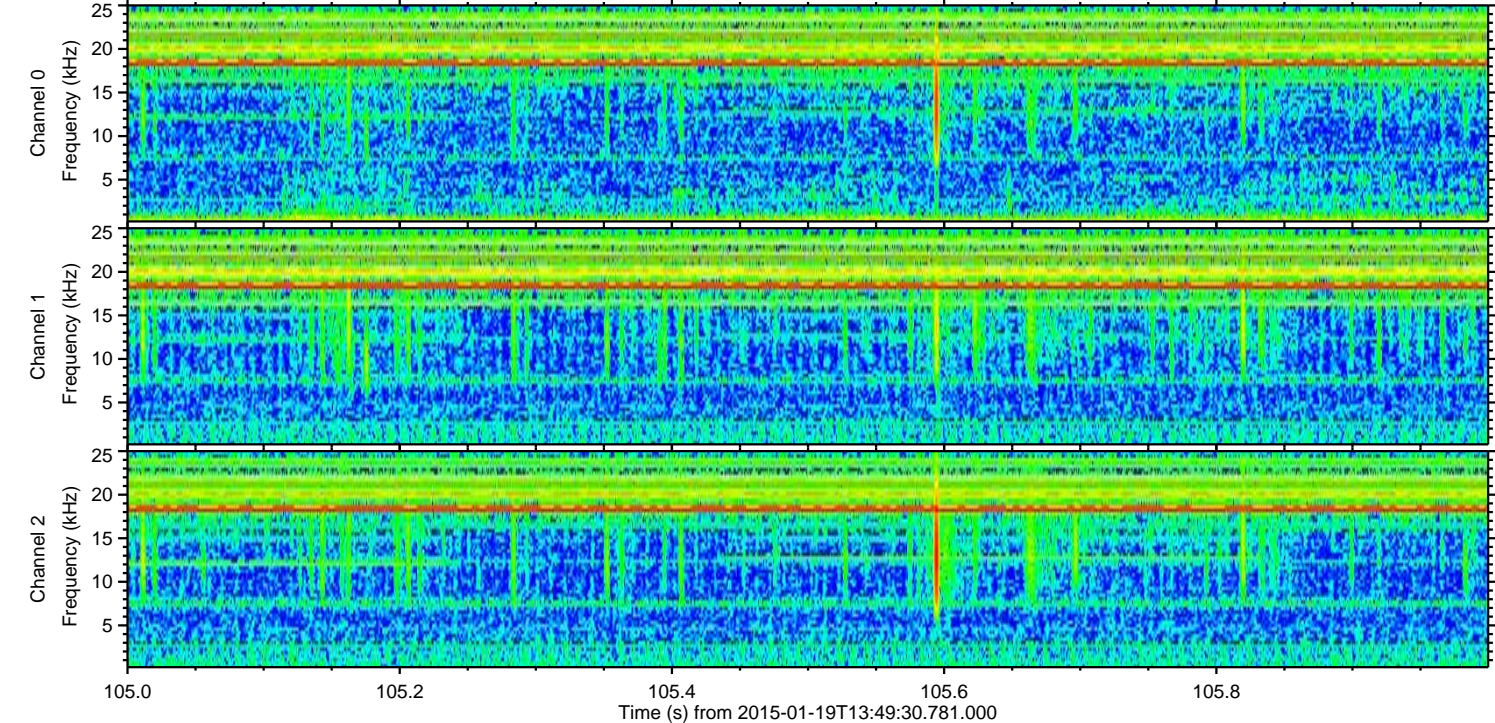
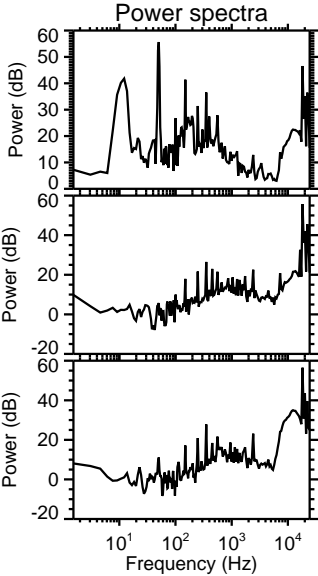
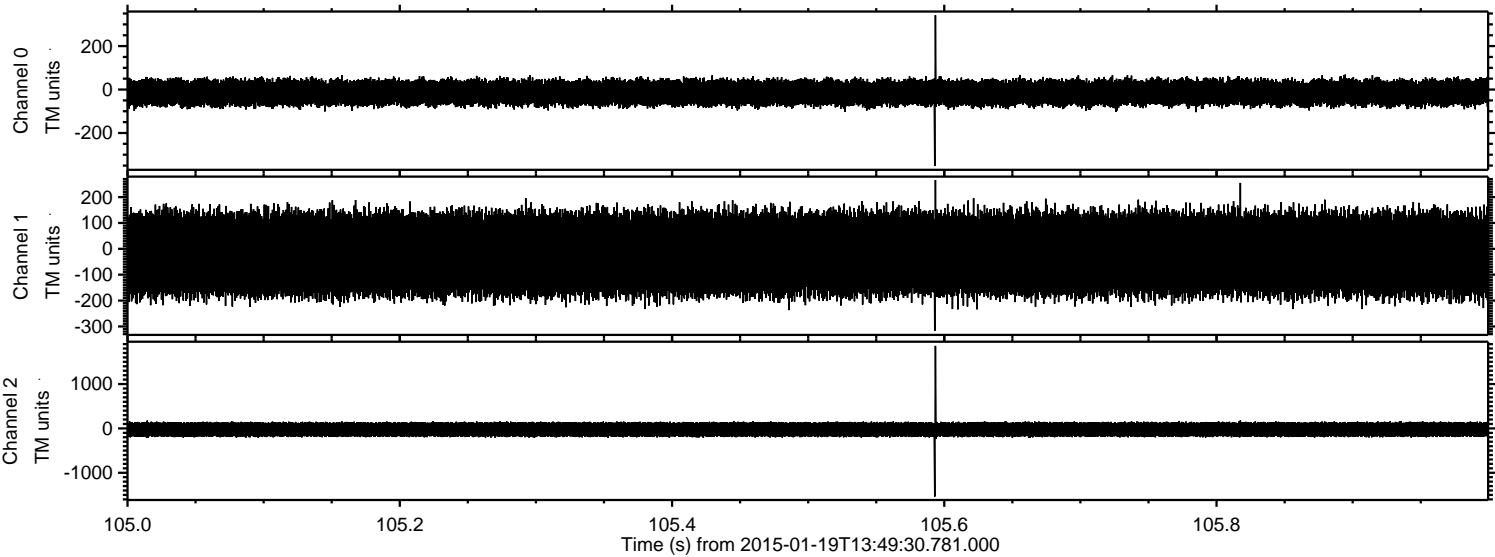
ELMAVAN 3D WAVEFORMS (Measured data sampled at 50 kHz) 49807 packets of 144 samples from 2015-01-19T13:49:30.781.000.

Processed Mon Feb 2 19:15:47 2015 by ELM ver.2012-10-06 from 001__elm20150119_134929__dat00.bin



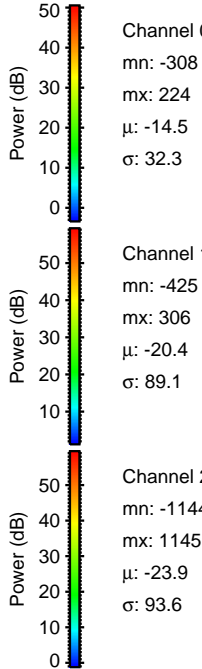
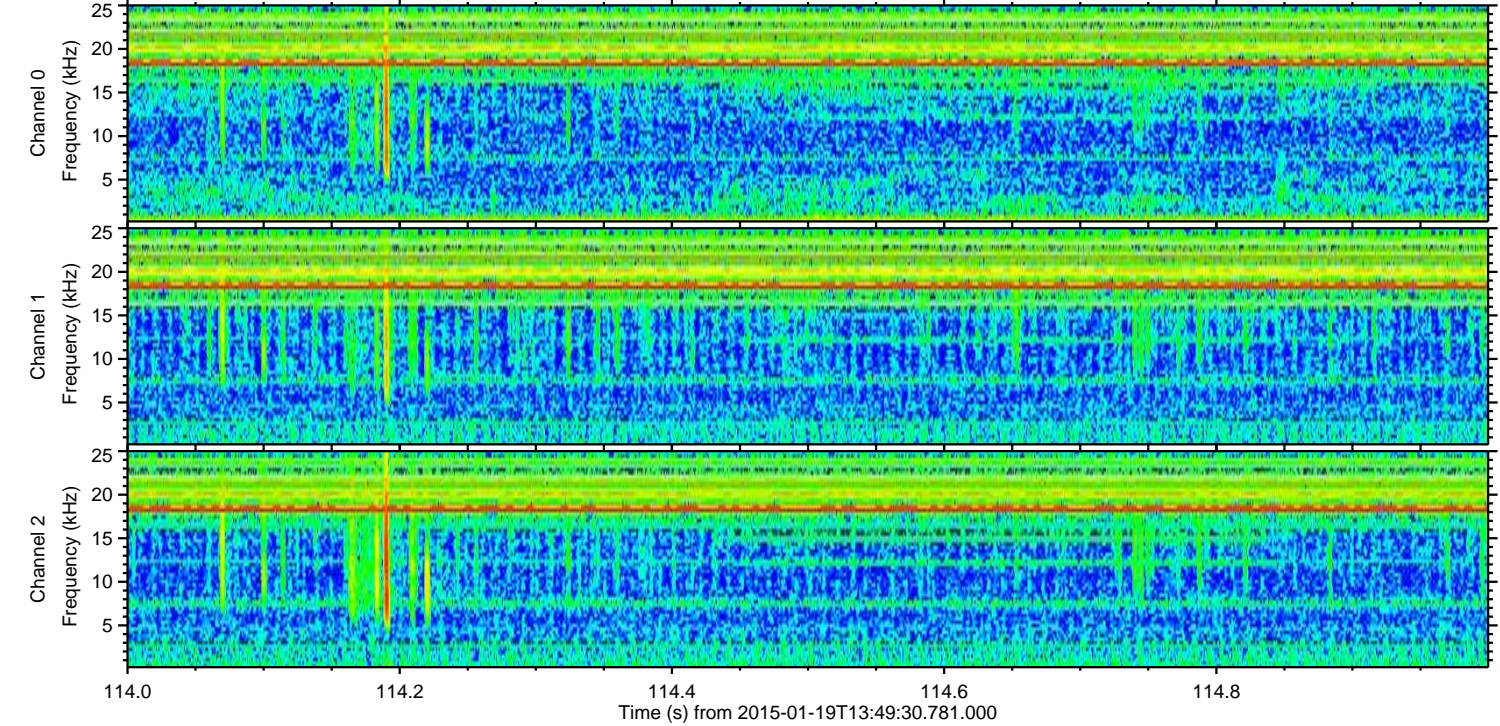
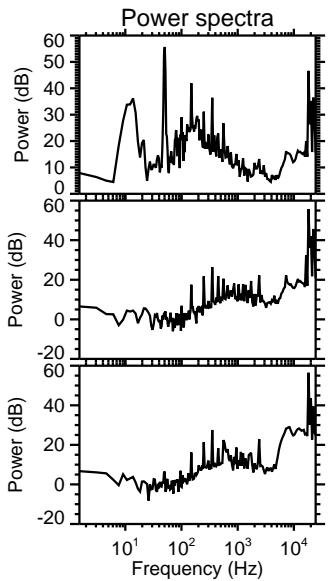
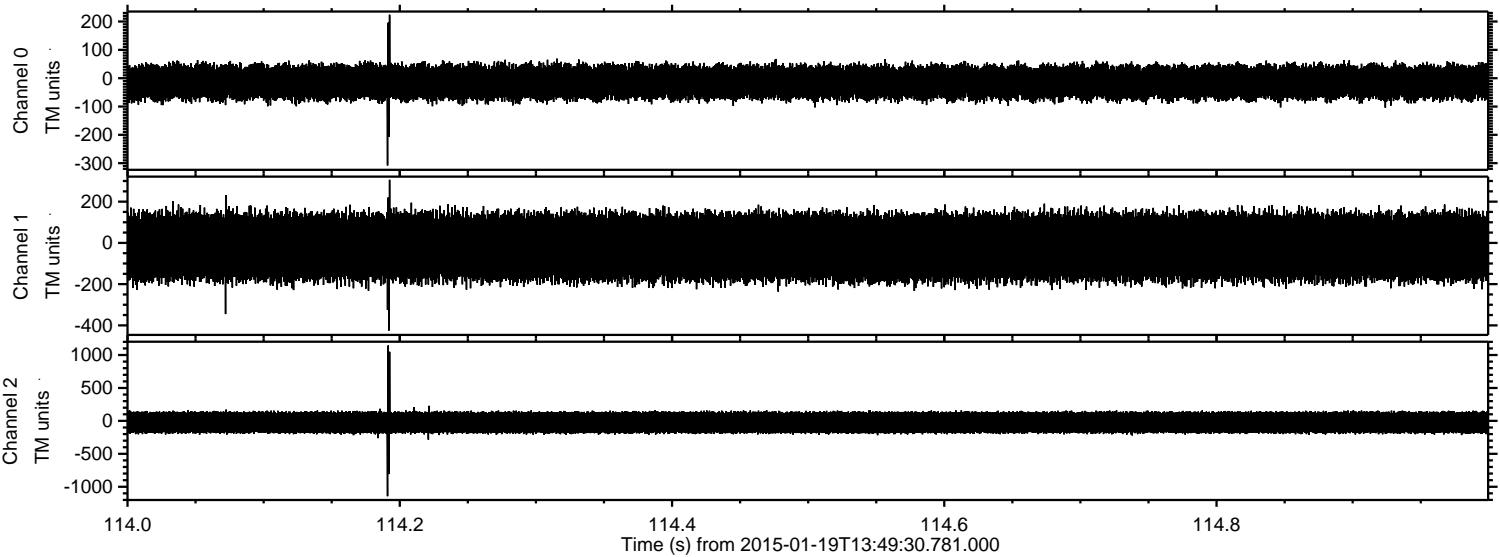
ELMAVAN 3D WAVEFORMS (Measured data sampled at 50 kHz) 49807 packets of 144 samples from 2015-01-19T13:49:30.781.000. Part 106/144

Processed Mon Feb 2 19:15:59 2015 by ELM ver.2012-10-06 from 001__elm20150119_134929__dat00.bin



ELMAVAN 3D WAVEFORMS (Measured data sampled at 50 kHz) 49807 packets of 144 samples from 2015-01-19T13:49:30.781.000. Part 115/144

Processed Mon Feb 2 19:16:00 2015 by ELM ver.2012-10-06 from 001__elm20150119_134929__dat00.bin

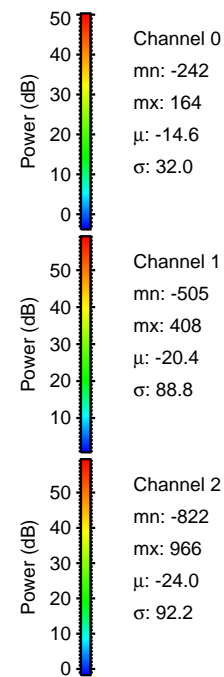
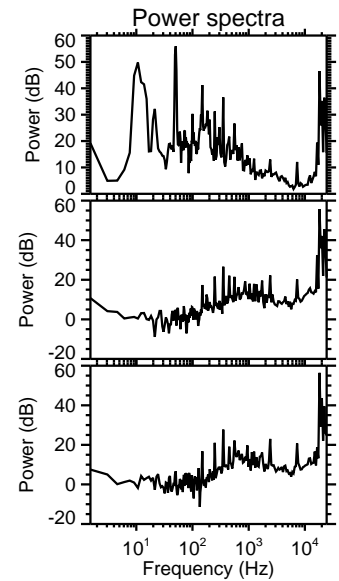
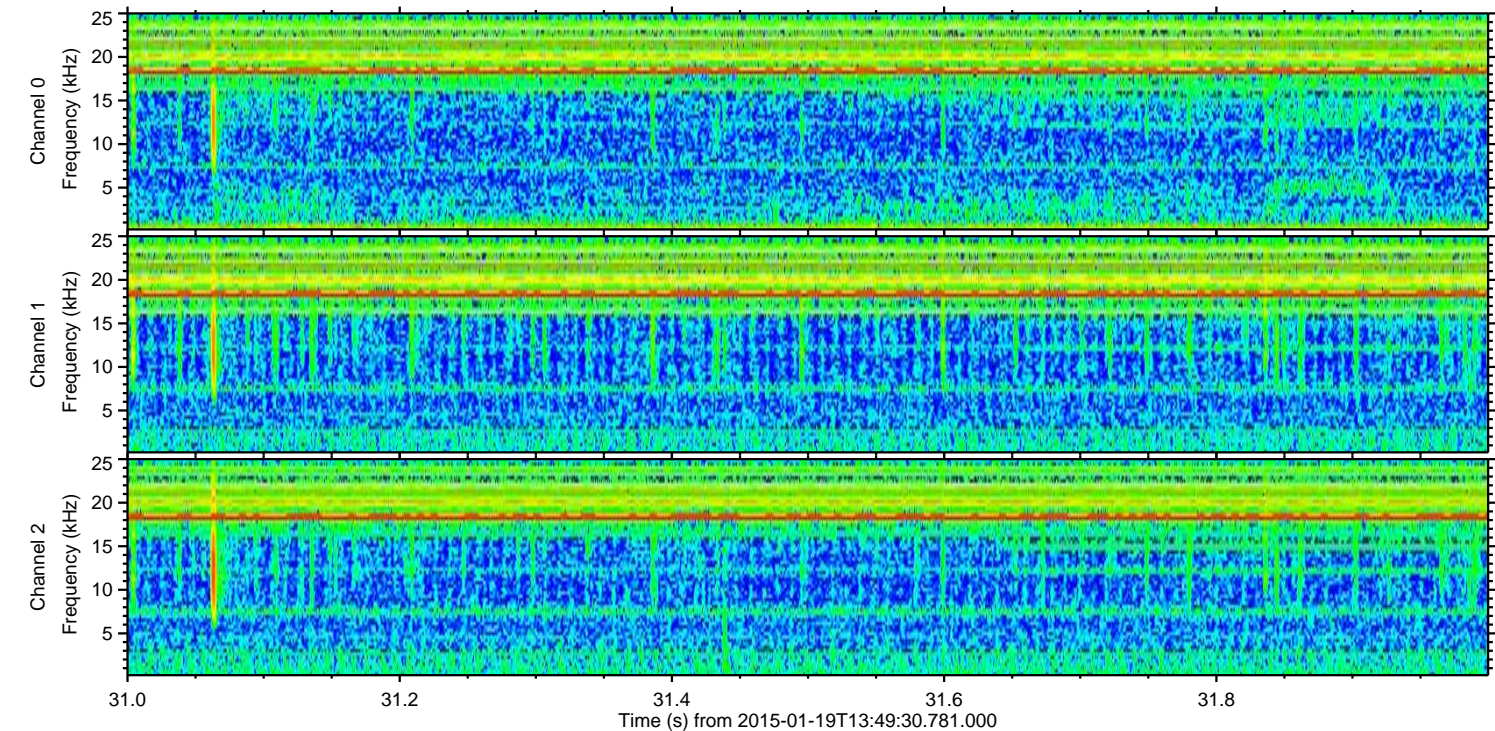
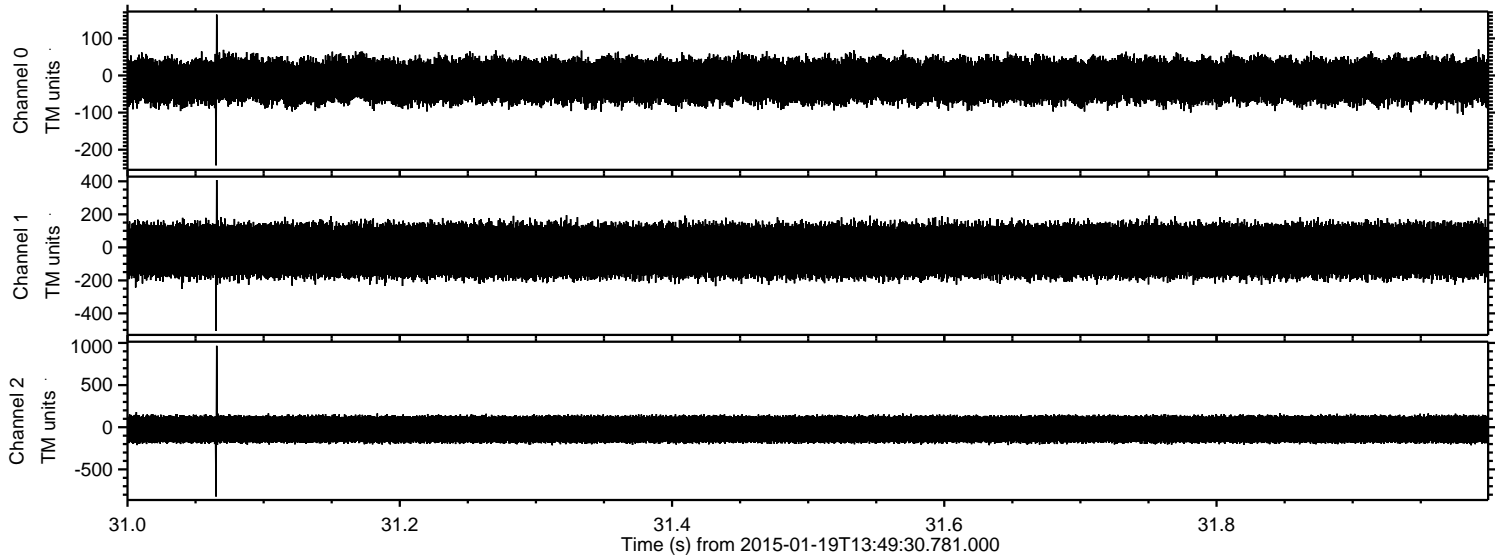


Channel 0
mn: -308
mx: 224
 μ : -14.5
 σ : 32.3

Channel 1
mn: -425
mx: 306
 μ : -20.4
 σ : 89.1

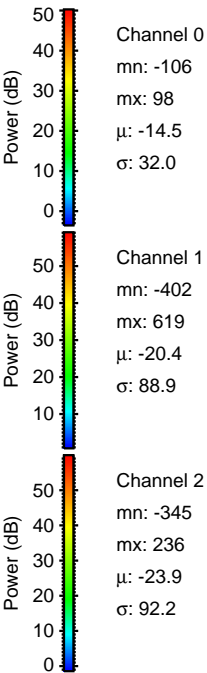
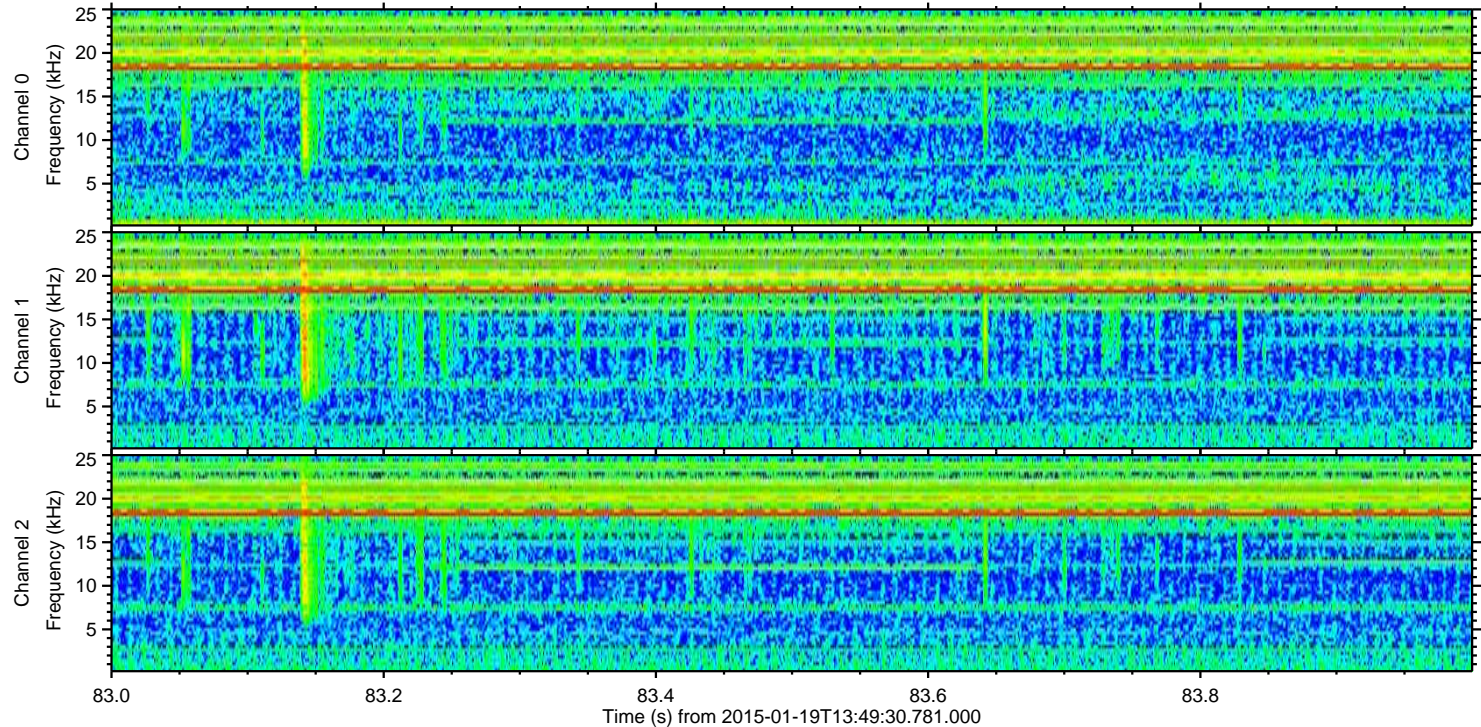
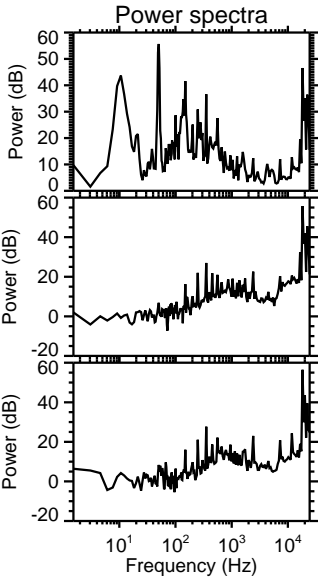
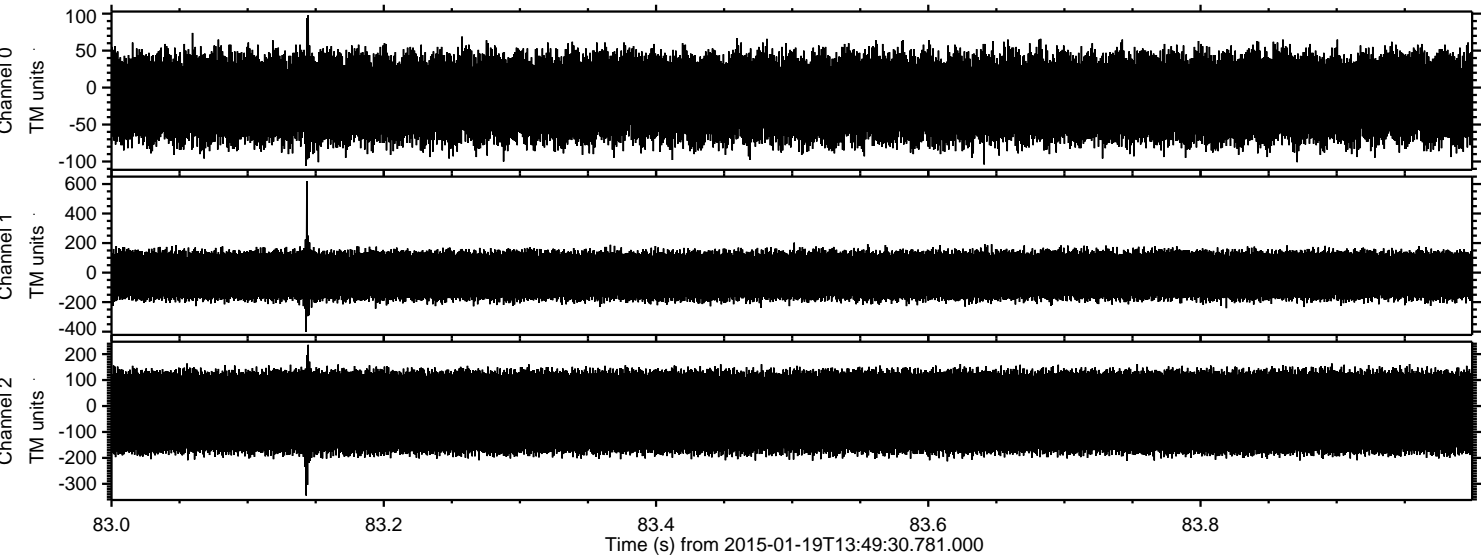
Channel 2
mn: -1144
mx: 1145
 μ : -23.9
 σ : 93.6

Processed Mon Feb 2 19:16:00 2015 by ELM ver.2012-10-06 from 001__elm20150119_134929__dat00.bin

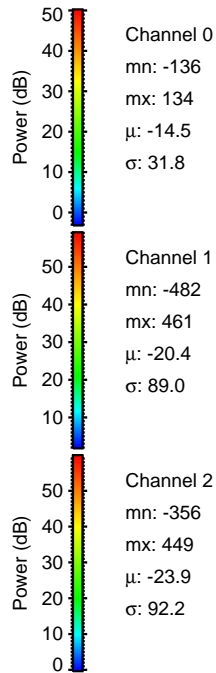
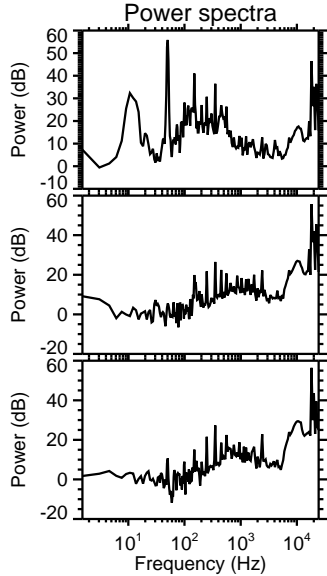
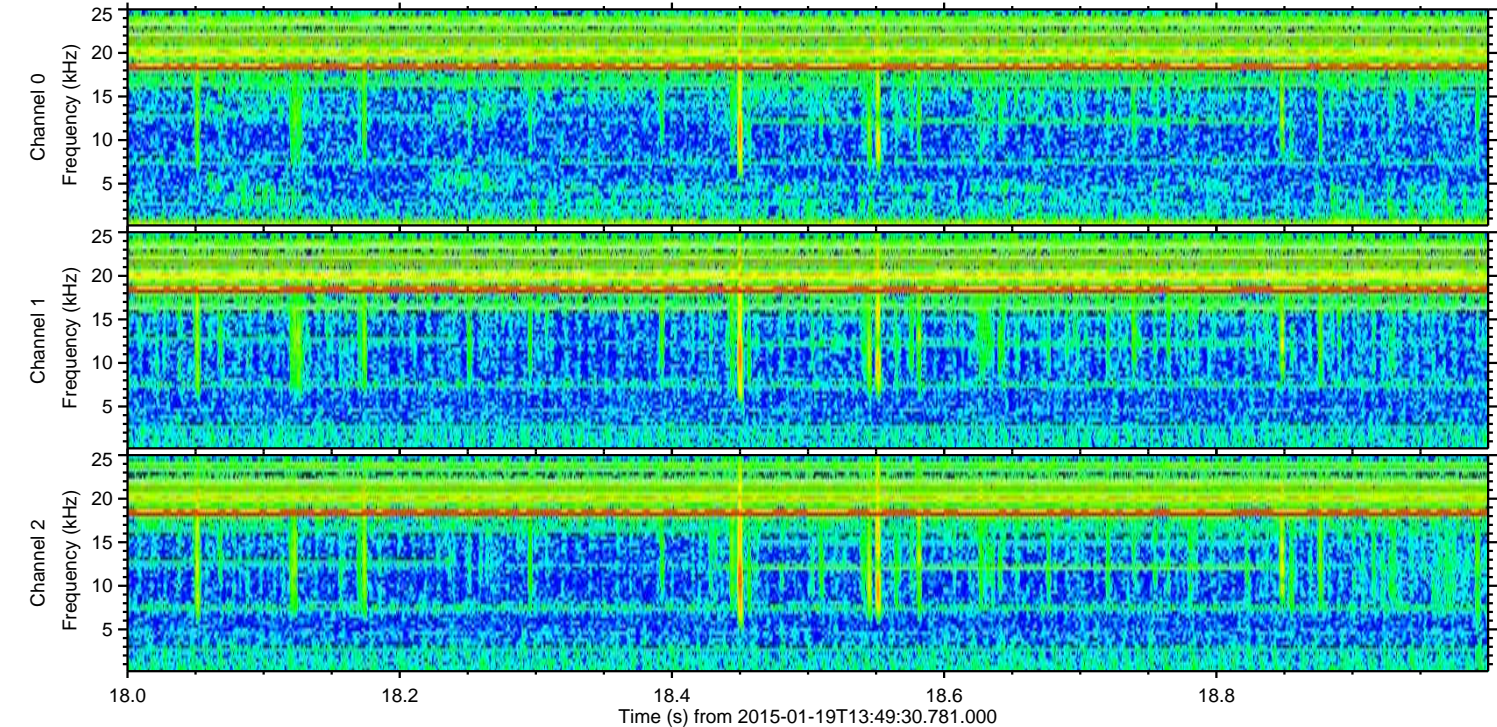
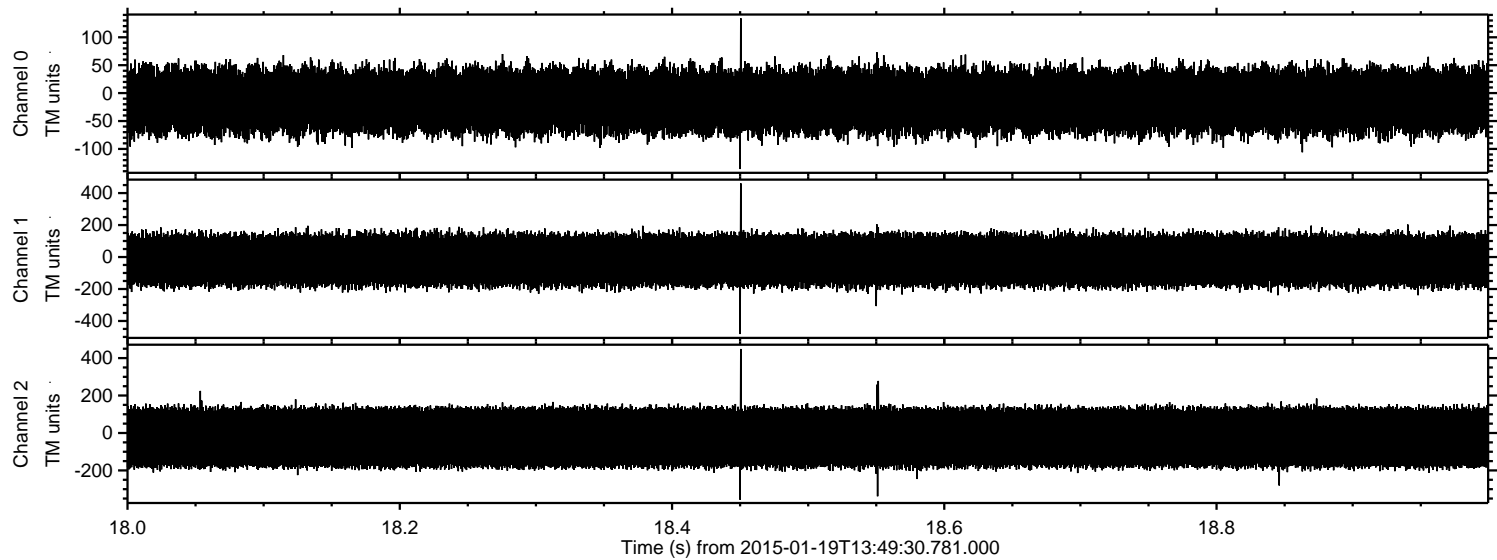


ELMAVAN 3D WAVEFORMS (Measured data sampled at 50 kHz) 49807 packets of 144 samples from 2015-01-19T13:49:30.781.000. Part 84/144

Processed Mon Feb 2 19:16:01 2015 by ELM ver.2012-10-06 from 001__elm20150119_134929__dat00.bin

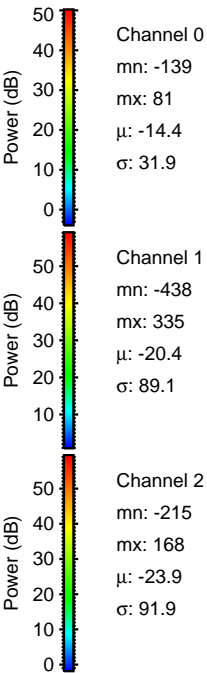
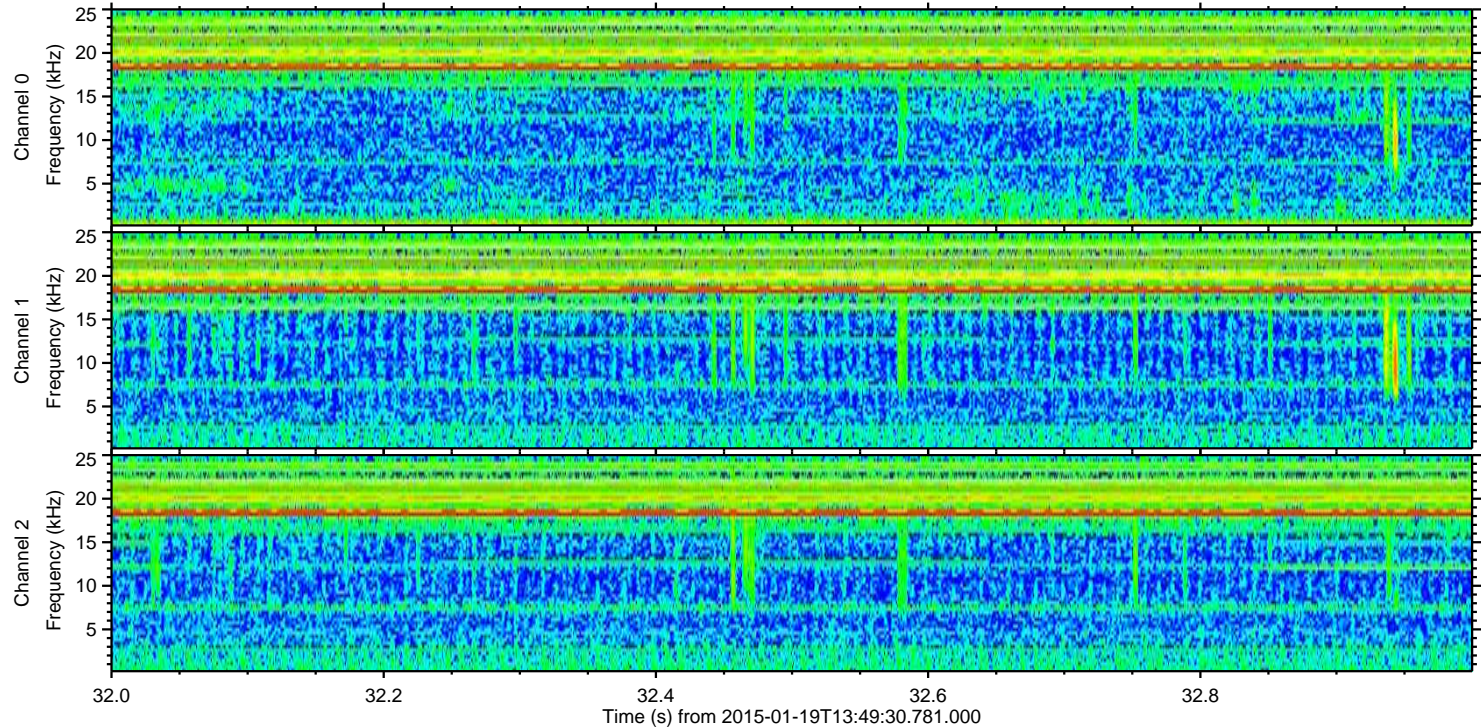
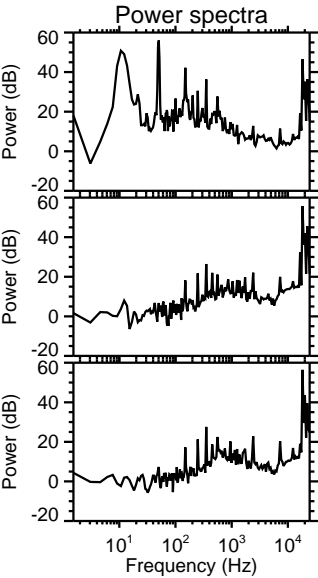
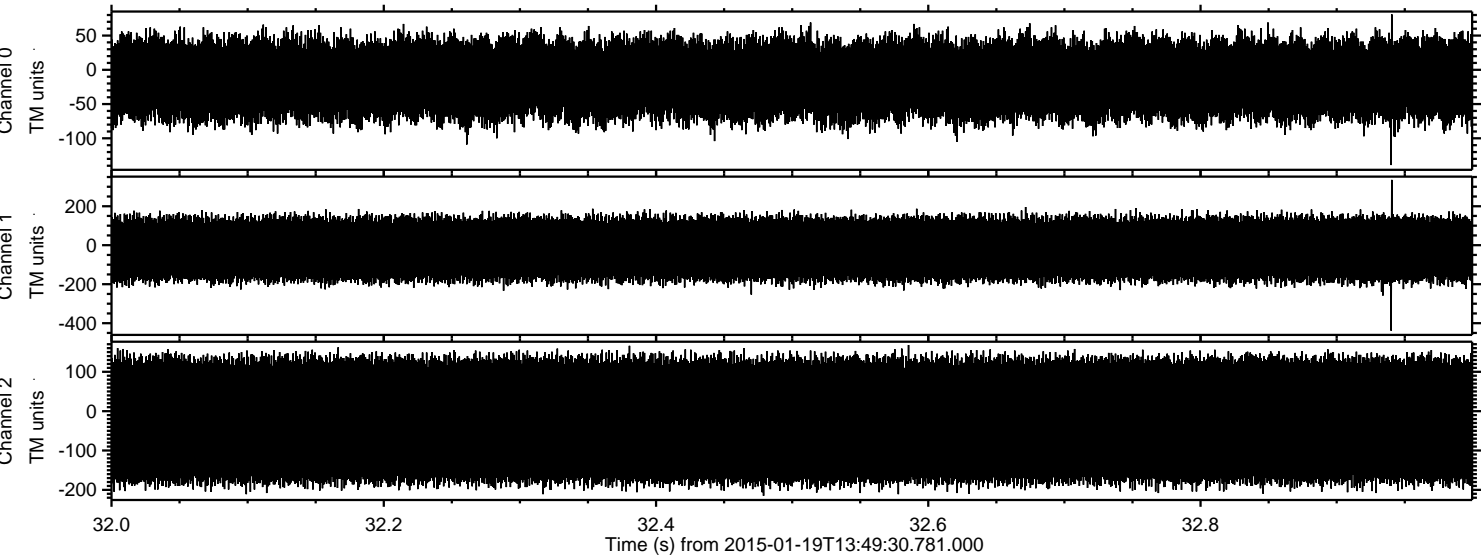


Processed Mon Feb 2 19:16:02 2015 by ELM ver.2012-10-06 from 001__elm20150119_134929__dat00.bin

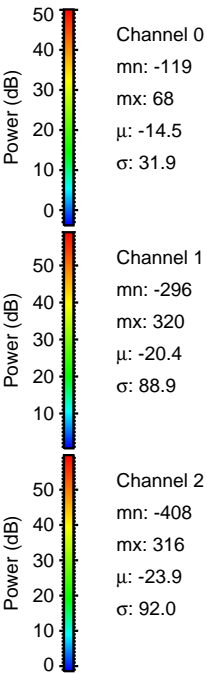
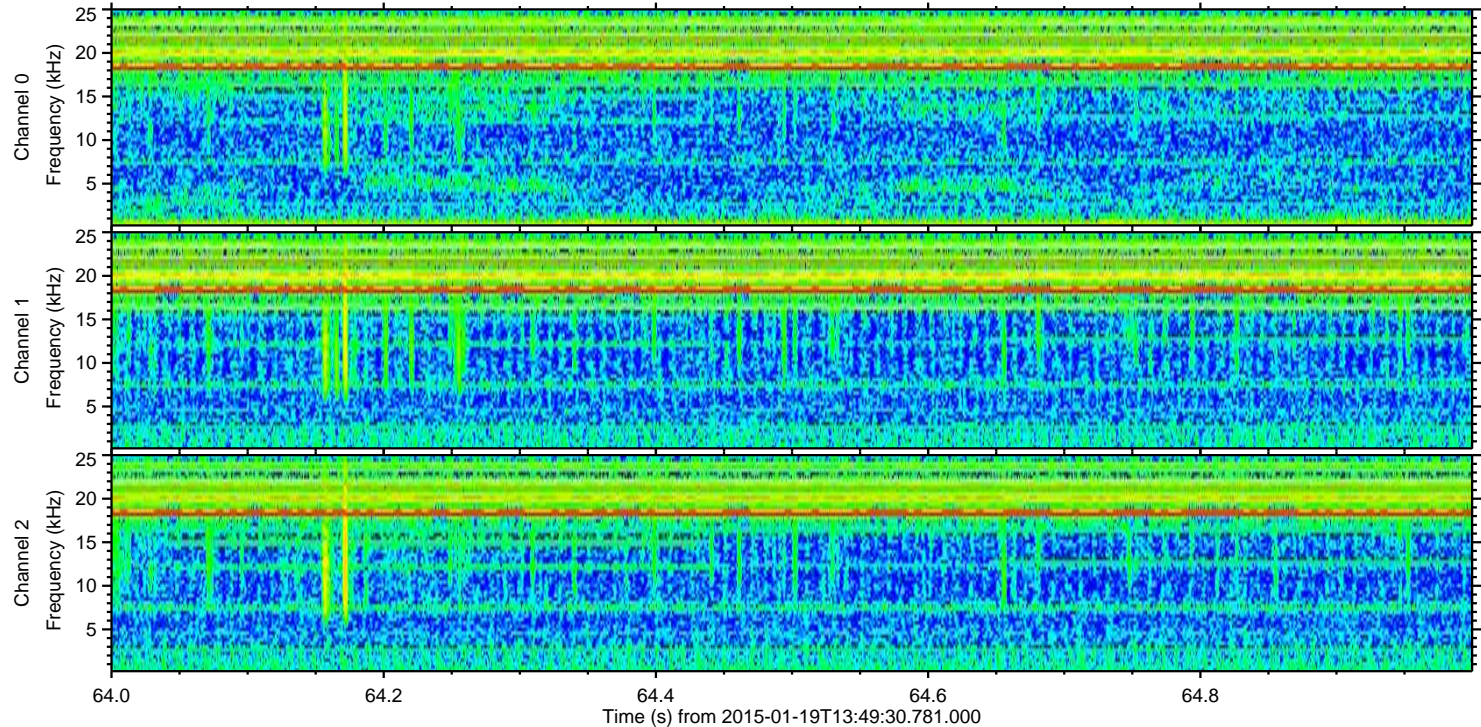
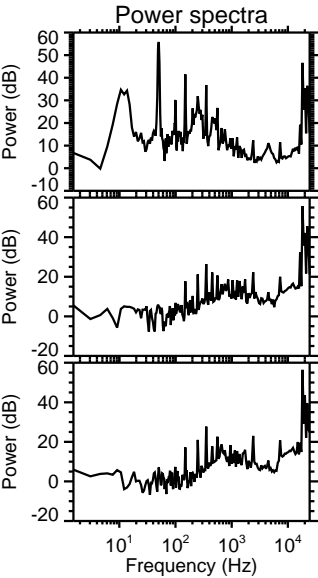
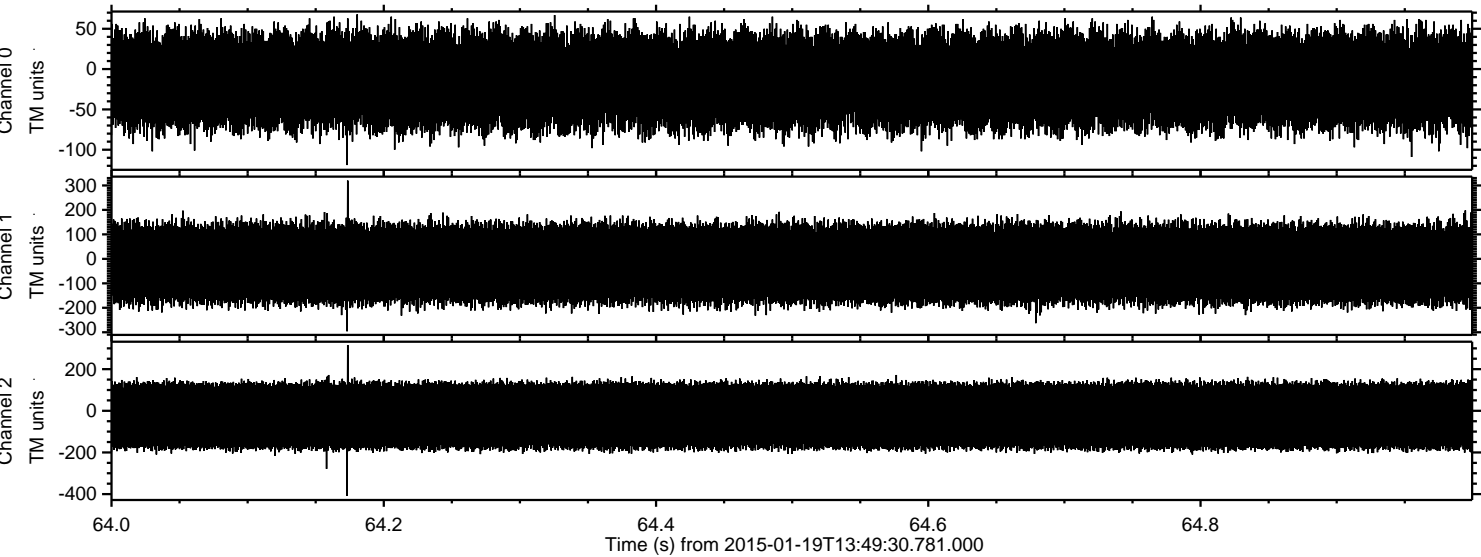


ELMAVAN 3D WAVEFORMS (Measured data sampled at 50 kHz) 49807 packets of 144 samples from 2015-01-19T13:49:30.781.000. Part 33/144

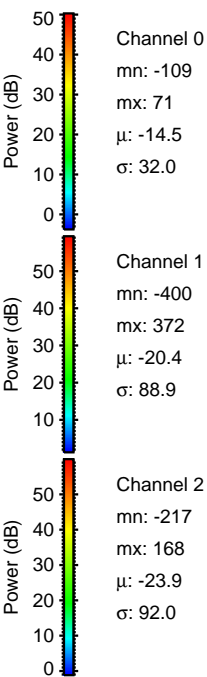
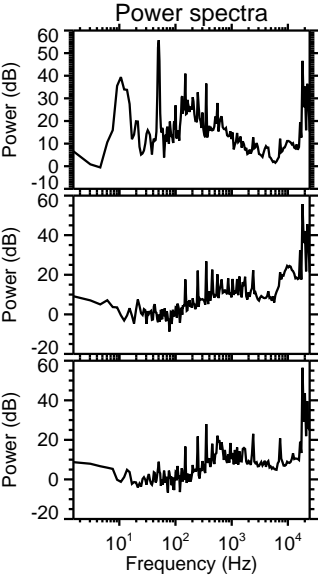
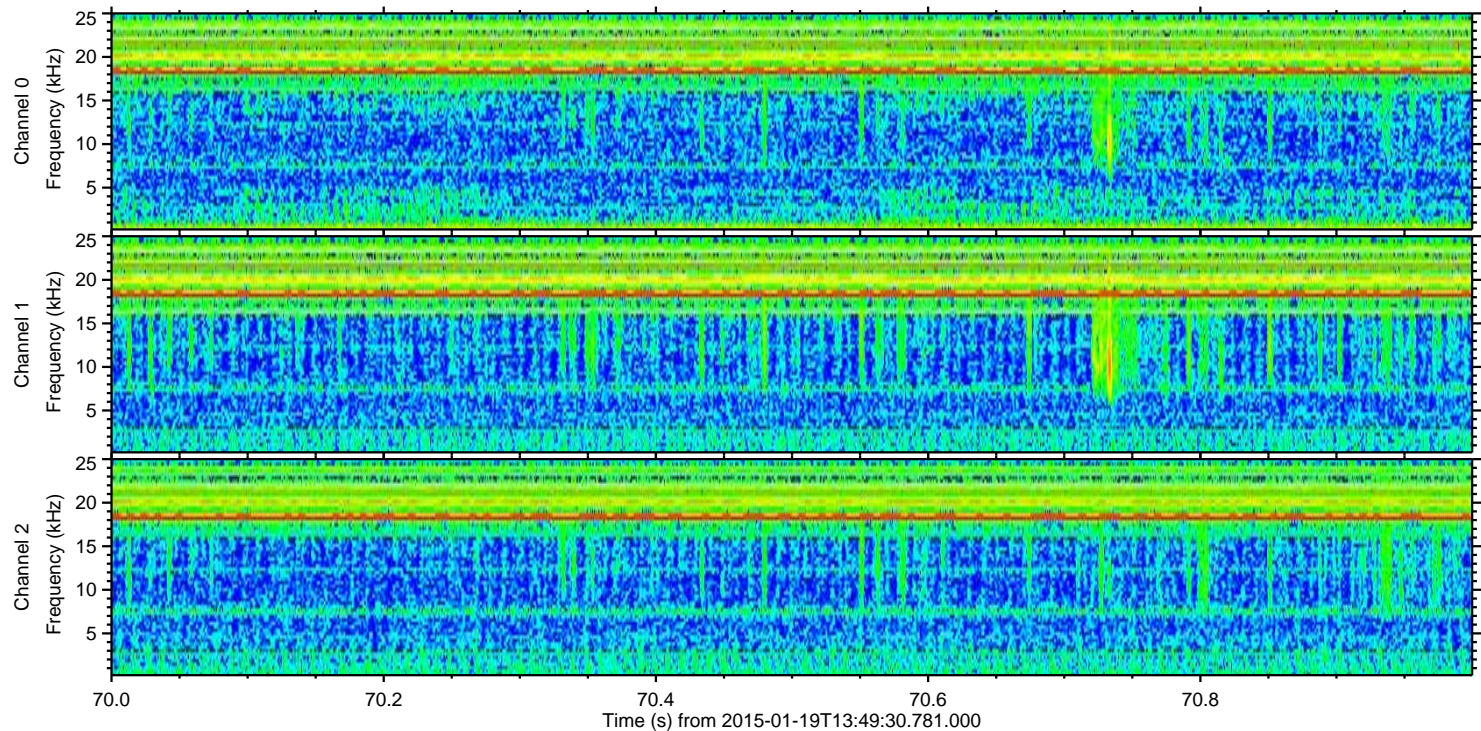
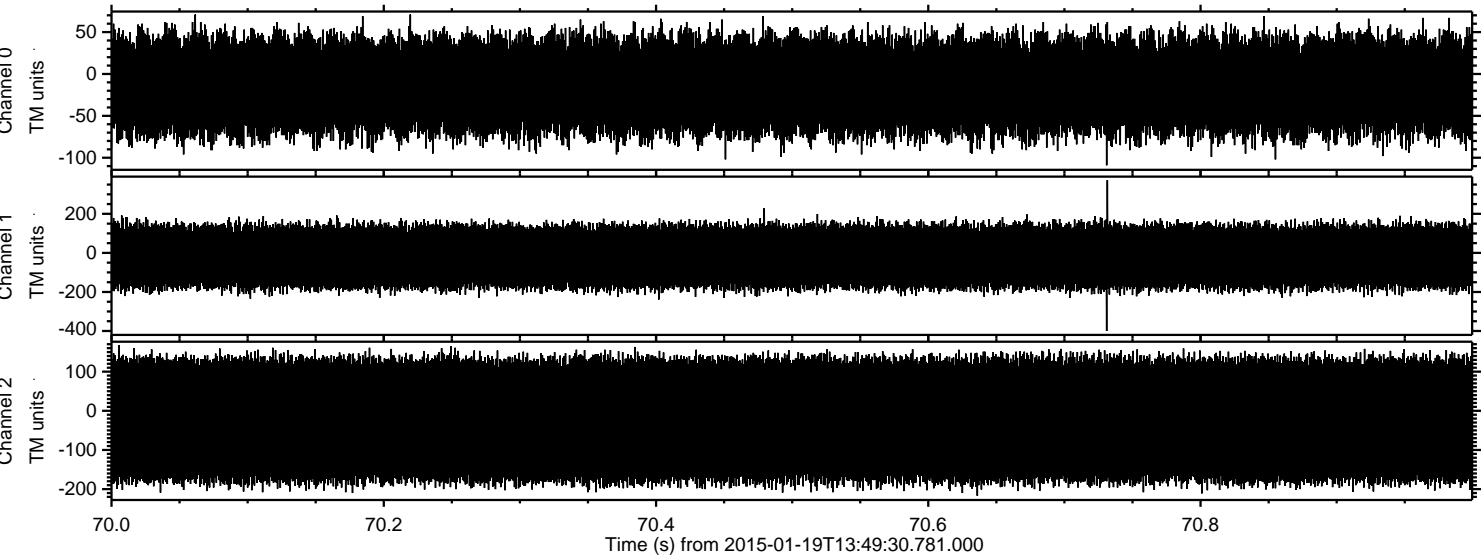
Processed Mon Feb 2 19:16:03 2015 by ELM ver.2012-10-06 from 001__elm20150119_134929__dat00.bin



Processed Mon Feb 2 19:16:04 2015 by ELM ver.2012-10-06 from 001__elm20150119_134929__dat00.bin



Processed Mon Feb 2 19:16:05 2015 by ELM ver.2012-10-06 from 001__elm20150119_134929__dat00.bin

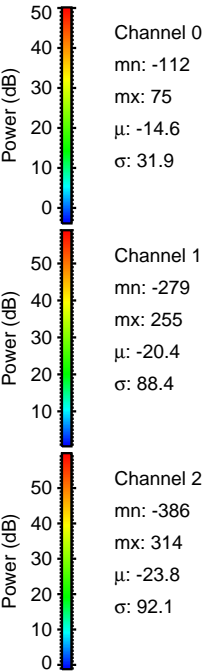
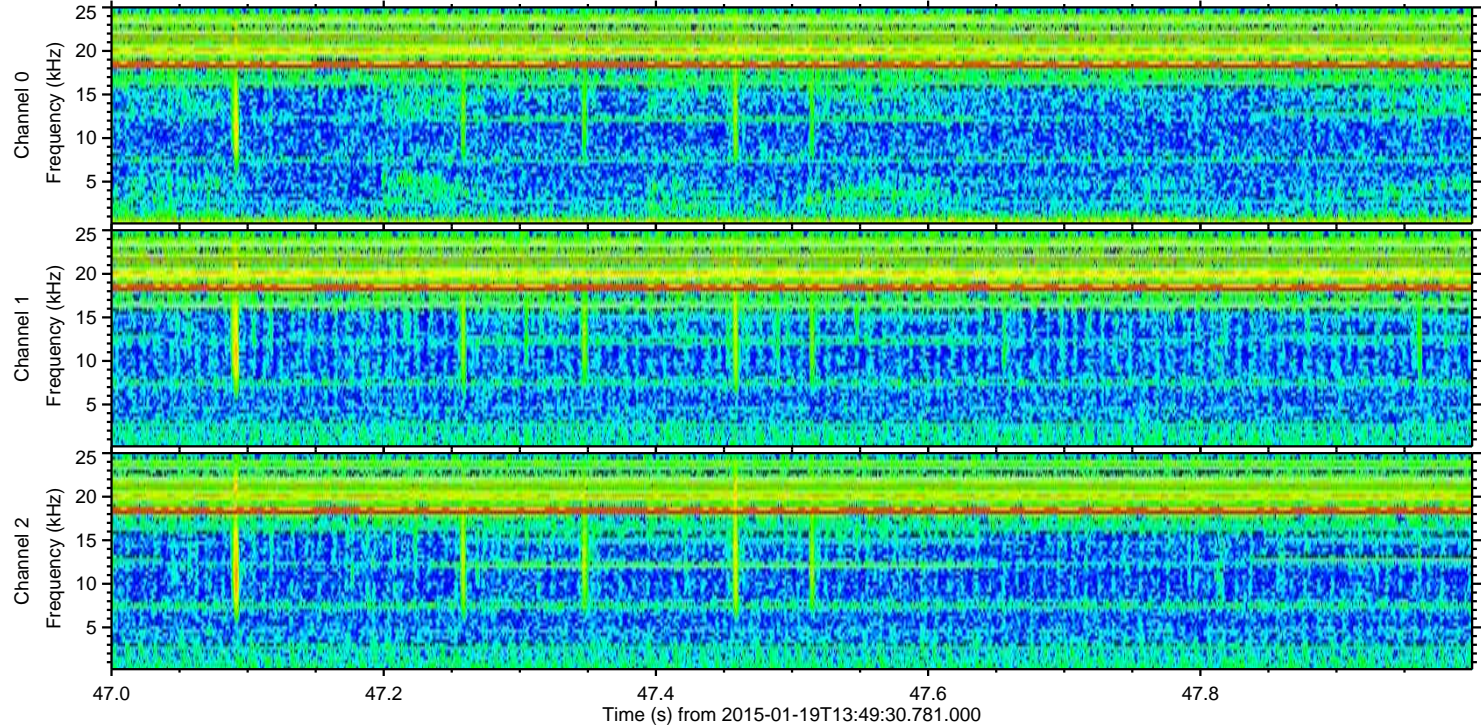
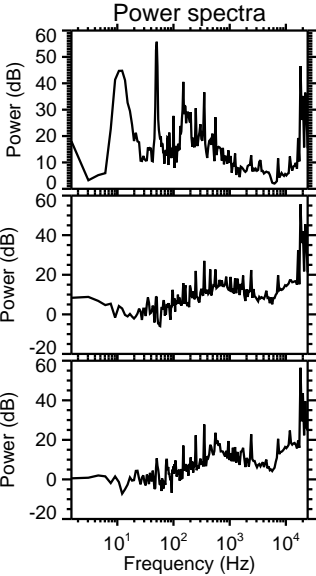
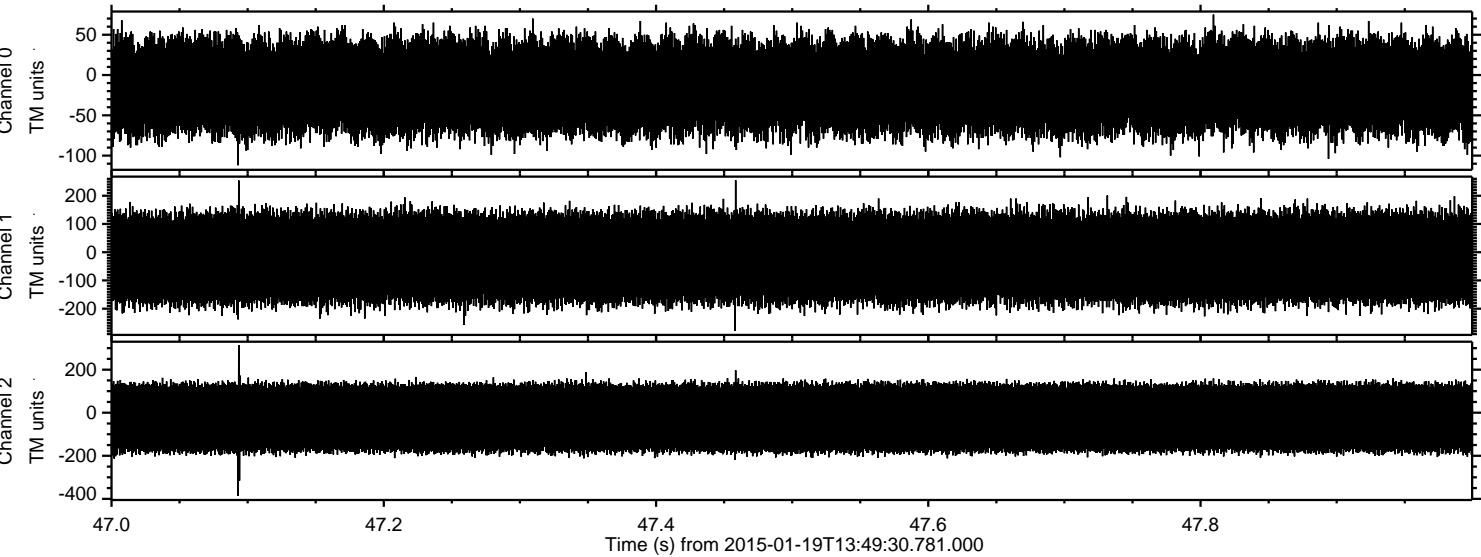


Channel 0
mn: -109
mx: 71
 μ : -14.5
 σ : 32.0

Channel 1
mn: -400
mx: 372
 μ : -20.4
 σ : 88.9

Channel 2
mn: -217
mx: 168
 μ : -23.9
 σ : 92.0

Processed Mon Feb 2 19:16:06 2015 by ELM ver.2012-10-06 from 001__elm20150119_134929__dat00.bin



Processed Mon Feb 2 19:16:07 2015 by ELM ver.2012-10-06 from 001__elm20150119_134929__dat00.bin

