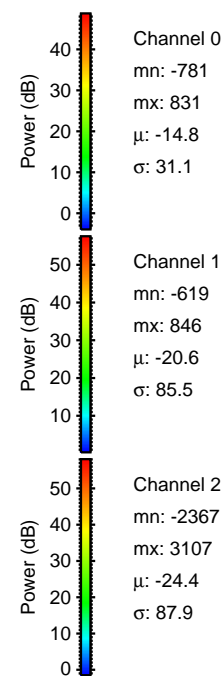
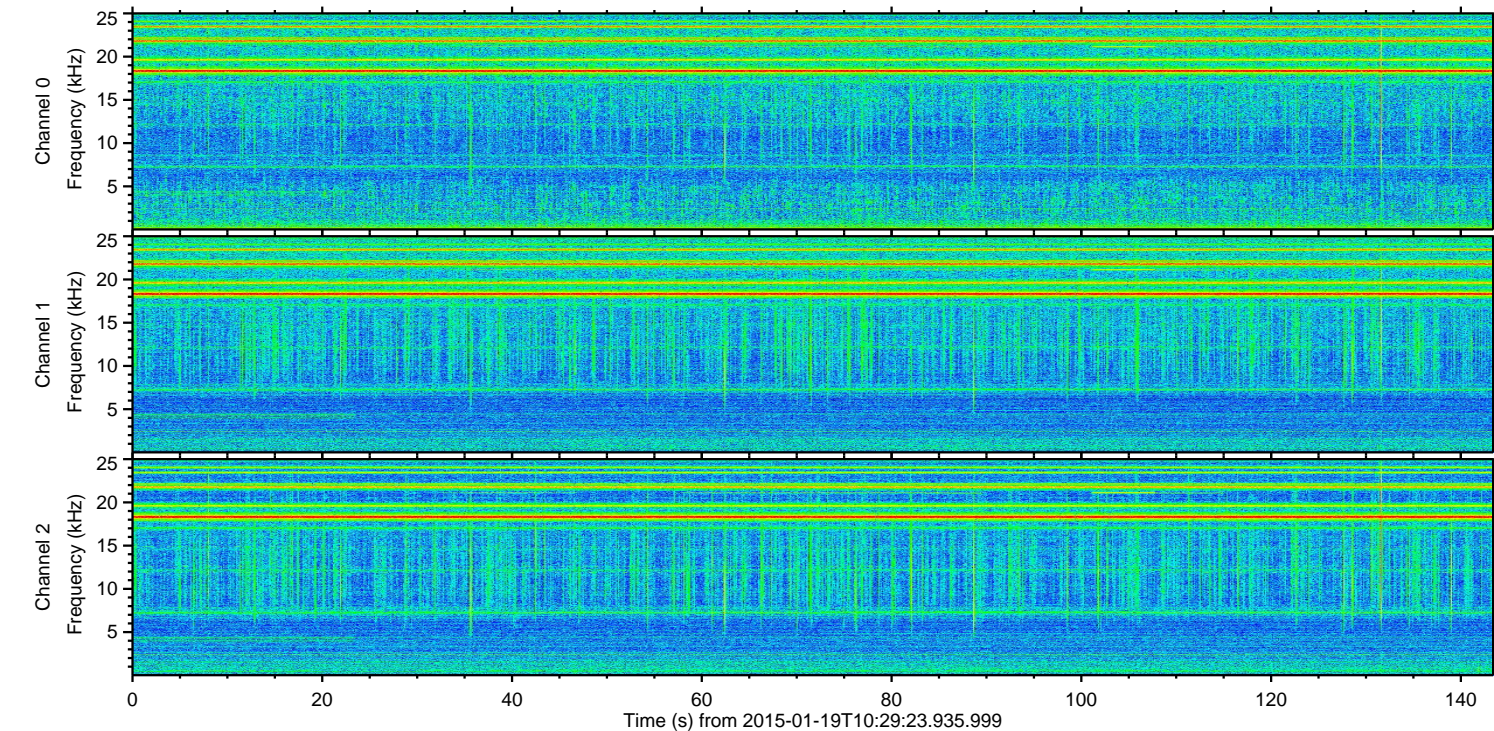
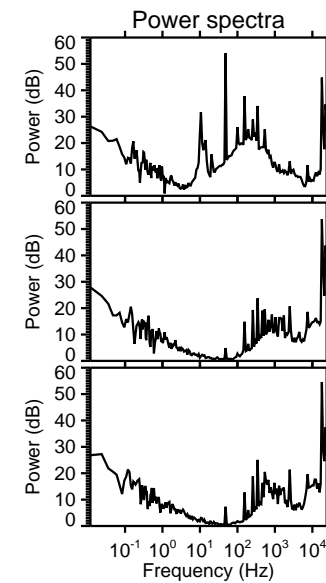
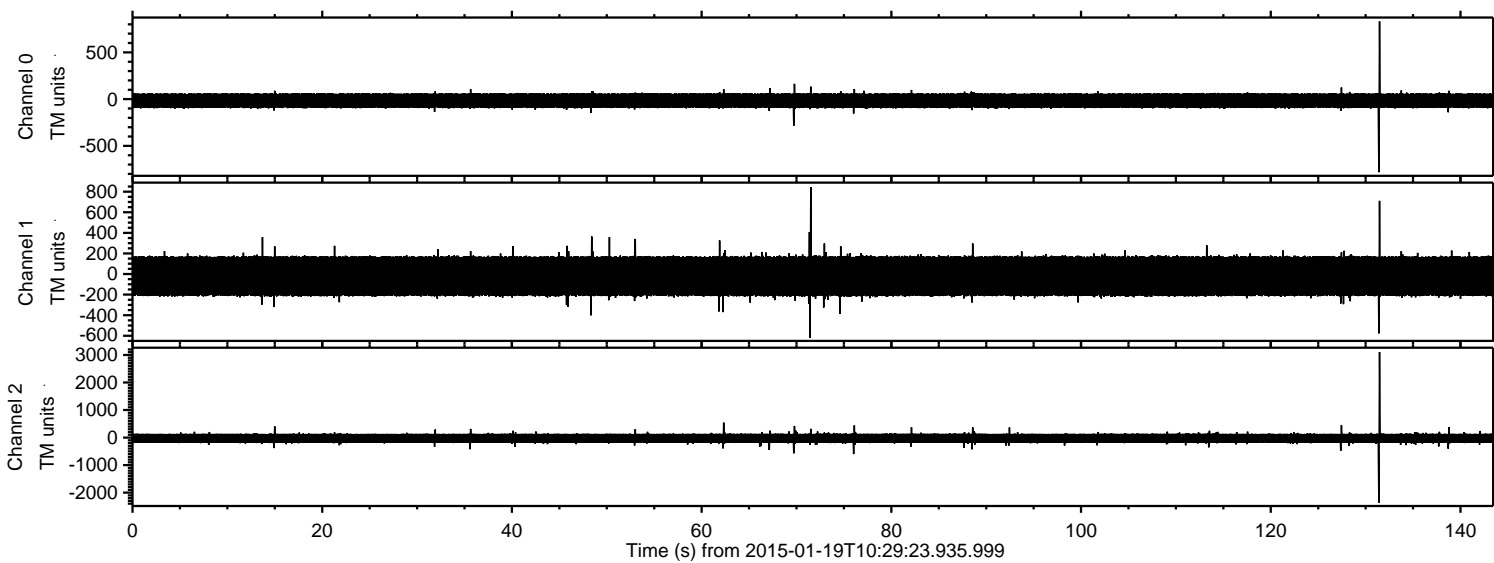


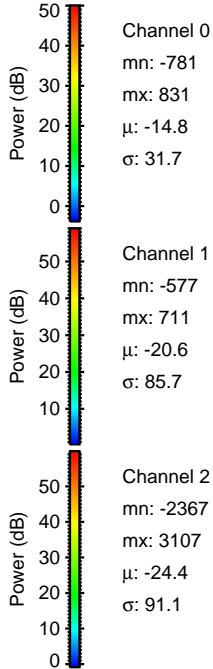
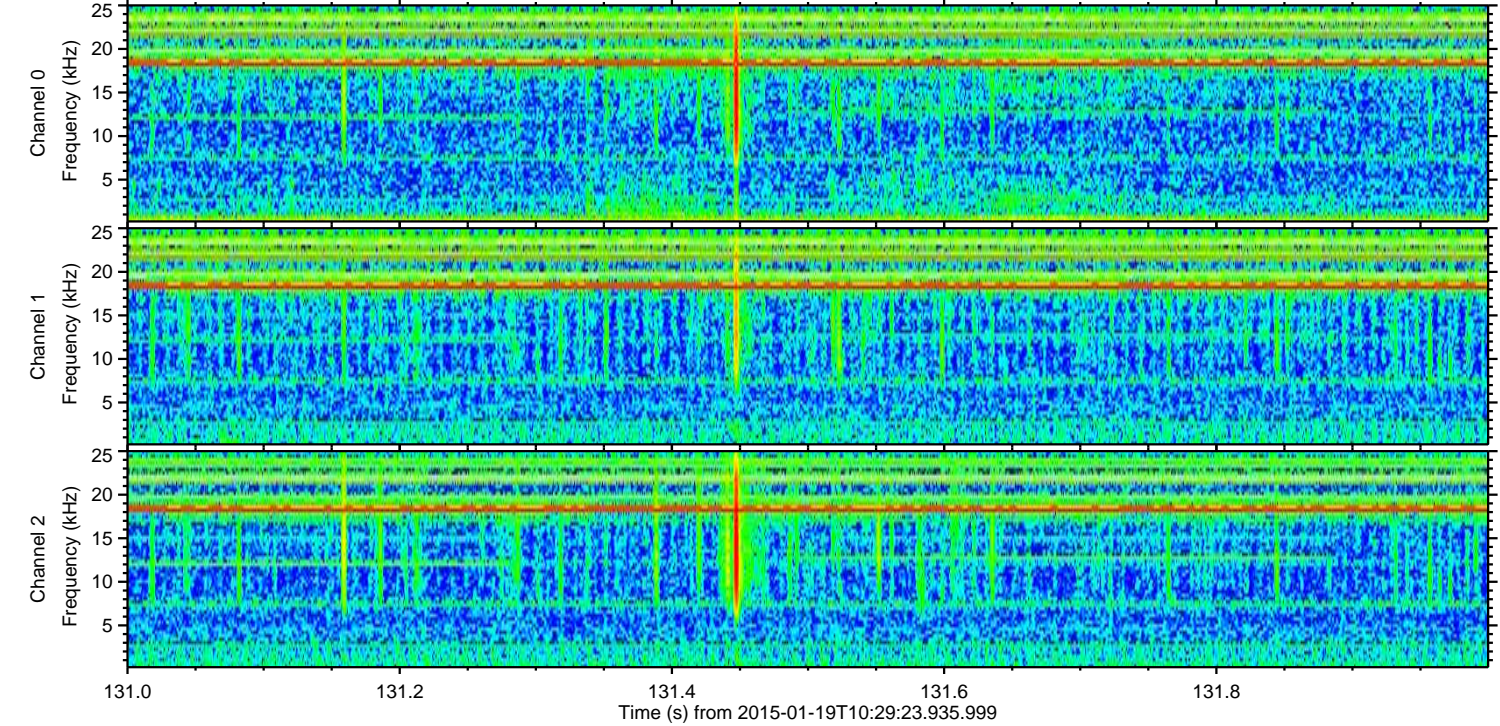
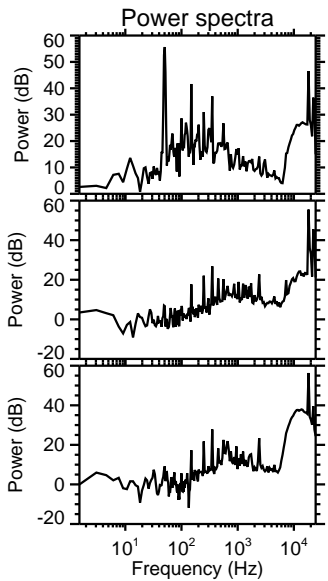
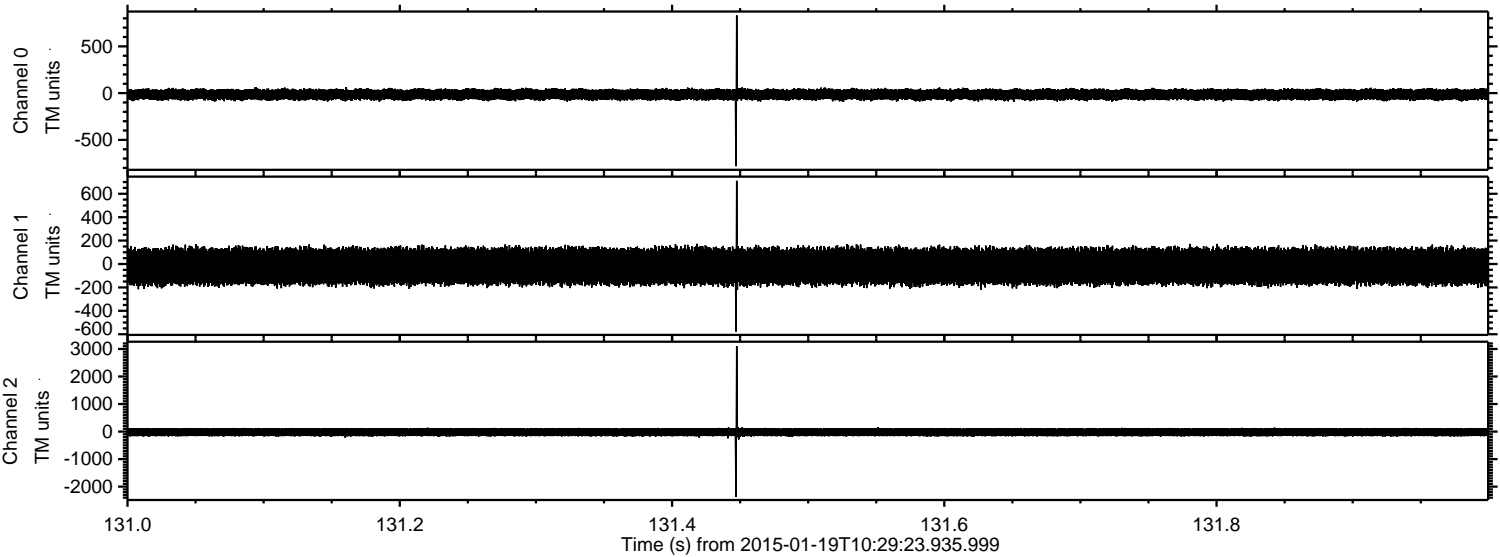
ELMAVAN 3D WAVEFORMS (Measured data sampled at 50 kHz) 49807 packets of 144 samples from 2015-01-19T10:29:23.935.999.

Processed Sat Jan 31 18:48:04 2015 by ELM ver.2012-10-06 from 001__elm20150119_102922__dat00.bin



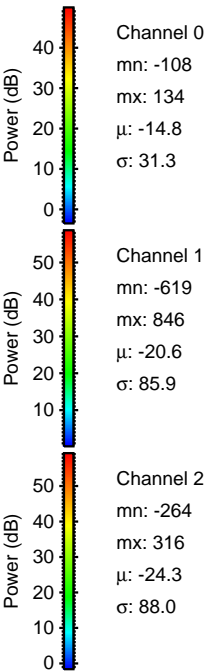
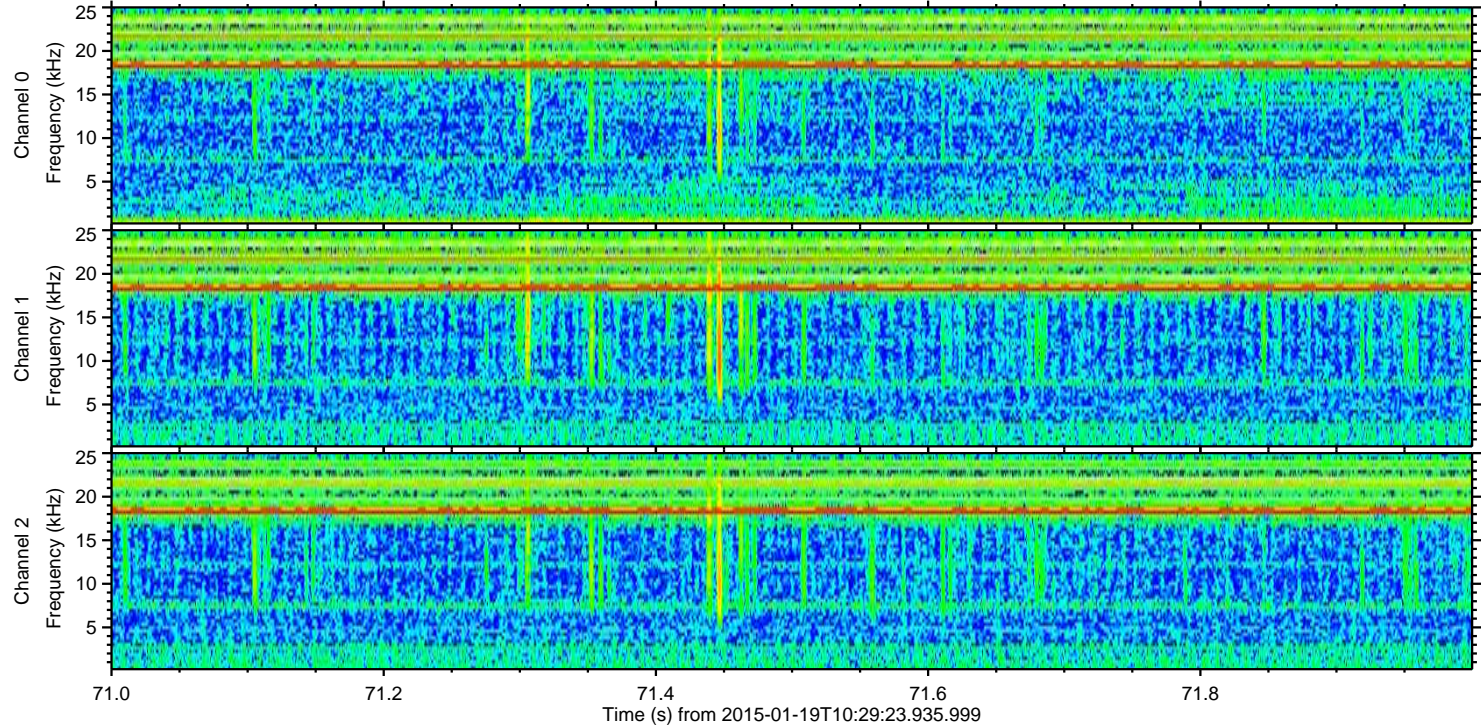
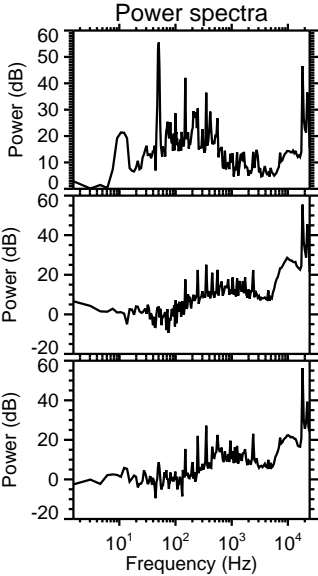
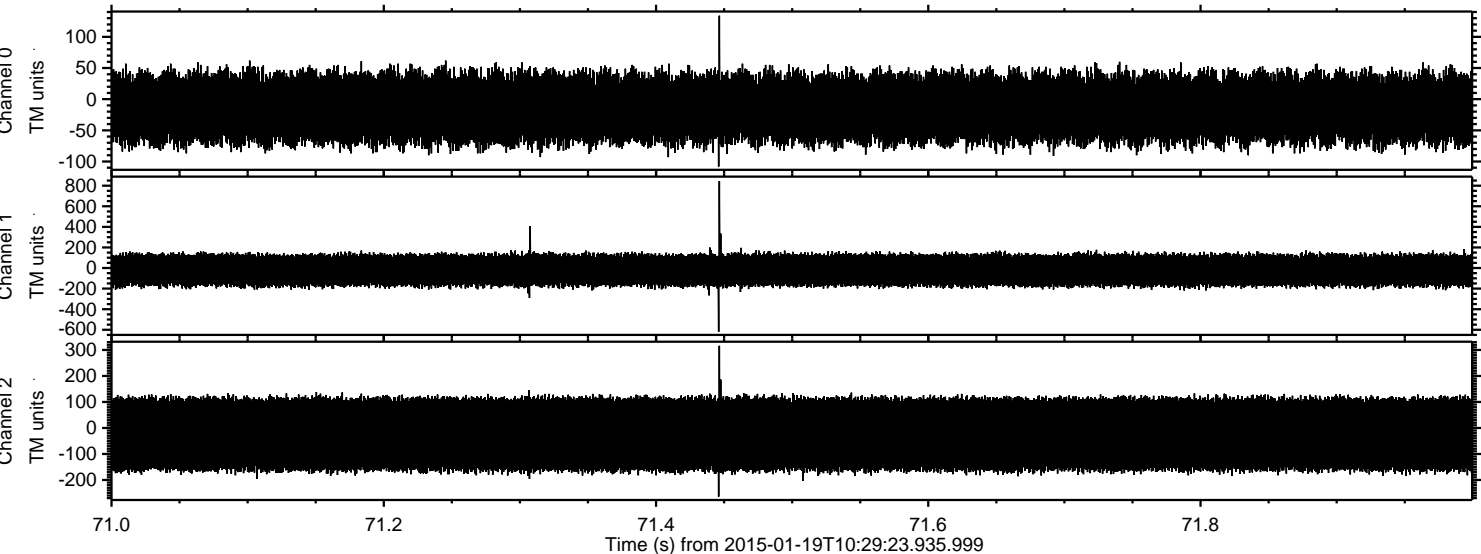
ELMAVAN 3D WAVEFORMS (Measured data sampled at 50 kHz) 49807 packets of 144 samples from 2015-01-19T10:29:23.935.999. Part 132/144

Processed Sat Jan 31 18:48:16 2015 by ELM ver.2012-10-06 from 001__elm20150119_102922__dat00.bin



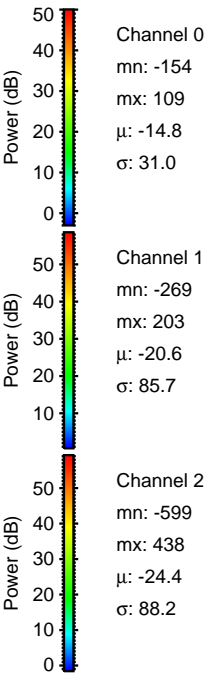
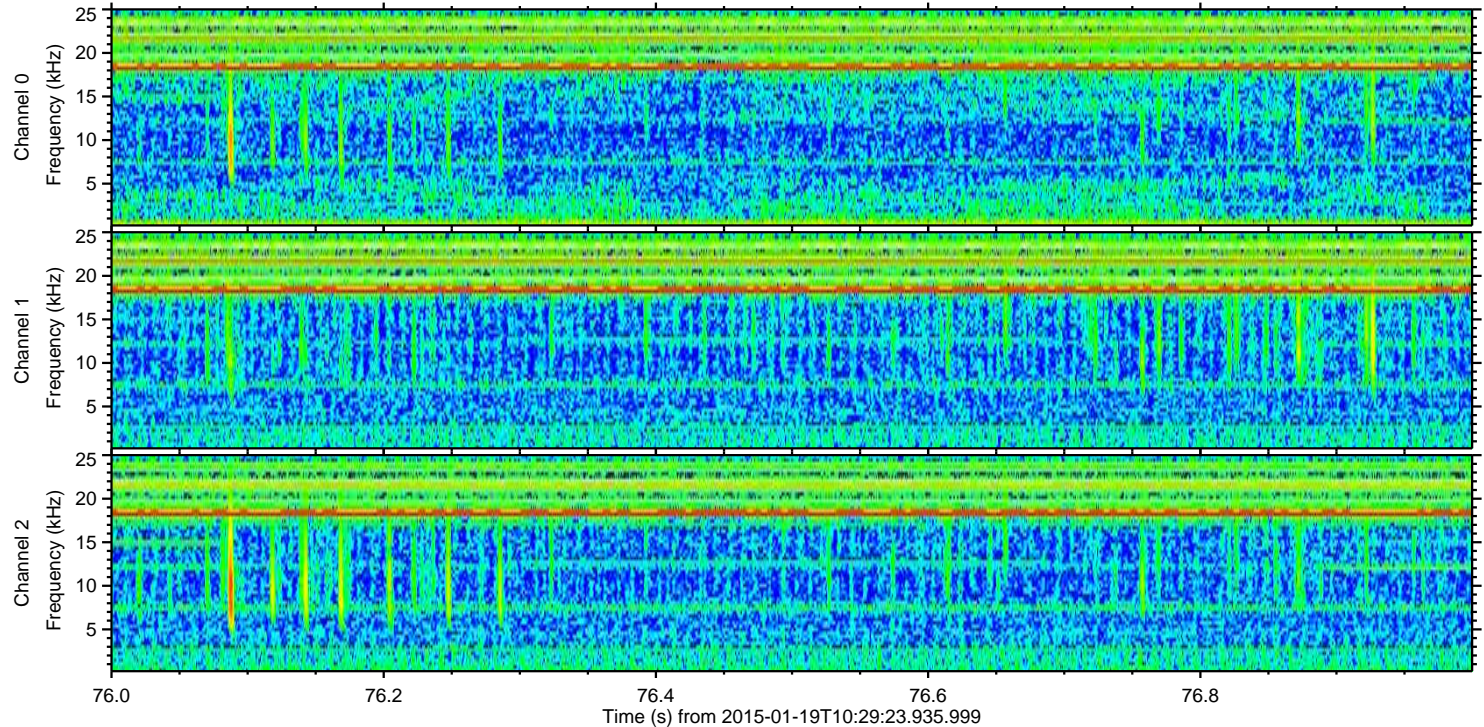
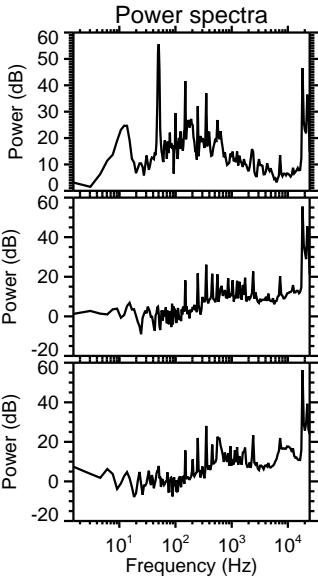
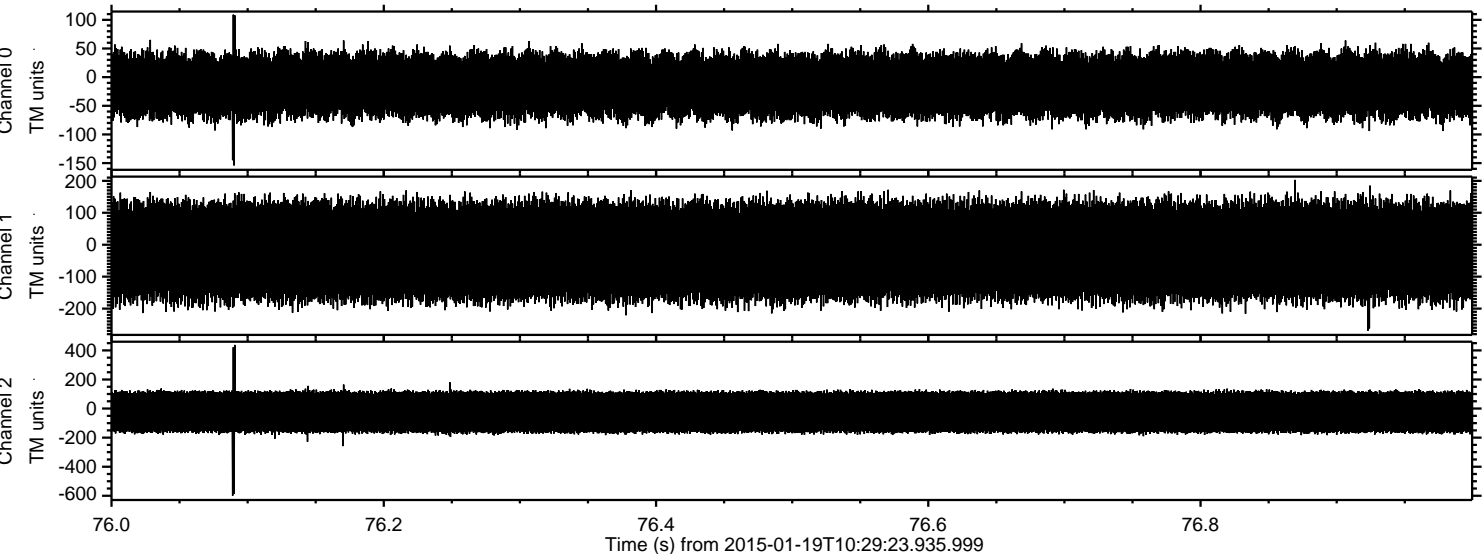
ELMAVAN 3D WAVEFORMS (Measured data sampled at 50 kHz) 49807 packets of 144 samples from 2015-01-19T10:29:23.935.999. Part 72/144

Processed Sat Jan 31 18:48:17 2015 by ELM ver.2012-10-06 from 001__elm20150119_102922__dat00.bin

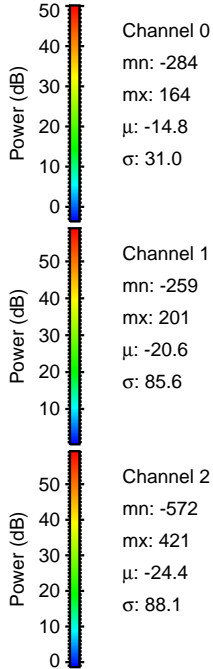
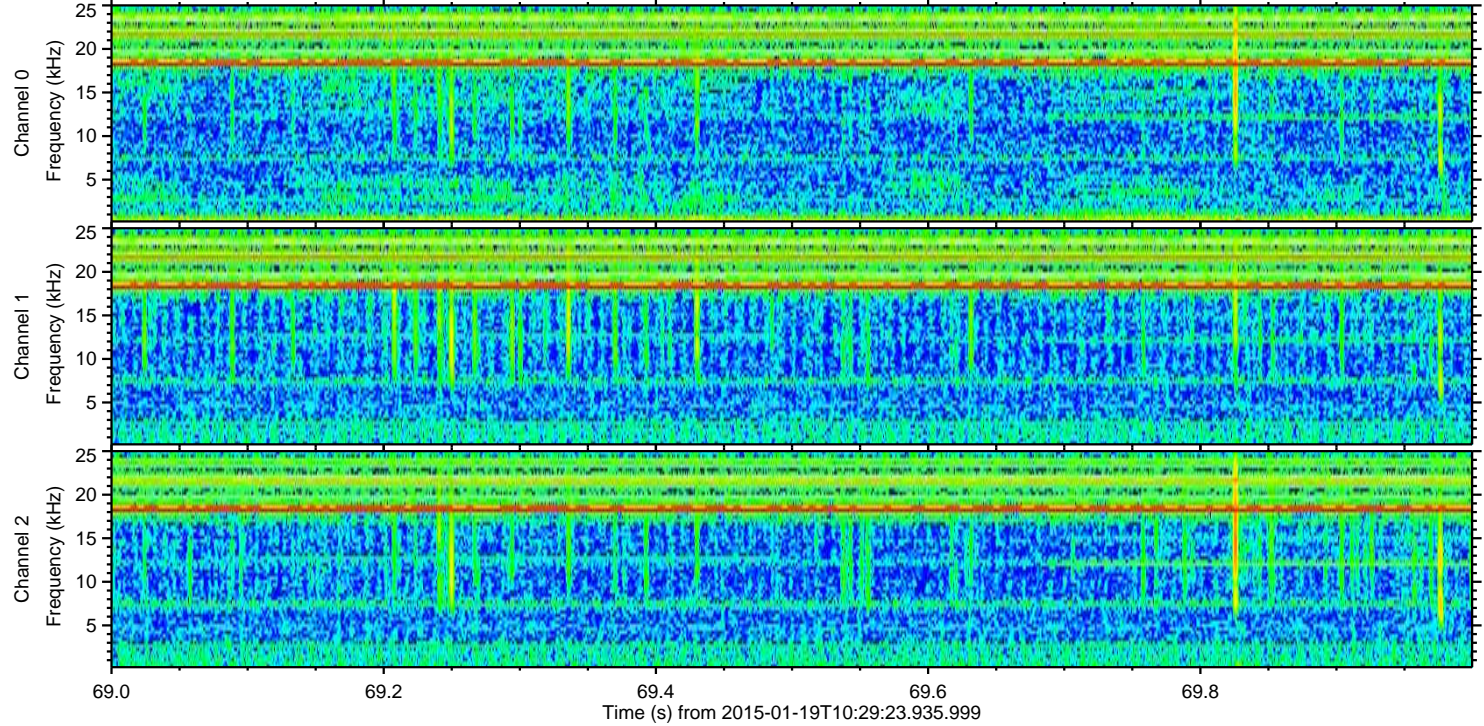
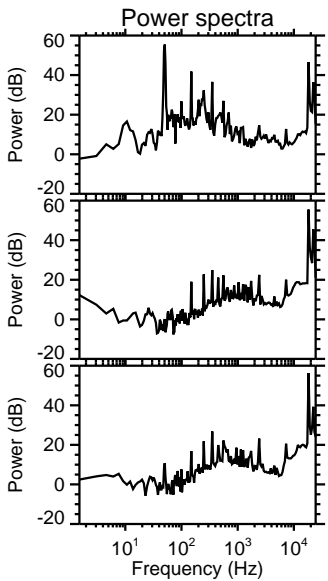
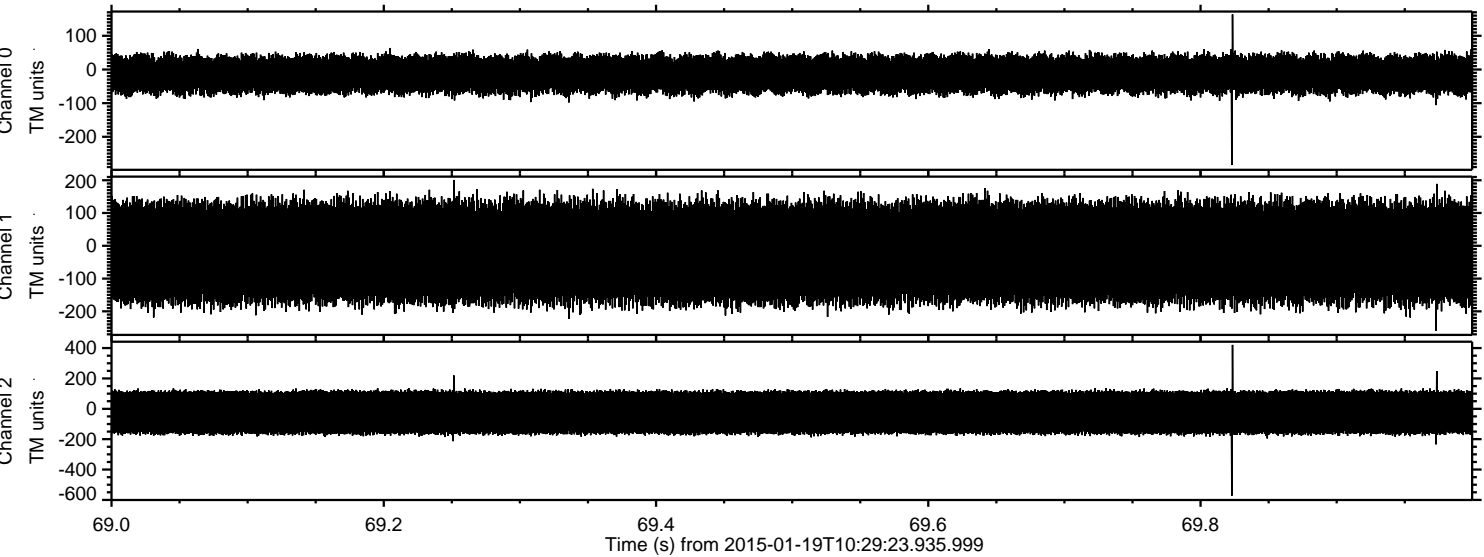


ELMAVAN 3D WAVEFORMS (Measured data sampled at 50 kHz) 49807 packets of 144 samples from 2015-01-19T10:29:23.935.999. Part 77/144

Processed Sat Jan 31 18:48:18 2015 by ELM ver.2012-10-06 from 001__elm20150119_102922__dat00.bin

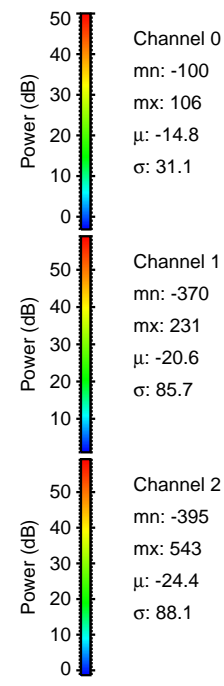
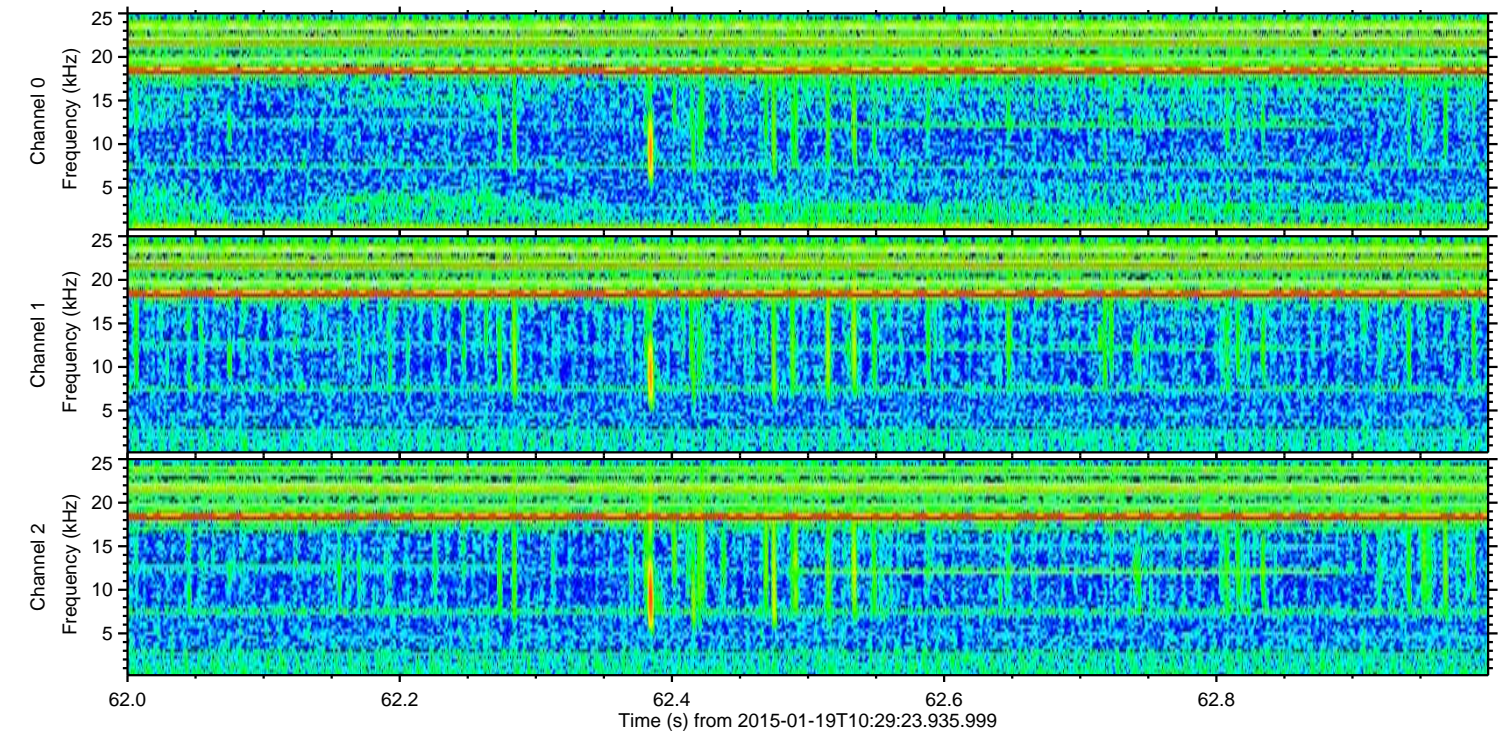
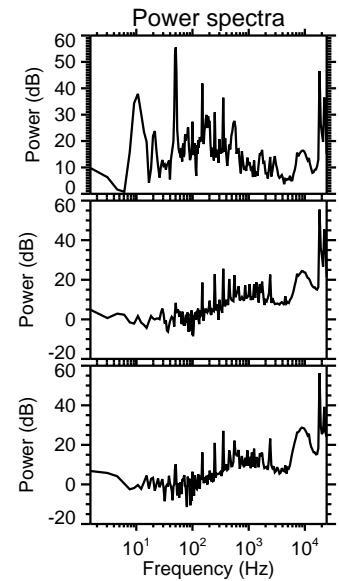
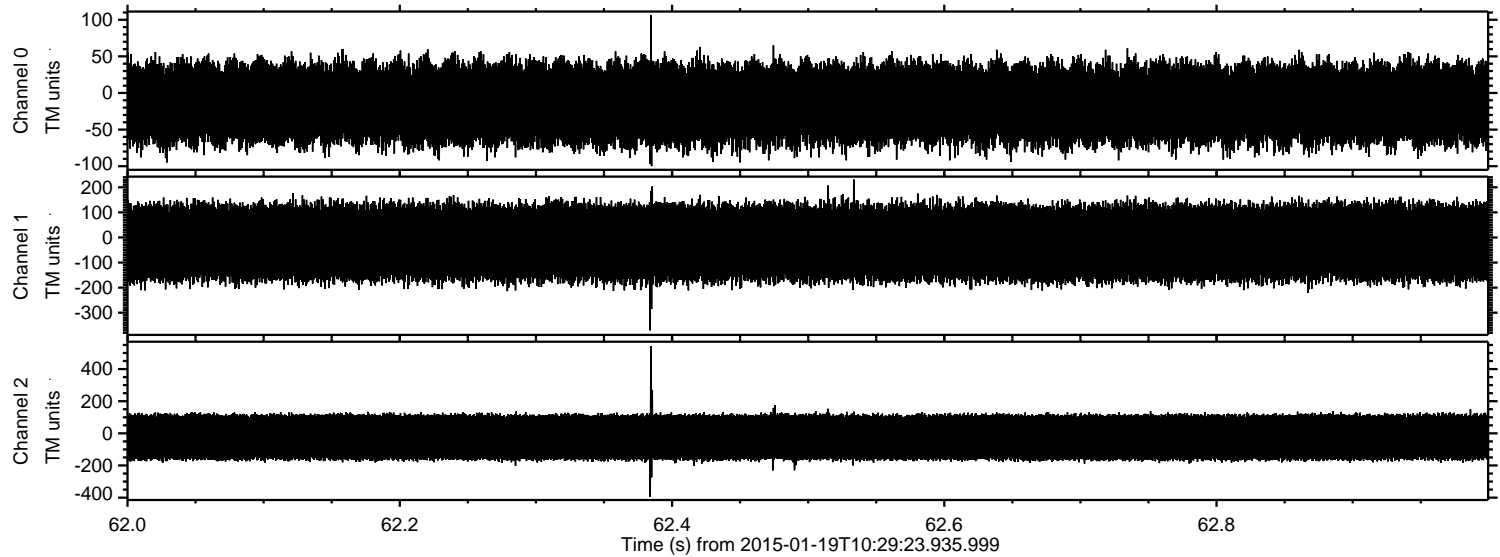


Processed Sat Jan 31 18:48:19 2015 by ELM ver.2012-10-06 from 001__elm20150119_102922__dat00.bin



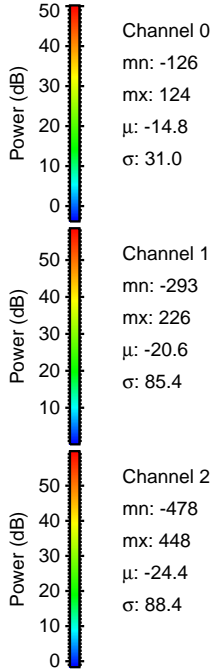
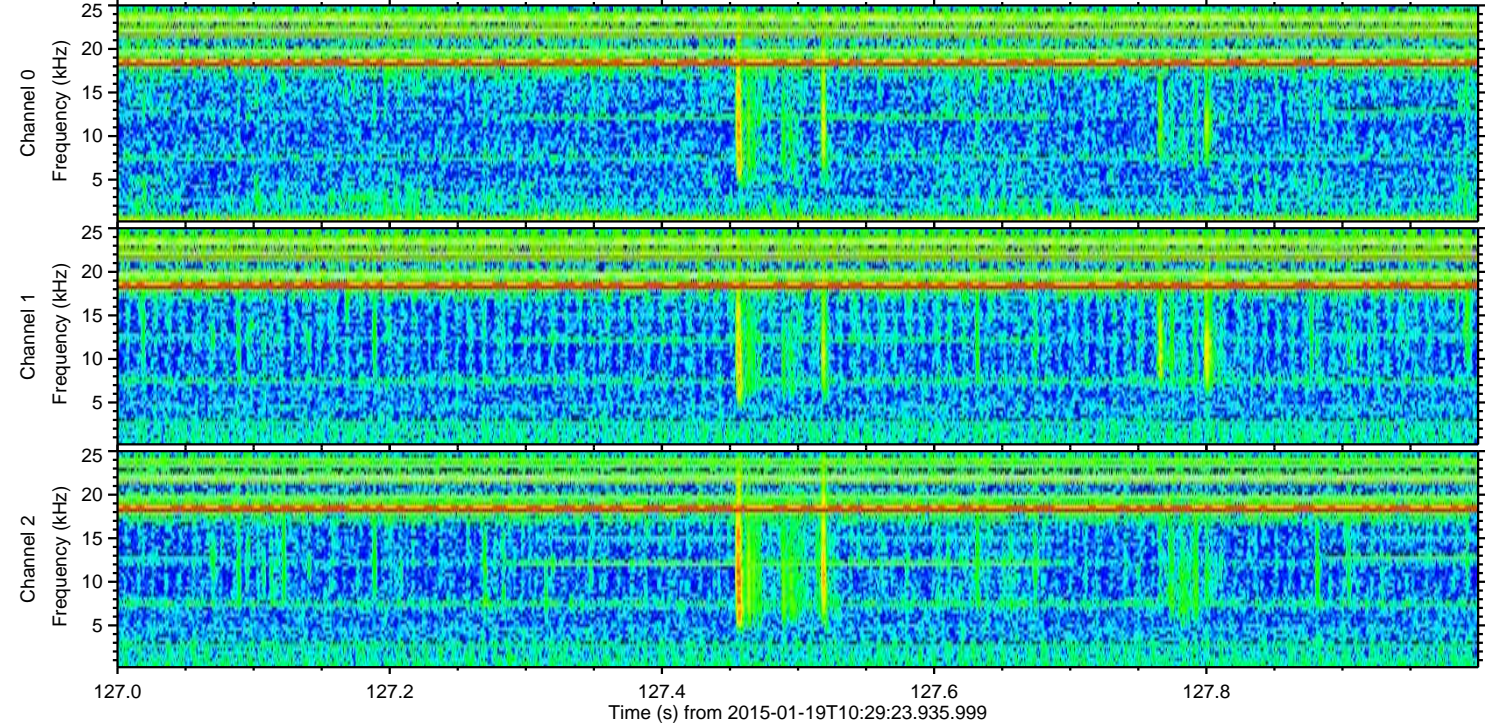
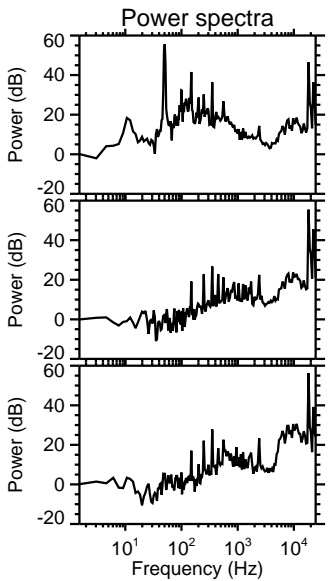
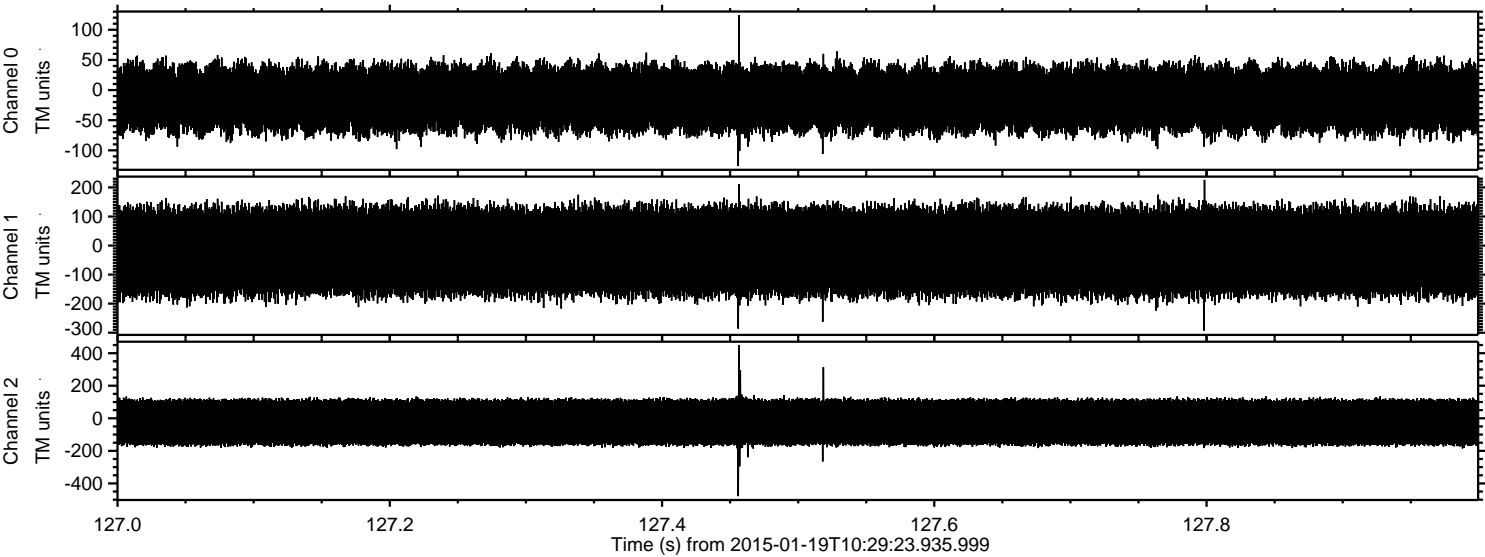
ELMAVAN 3D WAVEFORMS (Measured data sampled at 50 kHz) 49807 packets of 144 samples from 2015-01-19T10:29:23.935.999. Part 63/144

Processed Sat Jan 31 18:48:20 2015 by ELM ver.2012-10-06 from 001__elm20150119_102922__dat00.bin

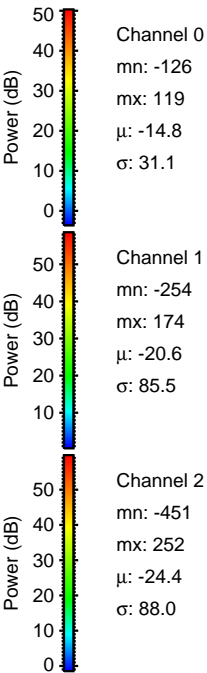
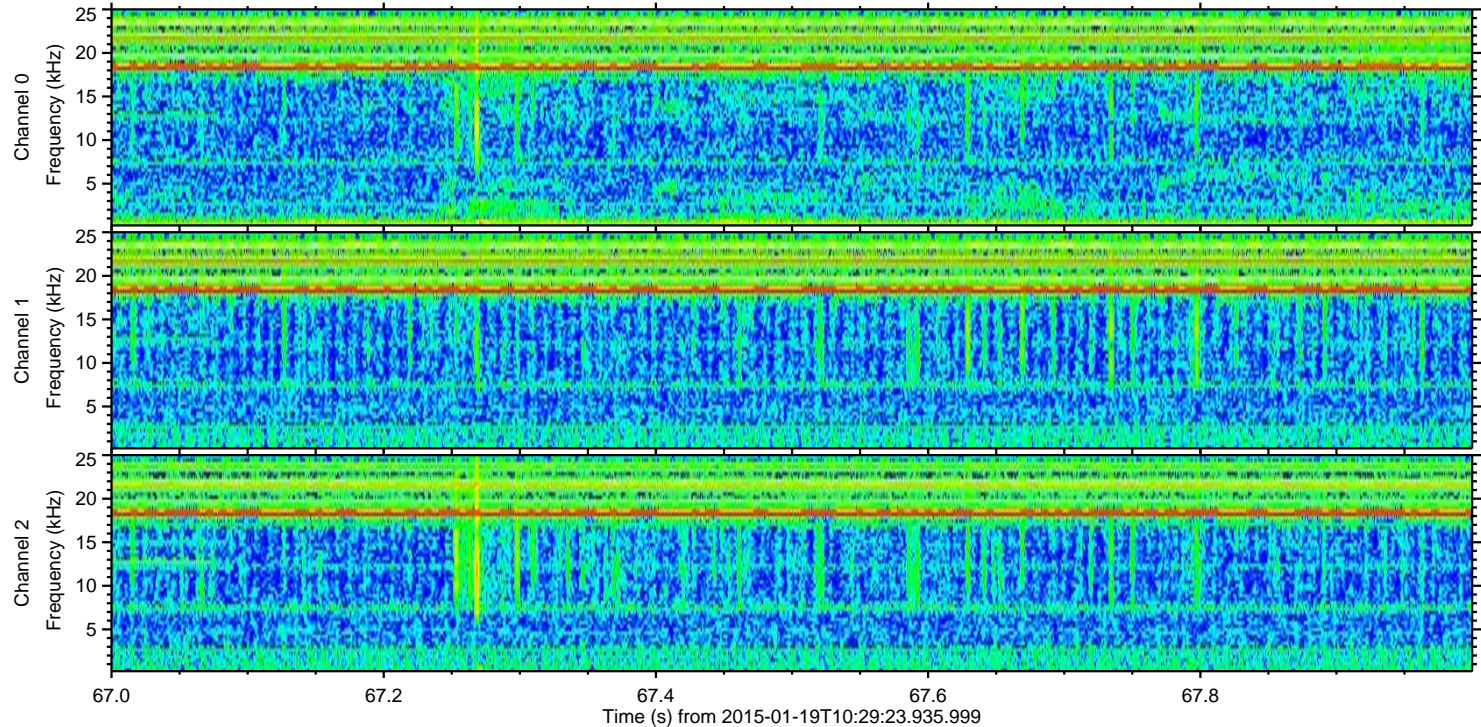
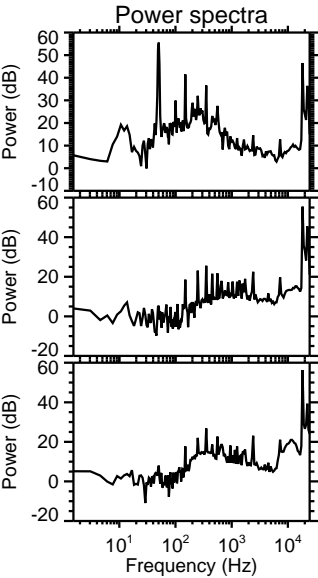
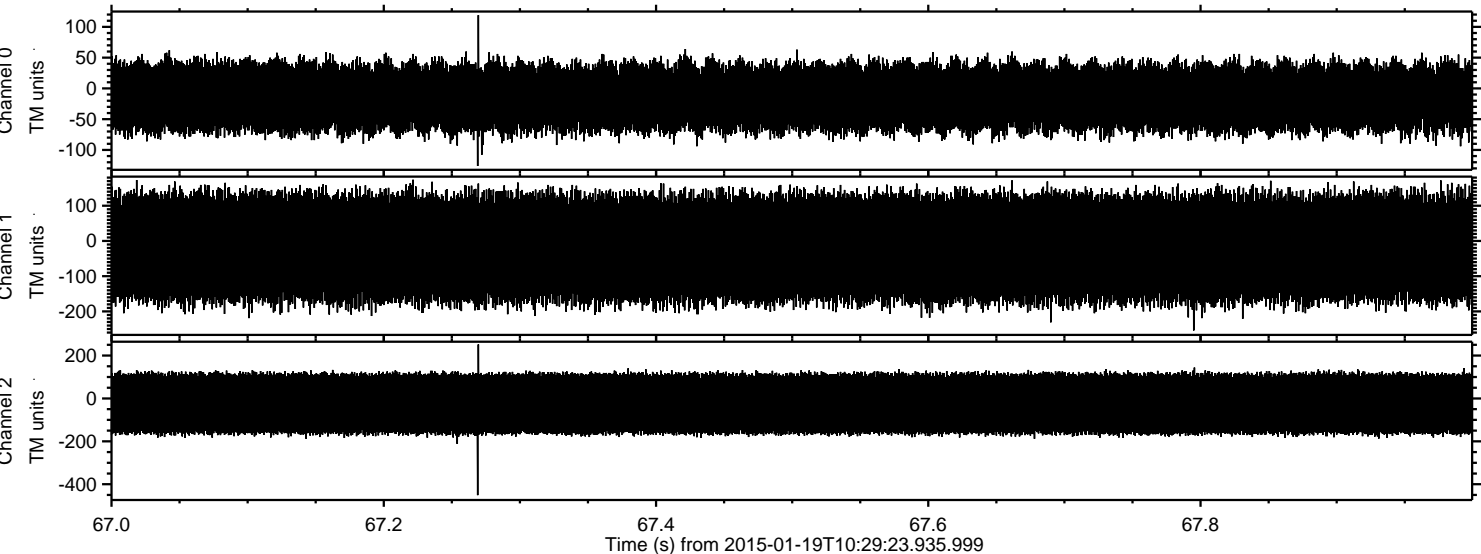


ELMAVAN 3D WAVEFORMS (Measured data sampled at 50 kHz) 49807 packets of 144 samples from 2015-01-19T10:29:23.935.999. Part 128/144

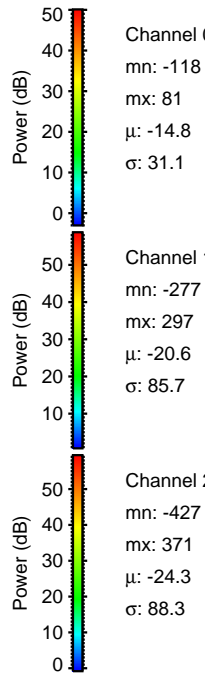
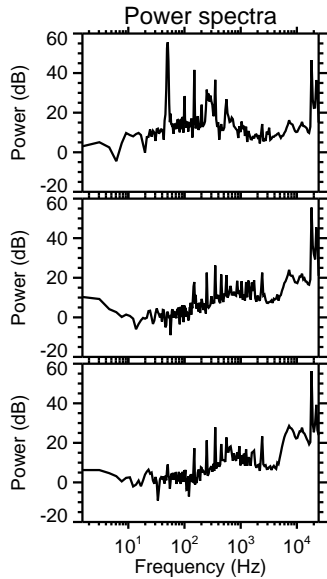
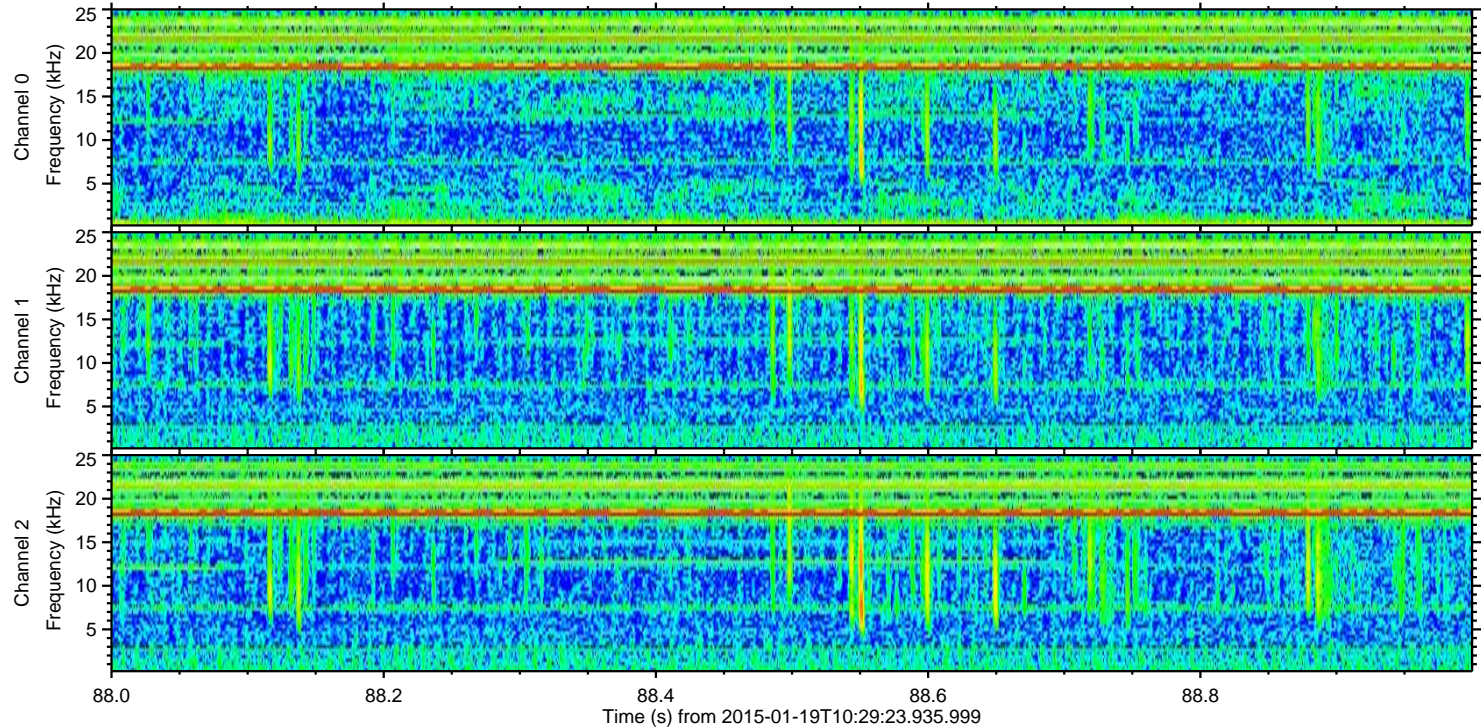
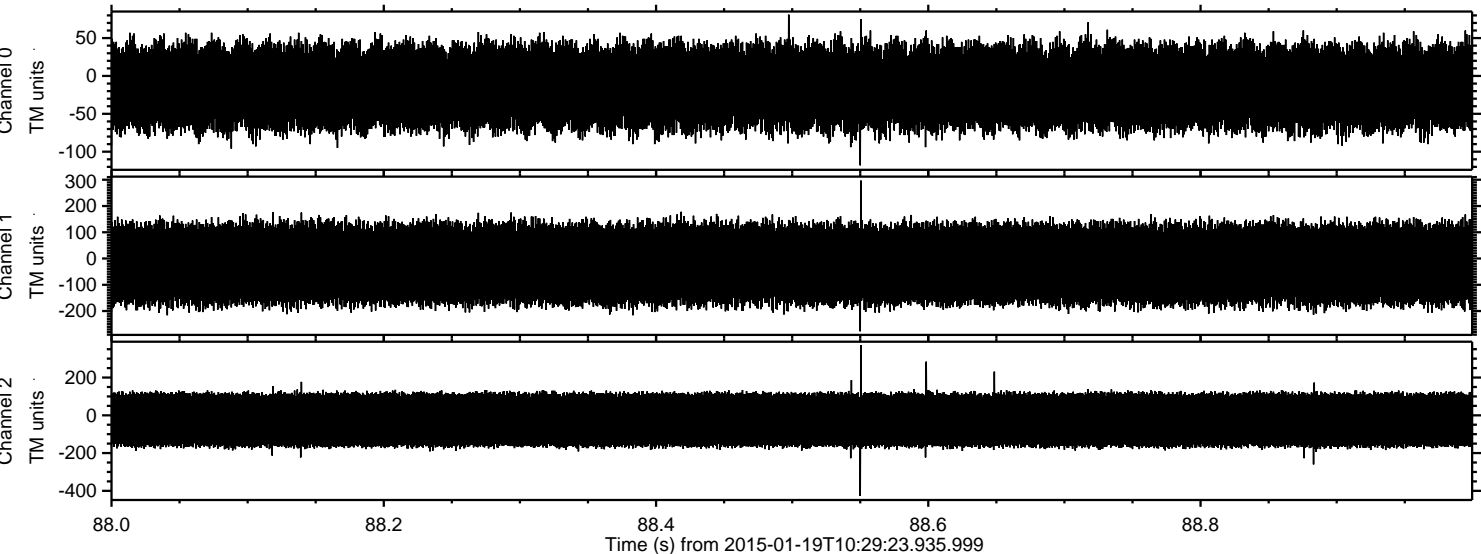
Processed Sat Jan 31 18:48:21 2015 by ELM ver.2012-10-06 from 001__elm20150119_102922__dat00.bin



Processed Sat Jan 31 18:48:22 2015 by ELM ver.2012-10-06 from 001__elm20150119_102922__dat00.bin



Processed Sat Jan 31 18:48:23 2015 by ELM ver.2012-10-06 from 001__elm20150119_102922__dat00.bin

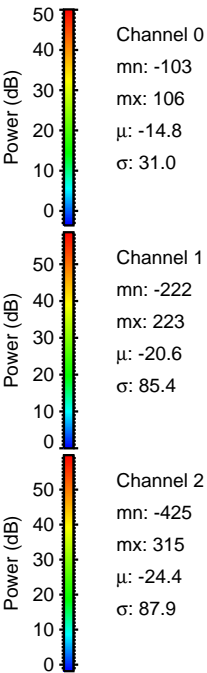
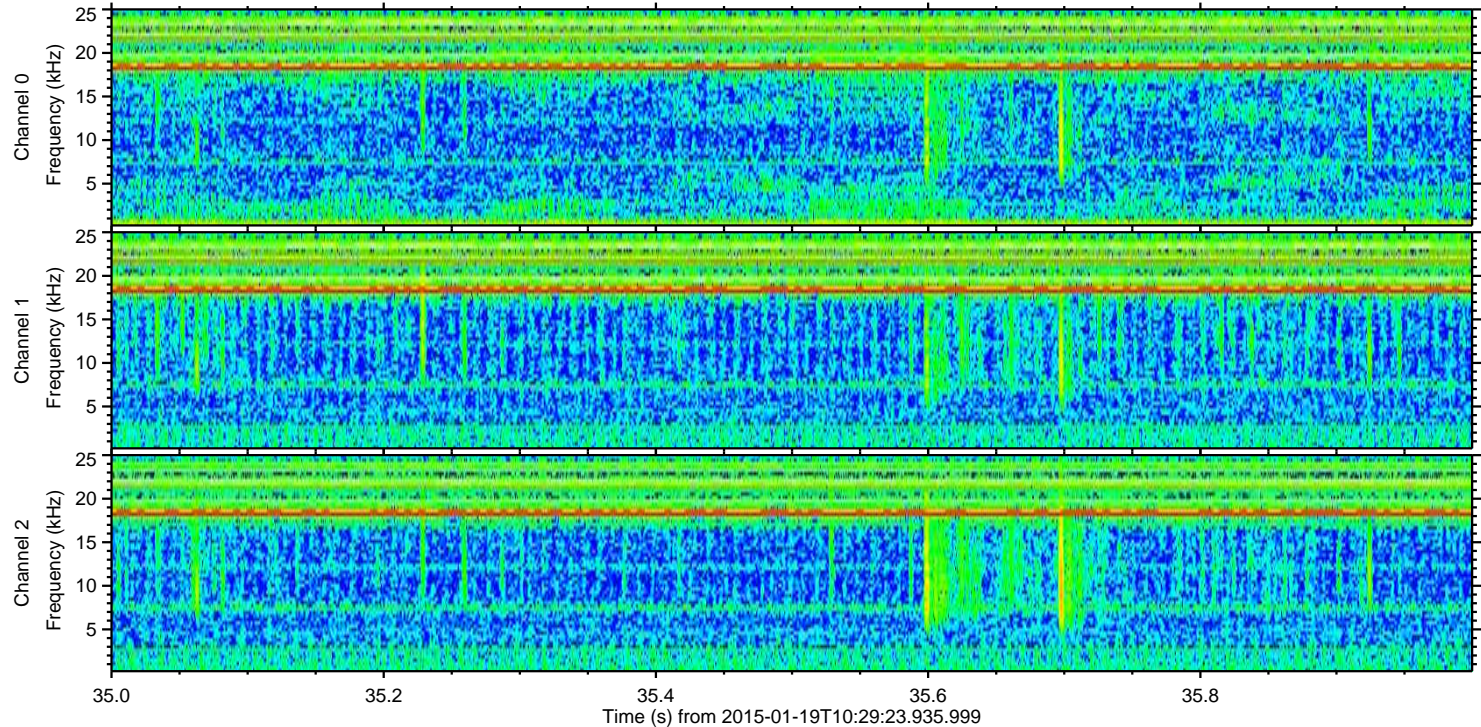
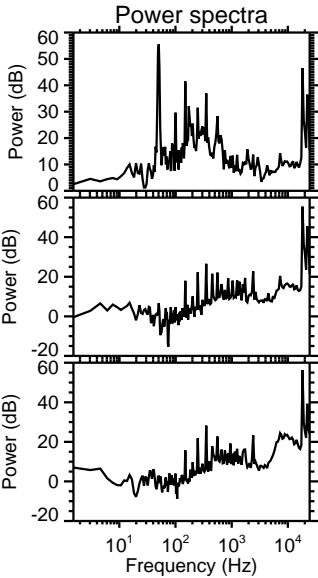
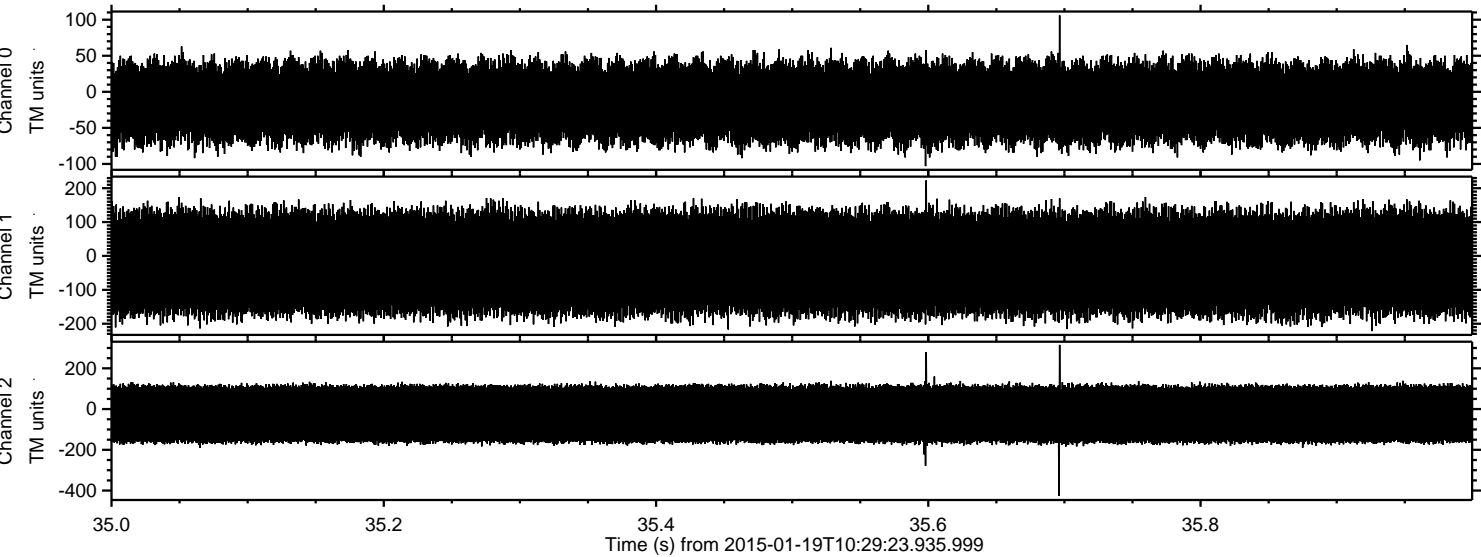


Channel 0
mn: -118
mx: 81
 μ : -14.8
 σ : 31.1

Channel 1
mn: -277
mx: 297
 μ : -20.6
 σ : 85.7

Channel 2
mn: -427
mx: 371
 μ : -24.3
 σ : 88.3

Processed Sat Jan 31 18:48:23 2015 by ELM ver.2012-10-06 from 001__elm20150119_102922__dat00.bin



Processed Sat Jan 31 18:48:24 2015 by ELM ver.2012-10-06 from 001__elm20150119_102922__dat00.bin

