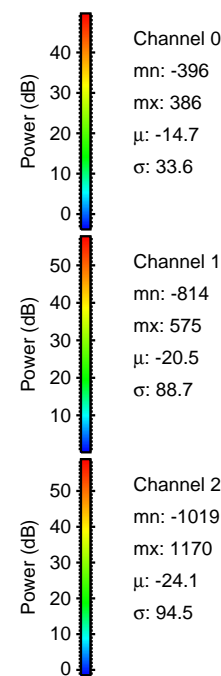
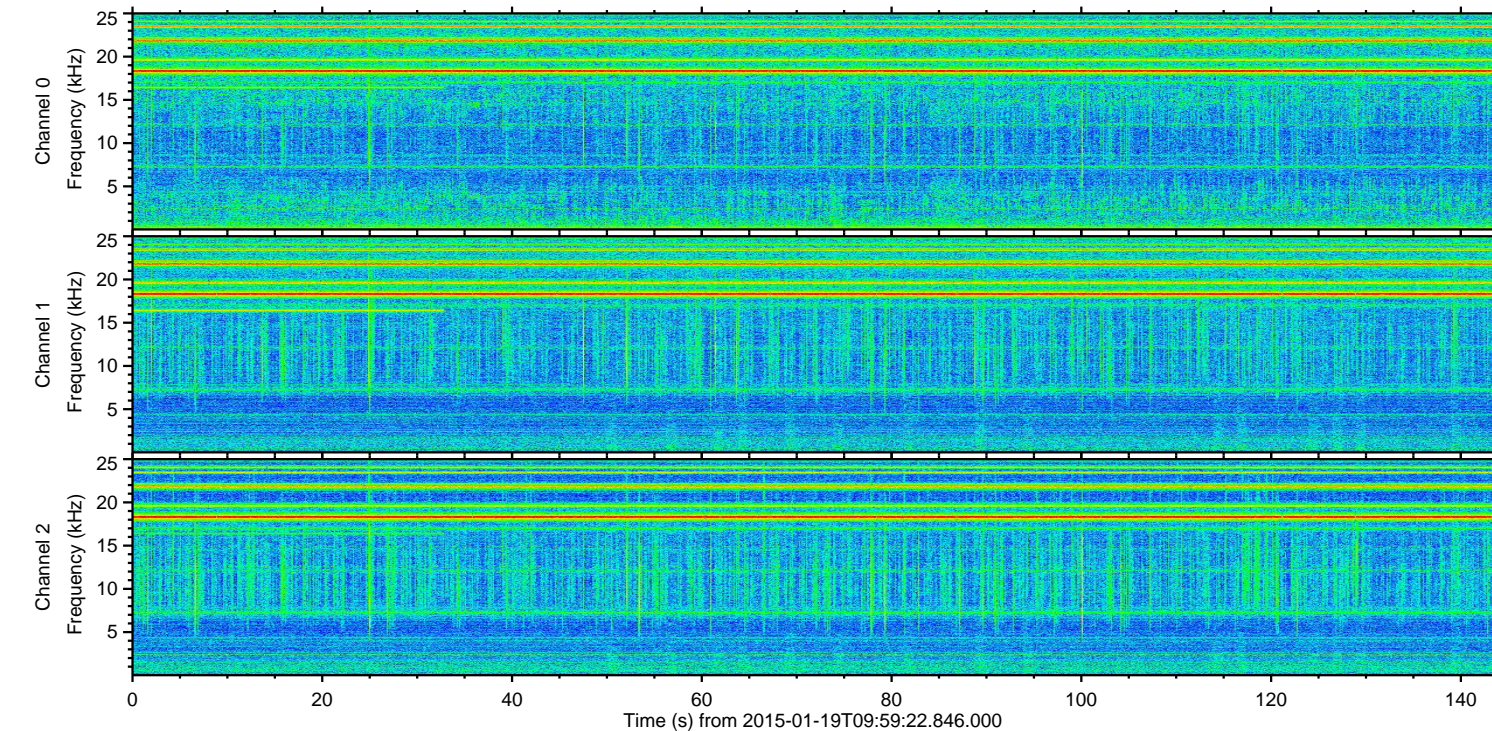
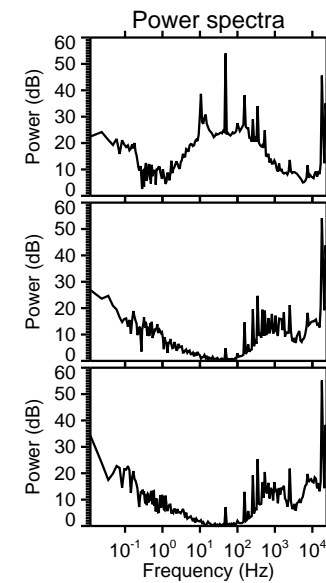
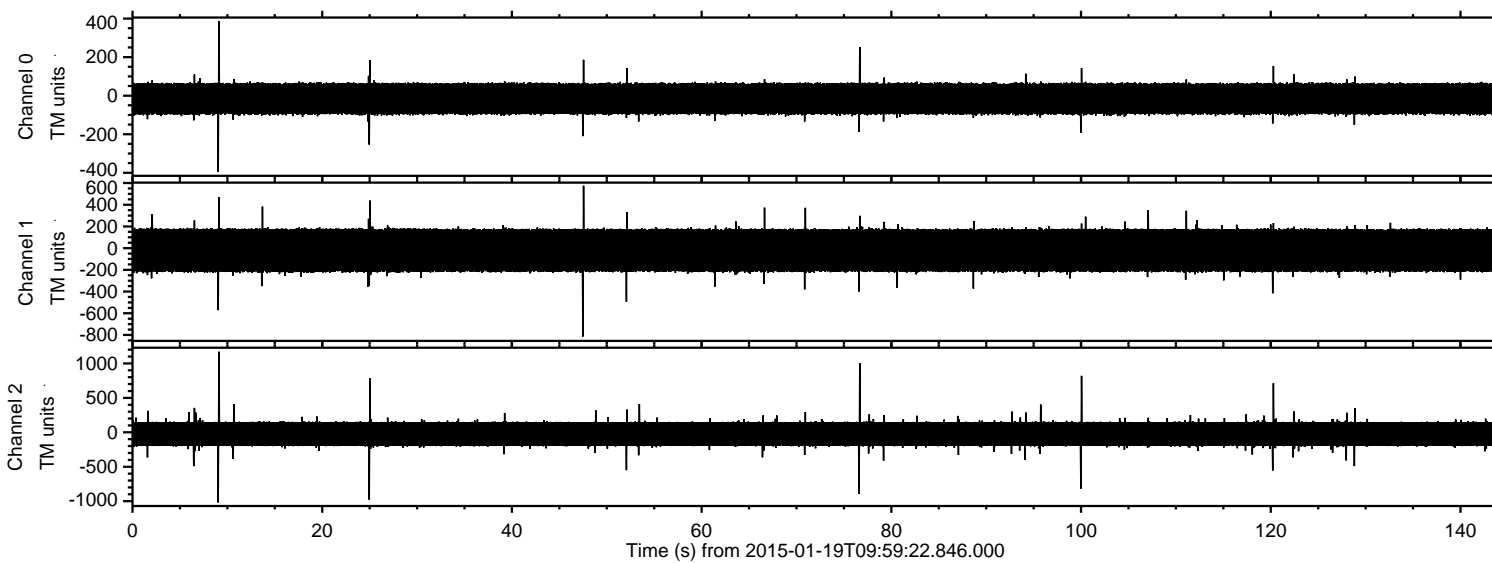


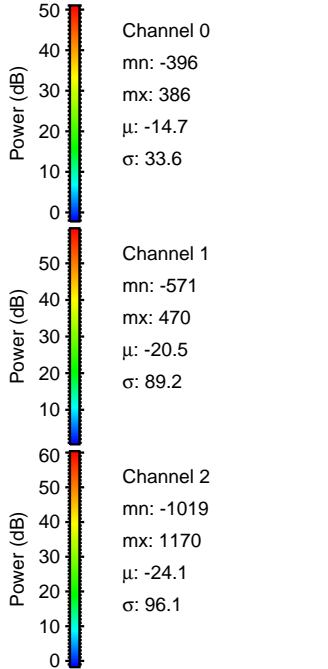
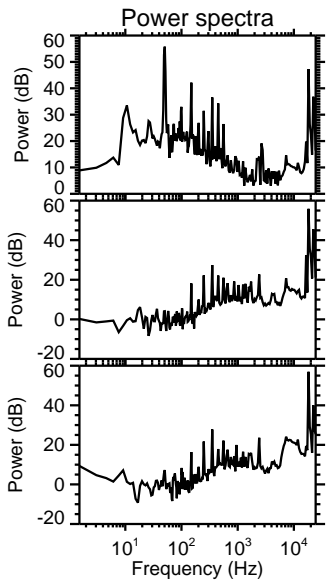
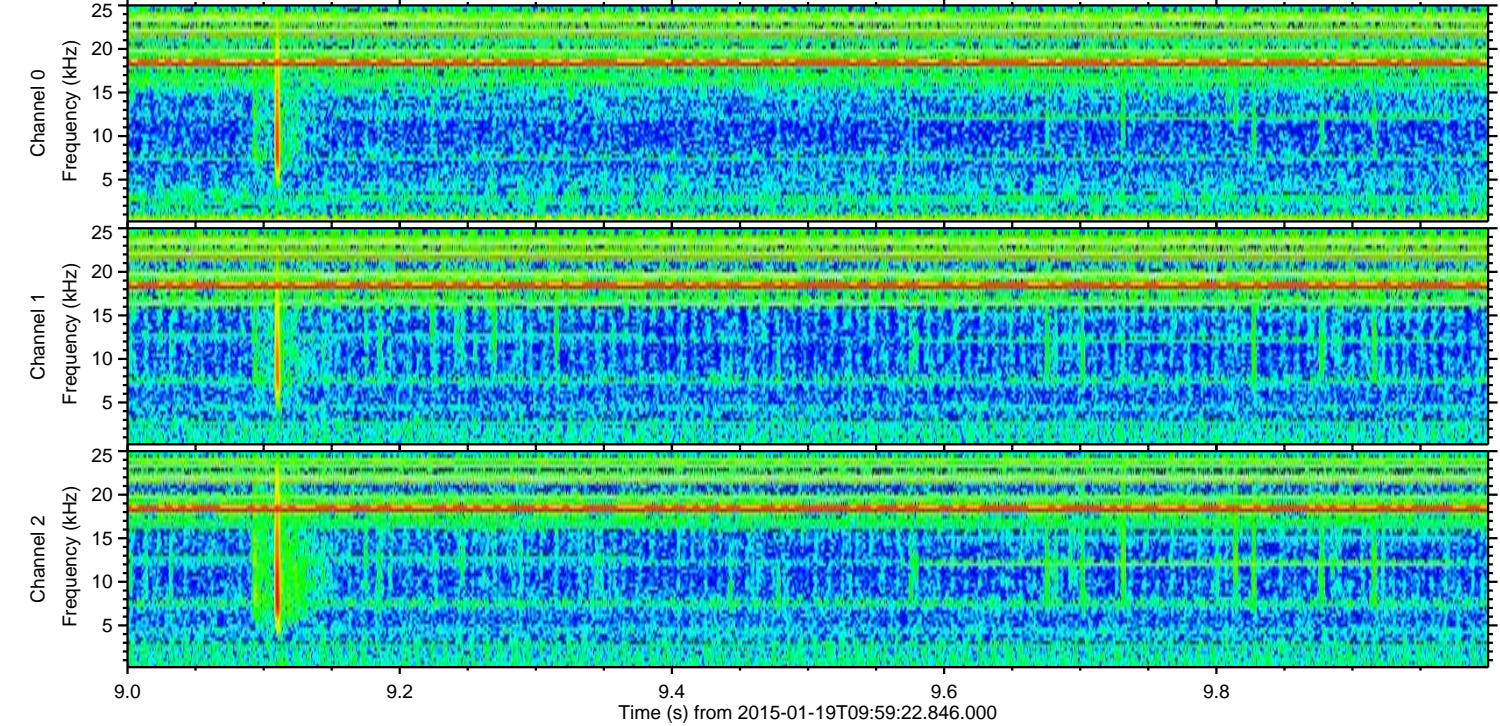
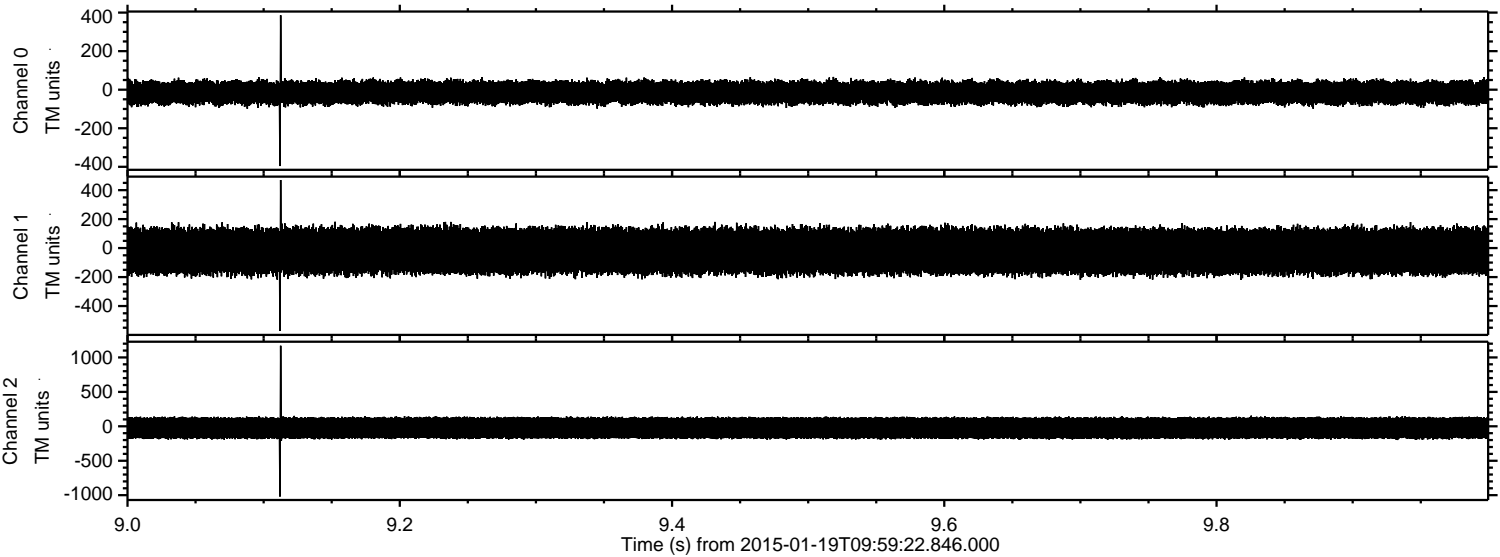
ELMAVAN 3D WAVEFORMS (Measured data sampled at 50 kHz) 49807 packets of 144 samples from 2015-01-19T09:59:22.846.000.

Processed Sat Jan 31 17:29:24 2015 by ELM ver.2012-10-06 from 001\_\_elm20150119\_095921\_\_dat00.bin



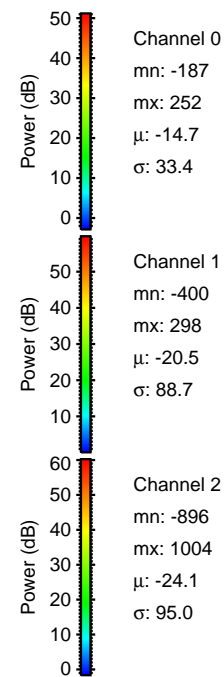
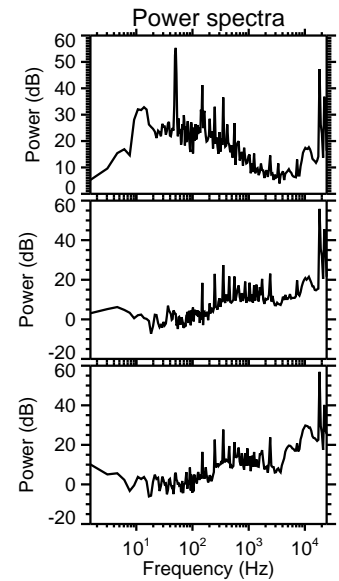
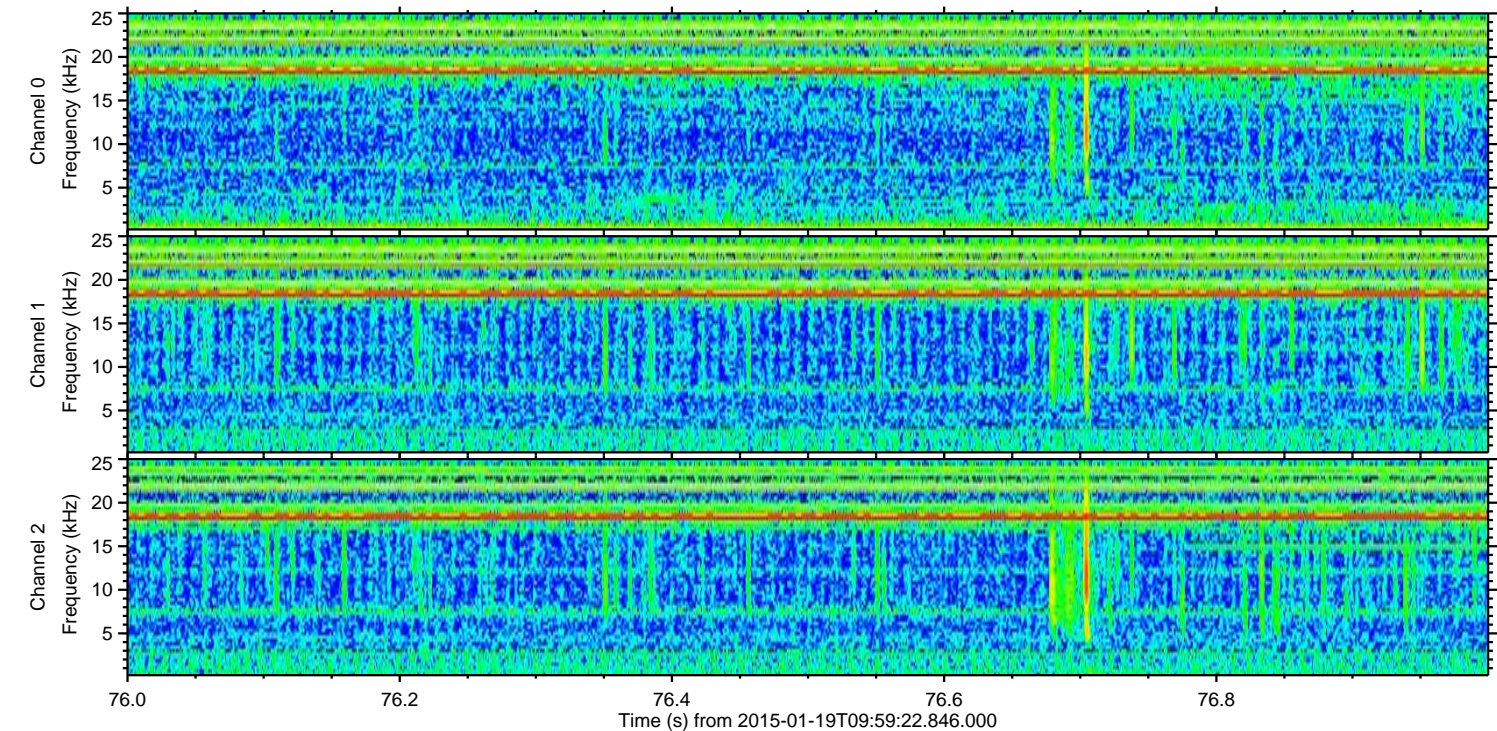
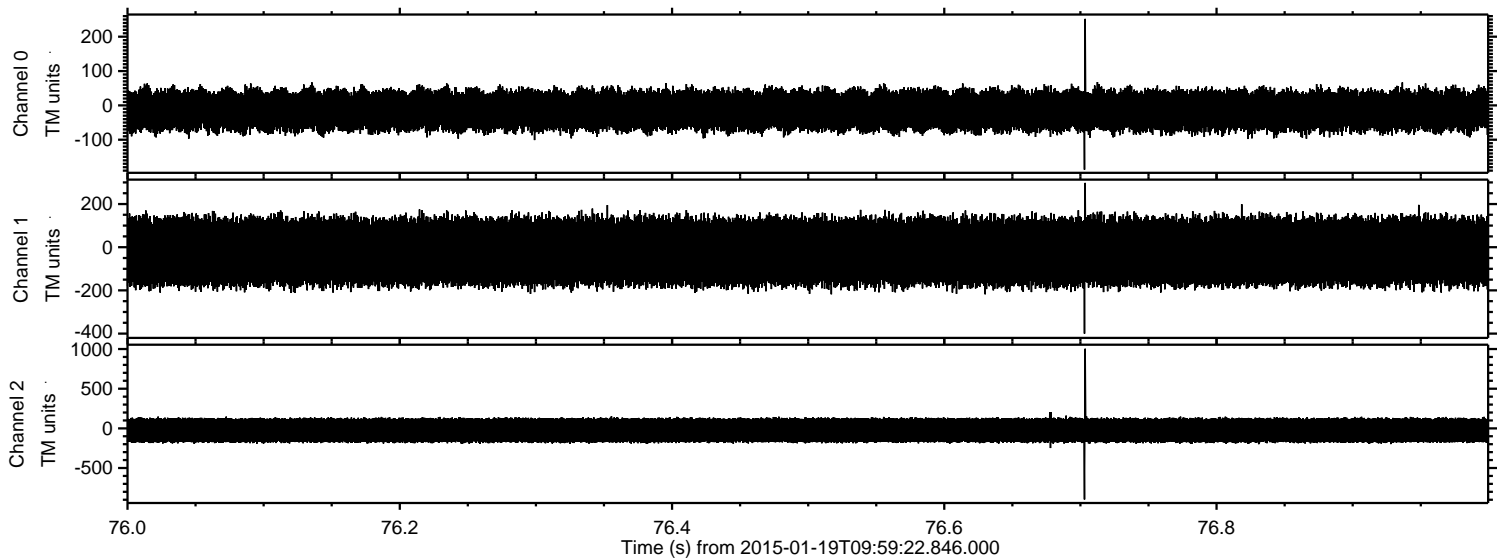


Processed Sat Jan 31 17:29:35 2015 by ELM ver.2012-10-06 from 001\_\_elm20150119\_095921\_\_dat00.bin



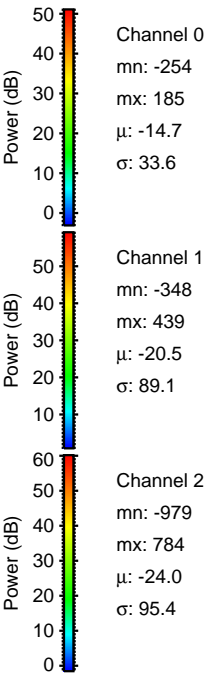
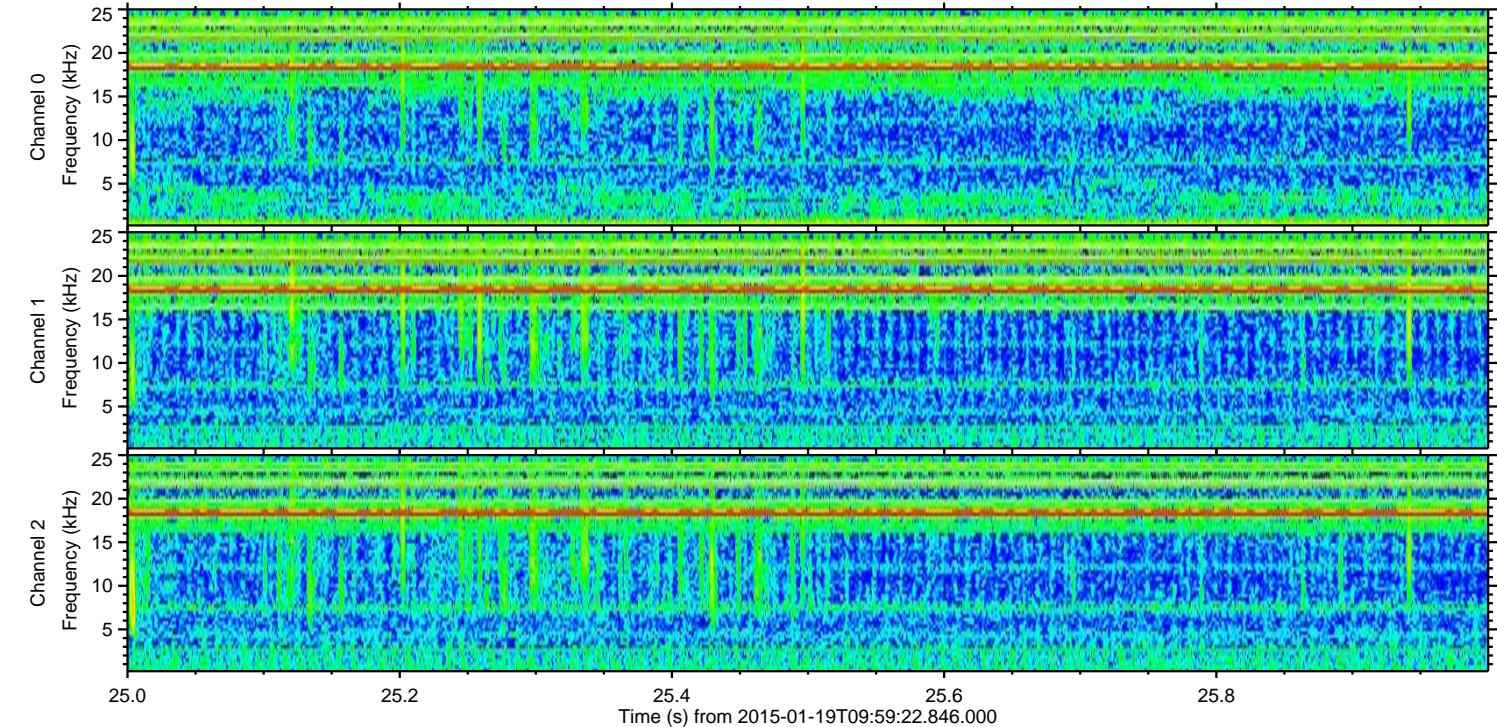
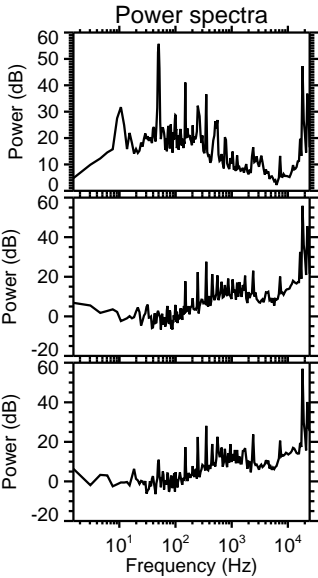
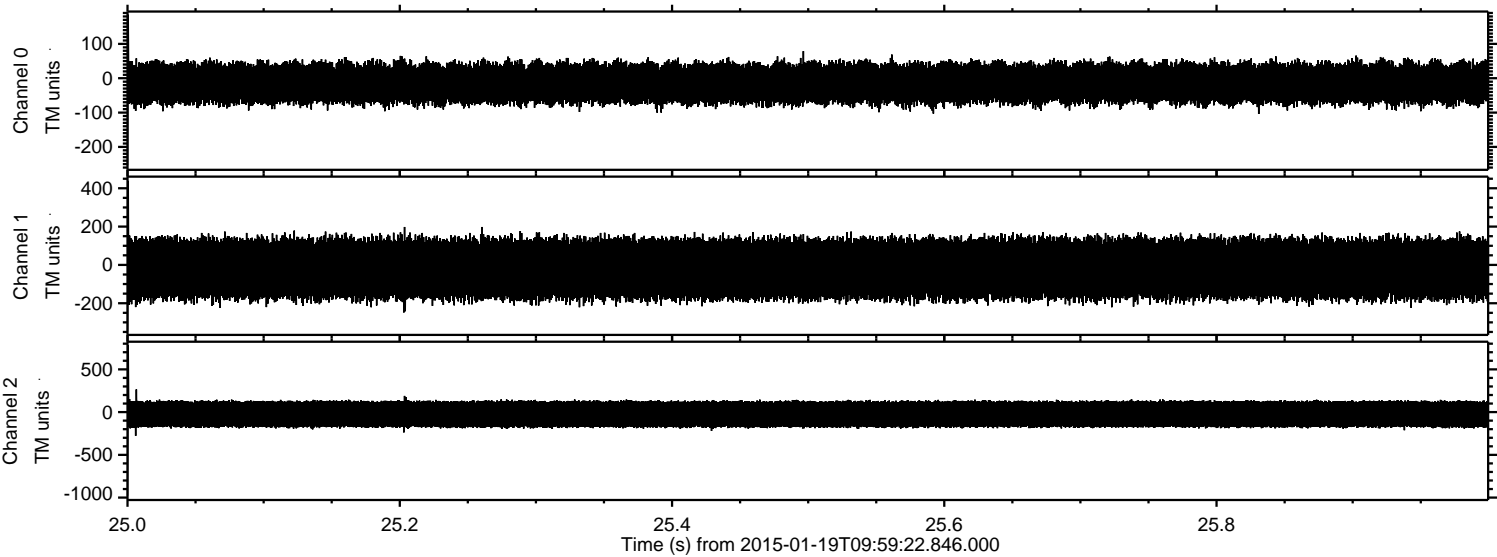


Processed Sat Jan 31 17:29:36 2015 by ELM ver.2012-10-06 from 001\_\_elm20150119\_095921\_\_dat00.bin





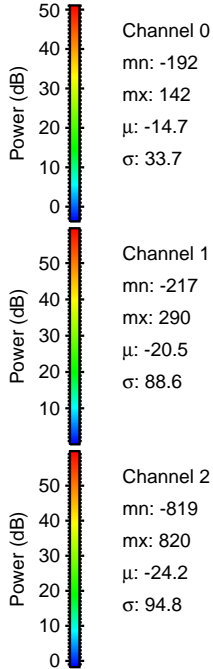
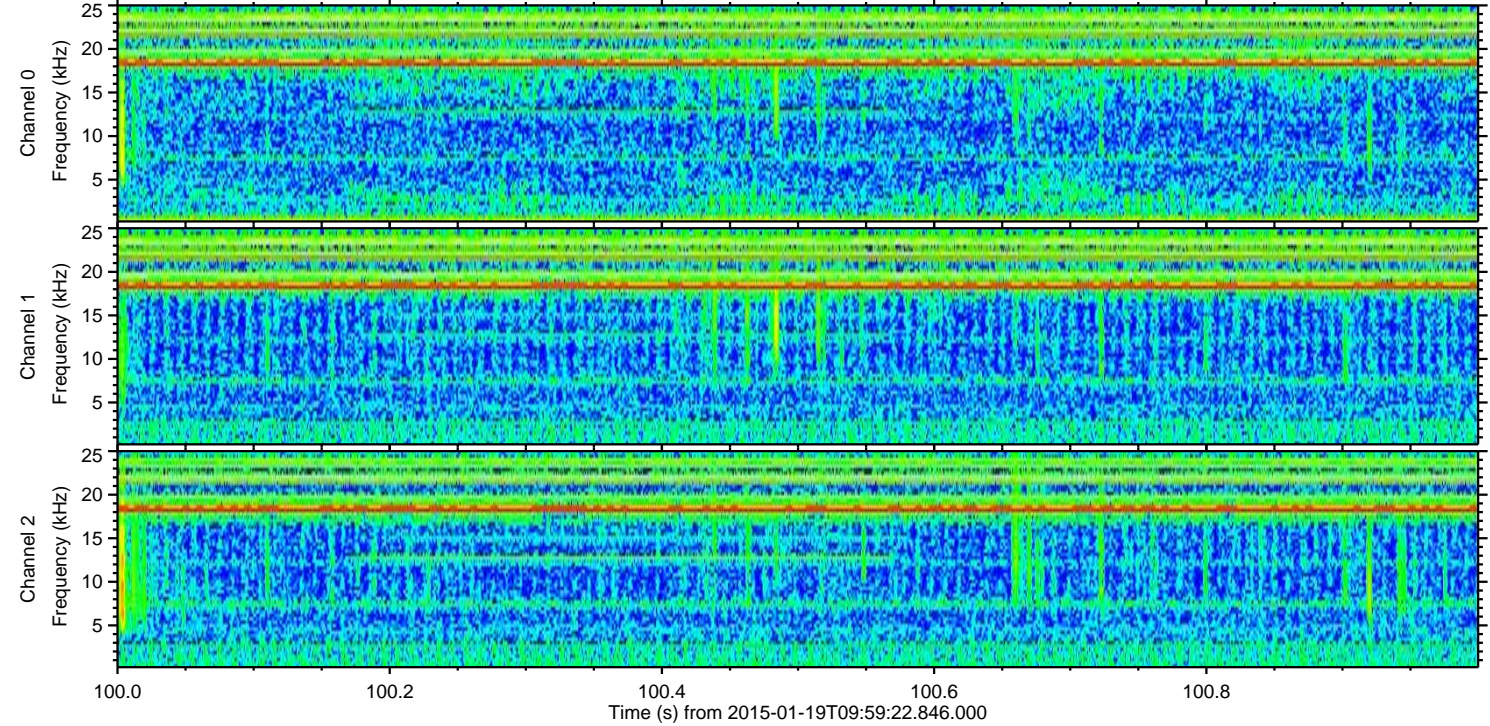
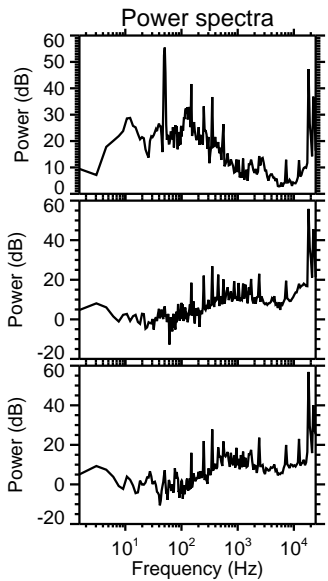
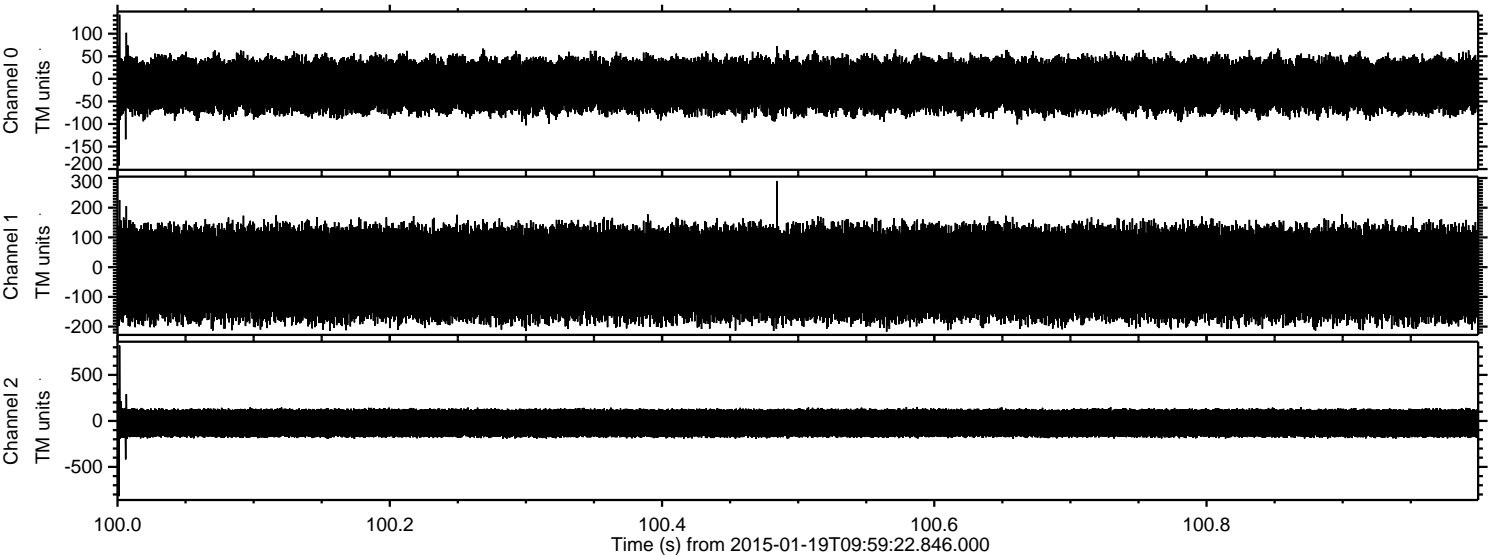
Processed Sat Jan 31 17:29:37 2015 by ELM ver.2012-10-06 from 001\_\_elm20150119\_095921\_\_dat00.bin





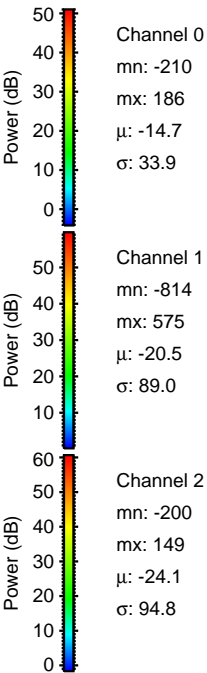
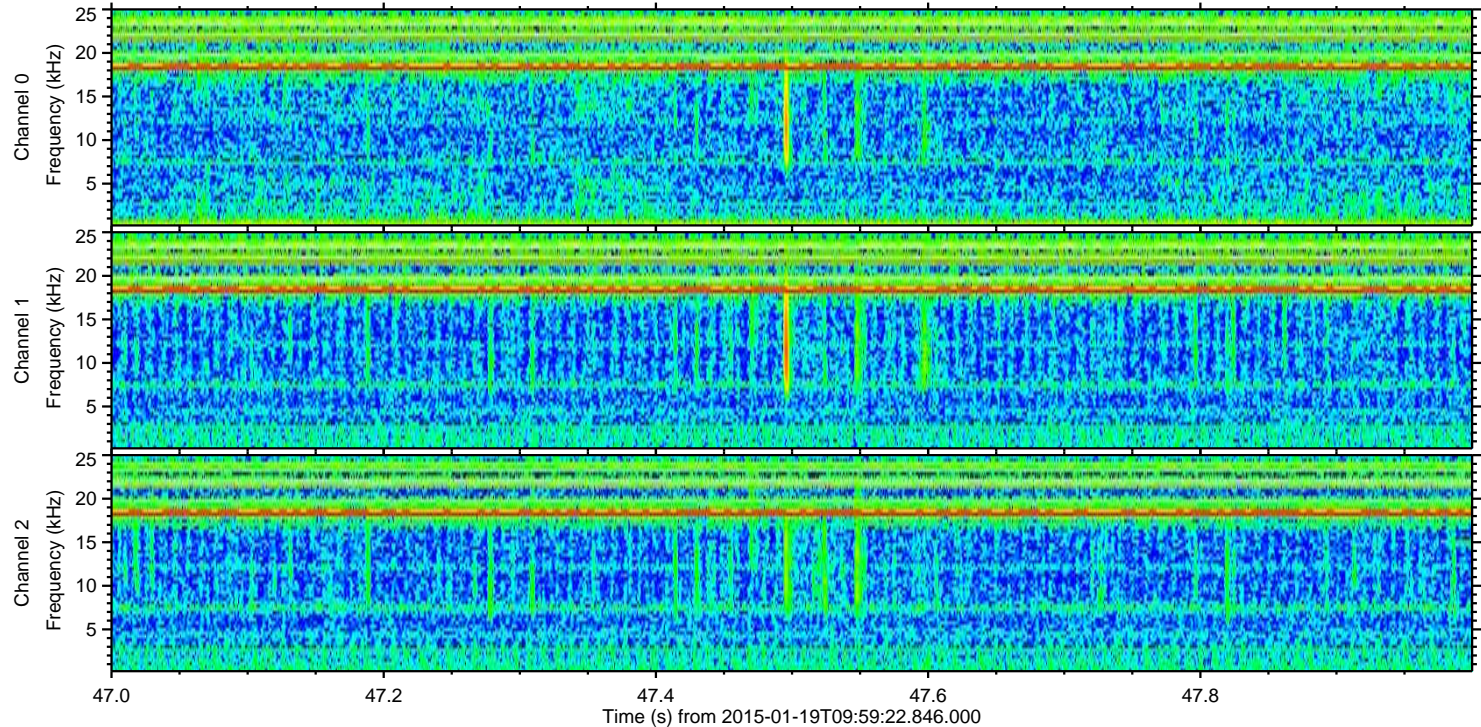
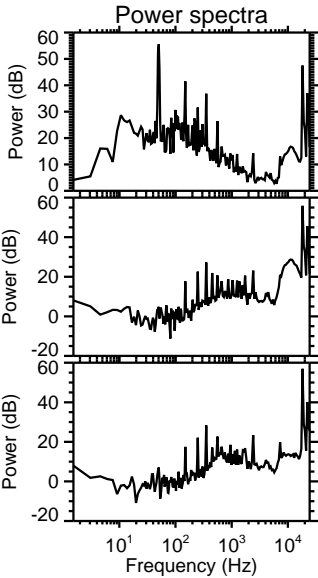
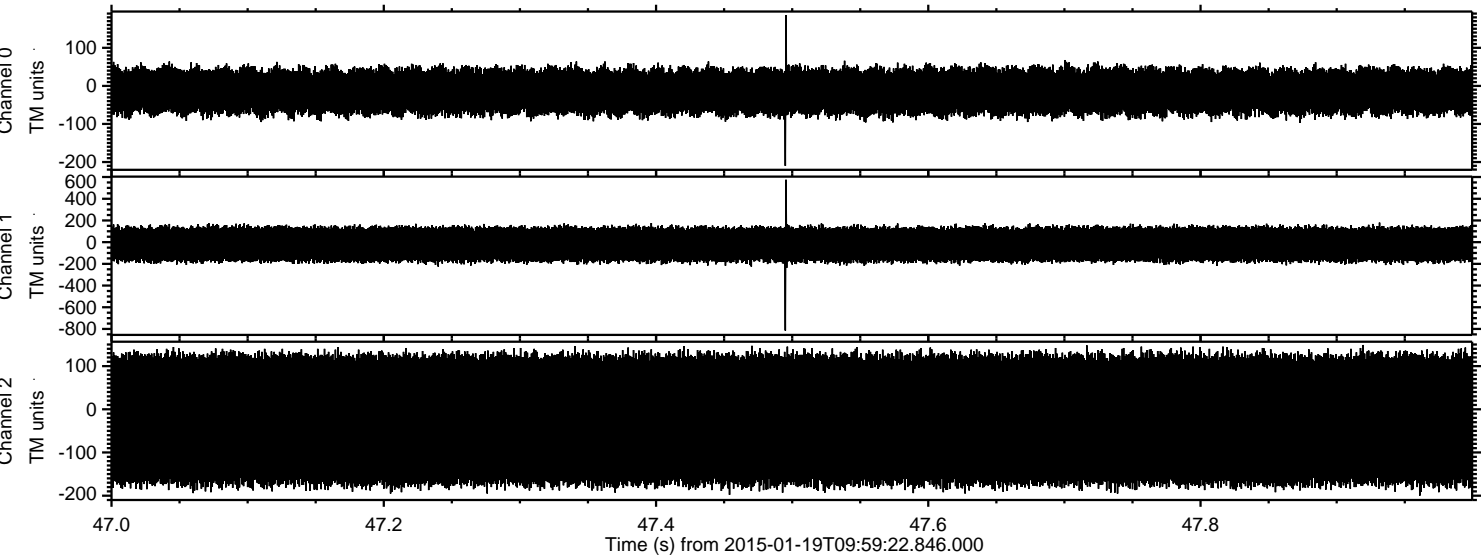
ELMAVAN 3D WAVEFORMS (Measured data sampled at 50 kHz) 49807 packets of 144 samples from 2015-01-19T09:59:22.846.000. Part 101/144

Processed Sat Jan 31 17:29:38 2015 by ELM ver.2012-10-06 from 001\_\_elm20150119\_095921\_\_dat00.bin





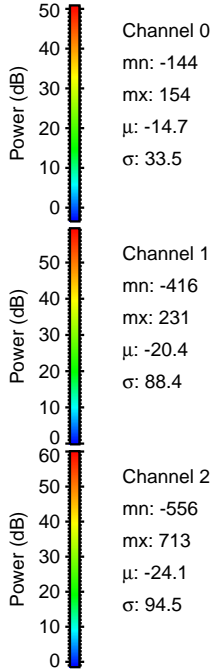
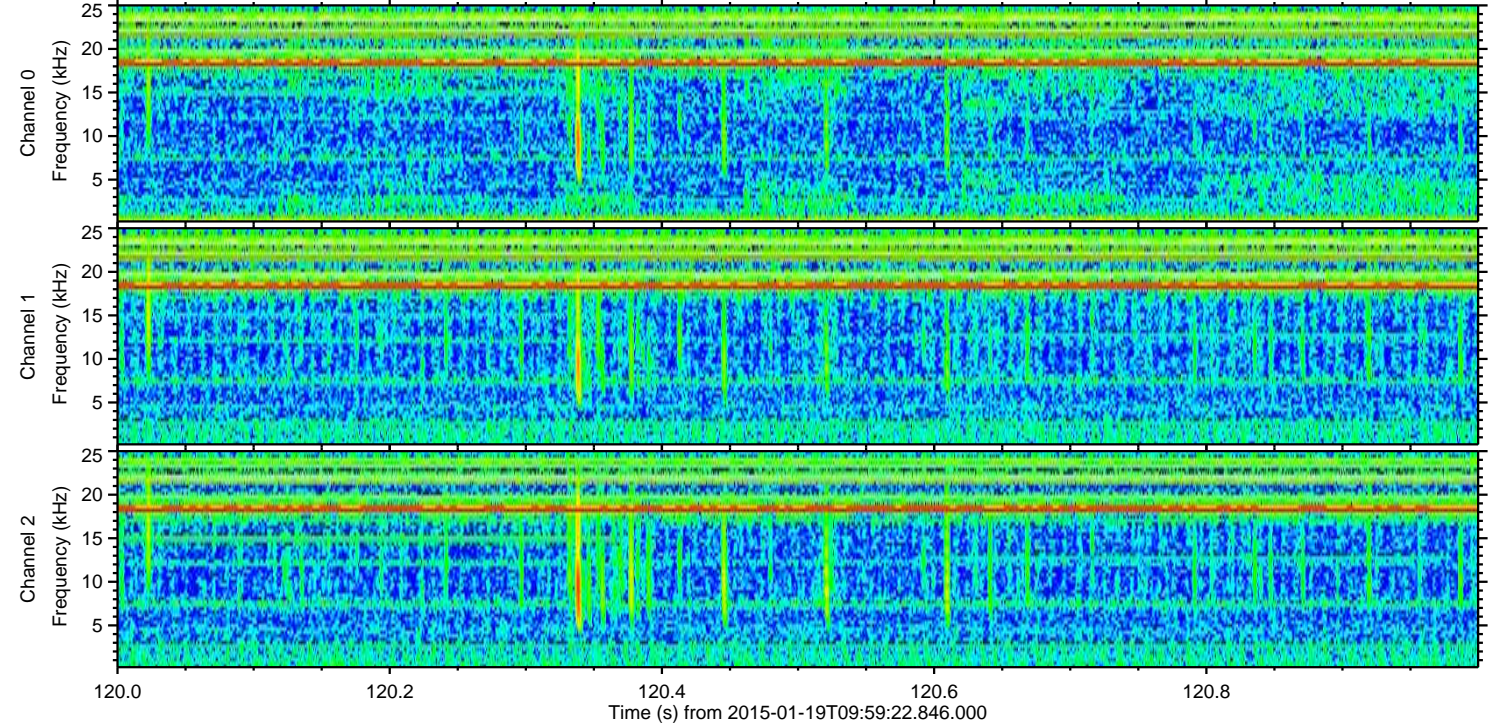
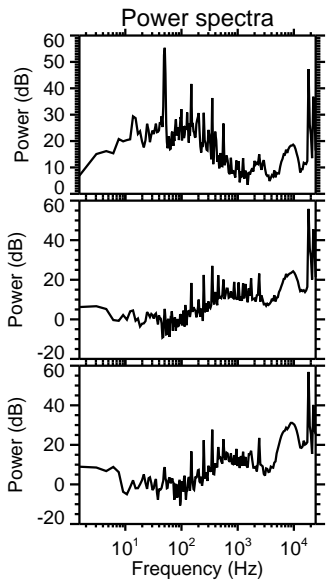
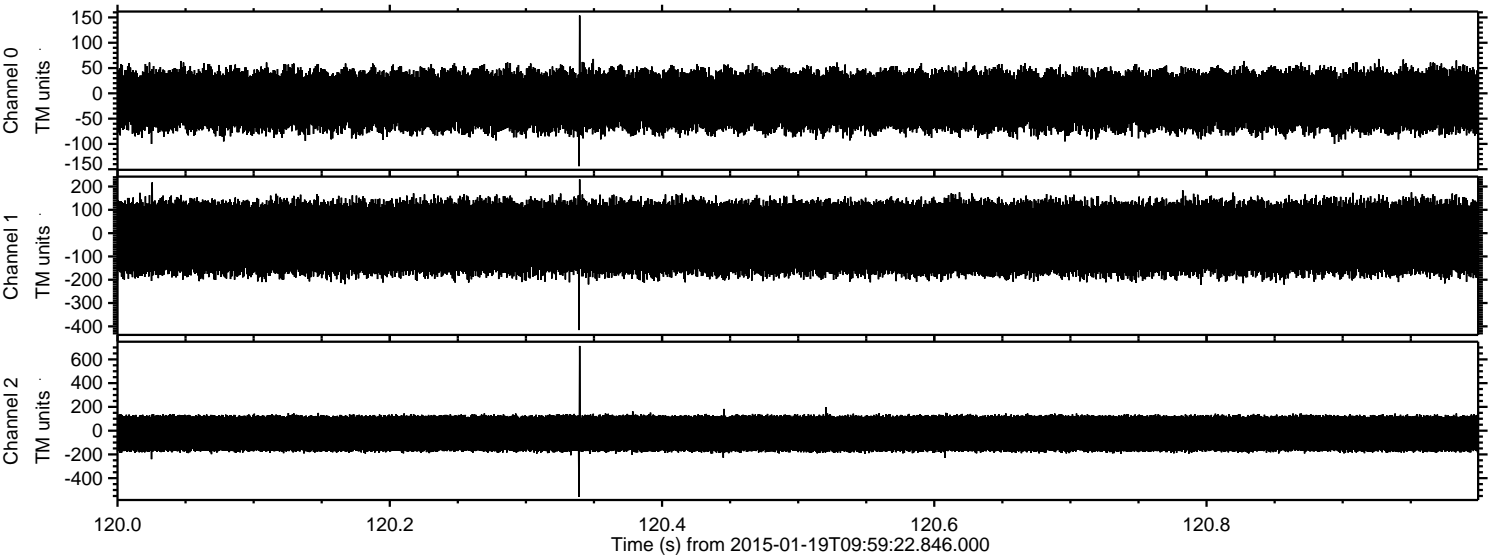
Processed Sat Jan 31 17:29:39 2015 by ELM ver.2012-10-06 from 001\_\_elm20150119\_095921\_\_dat00.bin





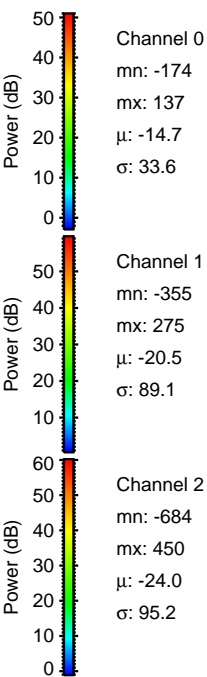
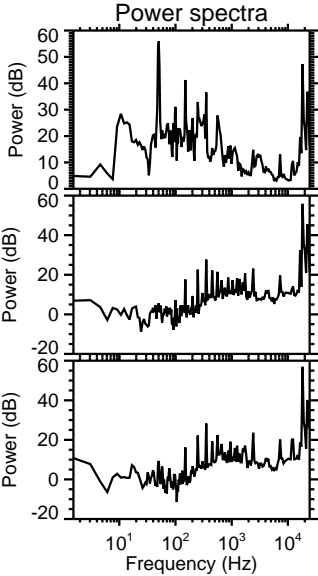
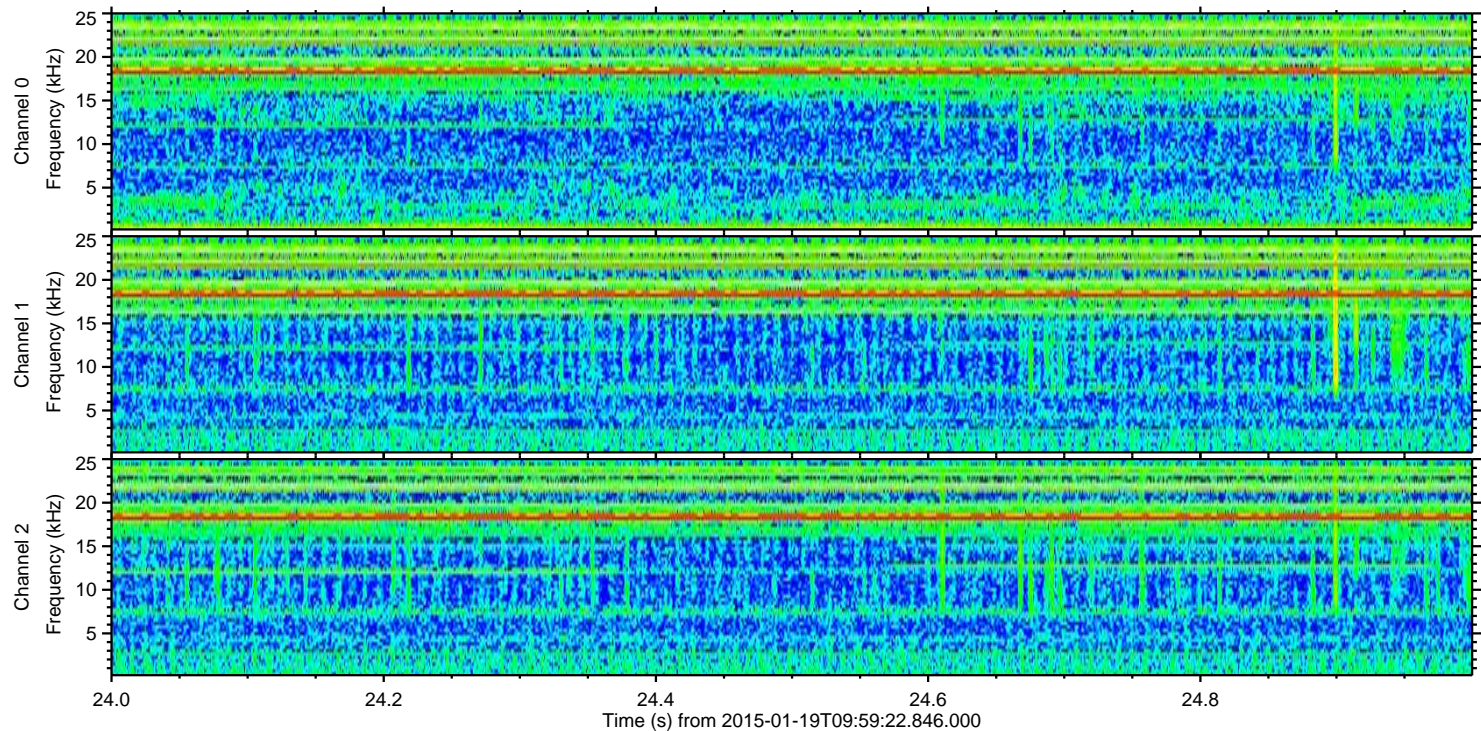
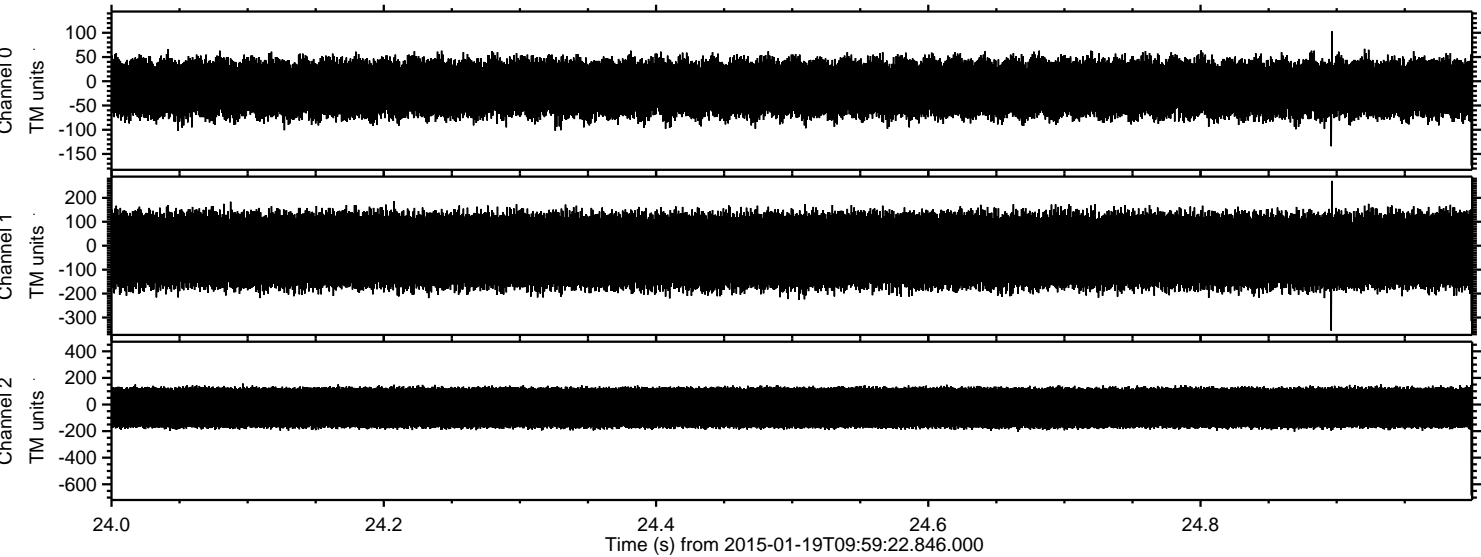
ELMAVAN 3D WAVEFORMS (Measured data sampled at 50 kHz) 49807 packets of 144 samples from 2015-01-19T09:59:22.846.000. Part 121/144

Processed Sat Jan 31 17:29:40 2015 by ELM ver.2012-10-06 from 001\_\_elm20150119\_095921\_\_dat00.bin



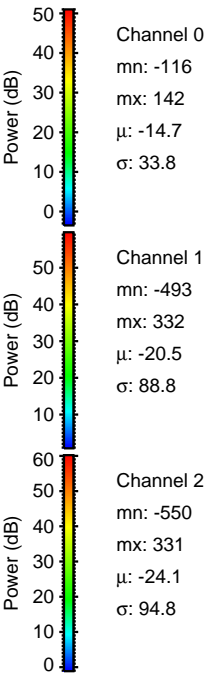
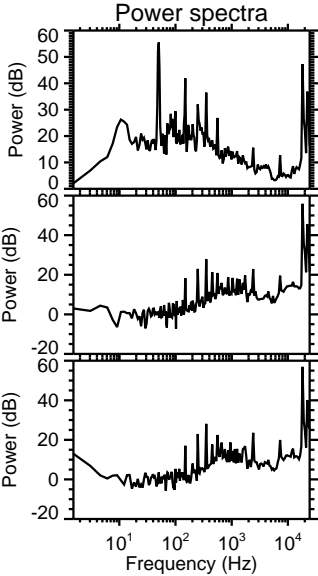
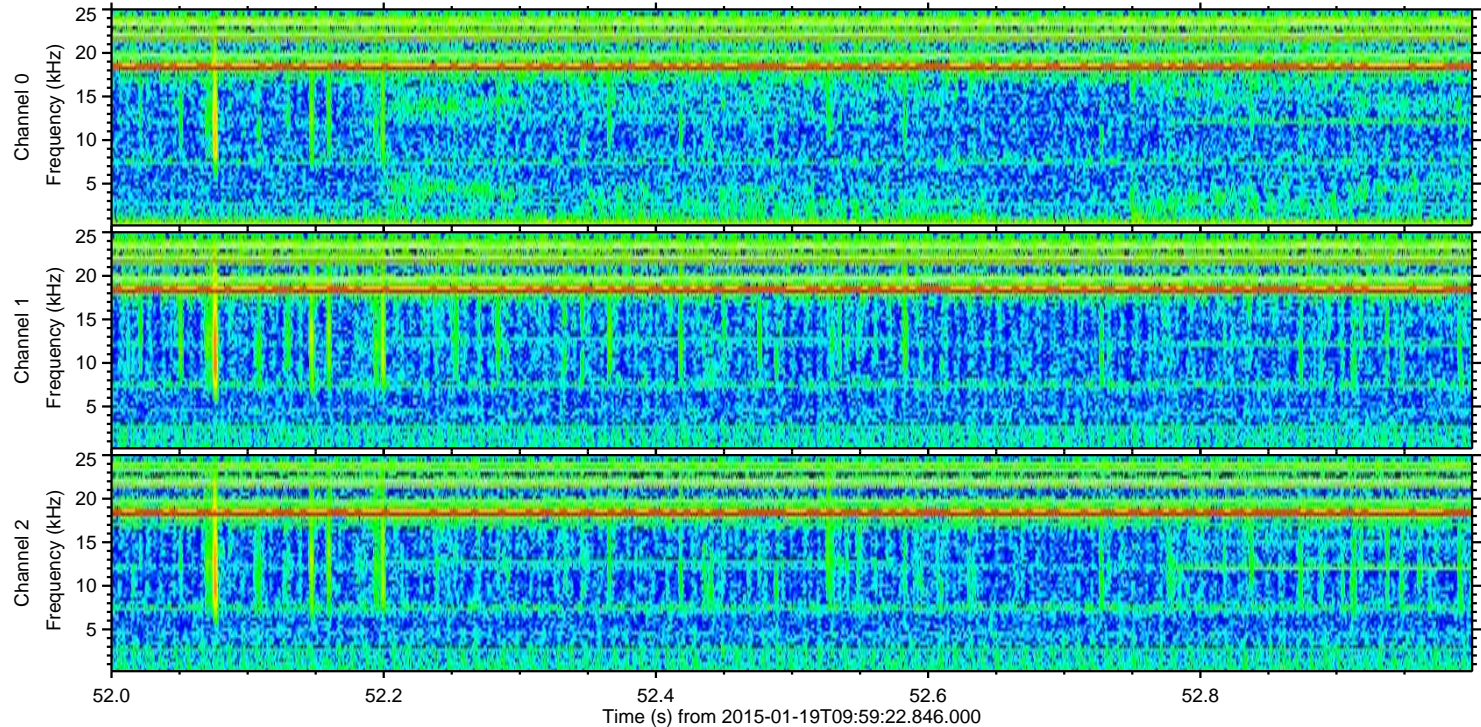
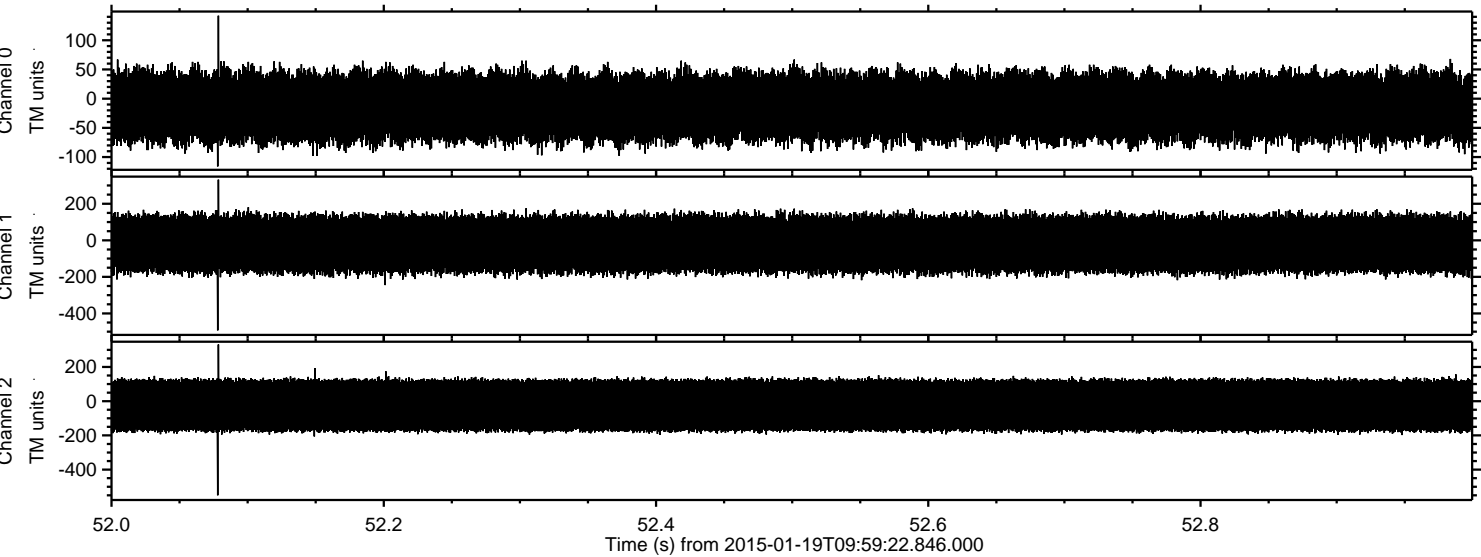


Processed Sat Jan 31 17:29:41 2015 by ELM ver.2012-10-06 from 001\_\_elm20150119\_095921\_\_dat00.bin





Processed Sat Jan 31 17:29:42 2015 by ELM ver.2012-10-06 from 001\_\_elm20150119\_095921\_\_dat00.bin



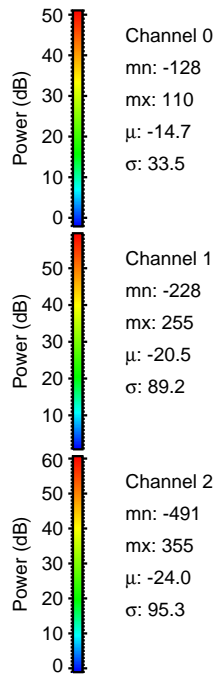
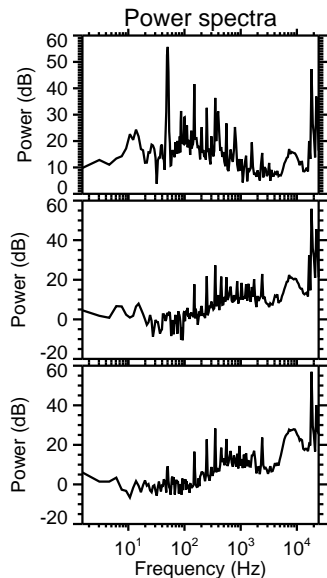
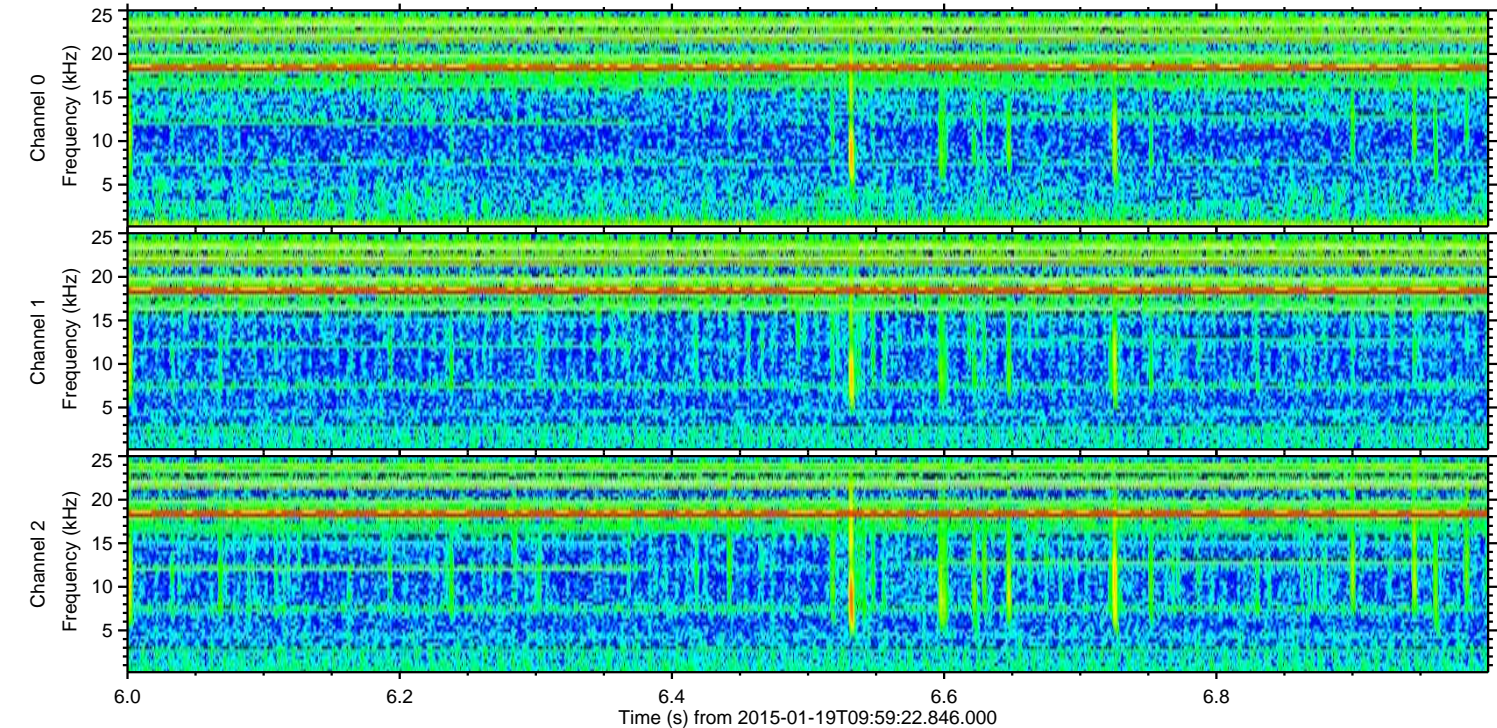
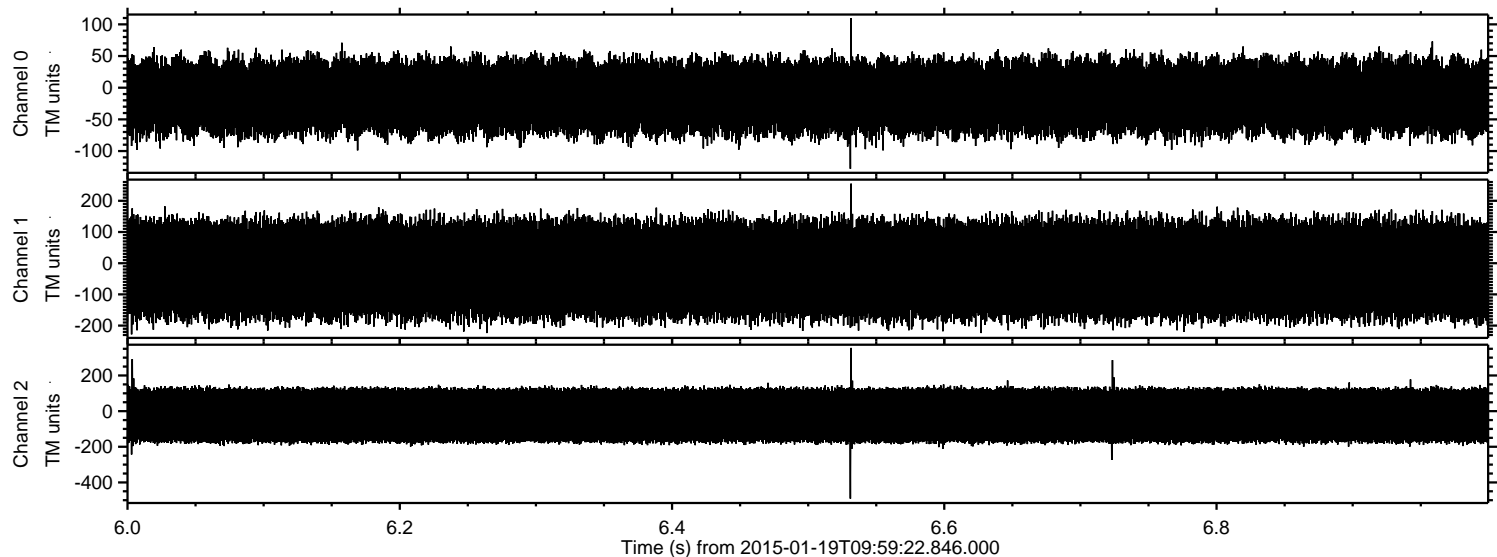
Channel 0  
mn: -116  
mx: 142  
 $\mu$ : -14.7  
 $\sigma$ : 33.8

Channel 1  
mn: -493  
mx: 332  
 $\mu$ : -20.5  
 $\sigma$ : 88.8

Channel 2  
mn: -550  
mx: 331  
 $\mu$ : -24.1  
 $\sigma$ : 94.8



Processed Sat Jan 31 17:29:43 2015 by ELM ver.2012-10-06 from 001\_\_elm20150119\_095921\_\_dat00.bin





ELMAVAN 3D WAVEFORMS (Measured data sampled at 50 kHz) 49807 packets of 144 samples from 2015-01-19T09:59:22.846.000. Part 107/144

Processed Sat Jan 31 17:29:44 2015 by ELM ver.2012-10-06 from 001\_\_elm20150119\_095921\_\_dat00.bin

