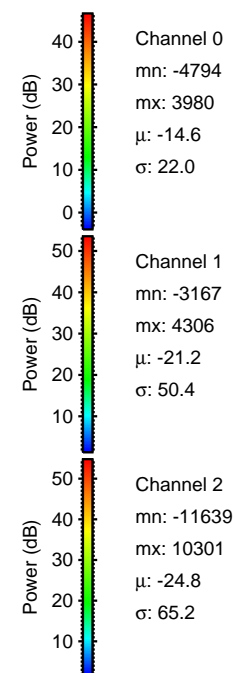
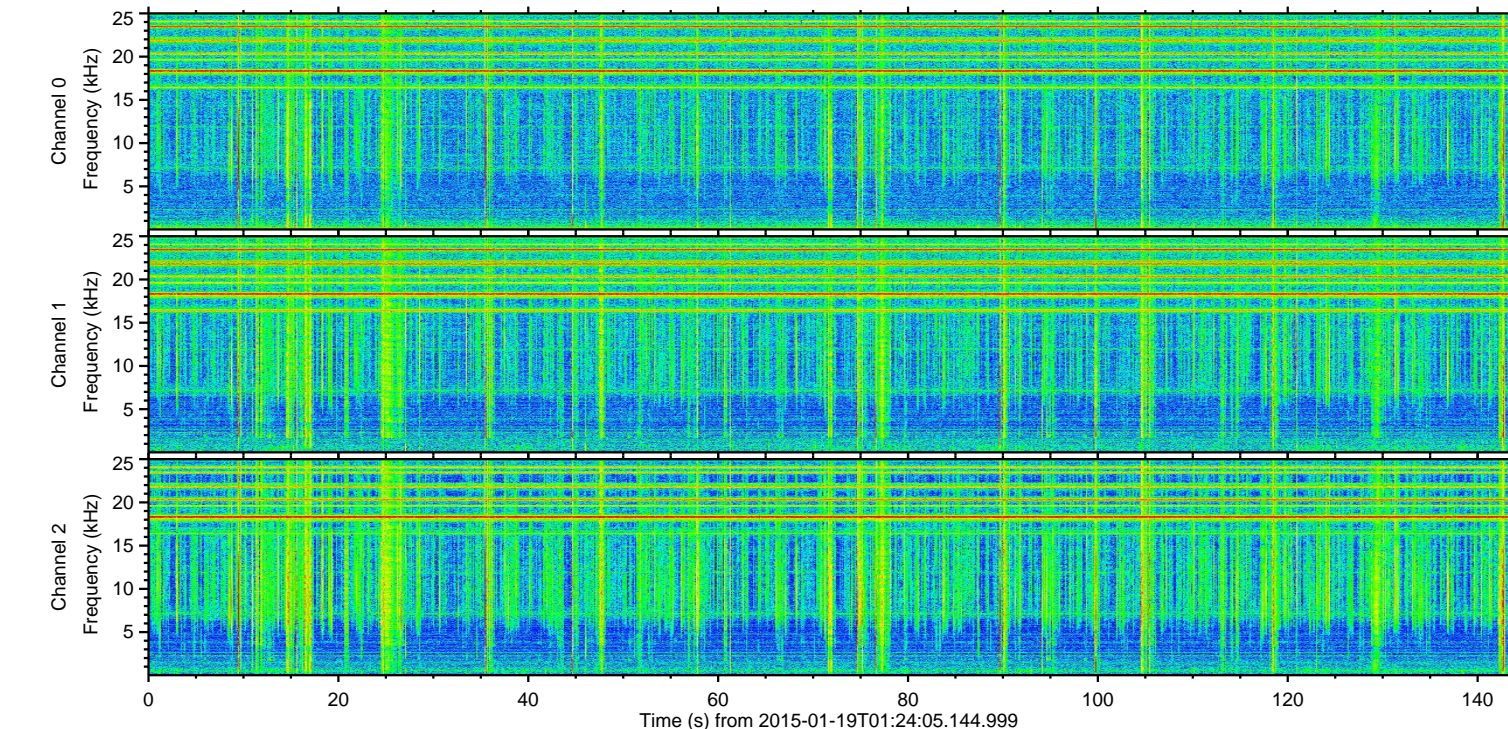
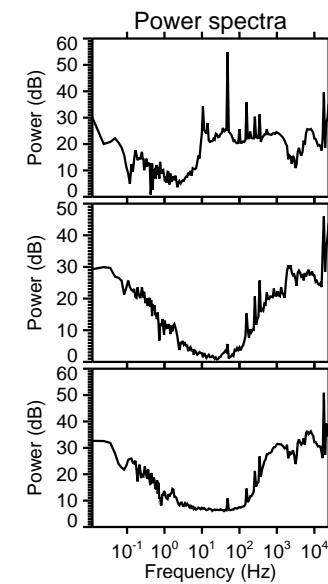
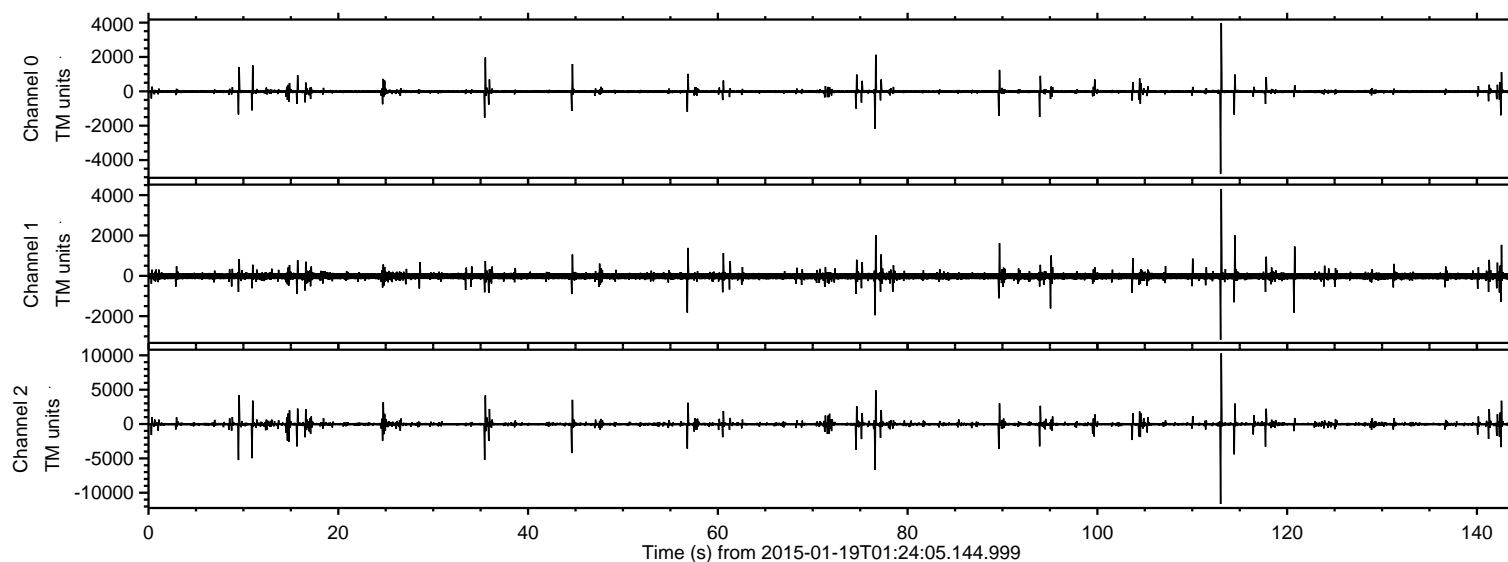


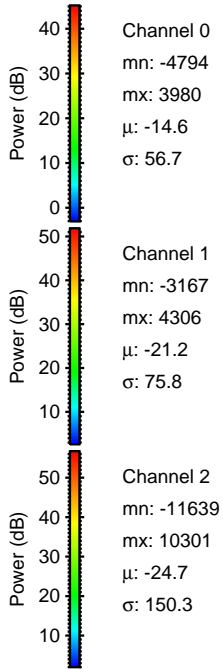
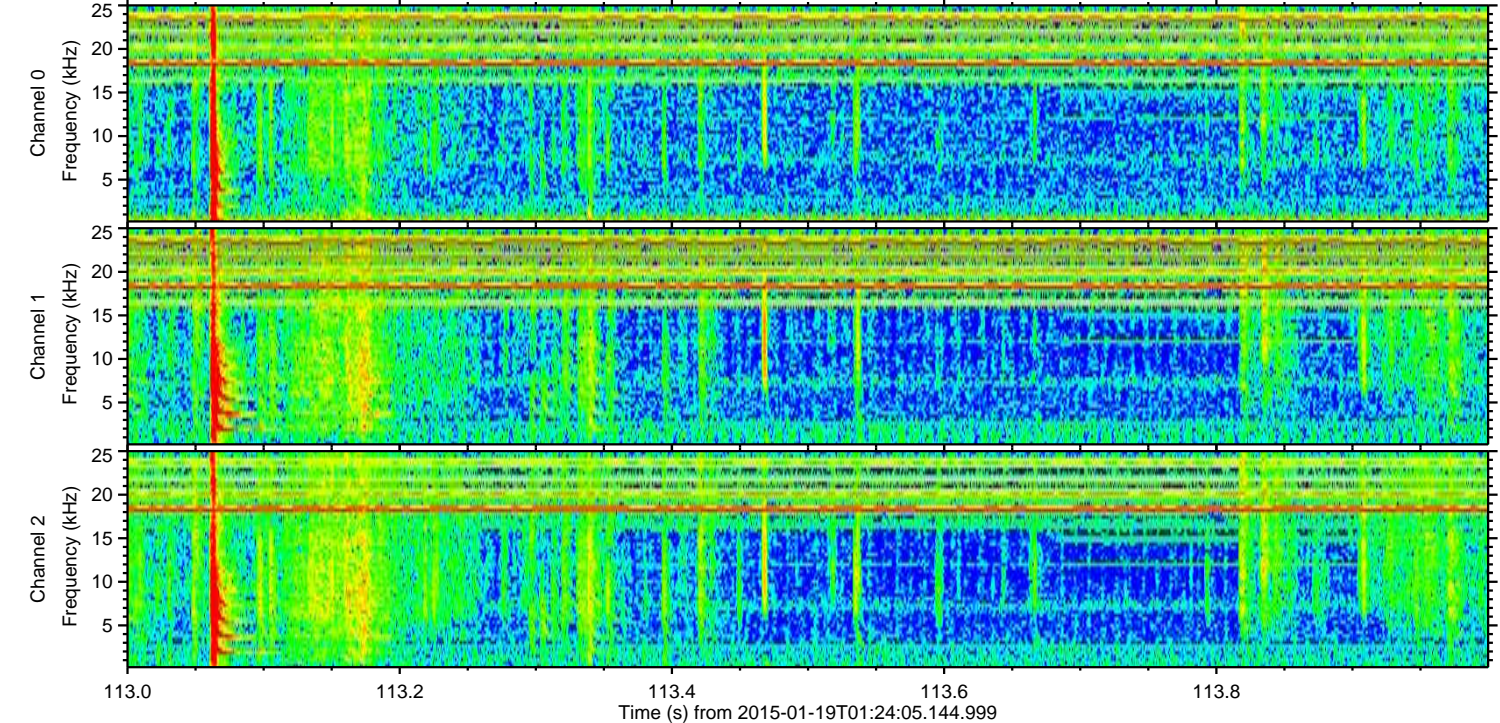
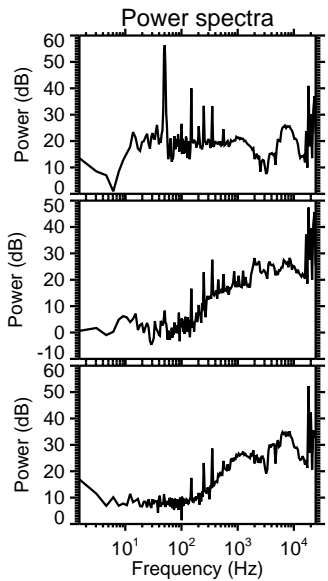
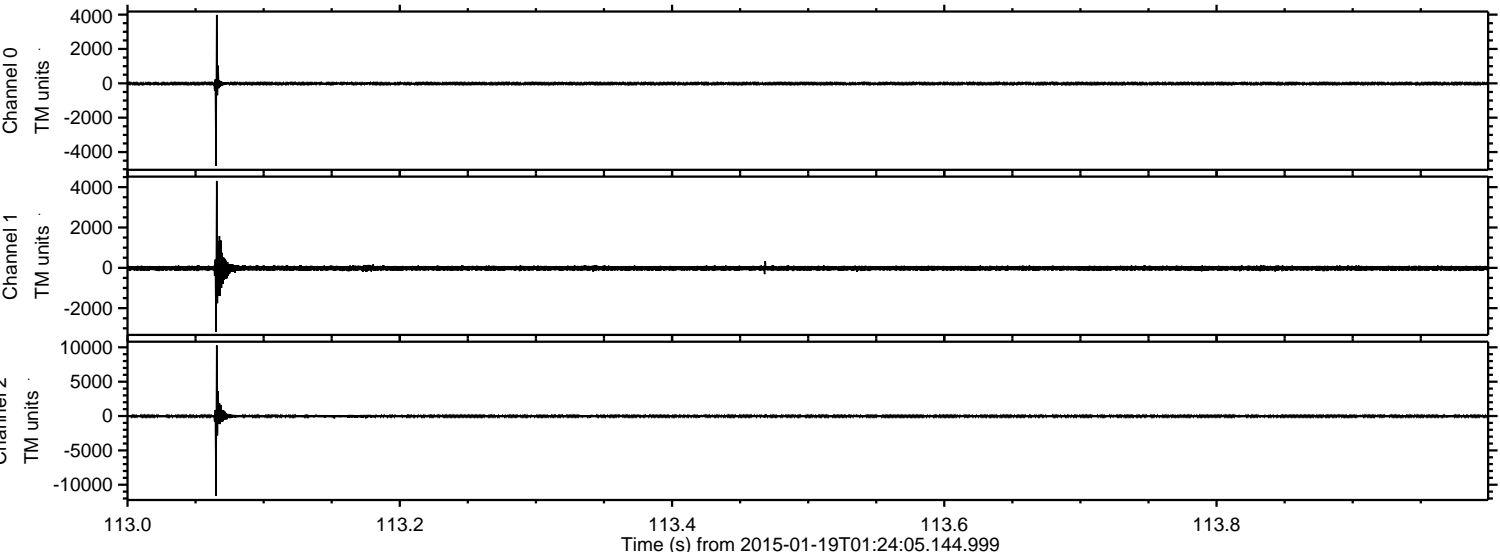
ELMAVAN 3D WAVEFORMS (Measured data sampled at 50 kHz) 49790 packets of 144 samples from 2015-01-19T01:24:05.144.999.

Processed Thu Jan 29 01:40:39 2015 by ELM ver.2012-10-06 from 001__elm20150119_012404__dat00.bin



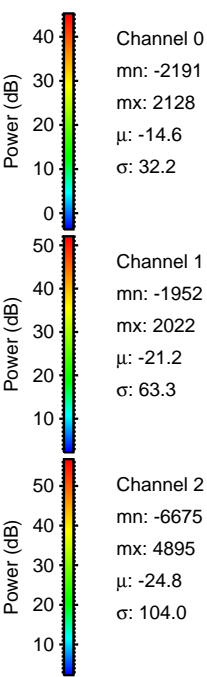
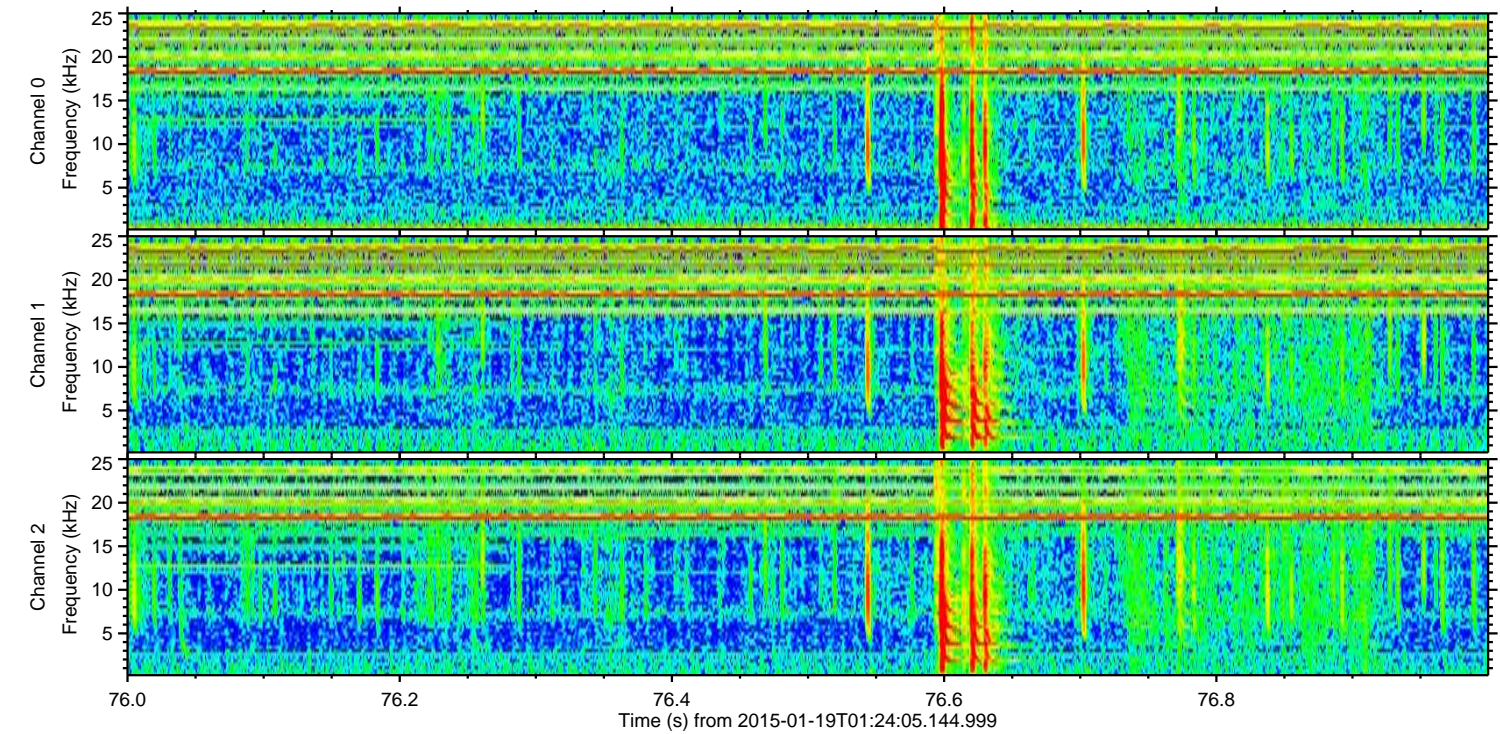
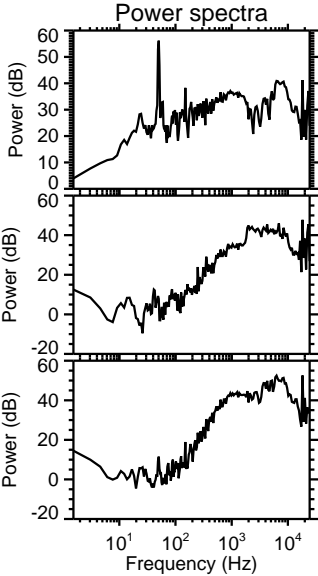
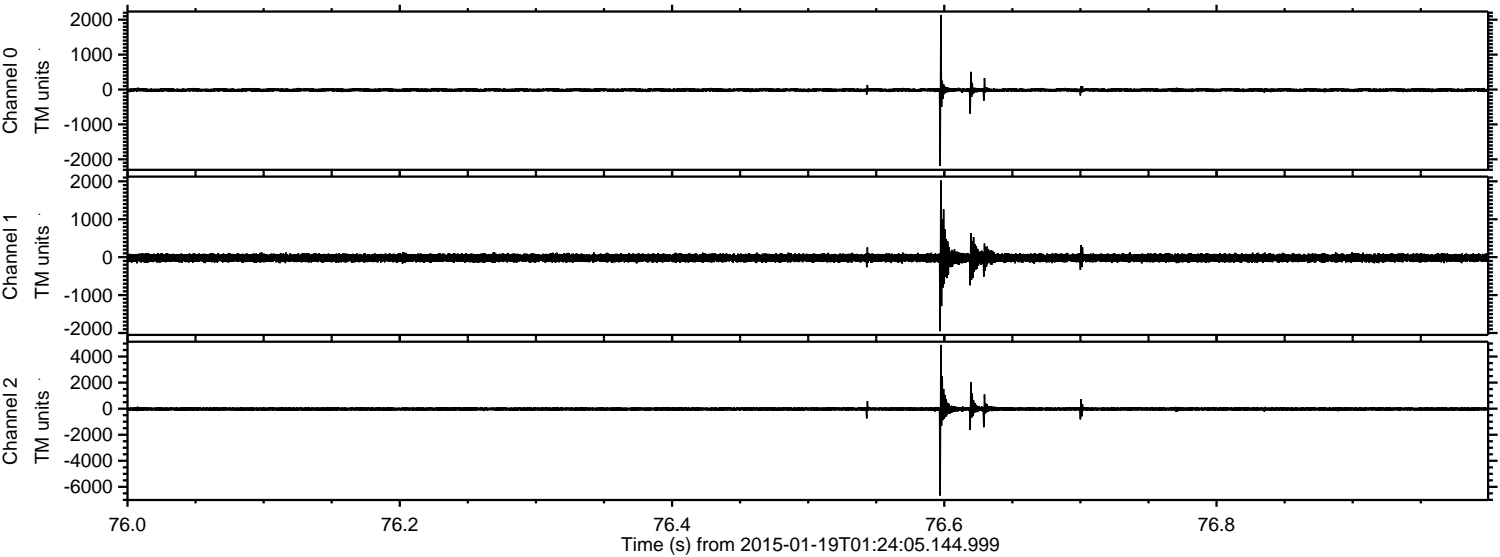
ELMAVAN 3D WAVEFORMS (Measured data sampled at 50 kHz) 49790 packets of 144 samples from 2015-01-19T01:24:05.144.999. Part 114/144

Processed Thu Jan 29 01:40:51 2015 by ELM ver.2012-10-06 from 001__elm20150119_012404__dat00.bin



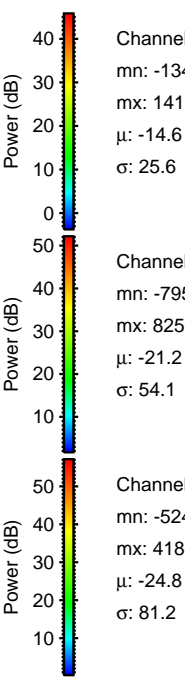
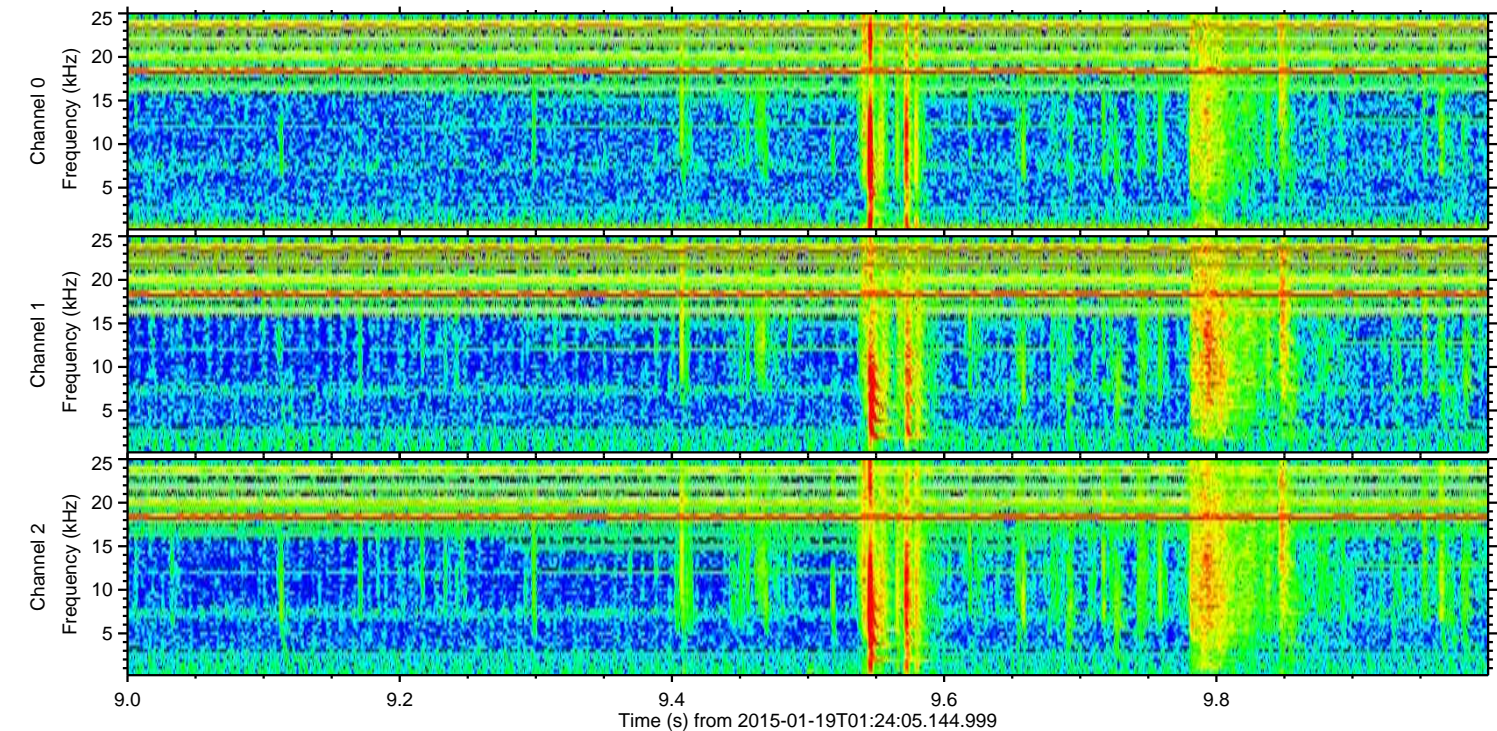
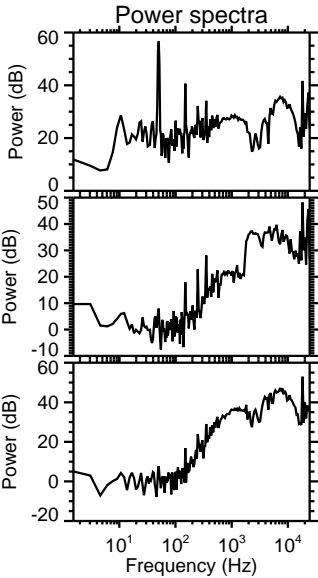
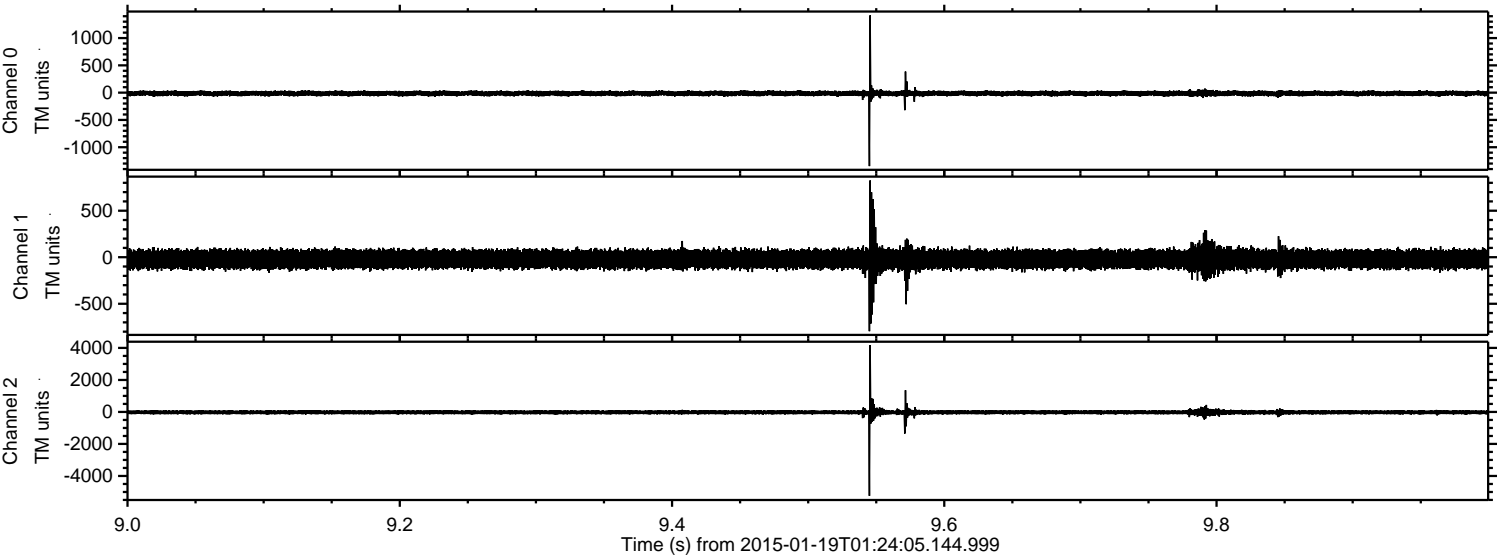
ELMAVAN 3D WAVEFORMS (Measured data sampled at 50 kHz) 49790 packets of 144 samples from 2015-01-19T01:24:05.144.999. Part 77/144

Processed Thu Jan 29 01:40:52 2015 by ELM ver.2012-10-06 from 001__elm20150119_012404__dat00.bin

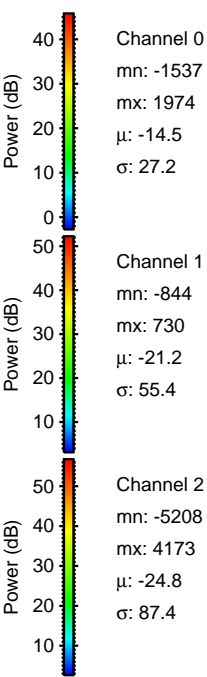
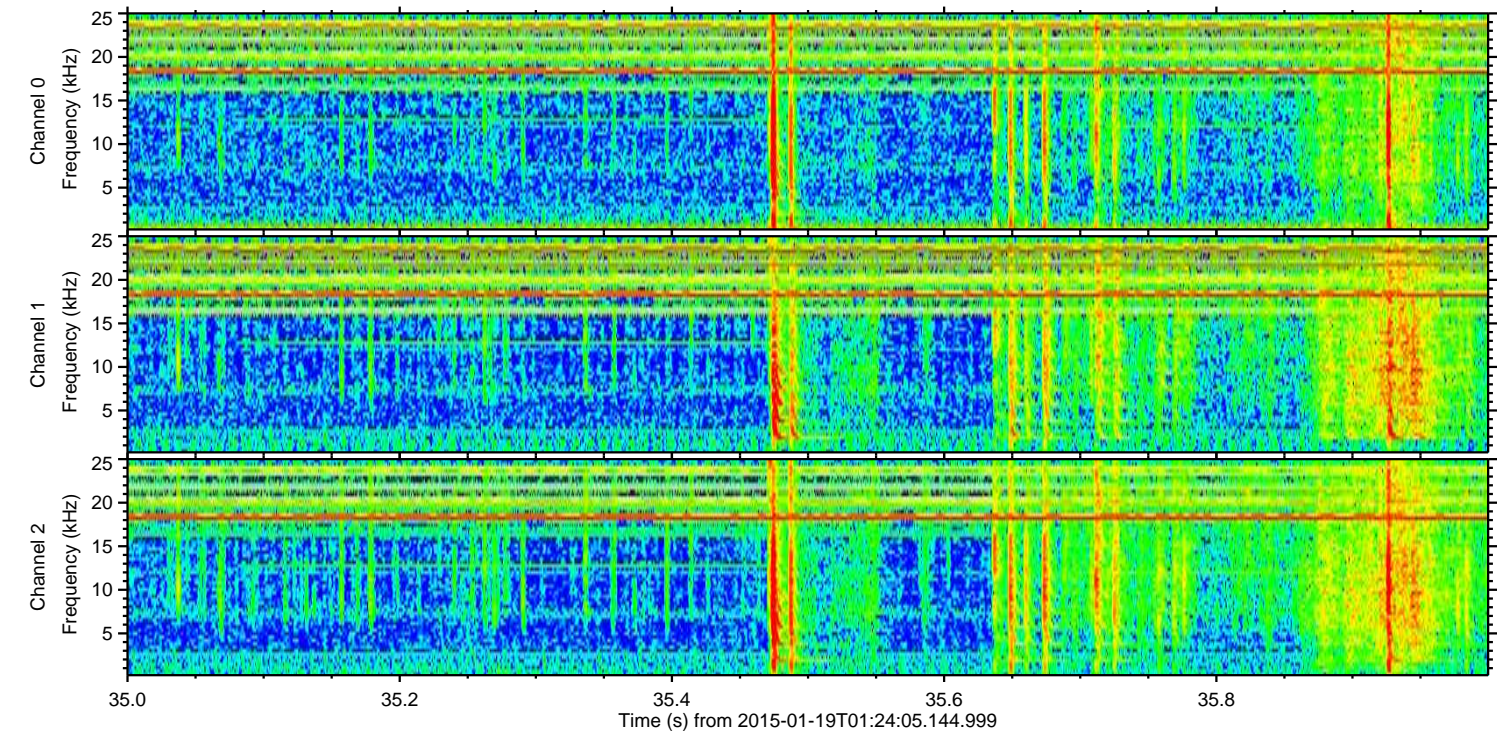
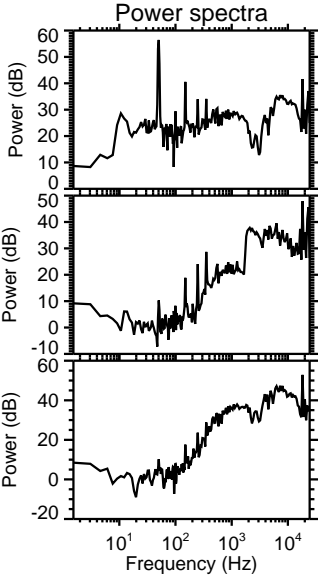
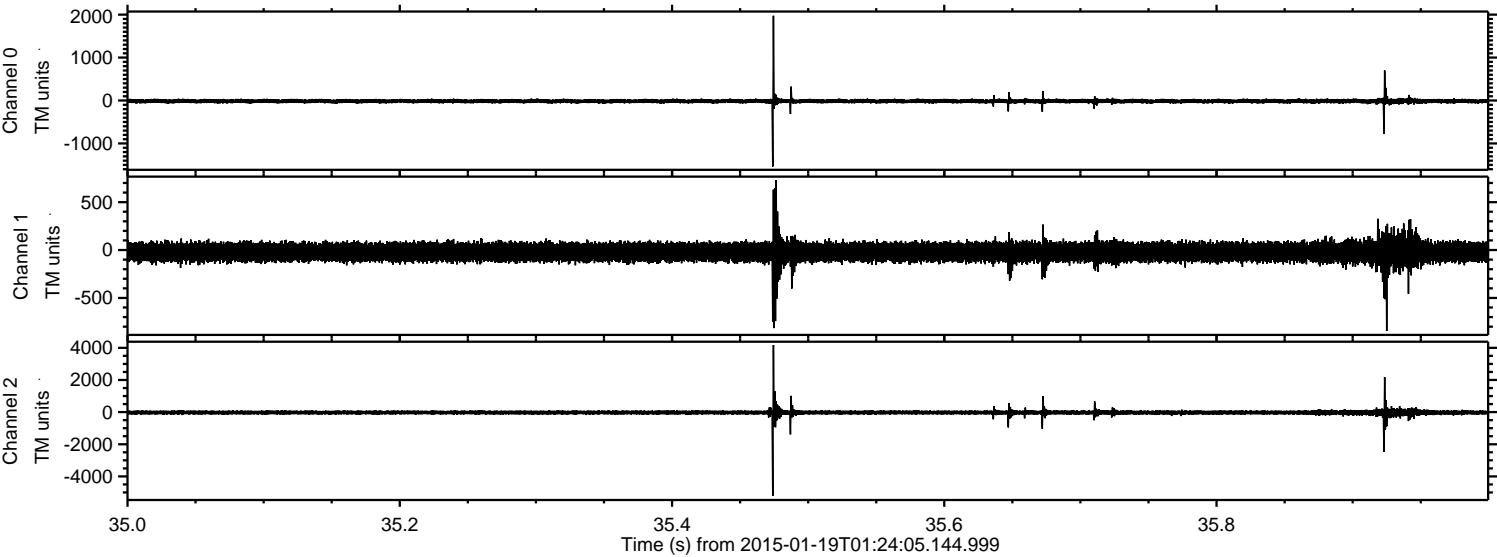


ELMAVAN 3D WAVEFORMS (Measured data sampled at 50 kHz) 49790 packets of 144 samples from 2015-01-19T01:24:05.144.999. Part 10/144

Processed Thu Jan 29 01:40:52 2015 by ELM ver.2012-10-06 from 001__elm20150119_012404__dat00.bin



Processed Thu Jan 29 01:40:53 2015 by ELM ver.2012-10-06 from 001__elm20150119_012404__dat00.bin



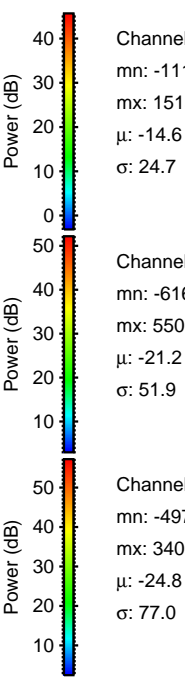
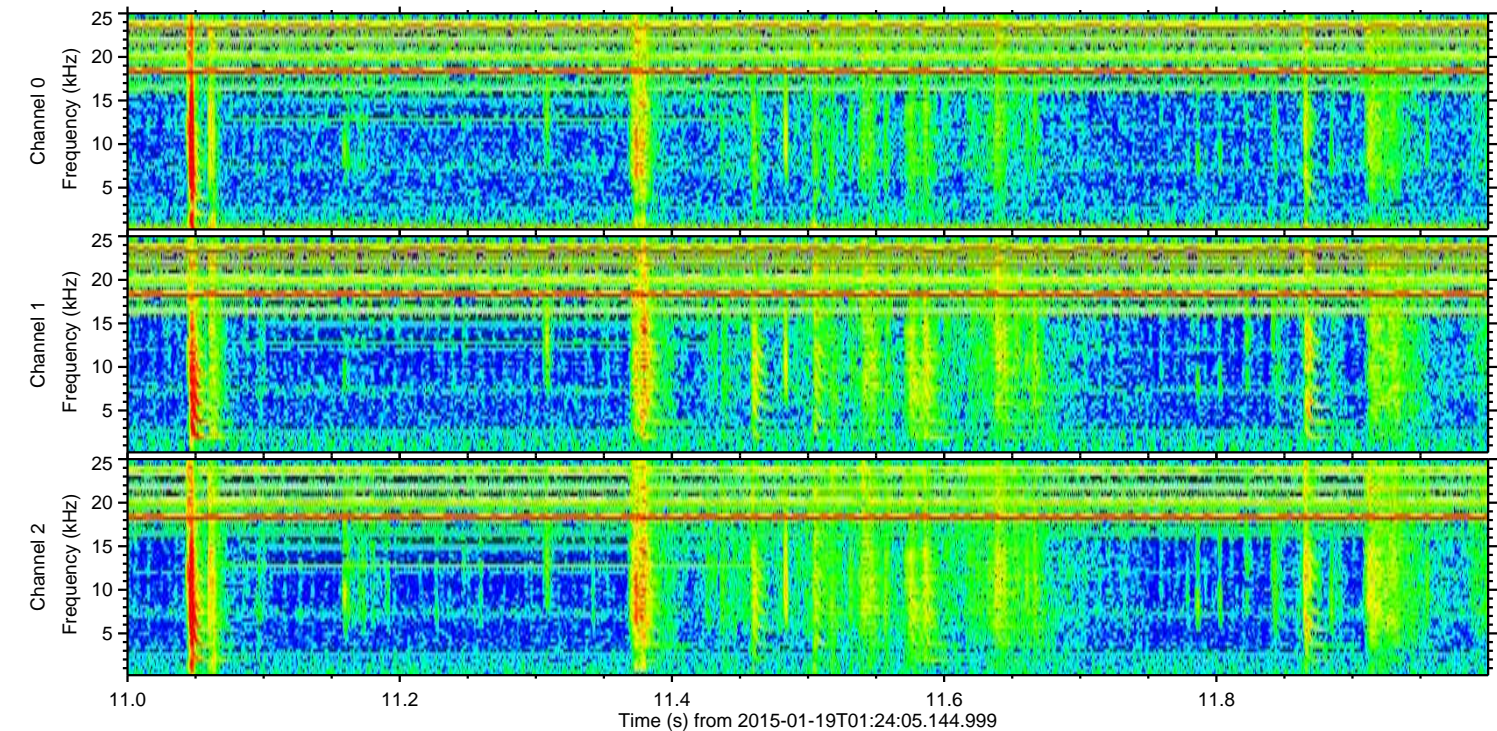
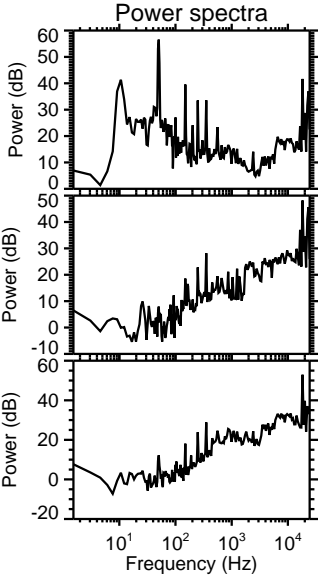
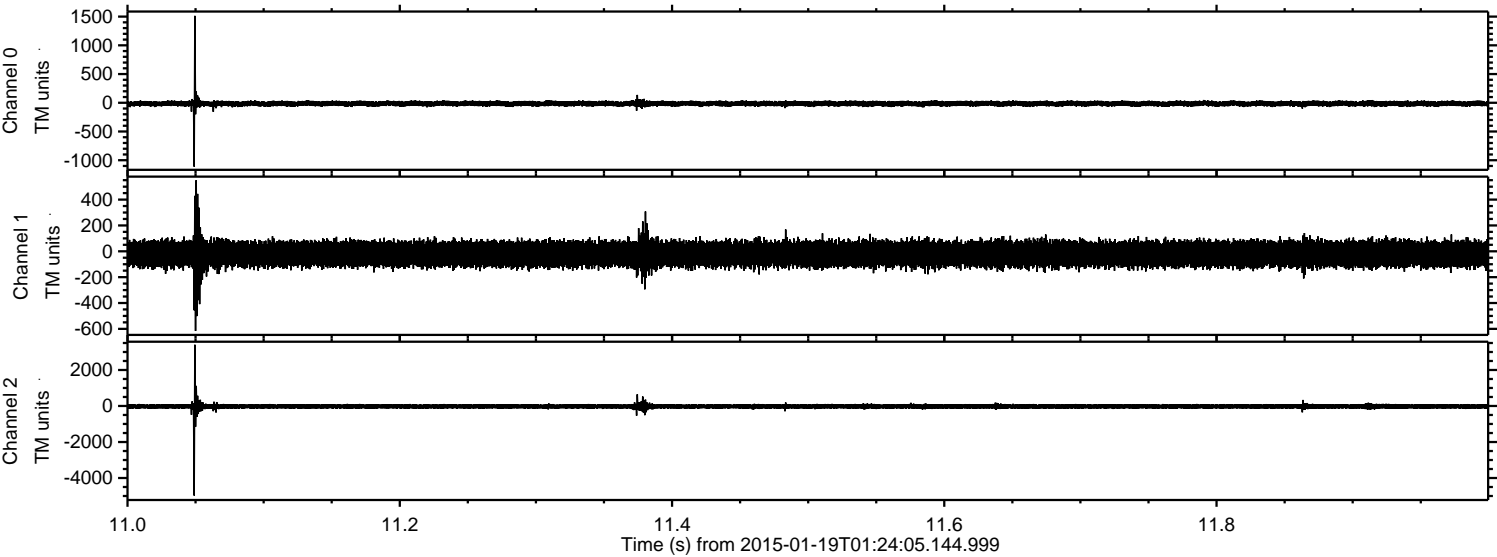
Channel 0
mn: -1537
mx: 1974
 μ : -14.5
 σ : 27.2

Channel 1
mn: -844
mx: 730
 μ : -21.2
 σ : 55.4

Channel 2
mn: -5208
mx: 4173
 μ : -24.8
 σ : 87.4

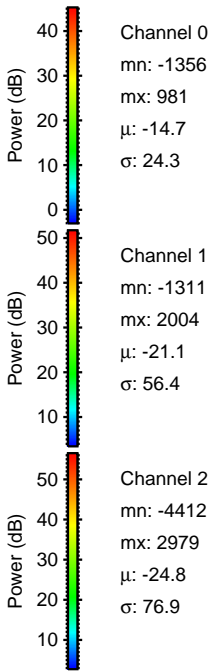
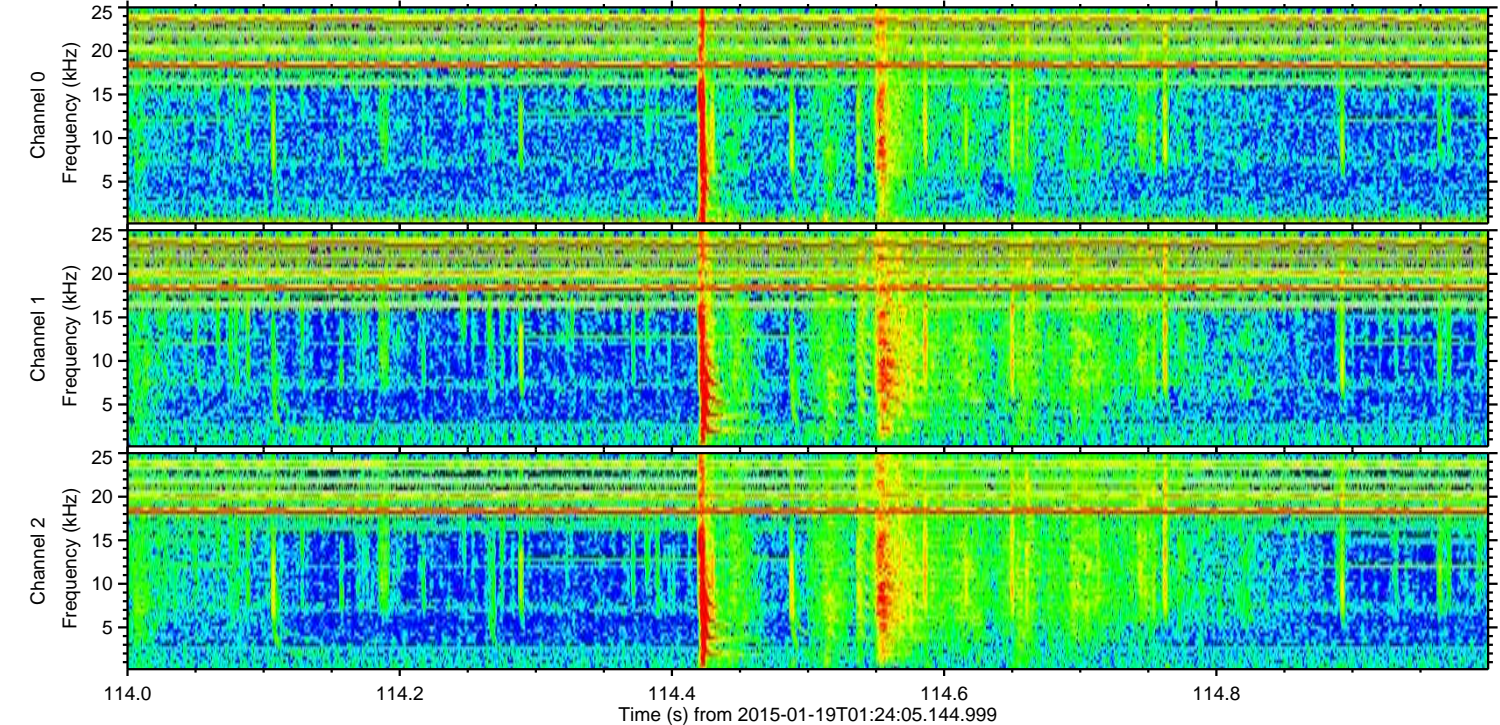
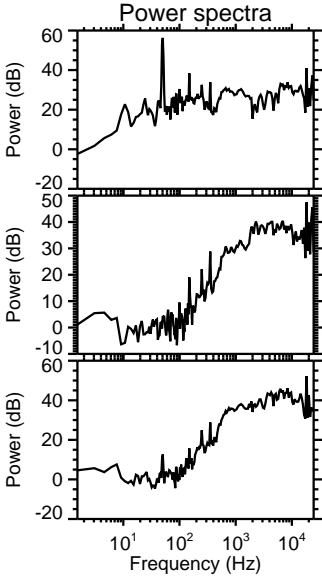
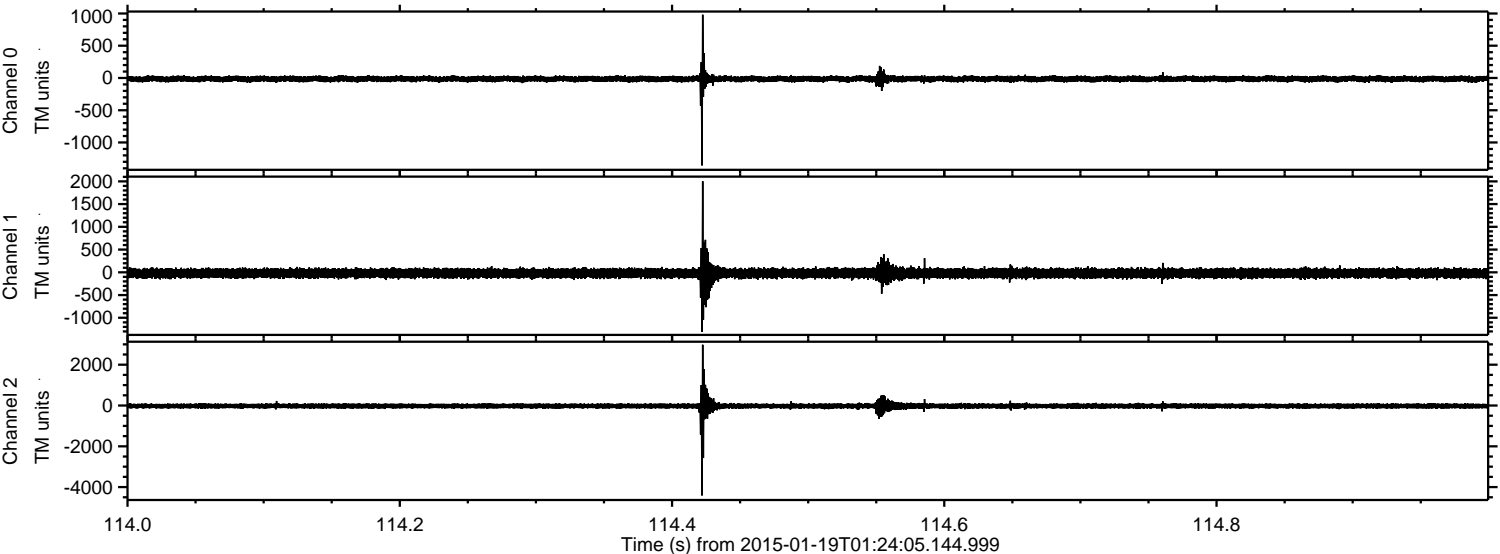
ELMAVAN 3D WAVEFORMS (Measured data sampled at 50 kHz) 49790 packets of 144 samples from 2015-01-19T01:24:05.144.999. Part 12/144

Processed Thu Jan 29 01:40:54 2015 by ELM ver.2012-10-06 from 001__elm20150119_012404__dat00.bin

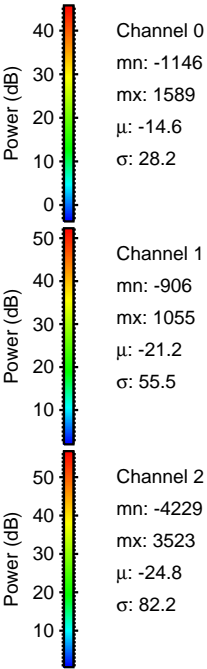
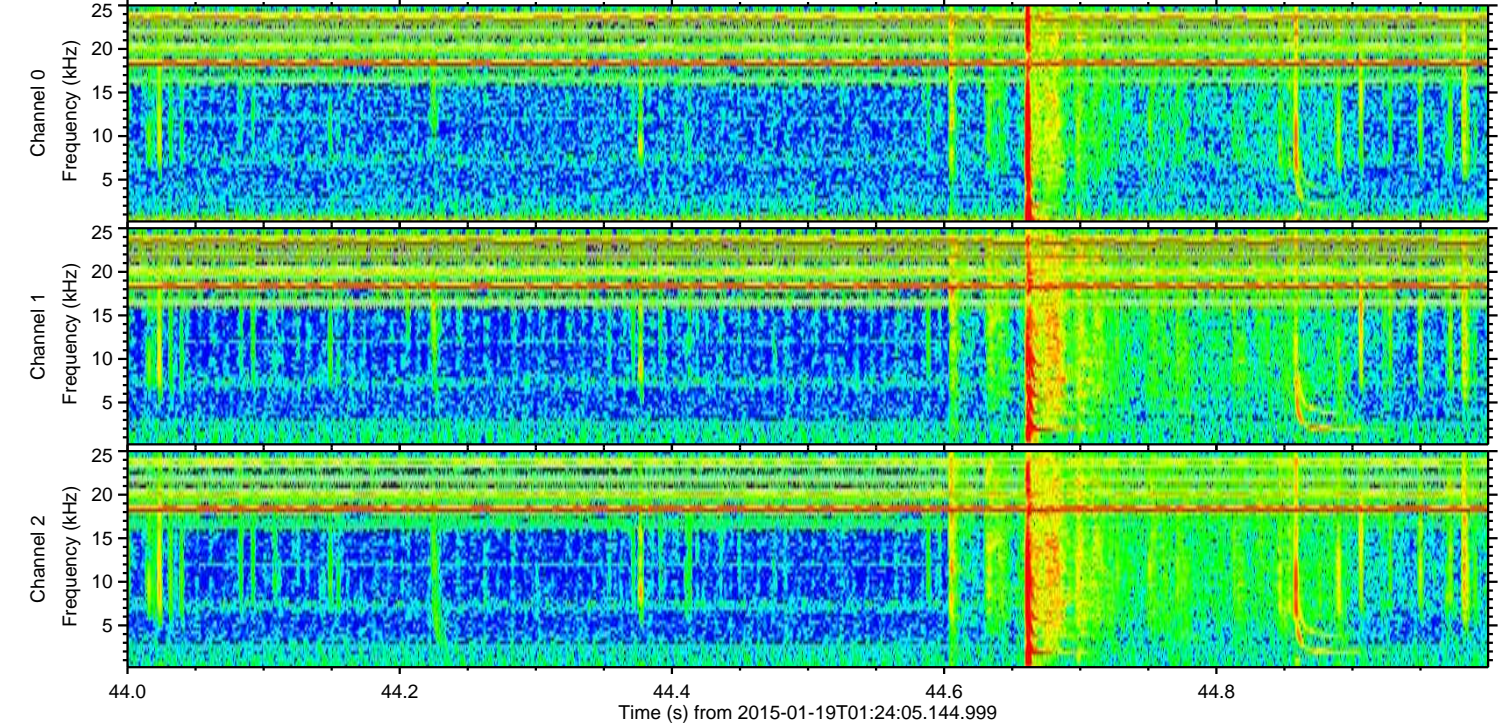
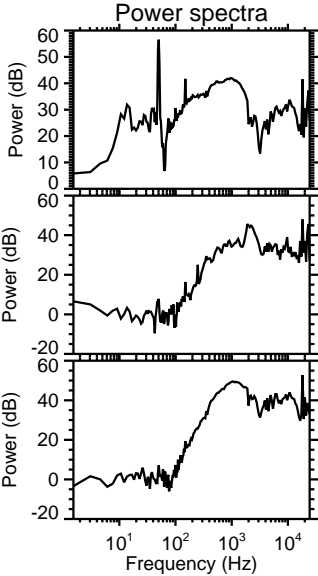
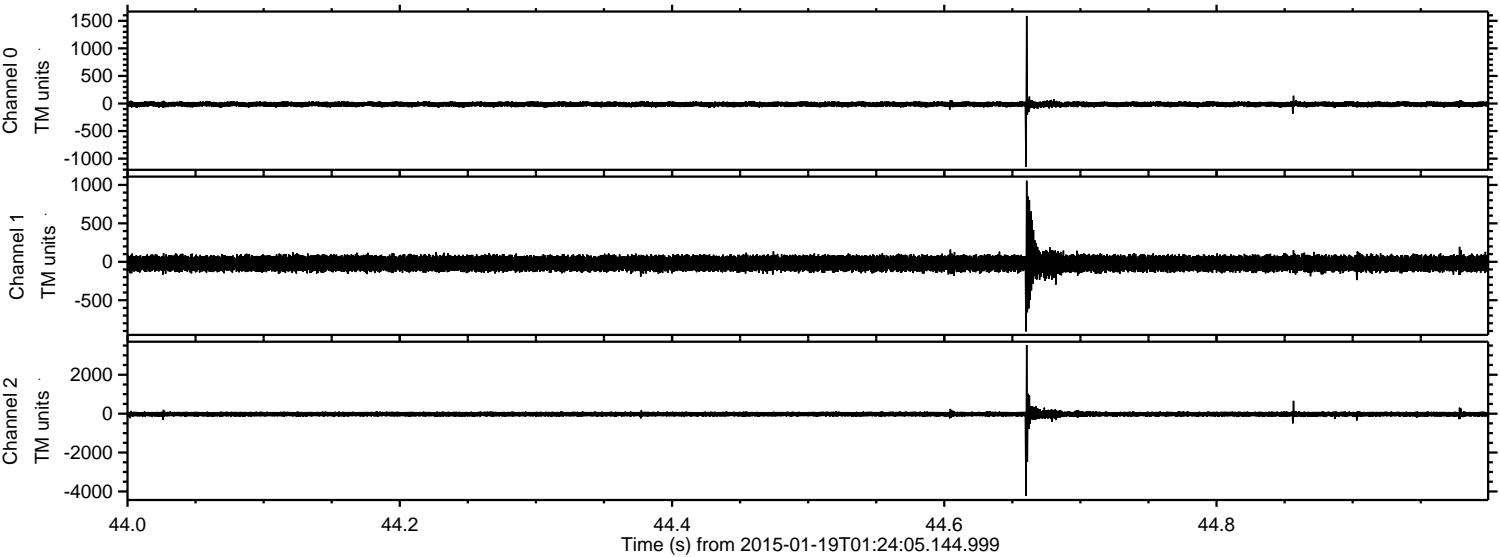


ELMAVAN 3D WAVEFORMS (Measured data sampled at 50 kHz) 49790 packets of 144 samples from 2015-01-19T01:24:05.144.999. Part 115/144

Processed Thu Jan 29 01:40:55 2015 by ELM ver.2012-10-06 from 001__elm20150119_012404__dat00.bin



Processed Thu Jan 29 01:40:56 2015 by ELM ver.2012-10-06 from 001__elm20150119_012404__dat00.bin



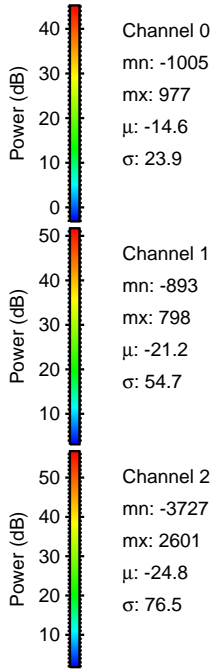
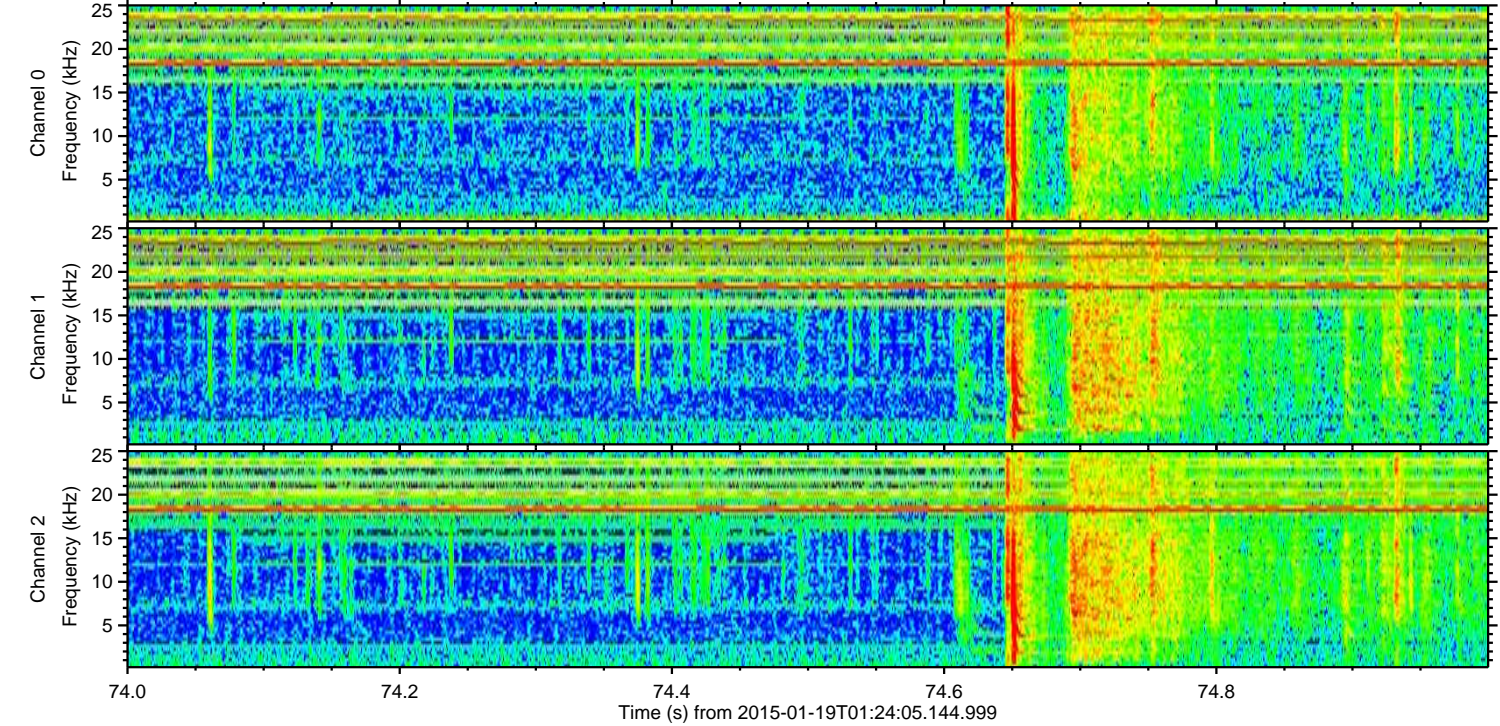
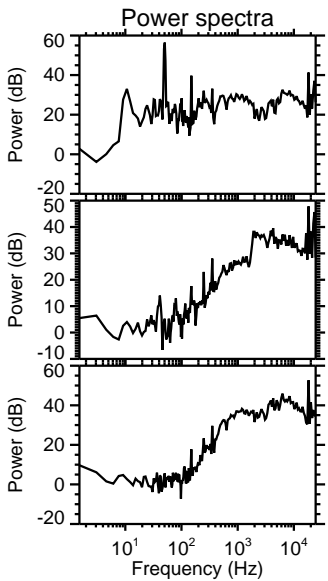
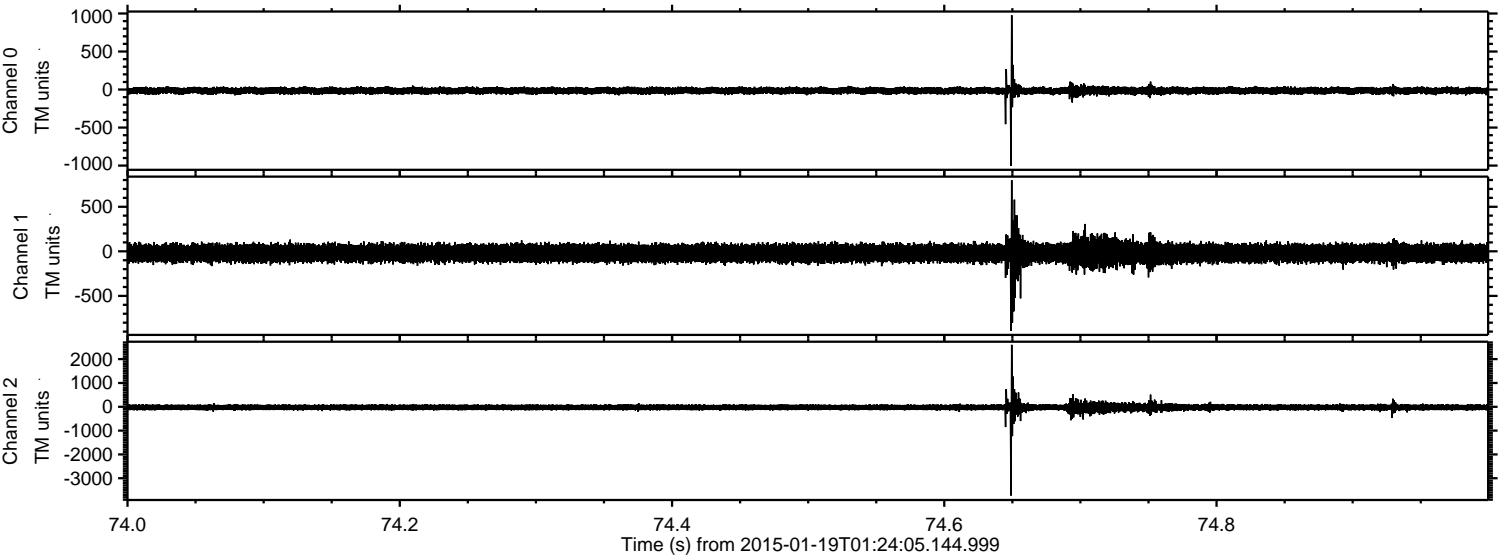
Channel 0
mn: -1146
mx: 1589
 μ : -14.6
 σ : 28.2

Channel 1
mn: -906
mx: 1055
 μ : -21.2
 σ : 55.5

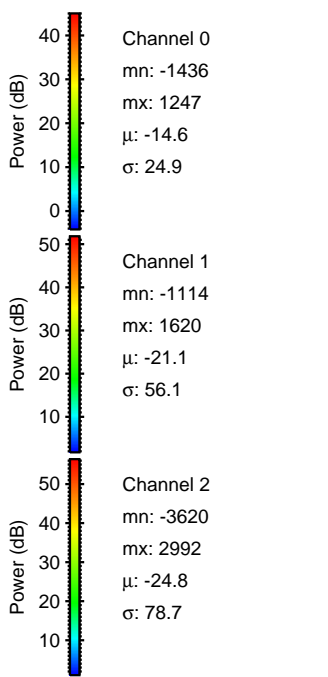
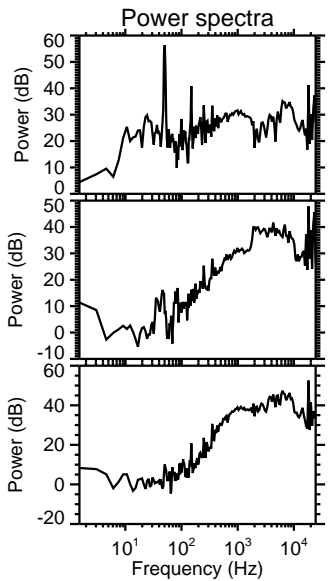
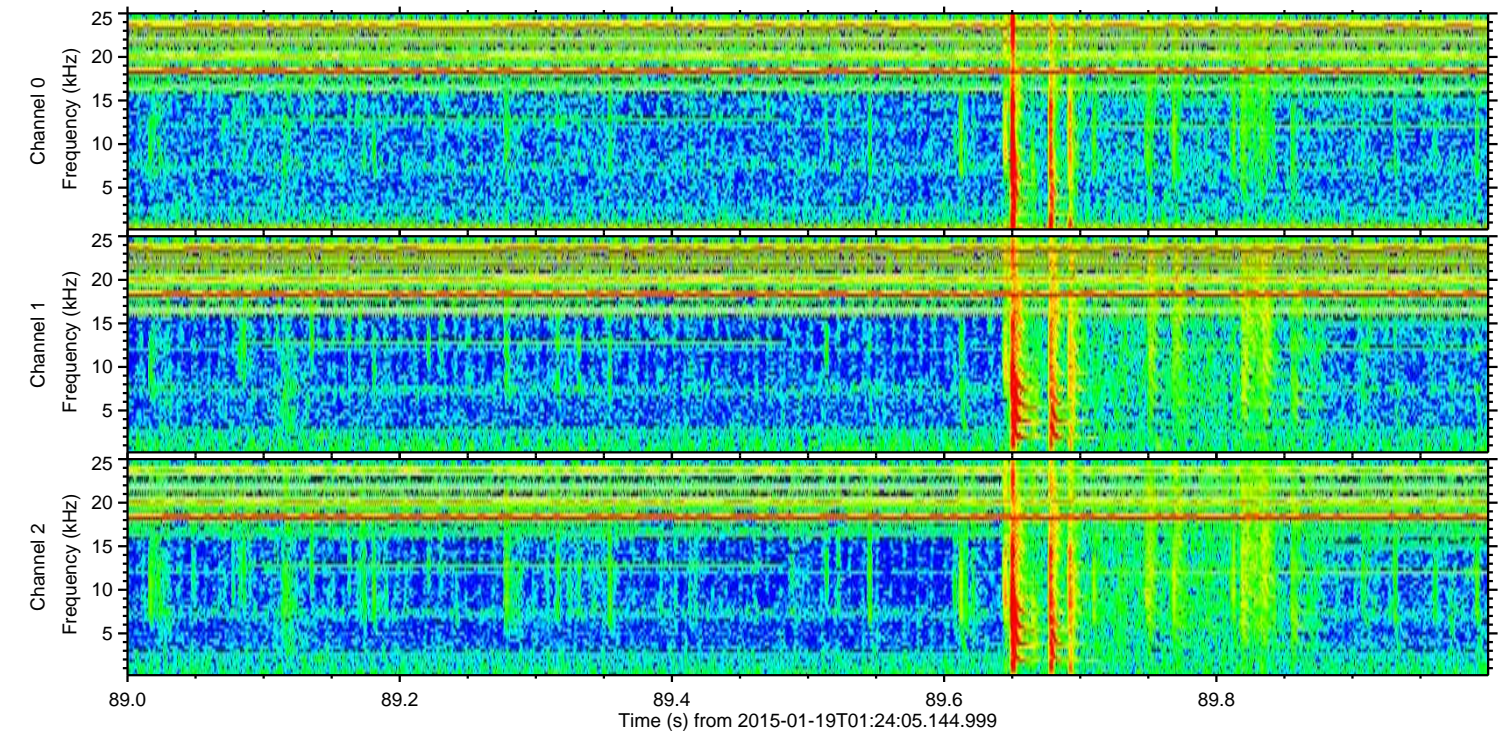
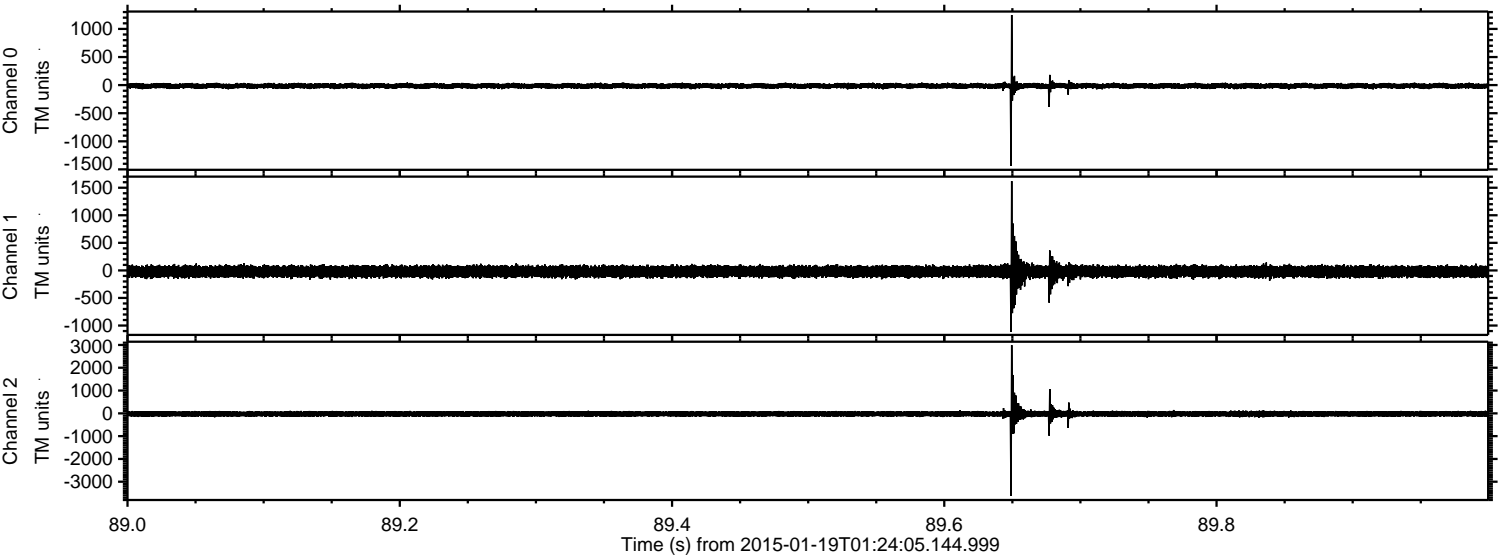
Channel 2
mn: -4229
mx: 3523
 μ : -24.8
 σ : 82.2

ELMAVAN 3D WAVEFORMS (Measured data sampled at 50 kHz) 49790 packets of 144 samples from 2015-01-19T01:24:05.144.999. Part 75/144

Processed Thu Jan 29 01:40:57 2015 by ELM ver.2012-10-06 from 001__elm20150119_012404__dat00.bin



Processed Thu Jan 29 01:40:58 2015 by ELM ver.2012-10-06 from 001__elm20150119_012404__dat00.bin



ELMAVAN 3D WAVEFORMS (Measured data sampled at 50 kHz) 49790 packets of 144 samples from 2015-01-19T01:24:05.144.999. Part 122/144

