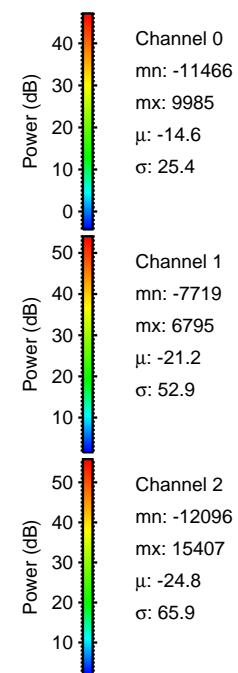
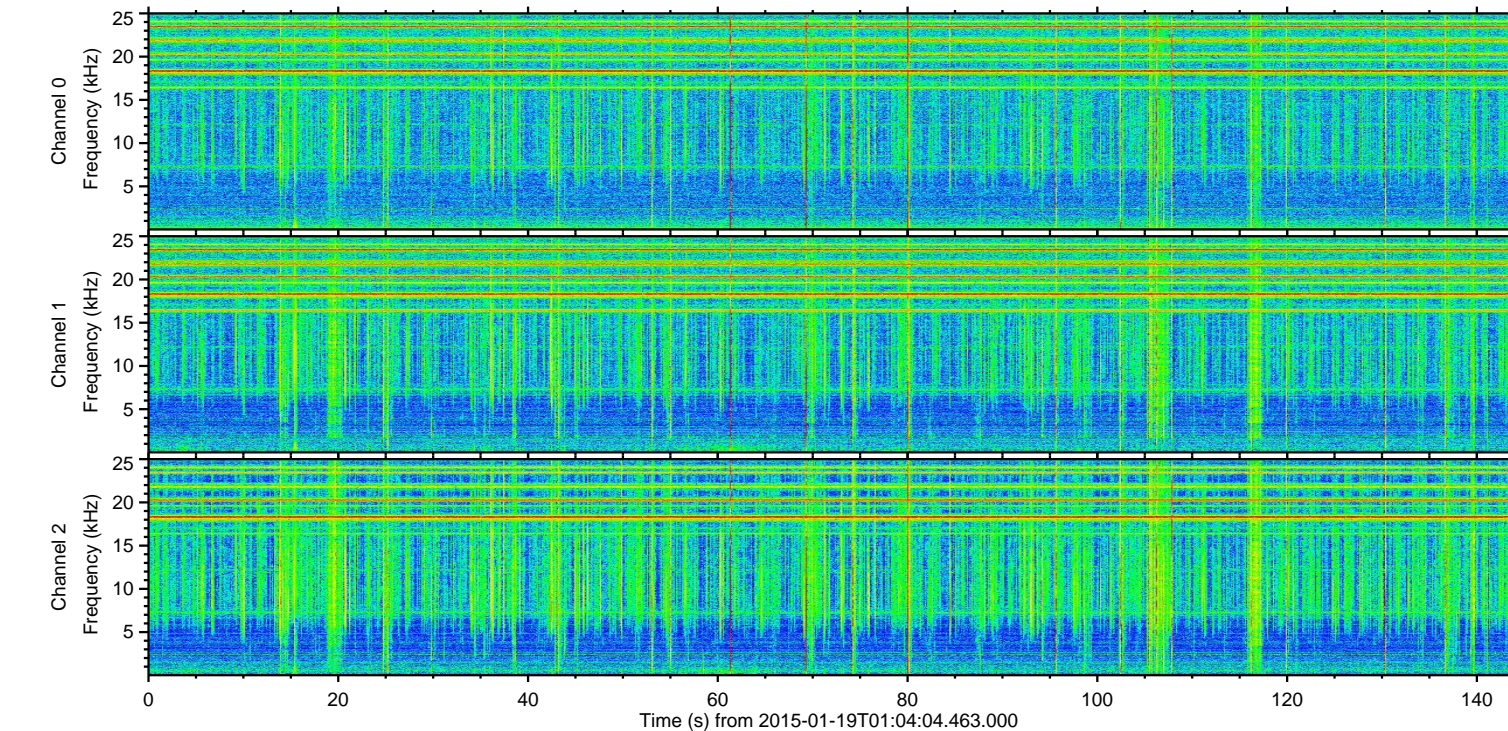
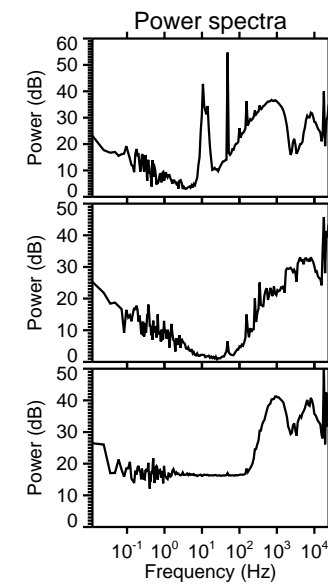
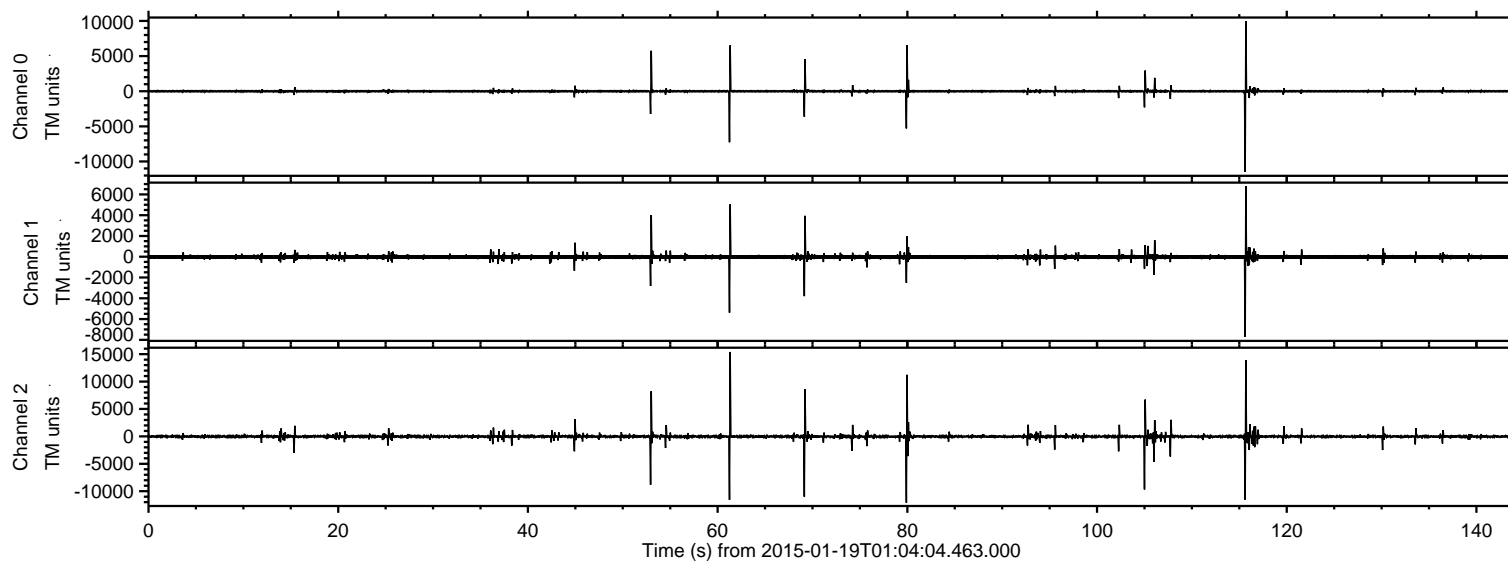


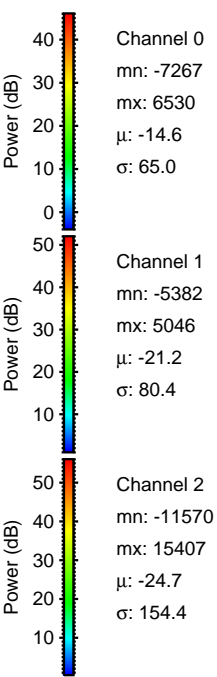
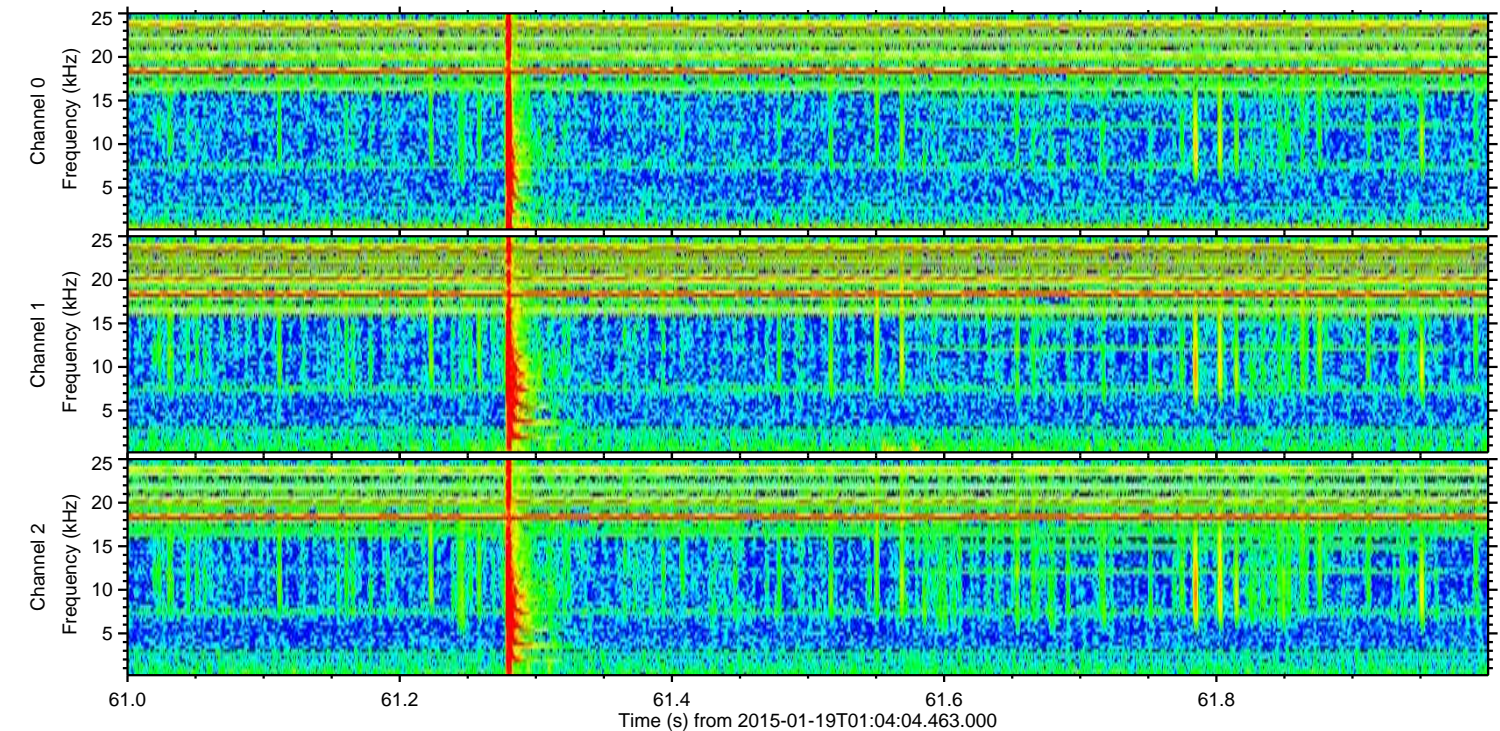
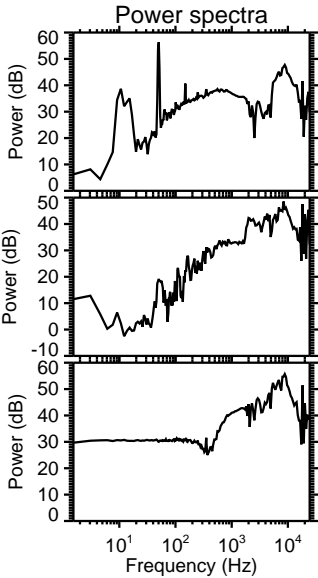
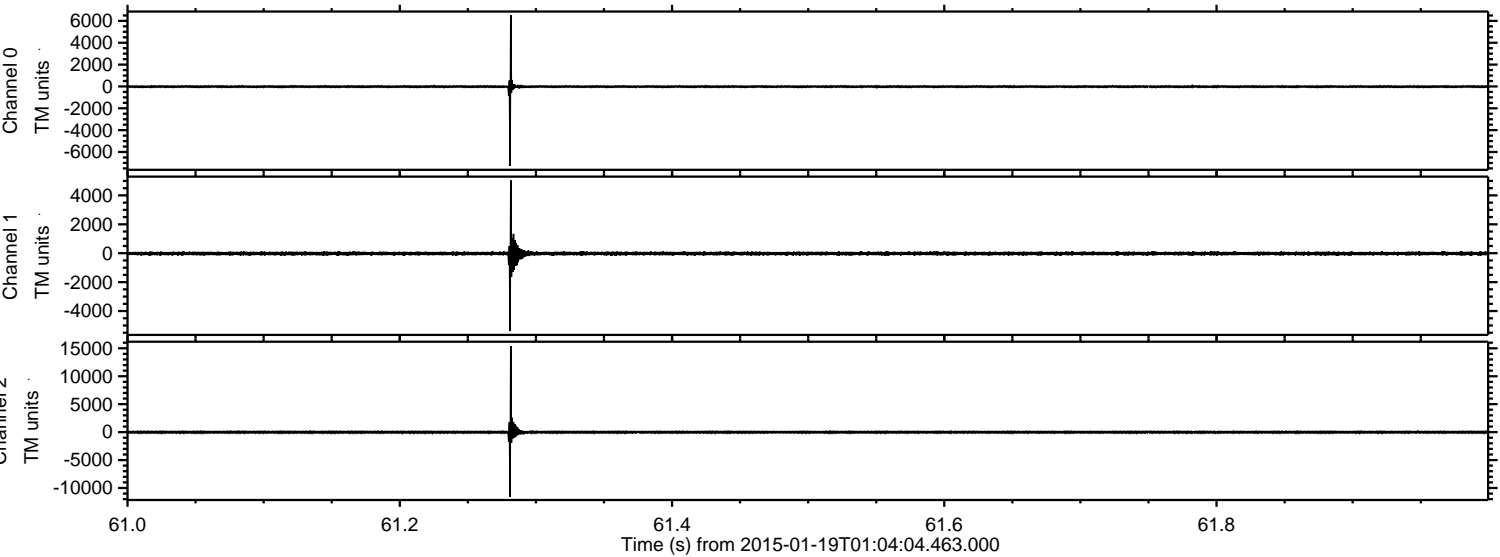
# ELMAVAN 3D WAVEFORMS (Measured data sampled at 50 kHz) 49808 packets of 144 samples from 2015-01-19T01:04:04.463.000.

Processed Thu Jan 29 00:29:00 2015 by ELM ver.2012-10-06 from 001\_\_elm20150119\_010403\_\_dat00.bin





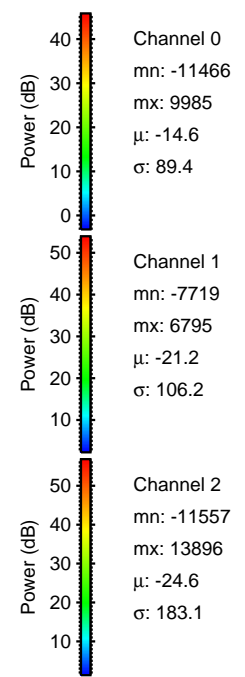
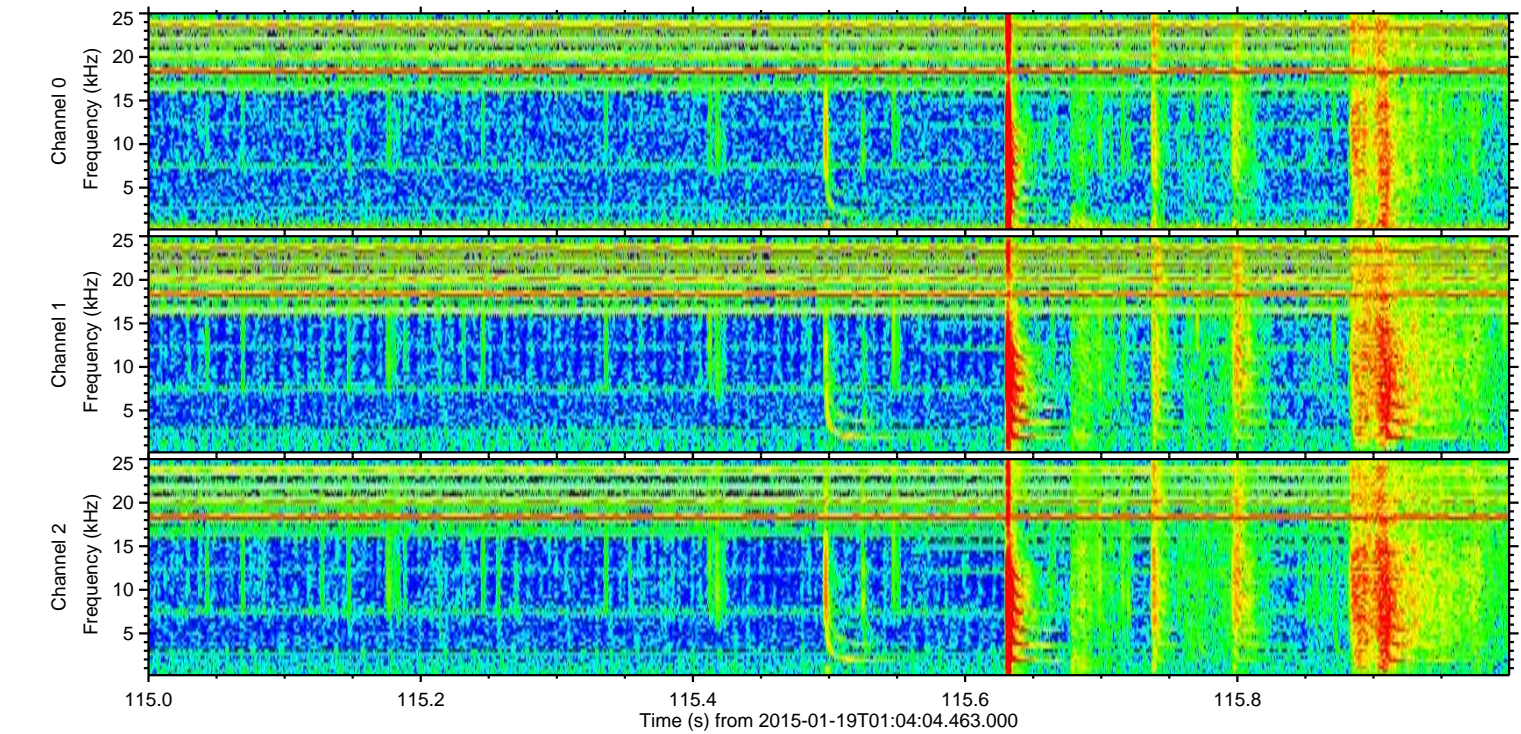
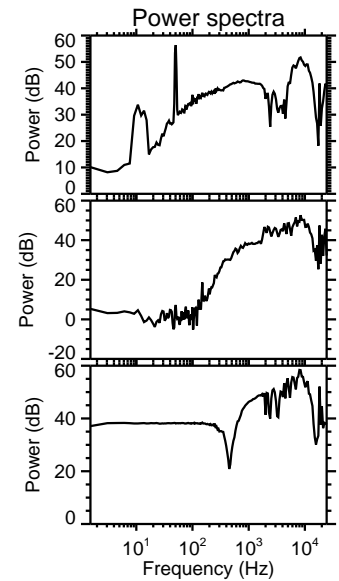
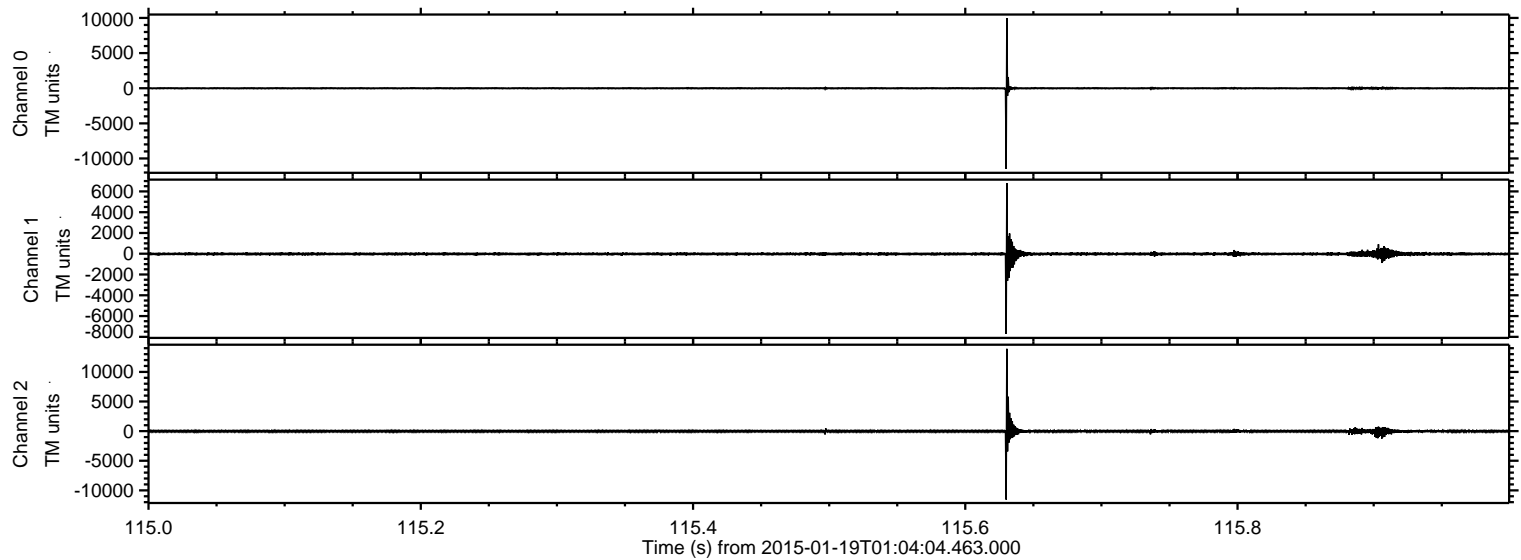
Processed Thu Jan 29 00:29:12 2015 by ELM ver.2012-10-06 from 001\_\_elm20150119\_010403\_\_dat00.bin





ELMAVAN 3D WAVEFORMS (Measured data sampled at 50 kHz) 49808 packets of 144 samples from 2015-01-19T01:04:04.463.000. Part 116/144

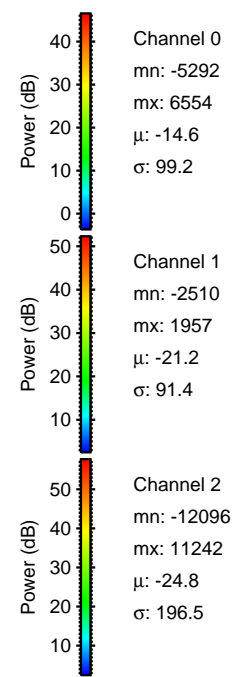
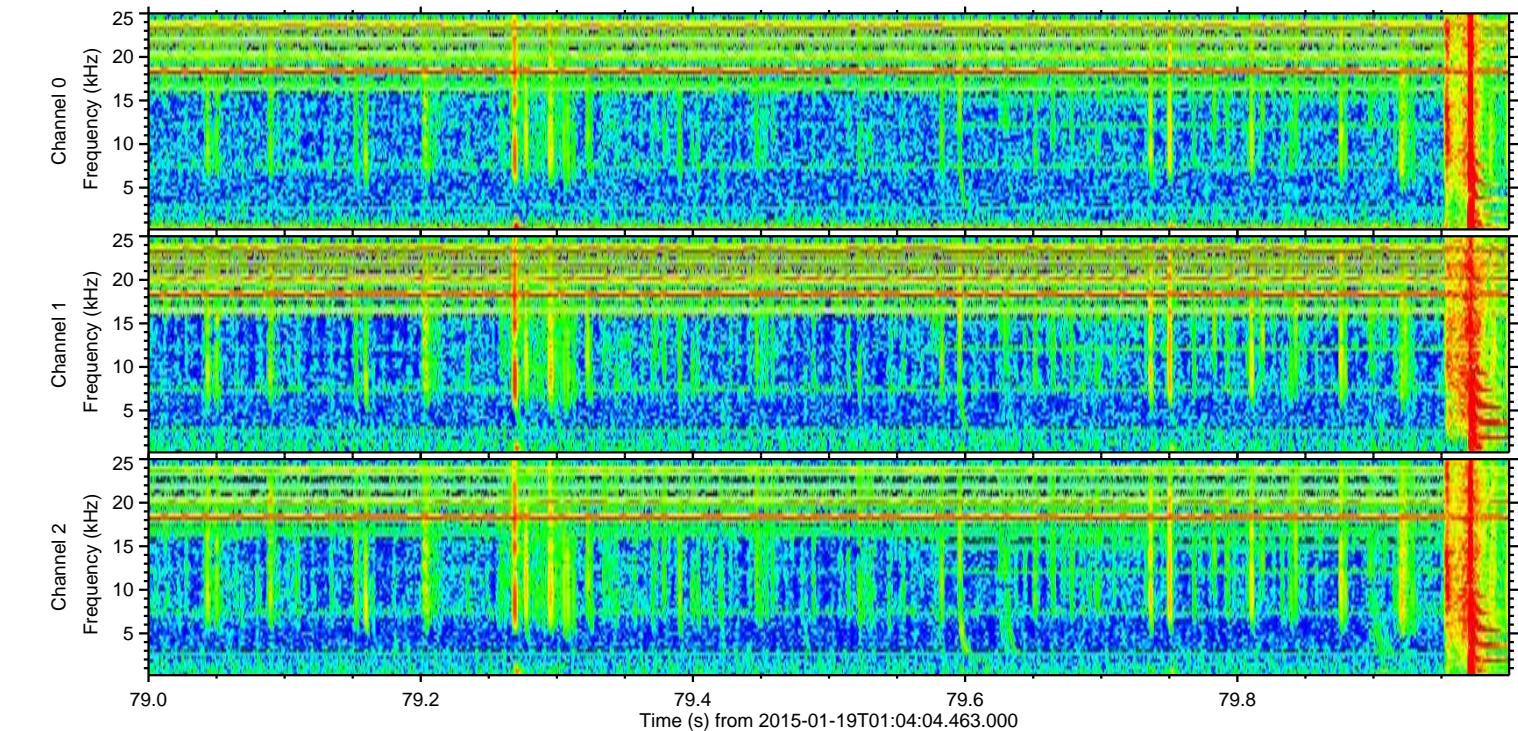
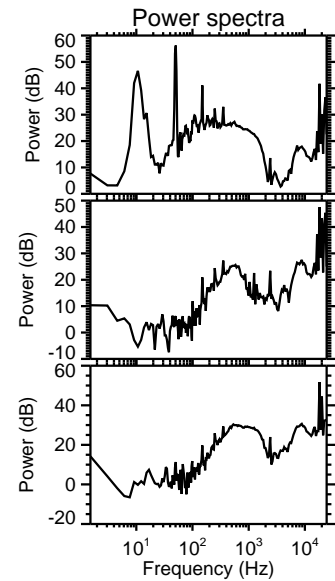
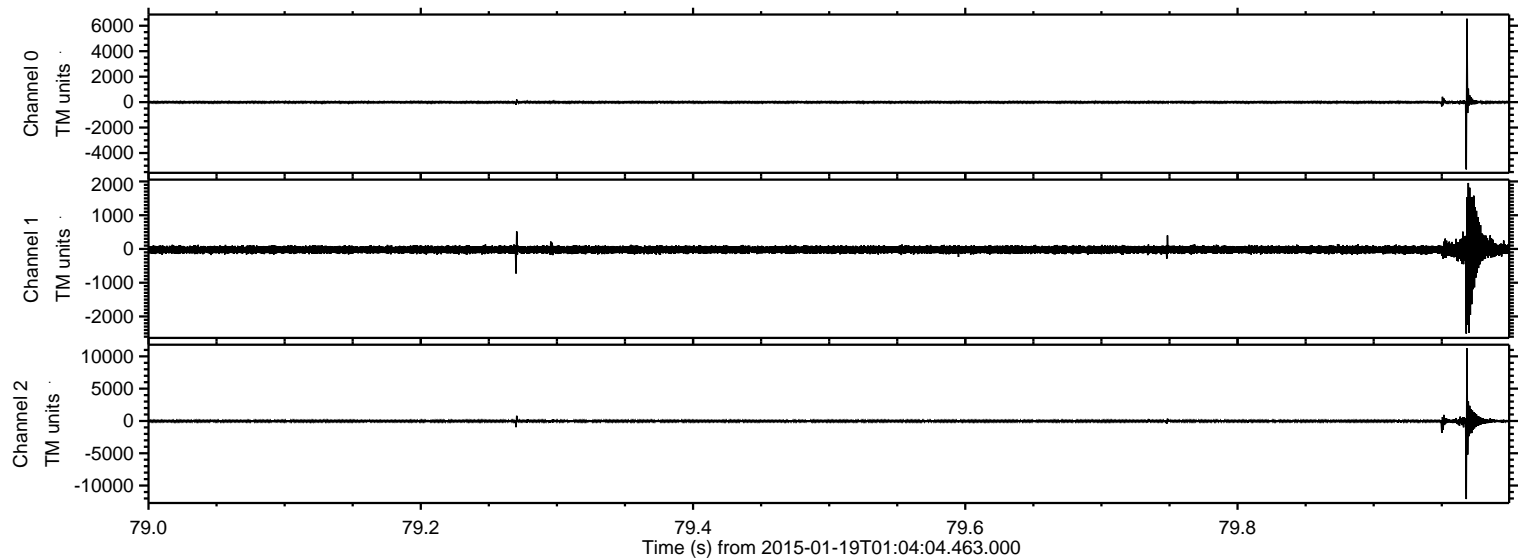
Processed Thu Jan 29 00:29:12 2015 by ELM ver.2012-10-06 from 001\_\_elm20150119\_010403\_\_dat00.bin





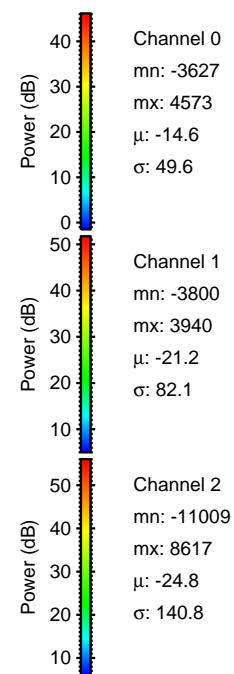
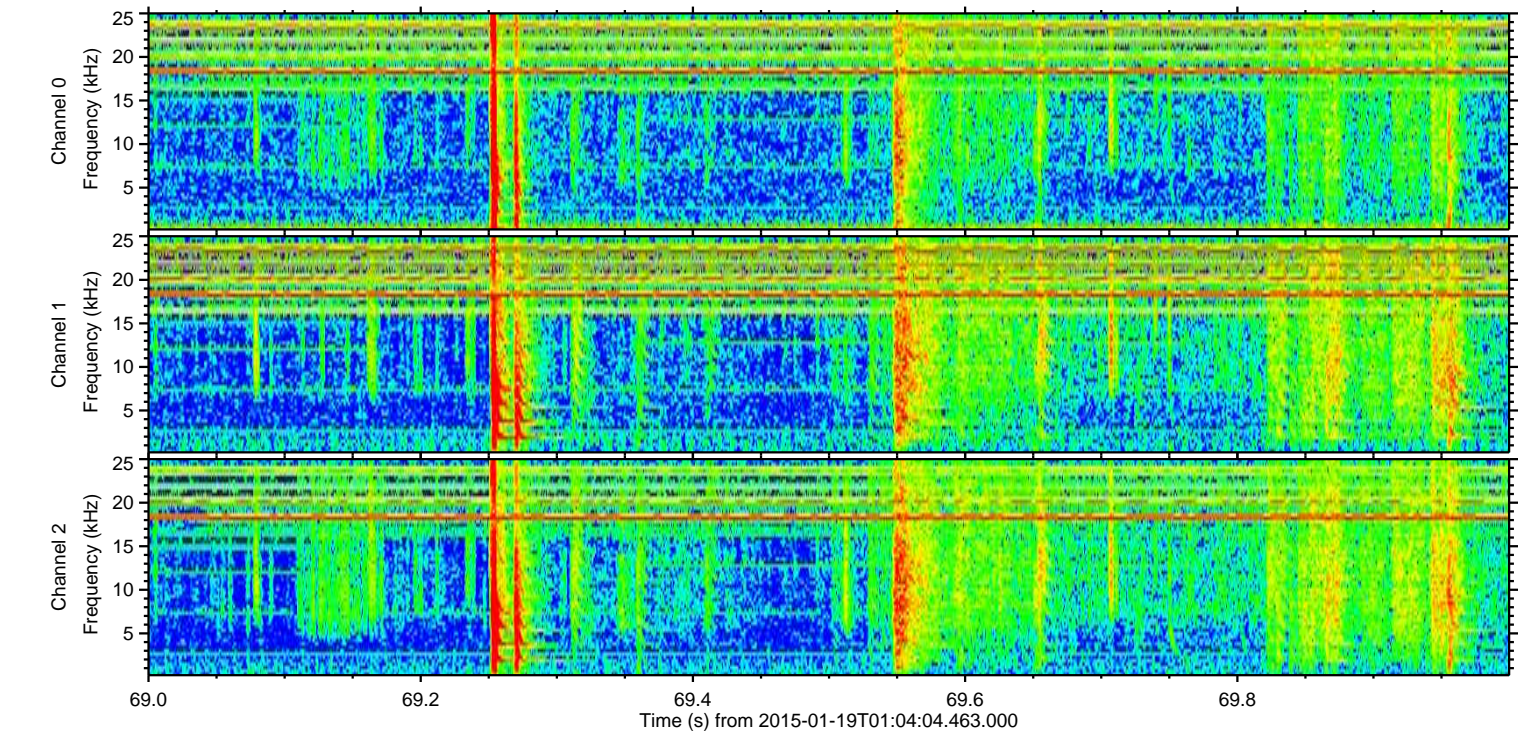
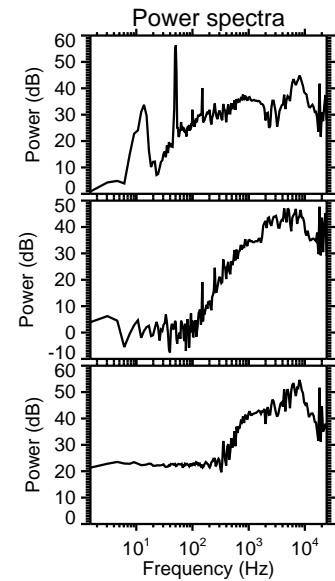
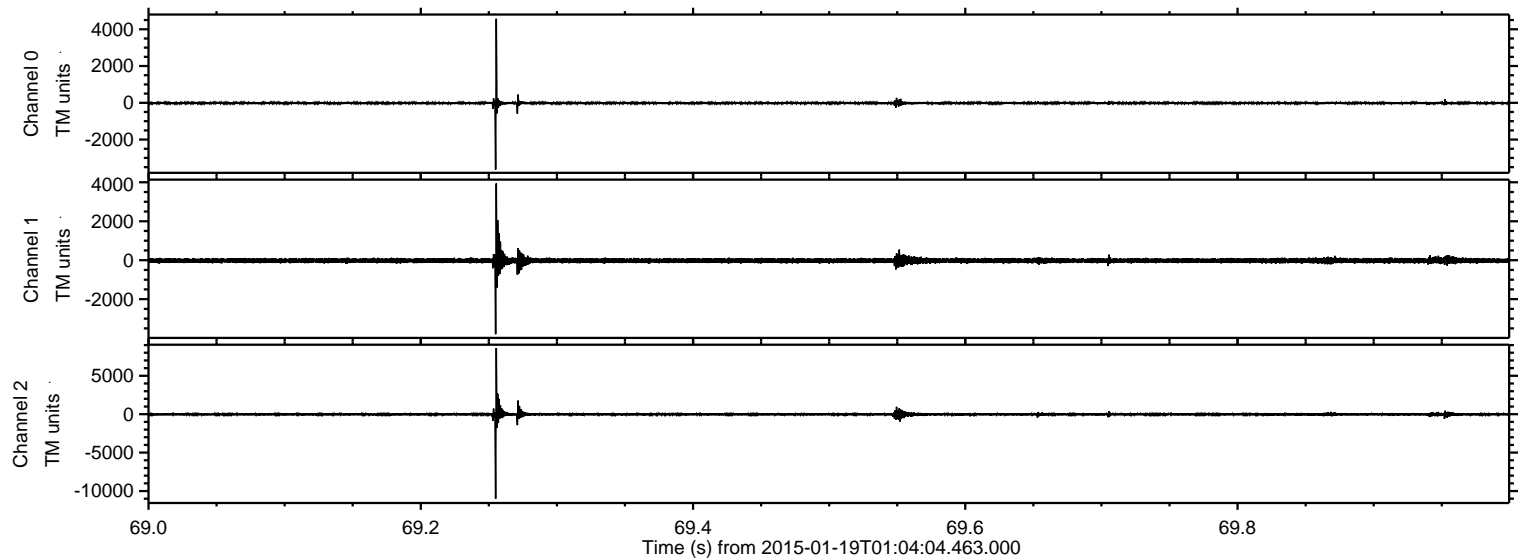
ELMAVAN 3D WAVEFORMS (Measured data sampled at 50 kHz) 49808 packets of 144 samples from 2015-01-19T01:04:04.463.000. Part 80/144

Processed Thu Jan 29 00:29:13 2015 by ELM ver.2012-10-06 from 001\_\_elm20150119\_010403\_\_dat00.bin





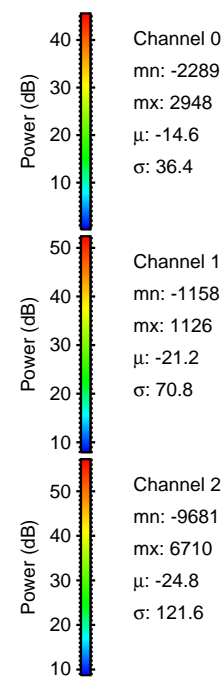
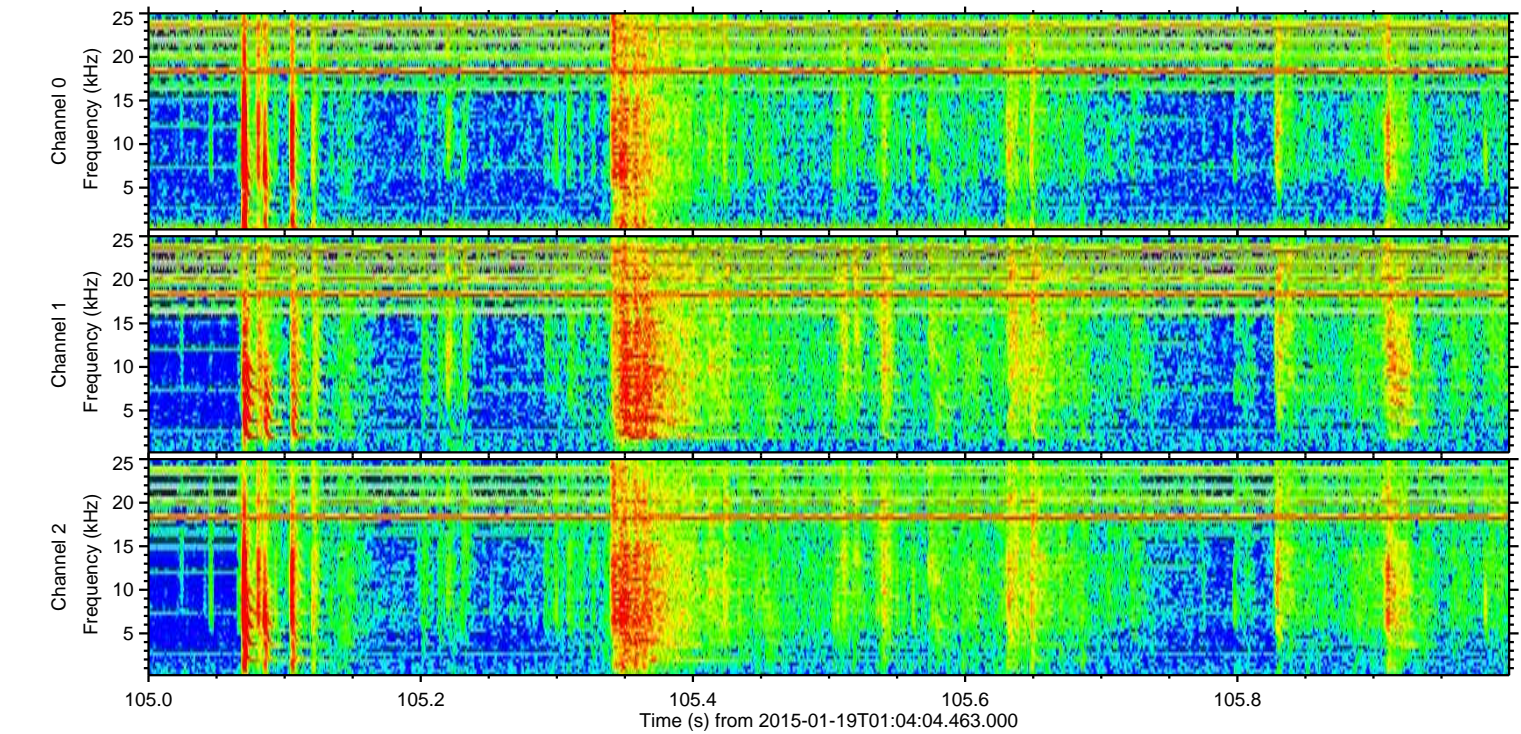
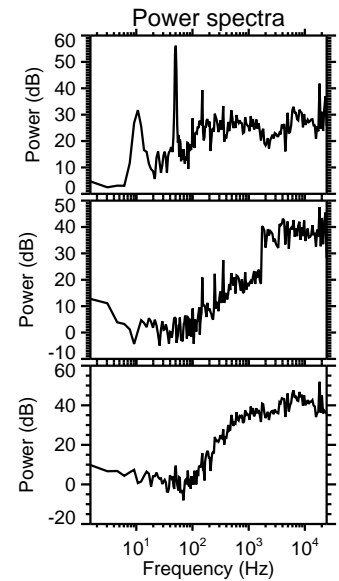
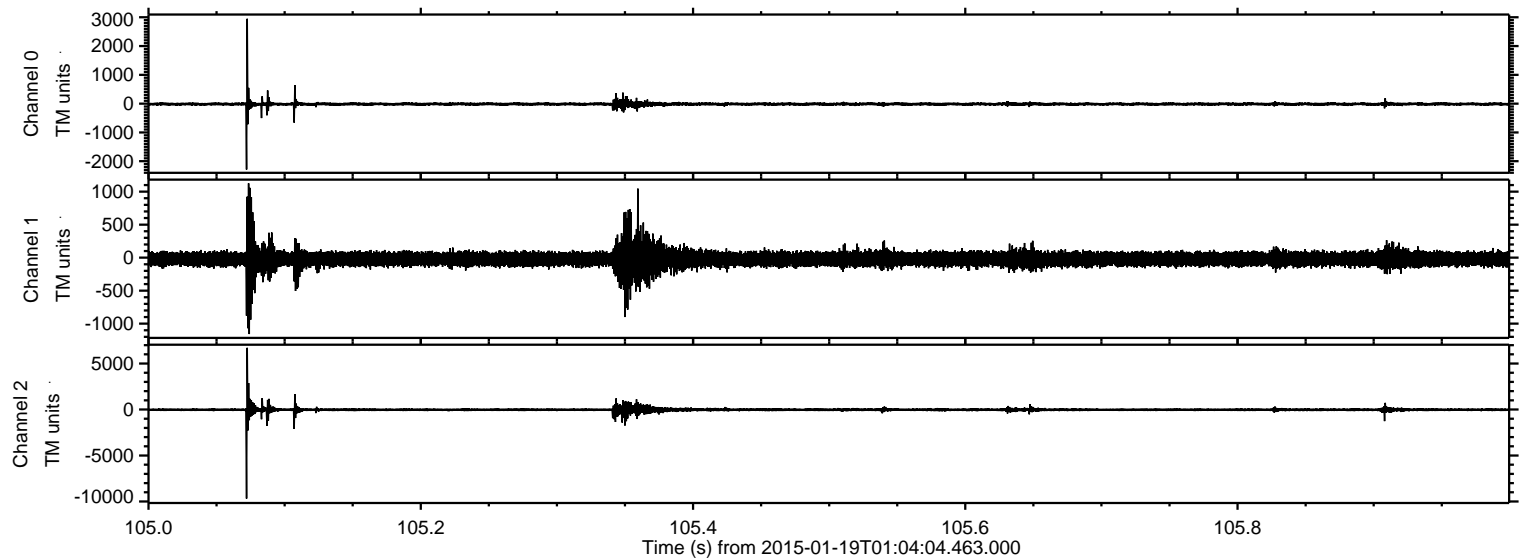
Processed Thu Jan 29 00:29:14 2015 by ELM ver.2012-10-06 from 001\_\_elm20150119\_010403\_\_dat00.bin





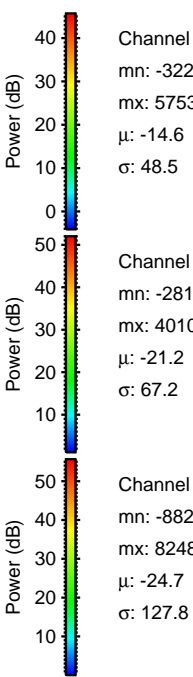
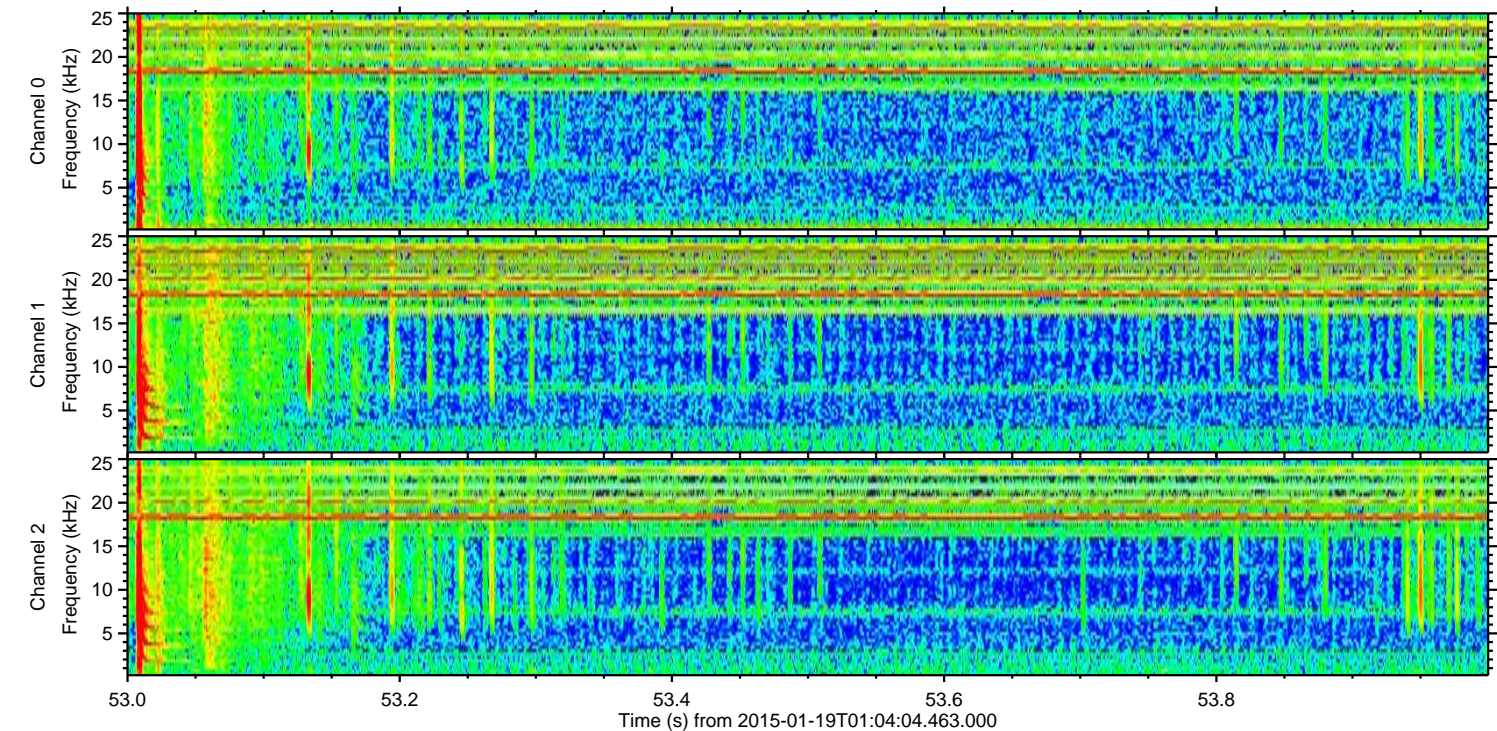
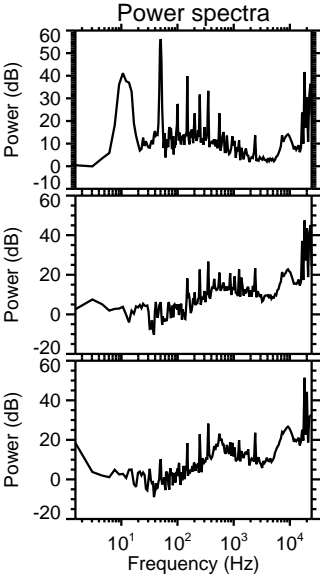
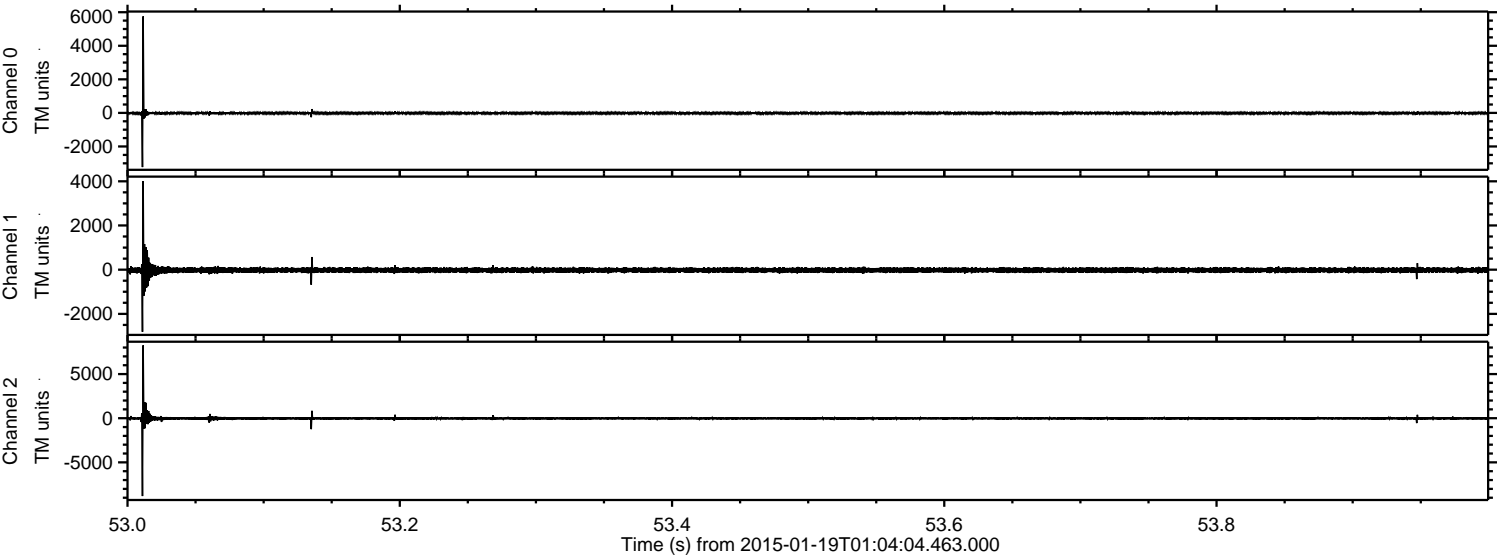
ELMAVAN 3D WAVEFORMS (Measured data sampled at 50 kHz) 49808 packets of 144 samples from 2015-01-19T01:04:04.463.000. Part 106/144

Processed Thu Jan 29 00:29:15 2015 by ELM ver.2012-10-06 from 001\_\_elm20150119\_010403\_\_dat00.bin



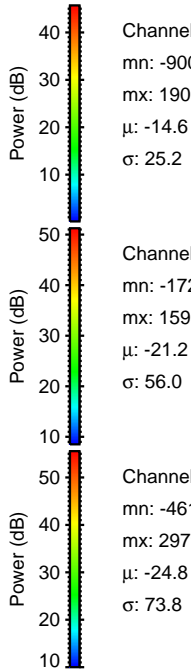
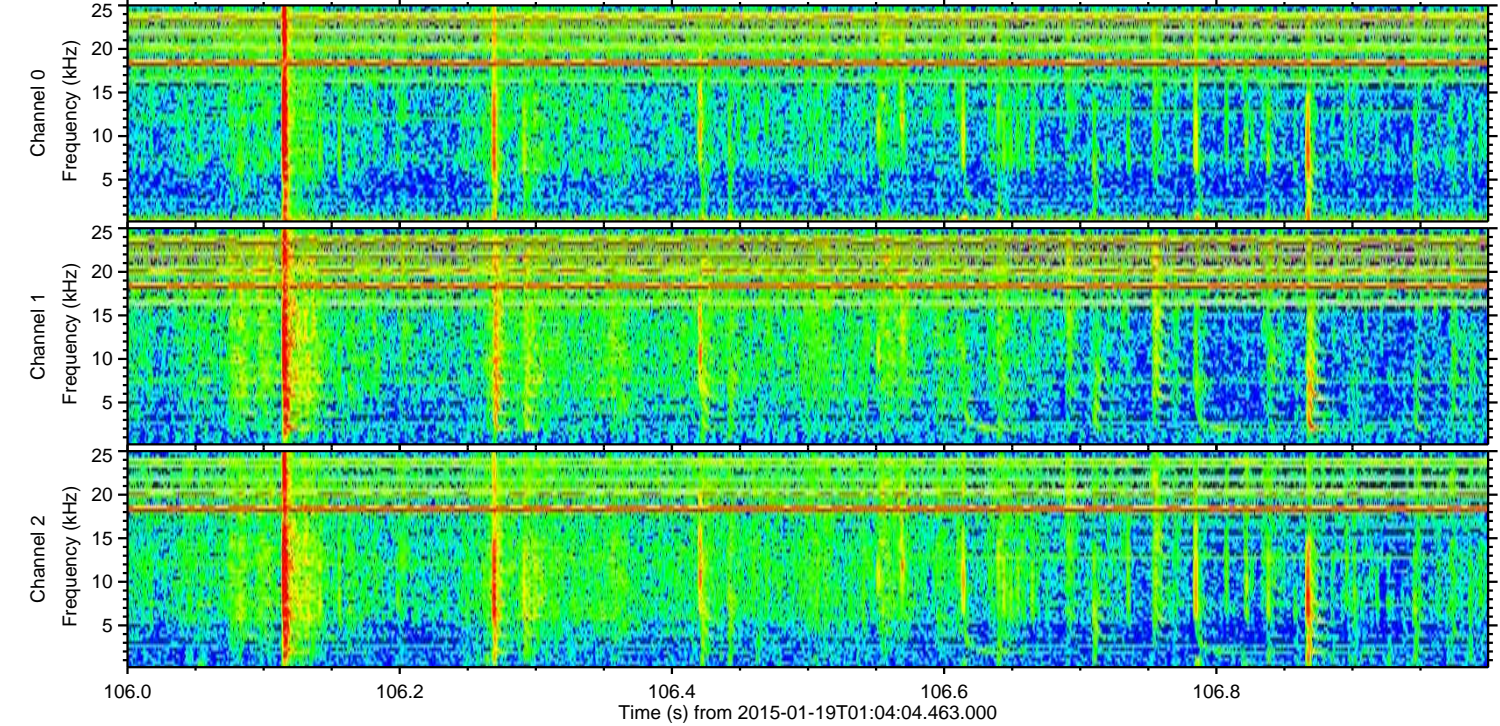
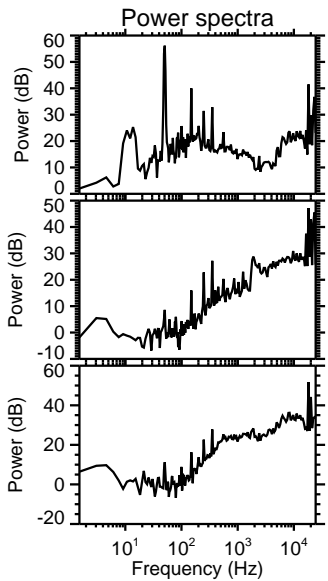
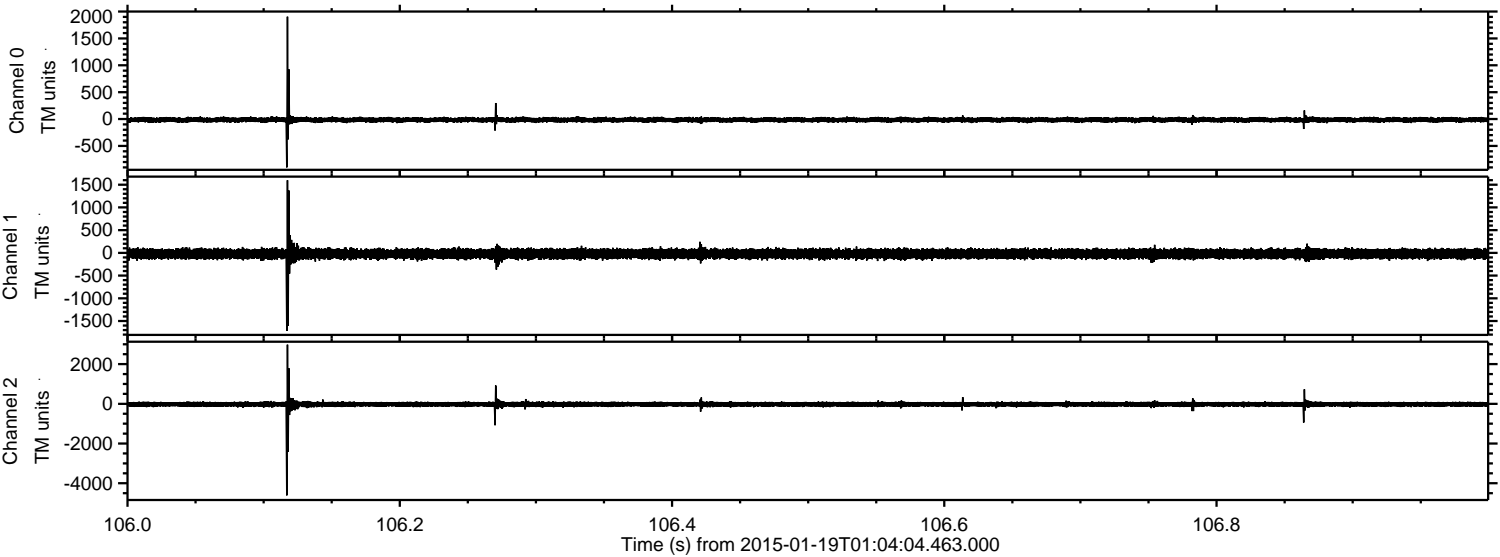


Processed Thu Jan 29 00:29:16 2015 by ELM ver.2012-10-06 from 001\_\_elm20150119\_010403\_\_dat00.bin





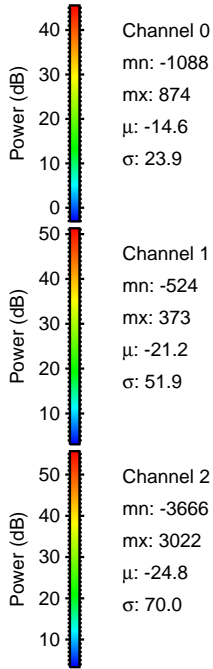
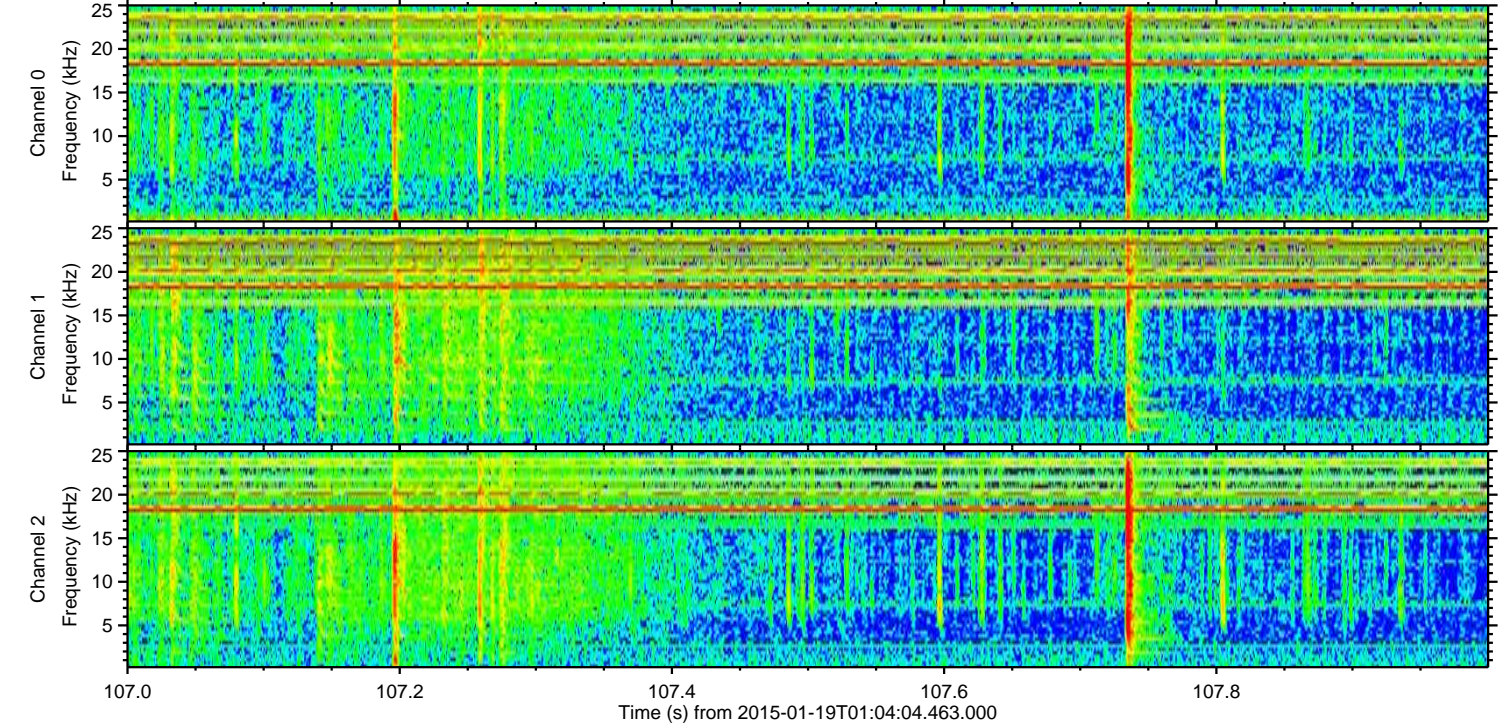
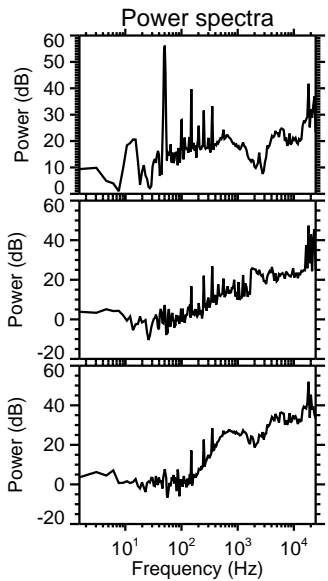
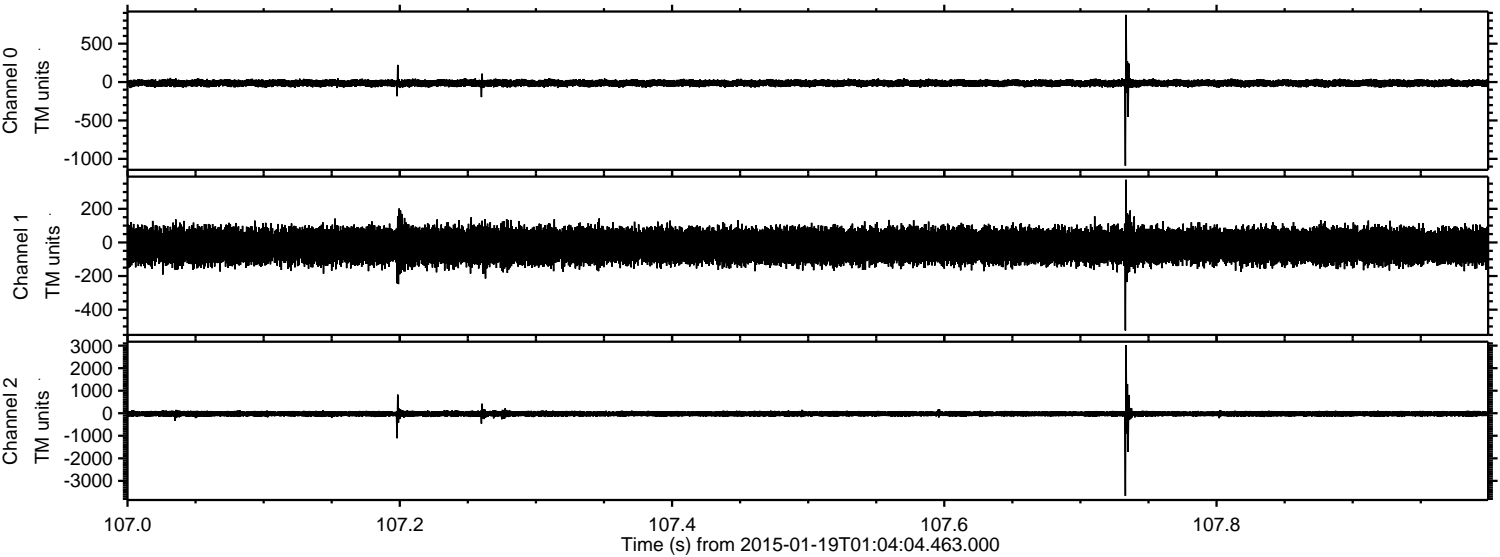
Processed Thu Jan 29 00:29:17 2015 by ELM ver.2012-10-06 from 001\_\_elm20150119\_010403\_\_dat00.bin





ELMAVAN 3D WAVEFORMS (Measured data sampled at 50 kHz) 49808 packets of 144 samples from 2015-01-19T01:04:04.463.000. Part 108/144

Processed Thu Jan 29 00:29:18 2015 by ELM ver.2012-10-06 from 001\_\_elm20150119\_010403\_\_dat00.bin



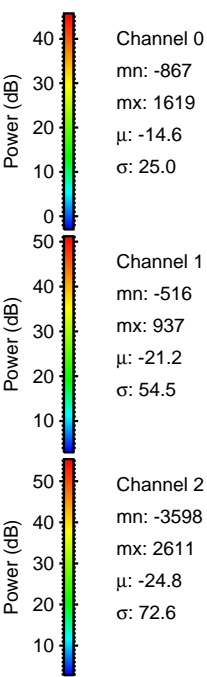
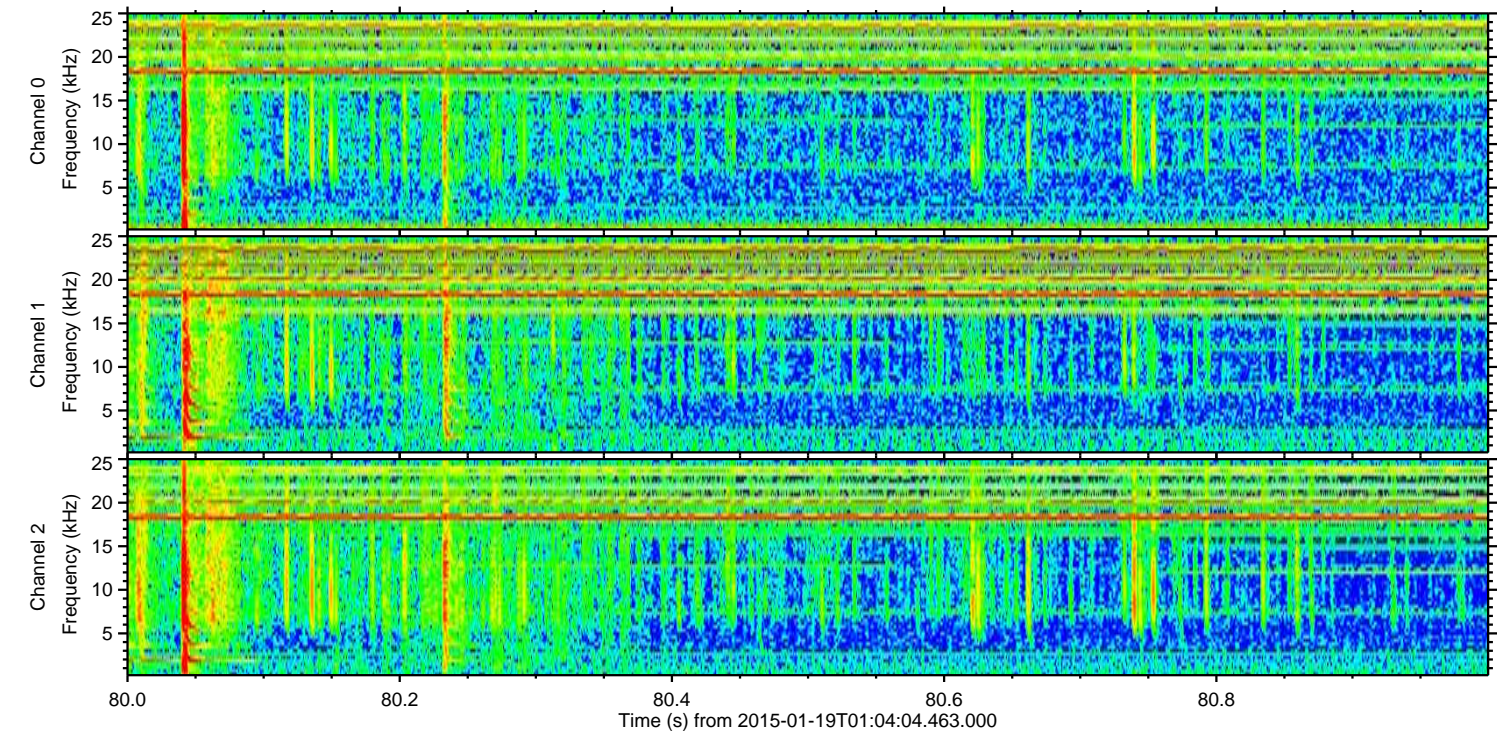
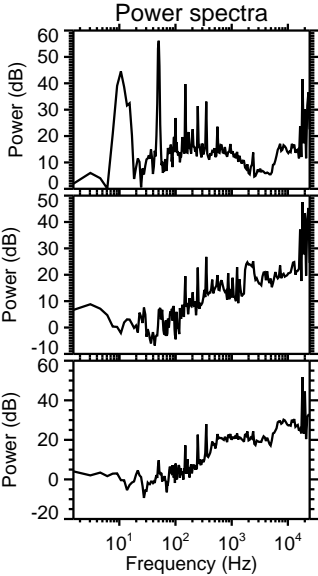
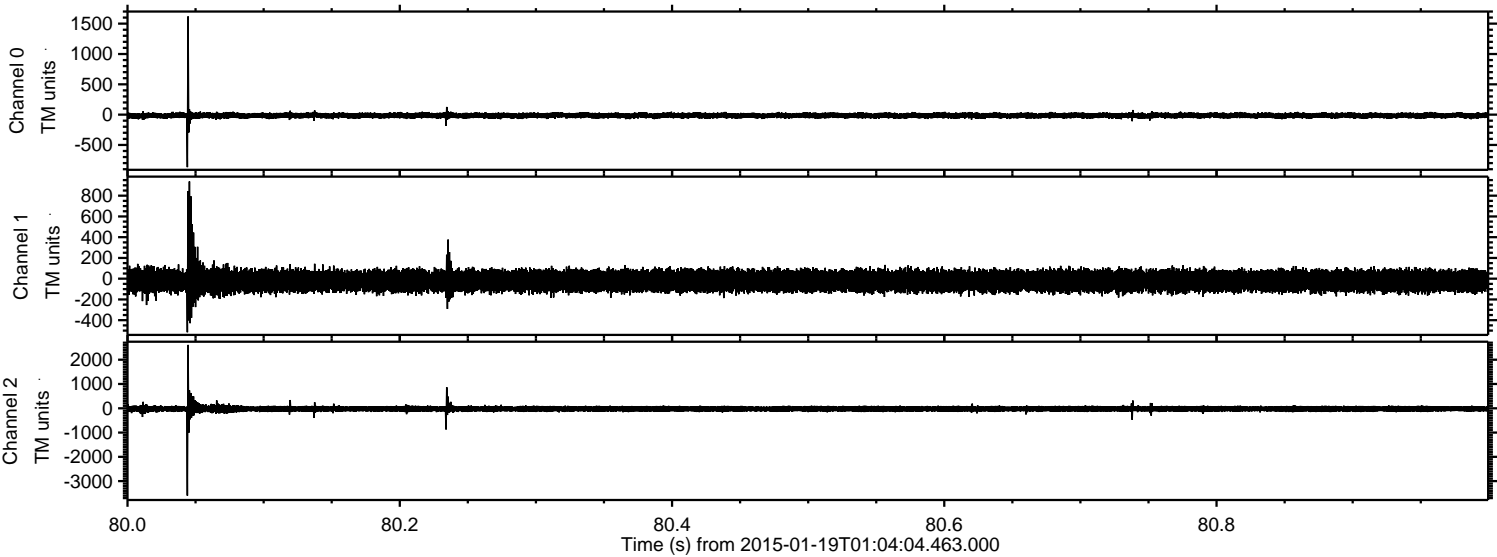
Channel 0  
mn: -1088  
mx: 874  
 $\mu$ : -14.6  
 $\sigma$ : 23.9

Channel 1  
mn: -524  
mx: 373  
 $\mu$ : -21.2  
 $\sigma$ : 51.9

Channel 2  
mn: -3666  
mx: 3022  
 $\mu$ : -24.8  
 $\sigma$ : 70.0



Processed Thu Jan 29 00:29:19 2015 by ELM ver.2012-10-06 from 001\_\_elm20150119\_010403\_\_dat00.bin



Channel 0  
mn: -867  
mx: 1619  
 $\mu$ : -14.6  
 $\sigma$ : 25.0

Channel 1  
mn: -516  
mx: 937  
 $\mu$ : -21.2  
 $\sigma$ : 54.5

Channel 2  
mn: -3598  
mx: 2611  
 $\mu$ : -24.8  
 $\sigma$ : 72.6



Processed Thu Jan 29 00:29:20 2015 by ELM ver.2012-10-06 from 001\_\_elm20150119\_010403\_\_dat00.bin

