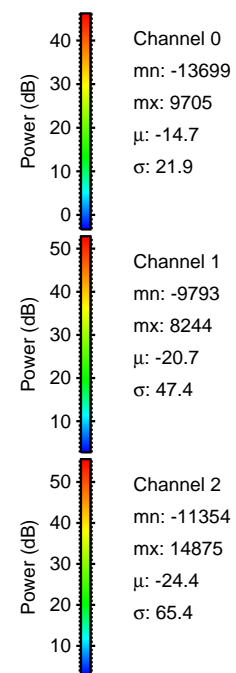
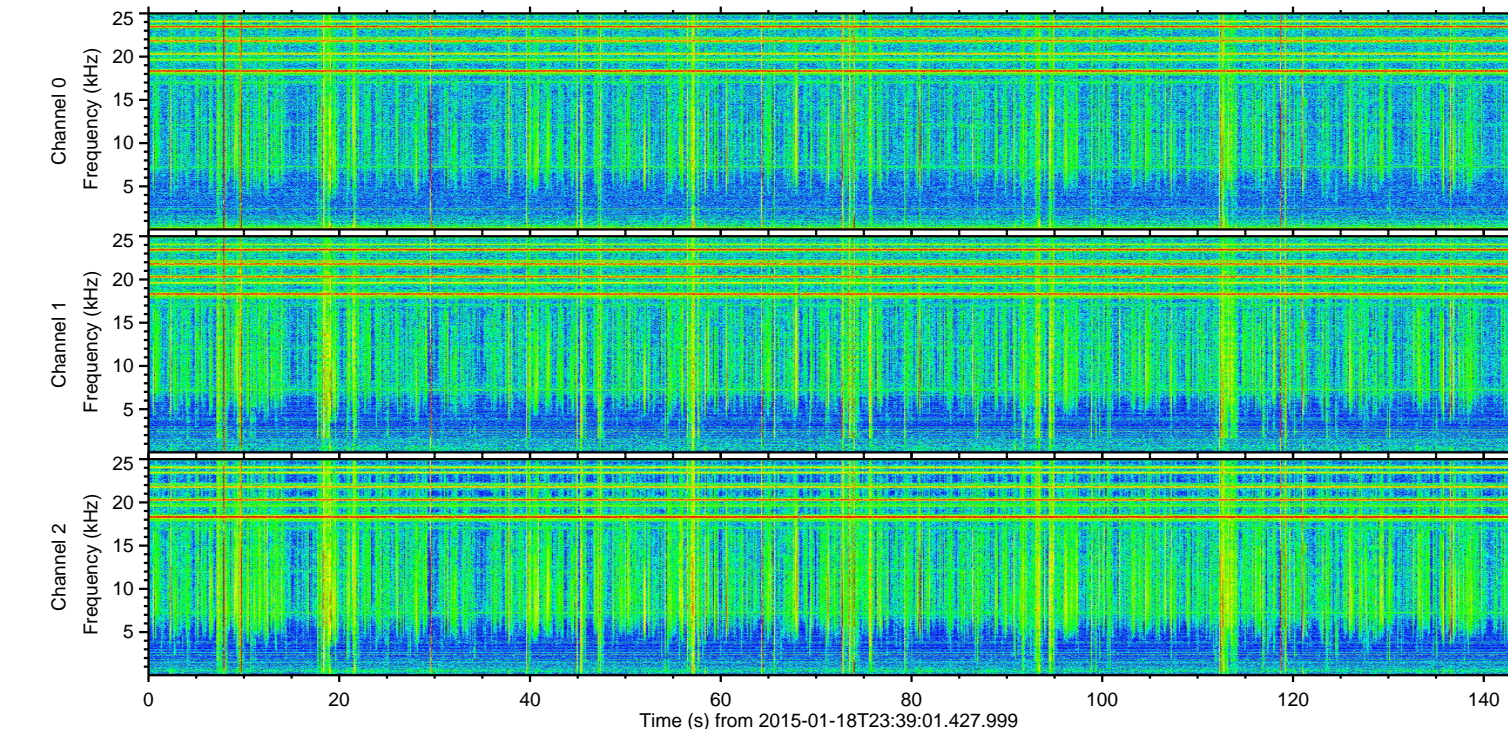
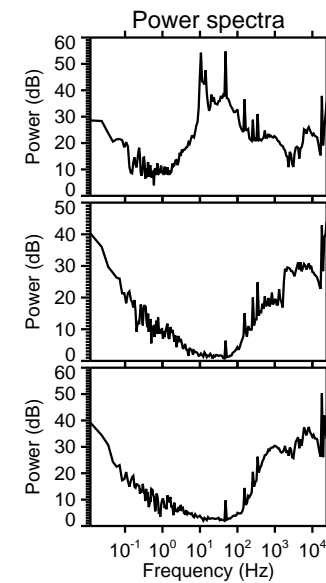
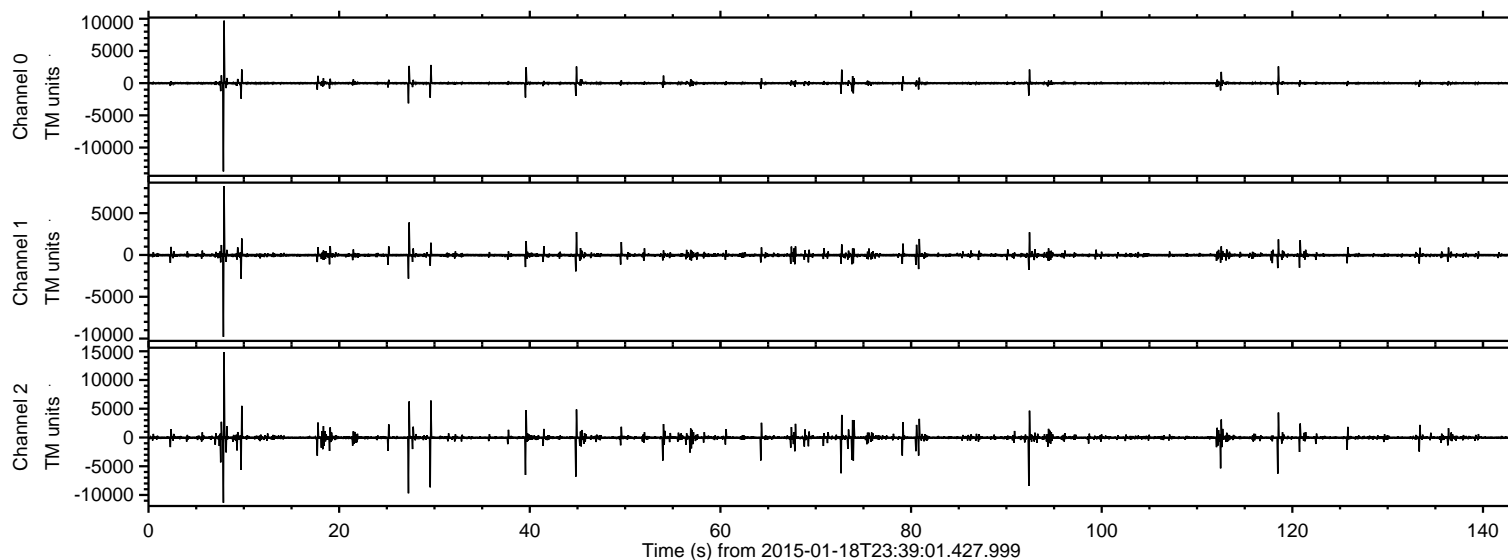


# ELMAVAN 3D WAVEFORMS (Measured data sampled at 50 kHz) 49563 packets of 144 samples from 2015-01-18T23:39:01.427.999.

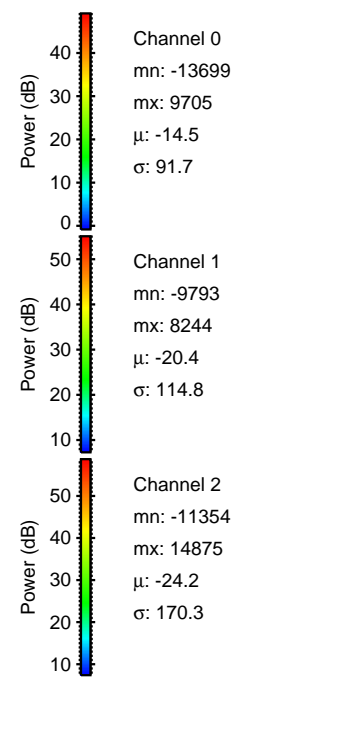
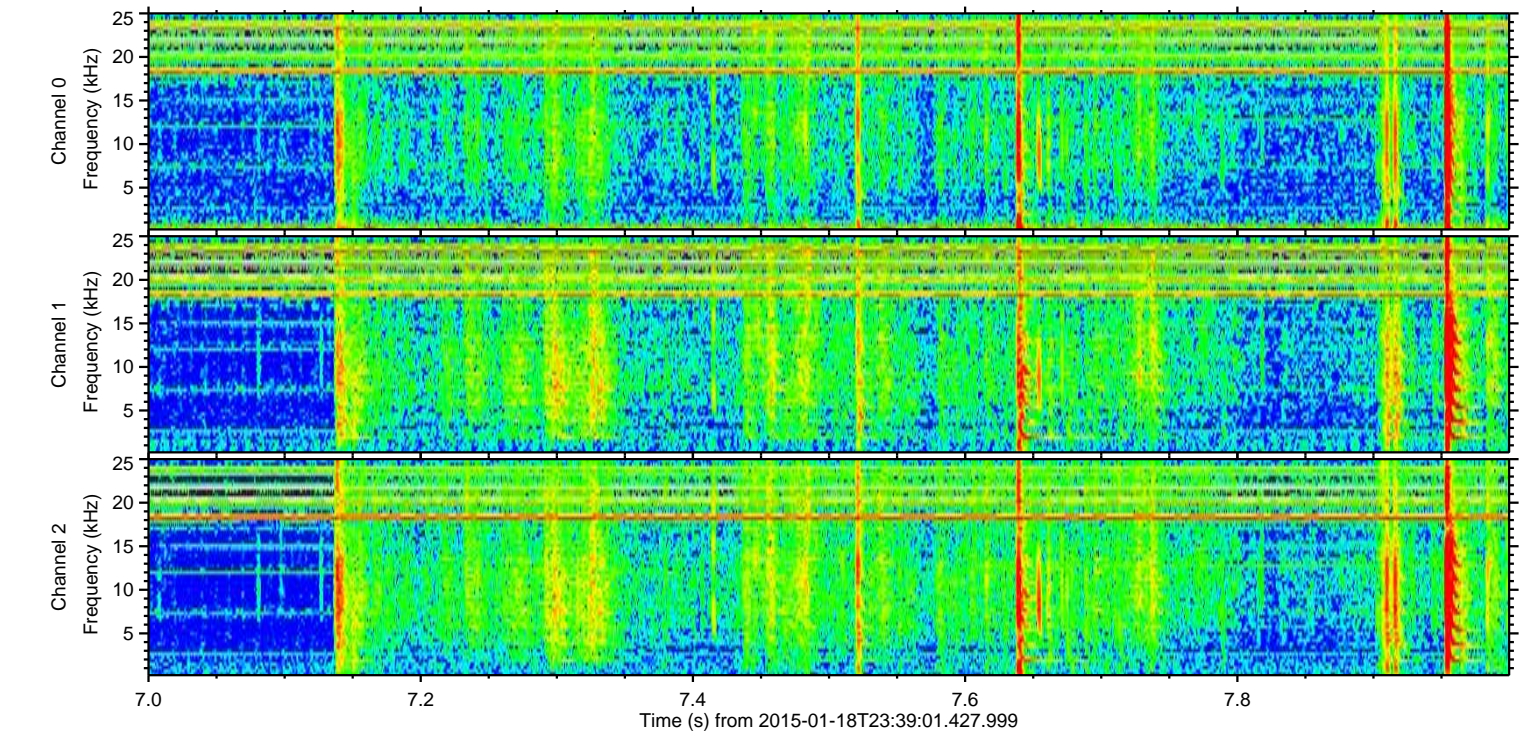
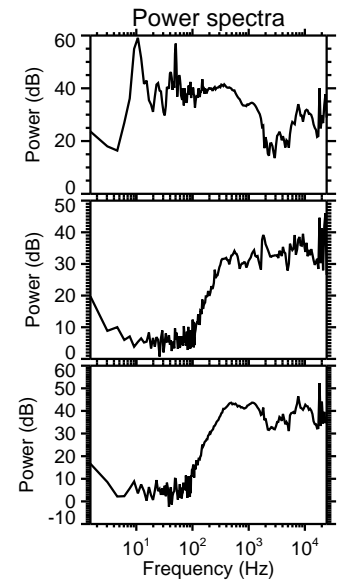
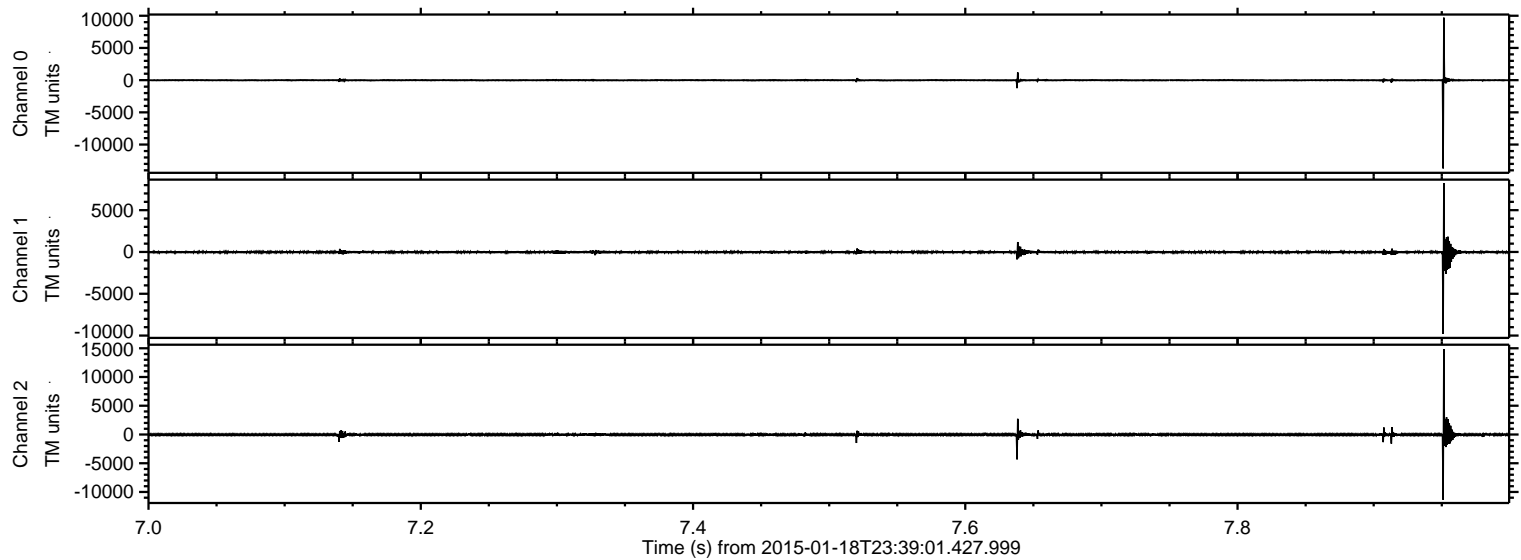
Processed Wed Jan 28 19:50:09 2015 by ELM ver.2012-10-06 from 001\_\_elm20150118\_233900\_\_dat00.bin





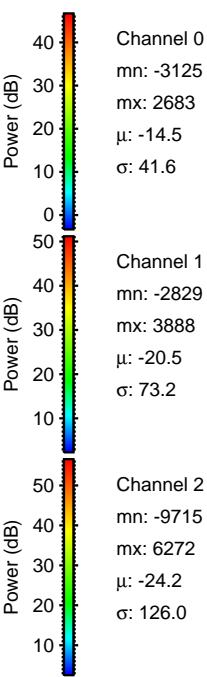
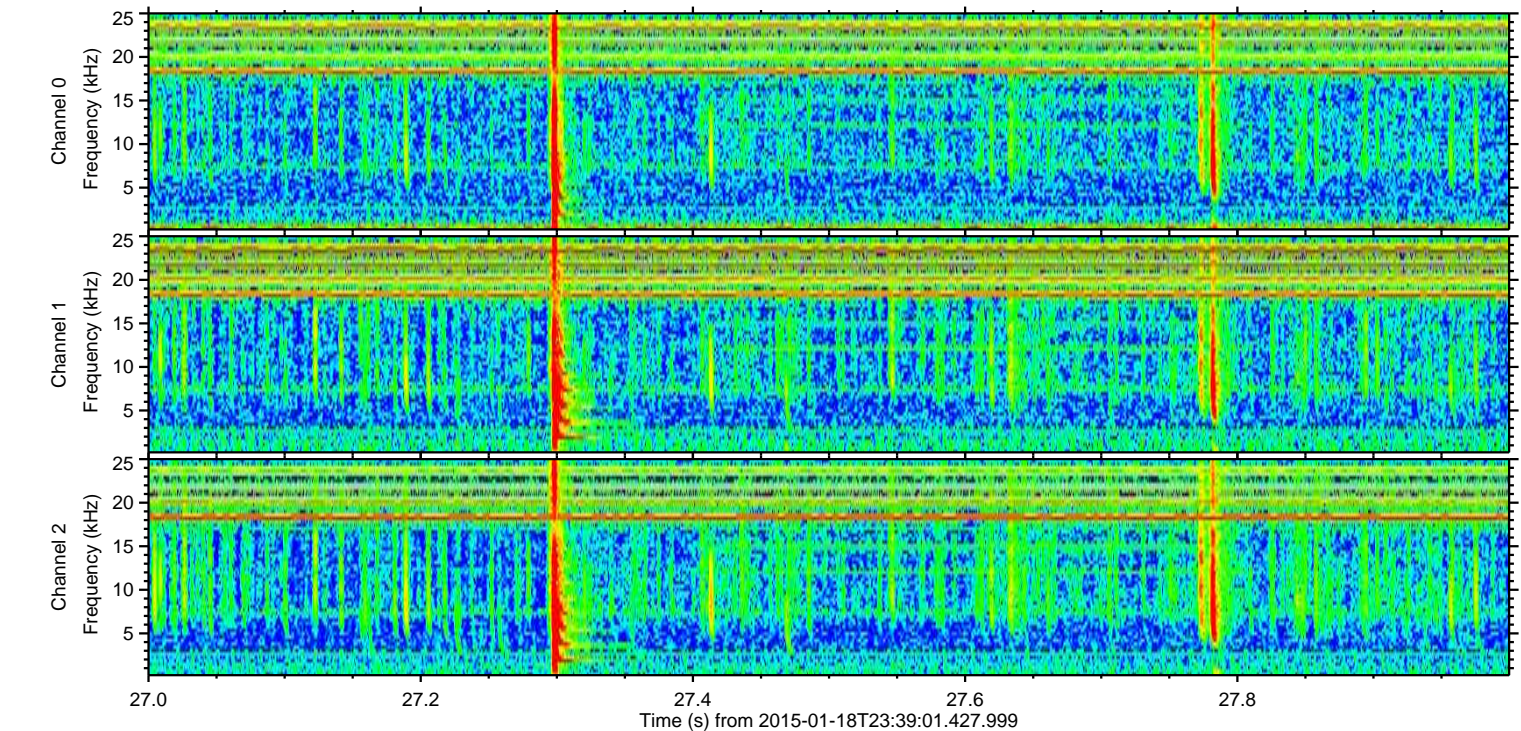
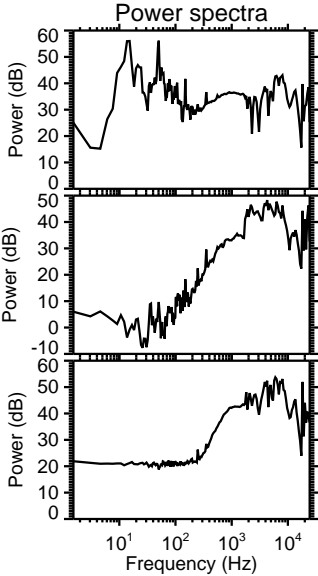
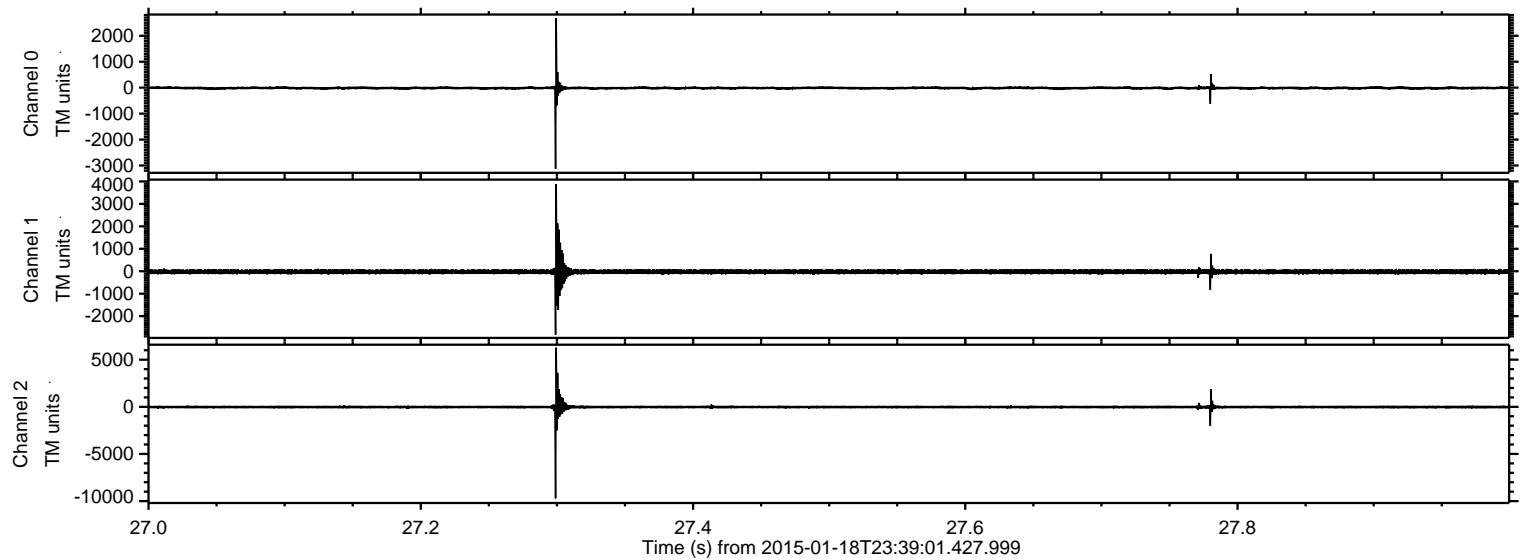
ELMAVAN 3D WAVEFORMS (Measured data sampled at 50 kHz) 49563 packets of 144 samples from 2015-01-18T23:39:01.427.999. Part 8/143

Processed Wed Jan 28 19:50:20 2015 by ELM ver.2012-10-06 from 001\_\_elm20150118\_233900\_\_dat00.bin





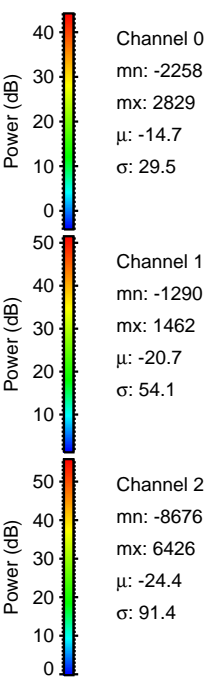
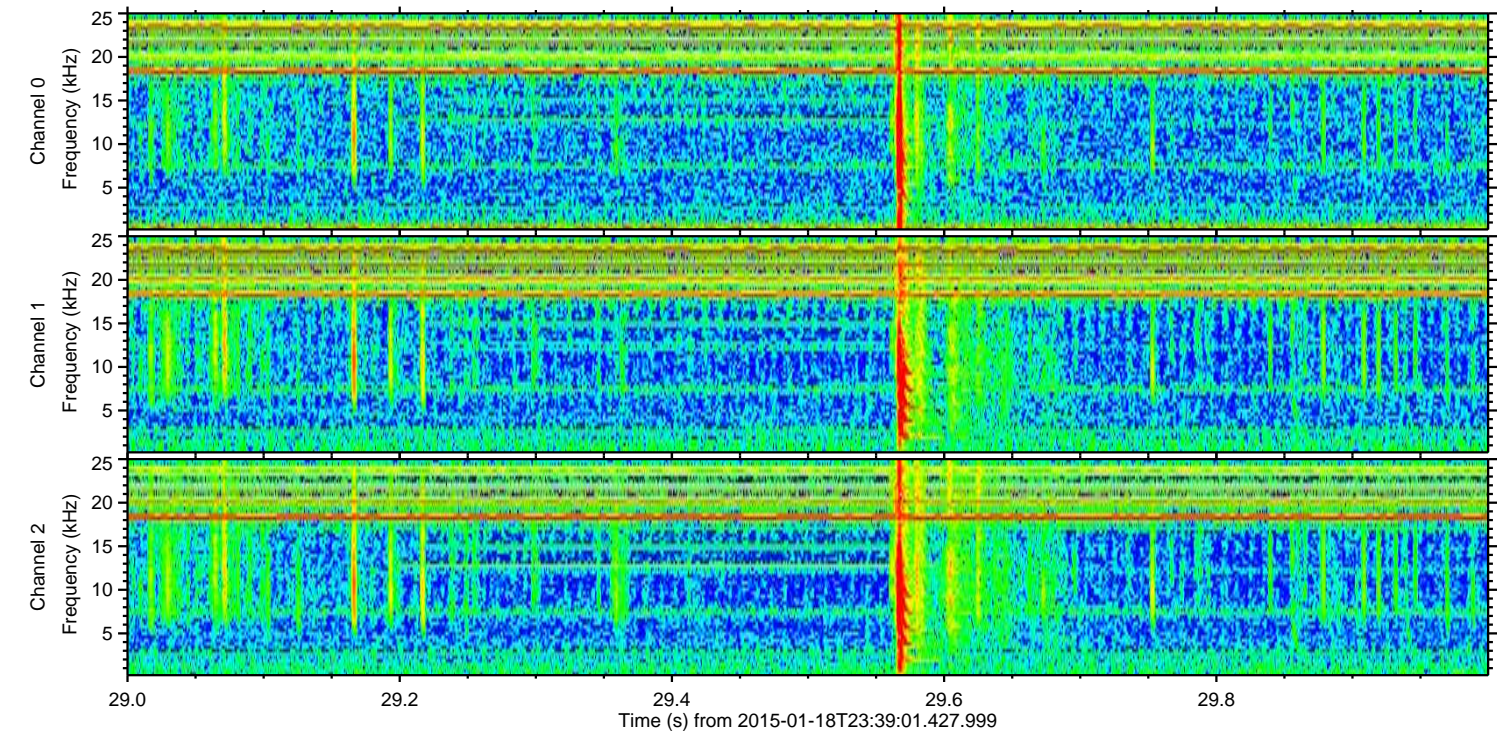
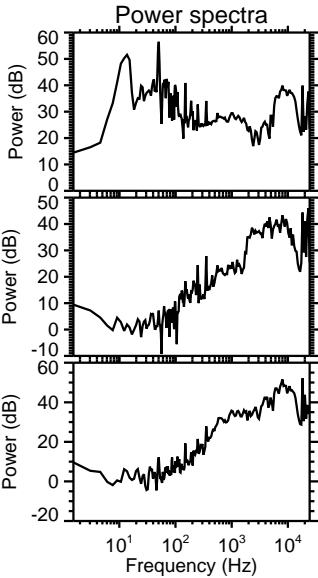
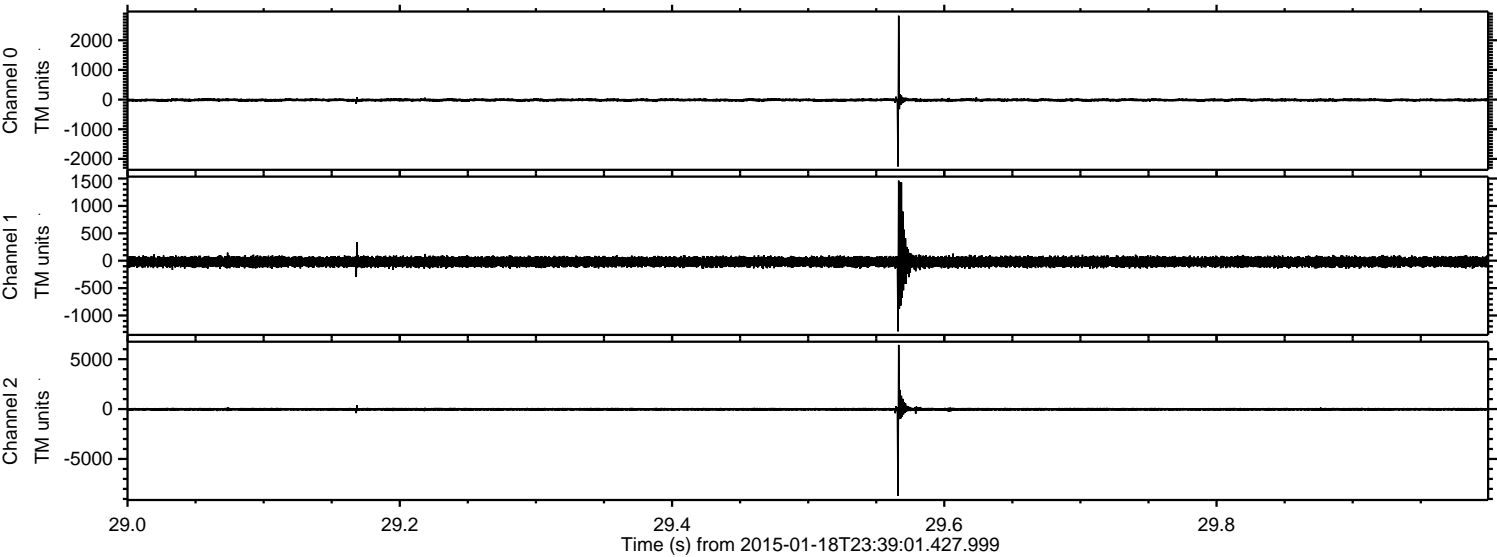
Processed Wed Jan 28 19:50:21 2015 by ELM ver.2012-10-06 from 001\_\_elm20150118\_233900\_\_dat00.bin





ELMAVAN 3D WAVEFORMS (Measured data sampled at 50 kHz) 49563 packets of 144 samples from 2015-01-18T23:39:01.427.999. Part 30/143

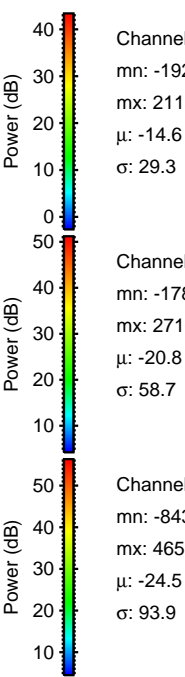
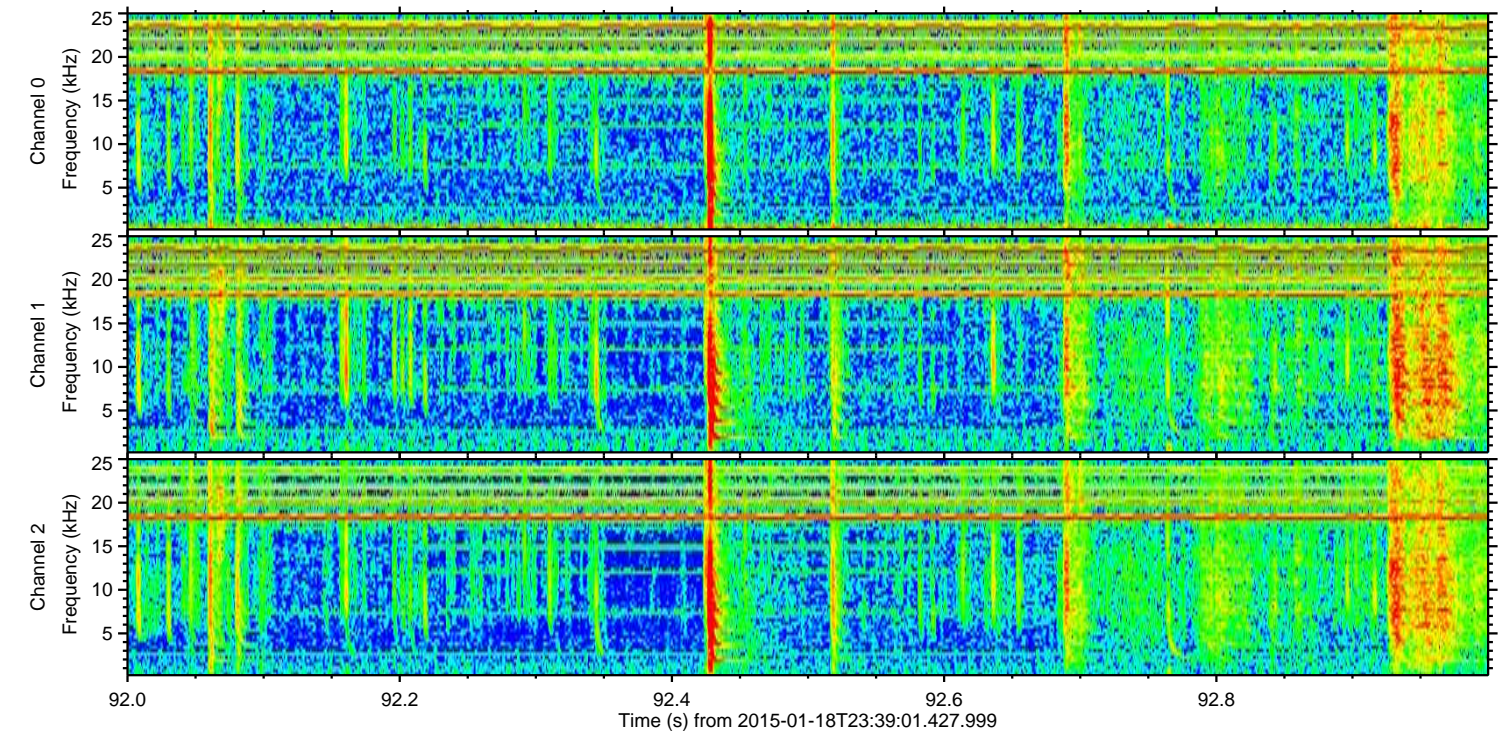
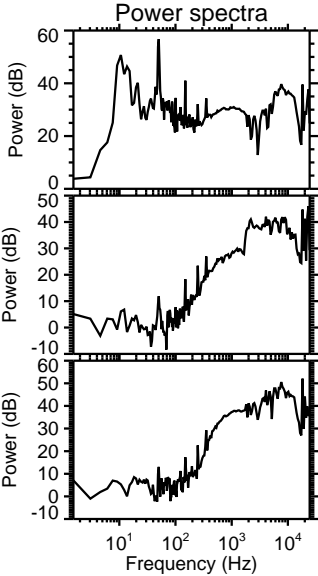
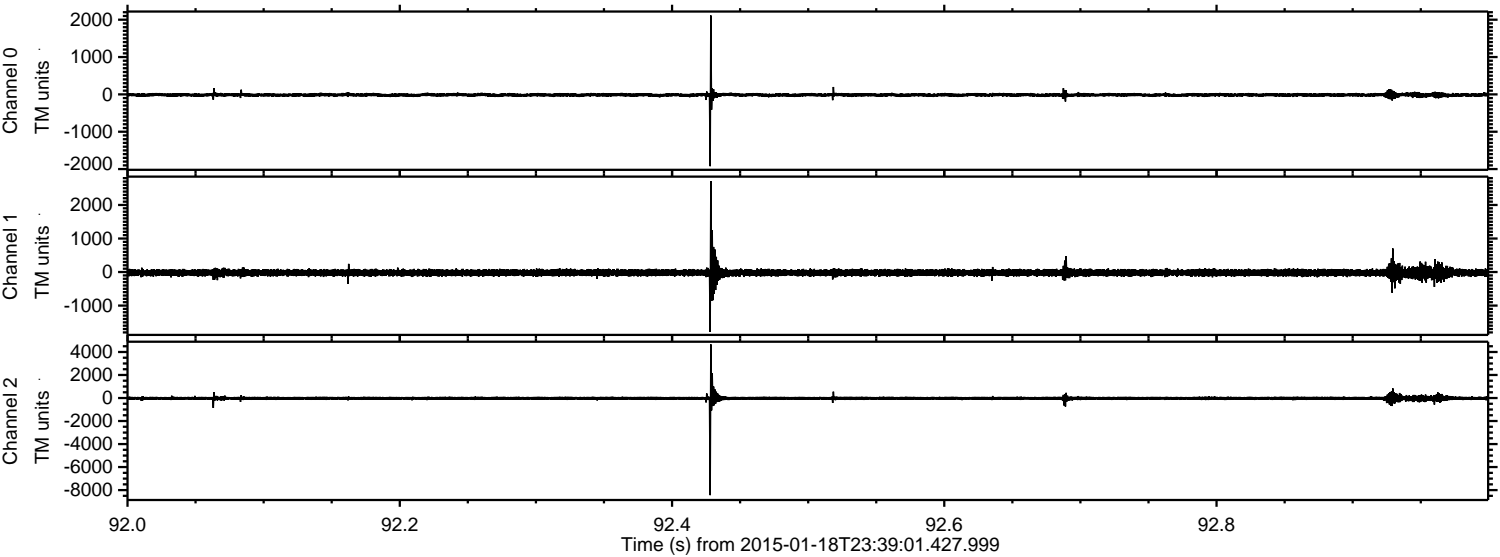
Processed Wed Jan 28 19:50:22 2015 by ELM ver.2012-10-06 from 001\_\_elm20150118\_233900\_\_dat00.bin





ELMAVAN 3D WAVEFORMS (Measured data sampled at 50 kHz) 49563 packets of 144 samples from 2015-01-18T23:39:01.427.999. Part 93/143

Processed Wed Jan 28 19:50:23 2015 by ELM ver.2012-10-06 from 001\_\_elm20150118\_233900\_\_dat00.bin



Channel 0  
mn: -1924  
mx: 2113  
 $\mu$ : -14.6  
 $\sigma$ : 29.3

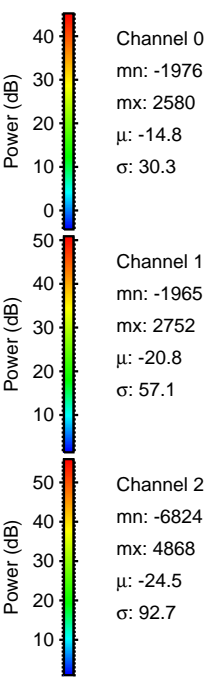
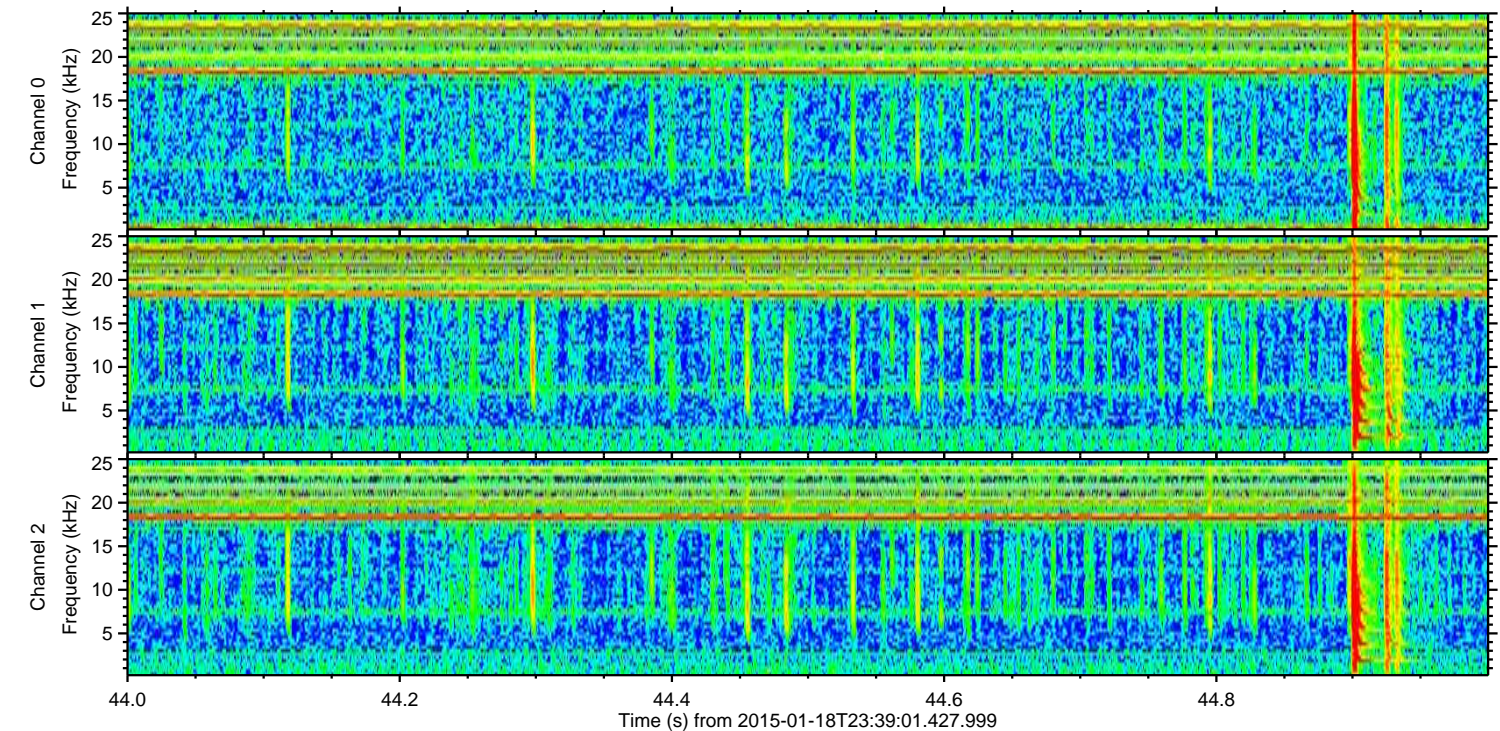
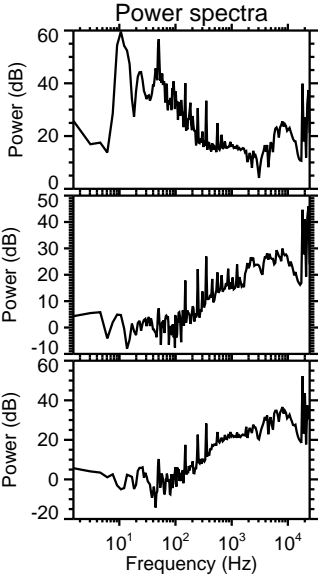
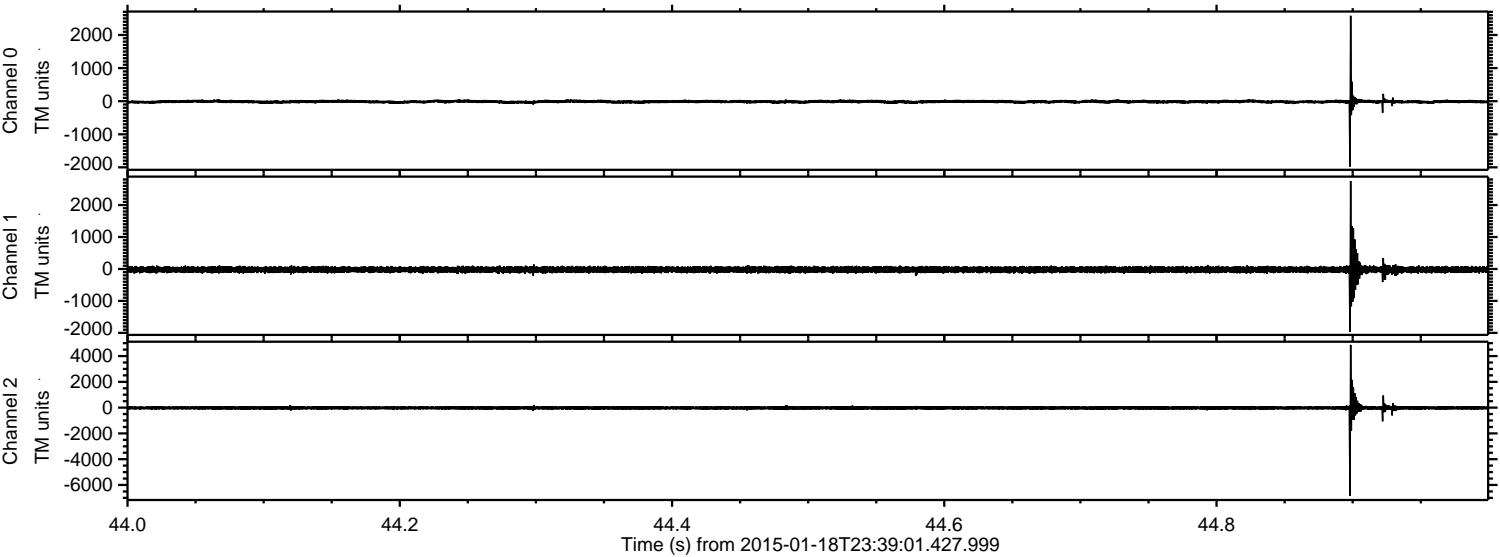
Channel 1  
mn: -1786  
mx: 2710  
 $\mu$ : -20.8  
 $\sigma$ : 58.7

Channel 2  
mn: -8439  
mx: 4659  
 $\mu$ : -24.5  
 $\sigma$ : 93.9



ELMAVAN 3D WAVEFORMS (Measured data sampled at 50 kHz) 49563 packets of 144 samples from 2015-01-18T23:39:01.427.999. Part 45/143

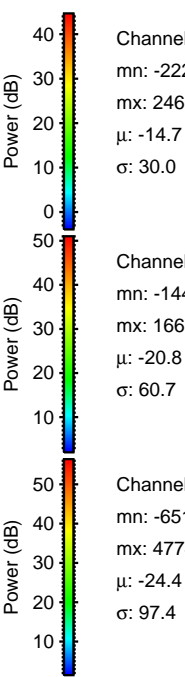
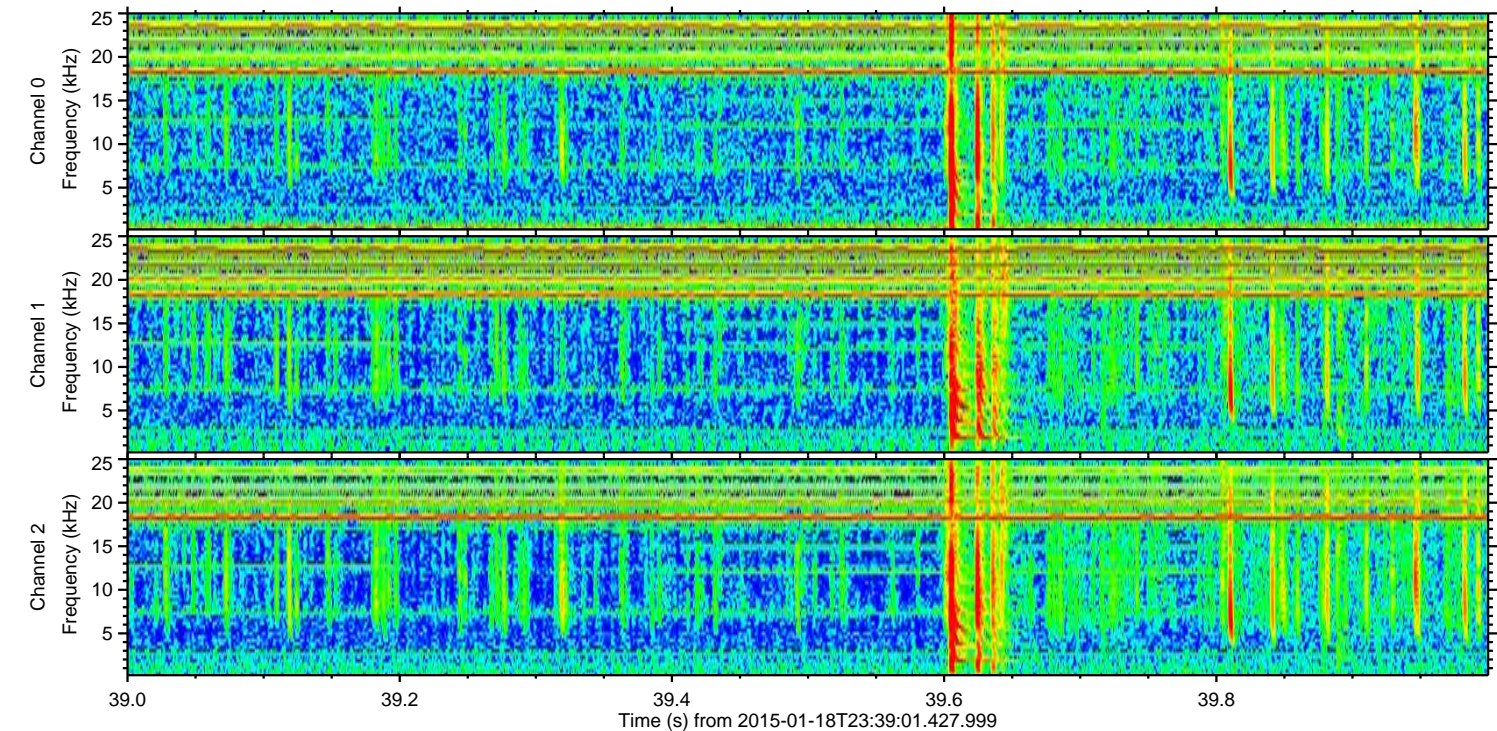
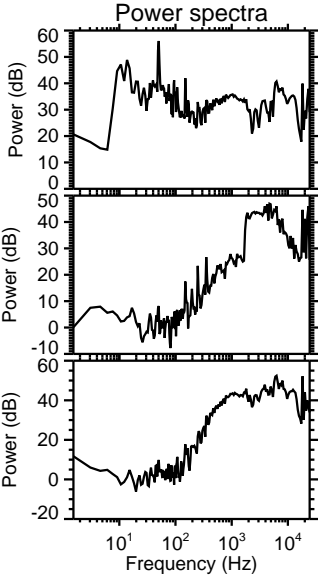
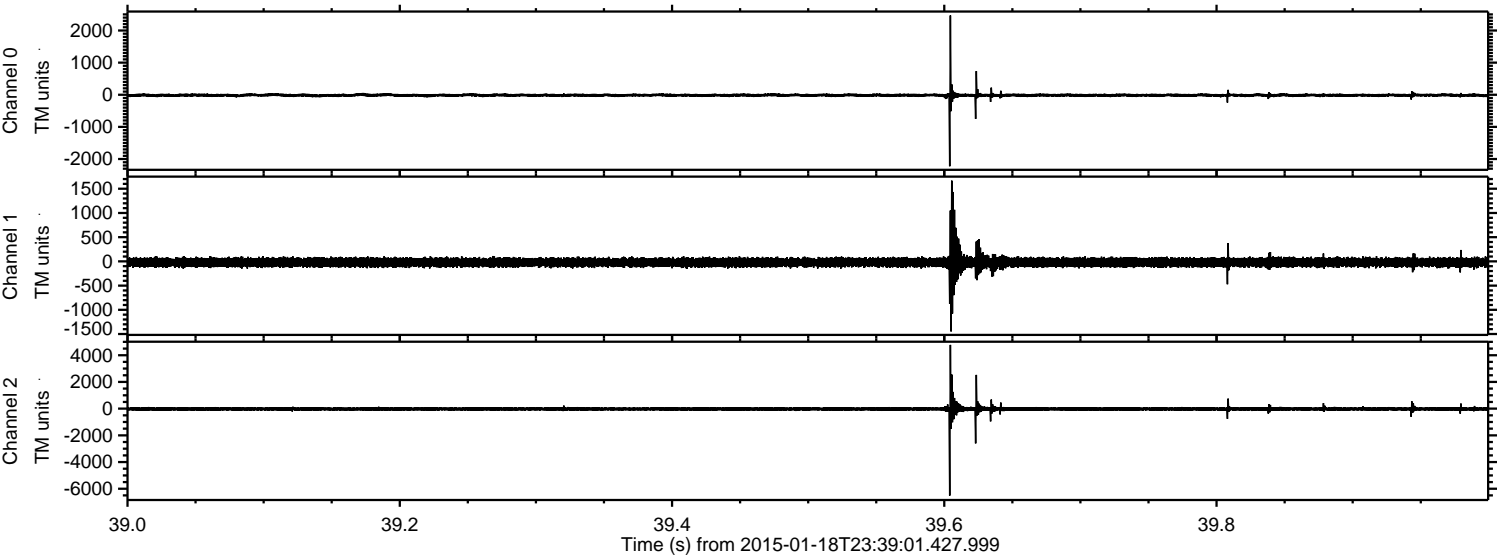
Processed Wed Jan 28 19:50:24 2015 by ELM ver.2012-10-06 from 001\_\_elm20150118\_233900\_\_dat00.bin





ELMAVAN 3D WAVEFORMS (Measured data sampled at 50 kHz) 49563 packets of 144 samples from 2015-01-18T23:39:01.427.999. Part 40/143

Processed Wed Jan 28 19:50:25 2015 by ELM ver.2012-10-06 from 001\_elm20150118\_233900\_\_dat00.bin



Channel 0  
mn: -2224  
mx: 2466  
μ: -14.7  
σ: 30.0

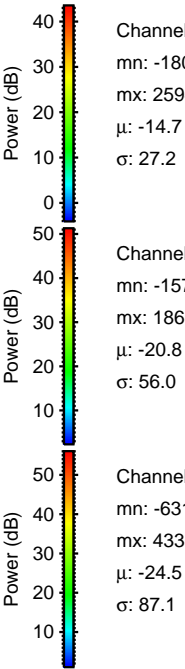
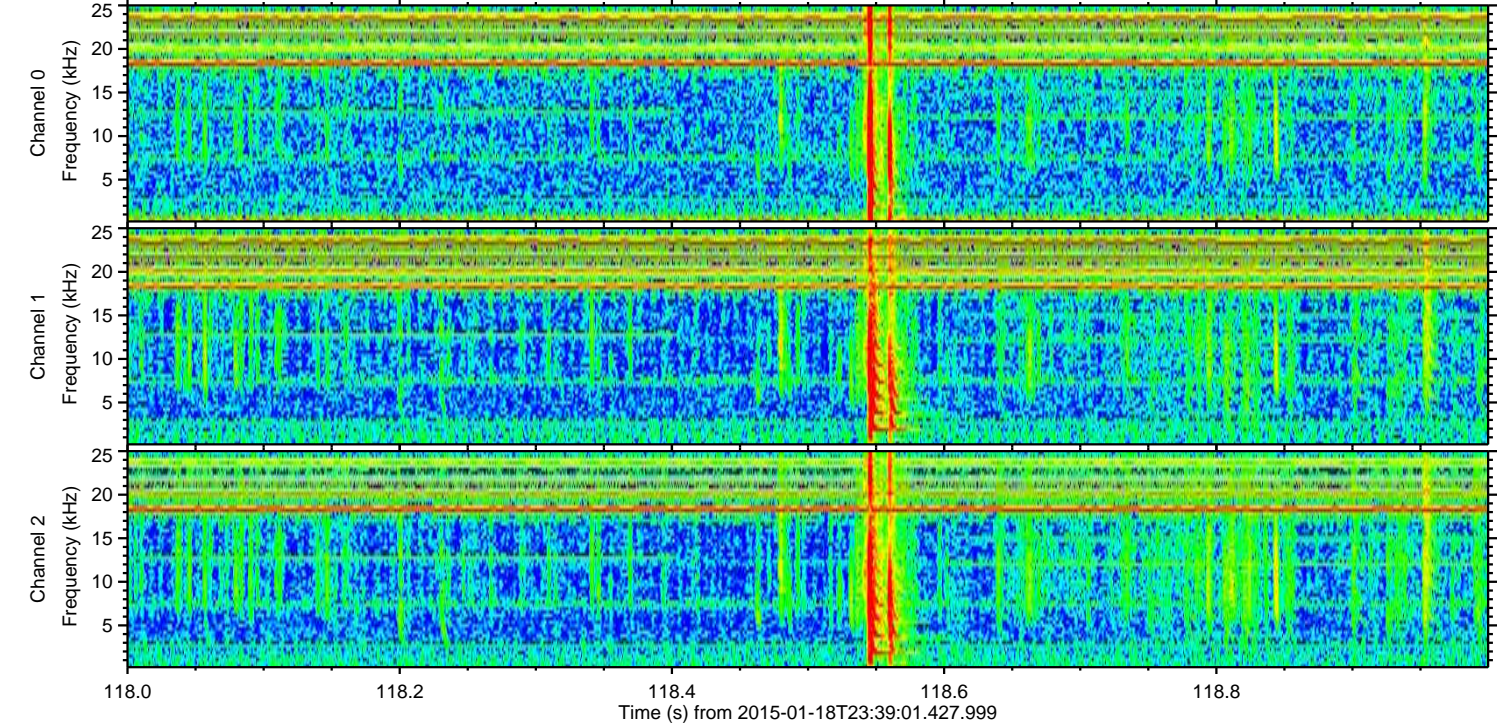
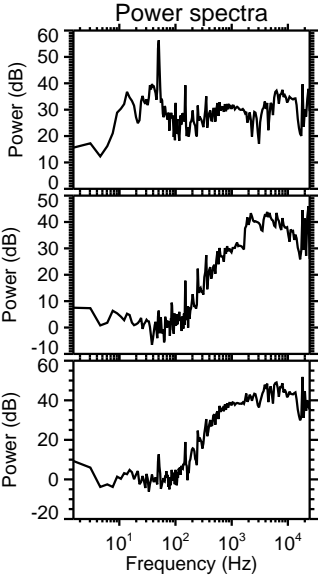
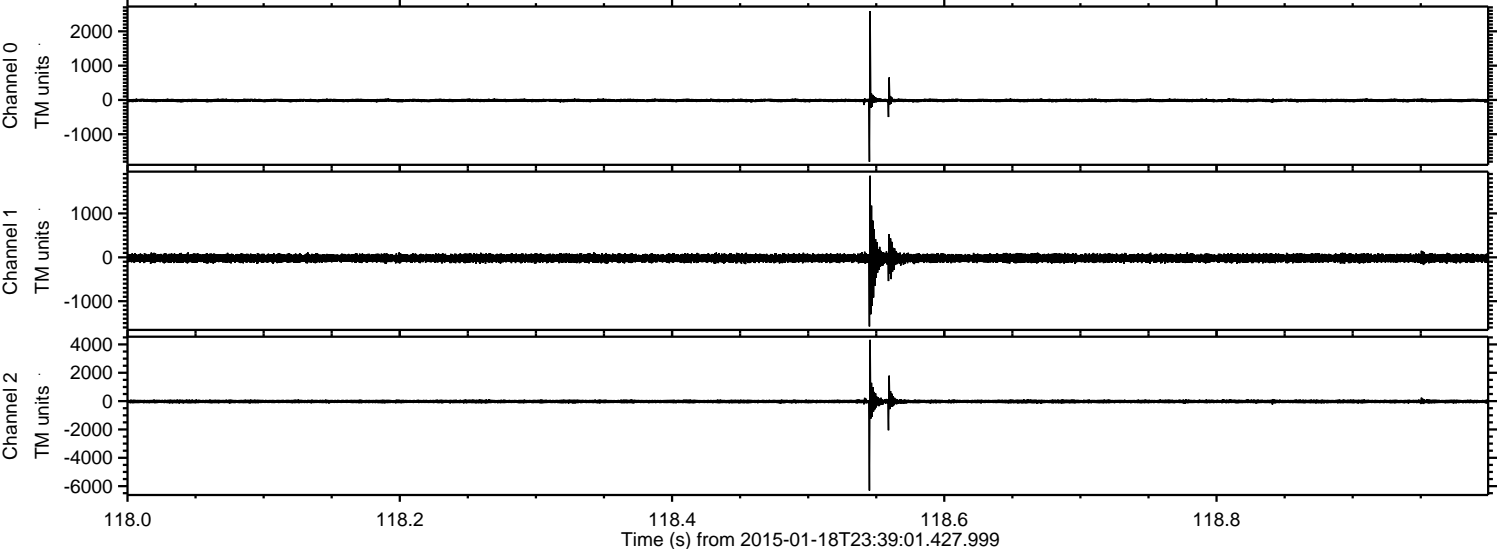
Channel 1  
mn: -1446  
mx: 1667  
μ: -20.8  
σ: 60.7

Channel 2  
mn: -6517  
mx: 4774  
μ: -24.4  
σ: 97.4



ELMAVAN 3D WAVEFORMS (Measured data sampled at 50 kHz) 49563 packets of 144 samples from 2015-01-18T23:39:01.427.999. Part 119/143

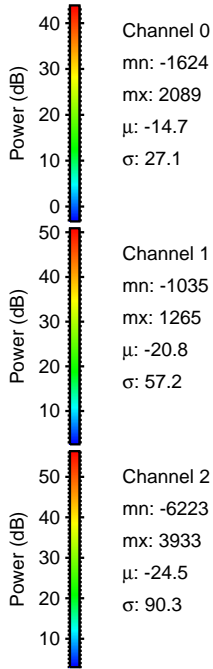
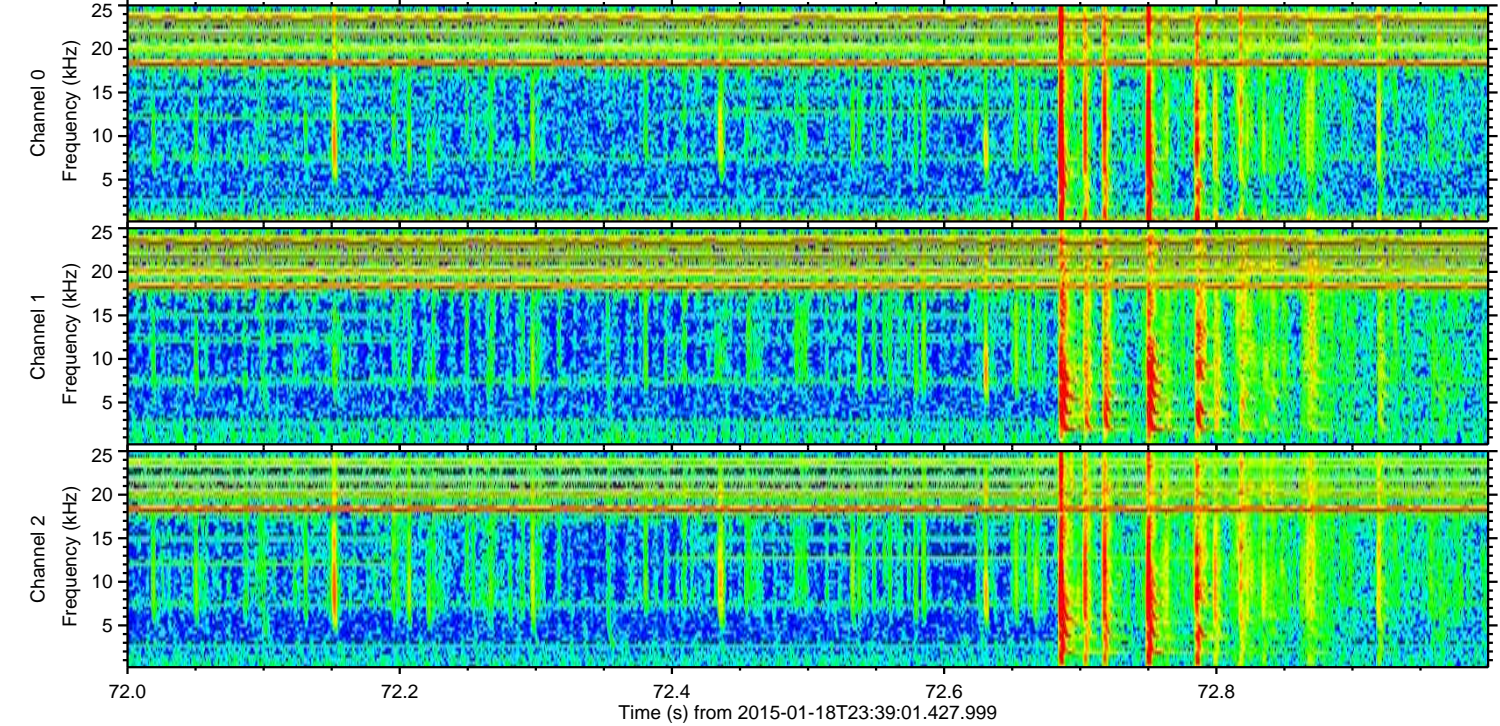
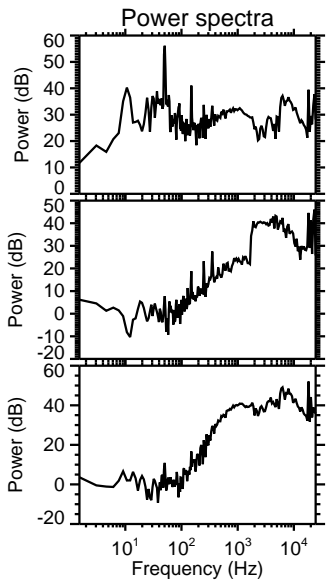
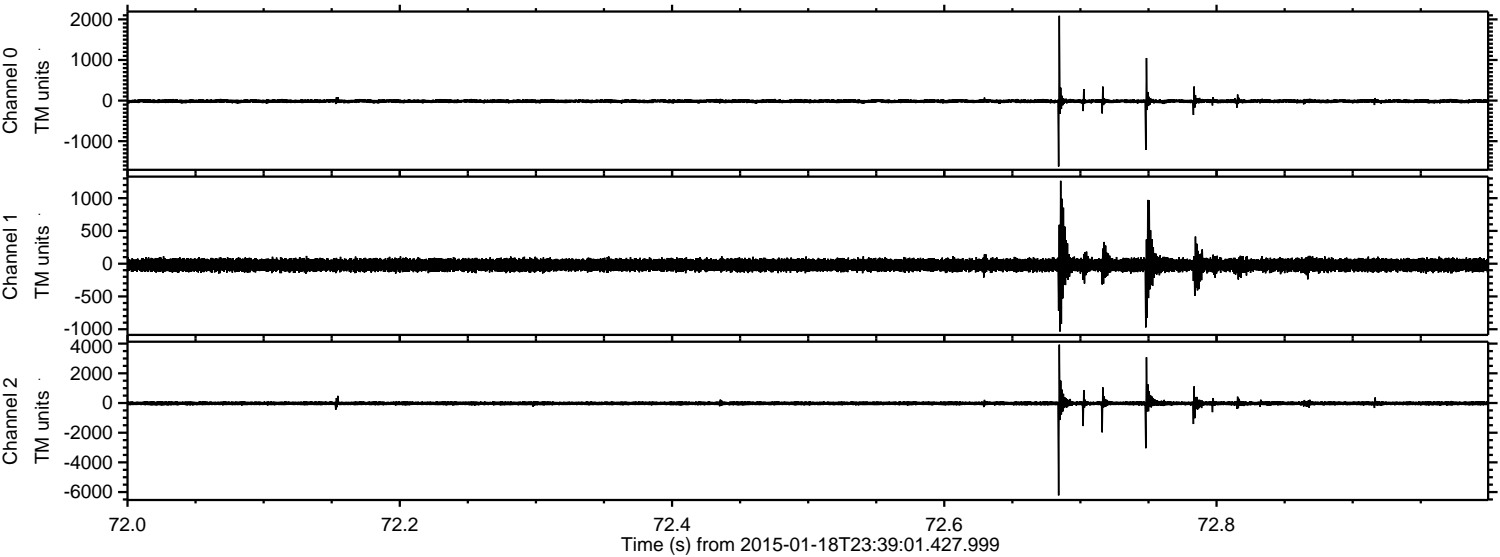
Processed Wed Jan 28 19:50:26 2015 by ELM ver.2012-10-06 from 001\_\_elm20150118\_233900\_\_dat00.bin





ELMAVAN 3D WAVEFORMS (Measured data sampled at 50 kHz) 49563 packets of 144 samples from 2015-01-18T23:39:01.427.999. Part 73/143

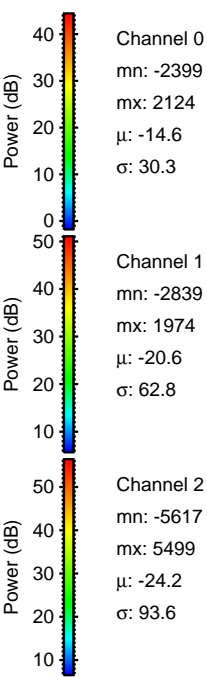
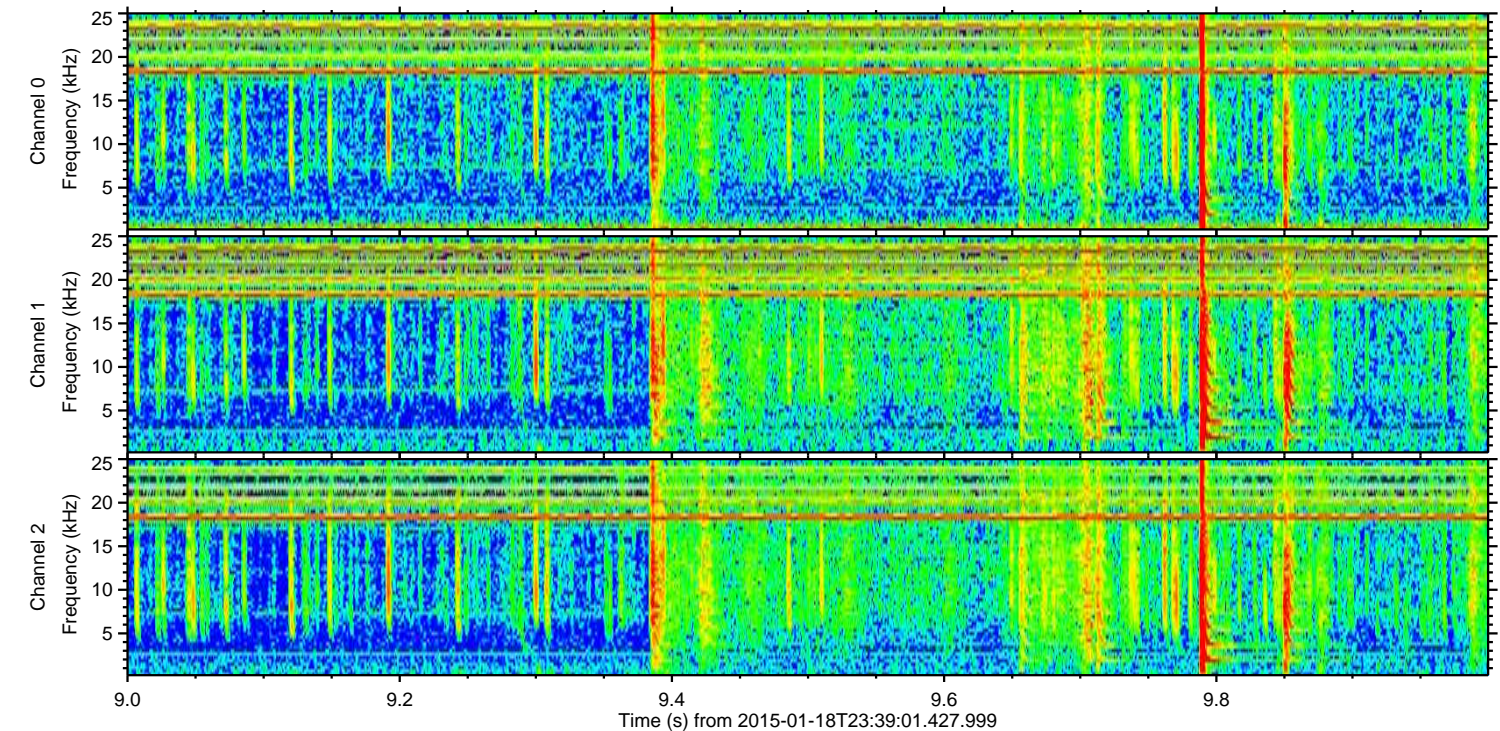
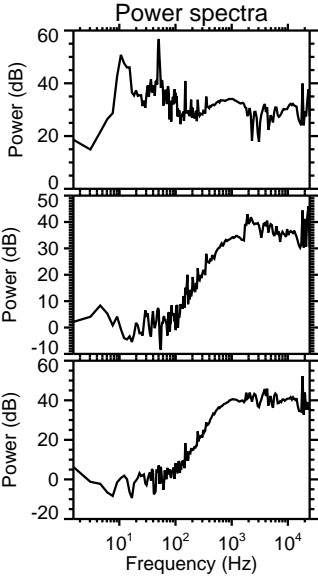
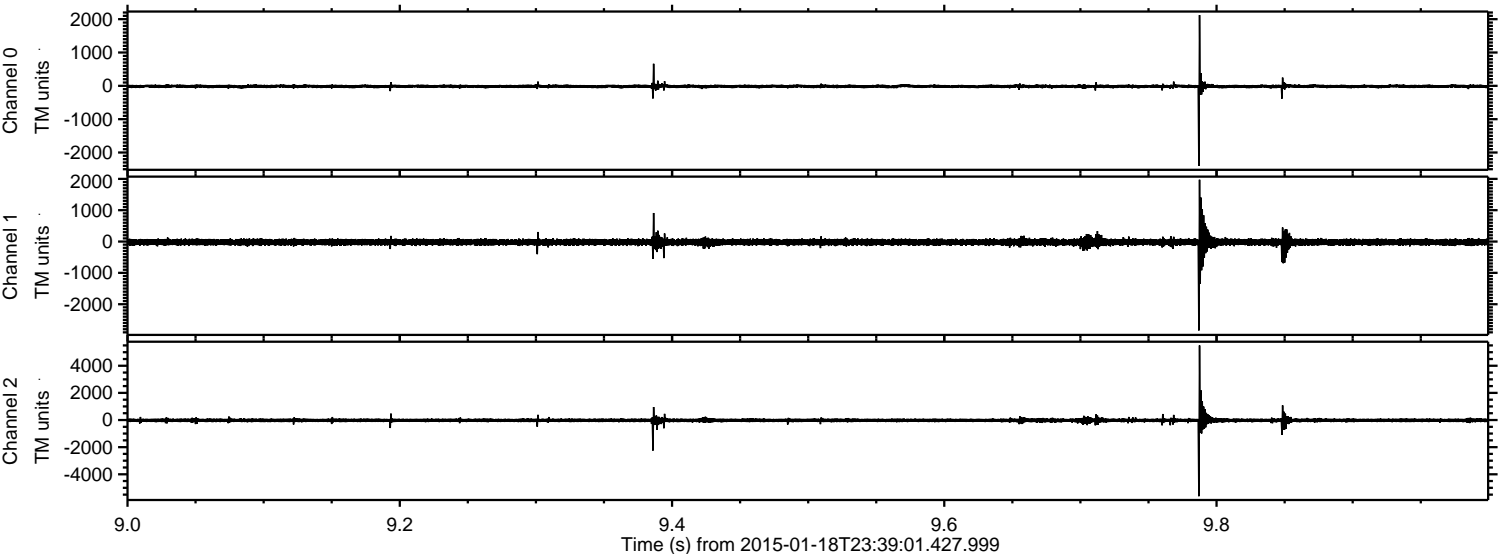
Processed Wed Jan 28 19:50:27 2015 by ELM ver.2012-10-06 from 001\_\_elm20150118\_233900\_\_dat00.bin





ELMAVAN 3D WAVEFORMS (Measured data sampled at 50 kHz) 49563 packets of 144 samples from 2015-01-18T23:39:01.427.999. Part 10/143

Processed Wed Jan 28 19:50:28 2015 by ELM ver.2012-10-06 from 001\_\_elm20150118\_233900\_\_dat00.bin





Processed Wed Jan 28 19:50:29 2015 by ELM ver.2012-10-06 from 001\_\_elm20150118\_233900\_\_dat00.bin

