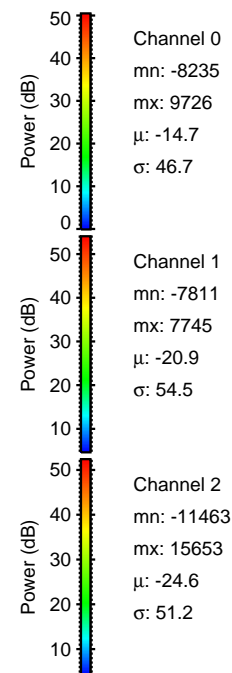
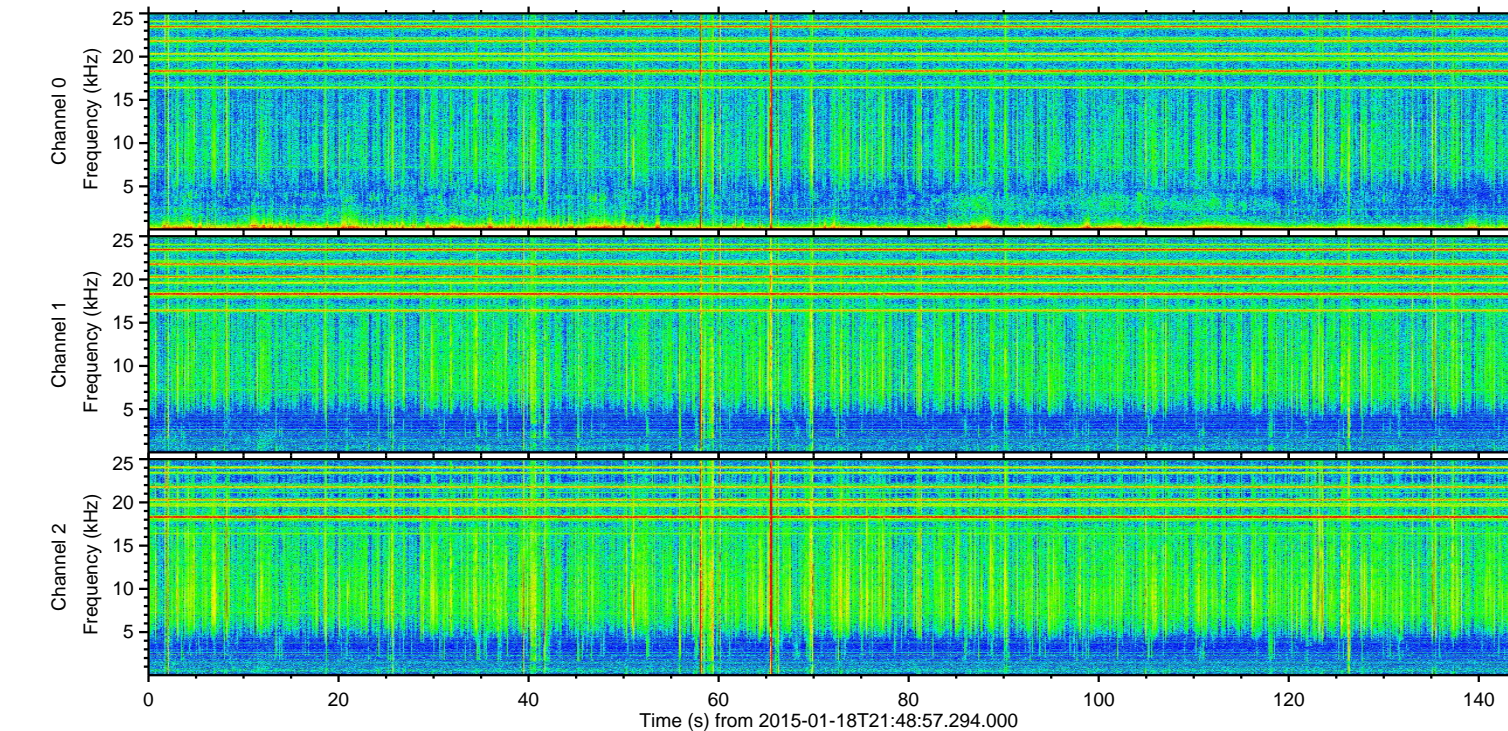
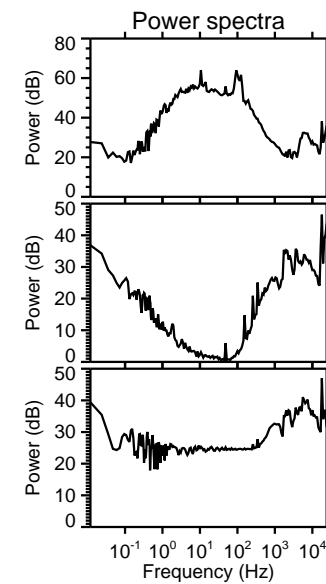
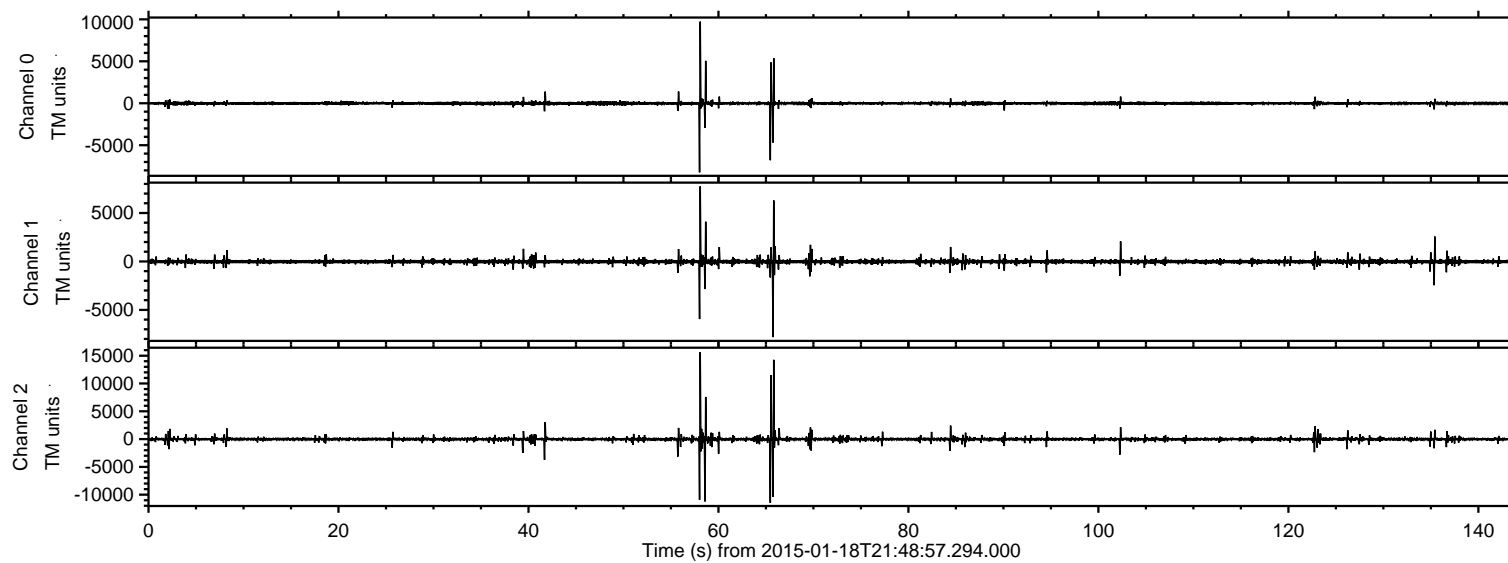
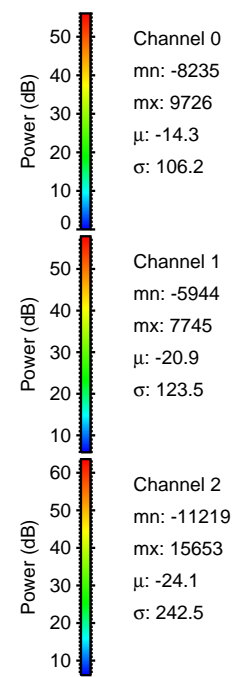
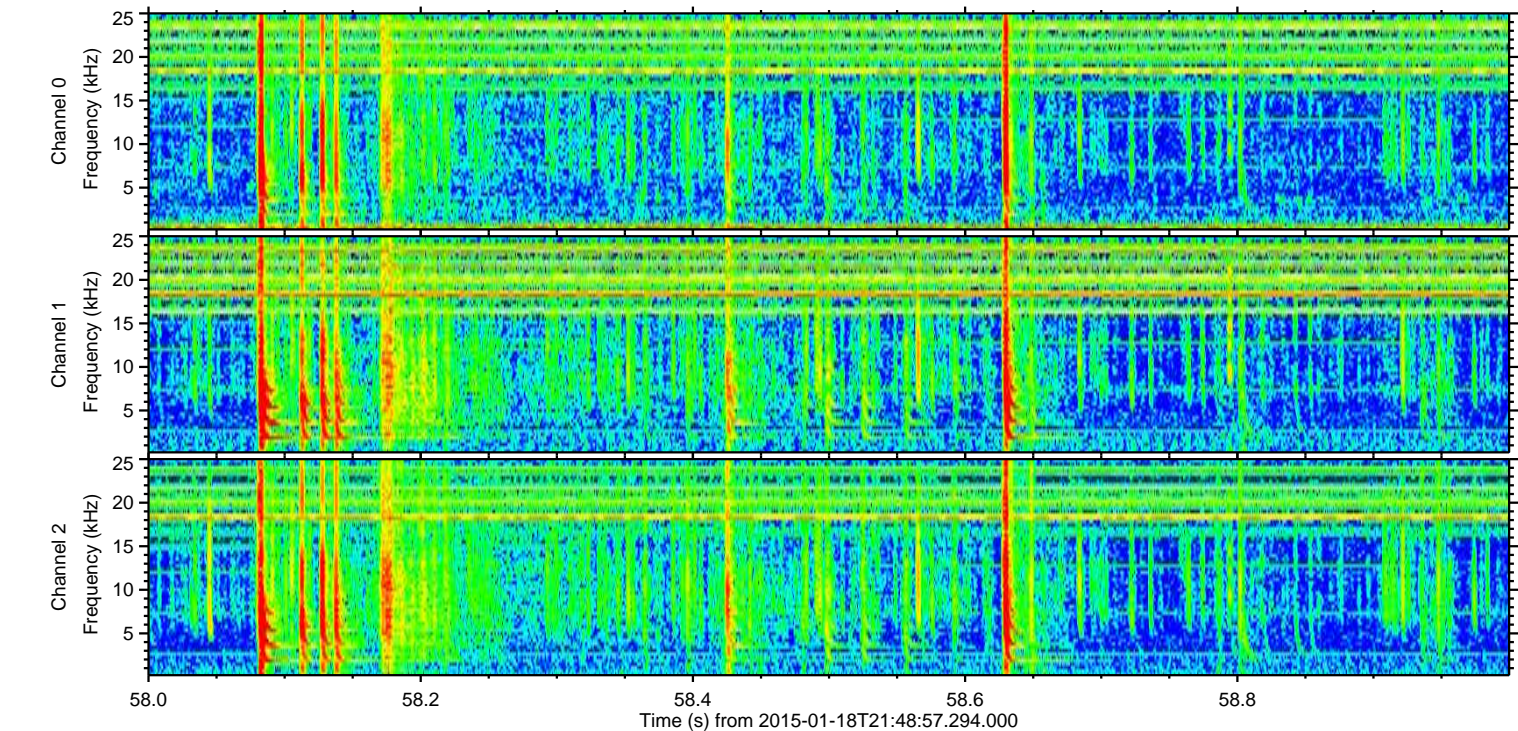
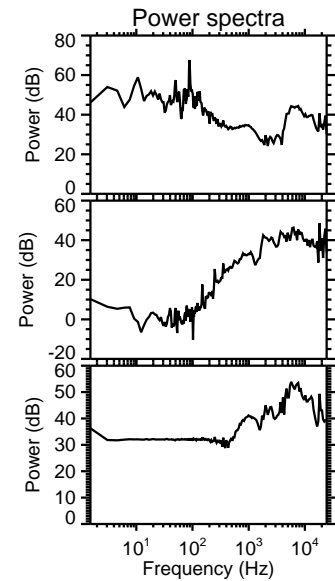
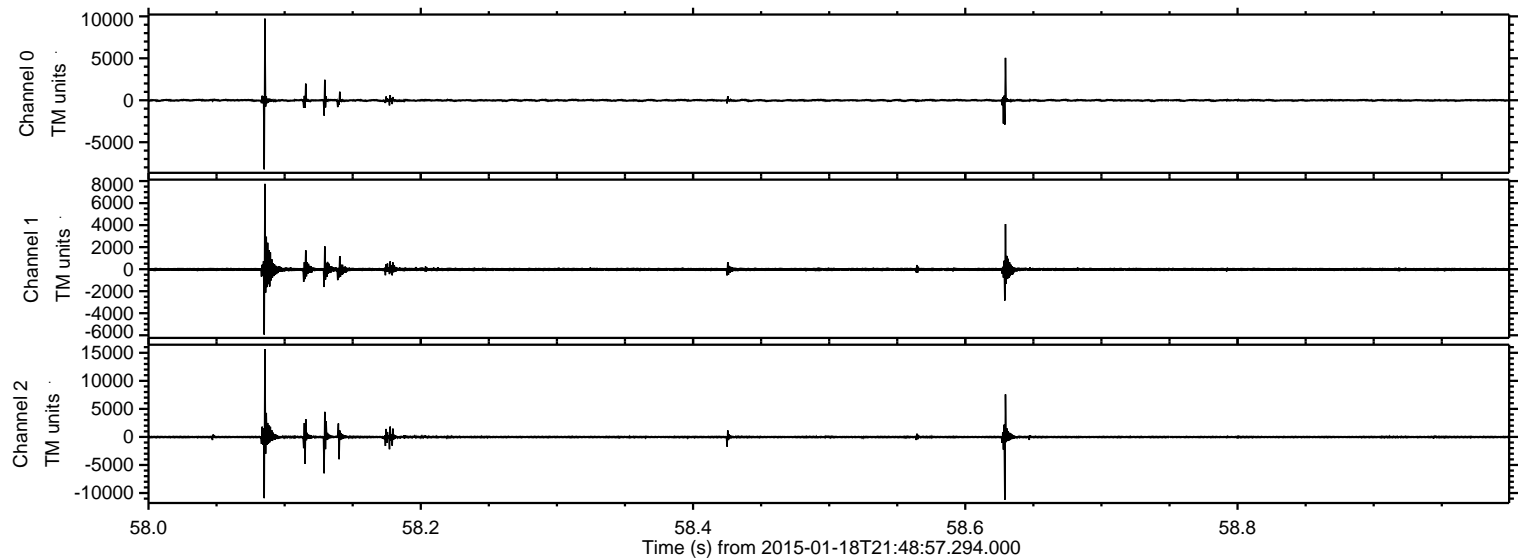


ELMAVAN 3D WAVEFORMS (Measured data sampled at 50 kHz) 49736 packets of 144 samples from 2015-01-18T21:48:57.294.000.

Processed Wed Jan 28 16:59:44 2015 by ELM ver.2012-10-06 from 001__elm20150118_214856__dat00.bin

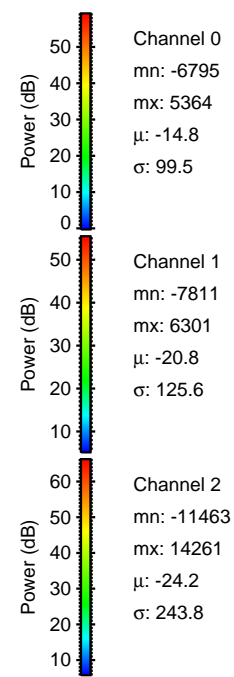
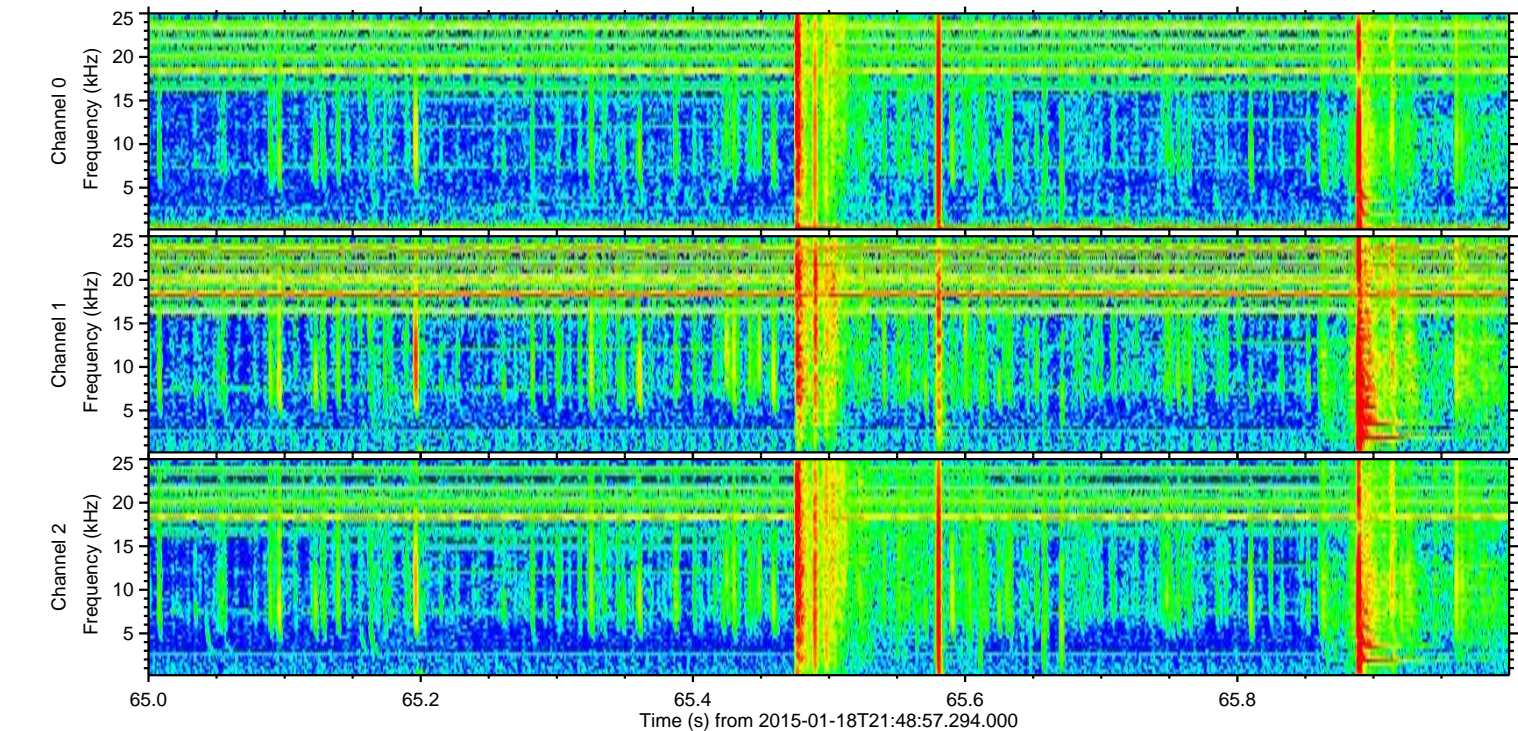
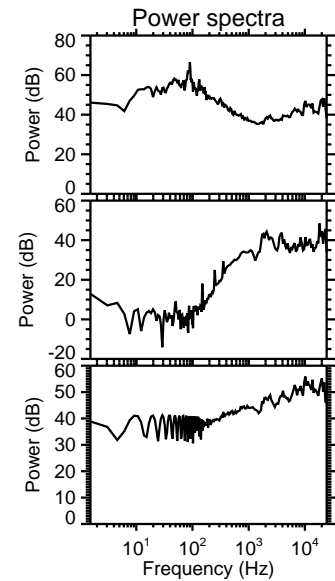
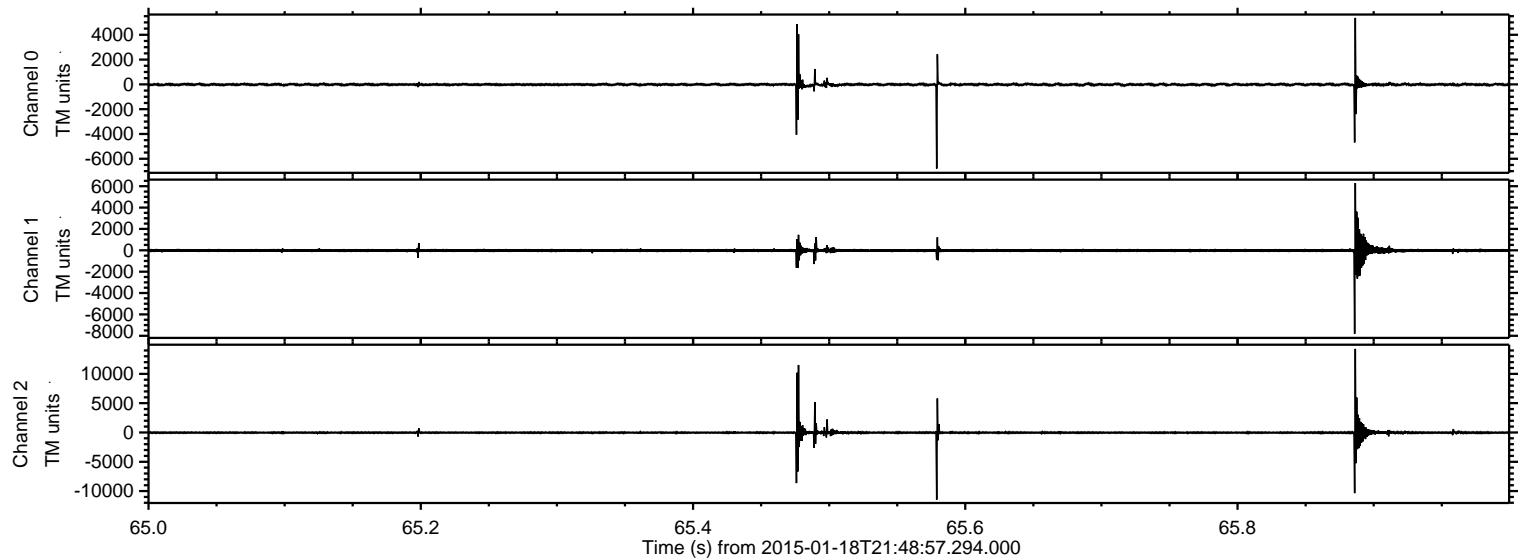


Processed Wed Jan 28 17:00:02 2015 by ELM ver.2012-10-06 from 001__elm20150118_214856__dat00.bin

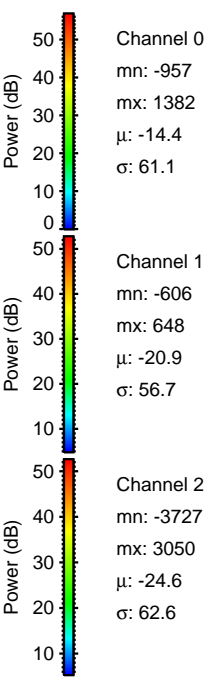
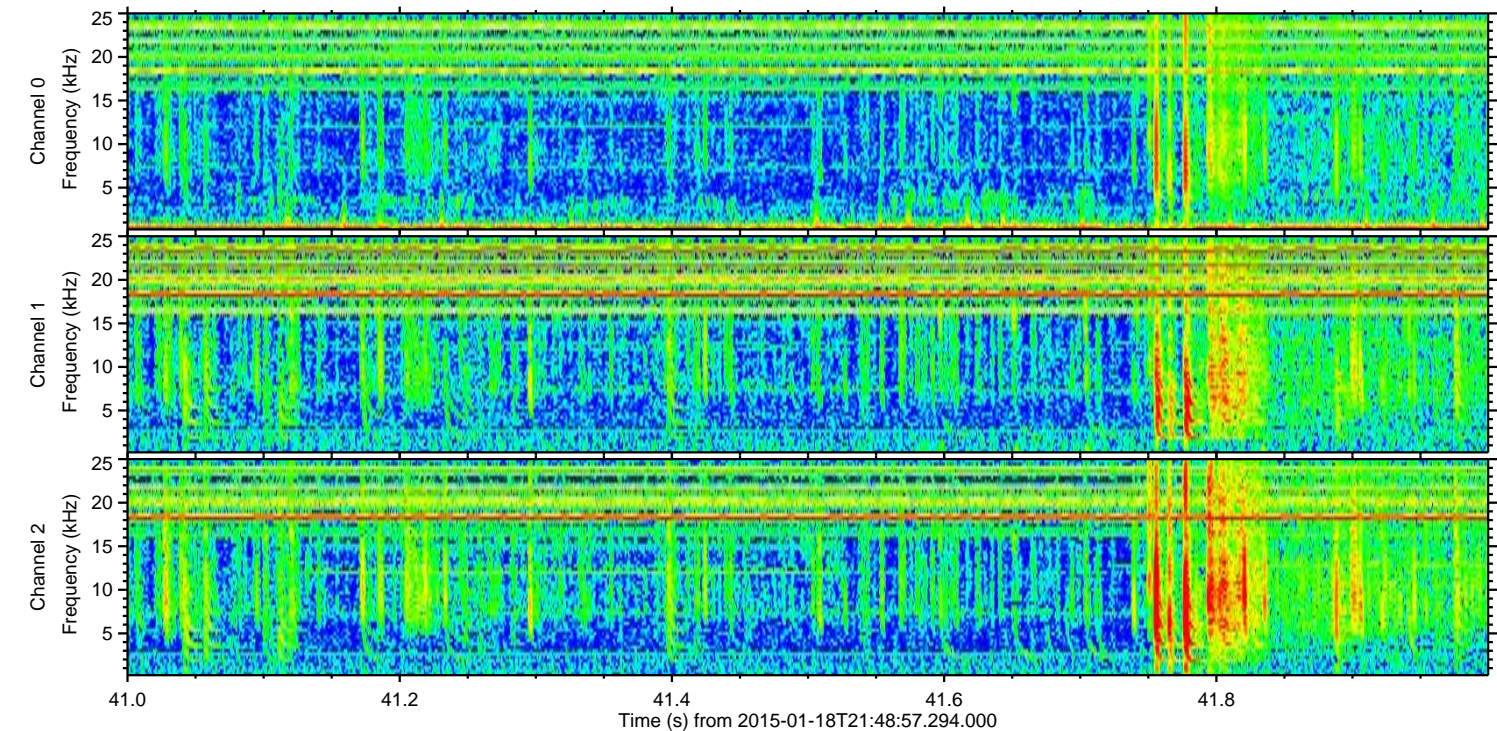
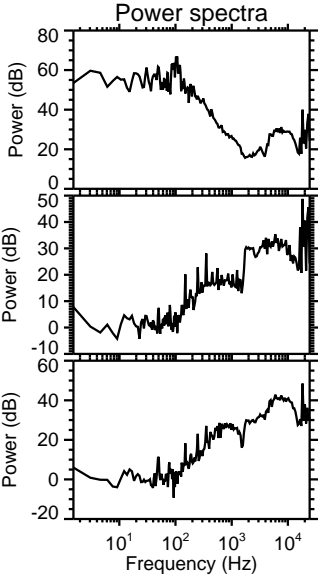
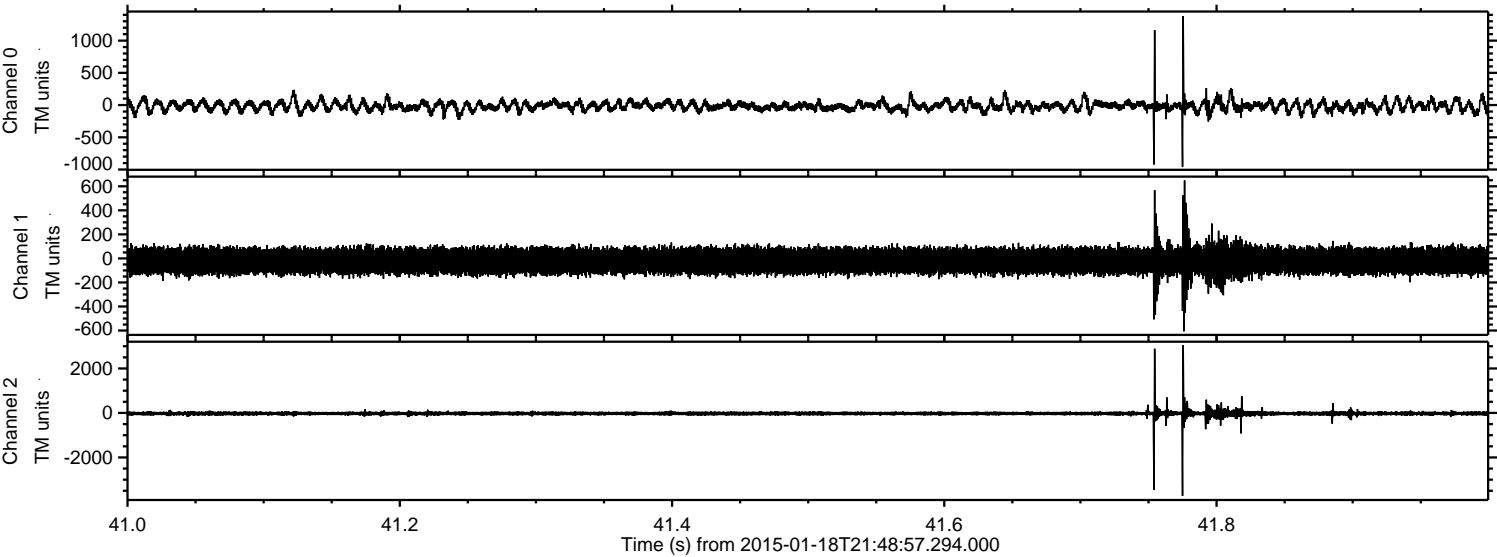


ELMAVAN 3D WAVEFORMS (Measured data sampled at 50 kHz) 49736 packets of 144 samples from 2015-01-18T21:48:57.294.000. Part 66/144

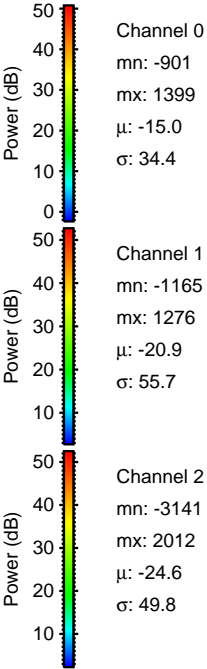
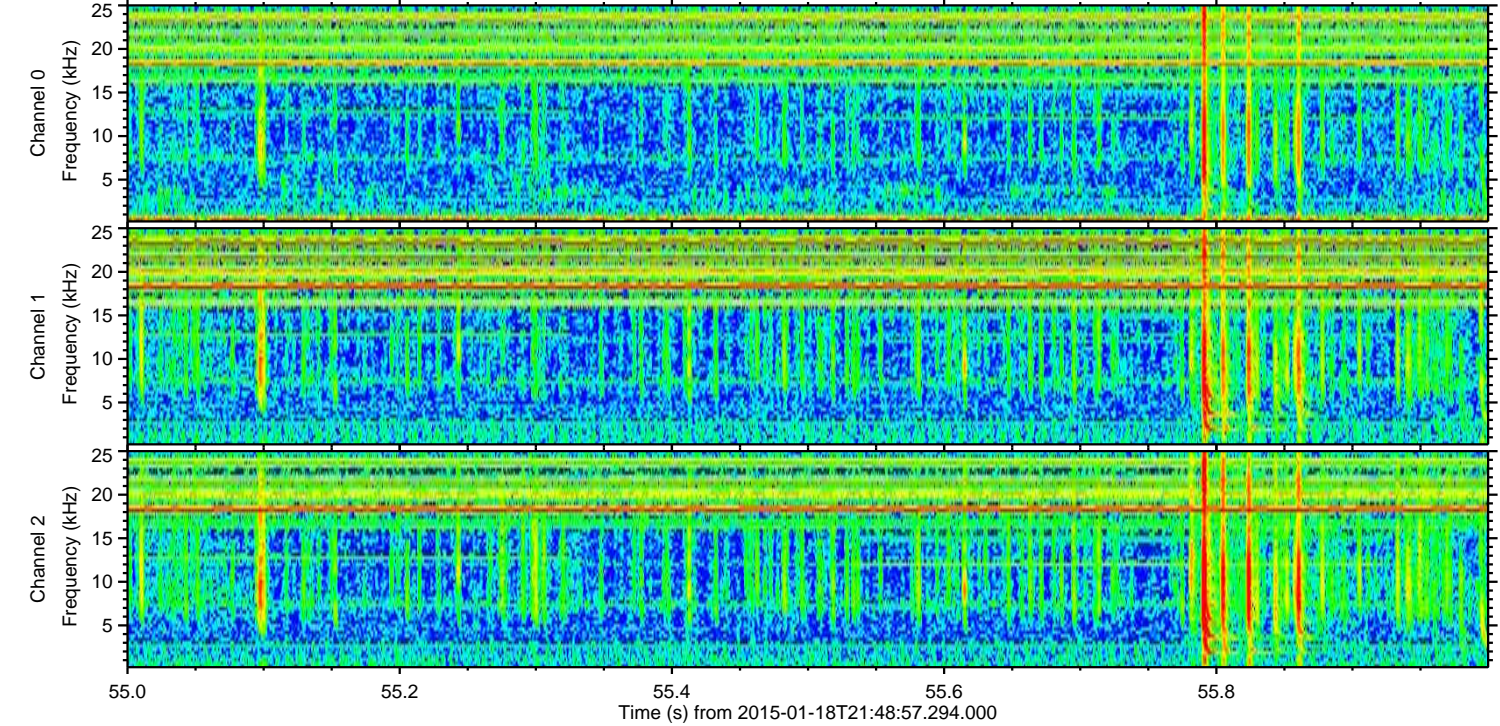
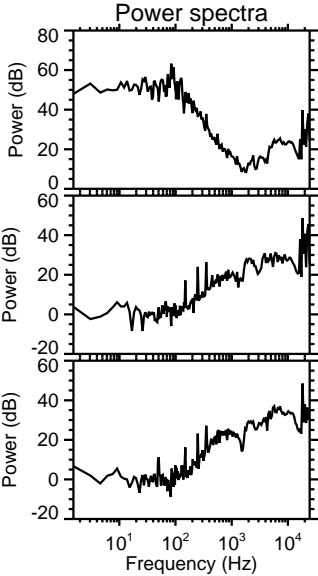
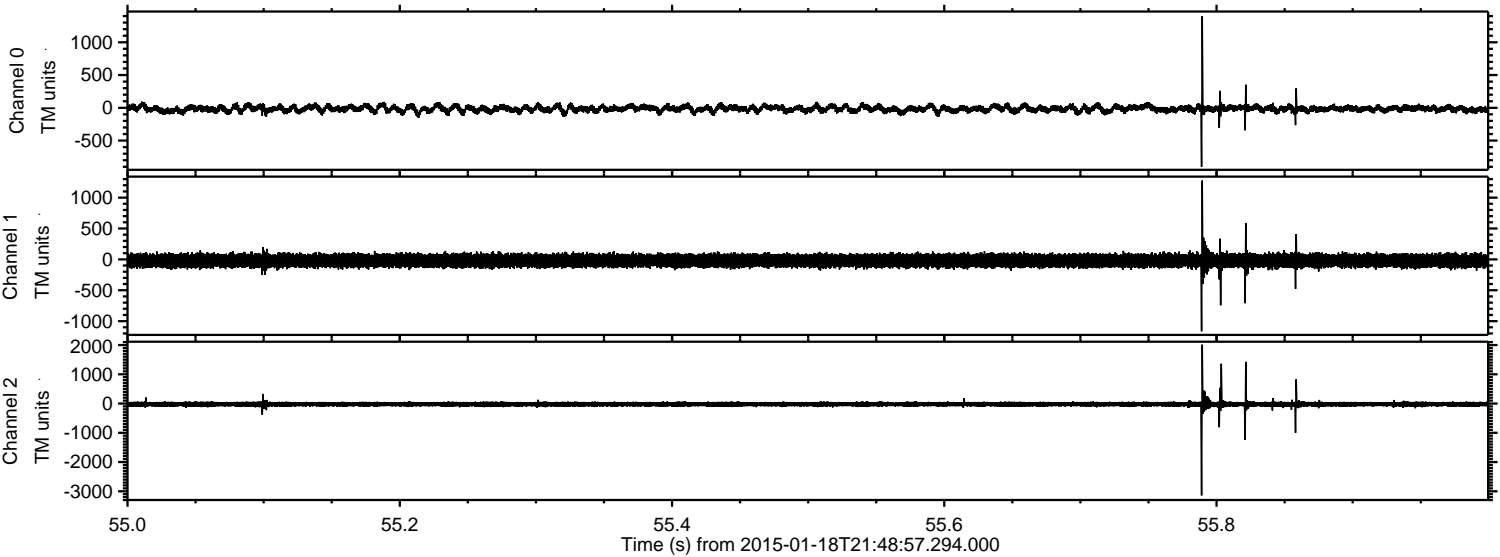
Processed Wed Jan 28 17:00:04 2015 by ELM ver.2012-10-06 from 001__elm20150118_214856__dat00.bin



Processed Wed Jan 28 17:00:06 2015 by ELM ver.2012-10-06 from 001__elm20150118_214856__dat00.bin

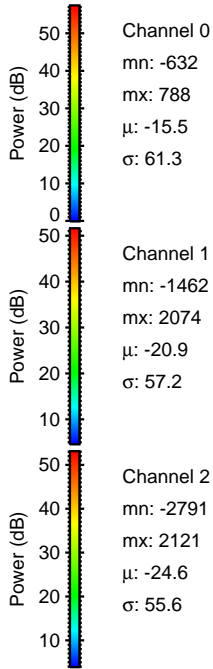
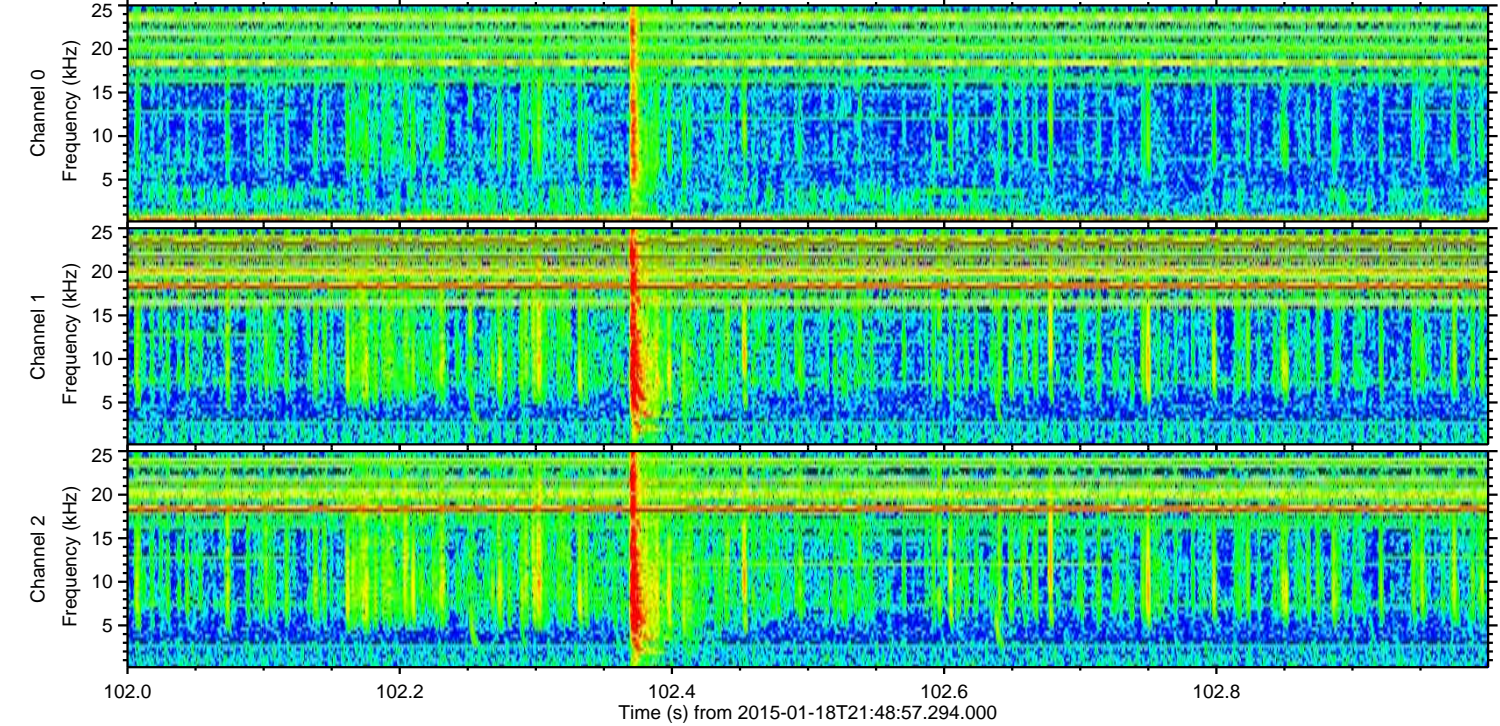
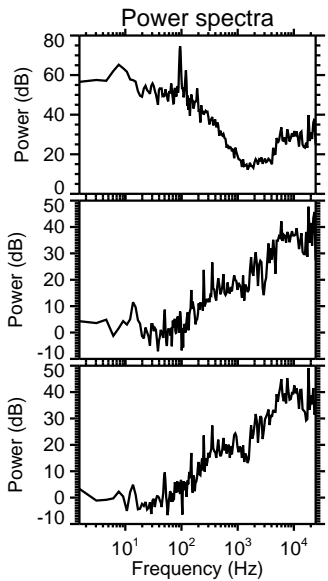
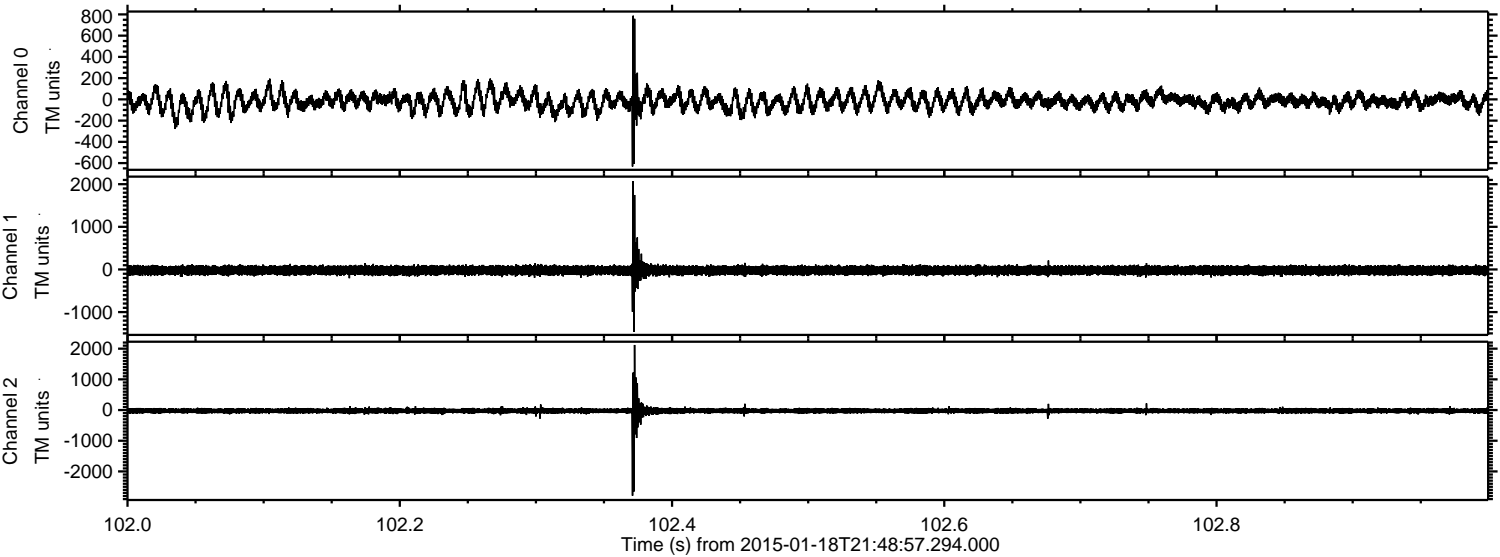


Processed Wed Jan 28 17:00:07 2015 by ELM ver.2012-10-06 from 001__elm20150118_214856__dat00.bin



ELMAVAN 3D WAVEFORMS (Measured data sampled at 50 kHz) 49736 packets of 144 samples from 2015-01-18T21:48:57.294.000. Part 103/144

Processed Wed Jan 28 17:00:09 2015 by ELM ver.2012-10-06 from 001__elm20150118_214856__dat00.bin

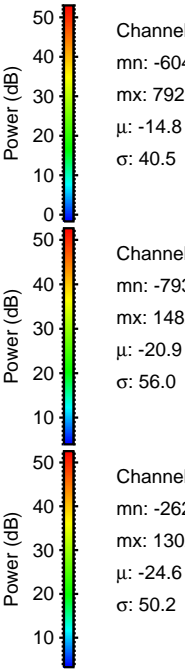
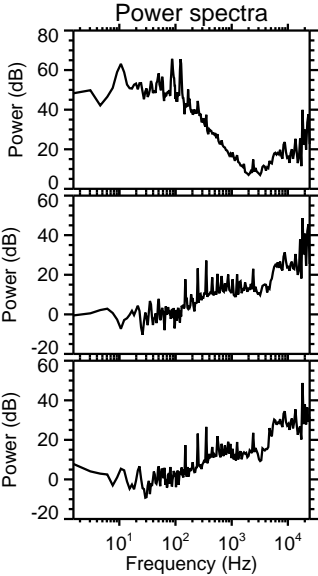
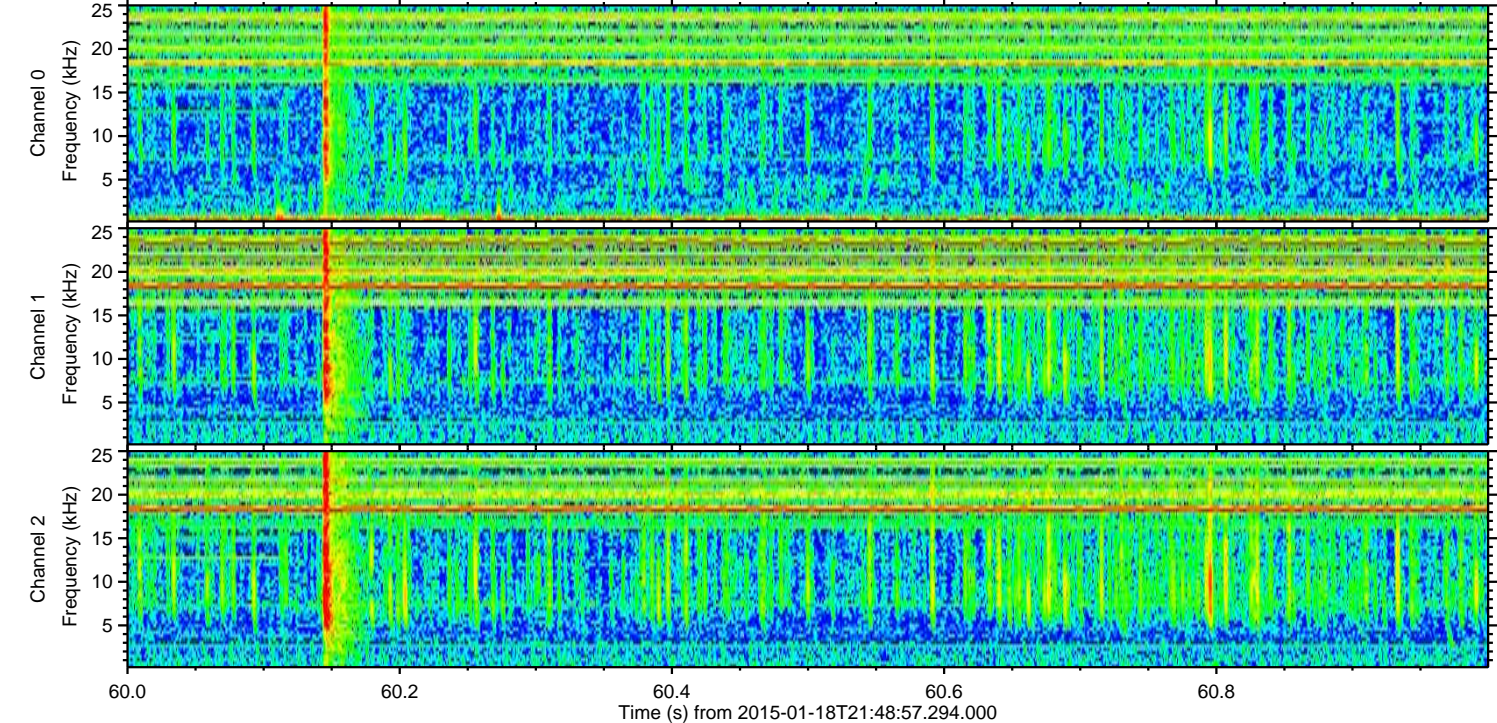
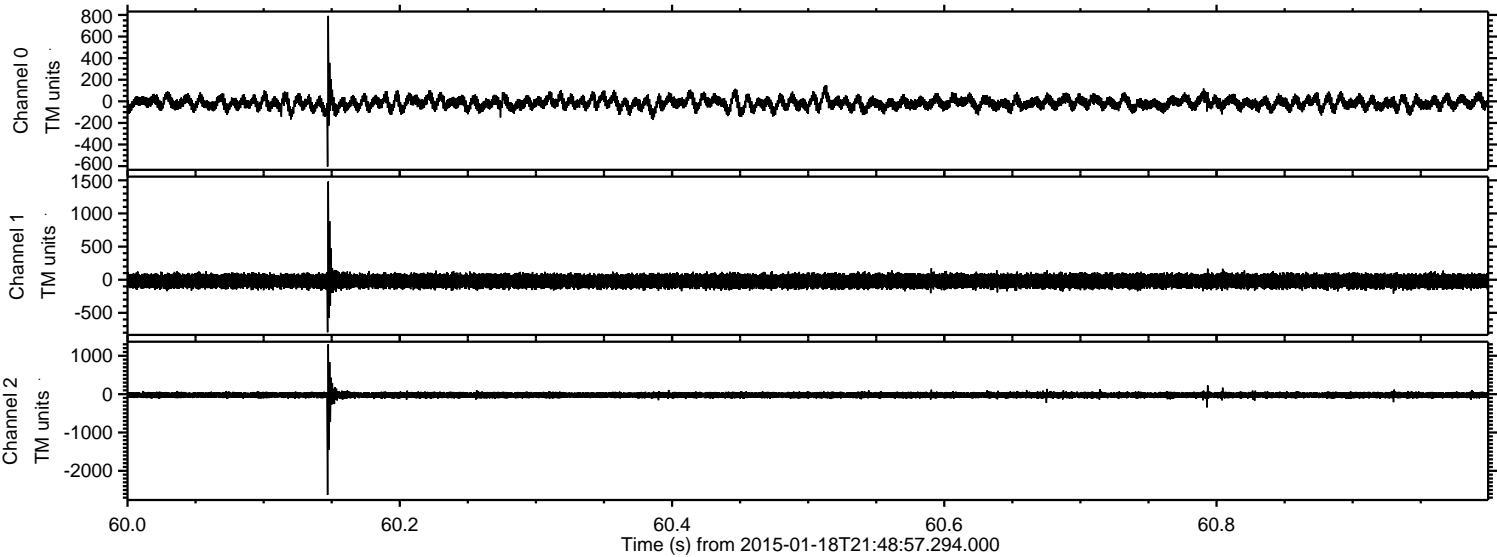


Channel 0
mn: -632
mx: 788
 μ : -15.5
 σ : 61.3

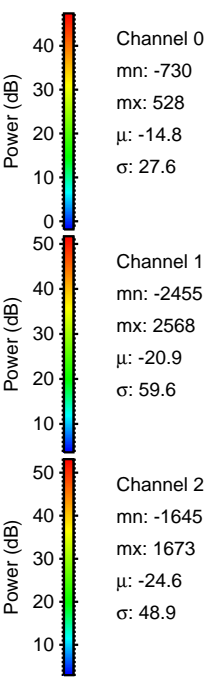
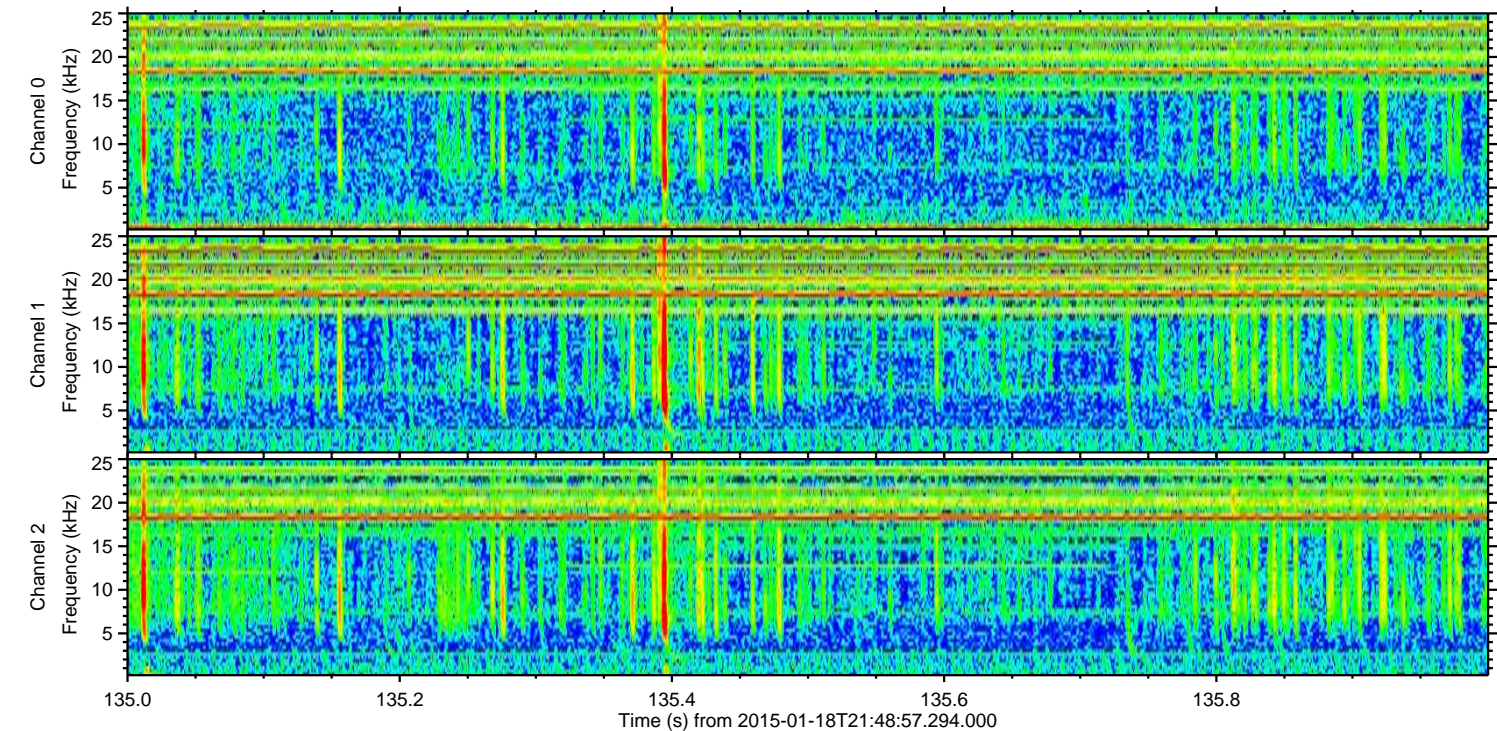
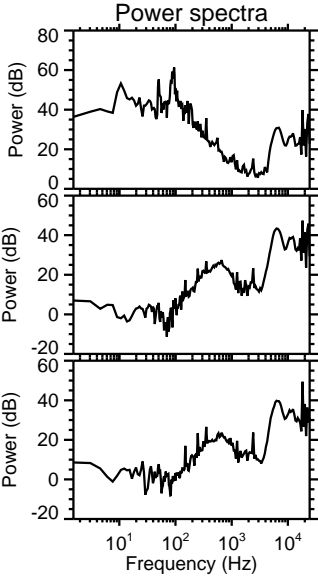
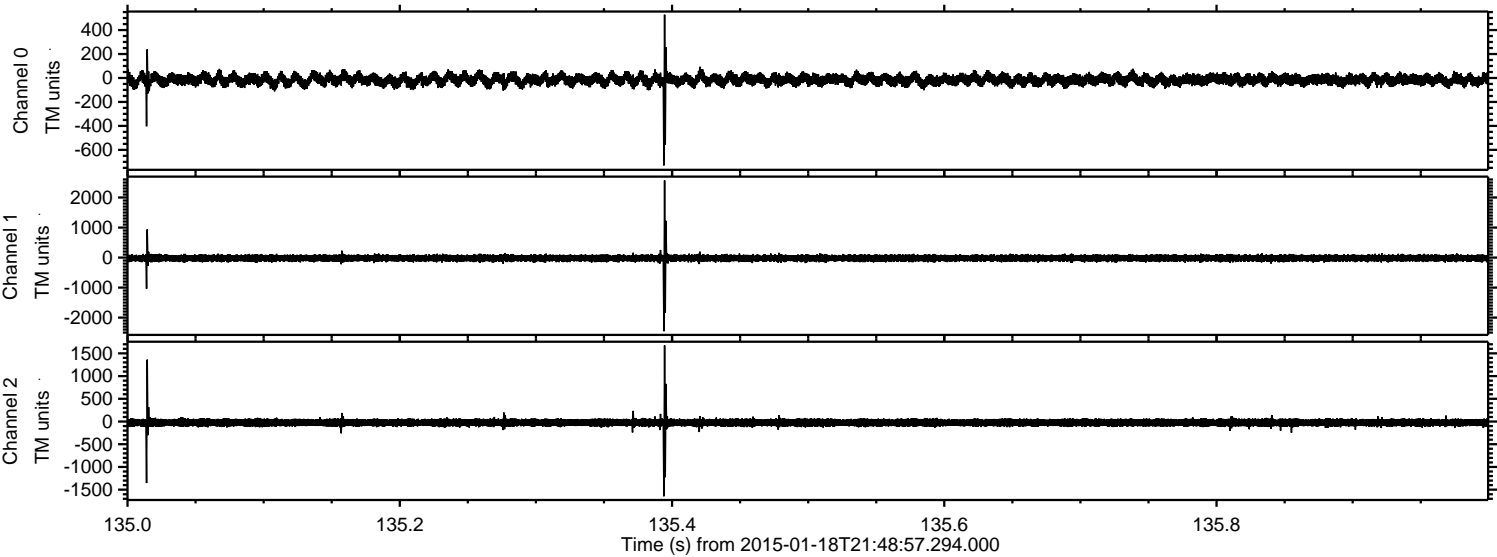
Channel 1
mn: -1462
mx: 2074
 μ : -20.9
 σ : 57.2

Channel 2
mn: -2791
mx: 2121
 μ : -24.6
 σ : 55.6

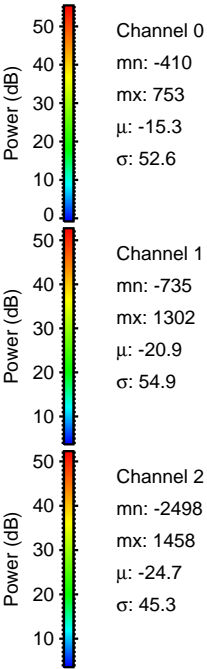
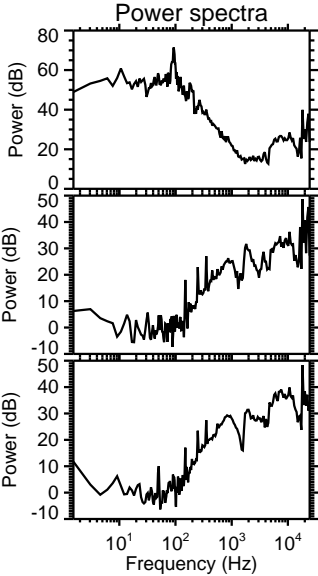
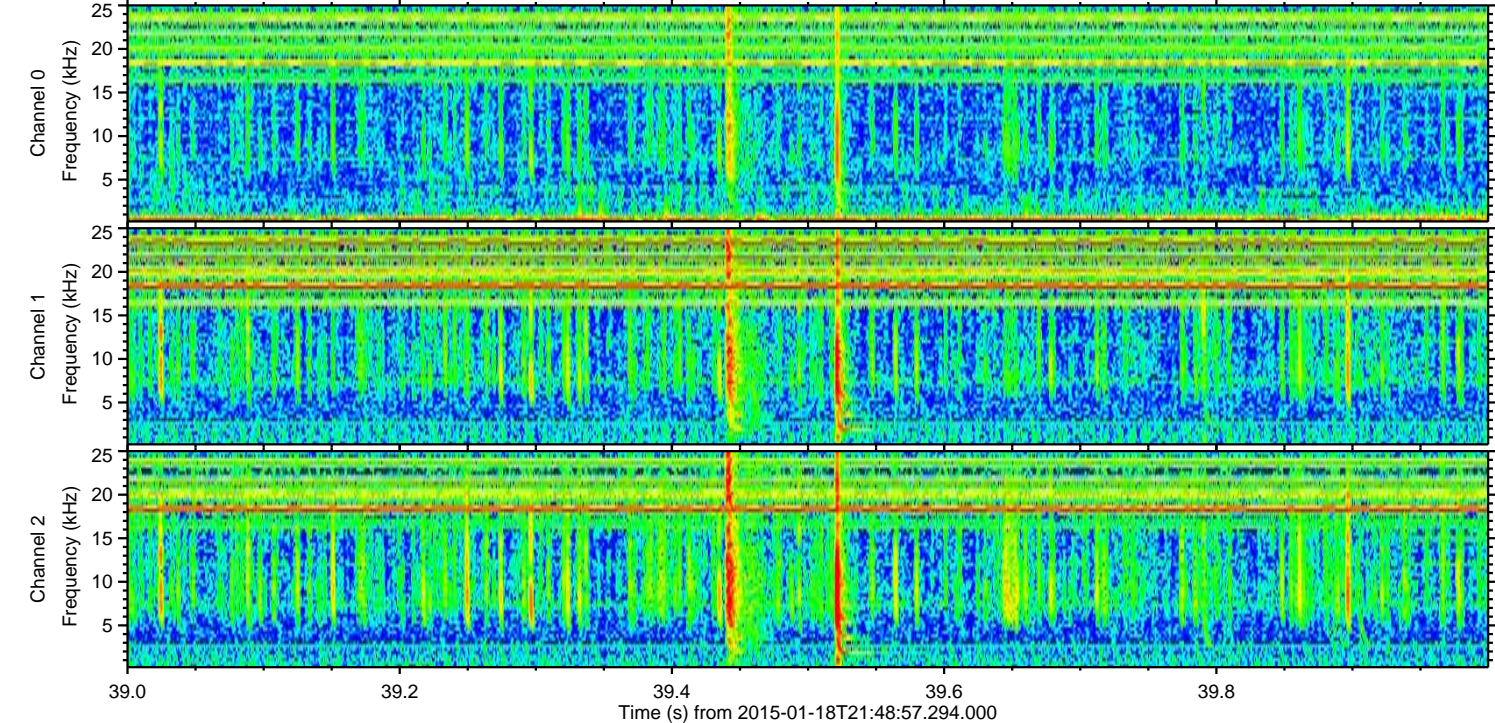
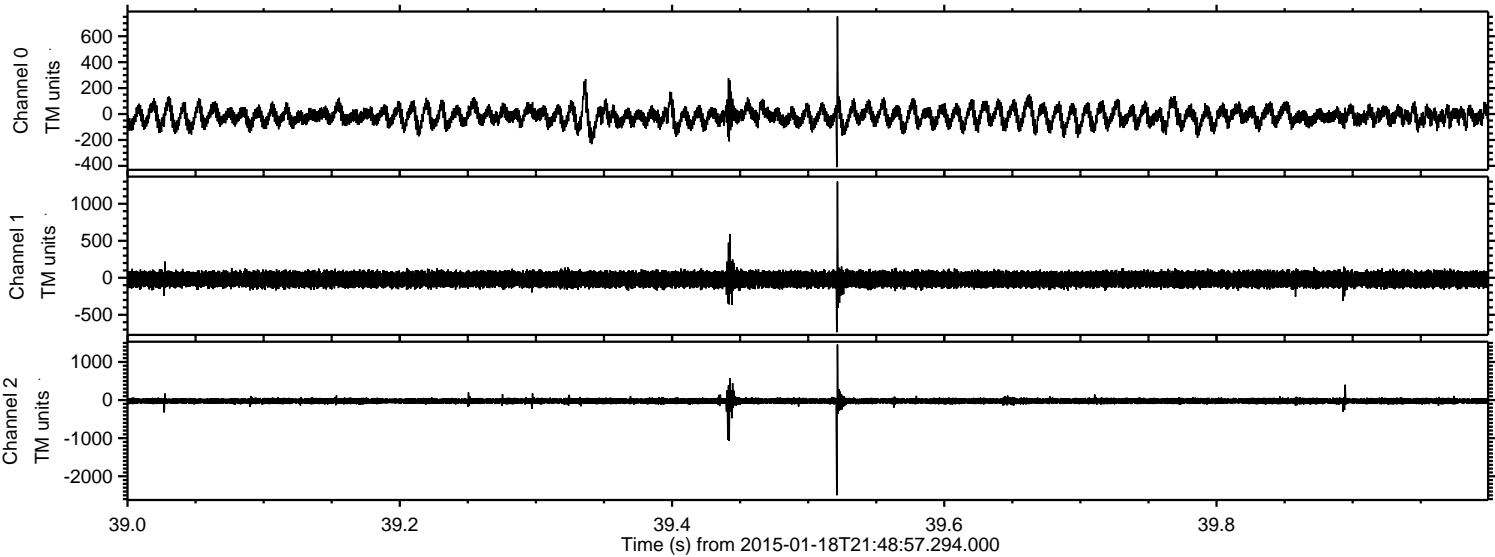
Processed Wed Jan 28 17:00:09 2015 by ELM ver.2012-10-06 from 001_elm20150118_214856__dat00.bin



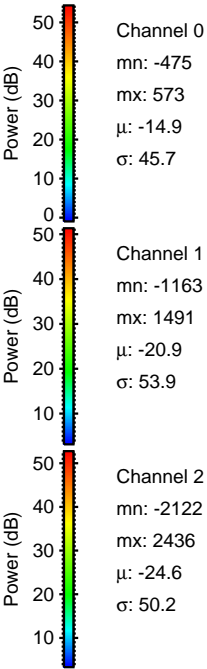
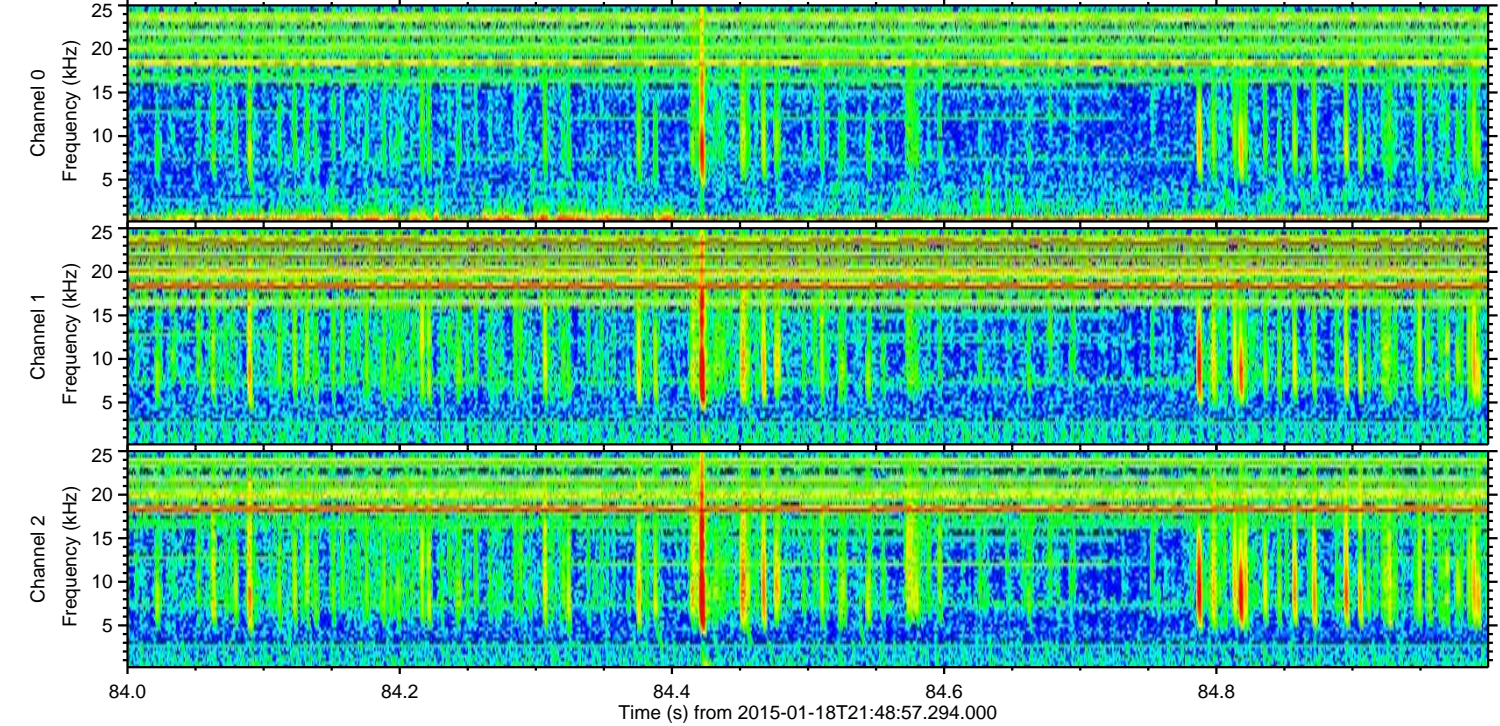
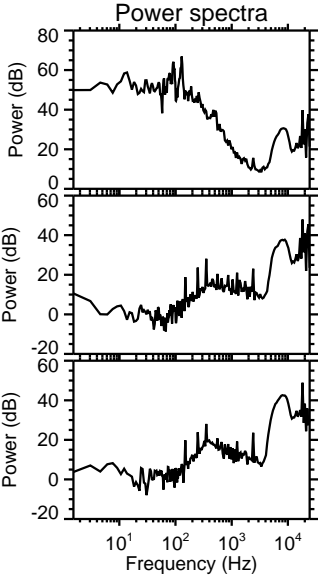
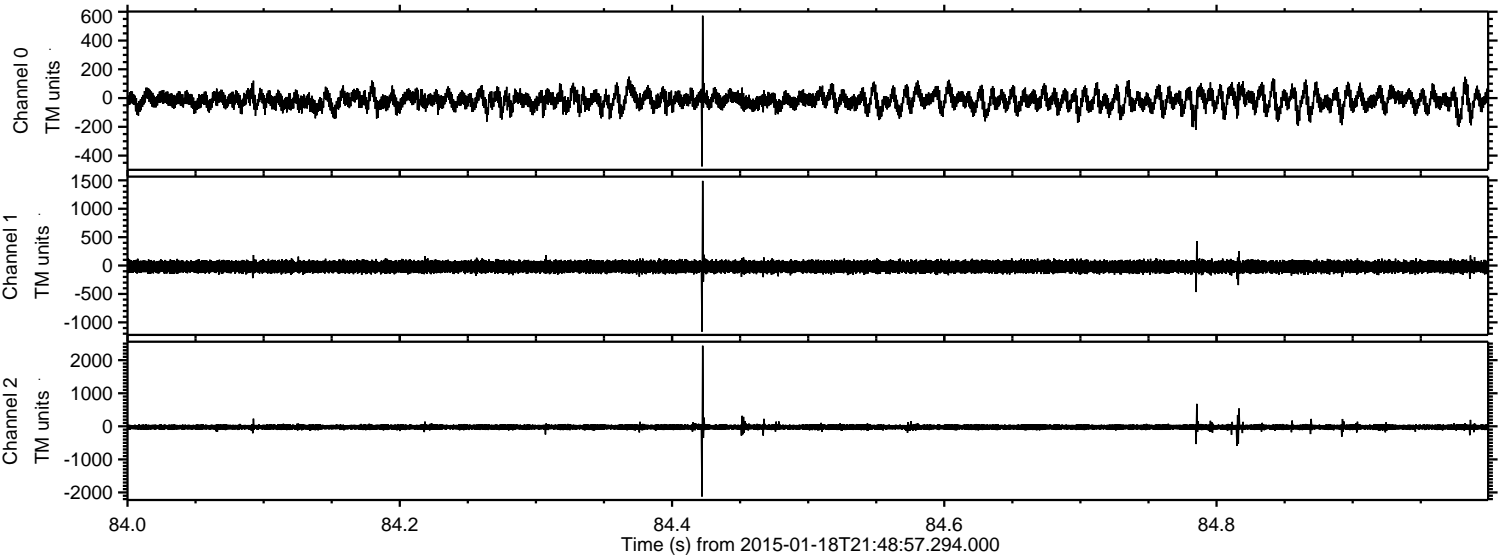
Processed Wed Jan 28 17:00:10 2015 by ELM ver.2012-10-06 from 001__elm20150118_214856__dat00.bin



Processed Wed Jan 28 17:00:11 2015 by ELM ver.2012-10-06 from 001__elm20150118_214856__dat00.bin



Processed Wed Jan 28 17:00:12 2015 by ELM ver.2012-10-06 from 001__elm20150118_214856__dat00.bin



Channel 0
mn: -475
mx: 573
 μ : -14.9
 σ : 45.7

Channel 1
mn: -1163
mx: 1491
 μ : -20.9
 σ : 53.9

Channel 2
mn: -2122
mx: 2436
 μ : -24.6
 σ : 50.2

Processed Wed Jan 28 17:00:13 2015 by ELM ver.2012-10-06 from 001__elm20150118_214856__dat00.bin

