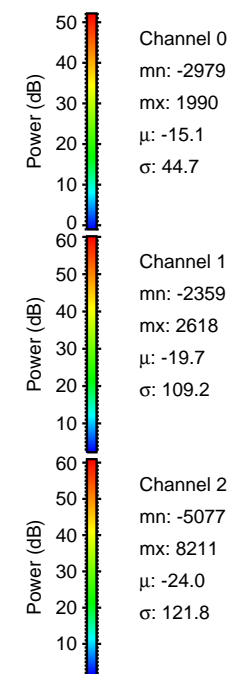
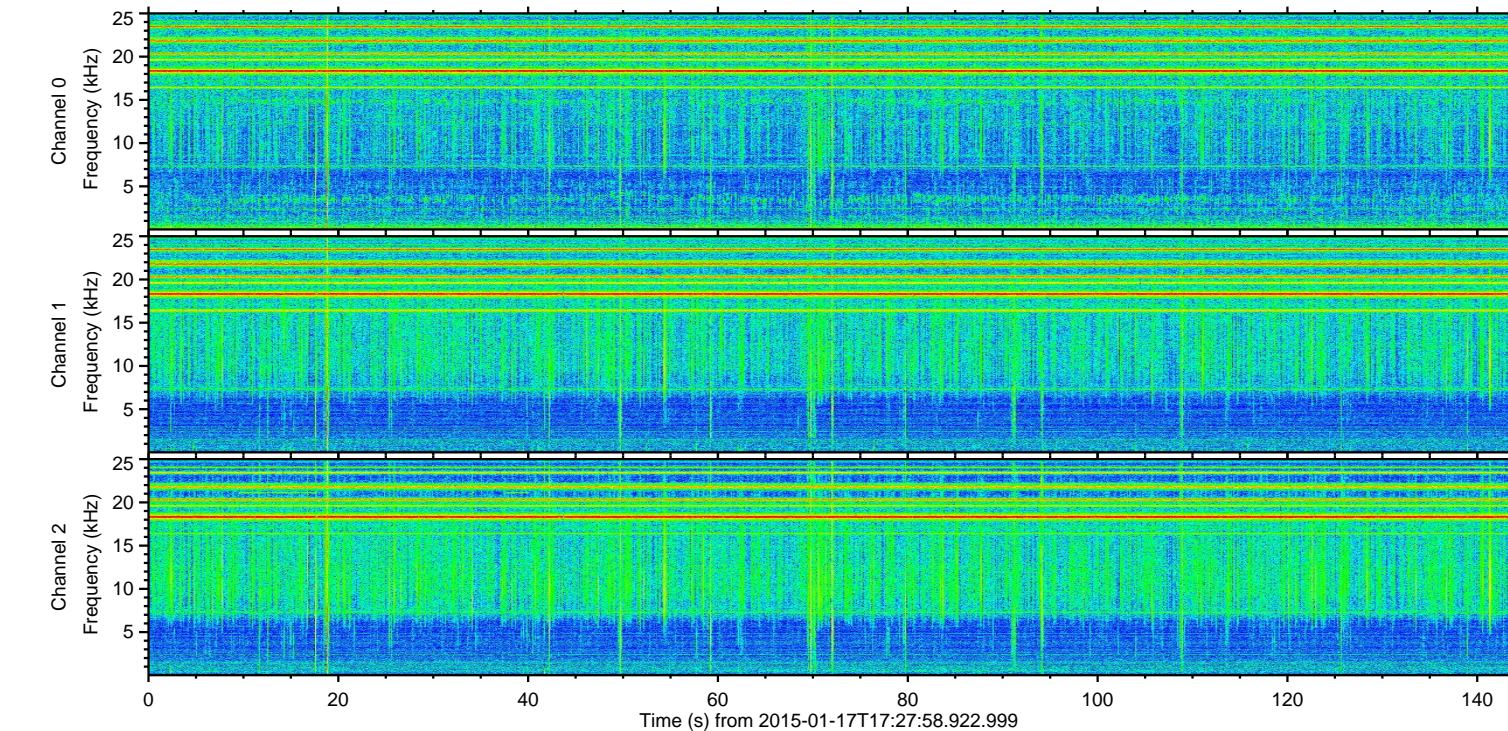
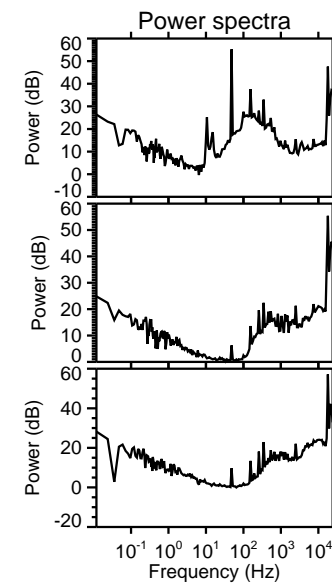
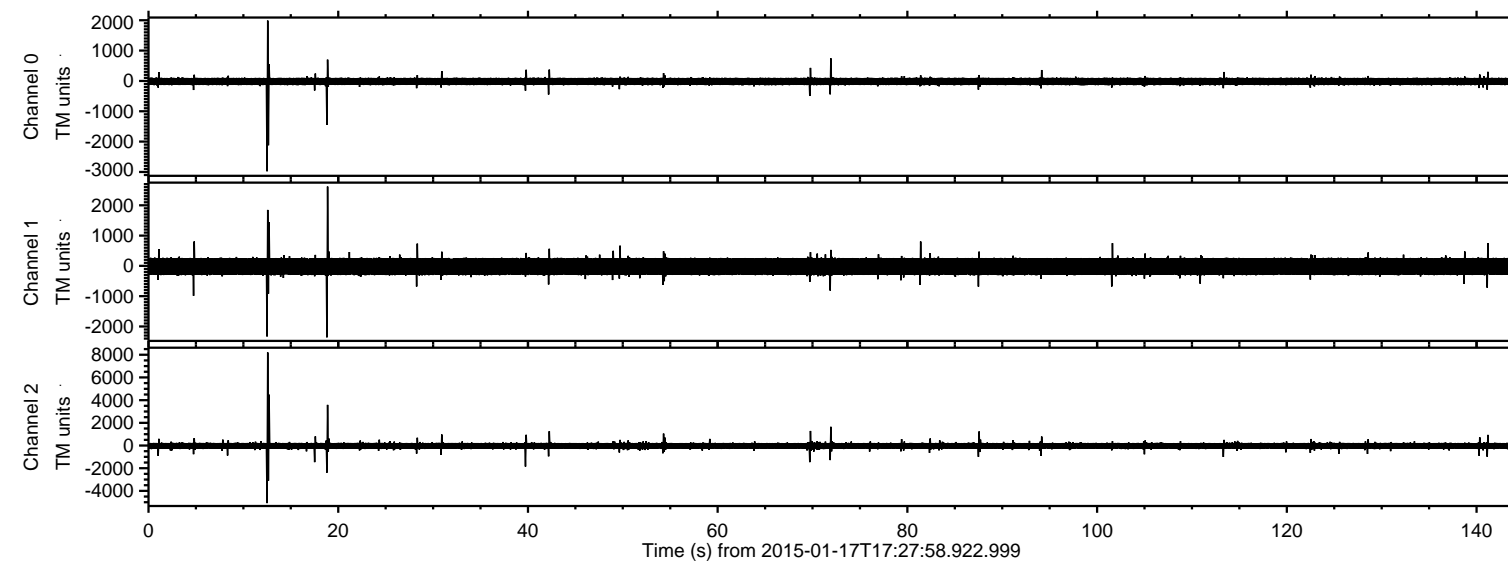


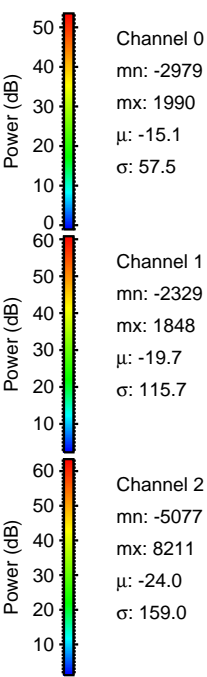
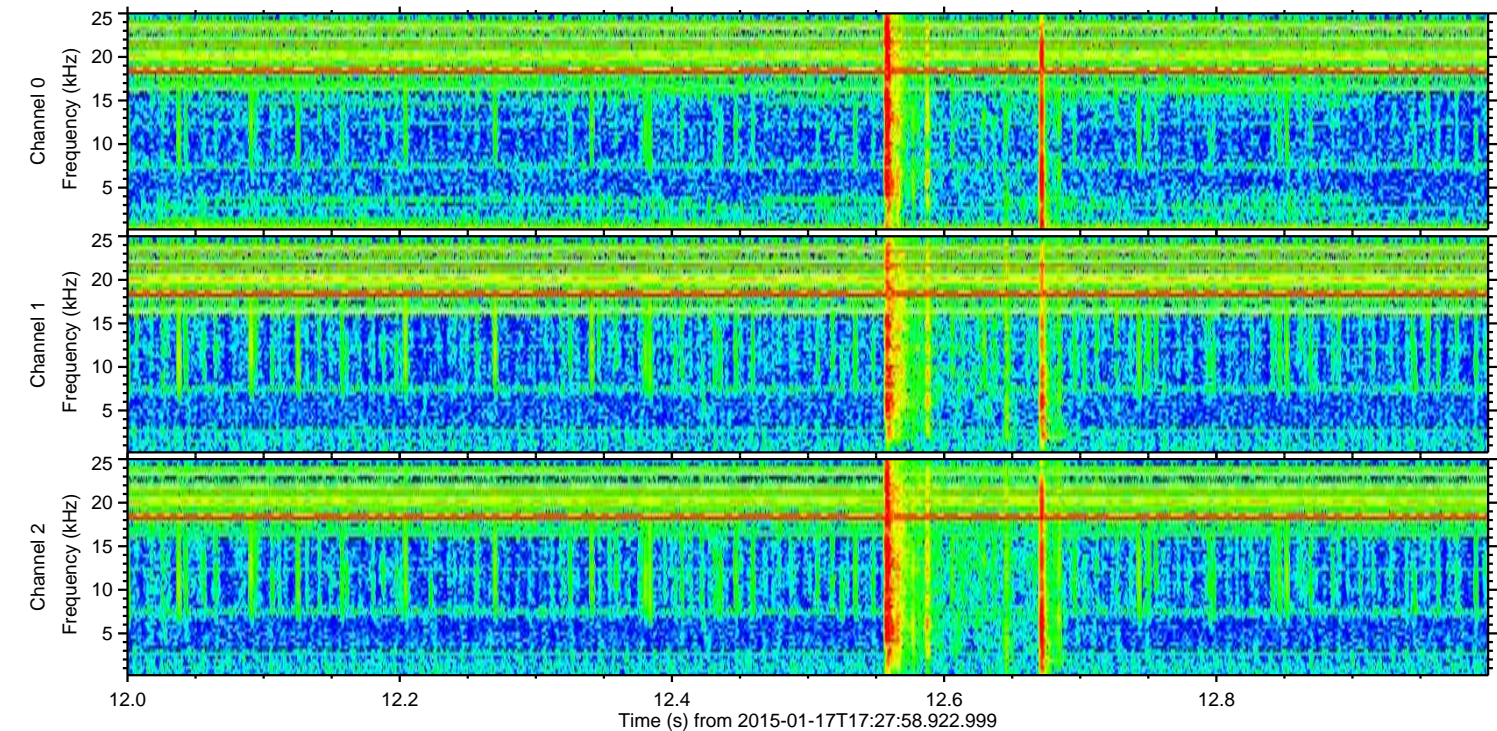
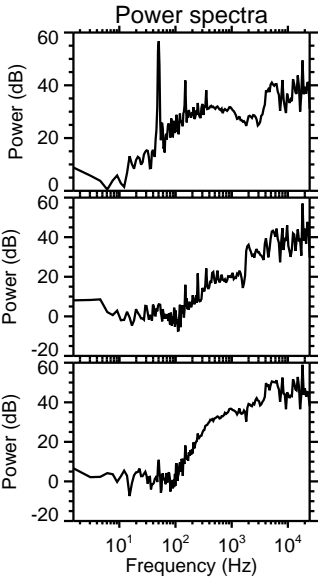
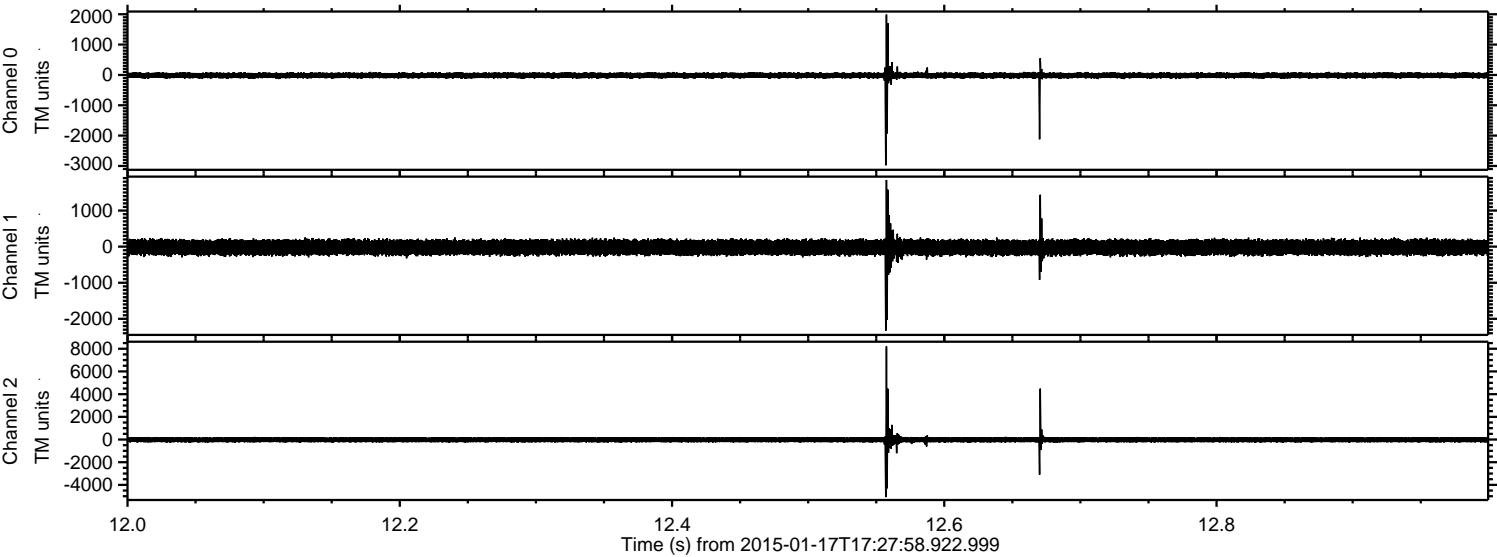
ELMAVAN 3D WAVEFORMS (Measured data sampled at 50 kHz) 49805 packets of 144 samples from 2015-01-17T17:27:58.922.999.

Processed Fri Jan 23 04:10:41 2015 by ELM ver.2012-10-06 from 001__elm20150117_172757__dat00.bin

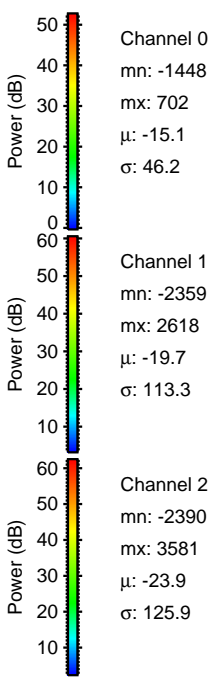
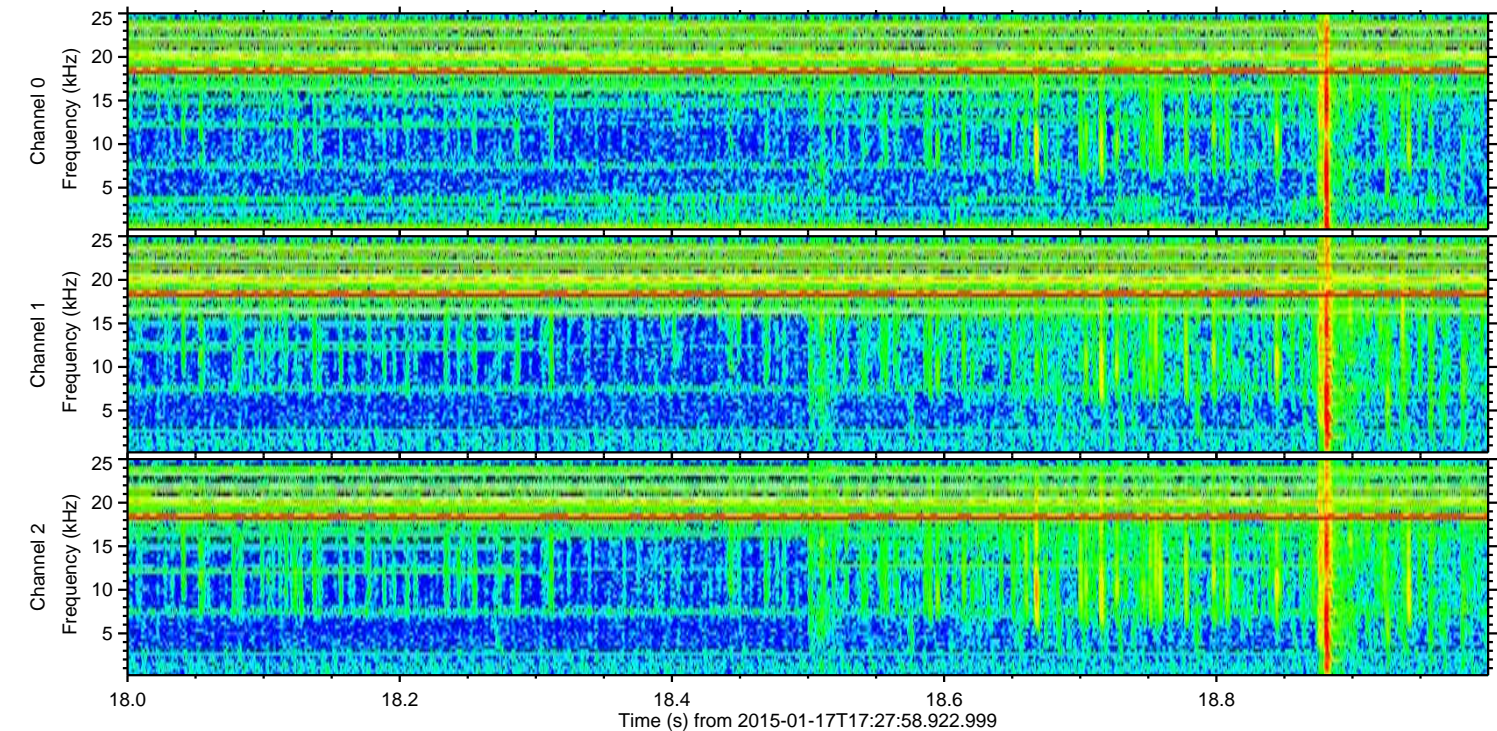
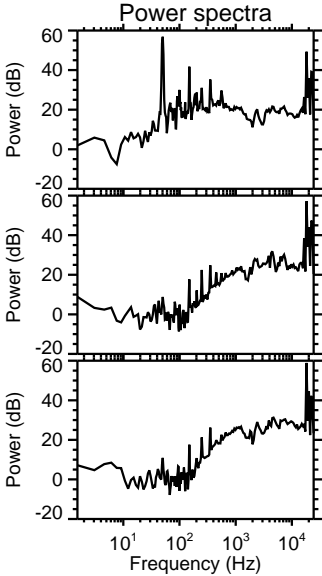
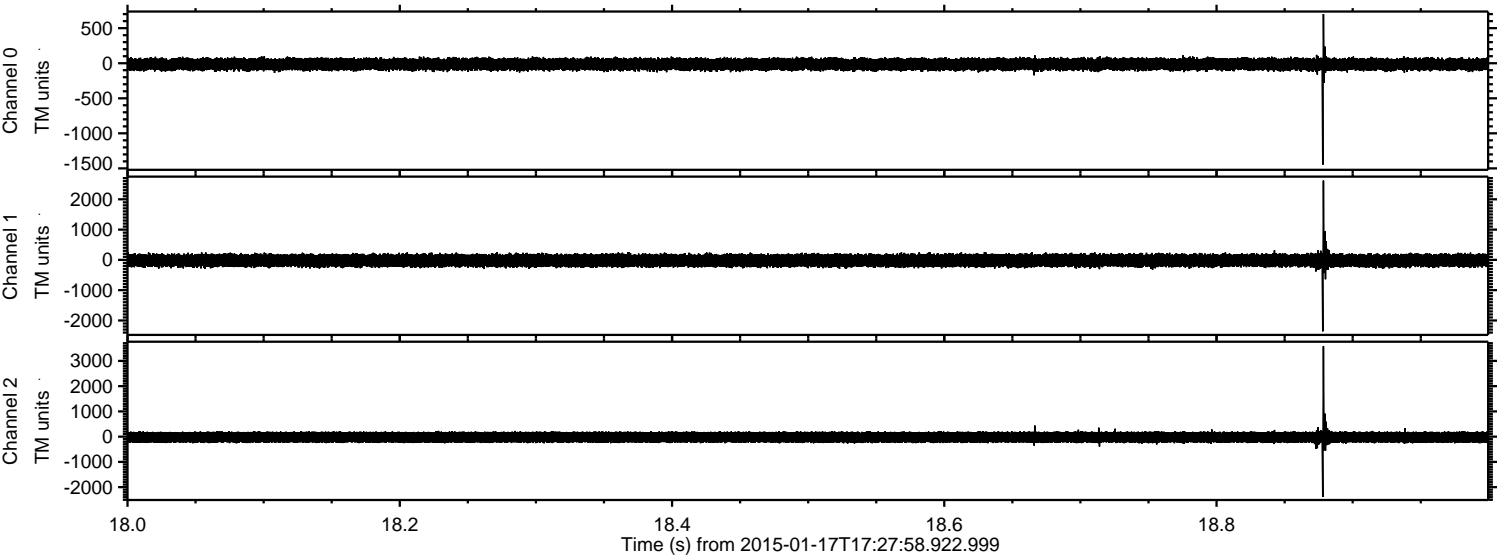


ELMAVAN 3D WAVEFORMS (Measured data sampled at 50 kHz) 49805 packets of 144 samples from 2015-01-17T17:27:58.922.999. Part 13/144

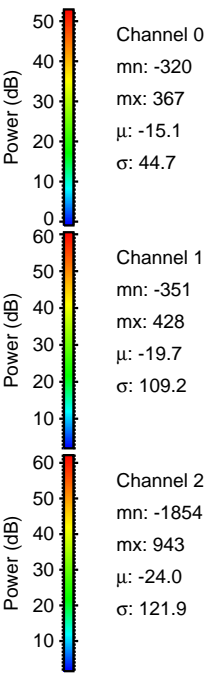
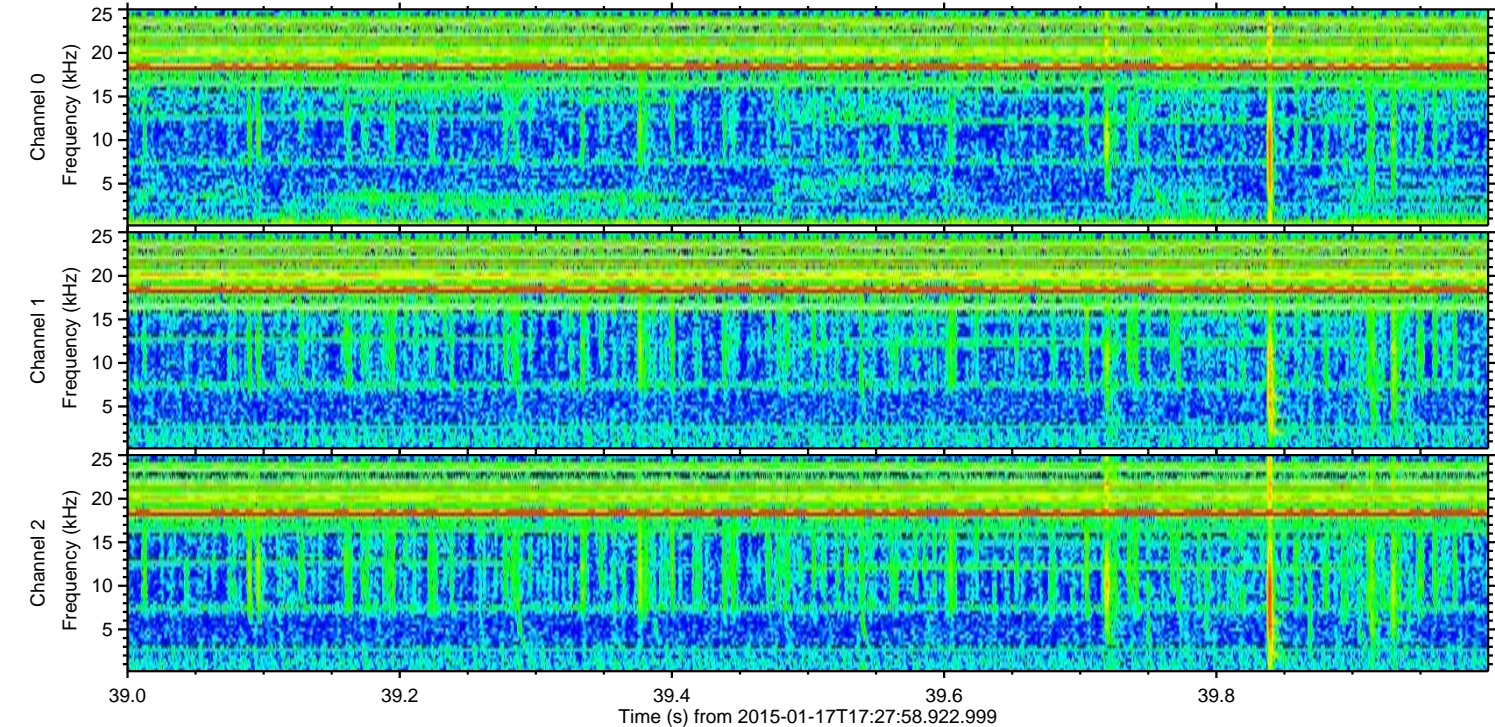
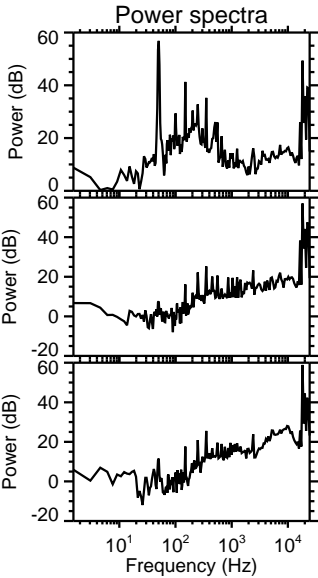
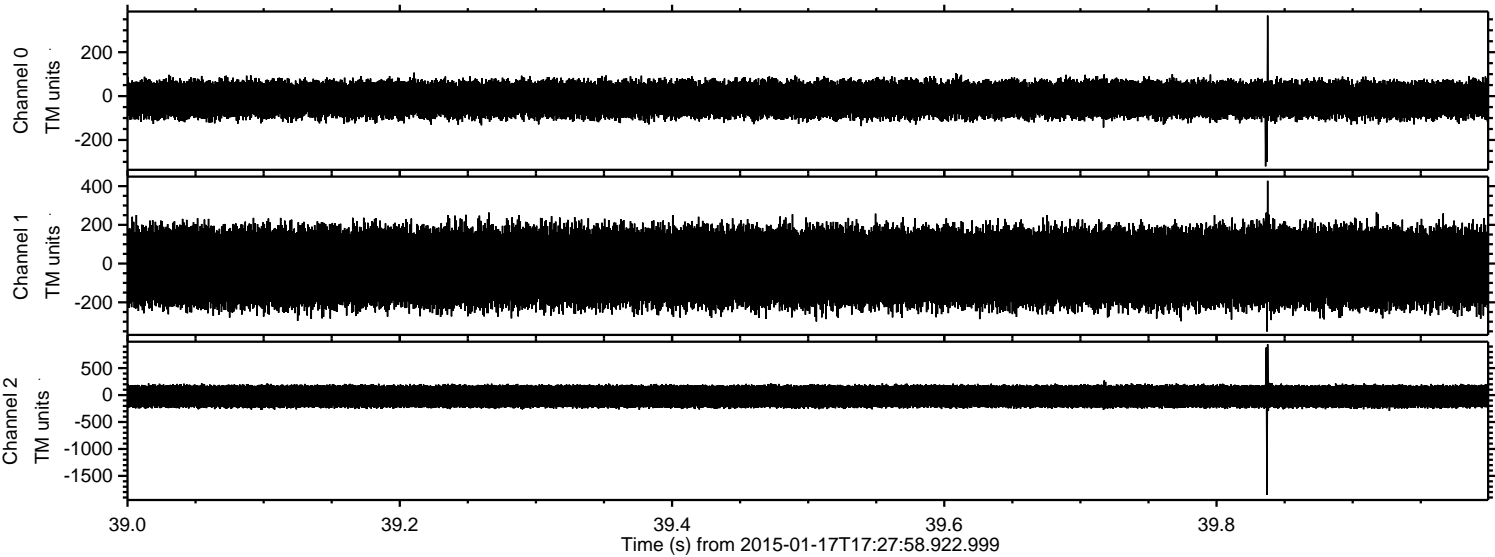
Processed Fri Jan 23 04:10:52 2015 by ELM ver.2012-10-06 from 001__elm20150117_172757__dat00.bin



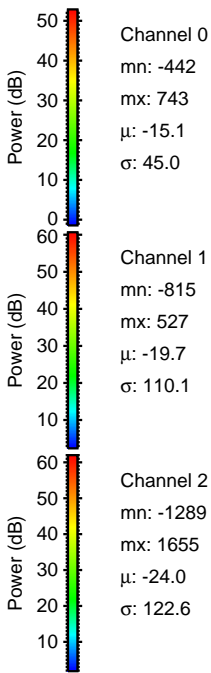
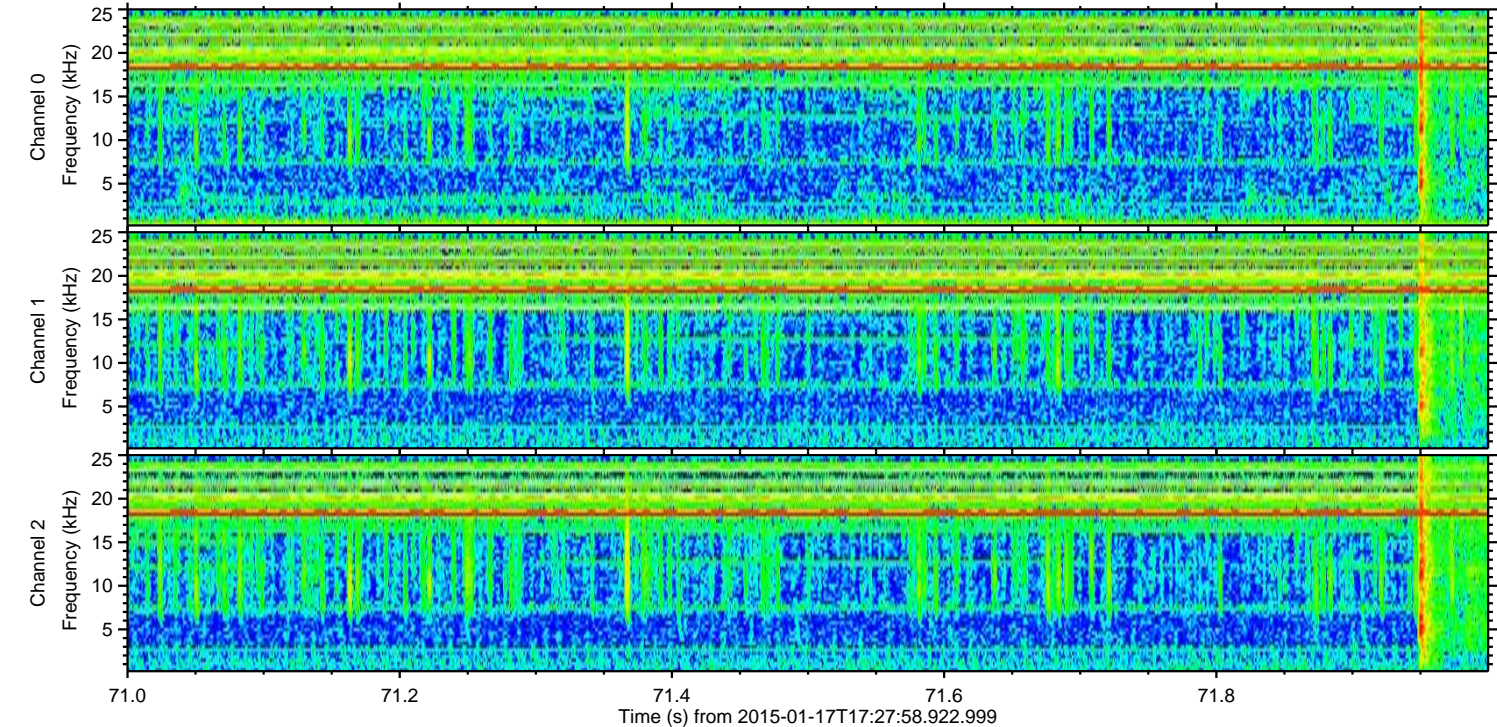
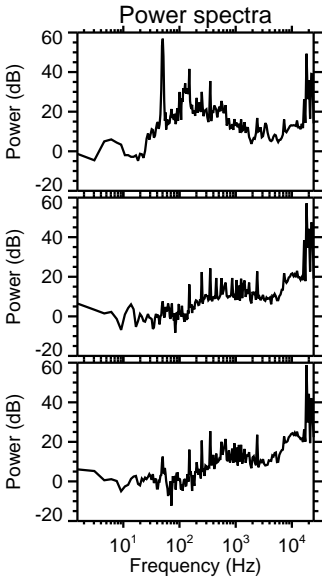
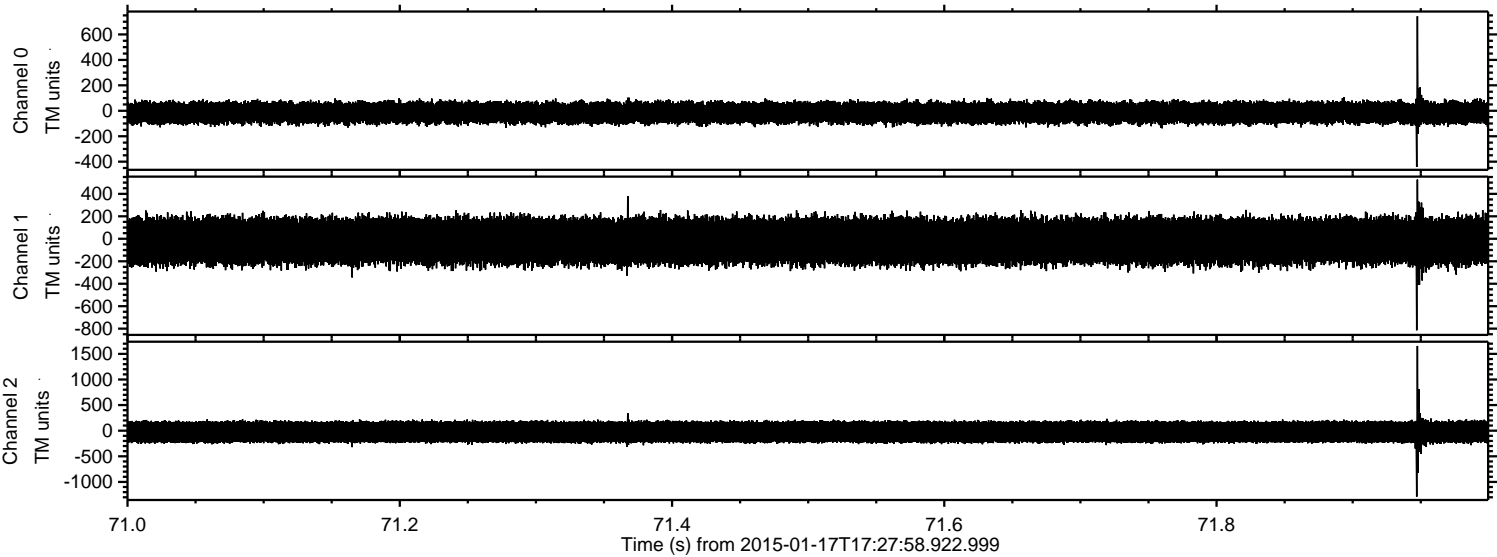
Processed Fri Jan 23 04:10:53 2015 by ELM ver.2012-10-06 from 001__elm20150117_172757__dat00.bin



Processed Fri Jan 23 04:10:54 2015 by ELM ver.2012-10-06 from 001__elm20150117_172757__dat00.bin



Processed Fri Jan 23 04:10:55 2015 by ELM ver.2012-10-06 from 001__elm20150117_172757__dat00.bin

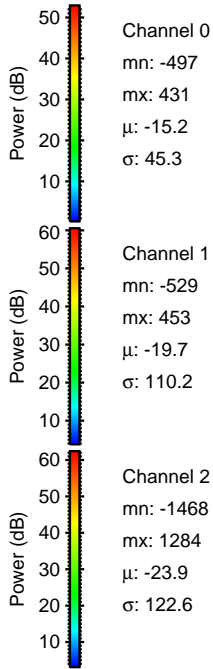
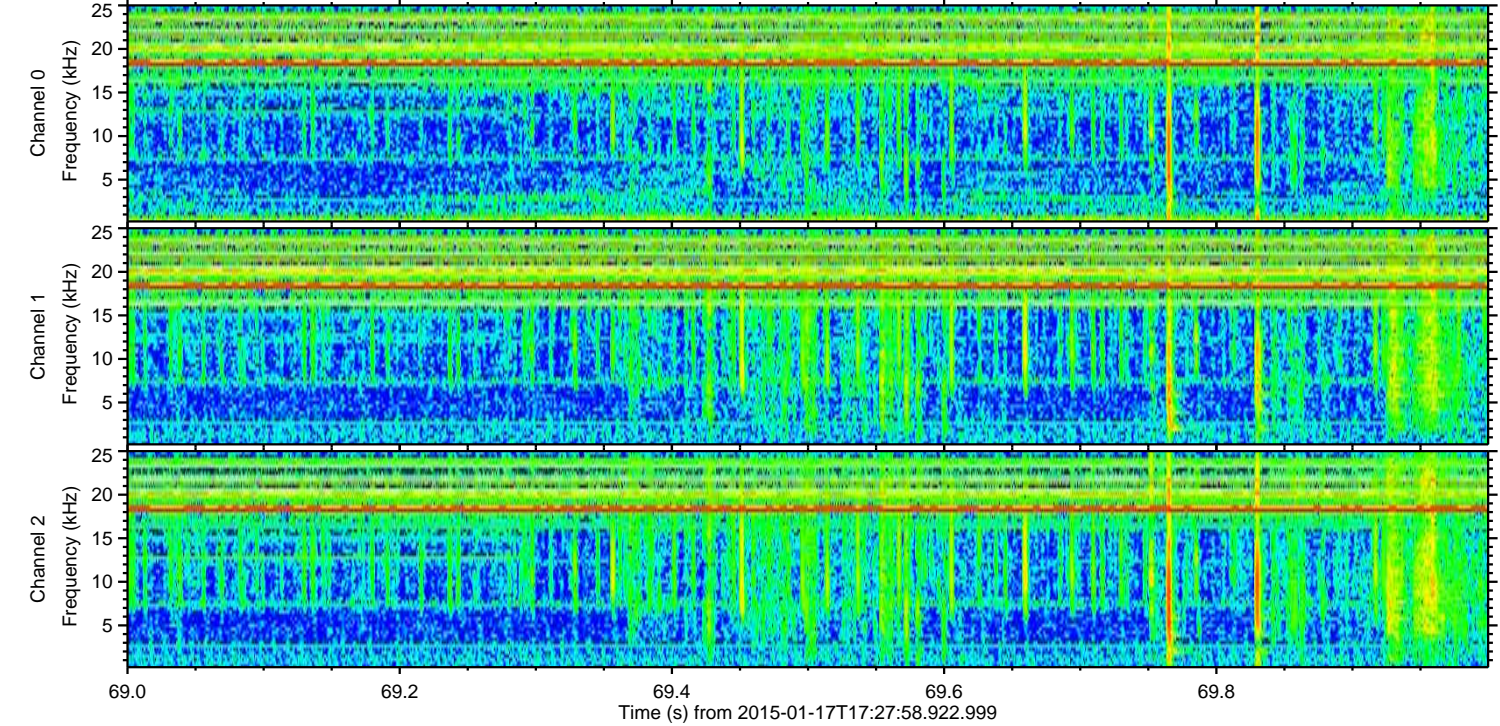
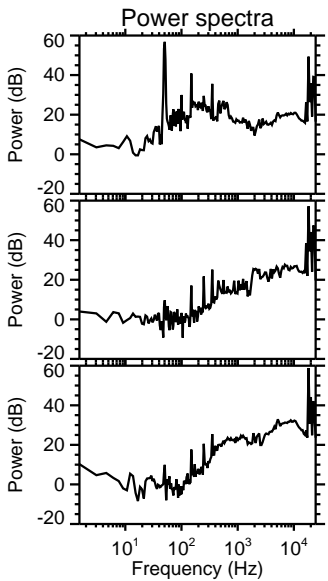
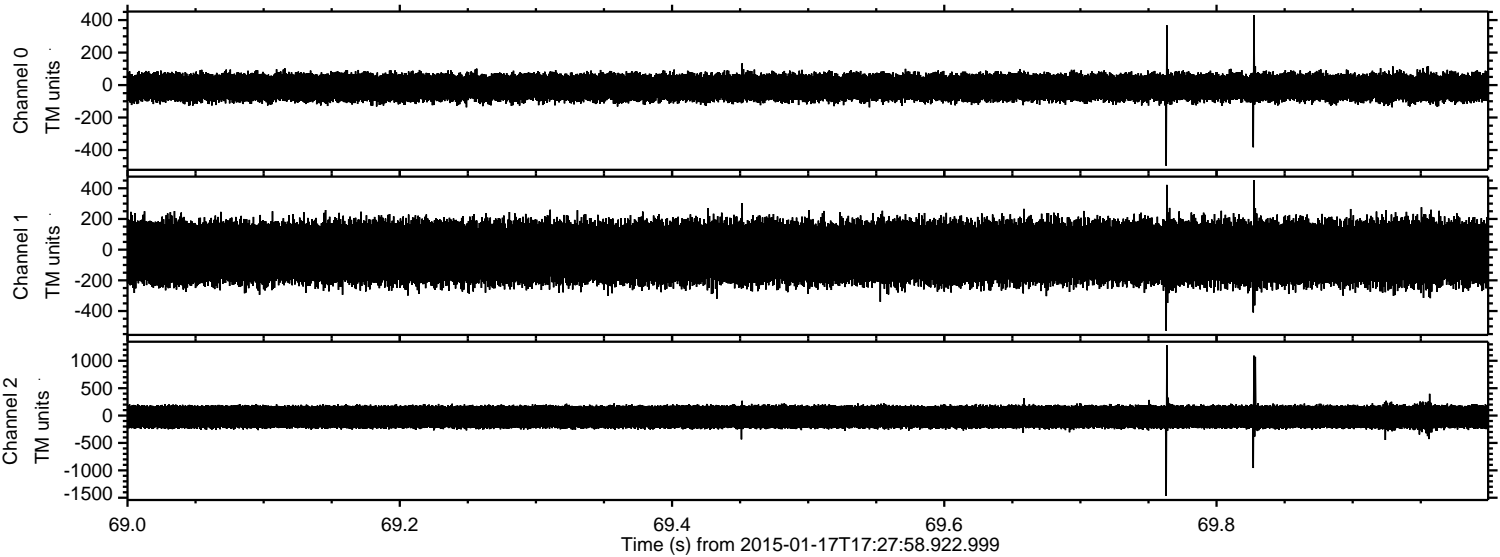


Channel 0
mn: -442
mx: 743
 μ : -15.1
 σ : 45.0

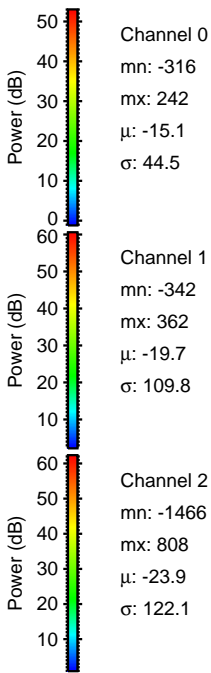
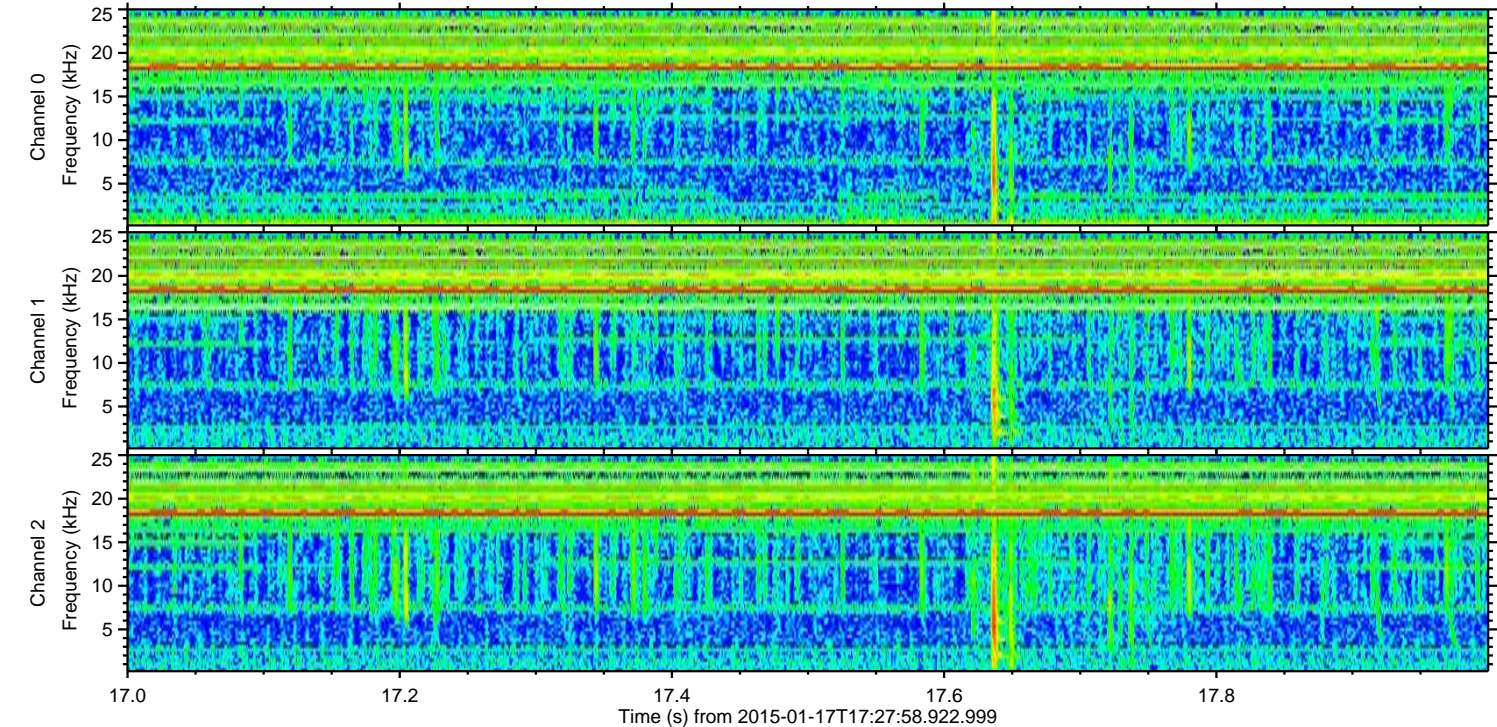
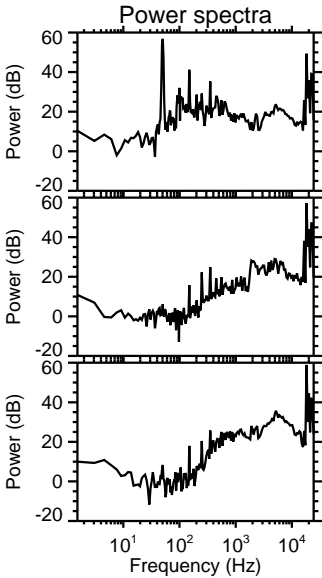
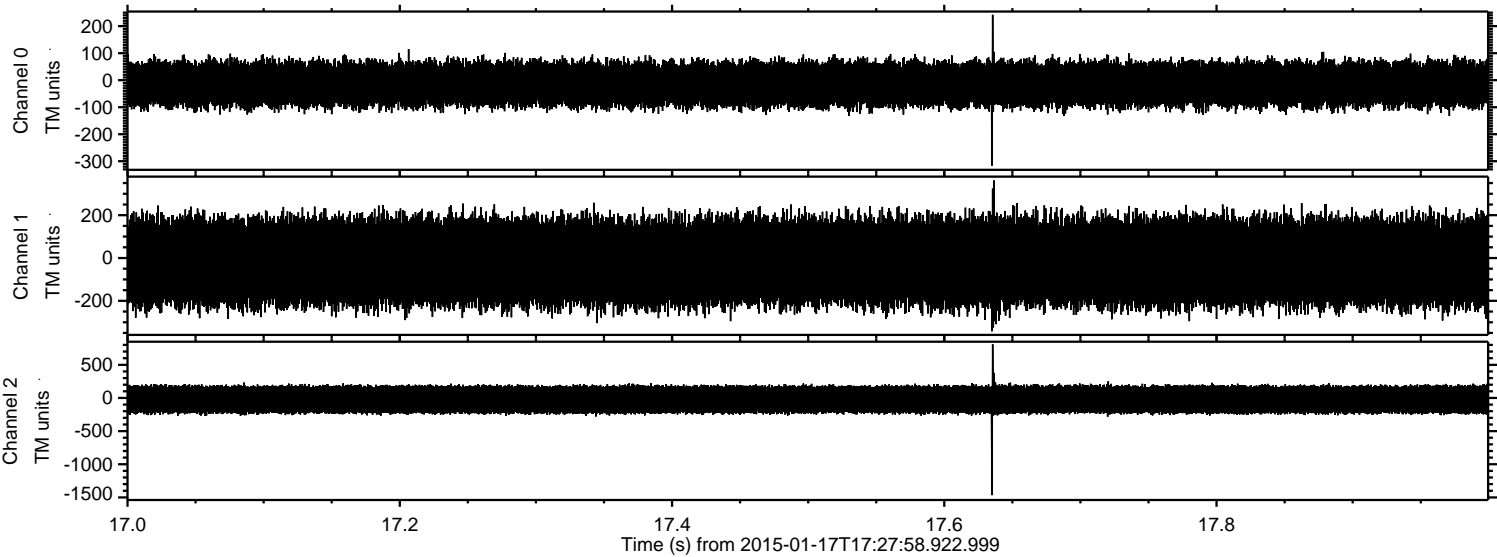
Channel 1
mn: -815
mx: 527
 μ : -19.7
 σ : 110.1

Channel 2
mn: -1289
mx: 1655
 μ : -24.0
 σ : 122.6

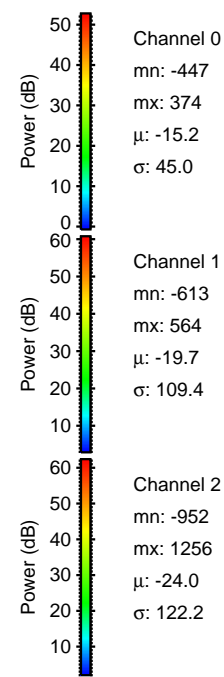
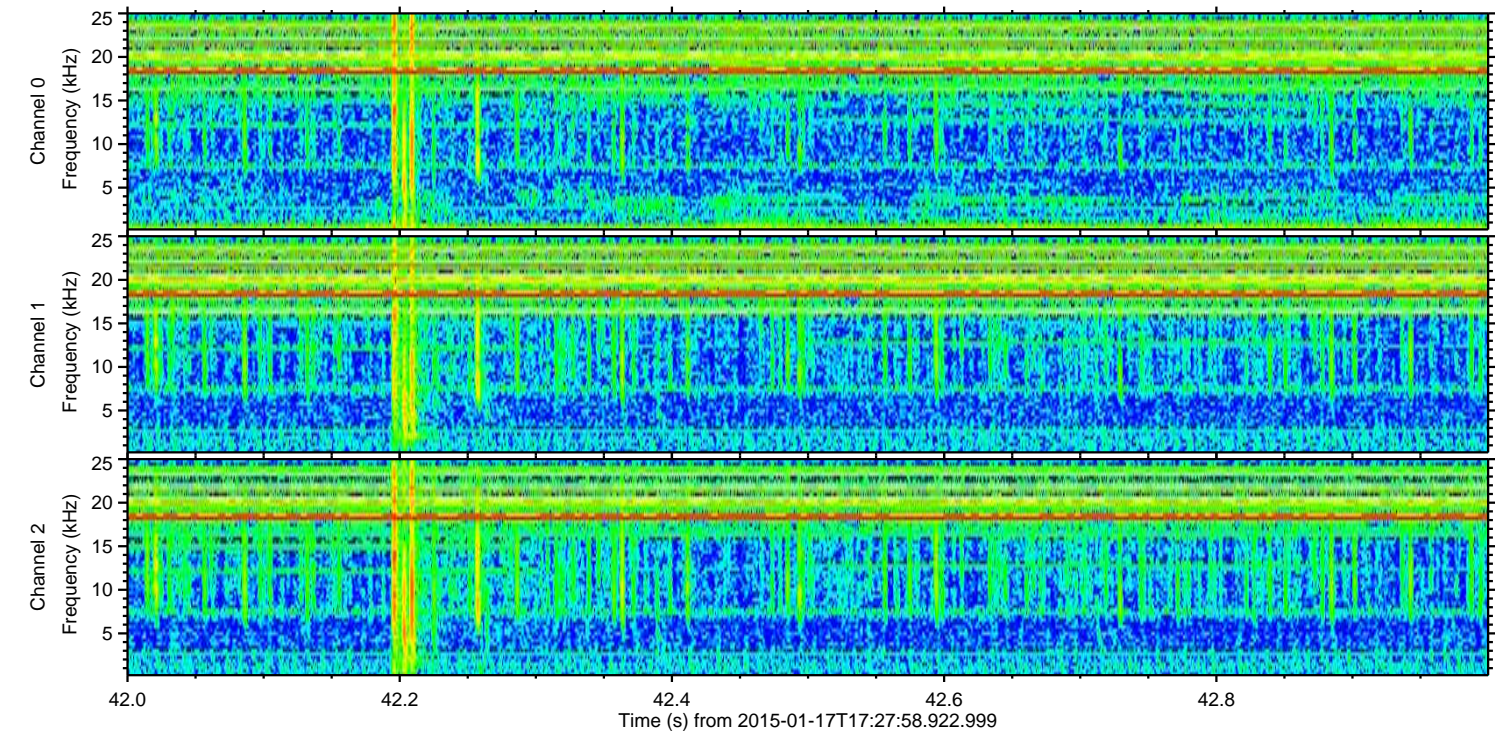
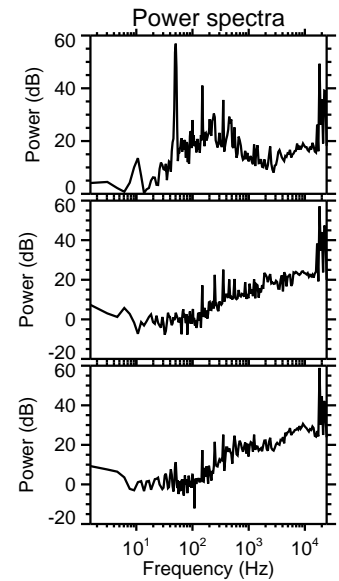
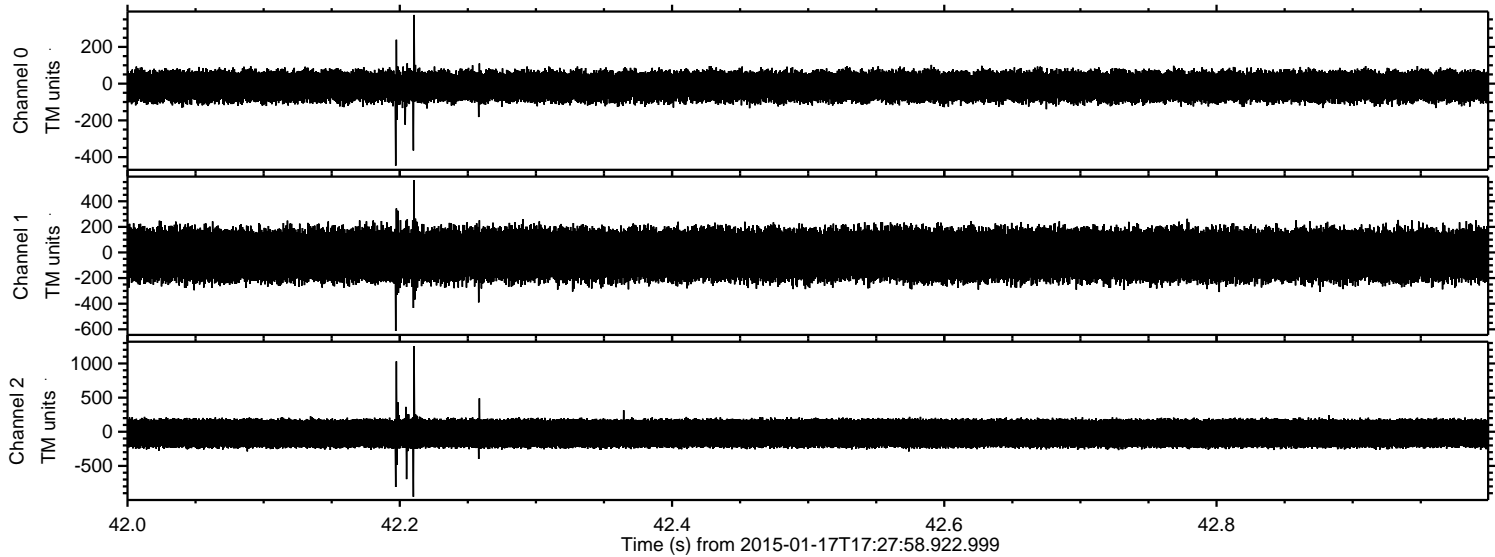
Processed Fri Jan 23 04:10:56 2015 by ELM ver.2012-10-06 from 001__elm20150117_172757__dat00.bin



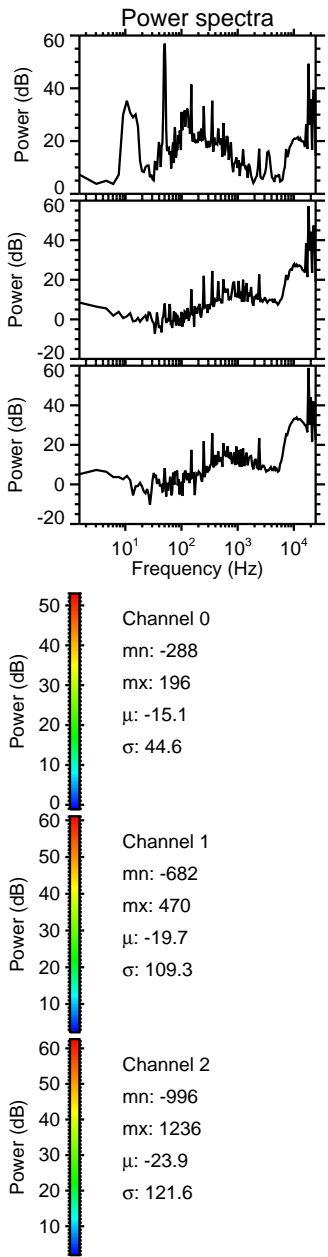
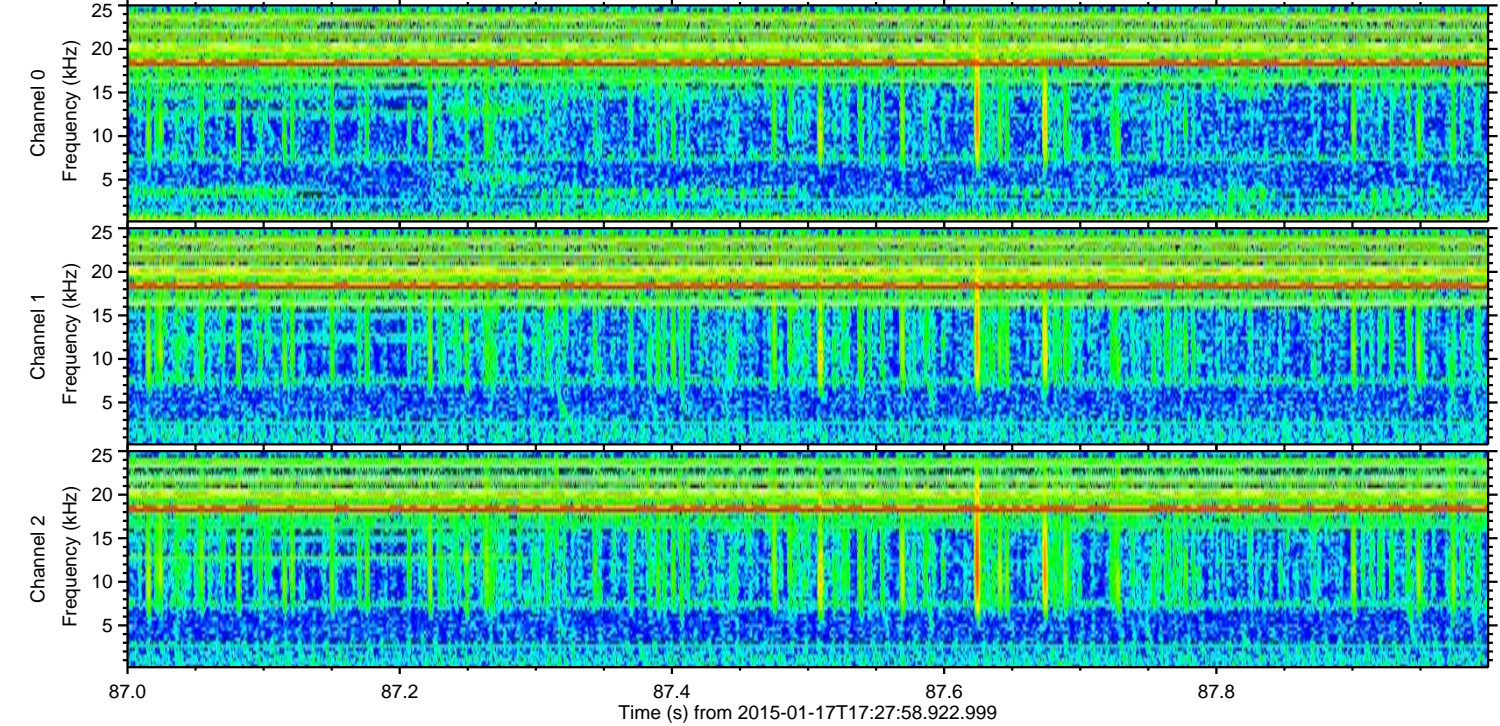
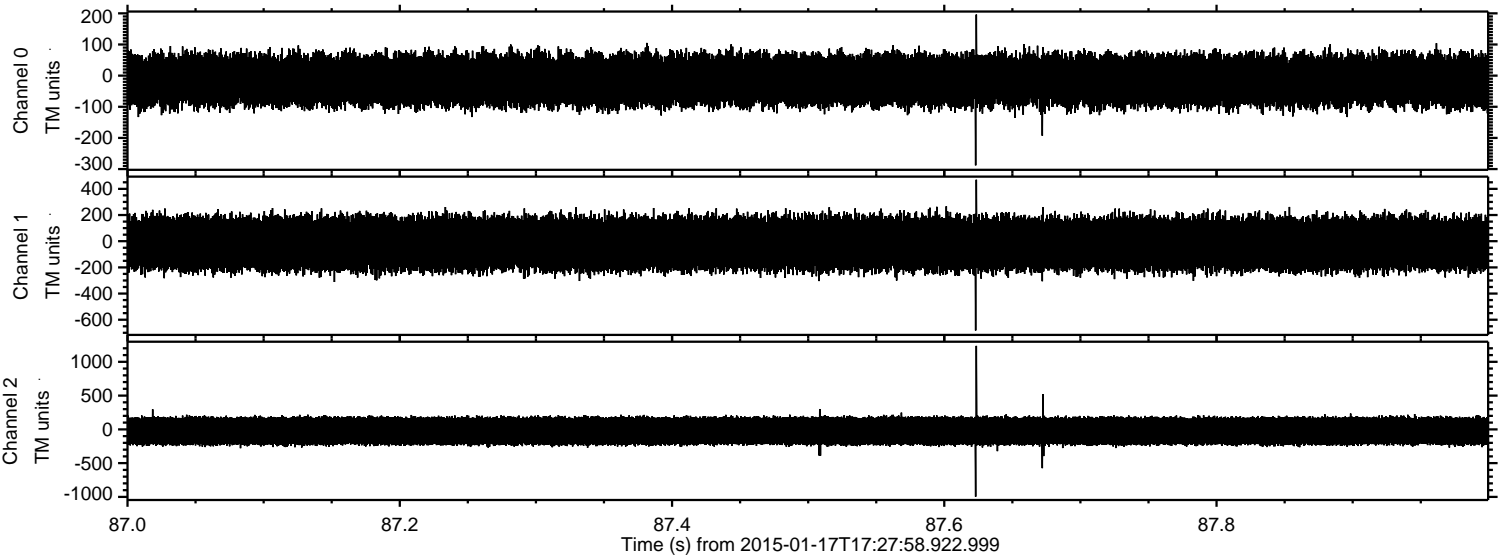
Processed Fri Jan 23 04:10:57 2015 by ELM ver.2012-10-06 from 001__elm20150117_172757__dat00.bin



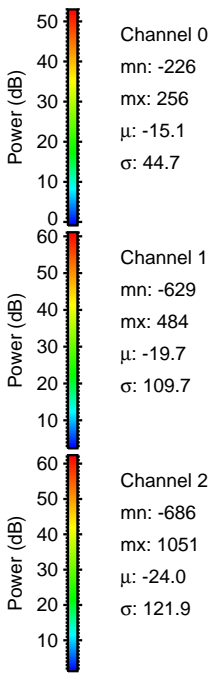
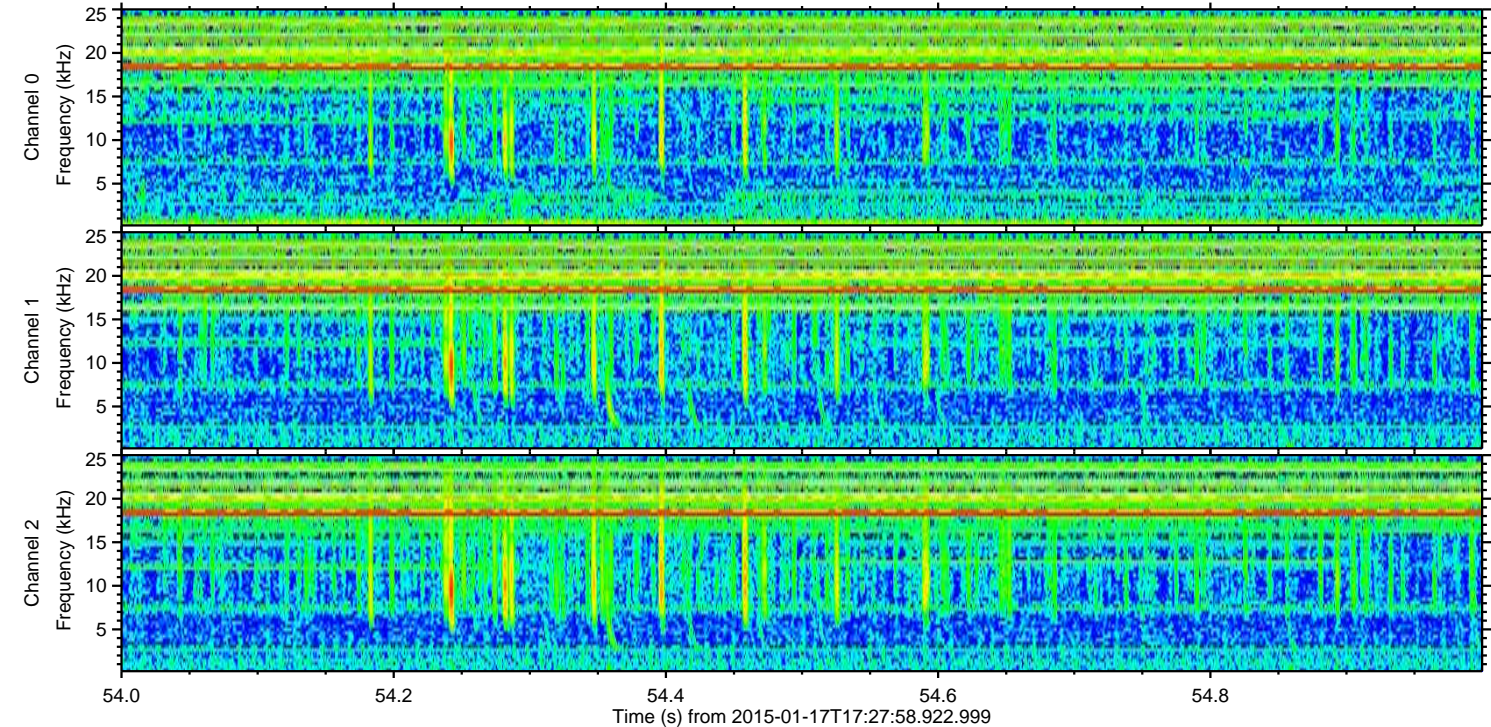
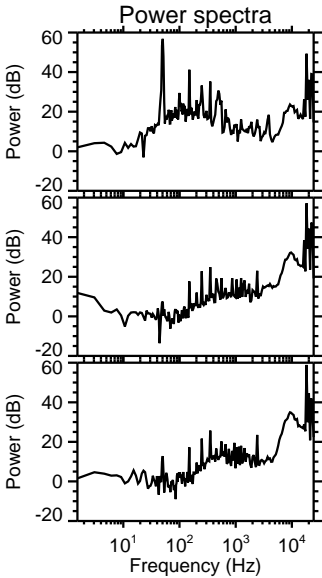
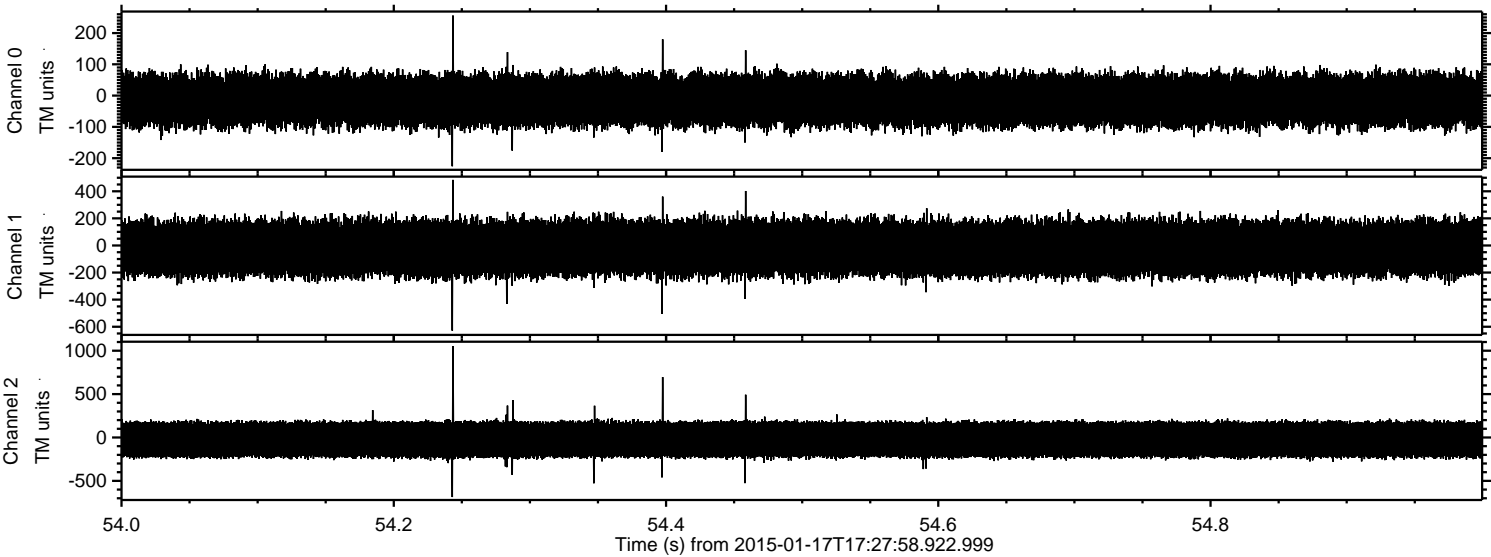
Processed Fri Jan 23 04:10:58 2015 by ELM ver.2012-10-06 from 001__elm20150117_172757__dat00.bin



Processed Fri Jan 23 04:10:59 2015 by ELM ver.2012-10-06 from 001__elm20150117_172757__dat00.bin



Processed Fri Jan 23 04:11:00 2015 by ELM ver.2012-10-06 from 001__elm20150117_172757__dat00.bin



Channel 0
mn: -226
mx: 256
 μ : -15.1
 σ : 44.7

Channel 1
mn: -629
mx: 484
 μ : -19.7
 σ : 109.7

Channel 2
mn: -686
mx: 1051
 μ : -24.0
 σ : 121.9

Processed Fri Jan 23 04:11:01 2015 by ELM ver.2012-10-06 from 001__elm20150117_172757__dat00.bin

