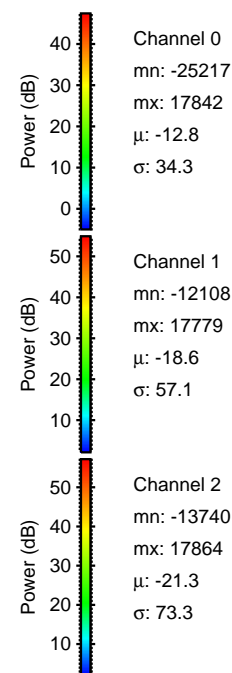
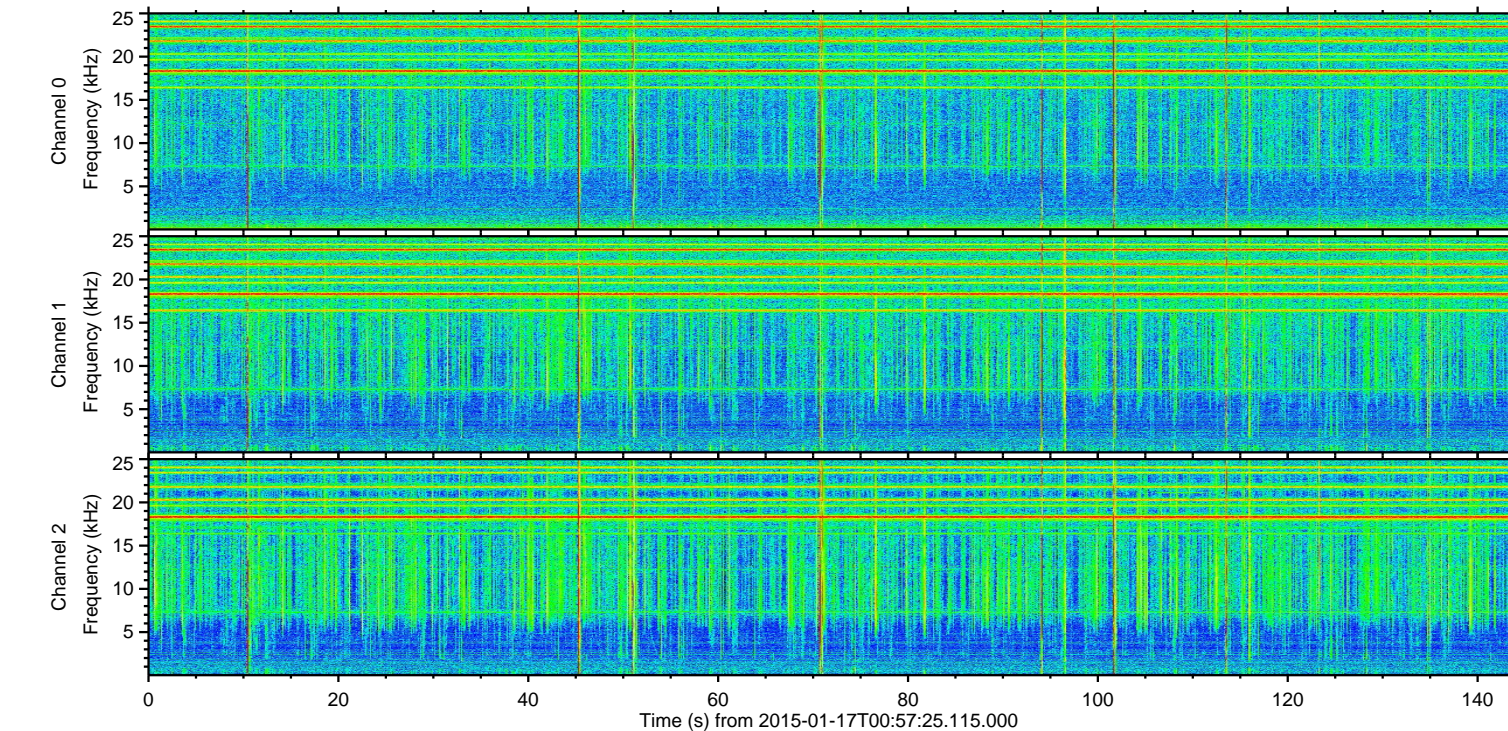
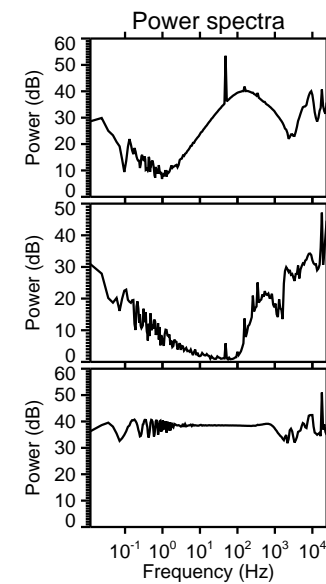
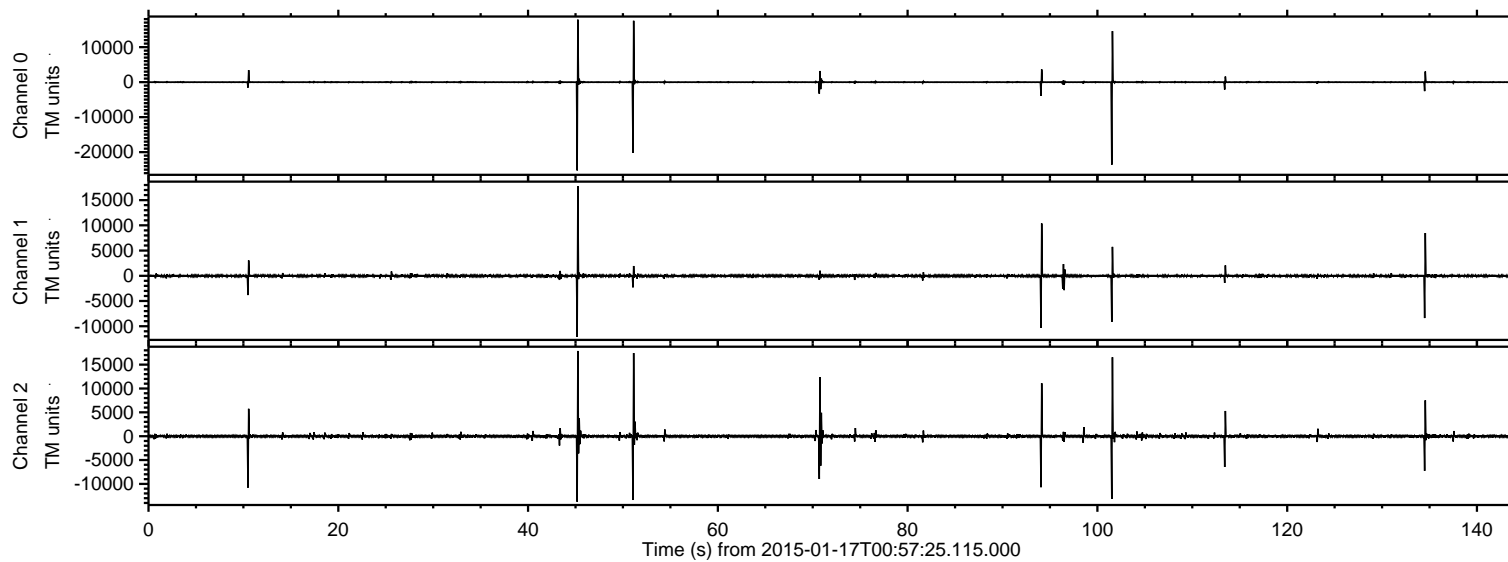
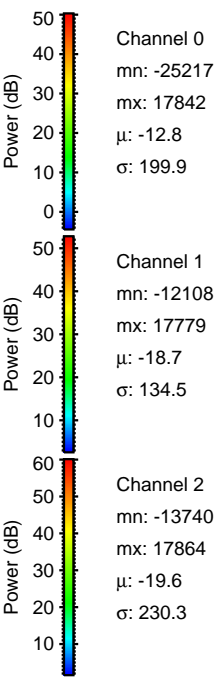
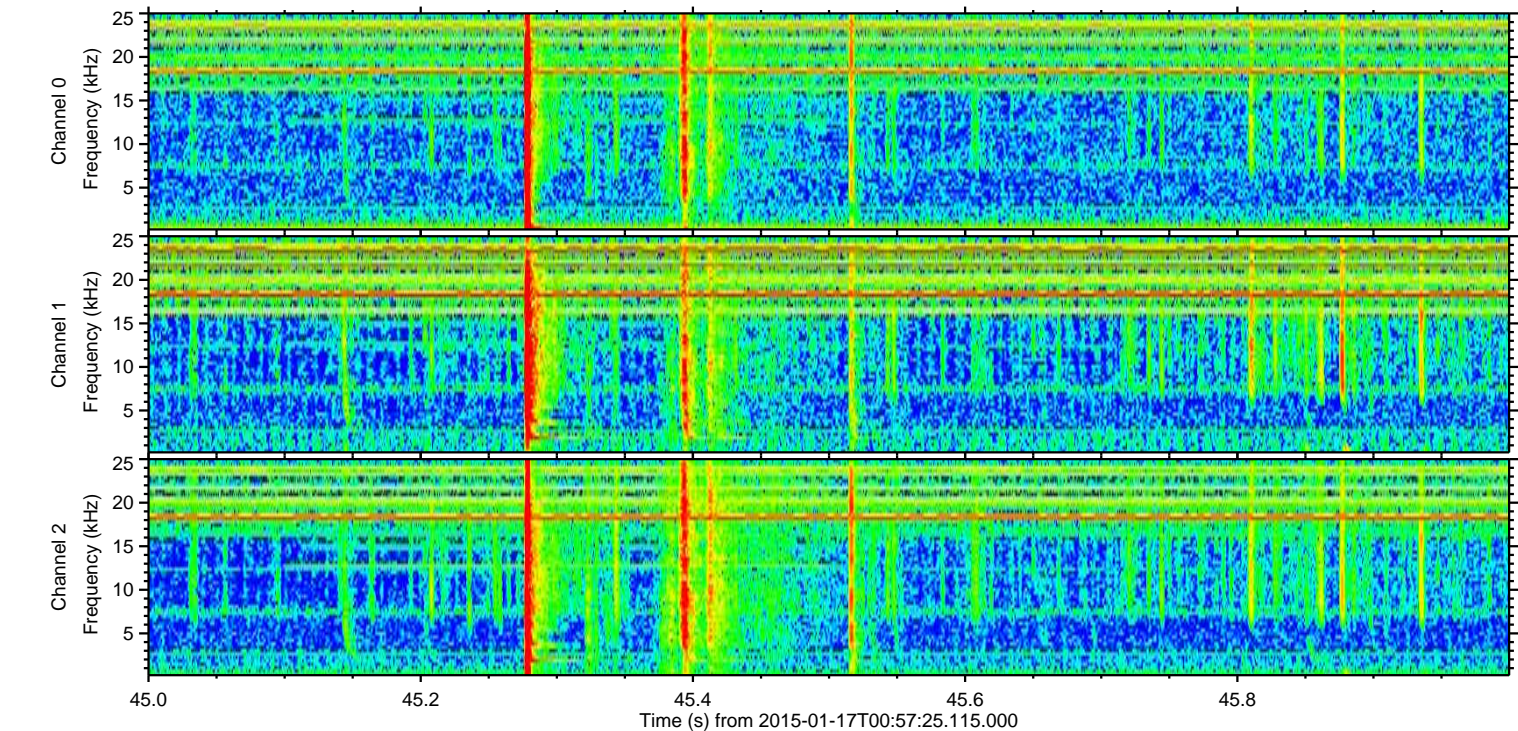
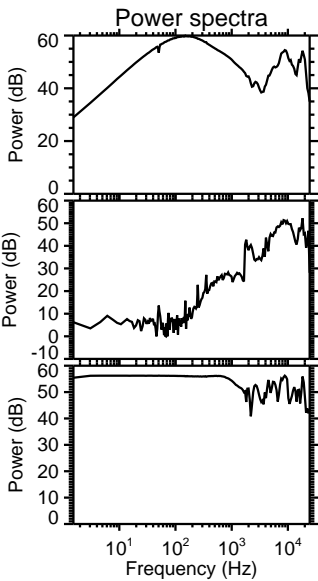
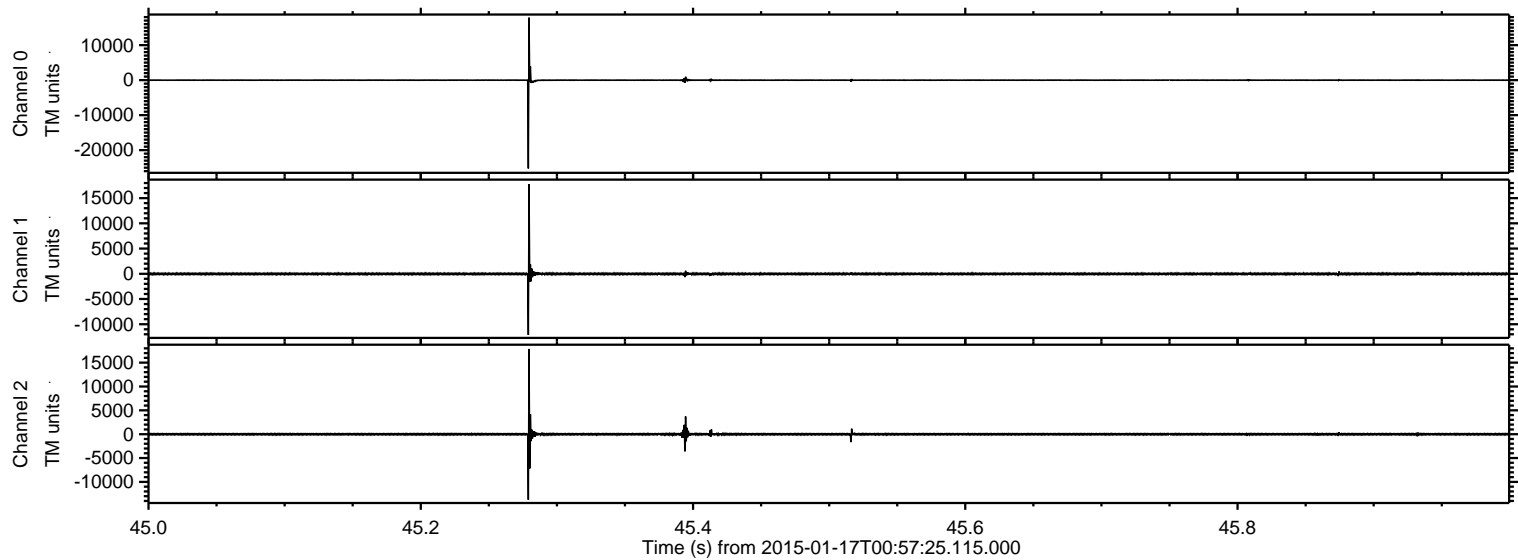


ELMAVAN 3D WAVEFORMS (Measured data sampled at 50 kHz) 49789 packets of 144 samples from 2015-01-17T00:57:25.115.000.

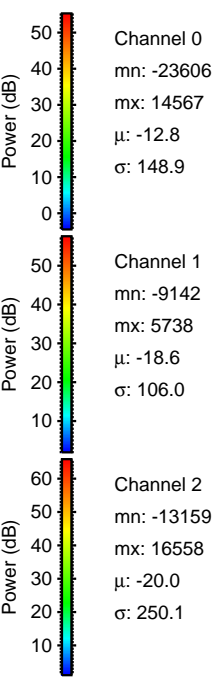
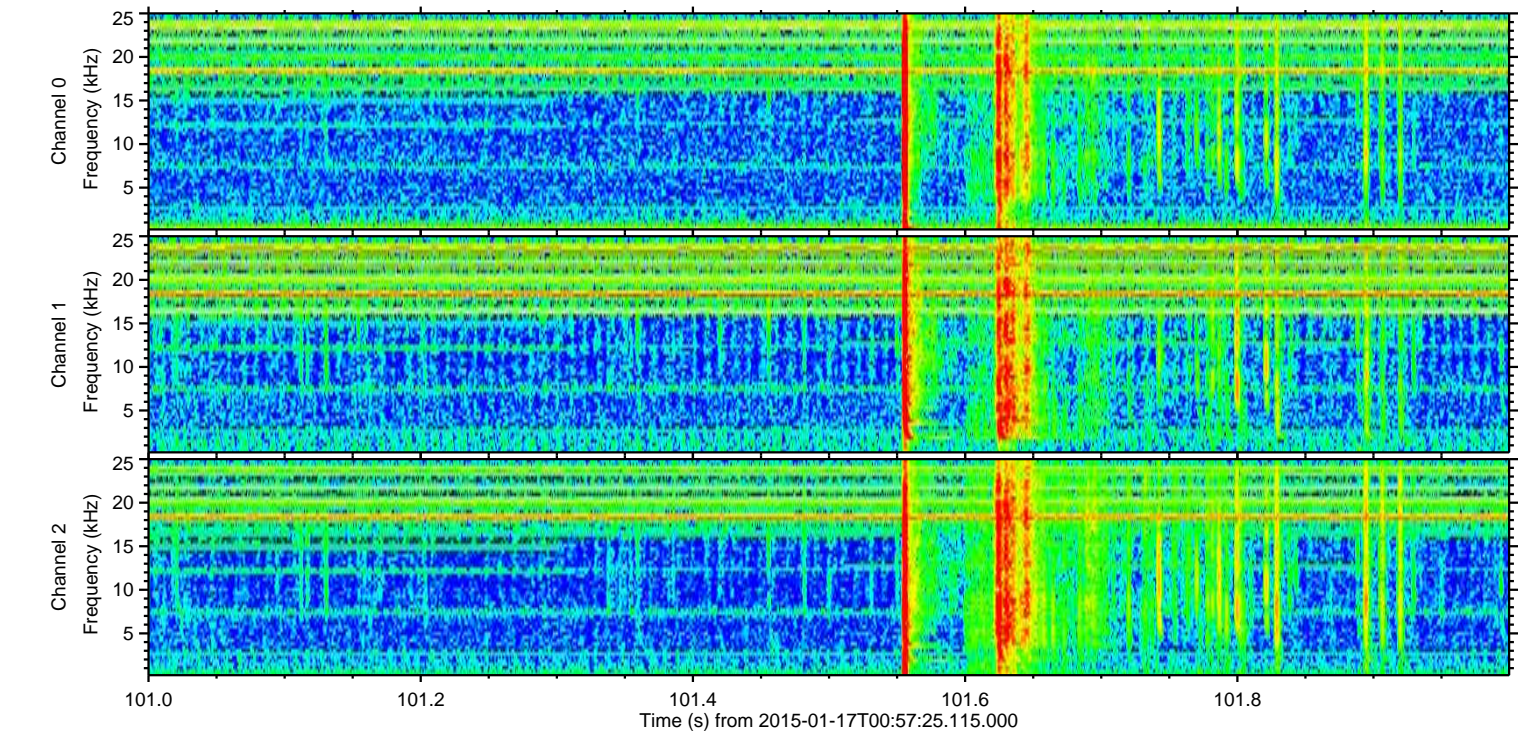
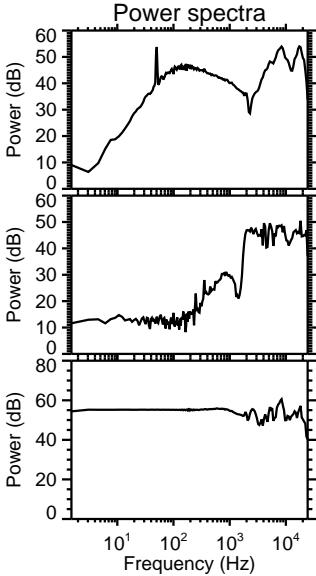
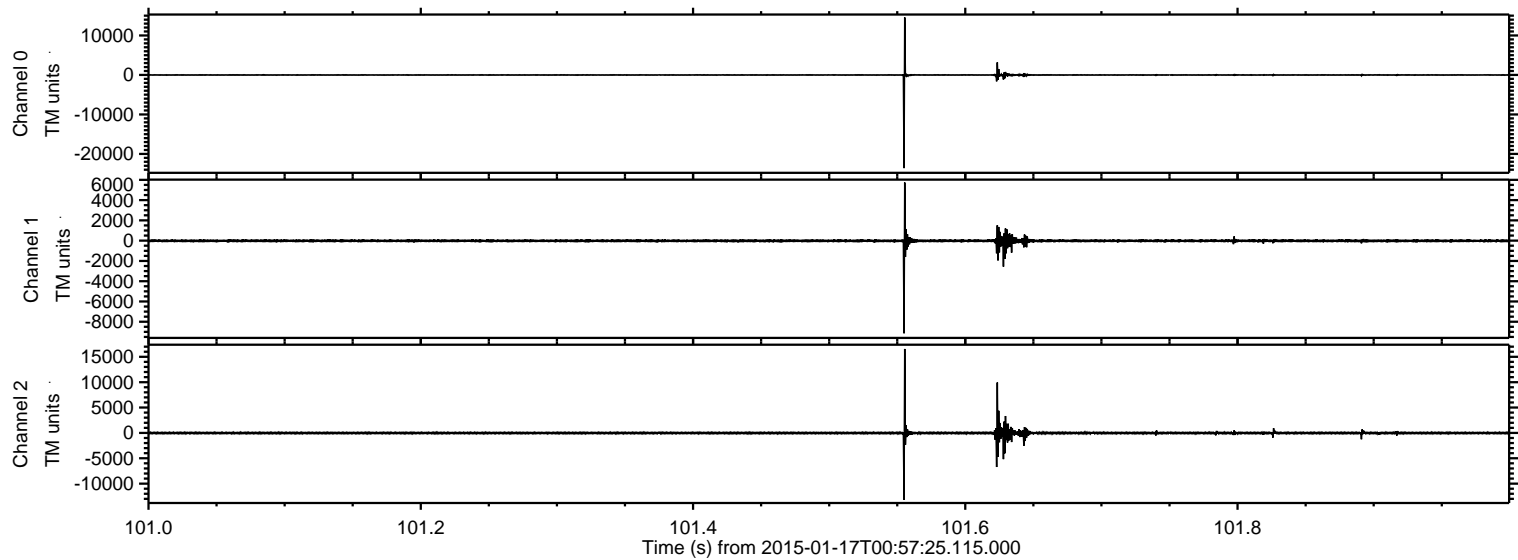
Processed Mon Jan 19 07:19:19 2015 by ELM ver.2012-10-06 from 001__elm20150117_005724__dat00.bin



Processed Mon Jan 19 07:19:31 2015 by ELM ver.2012-10-06 from 001__elm20150117_005724__dat00.bin

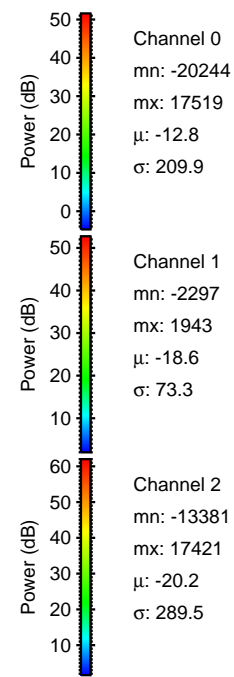
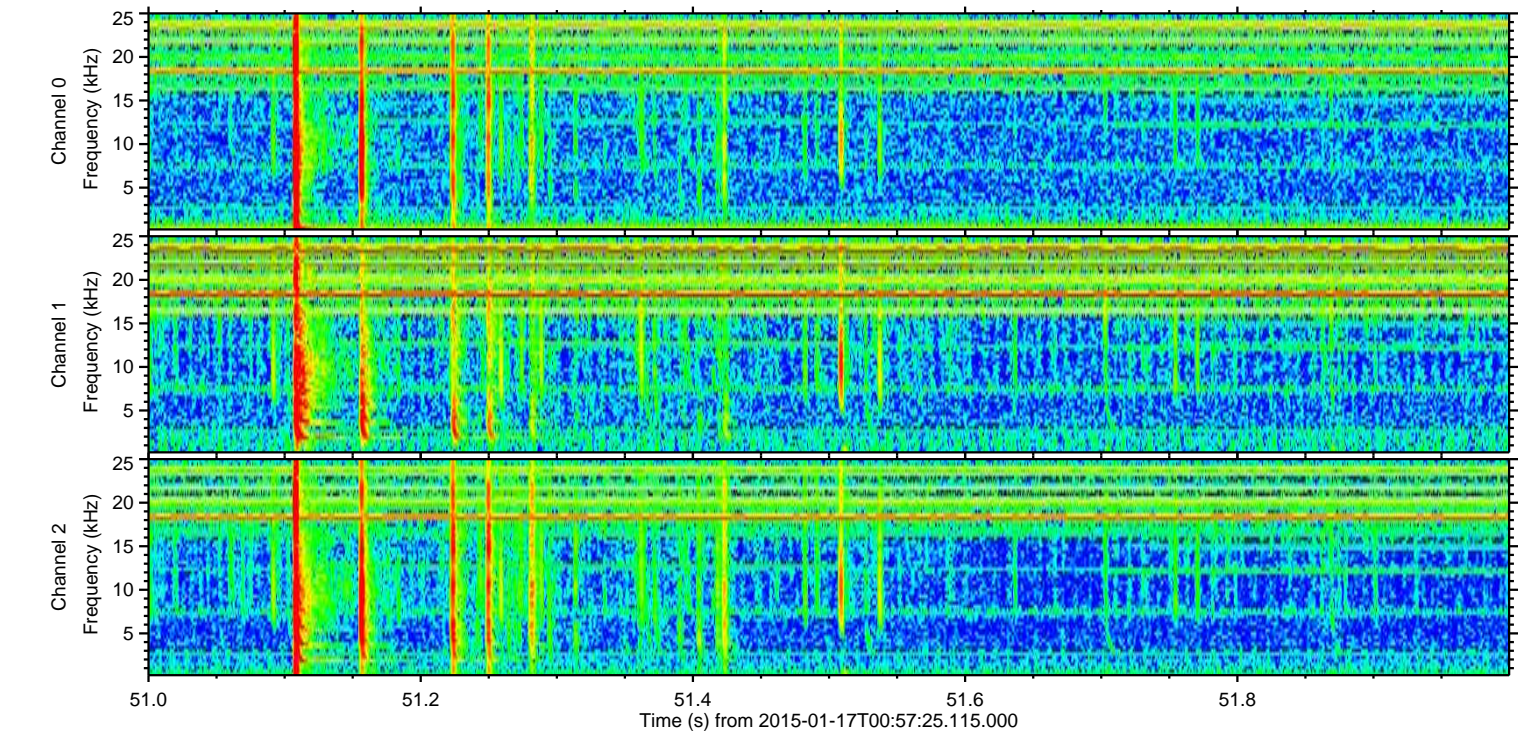
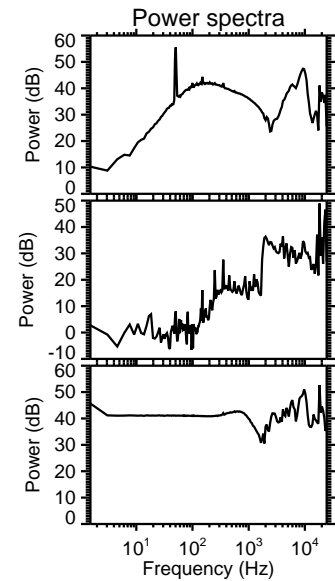
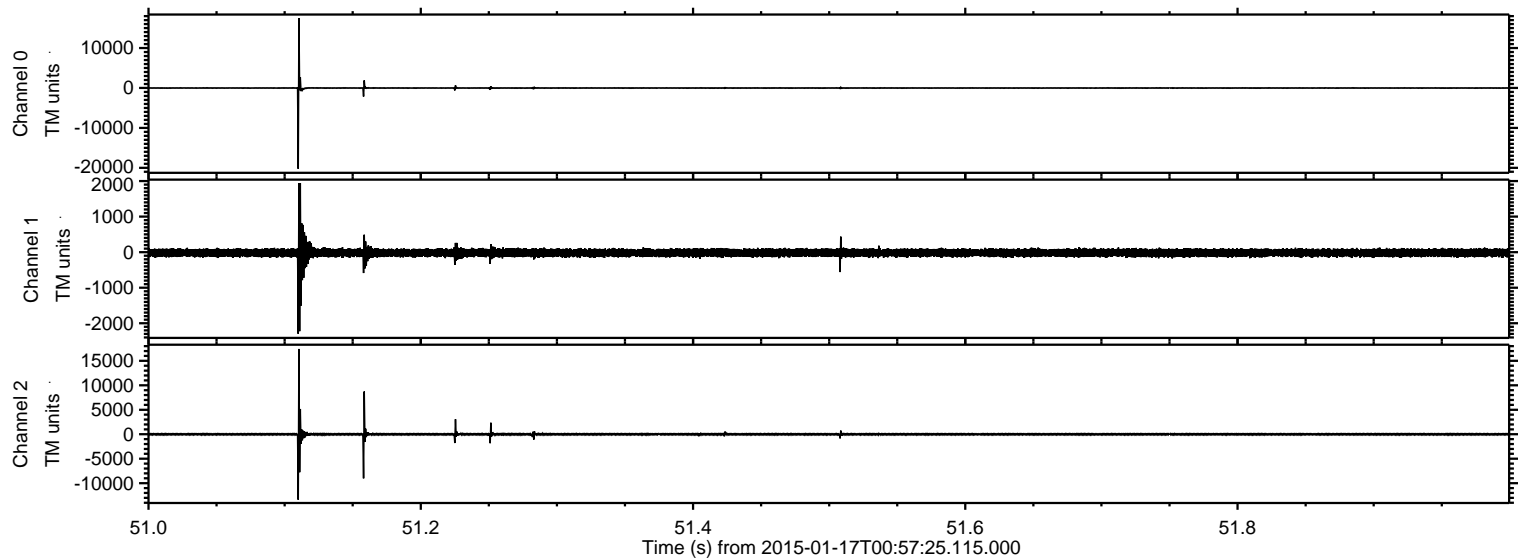


Processed Mon Jan 19 07:19:32 2015 by ELM ver.2012-10-06 from 001__elm20150117_005724__dat00.bin



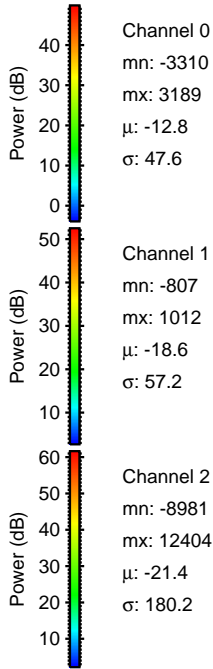
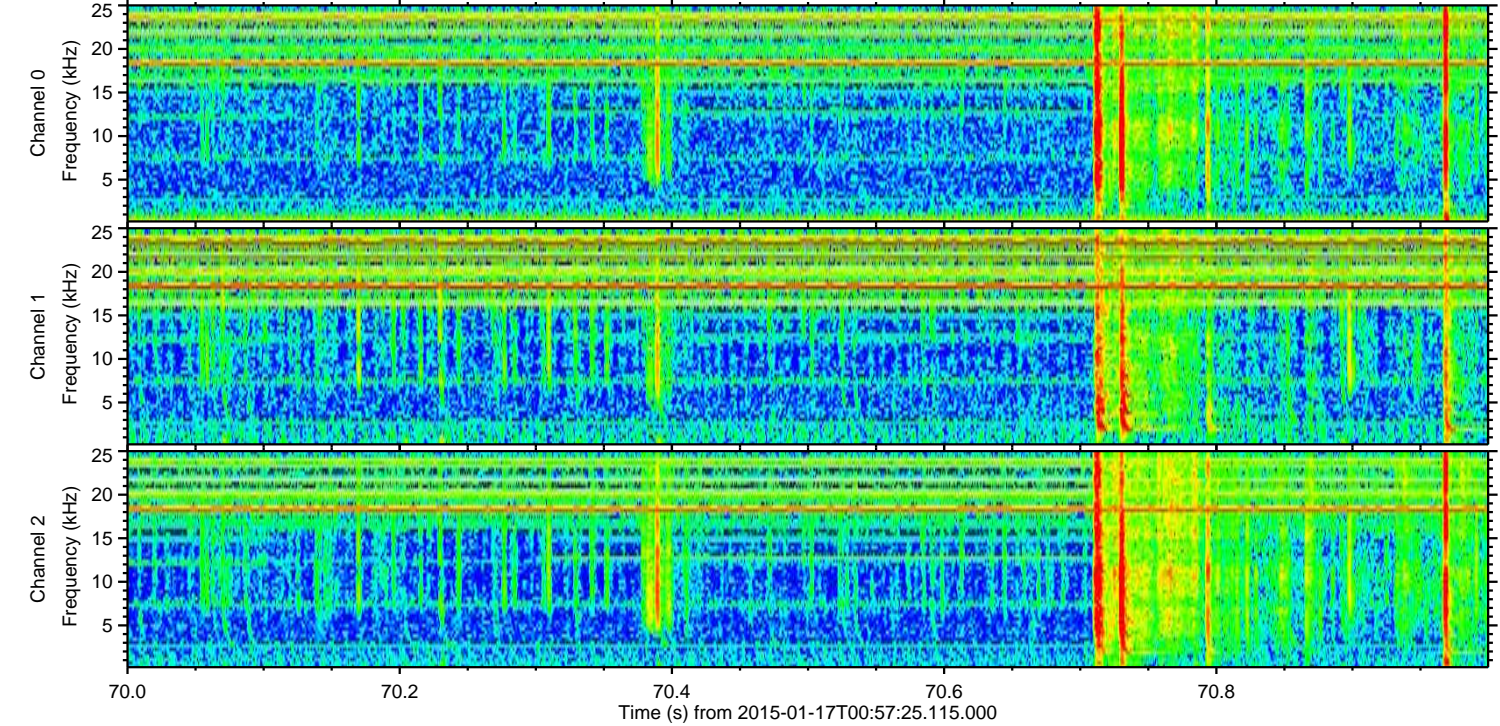
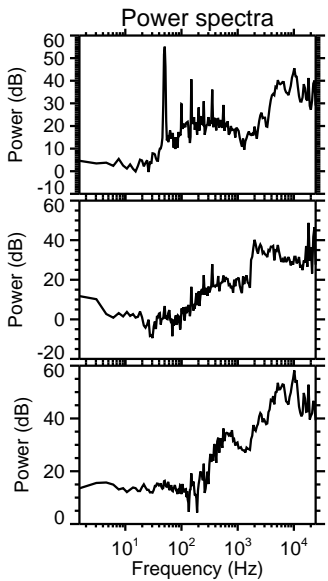
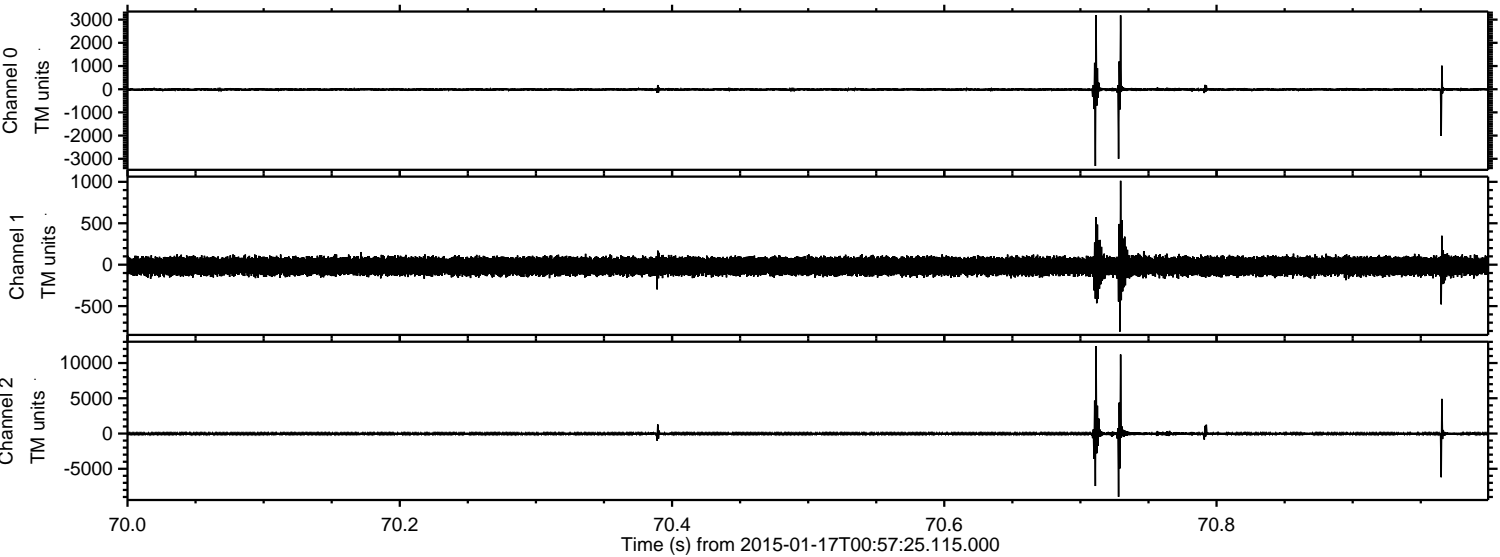
ELMAVAN 3D WAVEFORMS (Measured data sampled at 50 kHz) 49789 packets of 144 samples from 2015-01-17T00:57:25.115.000. Part 52/144

Processed Mon Jan 19 07:19:33 2015 by ELM ver.2012-10-06 from 001__elm20150117_005724__dat00.bin

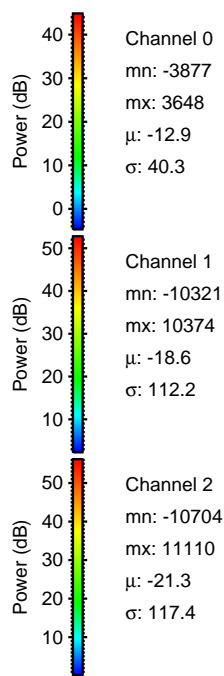
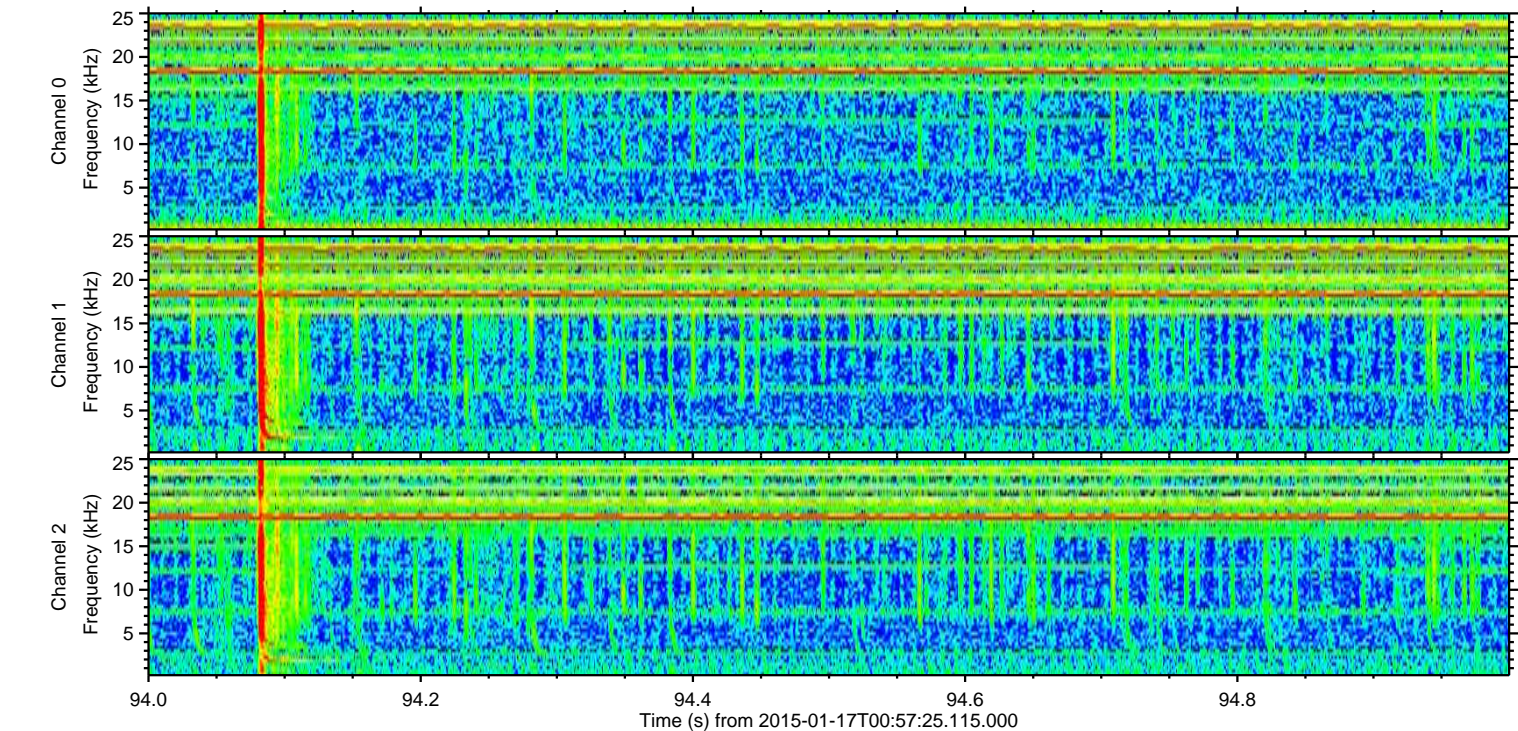
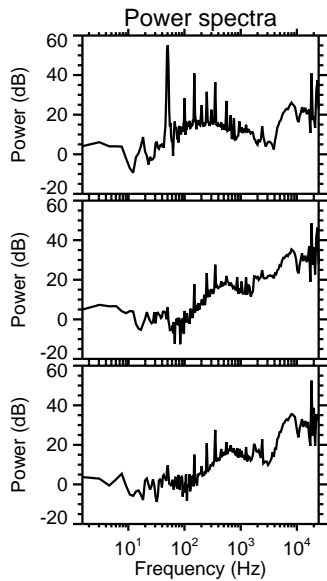
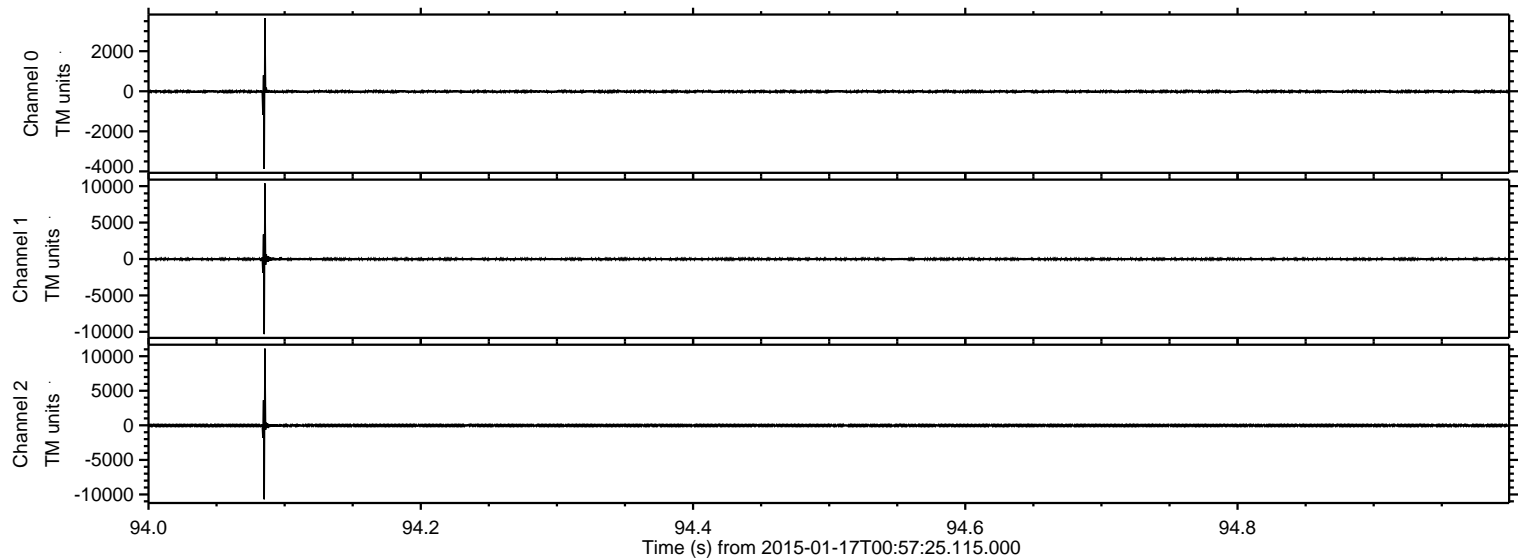


ELMAVAN 3D WAVEFORMS (Measured data sampled at 50 kHz) 49789 packets of 144 samples from 2015-01-17T00:57:25.115.000. Part 71/144

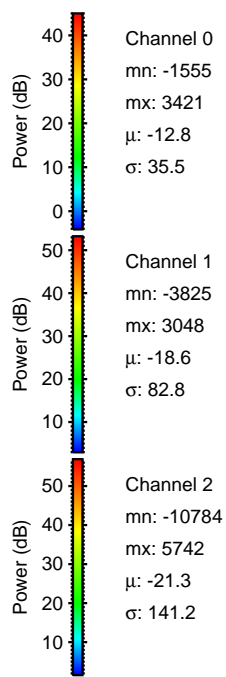
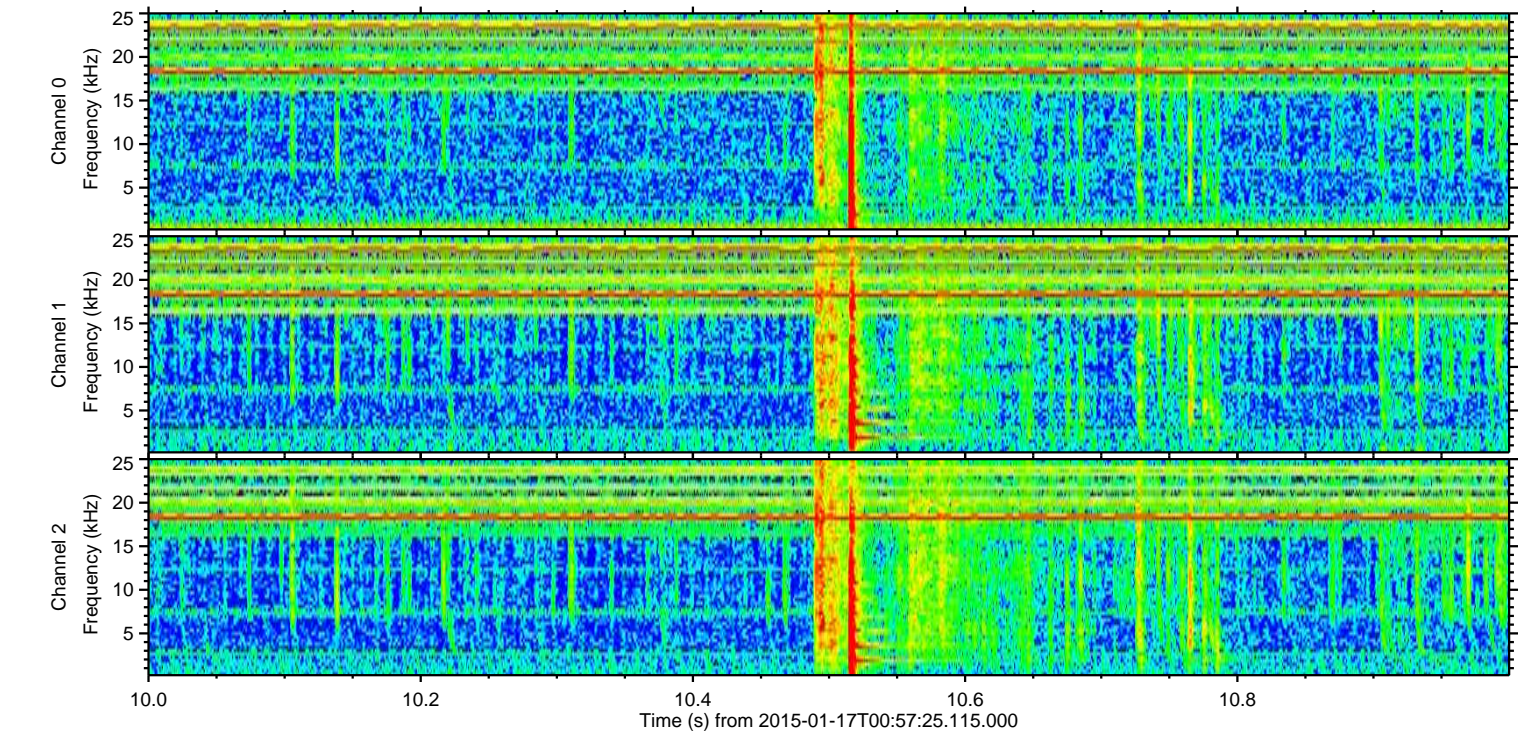
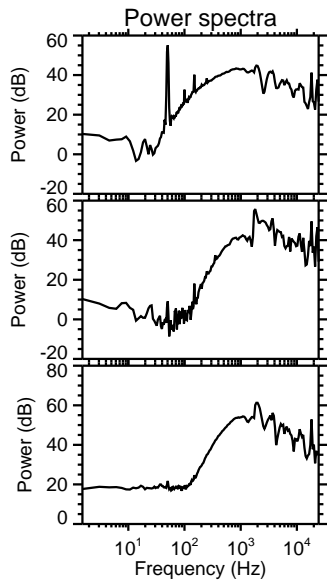
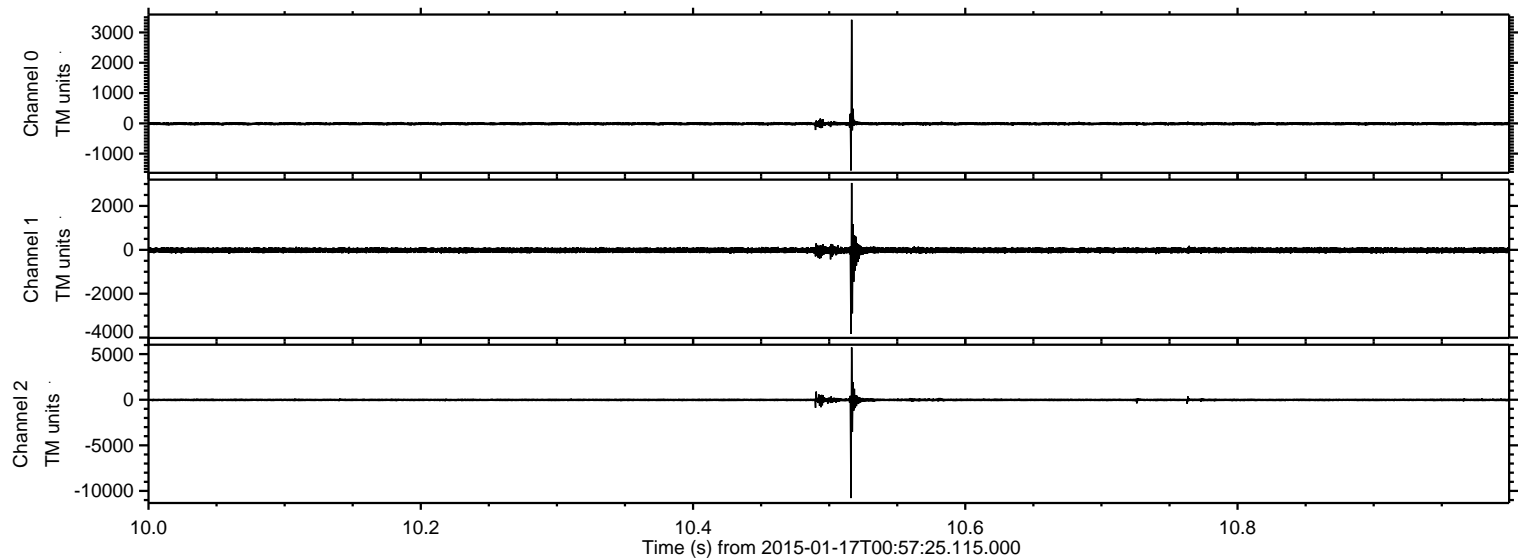
Processed Mon Jan 19 07:19:34 2015 by ELM ver.2012-10-06 from 001__elm20150117_005724__dat00.bin



Processed Mon Jan 19 07:19:35 2015 by ELM ver.2012-10-06 from 001__elm20150117_005724__dat00.bin

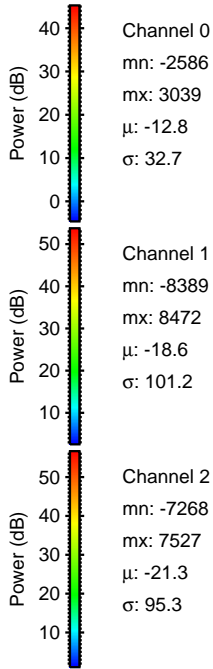
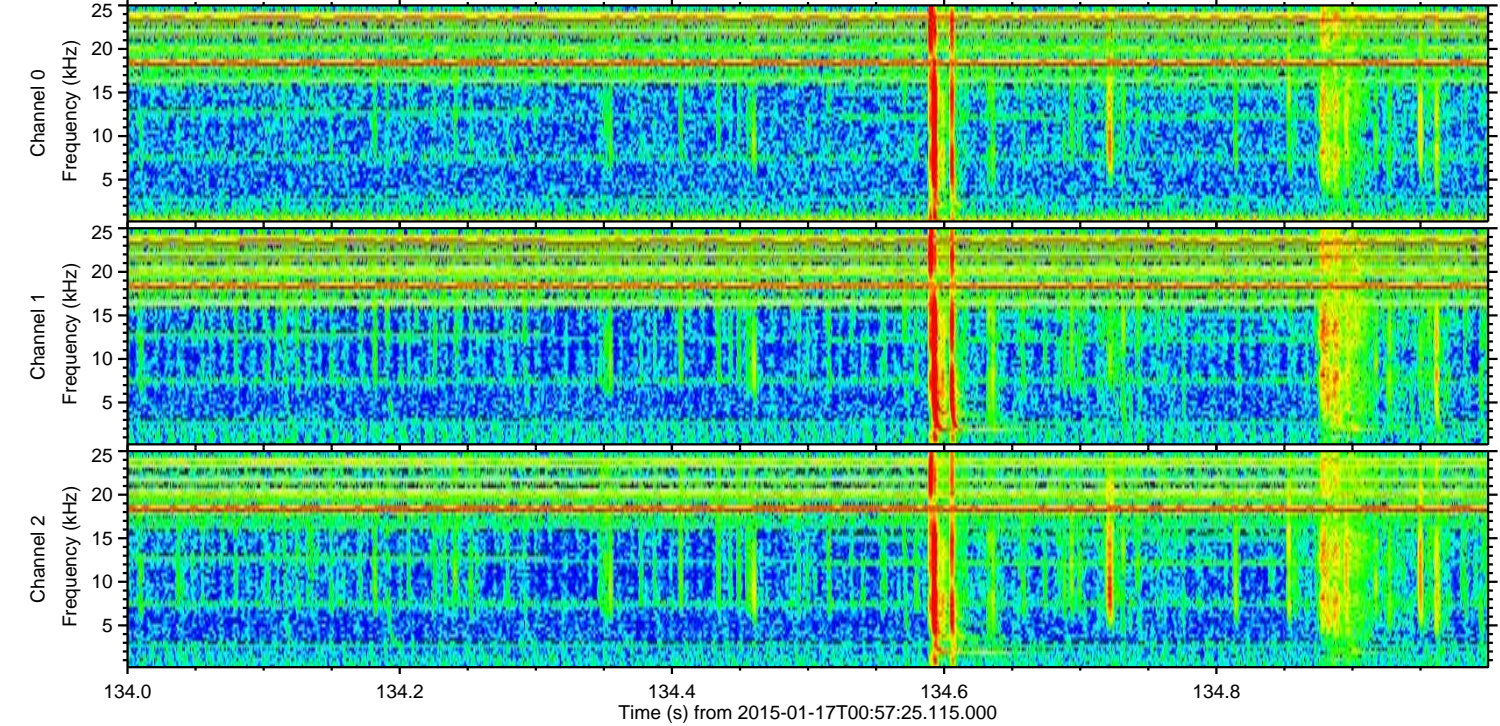
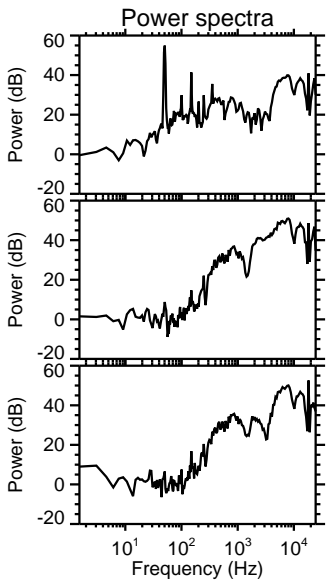
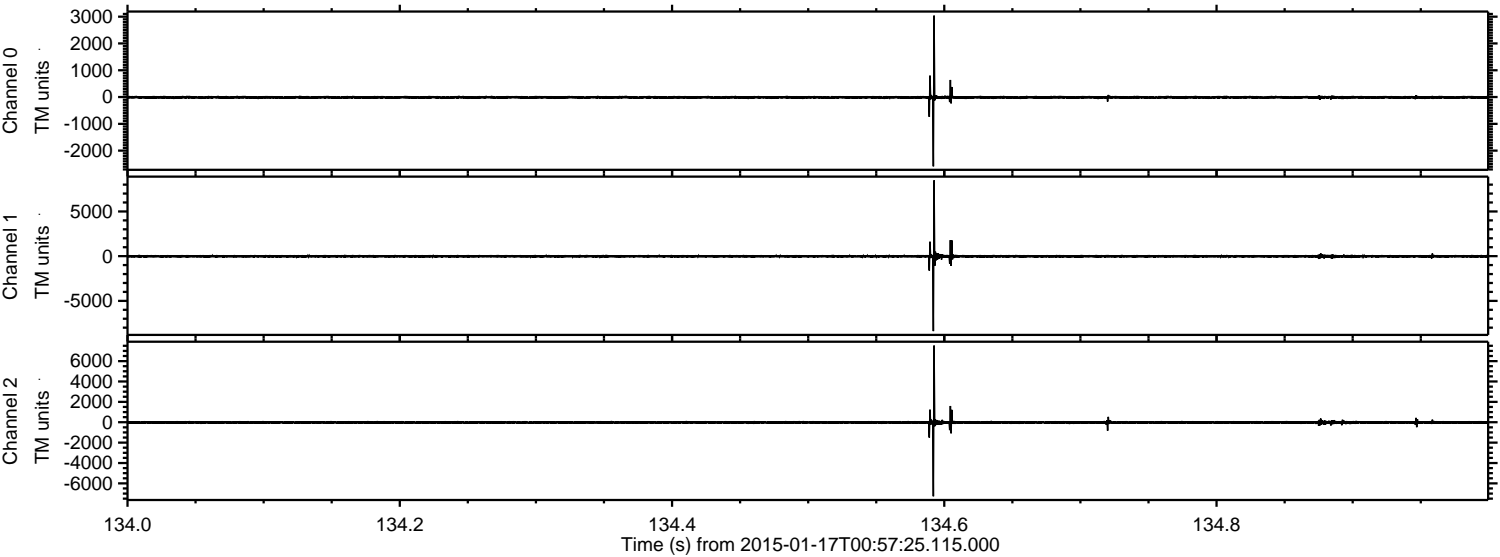


Processed Mon Jan 19 07:19:36 2015 by ELM ver.2012-10-06 from 001__elm20150117_005724__dat00.bin



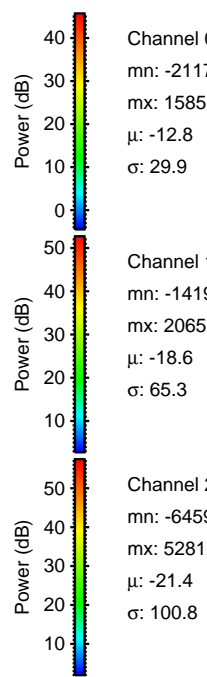
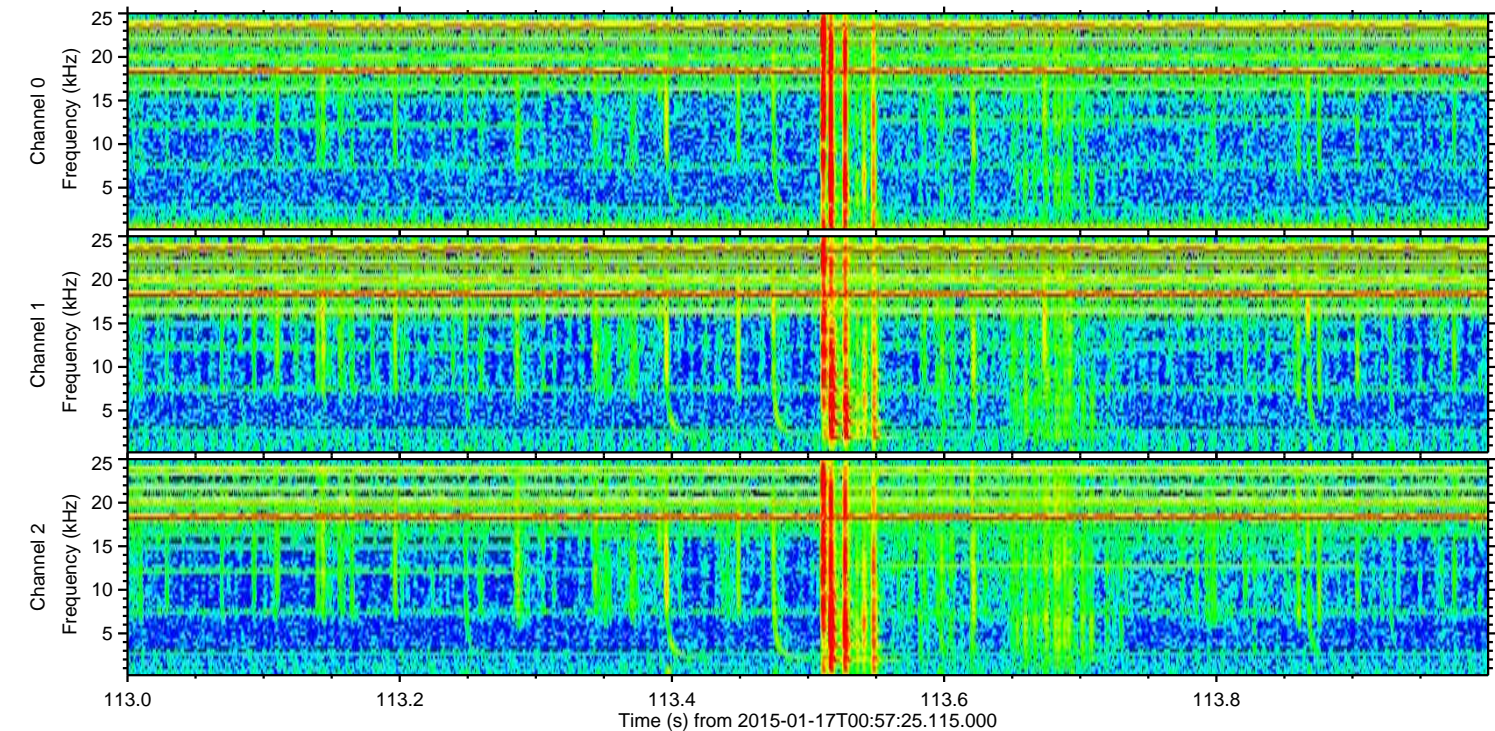
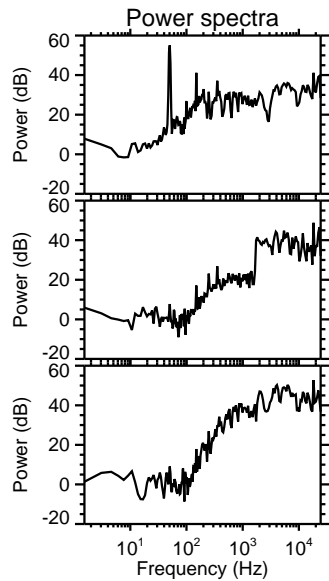
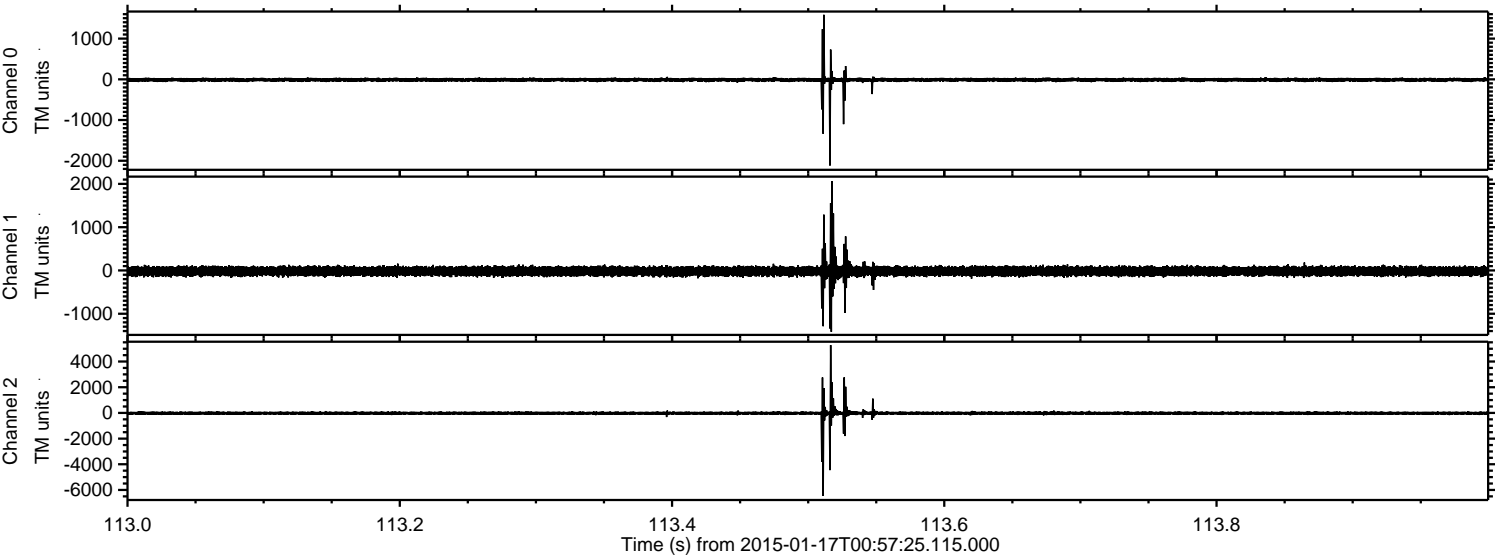
ELMAVAN 3D WAVEFORMS (Measured data sampled at 50 kHz) 49789 packets of 144 samples from 2015-01-17T00:57:25.115.000. Part 135/144

Processed Mon Jan 19 07:19:37 2015 by ELM ver.2012-10-06 from 001__elm20150117_005724__dat00.bin



ELMAVAN 3D WAVEFORMS (Measured data sampled at 50 kHz) 49789 packets of 144 samples from 2015-01-17T00:57:25.115.000. Part 114/144

Processed Mon Jan 19 07:19:38 2015 by ELM ver.2012-10-06 from 001__elm20150117_005724__dat00.bin

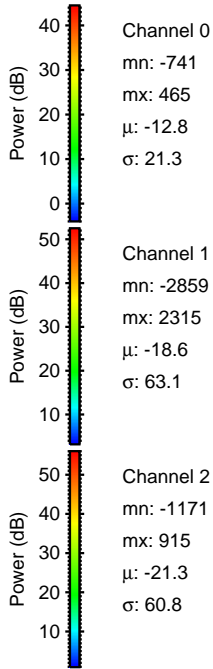
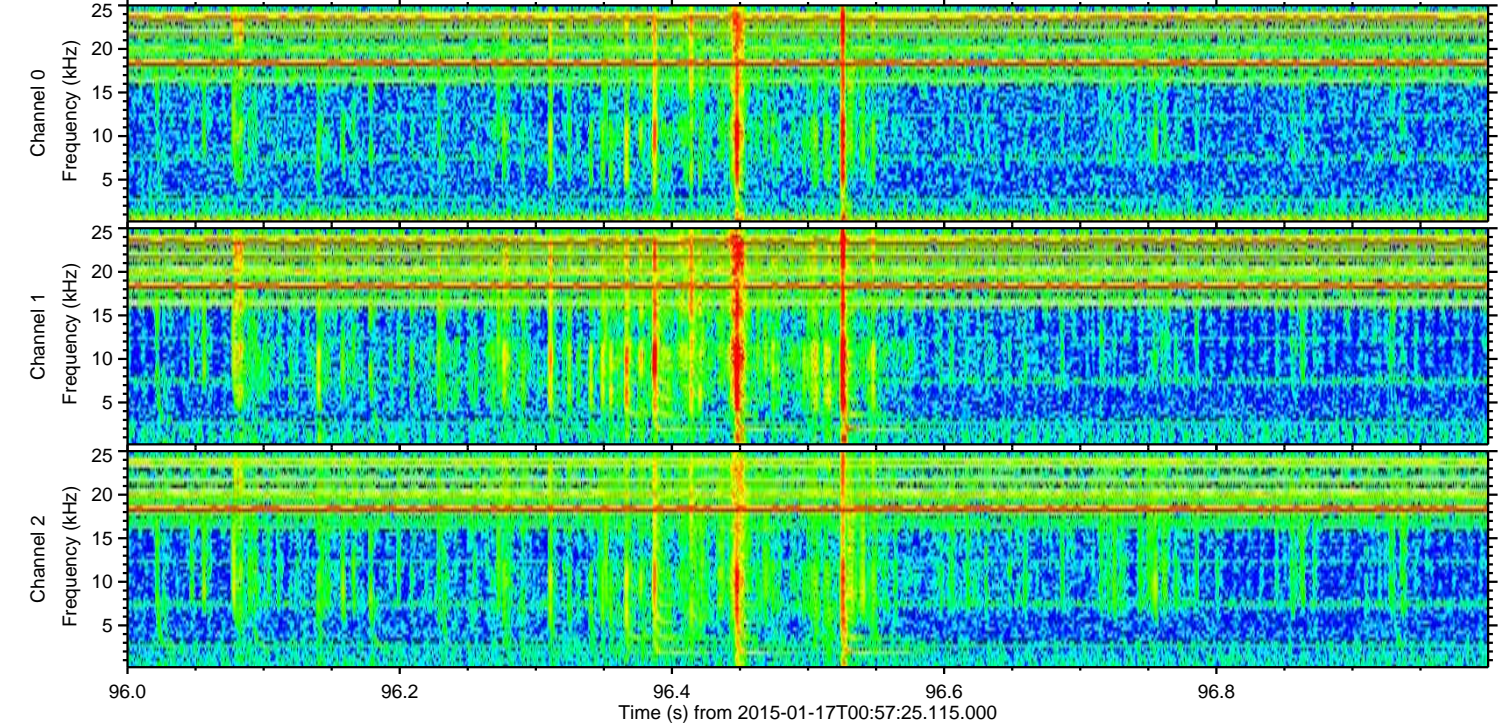
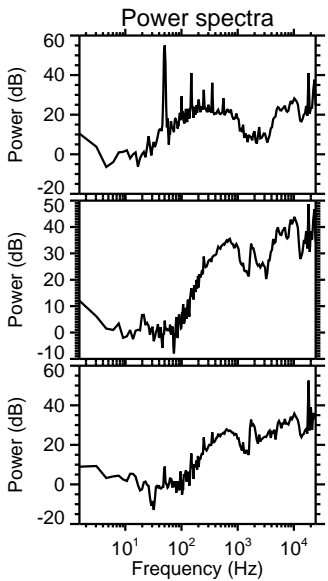
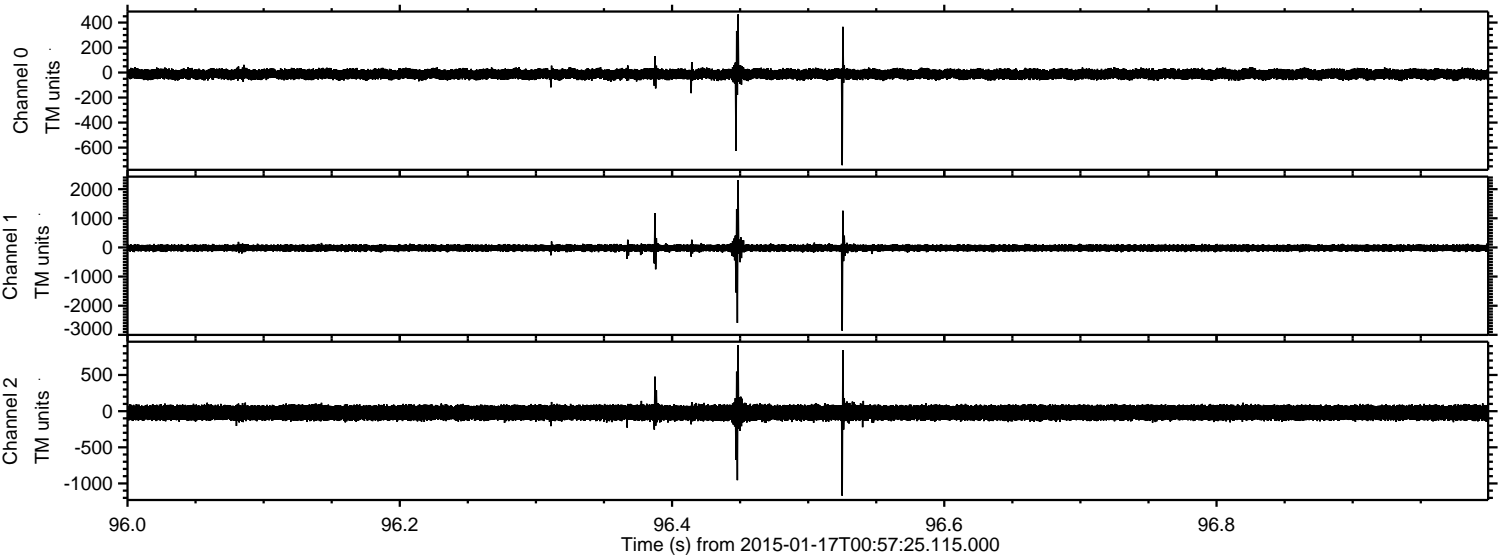


Channel 0
mn: -2117
mx: 1585
 μ : -12.8
 σ : 29.9

Channel 1
mn: -1419
mx: 2065
 μ : -18.6
 σ : 65.3

Channel 2
mn: -6459
mx: 5281
 μ : -21.4
 σ : 100.8

Processed Mon Jan 19 07:19:39 2015 by ELM ver.2012-10-06 from 001__elm20150117_005724__dat00.bin



Channel 0
mn: -741
mx: 465
 μ : -12.8
 σ : 21.3

Channel 1
mn: -2859
mx: 2315
 μ : -18.6
 σ : 63.1

Channel 2
mn: -1171
mx: 915
 μ : -21.3
 σ : 60.8

Processed Mon Jan 19 07:19:39 2015 by ELM ver.2012-10-06 from 001__elm20150117_005724__dat00.bin

