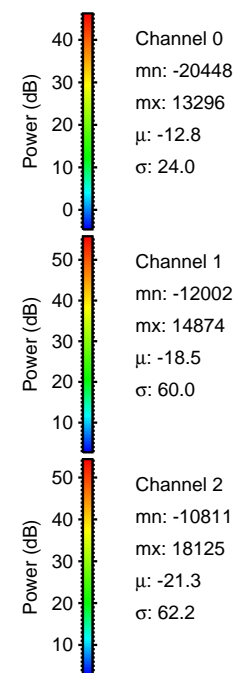
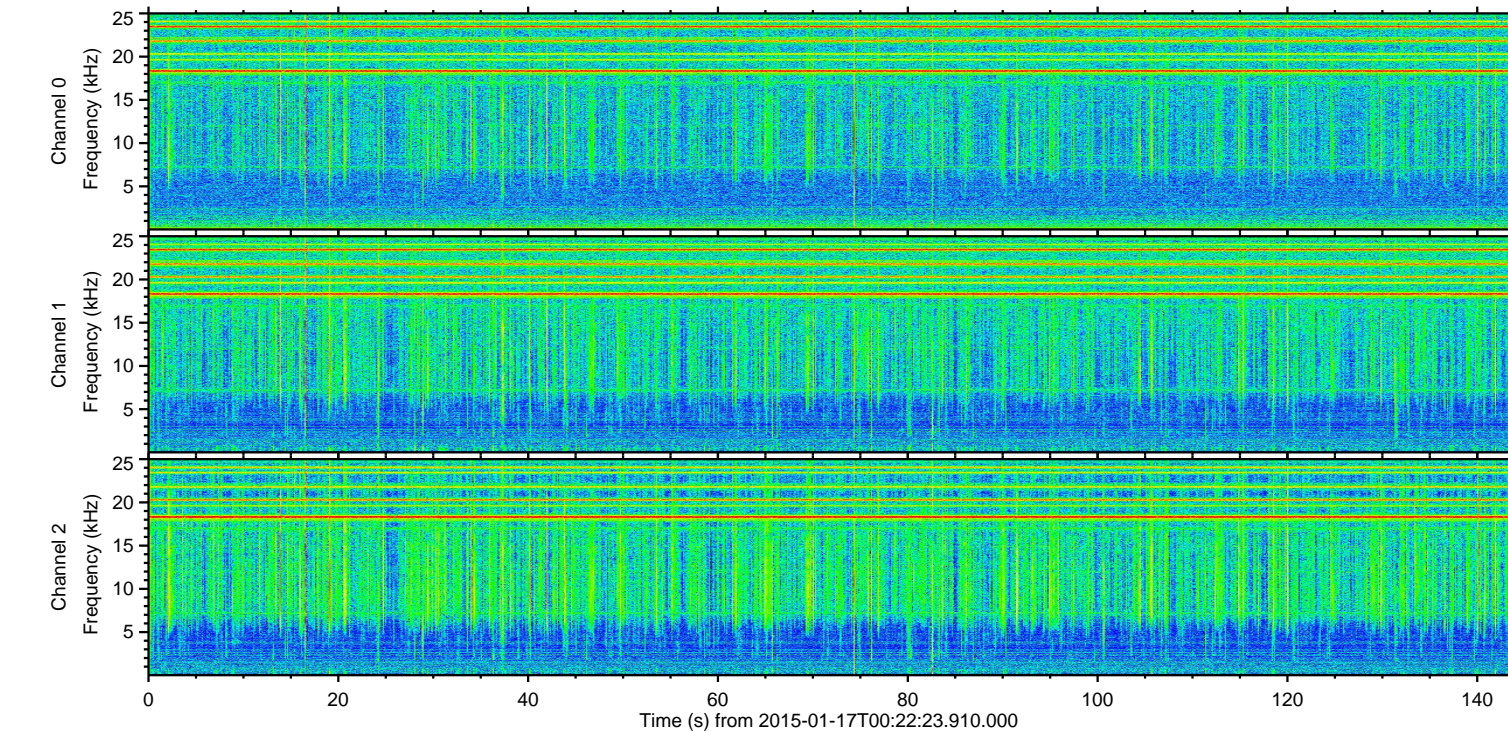
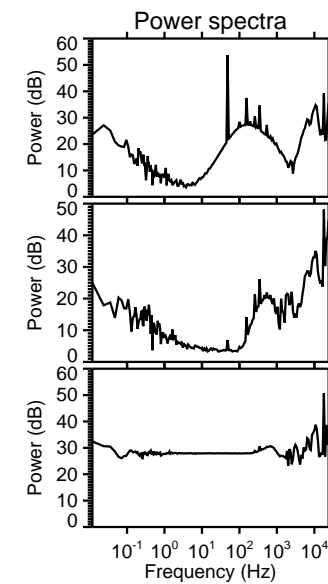
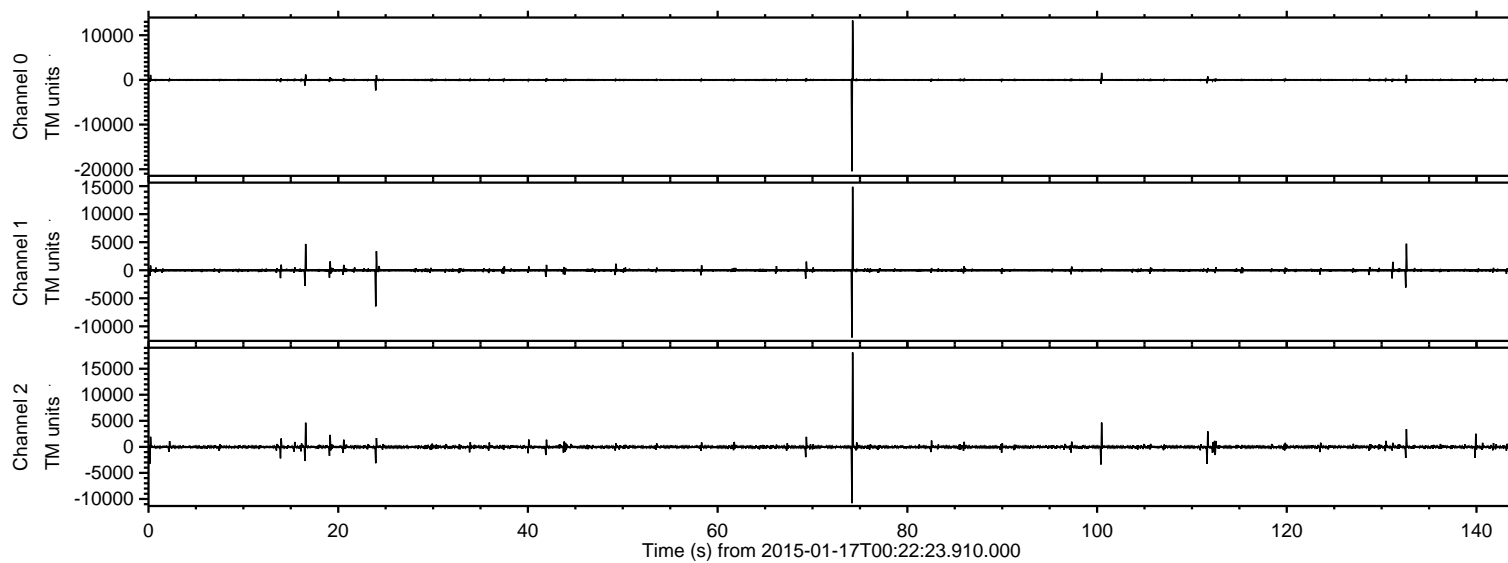


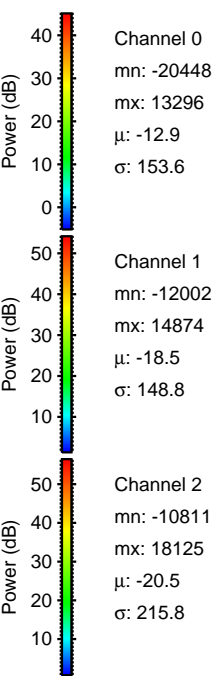
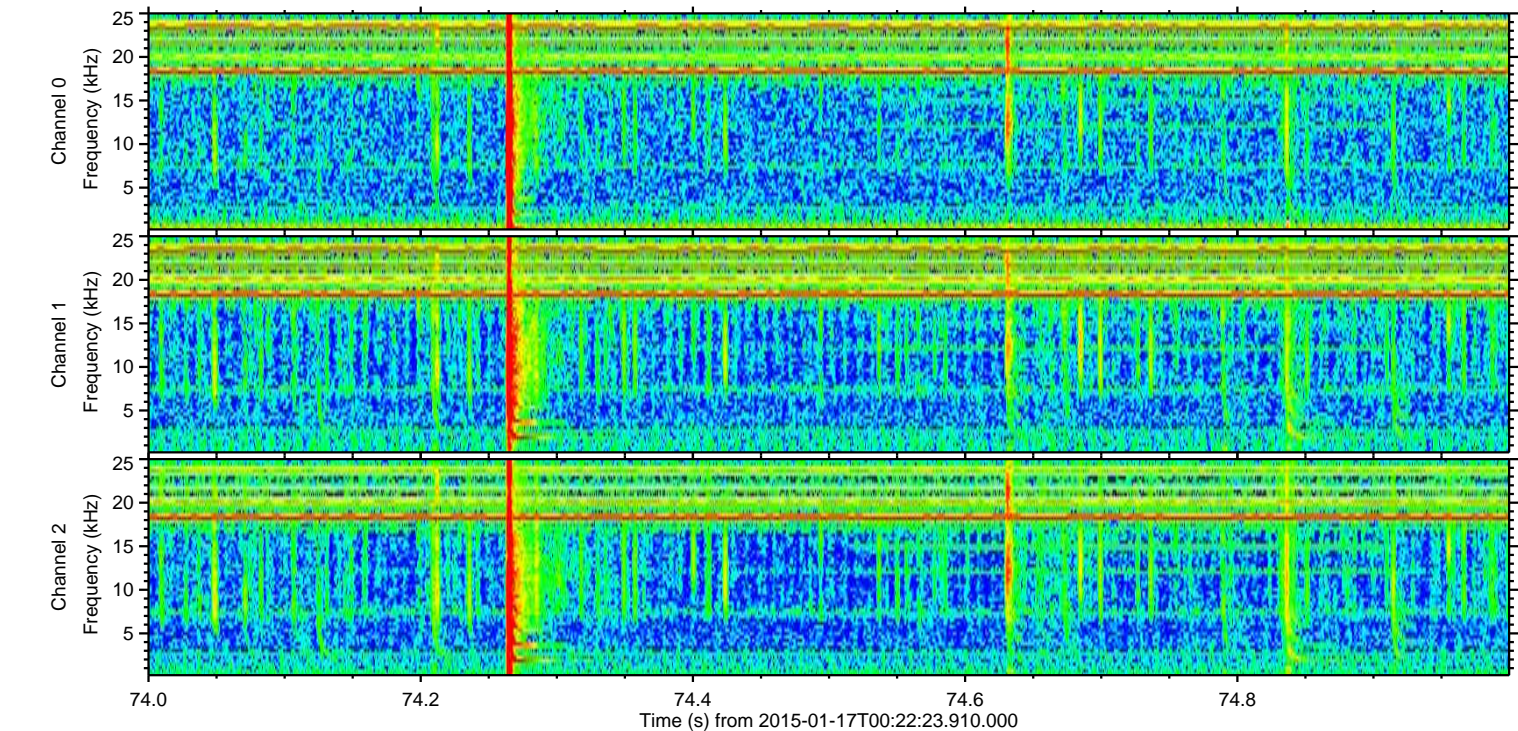
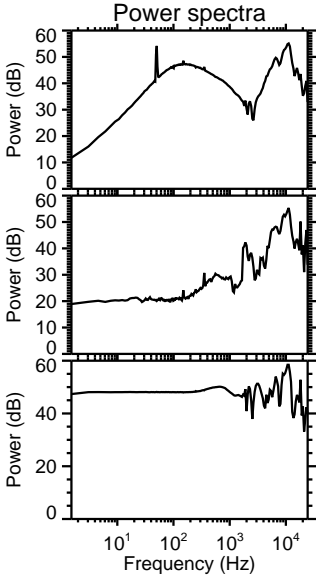
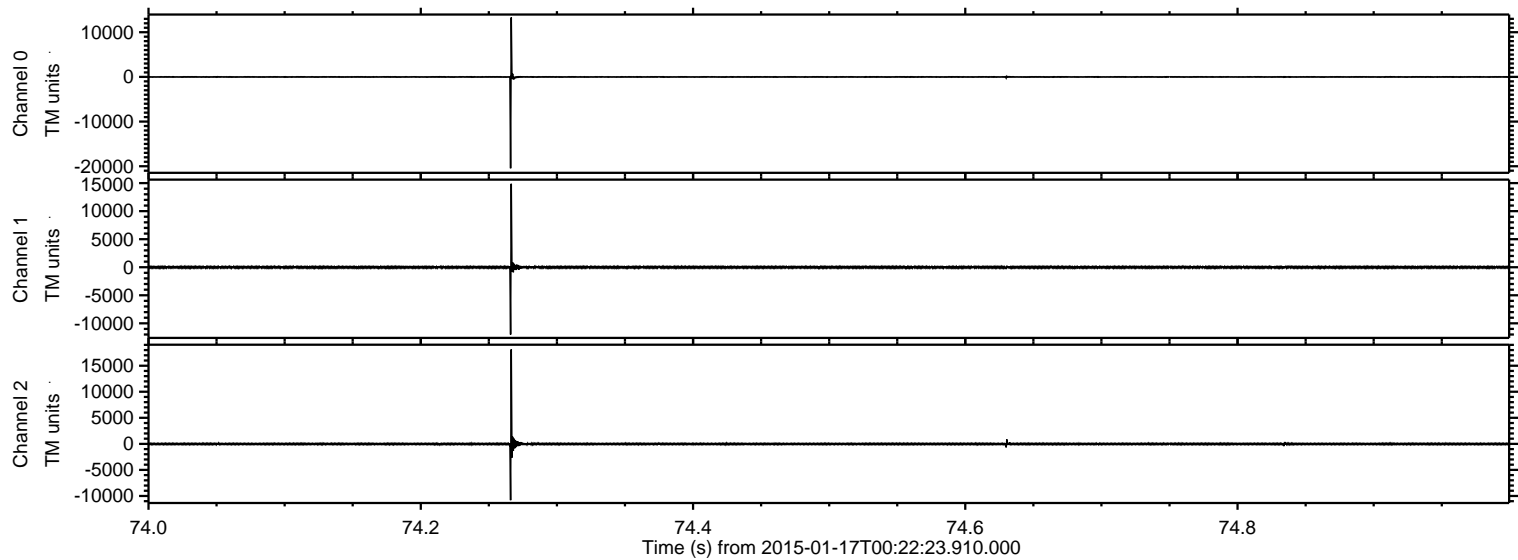
# ELMAVAN 3D WAVEFORMS (Measured data sampled at 50 kHz) 49806 packets of 144 samples from 2015-01-17T00:22:23.910.000.

Processed Mon Jan 19 04:39:28 2015 by ELM ver.2012-10-06 from 001\_\_elm20150117\_002222\_\_dat00.bin



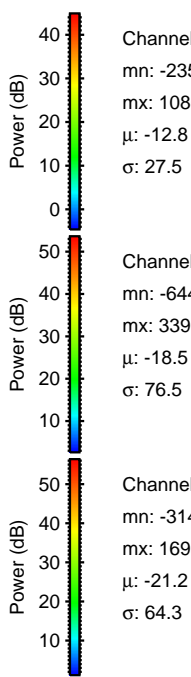
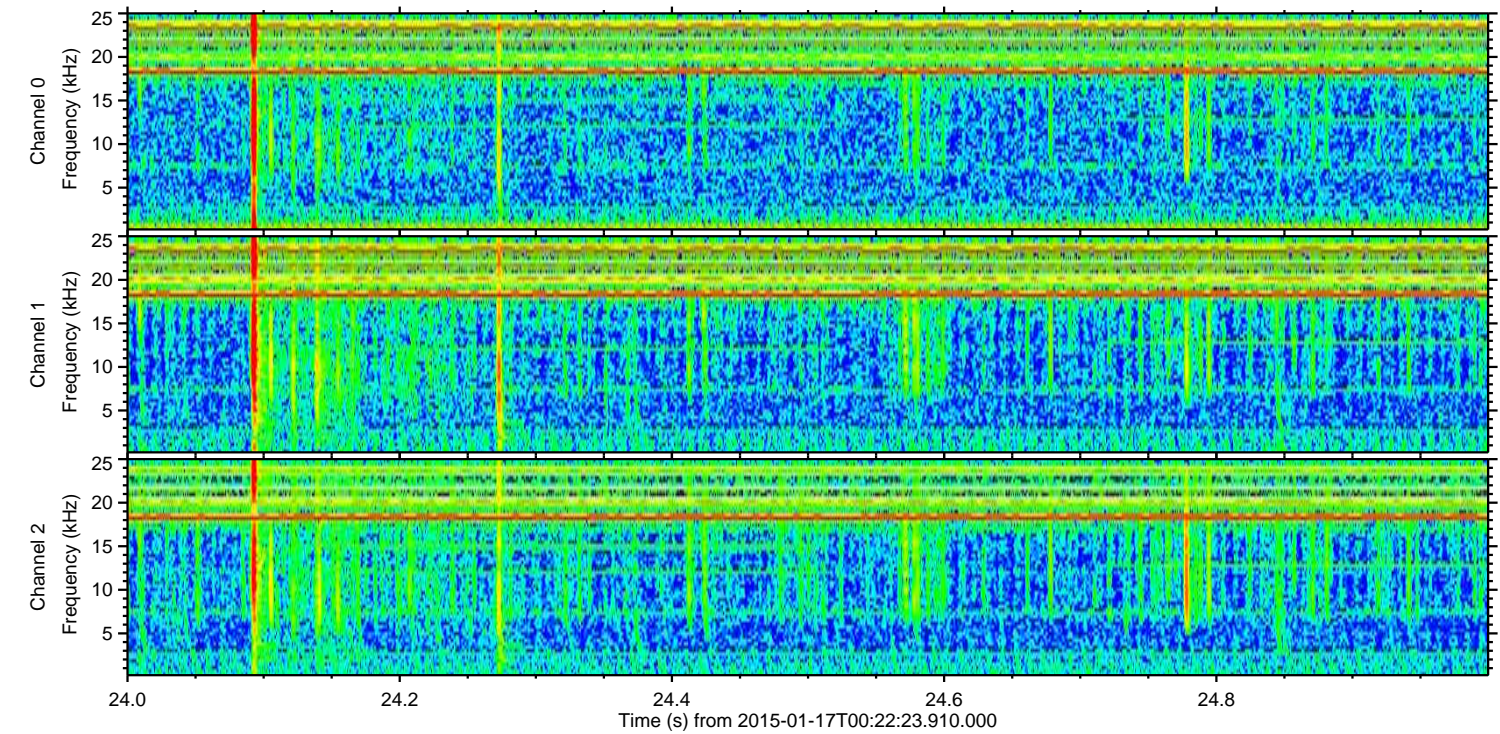
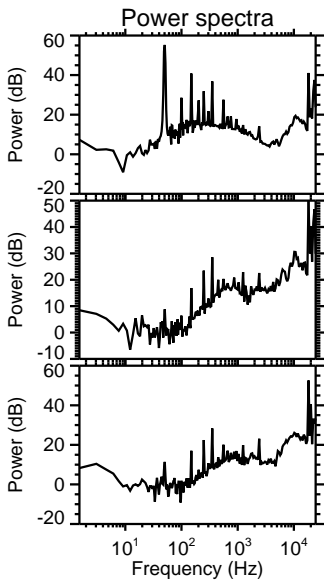
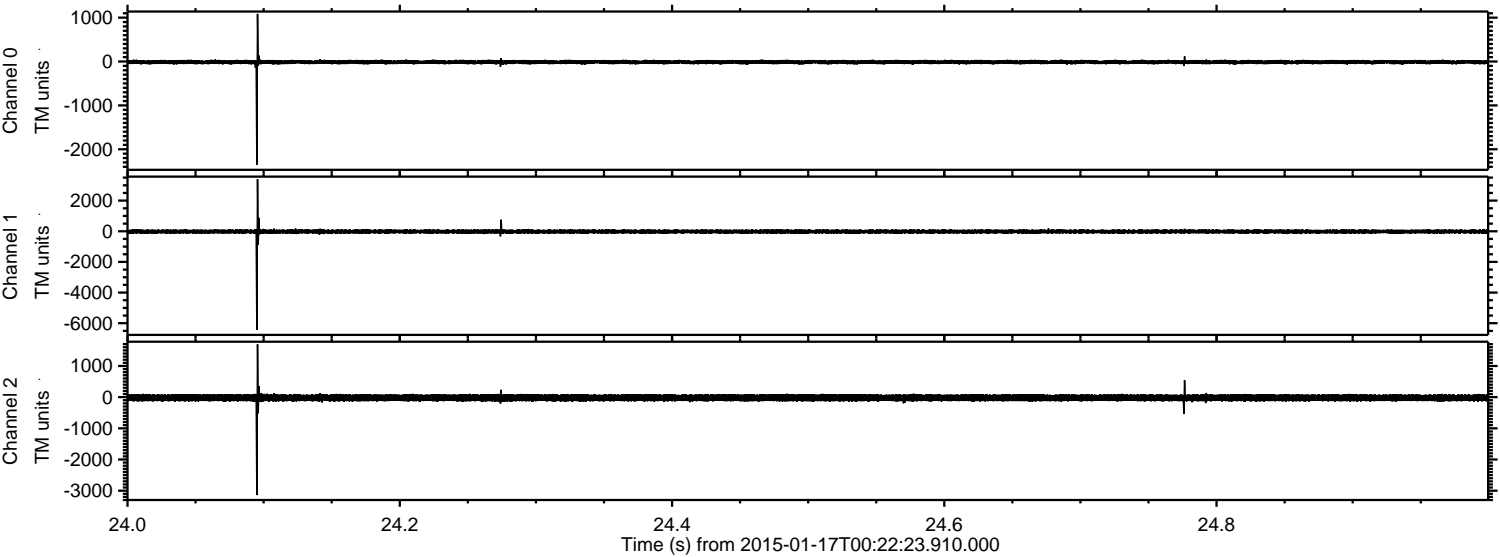


Processed Mon Jan 19 04:39:40 2015 by ELM ver.2012-10-06 from 001\_\_elm20150117\_002222\_\_dat00.bin





Processed Mon Jan 19 04:39:41 2015 by ELM ver.2012-10-06 from 001\_\_elm20150117\_002222\_\_dat00.bin



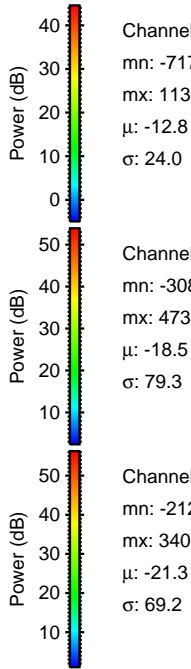
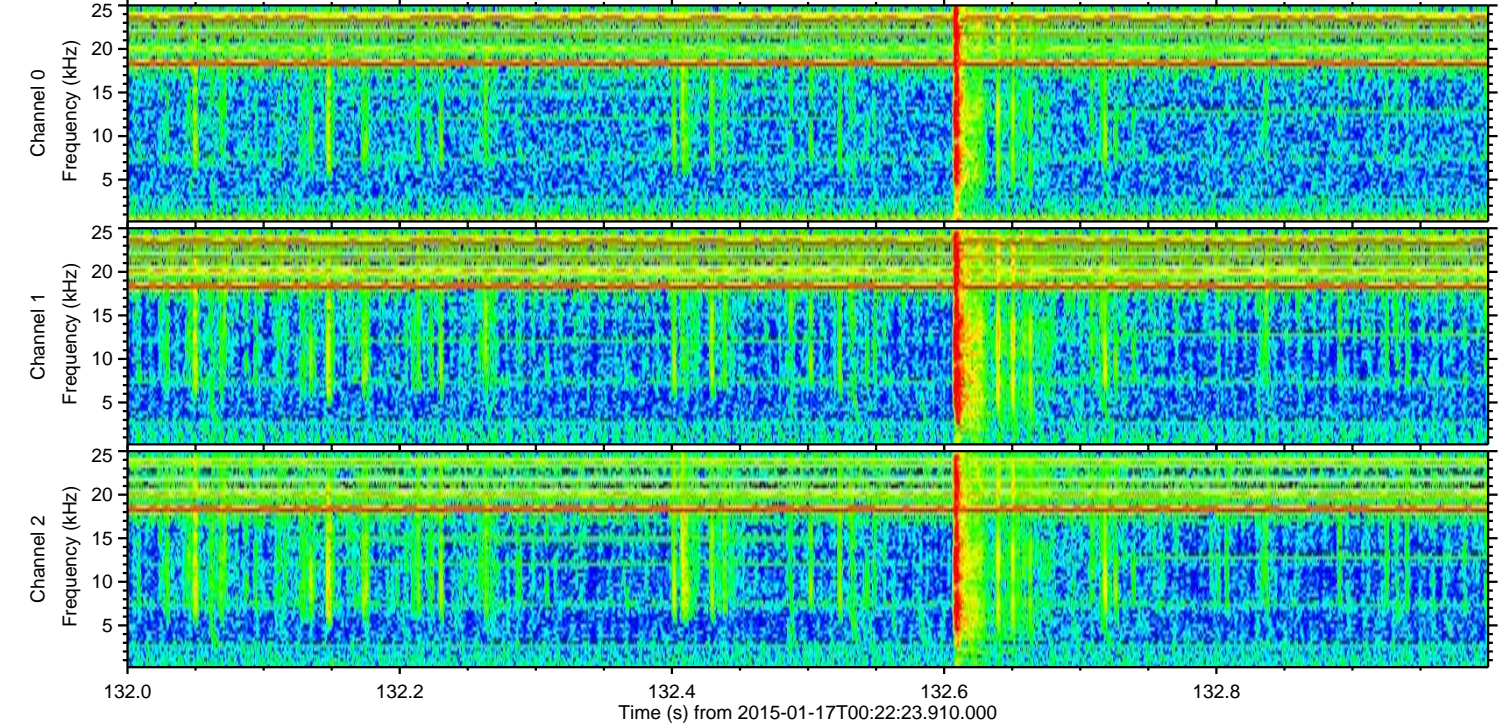
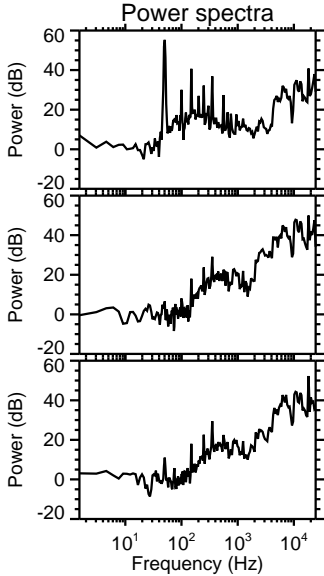
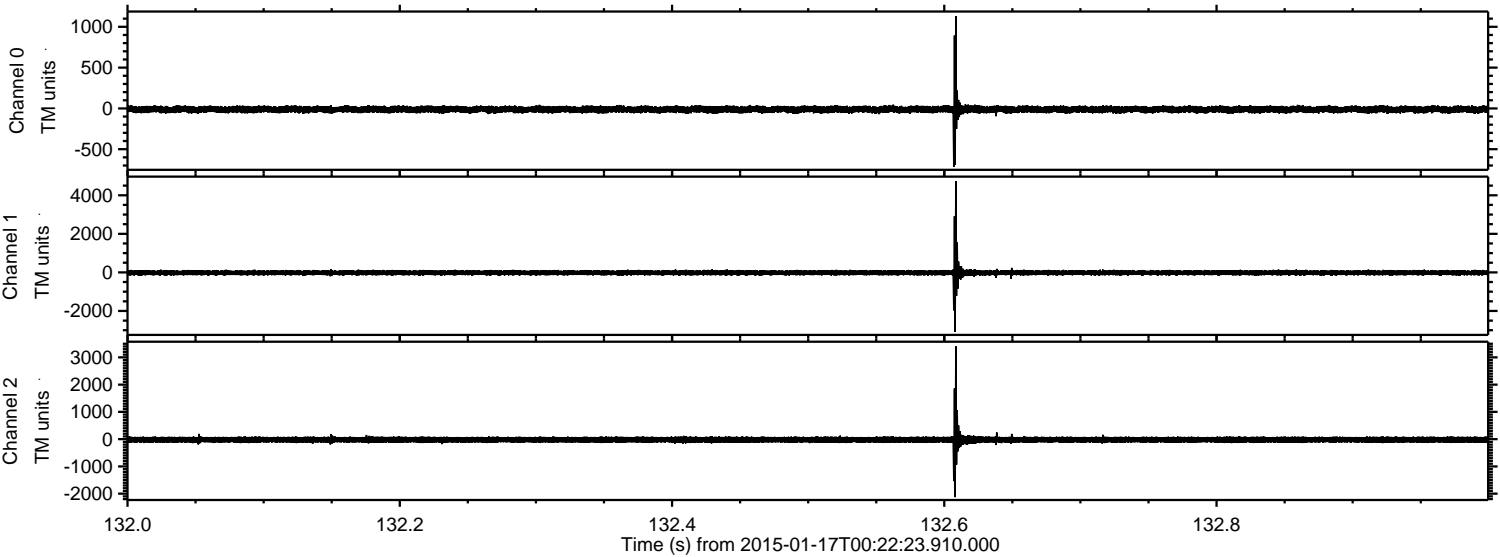
Channel 0  
mn: -2352  
mx: 1086  
 $\mu$ : -12.8  
 $\sigma$ : 27.5

Channel 1  
mn: -6441  
mx: 3396  
 $\mu$ : -18.5  
 $\sigma$ : 76.5

Channel 2  
mn: -3142  
mx: 1693  
 $\mu$ : -21.2  
 $\sigma$ : 64.3



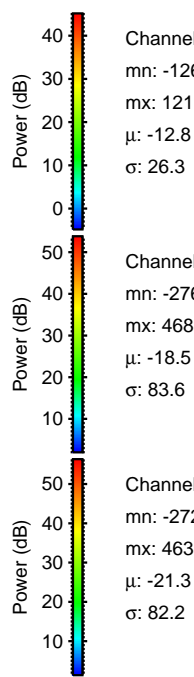
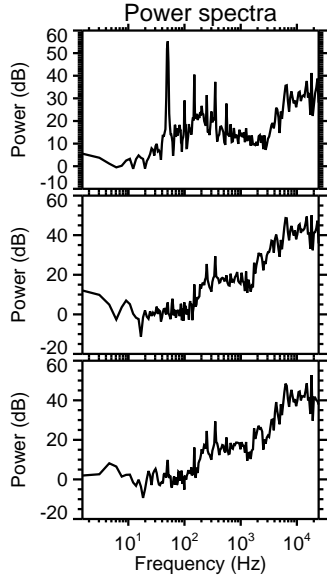
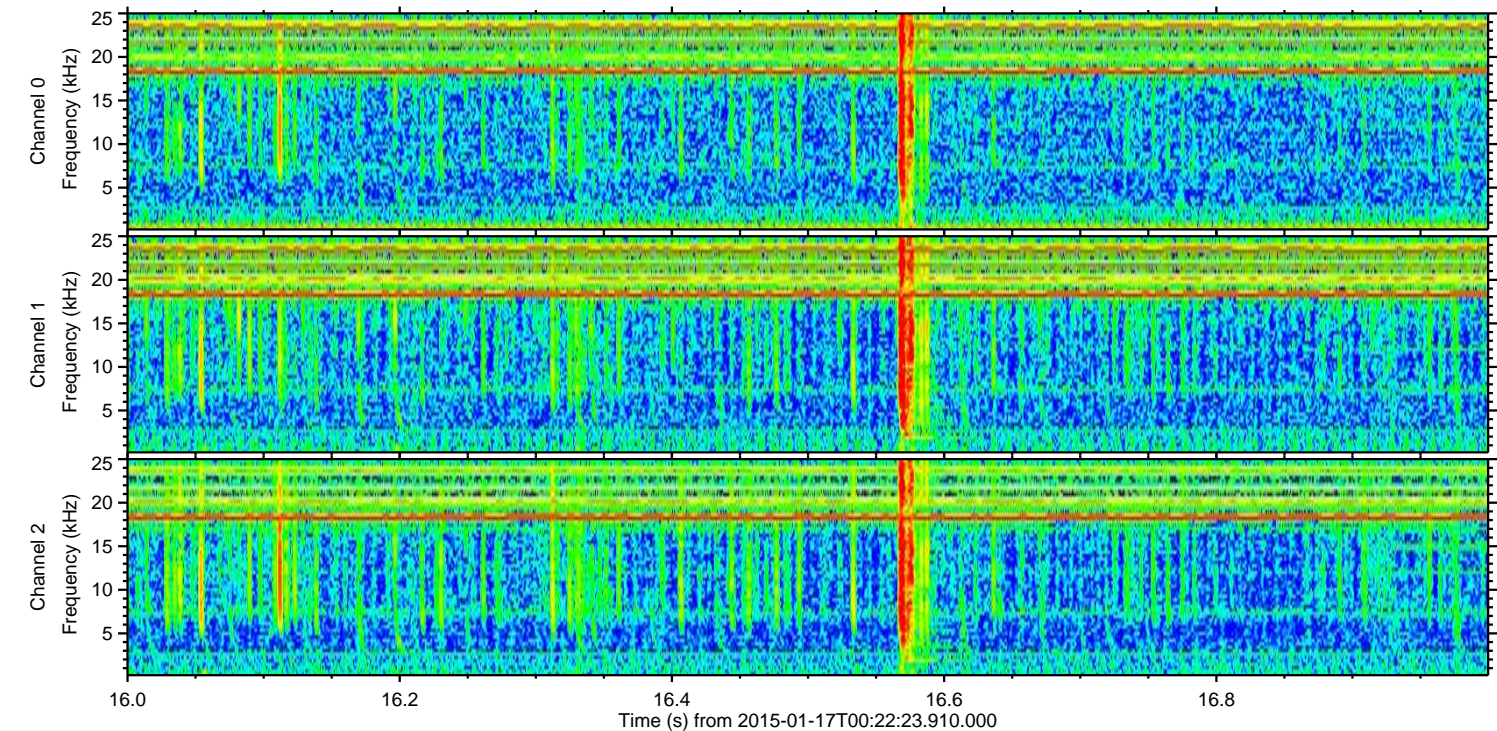
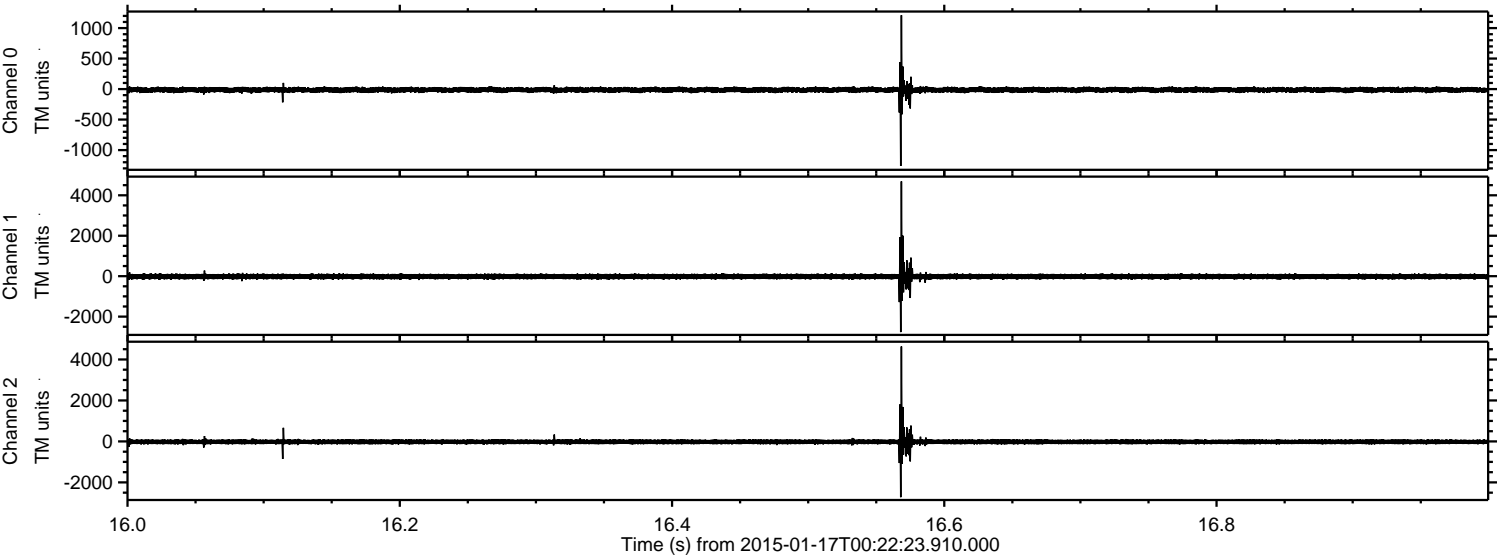
Processed Mon Jan 19 04:39:42 2015 by ELM ver.2012-10-06 from 001\_\_elm20150117\_002222\_\_dat00.bin





ELMAVAN 3D WAVEFORMS (Measured data sampled at 50 kHz) 49806 packets of 144 samples from 2015-01-17T00:22:23.910.000. Part 17/144

Processed Mon Jan 19 04:39:43 2015 by ELM ver.2012-10-06 from 001\_\_elm20150117\_002222\_\_dat00.bin



Channel 0  
mn: -1261  
mx: 1211  
 $\mu$ : -12.8  
 $\sigma$ : 26.3

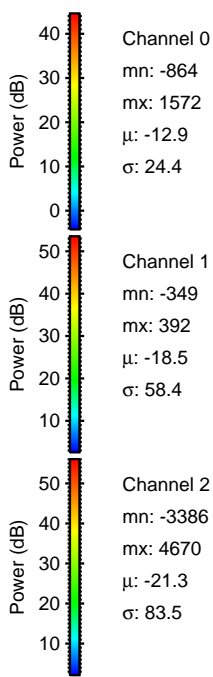
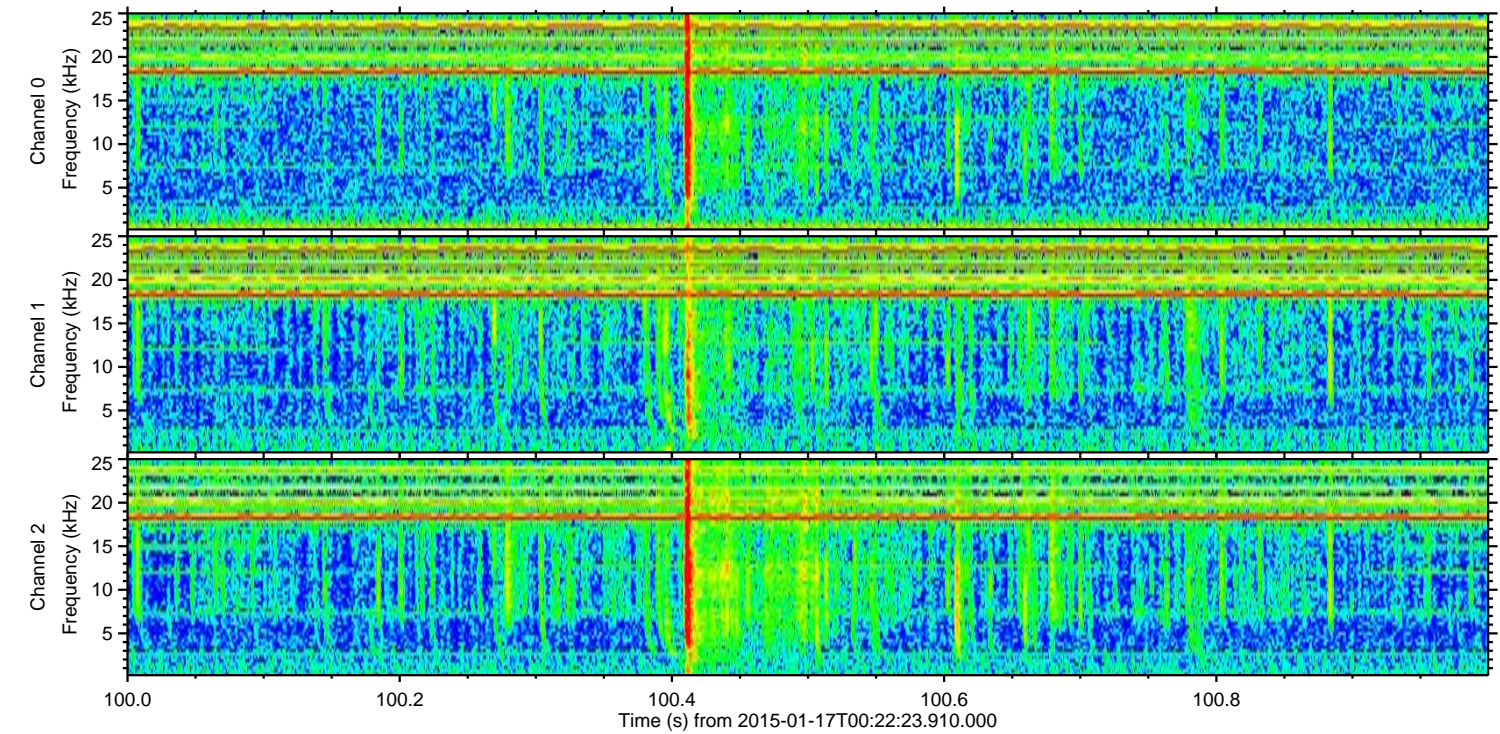
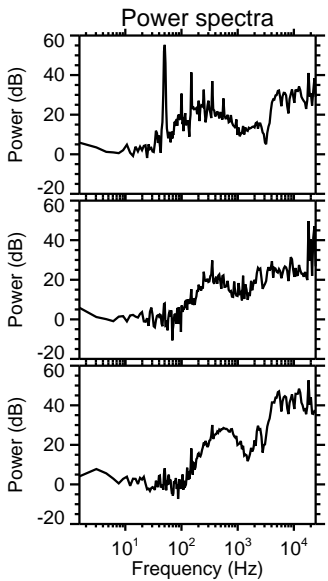
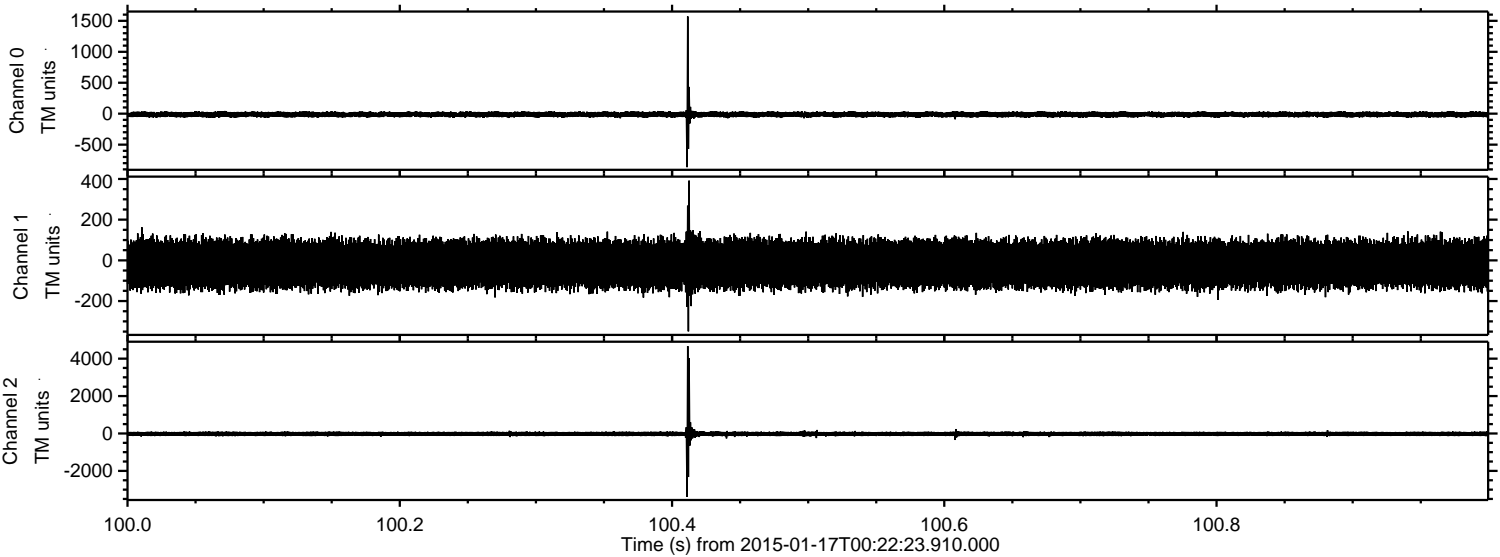
Channel 1  
mn: -2767  
mx: 4689  
 $\mu$ : -18.5  
 $\sigma$ : 83.6

Channel 2  
mn: -2723  
mx: 4635  
 $\mu$ : -21.3  
 $\sigma$ : 82.2



ELMAVAN 3D WAVEFORMS (Measured data sampled at 50 kHz) 49806 packets of 144 samples from 2015-01-17T00:22:23.910.000. Part 101/144

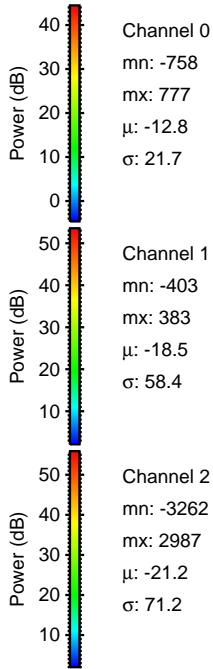
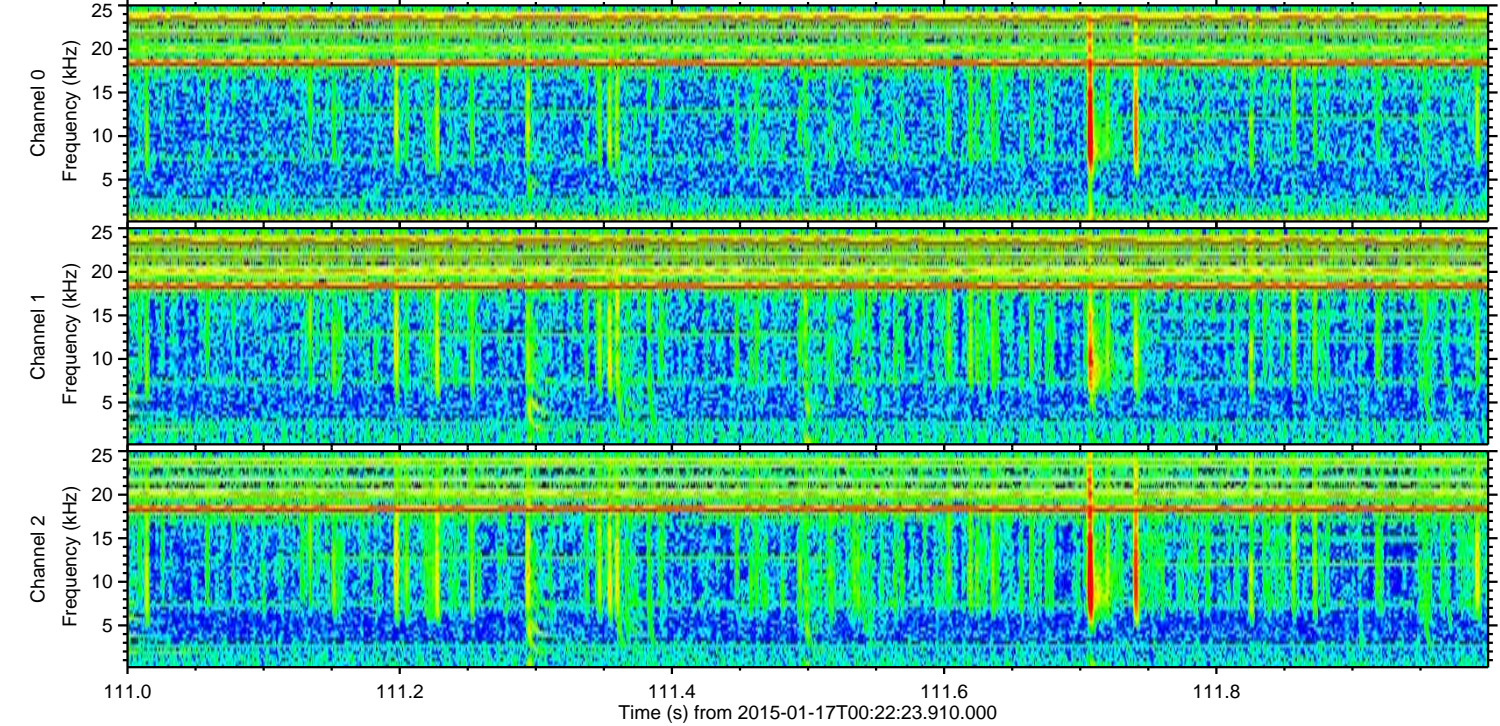
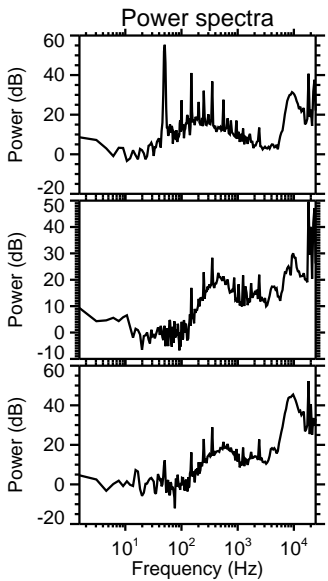
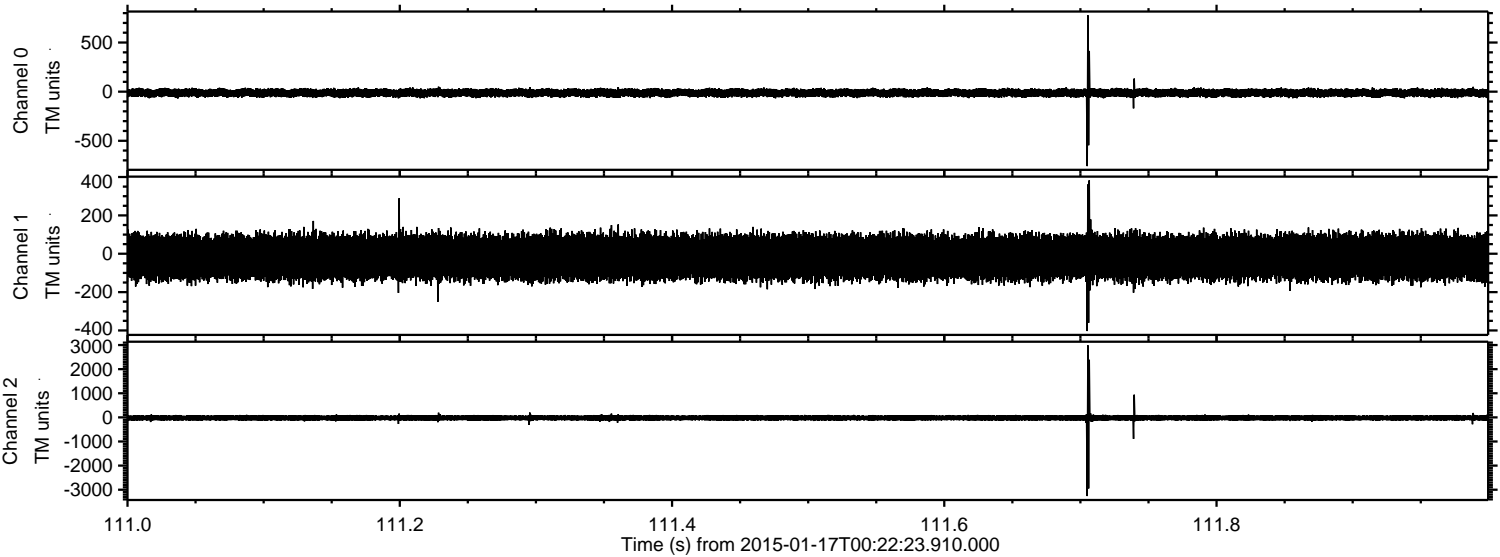
Processed Mon Jan 19 04:39:44 2015 by ELM ver.2012-10-06 from 001\_\_elm20150117\_002222\_\_dat00.bin





ELMAVAN 3D WAVEFORMS (Measured data sampled at 50 kHz) 49806 packets of 144 samples from 2015-01-17T00:22:23.910.000. Part 112/144

Processed Mon Jan 19 04:39:45 2015 by ELM ver.2012-10-06 from 001\_\_elm20150117\_002222\_\_dat00.bin



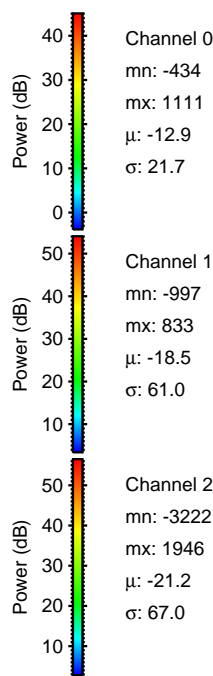
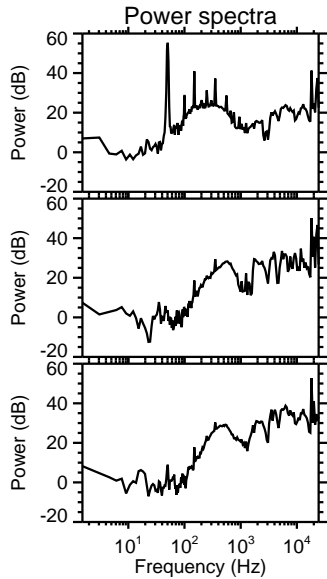
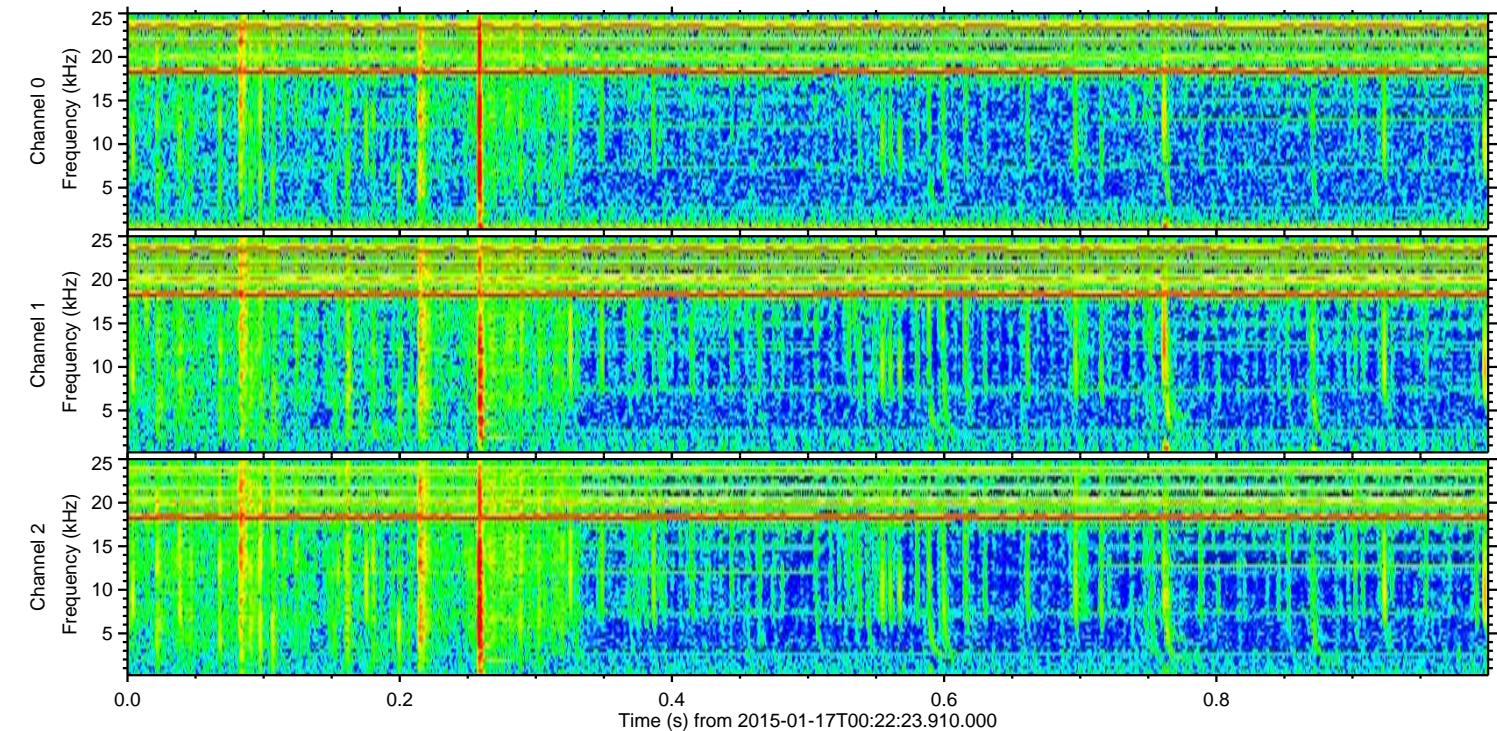
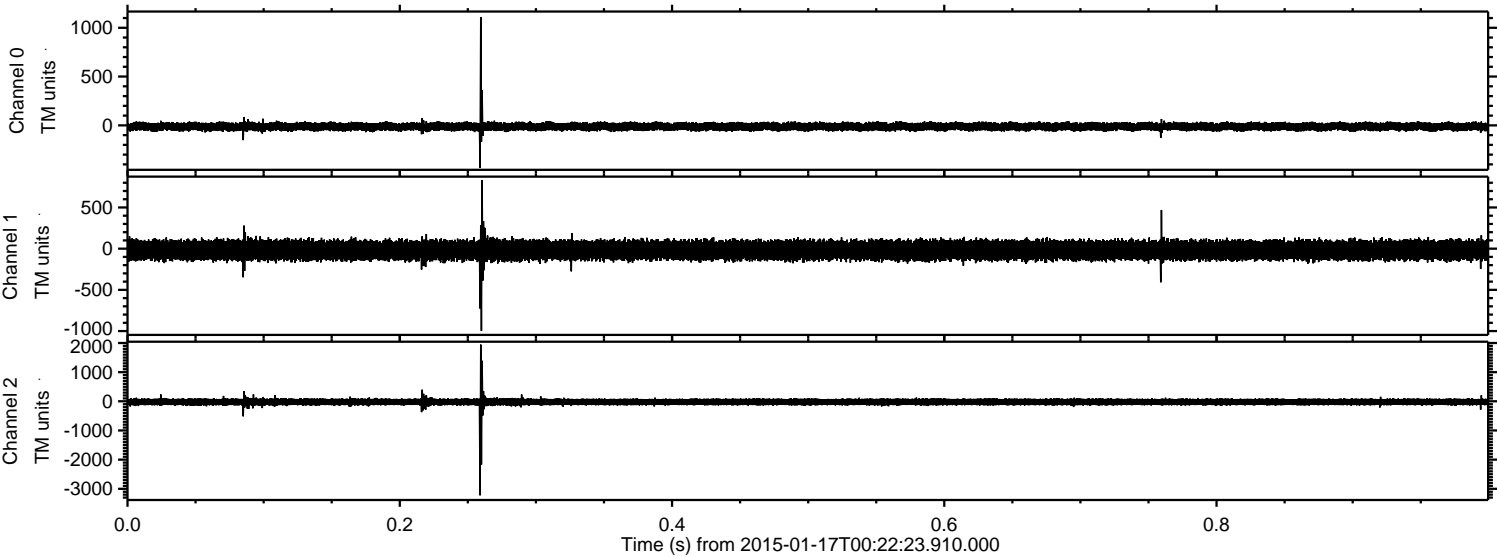
Channel 0  
mn: -758  
mx: 777  
 $\mu$ : -12.8  
 $\sigma$ : 21.7

Channel 1  
mn: -403  
mx: 383  
 $\mu$ : -18.5  
 $\sigma$ : 58.4

Channel 2  
mn: -3262  
mx: 2987  
 $\mu$ : -21.2  
 $\sigma$ : 71.2



Processed Mon Jan 19 04:39:46 2015 by ELM ver.2012-10-06 from 001\_\_elm20150117\_002222\_\_dat00.bin



Power spectra

Channel 0  
mn: -434  
mx: 1111  
 $\mu$ : -12.9  
 $\sigma$ : 21.7

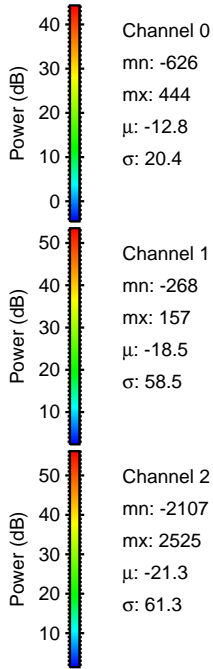
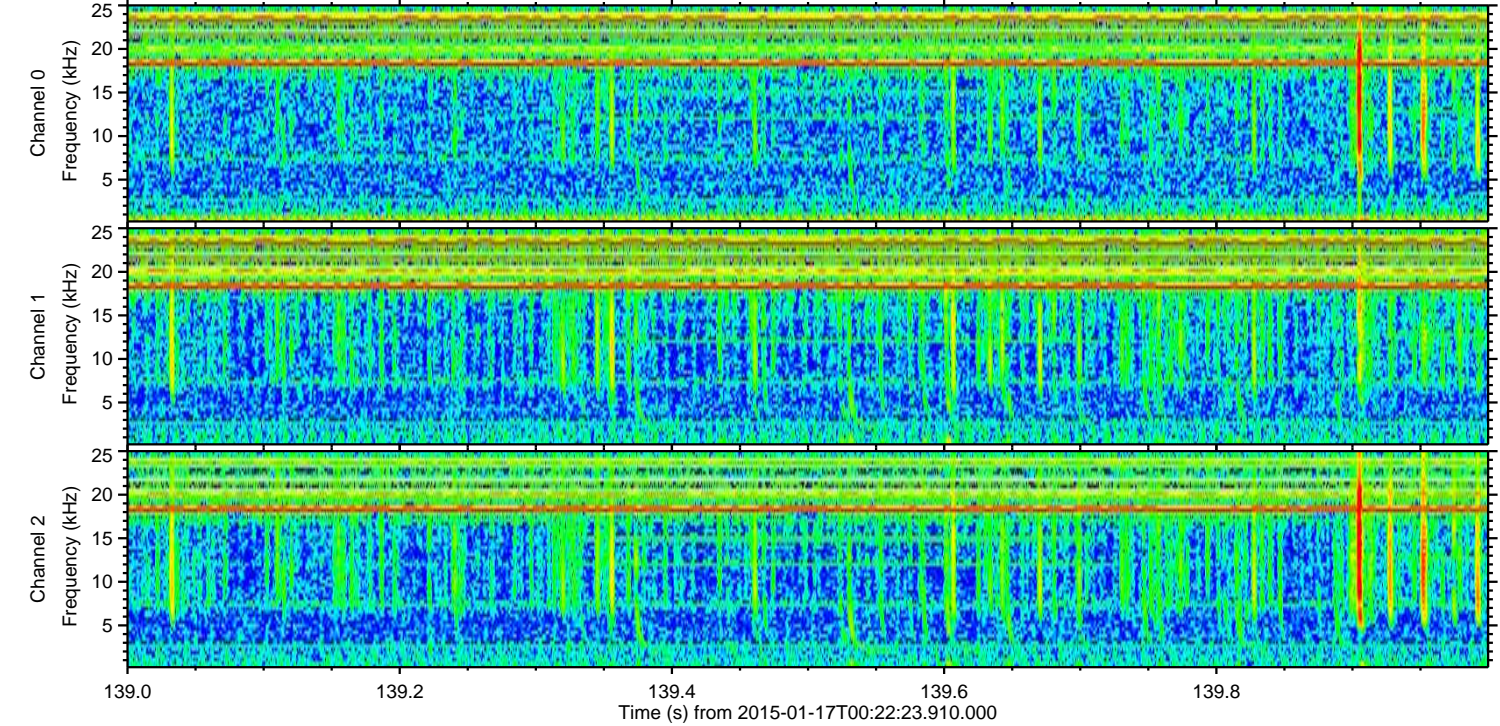
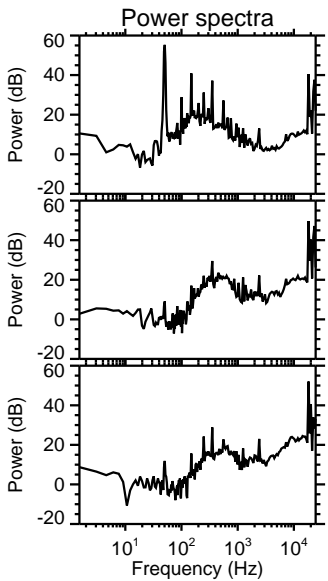
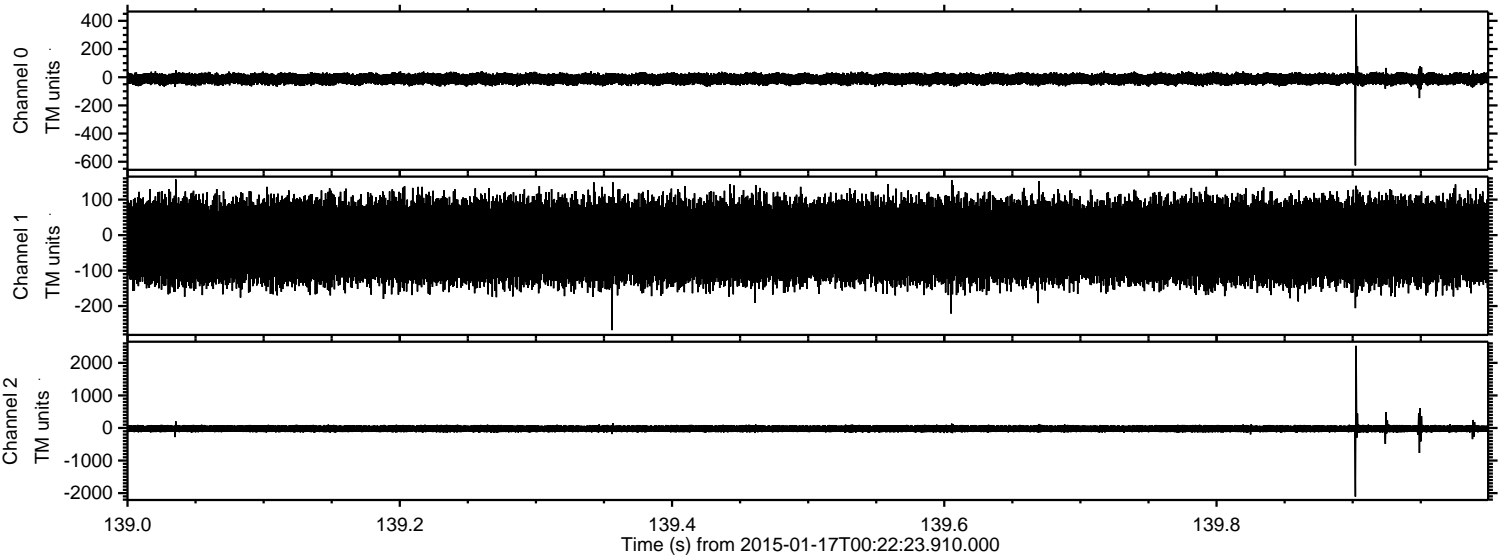
Channel 1  
mn: -997  
mx: 833  
 $\mu$ : -18.5  
 $\sigma$ : 61.0

Channel 2  
mn: -3222  
mx: 1946  
 $\mu$ : -21.2  
 $\sigma$ : 67.0



ELMAVAN 3D WAVEFORMS (Measured data sampled at 50 kHz) 49806 packets of 144 samples from 2015-01-17T00:22:23.910.000. Part 140/144

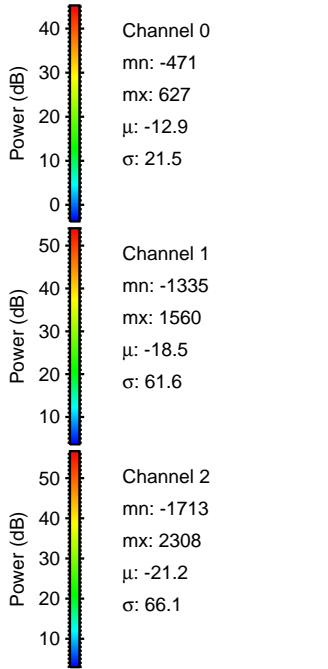
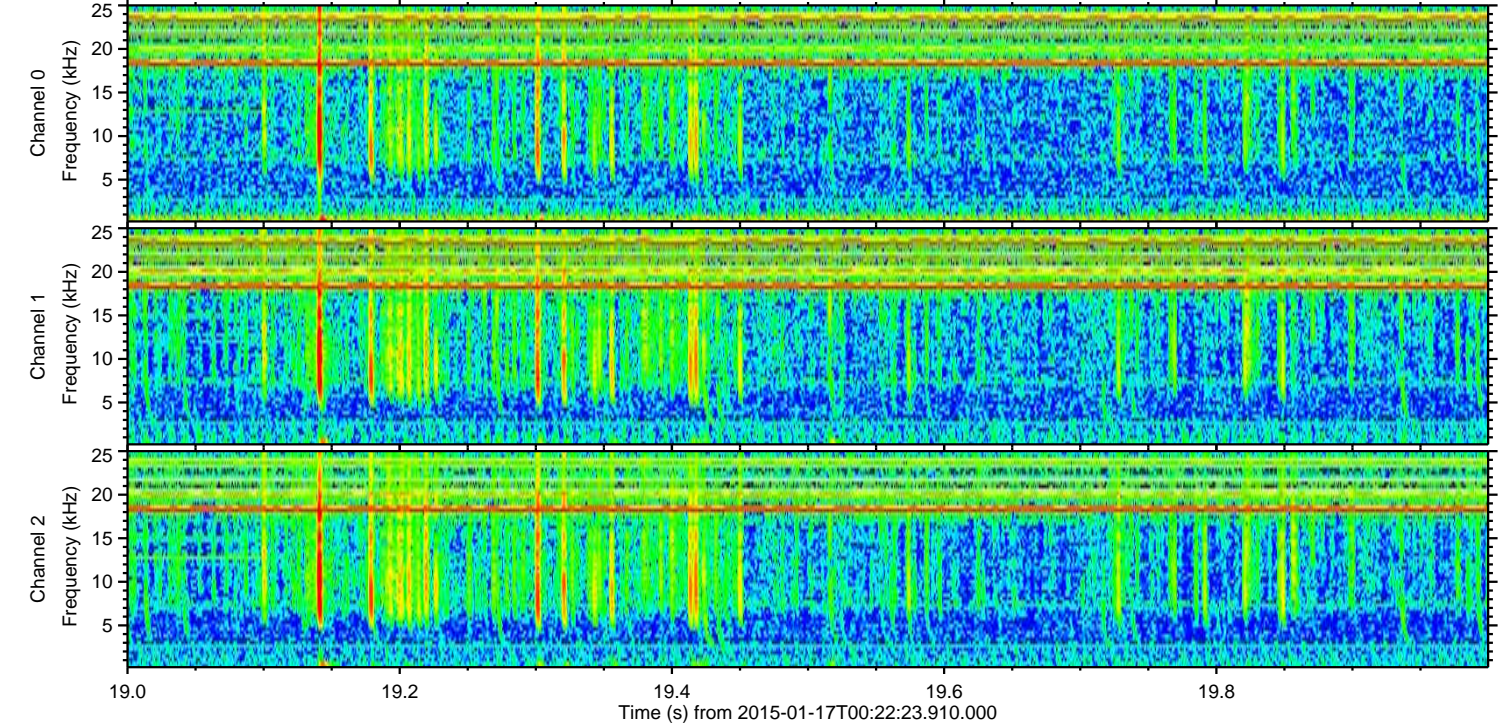
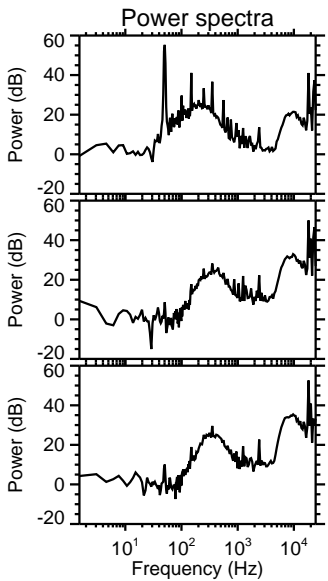
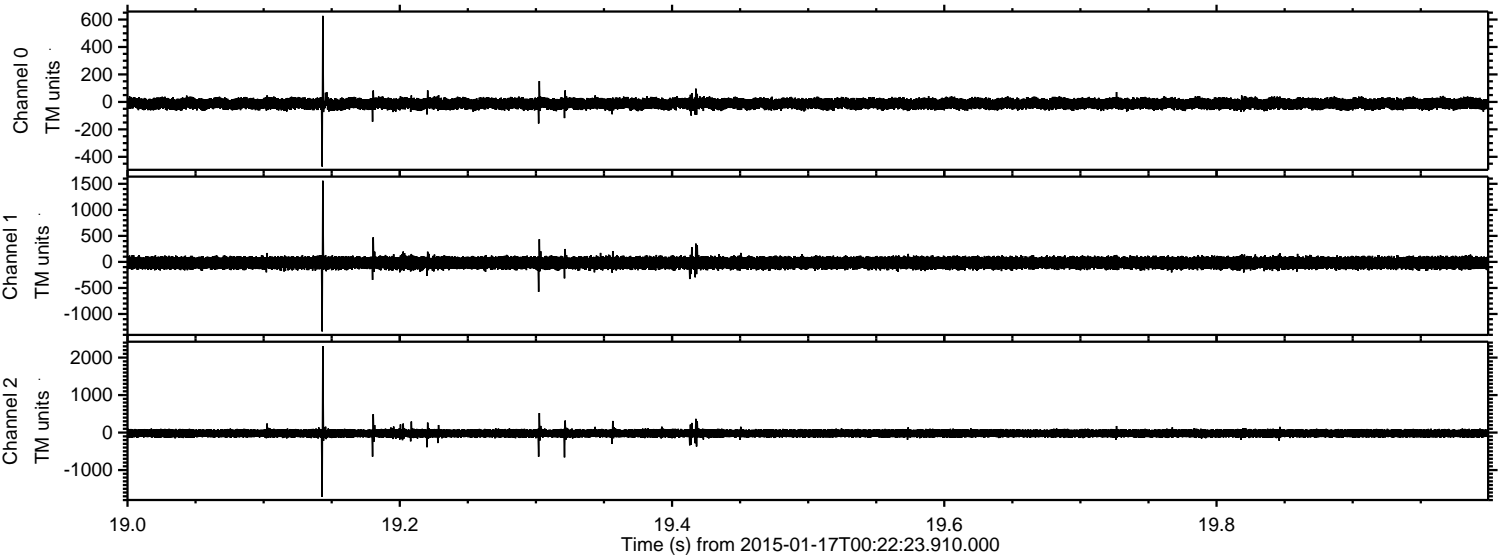
Processed Mon Jan 19 04:39:47 2015 by ELM ver.2012-10-06 from 001\_\_elm20150117\_002222\_\_dat00.bin





ELMAVAN 3D WAVEFORMS (Measured data sampled at 50 kHz) 49806 packets of 144 samples from 2015-01-17T00:22:23.910.000. Part 20/144

Processed Mon Jan 19 04:39:48 2015 by ELM ver.2012-10-06 from 001\_\_elm20150117\_002222\_\_dat00.bin





Processed Mon Jan 19 04:39:49 2015 by ELM ver.2012-10-06 from 001\_\_elm20150117\_002222\_\_dat00.bin

