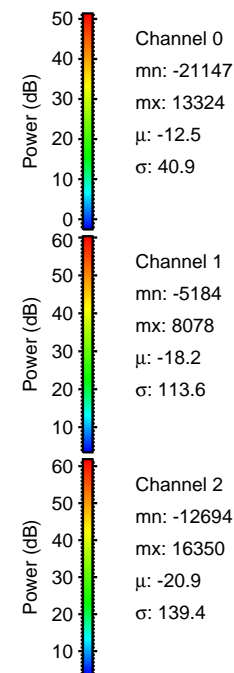
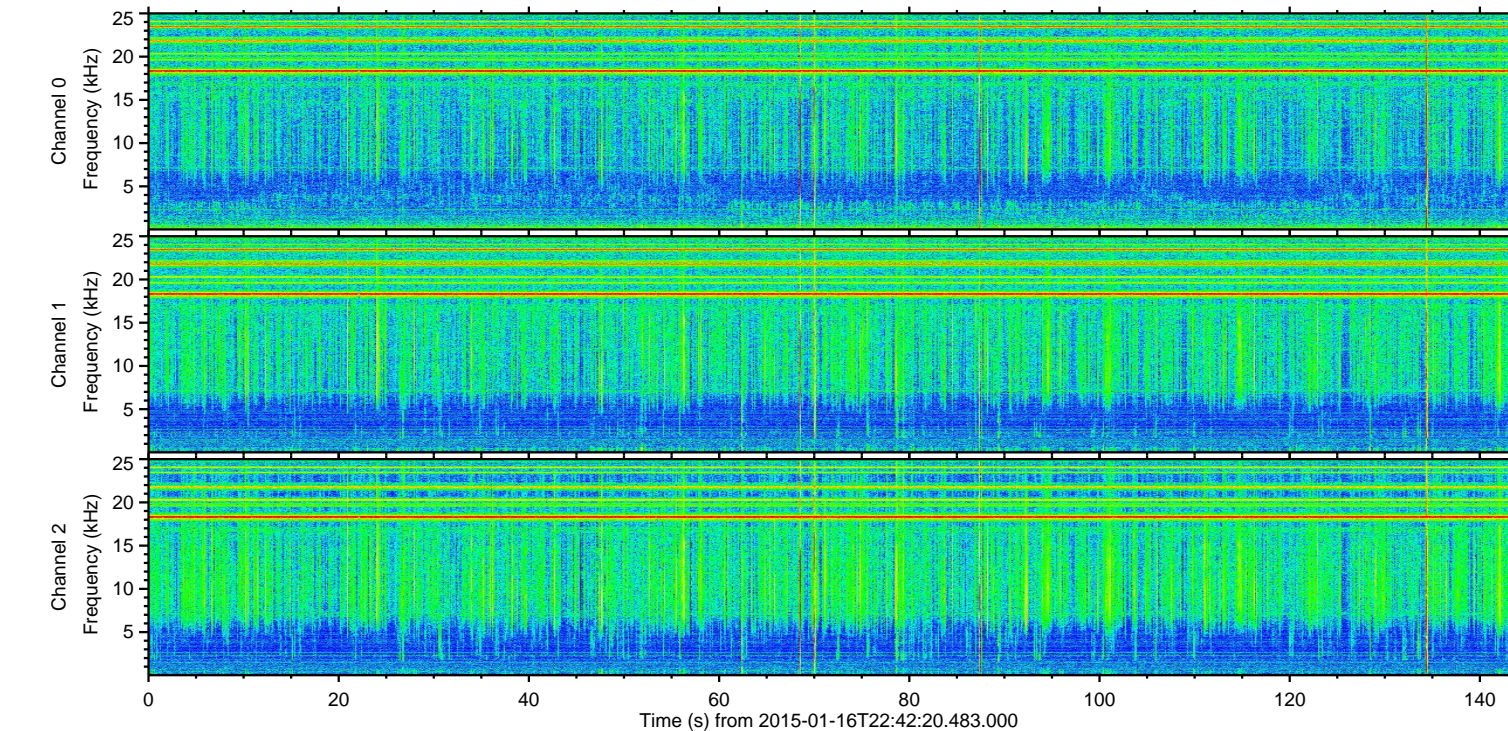
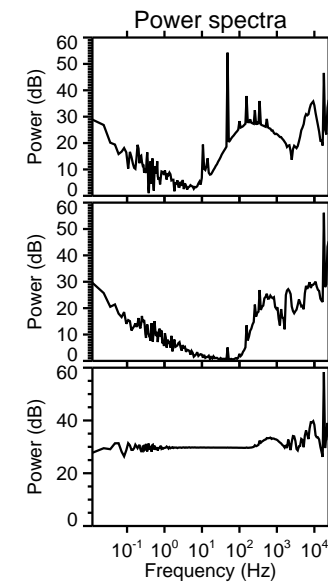
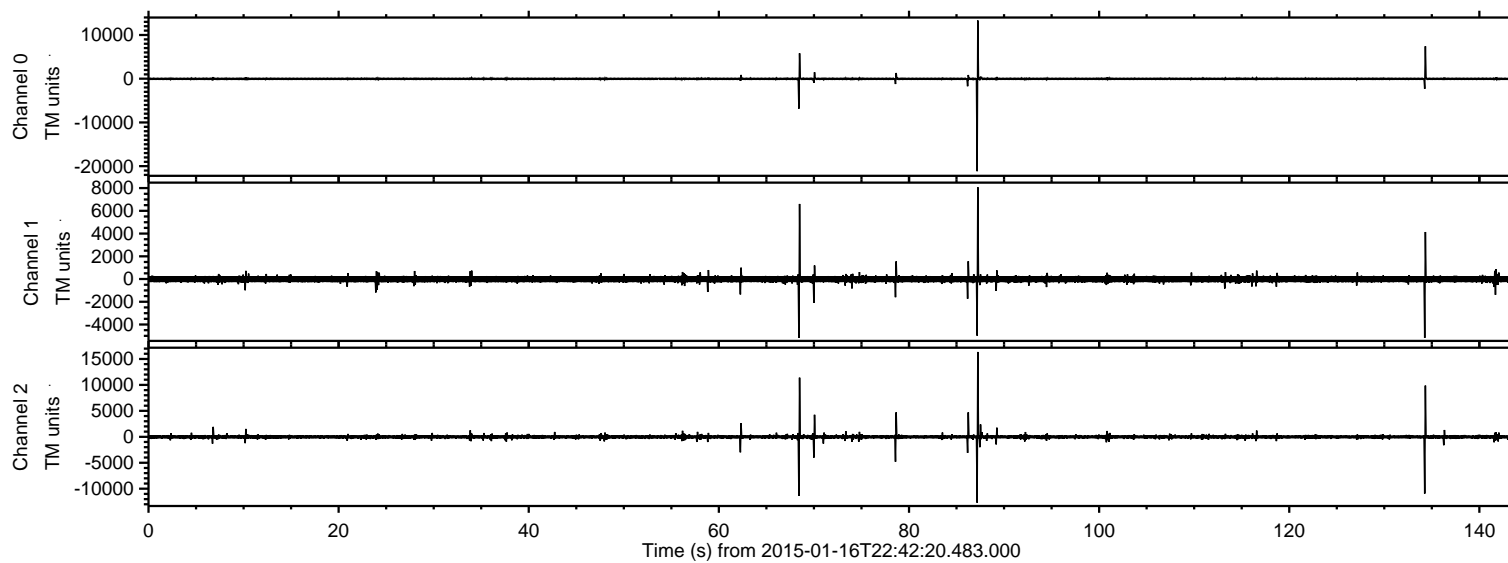


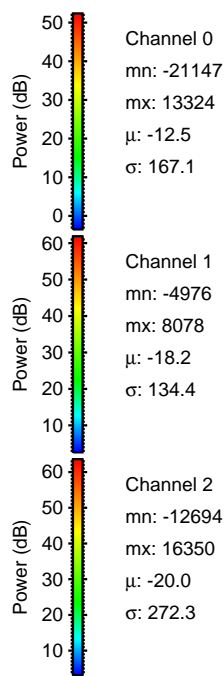
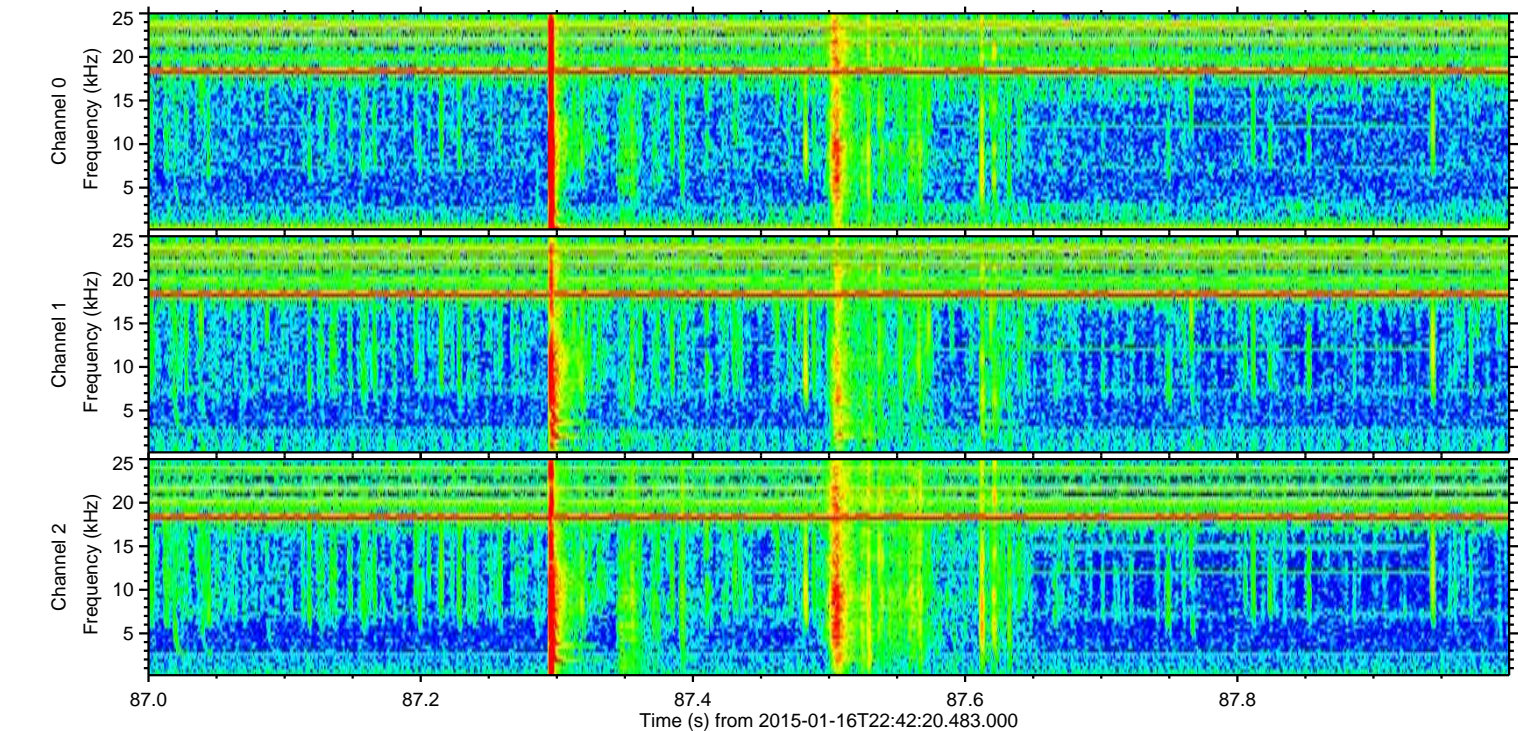
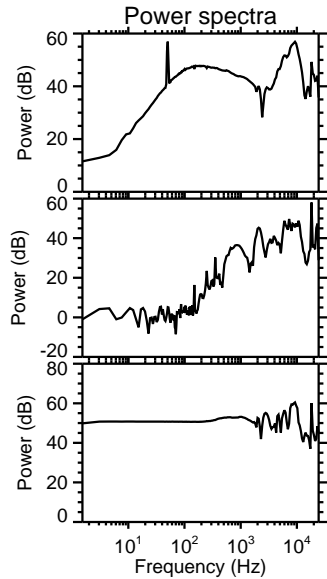
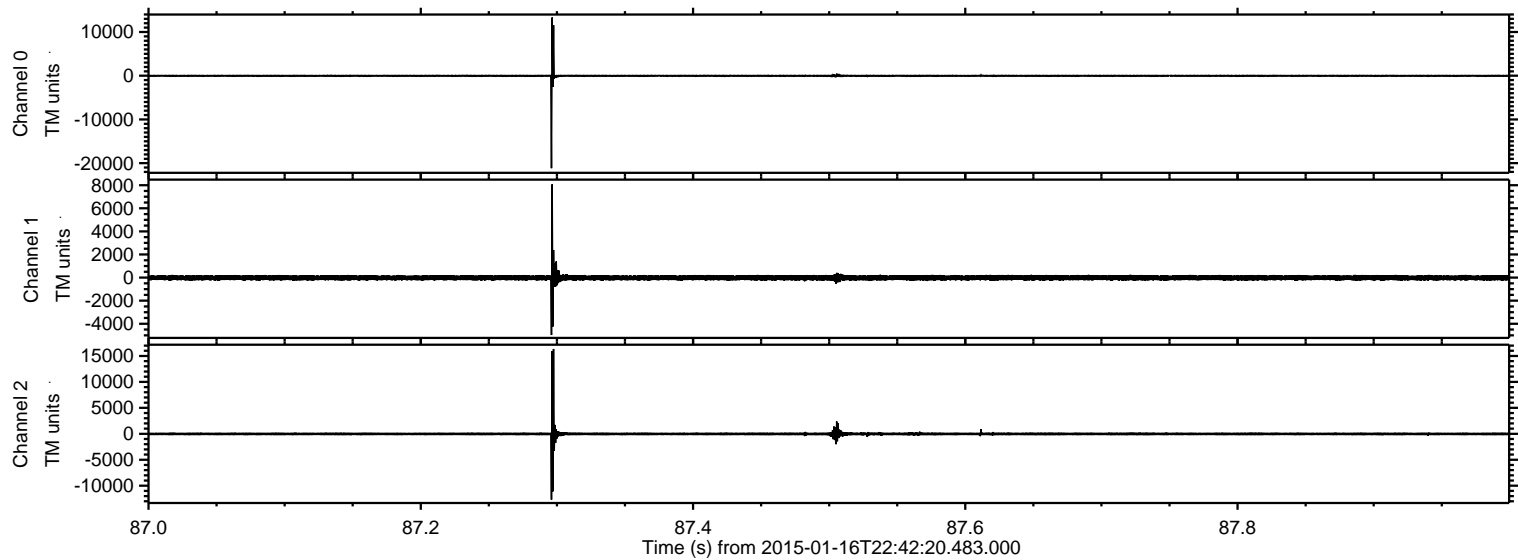
ELMAVAN 3D WAVEFORMS (Measured data sampled at 50 kHz) 49699 packets of 144 samples from 2015-01-16T22:42:20.483.000.

Processed Sun Jan 18 23:55:21 2015 by ELM ver.2012-10-06 from 001__elm20150116_224219__dat00.bin



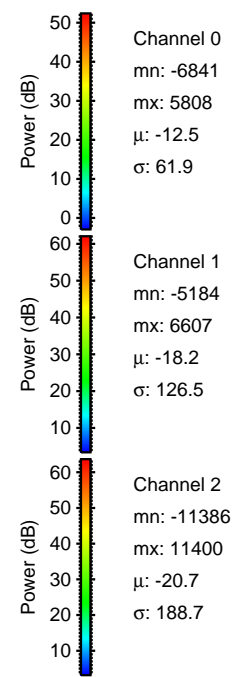
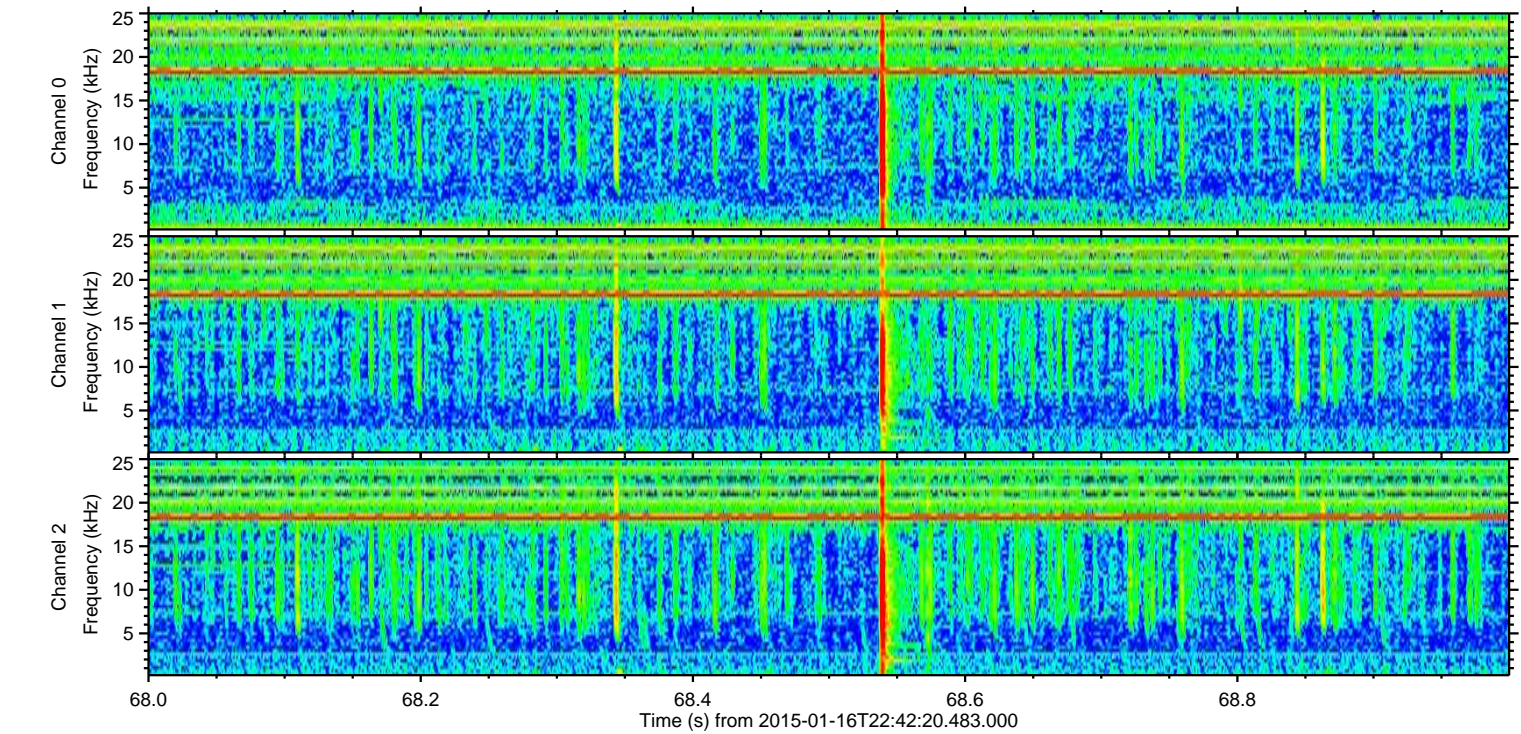
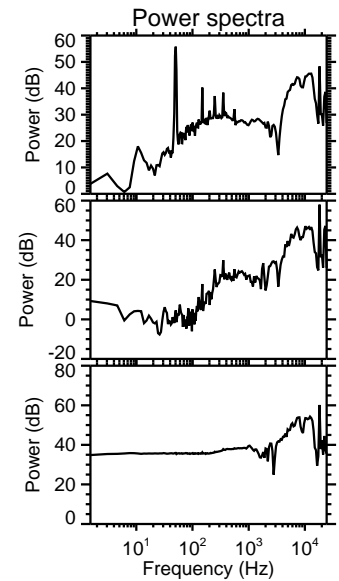
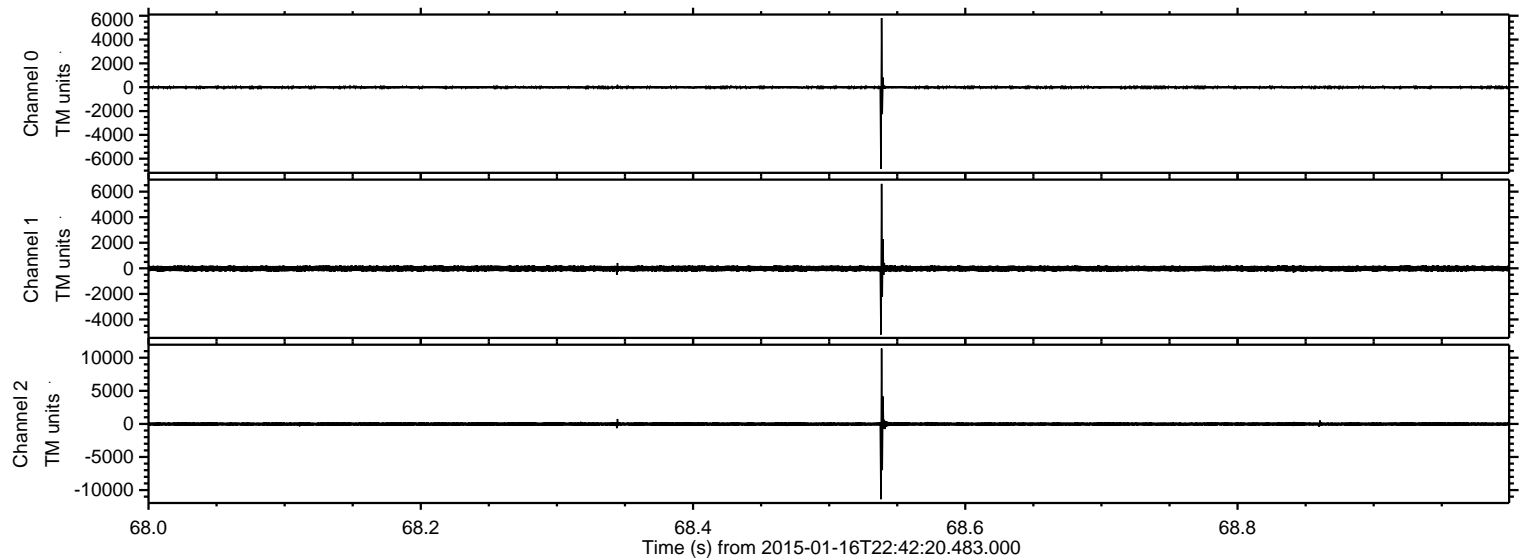
ELMAVAN 3D WAVEFORMS (Measured data sampled at 50 kHz) 49699 packets of 144 samples from 2015-01-16T22:42:20.483.000. Part 88/144

Processed Sun Jan 18 23:55:35 2015 by ELM ver.2012-10-06 from 001__elm20150116_224219__dat00.bin



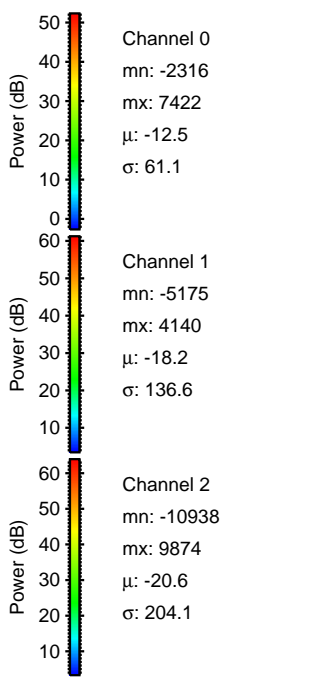
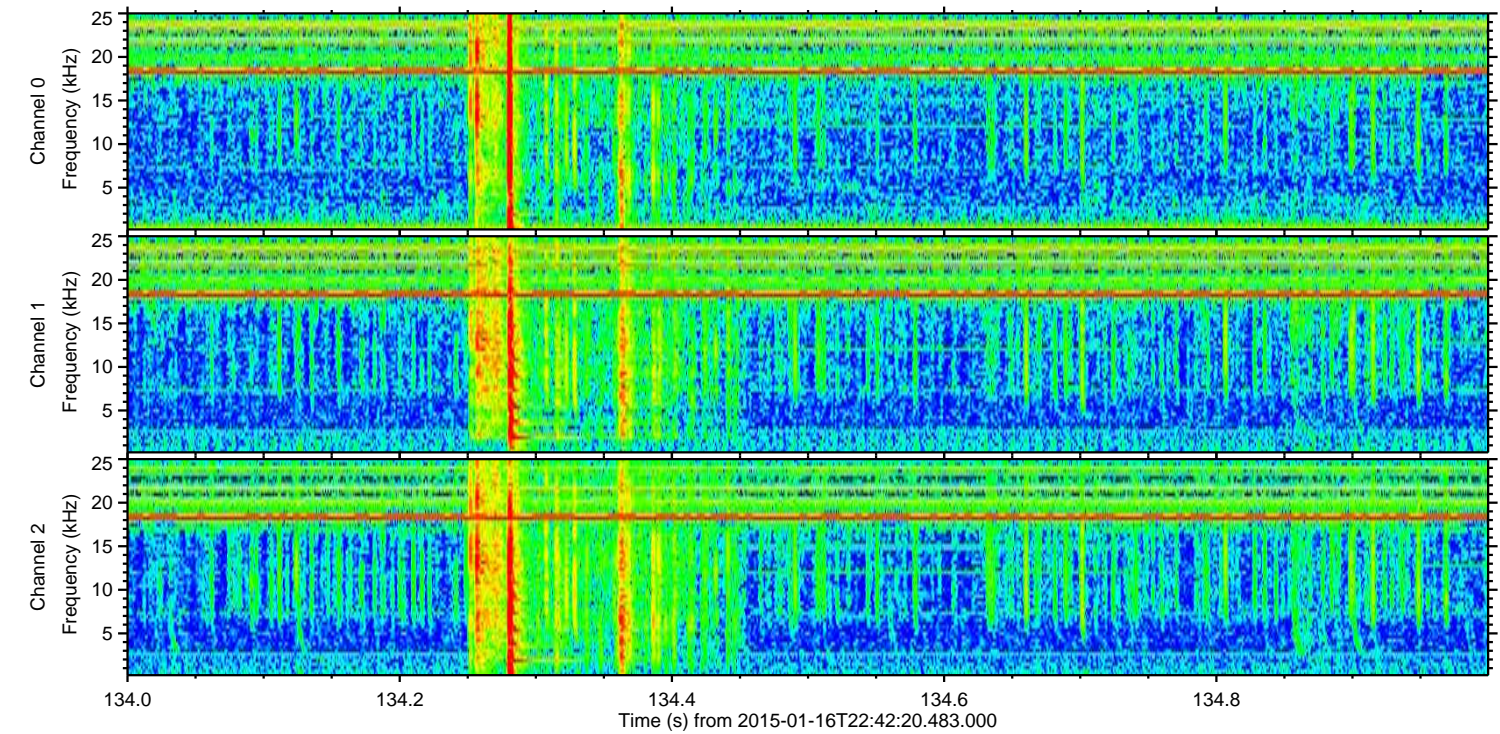
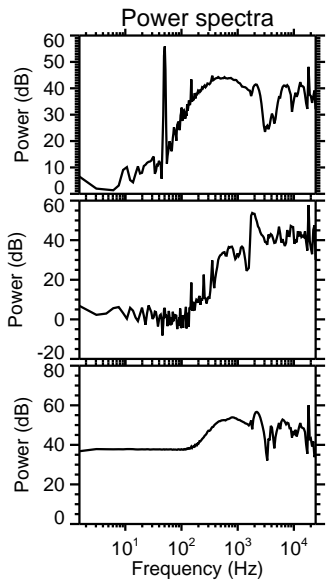
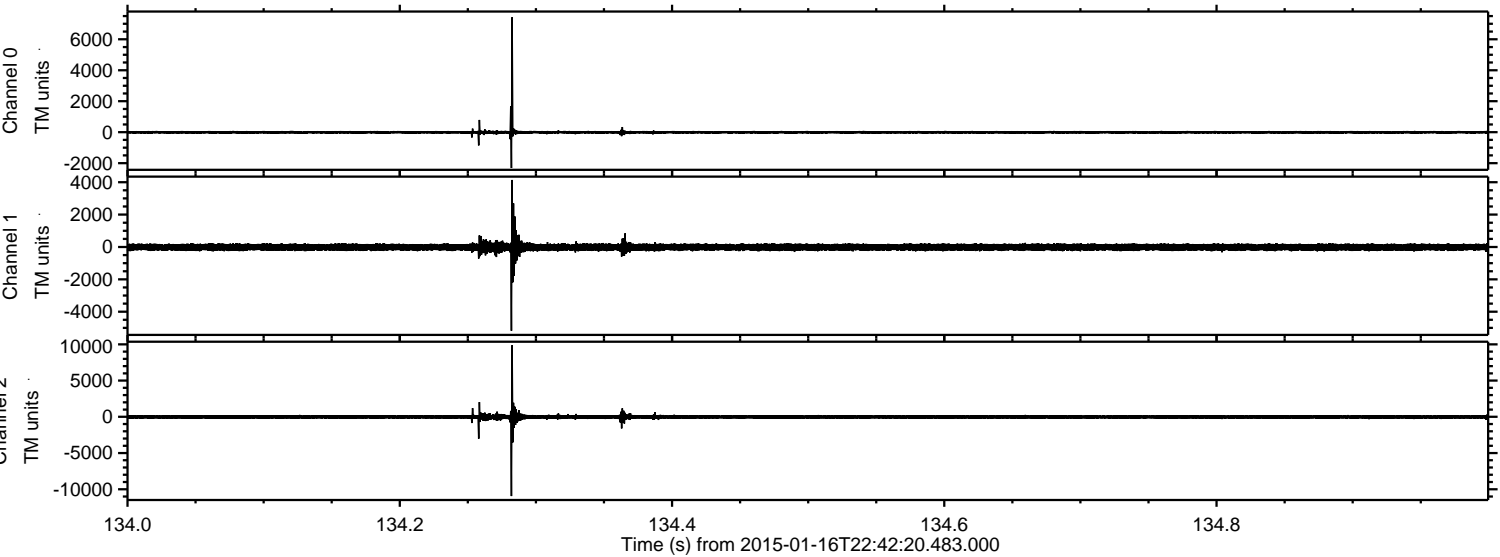
ELMAVAN 3D WAVEFORMS (Measured data sampled at 50 kHz) 49699 packets of 144 samples from 2015-01-16T22:42:20.483.000. Part 69/144

Processed Sun Jan 18 23:55:36 2015 by ELM ver.2012-10-06 from 001__elm20150116_224219__dat00.bin

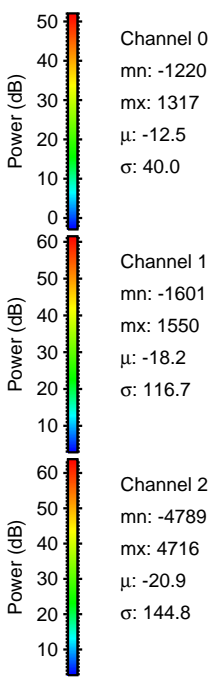
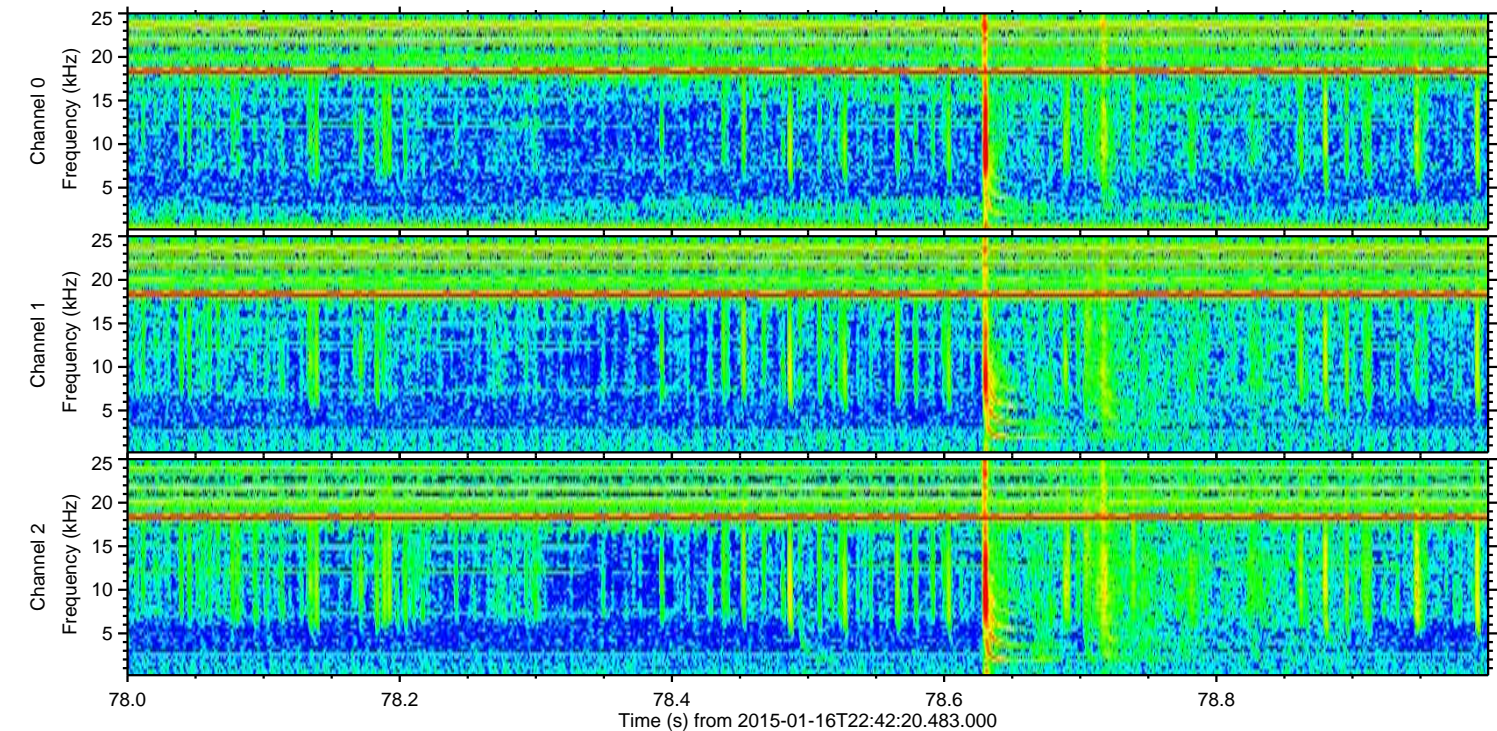
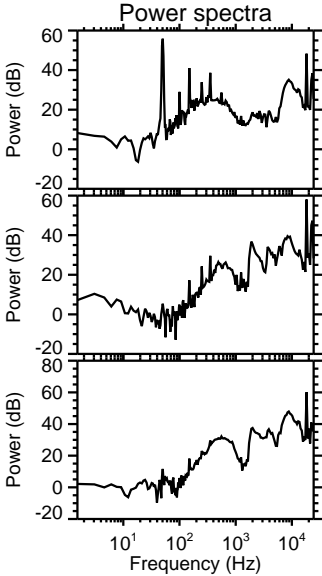
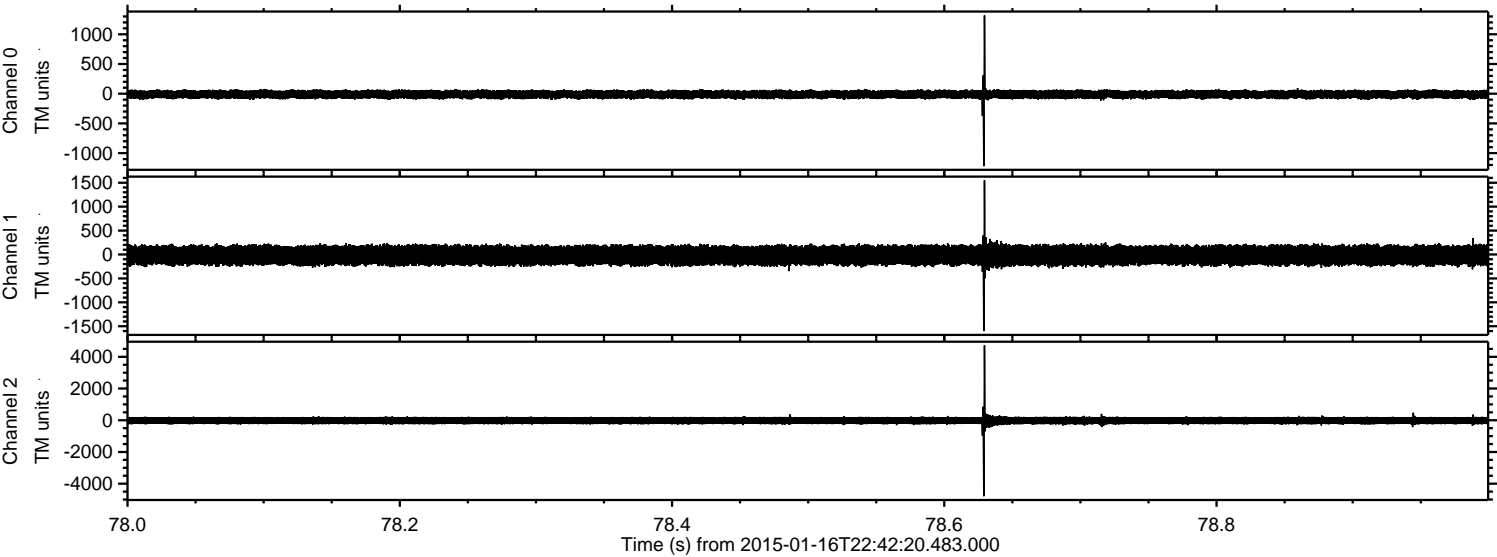


ELMAVAN 3D WAVEFORMS (Measured data sampled at 50 kHz) 49699 packets of 144 samples from 2015-01-16T22:42:20.483.000. Part 135/144

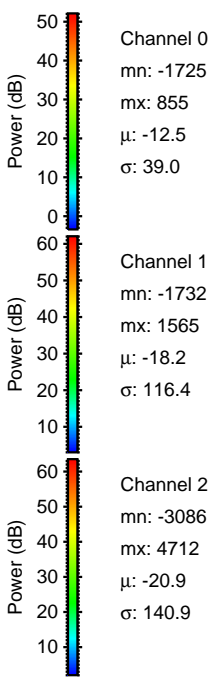
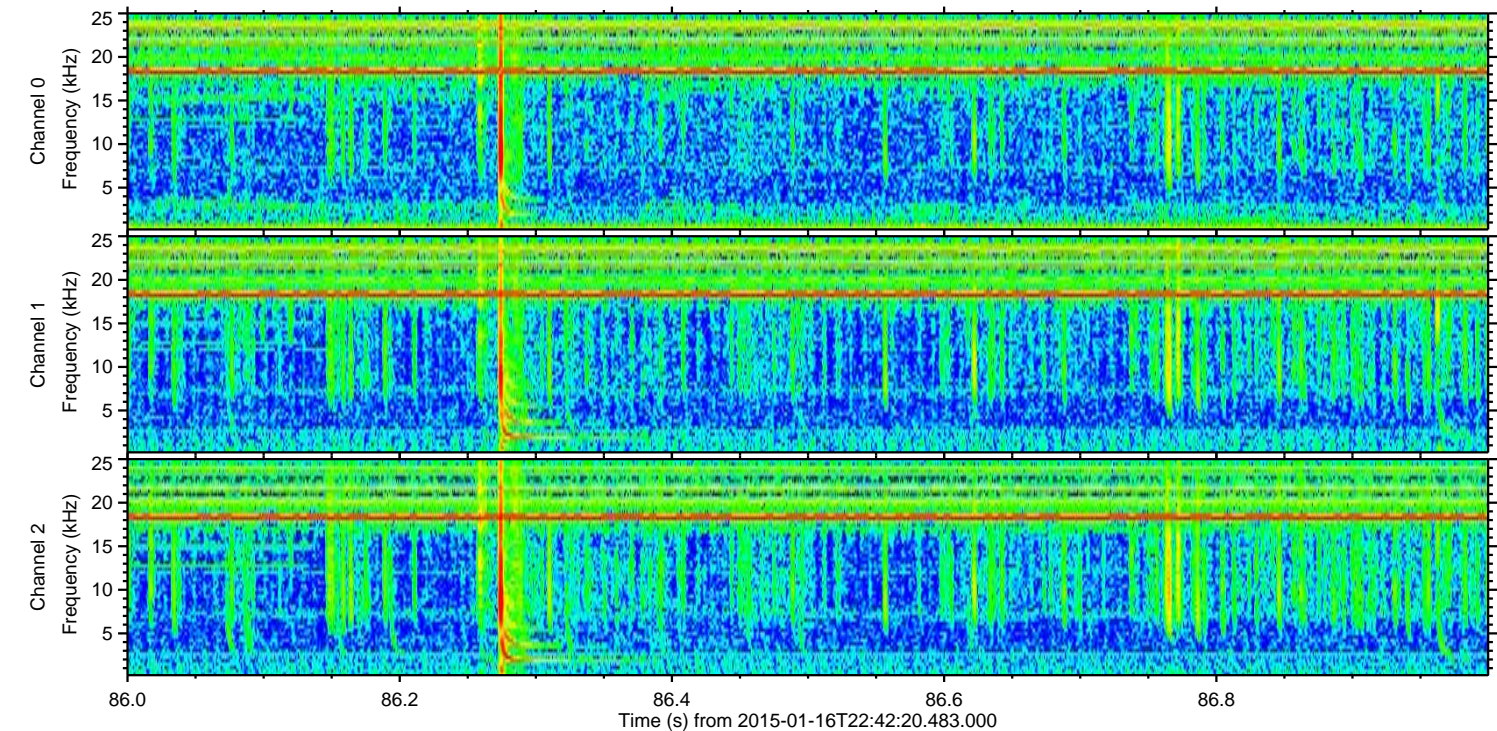
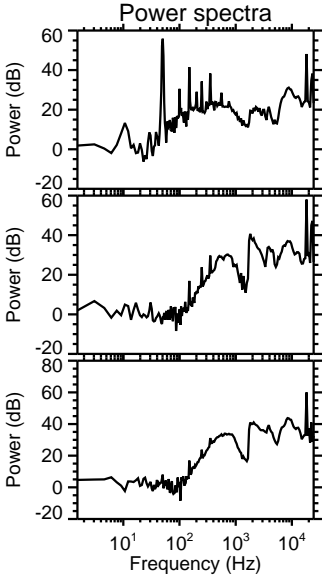
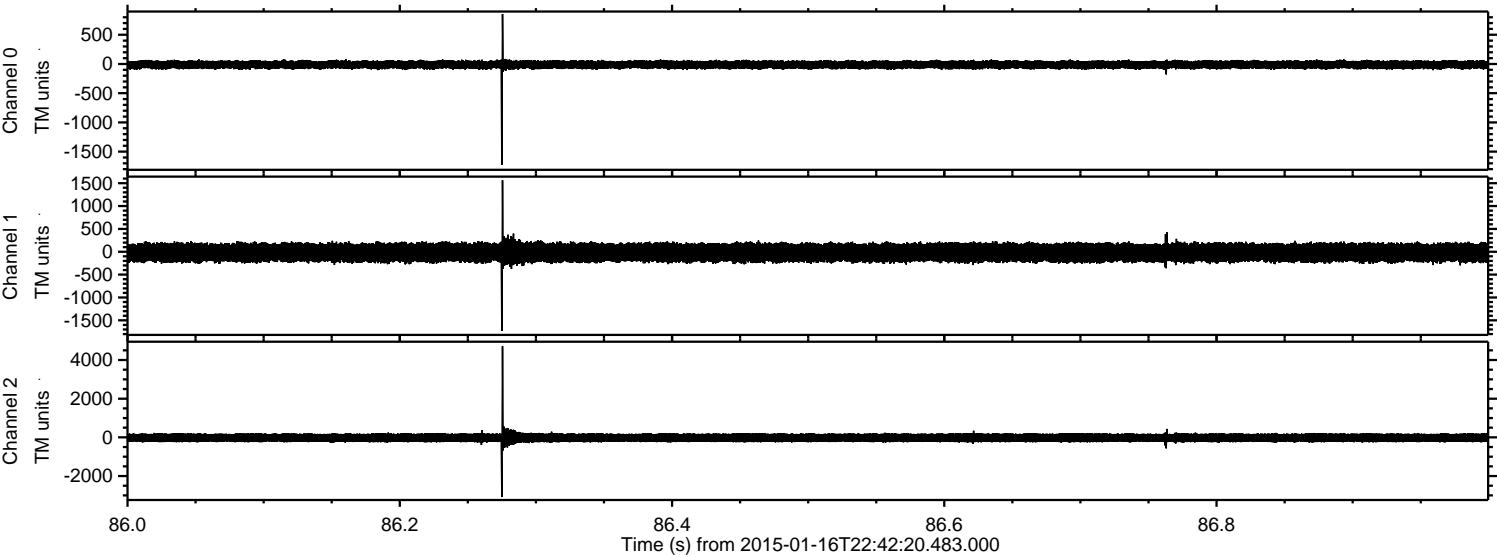
Processed Sun Jan 18 23:55:37 2015 by ELM ver.2012-10-06 from 001__elm20150116_224219__dat00.bin



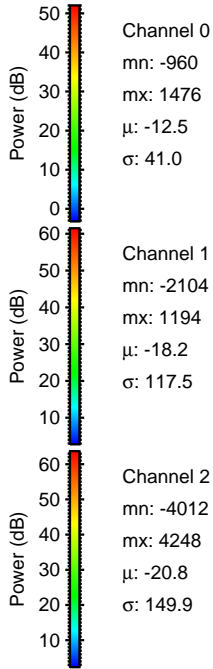
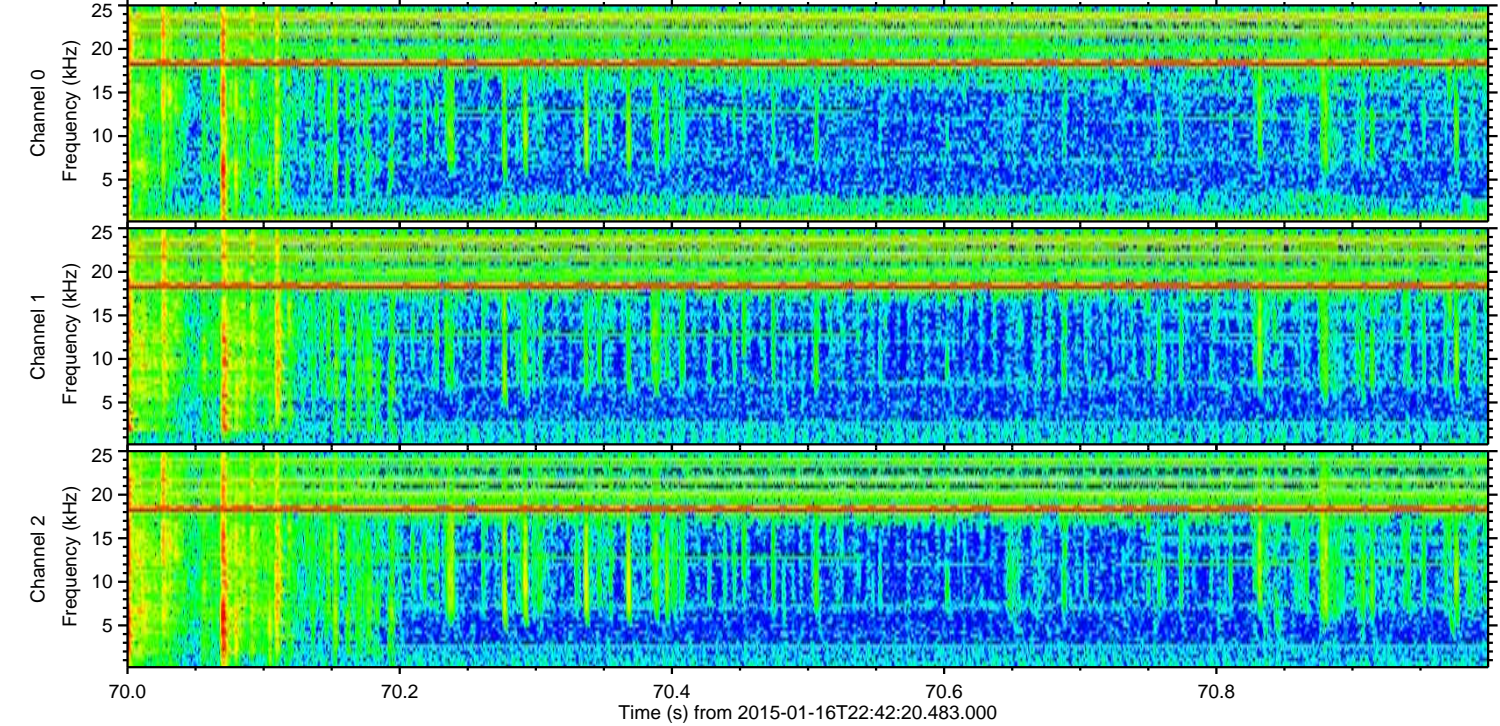
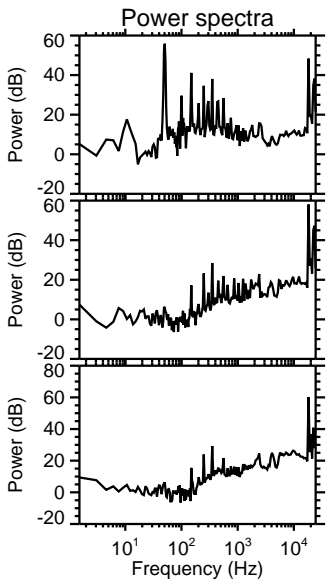
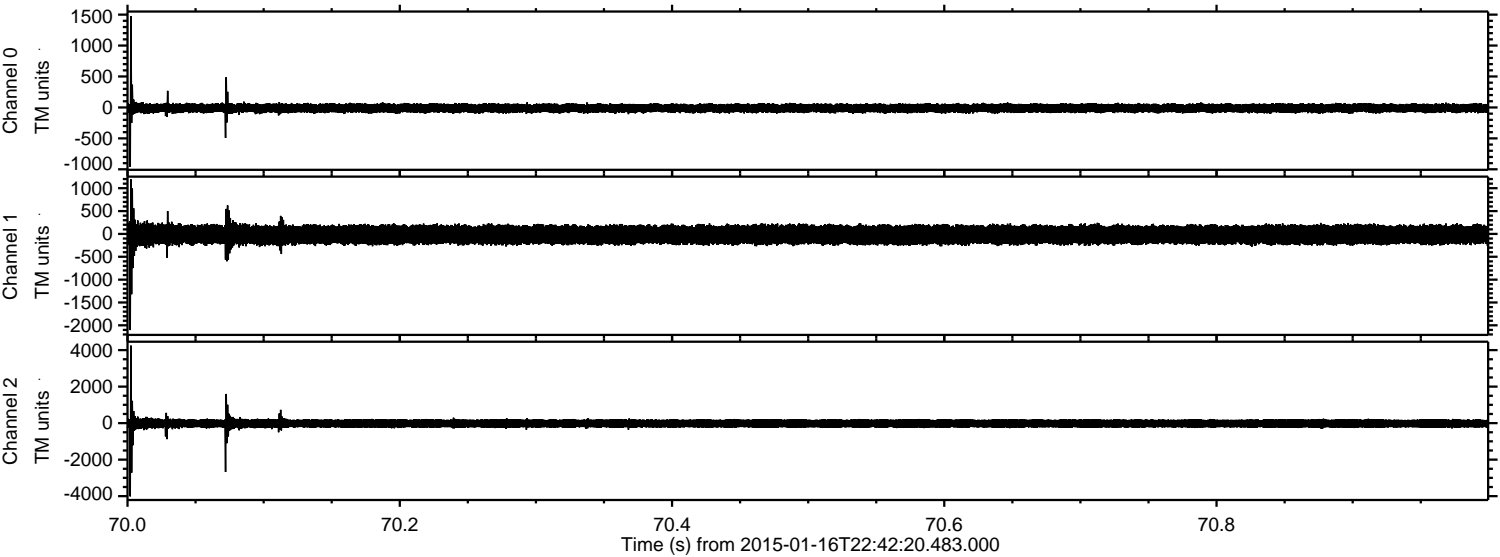
Processed Sun Jan 18 23:55:38 2015 by ELM ver.2012-10-06 from 001__elm20150116_224219__dat00.bin



Processed Sun Jan 18 23:55:39 2015 by ELM ver.2012-10-06 from 001__elm20150116_224219__dat00.bin

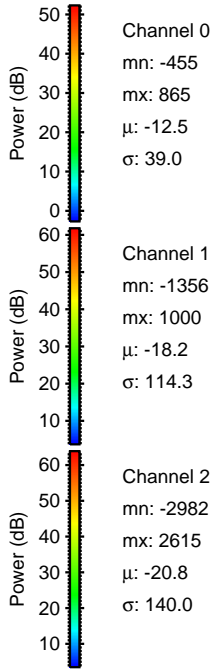
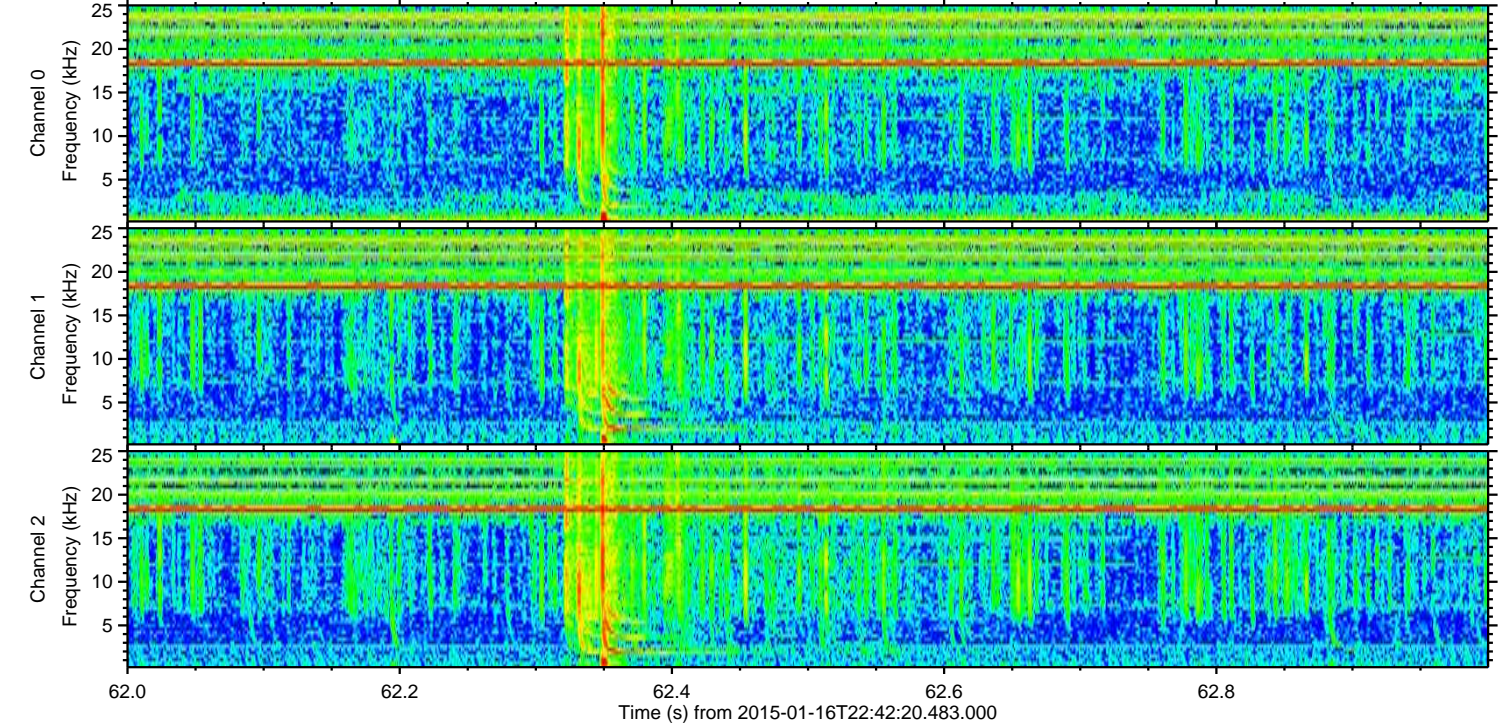
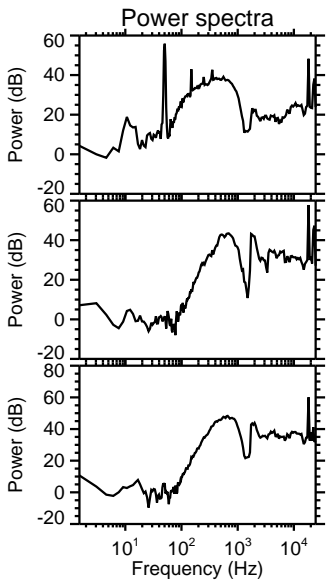
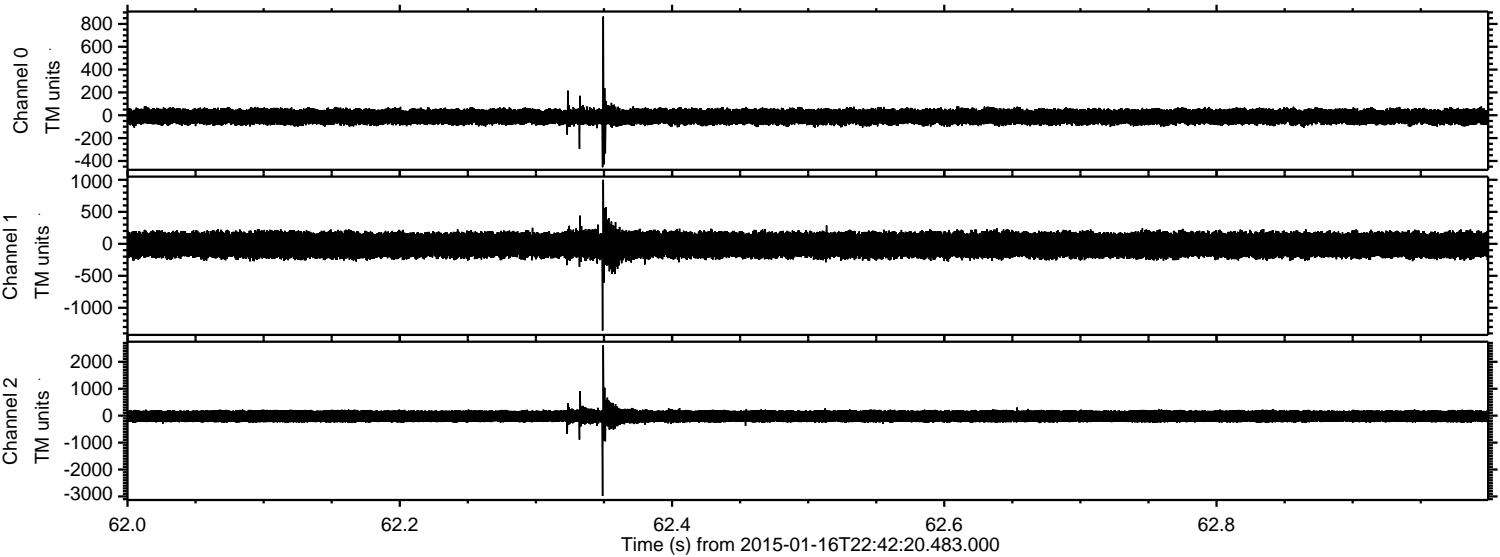


Processed Sun Jan 18 23:55:40 2015 by ELM ver.2012-10-06 from 001__elm20150116_224219__dat00.bin



ELMAVAN 3D WAVEFORMS (Measured data sampled at 50 kHz) 49699 packets of 144 samples from 2015-01-16T22:42:20.483.000. Part 63/144

Processed Sun Jan 18 23:55:41 2015 by ELM ver.2012-10-06 from 001__elm20150116_224219__dat00.bin

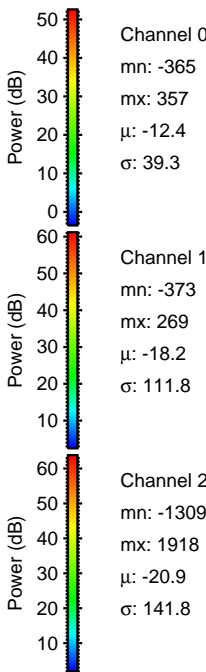
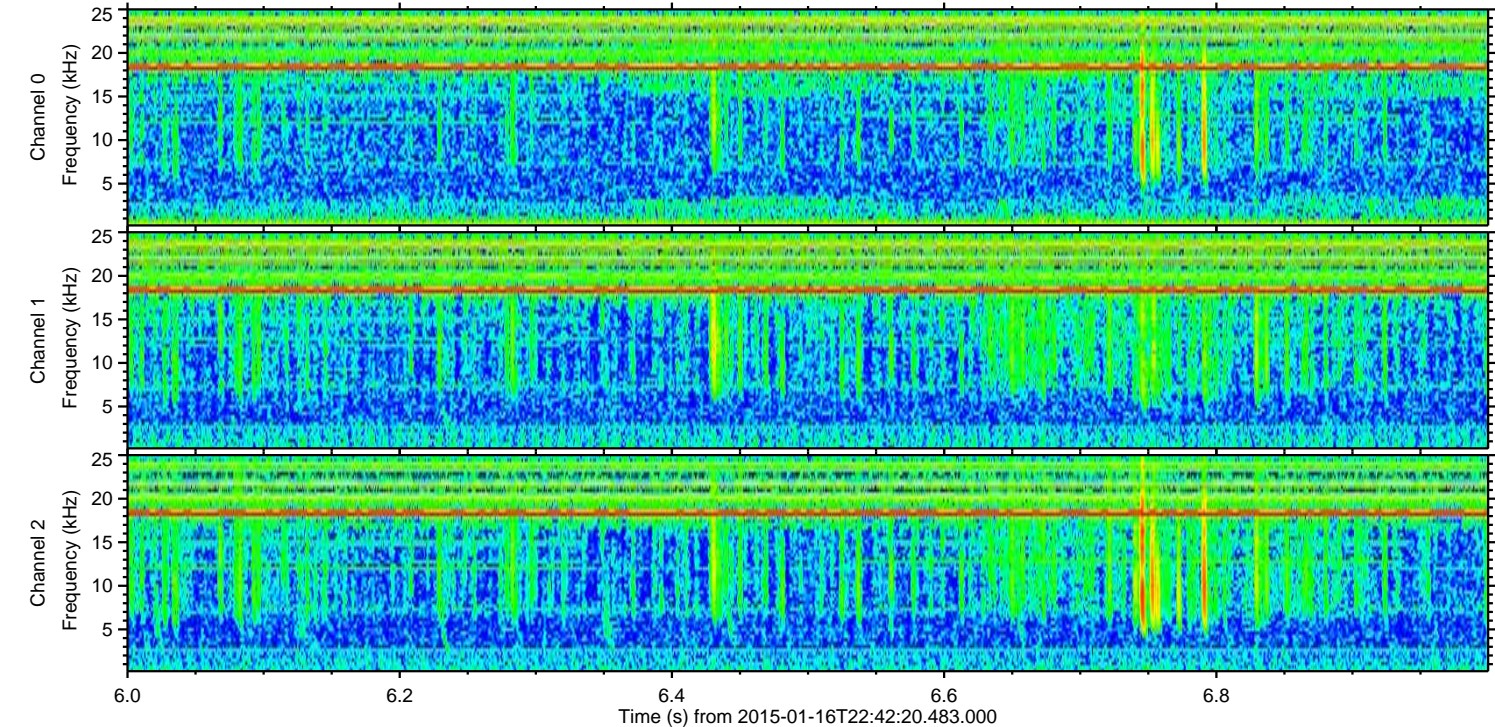
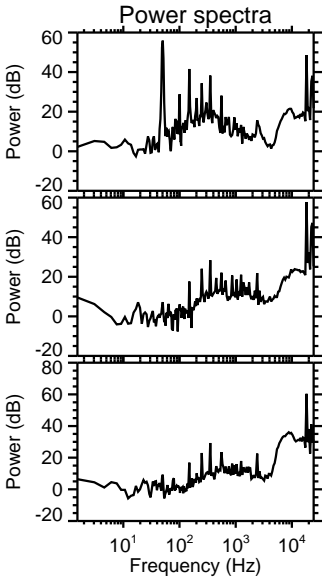
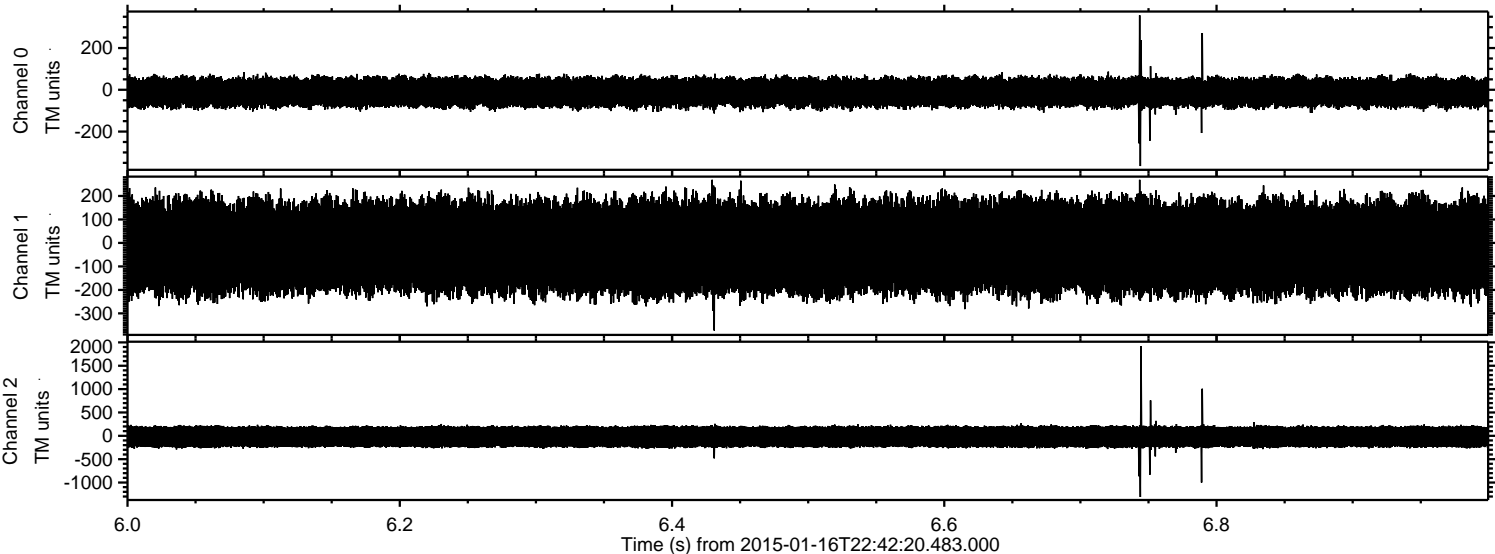


Channel 0
mn: -455
mx: 865
 μ : -12.5
 σ : 39.0

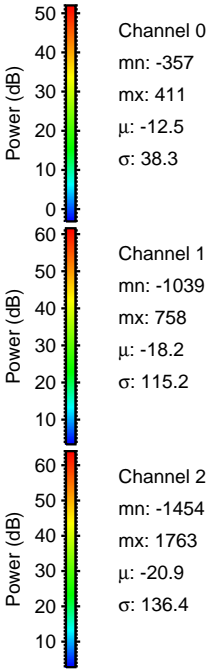
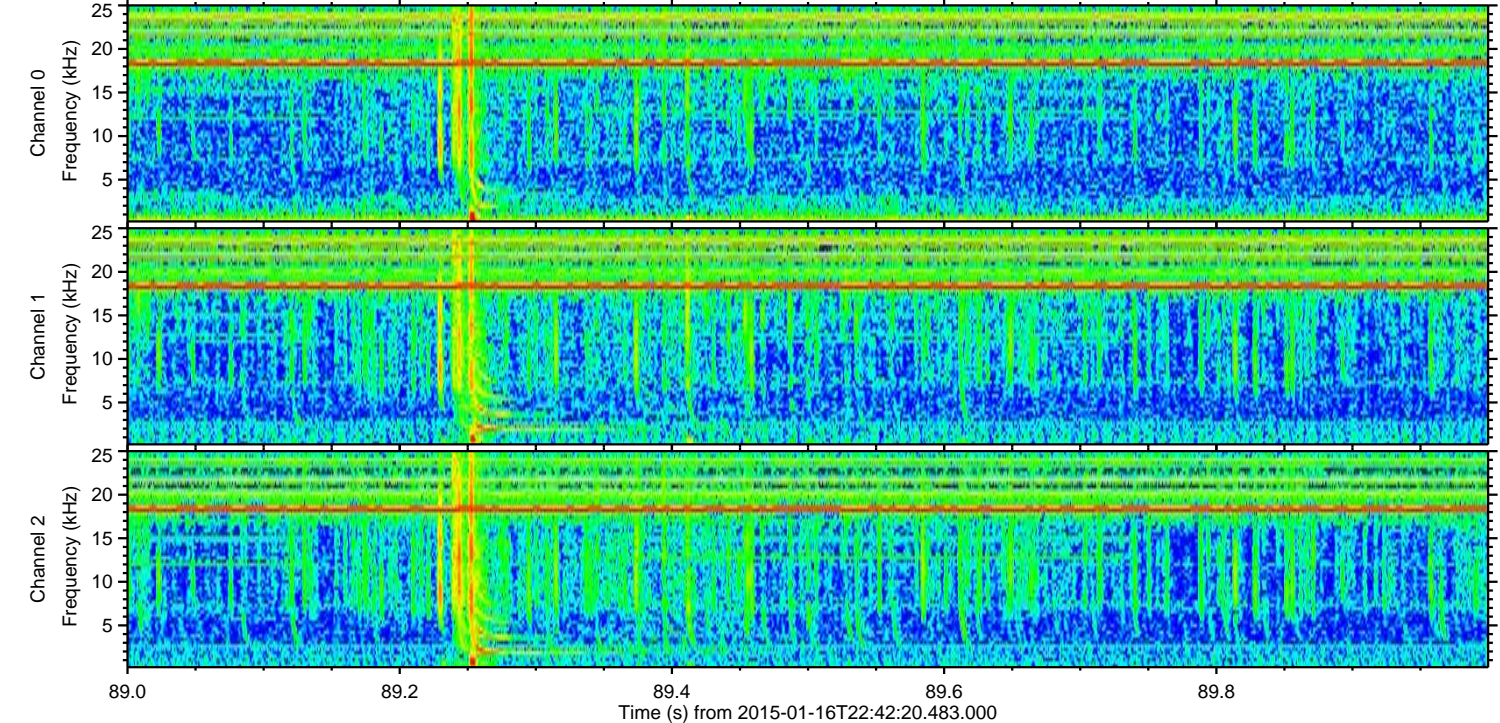
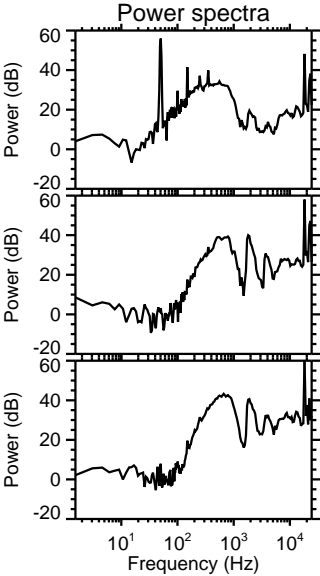
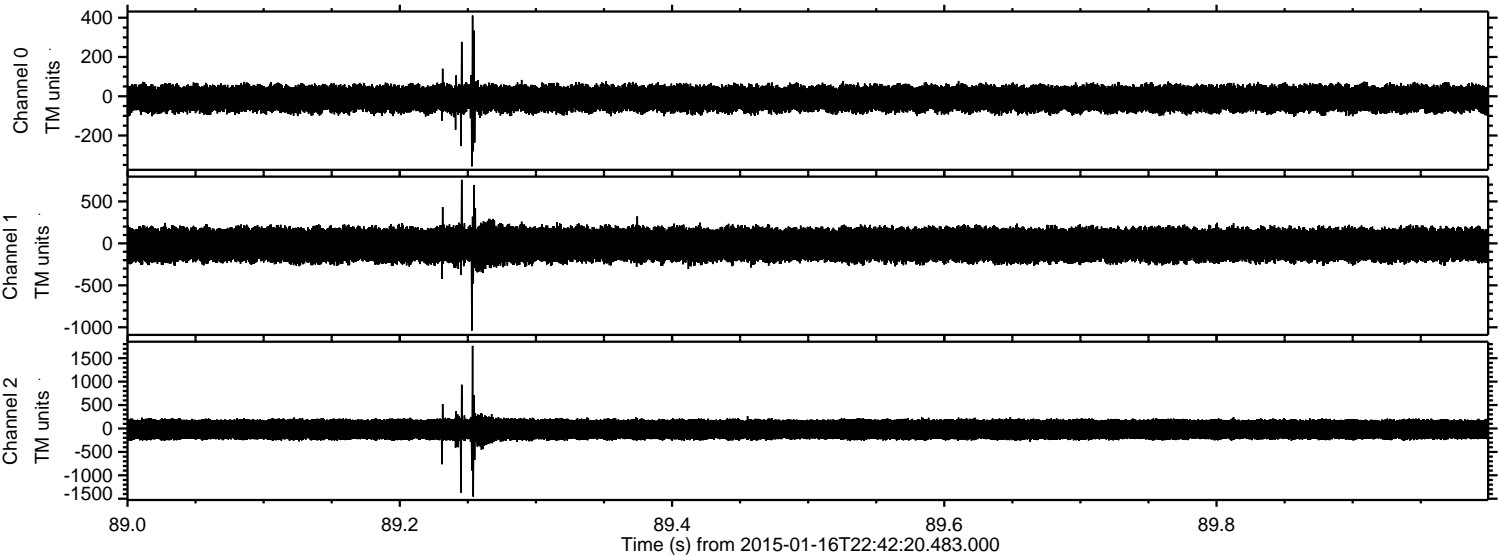
Channel 1
mn: -1356
mx: 1000
 μ : -18.2
 σ : 114.3

Channel 2
mn: -2982
mx: 2615
 μ : -20.8
 σ : 140.0

Processed Sun Jan 18 23:55:42 2015 by ELM ver.2012-10-06 from 001__elm20150116_224219__dat00.bin



Processed Sun Jan 18 23:55:43 2015 by ELM ver.2012-10-06 from 001__elm20150116_224219__dat00.bin



Processed Sun Jan 18 23:55:47 2015 by ELM ver.2012-10-06 from 001__elm20150116_224219__dat00.bin

