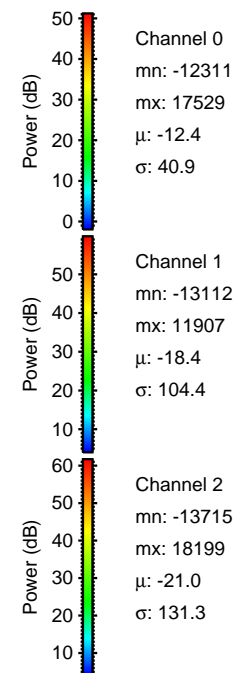
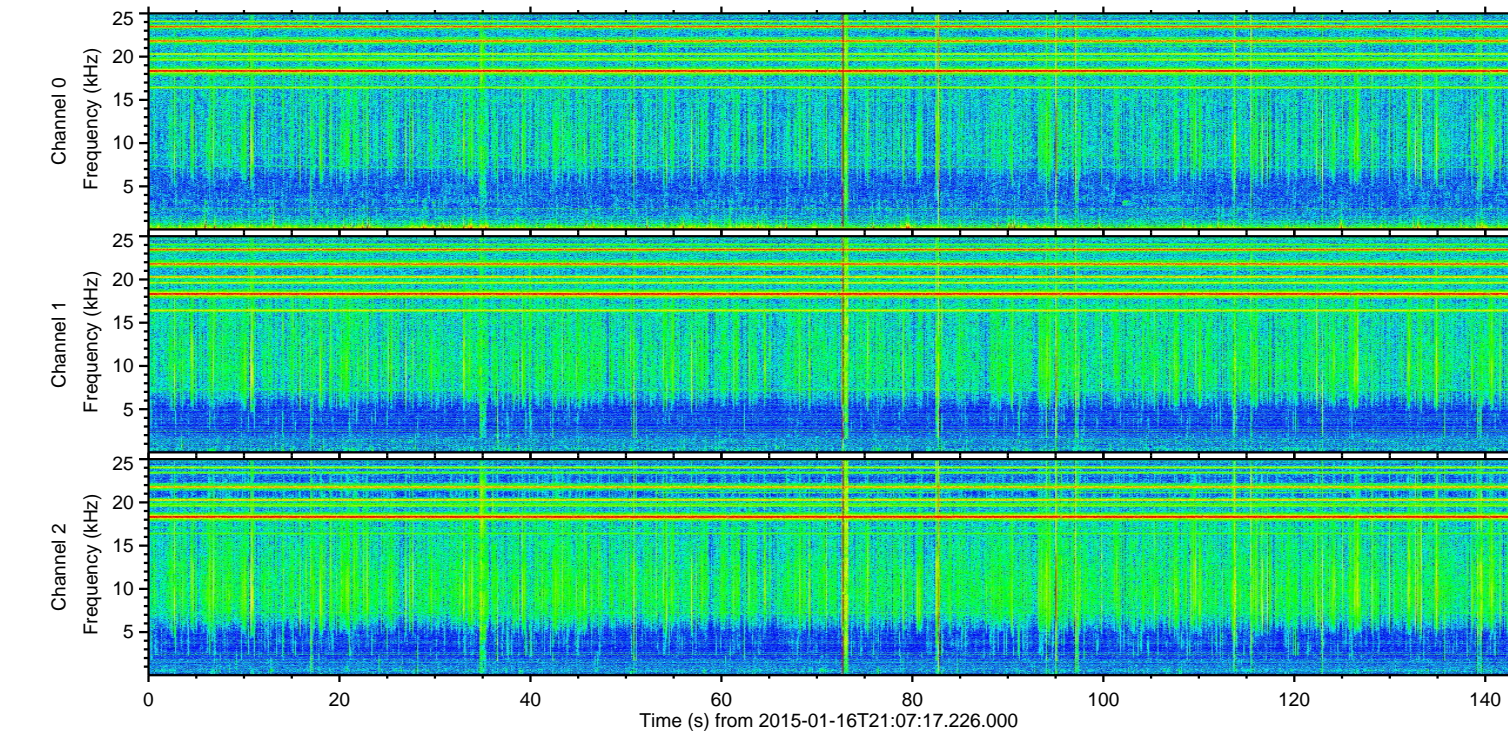
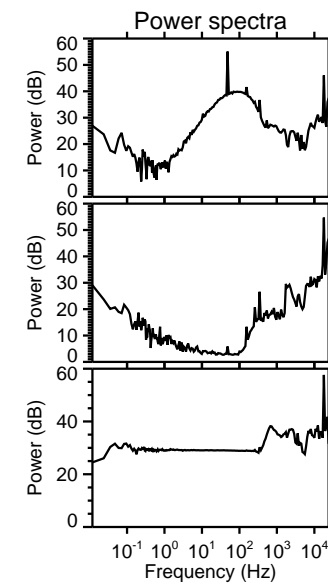
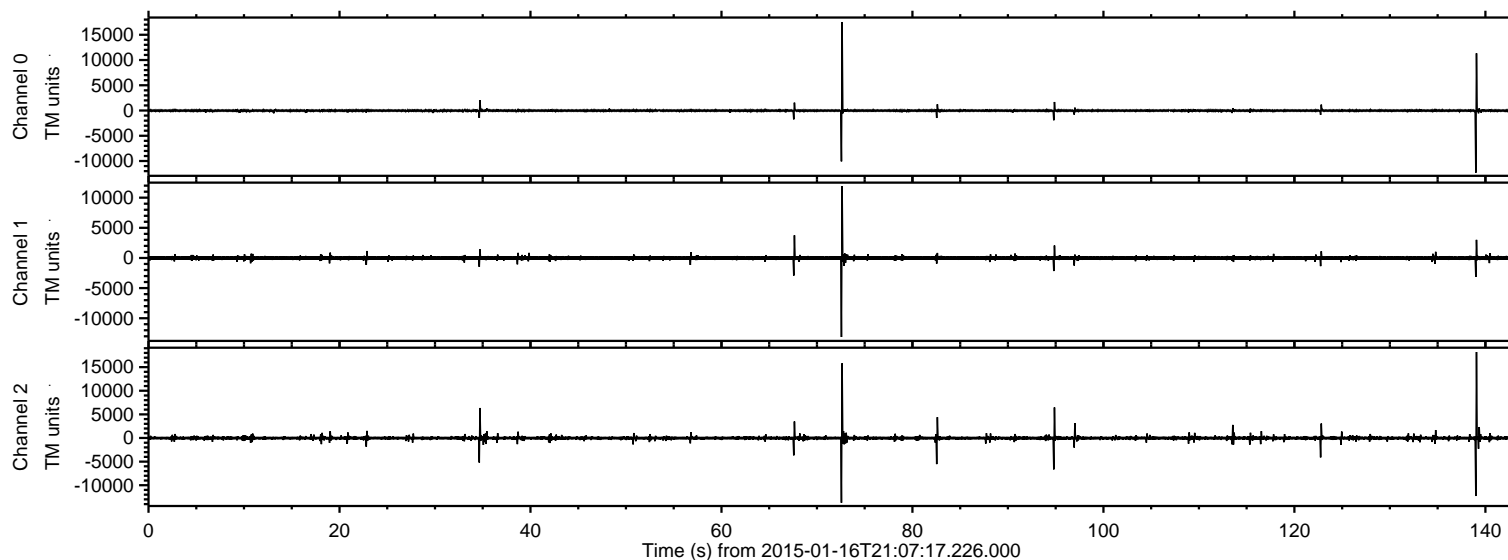


# ELMAVAN 3D WAVEFORMS (Measured data sampled at 50 kHz) 49500 packets of 144 samples from 2015-01-16T21:07:17.226.000.

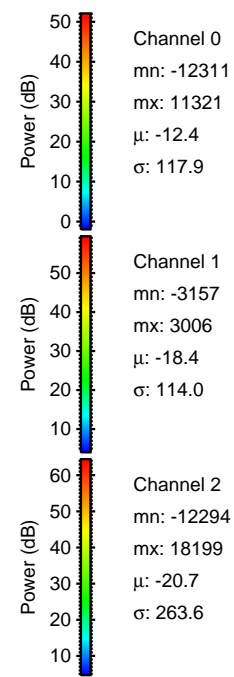
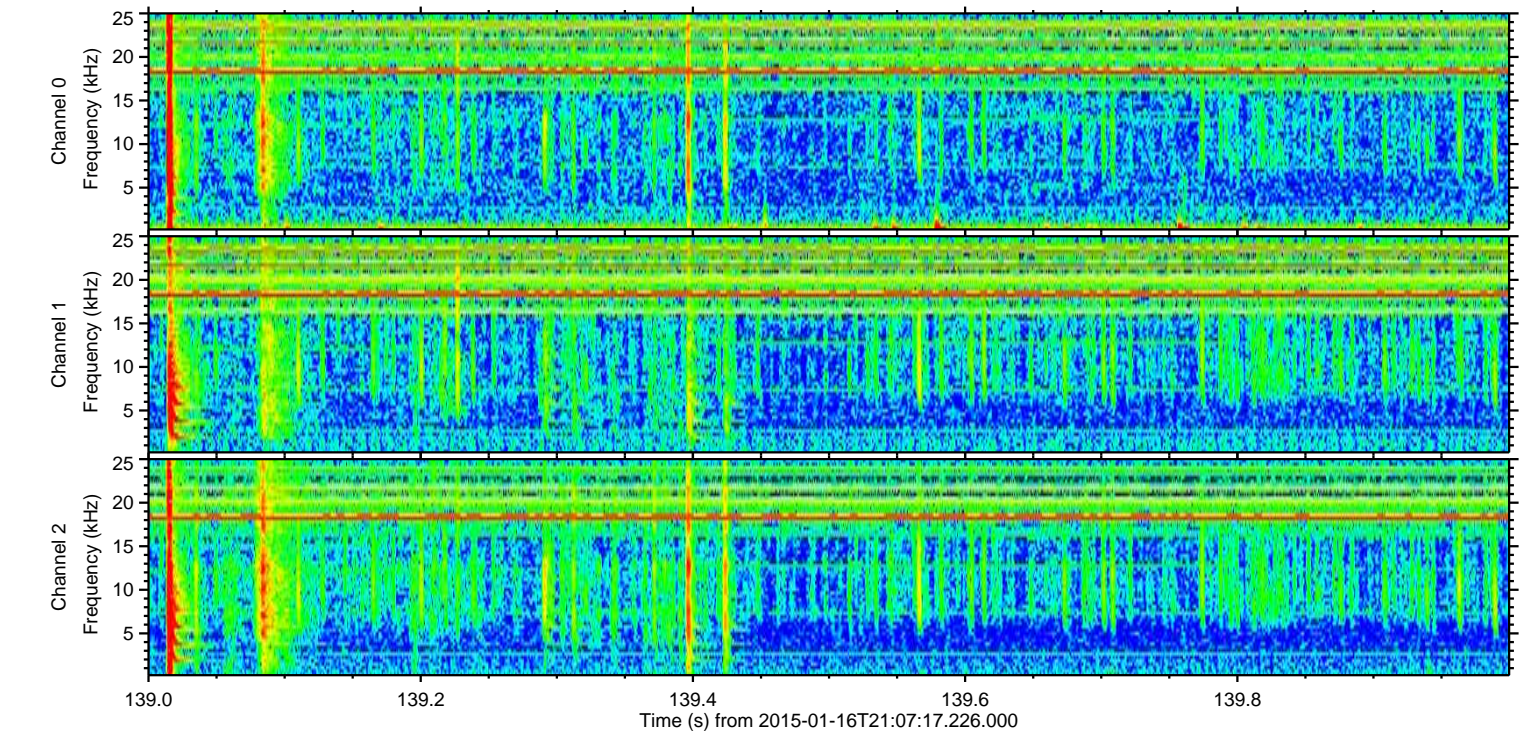
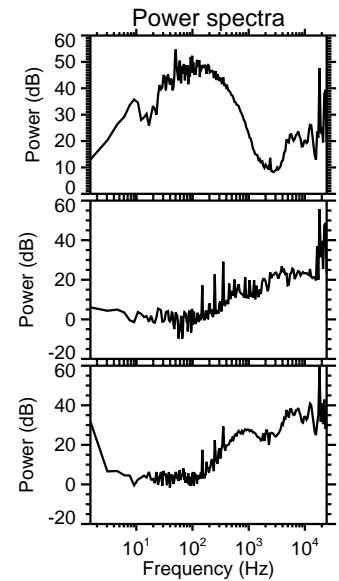
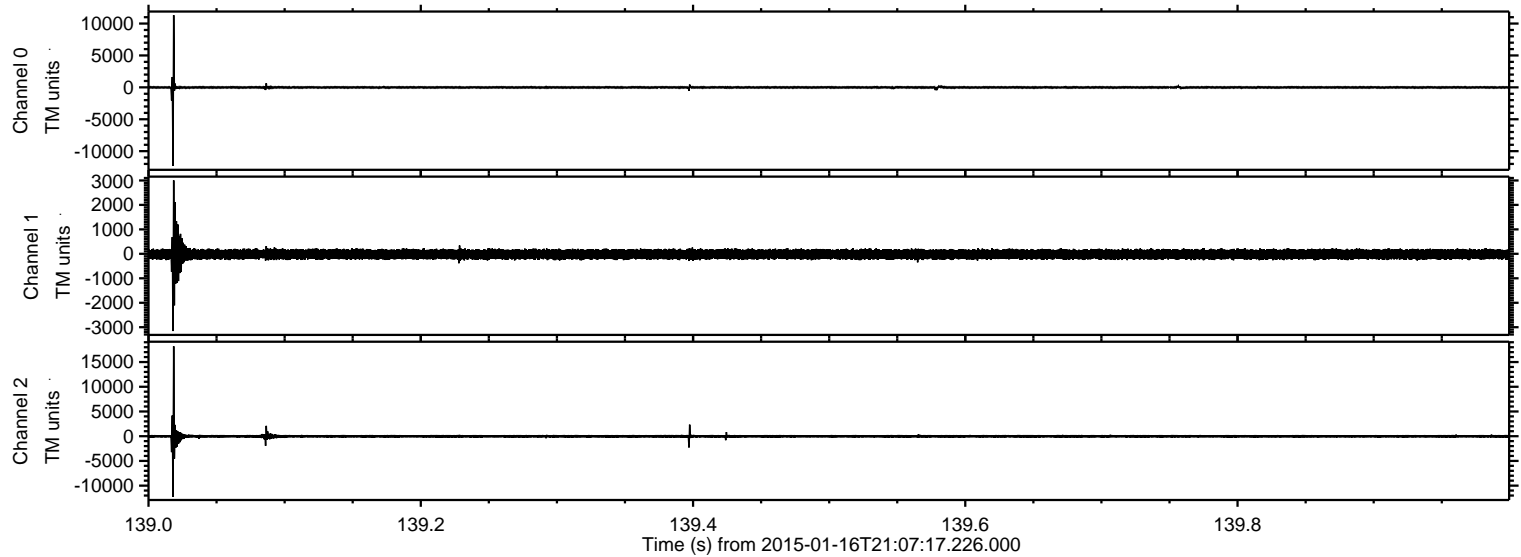
Processed Sun Jan 18 17:56:37 2015 by ELM ver.2012-10-06 from 001\_\_elm20150116\_210716\_\_dat00.bin





ELMAVAN 3D WAVEFORMS (Measured data sampled at 50 kHz) 49500 packets of 144 samples from 2015-01-16T21:07:17.226.000. Part 140/143

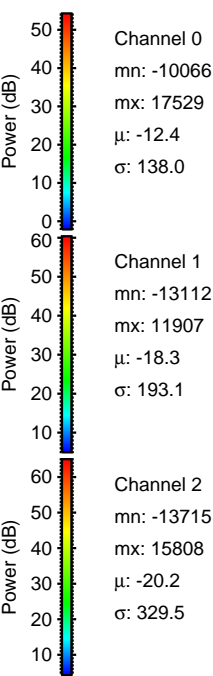
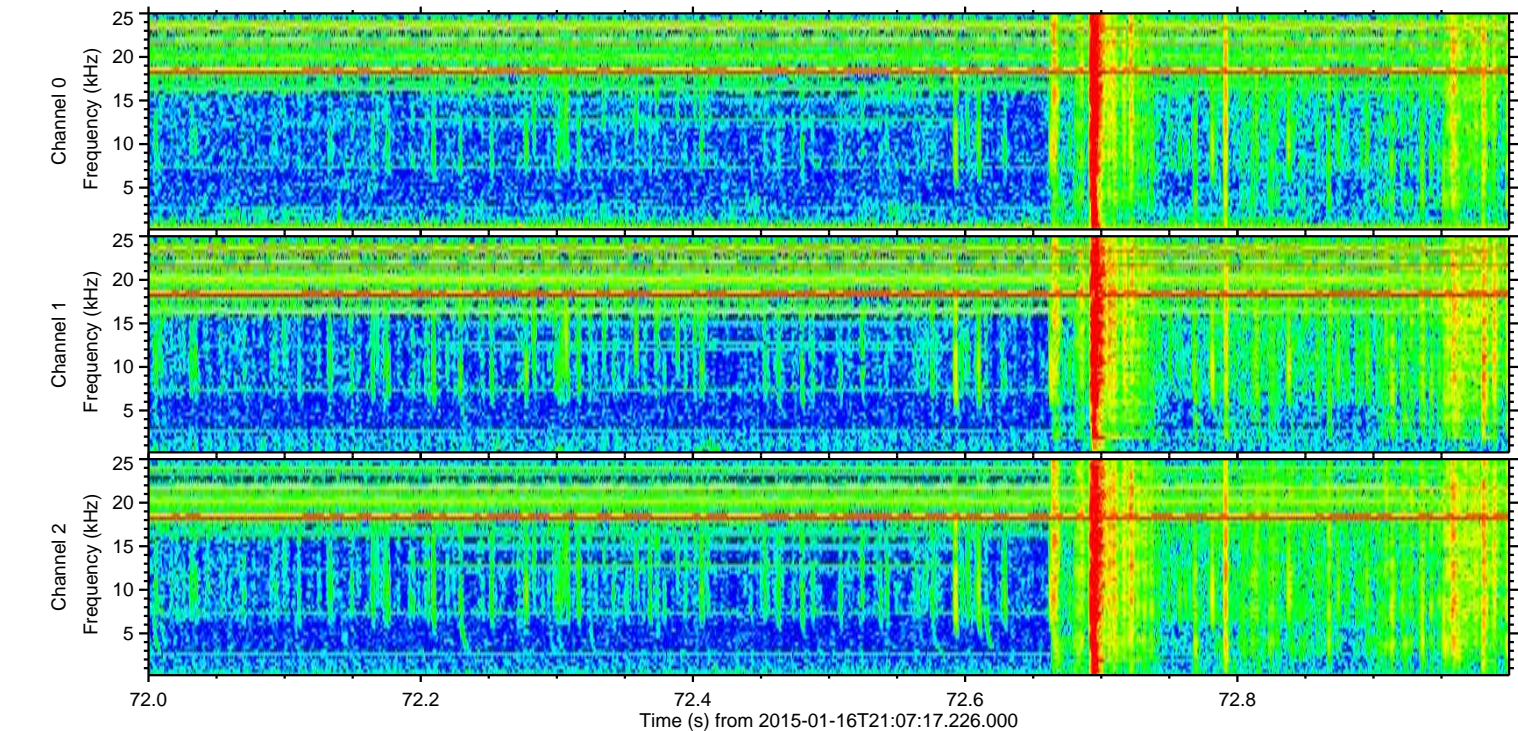
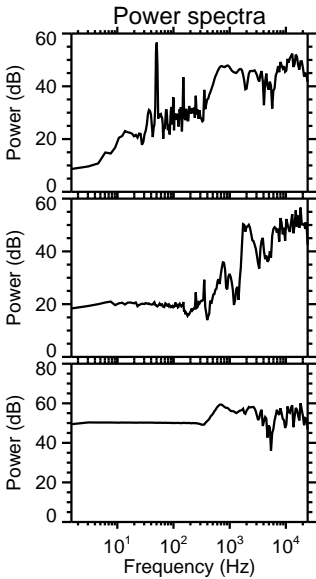
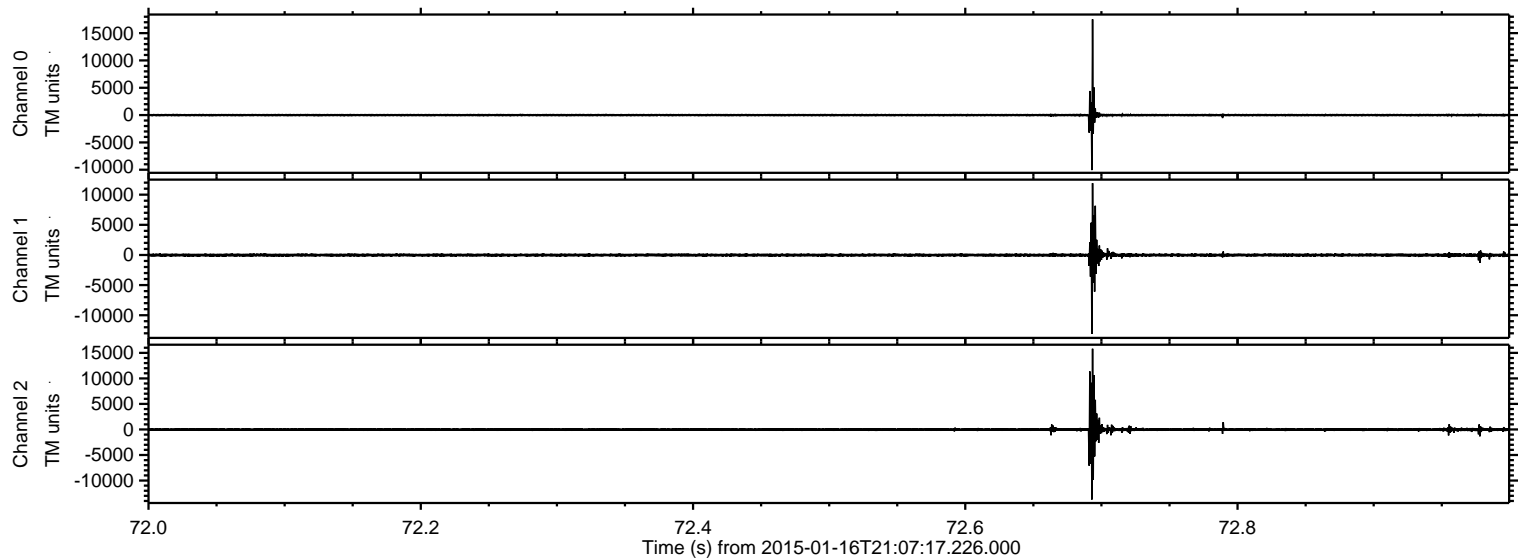
Processed Sun Jan 18 17:56:53 2015 by ELM ver.2012-10-06 from 001\_\_elm20150116\_210716\_\_dat00.bin





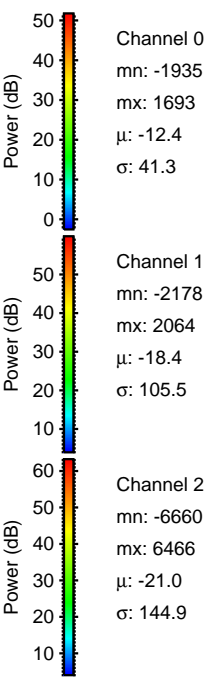
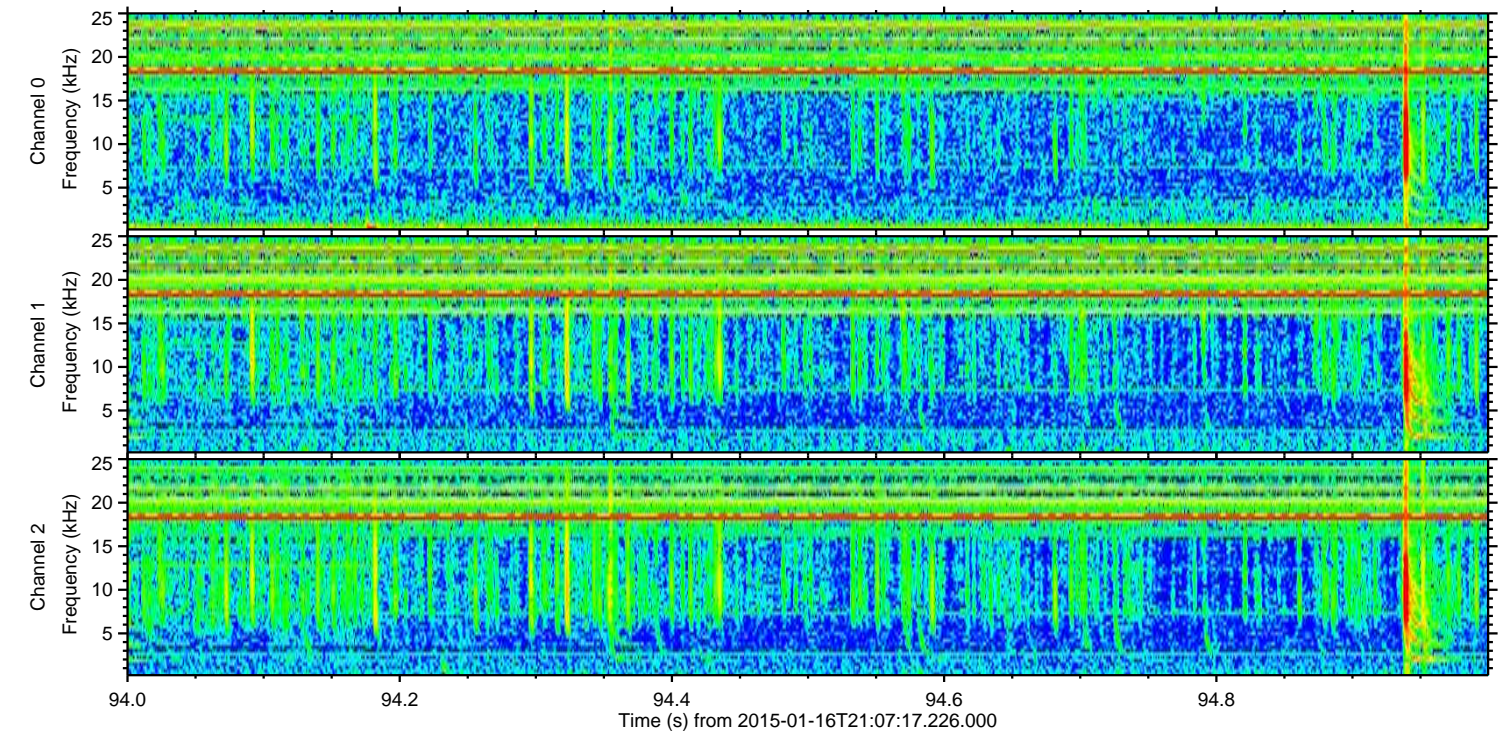
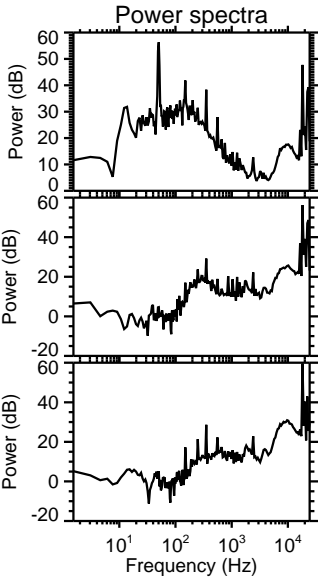
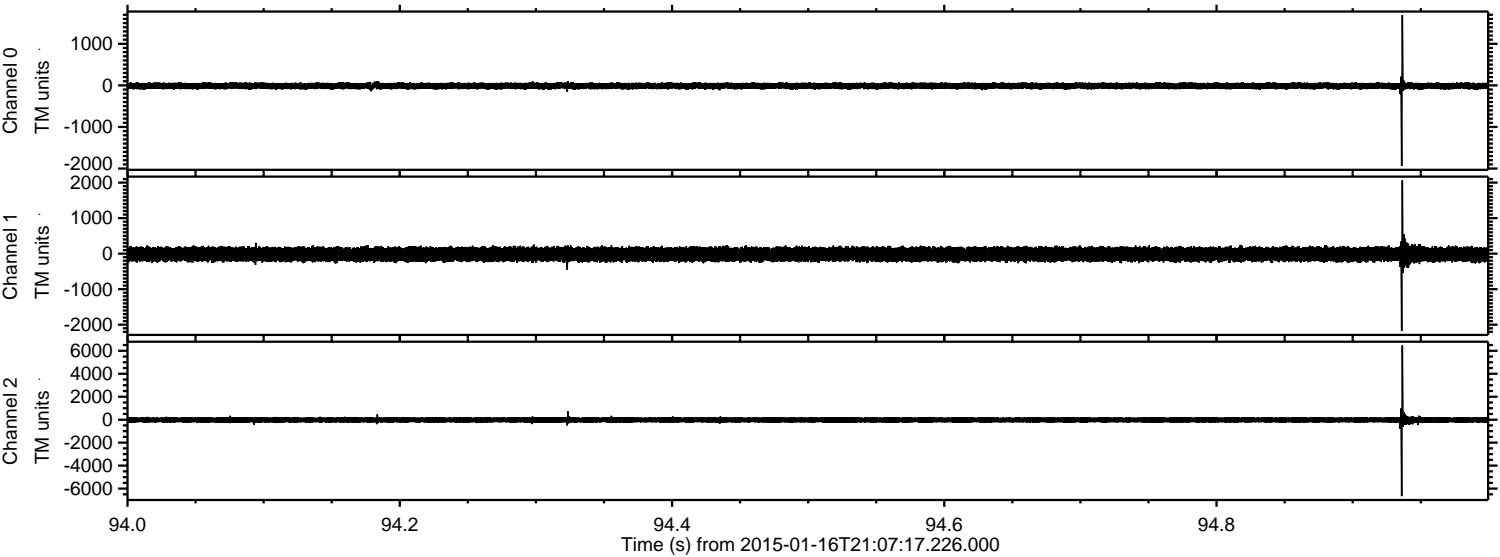
ELMAVAN 3D WAVEFORMS (Measured data sampled at 50 kHz) 49500 packets of 144 samples from 2015-01-16T21:07:17.226.000. Part 73/143

Processed Sun Jan 18 17:56:54 2015 by ELM ver.2012-10-06 from 001\_\_elm20150116\_210716\_\_dat00.bin





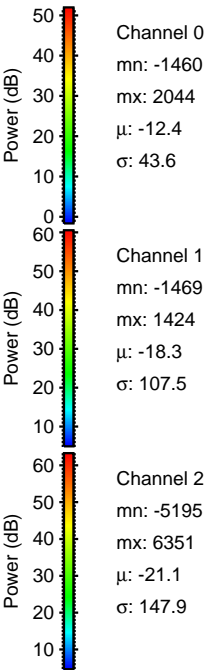
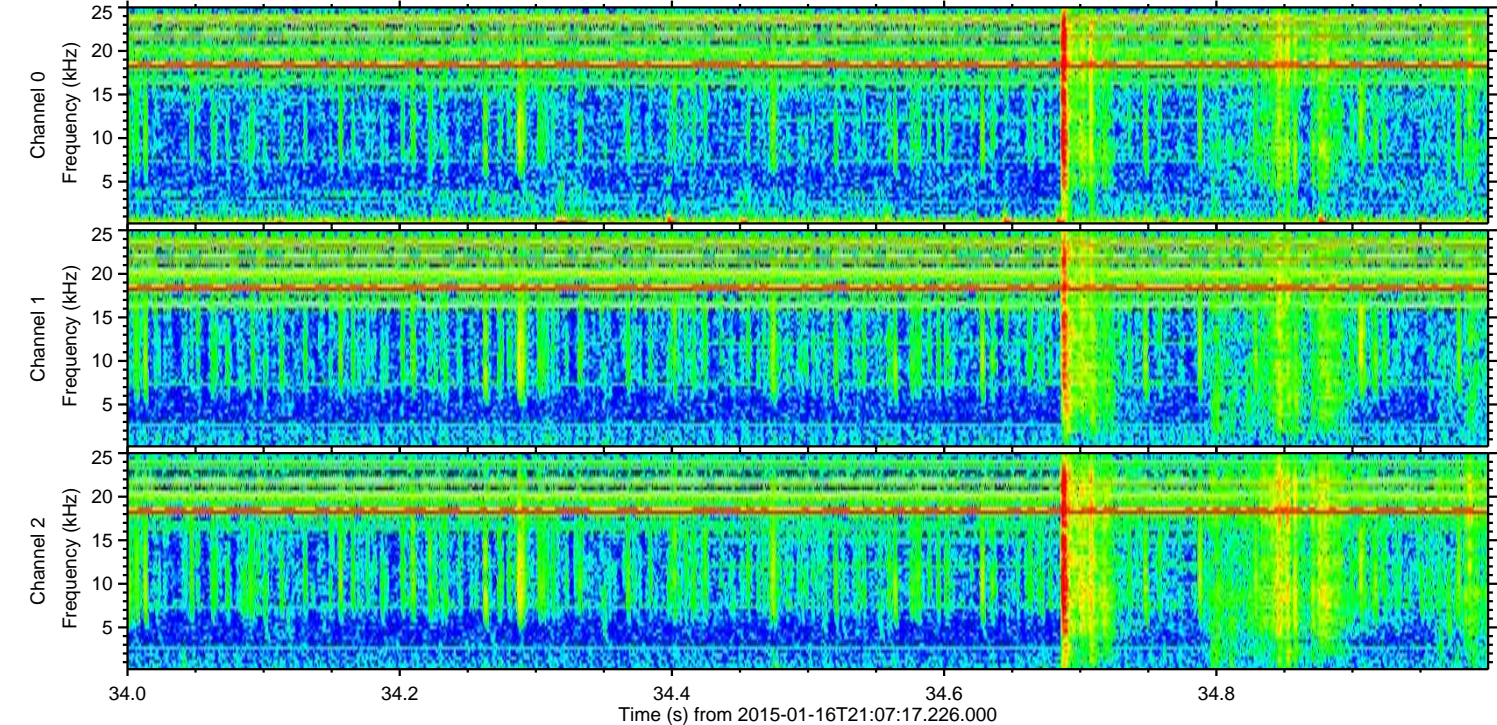
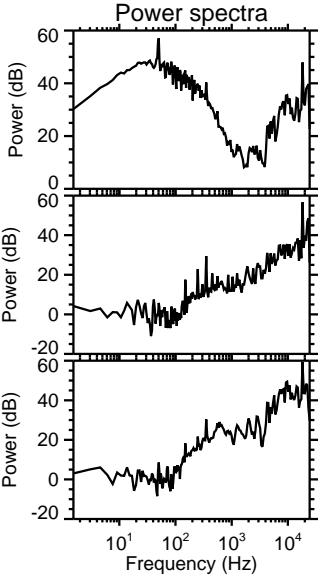
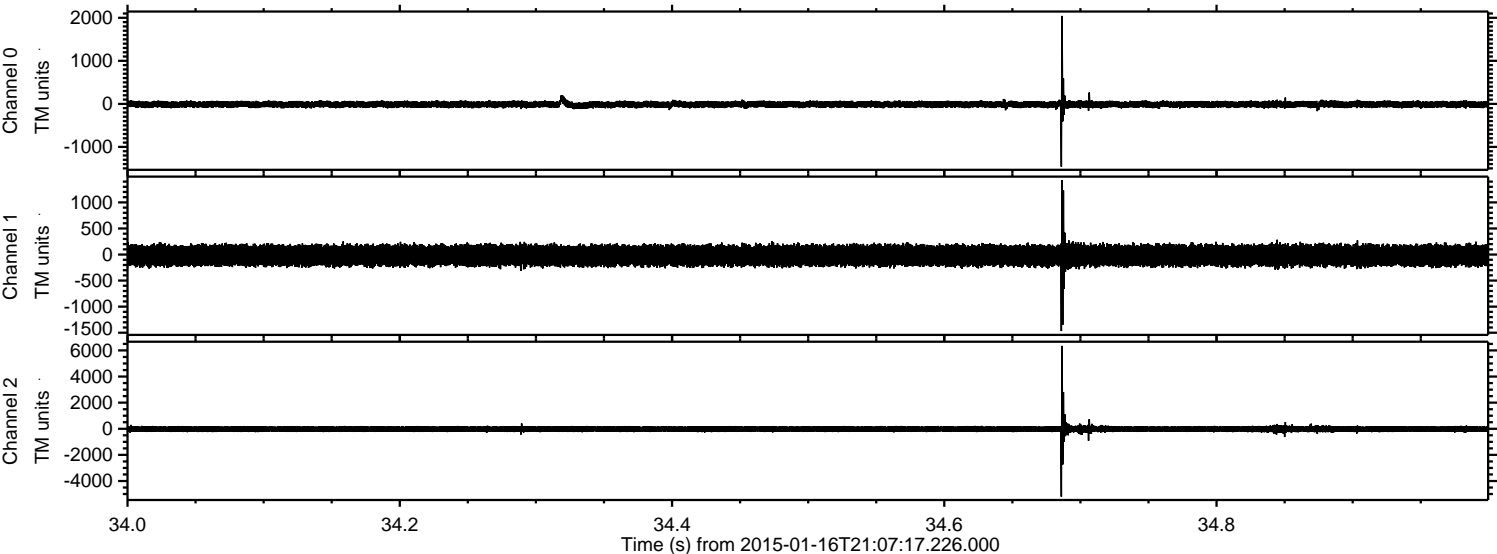
Processed Sun Jan 18 17:56:55 2015 by ELM ver.2012-10-06 from 001\_\_elm20150116\_210716\_\_dat00.bin





ELMAVAN 3D WAVEFORMS (Measured data sampled at 50 kHz) 49500 packets of 144 samples from 2015-01-16T21:07:17.226.000. Part 35/143

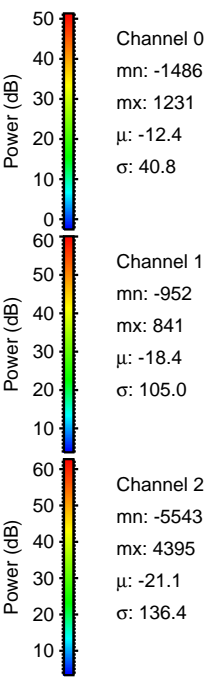
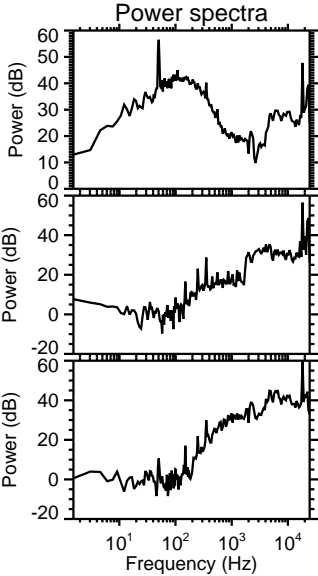
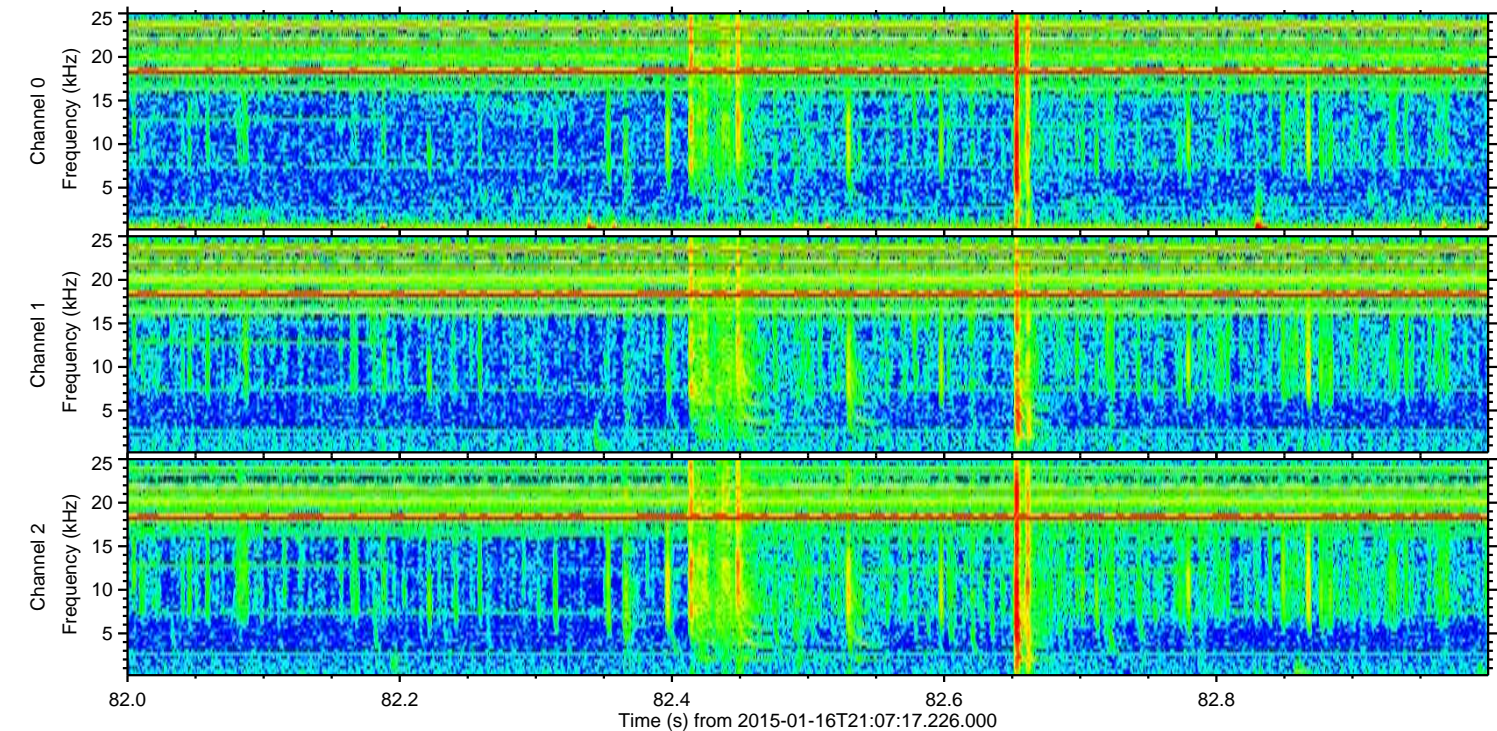
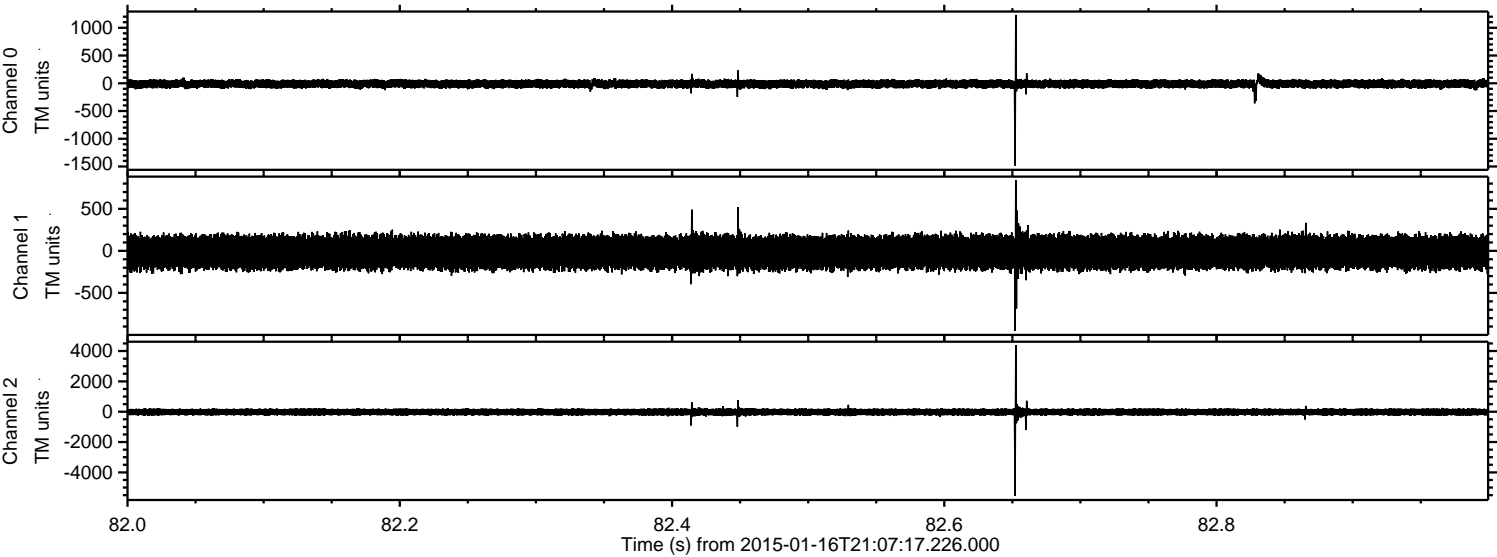
Processed Sun Jan 18 17:56:56 2015 by ELM ver.2012-10-06 from 001\_\_elm20150116\_210716\_\_dat00.bin





ELMAVAN 3D WAVEFORMS (Measured data sampled at 50 kHz) 49500 packets of 144 samples from 2015-01-16T21:07:17.226.000. Part 83/143

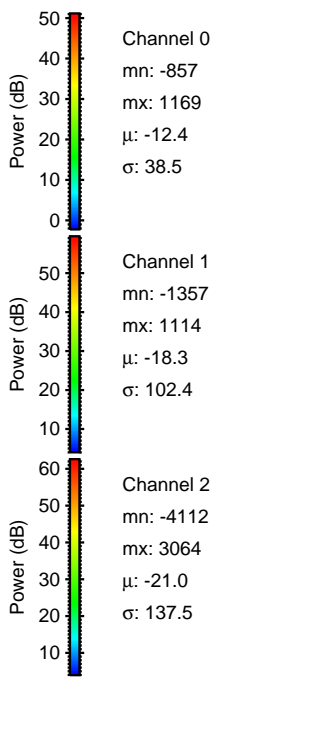
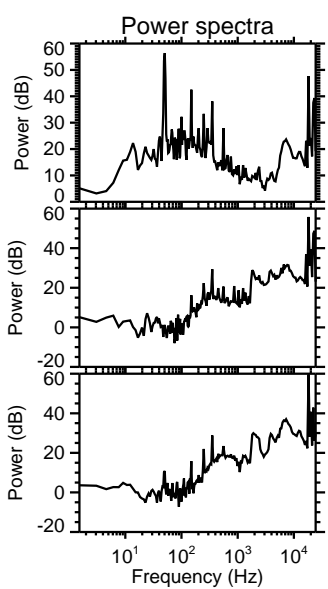
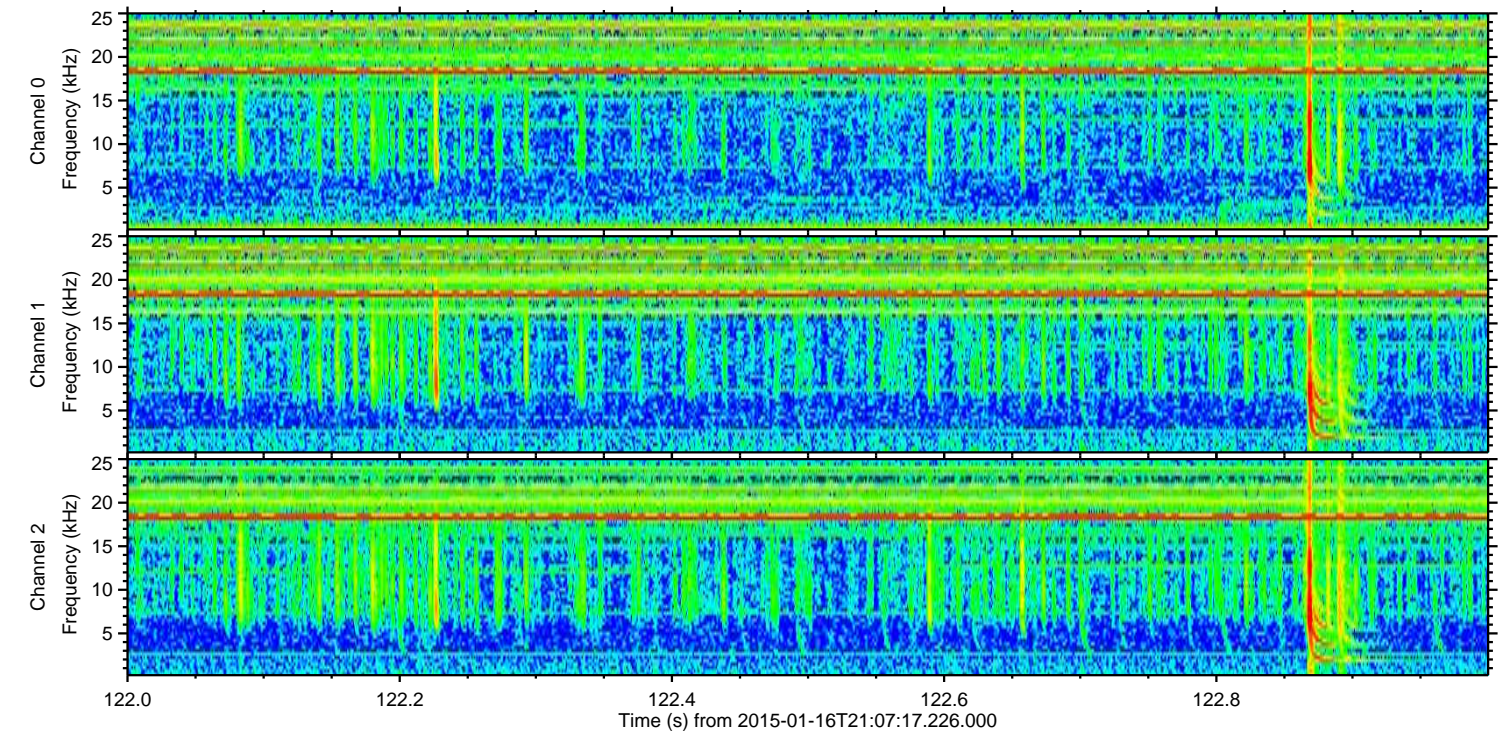
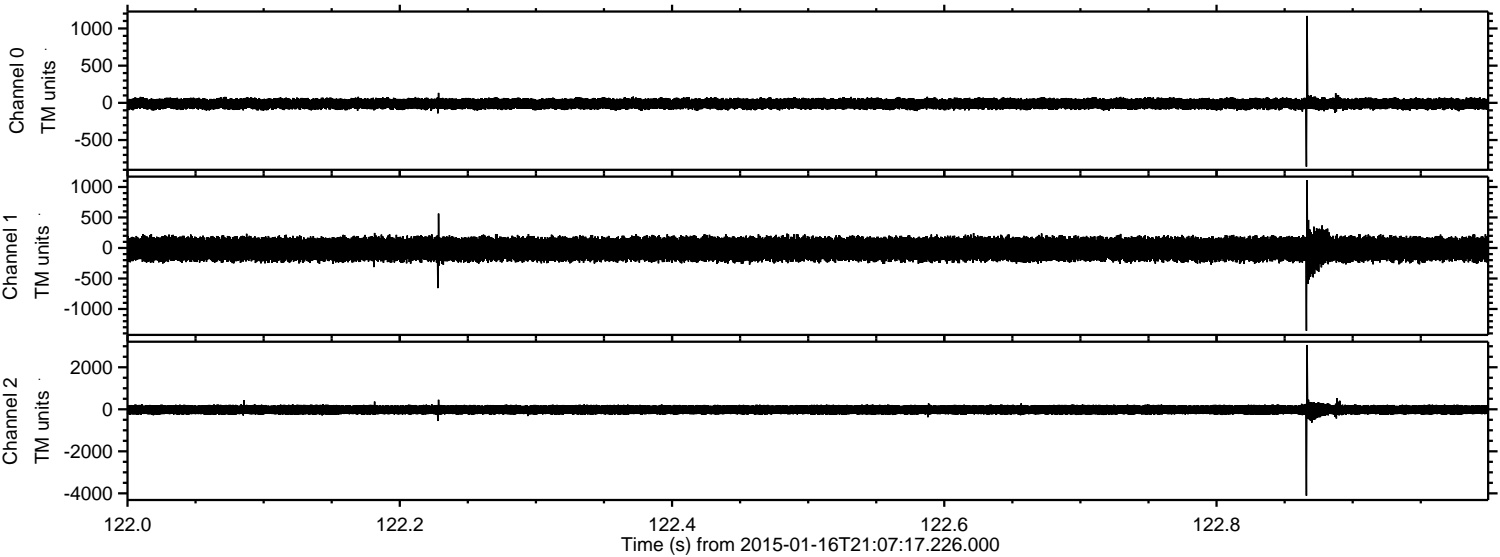
Processed Sun Jan 18 17:56:57 2015 by ELM ver.2012-10-06 from 001\_\_elm20150116\_210716\_\_dat00.bin





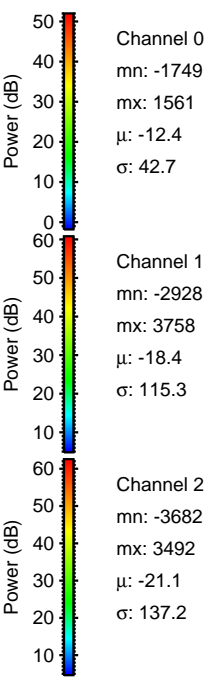
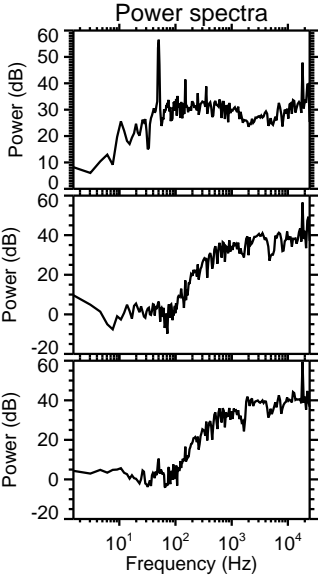
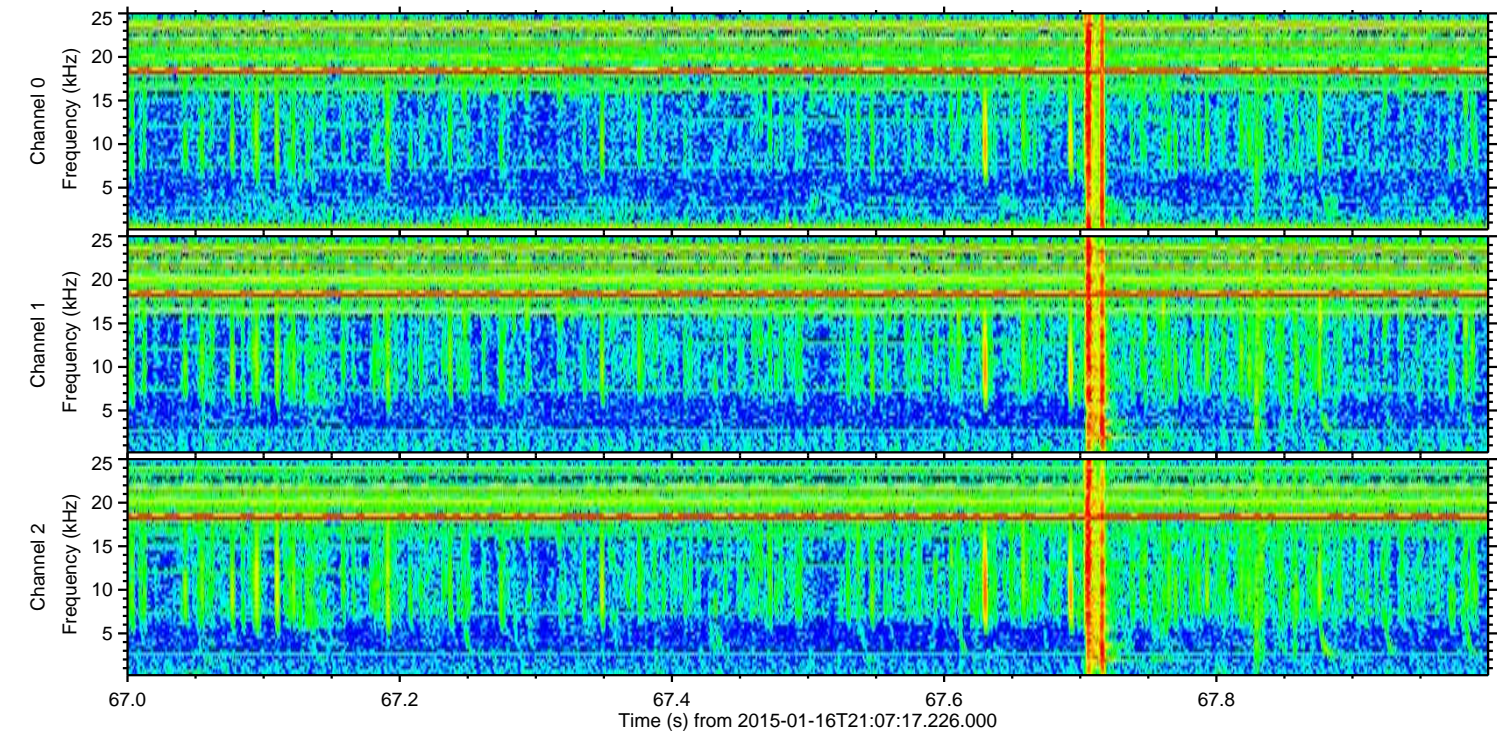
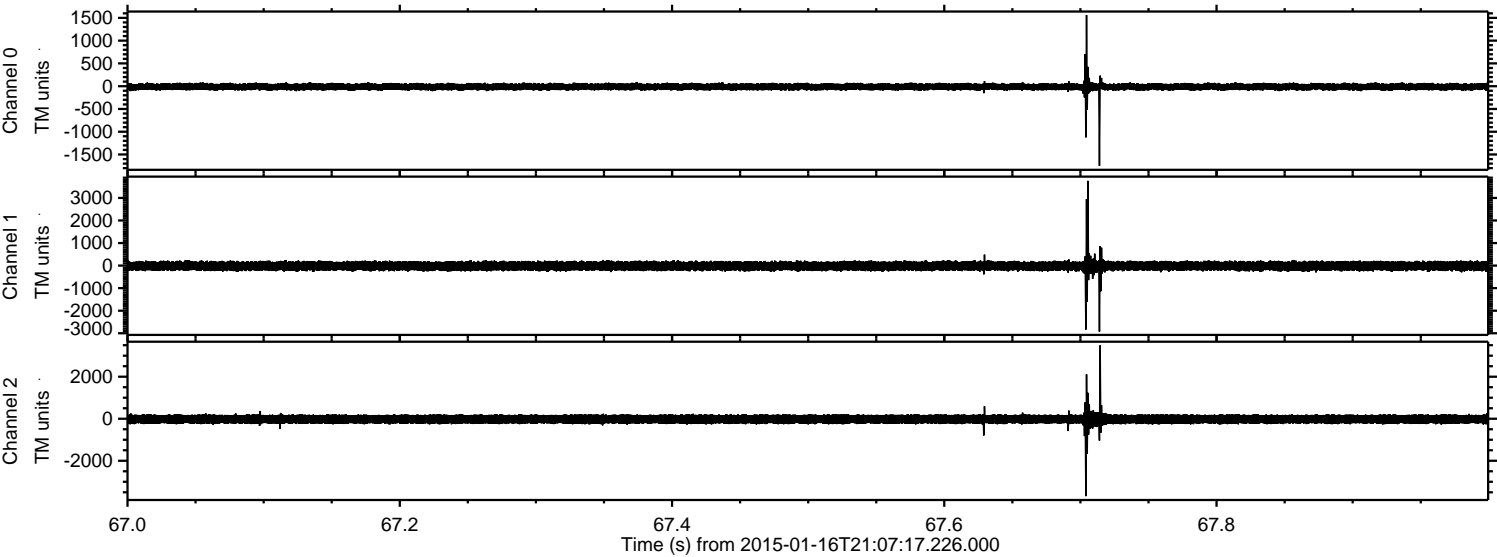
ELMAVAN 3D WAVEFORMS (Measured data sampled at 50 kHz) 49500 packets of 144 samples from 2015-01-16T21:07:17.226.000. Part 123/143

Processed Sun Jan 18 17:56:58 2015 by ELM ver.2012-10-06 from 001\_\_elm20150116\_210716\_\_dat00.bin



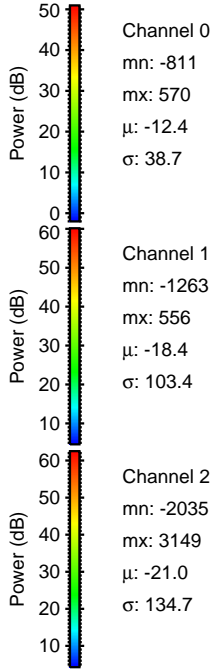
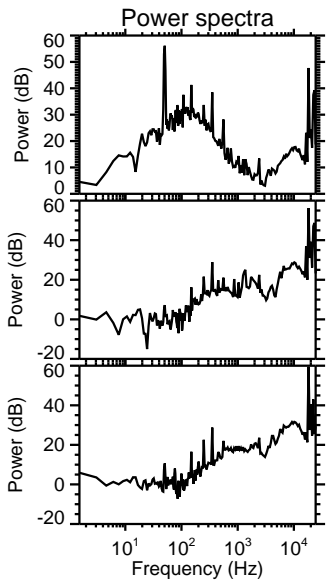
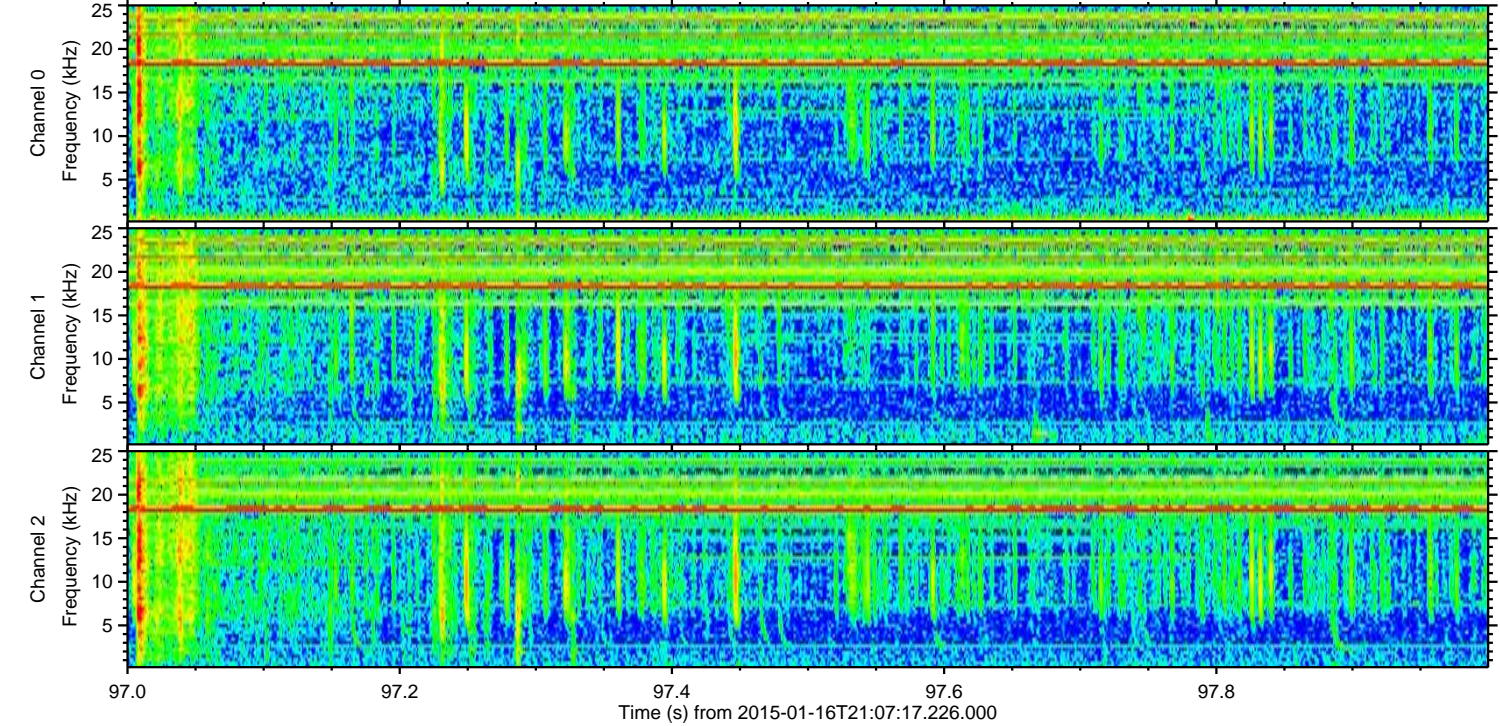
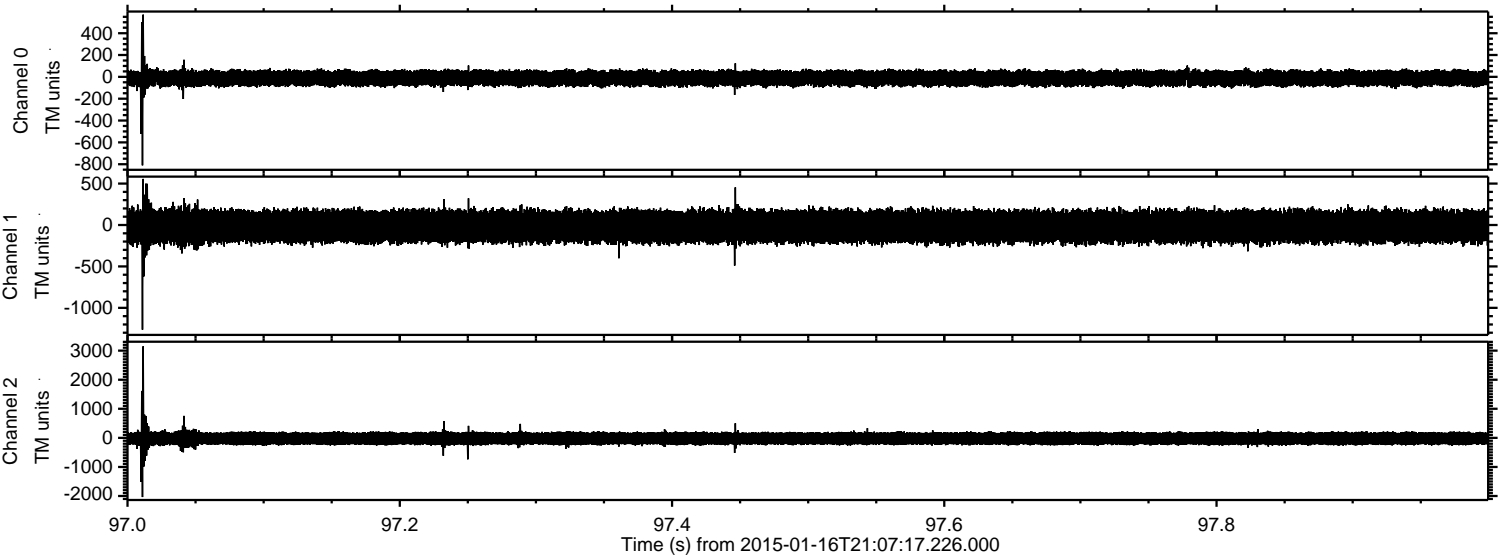


Processed Sun Jan 18 17:56:59 2015 by ELM ver.2012-10-06 from 001\_\_elm20150116\_210716\_\_dat00.bin





Processed Sun Jan 18 17:57:00 2015 by ELM ver.2012-10-06 from 001\_\_elm20150116\_210716\_\_dat00.bin



Channel 0  
mn: -811  
mx: 570  
 $\mu$ : -12.4  
 $\sigma$ : 38.7

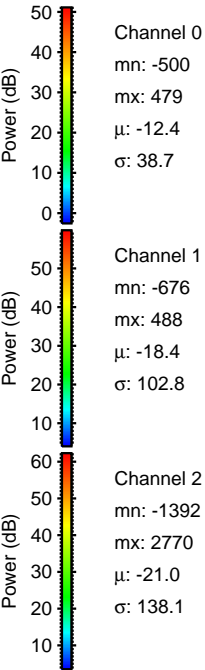
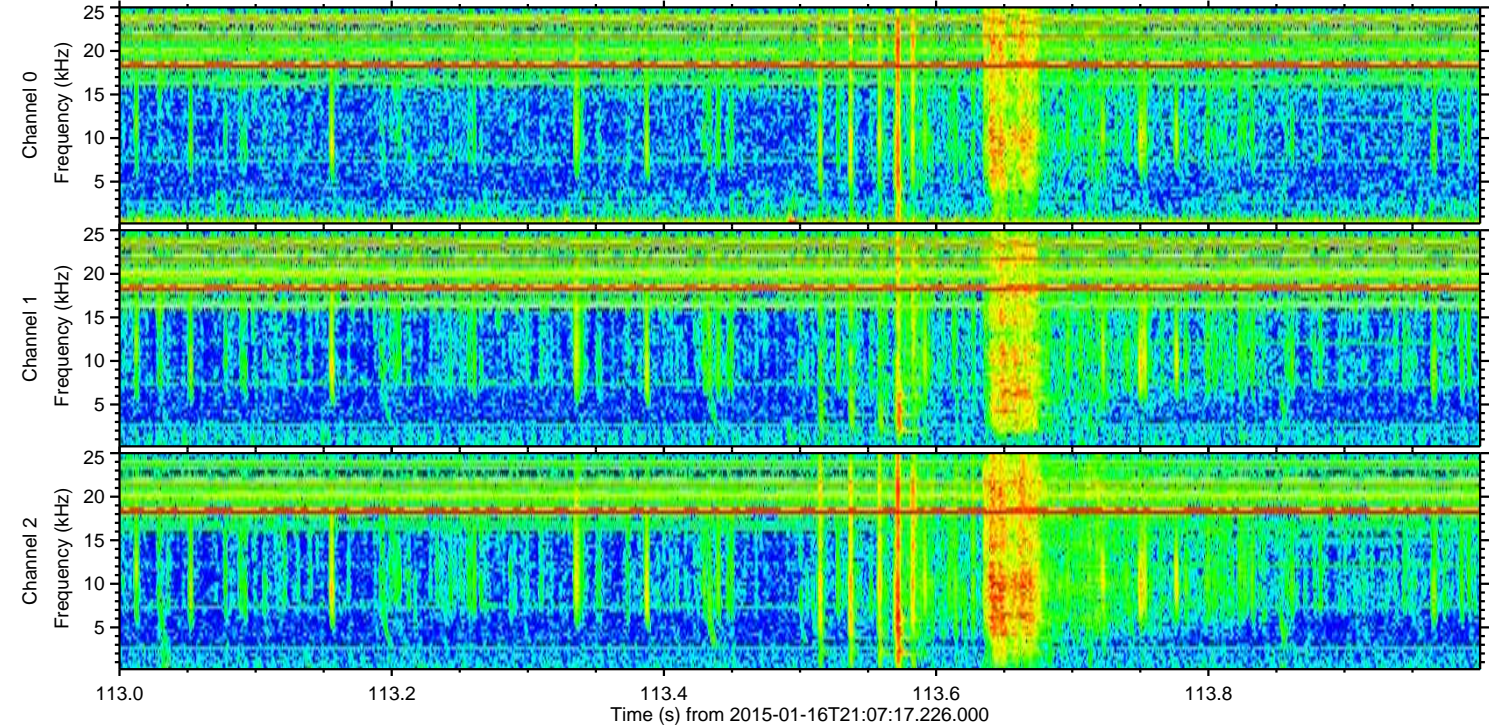
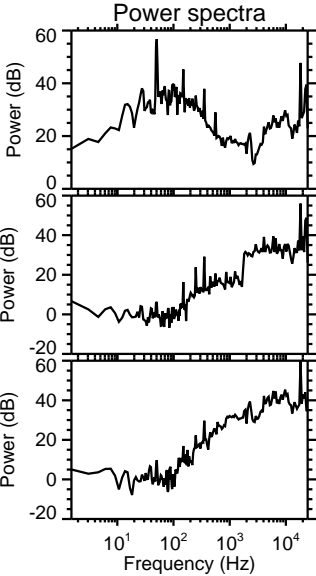
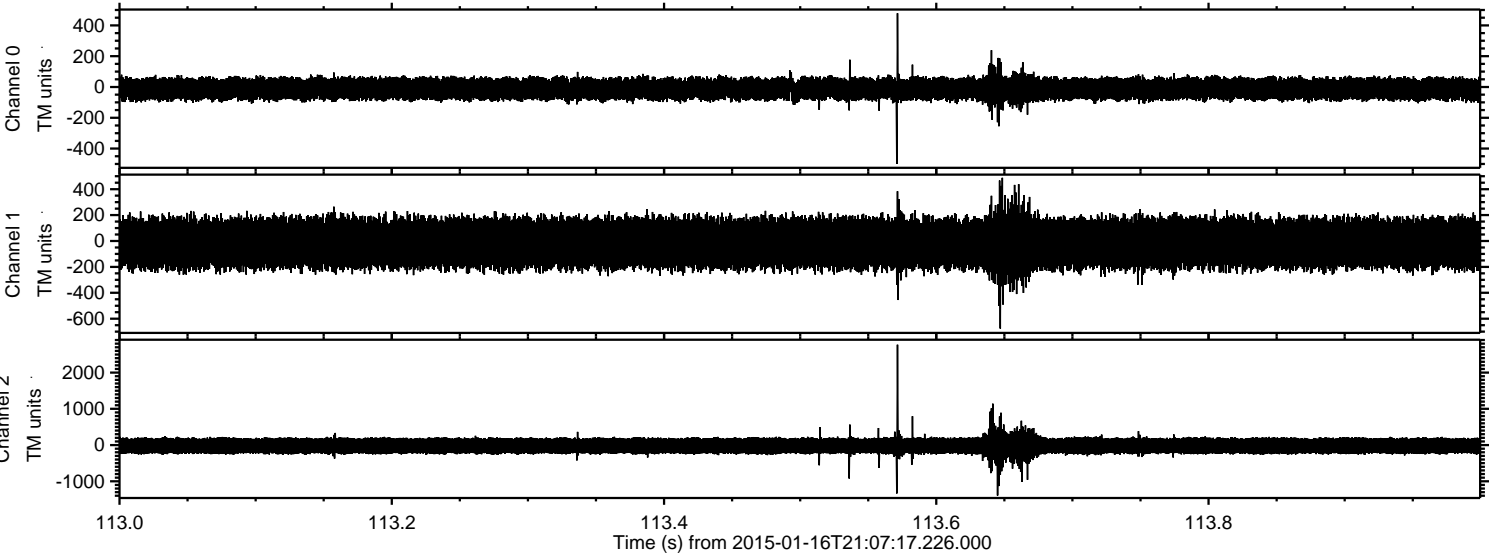
Channel 1  
mn: -1263  
mx: 556  
 $\mu$ : -18.4  
 $\sigma$ : 103.4

Channel 2  
mn: -2035  
mx: 3149  
 $\mu$ : -21.0  
 $\sigma$ : 134.7



ELMAVAN 3D WAVEFORMS (Measured data sampled at 50 kHz) 49500 packets of 144 samples from 2015-01-16T21:07:17.226.000. Part 114/143

Processed Sun Jan 18 17:57:01 2015 by ELM ver.2012-10-06 from 001\_\_elm20150116\_210716\_\_dat00.bin





ELMAVAN 3D WAVEFORMS (Measured data sampled at 50 kHz) 49500 packets of 144 samples from 2015-01-16T21:07:17.226.000. Part 82/143

Processed Sun Jan 18 17:57:02 2015 by ELM ver.2012-10-06 from 001\_\_elm20150116\_210716\_\_dat00.bin

