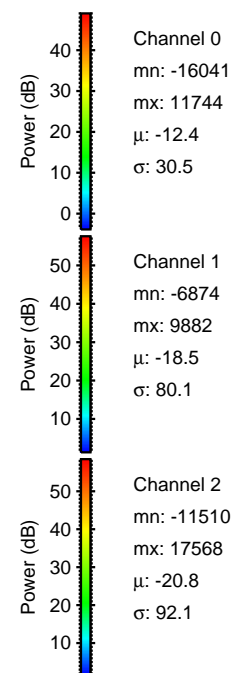
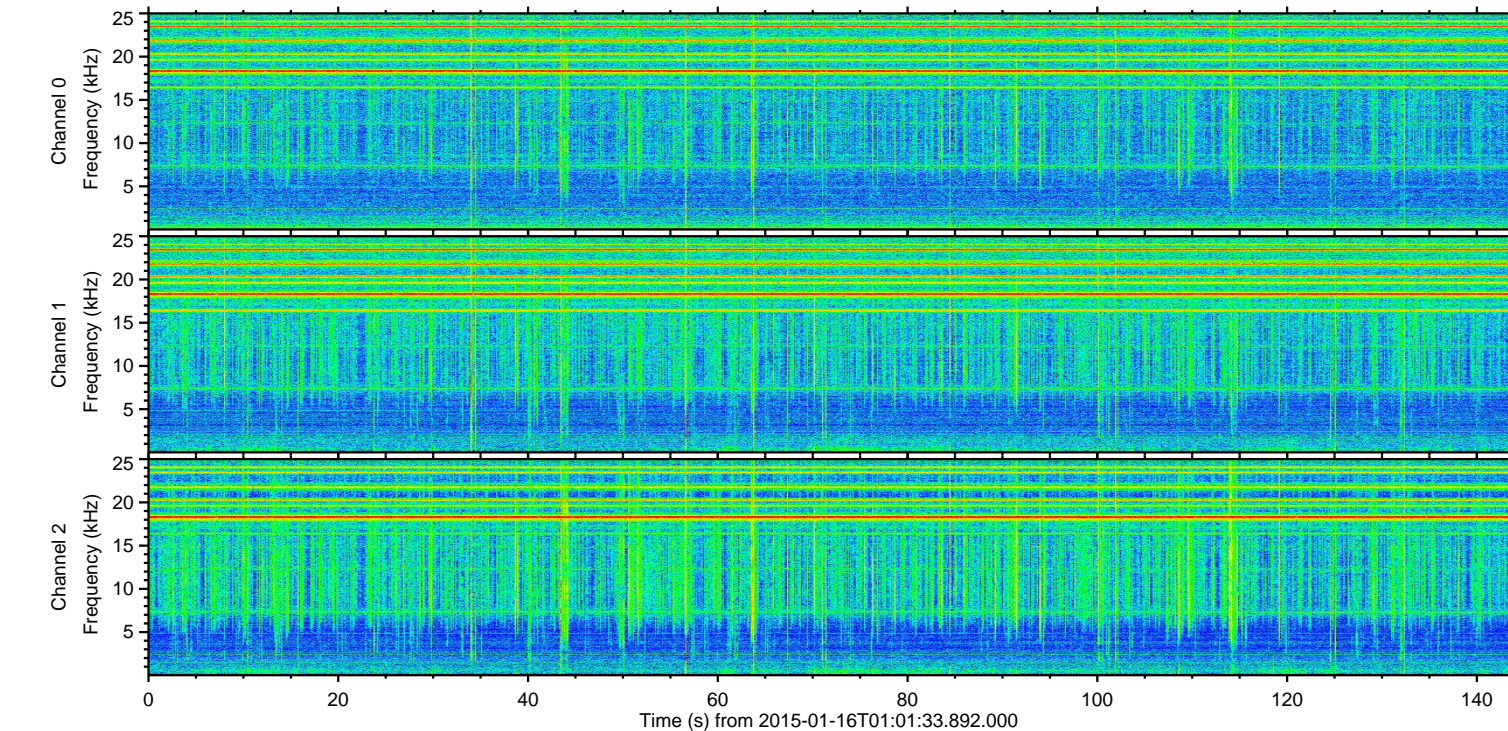
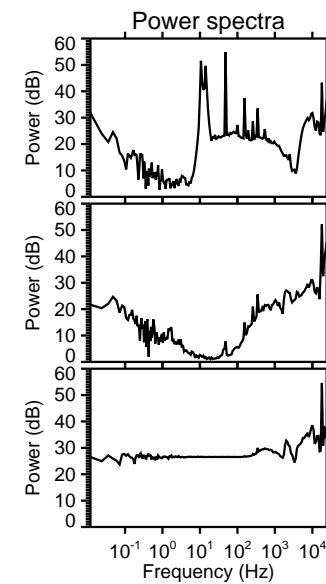
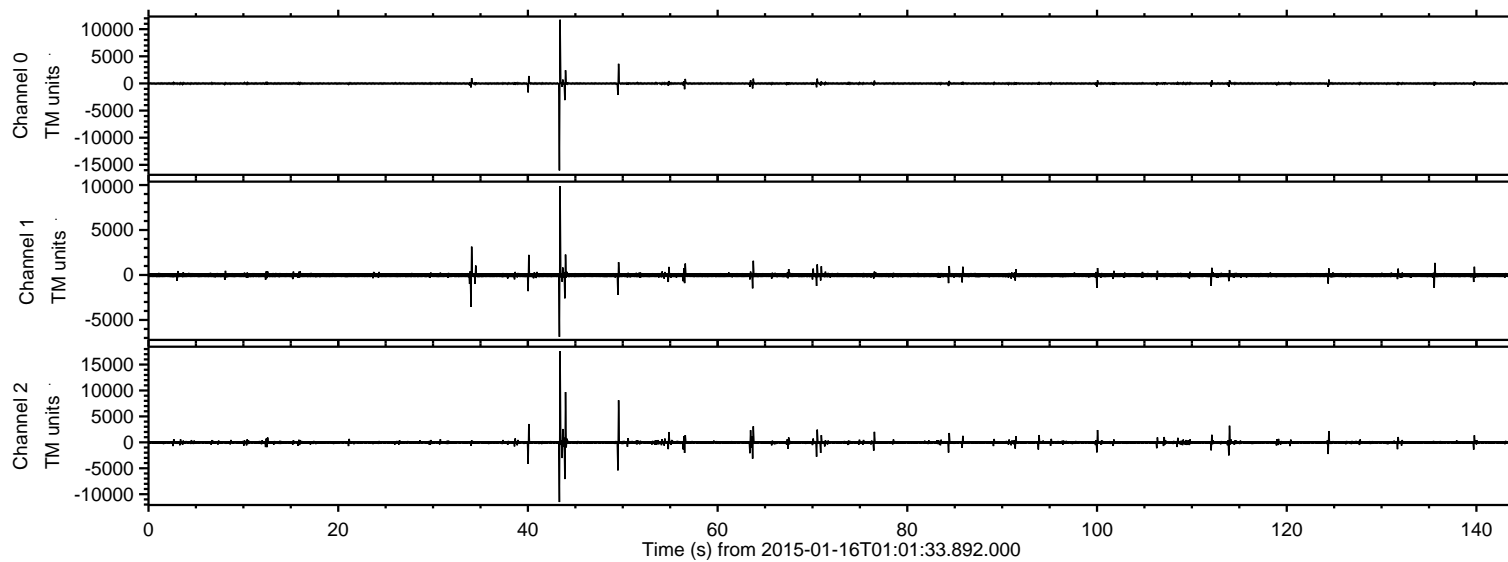


# ELMAVAN 3D WAVEFORMS (Measured data sampled at 50 kHz) 49809 packets of 144 samples from 2015-01-16T01:01:33.892.000.

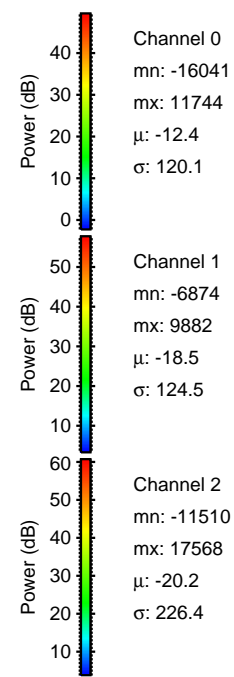
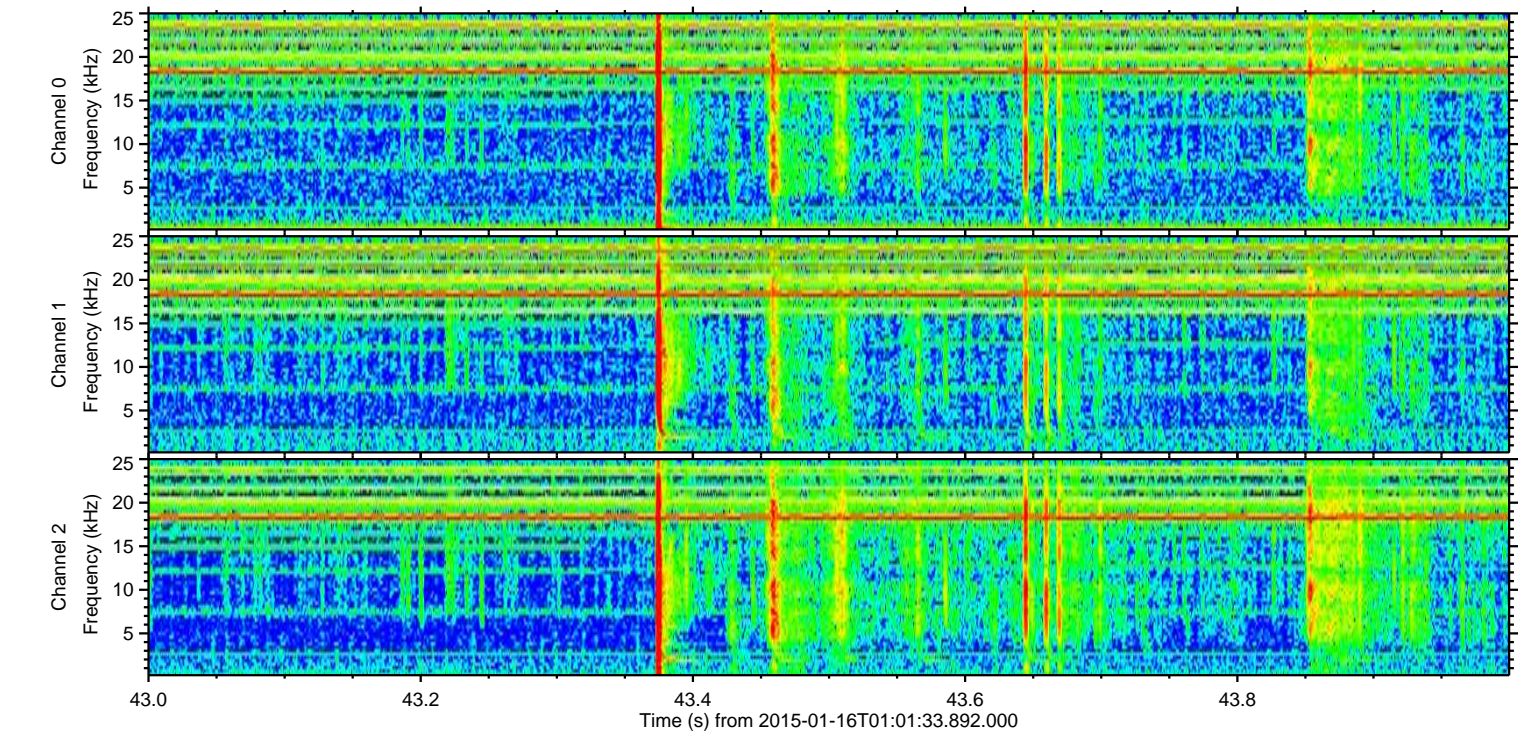
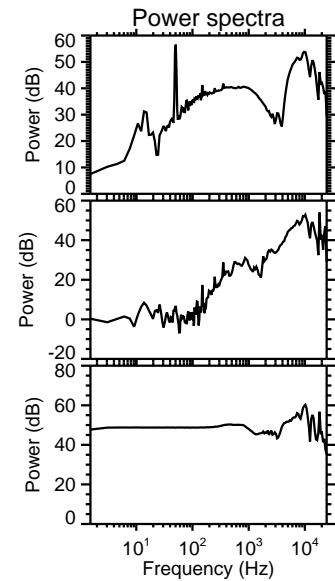
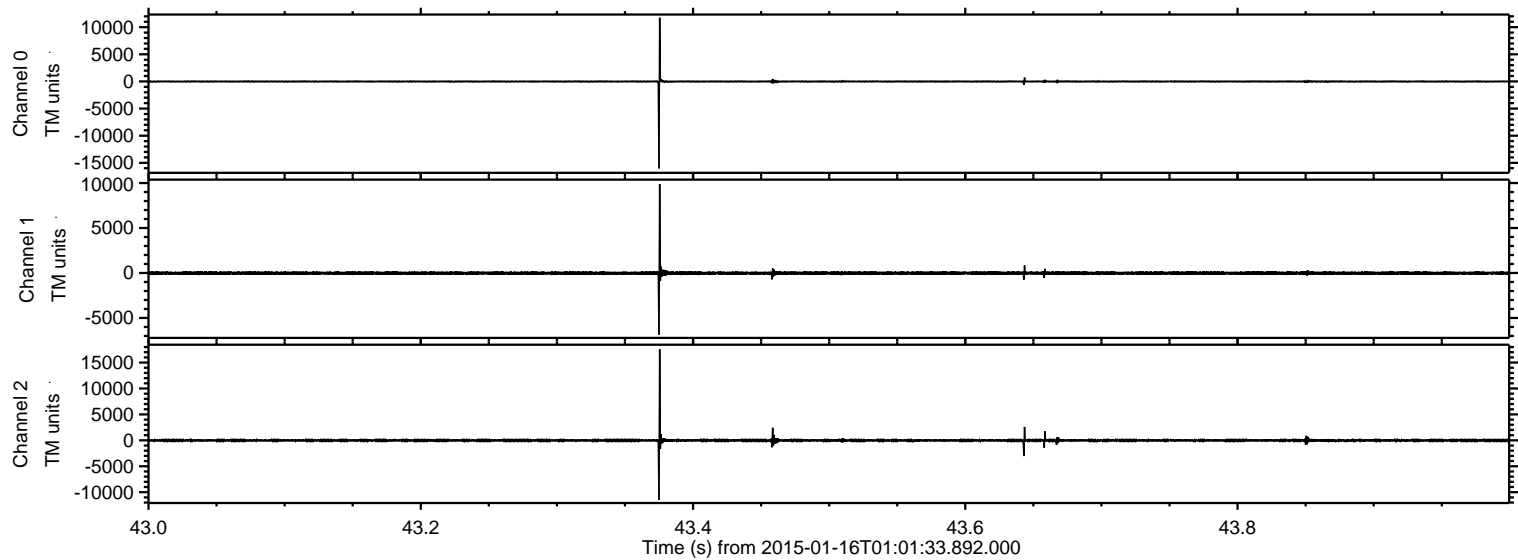
Processed Fri Jan 16 14:17:11 2015 by ELM ver.2012-10-06 from 001\_\_elm20150116\_010132\_\_dat00.bin





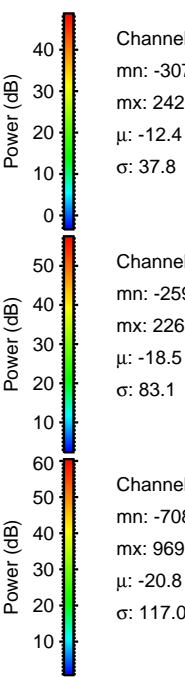
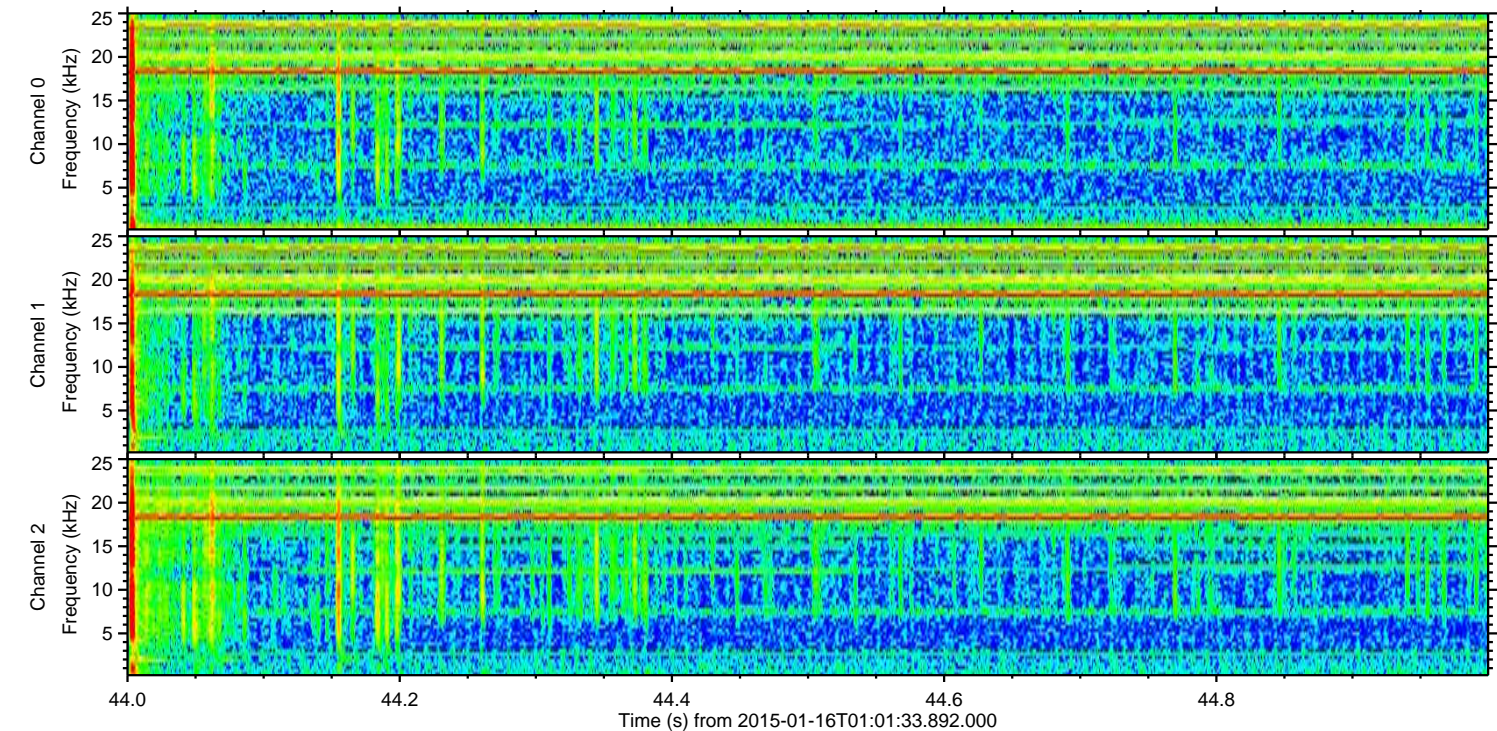
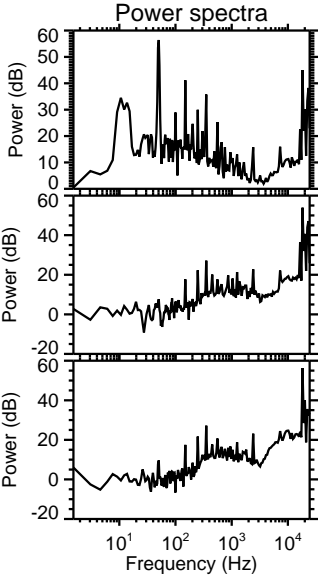
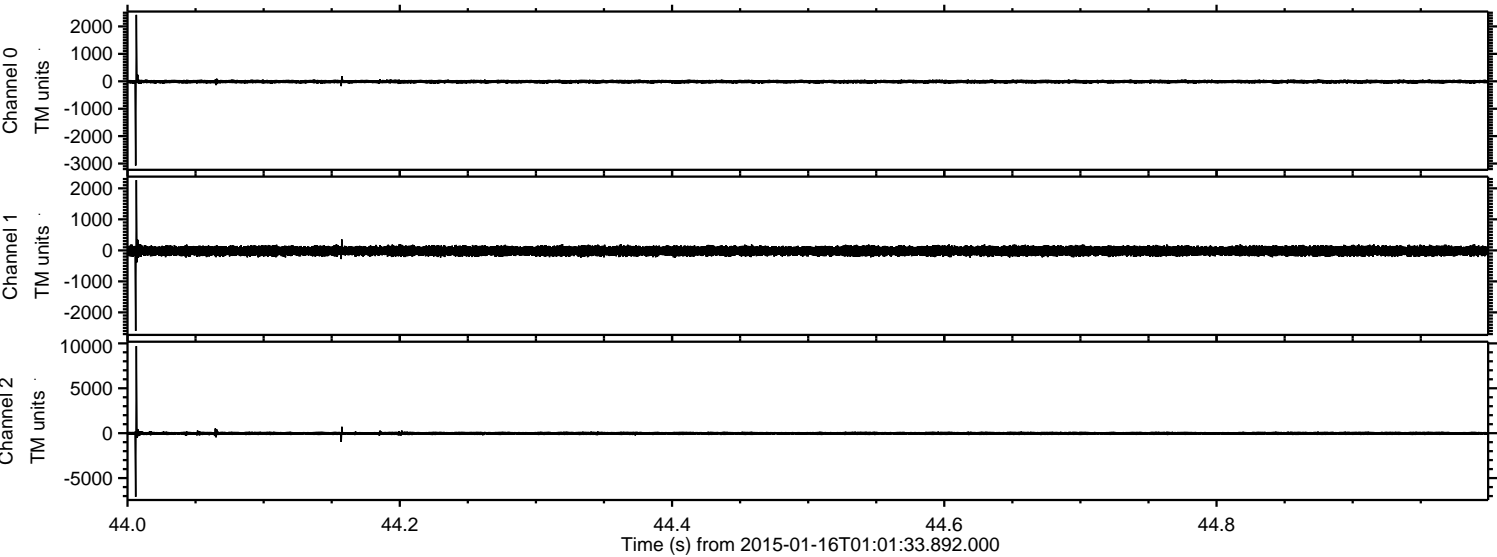
ELMAVAN 3D WAVEFORMS (Measured data sampled at 50 kHz) 49809 packets of 144 samples from 2015-01-16T01:01:33.892.000. Part 44/144

Processed Fri Jan 16 14:17:23 2015 by ELM ver.2012-10-06 from 001\_\_elm20150116\_010132\_\_dat00.bin





Processed Fri Jan 16 14:17:24 2015 by ELM ver.2012-10-06 from 001\_\_elm20150116\_010132\_\_dat00.bin



Channel 0  
mn: -3075  
mx: 2423  
 $\mu$ : -12.4  
 $\sigma$ : 37.8

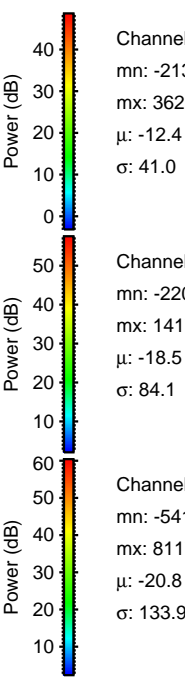
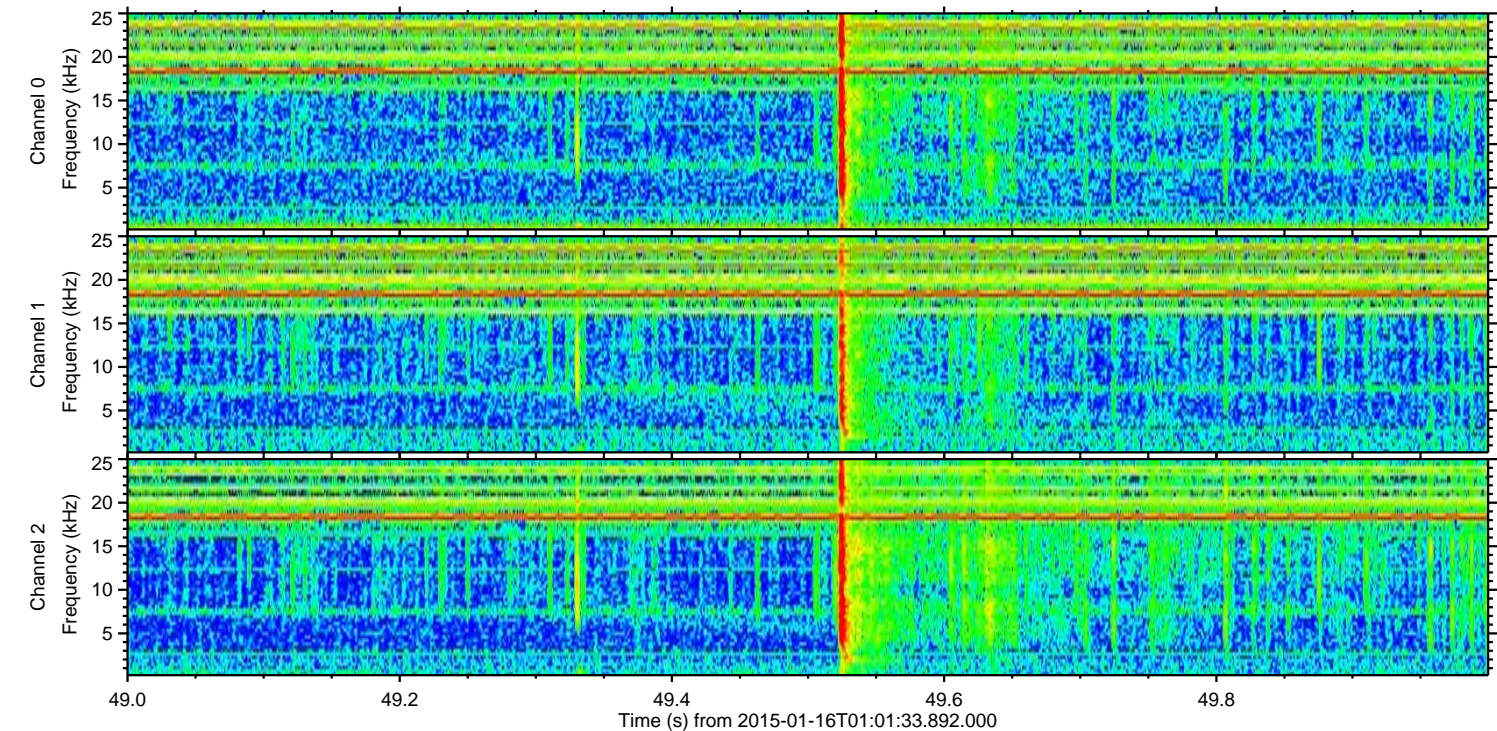
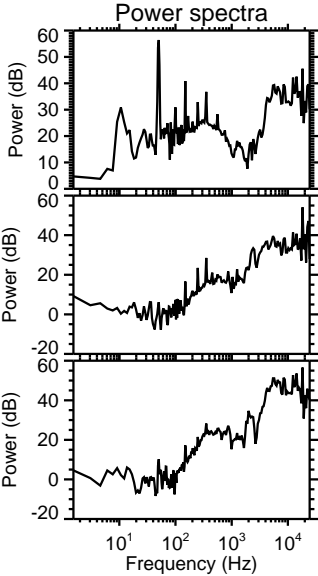
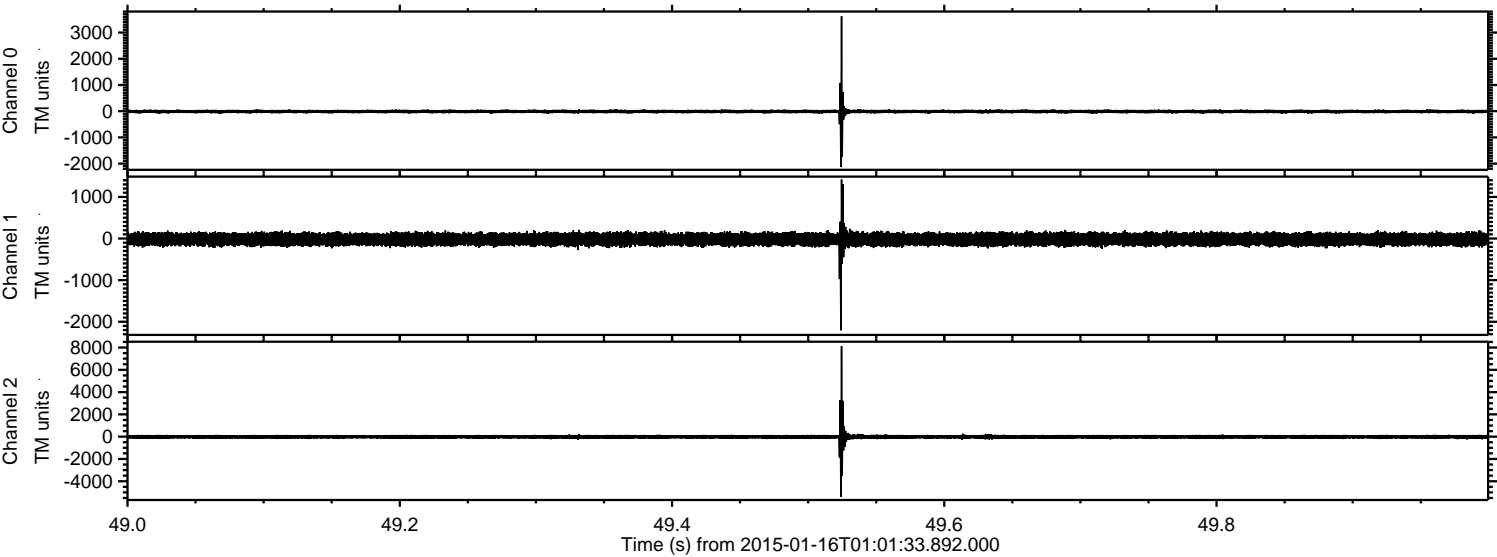
Channel 1  
mn: -2596  
mx: 2265  
 $\mu$ : -18.5  
 $\sigma$ : 83.1

Channel 2  
mn: -7085  
mx: 9697  
 $\mu$ : -20.8  
 $\sigma$ : 117.0



ELMAVAN 3D WAVEFORMS (Measured data sampled at 50 kHz) 49809 packets of 144 samples from 2015-01-16T01:01:33.892.000. Part 50/144

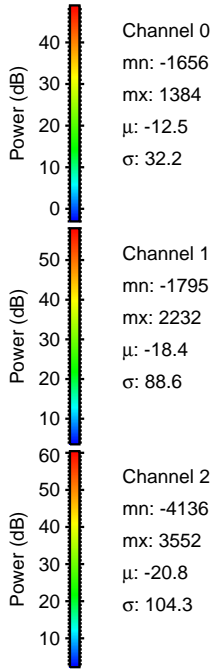
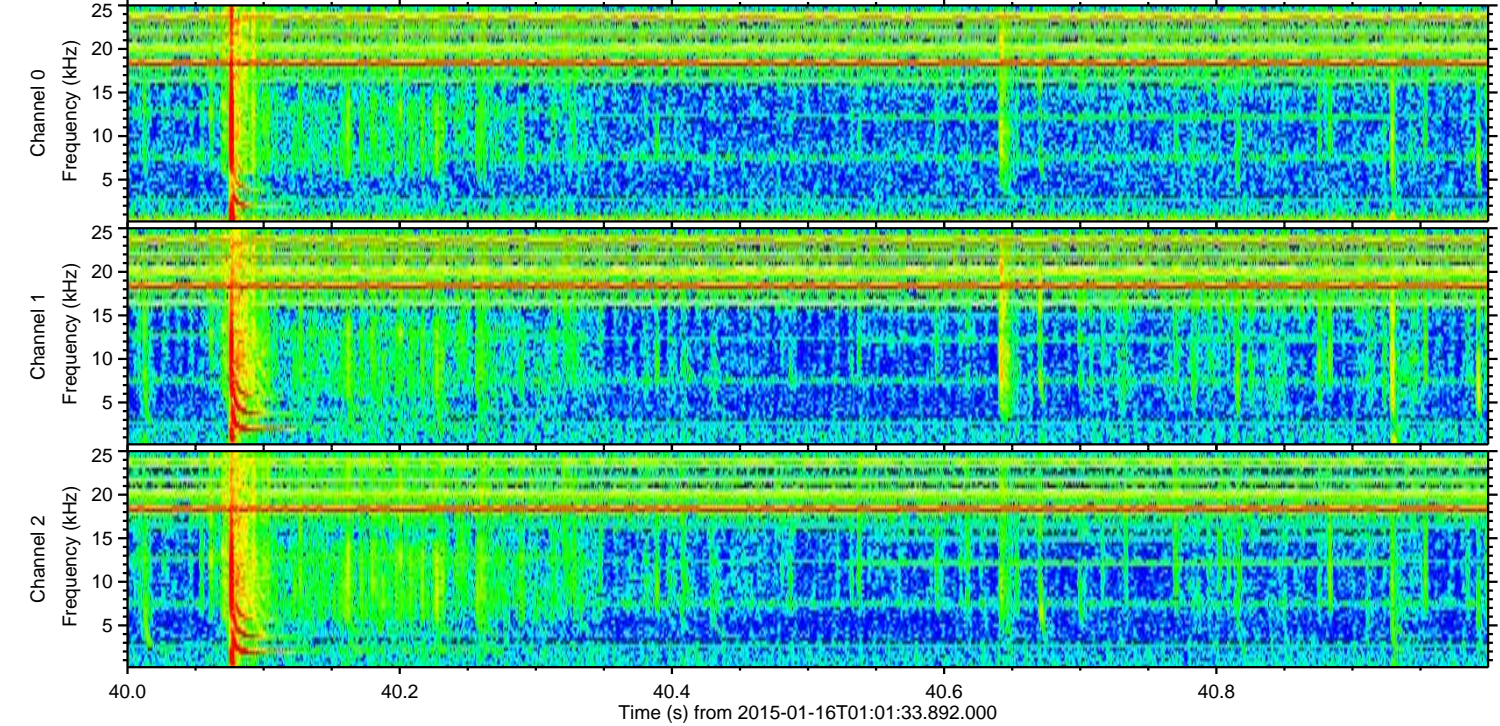
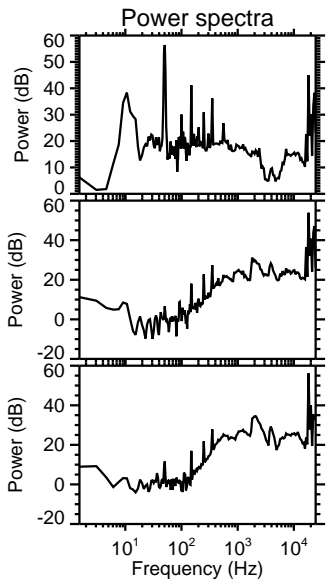
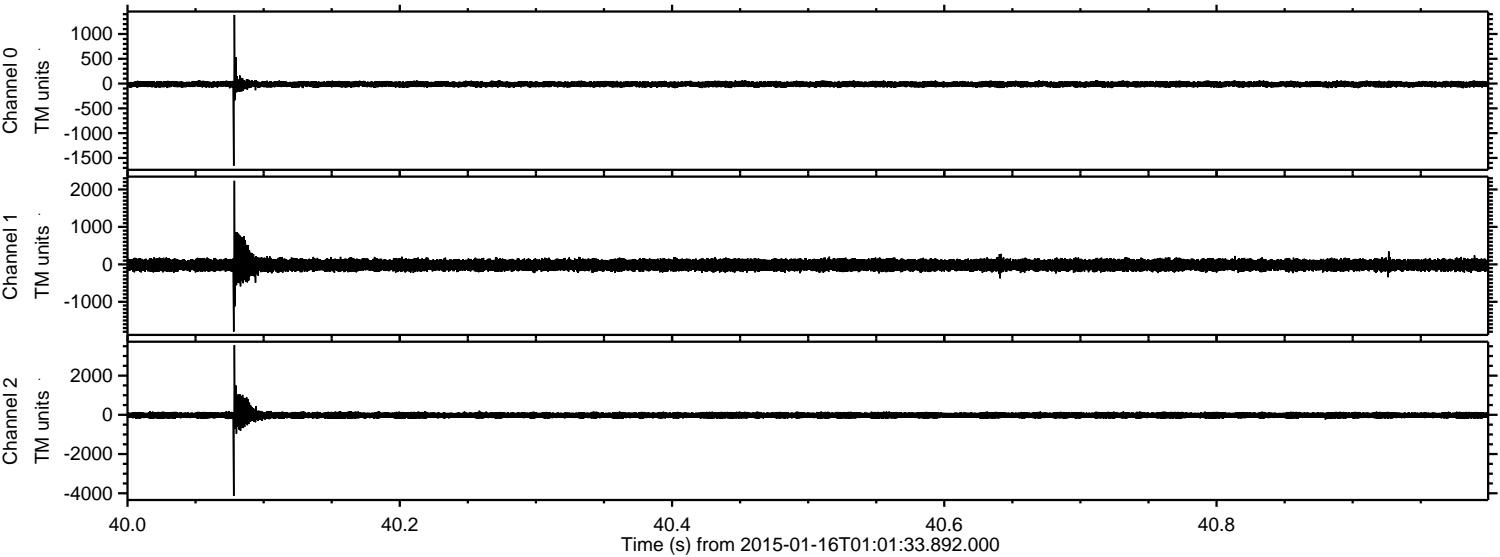
Processed Fri Jan 16 14:17:25 2015 by ELM ver.2012-10-06 from 001\_\_elm20150116\_010132\_\_dat00.bin





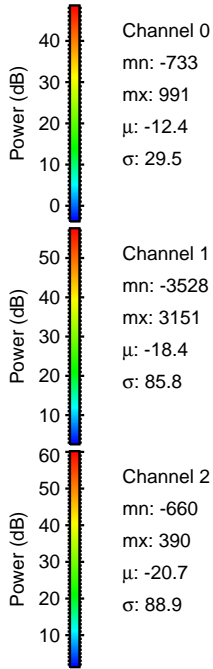
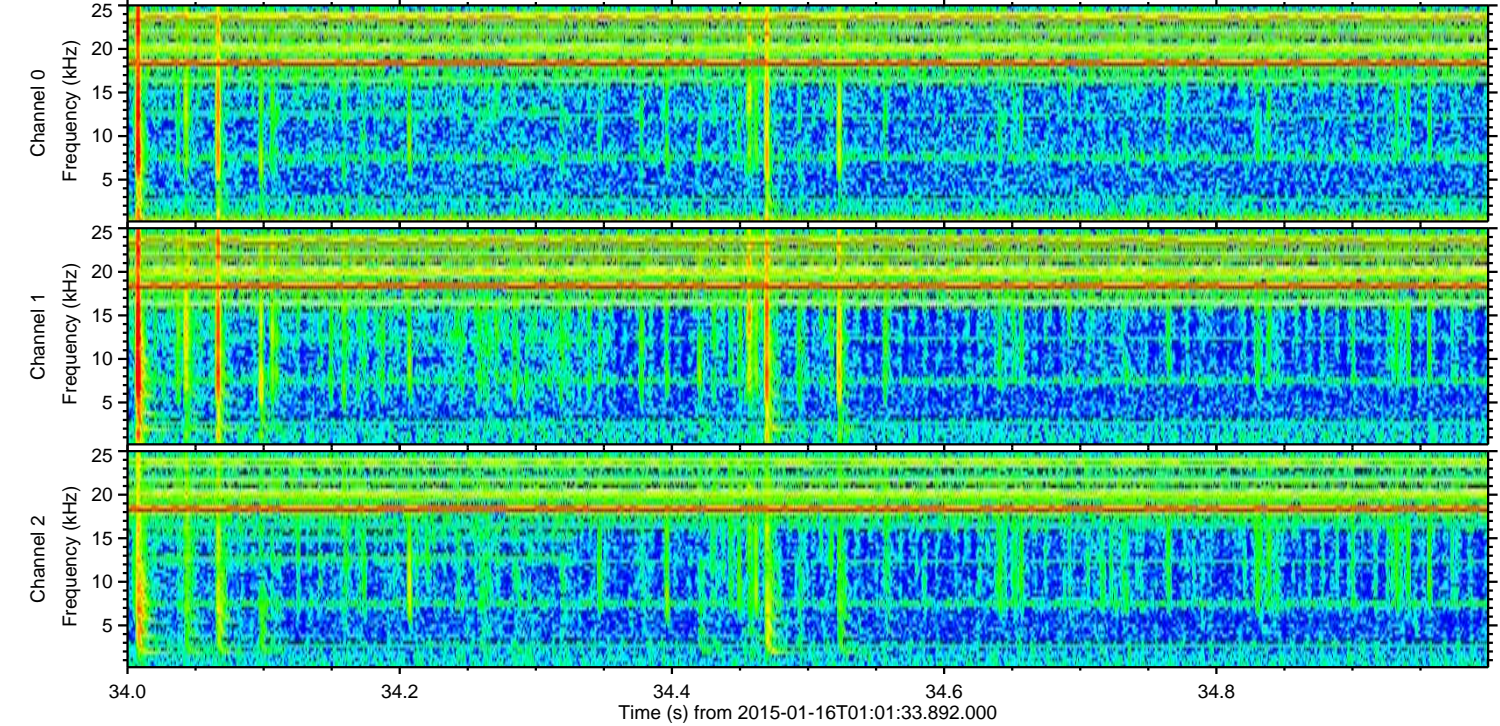
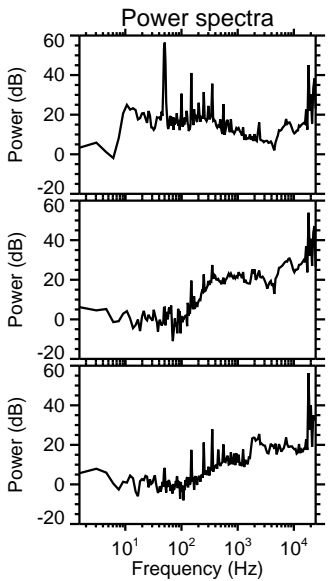
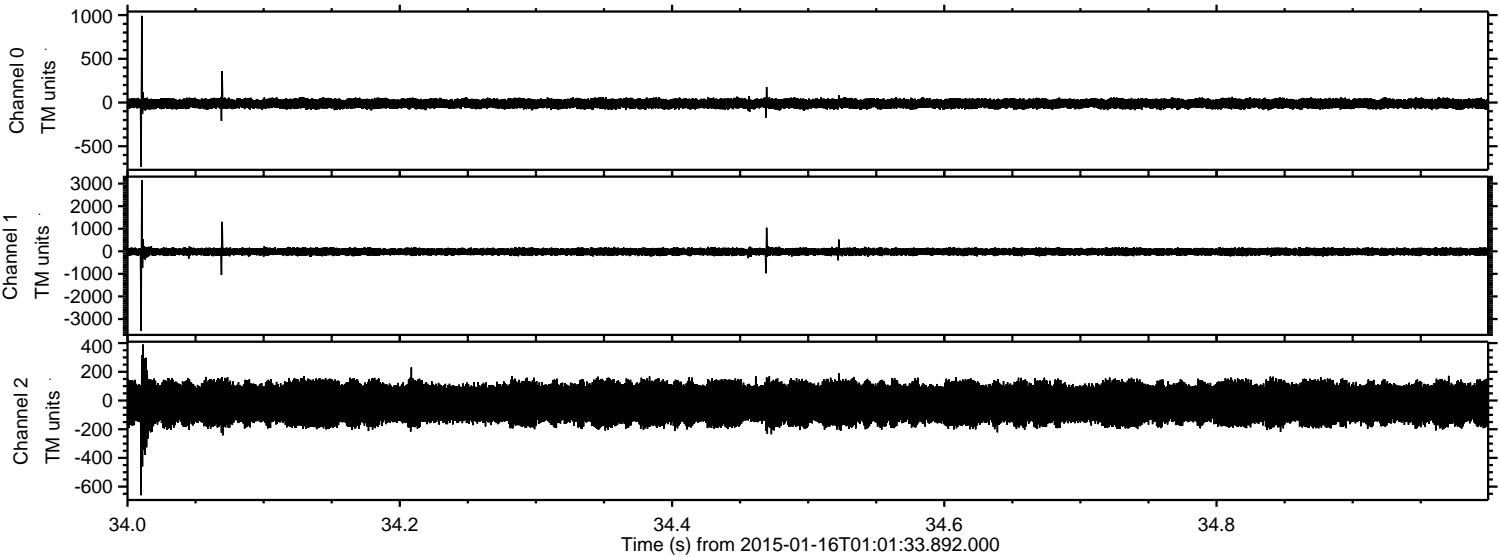
ELMAVAN 3D WAVEFORMS (Measured data sampled at 50 kHz) 49809 packets of 144 samples from 2015-01-16T01:01:33.892.000. Part 41/144

Processed Fri Jan 16 14:17:26 2015 by ELM ver.2012-10-06 from 001\_\_elm20150116\_010132\_\_dat00.bin





Processed Fri Jan 16 14:17:27 2015 by ELM ver.2012-10-06 from 001\_\_elm20150116\_010132\_\_dat00.bin



Channel 0  
mn: -733  
mx: 991  
 $\mu$ : -12.4  
 $\sigma$ : 29.5

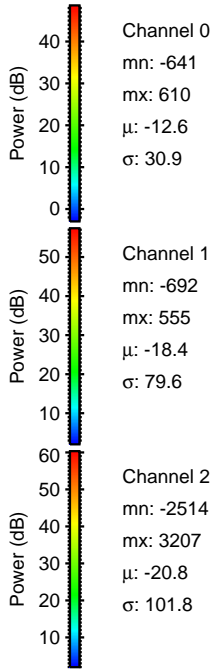
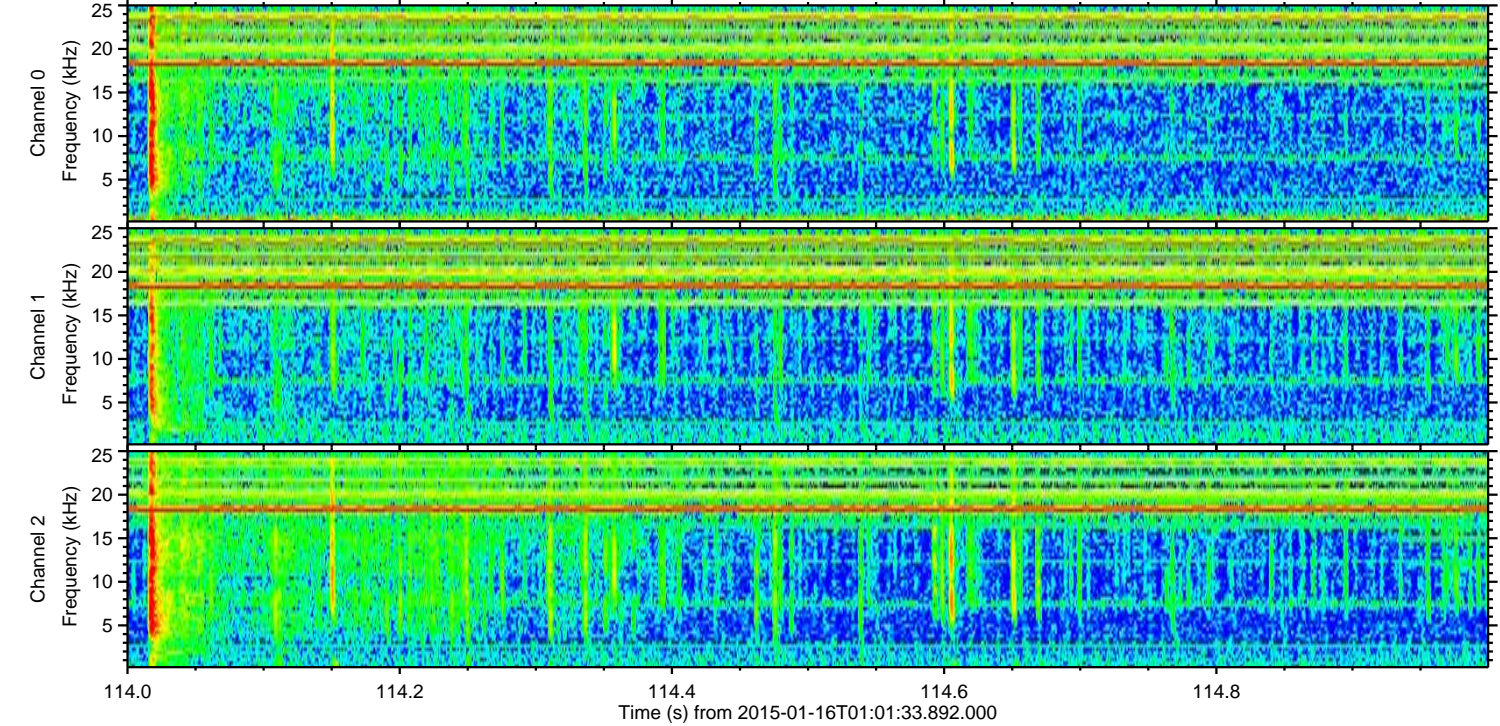
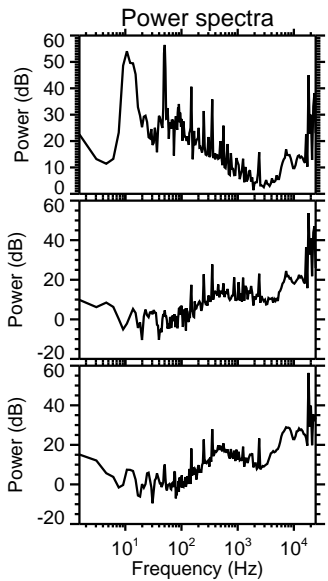
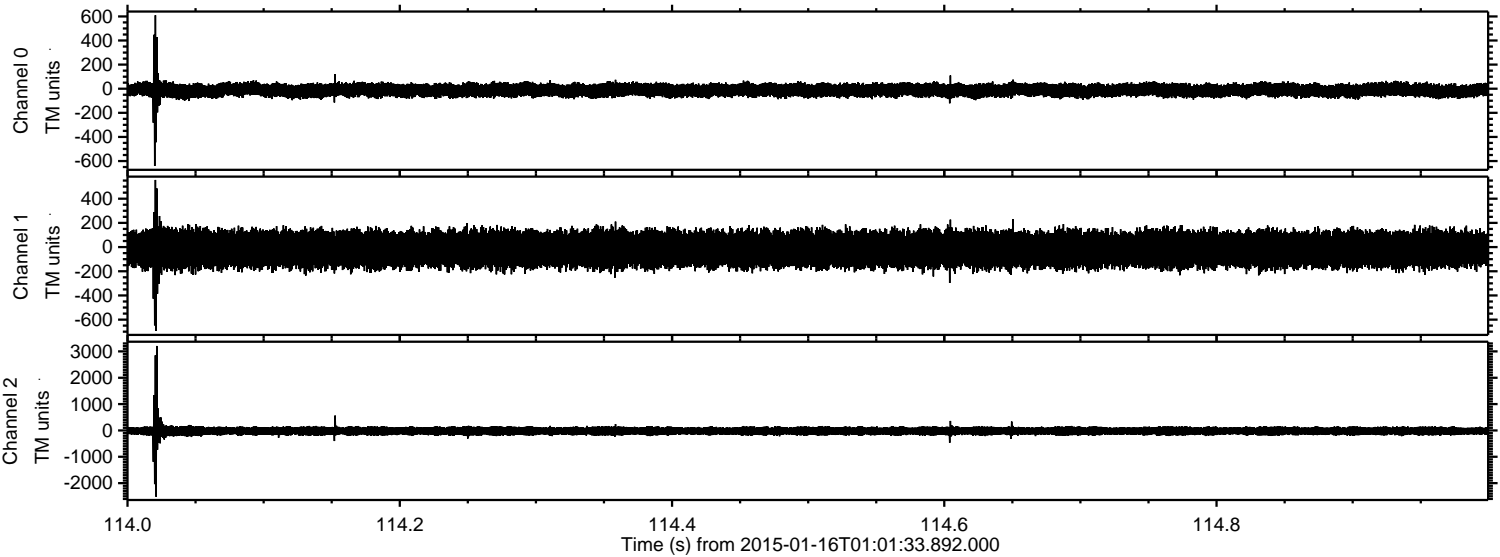
Channel 1  
mn: -3528  
mx: 3151  
 $\mu$ : -18.4  
 $\sigma$ : 85.8

Channel 2  
mn: -660  
mx: 390  
 $\mu$ : -20.7  
 $\sigma$ : 88.9



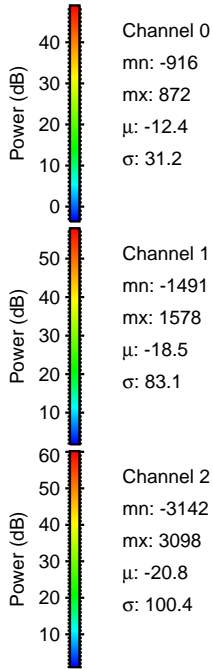
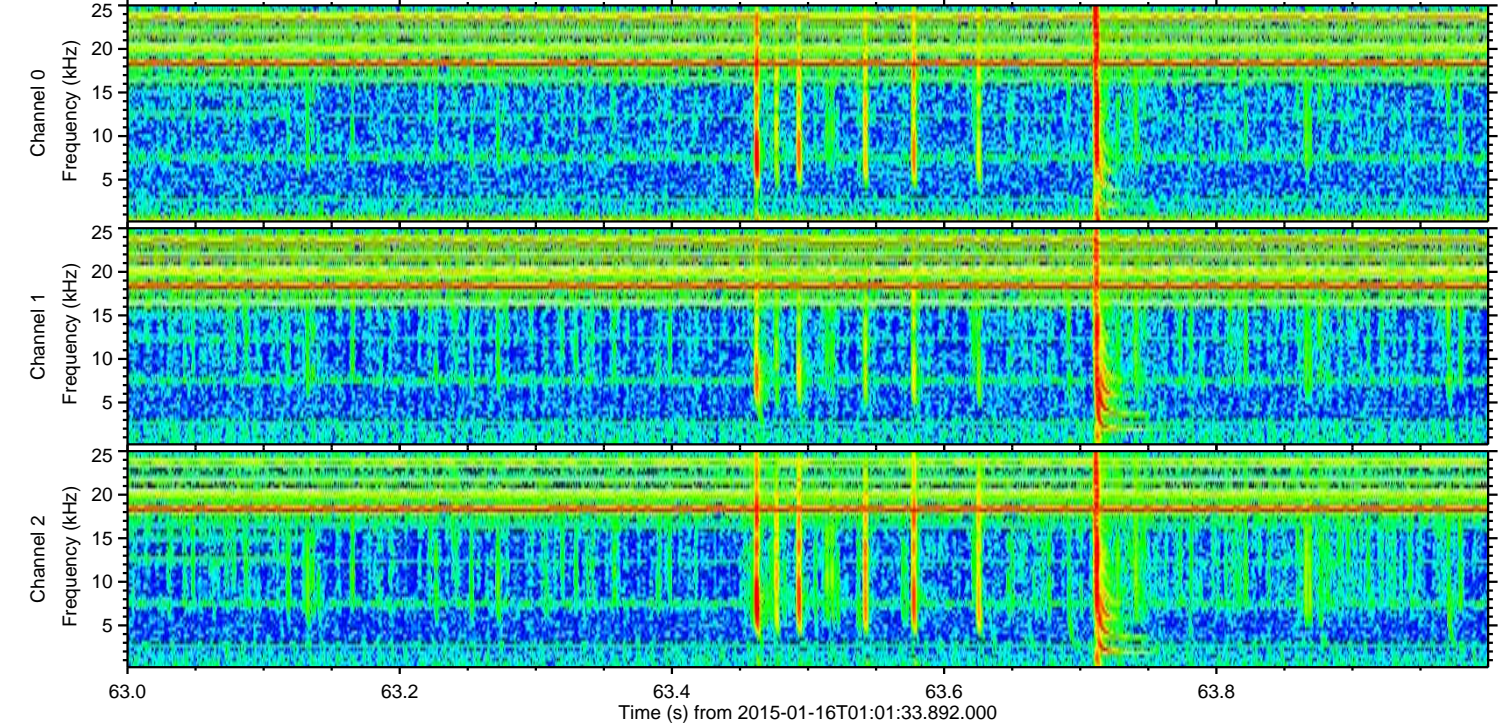
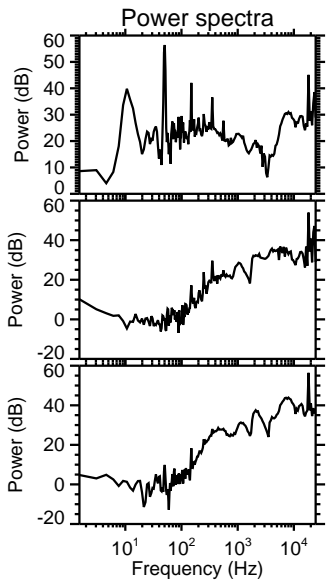
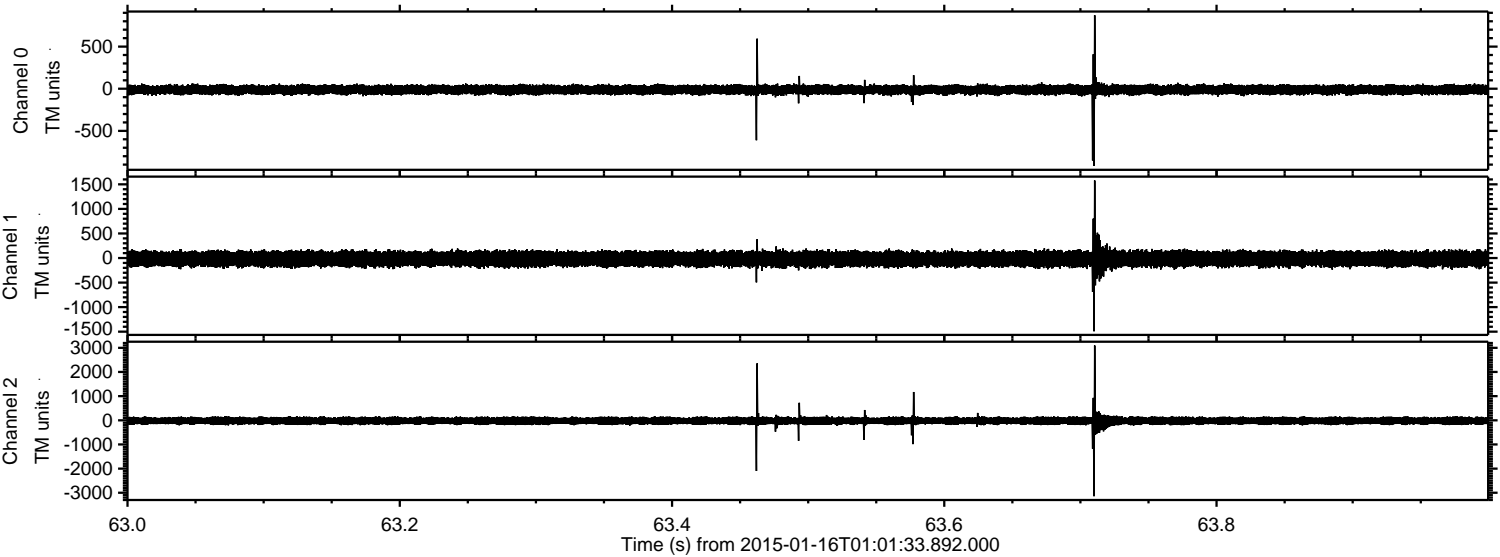
ELMAVAN 3D WAVEFORMS (Measured data sampled at 50 kHz) 49809 packets of 144 samples from 2015-01-16T01:01:33.892.000. Part 115/144

Processed Fri Jan 16 14:17:28 2015 by ELM ver.2012-10-06 from 001\_\_elm20150116\_010132\_\_dat00.bin



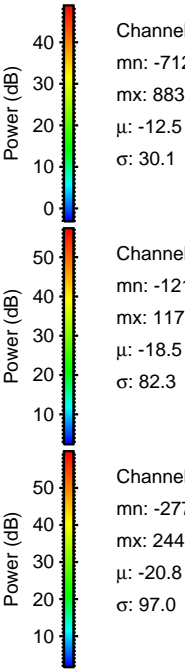
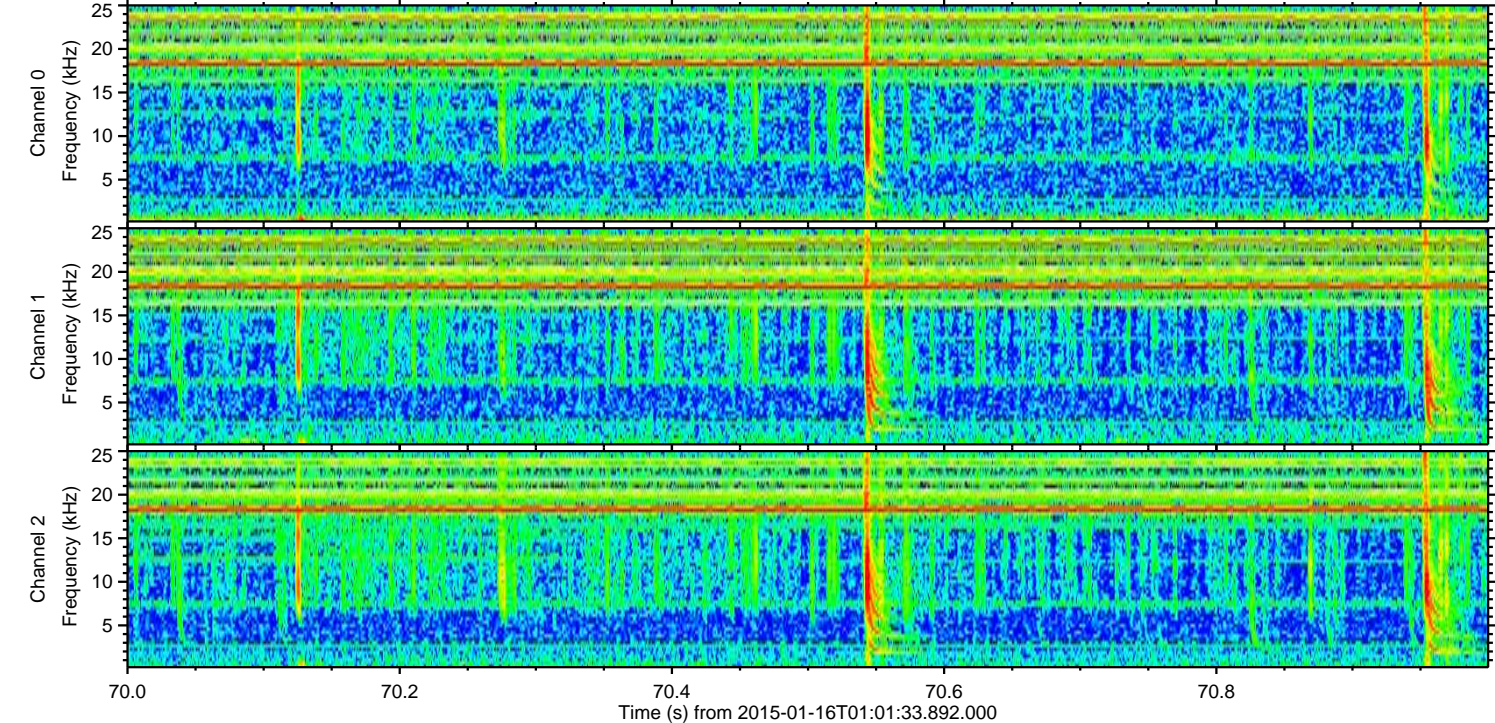
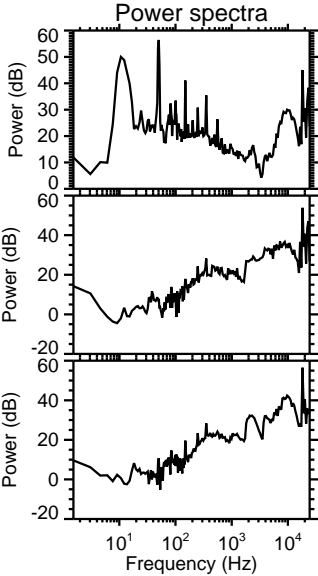
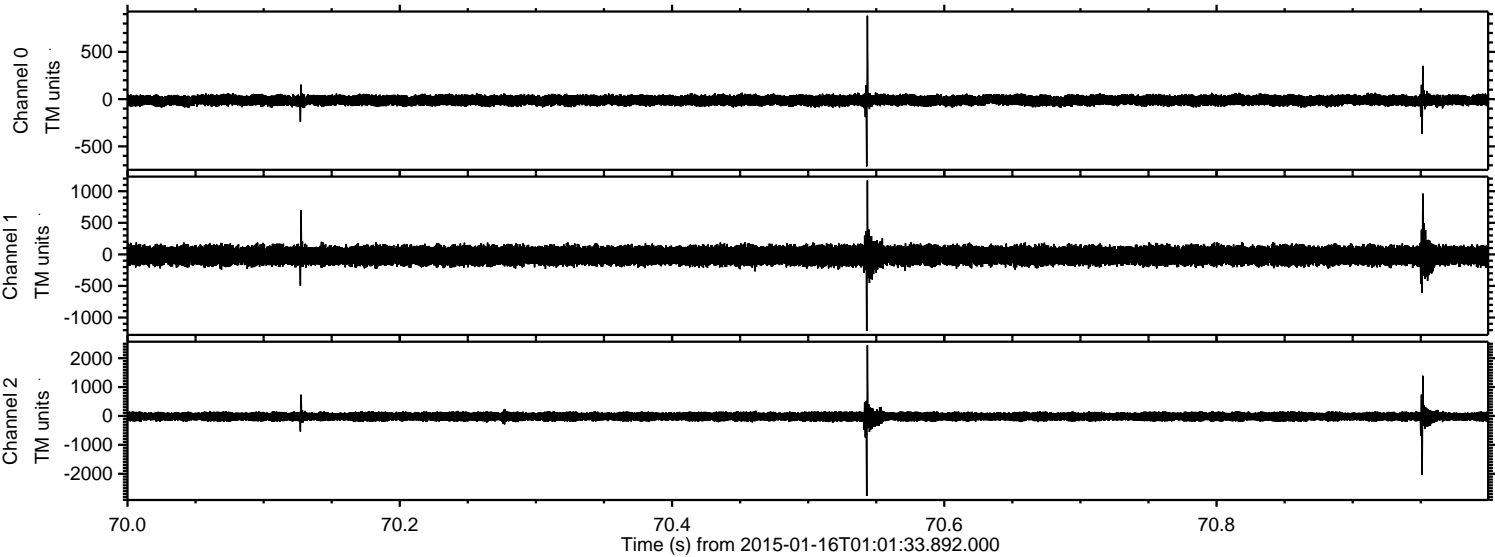


Processed Fri Jan 16 14:17:29 2015 by ELM ver.2012-10-06 from 001\_\_elm20150116\_010132\_\_dat00.bin





Processed Fri Jan 16 14:17:30 2015 by ELM ver.2012-10-06 from 001\_\_elm20150116\_010132\_\_dat00.bin



Channel 0  
mn: -712  
mx: 883  
 $\mu$ : -12.5  
 $\sigma$ : 30.1

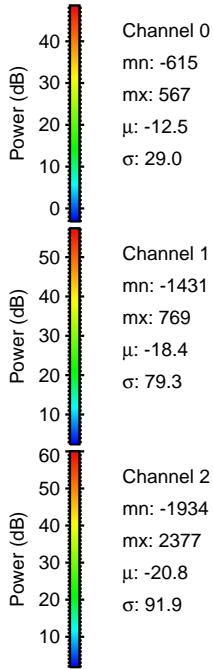
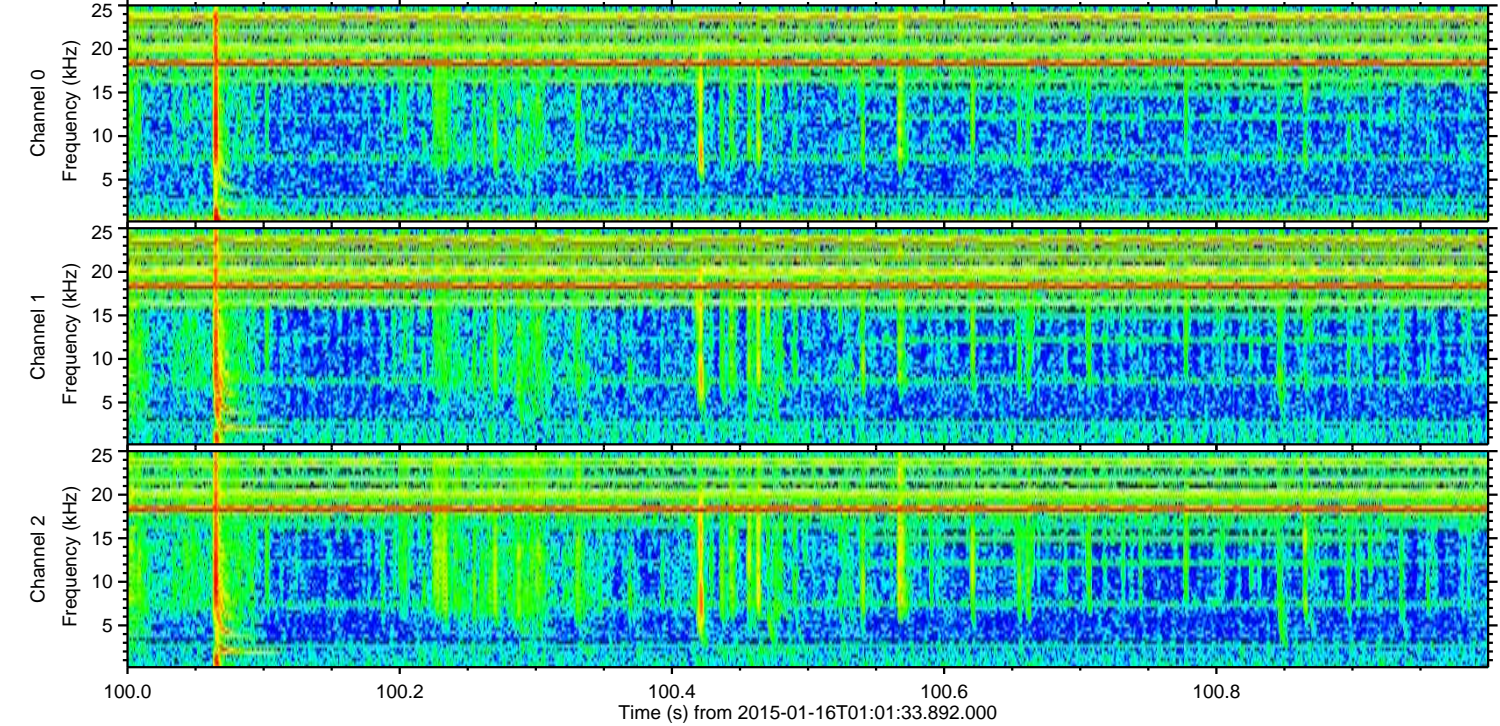
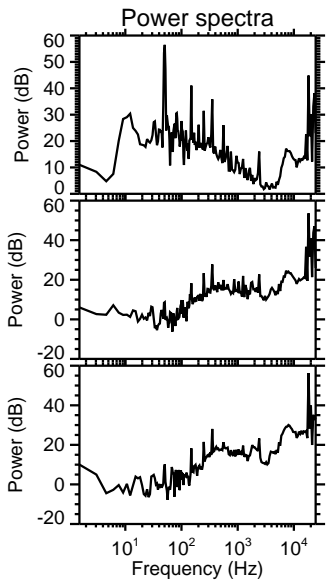
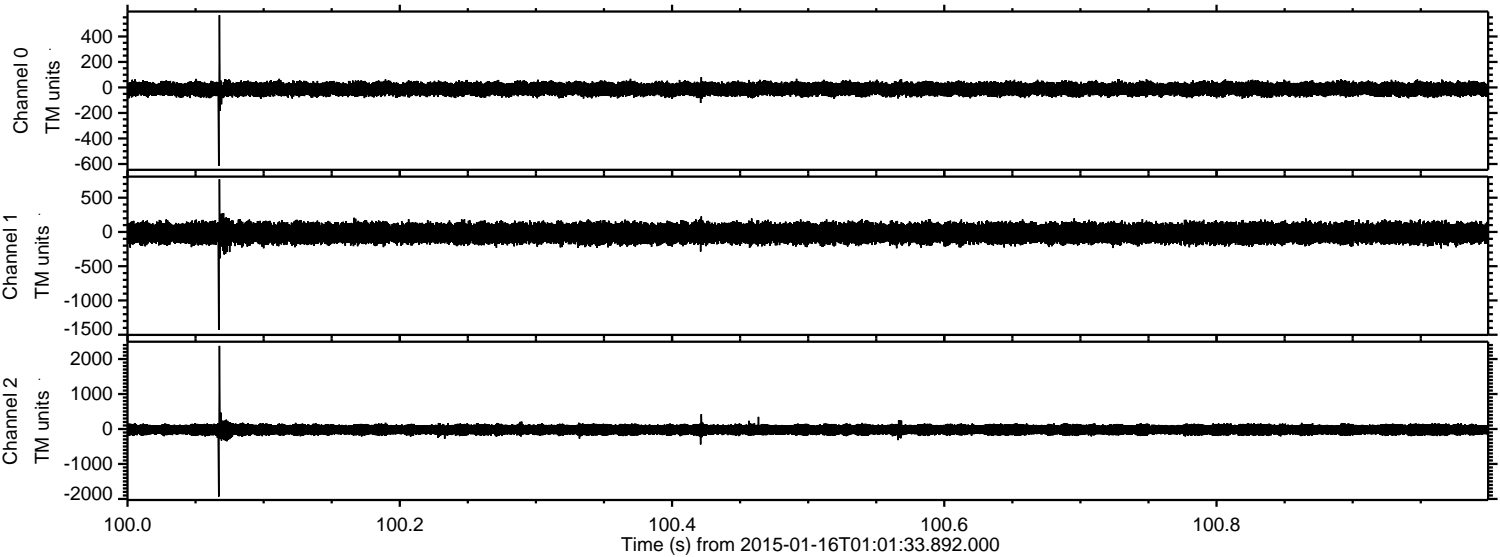
Channel 1  
mn: -1215  
mx: 1173  
 $\mu$ : -18.5  
 $\sigma$ : 82.3

Channel 2  
mn: -2770  
mx: 2447  
 $\mu$ : -20.8  
 $\sigma$ : 97.0



ELMAVAN 3D WAVEFORMS (Measured data sampled at 50 kHz) 49809 packets of 144 samples from 2015-01-16T01:01:33.892.000. Part 101/144

Processed Fri Jan 16 14:17:31 2015 by ELM ver.2012-10-06 from 001\_\_elm20150116\_010132\_\_dat00.bin



Channel 0  
mn: -615  
mx: 567  
 $\mu$ : -12.5  
 $\sigma$ : 29.0

Channel 1  
mn: -1431  
mx: 769  
 $\mu$ : -18.4  
 $\sigma$ : 79.3

Channel 2  
mn: -1934  
mx: 2377  
 $\mu$ : -20.8  
 $\sigma$ : 91.9



Processed Fri Jan 16 14:17:32 2015 by ELM ver.2012-10-06 from 001\_\_elm20150116\_010132\_\_dat00.bin

