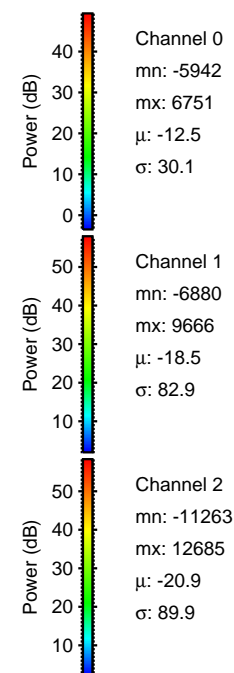
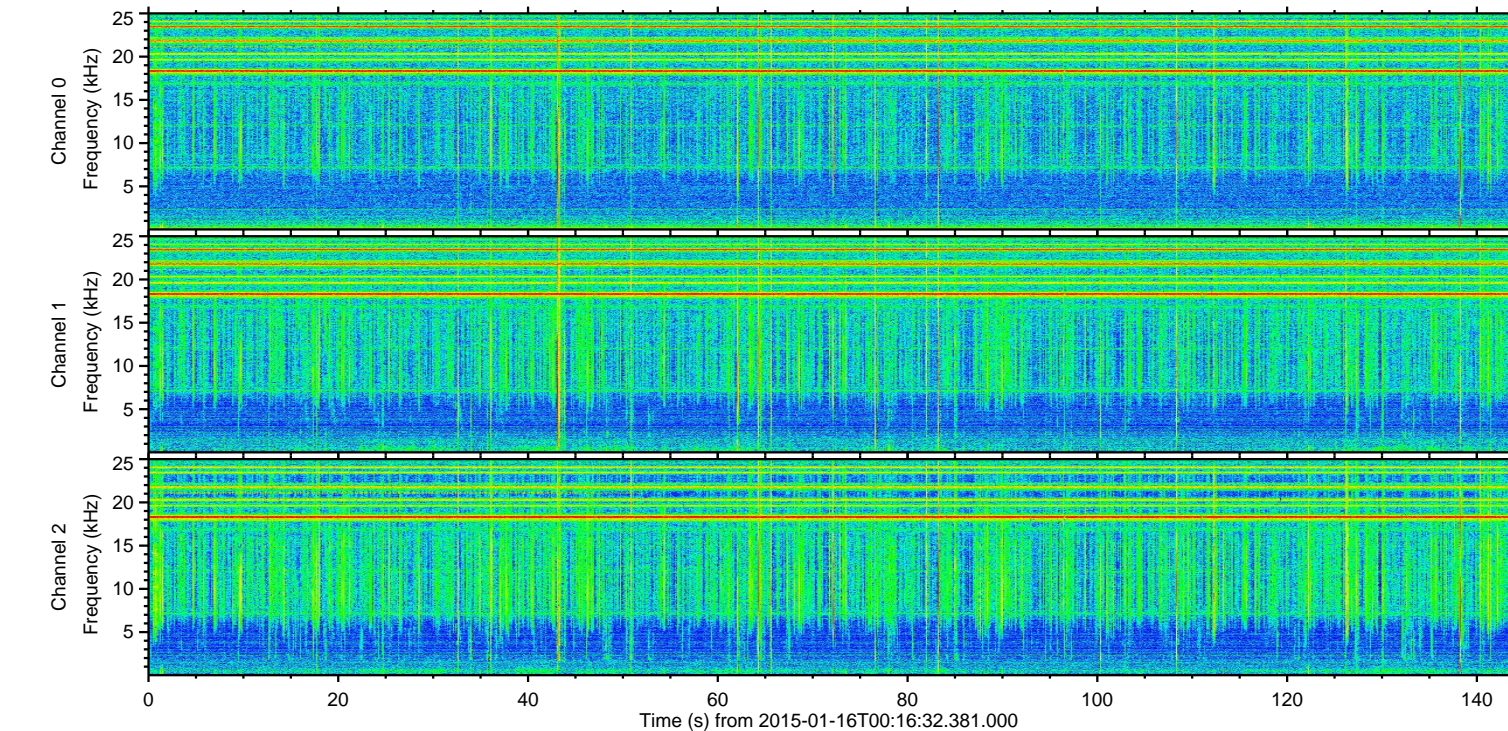
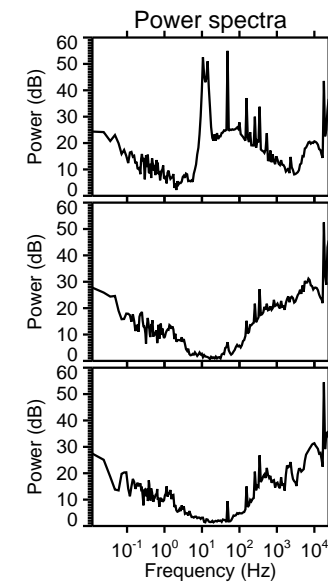
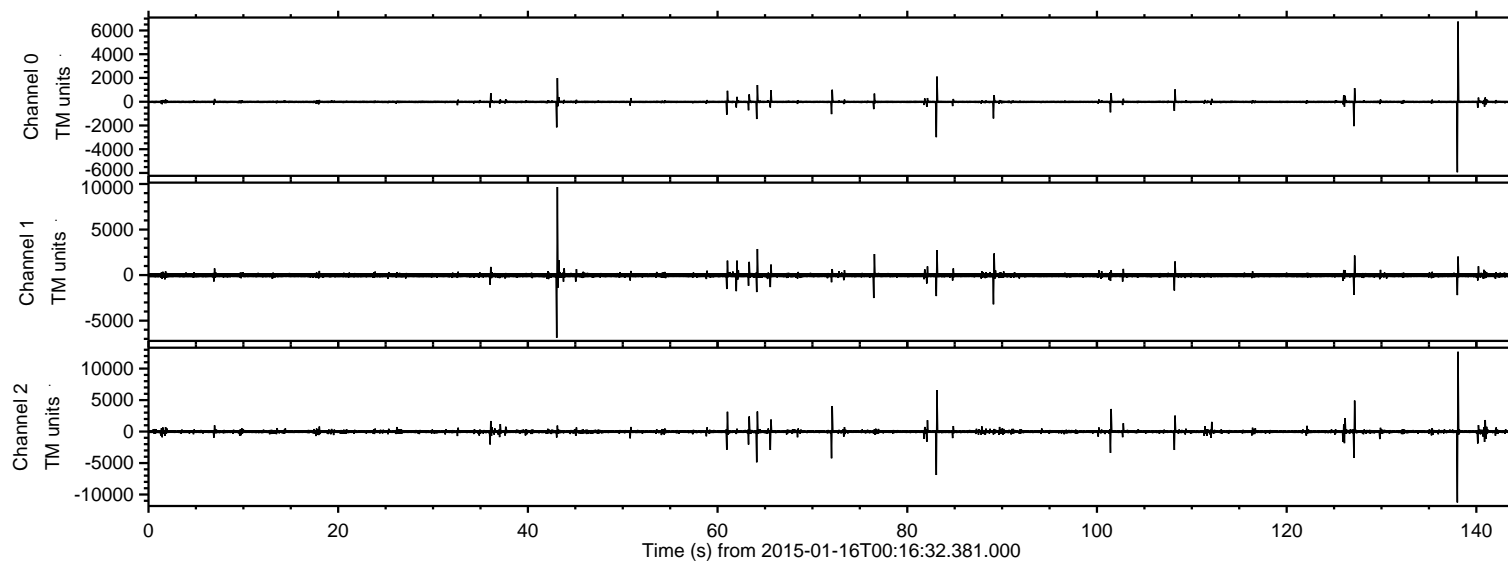


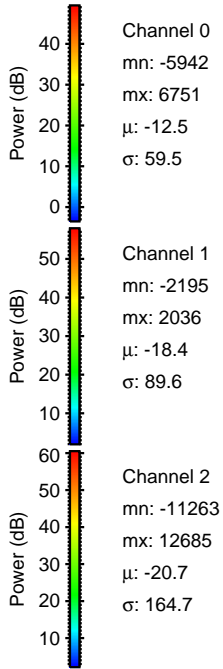
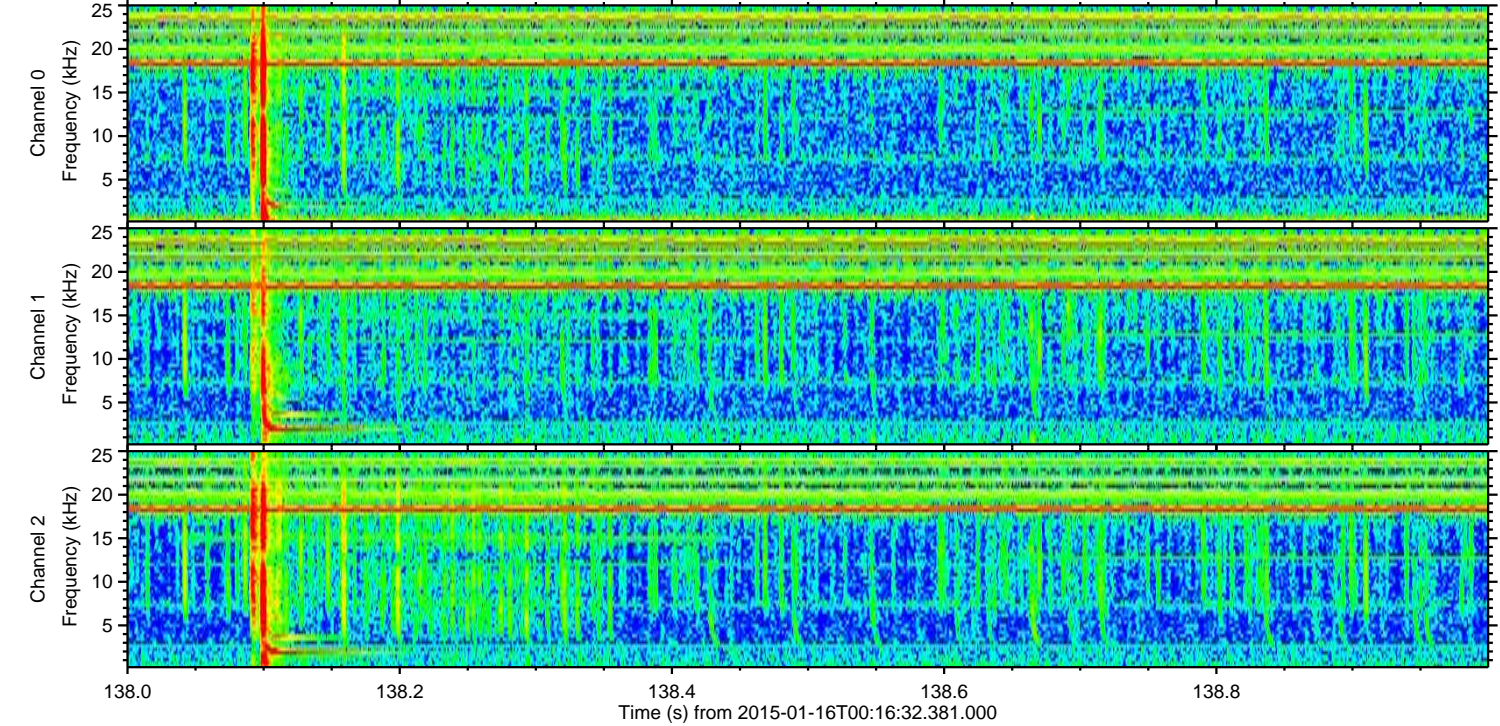
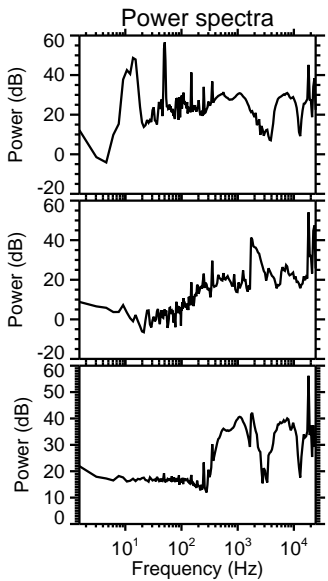
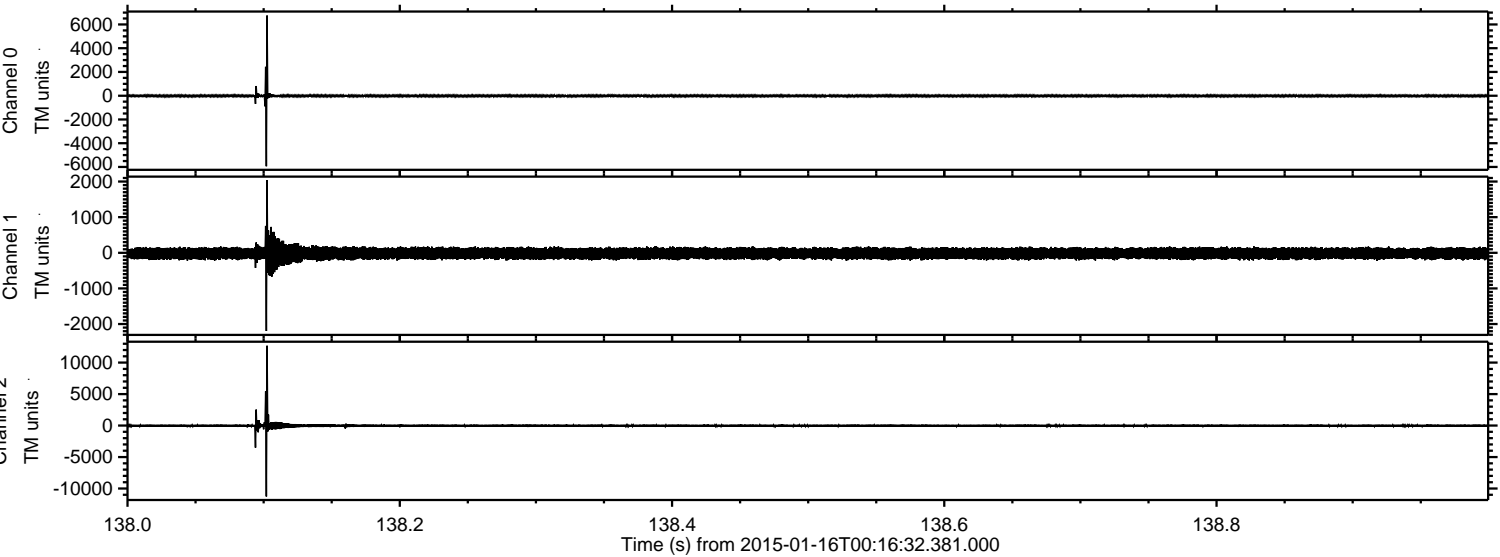
ELMAVAN 3D WAVEFORMS (Measured data sampled at 50 kHz) 49812 packets of 144 samples from 2015-01-16T00:16:32.381.000.

Processed Fri Jan 16 13:52:41 2015 by ELM ver.2012-10-06 from 001__elm20150116_001631__dat00.bin



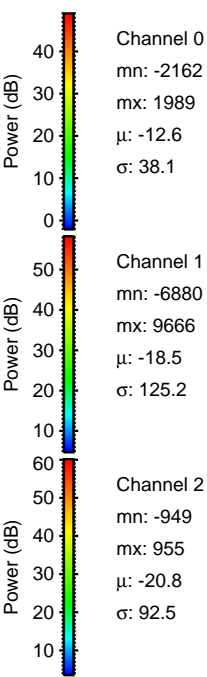
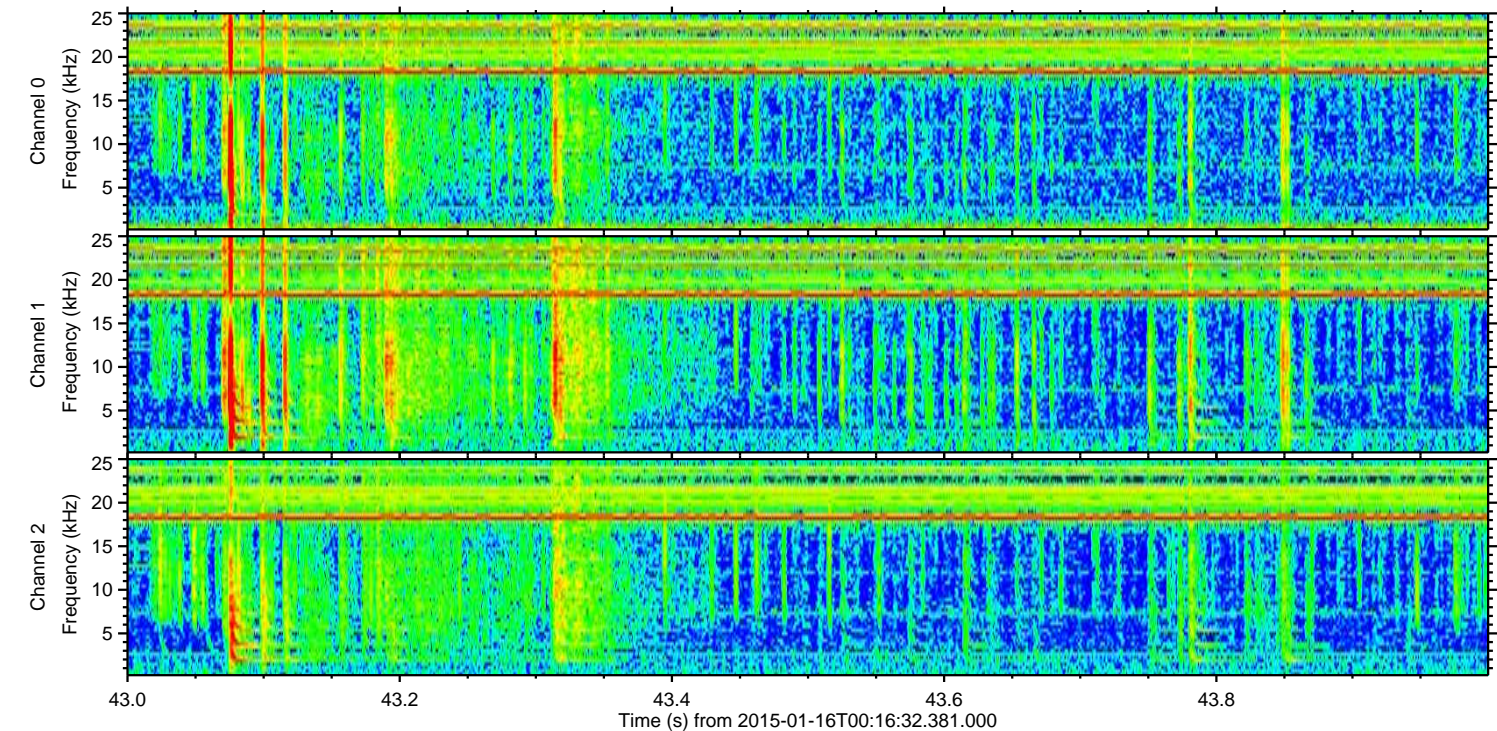
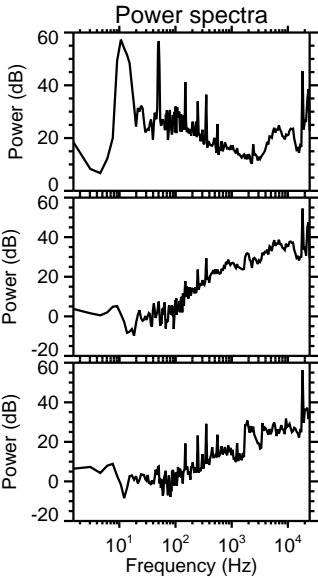
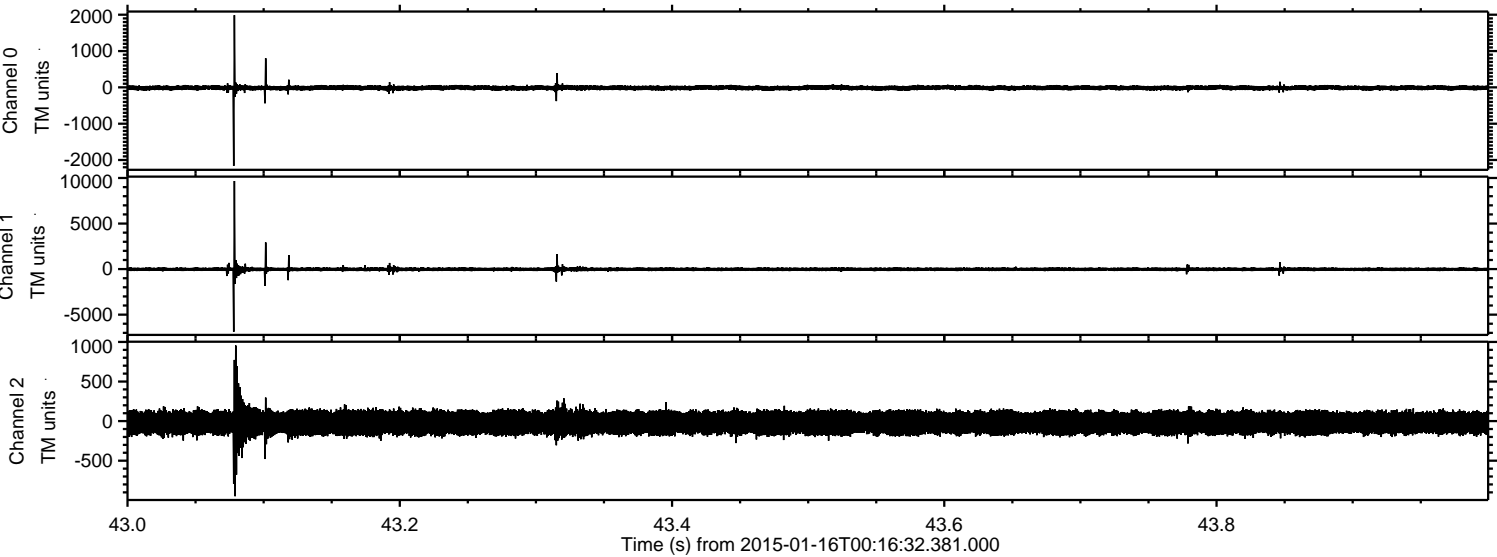
ELMAVAN 3D WAVEFORMS (Measured data sampled at 50 kHz) 49812 packets of 144 samples from 2015-01-16T00:16:32.381.000. Part 139/144

Processed Fri Jan 16 13:52:52 2015 by ELM ver.2012-10-06 from 001__elm20150116_001631__dat00.bin

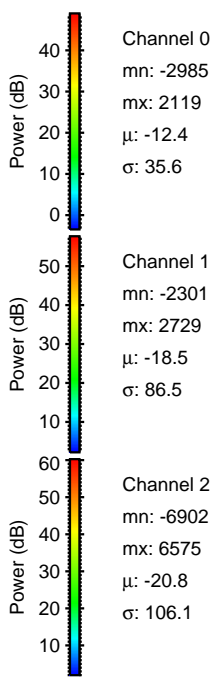
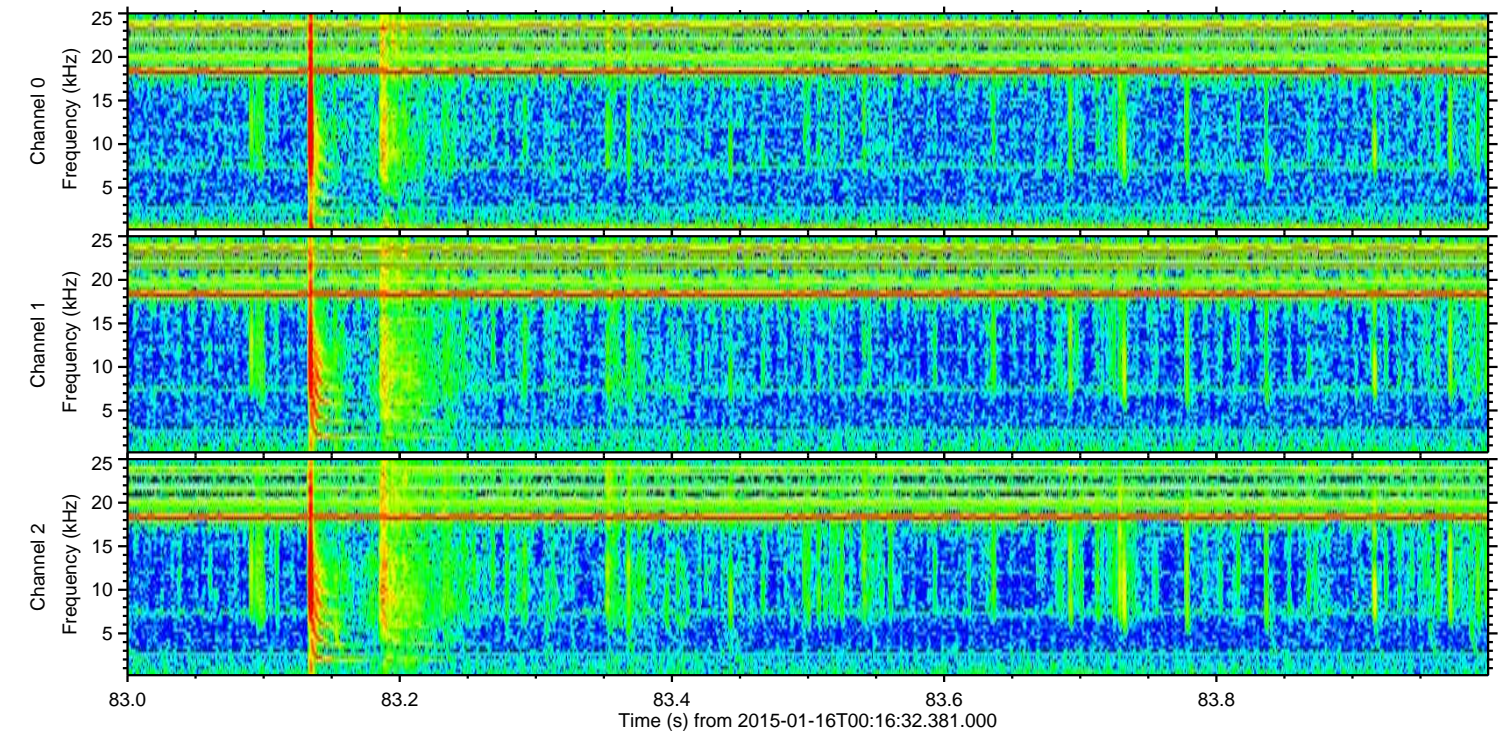
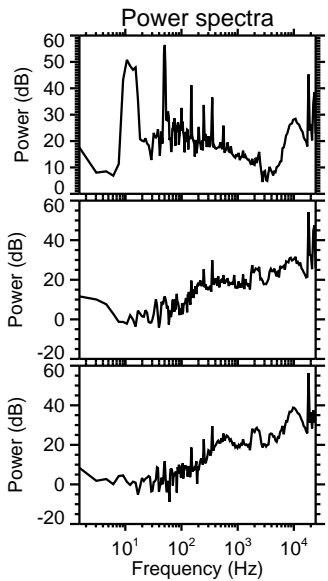
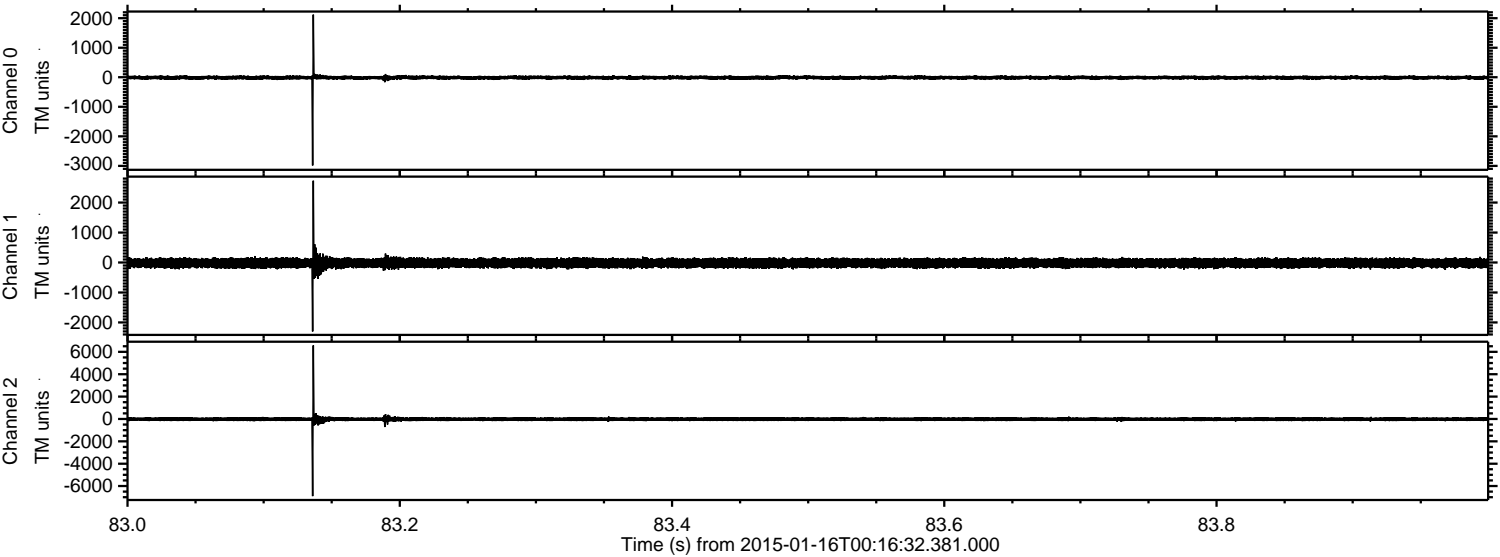


ELMAVAN 3D WAVEFORMS (Measured data sampled at 50 kHz) 49812 packets of 144 samples from 2015-01-16T00:16:32.381.000. Part 44/144

Processed Fri Jan 16 13:52:53 2015 by ELM ver.2012-10-06 from 001__elm20150116_001631__dat00.bin

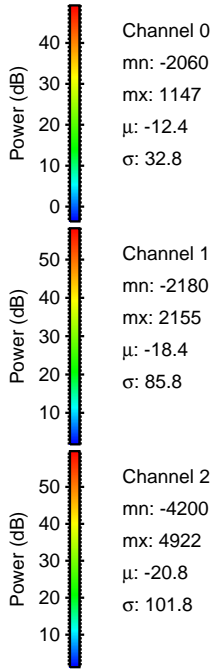
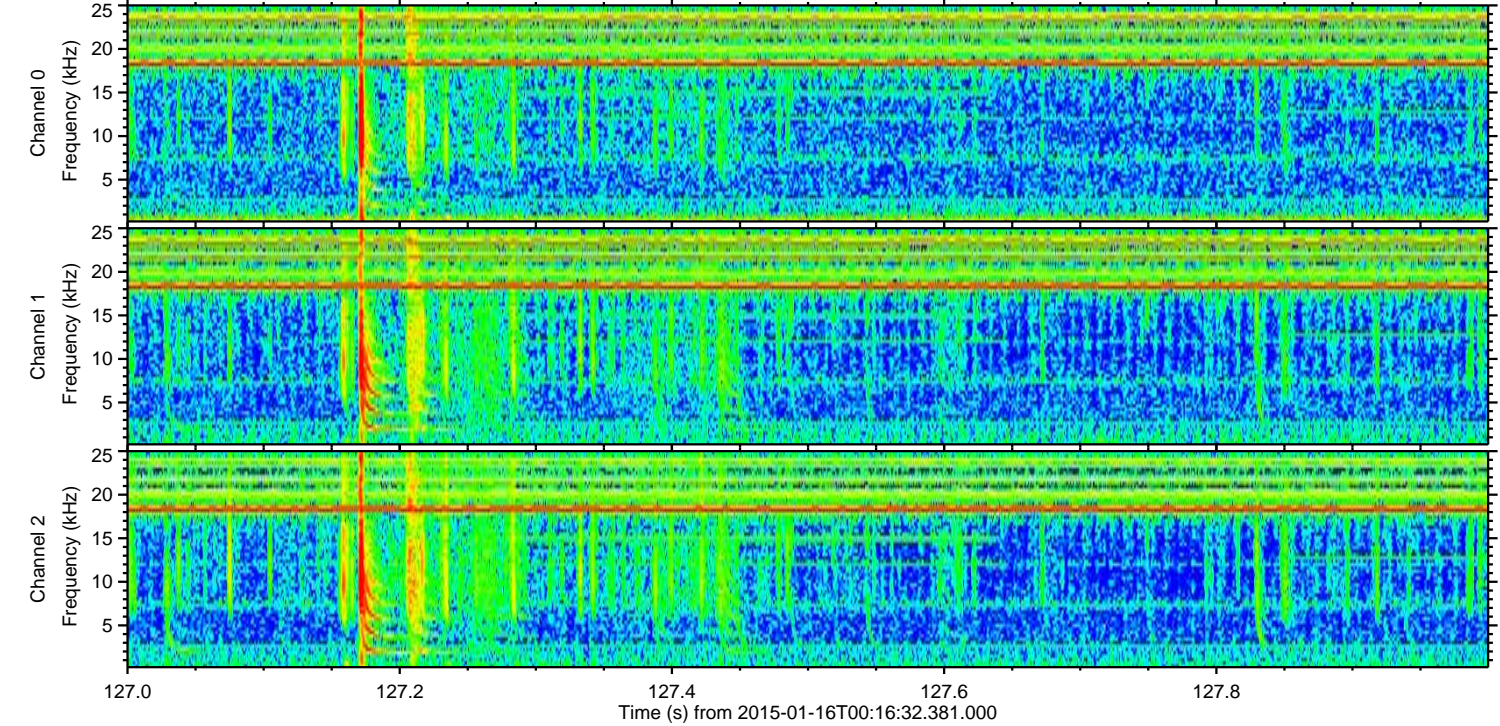
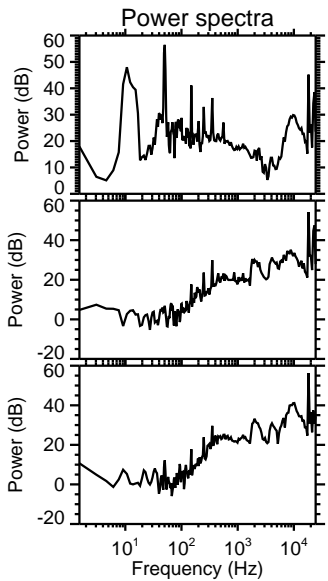
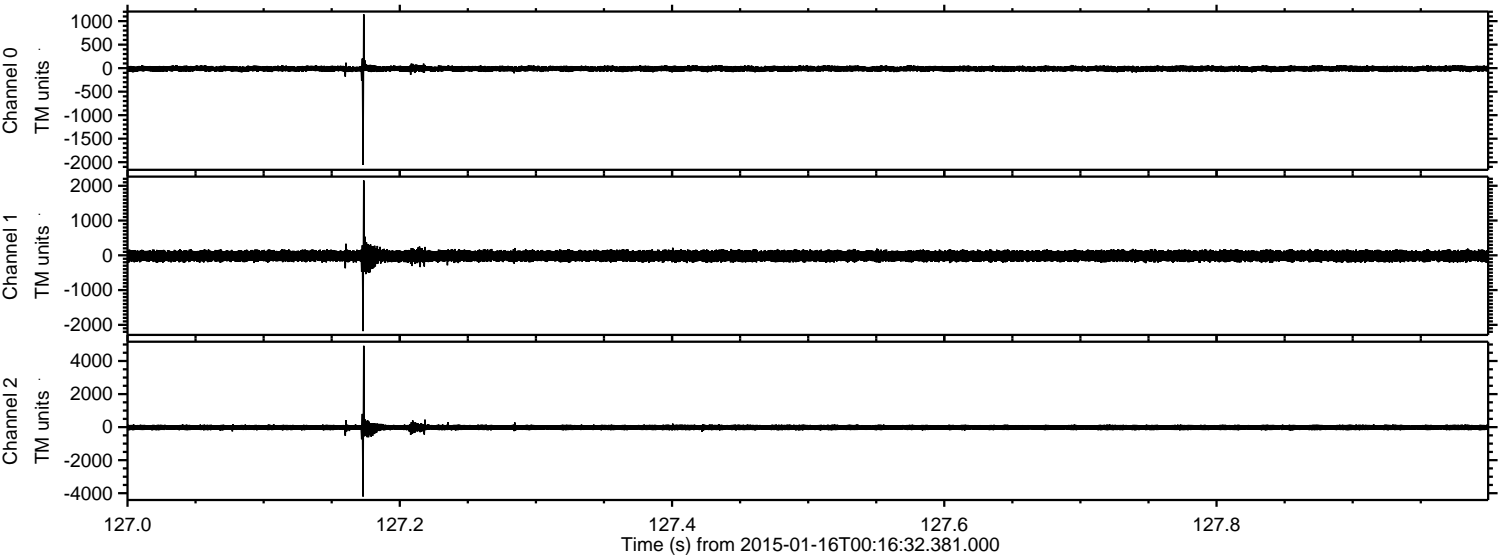


Processed Fri Jan 16 13:52:54 2015 by ELM ver.2012-10-06 from 001__elm20150116_001631__dat00.bin

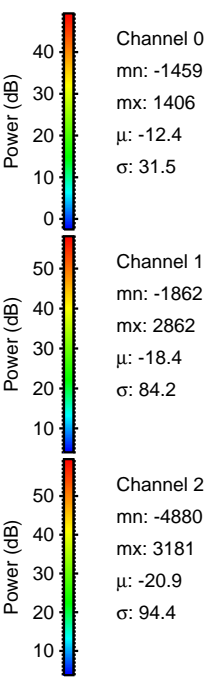
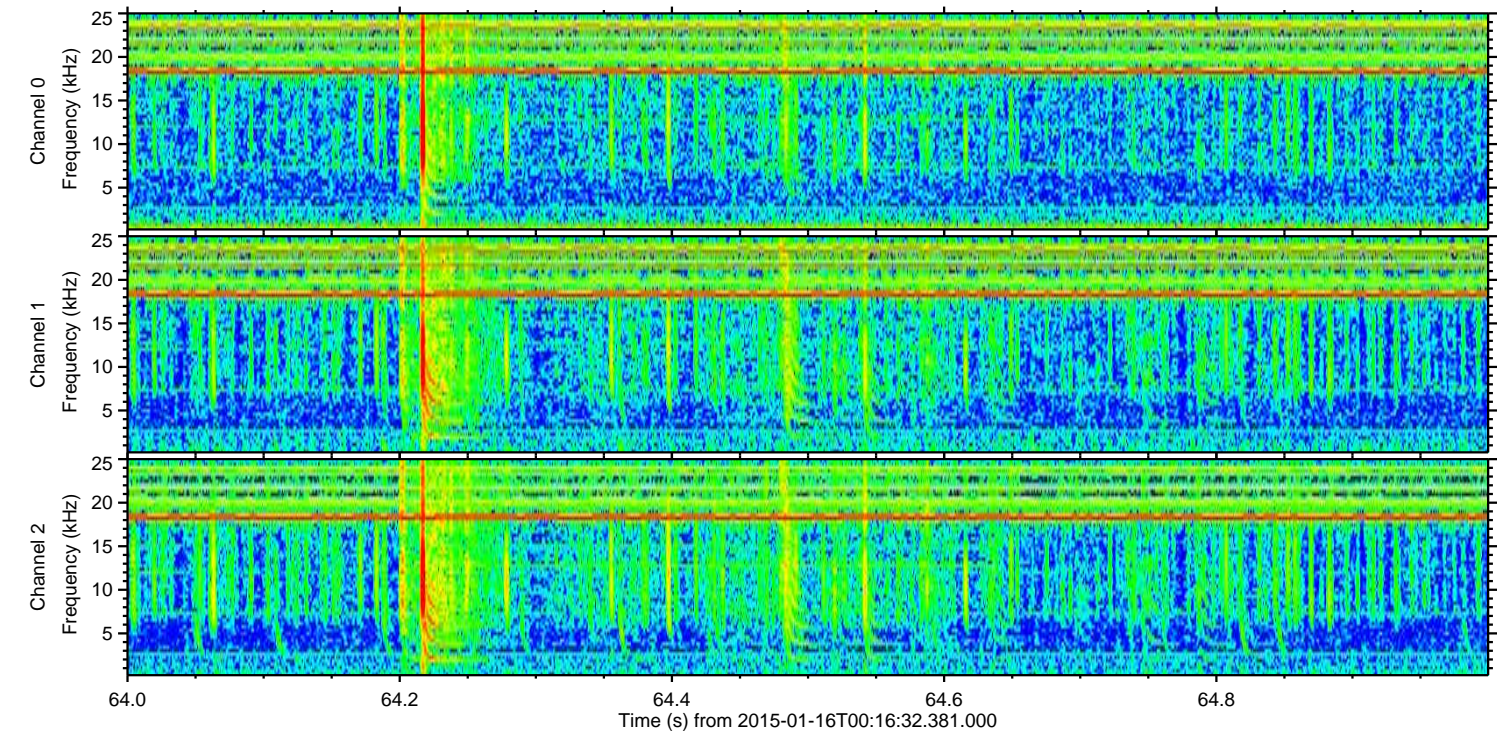
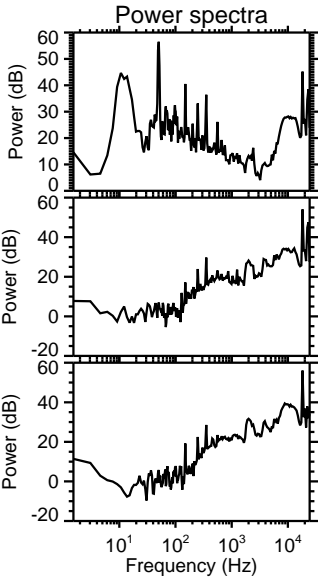
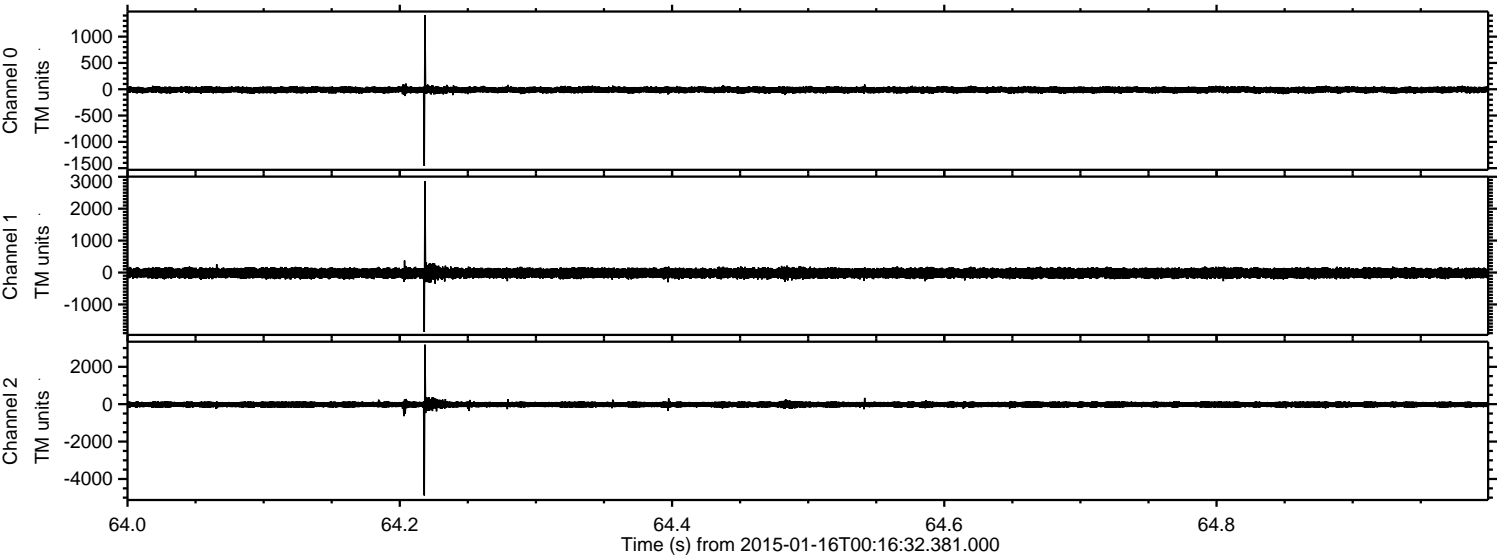


ELMAVAN 3D WAVEFORMS (Measured data sampled at 50 kHz) 49812 packets of 144 samples from 2015-01-16T00:16:32.381.000. Part 128/144

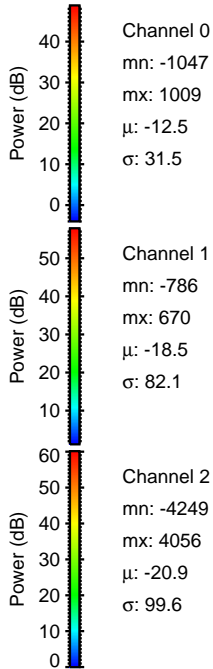
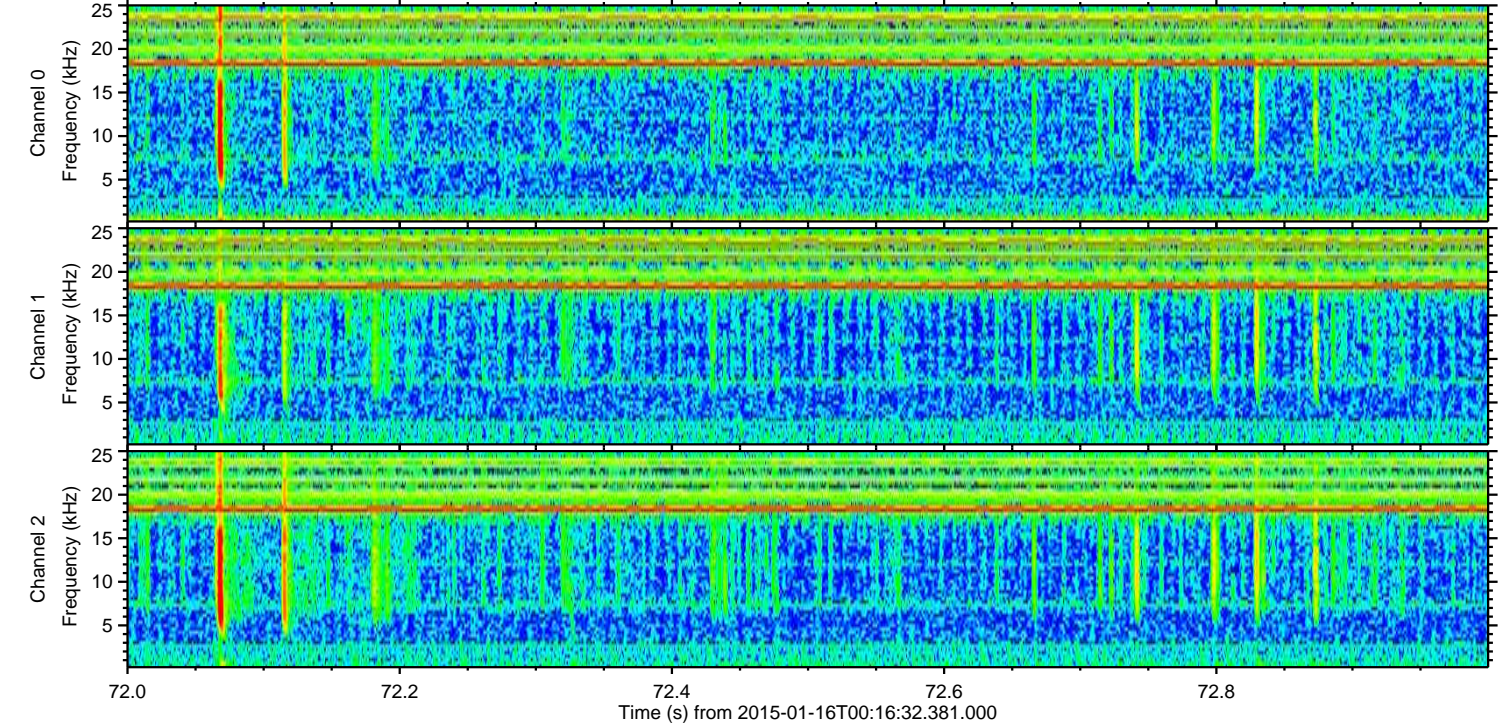
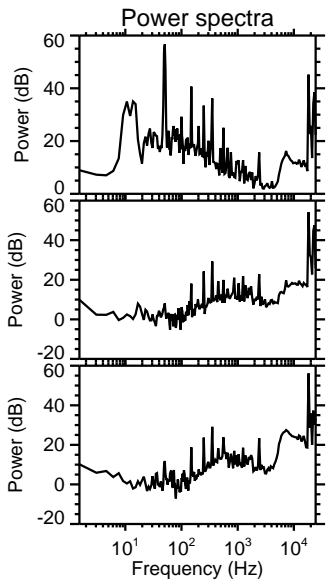
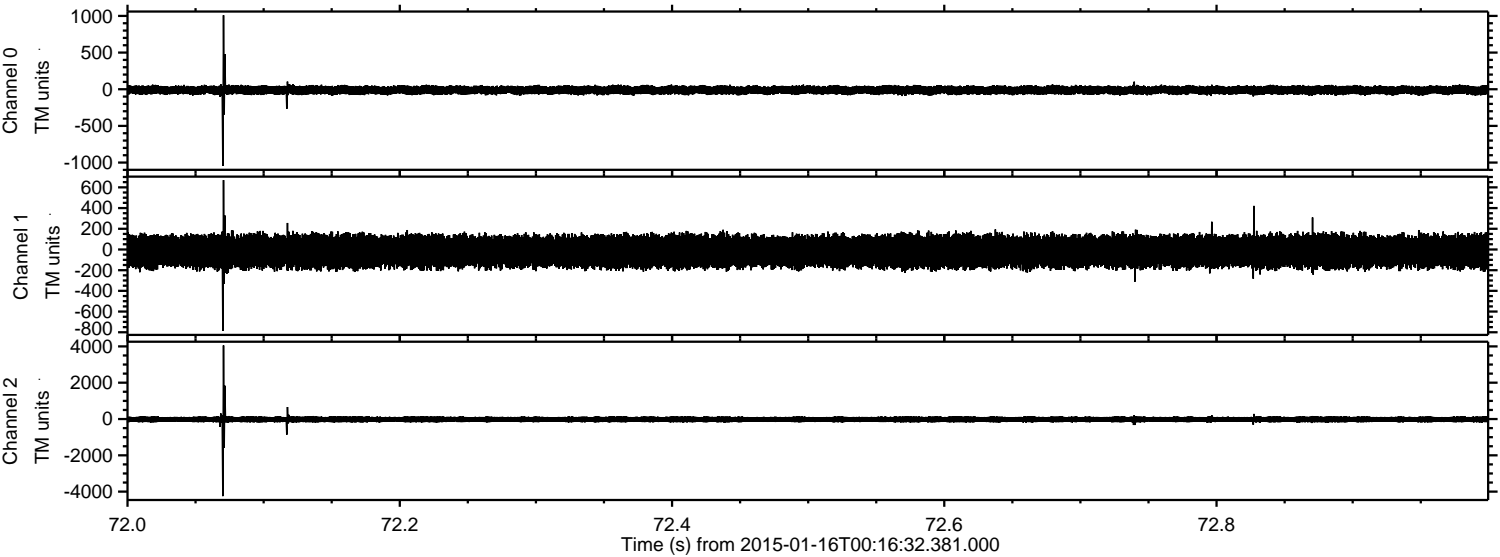
Processed Fri Jan 16 13:52:55 2015 by ELM ver.2012-10-06 from 001__elm20150116_001631__dat00.bin



Processed Fri Jan 16 13:52:56 2015 by ELM ver.2012-10-06 from 001__elm20150116_001631__dat00.bin

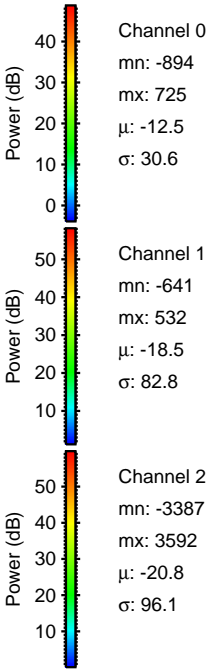
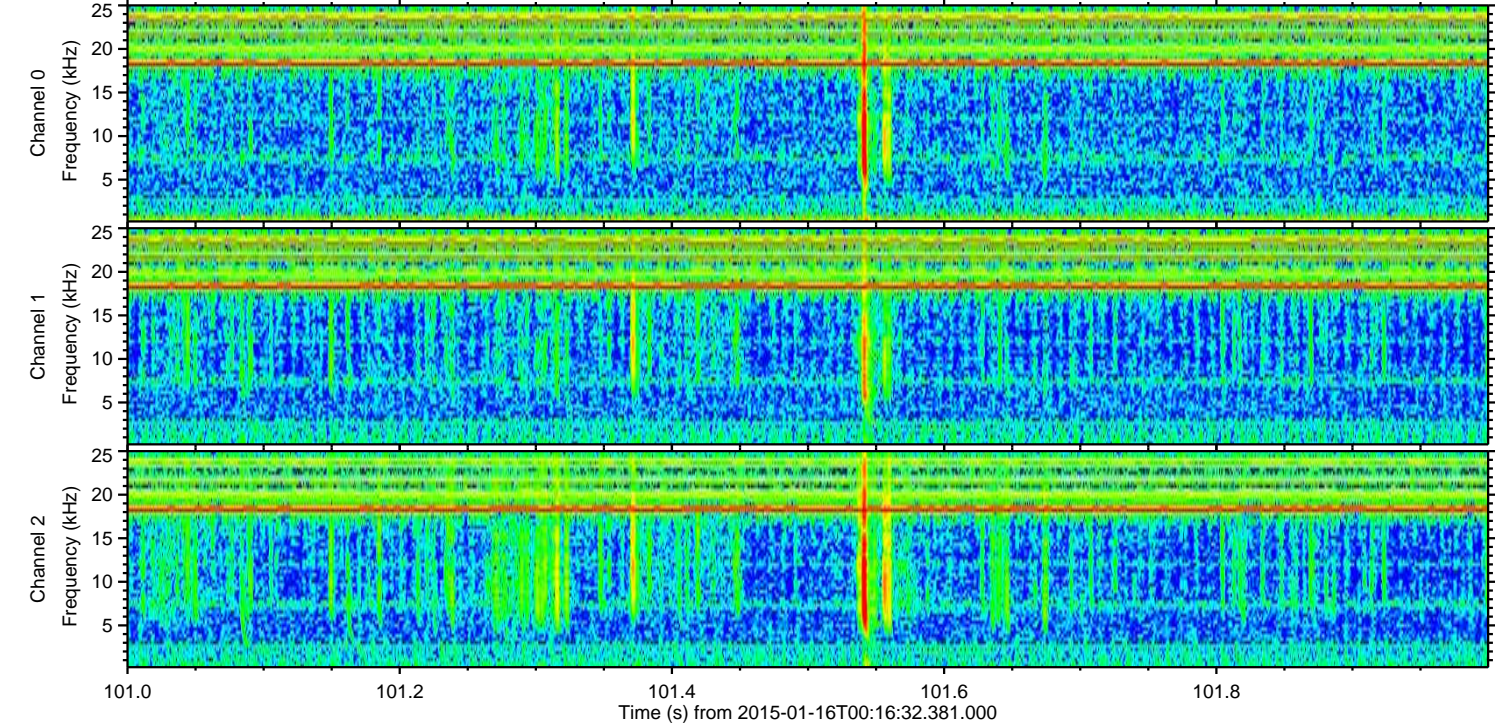
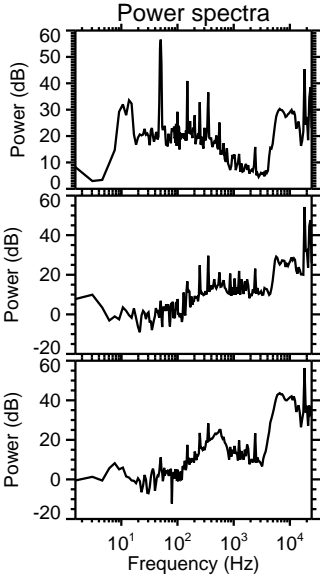
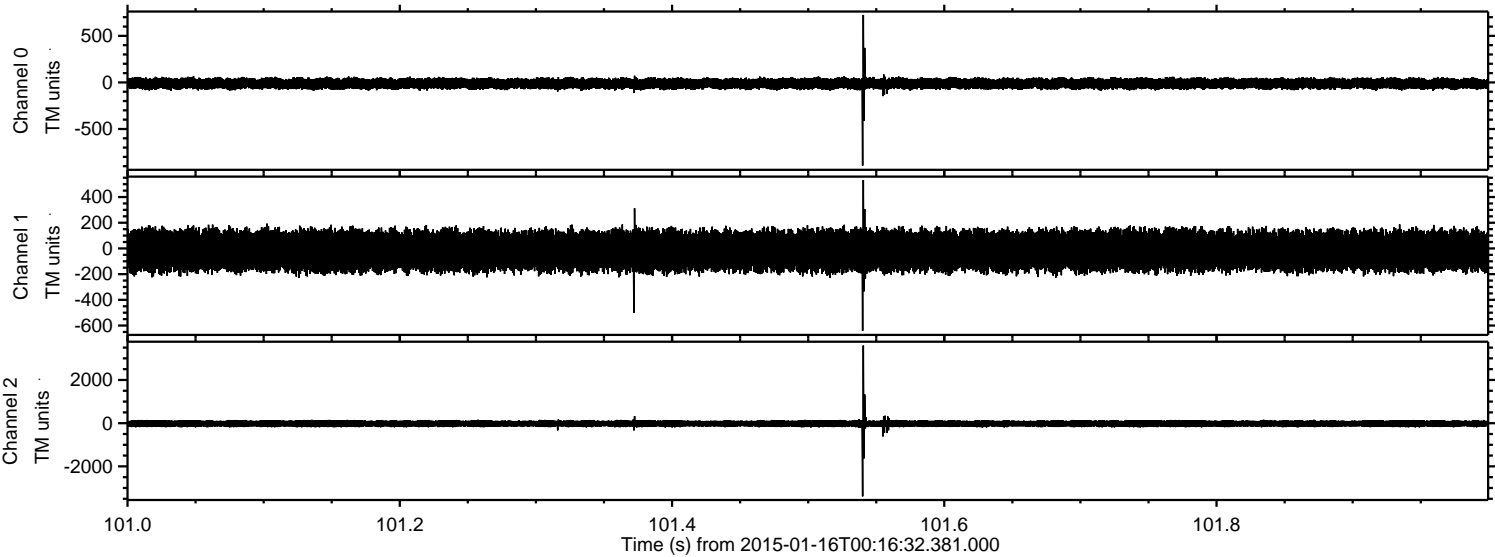


Processed Fri Jan 16 13:52:57 2015 by ELM ver.2012-10-06 from 001__elm20150116_001631__dat00.bin

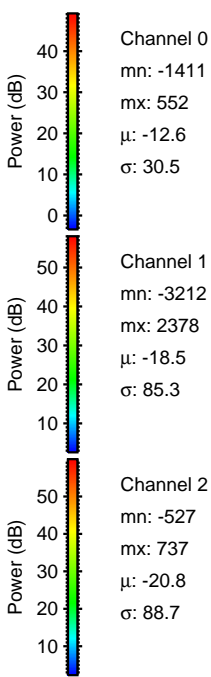
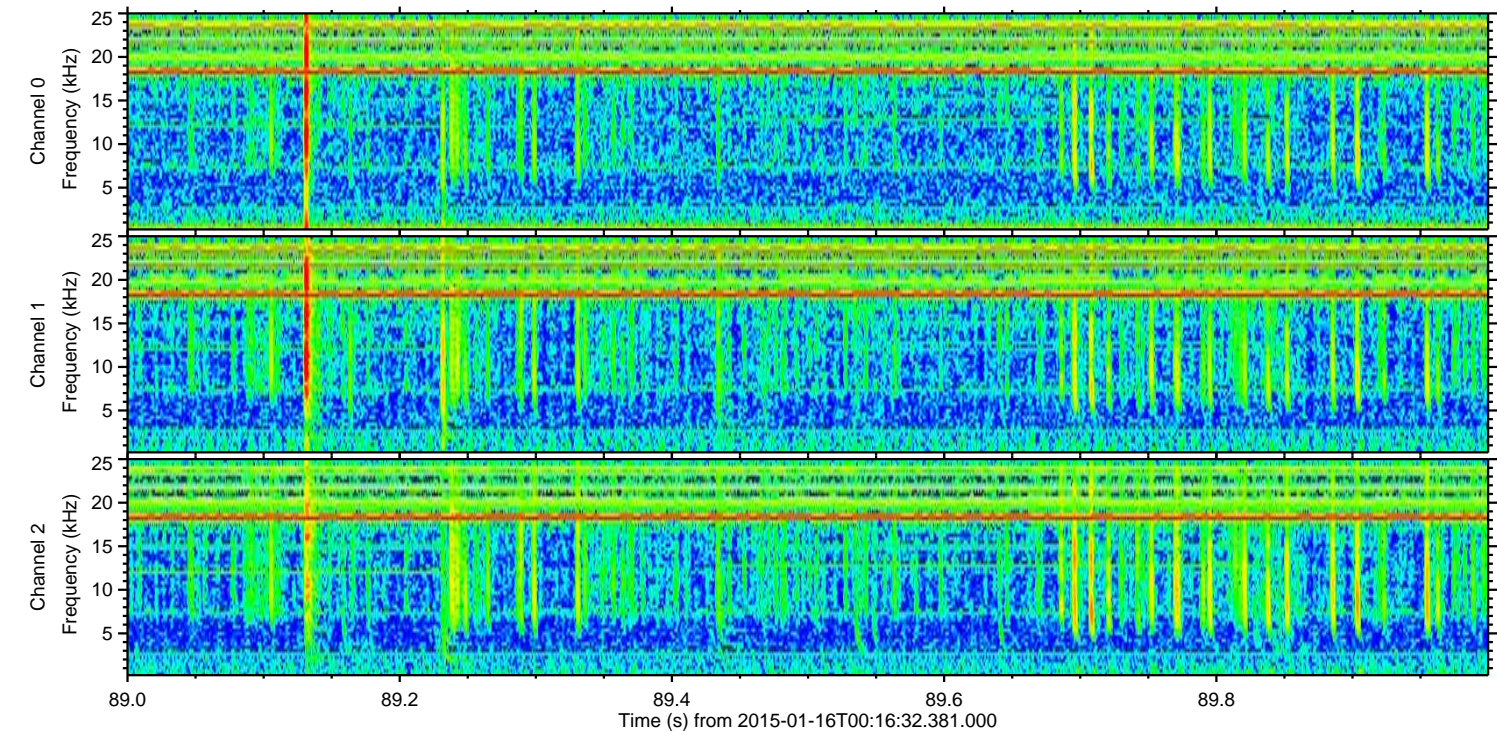
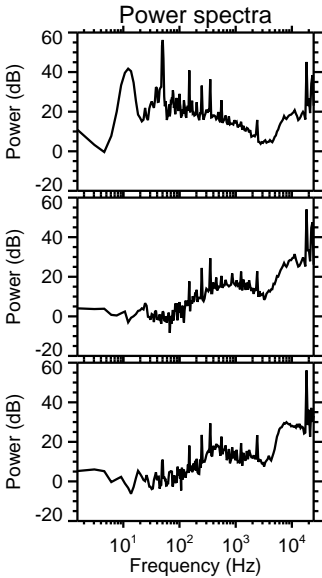
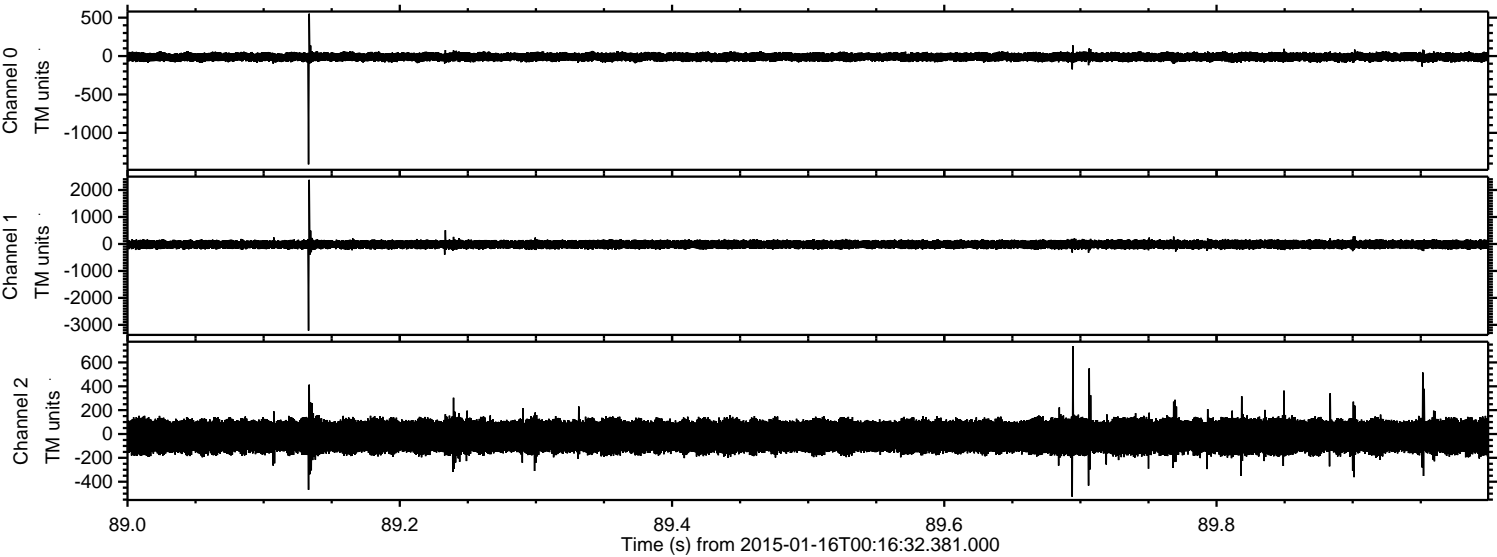


ELMAVAN 3D WAVEFORMS (Measured data sampled at 50 kHz) 49812 packets of 144 samples from 2015-01-16T00:16:32.381.000. Part 102/144

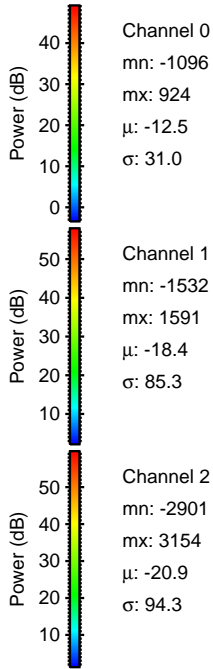
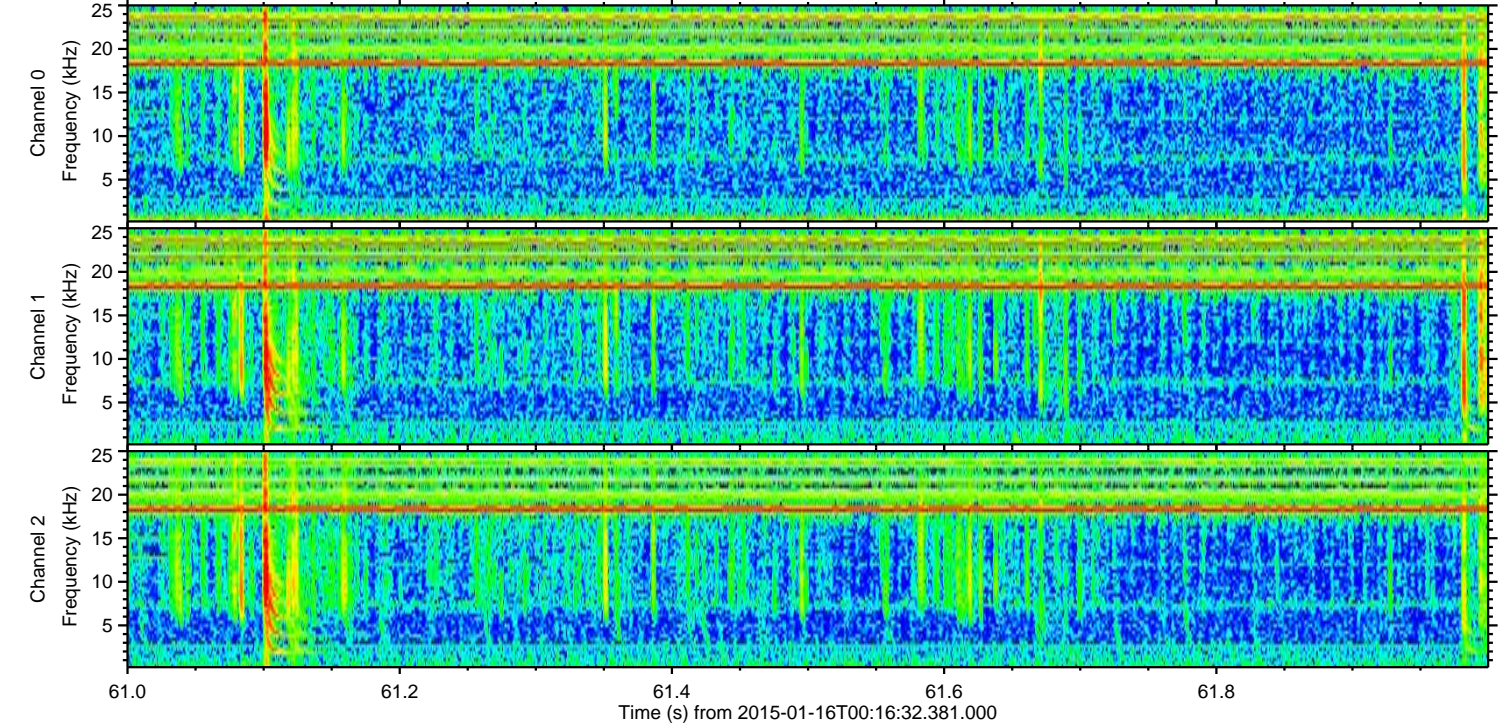
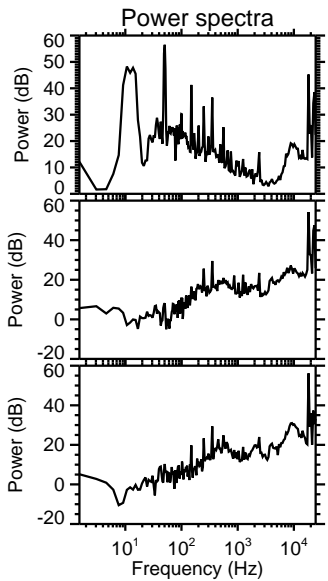
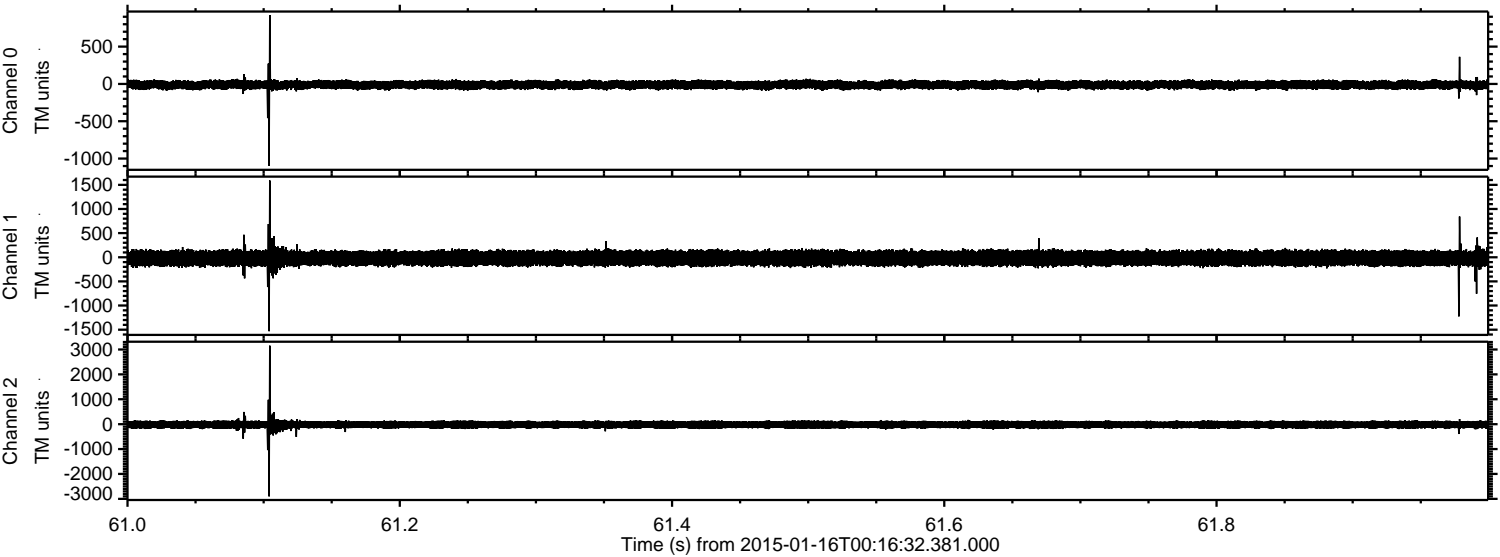
Processed Fri Jan 16 13:52:58 2015 by ELM ver.2012-10-06 from 001__elm20150116_001631__dat00.bin



Processed Fri Jan 16 13:52:59 2015 by ELM ver.2012-10-06 from 001__elm20150116_001631__dat00.bin



Processed Fri Jan 16 13:53:00 2015 by ELM ver.2012-10-06 from 001__elm20150116_001631__dat00.bin



Channel 0
mn: -1096
mx: 924
 μ : -12.5
 σ : 31.0

Channel 1
mn: -1532
mx: 1591
 μ : -18.4
 σ : 85.3

Channel 2
mn: -2901
mx: 3154
 μ : -20.9
 σ : 94.3

Processed Fri Jan 16 13:53:01 2015 by ELM ver.2012-10-06 from 001__elm20150116_001631__dat00.bin

