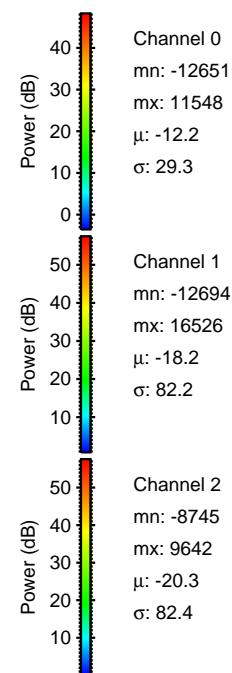
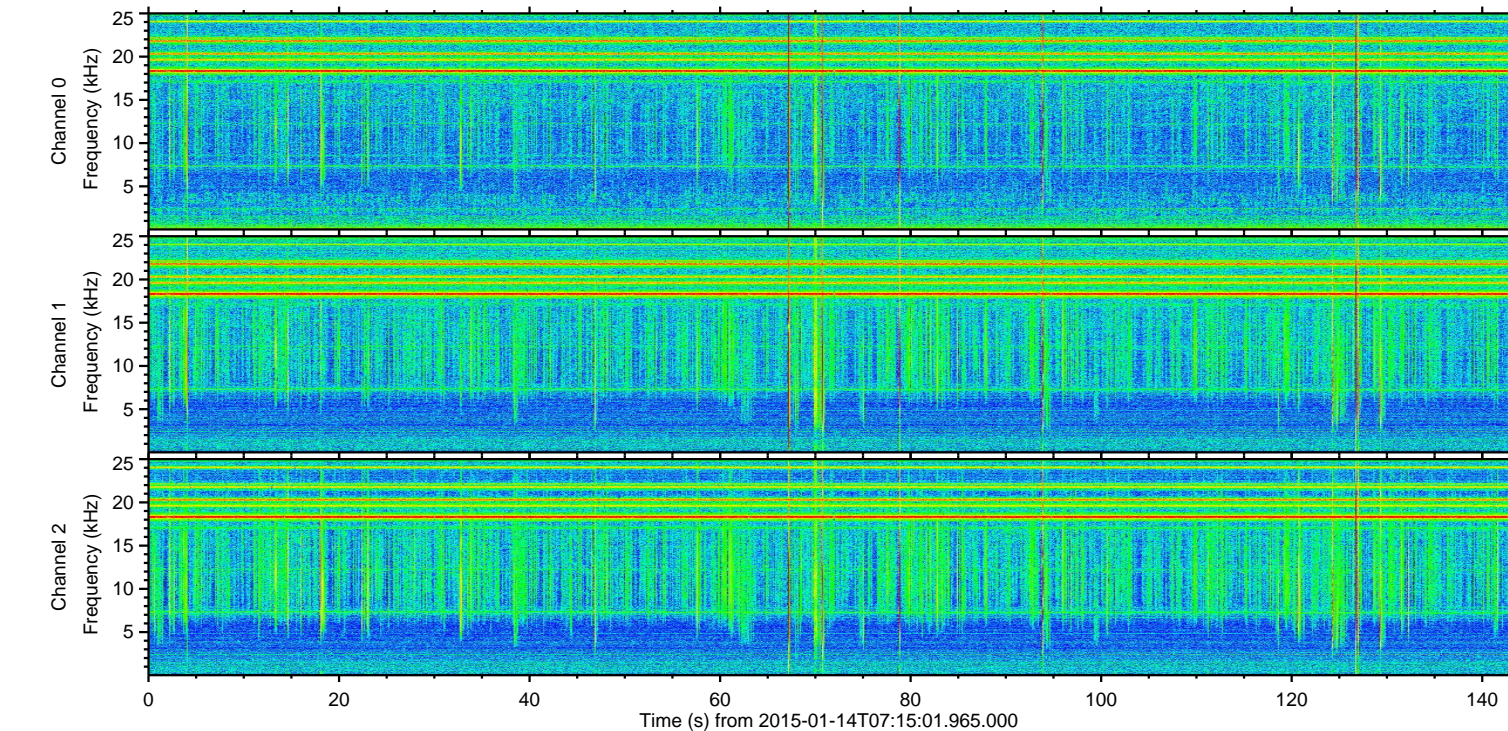
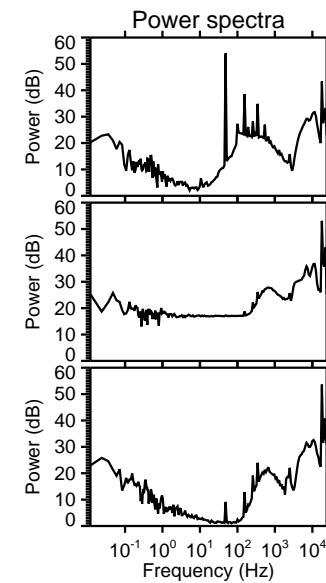
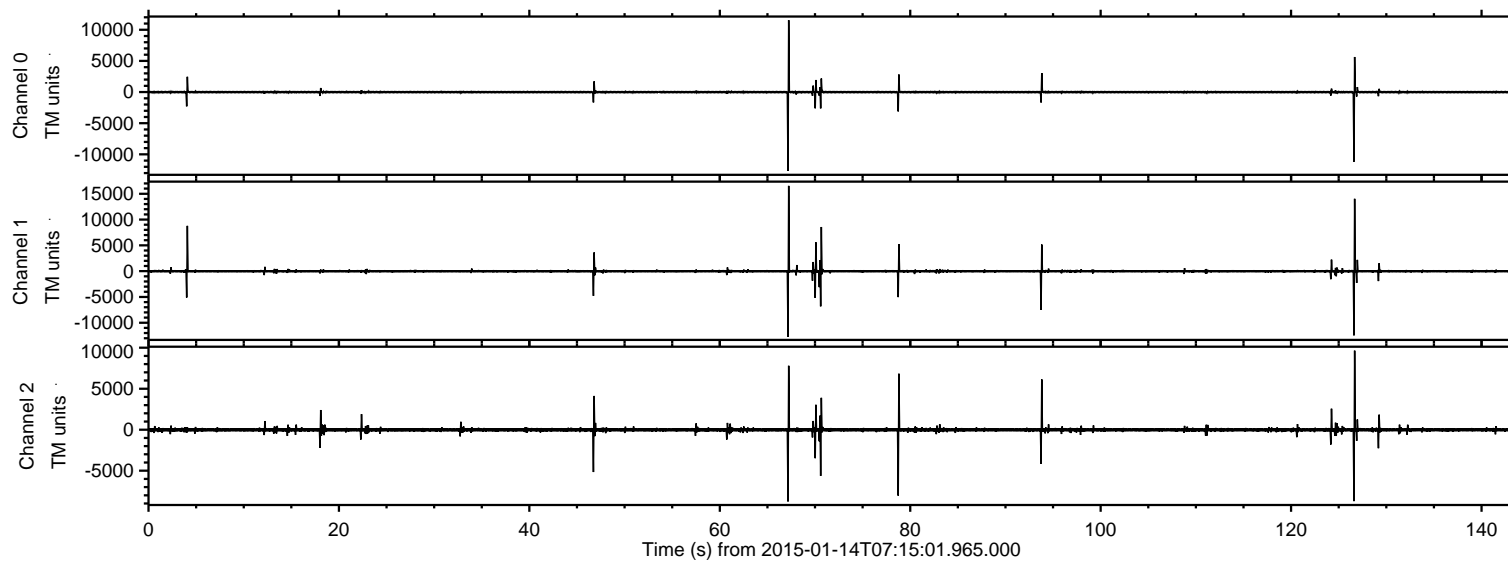
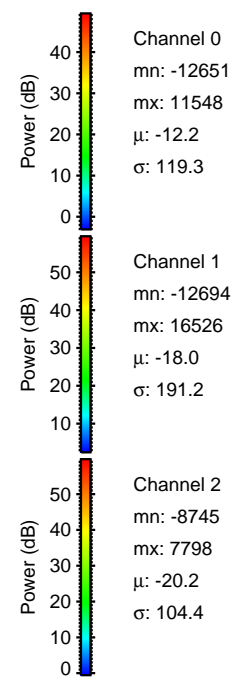
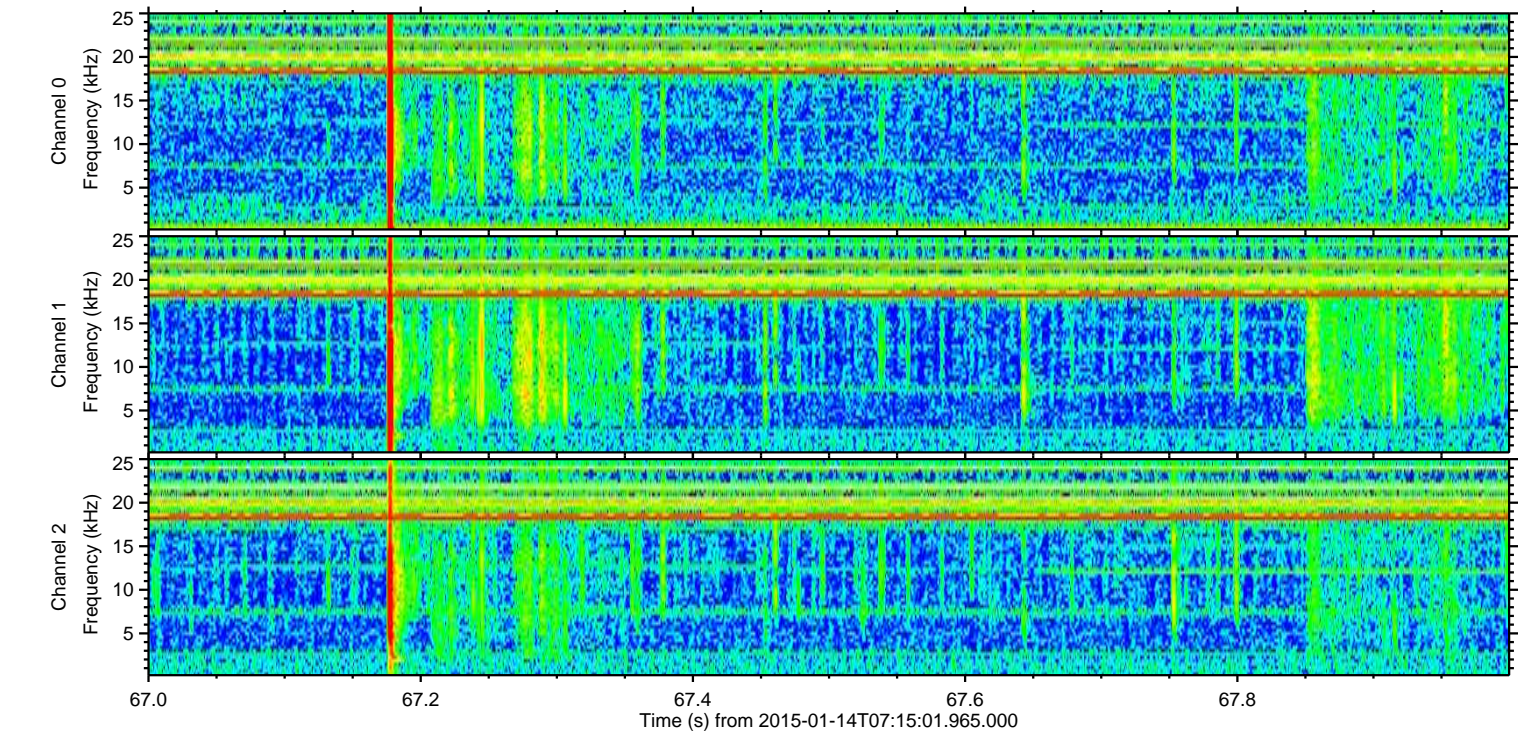
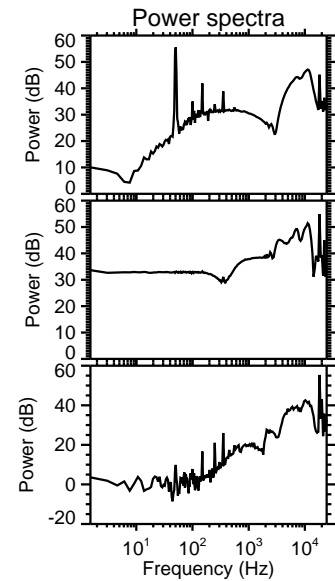
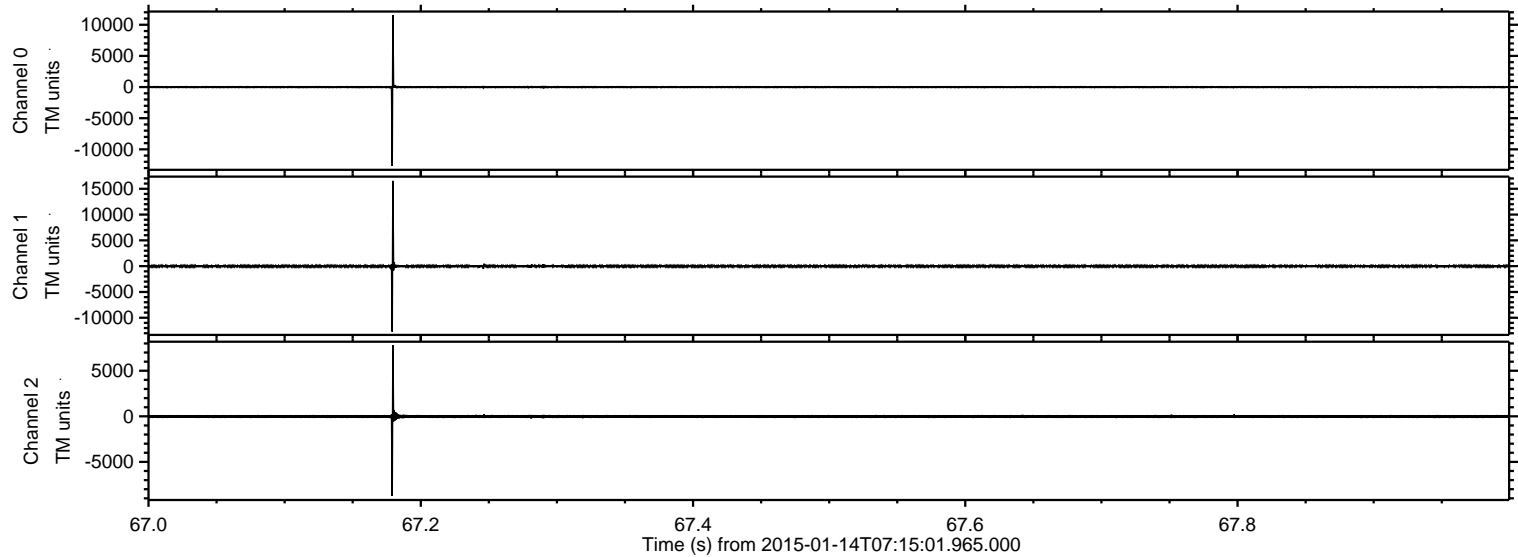


ELMAVAN 3D WAVEFORMS (Measured data sampled at 50 kHz) 49618 packets of 144 samples from 2015-01-14T07:15:01.965.000.

Processed Wed Jan 14 08:29:30 2015 by ELM ver.2012-10-06 from 001__elm20150114_071500__dat00.bin

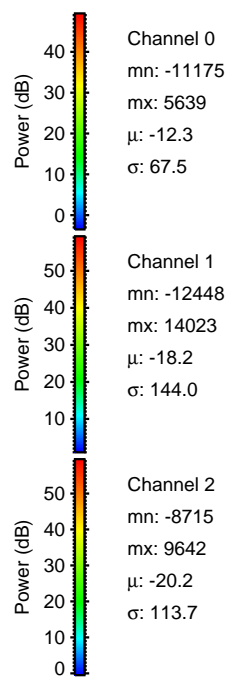
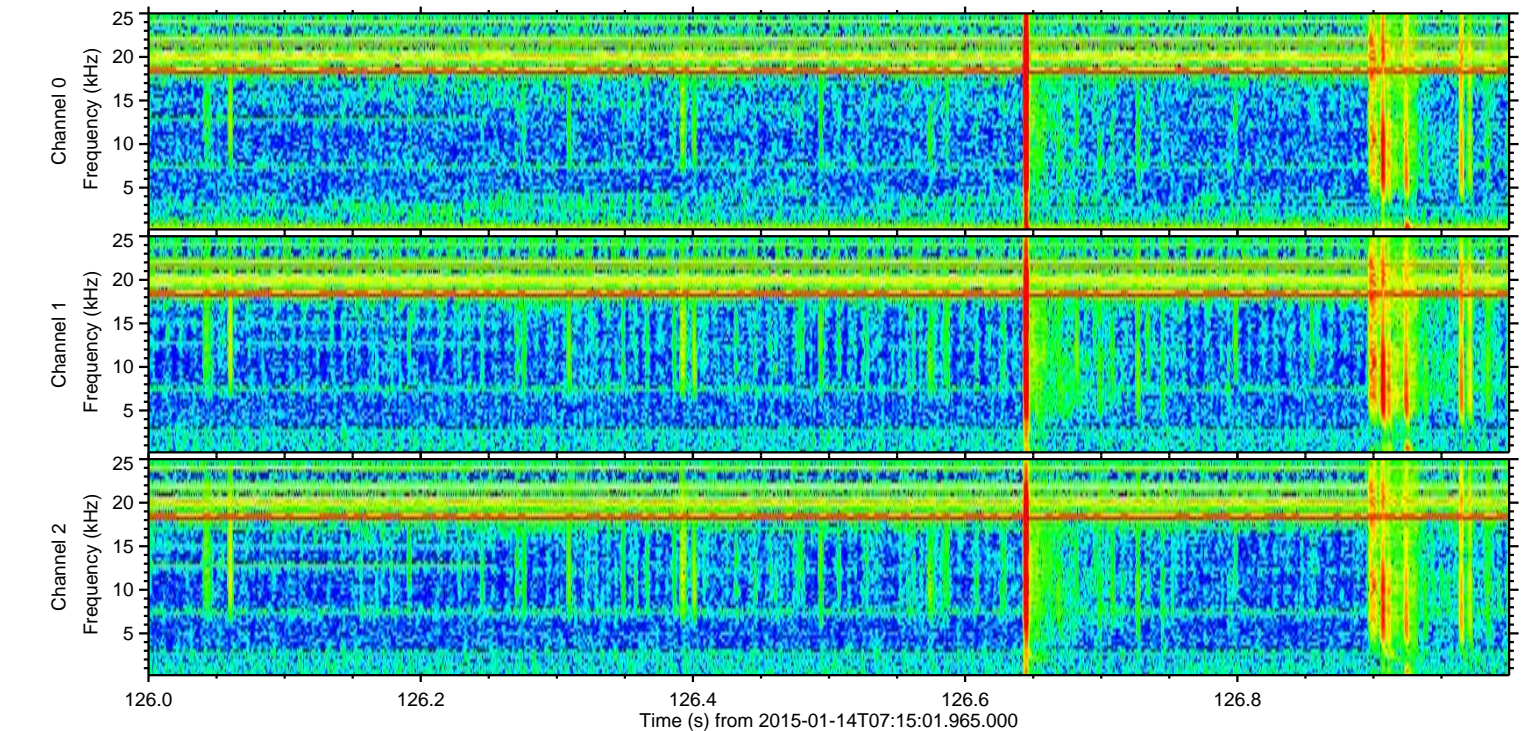
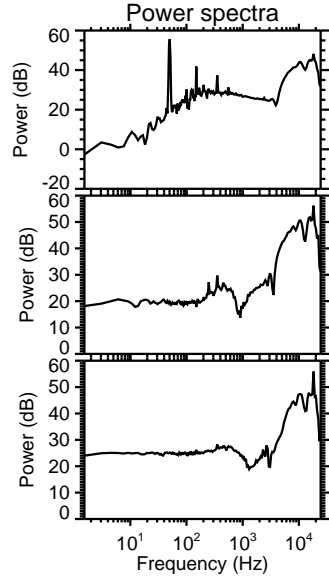
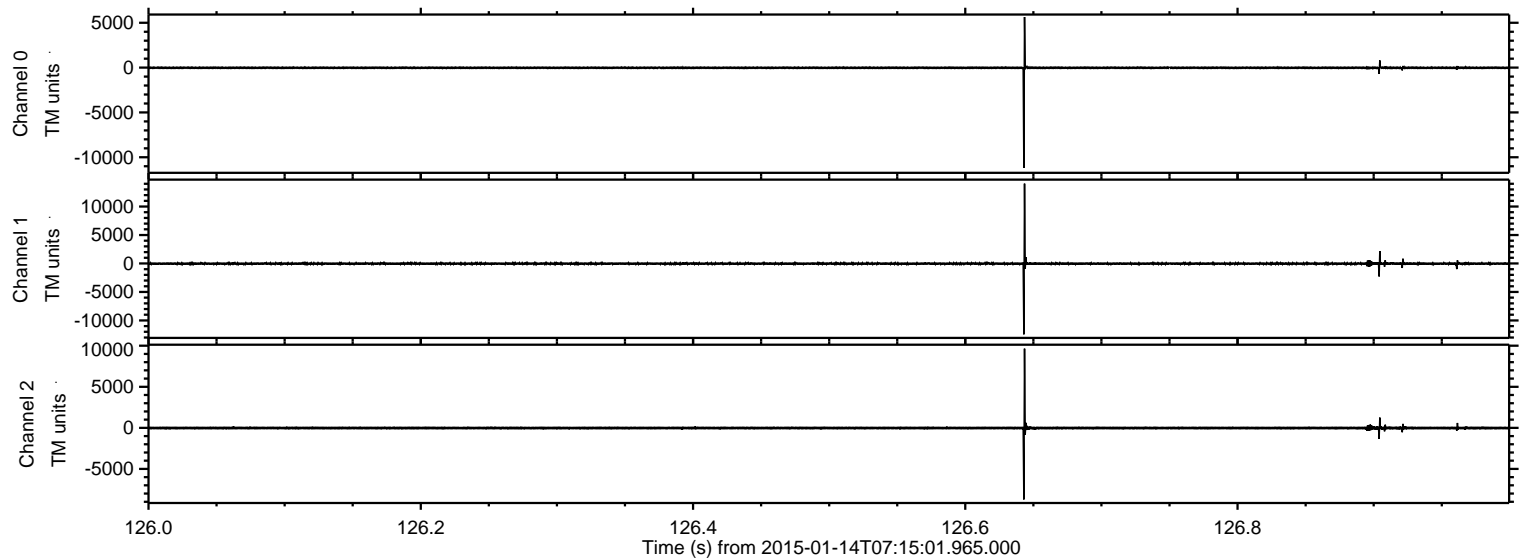


Processed Wed Jan 14 08:29:47 2015 by ELM ver.2012-10-06 from 001__elm20150114_071500__dat00.bin

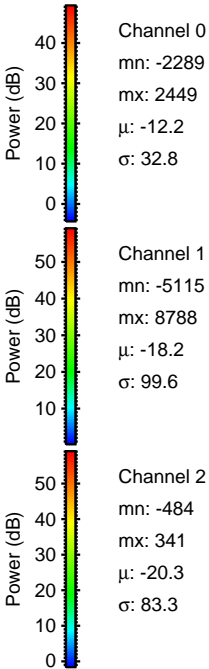
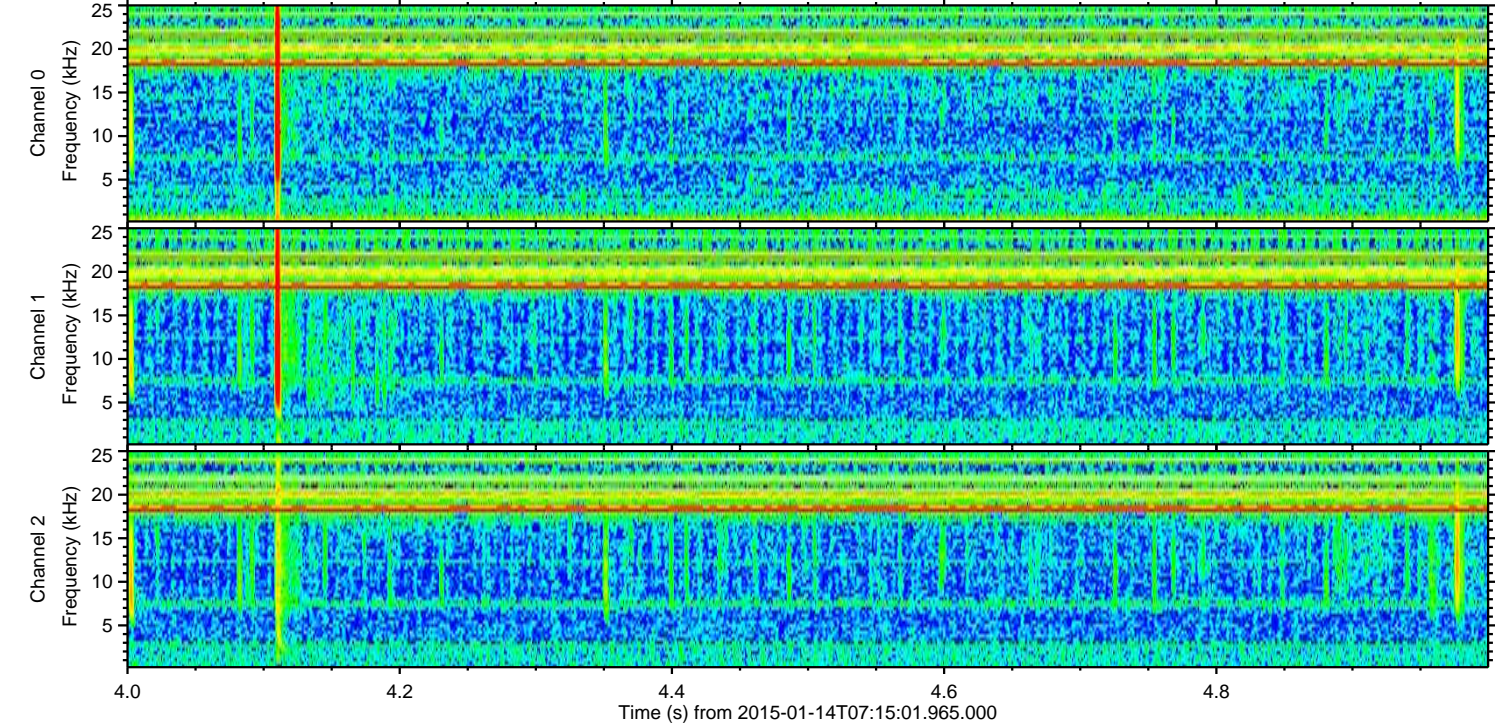
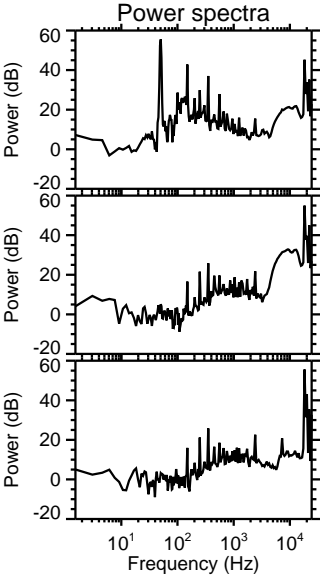
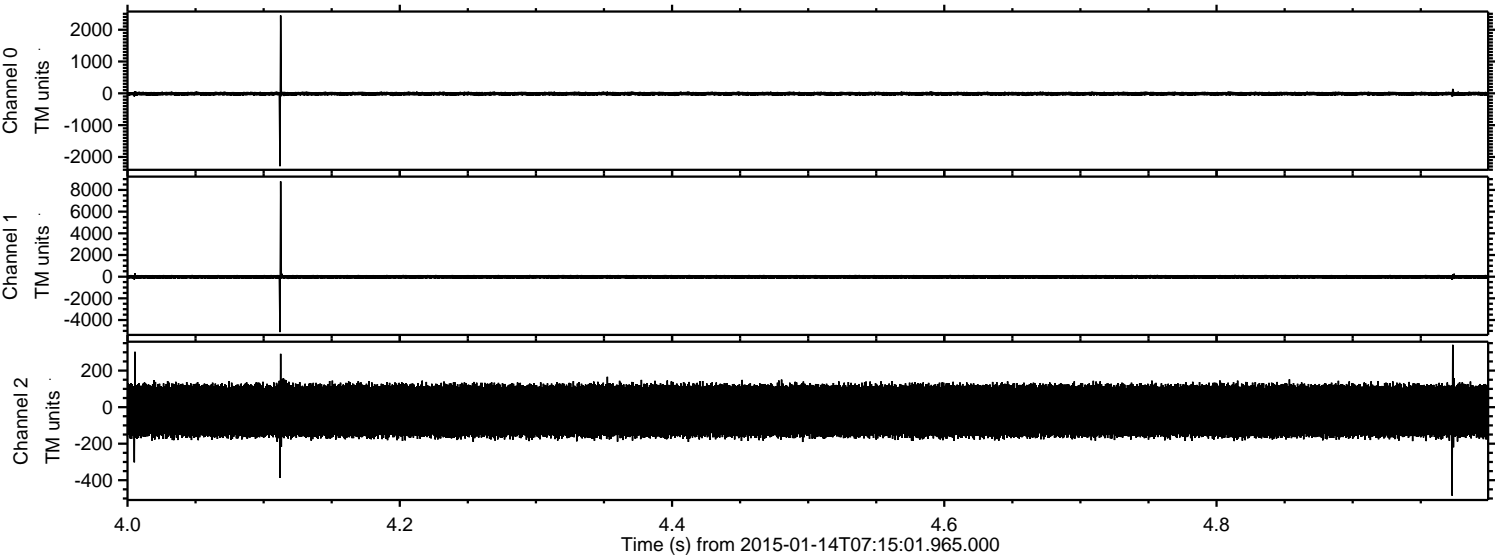


ELMAVAN 3D WAVEFORMS (Measured data sampled at 50 kHz) 49618 packets of 144 samples from 2015-01-14T07:15:01.965.000. Part 127/143

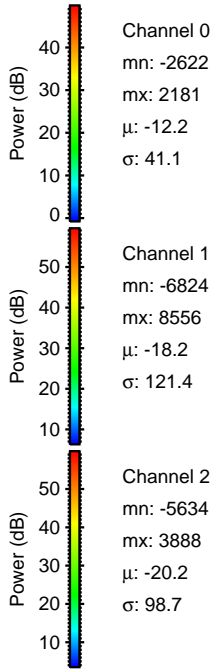
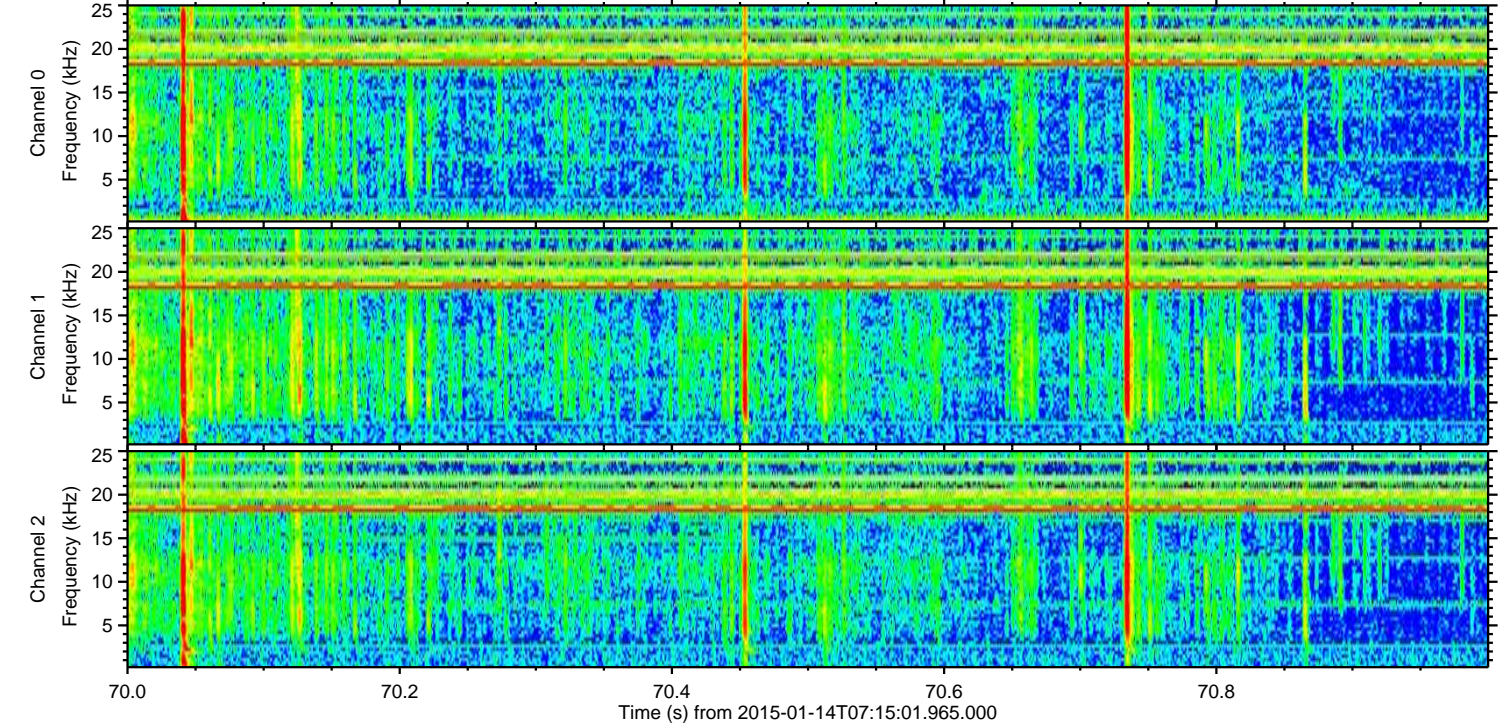
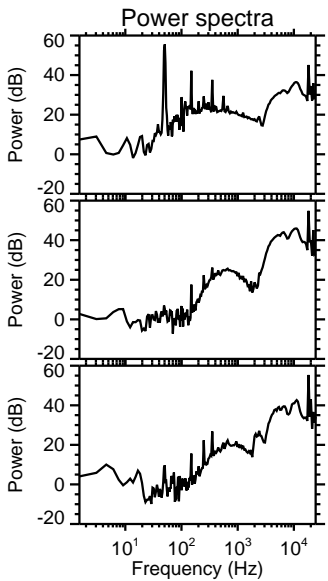
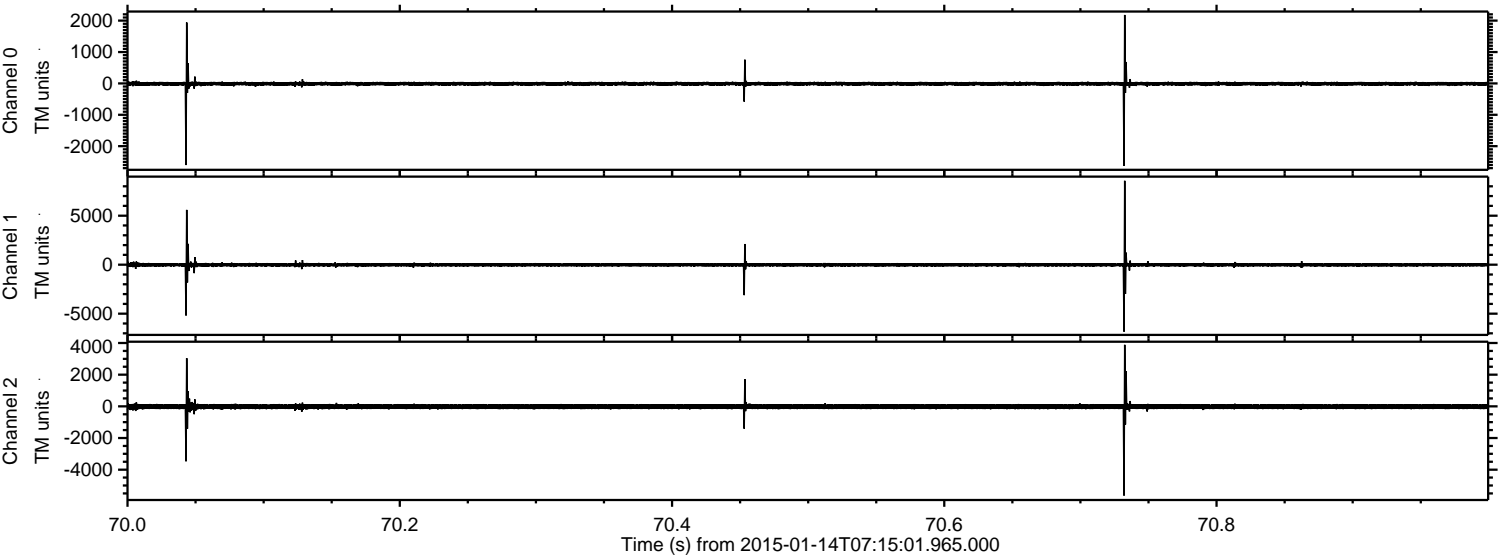
Processed Wed Jan 14 08:29:48 2015 by ELM ver.2012-10-06 from 001__elm20150114_071500__dat00.bin



Processed Wed Jan 14 08:29:50 2015 by ELM ver.2012-10-06 from 001__elm20150114_071500__dat00.bin



Processed Wed Jan 14 08:29:52 2015 by ELM ver.2012-10-06 from 001__elm20150114_071500__dat00.bin

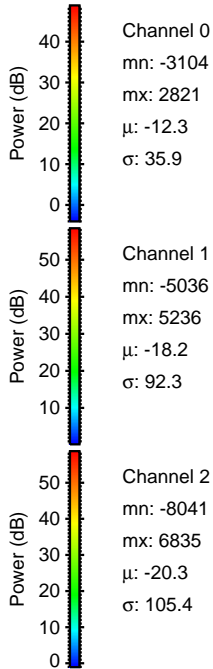
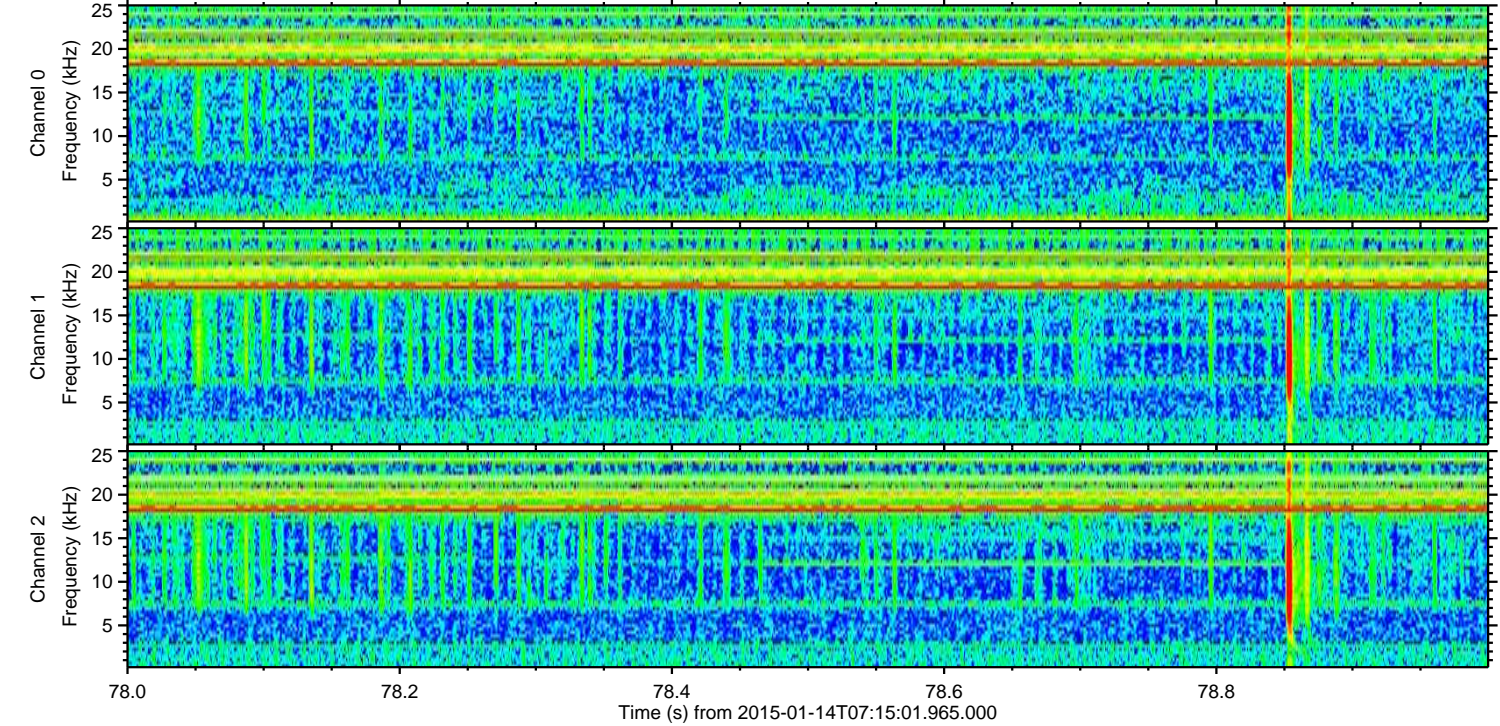
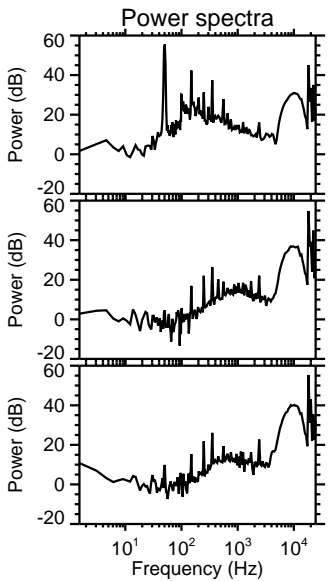
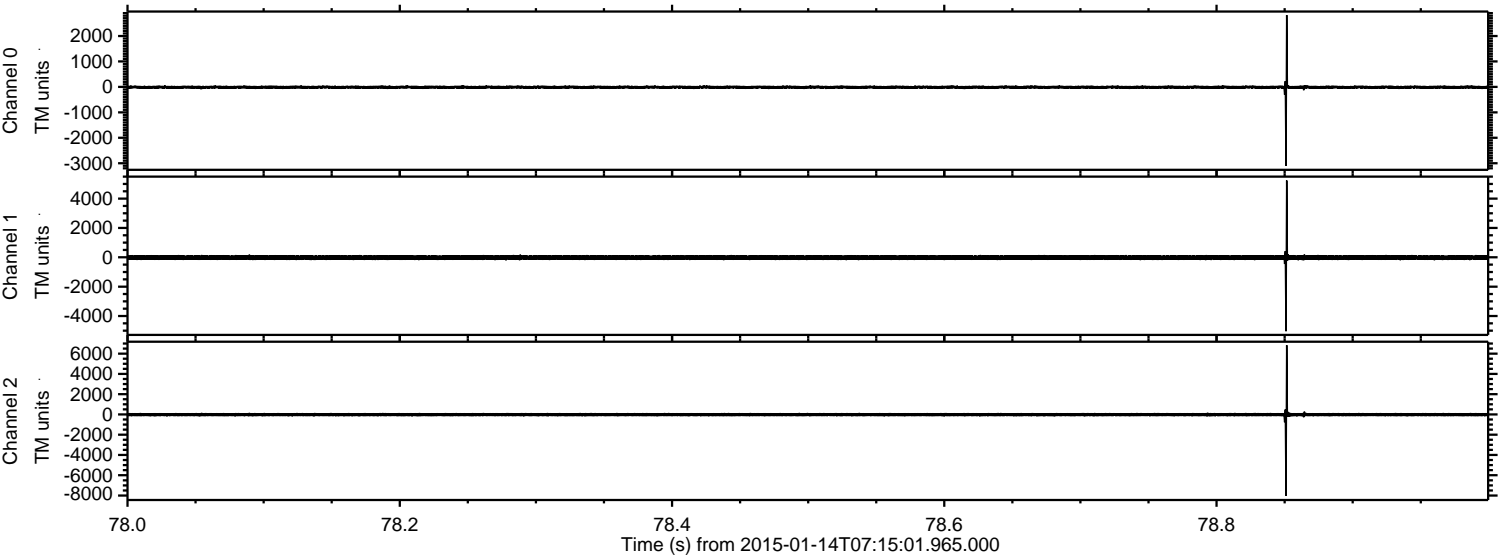


Channel 0
mn: -2622
mx: 2181
 μ : -12.2
 σ : 41.1

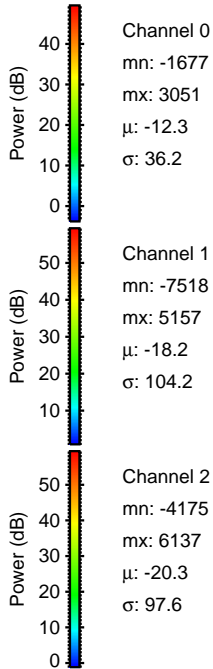
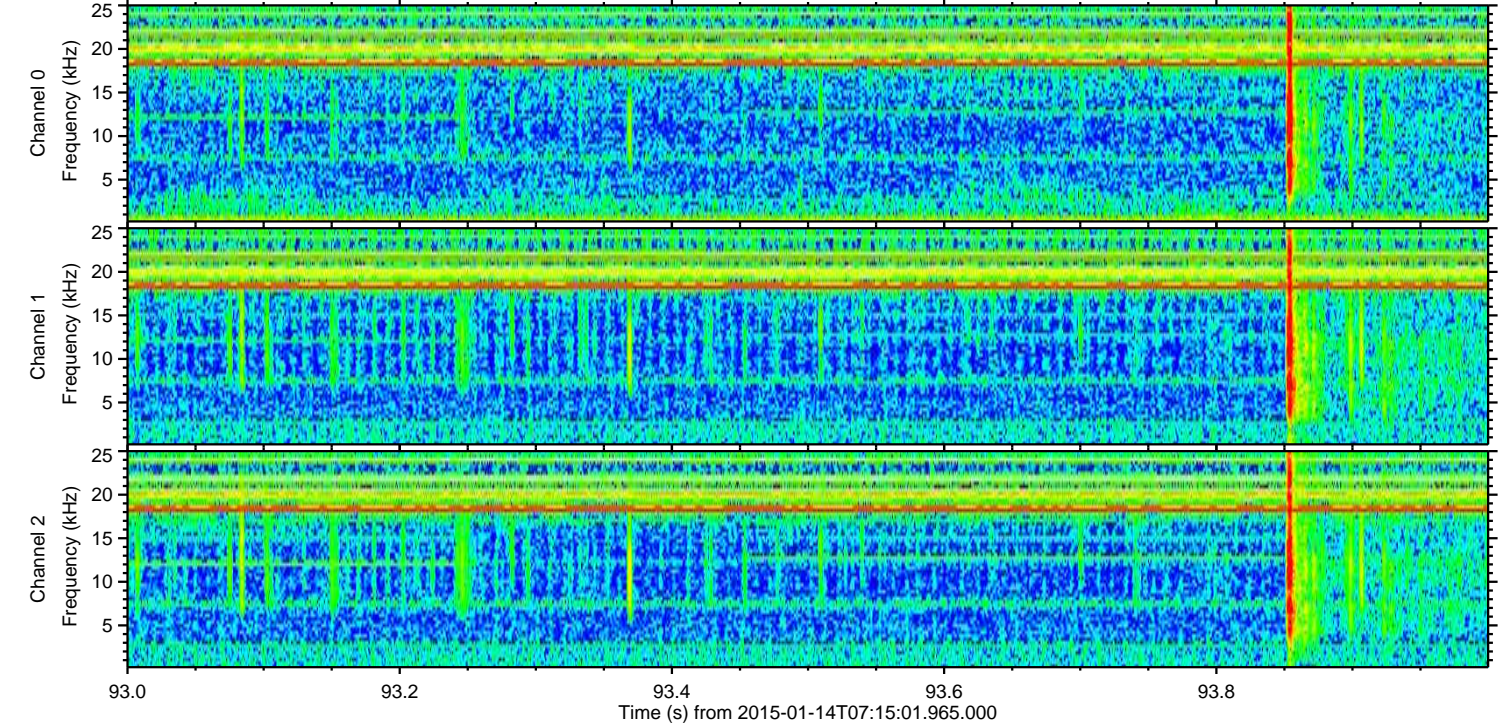
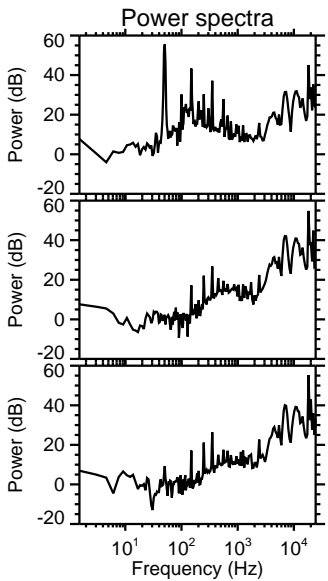
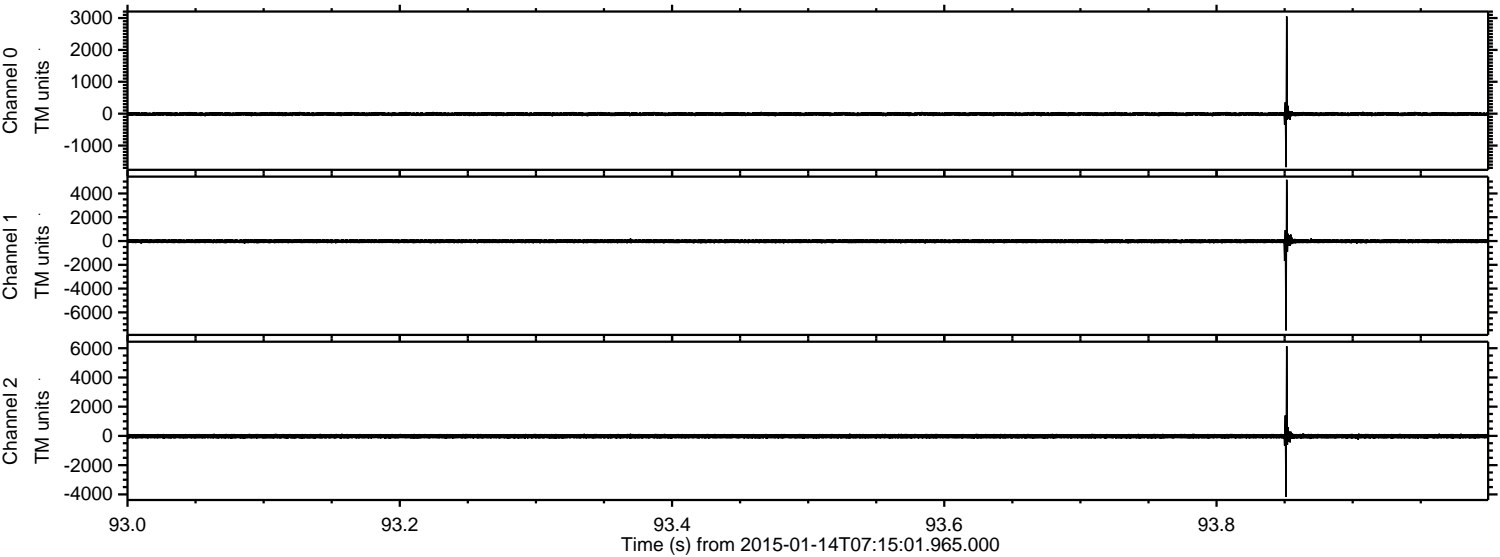
Channel 1
mn: -6824
mx: 8556
 μ : -18.2
 σ : 121.4

Channel 2
mn: -5634
mx: 3888
 μ : -20.2
 σ : 98.7

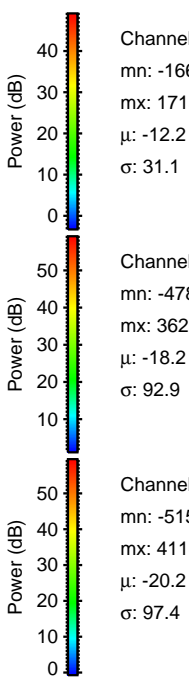
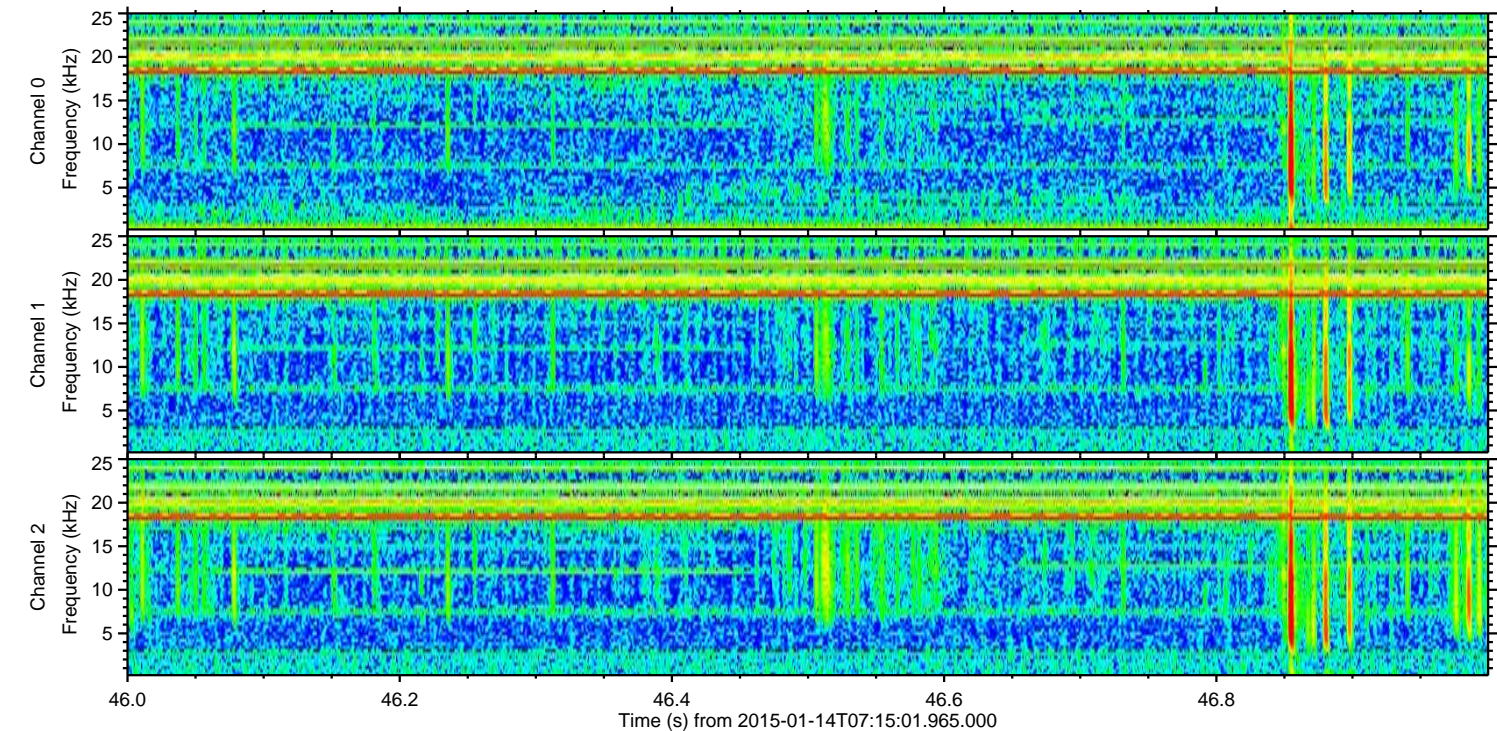
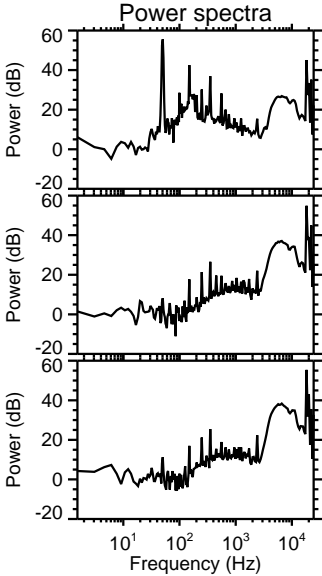
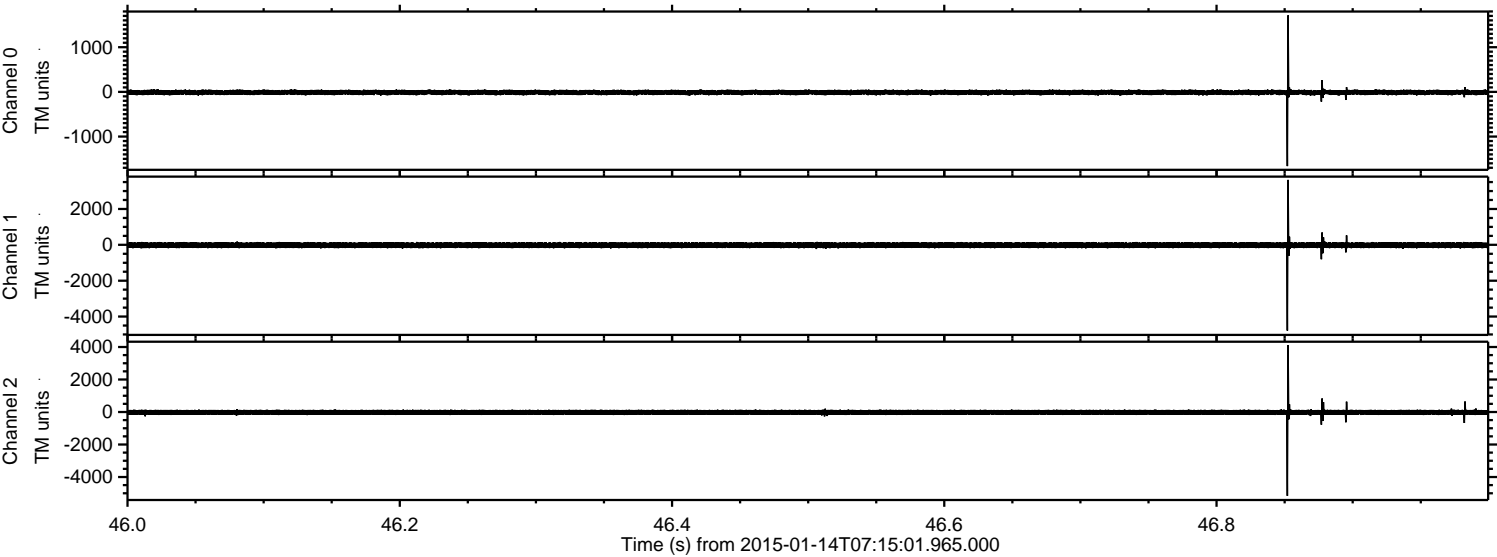
Processed Wed Jan 14 08:29:54 2015 by ELM ver.2012-10-06 from 001__elm20150114_071500__dat00.bin



Processed Wed Jan 14 08:29:56 2015 by ELM ver.2012-10-06 from 001__elm20150114_071500__dat00.bin

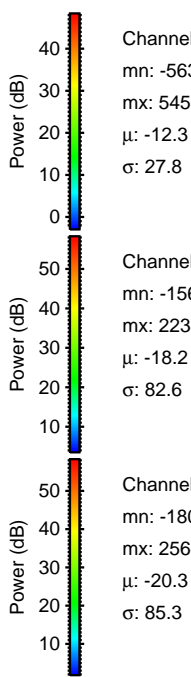
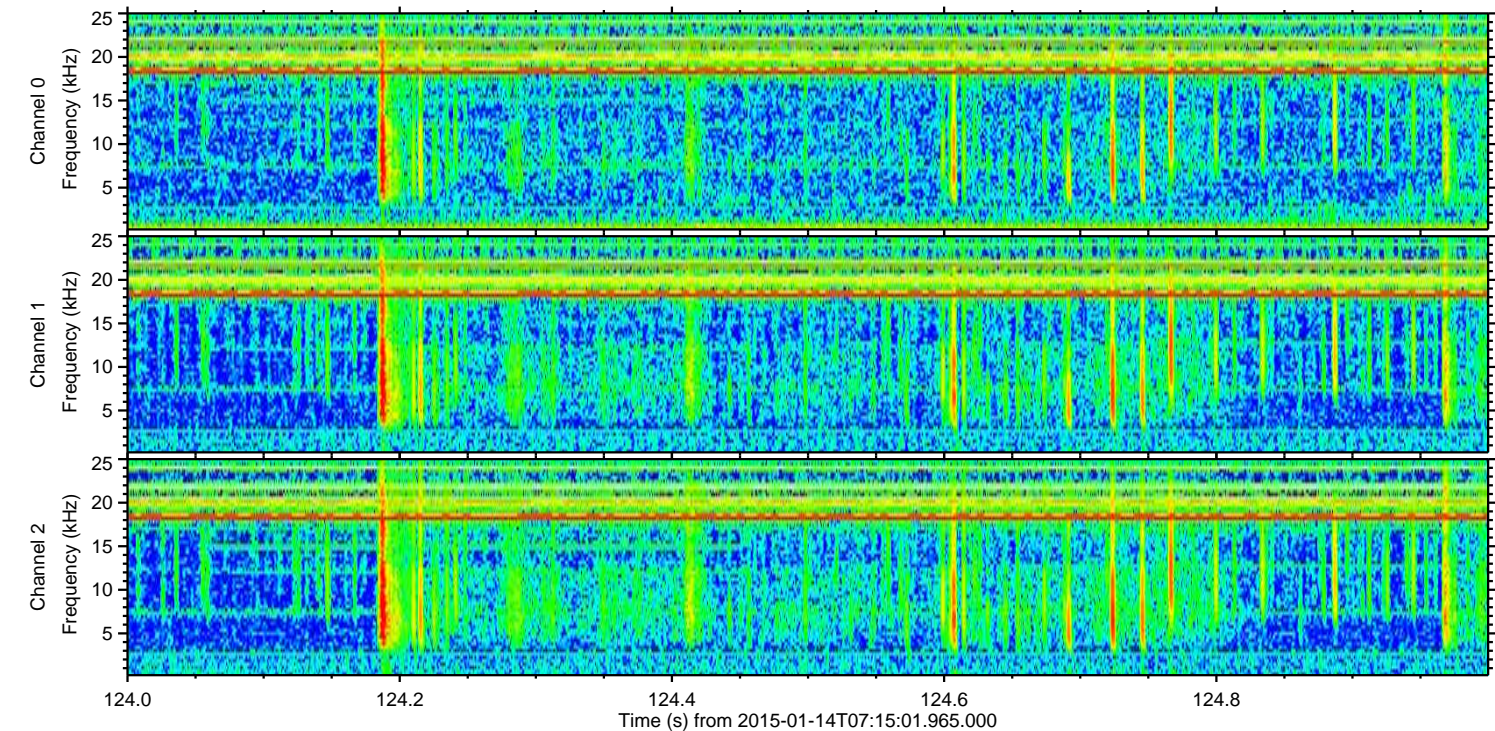
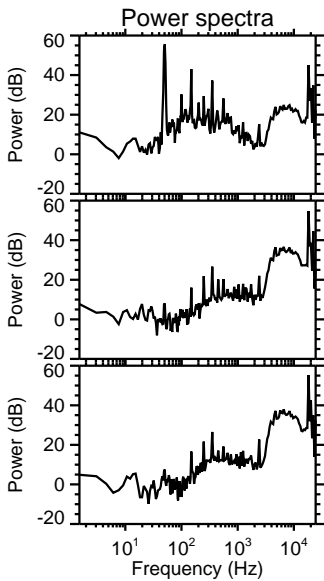
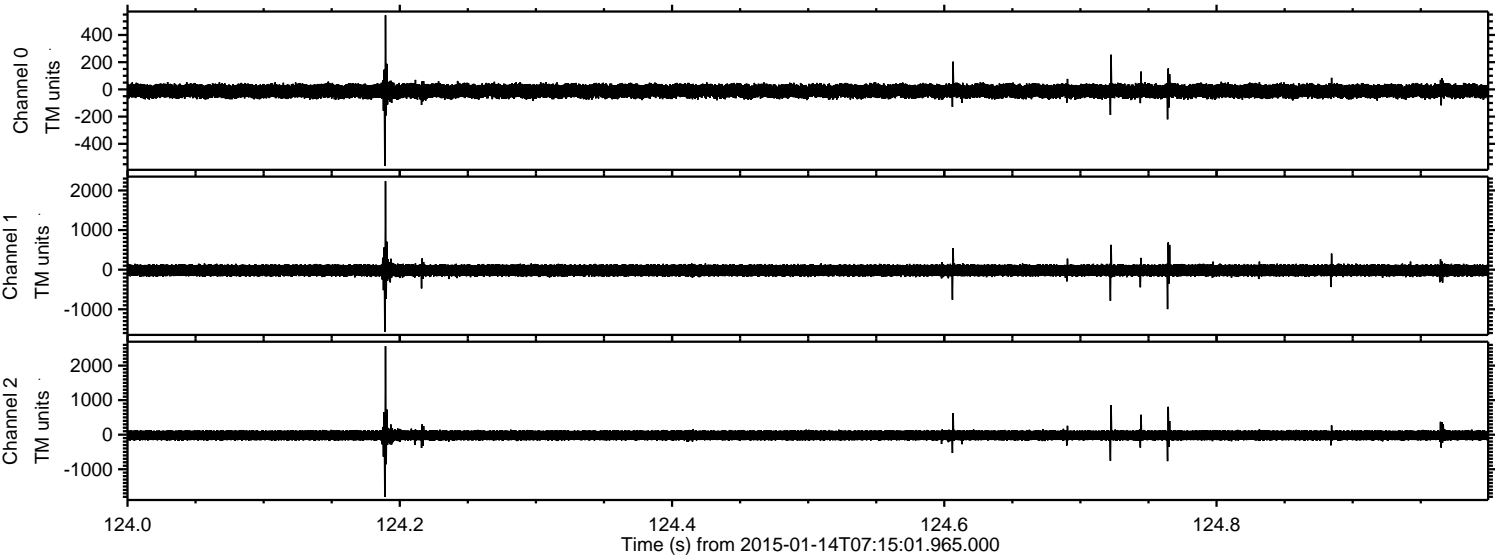


Processed Wed Jan 14 08:29:58 2015 by ELM ver.2012-10-06 from 001__elm20150114_071500__dat00.bin

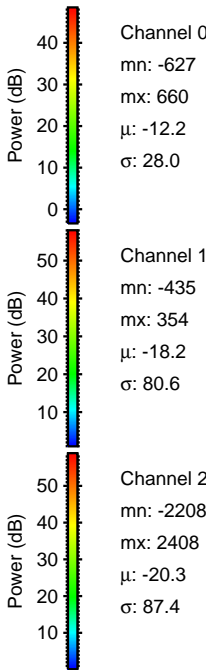
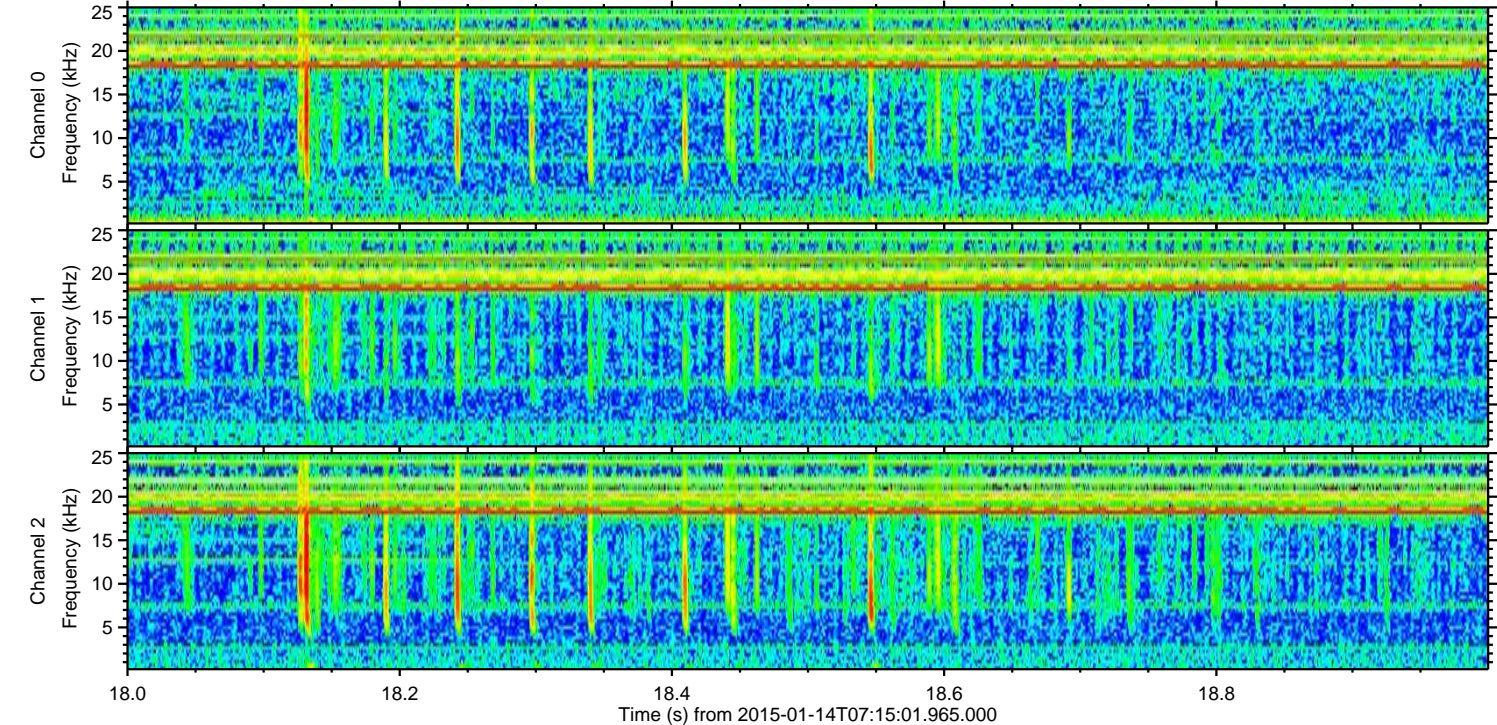
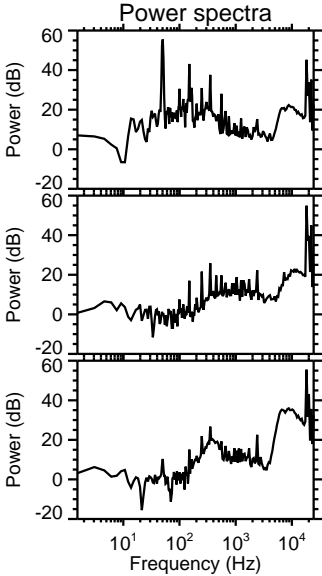
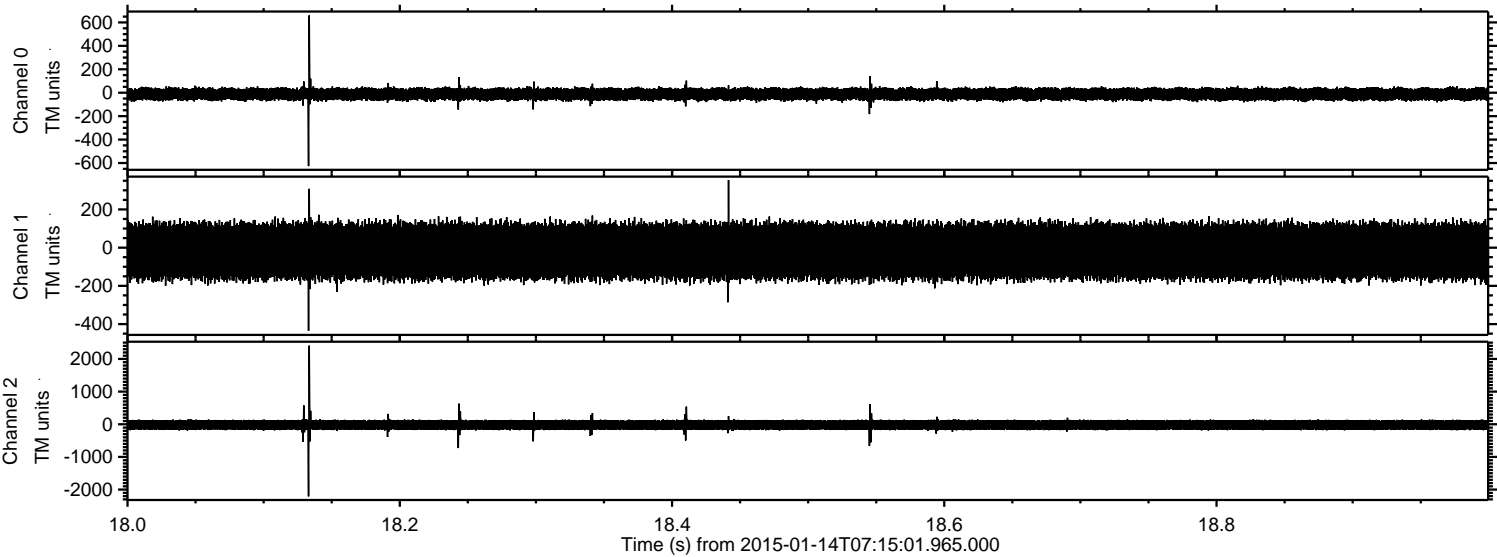


ELMAVAN 3D WAVEFORMS (Measured data sampled at 50 kHz) 49618 packets of 144 samples from 2015-01-14T07:15:01.965.000. Part 125/143

Processed Wed Jan 14 08:30:00 2015 by ELM ver.2012-10-06 from 001__elm20150114_071500__dat00.bin



Processed Wed Jan 14 08:30:01 2015 by ELM ver.2012-10-06 from 001__elm20150114_071500__dat00.bin



Channel 0
mn: -627
mx: 660
 μ : -12.2
 σ : 28.0

Channel 1
mn: -435
mx: 354
 μ : -18.2
 σ : 80.6

Channel 2
mn: -2208
mx: 2408
 μ : -20.3
 σ : 87.4

