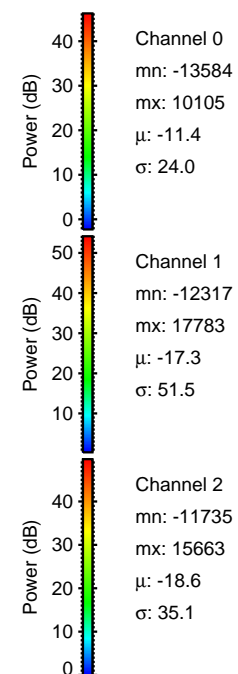
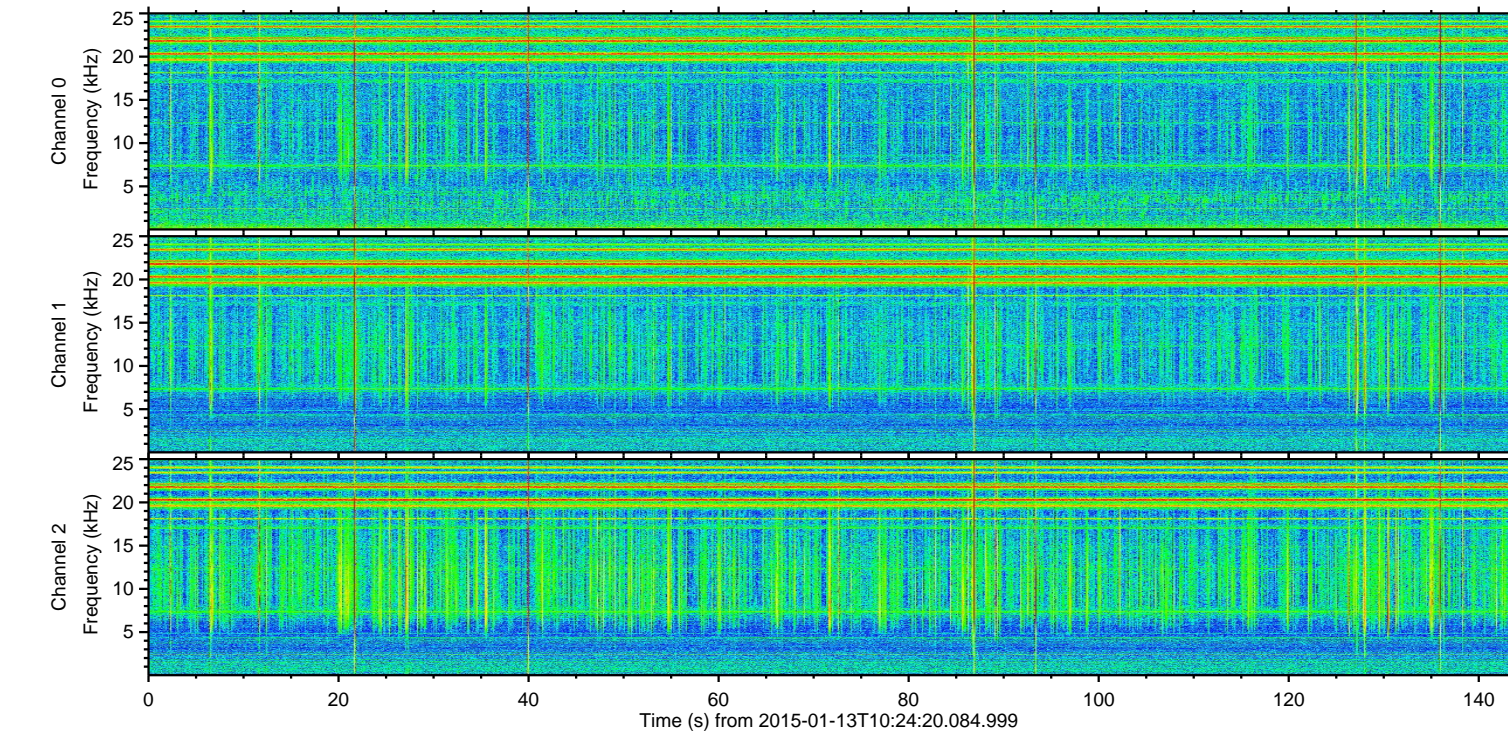
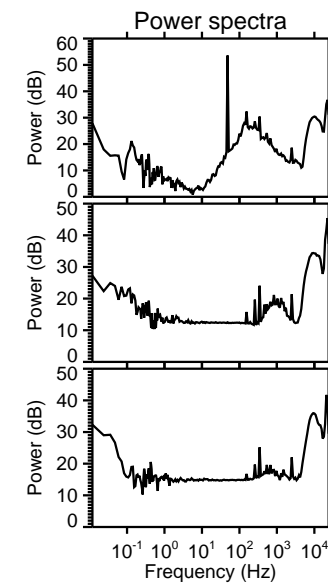
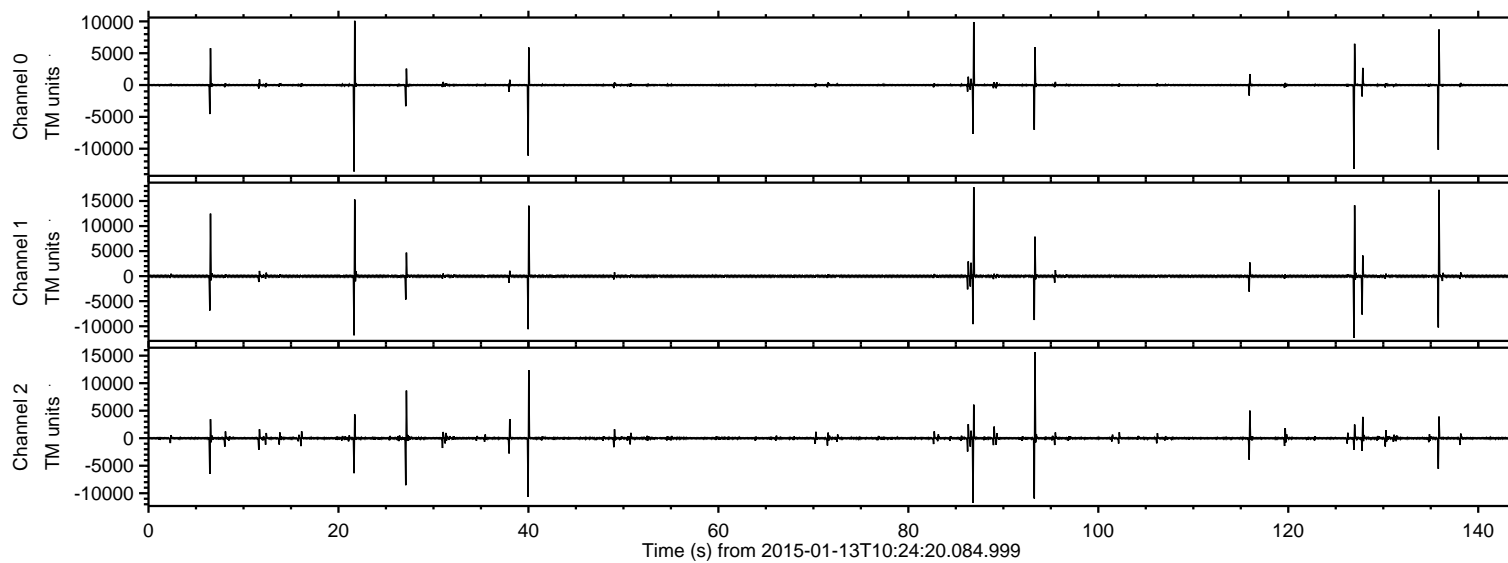


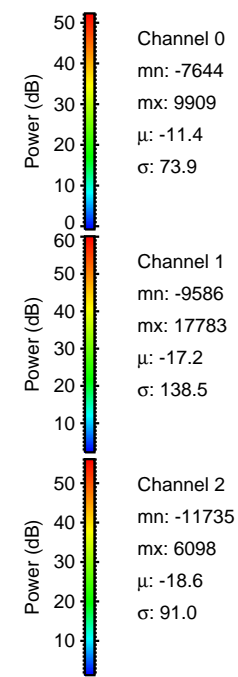
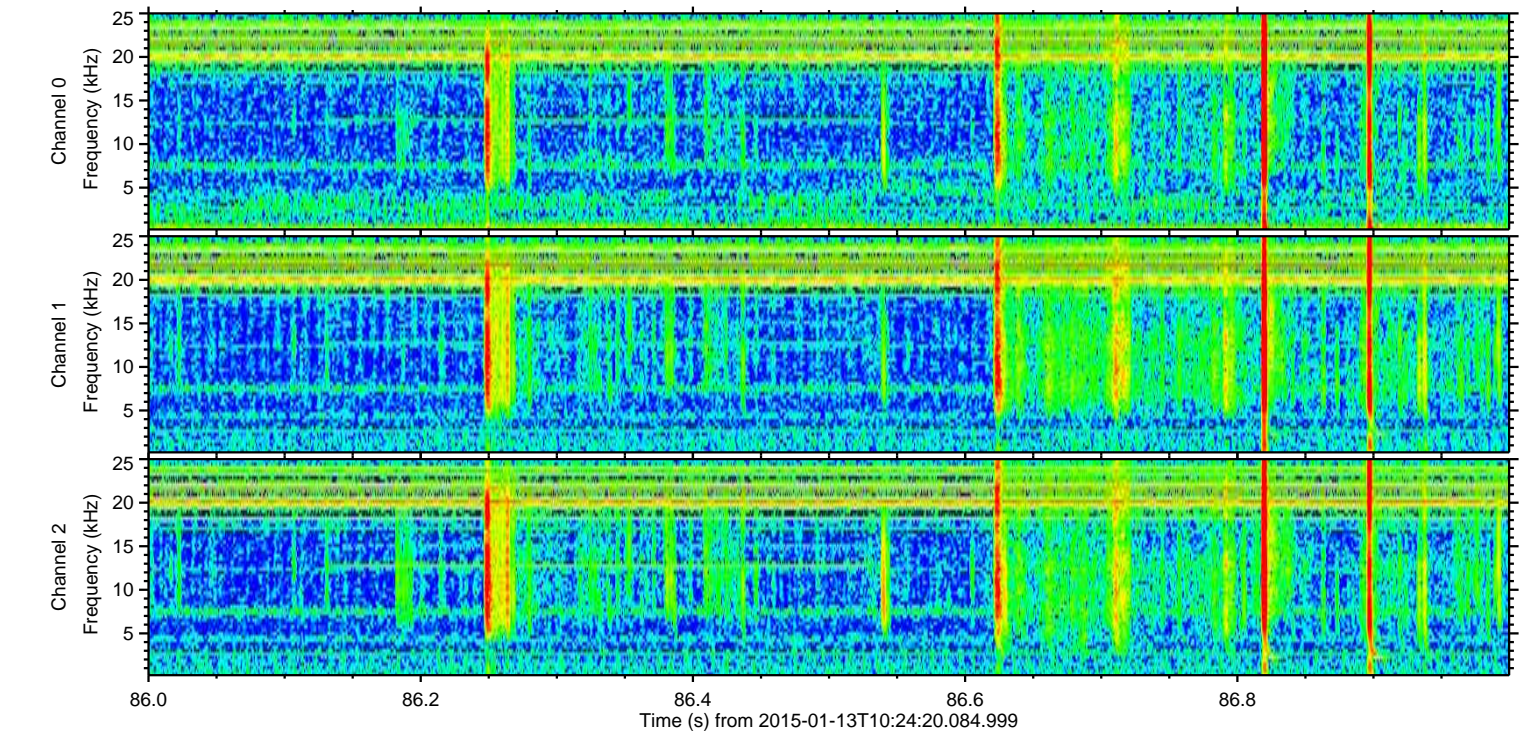
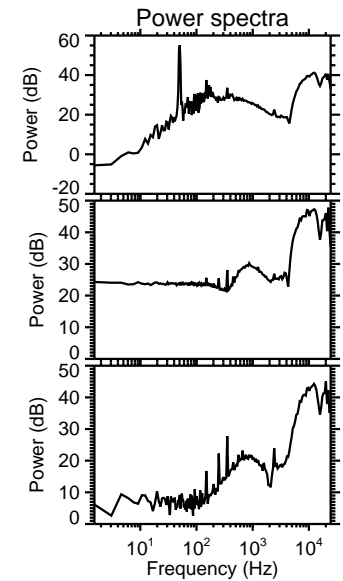
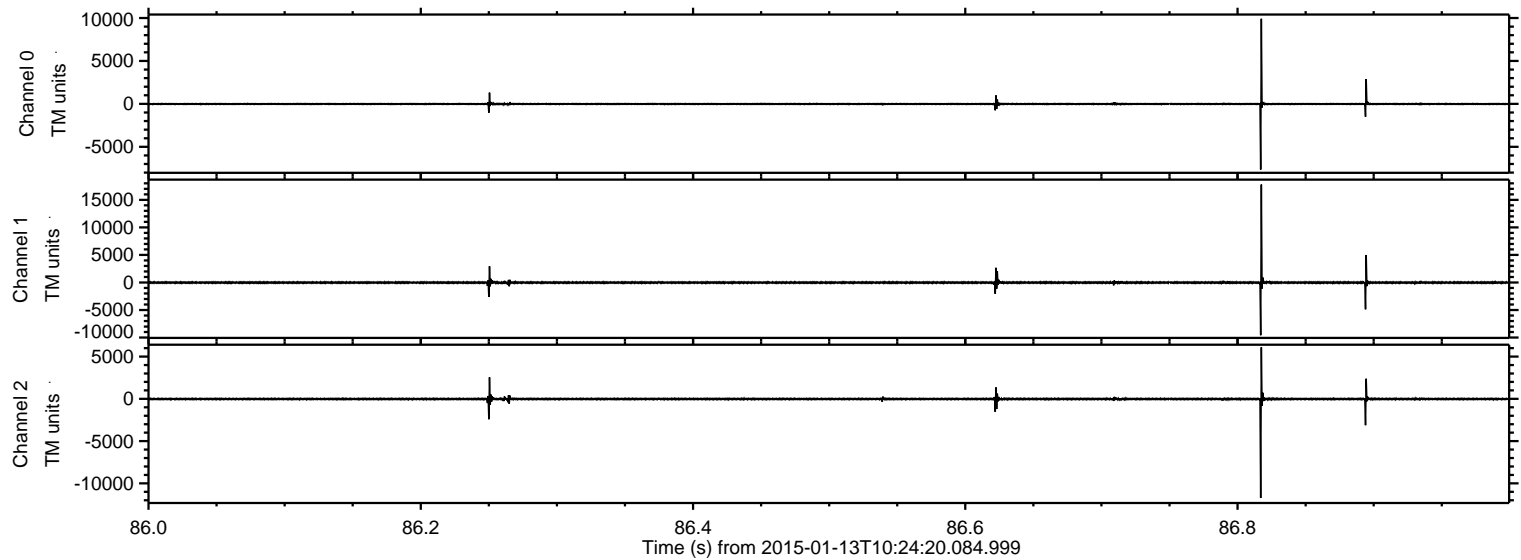
ELMAVAN 3D WAVEFORMS (Measured data sampled at 50 kHz) 49741 packets of 144 samples from 2015-01-13T10:24:20.084.999.

Processed Tue Jan 13 11:41:15 2015 by ELM ver.2012-10-06 from 001__elm20150113_102419__dat00.bin



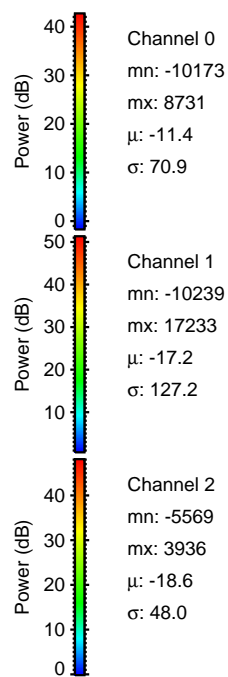
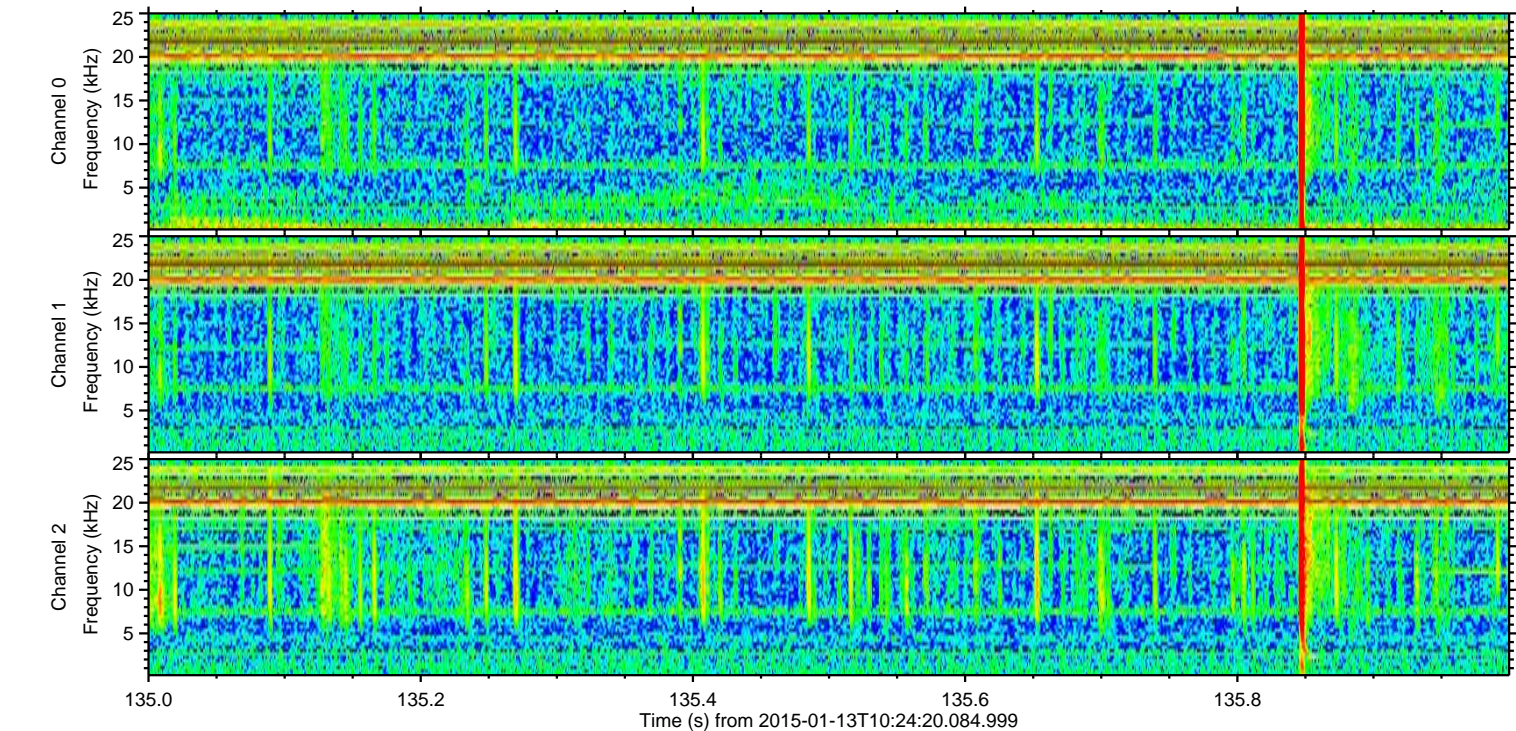
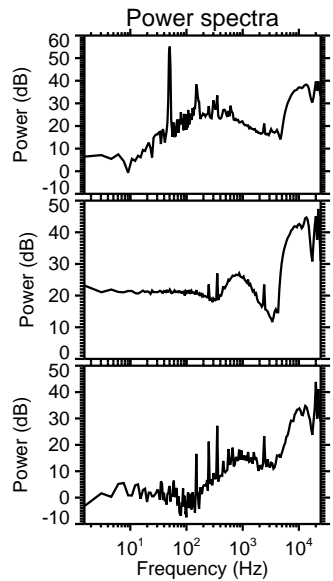
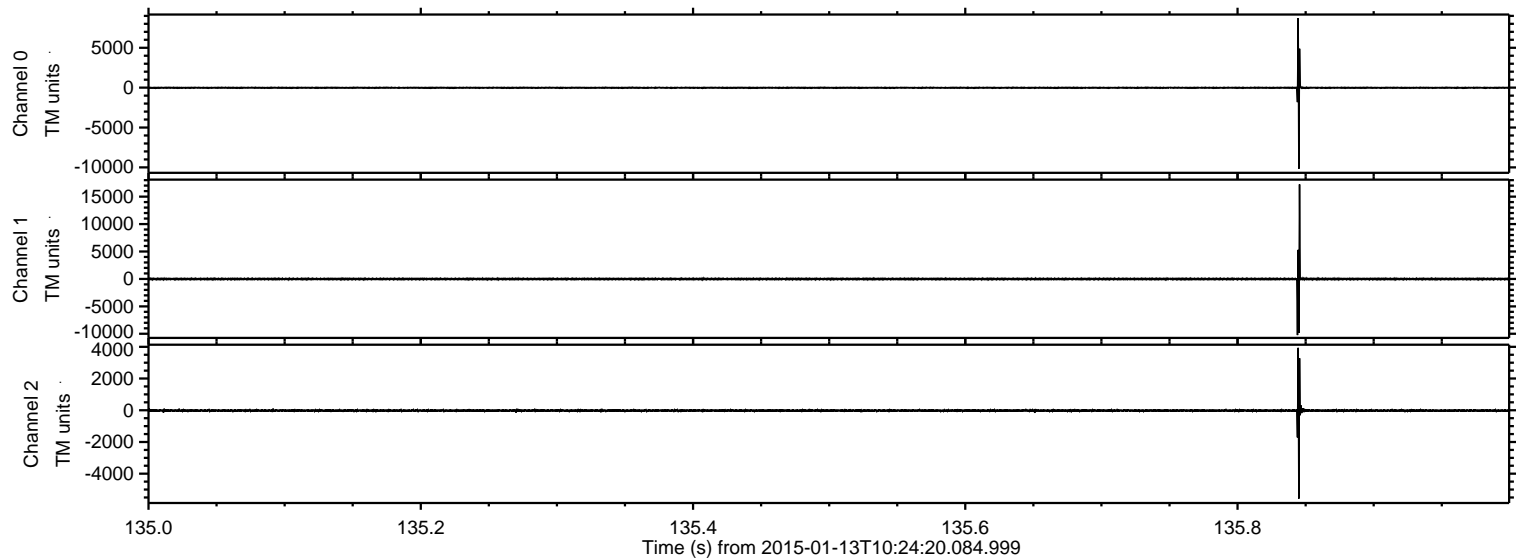
ELMAVAN 3D WAVEFORMS (Measured data sampled at 50 kHz) 49741 packets of 144 samples from 2015-01-13T10:24:20.084.999. Part 87/144

Processed Tue Jan 13 11:41:27 2015 by ELM ver.2012-10-06 from 001__elm20150113_102419__dat00.bin

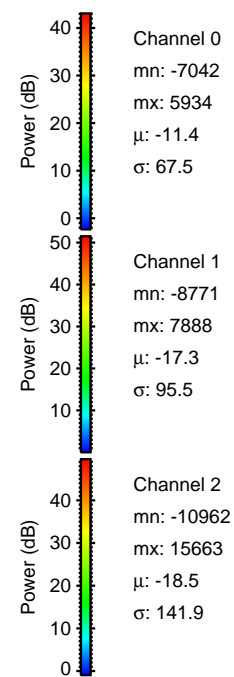
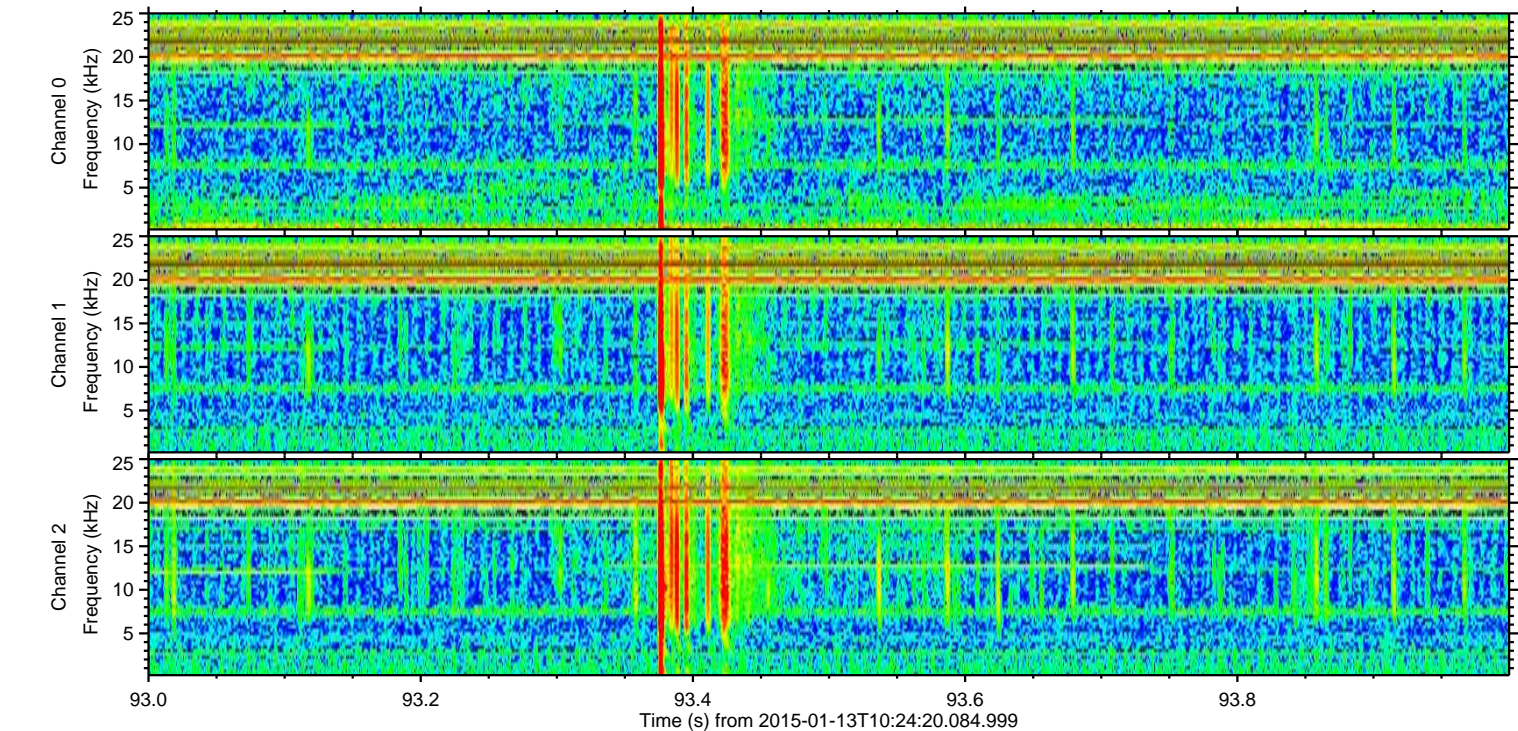
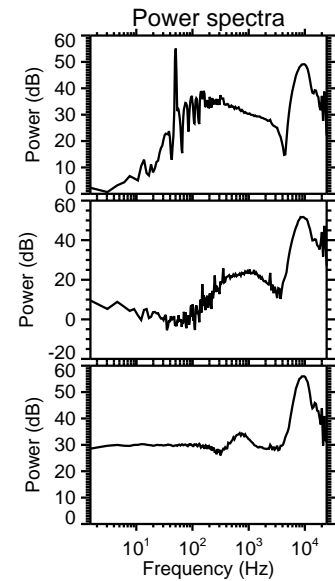
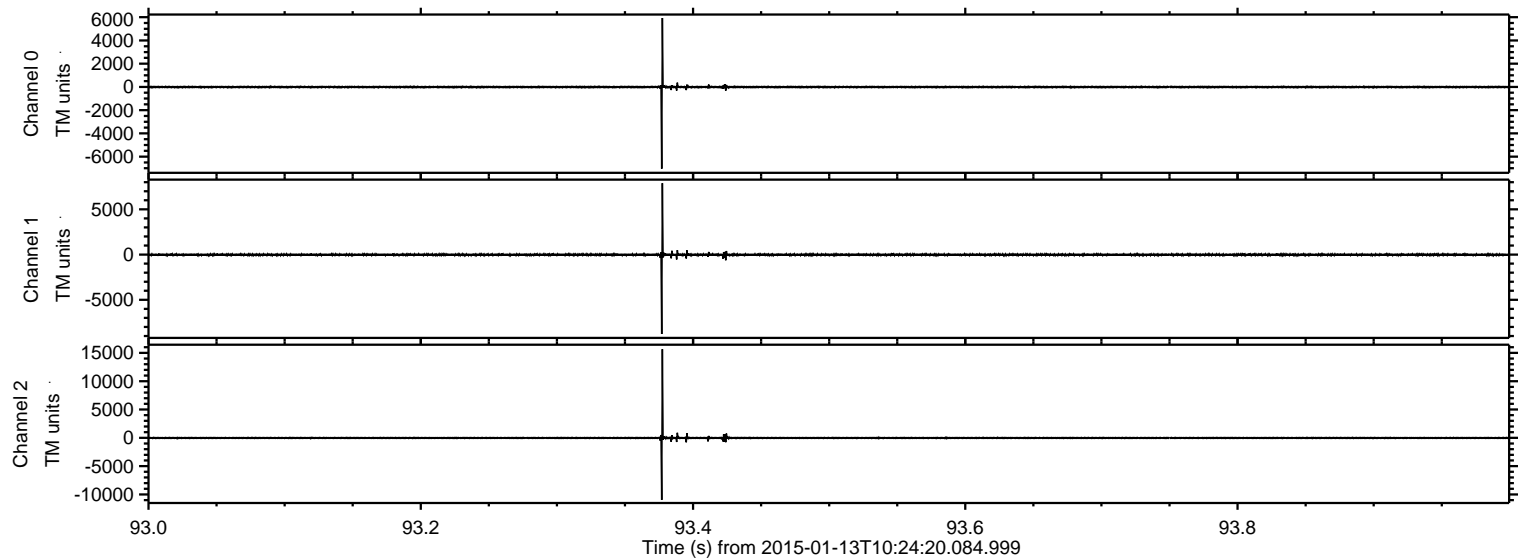


ELMAVAN 3D WAVEFORMS (Measured data sampled at 50 kHz) 49741 packets of 144 samples from 2015-01-13T10:24:20.084.999. Part 136/144

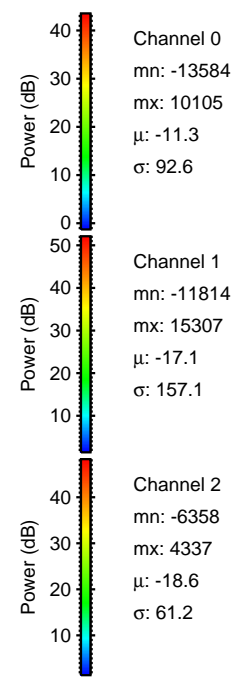
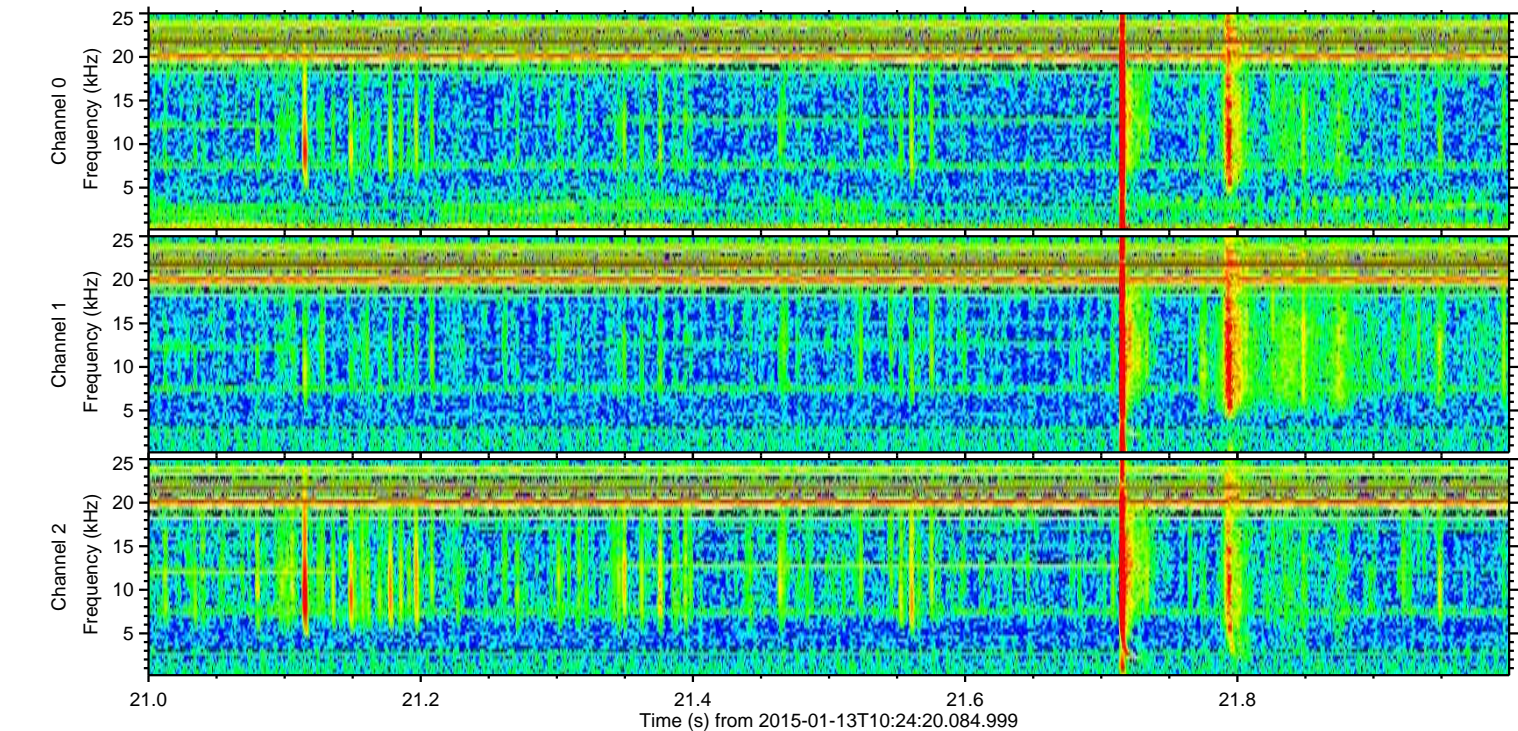
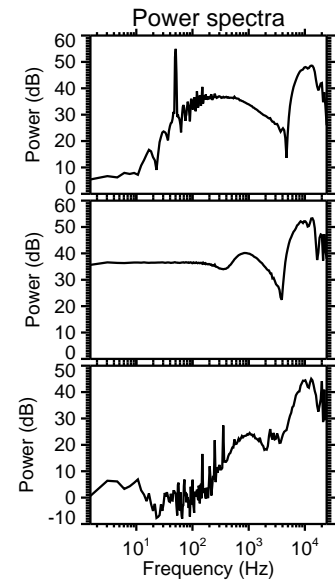
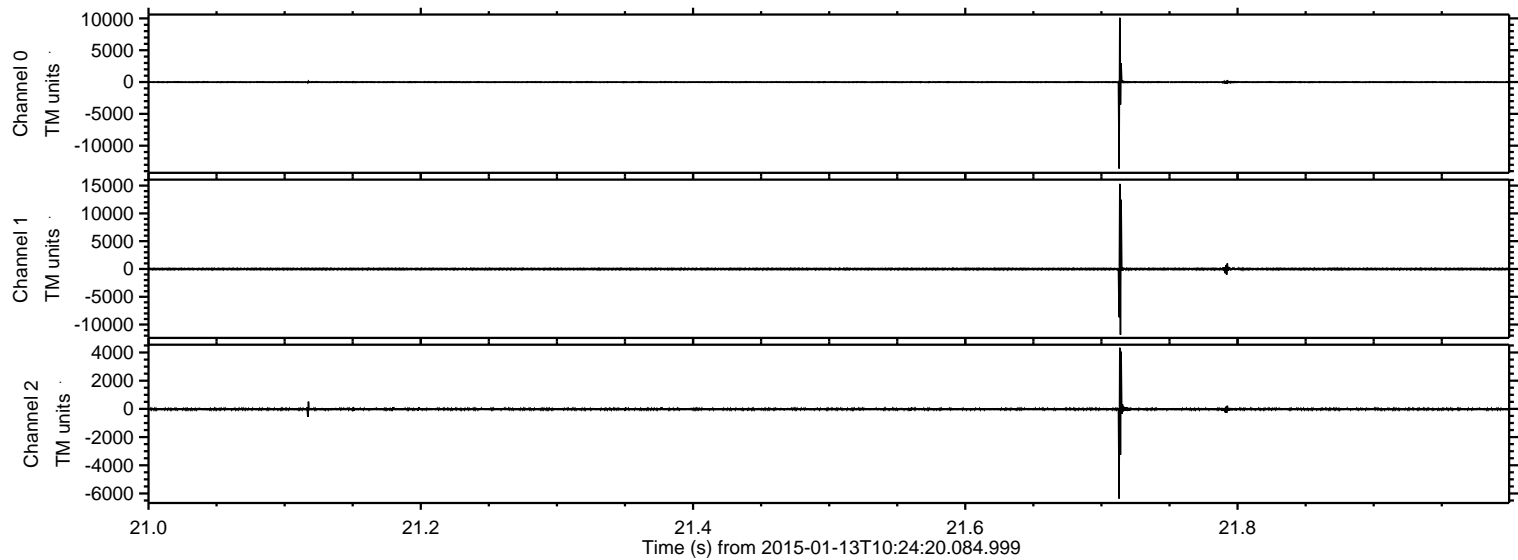
Processed Tue Jan 13 11:41:28 2015 by ELM ver.2012-10-06 from 001__elm20150113_102419__dat00.bin



Processed Tue Jan 13 11:41:29 2015 by ELM ver.2012-10-06 from 001__elm20150113_102419__dat00.bin

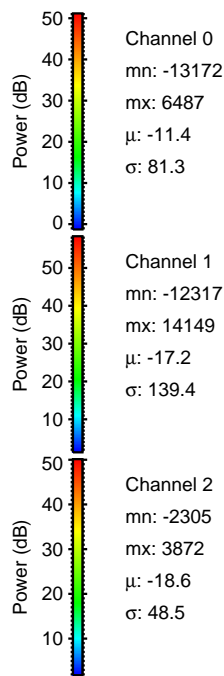
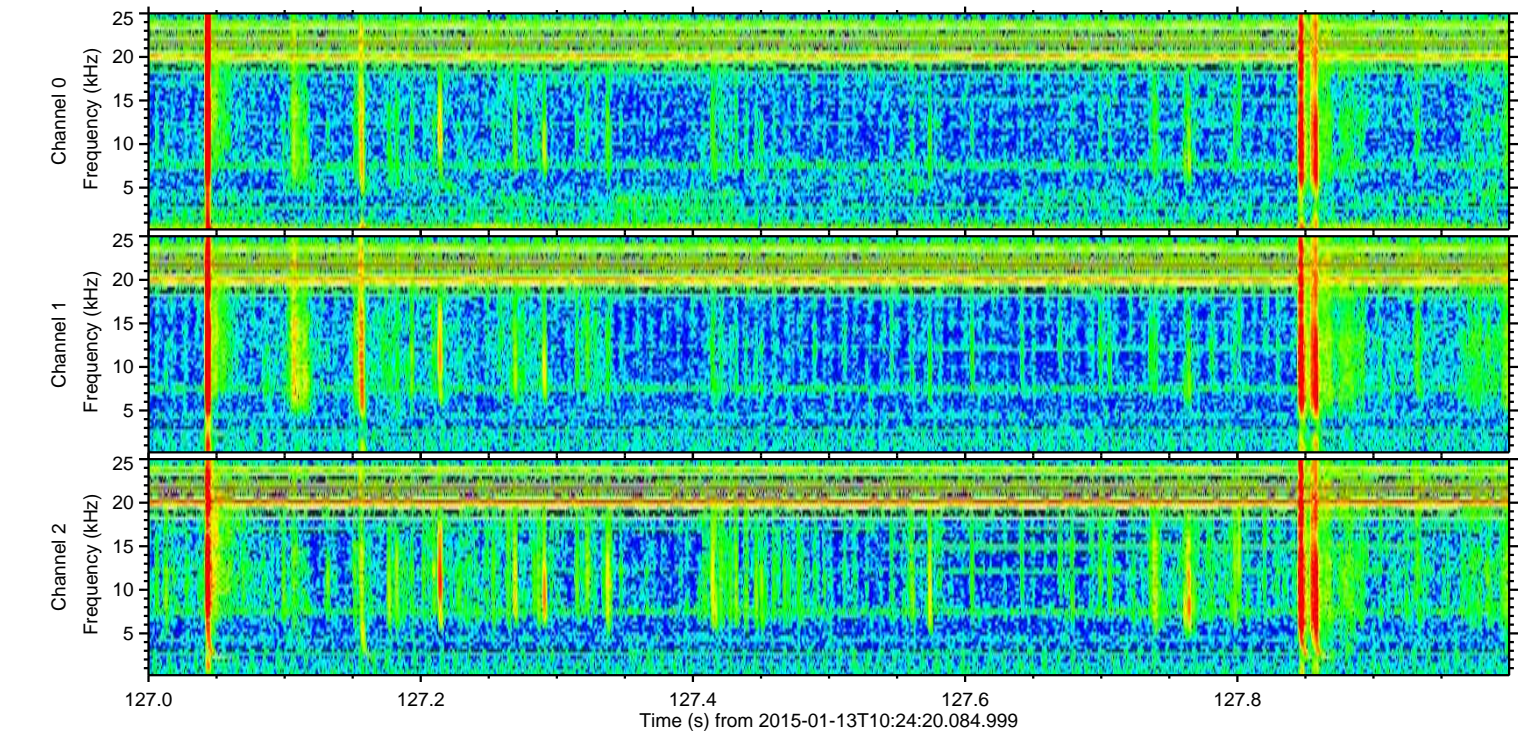
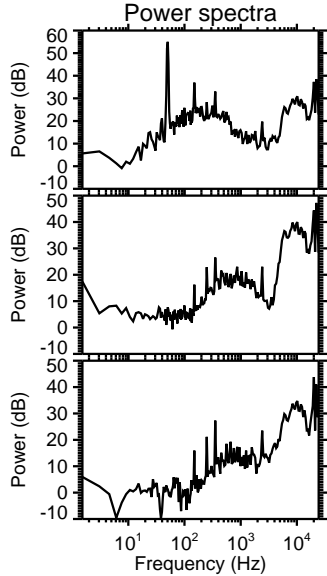
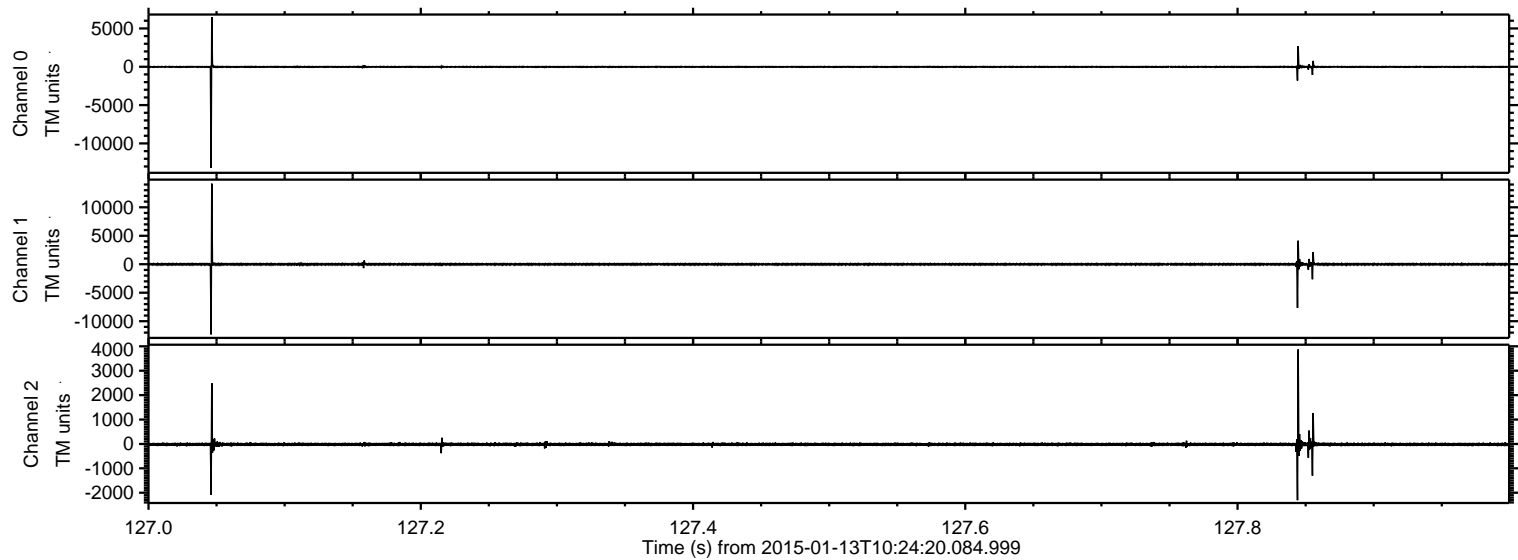


Processed Tue Jan 13 11:41:29 2015 by ELM ver.2012-10-06 from 001__elm20150113_102419__dat00.bin

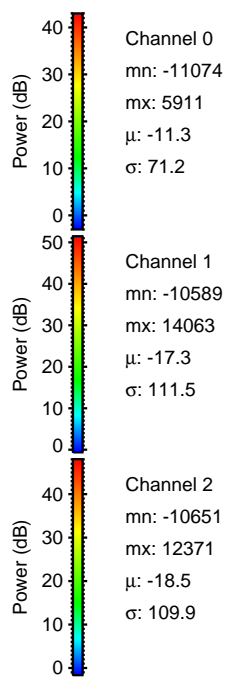
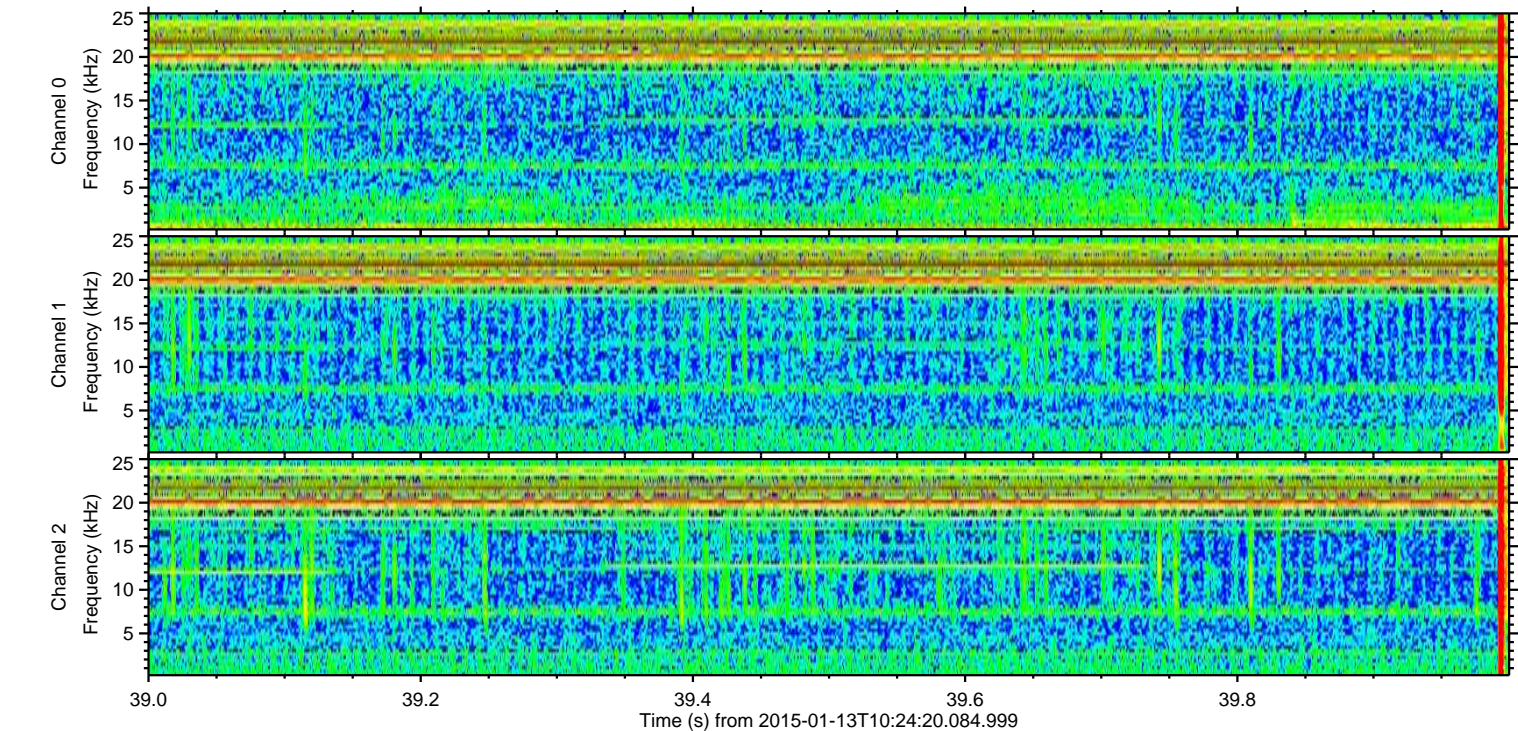
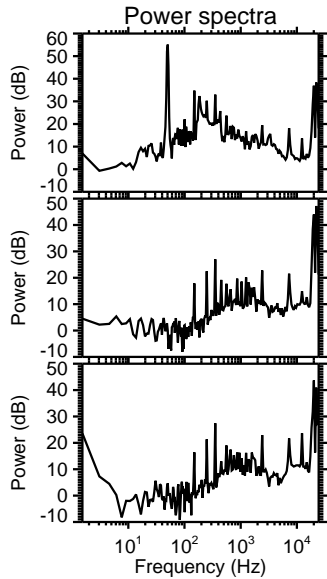
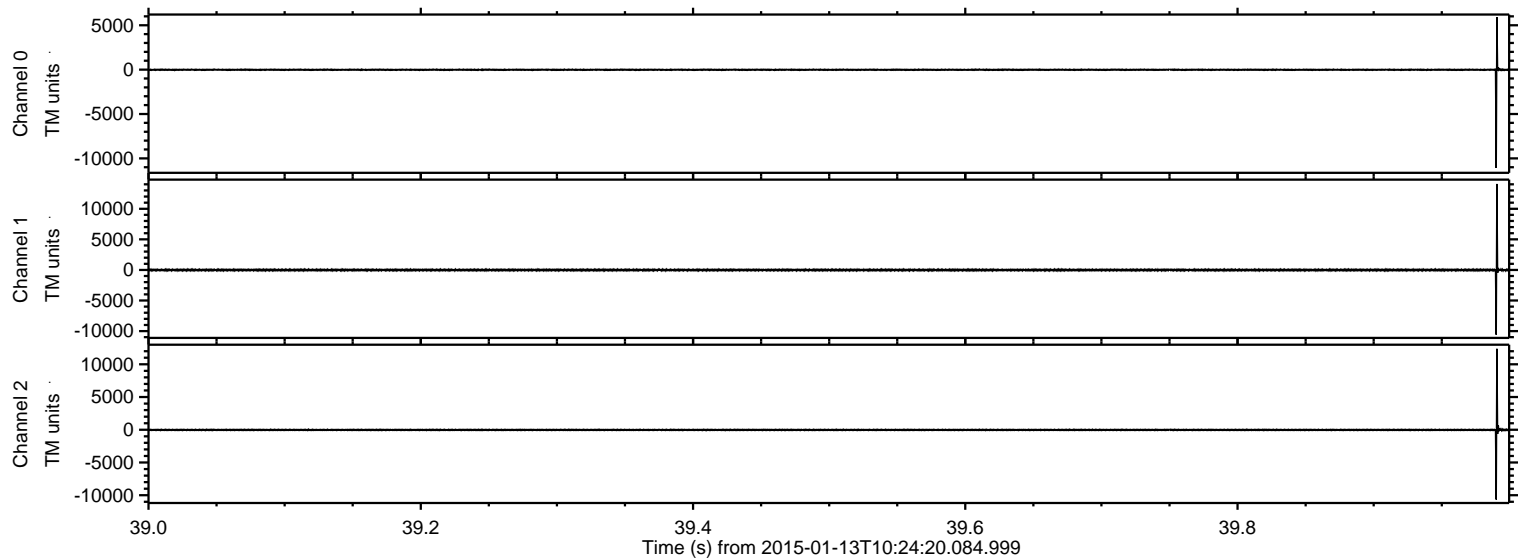


ELMAVAN 3D WAVEFORMS (Measured data sampled at 50 kHz) 49741 packets of 144 samples from 2015-01-13T10:24:20.084.999. Part 128/144

Processed Tue Jan 13 11:41:30 2015 by ELM ver.2012-10-06 from 001__elm20150113_102419__dat00.bin

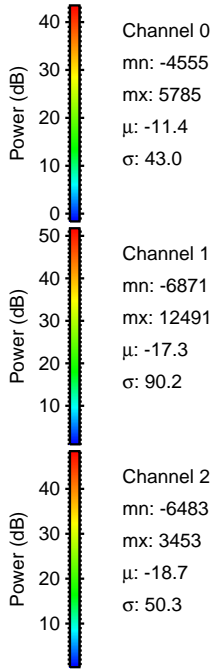
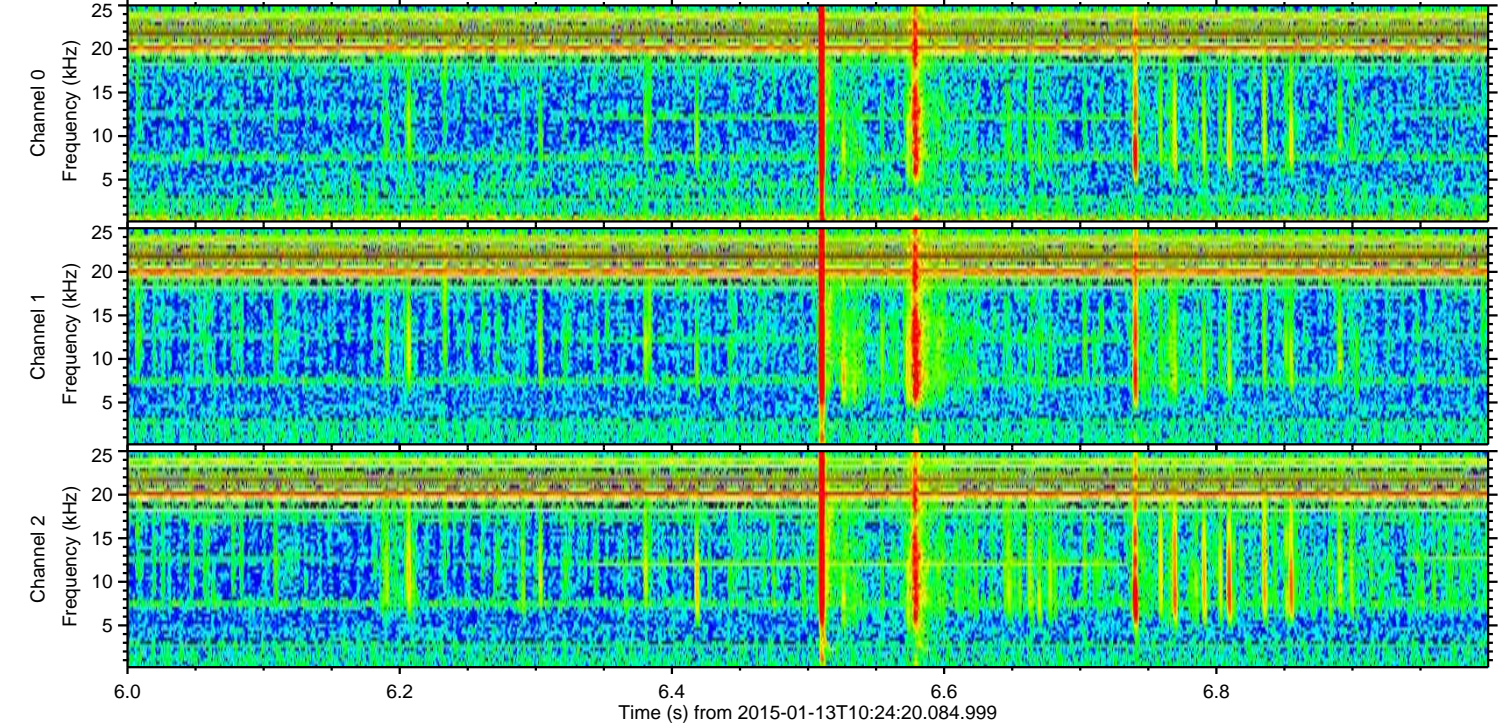
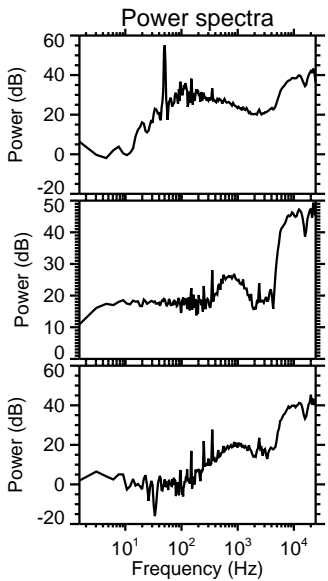
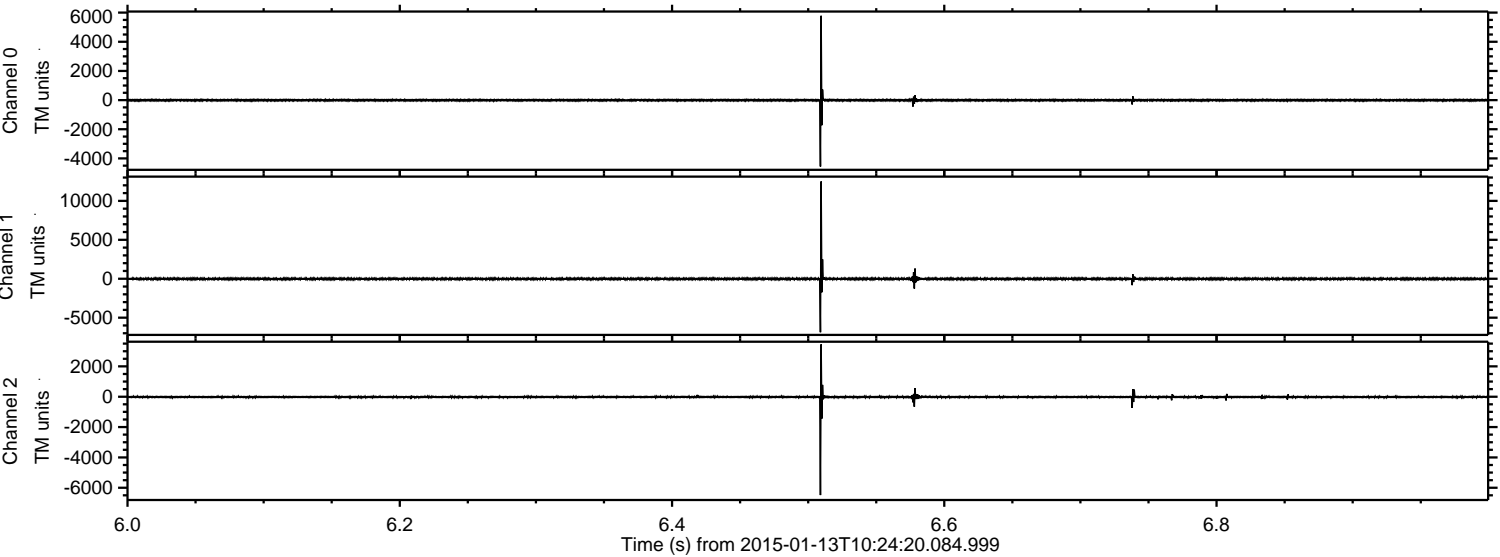


Processed Tue Jan 13 11:41:31 2015 by ELM ver.2012-10-06 from 001__elm20150113_102419__dat00.bin

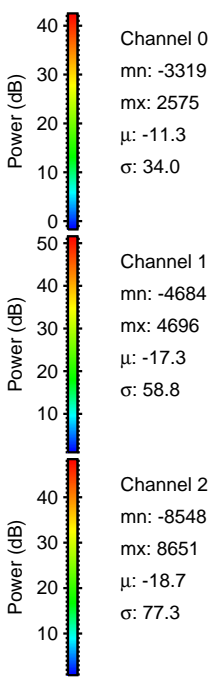
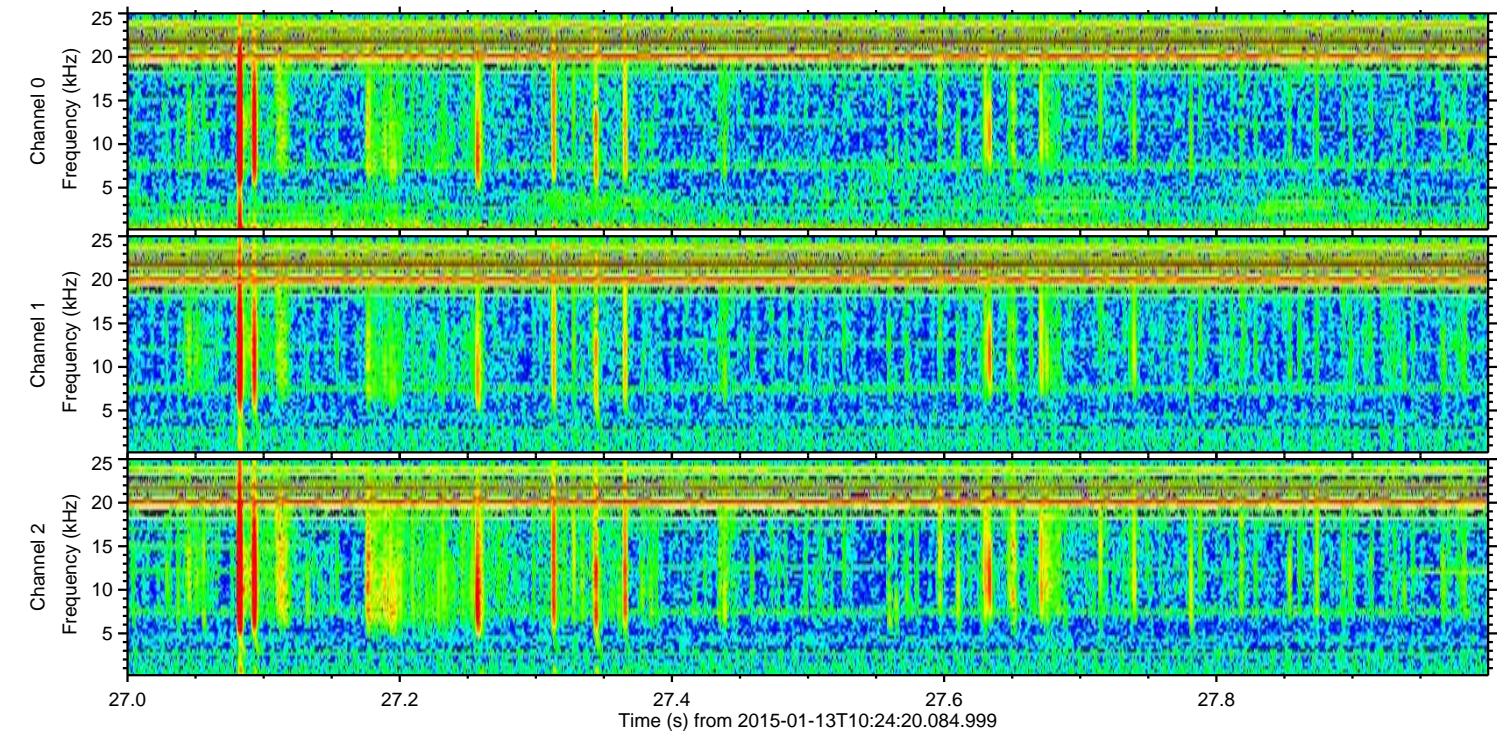
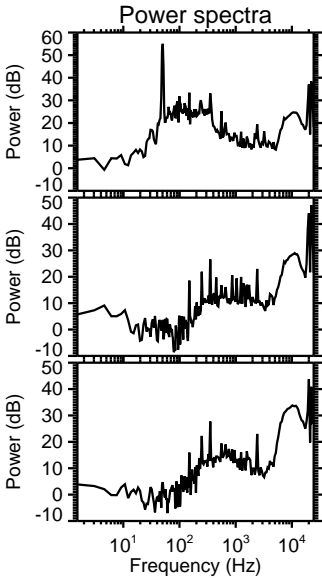
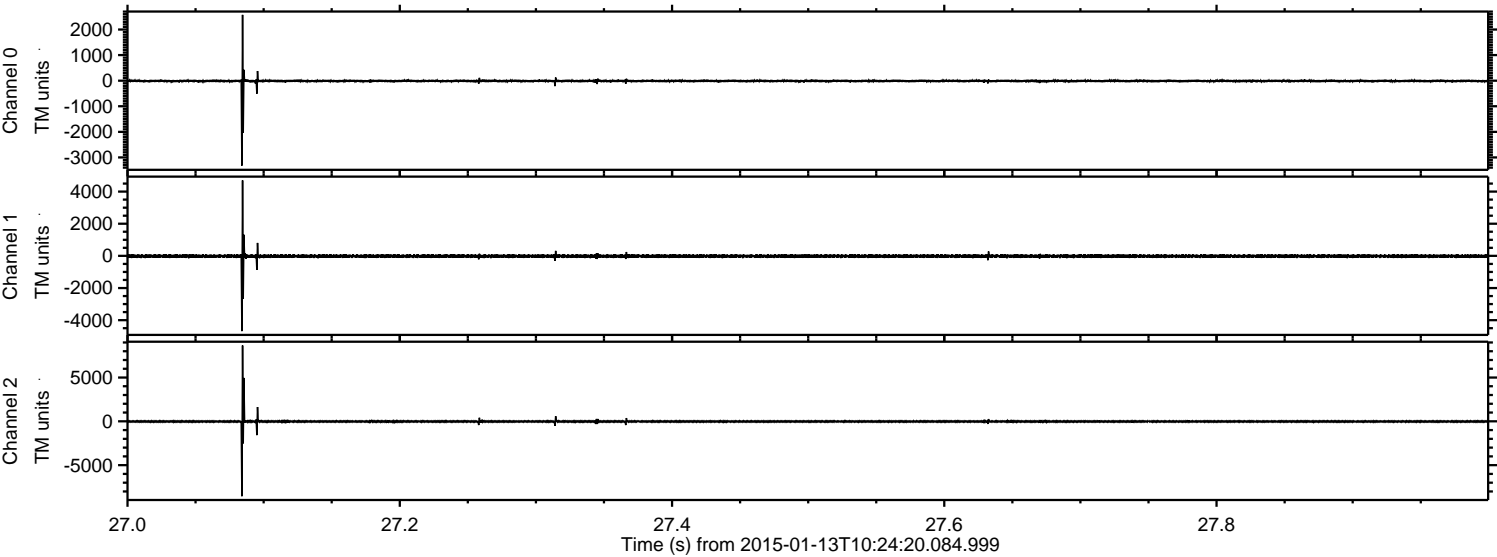


ELMAVAN 3D WAVEFORMS (Measured data sampled at 50 kHz) 49741 packets of 144 samples from 2015-01-13T10:24:20.084.999. Part 7/144

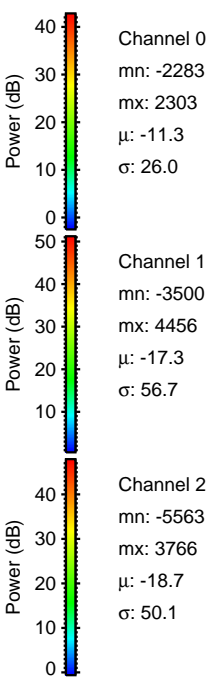
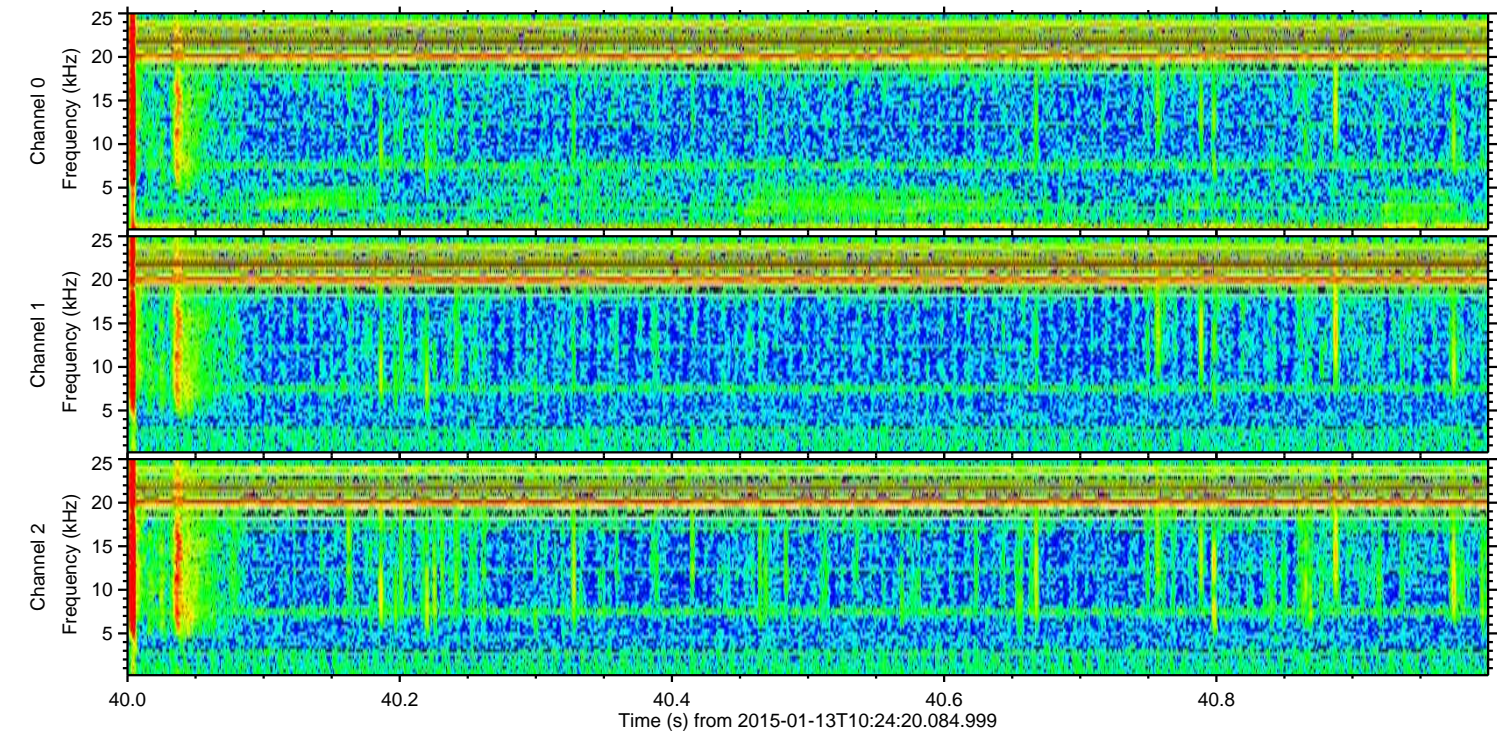
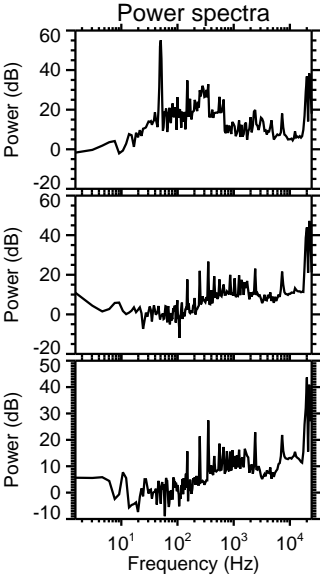
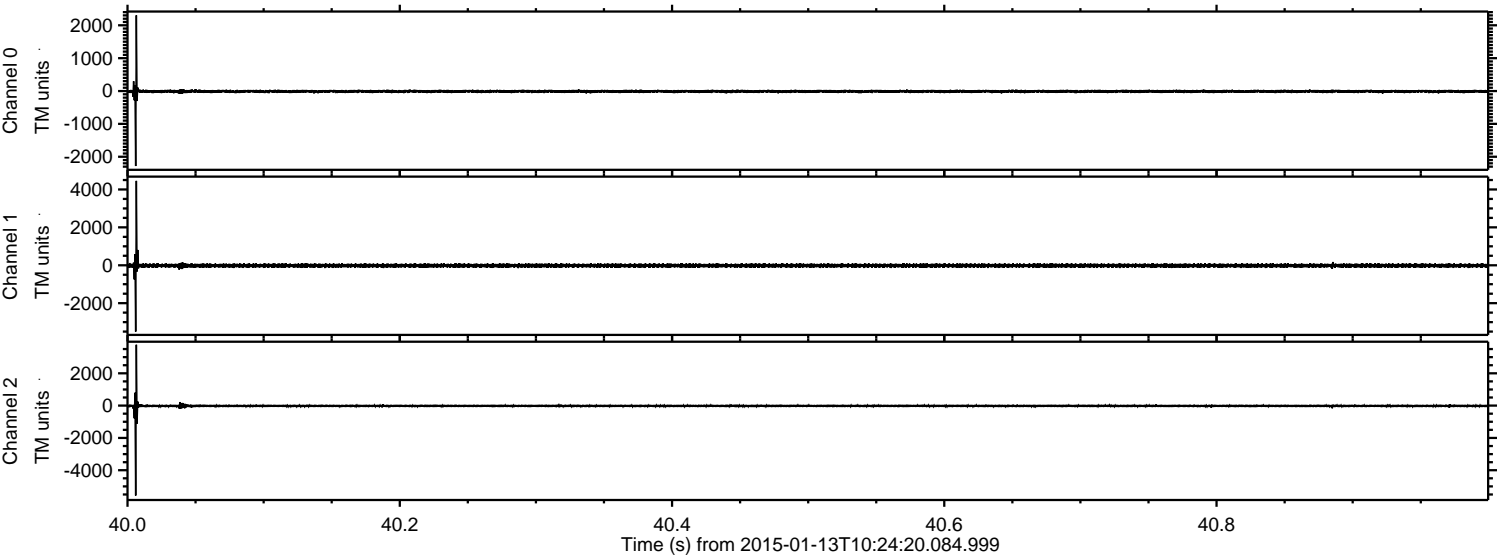
Processed Tue Jan 13 11:41:32 2015 by ELM ver.2012-10-06 from 001__elm20150113_102419__dat00.bin



Processed Tue Jan 13 11:41:33 2015 by ELM ver.2012-10-06 from 001__elm20150113_102419__dat00.bin



Processed Tue Jan 13 11:41:34 2015 by ELM ver.2012-10-06 from 001__elm20150113_102419__dat00.bin



Channel 0
mn: -2283
mx: 2303
 μ : -11.3
 σ : 26.0

Channel 1
mn: -3500
mx: 4456
 μ : -17.3
 σ : 56.7

Channel 2
mn: -5563
mx: 3766
 μ : -18.7
 σ : 50.1

