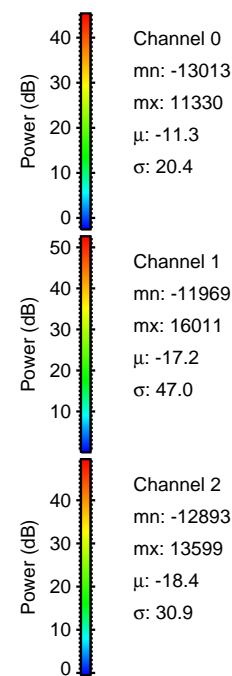
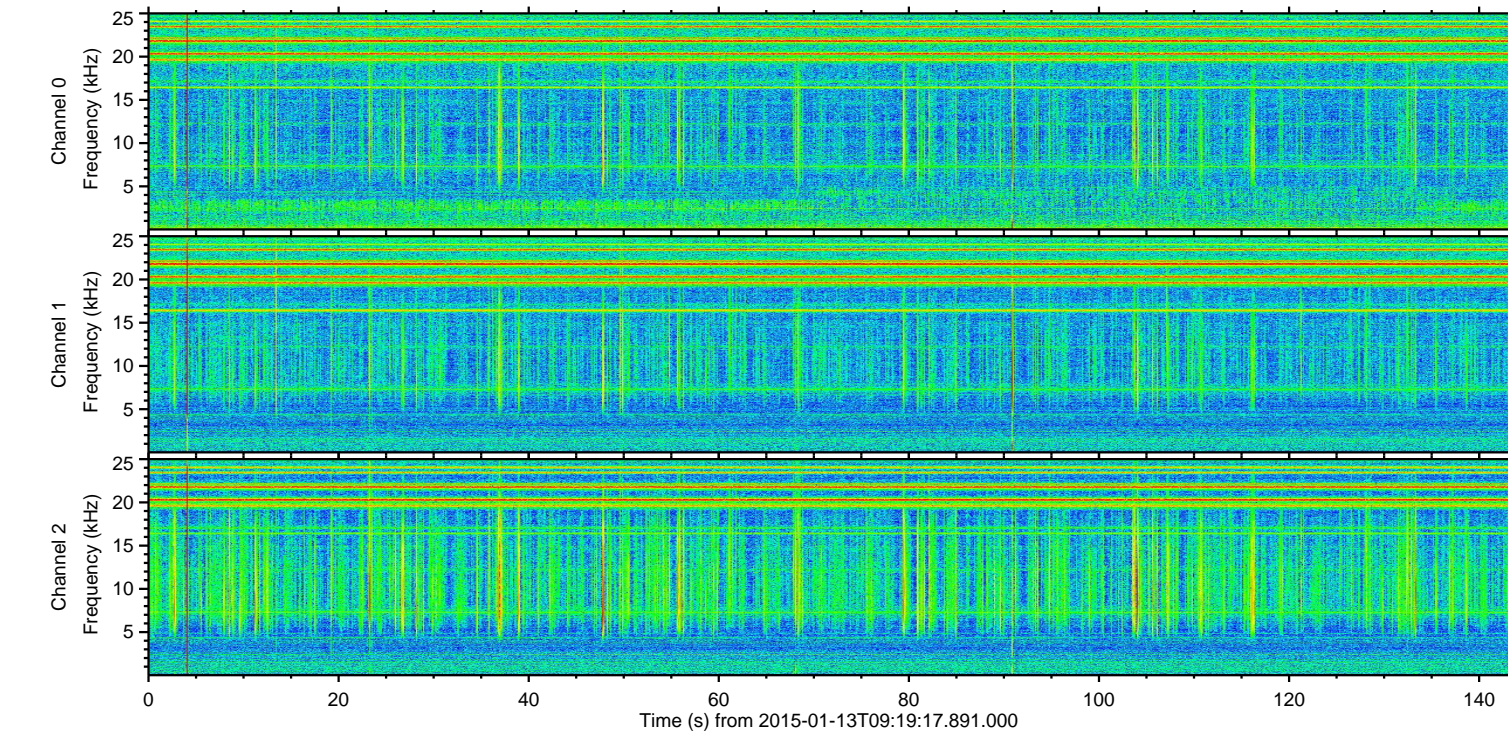
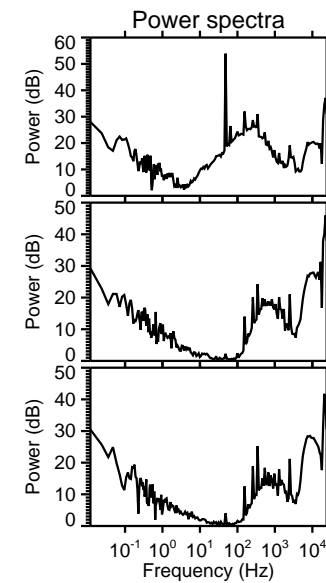
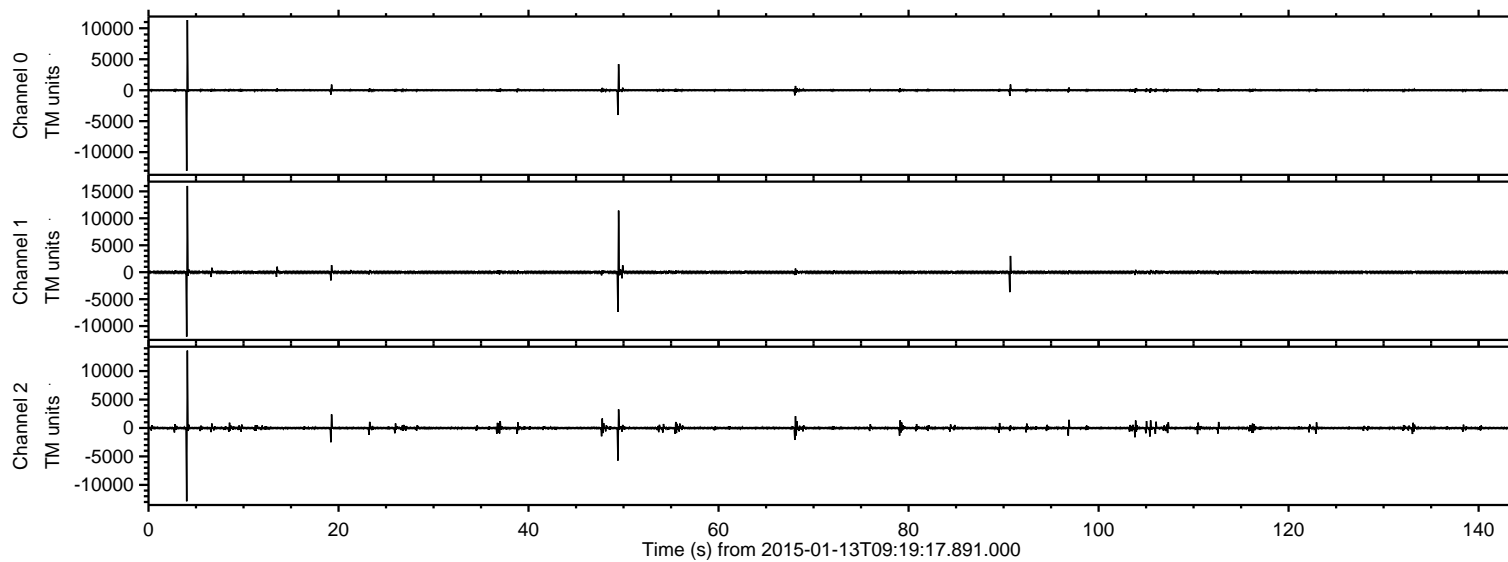
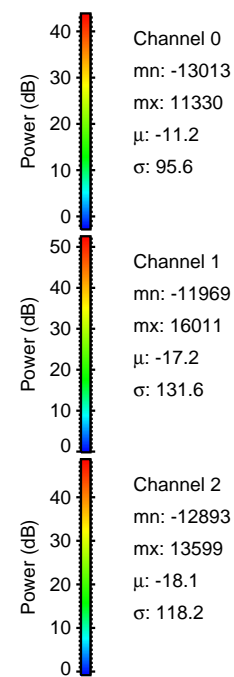
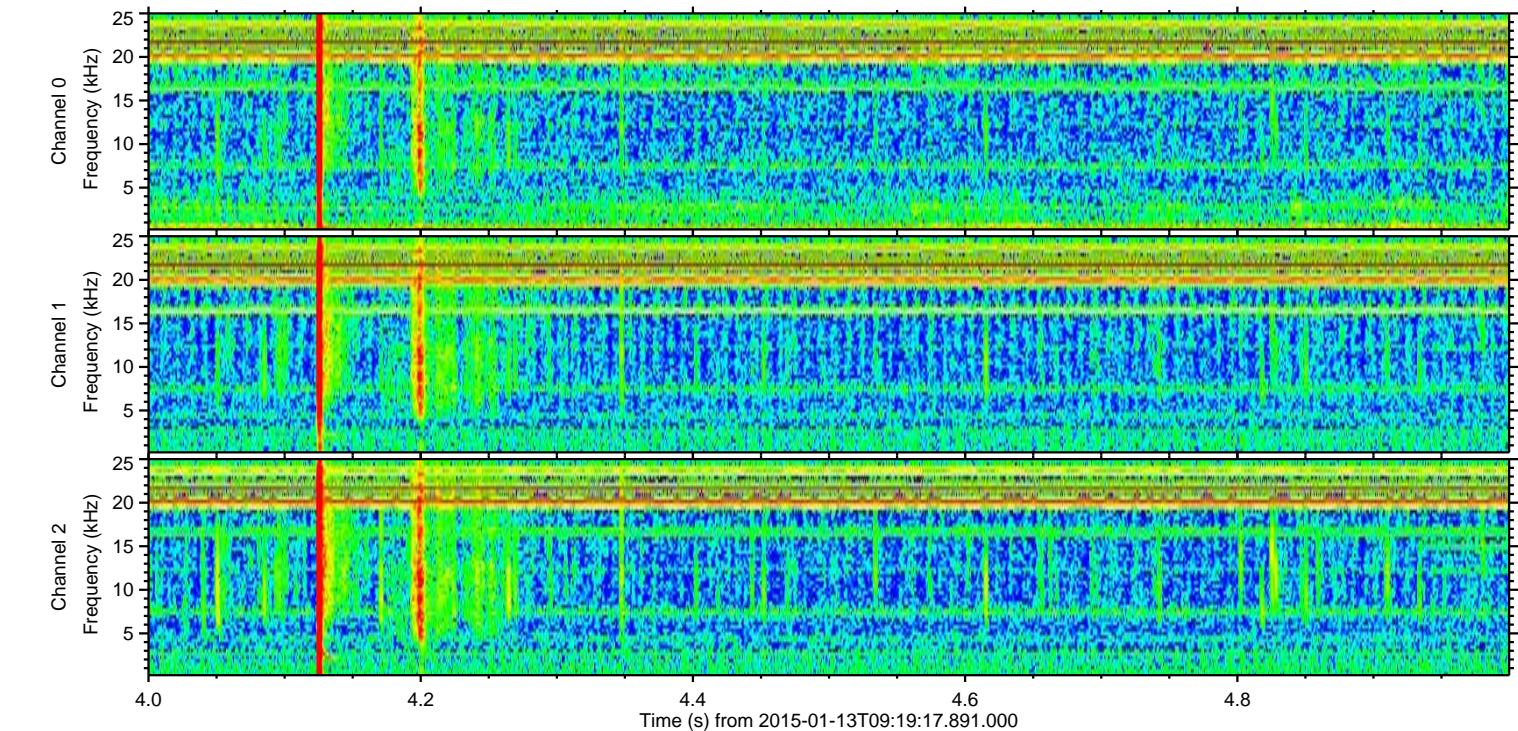
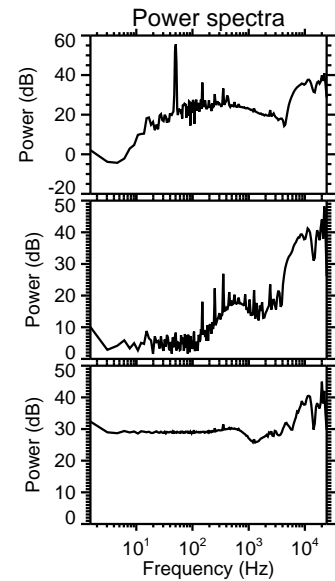
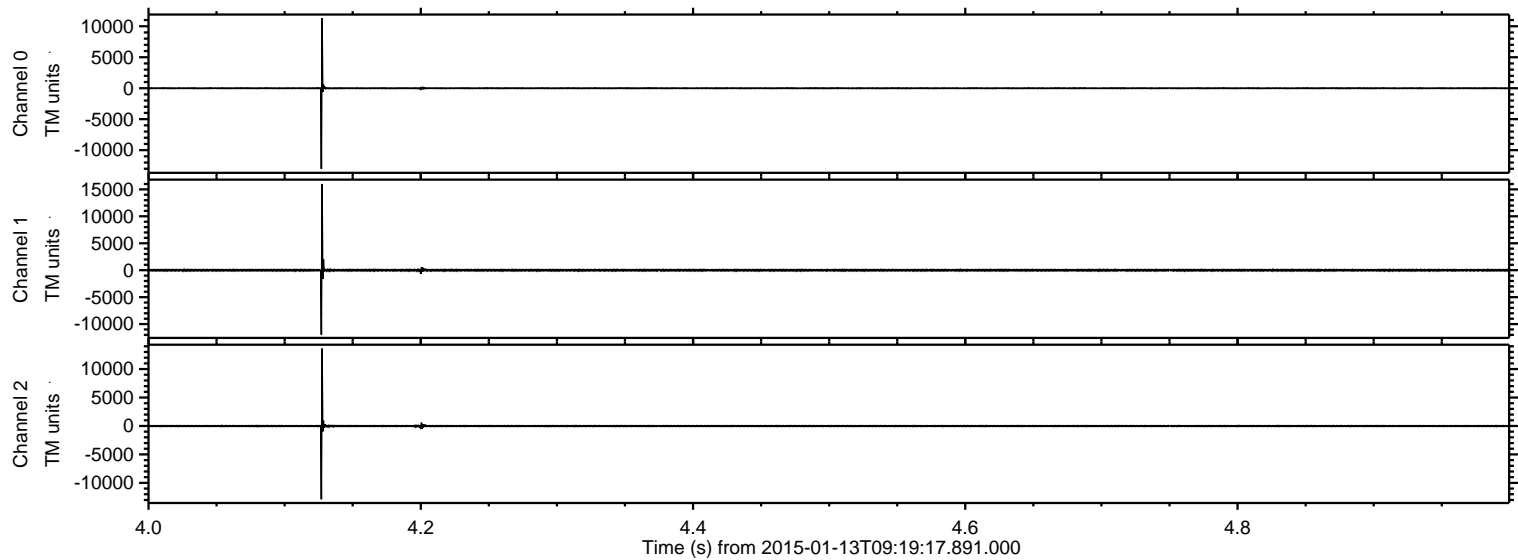


ELMAVAN 3D WAVEFORMS (Measured data sampled at 50 kHz) 49727 packets of 144 samples from 2015-01-13T09:19:17.891.000.

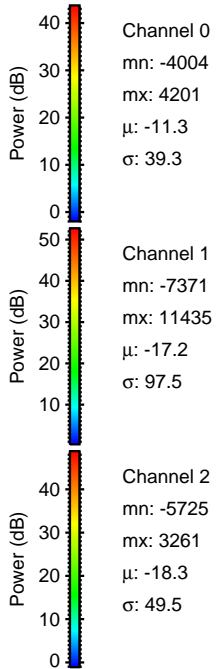
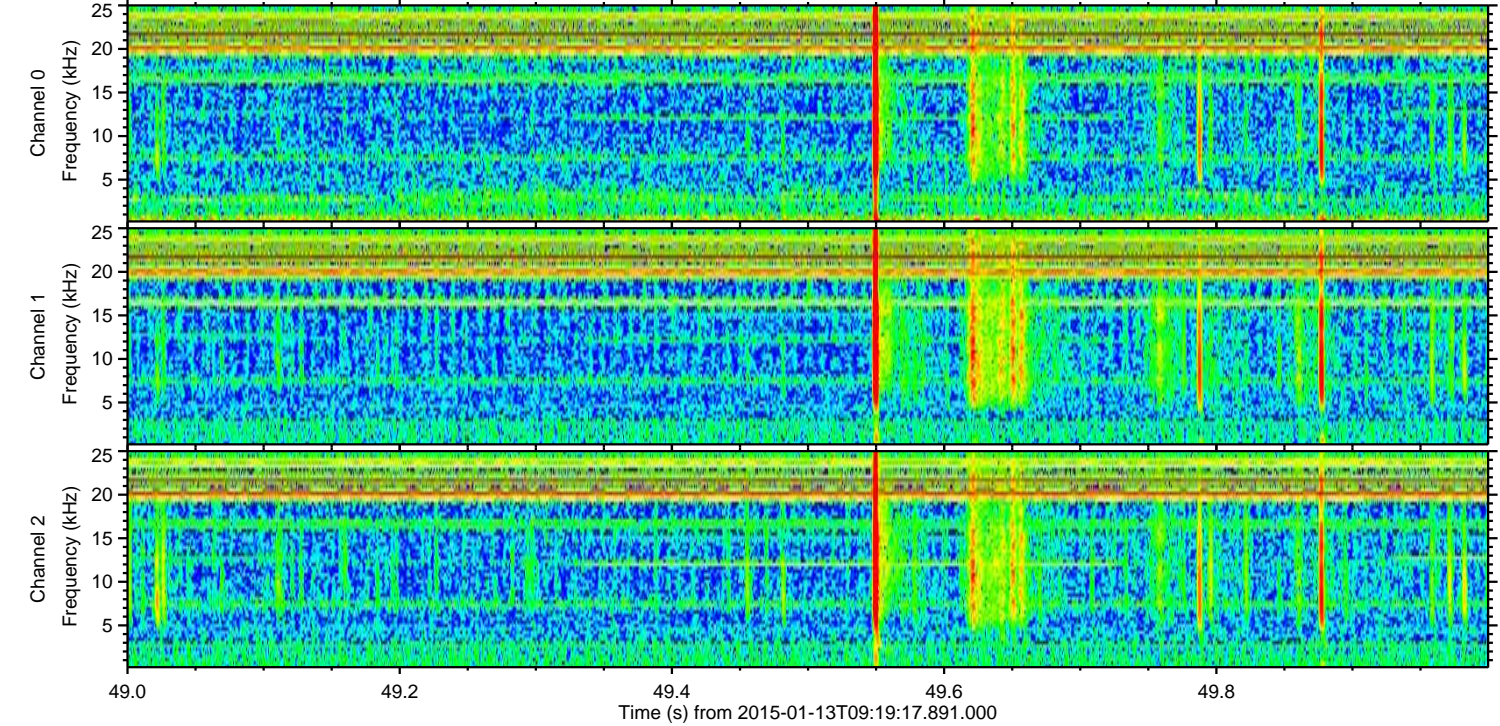
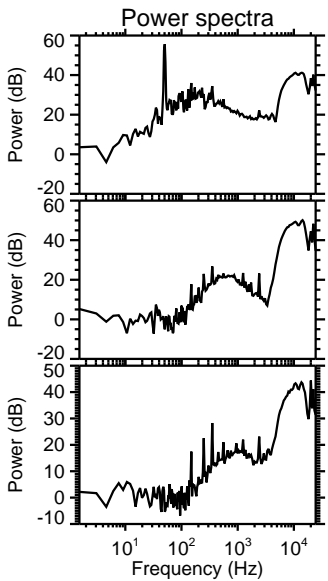
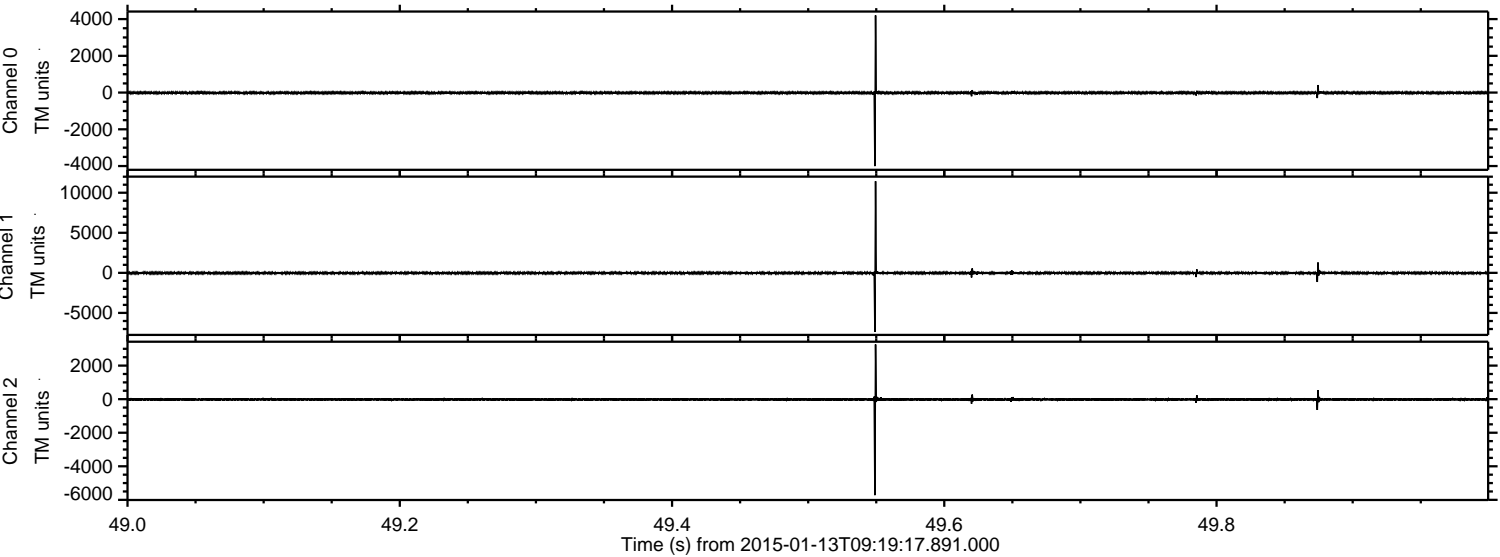
Processed Tue Jan 13 11:20:17 2015 by ELM ver.2012-10-06 from 001__elm20150113_091916__dat00.bin



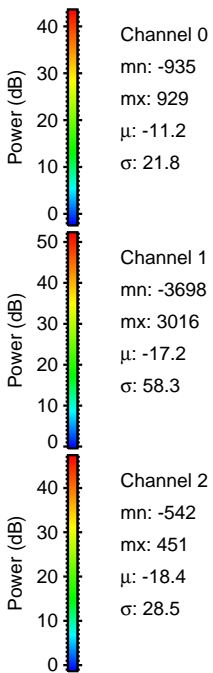
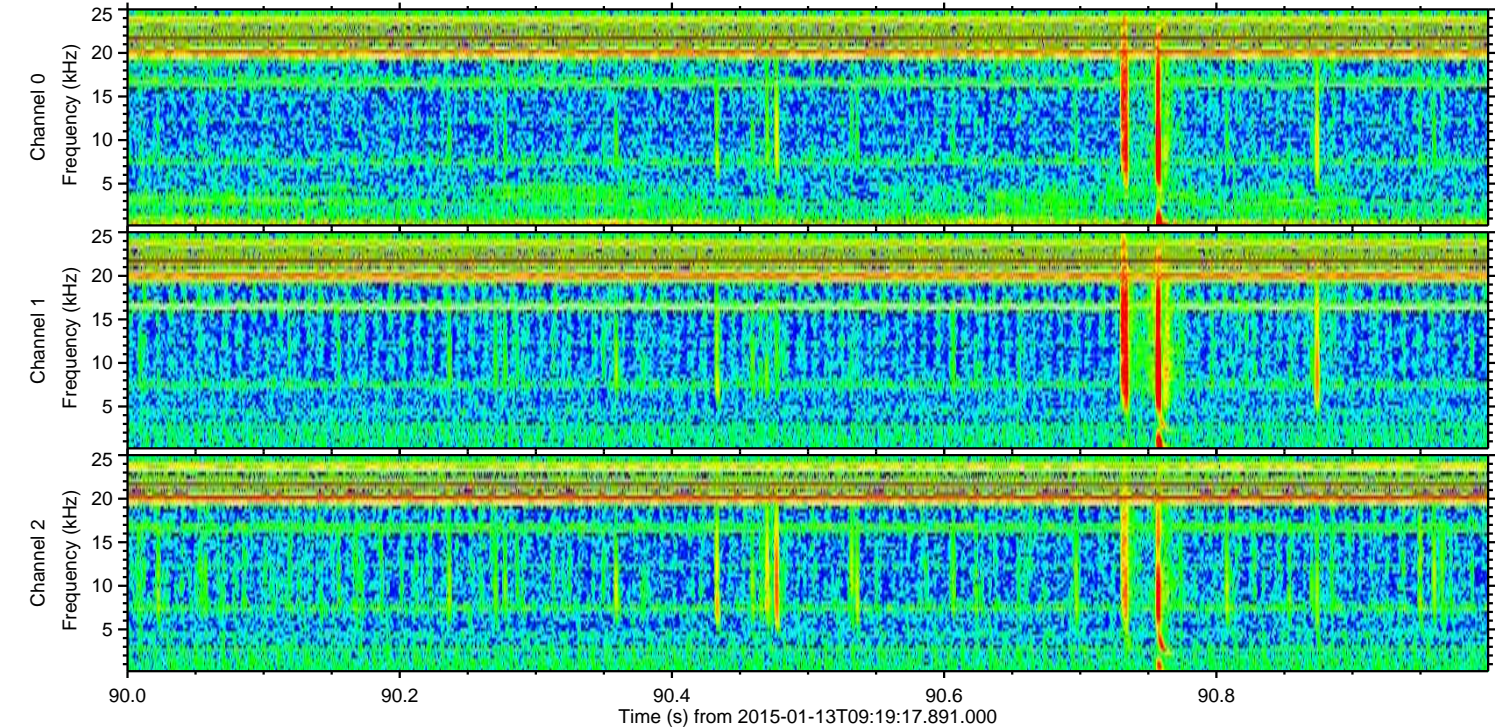
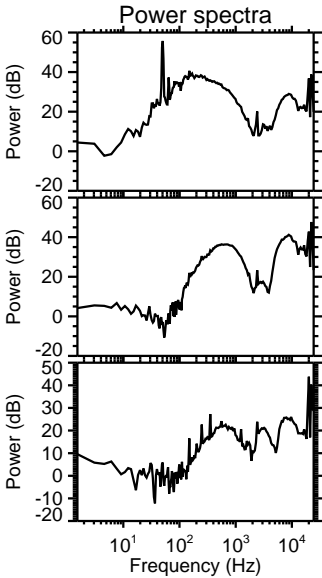
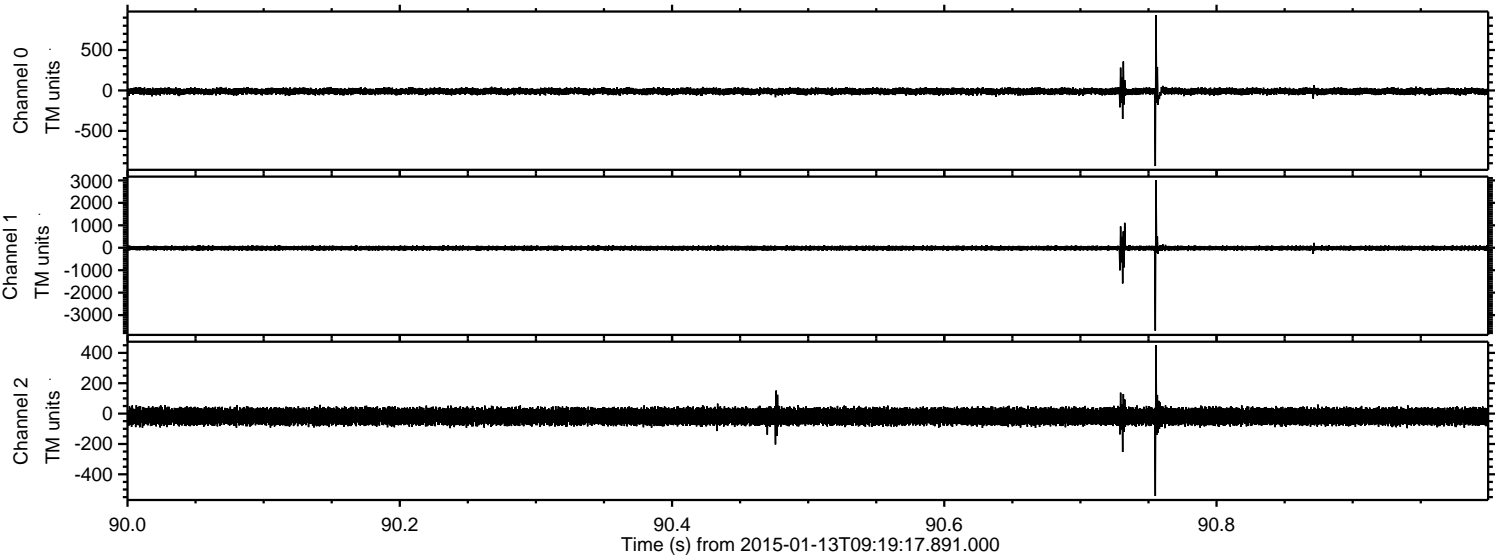
Processed Tue Jan 13 11:20:32 2015 by ELM ver.2012-10-06 from 001__elm20150113_091916__dat00.bin



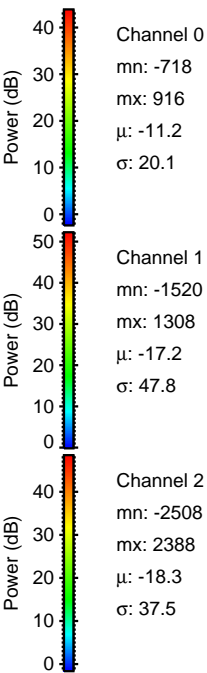
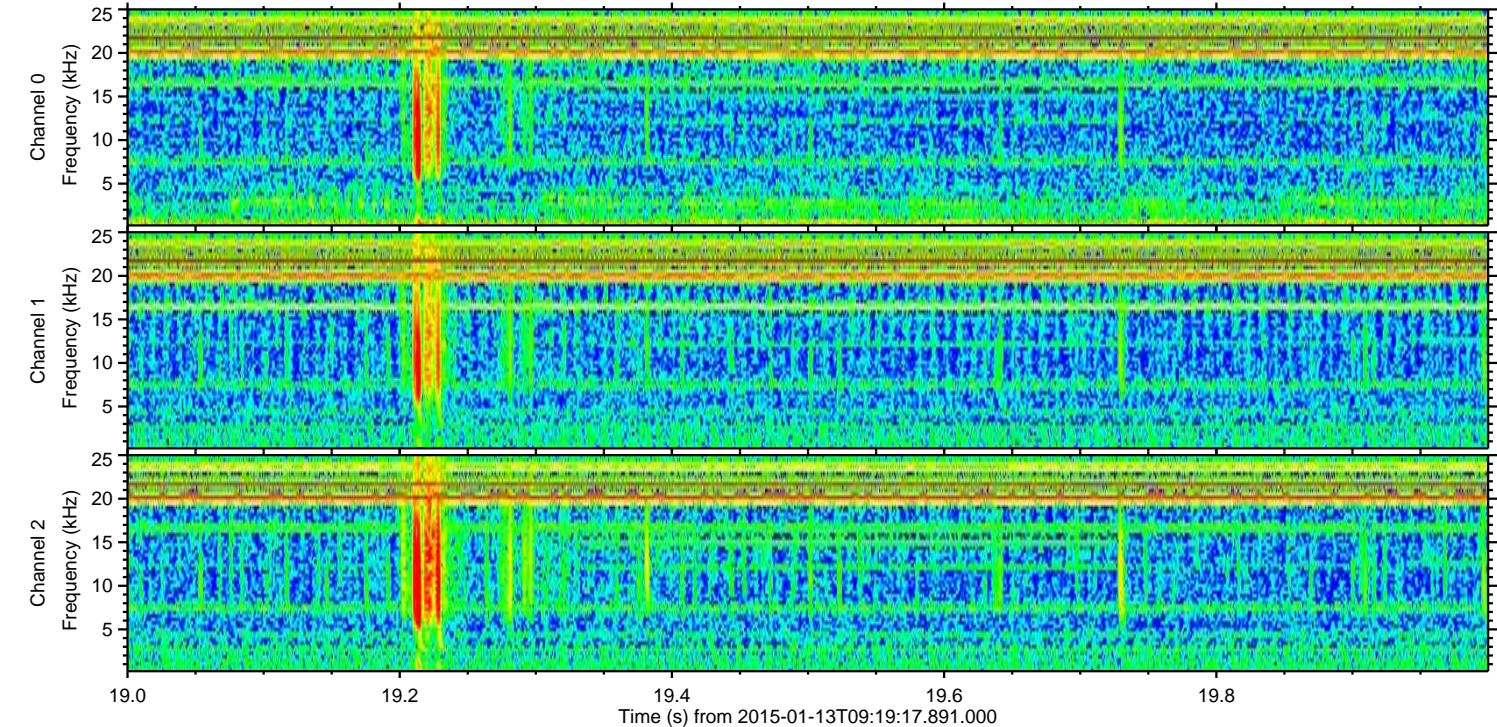
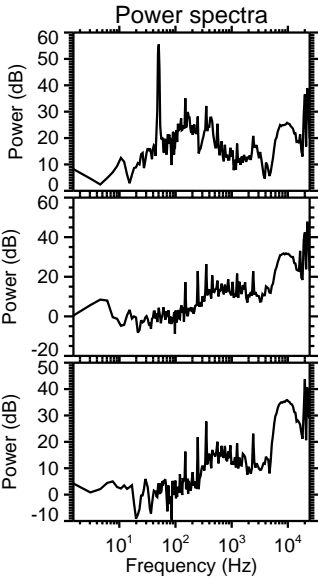
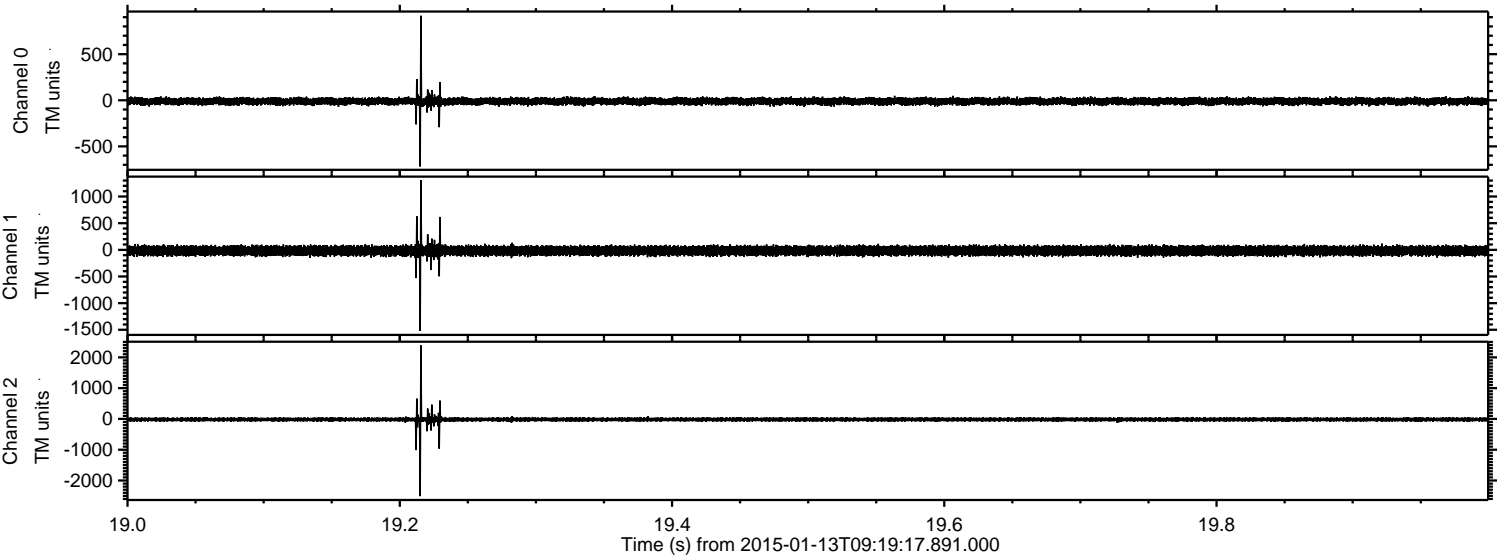
Processed Tue Jan 13 11:20:33 2015 by ELM ver.2012-10-06 from 001__elm20150113_091916__dat00.bin



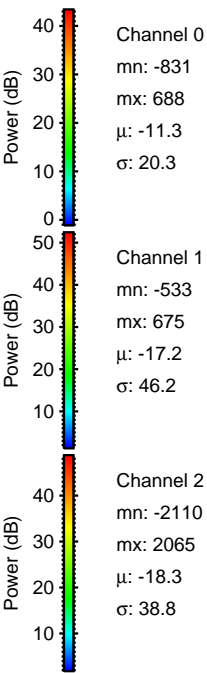
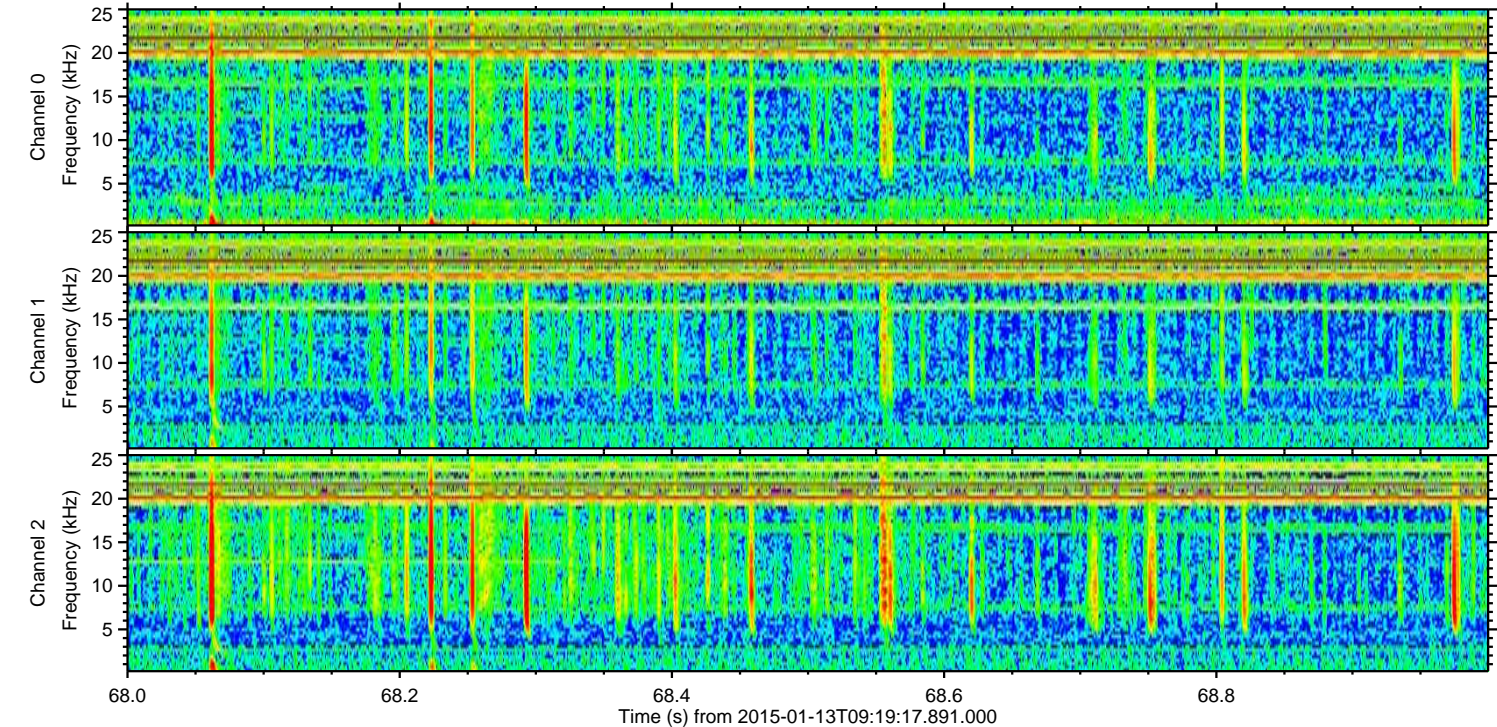
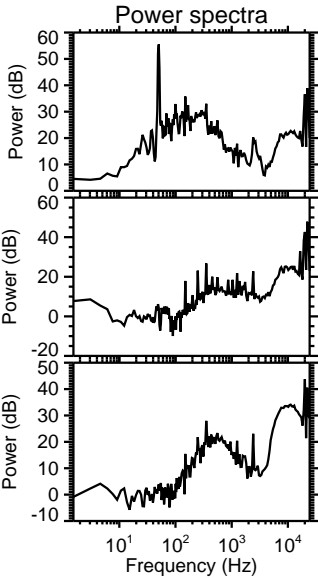
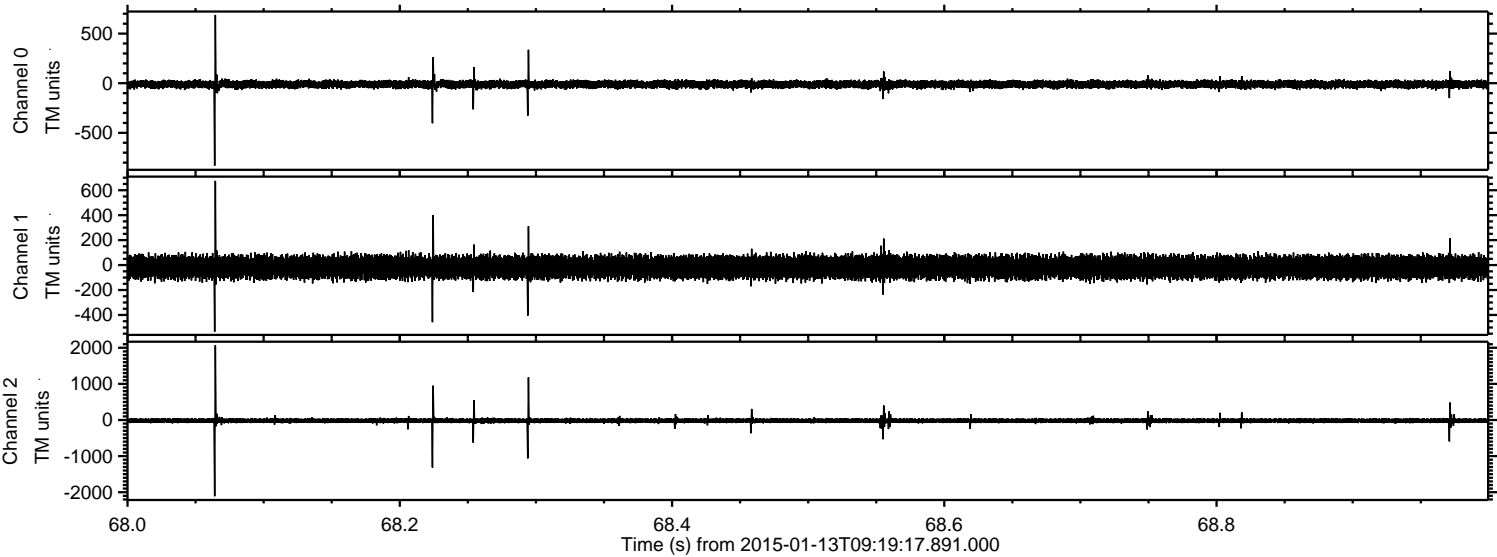
Processed Tue Jan 13 11:20:34 2015 by ELM ver.2012-10-06 from 001__elm20150113_091916__dat00.bin



Processed Tue Jan 13 11:20:35 2015 by ELM ver.2012-10-06 from 001__elm20150113_091916__dat00.bin

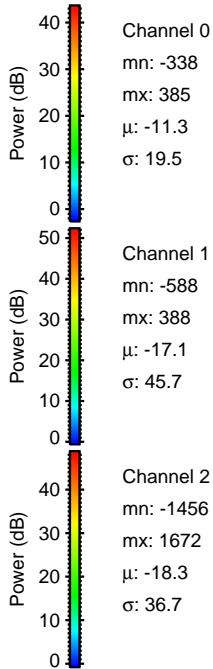
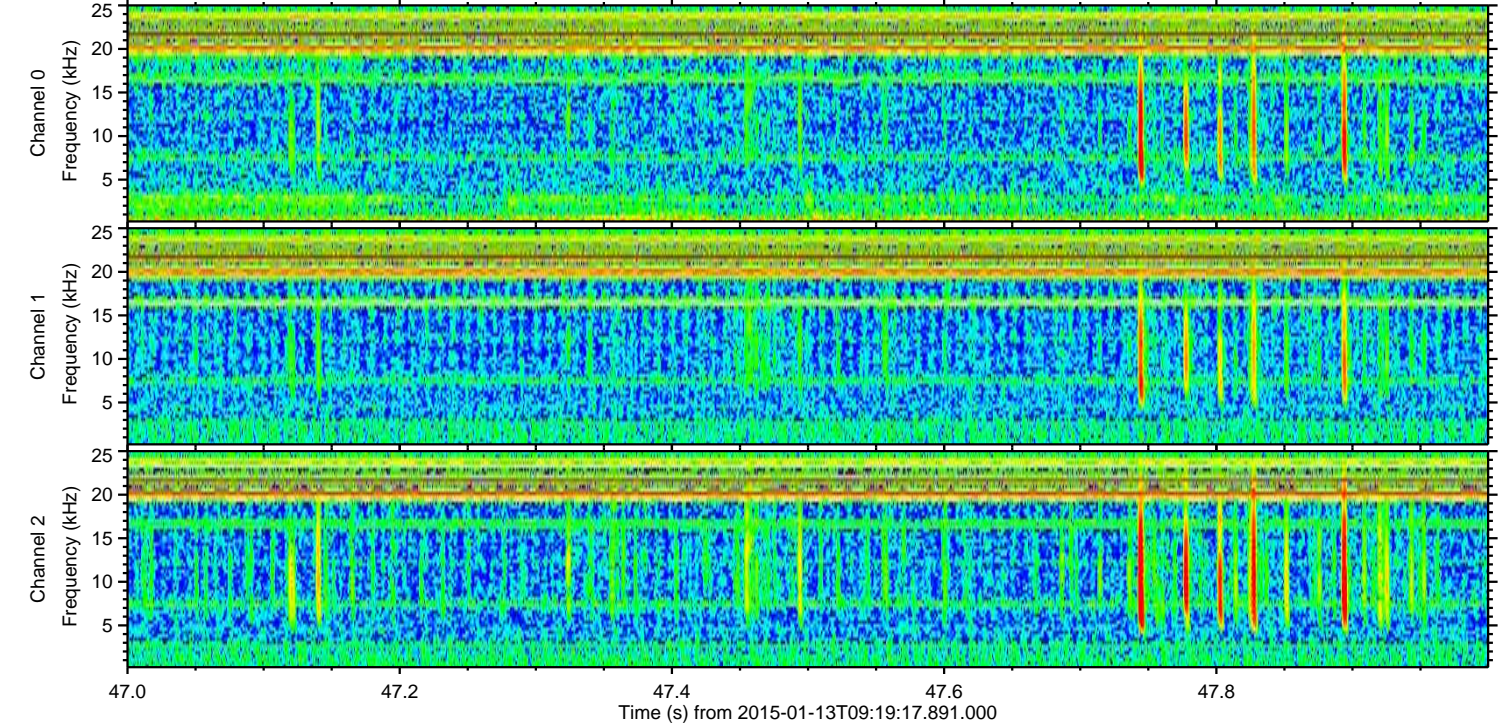
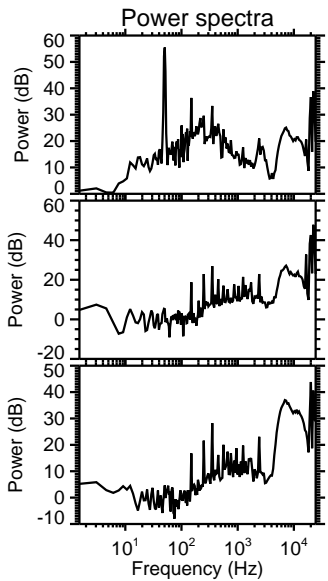
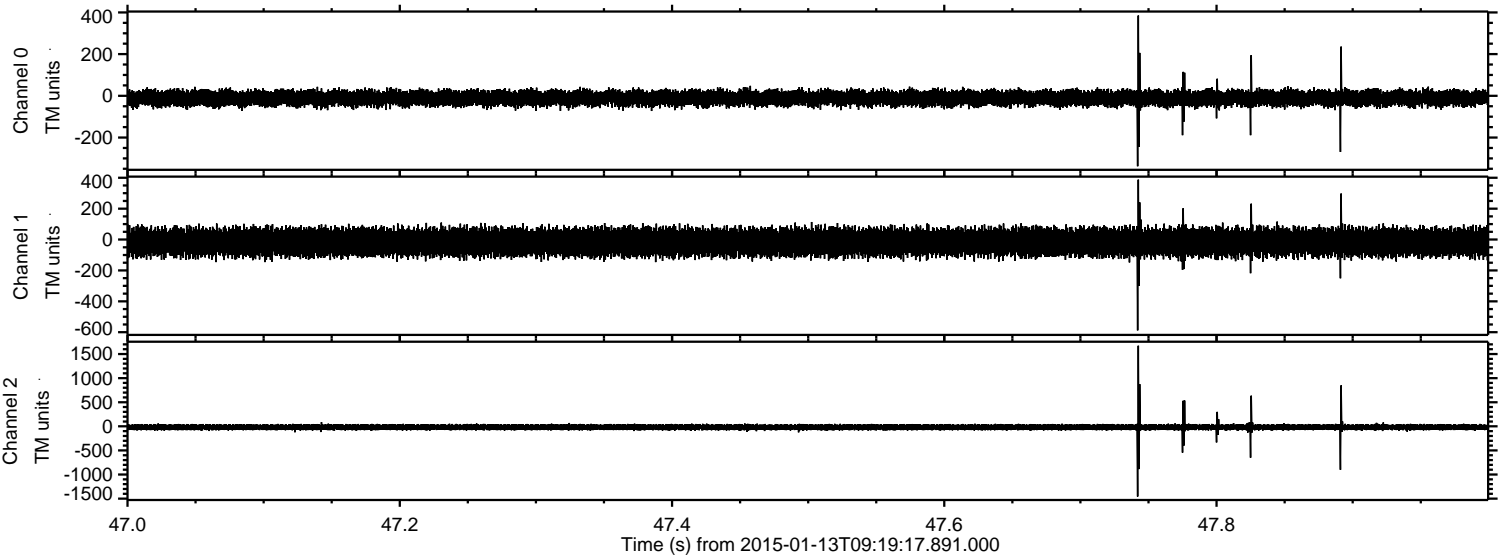


Processed Tue Jan 13 11:20:37 2015 by ELM ver.2012-10-06 from 001__elm20150113_091916__dat00.bin



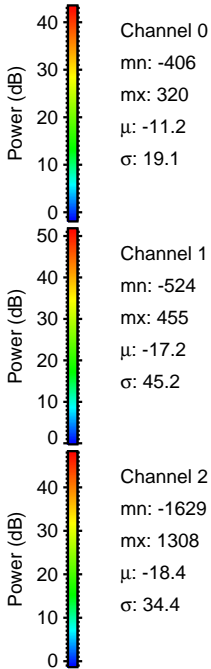
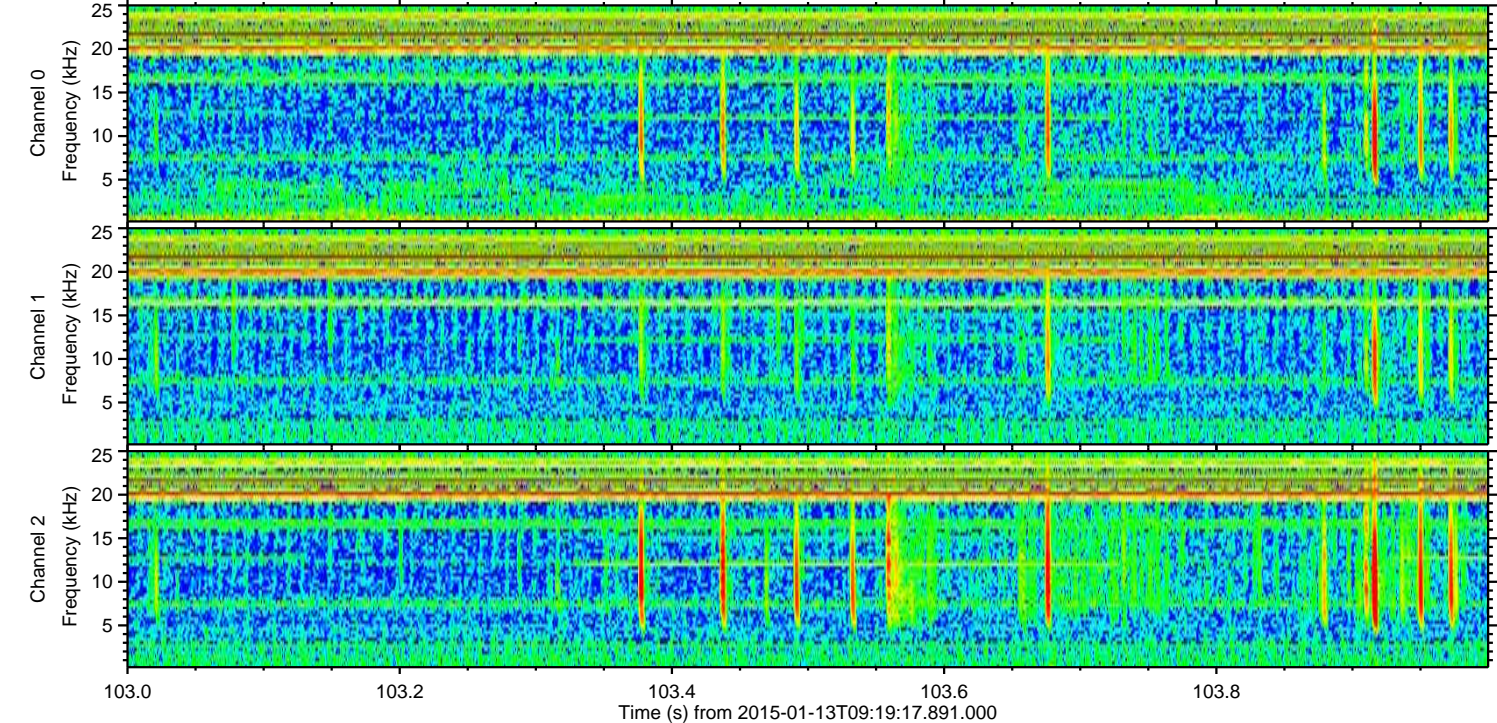
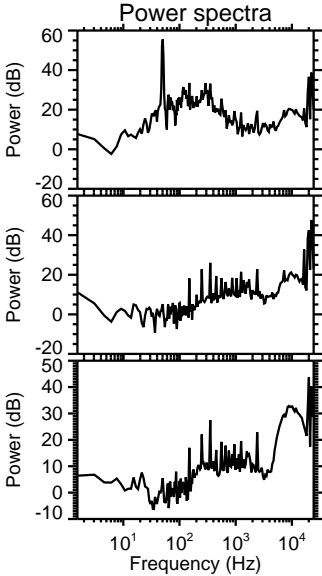
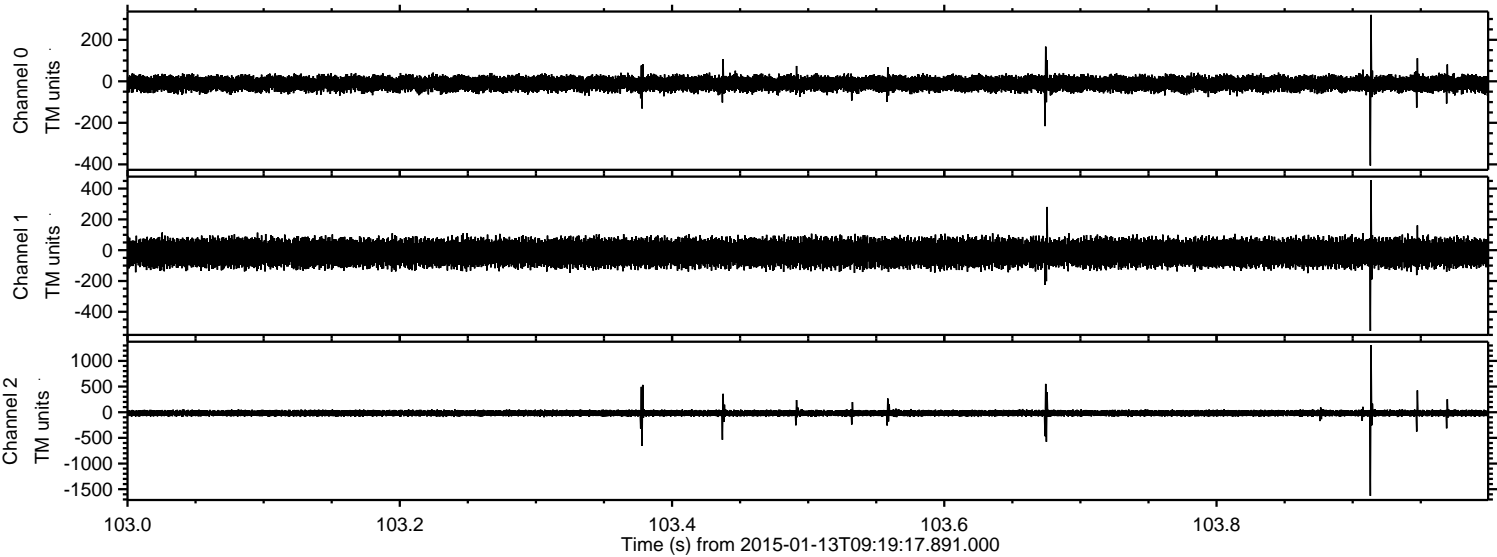
ELMAVAN 3D WAVEFORMS (Measured data sampled at 50 kHz) 49727 packets of 144 samples from 2015-01-13T09:19:17.891.000. Part 48/144

Processed Tue Jan 13 11:20:38 2015 by ELM ver.2012-10-06 from 001__elm20150113_091916__dat00.bin



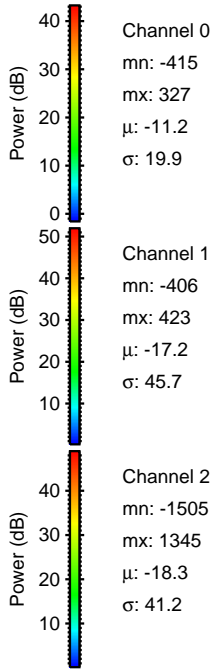
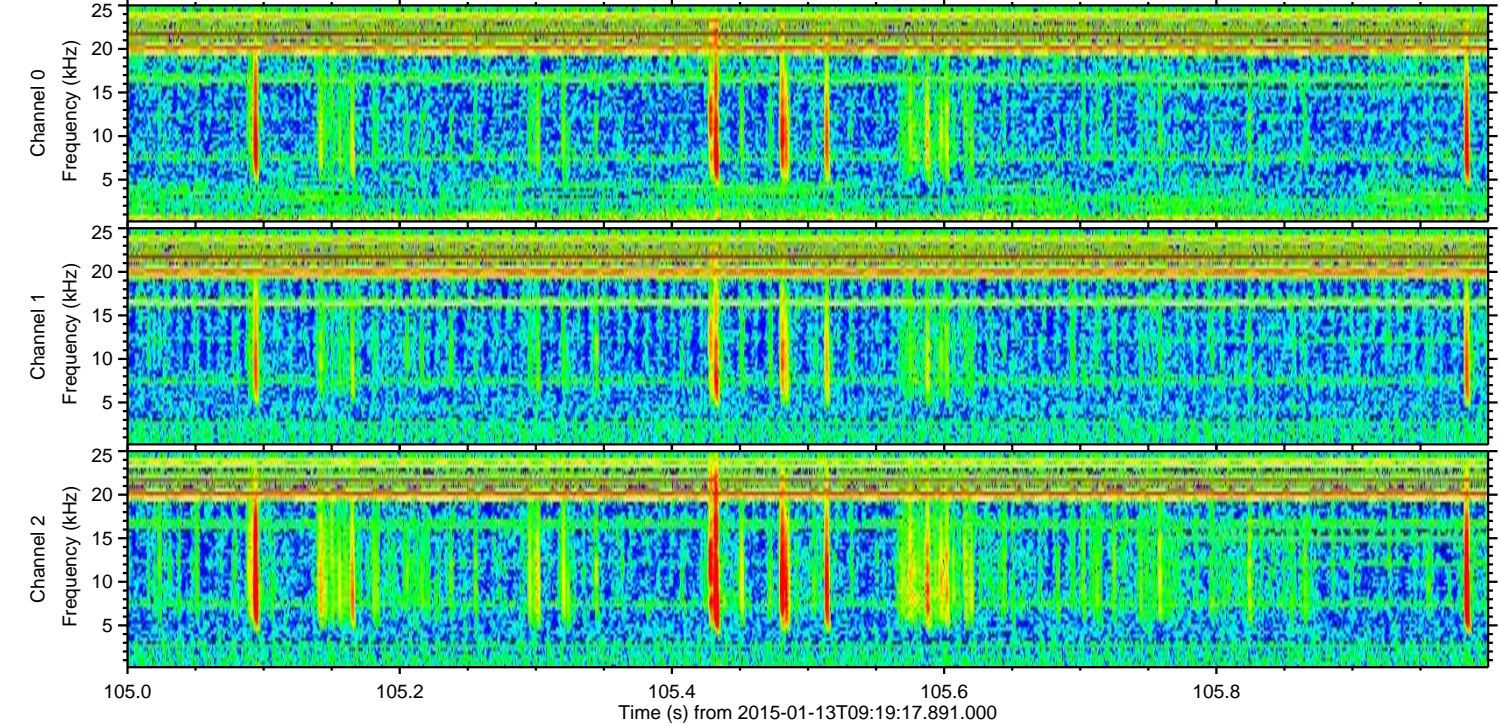
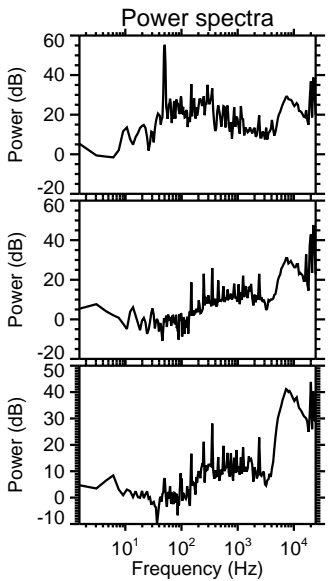
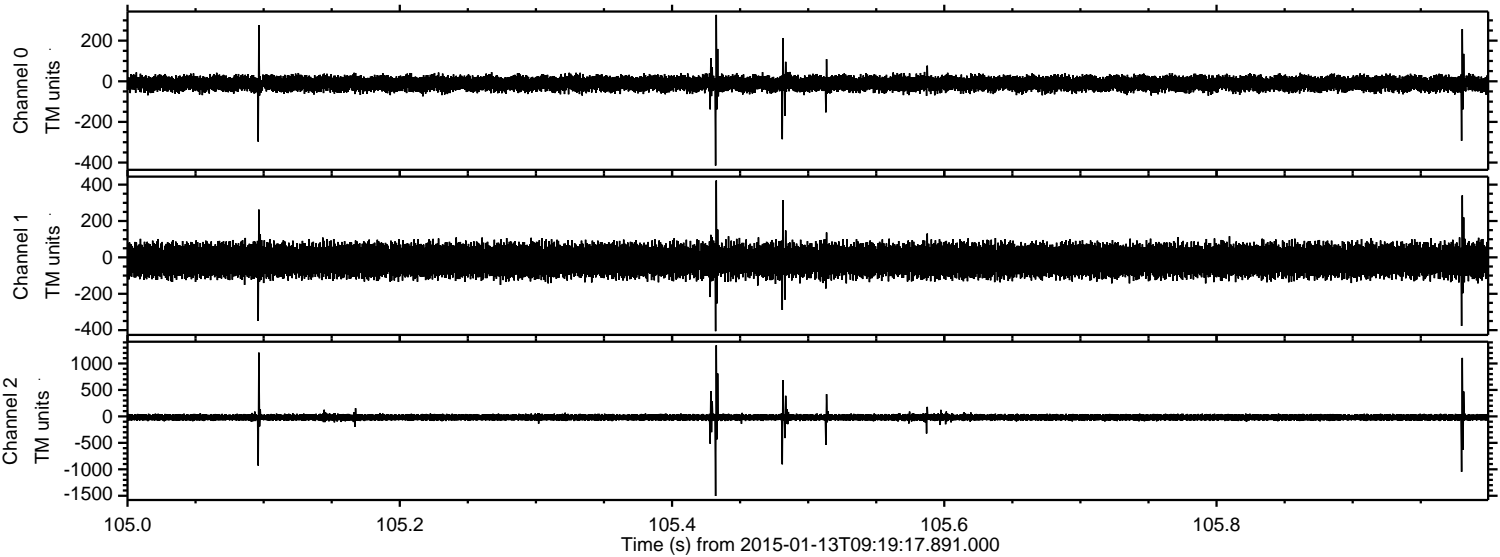
ELMAVAN 3D WAVEFORMS (Measured data sampled at 50 kHz) 49727 packets of 144 samples from 2015-01-13T09:19:17.891.000. Part 104/144

Processed Tue Jan 13 11:20:39 2015 by ELM ver.2012-10-06 from 001__elm20150113_091916__dat00.bin



ELMAVAN 3D WAVEFORMS (Measured data sampled at 50 kHz) 49727 packets of 144 samples from 2015-01-13T09:19:17.891.000. Part 106/144

Processed Tue Jan 13 11:20:40 2015 by ELM ver.2012-10-06 from 001__elm20150113_091916__dat00.bin

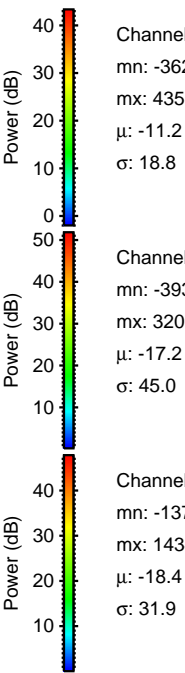
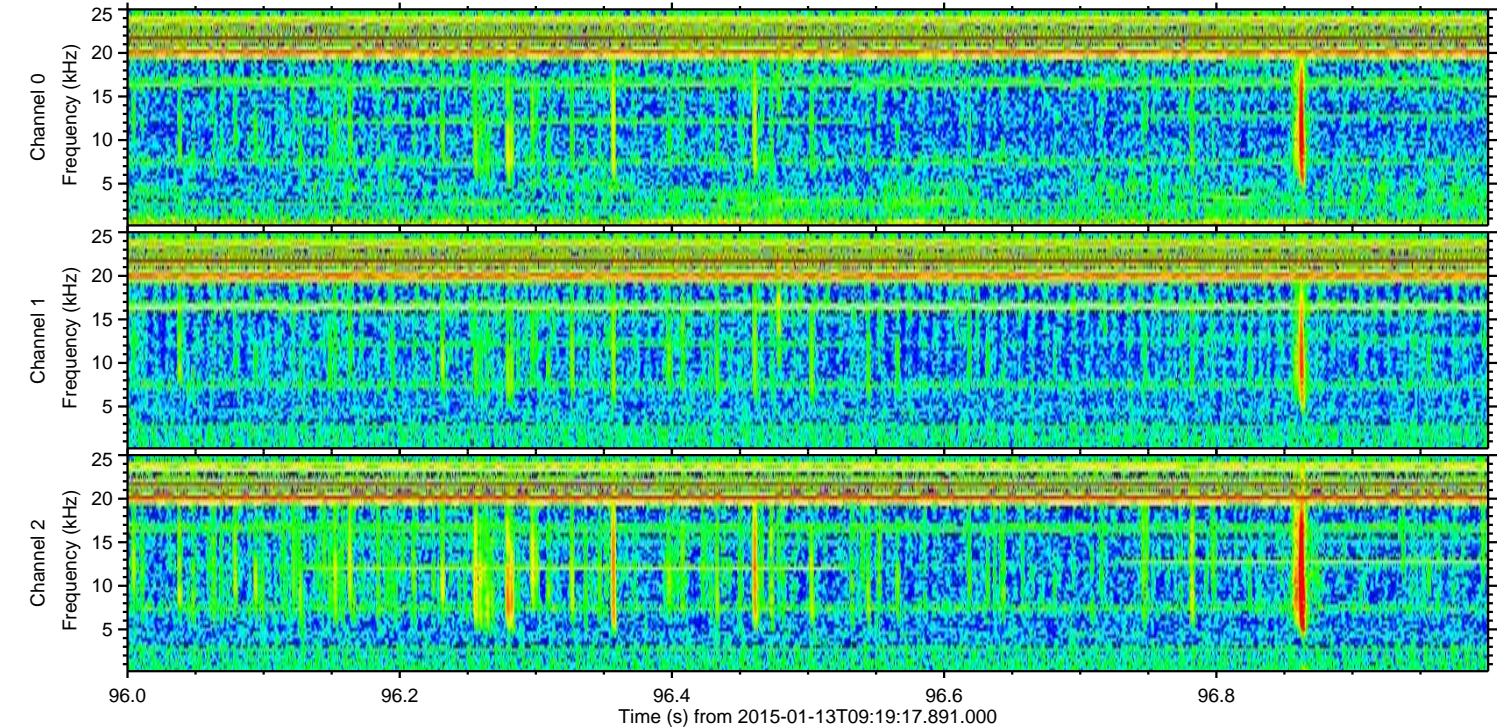
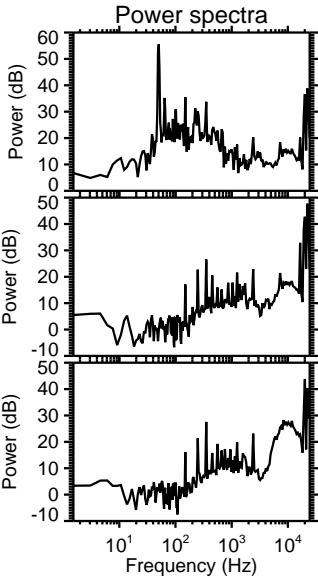
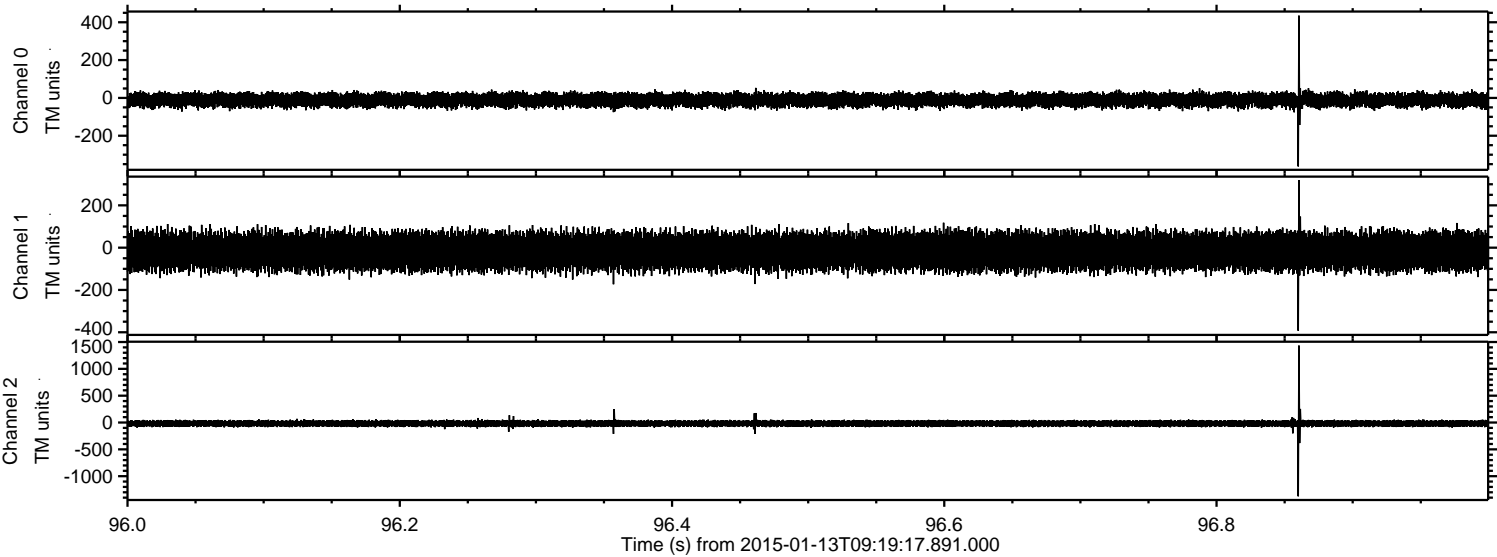


Channel 0
mn: -415
mx: 327
 μ : -11.2
 σ : 19.9

Channel 1
mn: -406
mx: 423
 μ : -17.2
 σ : 45.7

Channel 2
mn: -1505
mx: 1345
 μ : -18.3
 σ : 41.2

Processed Tue Jan 13 11:20:41 2015 by ELM ver.2012-10-06 from 001__elm20150113_091916__dat00.bin



Channel 0
mn: -362
mx: 435
 μ : -11.2
 σ : 18.8

Channel 1
mn: -393
mx: 320
 μ : -17.2
 σ : 45.0

Channel 2
mn: -1375
mx: 1434
 μ : -18.4
 σ : 31.9

Processed Tue Jan 13 11:20:42 2015 by ELM ver.2012-10-06 from 001__elm20150113_091916__dat00.bin

