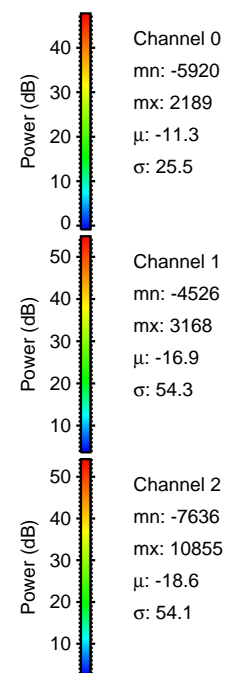
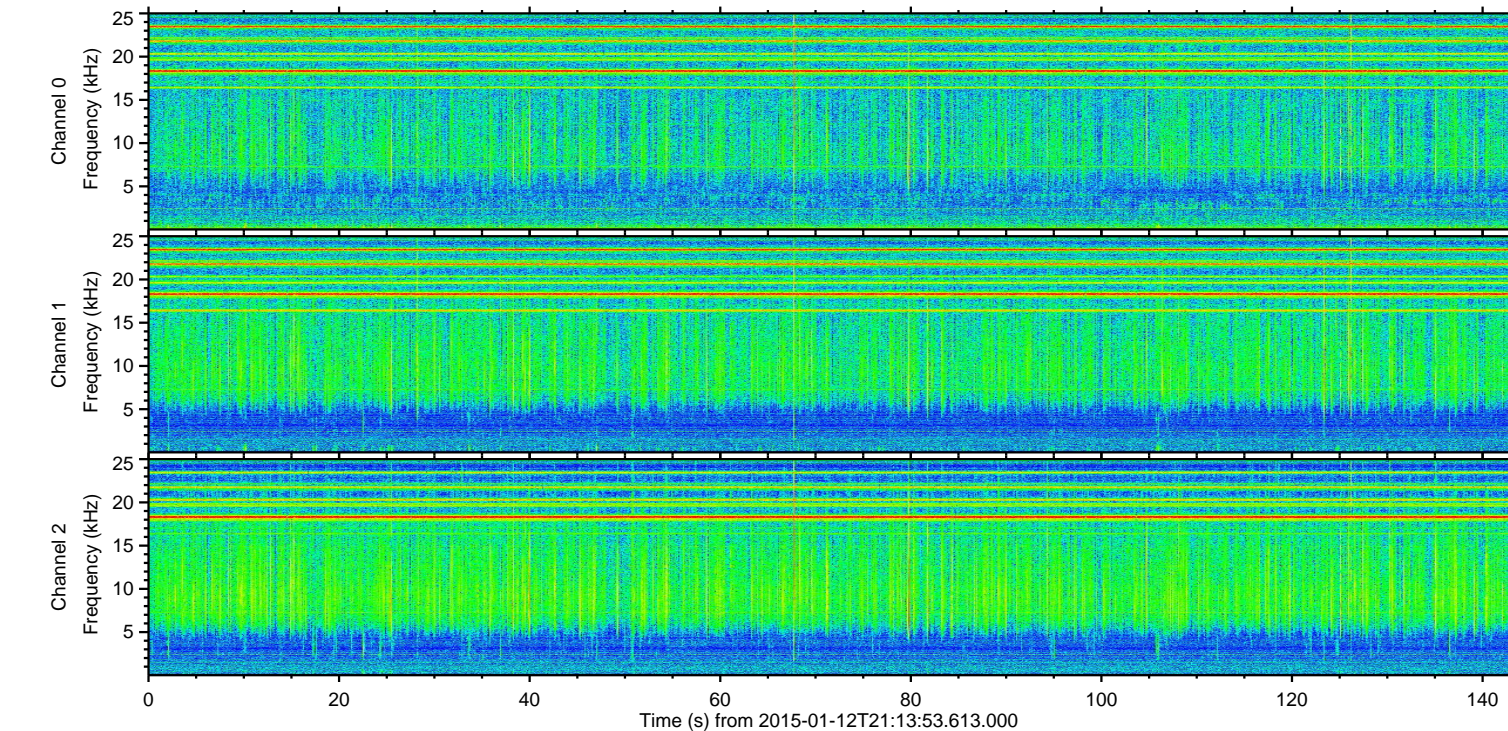
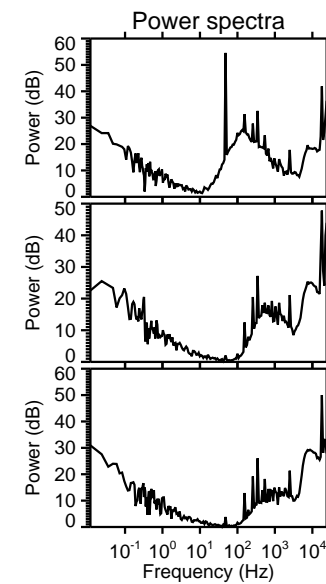
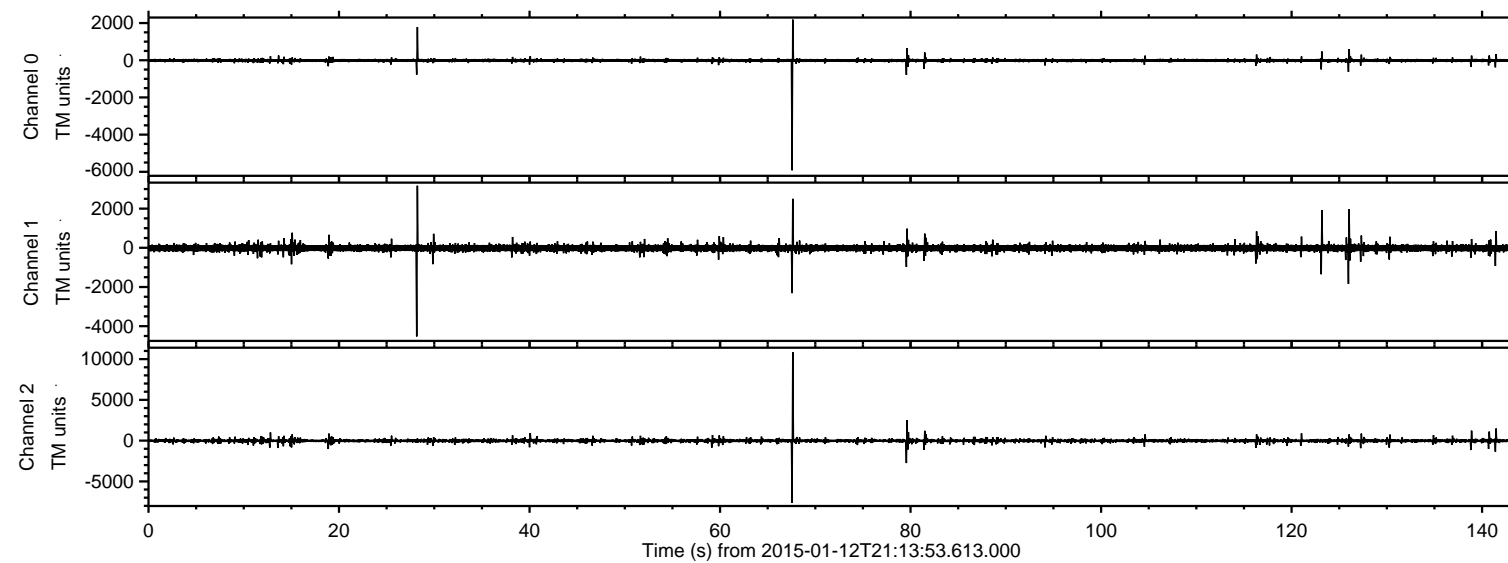
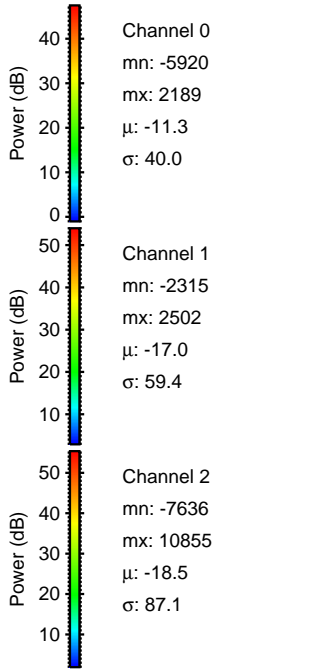
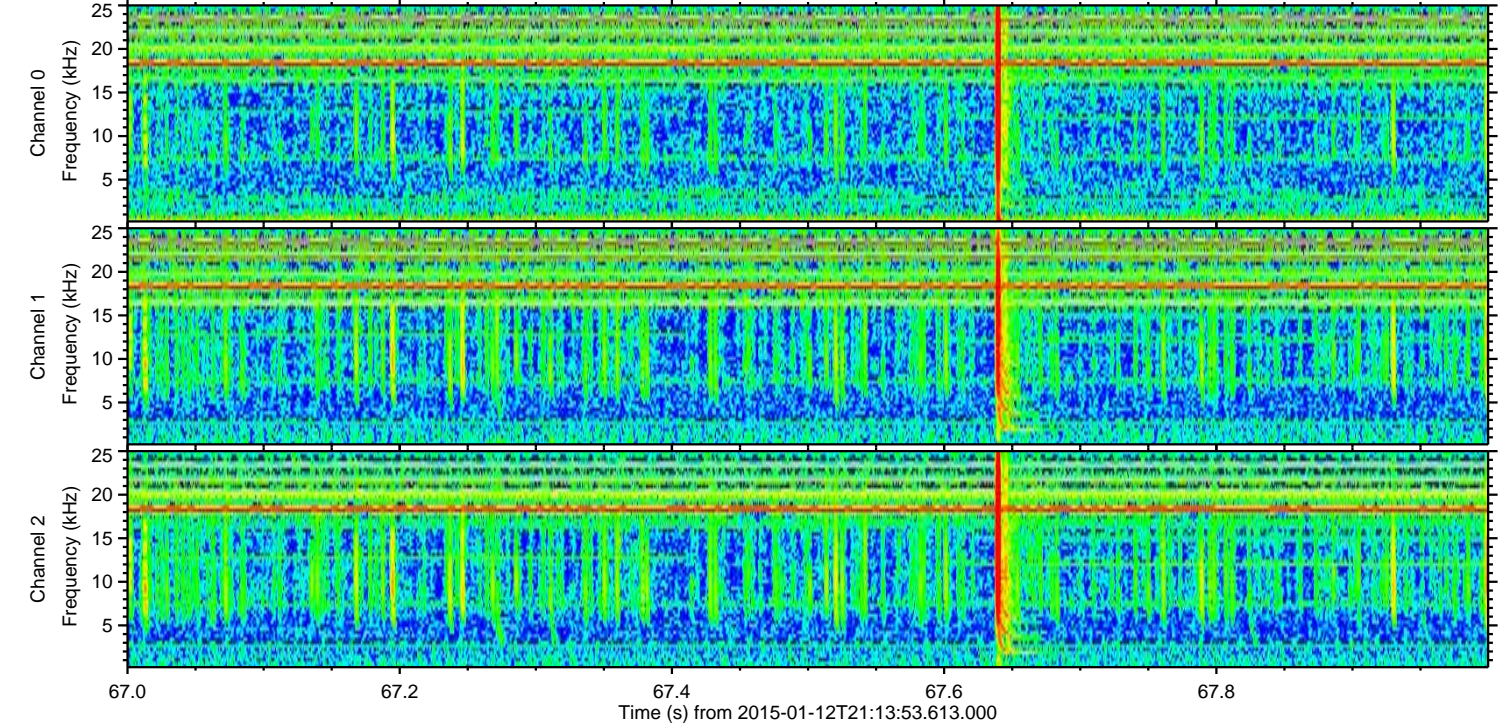
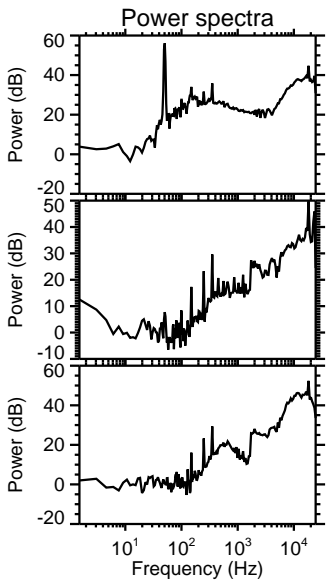
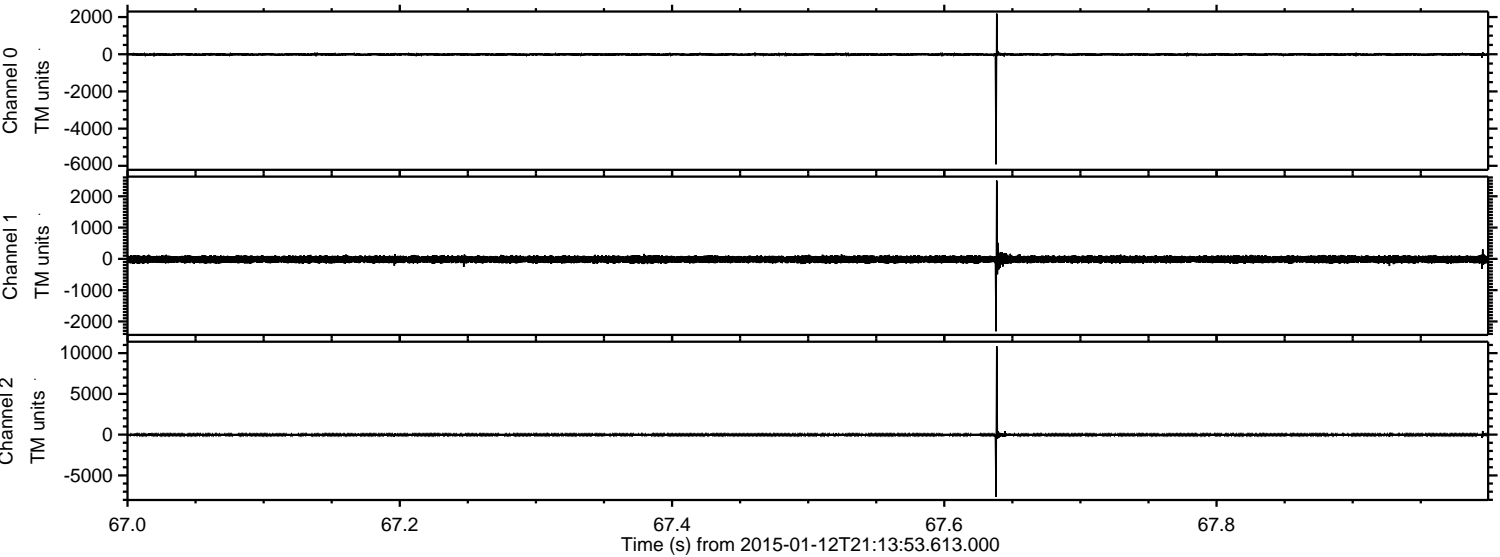


ELMAVAN 3D WAVEFORMS (Measured data sampled at 50 kHz) 49597 packets of 144 samples from 2015-01-12T21:13:53.613.000.

Processed Mon Jan 12 22:20:52 2015 by ELM ver.2012-10-06 from 001__elm20150112_211352__dat00.bin

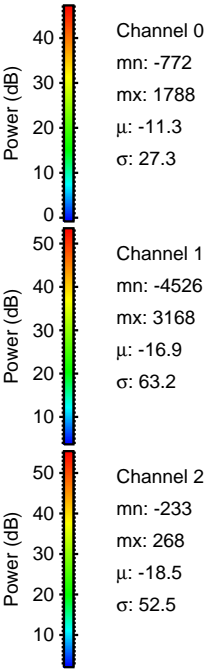
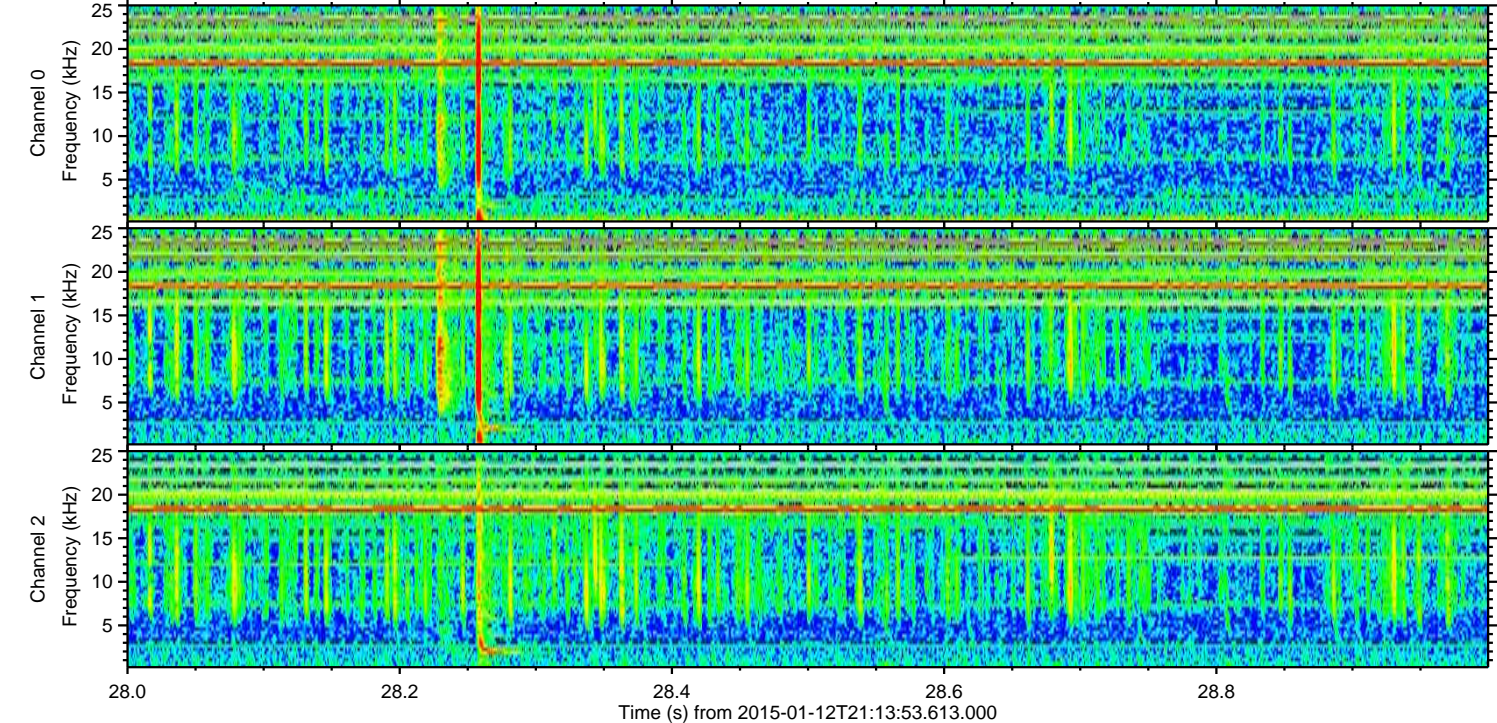
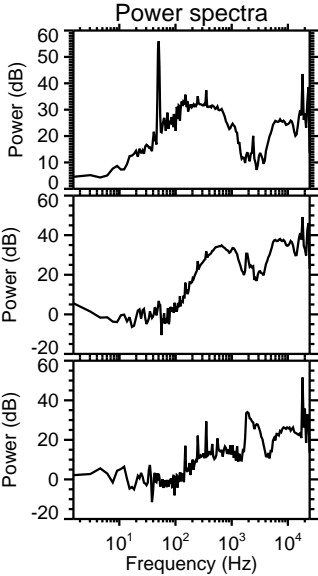
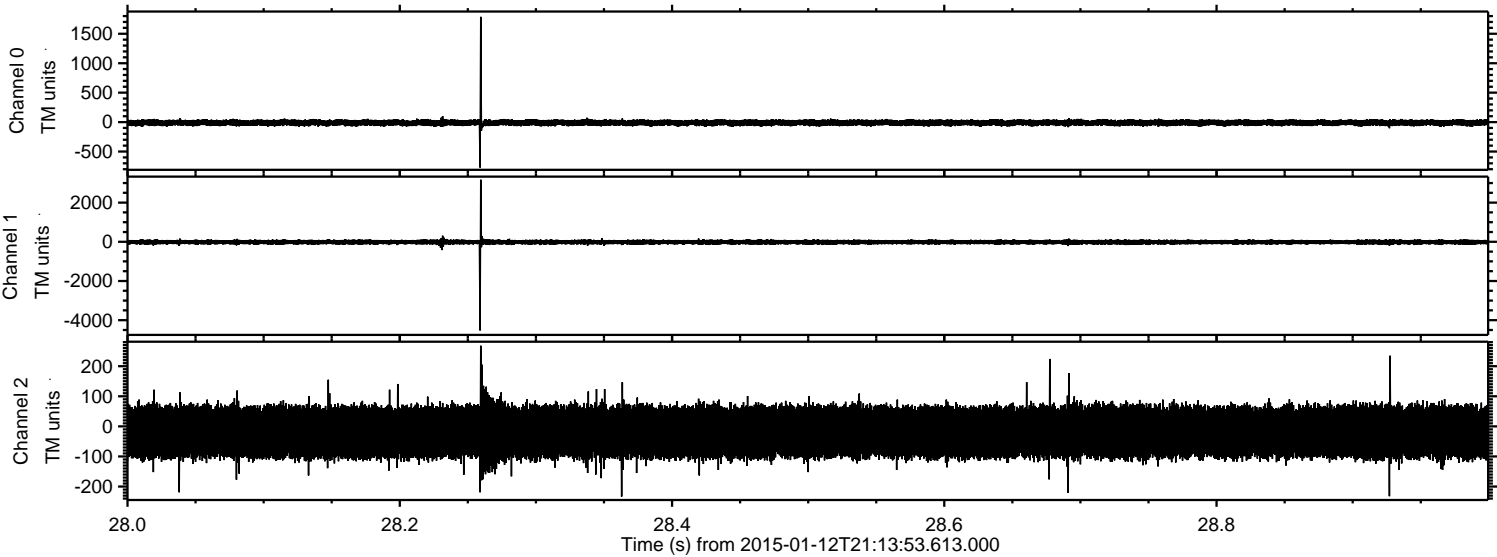


Processed Mon Jan 12 22:21:11 2015 by ELM ver.2012-10-06 from 001__elm20150112_211352__dat00.bin



ELMAVAN 3D WAVEFORMS (Measured data sampled at 50 kHz) 49597 packets of 144 samples from 2015-01-12T21:13:53.613.000. Part 29/143

Processed Mon Jan 12 22:21:12 2015 by ELM ver.2012-10-06 from 001__elm20150112_211352__dat00.bin

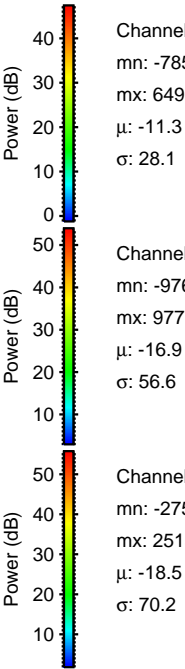
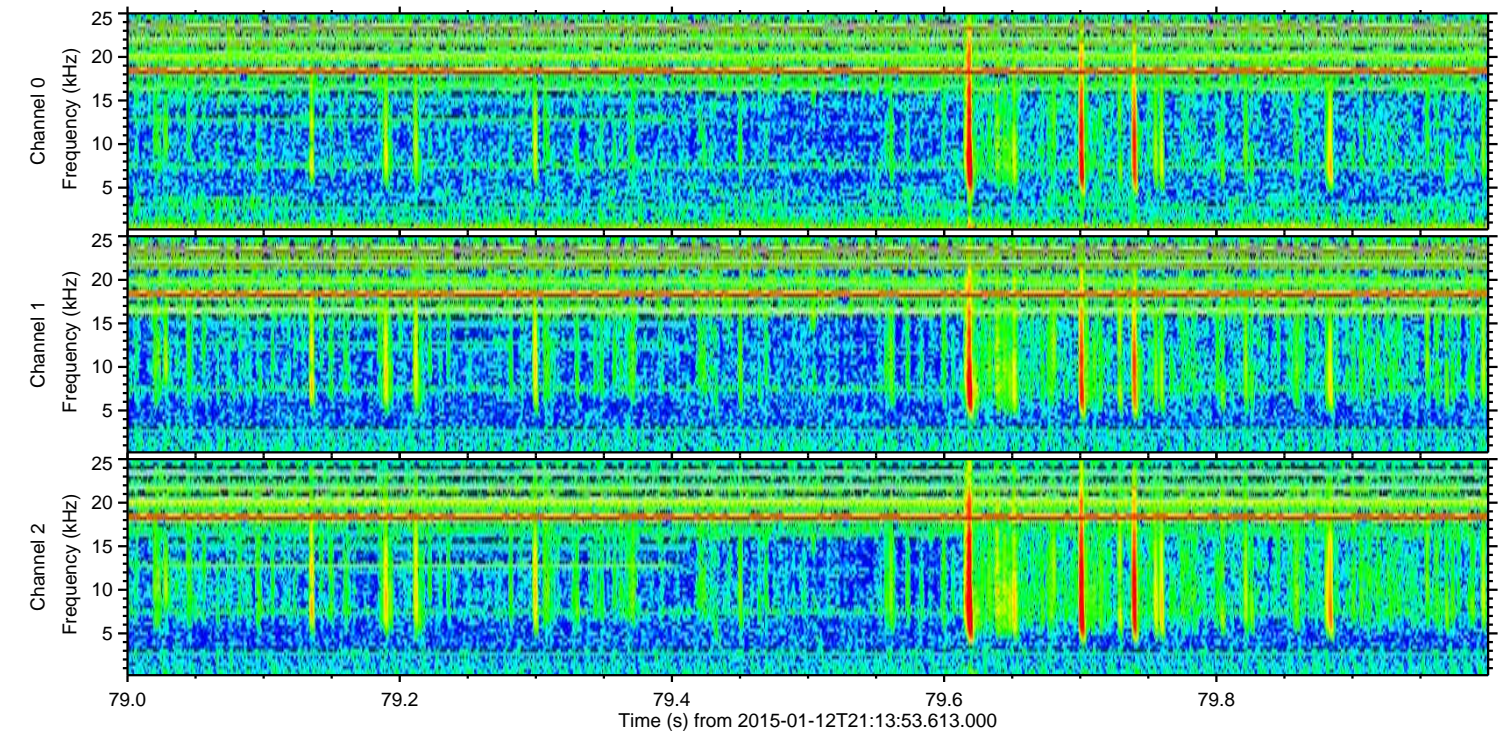
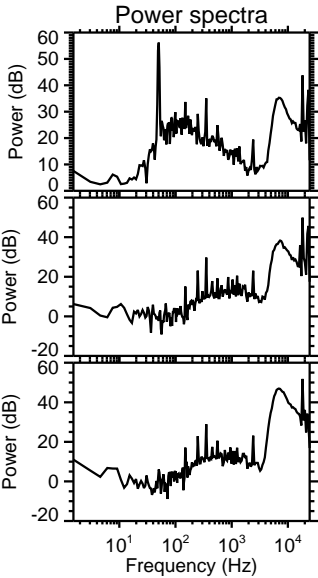
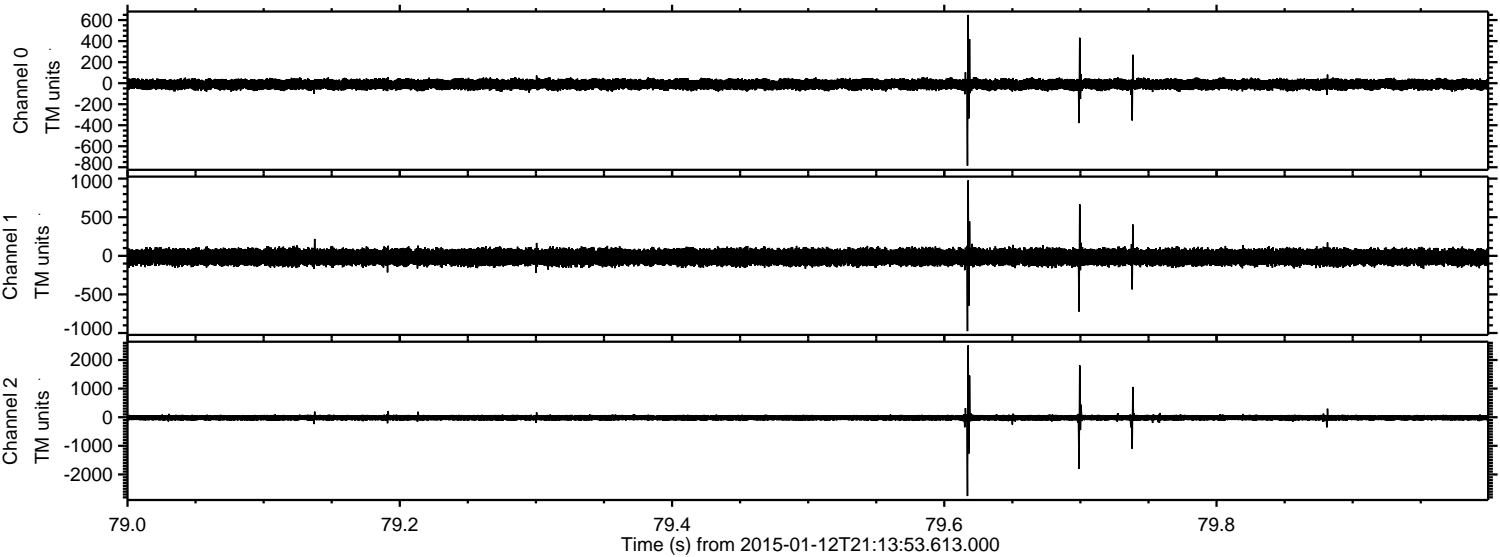


Channel 0
mn: -772
mx: 1788
 μ : -11.3
 σ : 27.3

Channel 1
mn: -4526
mx: 3168
 μ : -16.9
 σ : 63.2

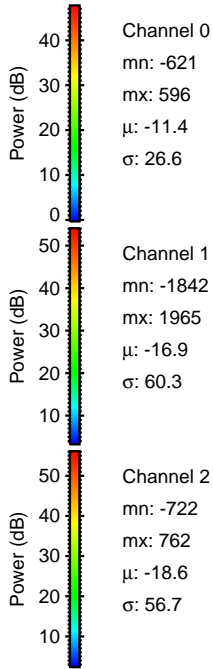
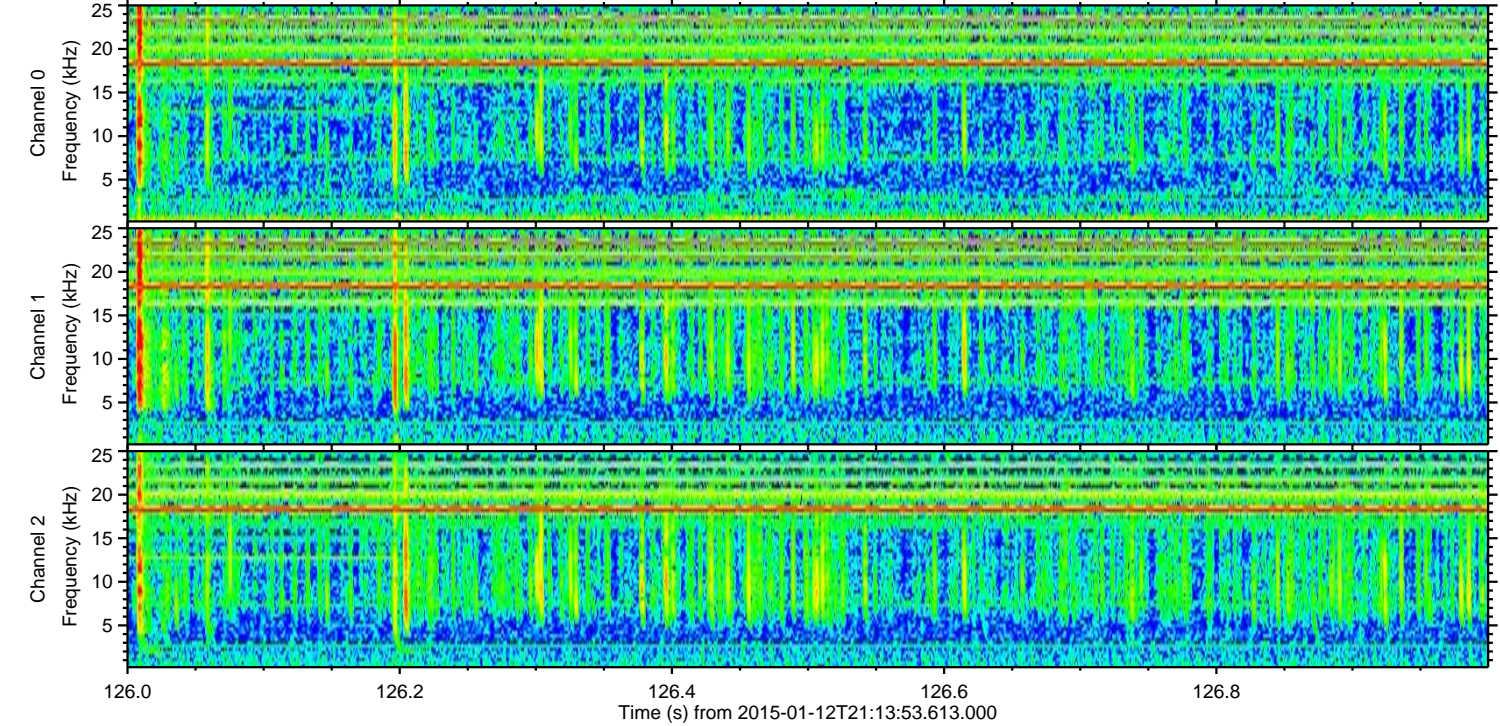
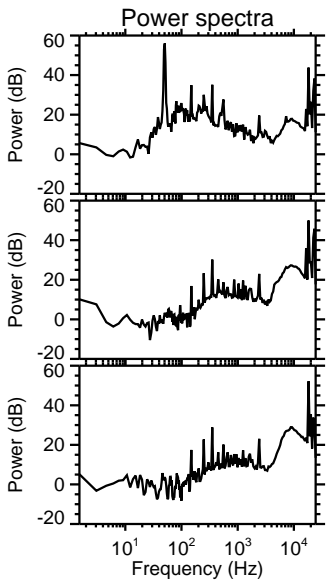
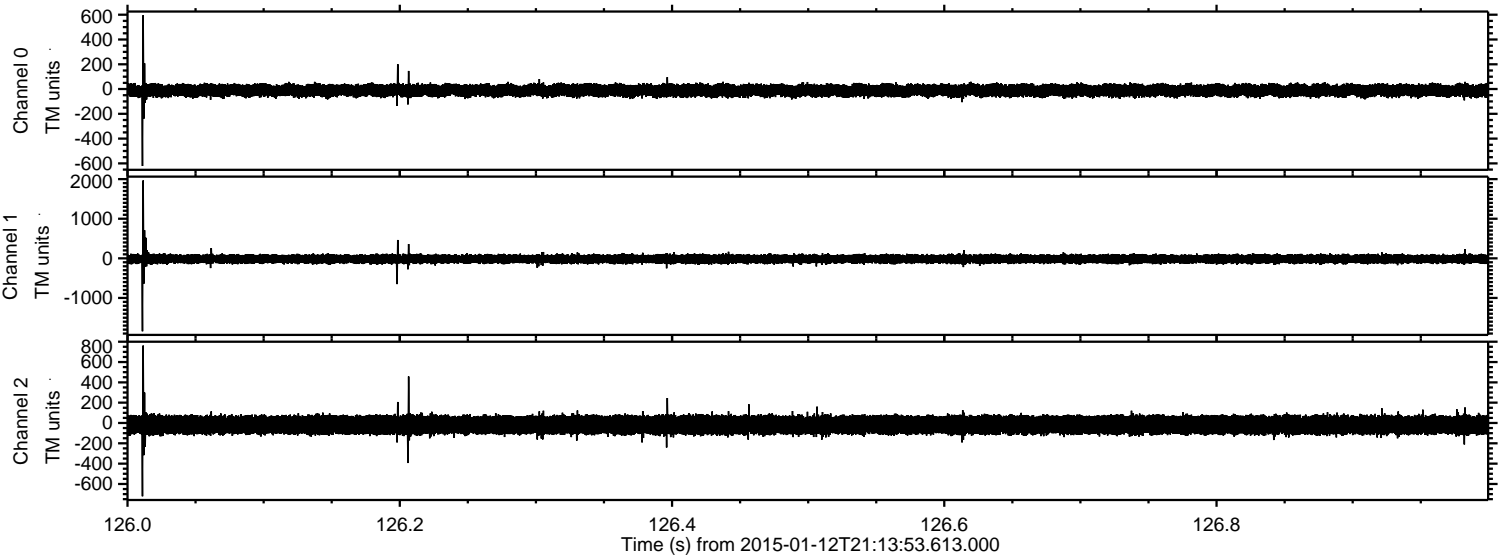
Channel 2
mn: -233
mx: 268
 μ : -18.5
 σ : 52.5

Processed Mon Jan 12 22:21:13 2015 by ELM ver.2012-10-06 from 001__elm20150112_211352__dat00.bin



ELMAVAN 3D WAVEFORMS (Measured data sampled at 50 kHz) 49597 packets of 144 samples from 2015-01-12T21:13:53.613.000. Part 127/143

Processed Mon Jan 12 22:21:14 2015 by ELM ver.2012-10-06 from 001__elm20150112_211352__dat00.bin



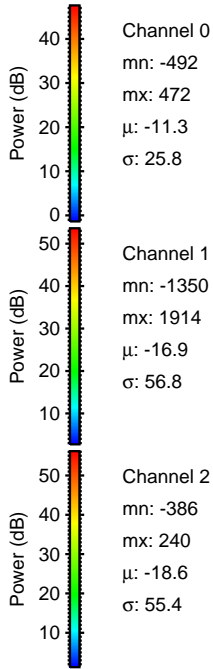
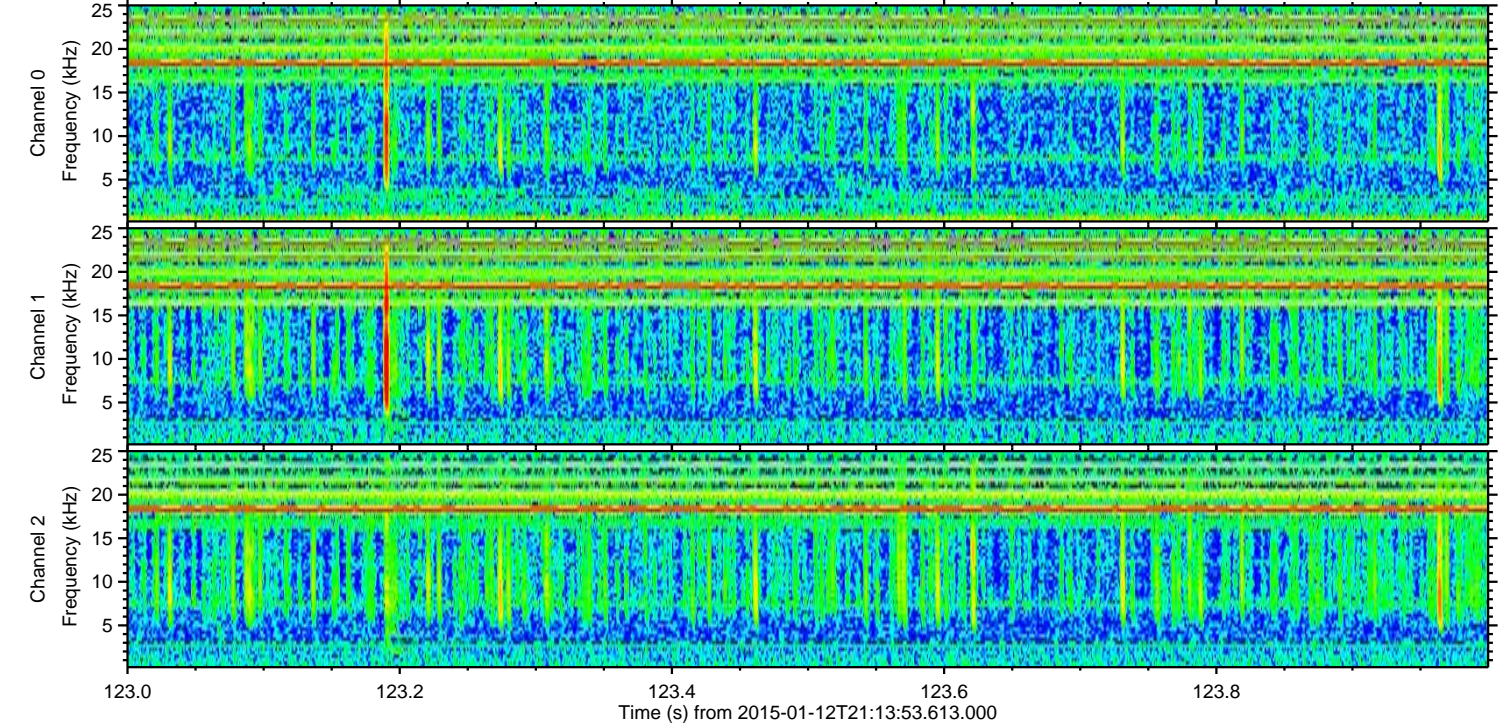
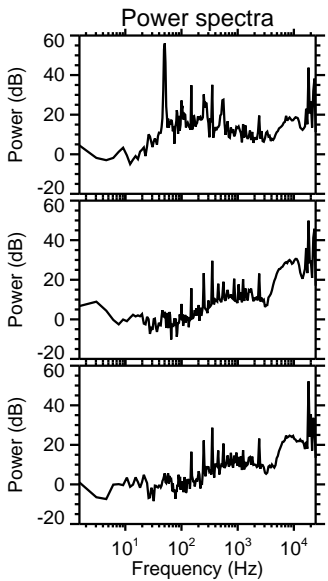
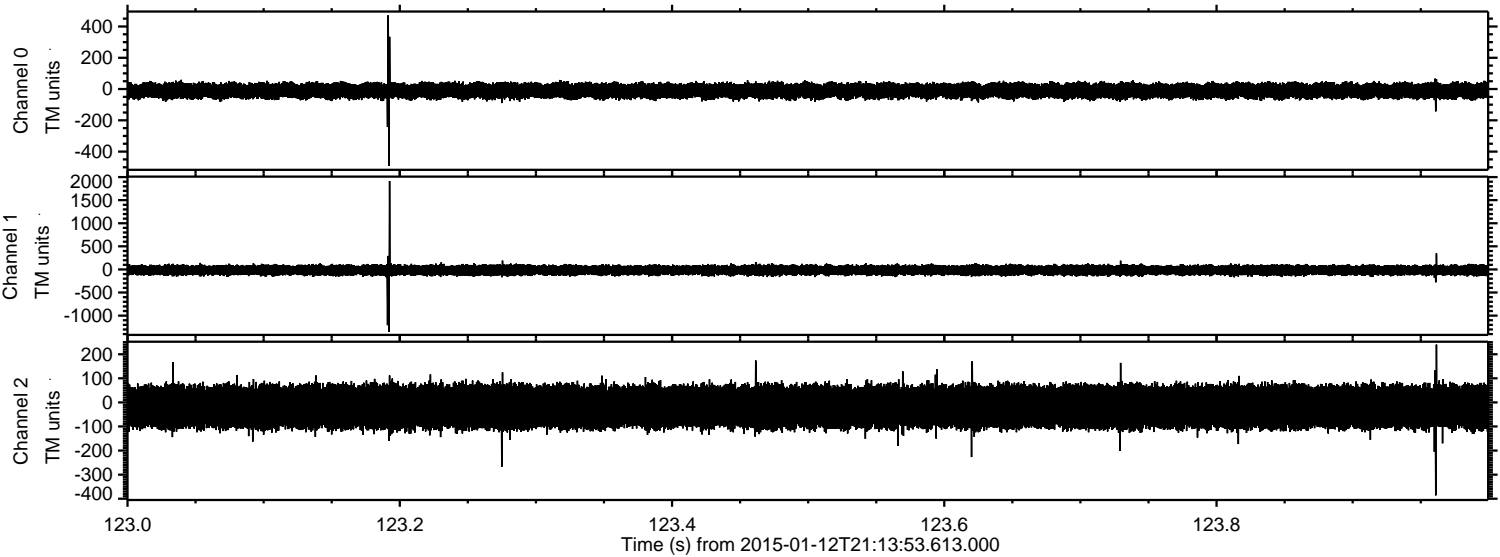
Channel 0
mn: -621
mx: 596
 μ : -11.4
 σ : 26.6

Channel 1
mn: -1842
mx: 1965
 μ : -16.9
 σ : 60.3

Channel 2
mn: -722
mx: 762
 μ : -18.6
 σ : 56.7

ELMAVAN 3D WAVEFORMS (Measured data sampled at 50 kHz) 49597 packets of 144 samples from 2015-01-12T21:13:53.613.000. Part 124/143

Processed Mon Jan 12 22:21:15 2015 by ELM ver.2012-10-06 from 001__elm20150112_211352__dat00.bin



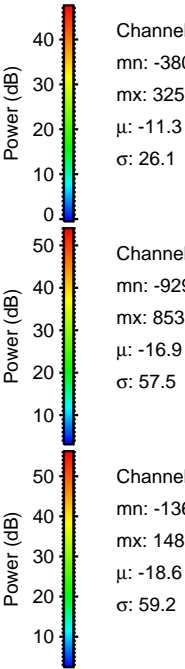
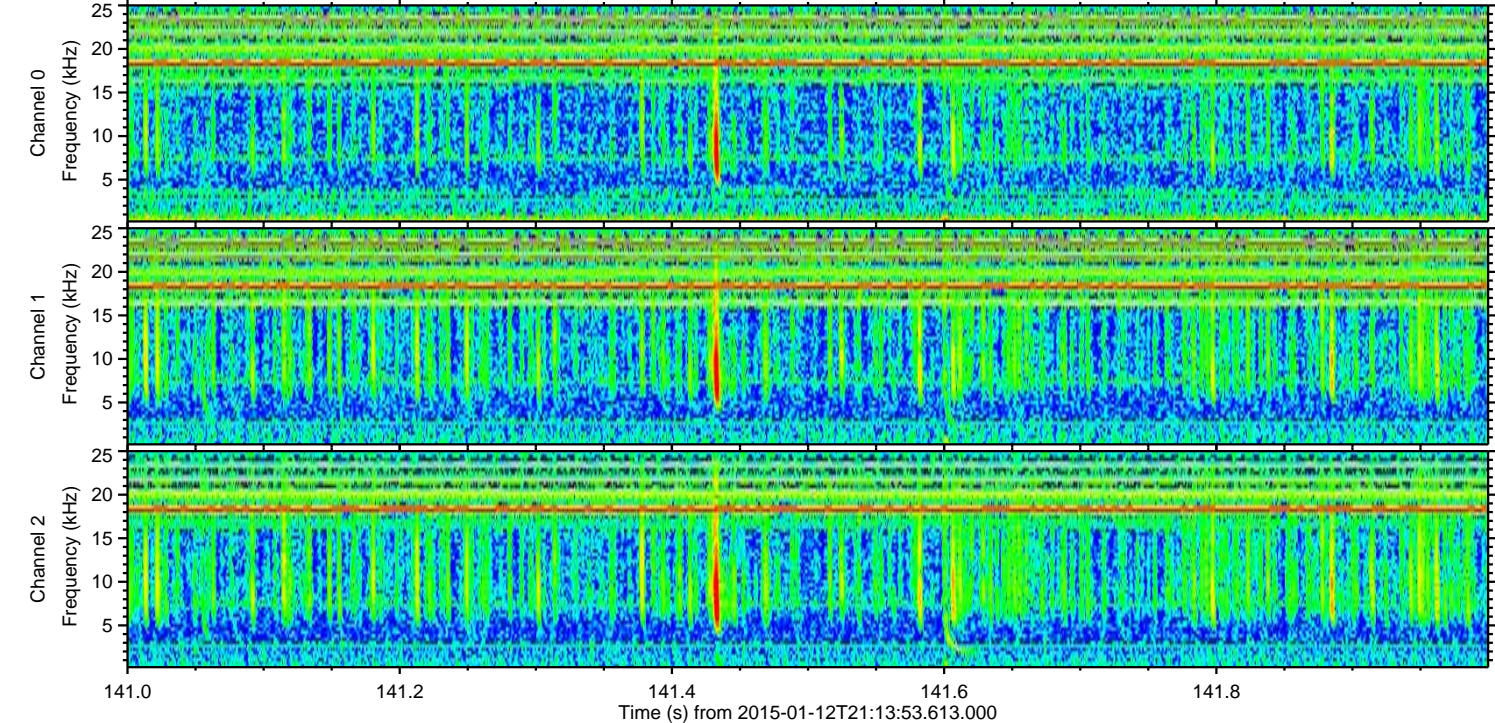
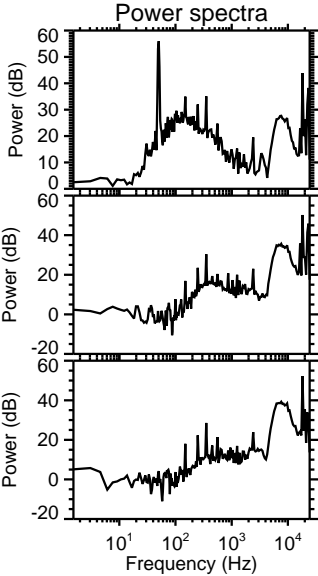
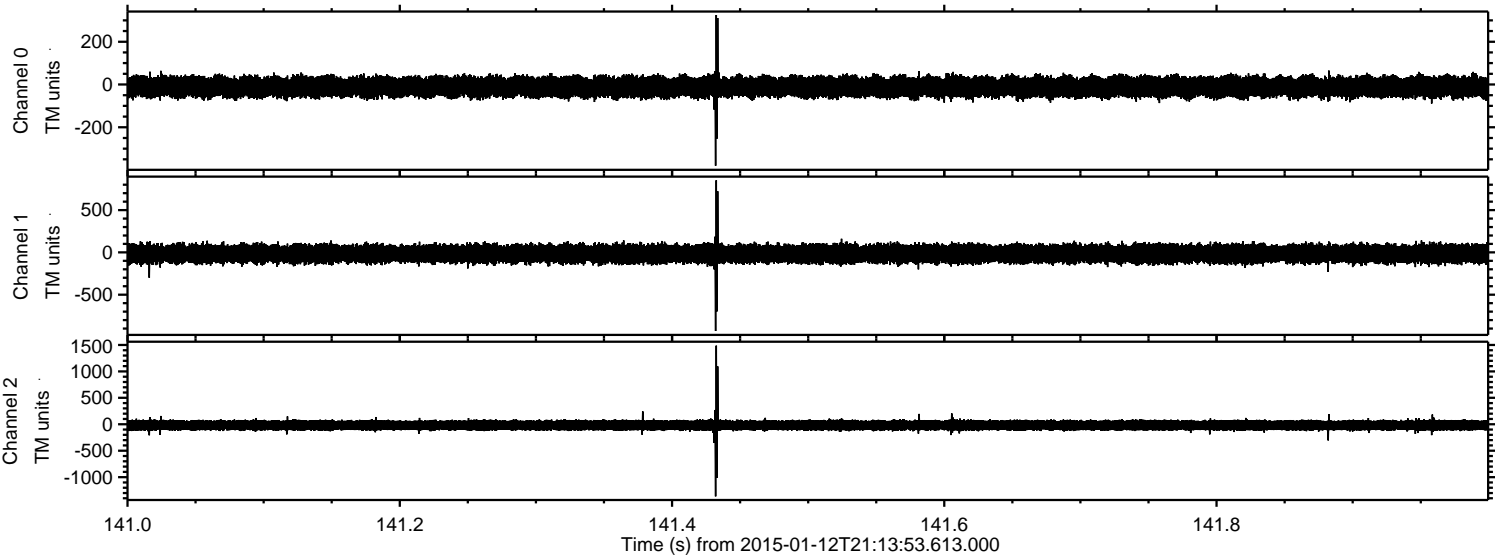
Channel 0
mn: -492
mx: 472
 μ : -11.3
 σ : 25.8

Channel 1
mn: -1350
mx: 1914
 μ : -16.9
 σ : 56.8

Channel 2
mn: -386
mx: 240
 μ : -18.6
 σ : 55.4

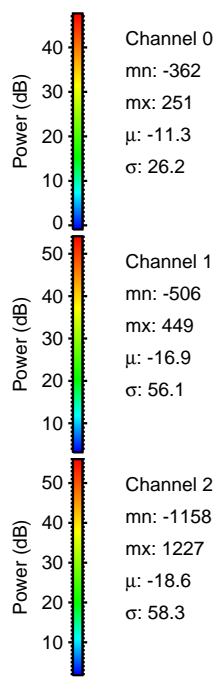
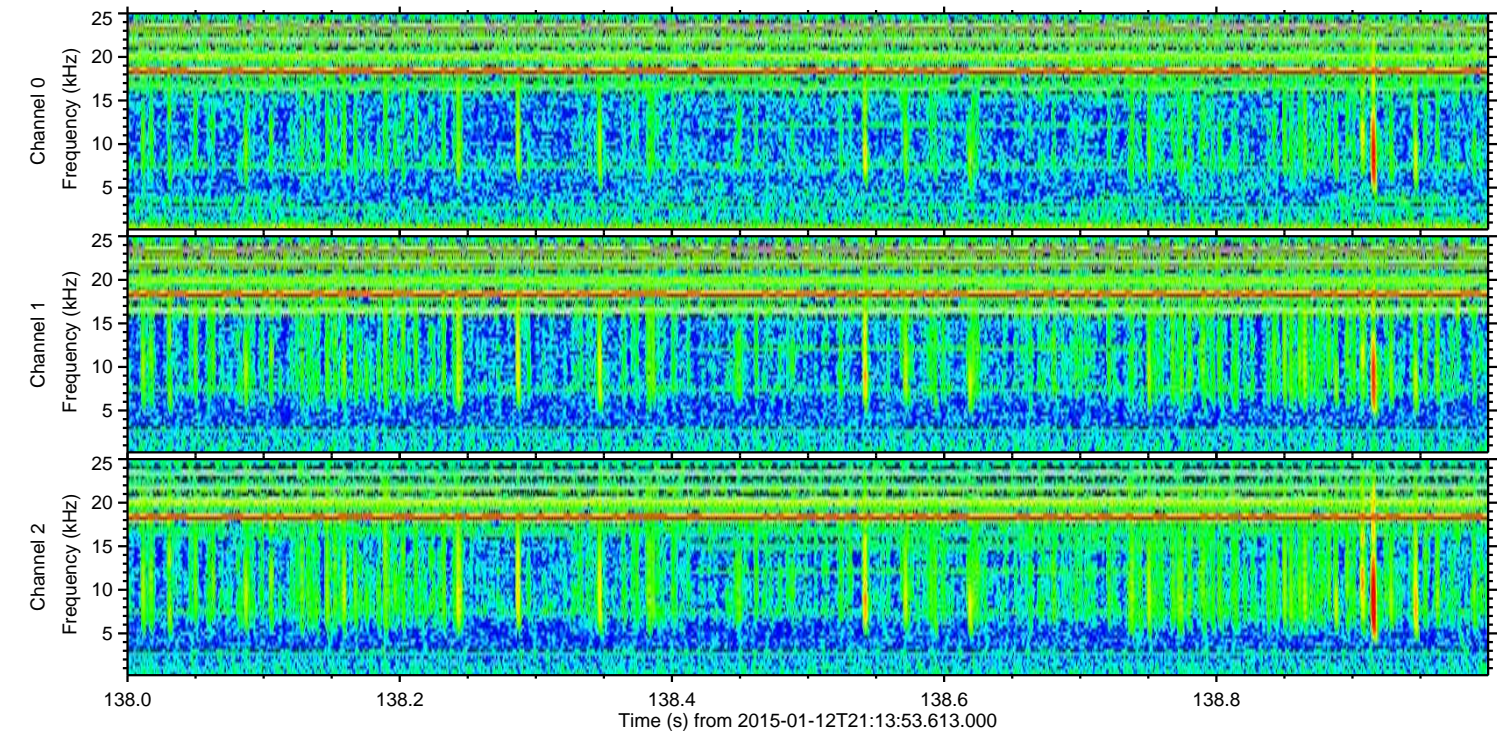
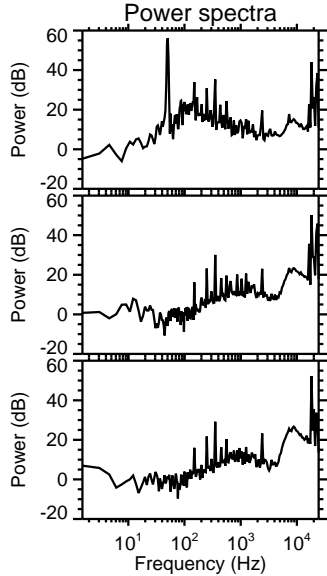
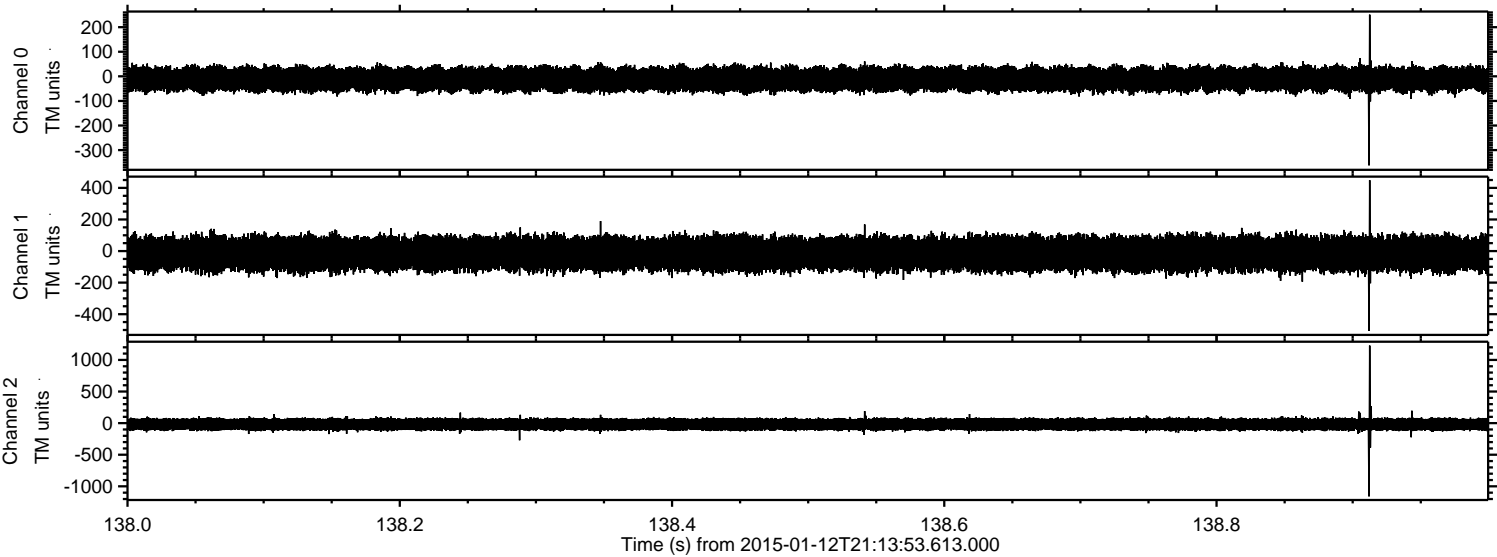
ELMAVAN 3D WAVEFORMS (Measured data sampled at 50 kHz) 49597 packets of 144 samples from 2015-01-12T21:13:53.613.000. Part 142/143

Processed Mon Jan 12 22:21:16 2015 by ELM ver.2012-10-06 from 001__elm20150112_211352__dat00.bin



ELMAVAN 3D WAVEFORMS (Measured data sampled at 50 kHz) 49597 packets of 144 samples from 2015-01-12T21:13:53.613.000. Part 139/143

Processed Mon Jan 12 22:21:17 2015 by ELM ver.2012-10-06 from 001__elm20150112_211352__dat00.bin

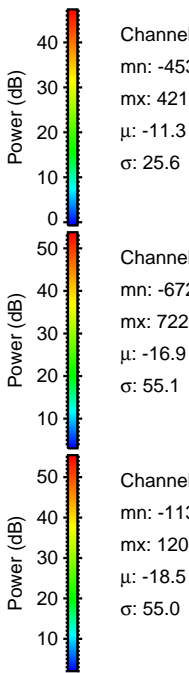
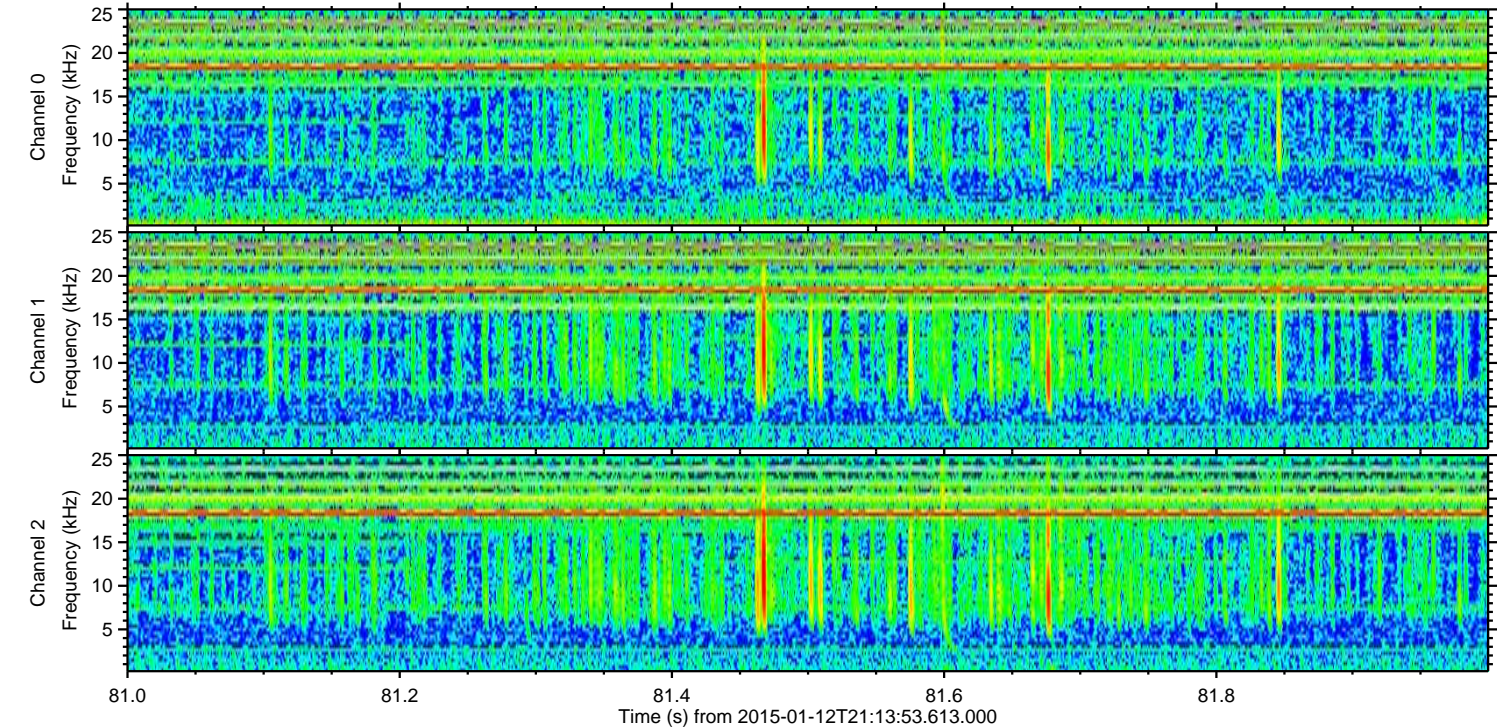
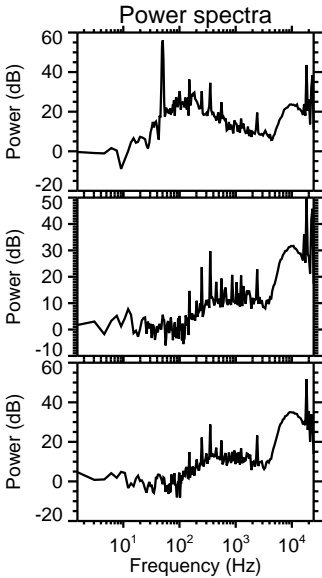
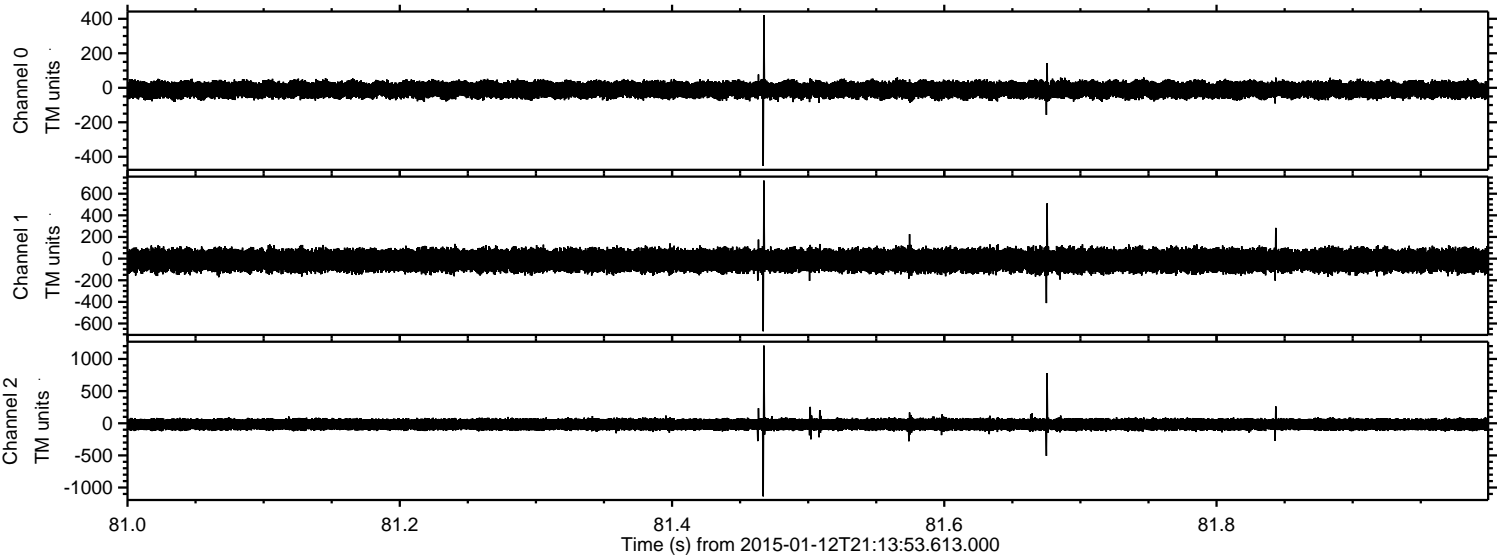


Channel 0
mn: -362
mx: 251
 μ : -11.3
 σ : 26.2

Channel 1
mn: -506
mx: 449
 μ : -16.9
 σ : 56.1

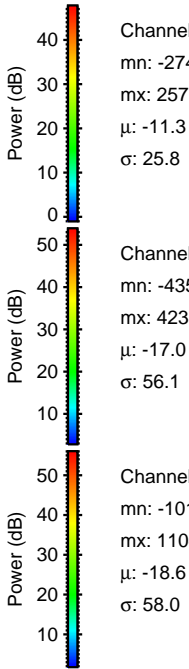
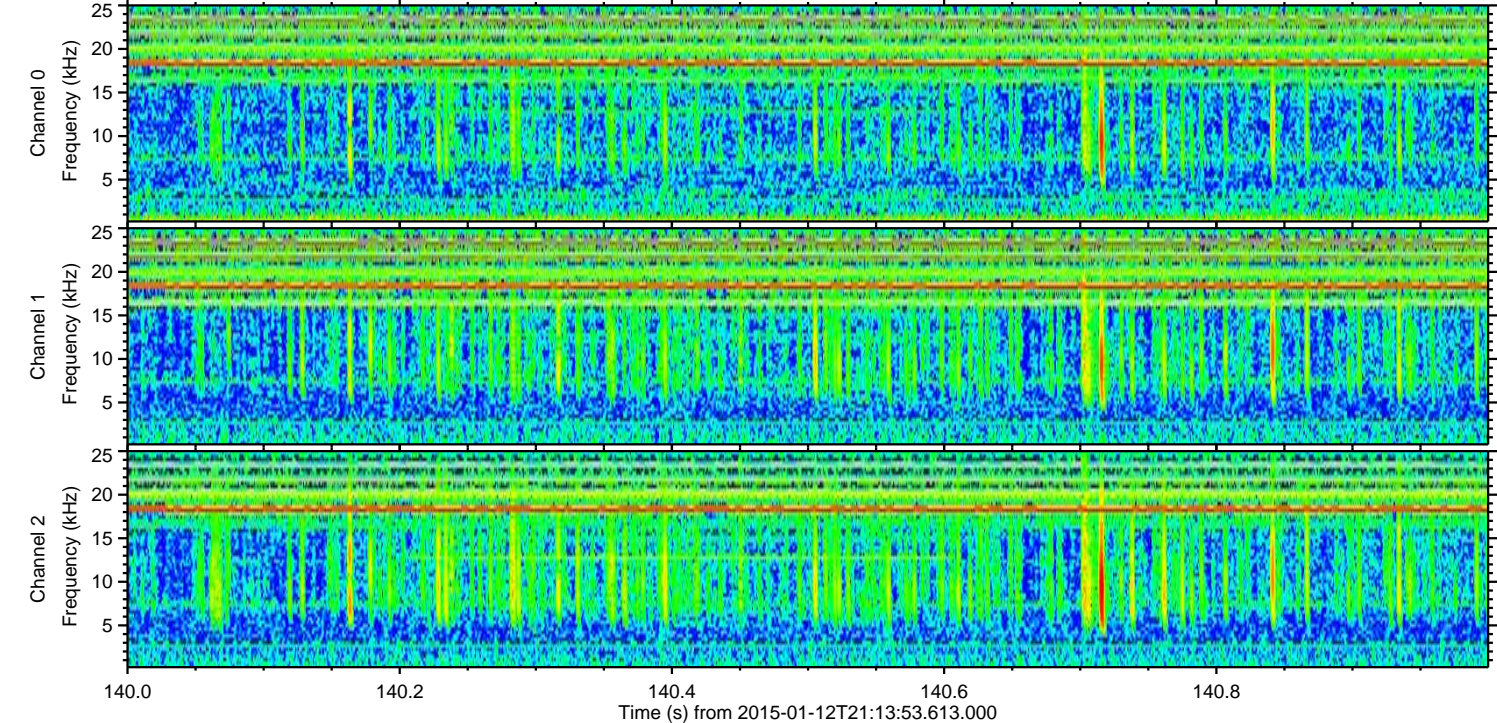
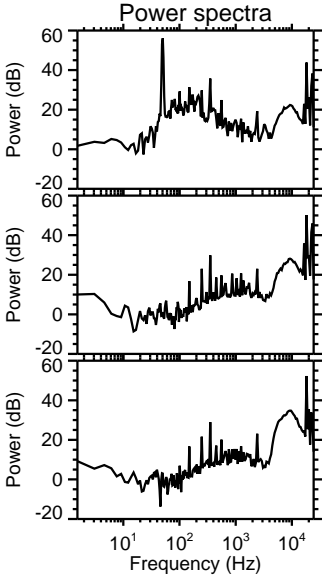
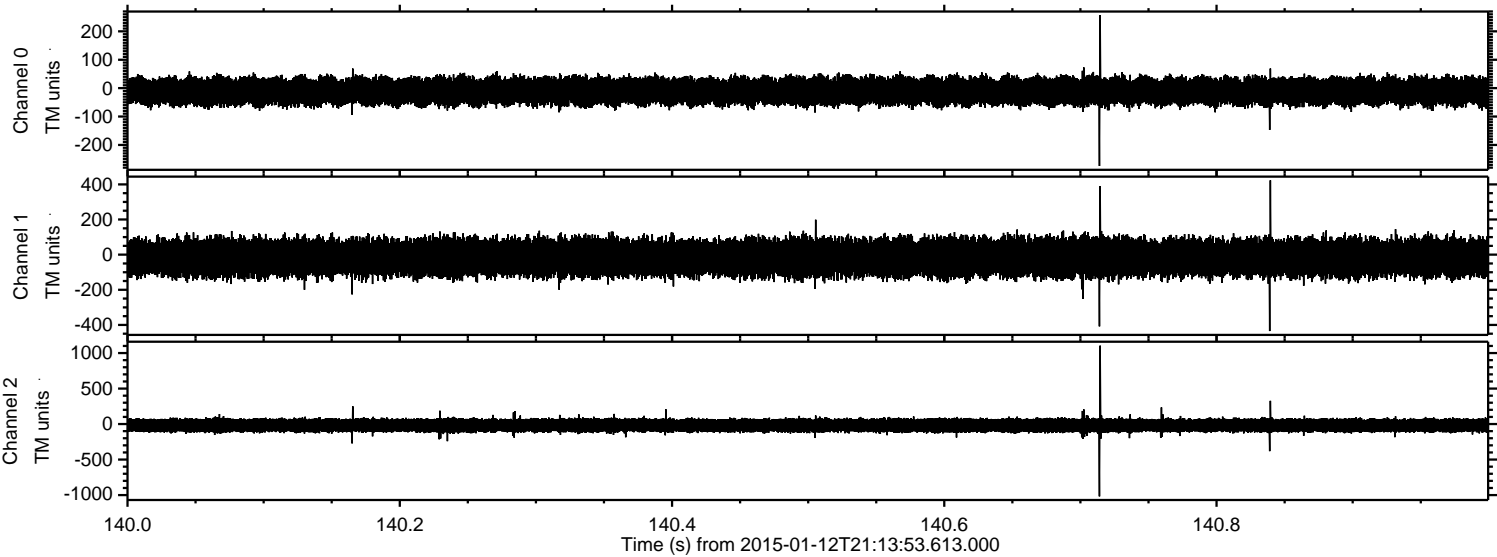
Channel 2
mn: -1158
mx: 1227
 μ : -18.6
 σ : 58.3

Processed Mon Jan 12 22:21:18 2015 by ELM ver.2012-10-06 from 001_elm20150112_211352__dat00.bin



ELMAVAN 3D WAVEFORMS (Measured data sampled at 50 kHz) 49597 packets of 144 samples from 2015-01-12T21:13:53.613.000. Part 141/143

Processed Mon Jan 12 22:21:19 2015 by ELM ver.2012-10-06 from 001__elm20150112_211352__dat00.bin



Channel 0
mn: -274
mx: 257
 μ : -11.3
 σ : 25.8

Channel 1
mn: -435
mx: 423
 μ : -17.0
 σ : 56.1

Channel 2
mn: -1018
mx: 1104
 μ : -18.6
 σ : 58.0

Processed Mon Jan 12 22:21:20 2015 by ELM ver.2012-10-06 from 001__elm20150112_211352__dat00.bin

