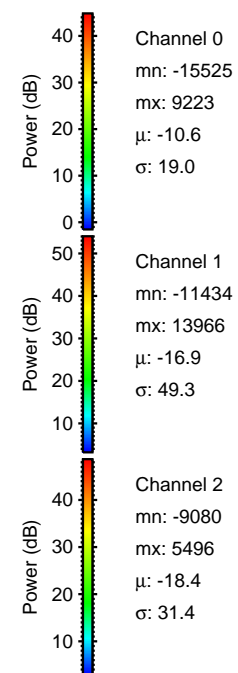
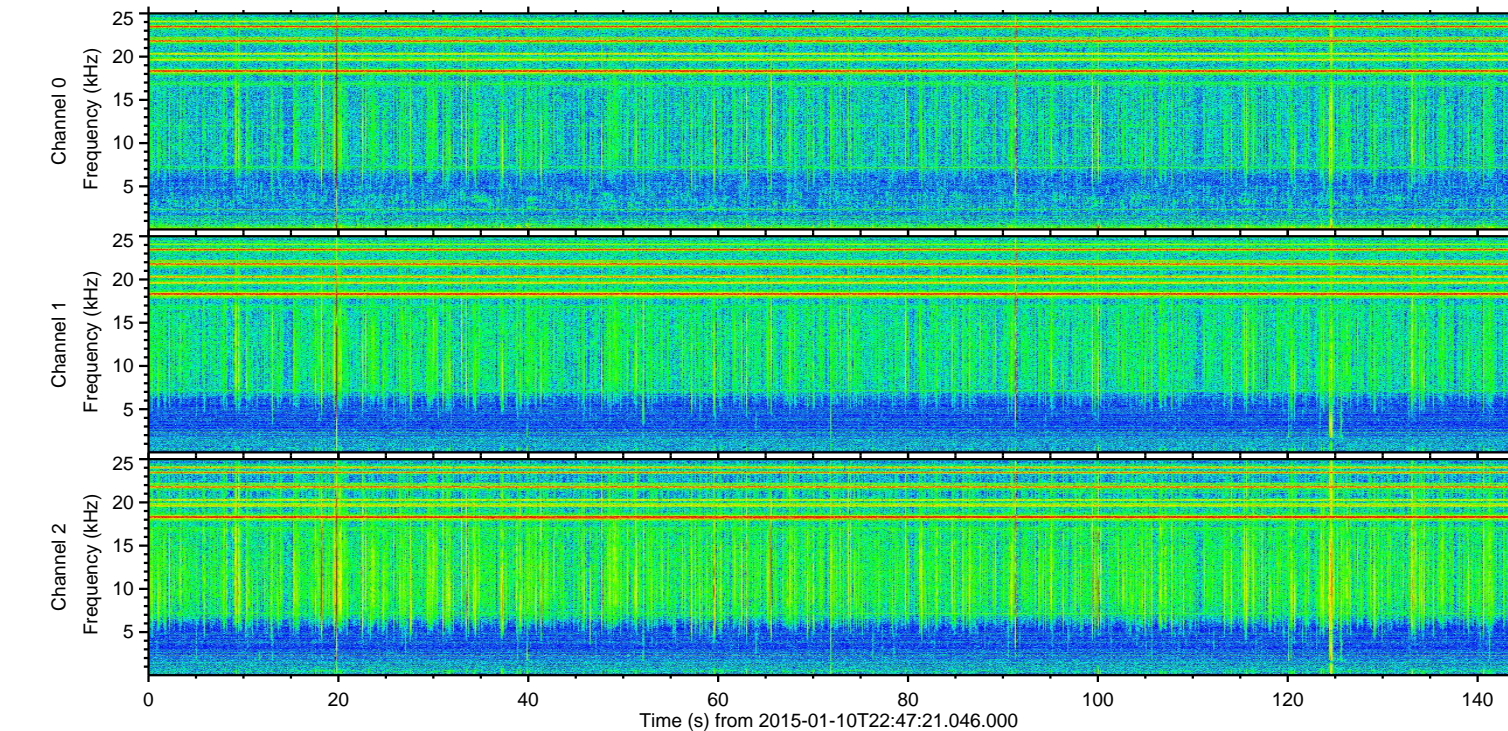
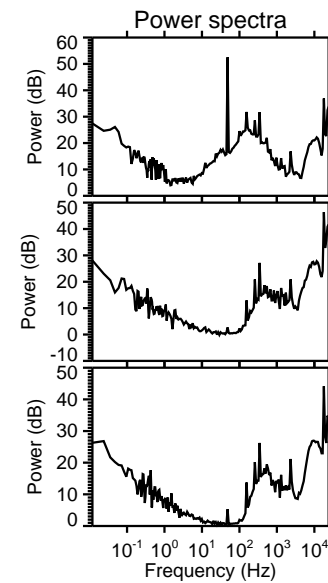
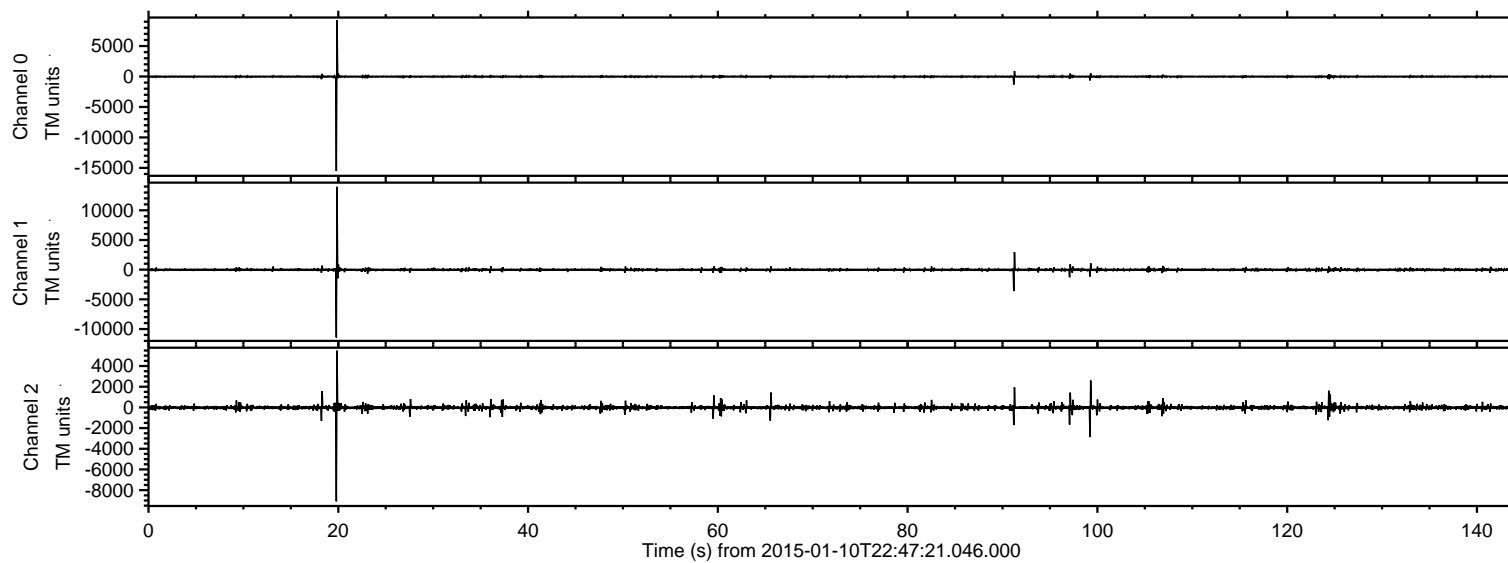
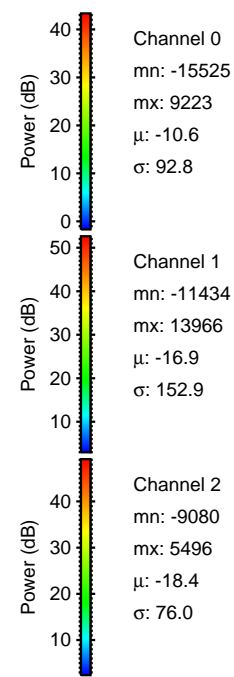
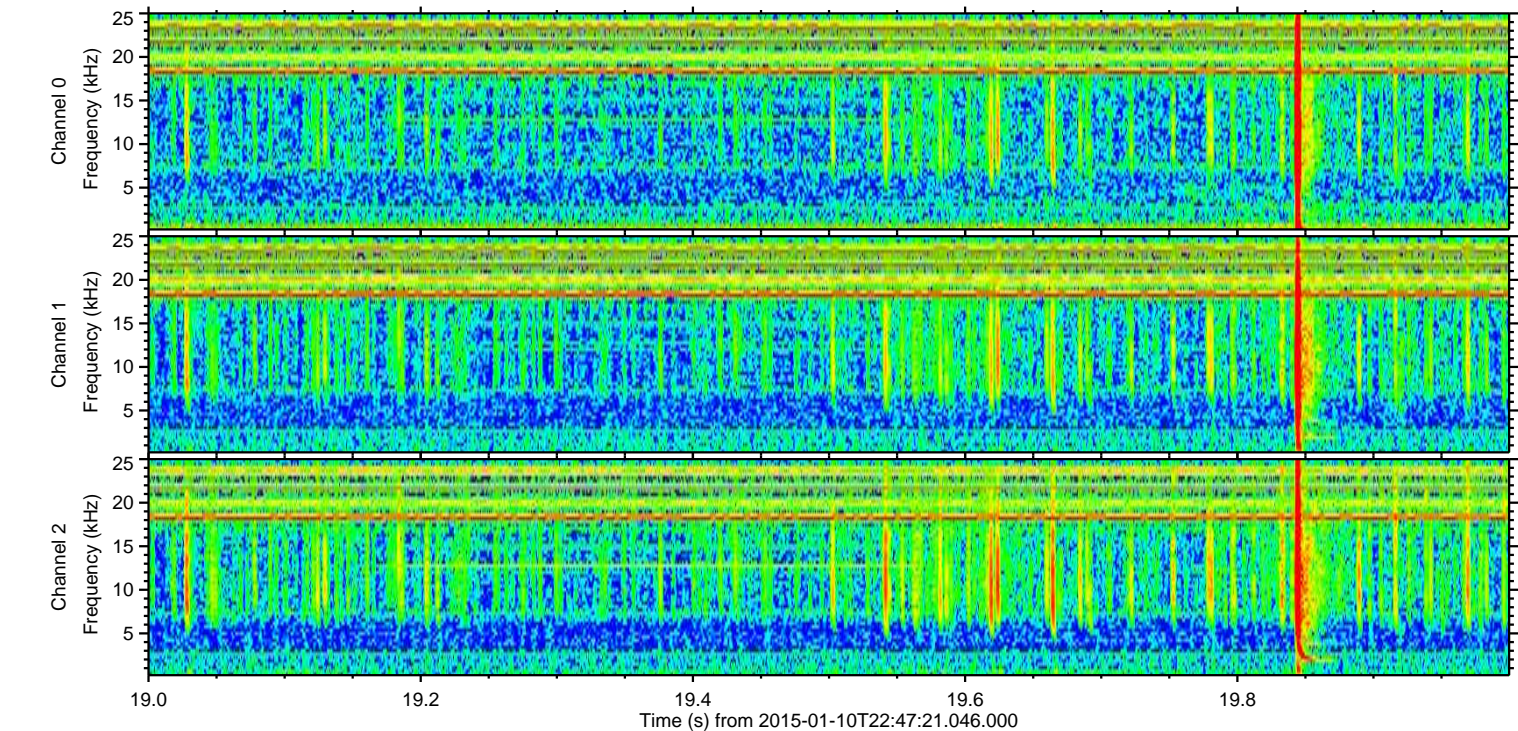
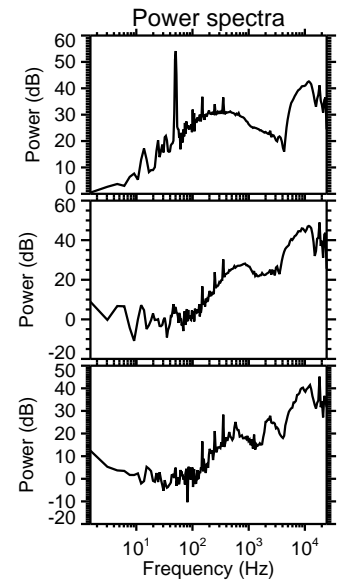
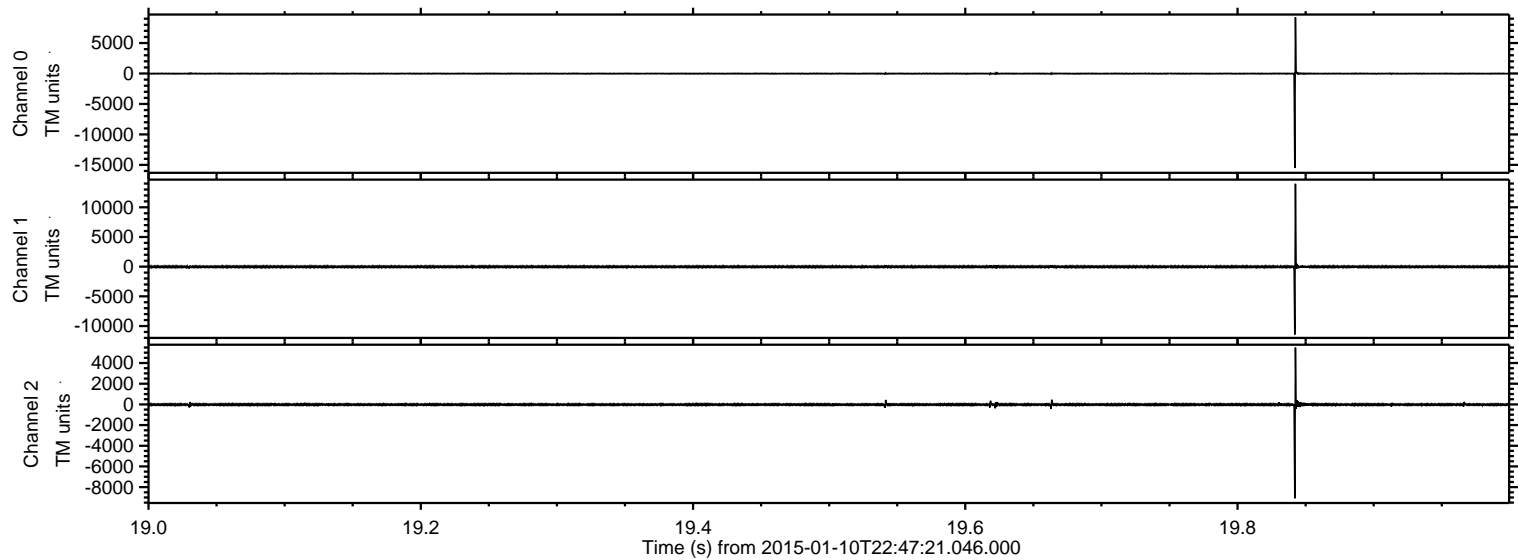


ELMAVAN 3D WAVEFORMS (Measured data sampled at 50 kHz) 49789 packets of 144 samples from 2015-01-10T22:47:21.046.000.

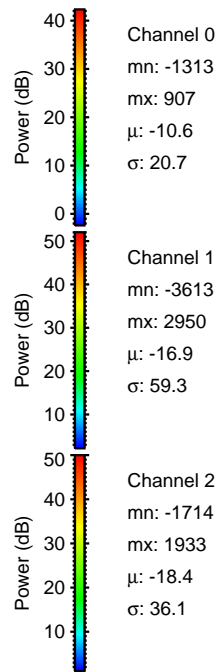
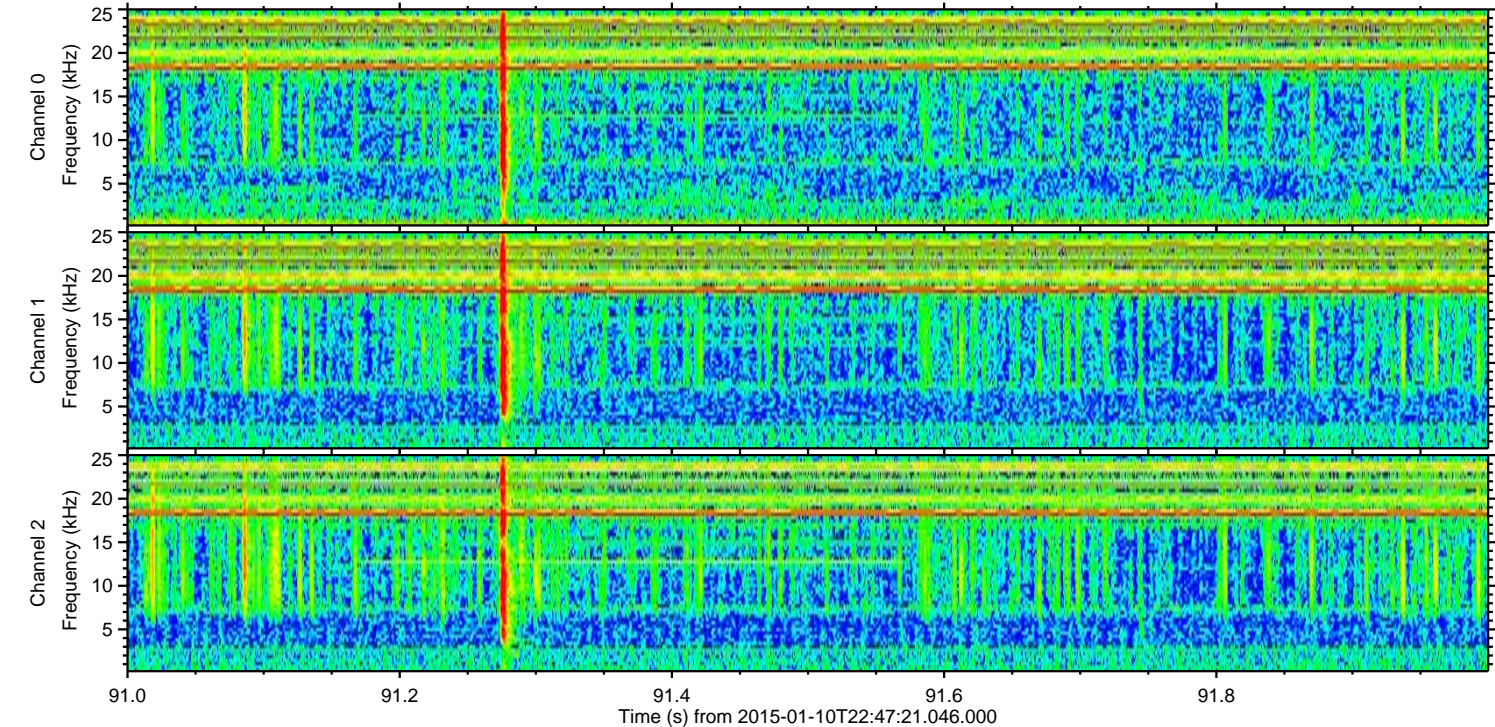
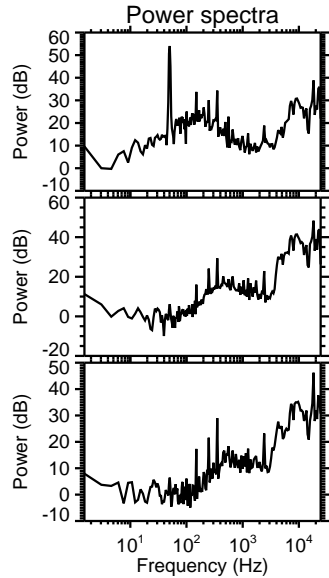
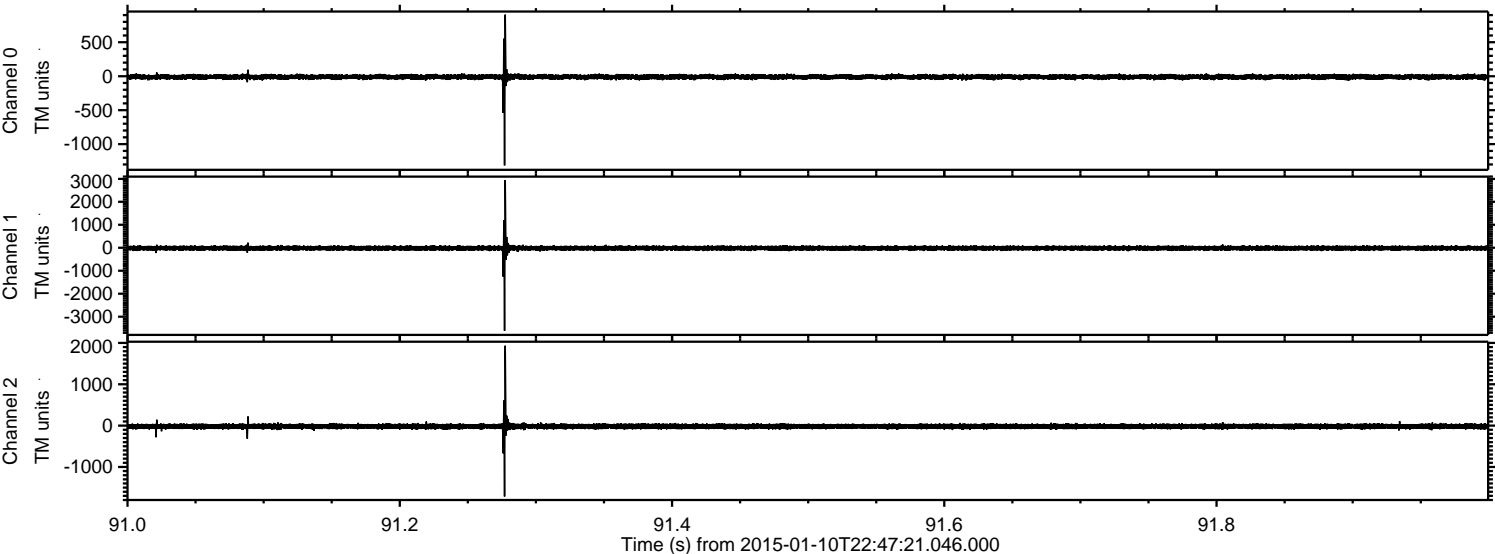
Processed Sat Jan 10 23:54:49 2015 by ELM ver.2012-10-06 from 001__elm20150110_224720__dat00.bin



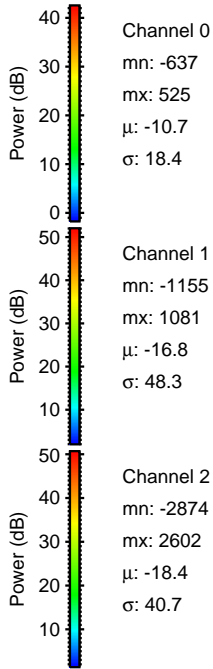
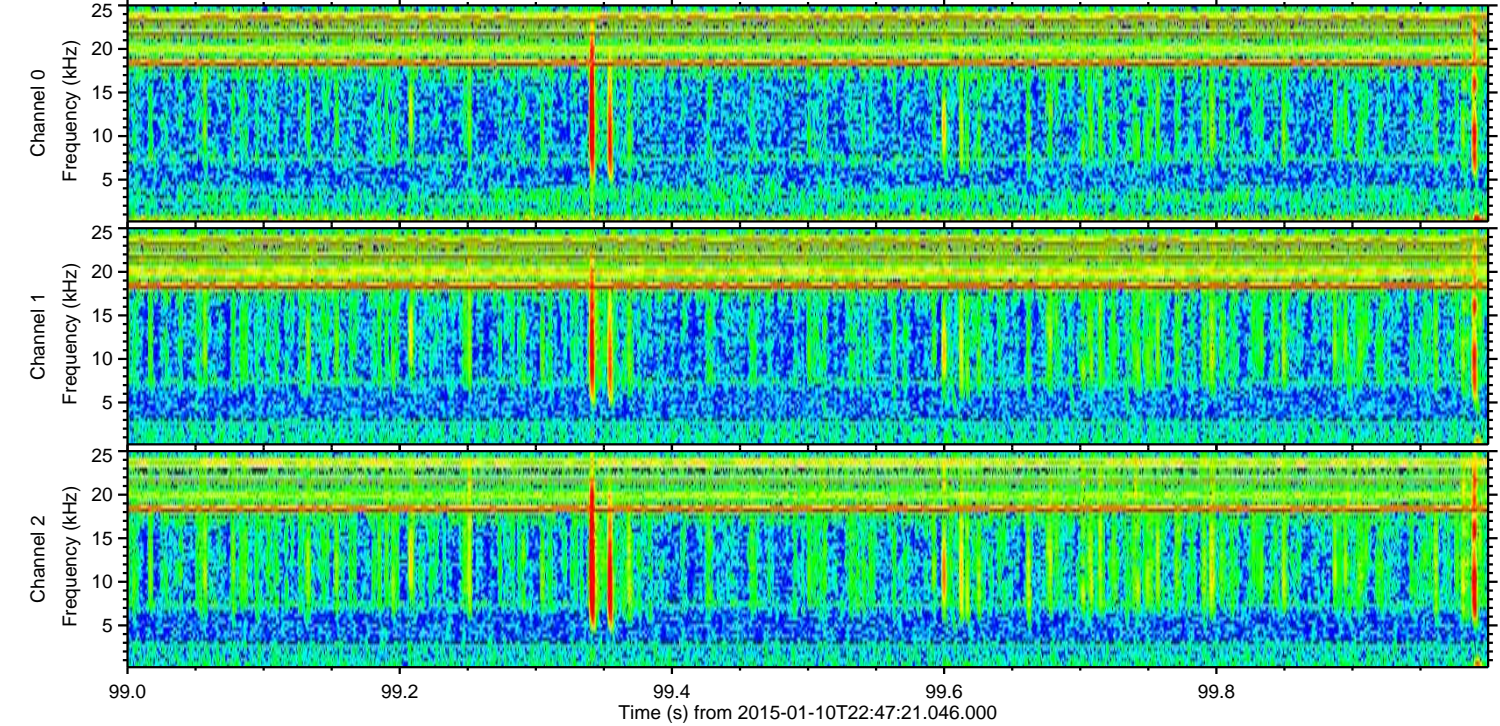
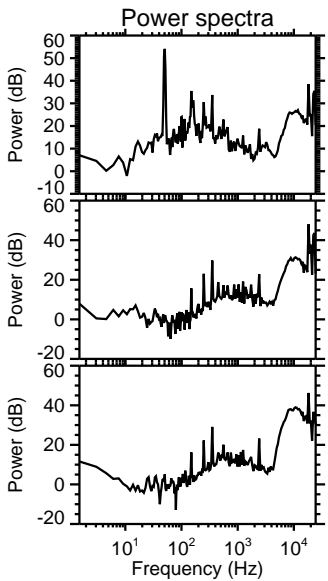
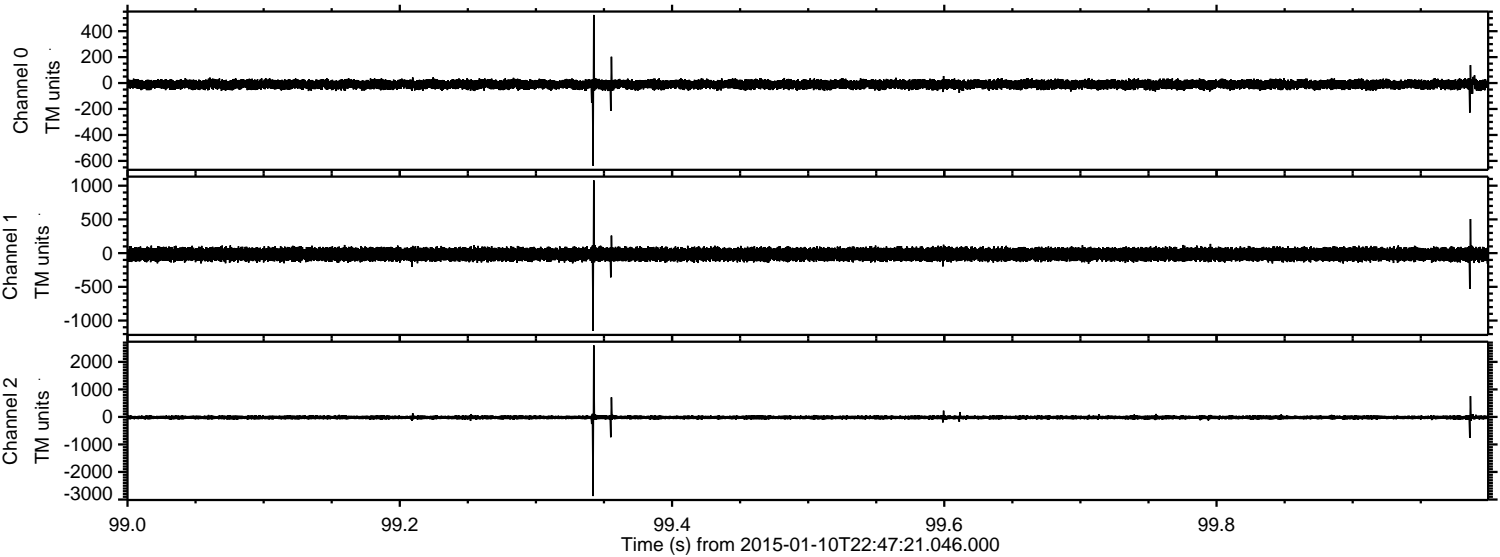
Processed Sat Jan 10 23:55:01 2015 by ELM ver.2012-10-06 from 001__elm20150110_224720__dat00.bin



Processed Sat Jan 10 23:55:01 2015 by ELM ver.2012-10-06 from 001__elm20150110_224720__dat00.bin



Processed Sat Jan 10 23:55:02 2015 by ELM ver.2012-10-06 from 001__elm20150110_224720__dat00.bin

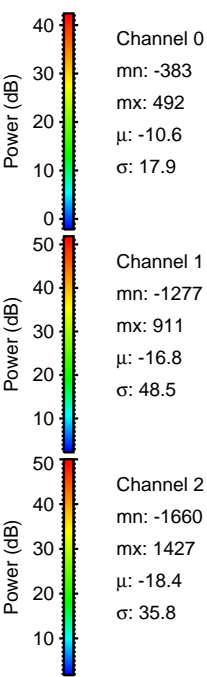
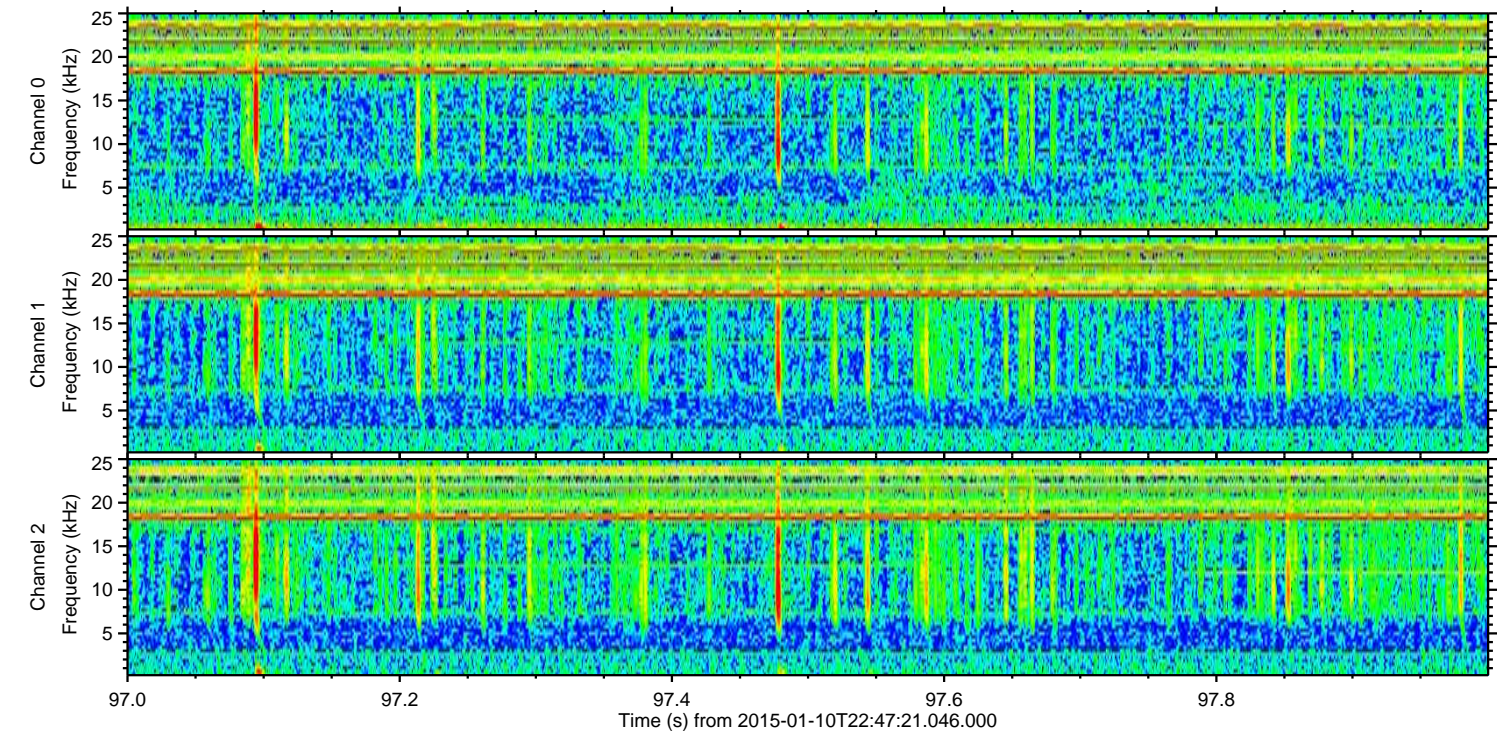
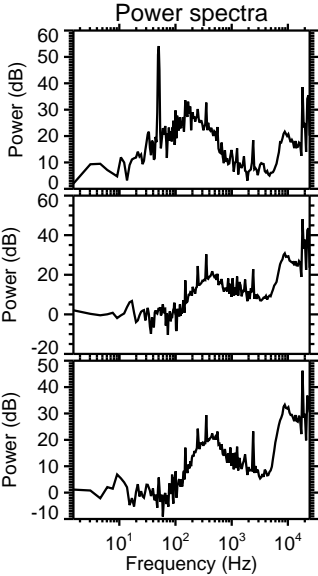
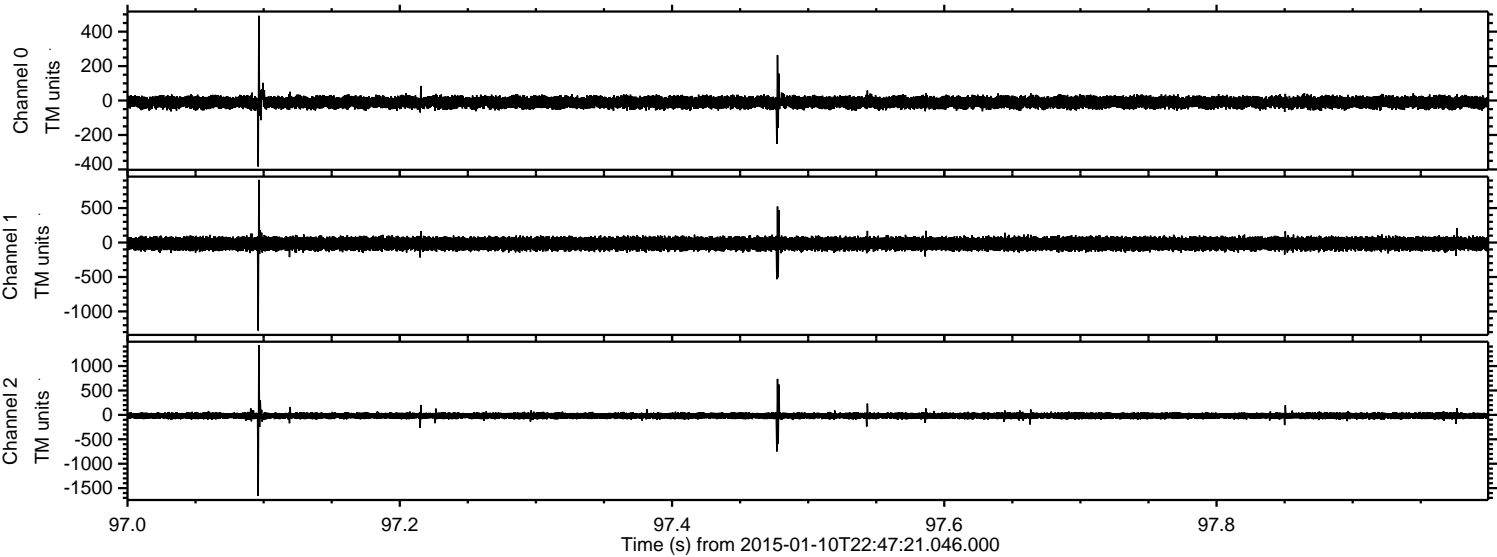


Channel 0
mn: -637
mx: 525
 μ : -10.7
 σ : 18.4

Channel 1
mn: -1155
mx: 1081
 μ : -16.8
 σ : 48.3

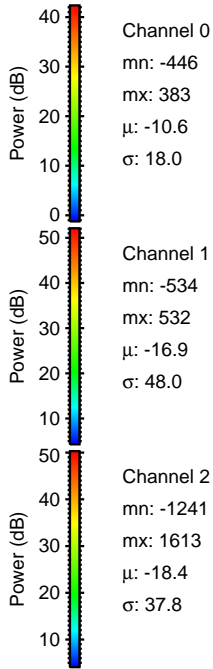
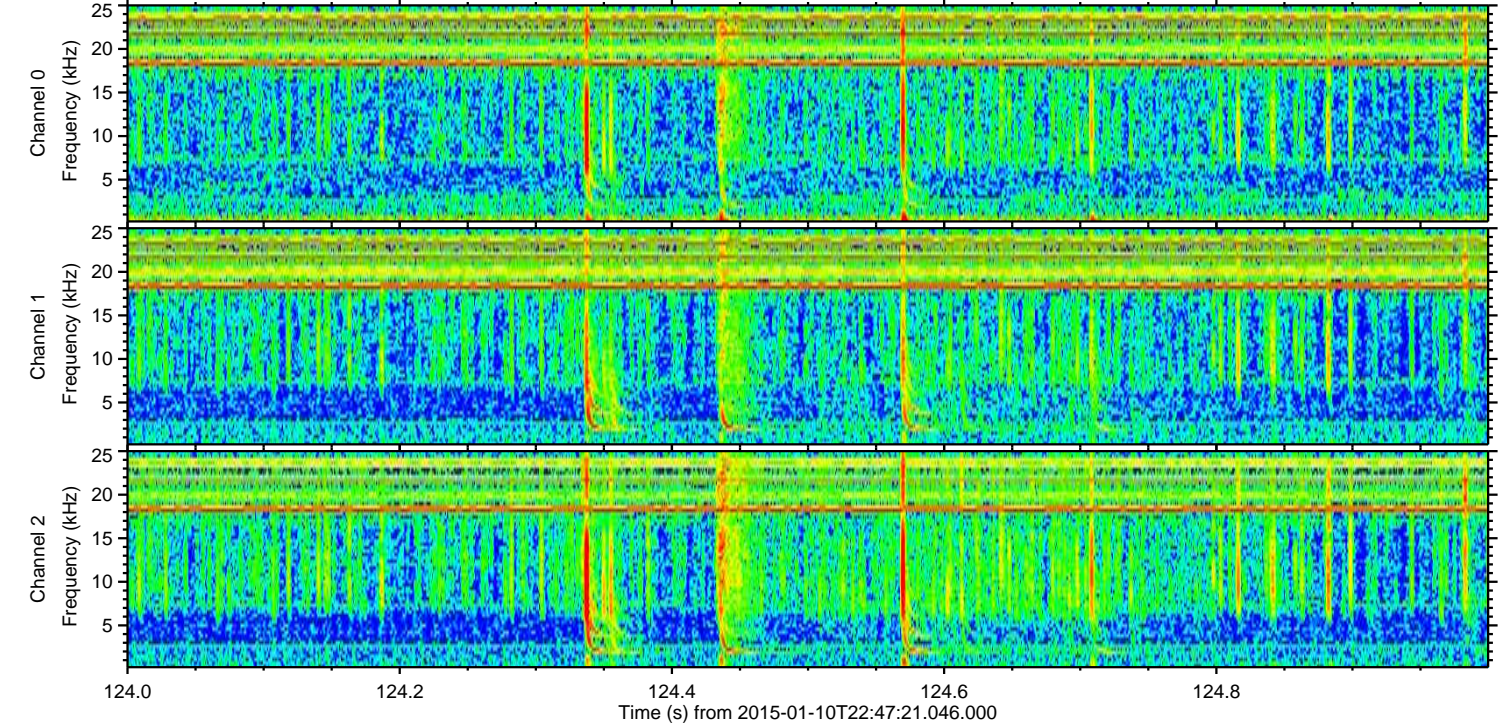
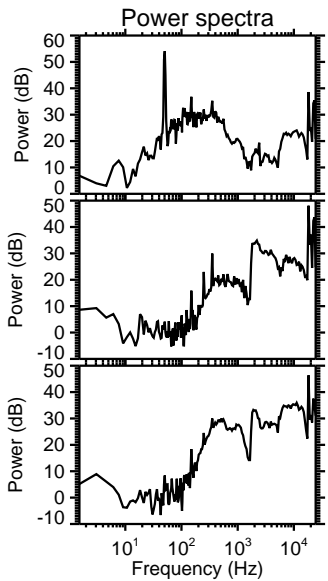
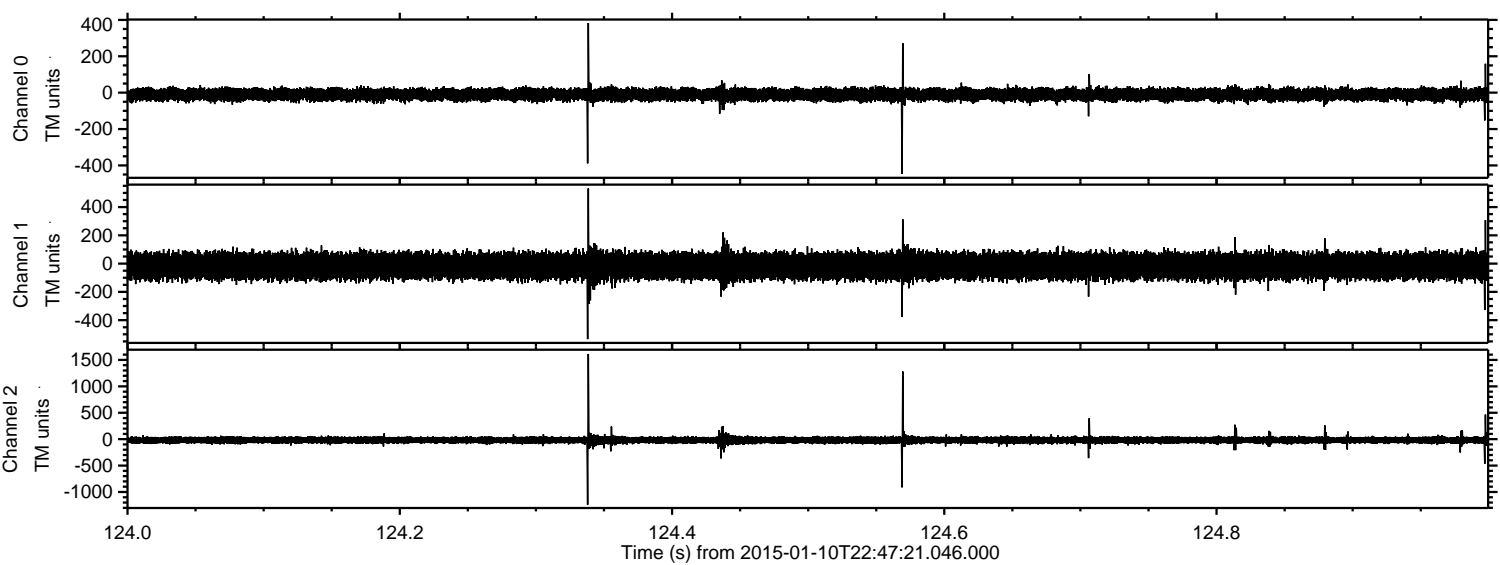
Channel 2
mn: -2874
mx: 2602
 μ : -18.4
 σ : 40.7

Processed Sat Jan 10 23:55:03 2015 by ELM ver.2012-10-06 from 001__elm20150110_224720__dat00.bin

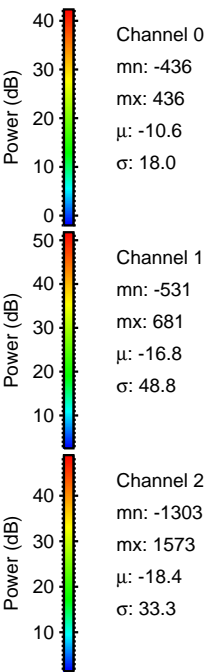
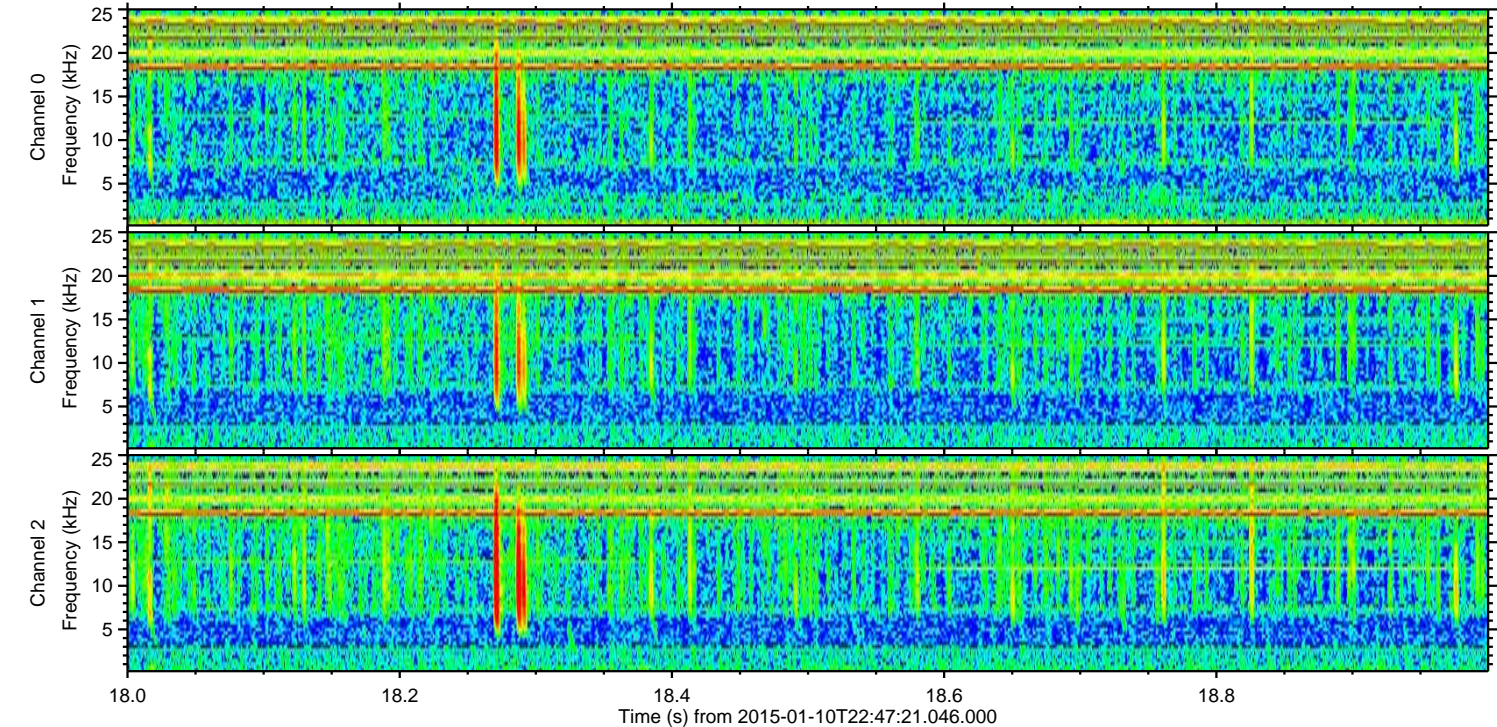
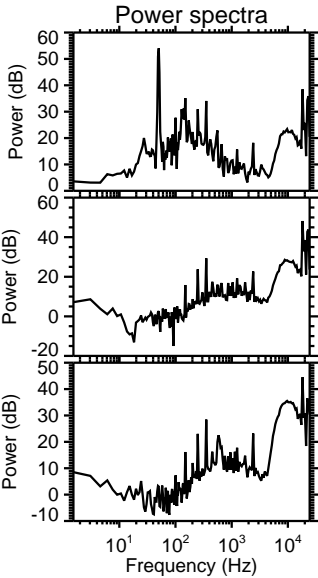
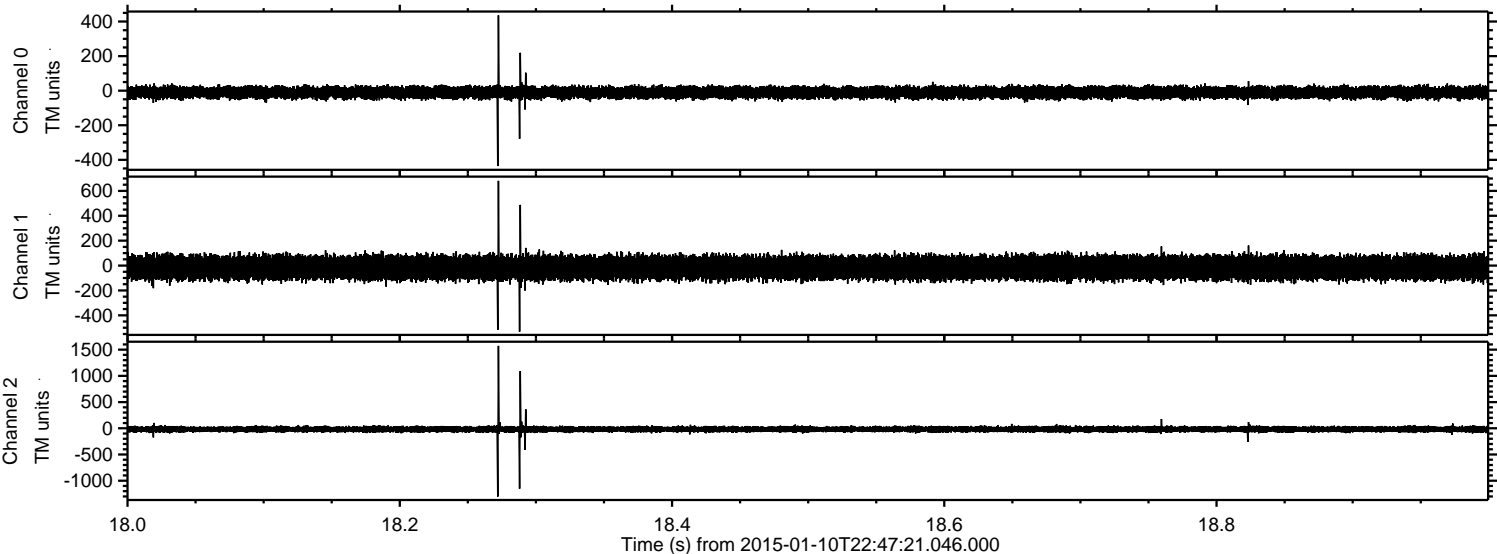


ELMAVAN 3D WAVEFORMS (Measured data sampled at 50 kHz) 49789 packets of 144 samples from 2015-01-10T22:47:21.046.000. Part 125/144

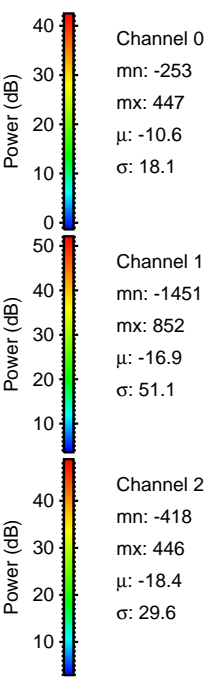
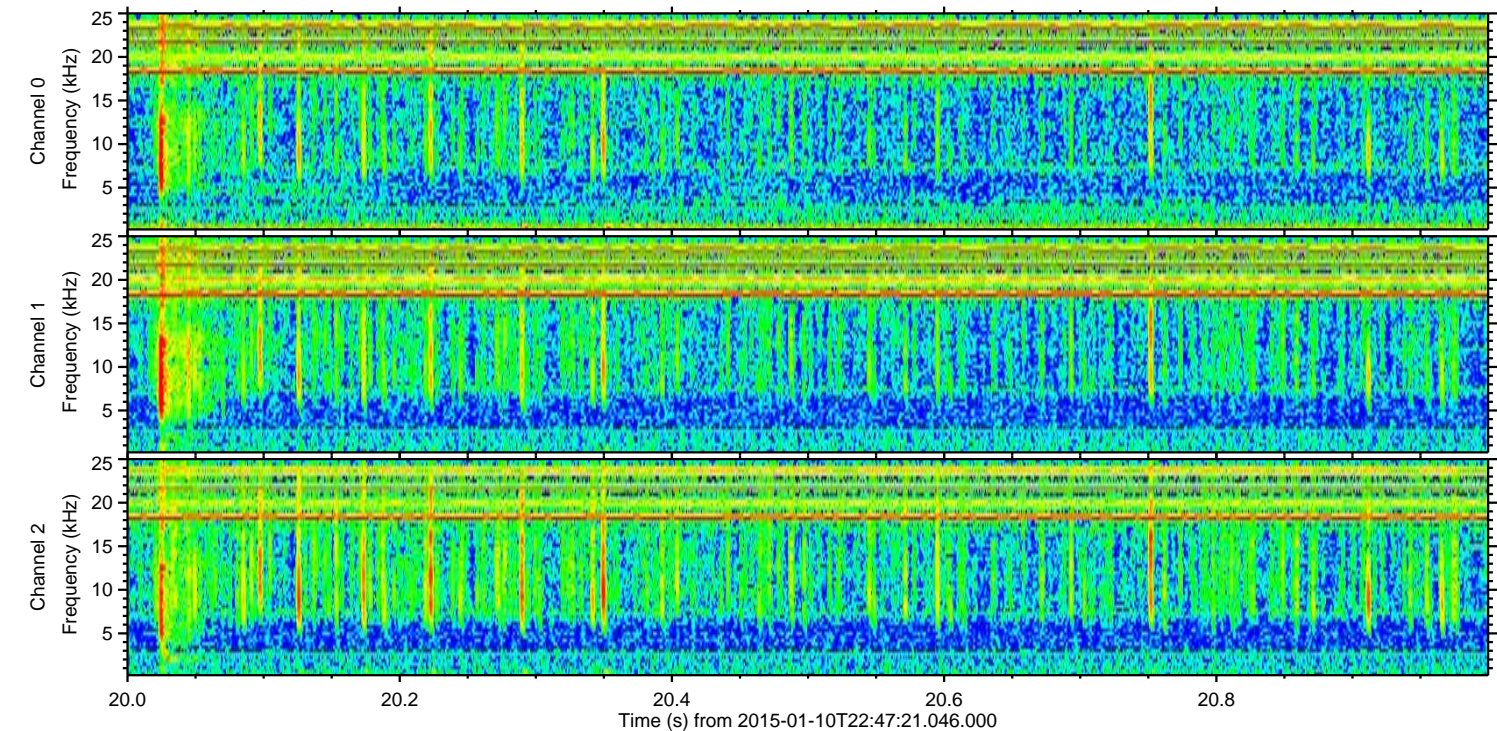
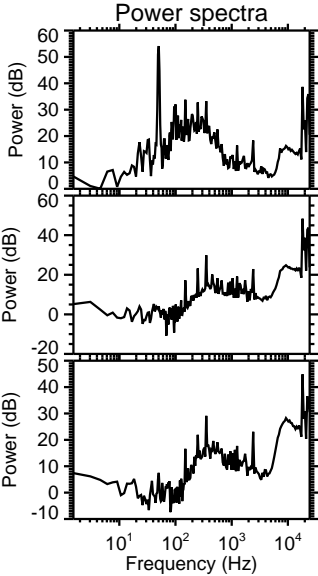
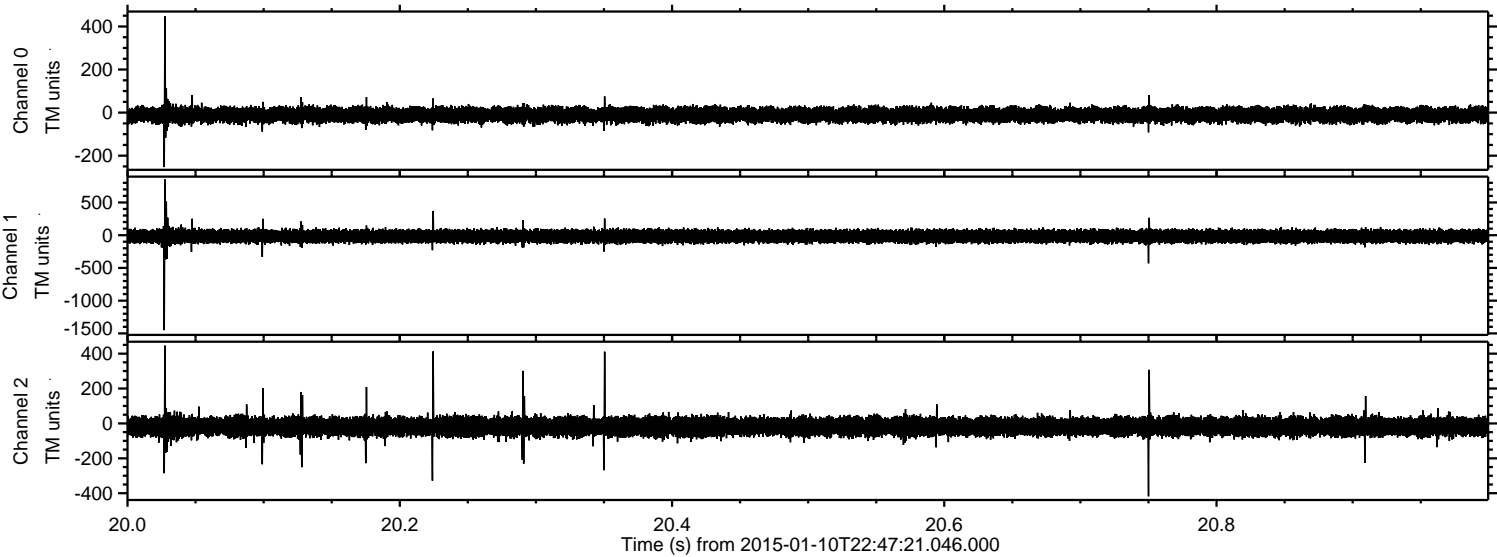
Processed Sat Jan 10 23:55:04 2015 by ELM ver.2012-10-06 from 001__elm20150110_224720__dat00.bin



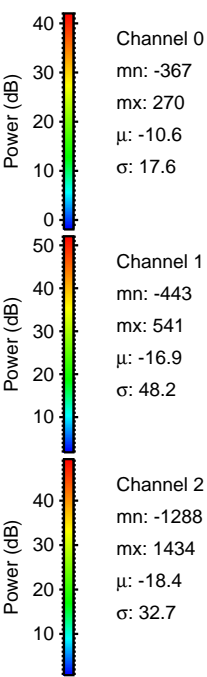
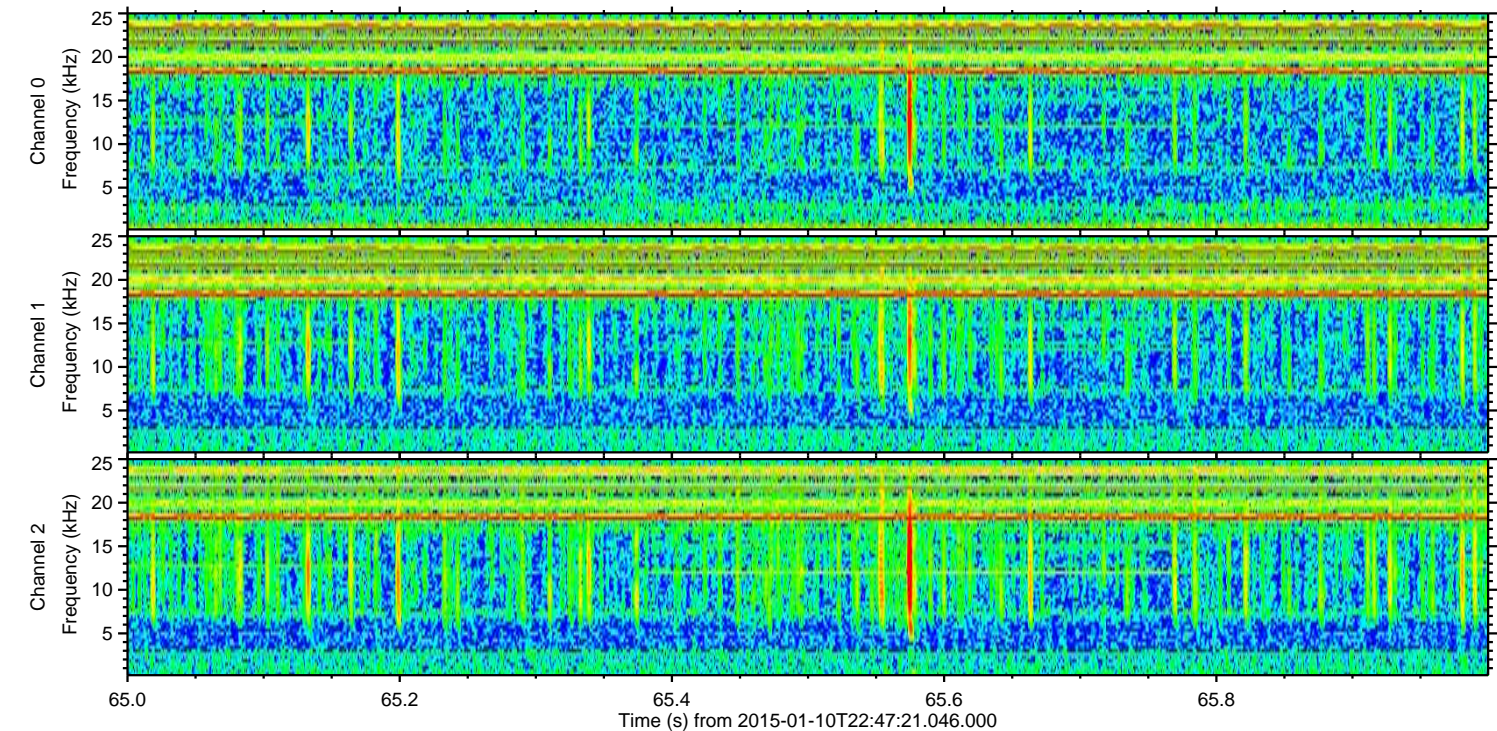
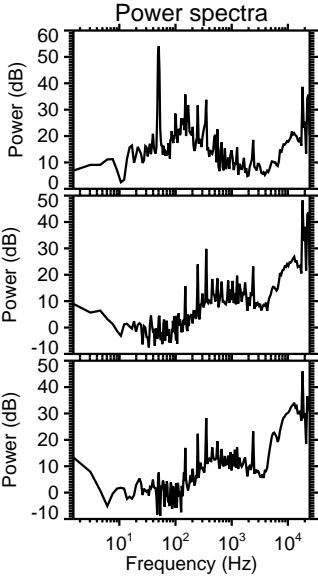
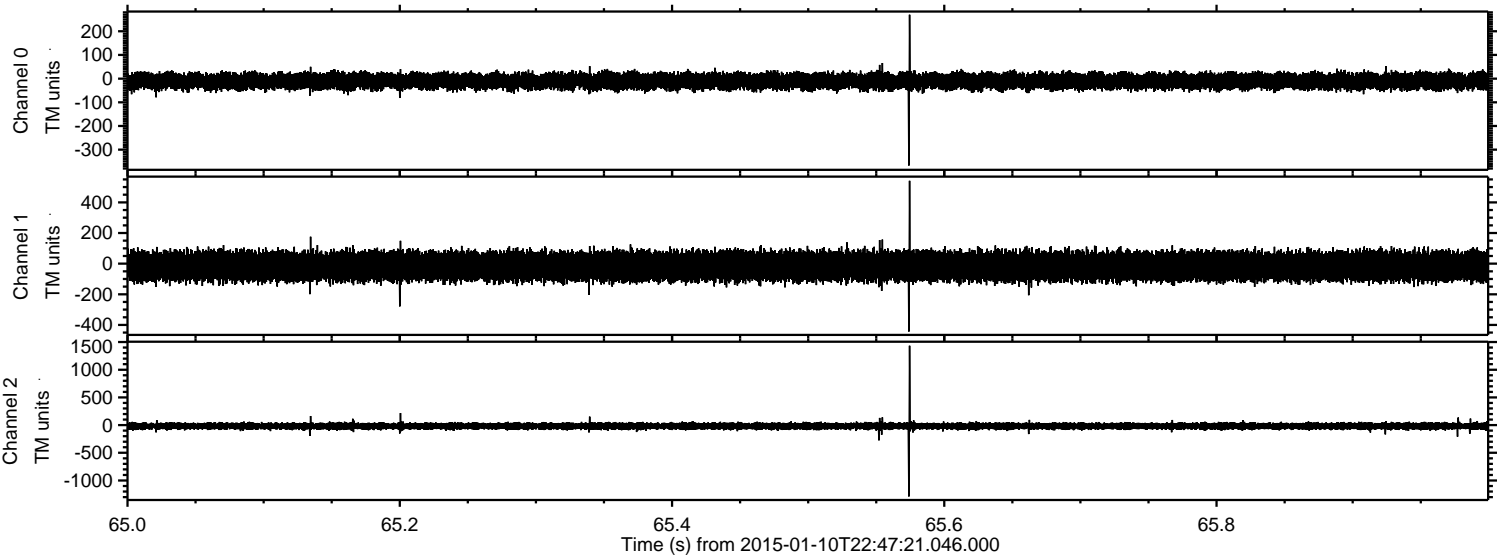
Processed Sat Jan 10 23:55:05 2015 by ELM ver.2012-10-06 from 001__elm20150110_224720__dat00.bin



Processed Sat Jan 10 23:55:06 2015 by ELM ver.2012-10-06 from 001__elm20150110_224720__dat00.bin



Processed Sat Jan 10 23:55:07 2015 by ELM ver.2012-10-06 from 001__elm20150110_224720__dat00.bin

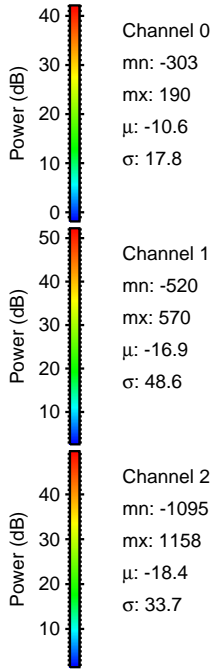
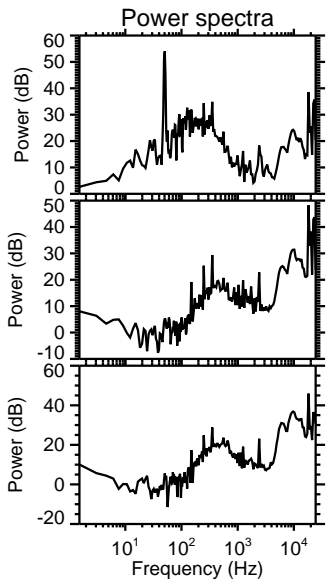
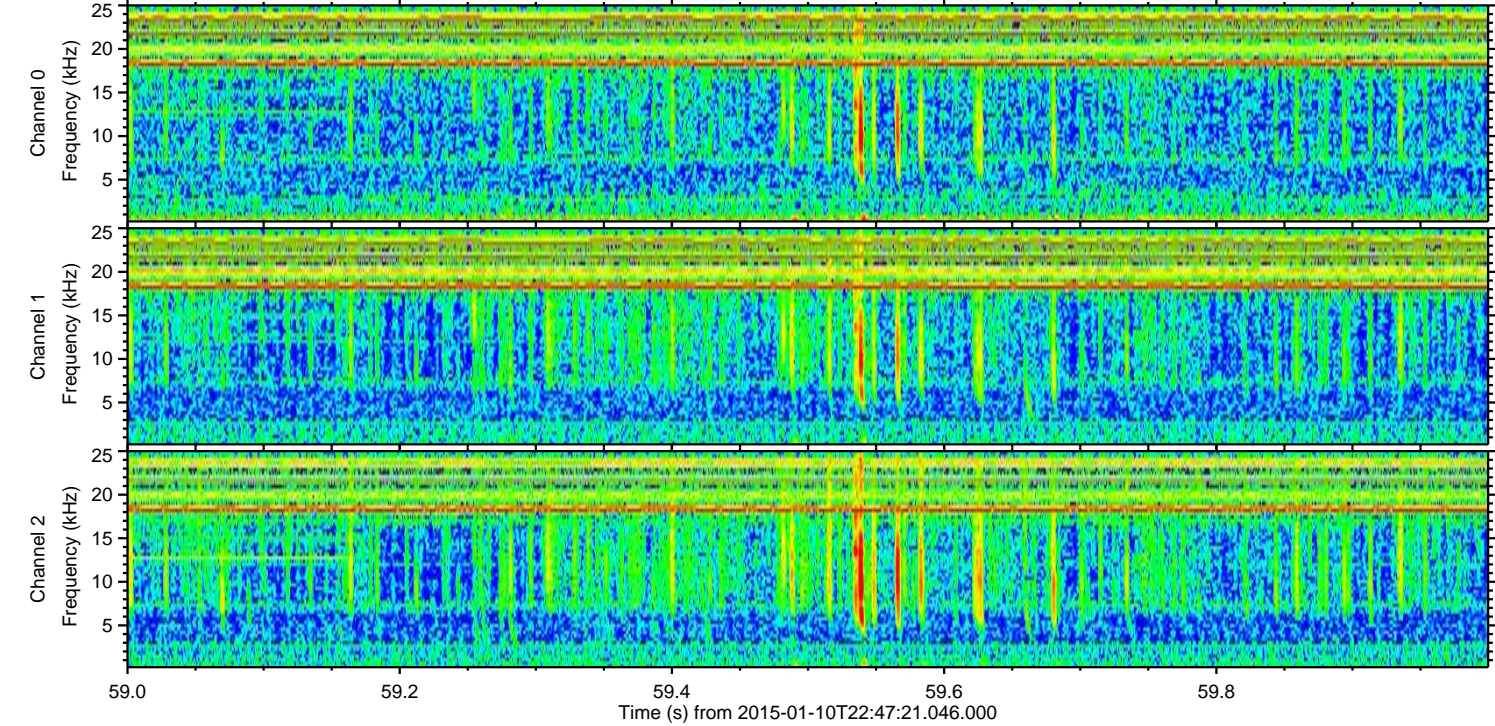
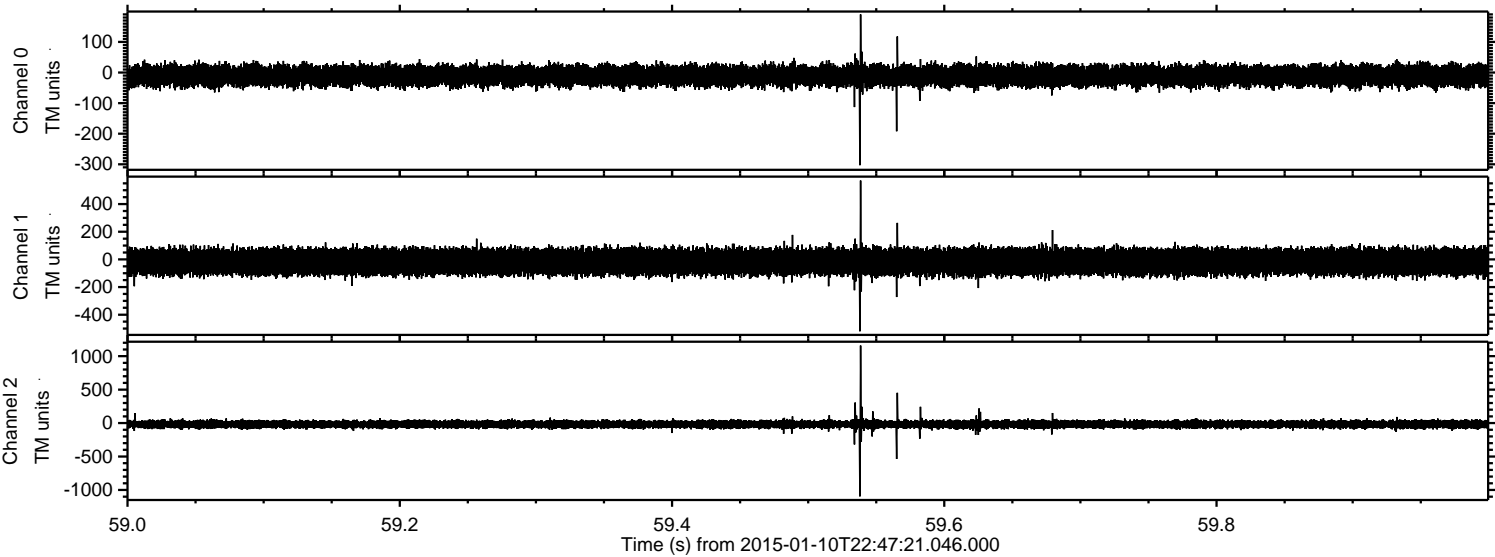


Channel 0
mn: -367
mx: 270
 μ : -10.6
 σ : 17.6

Channel 1
mn: -443
mx: 541
 μ : -16.9
 σ : 48.2

Channel 2
mn: -1288
mx: 1434
 μ : -18.4
 σ : 32.7

Processed Sat Jan 10 23:55:08 2015 by ELM ver.2012-10-06 from 001__elm20150110_224720__dat00.bin



Processed Sat Jan 10 23:55:09 2015 by ELM ver.2012-10-06 from 001__elm20150110_224720__dat00.bin

