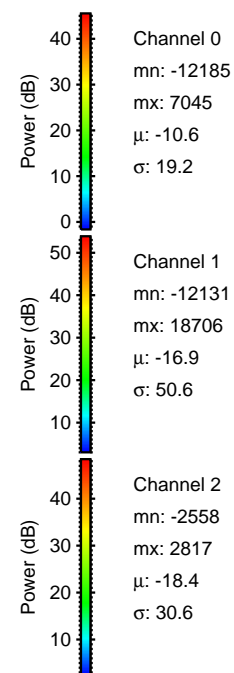
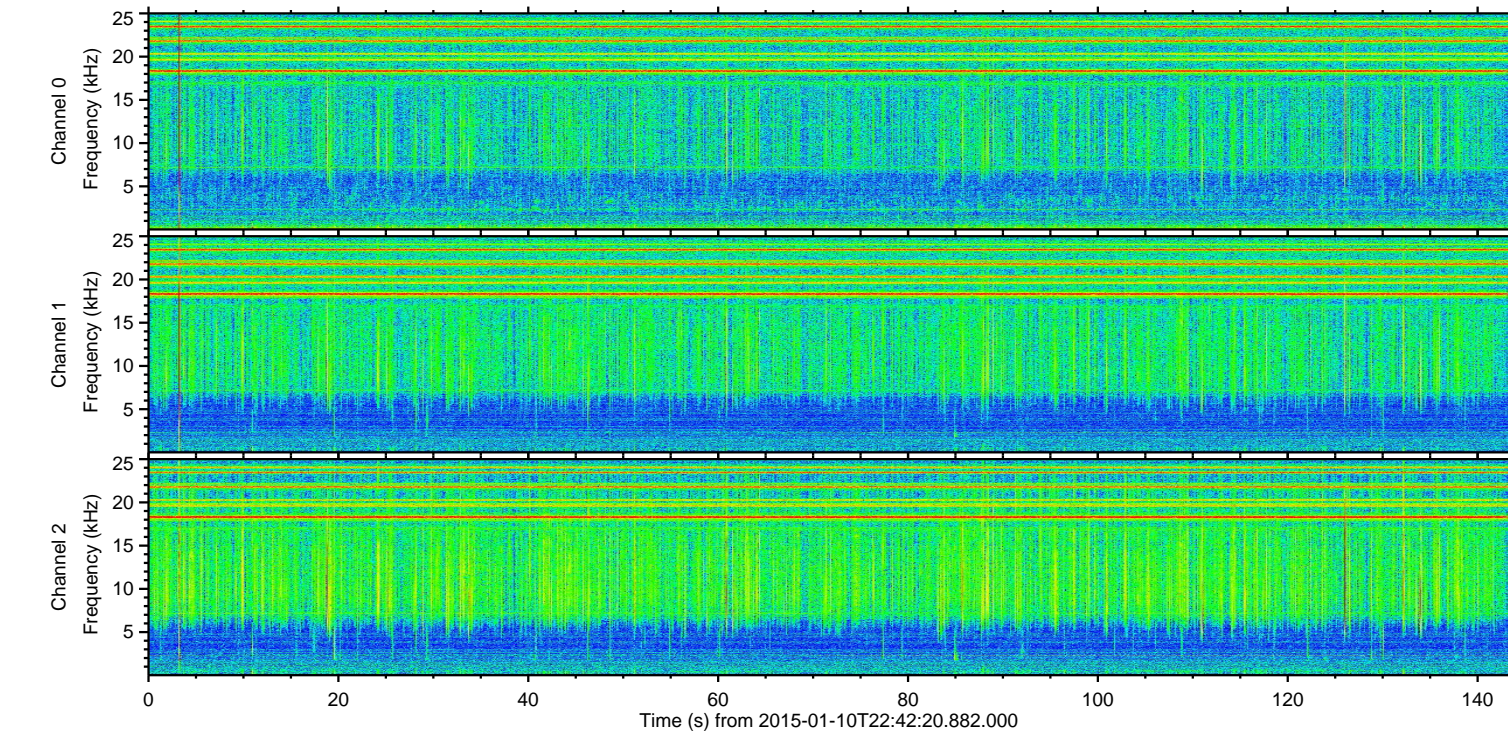
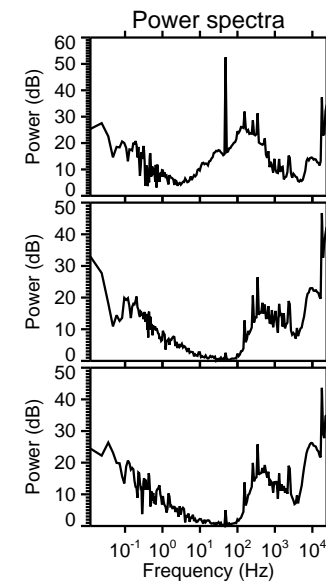
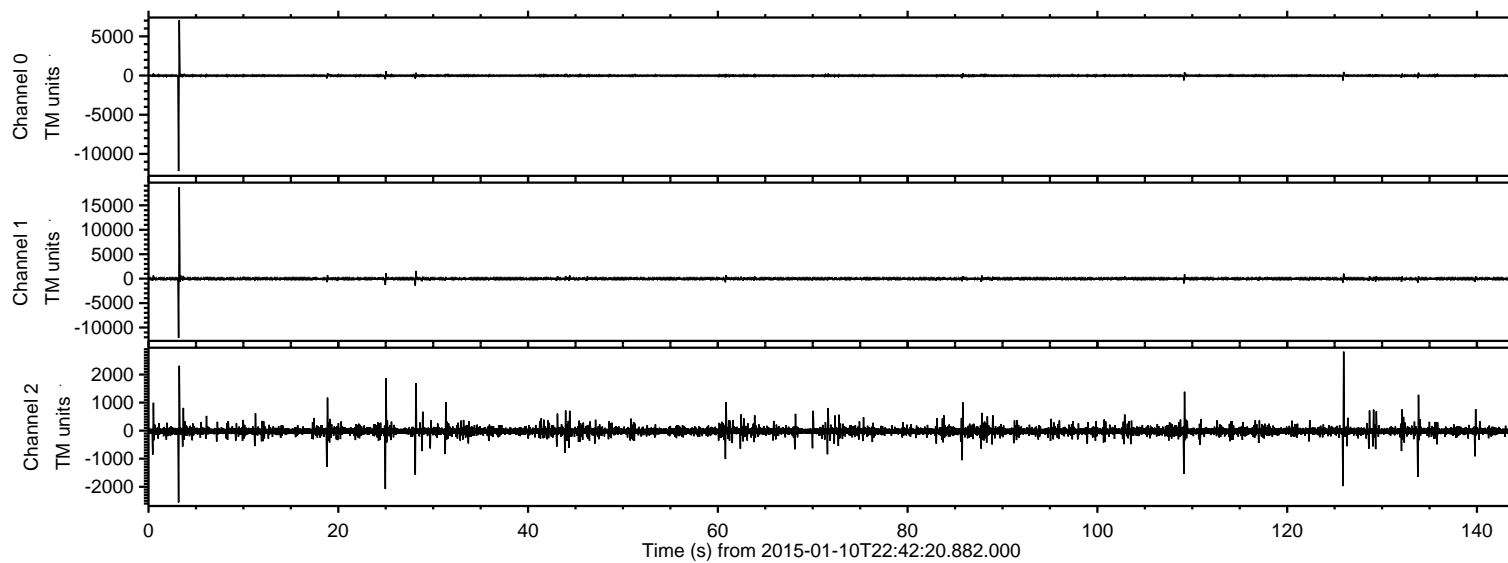
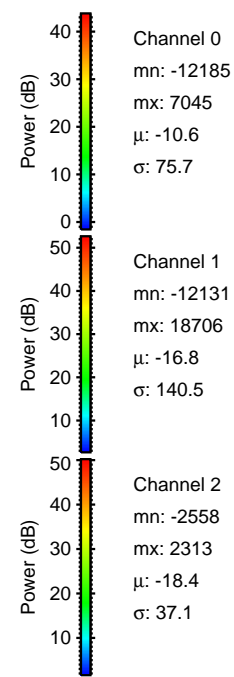
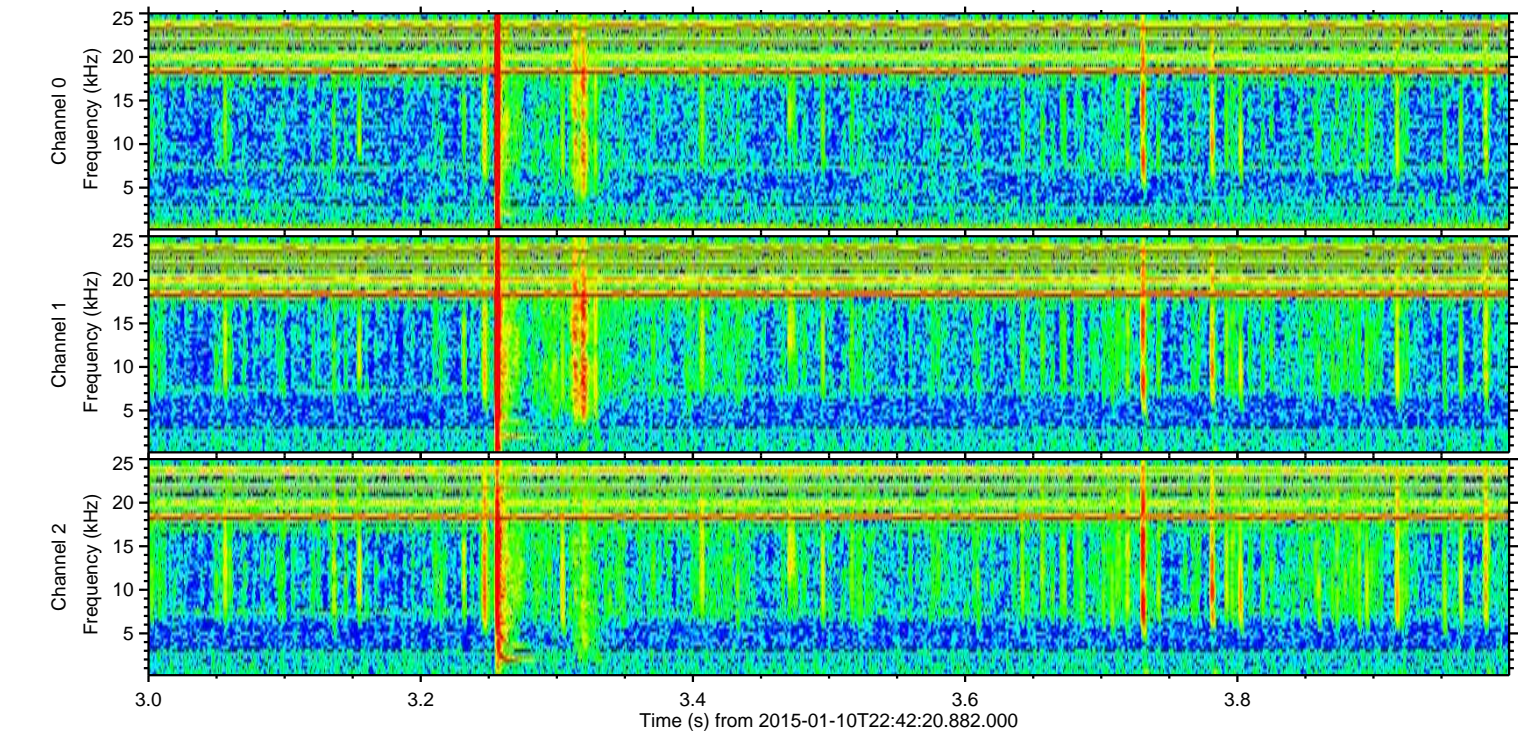
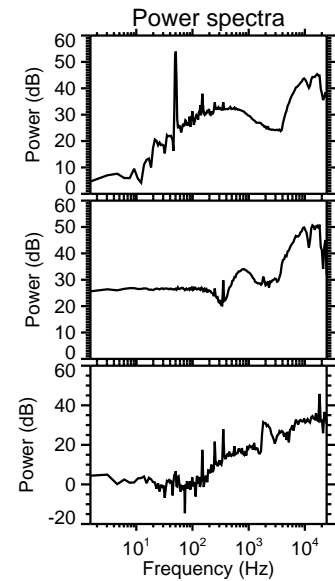
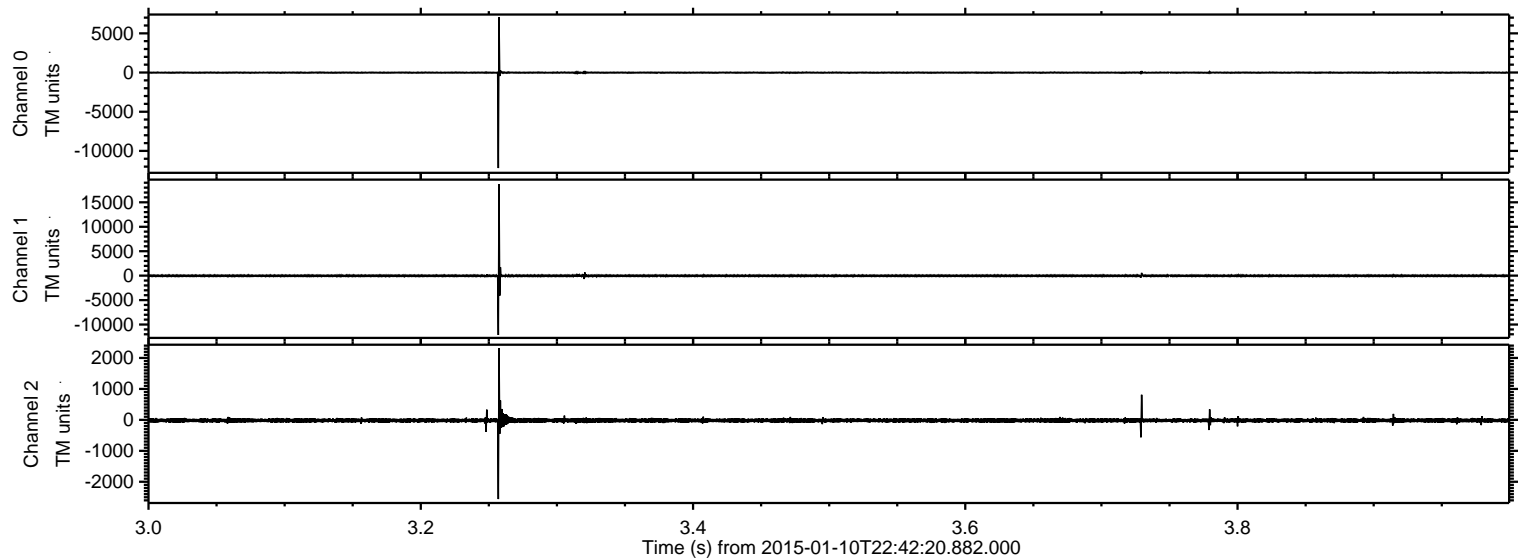


ELMAVAN 3D WAVEFORMS (Measured data sampled at 50 kHz) 49789 packets of 144 samples from 2015-01-10T22:42:20.882.000.

Processed Sat Jan 10 23:49:54 2015 by ELM ver.2012-10-06 from 001__elm20150110_224219__dat00.bin

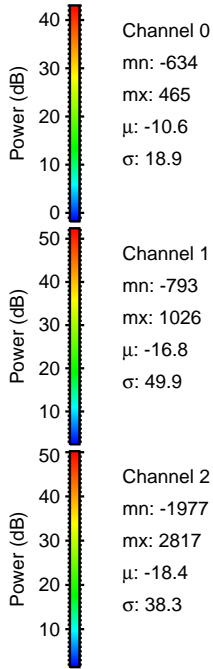
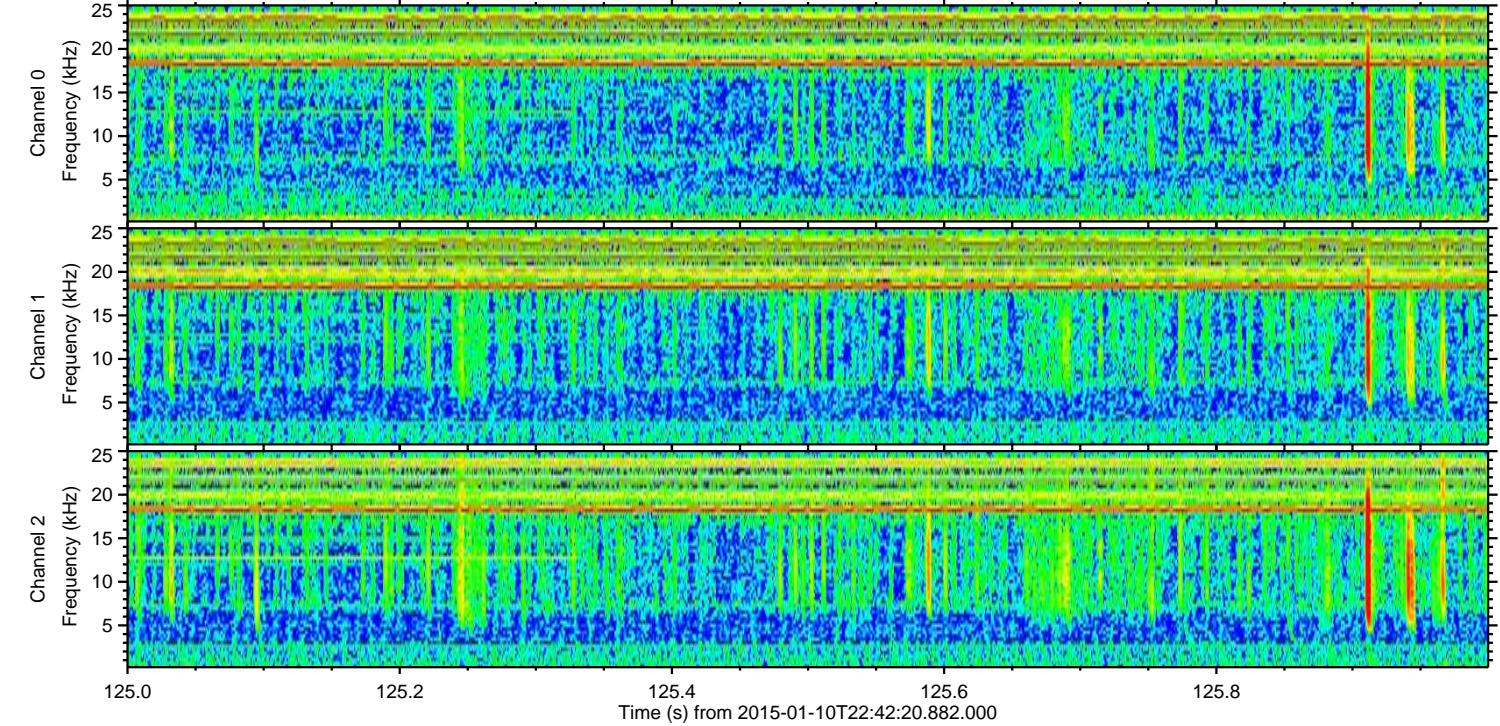
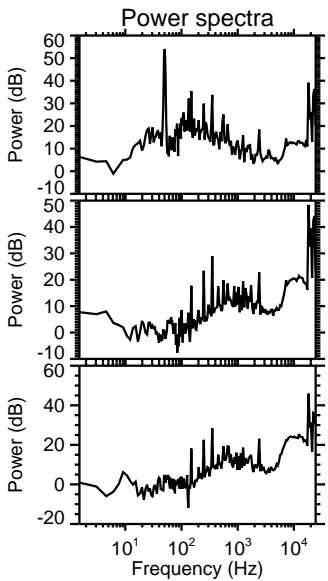
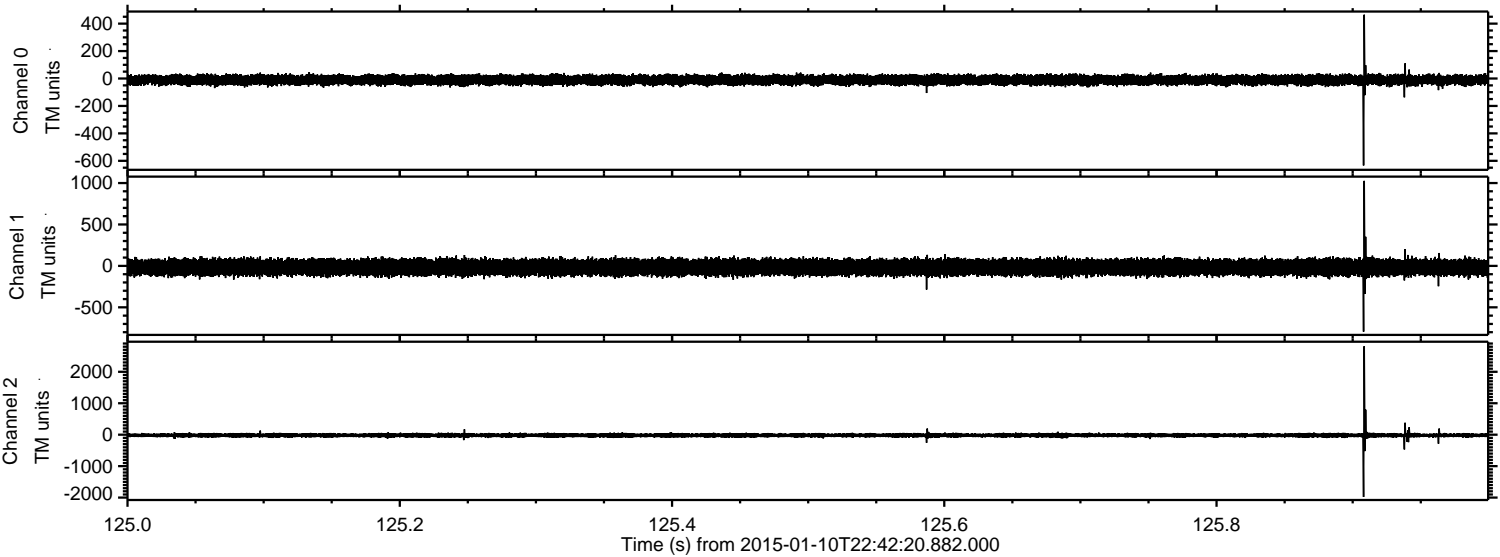


Processed Sat Jan 10 23:50:05 2015 by ELM ver.2012-10-06 from 001__elm20150110_224219__dat00.bin



ELMAVAN 3D WAVEFORMS (Measured data sampled at 50 kHz) 49789 packets of 144 samples from 2015-01-10T22:42:20.882.000. Part 126/144

Processed Sat Jan 10 23:50:06 2015 by ELM ver.2012-10-06 from 001__elm20150110_224219__dat00.bin

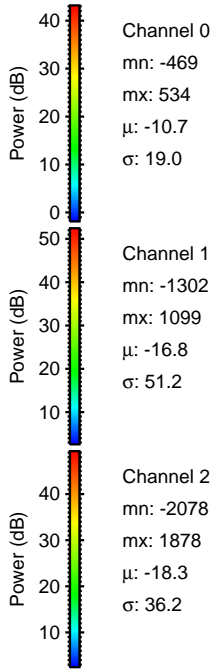
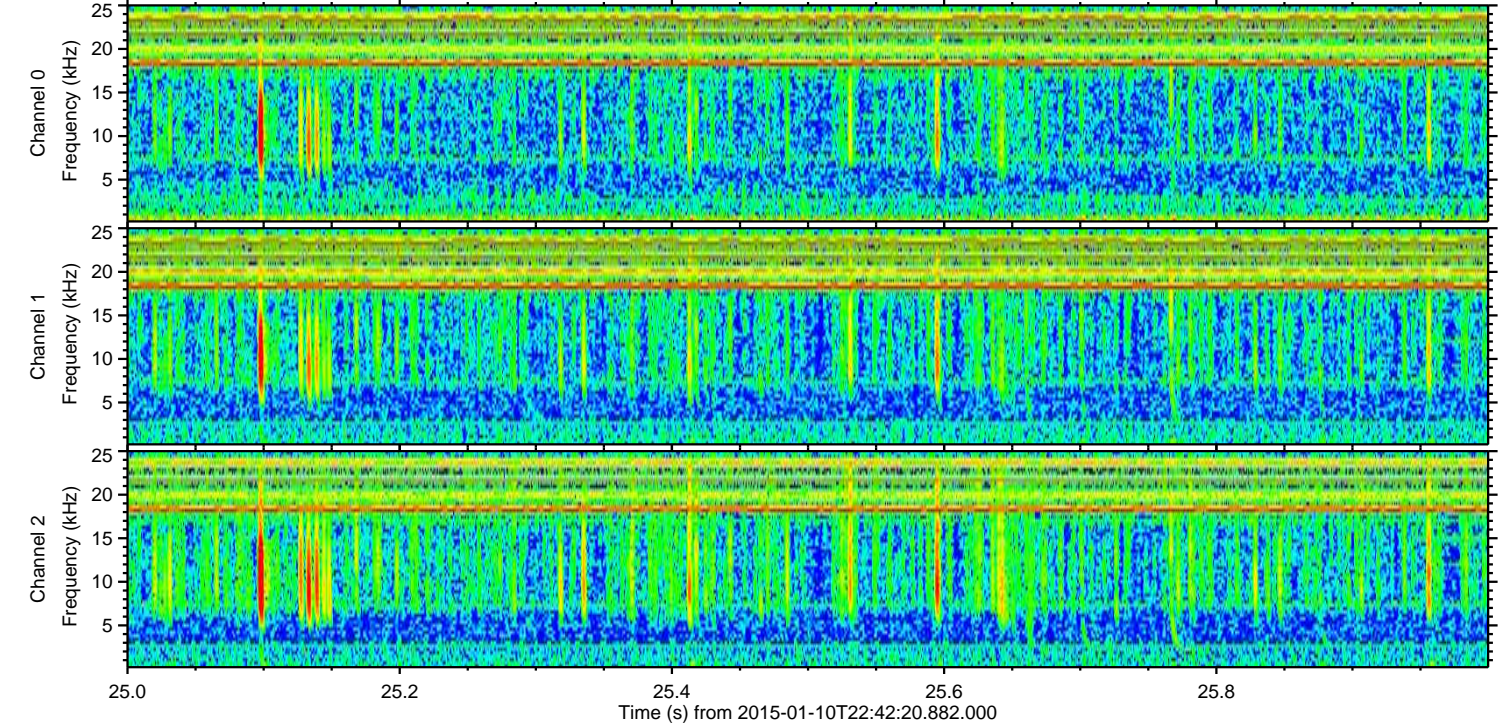
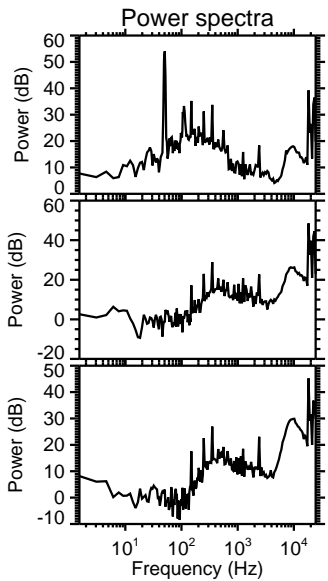
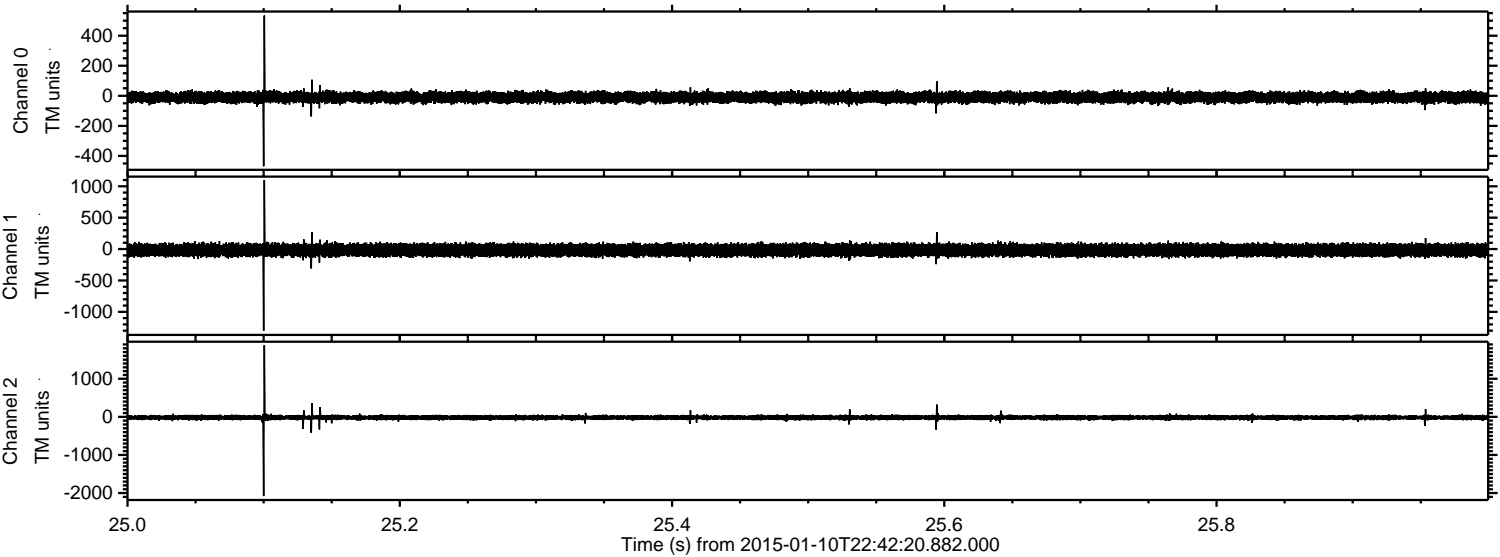


Channel 0
mn: -634
mx: 465
 μ : -10.6
 σ : 18.9

Channel 1
mn: -793
mx: 1026
 μ : -16.8
 σ : 49.9

Channel 2
mn: -1977
mx: 2817
 μ : -18.4
 σ : 38.3

Processed Sat Jan 10 23:50:07 2015 by ELM ver.2012-10-06 from 001__elm20150110_224219__dat00.bin

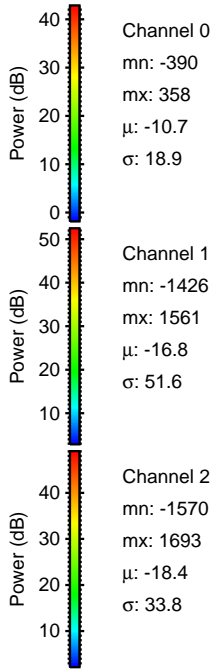
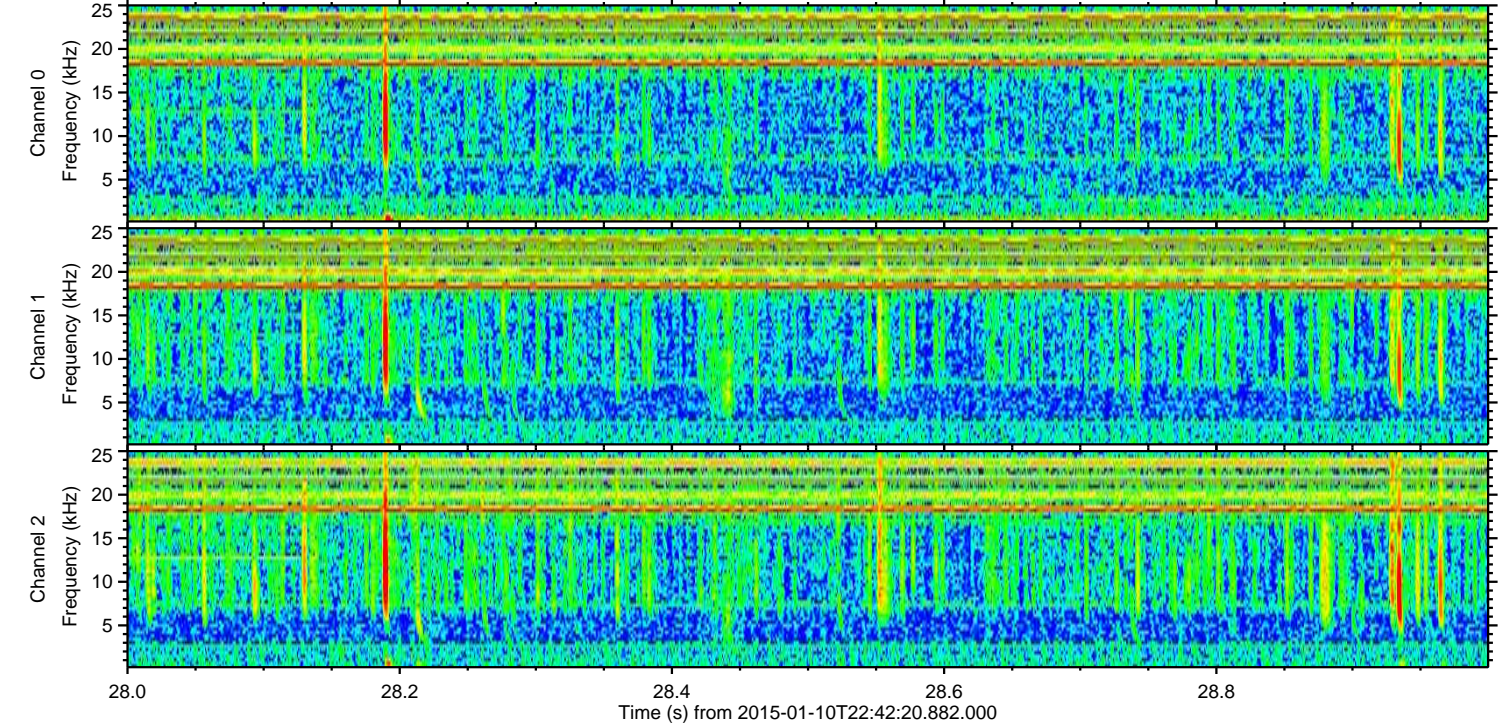
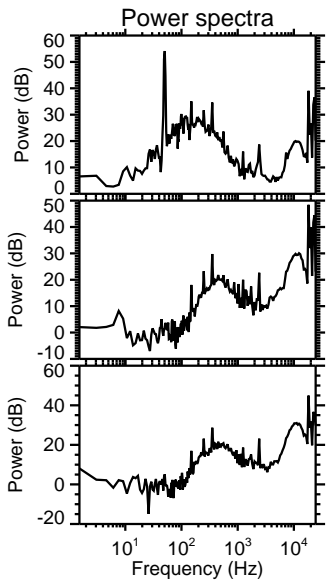
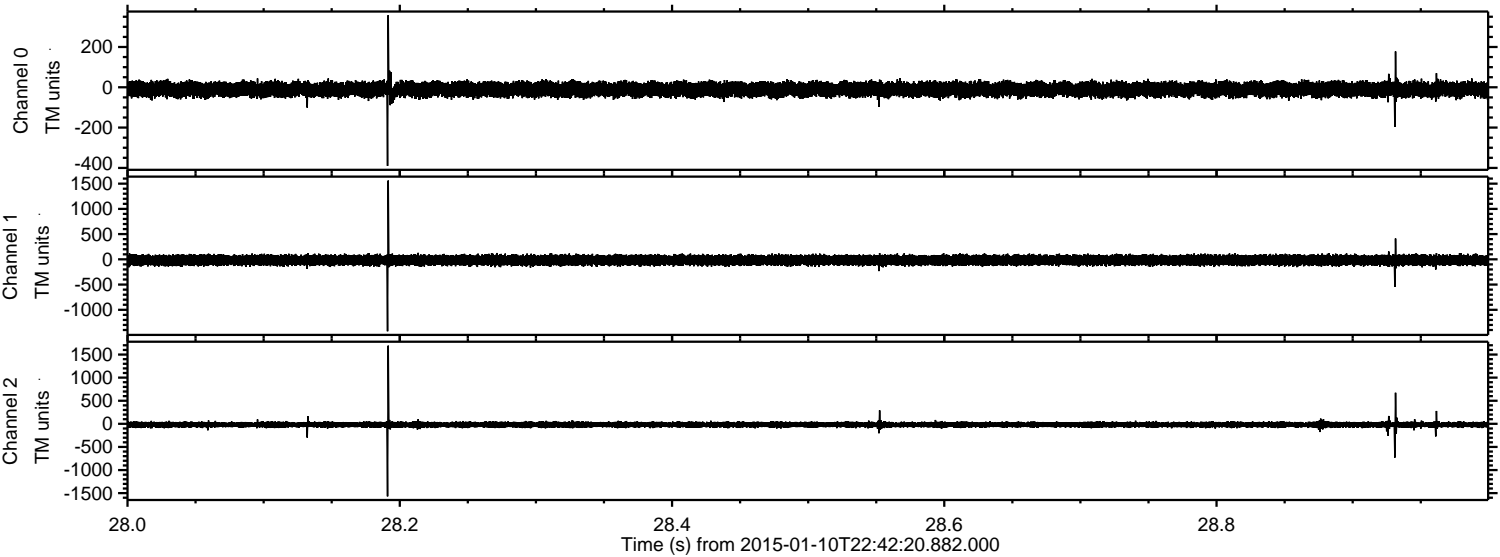


Channel 0
mn: -469
mx: 534
 μ : -10.7
 σ : 19.0

Channel 1
mn: -1302
mx: 1099
 μ : -16.8
 σ : 51.2

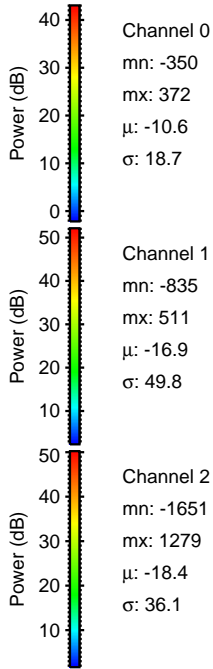
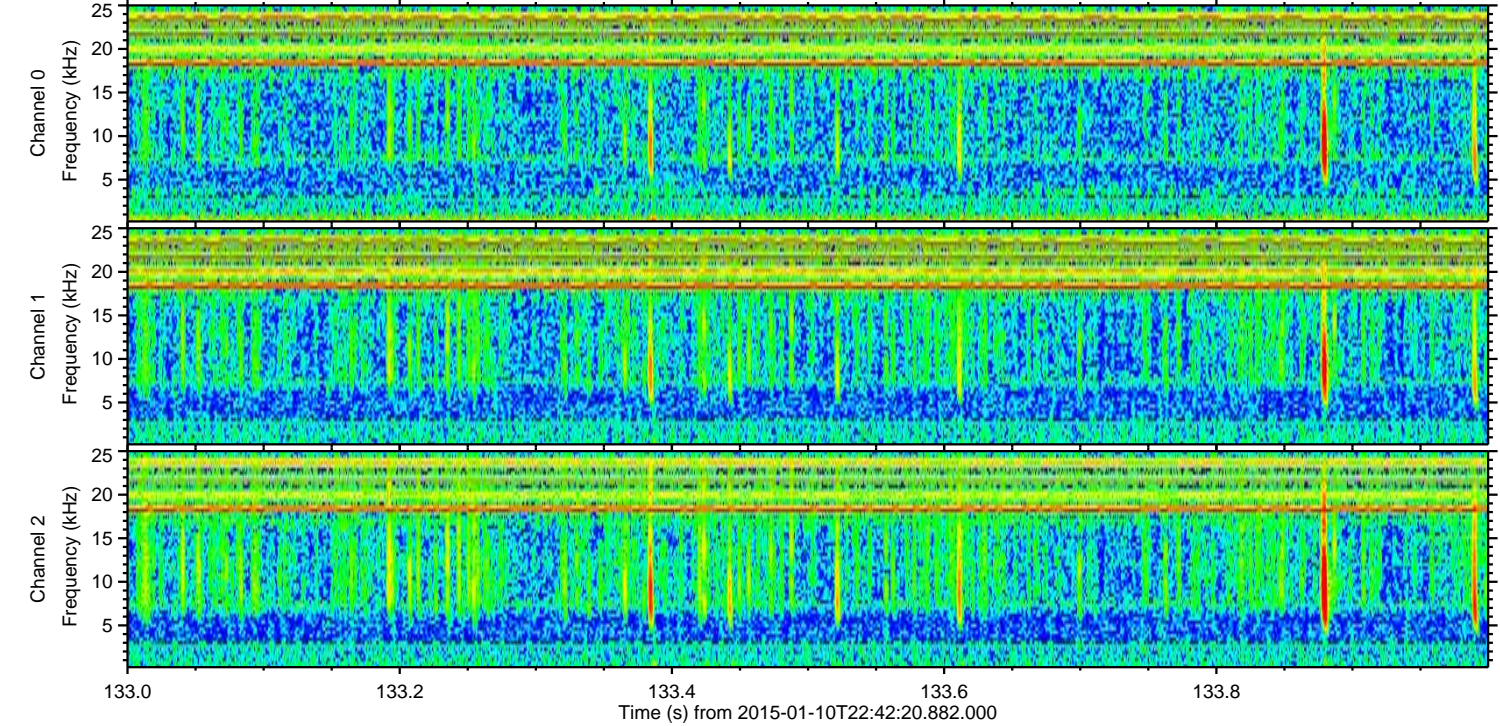
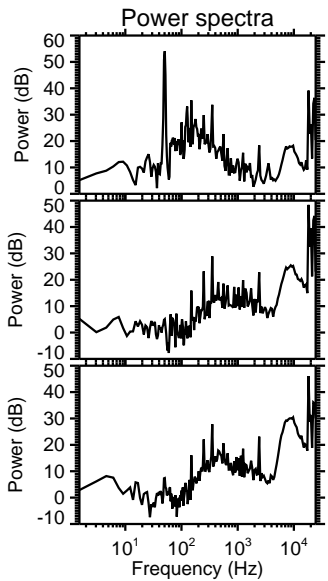
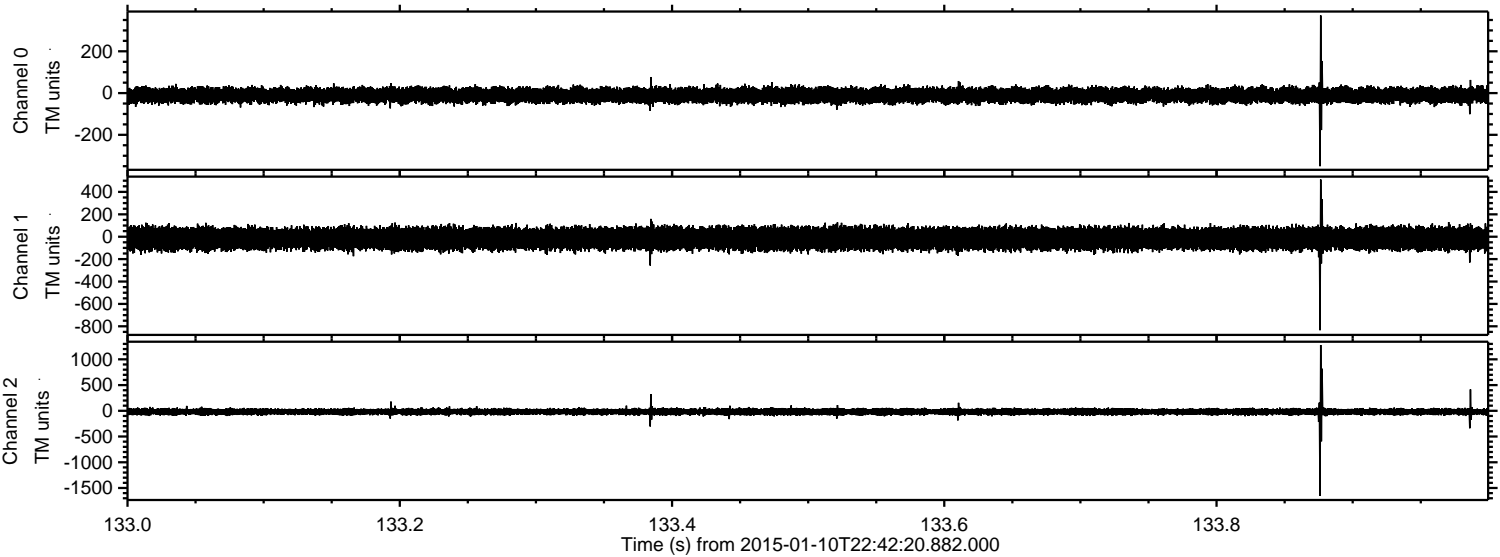
Channel 2
mn: -2078
mx: 1878
 μ : -18.3
 σ : 36.2

Processed Sat Jan 10 23:50:08 2015 by ELM ver.2012-10-06 from 001__elm20150110_224219__dat00.bin



ELMAVAN 3D WAVEFORMS (Measured data sampled at 50 kHz) 49789 packets of 144 samples from 2015-01-10T22:42:20.882.000. Part 134/144

Processed Sat Jan 10 23:50:09 2015 by ELM ver.2012-10-06 from 001__elm20150110_224219__dat00.bin



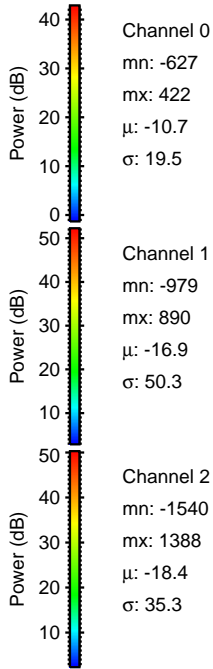
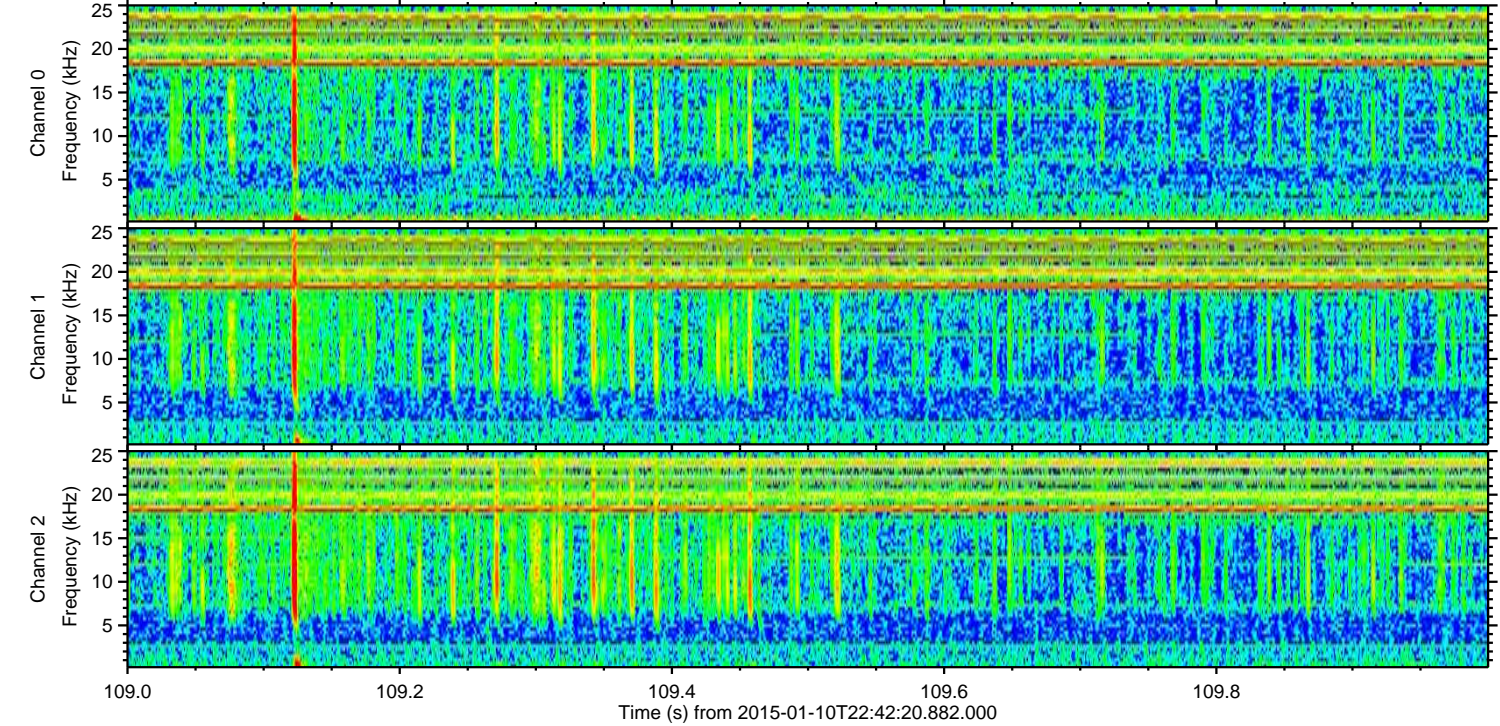
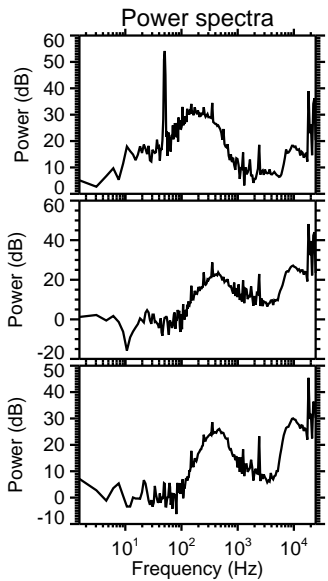
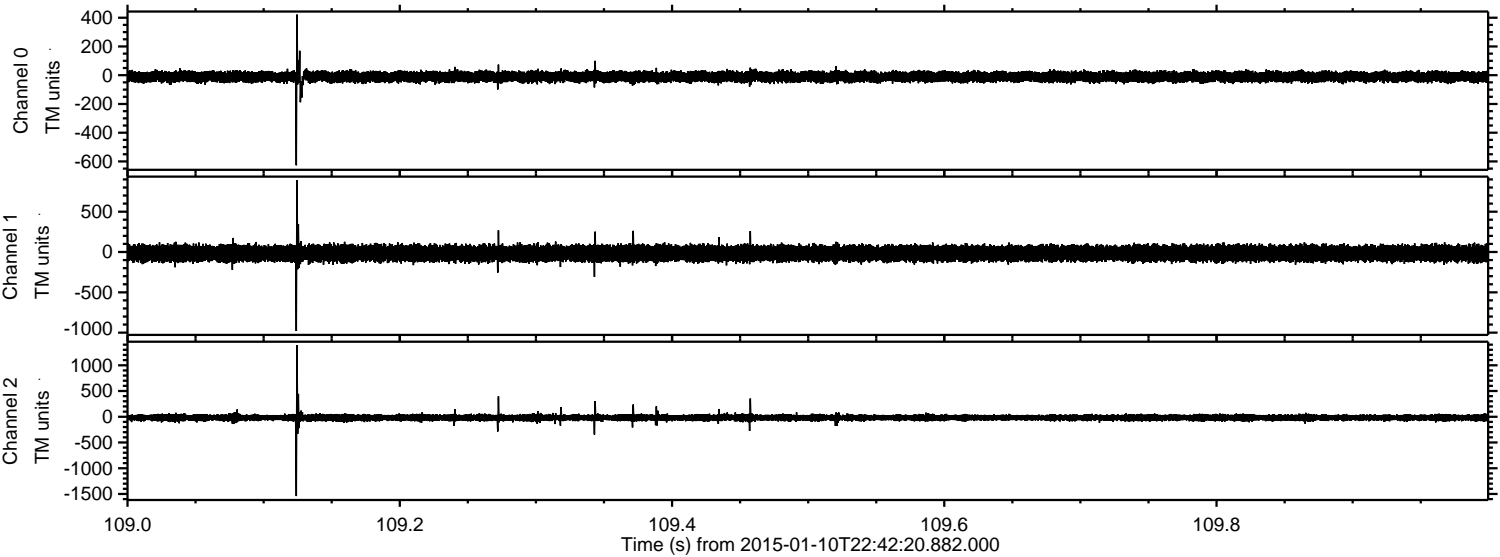
Channel 0
mn: -350
mx: 372
 μ : -10.6
 σ : 18.7

Channel 1
mn: -835
mx: 511
 μ : -16.9
 σ : 49.8

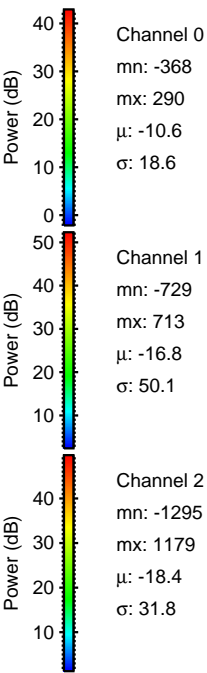
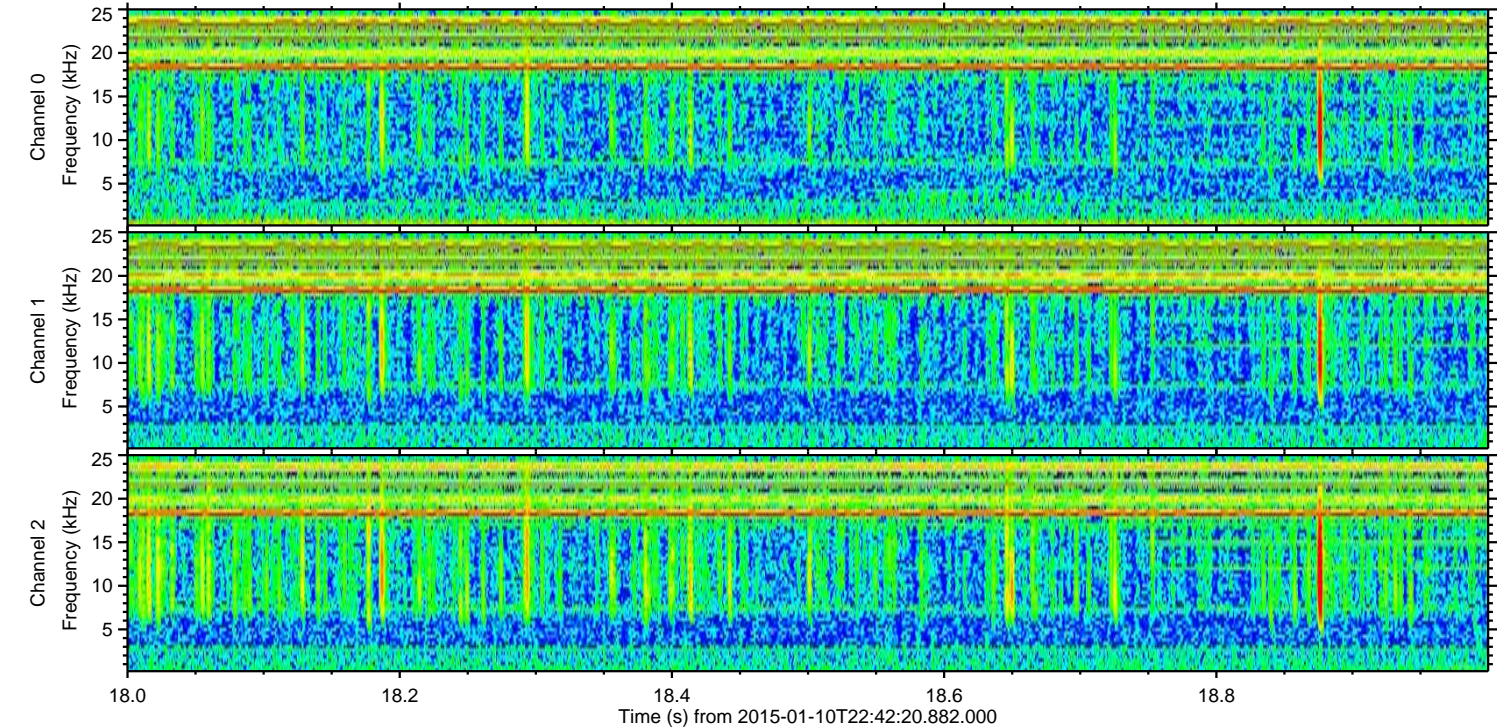
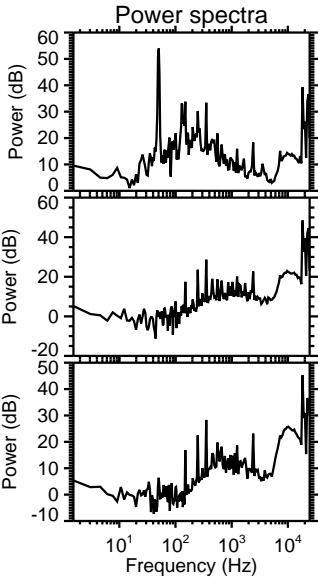
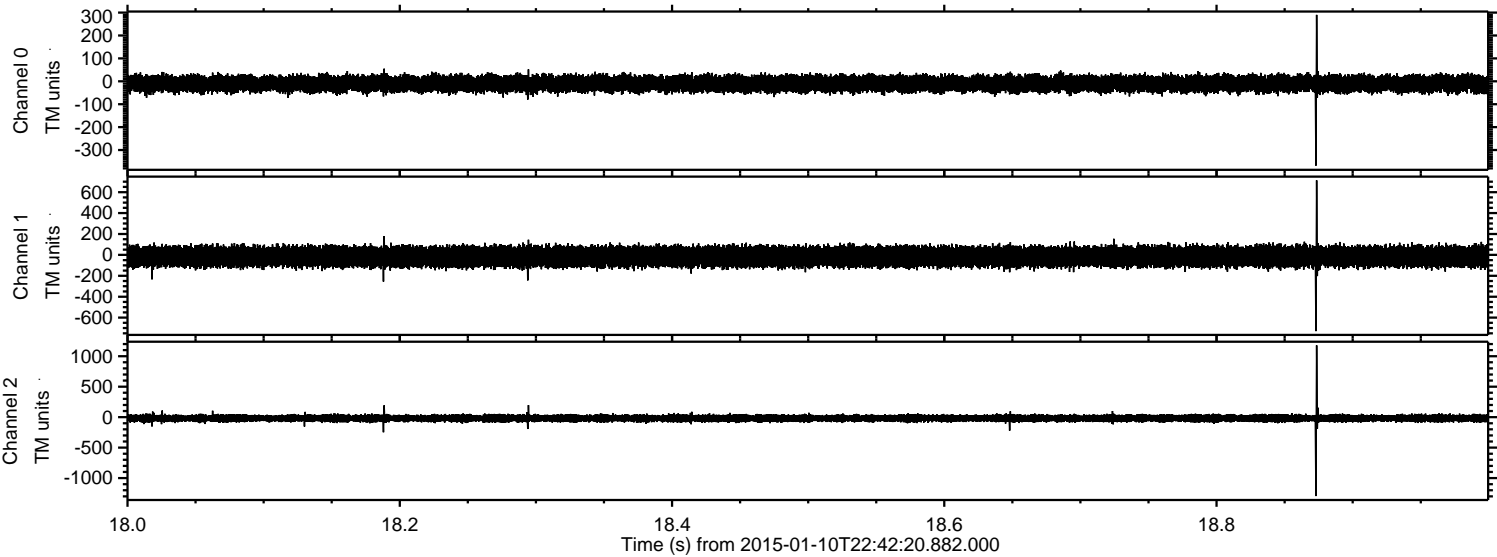
Channel 2
mn: -1651
mx: 1279
 μ : -18.4
 σ : 36.1

ELMAVAN 3D WAVEFORMS (Measured data sampled at 50 kHz) 49789 packets of 144 samples from 2015-01-10T22:42:20.882.000. Part 110/144

Processed Sat Jan 10 23:50:10 2015 by ELM ver.2012-10-06 from 001__elm20150110_224219__dat00.bin



Processed Sat Jan 10 23:50:11 2015 by ELM ver.2012-10-06 from 001__elm20150110_224219__dat00.bin

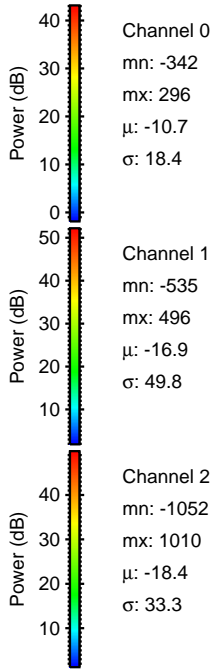
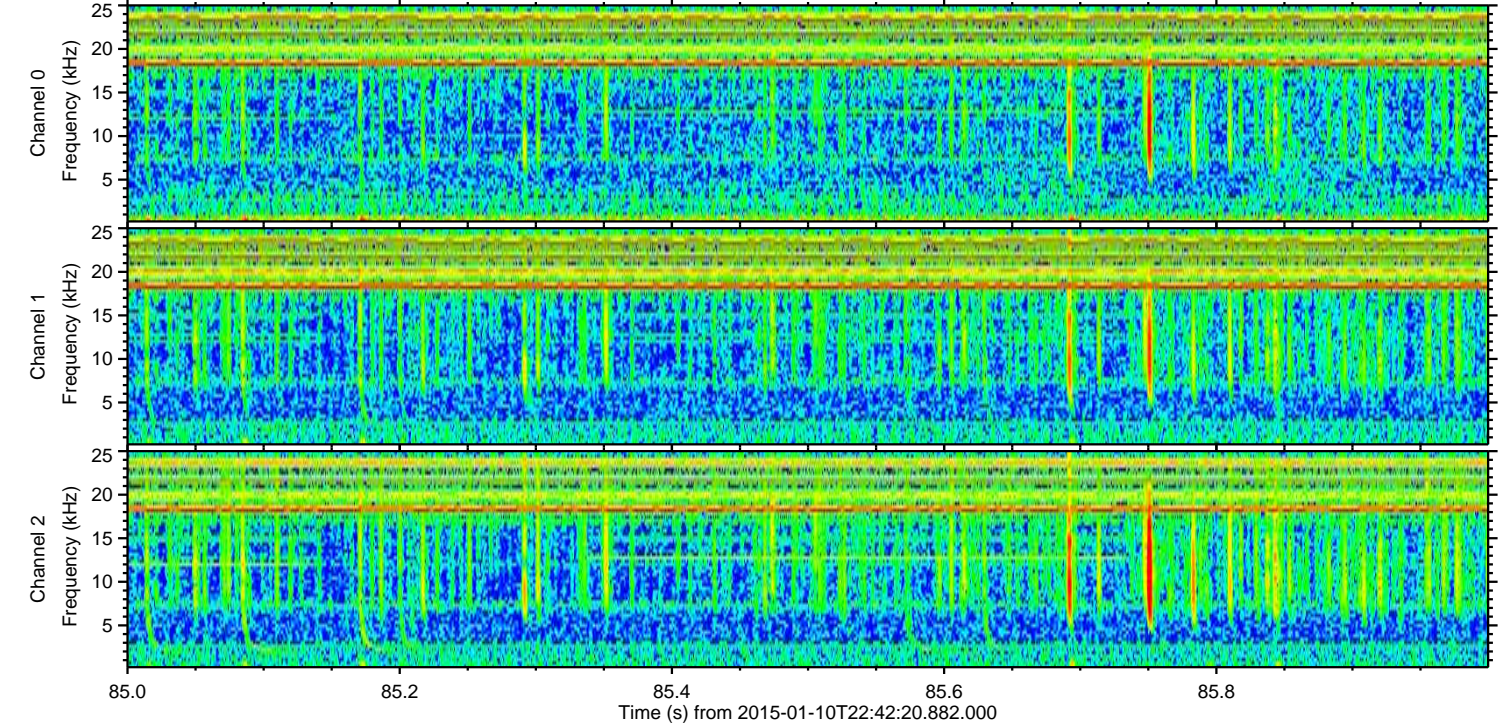
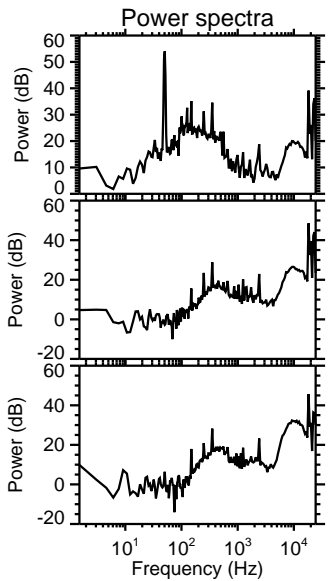
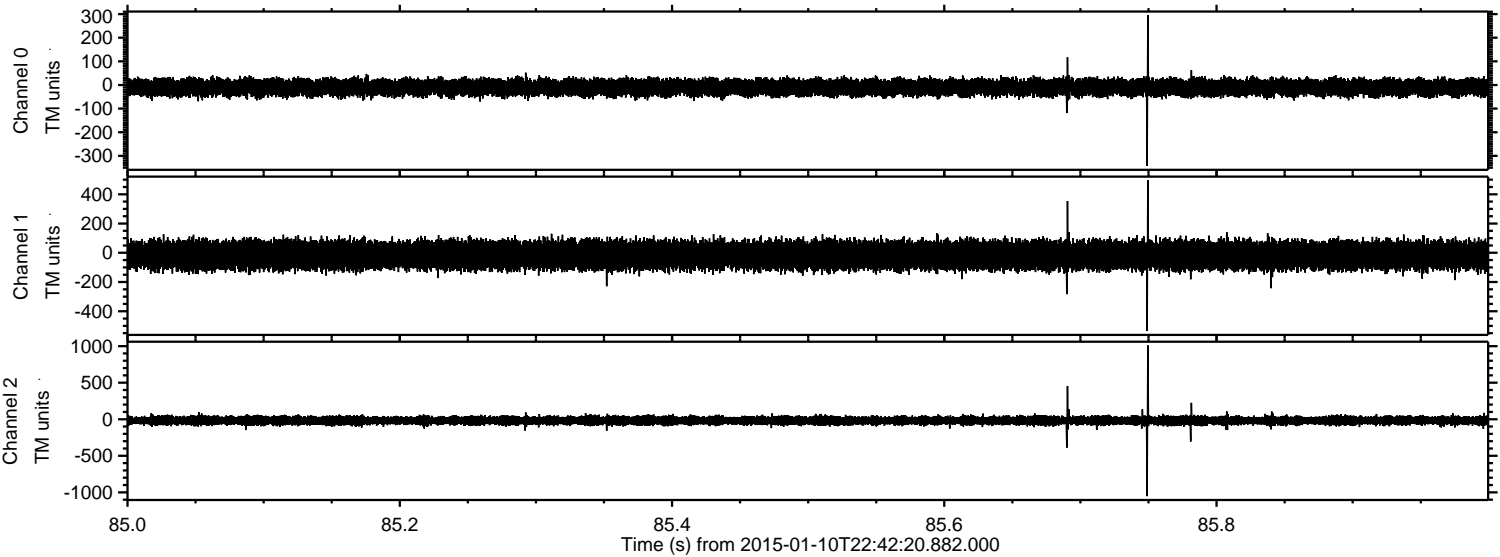


Channel 0
mn: -368
mx: 290
 μ : -10.6
 σ : 18.6

Channel 1
mn: -729
mx: 713
 μ : -16.8
 σ : 50.1

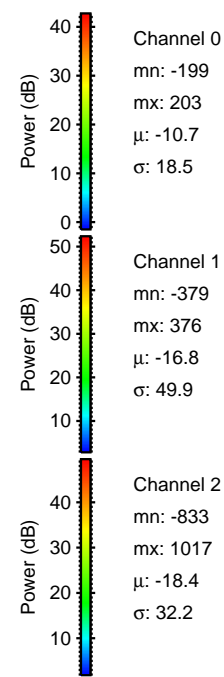
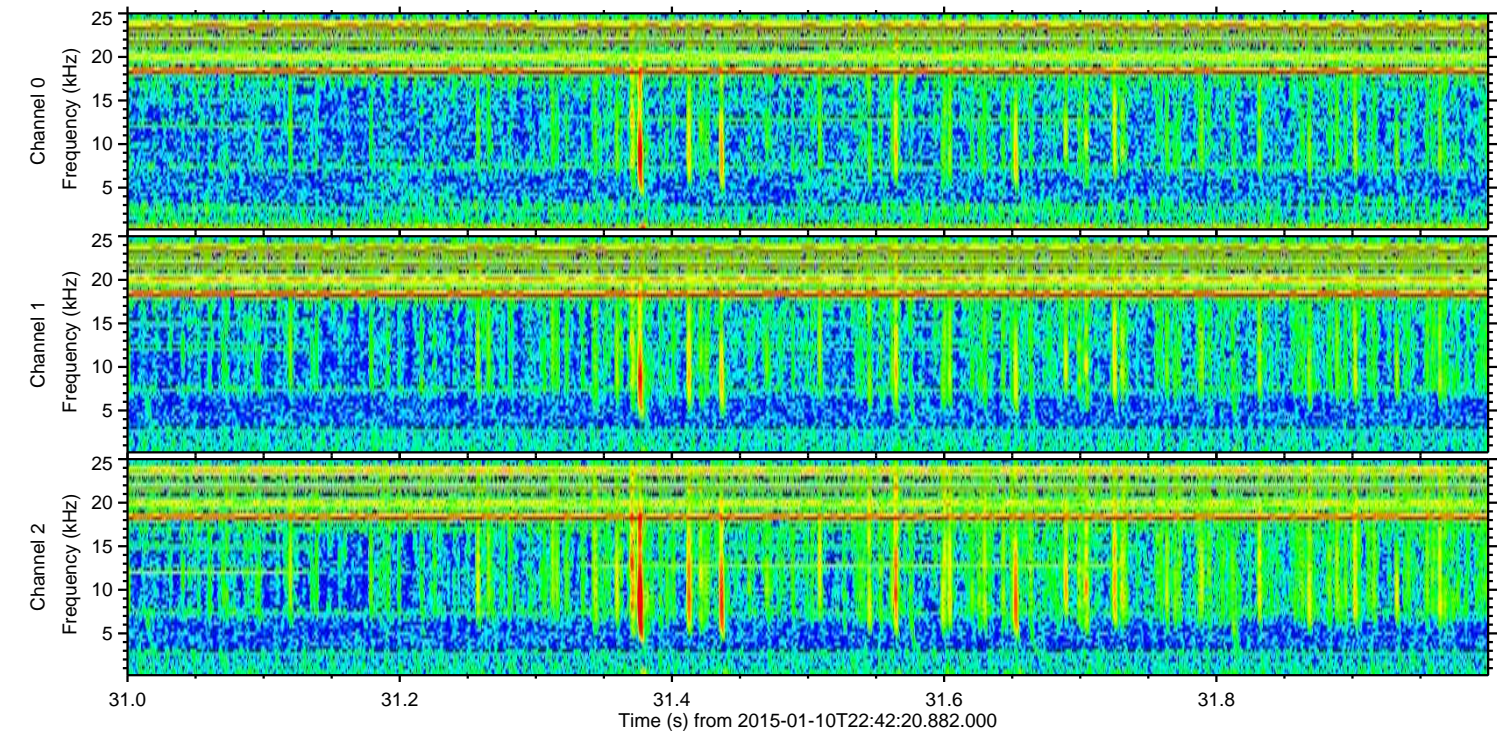
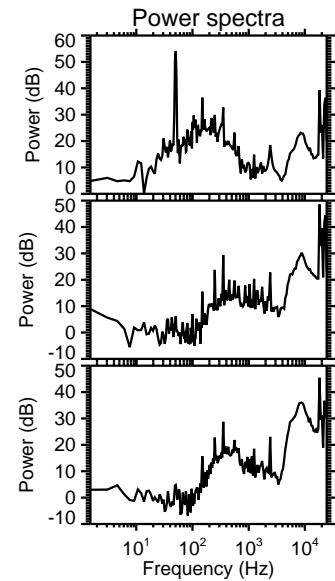
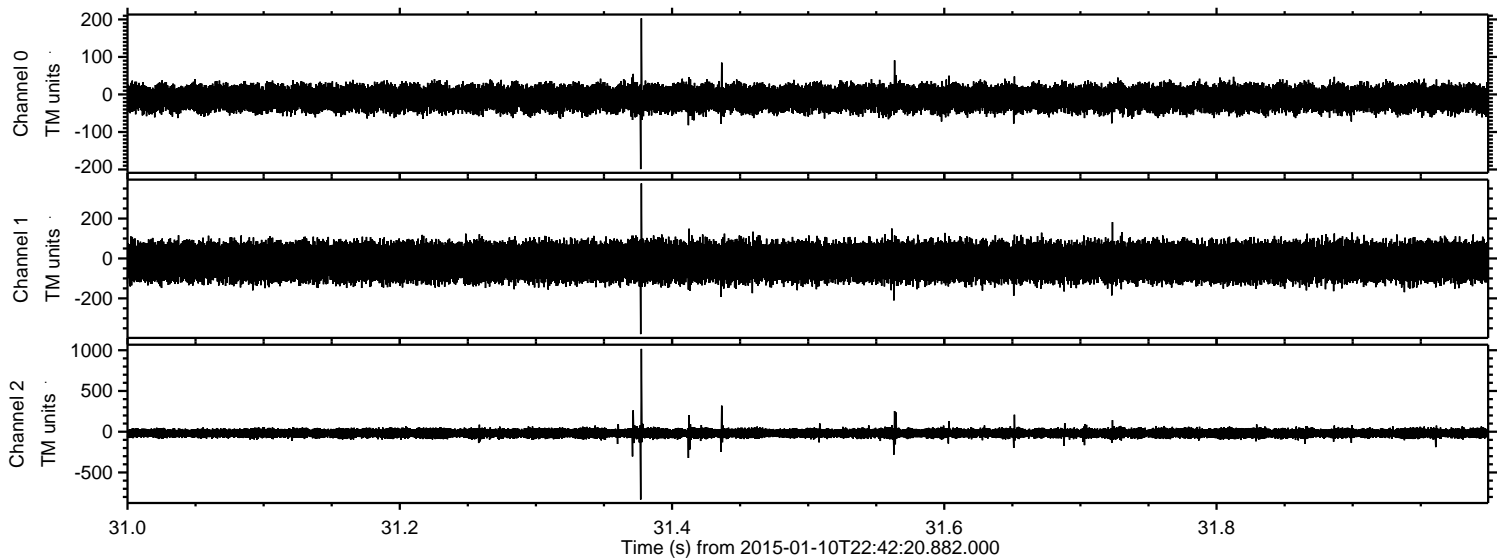
Channel 2
mn: -1295
mx: 1179
 μ : -18.4
 σ : 31.8

Processed Sat Jan 10 23:50:12 2015 by ELM ver.2012-10-06 from 001__elm20150110_224219__dat00.bin



ELMAVAN 3D WAVEFORMS (Measured data sampled at 50 kHz) 49789 packets of 144 samples from 2015-01-10T22:42:20.882.000. Part 32/144

Processed Sat Jan 10 23:50:13 2015 by ELM ver.2012-10-06 from 001__elm20150110_224219__dat00.bin



Processed Sat Jan 10 23:50:14 2015 by ELM ver.2012-10-06 from 001__elm20150110_224219__dat00.bin

