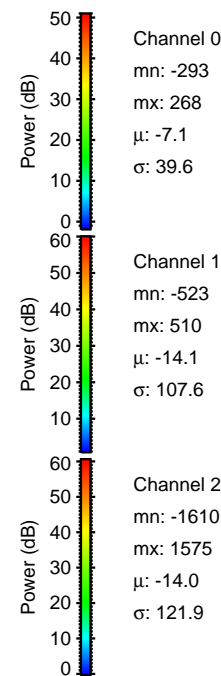
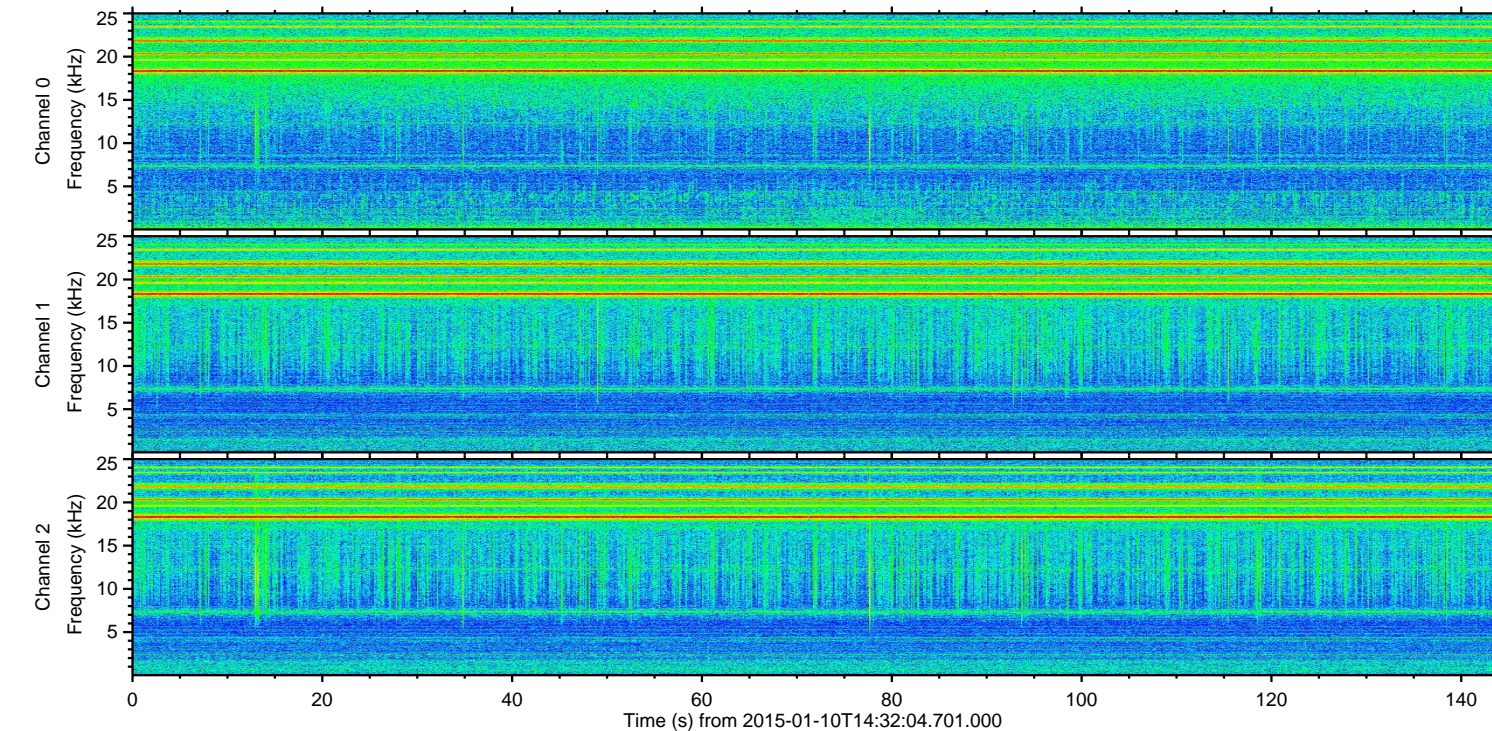
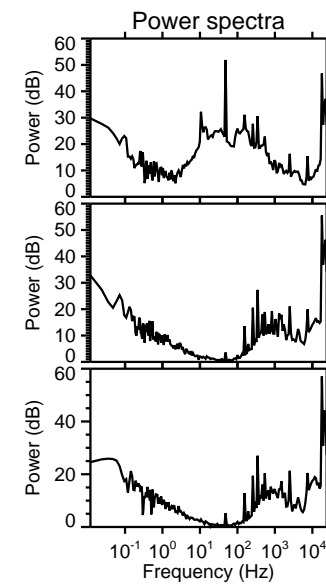
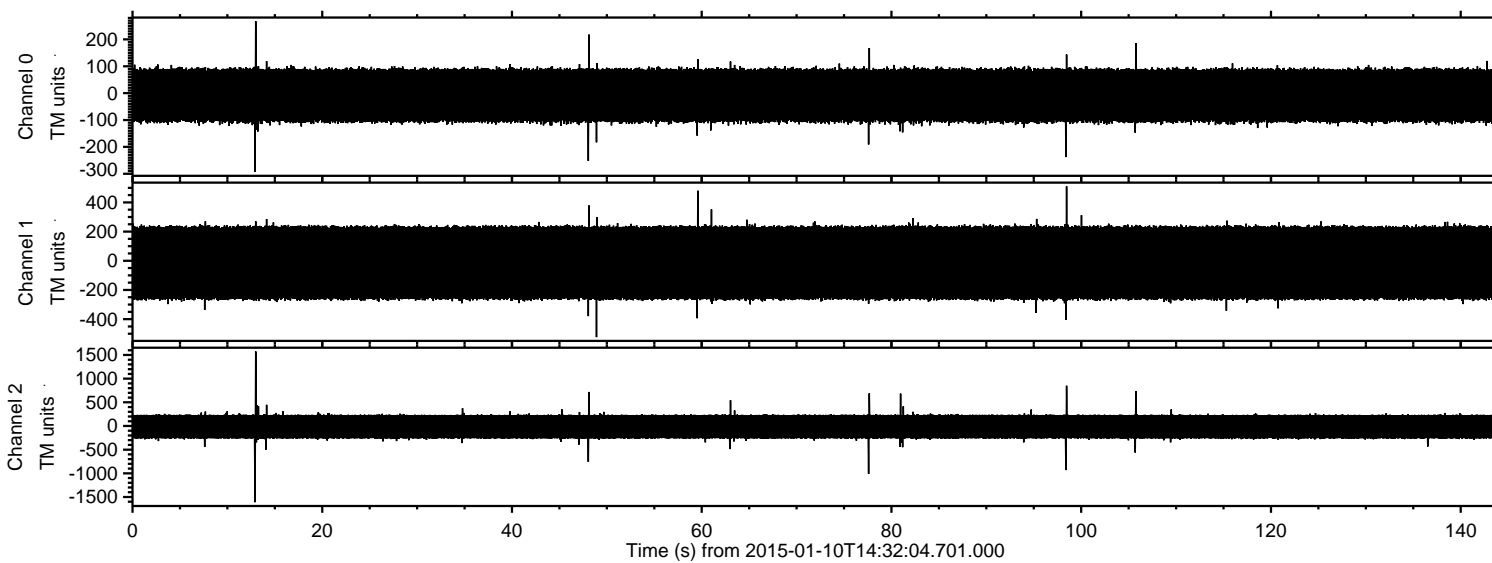
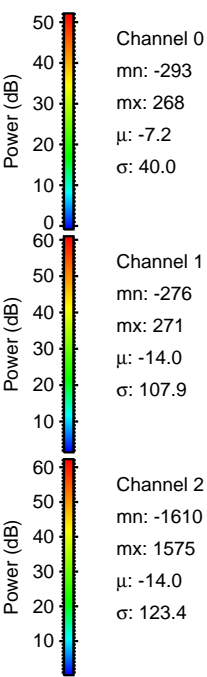
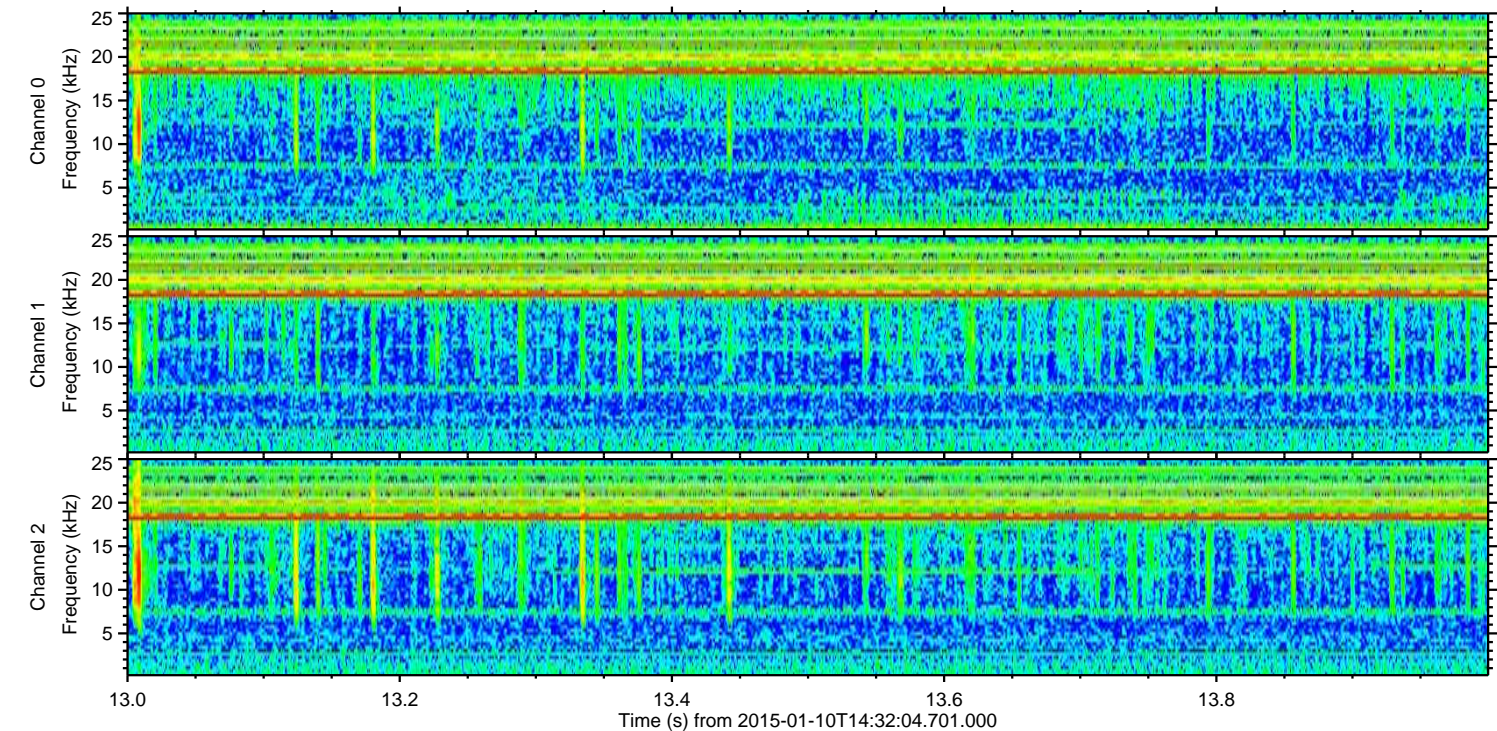
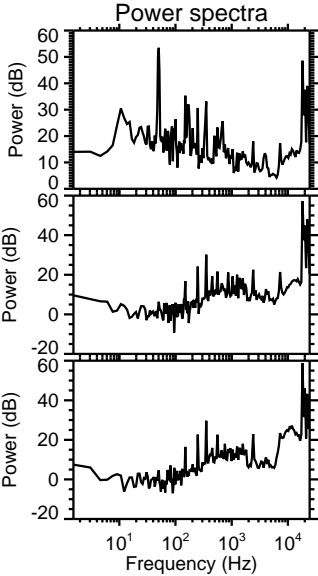
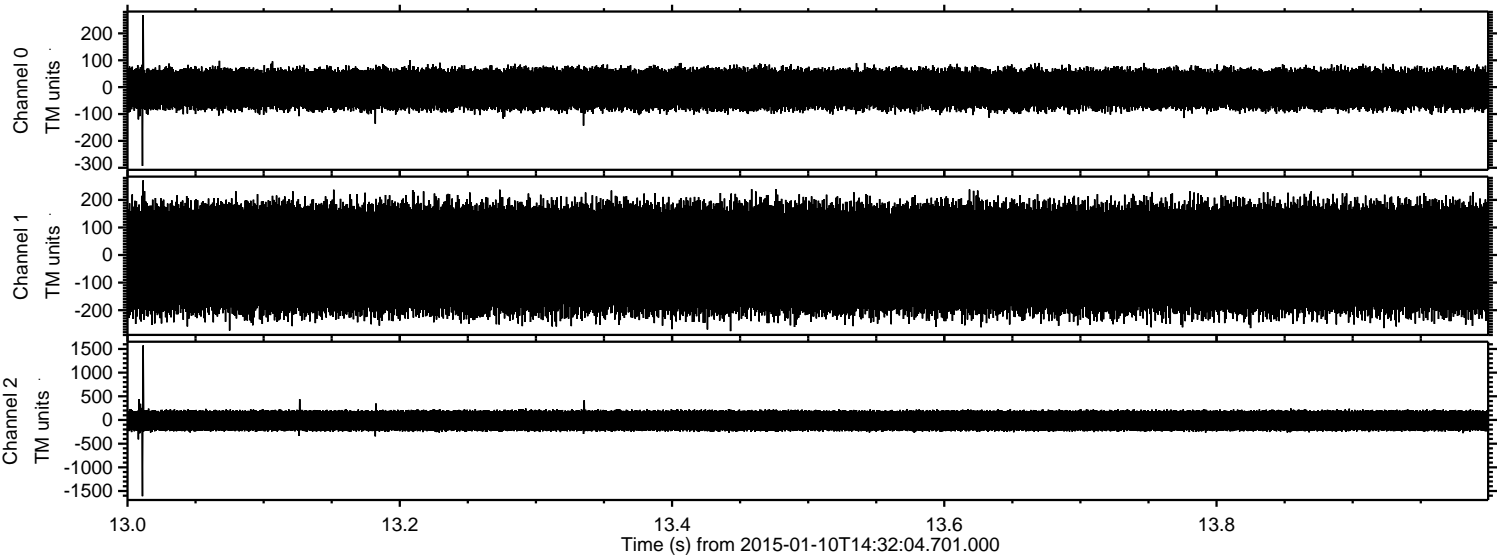


ELMAVAN 3D WAVEFORMS (Measured data sampled at 50 kHz) 49799 packets of 144 samples from 2015-01-10T14:32:04.701.000.

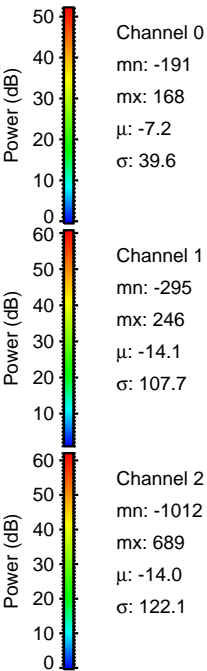
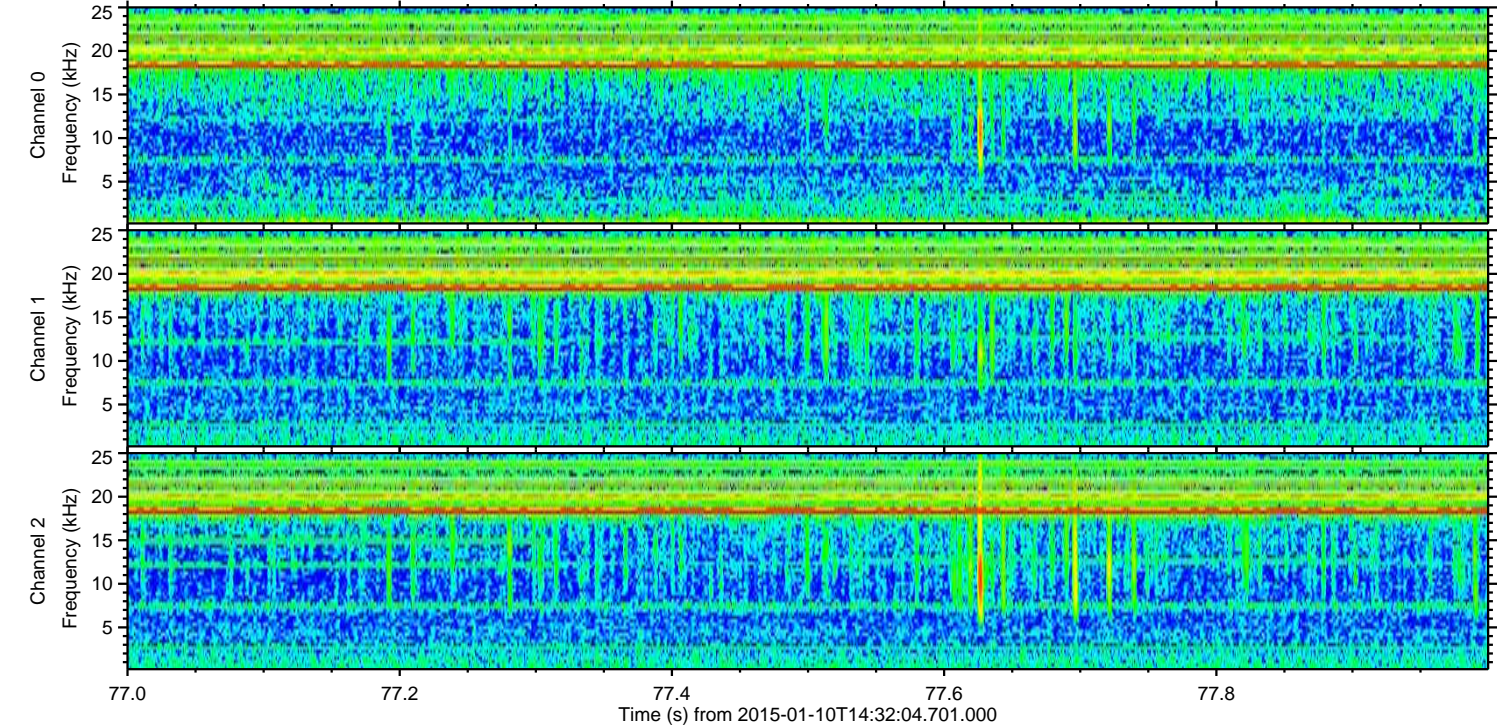
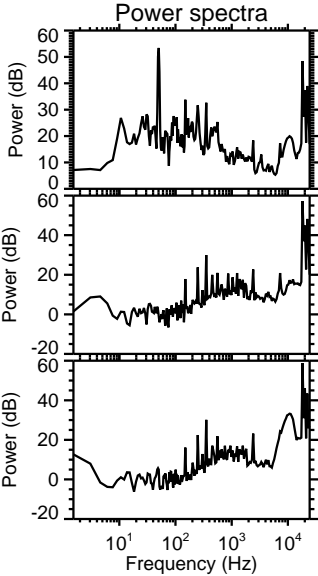
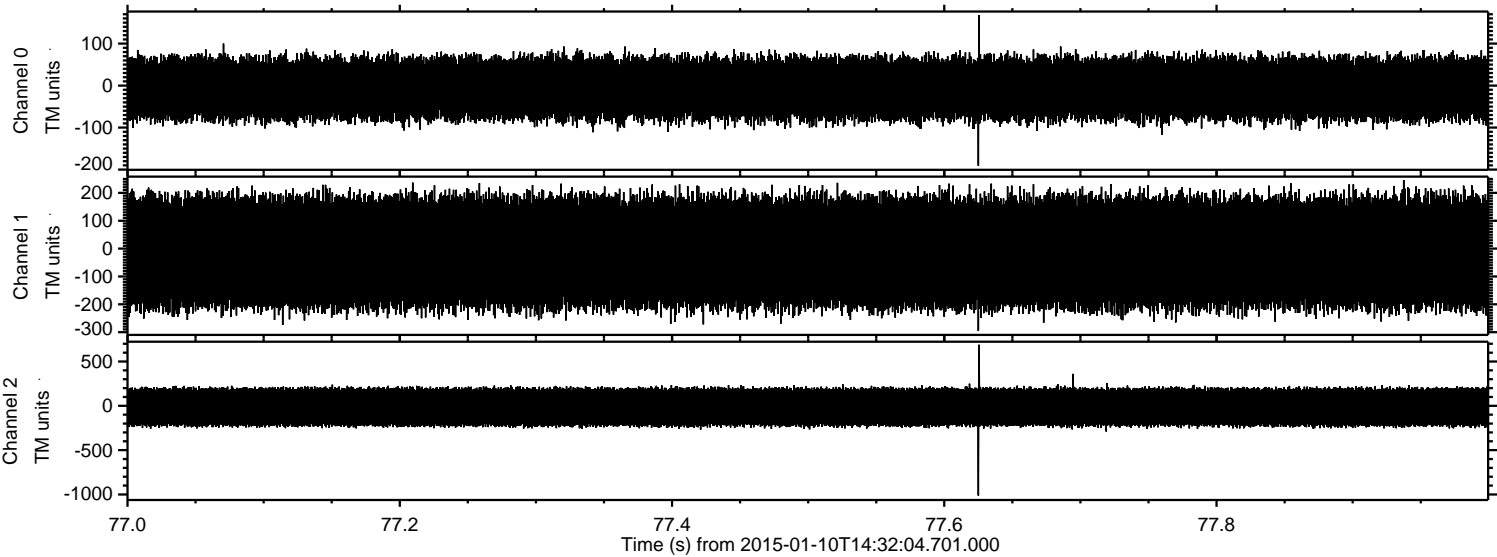
Processed Sat Jan 10 15:40:08 2015 by ELM ver.2012-10-06 from 001__elm20150110_143203__dat00.bin



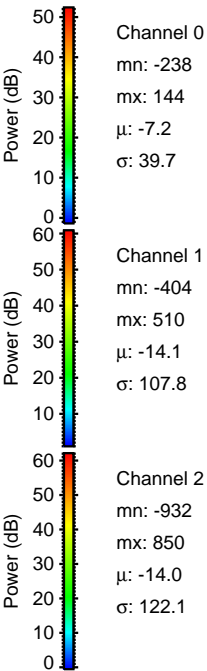
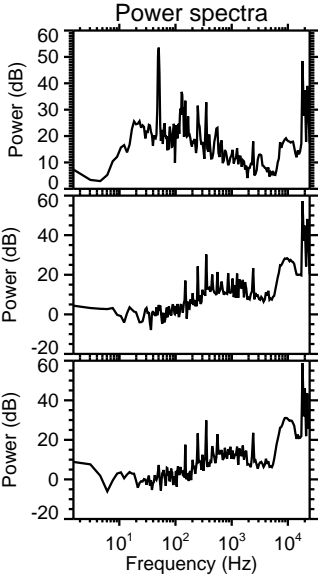
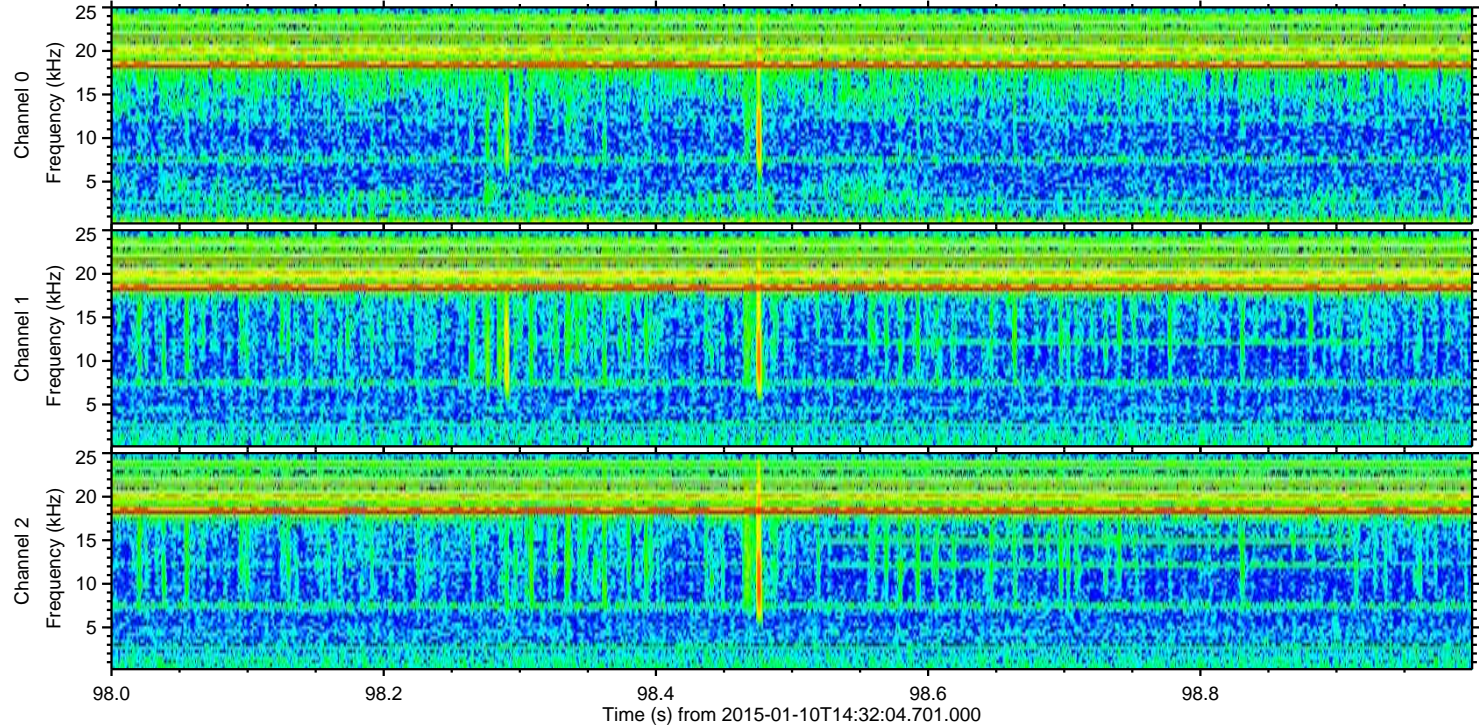
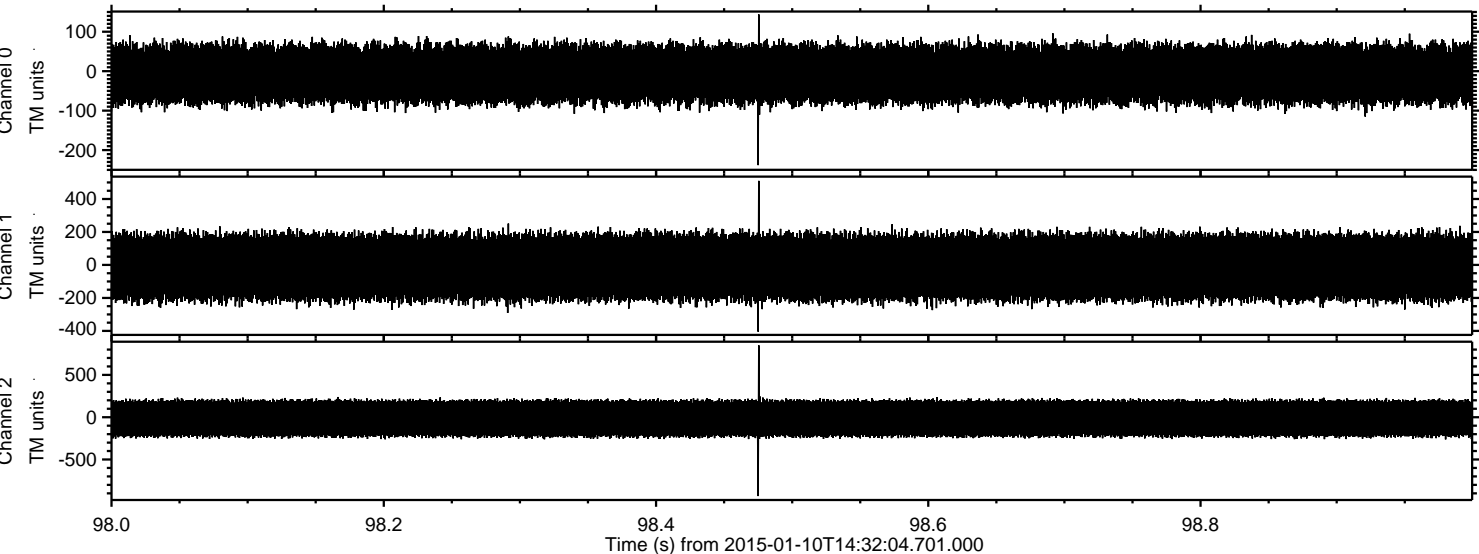
Processed Sat Jan 10 15:40:19 2015 by ELM ver.2012-10-06 from 001__elm20150110_143203__dat00.bin



Processed Sat Jan 10 15:40:20 2015 by ELM ver.2012-10-06 from 001__elm20150110_143203__dat00.bin

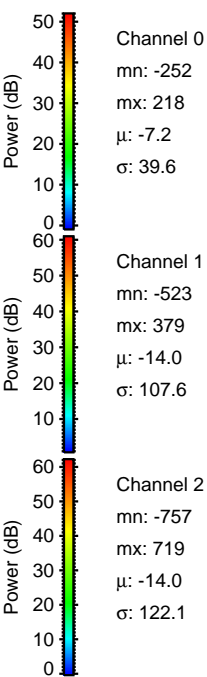
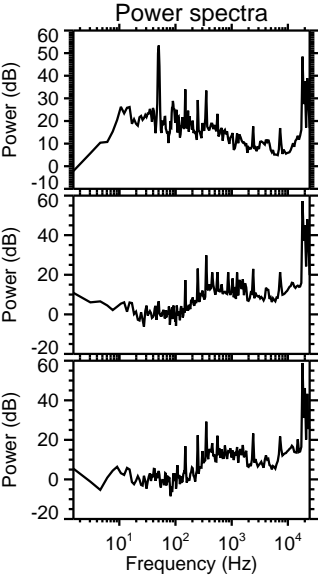
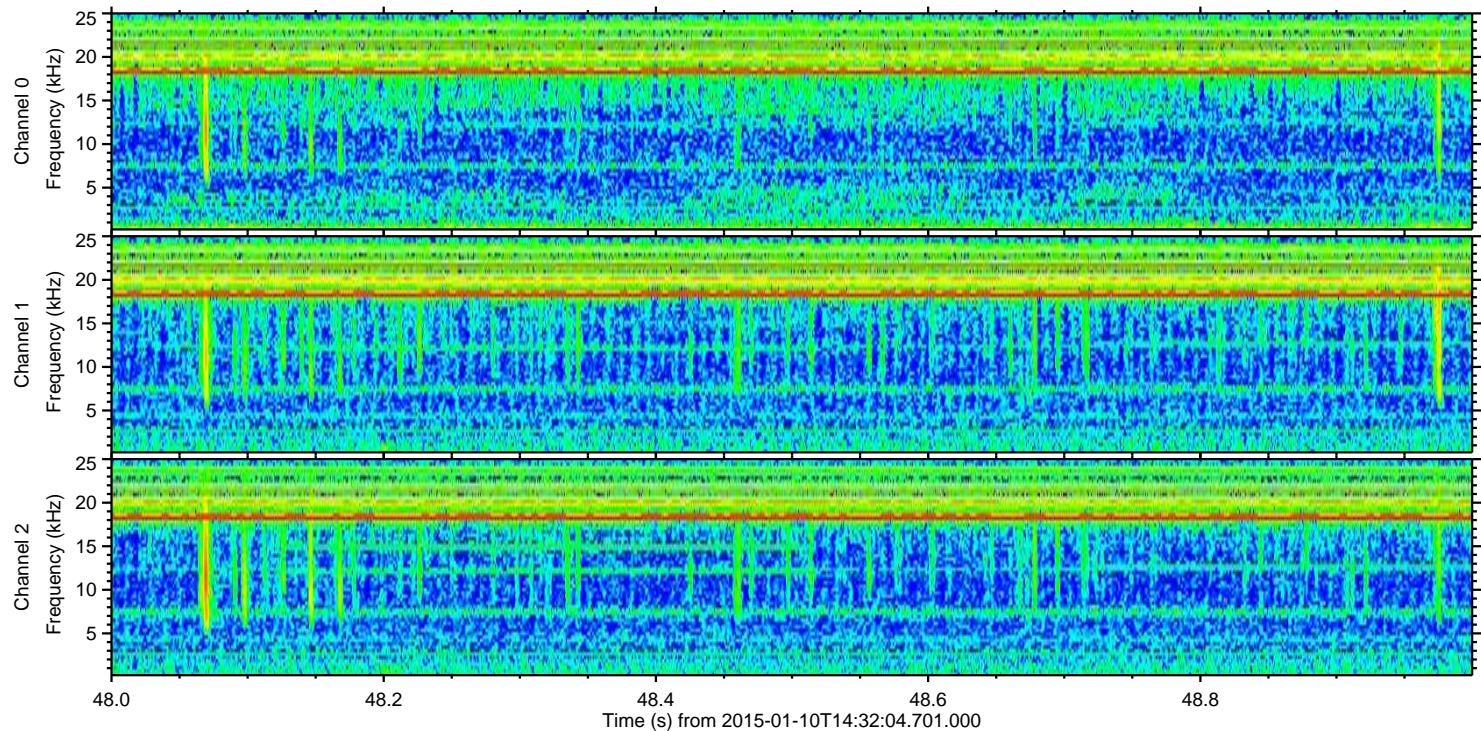
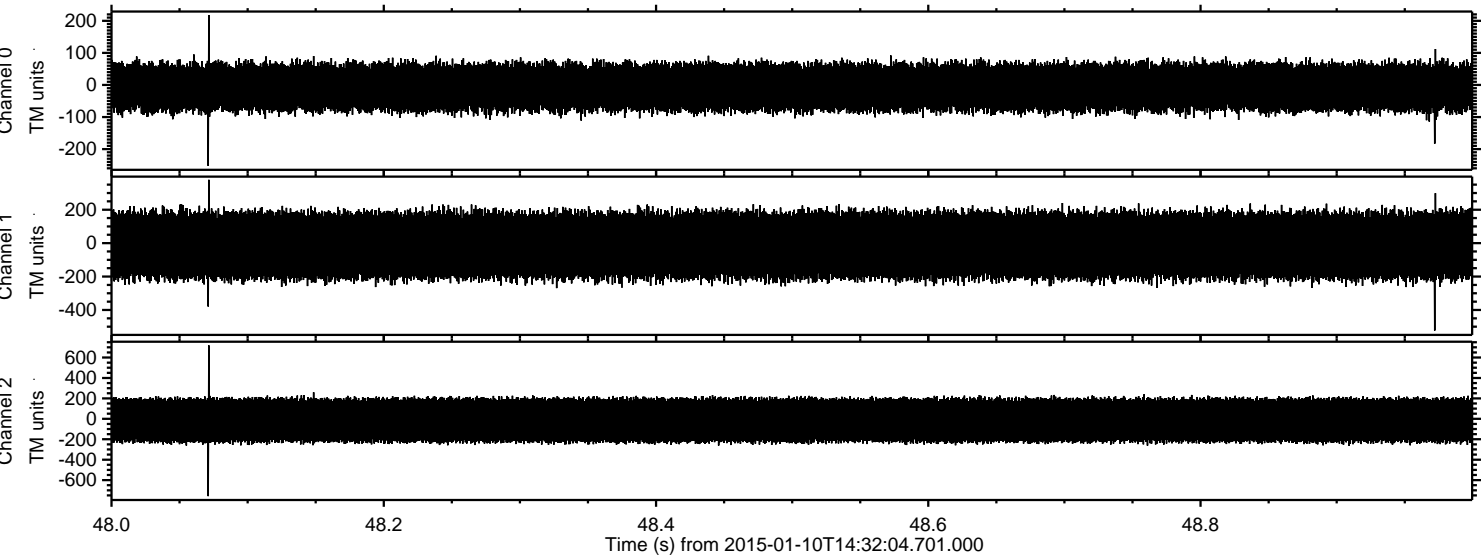


Processed Sat Jan 10 15:40:21 2015 by ELM ver.2012-10-06 from 001__elm20150110_143203__dat00.bin



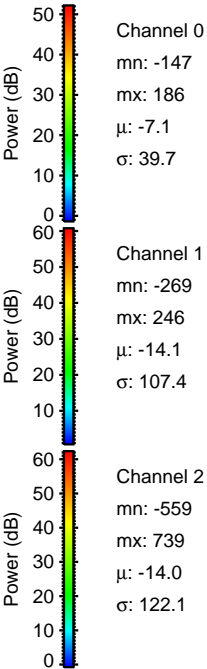
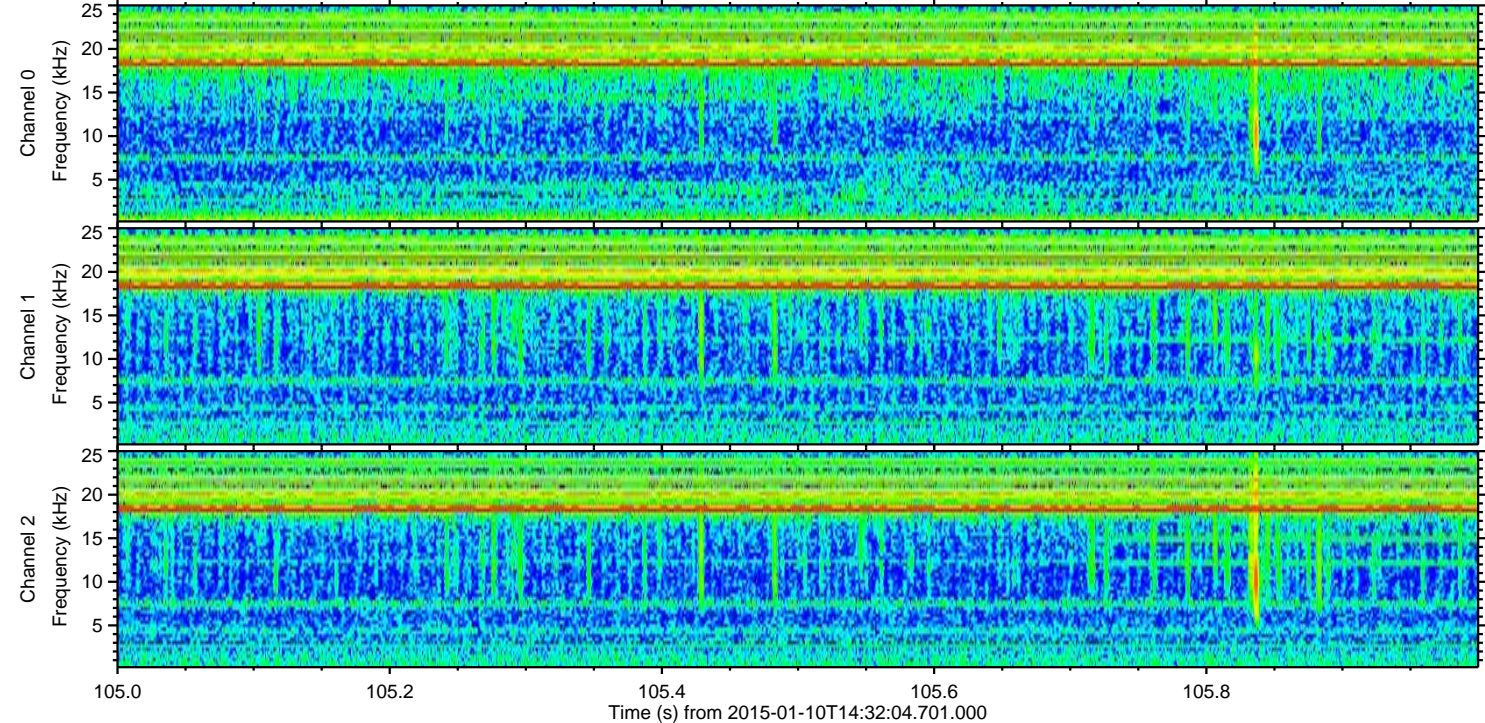
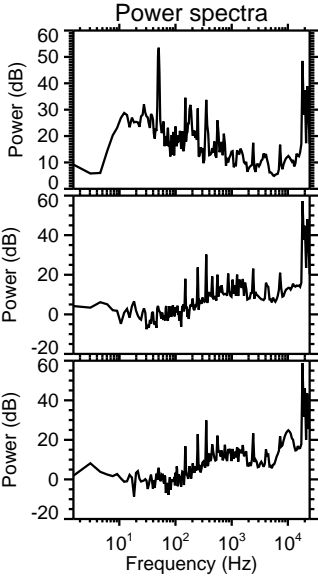
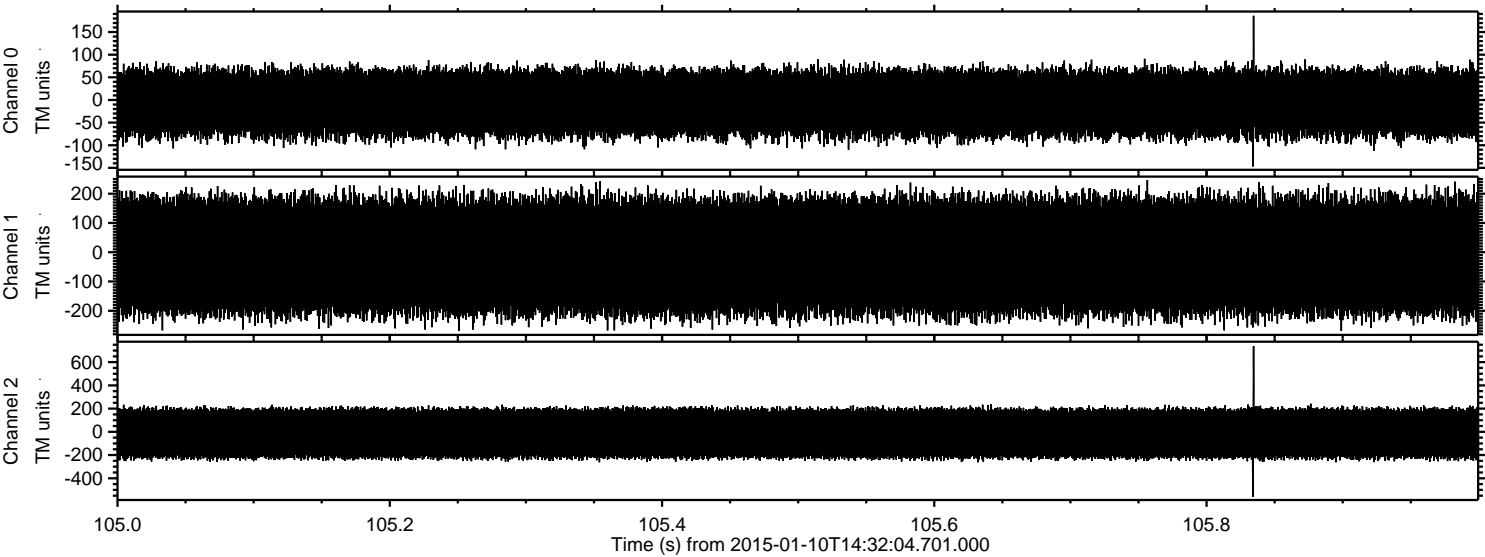
ELMAVAN 3D WAVEFORMS (Measured data sampled at 50 kHz) 49799 packets of 144 samples from 2015-01-10T14:32:04.701.000. Part 49/144

Processed Sat Jan 10 15:40:22 2015 by ELM ver.2012-10-06 from 001__elm20150110_143203__dat00.bin

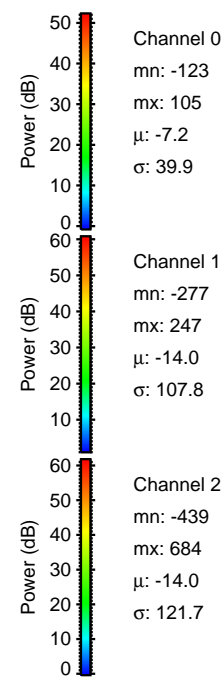
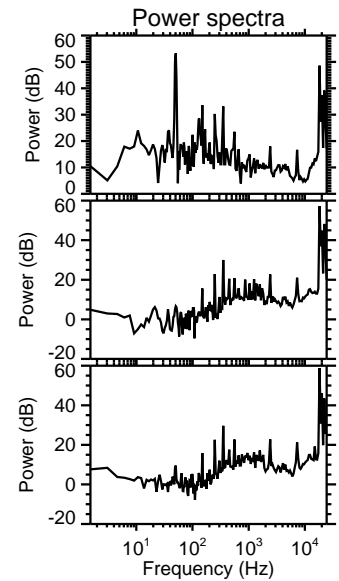
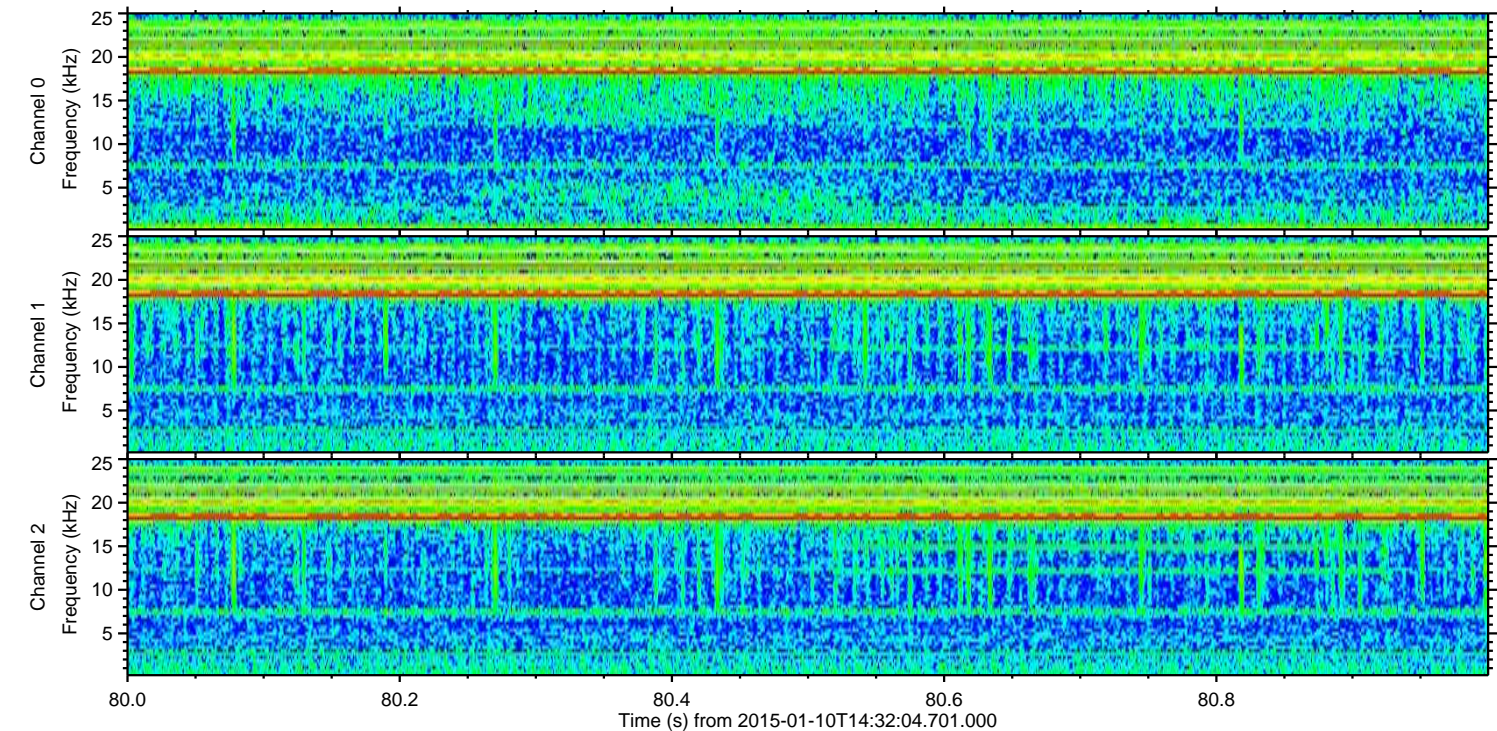
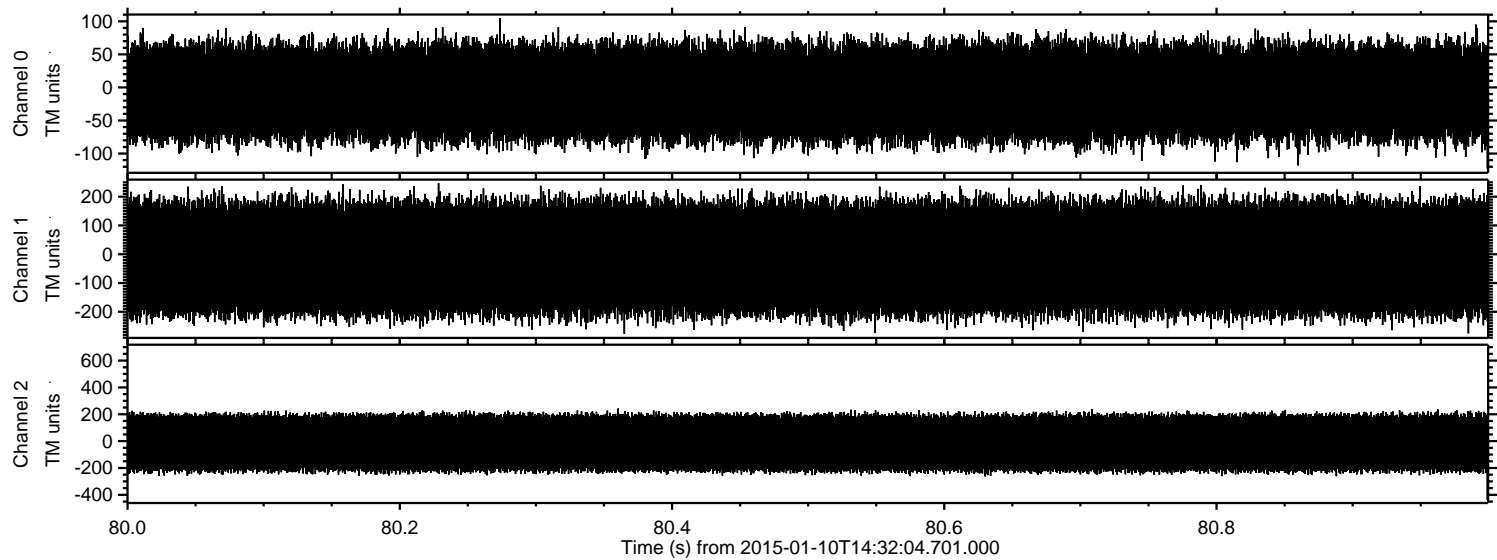


ELMAVAN 3D WAVEFORMS (Measured data sampled at 50 kHz) 49799 packets of 144 samples from 2015-01-10T14:32:04.701.000. Part 106/144

Processed Sat Jan 10 15:40:23 2015 by ELM ver.2012-10-06 from 001__elm20150110_143203__dat00.bin



Processed Sat Jan 10 15:40:24 2015 by ELM ver.2012-10-06 from 001__elm20150110_143203__dat00.bin

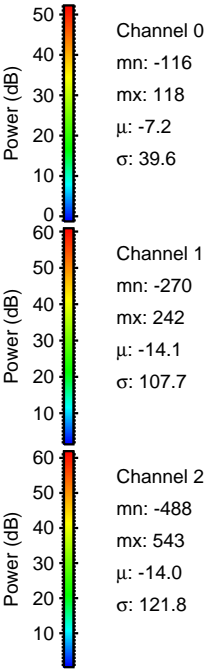
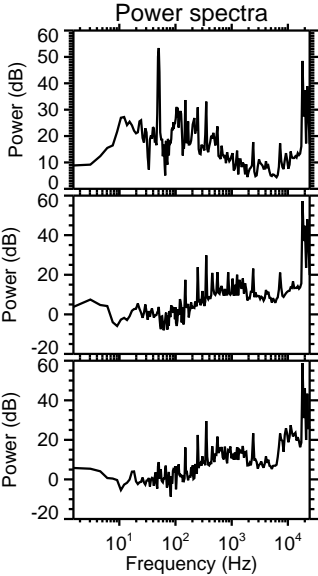
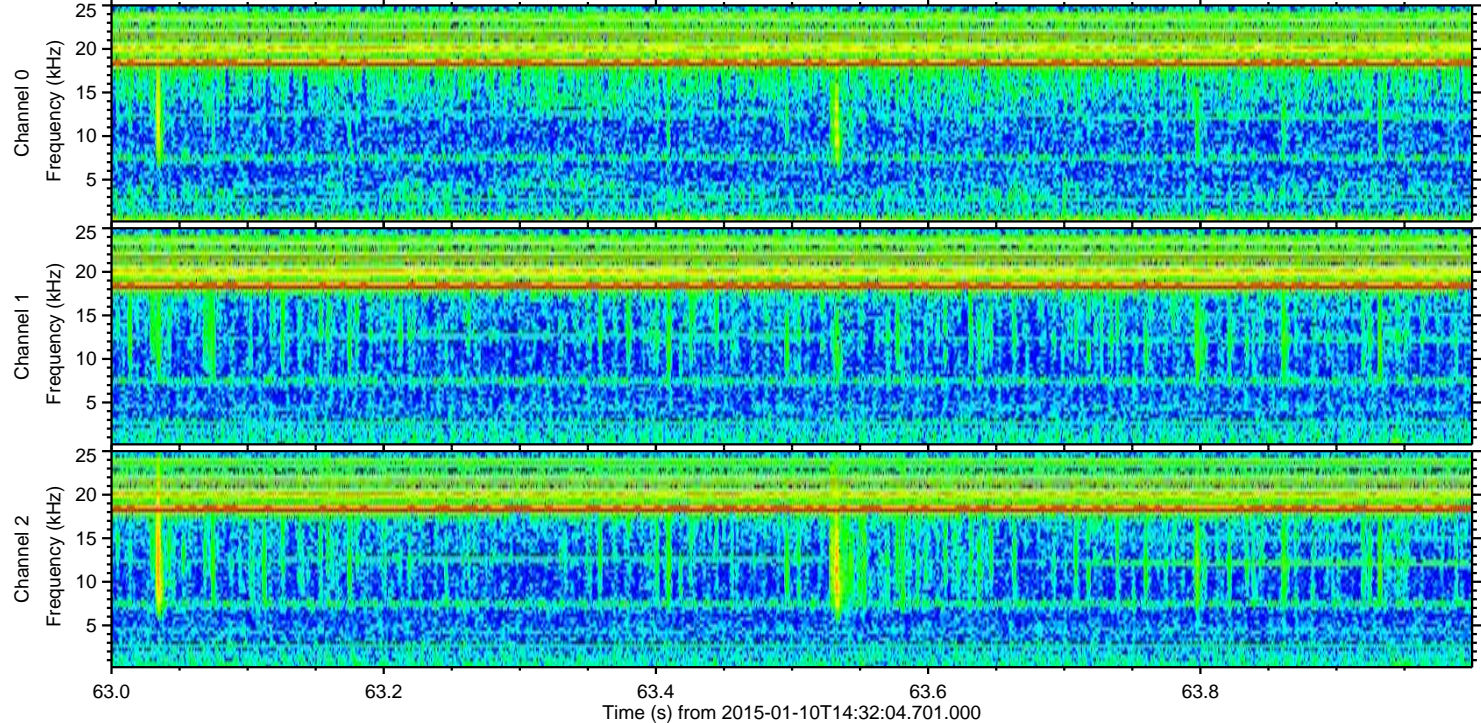
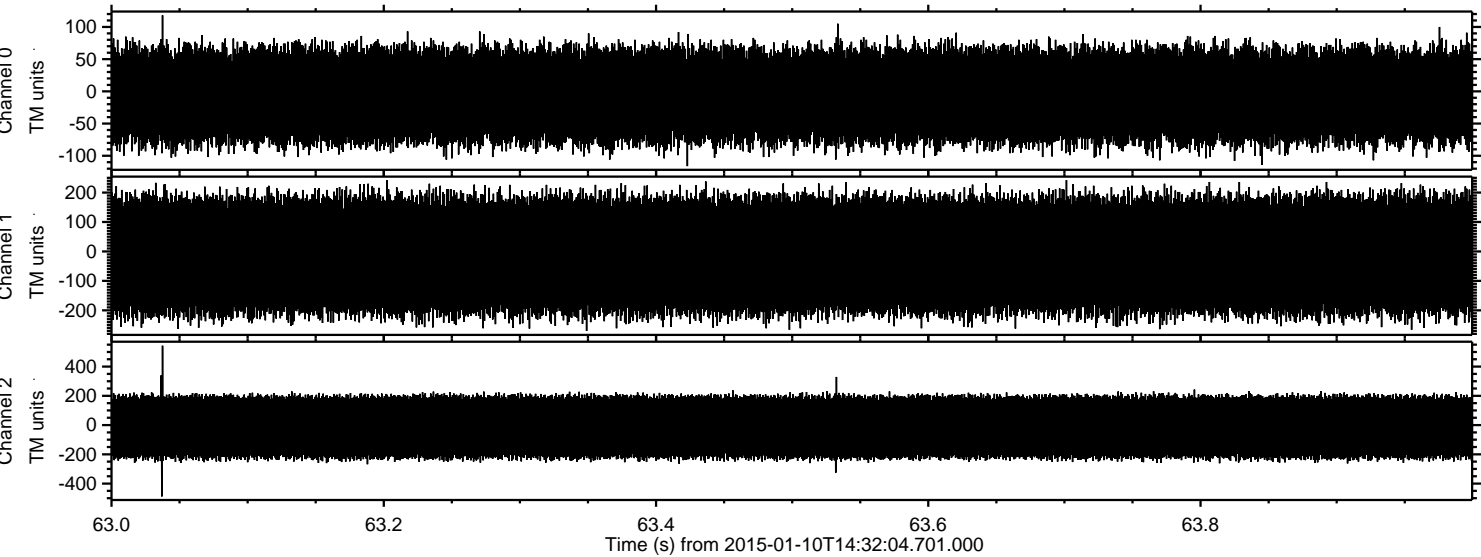


Channel 0
mn: -123
mx: 105
 μ : -7.2
 σ : 39.9

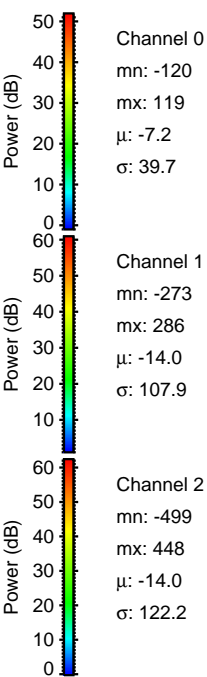
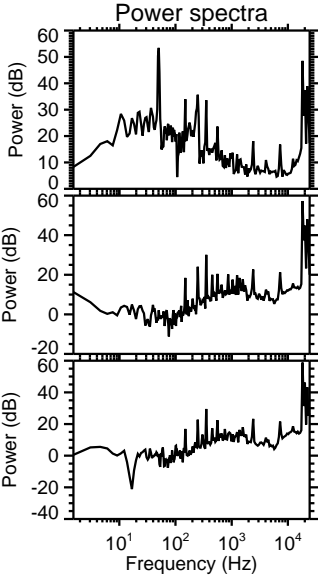
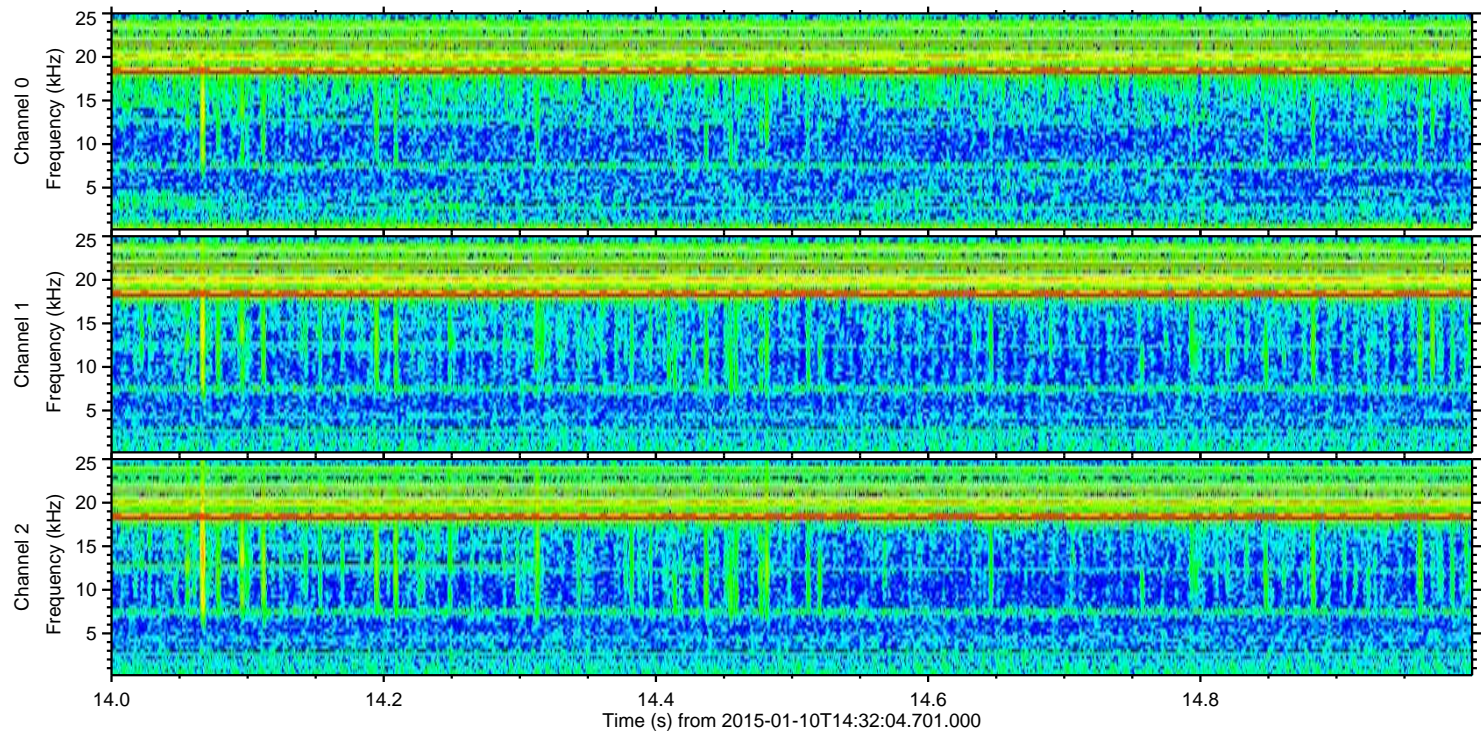
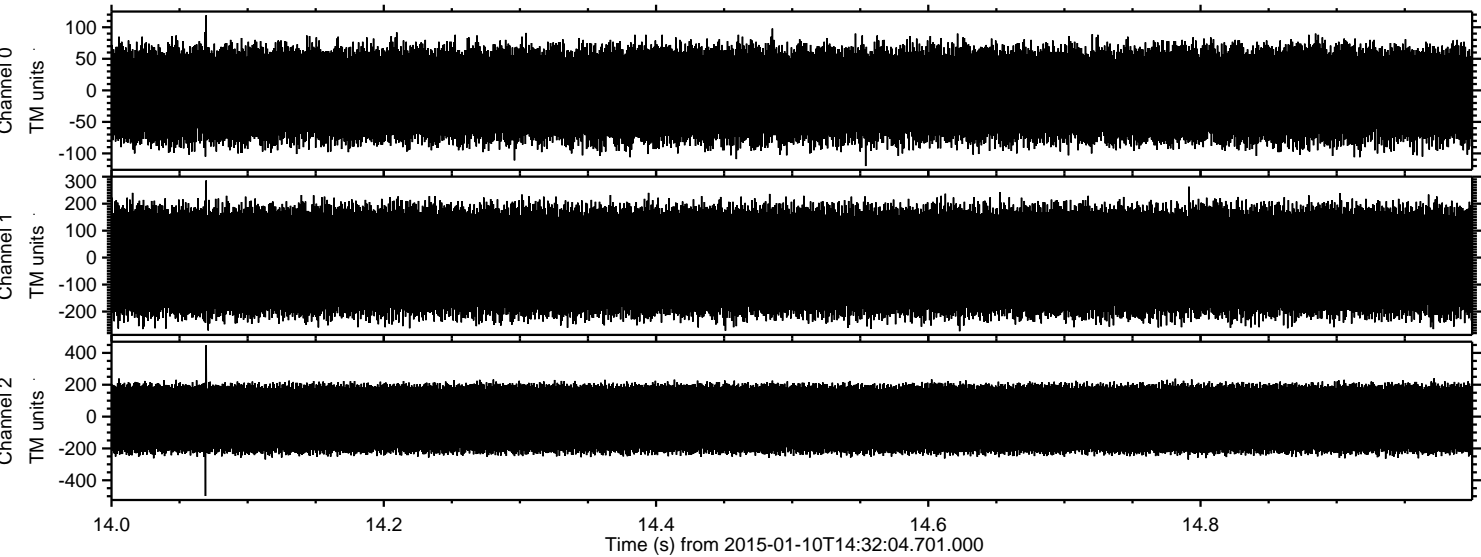
Channel 1
mn: -277
mx: 247
 μ : -14.0
 σ : 107.8

Channel 2
mn: -439
mx: 684
 μ : -14.0
 σ : 121.7

Processed Sat Jan 10 15:40:25 2015 by ELM ver.2012-10-06 from 001__elm20150110_143203__dat00.bin



Processed Sat Jan 10 15:40:26 2015 by ELM ver.2012-10-06 from 001__elm20150110_143203__dat00.bin

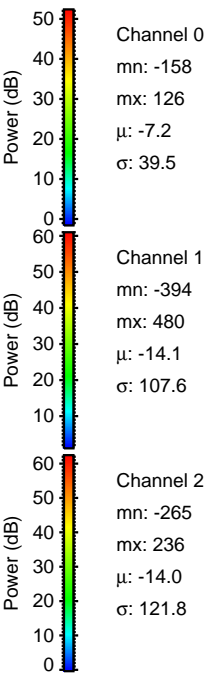
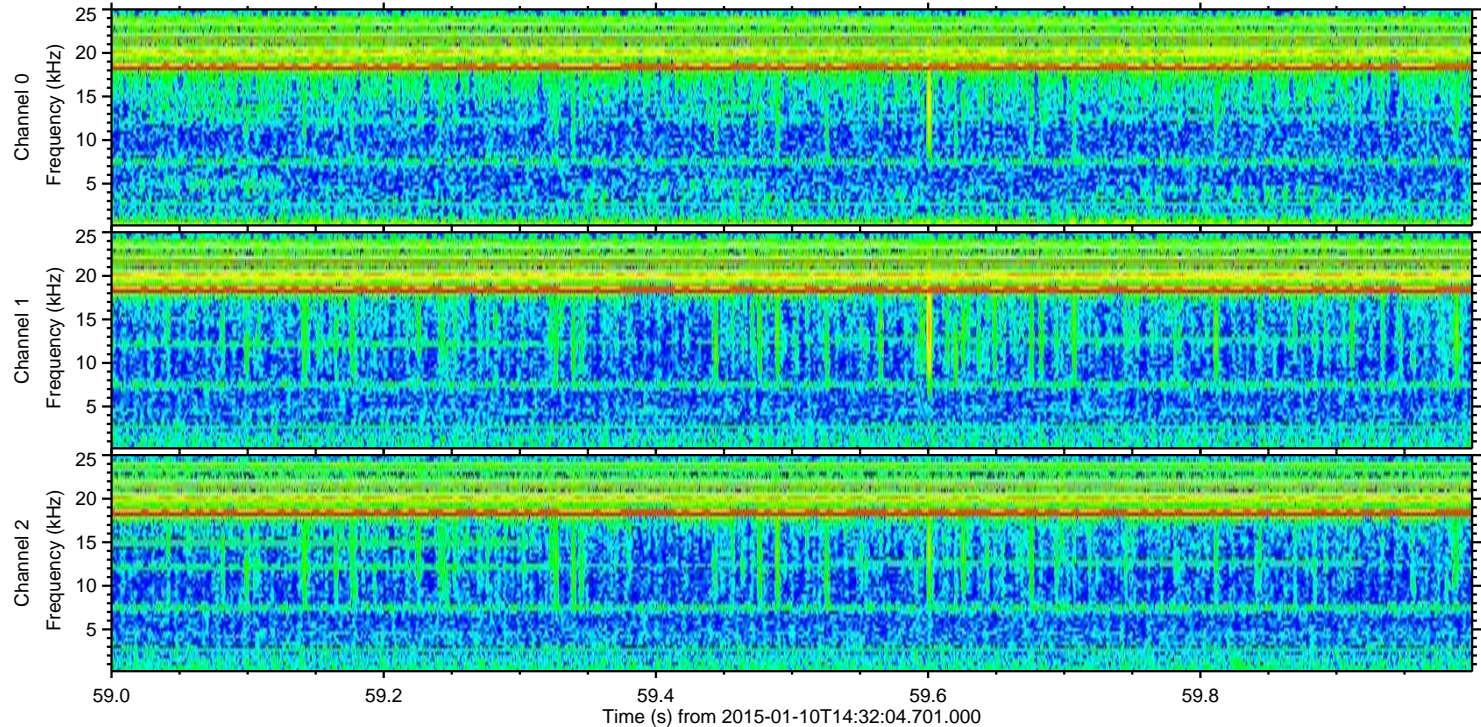
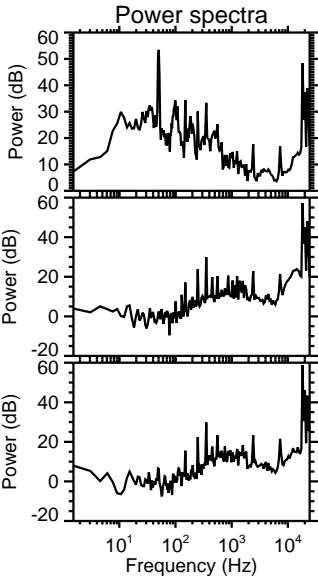
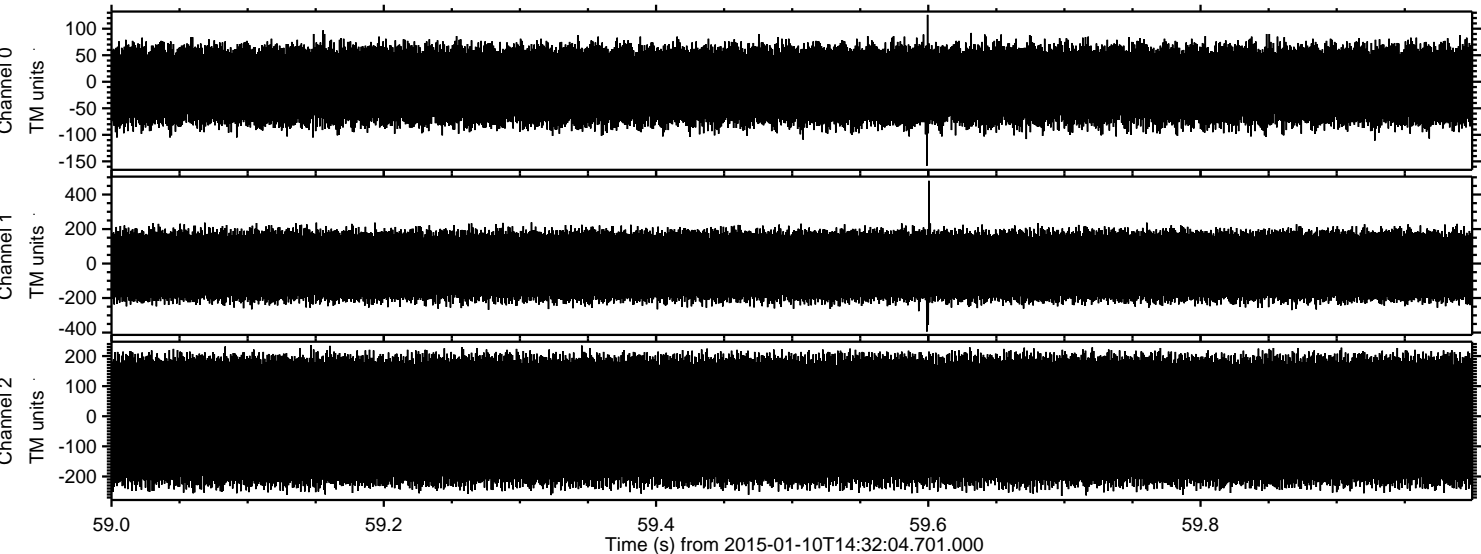


Channel 0
mn: -120
mx: 119
 μ : -7.2
 σ : 39.7

Channel 1
mn: -273
mx: 286
 μ : -14.0
 σ : 107.9

Channel 2
mn: -499
mx: 448
 μ : -14.0
 σ : 122.2

Processed Sat Jan 10 15:40:27 2015 by ELM ver.2012-10-06 from 001__elm20150110_143203__dat00.bin



Processed Sat Jan 10 15:40:28 2015 by ELM ver.2012-10-06 from 001__elm20150110_143203__dat00.bin

