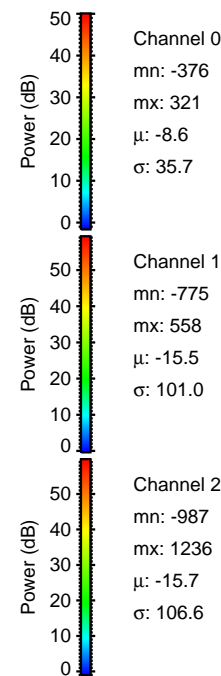
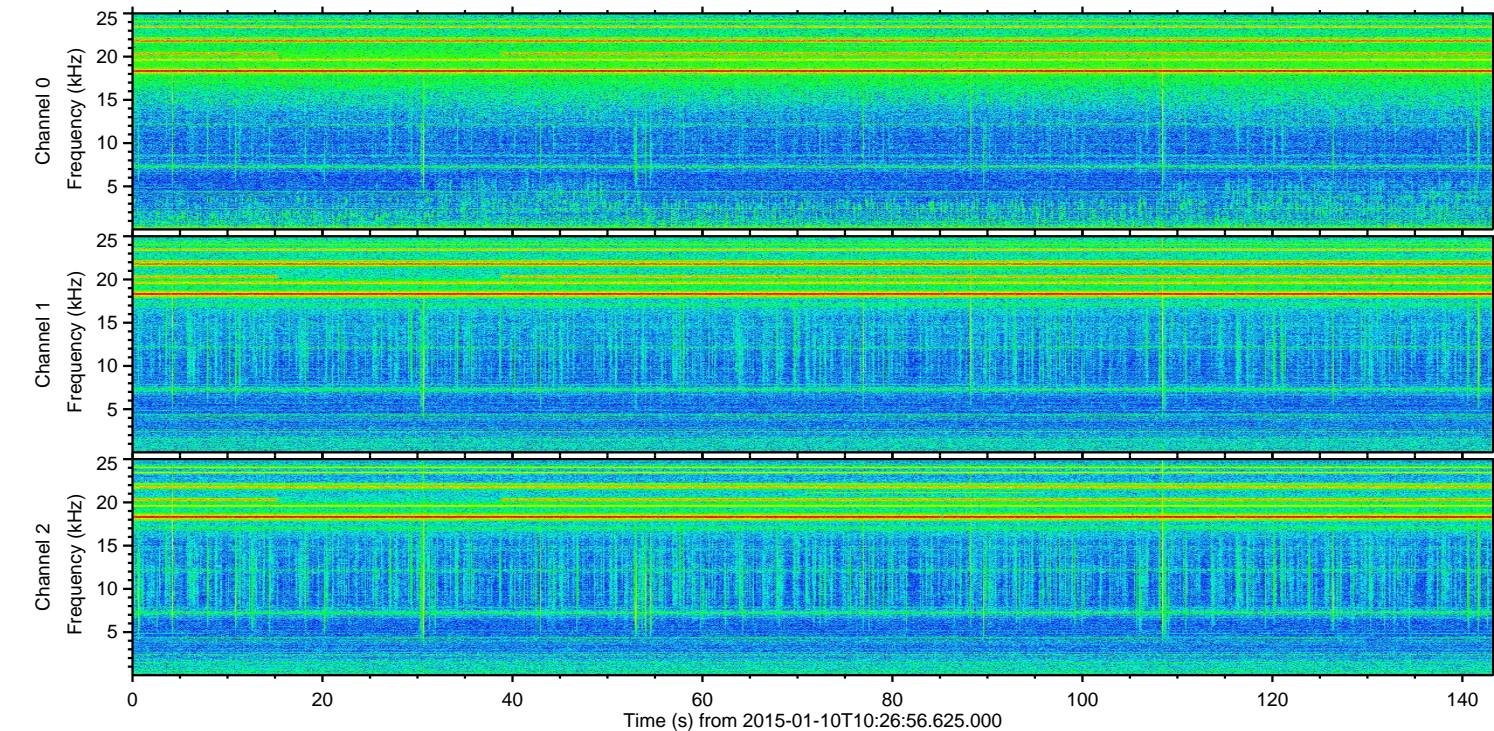
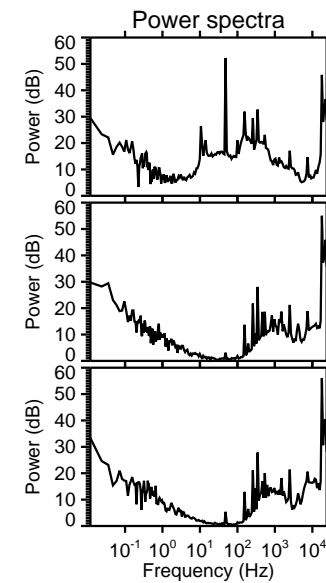
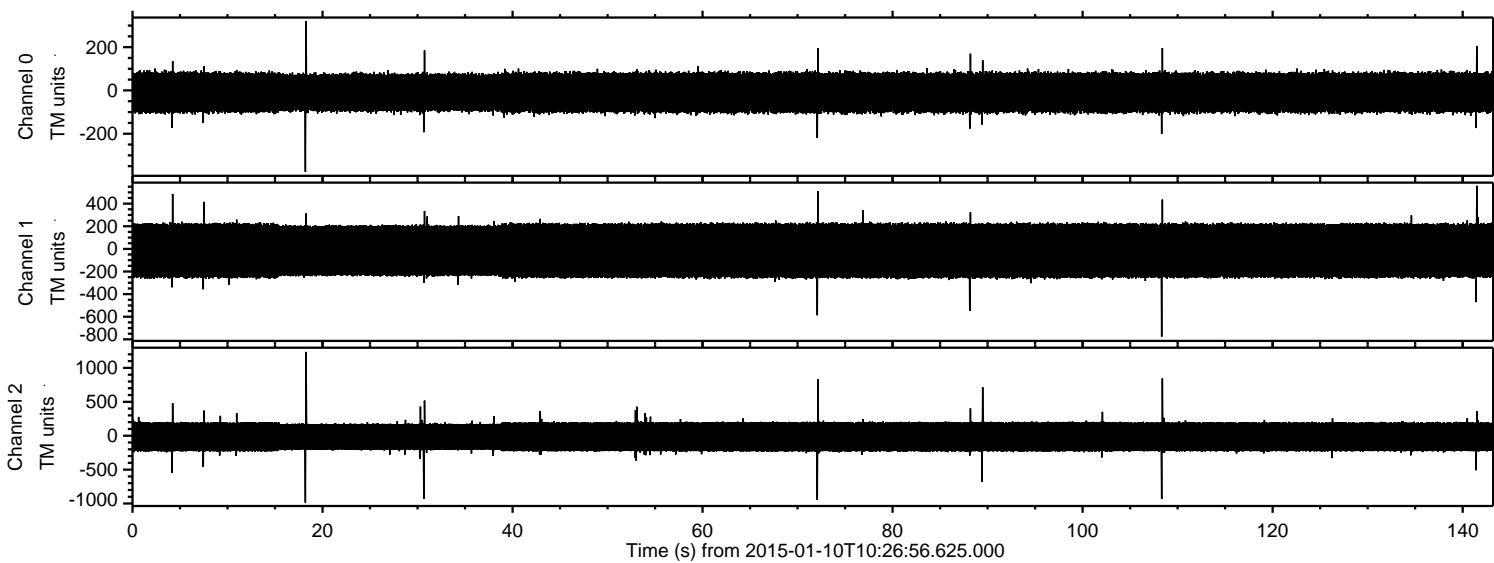
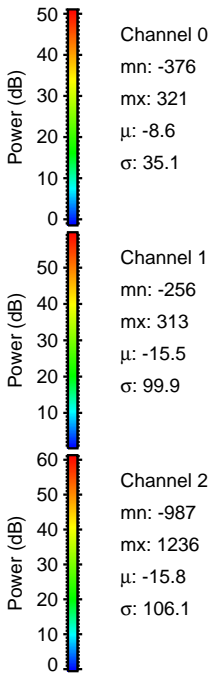
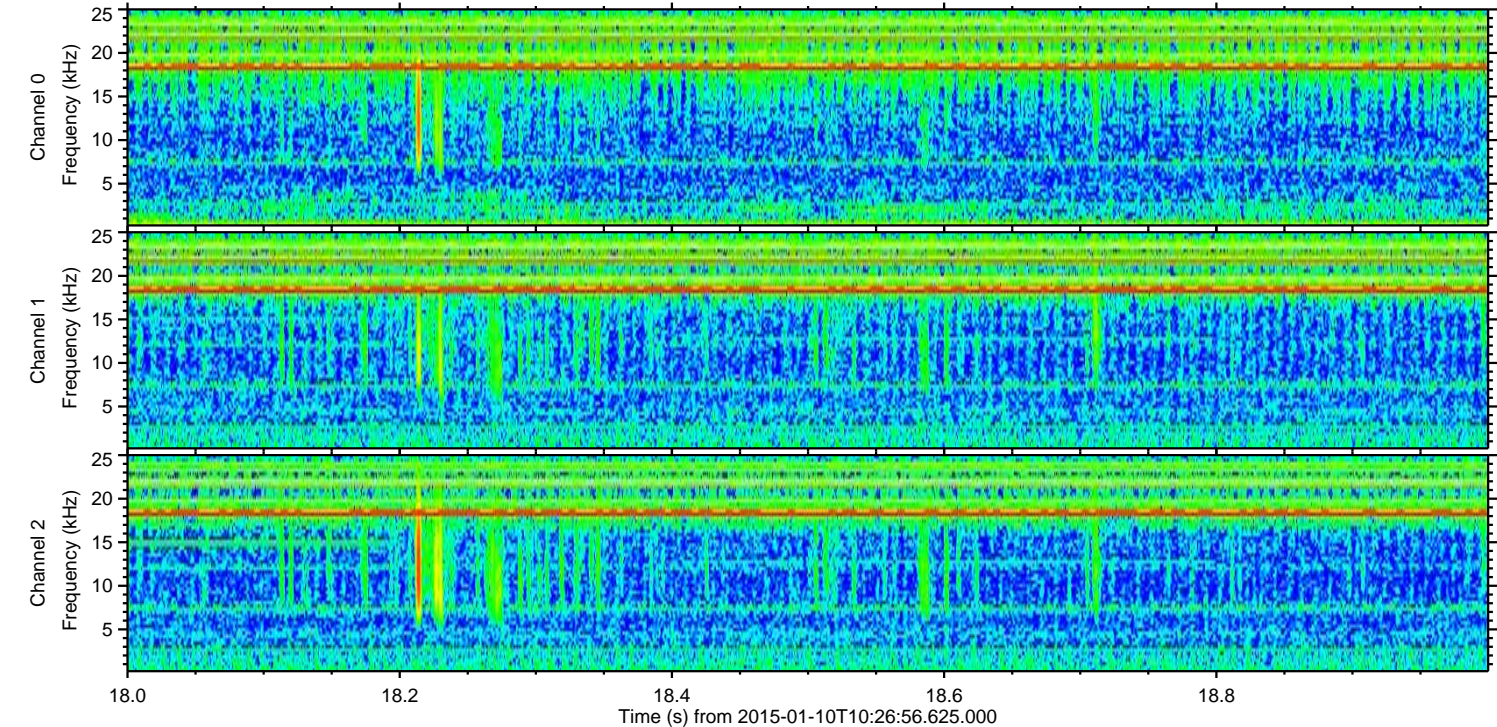
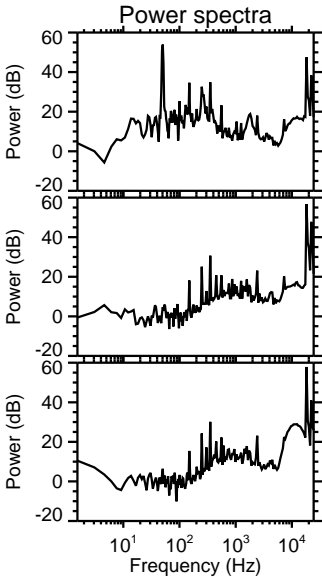
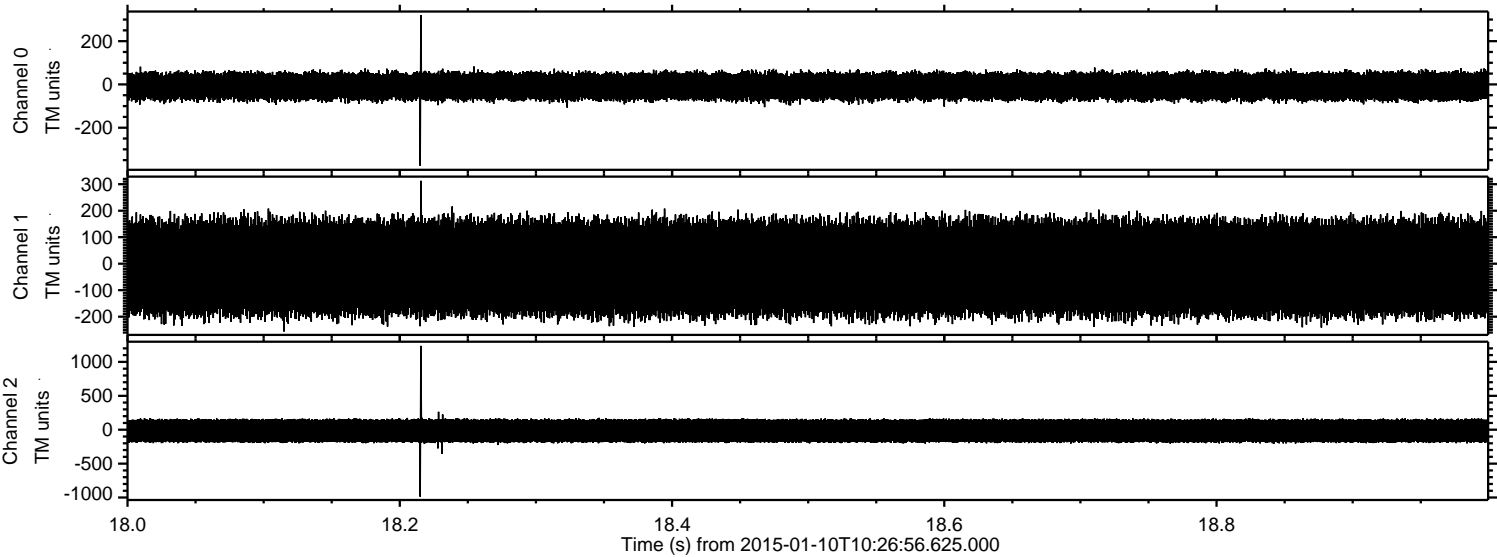


ELMAVAN 3D WAVEFORMS (Measured data sampled at 50 kHz) 49750 packets of 144 samples from 2015-01-10T10:26:56.625.000.

Processed Sat Jan 10 11:34:21 2015 by ELM ver.2012-10-06 from 001__elm20150110_102655__dat00.bin

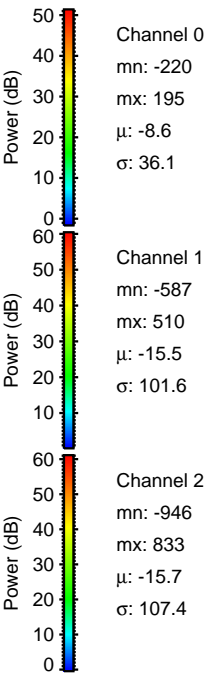
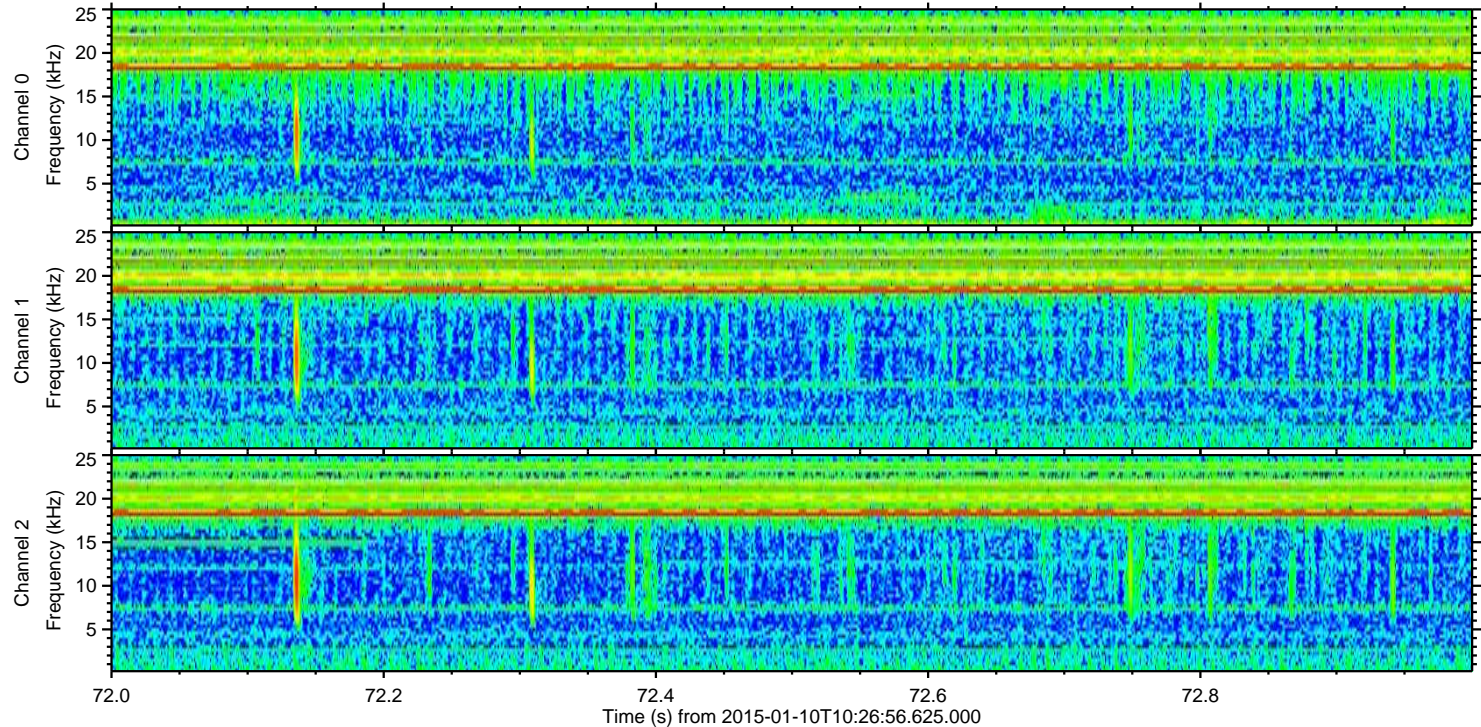
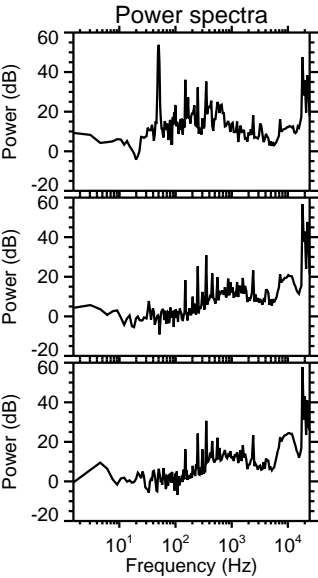
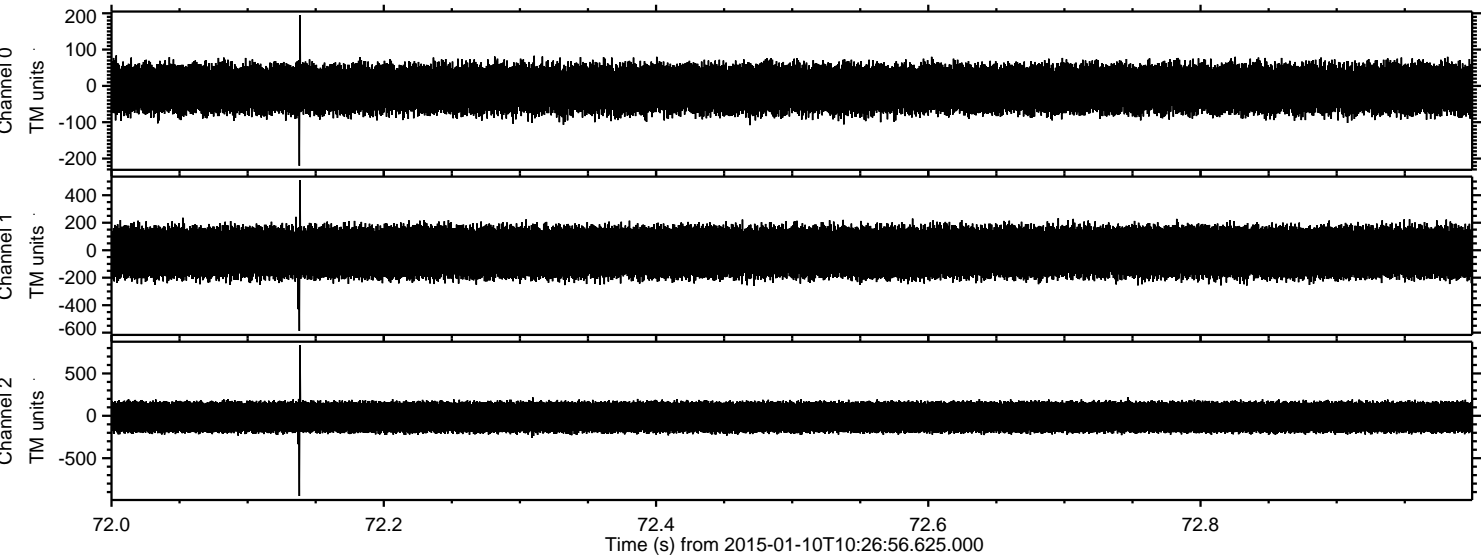


Processed Sat Jan 10 11:34:32 2015 by ELM ver.2012-10-06 from 001__elm20150110_102655__dat00.bin

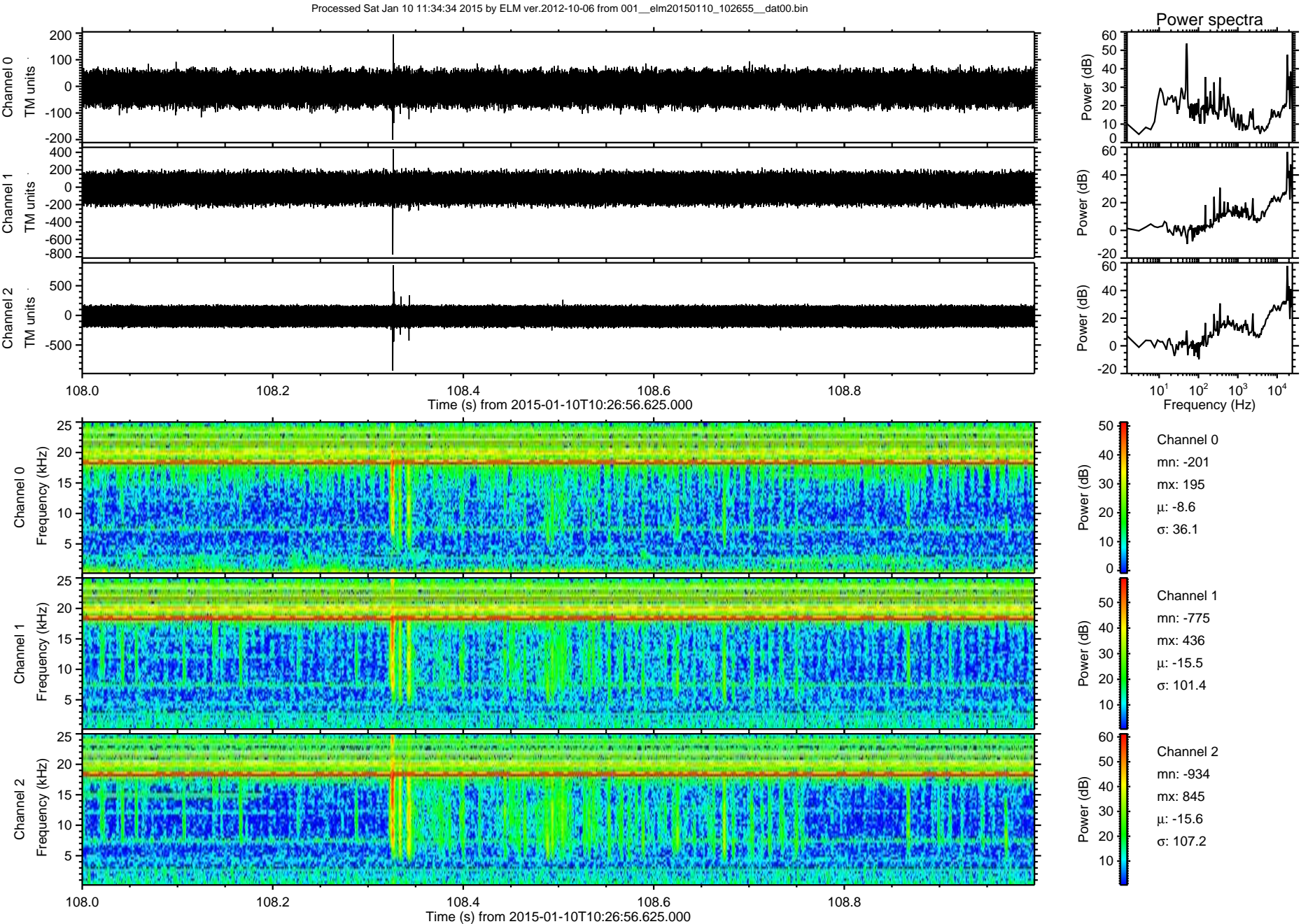


ELMAVAN 3D WAVEFORMS (Measured data sampled at 50 kHz) 49750 packets of 144 samples from 2015-01-10T10:26:56.625.000. Part 73/144

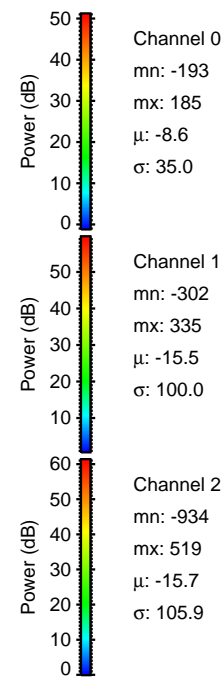
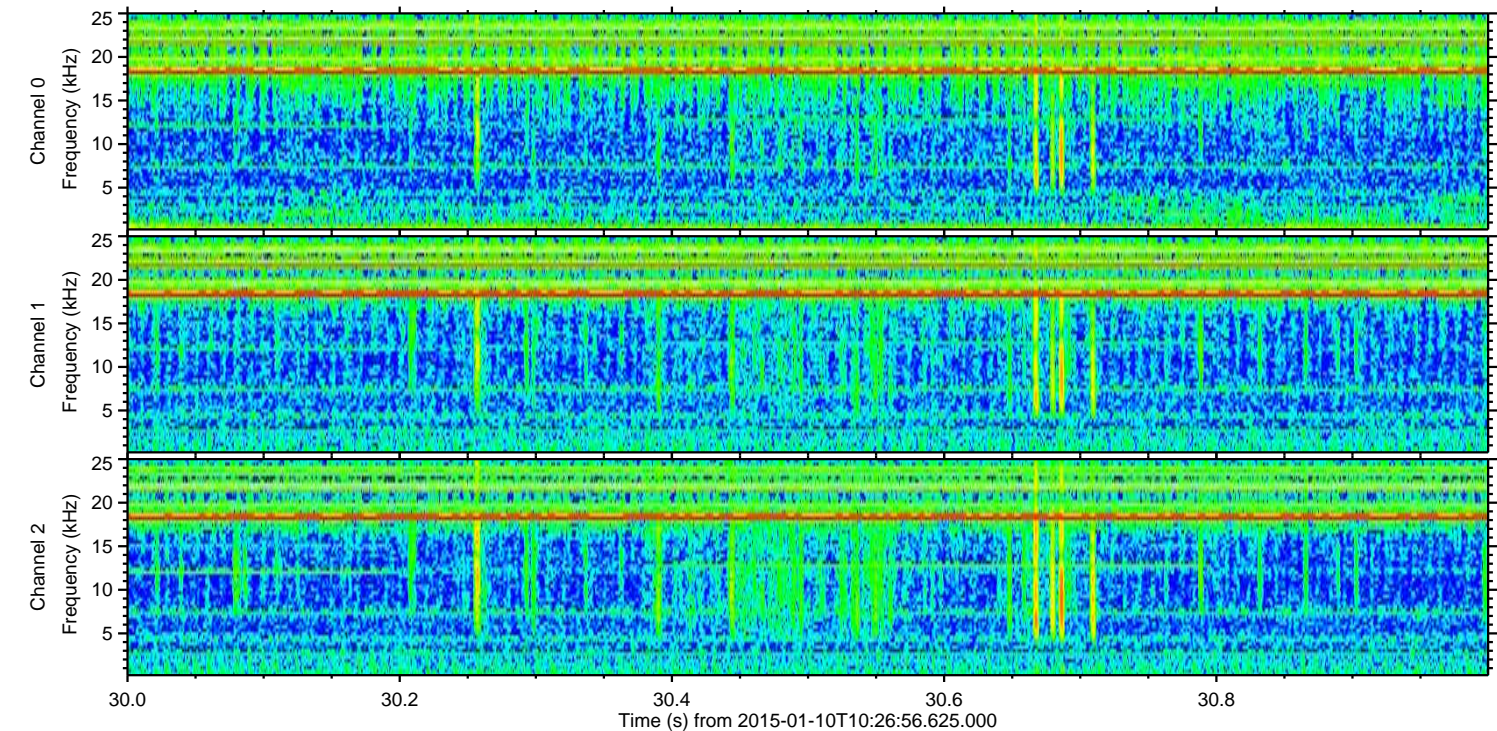
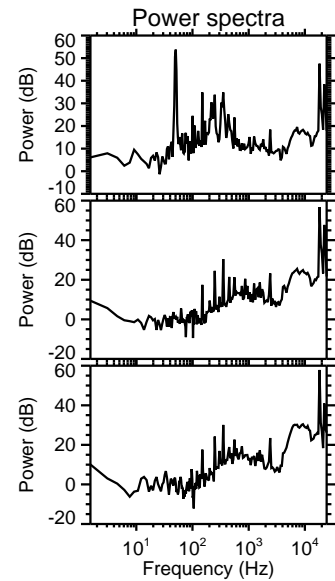
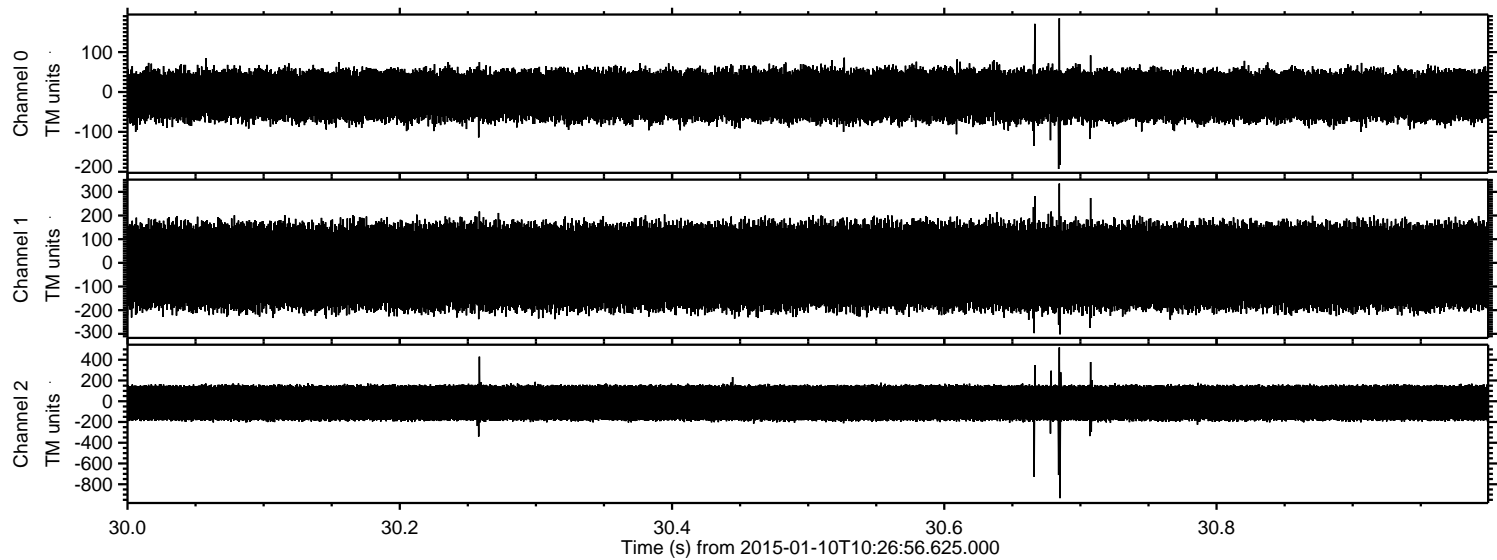
Processed Sat Jan 10 11:34:33 2015 by ELM ver.2012-10-06 from 001__elm20150110_102655__dat00.bin



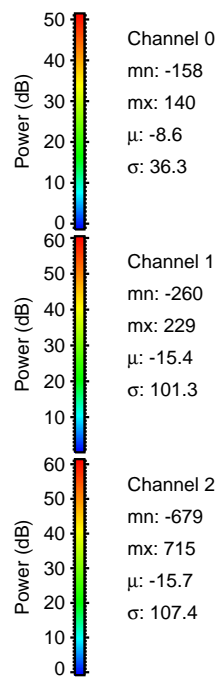
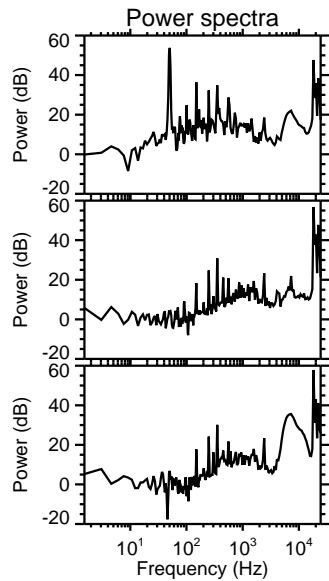
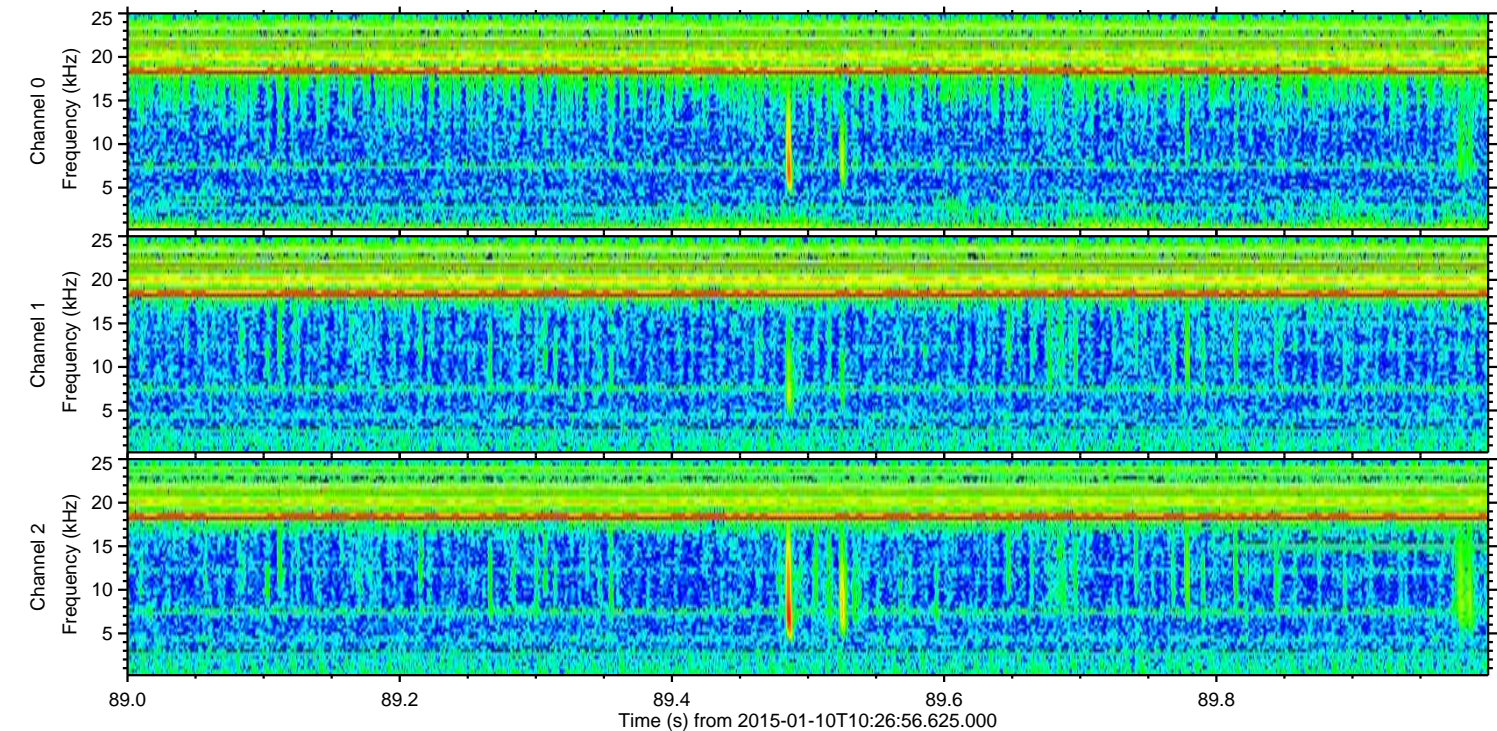
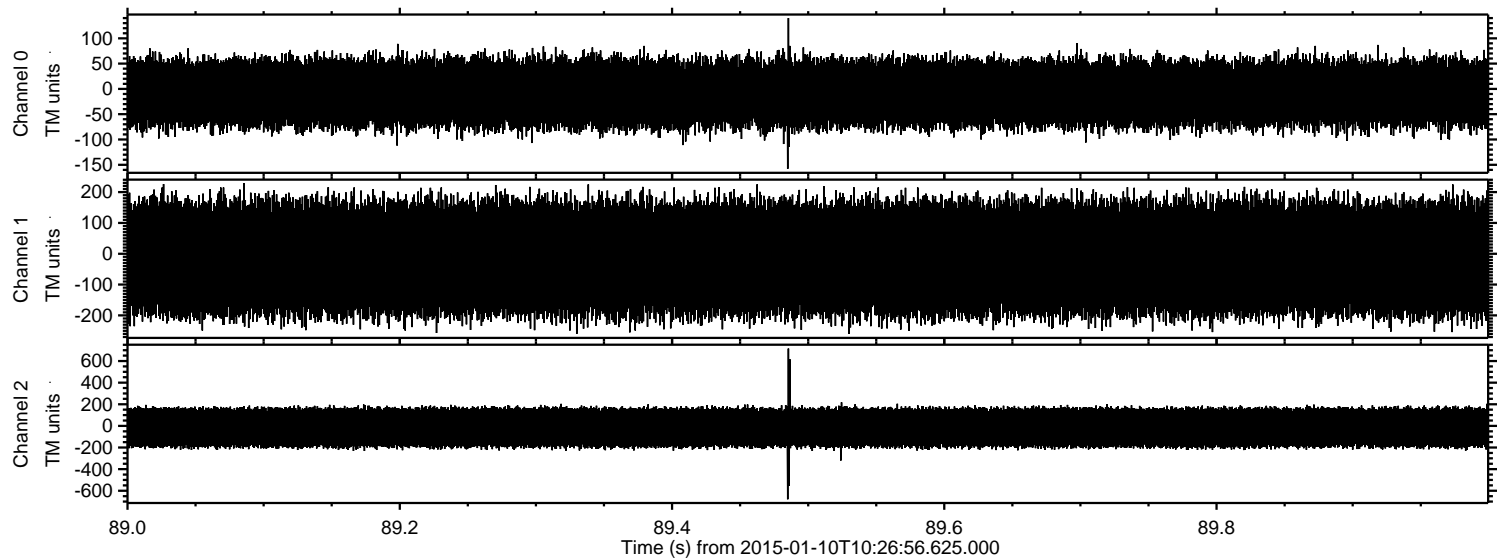
ELMAVAN 3D WAVEFORMS (Measured data sampled at 50 kHz) 49750 packets of 144 samples from 2015-01-10T10:26:56.625.000. Part 109/144



Processed Sat Jan 10 11:34:35 2015 by ELM ver.2012-10-06 from 001__elm20150110_102655__dat00.bin



Processed Sat Jan 10 11:34:36 2015 by ELM ver.2012-10-06 from 001__elm20150110_102655__dat00.bin

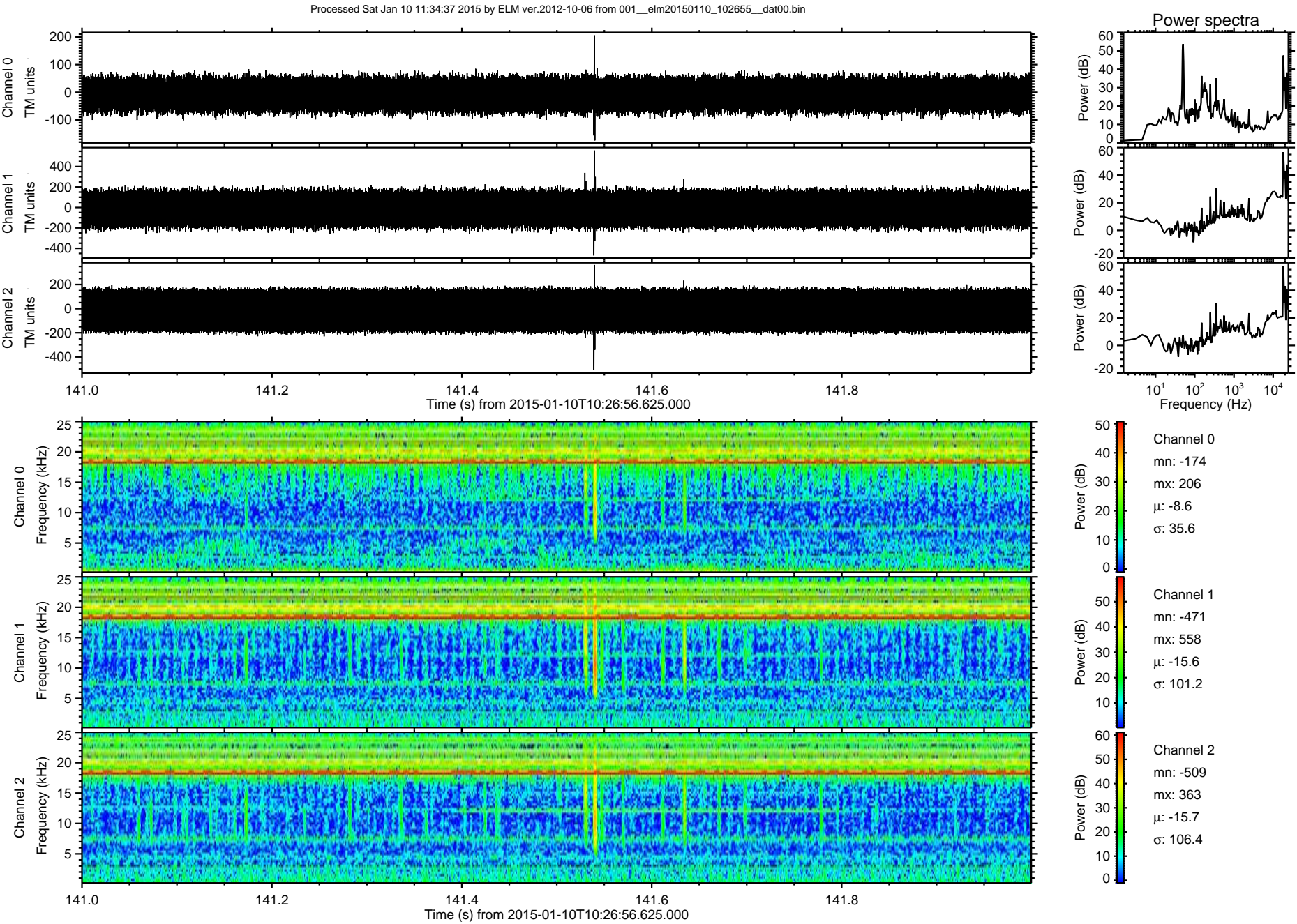


Channel 0
mn: -158
mx: 140
 μ : -8.6
 σ : 36.3

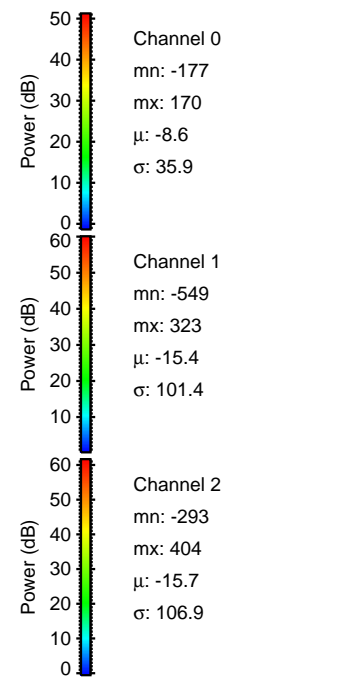
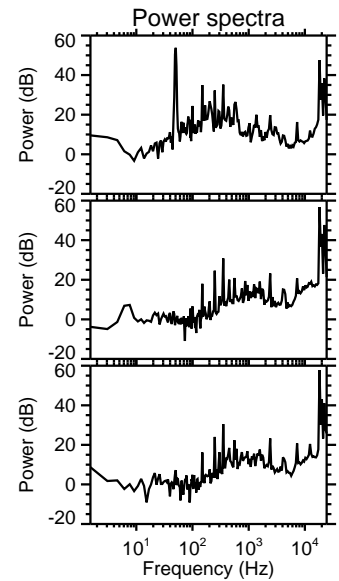
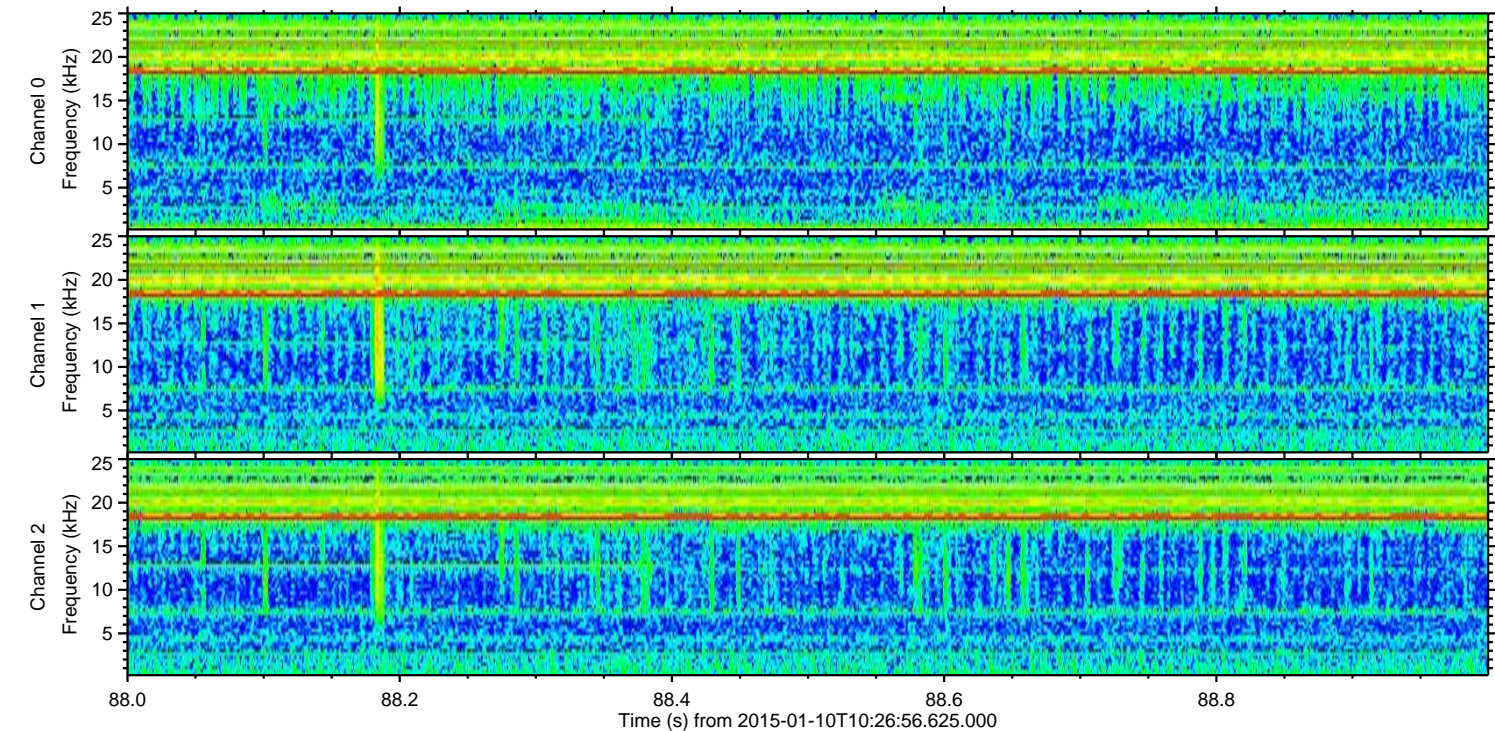
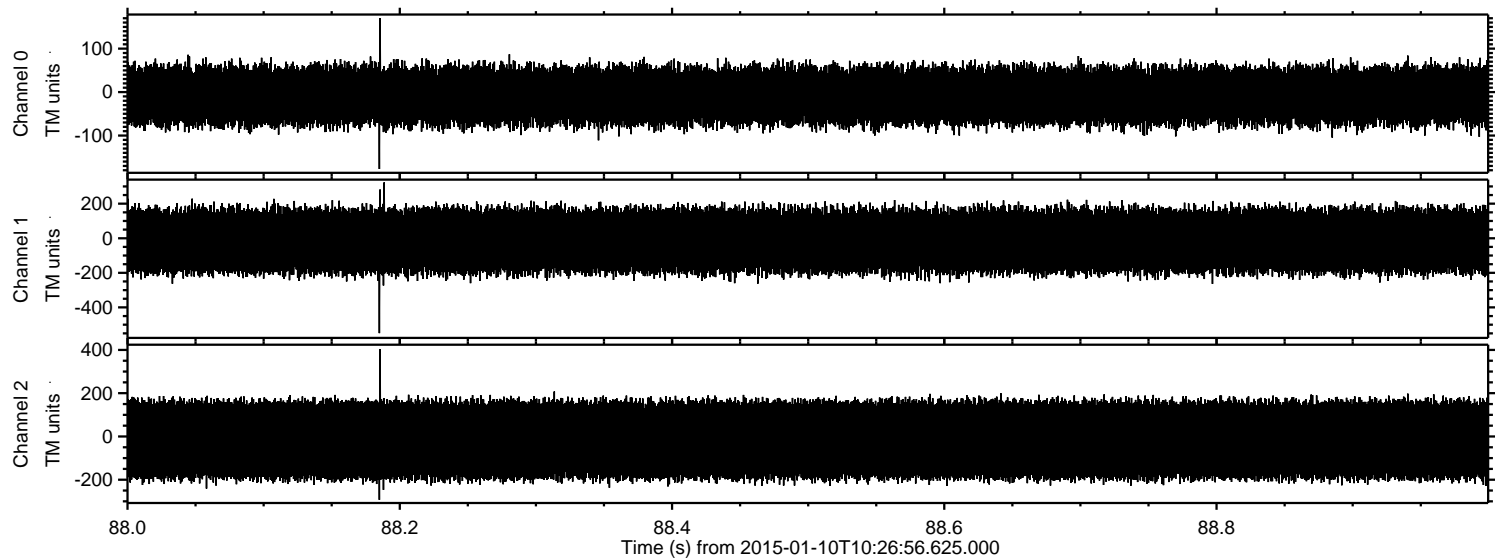
Channel 1
mn: -260
mx: 229
 μ : -15.4
 σ : 101.3

Channel 2
mn: -679
mx: 715
 μ : -15.7
 σ : 107.4

ELMAVAN 3D WAVEFORMS (Measured data sampled at 50 kHz) 49750 packets of 144 samples from 2015-01-10T10:26:56.625.000. Part 142/144



Processed Sat Jan 10 11:34:38 2015 by ELM ver.2012-10-06 from 001__elm20150110_102655__dat00.bin

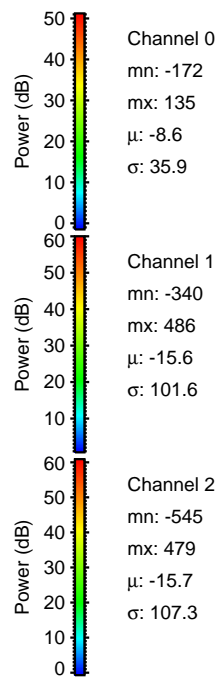
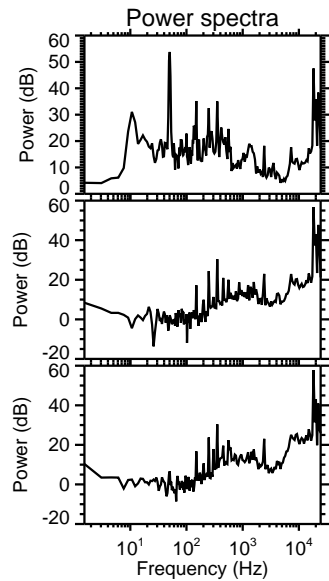
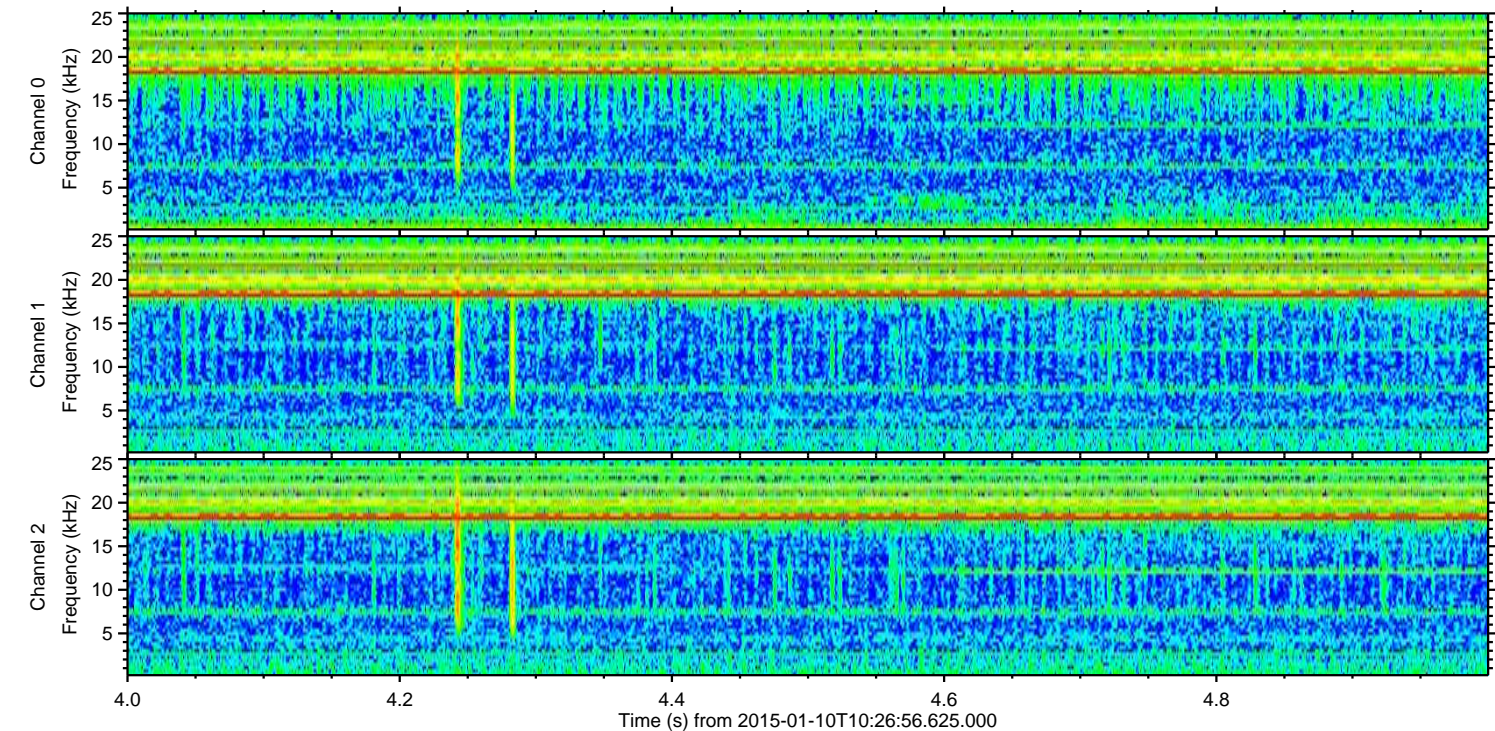
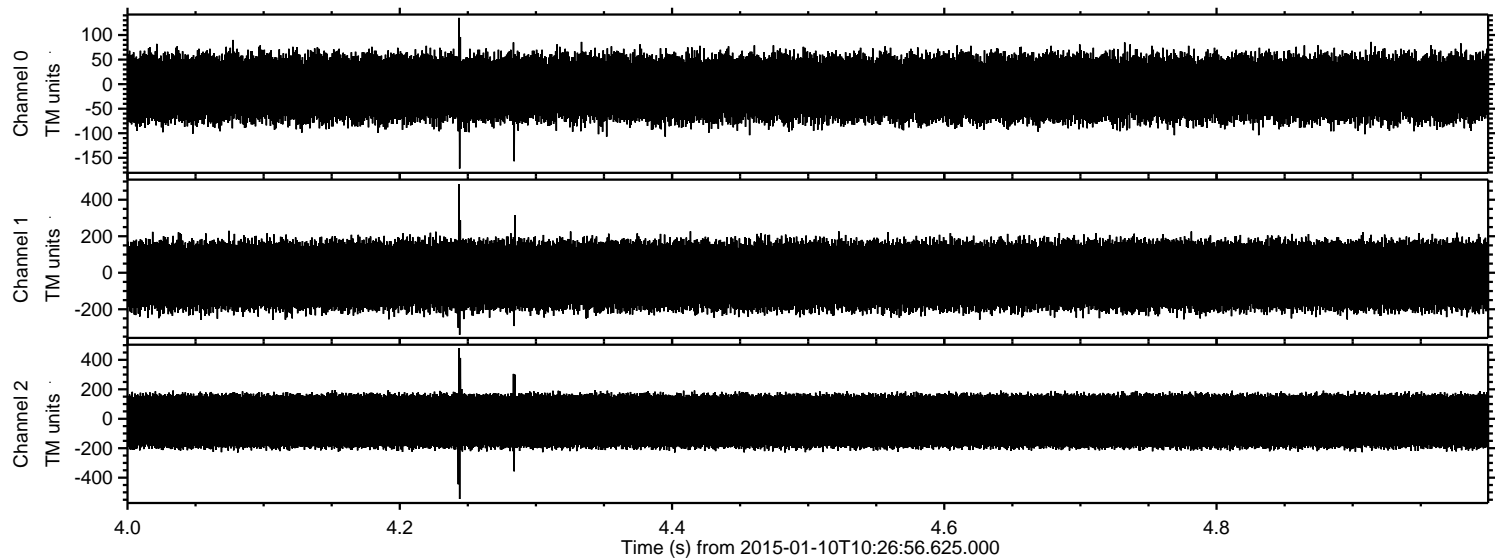


Channel 0
mn: -177
mx: 170
 μ : -8.6
 σ : 35.9

Channel 1
mn: -549
mx: 323
 μ : -15.4
 σ : 101.4

Channel 2
mn: -293
mx: 404
 μ : -15.7
 σ : 106.9

Processed Sat Jan 10 11:34:39 2015 by ELM ver.2012-10-06 from 001__elm20150110_102655__dat00.bin

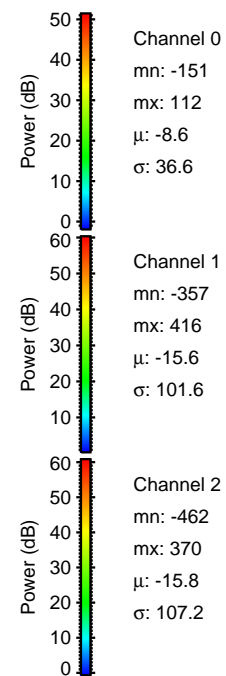
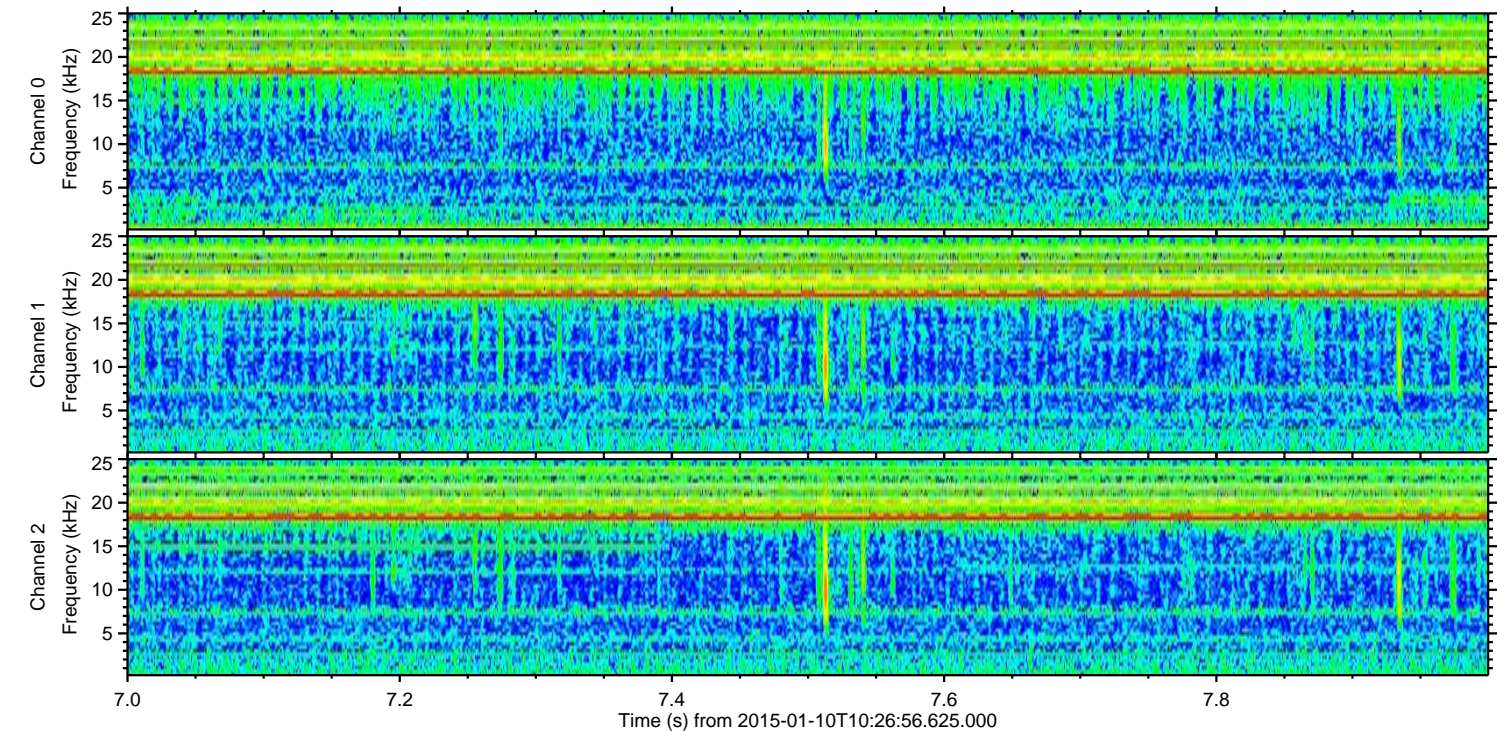
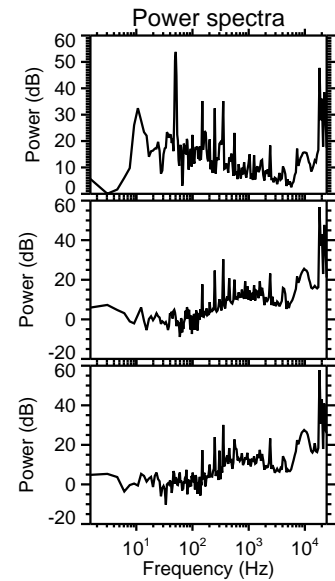
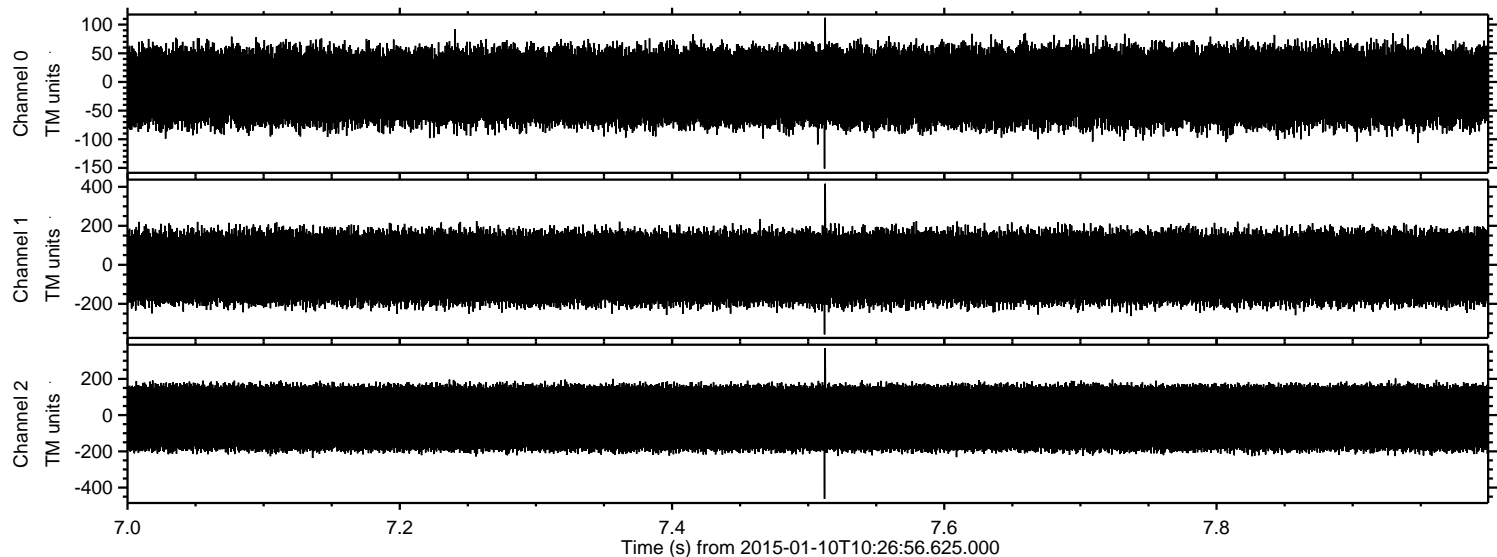


Channel 0
mn: -172
mx: 135
 μ : -8.6
 σ : 35.9

Channel 1
mn: -340
mx: 486
 μ : -15.6
 σ : 101.6

Channel 2
mn: -545
mx: 479
 μ : -15.7
 σ : 107.3

Processed Sat Jan 10 11:34:40 2015 by ELM ver.2012-10-06 from 001__elm20150110_102655__dat00.bin



Processed Sat Jan 10 11:34:41 2015 by ELM ver.2012-10-06 from 001__elm20150110_102655__dat00.bin

