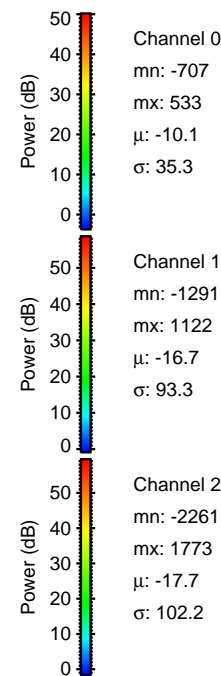
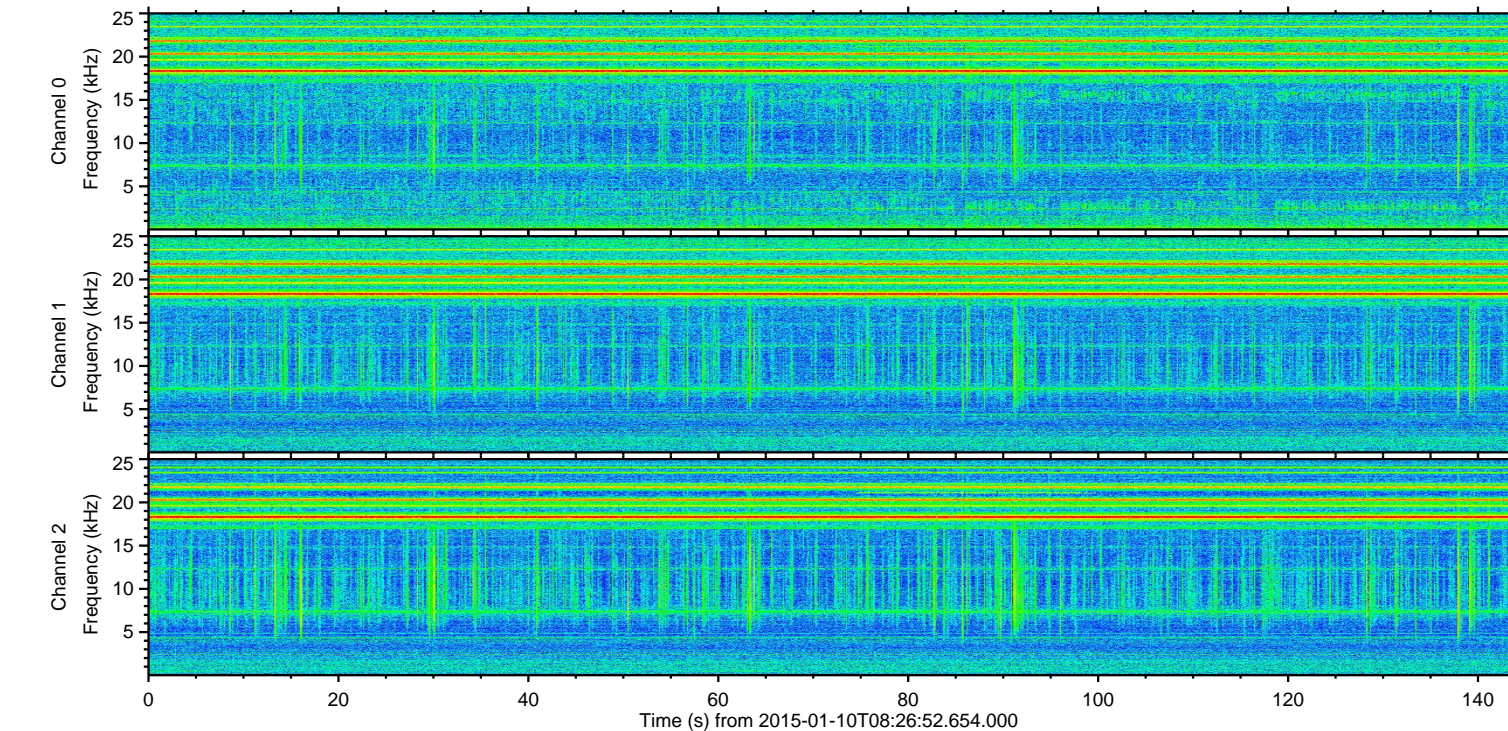
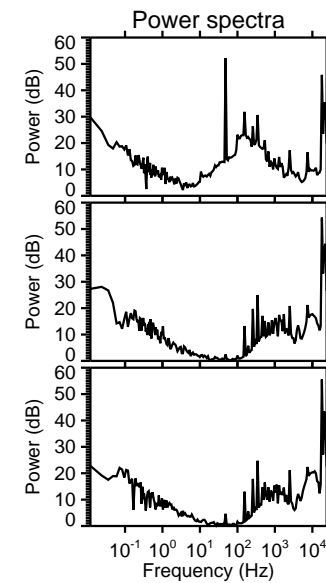
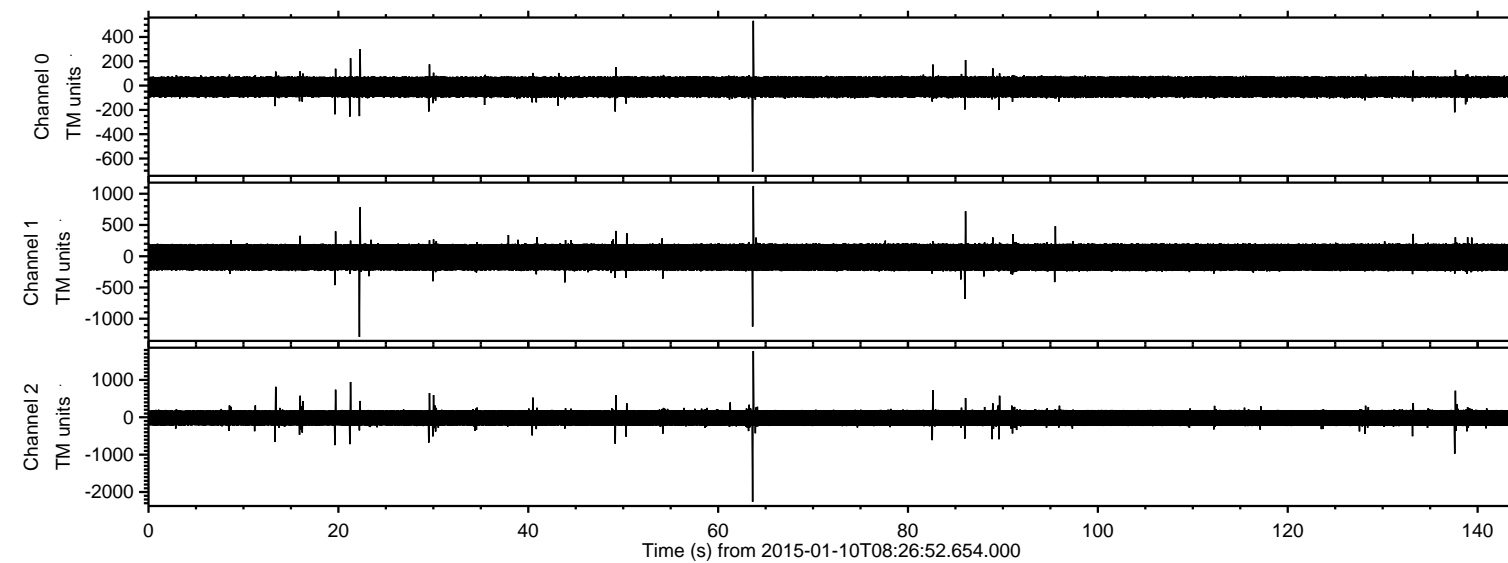


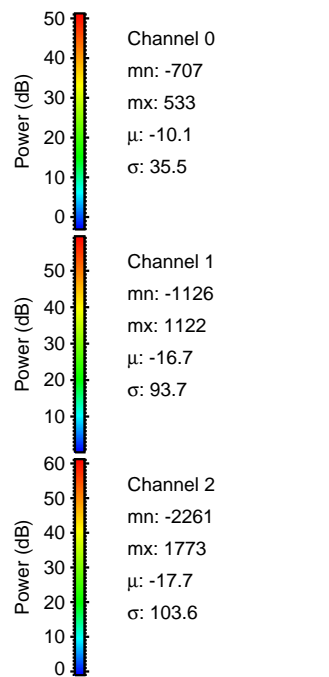
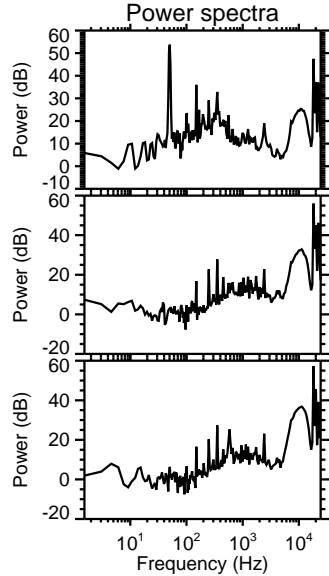
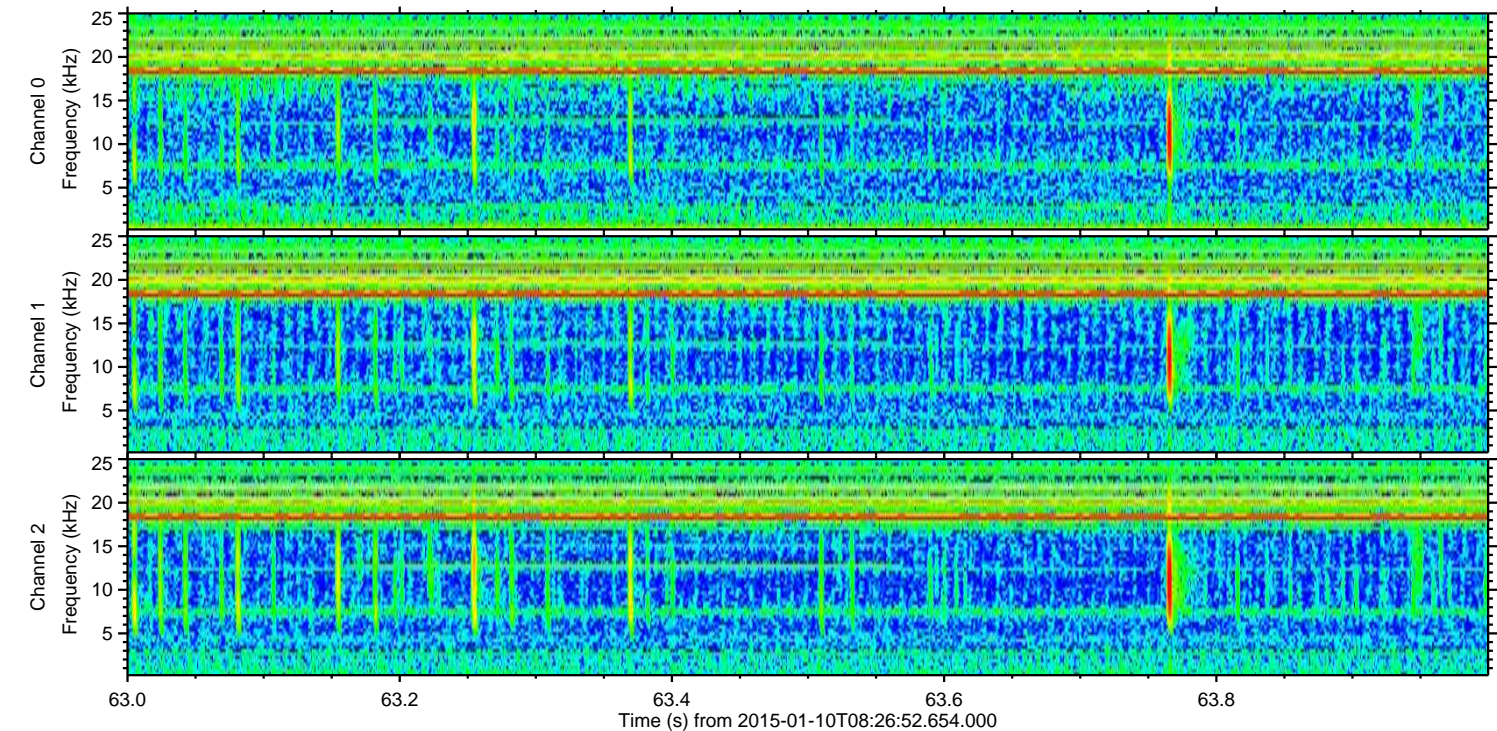
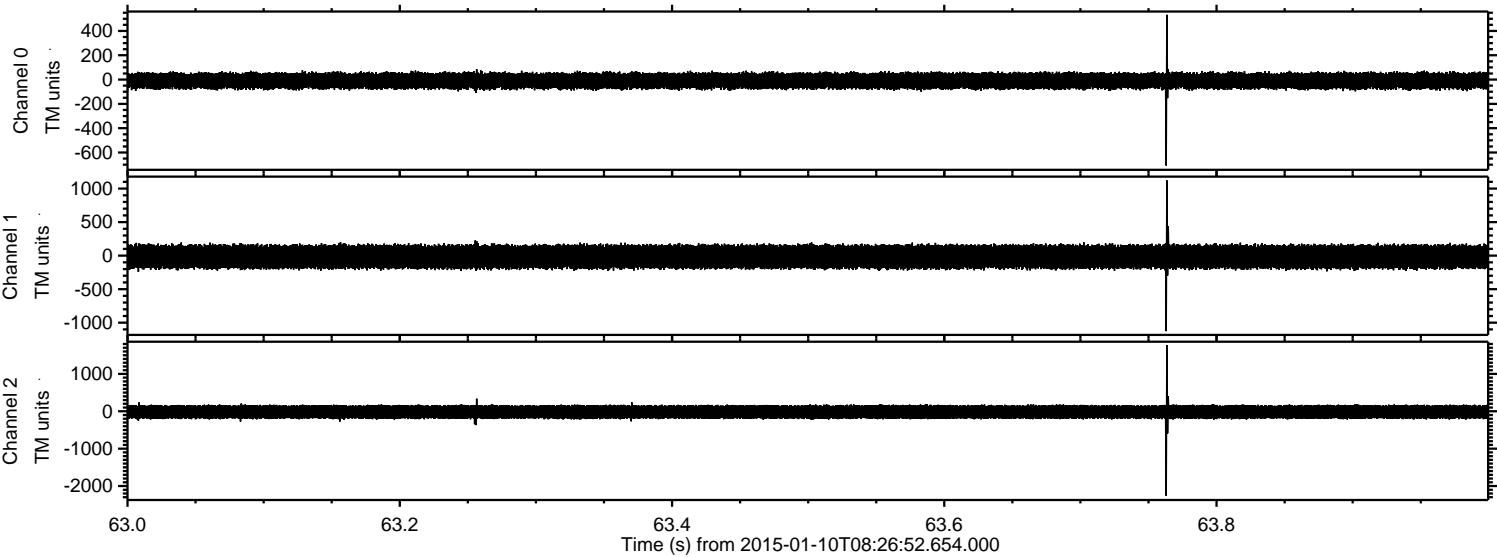
# ELMAVAN 3D WAVEFORMS (Measured data sampled at 50 kHz) 49764 packets of 144 samples from 2015-01-10T08:26:52.654.000.

Processed Sat Jan 10 09:34:30 2015 by ELM ver.2012-10-06 from 001\_\_elm20150110\_082651\_\_dat00.bin





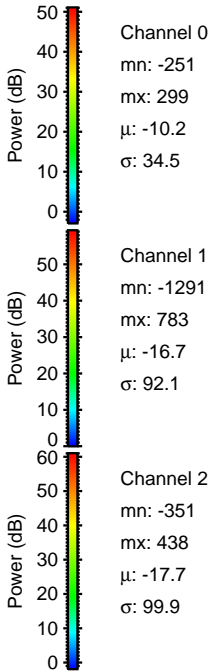
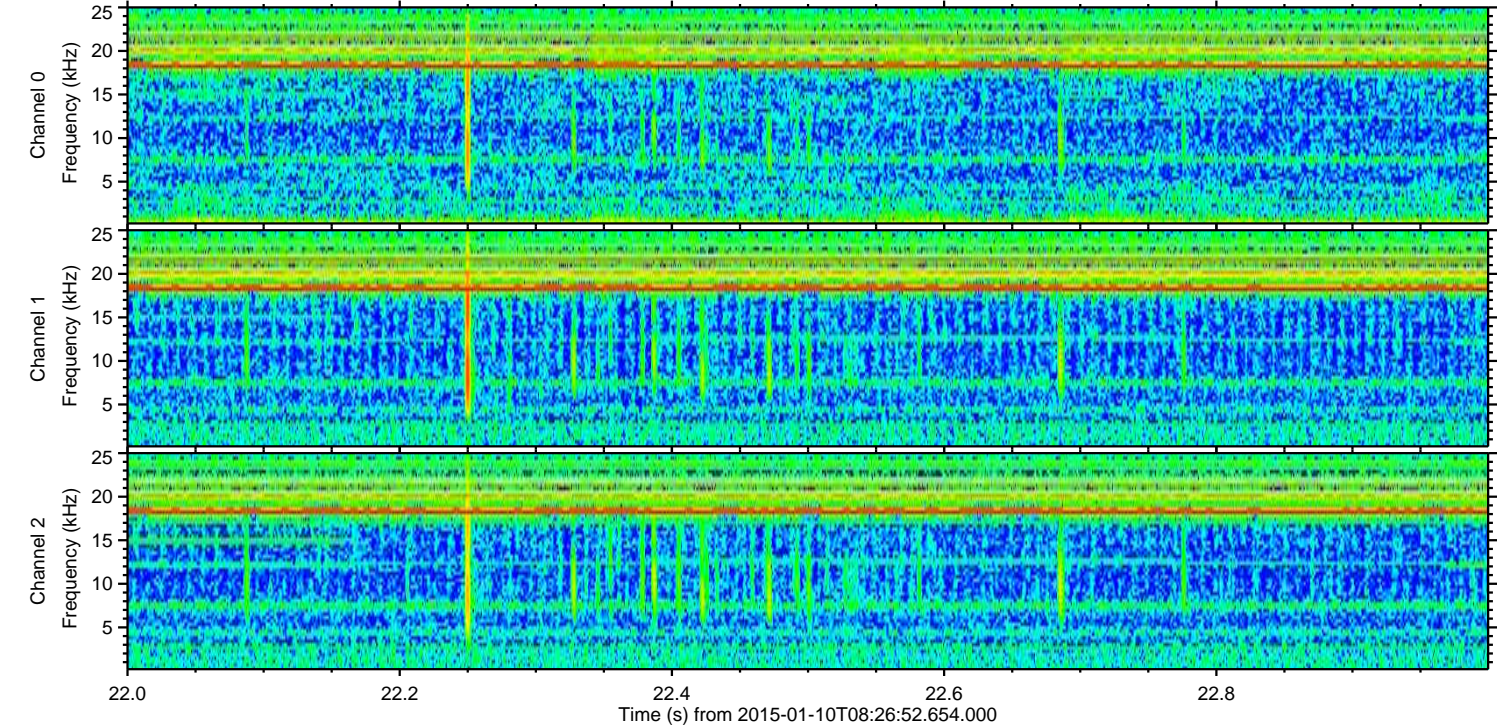
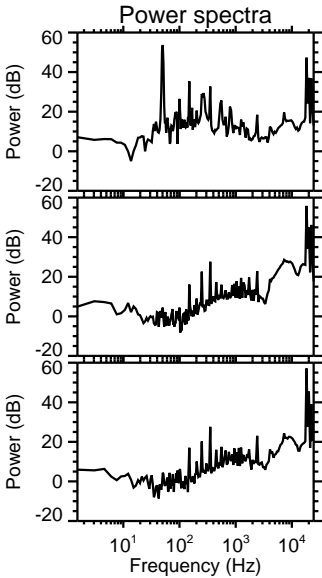
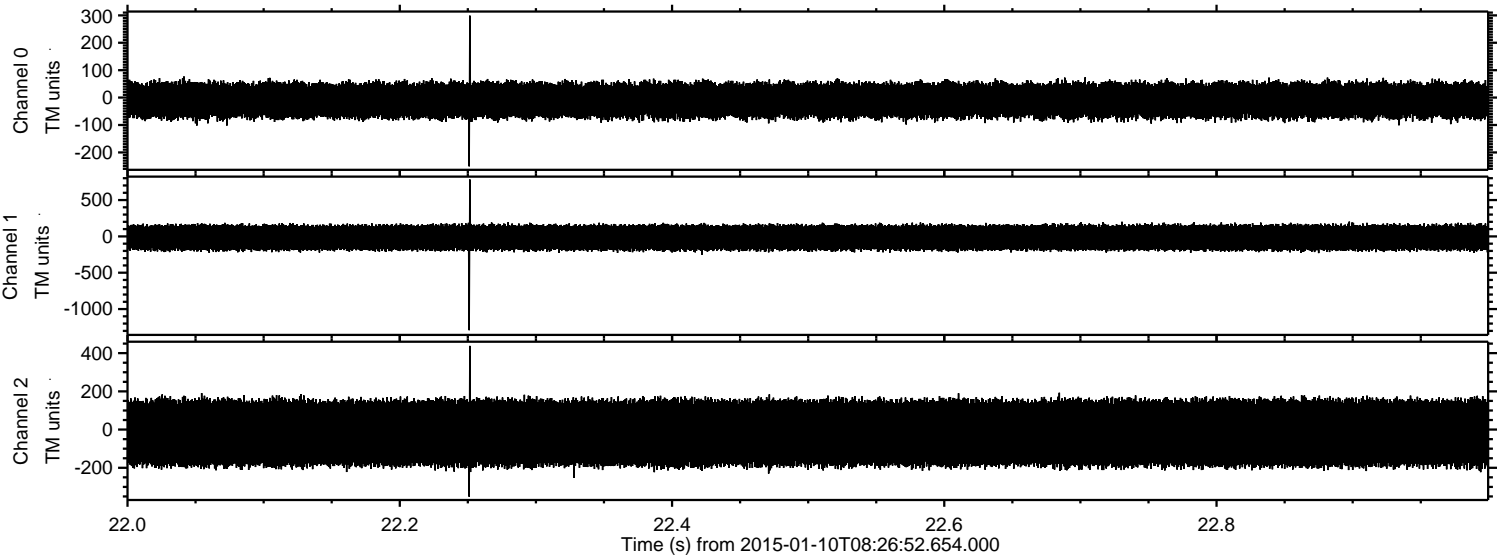
Processed Sat Jan 10 09:34:41 2015 by ELM ver.2012-10-06 from 001\_\_elm20150110\_082651\_\_dat00.bin





ELMAVAN 3D WAVEFORMS (Measured data sampled at 50 kHz) 49764 packets of 144 samples from 2015-01-10T08:26:52.654.000. Part 23/144

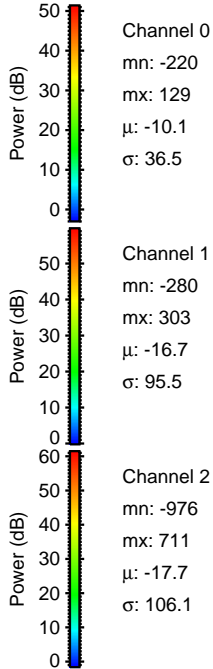
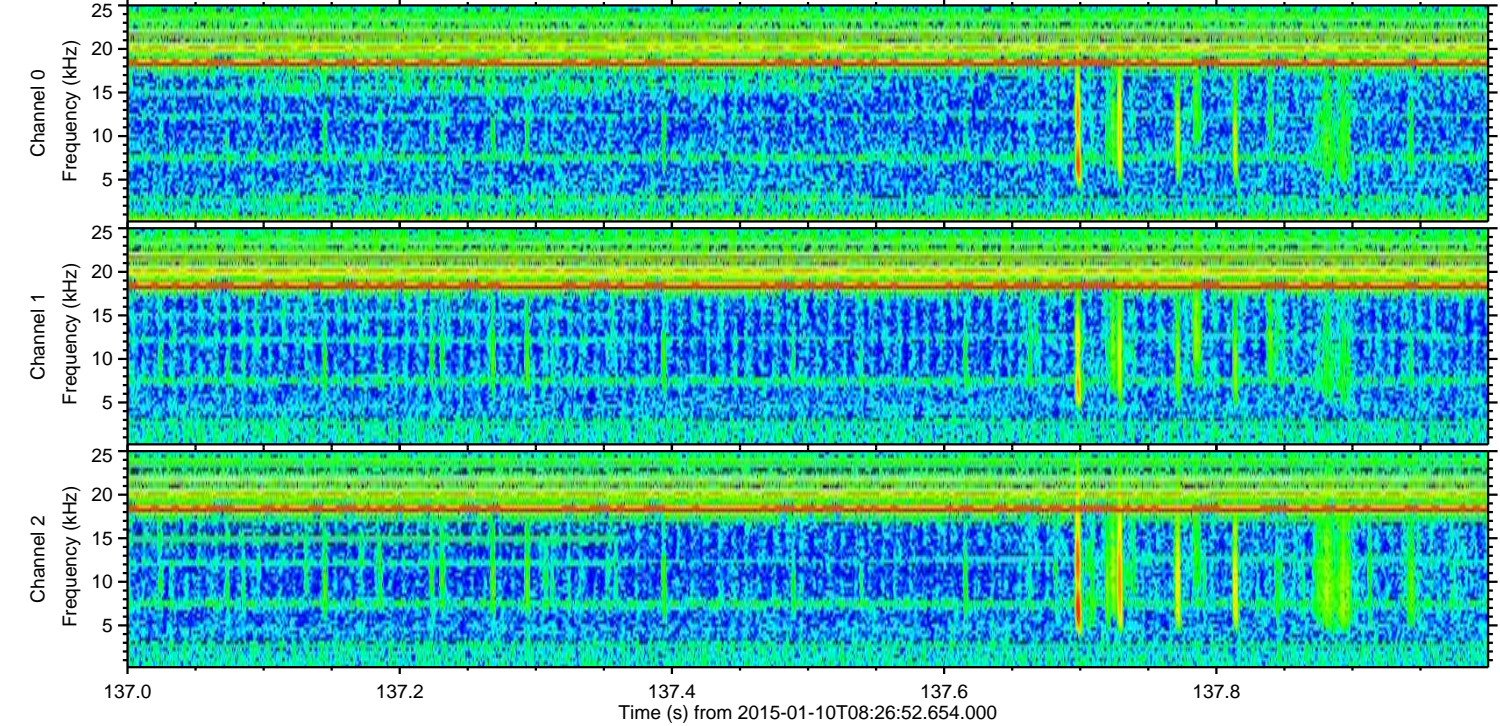
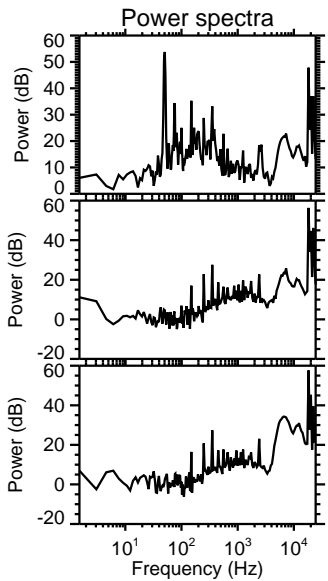
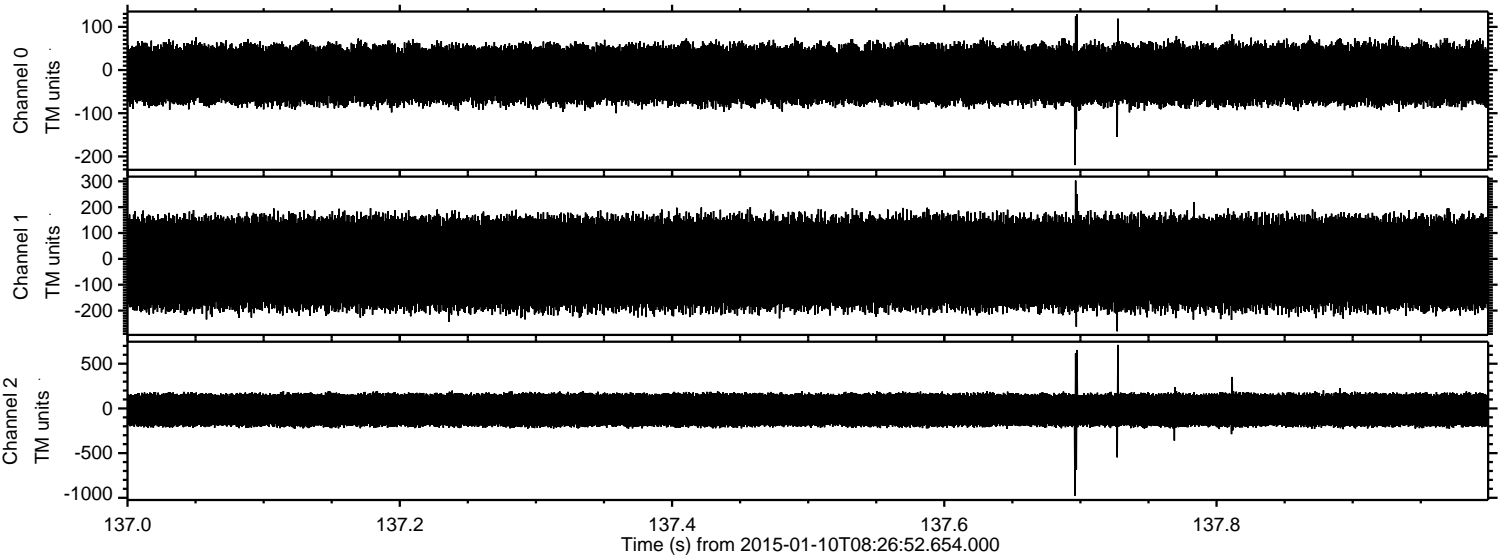
Processed Sat Jan 10 09:34:42 2015 by ELM ver.2012-10-06 from 001\_\_elm20150110\_082651\_\_dat00.bin





ELMAVAN 3D WAVEFORMS (Measured data sampled at 50 kHz) 49764 packets of 144 samples from 2015-01-10T08:26:52.654.000. Part 138/144

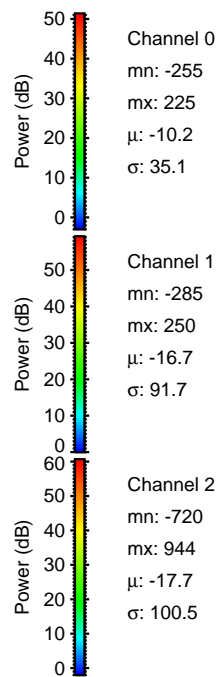
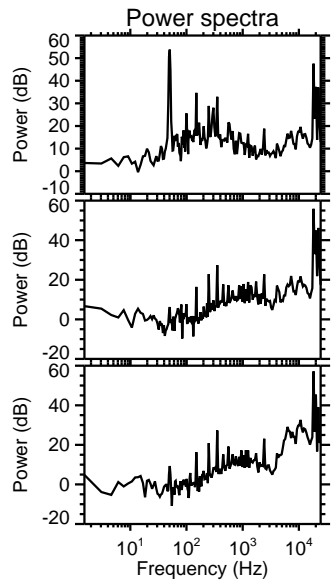
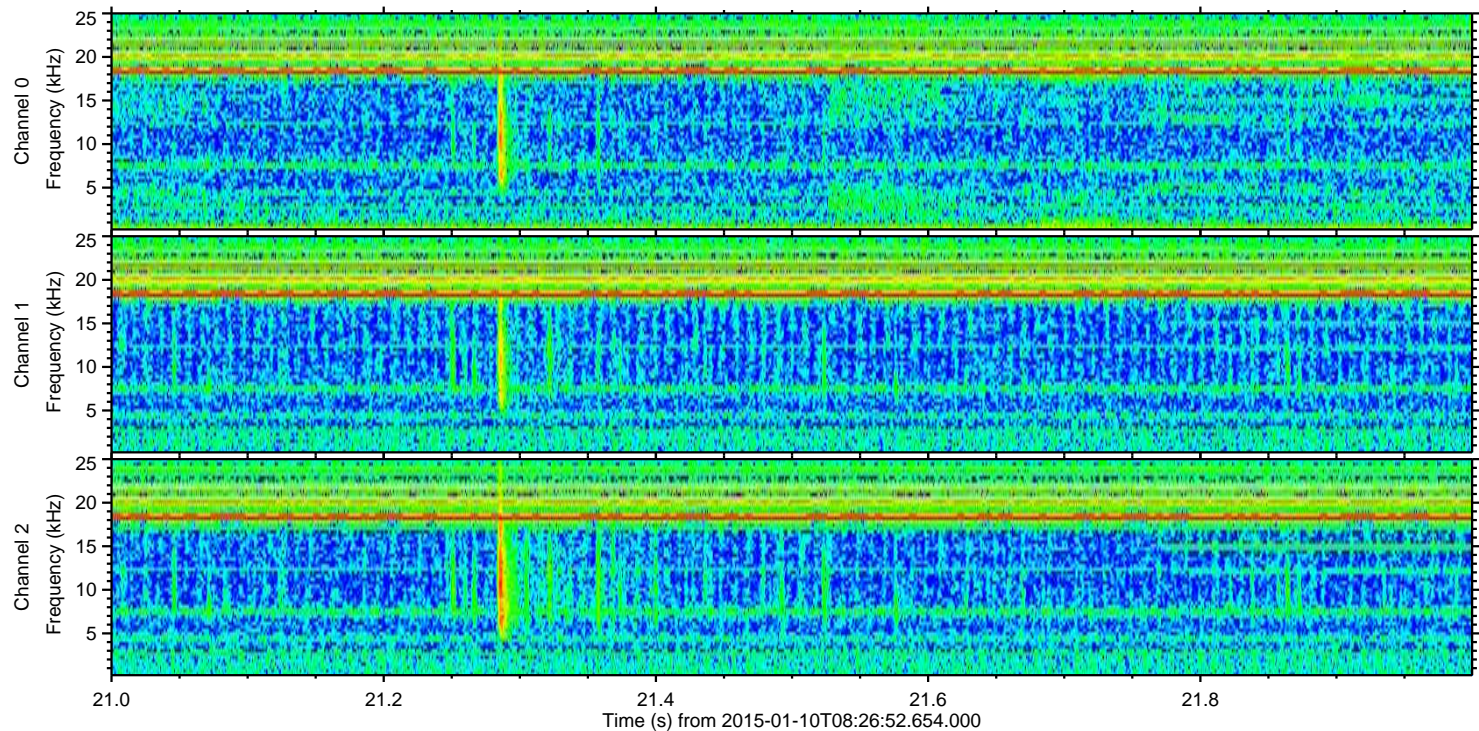
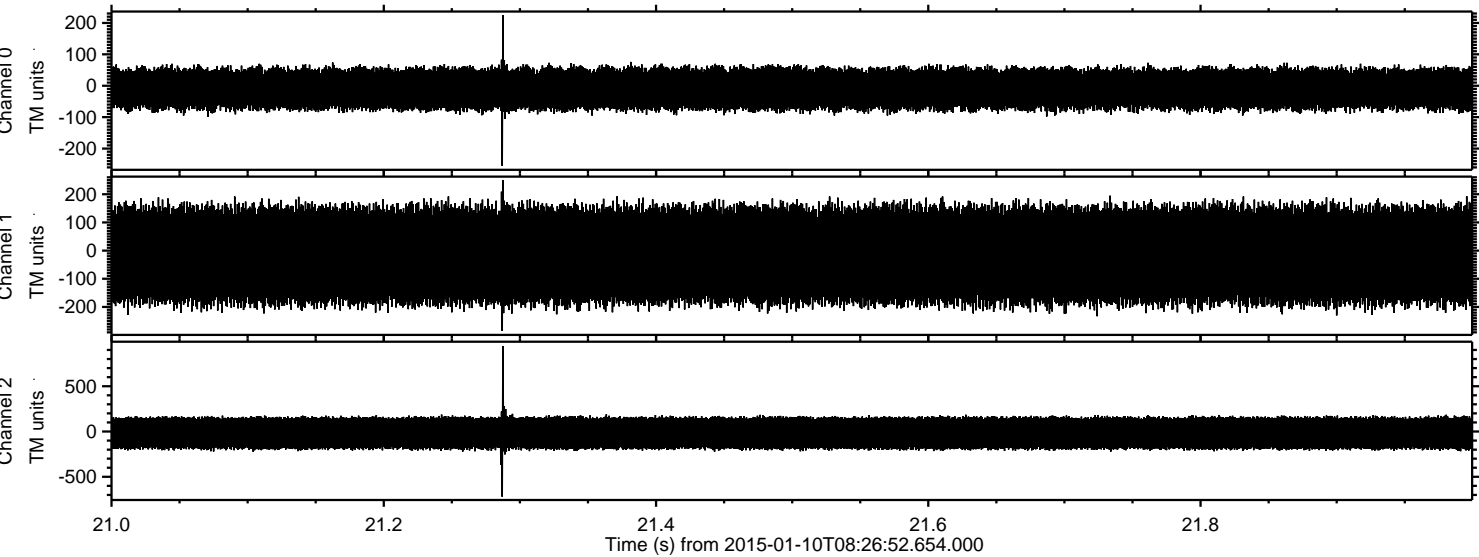
Processed Sat Jan 10 09:34:43 2015 by ELM ver.2012-10-06 from 001\_\_elm20150110\_082651\_\_dat00.bin





ELMAVAN 3D WAVEFORMS (Measured data sampled at 50 kHz) 49764 packets of 144 samples from 2015-01-10T08:26:52.654.000. Part 22/144

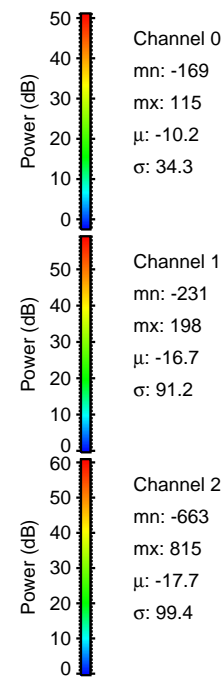
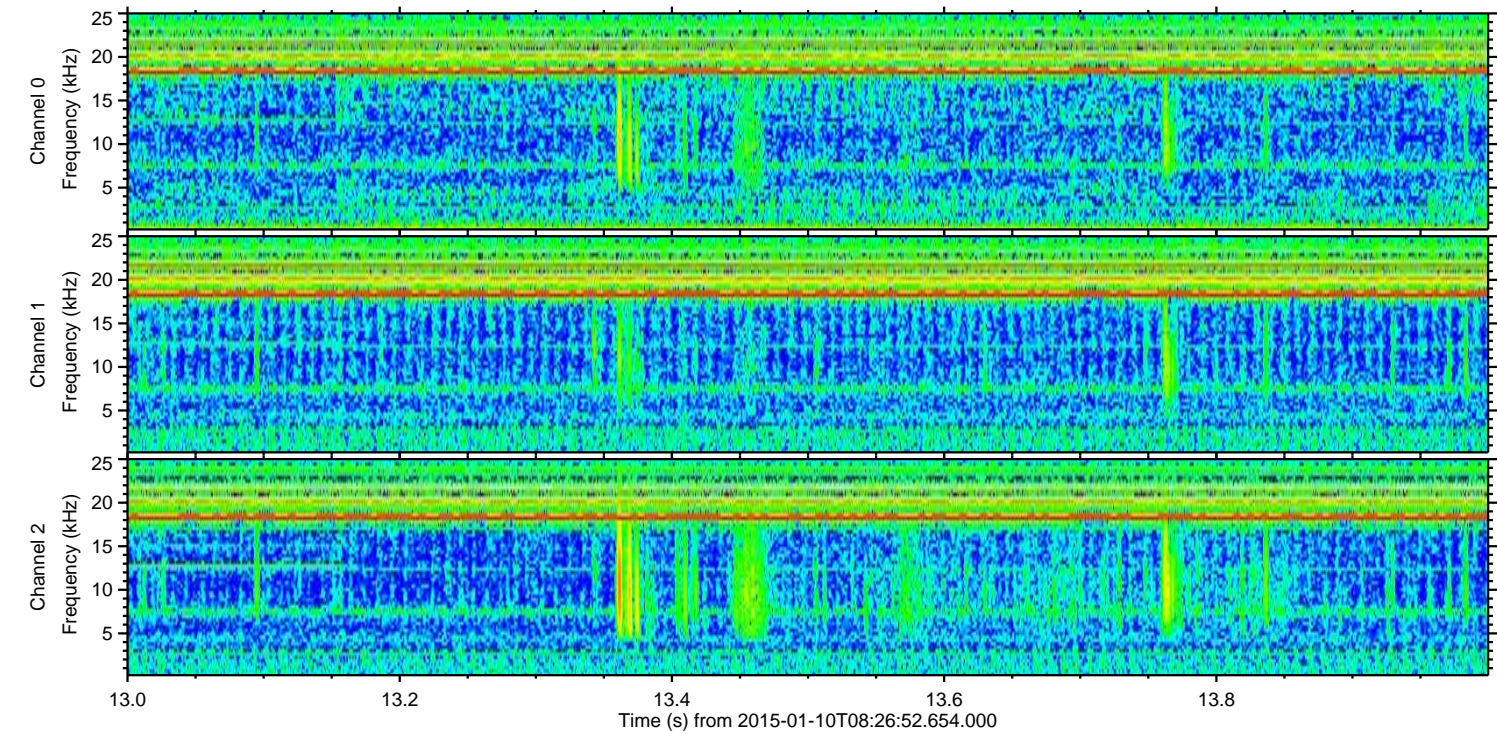
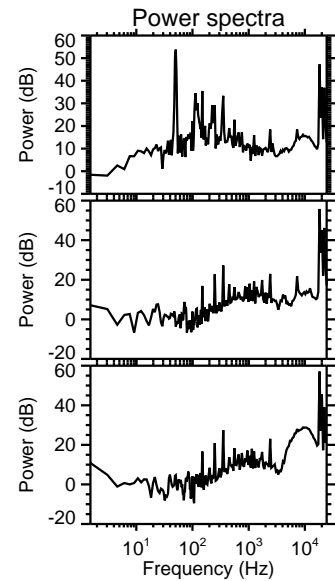
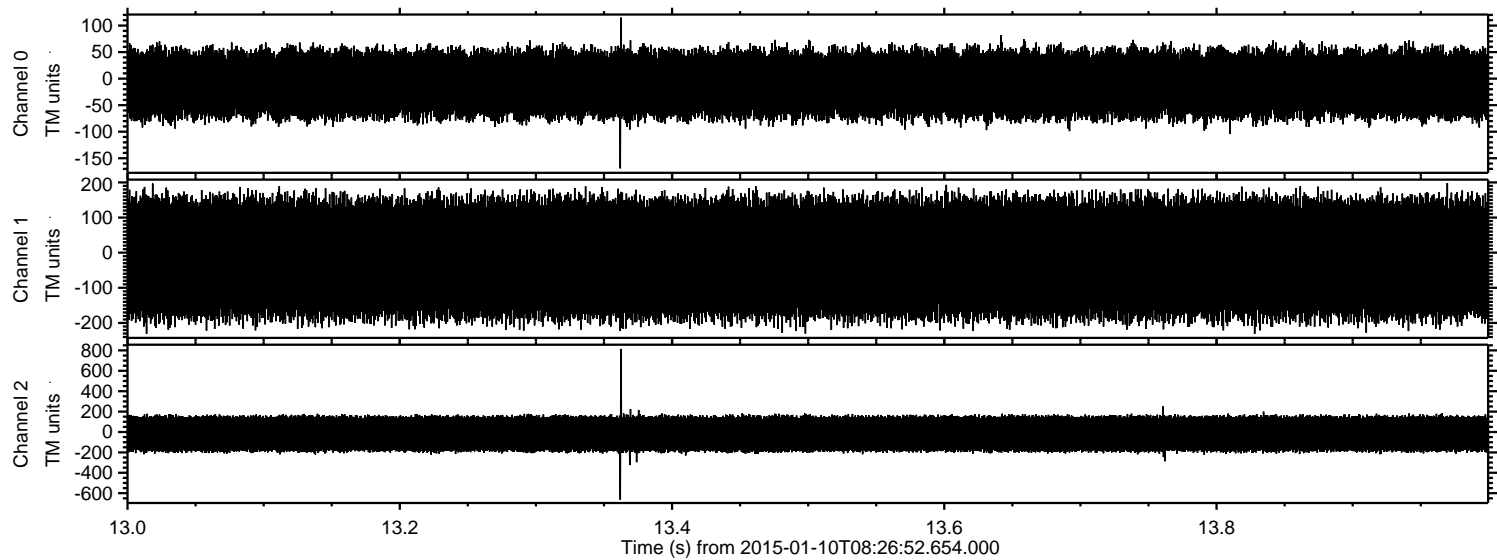
Processed Sat Jan 10 09:34:44 2015 by ELM ver.2012-10-06 from 001\_\_elm20150110\_082651\_\_dat00.bin





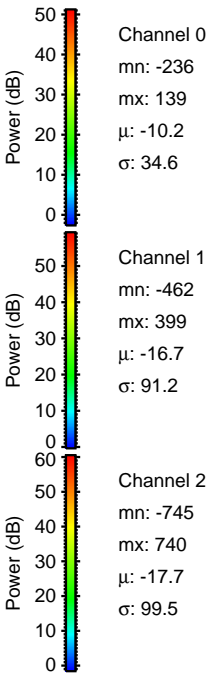
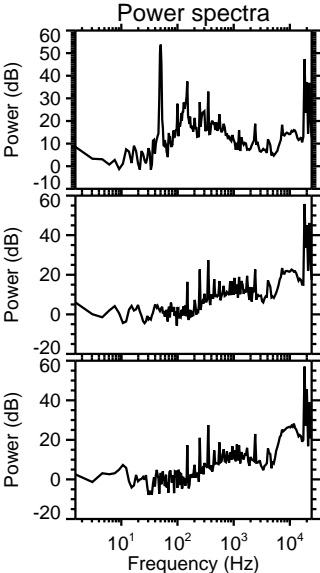
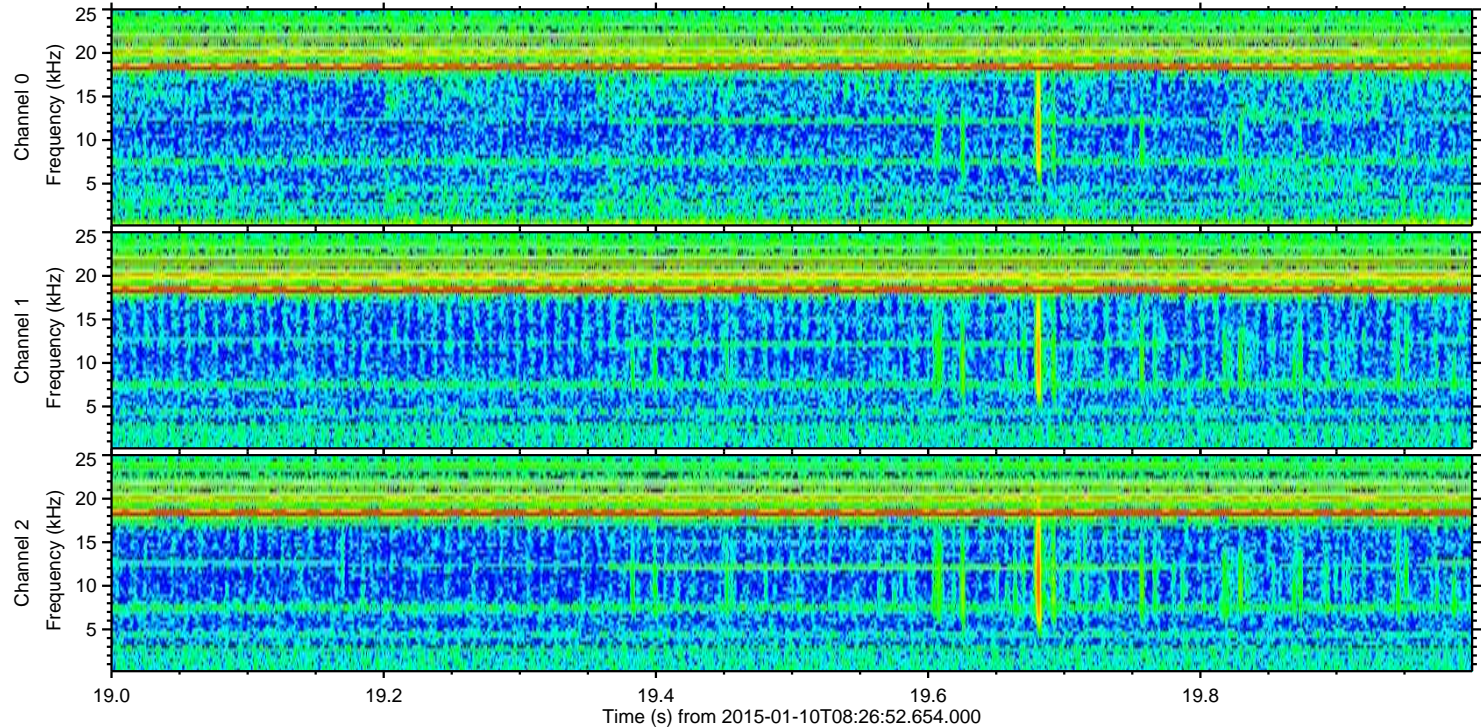
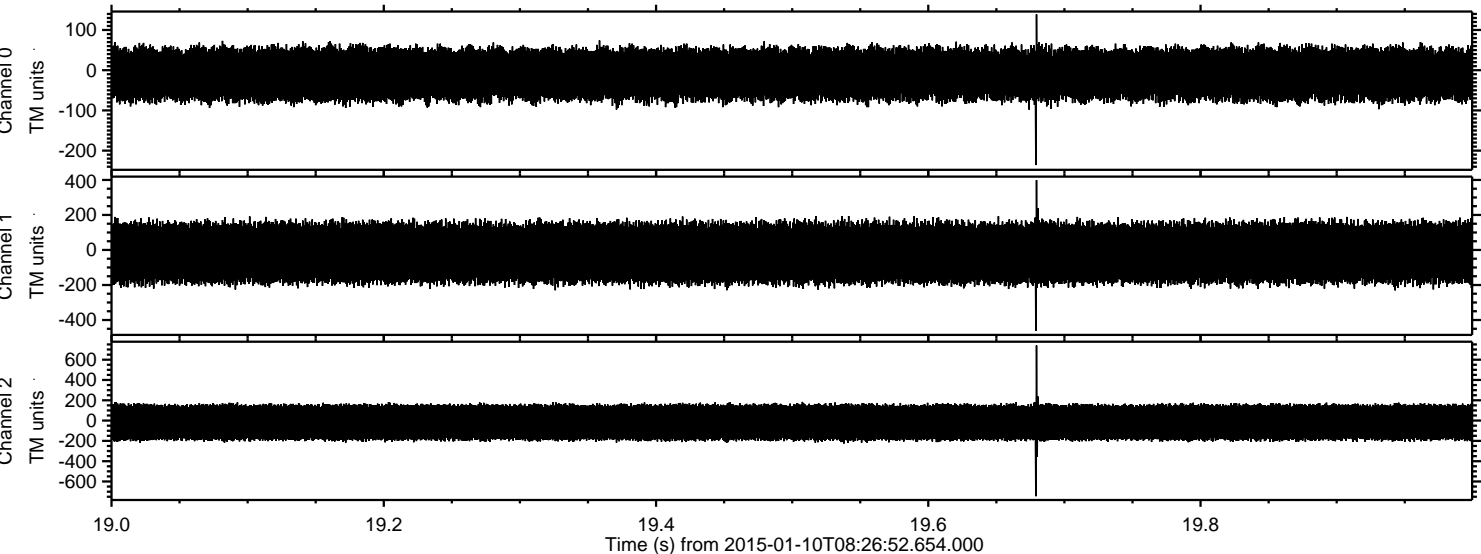
ELMAVAN 3D WAVEFORMS (Measured data sampled at 50 kHz) 49764 packets of 144 samples from 2015-01-10T08:26:52.654.000. Part 14/144

Processed Sat Jan 10 09:34:45 2015 by ELM ver.2012-10-06 from 001\_\_elm20150110\_082651\_\_dat00.bin



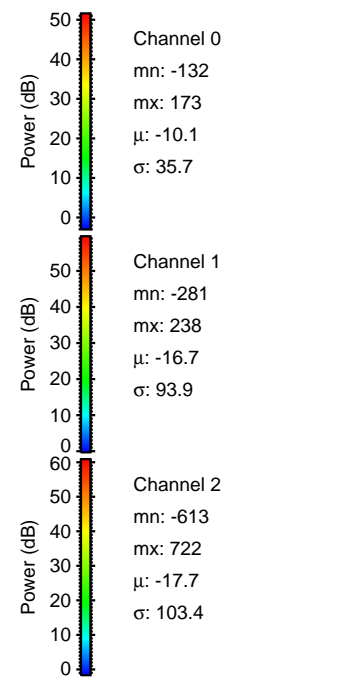
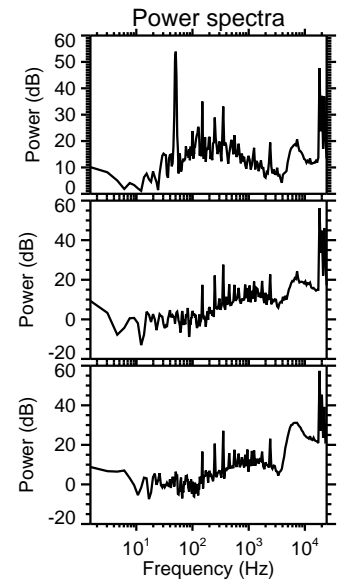
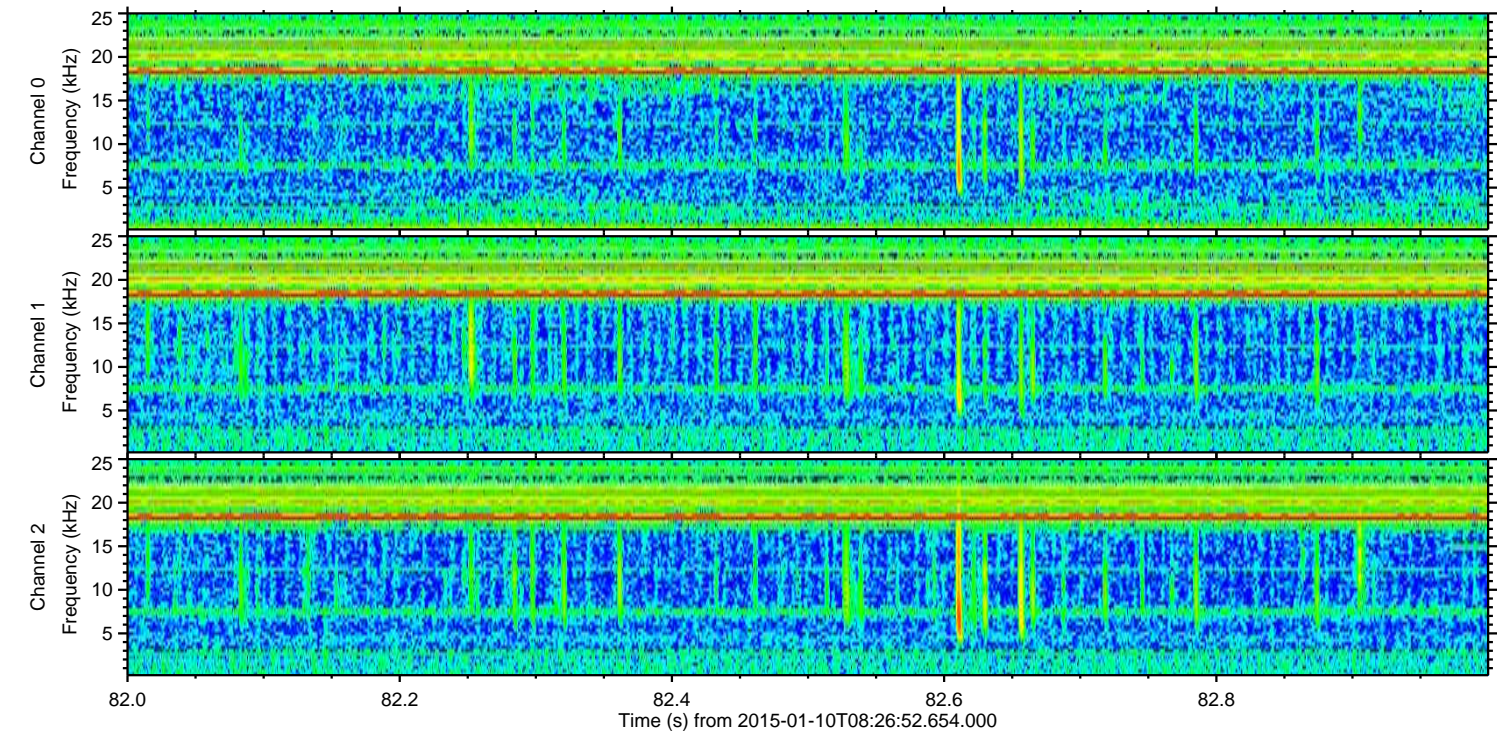
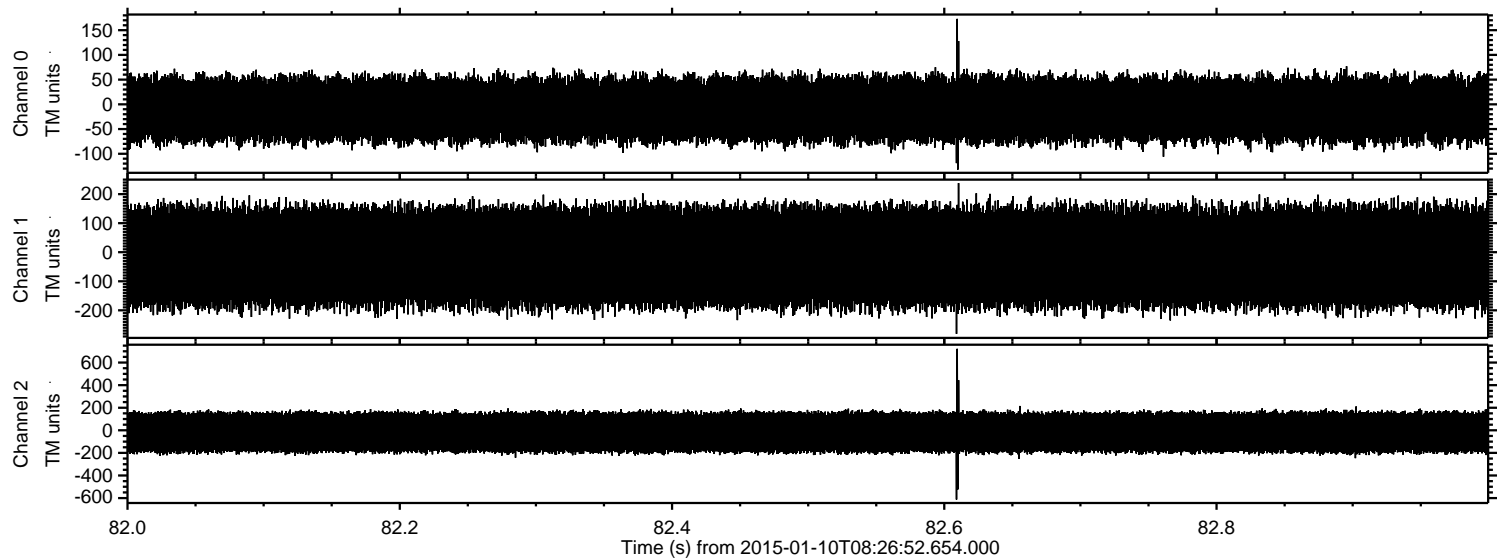


Processed Sat Jan 10 09:34:46 2015 by ELM ver.2012-10-06 from 001\_\_elm20150110\_082651\_\_dat00.bin



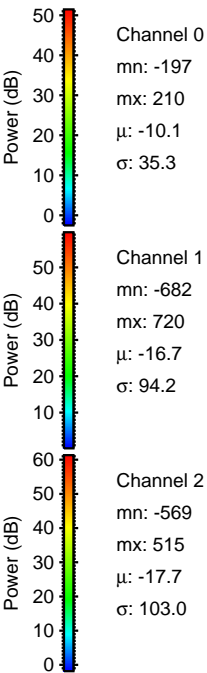
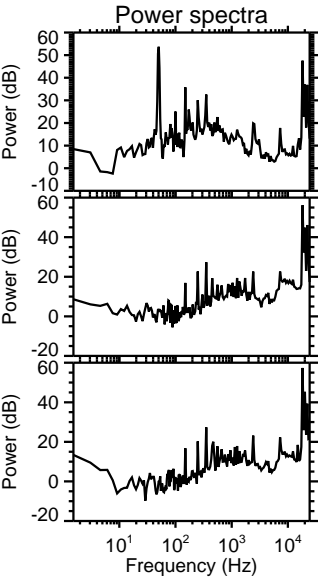
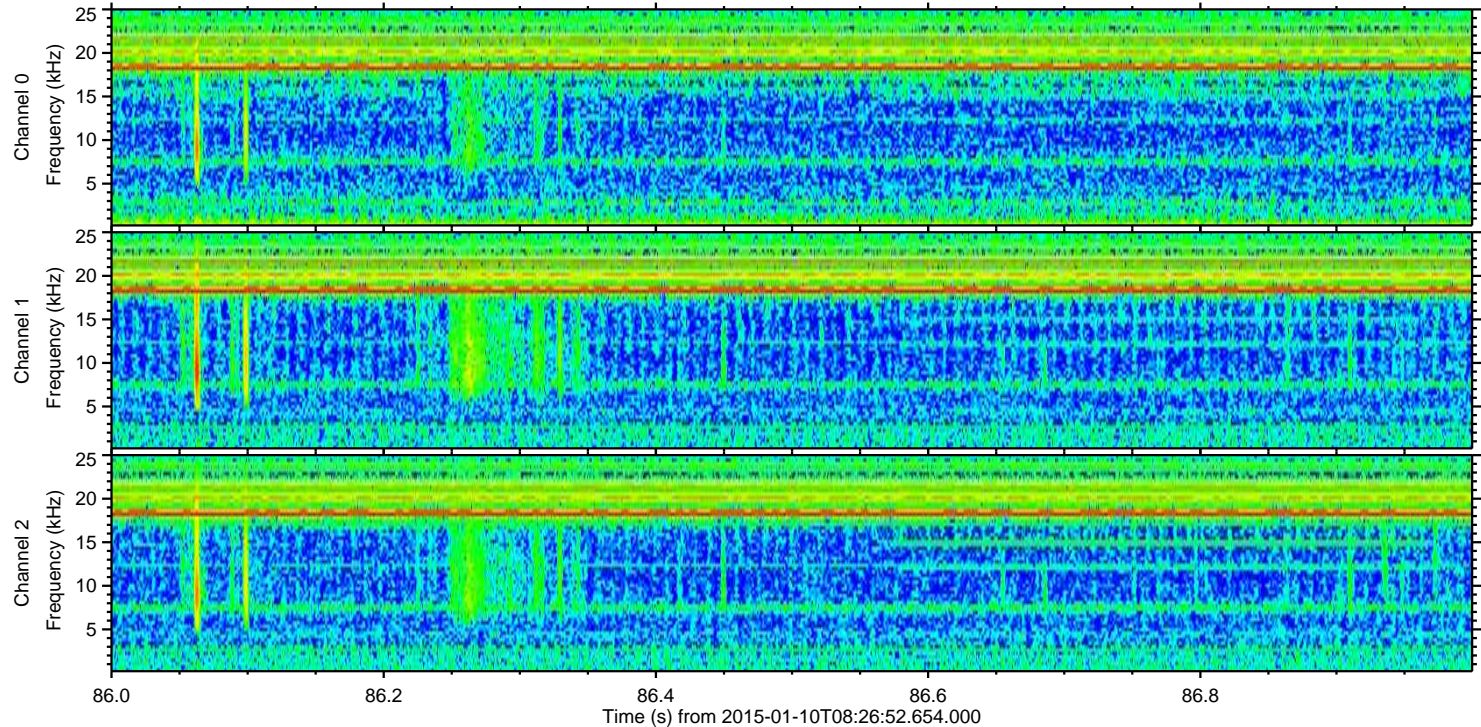
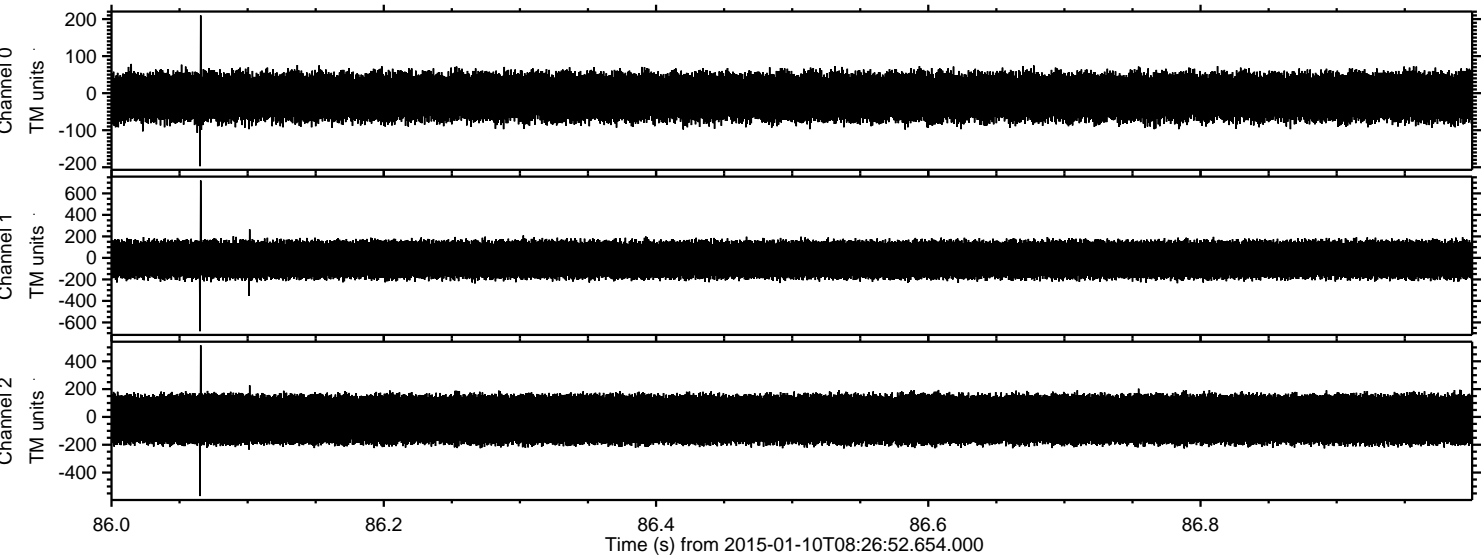


Processed Sat Jan 10 09:34:47 2015 by ELM ver.2012-10-06 from 001\_\_elm20150110\_082651\_\_dat00.bin



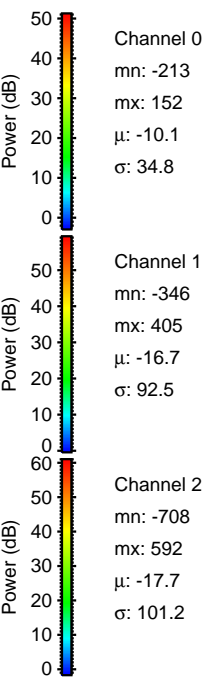
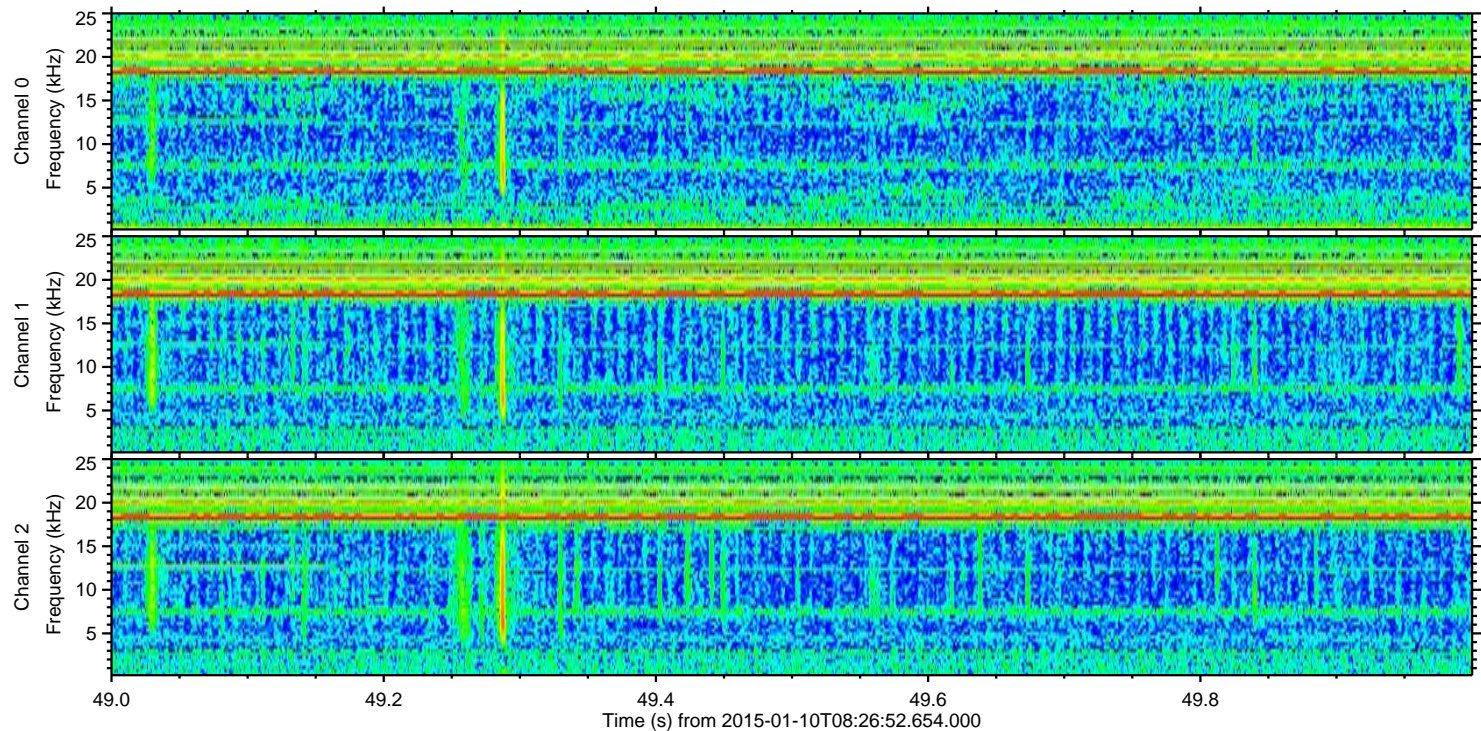
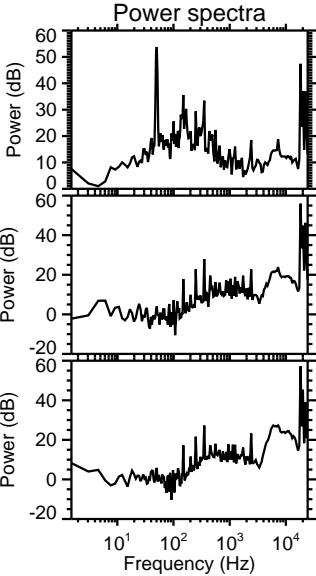
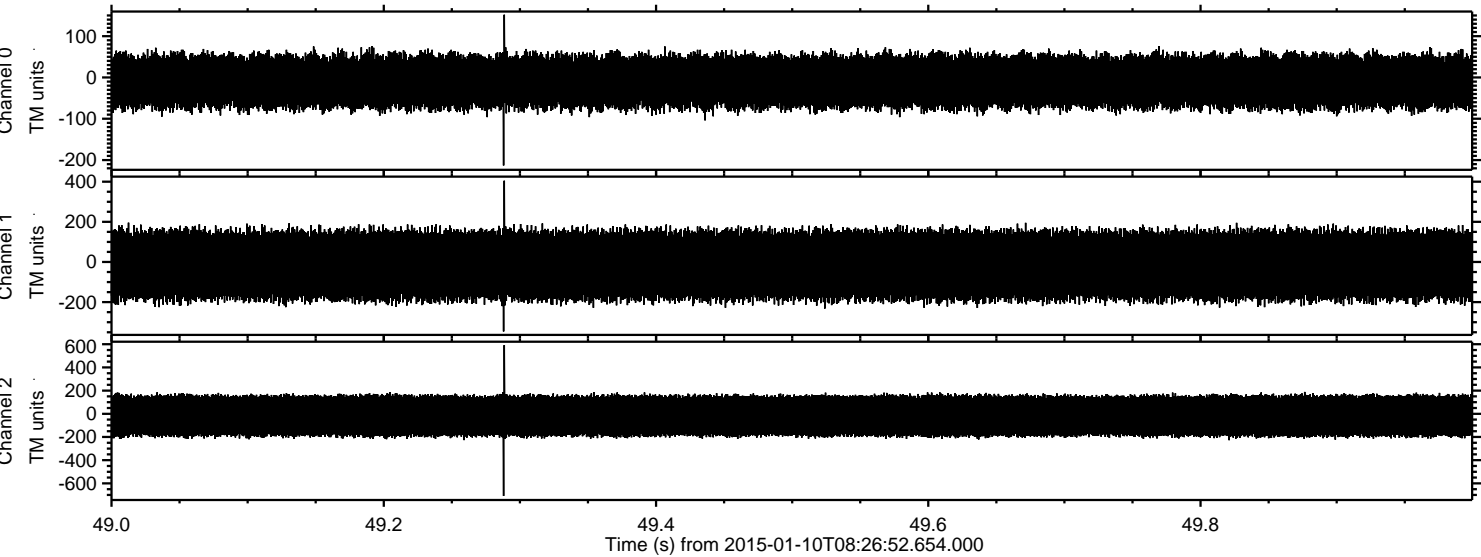


Processed Sat Jan 10 09:34:48 2015 by ELM ver.2012-10-06 from 001\_\_elm20150110\_082651\_\_dat00.bin





Processed Sat Jan 10 09:34:49 2015 by ELM ver.2012-10-06 from 001\_\_elm20150110\_082651\_\_dat00.bin





Processed Sat Jan 10 09:34:50 2015 by ELM ver.2012-10-06 from 001\_\_elm20150110\_082651\_\_dat00.bin

