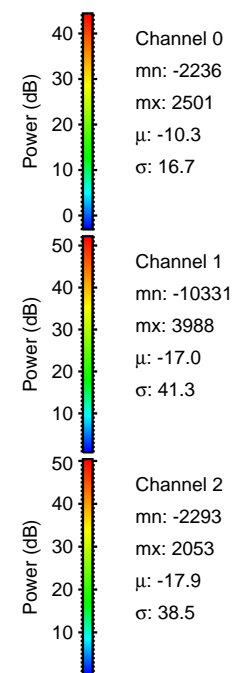
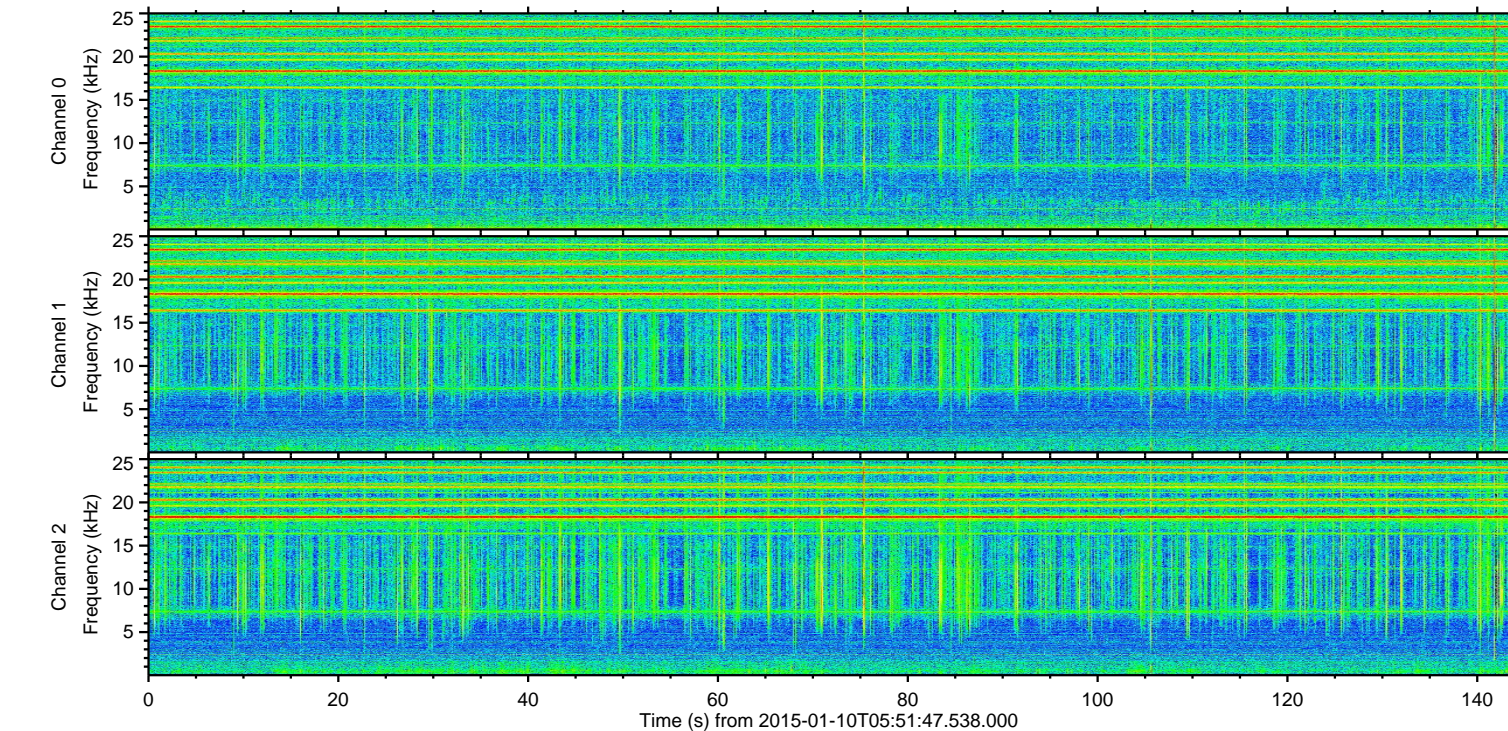
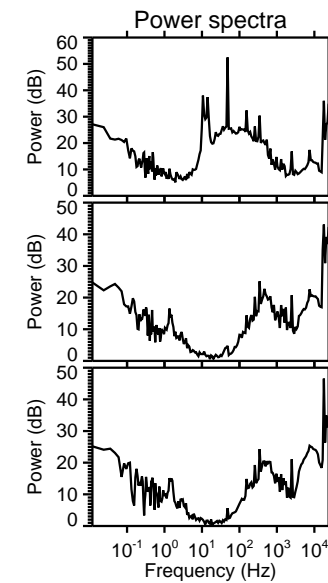
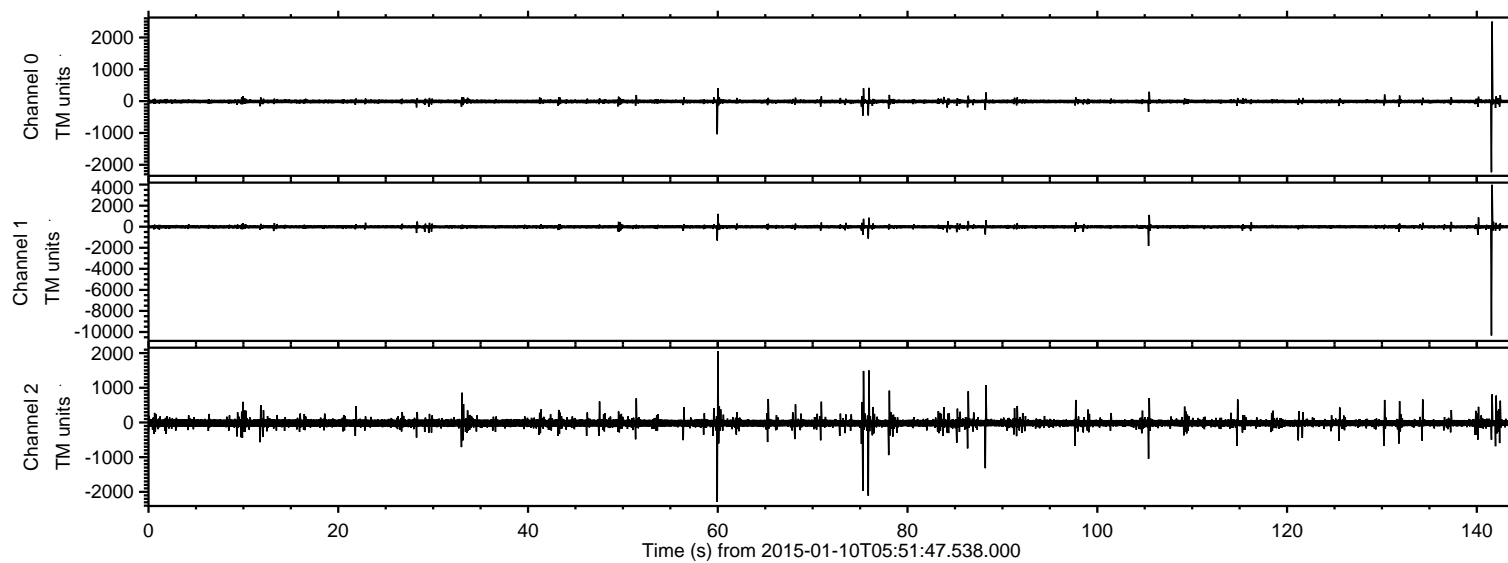


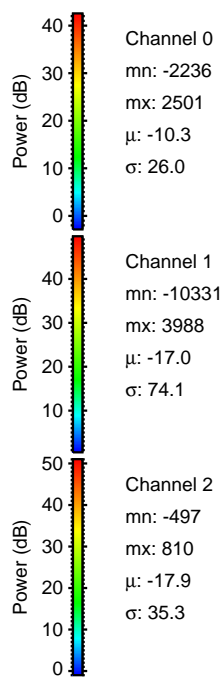
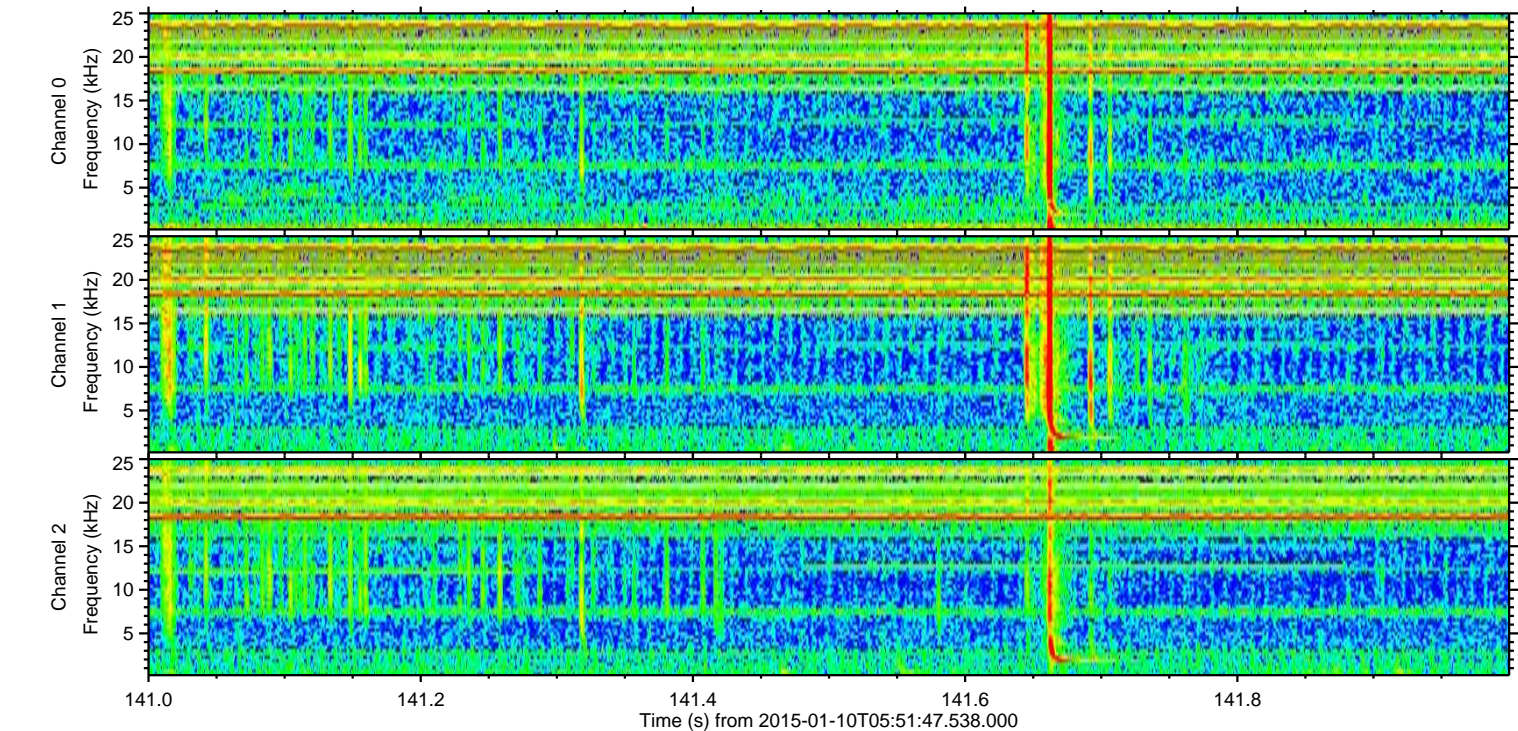
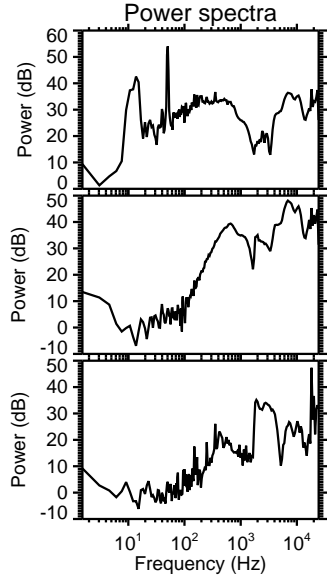
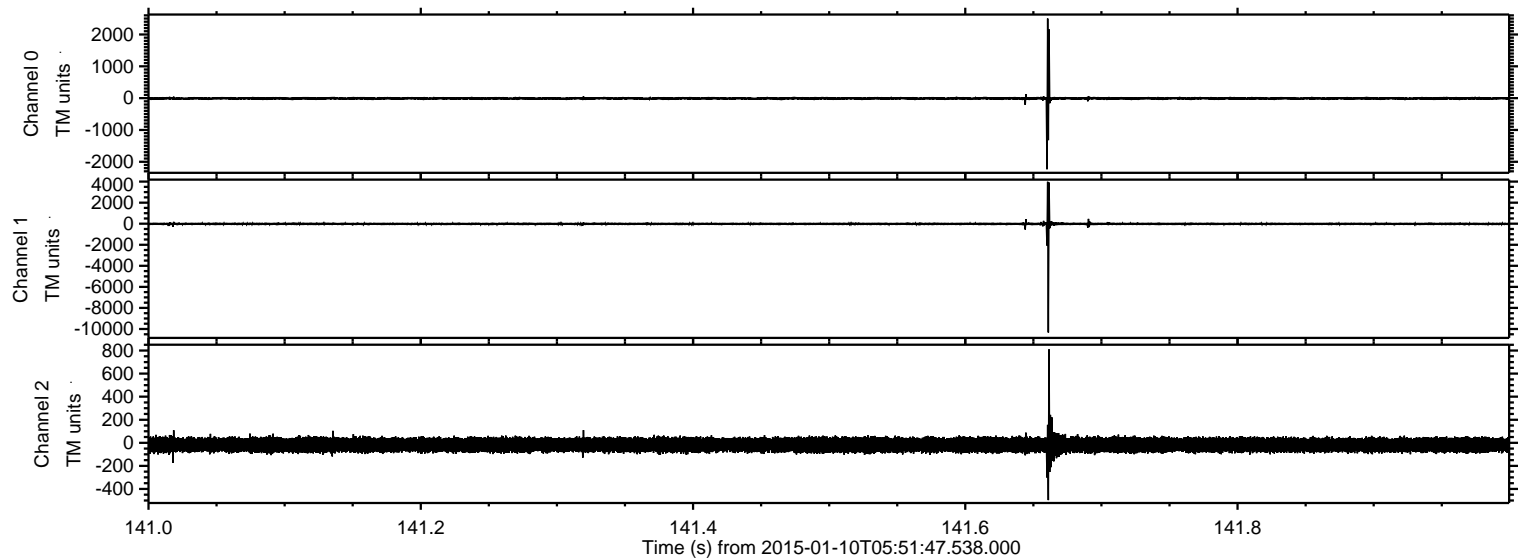
ELMAVAN 3D WAVEFORMS (Measured data sampled at 50 kHz) 49794 packets of 144 samples from 2015-01-10T05:51:47.538.000.

Processed Sat Jan 10 06:59:20 2015 by ELM ver.2012-10-06 from 001__elm20150110_055146__dat00.bin

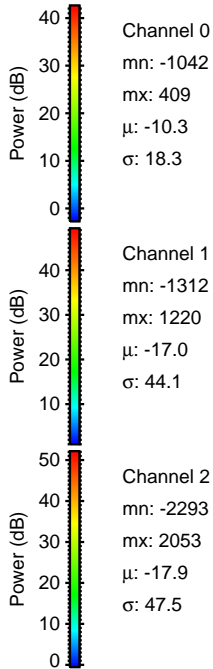
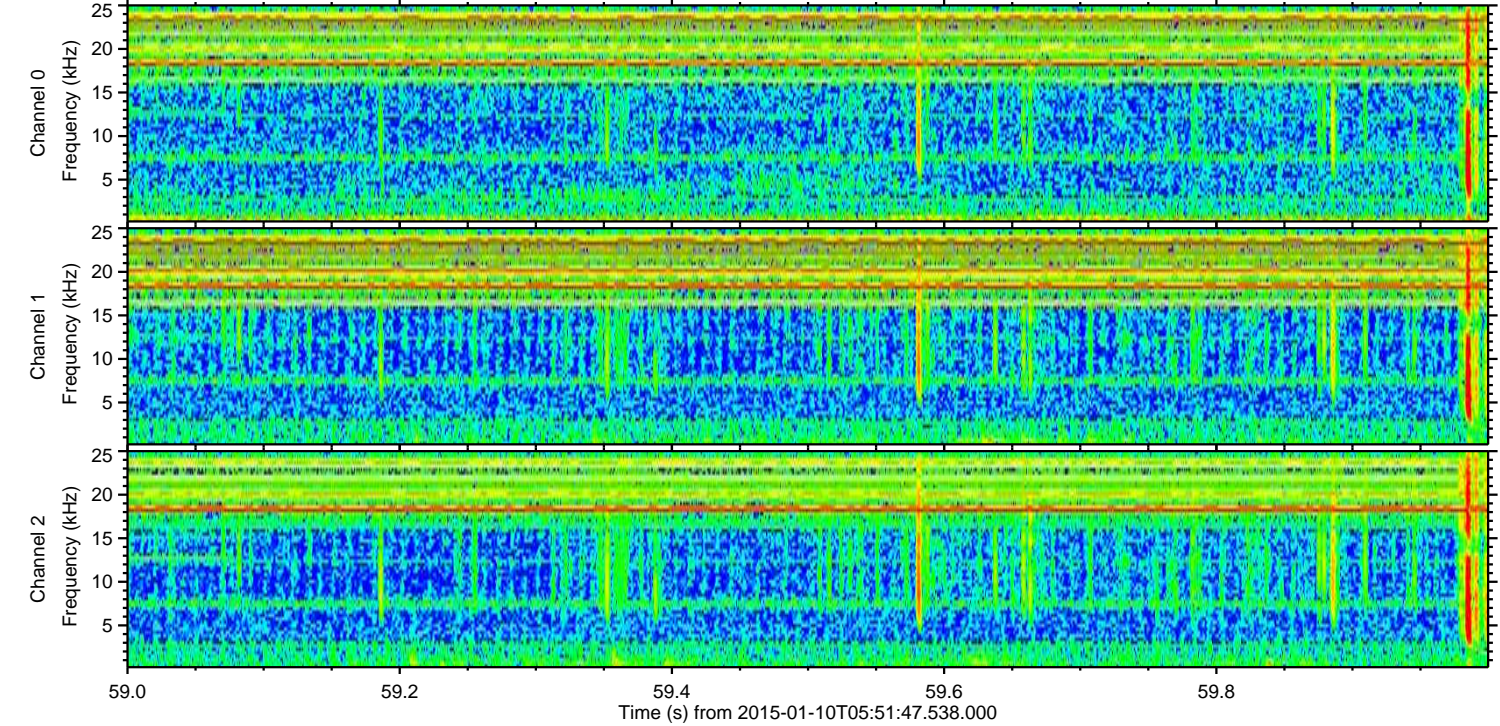
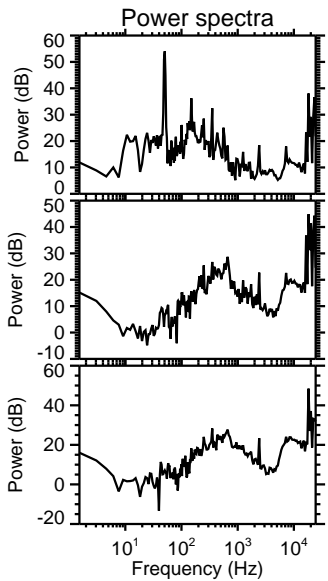
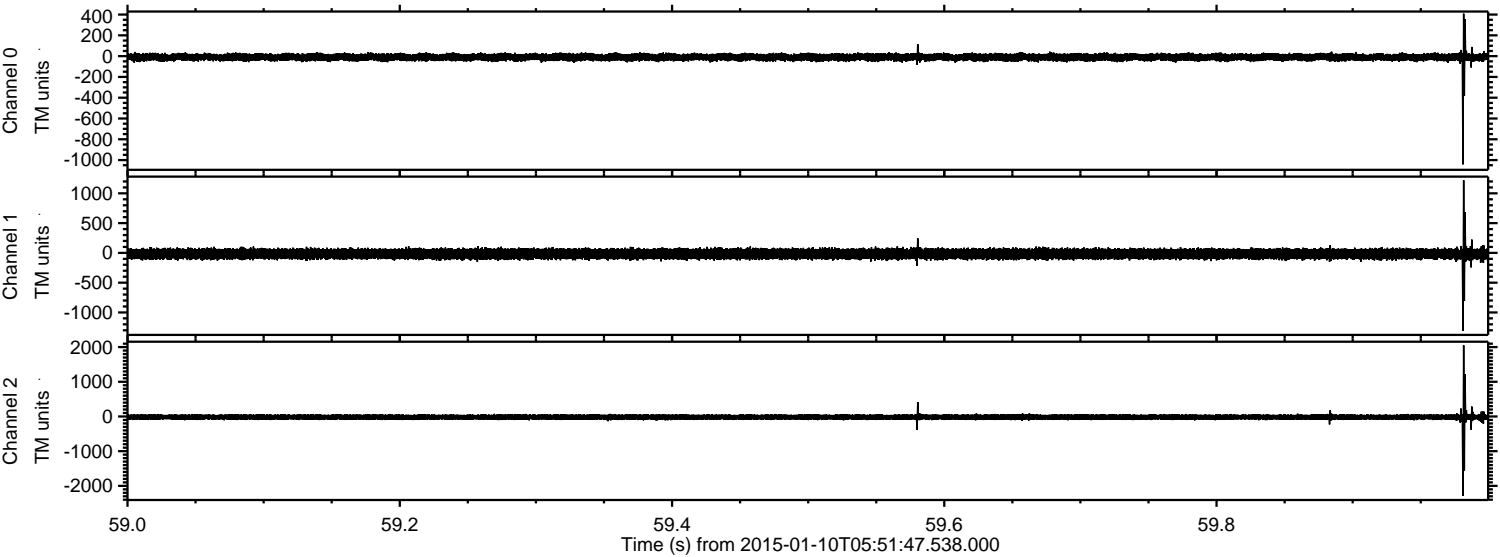


ELMAVAN 3D WAVEFORMS (Measured data sampled at 50 kHz) 49794 packets of 144 samples from 2015-01-10T05:51:47.538.000. Part 142/144

Processed Sat Jan 10 06:59:31 2015 by ELM ver.2012-10-06 from 001__elm20150110_055146__dat00.bin



Processed Sat Jan 10 06:59:32 2015 by ELM ver.2012-10-06 from 001__elm20150110_055146__dat00.bin



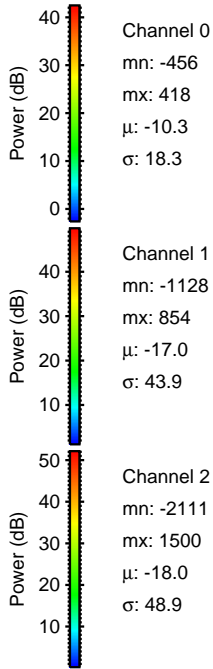
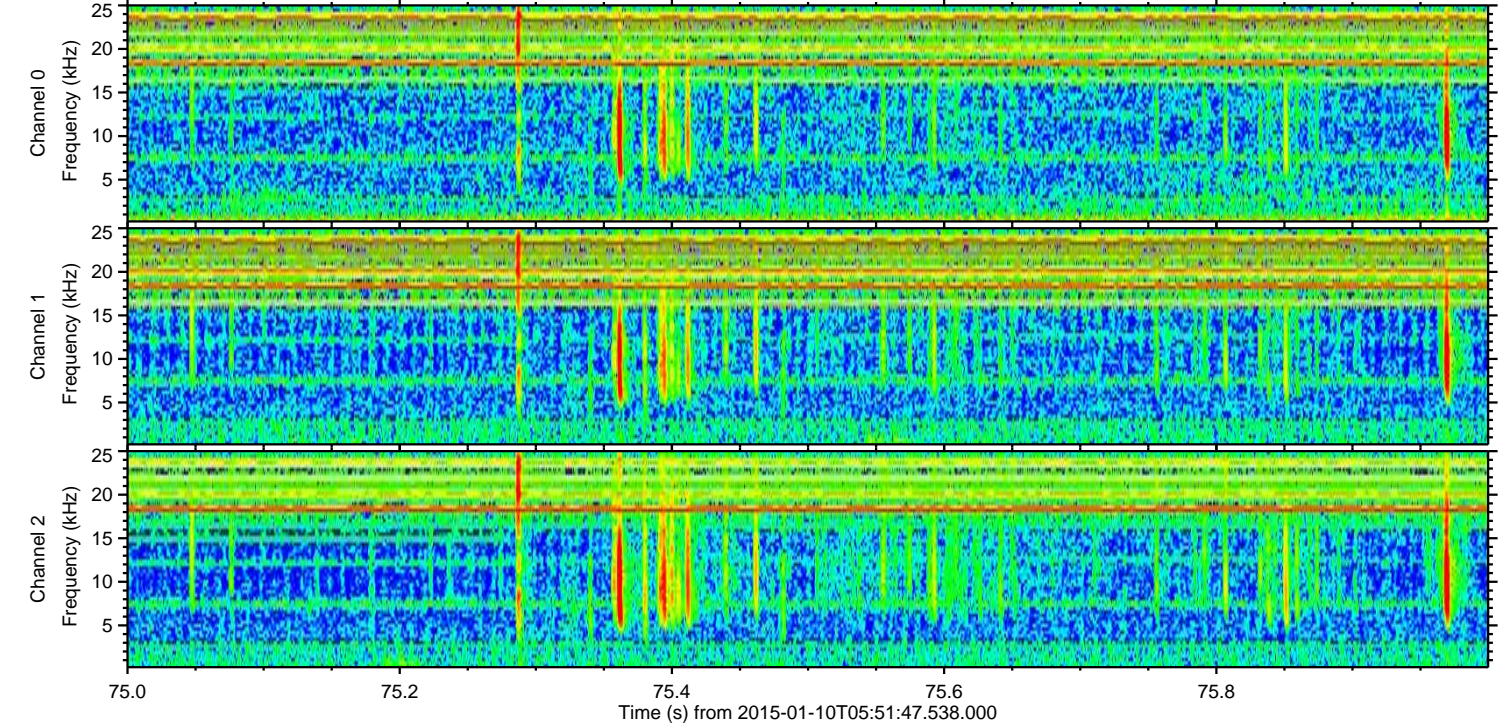
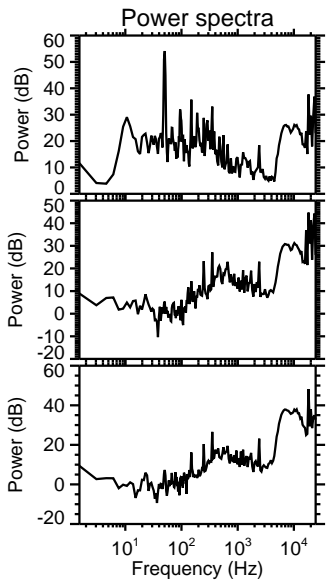
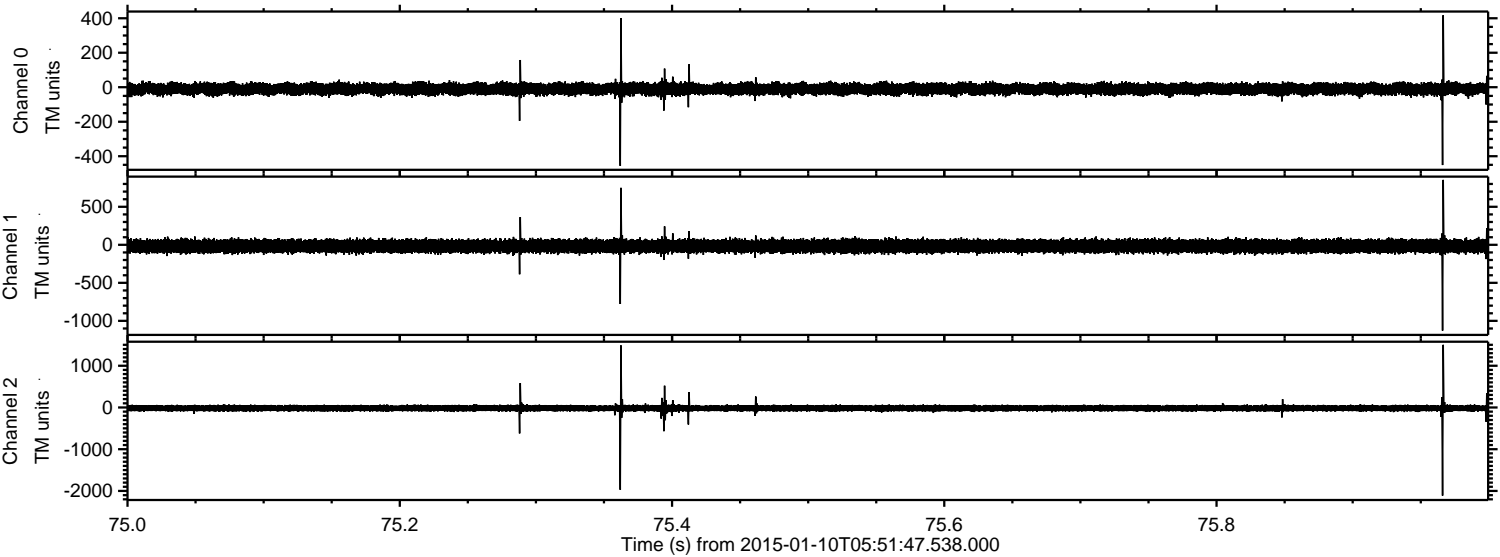
Channel 0
mn: -1042
mx: 409
 μ : -10.3
 σ : 18.3

Channel 1
mn: -1312
mx: 1220
 μ : -17.0
 σ : 44.1

Channel 2
mn: -2293
mx: 2053
 μ : -17.9
 σ : 47.5

ELMAVAN 3D WAVEFORMS (Measured data sampled at 50 kHz) 49794 packets of 144 samples from 2015-01-10T05:51:47.538.000. Part 76/144

Processed Sat Jan 10 06:59:33 2015 by ELM ver.2012-10-06 from 001__elm20150110_055146__dat00.bin



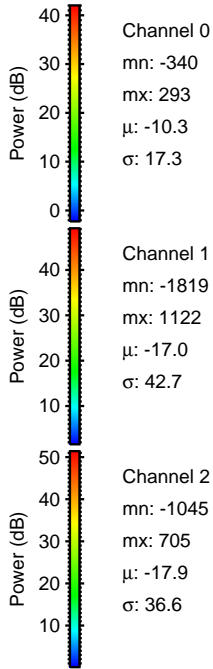
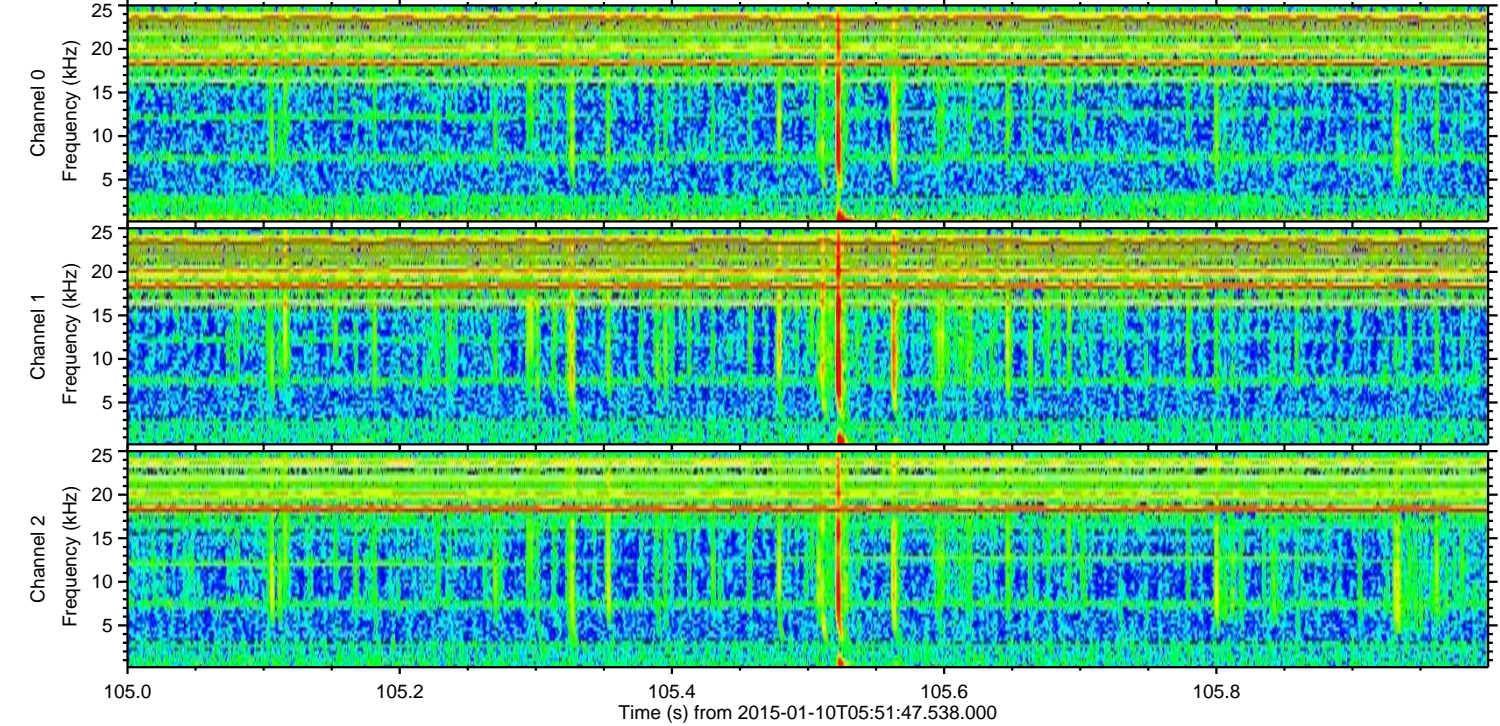
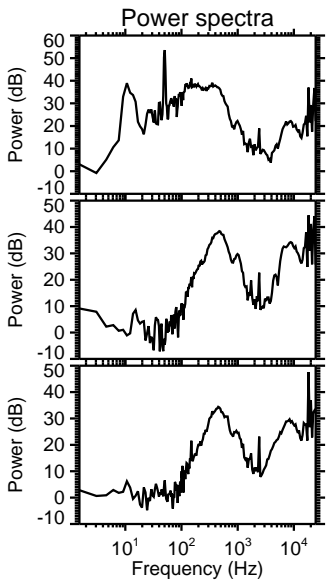
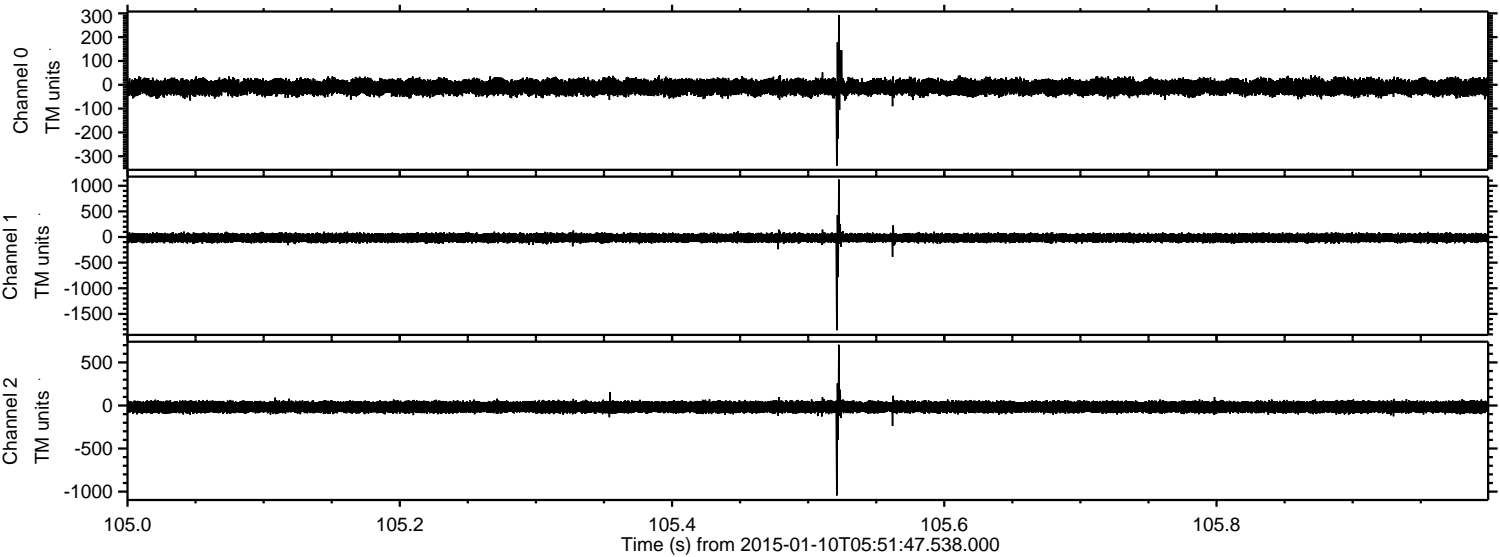
Channel 0
mn: -456
mx: 418
 μ : -10.3
 σ : 18.3

Channel 1
mn: -1128
mx: 854
 μ : -17.0
 σ : 43.9

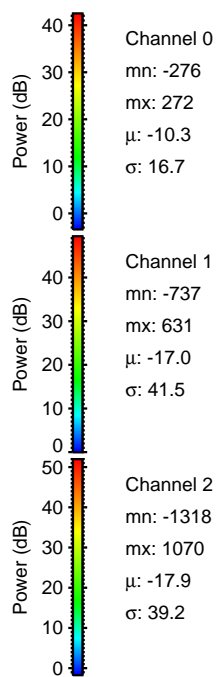
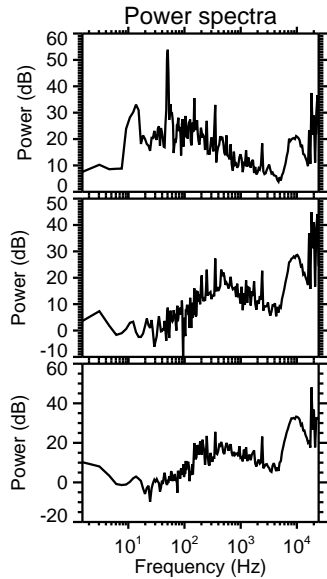
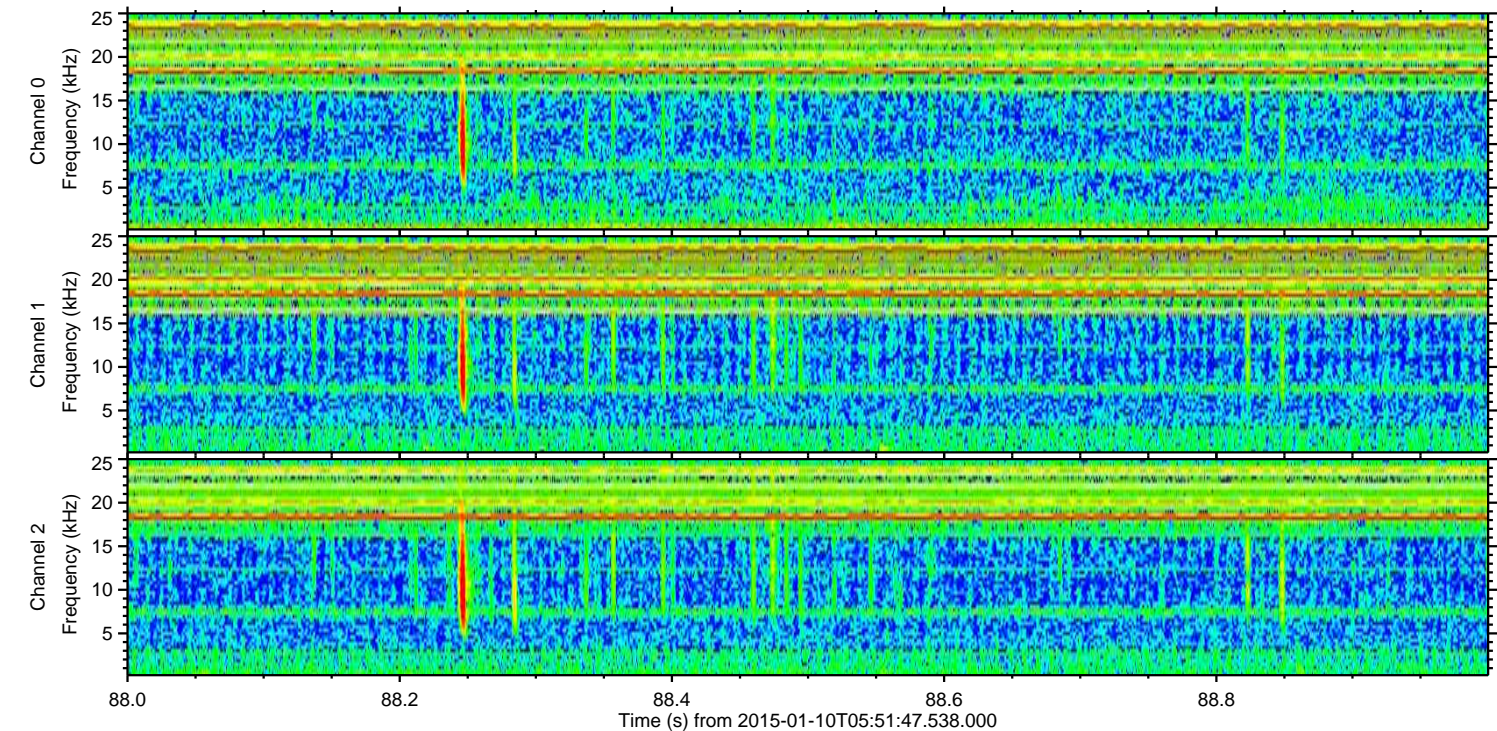
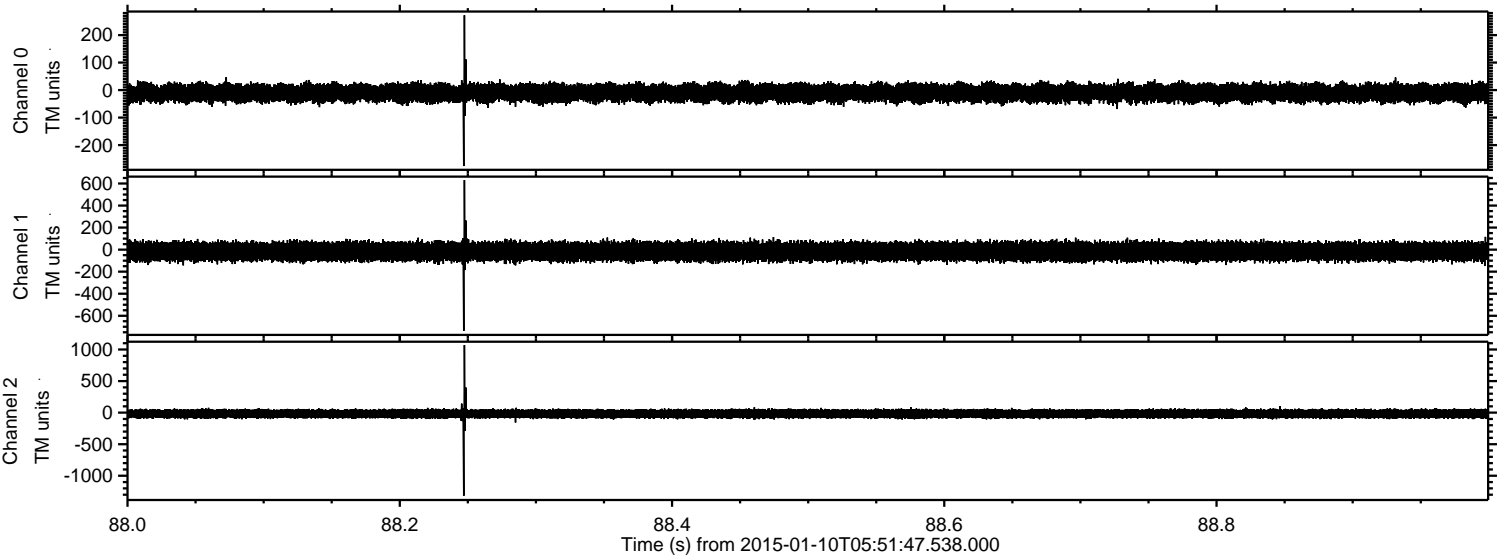
Channel 2
mn: -2111
mx: 1500
 μ : -18.0
 σ : 48.9

ELMAVAN 3D WAVEFORMS (Measured data sampled at 50 kHz) 49794 packets of 144 samples from 2015-01-10T05:51:47.538.000. Part 106/144

Processed Sat Jan 10 06:59:34 2015 by ELM ver.2012-10-06 from 001__elm20150110_055146__dat00.bin

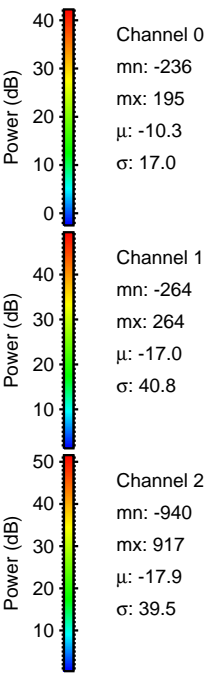
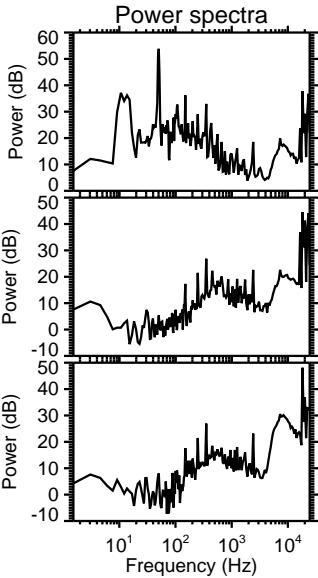
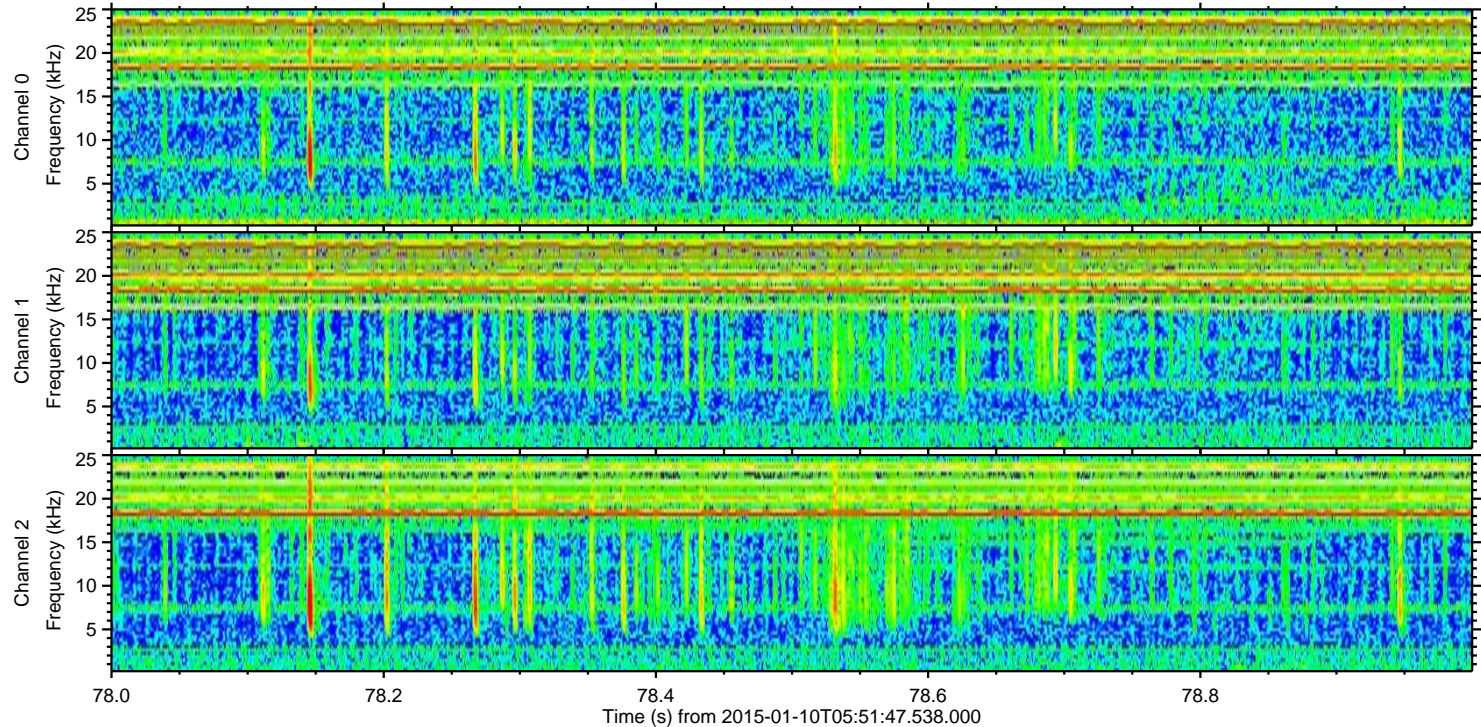
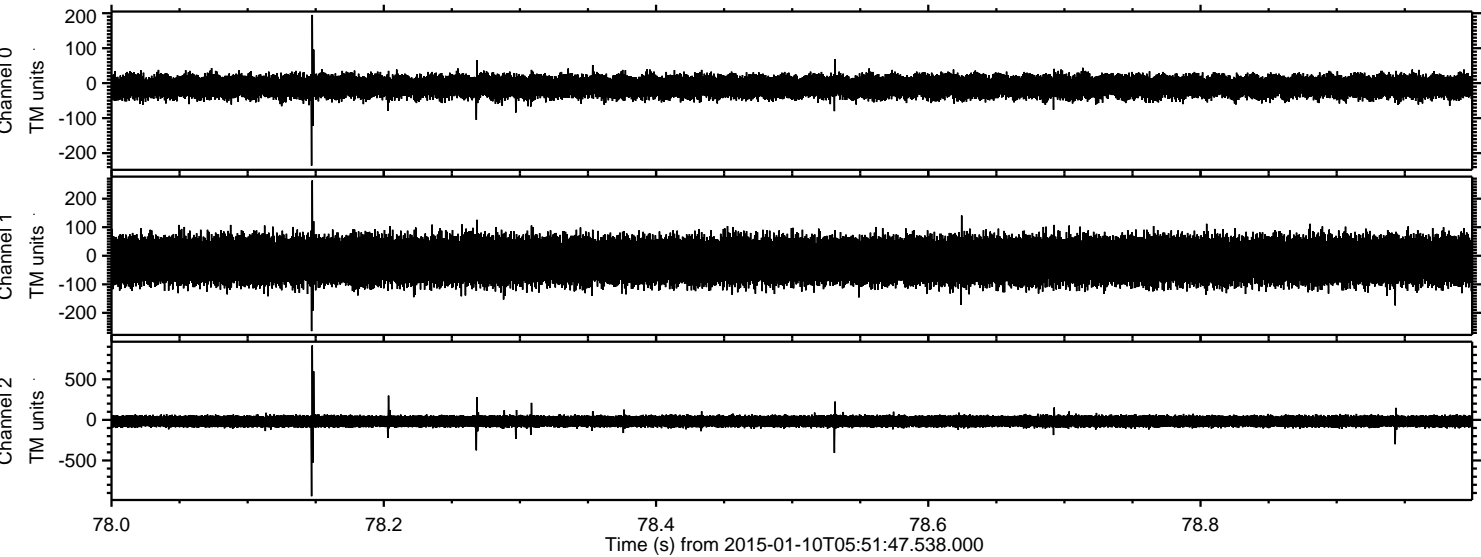


Processed Sat Jan 10 06:59:35 2015 by ELM ver.2012-10-06 from 001__elm20150110_055146__dat00.bin



Power spectra

Processed Sat Jan 10 06:59:36 2015 by ELM ver.2012-10-06 from 001__elm20150110_055146__dat00.bin

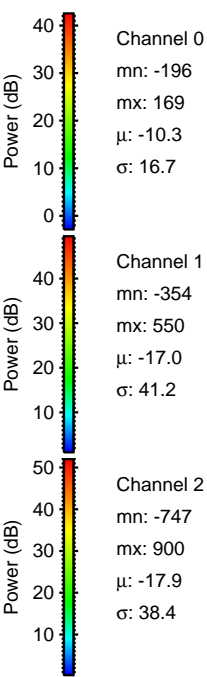
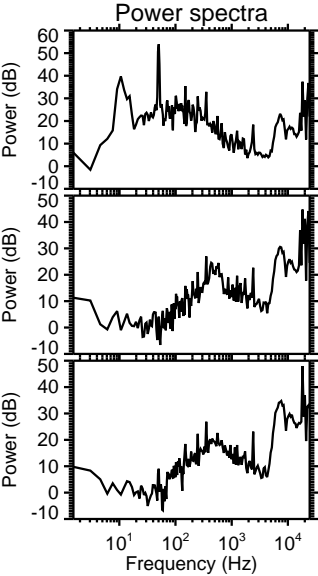
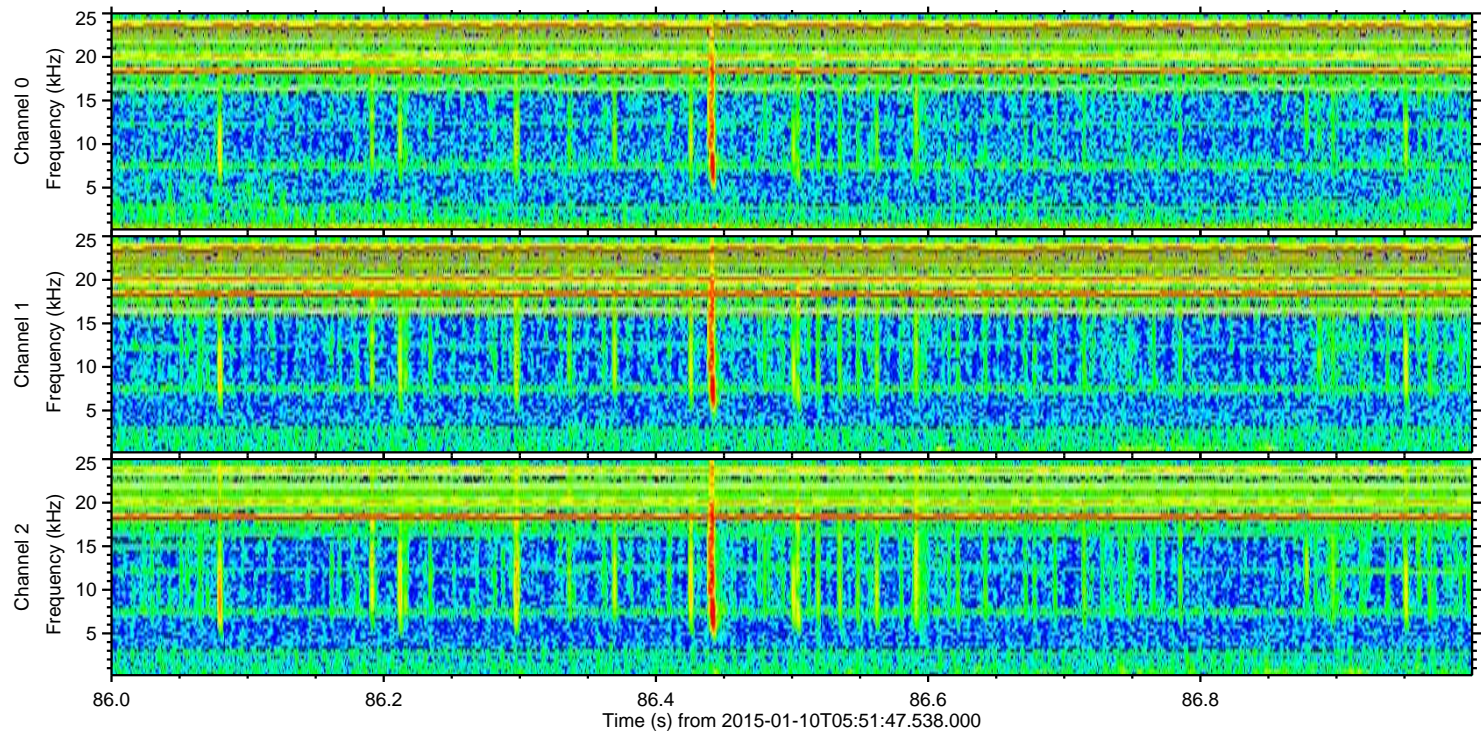
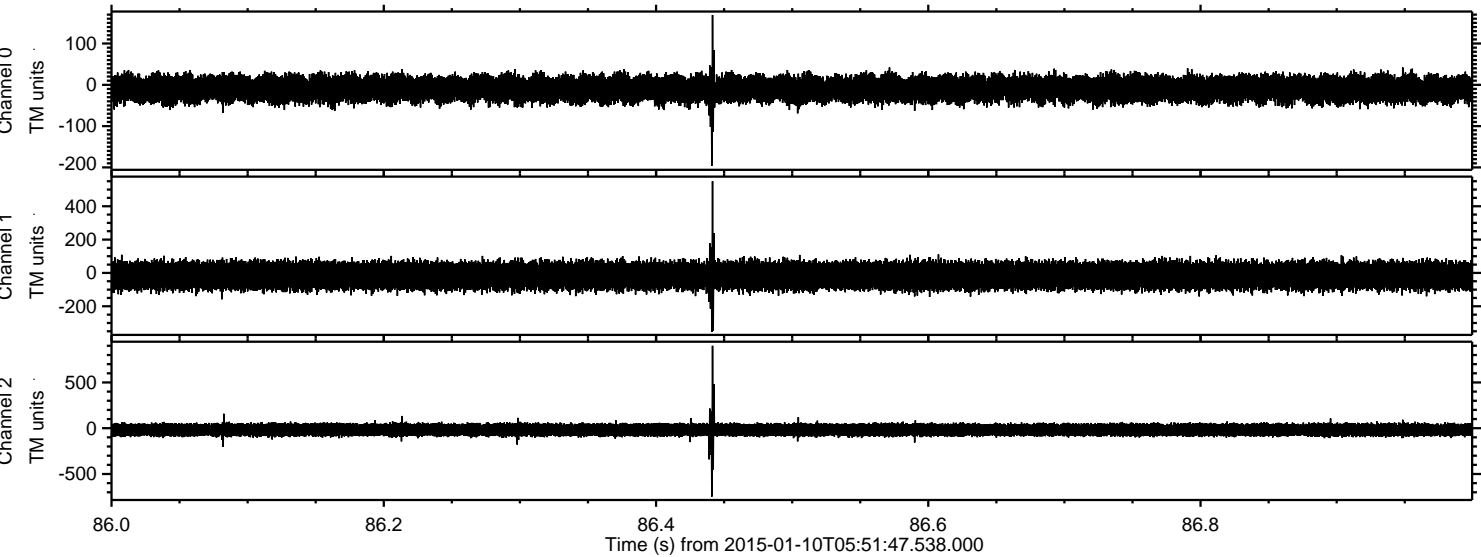


Channel 0
mn: -236
mx: 195
 μ : -10.3
 σ : 17.0

Channel 1
mn: -264
mx: 264
 μ : -17.0
 σ : 40.8

Channel 2
mn: -940
mx: 917
 μ : -17.9
 σ : 39.5

Processed Sat Jan 10 06:59:37 2015 by ELM ver.2012-10-06 from 001__elm20150110_055146__dat00.bin



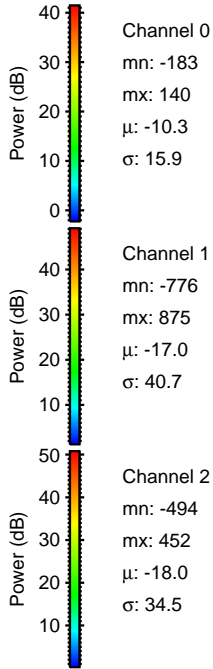
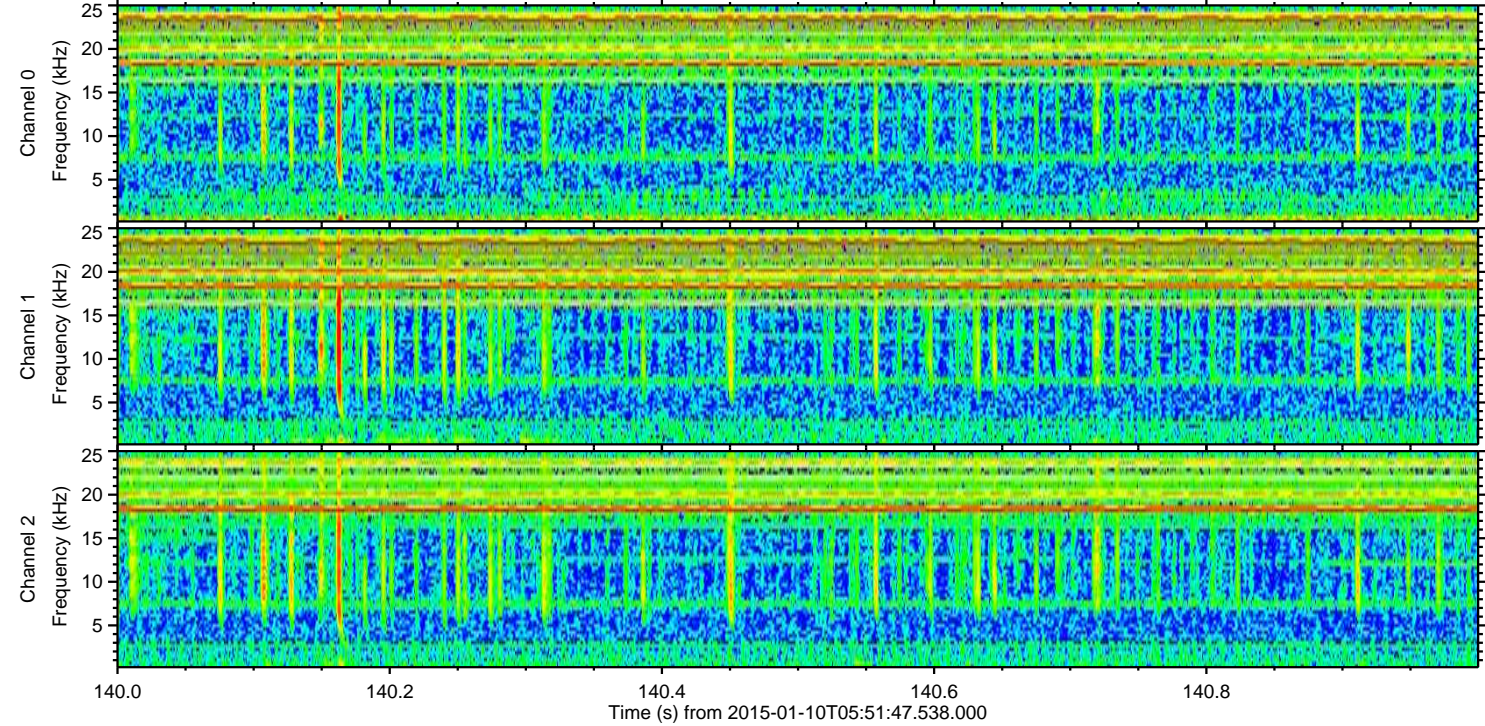
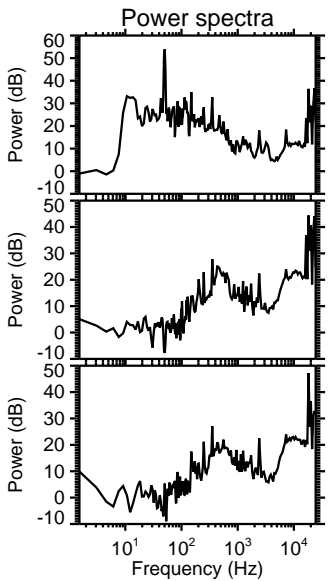
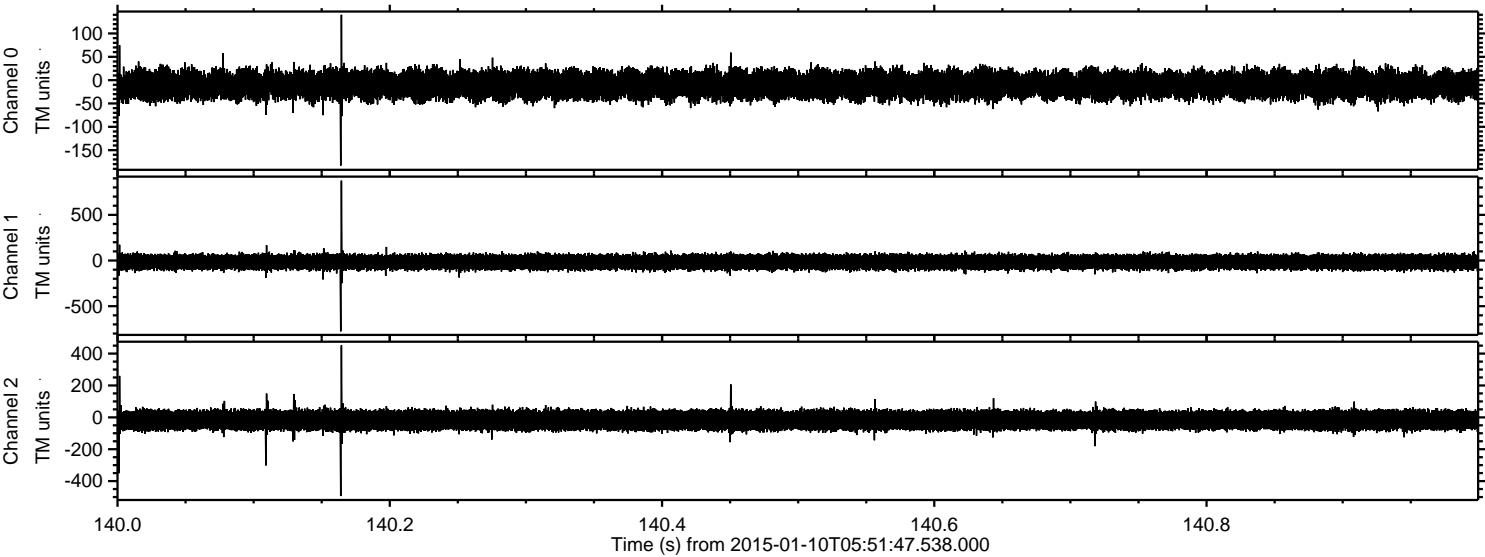
Channel 0
mn: -196
mx: 169
 μ : -10.3
 σ : 16.7

Channel 1
mn: -354
mx: 550
 μ : -17.0
 σ : 41.2

Channel 2
mn: -747
mx: 900
 μ : -17.9
 σ : 38.4

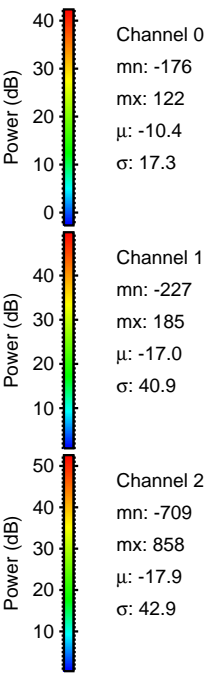
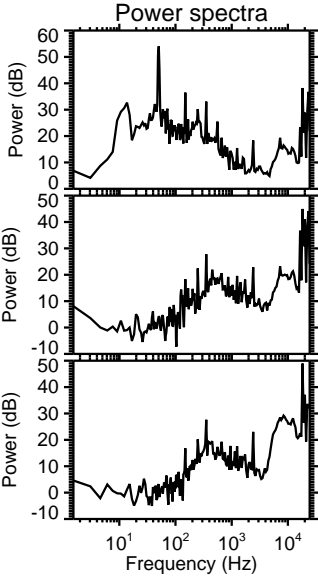
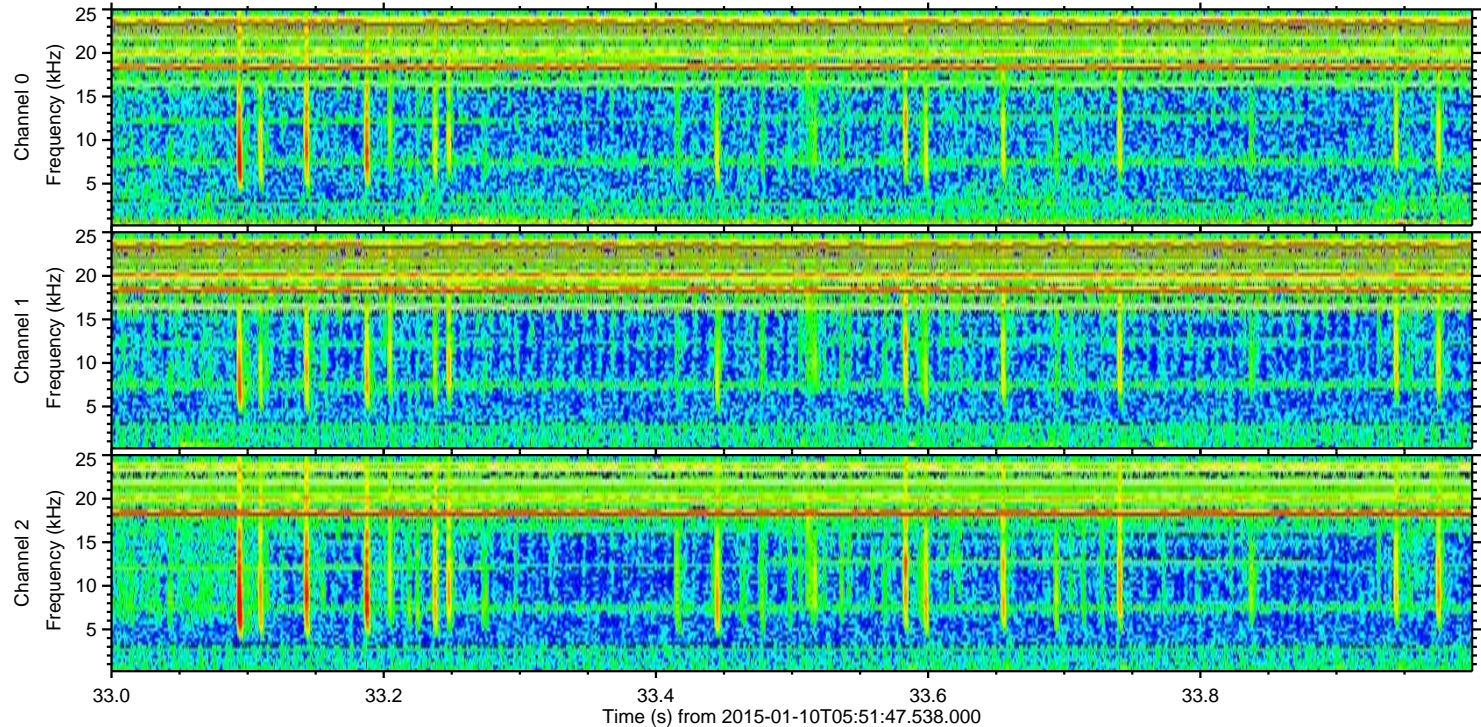
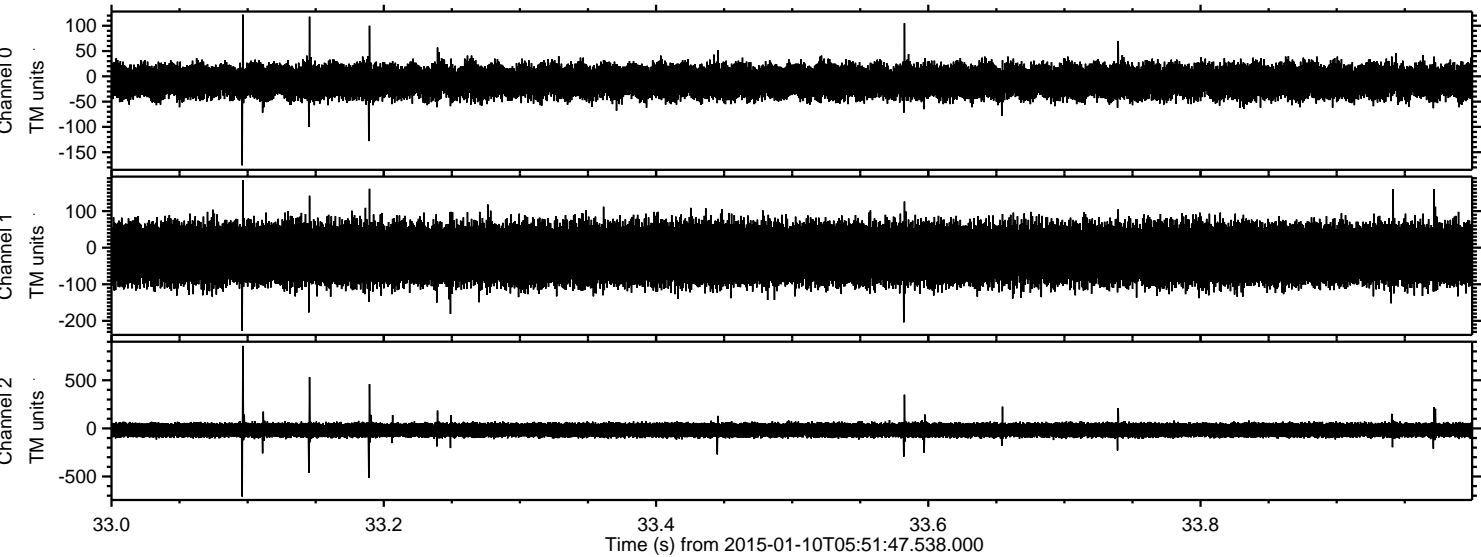
ELMAVAN 3D WAVEFORMS (Measured data sampled at 50 kHz) 49794 packets of 144 samples from 2015-01-10T05:51:47.538.000. Part 141/144

Processed Sat Jan 10 06:59:38 2015 by ELM ver.2012-10-06 from 001__elm20150110_055146__dat00.bin



ELMAVAN 3D WAVEFORMS (Measured data sampled at 50 kHz) 49794 packets of 144 samples from 2015-01-10T05:51:47.538.000. Part 34/144

Processed Sat Jan 10 06:59:39 2015 by ELM ver.2012-10-06 from 001__elm20150110_055146__dat00.bin



Power spectra

Channel 0
mn: -176
mx: 122
 μ : -10.4
 σ : 17.3

Channel 1
mn: -227
mx: 185
 μ : -17.0
 σ : 40.9

Channel 2
mn: -709
mx: 858
 μ : -17.9
 σ : 42.9

ELMAVAN 3D WAVEFORMS (Measured data sampled at 50 kHz) 49794 packets of 144 samples from 2015-01-10T05:51:47.538.000. Part 103/144

Processed Sat Jan 10 06:59:40 2015 by ELM ver.2012-10-06 from 001__elm20150110_055146__dat00.bin

