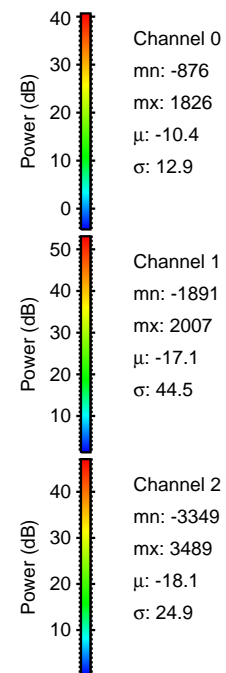
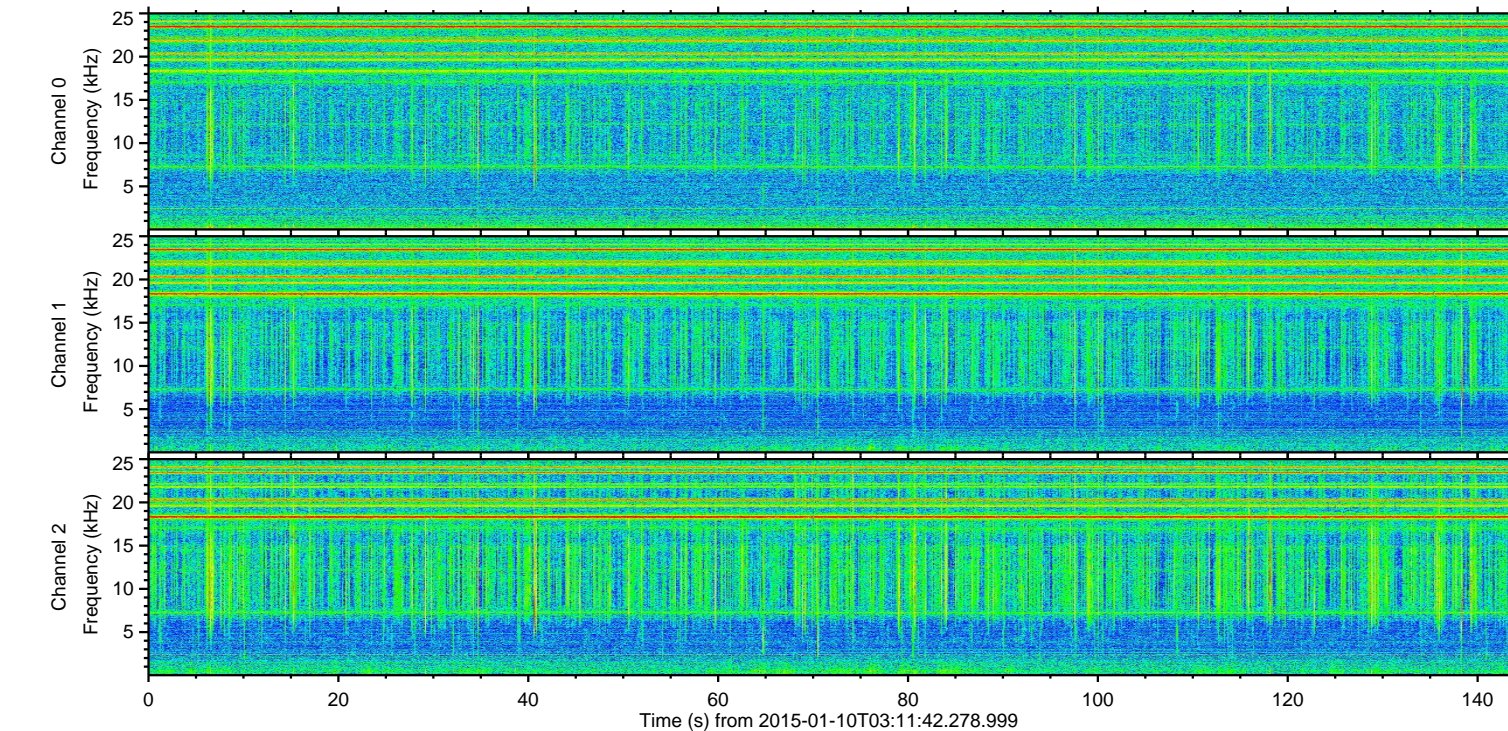
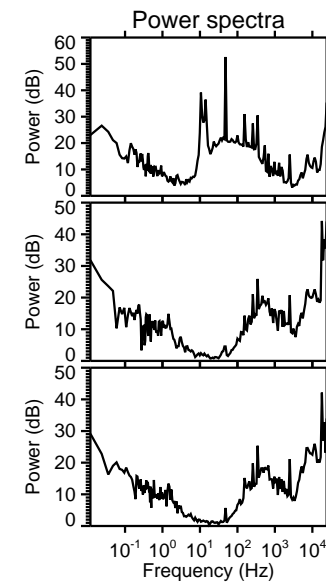
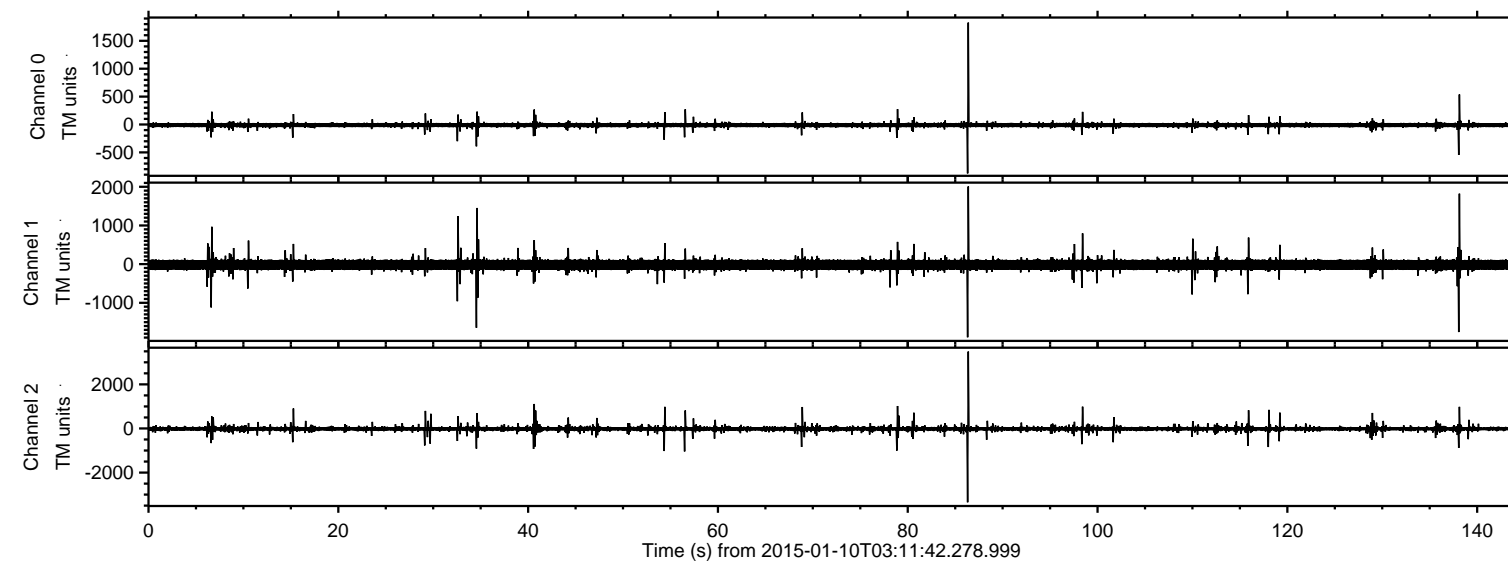
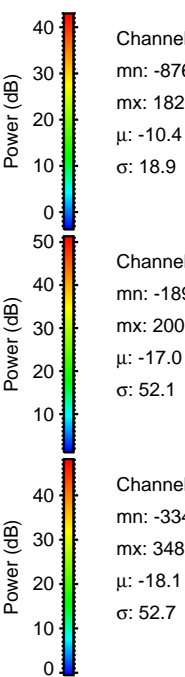
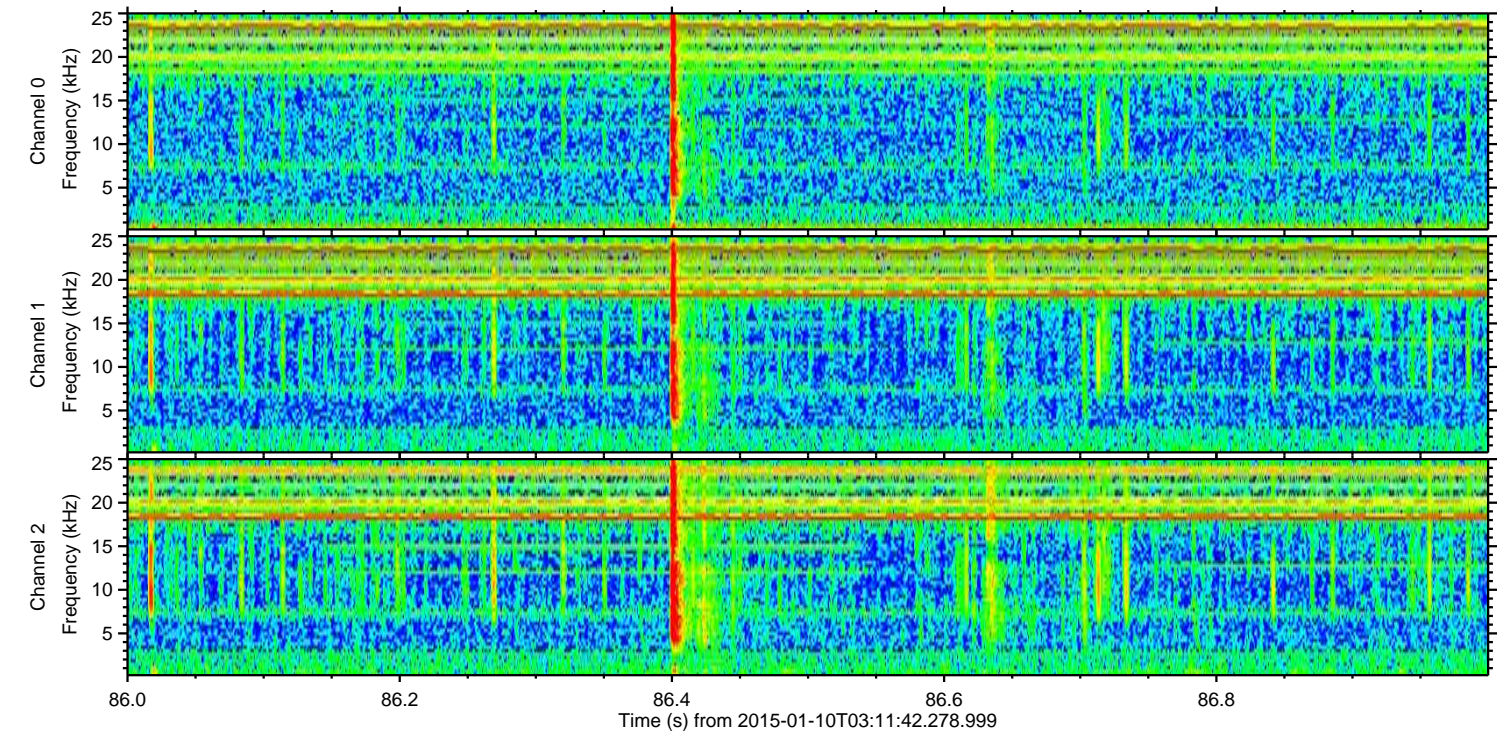
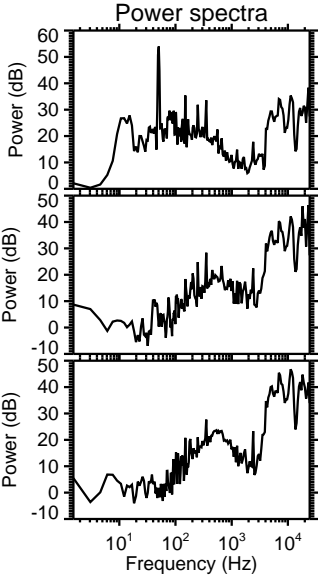
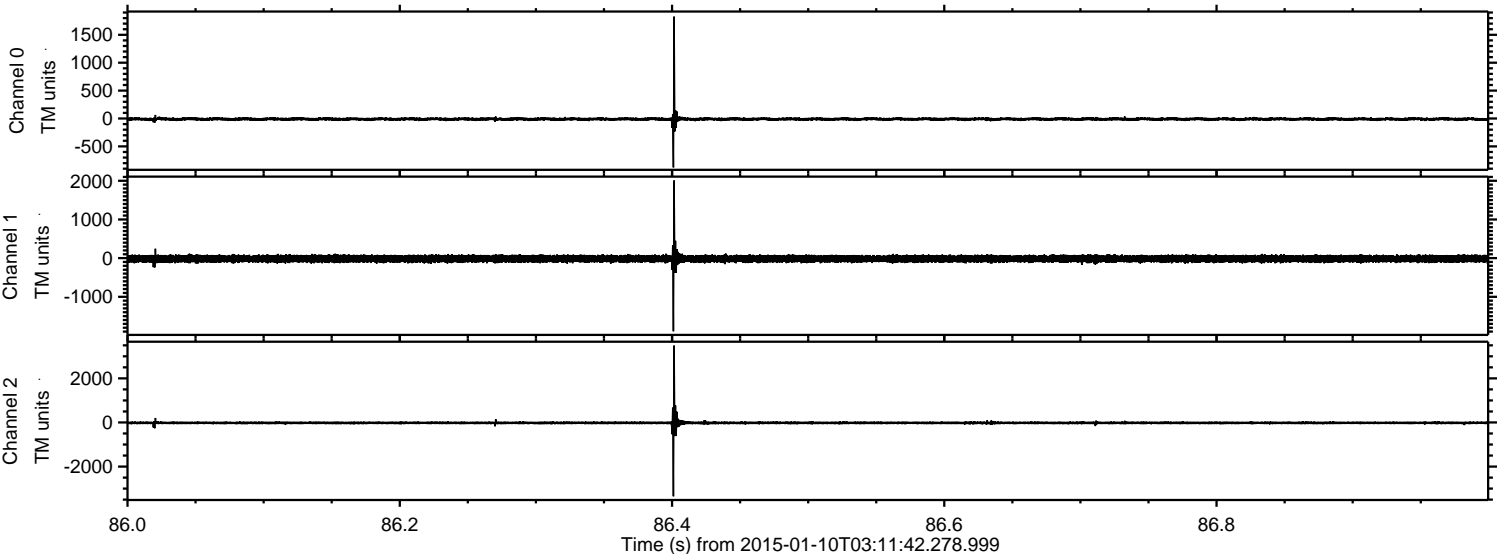


ELMAVAN 3D WAVEFORMS (Measured data sampled at 50 kHz) 49781 packets of 144 samples from 2015-01-10T03:11:42.278.999.

Processed Sat Jan 10 04:19:15 2015 by ELM ver.2012-10-06 from 001__elm20150110_031141__dat00.bin

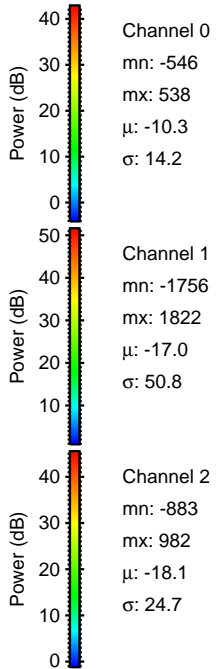
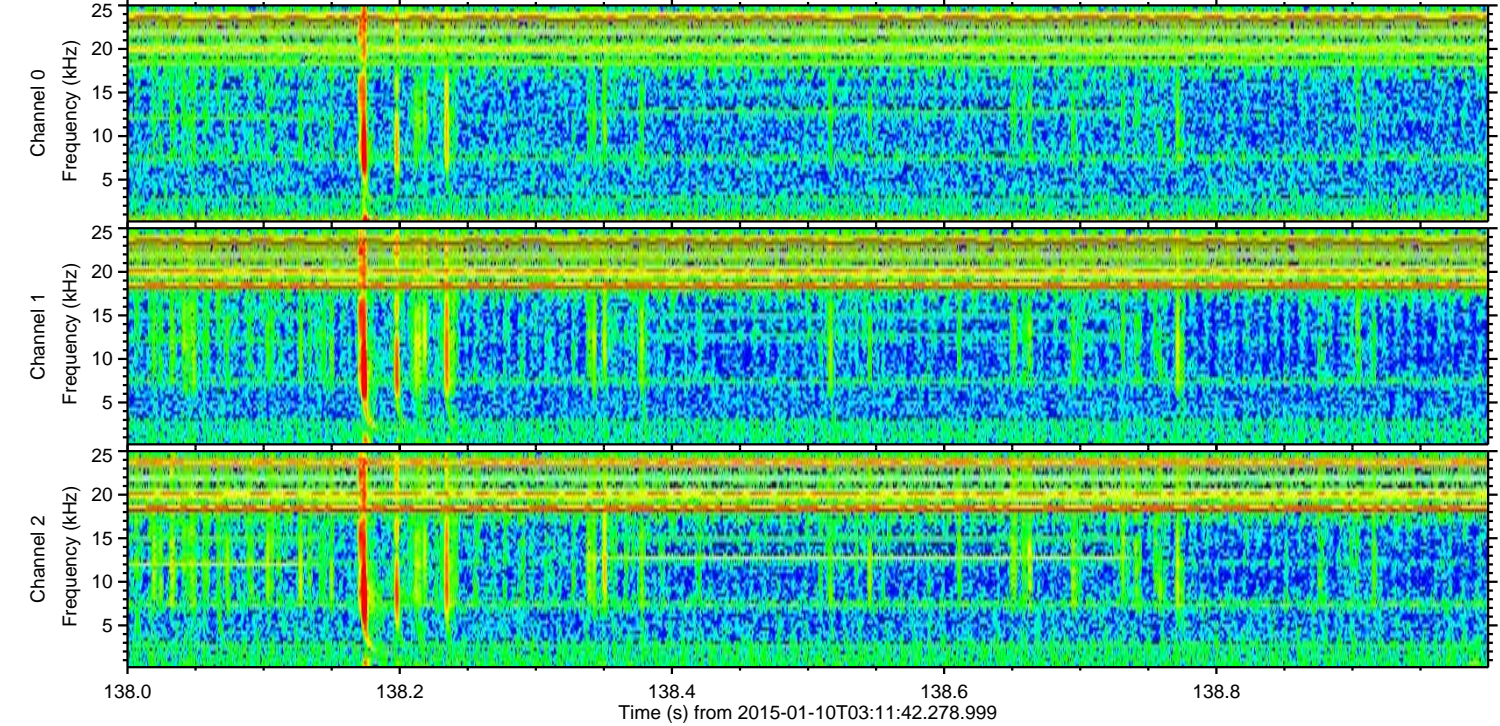
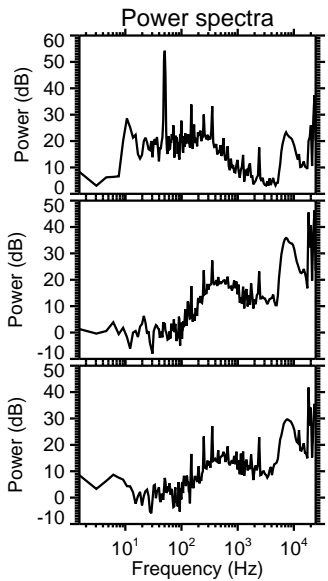
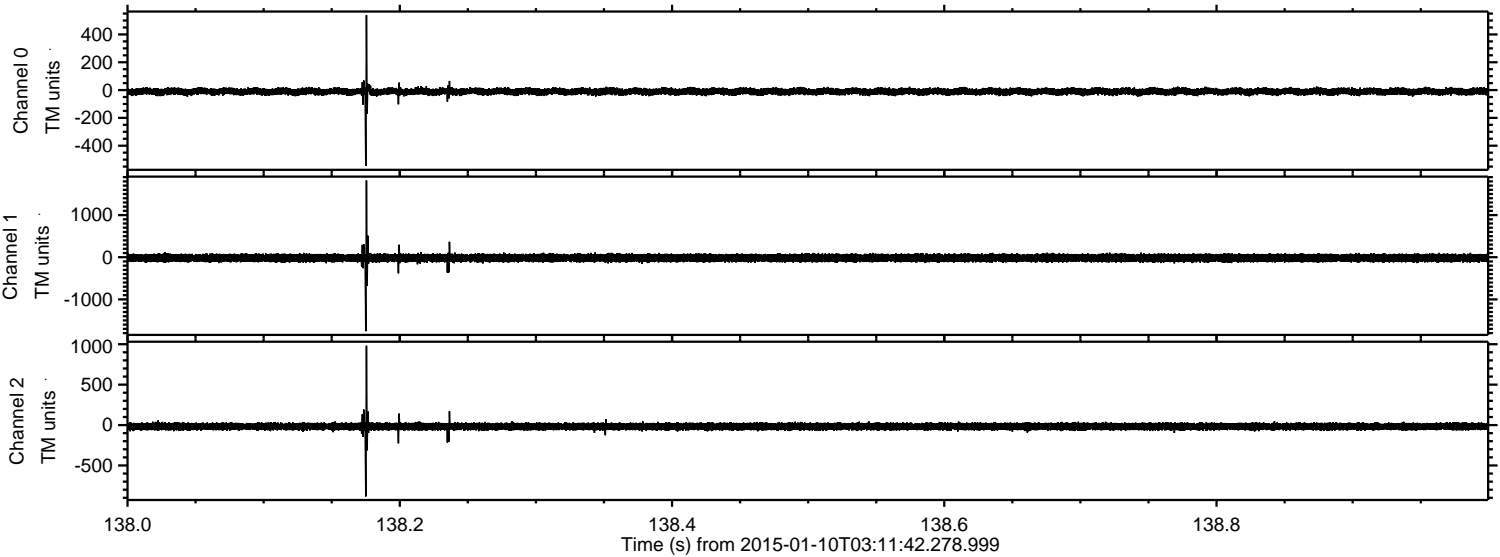


Processed Sat Jan 10 04:19:27 2015 by ELM ver.2012-10-06 from 001__elm20150110_031141__dat00.bin

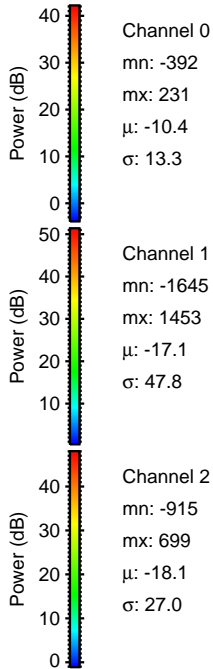
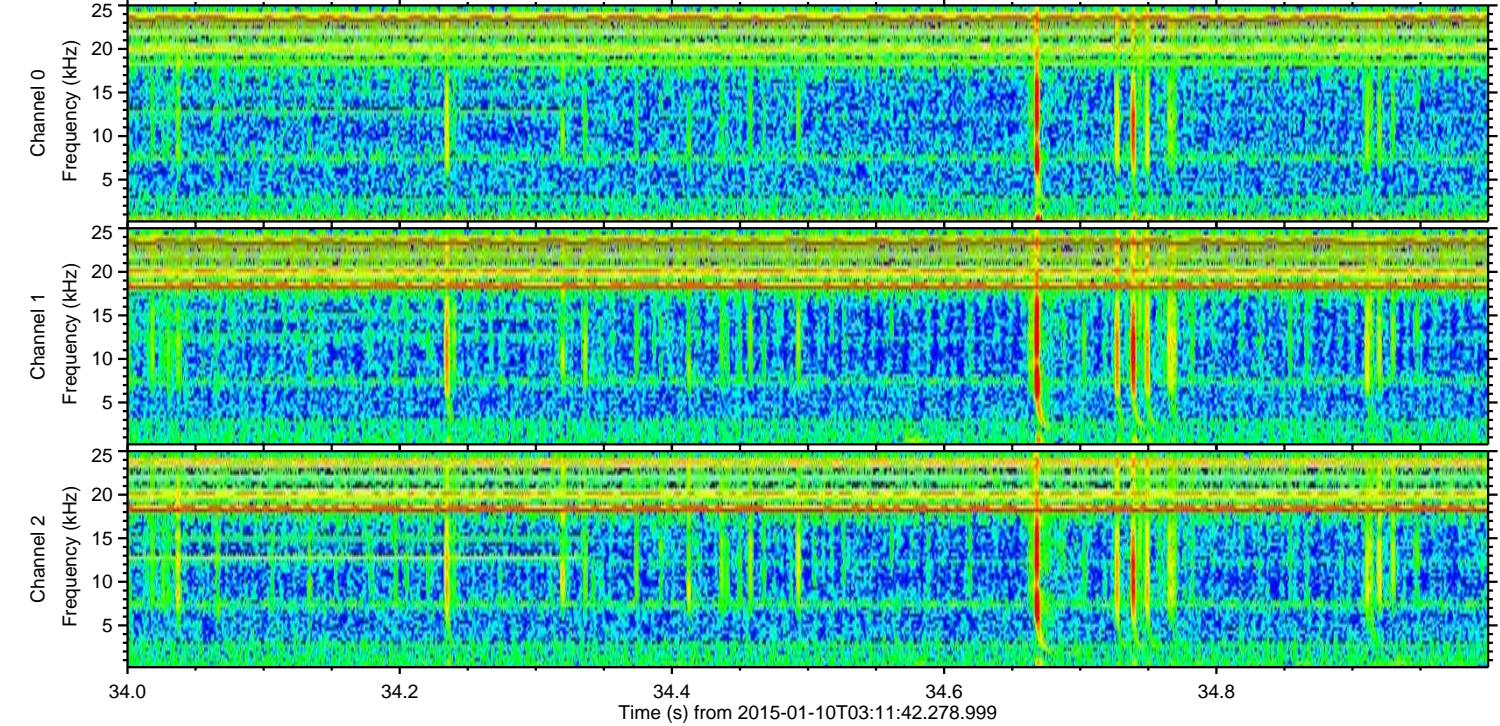
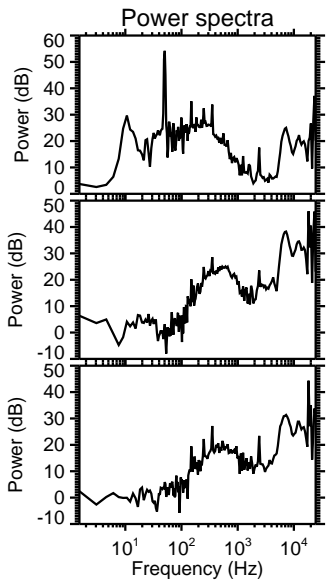
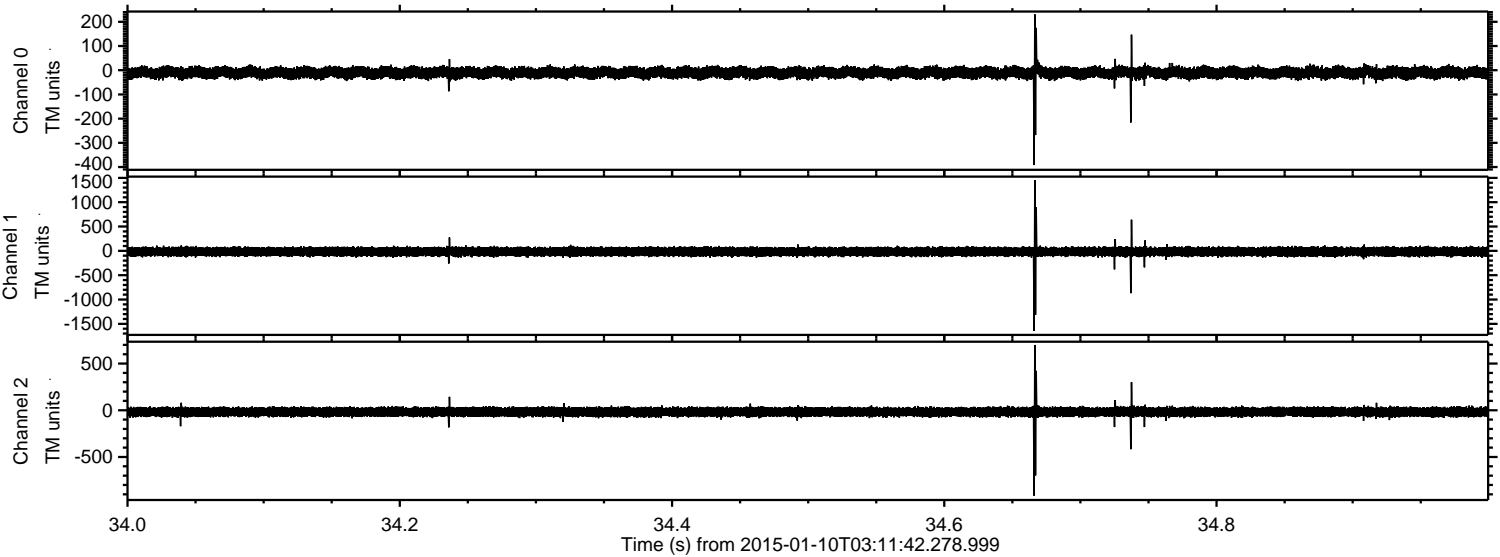


ELMAVAN 3D WAVEFORMS (Measured data sampled at 50 kHz) 49781 packets of 144 samples from 2015-01-10T03:11:42.278.999. Part 139/144

Processed Sat Jan 10 04:19:28 2015 by ELM ver.2012-10-06 from 001__elm20150110_031141__dat00.bin

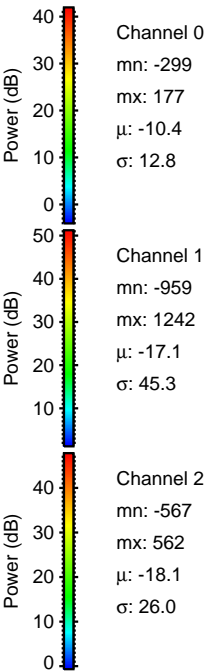
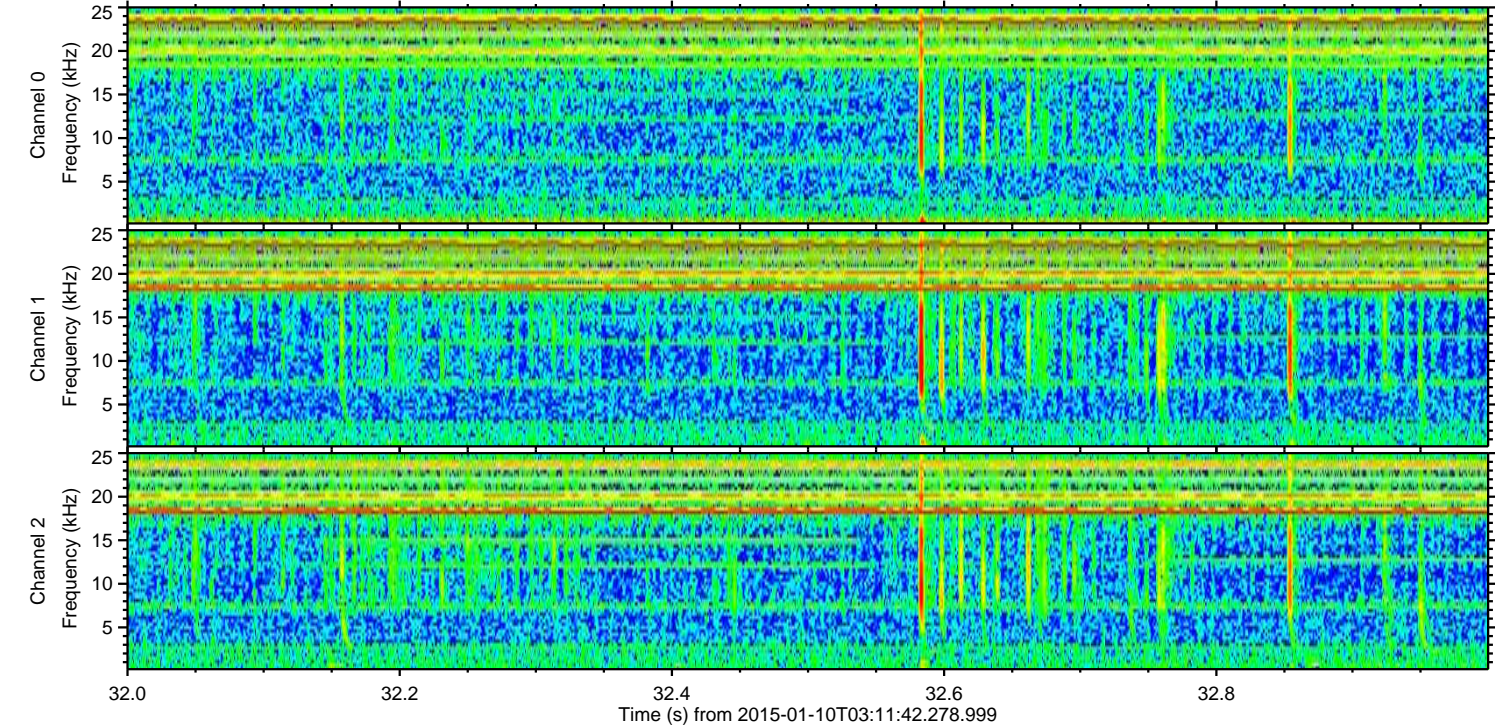
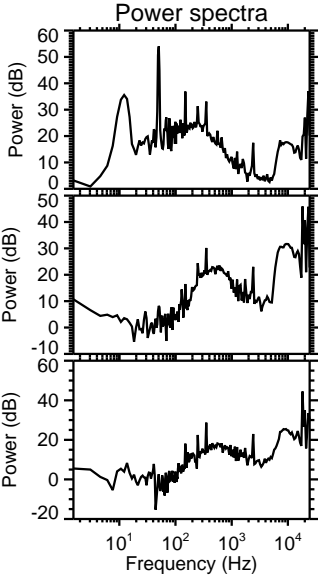
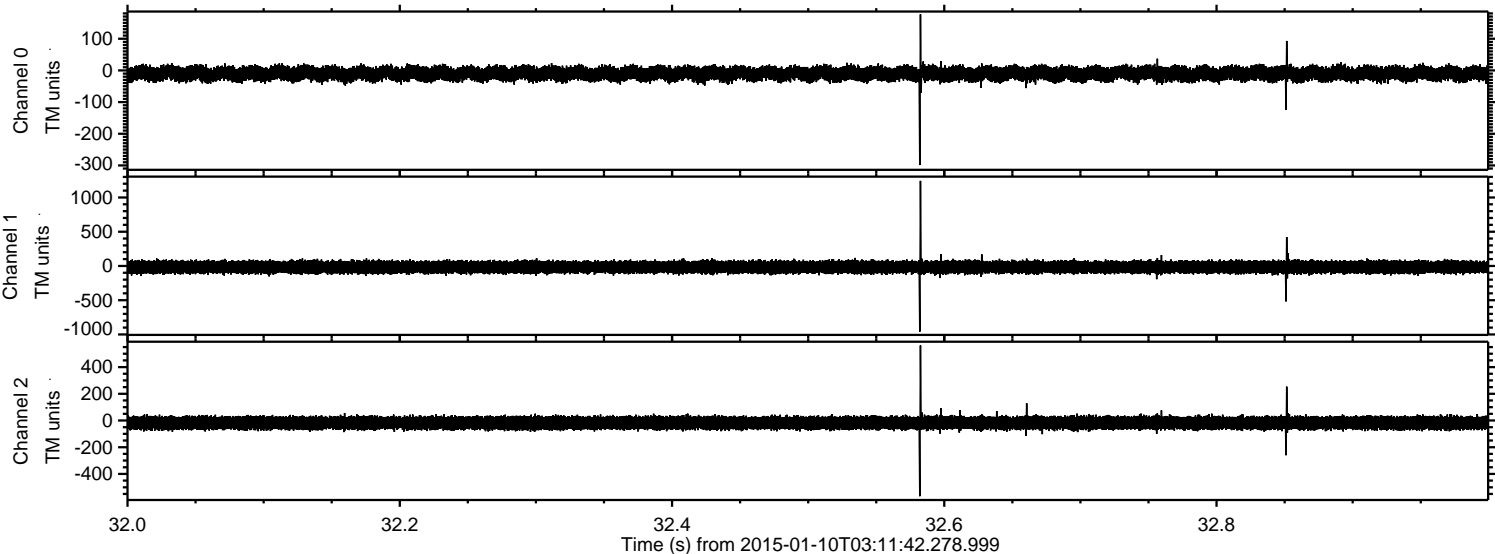


Processed Sat Jan 10 04:19:29 2015 by ELM ver.2012-10-06 from 001__elm20150110_031141__dat00.bin



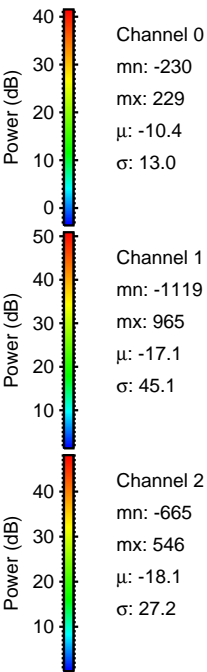
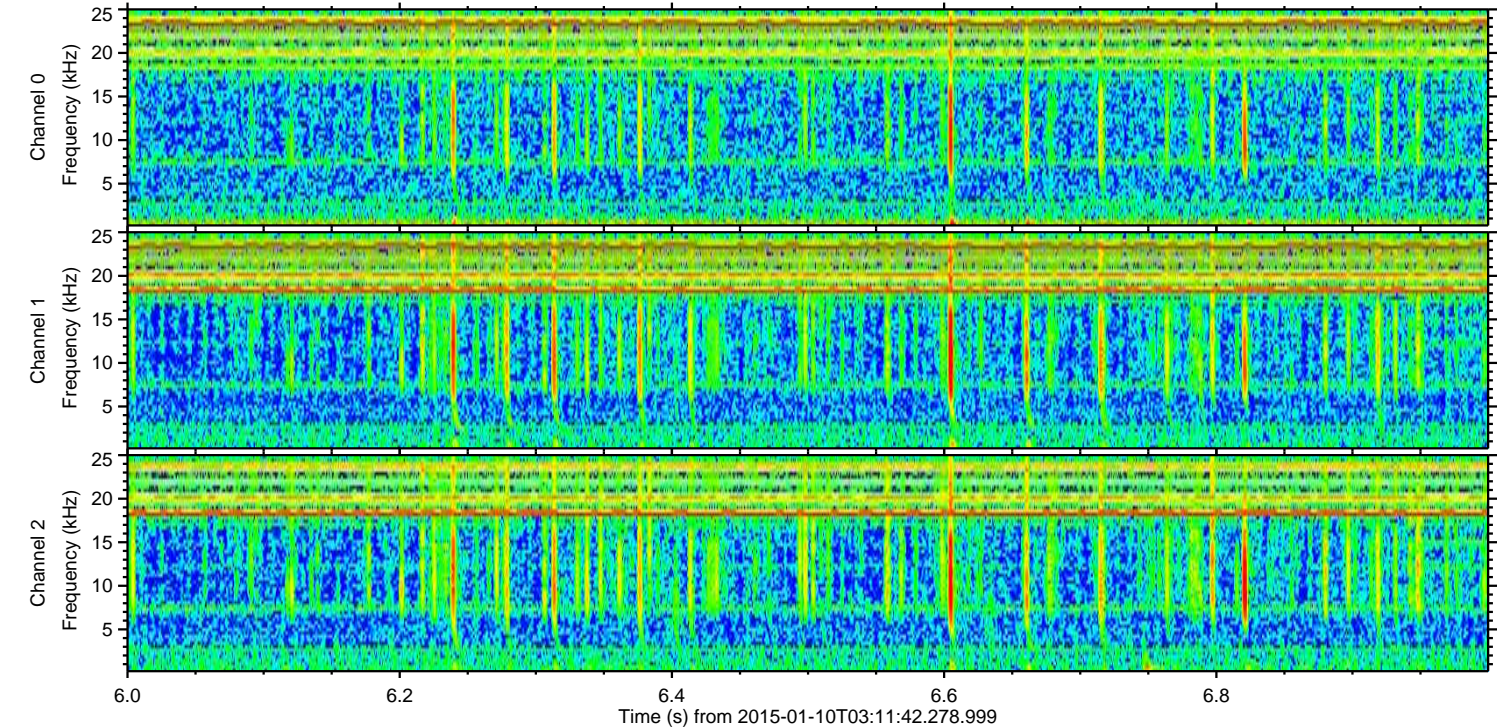
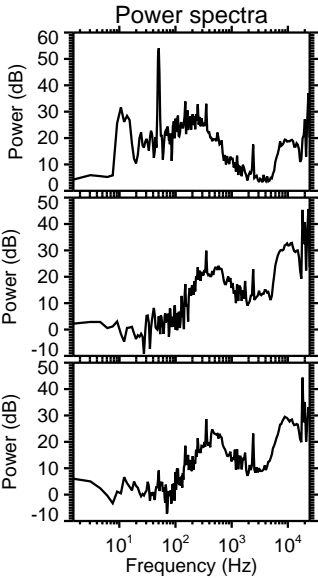
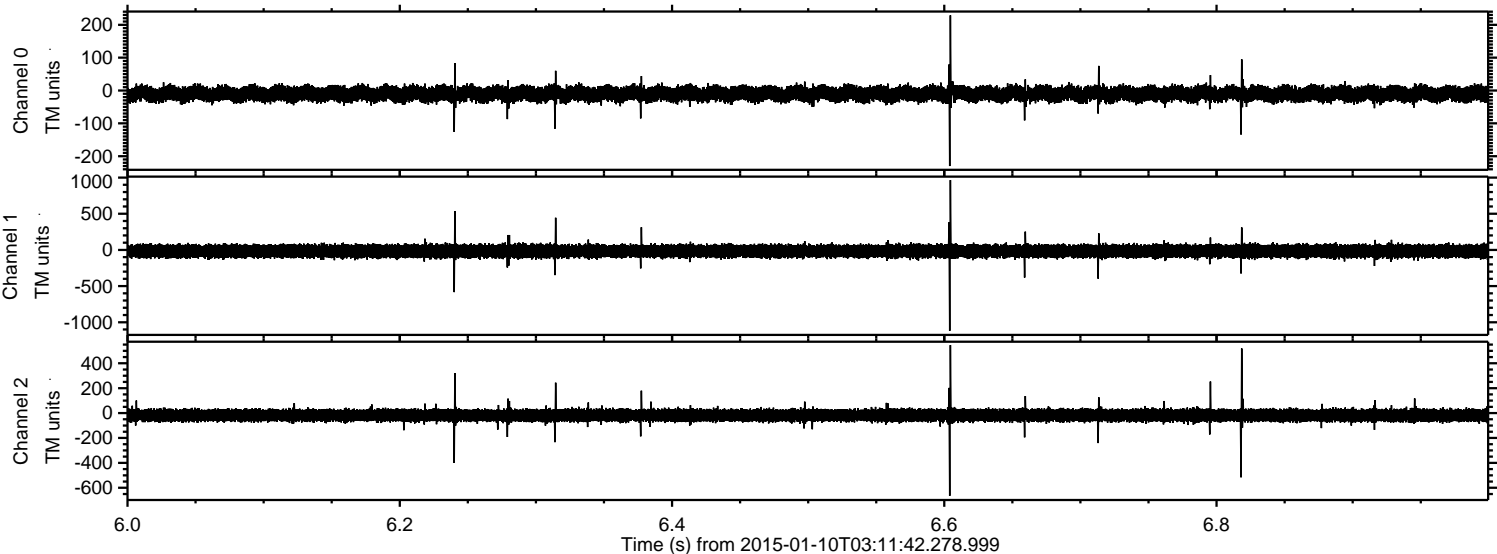
ELMAVAN 3D WAVEFORMS (Measured data sampled at 50 kHz) 49781 packets of 144 samples from 2015-01-10T03:11:42.278.999. Part 33/144

Processed Sat Jan 10 04:19:30 2015 by ELM ver.2012-10-06 from 001__elm20150110_031141__dat00.bin



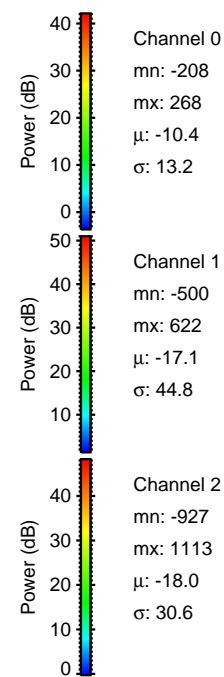
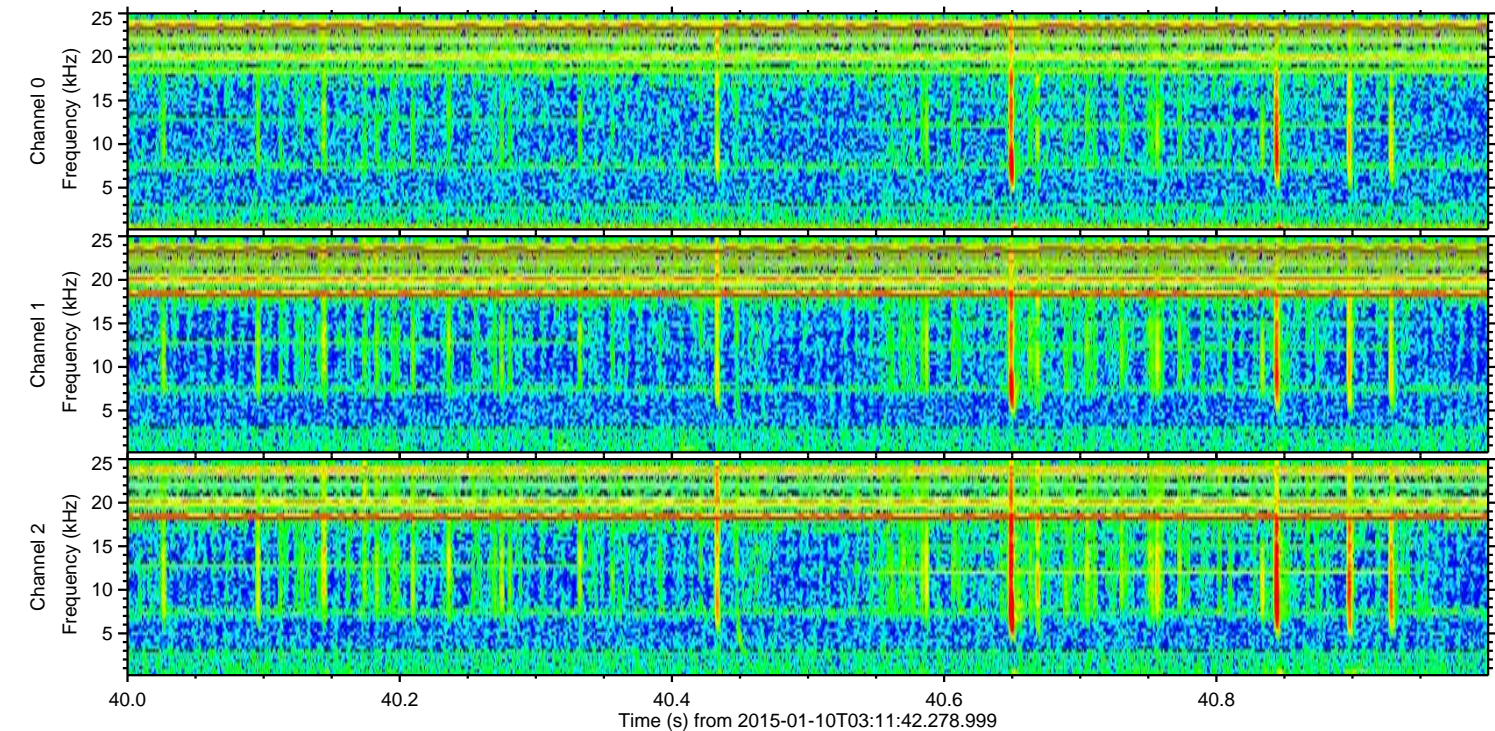
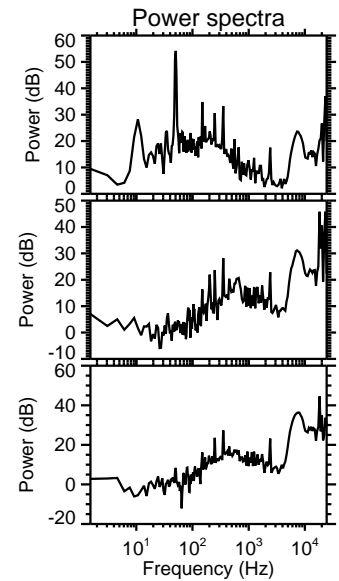
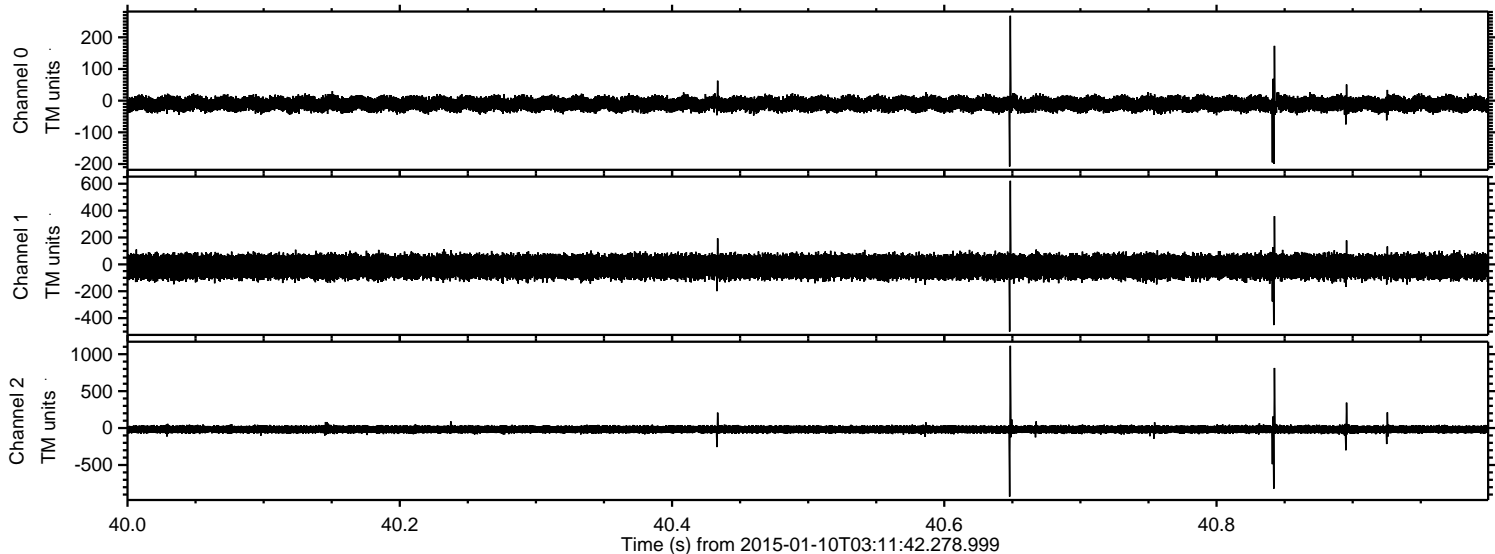
ELMAVAN 3D WAVEFORMS (Measured data sampled at 50 kHz) 49781 packets of 144 samples from 2015-01-10T03:11:42.278.999. Part 7/144

Processed Sat Jan 10 04:19:30 2015 by ELM ver.2012-10-06 from 001__elm20150110_031141__dat00.bin



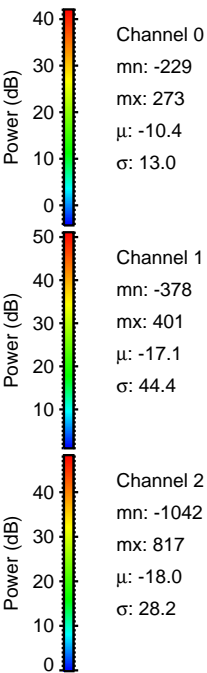
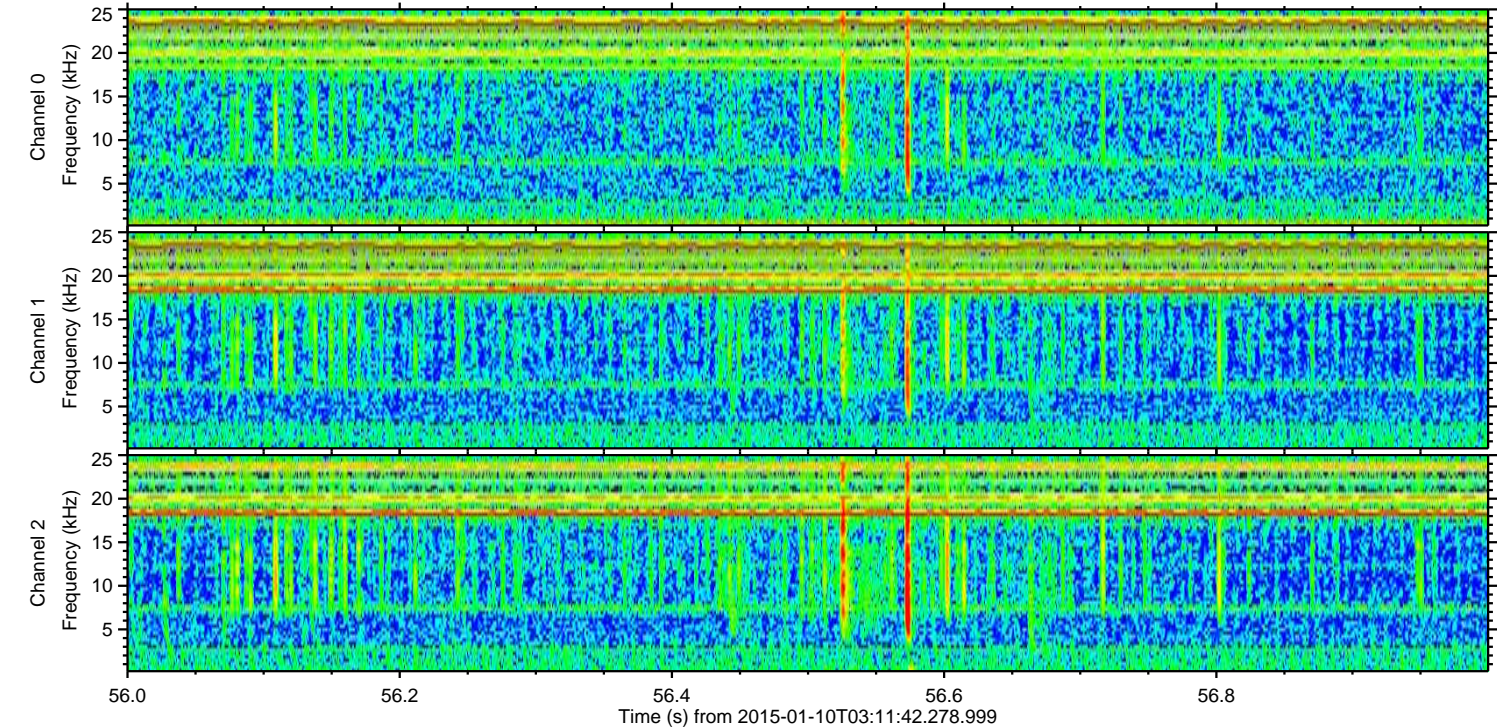
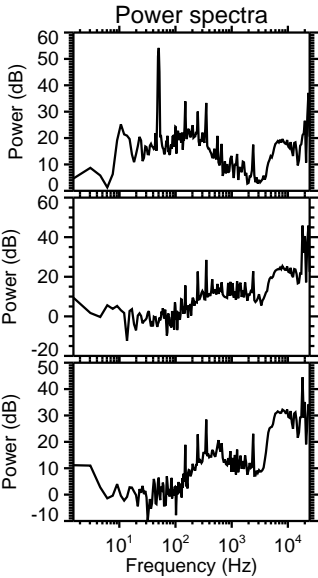
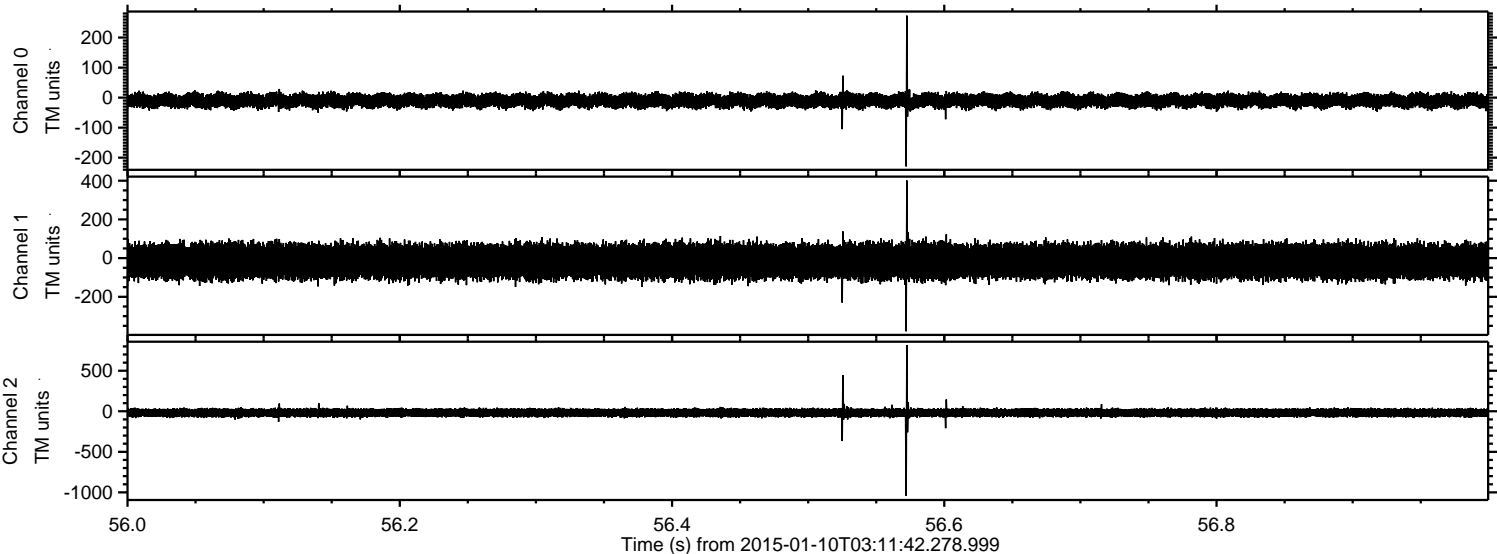
ELMAVAN 3D WAVEFORMS (Measured data sampled at 50 kHz) 49781 packets of 144 samples from 2015-01-10T03:11:42.278.999. Part 41/144

Processed Sat Jan 10 04:19:31 2015 by ELM ver.2012-10-06 from 001__elm20150110_031141__dat00.bin

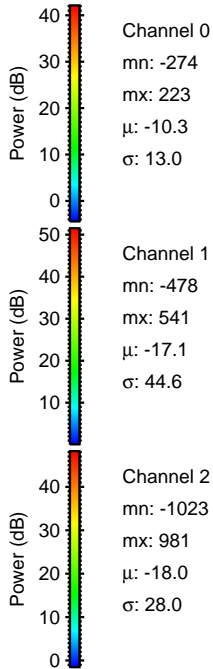
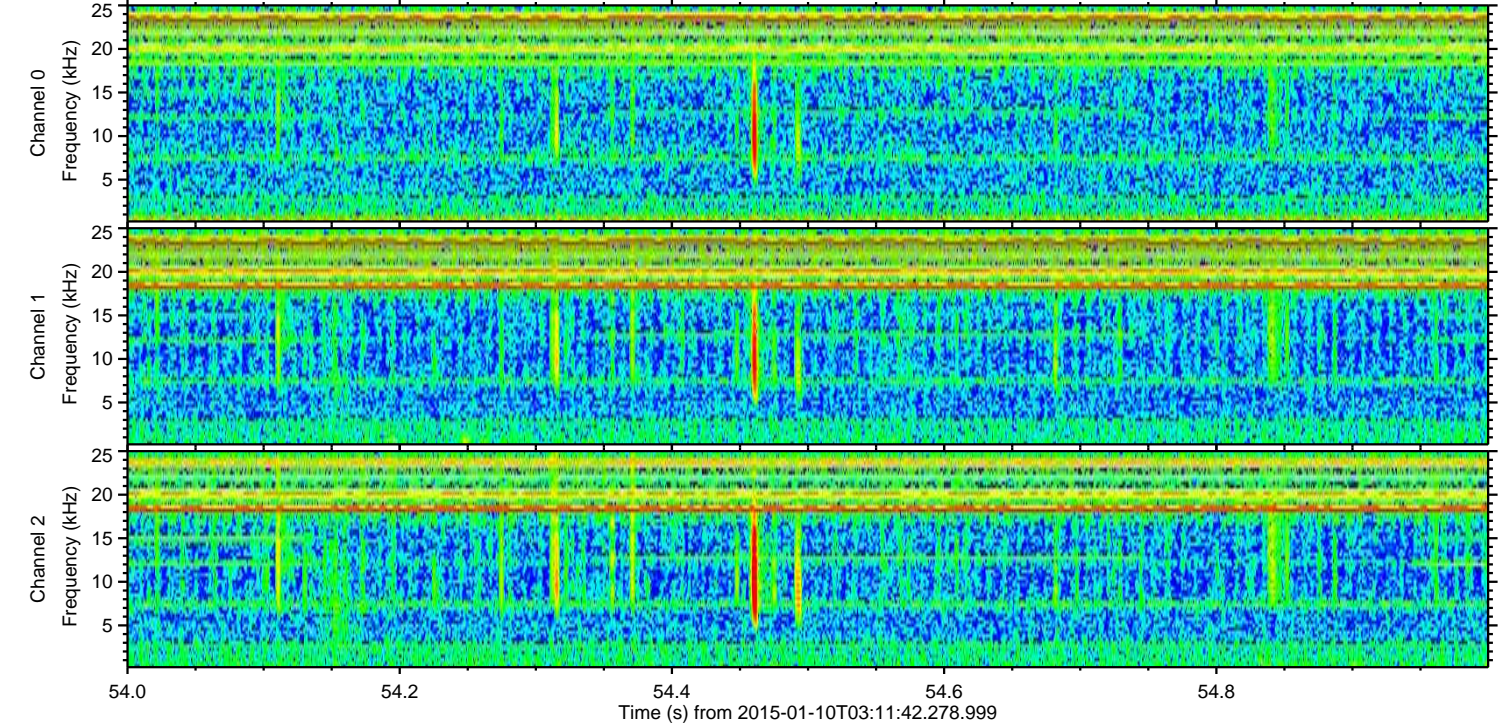
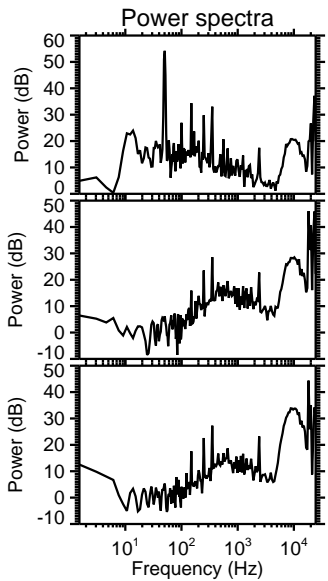
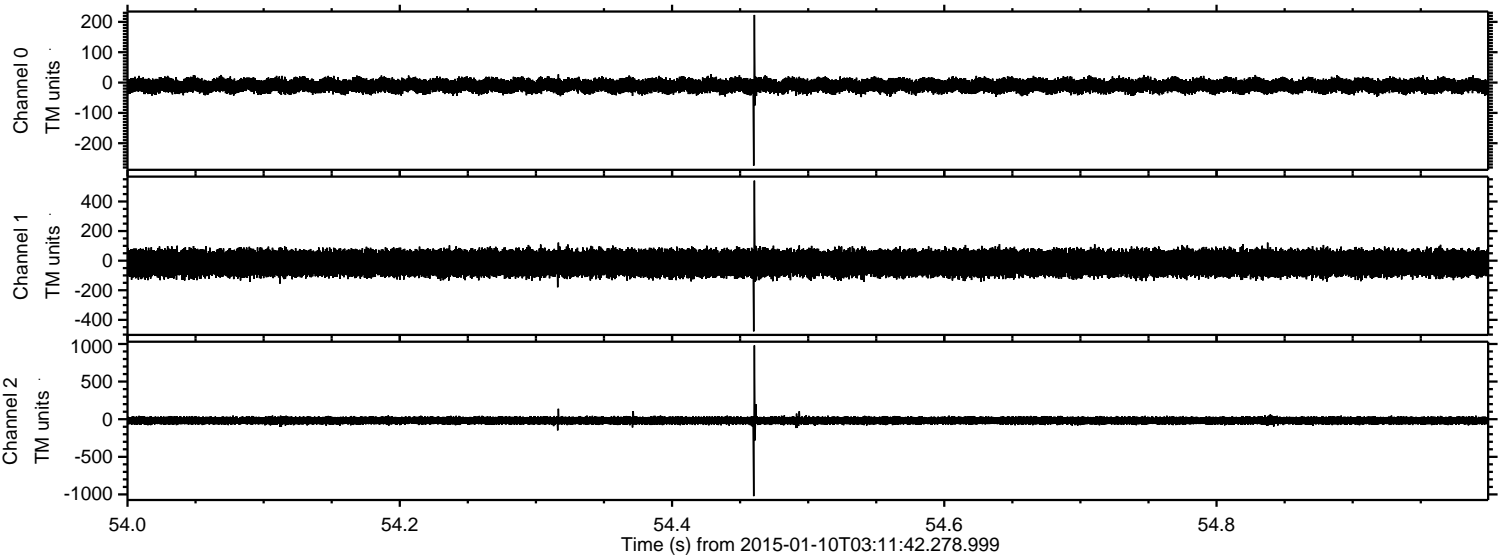


ELMAVAN 3D WAVEFORMS (Measured data sampled at 50 kHz) 49781 packets of 144 samples from 2015-01-10T03:11:42.278.999. Part 57/144

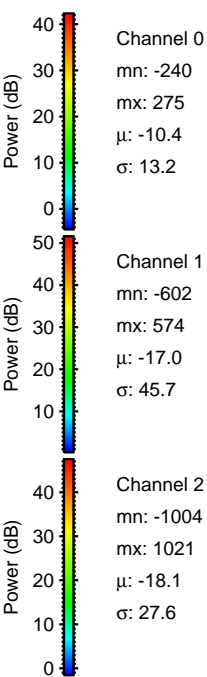
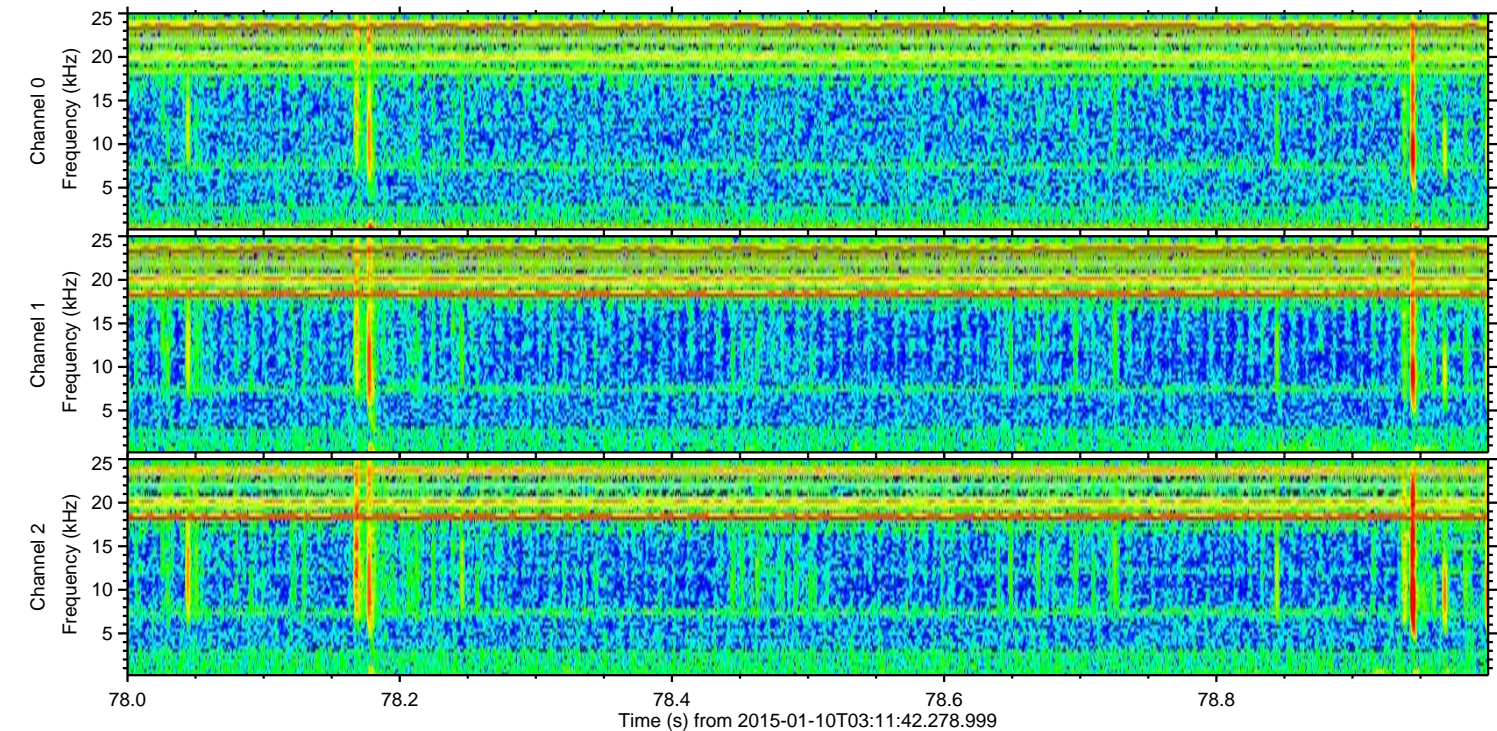
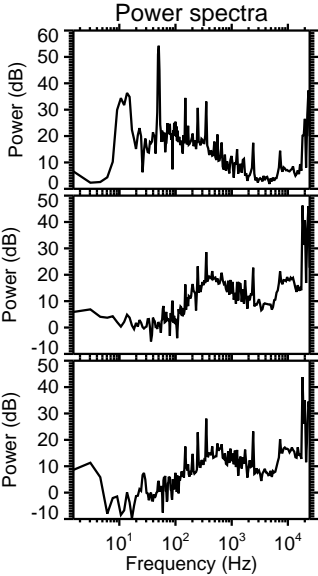
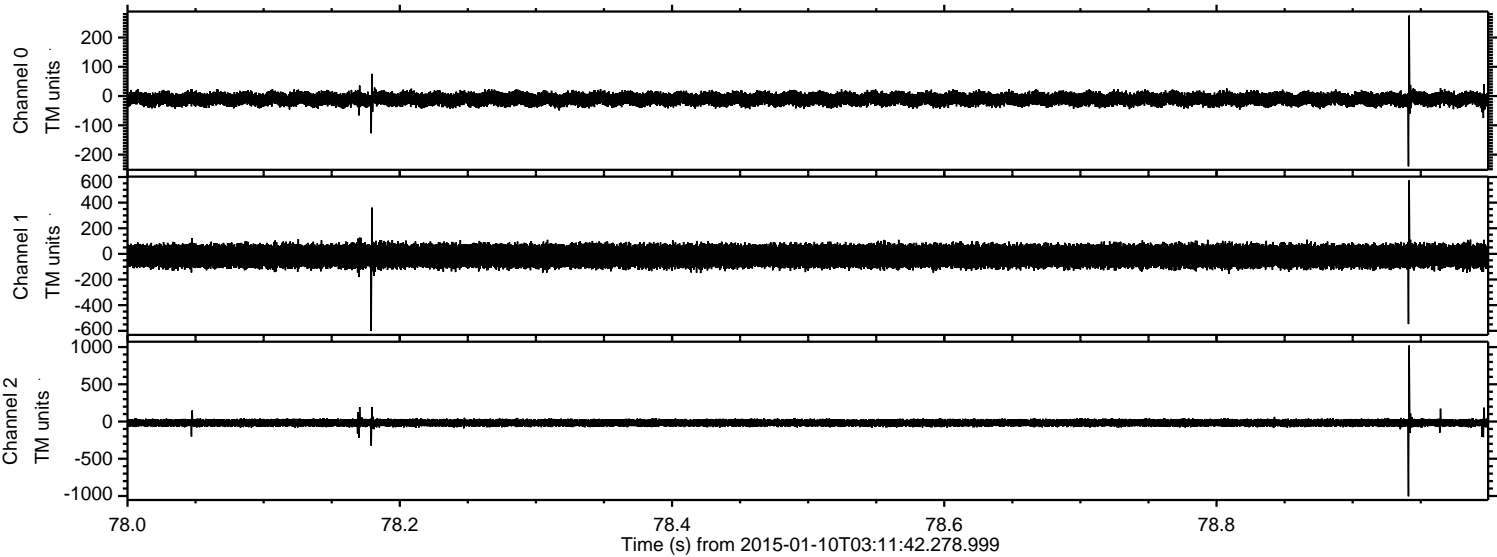
Processed Sat Jan 10 04:19:32 2015 by ELM ver.2012-10-06 from 001__elm20150110_031141__dat00.bin



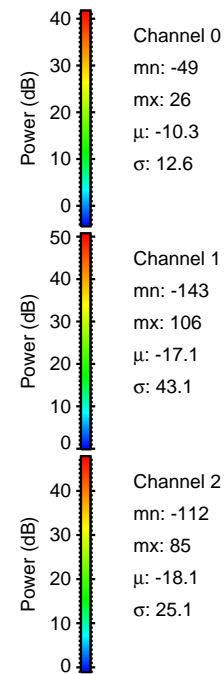
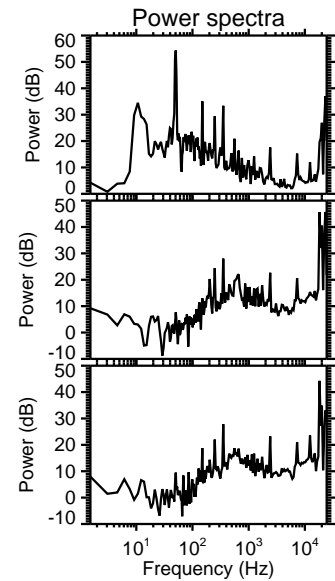
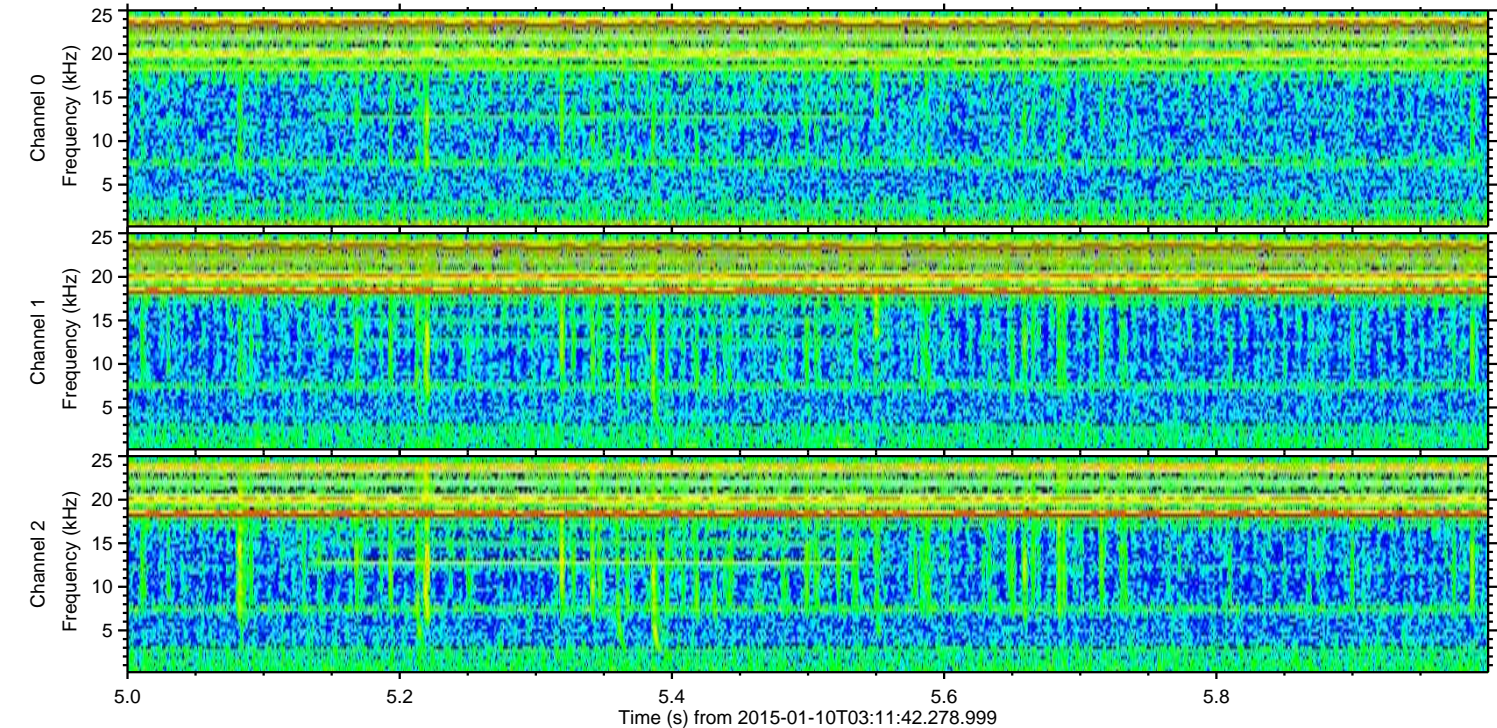
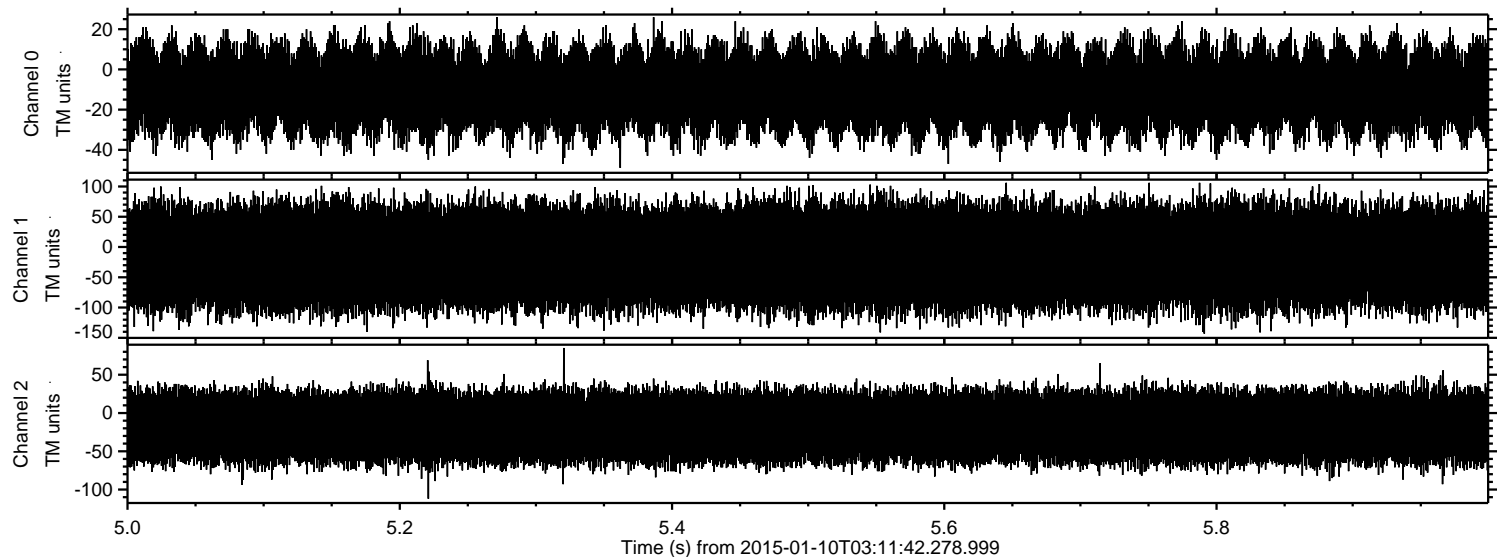
Processed Sat Jan 10 04:19:33 2015 by ELM ver.2012-10-06 from 001__elm20150110_031141__dat00.bin



Processed Sat Jan 10 04:19:34 2015 by ELM ver.2012-10-06 from 001__elm20150110_031141__dat00.bin



Processed Sat Jan 10 04:19:35 2015 by ELM ver.2012-10-06 from 001__elm20150110_031141__dat00.bin



Power spectra

Channel 0
mn: -49
mx: 26
 μ : -10.3
 σ : 12.6

Channel 1
mn: -143
mx: 106
 μ : -17.1
 σ : 43.1

Channel 2
mn: -112
mx: 85
 μ : -18.1
 σ : 25.1