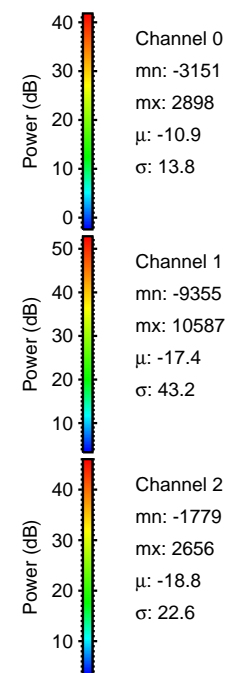
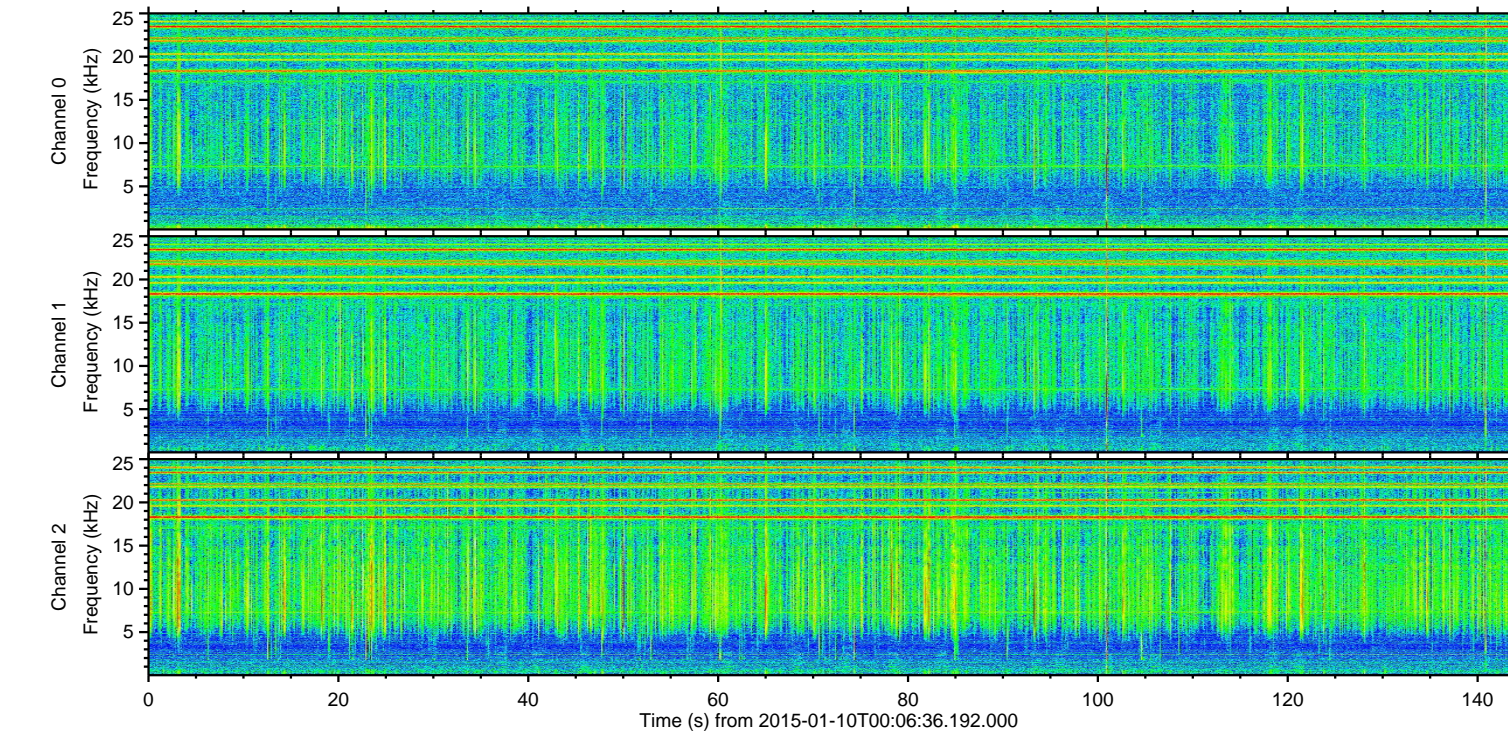
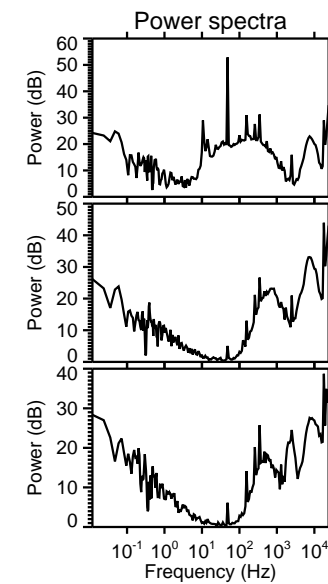
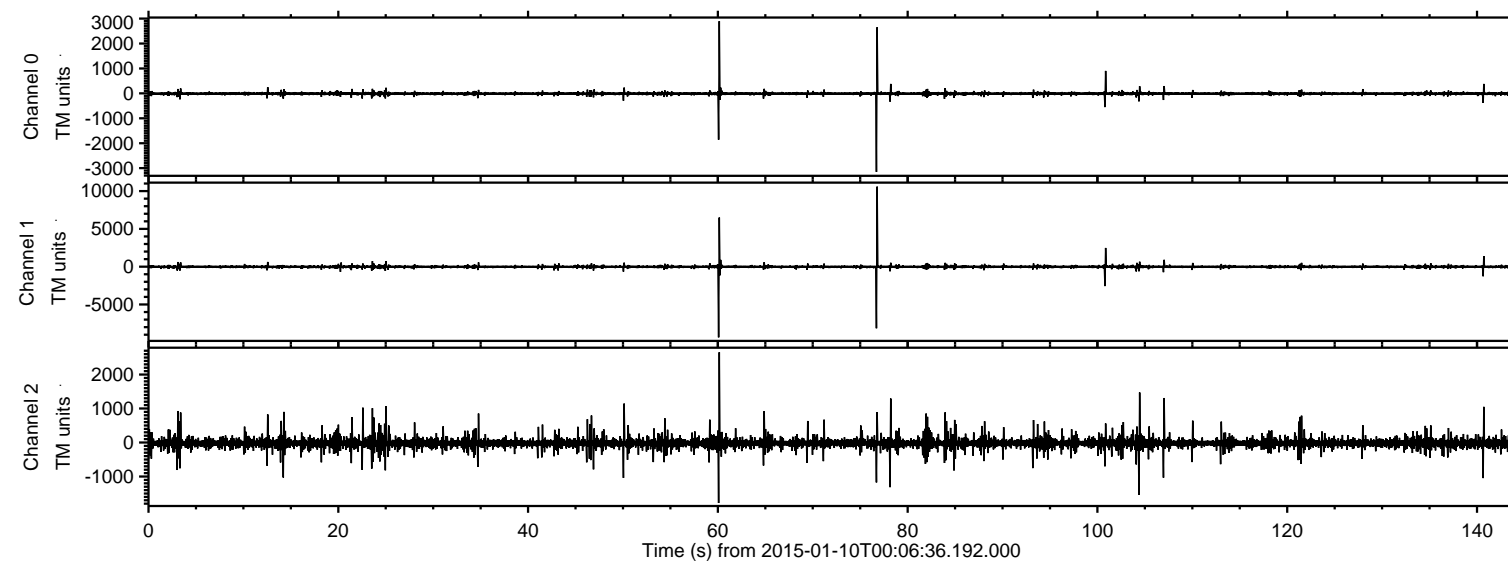


# ELMAVAN 3D WAVEFORMS (Measured data sampled at 50 kHz) 49788 packets of 144 samples from 2015-01-10T00:06:36.192.000.

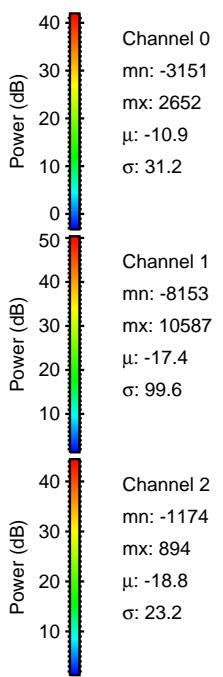
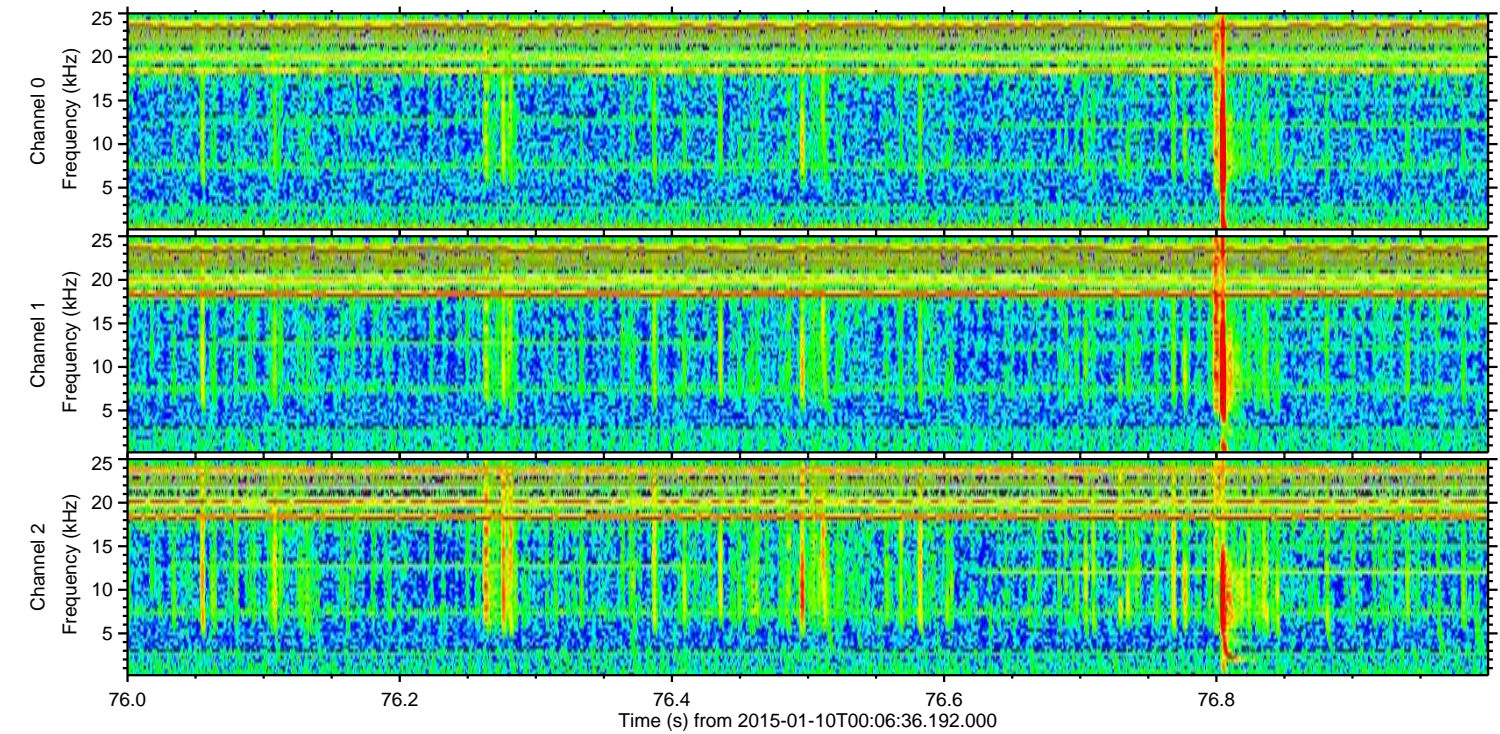
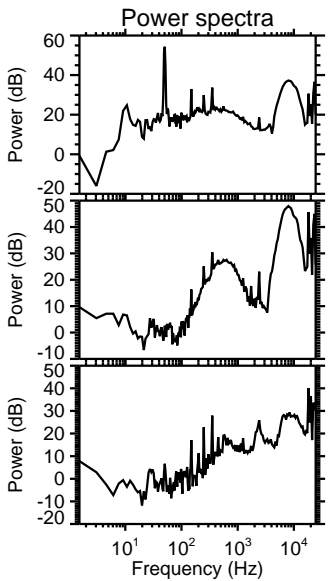
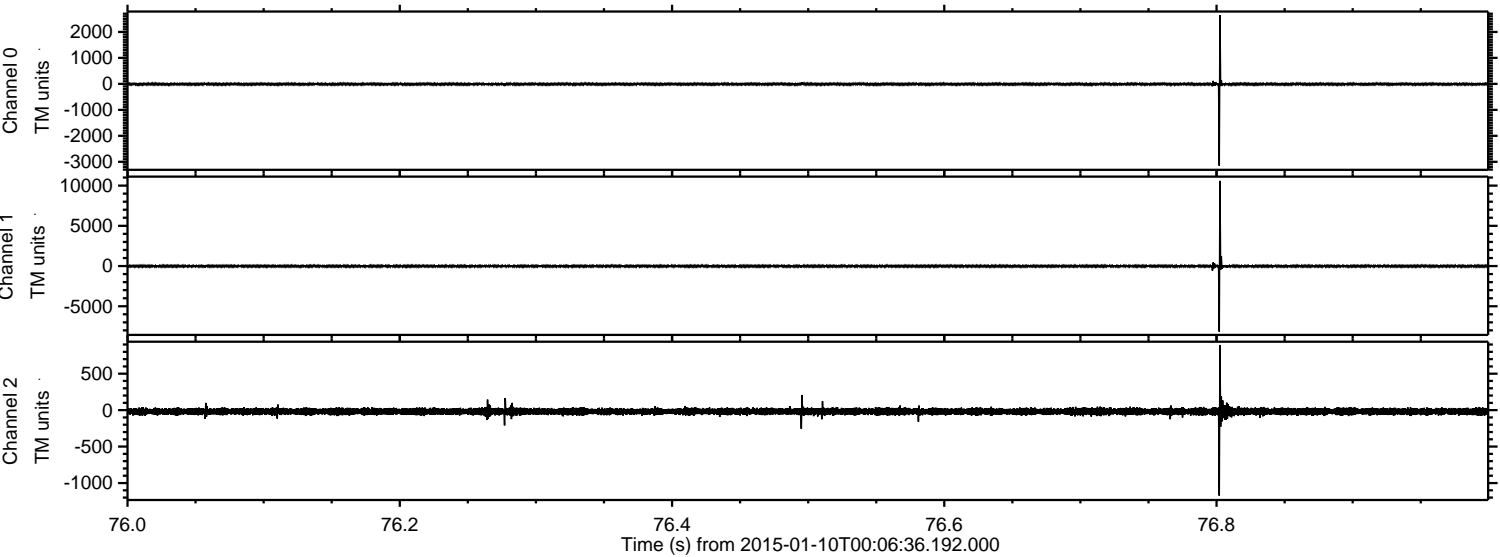
Processed Sat Jan 10 01:13:32 2015 by ELM ver.2012-10-06 from 001\_\_elm20150110\_000635\_\_dat00.bin





ELMAVAN 3D WAVEFORMS (Measured data sampled at 50 kHz) 49788 packets of 144 samples from 2015-01-10T00:06:36.192.000. Part 77/144

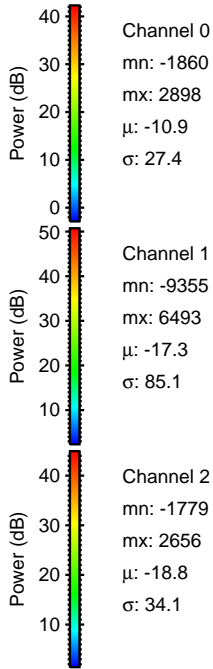
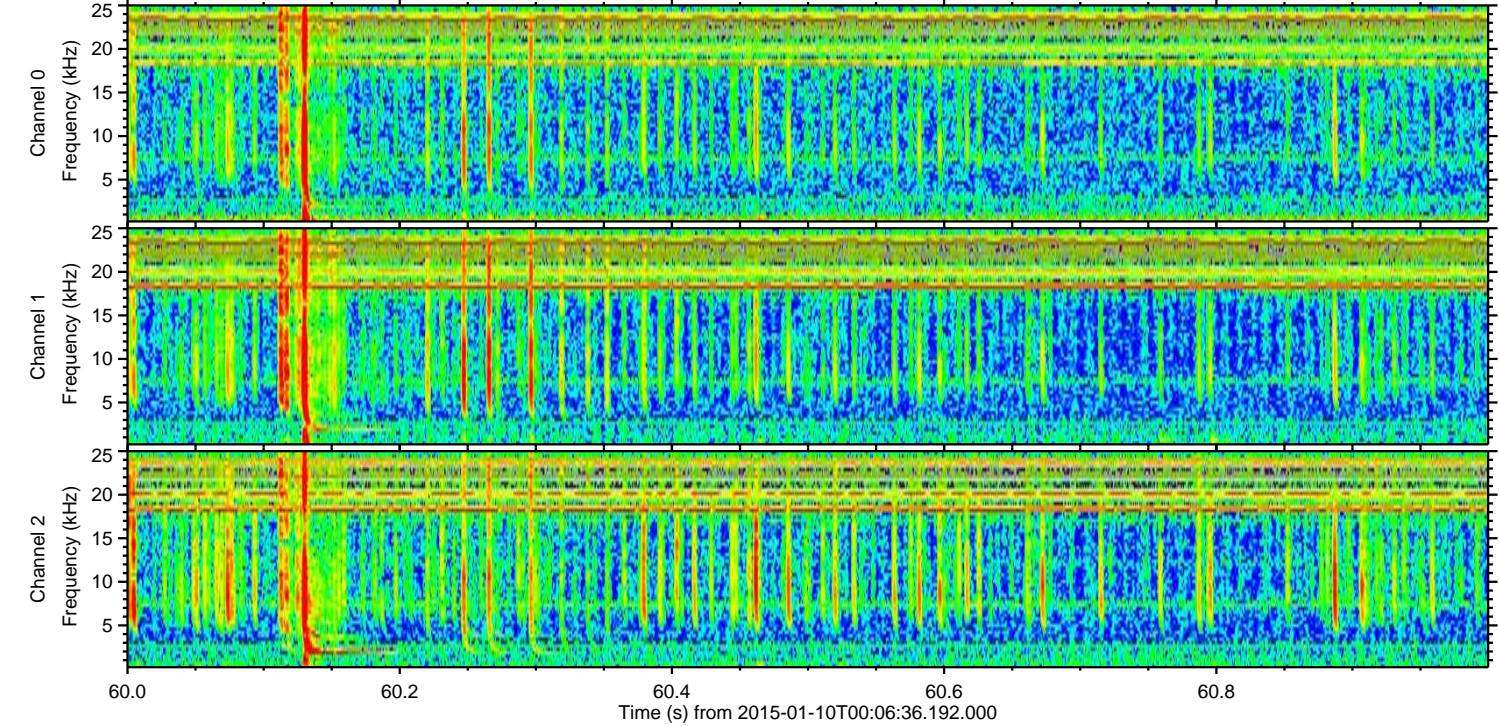
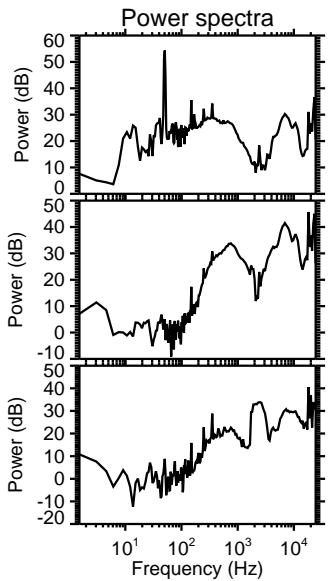
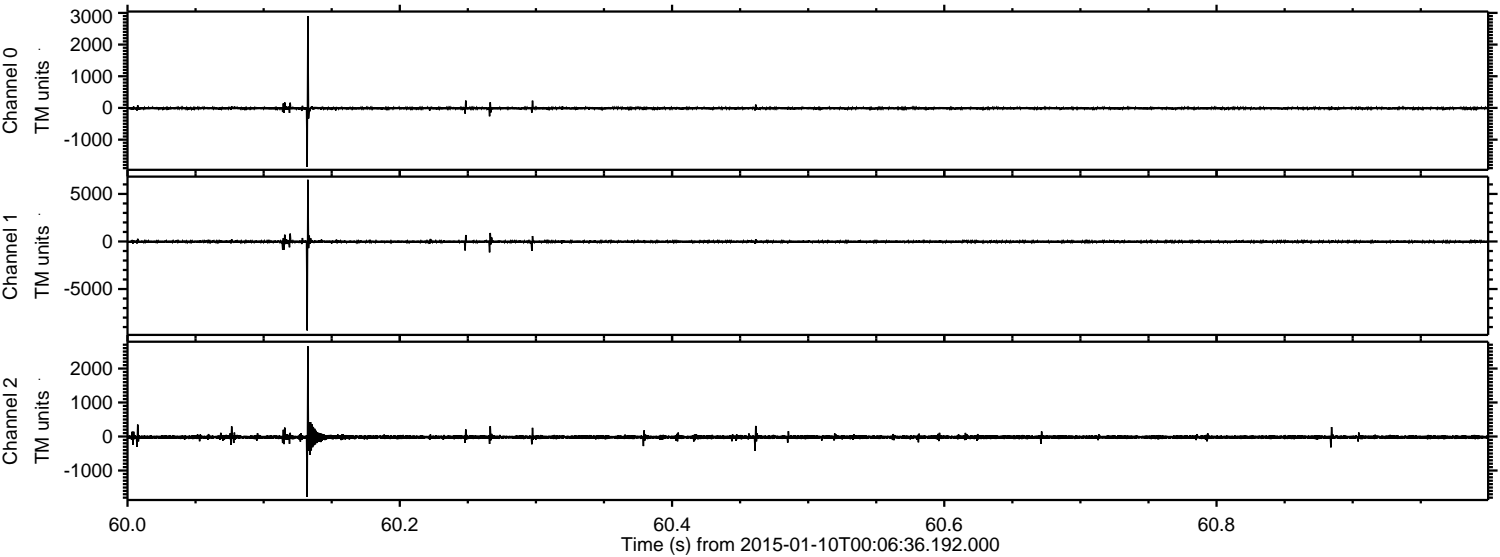
Processed Sat Jan 10 01:13:52 2015 by ELM ver.2012-10-06 from 001\_\_elm20150110\_000635\_\_dat00.bin





ELMAVAN 3D WAVEFORMS (Measured data sampled at 50 kHz) 49788 packets of 144 samples from 2015-01-10T00:06:36.192.000. Part 61/144

Processed Sat Jan 10 01:13:53 2015 by ELM ver.2012-10-06 from 001\_\_elm20150110\_000635\_\_dat00.bin



Channel 0  
mn: -1860  
mx: 2898  
 $\mu$ : -10.9  
 $\sigma$ : 27.4

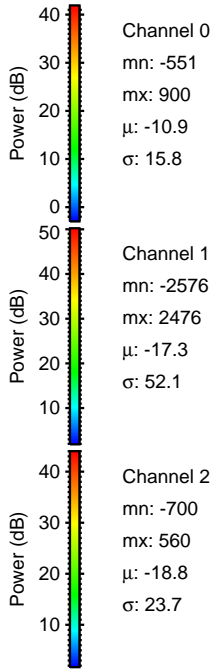
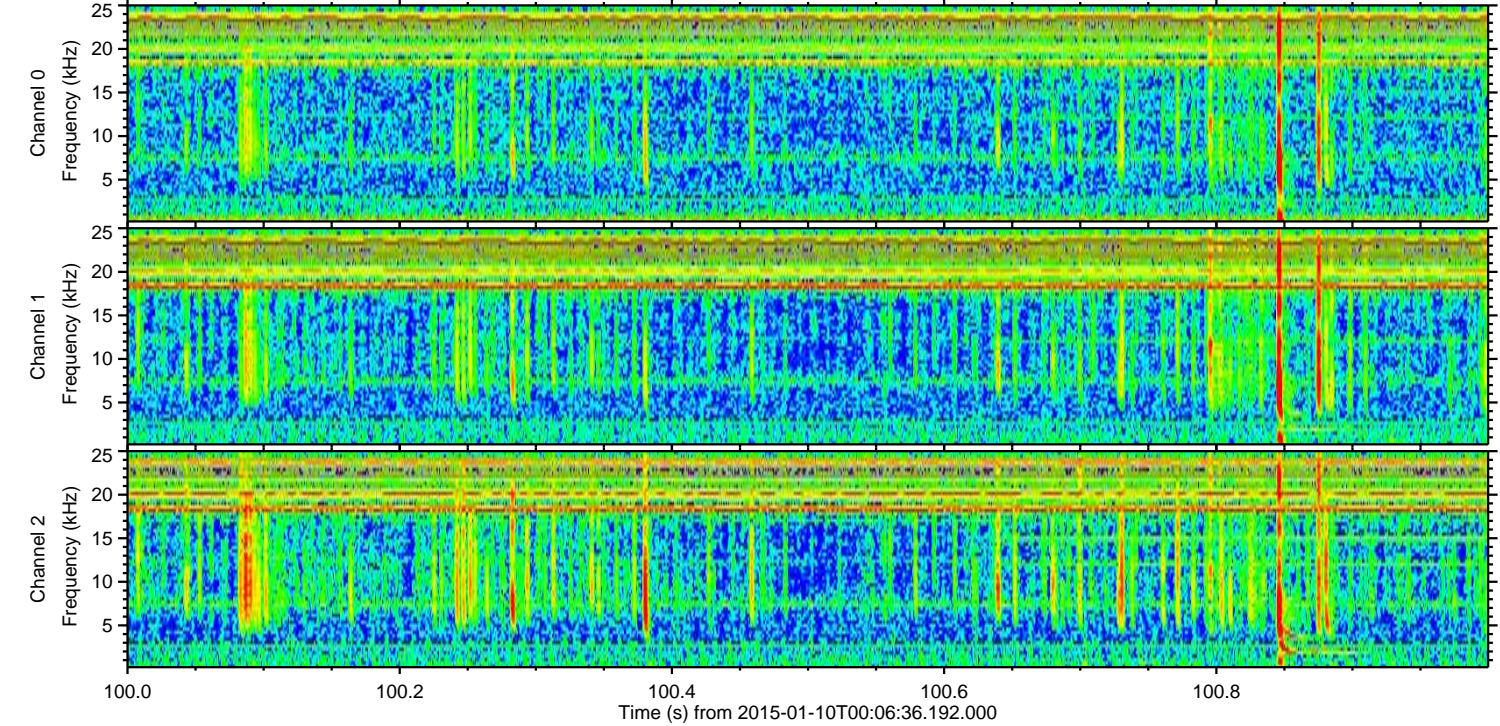
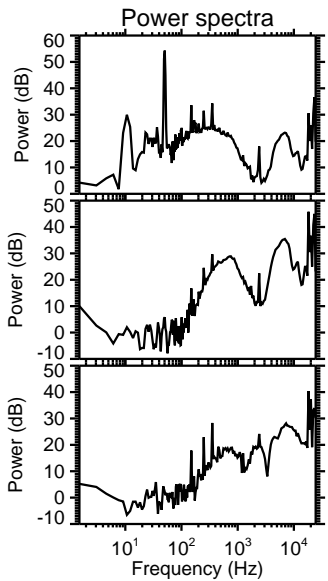
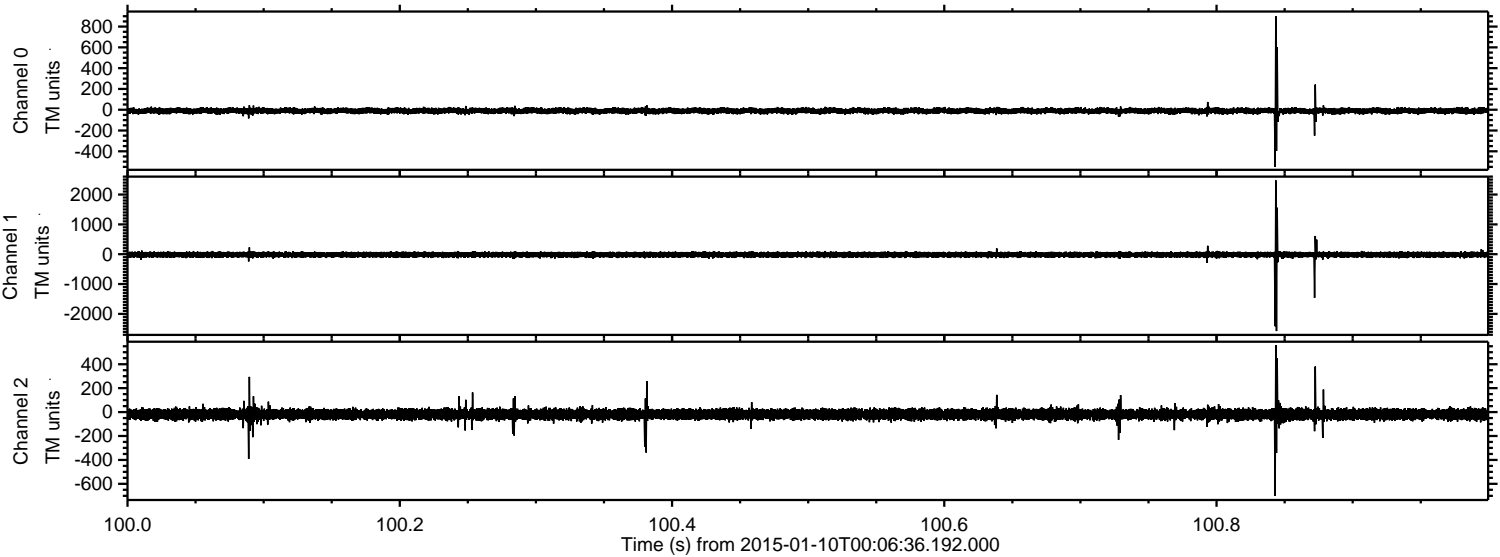
Channel 1  
mn: -9355  
mx: 6493  
 $\mu$ : -17.3  
 $\sigma$ : 85.1

Channel 2  
mn: -1779  
mx: 2656  
 $\mu$ : -18.8  
 $\sigma$ : 34.1



ELMAVAN 3D WAVEFORMS (Measured data sampled at 50 kHz) 49788 packets of 144 samples from 2015-01-10T00:06:36.192.000. Part 101/144

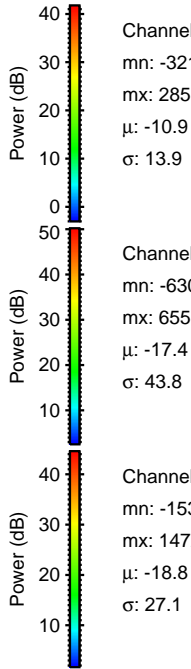
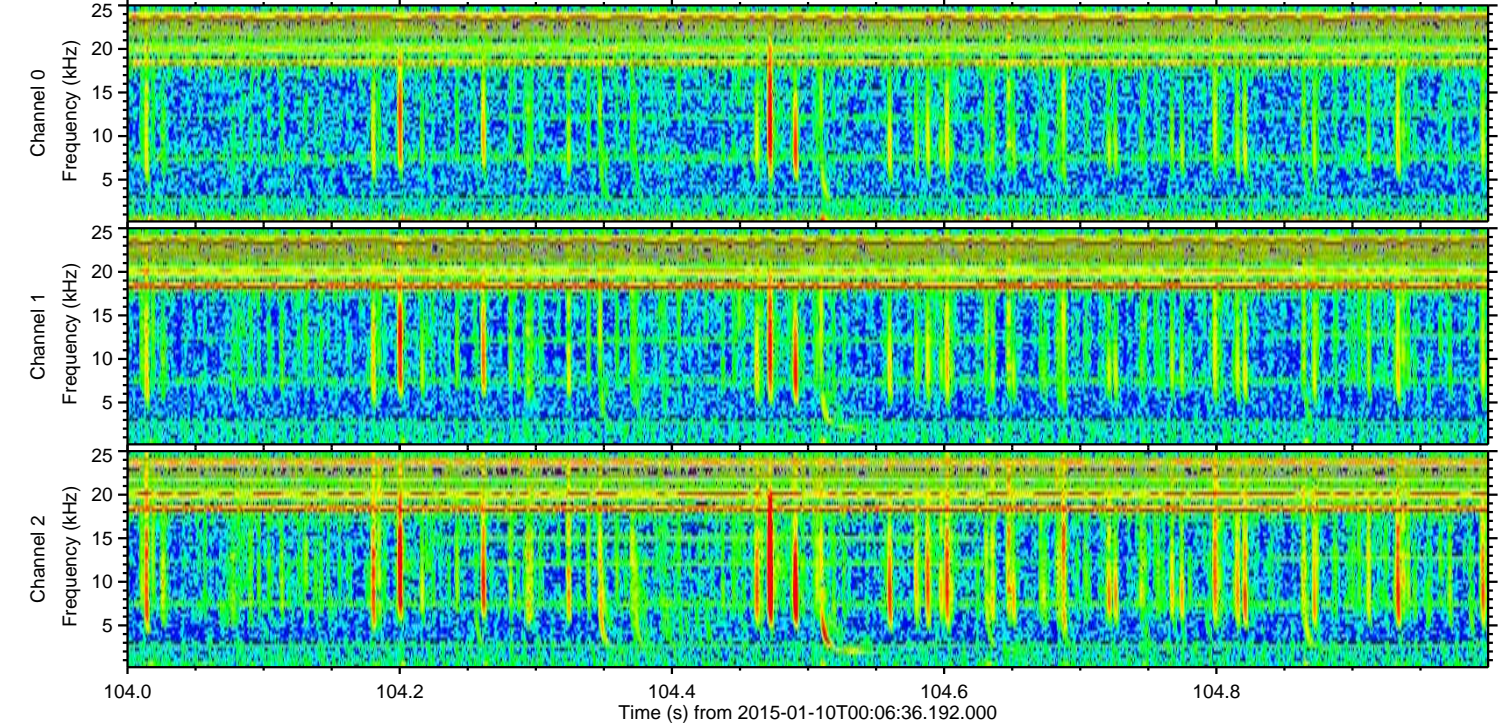
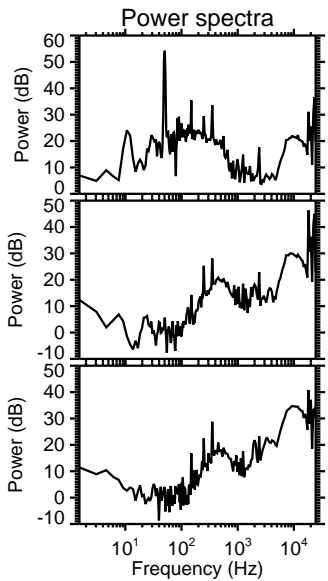
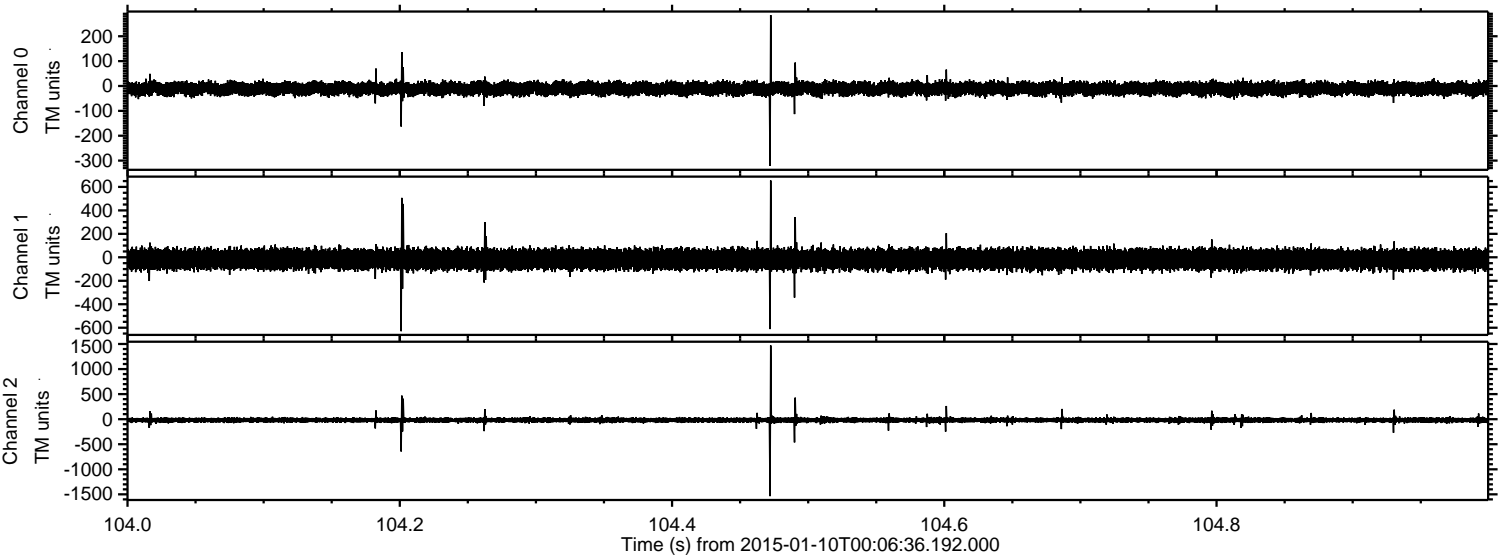
Processed Sat Jan 10 01:13:54 2015 by ELM ver.2012-10-06 from 001\_\_elm20150110\_000635\_\_dat00.bin





ELMAVAN 3D WAVEFORMS (Measured data sampled at 50 kHz) 49788 packets of 144 samples from 2015-01-10T00:06:36.192.000. Part 105/144

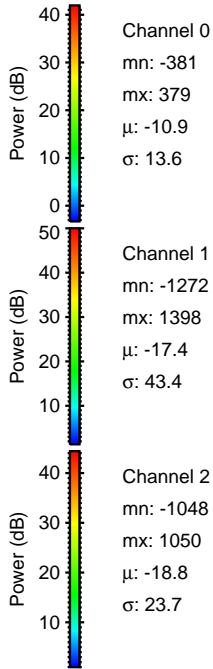
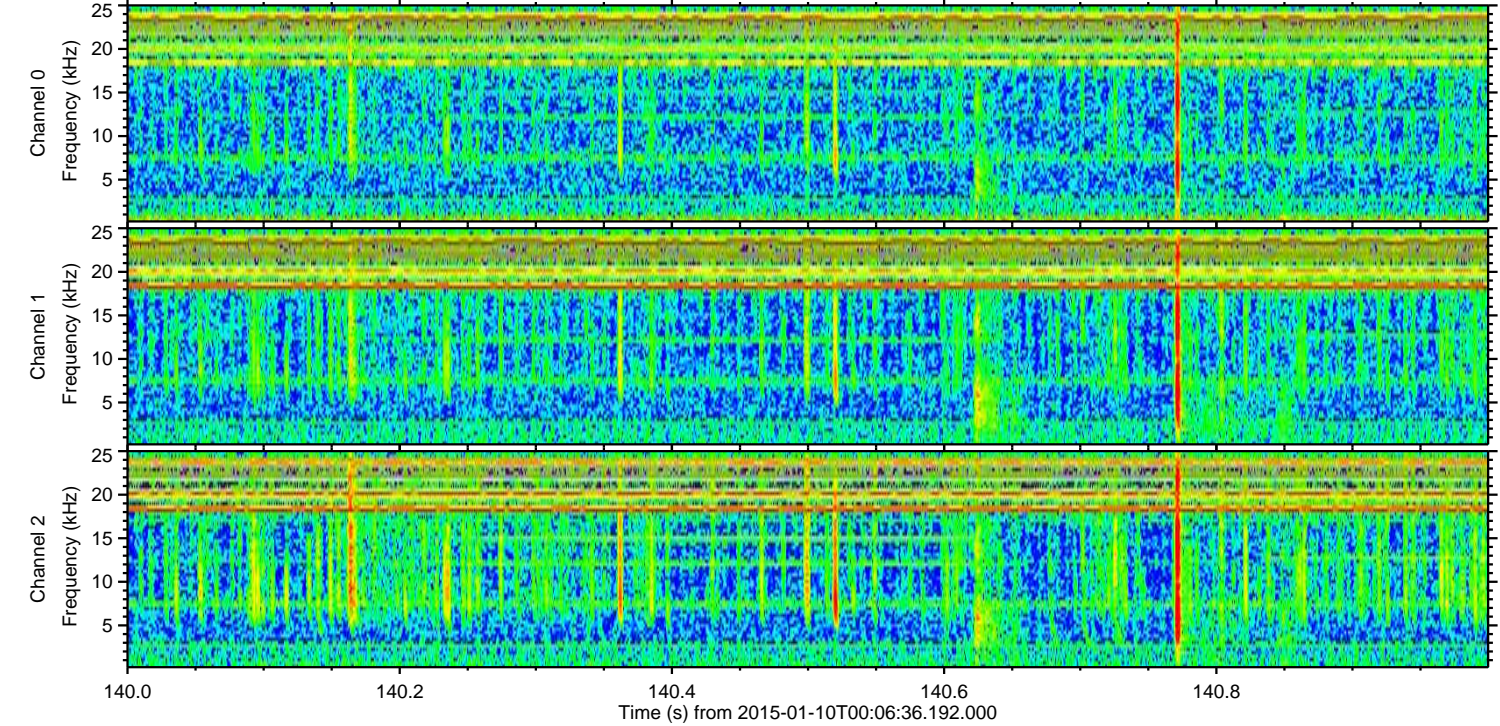
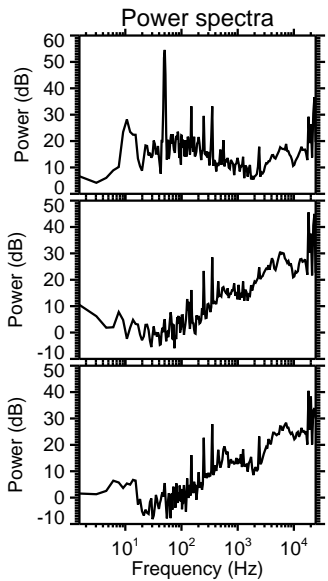
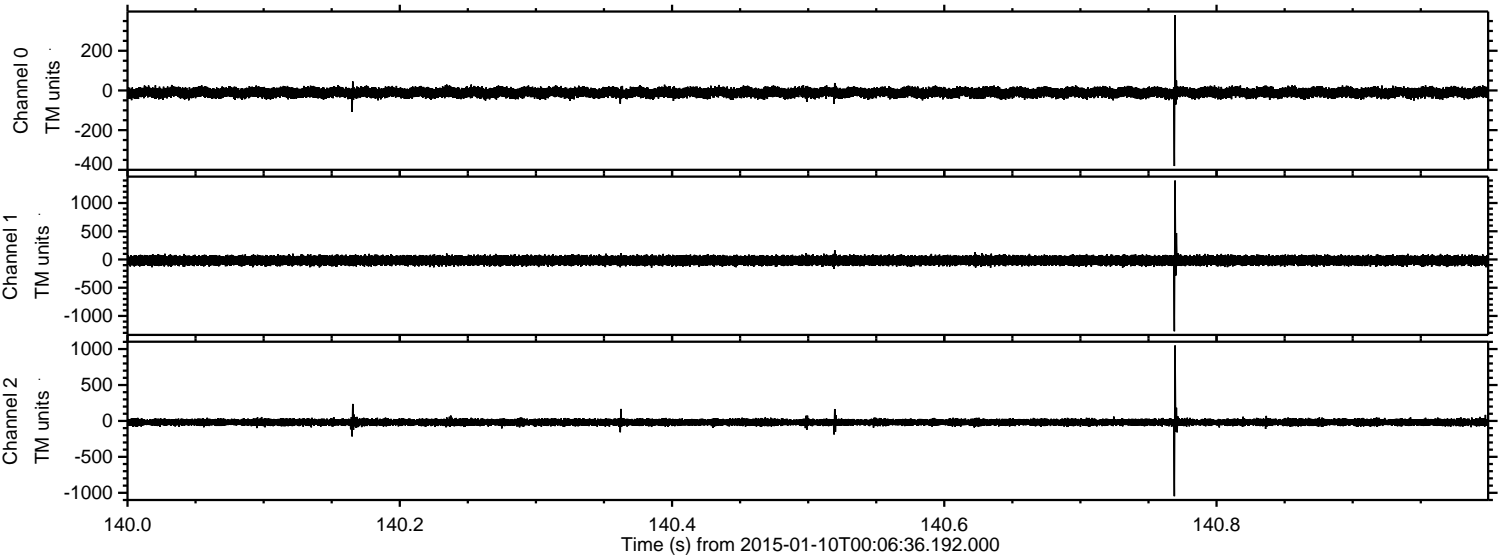
Processed Sat Jan 10 01:13:54 2015 by ELM ver.2012-10-06 from 001\_\_elm20150110\_000635\_\_dat00.bin





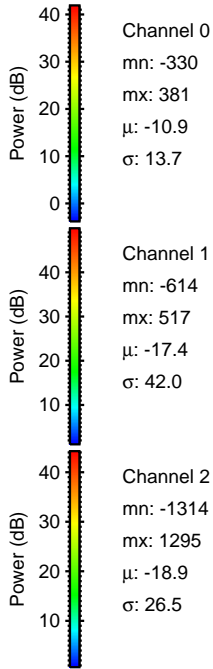
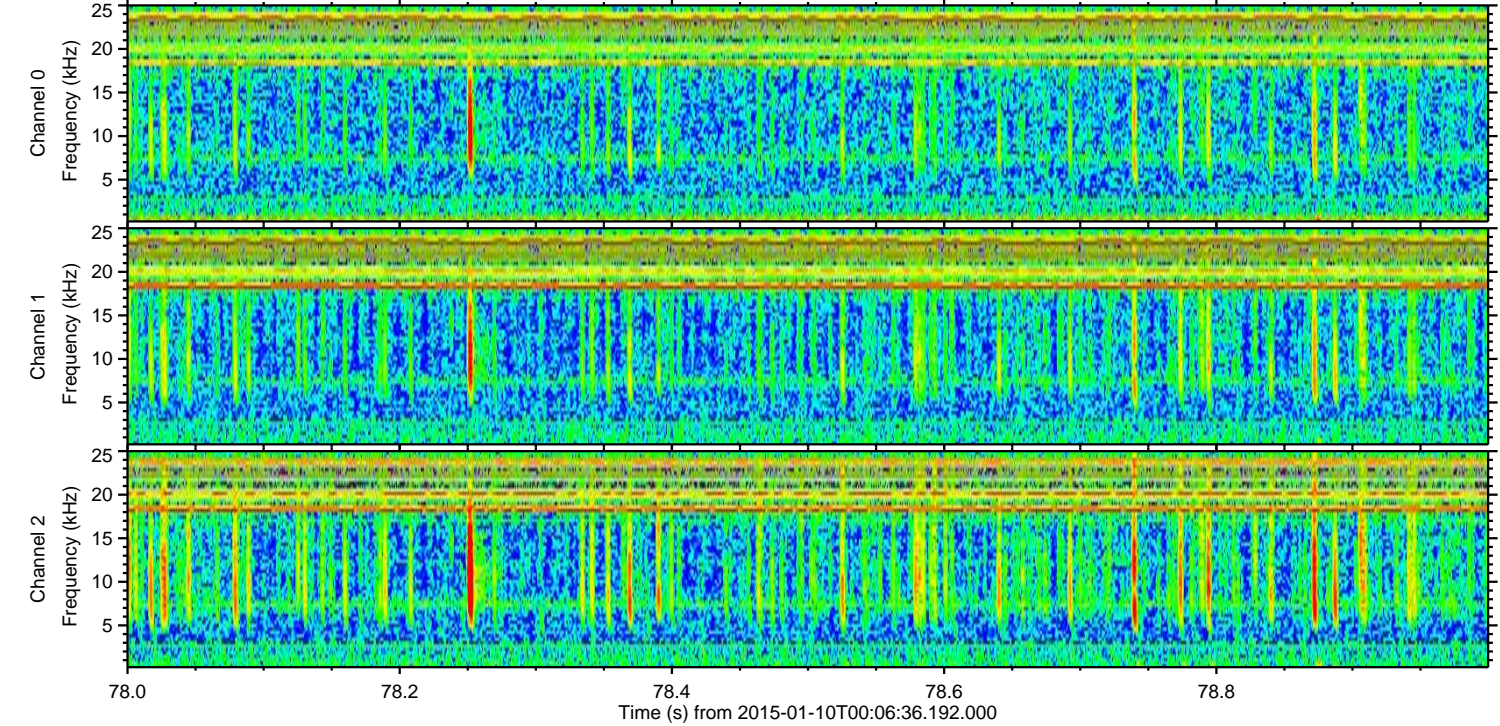
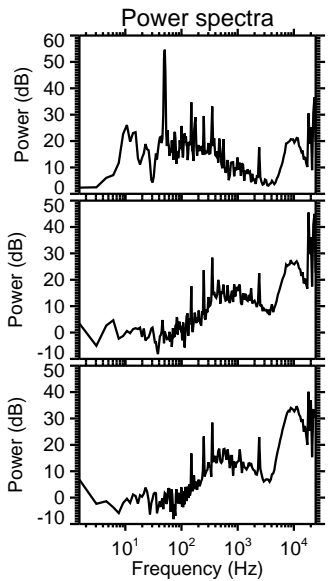
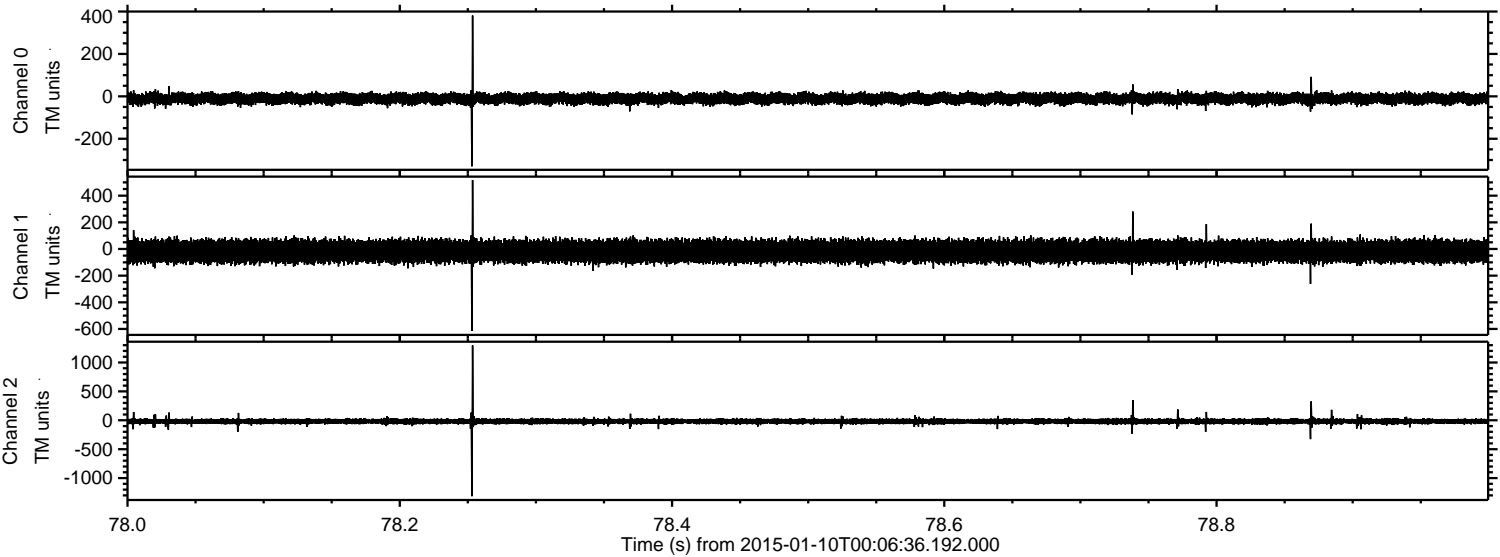
ELMAVAN 3D WAVEFORMS (Measured data sampled at 50 kHz) 49788 packets of 144 samples from 2015-01-10T00:06:36.192.000. Part 141/144

Processed Sat Jan 10 01:13:55 2015 by ELM ver.2012-10-06 from 001\_\_elm20150110\_000635\_\_dat00.bin





Processed Sat Jan 10 01:13:56 2015 by ELM ver.2012-10-06 from 001\_\_elm20150110\_000635\_\_dat00.bin



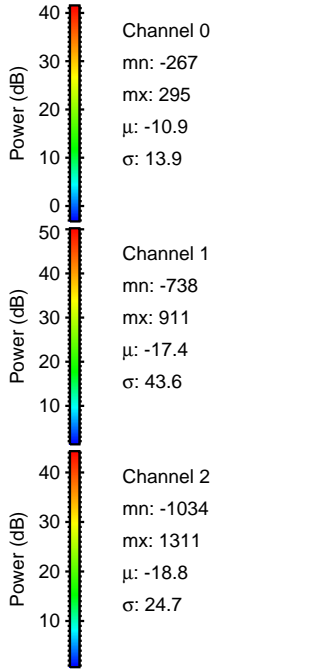
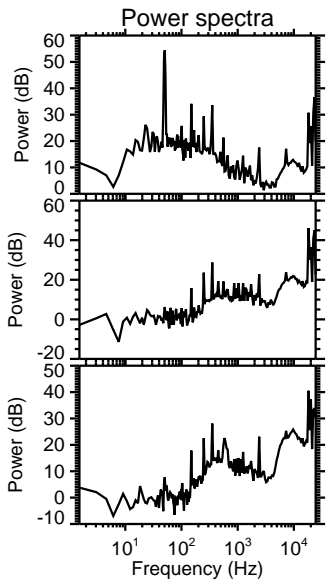
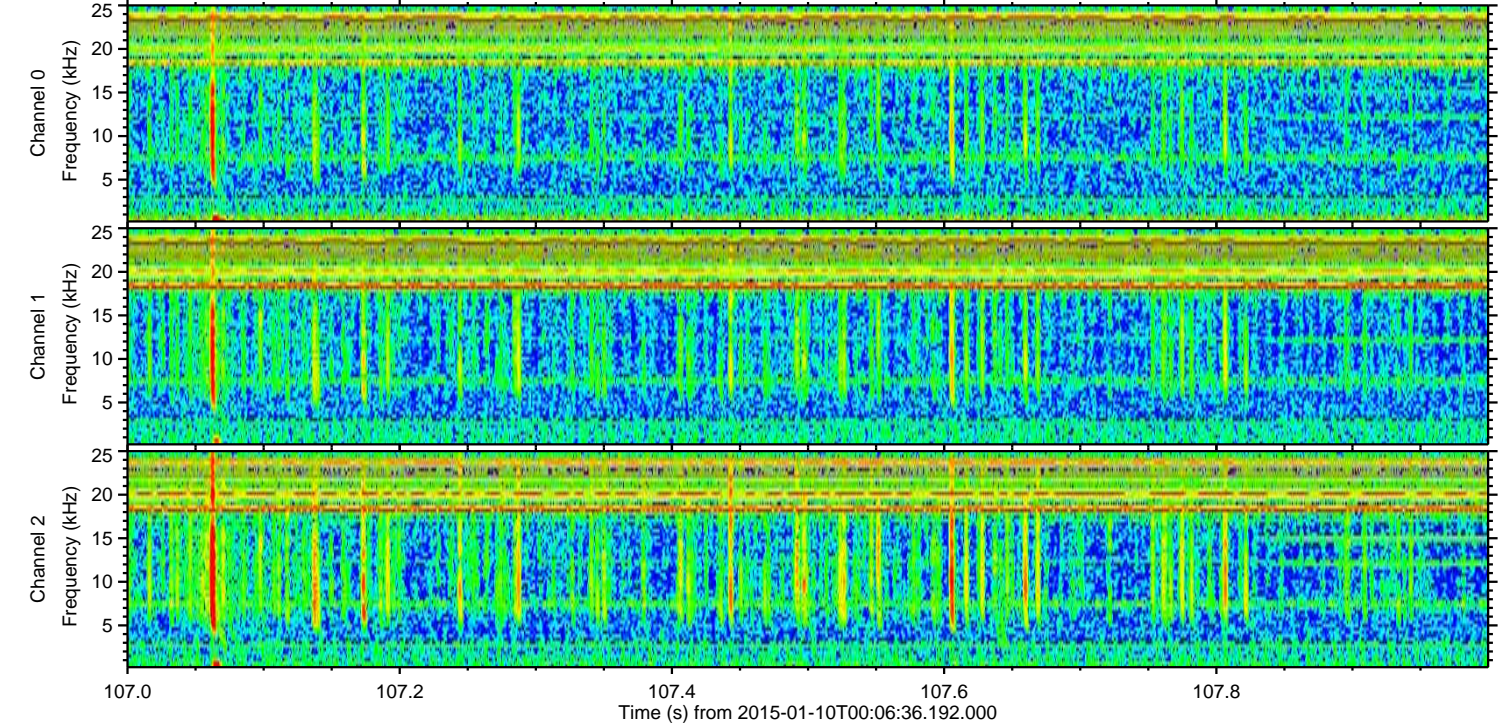
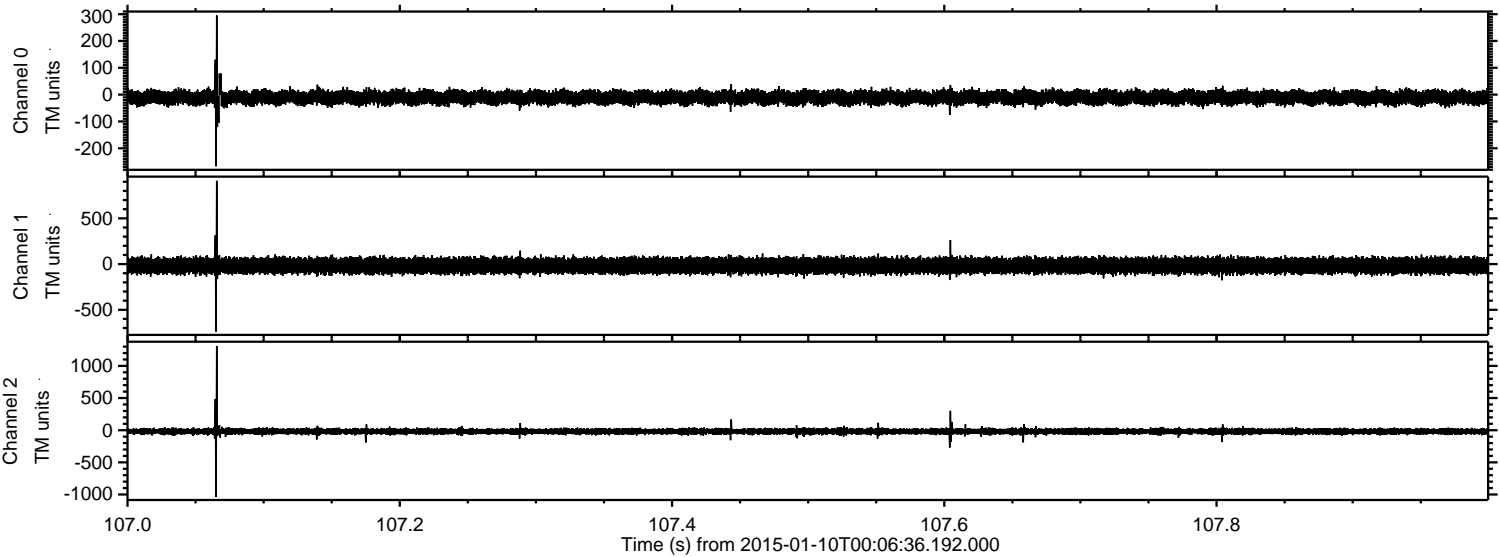
Channel 0  
mn: -330  
mx: 381  
 $\mu$ : -10.9  
 $\sigma$ : 13.7

Channel 1  
mn: -614  
mx: 517  
 $\mu$ : -17.4  
 $\sigma$ : 42.0

Channel 2  
mn: -1314  
mx: 1295  
 $\mu$ : -18.9  
 $\sigma$ : 26.5



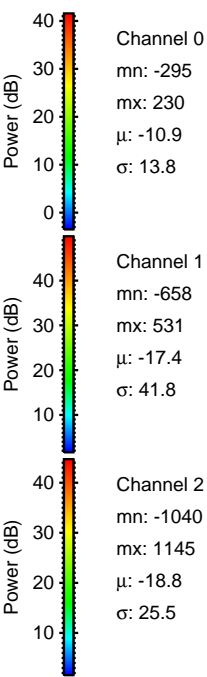
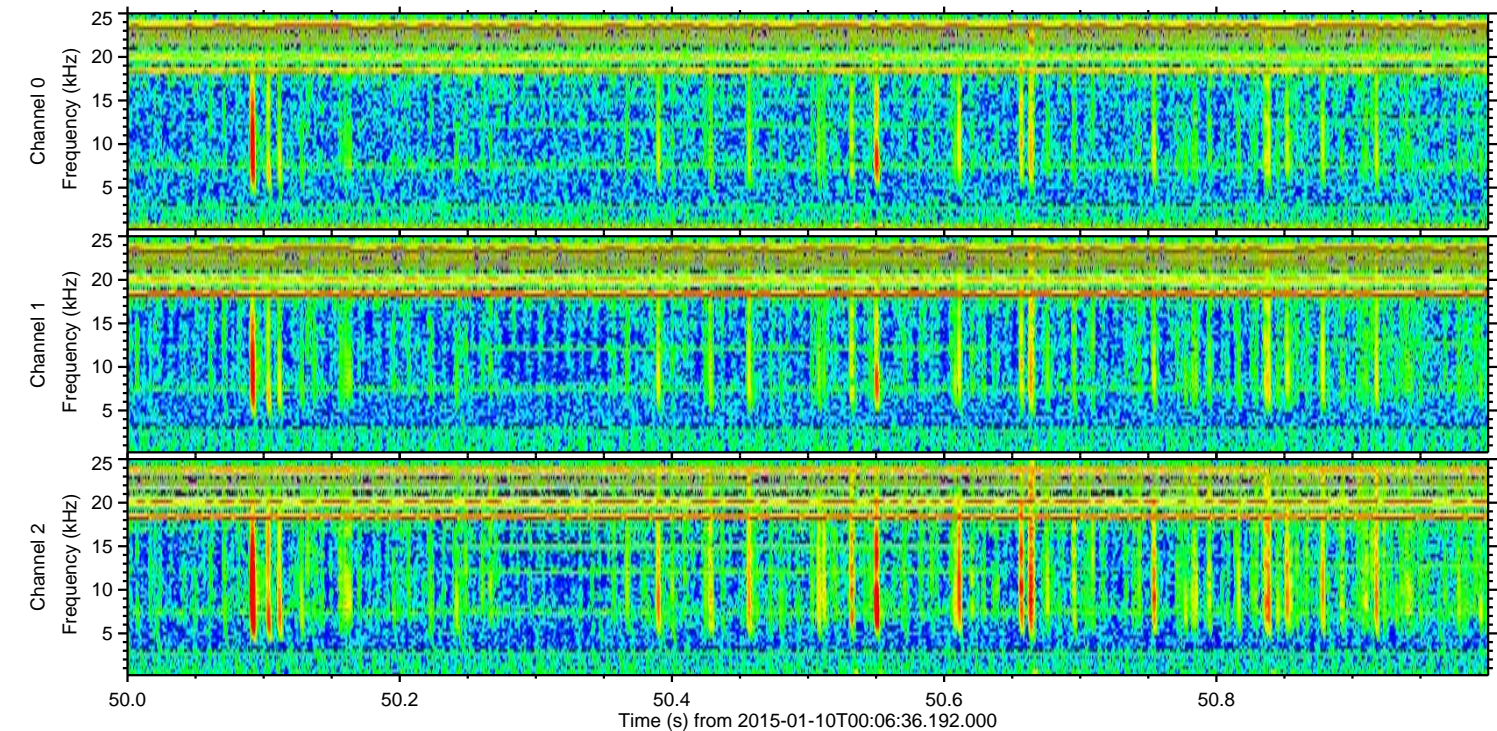
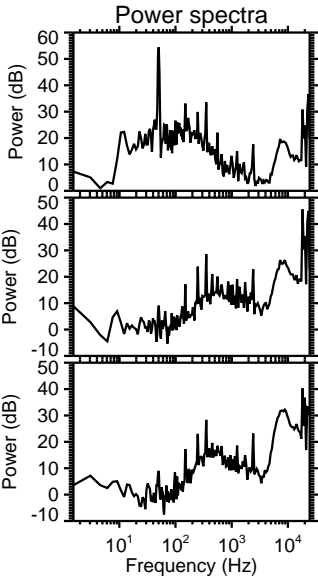
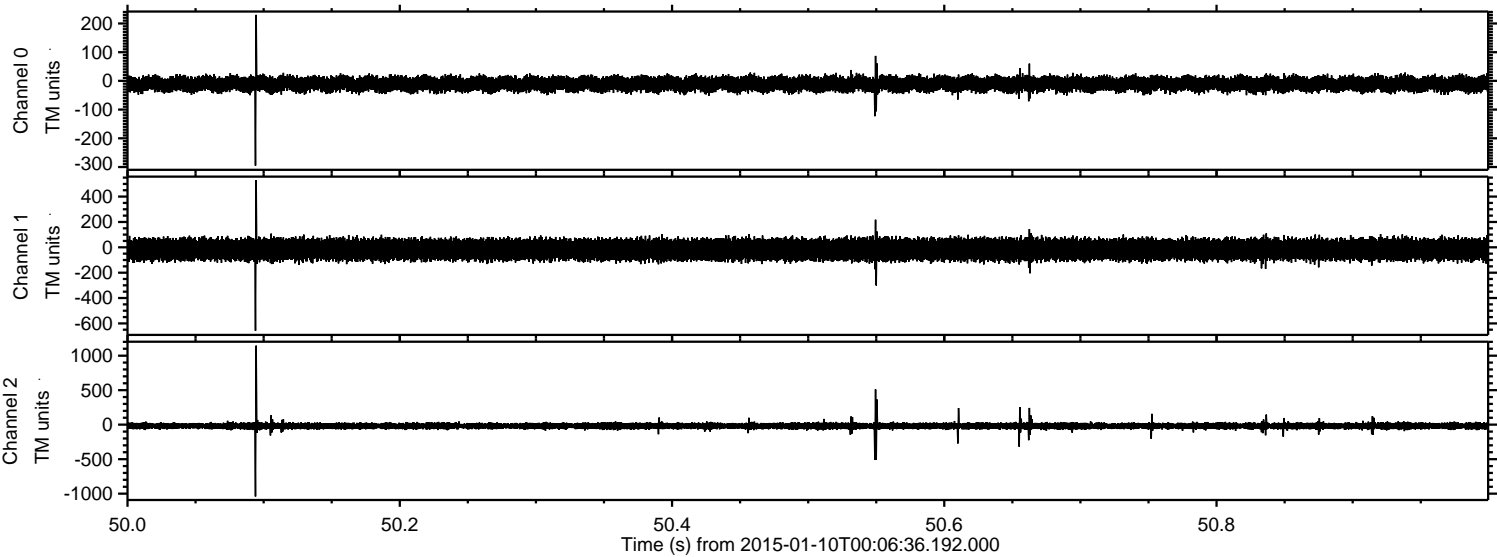
Processed Sat Jan 10 01:13:57 2015 by ELM ver.2012-10-06 from 001\_\_elm20150110\_000635\_\_dat00.bin





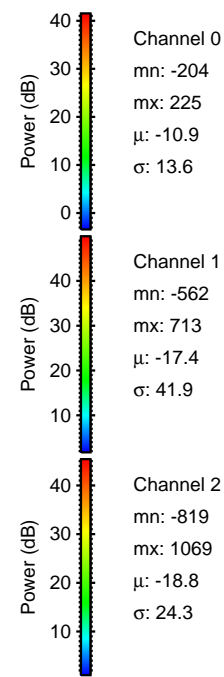
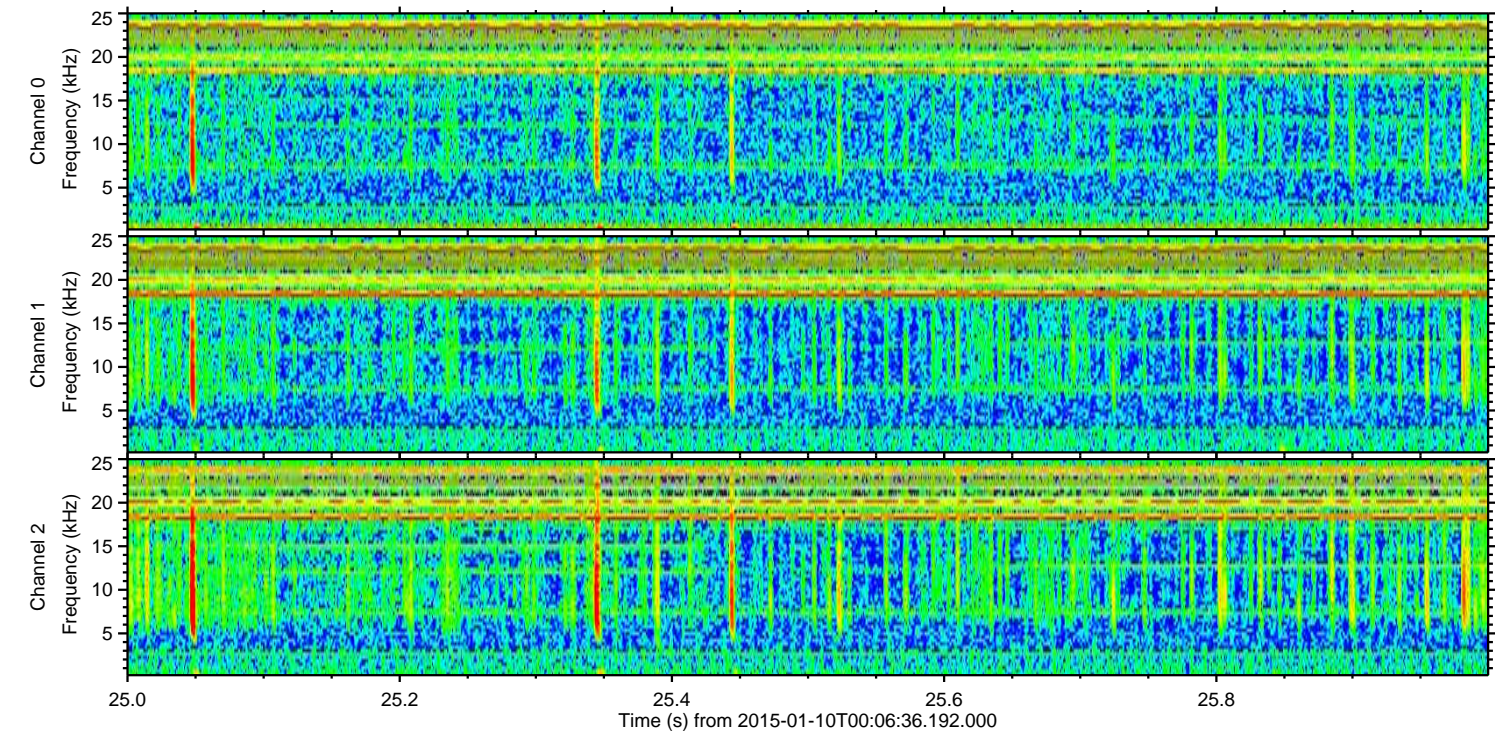
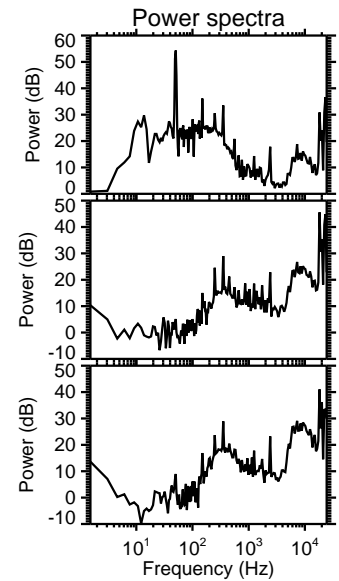
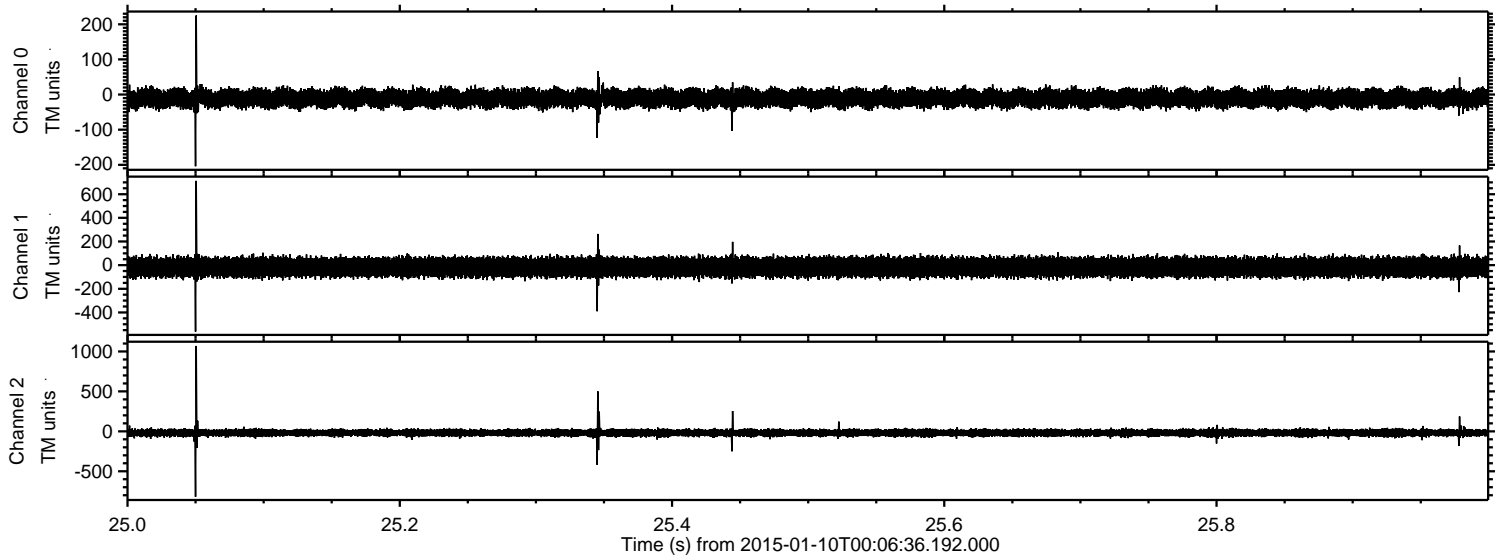
ELMAVAN 3D WAVEFORMS (Measured data sampled at 50 kHz) 49788 packets of 144 samples from 2015-01-10T00:06:36.192.000. Part 51/144

Processed Sat Jan 10 01:13:58 2015 by ELM ver.2012-10-06 from 001\_\_elm20150110\_000635\_\_dat00.bin





Processed Sat Jan 10 01:13:59 2015 by ELM ver.2012-10-06 from 001\_\_elm20150110\_000635\_\_dat00.bin





Processed Sat Jan 10 01:14:00 2015 by ELM ver.2012-10-06 from 001\_\_elm20150110\_000635\_\_dat00.bin

