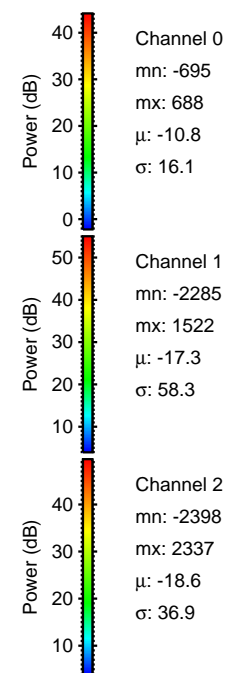
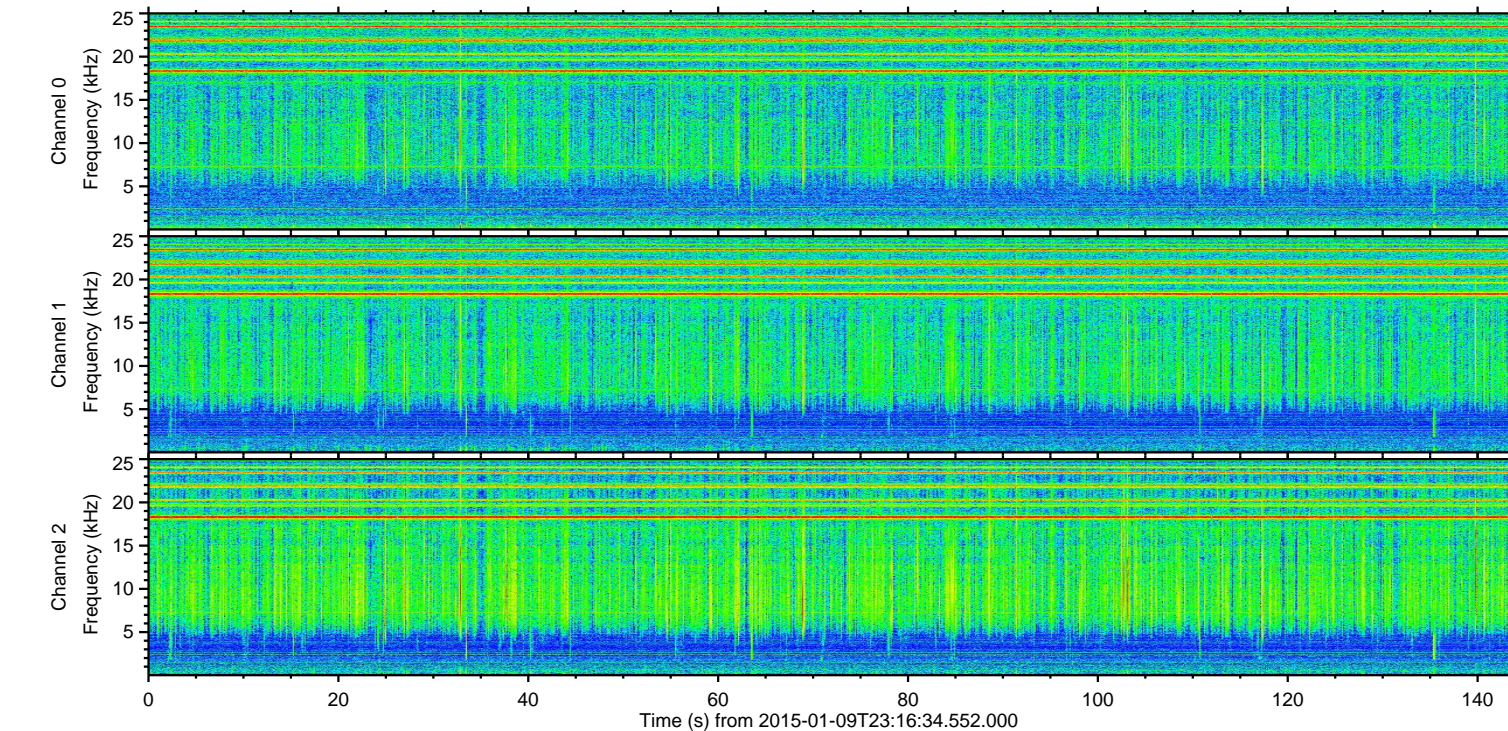
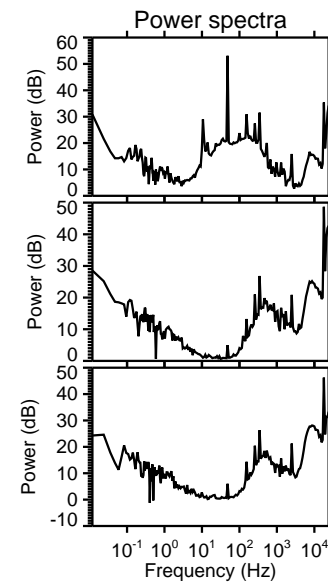
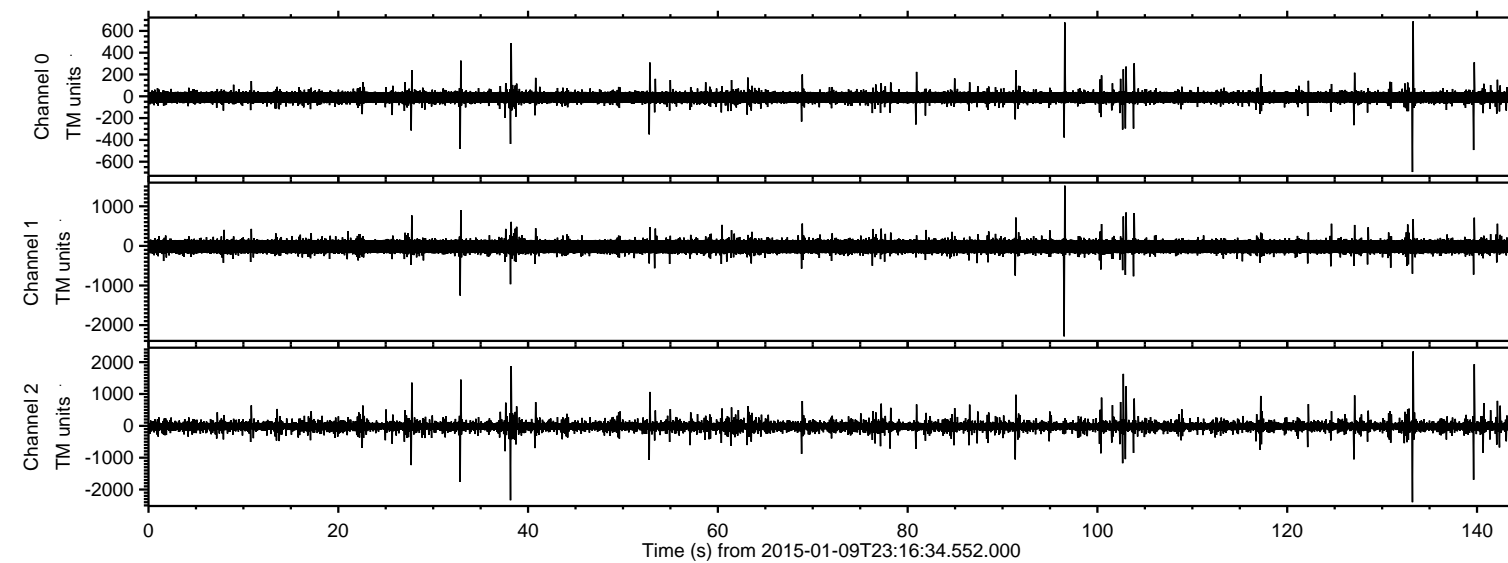


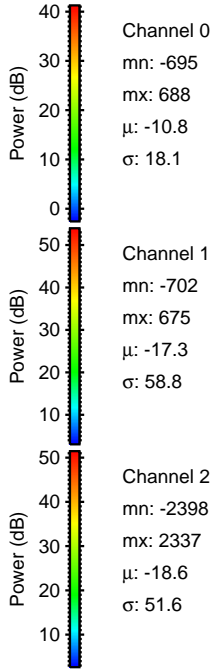
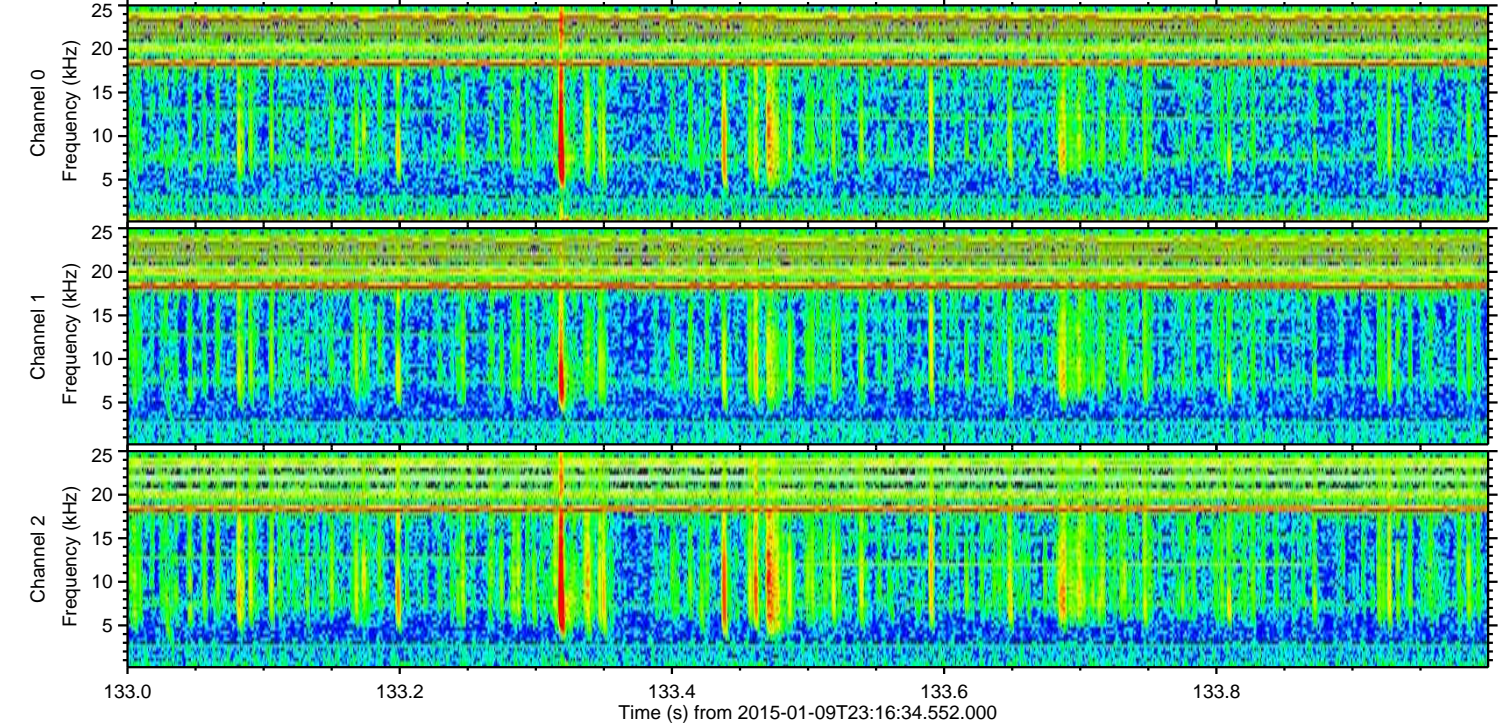
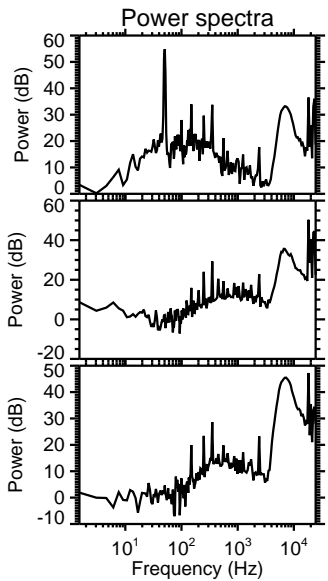
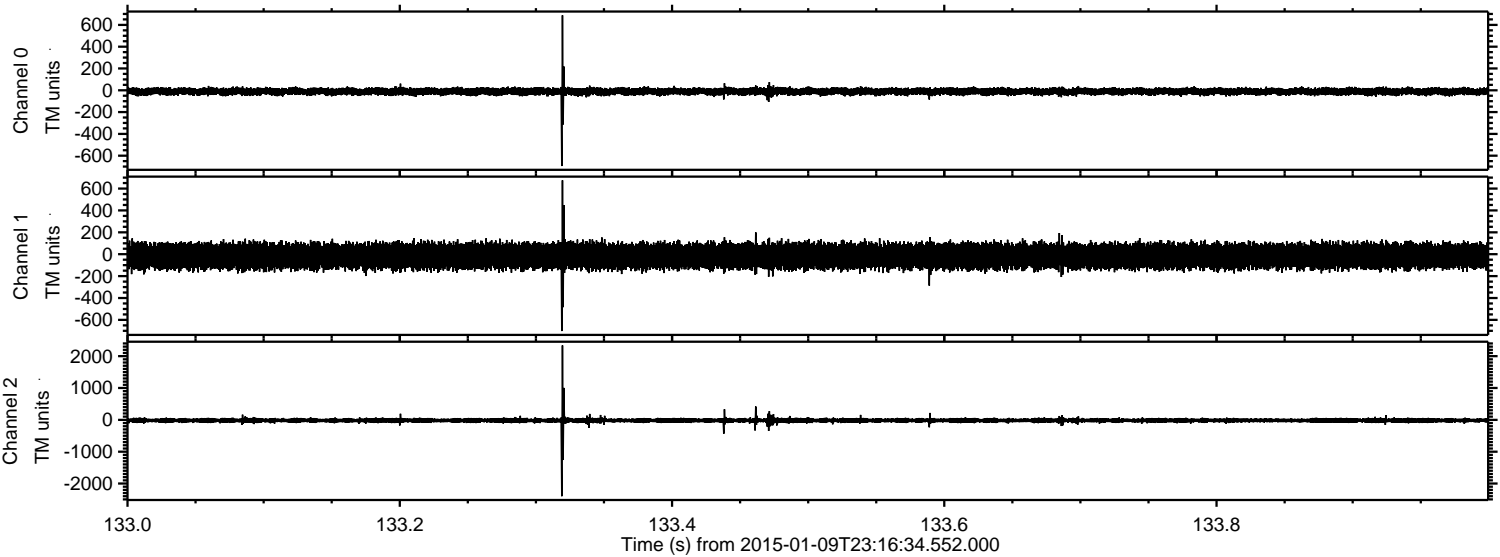
ELMAVAN 3D WAVEFORMS (Measured data sampled at 50 kHz) 49787 packets of 144 samples from 2015-01-09T23:16:34.552.000.

Processed Sat Jan 10 00:23:36 2015 by ELM ver.2012-10-06 from 001__elm20150109_231633__dat00.bin

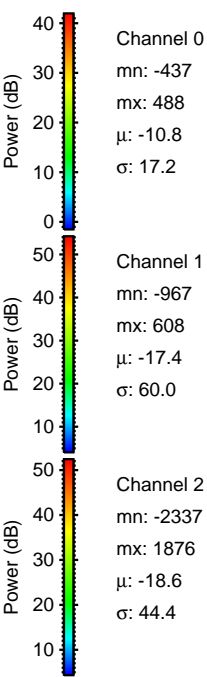
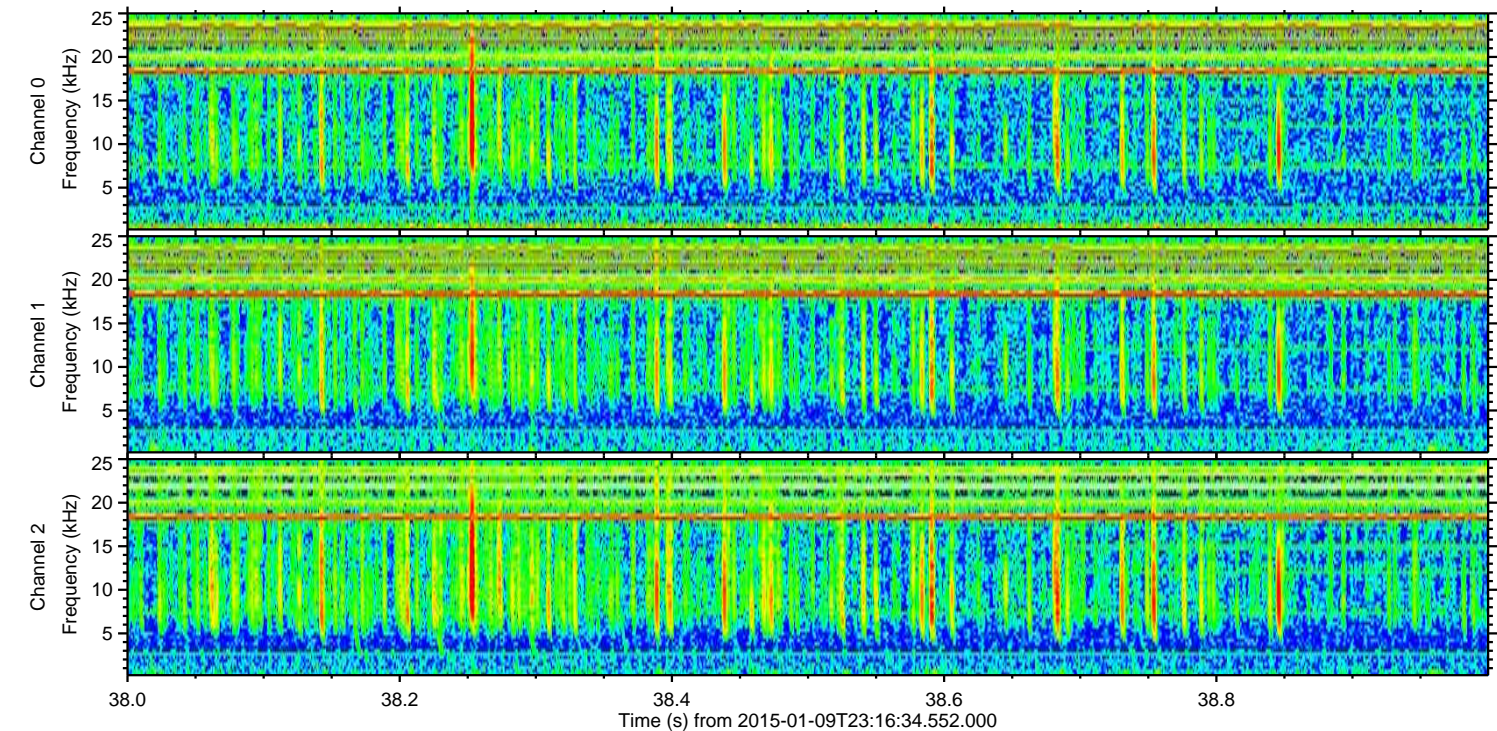
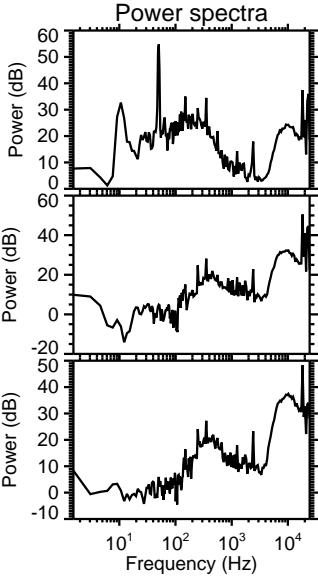
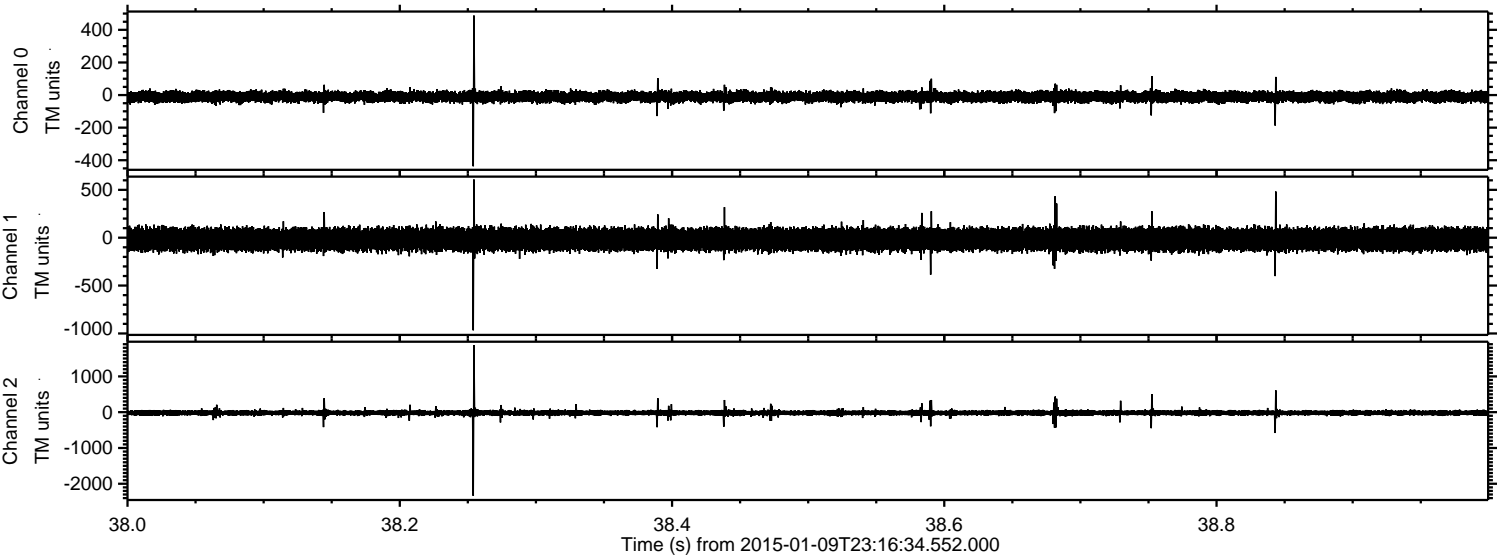


ELMAVAN 3D WAVEFORMS (Measured data sampled at 50 kHz) 49787 packets of 144 samples from 2015-01-09T23:16:34.552.000. Part 134/144

Processed Sat Jan 10 00:23:48 2015 by ELM ver.2012-10-06 from 001__elm20150109_231633__dat00.bin



Processed Sat Jan 10 00:23:49 2015 by ELM ver.2012-10-06 from 001__elm20150109_231633__dat00.bin



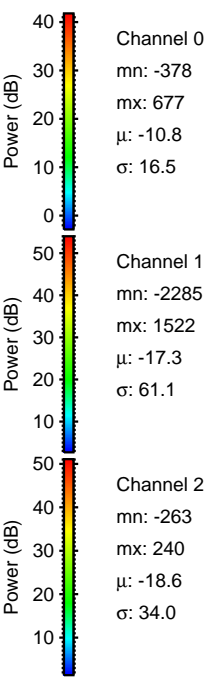
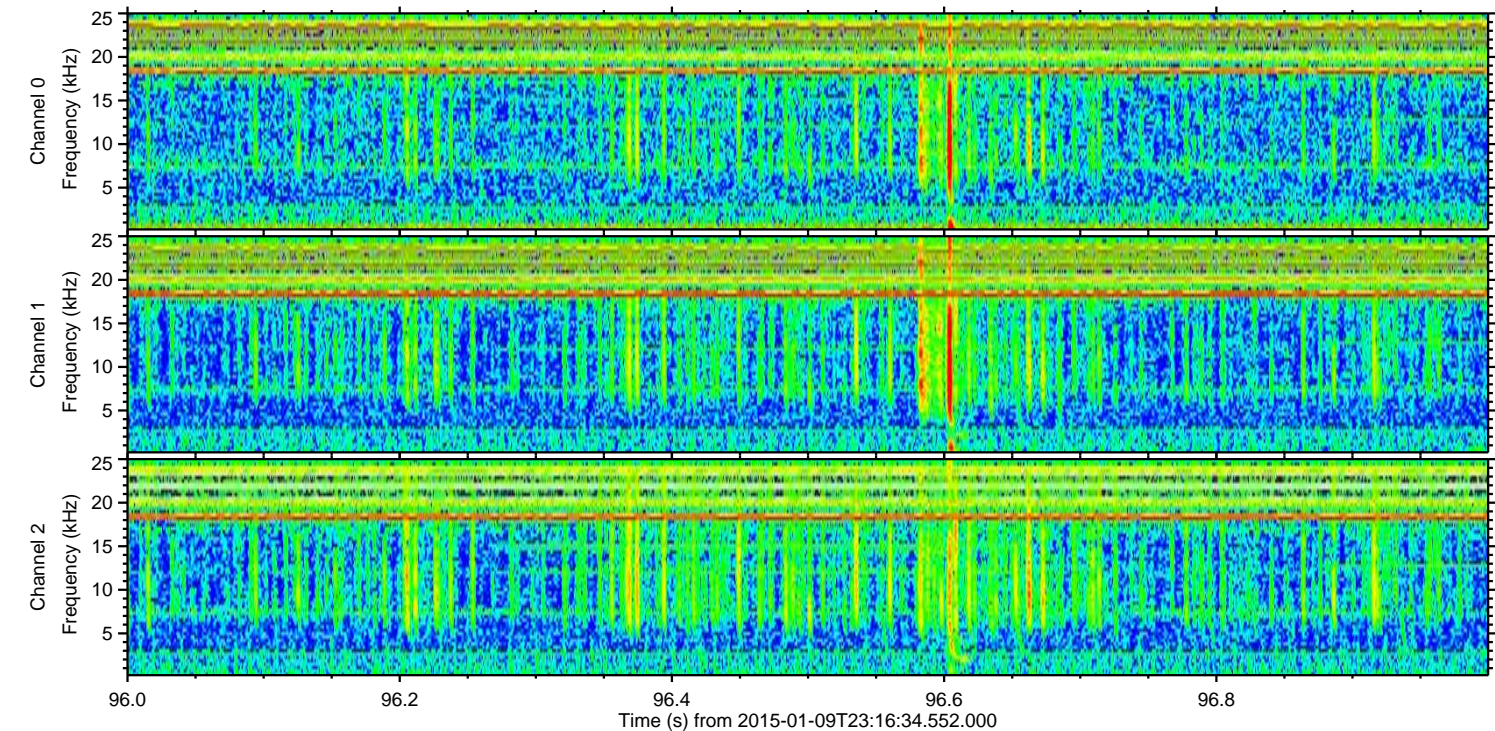
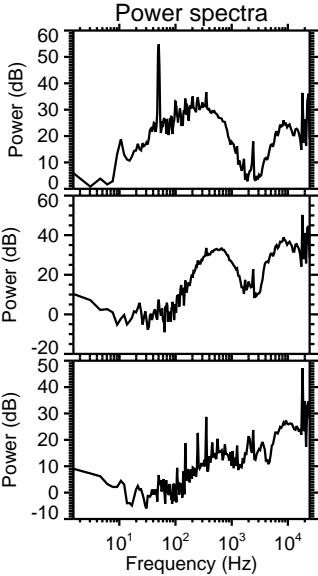
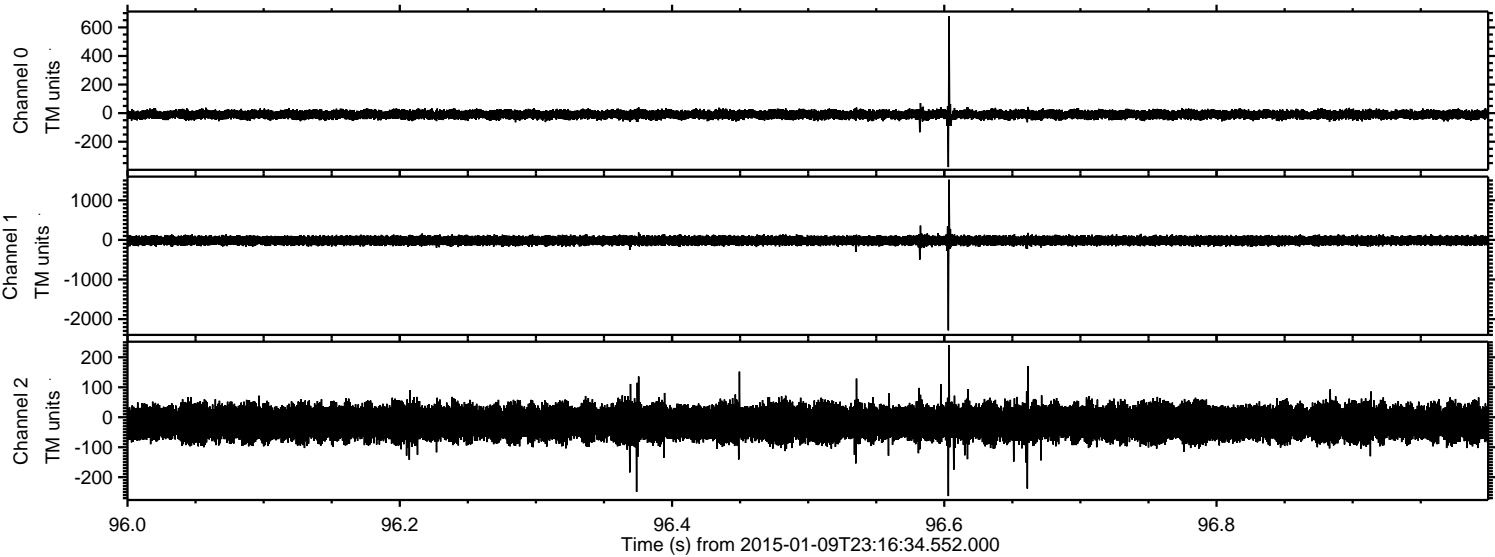
Channel 0
mn: -437
mx: 488
 μ : -10.8
 σ : 17.2

Channel 1
mn: -967
mx: 608
 μ : -17.4
 σ : 60.0

Channel 2
mn: -2337
mx: 1876
 μ : -18.6
 σ : 44.4

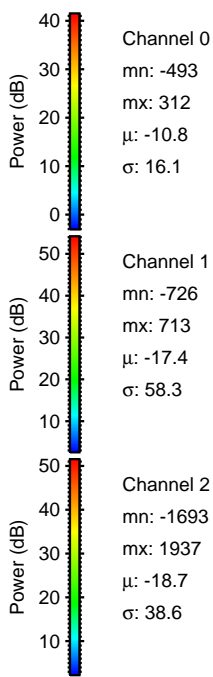
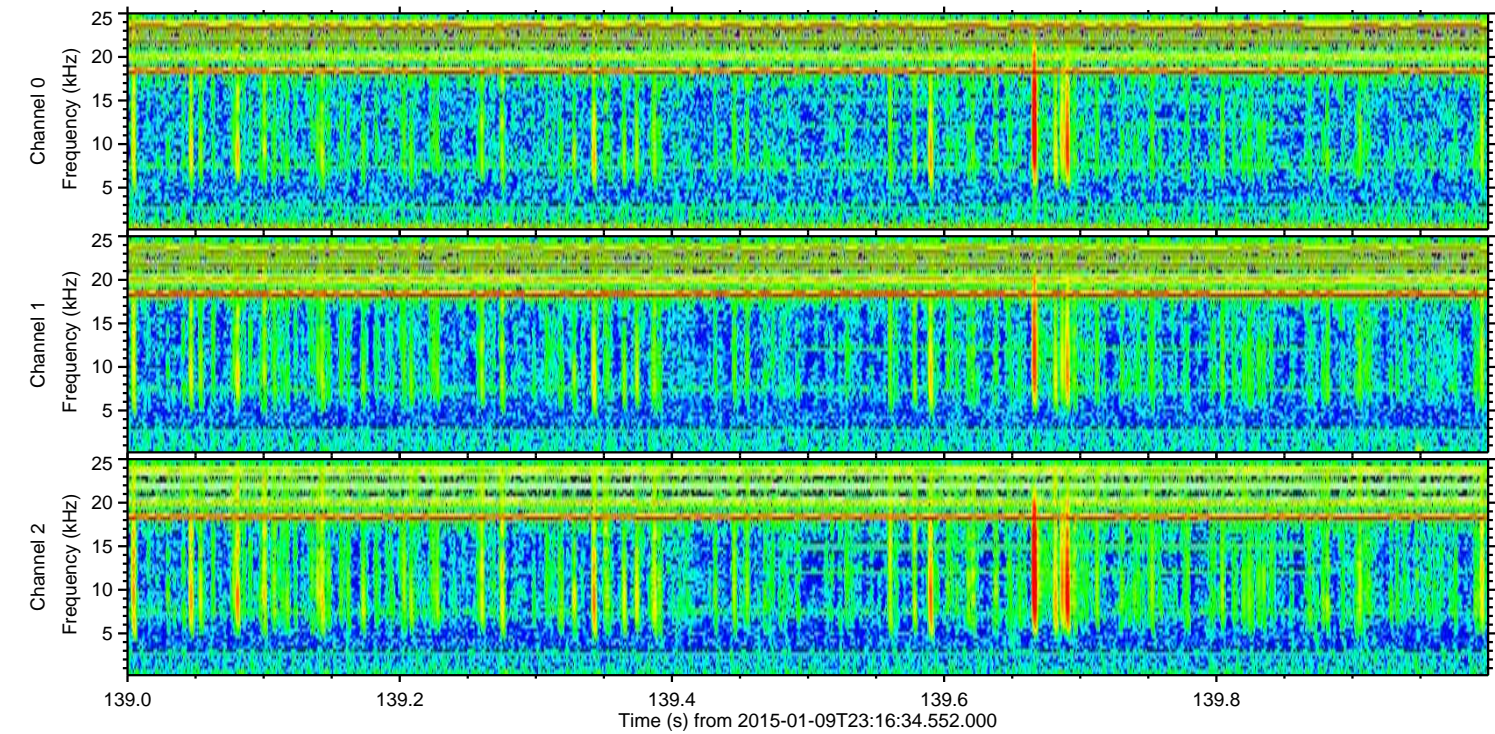
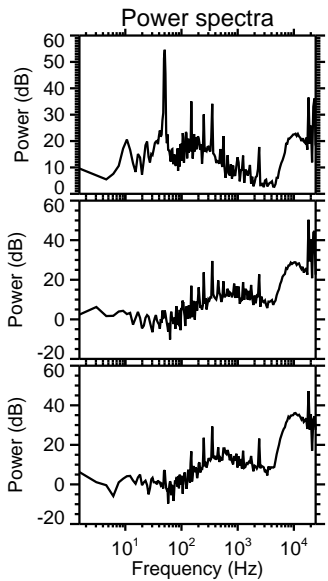
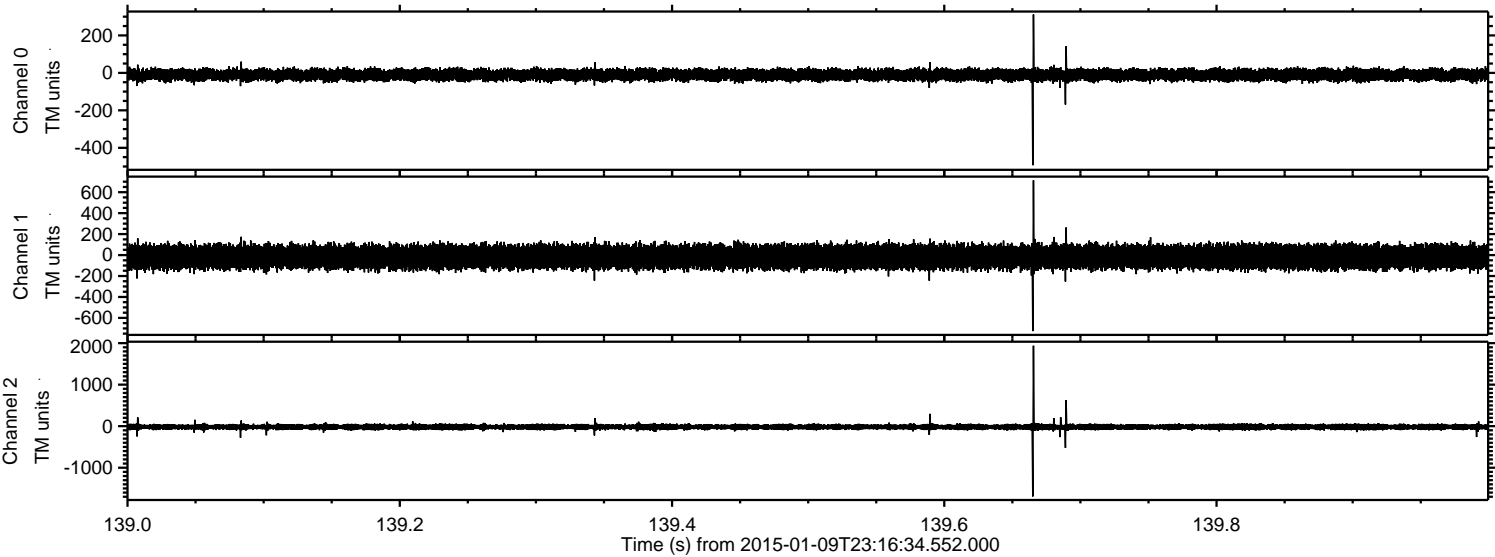
ELMAVAN 3D WAVEFORMS (Measured data sampled at 50 kHz) 49787 packets of 144 samples from 2015-01-09T23:16:34.552.000. Part 97/144

Processed Sat Jan 10 00:23:50 2015 by ELM ver.2012-10-06 from 001__elm20150109_231633__dat00.bin

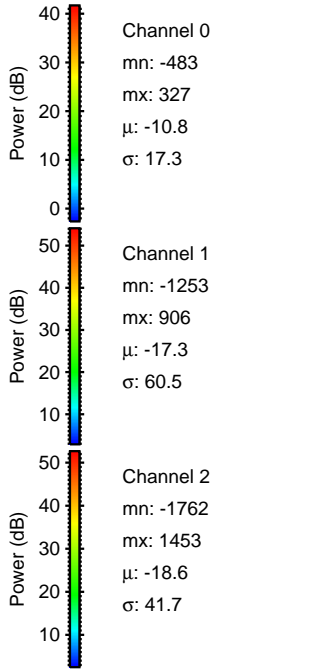
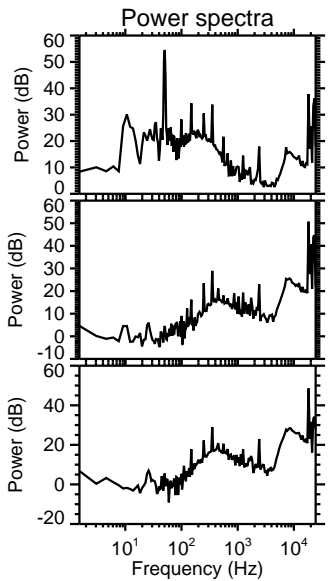
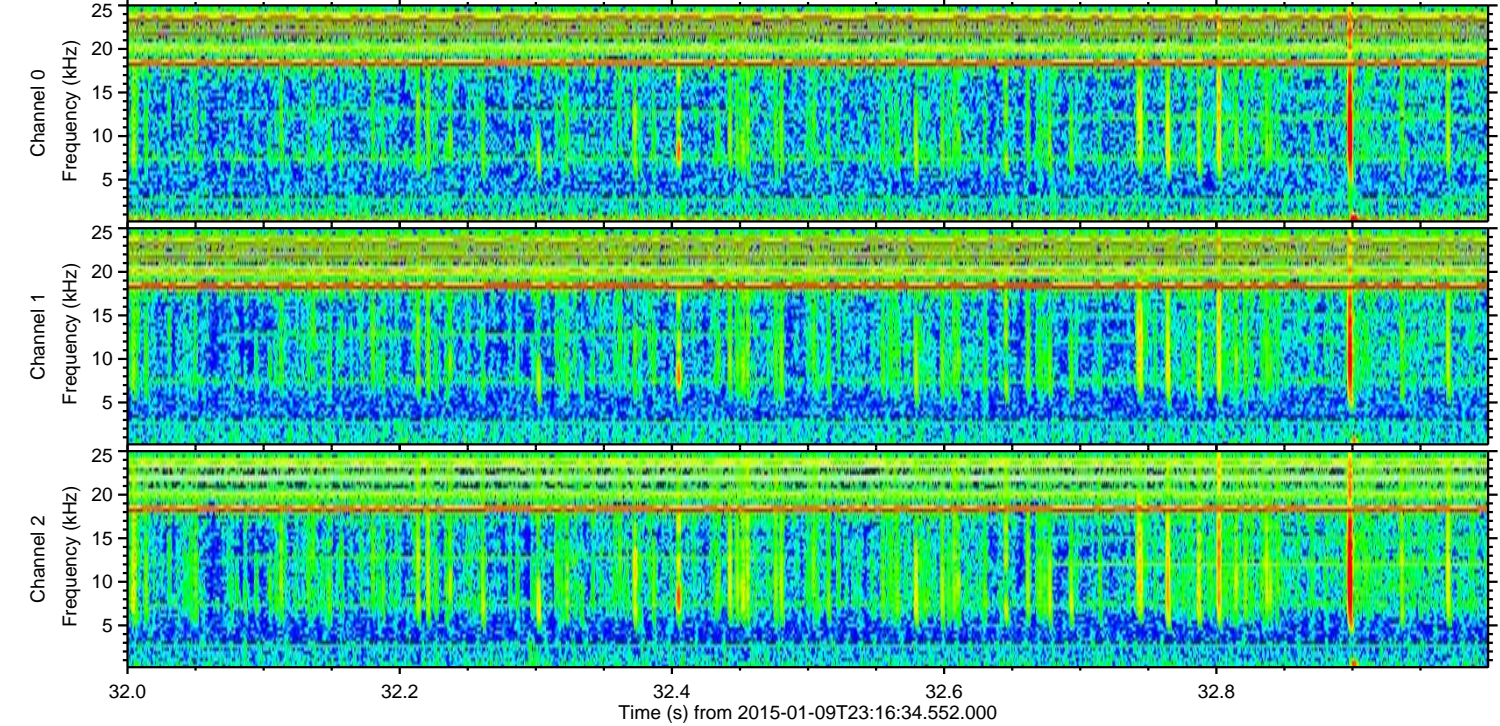
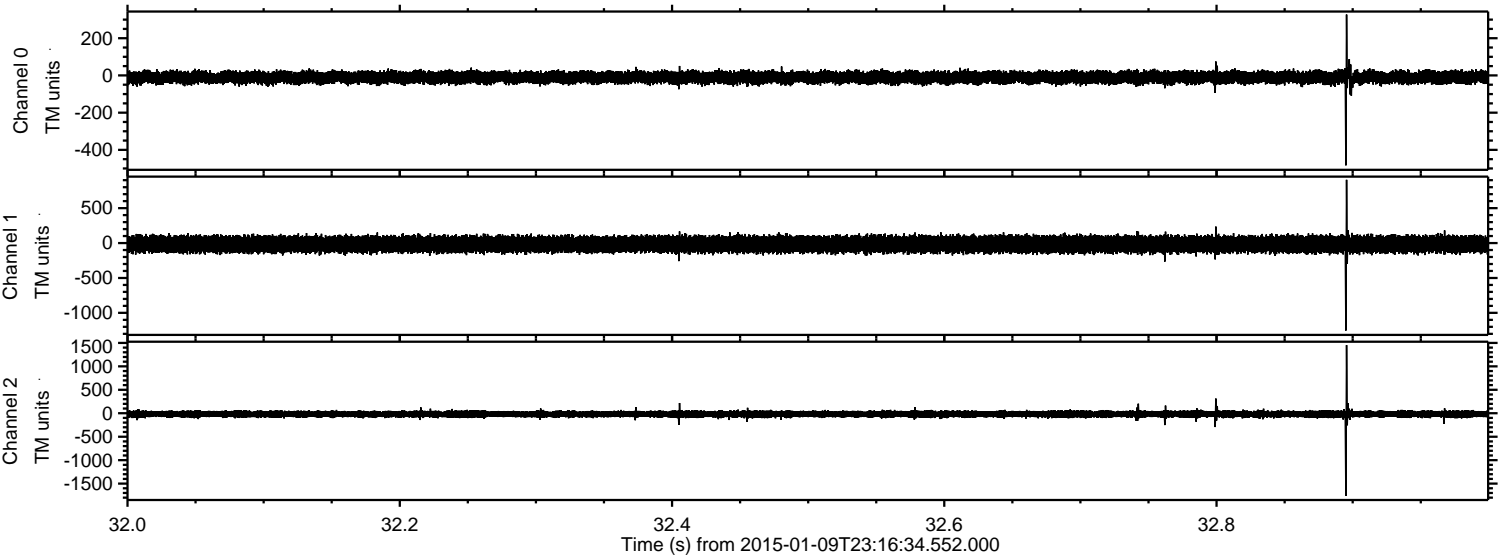


ELMAVAN 3D WAVEFORMS (Measured data sampled at 50 kHz) 49787 packets of 144 samples from 2015-01-09T23:16:34.552.000. Part 140/144

Processed Sat Jan 10 00:23:51 2015 by ELM ver.2012-10-06 from 001__elm20150109_231633__dat00.bin

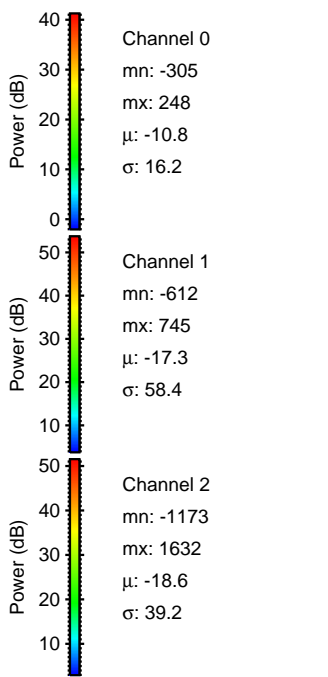
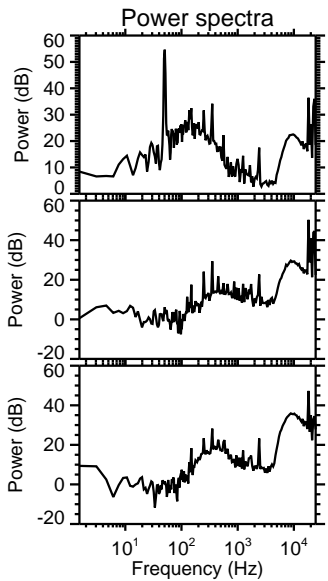
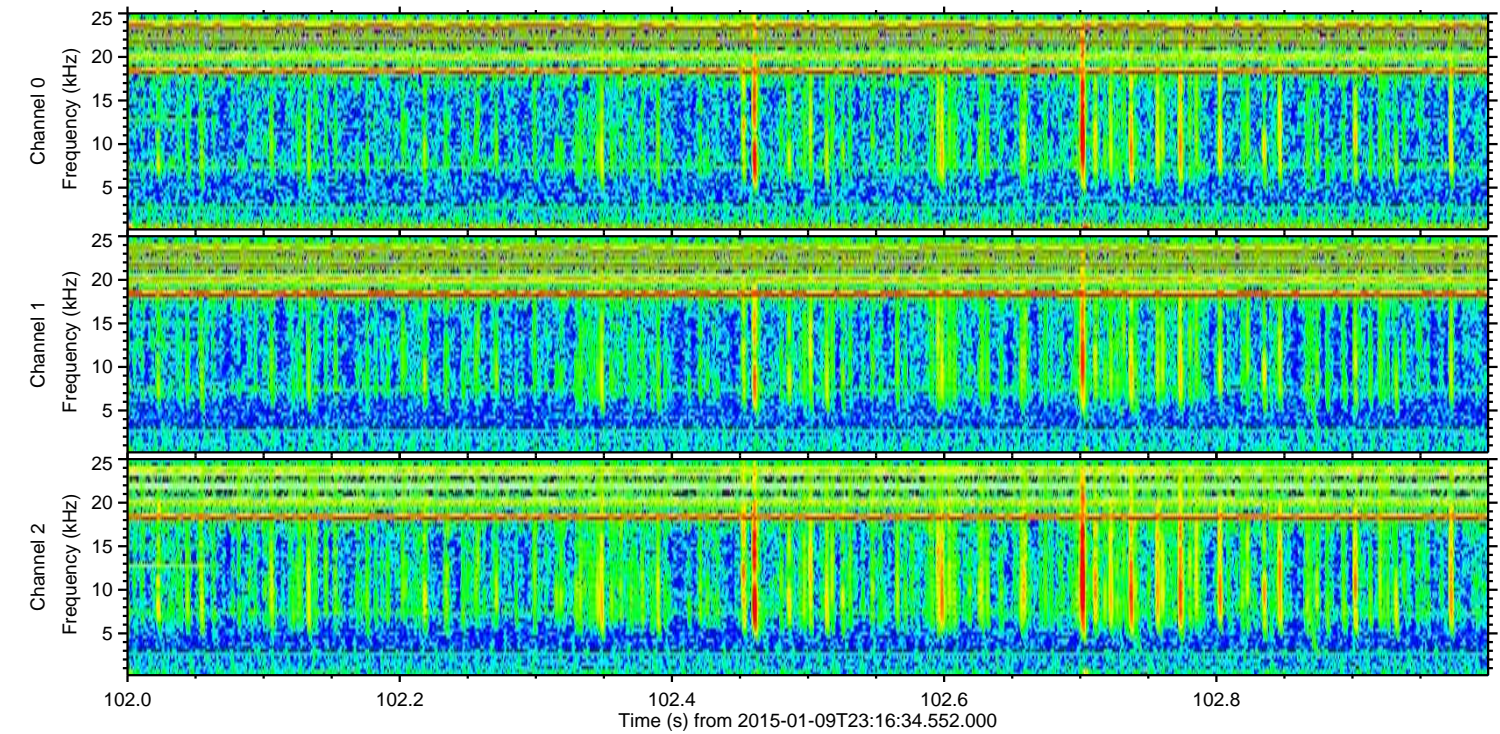
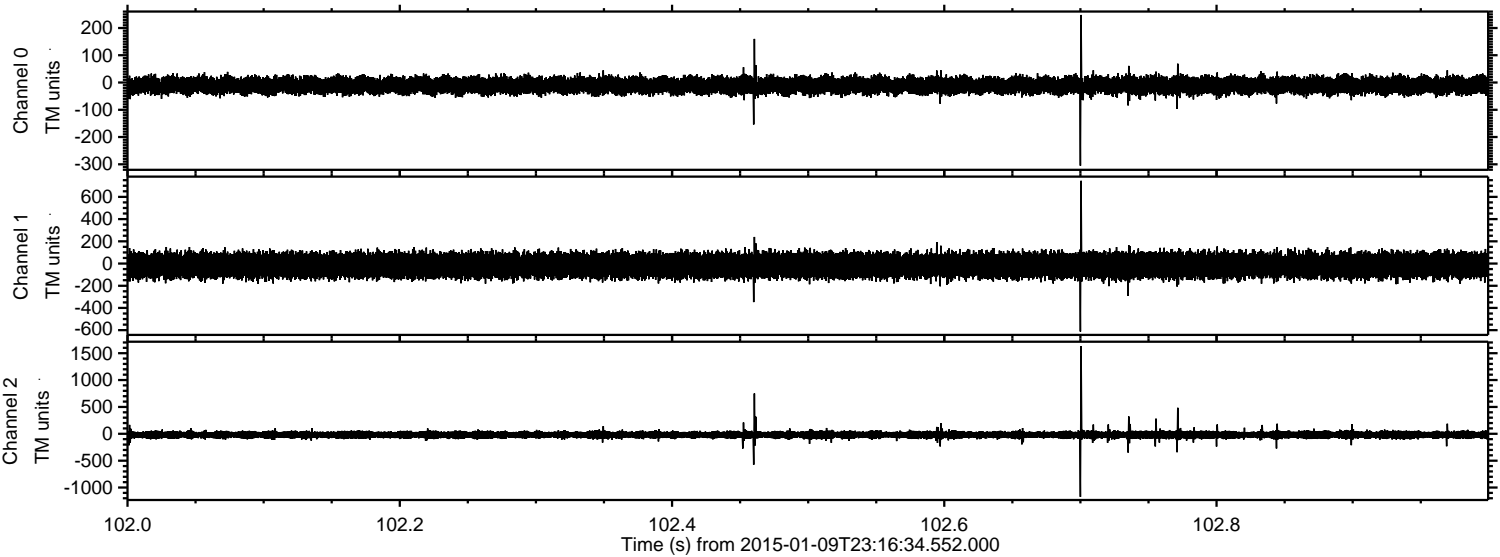


Processed Sat Jan 10 00:23:52 2015 by ELM ver.2012-10-06 from 001__elm20150109_231633__dat00.bin

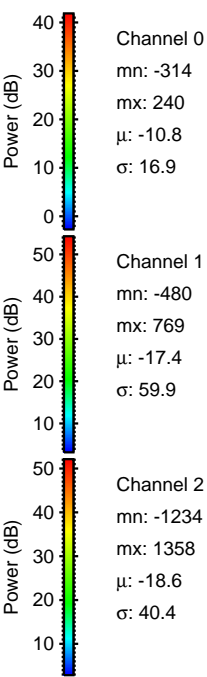
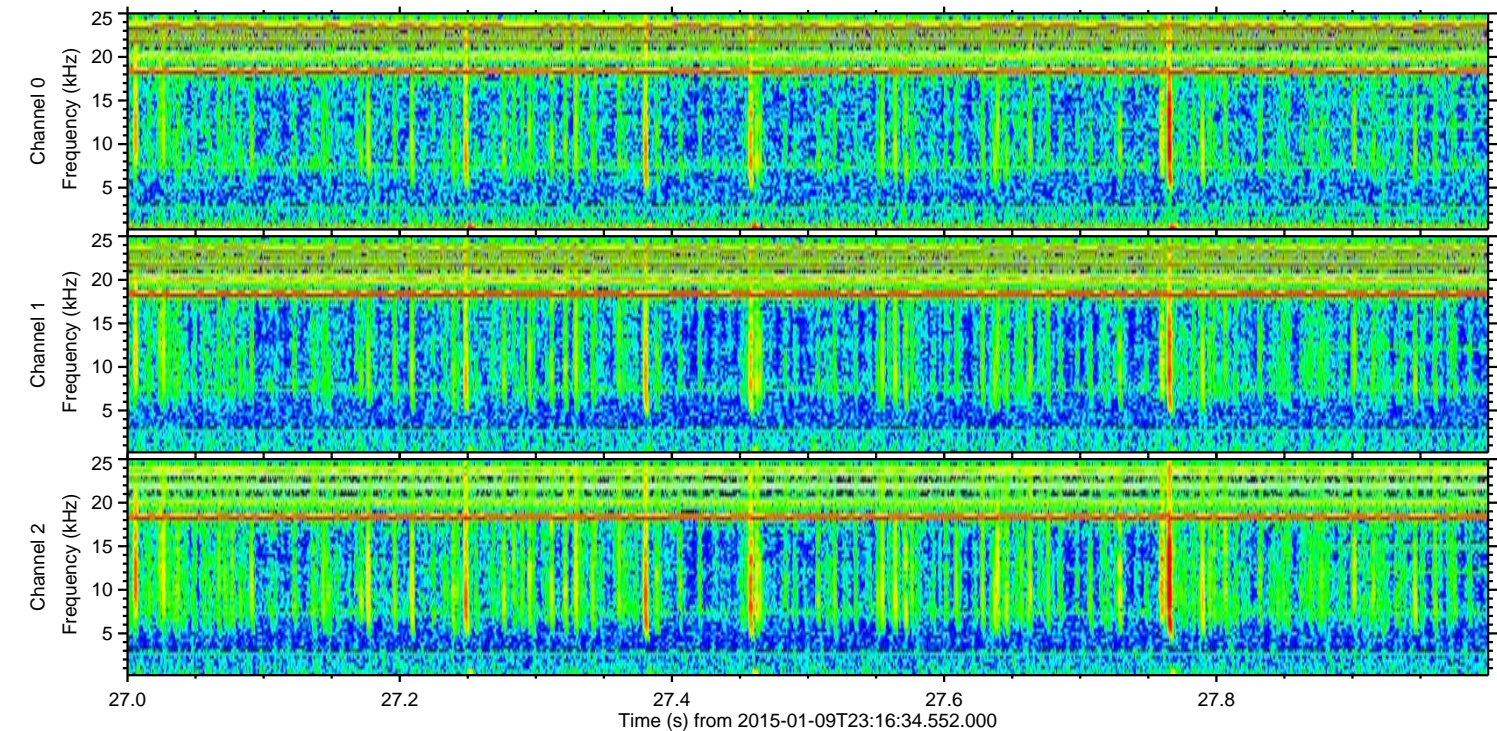
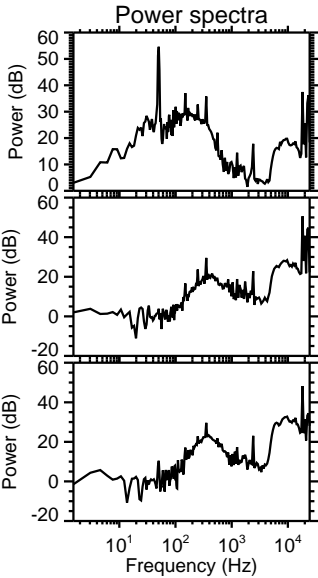
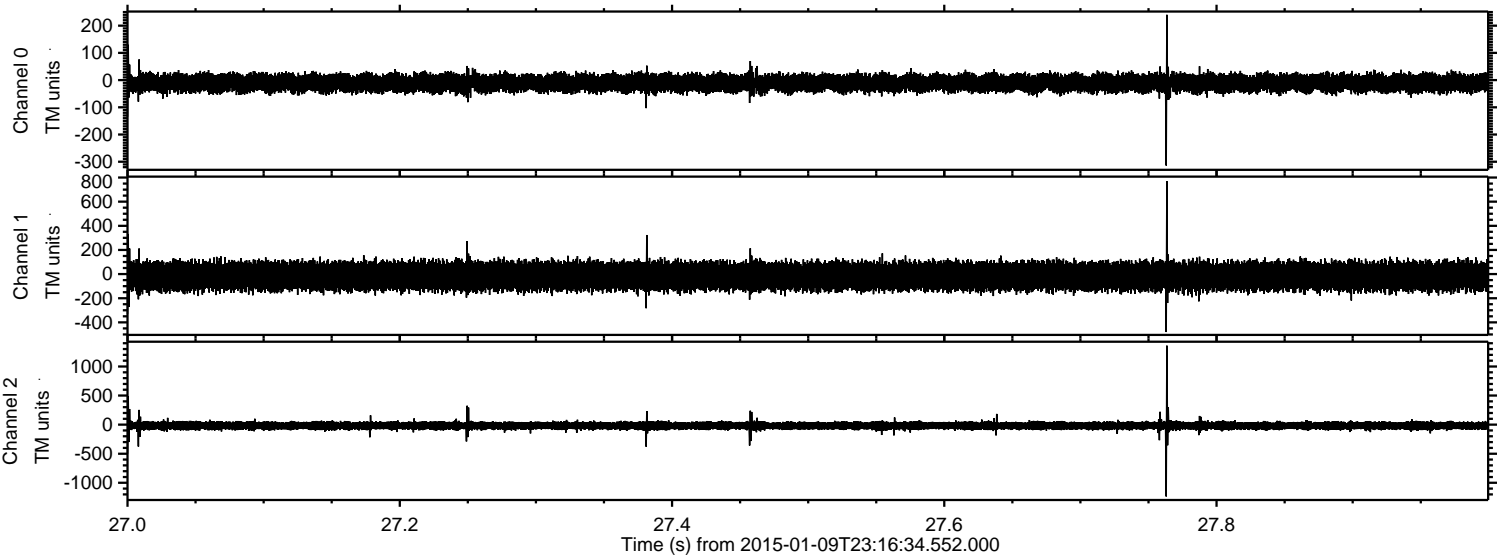


ELMAVAN 3D WAVEFORMS (Measured data sampled at 50 kHz) 49787 packets of 144 samples from 2015-01-09T23:16:34.552.000. Part 103/144

Processed Sat Jan 10 00:23:53 2015 by ELM ver.2012-10-06 from 001__elm20150109_231633__dat00.bin



Processed Sat Jan 10 00:23:53 2015 by ELM ver.2012-10-06 from 001__elm20150109_231633__dat00.bin

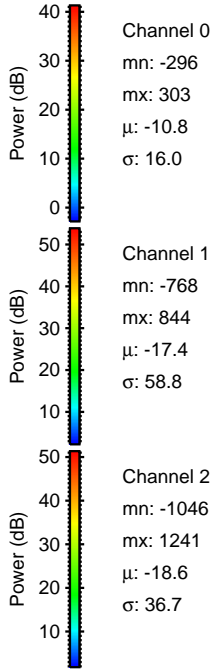
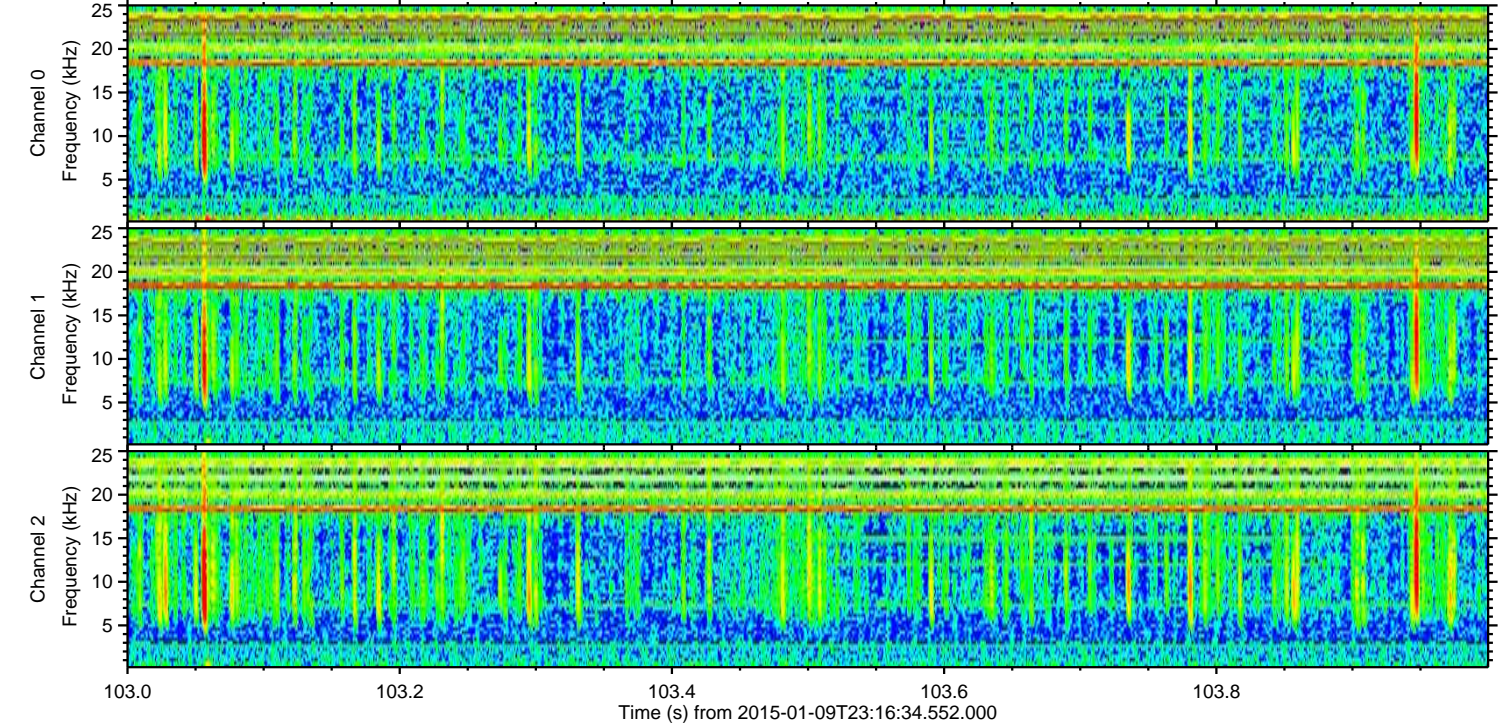
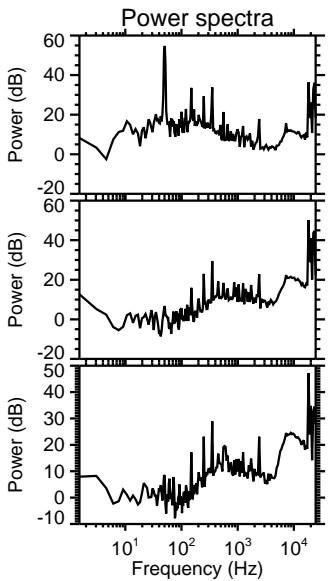
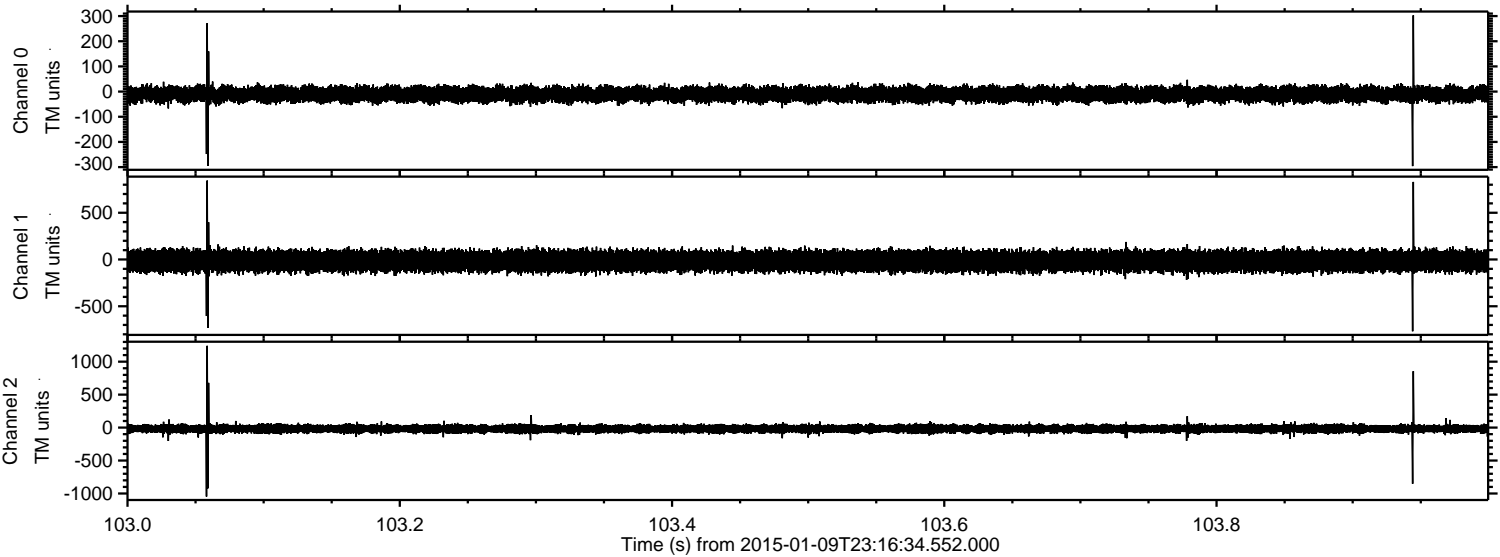


Channel 0
mn: -314
mx: 240
 μ : -10.8
 σ : 16.9

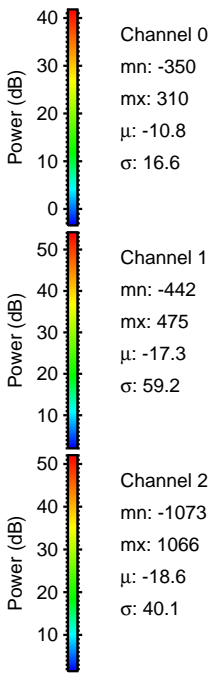
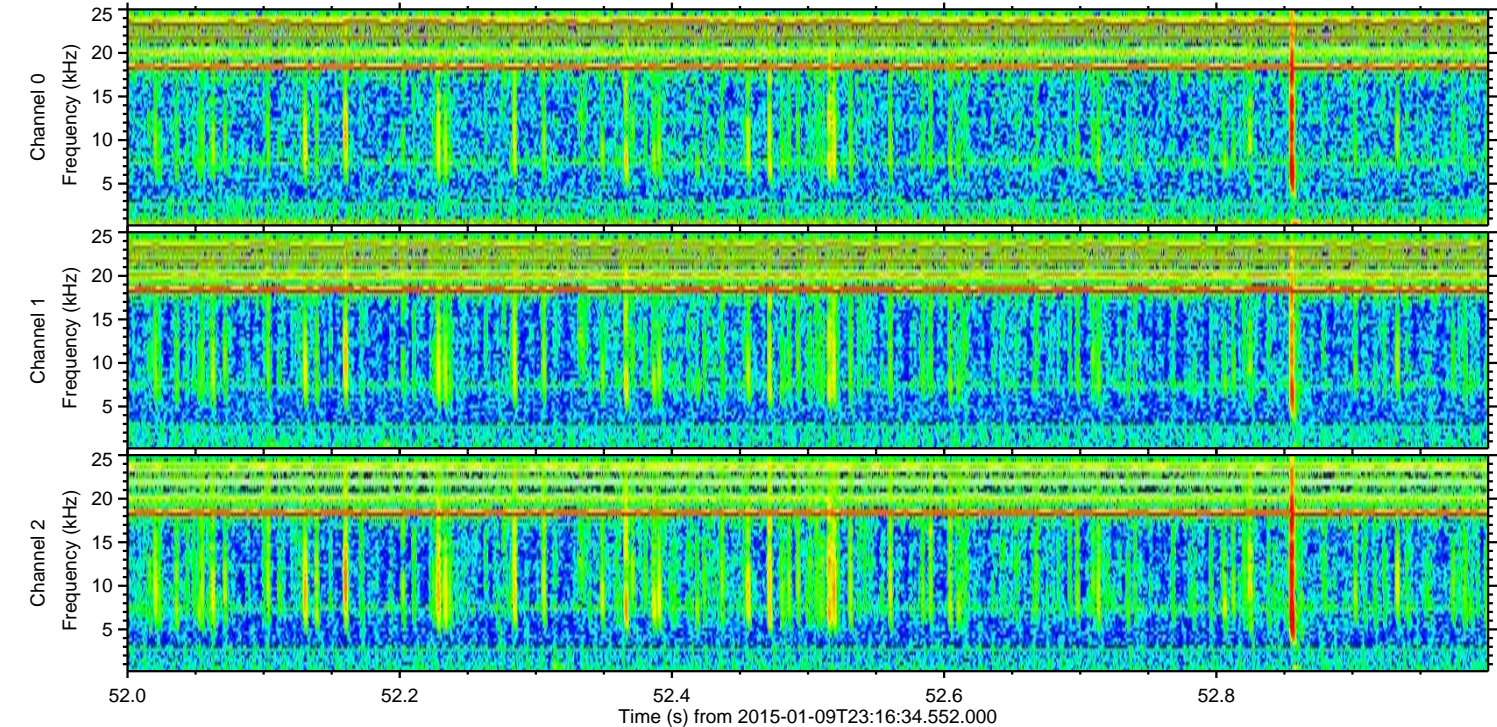
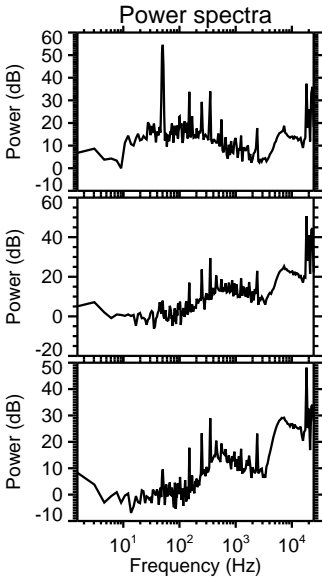
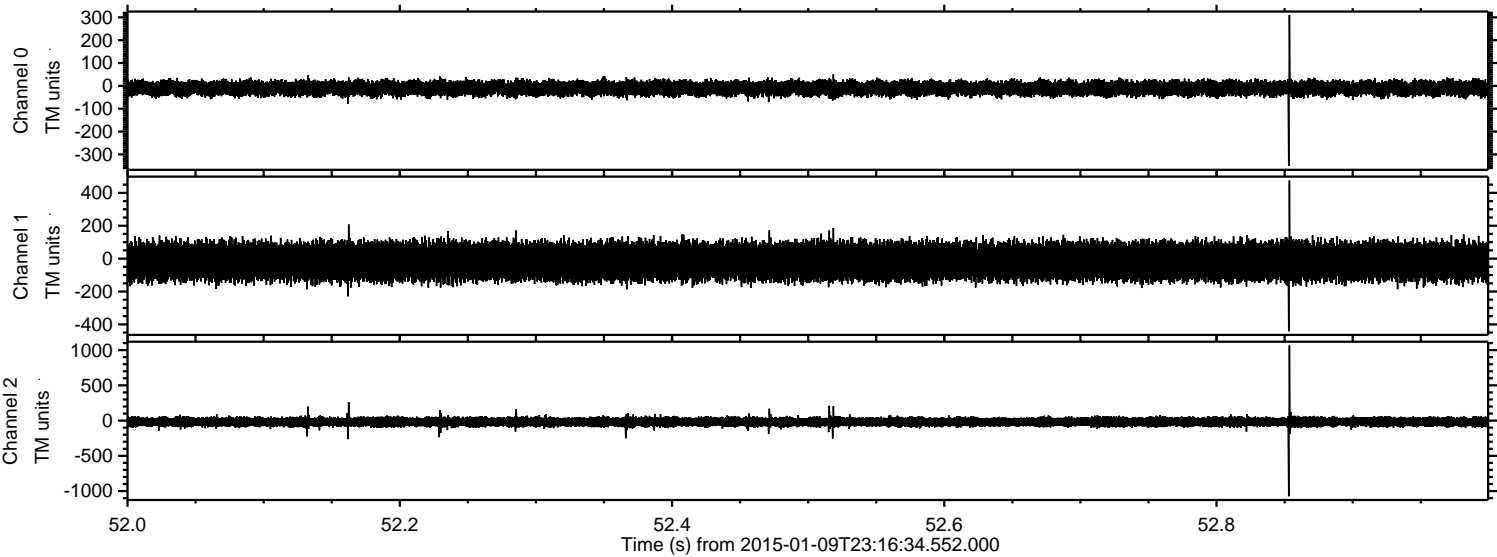
Channel 1
mn: -480
mx: 769
 μ : -17.4
 σ : 59.9

Channel 2
mn: -1234
mx: 1358
 μ : -18.6
 σ : 40.4

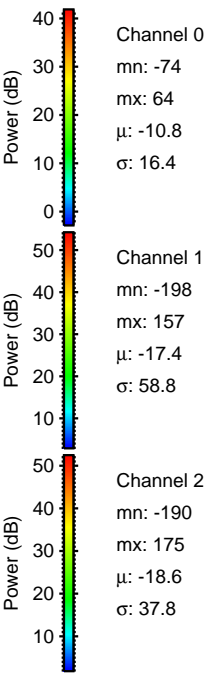
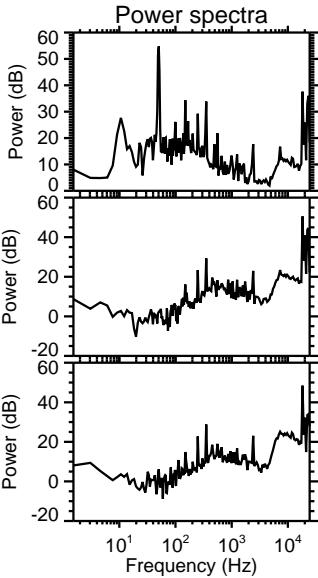
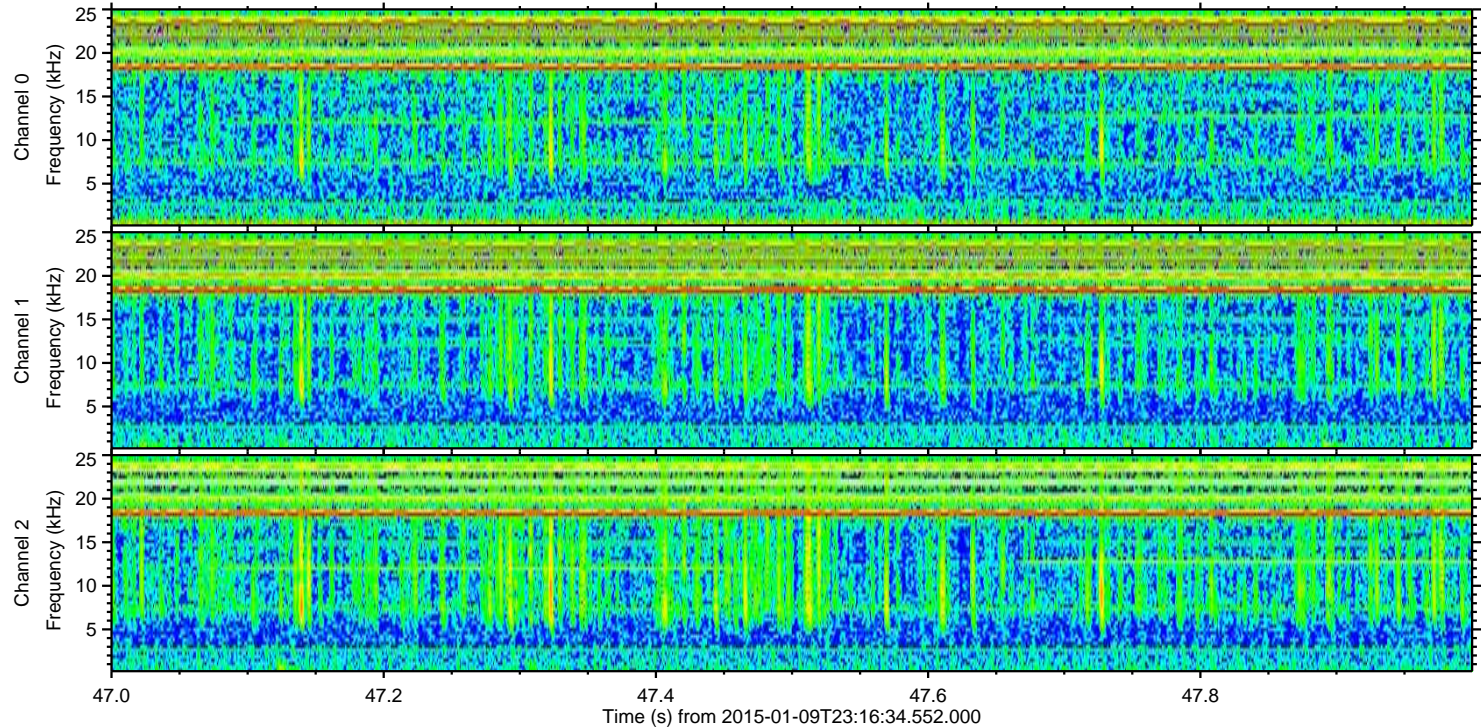
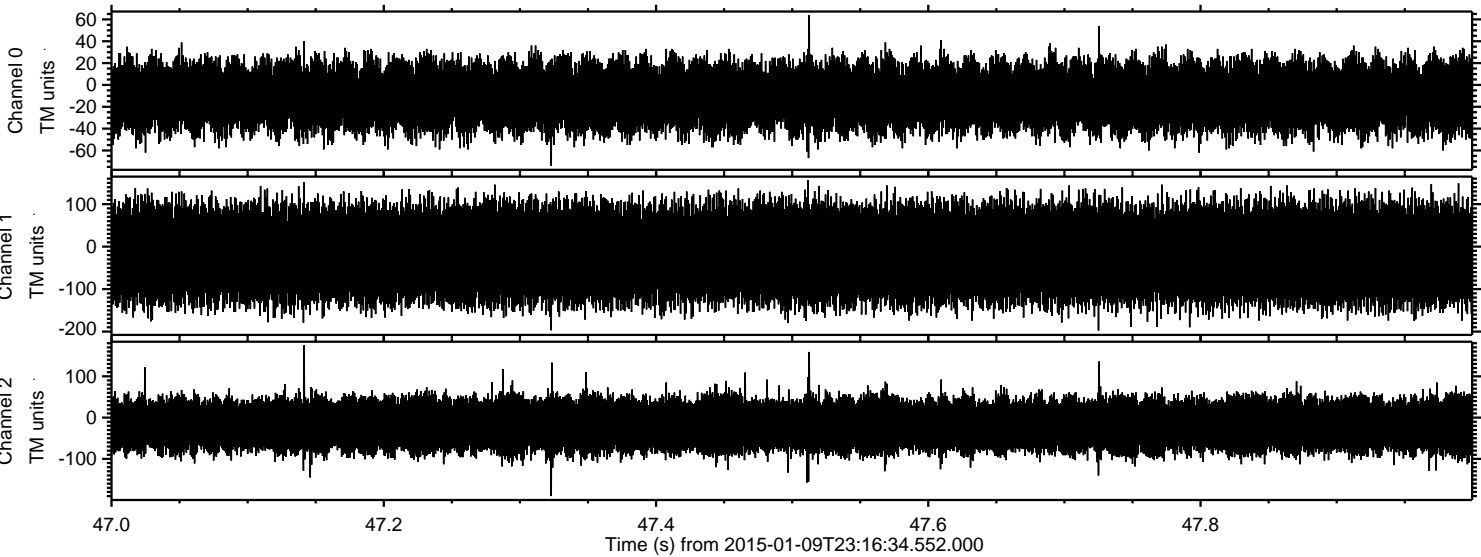
Processed Sat Jan 10 00:23:54 2015 by ELM ver.2012-10-06 from 001__elm20150109_231633__dat00.bin



Processed Sat Jan 10 00:23:55 2015 by ELM ver.2012-10-06 from 001__elm20150109_231633__dat00.bin



Processed Sat Jan 10 00:23:56 2015 by ELM ver.2012-10-06 from 001__elm20150109_231633__dat00.bin



Channel 0
mn: -74
mx: 64
 μ : -10.8
 σ : 16.4

Channel 1
mn: -198
mx: 157
 μ : -17.4
 σ : 58.8

Channel 2
mn: -190
mx: 175
 μ : -18.6
 σ : 37.8