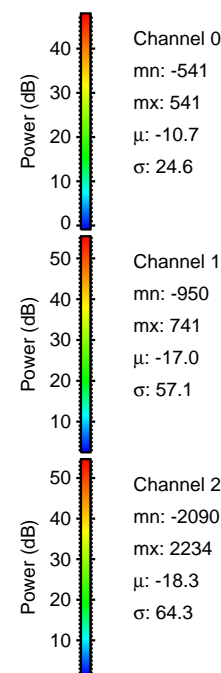
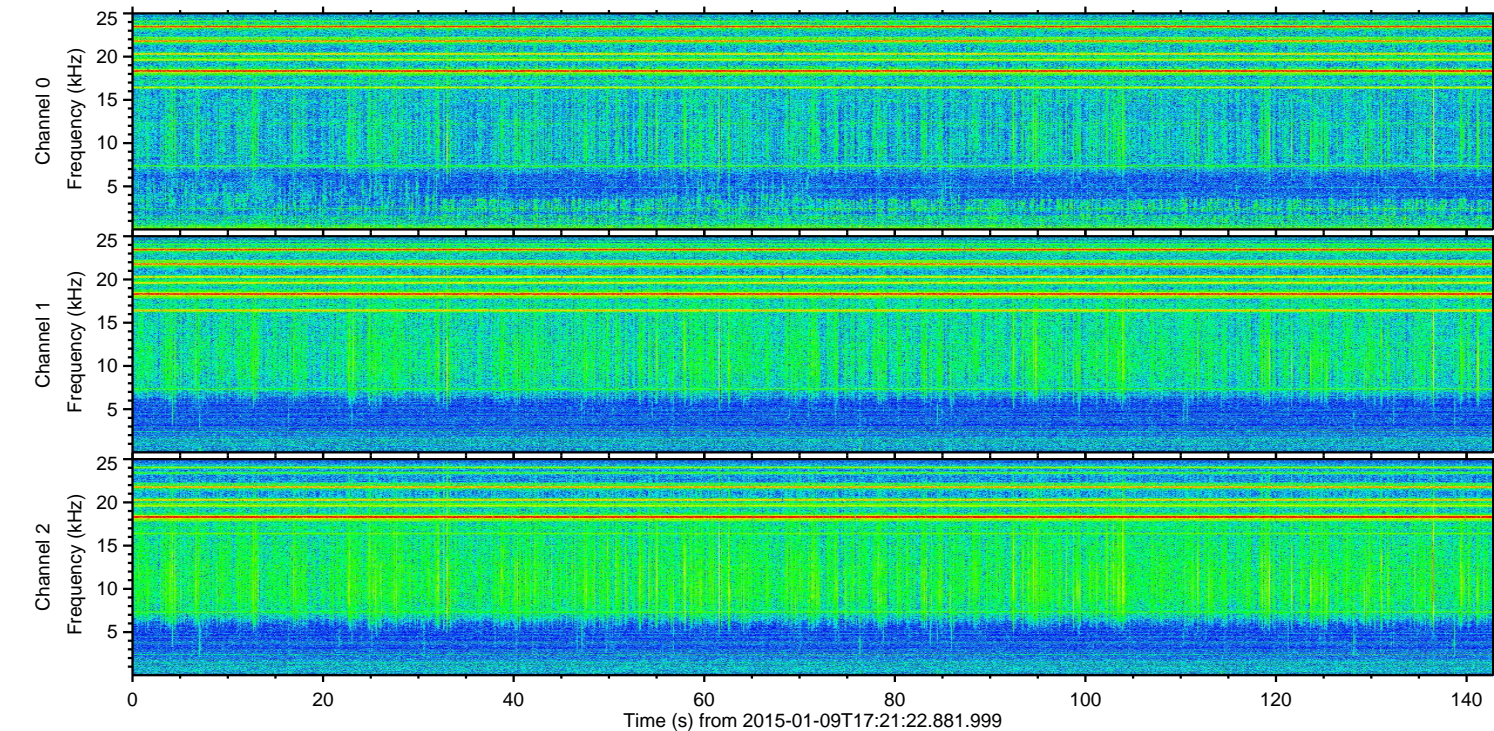
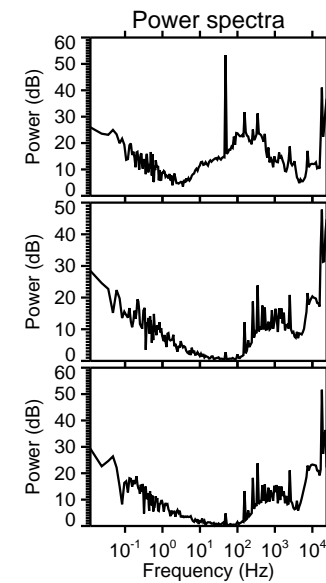
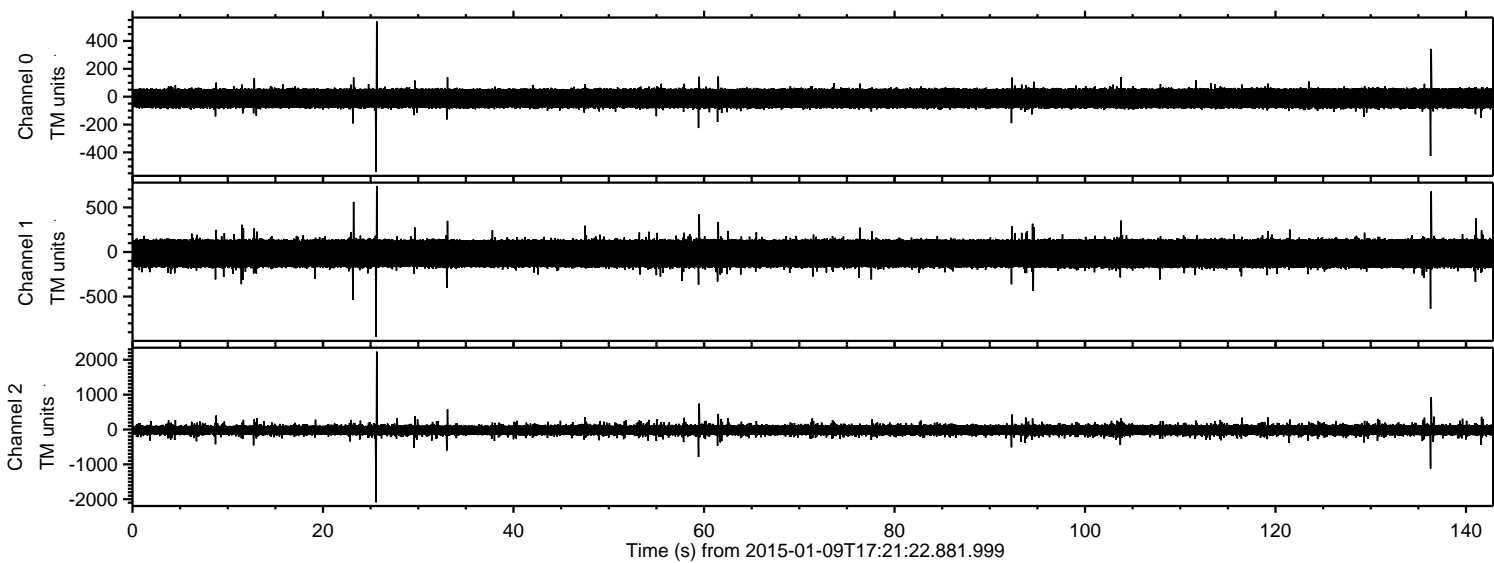
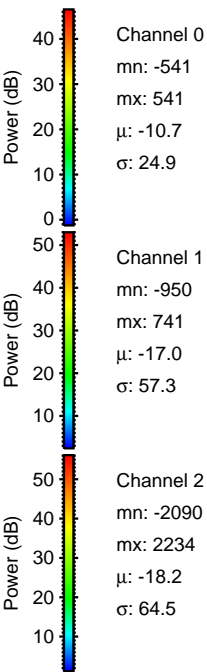
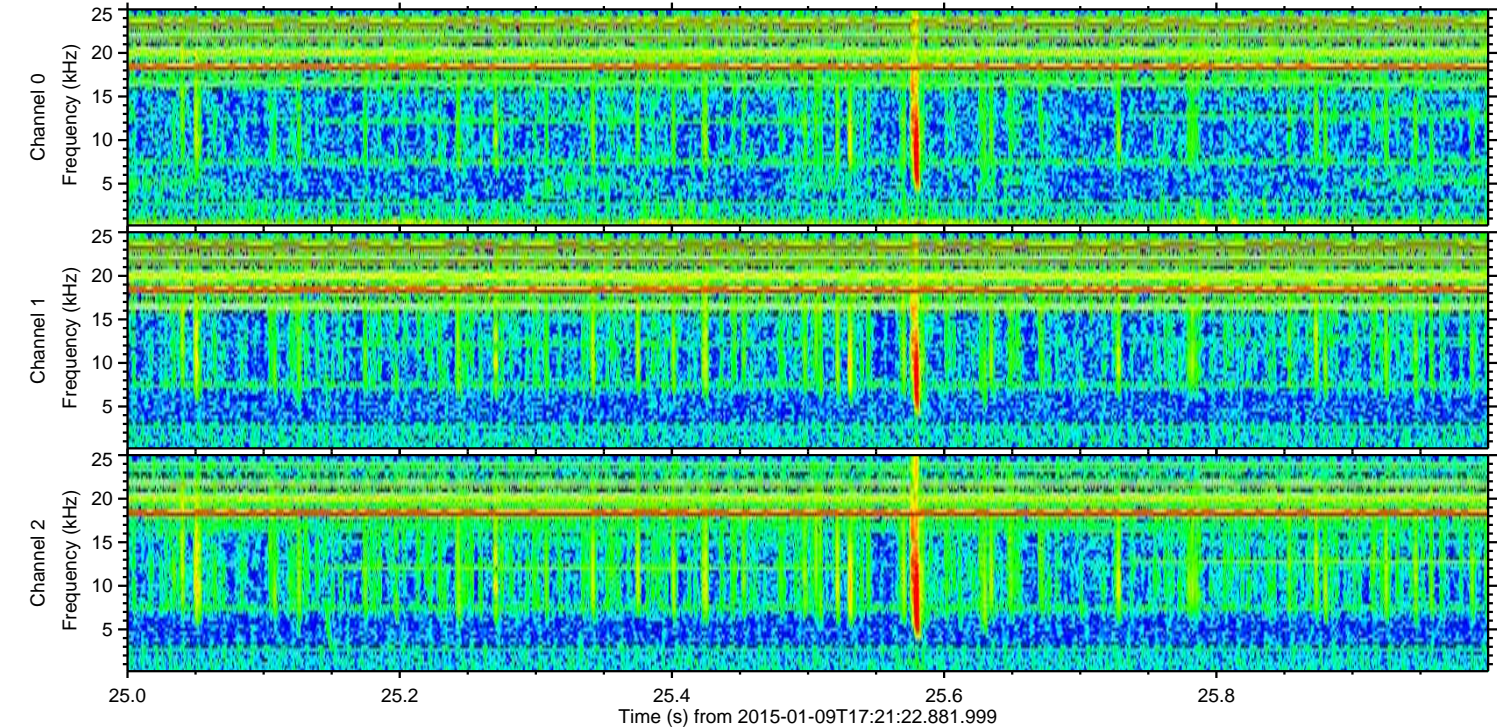
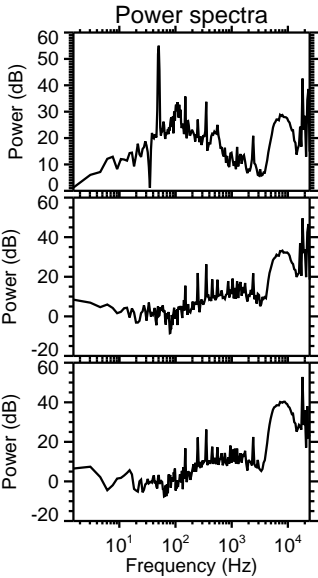
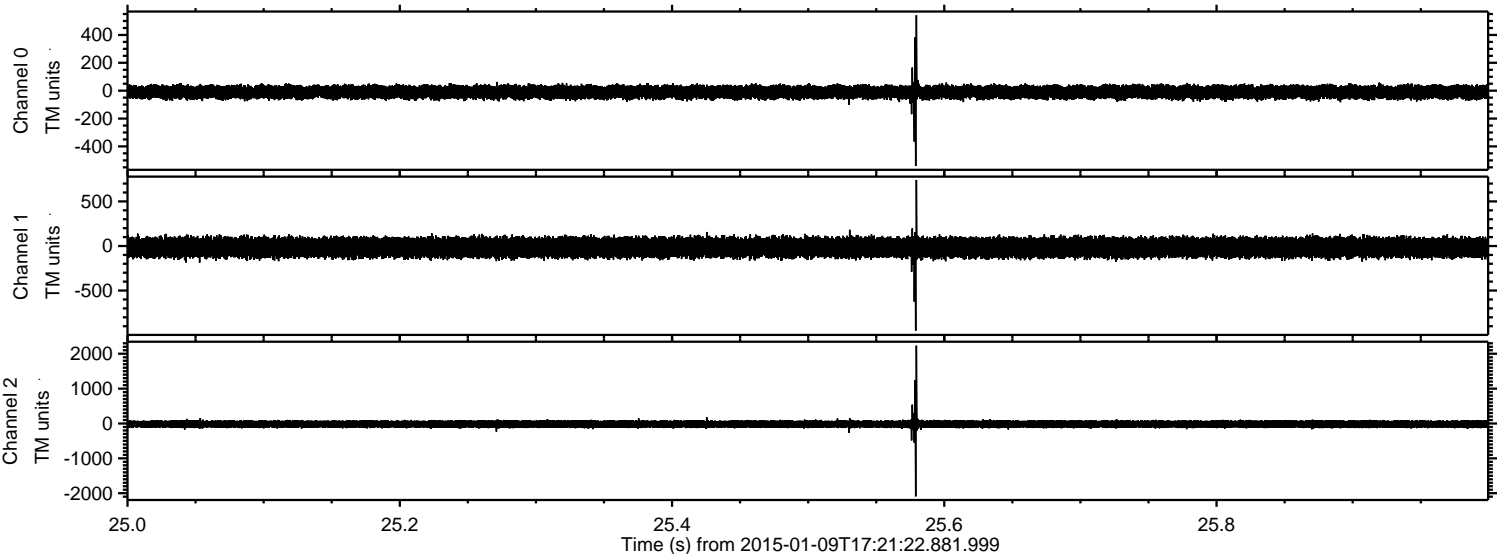


ELMAVAN 3D WAVEFORMS (Measured data sampled at 50 kHz) 49599 packets of 144 samples from 2015-01-09T17:21:22.881.999.

Processed Fri Jan 9 18:29:36 2015 by ELM ver.2012-10-06 from 001__elm20150109_172121__dat00.bin

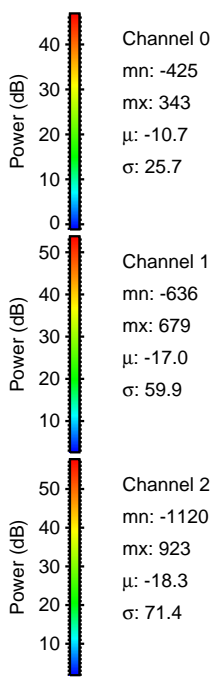
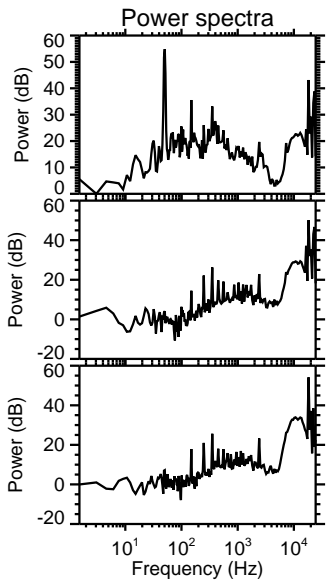
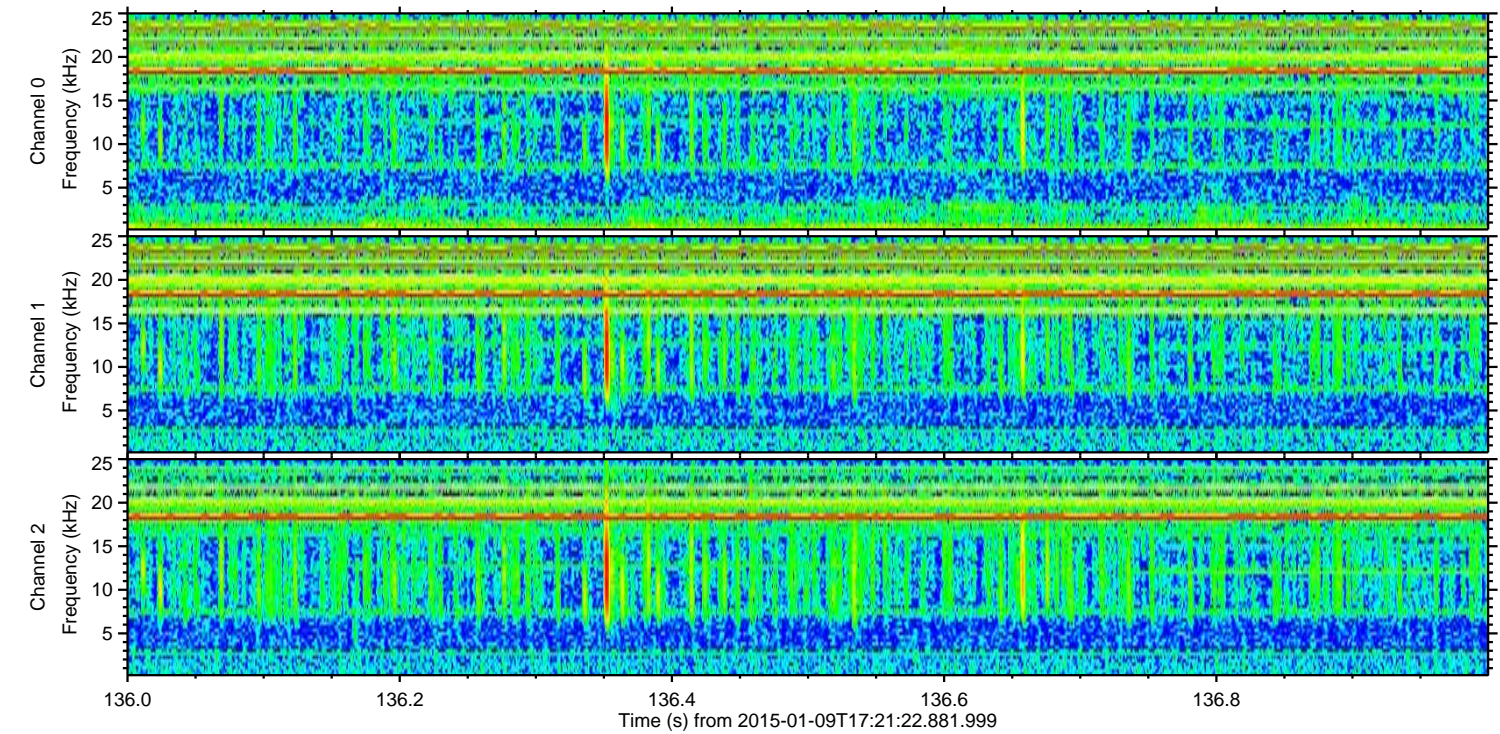
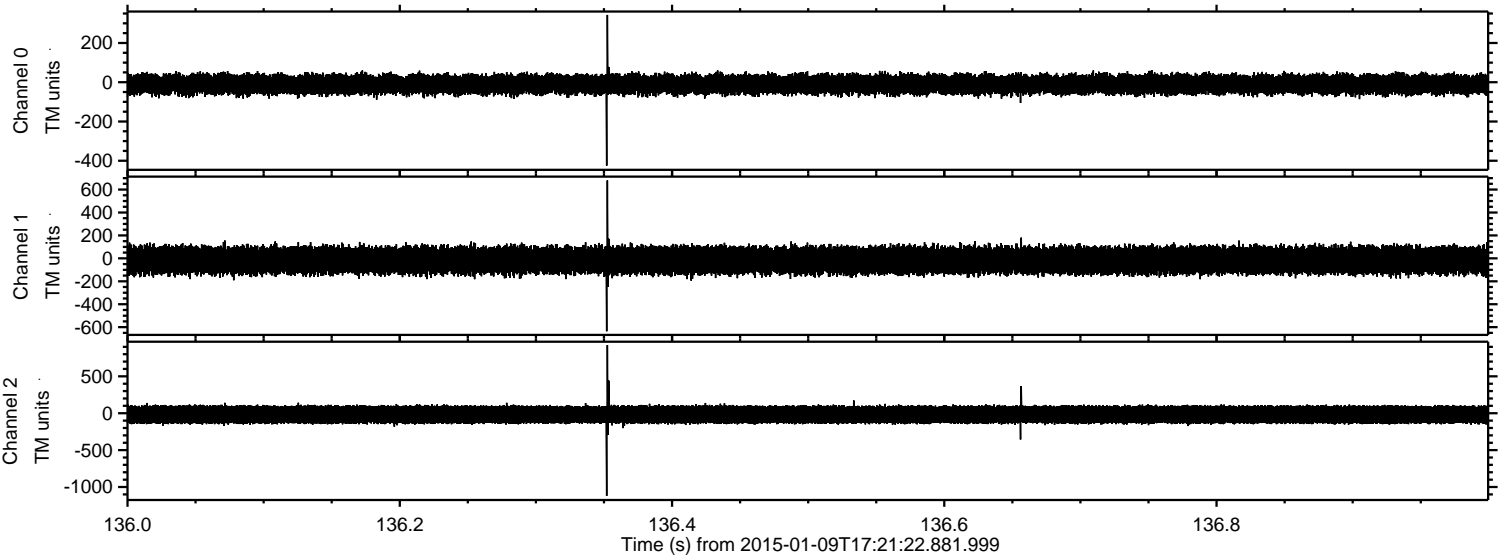


Processed Fri Jan 9 18:29:51 2015 by ELM ver.2012-10-06 from 001__elm20150109_172121__dat00.bin



ELMAVAN 3D WAVEFORMS (Measured data sampled at 50 kHz) 49599 packets of 144 samples from 2015-01-09T17:21:22.881.999. Part 137/143

Processed Fri Jan 9 18:29:52 2015 by ELM ver.2012-10-06 from 001__elm20150109_172121__dat00.bin

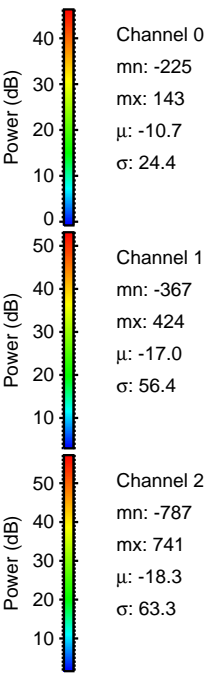
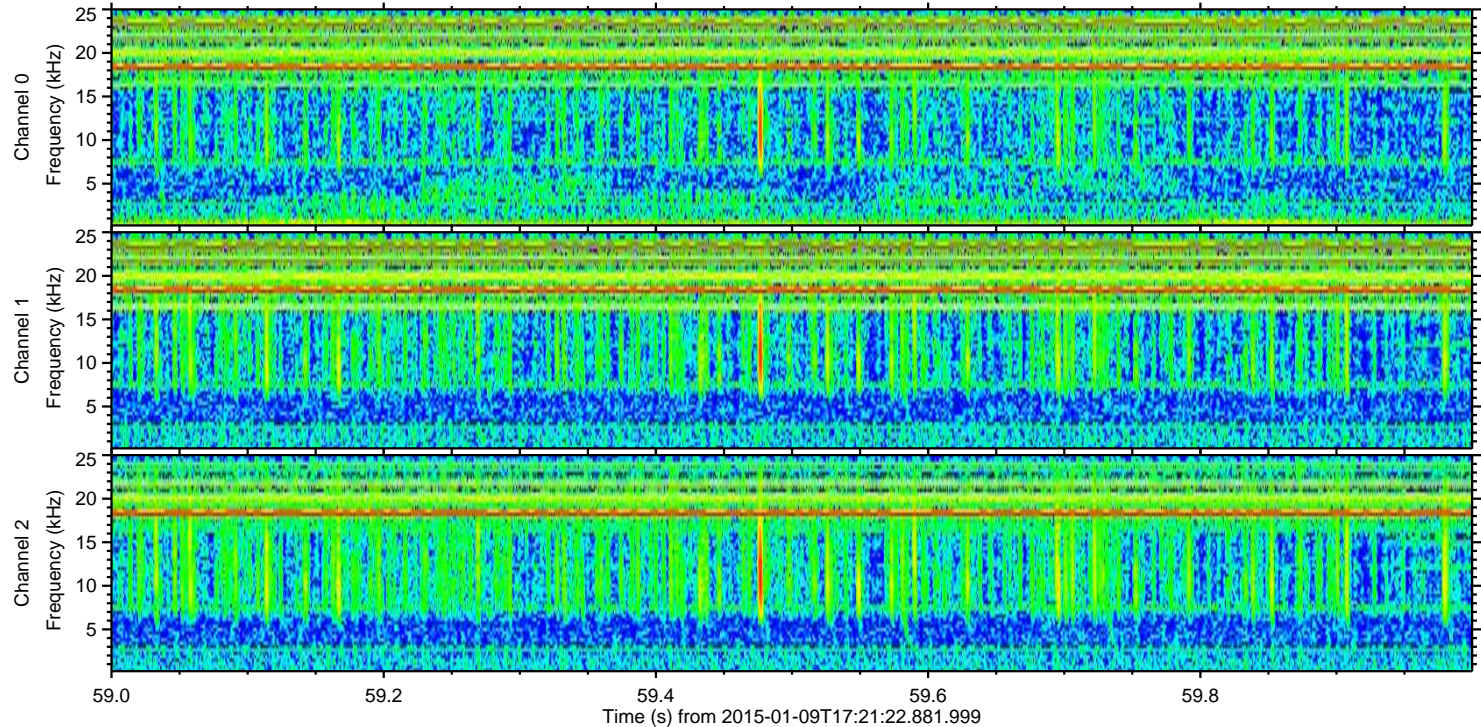
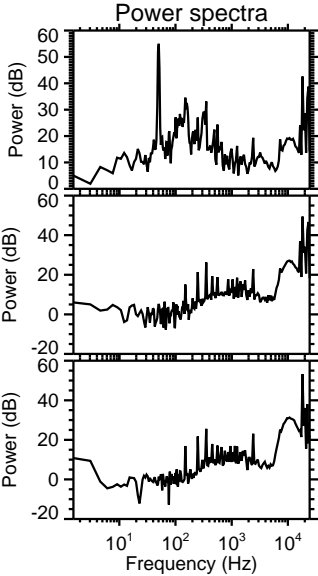
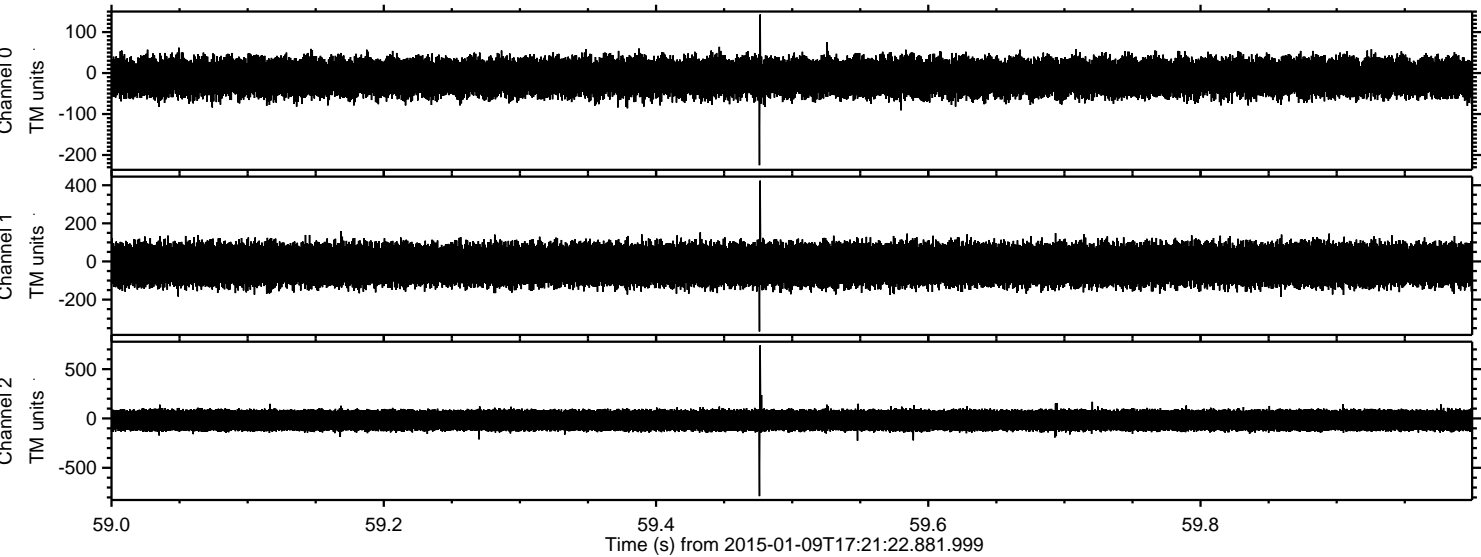


Channel 0
mn: -425
mx: 343
 μ : -10.7
 σ : 25.7

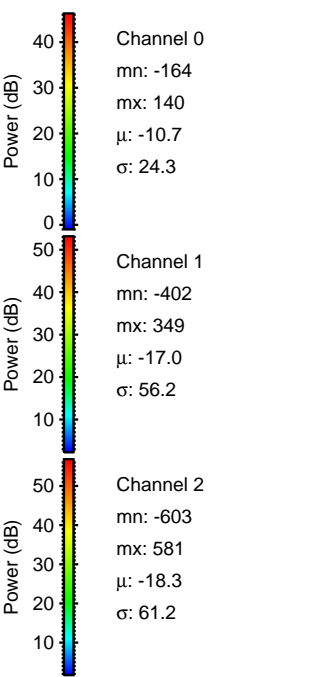
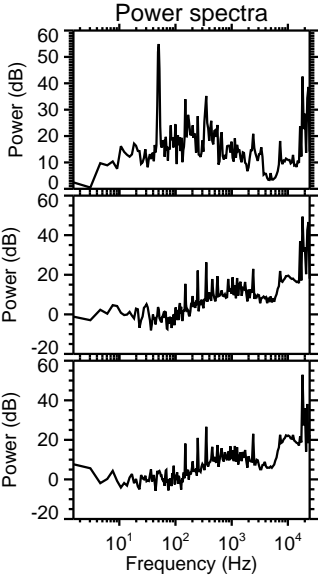
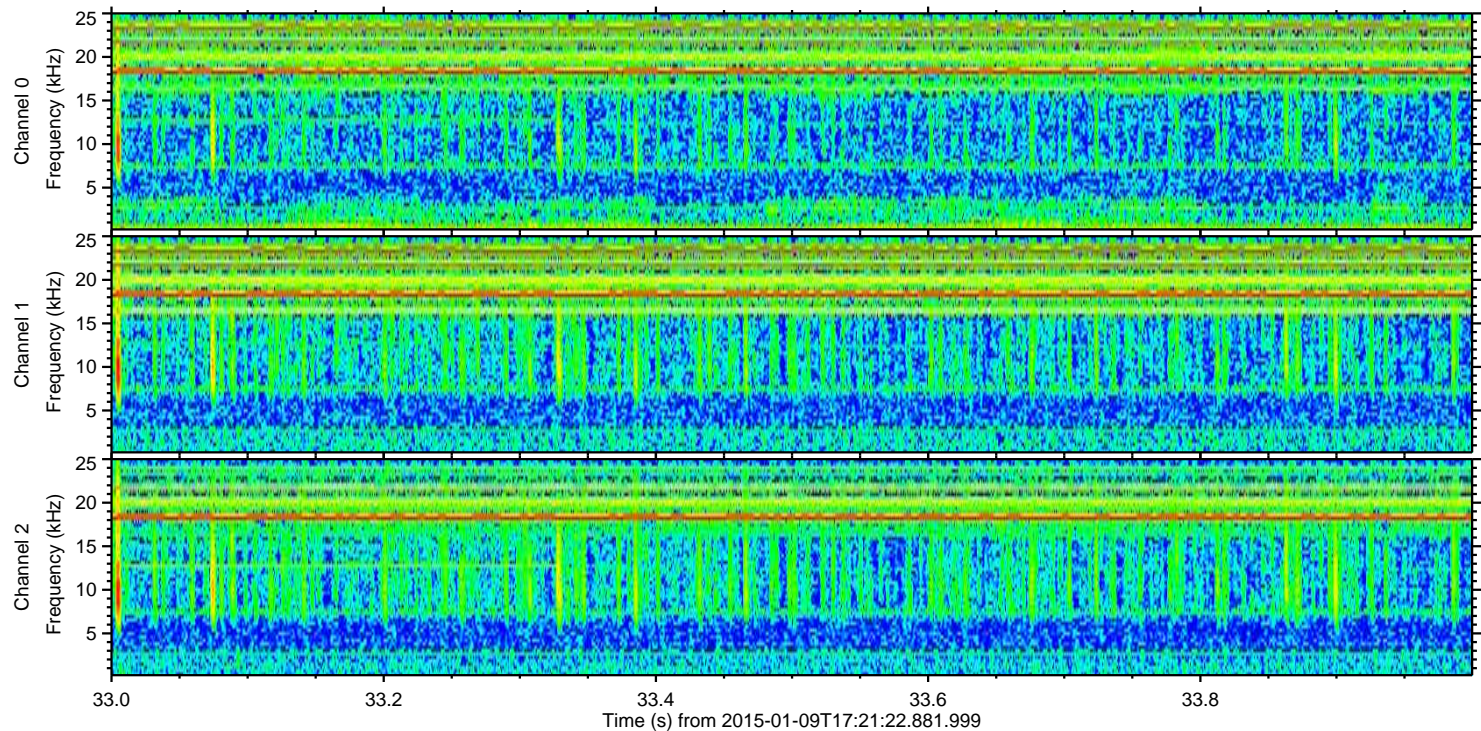
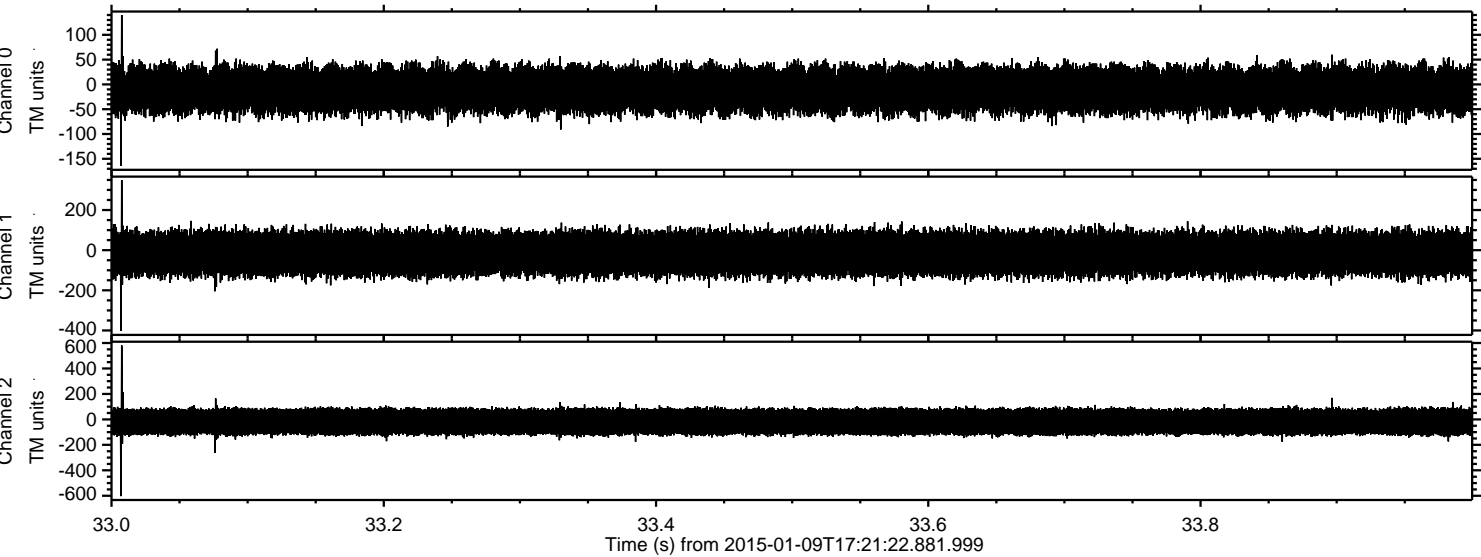
Channel 1
mn: -636
mx: 679
 μ : -17.0
 σ : 59.9

Channel 2
mn: -1120
mx: 923
 μ : -18.3
 σ : 71.4

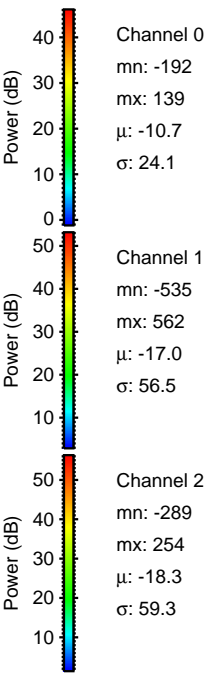
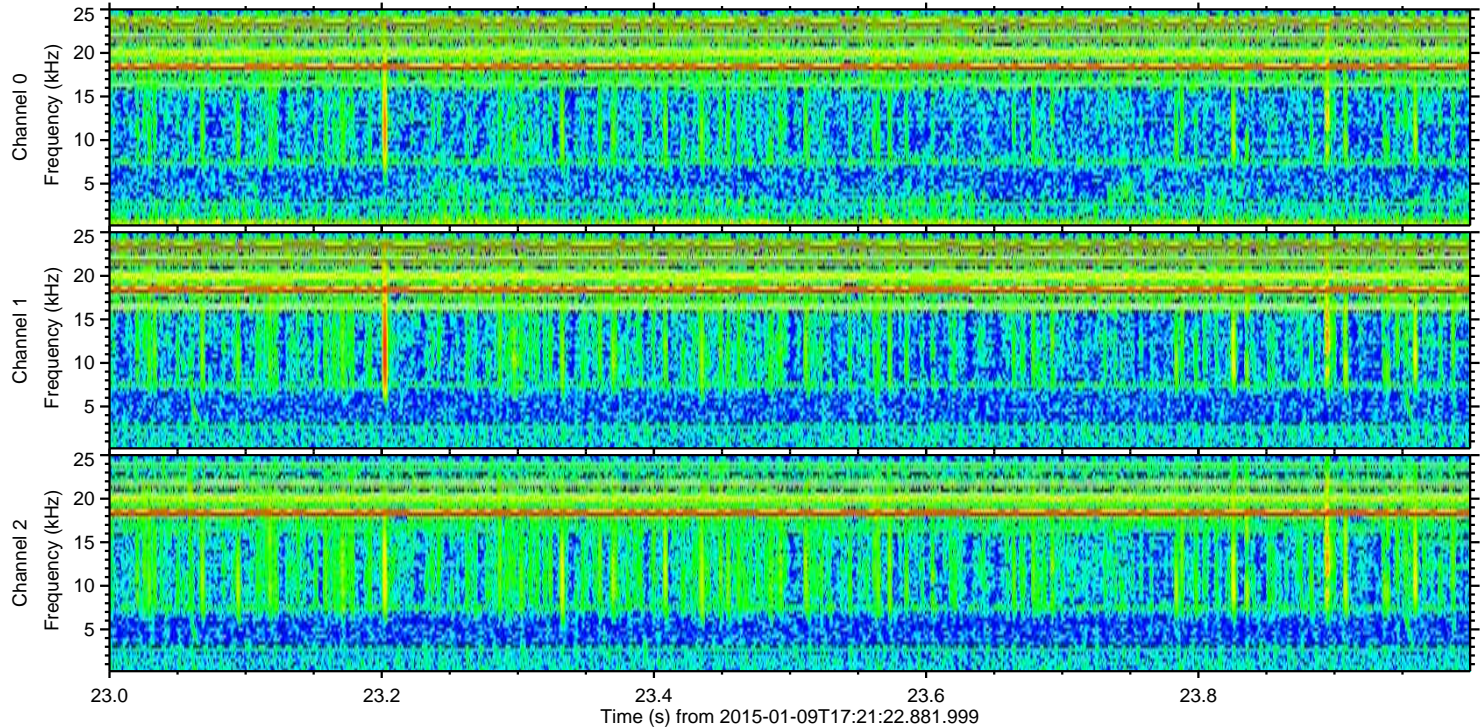
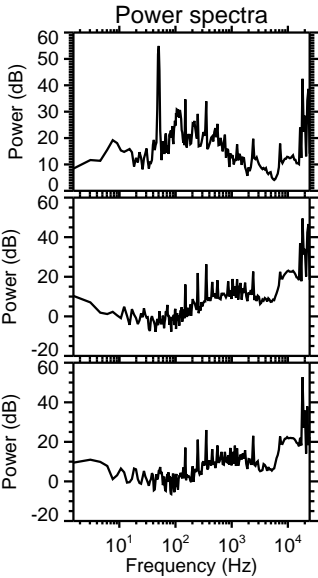
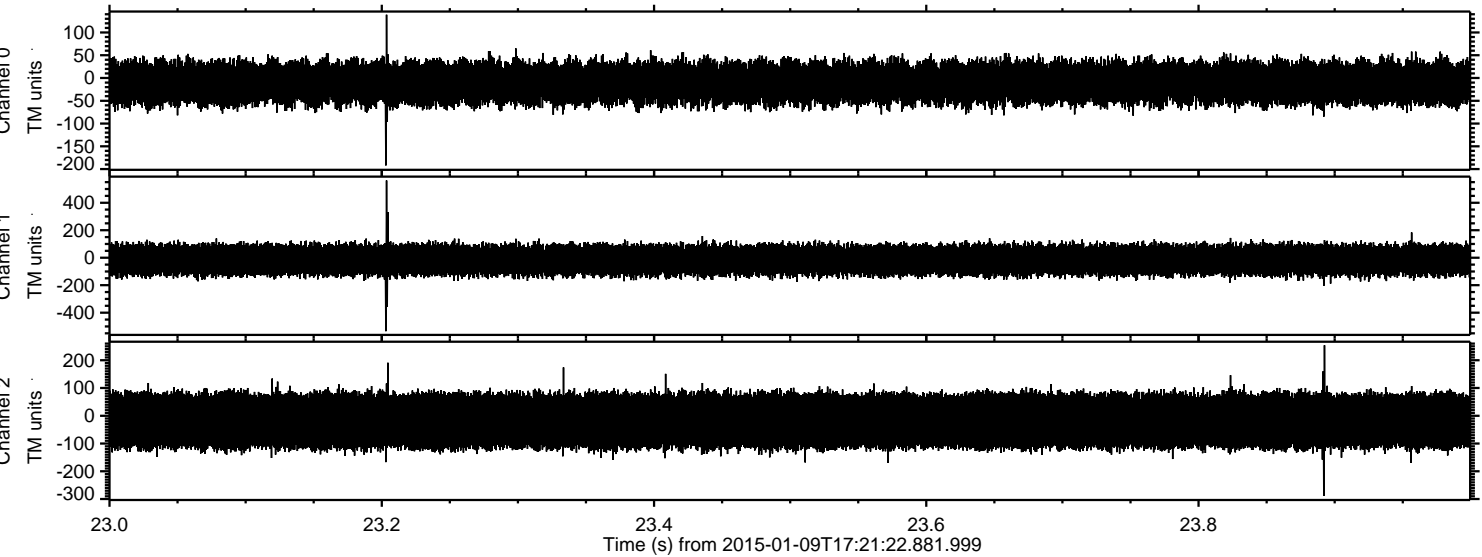
Processed Fri Jan 9 18:29:53 2015 by ELM ver.2012-10-06 from 001__elm20150109_172121__dat00.bin



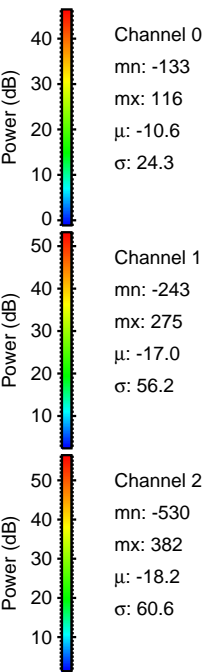
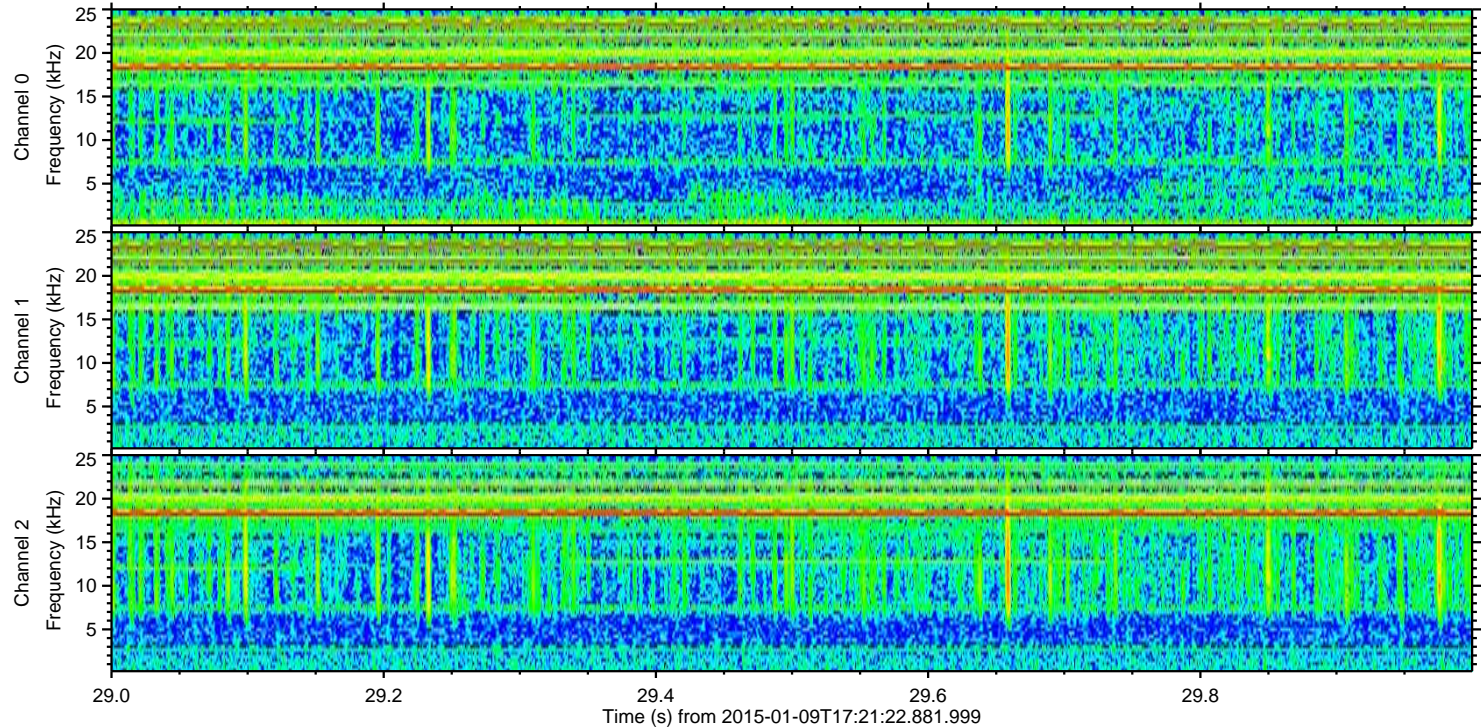
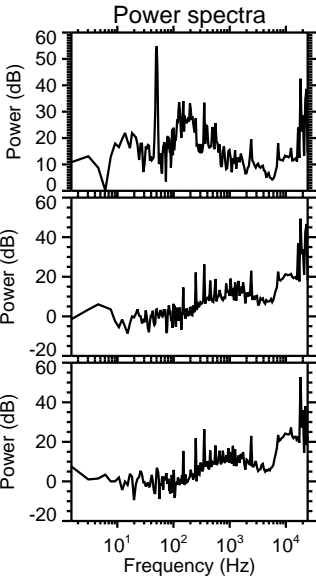
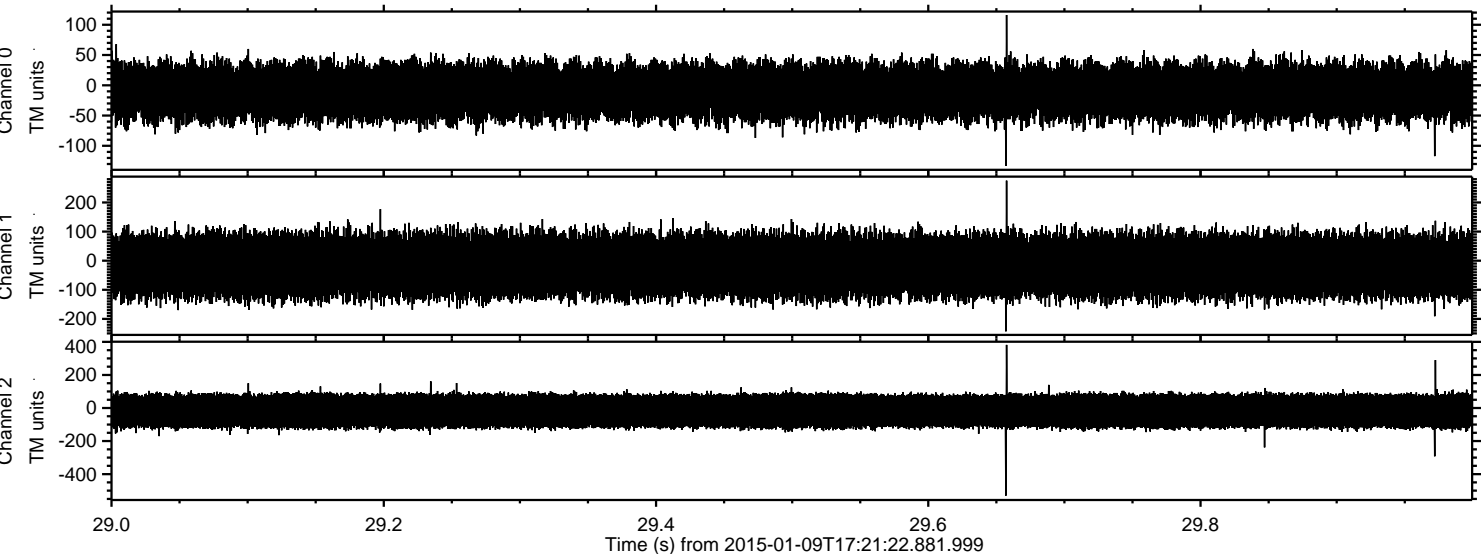
Processed Fri Jan 9 18:29:54 2015 by ELM ver.2012-10-06 from 001__elm20150109_172121__dat00.bin



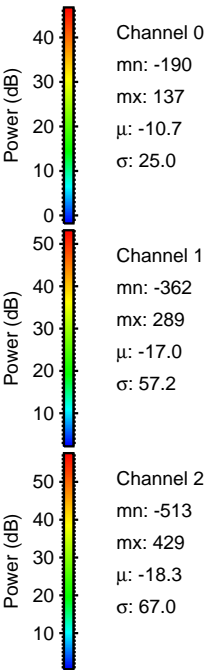
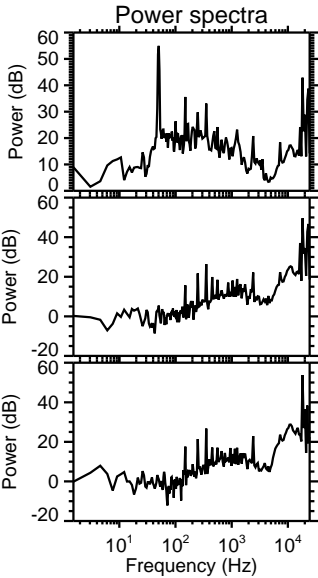
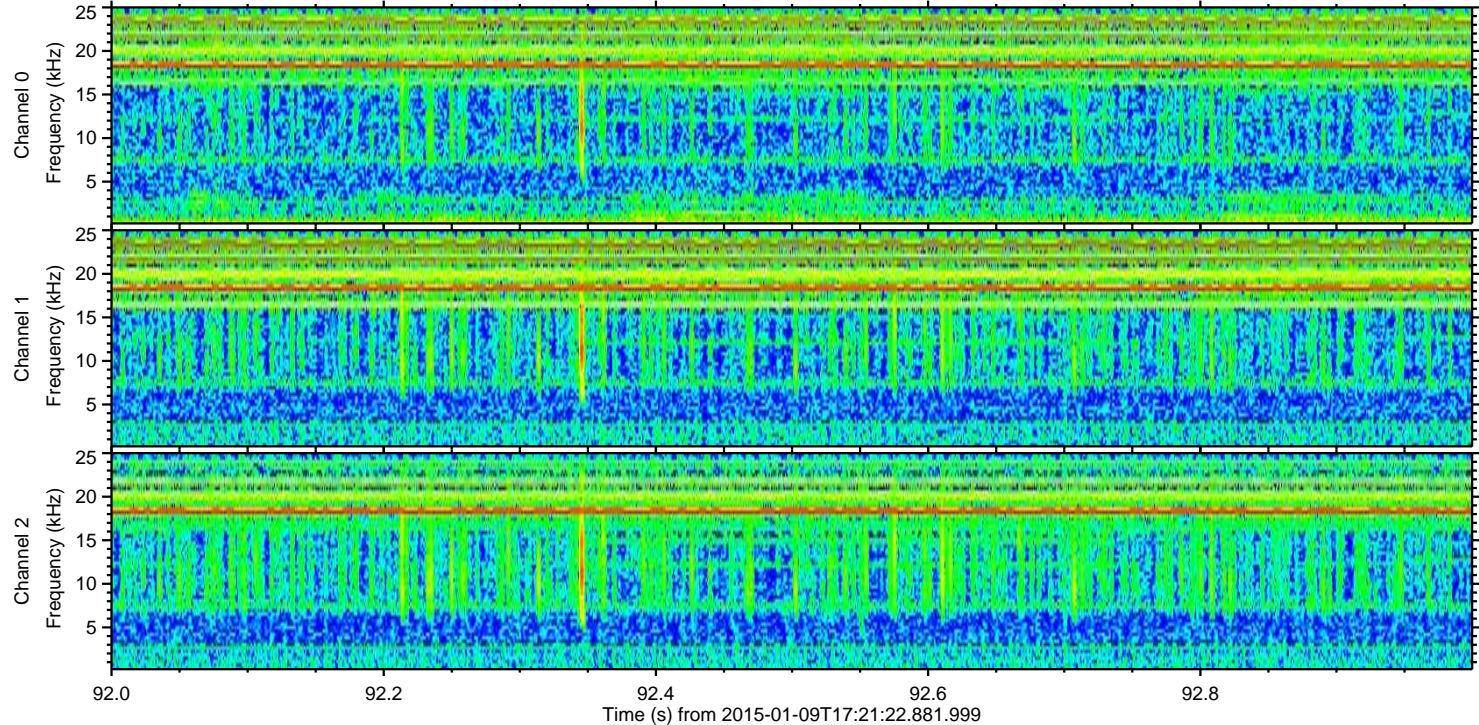
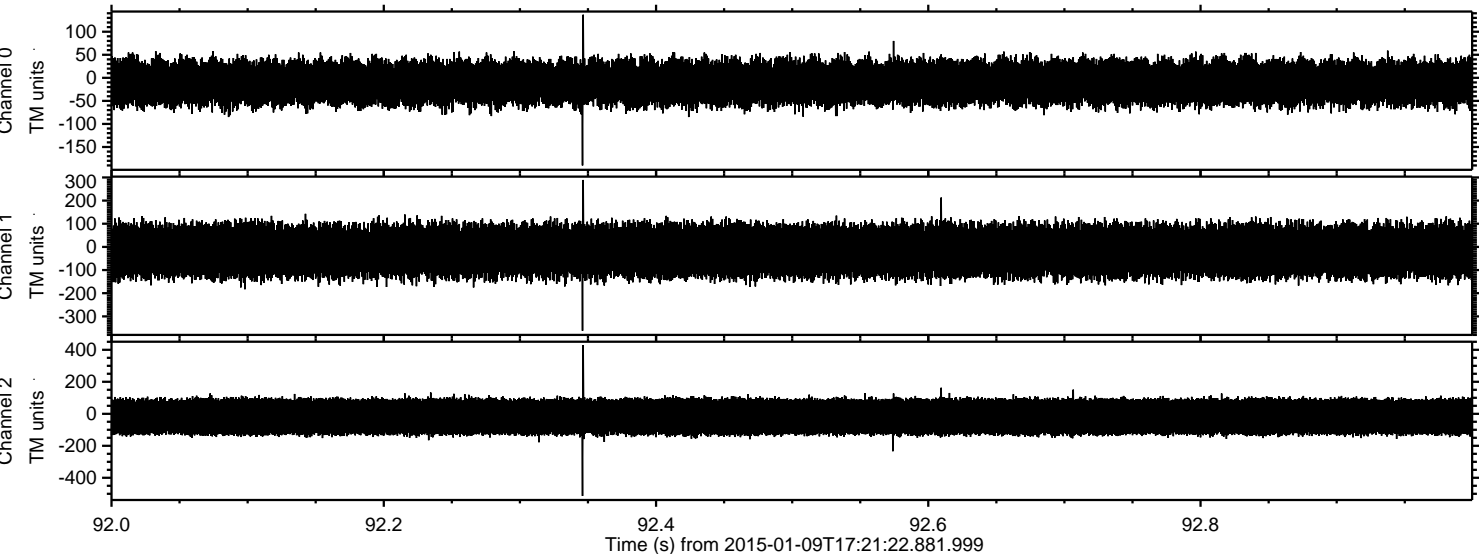
Processed Fri Jan 9 18:29:55 2015 by ELM ver.2012-10-06 from 001__elm20150109_172121__dat00.bin



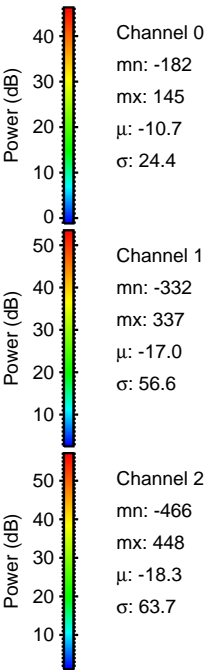
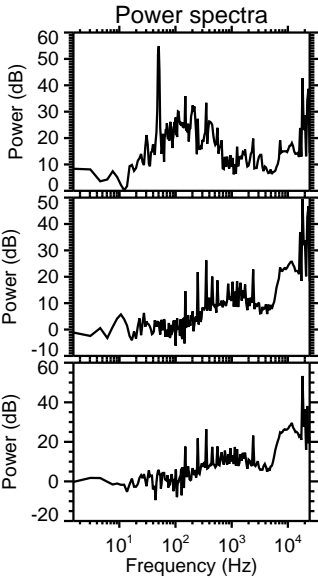
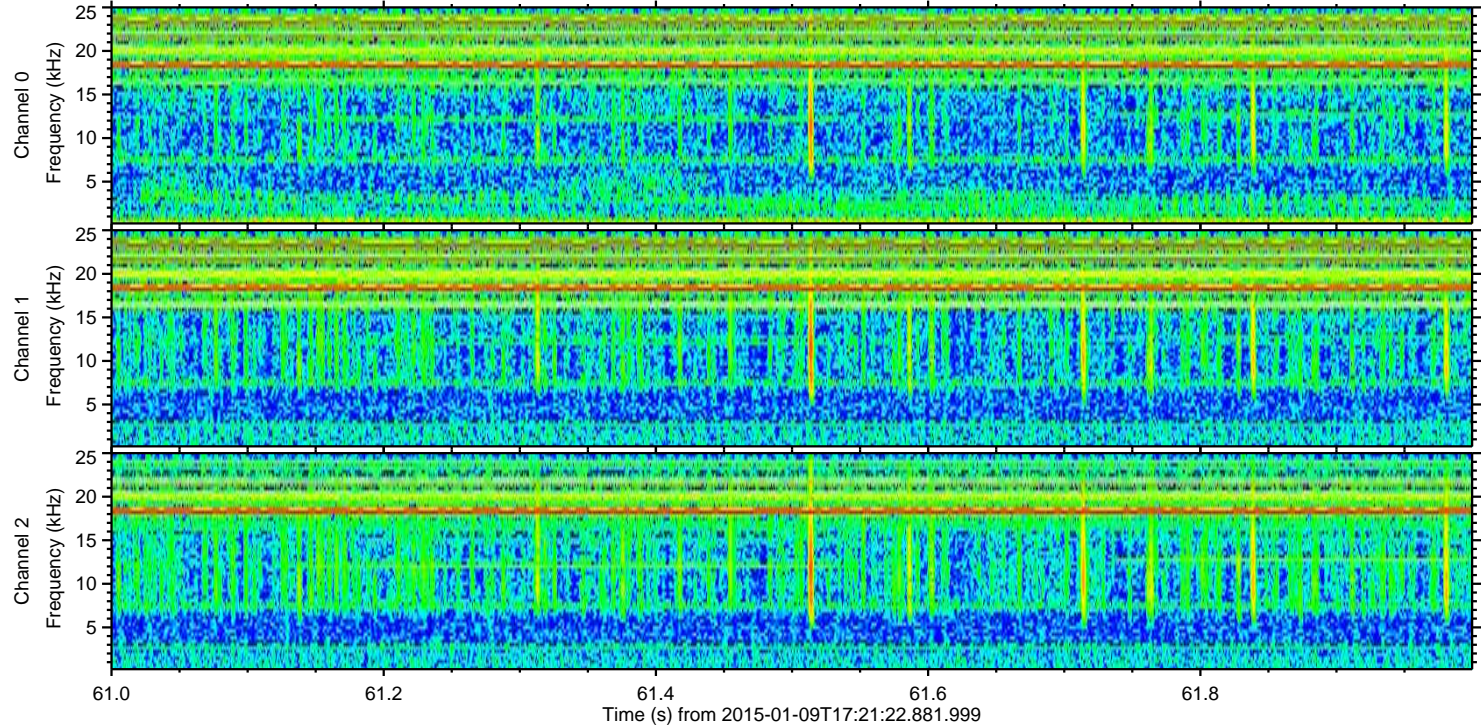
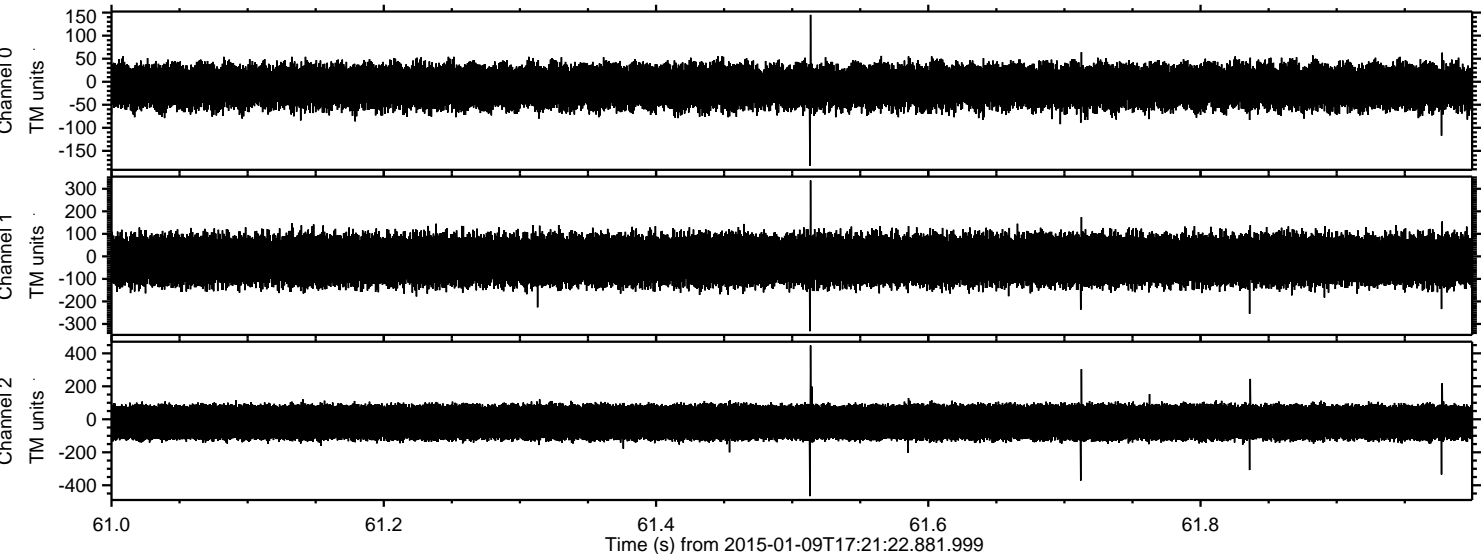
Processed Fri Jan 9 18:29:56 2015 by ELM ver.2012-10-06 from 001__elm20150109_172121__dat00.bin



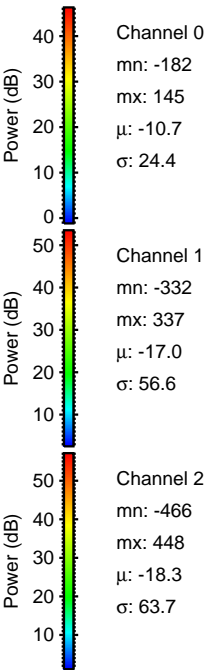
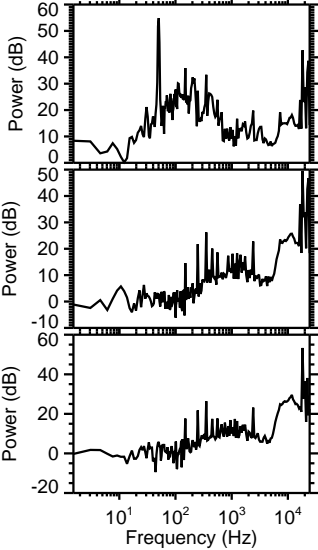
Processed Fri Jan 9 18:29:58 2015 by ELM ver.2012-10-06 from 001__elm20150109_172121__dat00.bin



Processed Fri Jan 9 18:29:59 2015 by ELM ver.2012-10-06 from 001__elm20150109_172121__dat00.bin



Power spectra



Processed Fri Jan 9 18:30:00 2015 by ELM ver.2012-10-06 from 001__elm20150109_172121__dat00.bin

