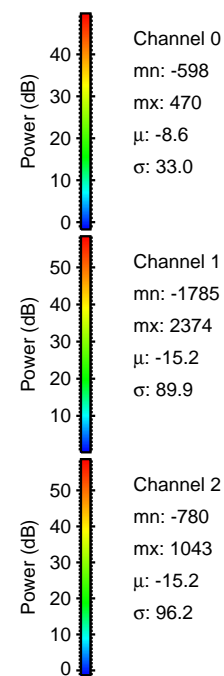
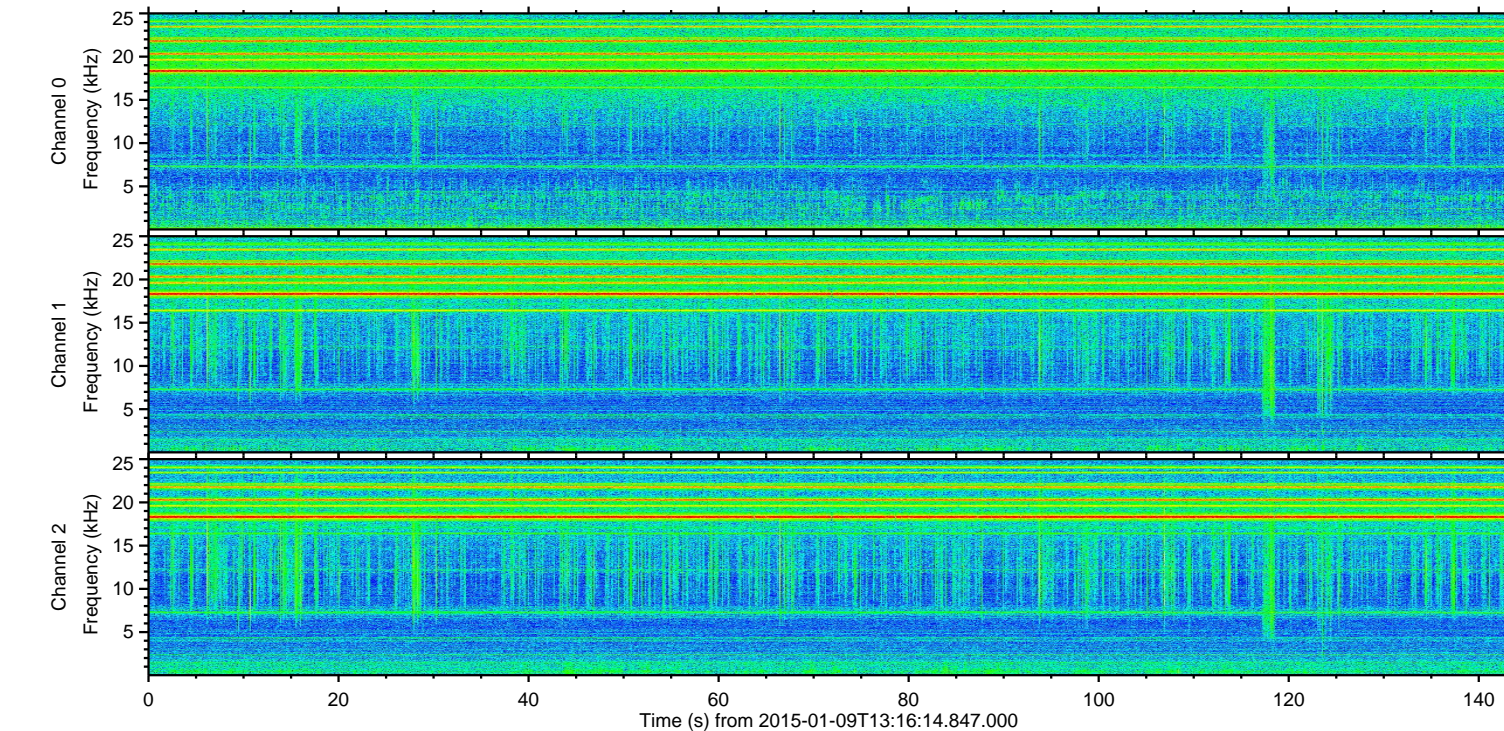
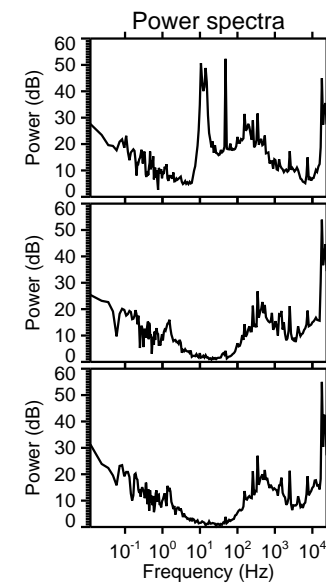
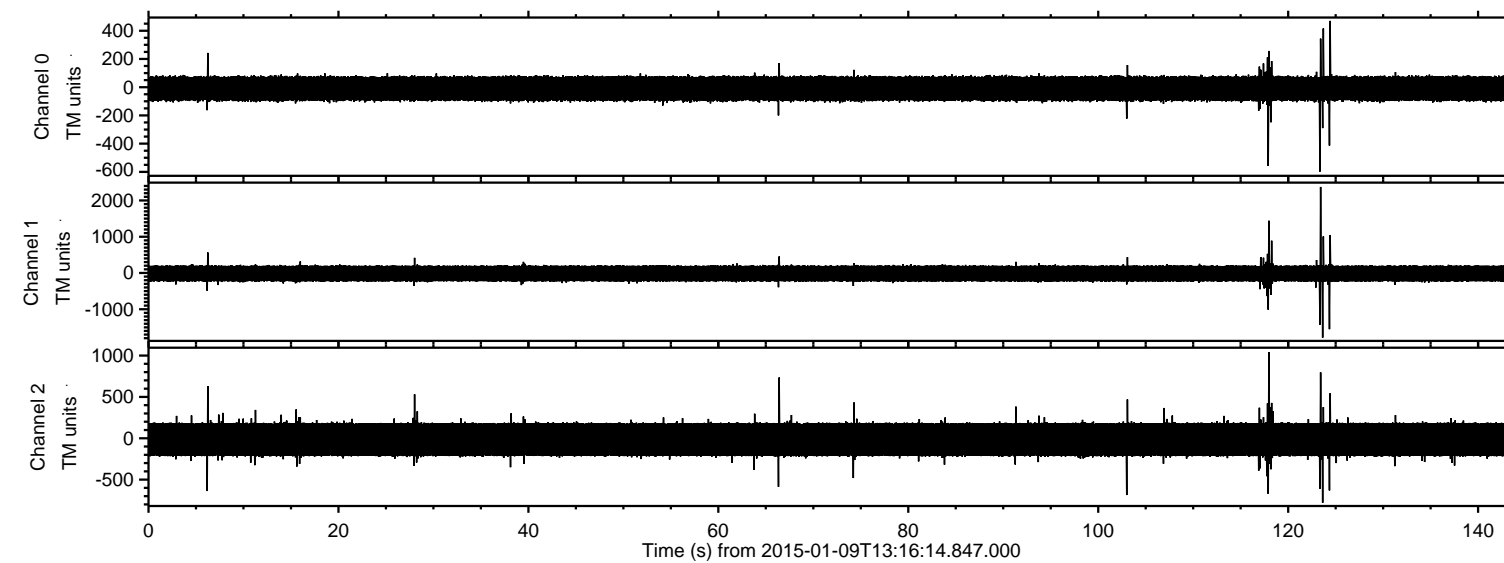


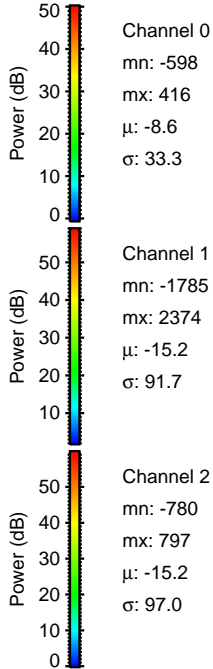
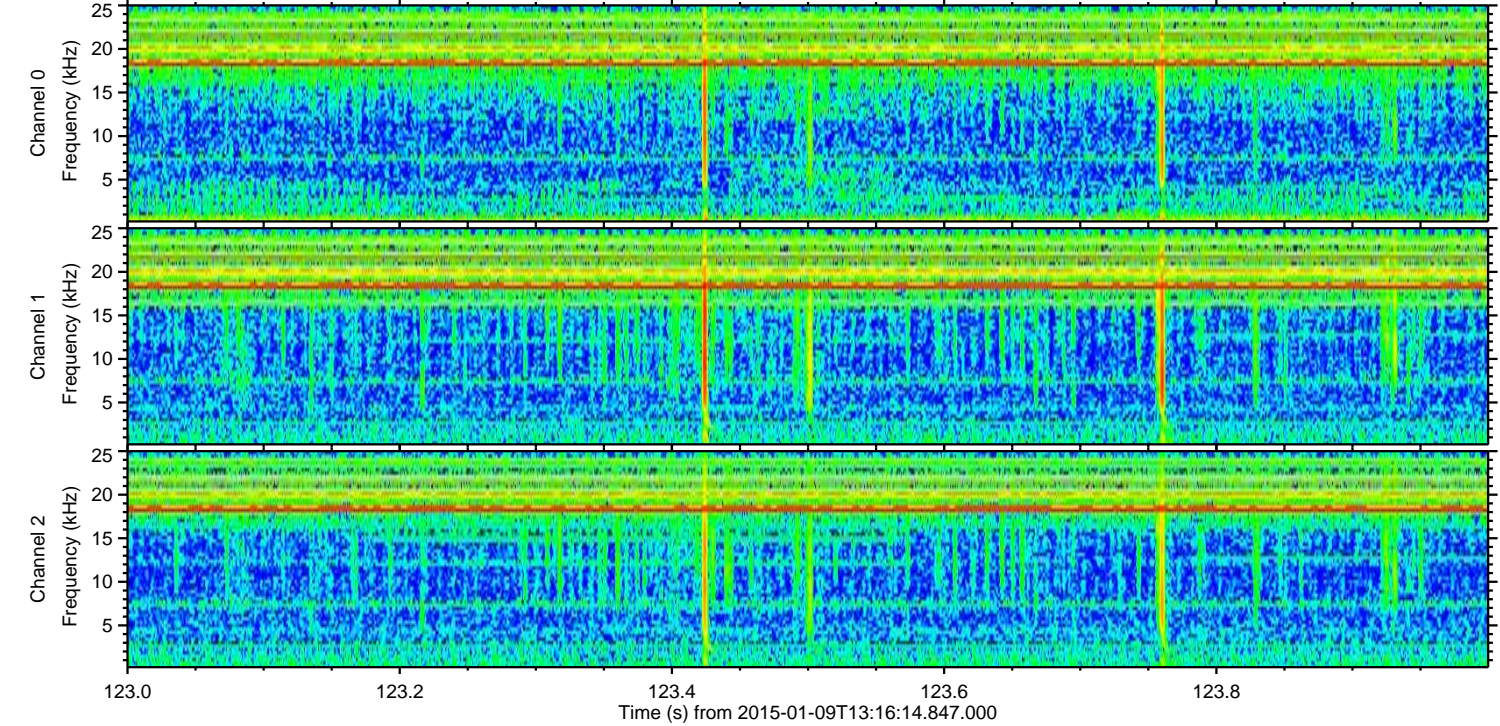
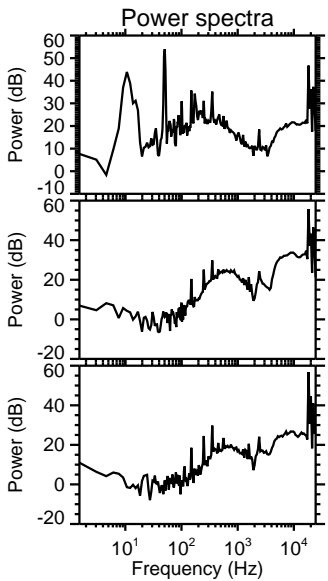
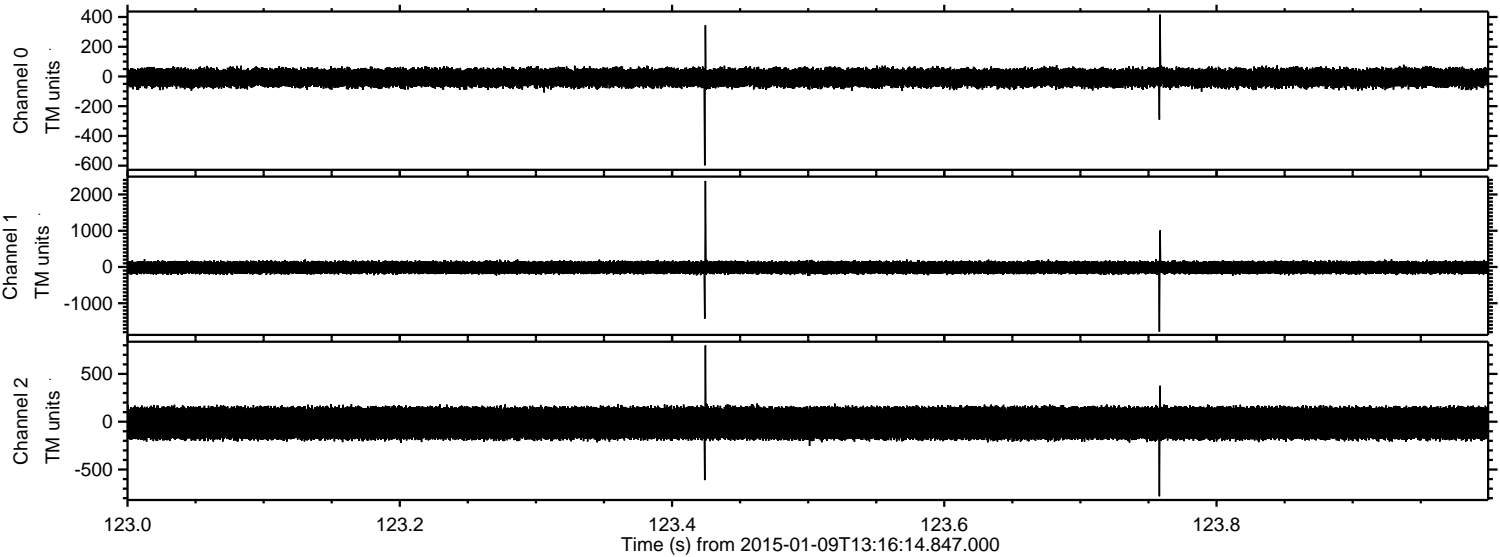
ELMAVAN 3D WAVEFORMS (Measured data sampled at 50 kHz) 49746 packets of 144 samples from 2015-01-09T13:16:14.847.000.

Processed Fri Jan 9 14:23:50 2015 by ELM ver.2012-10-06 from 001__elm20150109_131613__dat00.bin



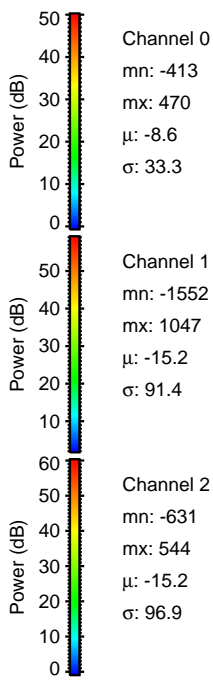
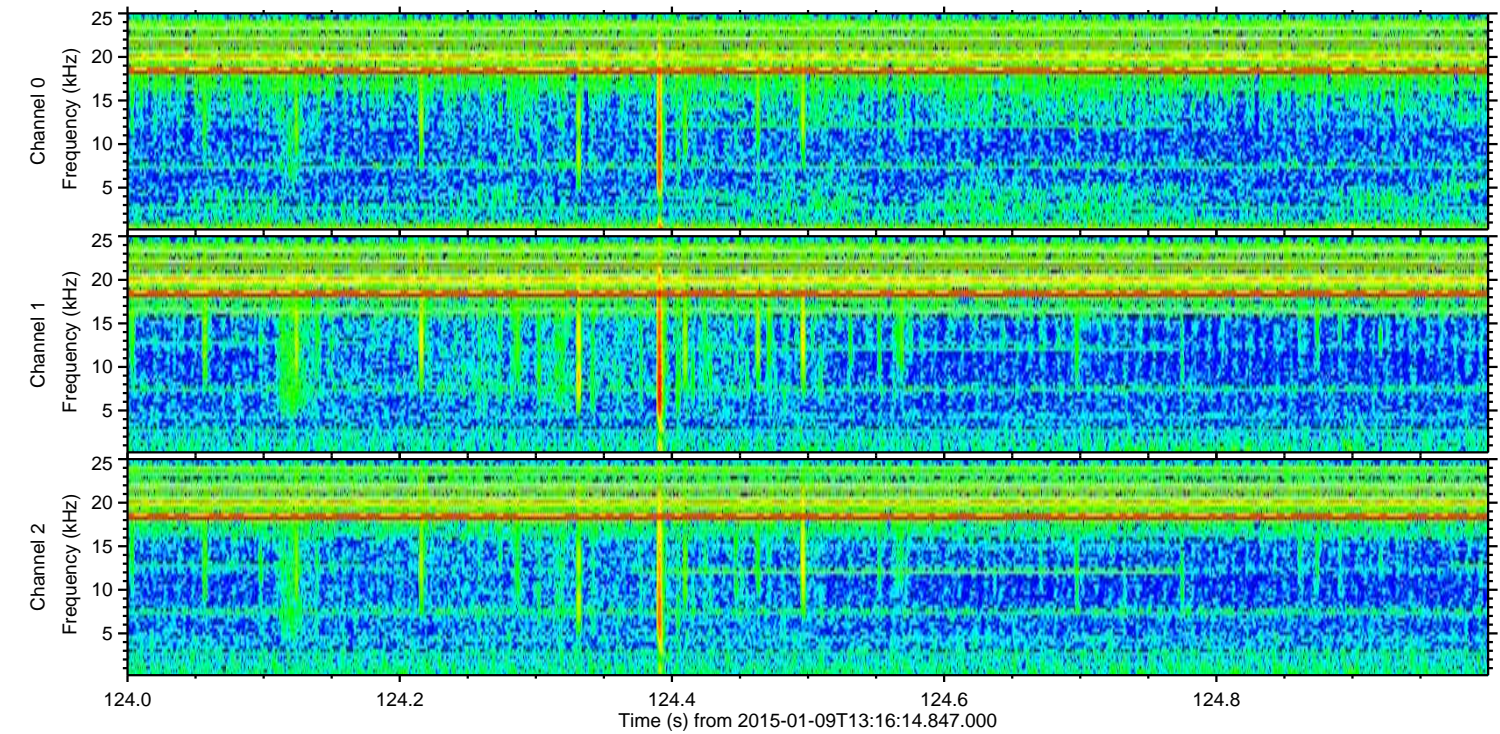
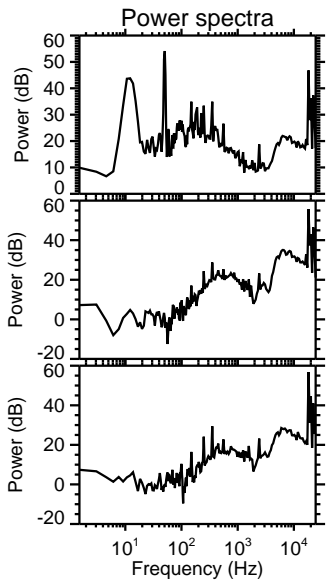
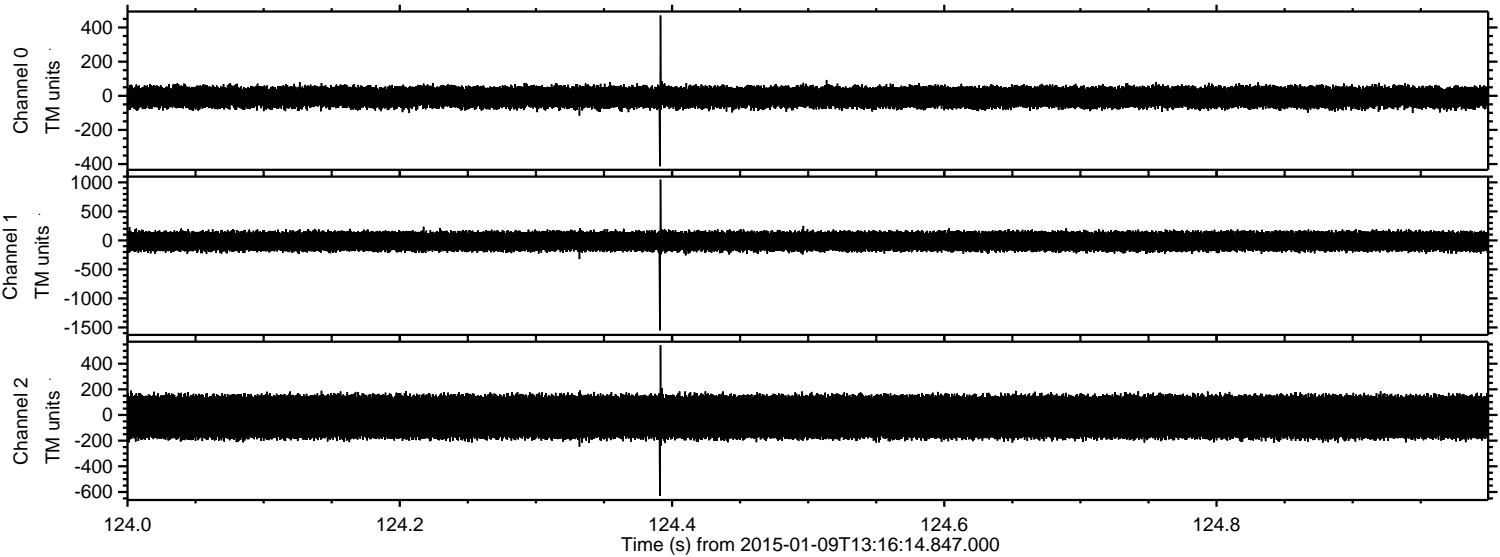
ELMAVAN 3D WAVEFORMS (Measured data sampled at 50 kHz) 49746 packets of 144 samples from 2015-01-09T13:16:14.847.000. Part 124/144

Processed Fri Jan 9 14:24:02 2015 by ELM ver.2012-10-06 from 001__elm20150109_131613__dat00.bin



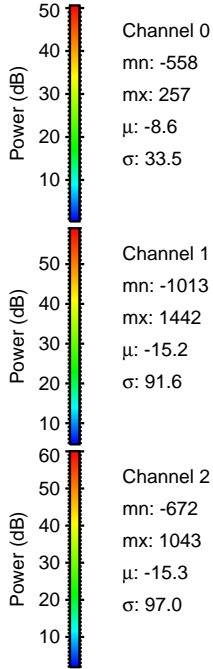
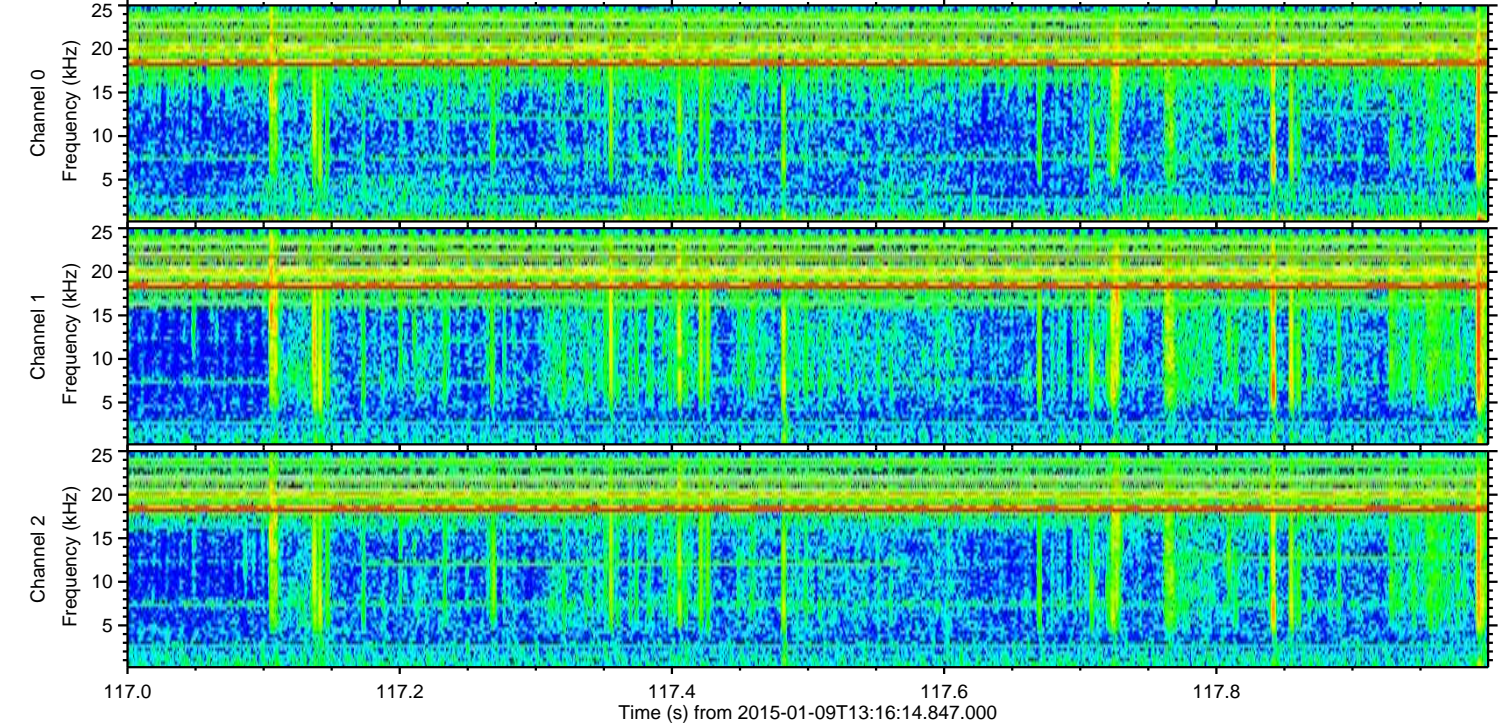
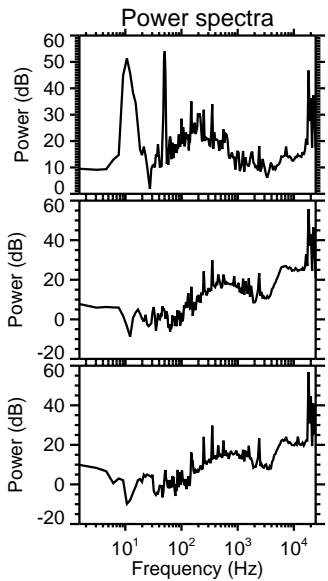
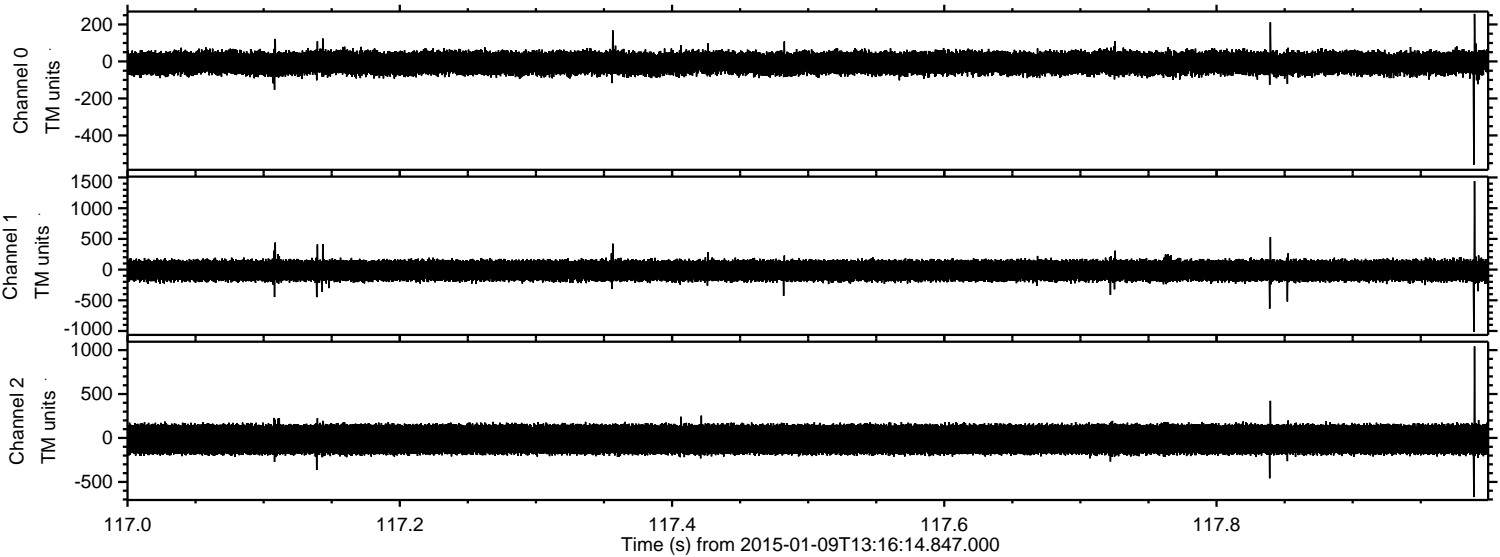
ELMAVAN 3D WAVEFORMS (Measured data sampled at 50 kHz) 49746 packets of 144 samples from 2015-01-09T13:16:14.847.000. Part 125/144

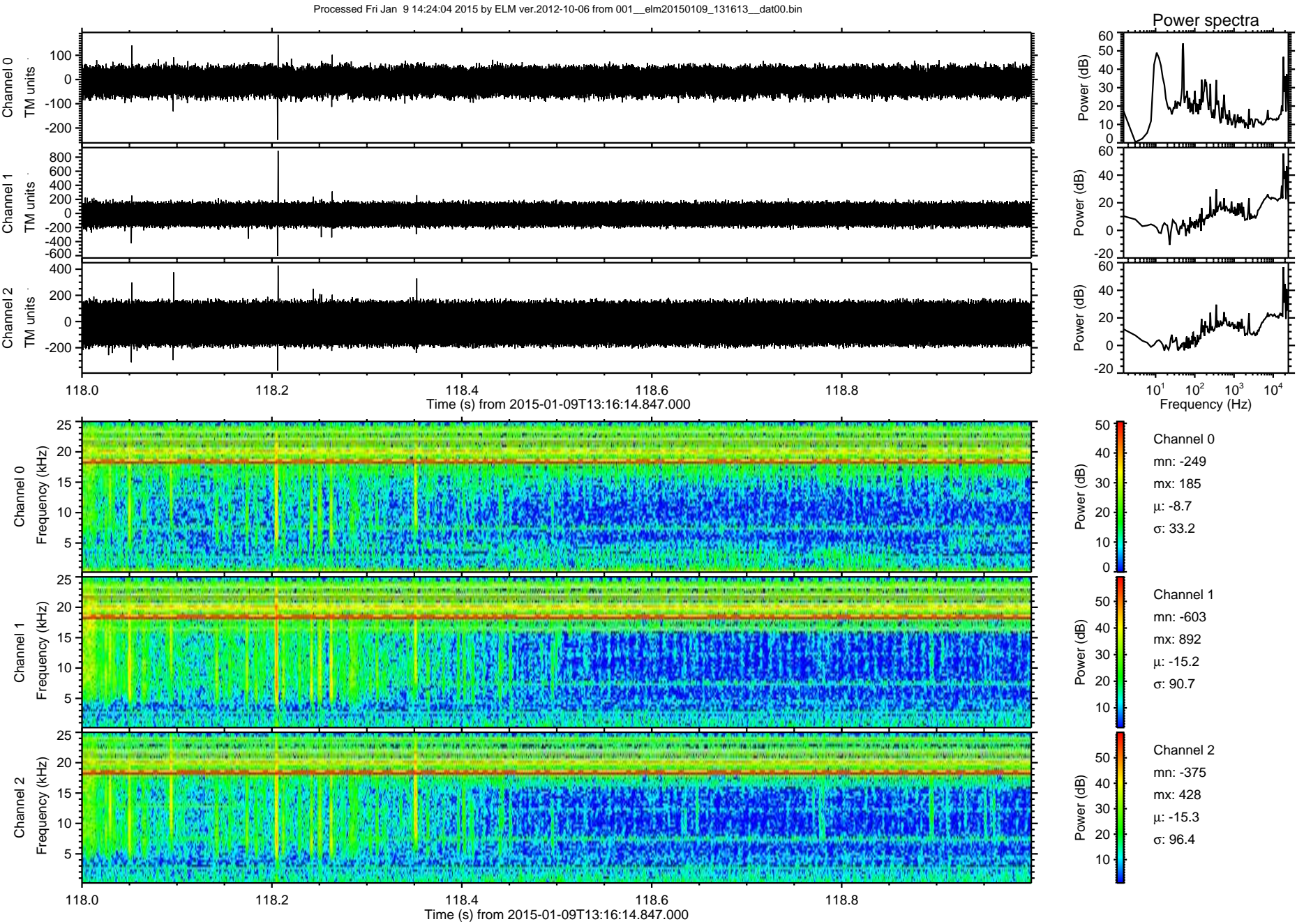
Processed Fri Jan 9 14:24:03 2015 by ELM ver.2012-10-06 from 001__elm20150109_131613__dat00.bin



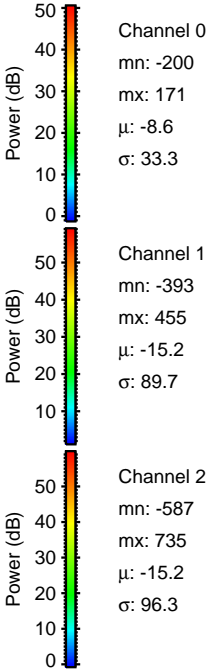
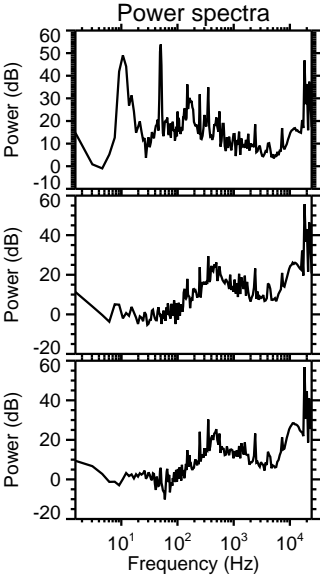
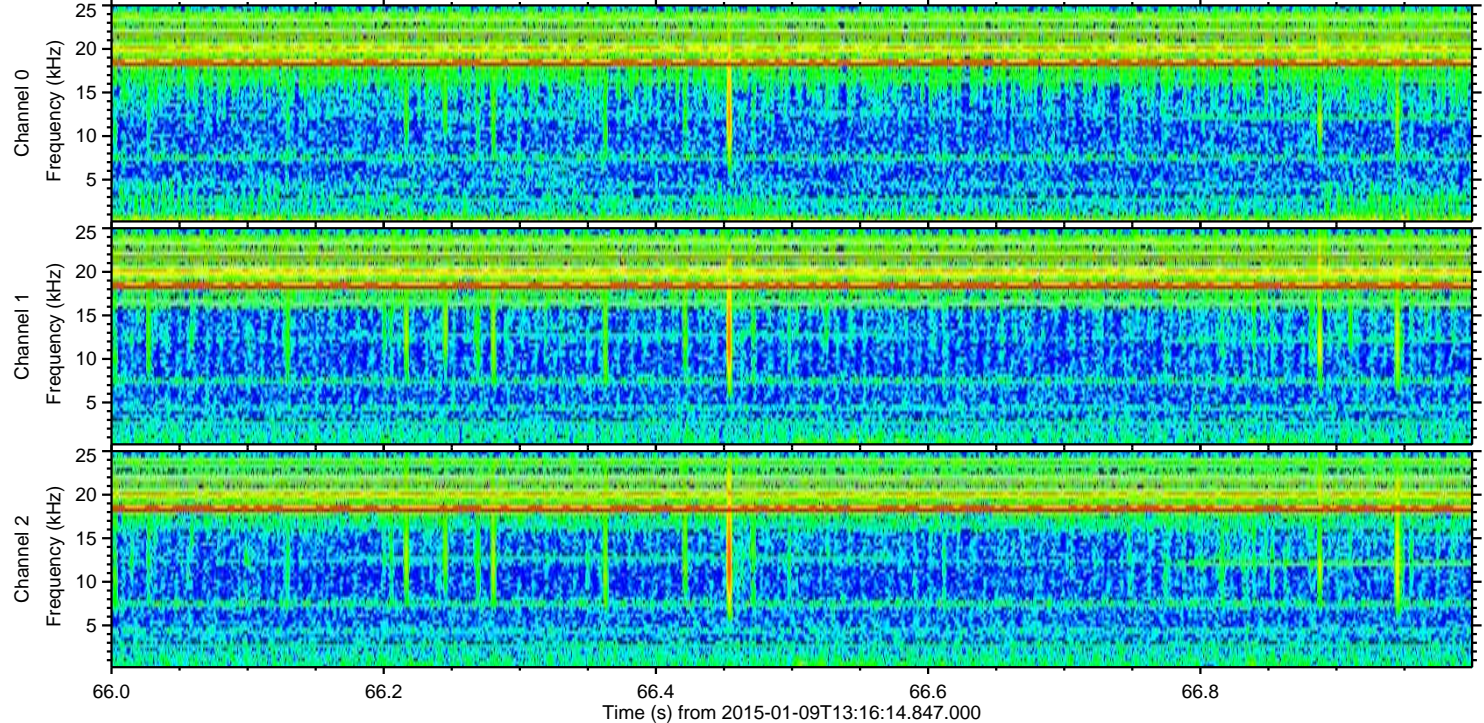
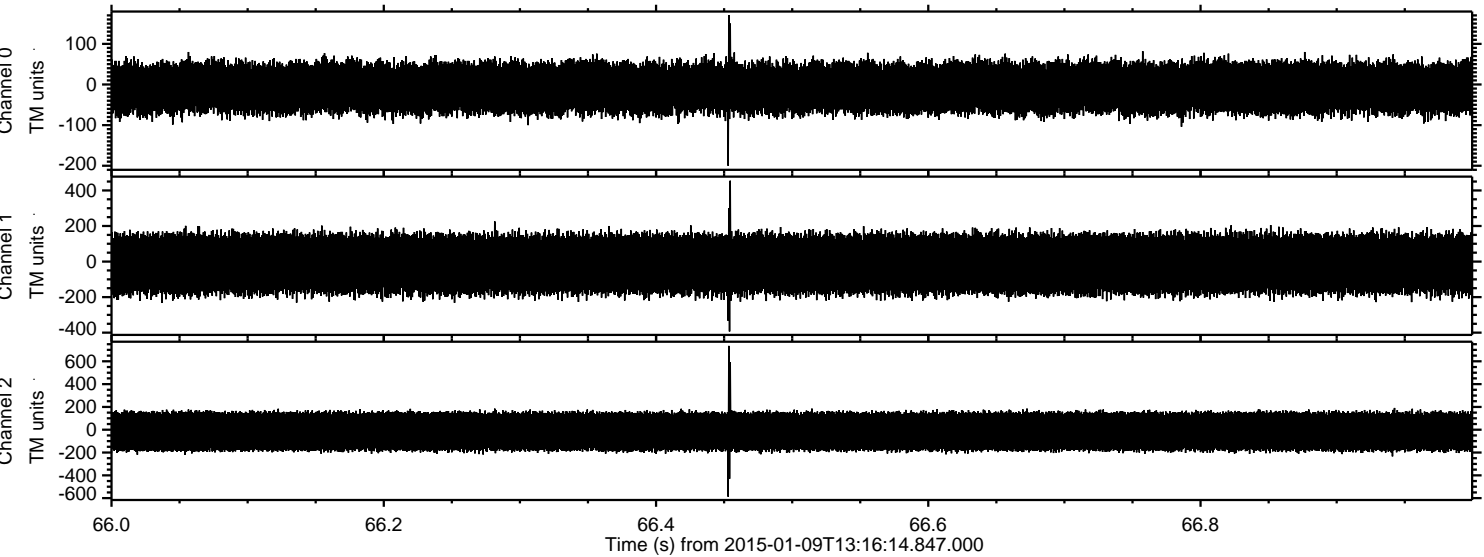
ELMAVAN 3D WAVEFORMS (Measured data sampled at 50 kHz) 49746 packets of 144 samples from 2015-01-09T13:16:14.847.000. Part 118/144

Processed Fri Jan 9 14:24:03 2015 by ELM ver.2012-10-06 from 001__elm20150109_131613__dat00.bin

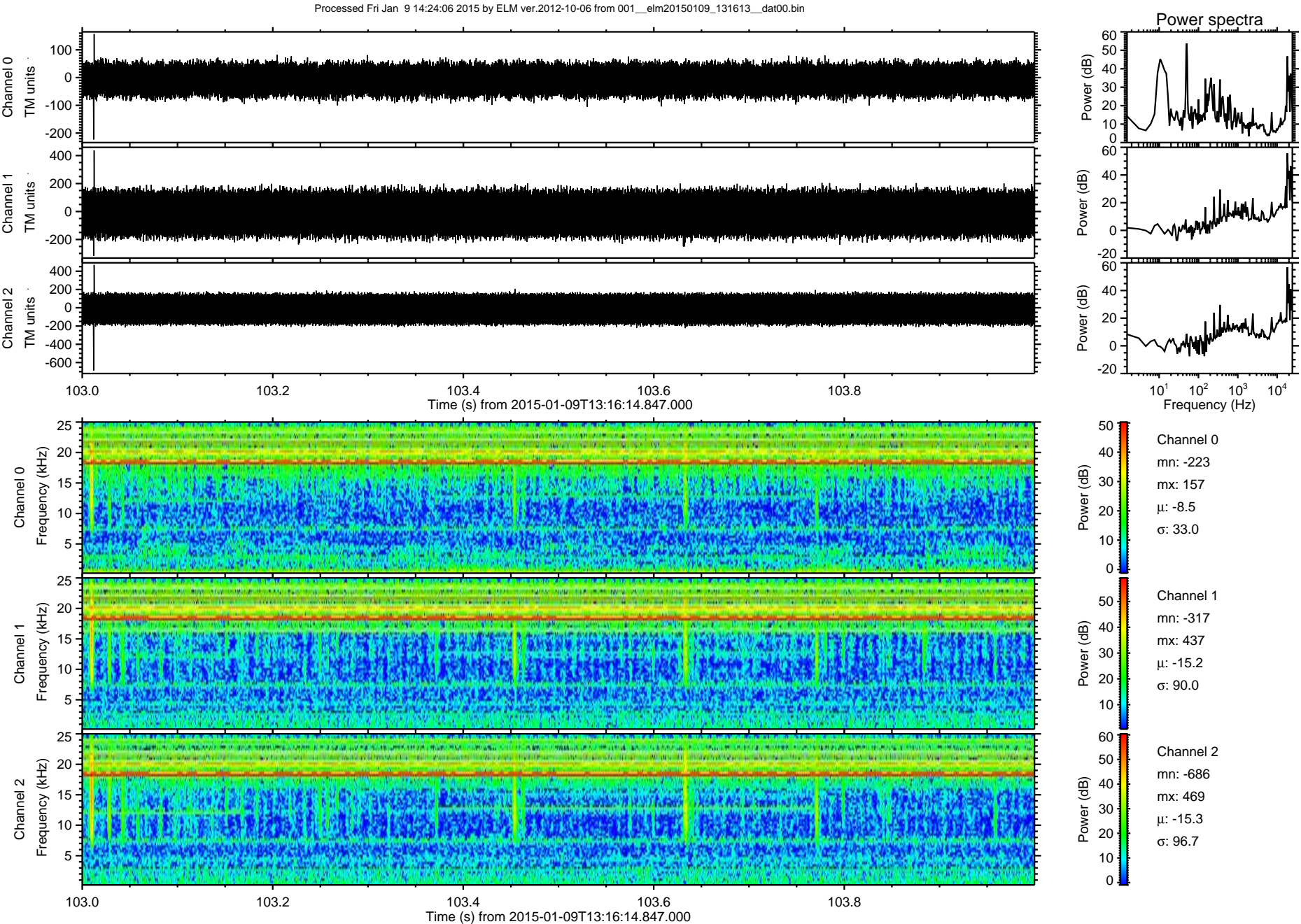




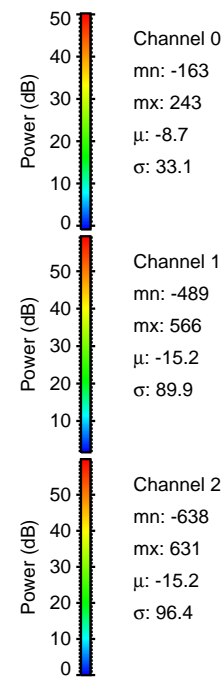
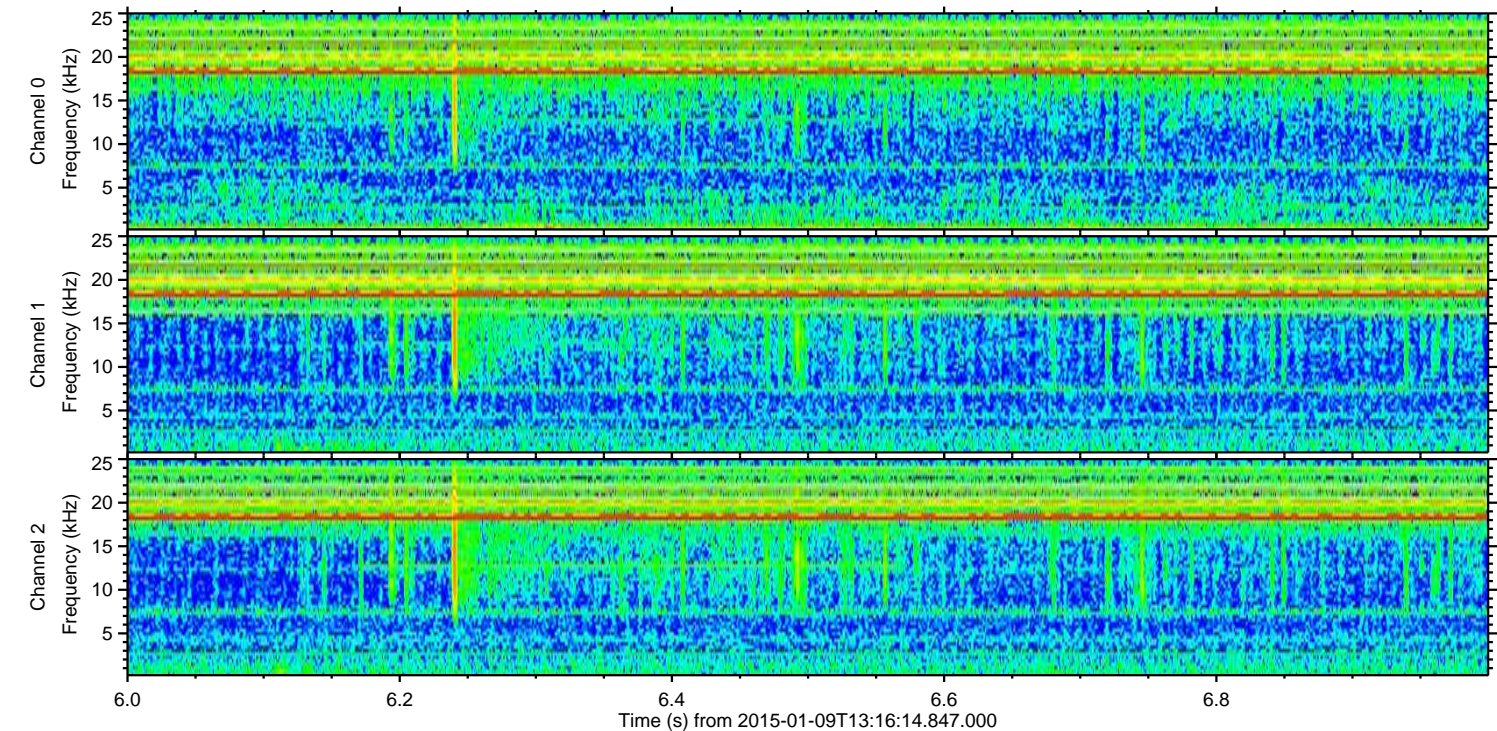
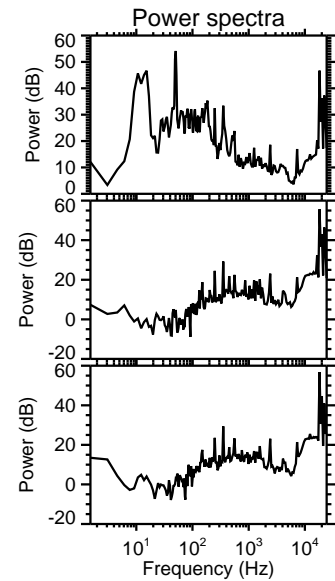
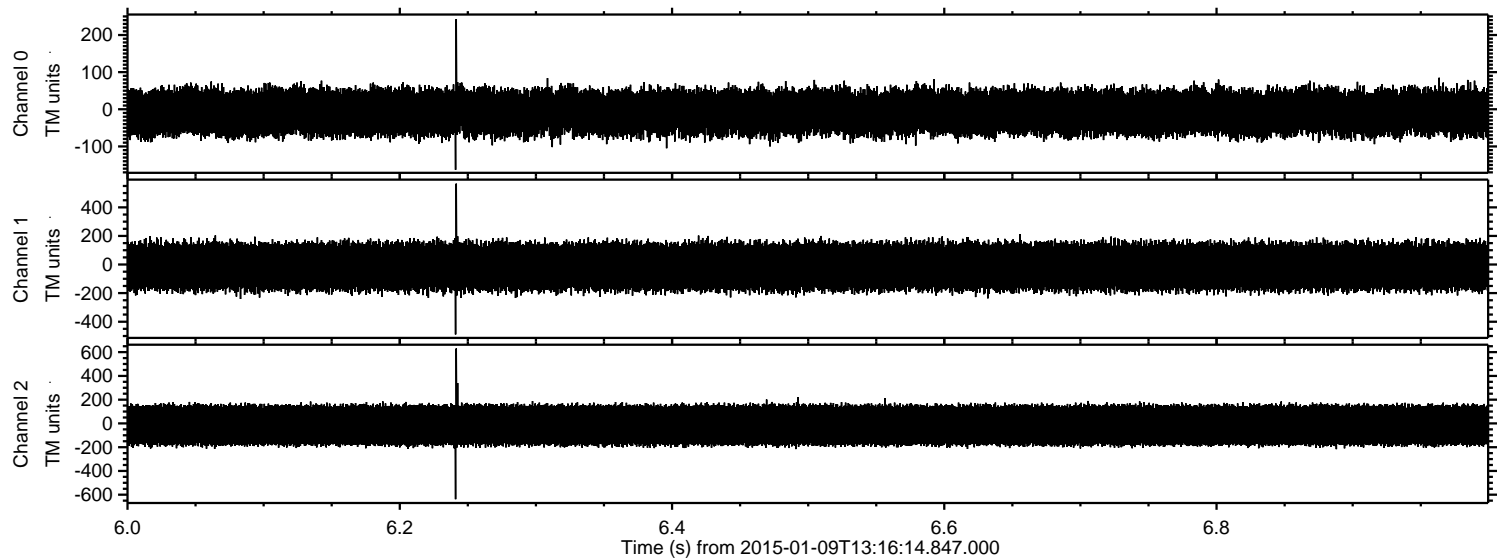
Processed Fri Jan 9 14:24:05 2015 by ELM ver.2012-10-06 from 001__elm20150109_131613__dat00.bin



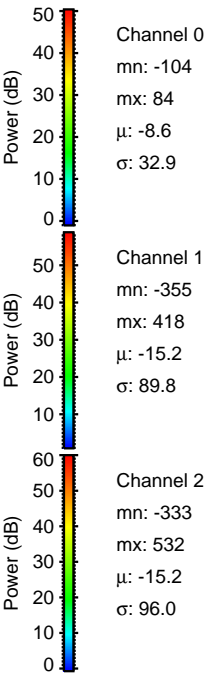
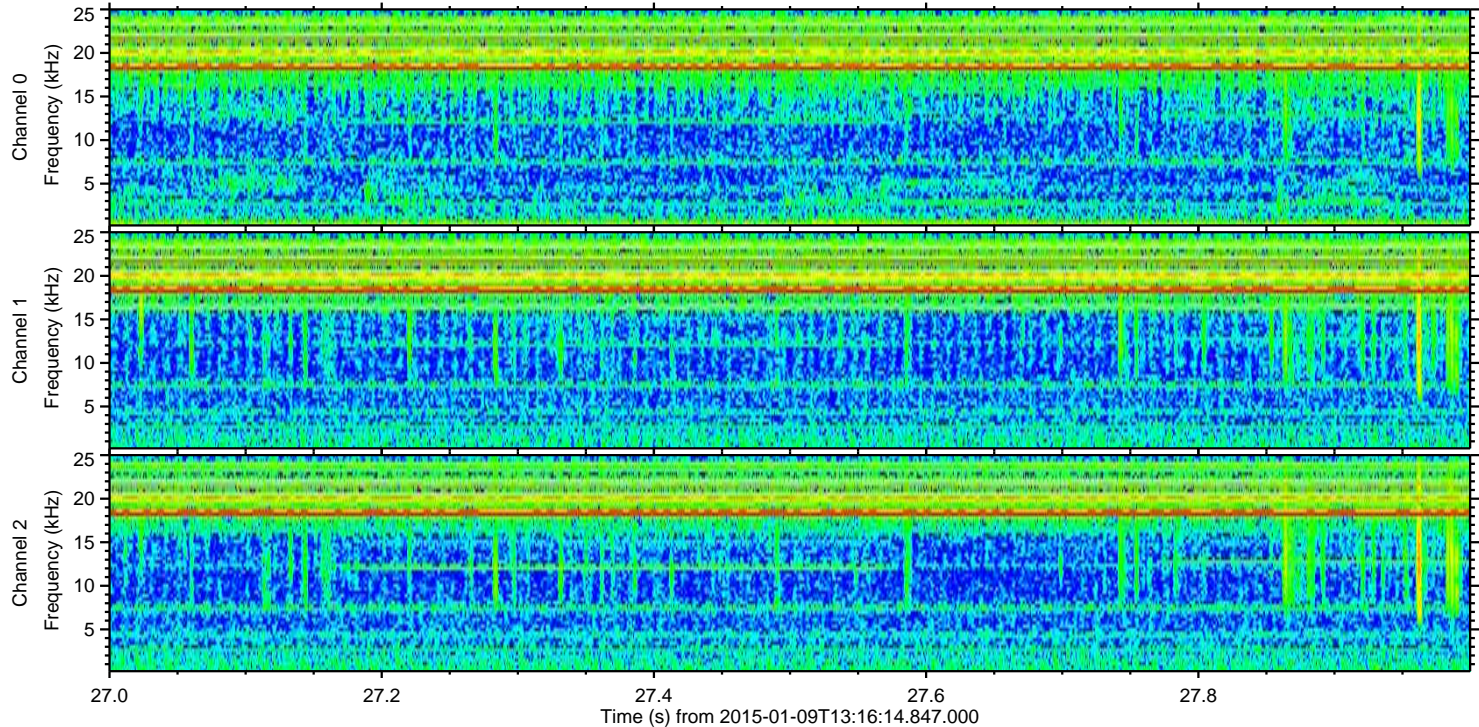
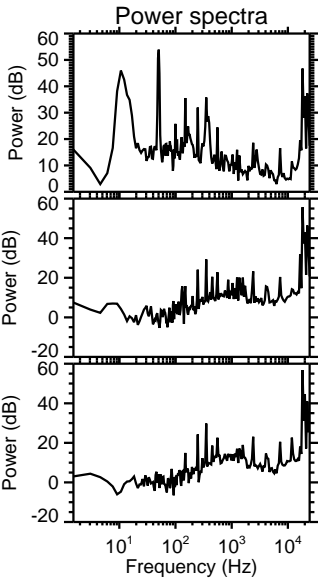
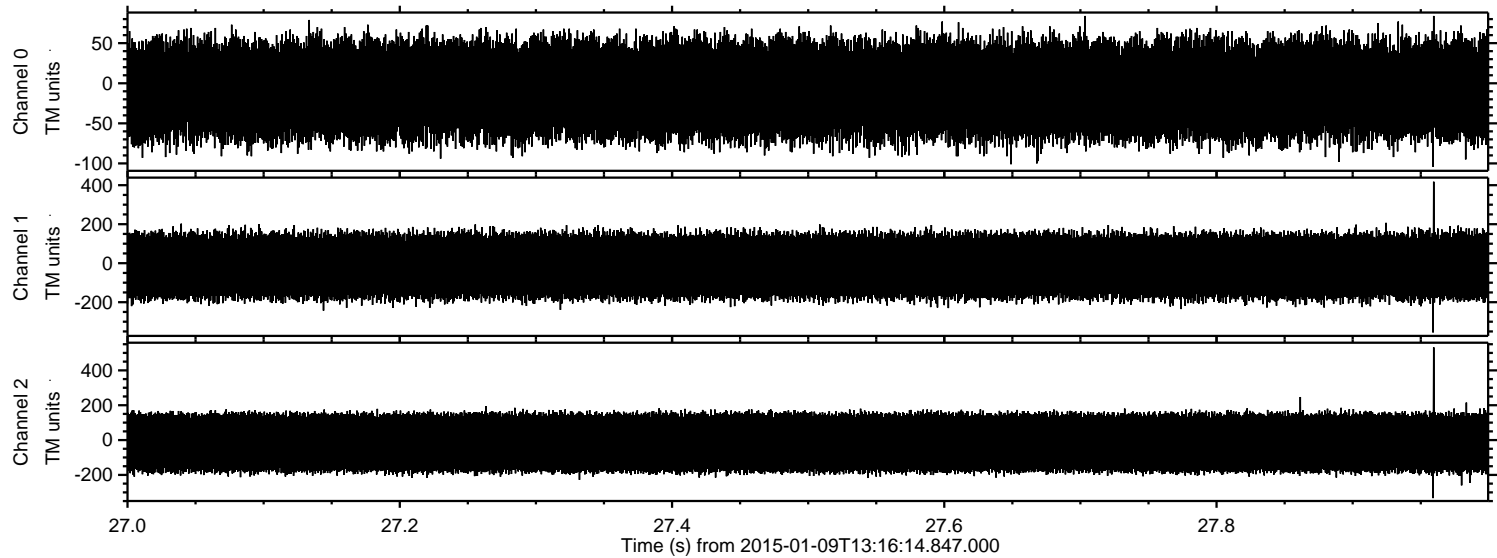
ELMAVAN 3D WAVEFORMS (Measured data sampled at 50 kHz) 49746 packets of 144 samples from 2015-01-09T13:16:14.847.000. Part 104/144



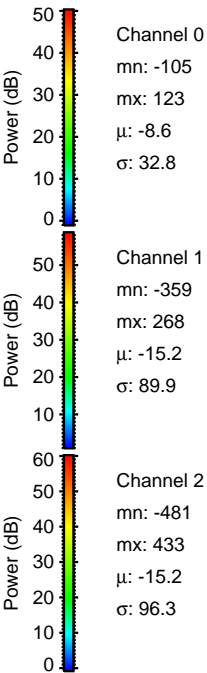
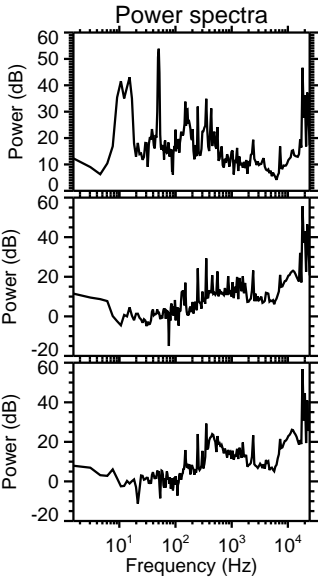
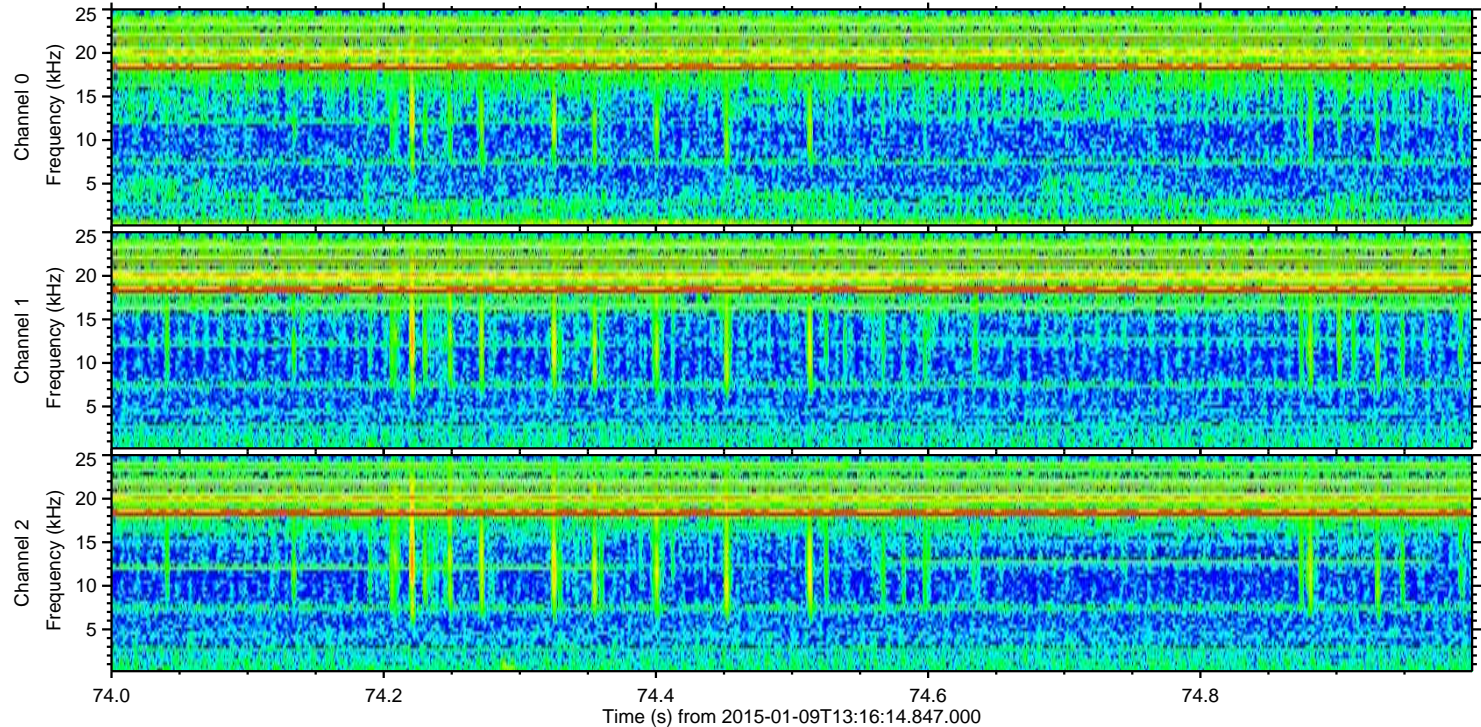
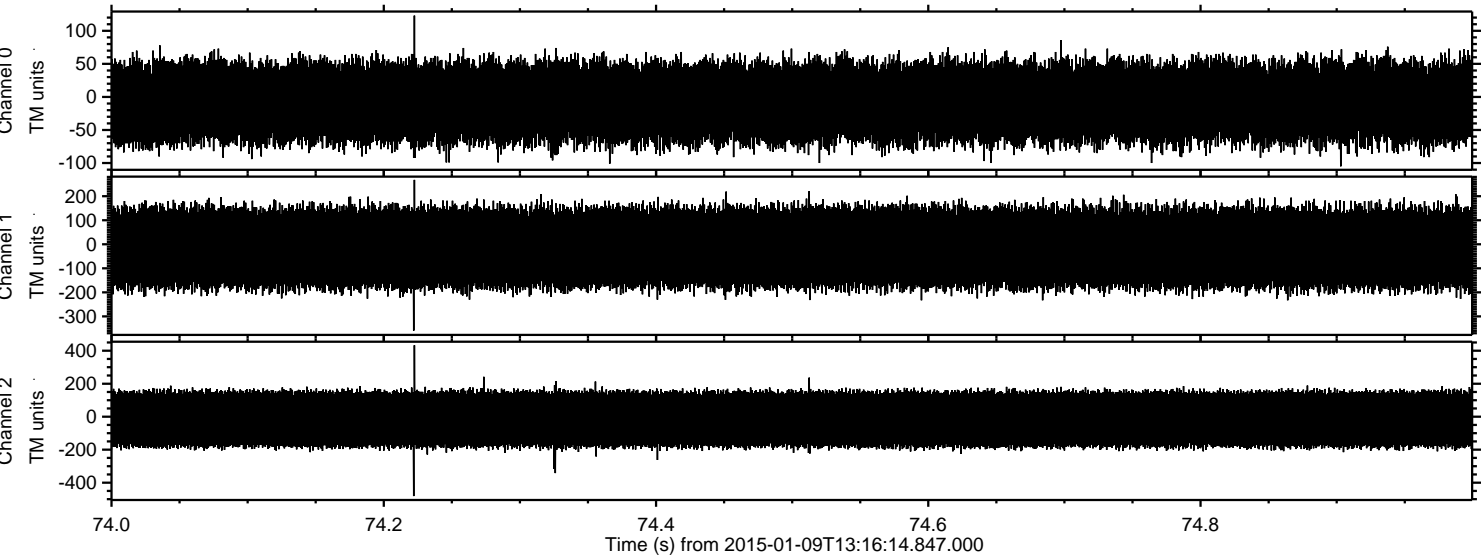
Processed Fri Jan 9 14:24:07 2015 by ELM ver.2012-10-06 from 001__elm20150109_131613__dat00.bin



Processed Fri Jan 9 14:24:08 2015 by ELM ver.2012-10-06 from 001__elm20150109_131613__dat00.bin



Processed Fri Jan 9 14:24:09 2015 by ELM ver.2012-10-06 from 001__elm20150109_131613__dat00.bin



Channel 0
mn: -105
mx: 123
 μ : -8.6
 σ : 32.8

Channel 1
mn: -359
mx: 268
 μ : -15.2
 σ : 89.9

Channel 2
mn: -481
mx: 433
 μ : -15.2
 σ : 96.3

