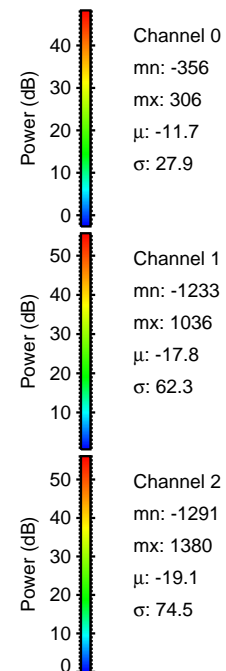
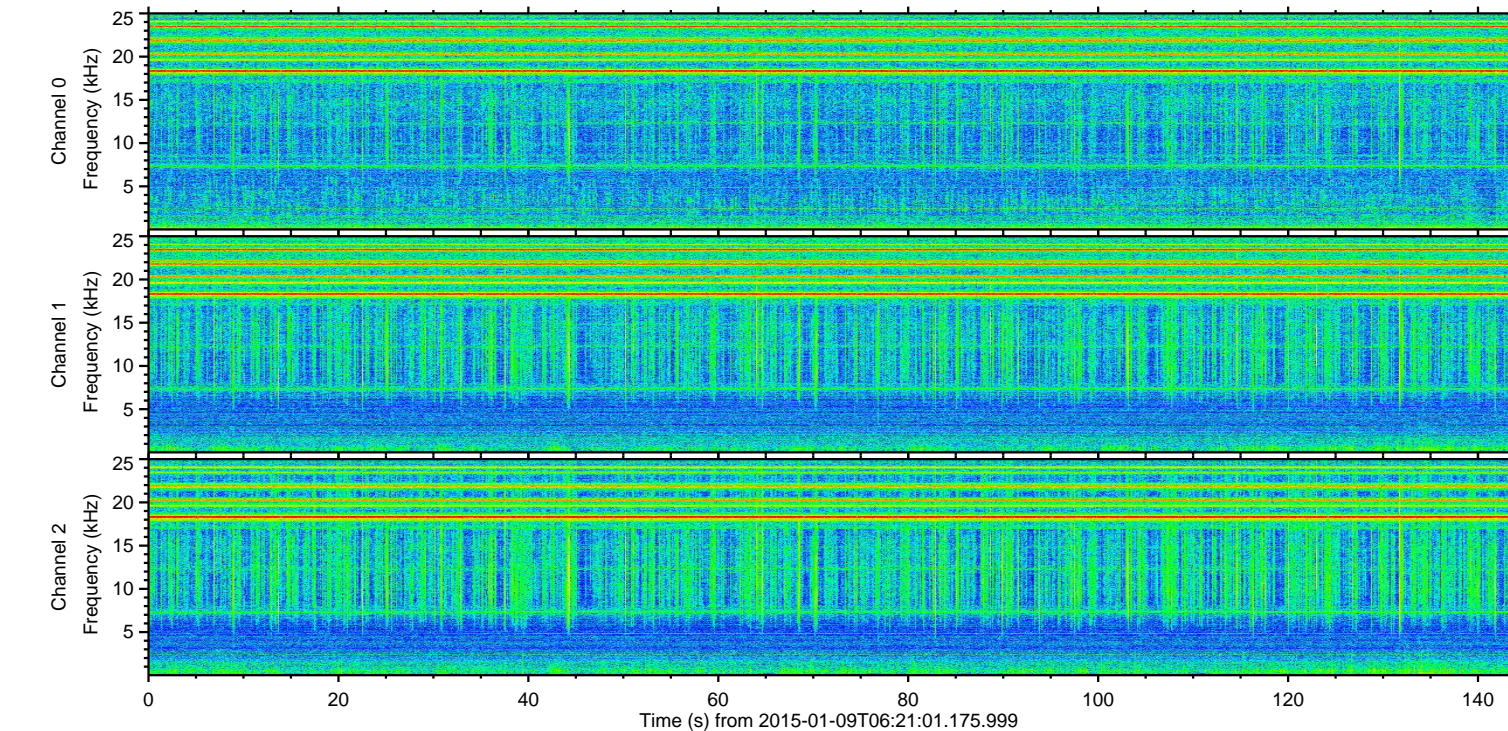
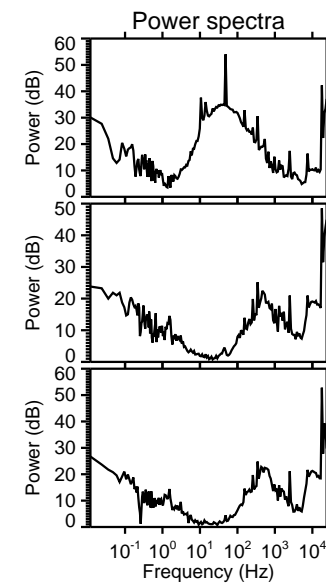
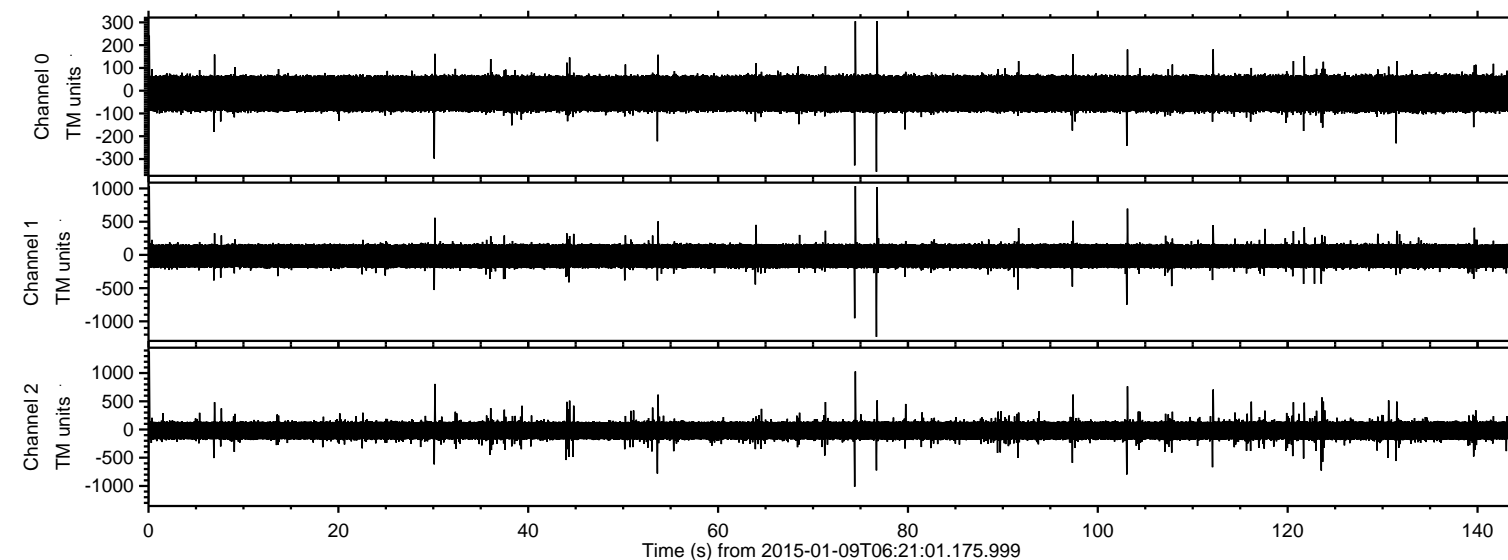


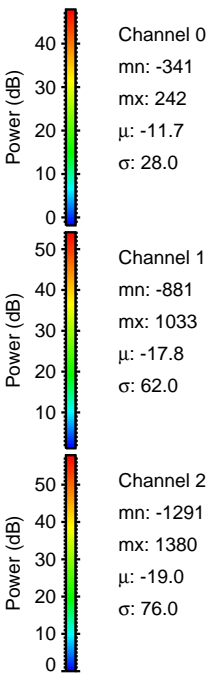
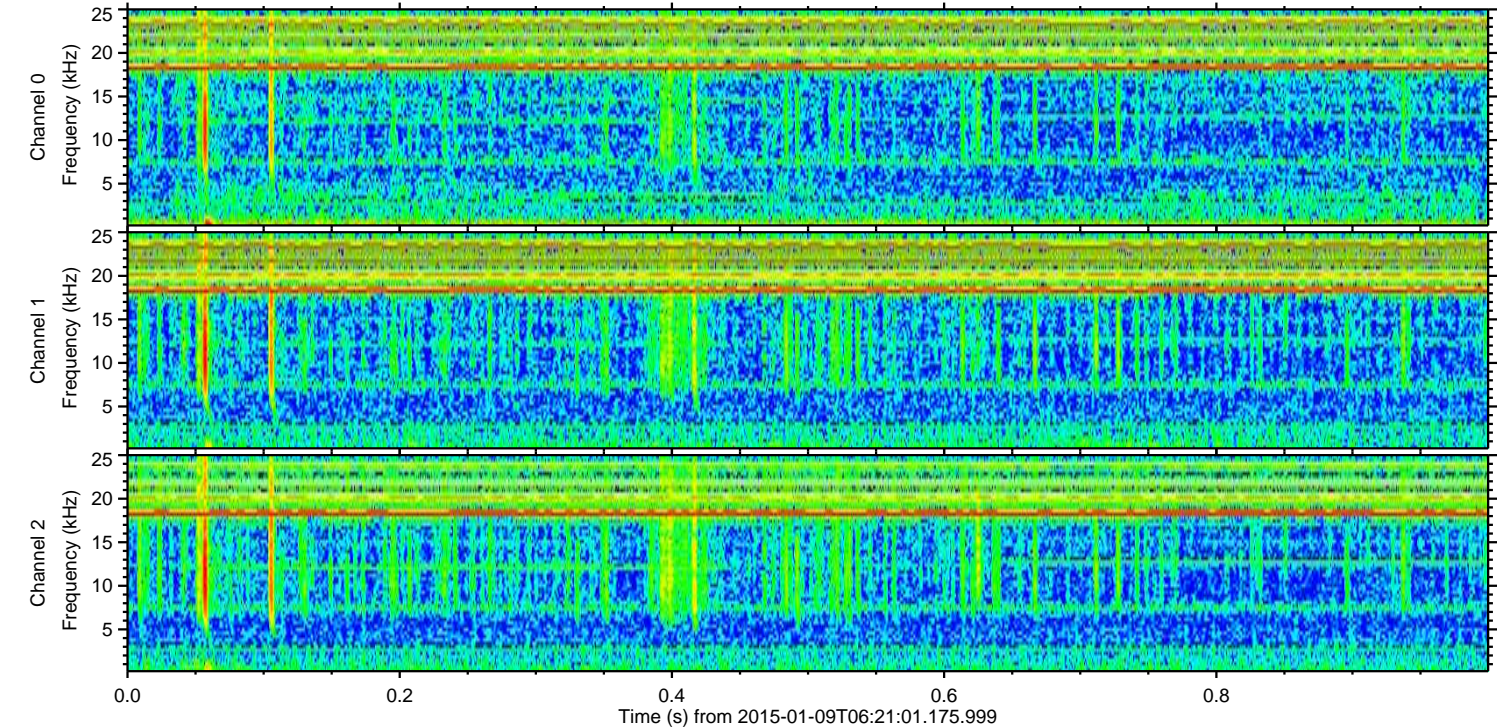
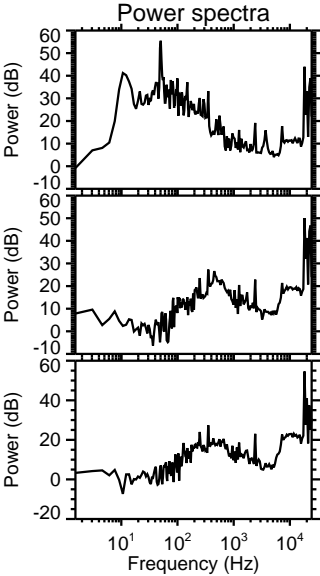
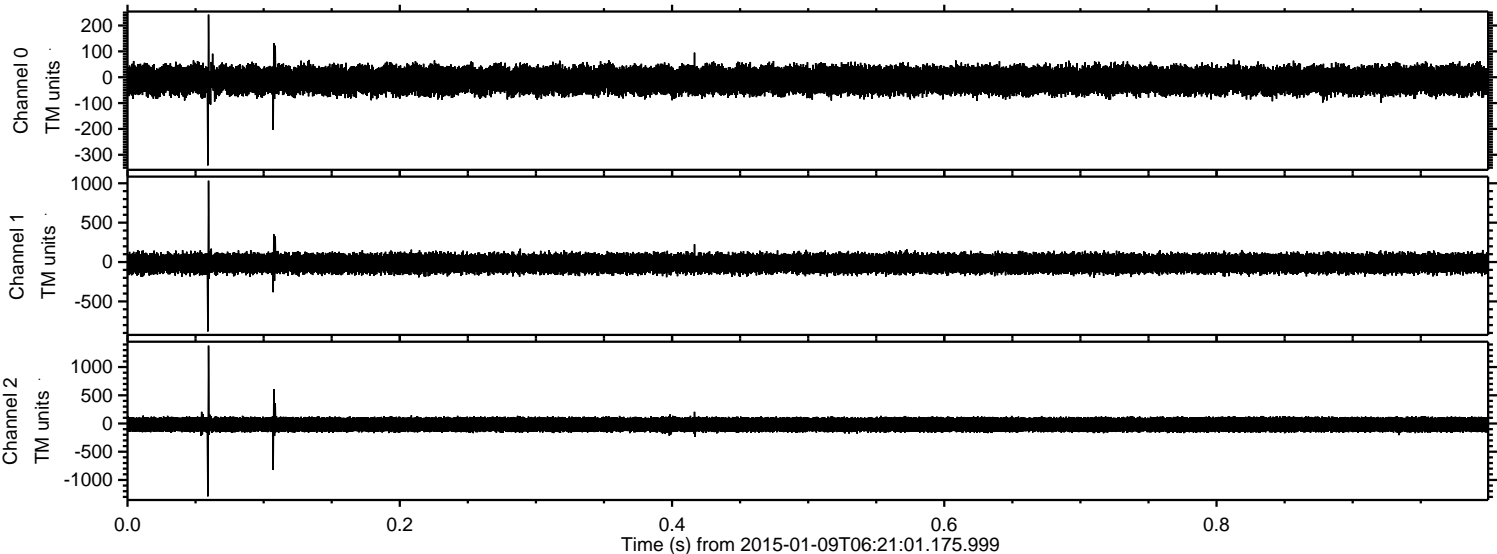
ELMAVAN 3D WAVEFORMS (Measured data sampled at 50 kHz) 49768 packets of 144 samples from 2015-01-09T06:21:01.175.999.

Processed Fri Jan 9 07:29:25 2015 by ELM ver.2012-10-06 from 001__elm20150109_062100__dat00.bin

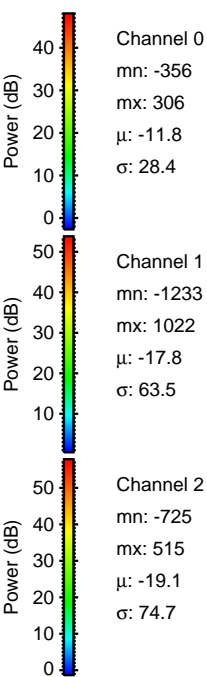
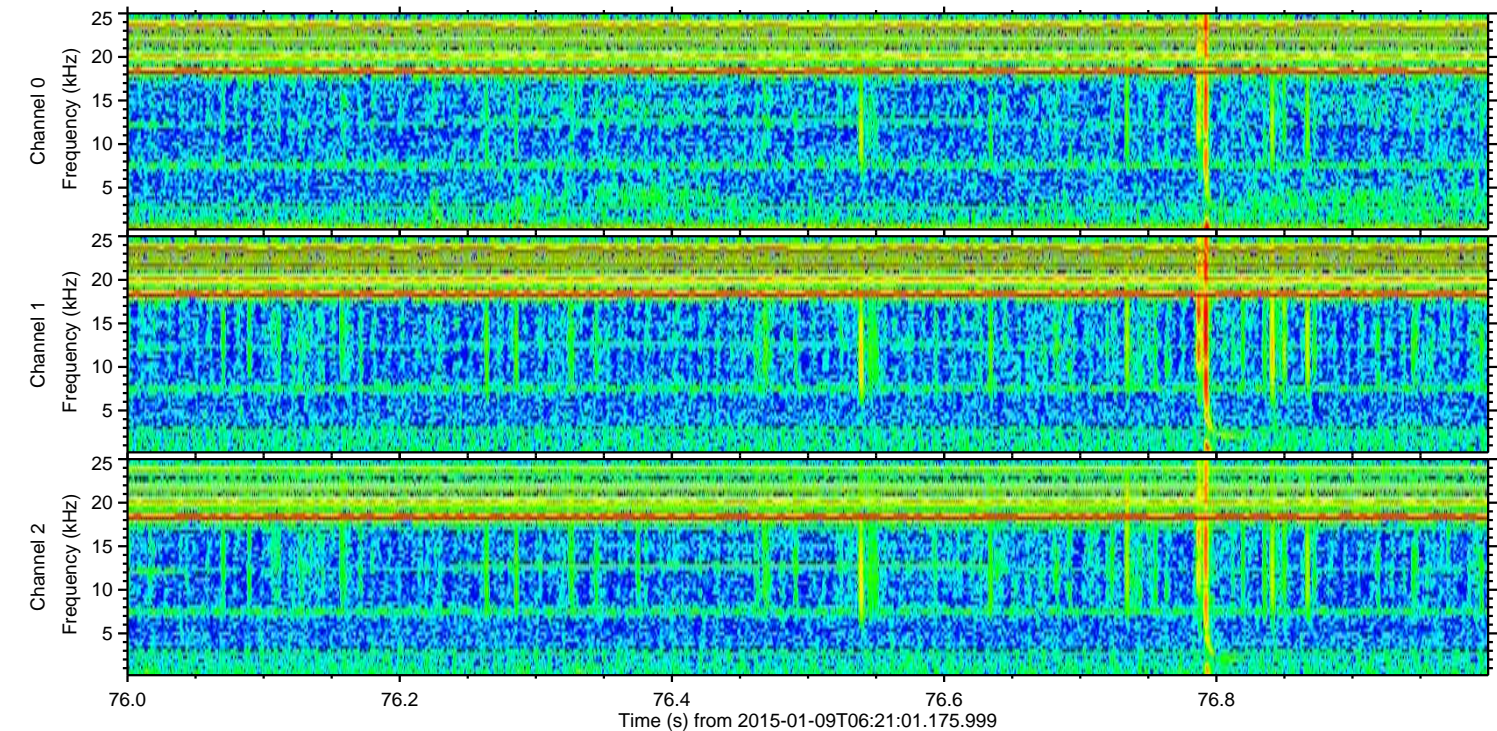
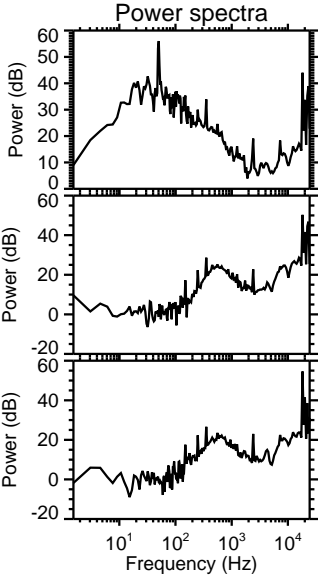
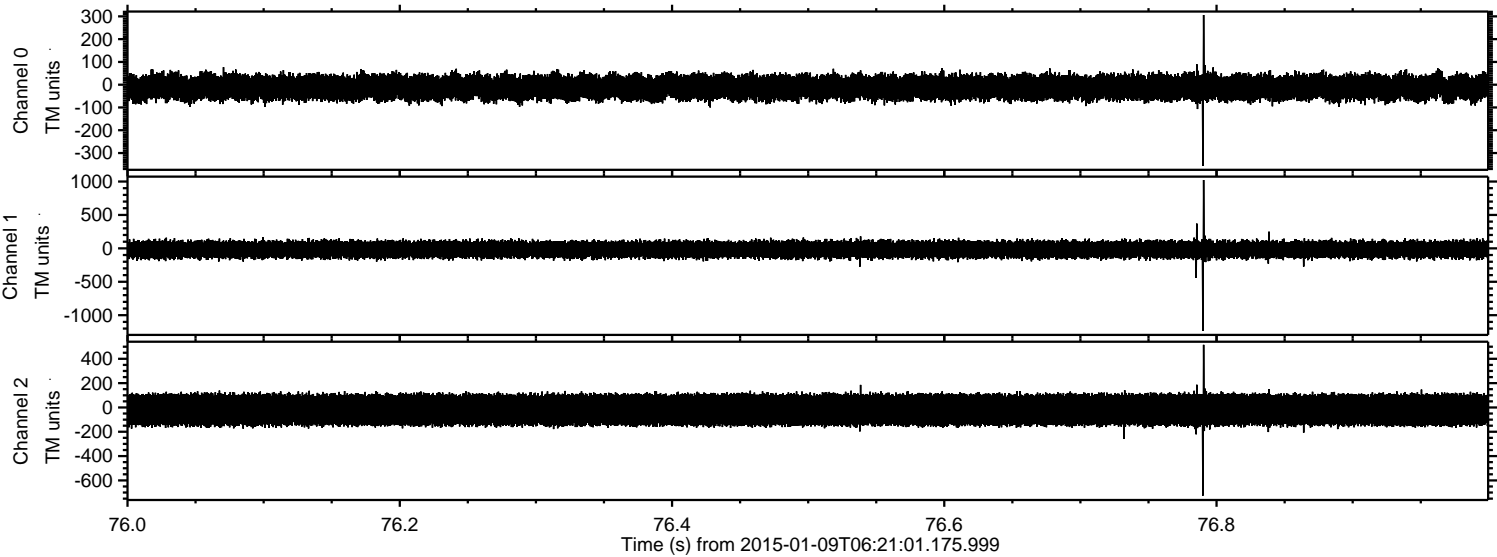


ELMAVAN 3D WAVEFORMS (Measured data sampled at 50 kHz) 49768 packets of 144 samples from 2015-01-09T06:21:01.175.999. Part 1/144

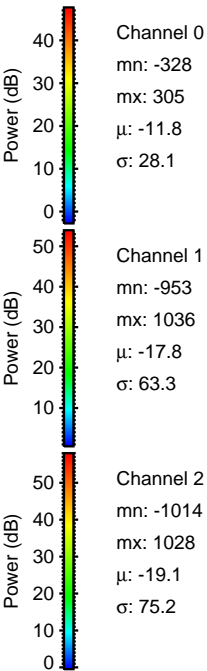
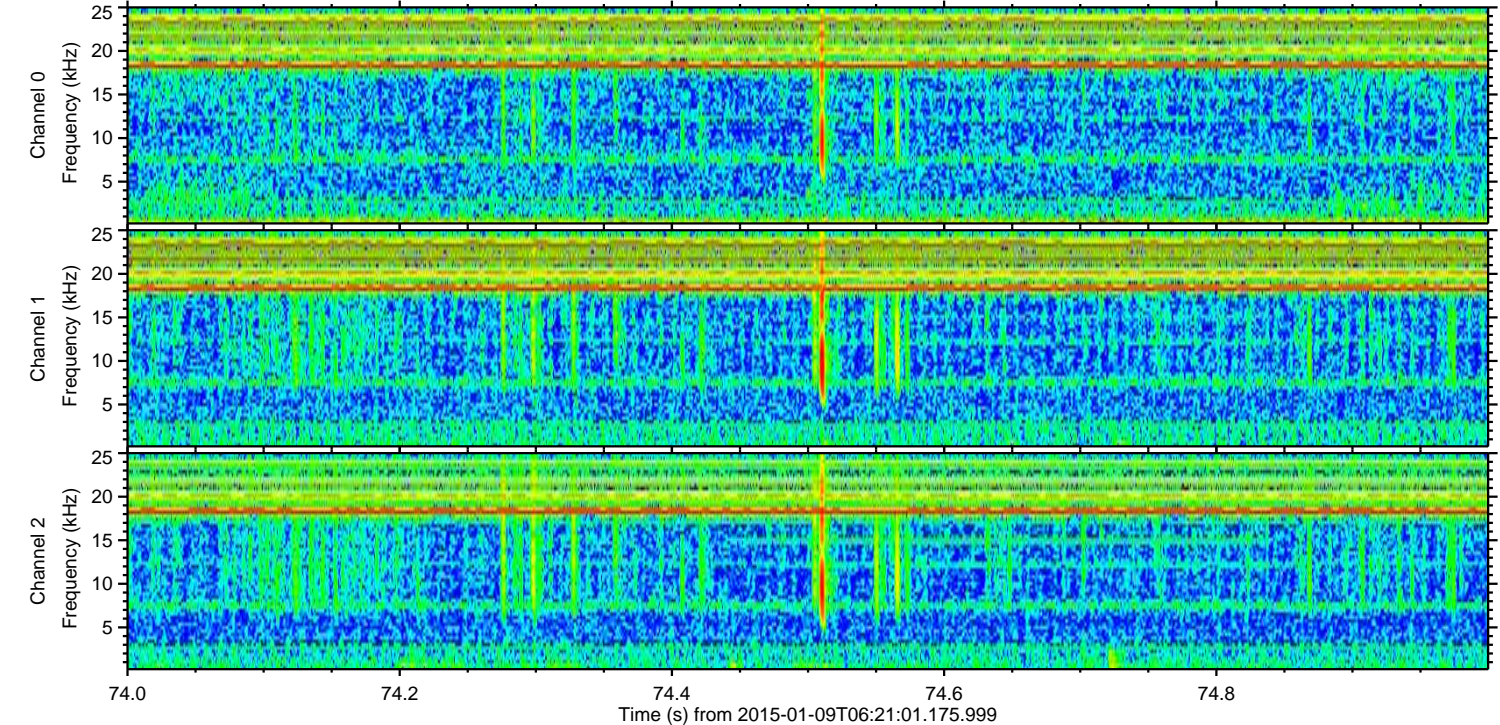
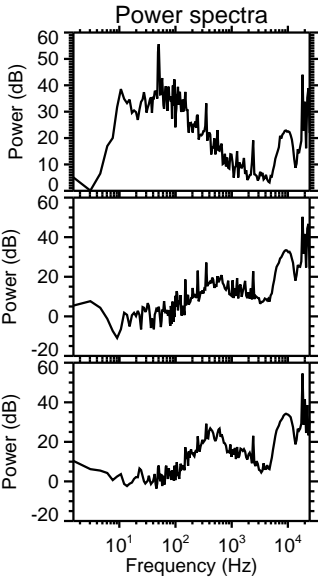
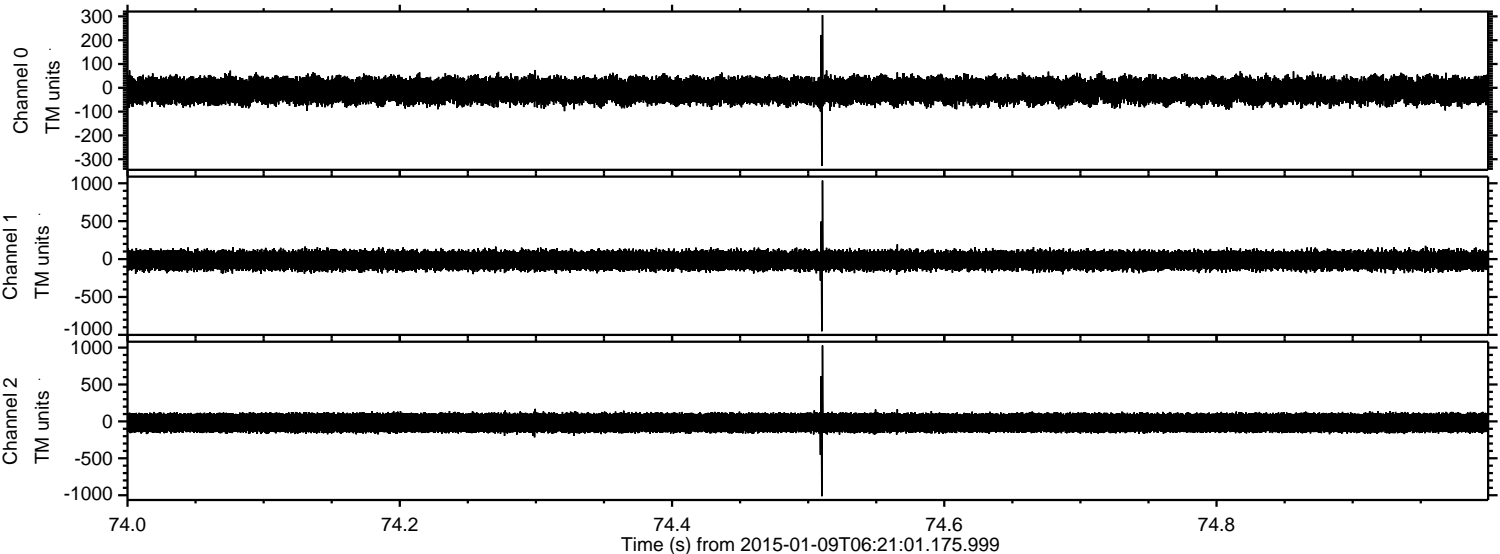
Processed Fri Jan 9 07:29:37 2015 by ELM ver.2012-10-06 from 001__elm20150109_062100__dat00.bin



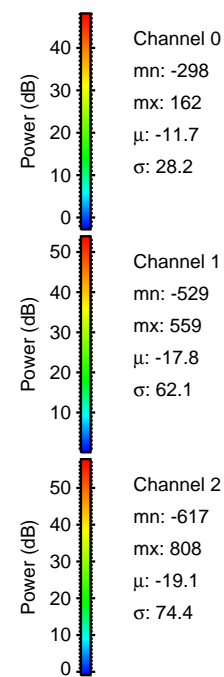
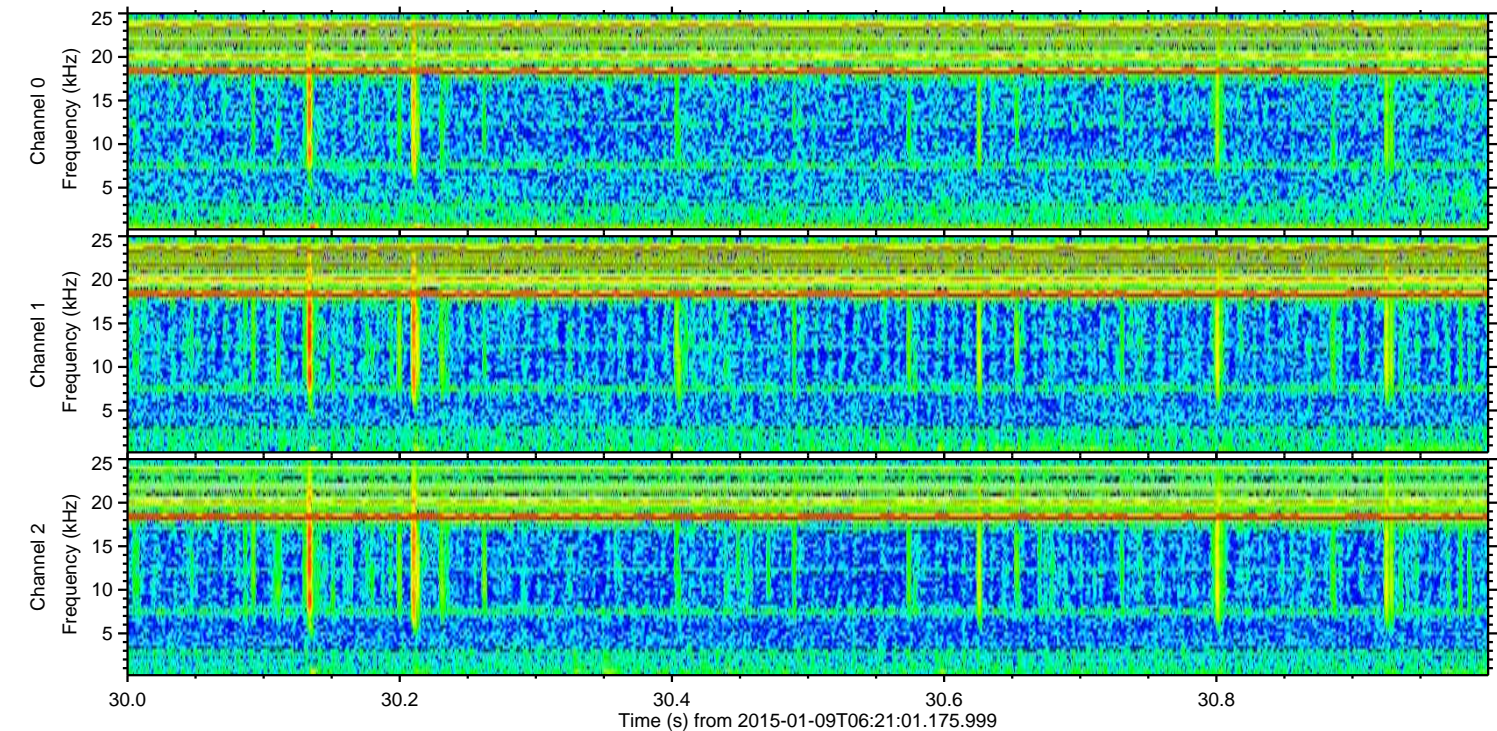
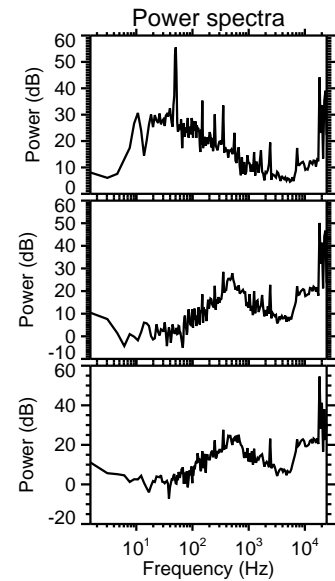
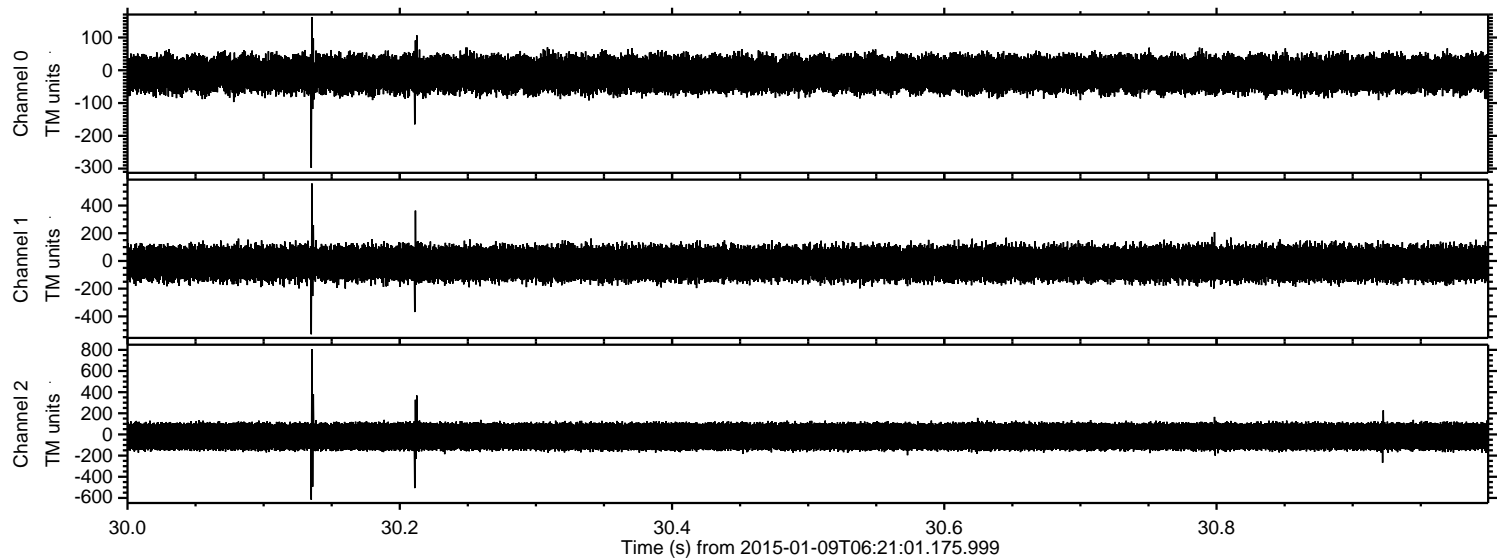
Processed Fri Jan 9 07:29:38 2015 by ELM ver.2012-10-06 from 001__elm20150109_062100__dat00.bin



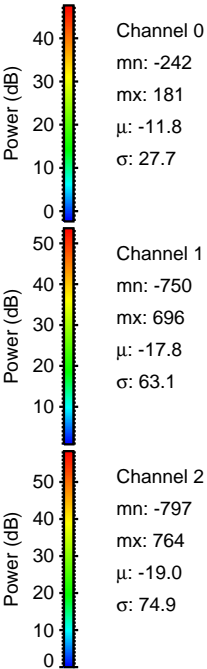
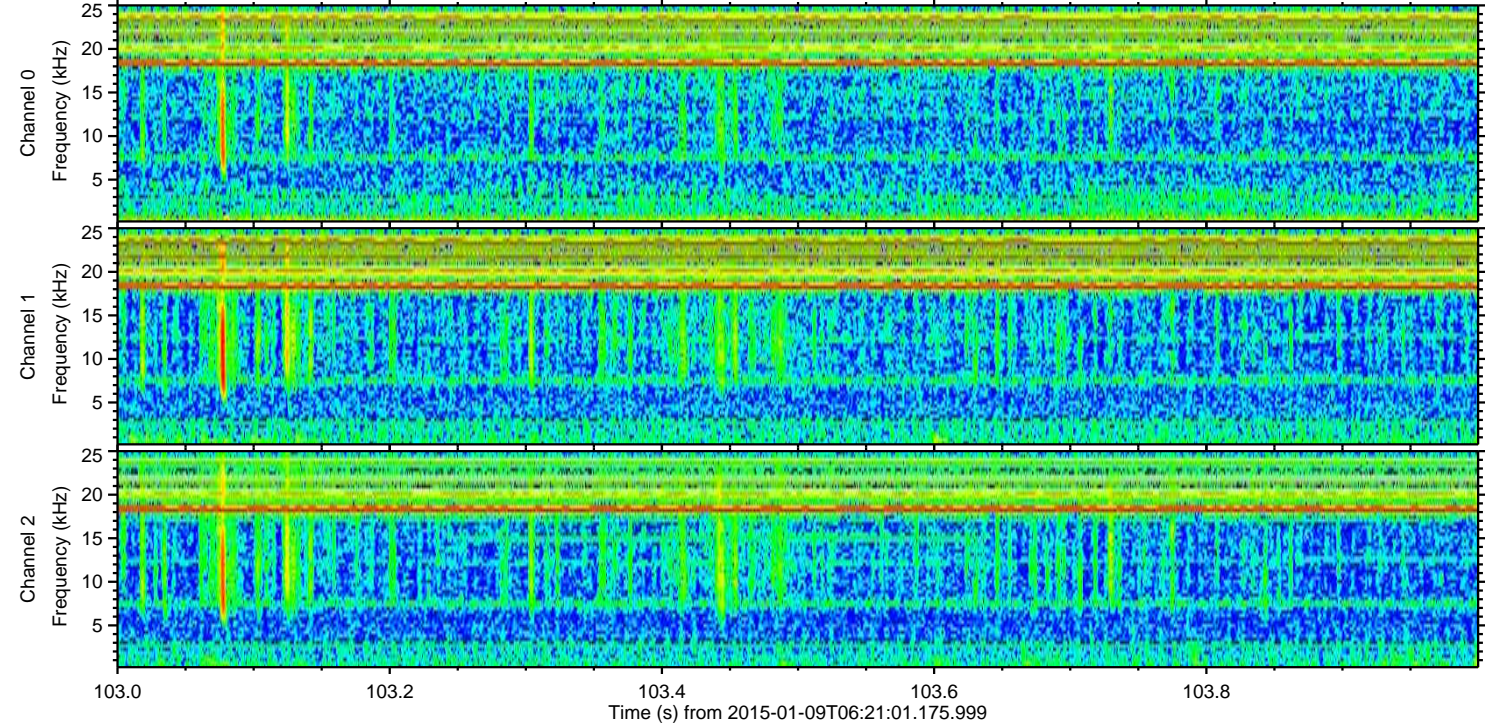
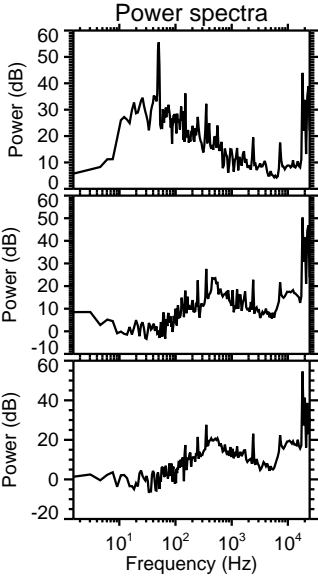
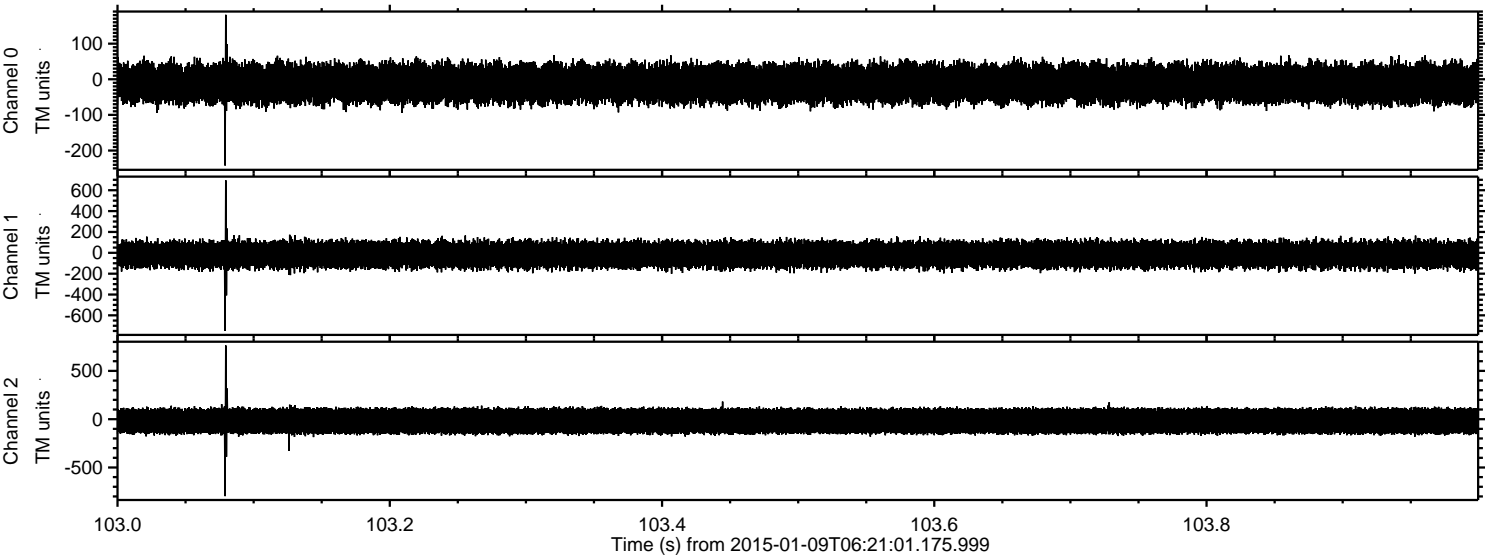
Processed Fri Jan 9 07:29:39 2015 by ELM ver.2012-10-06 from 001__elm20150109_062100__dat00.bin



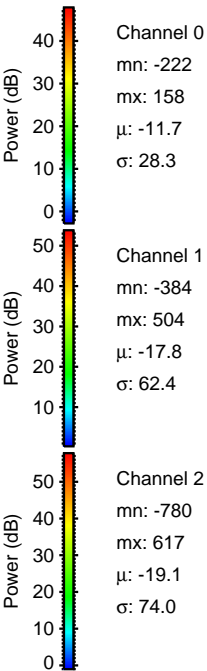
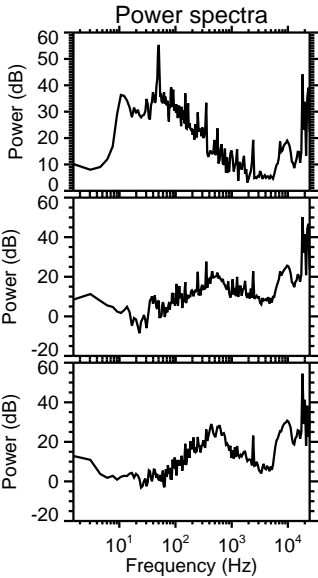
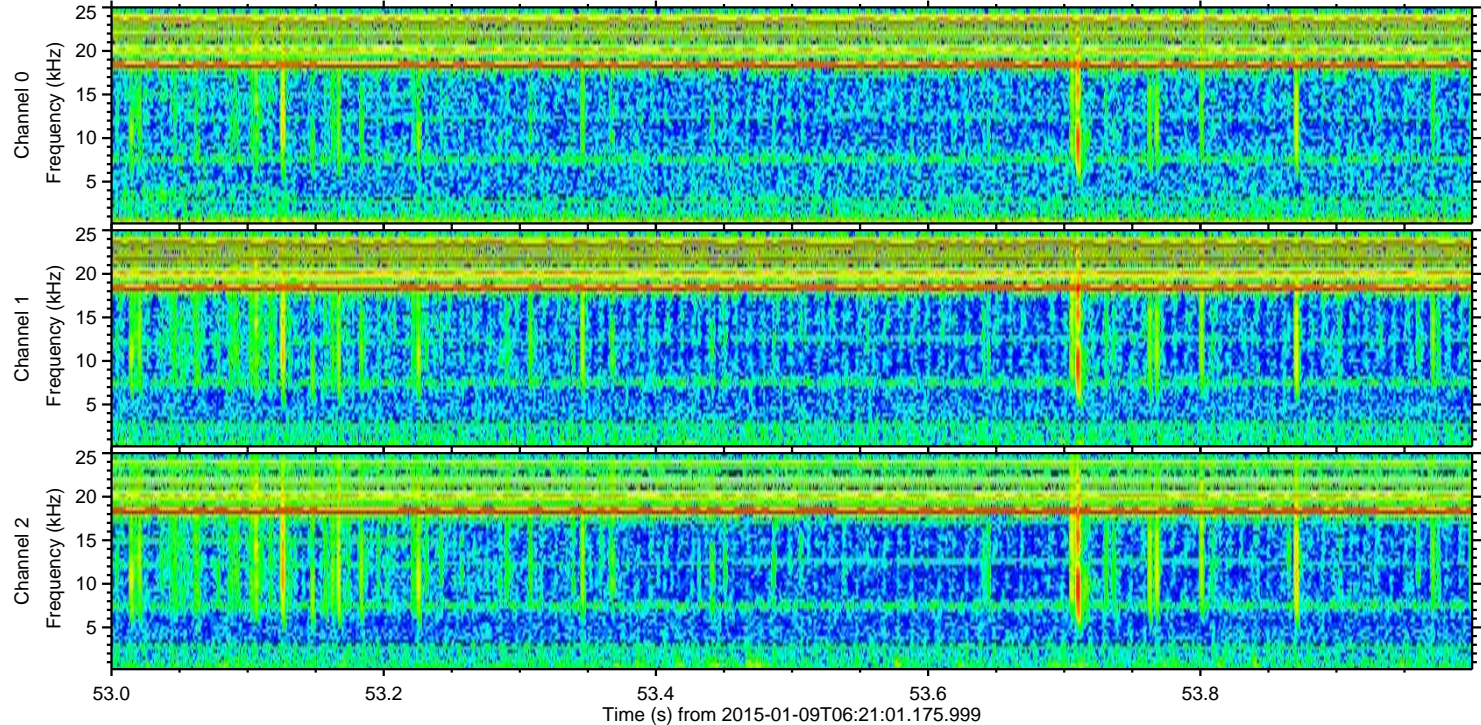
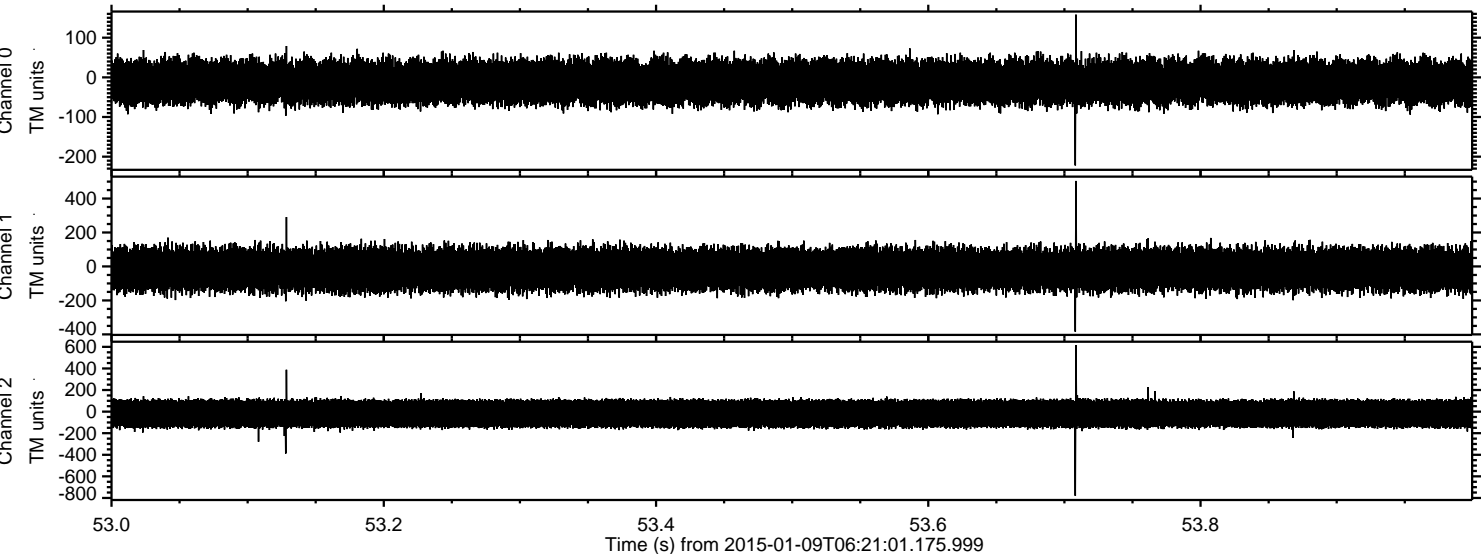
Processed Fri Jan 9 07:29:40 2015 by ELM ver.2012-10-06 from 001__elm20150109_062100__dat00.bin



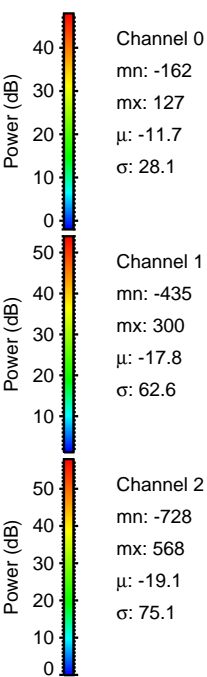
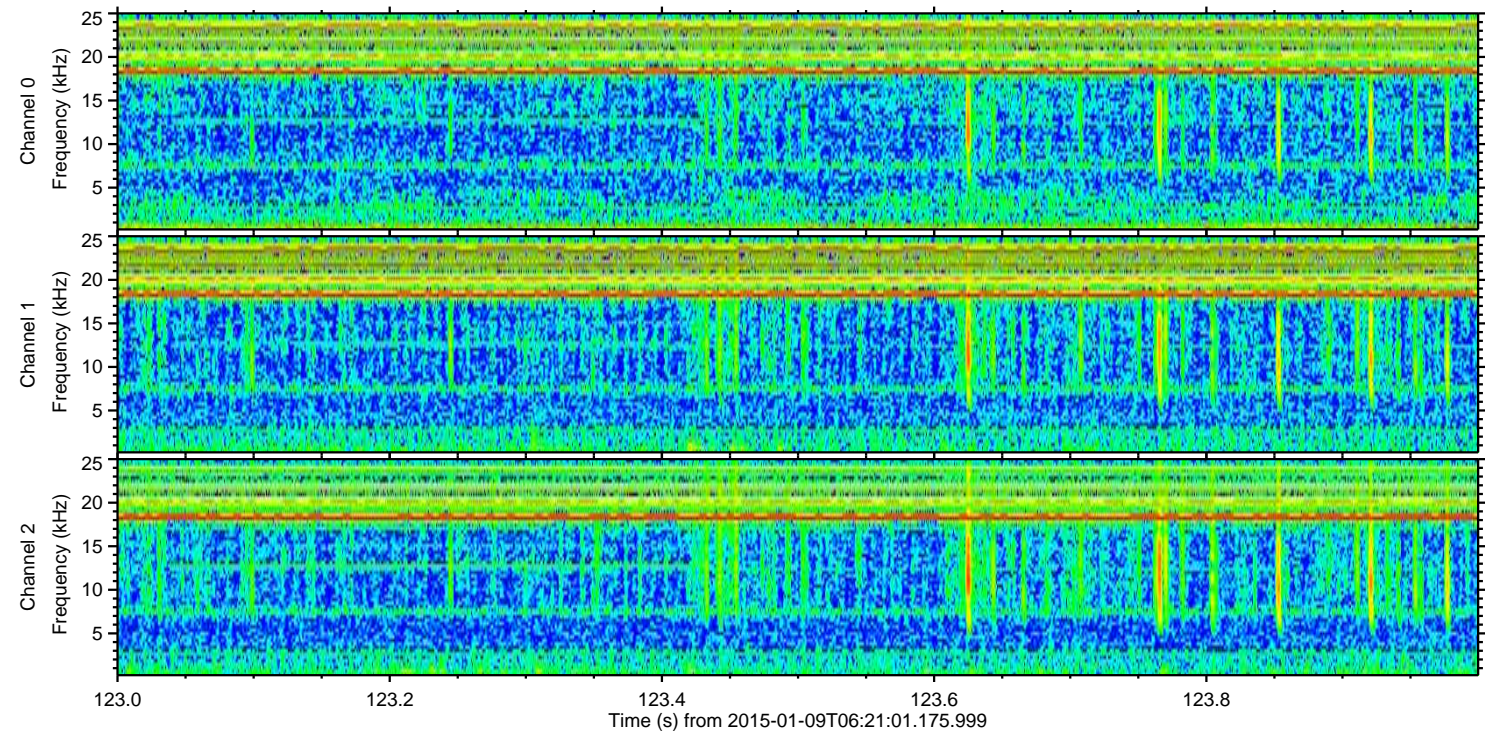
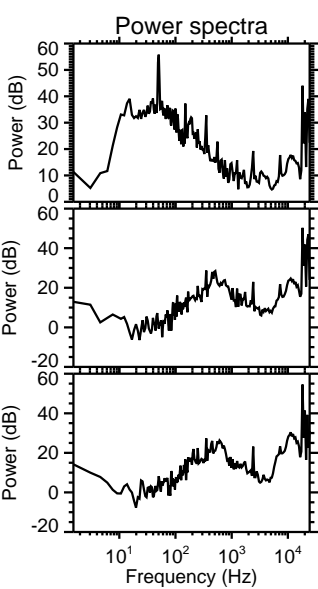
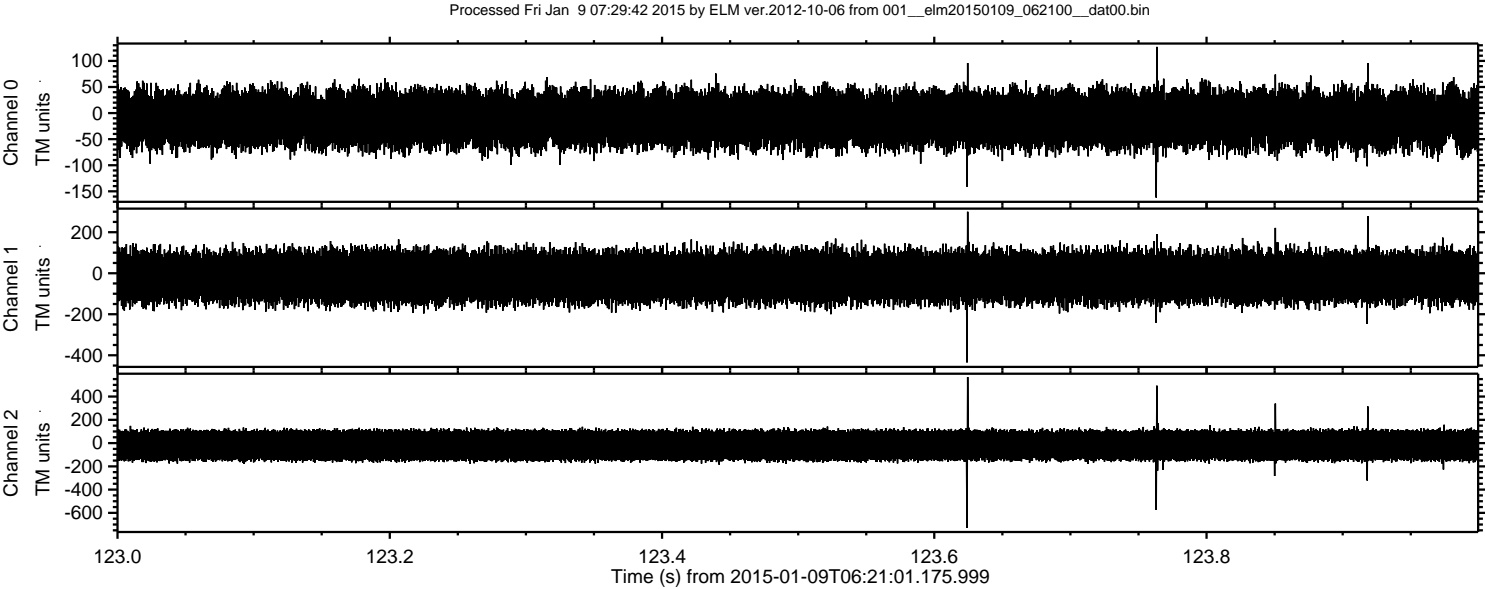
Processed Fri Jan 9 07:29:40 2015 by ELM ver.2012-10-06 from 001__elm20150109_062100__dat00.bin



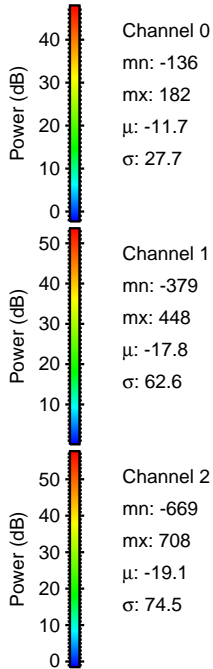
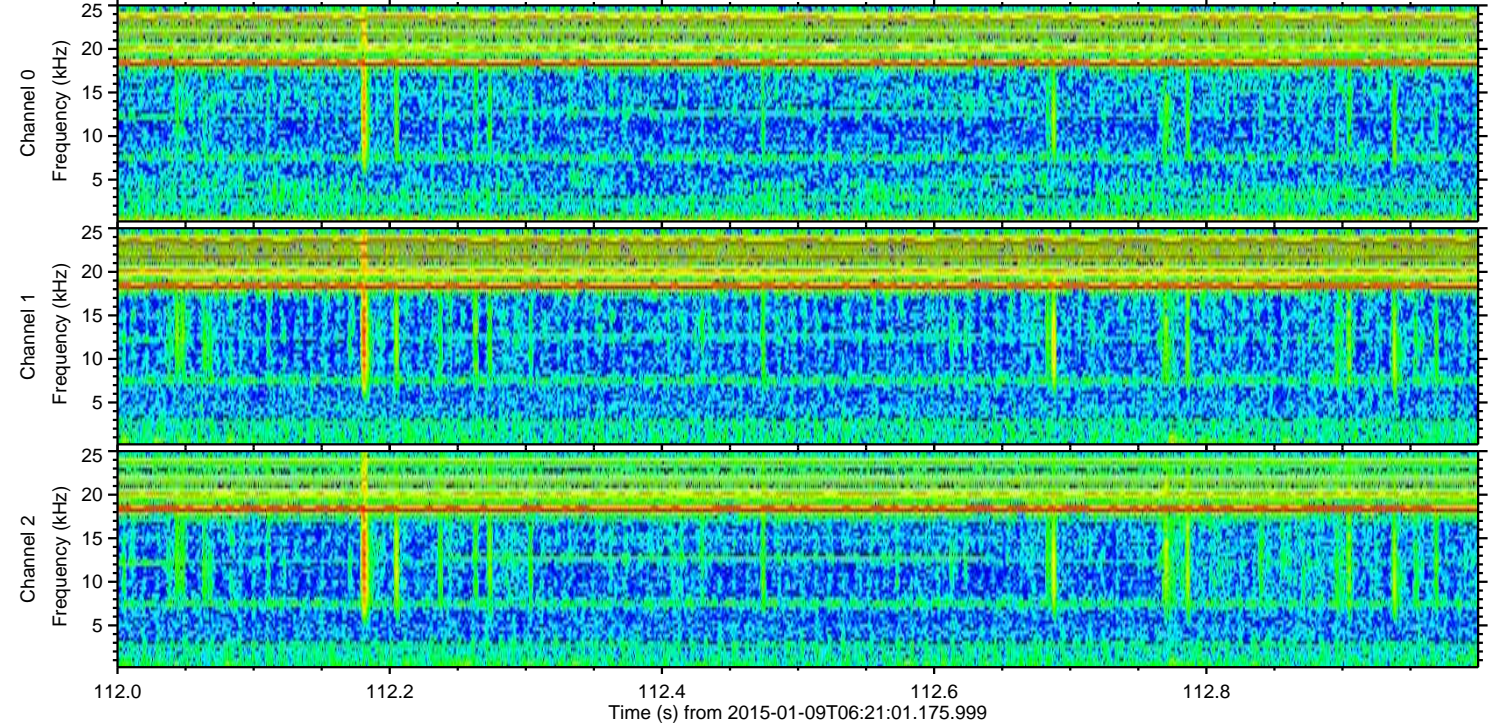
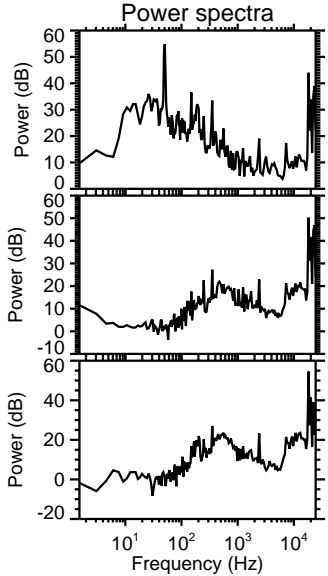
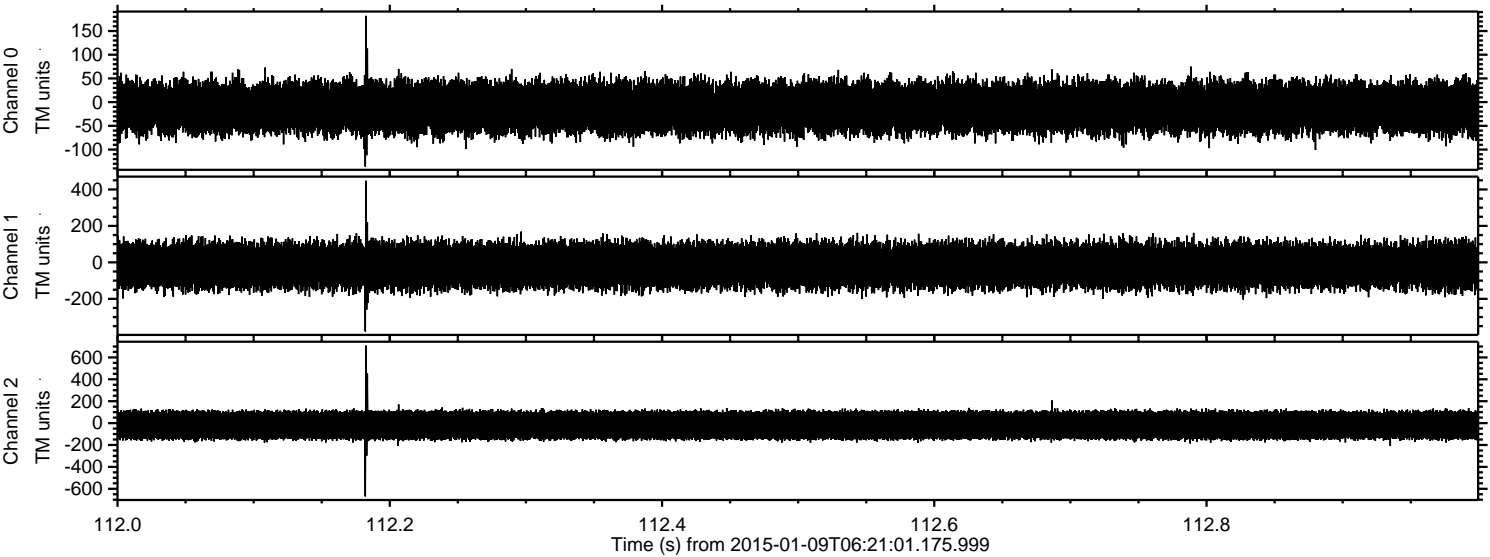
Processed Fri Jan 9 07:29:41 2015 by ELM ver.2012-10-06 from 001__elm20150109_062100__dat00.bin



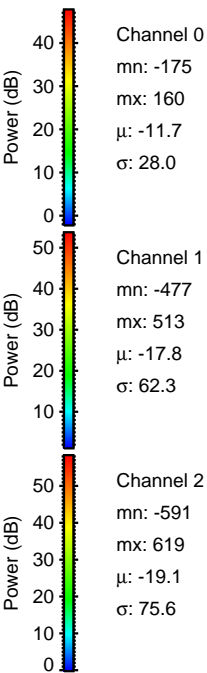
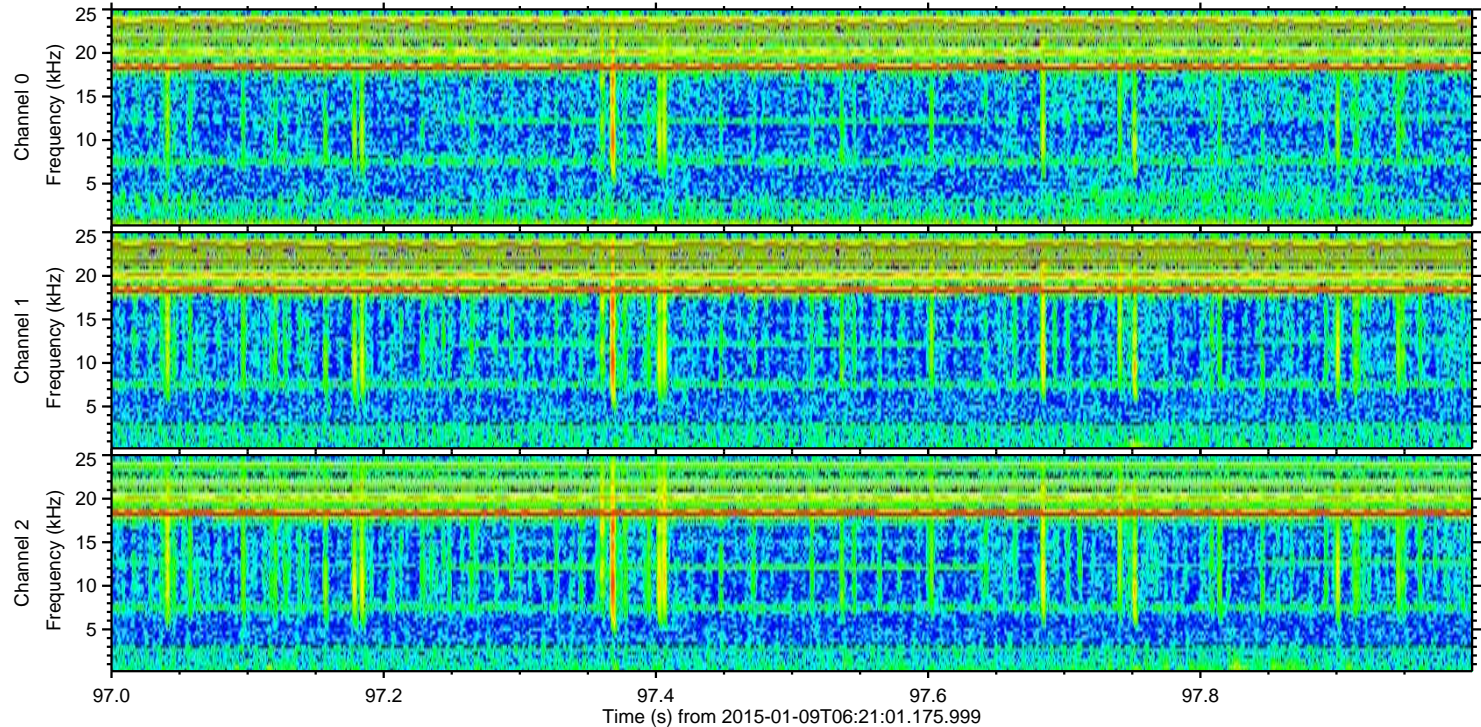
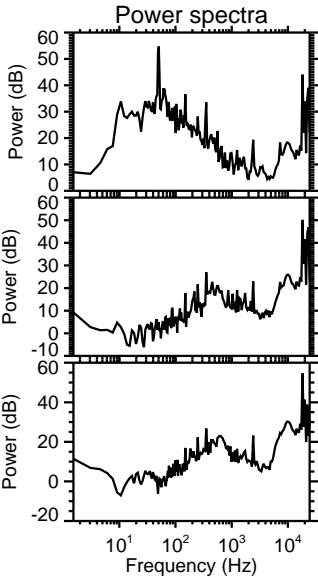
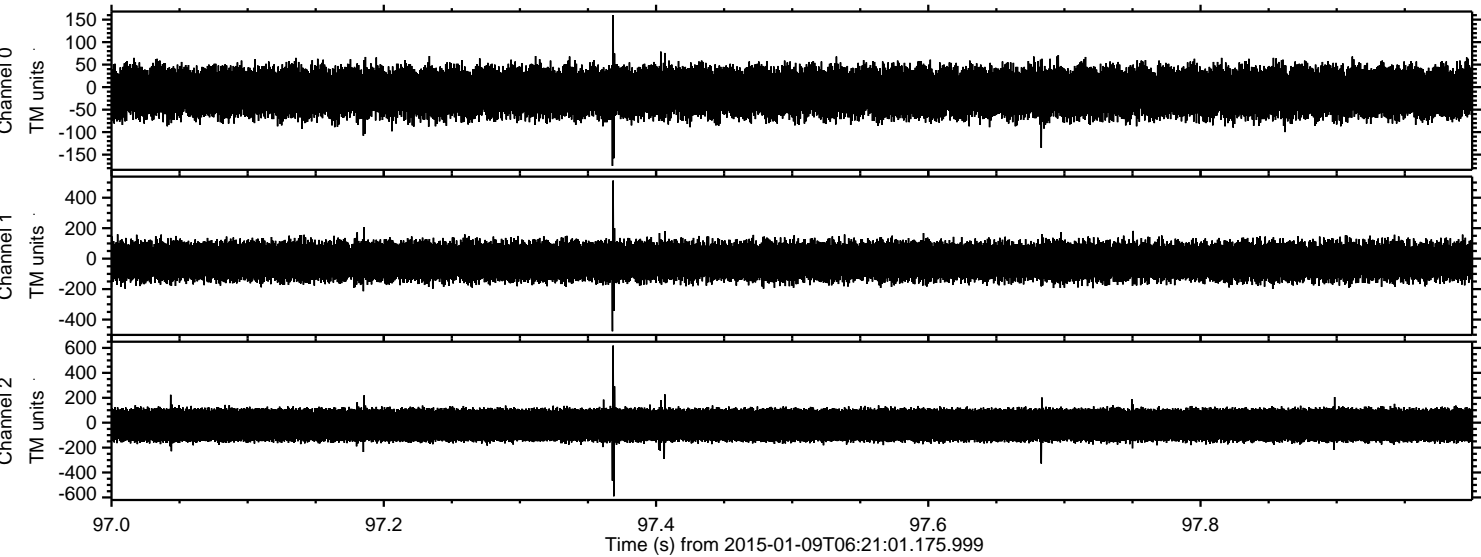
ELMAVAN 3D WAVEFORMS (Measured data sampled at 50 kHz) 49768 packets of 144 samples from 2015-01-09T06:21:01.175.999. Part 124/144



Processed Fri Jan 9 07:29:43 2015 by ELM ver.2012-10-06 from 001__elm20150109_062100__dat00.bin



Processed Fri Jan 9 07:29:44 2015 by ELM ver.2012-10-06 from 001__elm20150109_062100__dat00.bin



Processed Fri Jan 9 07:29:45 2015 by ELM ver.2012-10-06 from 001__elm20150109_062100__dat00.bin

