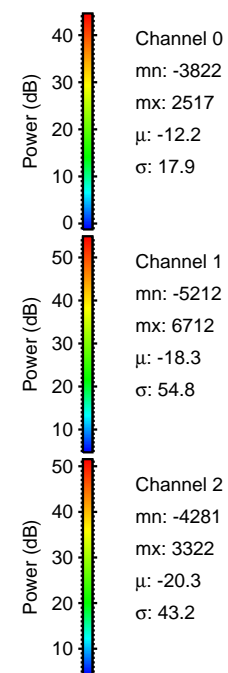
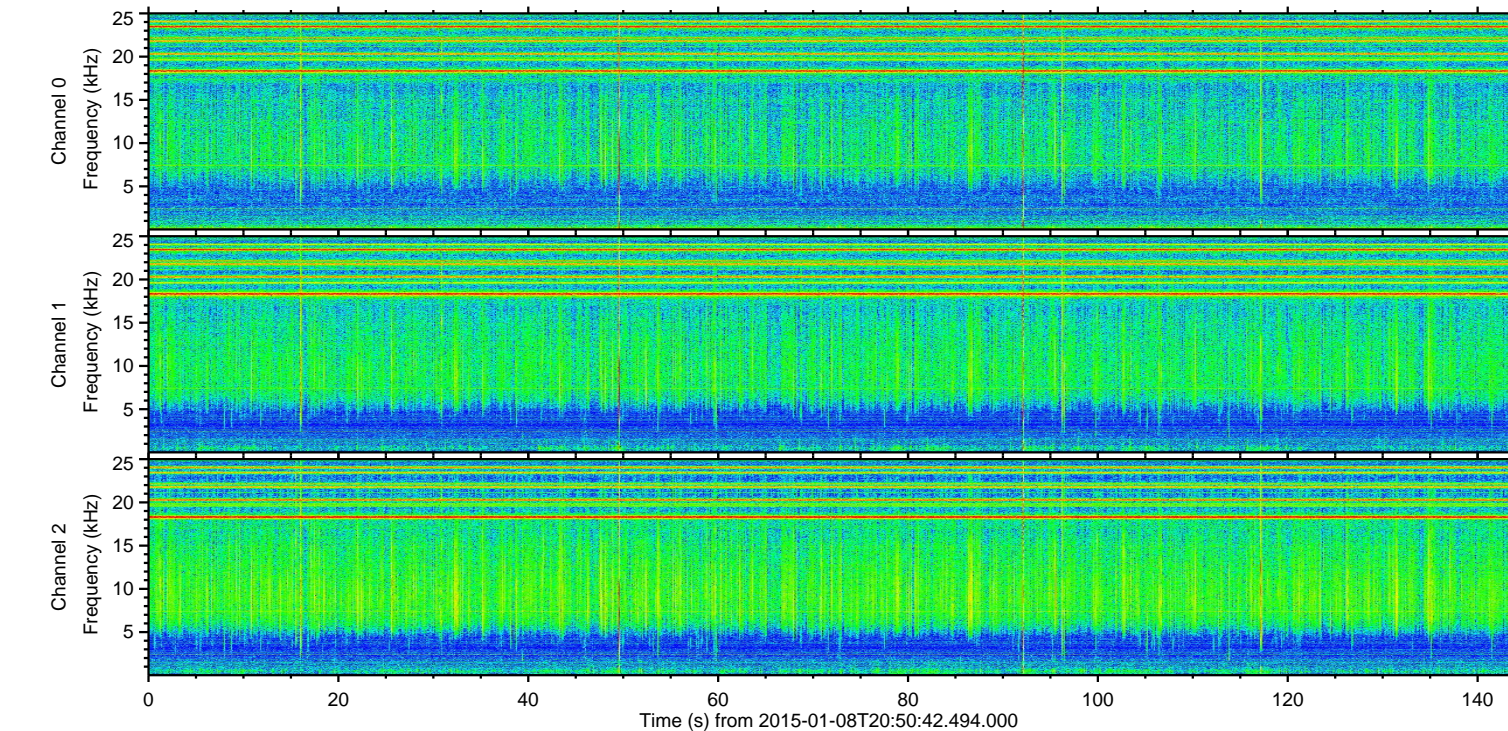
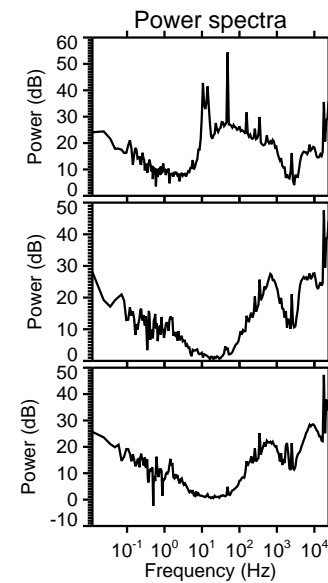
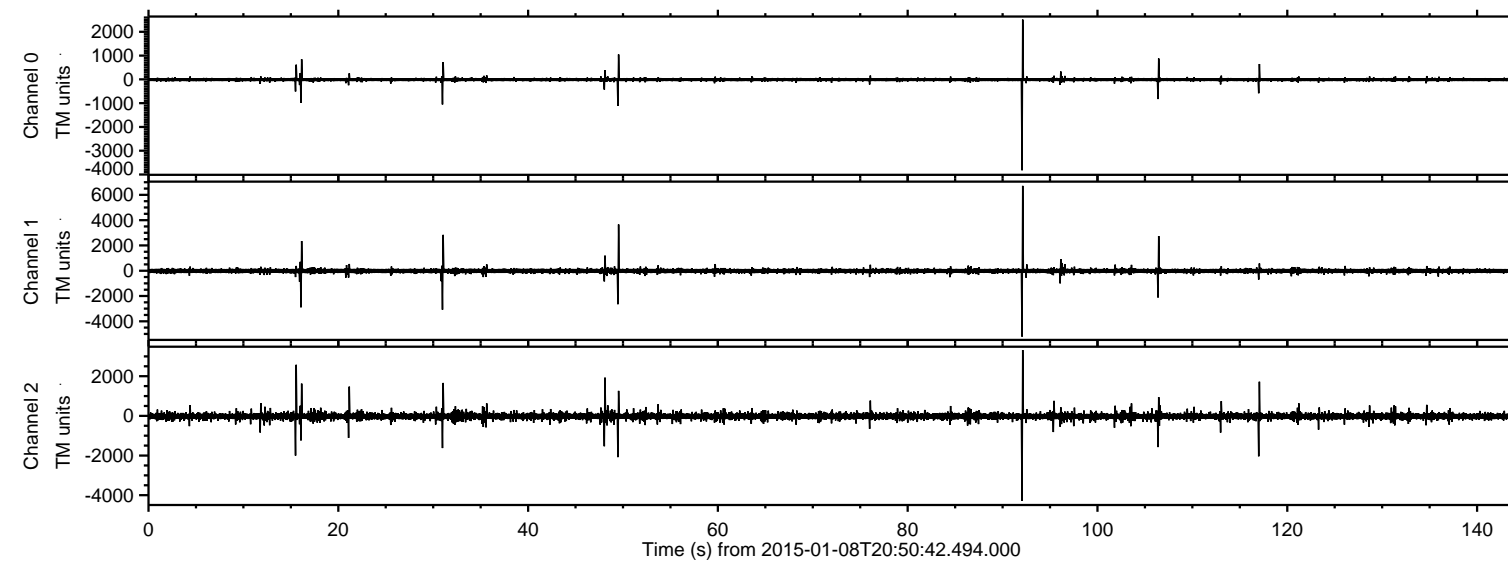
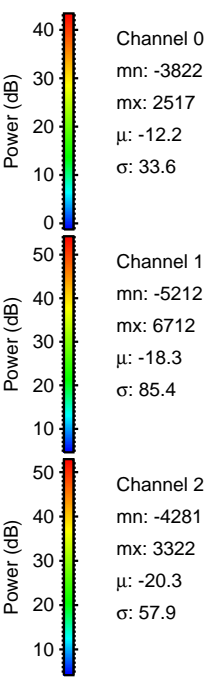
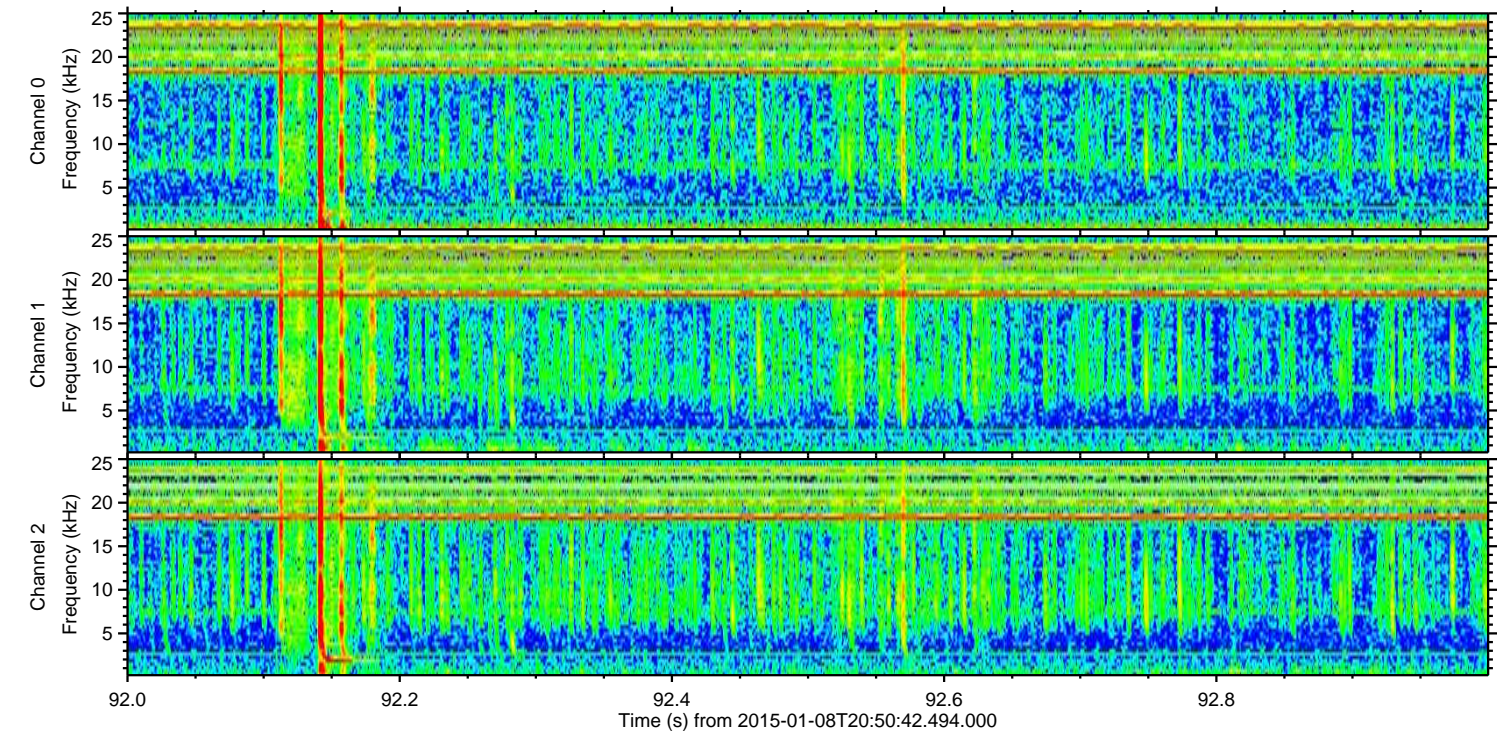
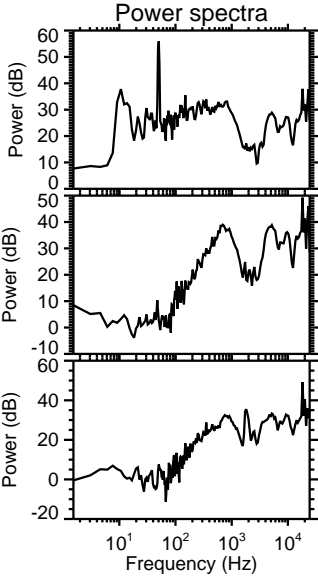
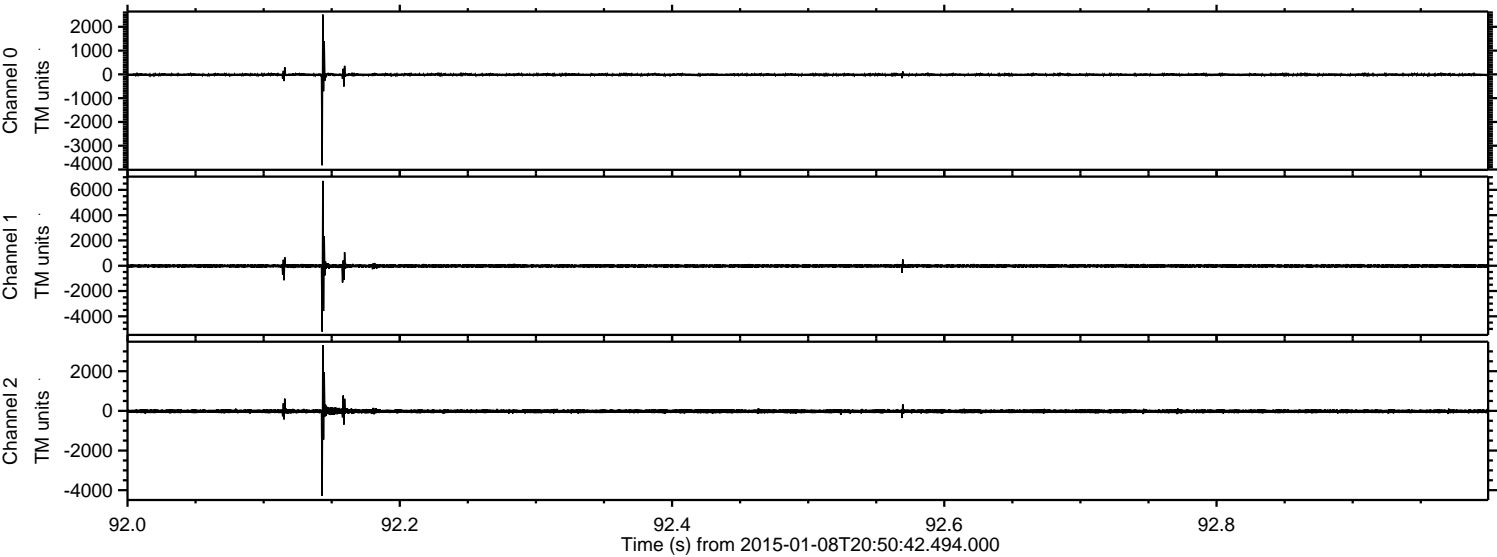


ELMAVAN 3D WAVEFORMS (Measured data sampled at 50 kHz) 49785 packets of 144 samples from 2015-01-08T20:50:42.494.000.

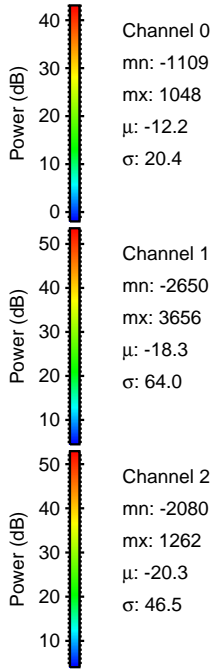
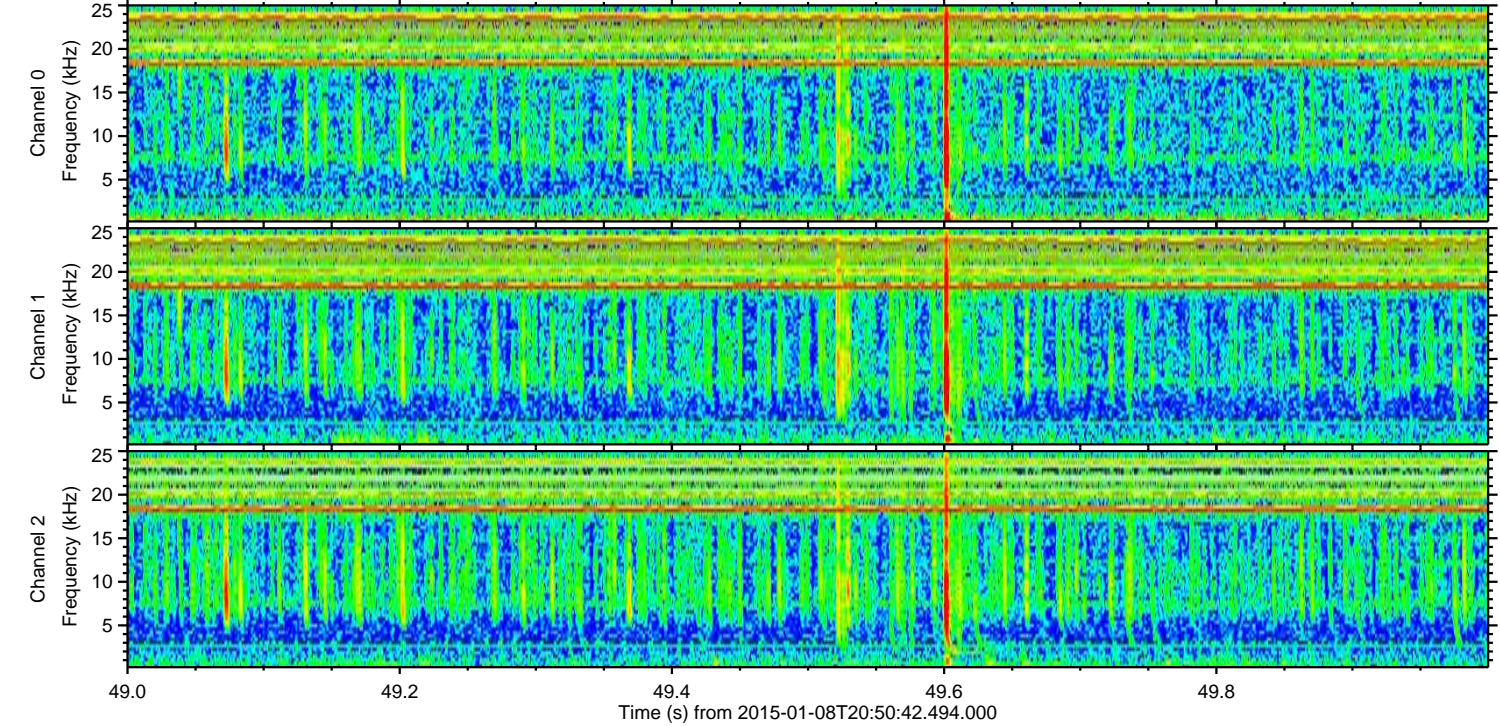
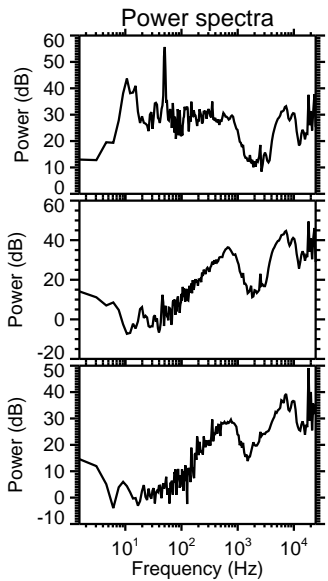
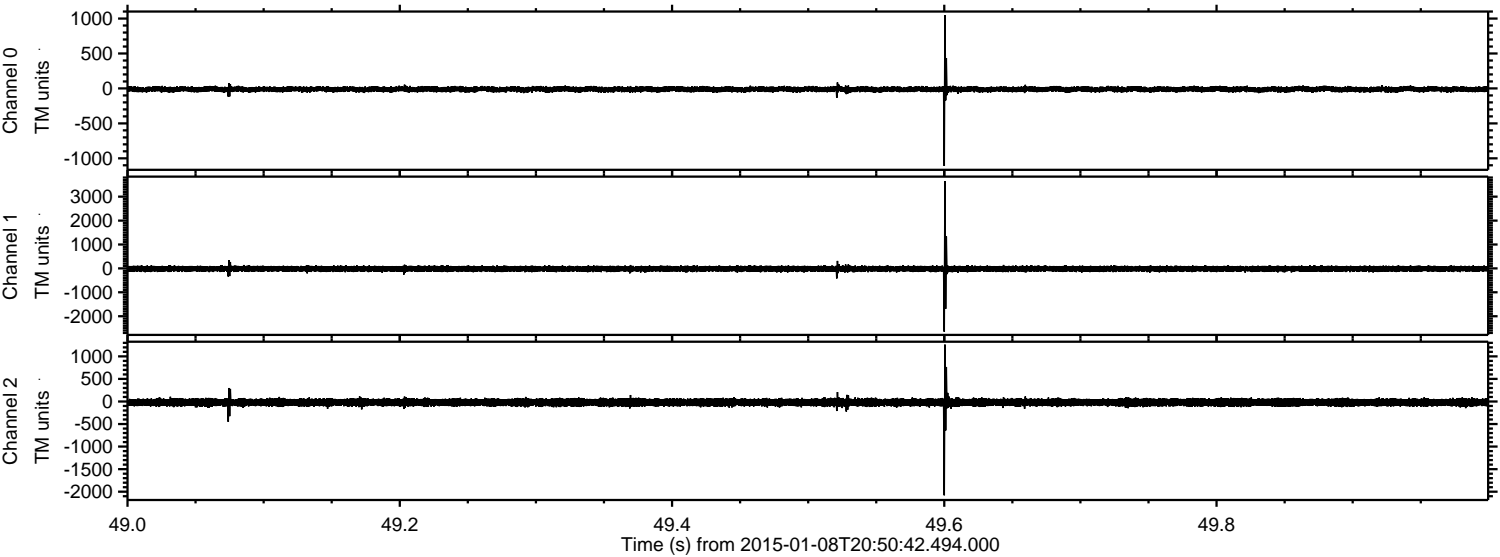
Processed Thu Jan 8 21:58:47 2015 by ELM ver.2012-10-06 from 001__elm20150108_205041__dat00.bin



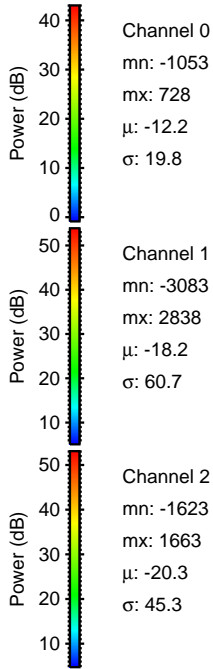
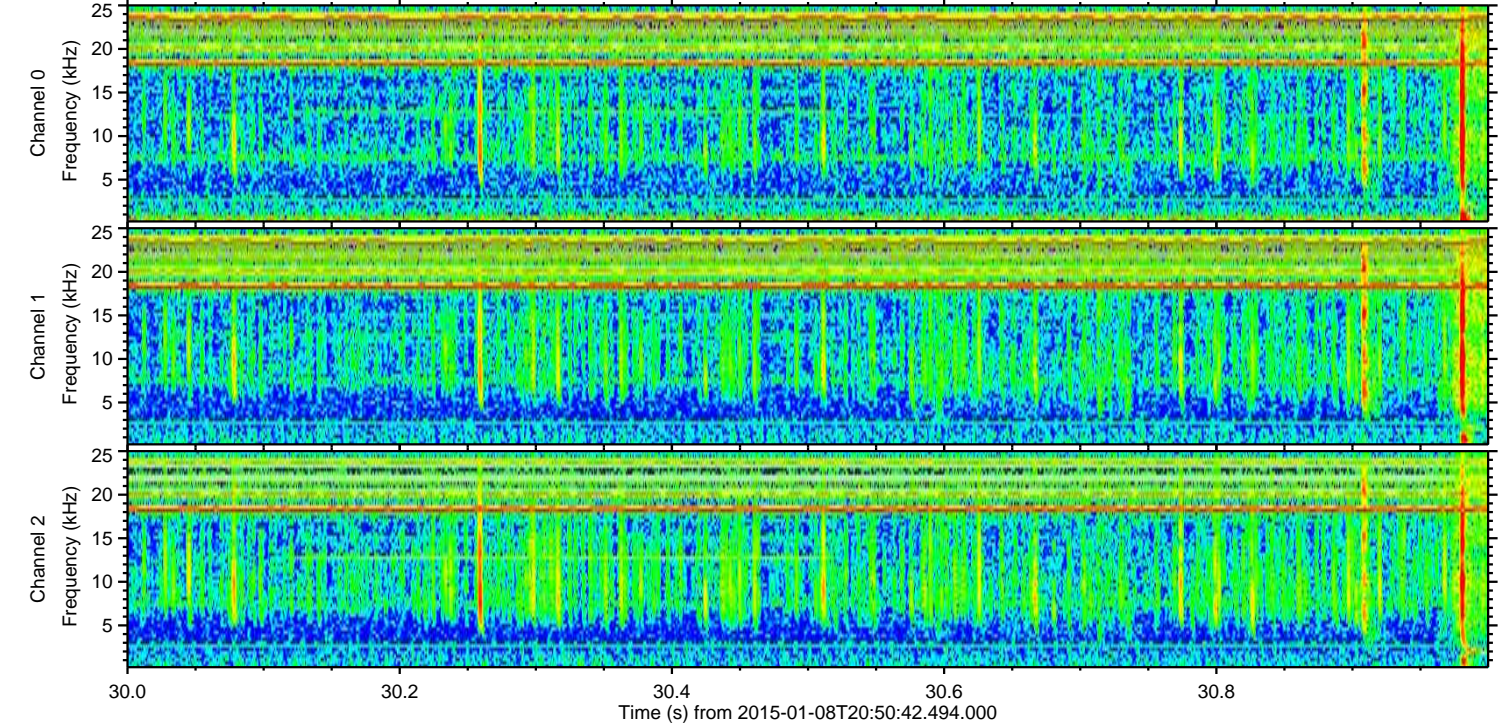
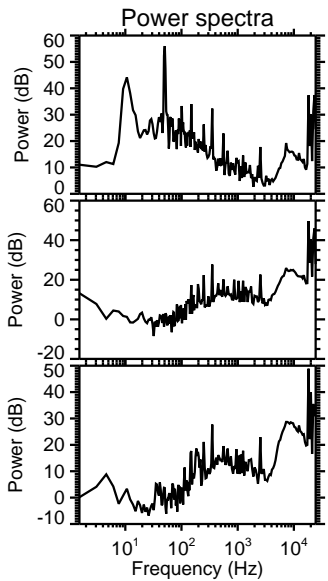
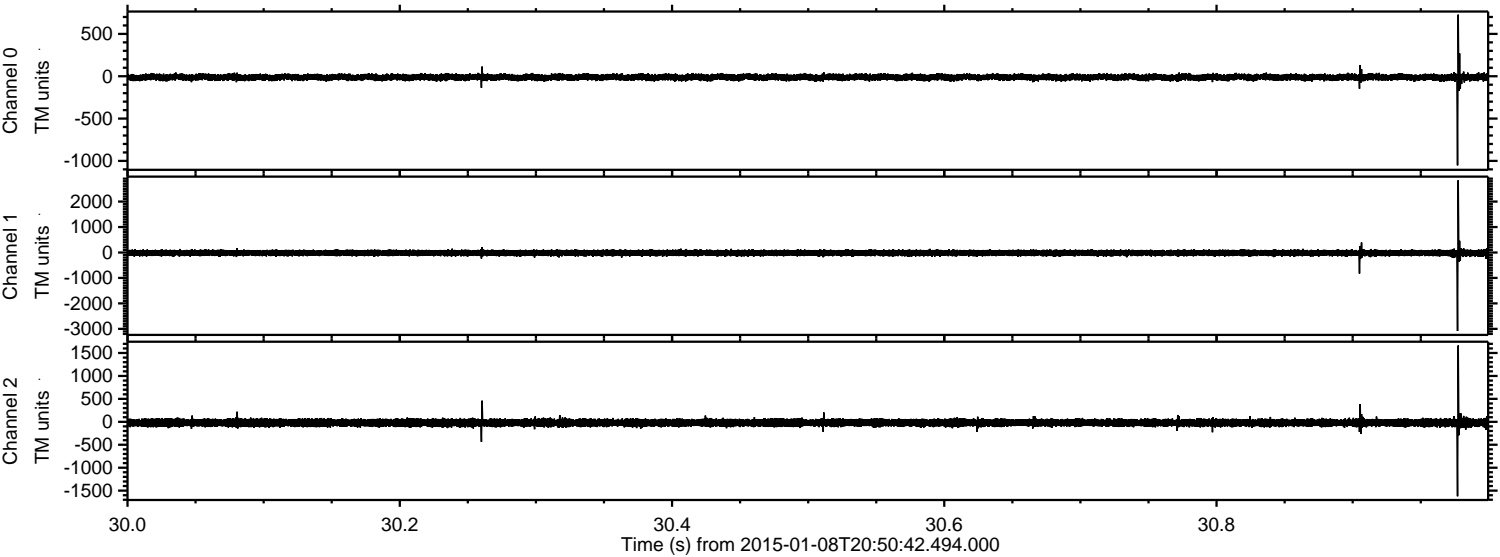
Processed Thu Jan 8 21:59:00 2015 by ELM ver.2012-10-06 from 001__elm20150108_205041__dat00.bin



Processed Thu Jan 8 21:59:01 2015 by ELM ver.2012-10-06 from 001__elm20150108_205041__dat00.bin



Processed Thu Jan 8 21:59:02 2015 by ELM ver.2012-10-06 from 001__elm20150108_205041__dat00.bin

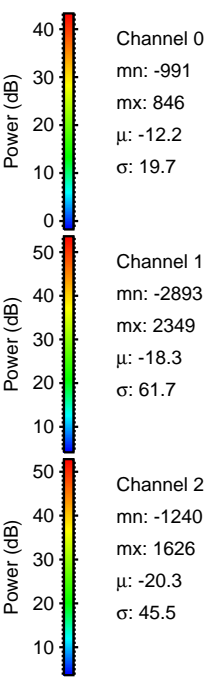
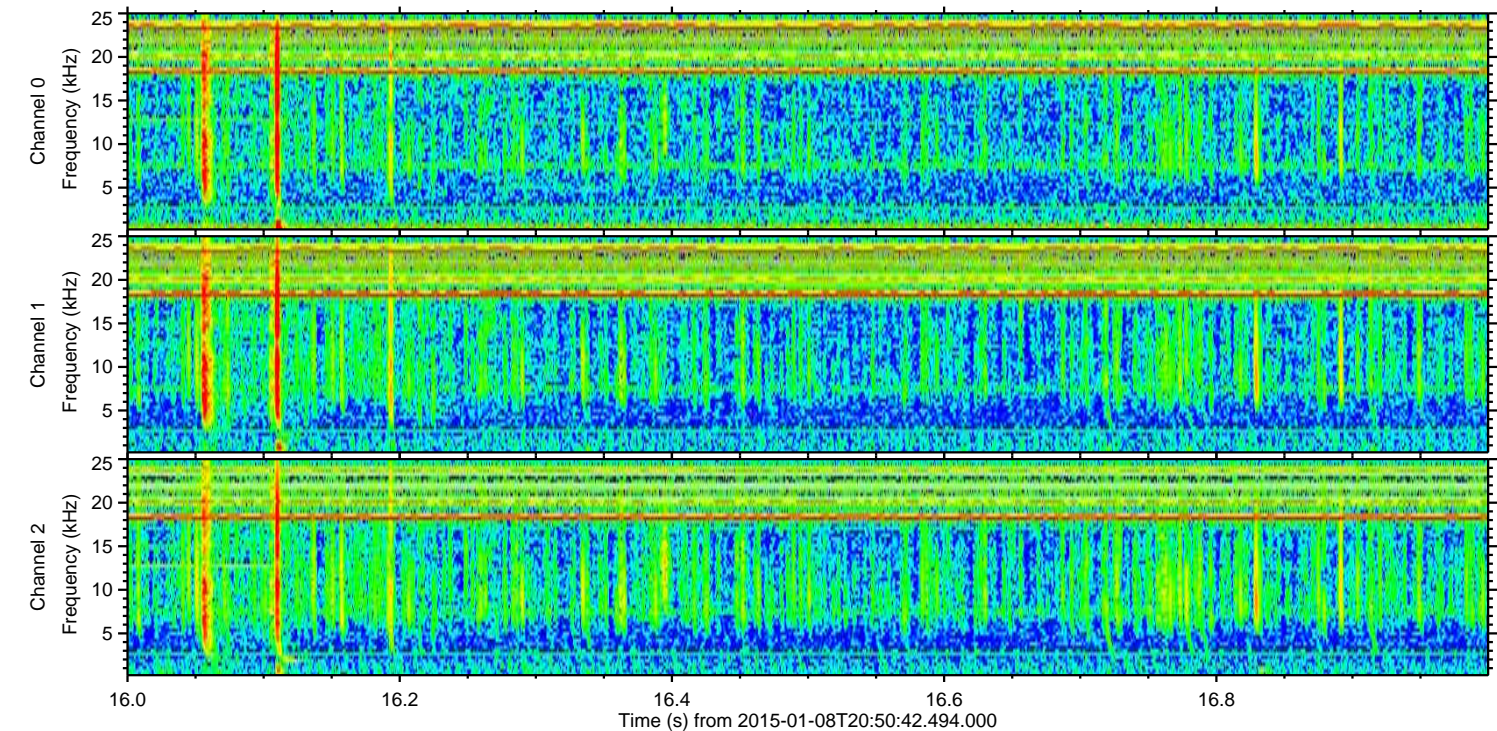
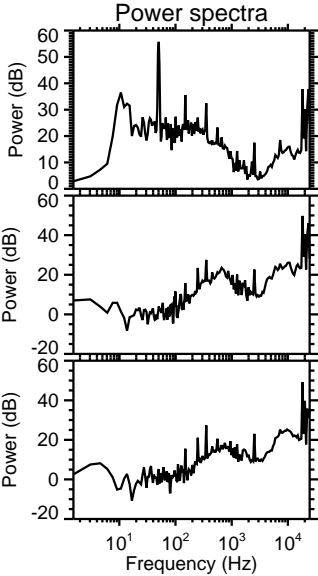
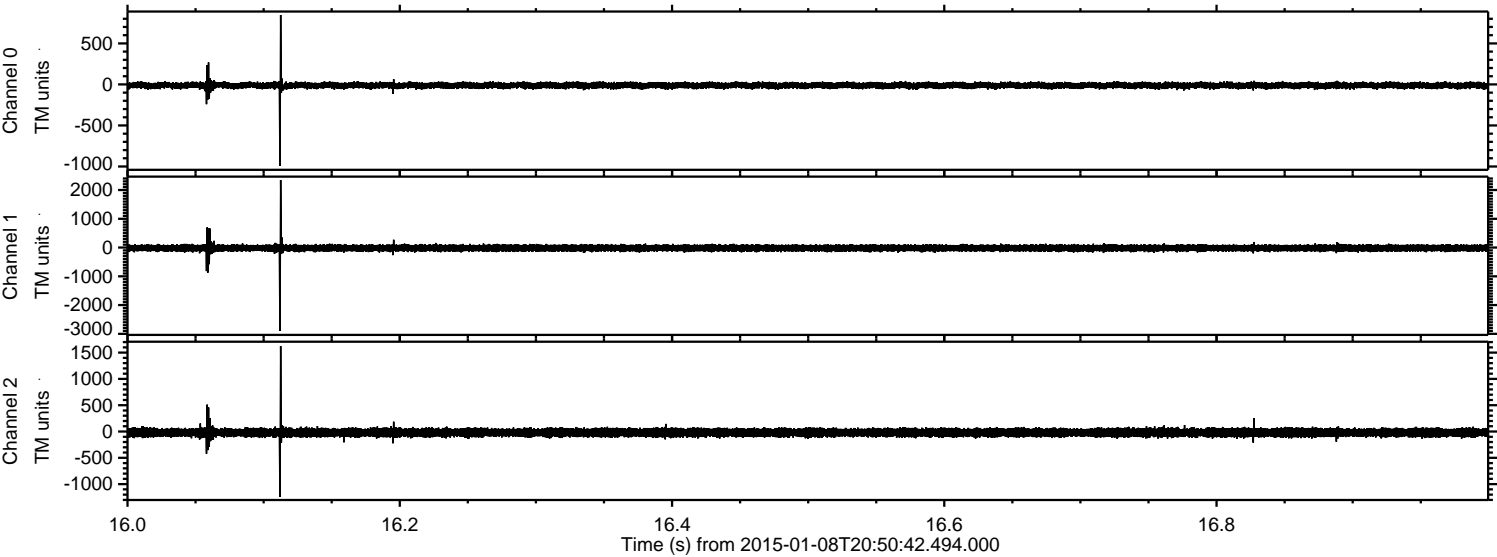


Channel 0
mn: -1053
mx: 728
 μ : -12.2
 σ : 19.8

Channel 1
mn: -3083
mx: 2838
 μ : -18.2
 σ : 60.7

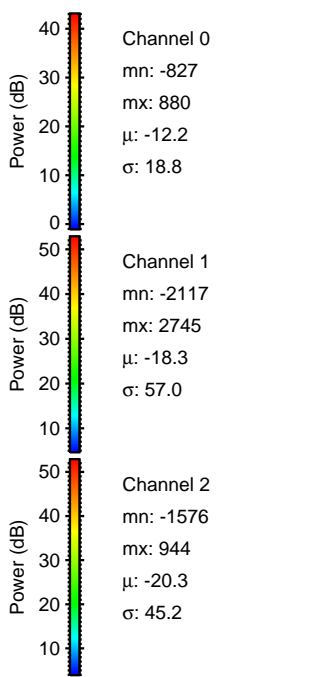
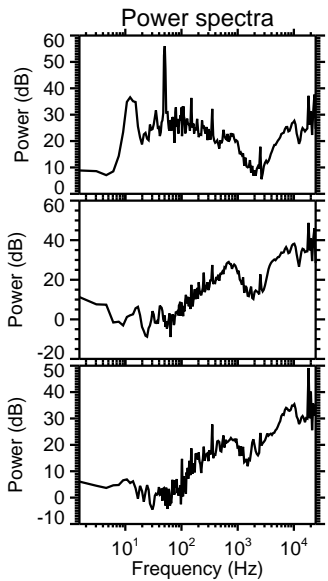
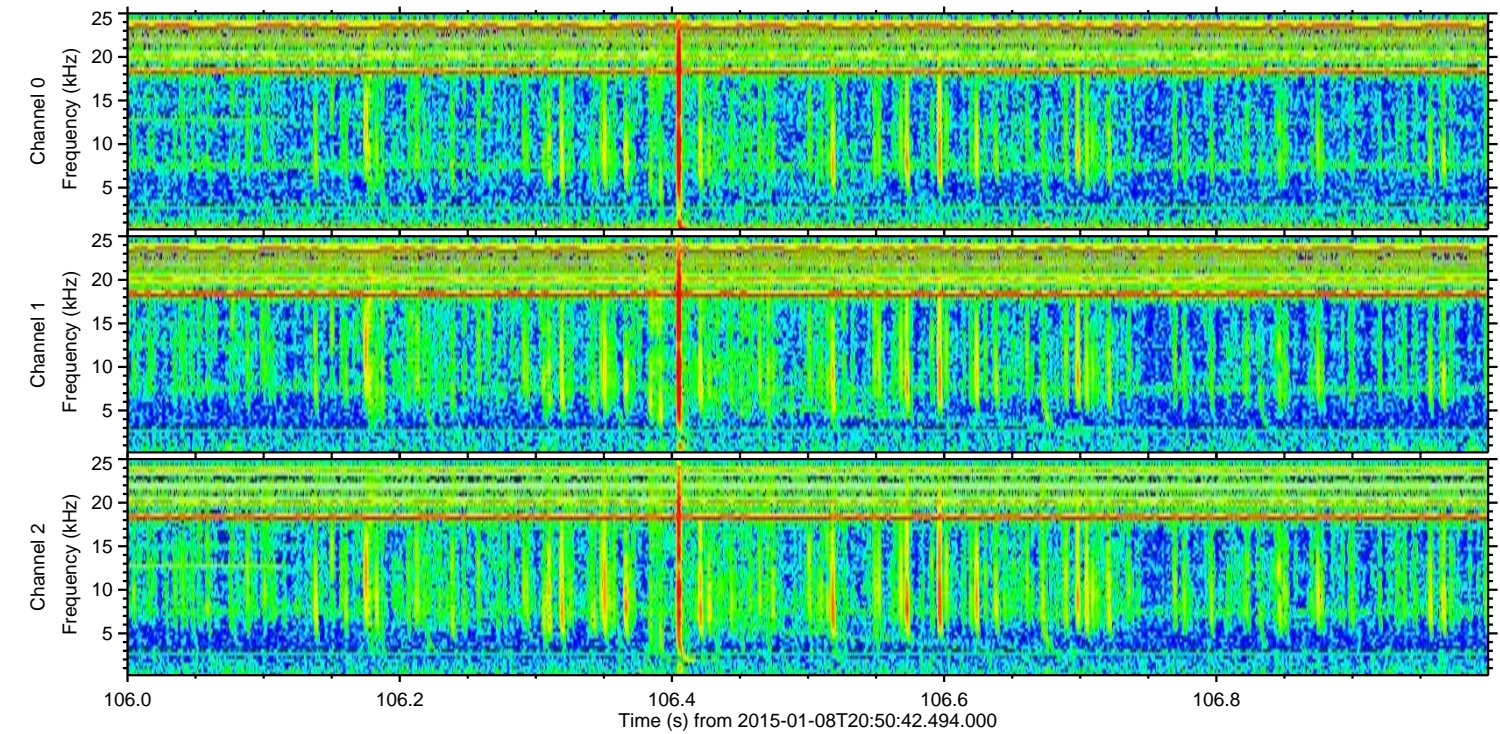
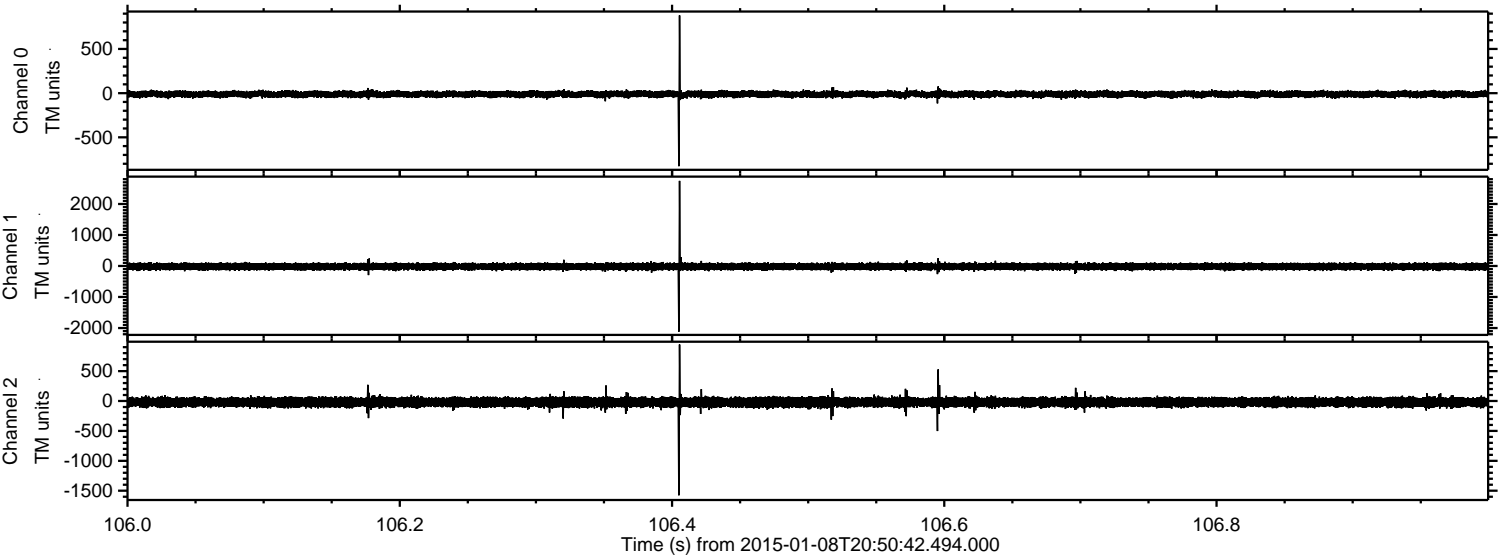
Channel 2
mn: -1623
mx: 1663
 μ : -20.3
 σ : 45.3

Processed Thu Jan 8 21:59:03 2015 by ELM ver.2012-10-06 from 001__elm20150108_205041__dat00.bin

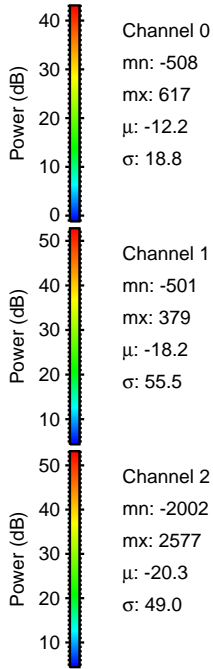
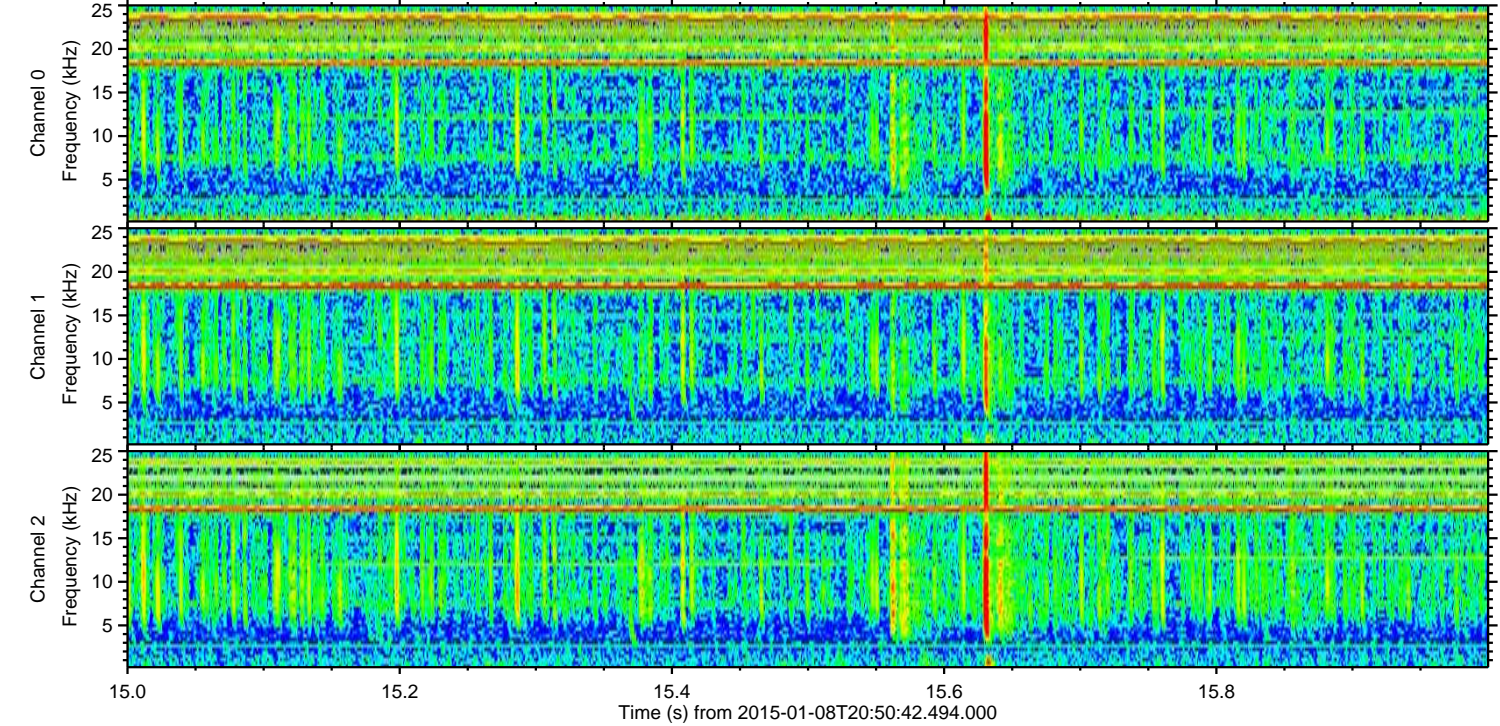
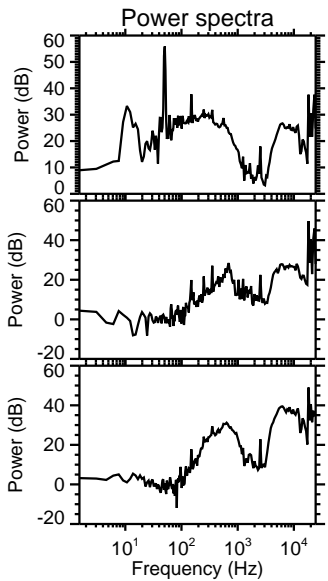
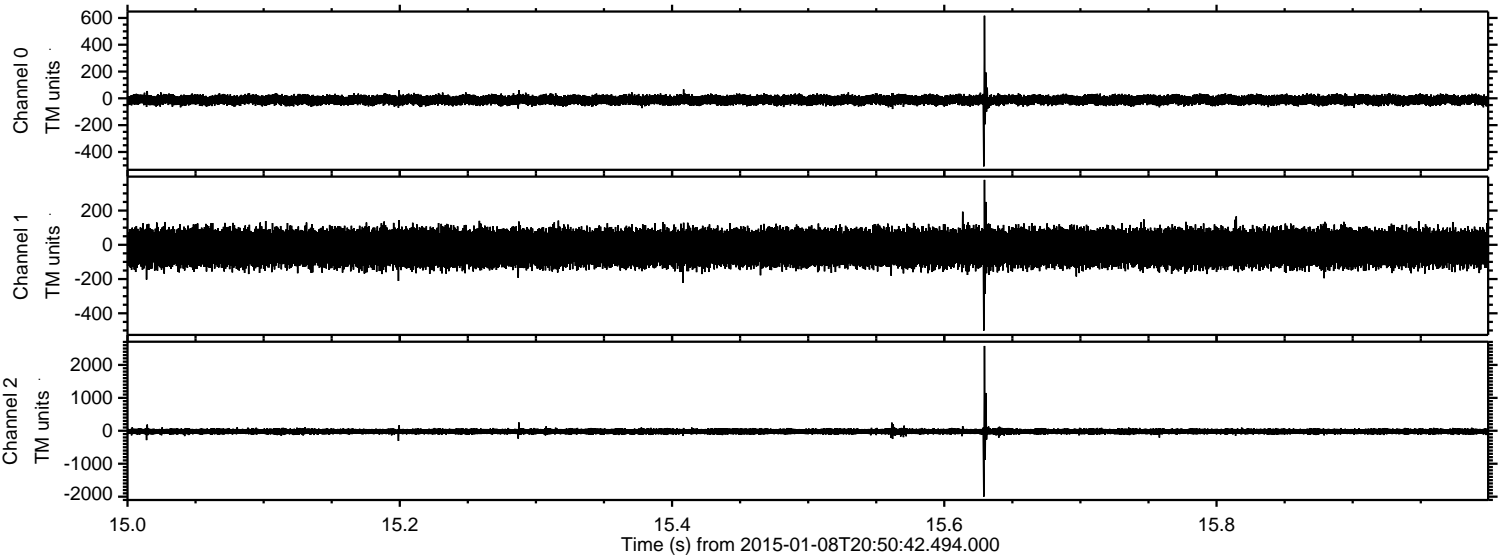


ELMAVAN 3D WAVEFORMS (Measured data sampled at 50 kHz) 49785 packets of 144 samples from 2015-01-08T20:50:42.494.000. Part 107/144

Processed Thu Jan 8 21:59:04 2015 by ELM ver.2012-10-06 from 001__elm20150108_205041__dat00.bin

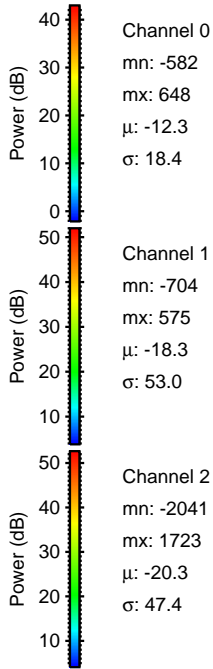
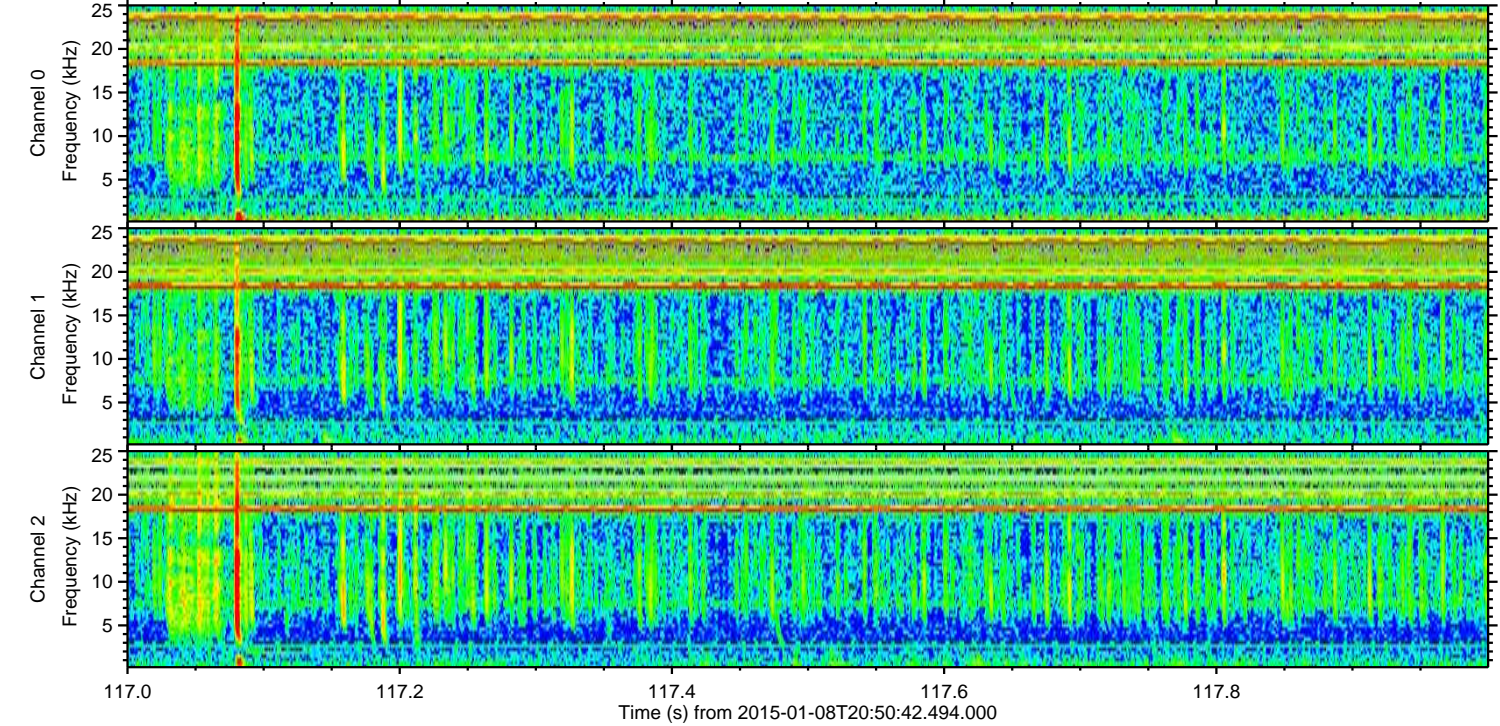
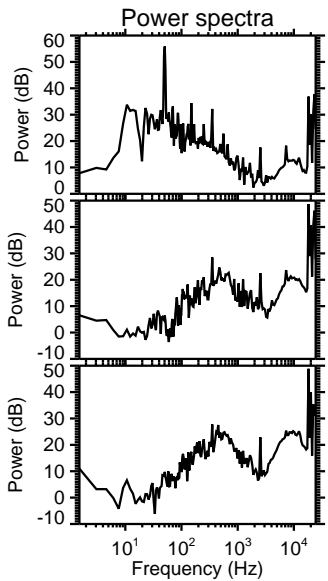
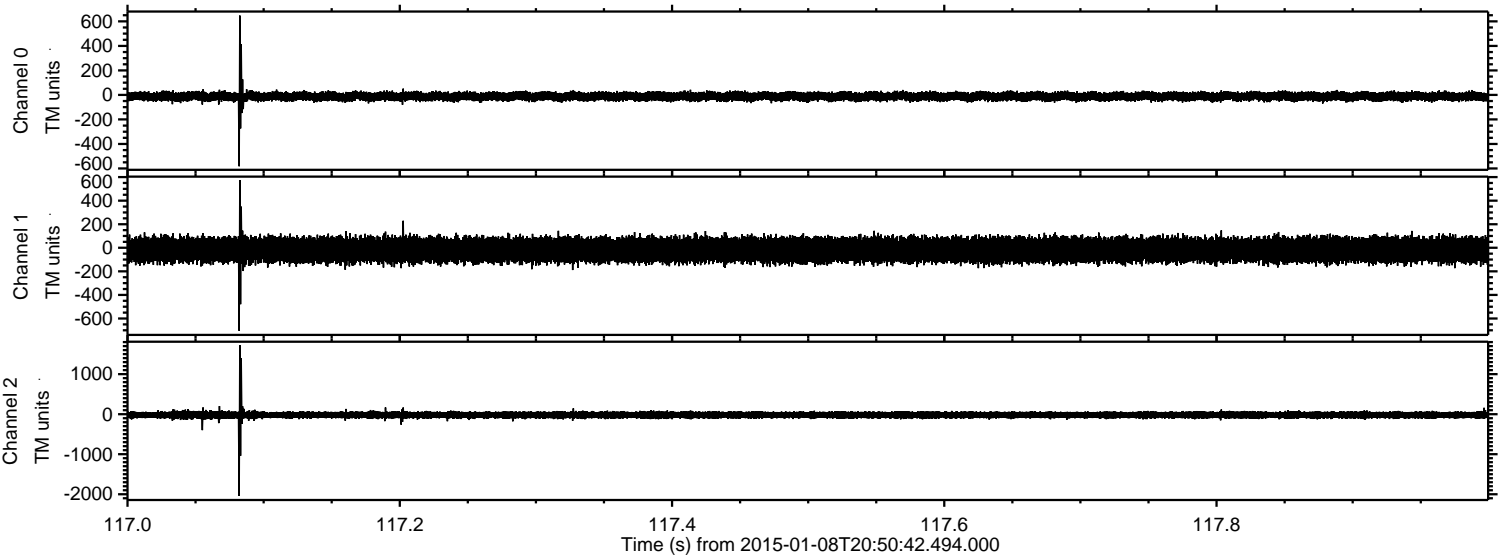


Processed Thu Jan 8 21:59:05 2015 by ELM ver.2012-10-06 from 001__elm20150108_205041__dat00.bin

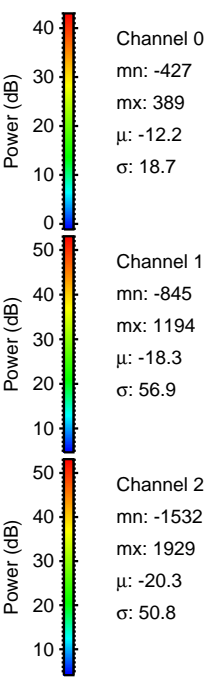
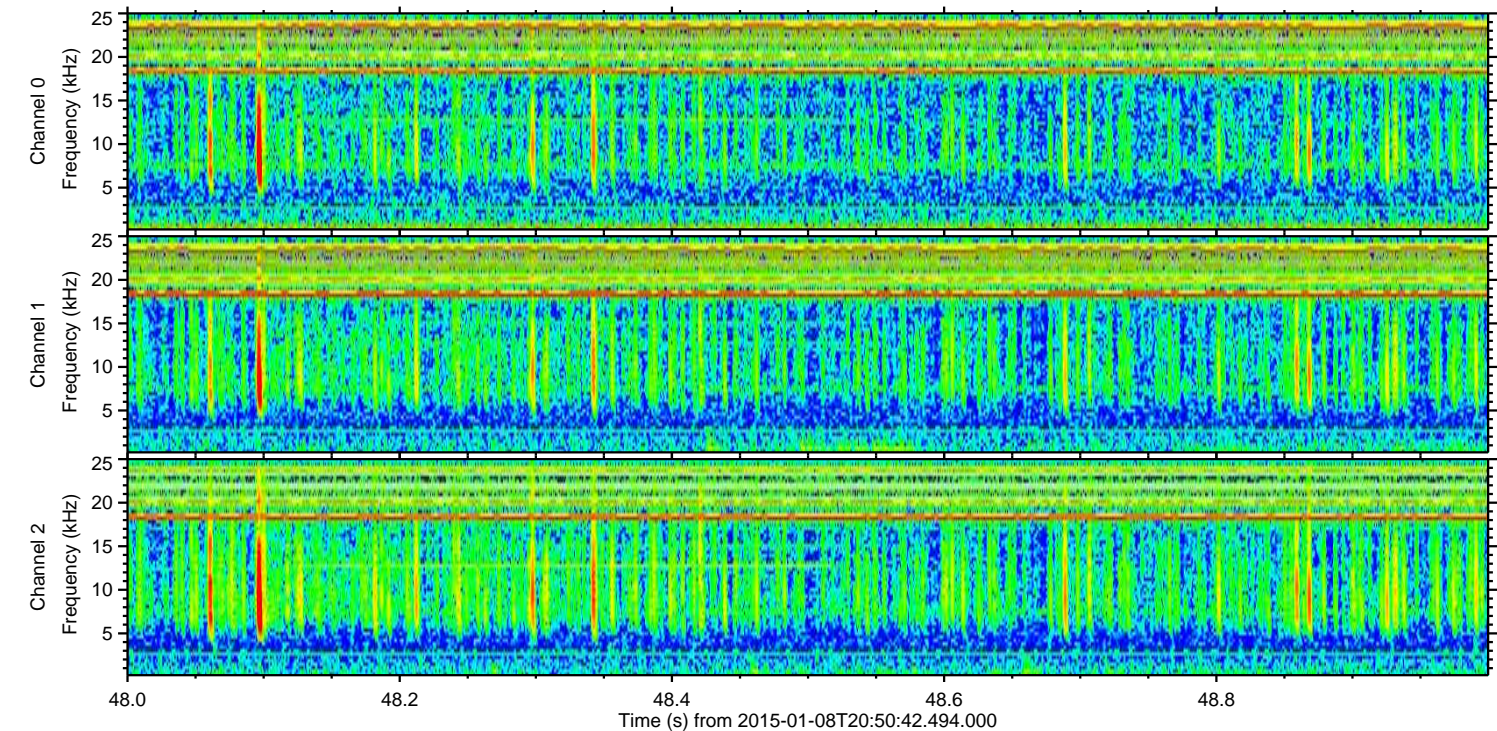
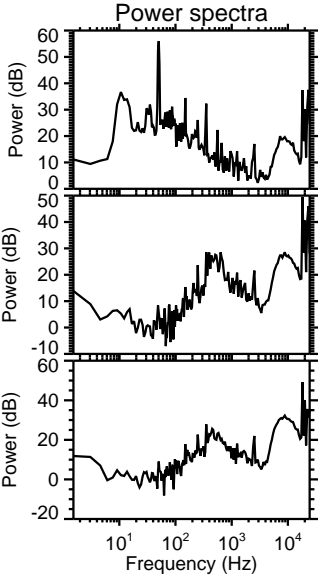
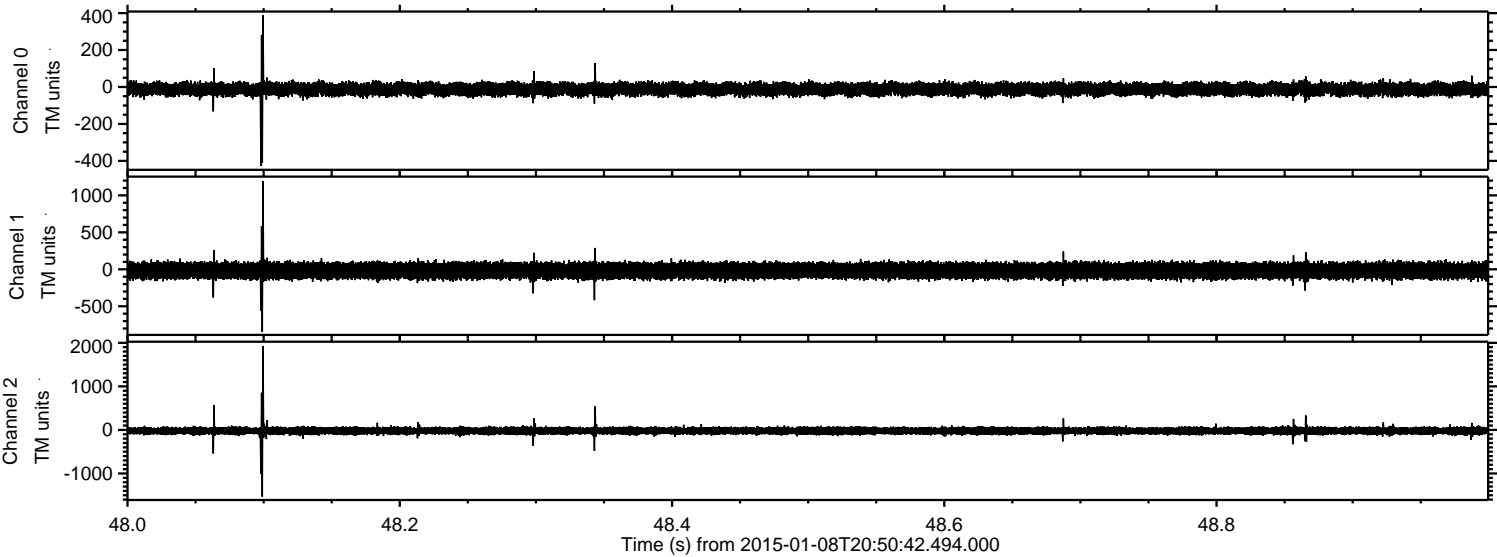


ELMAVAN 3D WAVEFORMS (Measured data sampled at 50 kHz) 49785 packets of 144 samples from 2015-01-08T20:50:42.494.000. Part 118/144

Processed Thu Jan 8 21:59:06 2015 by ELM ver.2012-10-06 from 001__elm20150108_205041__dat00.bin



Processed Thu Jan 8 21:59:07 2015 by ELM ver.2012-10-06 from 001__elm20150108_205041__dat00.bin

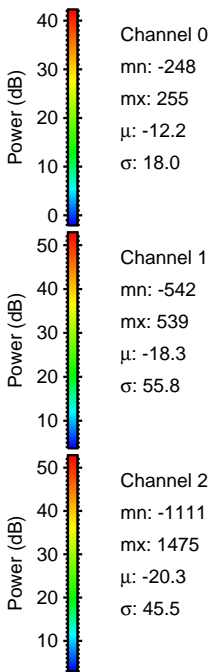
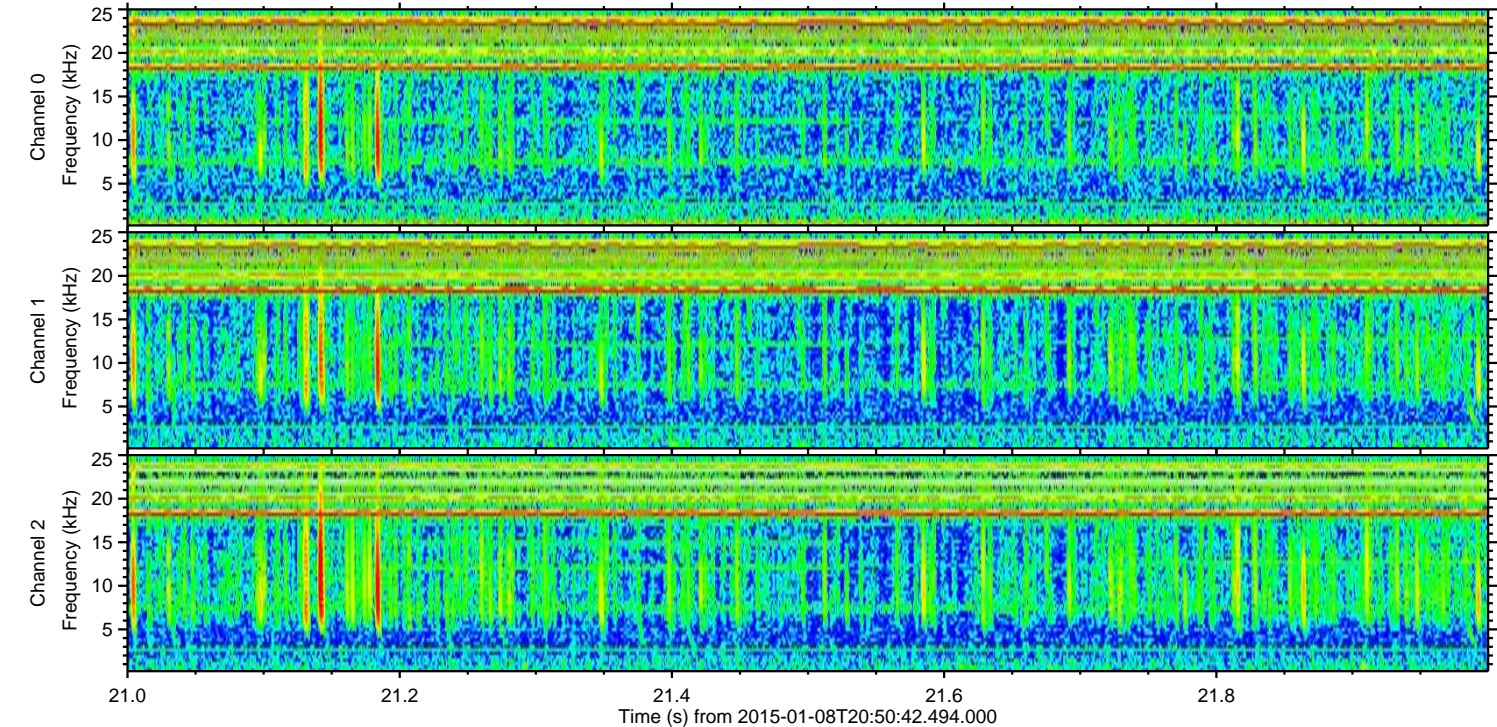
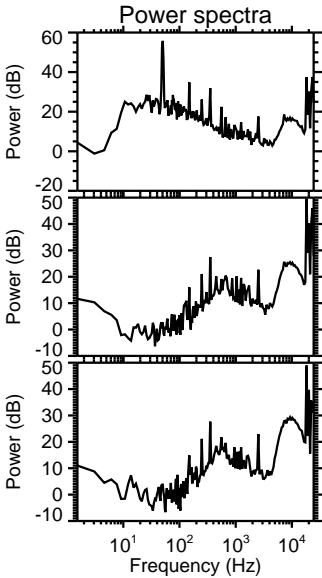
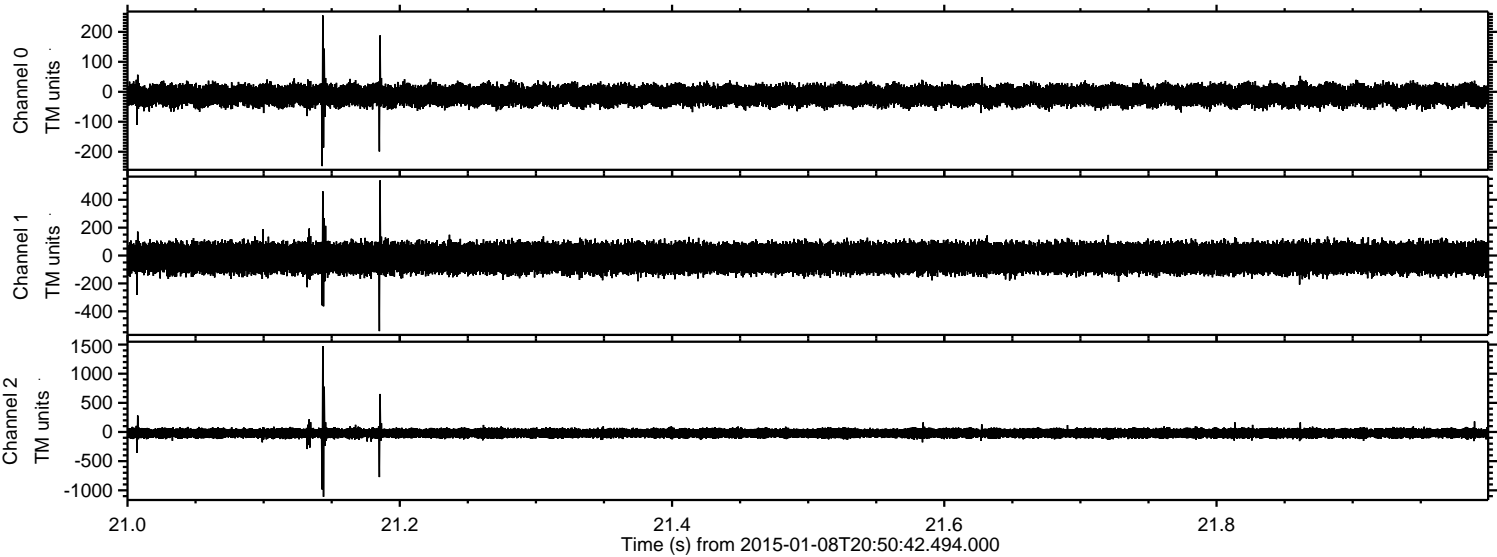


Channel 0
mn: -427
mx: 389
 μ : -12.2
 σ : 18.7

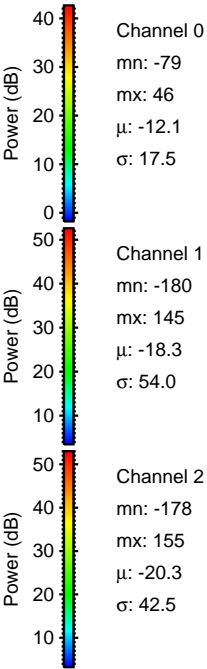
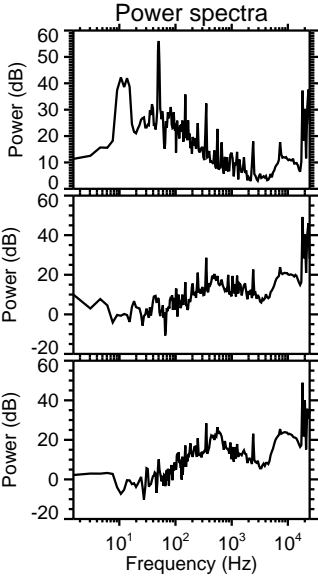
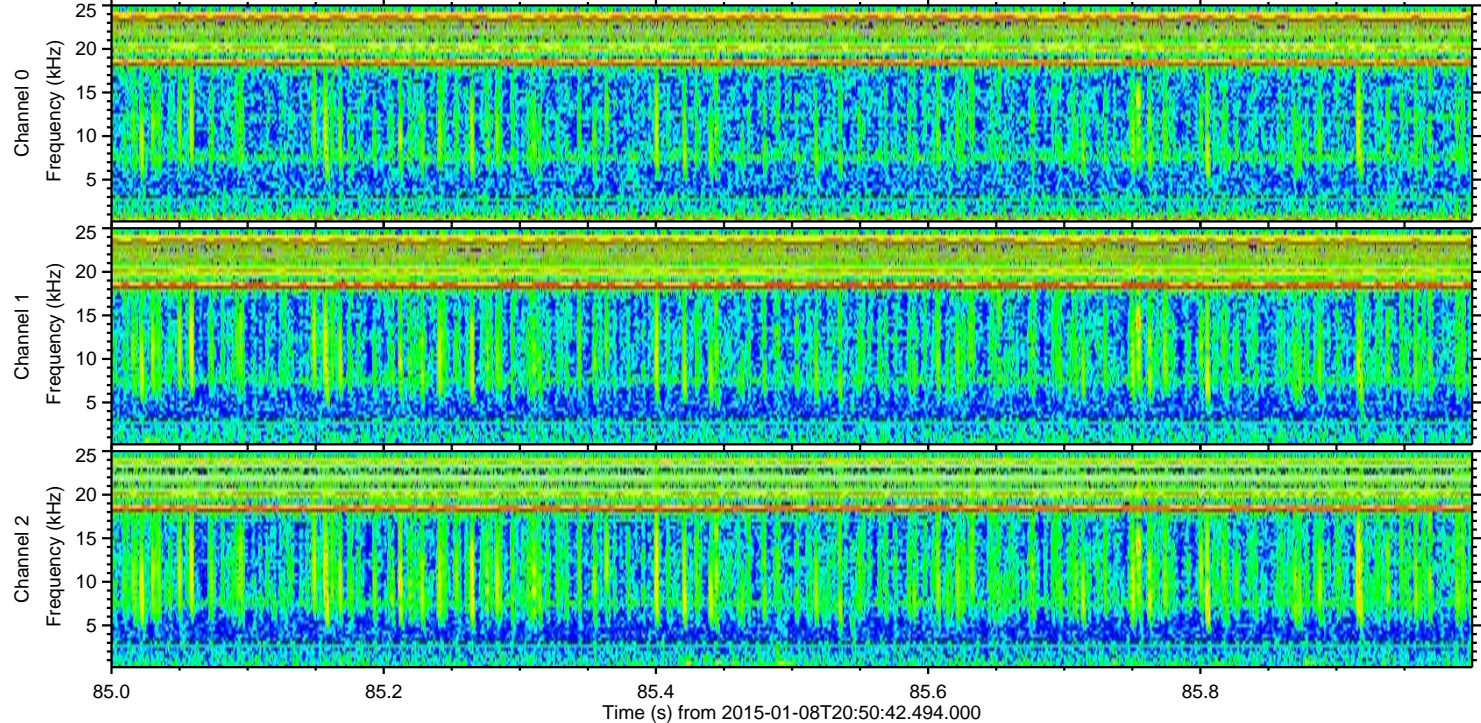
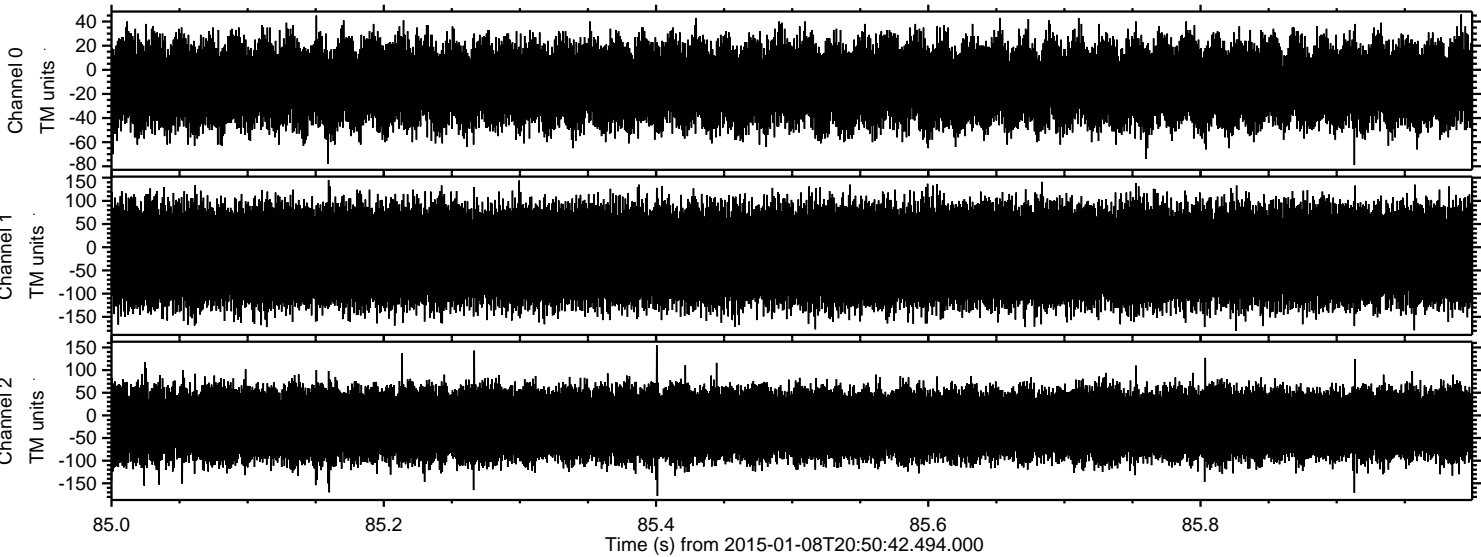
Channel 1
mn: -845
mx: 1194
 μ : -18.3
 σ : 56.9

Channel 2
mn: -1532
mx: 1929
 μ : -20.3
 σ : 50.8

Processed Thu Jan 8 21:59:07 2015 by ELM ver.2012-10-06 from 001__elm20150108_205041__dat00.bin



Processed Thu Jan 8 21:59:08 2015 by ELM ver.2012-10-06 from 001__elm20150108_205041__dat00.bin



Channel 0
mn: -79
mx: 46
 μ : -12.1
 σ : 17.5

Channel 1
mn: -180
mx: 145
 μ : -18.3
 σ : 54.0

Channel 2
mn: -178
mx: 155
 μ : -20.3
 σ : 42.5