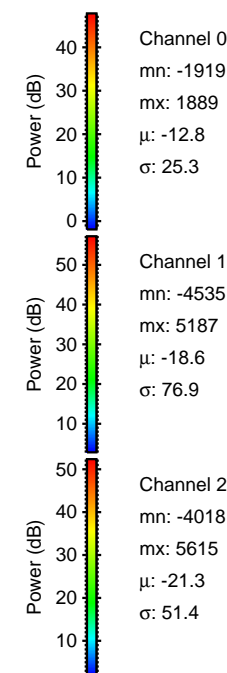
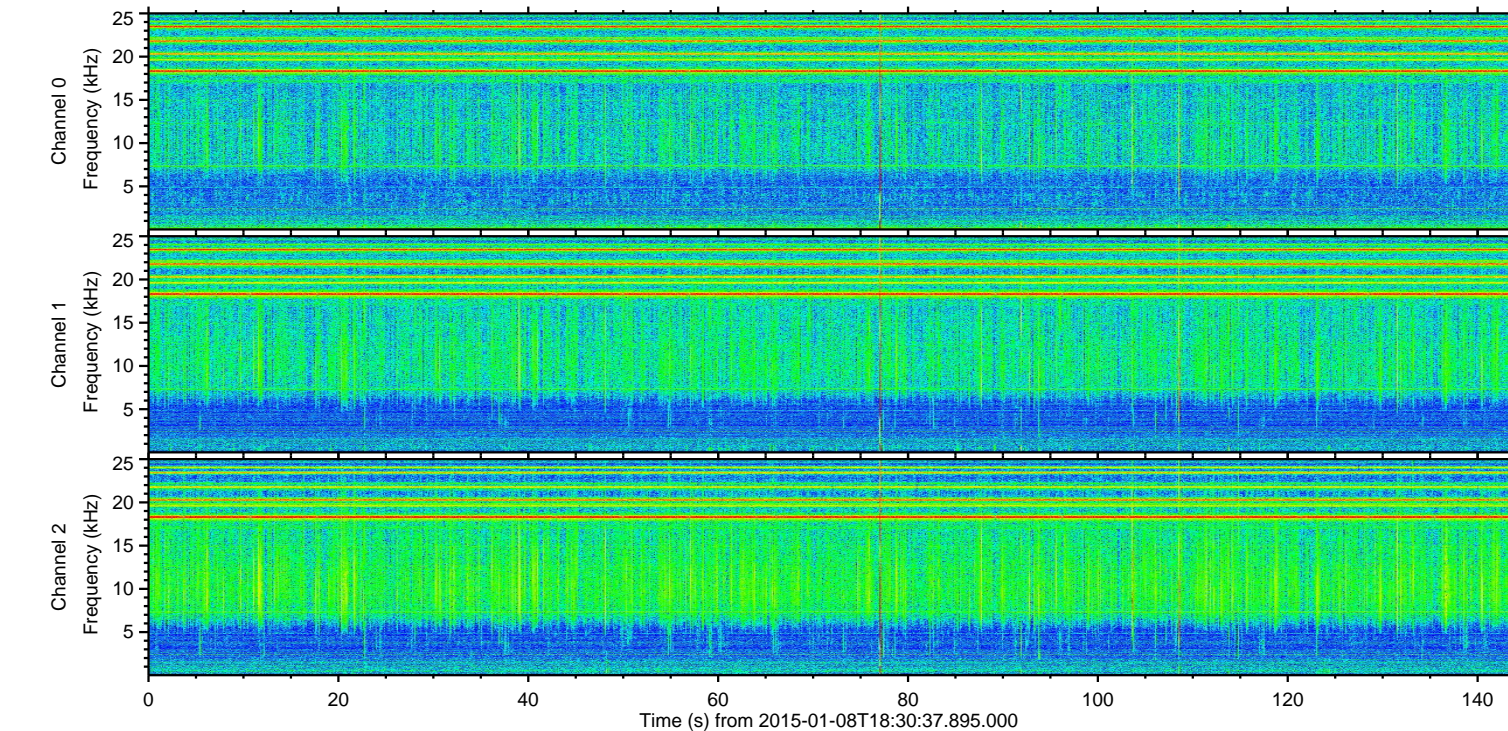
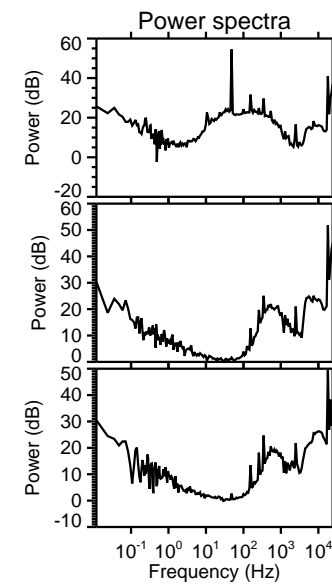
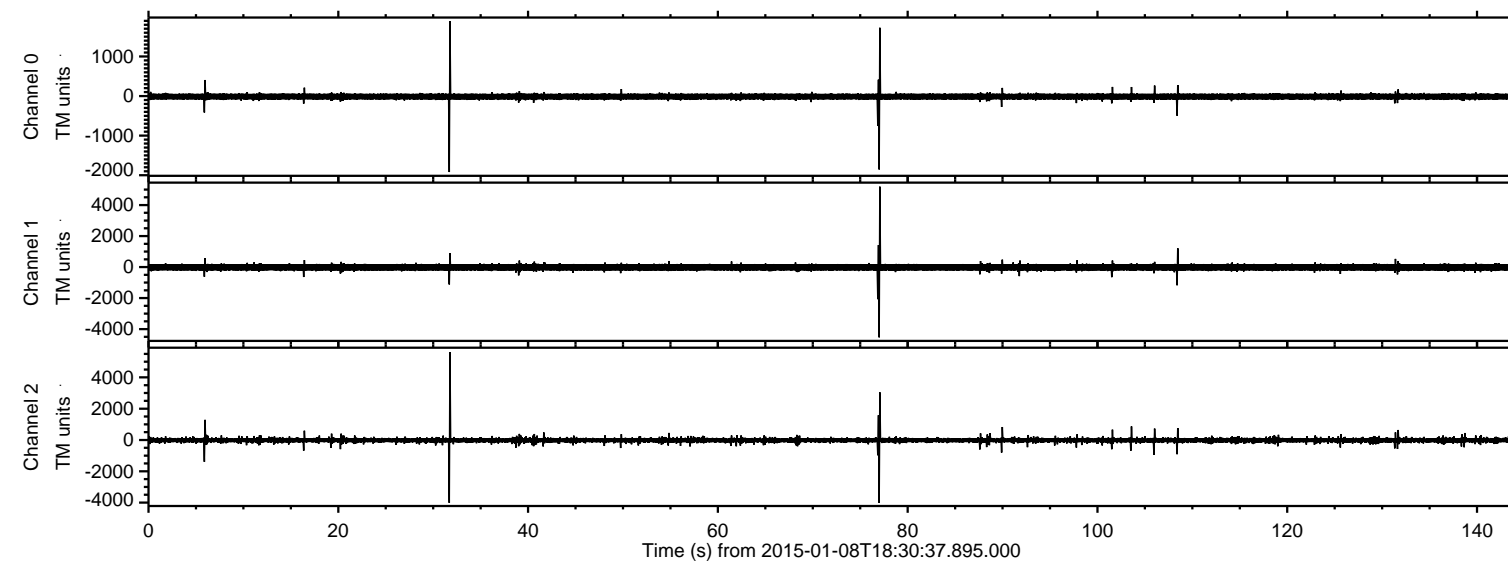


ELMAVAN 3D WAVEFORMS (Measured data sampled at 50 kHz) 49786 packets of 144 samples from 2015-01-08T18:30:37.895.000.

Processed Thu Jan 8 19:38:29 2015 by ELM ver.2012-10-06 from 001\_\_elm20150108\_183036\_\_dat00.bin



Channel 0  
mn: -1919  
mx: 1889  
 $\mu$ : -12.8  
 $\sigma$ : 25.3

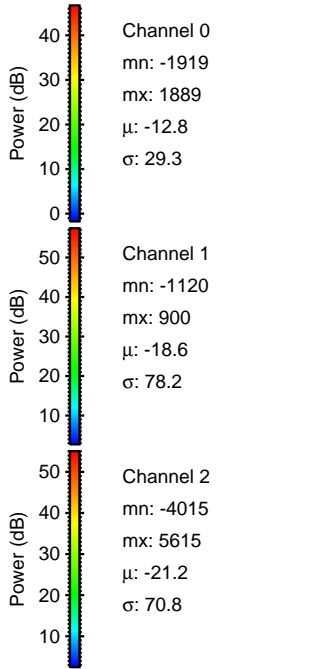
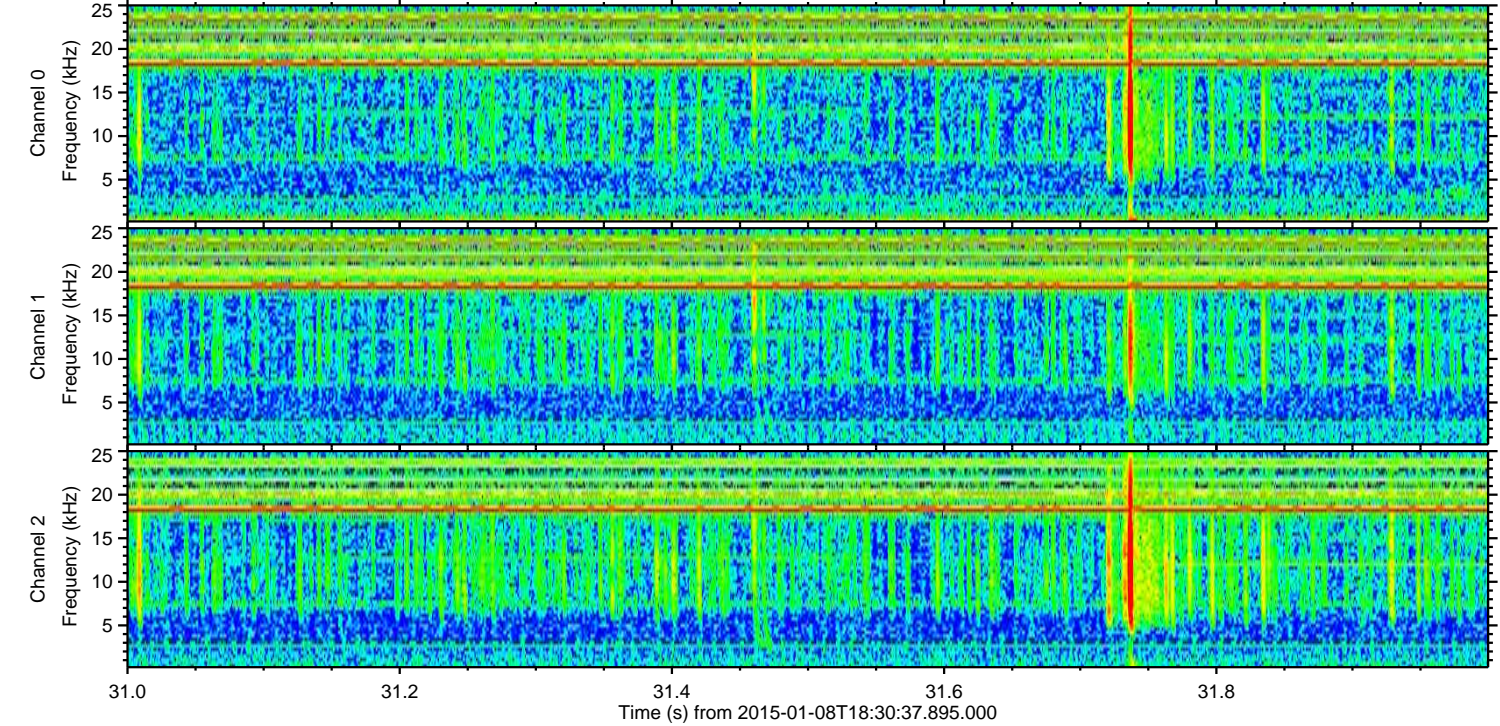
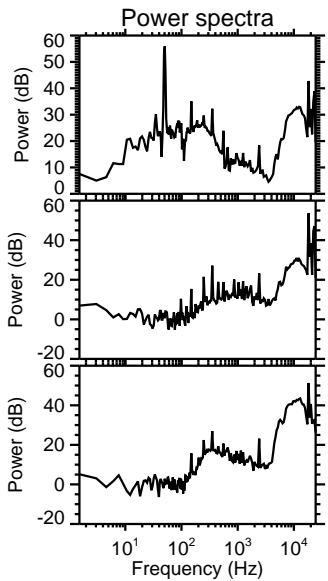
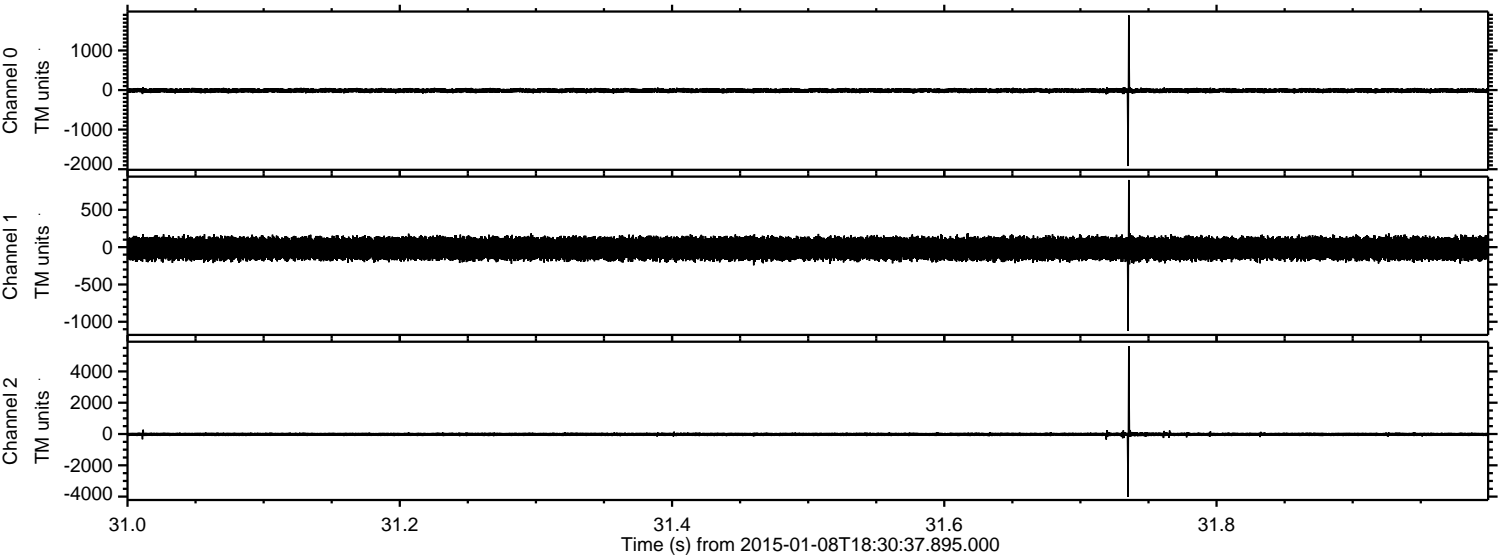
Channel 1  
mn: -4535  
mx: 5187  
 $\mu$ : -18.6  
 $\sigma$ : 76.9

Channel 2  
mn: -4018  
mx: 5615  
 $\mu$ : -21.3  
 $\sigma$ : 51.4



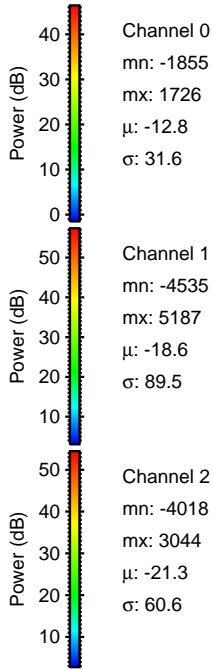
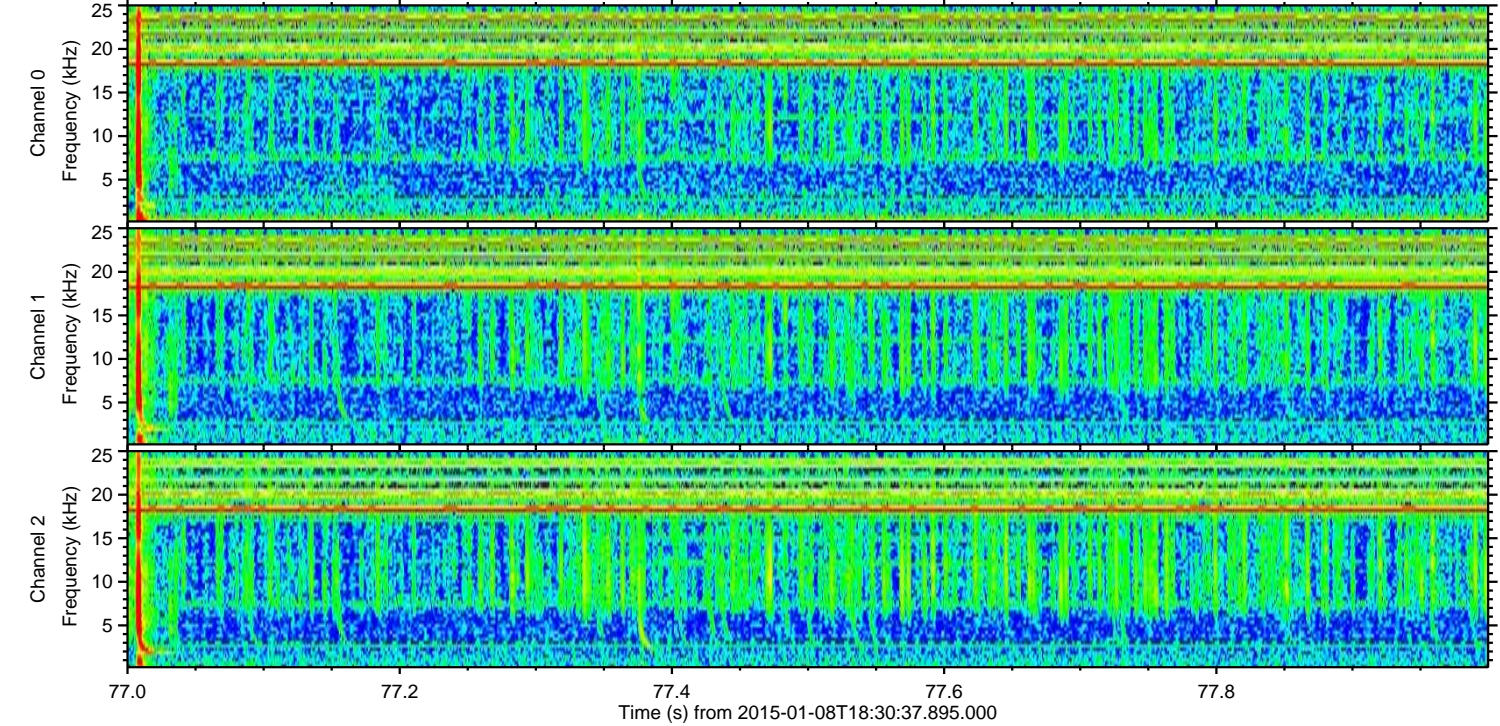
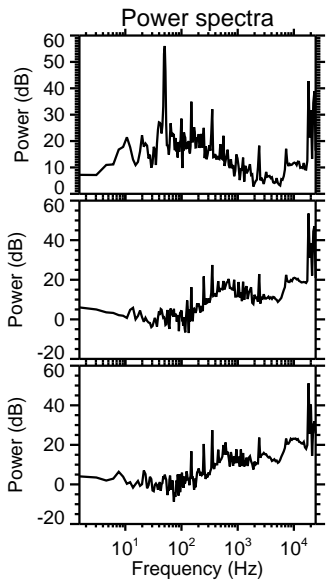
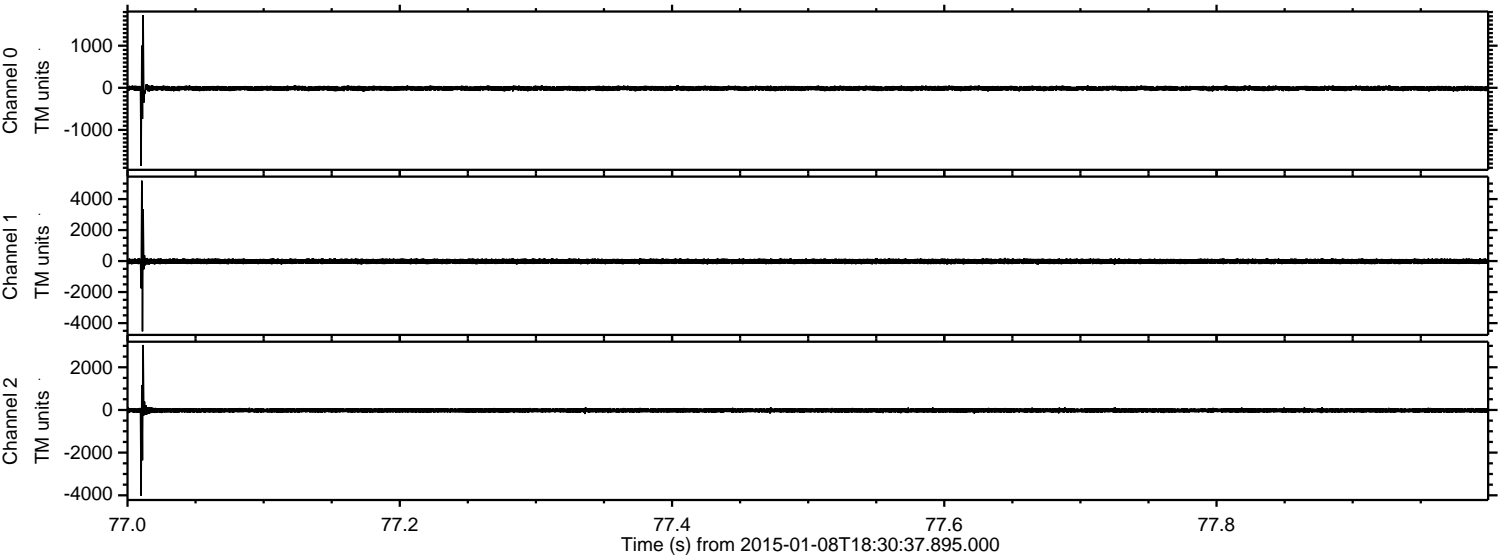
ELMAVAN 3D WAVEFORMS (Measured data sampled at 50 kHz) 49786 packets of 144 samples from 2015-01-08T18:30:37.895.000. Part 32/144

Processed Thu Jan 8 19:38:42 2015 by ELM ver.2012-10-06 from 001\_\_elm20150108\_183036\_\_dat00.bin





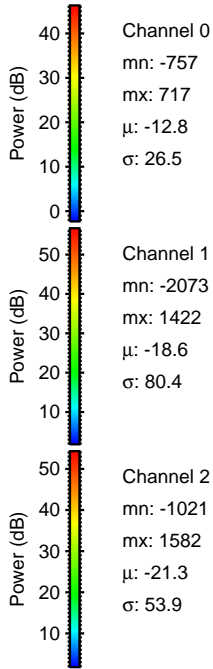
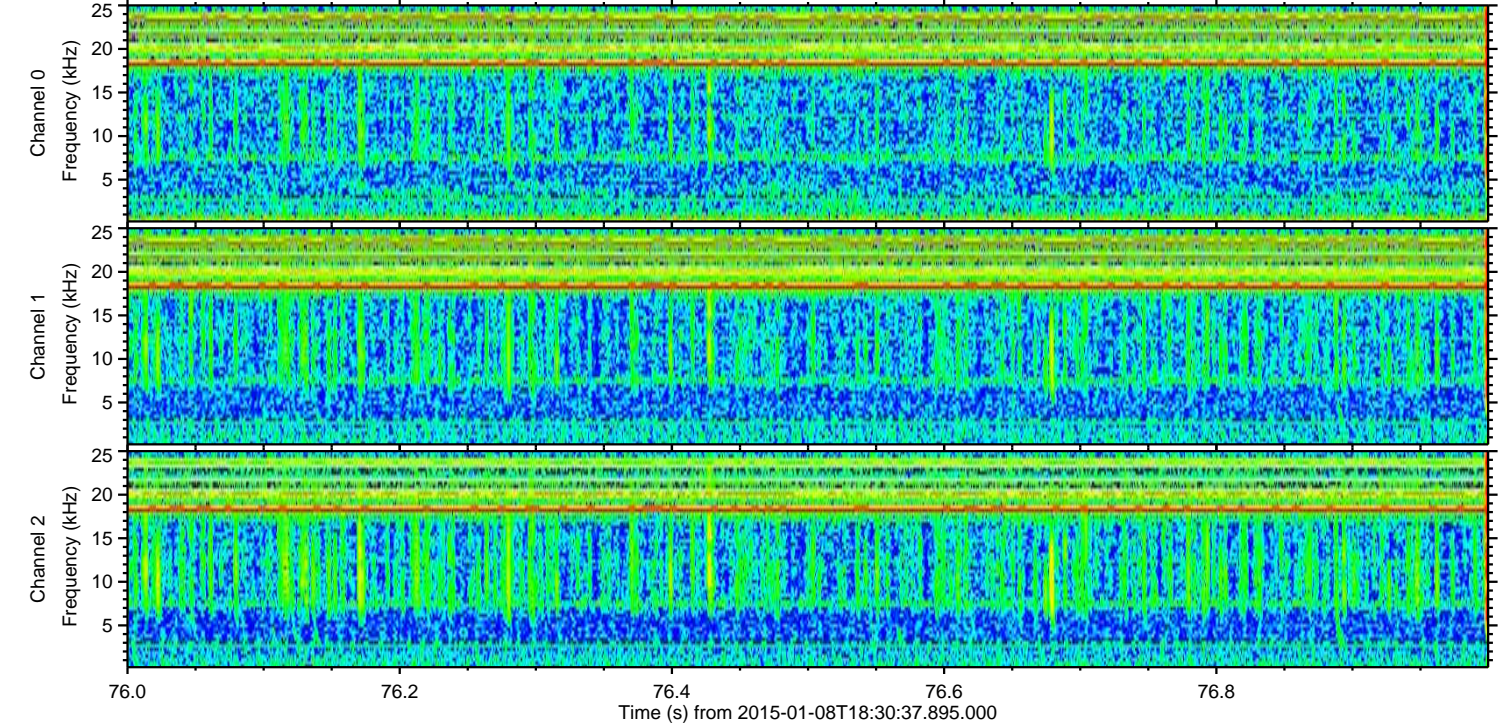
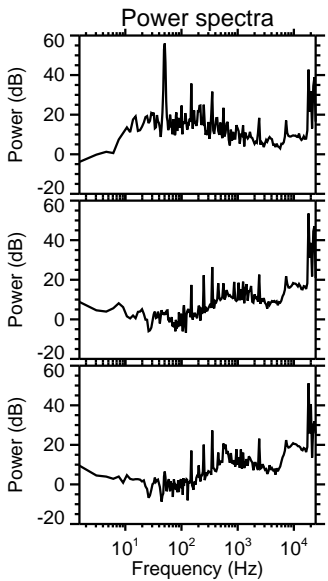
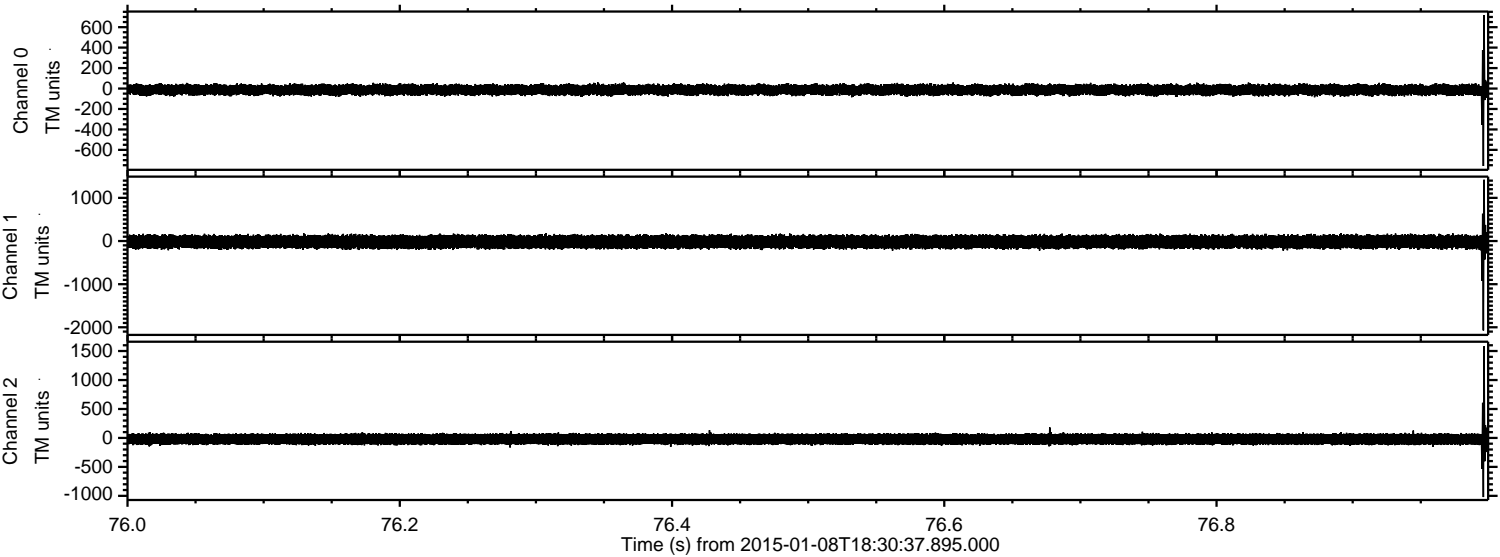
Processed Thu Jan 8 19:38:42 2015 by ELM ver.2012-10-06 from 001\_\_elm20150108\_183036\_\_dat00.bin





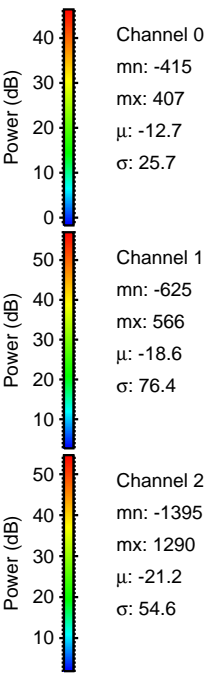
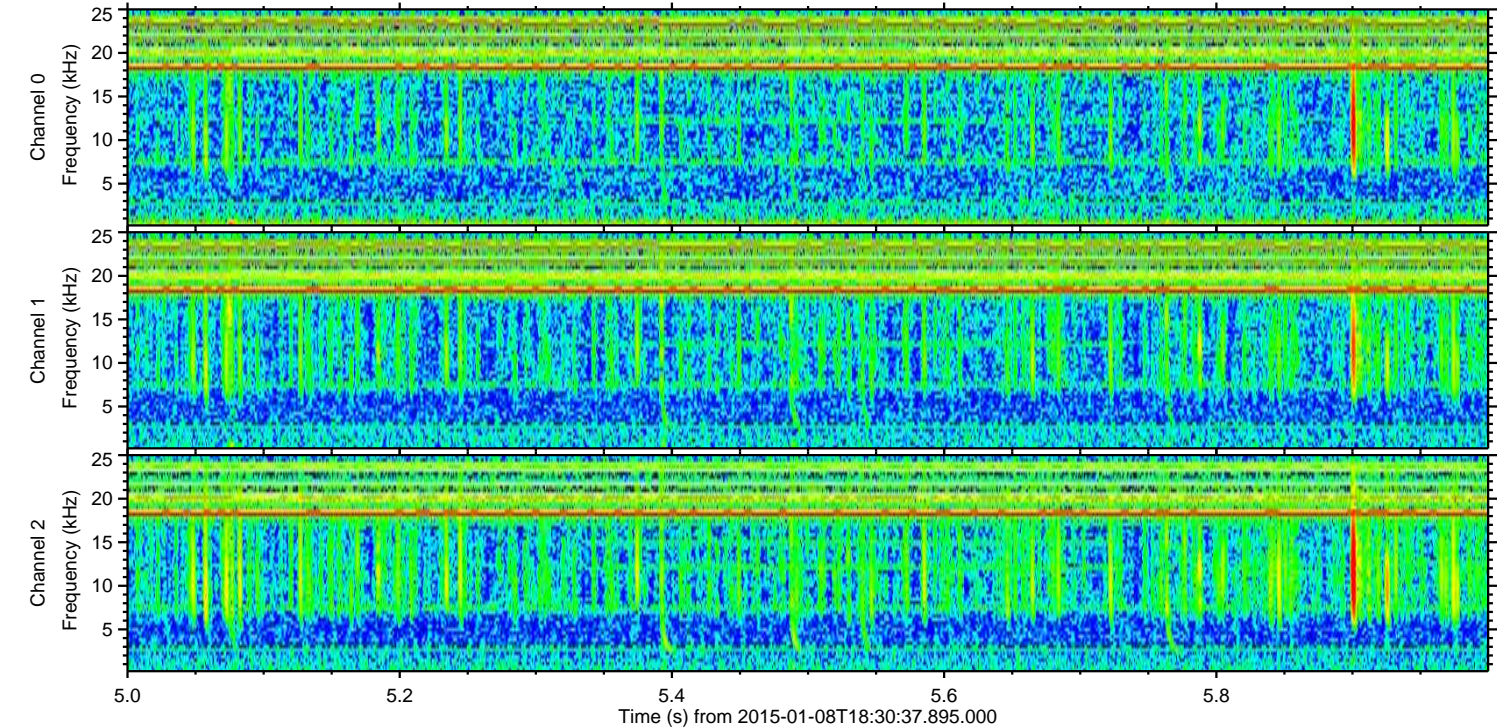
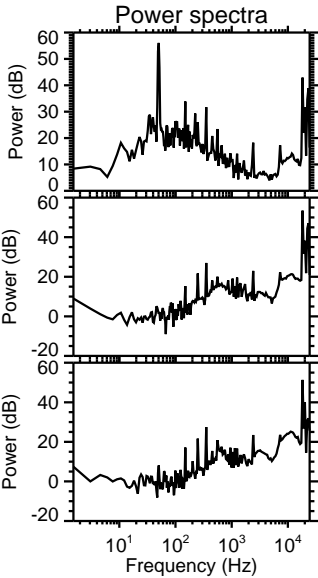
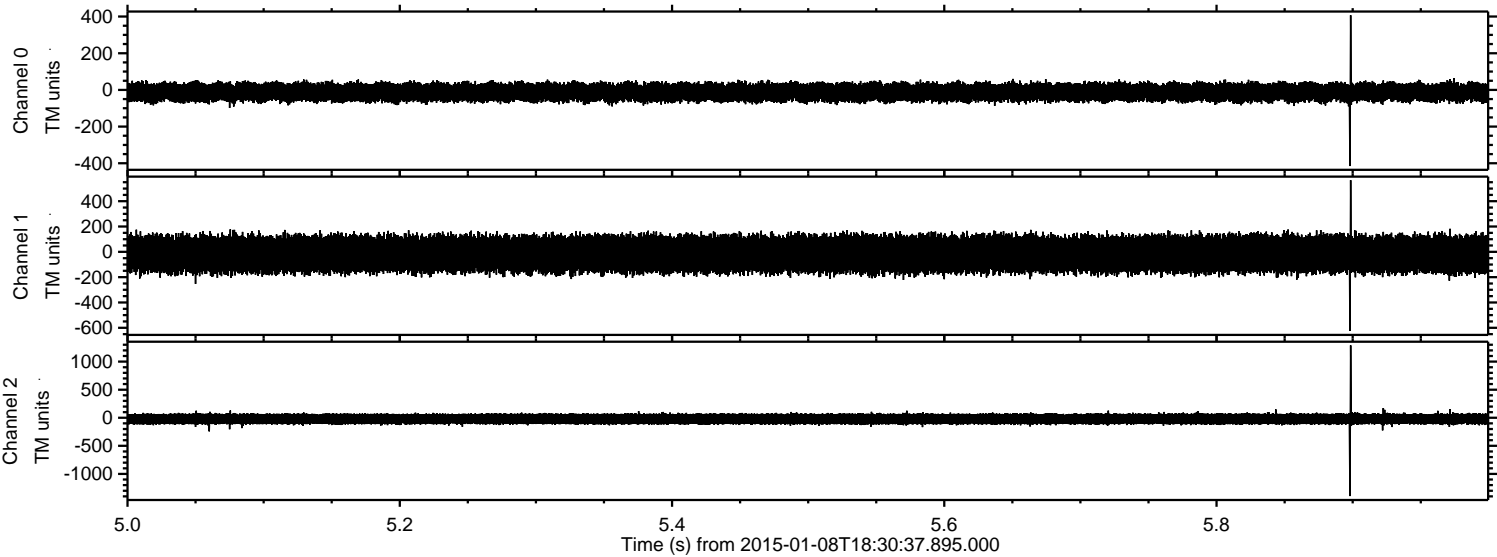
ELMAVAN 3D WAVEFORMS (Measured data sampled at 50 kHz) 49786 packets of 144 samples from 2015-01-08T18:30:37.895.000. Part 77/144

Processed Thu Jan 8 19:38:43 2015 by ELM ver.2012-10-06 from 001\_\_elm20150108\_183036\_\_dat00.bin



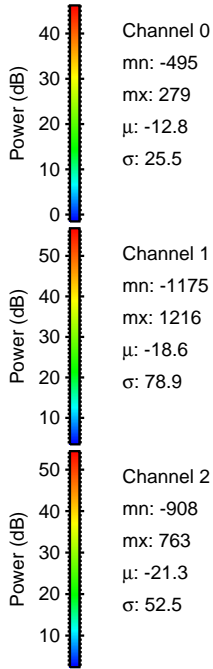
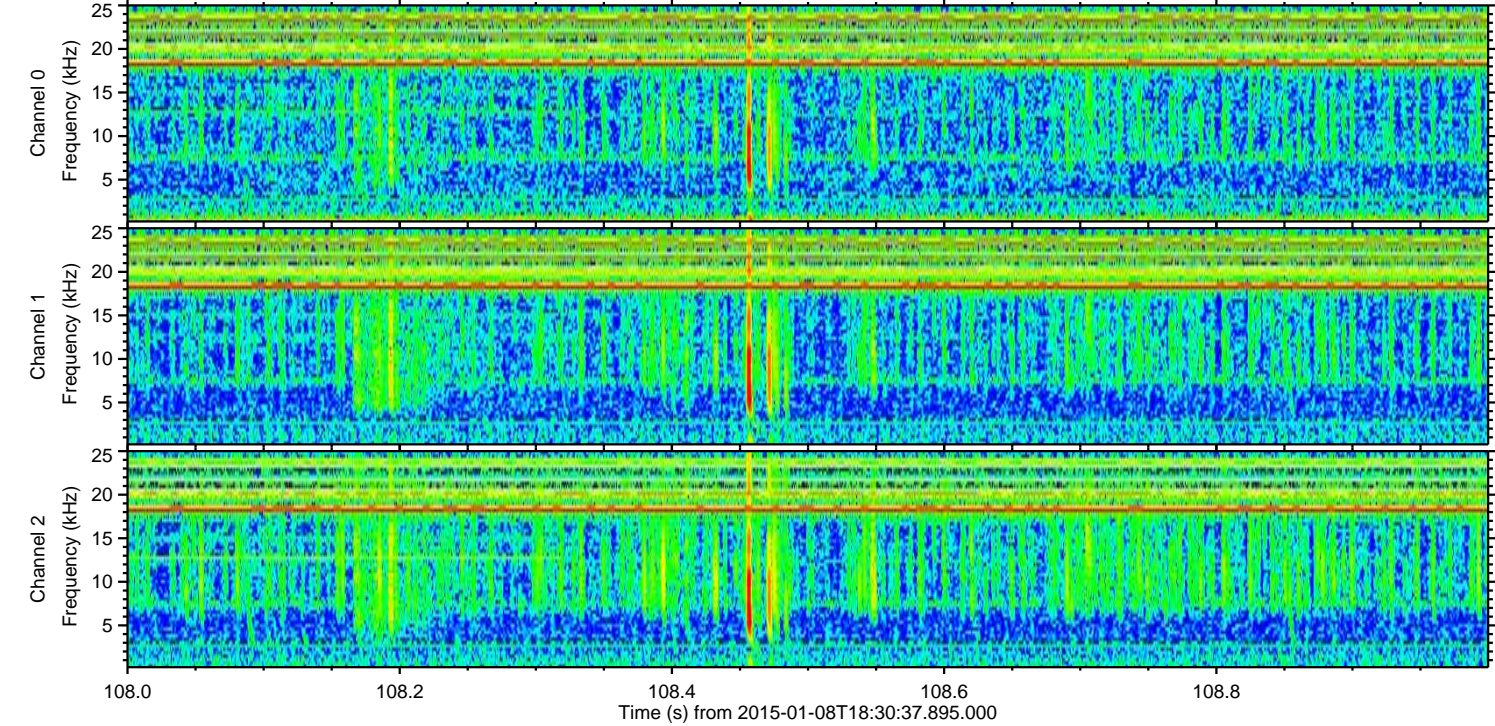
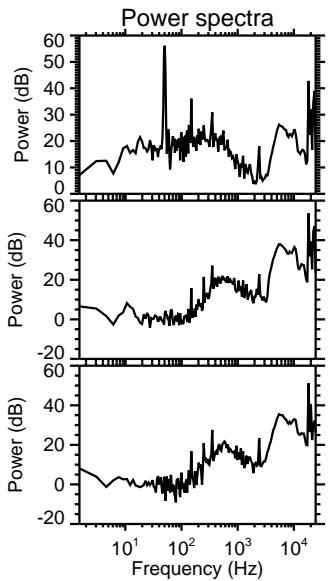
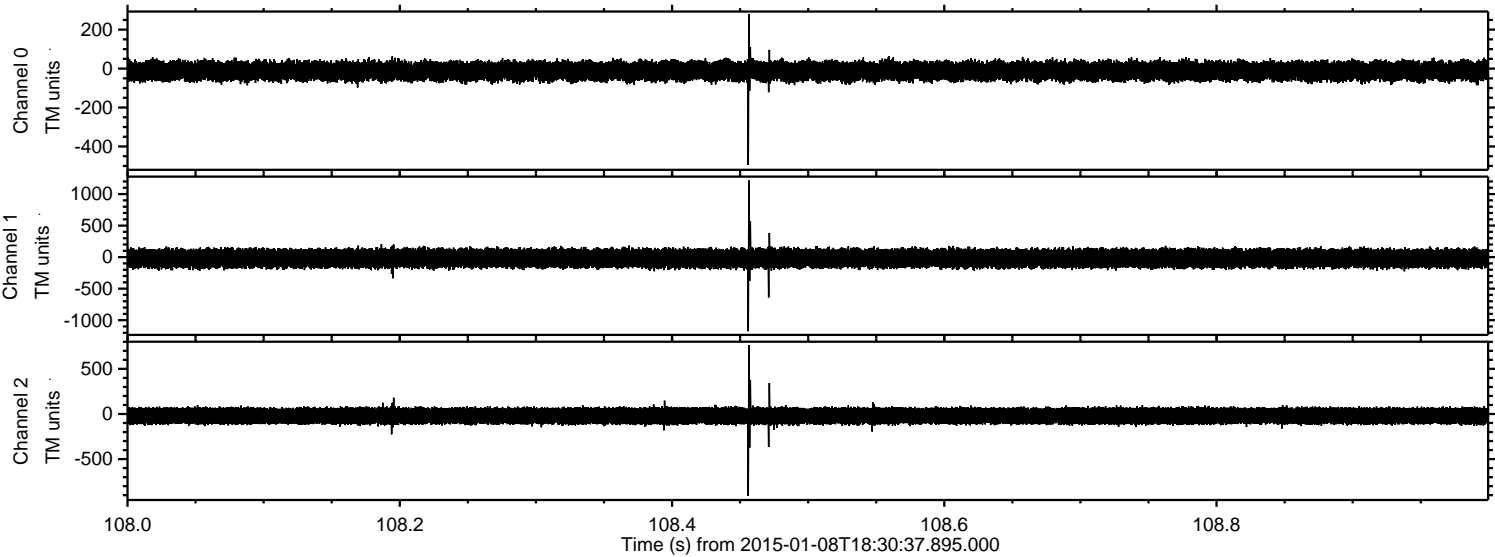


Processed Thu Jan 8 19:38:44 2015 by ELM ver.2012-10-06 from 001\_\_elm20150108\_183036\_\_dat00.bin





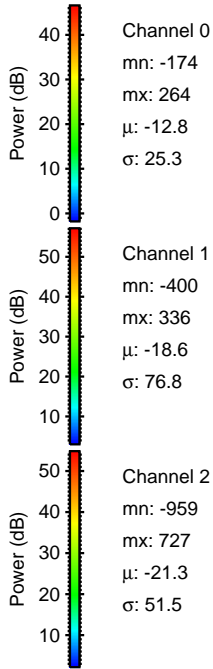
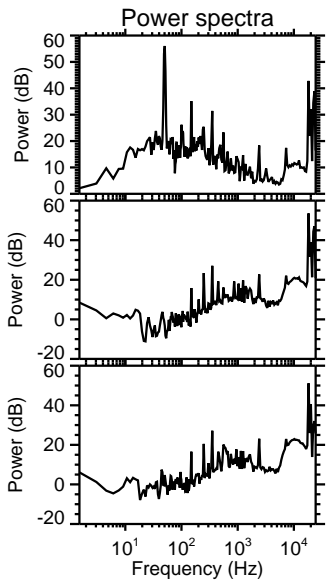
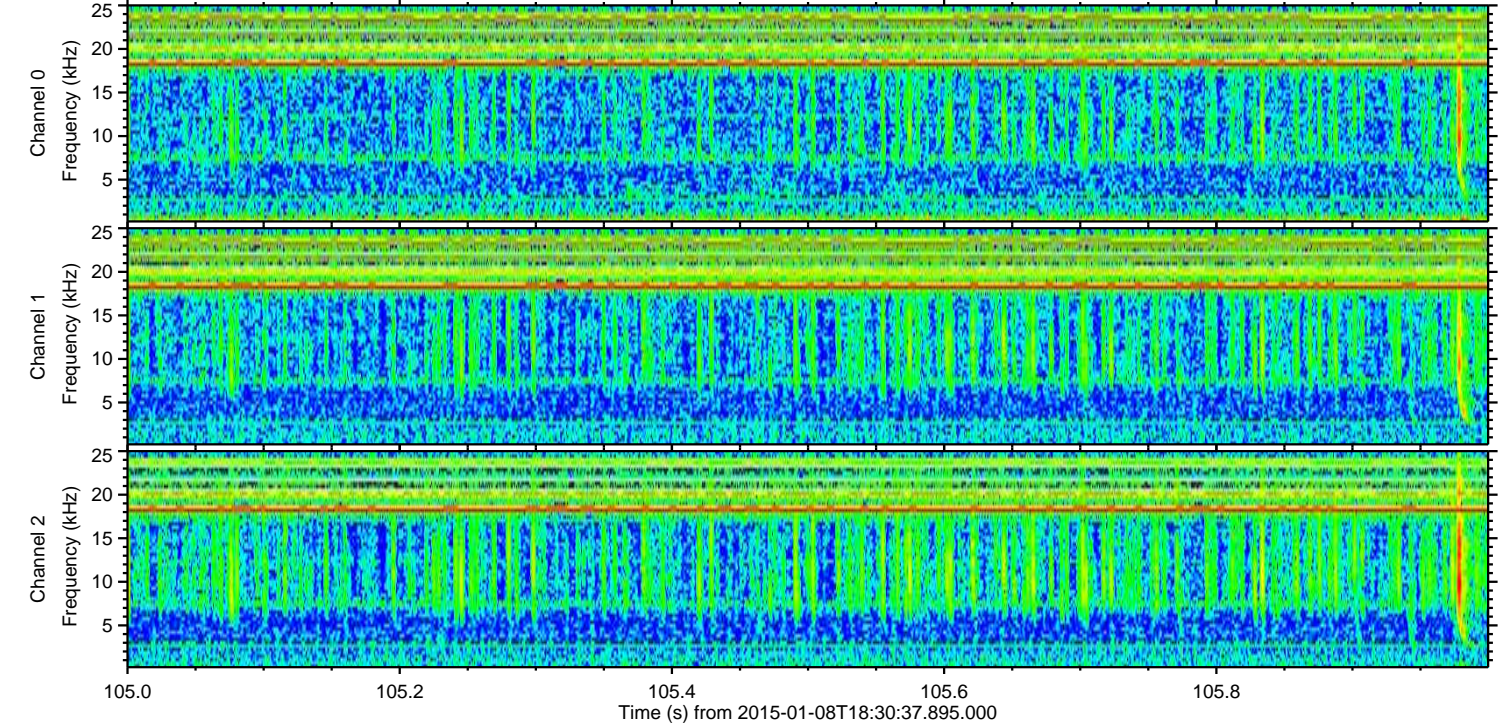
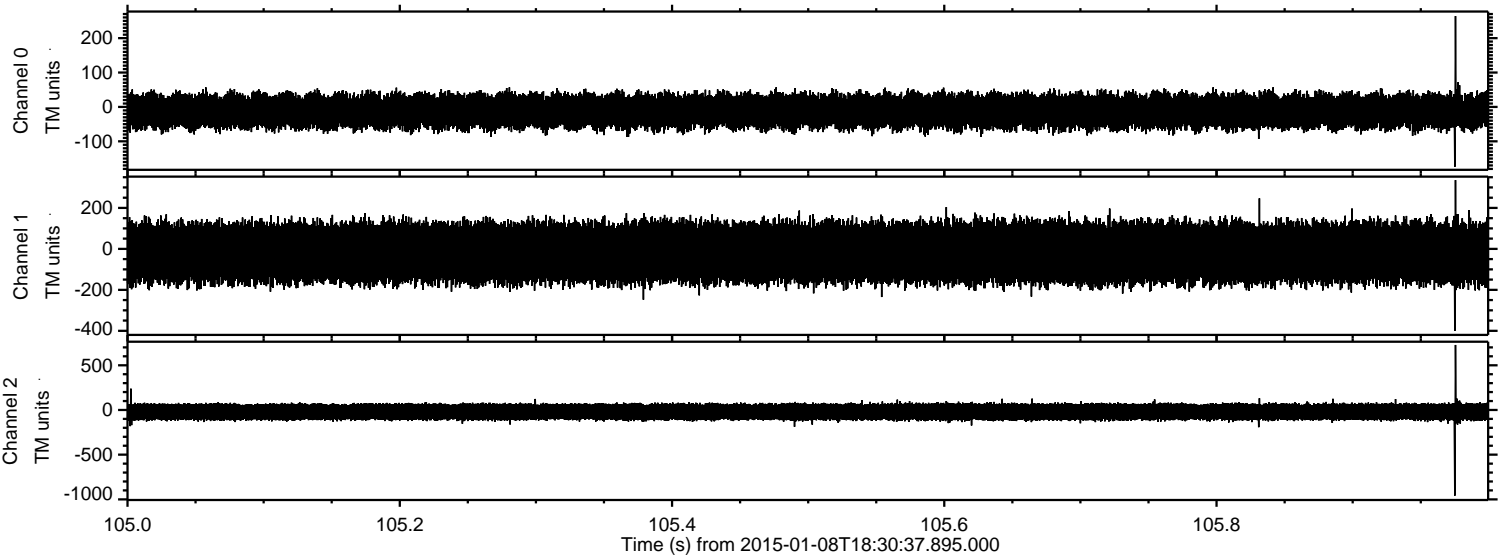
Processed Thu Jan 8 19:38:45 2015 by ELM ver.2012-10-06 from 001\_\_elm20150108\_183036\_\_dat00.bin





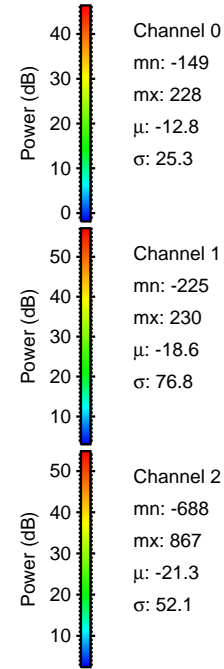
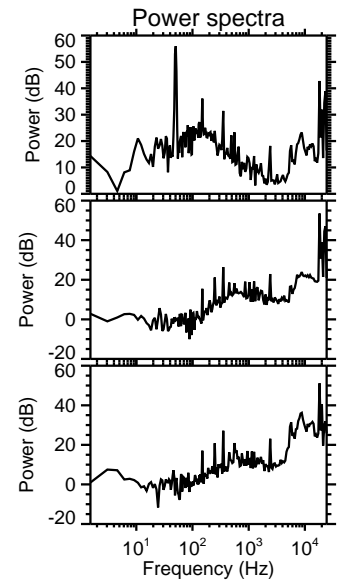
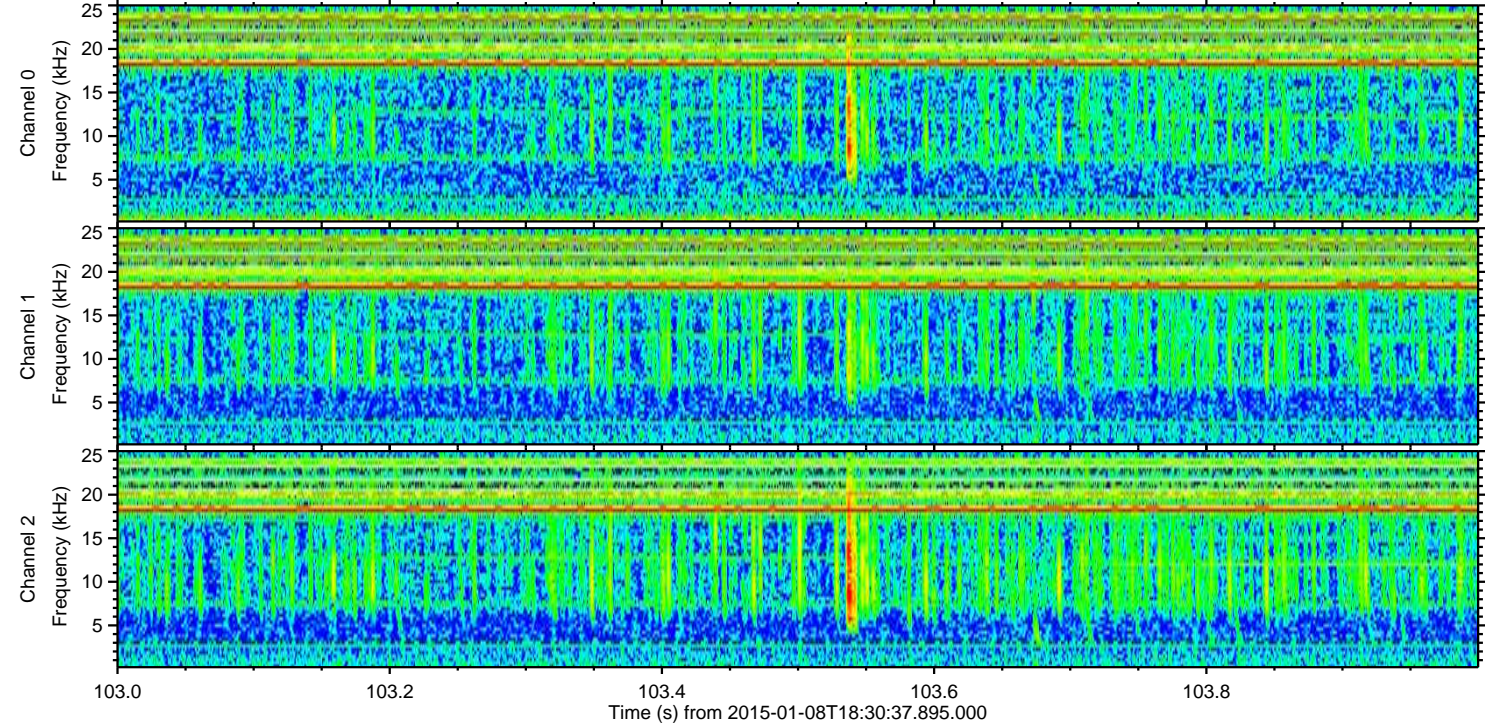
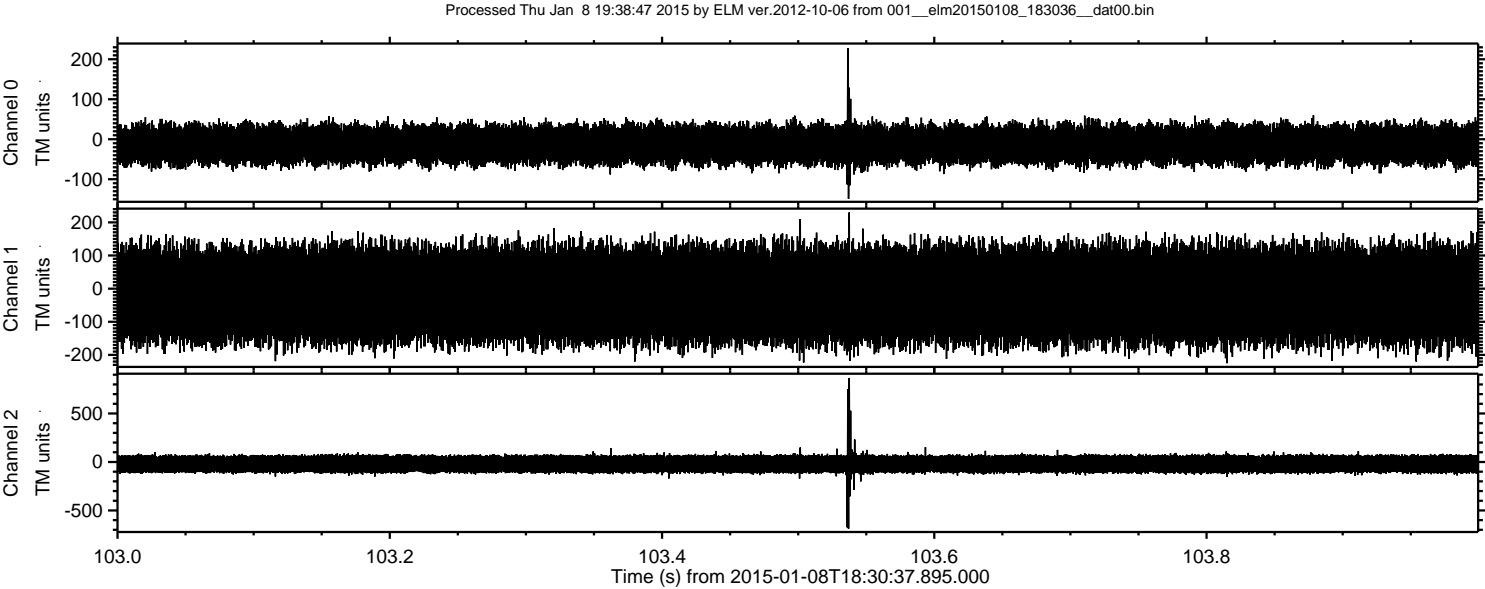
ELMAVAN 3D WAVEFORMS (Measured data sampled at 50 kHz) 49786 packets of 144 samples from 2015-01-08T18:30:37.895.000. Part 106/144

Processed Thu Jan 8 19:38:46 2015 by ELM ver.2012-10-06 from 001\_\_elm20150108\_183036\_\_dat00.bin





ELMAVAN 3D WAVEFORMS (Measured data sampled at 50 kHz) 49786 packets of 144 samples from 2015-01-08T18:30:37.895.000. Part 104/144



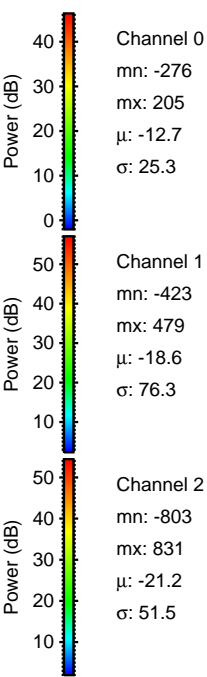
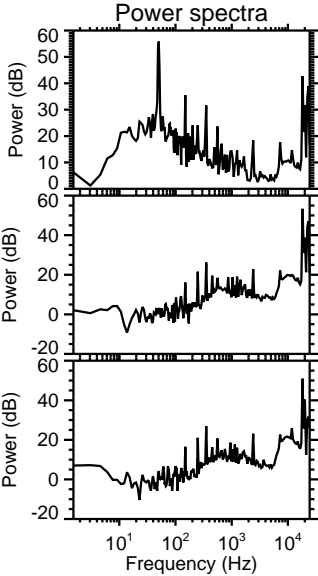
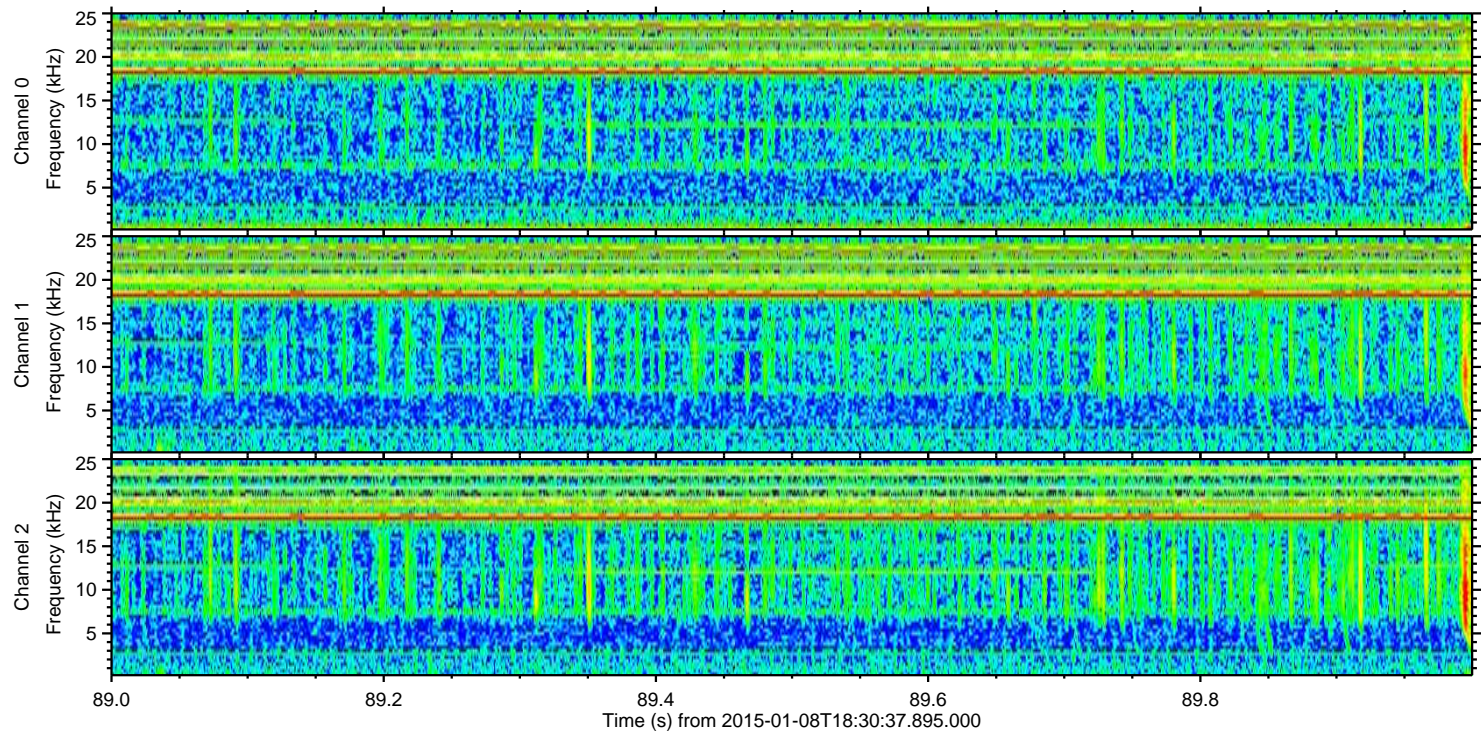
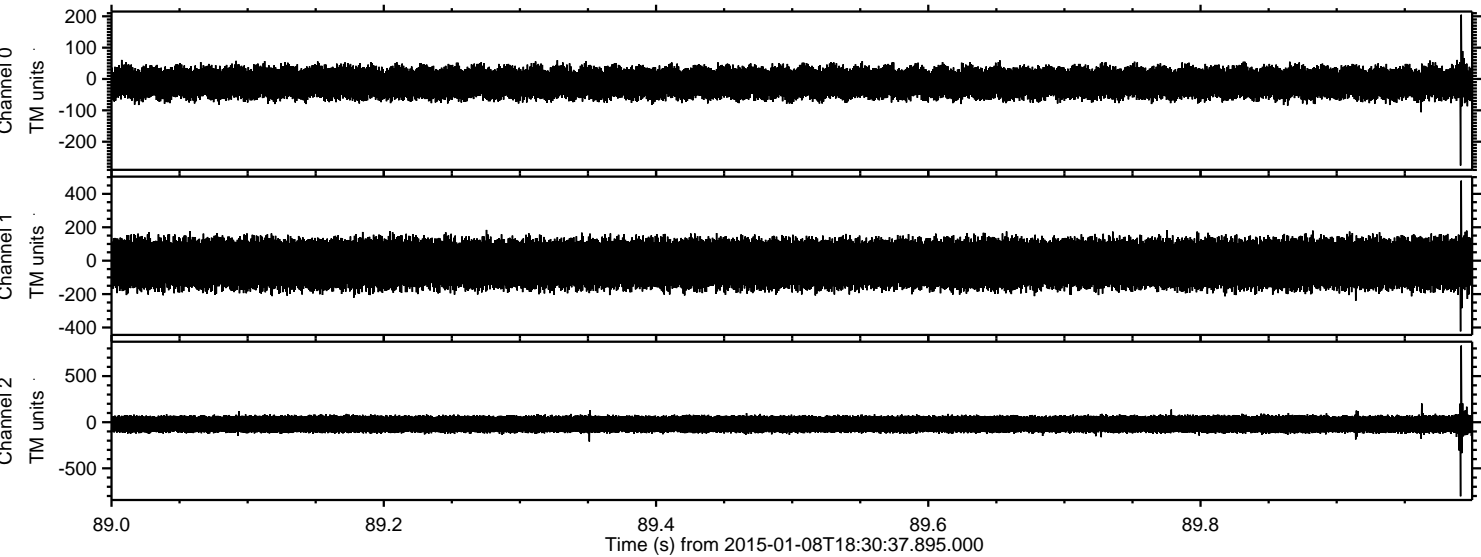
Channel 0  
mn: -149  
mx: 228  
 $\mu$ : -12.8  
 $\sigma$ : 25.3

Channel 1  
mn: -225  
mx: 230  
 $\mu$ : -18.6  
 $\sigma$ : 76.8

Channel 2  
mn: -688  
mx: 867  
 $\mu$ : -21.3  
 $\sigma$ : 52.1



Processed Thu Jan 8 19:38:48 2015 by ELM ver.2012-10-06 from 001\_\_elm20150108\_183036\_\_dat00.bin



Power spectra

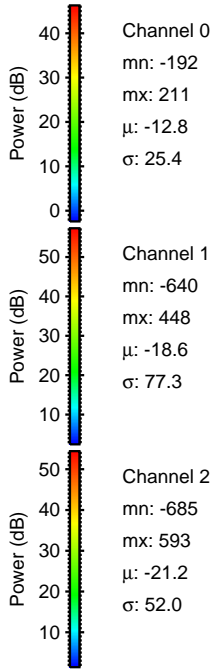
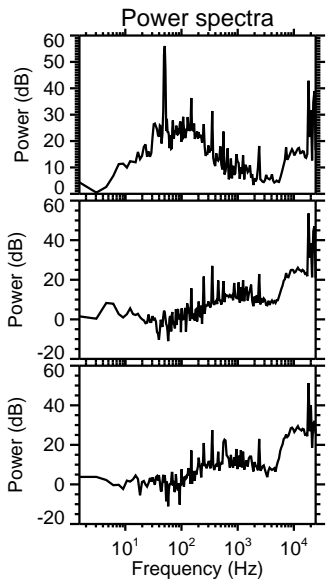
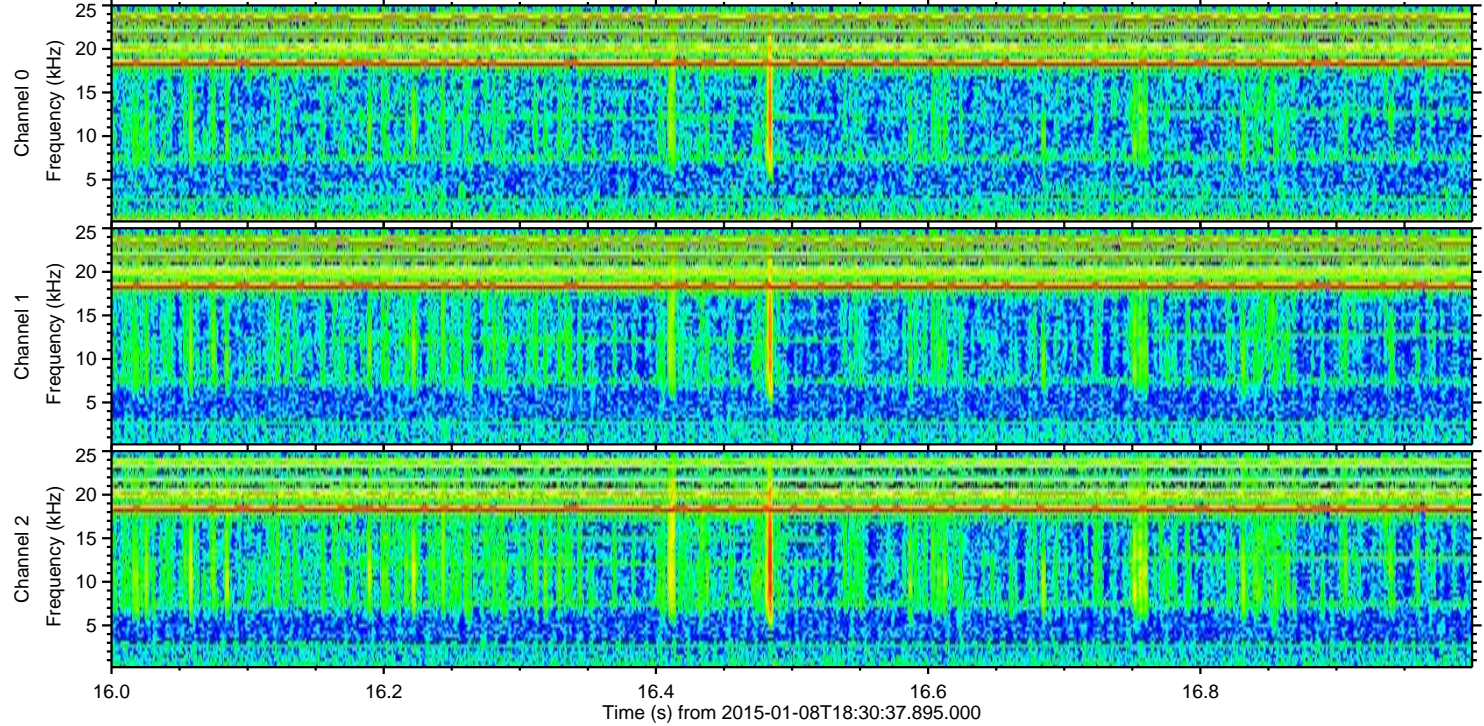
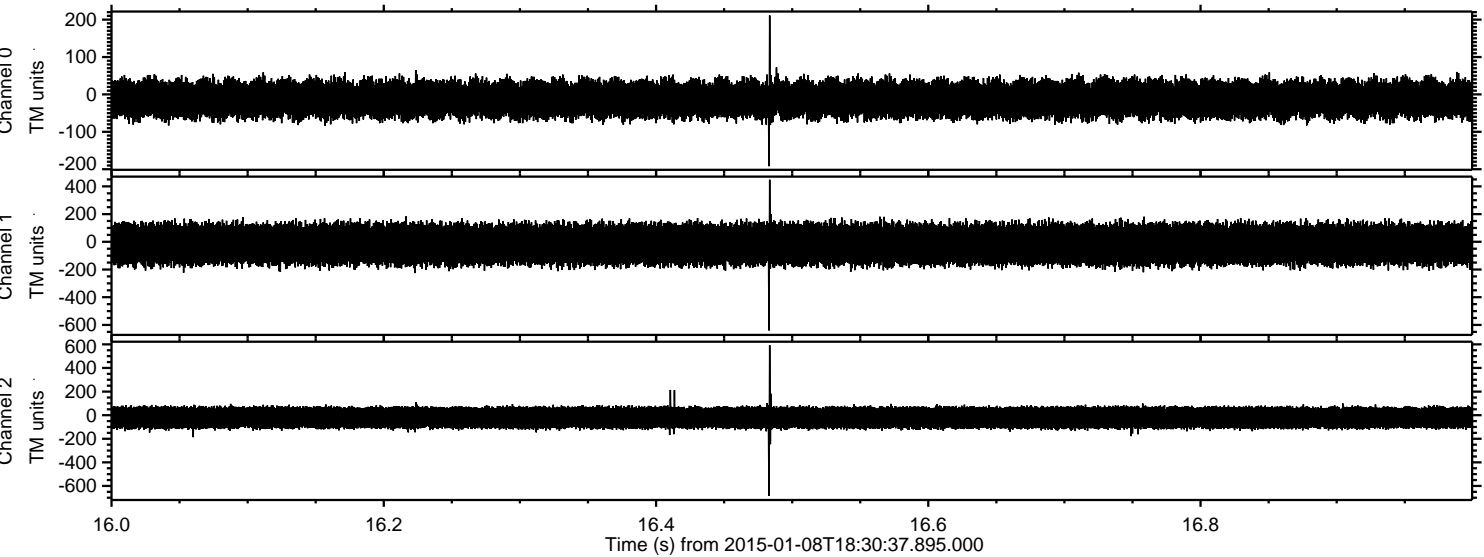
Channel 0  
mn: -276  
mx: 205  
 $\mu$ : -12.7  
 $\sigma$ : 25.3

Channel 1  
mn: -423  
mx: 479  
 $\mu$ : -18.6  
 $\sigma$ : 76.3

Channel 2  
mn: -803  
mx: 831  
 $\mu$ : -21.2  
 $\sigma$ : 51.5



Processed Thu Jan 8 19:38:49 2015 by ELM ver.2012-10-06 from 001\_\_elm20150108\_183036\_\_dat00.bin



Channel 0  
mn: -192  
mx: 211  
 $\mu$ : -12.8  
 $\sigma$ : 25.4

Channel 1  
mn: -640  
mx: 448  
 $\mu$ : -18.6  
 $\sigma$ : 77.3

Channel 2  
mn: -685  
mx: 593  
 $\mu$ : -21.2  
 $\sigma$ : 52.0



ELMAVAN 3D WAVEFORMS (Measured data sampled at 50 kHz) 49786 packets of 144 samples from 2015-01-08T18:30:37.895.000. Part 3/144

Processed Thu Jan 8 19:38:50 2015 by ELM ver.2012-10-06 from 001\_\_elm20150108\_183036\_\_dat00.bin

