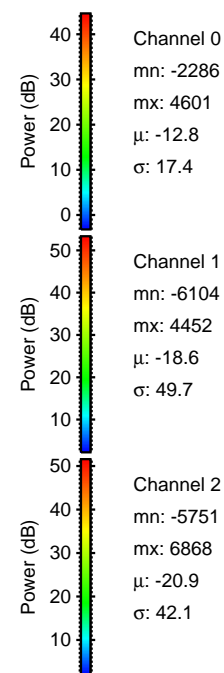
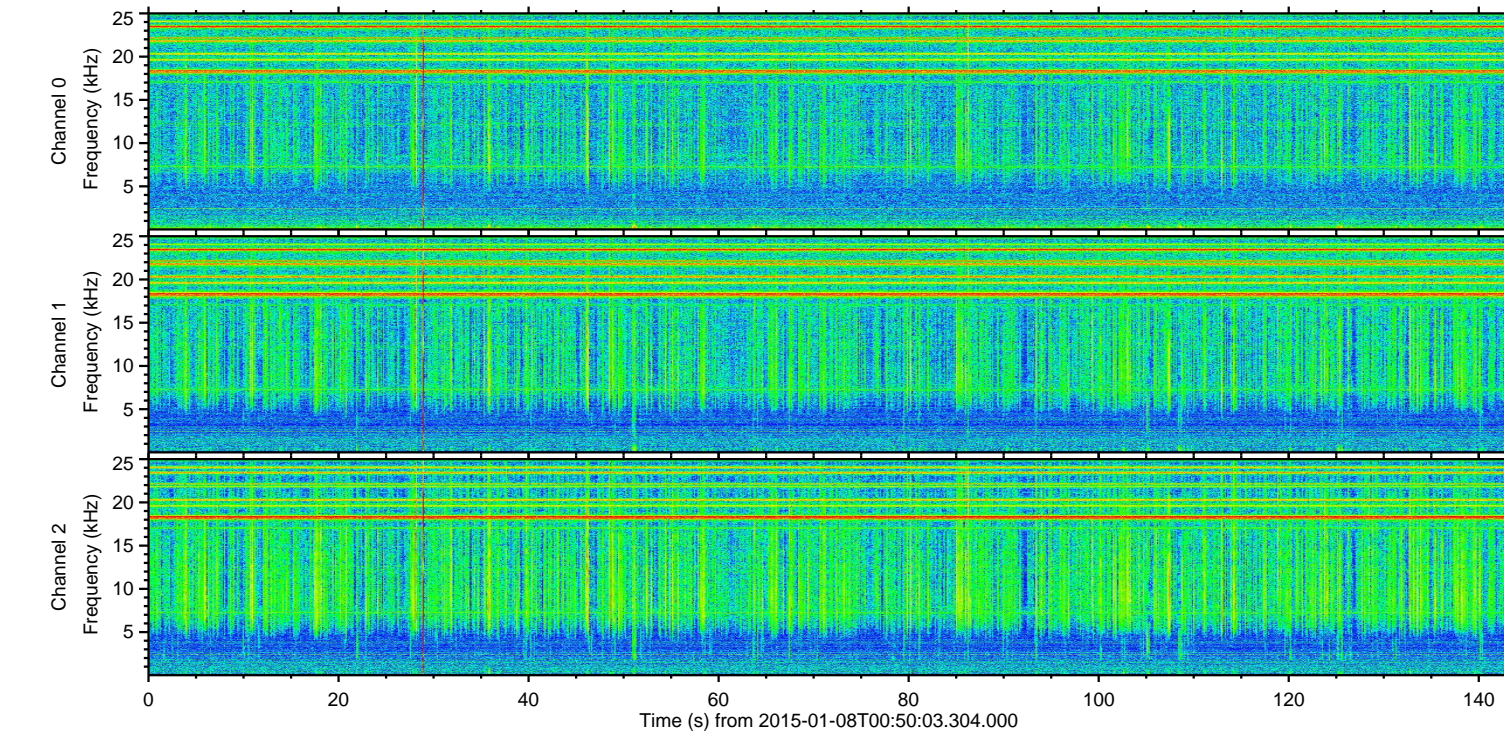
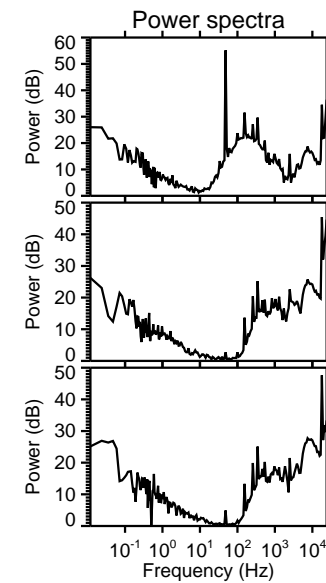
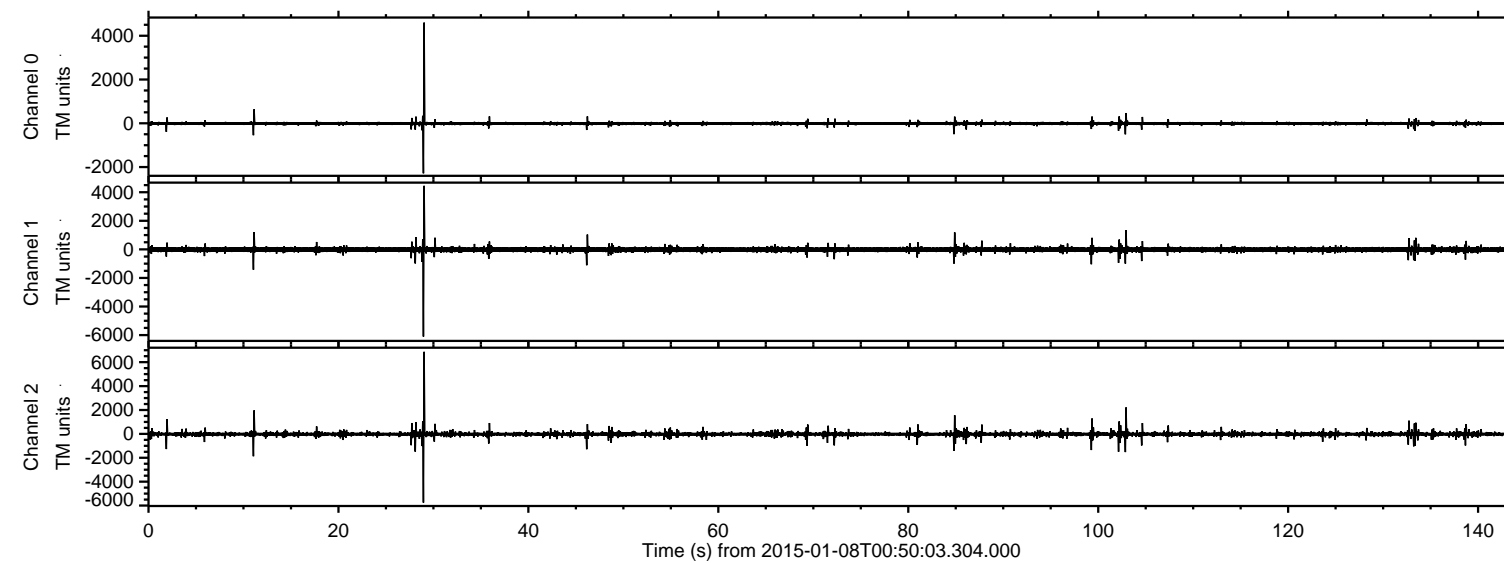


# ELMAVAN 3D WAVEFORMS (Measured data sampled at 50 kHz) 49747 packets of 144 samples from 2015-01-08T00:50:03.304.000.

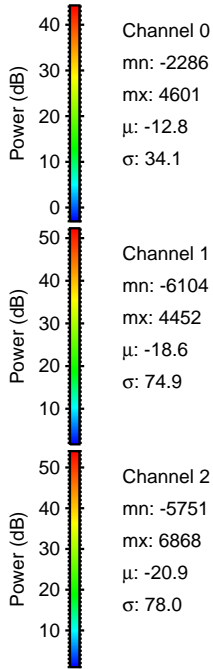
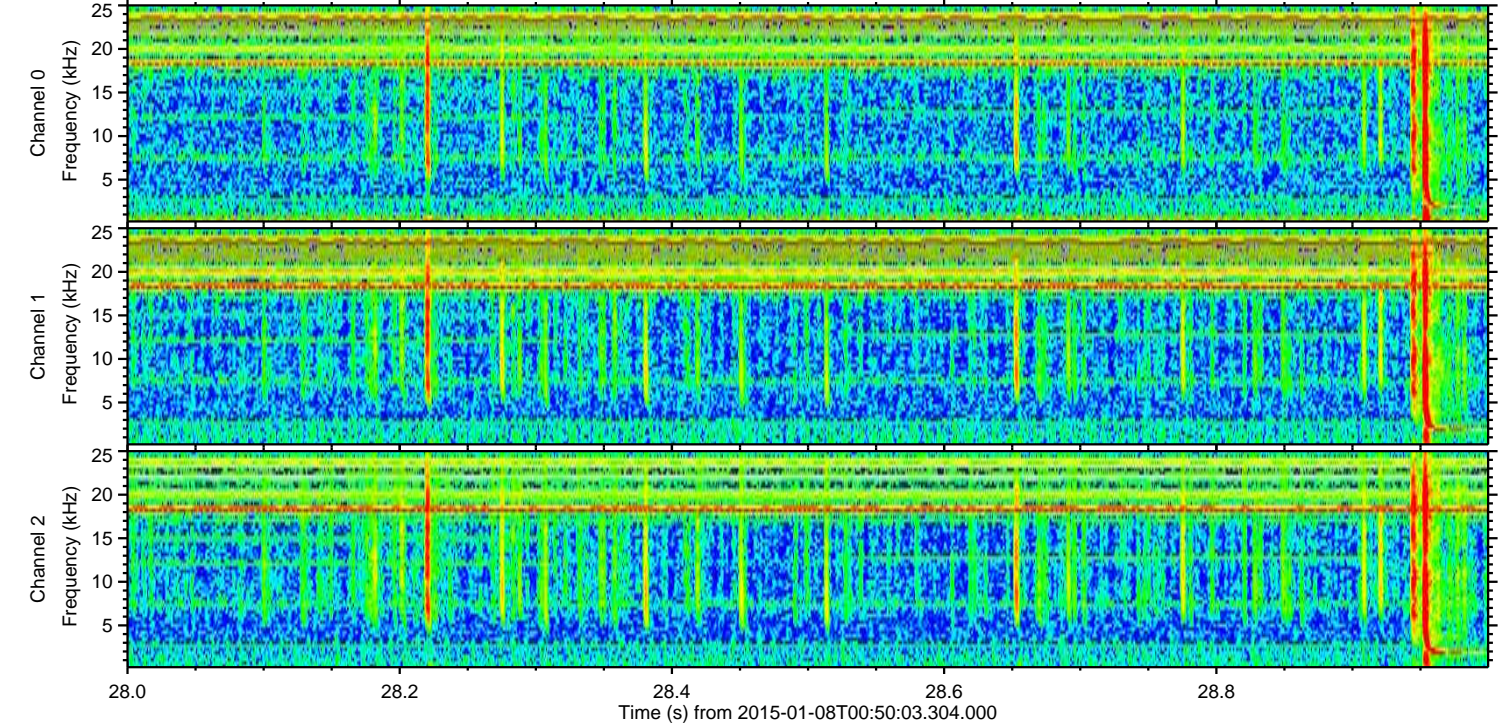
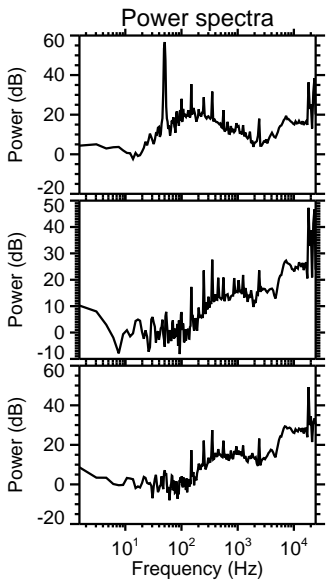
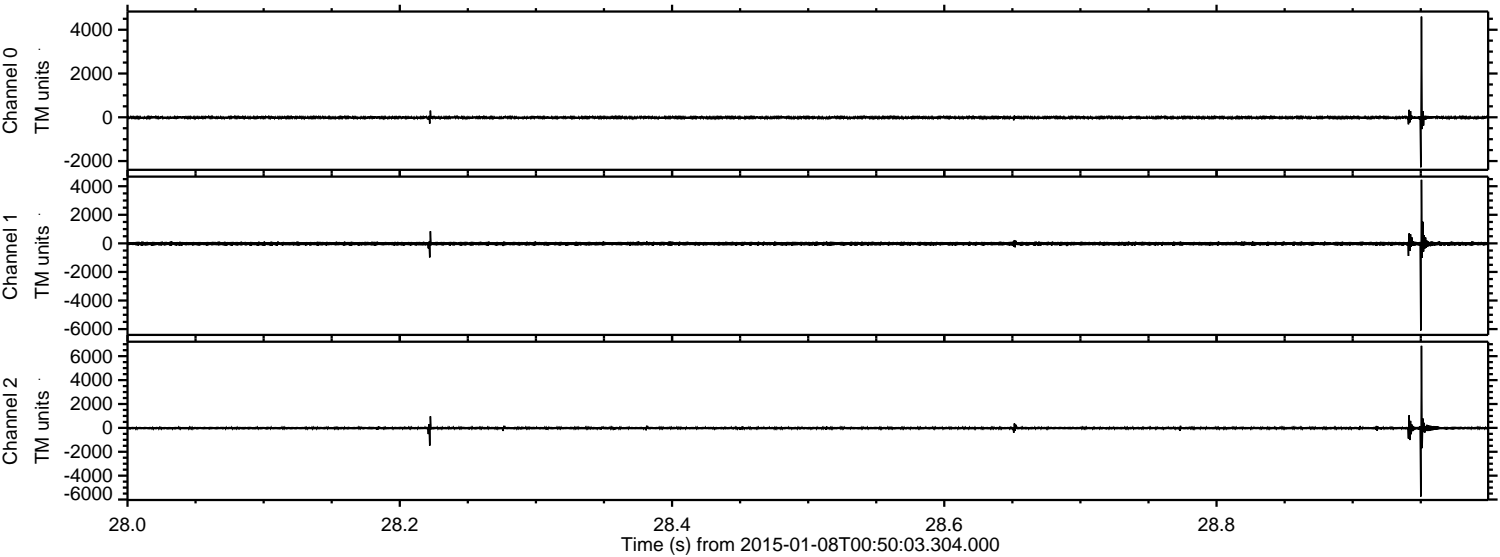
Processed Thu Jan 8 01:57:40 2015 by ELM ver.2012-10-06 from 001\_\_elm20150108\_005002\_\_dat00.bin





ELMAVAN 3D WAVEFORMS (Measured data sampled at 50 kHz) 49747 packets of 144 samples from 2015-01-08T00:50:03.304.000. Part 29/144

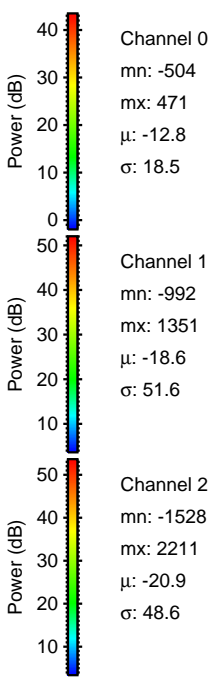
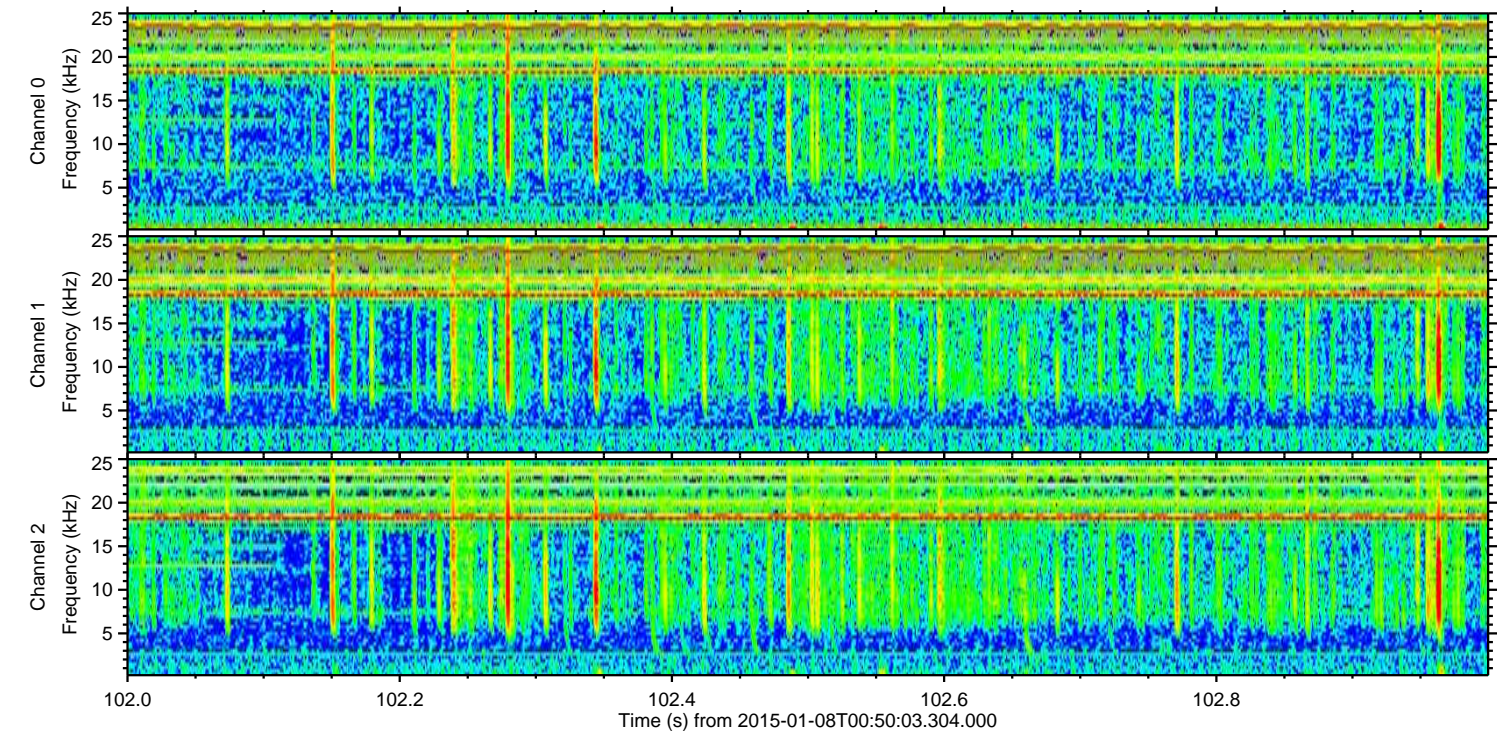
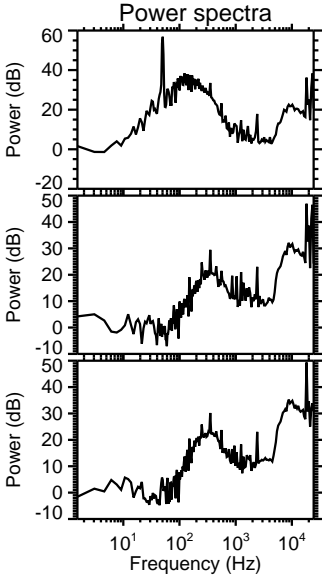
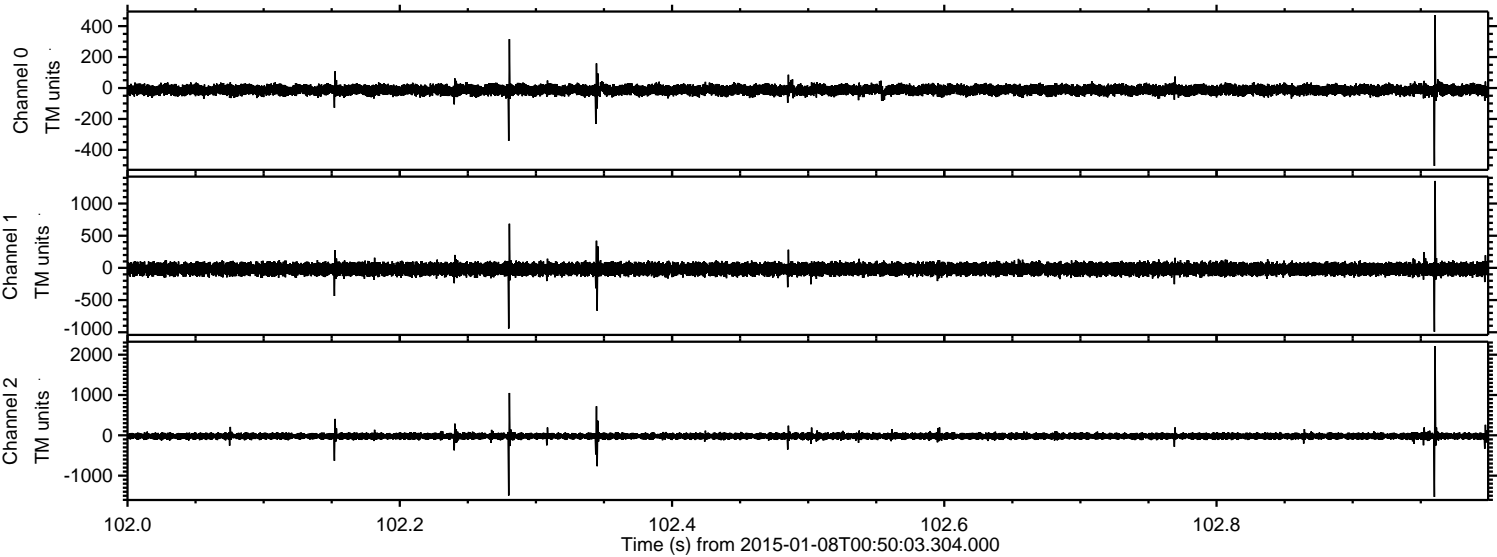
Processed Thu Jan 8 01:57:52 2015 by ELM ver.2012-10-06 from 001\_\_elm20150108\_005002\_\_dat00.bin





ELMAVAN 3D WAVEFORMS (Measured data sampled at 50 kHz) 49747 packets of 144 samples from 2015-01-08T00:50:03.304.000. Part 103/144

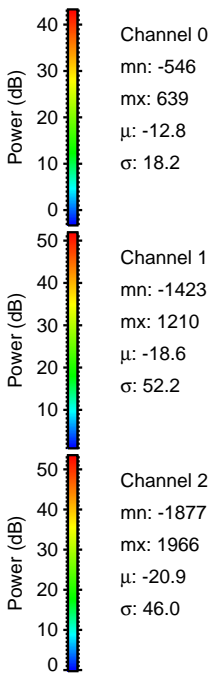
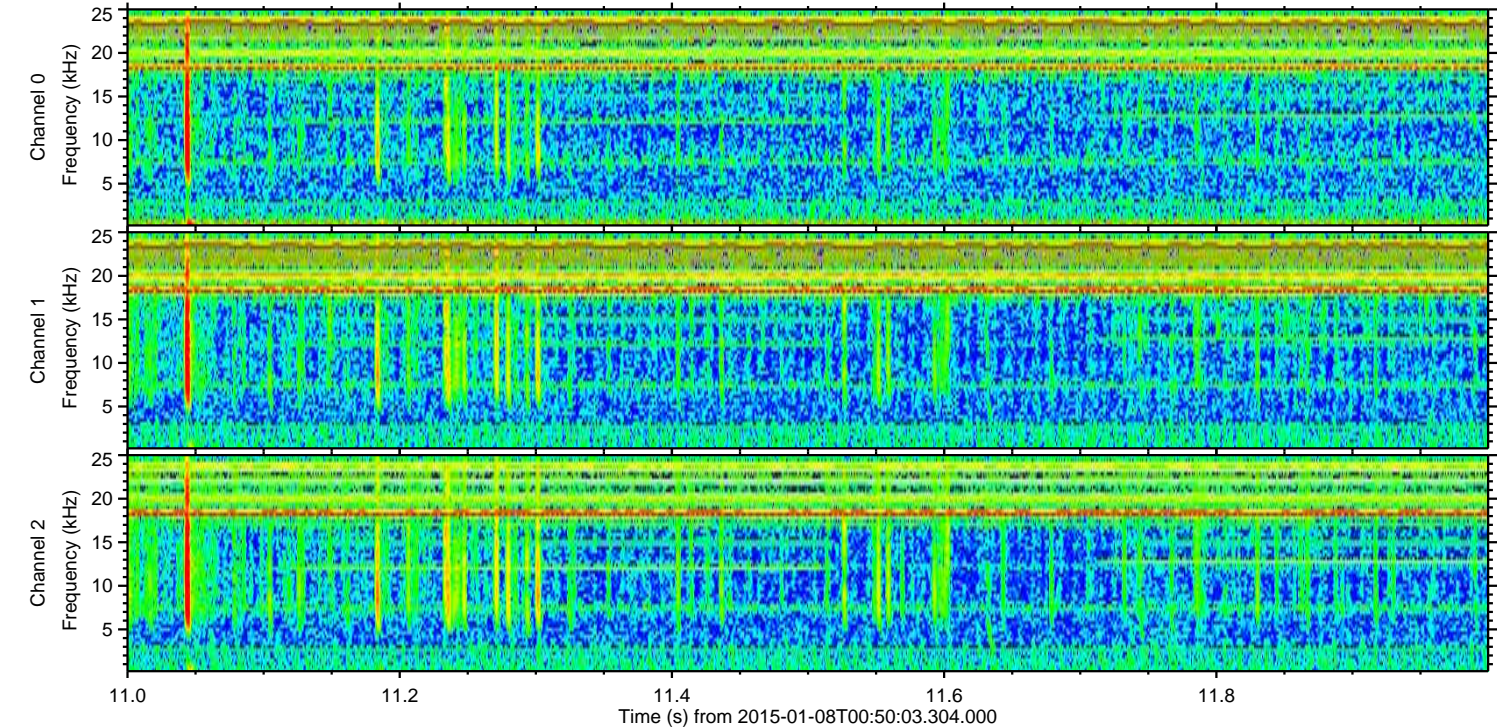
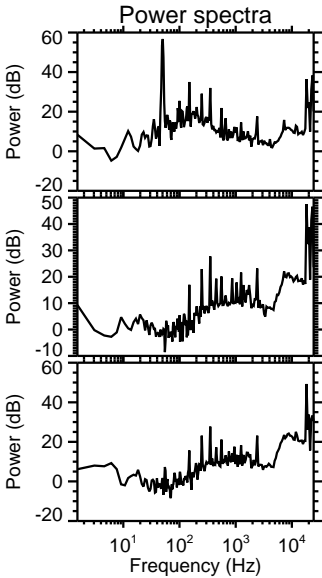
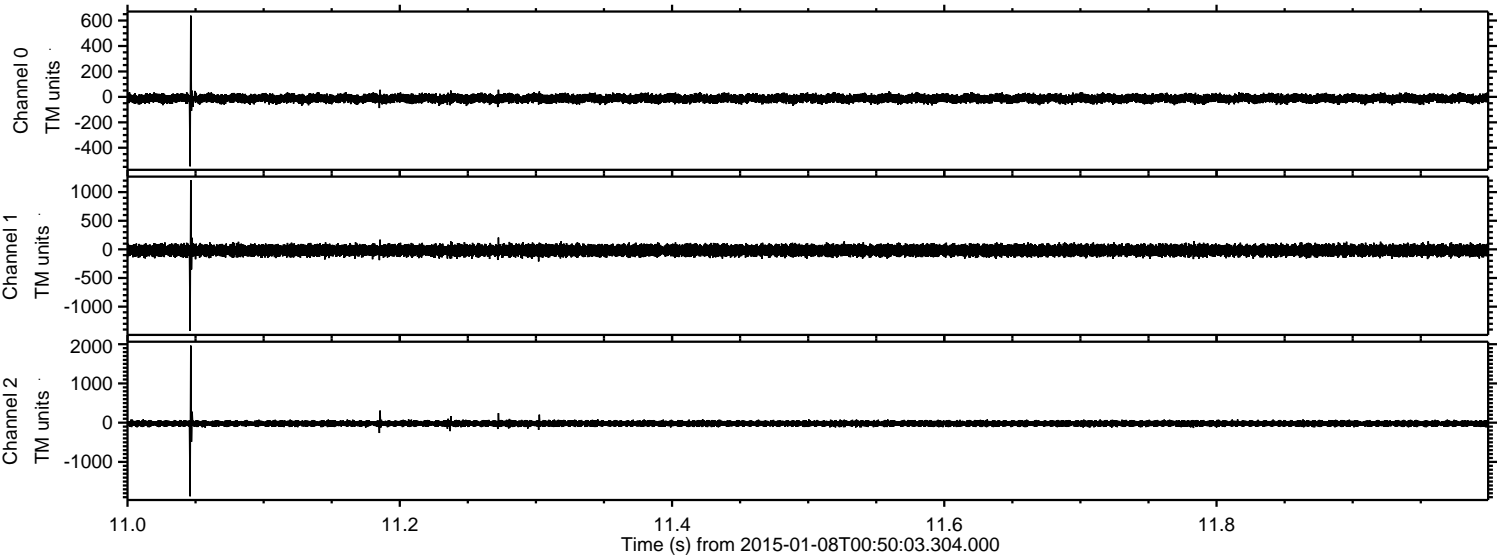
Processed Thu Jan 8 01:57:53 2015 by ELM ver.2012-10-06 from 001\_\_elm20150108\_005002\_\_dat00.bin





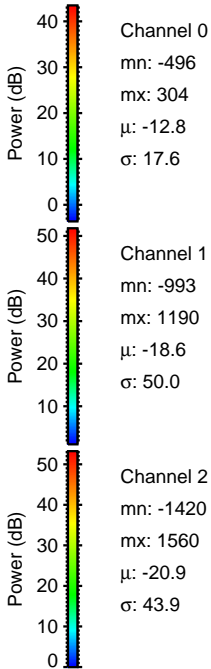
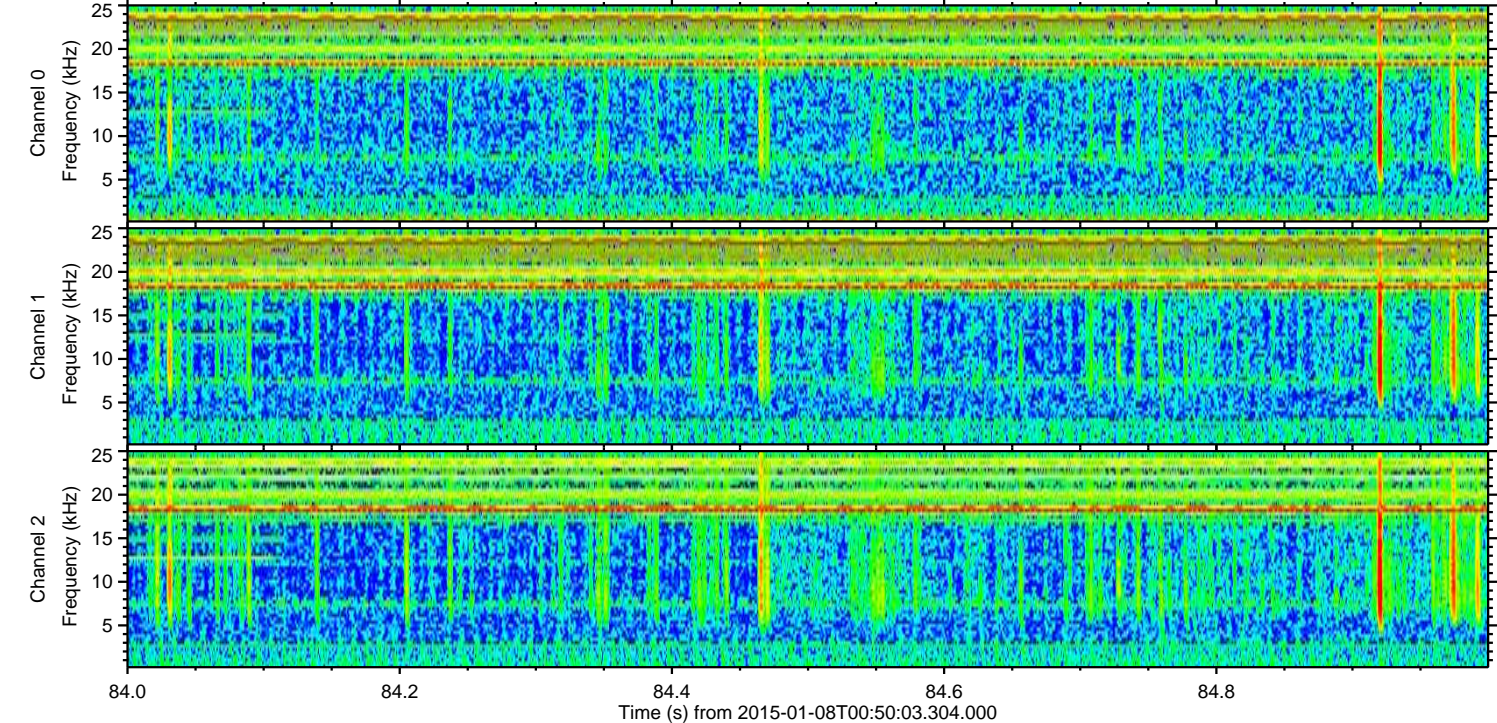
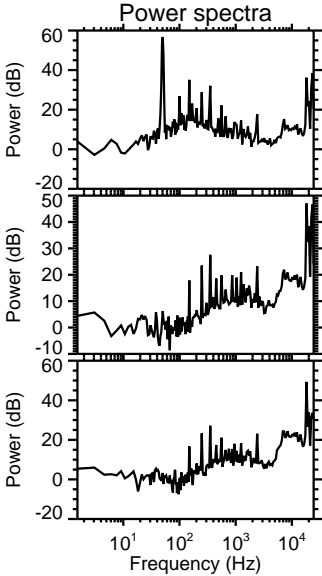
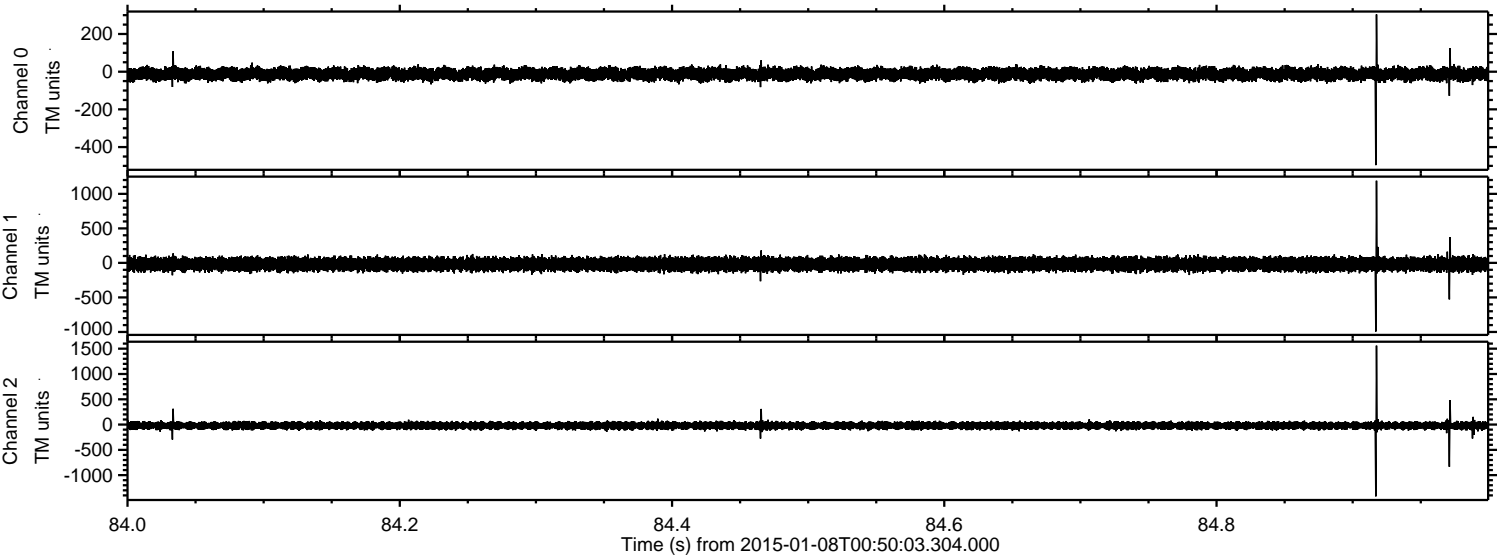
ELMAVAN 3D WAVEFORMS (Measured data sampled at 50 kHz) 49747 packets of 144 samples from 2015-01-08T00:50:03.304.000. Part 12/144

Processed Thu Jan 8 01:57:54 2015 by ELM ver.2012-10-06 from 001\_\_elm20150108\_005002\_\_dat00.bin



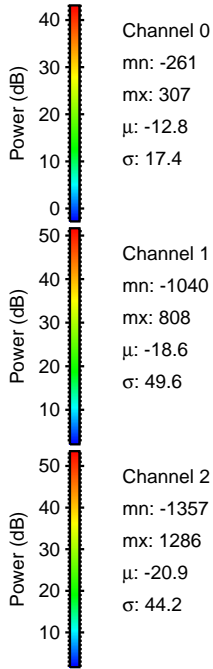
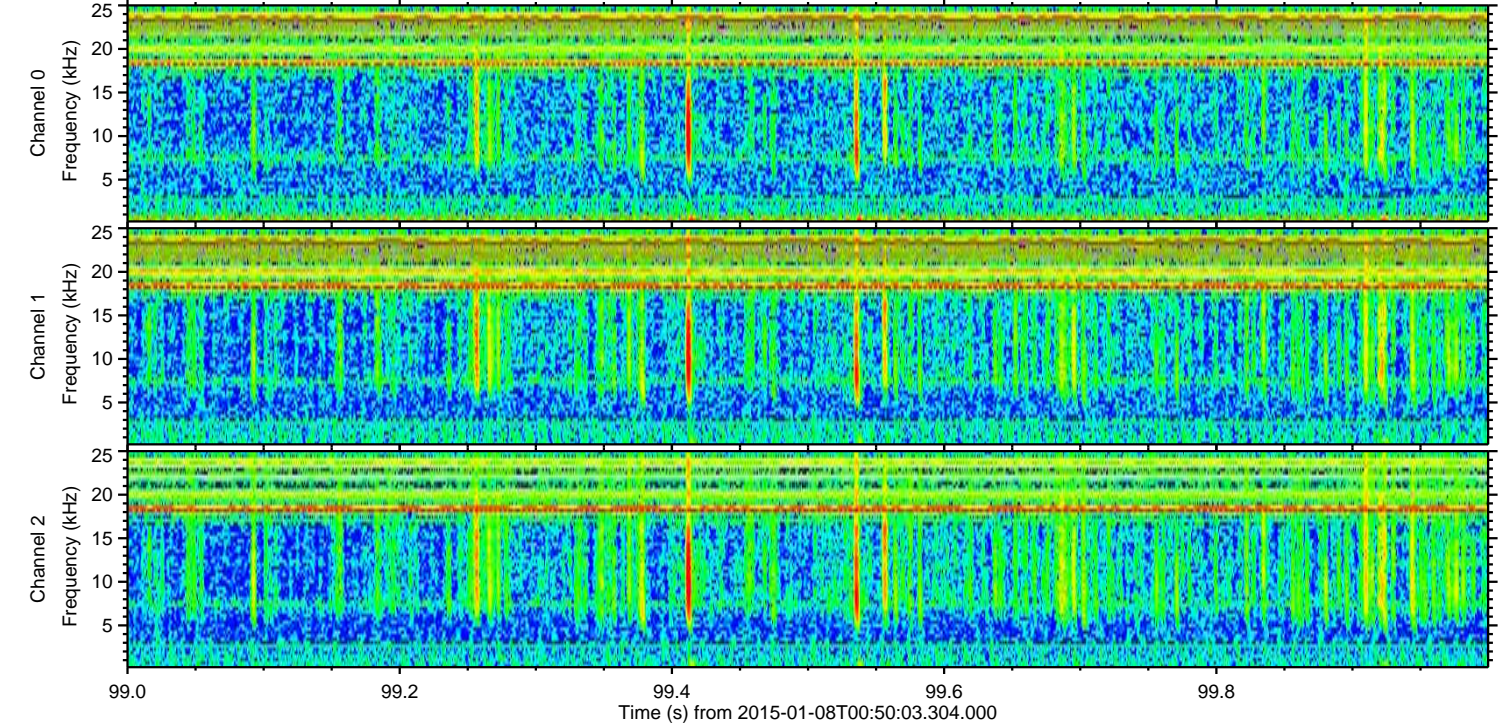
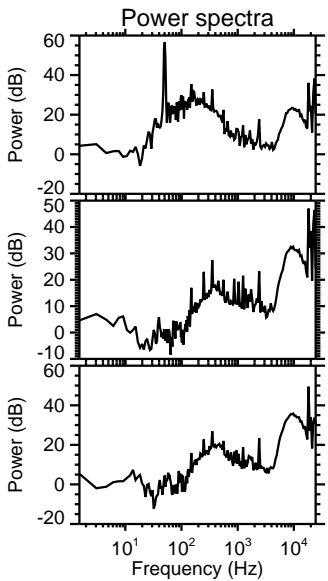
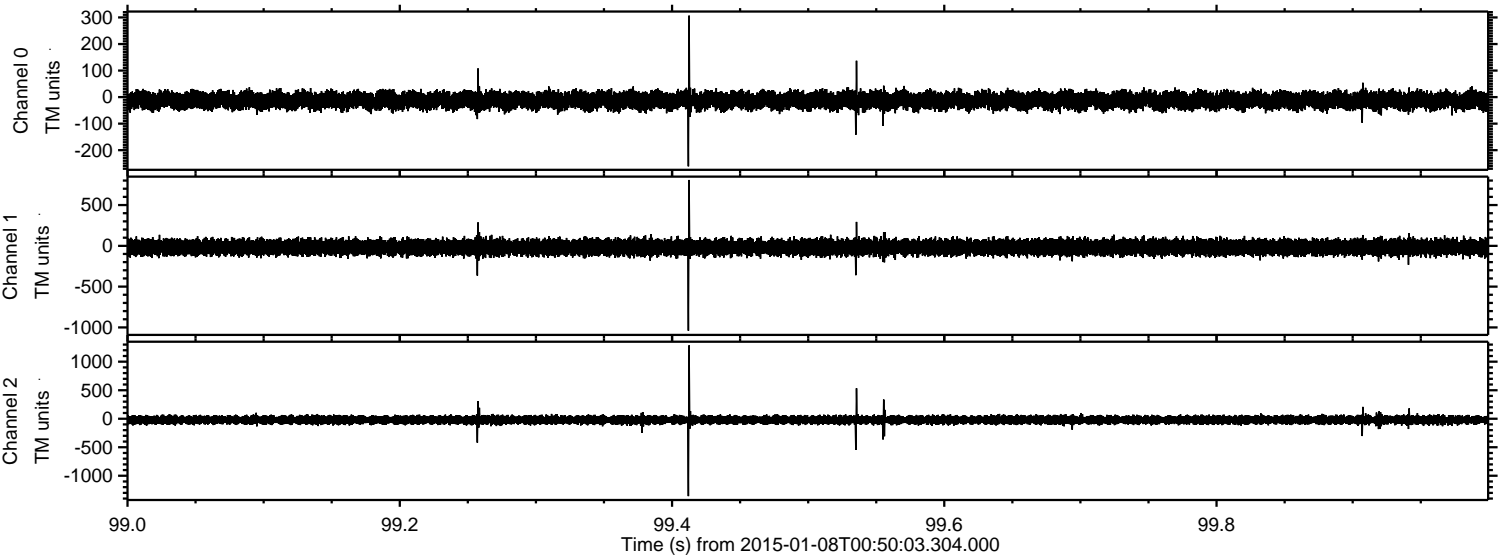


Processed Thu Jan 8 01:57:55 2015 by ELM ver.2012-10-06 from 001\_\_elm20150108\_005002\_\_dat00.bin





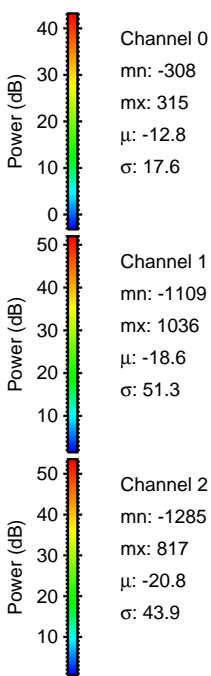
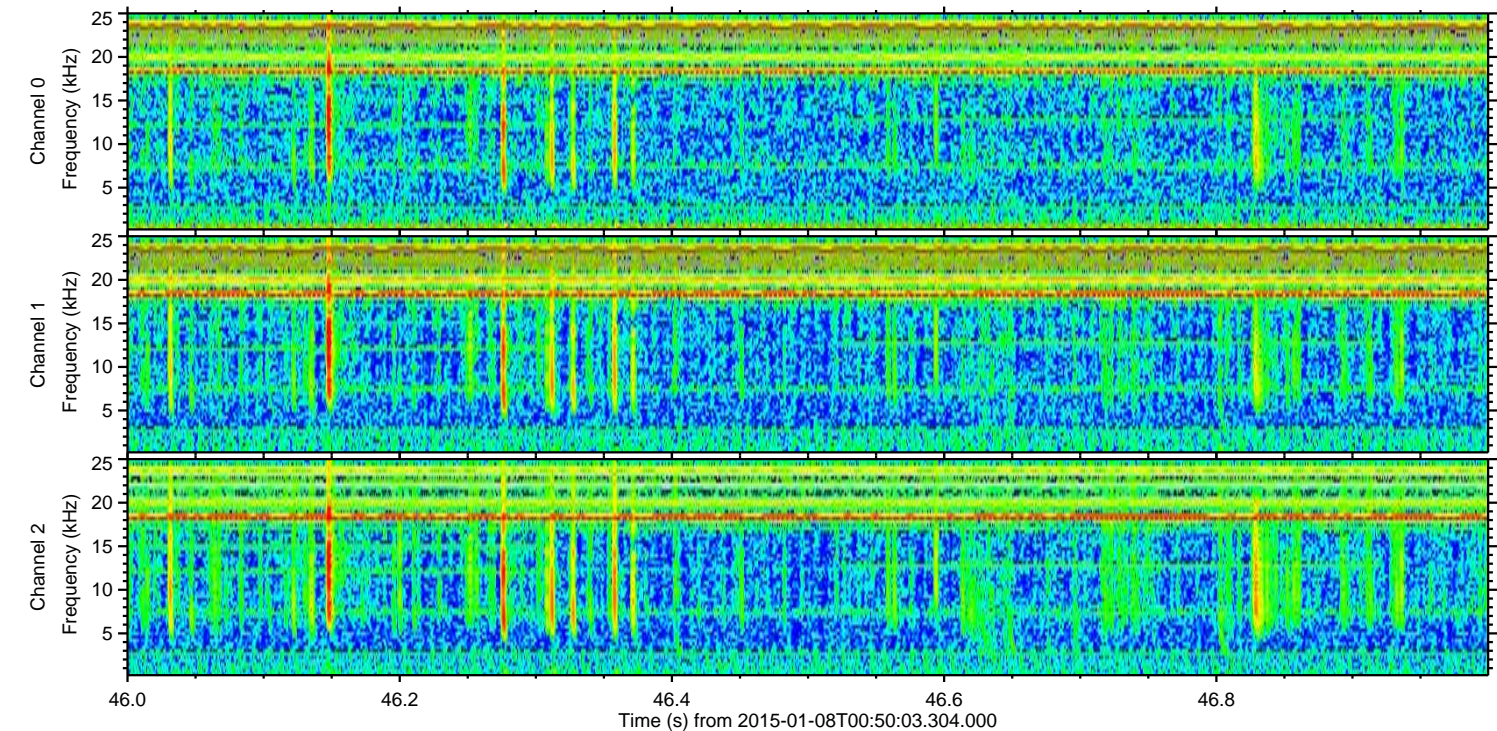
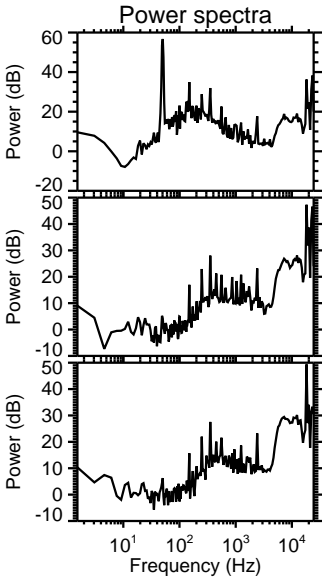
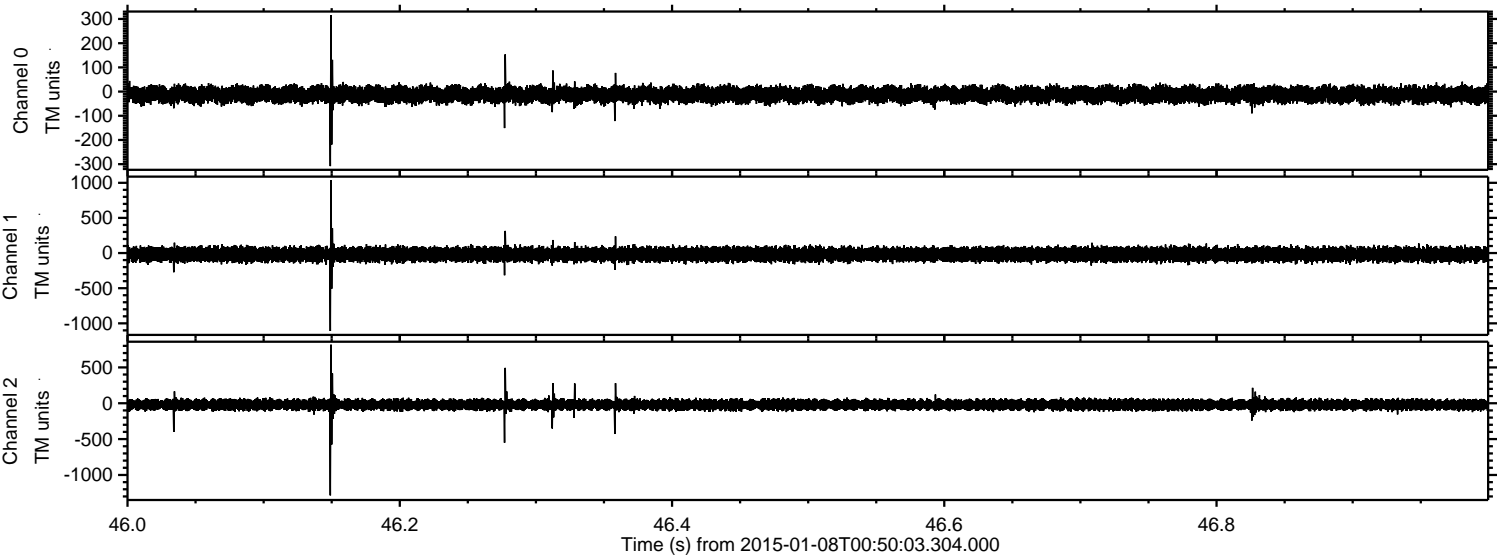
Processed Thu Jan 8 01:57:56 2015 by ELM ver.2012-10-06 from 001\_\_elm20150108\_005002\_\_dat00.bin





ELMAVAN 3D WAVEFORMS (Measured data sampled at 50 kHz) 49747 packets of 144 samples from 2015-01-08T00:50:03.304.000. Part 47/144

Processed Thu Jan 8 01:57:57 2015 by ELM ver.2012-10-06 from 001\_\_elm20150108\_005002\_\_dat00.bin



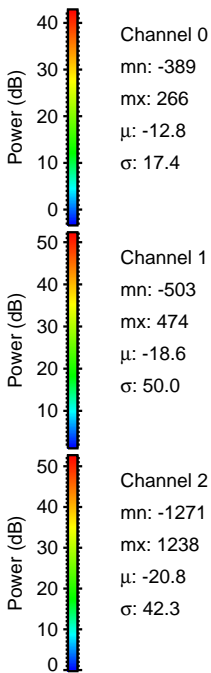
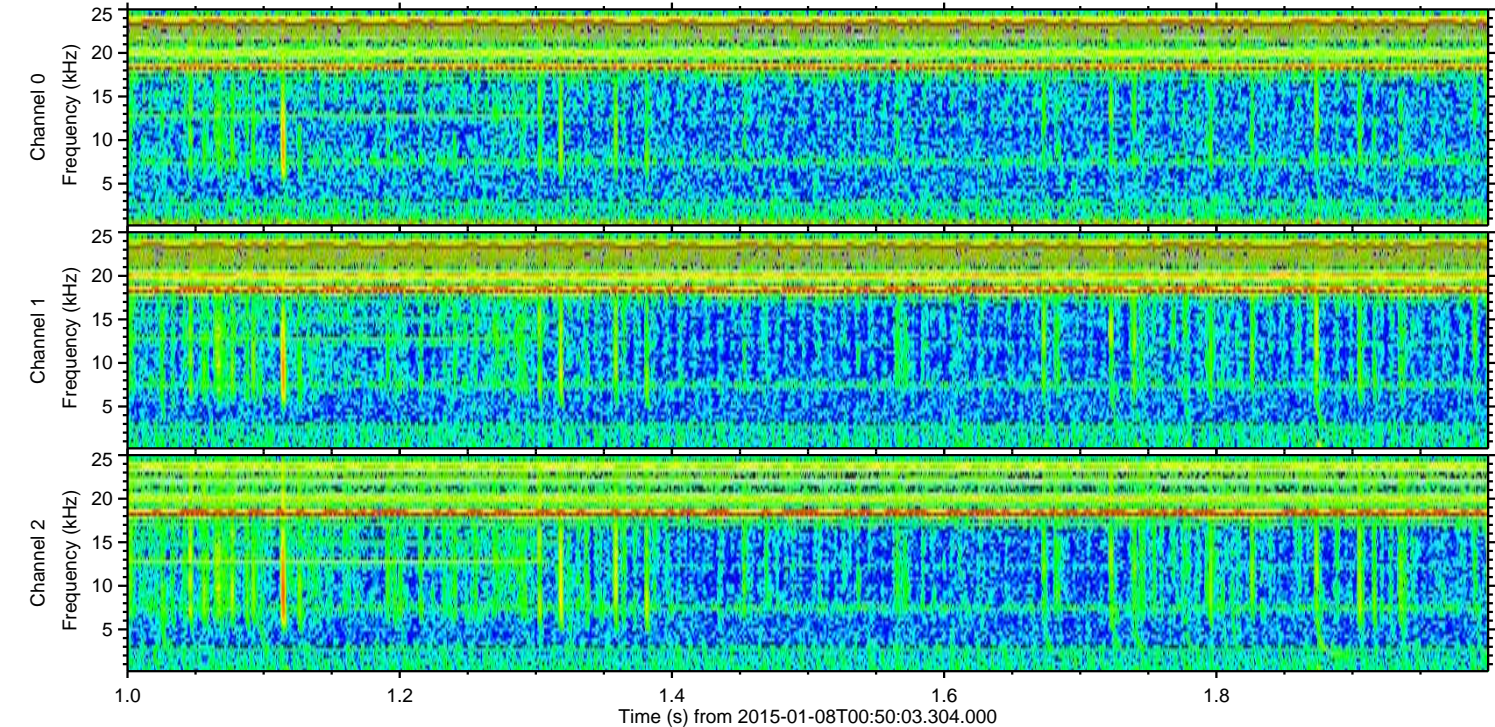
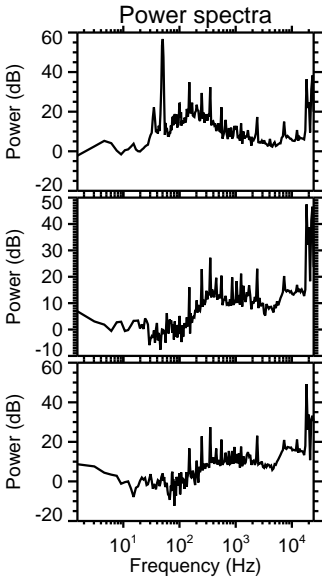
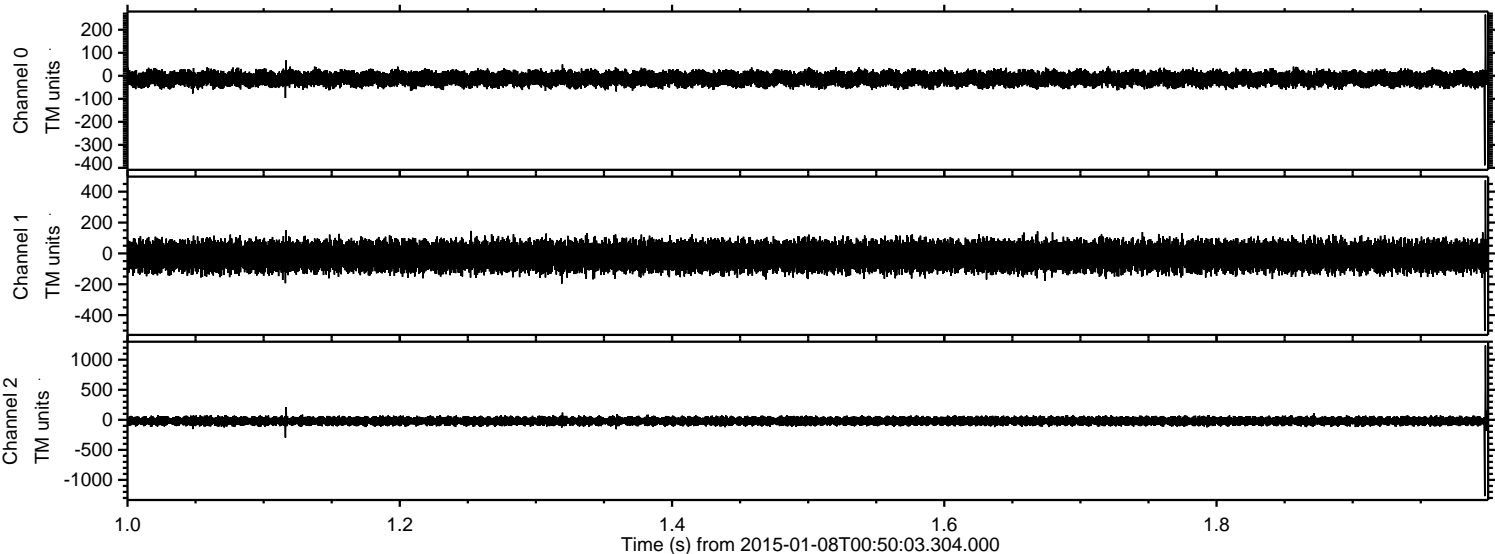
Channel 0  
mn: -308  
mx: 315  
 $\mu$ : -12.8  
 $\sigma$ : 17.6

Channel 1  
mn: -1109  
mx: 1036  
 $\mu$ : -18.6  
 $\sigma$ : 51.3

Channel 2  
mn: -1285  
mx: 817  
 $\mu$ : -20.8  
 $\sigma$ : 43.9



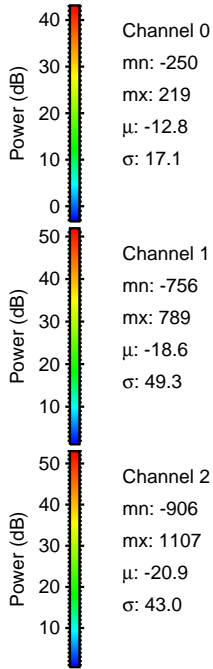
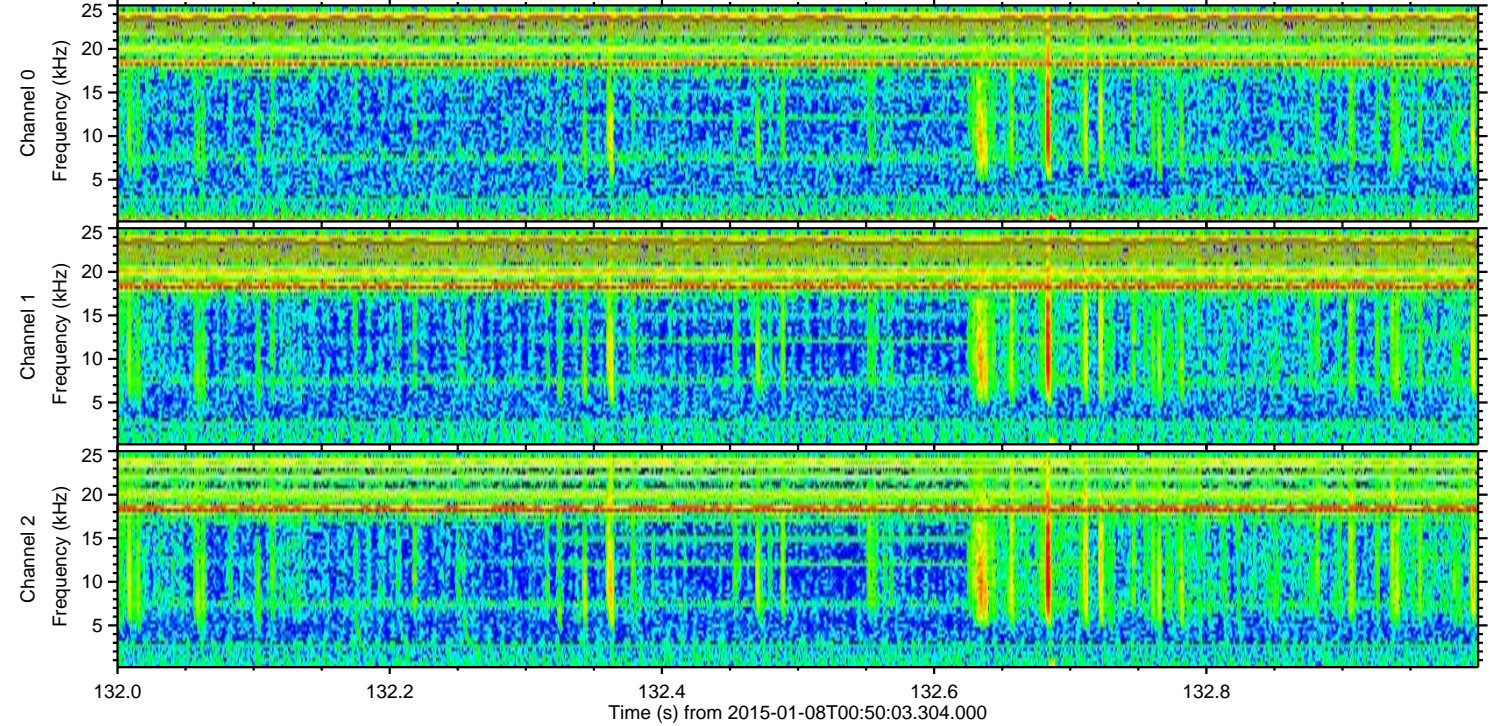
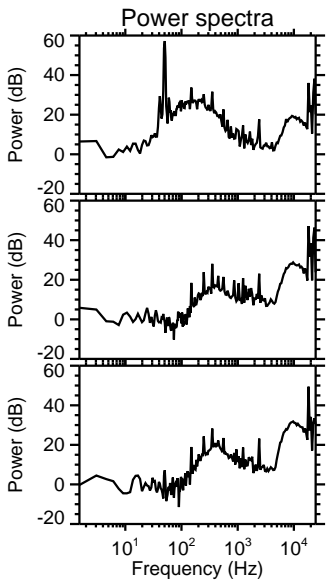
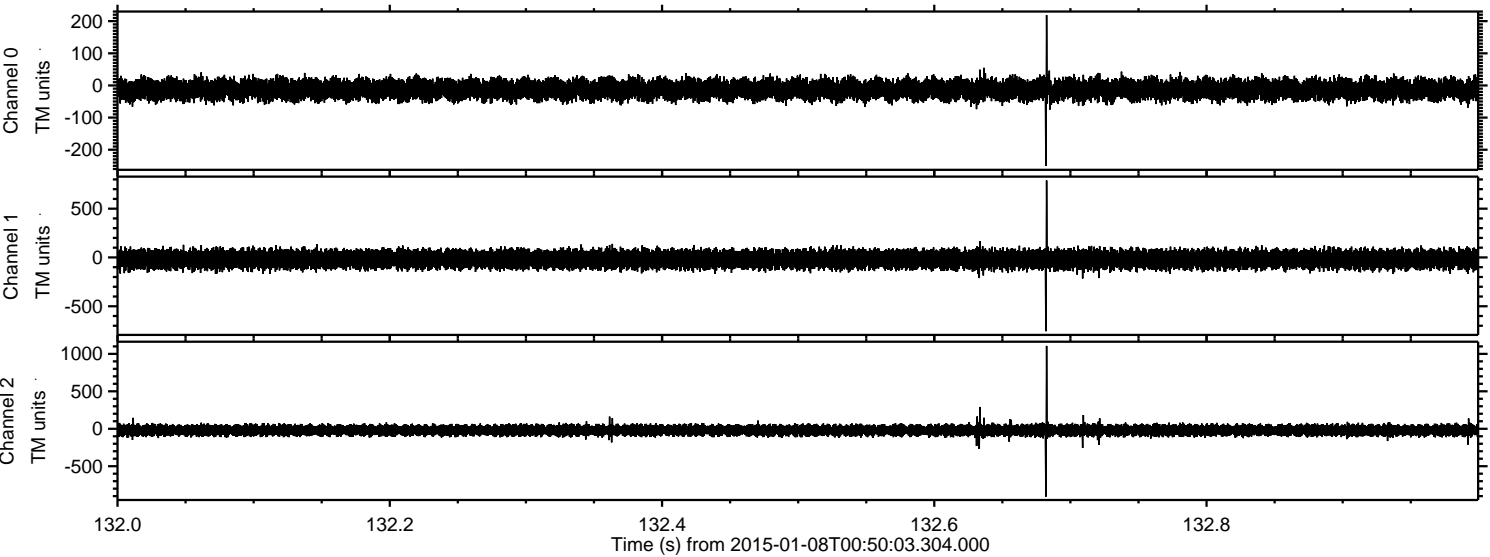
Processed Thu Jan 8 01:57:58 2015 by ELM ver.2012-10-06 from 001\_\_elm20150108\_005002\_\_dat00.bin





ELMAVAN 3D WAVEFORMS (Measured data sampled at 50 kHz) 49747 packets of 144 samples from 2015-01-08T00:50:03.304.000. Part 133/144

Processed Thu Jan 8 01:57:59 2015 by ELM ver.2012-10-06 from 001\_\_elm20150108\_005002\_\_dat00.bin



Channel 0  
mn: -250  
mx: 219  
 $\mu$ : -12.8  
 $\sigma$ : 17.1

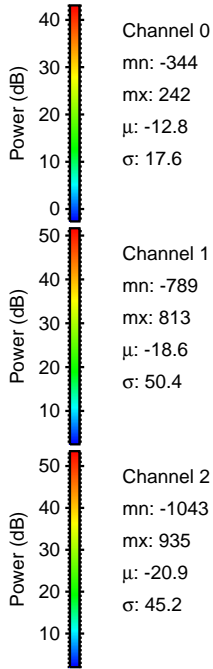
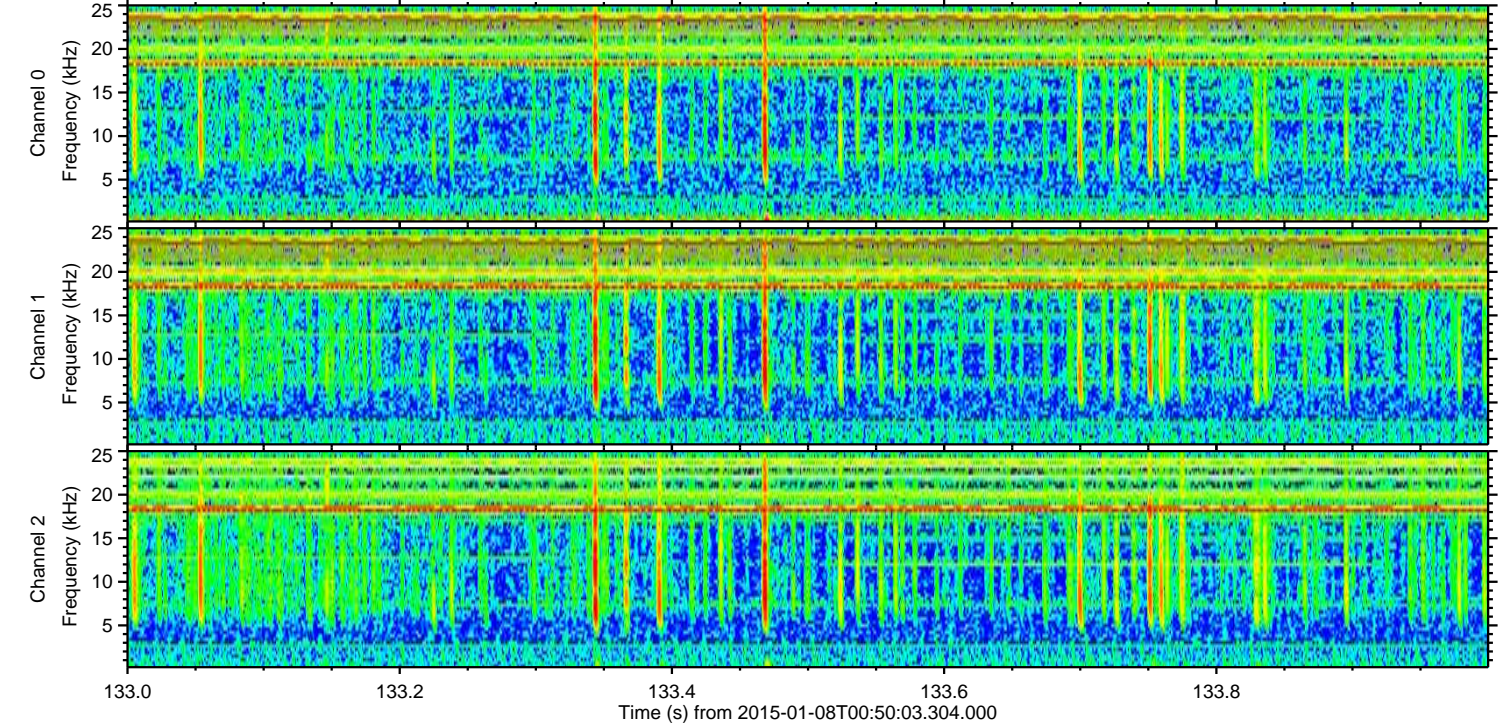
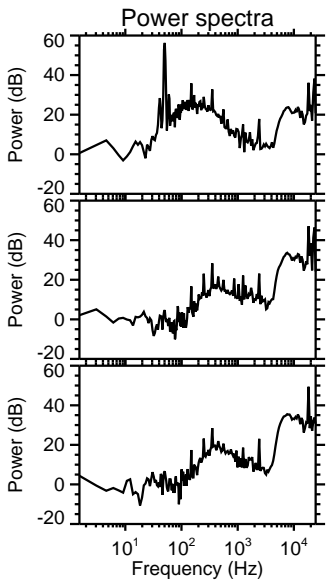
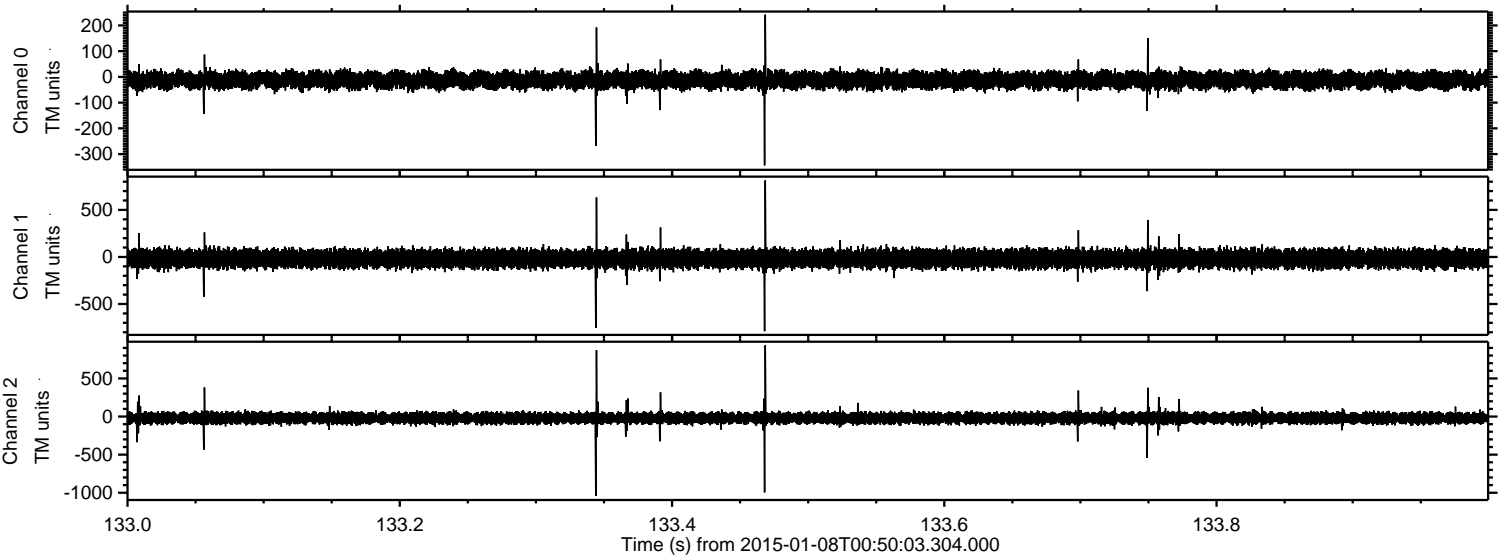
Channel 1  
mn: -756  
mx: 789  
 $\mu$ : -18.6  
 $\sigma$ : 49.3

Channel 2  
mn: -906  
mx: 1107  
 $\mu$ : -20.9  
 $\sigma$ : 43.0



ELMAVAN 3D WAVEFORMS (Measured data sampled at 50 kHz) 49747 packets of 144 samples from 2015-01-08T00:50:03.304.000. Part 134/144

Processed Thu Jan 8 01:58:00 2015 by ELM ver.2012-10-06 from 001\_\_elm20150108\_005002\_\_dat00.bin





Processed Thu Jan 8 01:58:01 2015 by ELM ver.2012-10-06 from 001\_\_elm20150108\_005002\_\_dat00.bin

