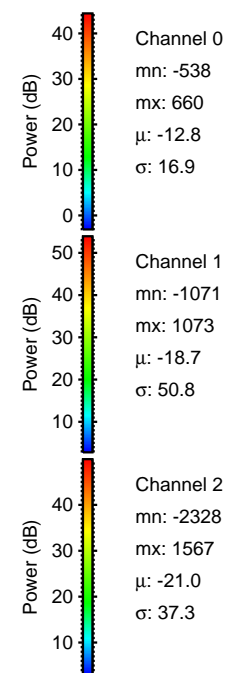
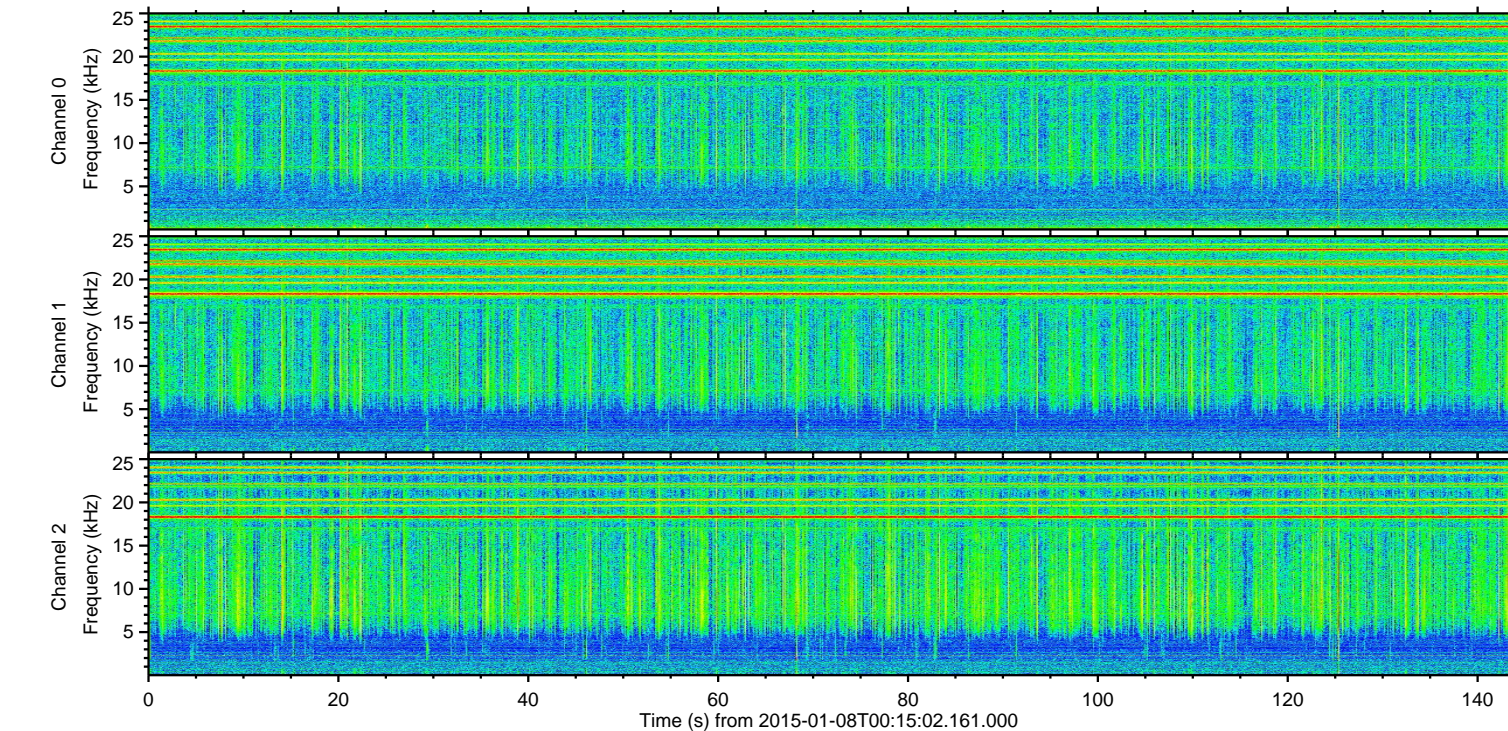
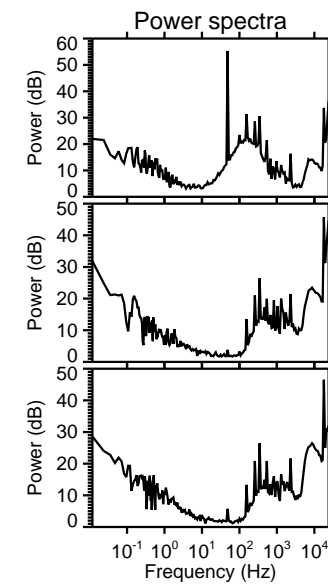
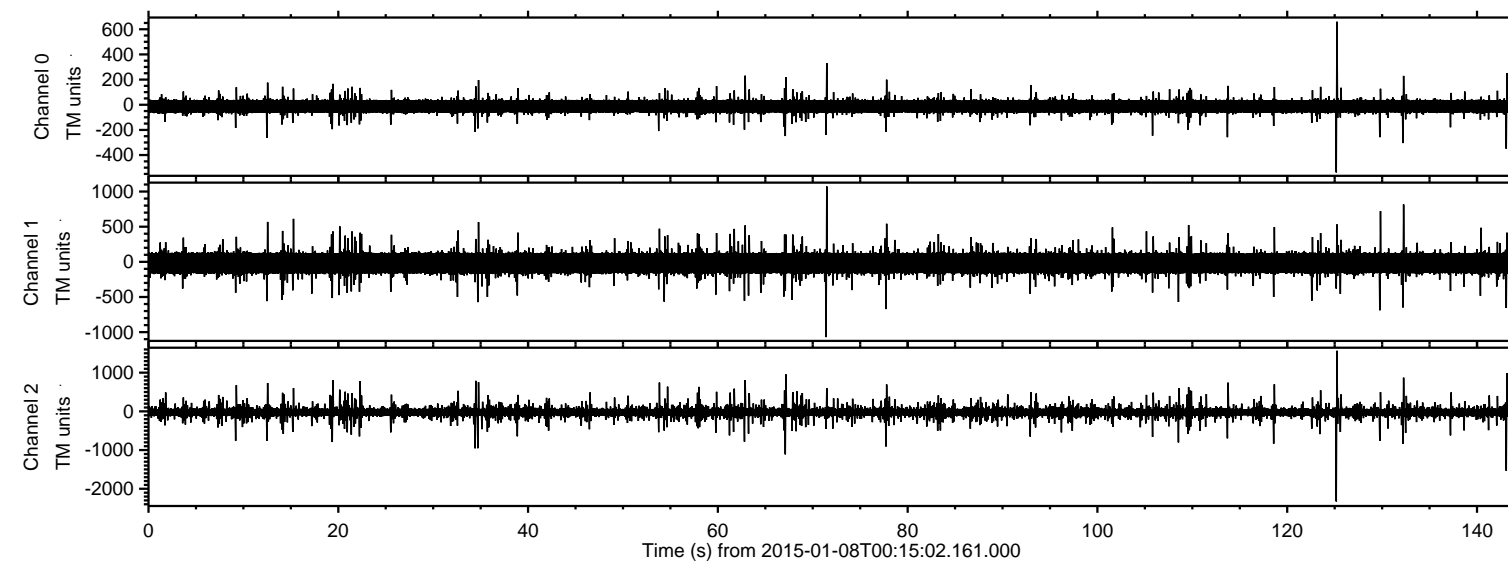


# ELMAVAN 3D WAVEFORMS (Measured data sampled at 50 kHz) 49787 packets of 144 samples from 2015-01-08T00:15:02.161.000.

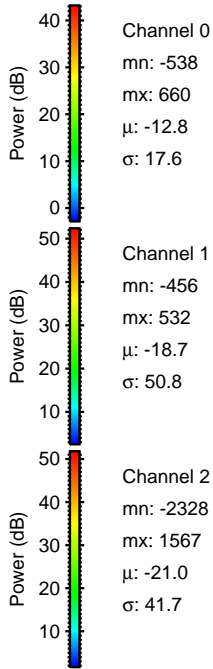
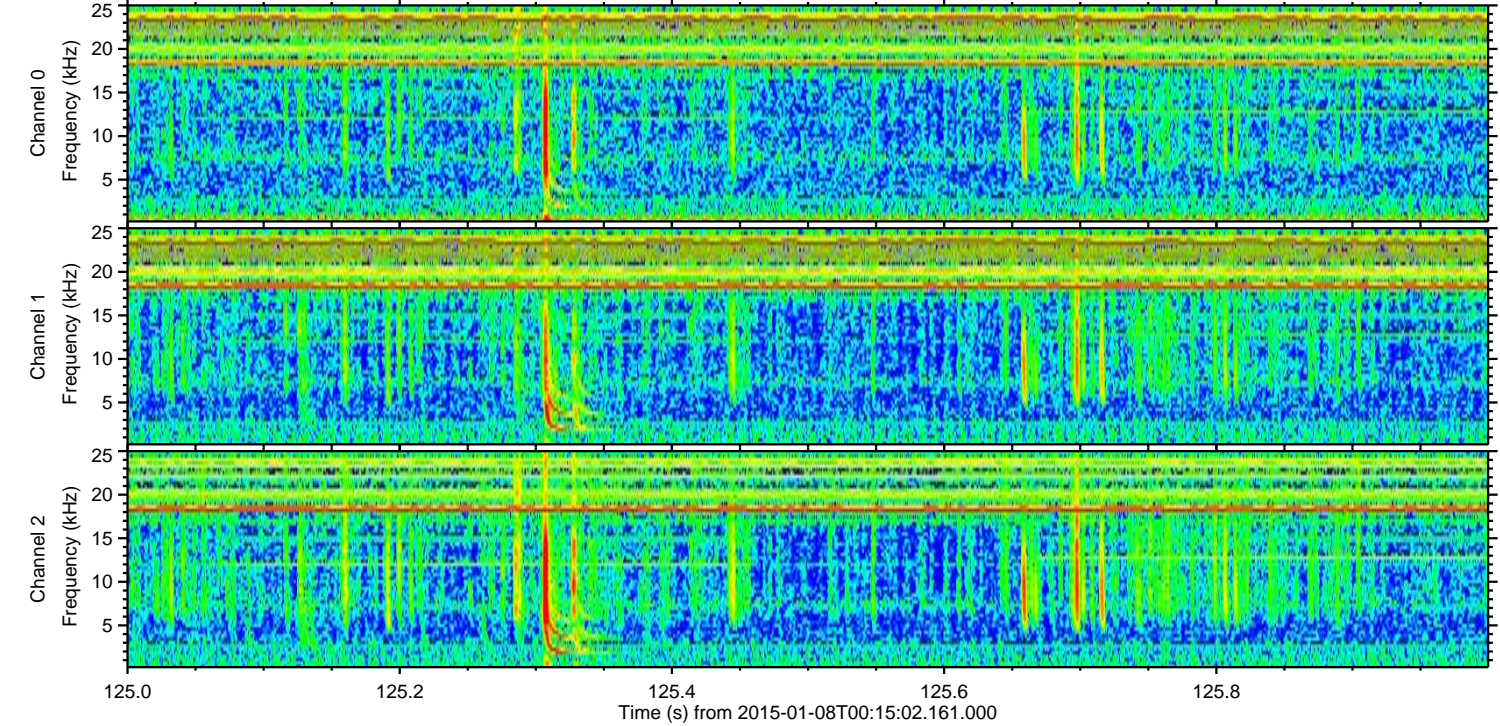
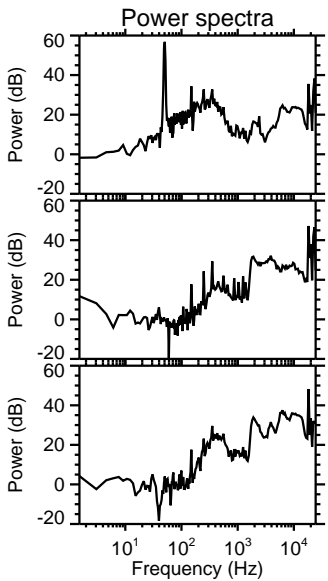
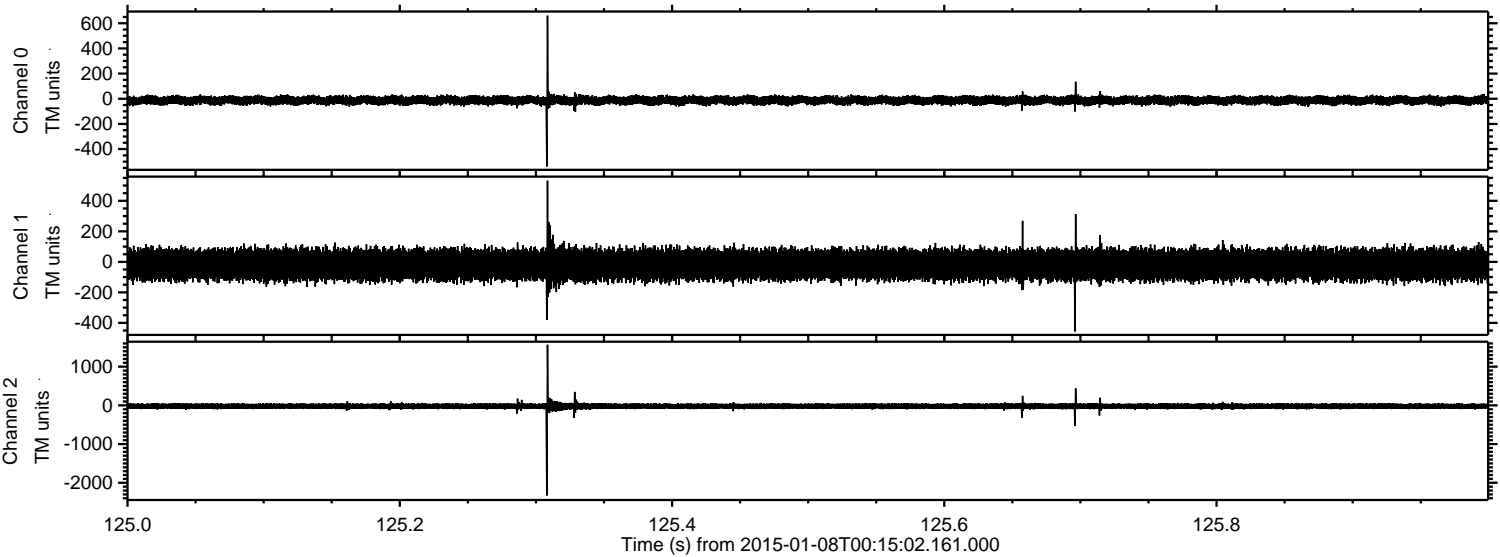
Processed Thu Jan 8 01:22:05 2015 by ELM ver.2012-10-06 from 001\_\_elm20150108\_001501\_\_dat00.bin





ELMAVAN 3D WAVEFORMS (Measured data sampled at 50 kHz) 49787 packets of 144 samples from 2015-01-08T00:15:02.161.000. Part 126/144

Processed Thu Jan 8 01:22:18 2015 by ELM ver.2012-10-06 from 001\_\_elm20150108\_001501\_\_dat00.bin



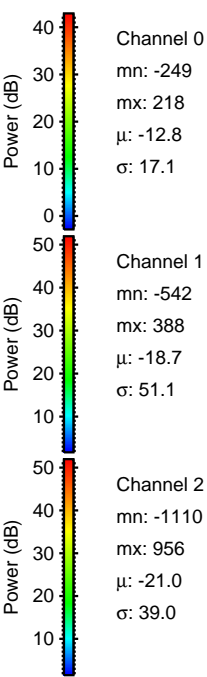
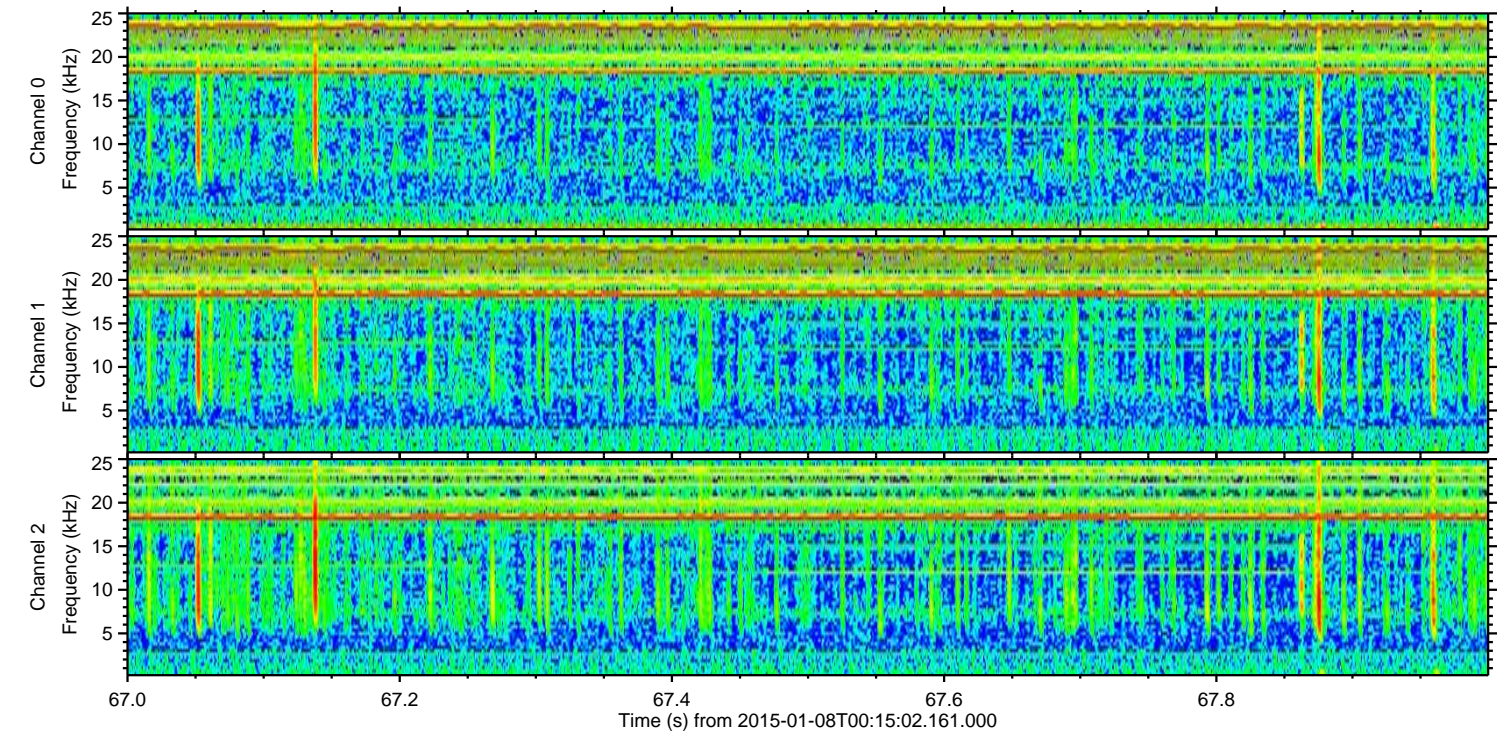
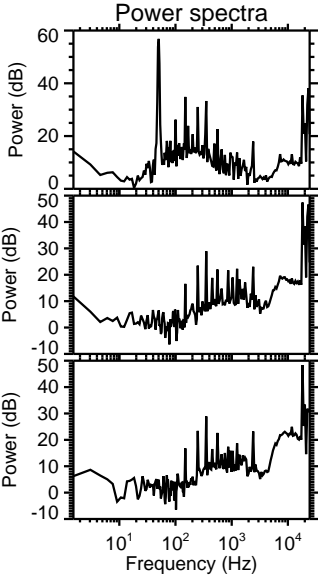
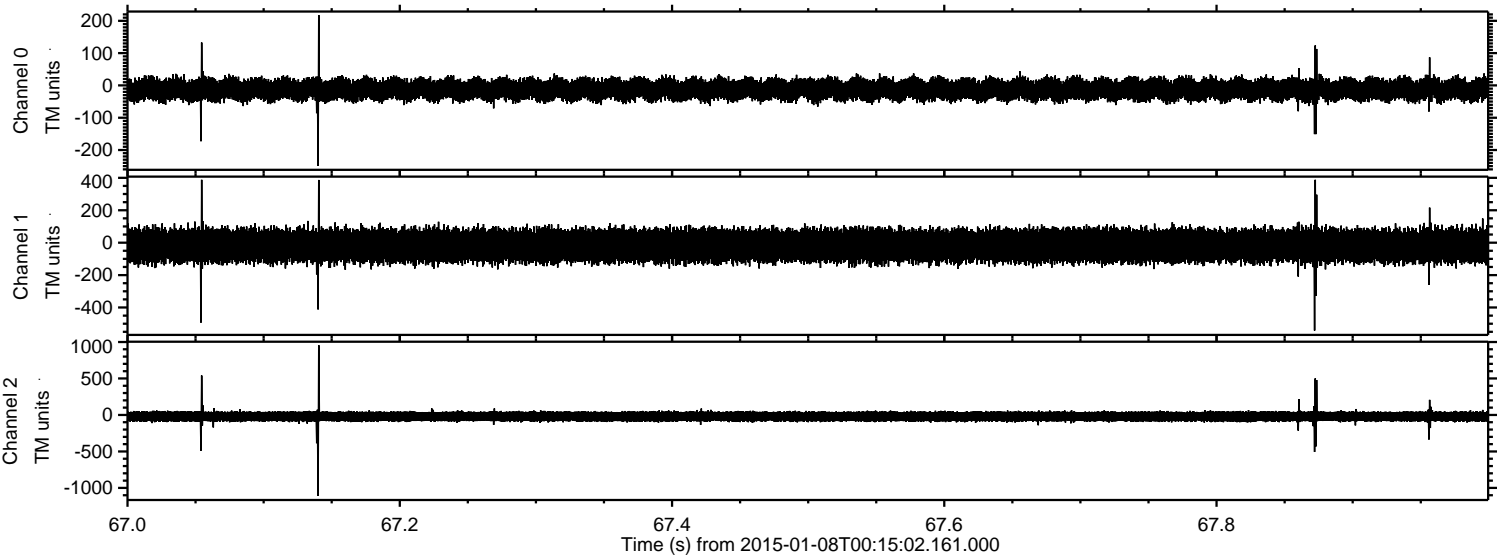
Channel 0  
mn: -538  
mx: 660  
 $\mu$ : -12.8  
 $\sigma$ : 17.6

Channel 1  
mn: -456  
mx: 532  
 $\mu$ : -18.7  
 $\sigma$ : 50.8

Channel 2  
mn: -2328  
mx: 1567  
 $\mu$ : -21.0  
 $\sigma$ : 41.7

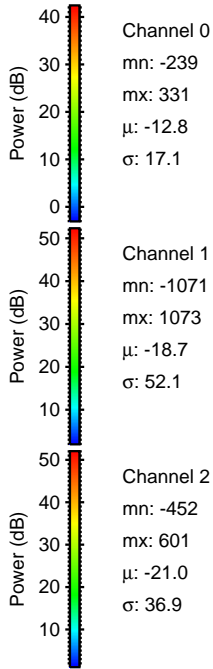
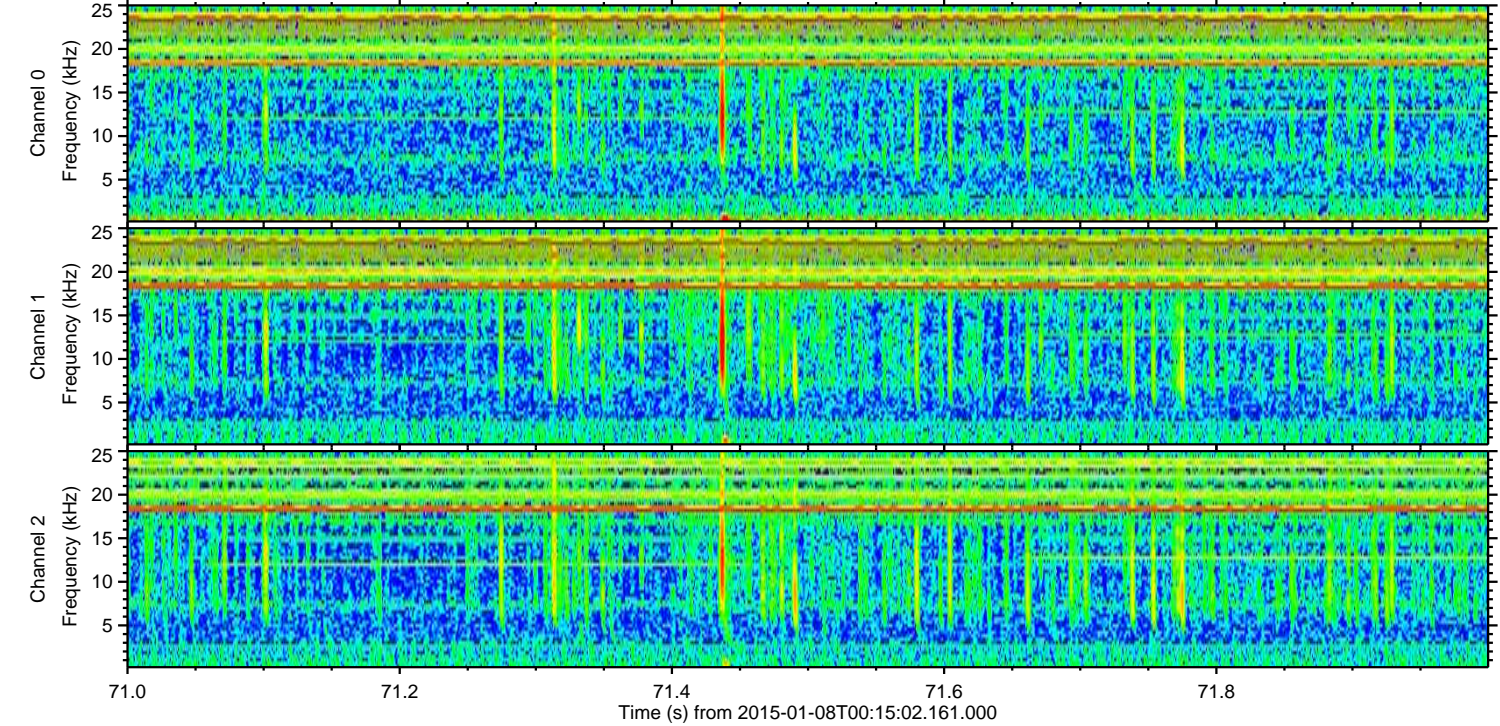
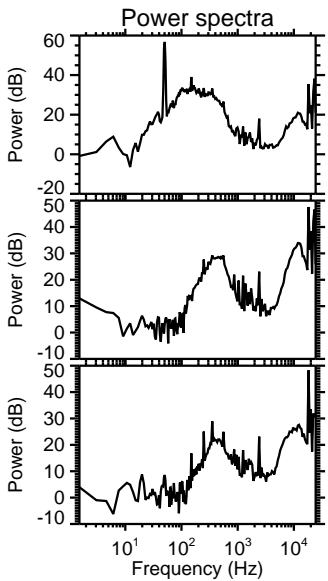
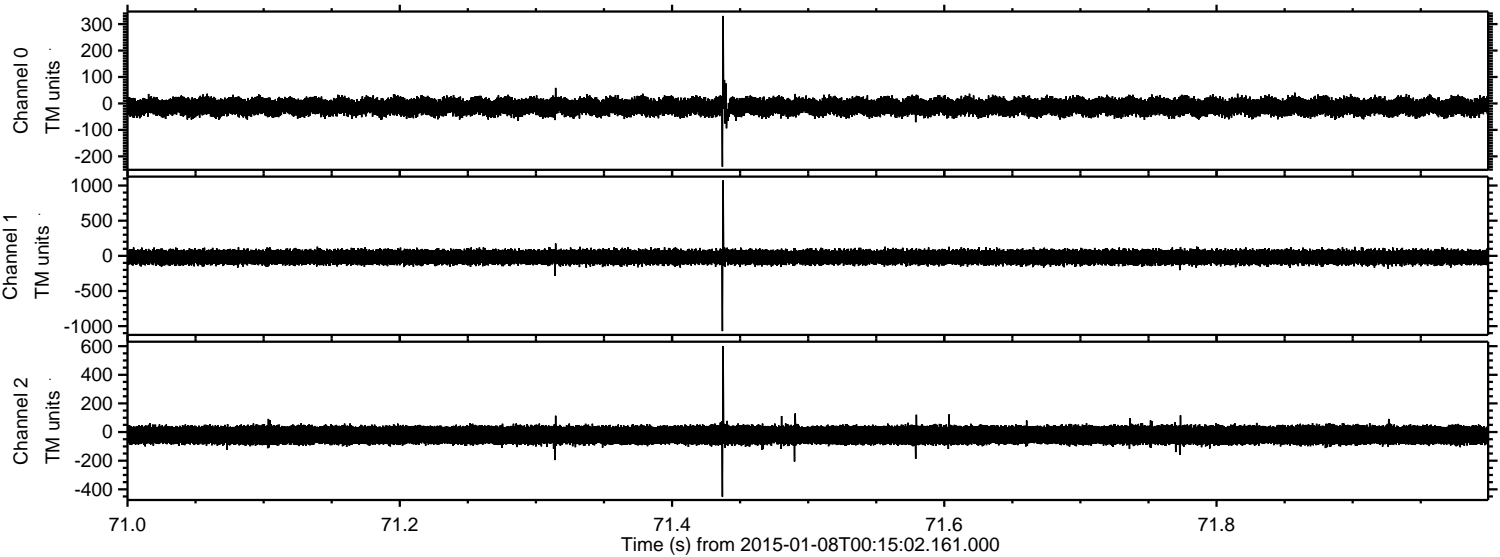


Processed Thu Jan 8 01:22:19 2015 by ELM ver.2012-10-06 from 001\_\_elm20150108\_001501\_\_dat00.bin





Processed Thu Jan 8 01:22:20 2015 by ELM ver.2012-10-06 from 001\_\_elm20150108\_001501\_\_dat00.bin



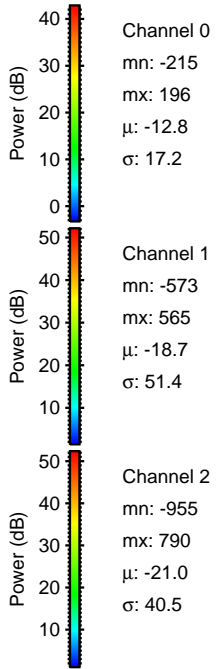
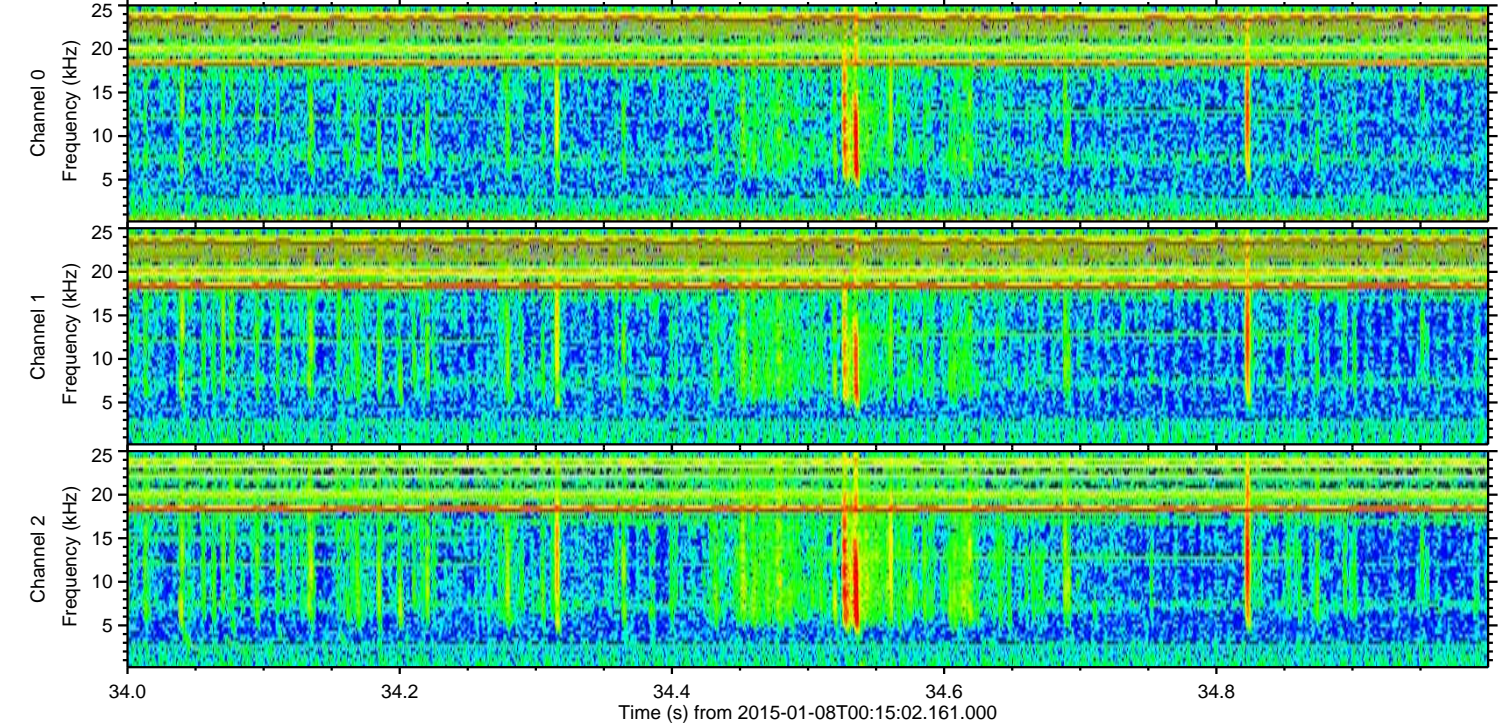
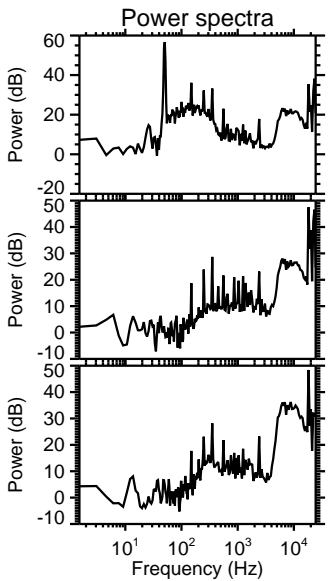
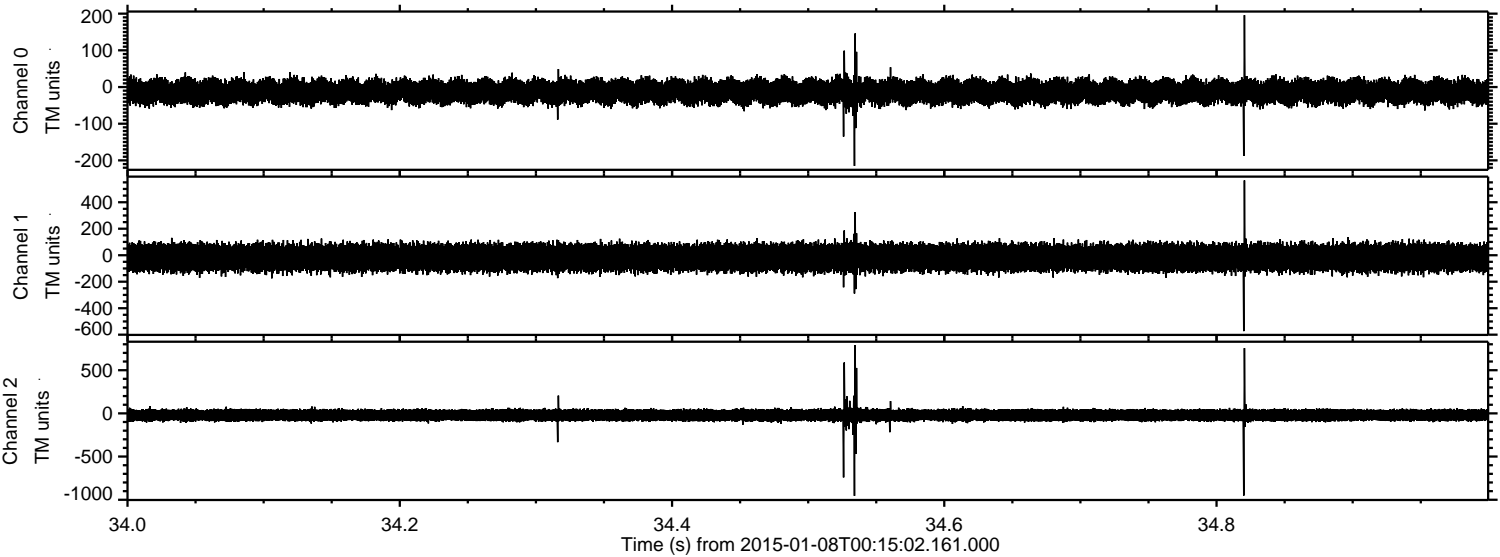
Channel 0  
mn: -239  
mx: 331  
 $\mu$ : -12.8  
 $\sigma$ : 17.1

Channel 1  
mn: -1071  
mx: 1073  
 $\mu$ : -18.7  
 $\sigma$ : 52.1

Channel 2  
mn: -452  
mx: 601  
 $\mu$ : -21.0  
 $\sigma$ : 36.9

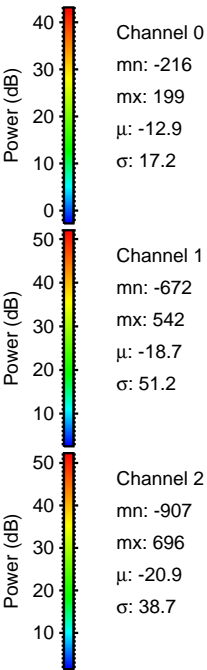
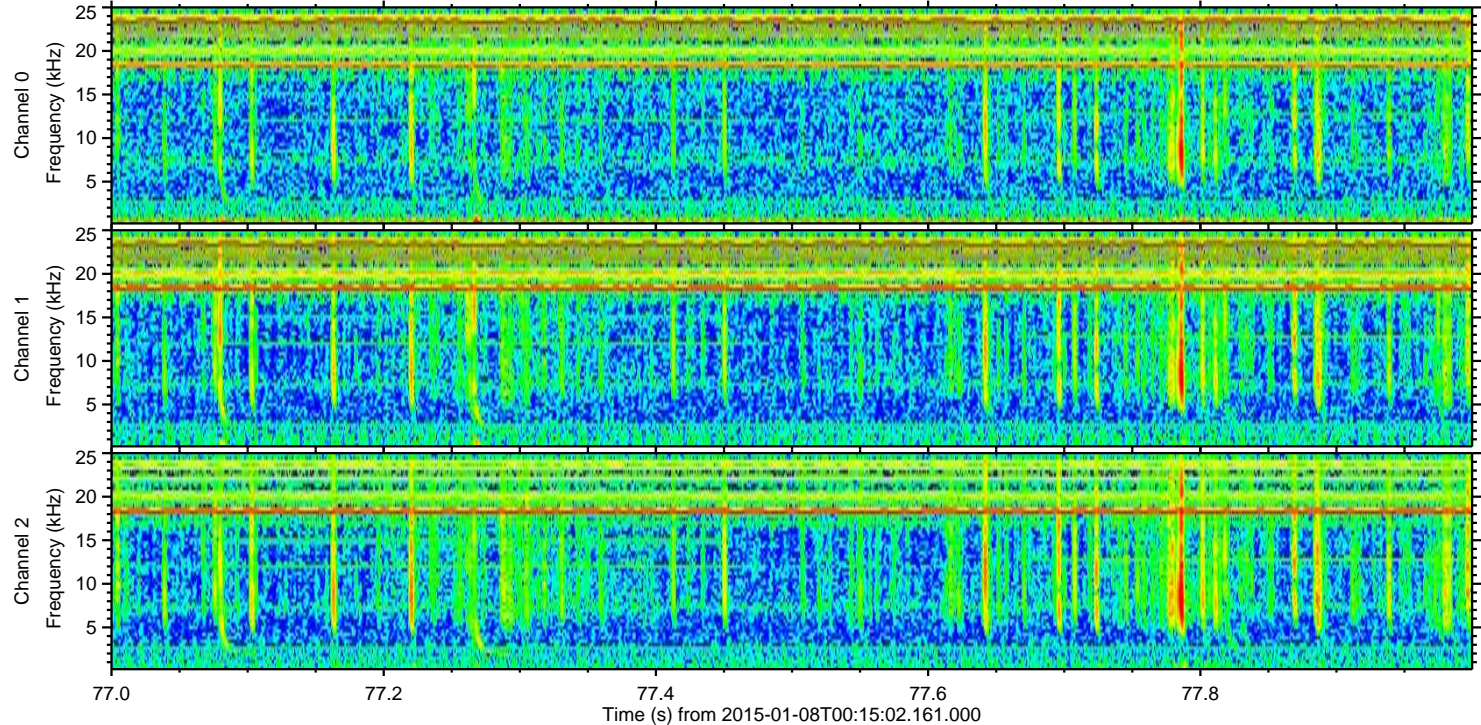
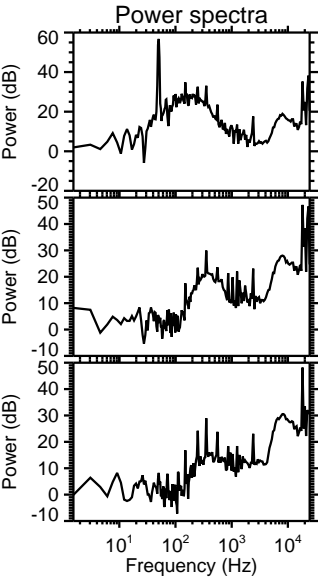
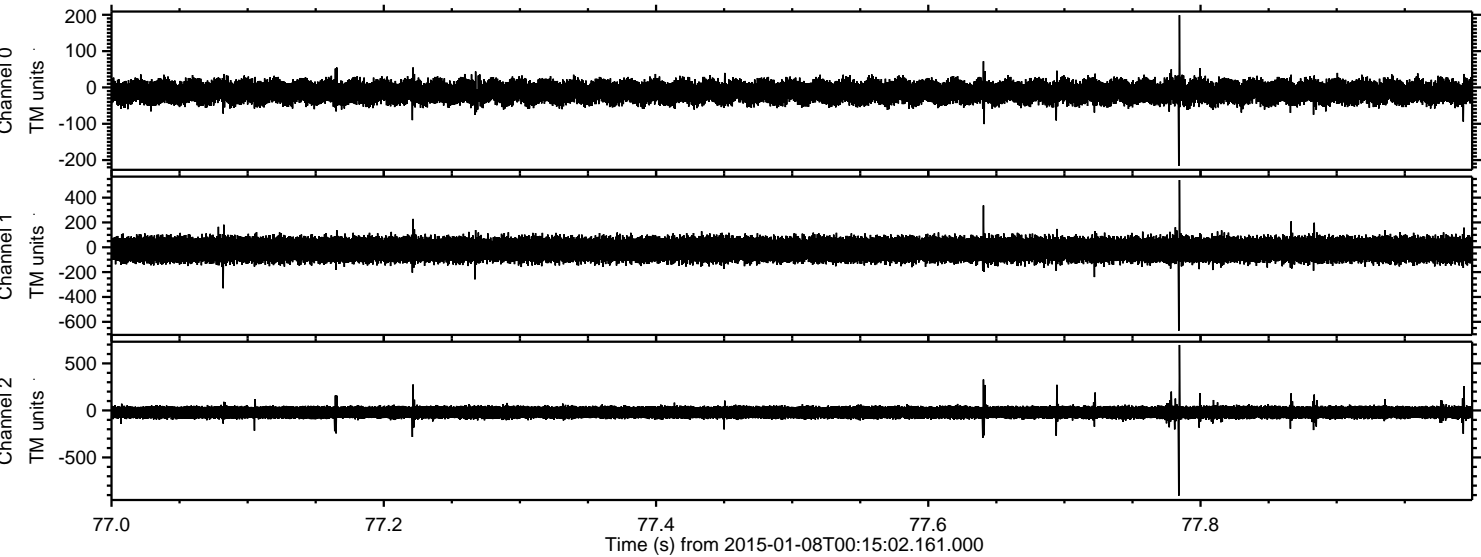


Processed Thu Jan 8 01:22:21 2015 by ELM ver.2012-10-06 from 001\_\_elm20150108\_001501\_\_dat00.bin



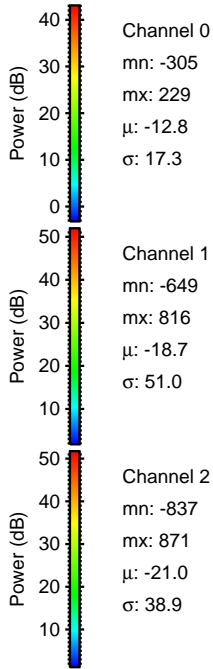
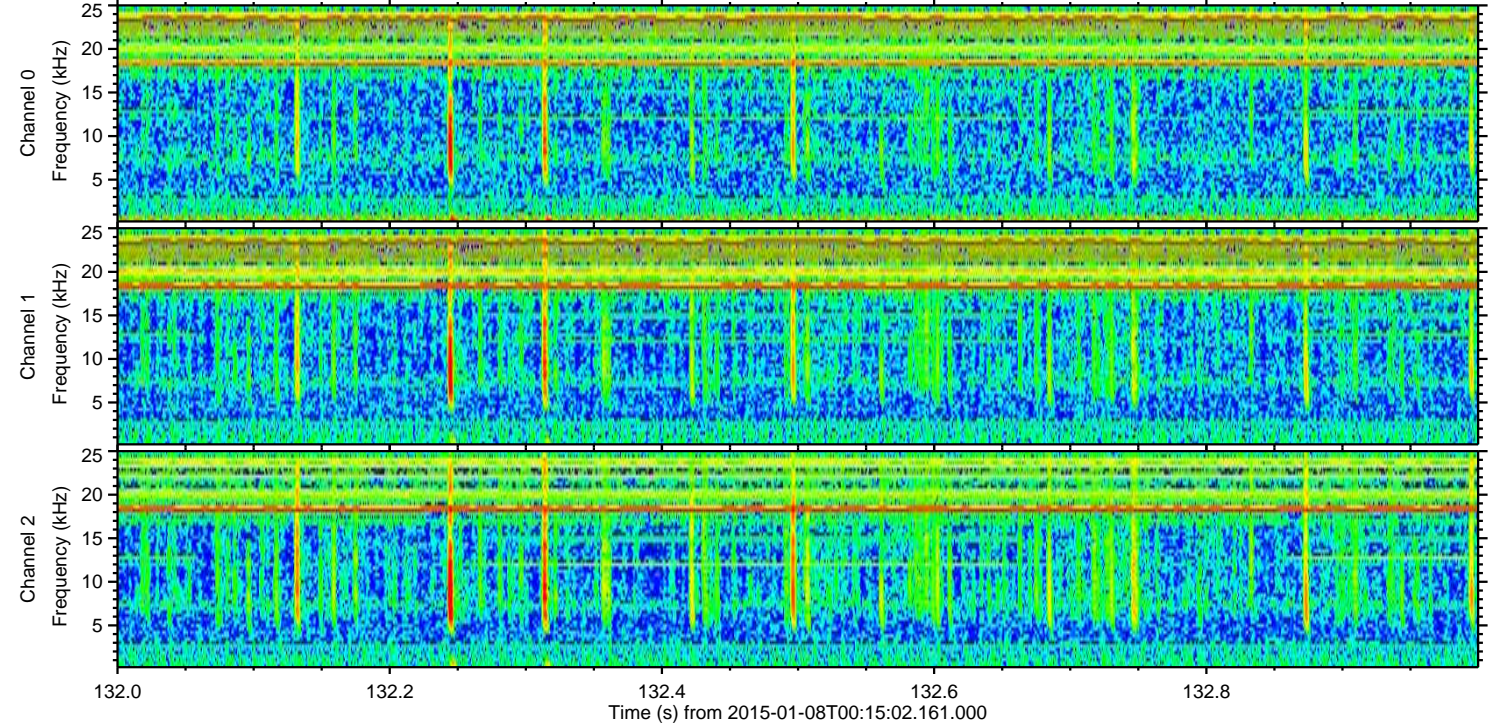
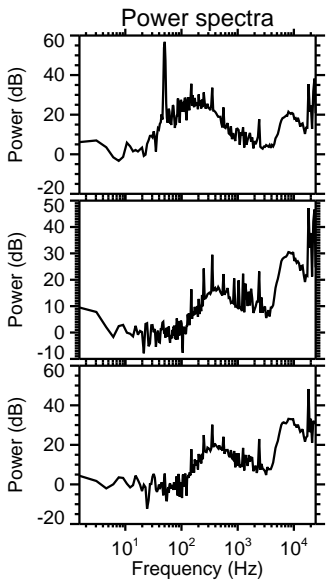
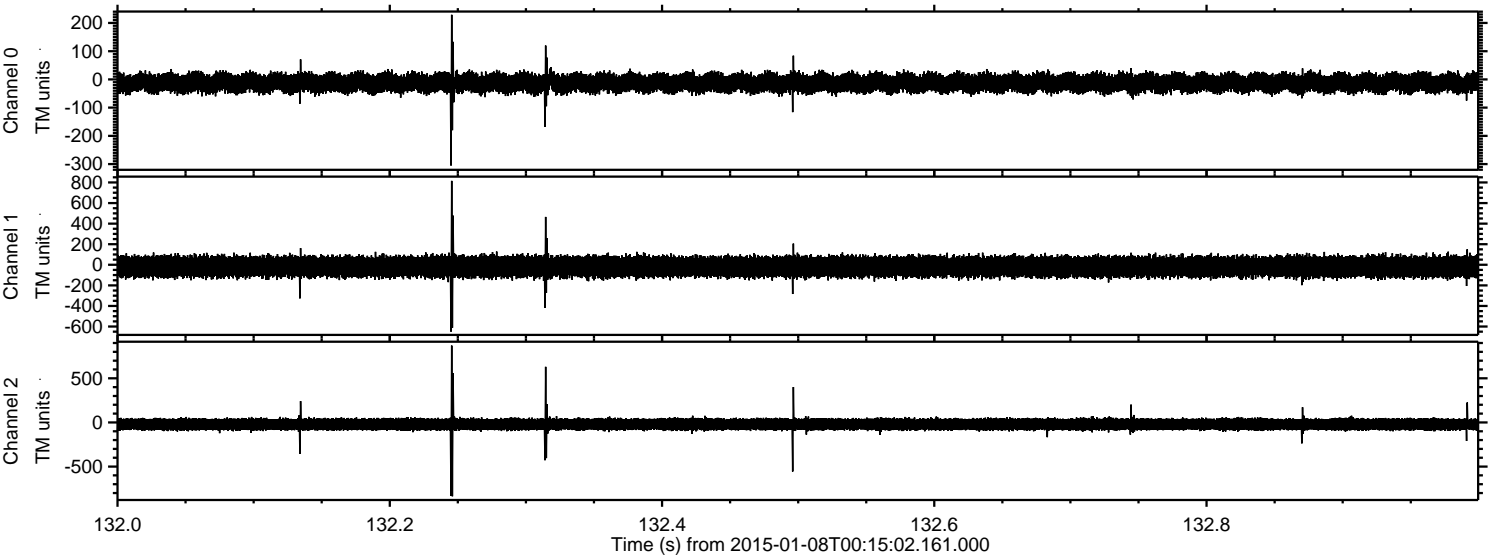


Processed Thu Jan 8 01:22:21 2015 by ELM ver.2012-10-06 from 001\_\_elm20150108\_001501\_\_dat00.bin





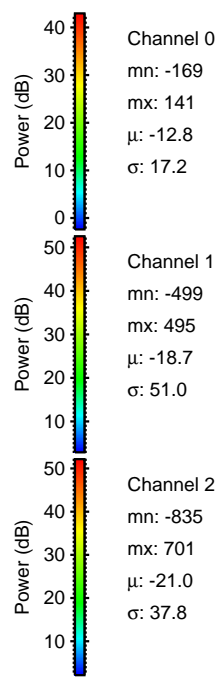
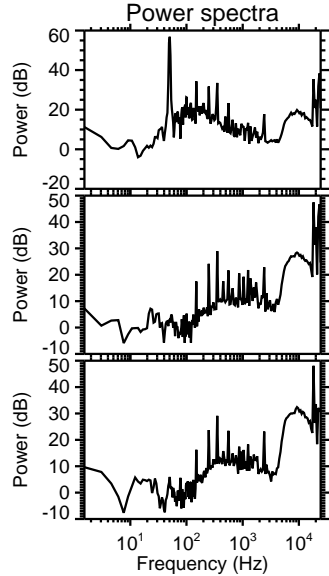
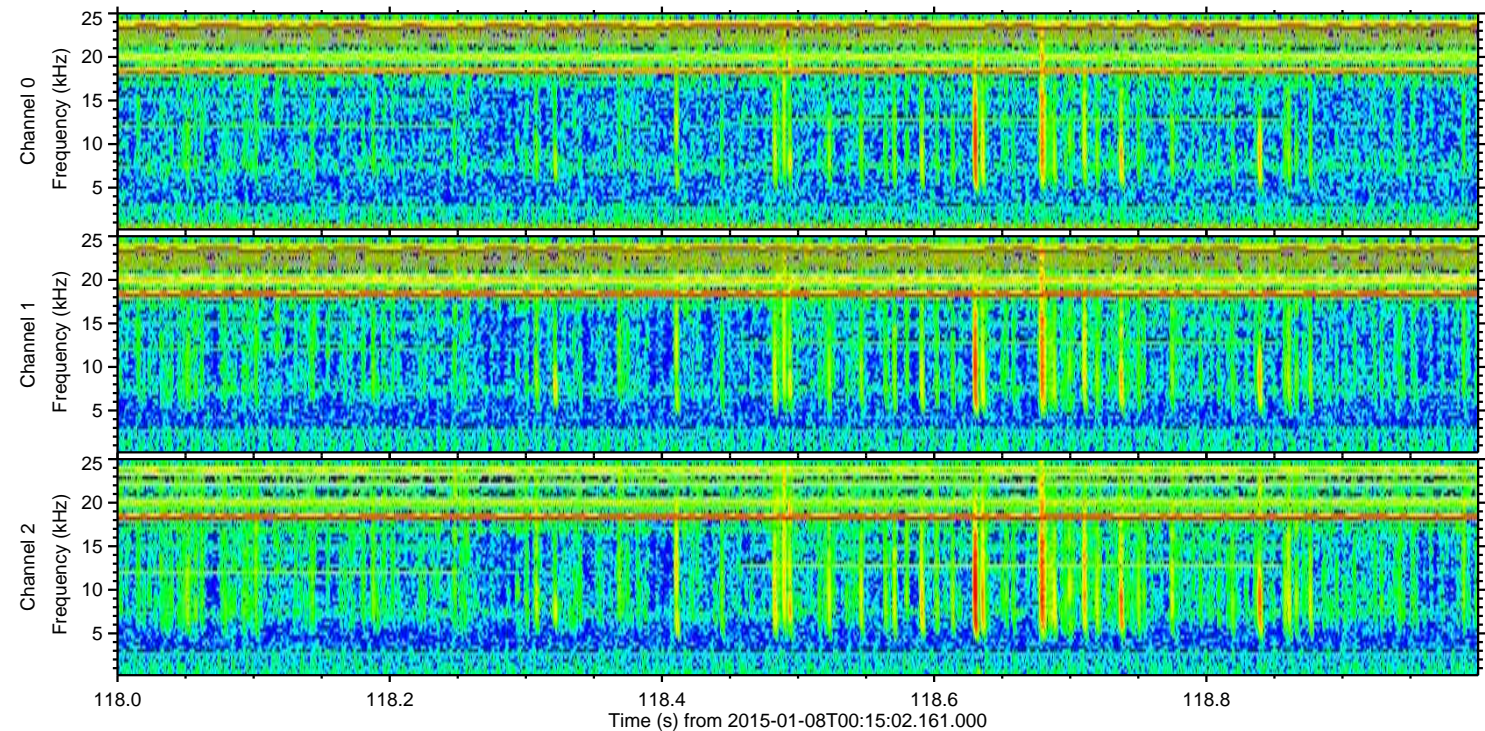
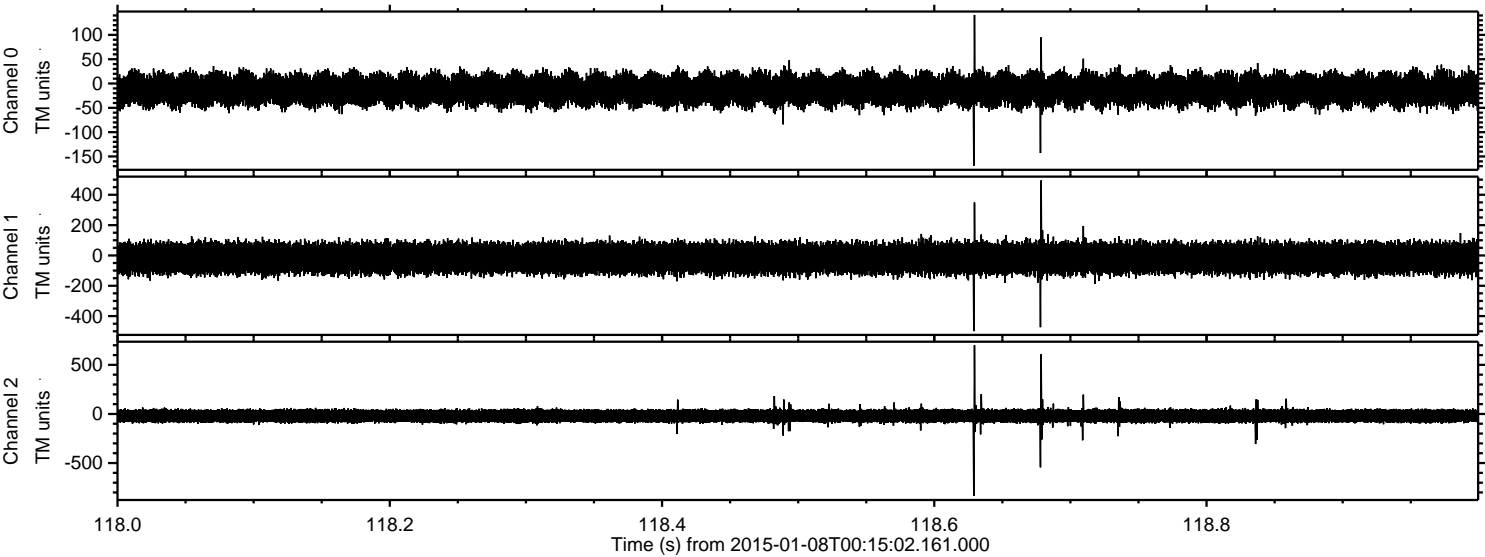
Processed Thu Jan 8 01:22:22 2015 by ELM ver.2012-10-06 from 001\_\_elm20150108\_001501\_\_dat00.bin





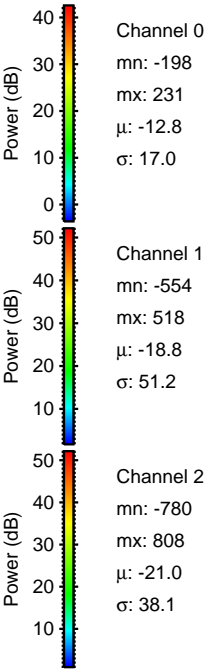
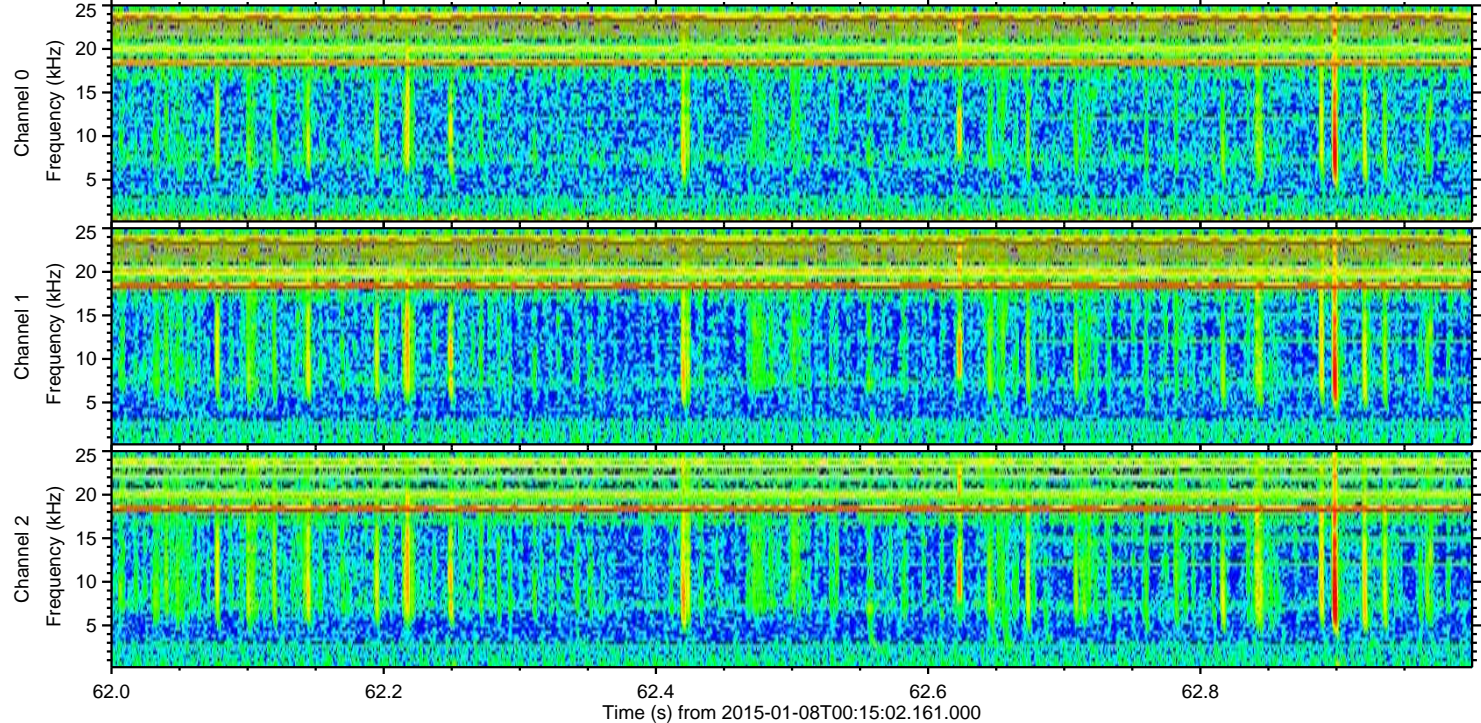
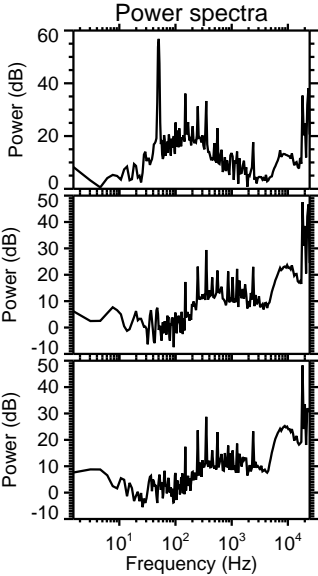
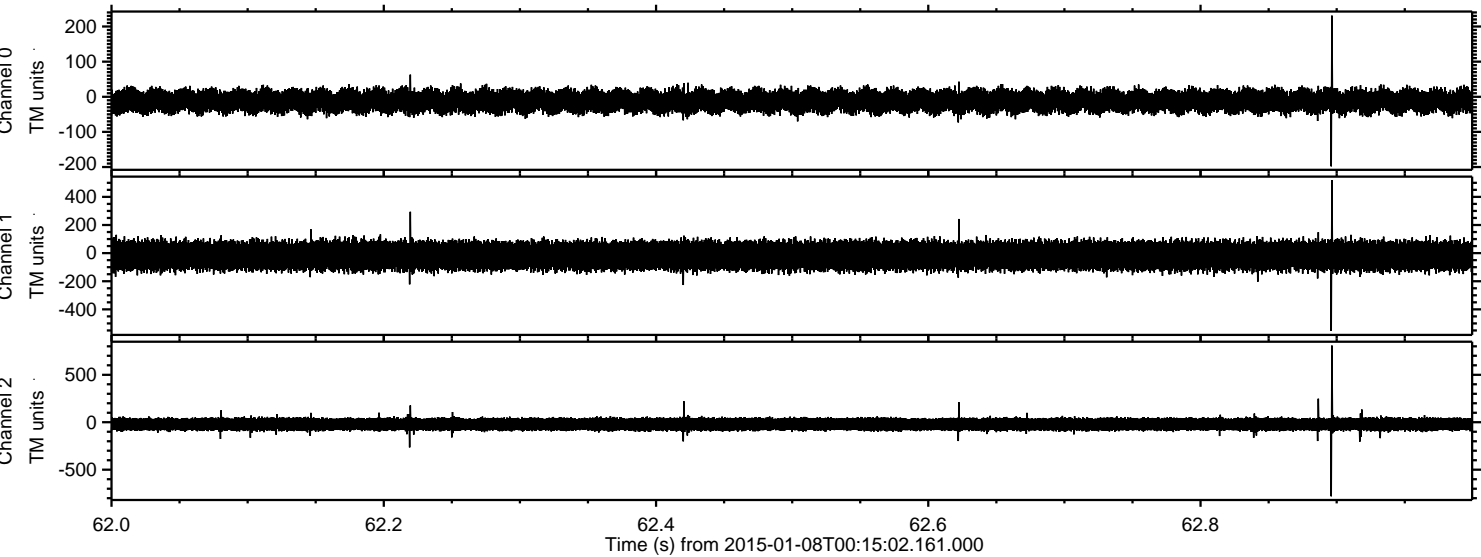
ELMAVAN 3D WAVEFORMS (Measured data sampled at 50 kHz) 49787 packets of 144 samples from 2015-01-08T00:15:02.161.000. Part 119/144

Processed Thu Jan 8 01:22:23 2015 by ELM ver.2012-10-06 from 001\_\_elm20150108\_001501\_\_dat00.bin



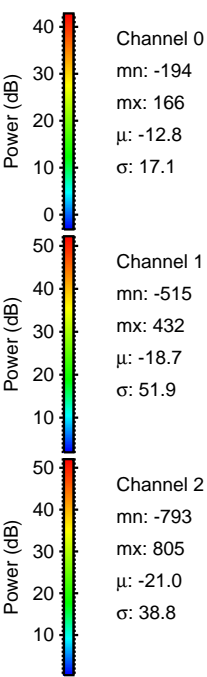
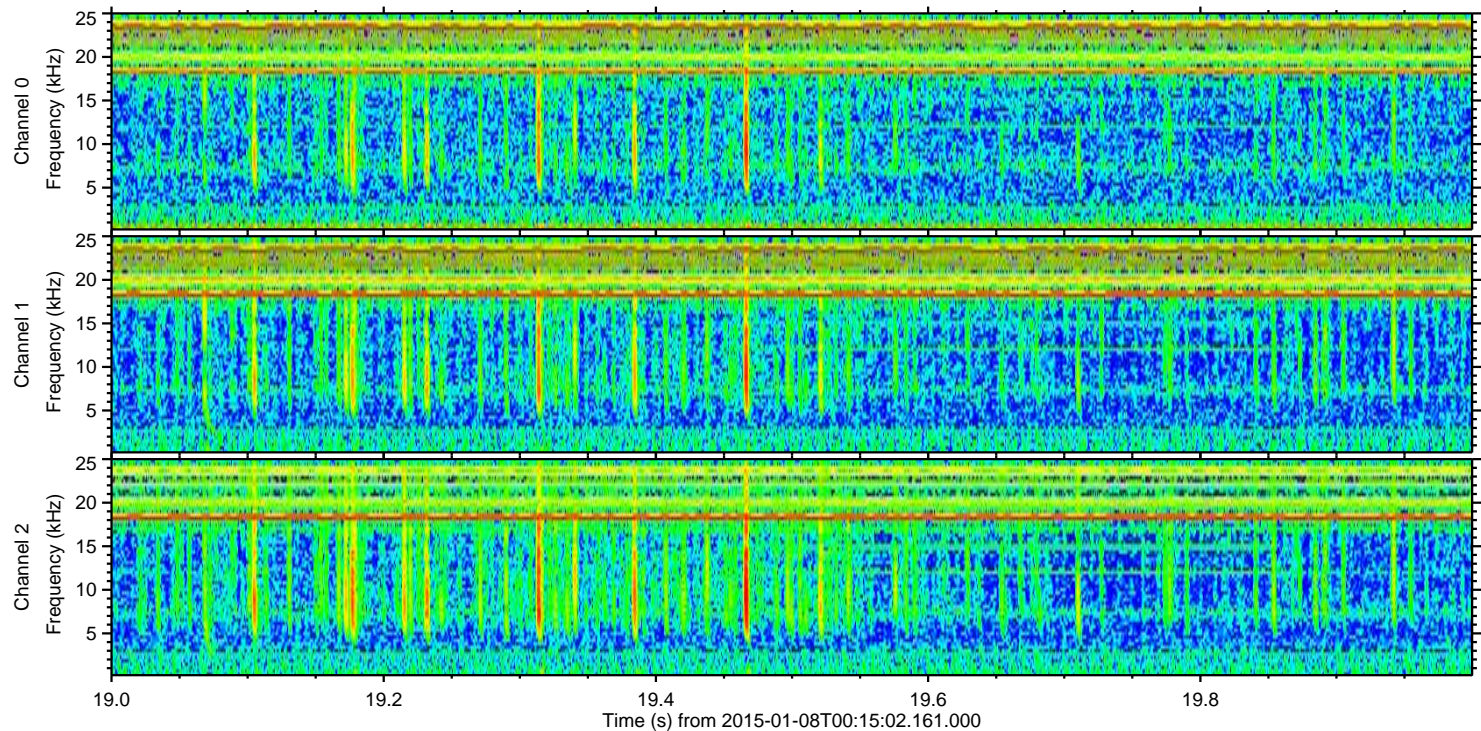
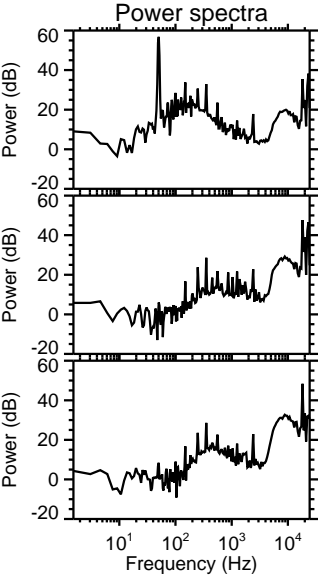
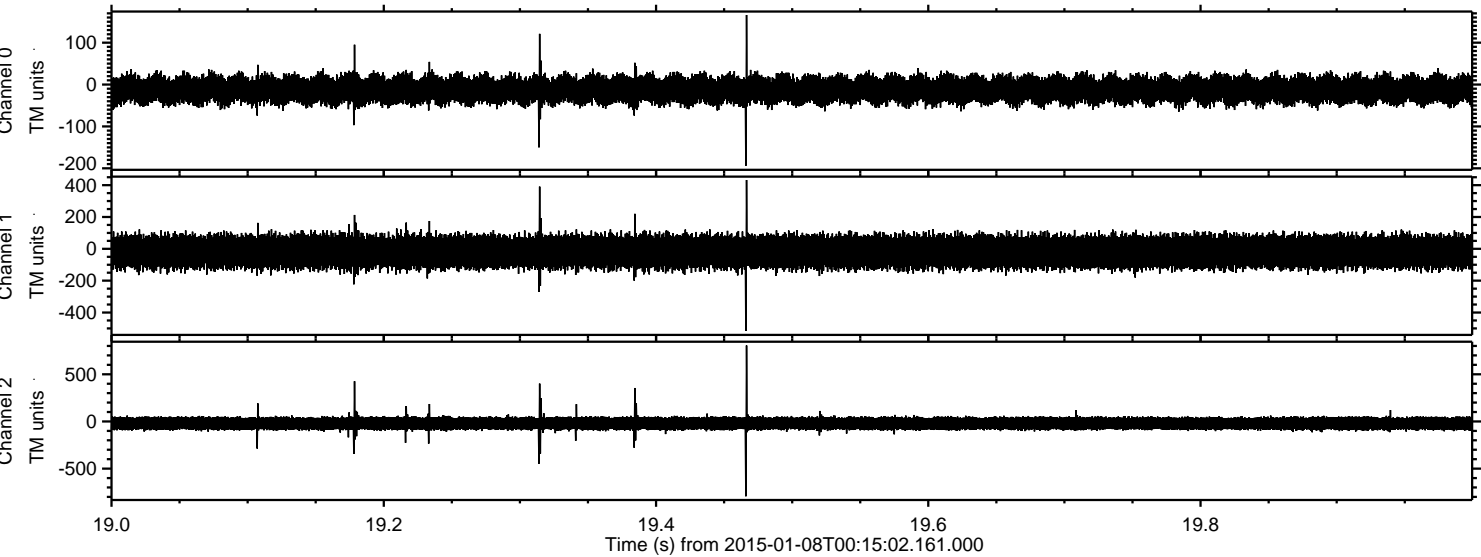


Processed Thu Jan 8 01:22:24 2015 by ELM ver.2012-10-06 from 001\_\_elm20150108\_001501\_\_dat00.bin



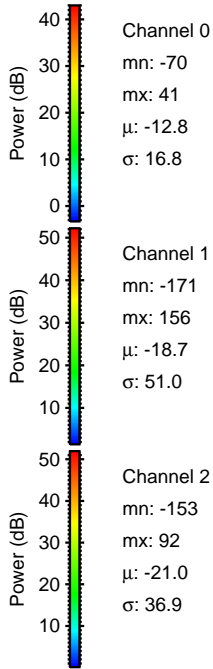
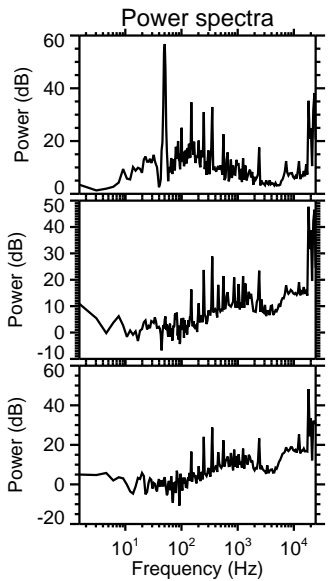
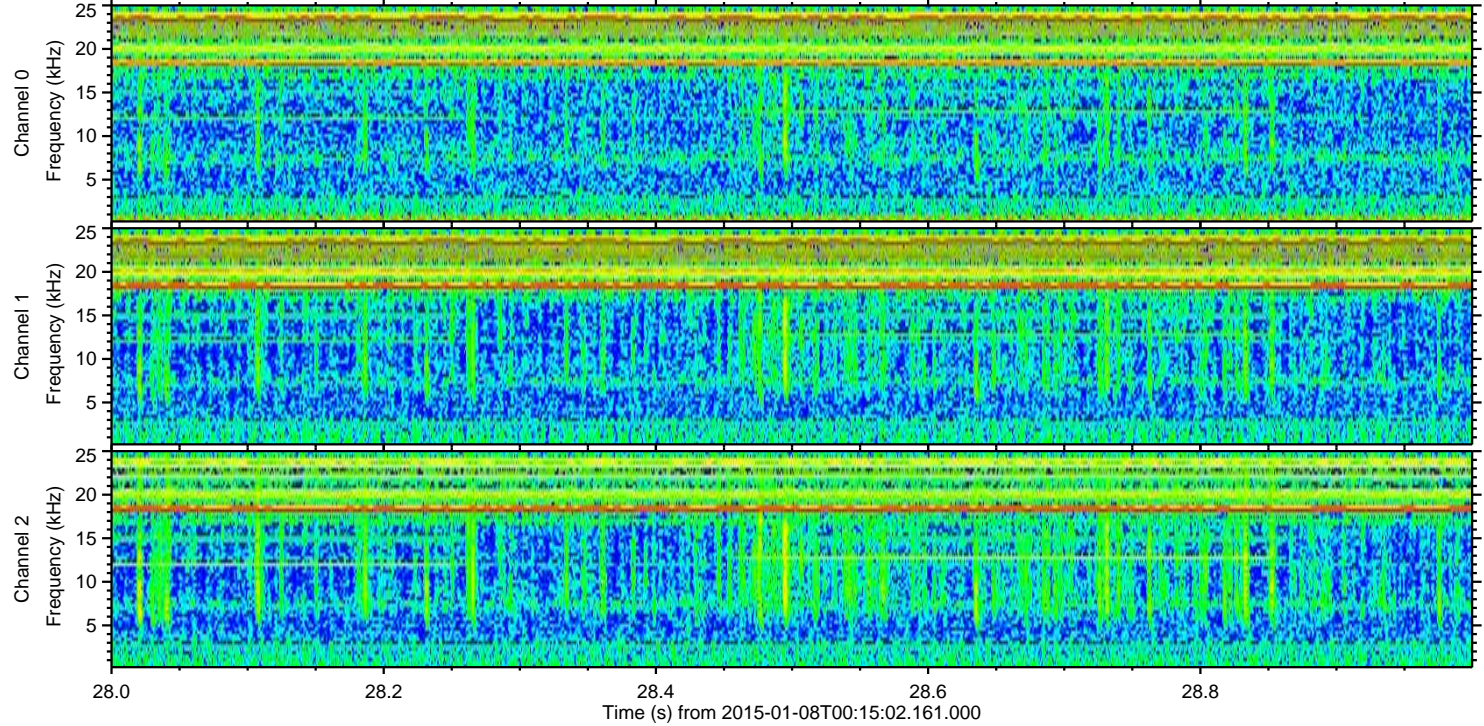
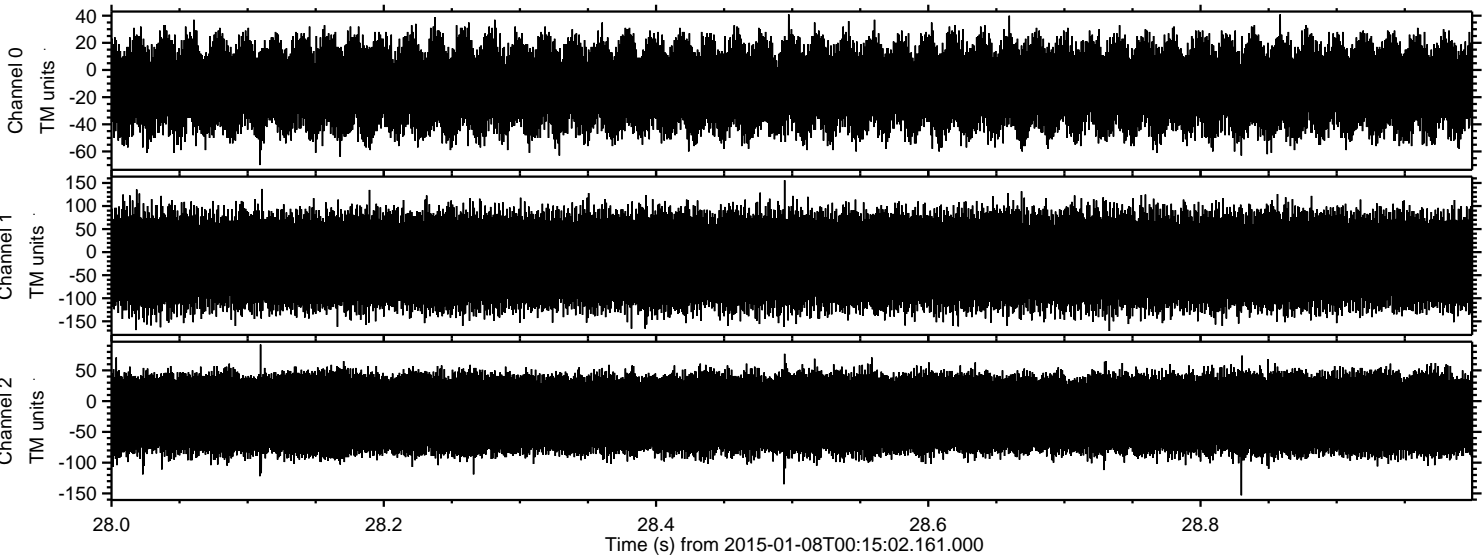


Processed Thu Jan 8 01:22:25 2015 by ELM ver.2012-10-06 from 001\_\_elm20150108\_001501\_\_dat00.bin





Processed Thu Jan 8 01:22:26 2015 by ELM ver.2012-10-06 from 001\_\_elm20150108\_001501\_\_dat00.bin



Channel 0  
mn: -70  
mx: 41  
 $\mu$ : -12.8  
 $\sigma$ : 16.8

Channel 1  
mn: -171  
mx: 156  
 $\mu$ : -18.7  
 $\sigma$ : 51.0

Channel 2  
mn: -153  
mx: 92  
 $\mu$ : -21.0  
 $\sigma$ : 36.9