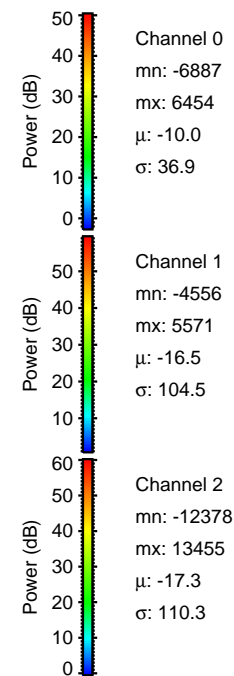
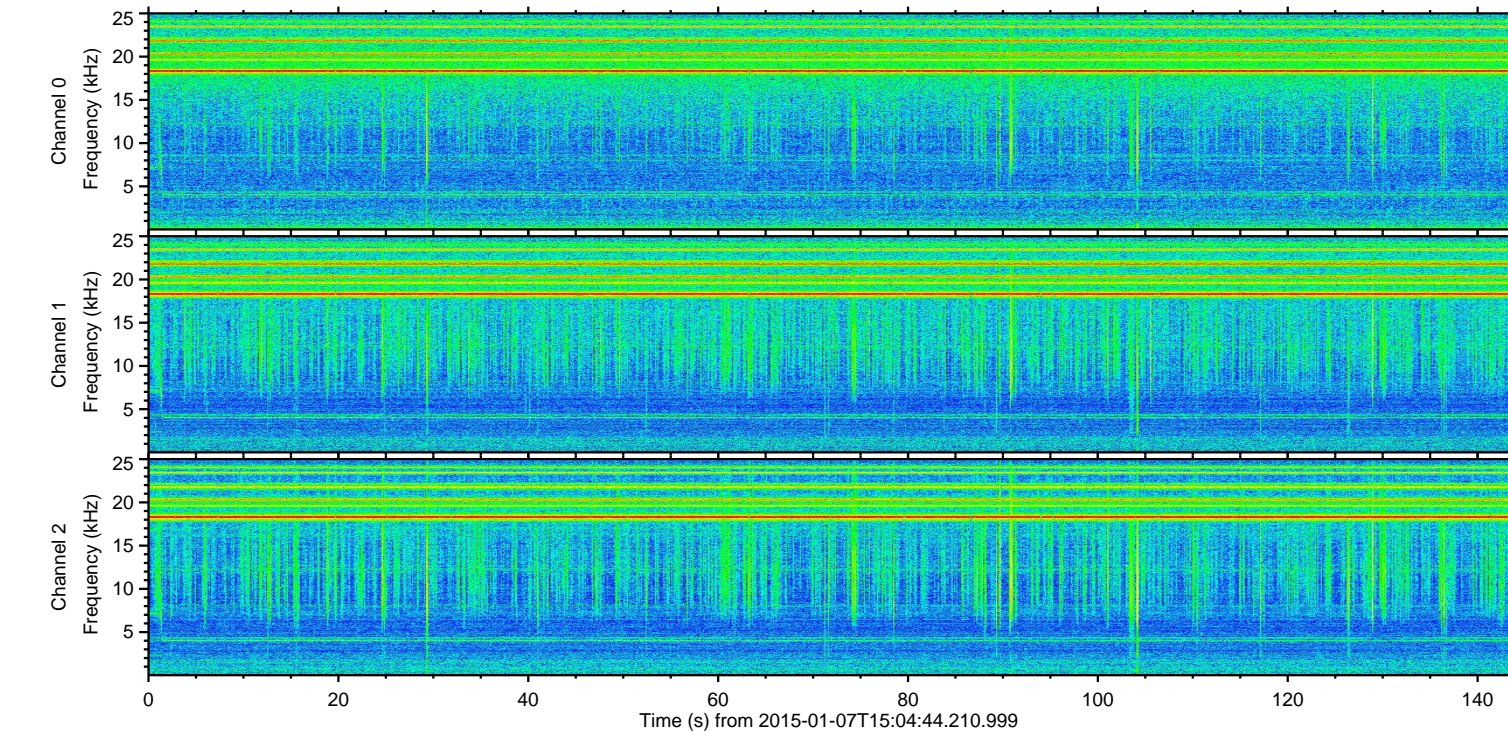
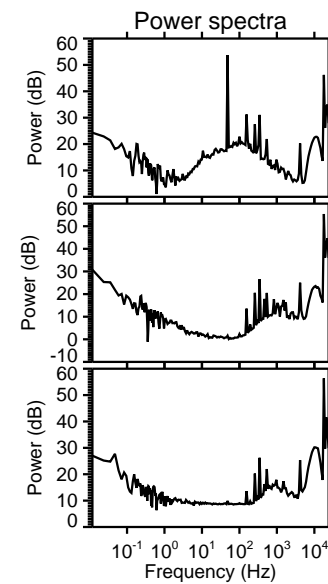
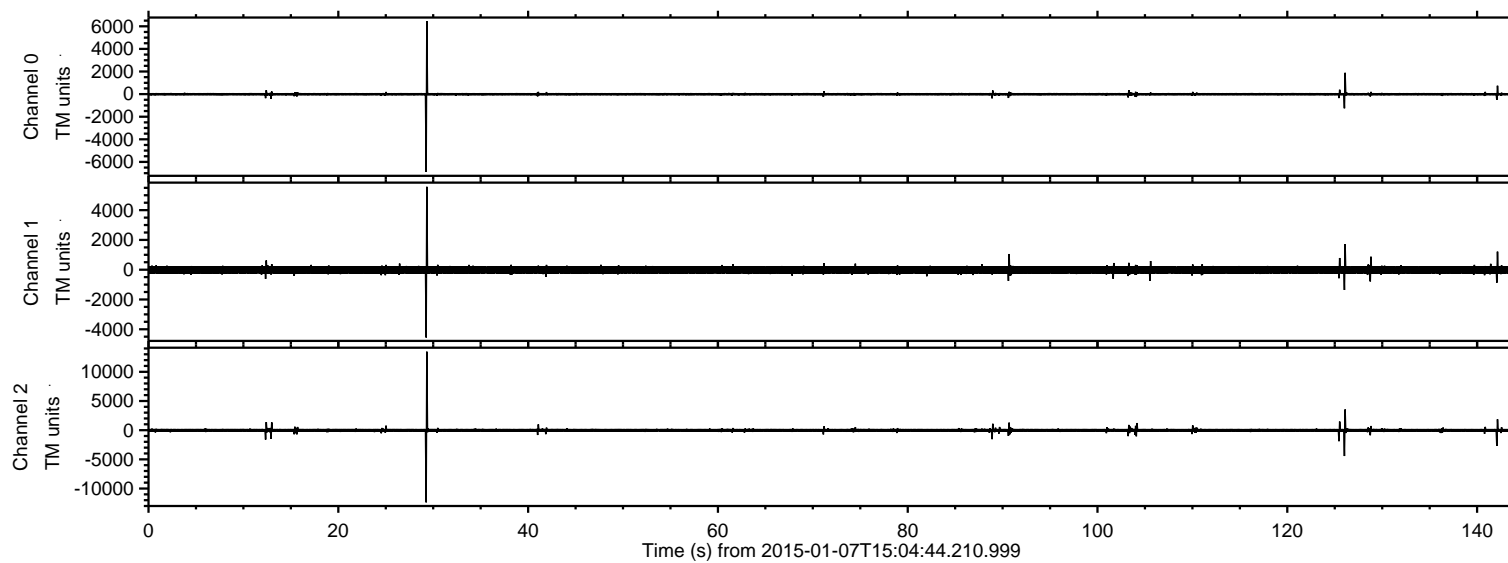
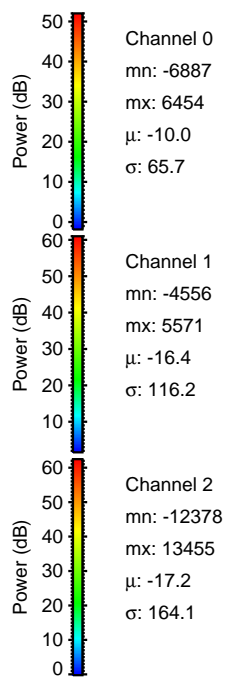
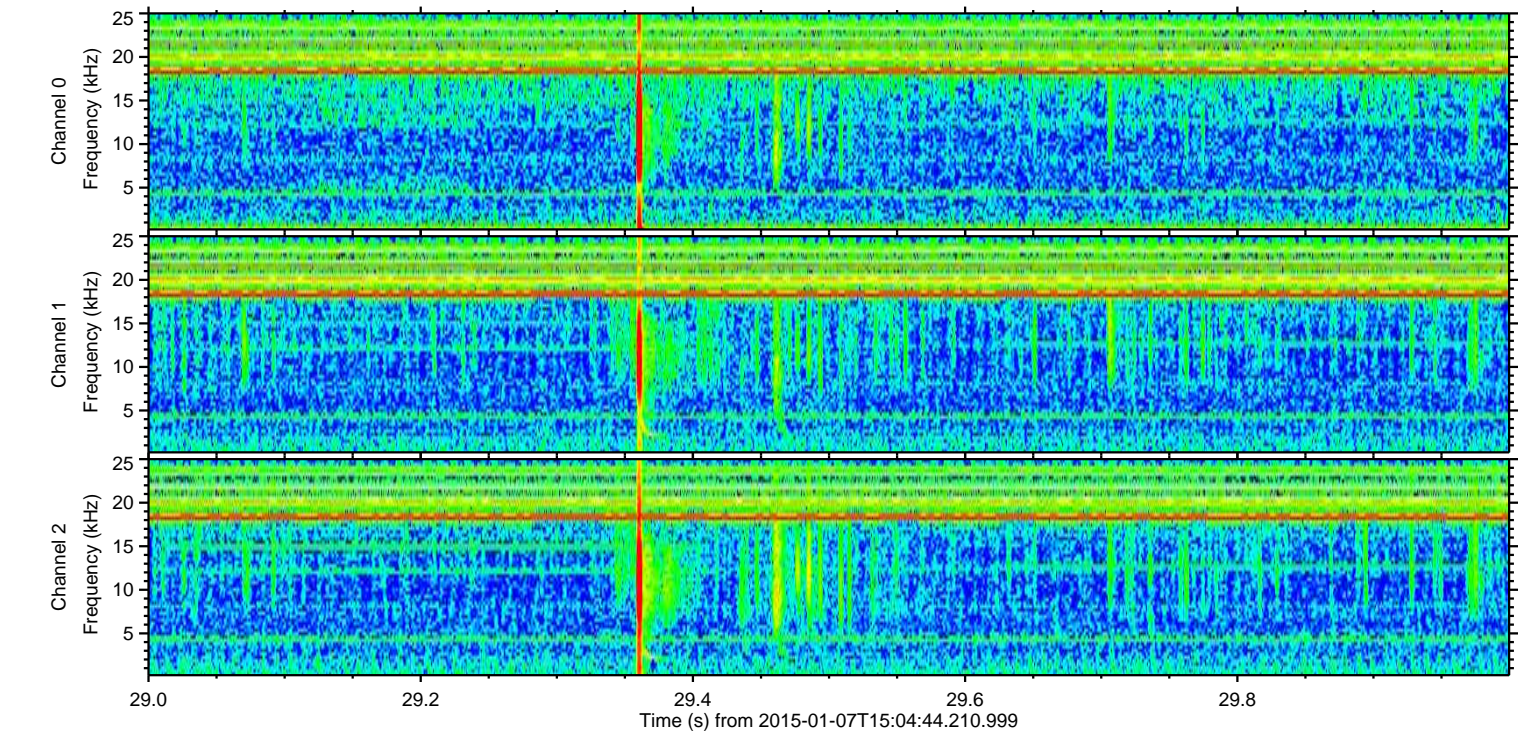
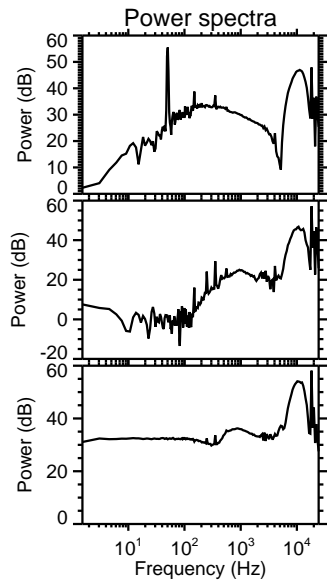
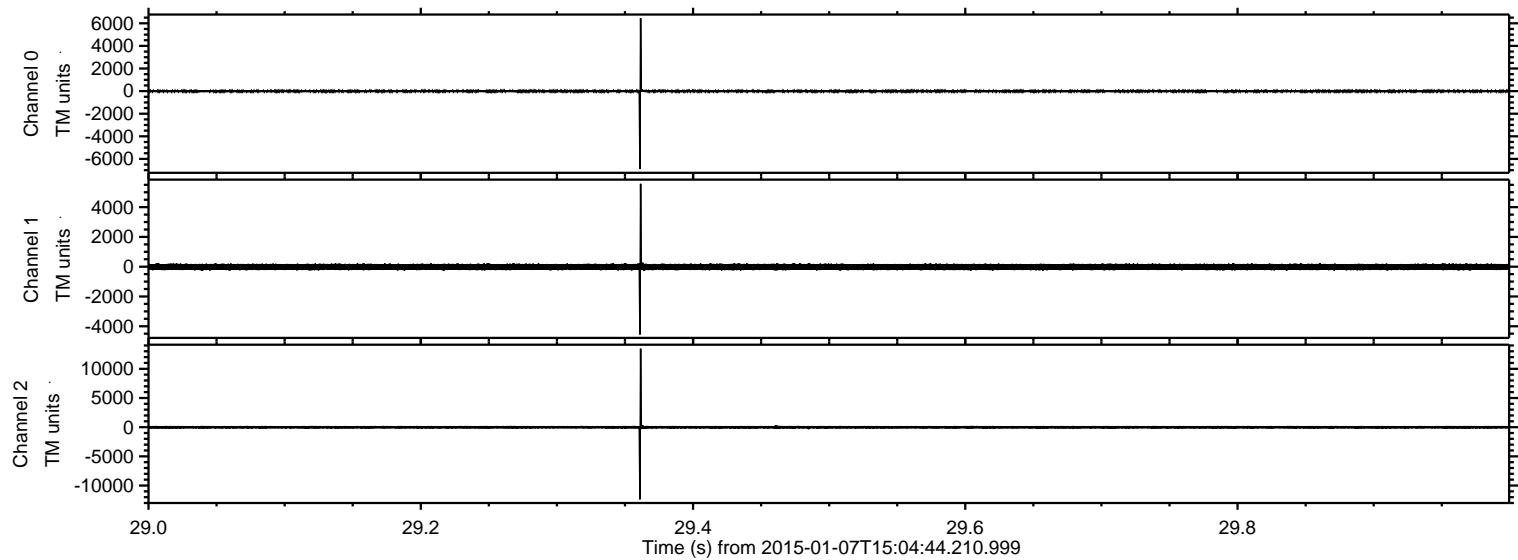


ELMAVAN 3D WAVEFORMS (Measured data sampled at 50 kHz) 49783 packets of 144 samples from 2015-01-07T15:04:44.210.999.

Processed Wed Jan 7 16:12:36 2015 by ELM ver.2012-10-06 from 001__elm20150107_150443__dat00.bin

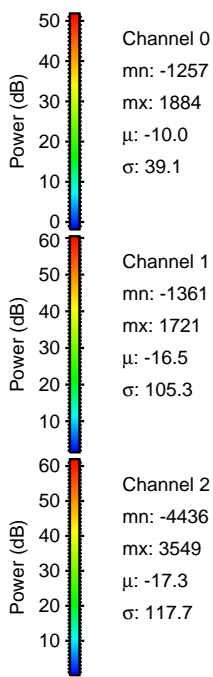
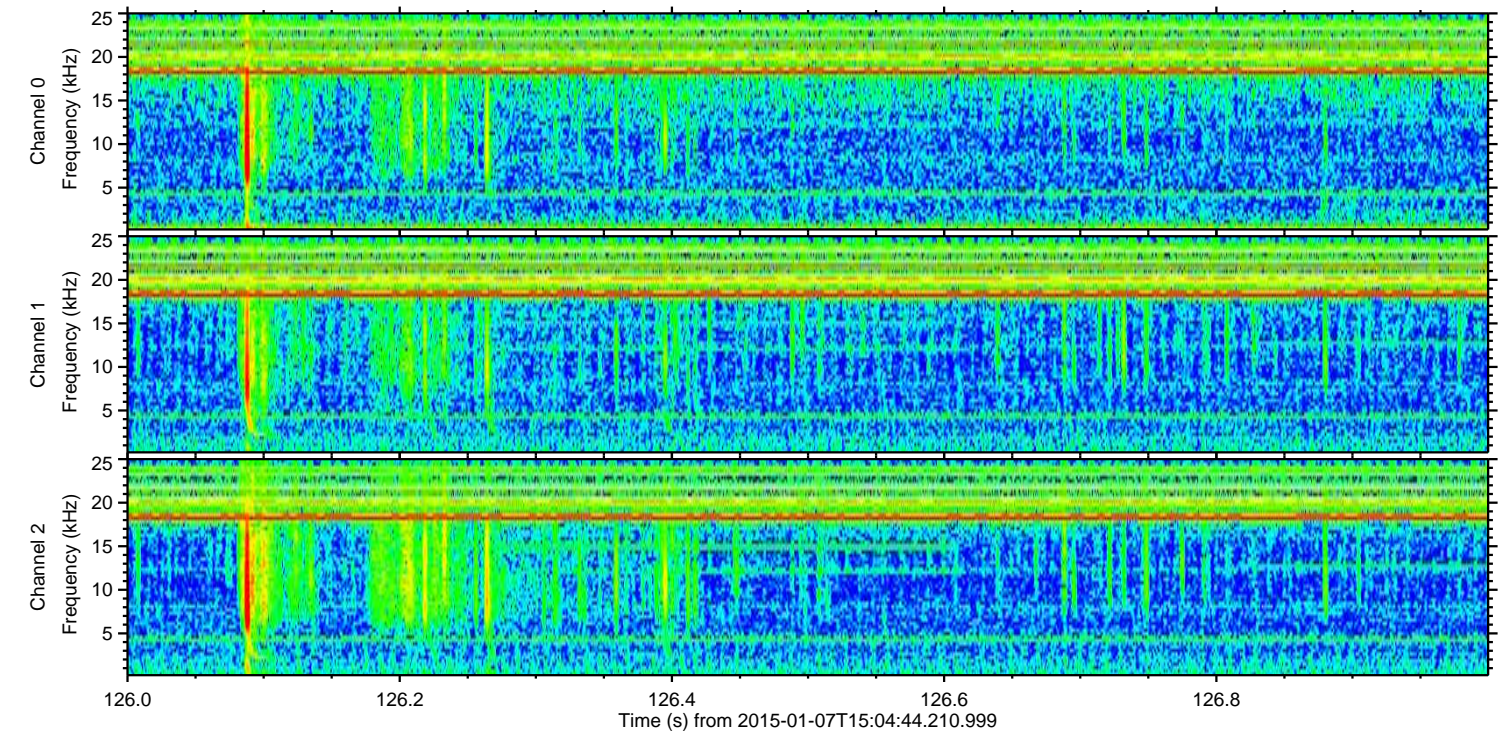
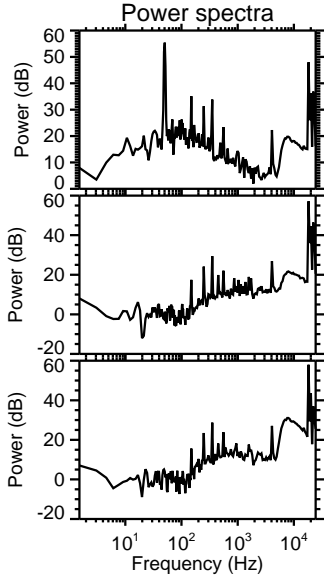
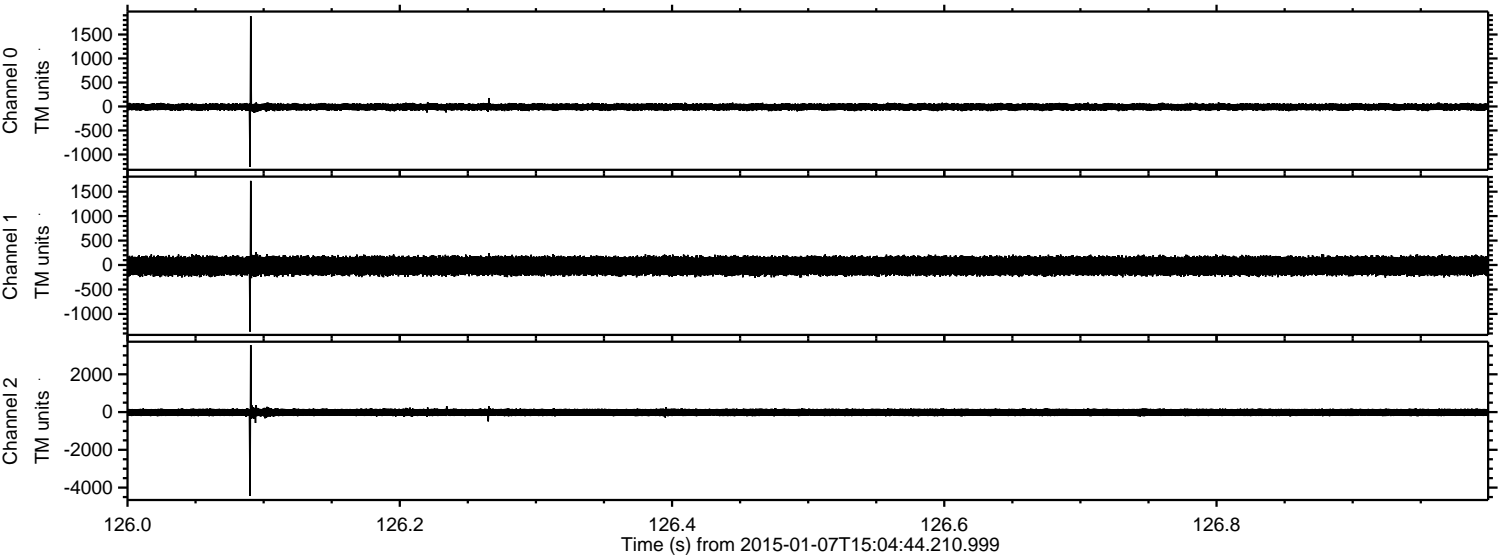


Processed Wed Jan 7 16:12:48 2015 by ELM ver.2012-10-06 from 001__elm20150107_150443__dat00.bin



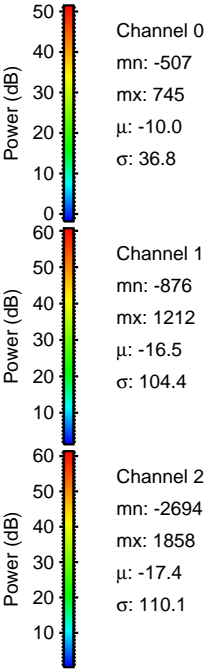
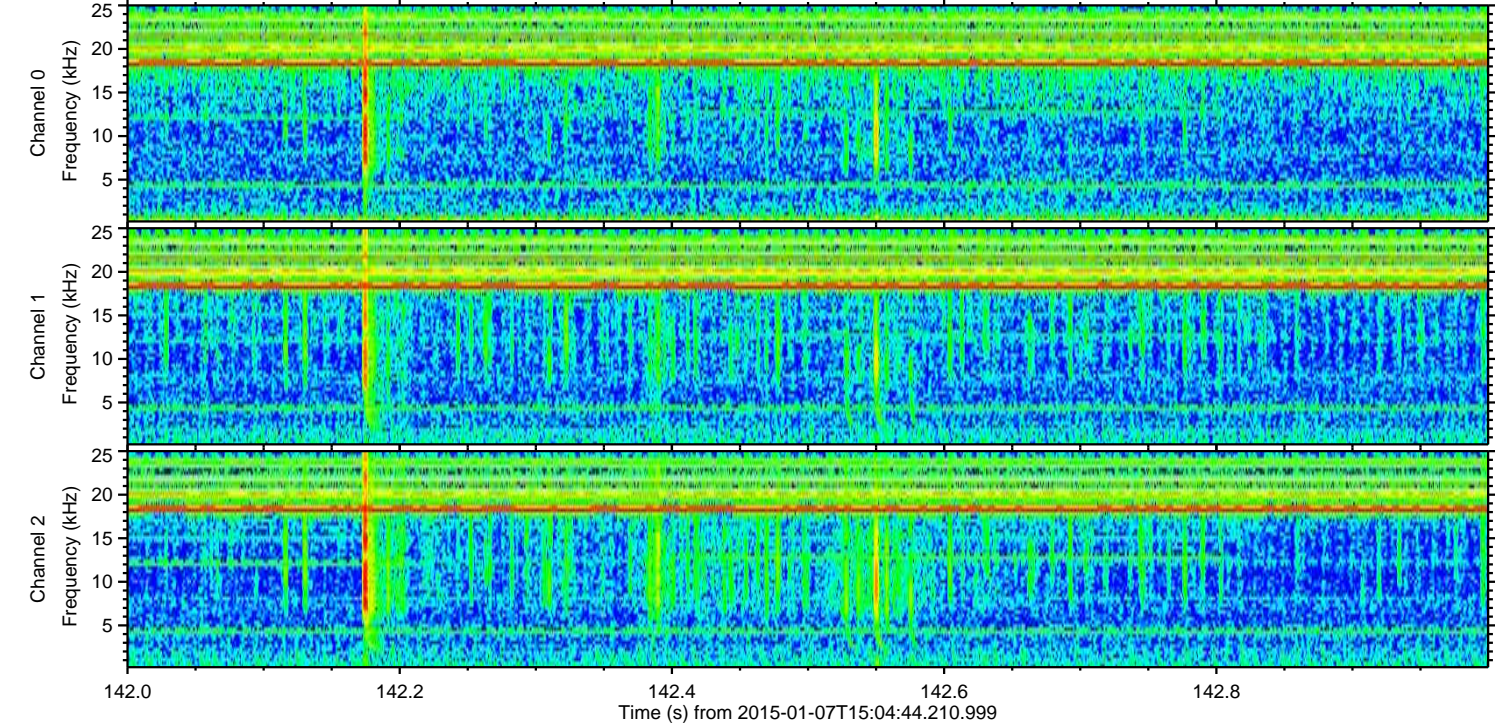
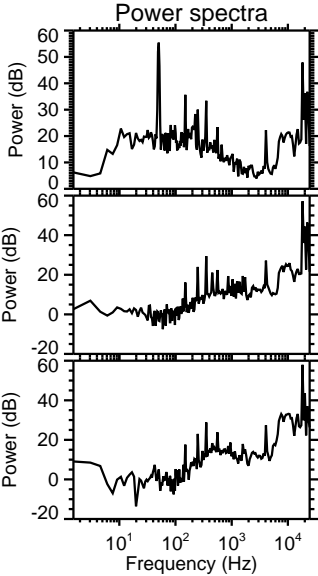
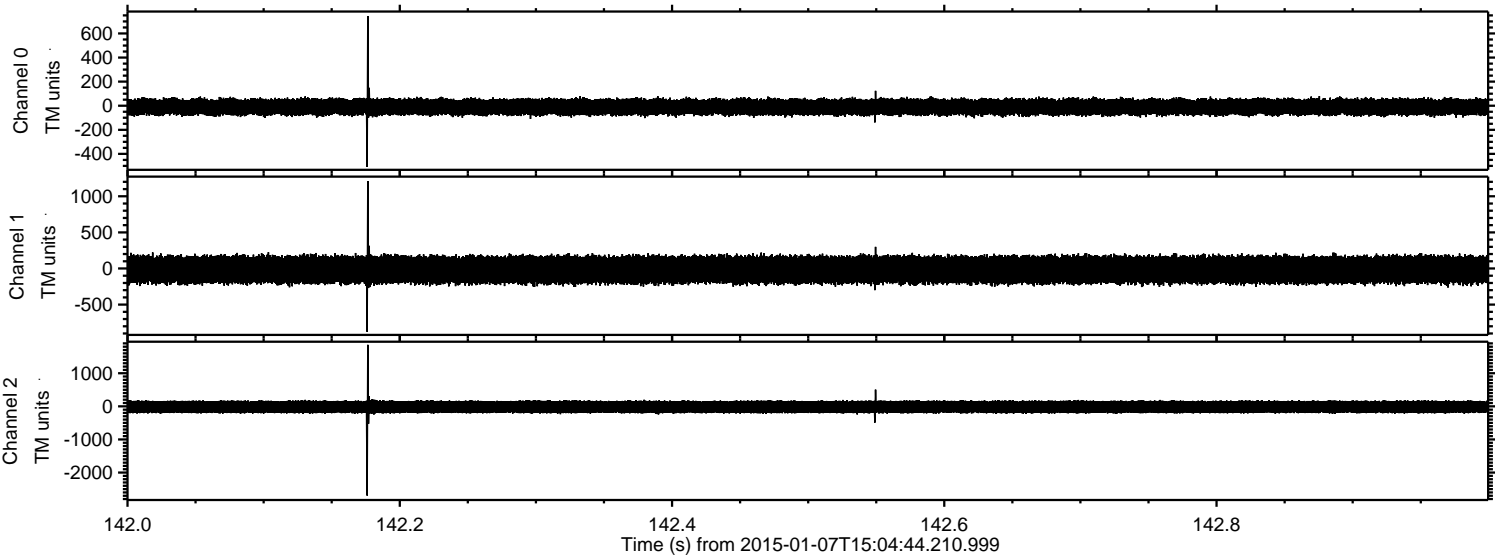
ELMAVAN 3D WAVEFORMS (Measured data sampled at 50 kHz) 49783 packets of 144 samples from 2015-01-07T15:04:44.210.999. Part 127/144

Processed Wed Jan 7 16:12:49 2015 by ELM ver.2012-10-06 from 001__elm20150107_150443__dat00.bin



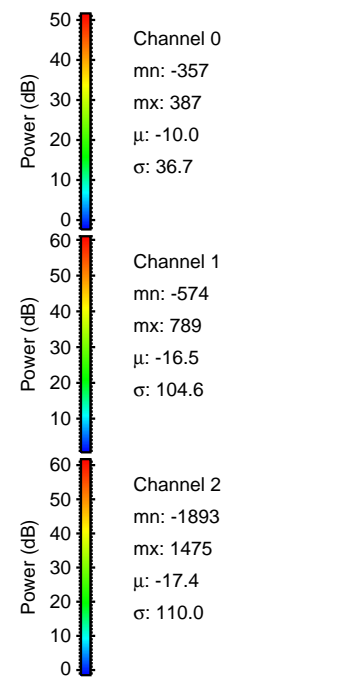
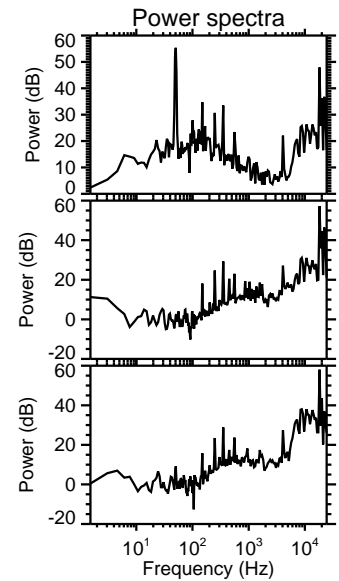
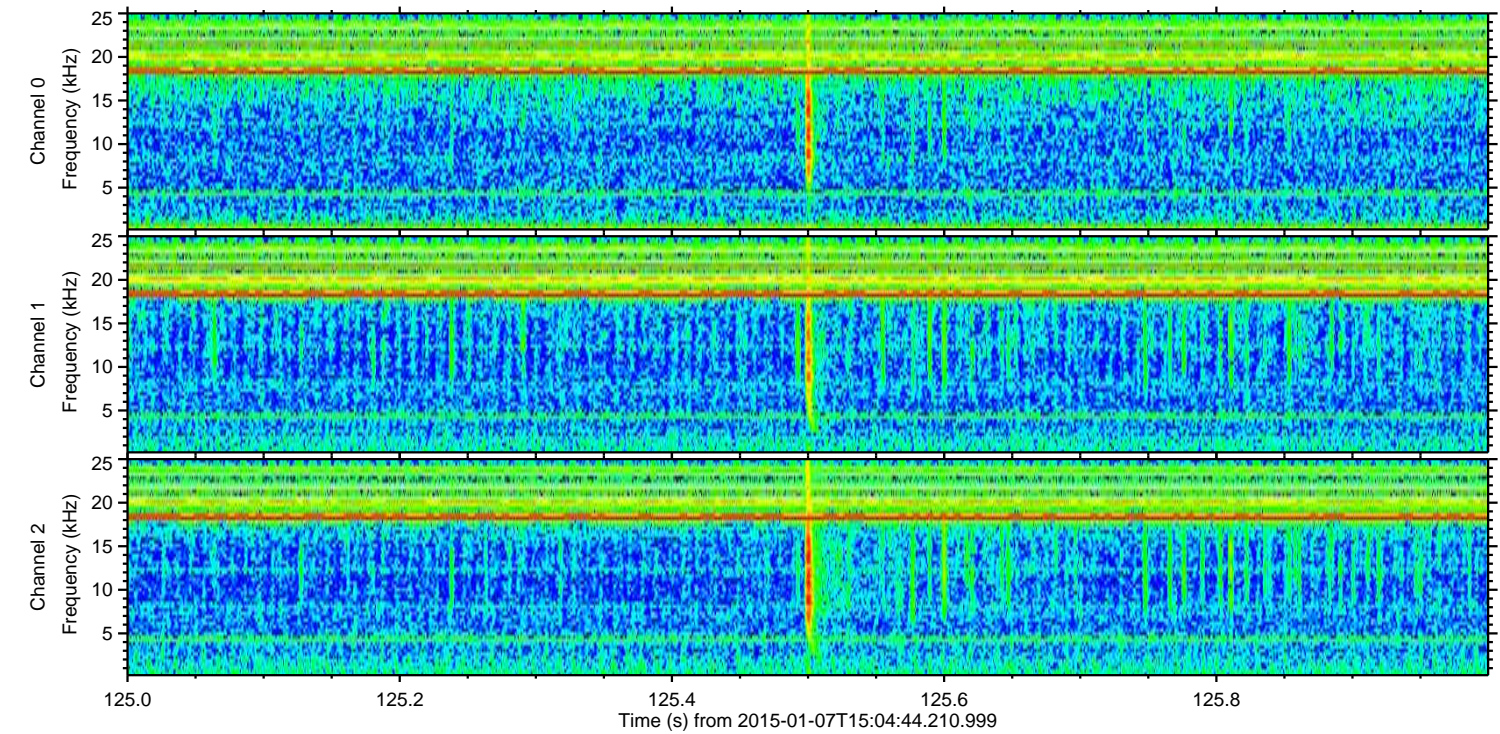
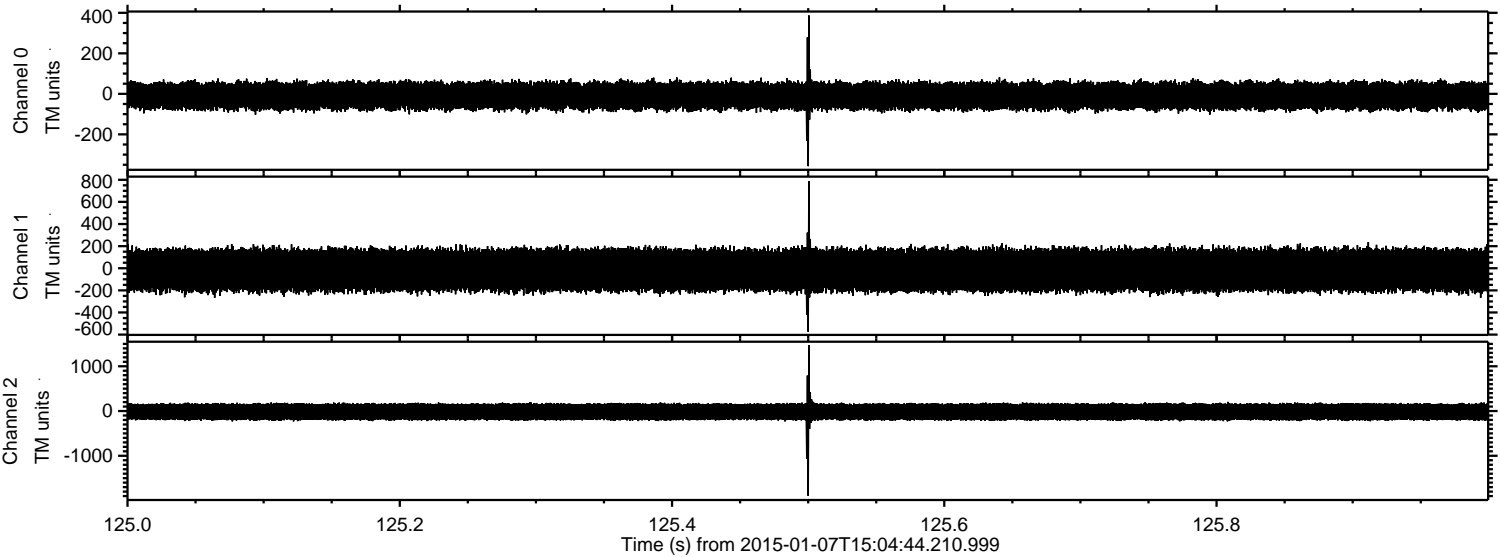
ELMAVAN 3D WAVEFORMS (Measured data sampled at 50 kHz) 49783 packets of 144 samples from 2015-01-07T15:04:44.210.999. Part 143/144

Processed Wed Jan 7 16:12:50 2015 by ELM ver.2012-10-06 from 001__elm20150107_150443__dat00.bin



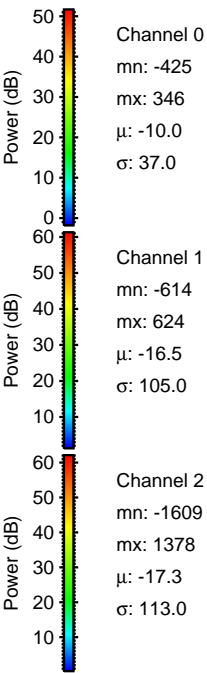
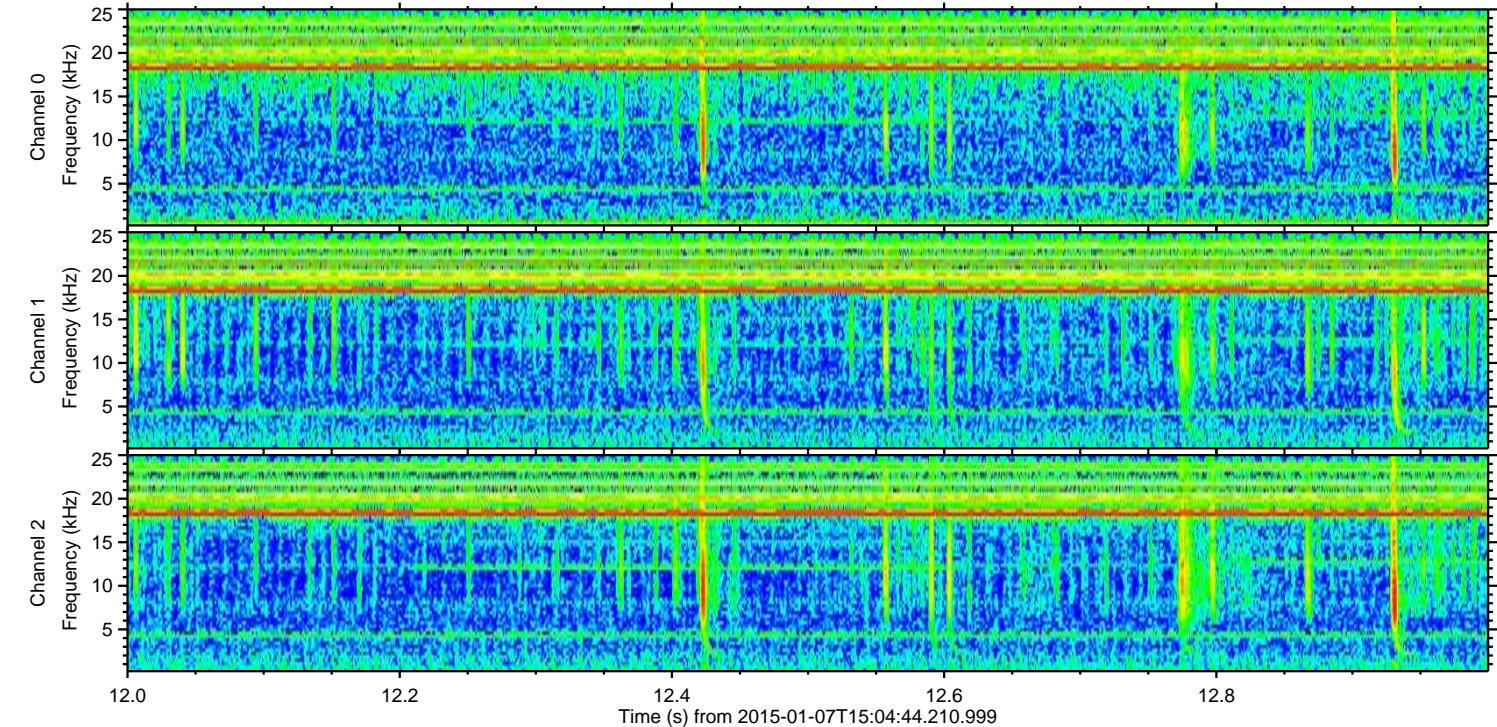
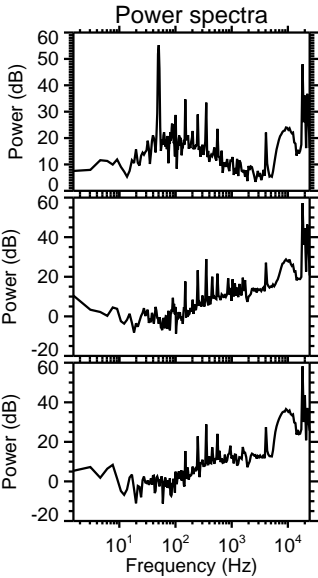
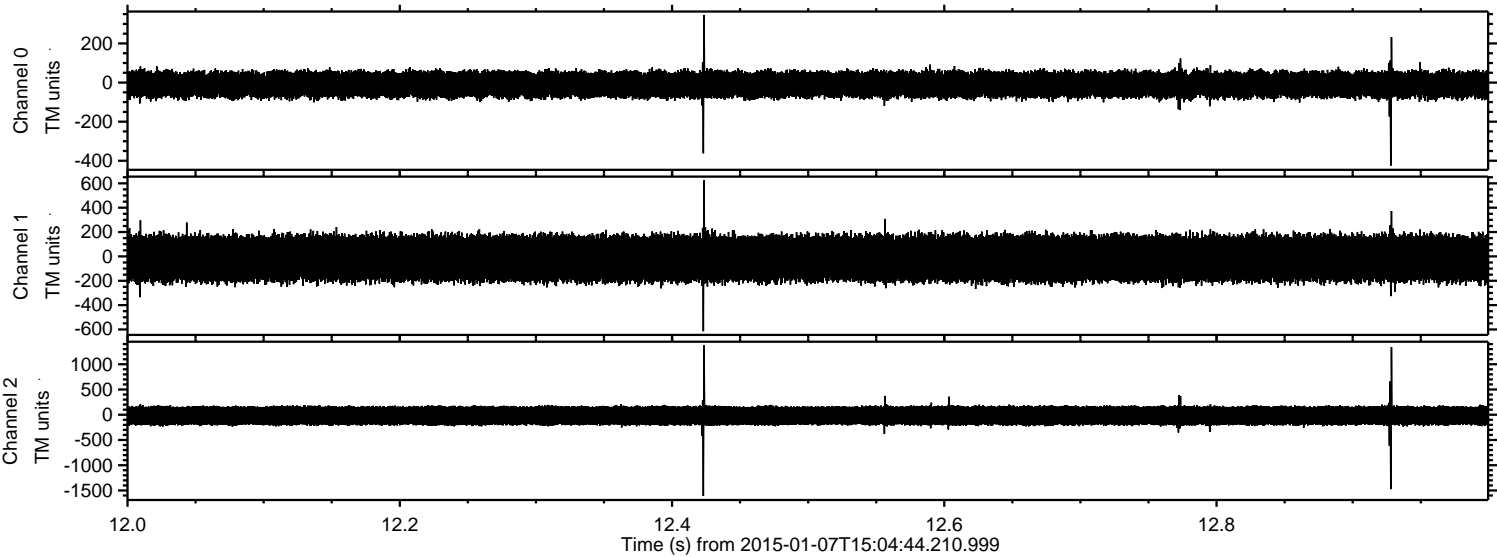
ELMAVAN 3D WAVEFORMS (Measured data sampled at 50 kHz) 49783 packets of 144 samples from 2015-01-07T15:04:44.210.999. Part 126/144

Processed Wed Jan 7 16:12:51 2015 by ELM ver.2012-10-06 from 001__elm20150107_150443__dat00.bin

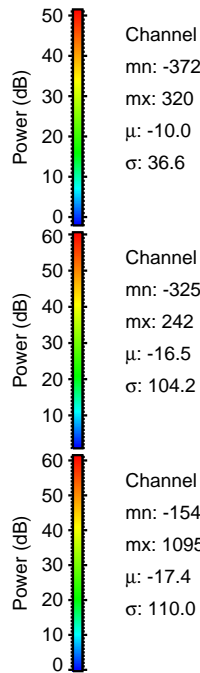
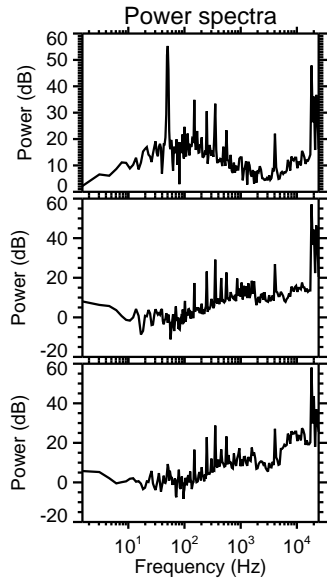
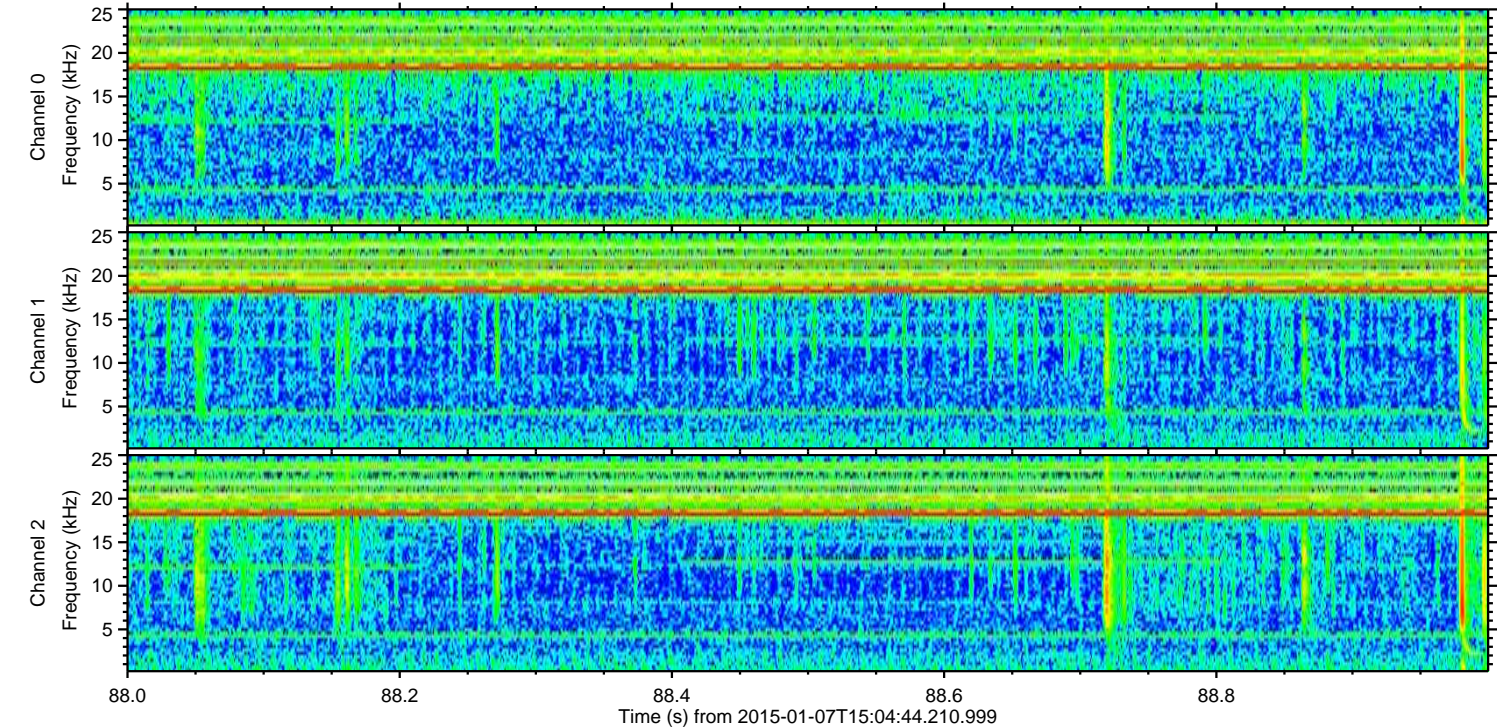
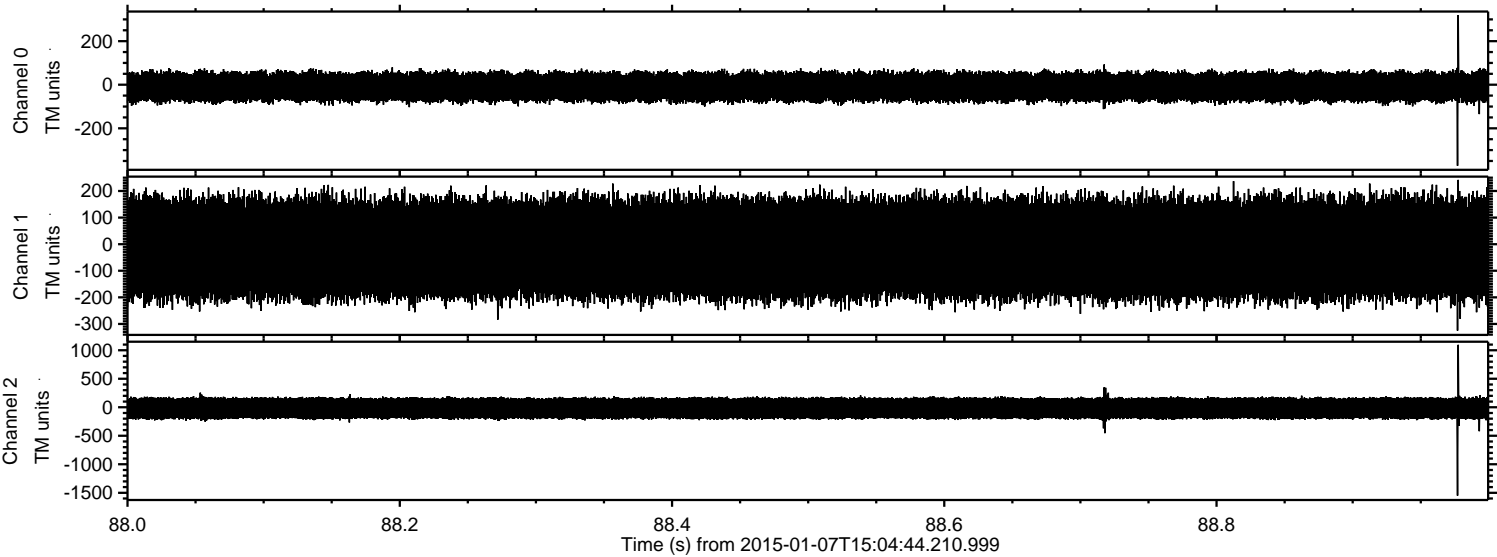


ELMAVAN 3D WAVEFORMS (Measured data sampled at 50 kHz) 49783 packets of 144 samples from 2015-01-07T15:04:44.210.999. Part 13/144

Processed Wed Jan 7 16:12:52 2015 by ELM ver.2012-10-06 from 001__elm20150107_150443__dat00.bin

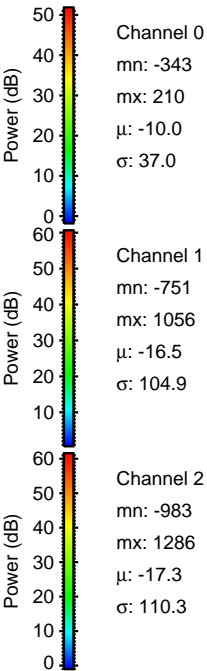
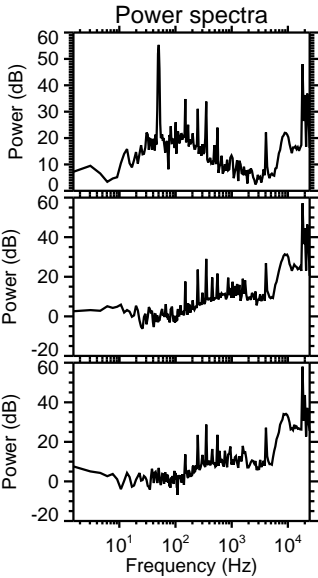
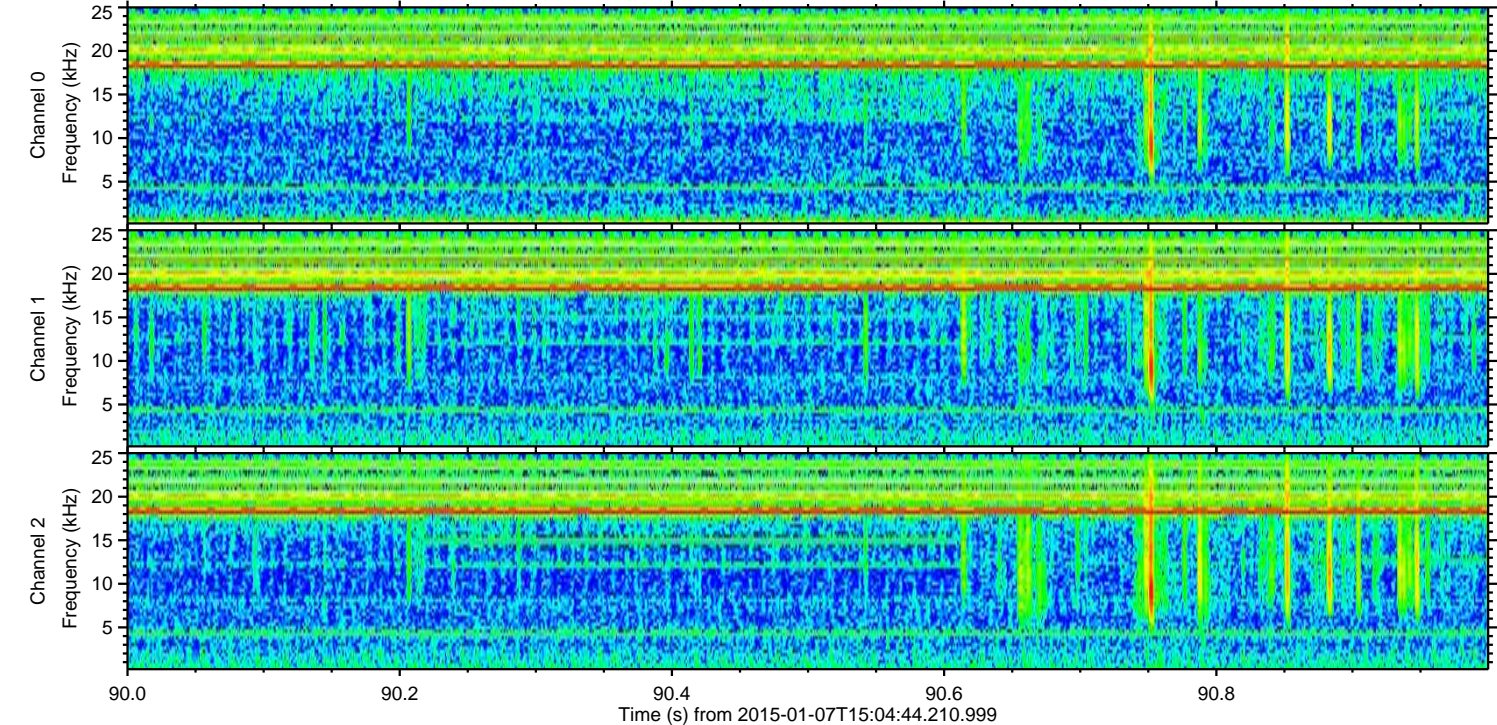
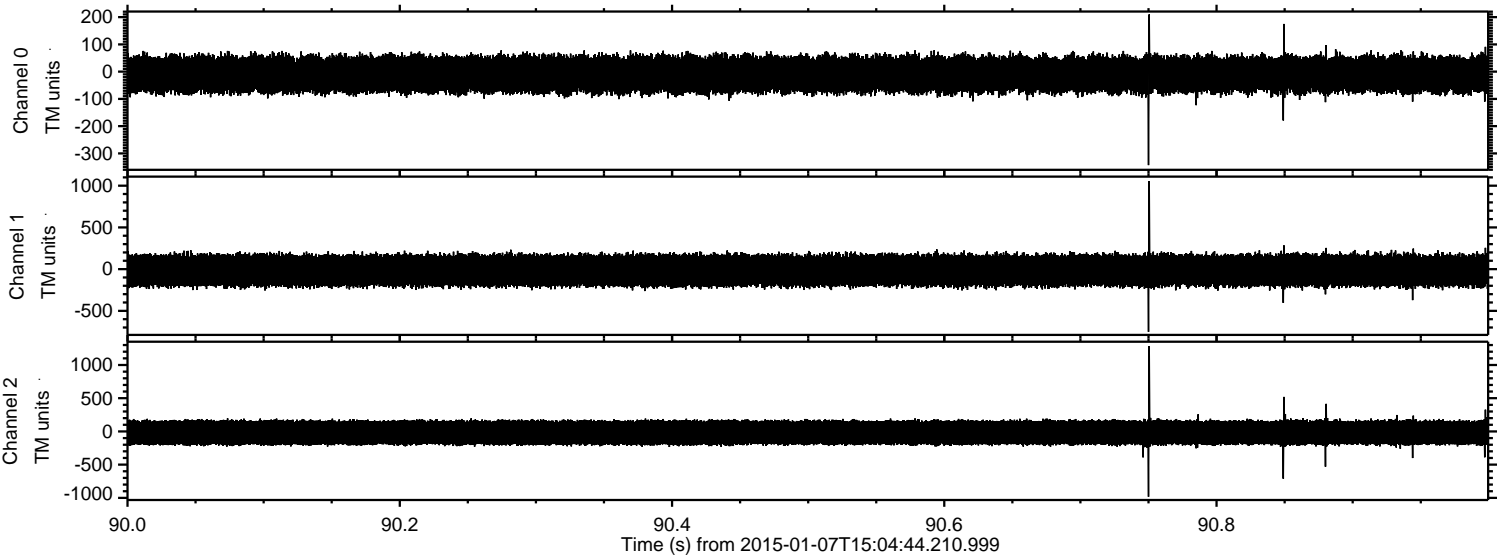


Processed Wed Jan 7 16:12:53 2015 by ELM ver.2012-10-06 from 001__elm20150107_150443__dat00.bin



ELMAVAN 3D WAVEFORMS (Measured data sampled at 50 kHz) 49783 packets of 144 samples from 2015-01-07T15:04:44.210.999. Part 91/144

Processed Wed Jan 7 16:12:54 2015 by ELM ver.2012-10-06 from 001__elm20150107_150443__dat00.bin



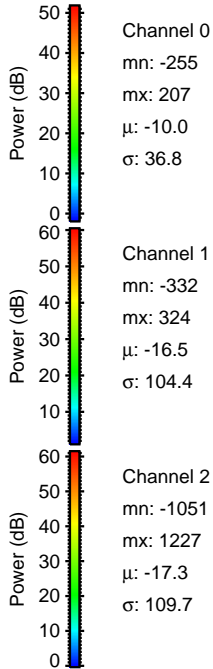
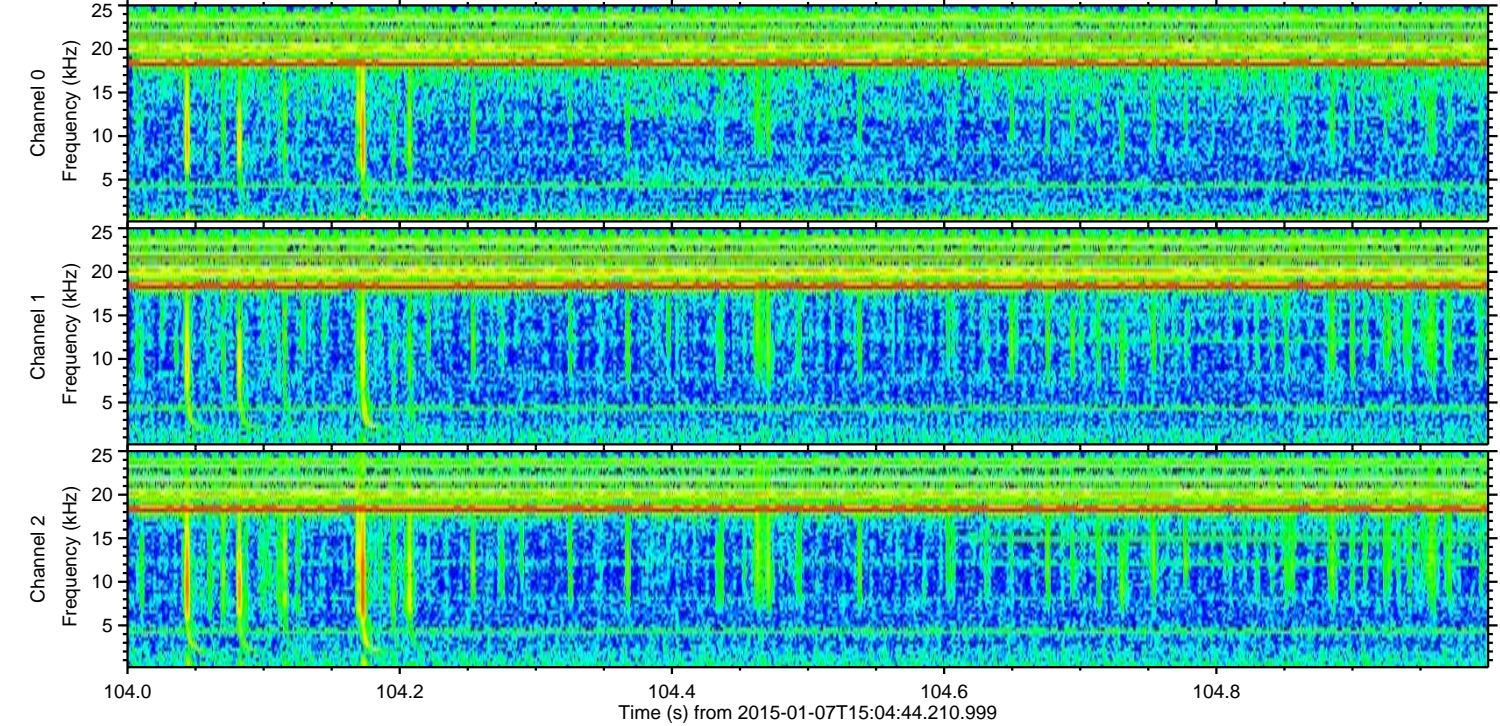
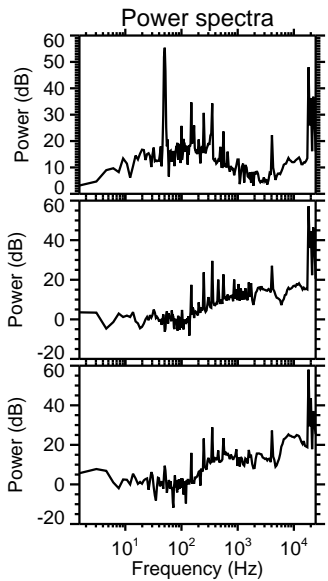
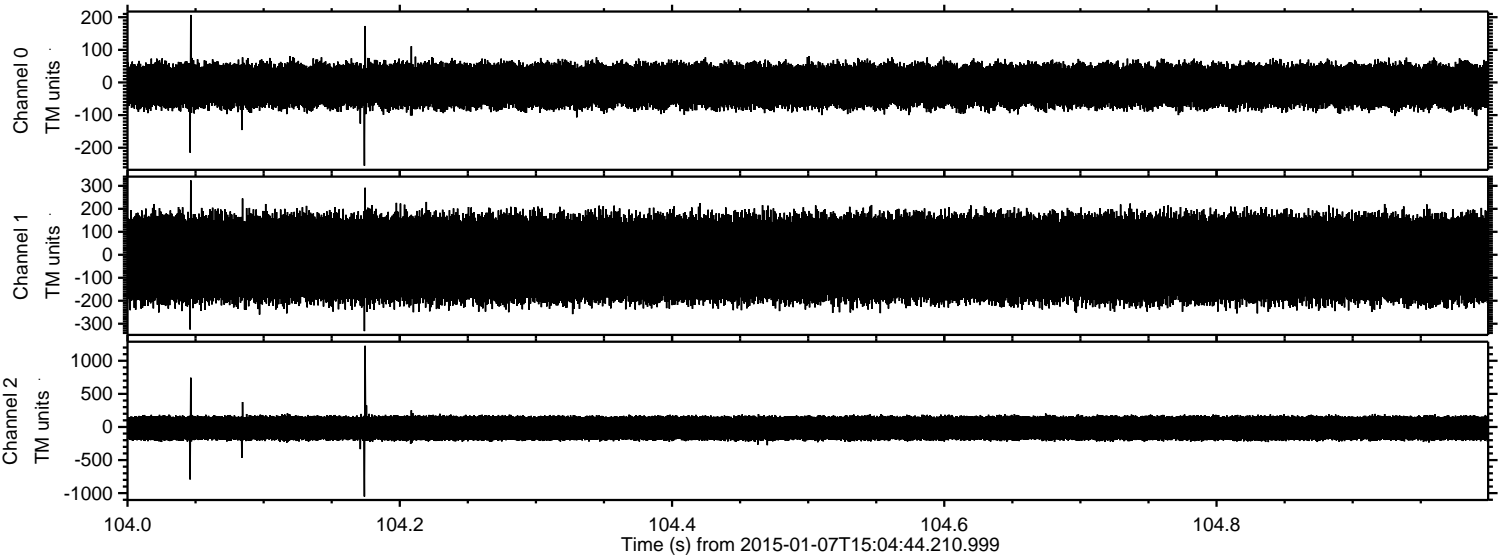
Channel 0
mn: -343
mx: 210
 μ : -10.0
 σ : 37.0

Channel 1
mn: -751
mx: 1056
 μ : -16.5
 σ : 104.9

Channel 2
mn: -983
mx: 1286
 μ : -17.3
 σ : 110.3

ELMAVAN 3D WAVEFORMS (Measured data sampled at 50 kHz) 49783 packets of 144 samples from 2015-01-07T15:04:44.210.999. Part 105/144

Processed Wed Jan 7 16:12:54 2015 by ELM ver.2012-10-06 from 001__elm20150107_150443__dat00.bin



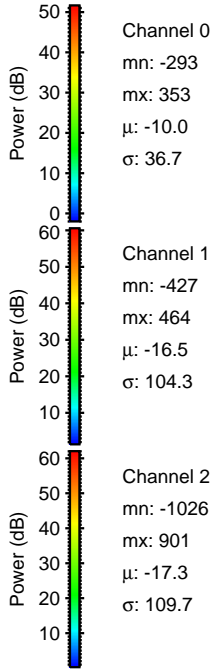
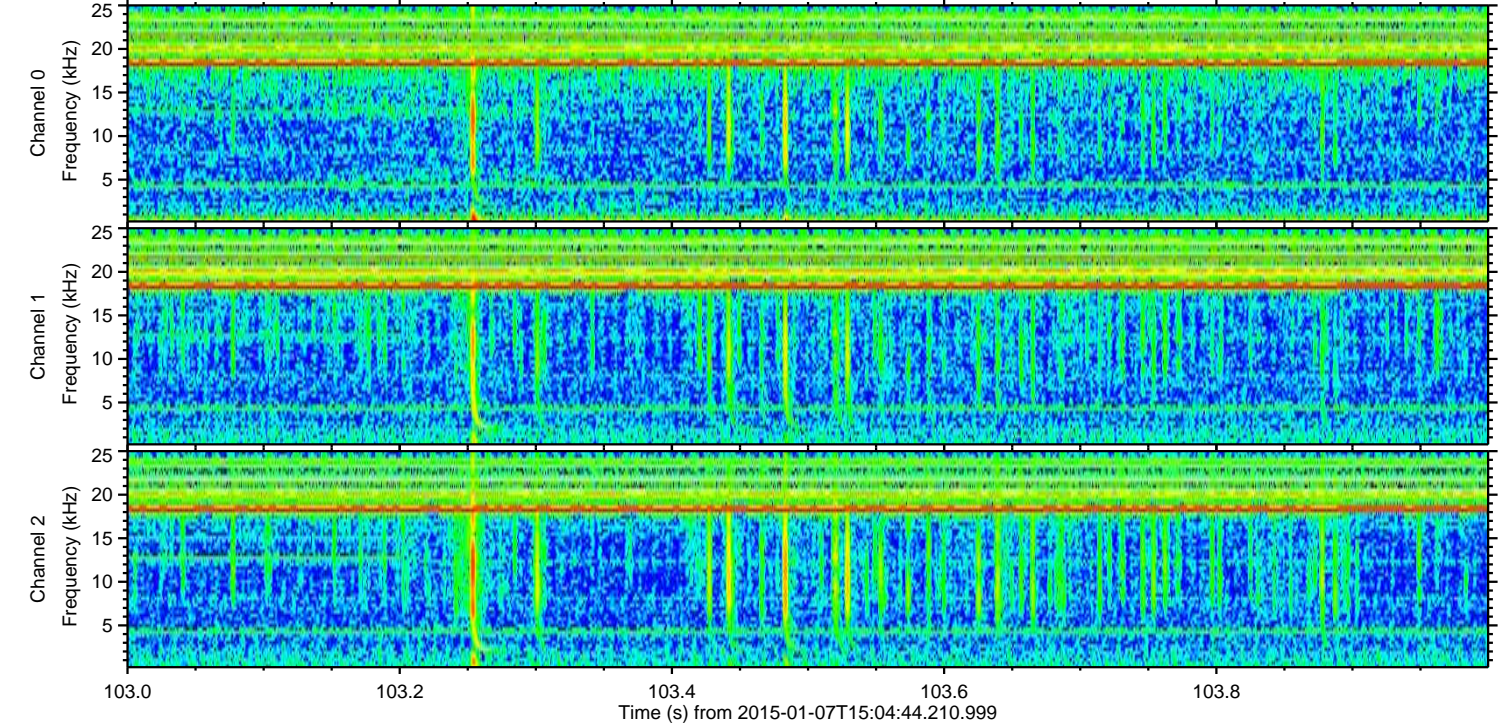
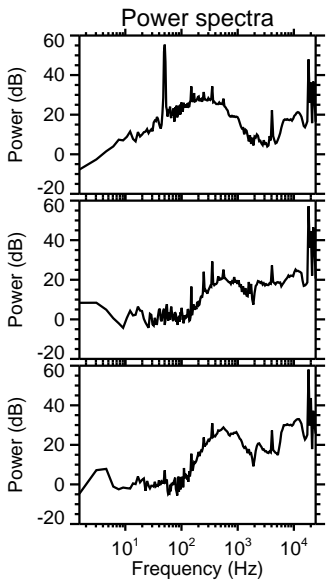
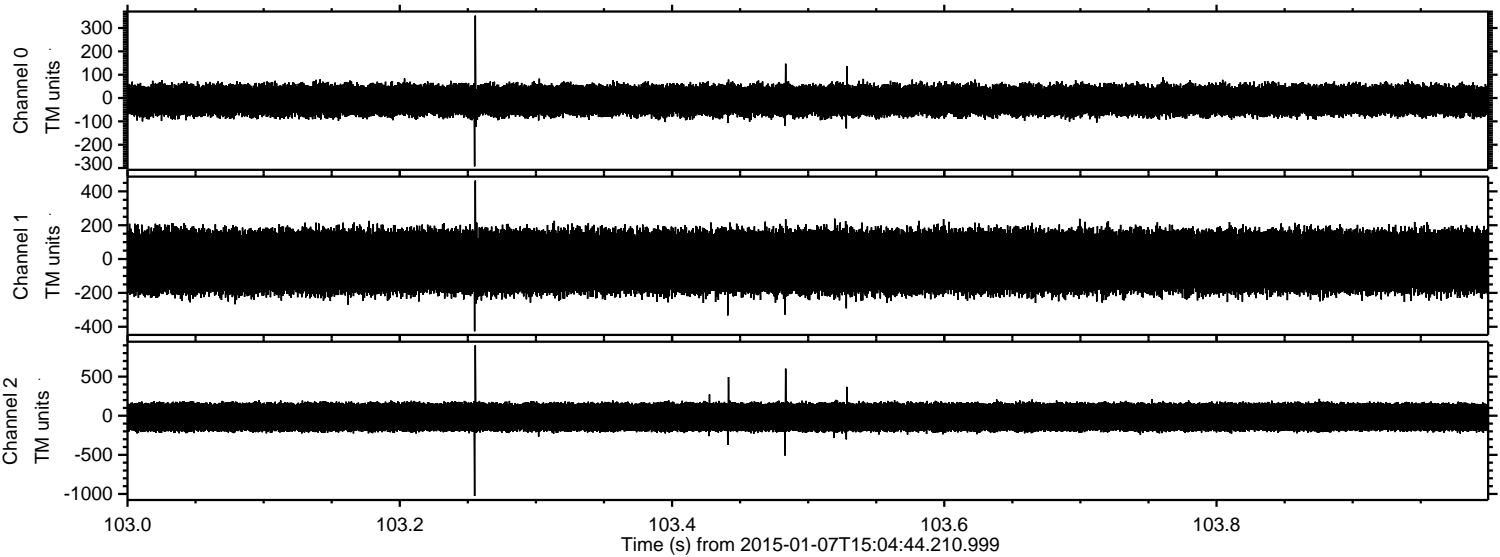
Channel 0
mn: -255
mx: 207
 μ : -10.0
 σ : 36.8

Channel 1
mn: -332
mx: 324
 μ : -16.5
 σ : 104.4

Channel 2
mn: -1051
mx: 1227
 μ : -17.3
 σ : 109.7

ELMAVAN 3D WAVEFORMS (Measured data sampled at 50 kHz) 49783 packets of 144 samples from 2015-01-07T15:04:44.210.999. Part 104/144

Processed Wed Jan 7 16:12:55 2015 by ELM ver.2012-10-06 from 001__elm20150107_150443__dat00.bin



ELMAVAN 3D WAVEFORMS (Measured data sampled at 50 kHz) 49783 packets of 144 samples from 2015-01-07T15:04:44.210.999. Part 121/144

Processed Wed Jan 7 16:12:56 2015 by ELM ver.2012-10-06 from 001__elm20150107_150443__dat00.bin

