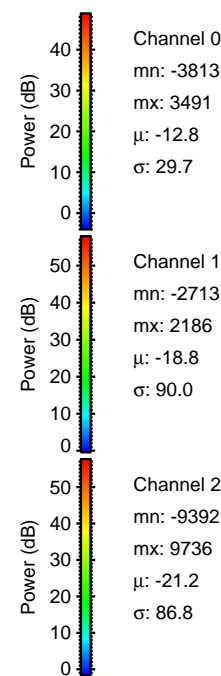
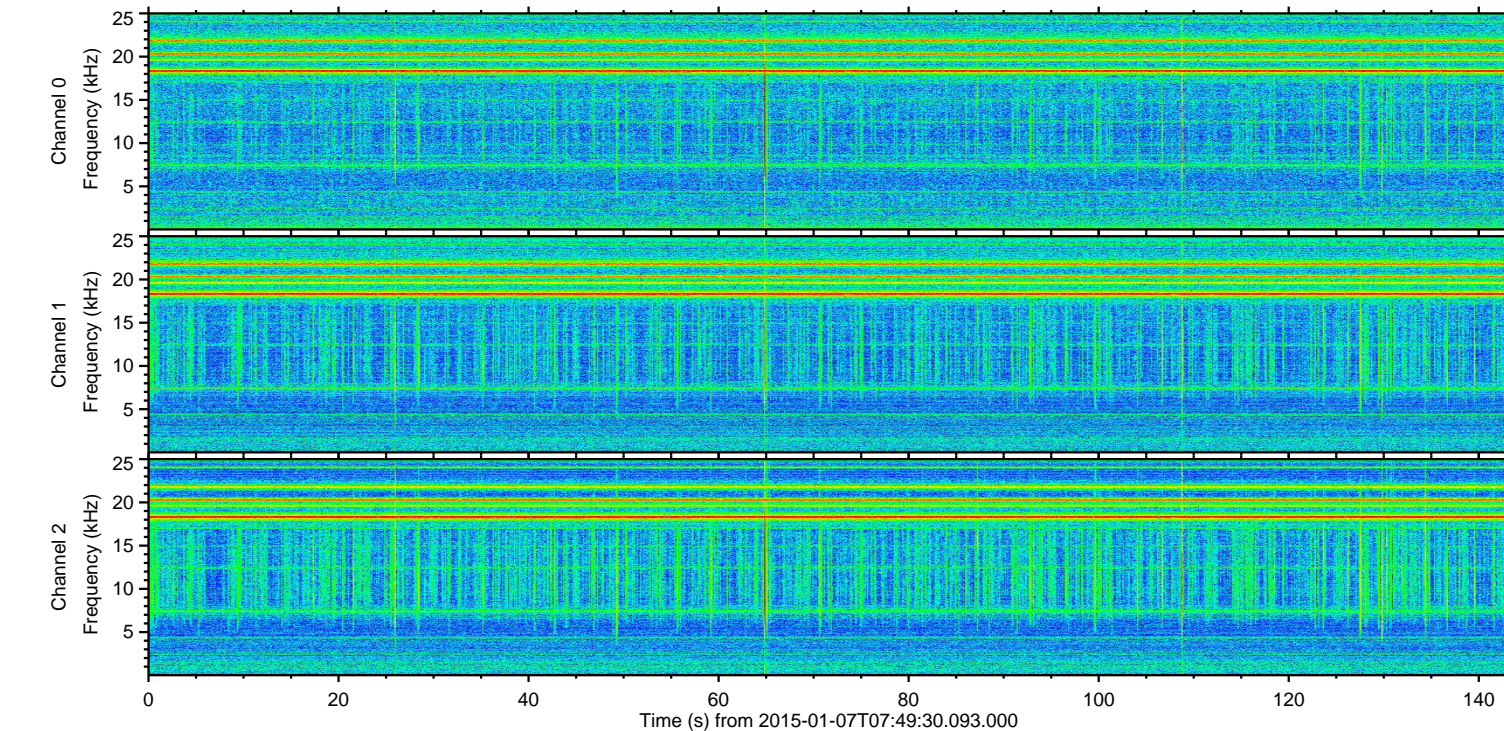
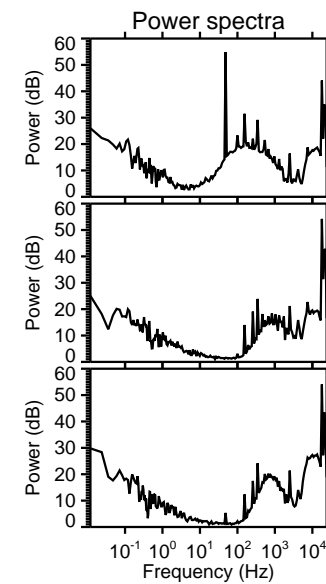
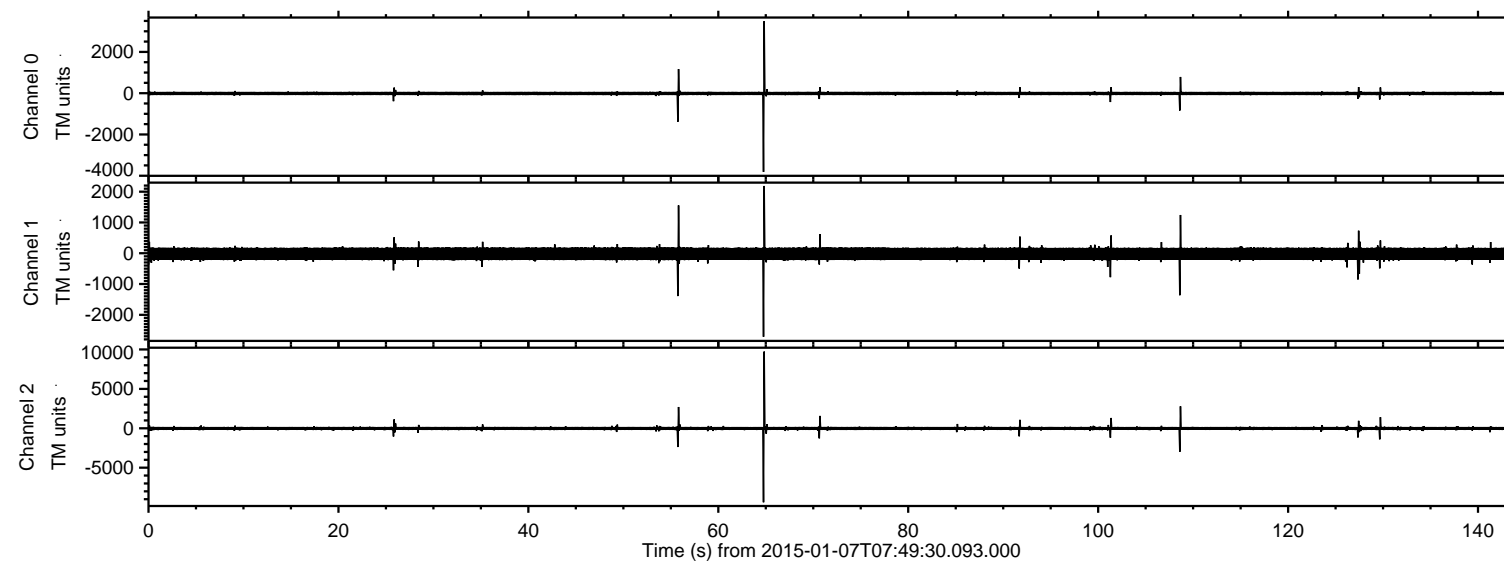
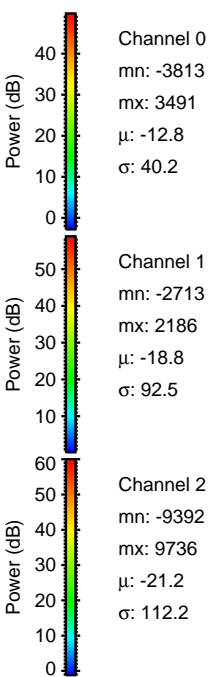
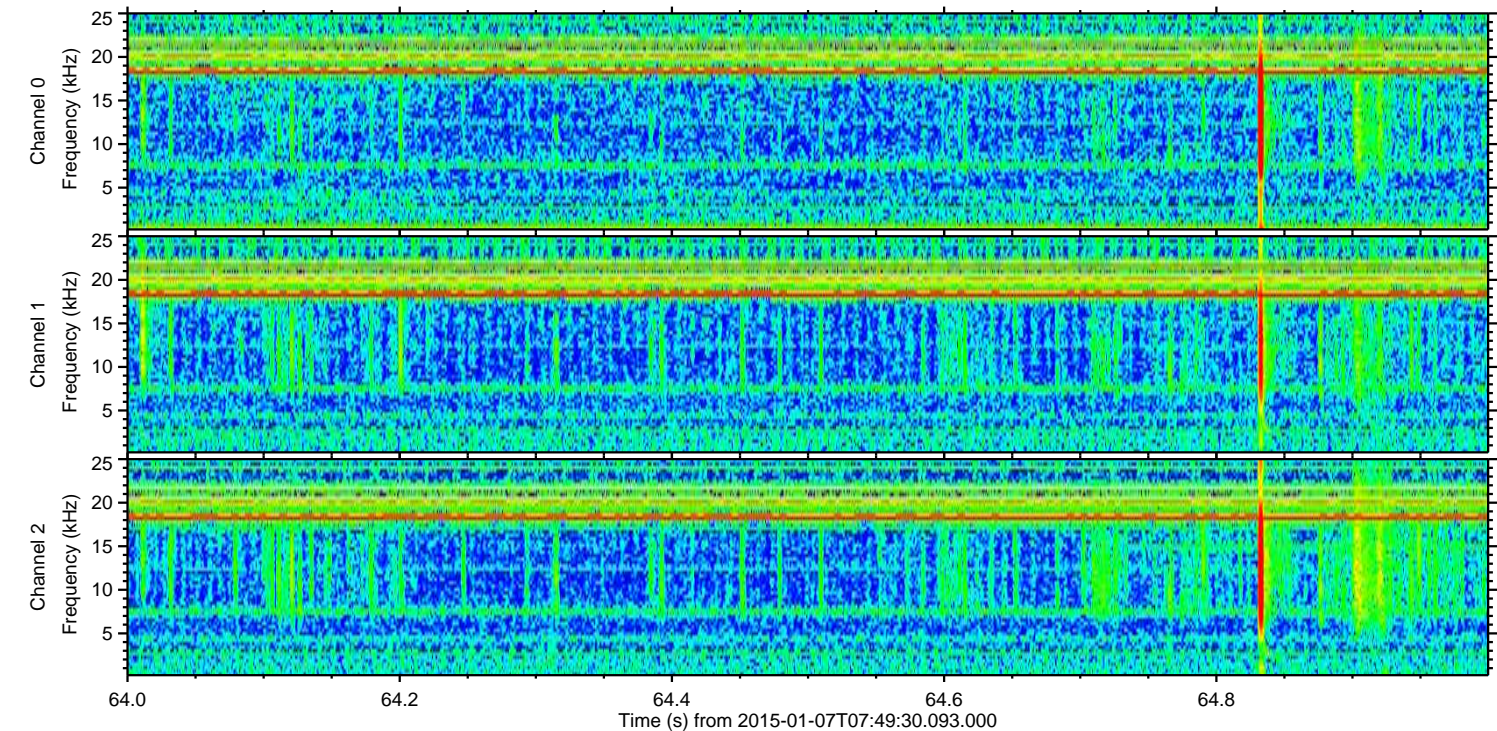
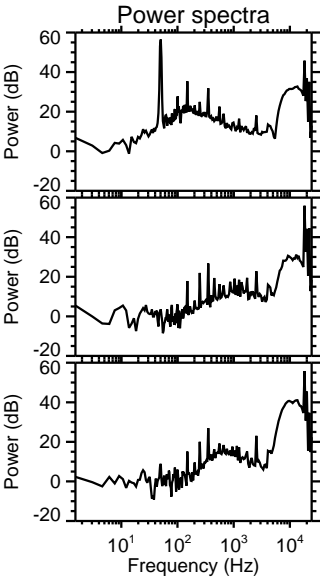
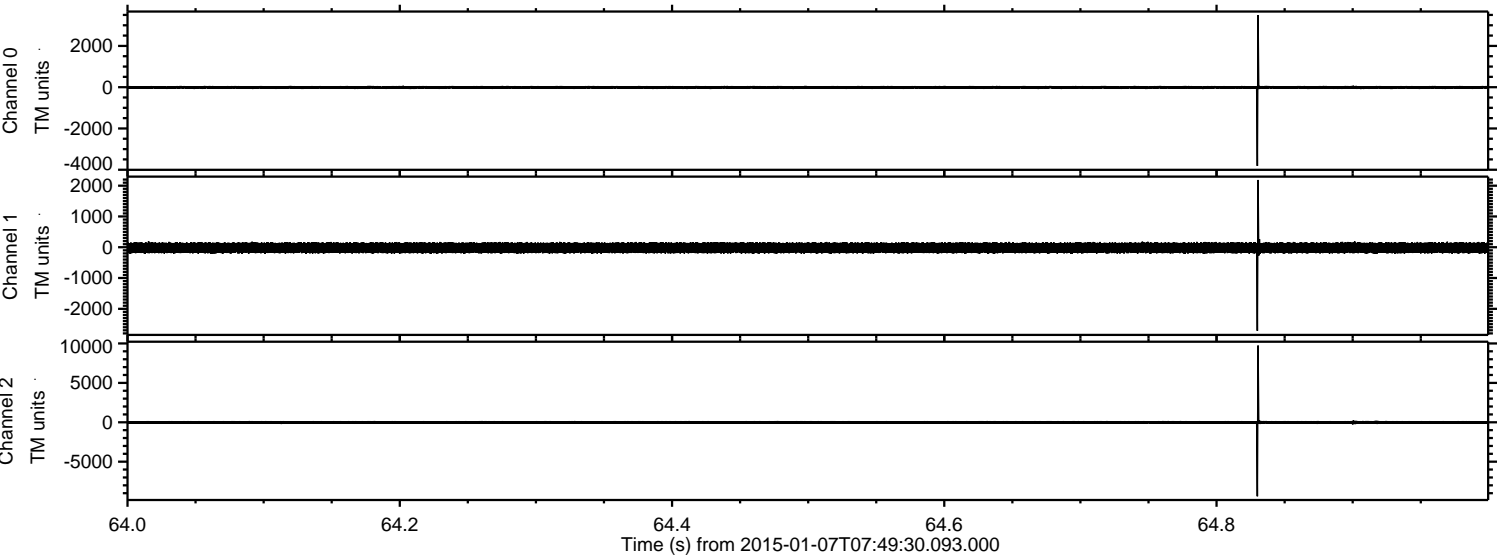


ELMAVAN 3D WAVEFORMS (Measured data sampled at 50 kHz) 49749 packets of 144 samples from 2015-01-07T07:49:30.093.000.

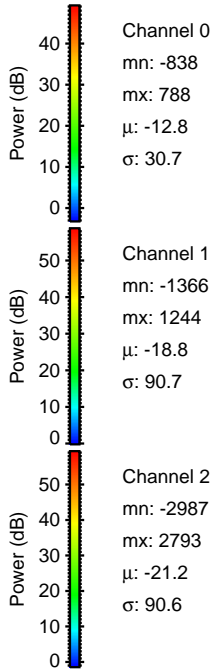
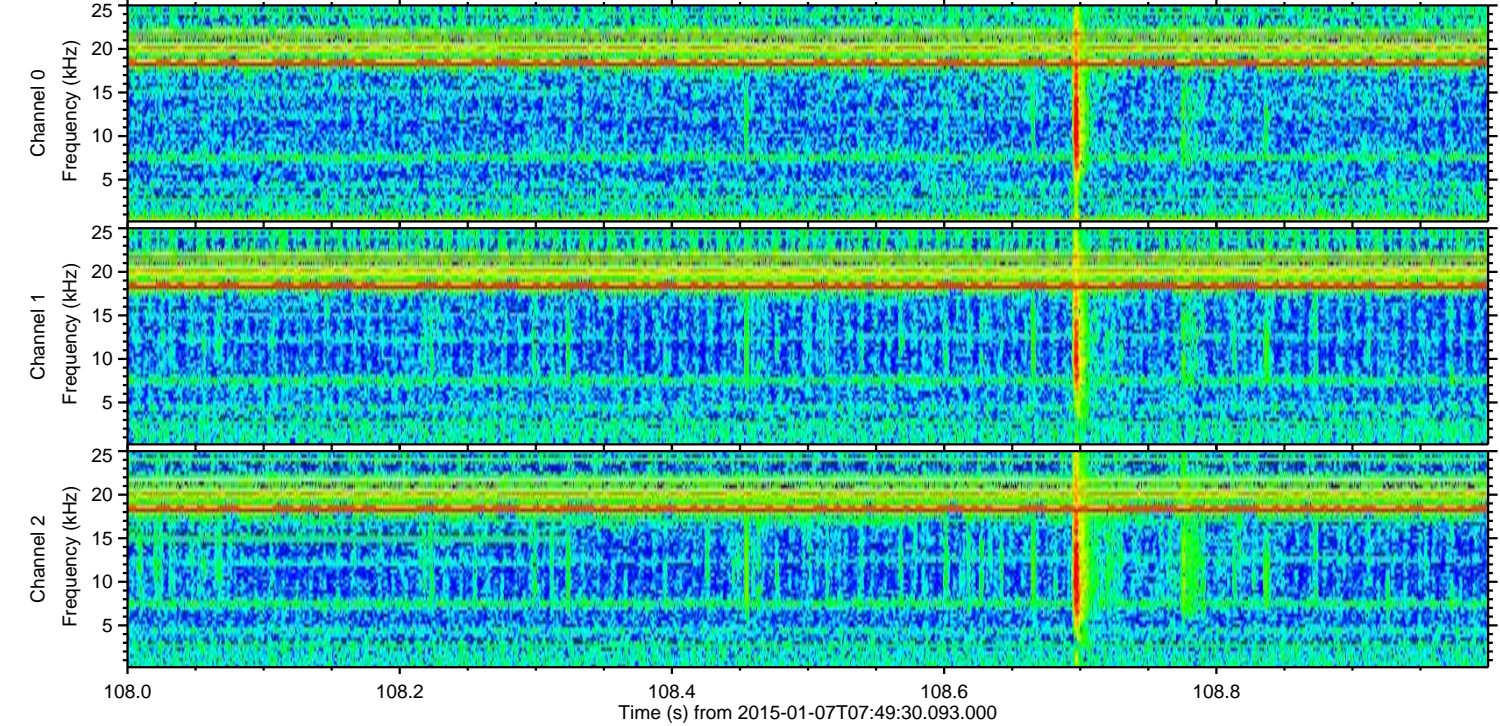
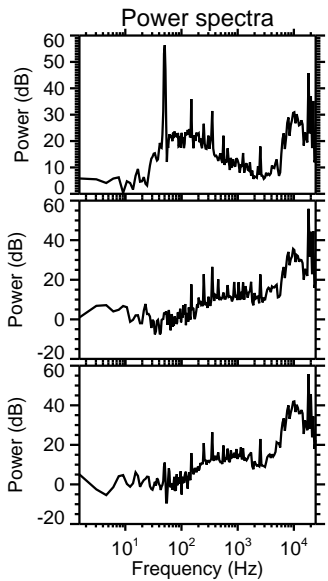
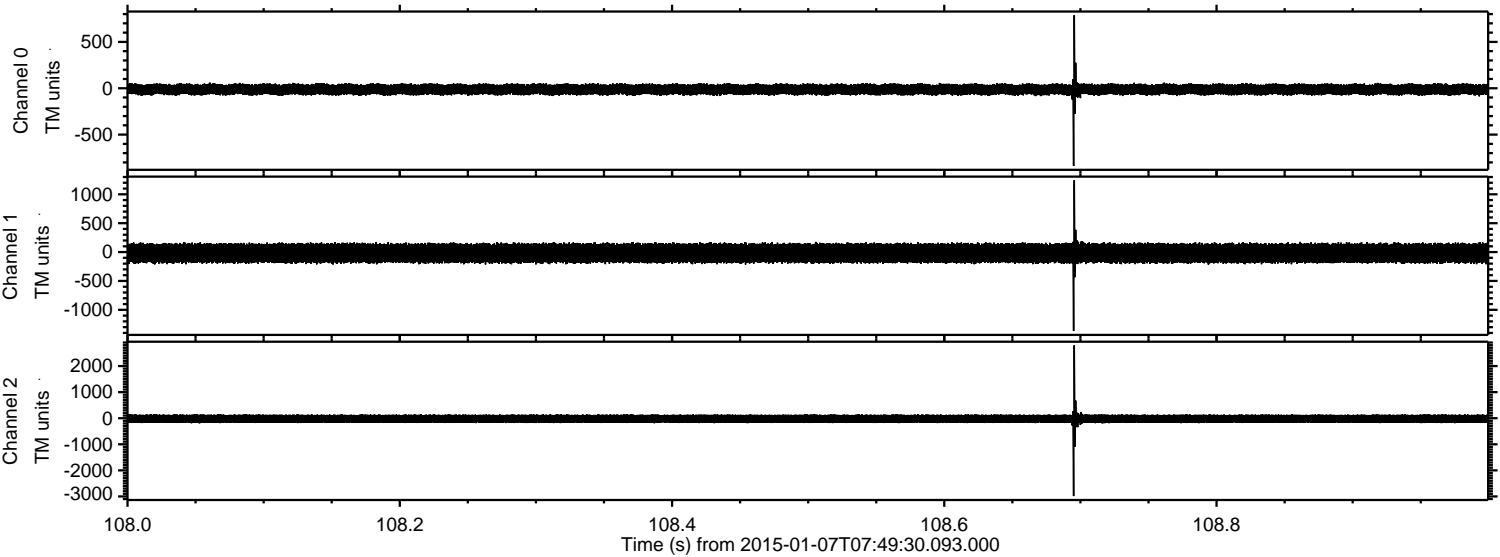
Processed Wed Jan 7 08:57:07 2015 by ELM ver.2012-10-06 from 001__elm20150107_074929__dat00.bin



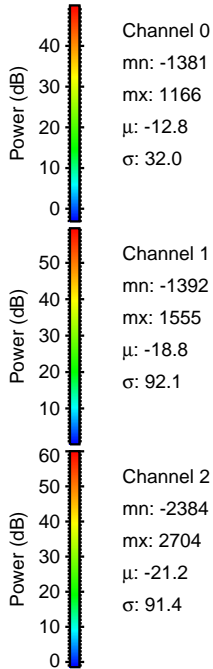
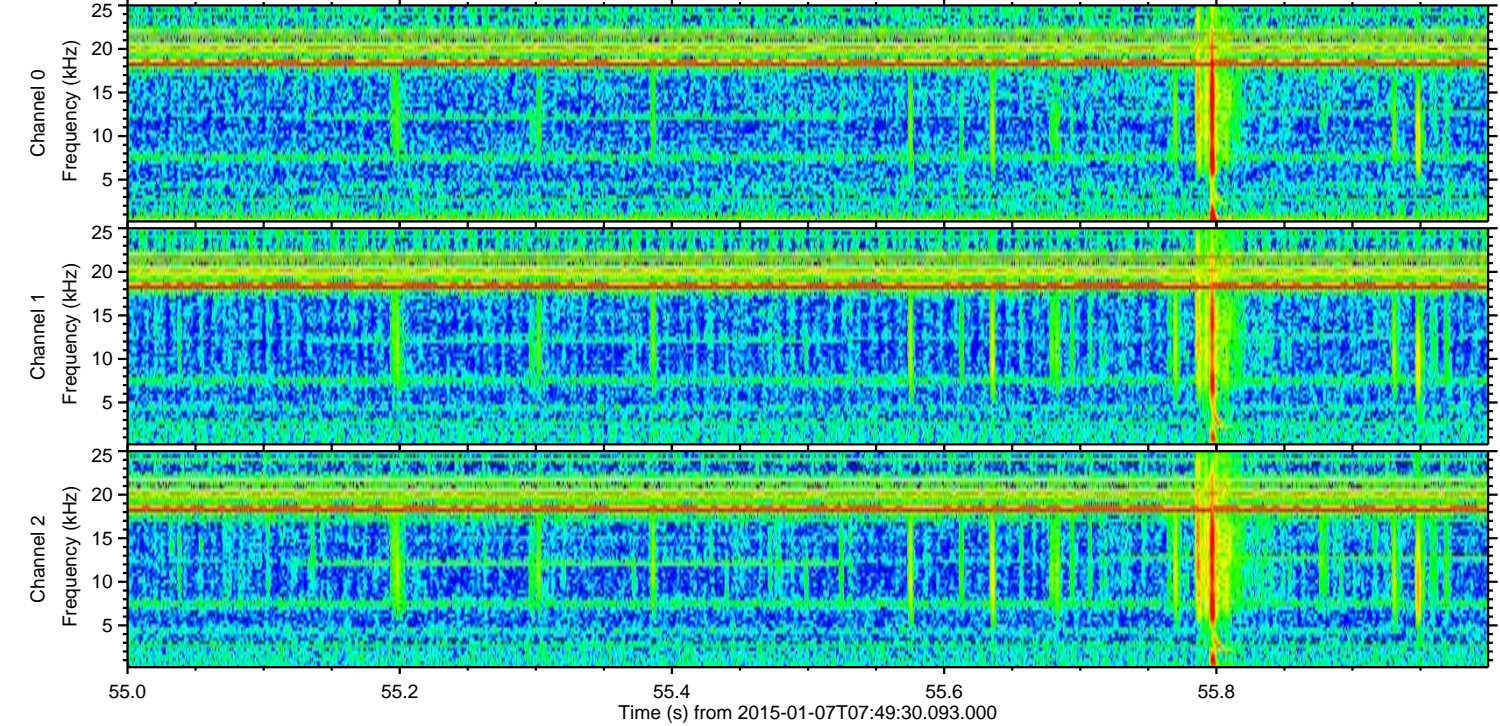
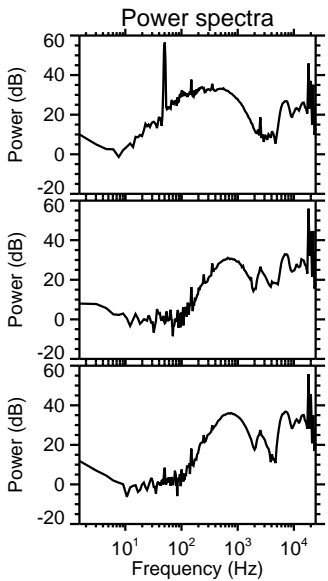
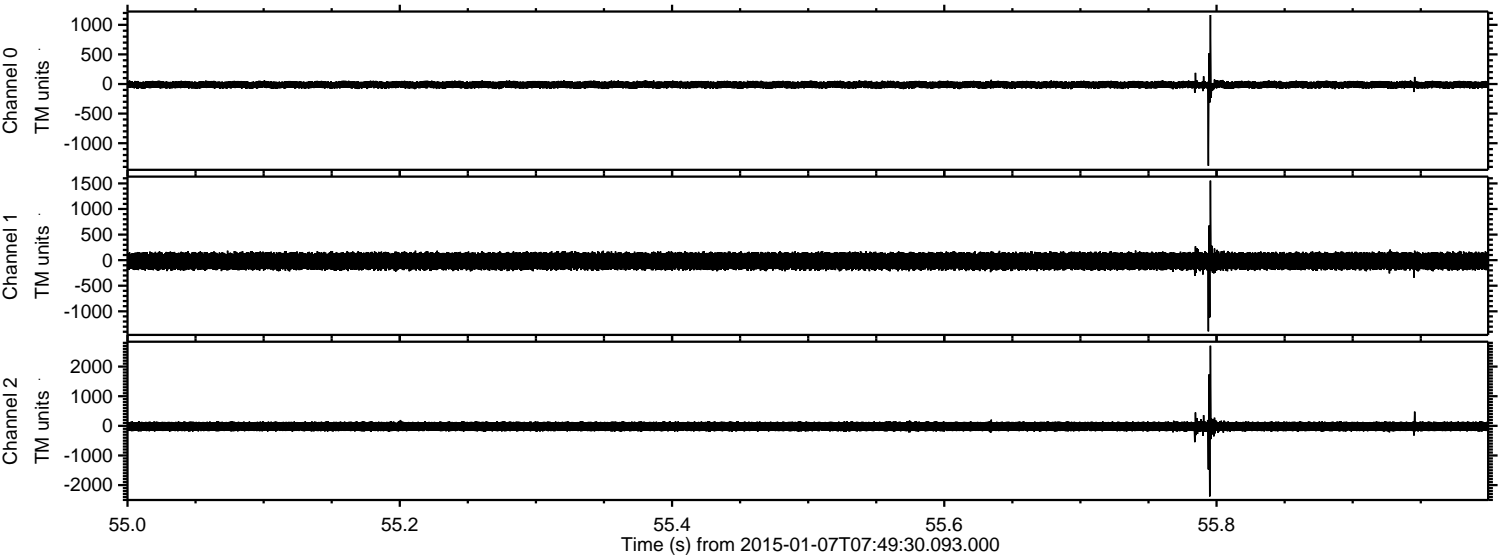
Processed Wed Jan 7 08:57:19 2015 by ELM ver.2012-10-06 from 001__elm20150107_074929__dat00.bin



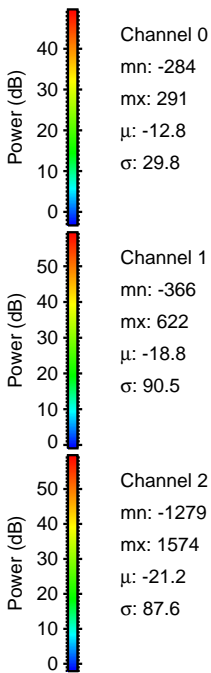
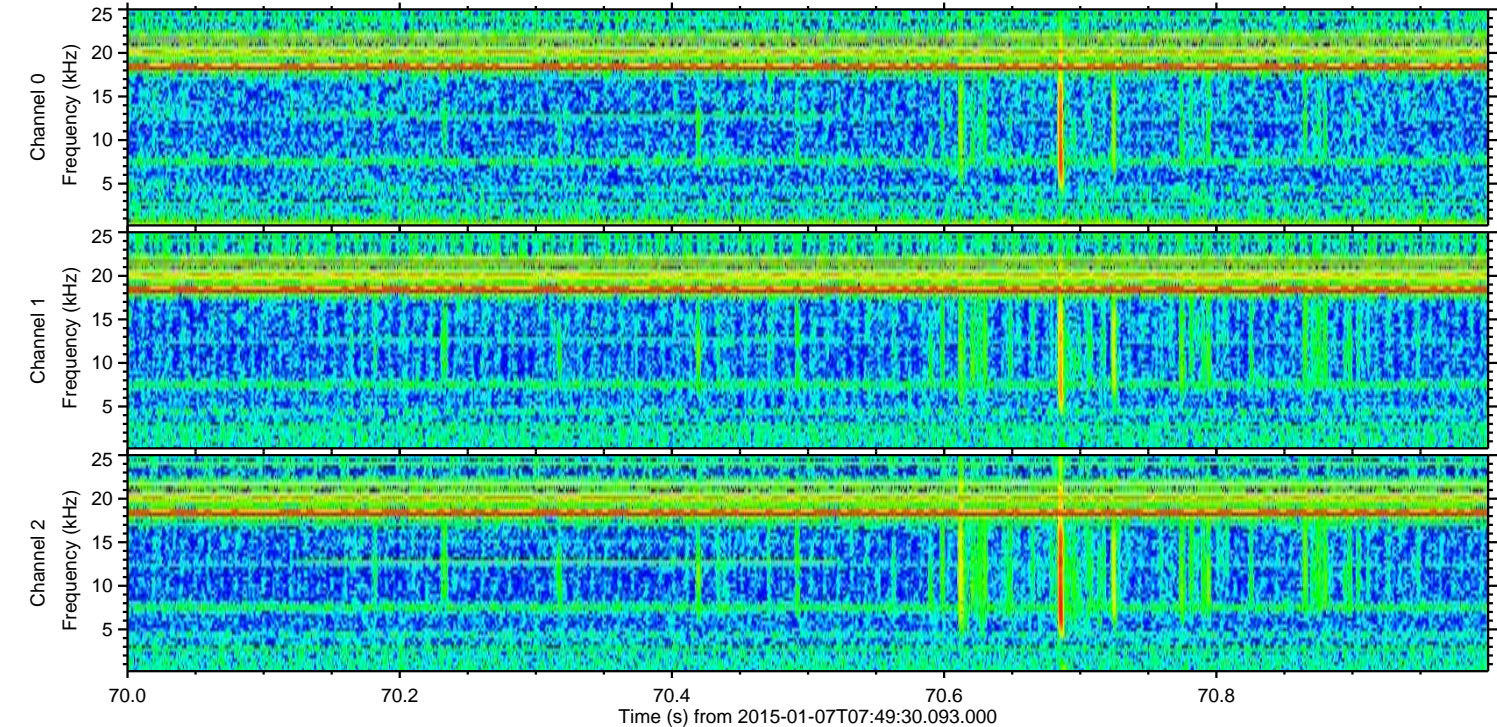
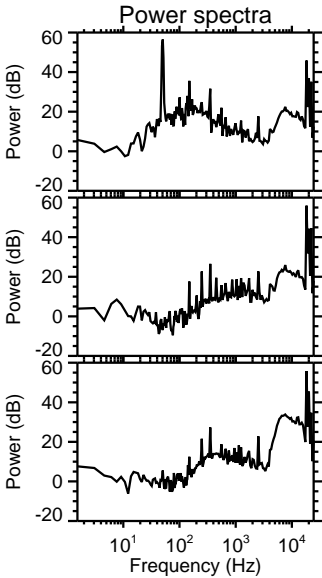
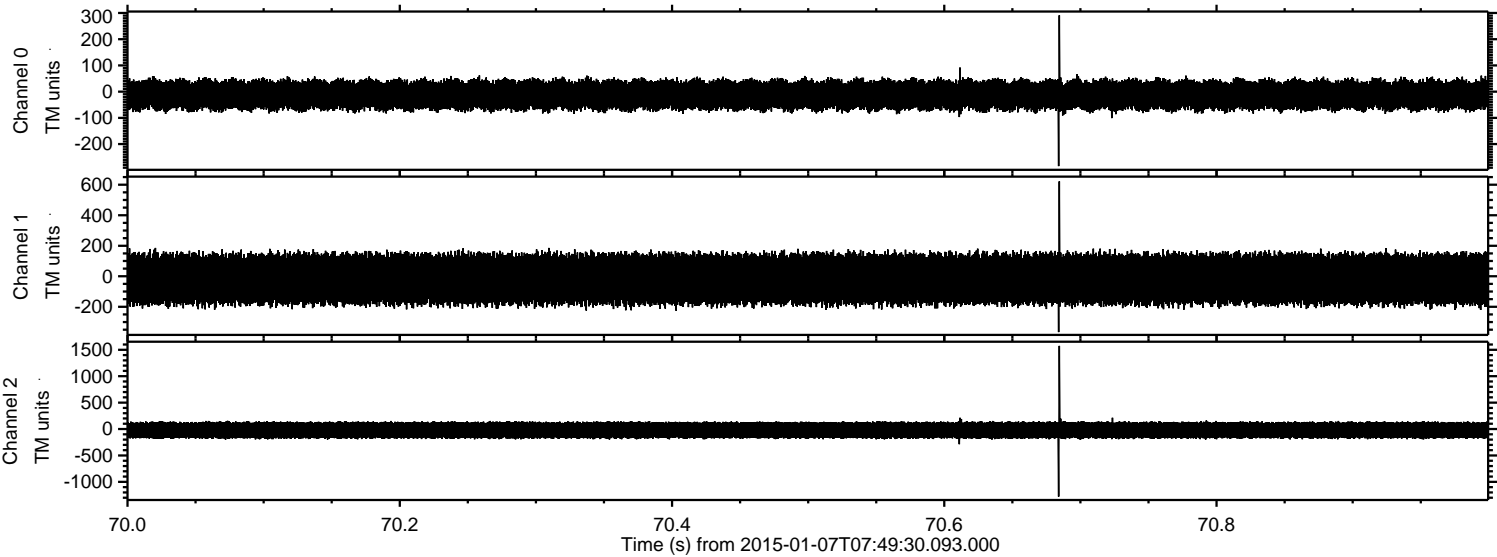
Processed Wed Jan 7 08:57:20 2015 by ELM ver.2012-10-06 from 001__elm20150107_074929__dat00.bin



Processed Wed Jan 7 08:57:21 2015 by ELM ver.2012-10-06 from 001__elm20150107_074929__dat00.bin

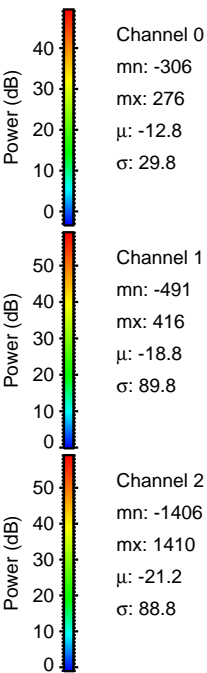
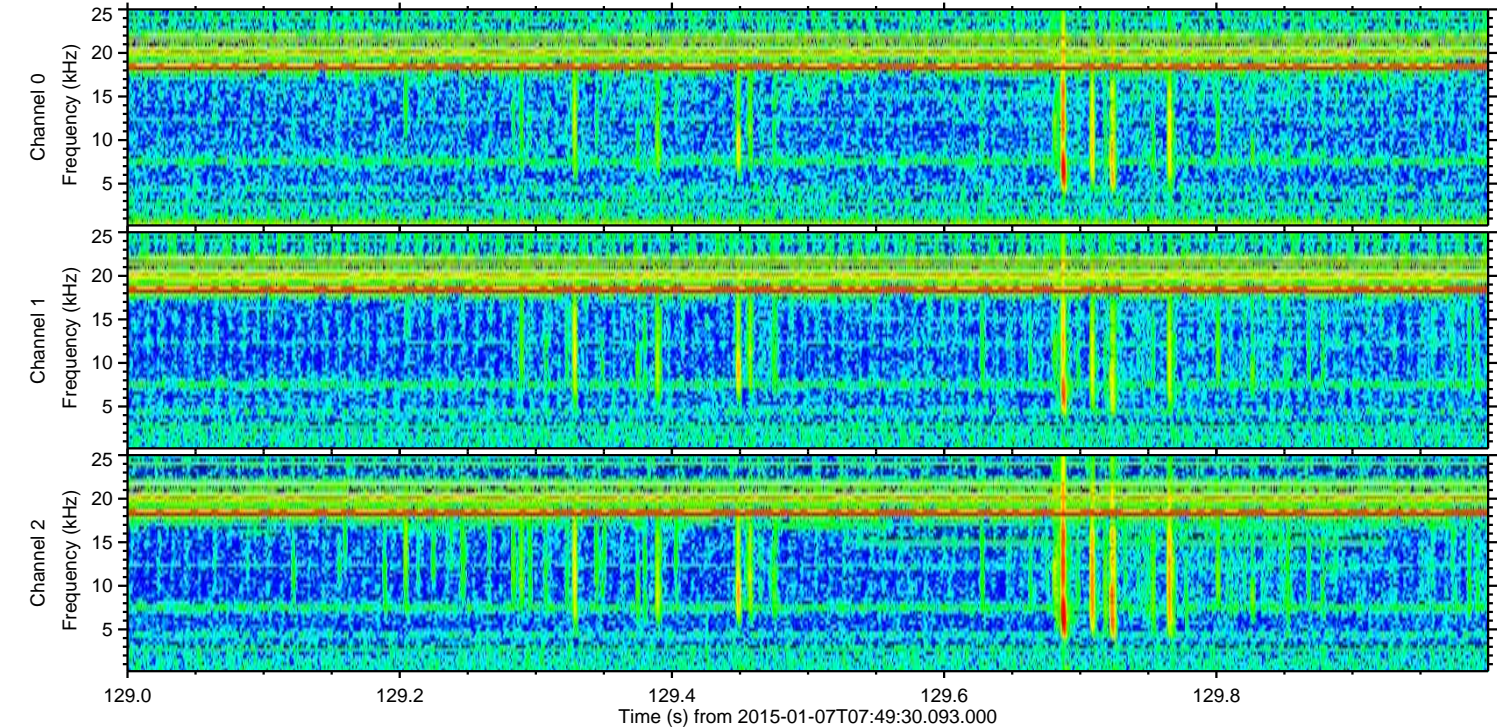
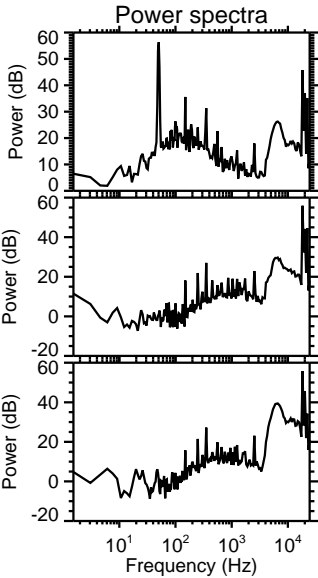
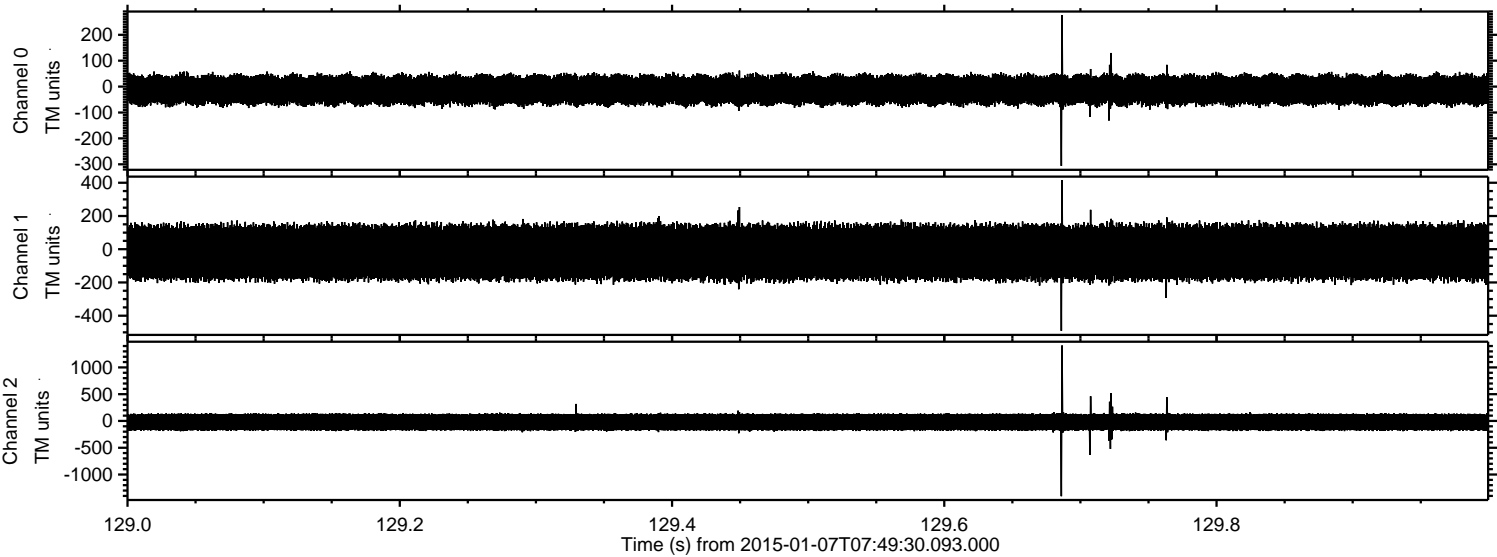


Processed Wed Jan 7 08:57:21 2015 by ELM ver.2012-10-06 from 001__elm20150107_074929__dat00.bin

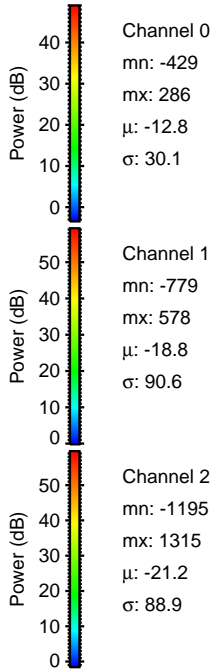
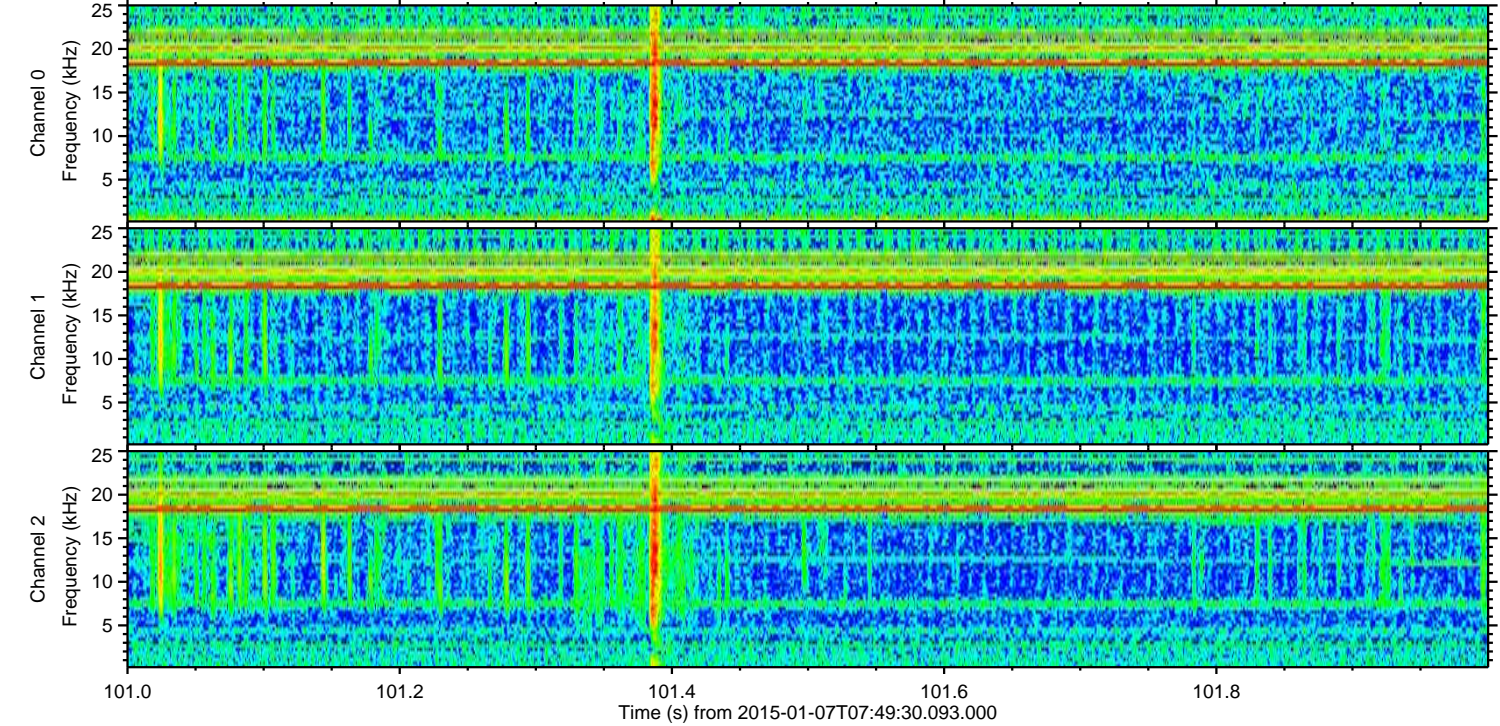
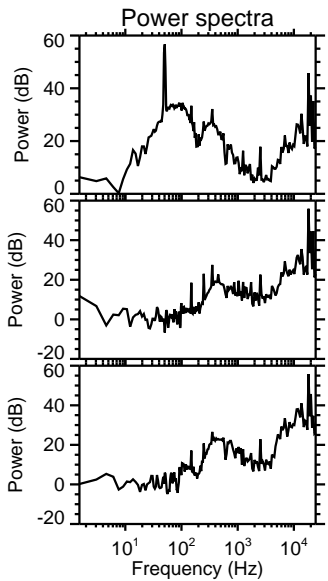
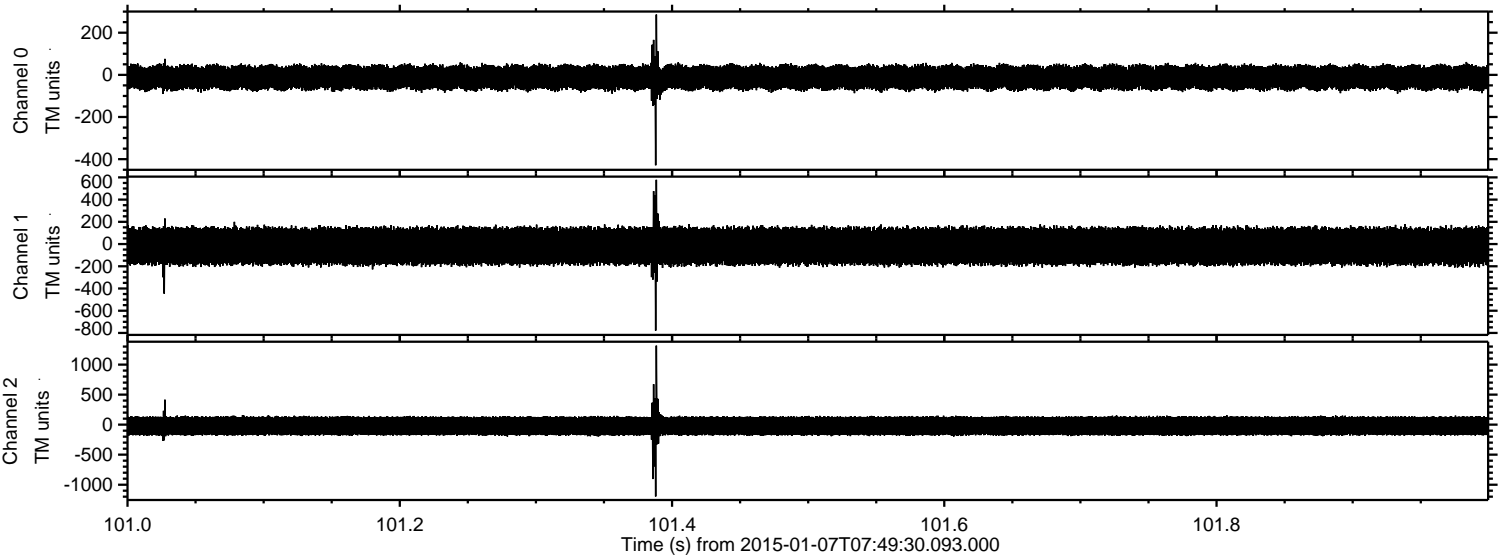


ELMAVAN 3D WAVEFORMS (Measured data sampled at 50 kHz) 49749 packets of 144 samples from 2015-01-07T07:49:30.093.000. Part 130/144

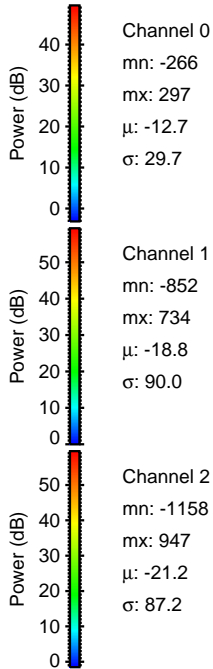
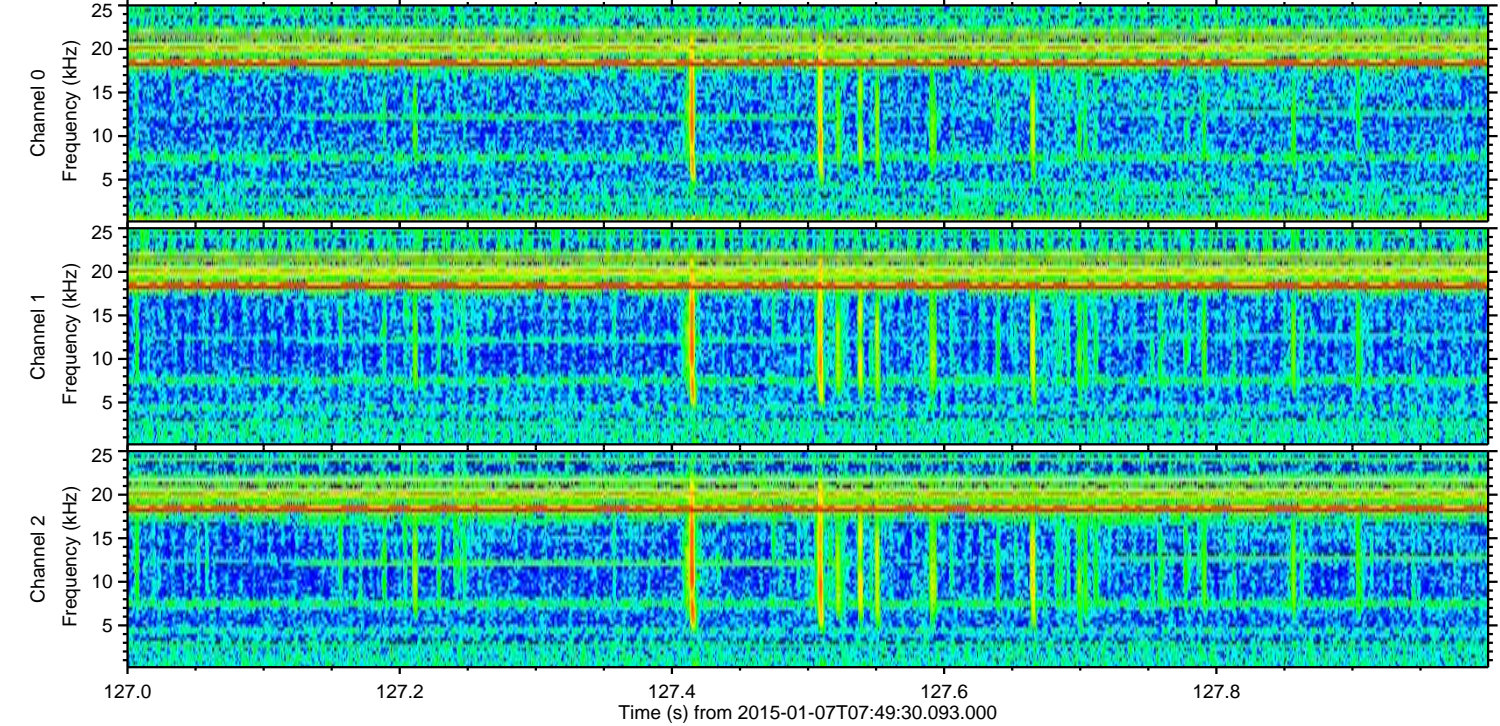
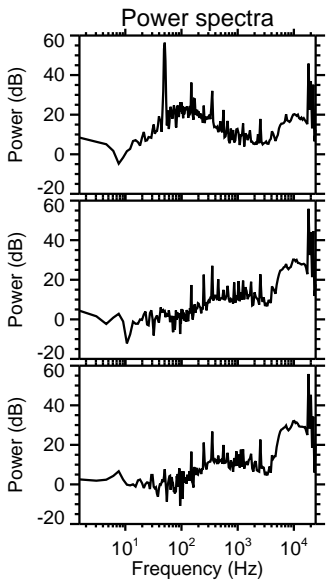
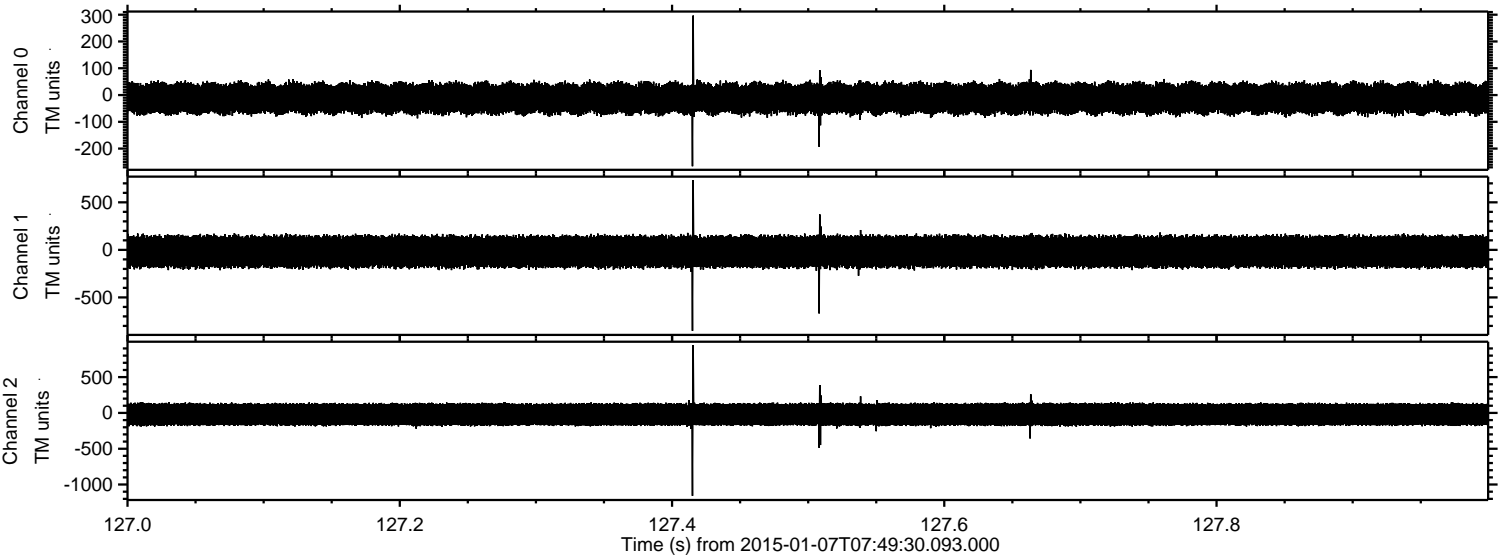
Processed Wed Jan 7 08:57:22 2015 by ELM ver.2012-10-06 from 001__elm20150107_074929__dat00.bin



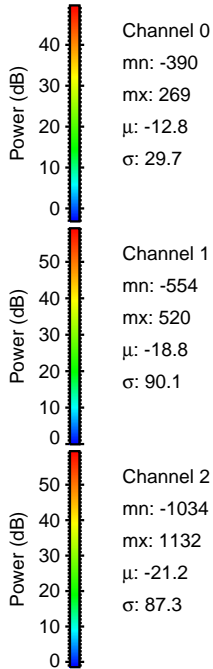
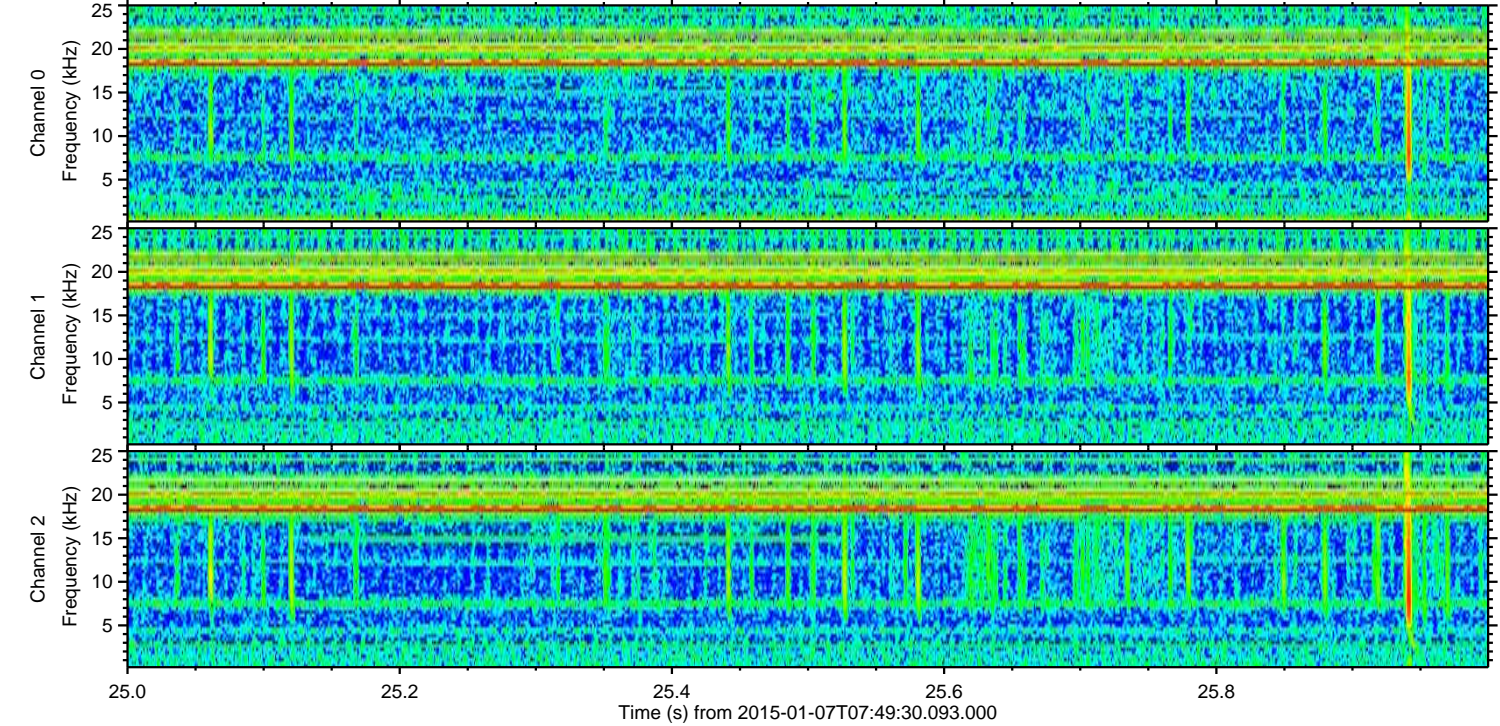
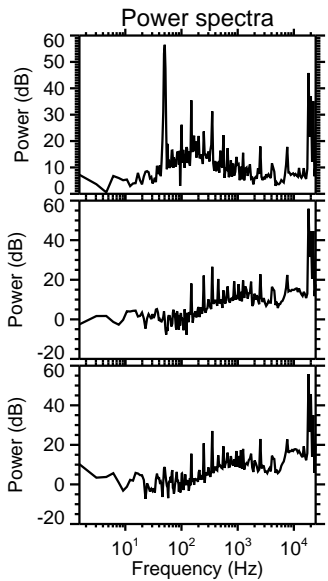
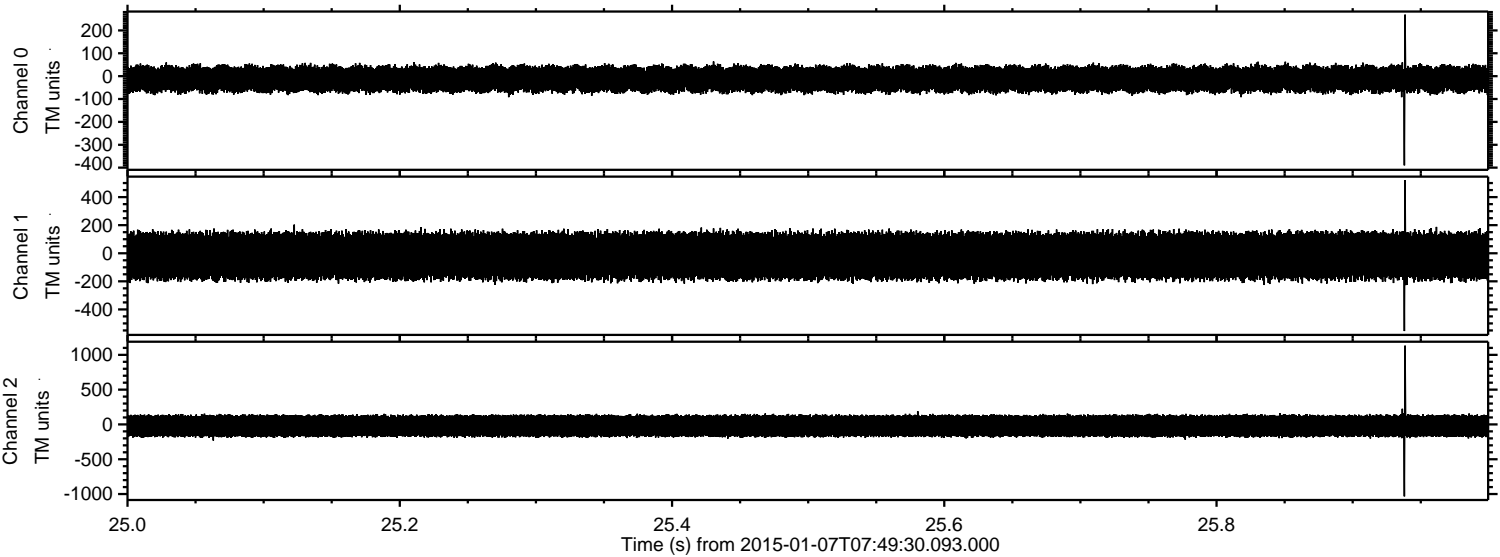
Processed Wed Jan 7 08:57:23 2015 by ELM ver.2012-10-06 from 001__elm20150107_074929__dat00.bin



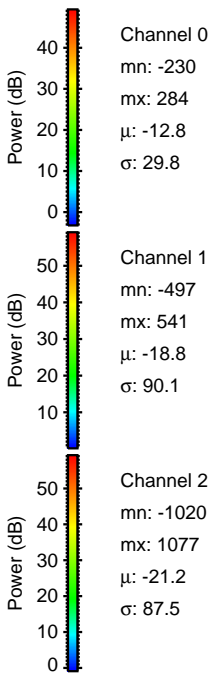
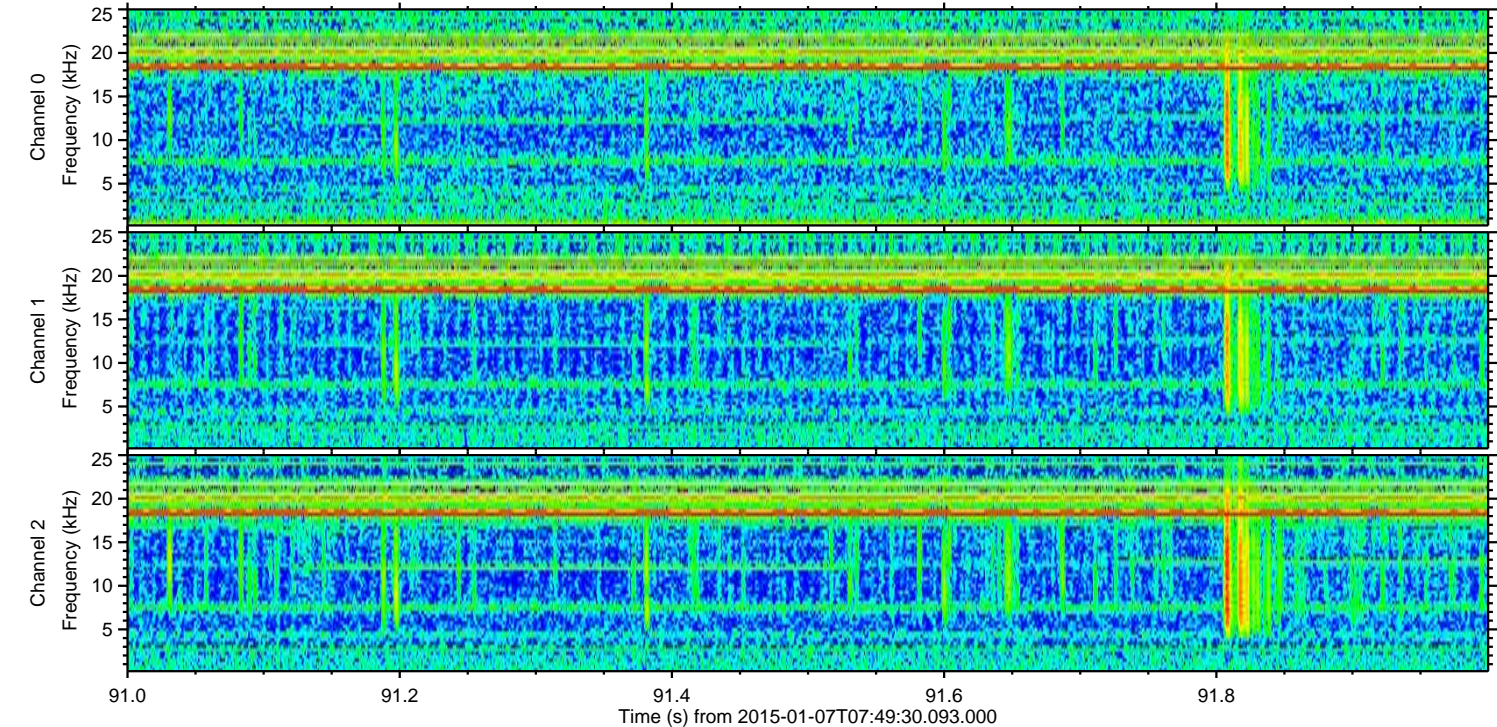
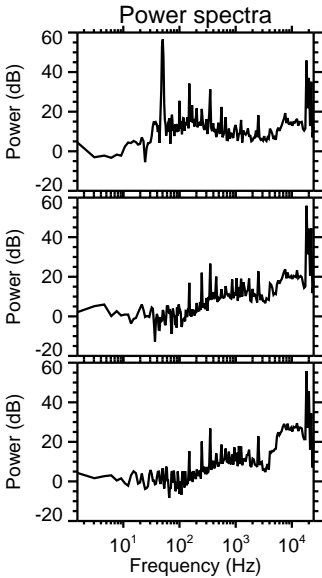
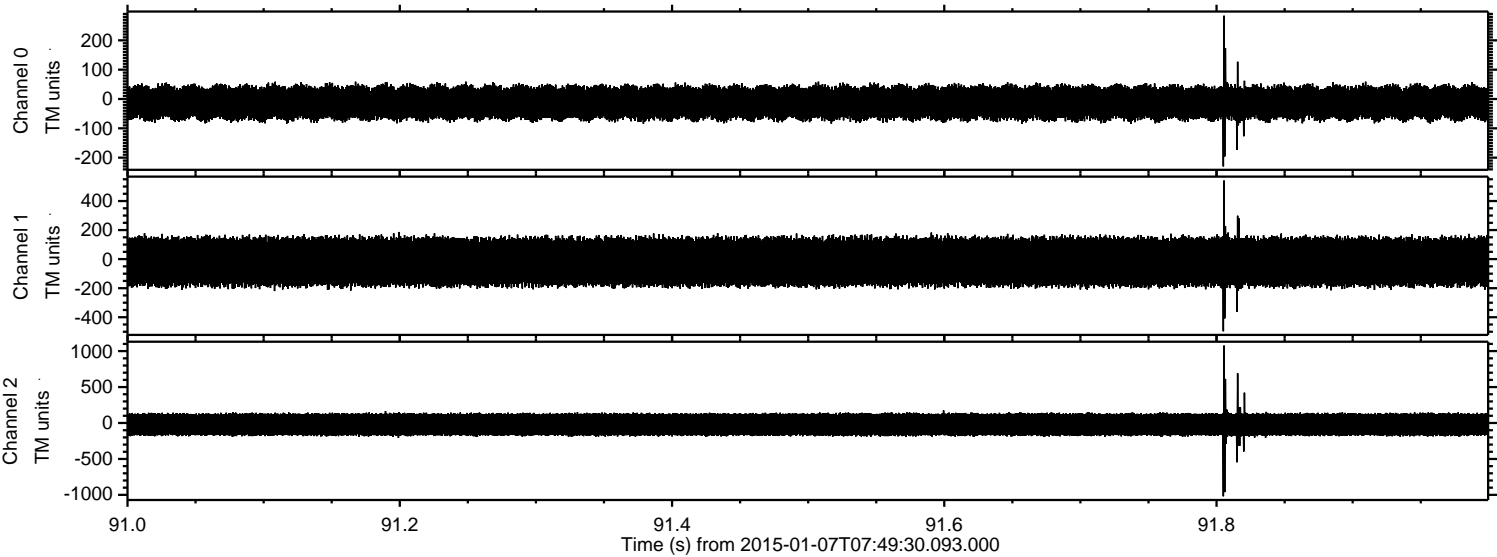
Processed Wed Jan 7 08:57:24 2015 by ELM ver.2012-10-06 from 001__elm20150107_074929__dat00.bin



Processed Wed Jan 7 08:57:25 2015 by ELM ver.2012-10-06 from 001__elm20150107_074929__dat00.bin



Processed Wed Jan 7 08:57:26 2015 by ELM ver.2012-10-06 from 001__elm20150107_074929__dat00.bin



ELMAVAN 3D WAVEFORMS (Measured data sampled at 50 kHz) 49749 packets of 144 samples from 2015-01-07T07:49:30.093.000. Part 113/144

