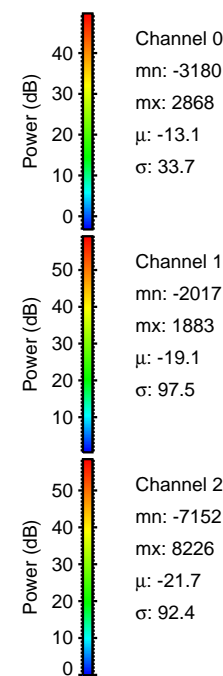
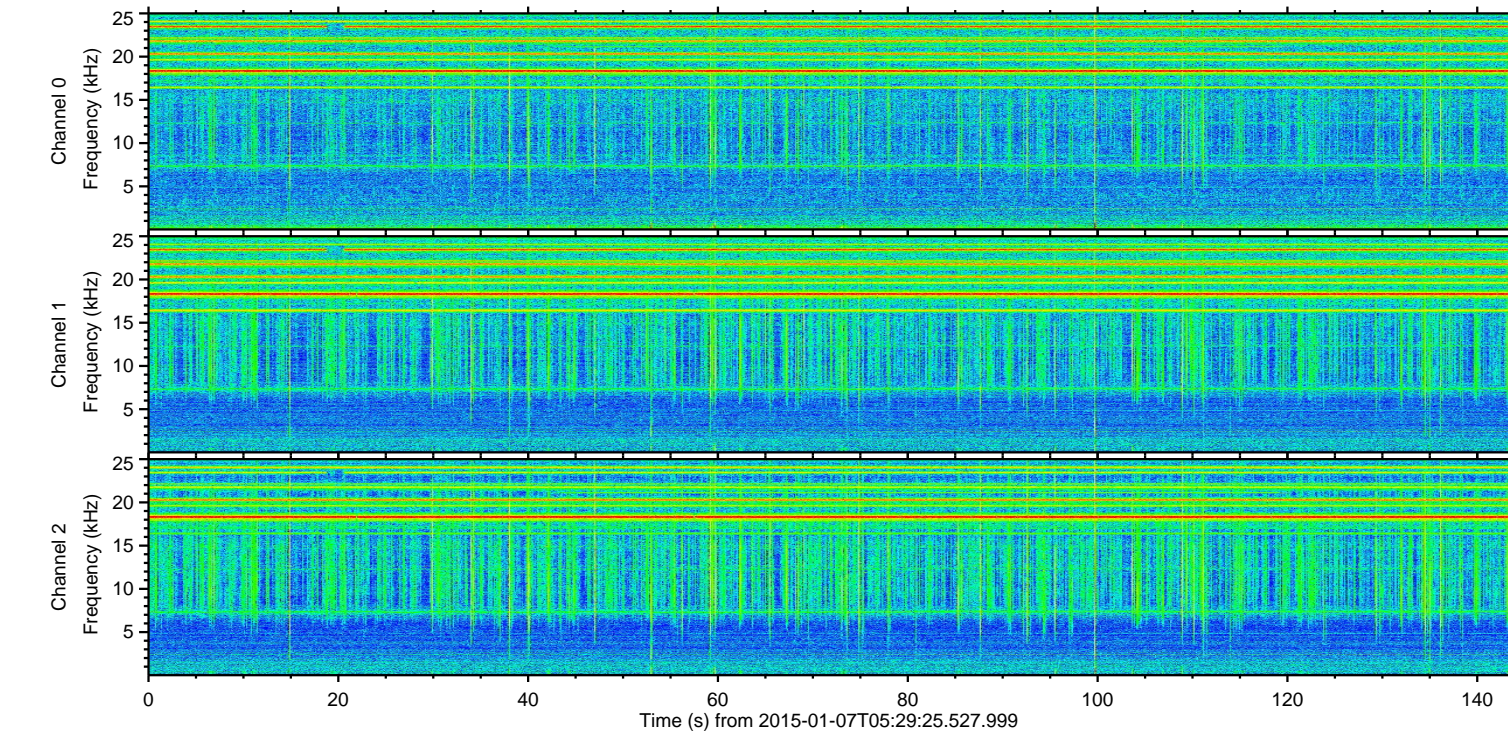
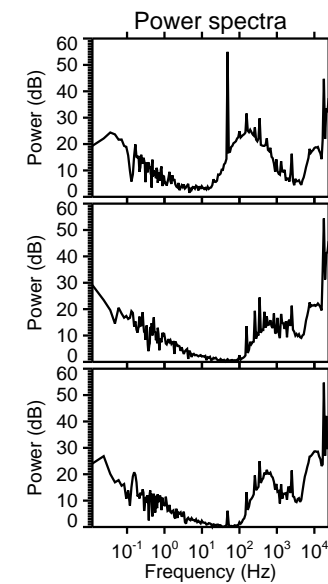
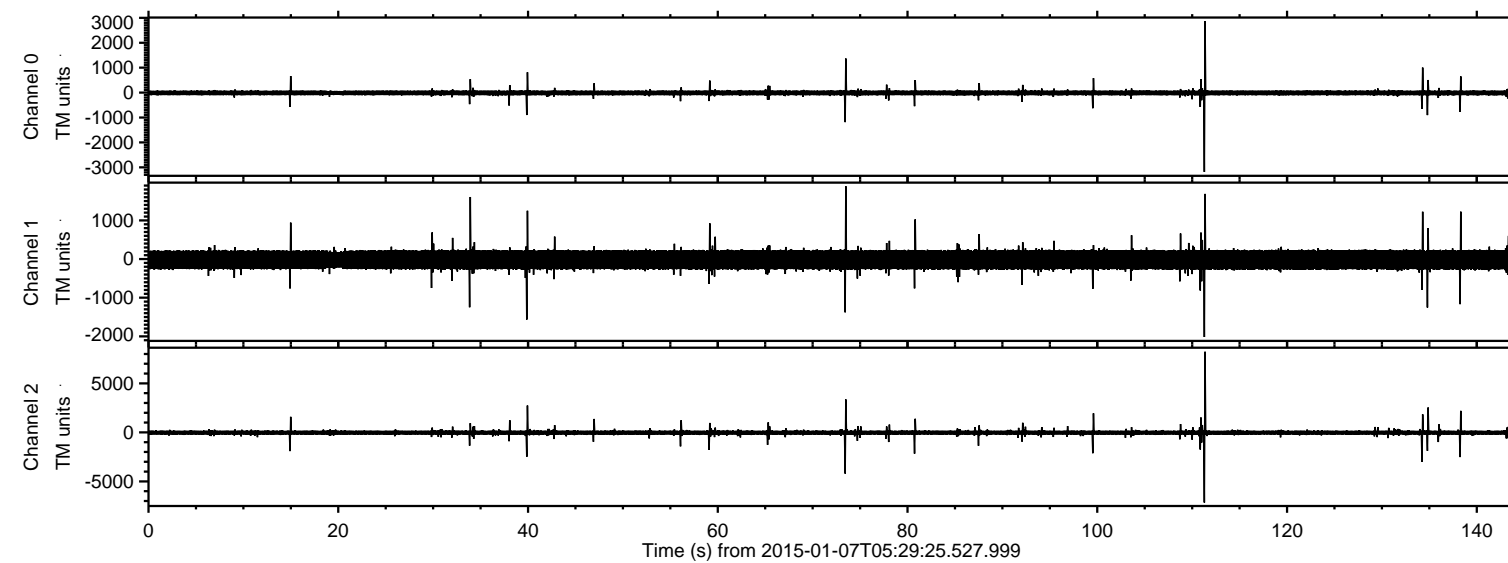


ELMAVAN 3D WAVEFORMS (Measured data sampled at 50 kHz) 49795 packets of 144 samples from 2015-01-07T05:29:25.527.999.

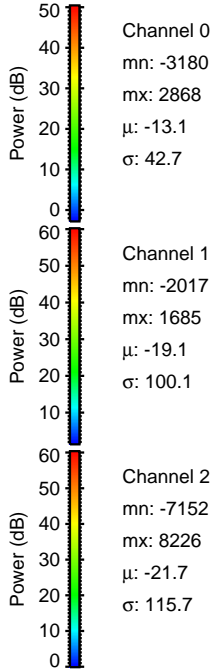
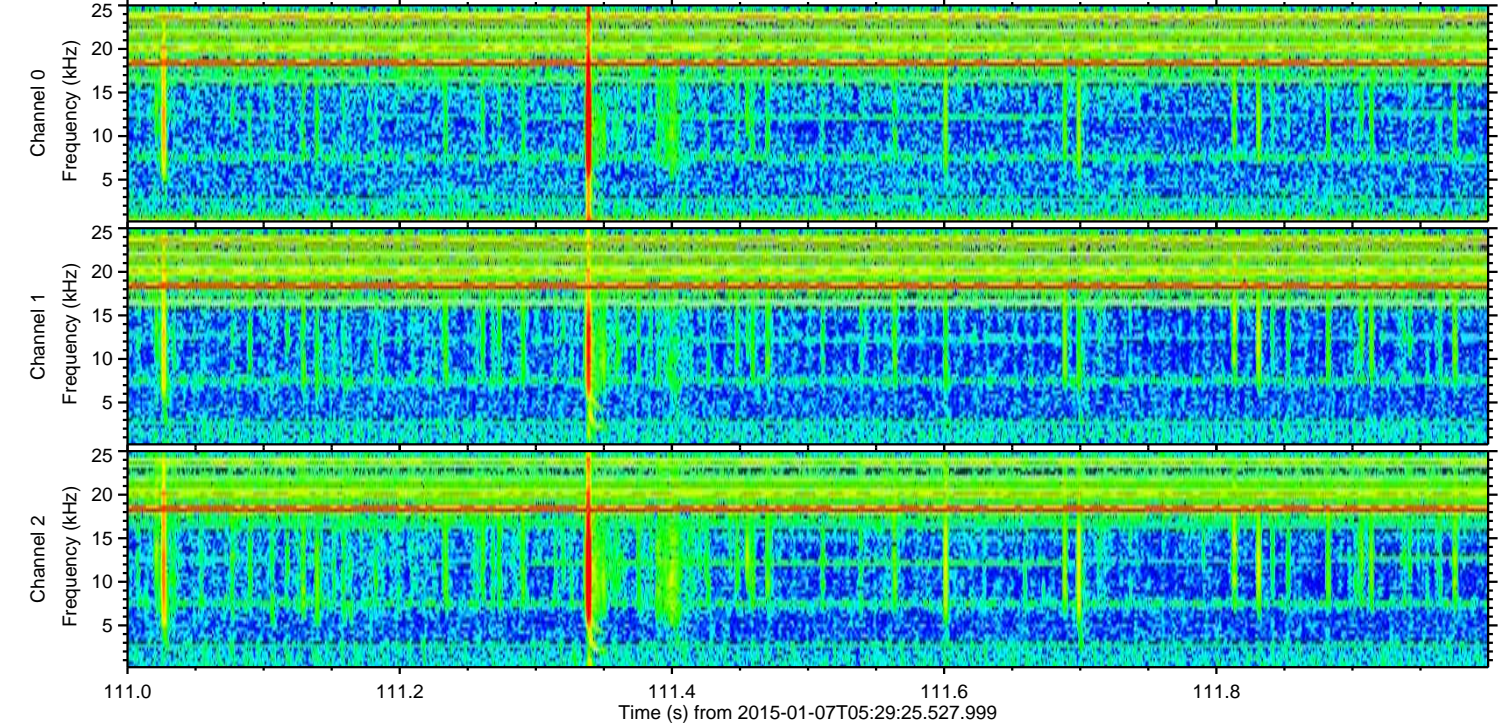
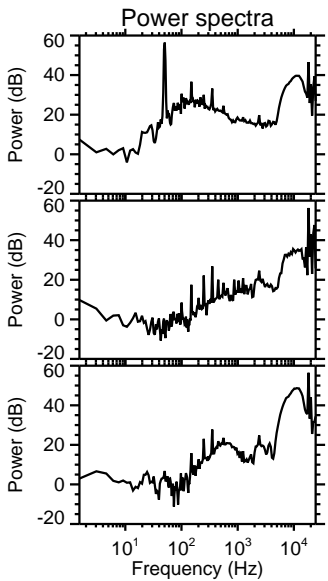
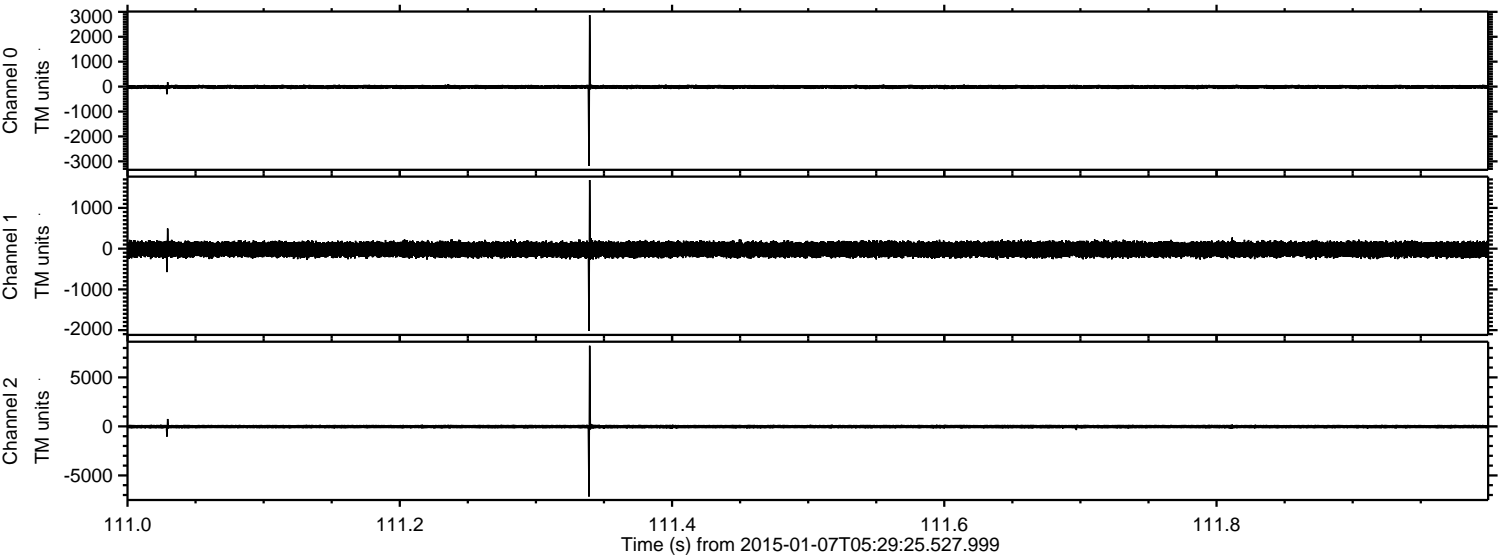
Processed Wed Jan 7 06:37:45 2015 by ELM ver.2012-10-06 from 001\_\_elm20150107\_052924\_\_dat00.bin





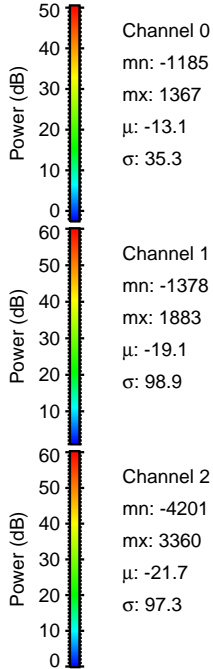
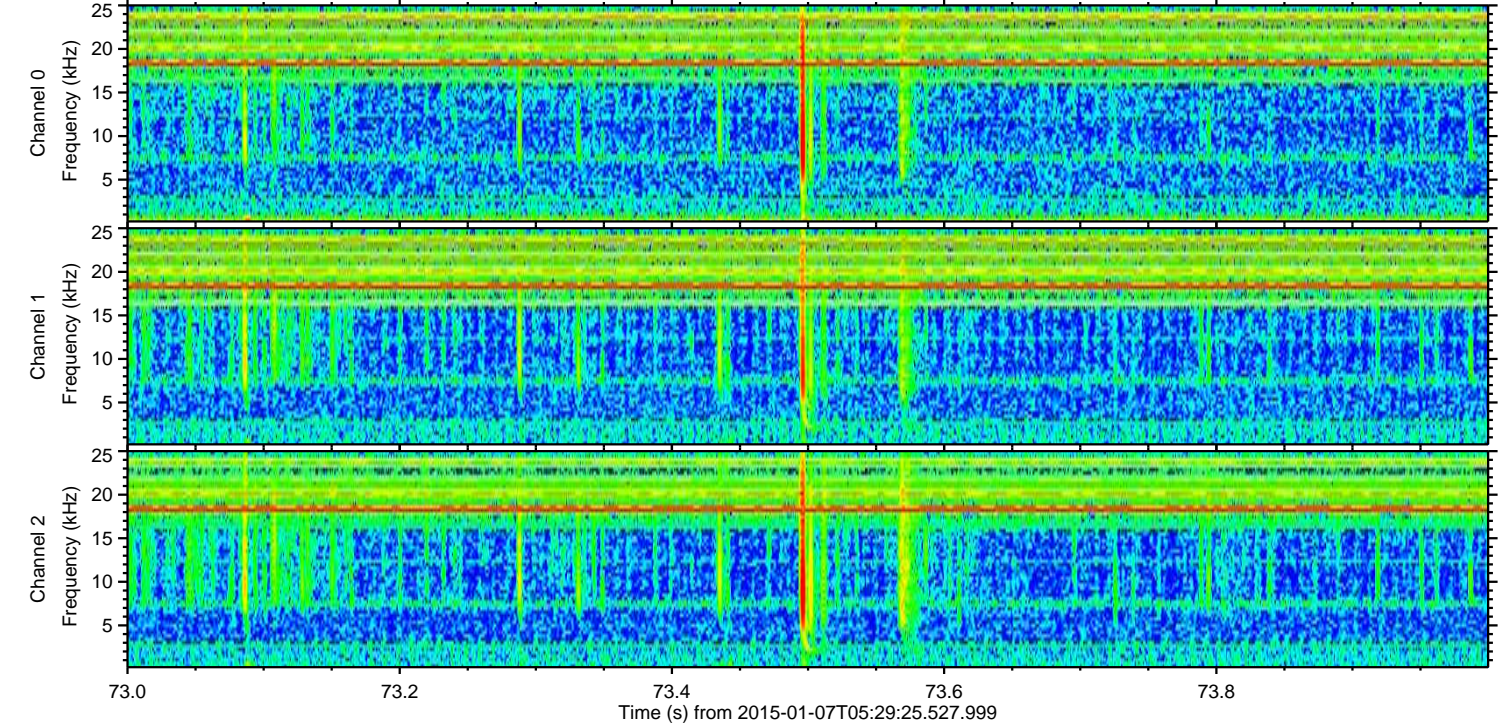
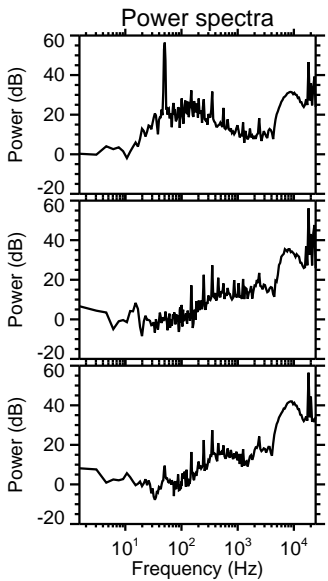
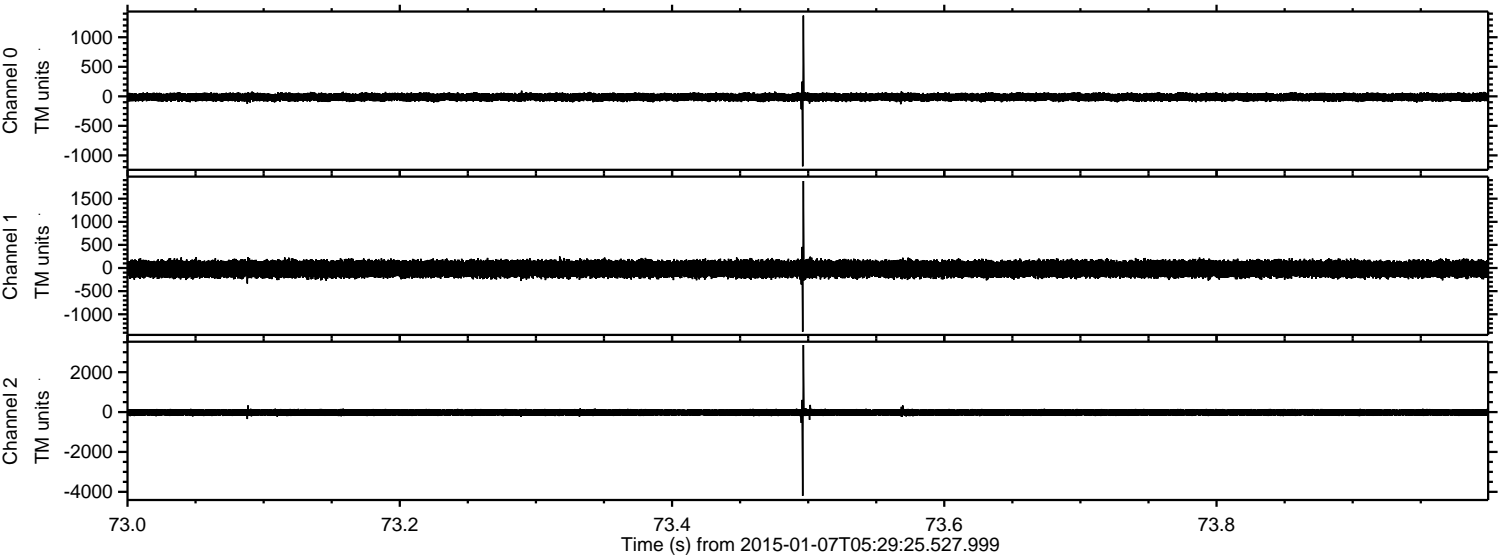
ELMAVAN 3D WAVEFORMS (Measured data sampled at 50 kHz) 49795 packets of 144 samples from 2015-01-07T05:29:25.527.999. Part 112/144

Processed Wed Jan 7 06:37:57 2015 by ELM ver.2012-10-06 from 001\_\_elm20150107\_052924\_\_dat00.bin





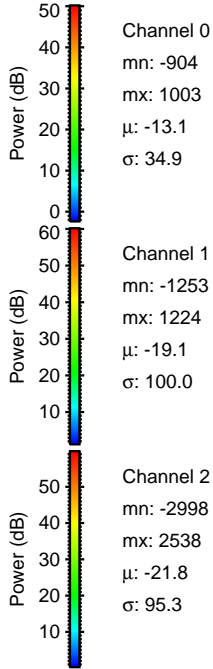
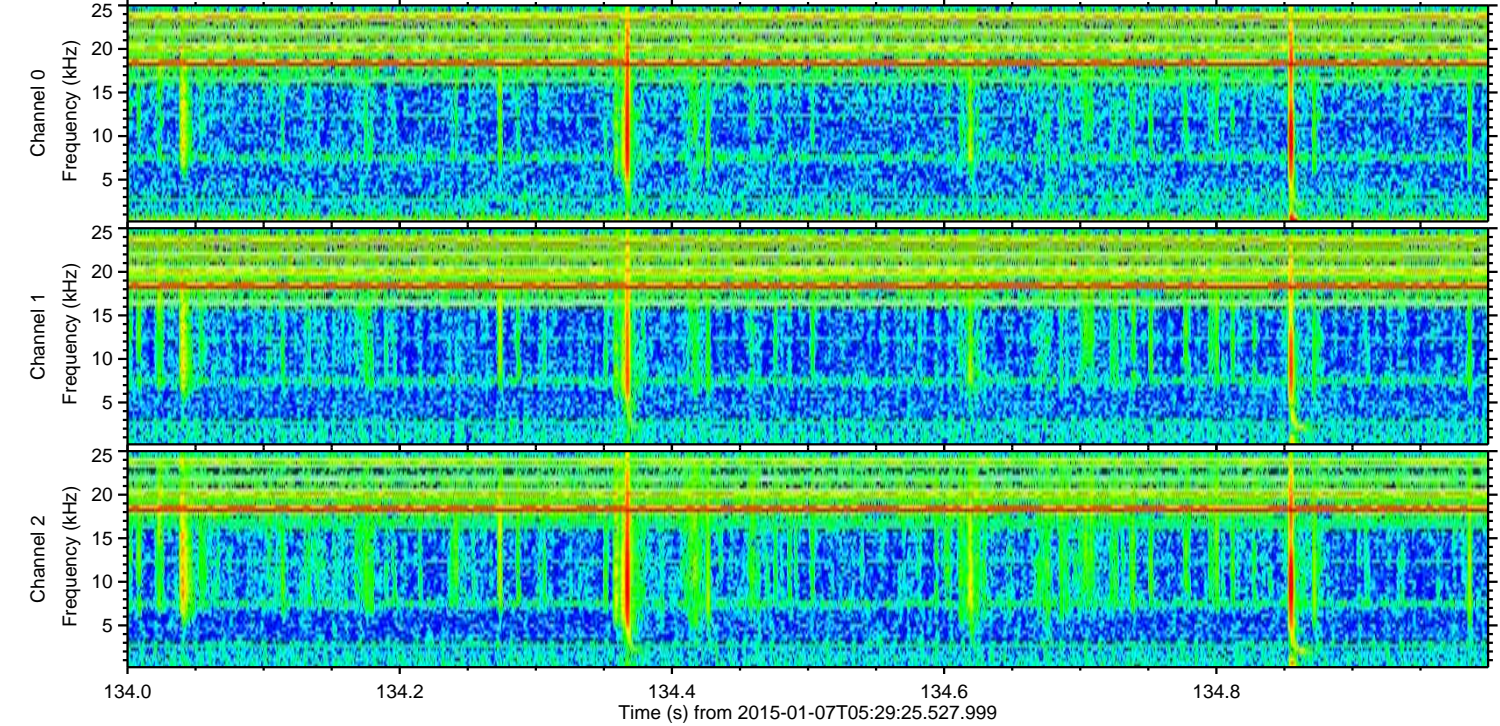
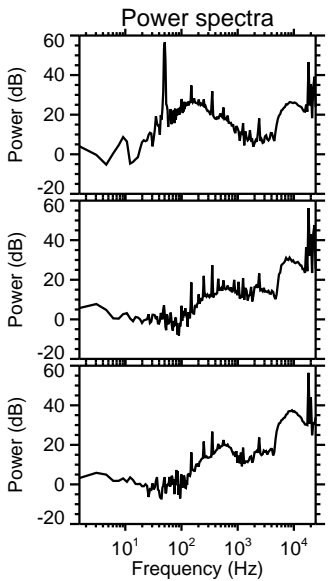
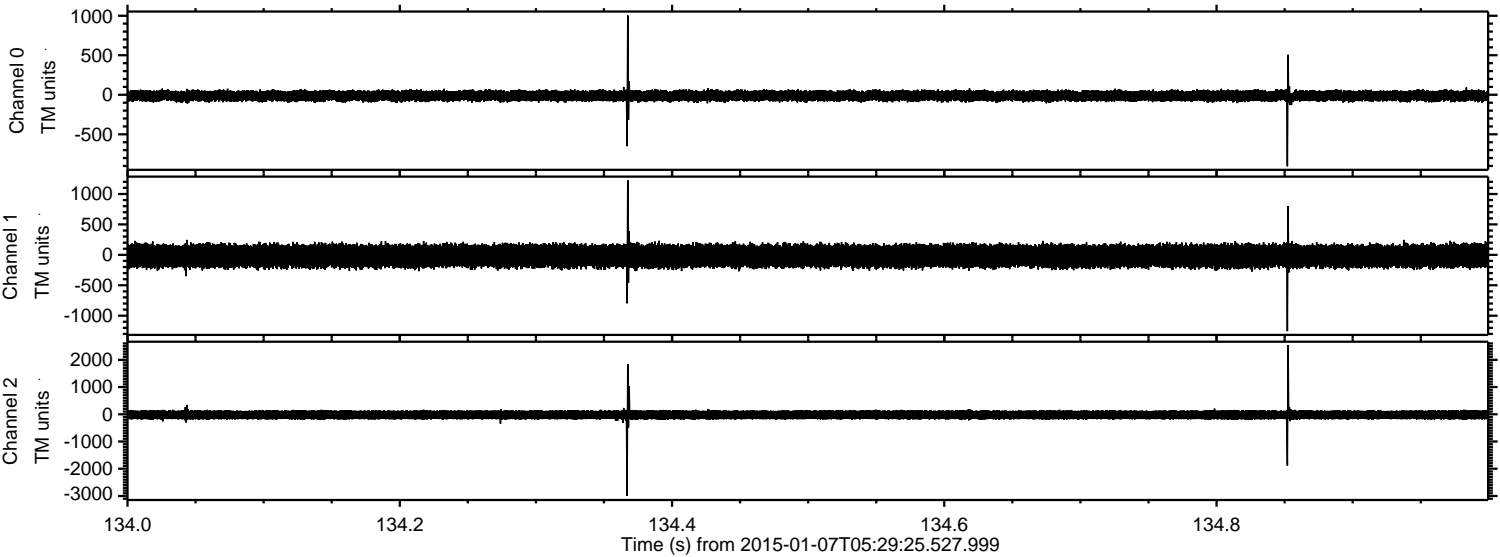
Processed Wed Jan 7 06:37:58 2015 by ELM ver.2012-10-06 from 001\_\_elm20150107\_052924\_\_dat00.bin





ELMAVAN 3D WAVEFORMS (Measured data sampled at 50 kHz) 49795 packets of 144 samples from 2015-01-07T05:29:25.527.999. Part 135/144

Processed Wed Jan 7 06:37:59 2015 by ELM ver.2012-10-06 from 001\_\_elm20150107\_052924\_\_dat00.bin



Channel 0  
mn: -904  
mx: 1003  
 $\mu$ : -13.1  
 $\sigma$ : 34.9

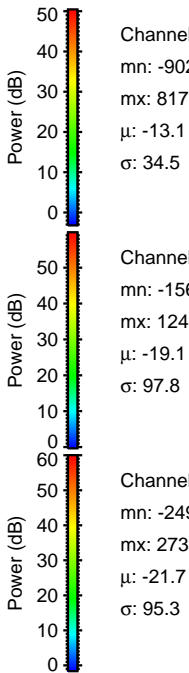
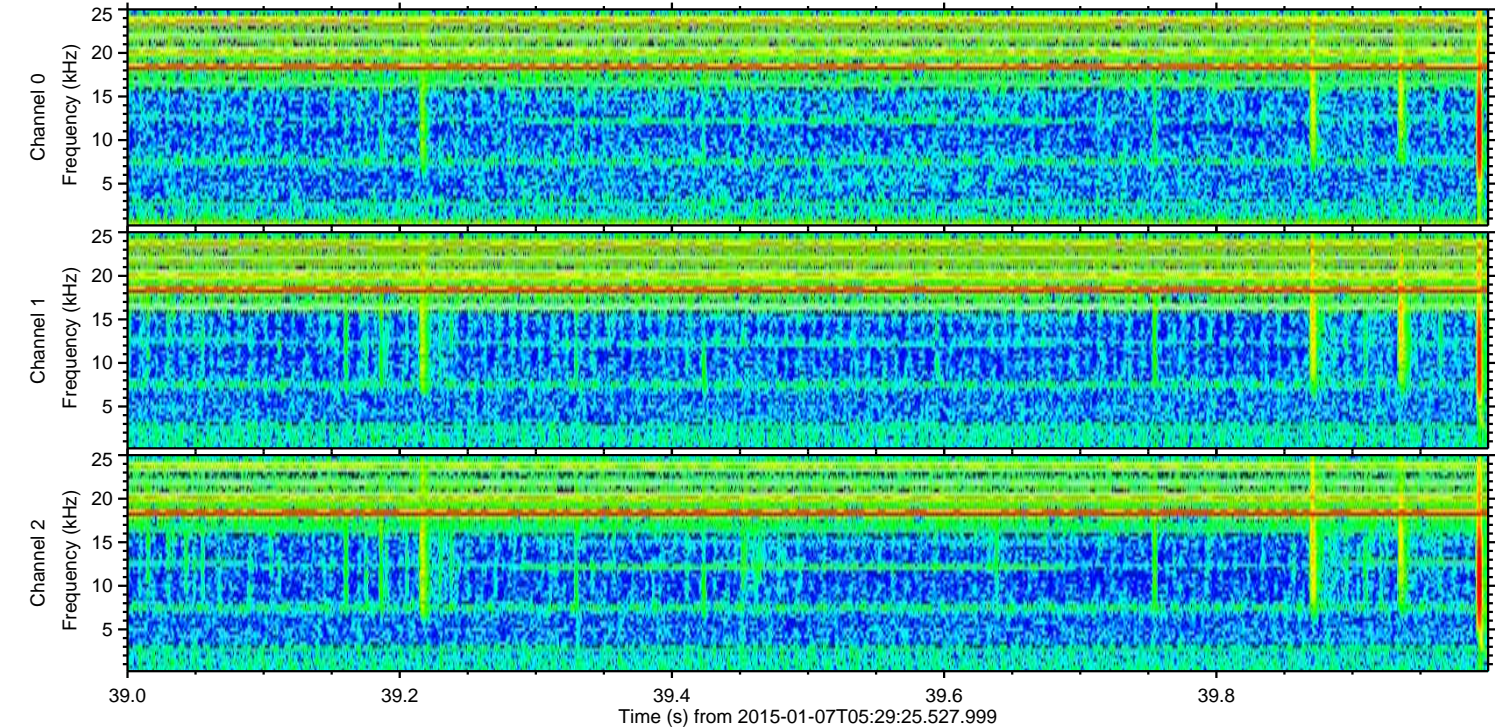
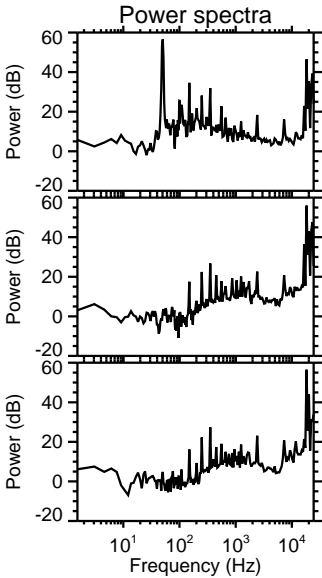
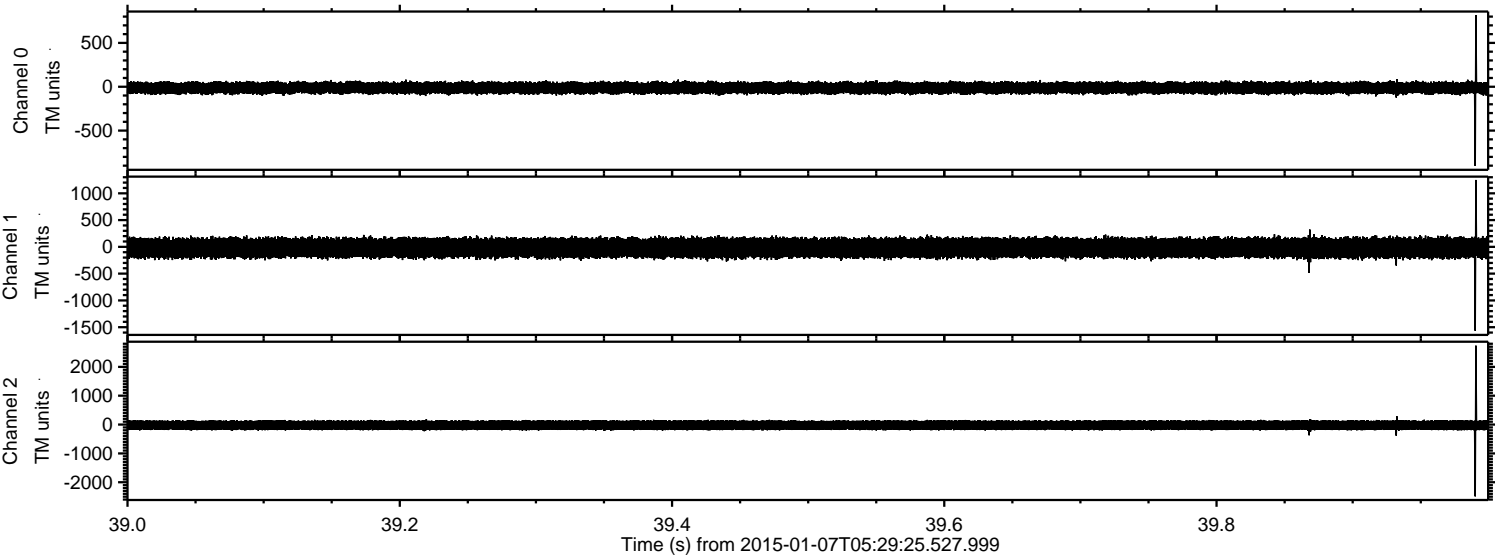
Channel 1  
mn: -1253  
mx: 1224  
 $\mu$ : -19.1  
 $\sigma$ : 100.0

Channel 2  
mn: -2998  
mx: 2538  
 $\mu$ : -21.8  
 $\sigma$ : 95.3



ELMAVAN 3D WAVEFORMS (Measured data sampled at 50 kHz) 49795 packets of 144 samples from 2015-01-07T05:29:25.527.999. Part 40/144

Processed Wed Jan 7 06:38:00 2015 by ELM ver.2012-10-06 from 001\_\_elm20150107\_052924\_\_dat00.bin



Channel 0  
mn: -902  
mx: 817  
 $\mu$ : -13.1  
 $\sigma$ : 34.5

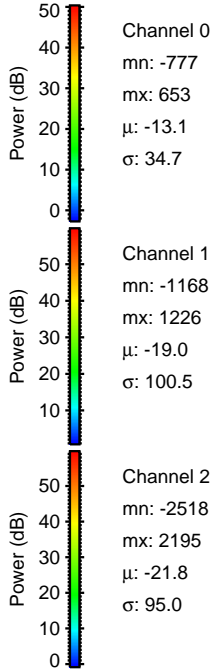
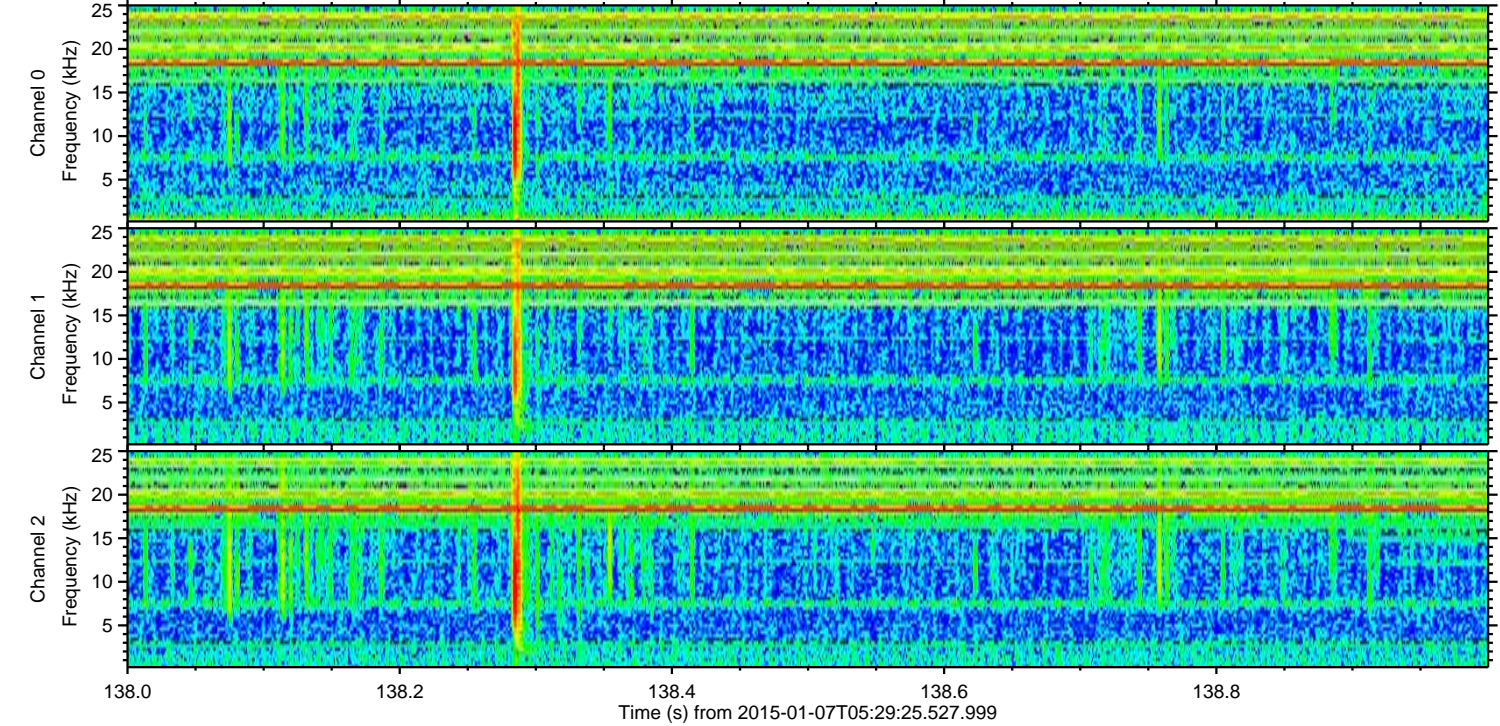
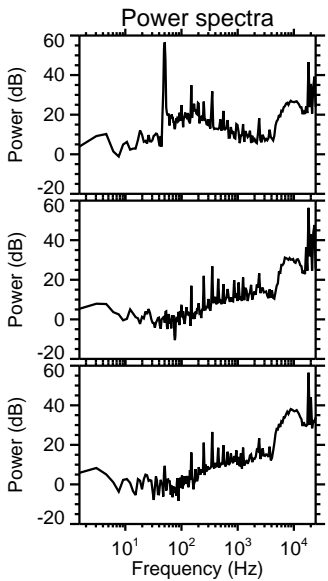
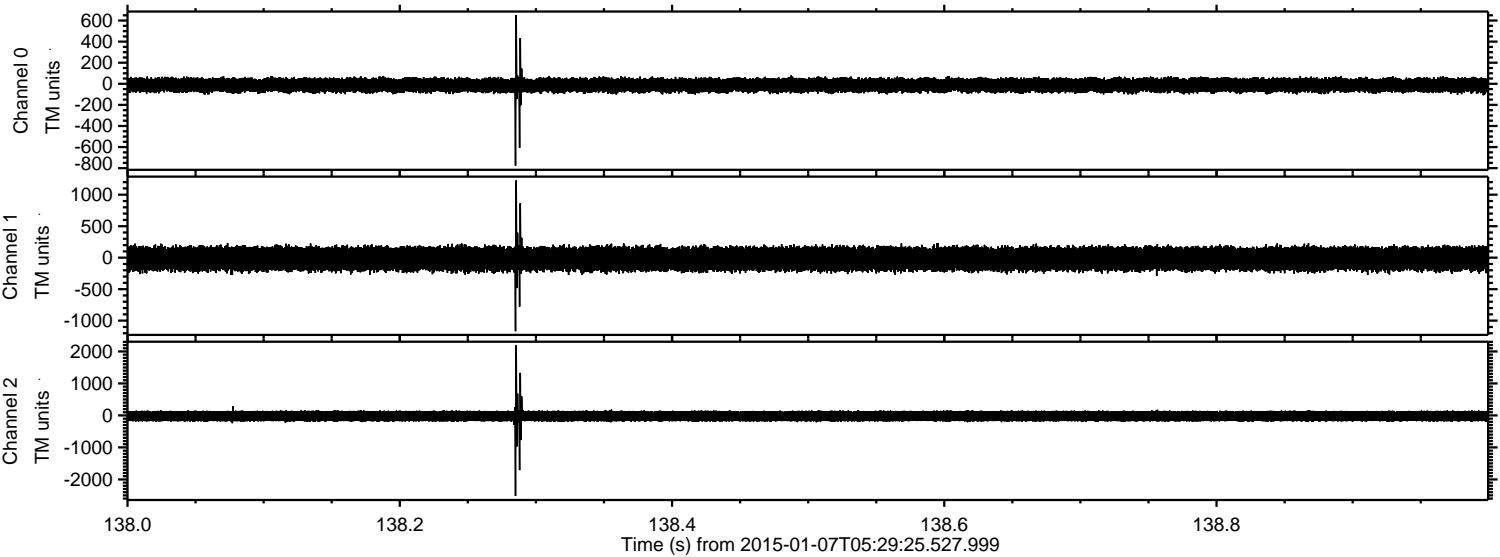
Channel 1  
mn: -1566  
mx: 1249  
 $\mu$ : -19.1  
 $\sigma$ : 97.8

Channel 2  
mn: -2490  
mx: 2735  
 $\mu$ : -21.7  
 $\sigma$ : 95.3



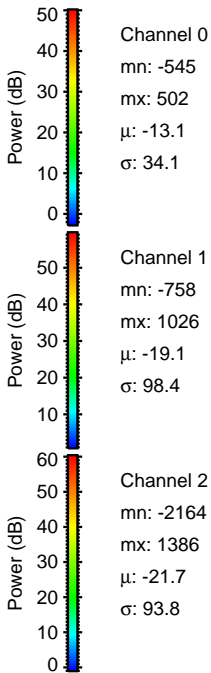
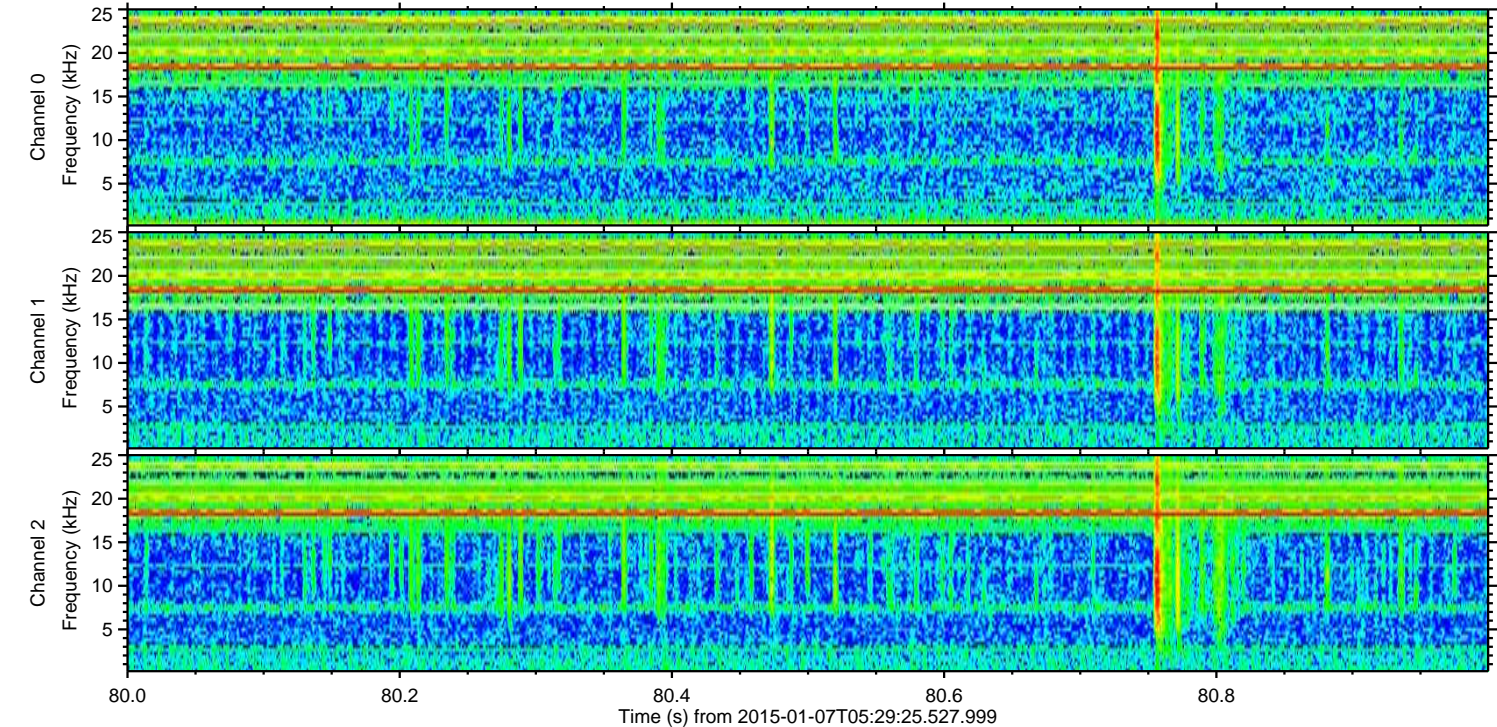
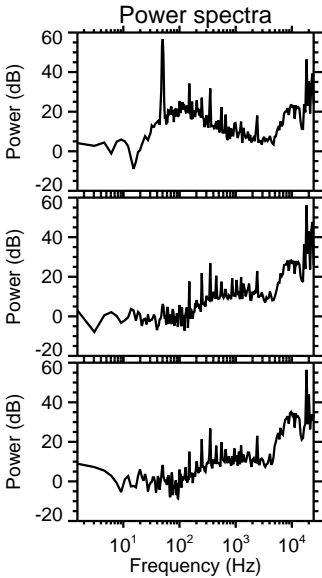
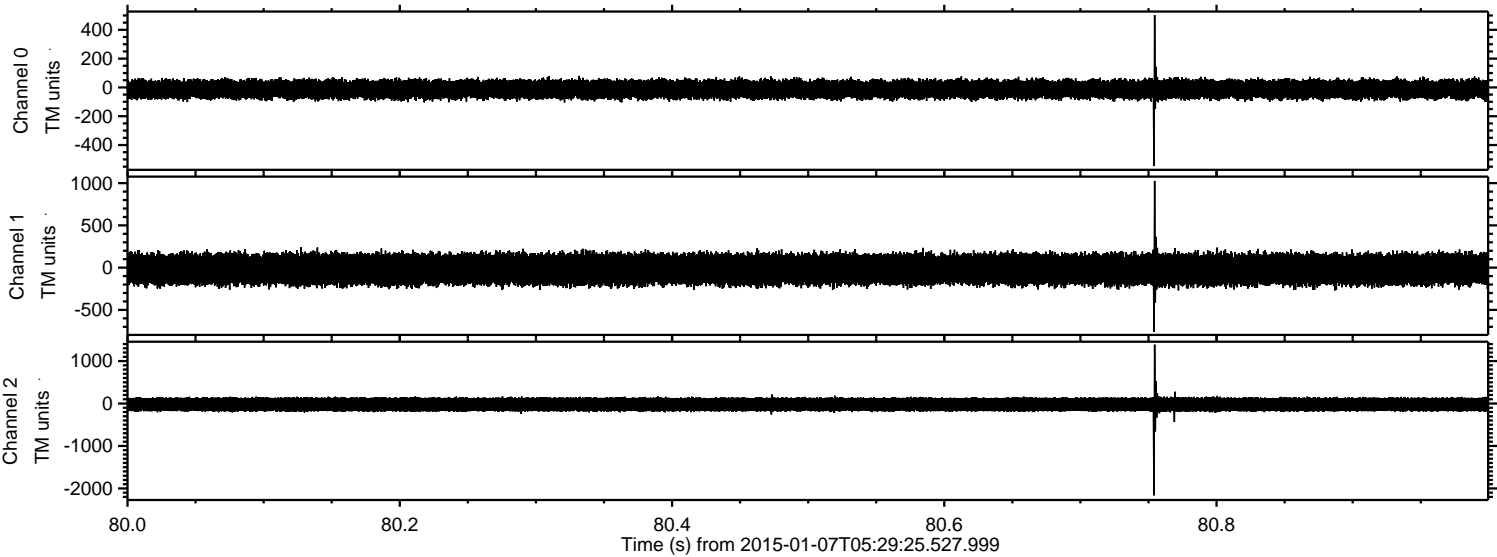
ELMAVAN 3D WAVEFORMS (Measured data sampled at 50 kHz) 49795 packets of 144 samples from 2015-01-07T05:29:25.527.999. Part 139/144

Processed Wed Jan 7 06:38:01 2015 by ELM ver.2012-10-06 from 001\_\_elm20150107\_052924\_\_dat00.bin





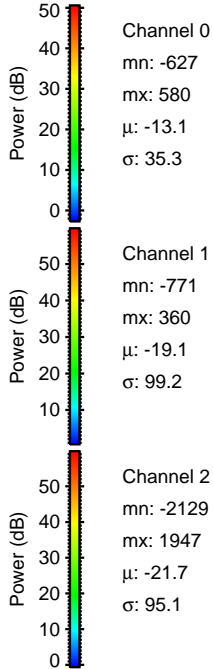
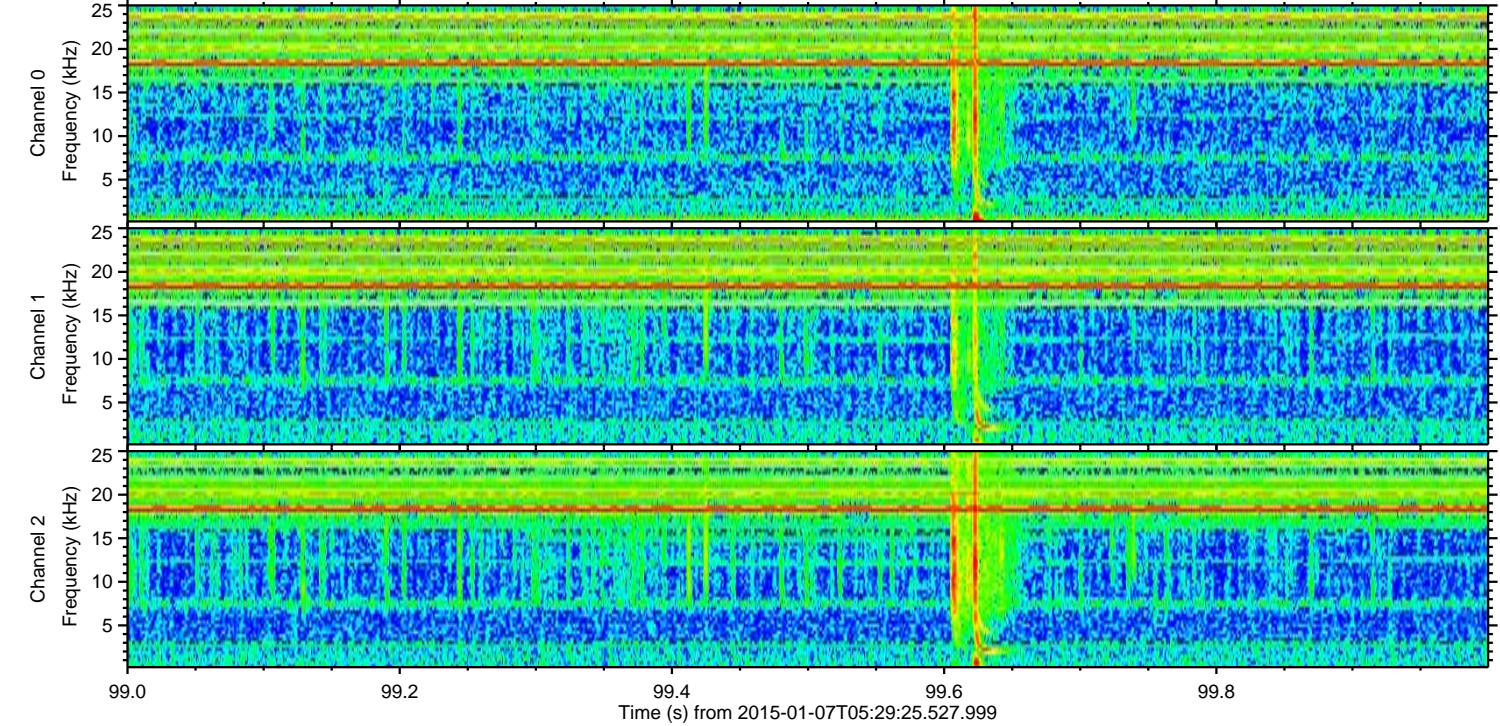
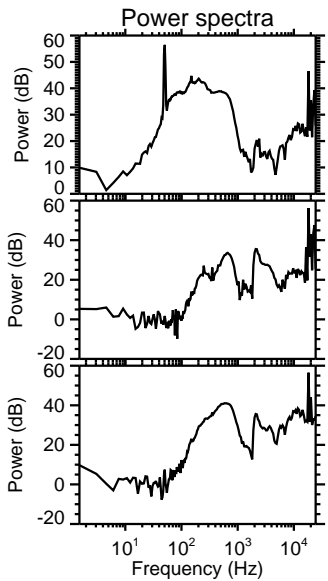
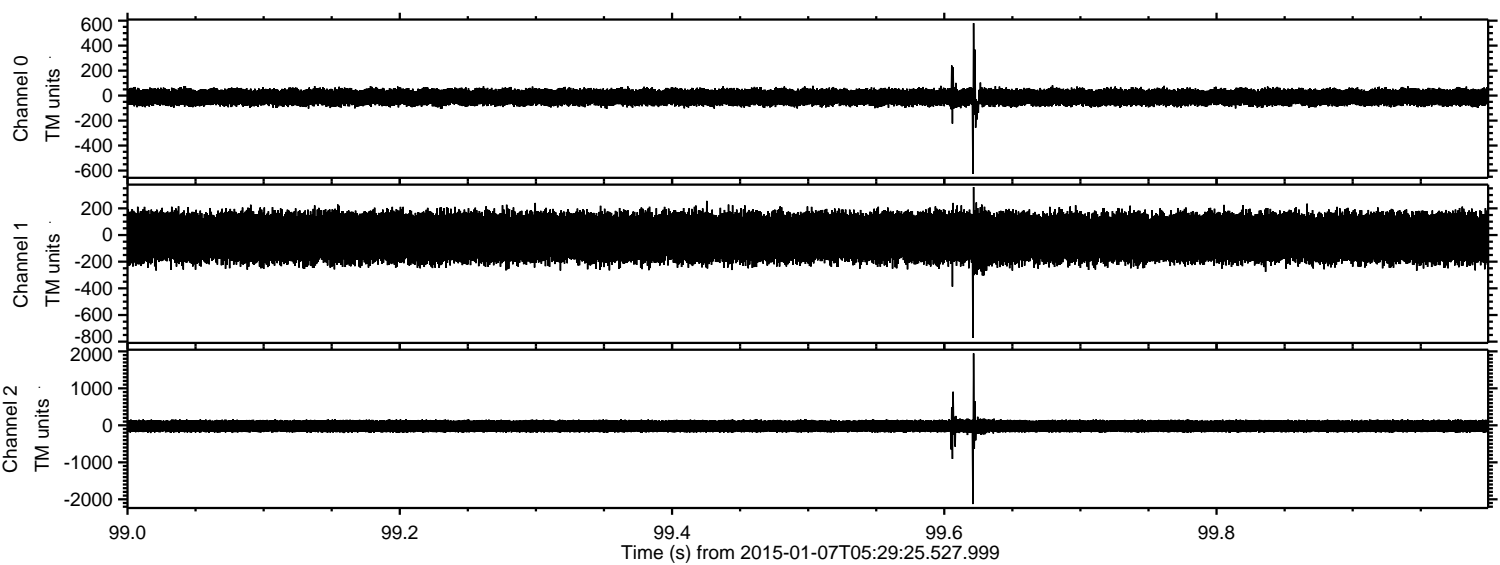
Processed Wed Jan 7 06:38:02 2015 by ELM ver.2012-10-06 from 001\_\_elm20150107\_052924\_\_dat00.bin





ELMAVAN 3D WAVEFORMS (Measured data sampled at 50 kHz) 49795 packets of 144 samples from 2015-01-07T05:29:25.527.999. Part 100/144

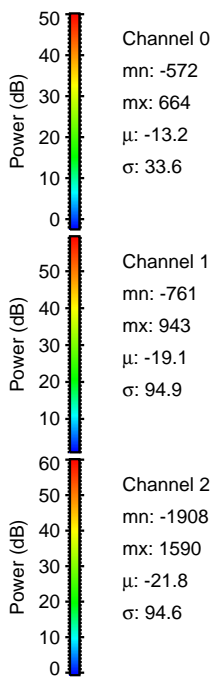
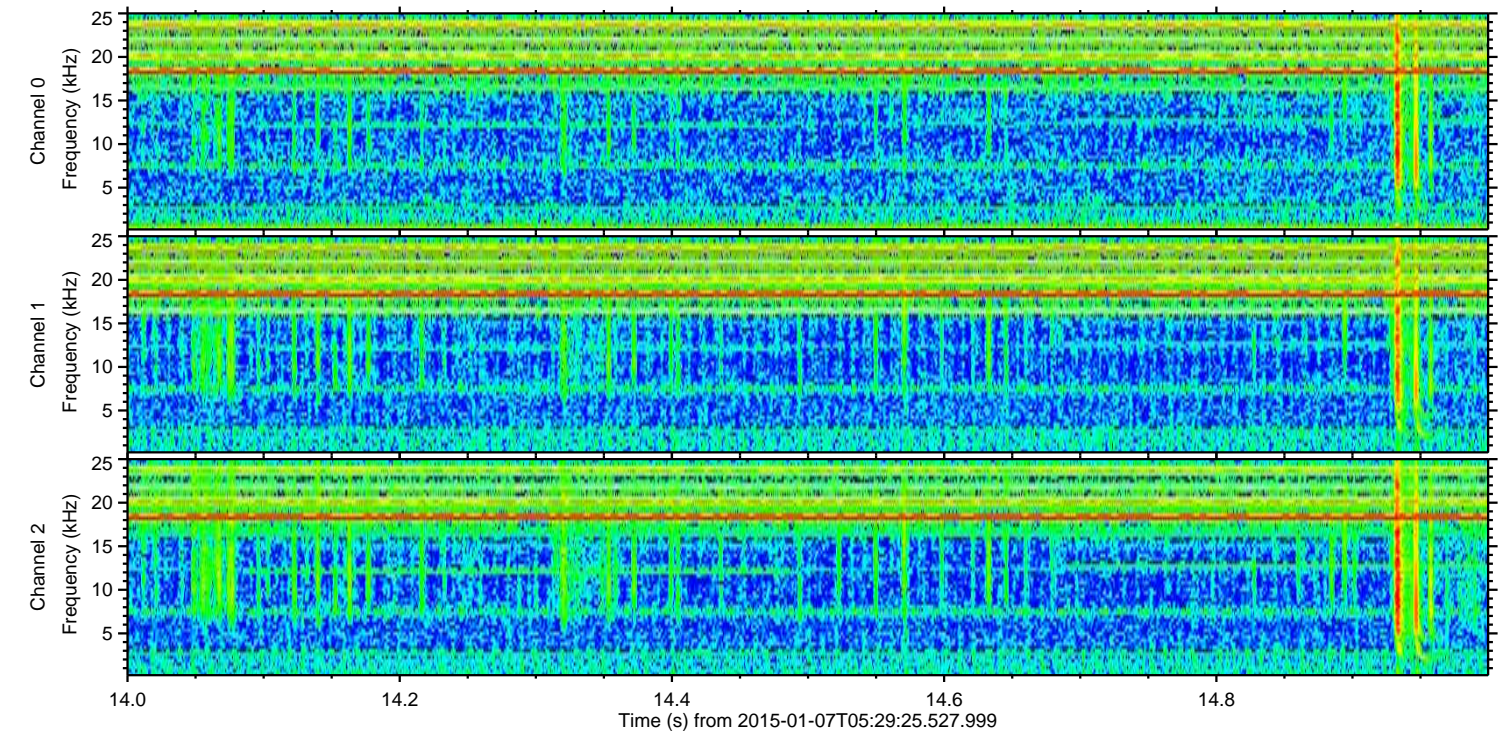
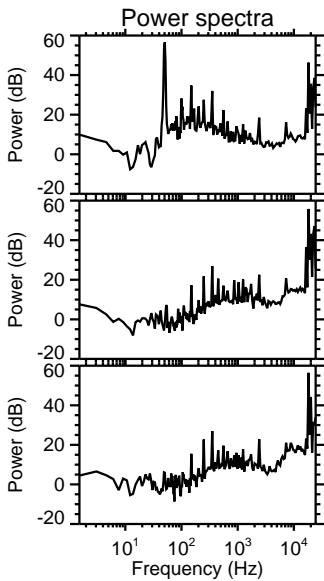
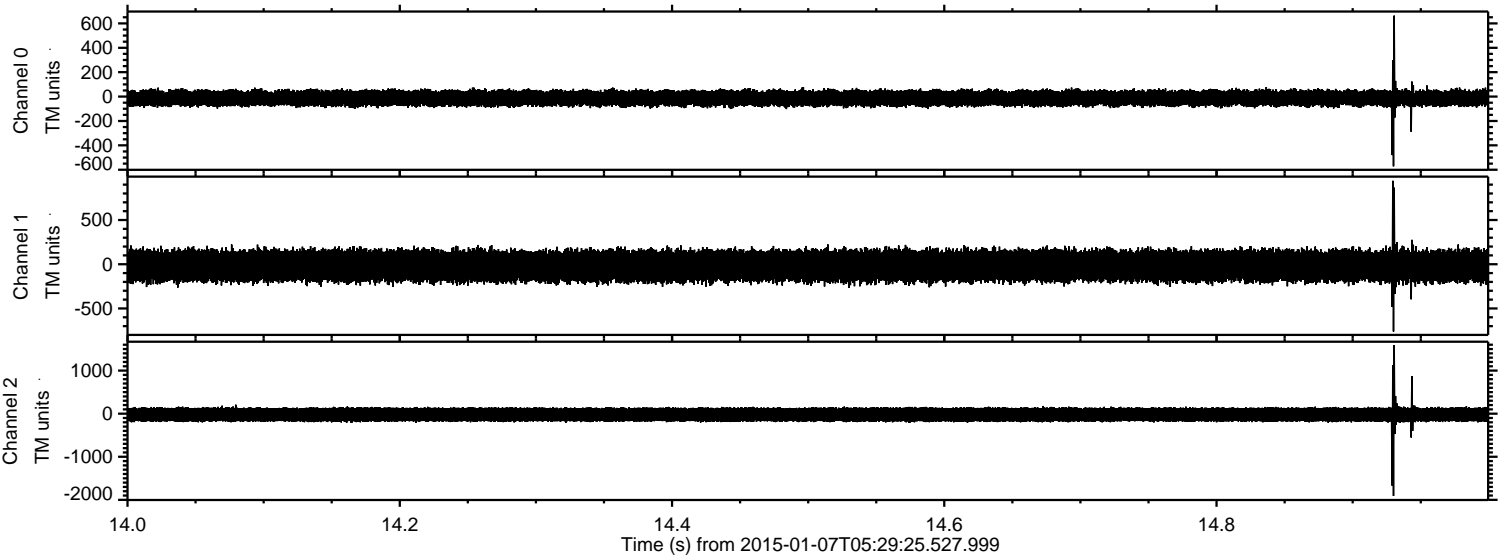
Processed Wed Jan 7 06:38:02 2015 by ELM ver.2012-10-06 from 001\_\_elm20150107\_052924\_\_dat00.bin





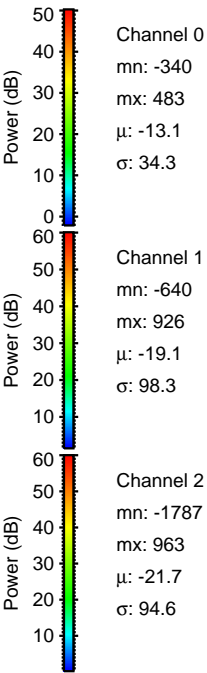
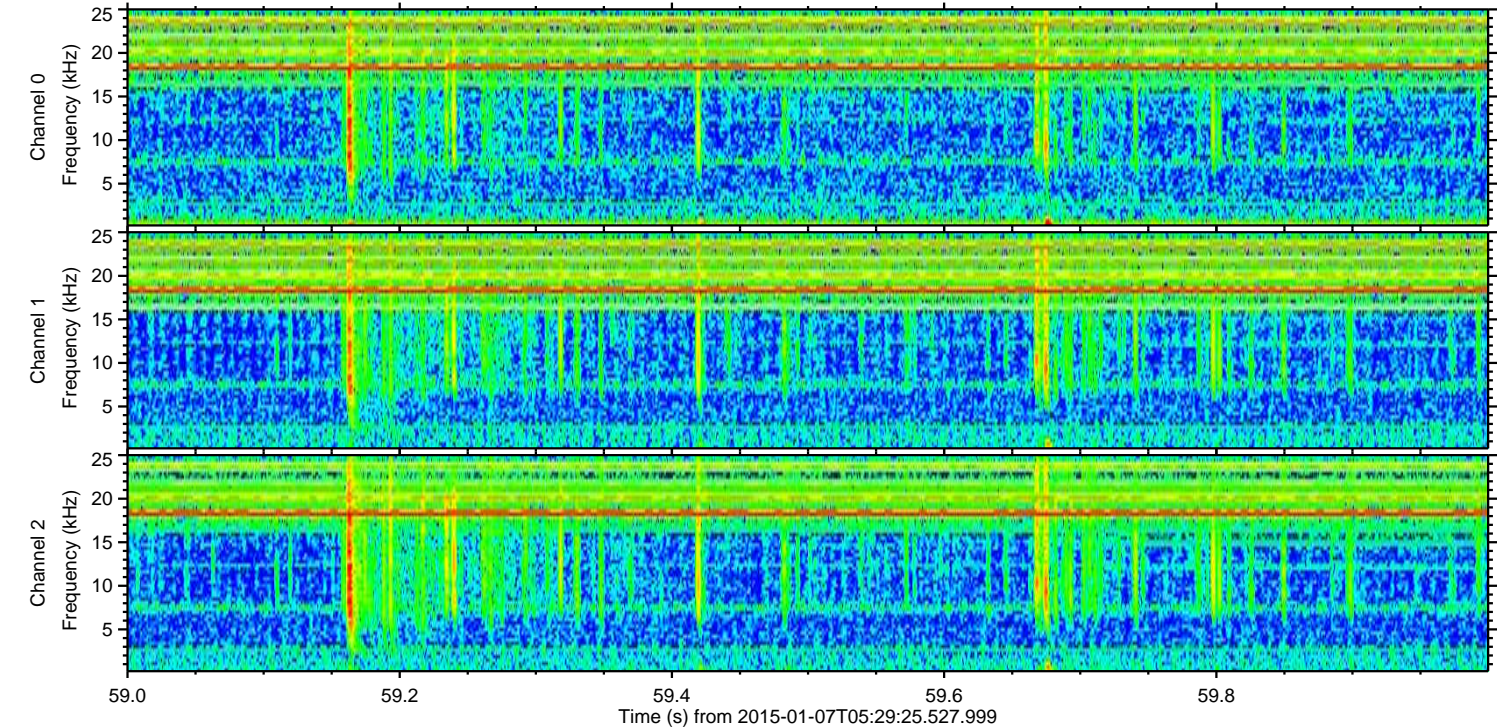
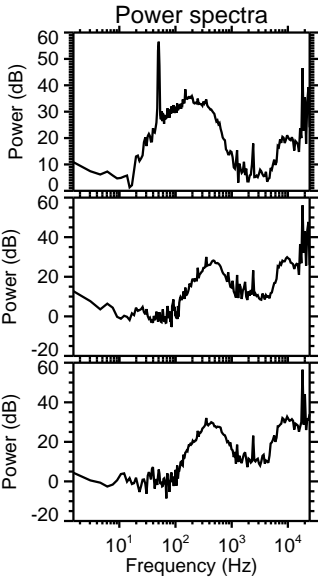
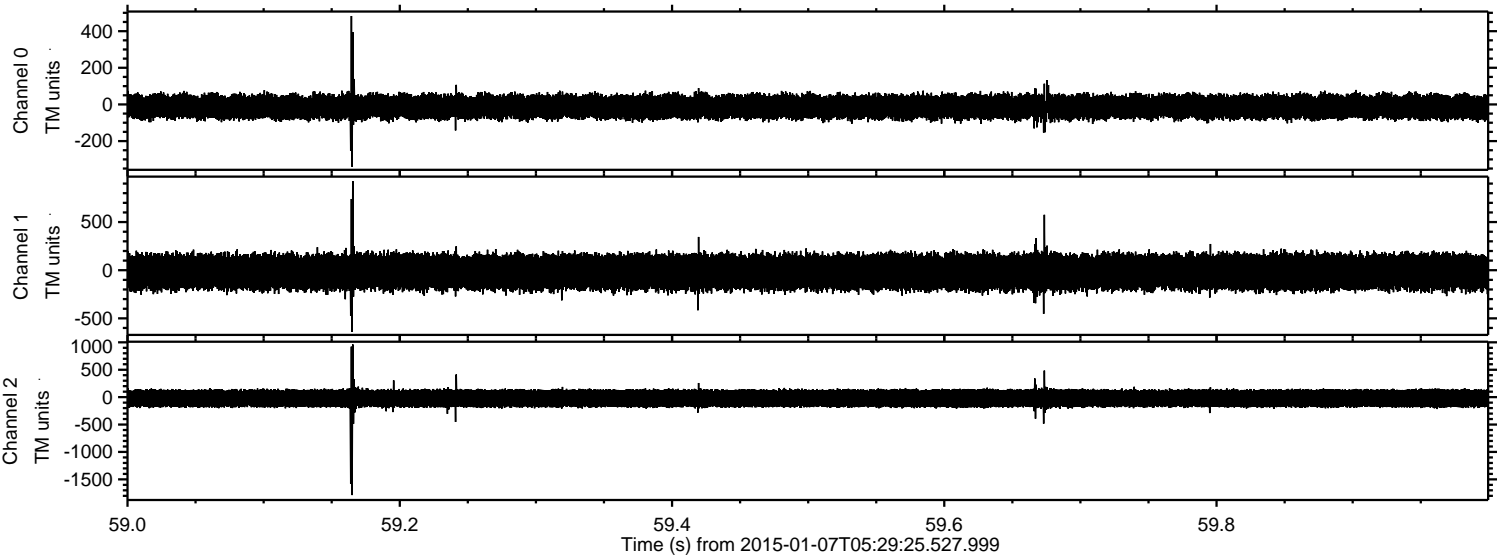
ELMAVAN 3D WAVEFORMS (Measured data sampled at 50 kHz) 49795 packets of 144 samples from 2015-01-07T05:29:25.527.999. Part 15/144

Processed Wed Jan 7 06:38:03 2015 by ELM ver.2012-10-06 from 001\_\_elm20150107\_052924\_\_dat00.bin





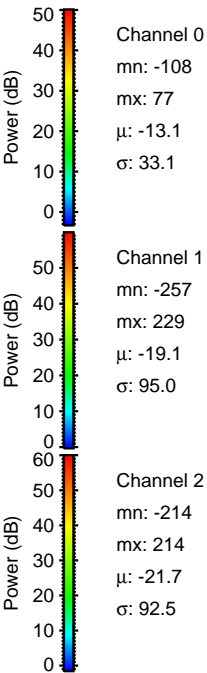
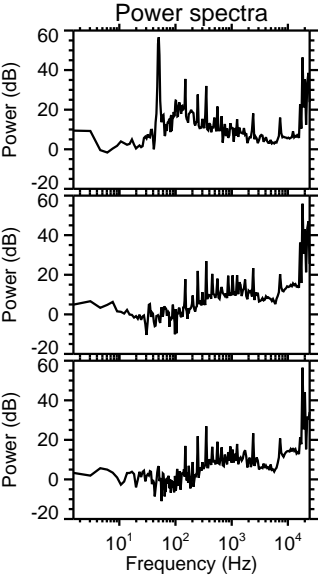
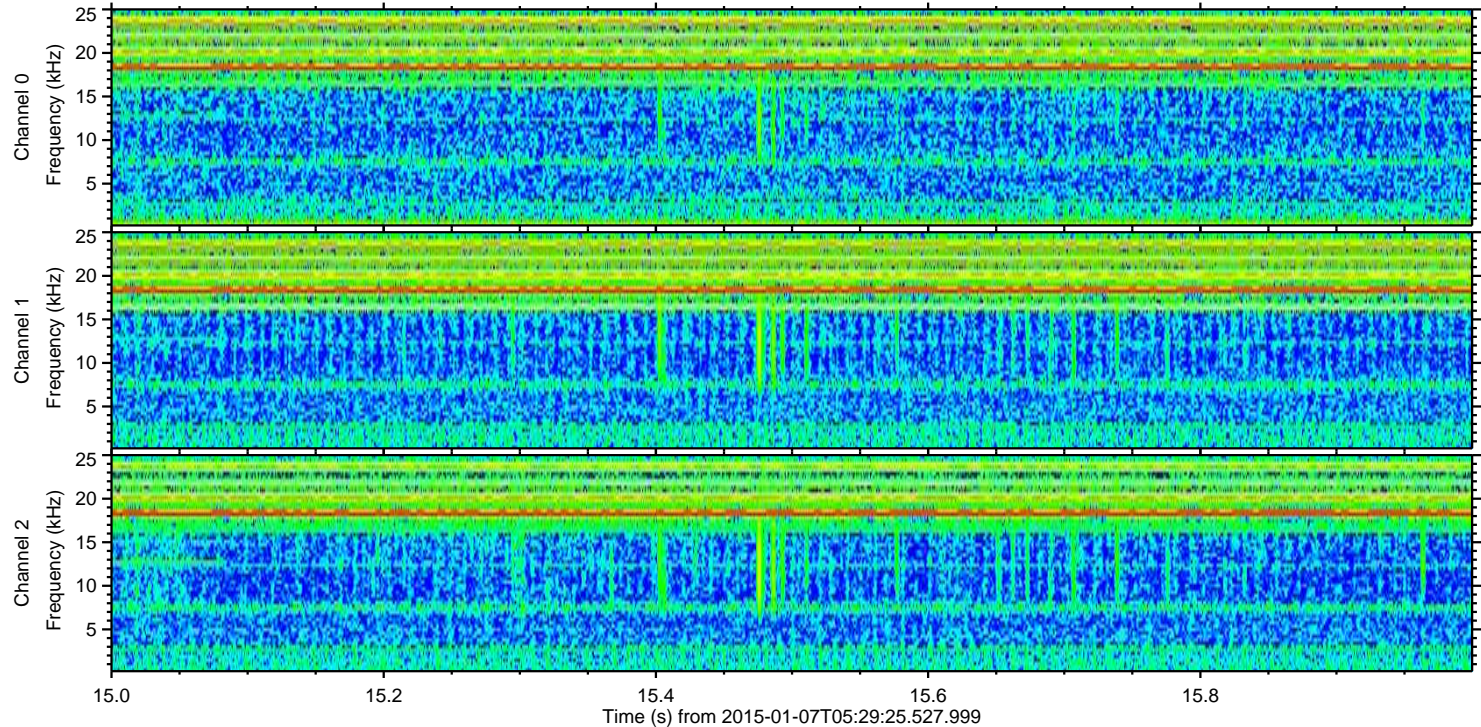
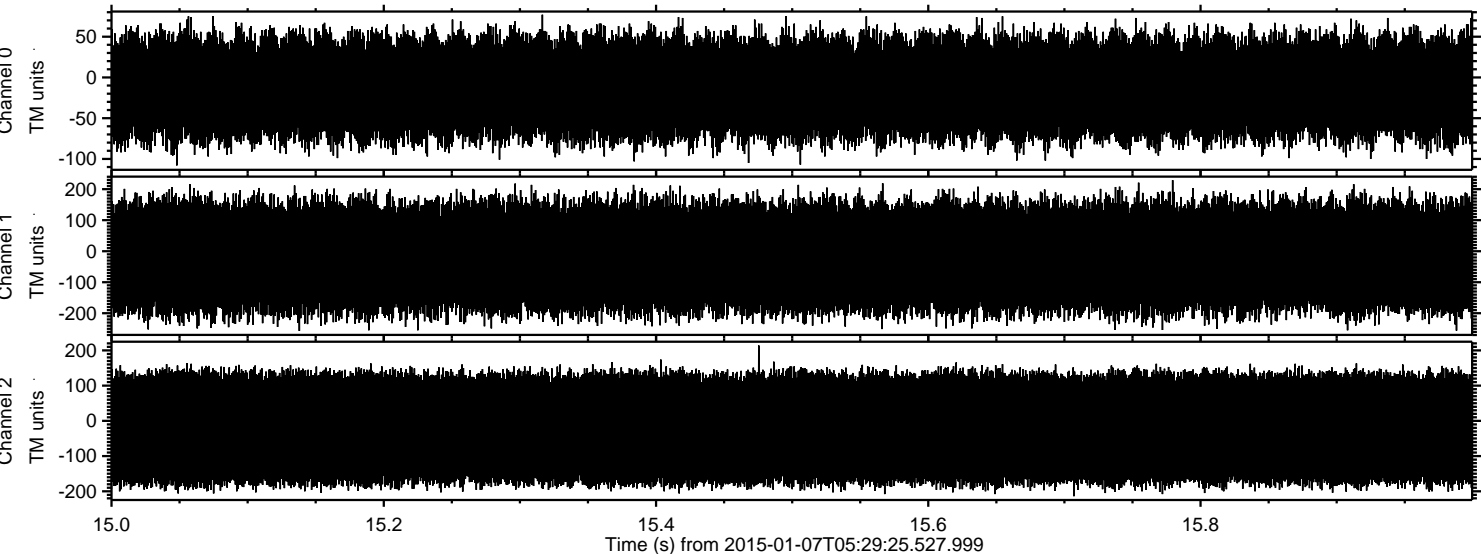
Processed Wed Jan 7 06:38:04 2015 by ELM ver.2012-10-06 from 001\_\_elm20150107\_052924\_\_dat00.bin





ELMAVAN 3D WAVEFORMS (Measured data sampled at 50 kHz) 49795 packets of 144 samples from 2015-01-07T05:29:25.527.999. Part 16/144

Processed Wed Jan 7 06:38:05 2015 by ELM ver.2012-10-06 from 001\_\_elm20150107\_052924\_\_dat00.bin



Channel 0  
mn: -108  
mx: 77  
 $\mu$ : -13.1  
 $\sigma$ : 33.1

Channel 1  
mn: -257  
mx: 229  
 $\mu$ : -19.1  
 $\sigma$ : 95.0

Channel 2  
mn: -214  
mx: 214  
 $\mu$ : -21.7  
 $\sigma$ : 92.5