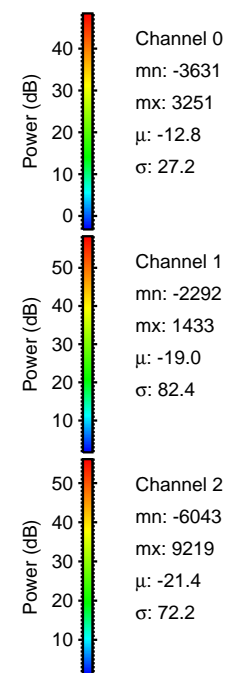
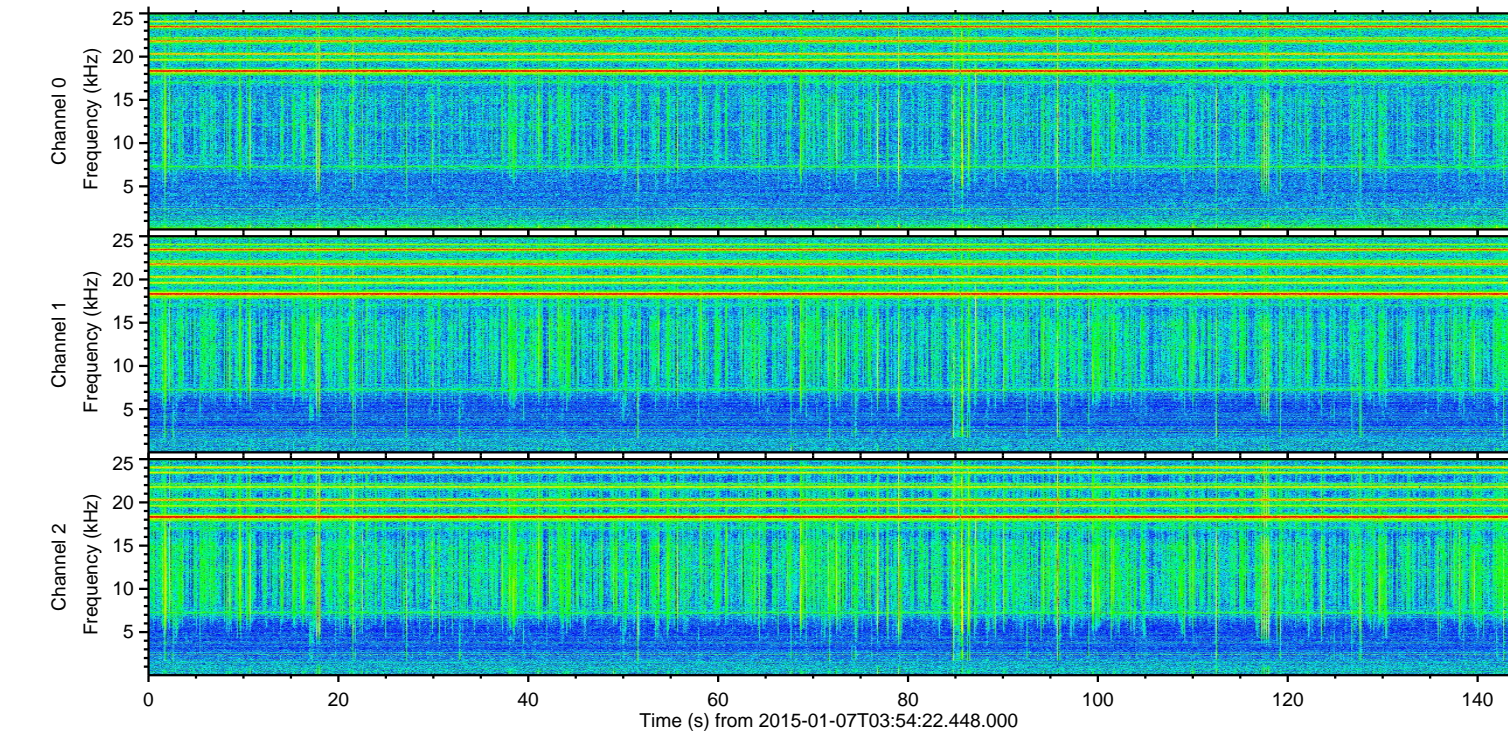
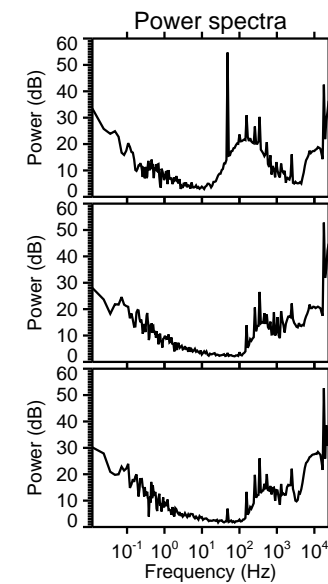
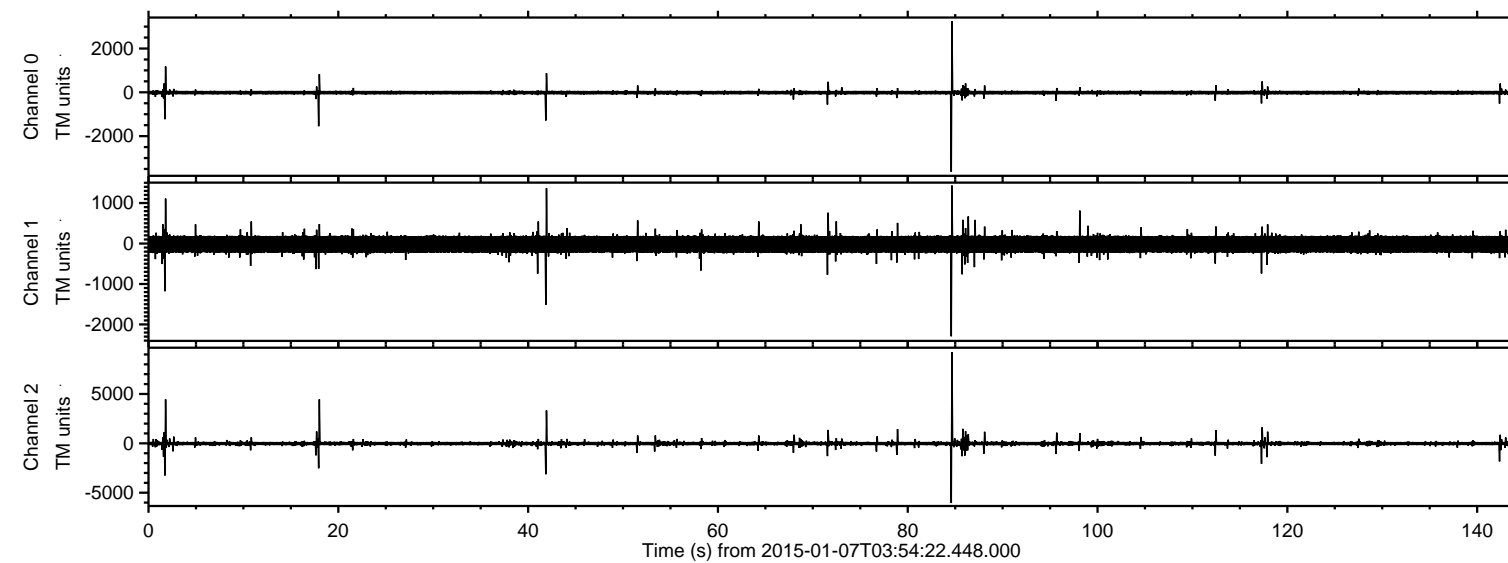
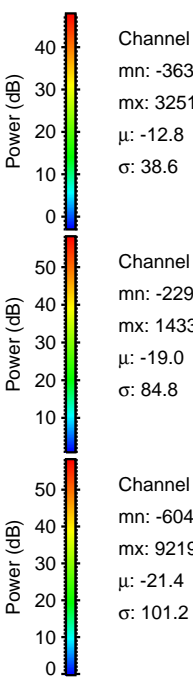
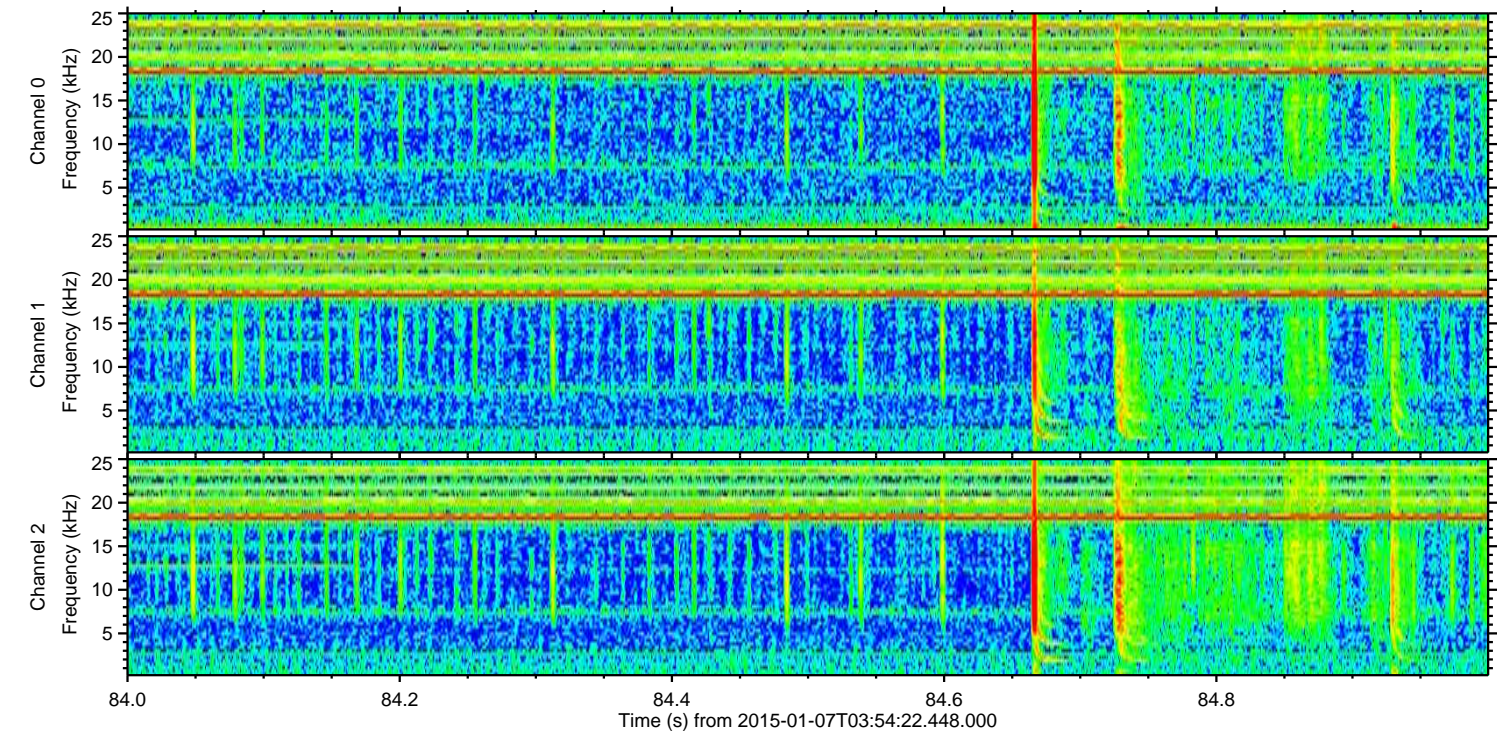
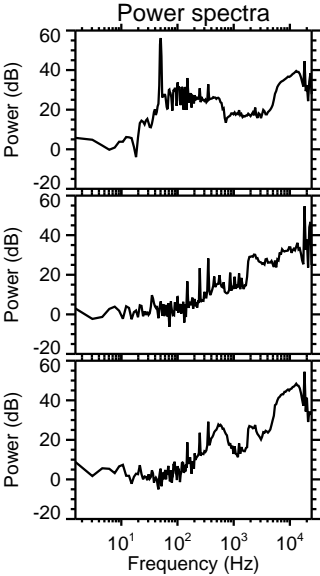
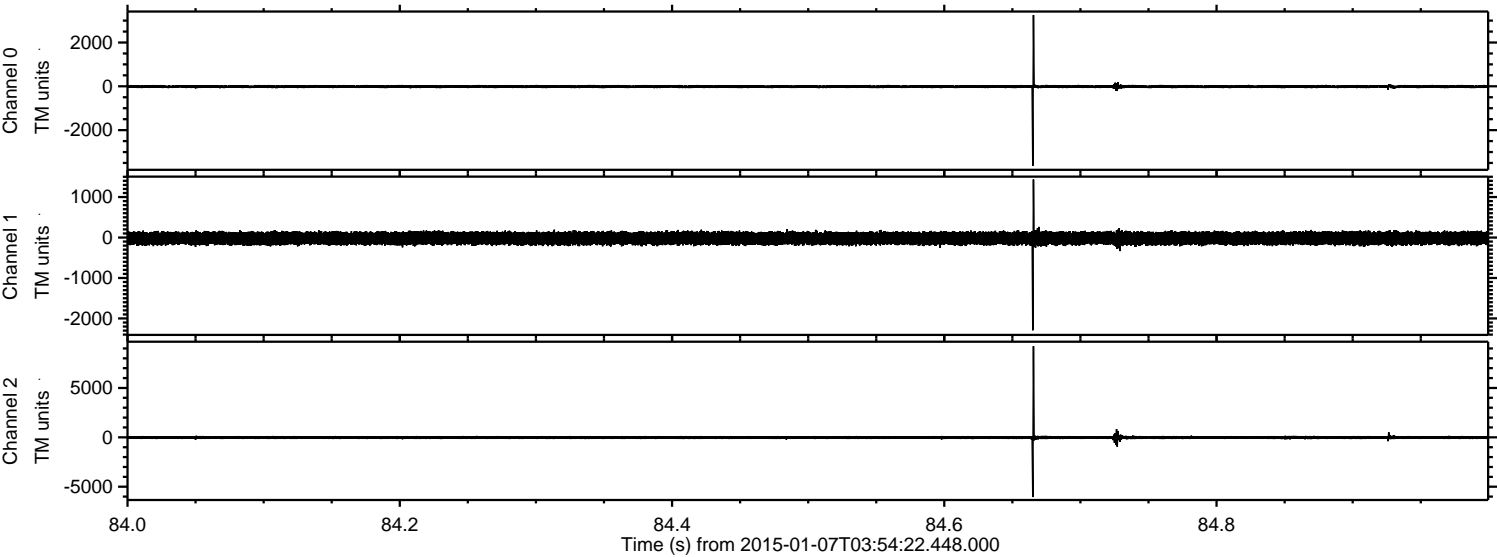


ELMAVAN 3D WAVEFORMS (Measured data sampled at 50 kHz) 49782 packets of 144 samples from 2015-01-07T03:54:22.448.000.

Processed Wed Jan 7 05:02:21 2015 by ELM ver.2012-10-06 from 001__elm20150107_035421__dat00.bin

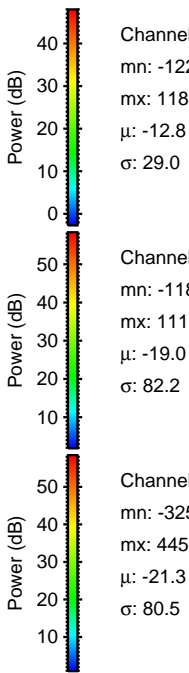
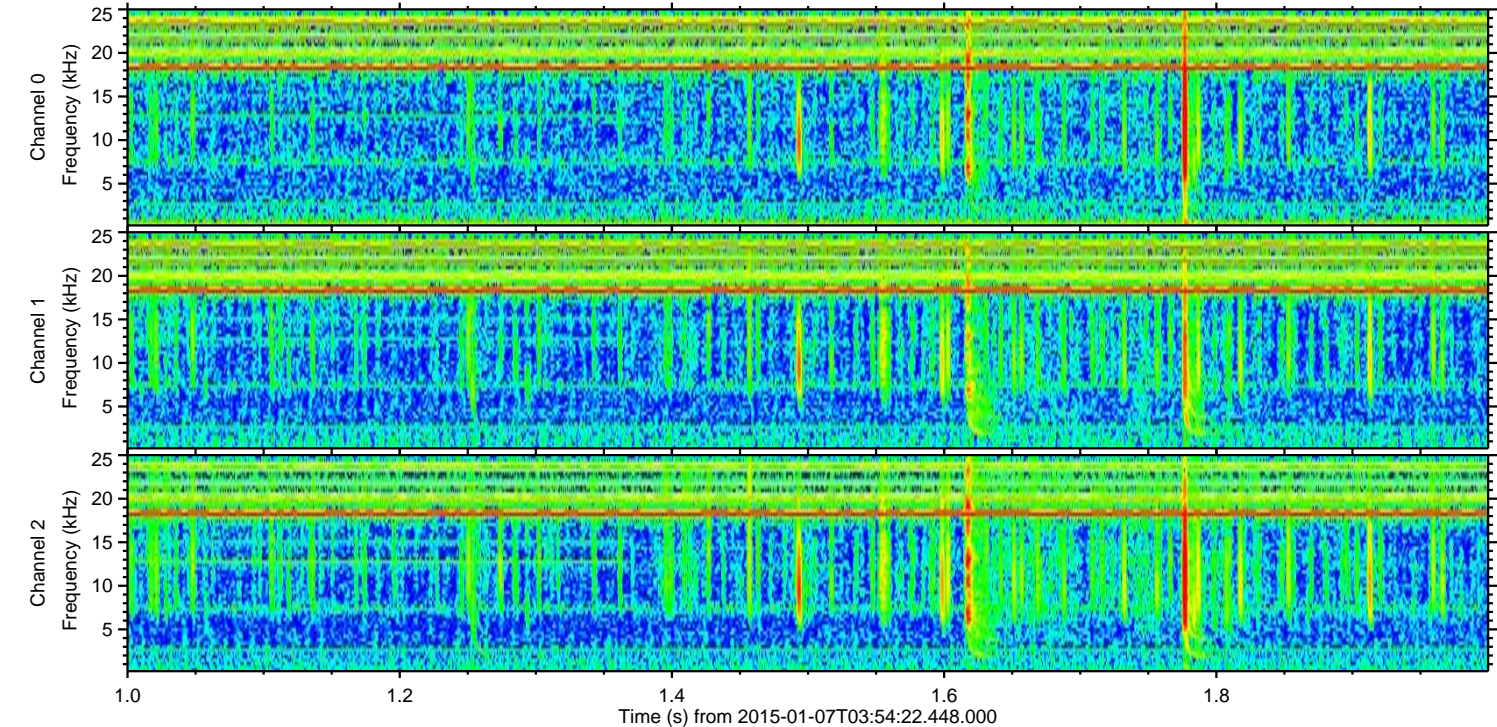
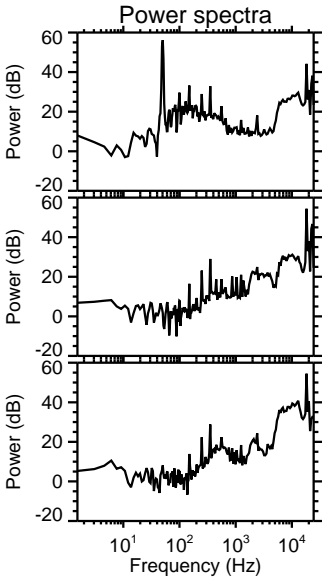
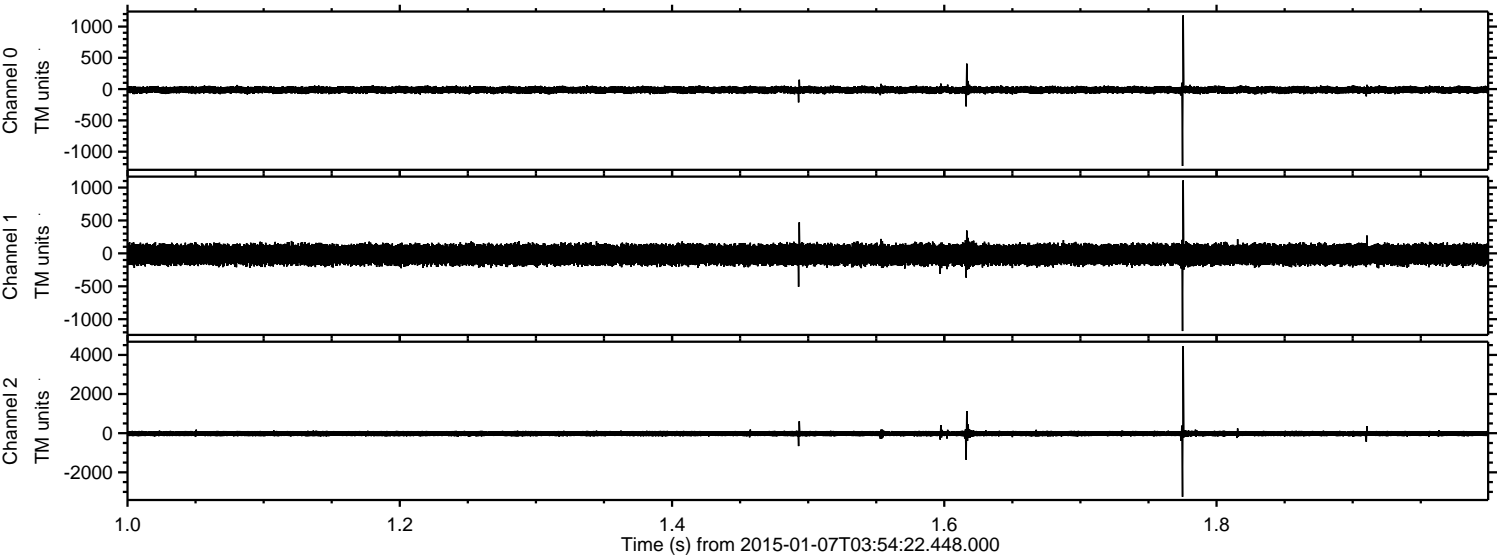


Processed Wed Jan 7 05:02:33 2015 by ELM ver.2012-10-06 from 001__elm20150107_035421__dat00.bin



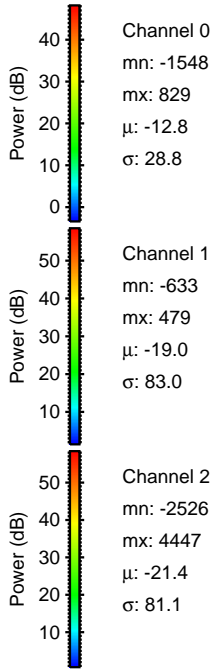
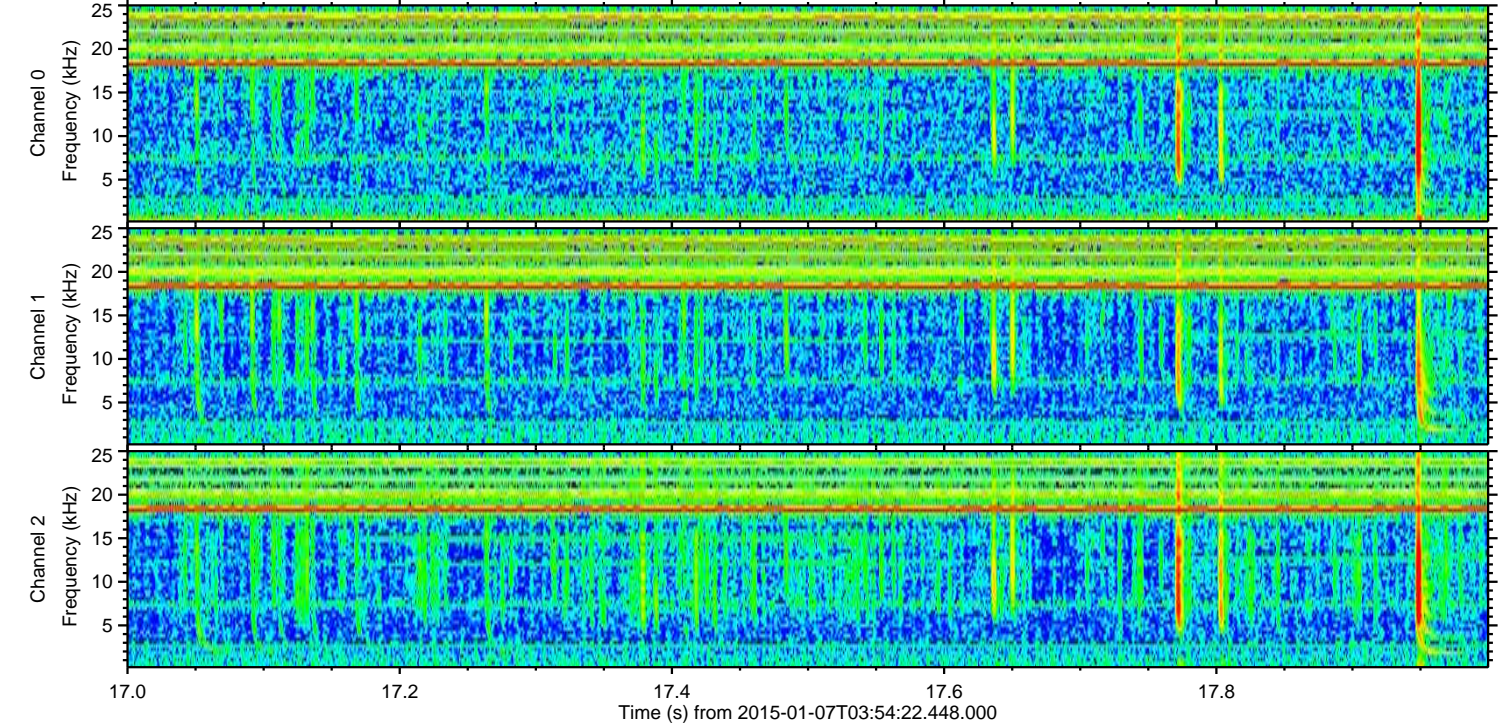
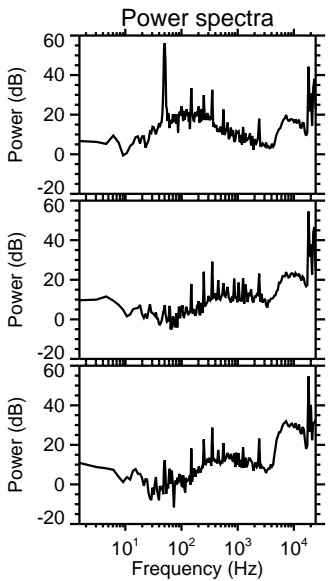
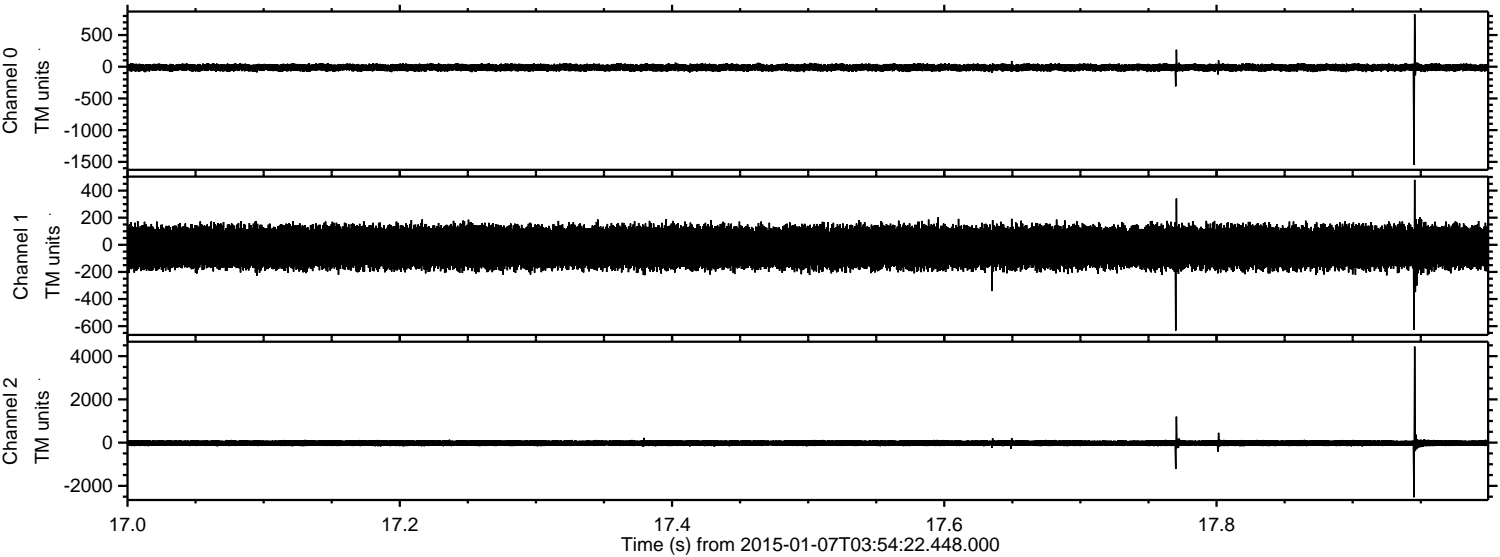
ELMAVAN 3D WAVEFORMS (Measured data sampled at 50 kHz) 49782 packets of 144 samples from 2015-01-07T03:54:22.448.000. Part 2/144

Processed Wed Jan 7 05:02:34 2015 by ELM ver.2012-10-06 from 001__elm20150107_035421__dat00.bin



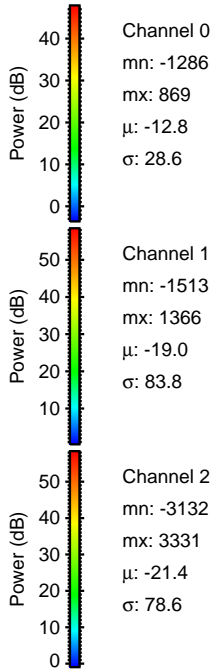
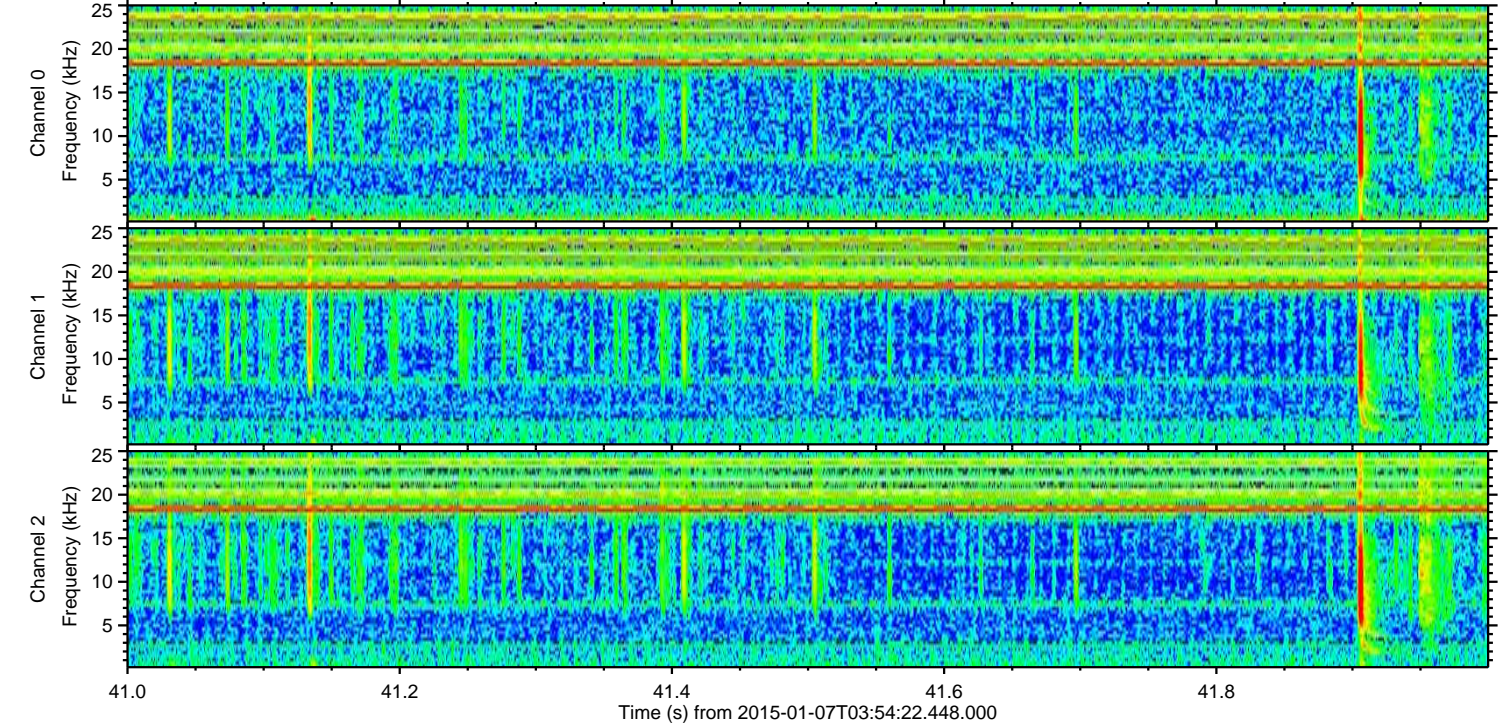
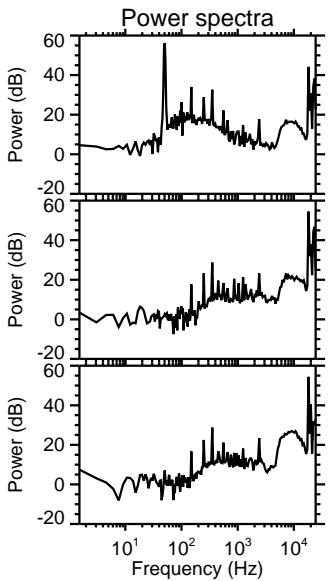
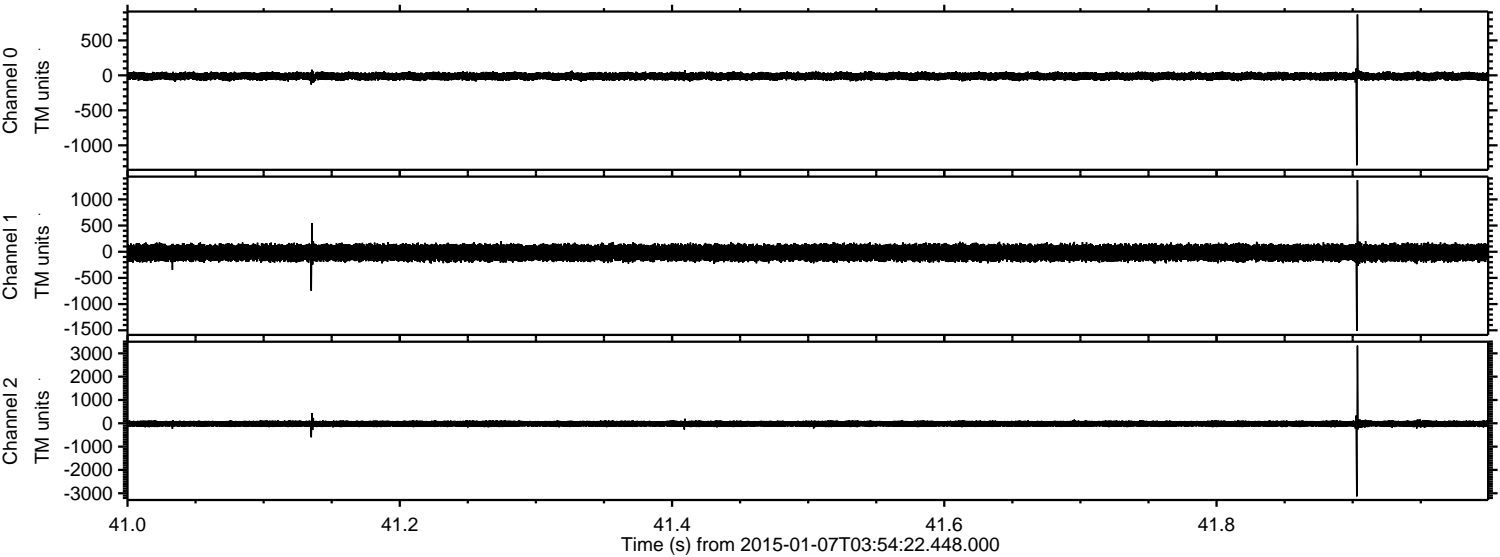
ELMAVAN 3D WAVEFORMS (Measured data sampled at 50 kHz) 49782 packets of 144 samples from 2015-01-07T03:54:22.448.000. Part 18/144

Processed Wed Jan 7 05:02:35 2015 by ELM ver.2012-10-06 from 001__elm20150107_035421__dat00.bin



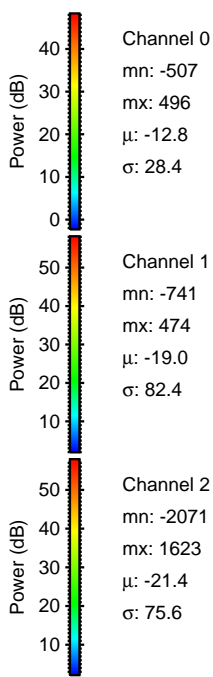
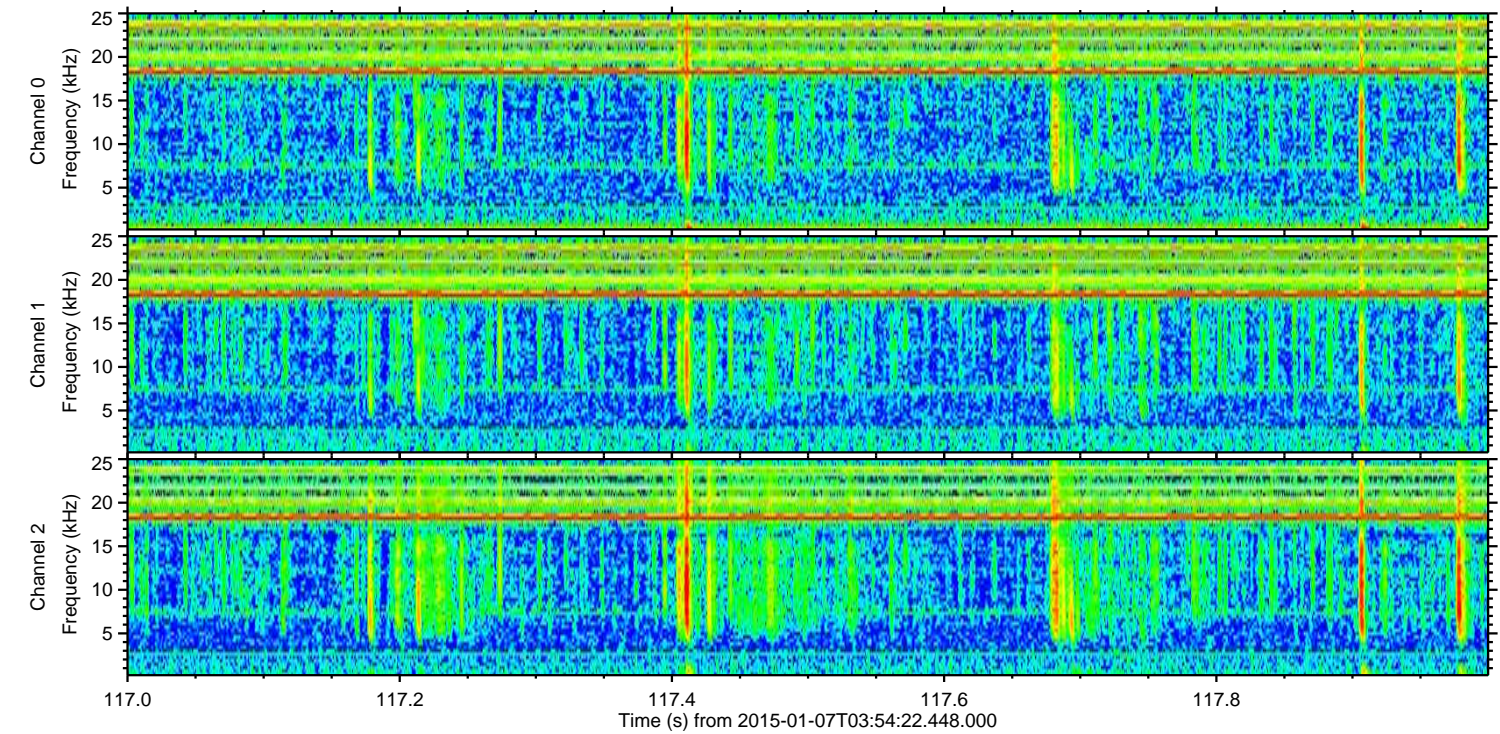
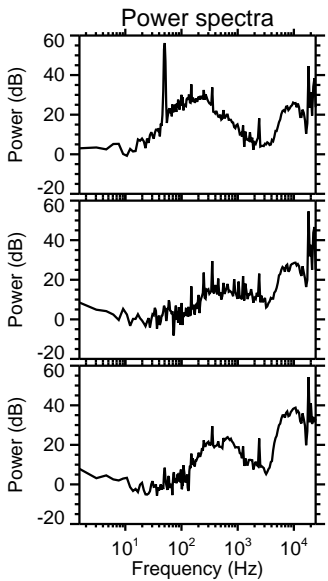
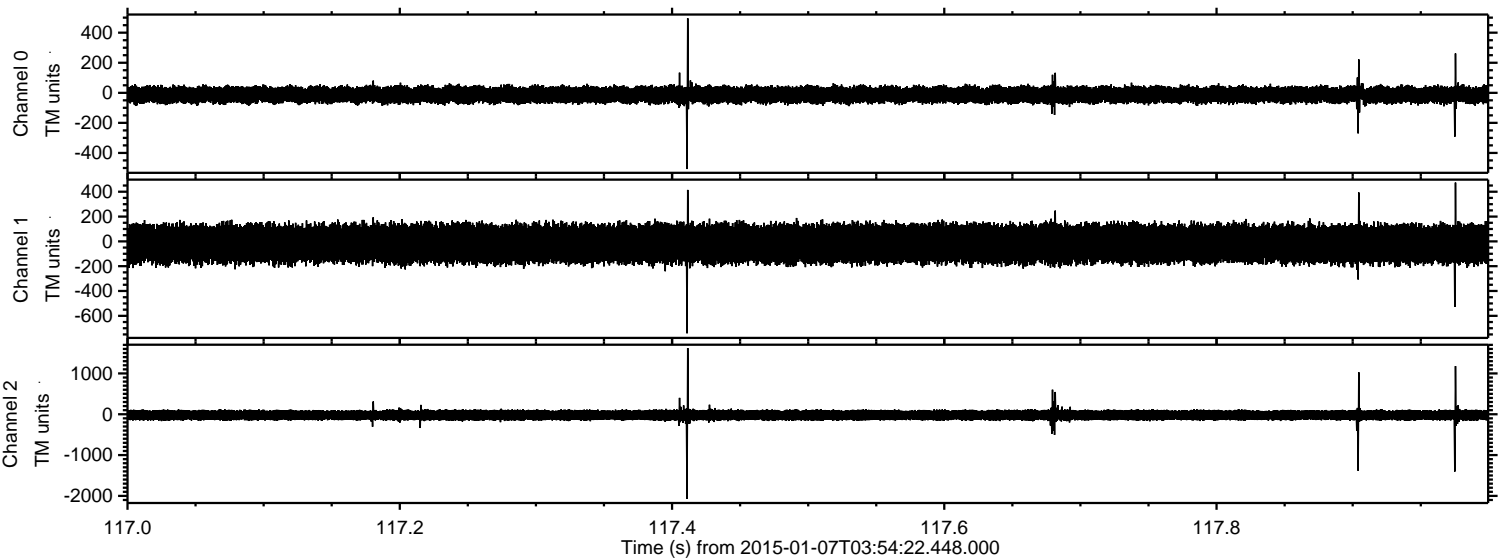
ELMAVAN 3D WAVEFORMS (Measured data sampled at 50 kHz) 49782 packets of 144 samples from 2015-01-07T03:54:22.448.000. Part 42/144

Processed Wed Jan 7 05:02:36 2015 by ELM ver.2012-10-06 from 001__elm20150107_035421__dat00.bin



ELMAVAN 3D WAVEFORMS (Measured data sampled at 50 kHz) 49782 packets of 144 samples from 2015-01-07T03:54:22.448.000. Part 118/144

Processed Wed Jan 7 05:02:37 2015 by ELM ver.2012-10-06 from 001__elm20150107_035421__dat00.bin



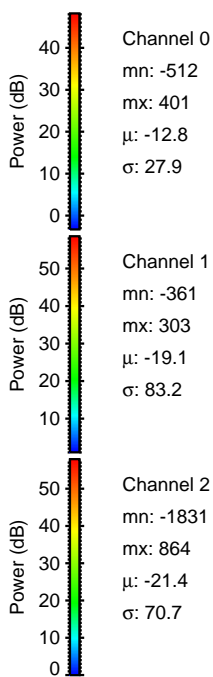
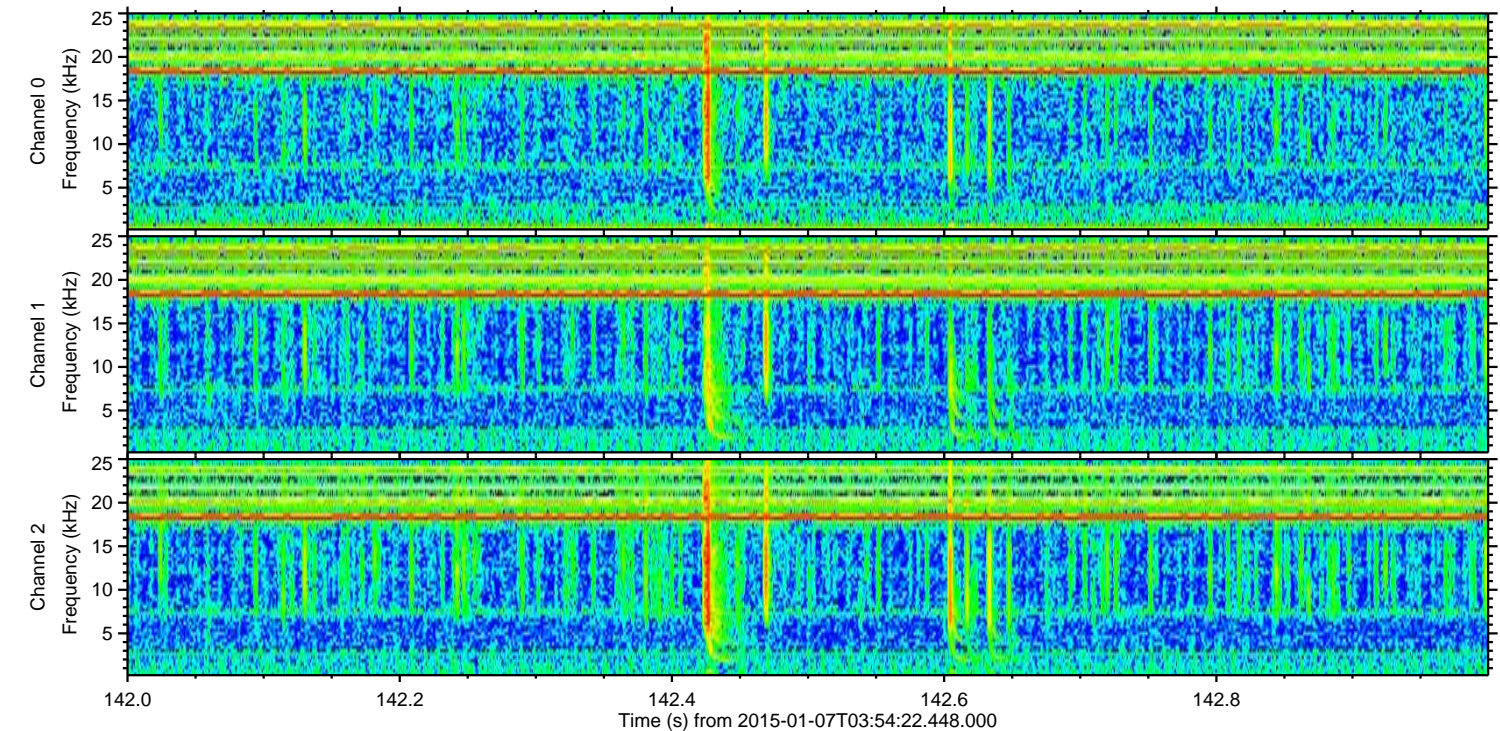
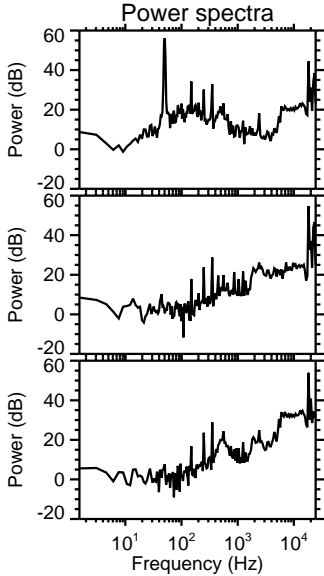
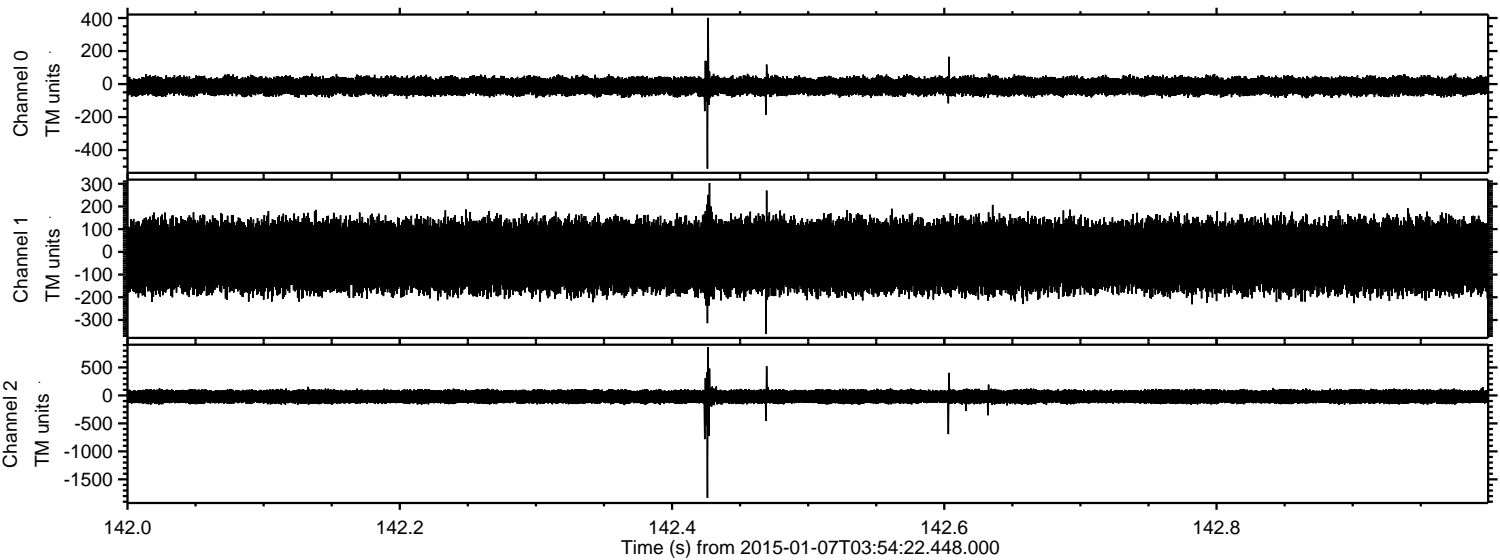
Channel 0
mn: -507
mx: 496
 μ : -12.8
 σ : 28.4

Channel 1
mn: -741
mx: 474
 μ : -19.0
 σ : 82.4

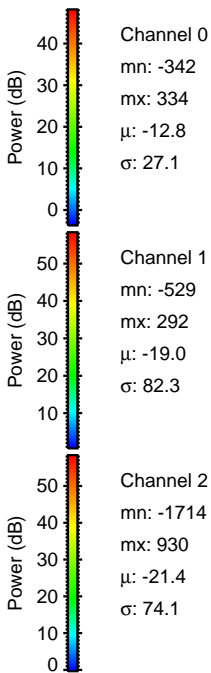
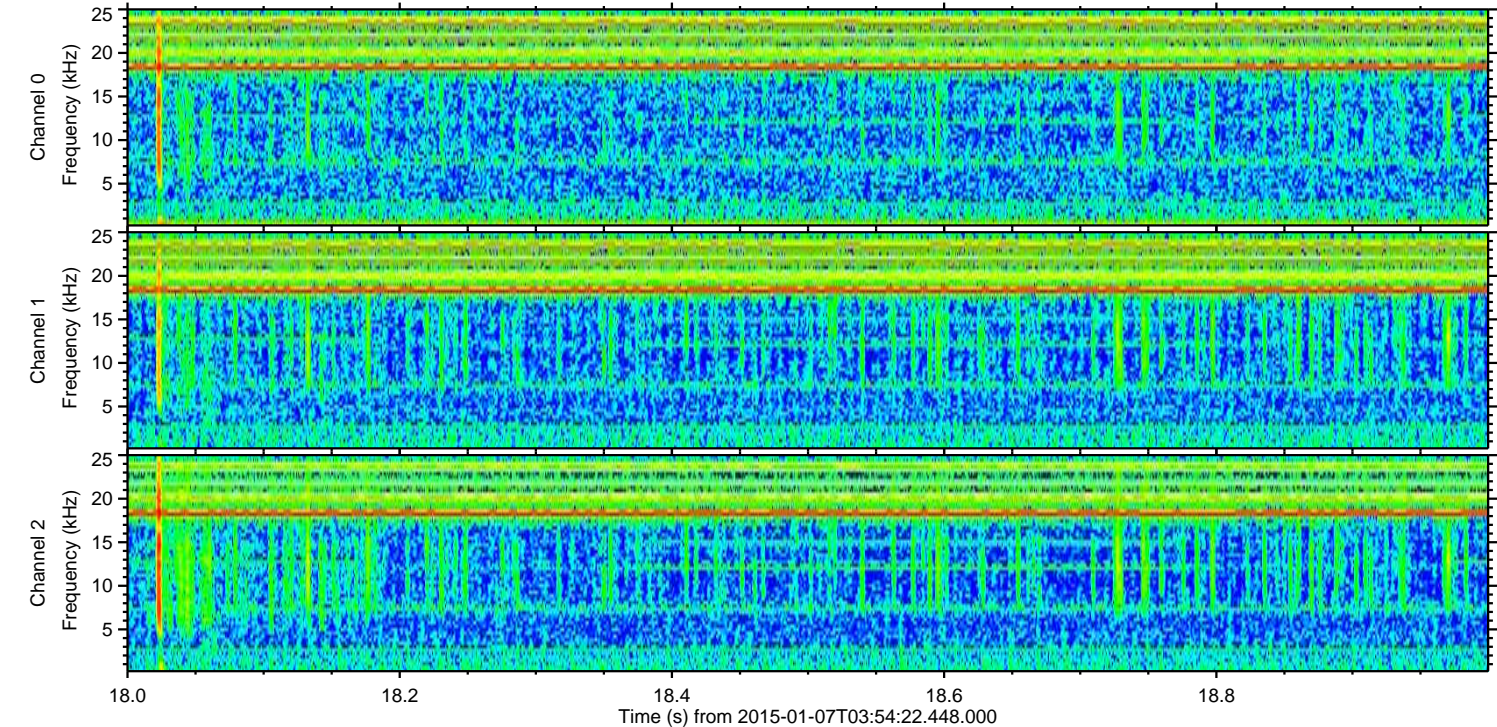
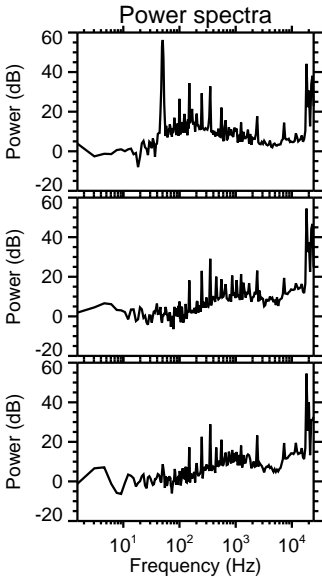
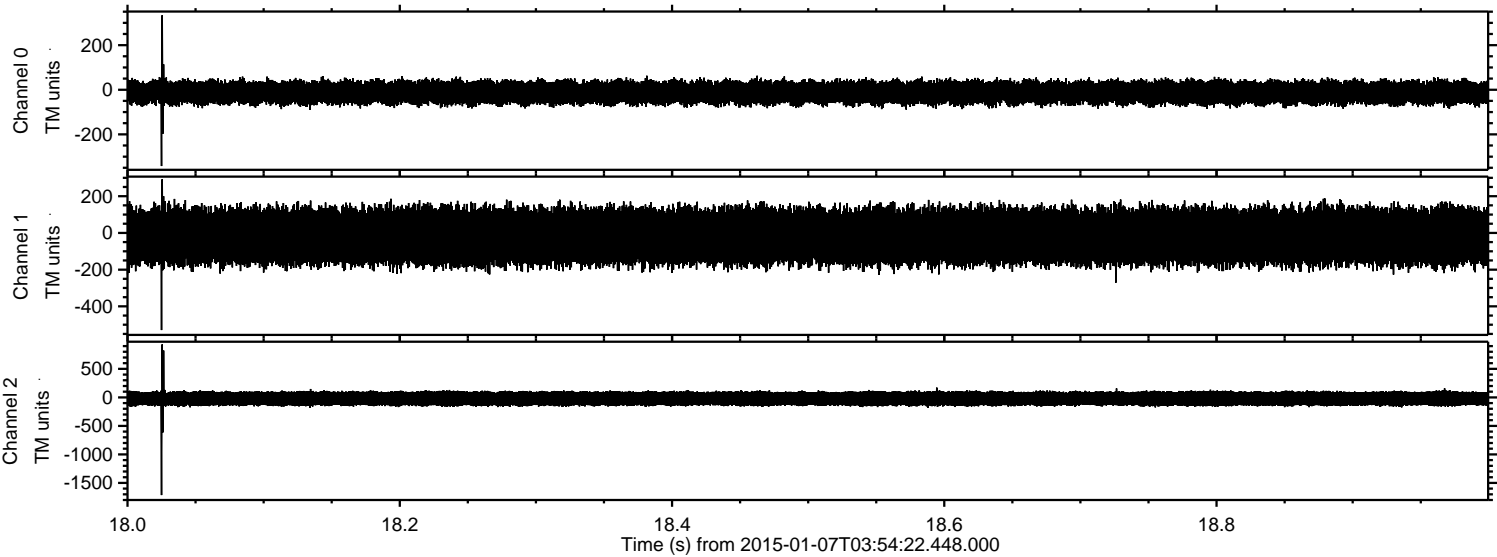
Channel 2
mn: -2071
mx: 1623
 μ : -21.4
 σ : 75.6

ELMAVAN 3D WAVEFORMS (Measured data sampled at 50 kHz) 49782 packets of 144 samples from 2015-01-07T03:54:22.448.000. Part 143/144

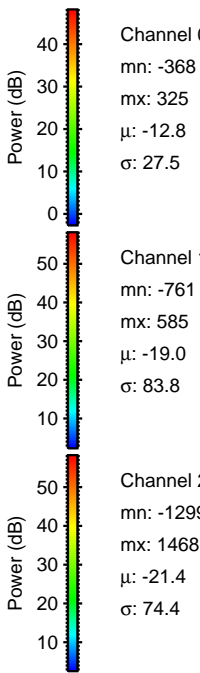
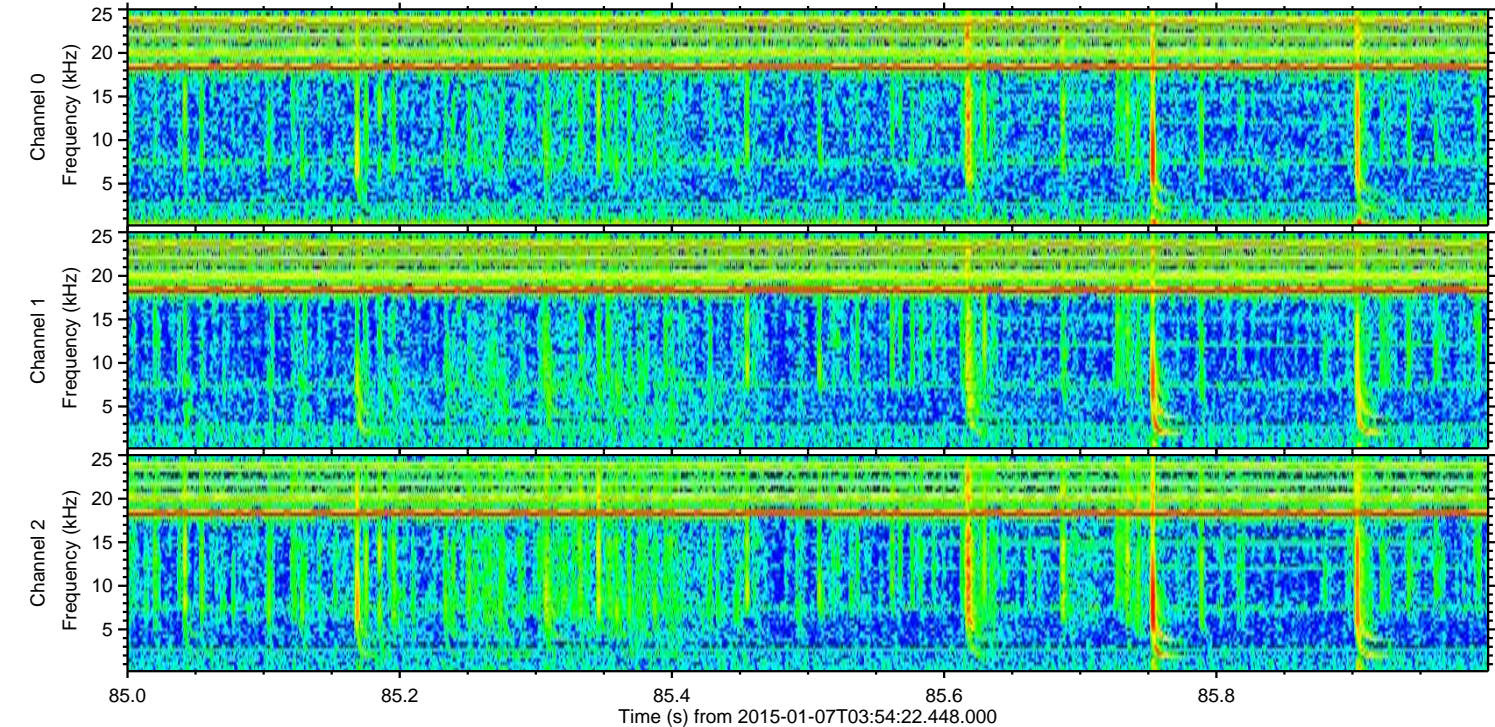
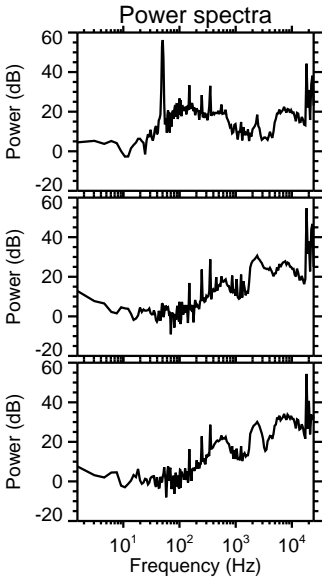
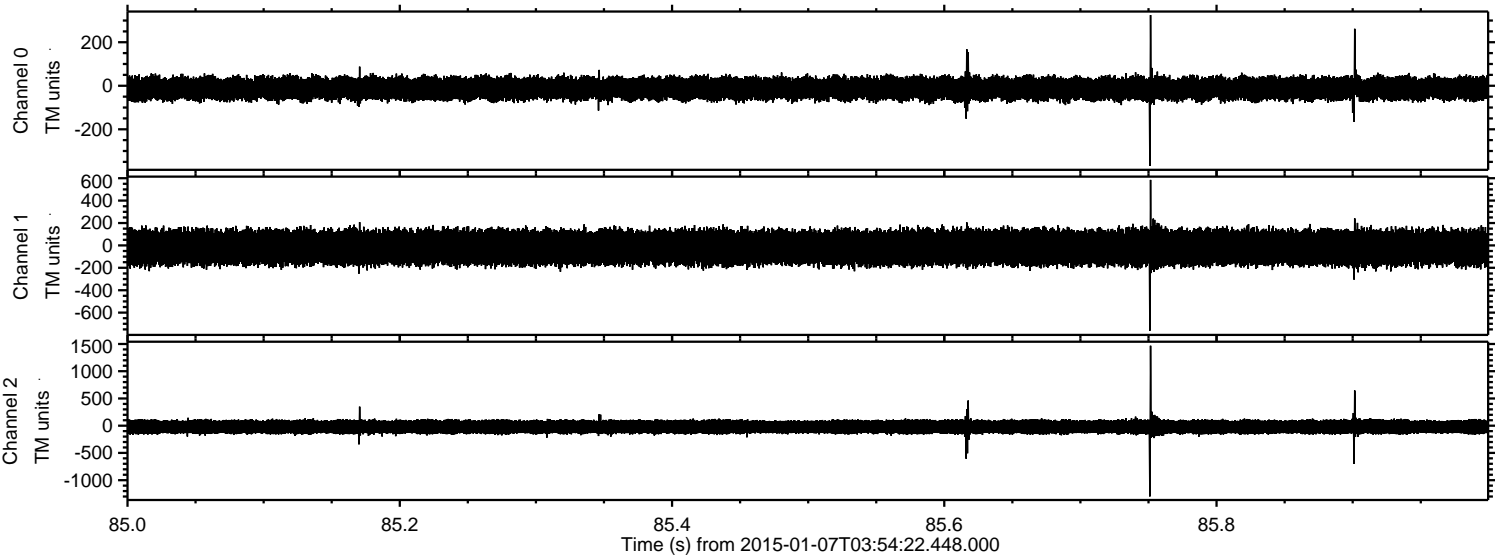
Processed Wed Jan 7 05:02:38 2015 by ELM ver.2012-10-06 from 001__elm20150107_035421__dat00.bin



Processed Wed Jan 7 05:02:38 2015 by ELM ver.2012-10-06 from 001__elm20150107_035421__dat00.bin



Processed Wed Jan 7 05:02:39 2015 by ELM ver.2012-10-06 from 001__elm20150107_035421__dat00.bin

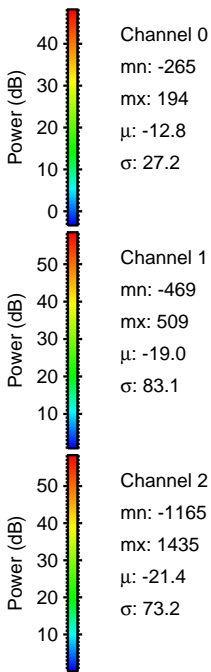
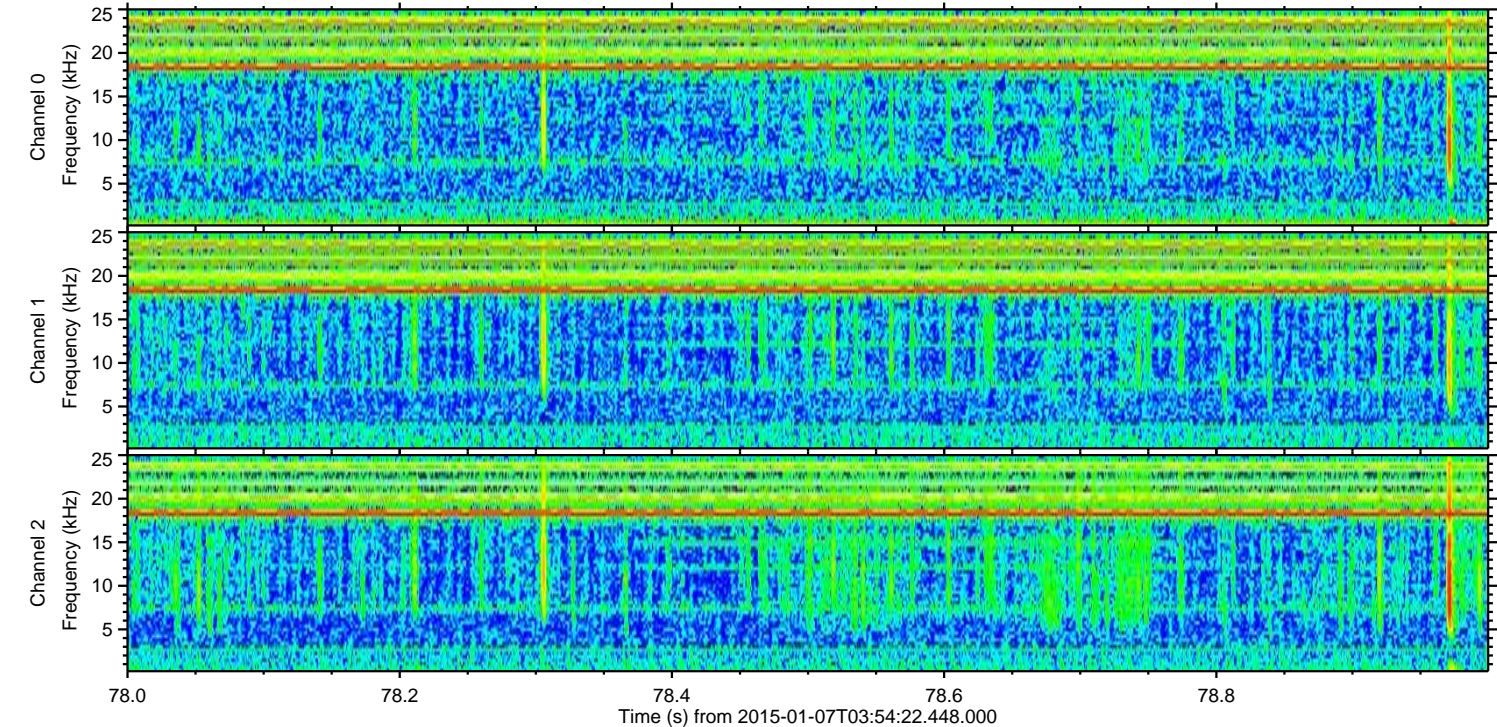
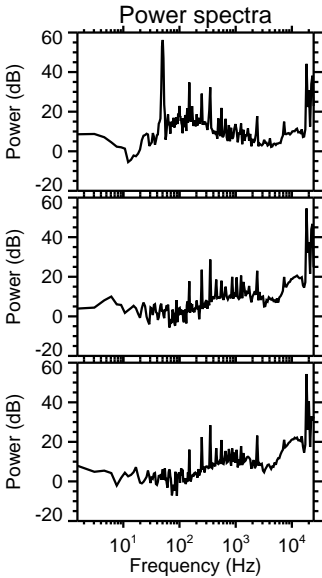
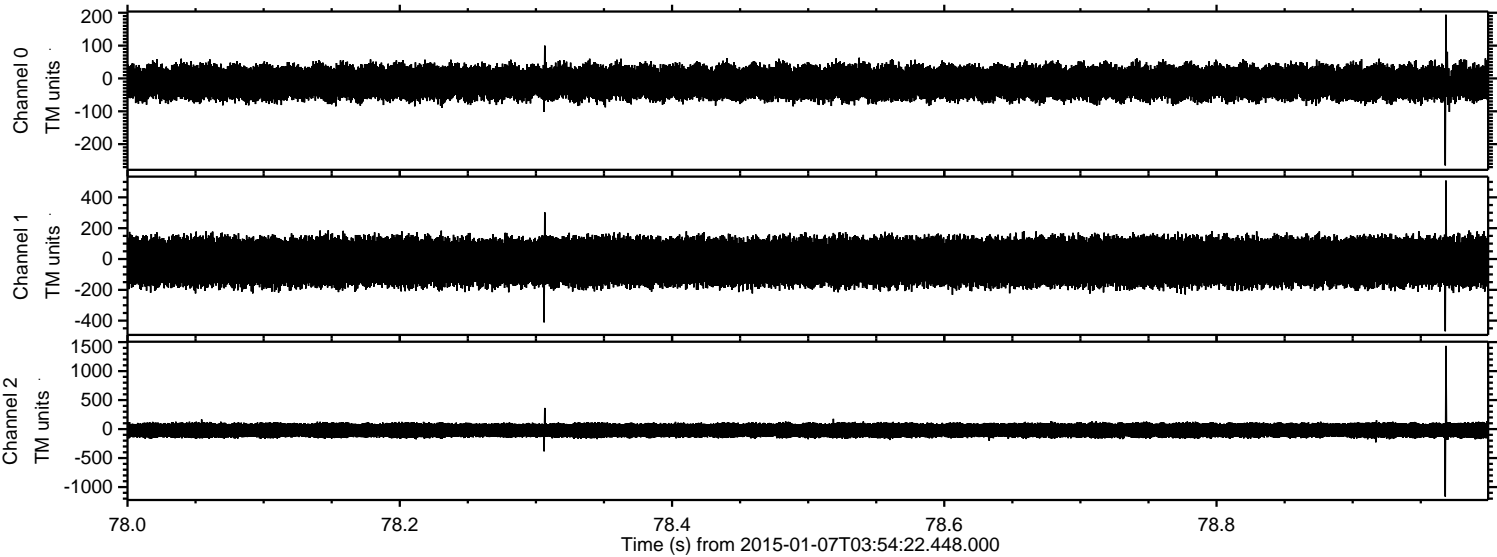


Channel 0
mn: -368
mx: 325
 μ : -12.8
 σ : 27.5

Channel 1
mn: -761
mx: 585
 μ : -19.0
 σ : 83.8

Channel 2
mn: -1299
mx: 1468
 μ : -21.4
 σ : 74.4

Processed Wed Jan 7 05:02:40 2015 by ELM ver.2012-10-06 from 001__elm20150107_035421__dat00.bin



ELMAVAN 3D WAVEFORMS (Measured data sampled at 50 kHz) 49782 packets of 144 samples from 2015-01-07T03:54:22.448.000. Part 121/144

