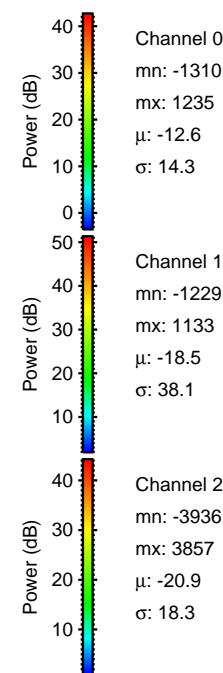
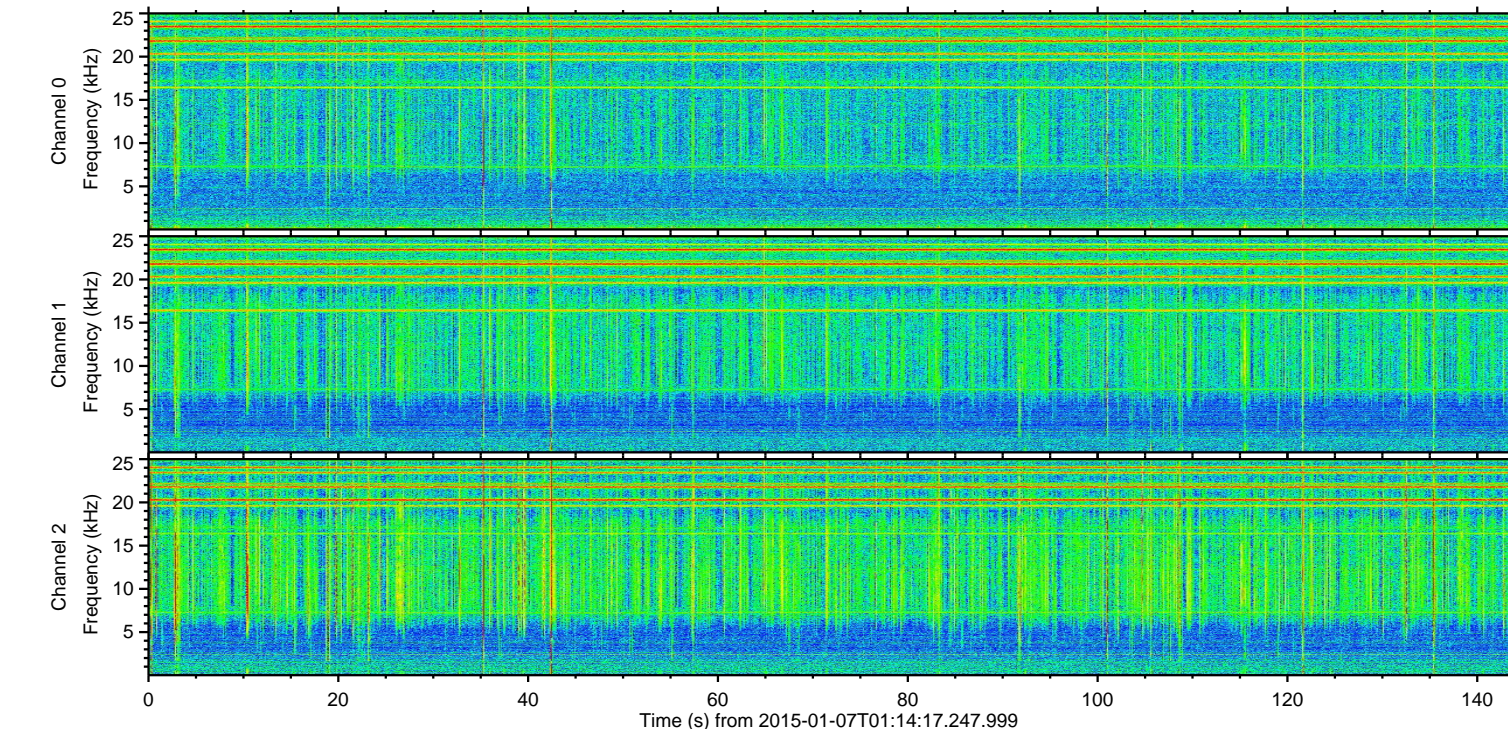
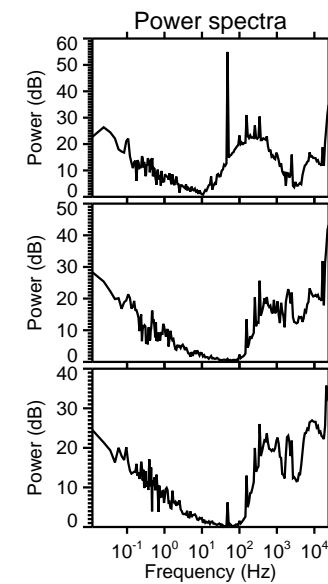
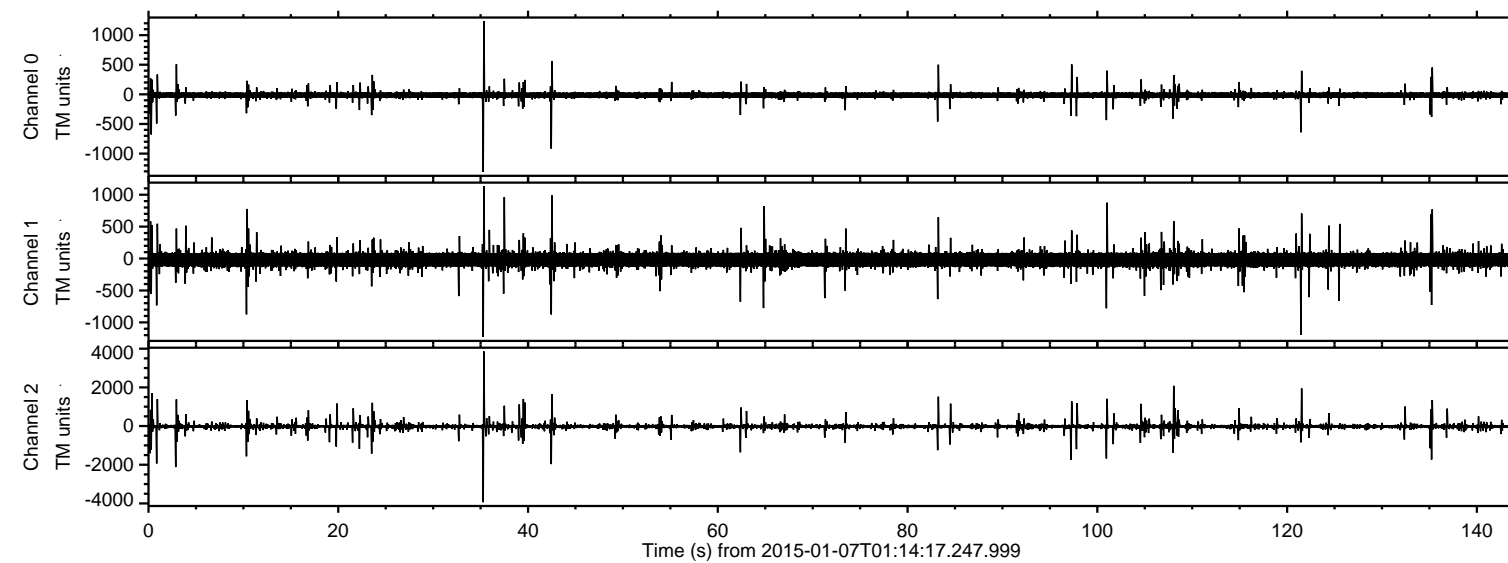


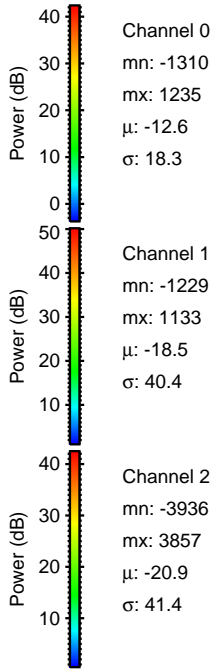
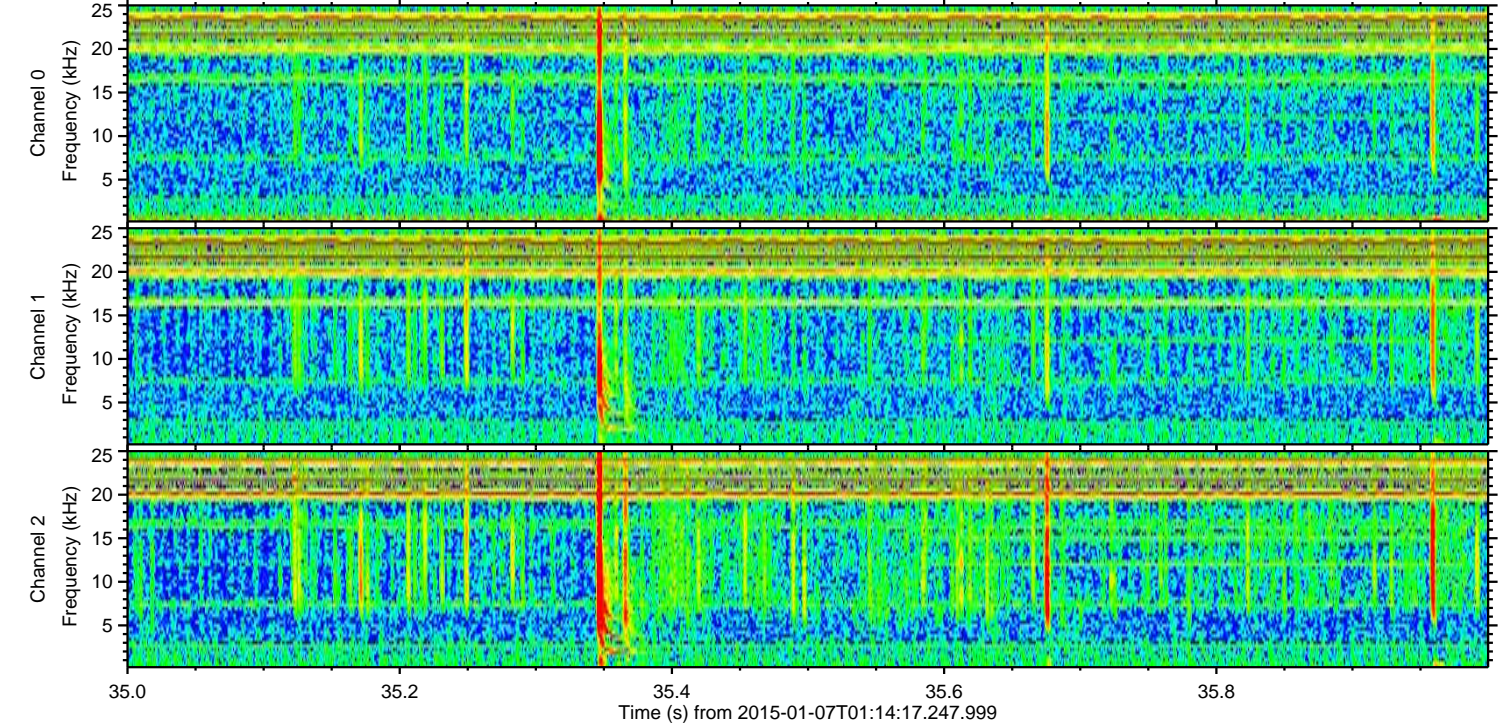
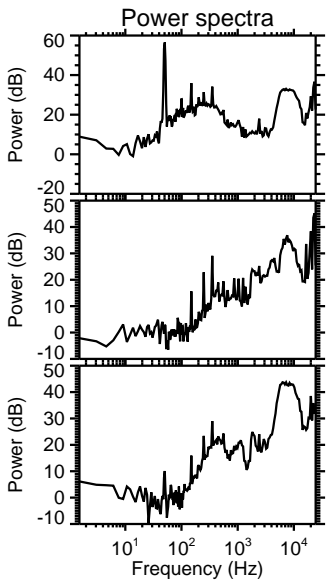
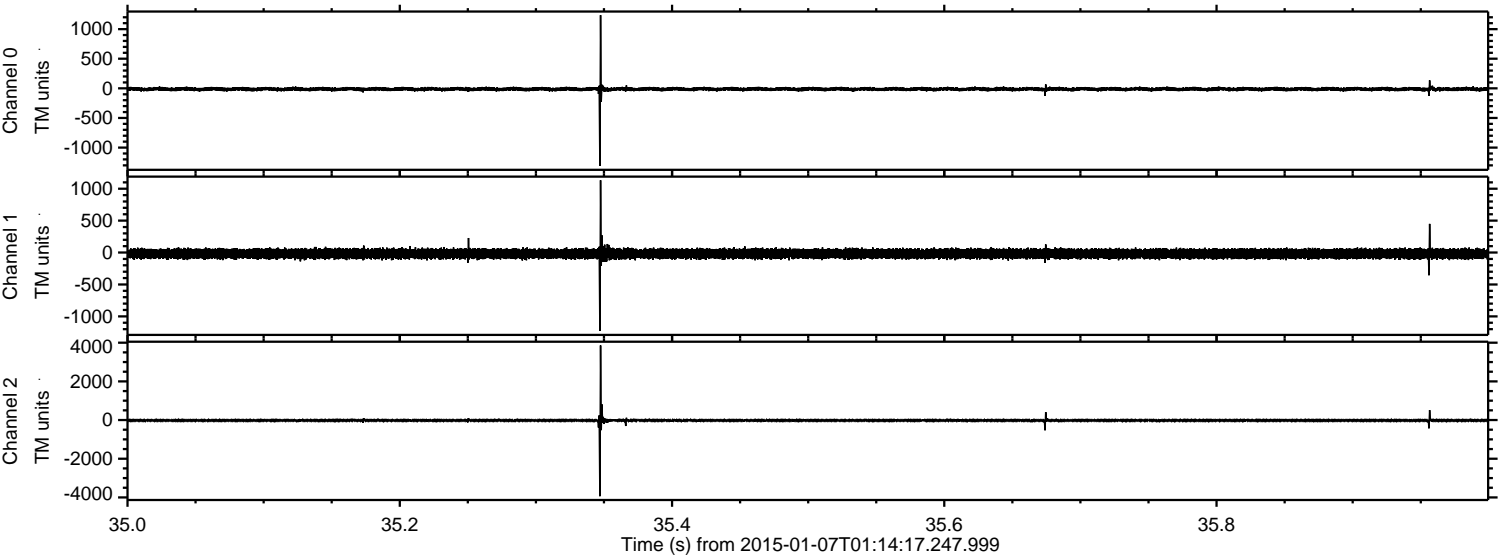
ELMAVAN 3D WAVEFORMS (Measured data sampled at 50 kHz) 49792 packets of 144 samples from 2015-01-07T01:14:17.247.999.

Processed Wed Jan 7 02:21:46 2015 by ELM ver.2012-10-06 from 001__elm20150107_011416__dat00.bin



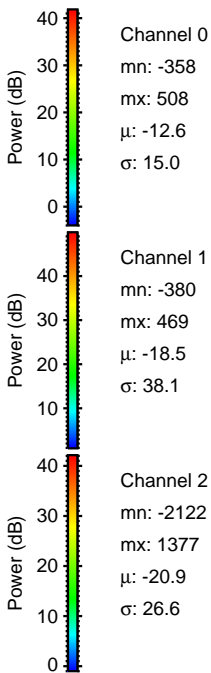
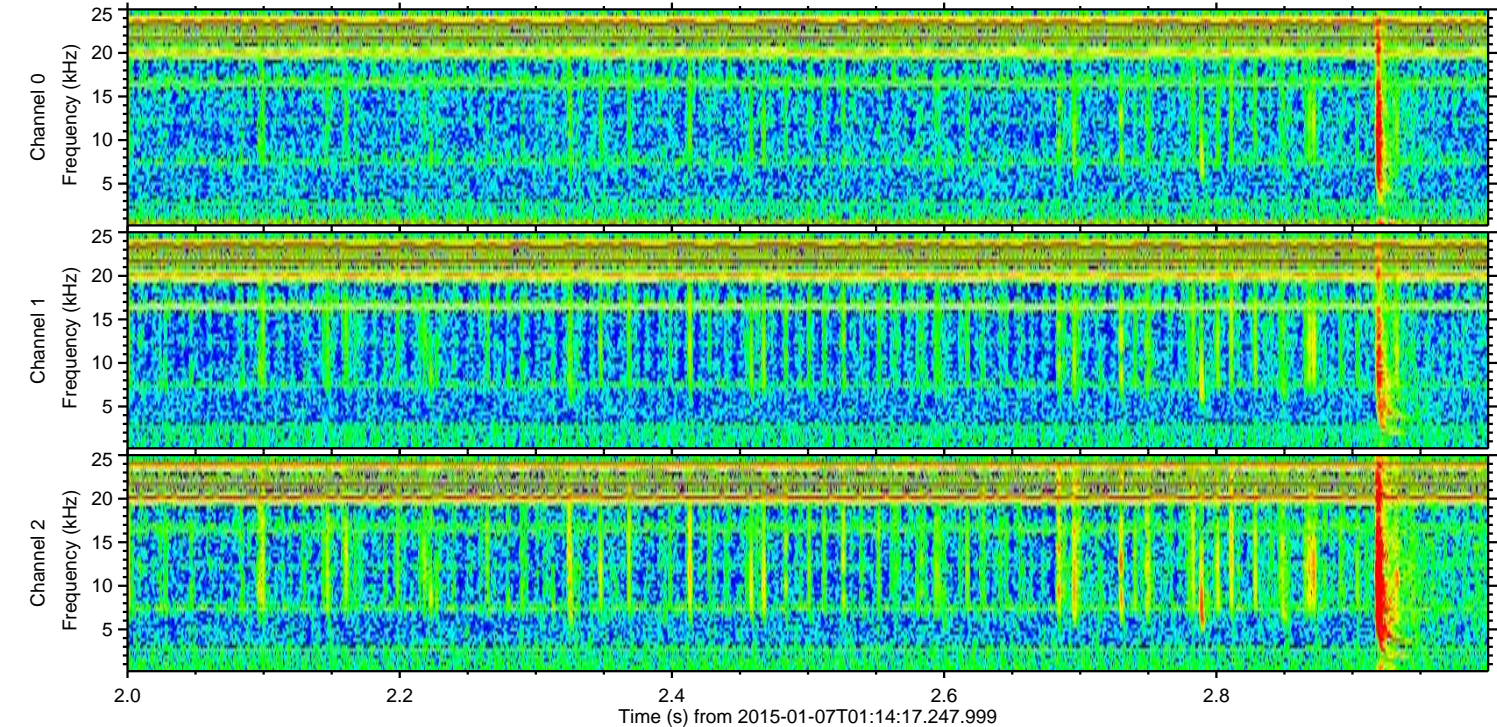
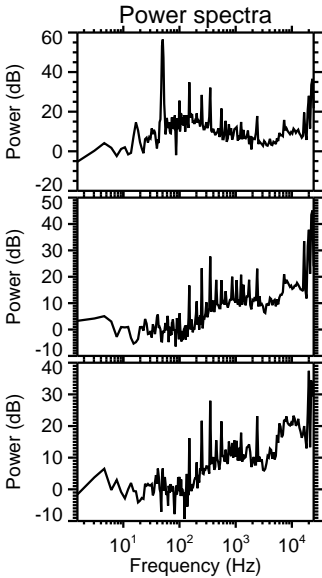
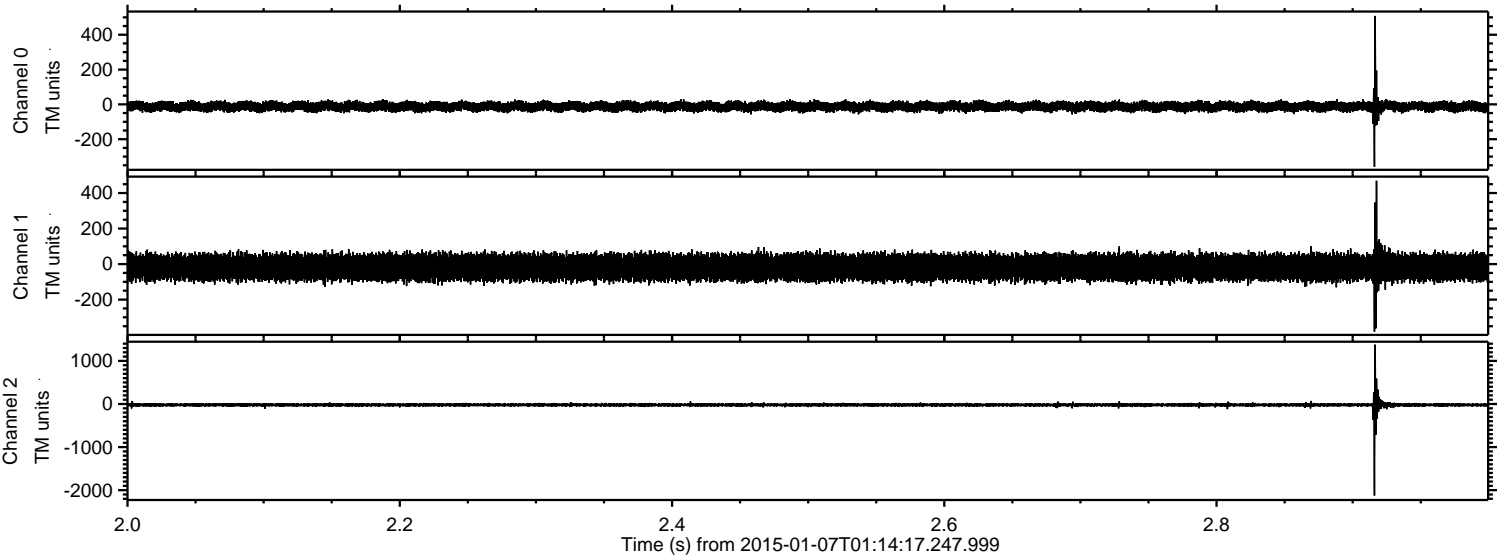
ELMAVAN 3D WAVEFORMS (Measured data sampled at 50 kHz) 49792 packets of 144 samples from 2015-01-07T01:14:17.247.999. Part 36/144

Processed Wed Jan 7 02:21:58 2015 by ELM ver.2012-10-06 from 001__elm20150107_011416__dat00.bin



ELMAVAN 3D WAVEFORMS (Measured data sampled at 50 kHz) 49792 packets of 144 samples from 2015-01-07T01:14:17.247.999. Part 3/144

Processed Wed Jan 7 02:21:59 2015 by ELM ver.2012-10-06 from 001__elm20150107_011416__dat00.bin



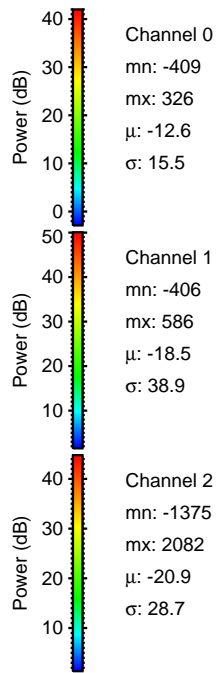
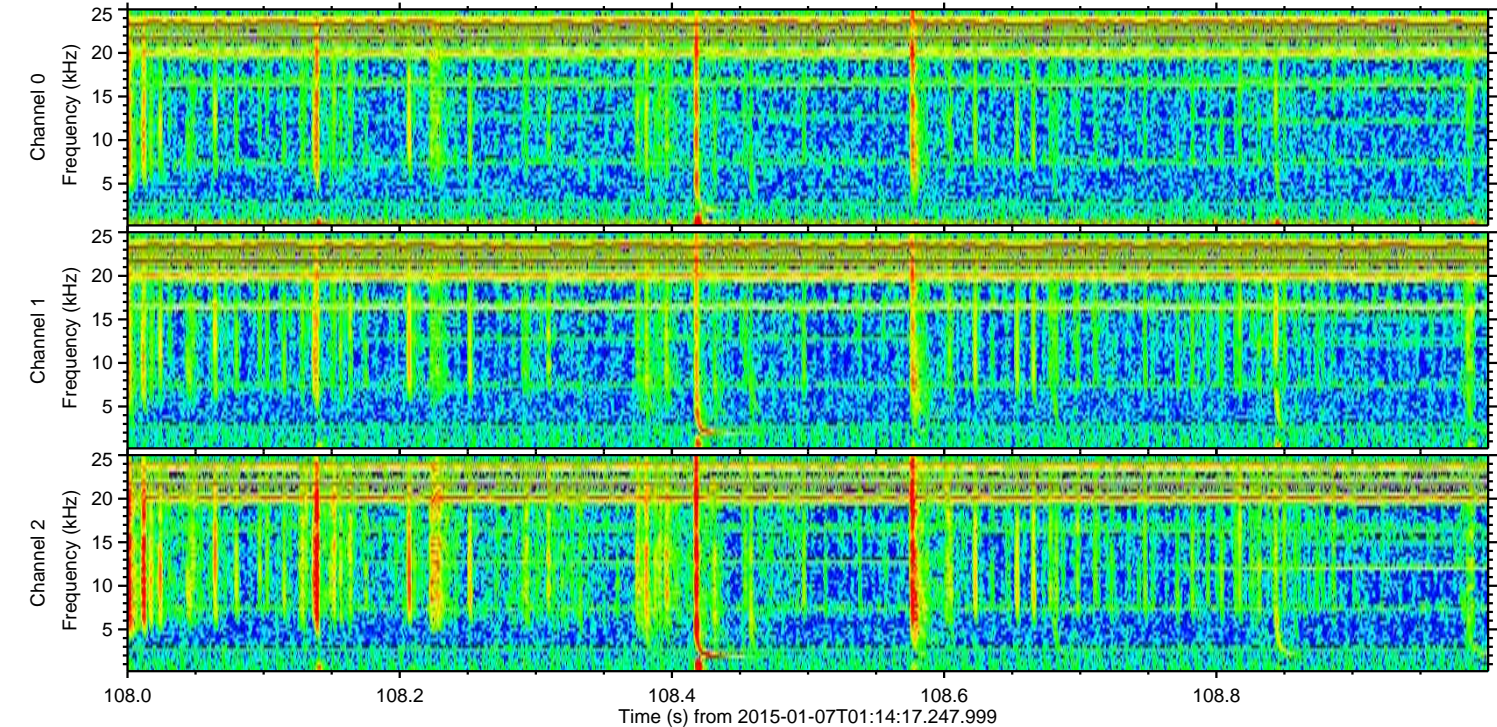
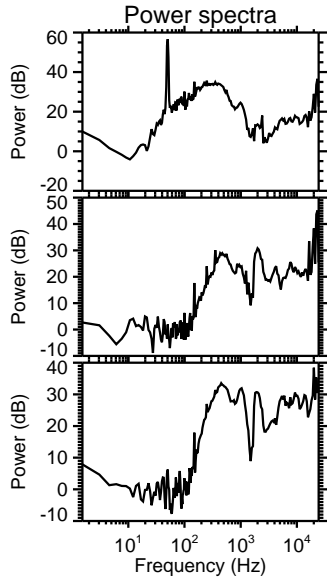
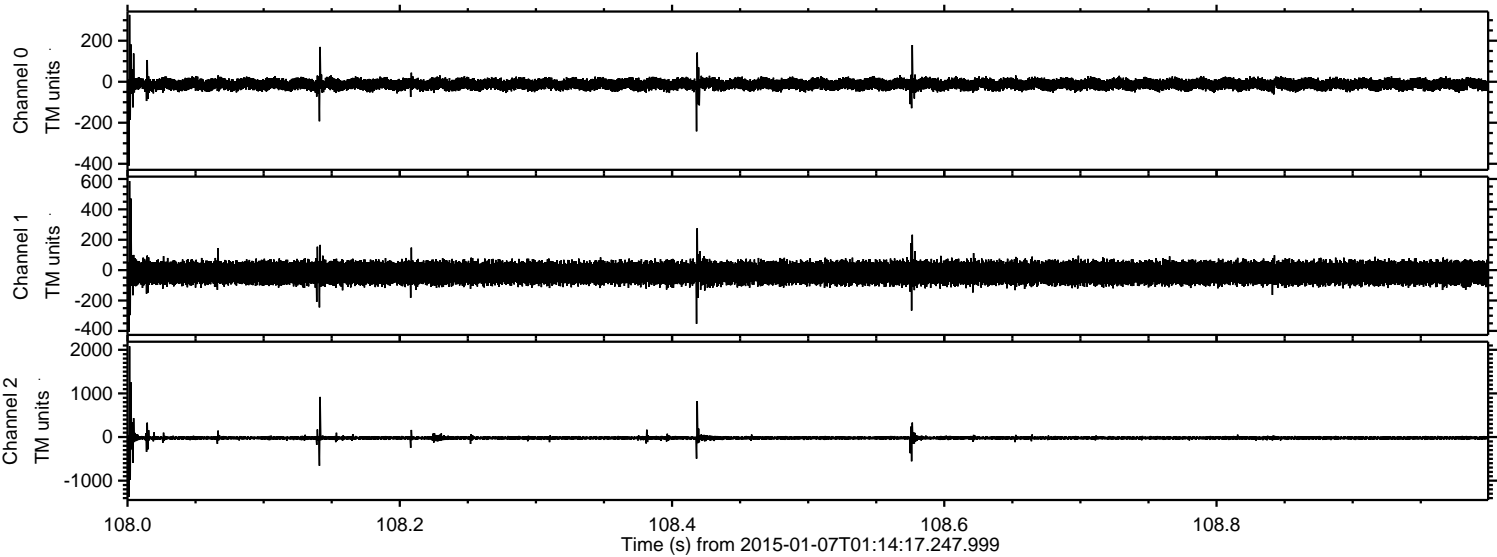
Channel 0
mn: -358
mx: 508
 μ : -12.6
 σ : 15.0

Channel 1
mn: -380
mx: 469
 μ : -18.5
 σ : 38.1

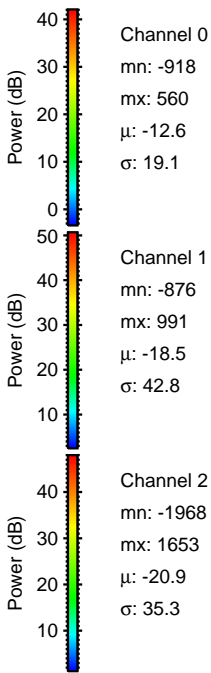
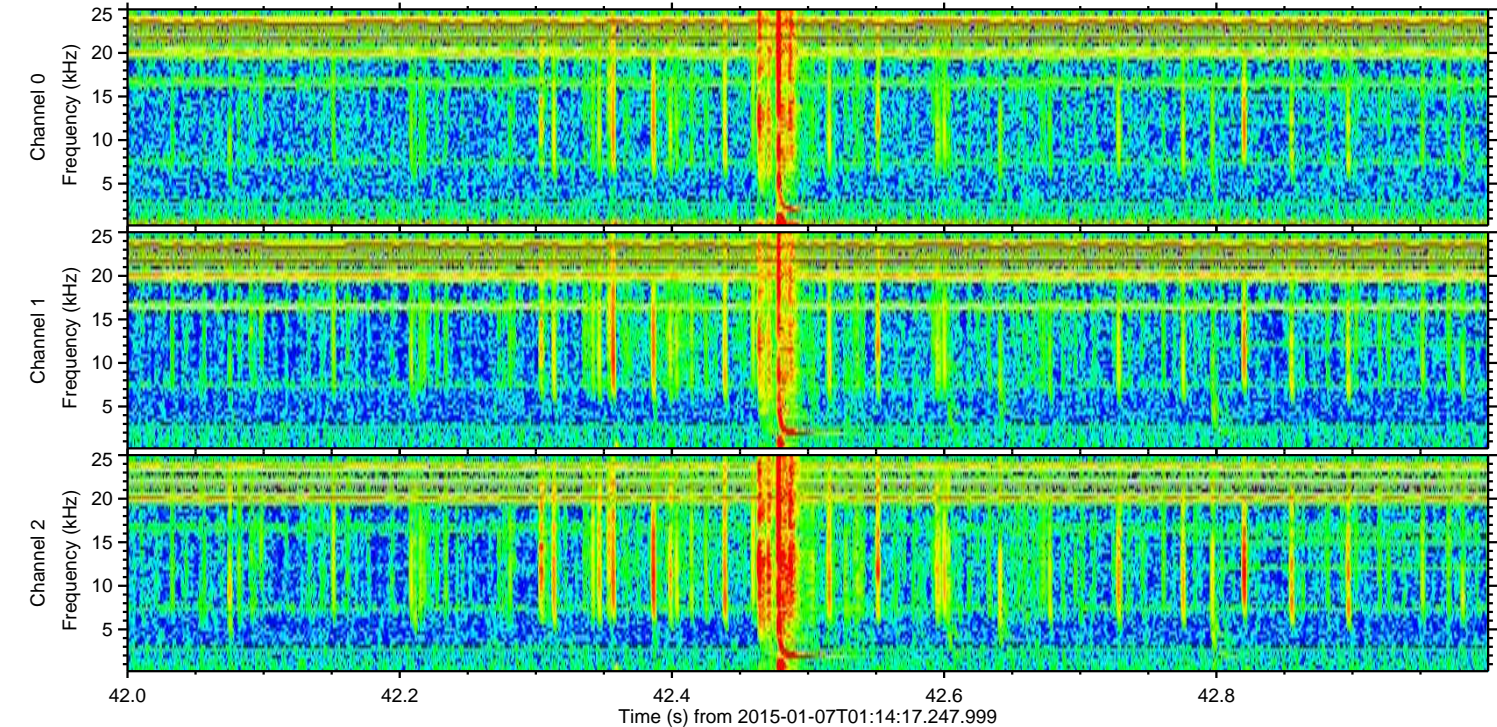
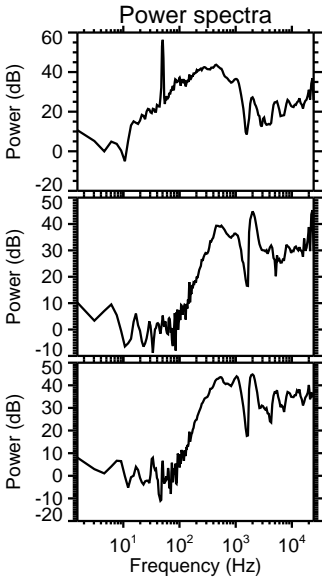
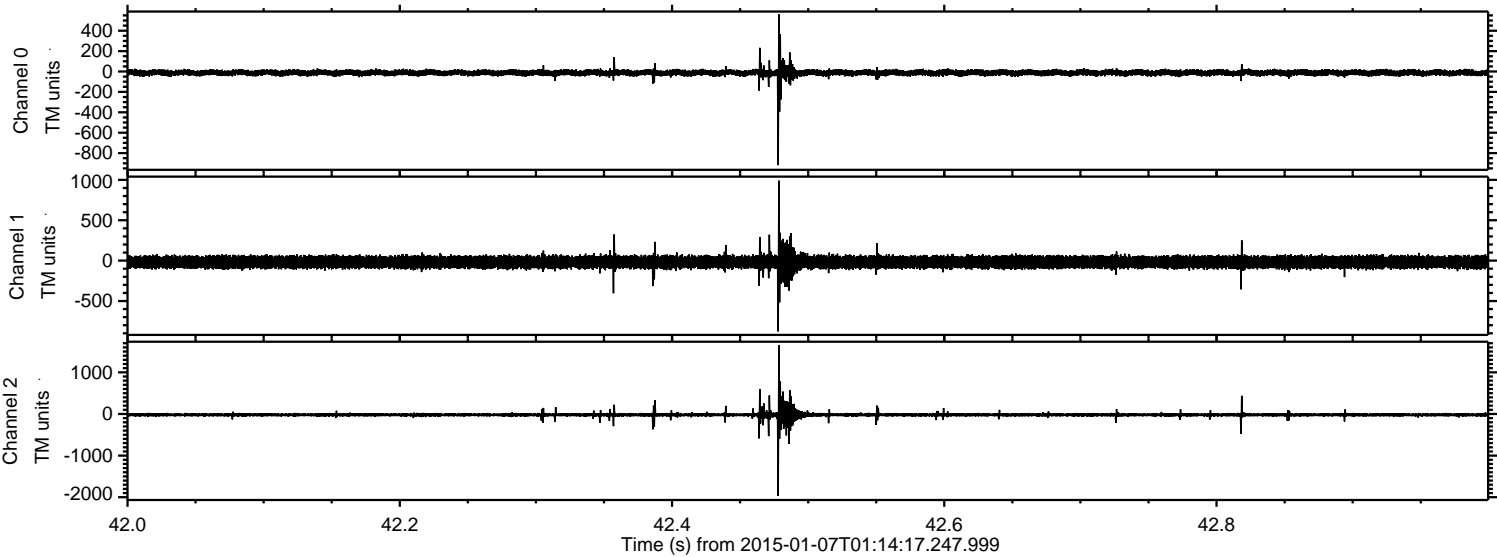
Channel 2
mn: -2122
mx: 1377
 μ : -20.9
 σ : 26.6

ELMAVAN 3D WAVEFORMS (Measured data sampled at 50 kHz) 49792 packets of 144 samples from 2015-01-07T01:14:17.247.999. Part 109/144

Processed Wed Jan 7 02:22:00 2015 by ELM ver.2012-10-06 from 001__elm20150107_011416__dat00.bin

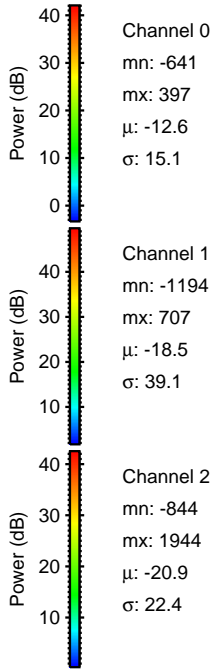
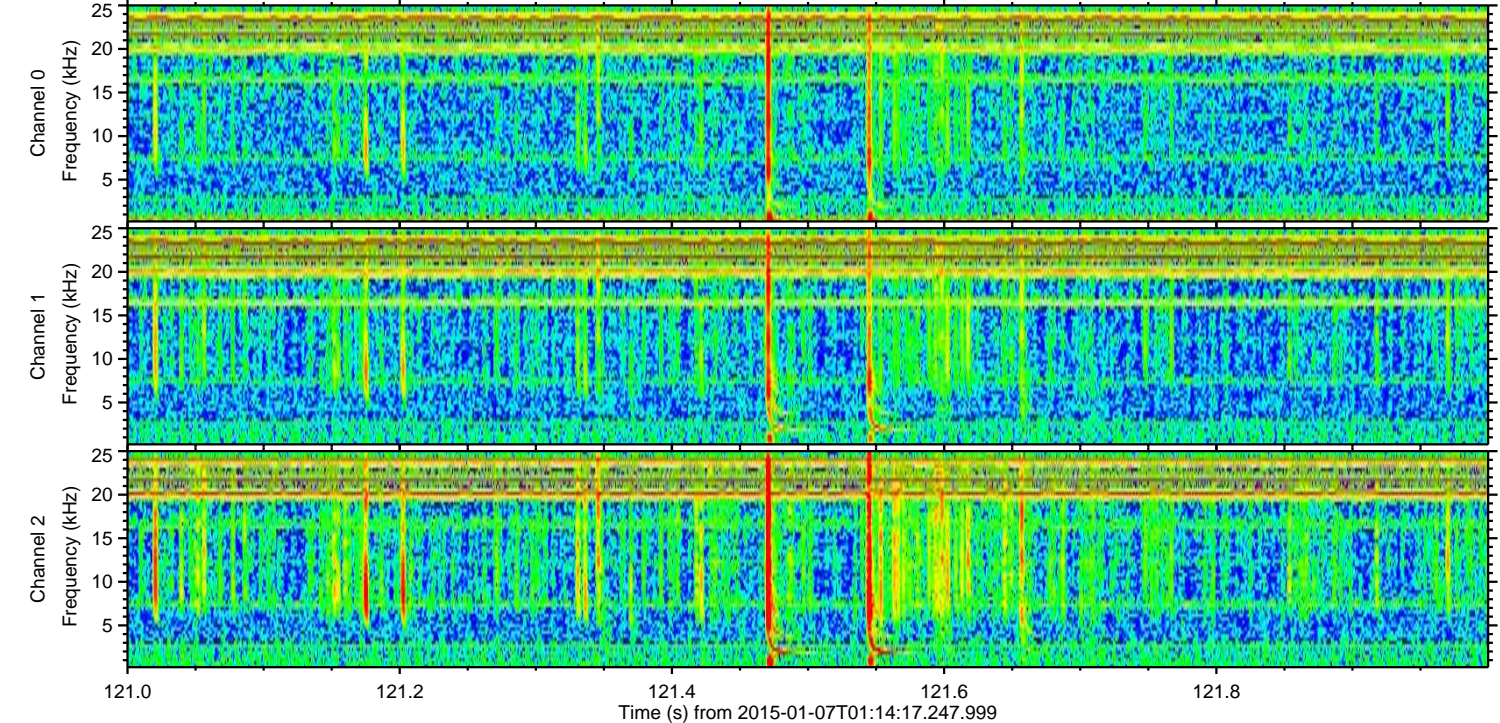
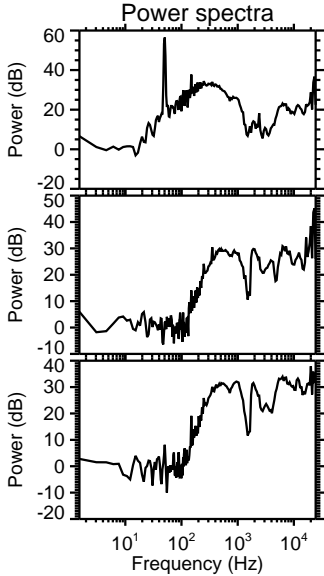
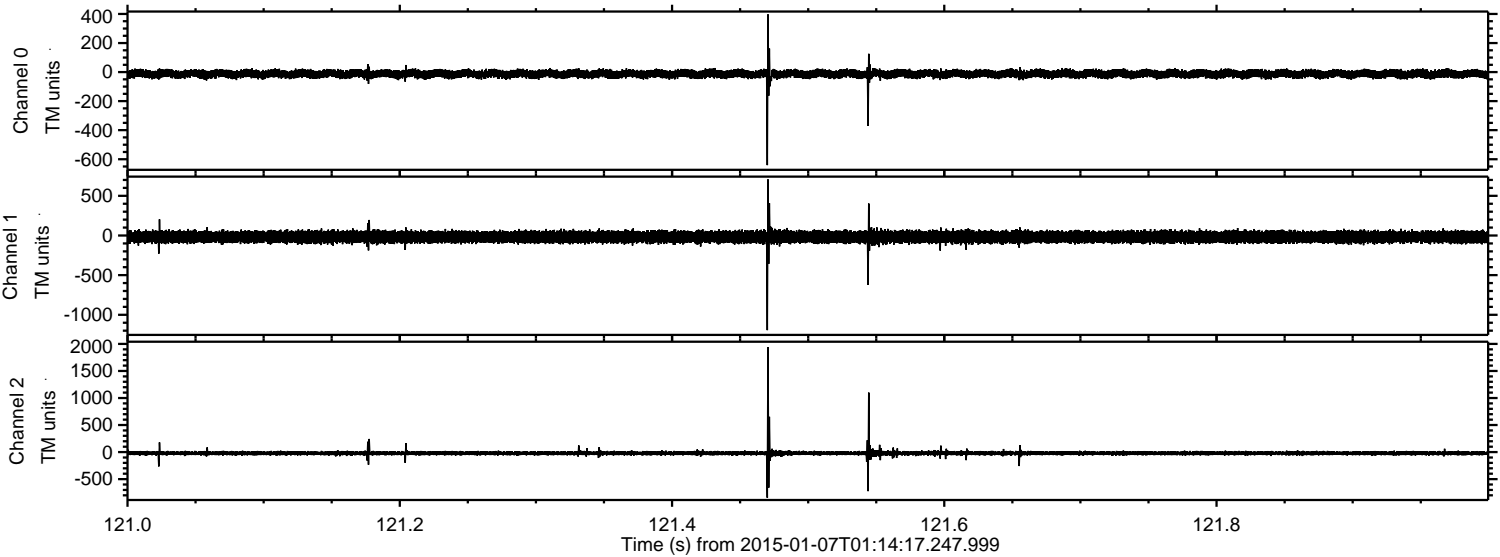


Processed Wed Jan 7 02:22:01 2015 by ELM ver.2012-10-06 from 001__elm20150107_011416__dat00.bin



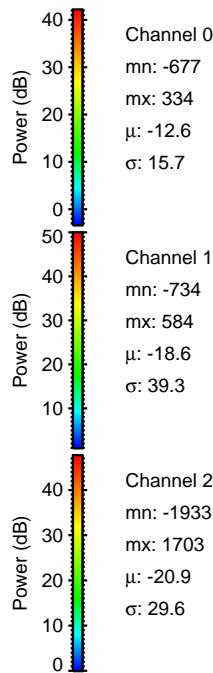
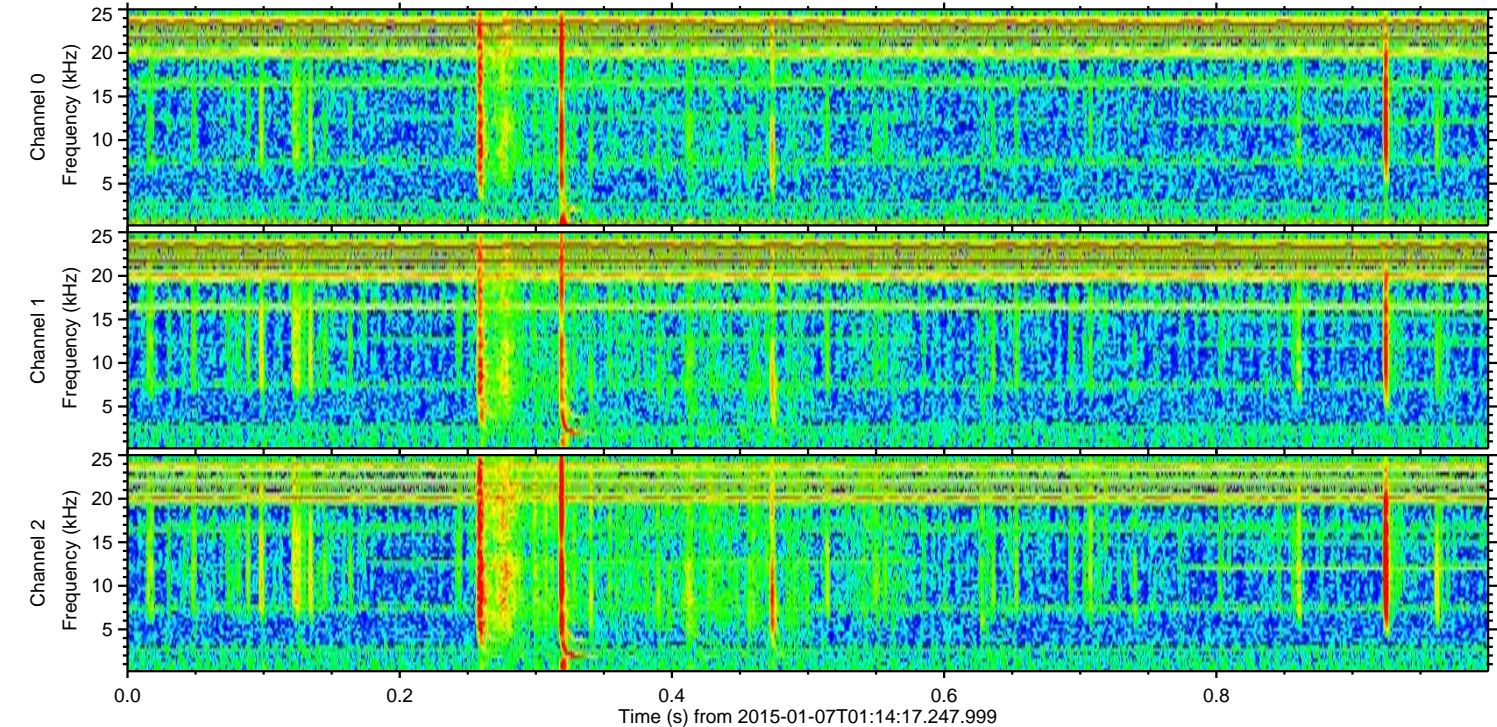
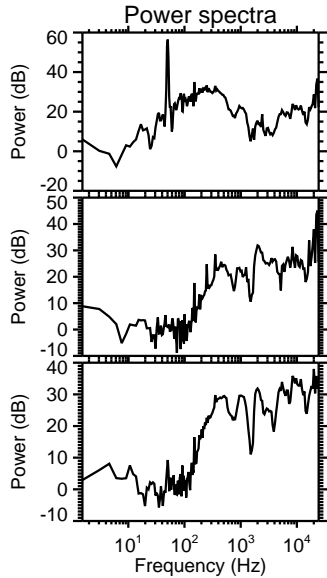
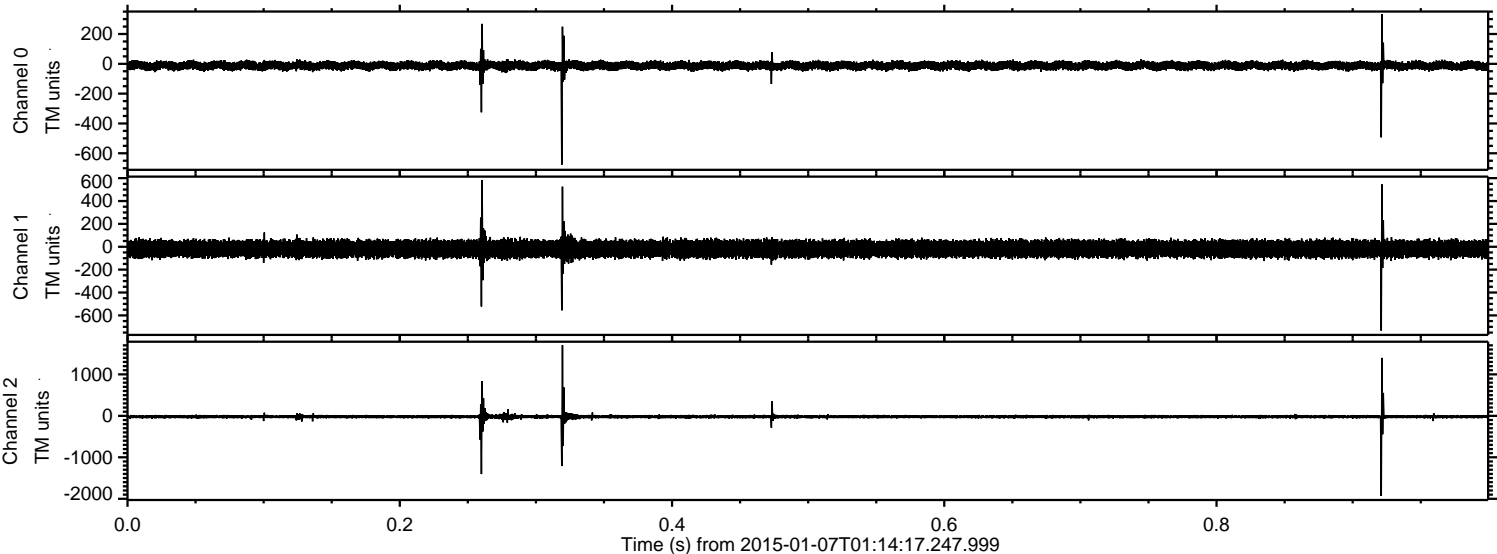
ELMAVAN 3D WAVEFORMS (Measured data sampled at 50 kHz) 49792 packets of 144 samples from 2015-01-07T01:14:17.247.999. Part 122/144

Processed Wed Jan 7 02:22:01 2015 by ELM ver.2012-10-06 from 001__elm20150107_011416__dat00.bin

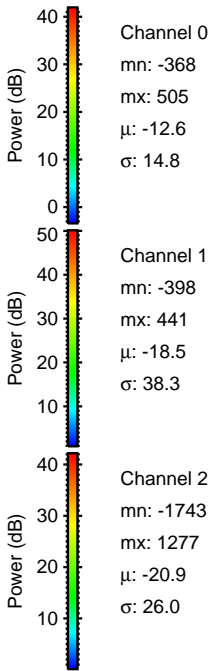
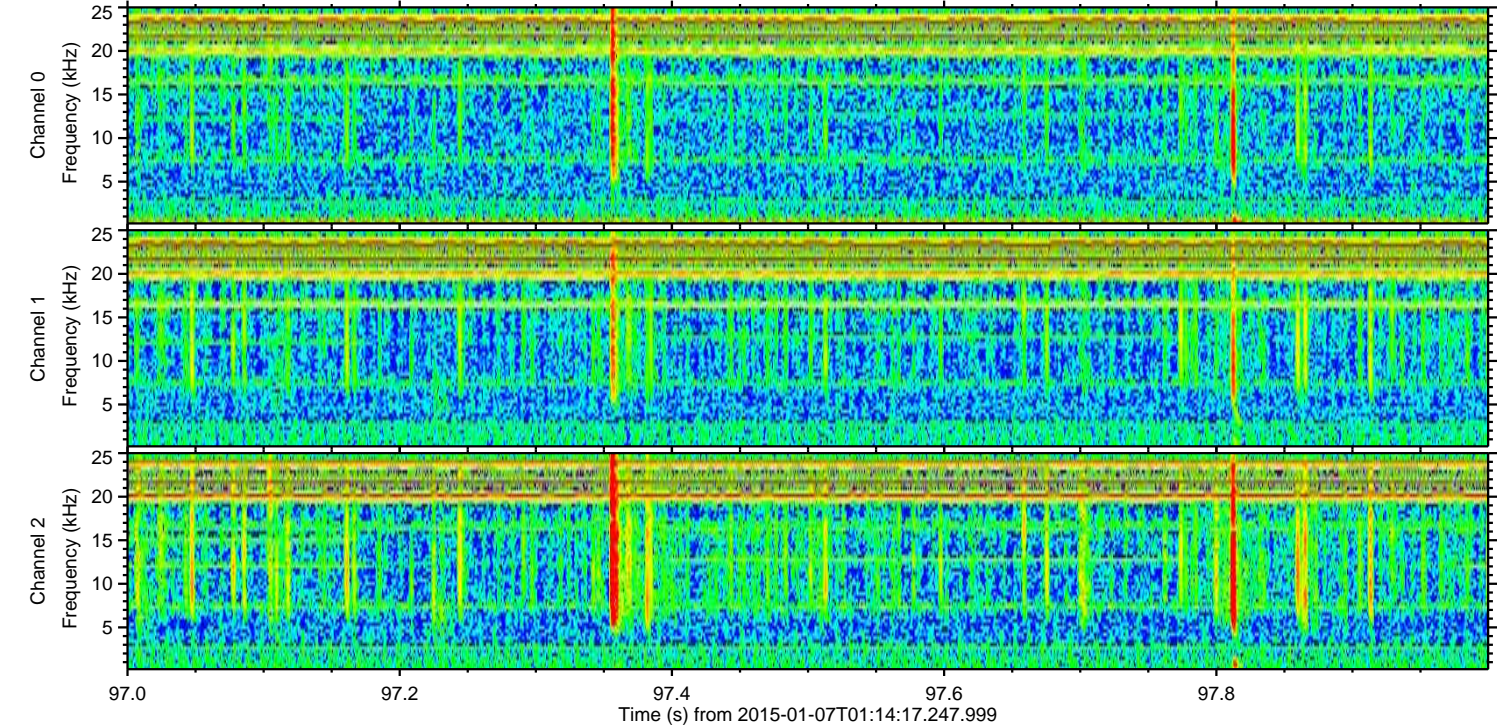
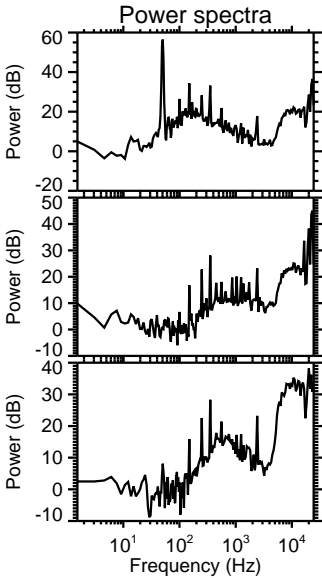
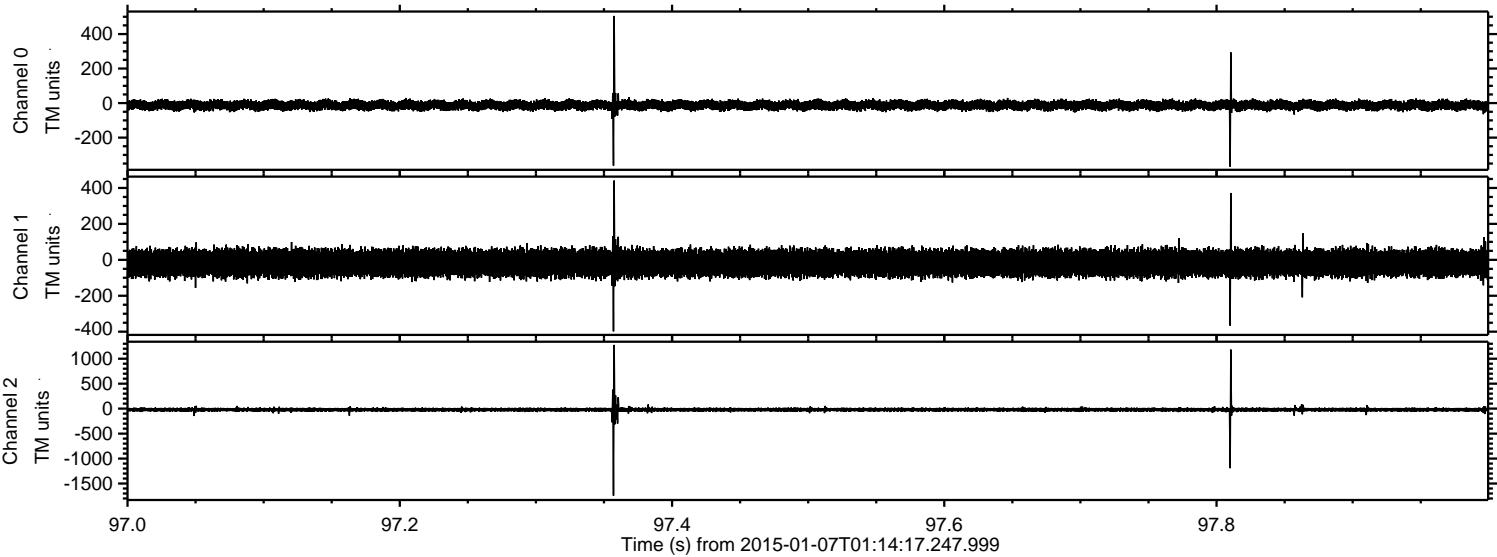


ELMAVAN 3D WAVEFORMS (Measured data sampled at 50 kHz) 49792 packets of 144 samples from 2015-01-07T01:14:17.247.999. Part 1/144

Processed Wed Jan 7 02:22:02 2015 by ELM ver.2012-10-06 from 001__elm20150107_011416__dat00.bin

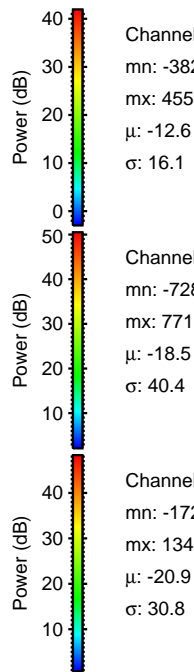
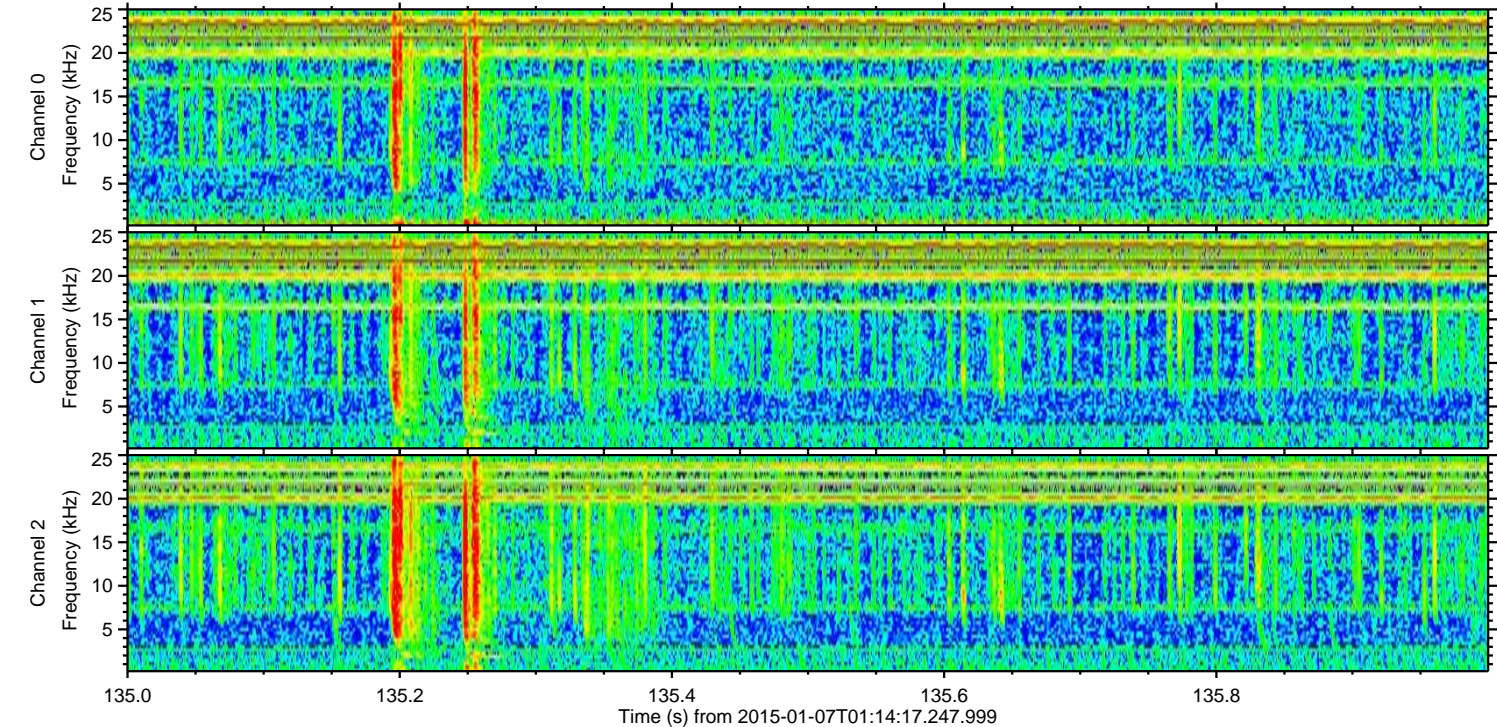
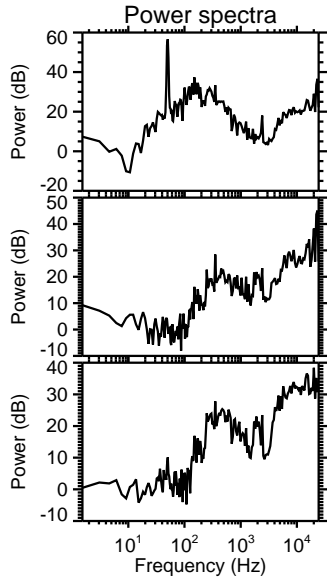
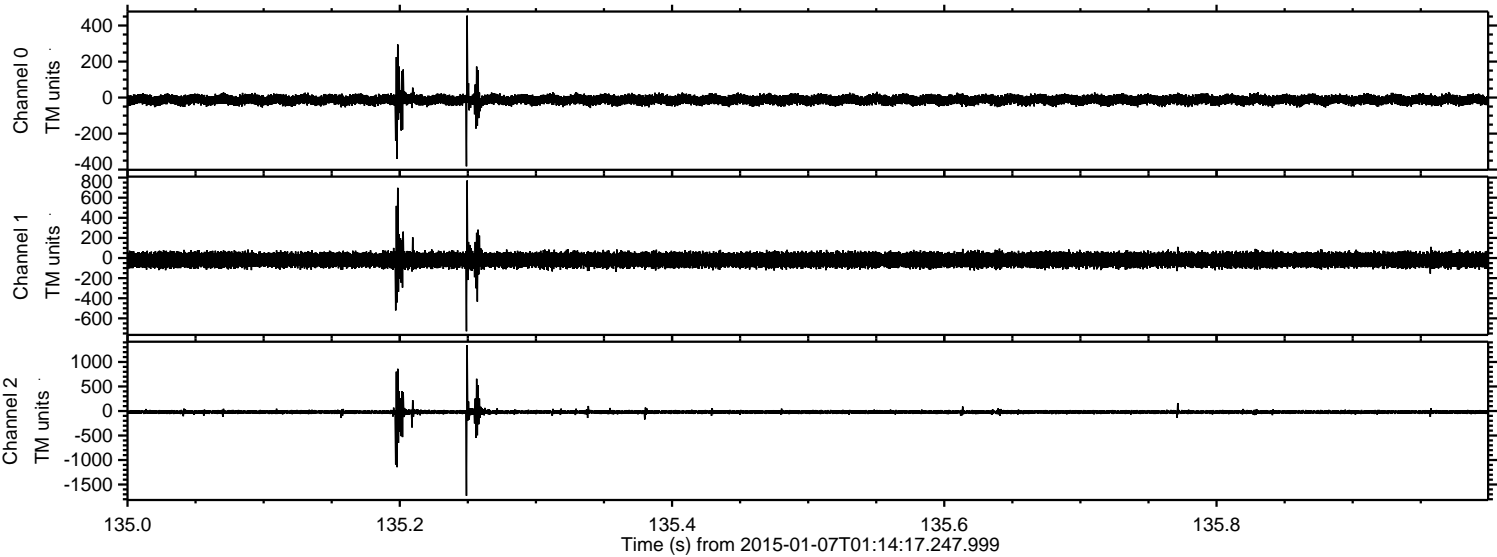


Processed Wed Jan 7 02:22:03 2015 by ELM ver.2012-10-06 from 001__elm20150107_011416__dat00.bin



ELMAVAN 3D WAVEFORMS (Measured data sampled at 50 kHz) 49792 packets of 144 samples from 2015-01-07T01:14:17.247.999. Part 136/144

Processed Wed Jan 7 02:22:04 2015 by ELM ver.2012-10-06 from 001__elm20150107_011416__dat00.bin



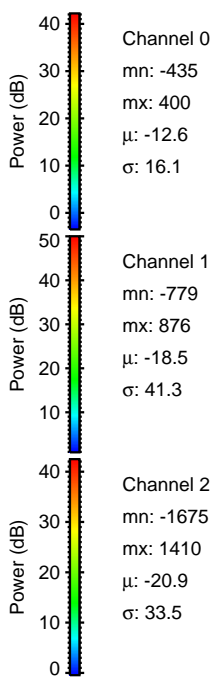
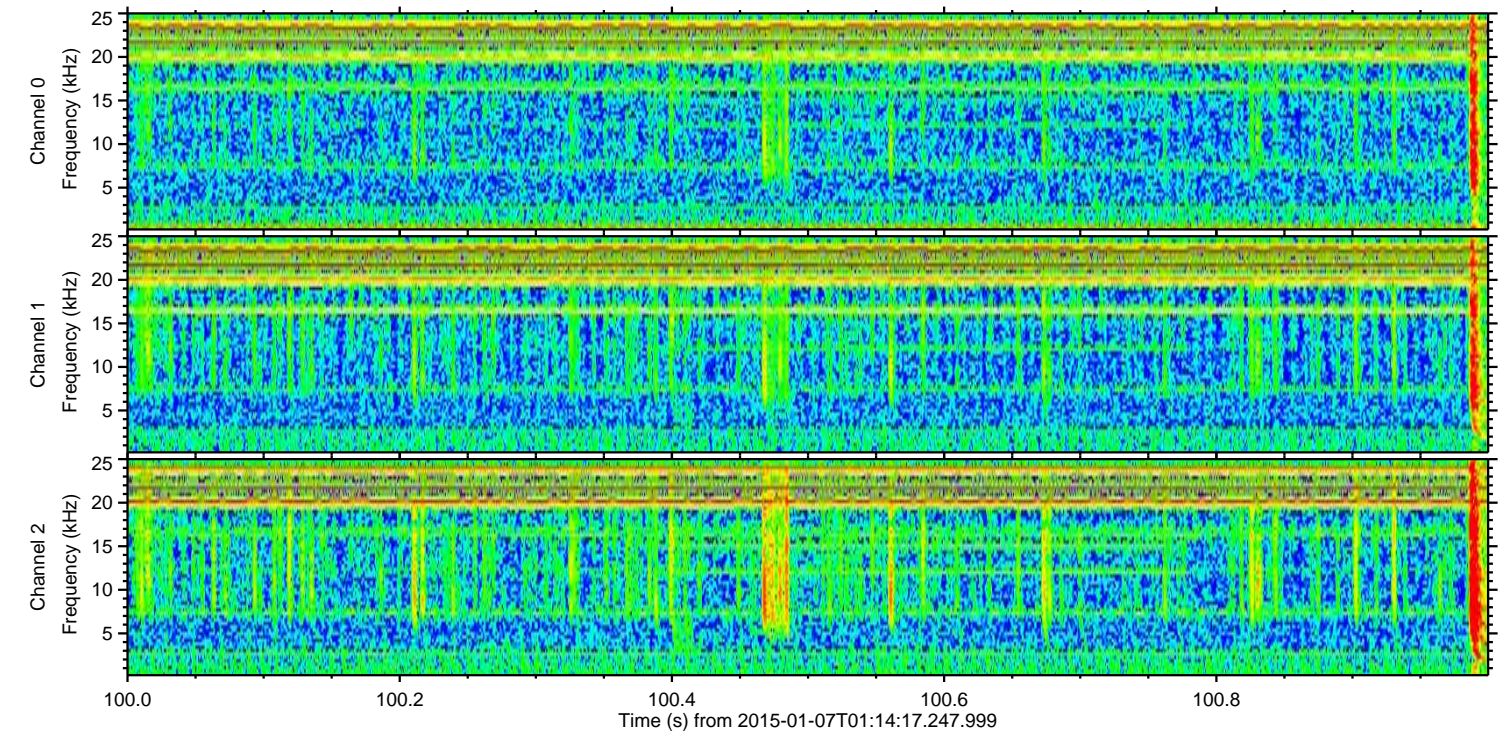
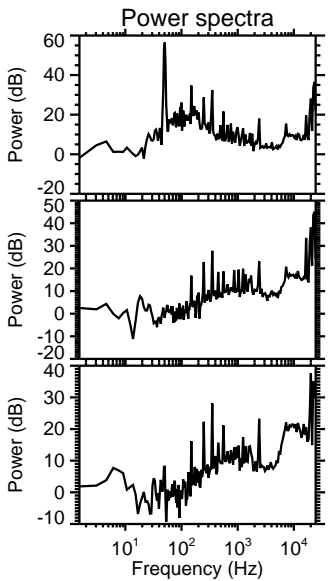
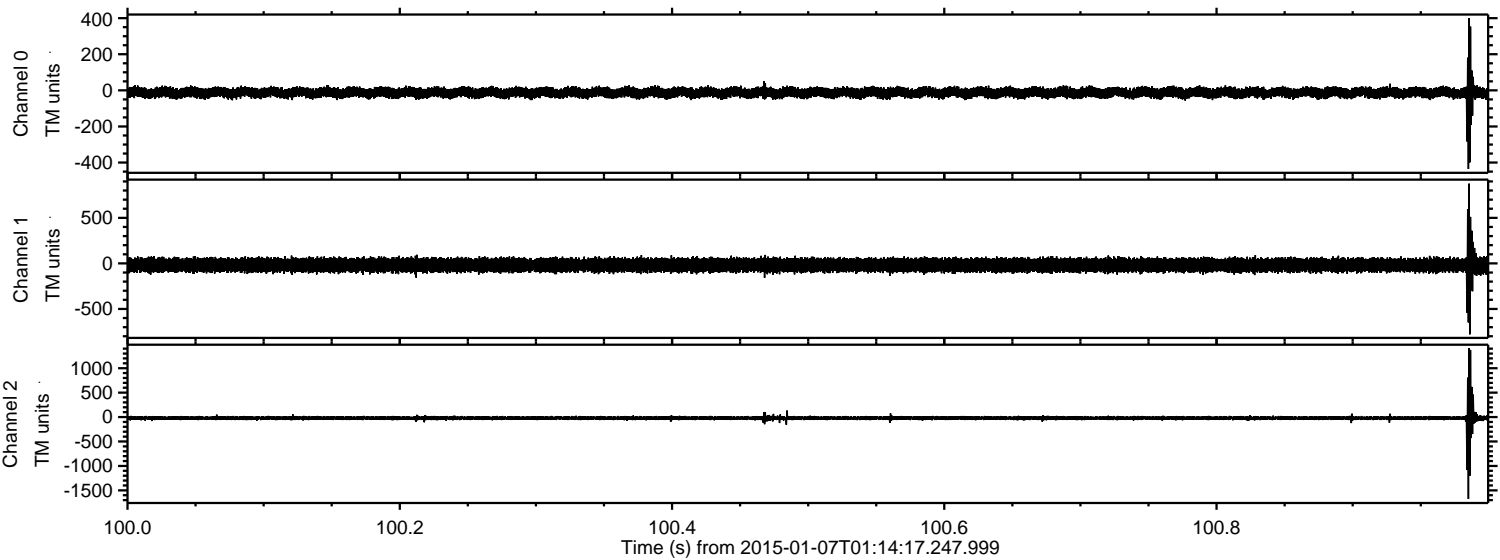
Channel 0
mn: -382
mx: 455
 μ : -12.6
 σ : 16.1

Channel 1
mn: -728
mx: 771
 μ : -18.5
 σ : 40.4

Channel 2
mn: -1729
mx: 1346
 μ : -20.9
 σ : 30.8

ELMAVAN 3D WAVEFORMS (Measured data sampled at 50 kHz) 49792 packets of 144 samples from 2015-01-07T01:14:17.247.999. Part 101/144

Processed Wed Jan 7 02:22:05 2015 by ELM ver.2012-10-06 from 001__elm20150107_011416__dat00.bin



Processed Wed Jan 7 02:22:06 2015 by ELM ver.2012-10-06 from 001__elm20150107_011416__dat00.bin

