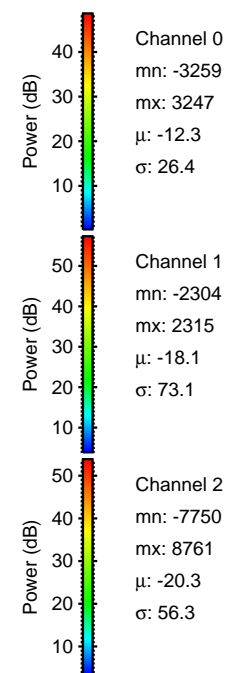
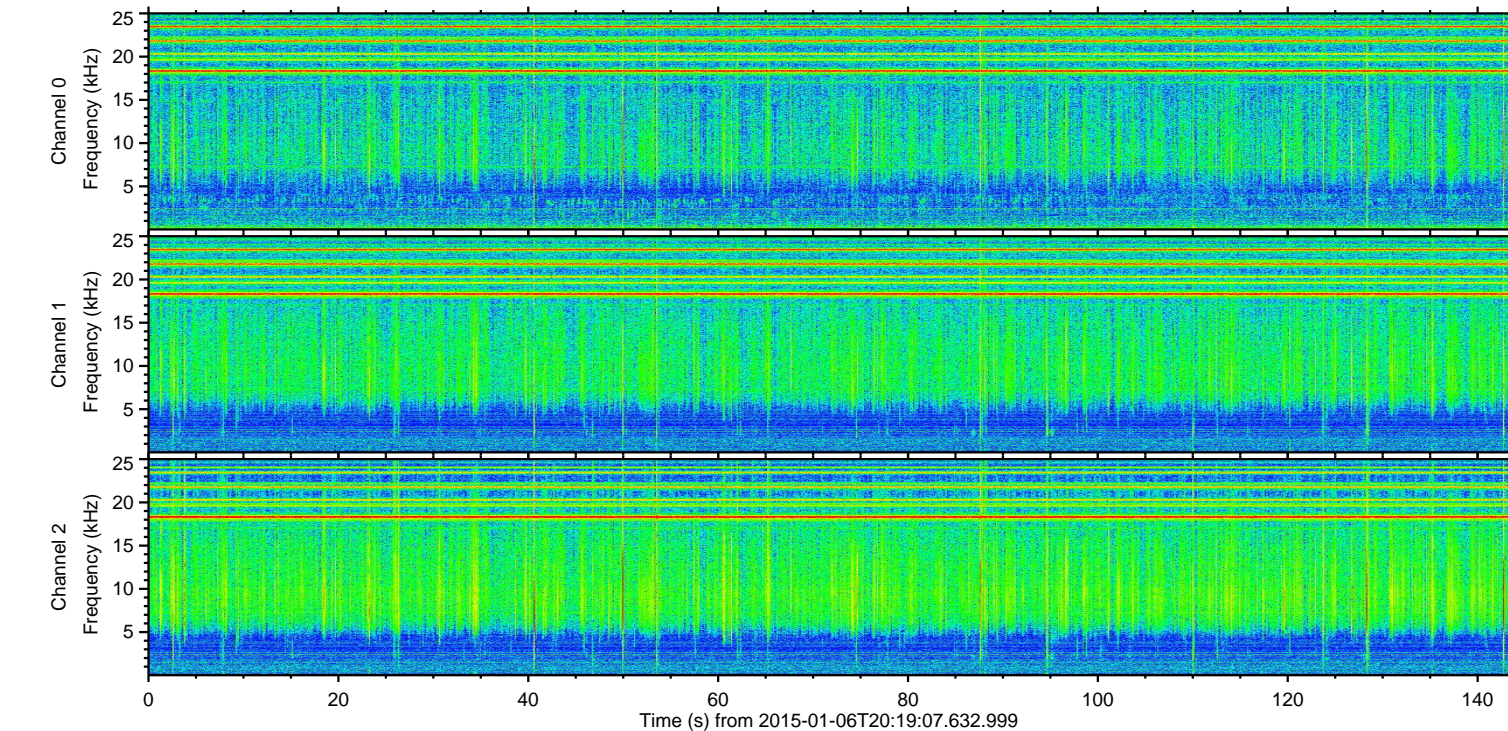
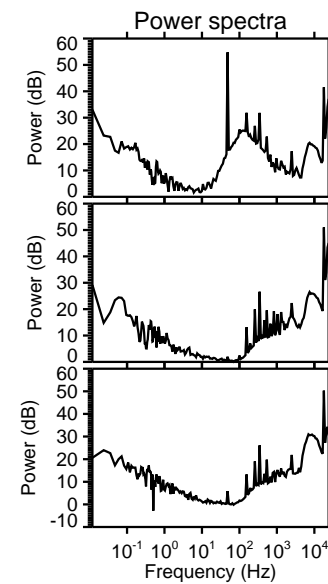
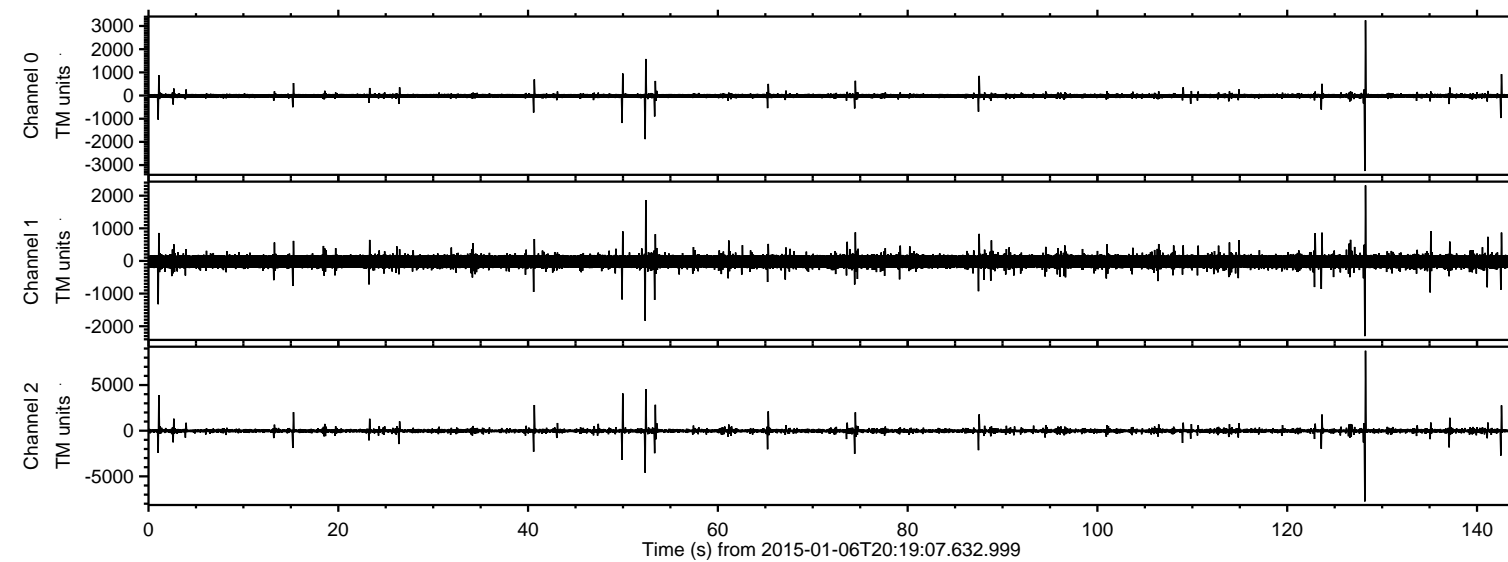


ELMAVAN 3D WAVEFORMS (Measured data sampled at 50 kHz) 49787 packets of 144 samples from 2015-01-06T20:19:07.632.999.

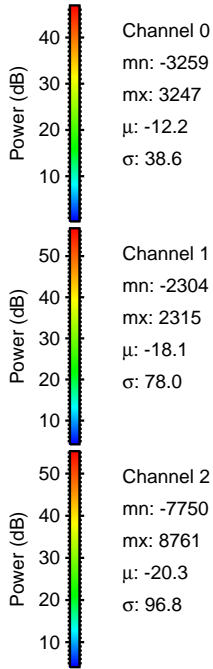
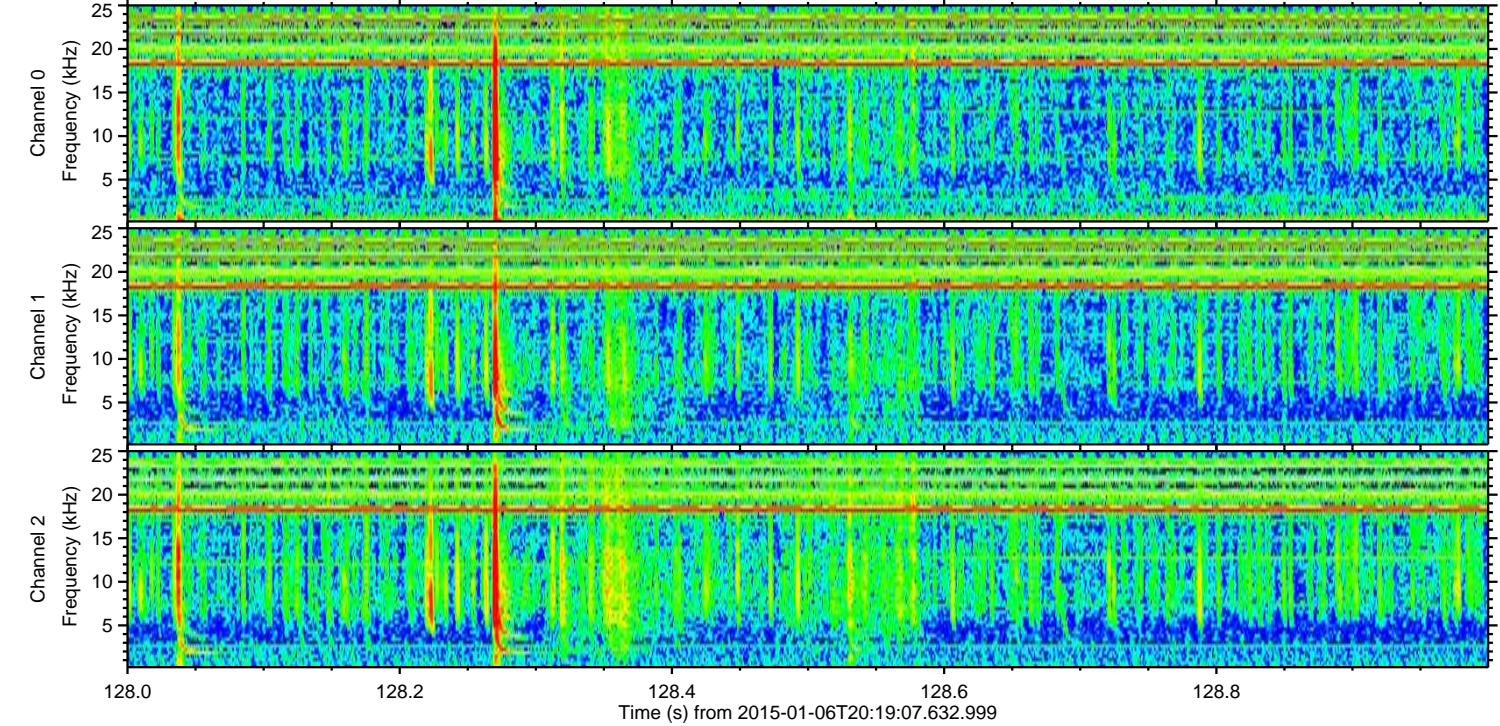
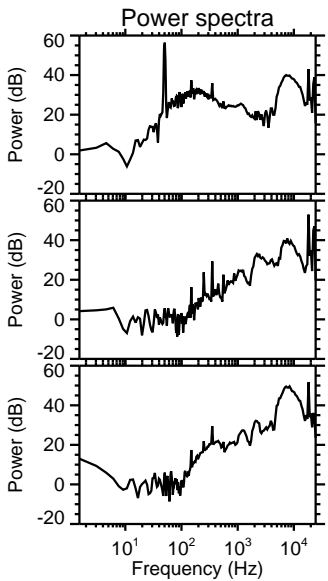
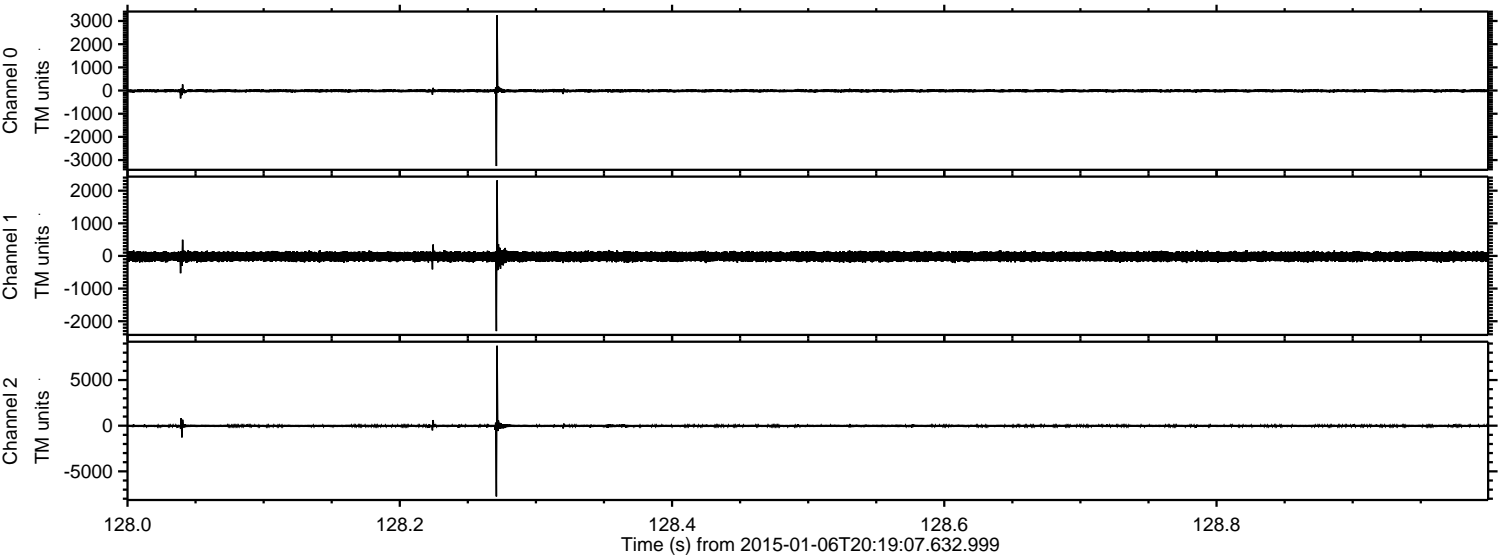
Processed Tue Jan 6 21:26:10 2015 by ELM ver.2012-10-06 from 001\_\_elm20150106\_201906\_\_dat00.bin





ELMAVAN 3D WAVEFORMS (Measured data sampled at 50 kHz) 49787 packets of 144 samples from 2015-01-06T20:19:07.632.999. Part 129/144

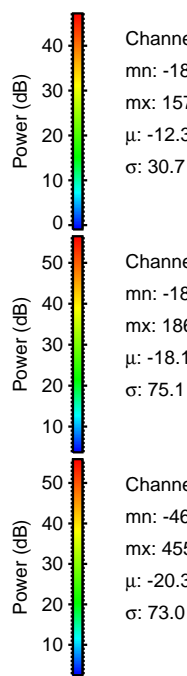
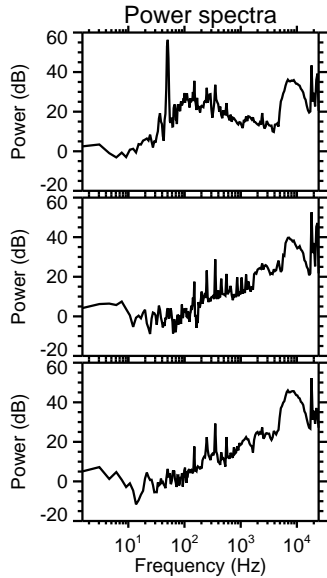
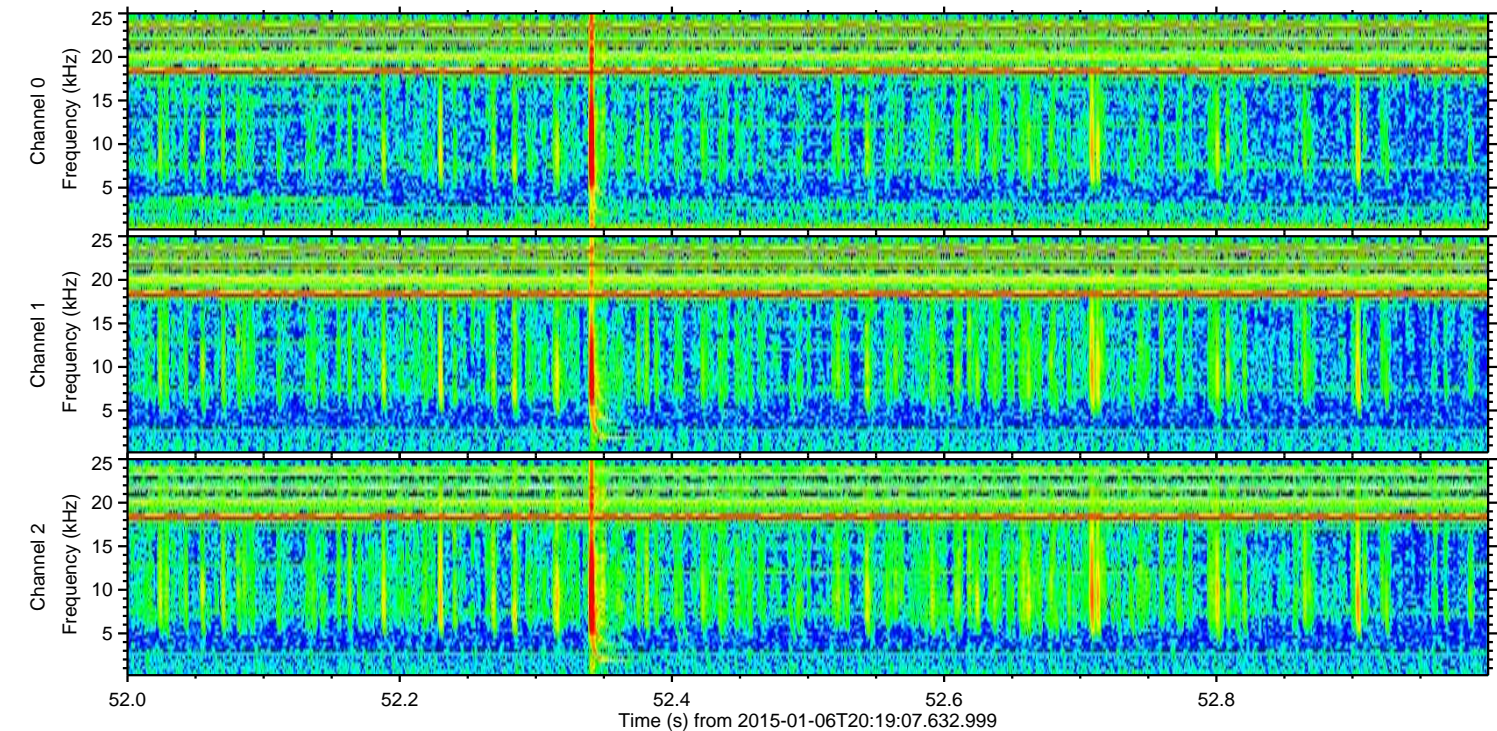
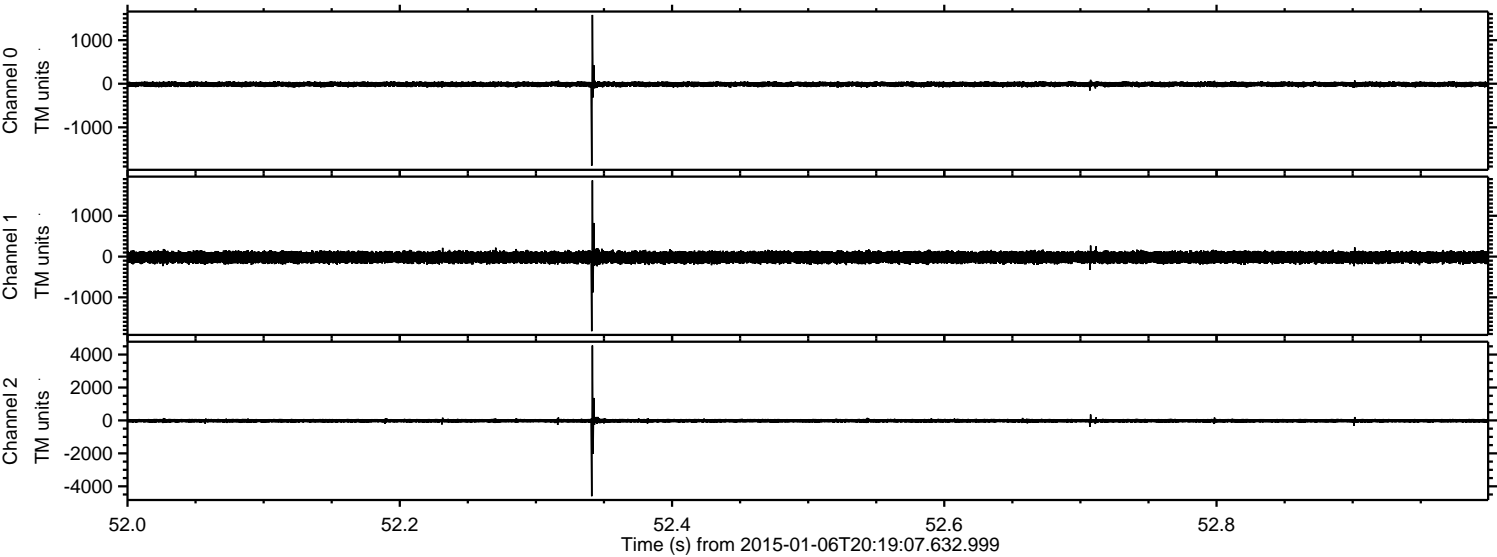
Processed Tue Jan 6 21:26:22 2015 by ELM ver.2012-10-06 from 001\_\_elm20150106\_201906\_\_dat00.bin





ELMAVAN 3D WAVEFORMS (Measured data sampled at 50 kHz) 49787 packets of 144 samples from 2015-01-06T20:19:07.632.999. Part 53/144

Processed Tue Jan 6 21:26:23 2015 by ELM ver.2012-10-06 from 001\_\_elm20150106\_201906\_\_dat00.bin



Channel 0  
mn: -1882  
mx: 1579  
 $\mu$ : -12.3  
 $\sigma$ : 30.7

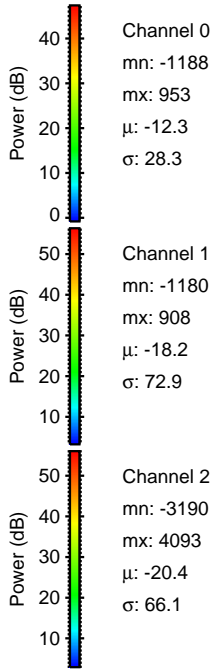
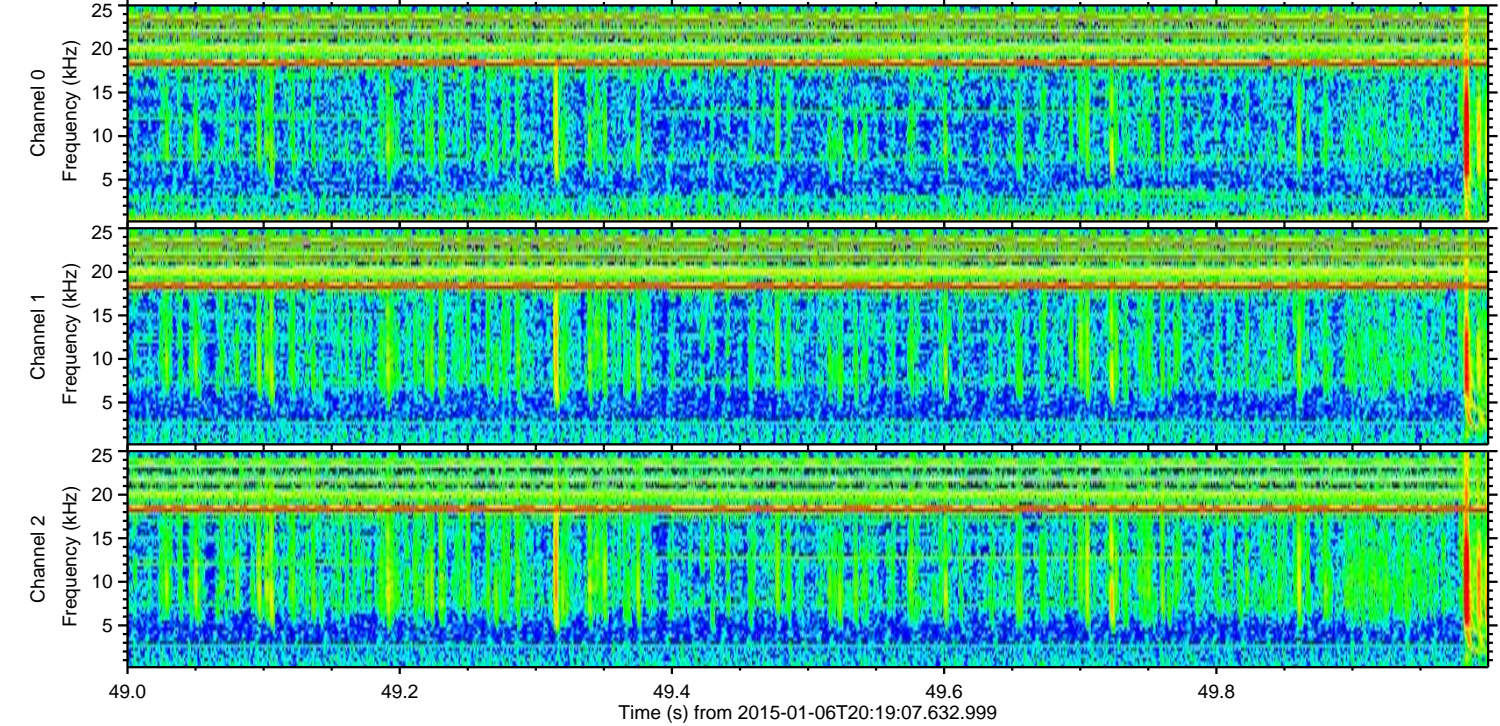
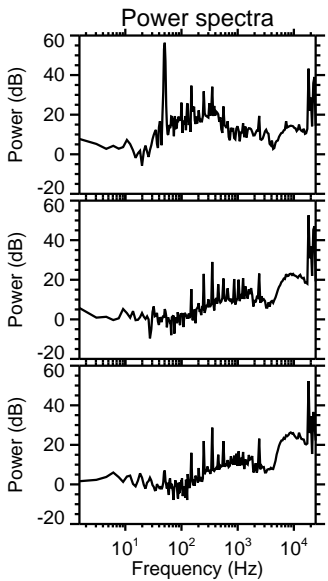
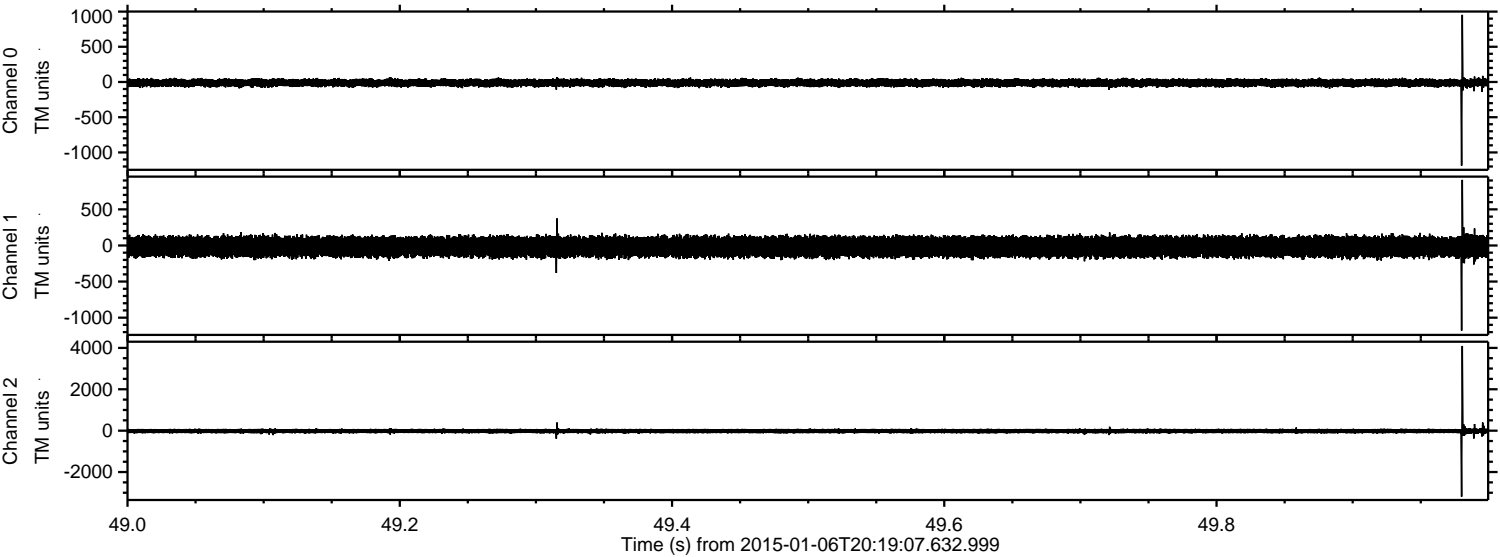
Channel 1  
mn: -1830  
mx: 1868  
 $\mu$ : -18.1  
 $\sigma$ : 75.1

Channel 2  
mn: -4603  
mx: 4554  
 $\mu$ : -20.3  
 $\sigma$ : 73.0



ELMAVAN 3D WAVEFORMS (Measured data sampled at 50 kHz) 49787 packets of 144 samples from 2015-01-06T20:19:07.632.999. Part 50/144

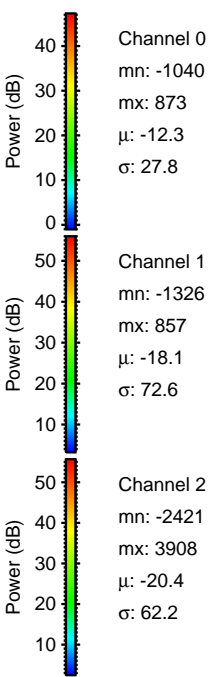
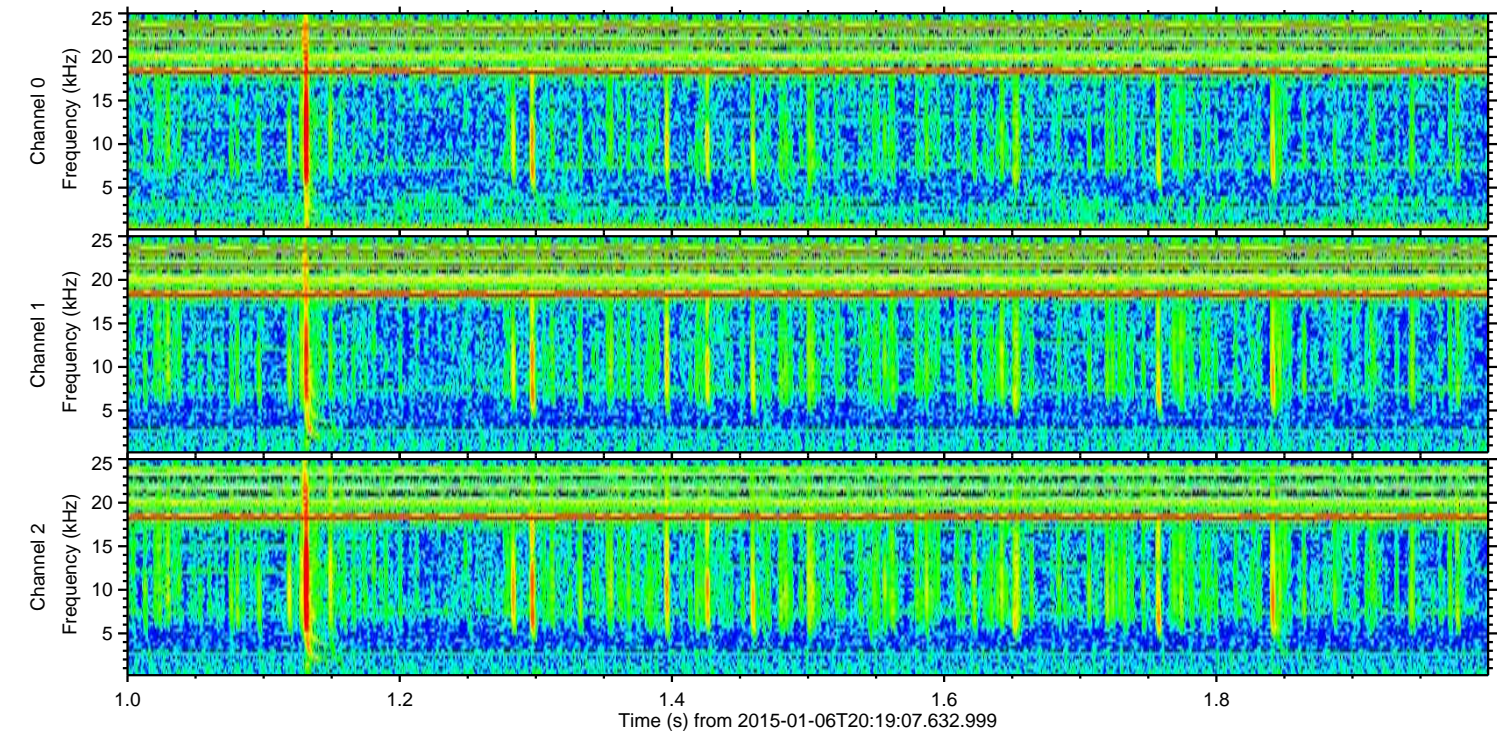
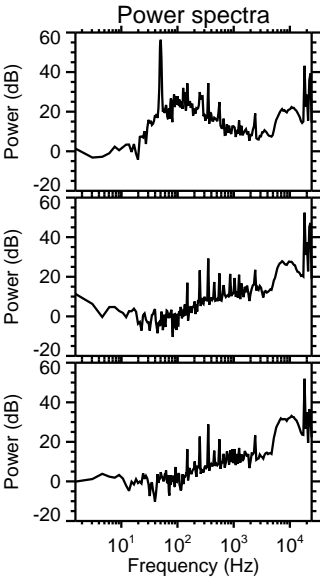
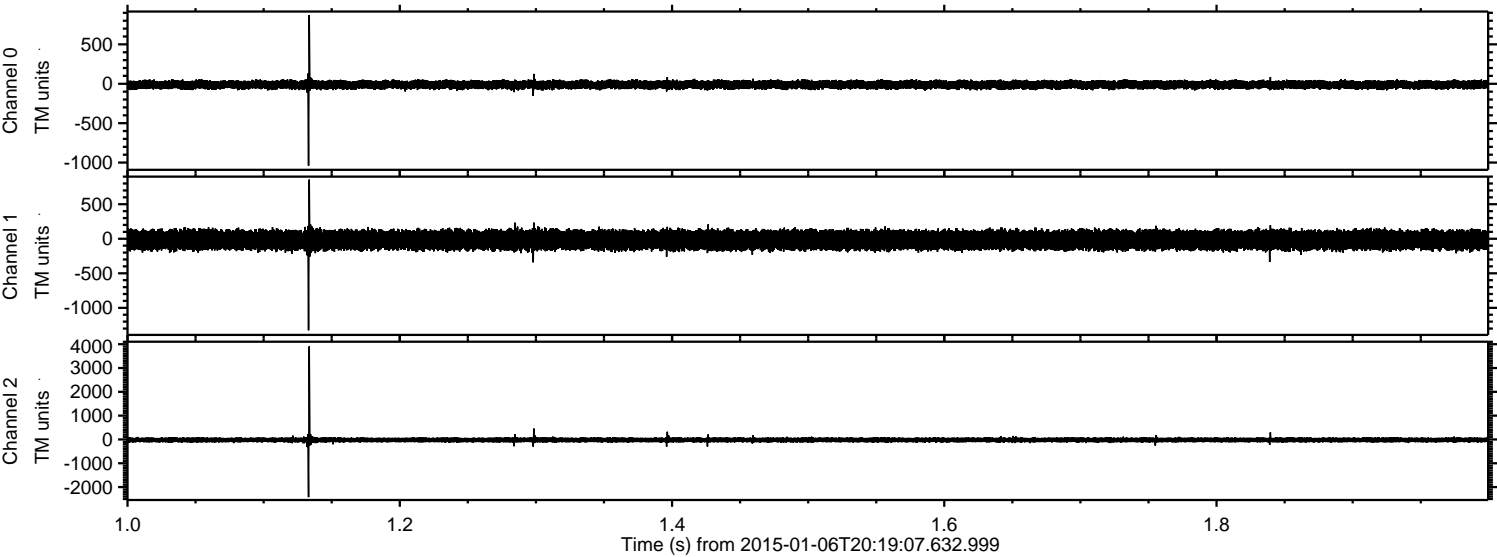
Processed Tue Jan 6 21:26:24 2015 by ELM ver.2012-10-06 from 001\_\_elm20150106\_201906\_\_dat00.bin





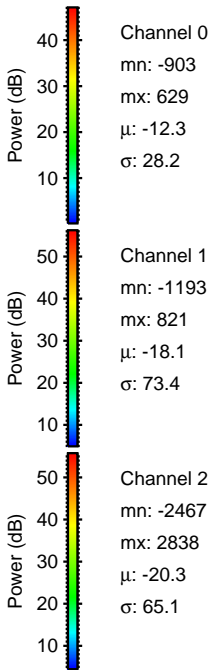
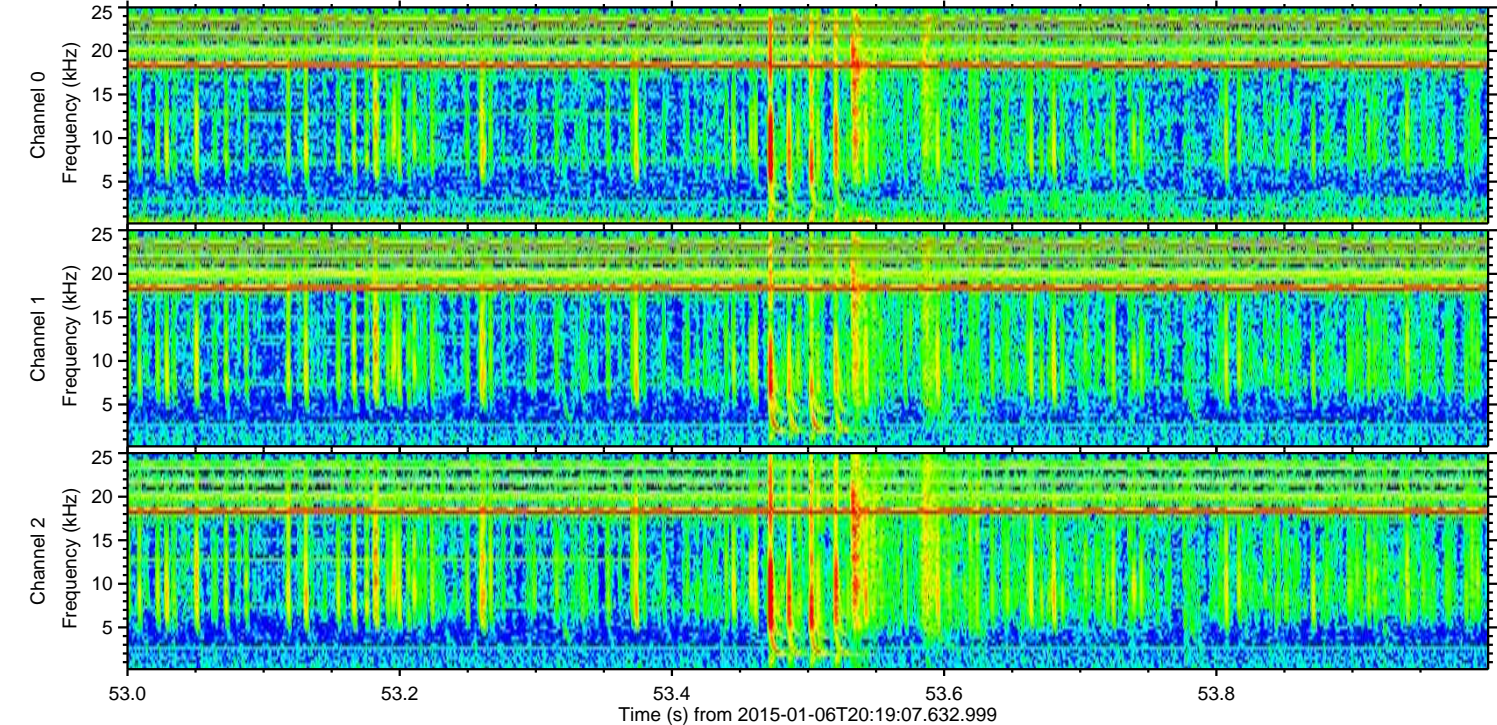
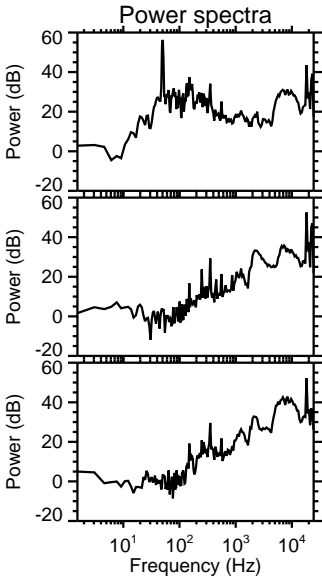
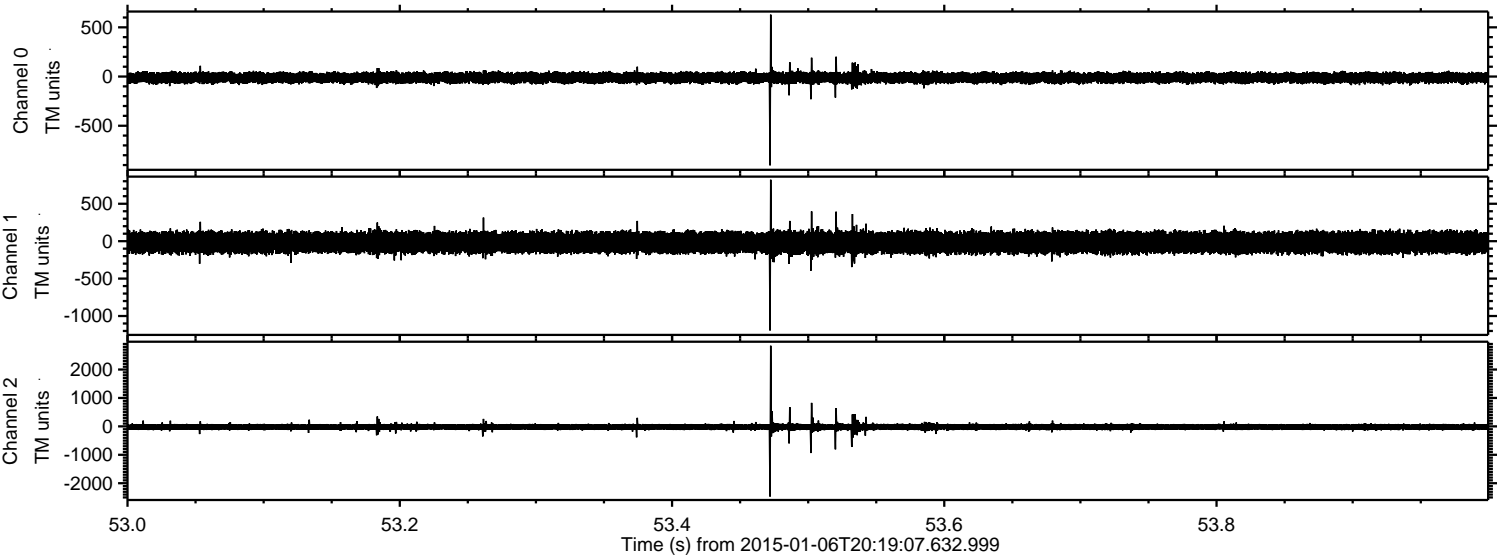
ELMAVAN 3D WAVEFORMS (Measured data sampled at 50 kHz) 49787 packets of 144 samples from 2015-01-06T20:19:07.632.999. Part 2/144

Processed Tue Jan 6 21:26:25 2015 by ELM ver.2012-10-06 from 001\_\_elm20150106\_201906\_\_dat00.bin





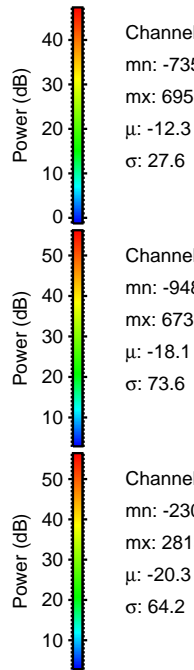
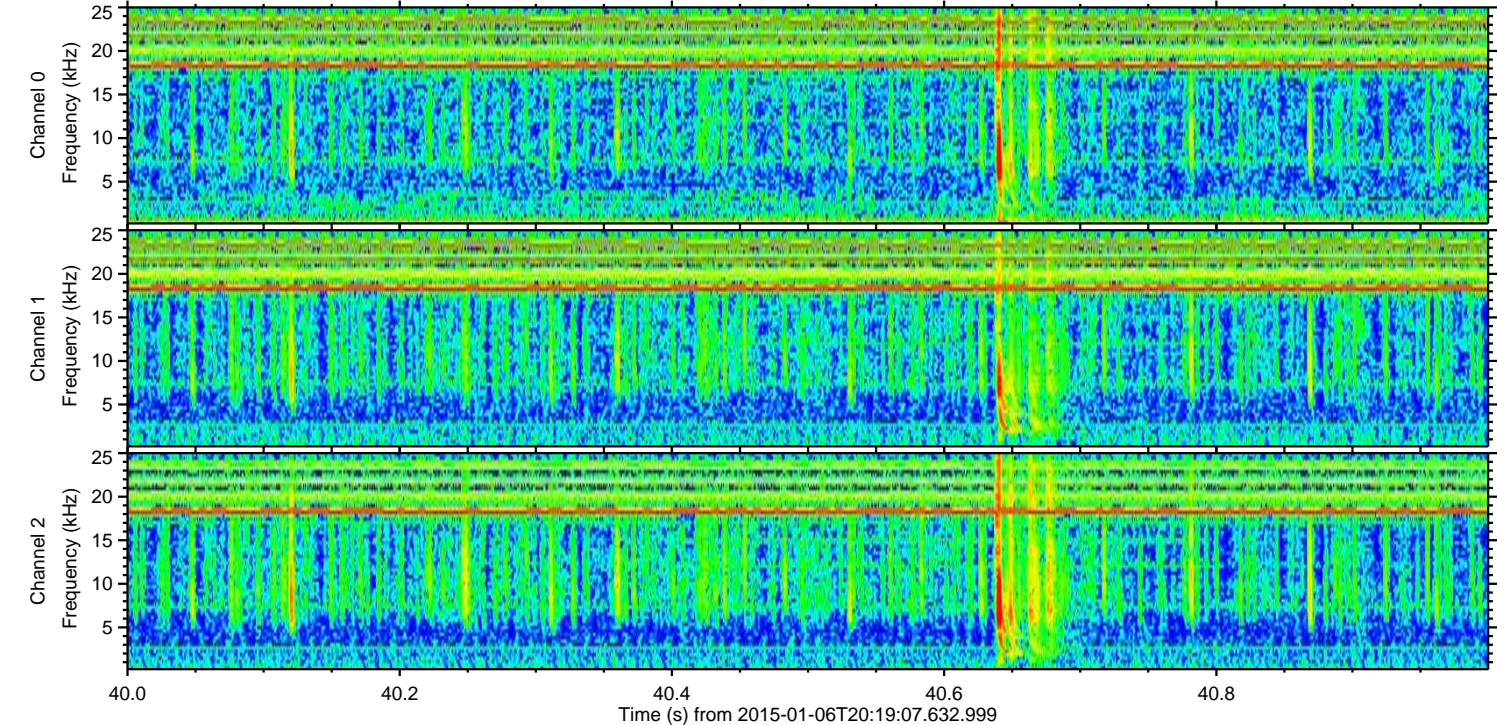
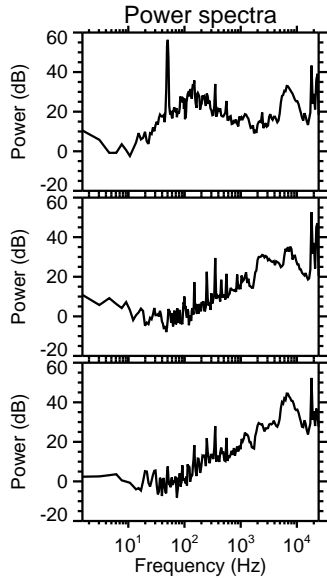
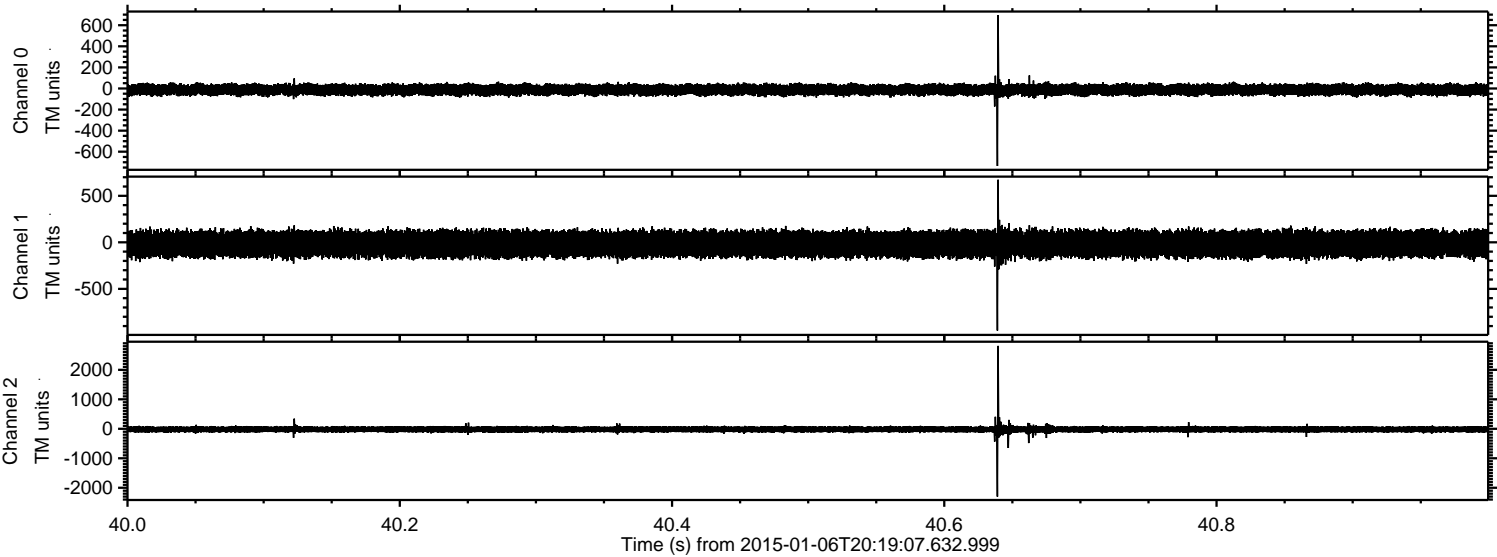
Processed Tue Jan 6 21:26:26 2015 by ELM ver.2012-10-06 from 001\_\_elm20150106\_201906\_\_dat00.bin





ELMAVAN 3D WAVEFORMS (Measured data sampled at 50 kHz) 49787 packets of 144 samples from 2015-01-06T20:19:07.632.999. Part 41/144

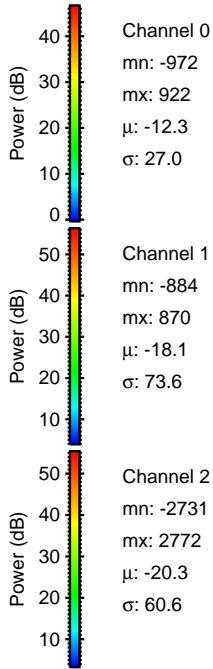
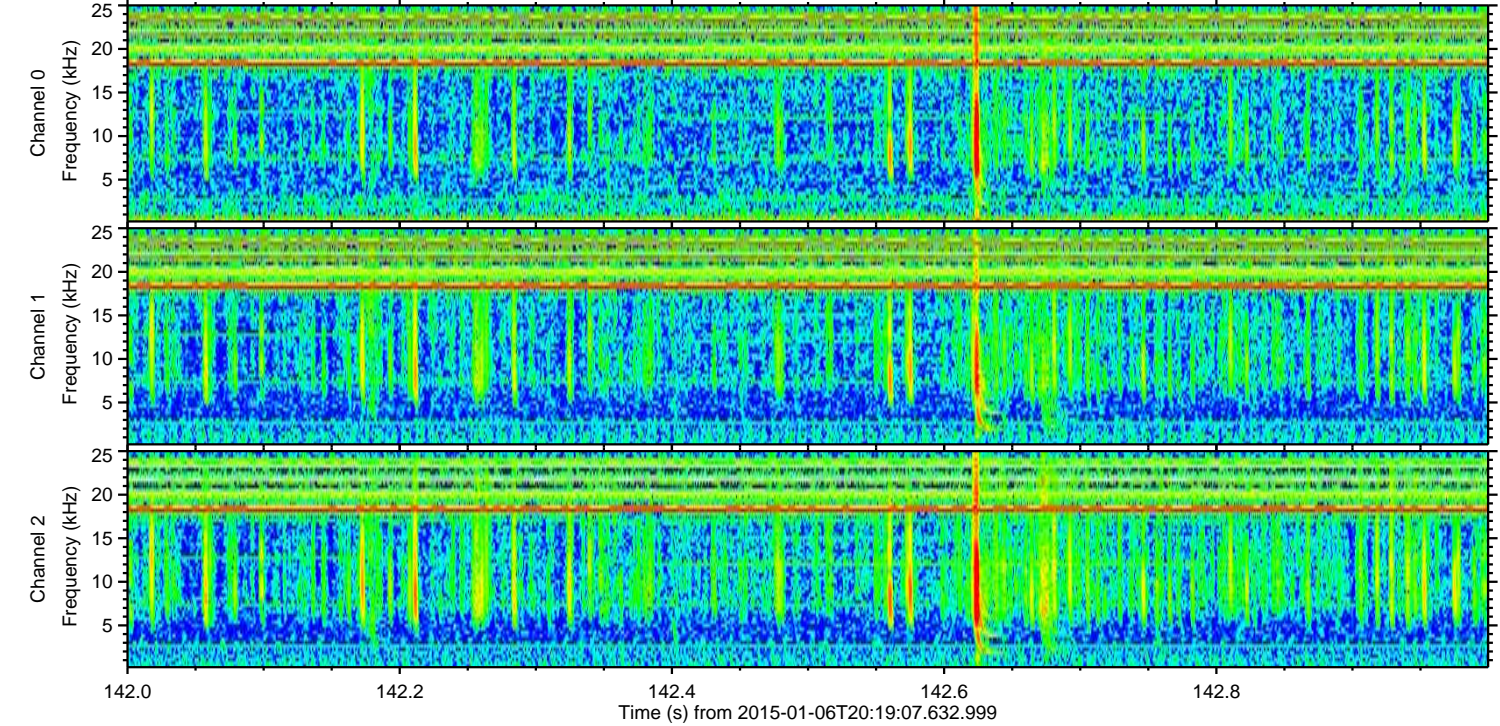
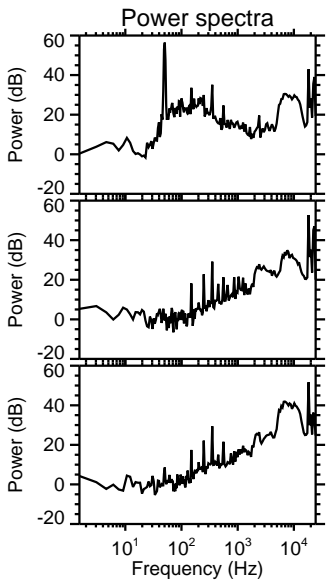
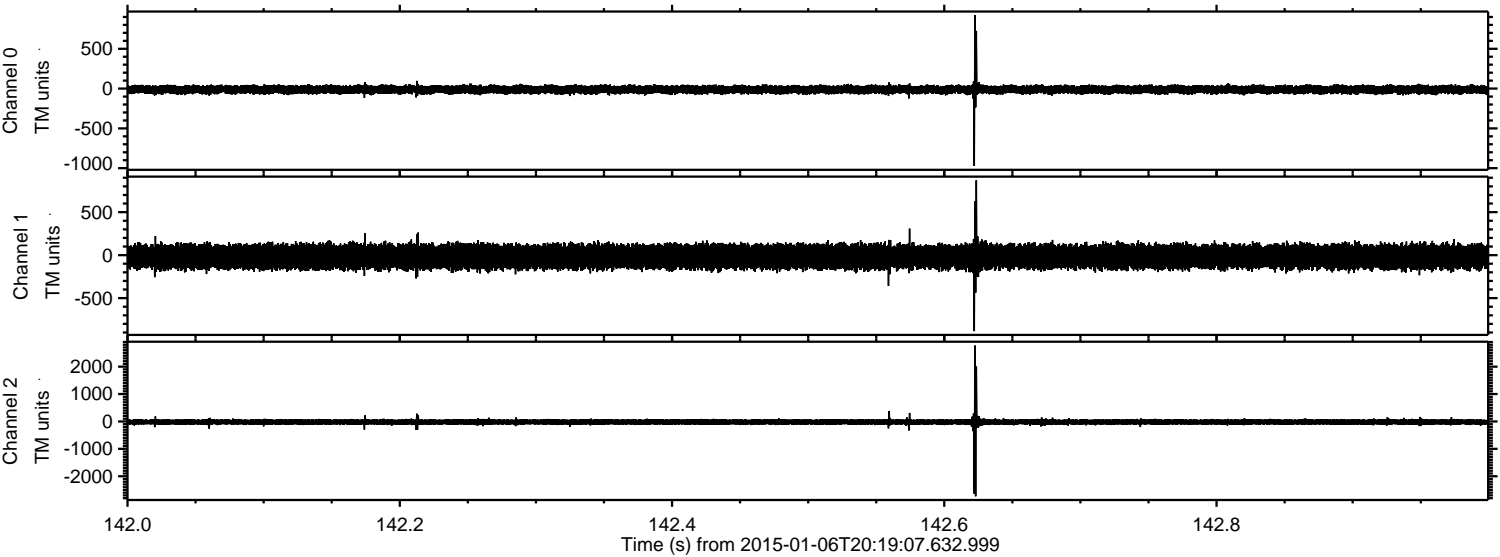
Processed Tue Jan 6 21:26:26 2015 by ELM ver.2012-10-06 from 001\_\_elm20150106\_201906\_\_dat00.bin





ELMAVAN 3D WAVEFORMS (Measured data sampled at 50 kHz) 49787 packets of 144 samples from 2015-01-06T20:19:07.632.999. Part 143/144

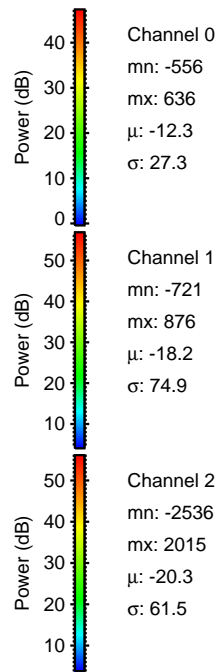
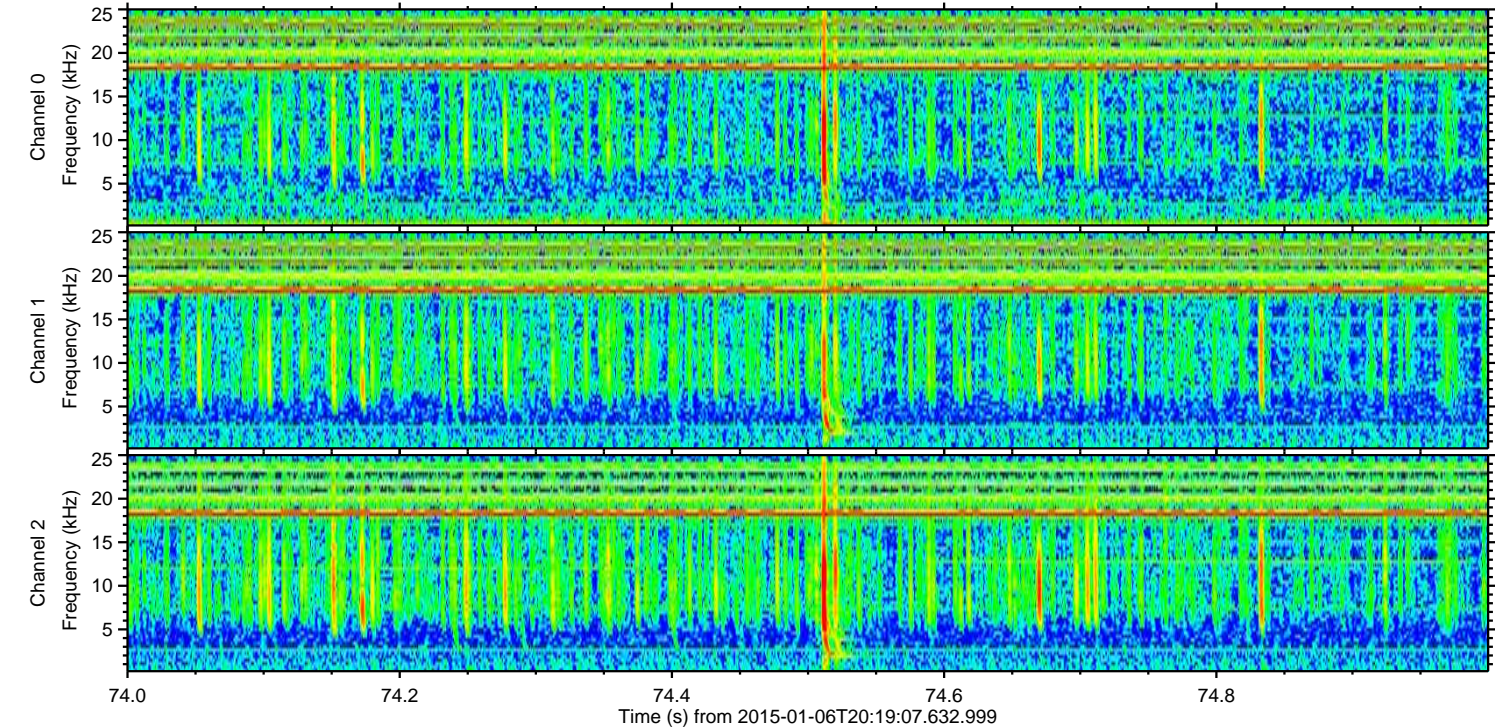
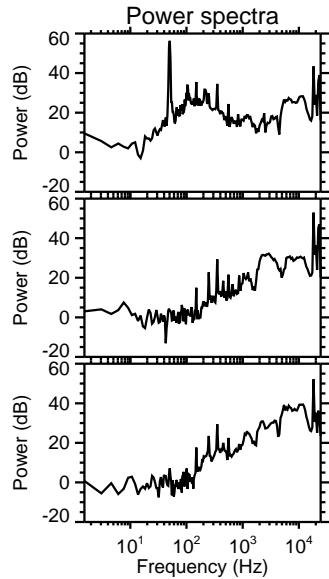
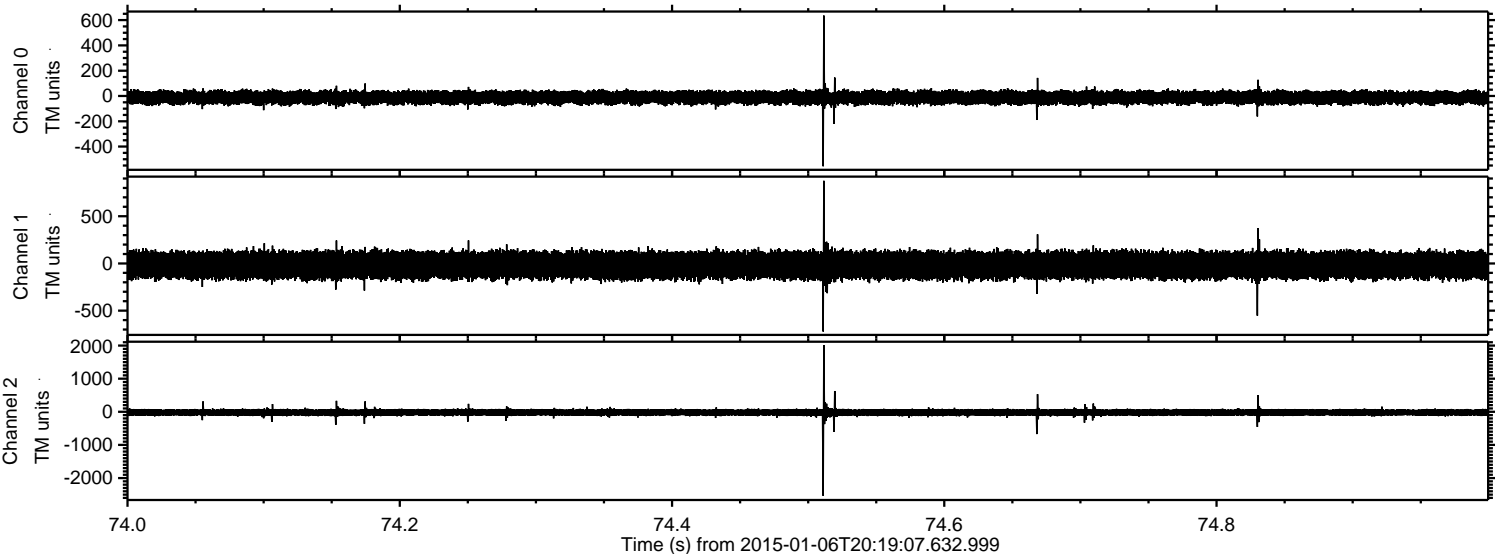
Processed Tue Jan 6 21:26:27 2015 by ELM ver.2012-10-06 from 001\_\_elm20150106\_201906\_\_dat00.bin





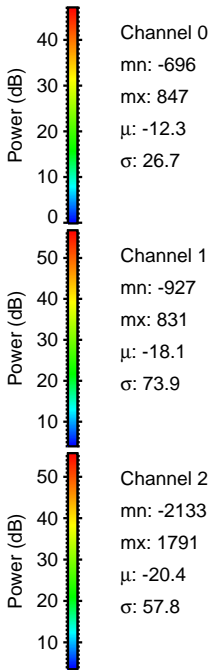
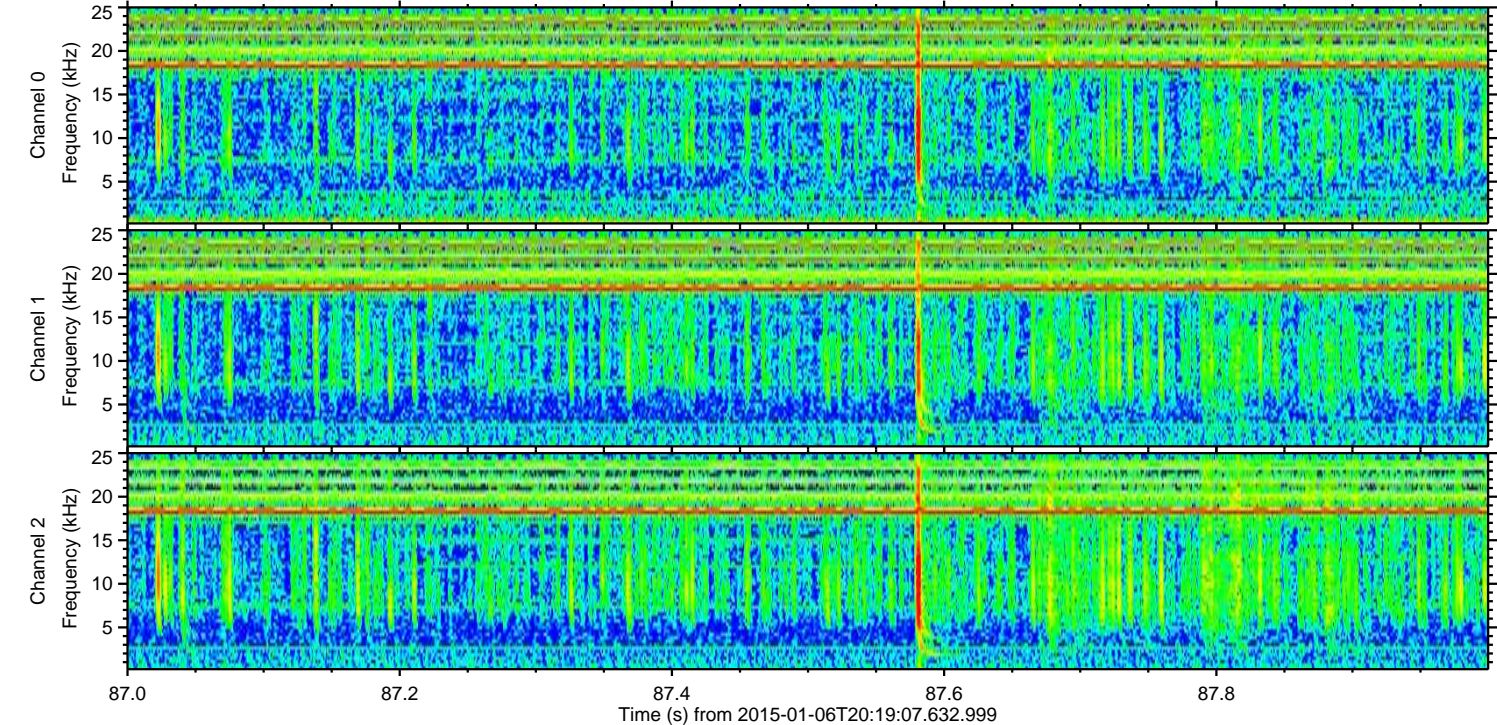
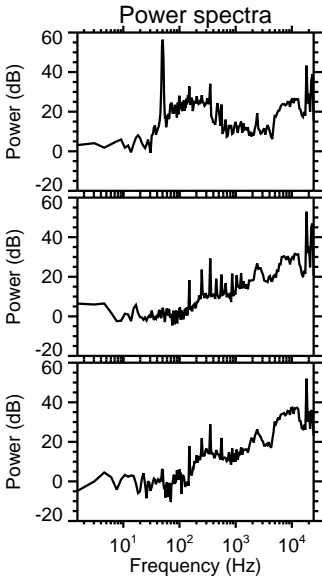
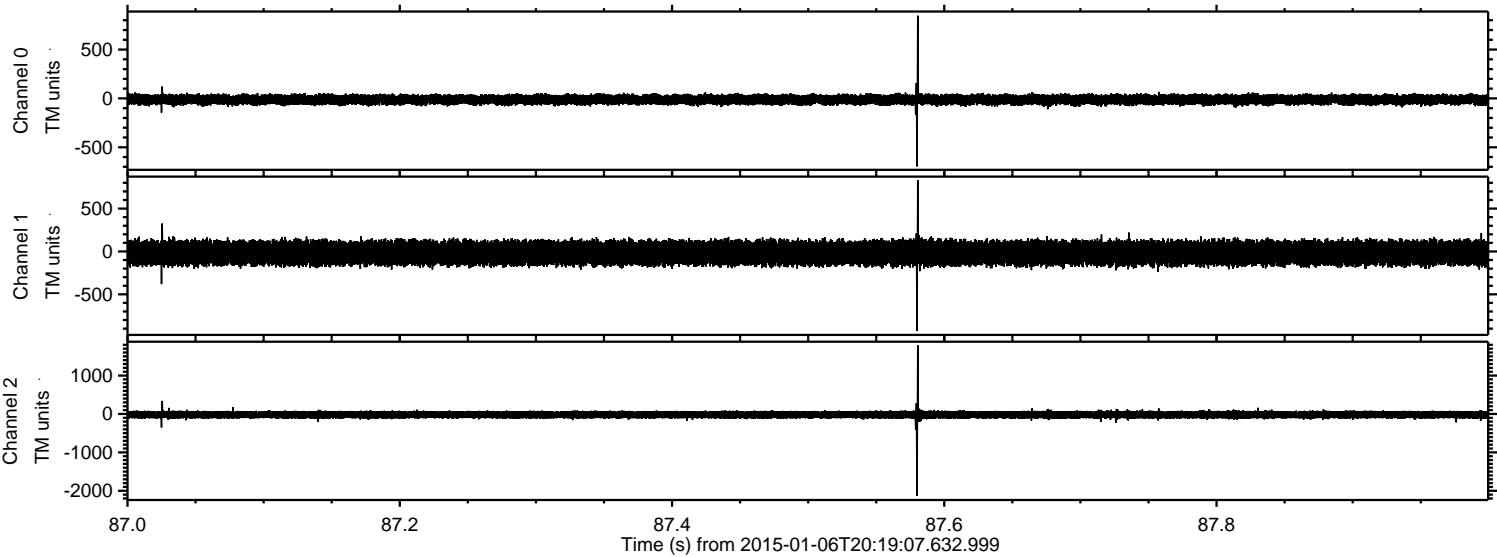
ELMAVAN 3D WAVEFORMS (Measured data sampled at 50 kHz) 49787 packets of 144 samples from 2015-01-06T20:19:07.632.999. Part 75/144

Processed Tue Jan 6 21:26:28 2015 by ELM ver.2012-10-06 from 001\_\_elm20150106\_201906\_\_dat00.bin





Processed Tue Jan 6 21:26:29 2015 by ELM ver.2012-10-06 from 001\_\_elm20150106\_201906\_\_dat00.bin



Channel 0  
mn: -696  
mx: 847  
 $\mu$ : -12.3  
 $\sigma$ : 26.7

Channel 1  
mn: -927  
mx: 831  
 $\mu$ : -18.1  
 $\sigma$ : 73.9

Channel 2  
mn: -2133  
mx: 1791  
 $\mu$ : -20.4  
 $\sigma$ : 57.8



Processed Tue Jan 6 21:26:30 2015 by ELM ver.2012-10-06 from 001\_\_elm20150106\_201906\_\_dat00.bin

