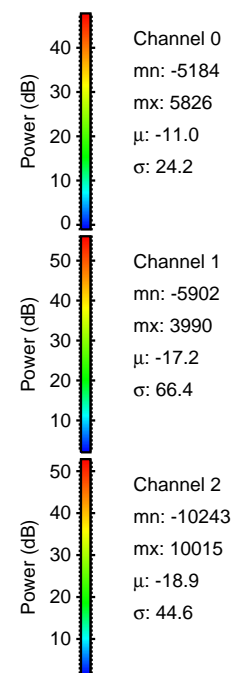
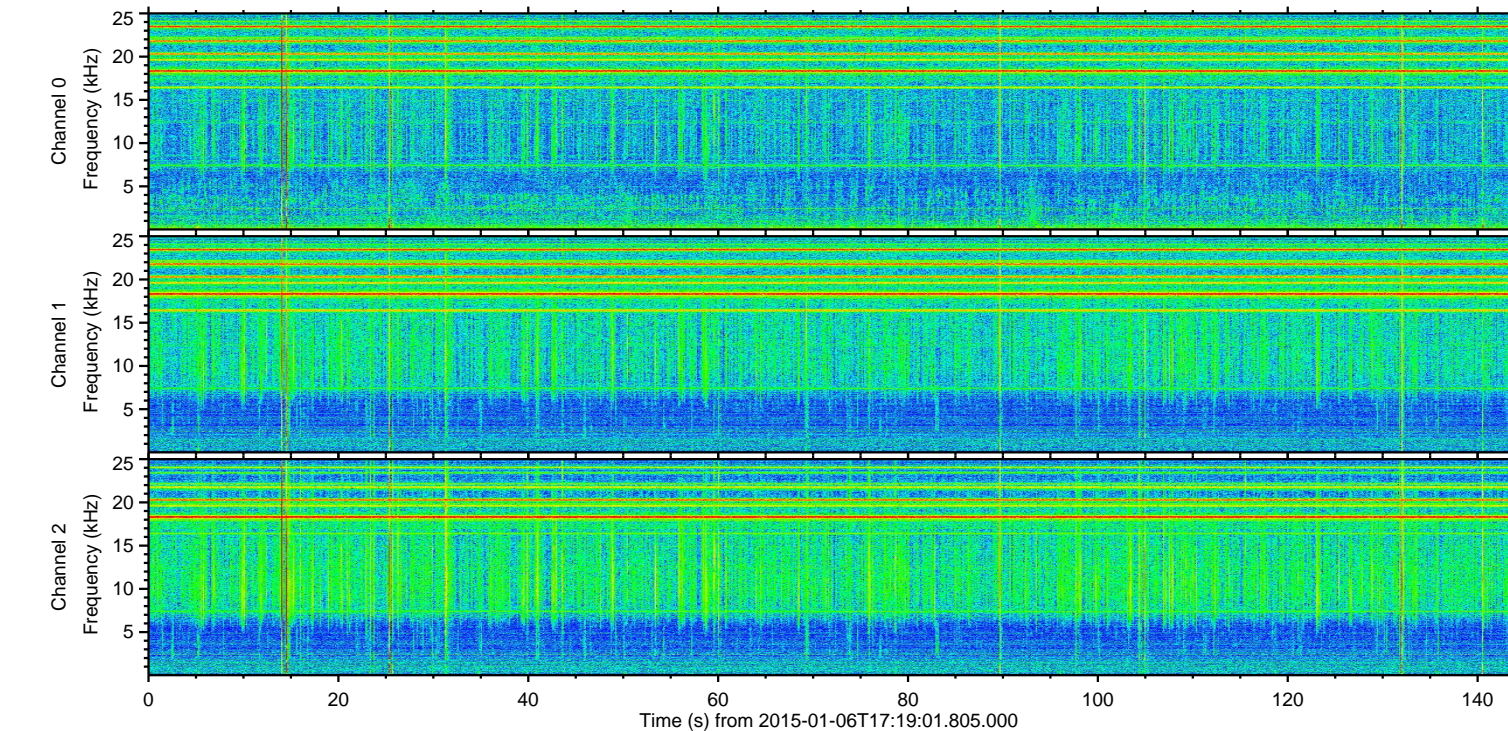
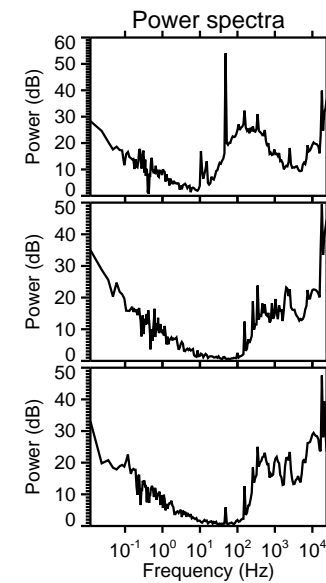
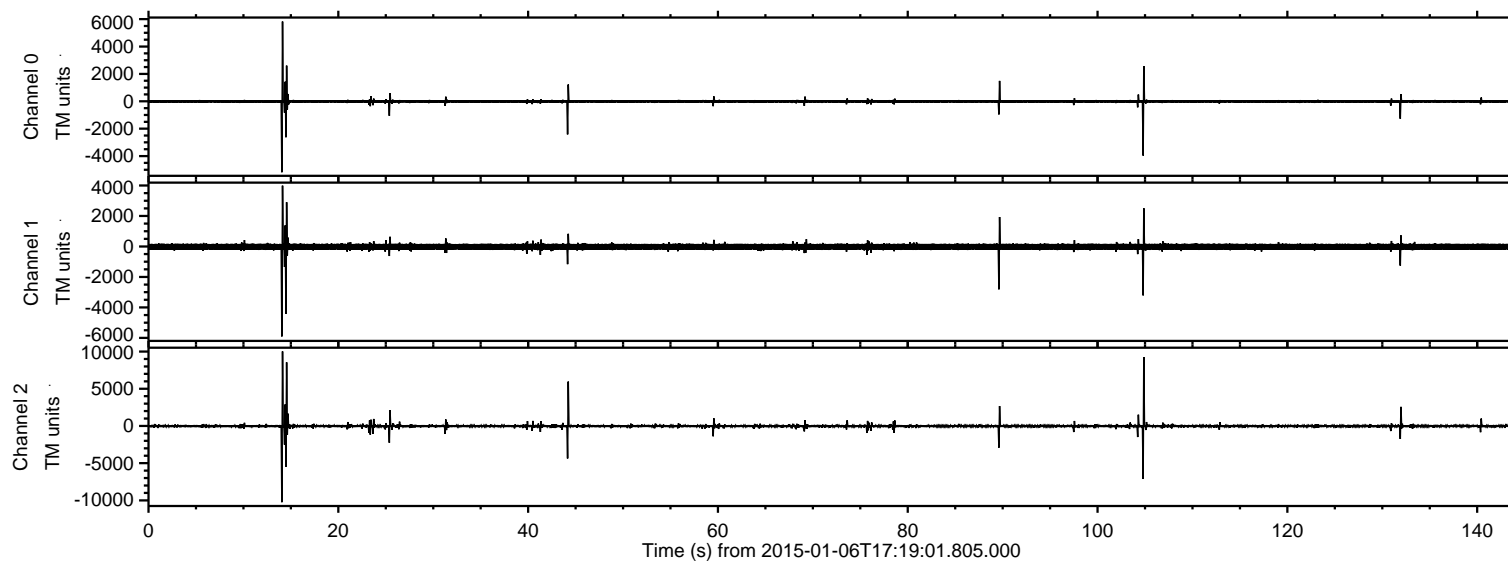


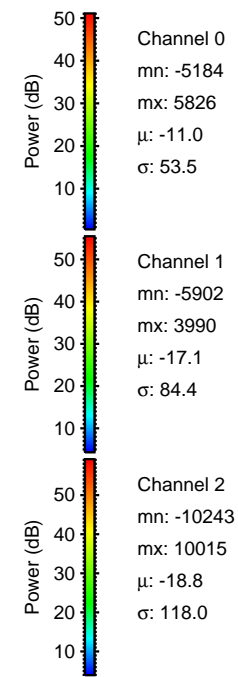
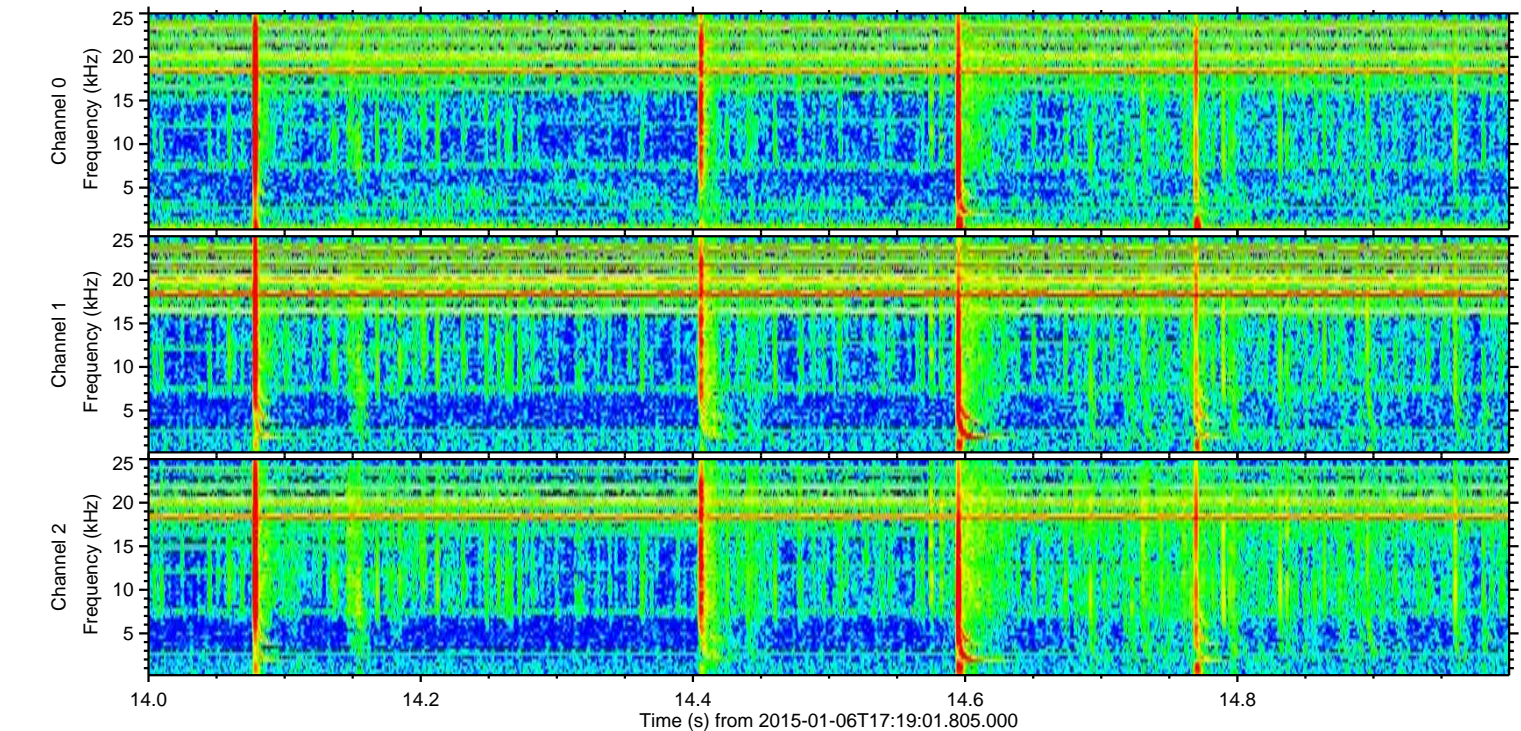
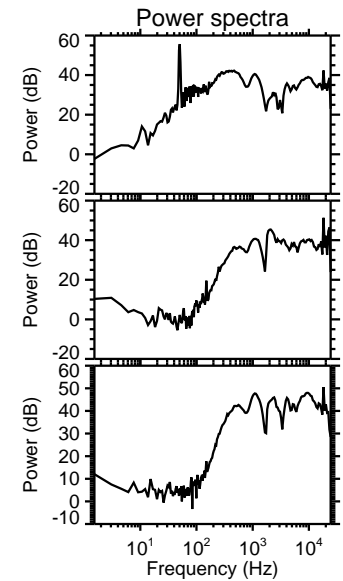
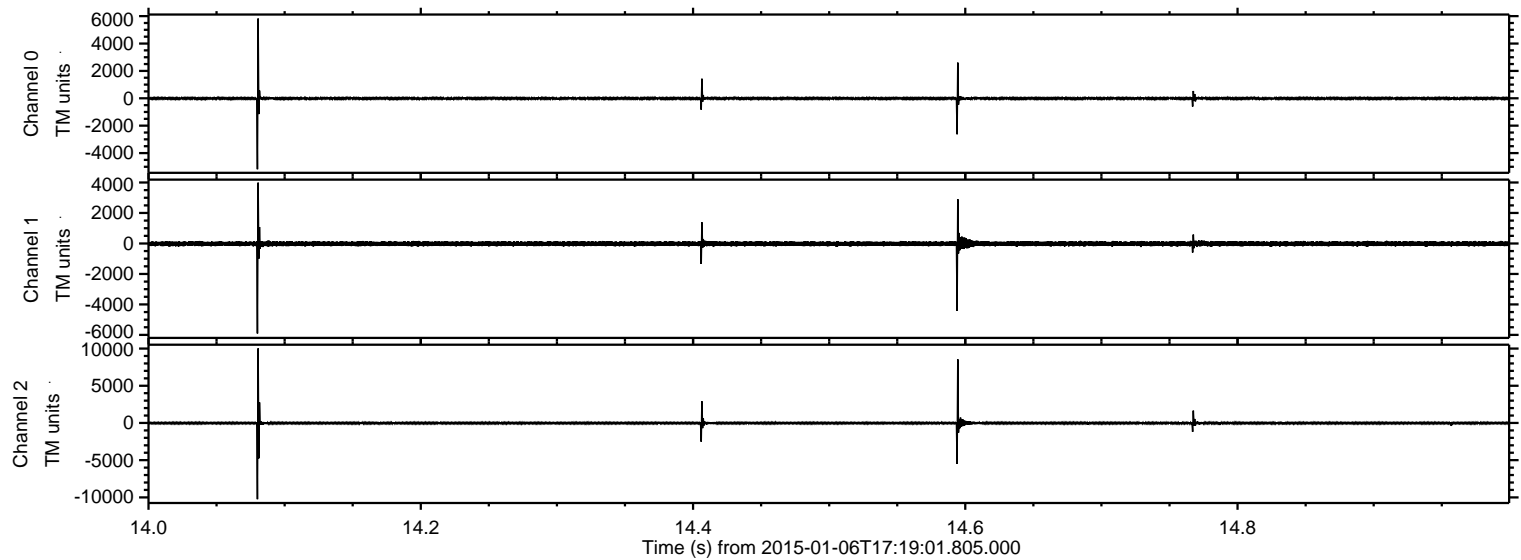
ELMAVAN 3D WAVEFORMS (Measured data sampled at 50 kHz) 49780 packets of 144 samples from 2015-01-06T17:19:01.805.000.

Processed Tue Jan 6 18:26:03 2015 by ELM ver.2012-10-06 from 001__elm20150106_171900__dat00.bin



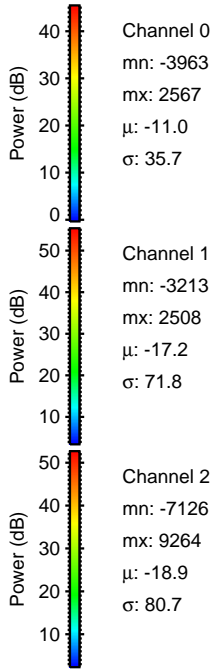
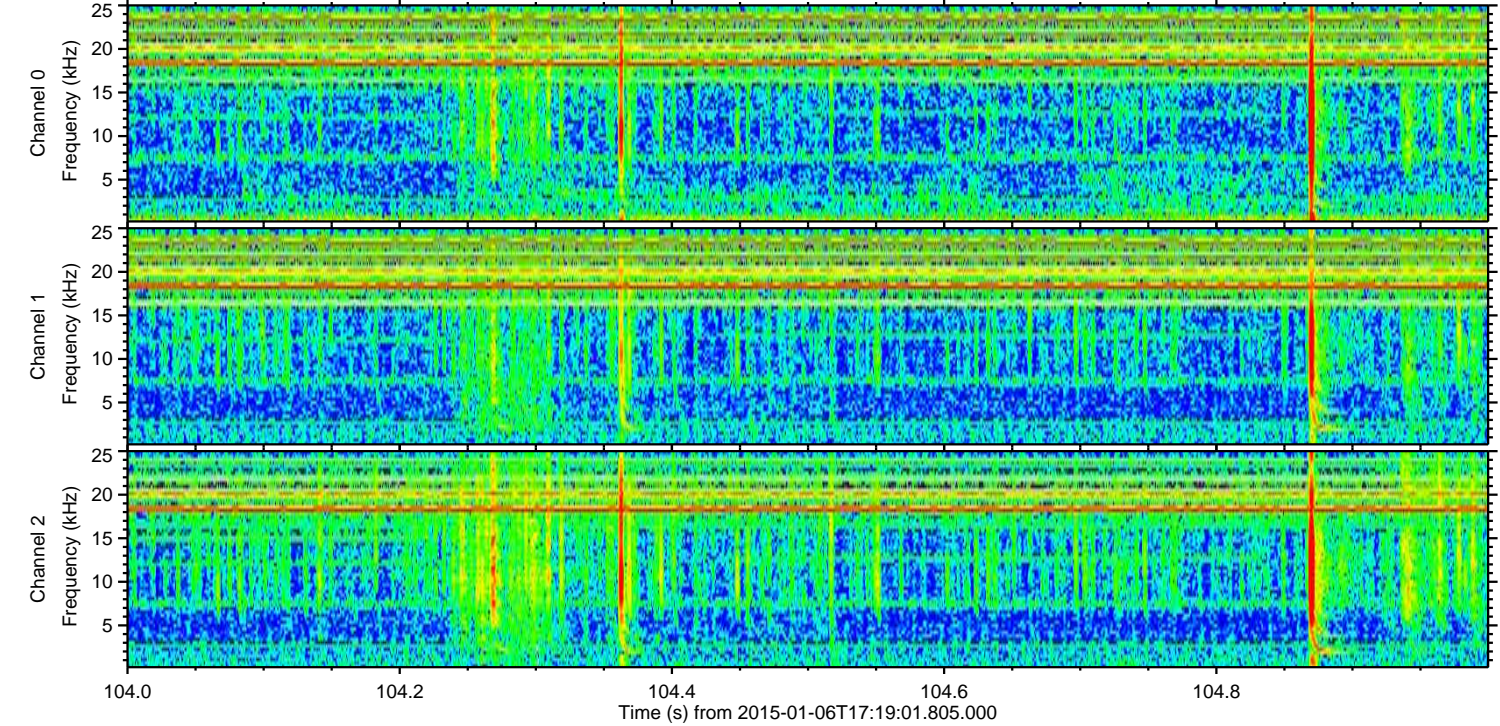
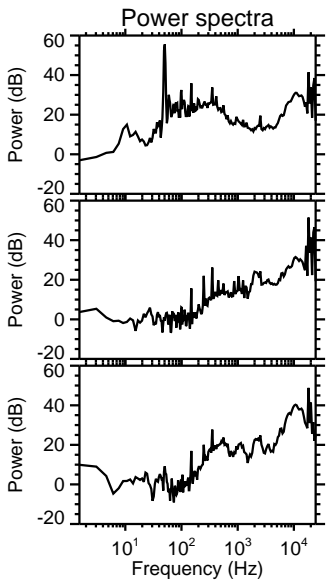
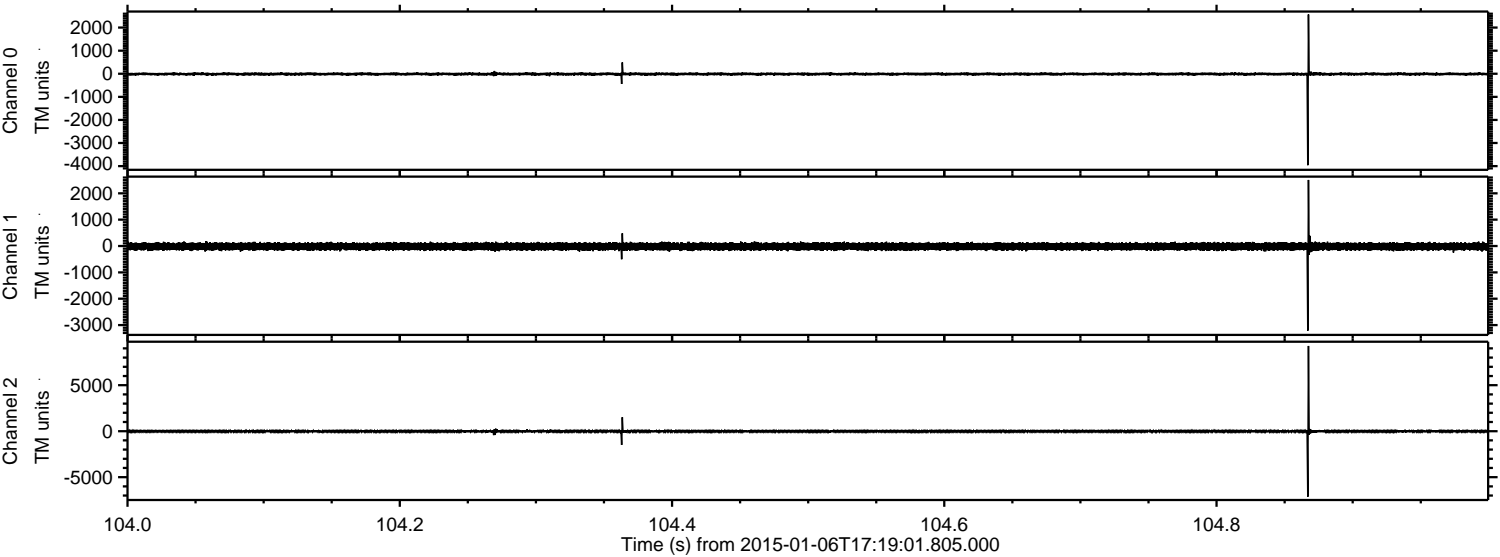
ELMAVAN 3D WAVEFORMS (Measured data sampled at 50 kHz) 49780 packets of 144 samples from 2015-01-06T17:19:01.805.000. Part 15/144

Processed Tue Jan 6 18:26:14 2015 by ELM ver.2012-10-06 from 001__elm20150106_171900__dat00.bin



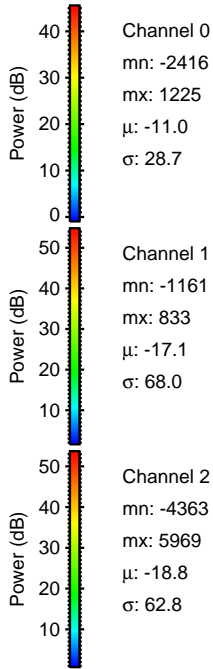
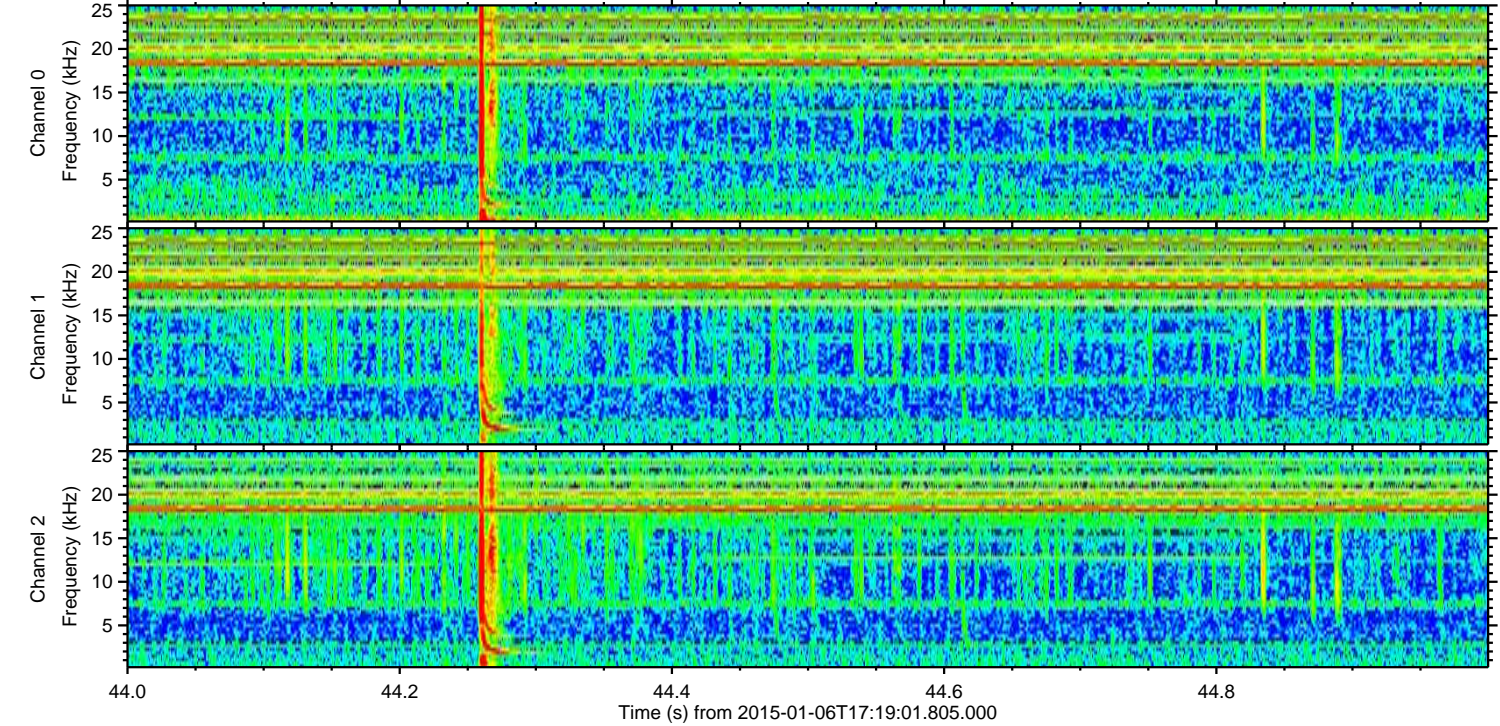
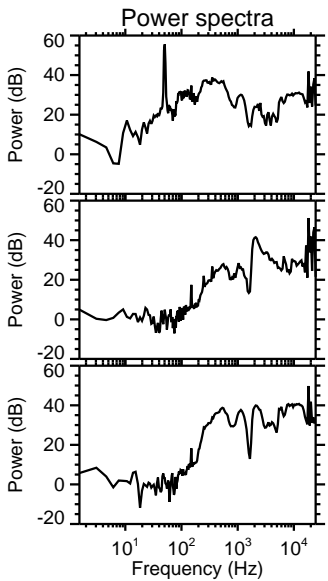
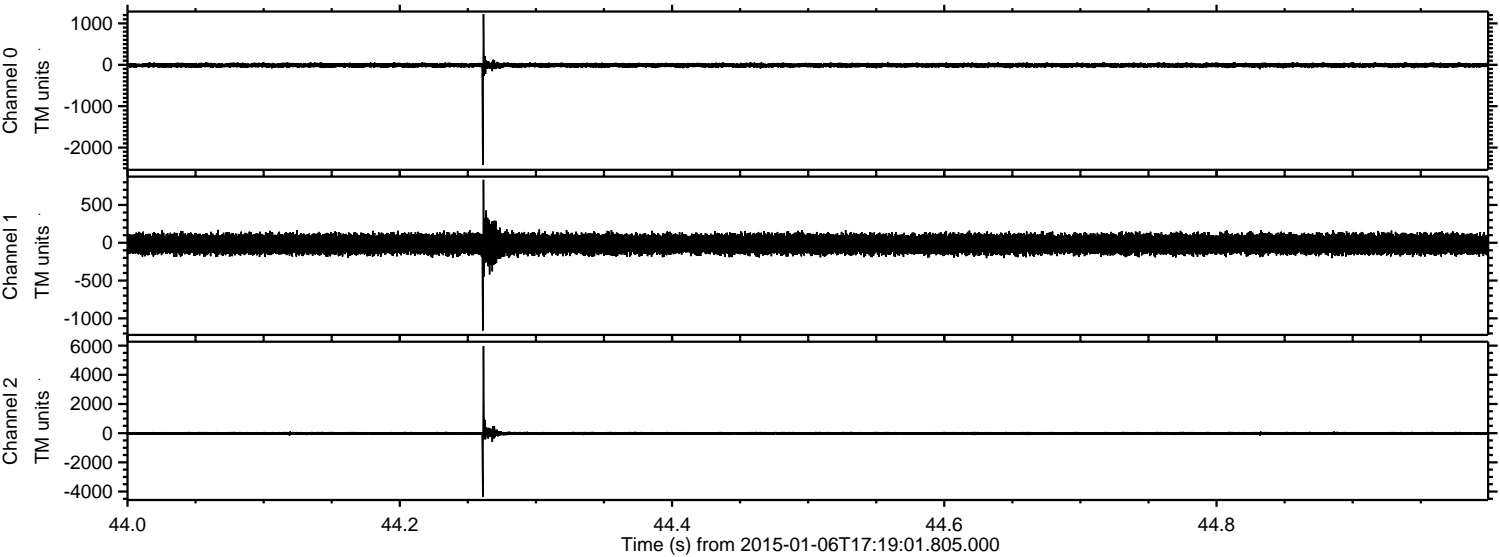
ELMAVAN 3D WAVEFORMS (Measured data sampled at 50 kHz) 49780 packets of 144 samples from 2015-01-06T17:19:01.805.000. Part 105/144

Processed Tue Jan 6 18:26:15 2015 by ELM ver.2012-10-06 from 001__elm20150106_171900__dat00.bin



ELMAVAN 3D WAVEFORMS (Measured data sampled at 50 kHz) 49780 packets of 144 samples from 2015-01-06T17:19:01.805.000. Part 45/144

Processed Tue Jan 6 18:26:16 2015 by ELM ver.2012-10-06 from 001__elm20150106_171900__dat00.bin

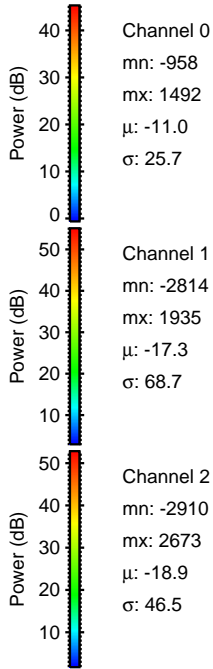
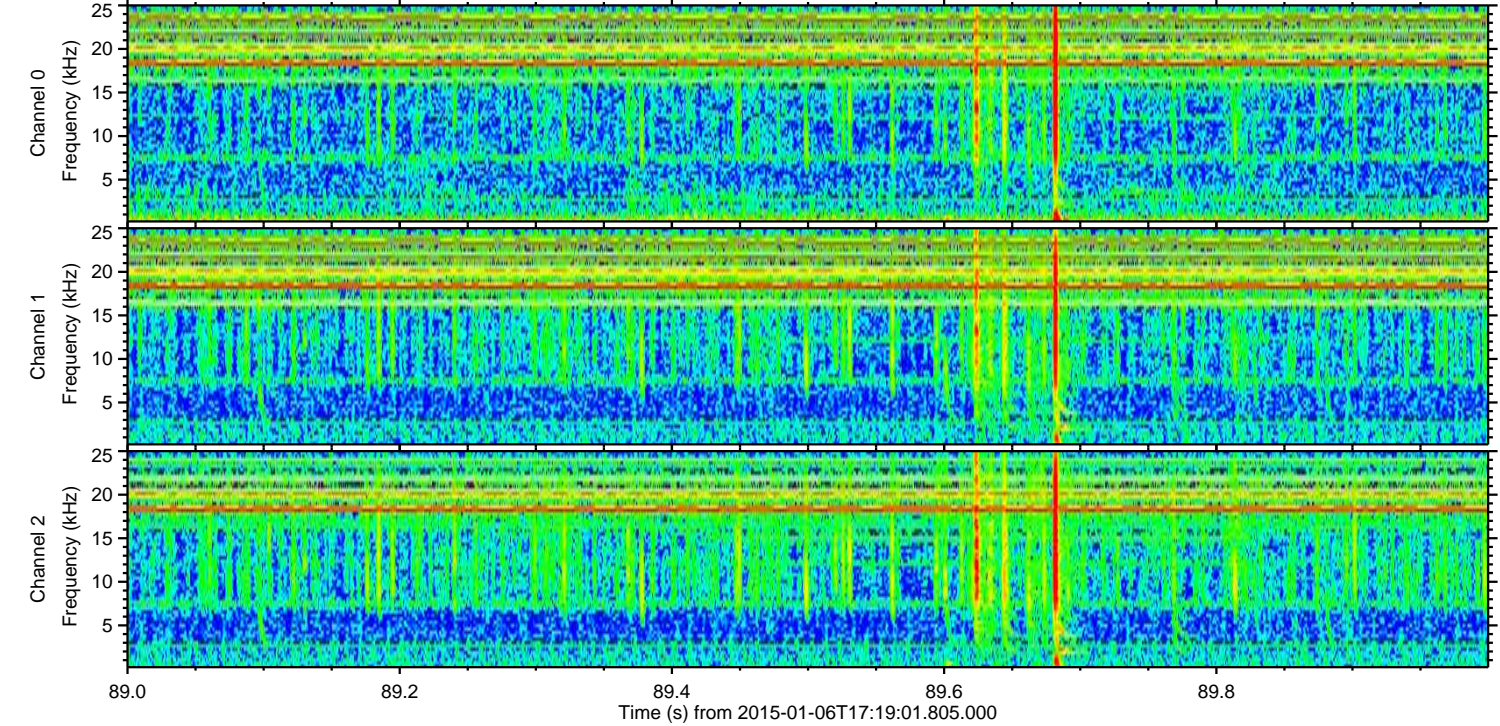
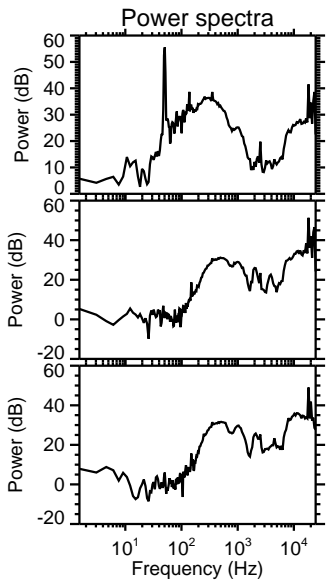
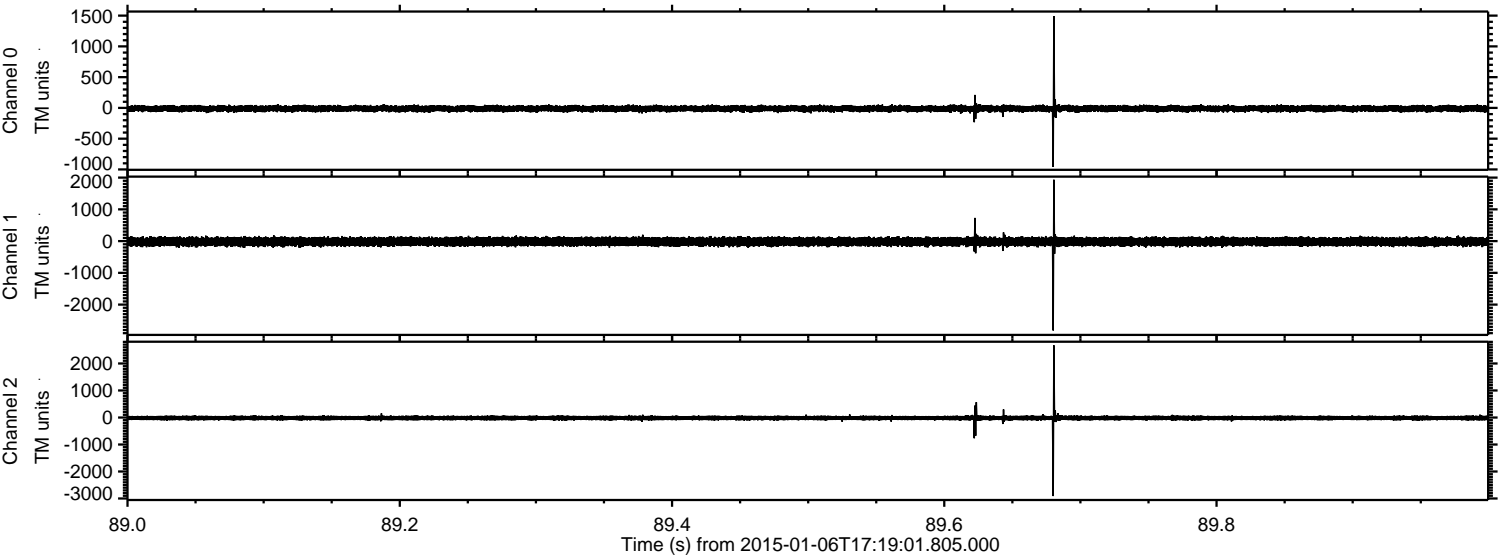


Channel 0
mn: -2416
mx: 1225
 μ : -11.0
 σ : 28.7

Channel 1
mn: -1161
mx: 833
 μ : -17.1
 σ : 68.0

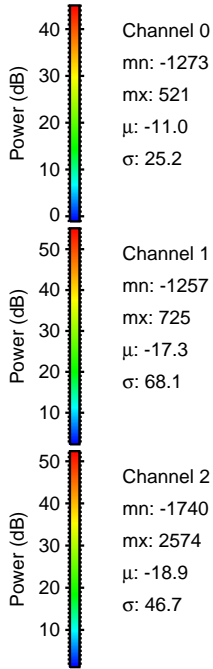
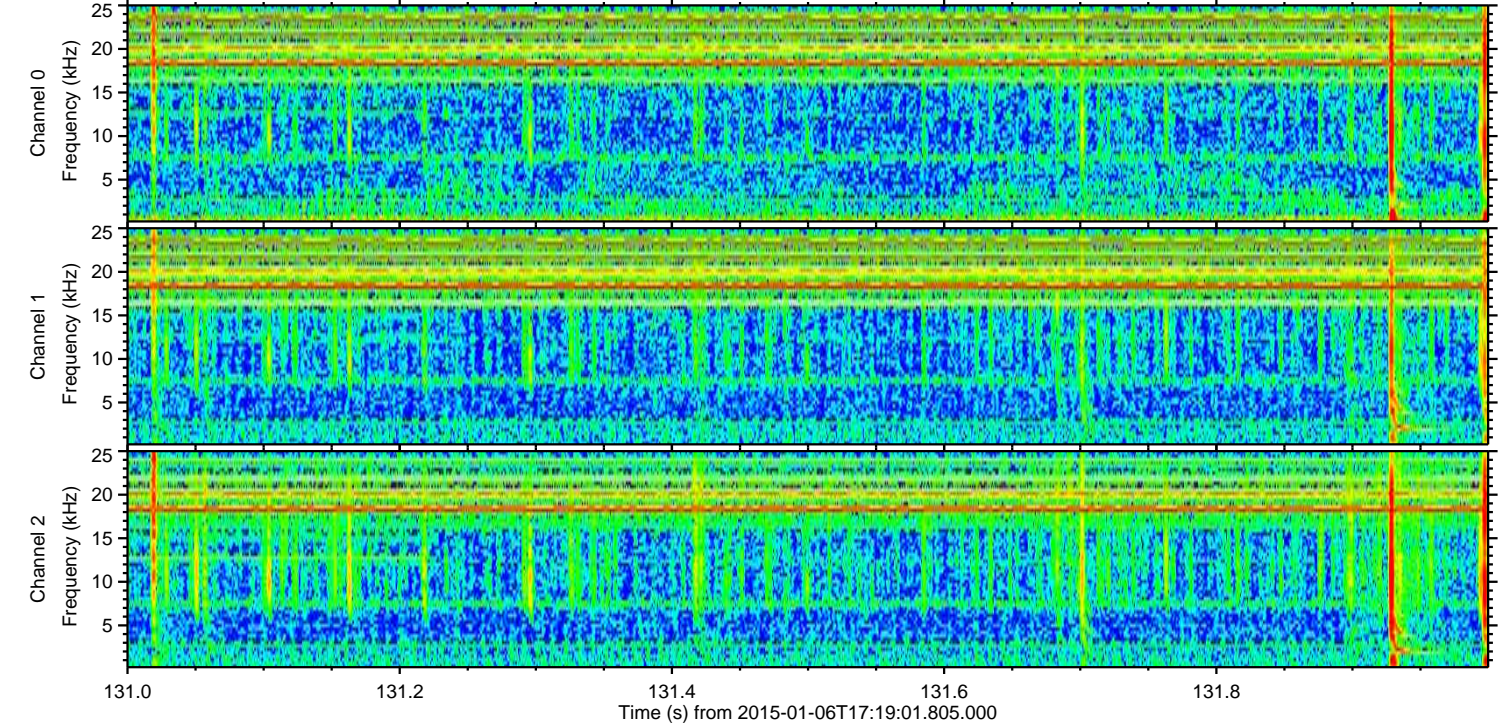
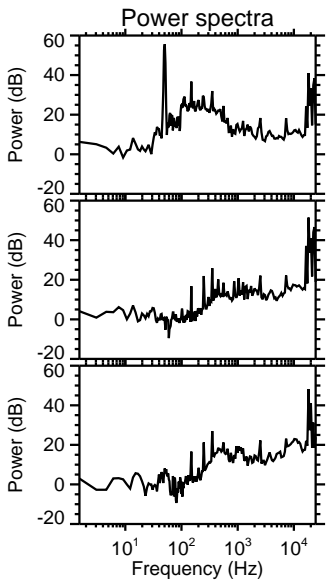
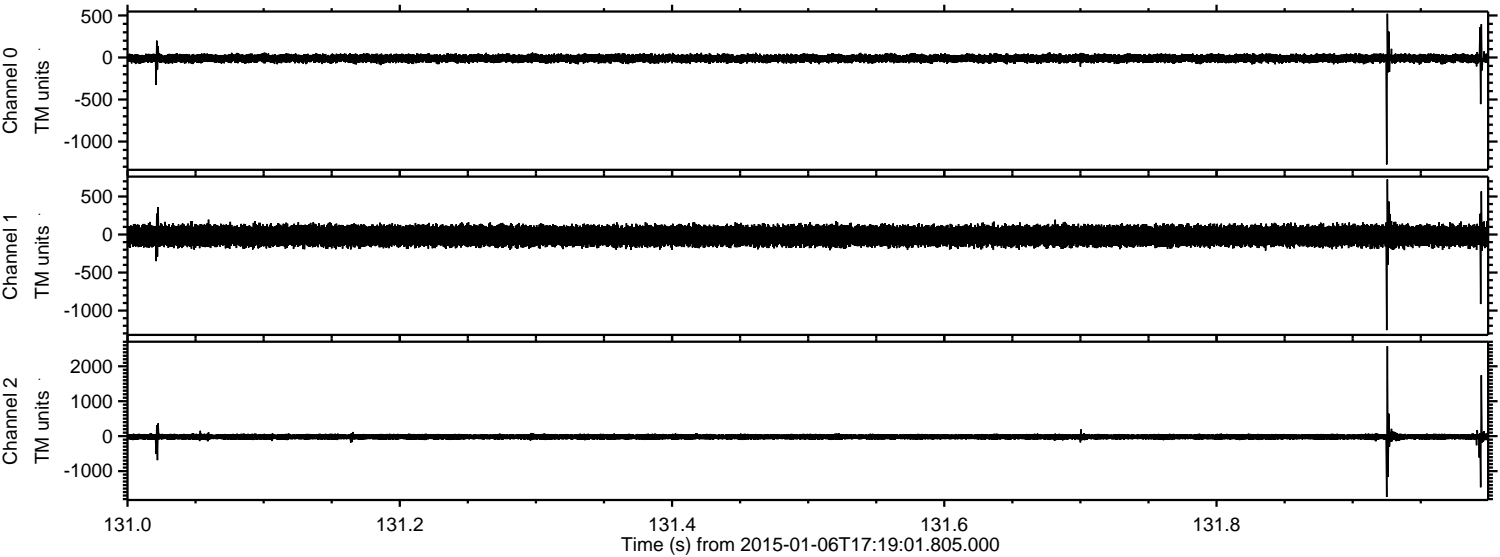
Channel 2
mn: -4363
mx: 5969
 μ : -18.8
 σ : 62.8

Processed Tue Jan 6 18:26:17 2015 by ELM ver.2012-10-06 from 001__elm20150106_171900__dat00.bin



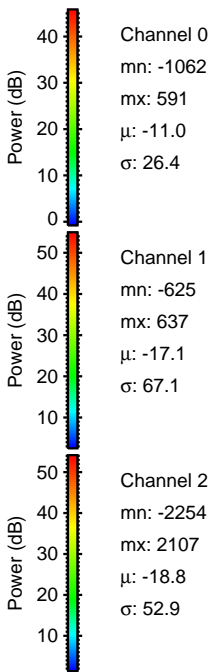
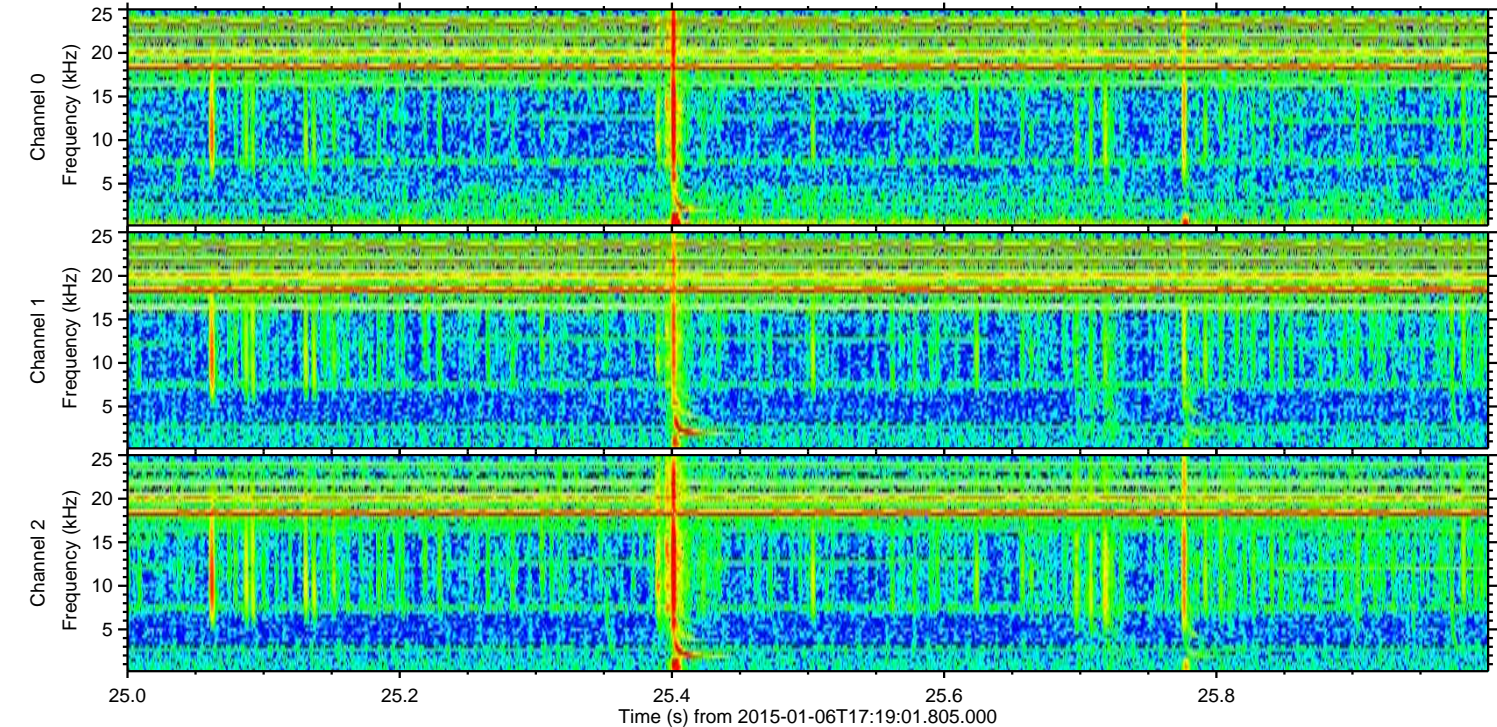
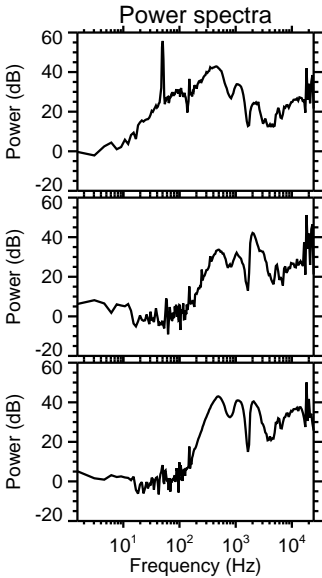
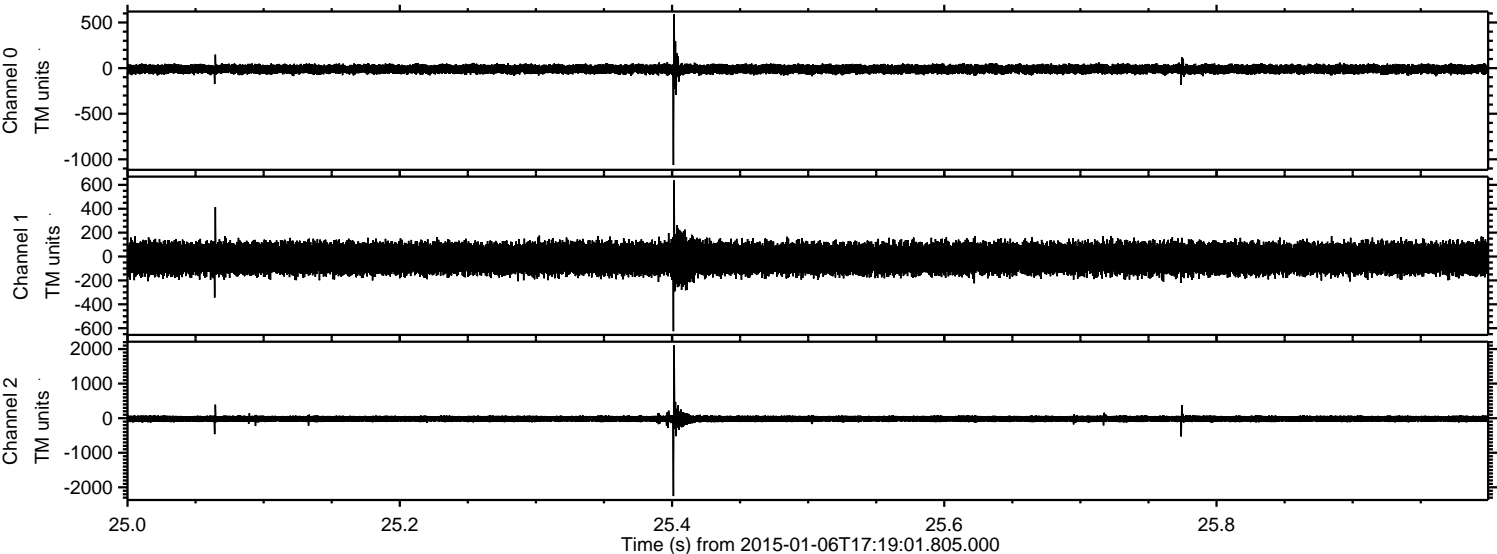
ELMAVAN 3D WAVEFORMS (Measured data sampled at 50 kHz) 49780 packets of 144 samples from 2015-01-06T17:19:01.805.000. Part 132/144

Processed Tue Jan 6 18:26:18 2015 by ELM ver.2012-10-06 from 001__elm20150106_171900__dat00.bin

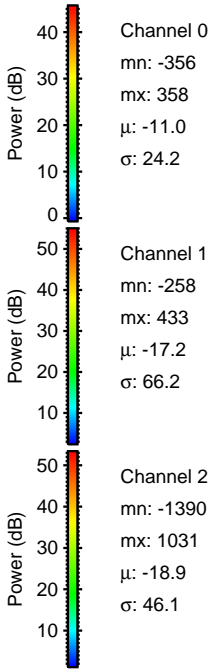
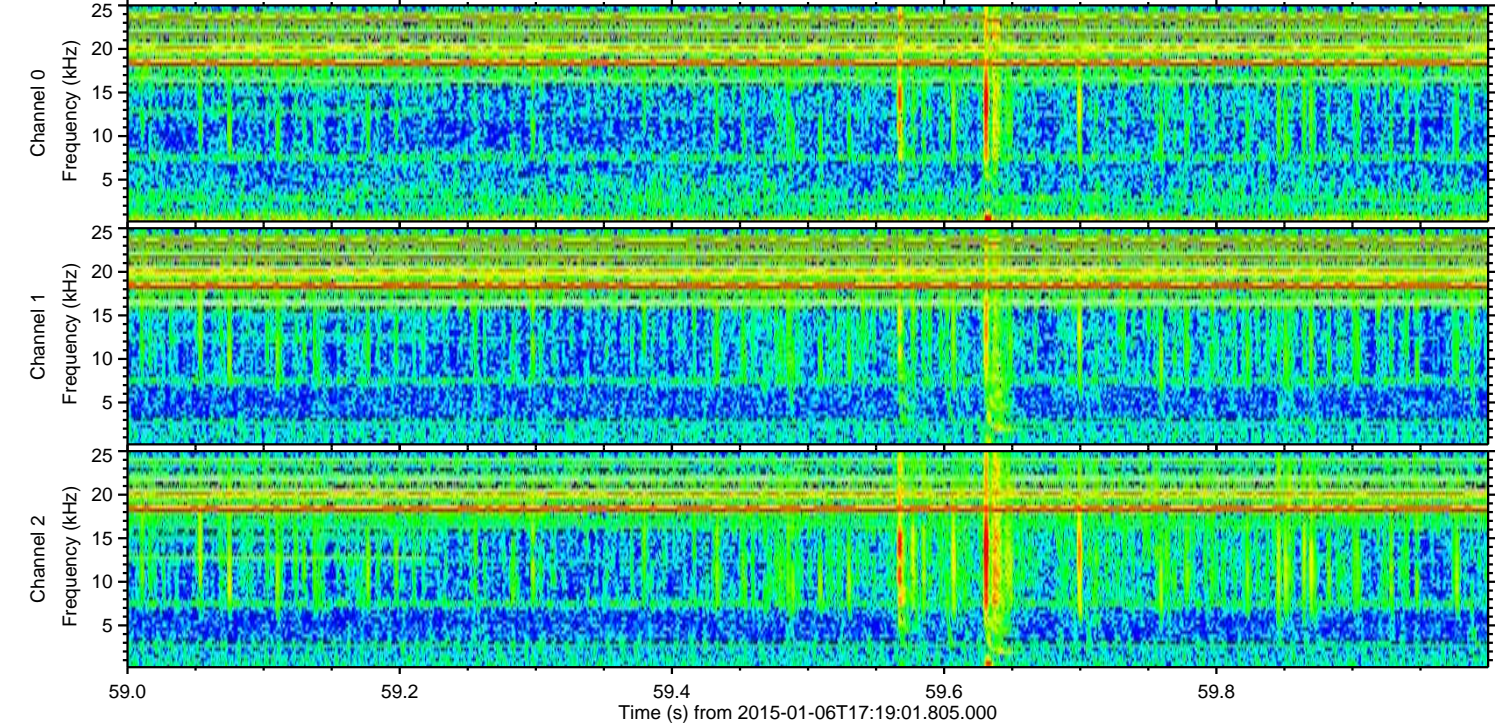
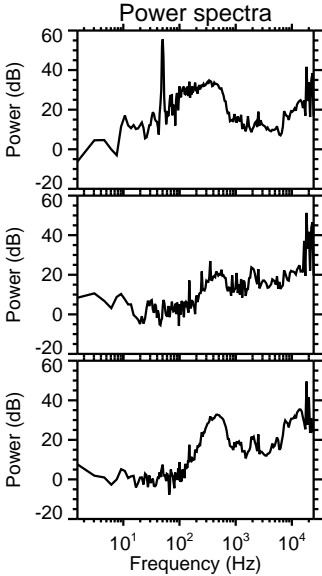
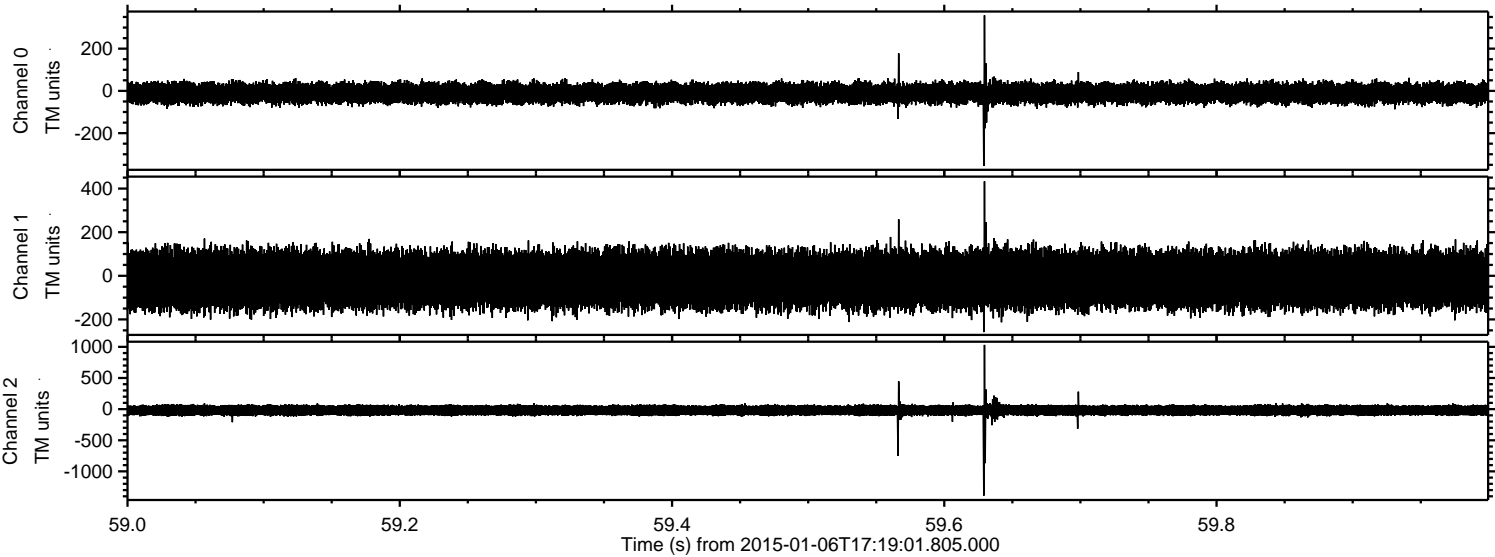


ELMAVAN 3D WAVEFORMS (Measured data sampled at 50 kHz) 49780 packets of 144 samples from 2015-01-06T17:19:01.805.000. Part 26/144

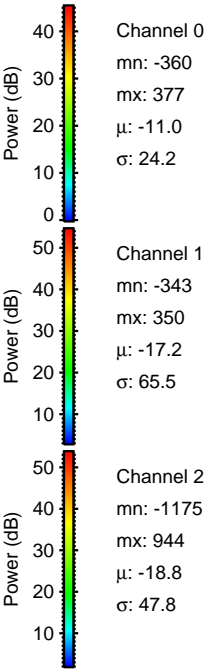
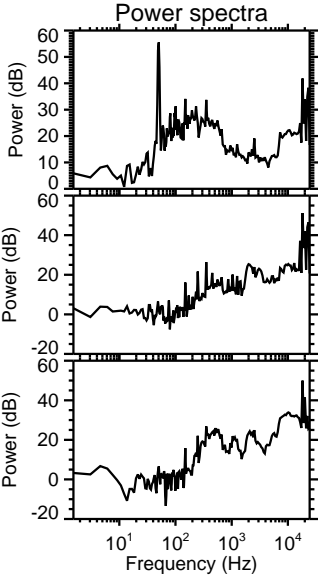
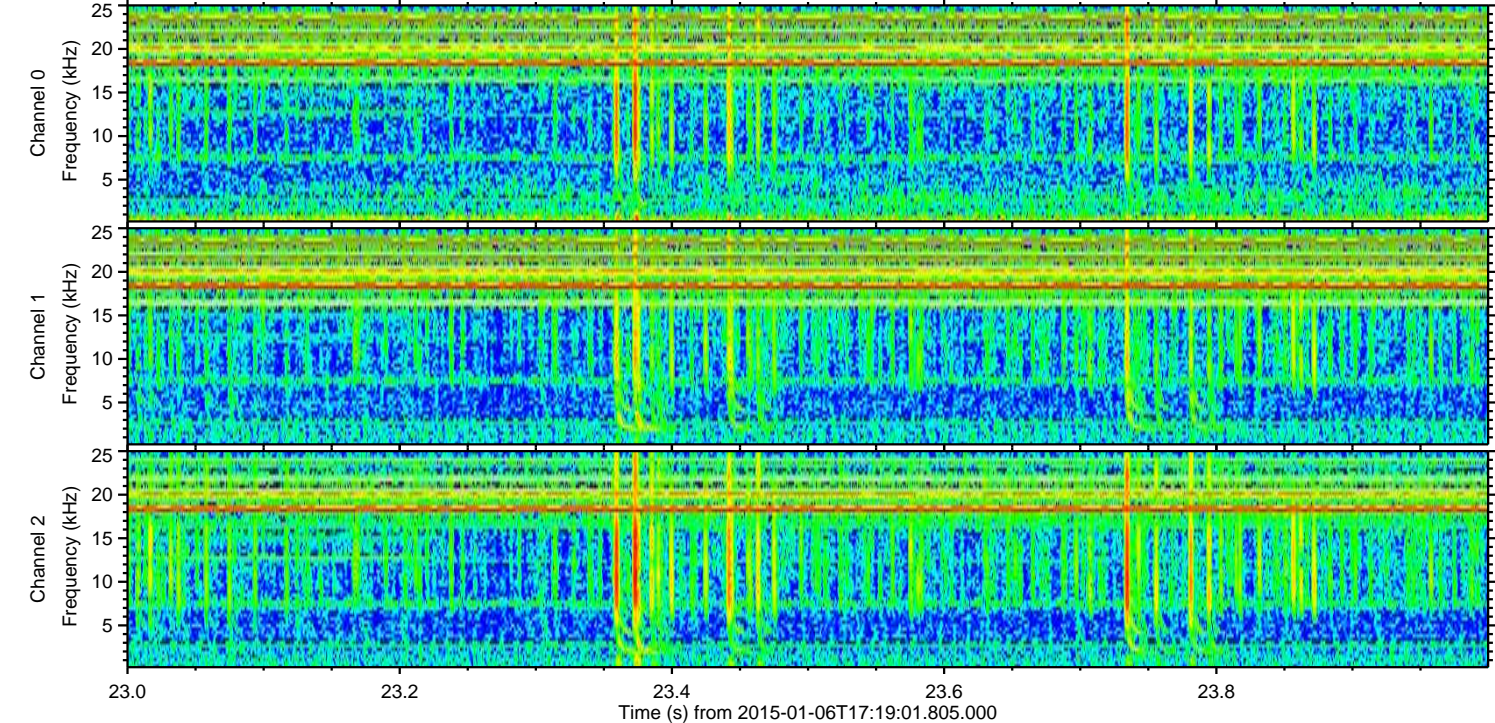
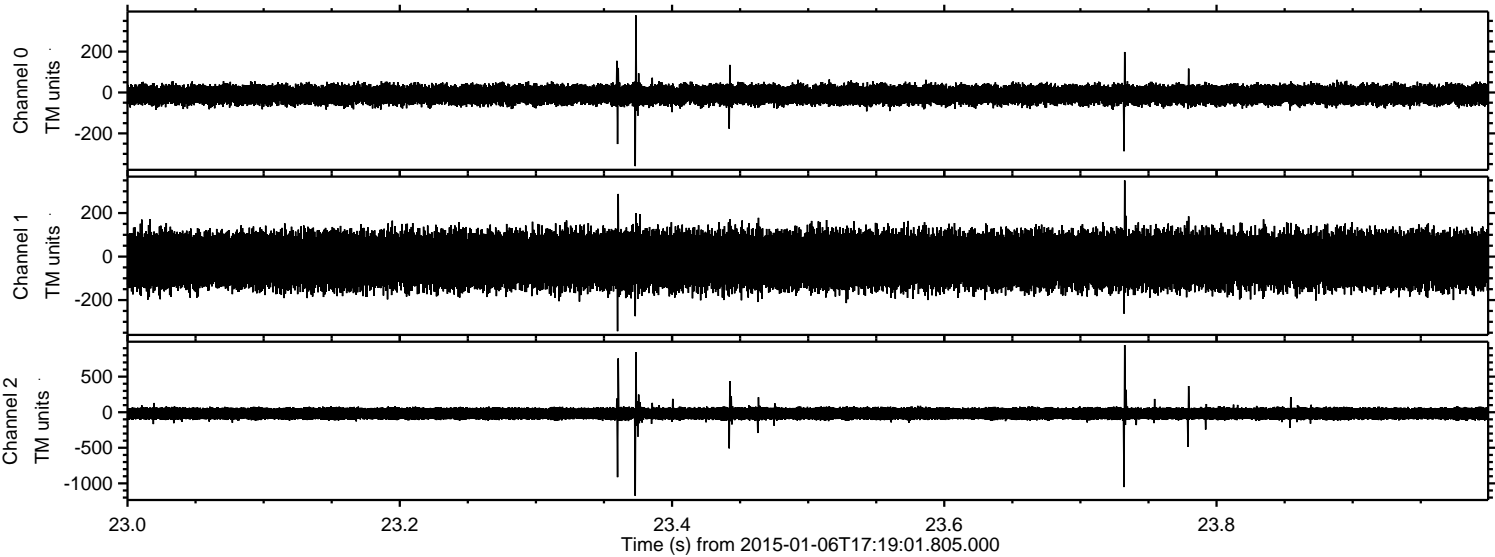
Processed Tue Jan 6 18:26:19 2015 by ELM ver.2012-10-06 from 001__elm20150106_171900__dat00.bin



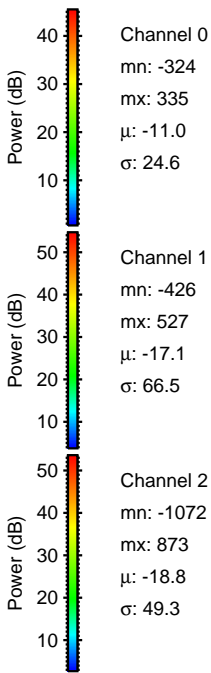
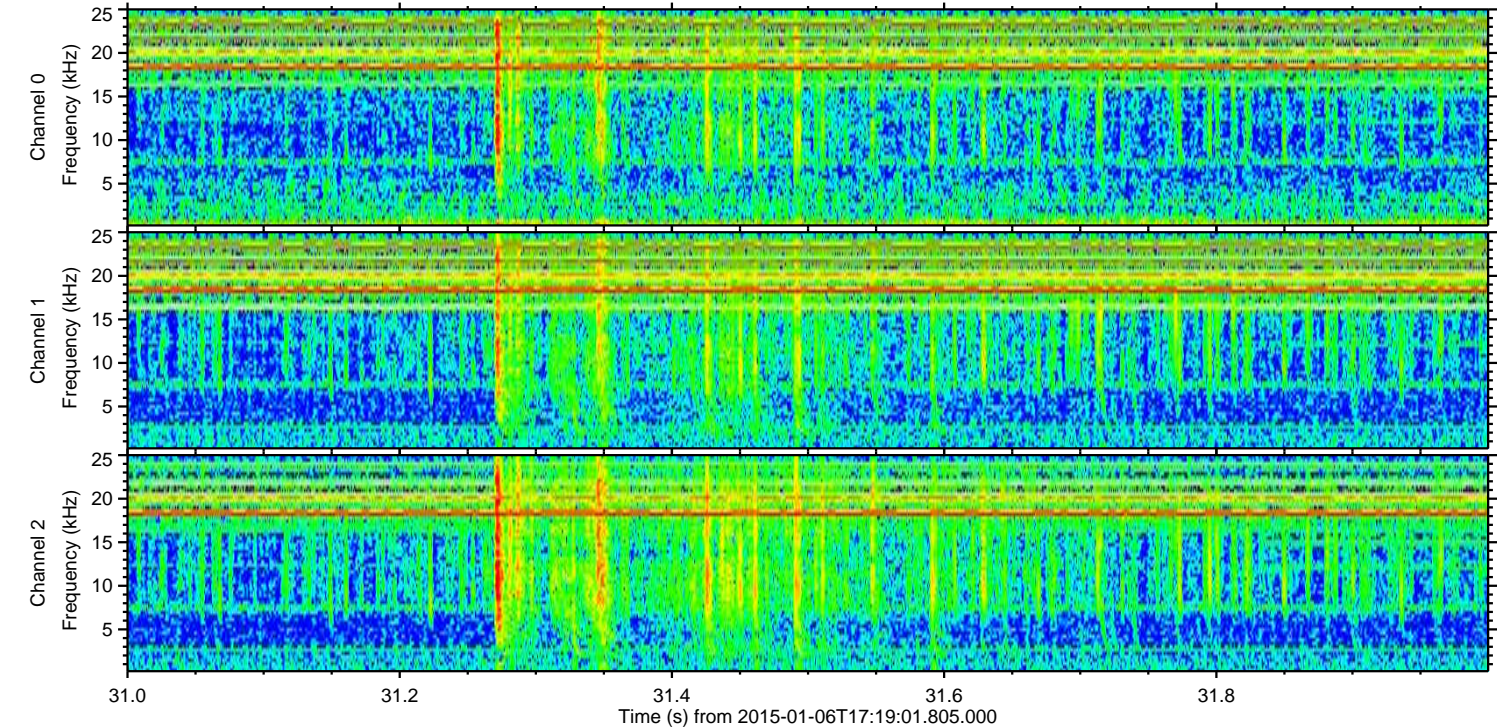
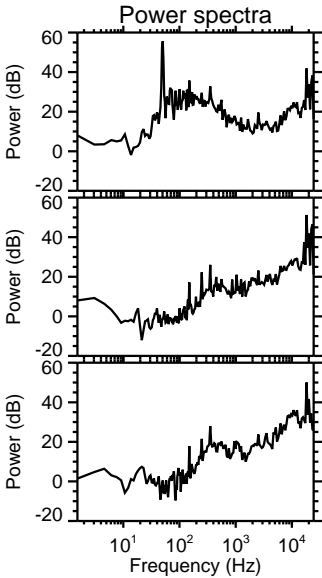
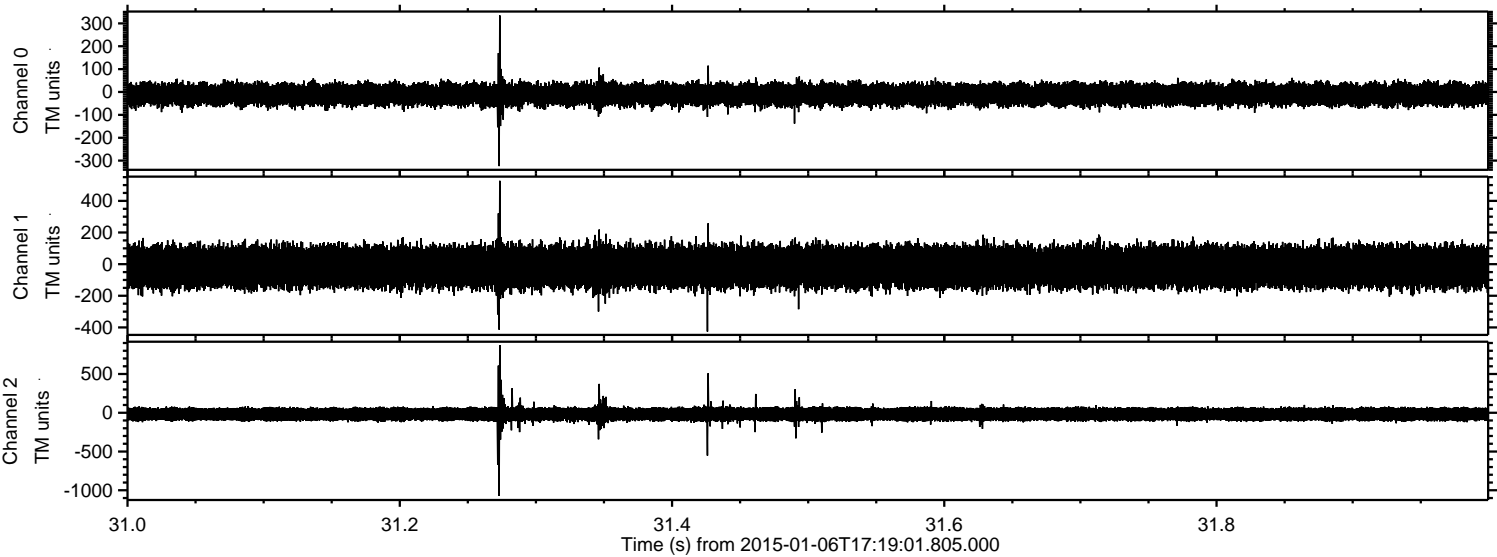
Processed Tue Jan 6 18:26:20 2015 by ELM ver.2012-10-06 from 001__elm20150106_171900__dat00.bin



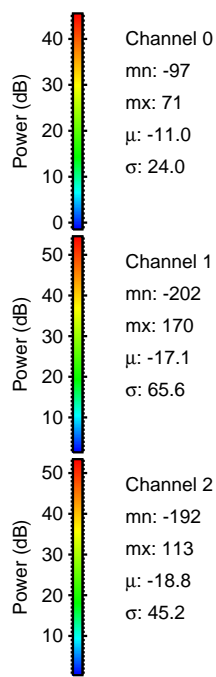
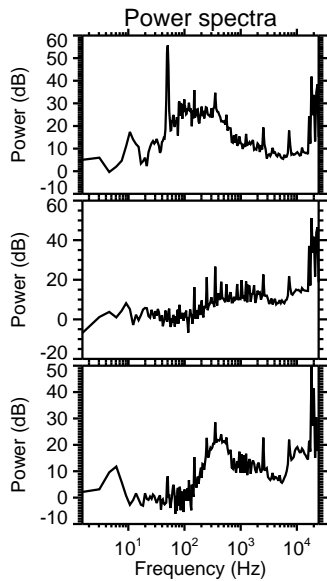
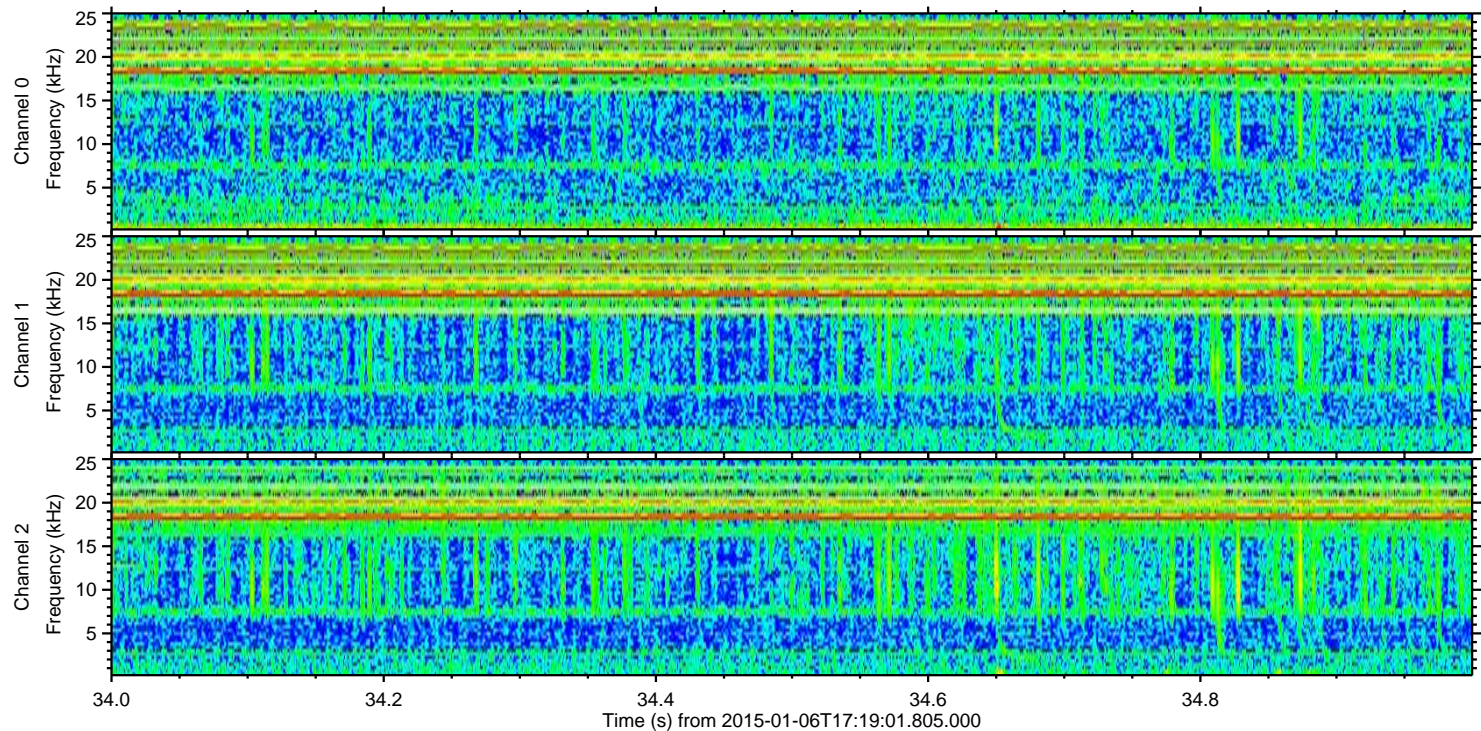
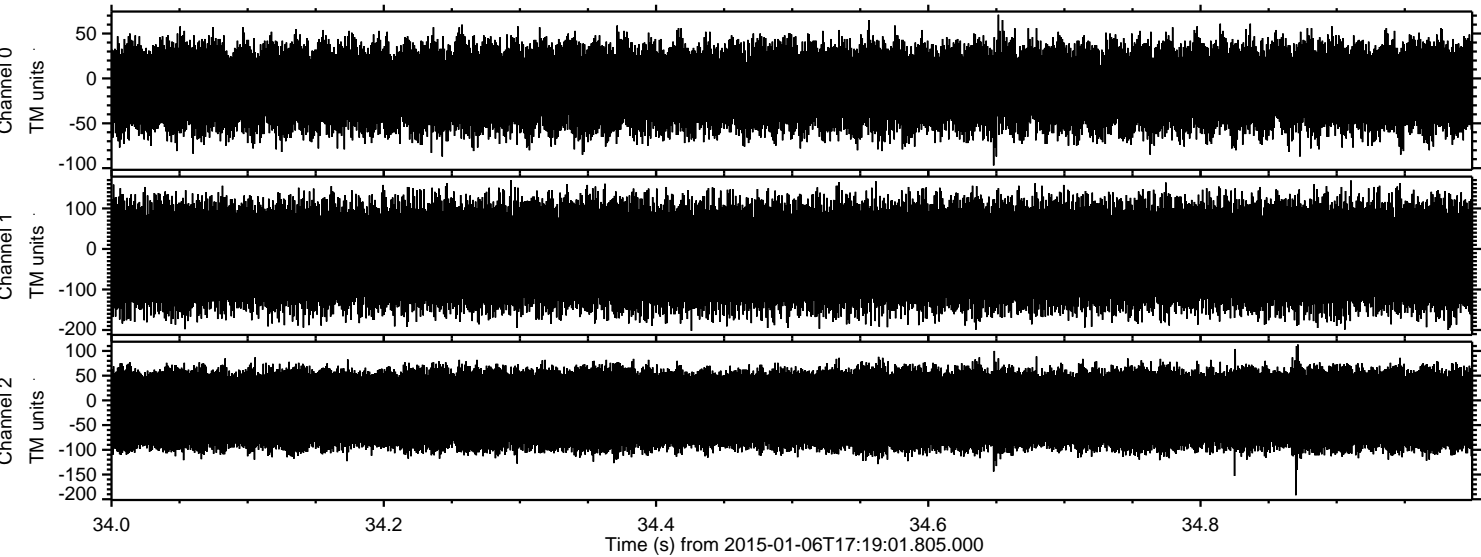
Processed Tue Jan 6 18:26:21 2015 by ELM ver.2012-10-06 from 001__elm20150106_171900__dat00.bin



Processed Tue Jan 6 18:26:22 2015 by ELM ver.2012-10-06 from 001__elm20150106_171900__dat00.bin



Processed Tue Jan 6 18:26:23 2015 by ELM ver.2012-10-06 from 001__elm20150106_171900__dat00.bin



Power spectra

Channel 0

mn: -97
mx: 71
 μ : -11.0
 σ : 24.0

Channel 1

mn: -202
mx: 170
 μ : -17.1
 σ : 65.6

Channel 2

mn: -192
mx: 113
 μ : -18.8
 σ : 45.2