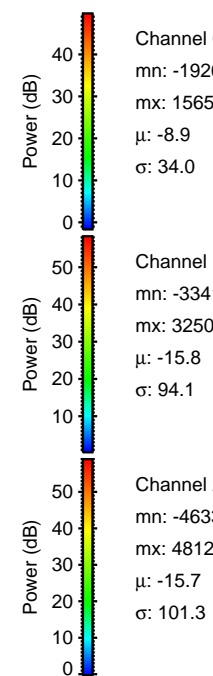
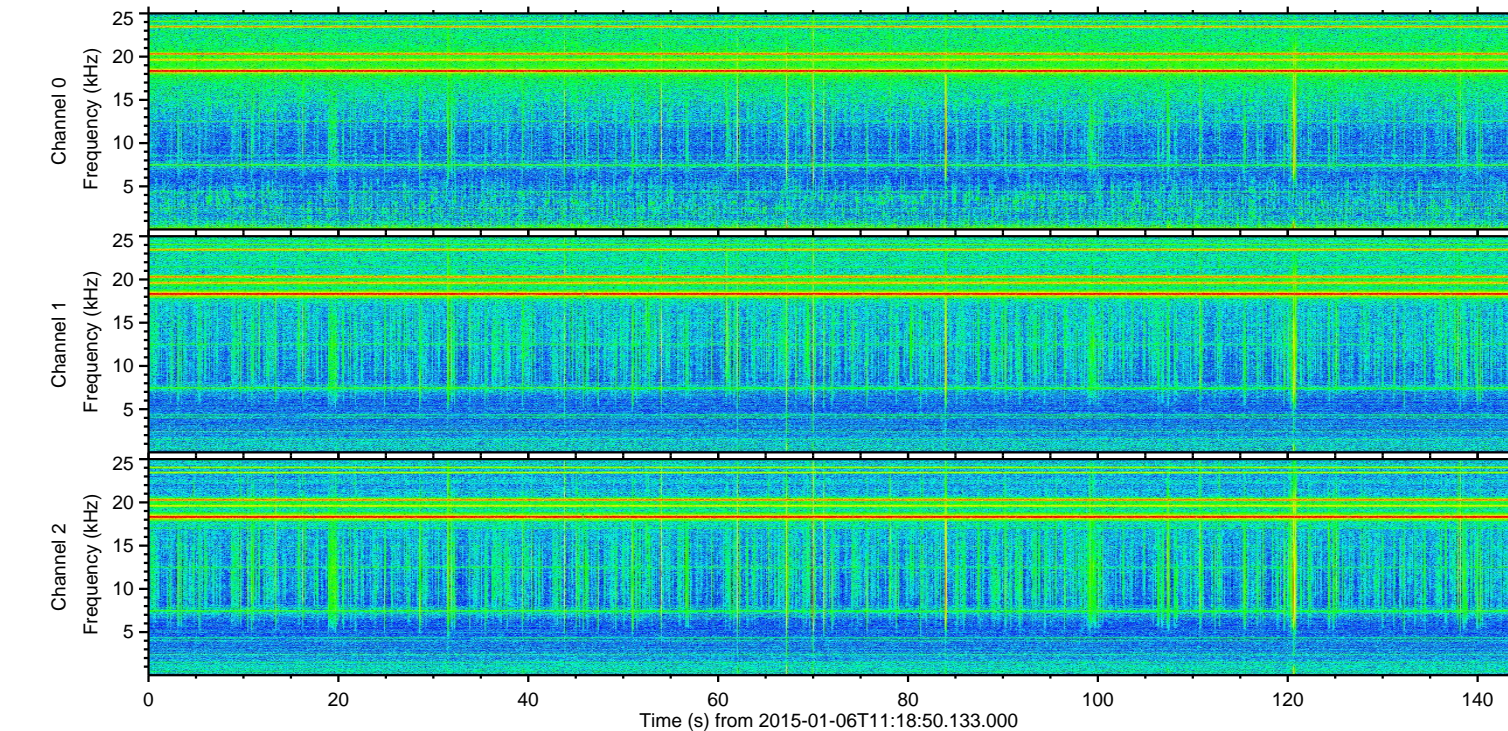
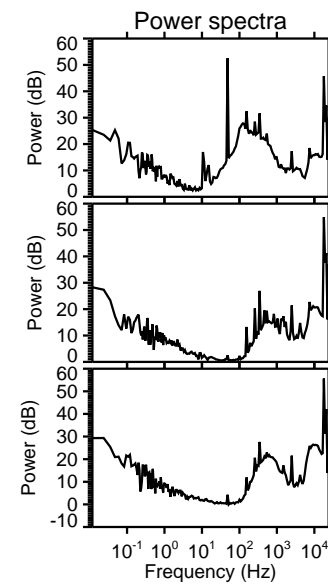
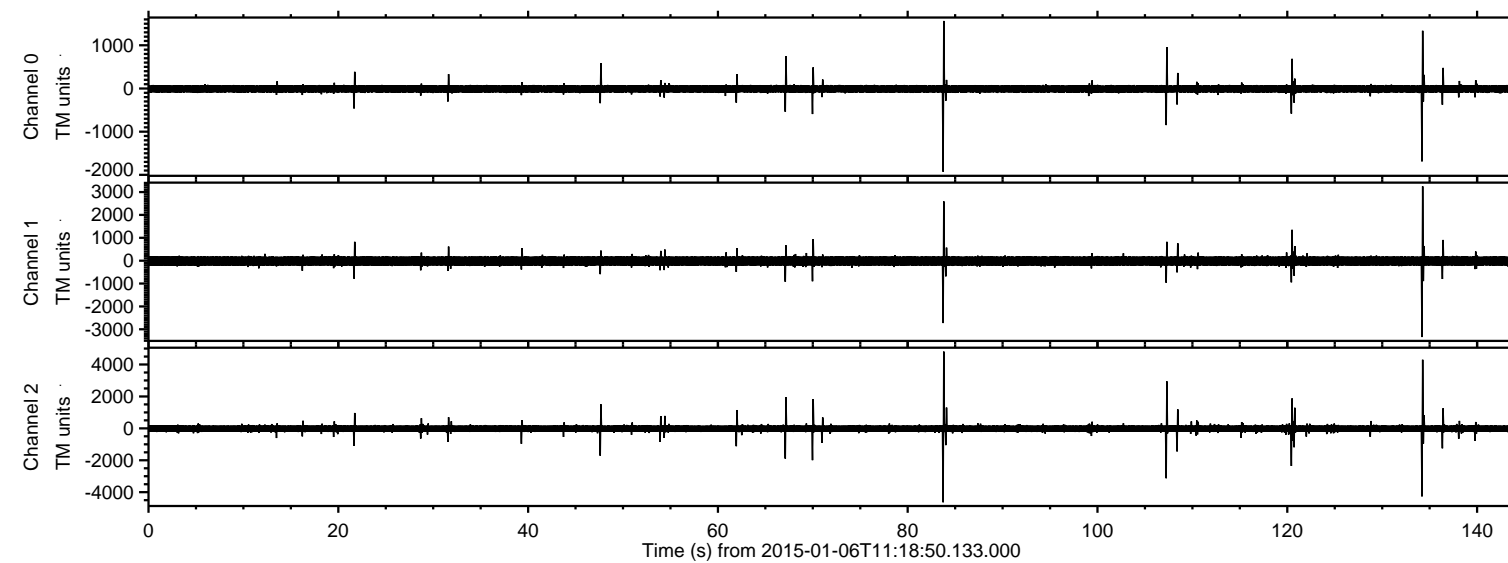
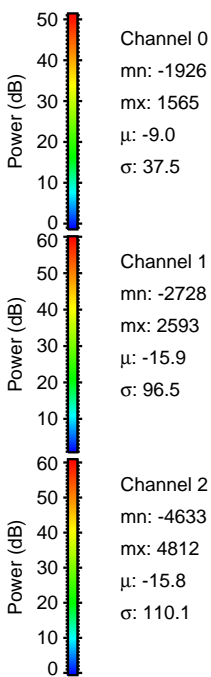
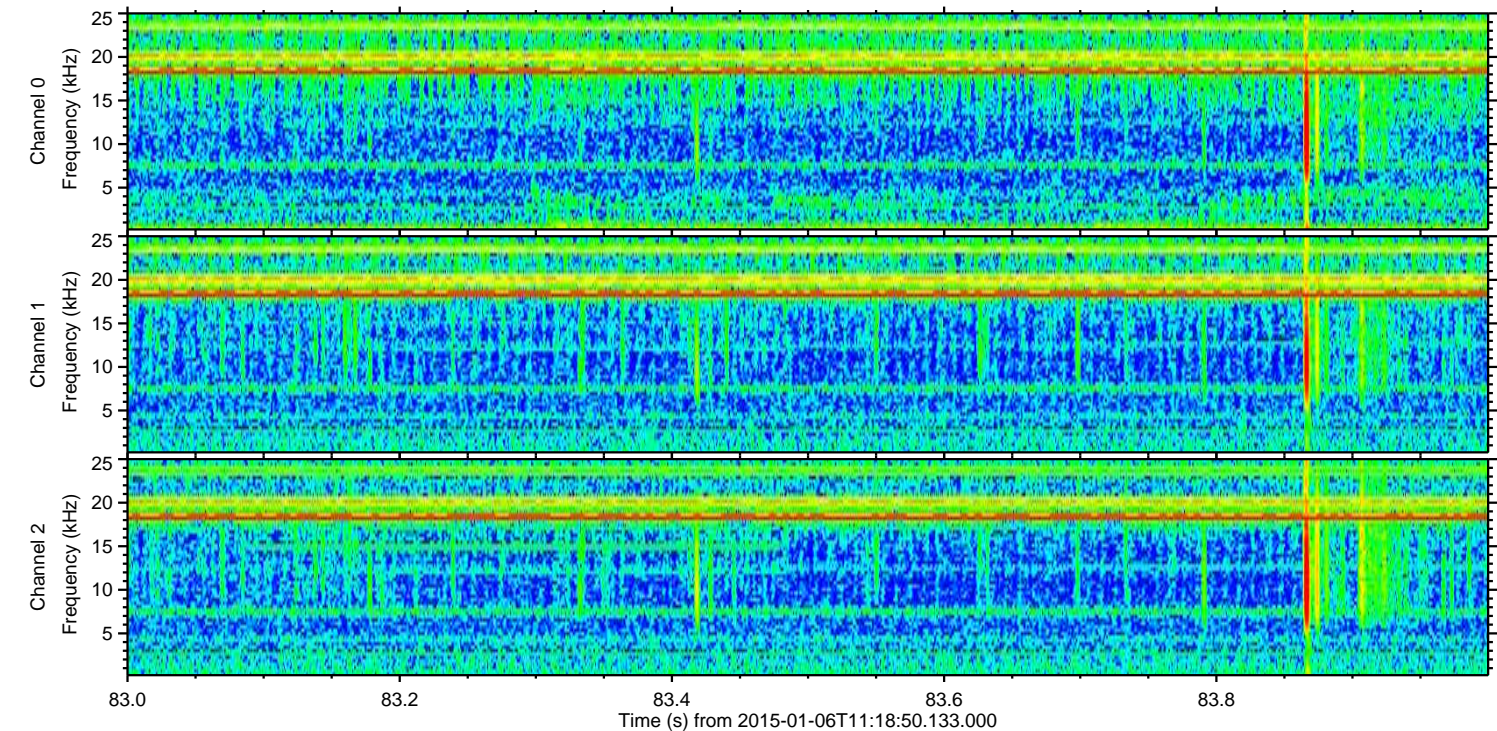
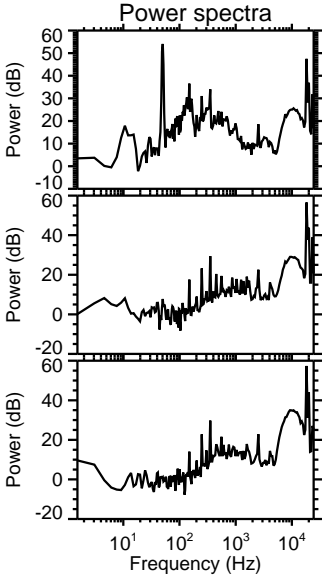
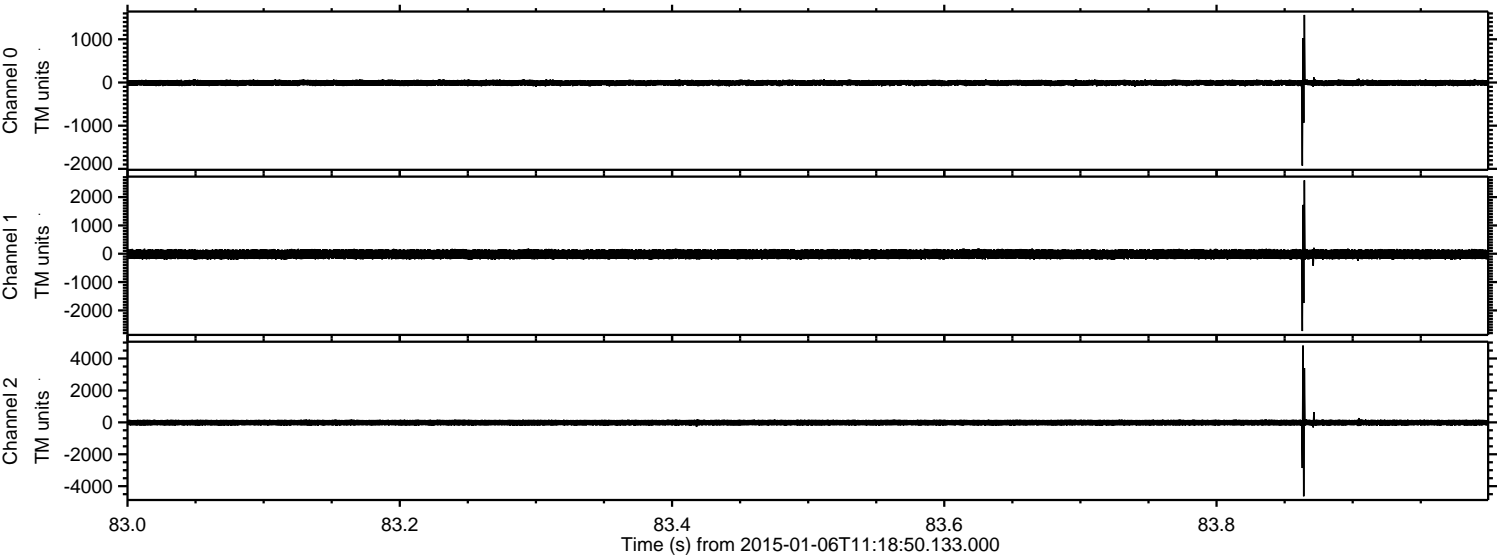


ELMAVAN 3D WAVEFORMS (Measured data sampled at 50 kHz) 49784 packets of 144 samples from 2015-01-06T11:18:50.133.000.

Processed Tue Jan 6 12:28:10 2015 by ELM ver.2012-10-06 from 001__elm20150106_111849__dat00.bin



Processed Tue Jan 6 12:28:21 2015 by ELM ver.2012-10-06 from 001__elm20150106_111849__dat00.bin



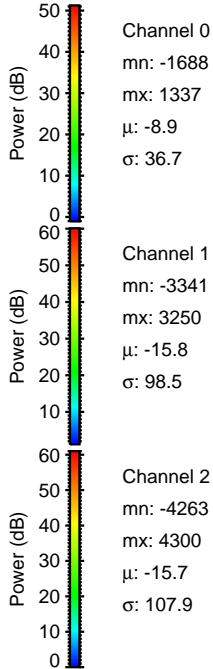
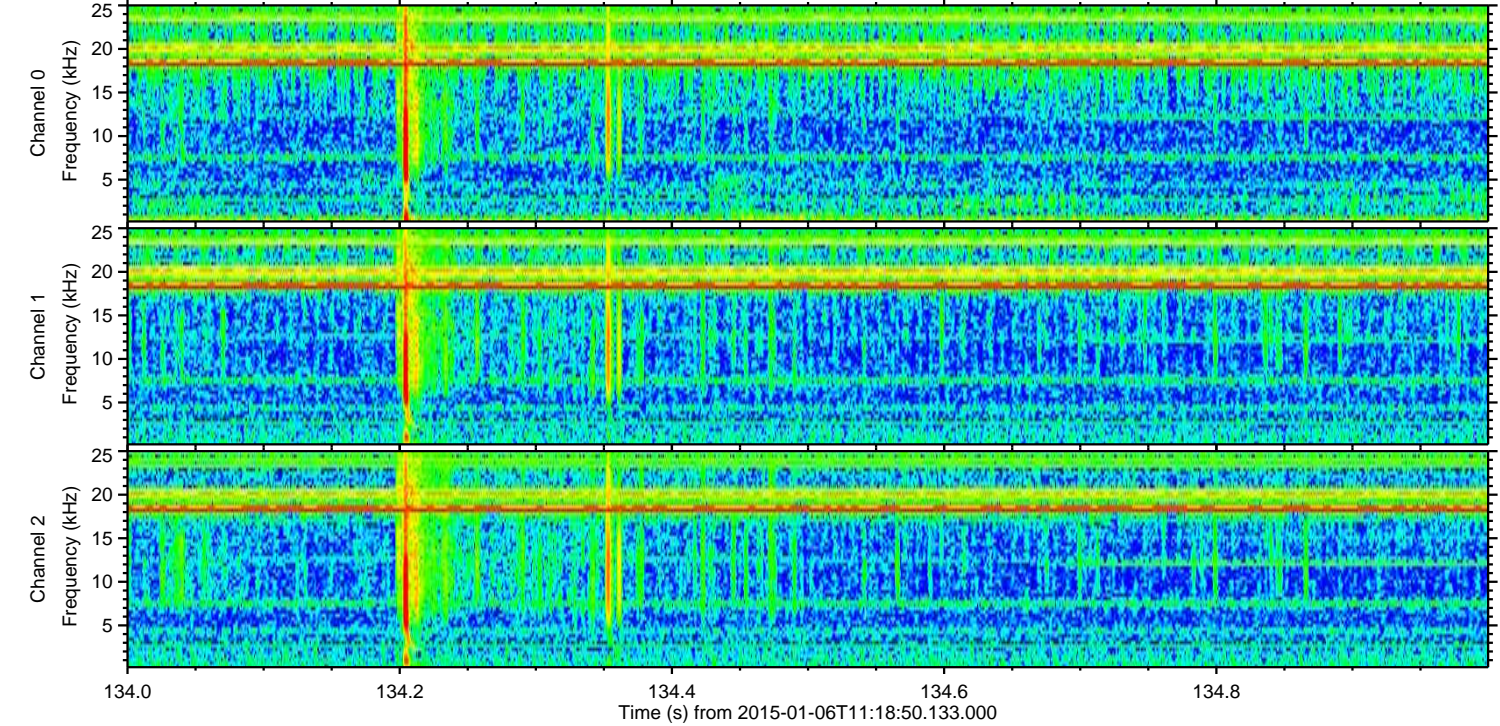
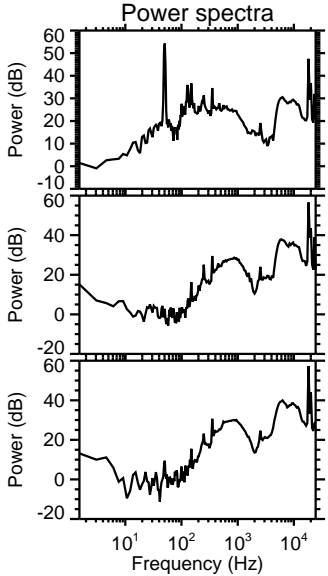
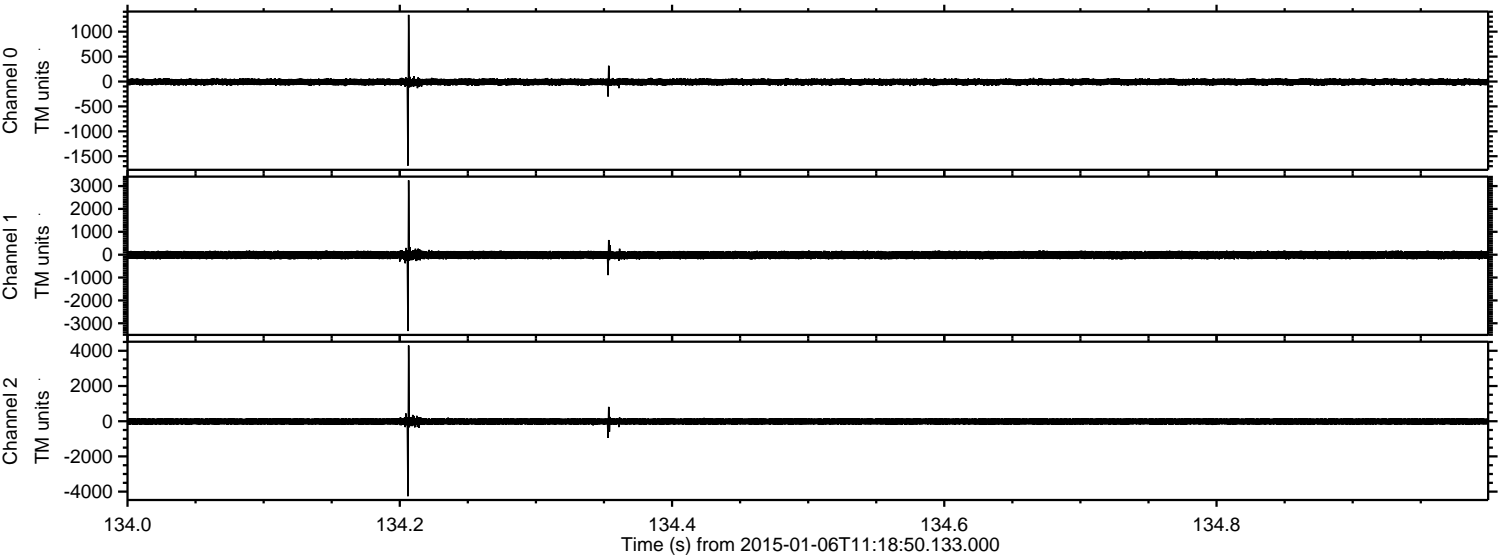
Channel 0
mn: -1926
mx: 1565
 μ : -9.0
 σ : 37.5

Channel 1
mn: -2728
mx: 2593
 μ : -15.9
 σ : 96.5

Channel 2
mn: -4633
mx: 4812
 μ : -15.8
 σ : 110.1

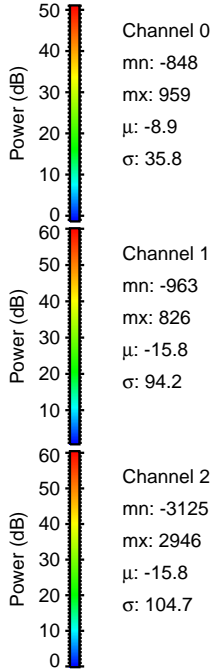
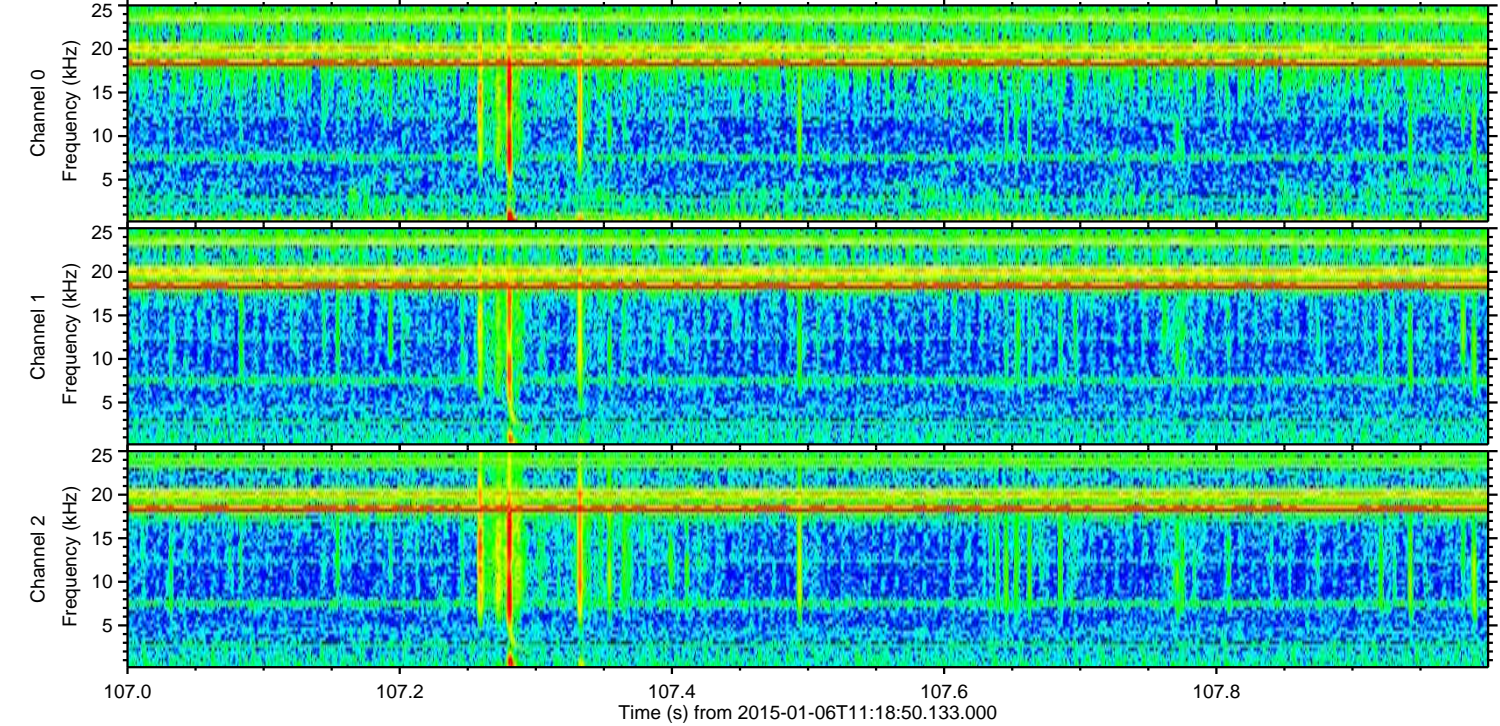
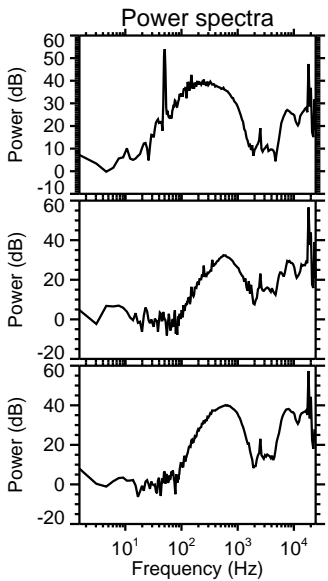
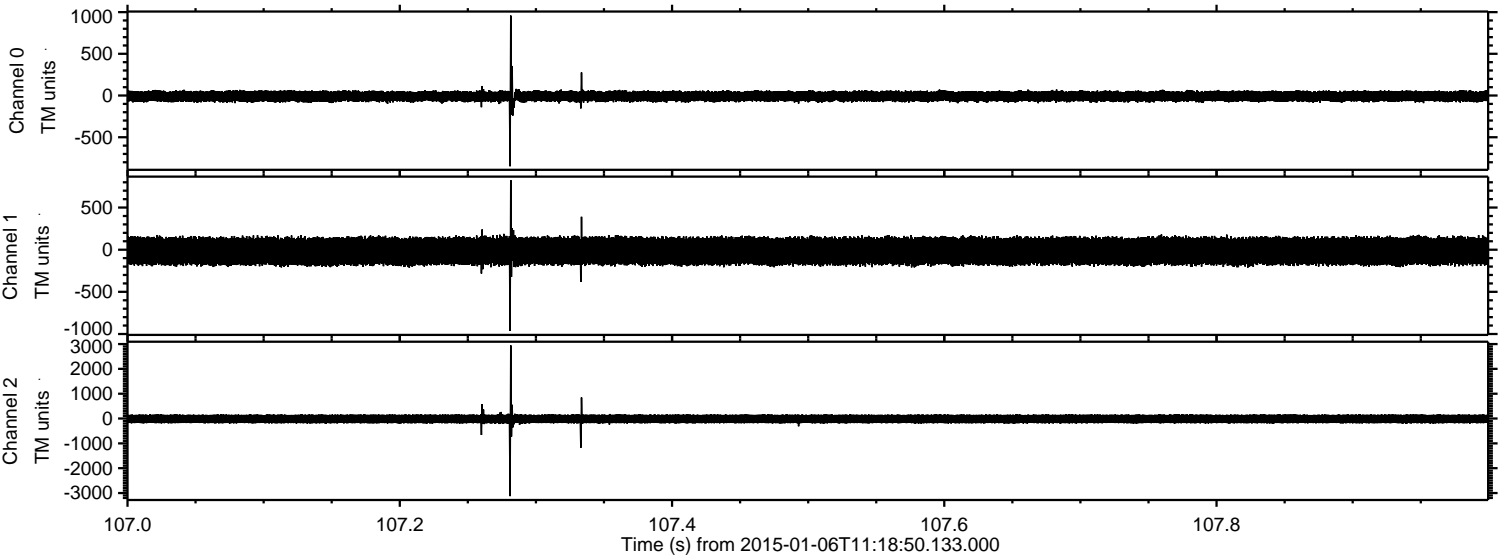
ELMAVAN 3D WAVEFORMS (Measured data sampled at 50 kHz) 49784 packets of 144 samples from 2015-01-06T11:18:50.133.000. Part 135/144

Processed Tue Jan 6 12:28:22 2015 by ELM ver.2012-10-06 from 001__elm20150106_111849__dat00.bin

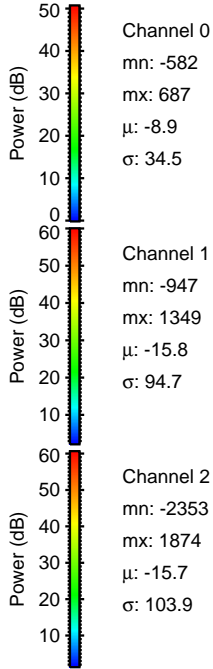
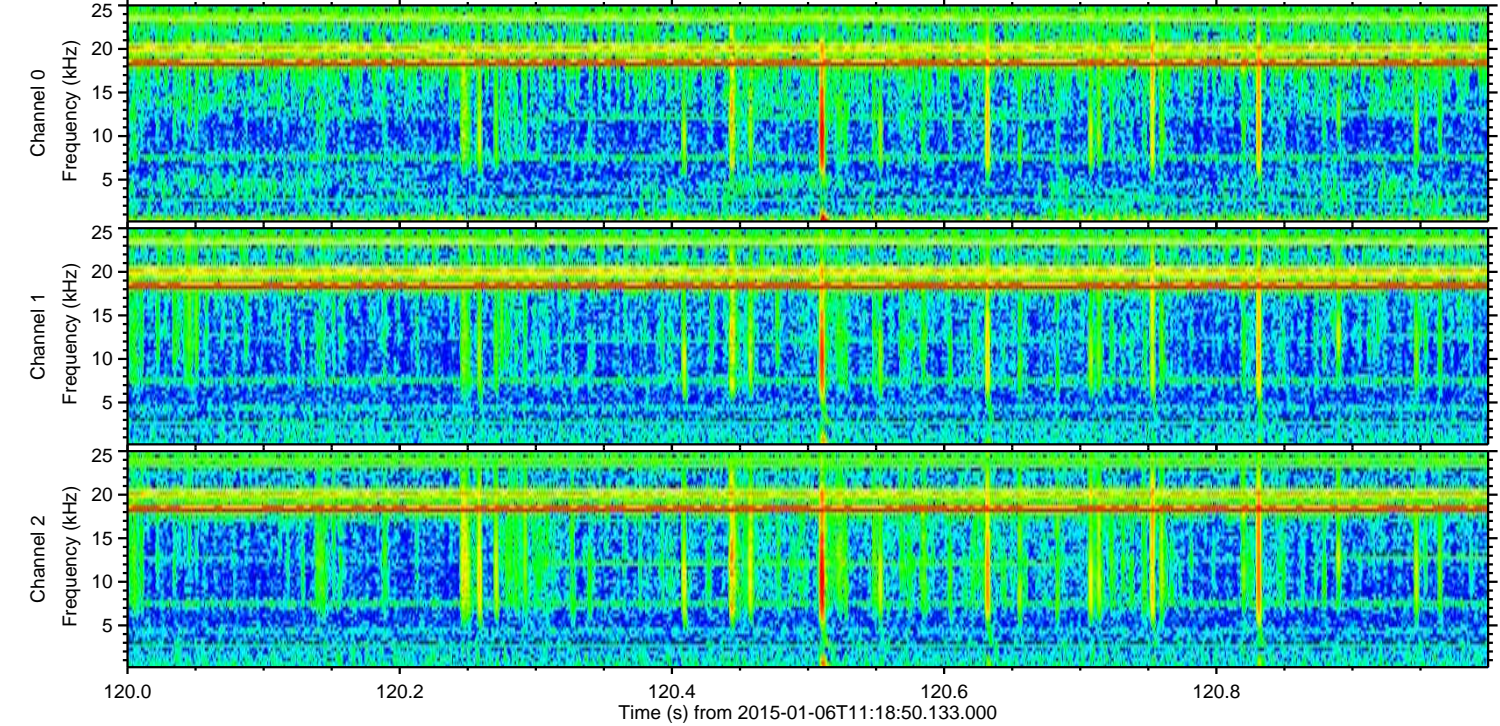
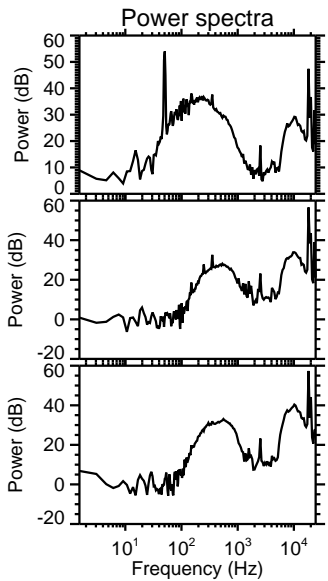
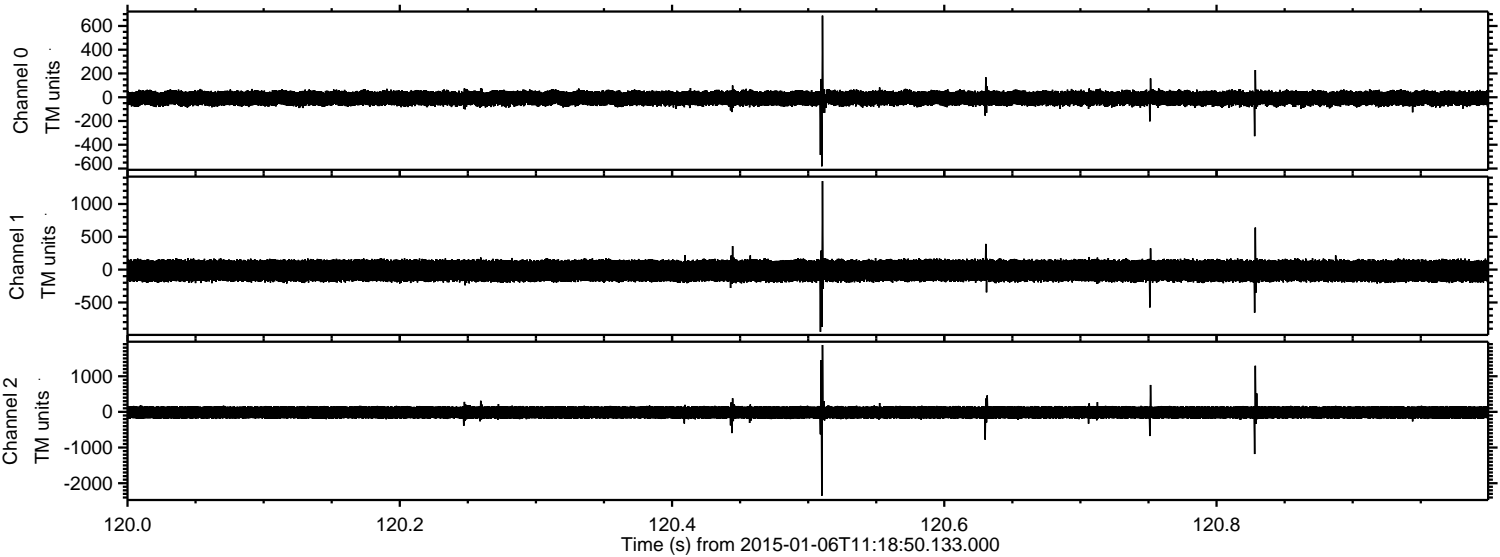


ELMAVAN 3D WAVEFORMS (Measured data sampled at 50 kHz) 49784 packets of 144 samples from 2015-01-06T11:18:50.133.000. Part 108/144

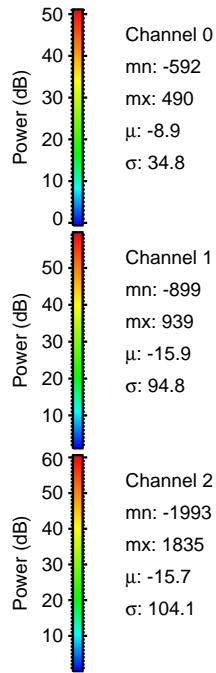
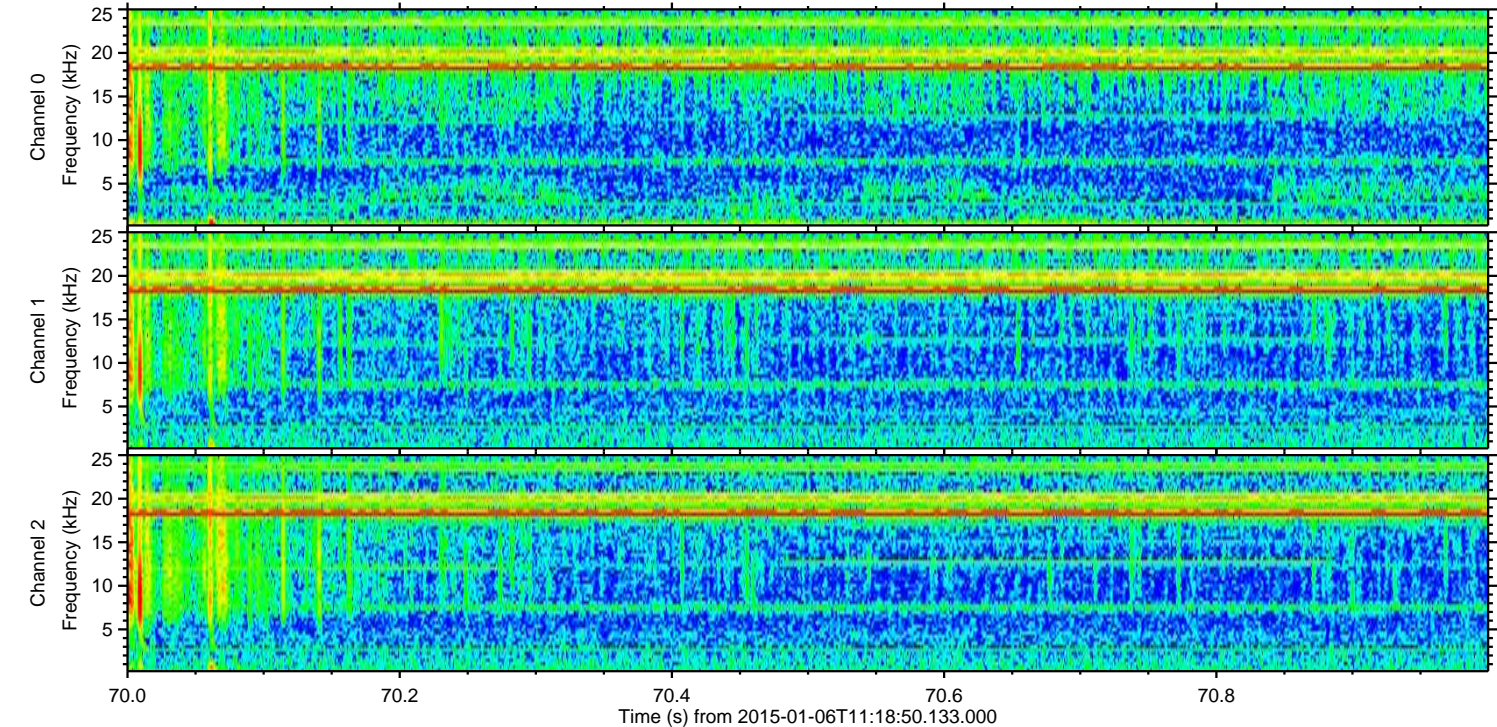
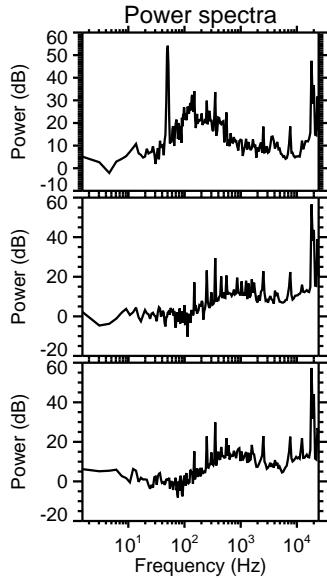
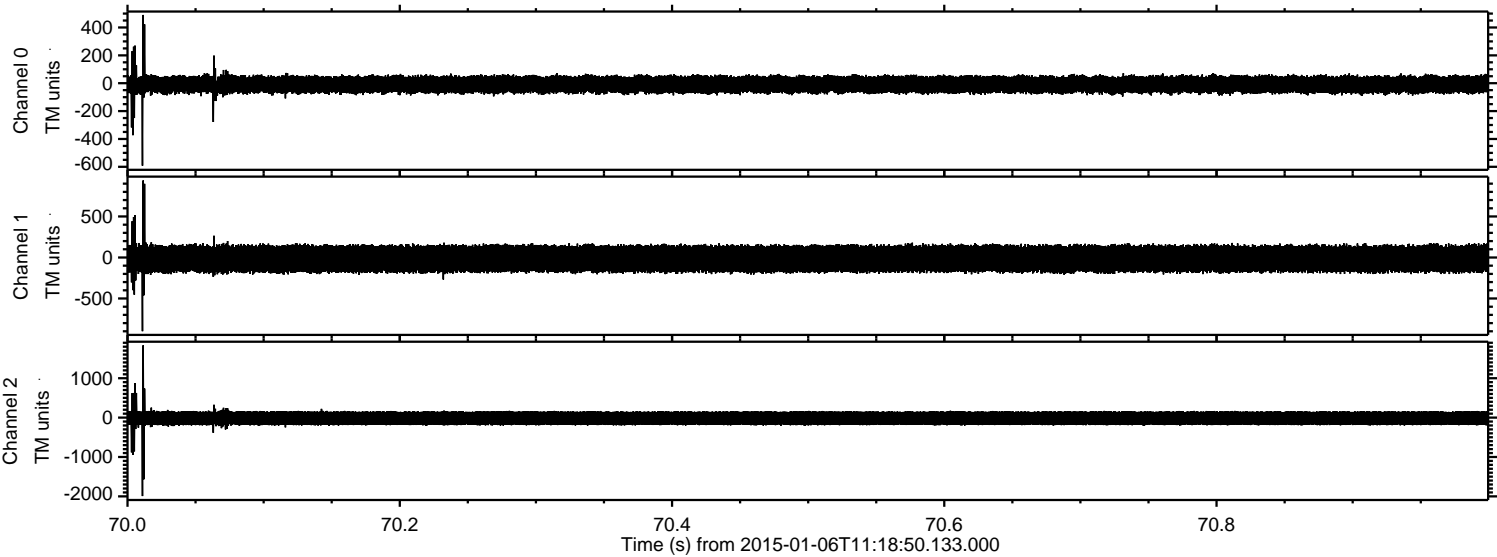
Processed Tue Jan 6 12:28:23 2015 by ELM ver.2012-10-06 from 001__elm20150106_111849__dat00.bin



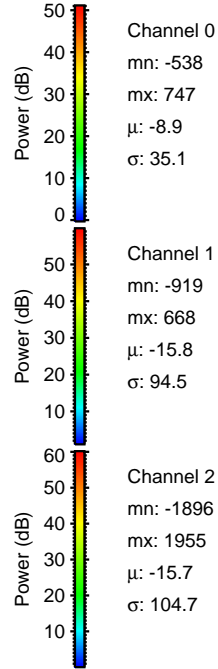
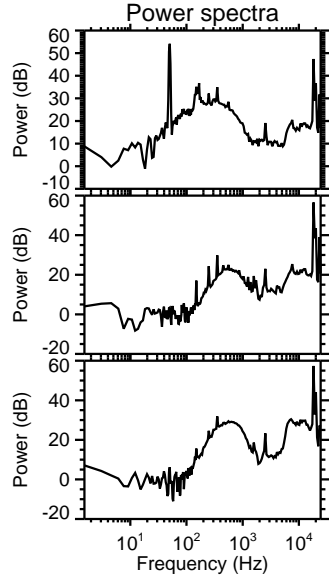
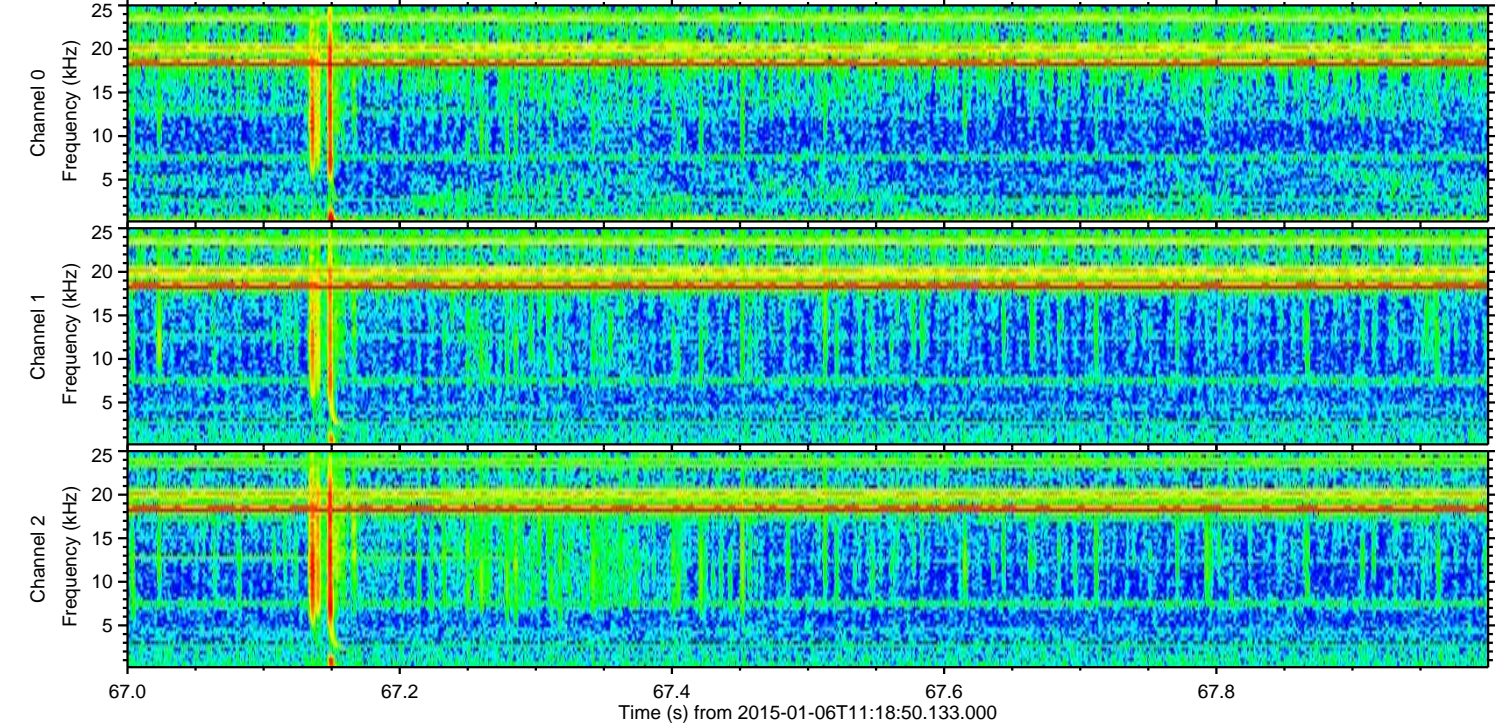
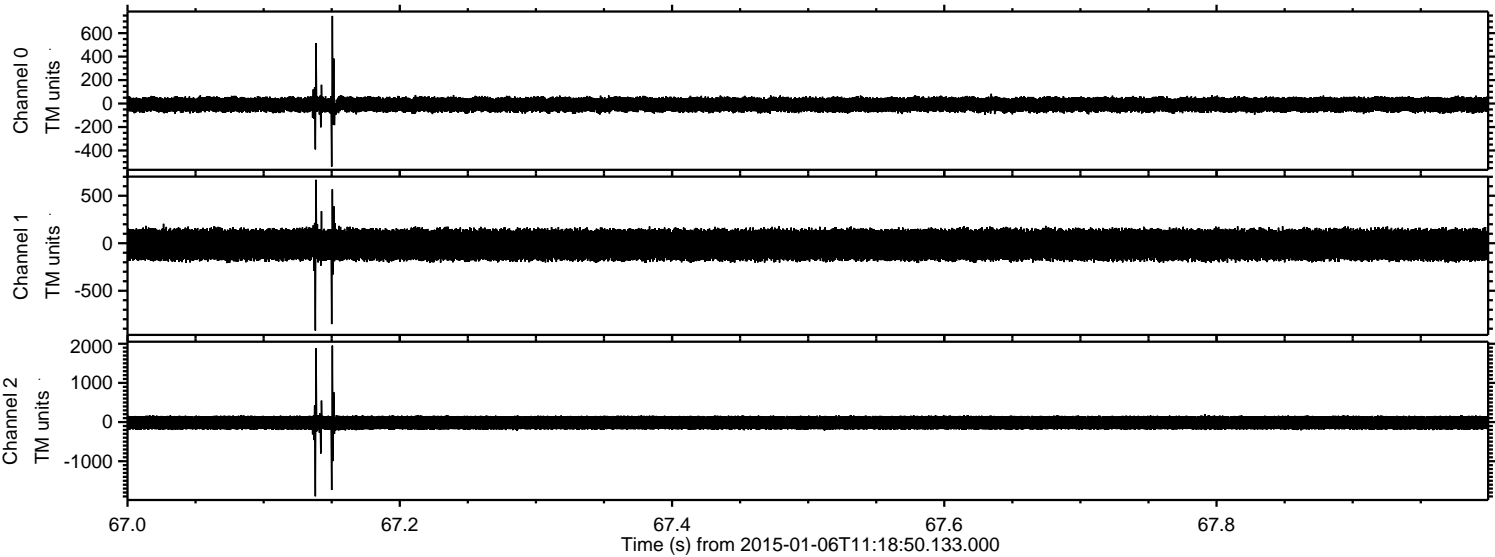
Processed Tue Jan 6 12:28:24 2015 by ELM ver.2012-10-06 from 001__elm20150106_111849__dat00.bin



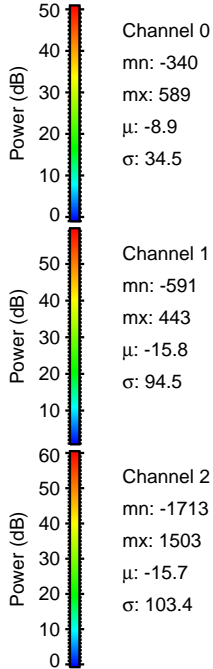
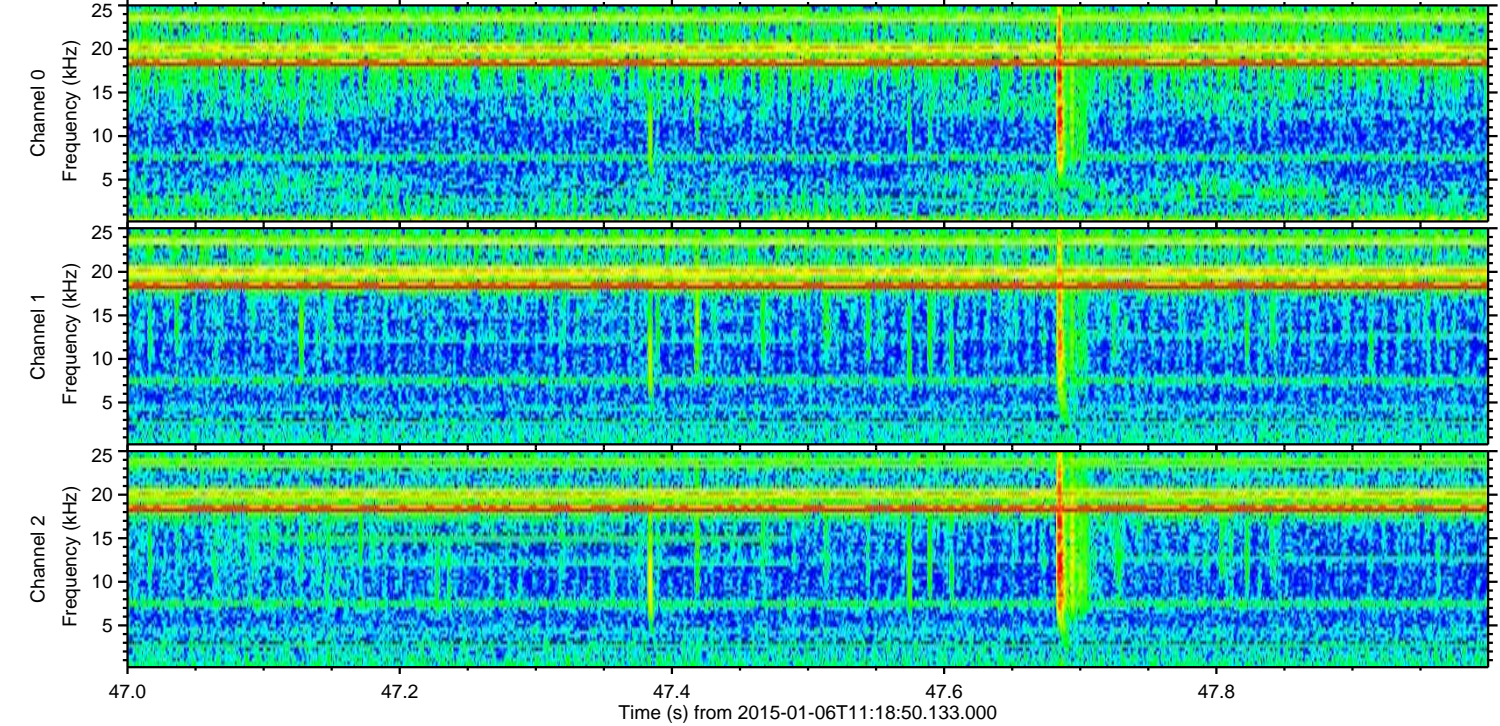
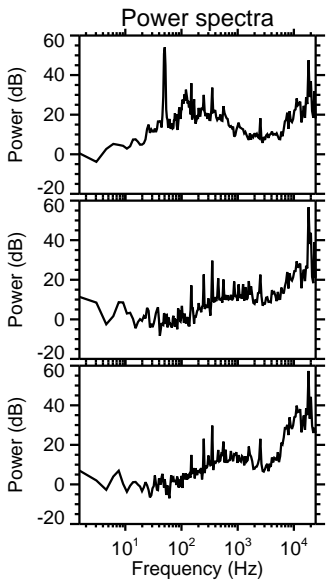
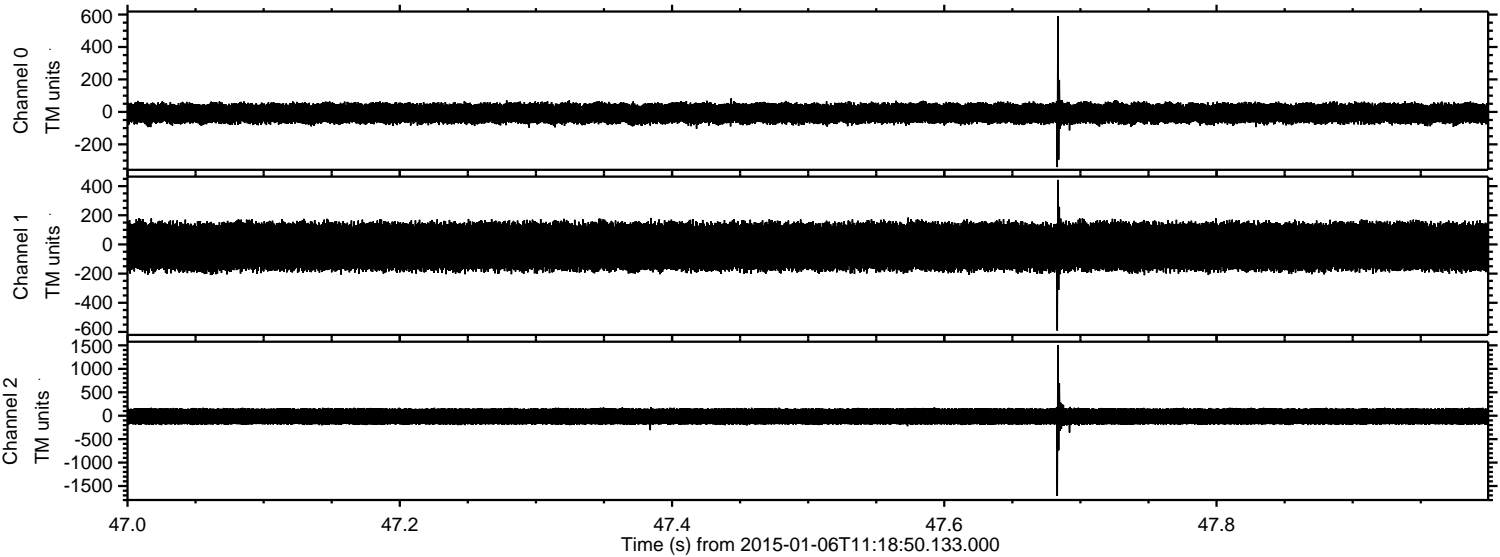
Processed Tue Jan 6 12:28:25 2015 by ELM ver.2012-10-06 from 001__elm20150106_111849__dat00.bin



Processed Tue Jan 6 12:28:26 2015 by ELM ver.2012-10-06 from 001__elm20150106_111849__dat00.bin



Processed Tue Jan 6 12:28:27 2015 by ELM ver.2012-10-06 from 001__elm20150106_111849__dat00.bin

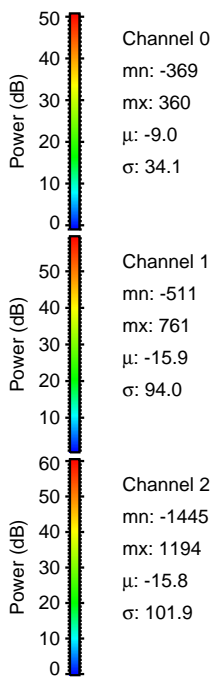
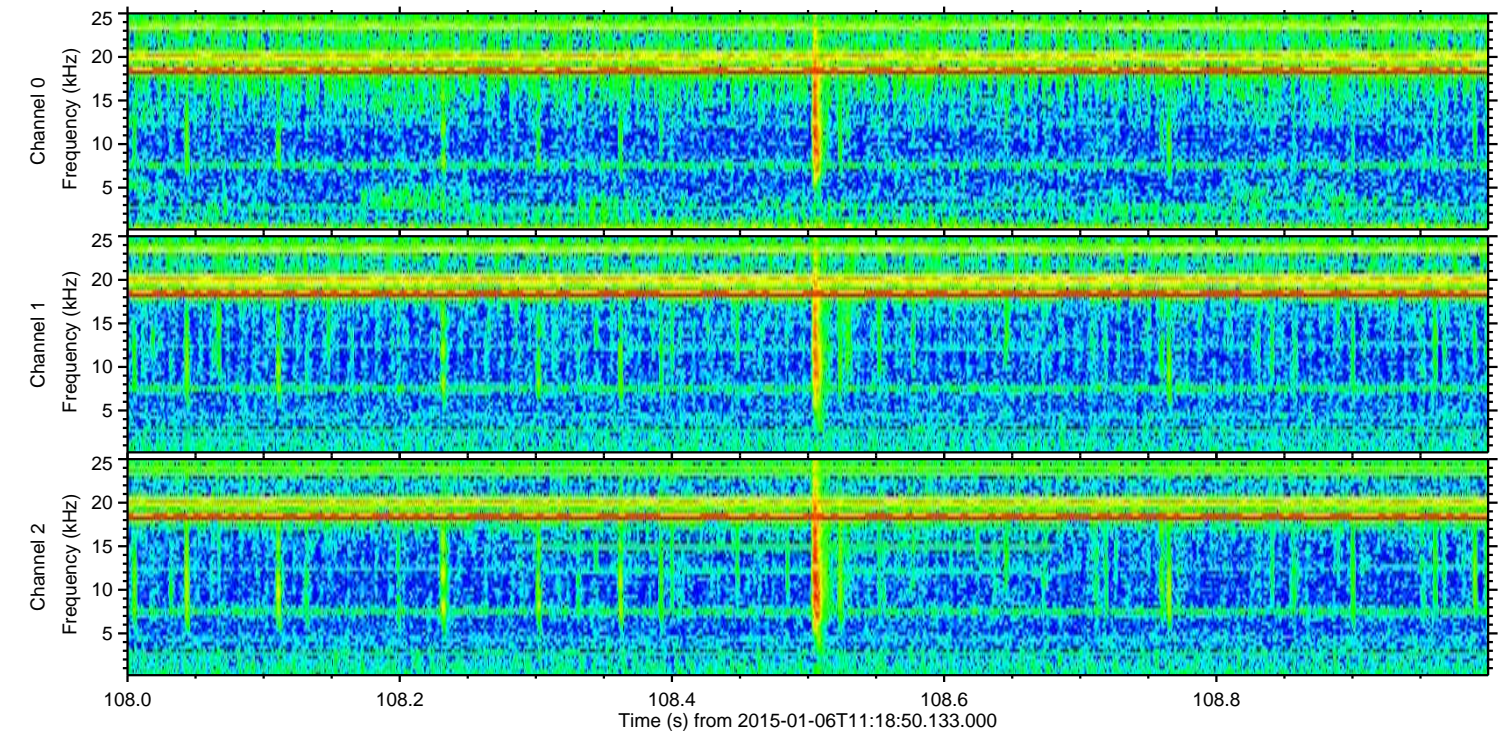
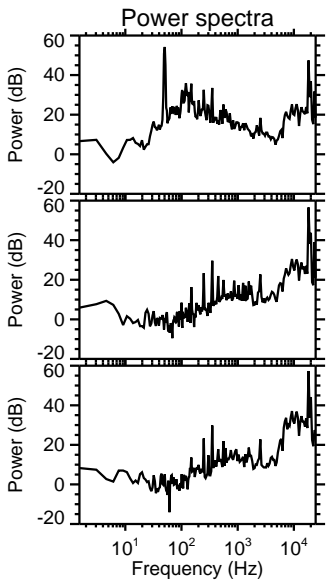
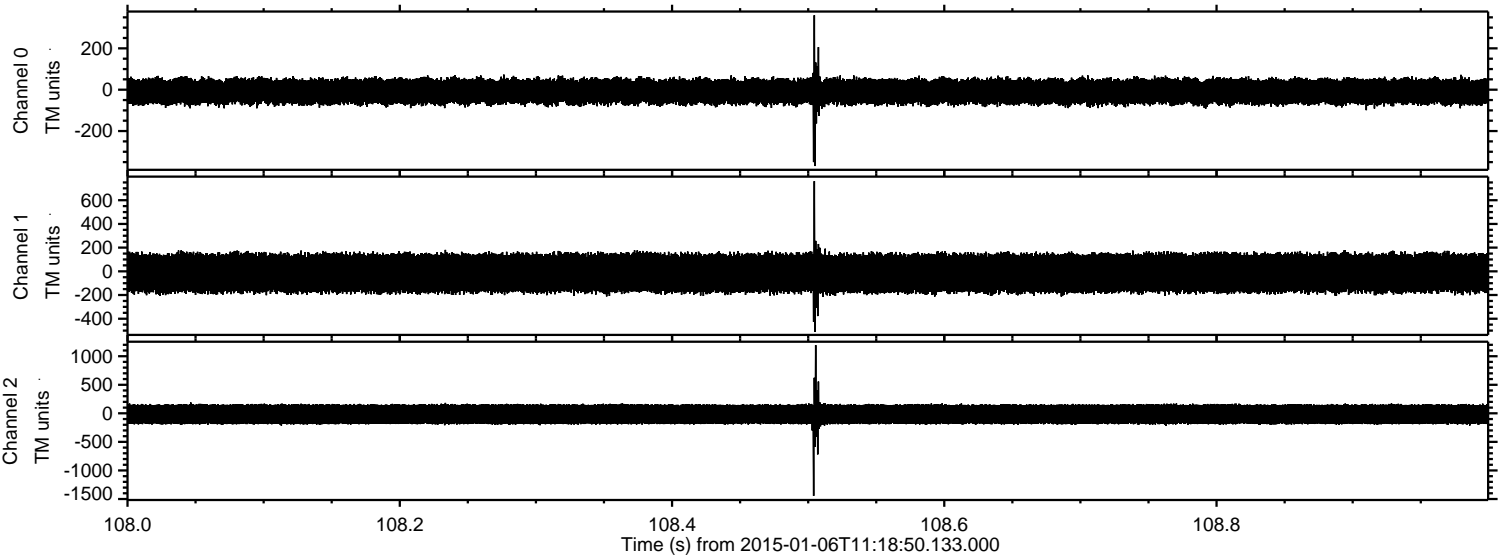


Channel 0
mn: -340
mx: 589
 μ : -8.9
 σ : 34.5

Channel 1
mn: -591
mx: 443
 μ : -15.8
 σ : 94.5

Channel 2
mn: -1713
mx: 1503
 μ : -15.7
 σ : 103.4

Processed Tue Jan 6 12:28:28 2015 by ELM ver.2012-10-06 from 001__elm20150106_111849__dat00.bin



Channel 0
mn: -369
mx: 360
 μ : -9.0
 σ : 34.1

Channel 1
mn: -511
mx: 761
 μ : -15.9
 σ : 94.0

Channel 2
mn: -1445
mx: 1194
 μ : -15.8
 σ : 101.9

Processed Tue Jan 6 12:28:29 2015 by ELM ver.2012-10-06 from 001__elm20150106_111849__dat00.bin

