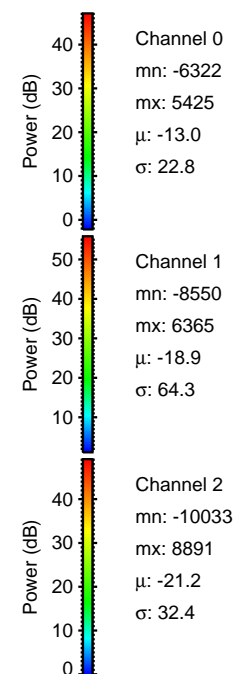
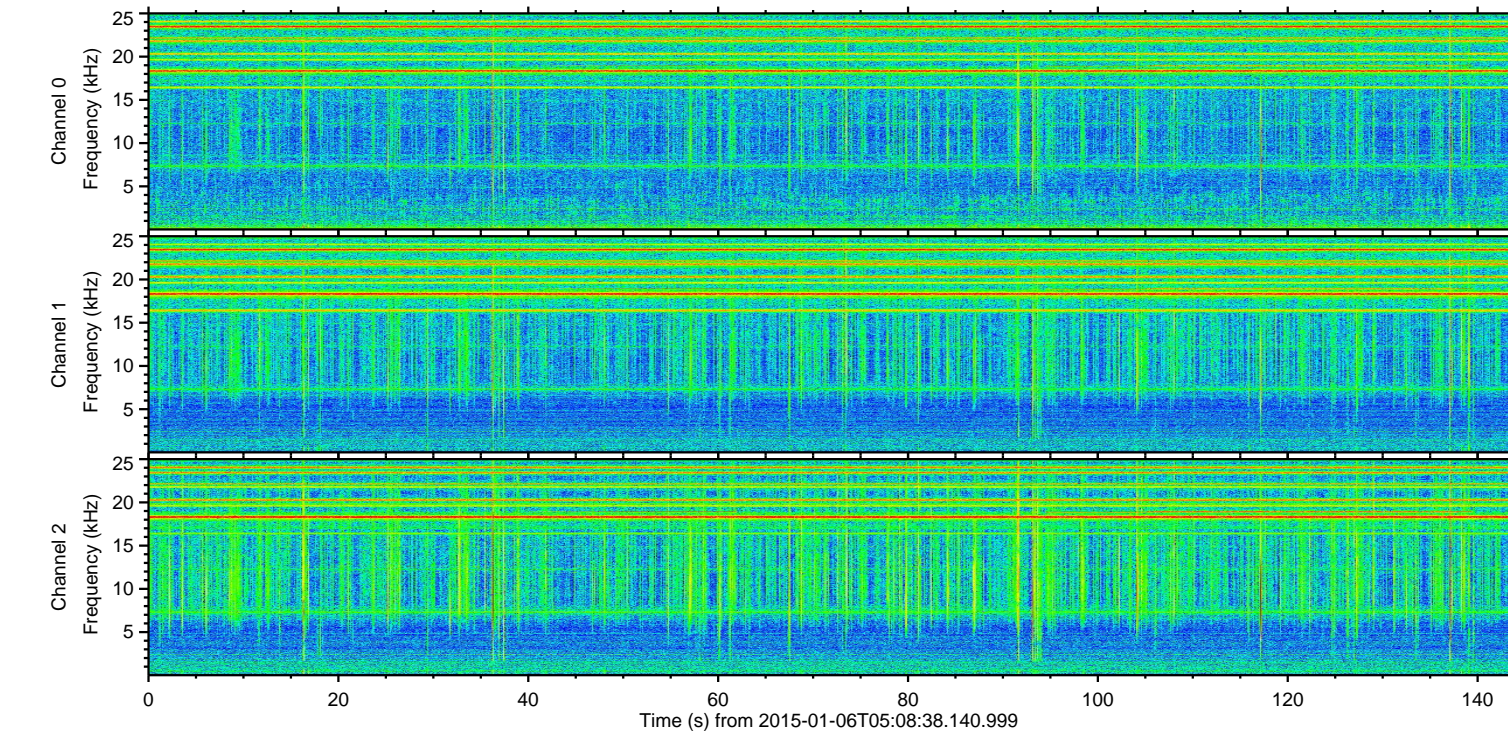
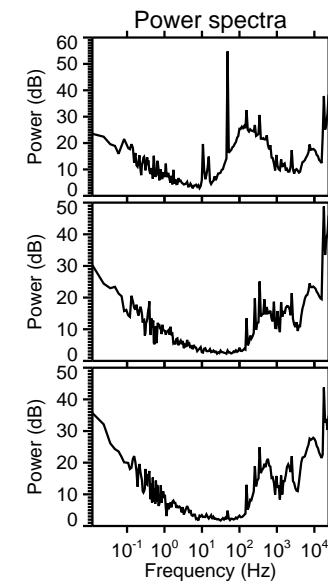
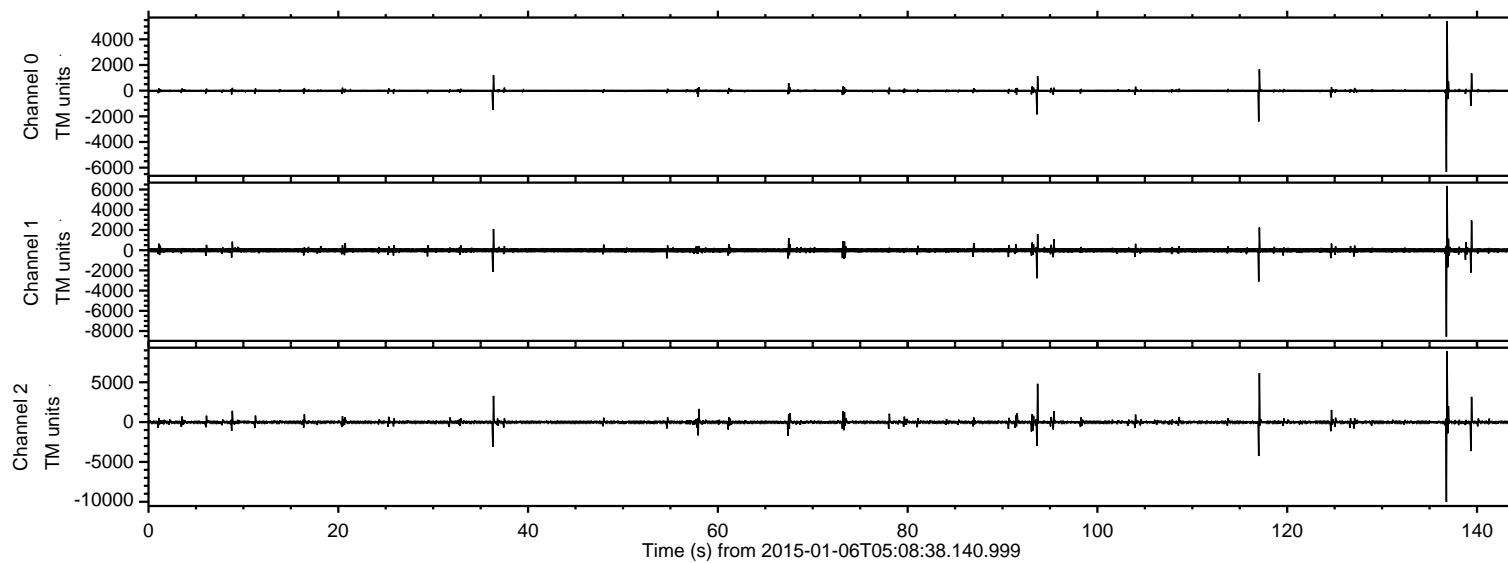


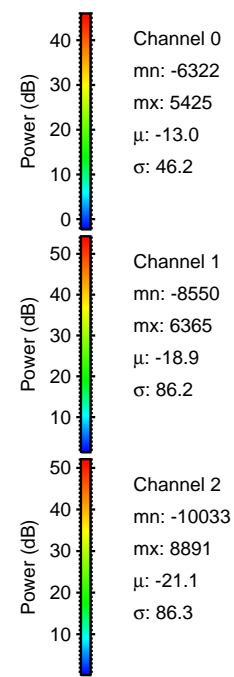
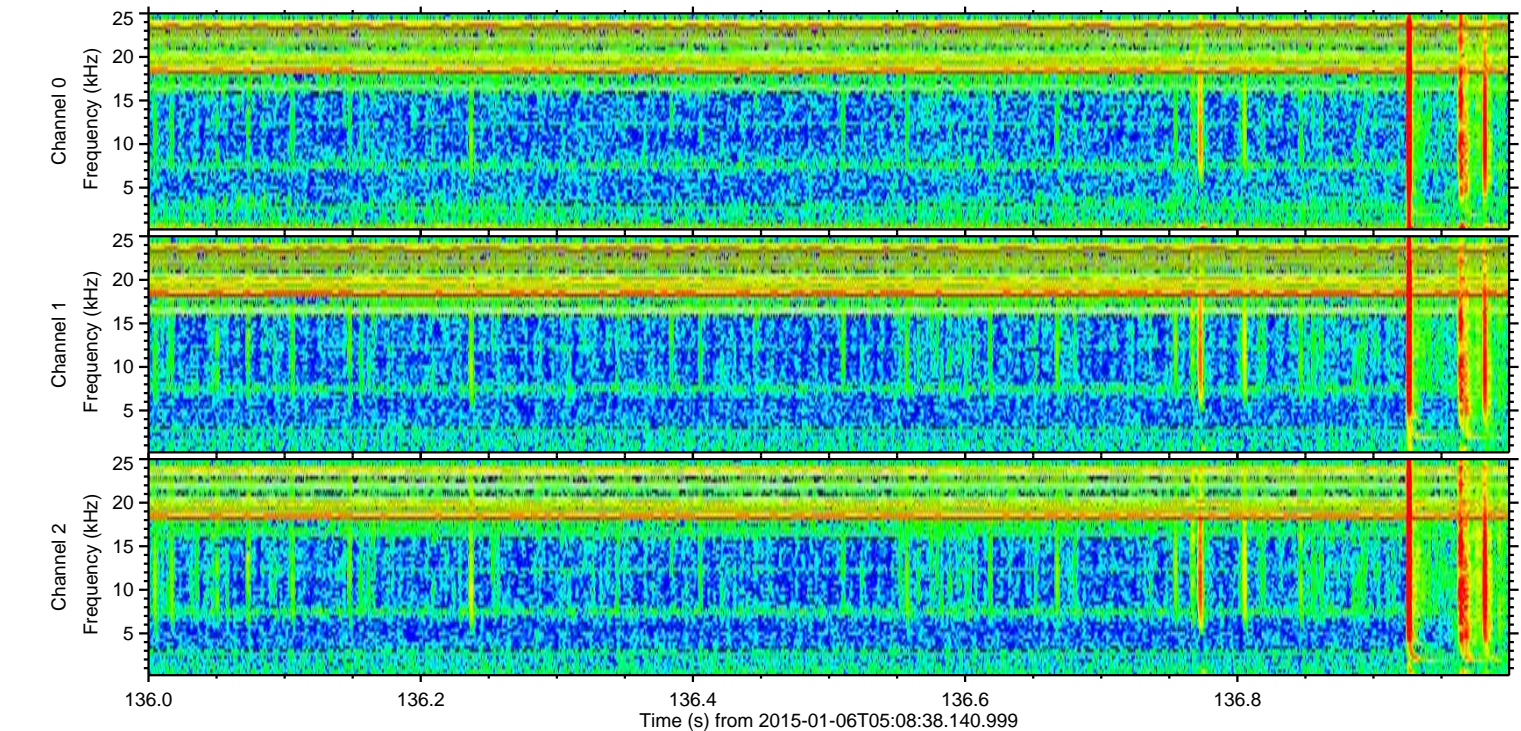
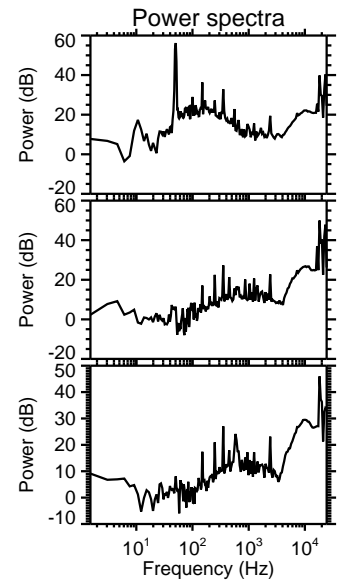
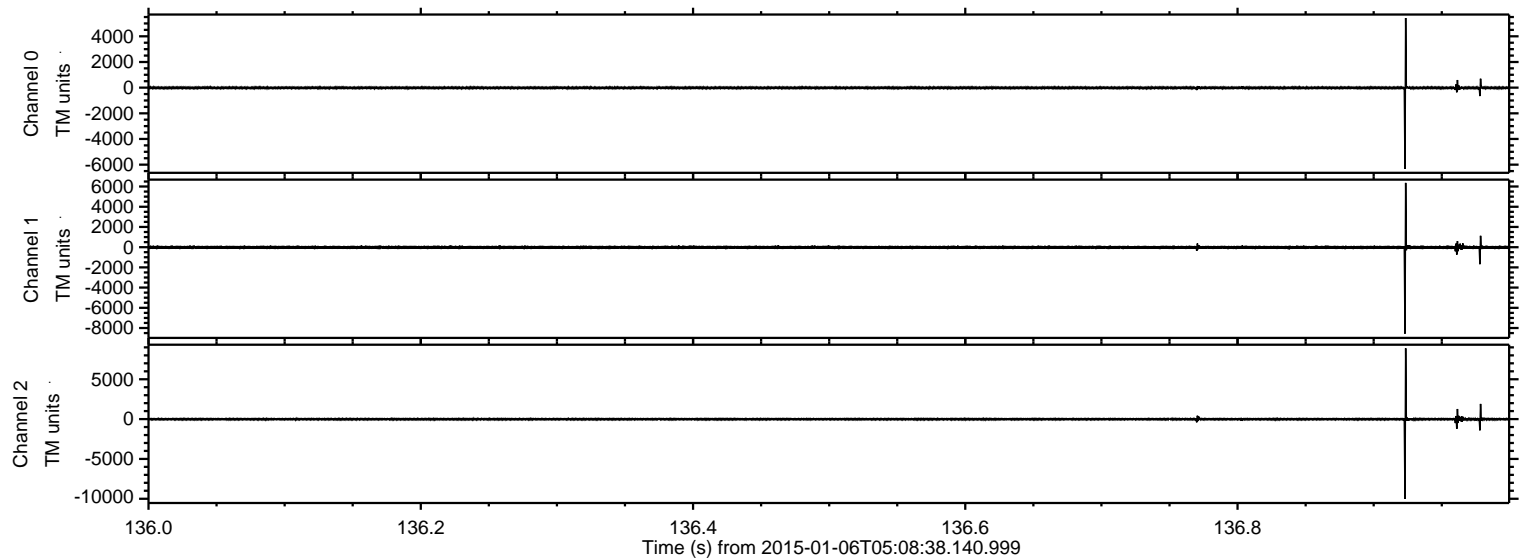
ELMAVAN 3D WAVEFORMS (Measured data sampled at 50 kHz) 49788 packets of 144 samples from 2015-01-06T05:08:38.140.999.

Processed Tue Jan 6 06:16:07 2015 by ELM ver.2012-10-06 from 001__elm20150106_050837__dat00.bin



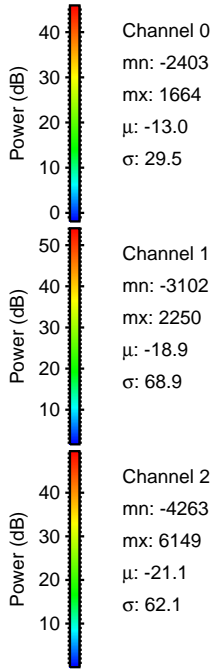
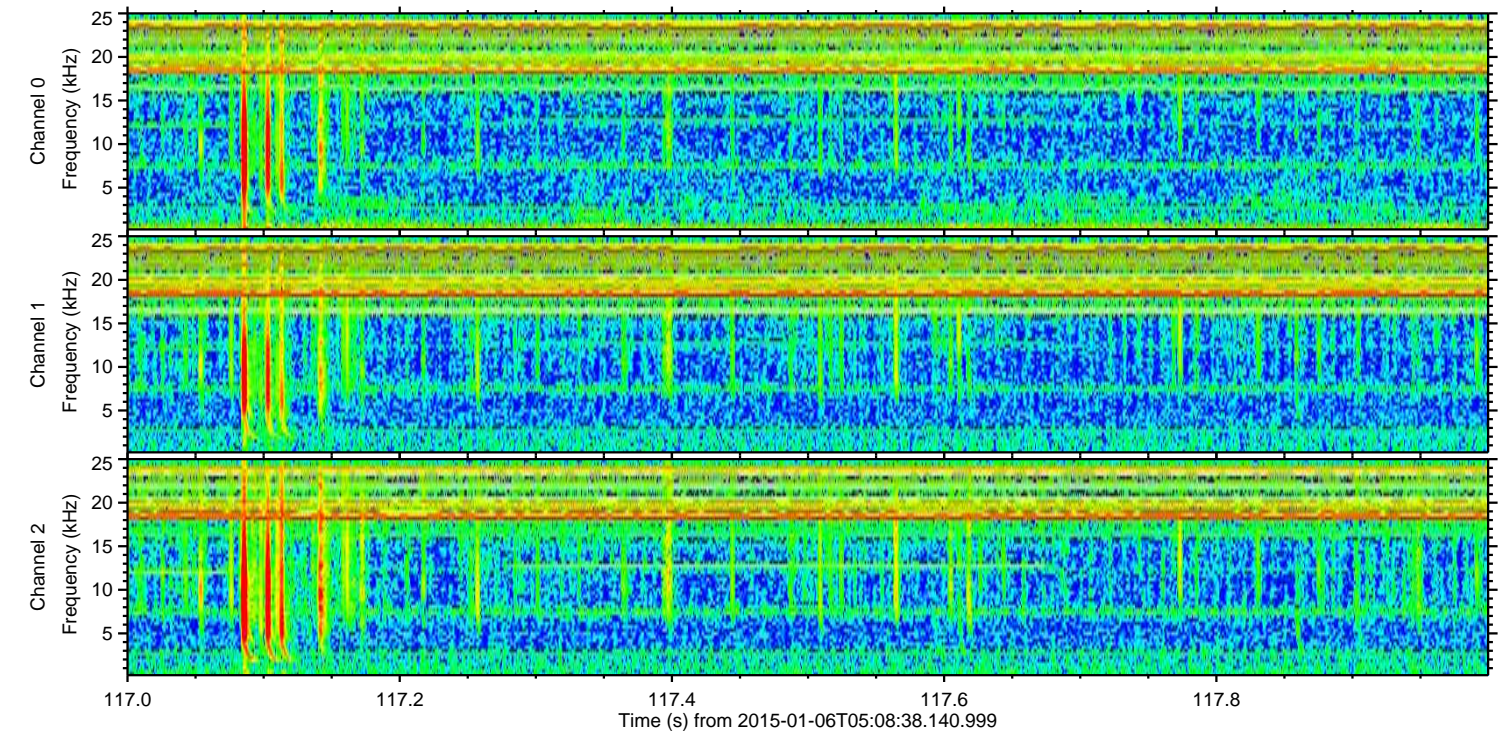
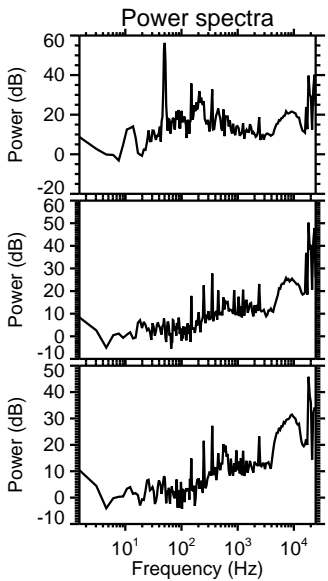
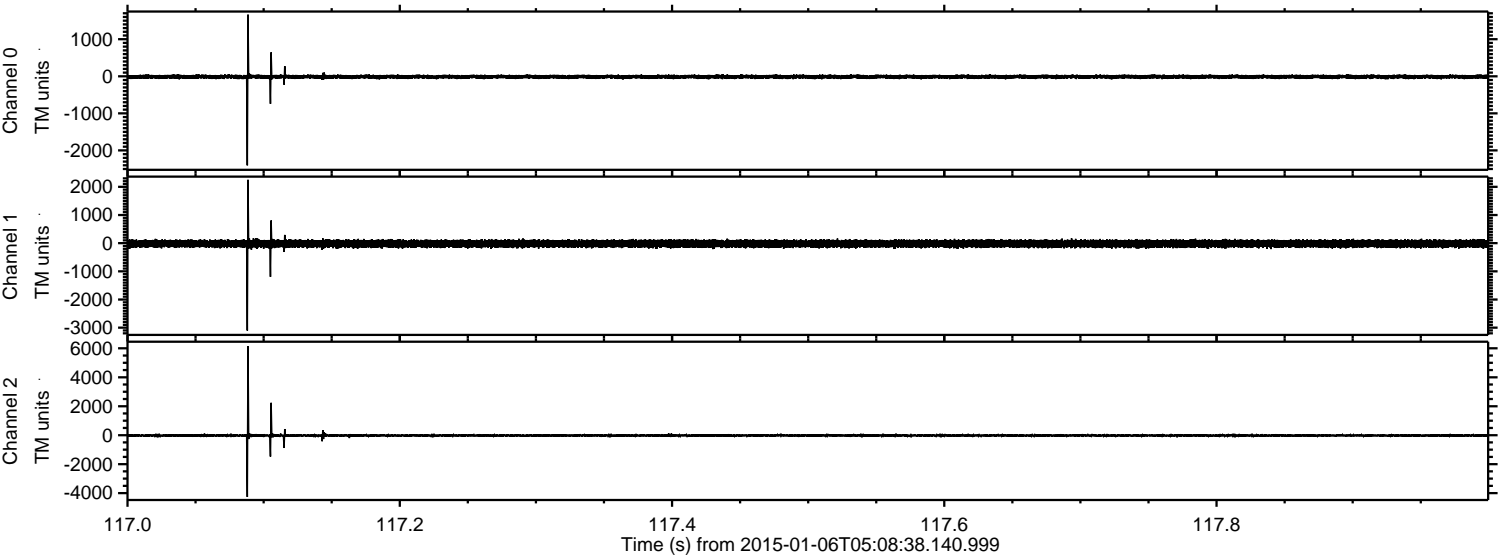
ELMAVAN 3D WAVEFORMS (Measured data sampled at 50 kHz) 49788 packets of 144 samples from 2015-01-06T05:08:38.140.999. Part 137/144

Processed Tue Jan 6 06:16:19 2015 by ELM ver.2012-10-06 from 001__elm20150106_050837__dat00.bin



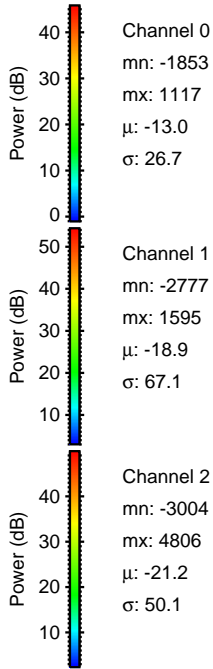
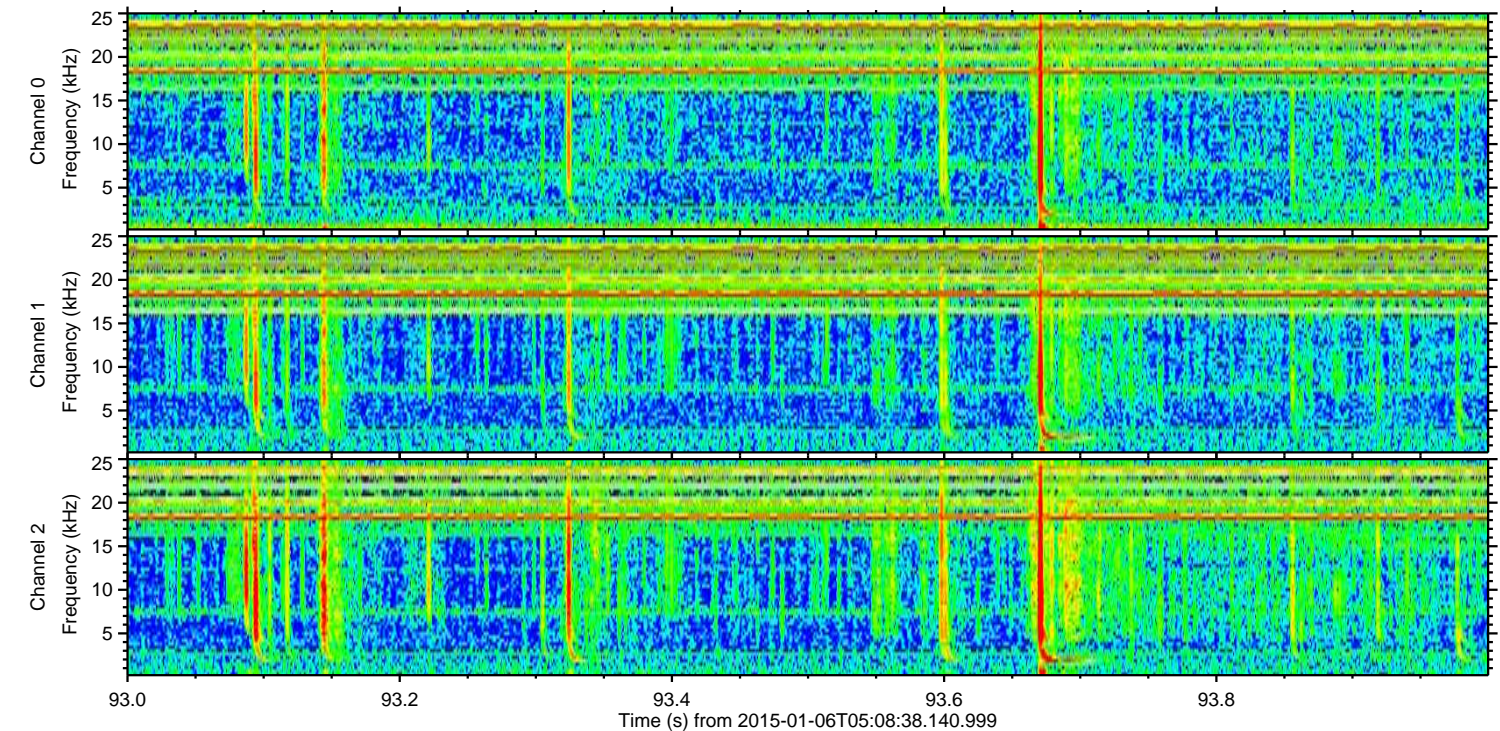
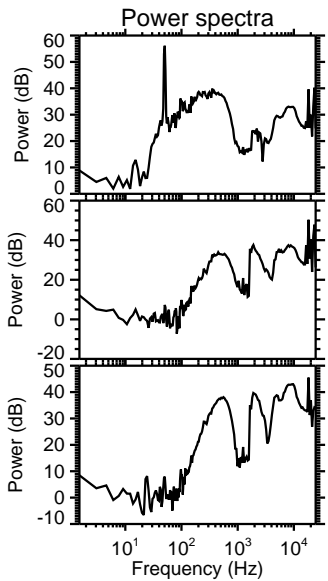
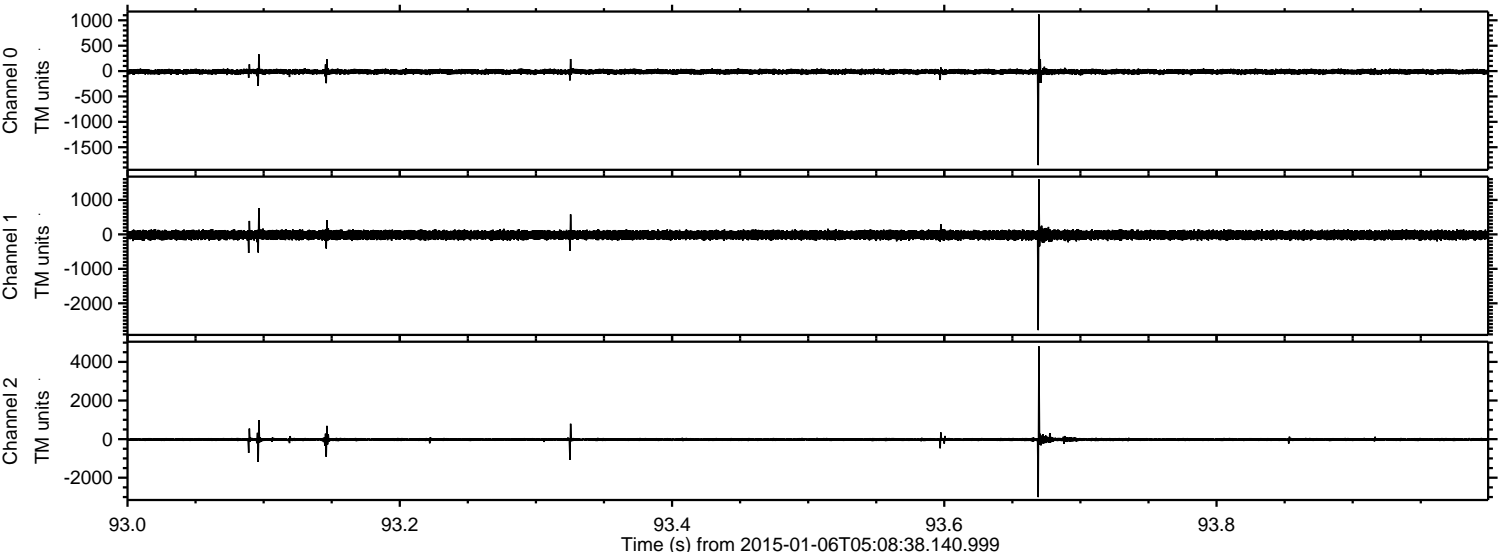
ELMAVAN 3D WAVEFORMS (Measured data sampled at 50 kHz) 49788 packets of 144 samples from 2015-01-06T05:08:38.140.999. Part 118/144

Processed Tue Jan 6 06:16:20 2015 by ELM ver.2012-10-06 from 001__elm20150106_050837__dat00.bin



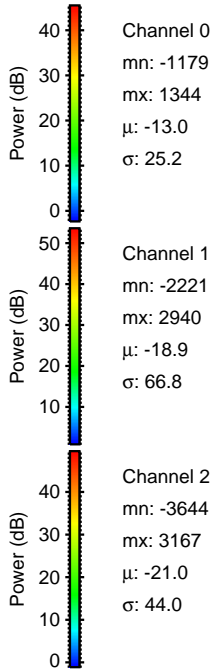
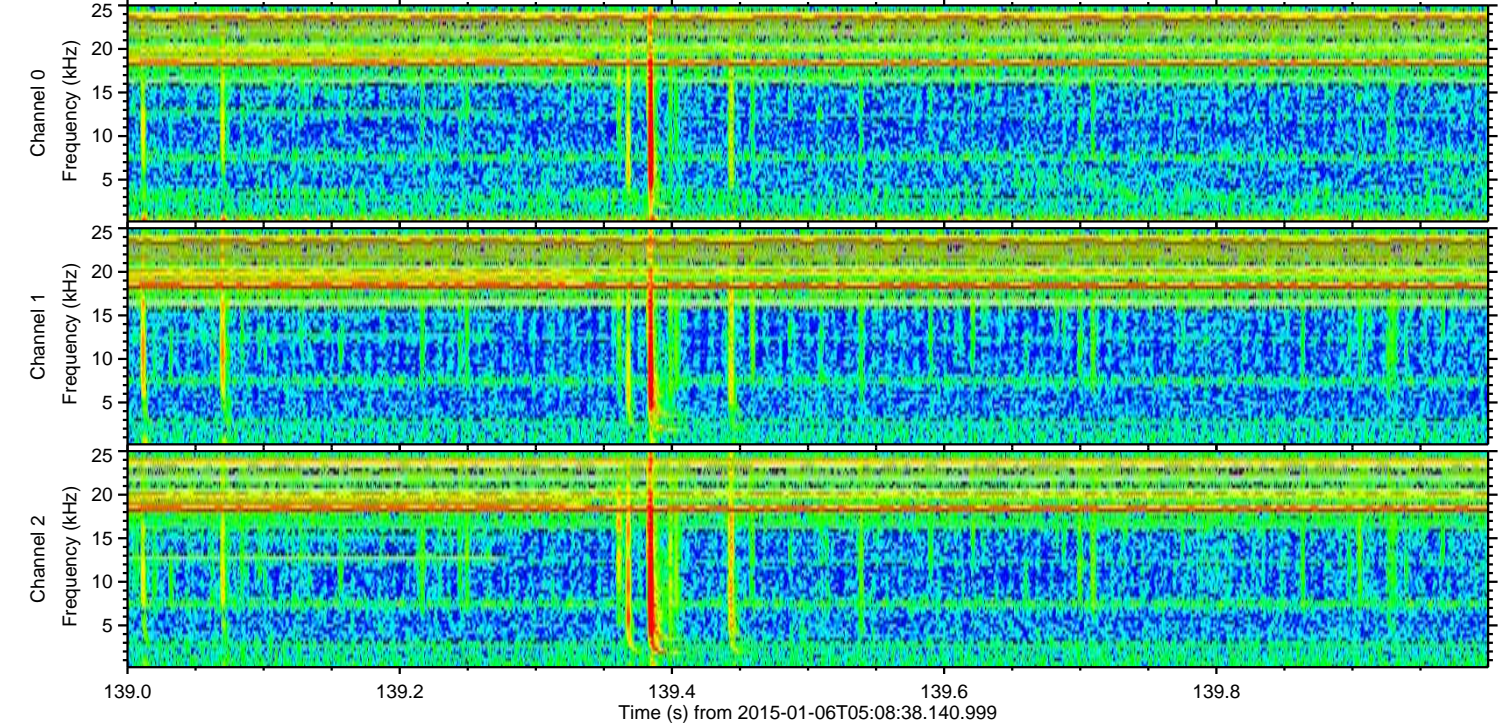
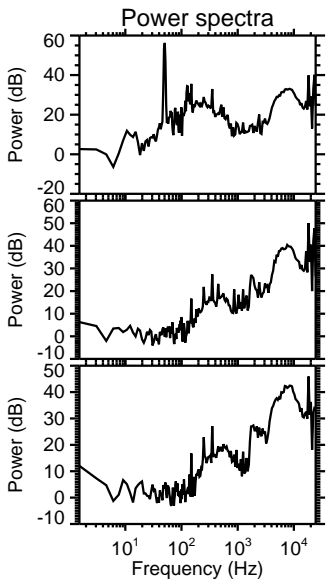
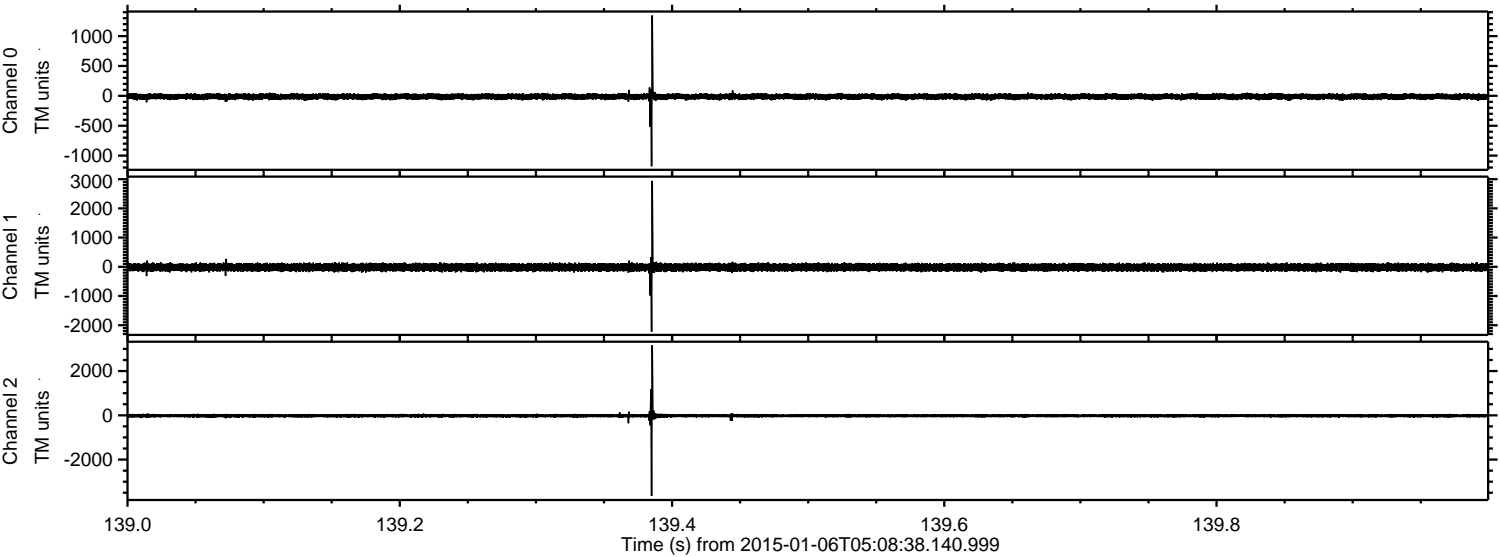
ELMAVAN 3D WAVEFORMS (Measured data sampled at 50 kHz) 49788 packets of 144 samples from 2015-01-06T05:08:38.140.999. Part 94/144

Processed Tue Jan 6 06:16:21 2015 by ELM ver.2012-10-06 from 001__elm20150106_050837__dat00.bin



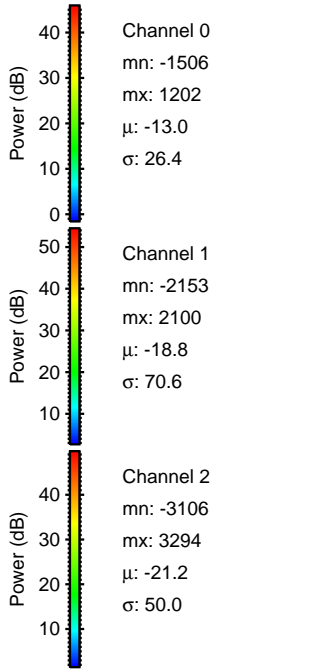
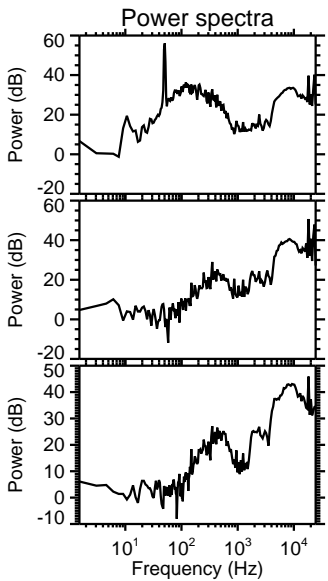
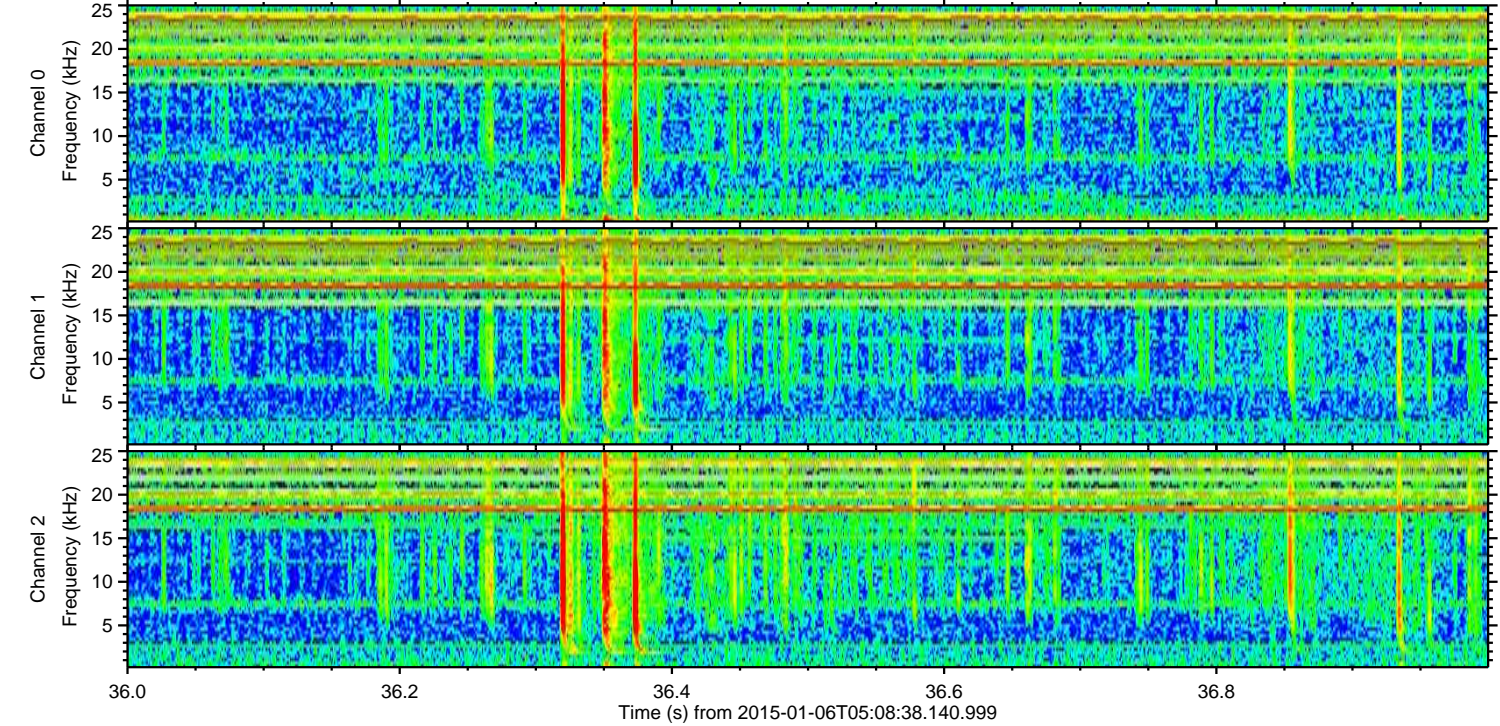
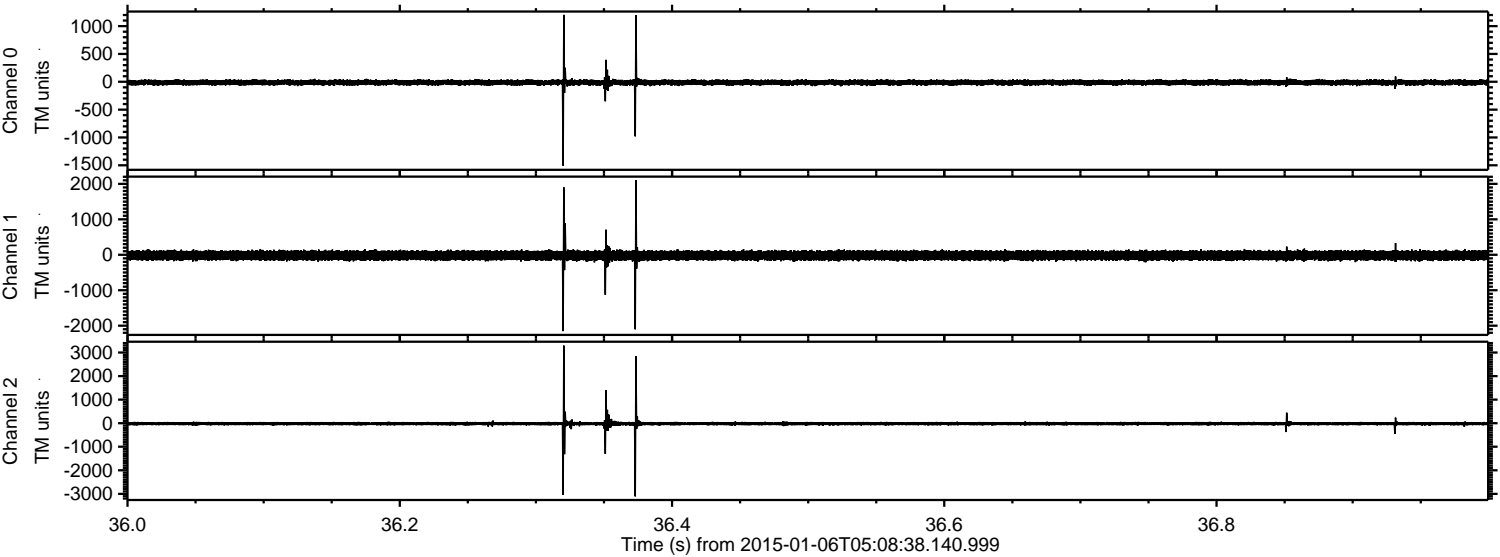
ELMAVAN 3D WAVEFORMS (Measured data sampled at 50 kHz) 49788 packets of 144 samples from 2015-01-06T05:08:38.140.999. Part 140/144

Processed Tue Jan 6 06:16:22 2015 by ELM ver.2012-10-06 from 001__elm20150106_050837__dat00.bin

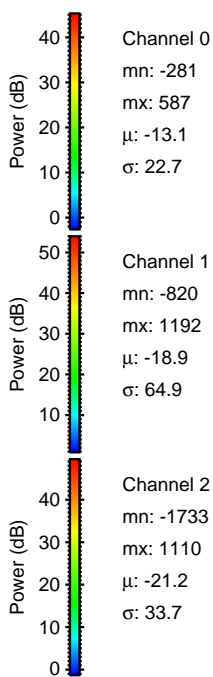
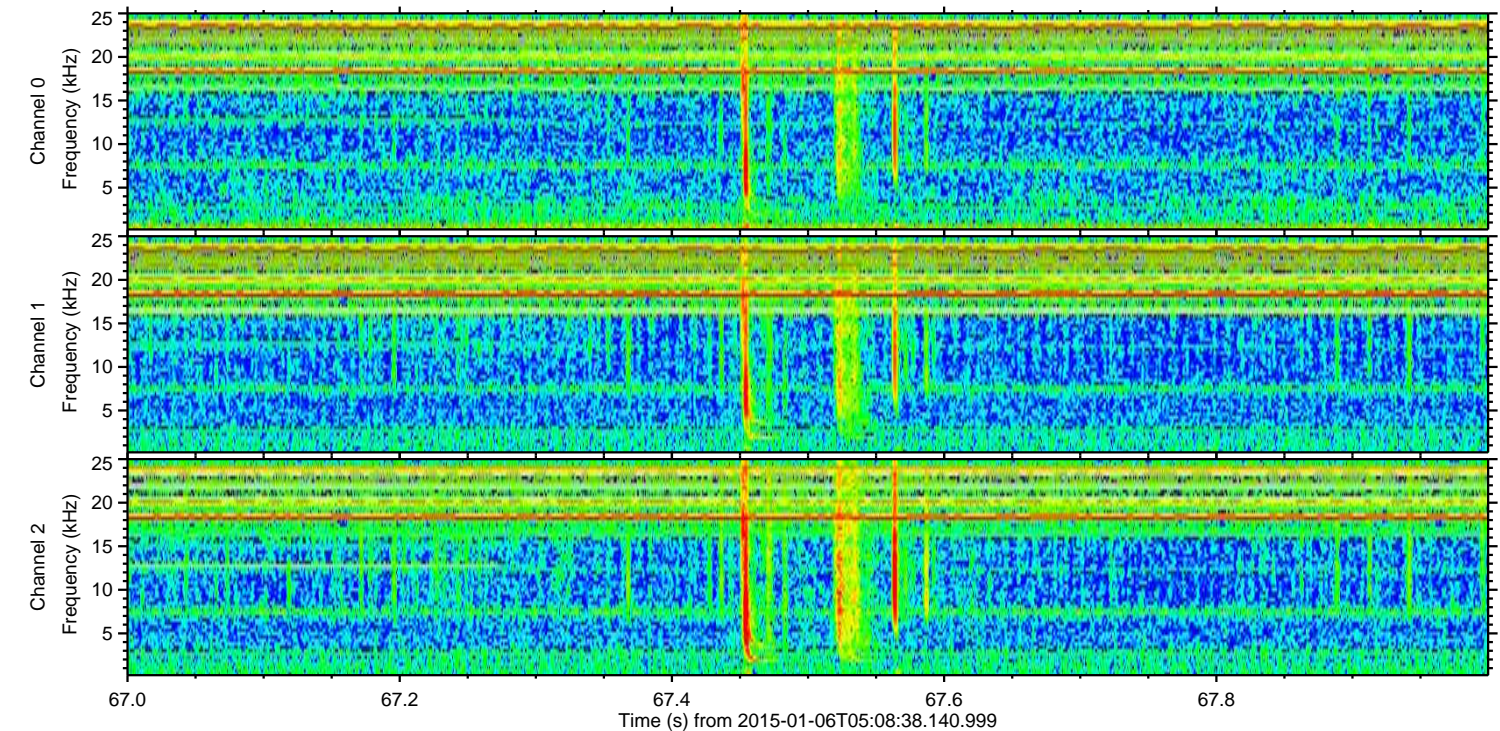
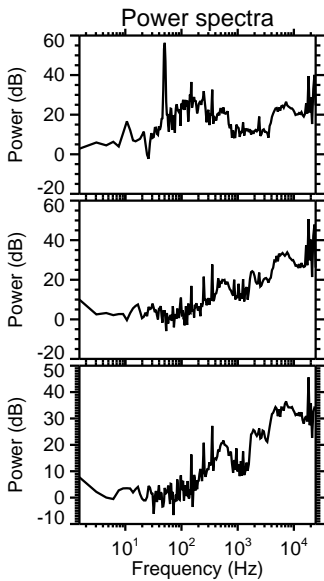
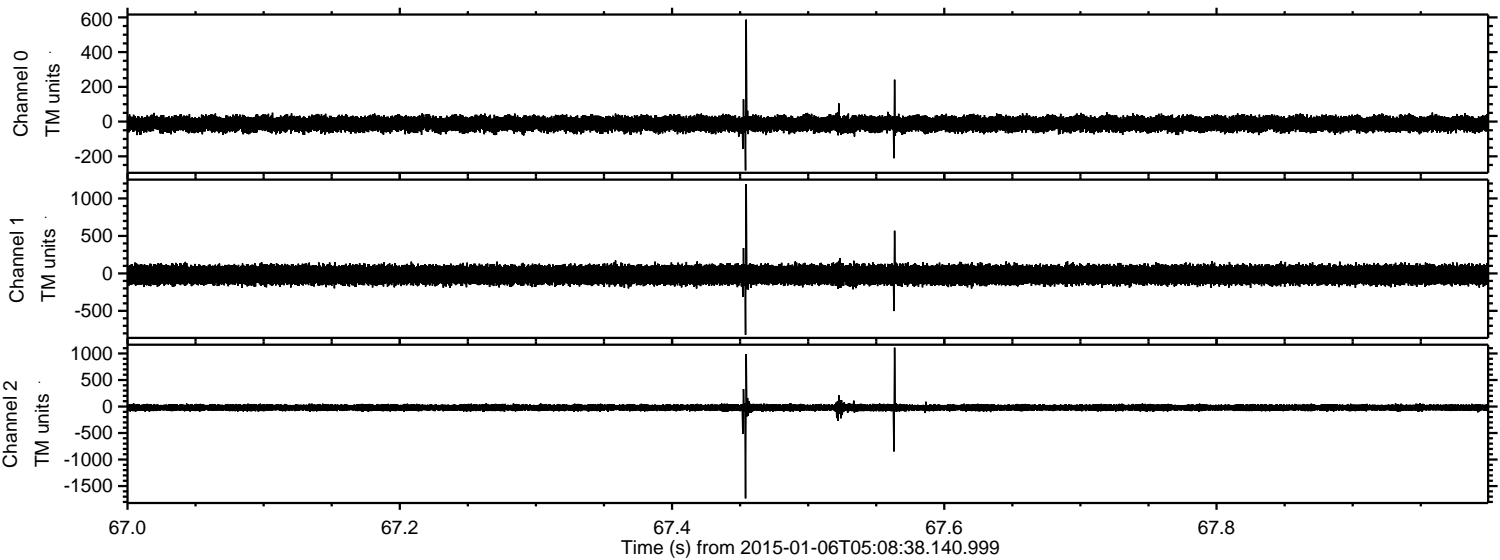


ELMAVAN 3D WAVEFORMS (Measured data sampled at 50 kHz) 49788 packets of 144 samples from 2015-01-06T05:08:38.140.999. Part 37/144

Processed Tue Jan 6 06:16:23 2015 by ELM ver.2012-10-06 from 001__elm20150106_050837__dat00.bin



Processed Tue Jan 6 06:16:24 2015 by ELM ver.2012-10-06 from 001__elm20150106_050837__dat00.bin

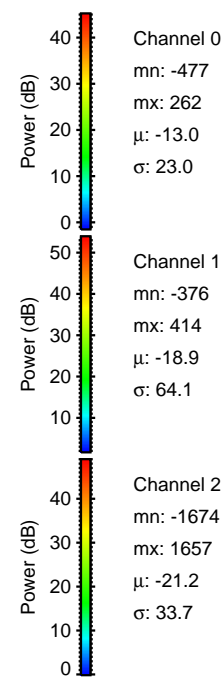
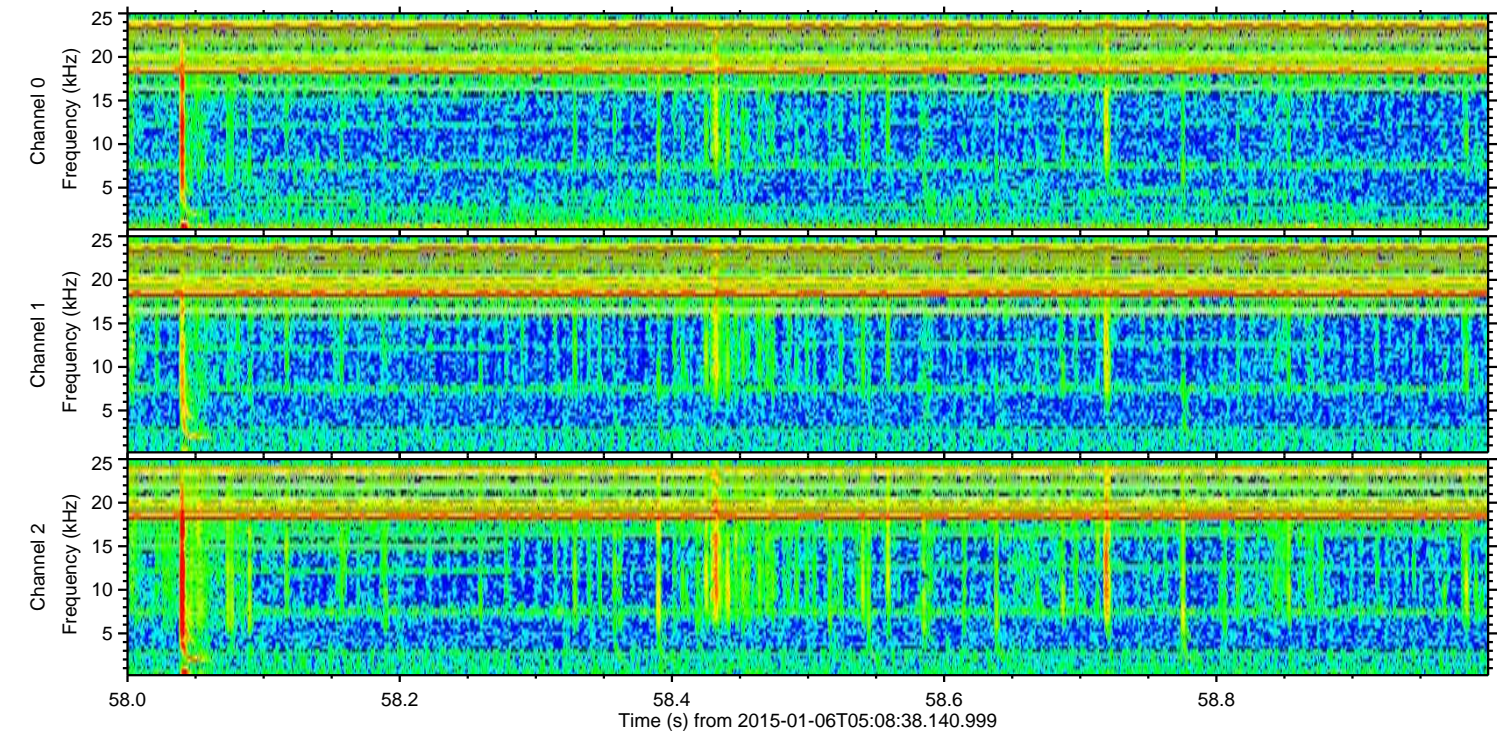
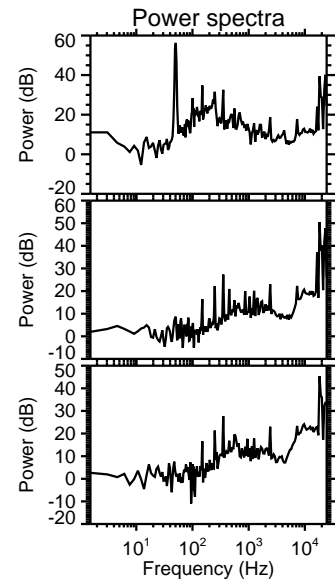
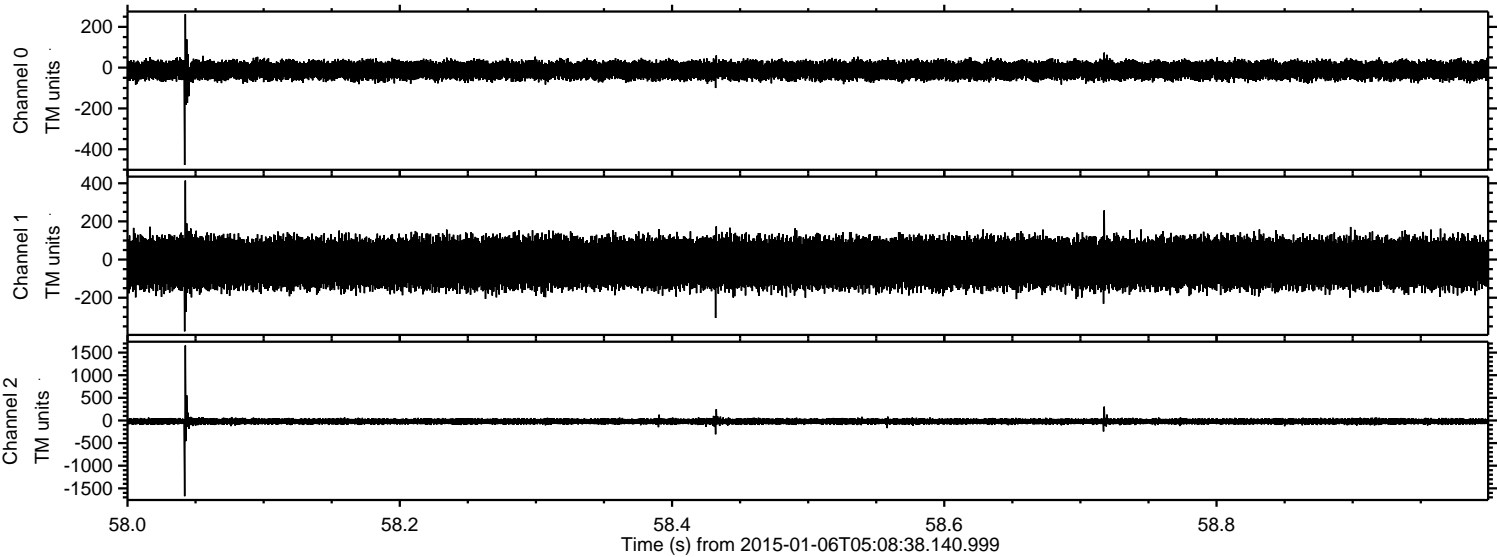


Channel 0
mn: -281
mx: 587
 μ : -13.1
 σ : 22.7

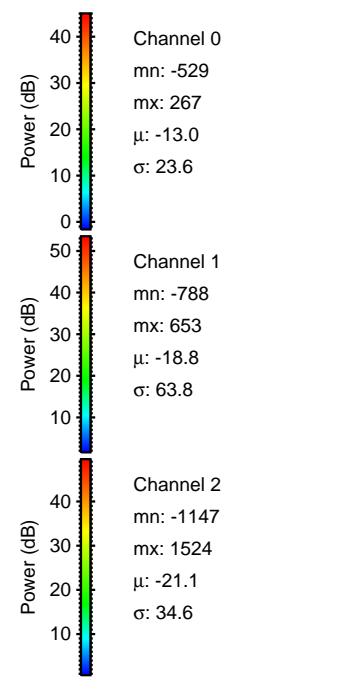
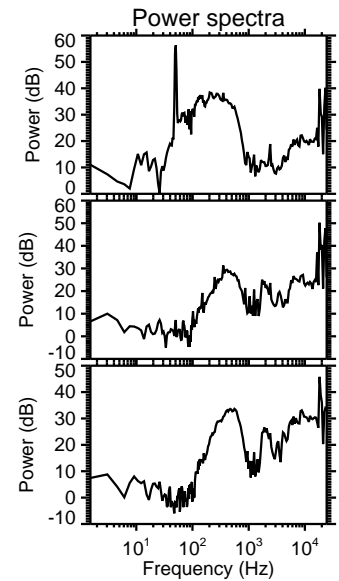
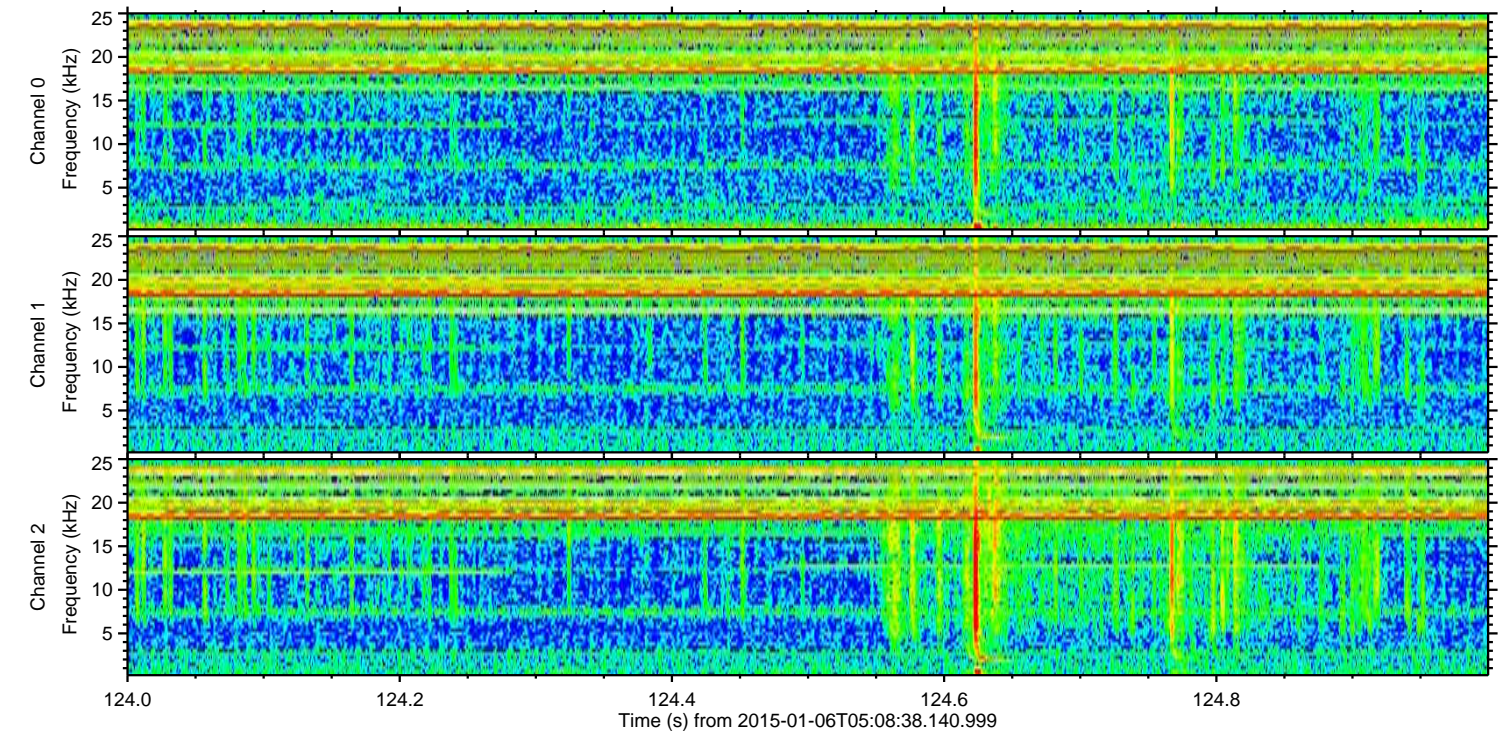
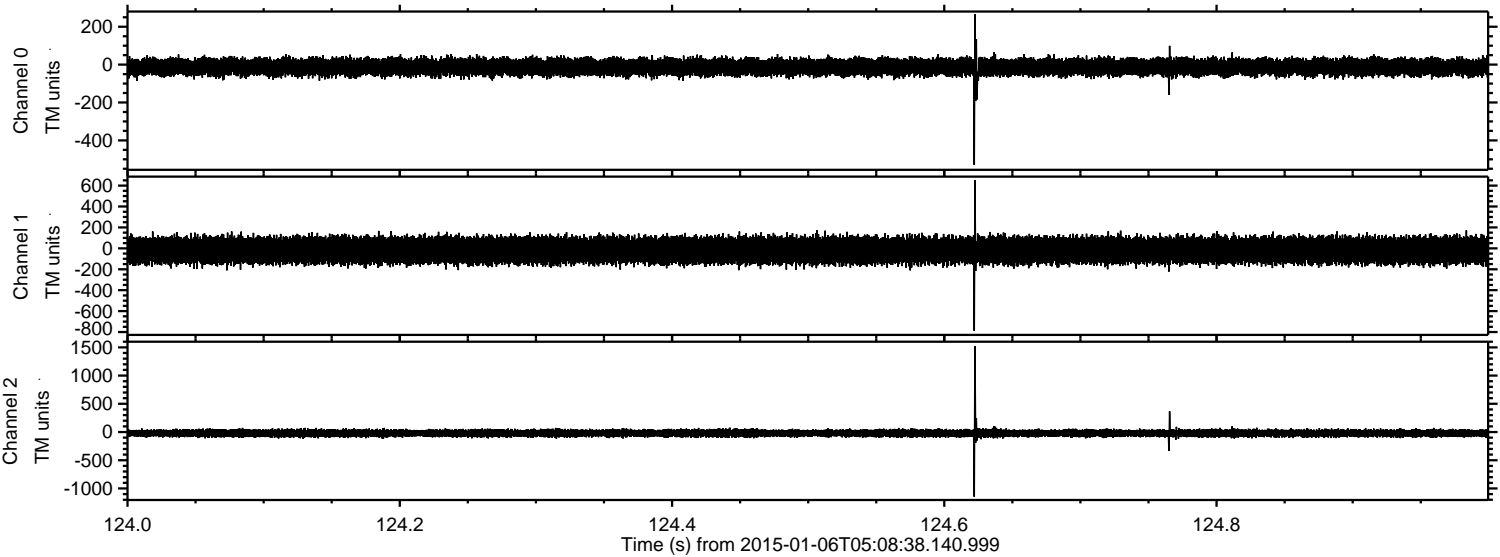
Channel 1
mn: -820
mx: 1192
 μ : -18.9
 σ : 64.9

Channel 2
mn: -1733
mx: 1110
 μ : -21.2
 σ : 33.7

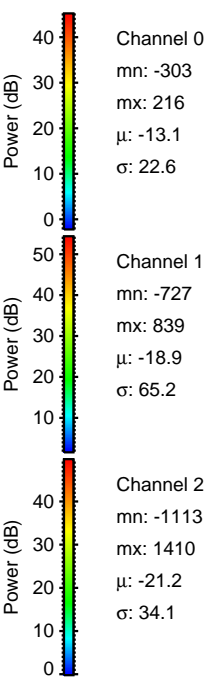
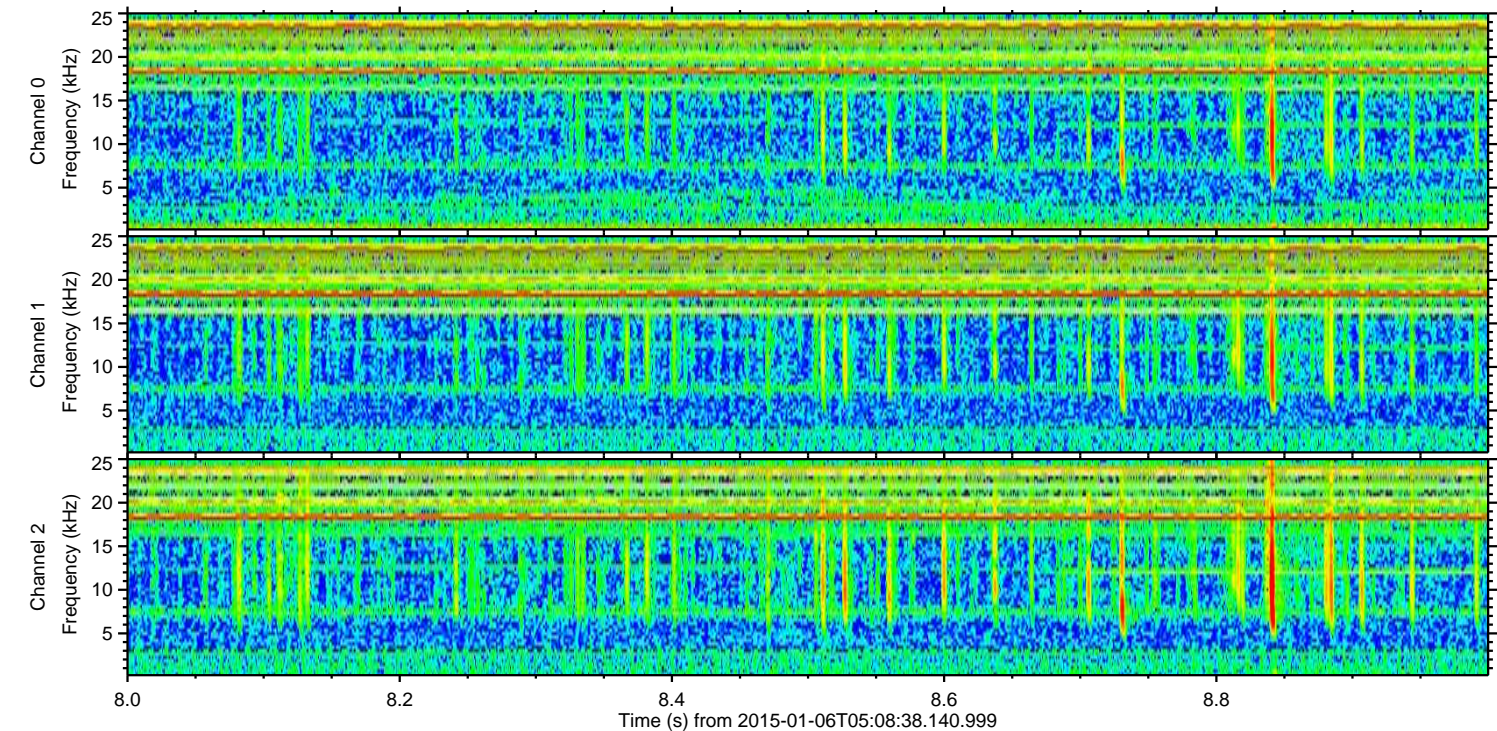
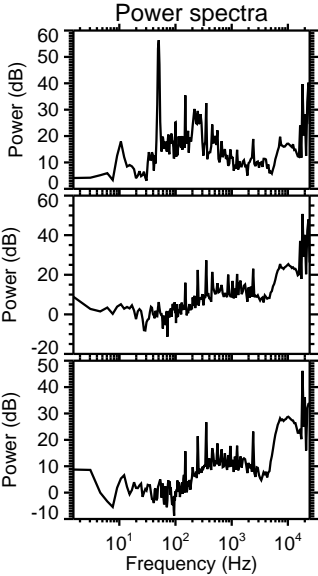
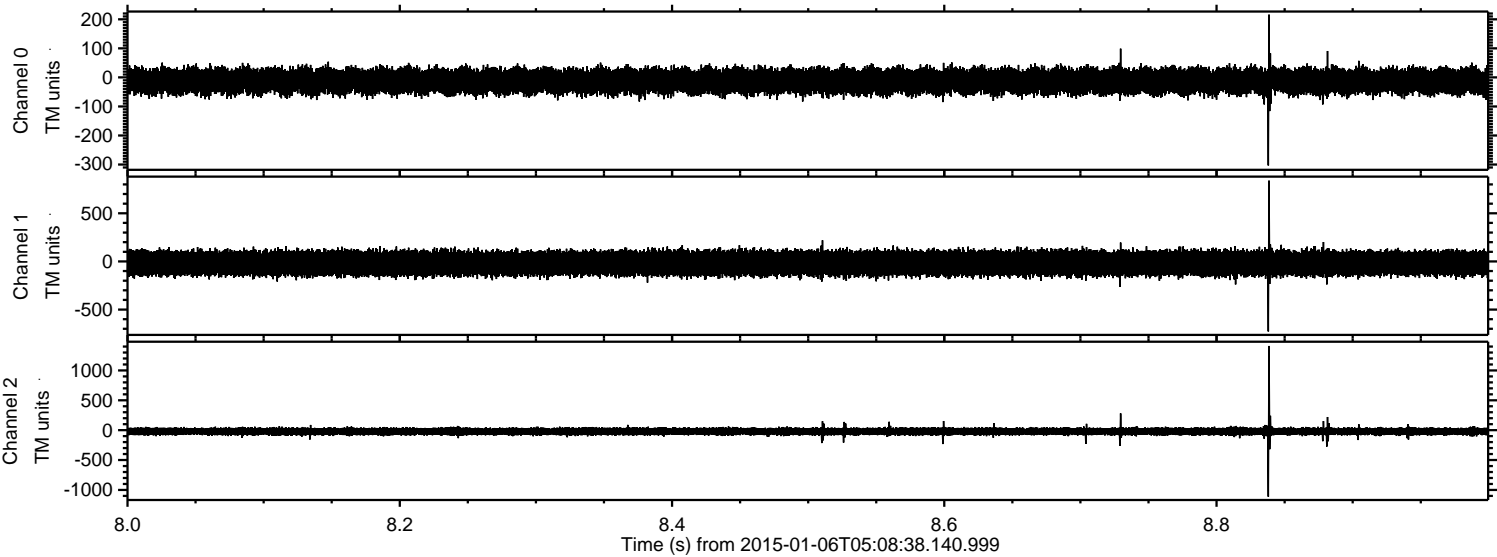
Processed Tue Jan 6 06:16:25 2015 by ELM ver.2012-10-06 from 001__elm20150106_050837__dat00.bin



Processed Tue Jan 6 06:16:26 2015 by ELM ver.2012-10-06 from 001__elm20150106_050837__dat00.bin



Processed Tue Jan 6 06:16:27 2015 by ELM ver.2012-10-06 from 001__elm20150106_050837__dat00.bin



Processed Tue Jan 6 06:16:28 2015 by ELM ver.2012-10-06 from 001__elm20150106_050837__dat00.bin

