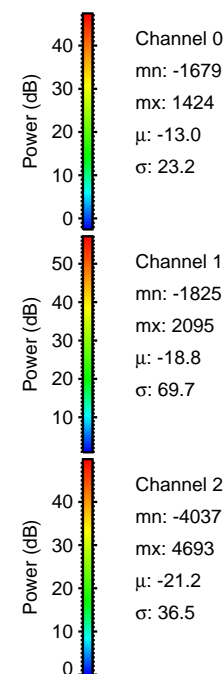
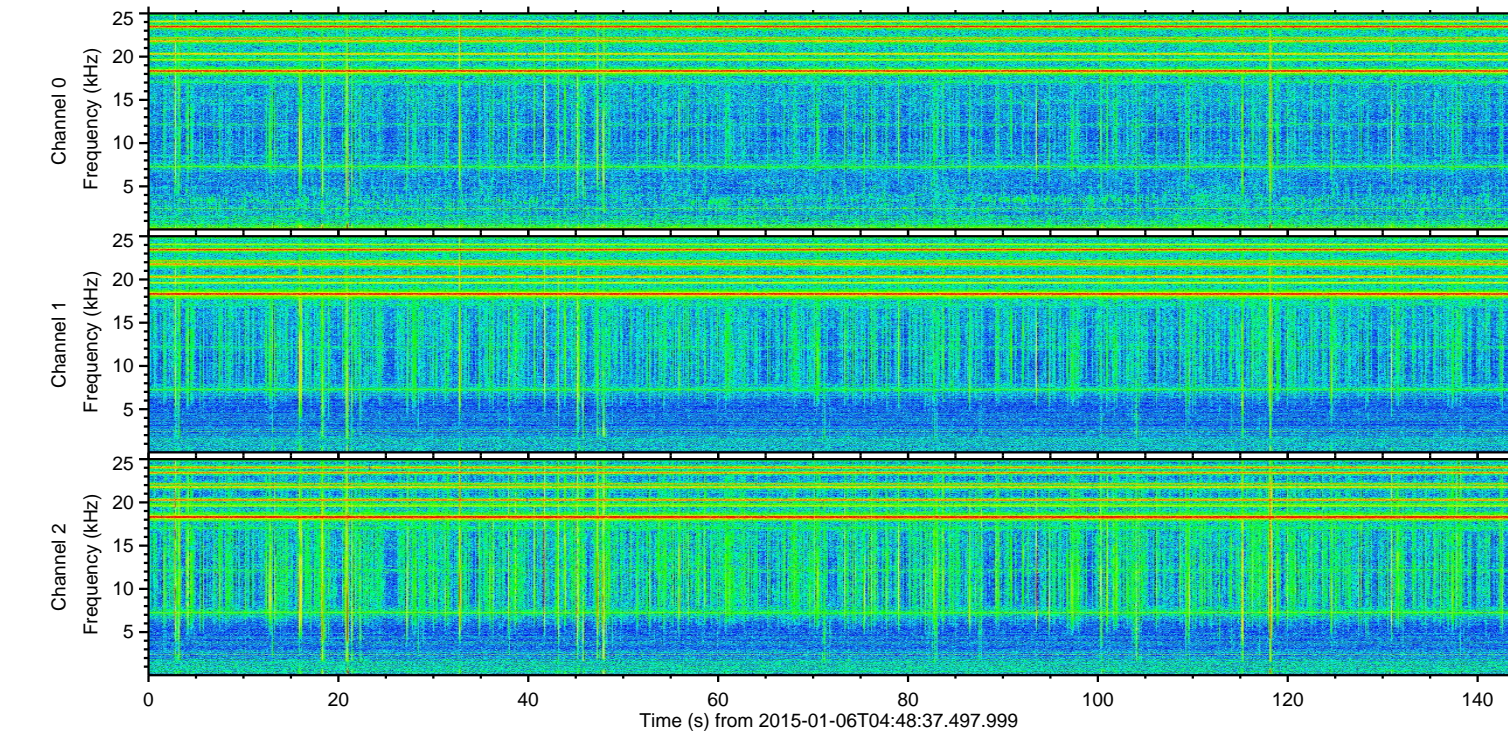
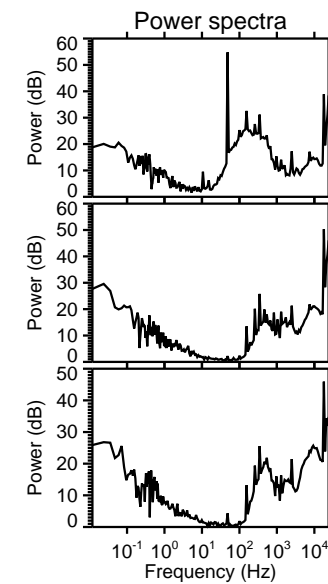
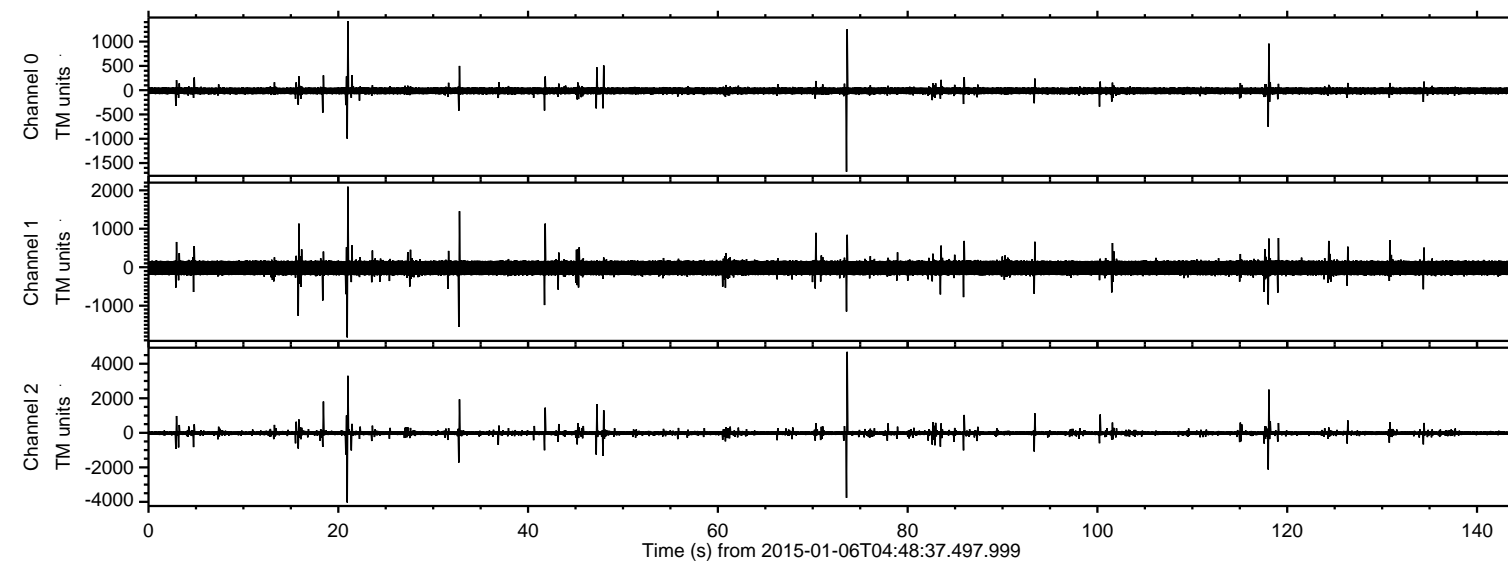


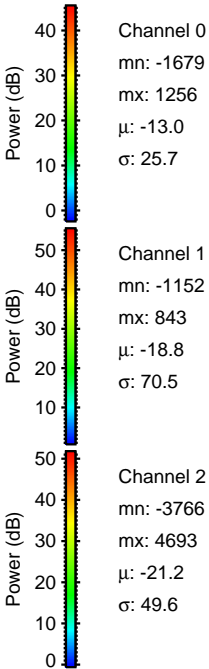
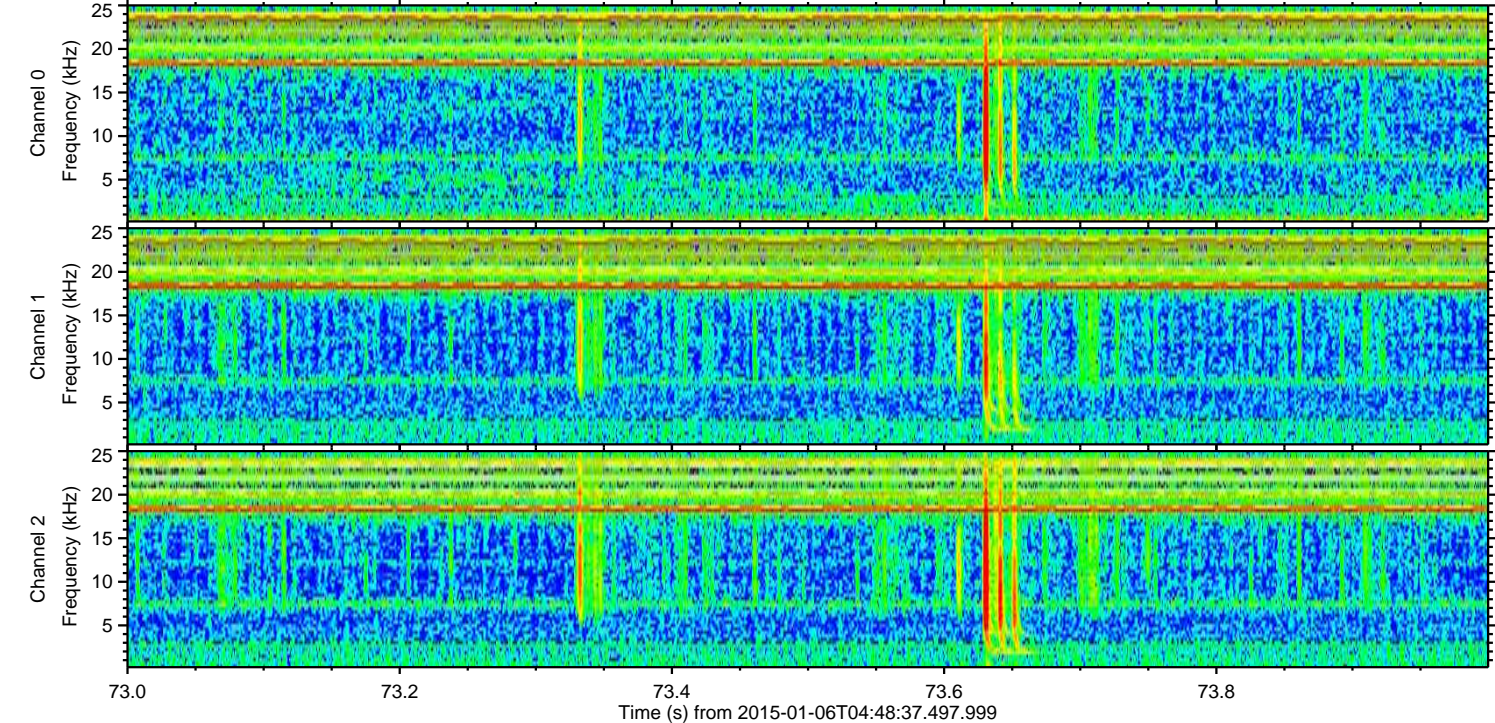
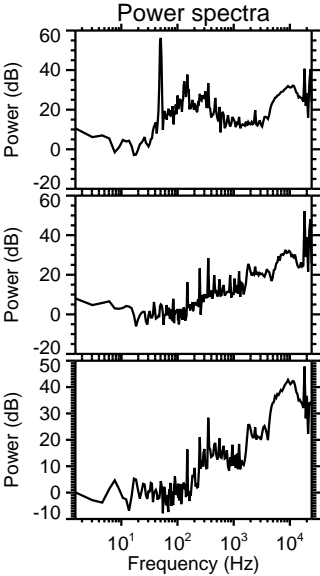
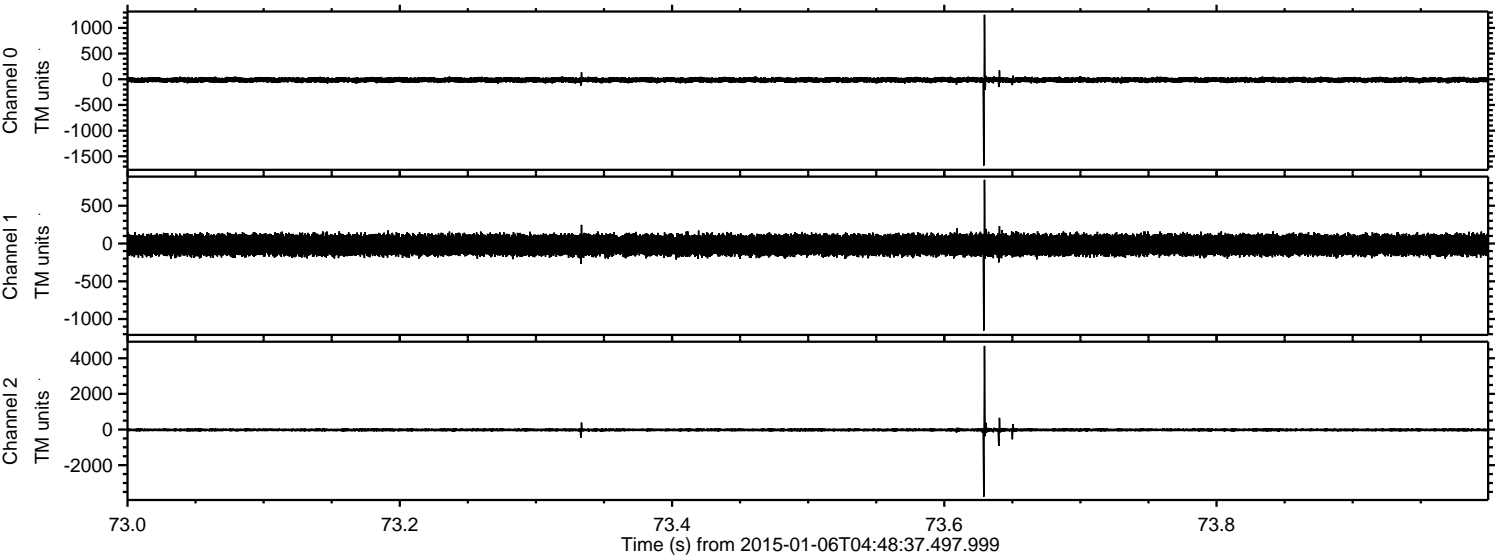
ELMAVAN 3D WAVEFORMS (Measured data sampled at 50 kHz) 49787 packets of 144 samples from 2015-01-06T04:48:37.497.999.

Processed Tue Jan 6 05:56:50 2015 by ELM ver.2012-10-06 from 001__elm20150106_044836__dat00.bin



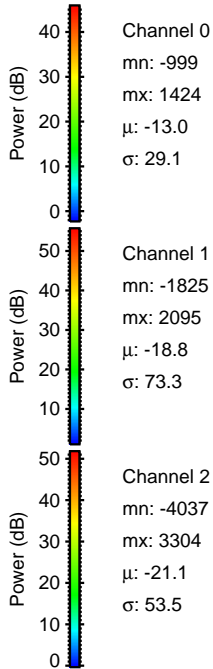
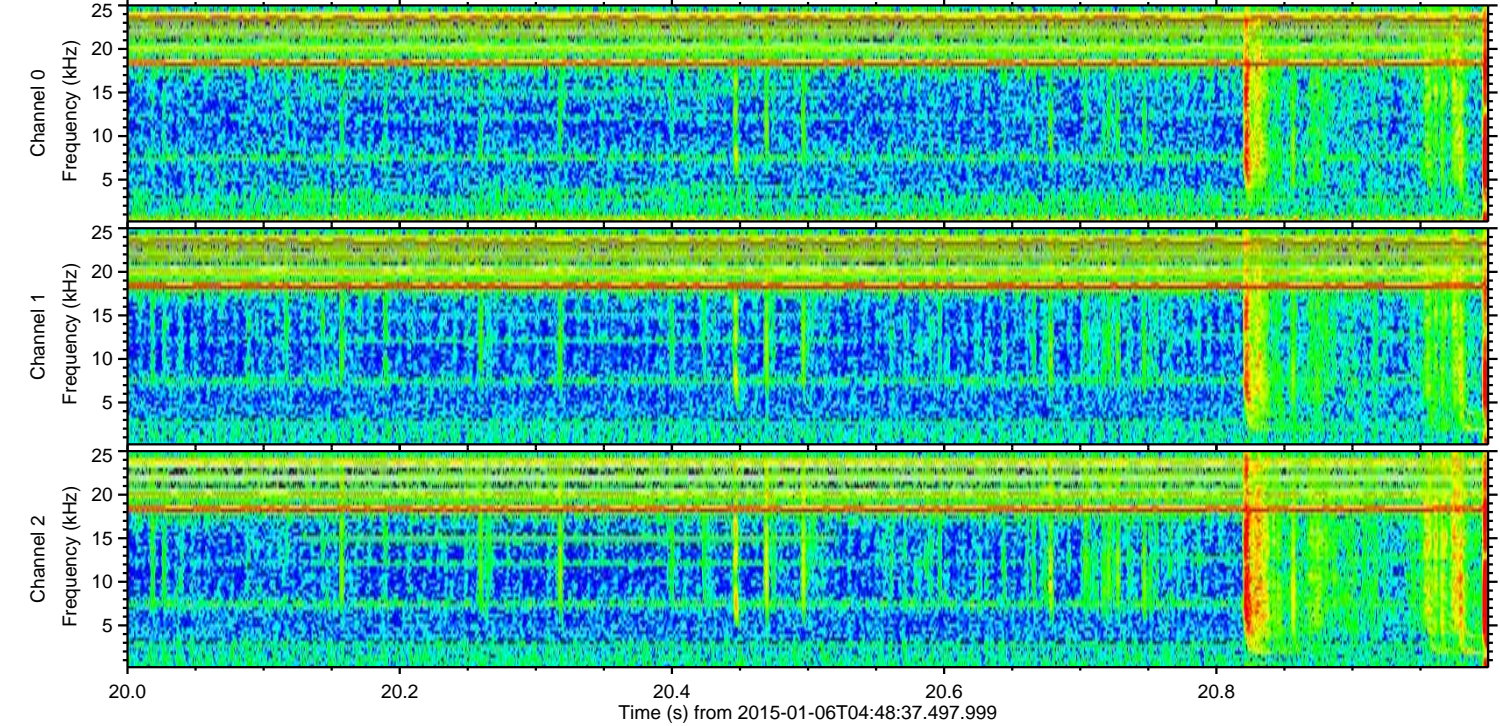
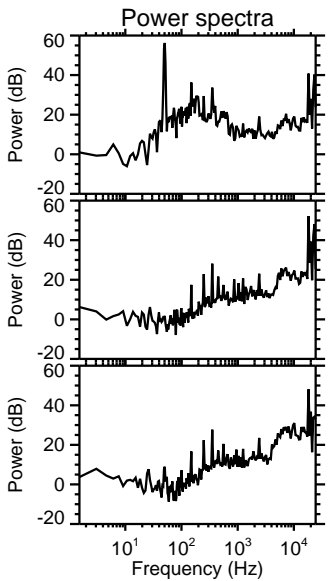
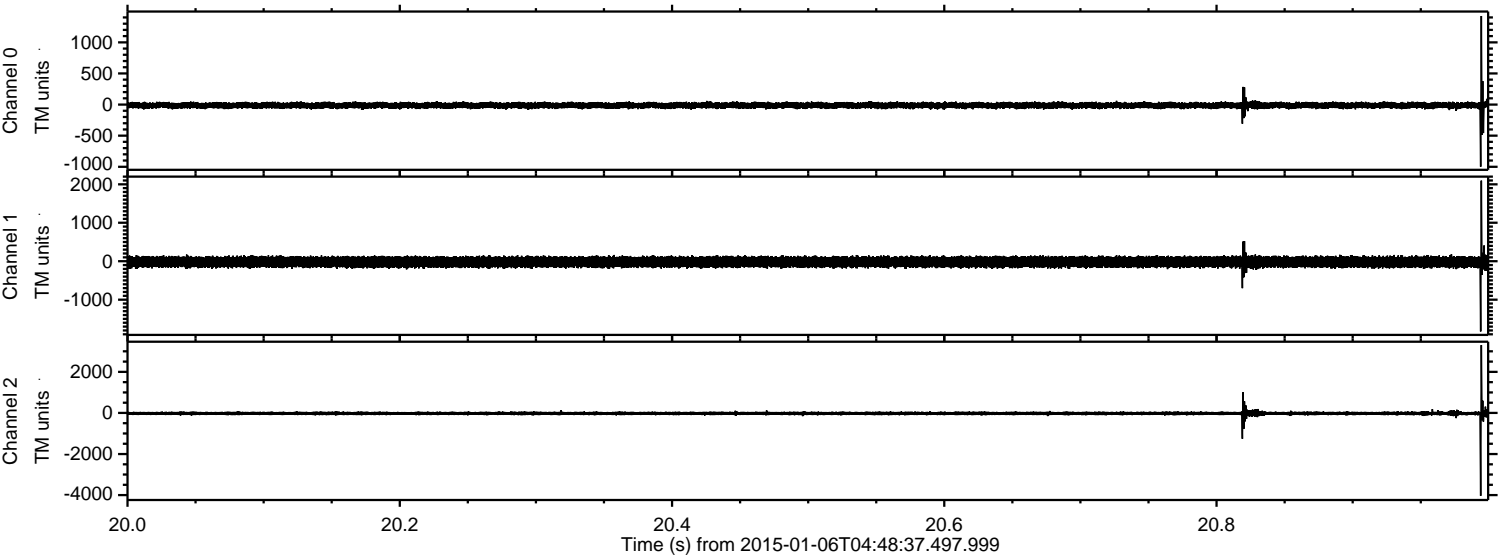
ELMAVAN 3D WAVEFORMS (Measured data sampled at 50 kHz) 49787 packets of 144 samples from 2015-01-06T04:48:37.497.999. Part 74/144

Processed Tue Jan 6 05:57:02 2015 by ELM ver.2012-10-06 from 001__elm20150106_044836__dat00.bin



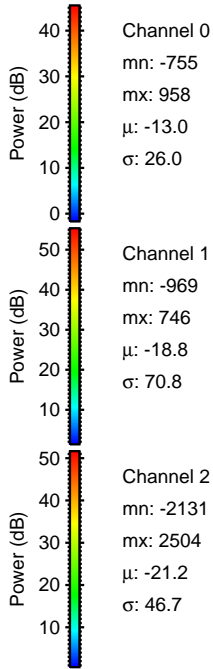
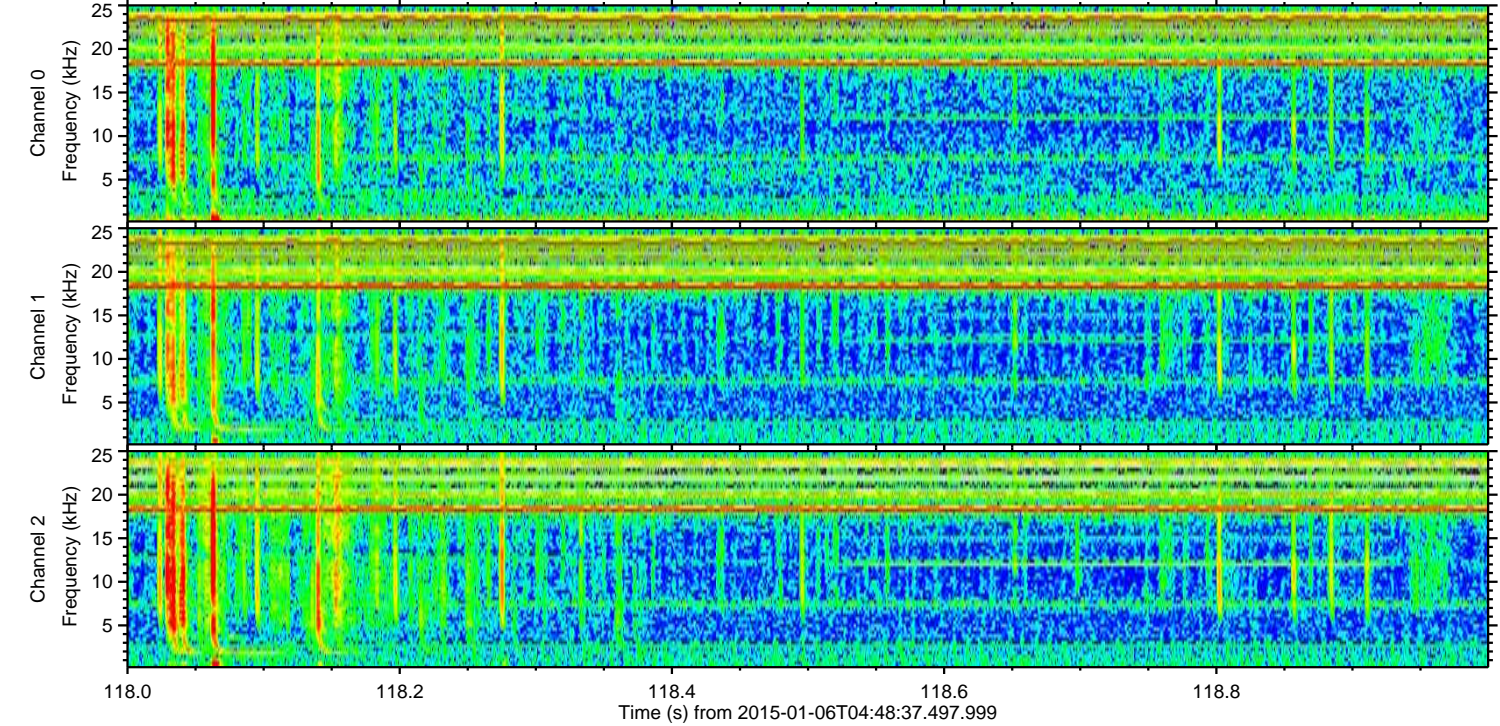
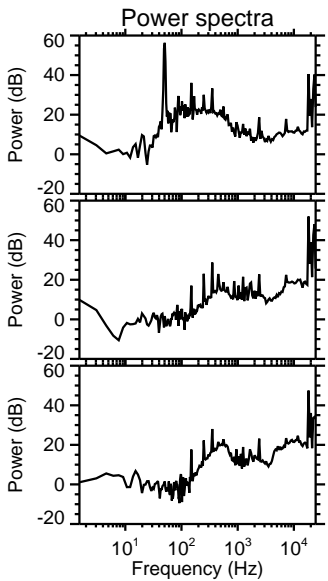
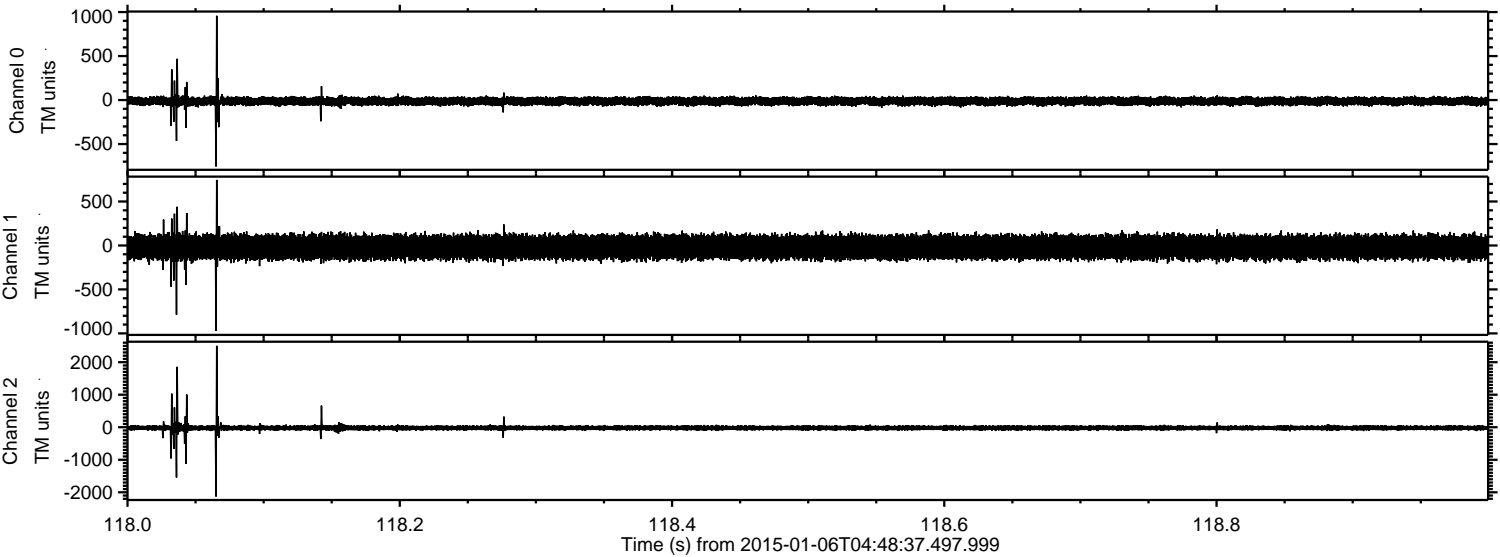
ELMAVAN 3D WAVEFORMS (Measured data sampled at 50 kHz) 49787 packets of 144 samples from 2015-01-06T04:48:37.497.999. Part 21/144

Processed Tue Jan 6 05:57:03 2015 by ELM ver.2012-10-06 from 001__elm20150106_044836__dat00.bin



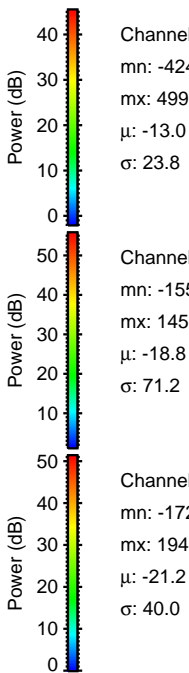
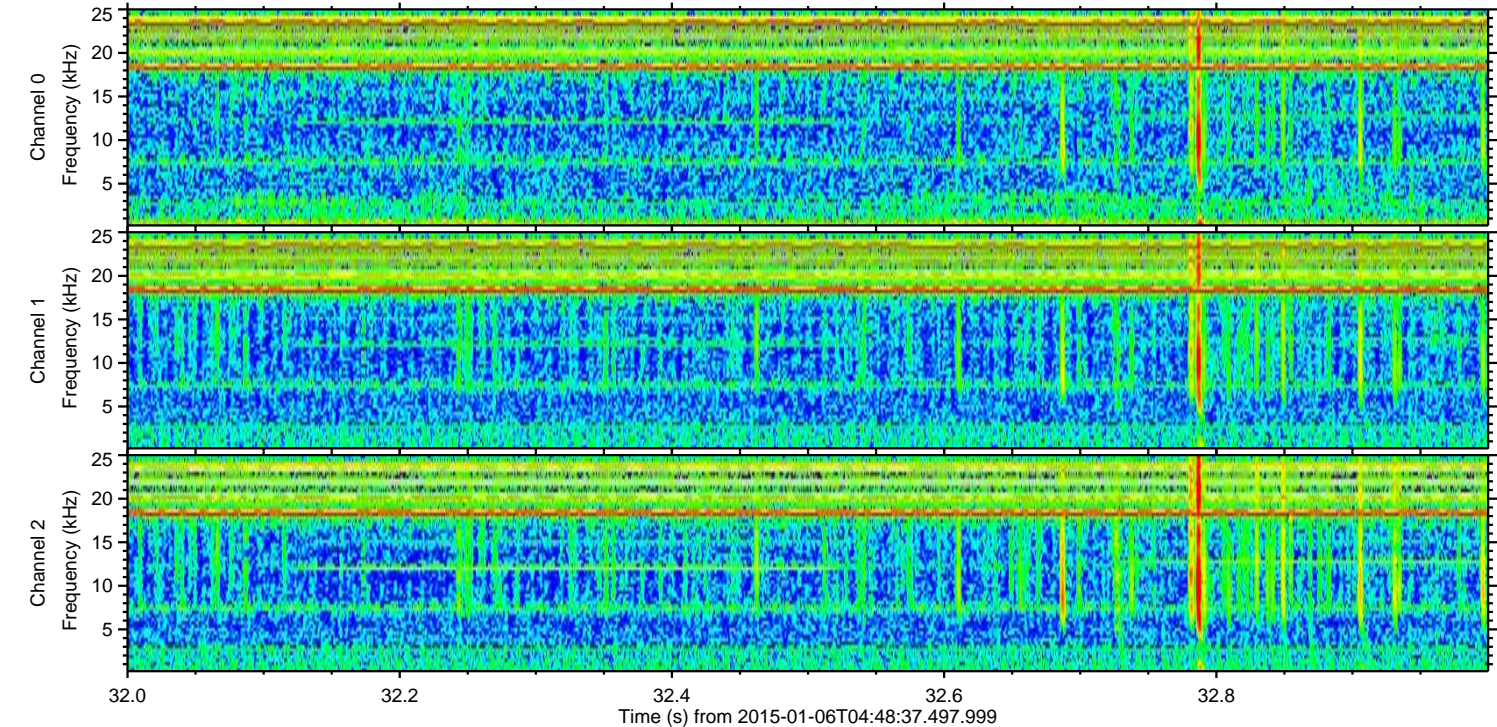
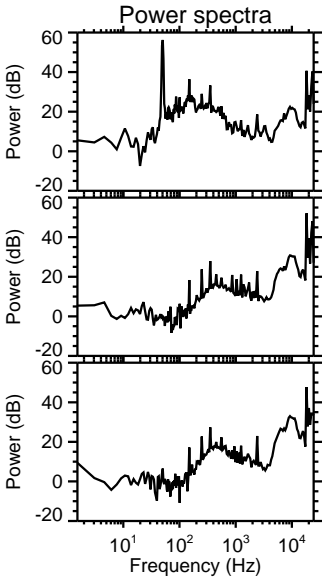
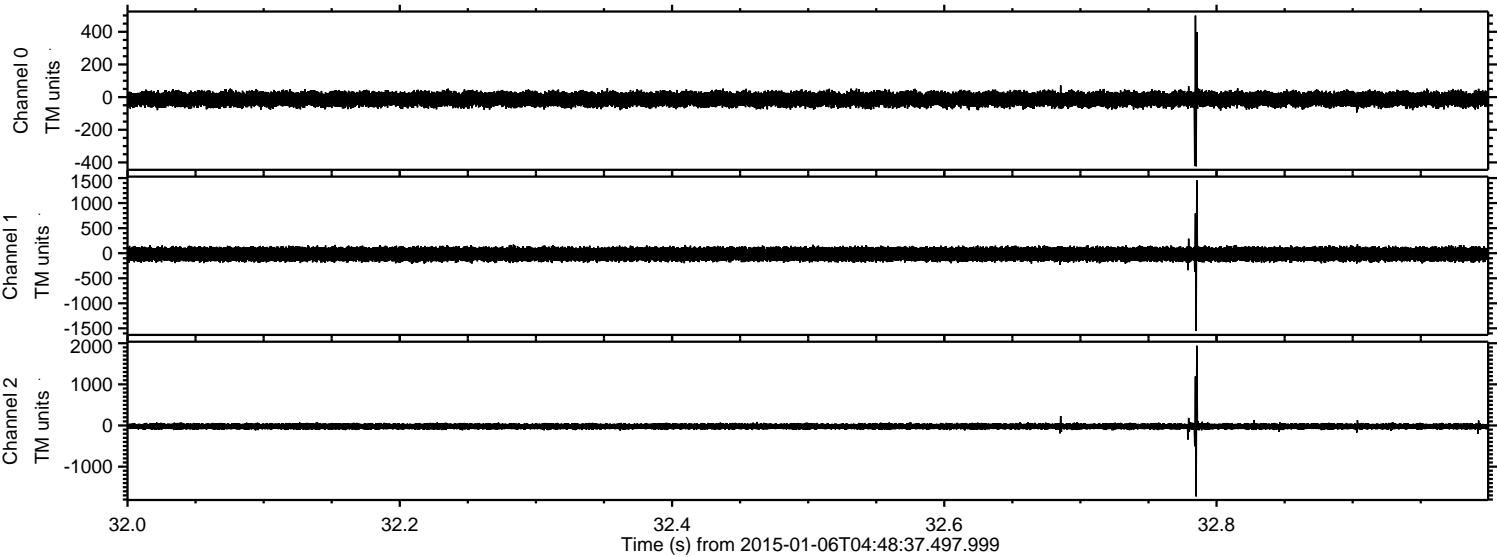
ELMAVAN 3D WAVEFORMS (Measured data sampled at 50 kHz) 49787 packets of 144 samples from 2015-01-06T04:48:37.497.999. Part 119/144

Processed Tue Jan 6 05:57:03 2015 by ELM ver.2012-10-06 from 001__elm20150106_044836__dat00.bin

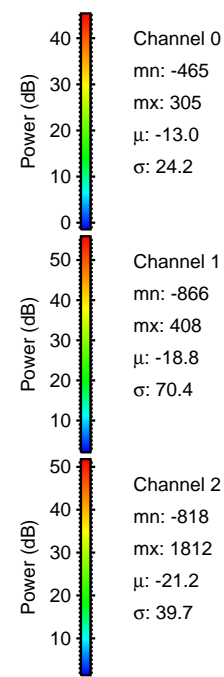
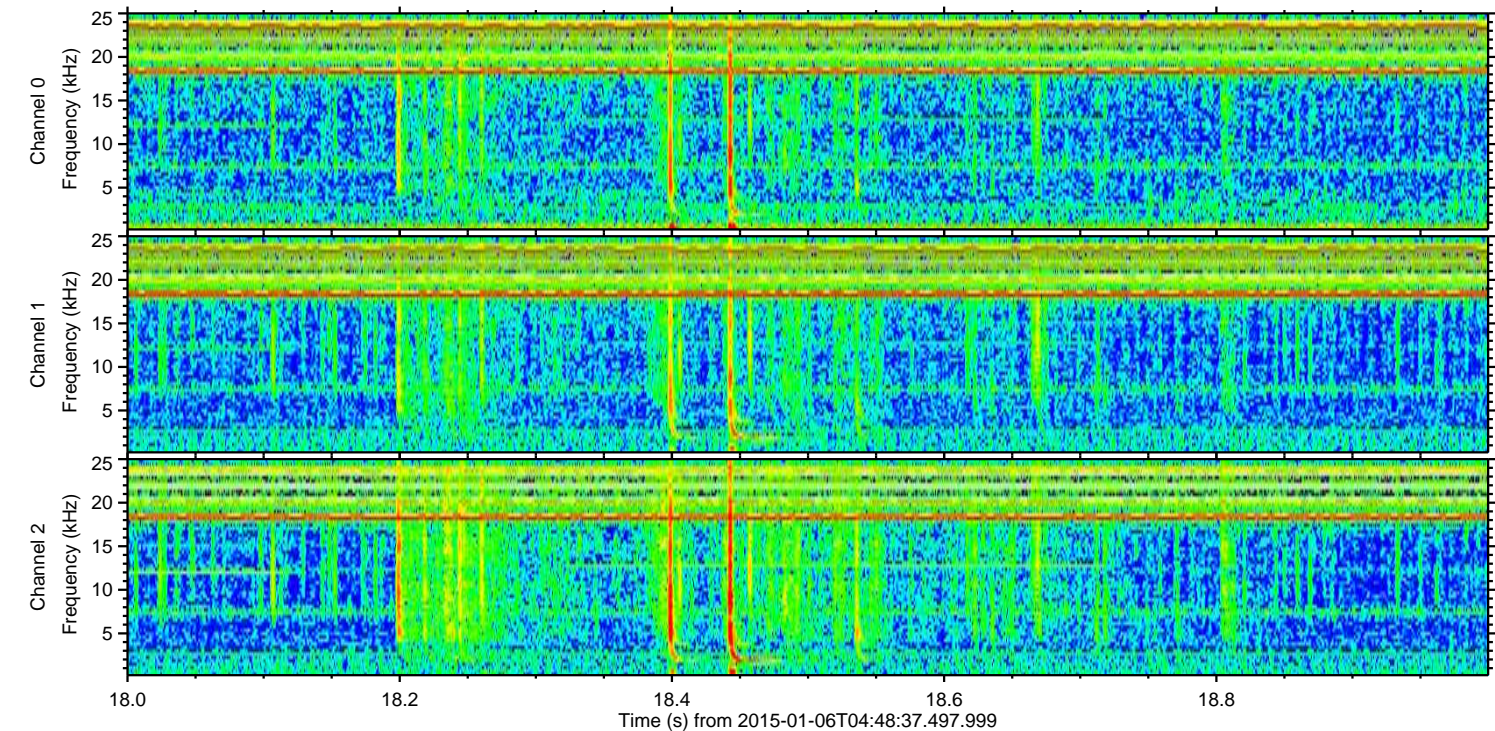
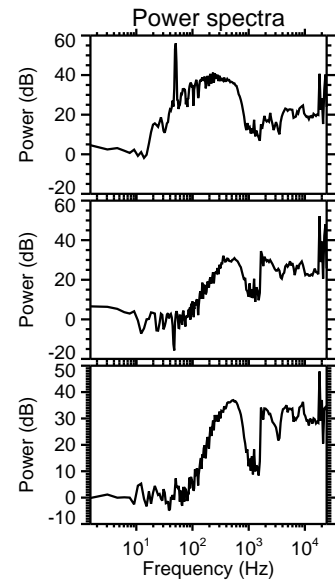
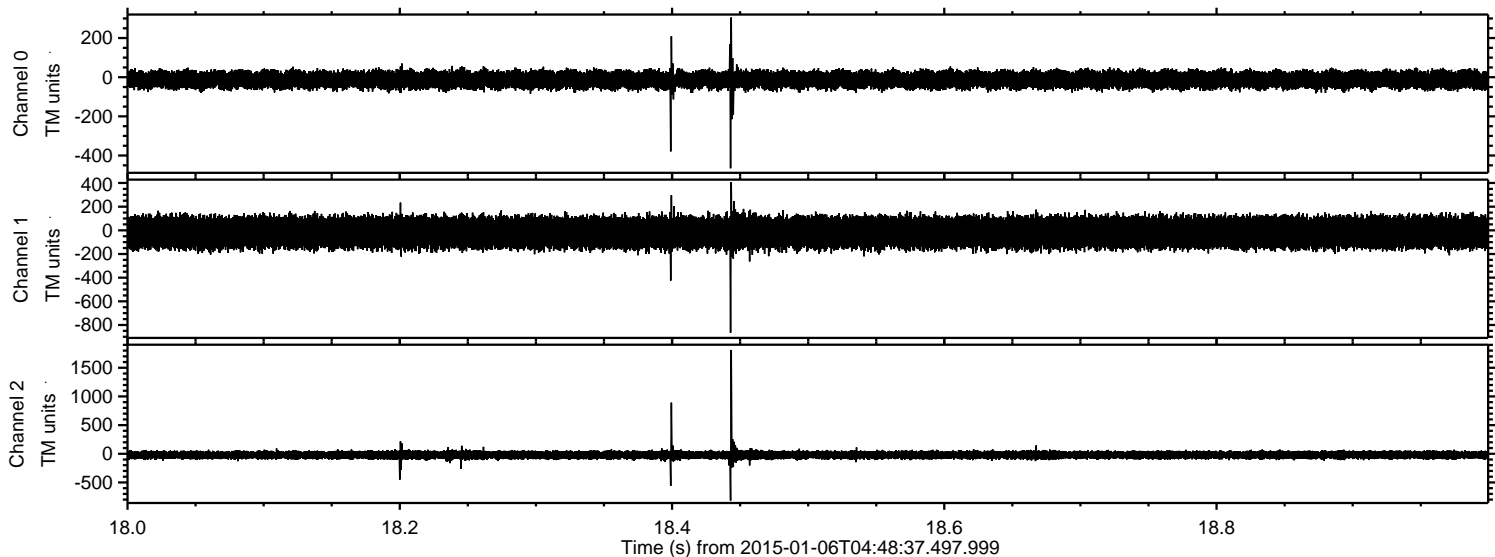


ELMAVAN 3D WAVEFORMS (Measured data sampled at 50 kHz) 49787 packets of 144 samples from 2015-01-06T04:48:37.497.999. Part 33/144

Processed Tue Jan 6 05:57:04 2015 by ELM ver.2012-10-06 from 001__elm20150106_044836__dat00.bin



Processed Tue Jan 6 05:57:05 2015 by ELM ver.2012-10-06 from 001__elm20150106_044836__dat00.bin



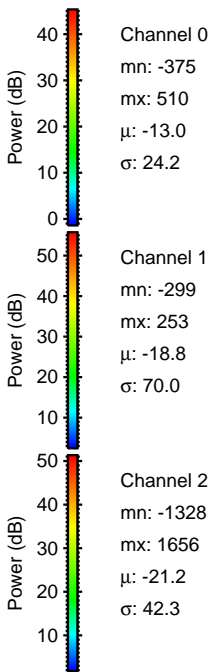
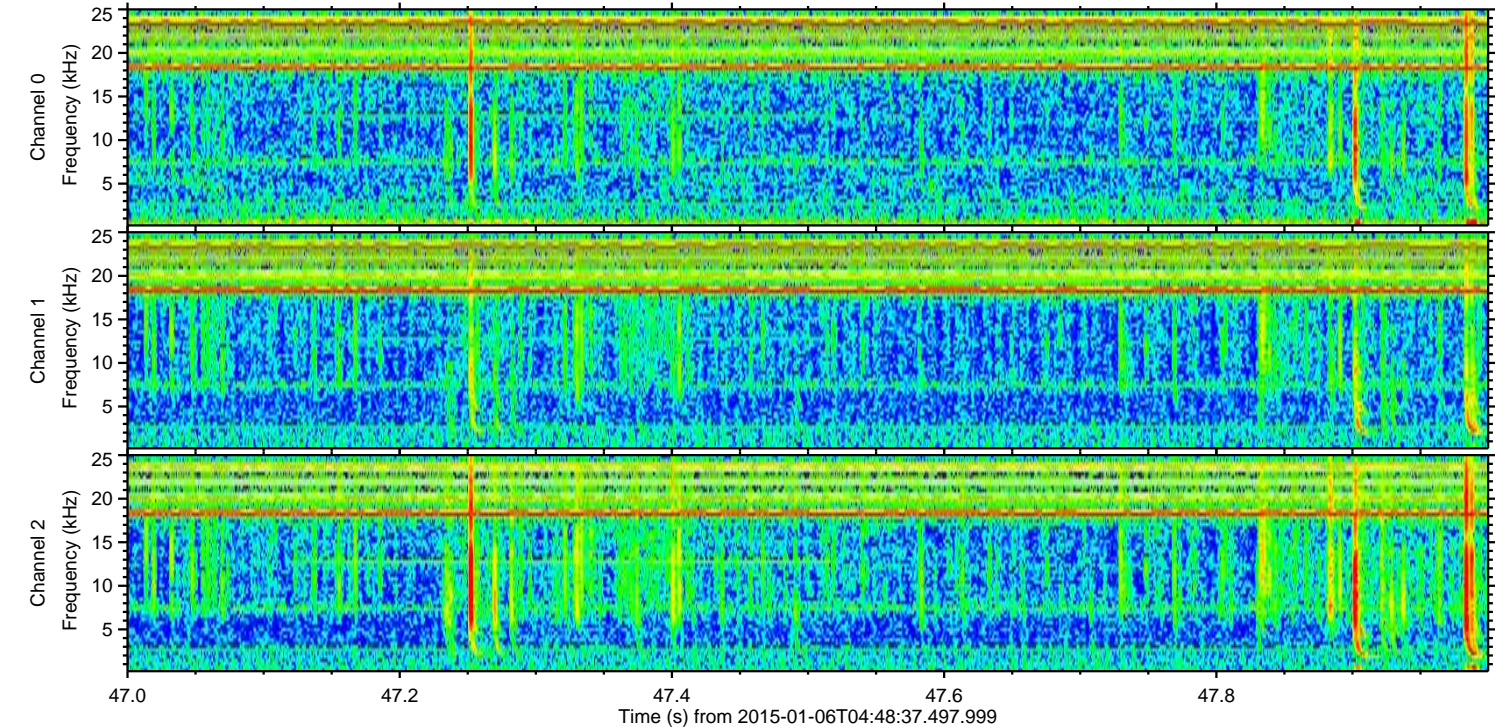
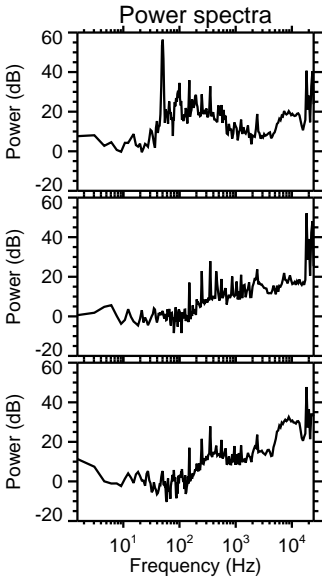
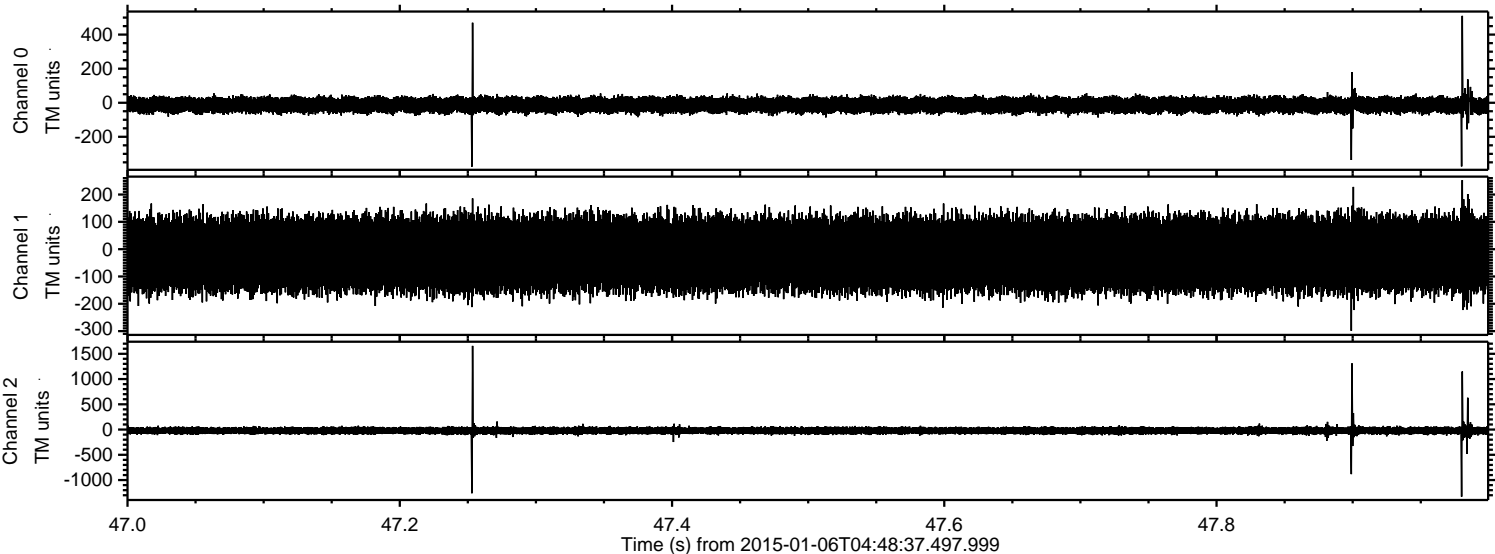
Channel 0
mn: -465
mx: 305
 μ : -13.0
 σ : 24.2

Channel 1
mn: -866
mx: 408
 μ : -18.8
 σ : 70.4

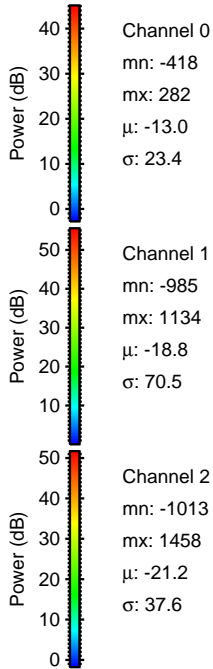
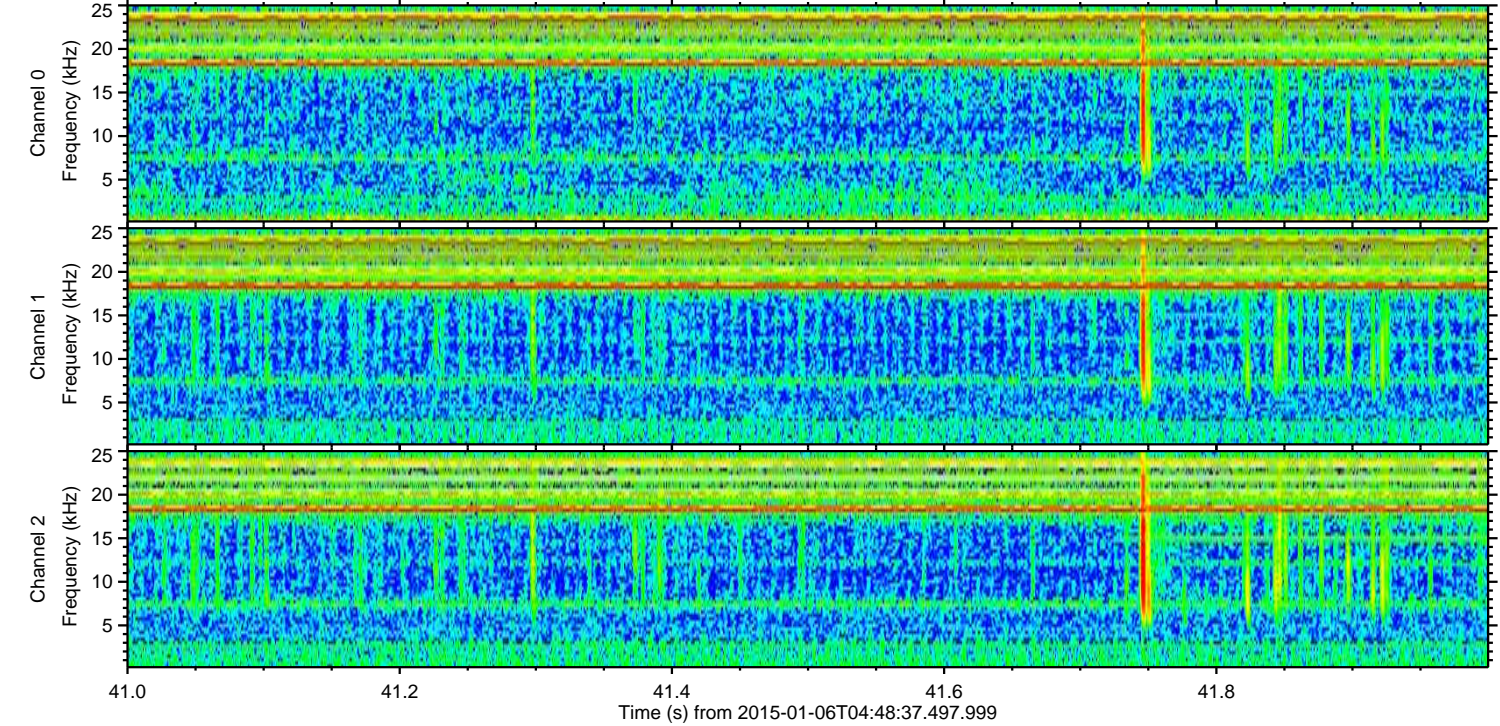
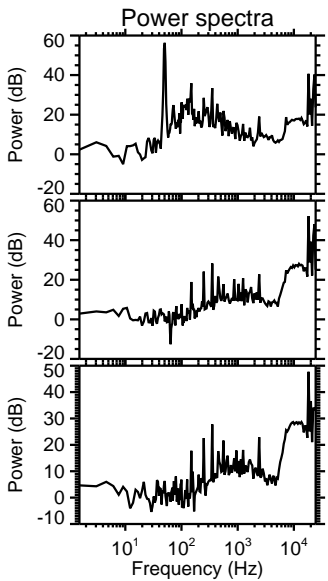
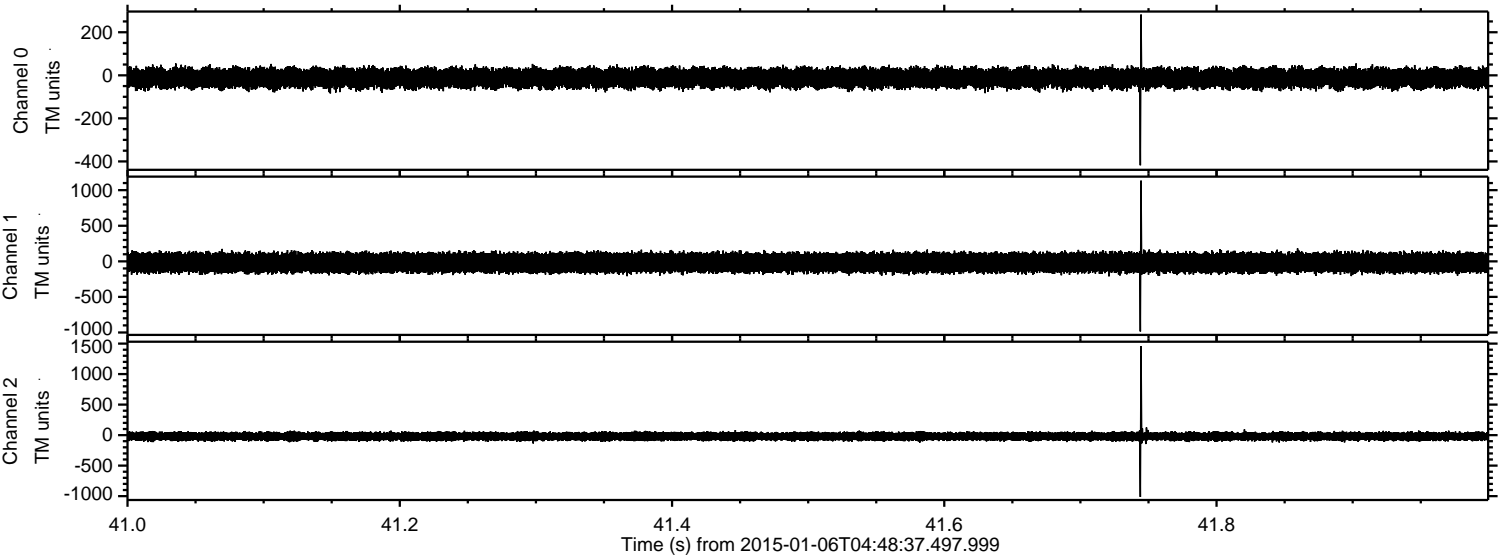
Channel 2
mn: -818
mx: 1812
 μ : -21.2
 σ : 39.7

ELMAVAN 3D WAVEFORMS (Measured data sampled at 50 kHz) 49787 packets of 144 samples from 2015-01-06T04:48:37.497.999. Part 48/144

Processed Tue Jan 6 05:57:06 2015 by ELM ver.2012-10-06 from 001__elm20150106_044836__dat00.bin



Processed Tue Jan 6 05:57:07 2015 by ELM ver.2012-10-06 from 001__elm20150106_044836__dat00.bin



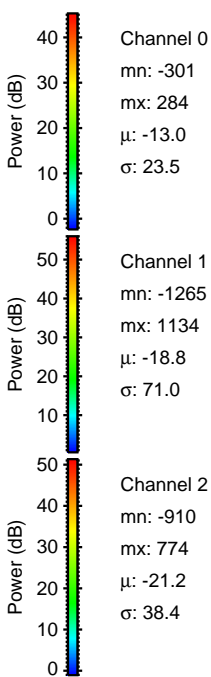
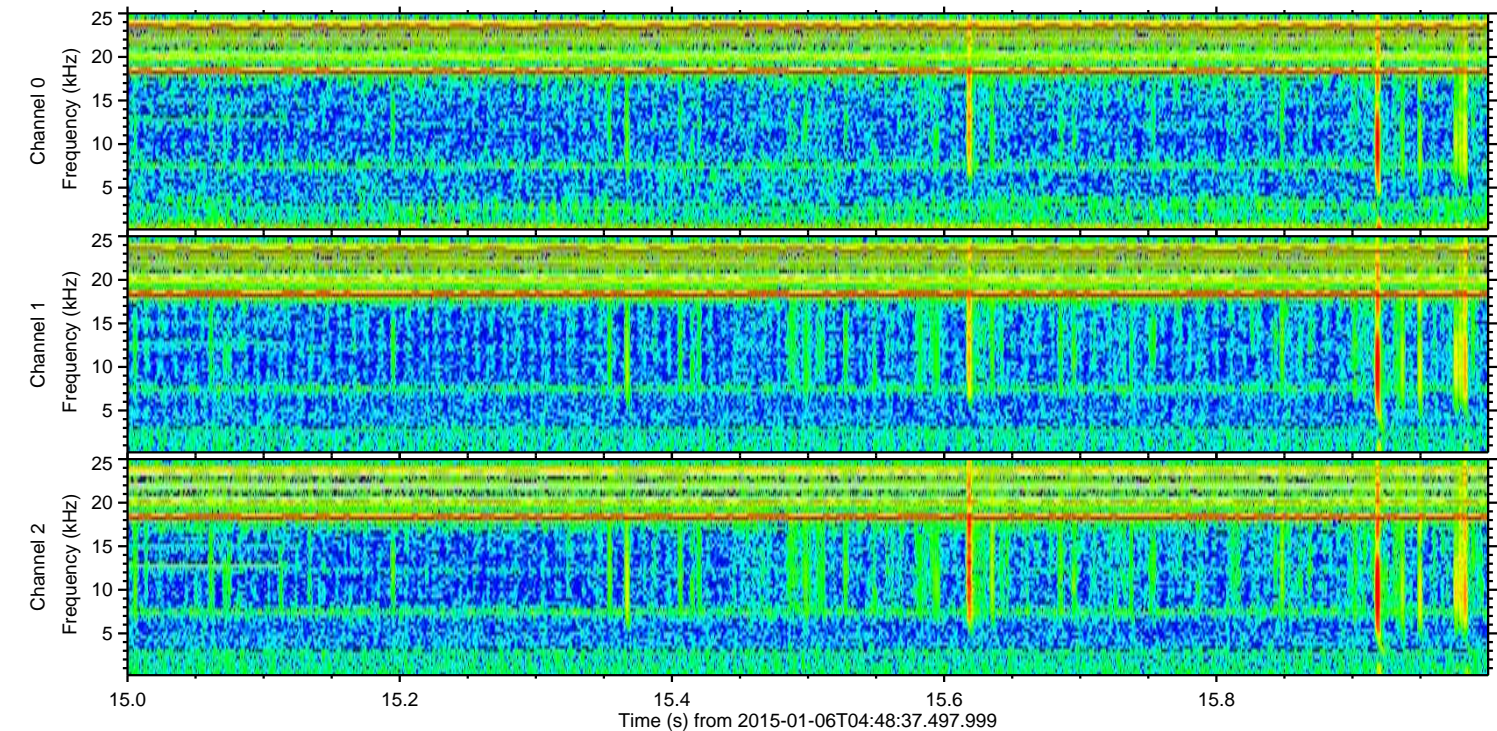
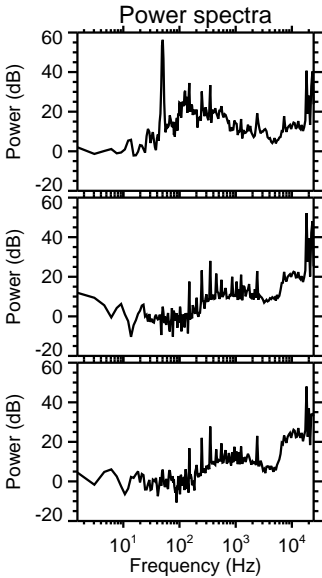
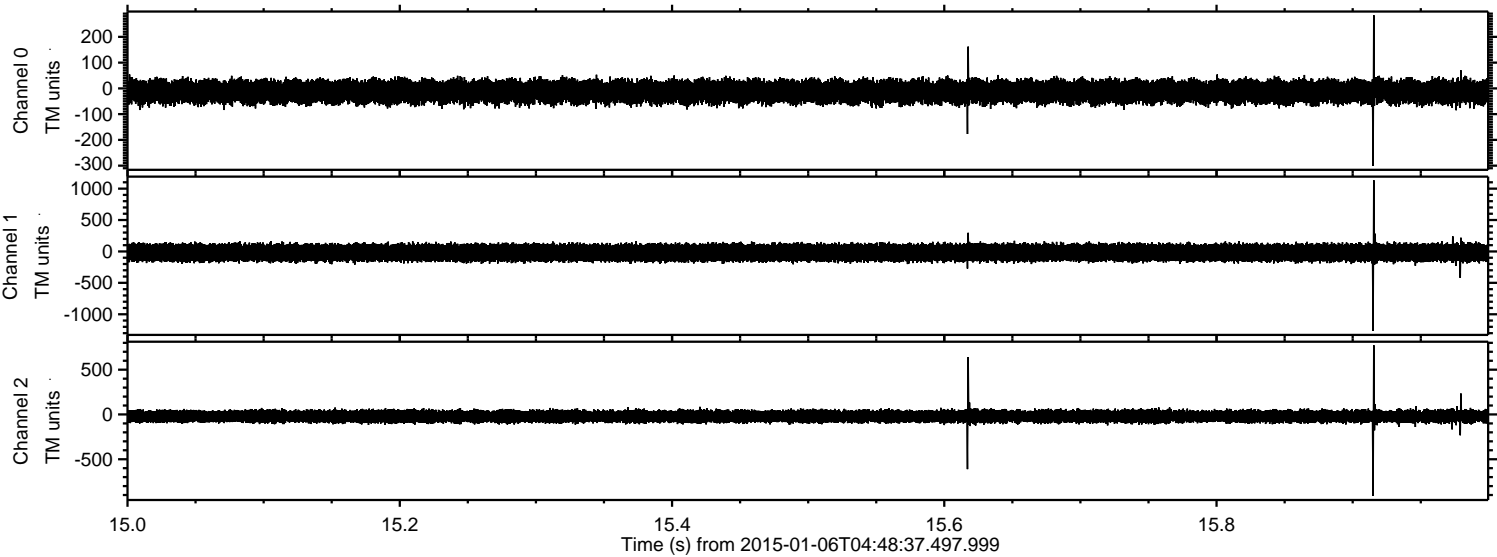
Channel 0
mn: -418
mx: 282
 μ : -13.0
 σ : 23.4

Channel 1
mn: -985
mx: 1134
 μ : -18.8
 σ : 70.5

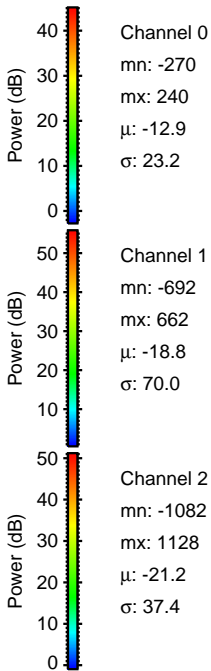
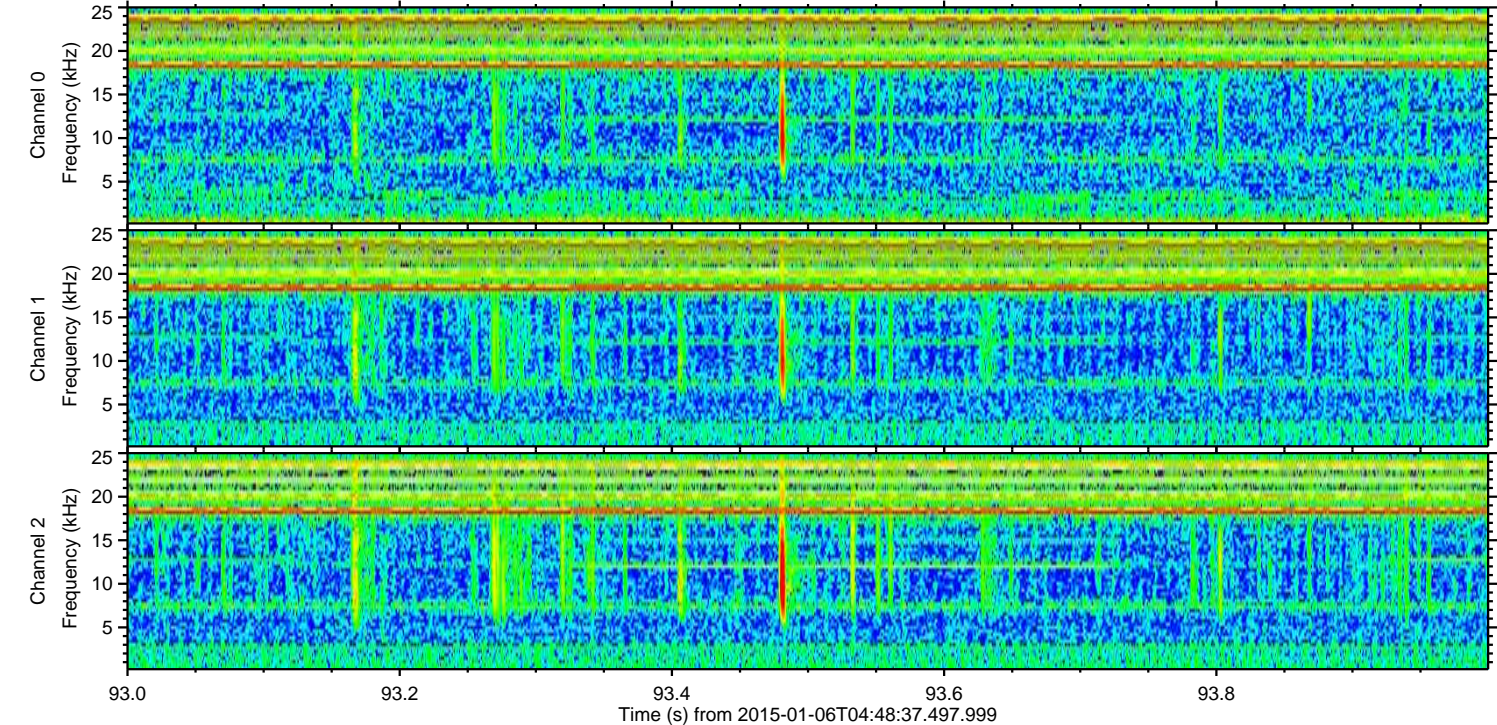
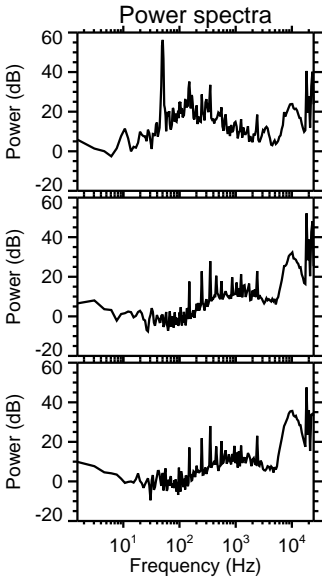
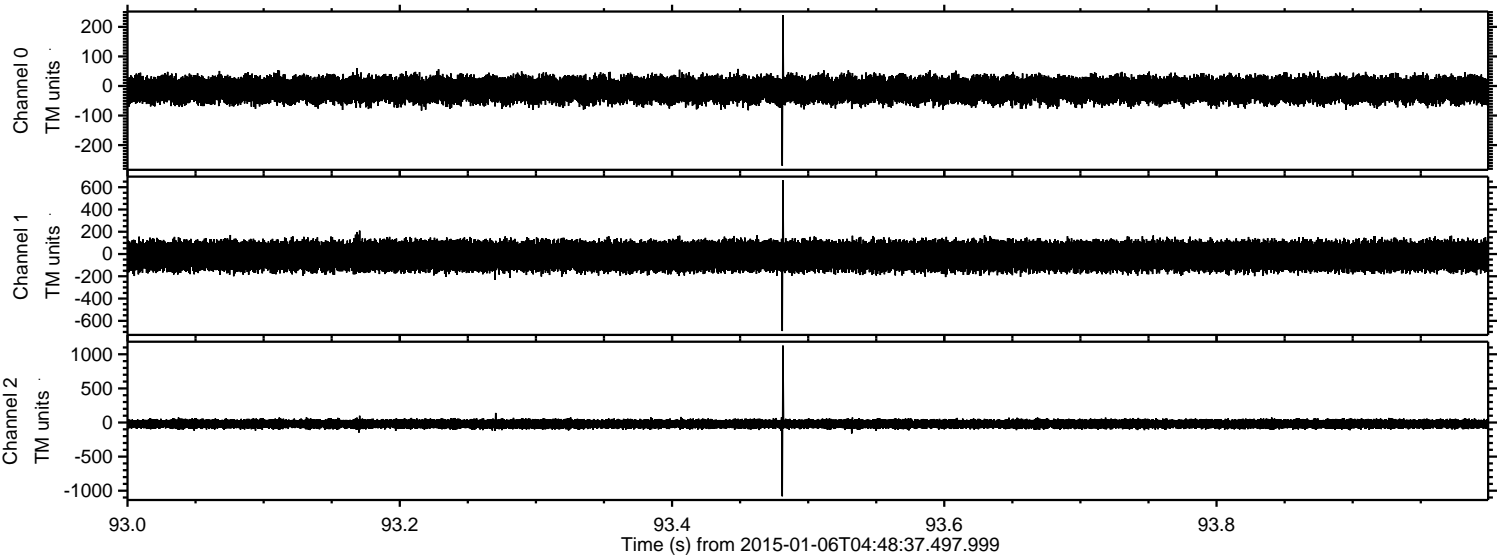
Channel 2
mn: -1013
mx: 1458
 μ : -21.2
 σ : 37.6

ELMAVAN 3D WAVEFORMS (Measured data sampled at 50 kHz) 49787 packets of 144 samples from 2015-01-06T04:48:37.497.999. Part 16/144

Processed Tue Jan 6 05:57:08 2015 by ELM ver.2012-10-06 from 001__elm20150106_044836__dat00.bin



Processed Tue Jan 6 05:57:09 2015 by ELM ver.2012-10-06 from 001__elm20150106_044836__dat00.bin



ELMAVAN 3D WAVEFORMS (Measured data sampled at 50 kHz) 49787 packets of 144 samples from 2015-01-06T04:48:37.497.999. Part 10/144

Processed Tue Jan 6 05:57:10 2015 by ELM ver.2012-10-06 from 001__elm20150106_044836__dat00.bin

