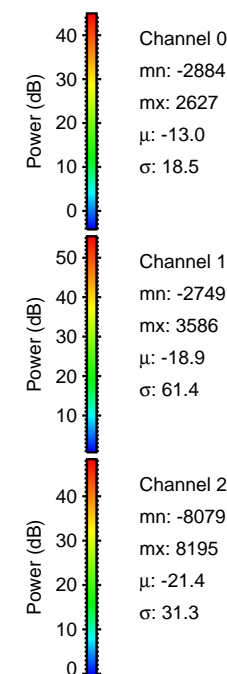
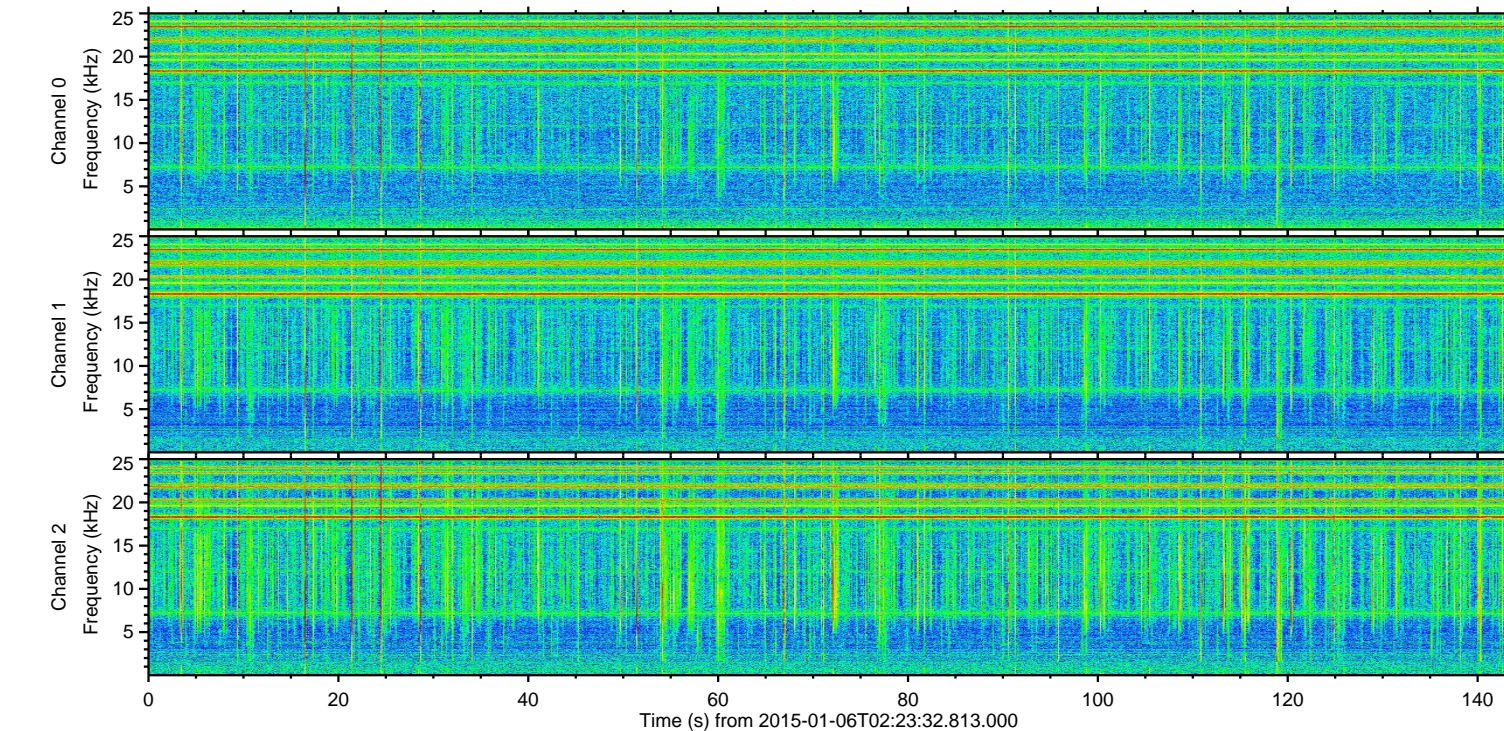
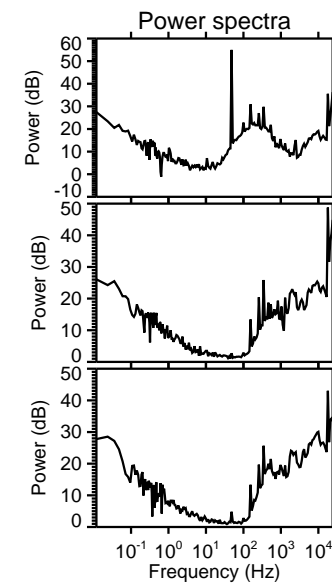
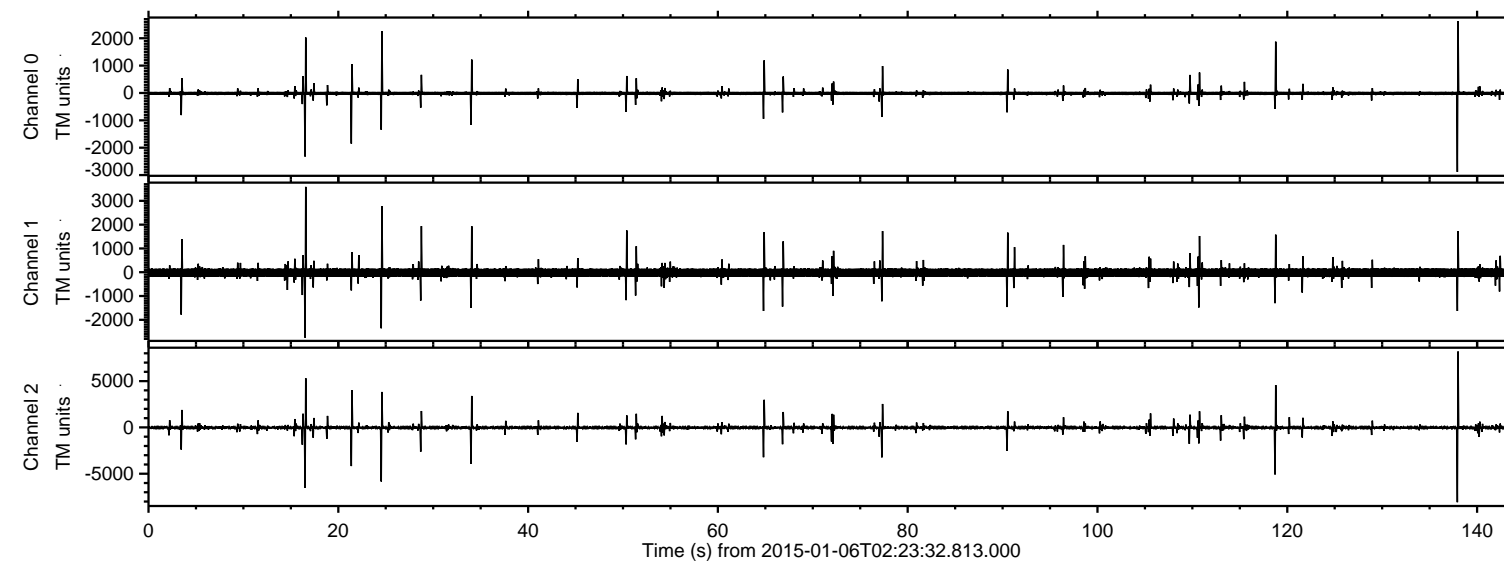


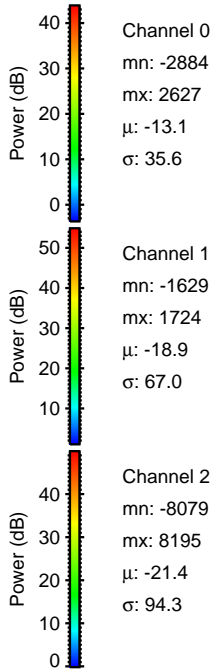
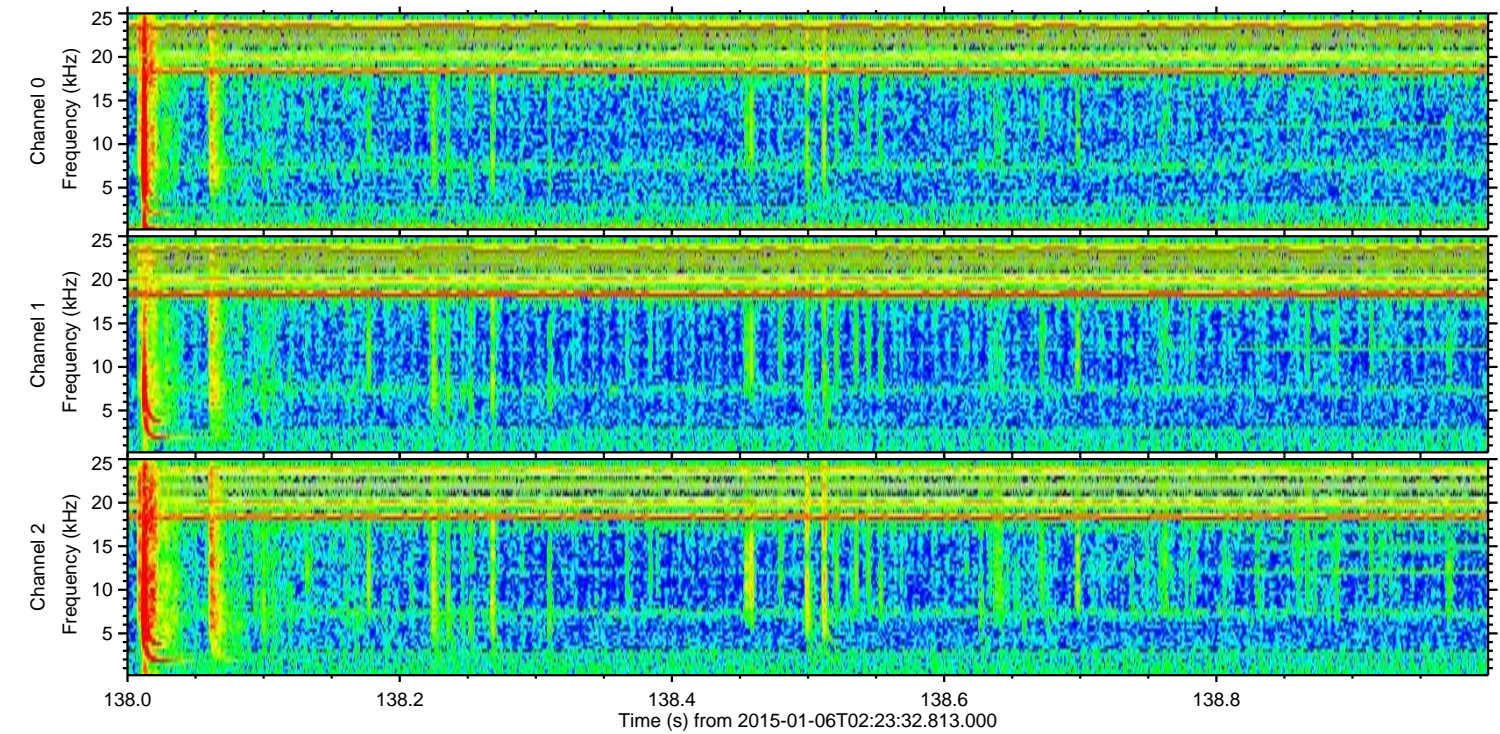
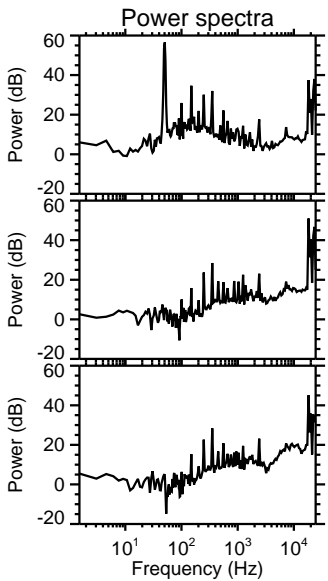
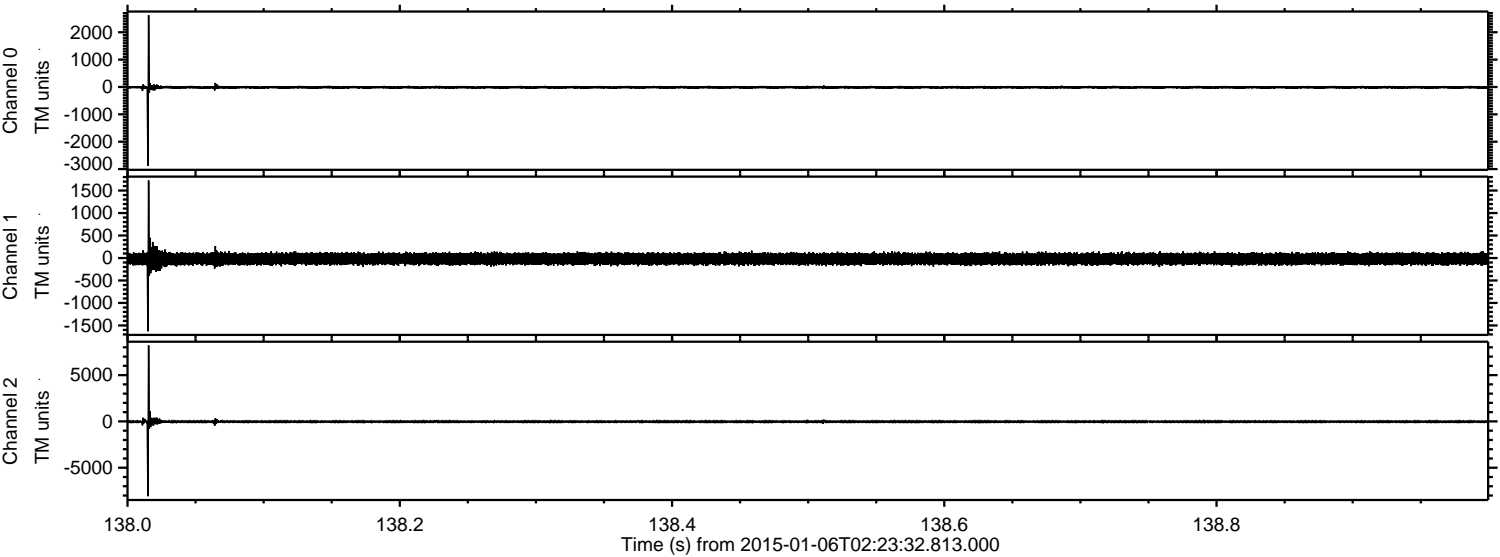
ELMAVAN 3D WAVEFORMS (Measured data sampled at 50 kHz) 49785 packets of 144 samples from 2015-01-06T02:23:32.813.000.

Processed Tue Jan 6 03:31:13 2015 by ELM ver.2012-10-06 from 001__elm20150106_022331__dat00.bin

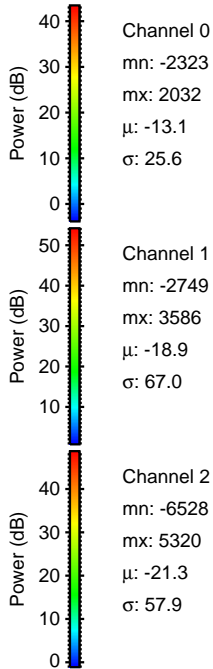
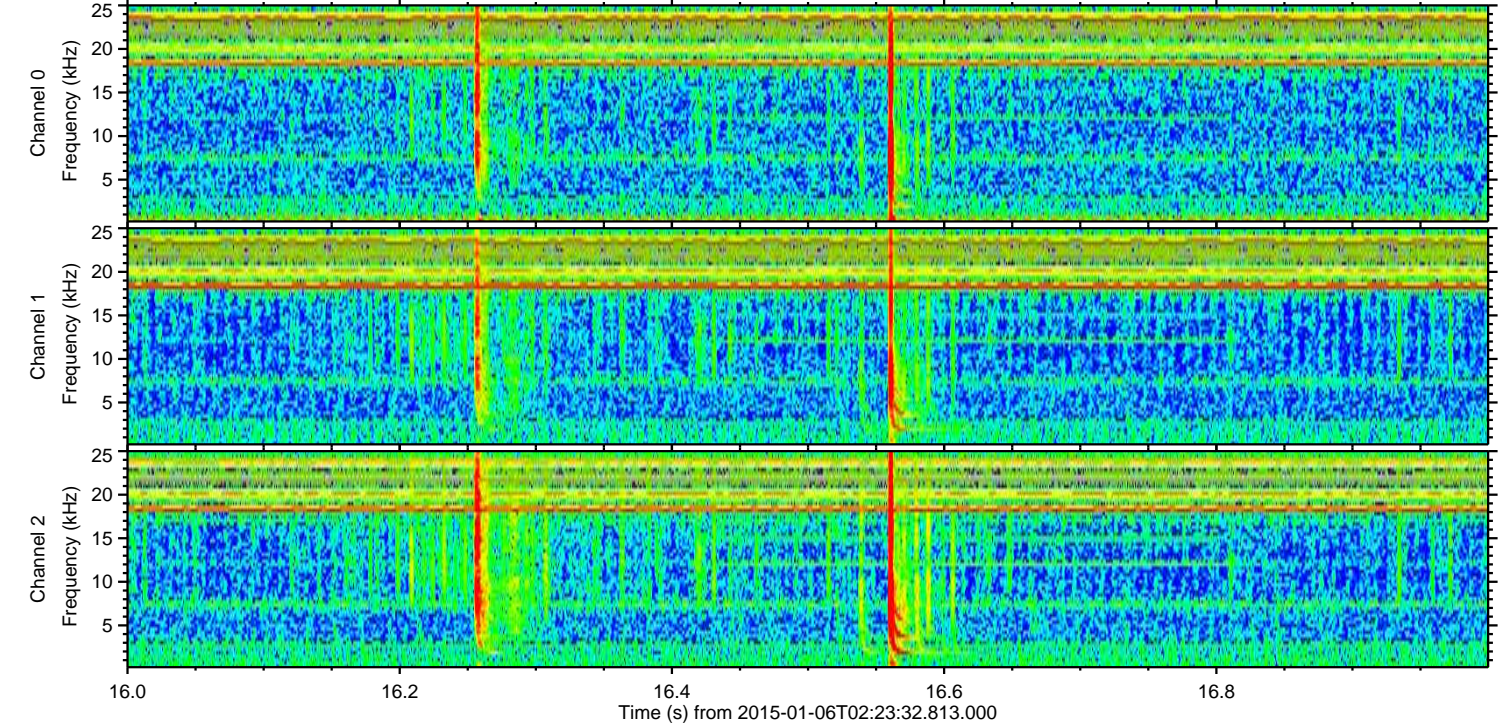
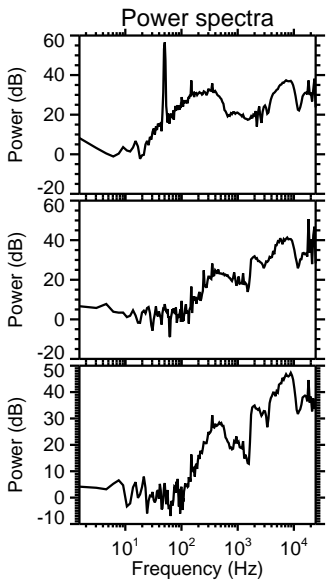
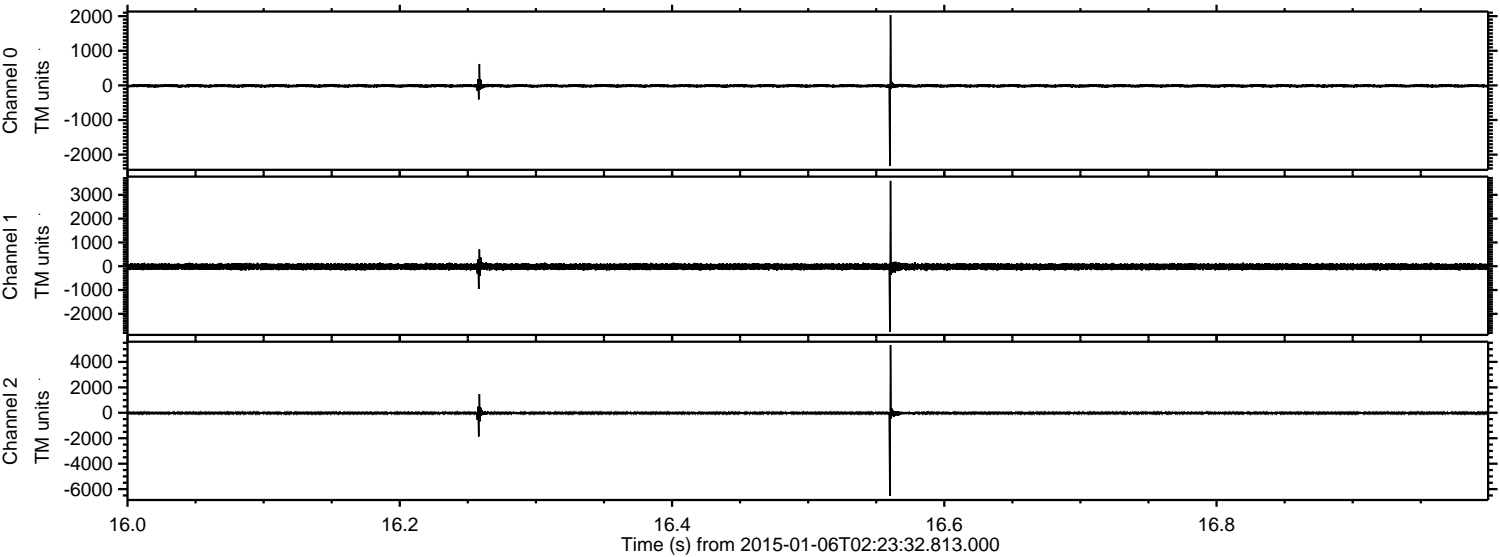


ELMAVAN 3D WAVEFORMS (Measured data sampled at 50 kHz) 49785 packets of 144 samples from 2015-01-06T02:23:32.813.000. Part 139/144

Processed Tue Jan 6 03:31:25 2015 by ELM ver.2012-10-06 from 001__elm20150106_022331__dat00.bin

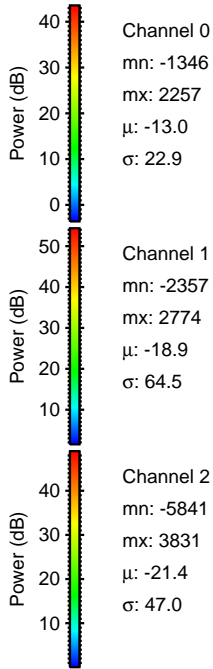
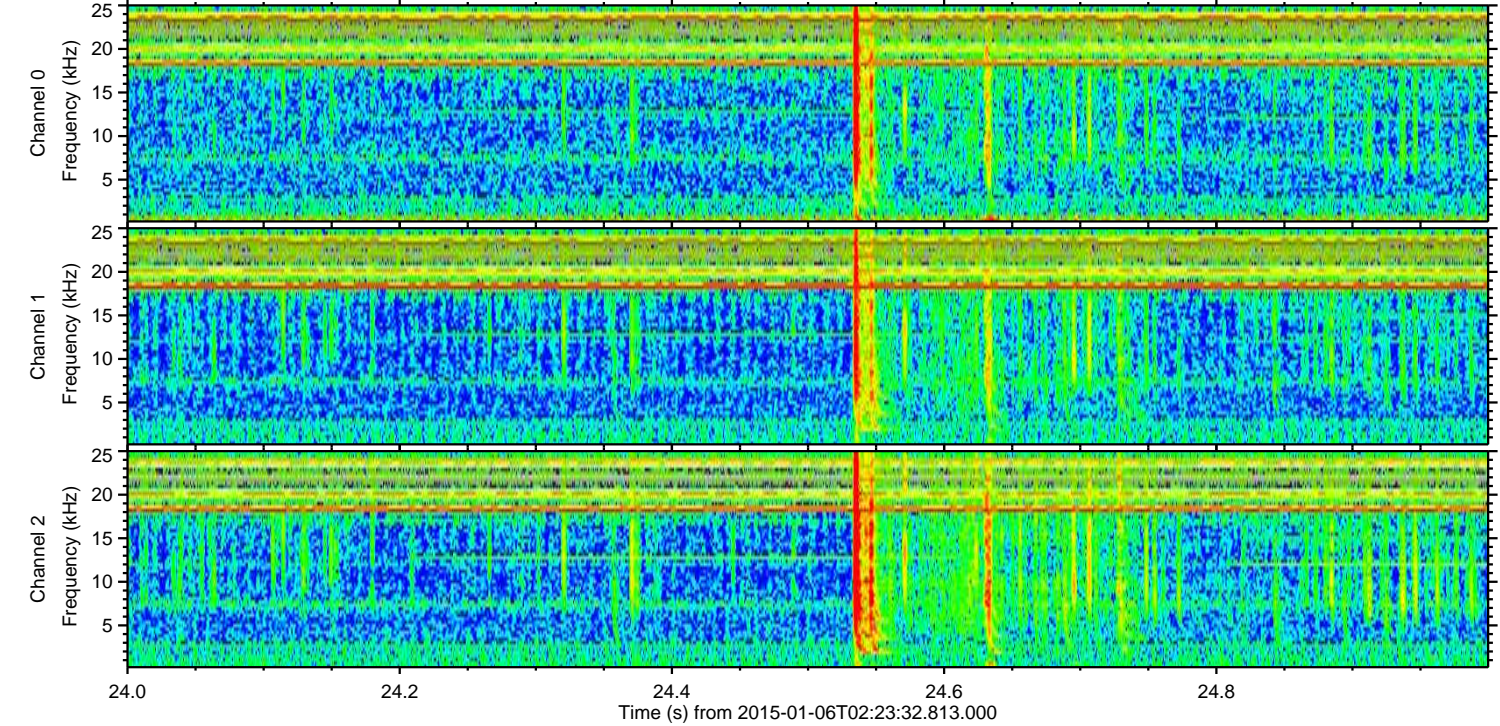
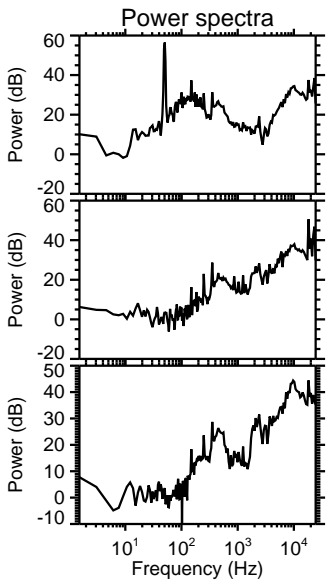
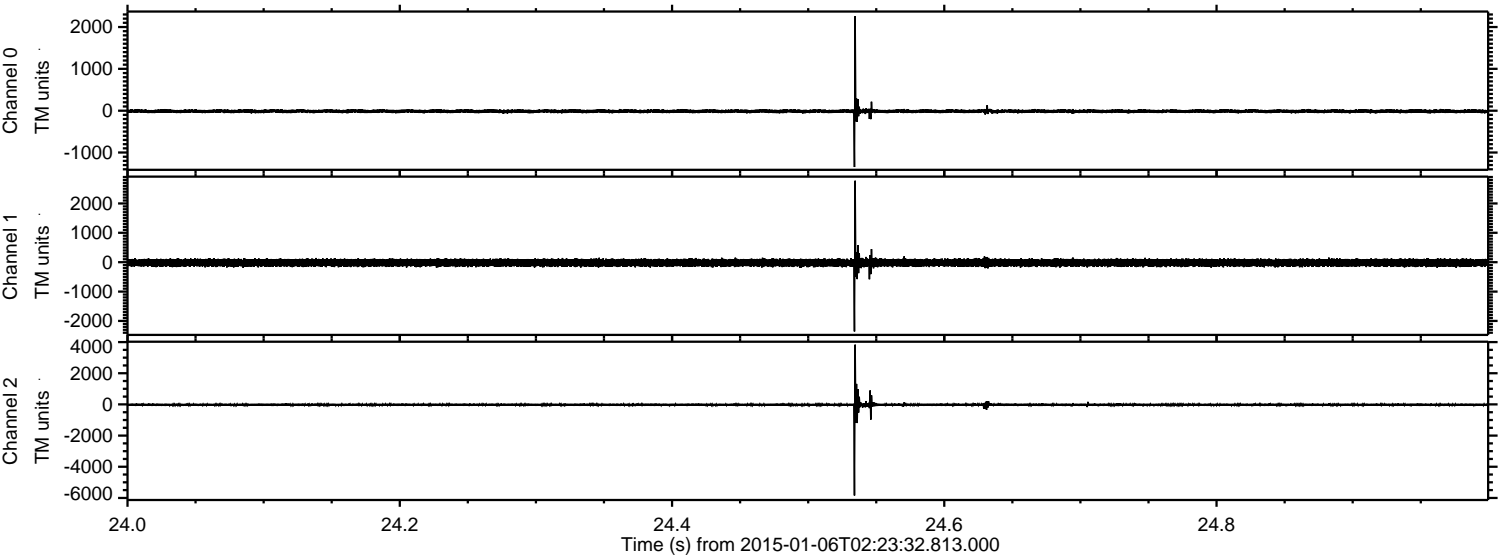


Processed Tue Jan 6 03:31:26 2015 by ELM ver.2012-10-06 from 001__elm20150106_022331__dat00.bin



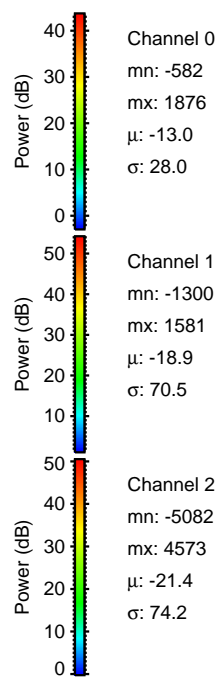
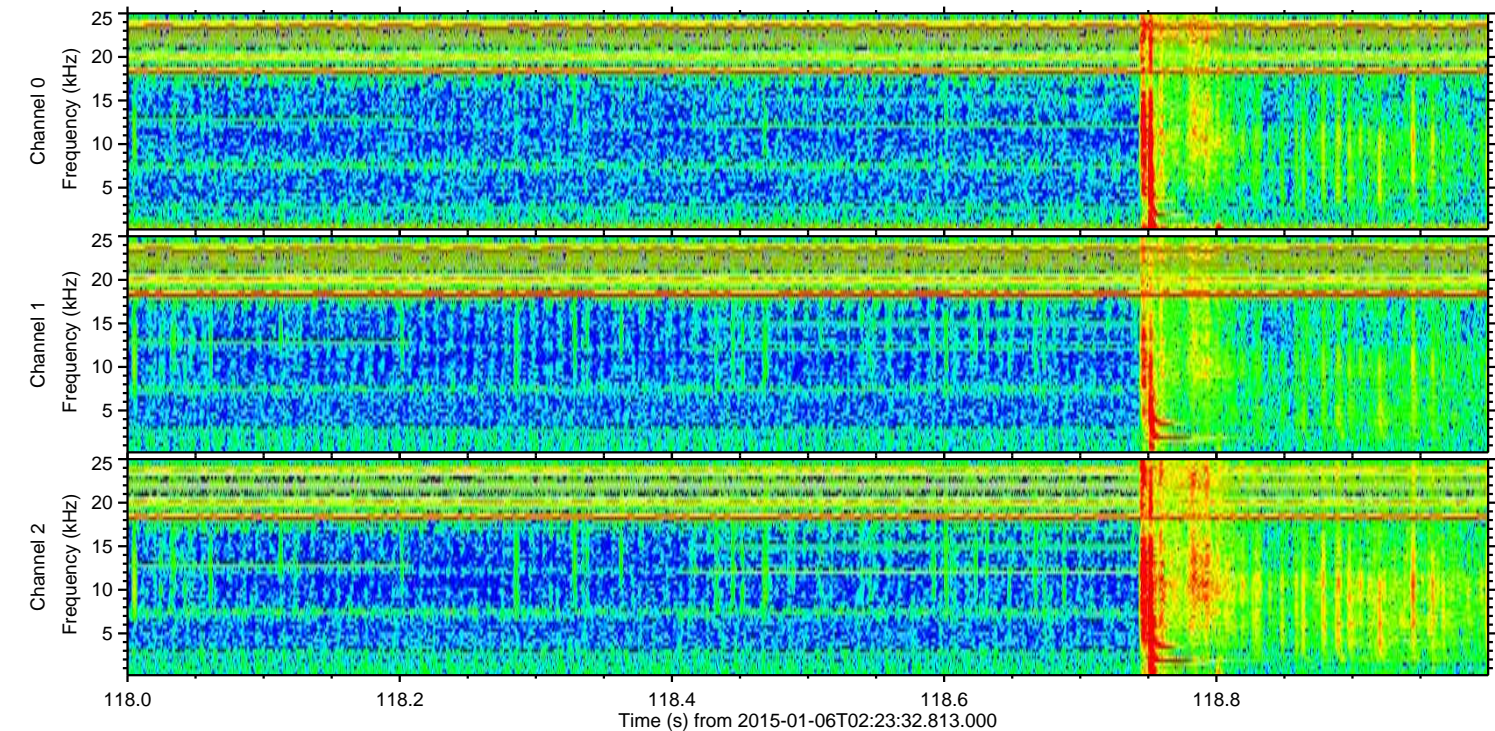
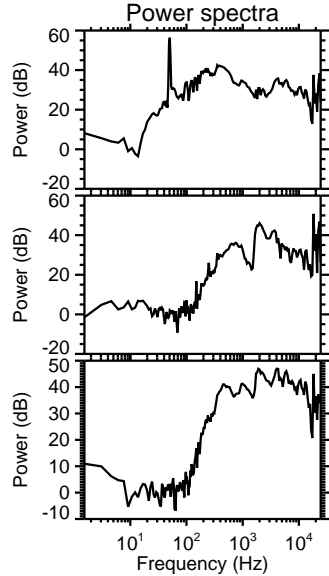
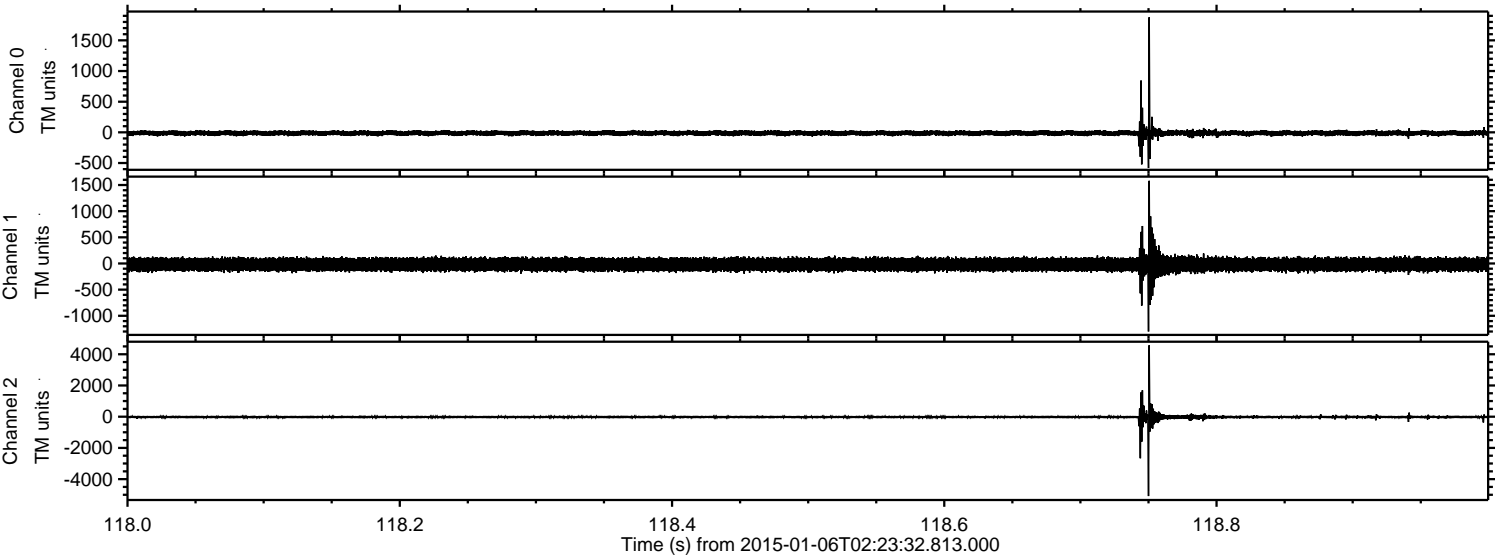
ELMAVAN 3D WAVEFORMS (Measured data sampled at 50 kHz) 49785 packets of 144 samples from 2015-01-06T02:23:32.813.000. Part 25/144

Processed Tue Jan 6 03:31:27 2015 by ELM ver.2012-10-06 from 001__elm20150106_022331__dat00.bin

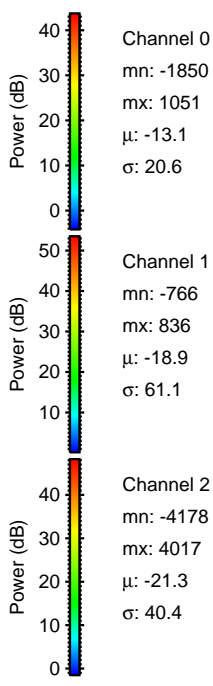
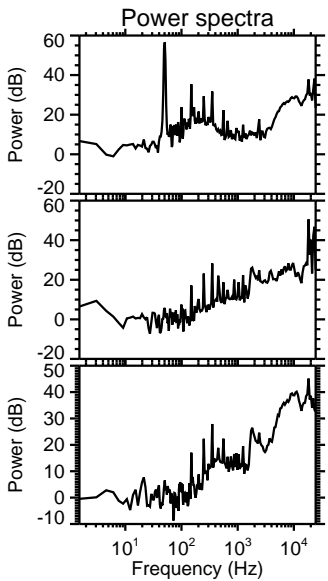
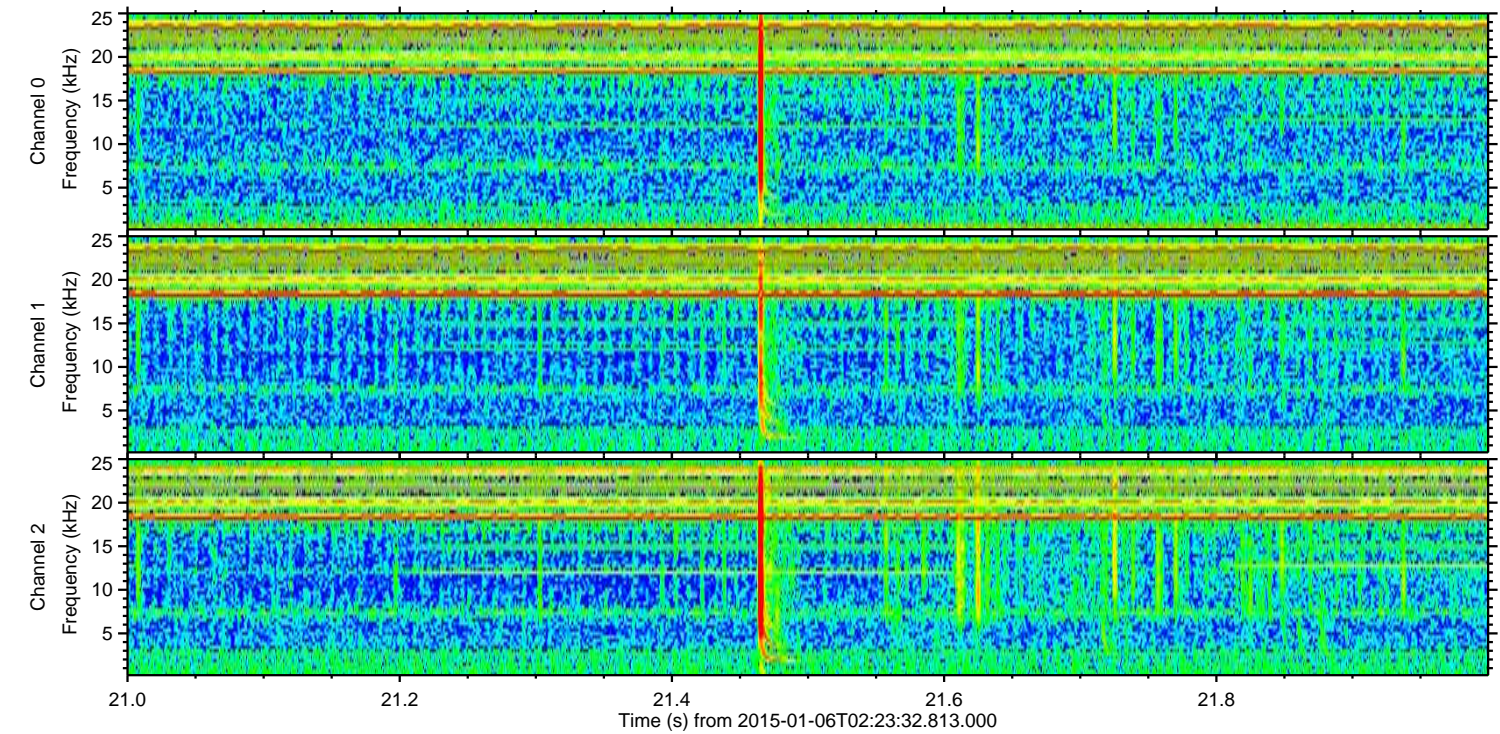
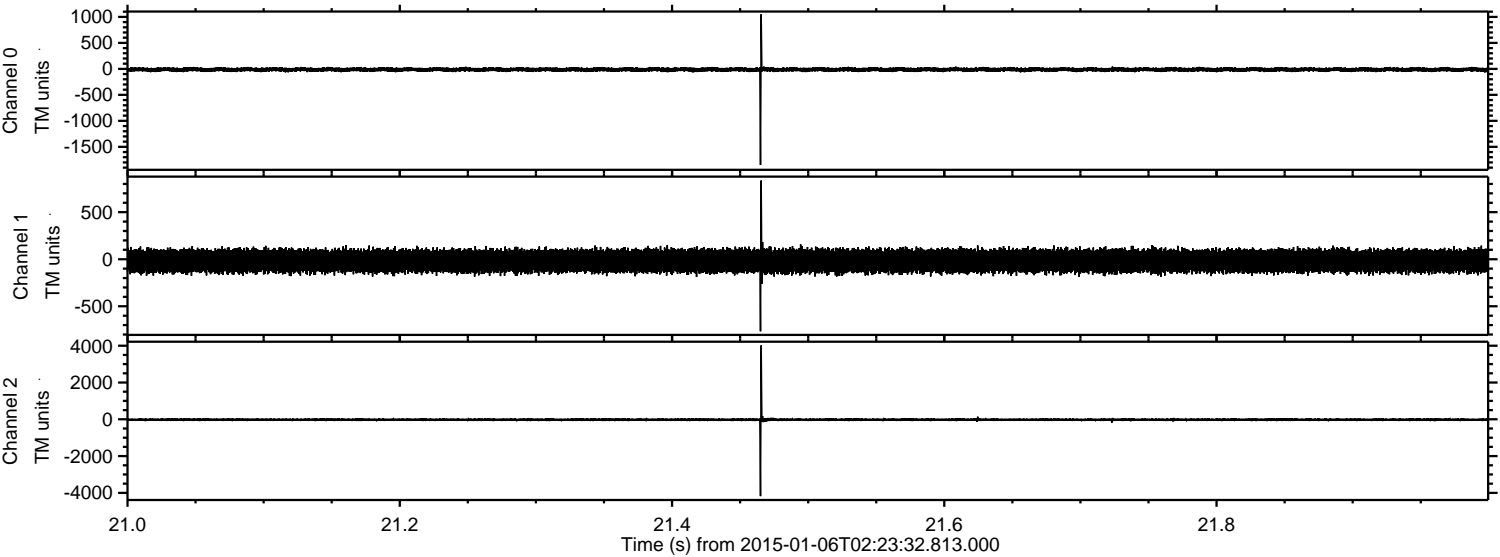


ELMAVAN 3D WAVEFORMS (Measured data sampled at 50 kHz) 49785 packets of 144 samples from 2015-01-06T02:23:32.813.000. Part 119/144

Processed Tue Jan 6 03:31:28 2015 by ELM ver.2012-10-06 from 001__elm20150106_022331__dat00.bin



Processed Tue Jan 6 03:31:29 2015 by ELM ver.2012-10-06 from 001__elm20150106_022331__dat00.bin



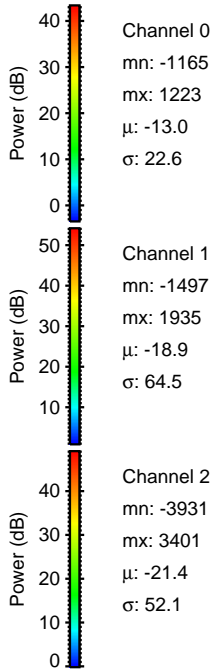
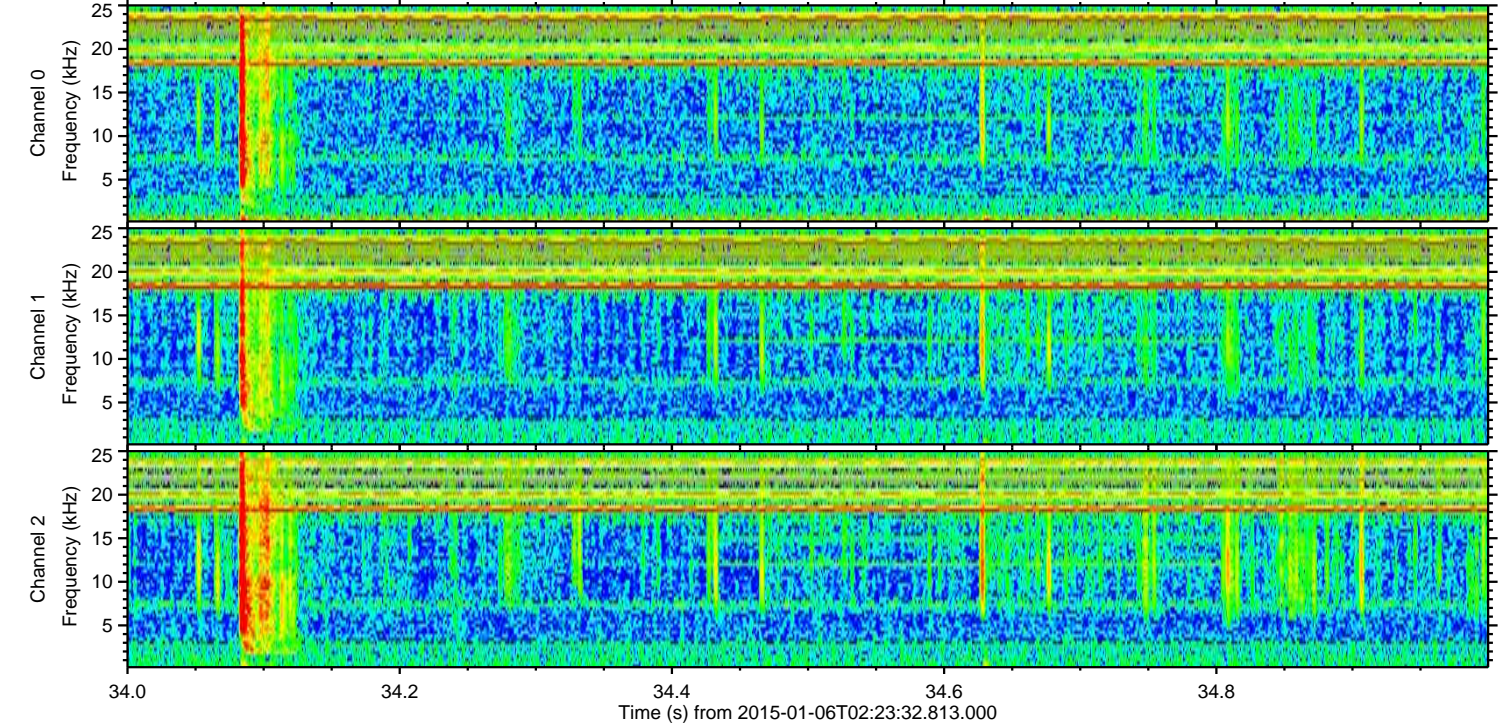
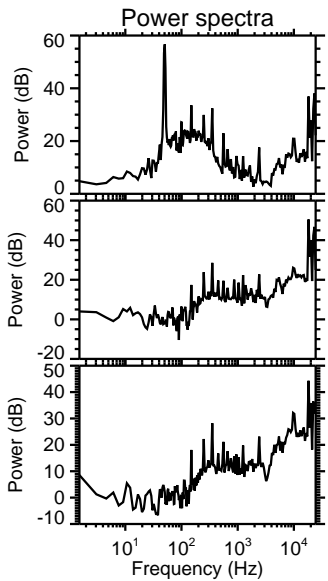
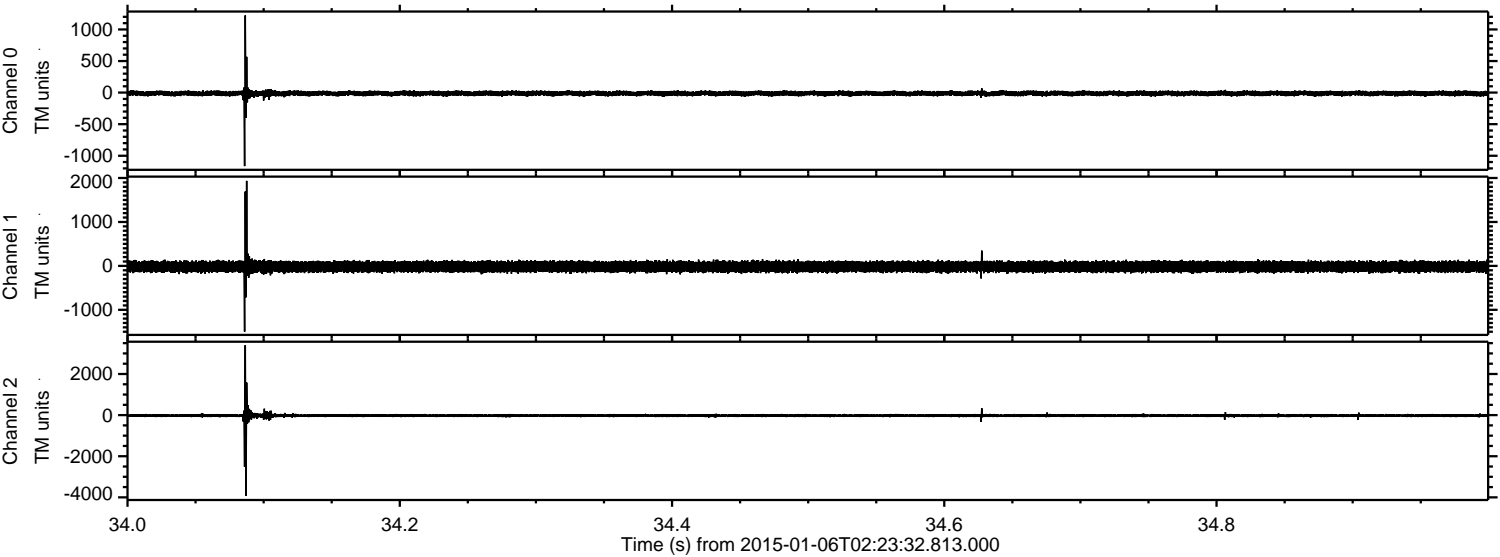
Channel 0
mn: -1850
mx: 1051
 μ : -13.1
 σ : 20.6

Channel 1
mn: -766
mx: 836
 μ : -18.9
 σ : 61.1

Channel 2
mn: -4178
mx: 4017
 μ : -21.3
 σ : 40.4

ELMAVAN 3D WAVEFORMS (Measured data sampled at 50 kHz) 49785 packets of 144 samples from 2015-01-06T02:23:32.813.000. Part 35/144

Processed Tue Jan 6 03:31:30 2015 by ELM ver.2012-10-06 from 001__elm20150106_022331__dat00.bin

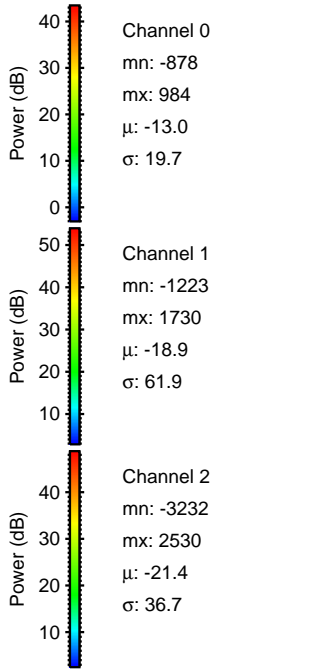
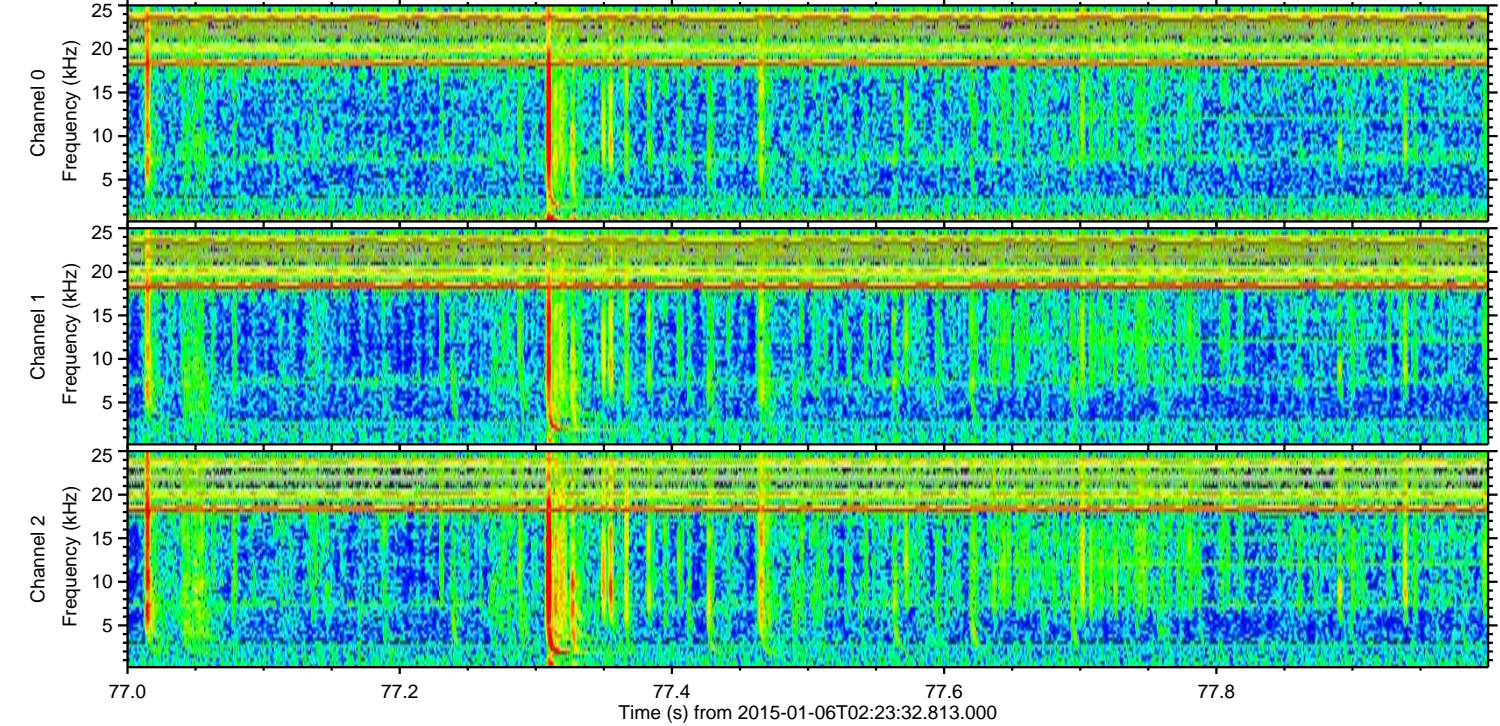
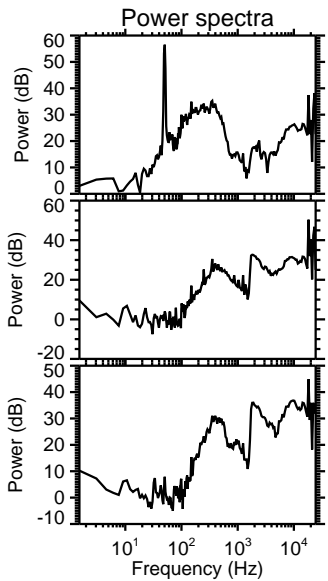
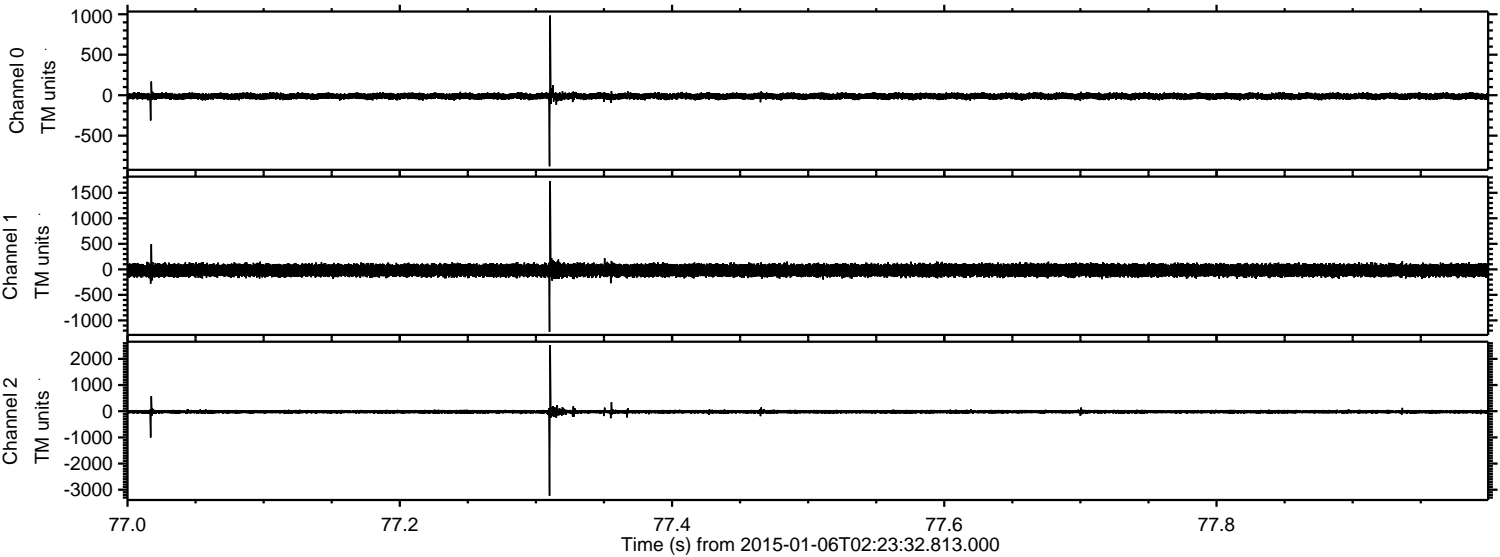


Channel 0
mn: -1165
mx: 1223
 μ : -13.0
 σ : 22.6

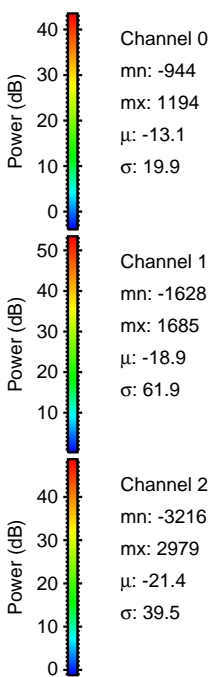
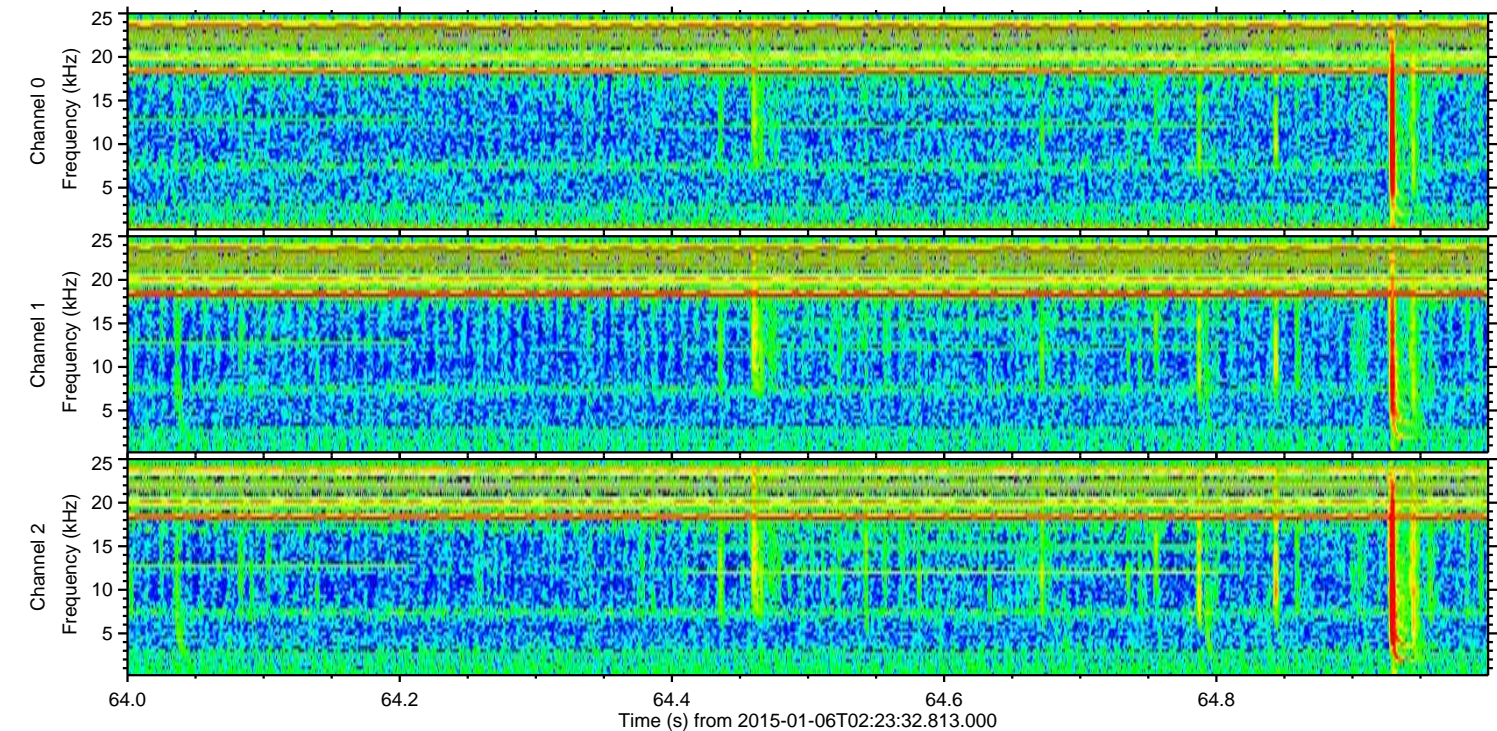
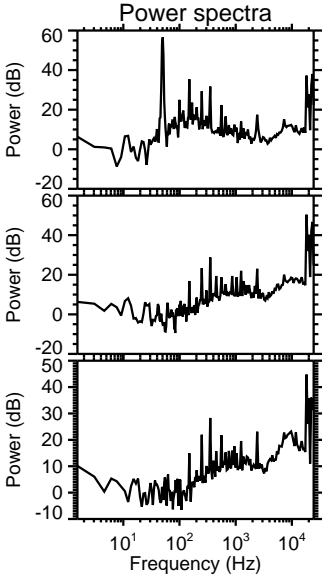
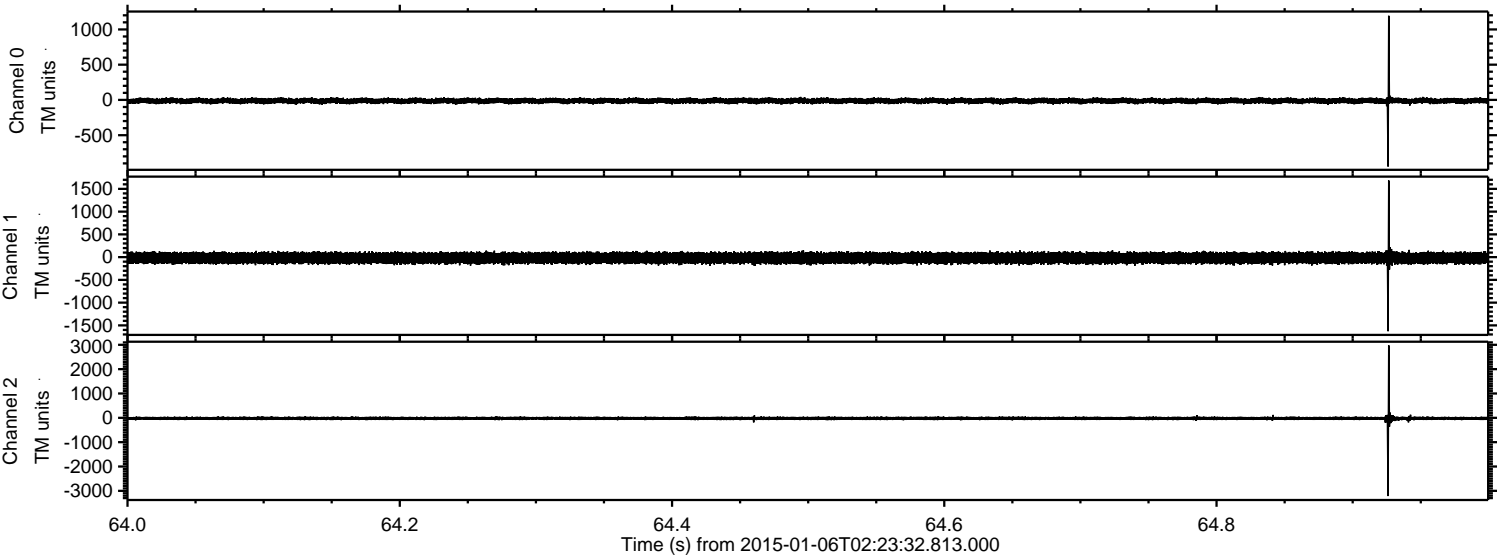
Channel 1
mn: -1497
mx: 1935
 μ : -18.9
 σ : 64.5

Channel 2
mn: -3931
mx: 3401
 μ : -21.4
 σ : 52.1

Processed Tue Jan 6 03:31:31 2015 by ELM ver.2012-10-06 from 001__elm20150106_022331__dat00.bin



Processed Tue Jan 6 03:31:32 2015 by ELM ver.2012-10-06 from 001__elm20150106_022331__dat00.bin



Processed Tue Jan 6 03:31:32 2015 by ELM ver.2012-10-06 from 001__elm20150106_022331__dat00.bin

