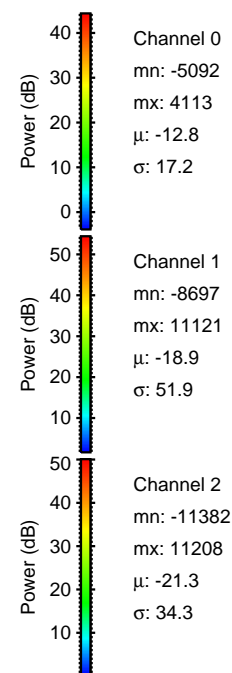
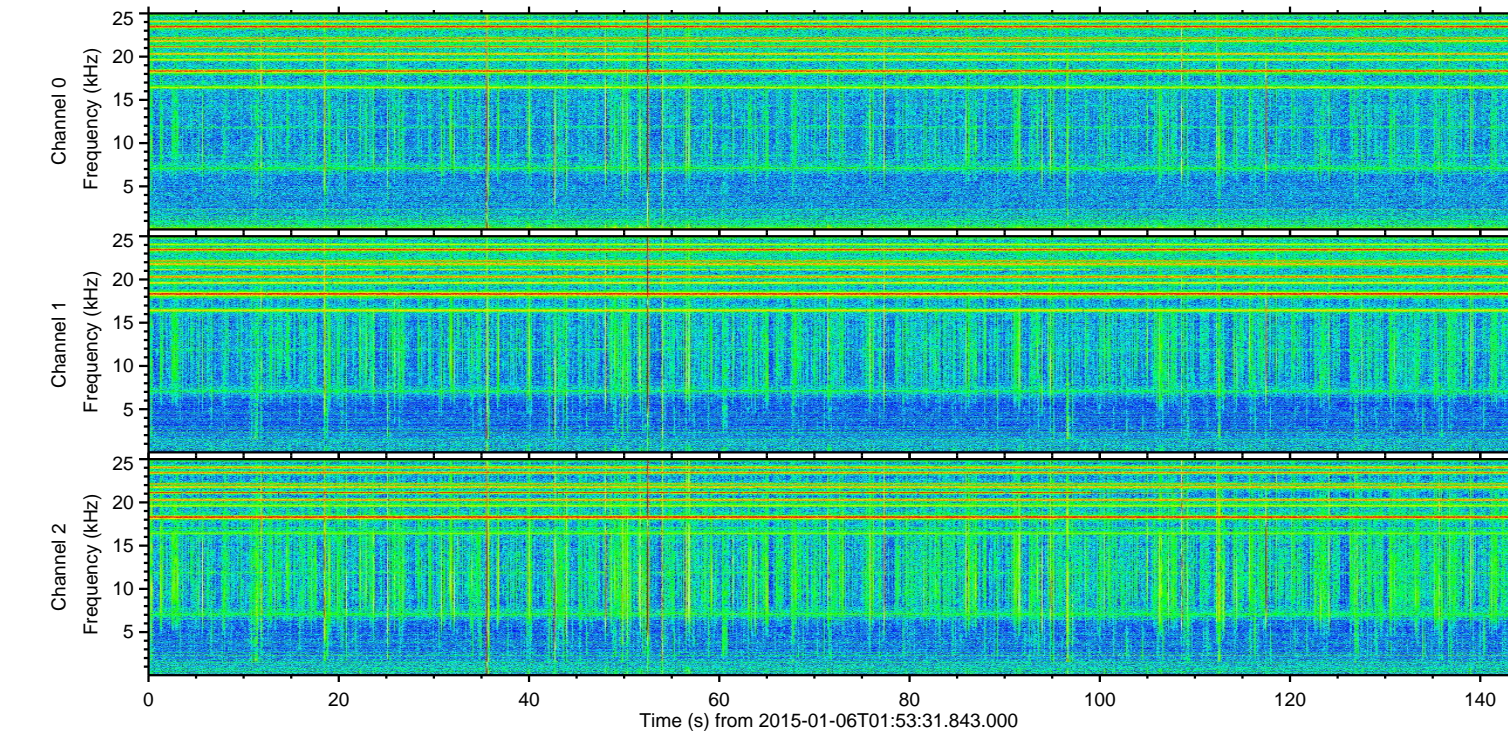
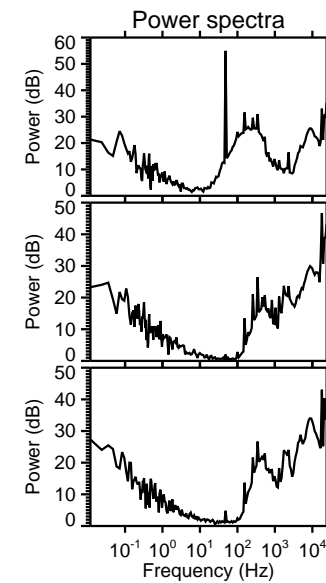
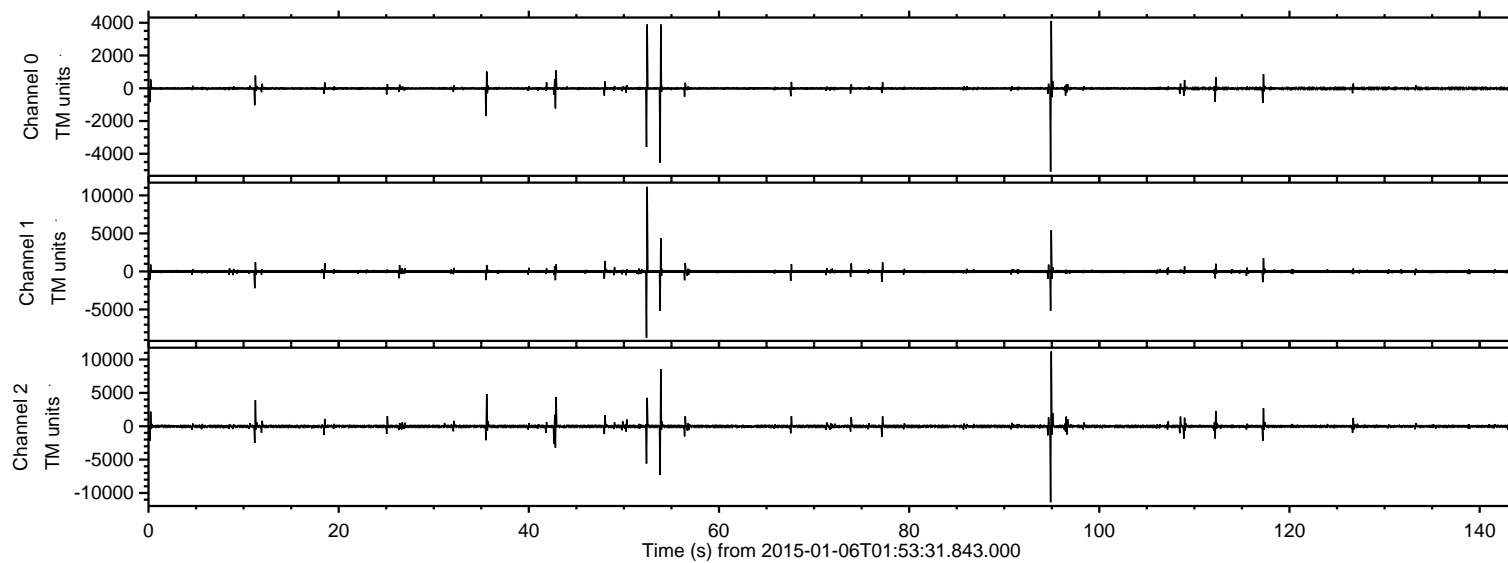


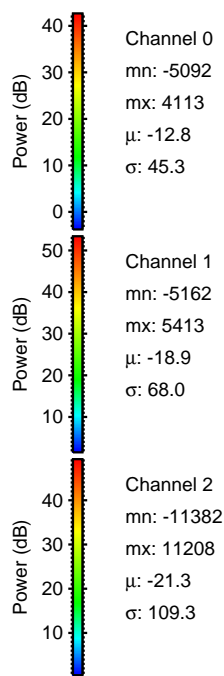
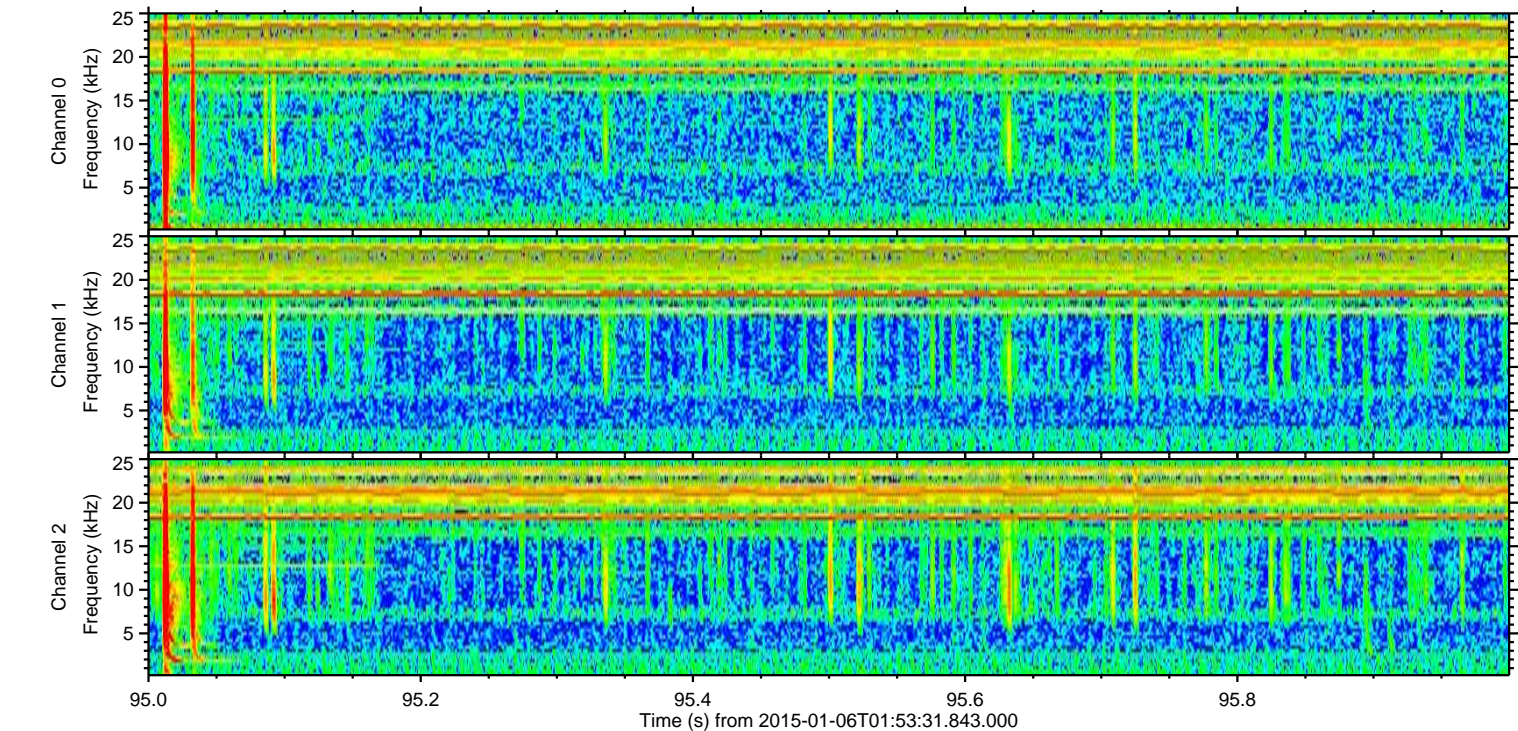
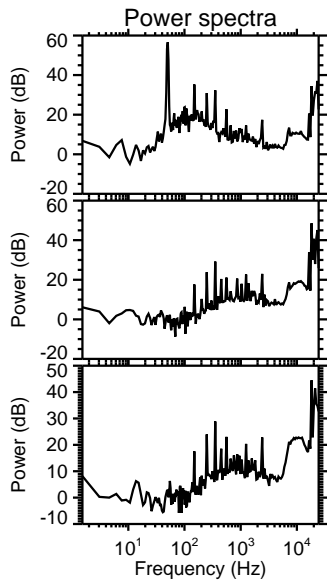
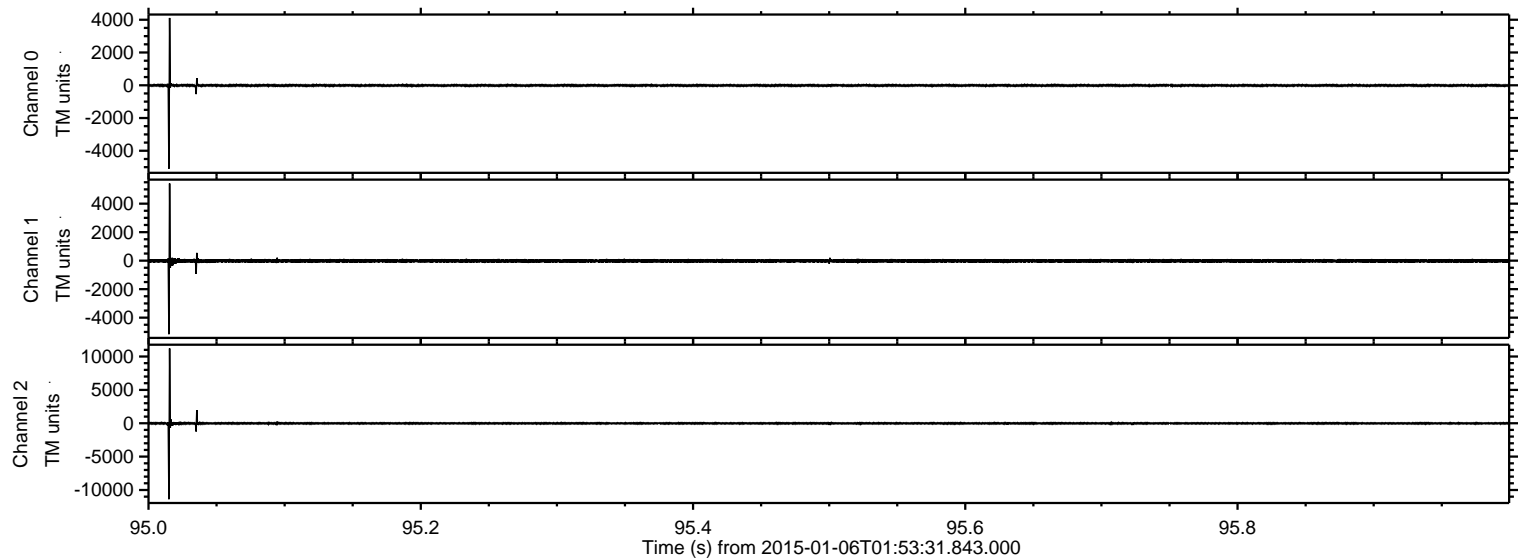
# ELMAVAN 3D WAVEFORMS (Measured data sampled at 50 kHz) 49688 packets of 144 samples from 2015-01-06T01:53:31.843.000.

Processed Tue Jan 6 03:01:44 2015 by ELM ver.2012-10-06 from 001\_\_elm20150106\_015330\_\_dat00.bin





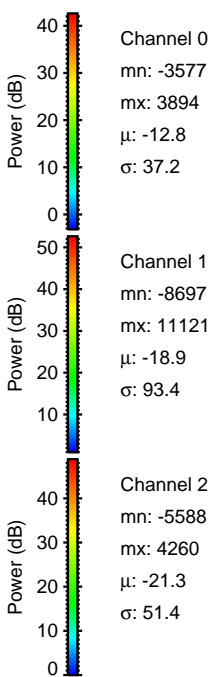
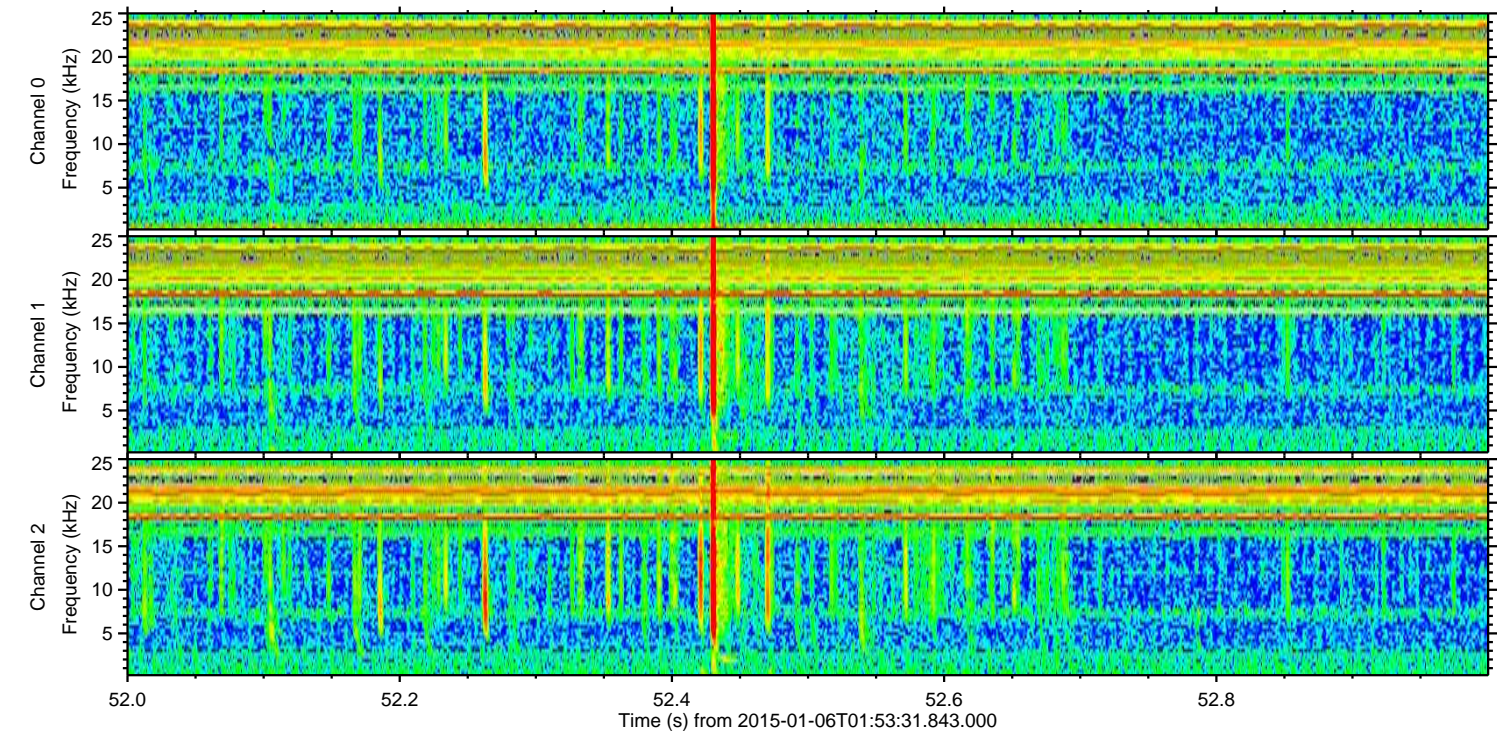
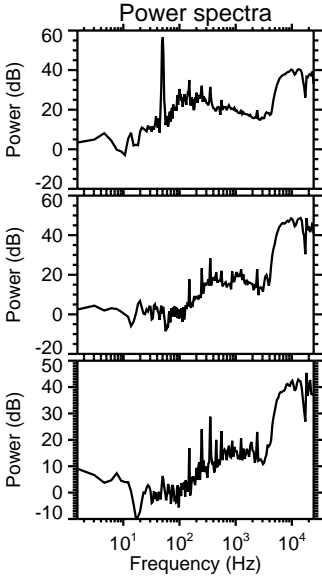
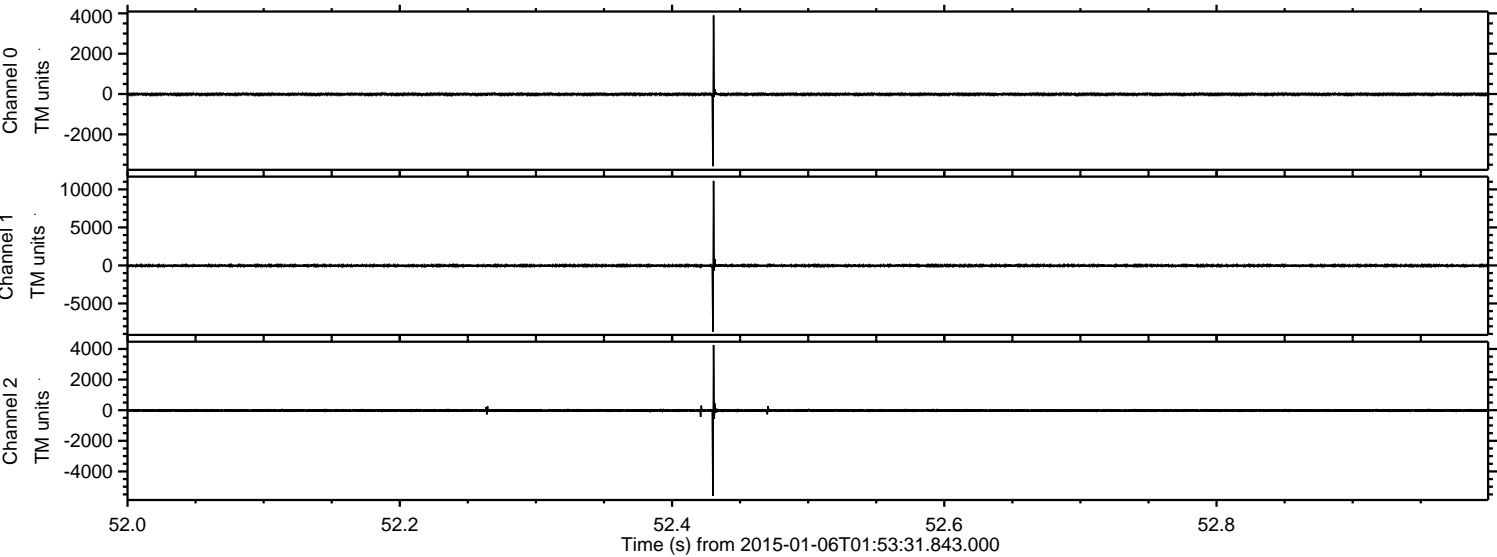
Processed Tue Jan 6 03:02:00 2015 by ELM ver.2012-10-06 from 001\_\_elm20150106\_015330\_\_dat00.bin





ELMAVAN 3D WAVEFORMS (Measured data sampled at 50 kHz) 49688 packets of 144 samples from 2015-01-06T01:53:31.843.000. Part 53/144

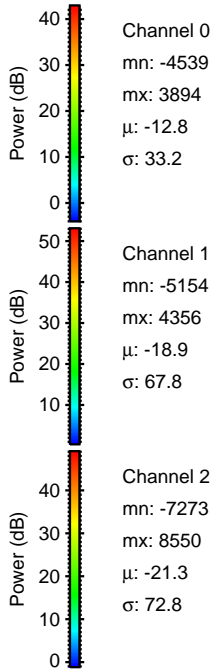
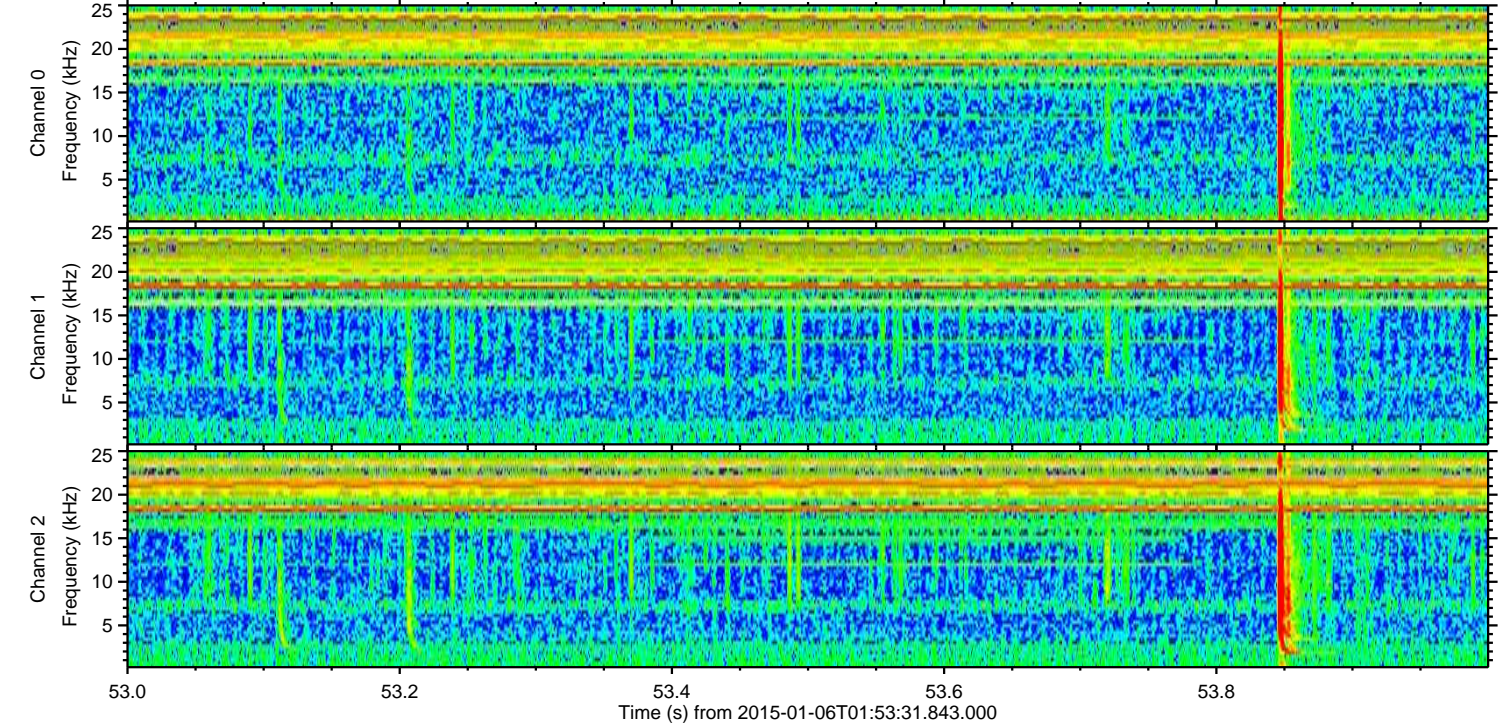
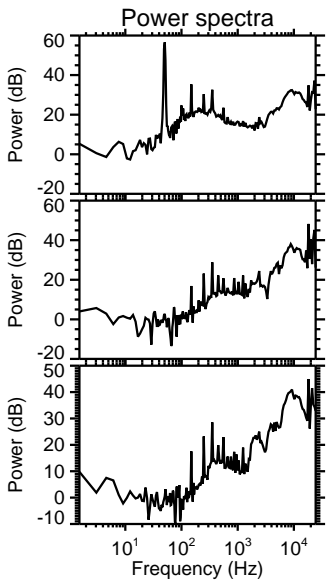
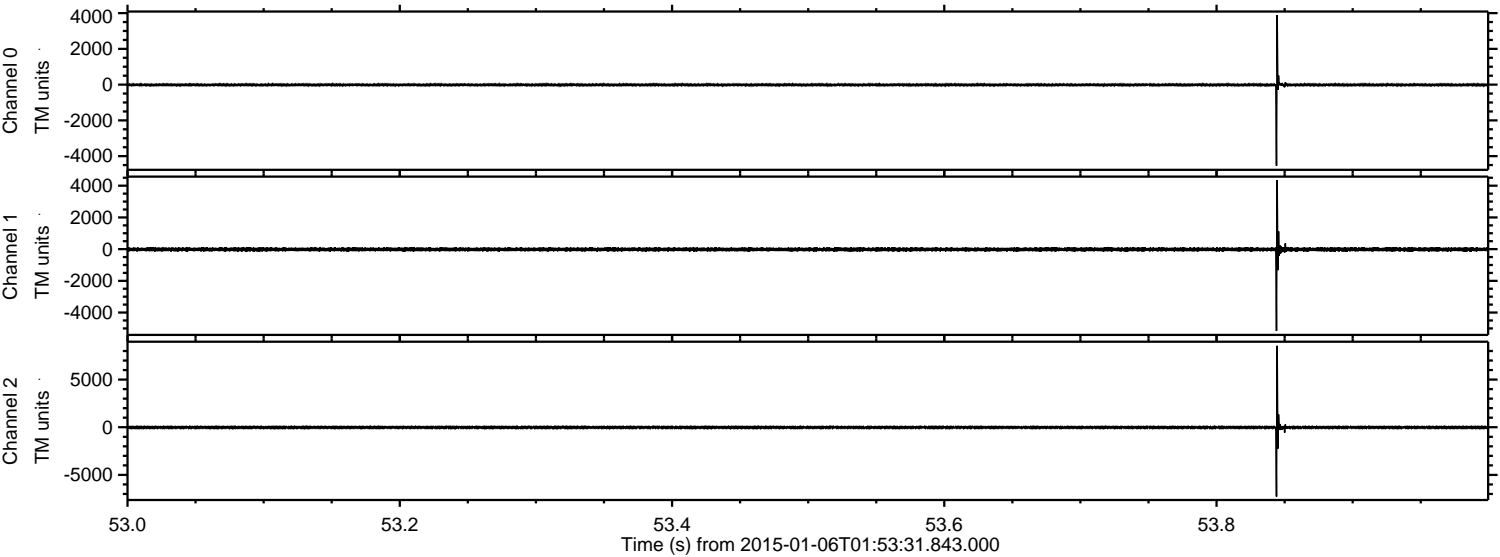
Processed Tue Jan 6 03:02:01 2015 by ELM ver.2012-10-06 from 001\_\_elm20150106\_015330\_\_dat00.bin





ELMAVAN 3D WAVEFORMS (Measured data sampled at 50 kHz) 49688 packets of 144 samples from 2015-01-06T01:53:31.843.000. Part 54/144

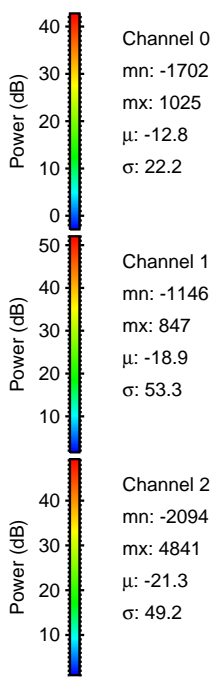
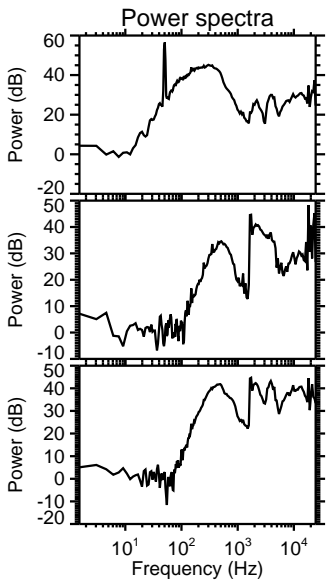
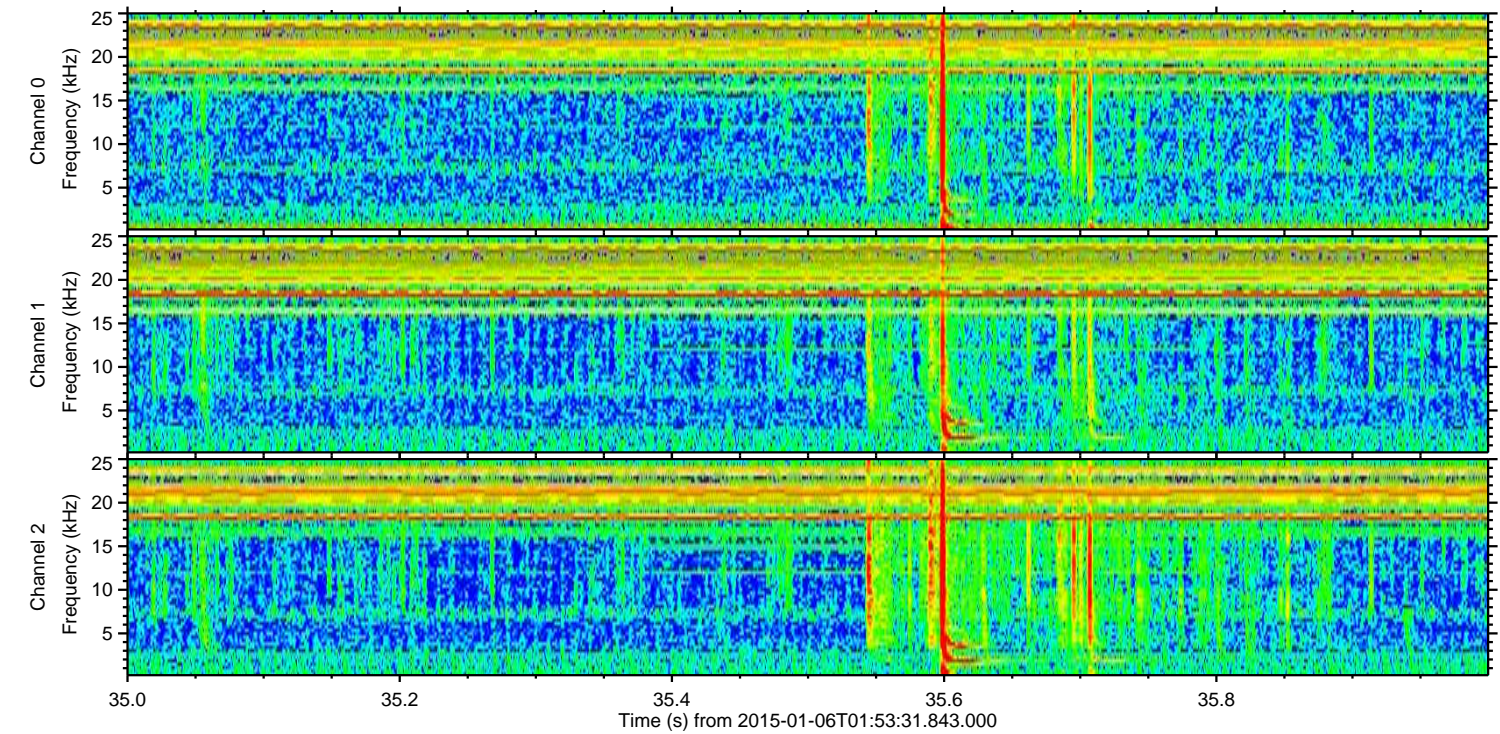
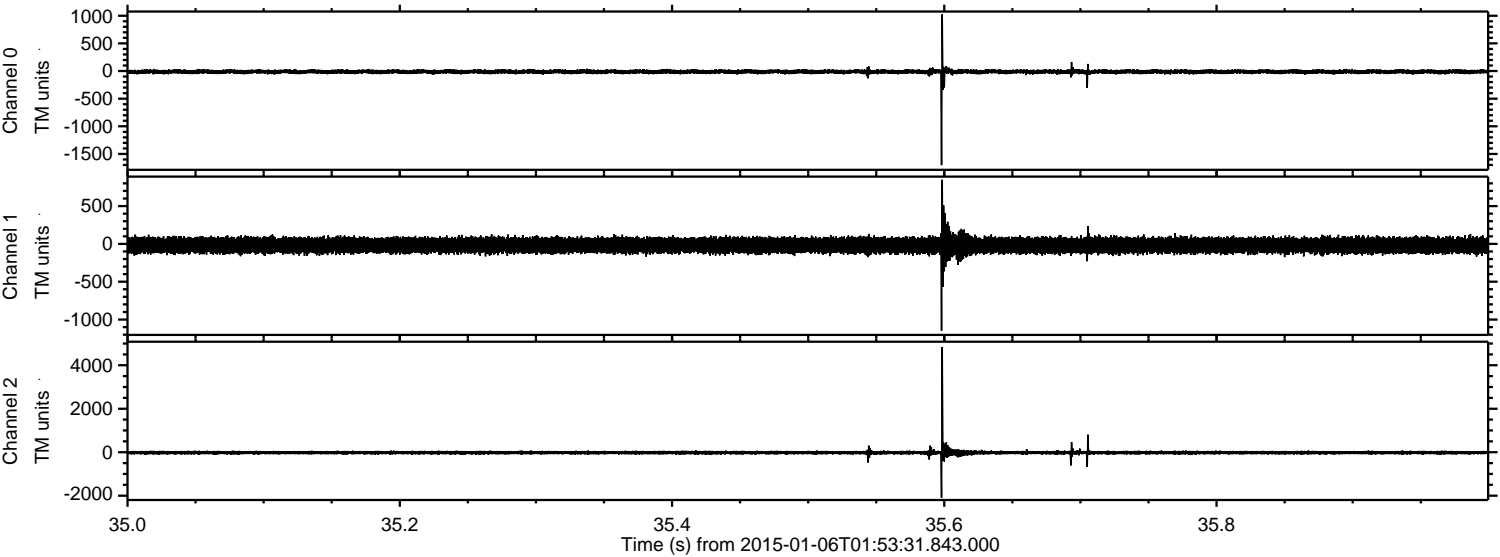
Processed Tue Jan 6 03:02:02 2015 by ELM ver.2012-10-06 from 001\_\_elm20150106\_015330\_\_dat00.bin





ELMAVAN 3D WAVEFORMS (Measured data sampled at 50 kHz) 49688 packets of 144 samples from 2015-01-06T01:53:31.843.000. Part 36/144

Processed Tue Jan 6 03:02:03 2015 by ELM ver.2012-10-06 from 001\_\_elm20150106\_015330\_\_dat00.bin



Channel 0  
mn: -1702  
mx: 1025  
μ: -12.8  
σ: 22.2

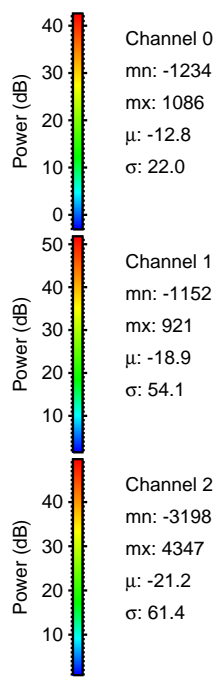
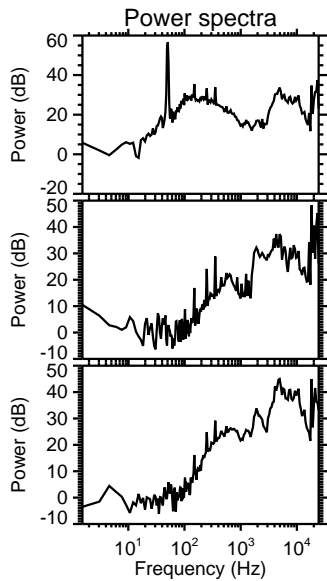
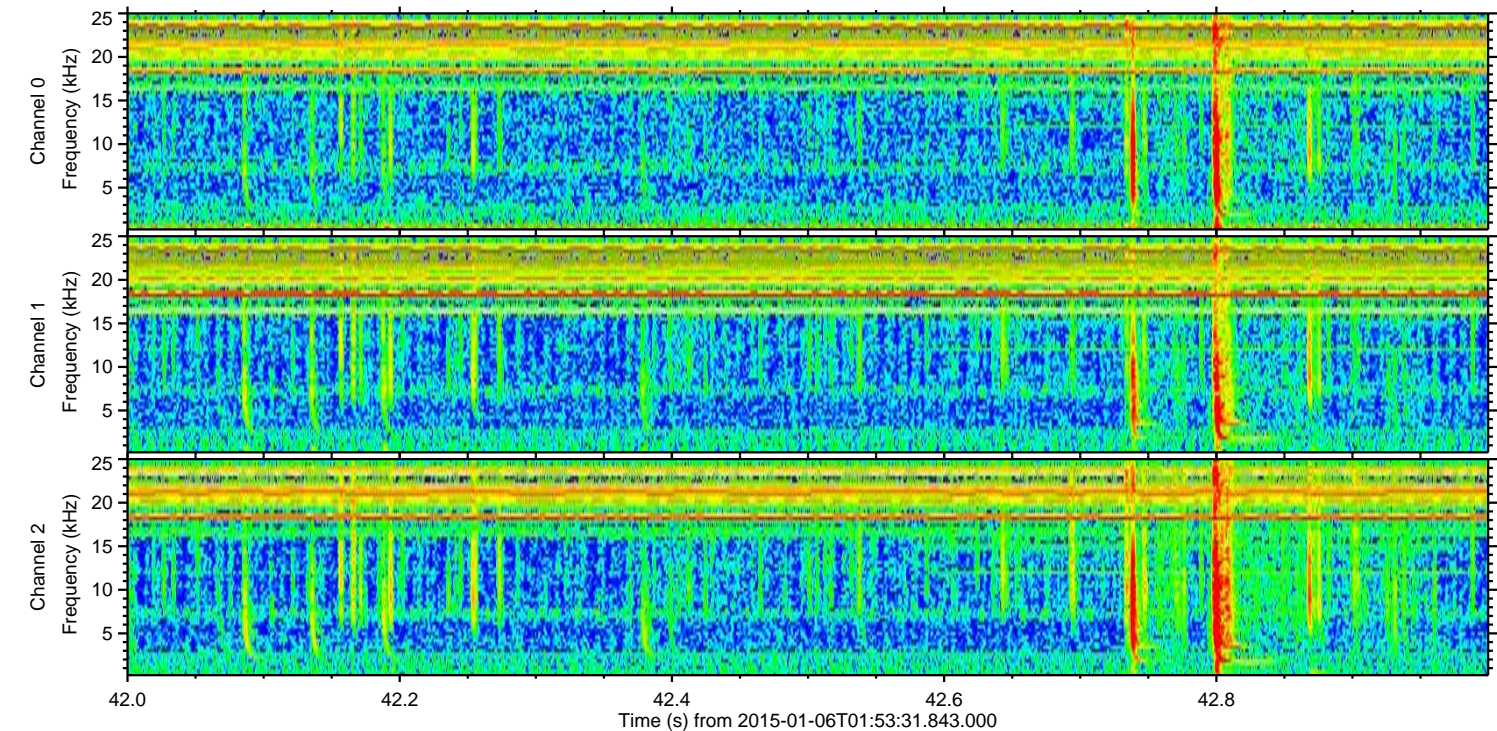
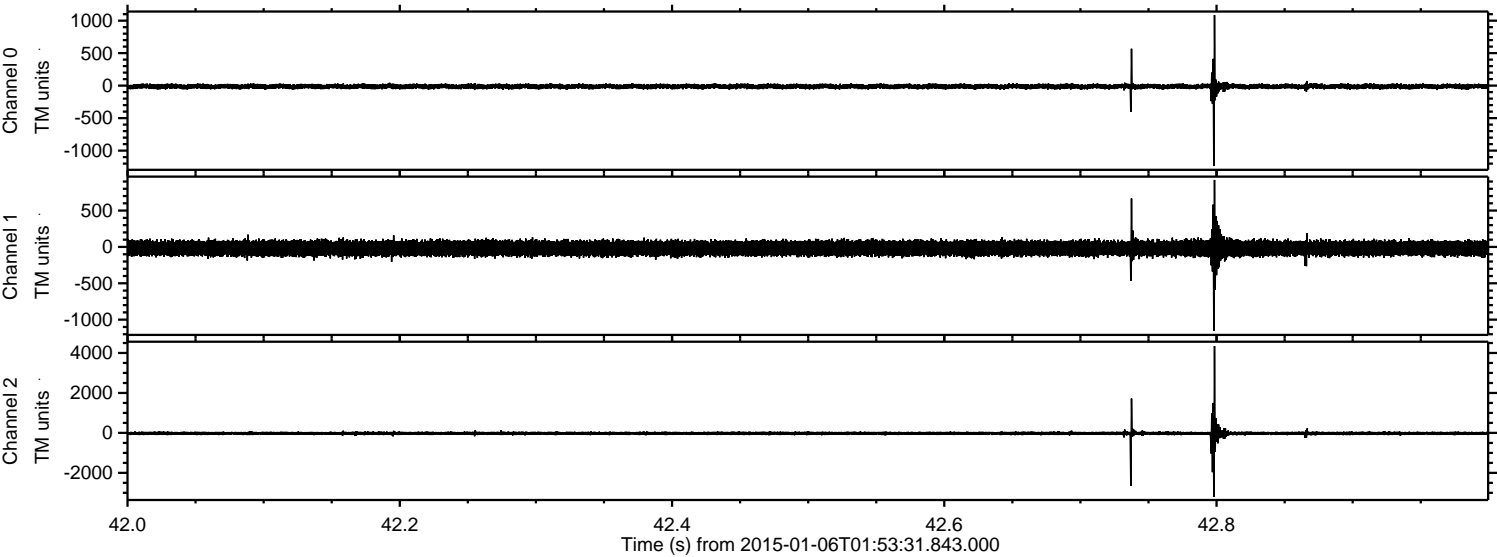
Channel 1  
mn: -1146  
mx: 847  
μ: -18.9  
σ: 53.3

Channel 2  
mn: -2094  
mx: 4841  
μ: -21.3  
σ: 49.2



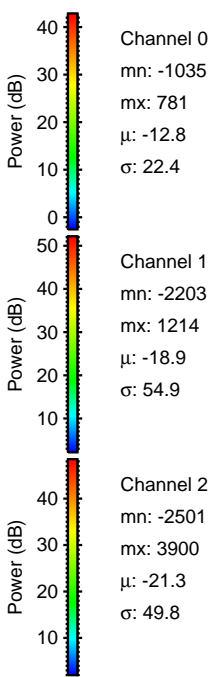
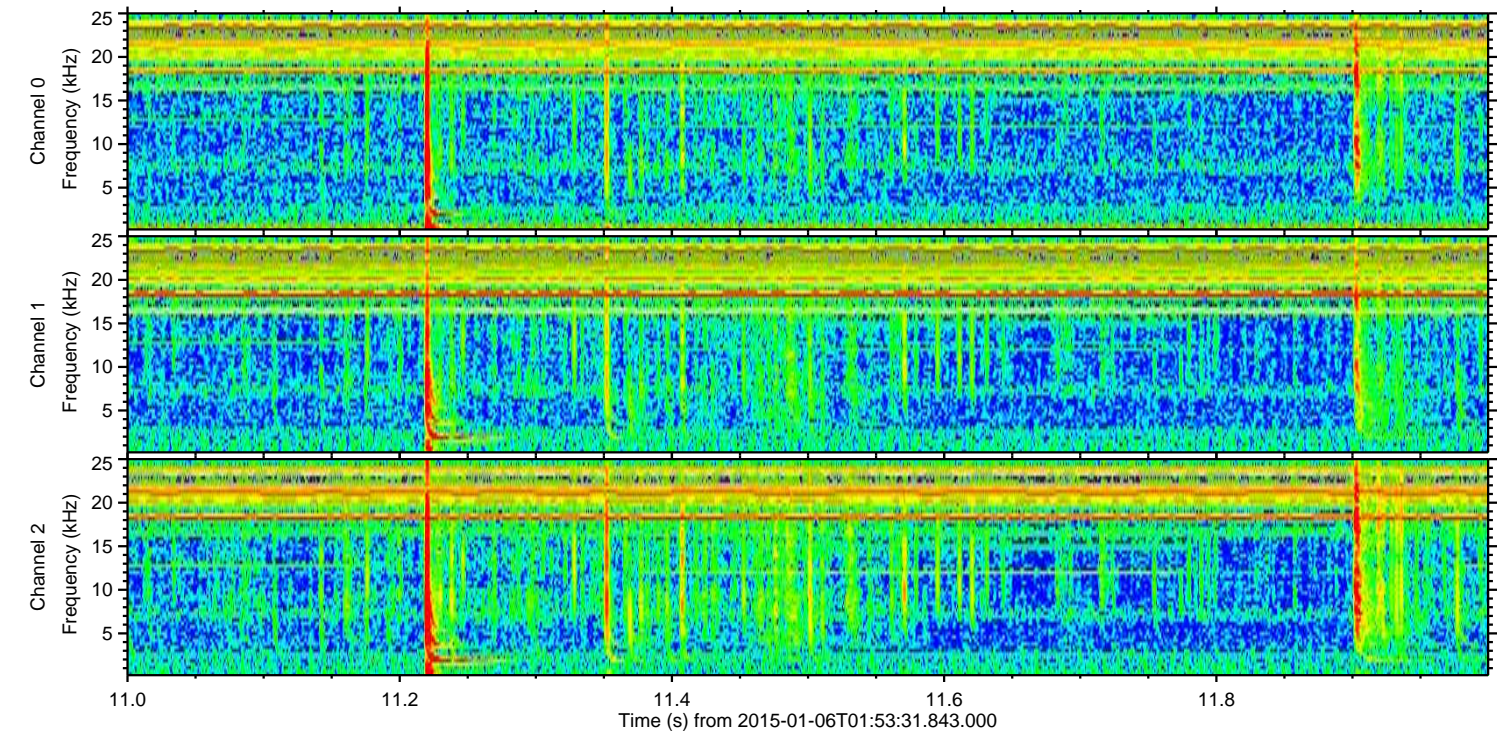
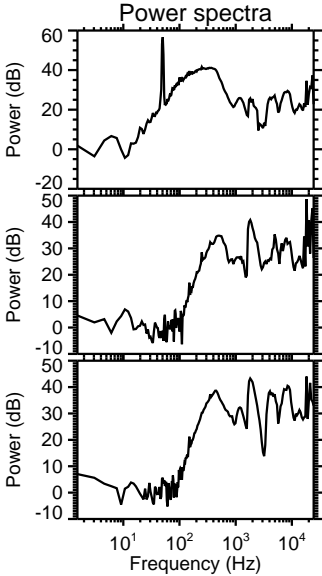
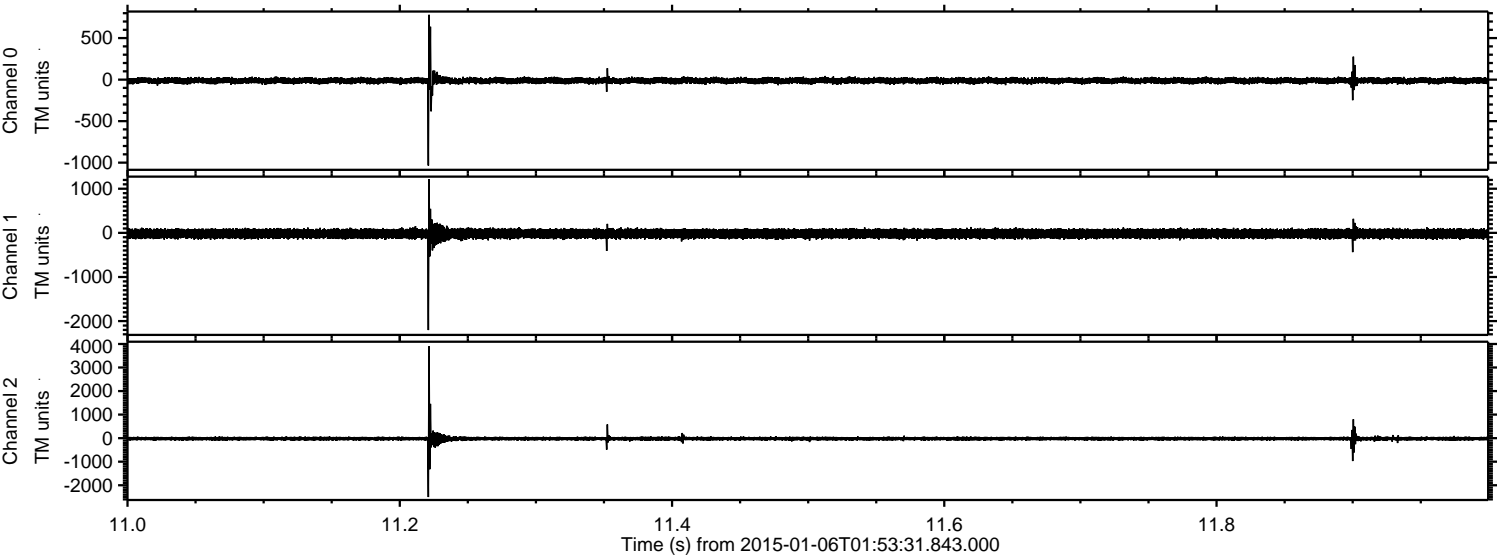
ELMAVAN 3D WAVEFORMS (Measured data sampled at 50 kHz) 49688 packets of 144 samples from 2015-01-06T01:53:31.843.000. Part 43/144

Processed Tue Jan 6 03:02:05 2015 by ELM ver.2012-10-06 from 001\_\_elm20150106\_015330\_\_dat00.bin





Processed Tue Jan 6 03:02:06 2015 by ELM ver.2012-10-06 from 001\_\_elm20150106\_015330\_\_dat00.bin



Channel 0  
mn: -1035  
mx: 781  
 $\mu$ : -12.8  
 $\sigma$ : 22.4

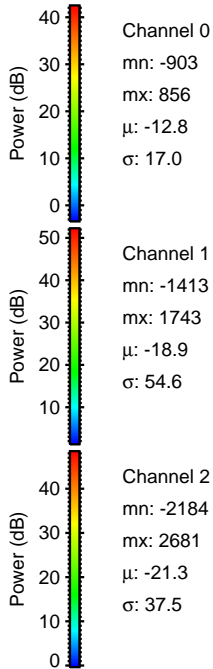
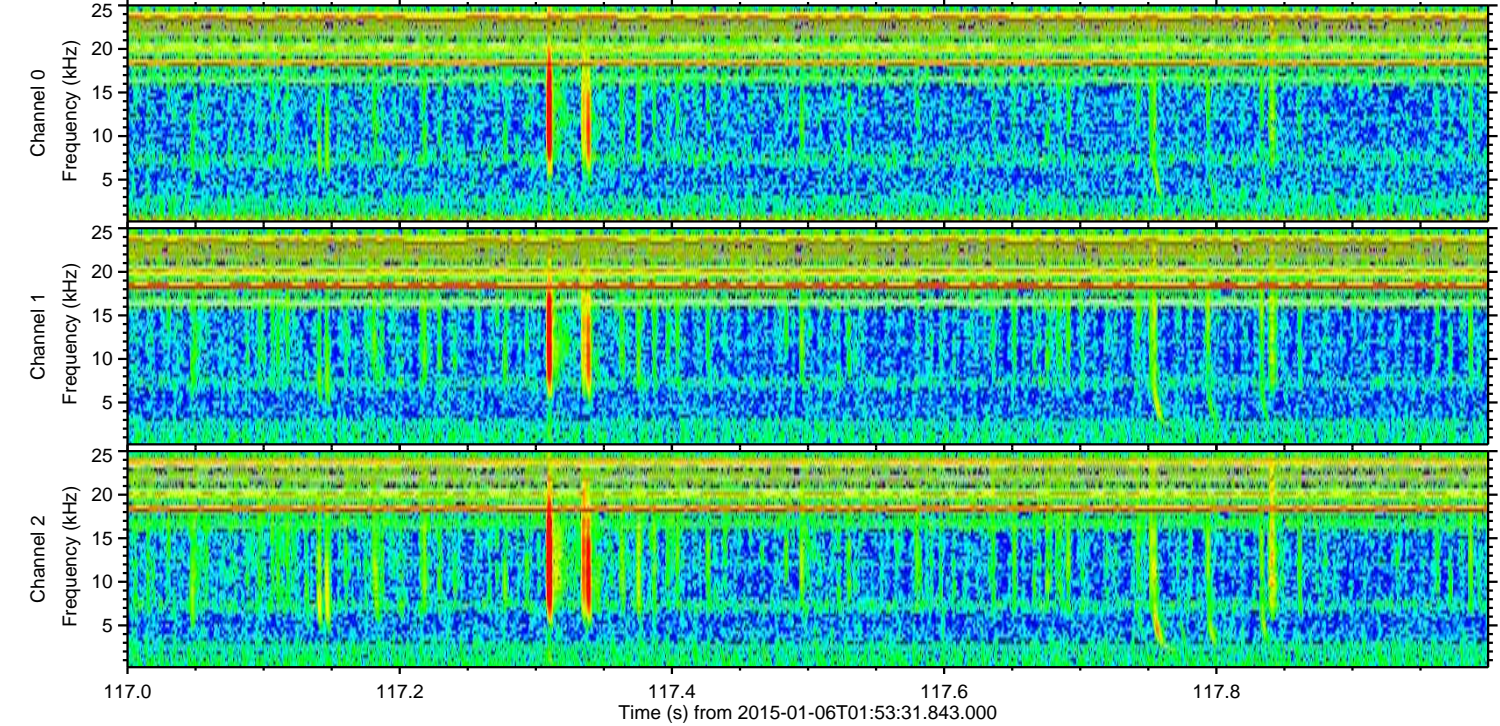
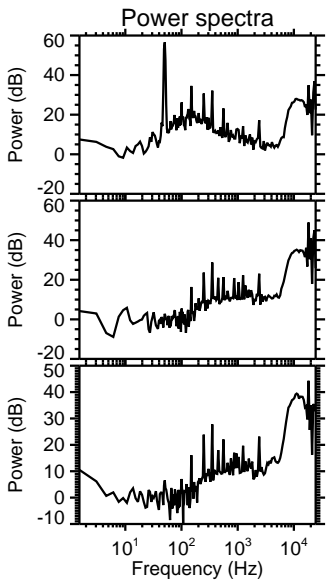
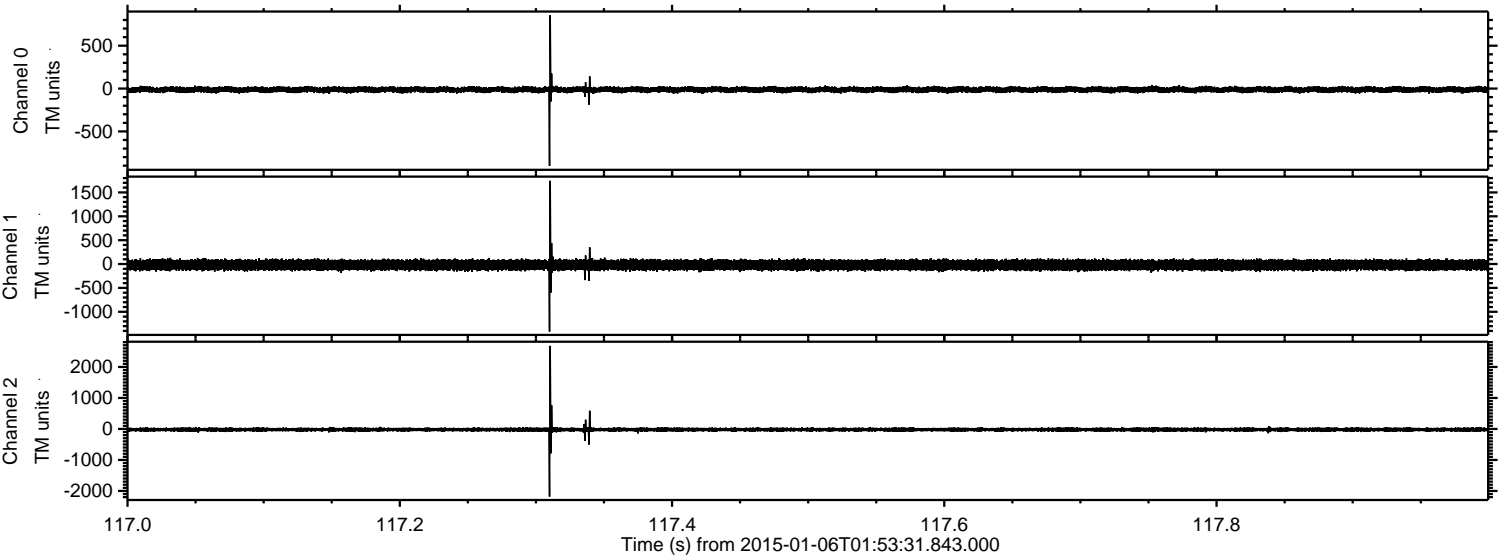
Channel 1  
mn: -2203  
mx: 1214  
 $\mu$ : -18.9  
 $\sigma$ : 54.9

Channel 2  
mn: -2501  
mx: 3900  
 $\mu$ : -21.3  
 $\sigma$ : 49.8



ELMAVAN 3D WAVEFORMS (Measured data sampled at 50 kHz) 49688 packets of 144 samples from 2015-01-06T01:53:31.843.000. Part 118/144

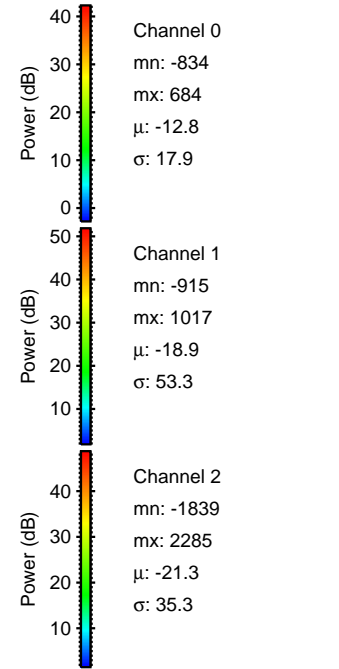
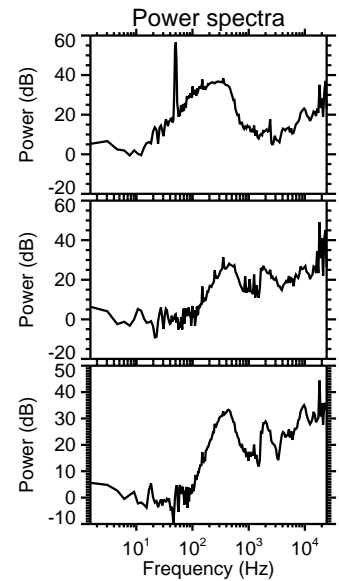
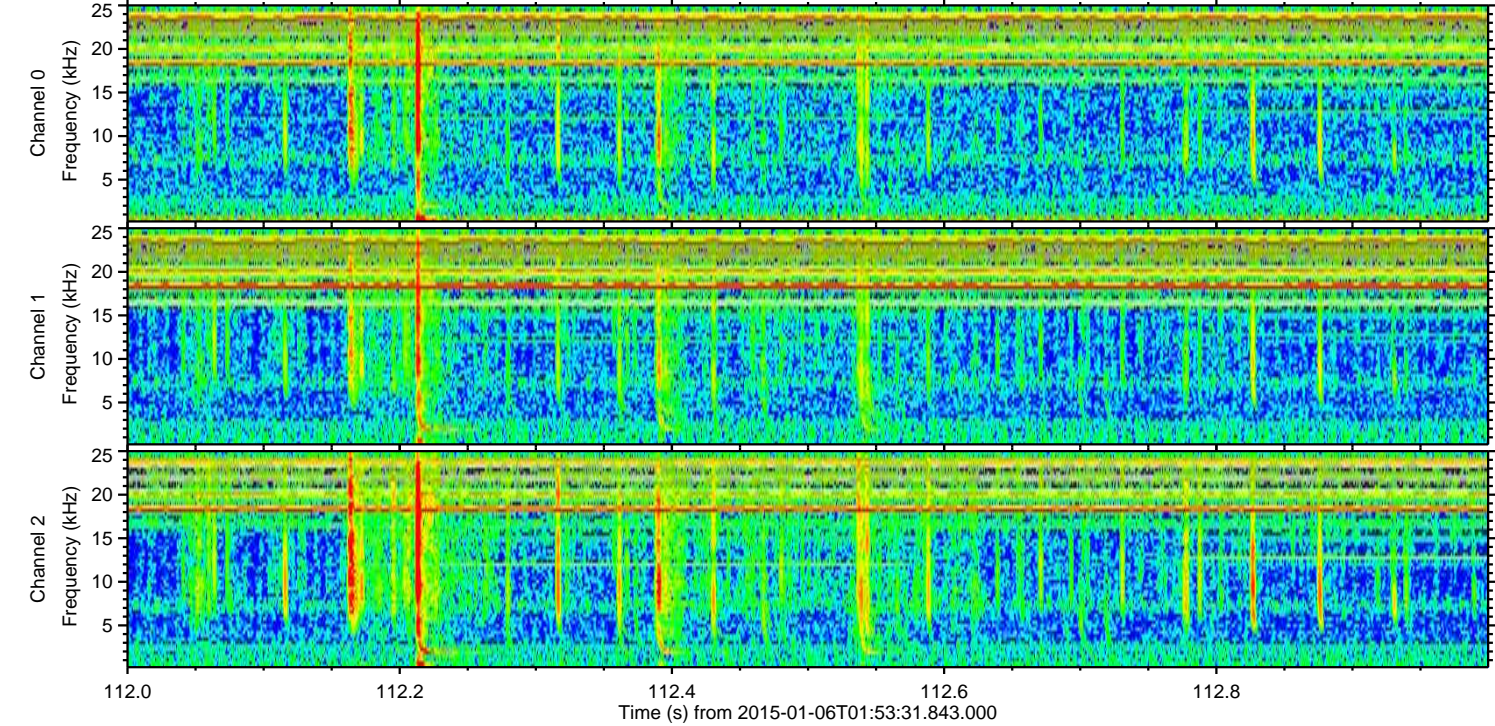
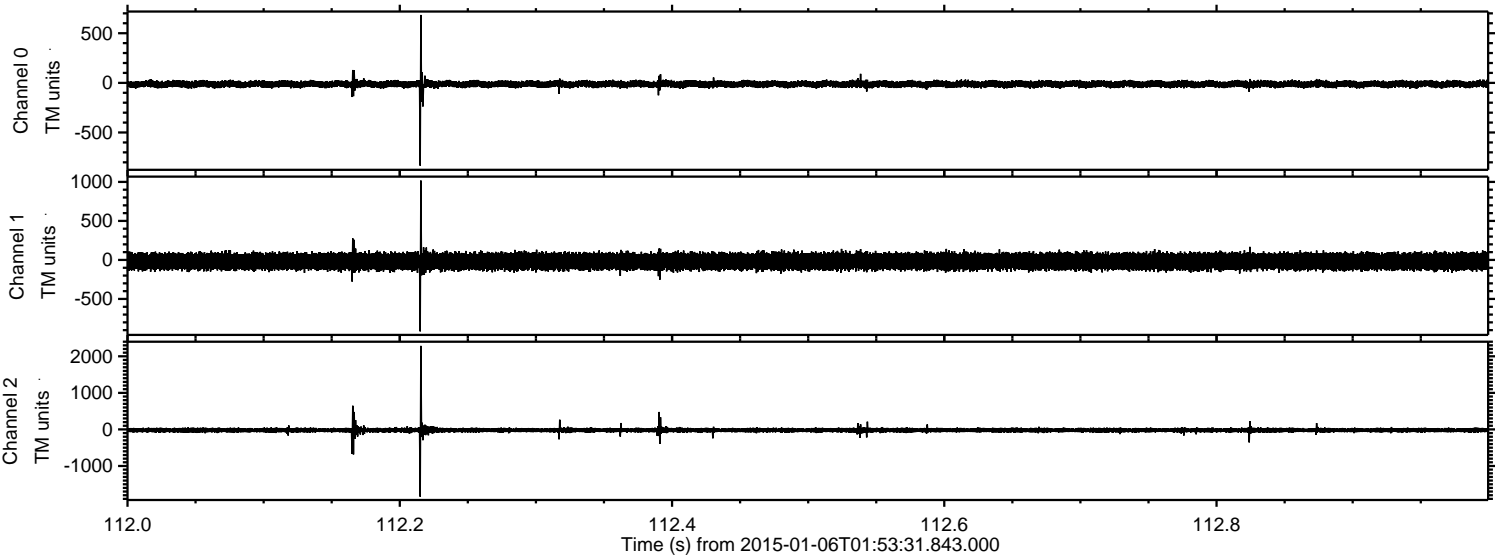
Processed Tue Jan 6 03:02:07 2015 by ELM ver.2012-10-06 from 001\_\_elm20150106\_015330\_\_dat00.bin





ELMAVAN 3D WAVEFORMS (Measured data sampled at 50 kHz) 49688 packets of 144 samples from 2015-01-06T01:53:31.843.000. Part 113/144

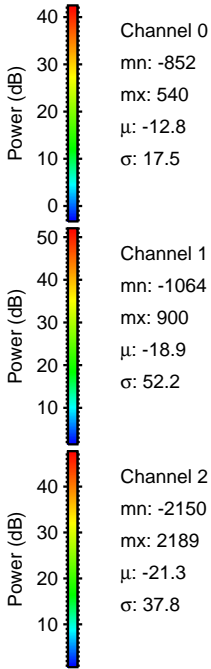
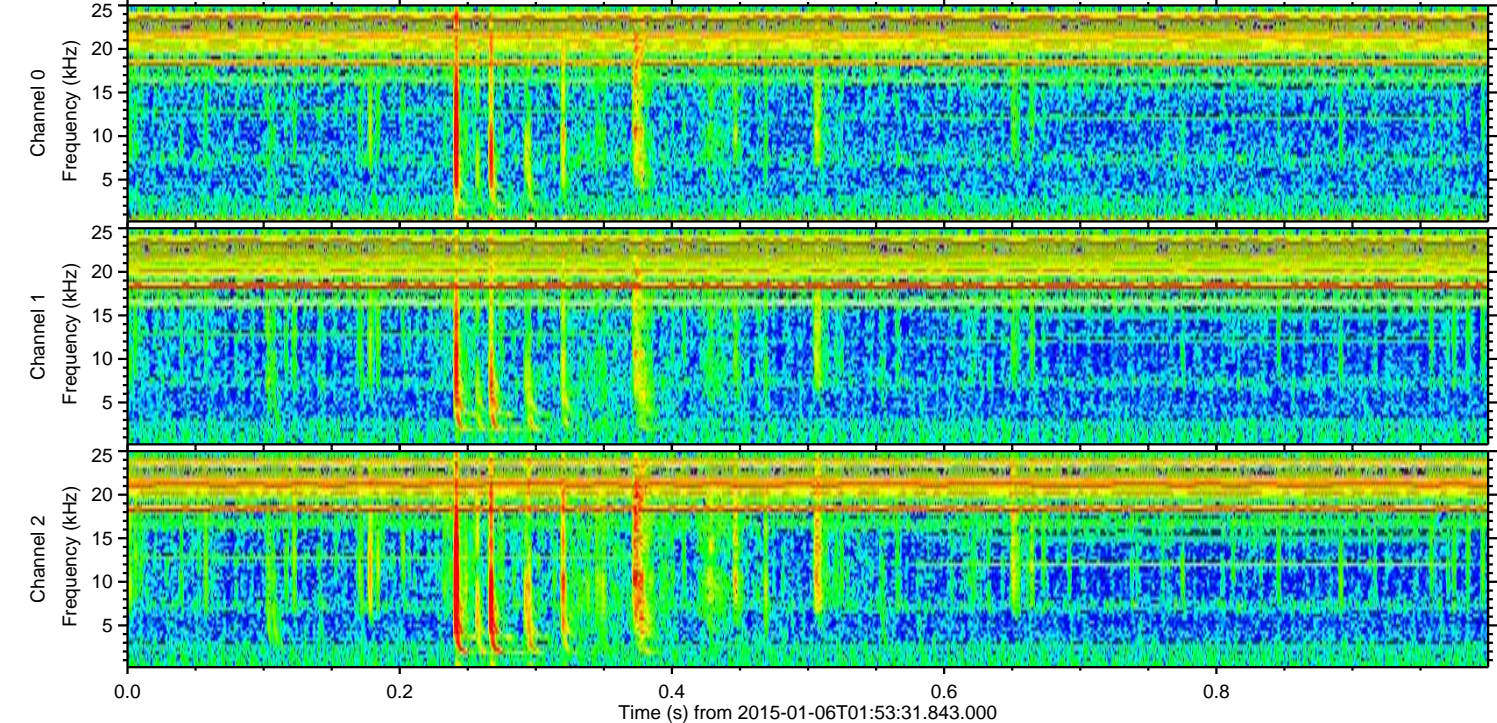
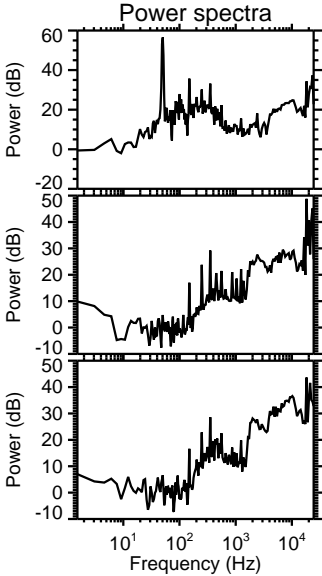
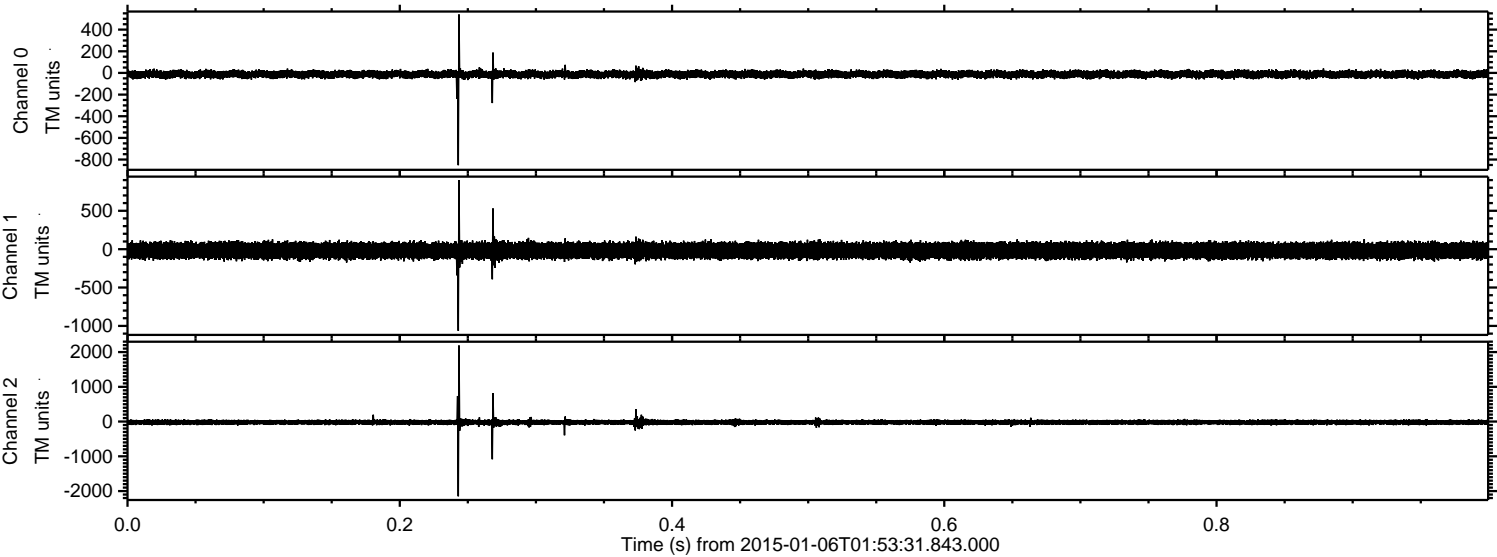
Processed Tue Jan 6 03:02:08 2015 by ELM ver.2012-10-06 from 001\_\_elm20150106\_015330\_\_dat00.bin





ELMAVAN 3D WAVEFORMS (Measured data sampled at 50 kHz) 49688 packets of 144 samples from 2015-01-06T01:53:31.843.000. Part 1/144

Processed Tue Jan 6 03:02:09 2015 by ELM ver.2012-10-06 from 001\_\_elm20150106\_015330\_\_dat00.bin





Processed Tue Jan 6 03:02:11 2015 by ELM ver.2012-10-06 from 001\_\_elm20150106\_015330\_\_dat00.bin

