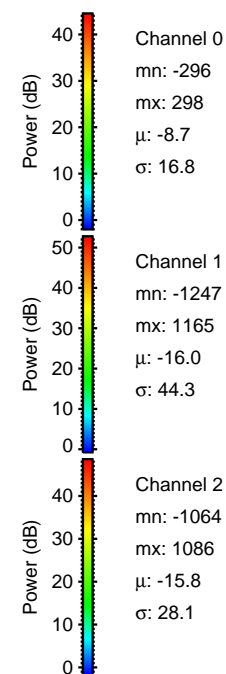
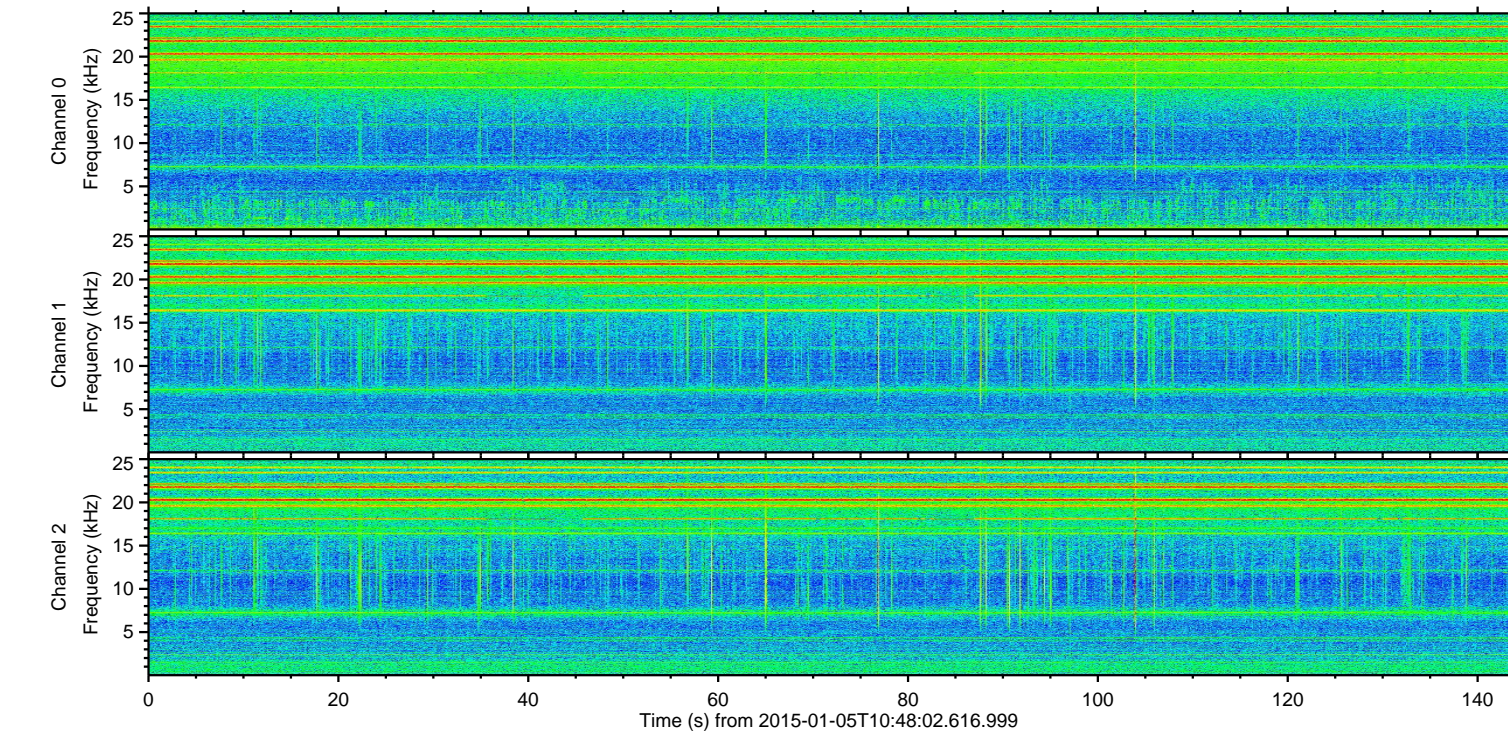
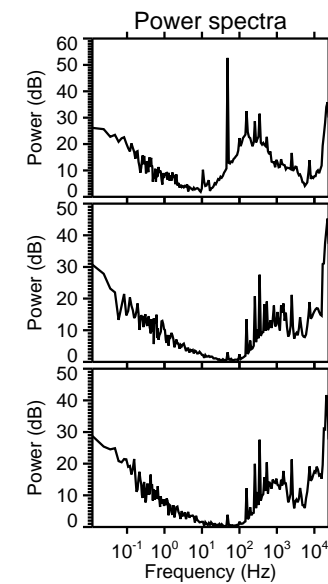
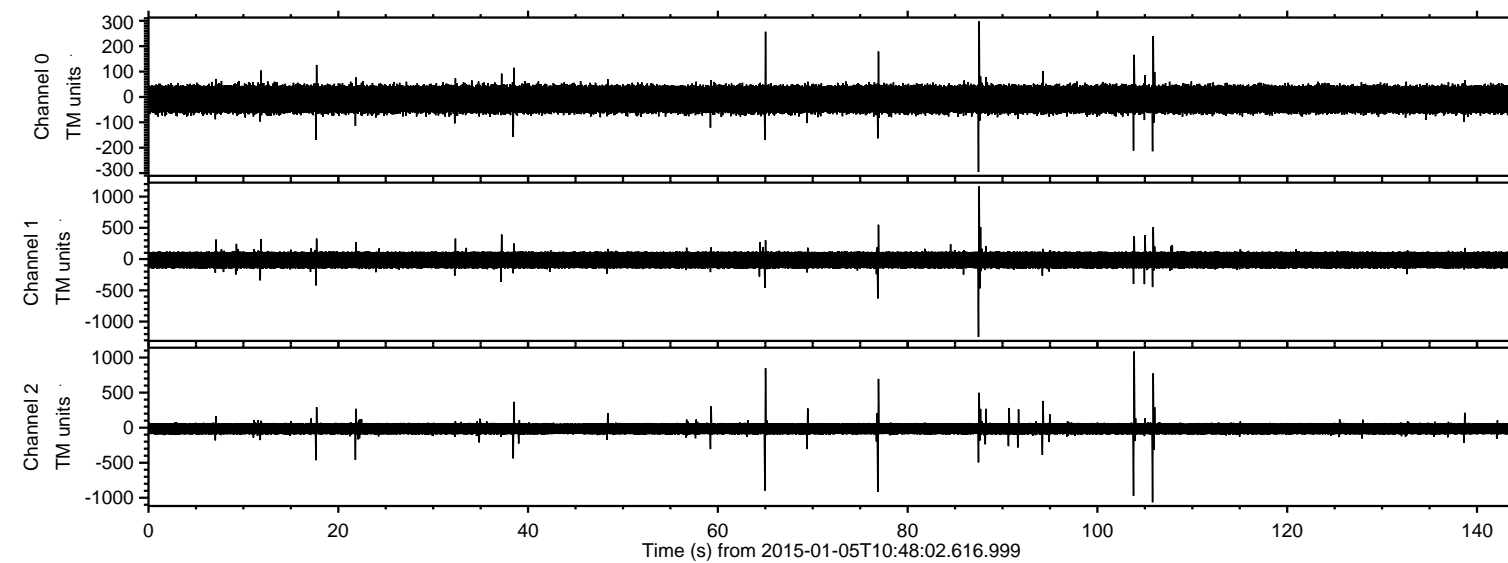


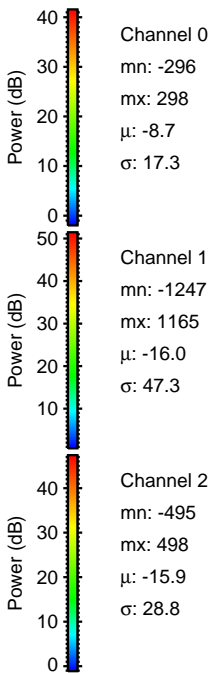
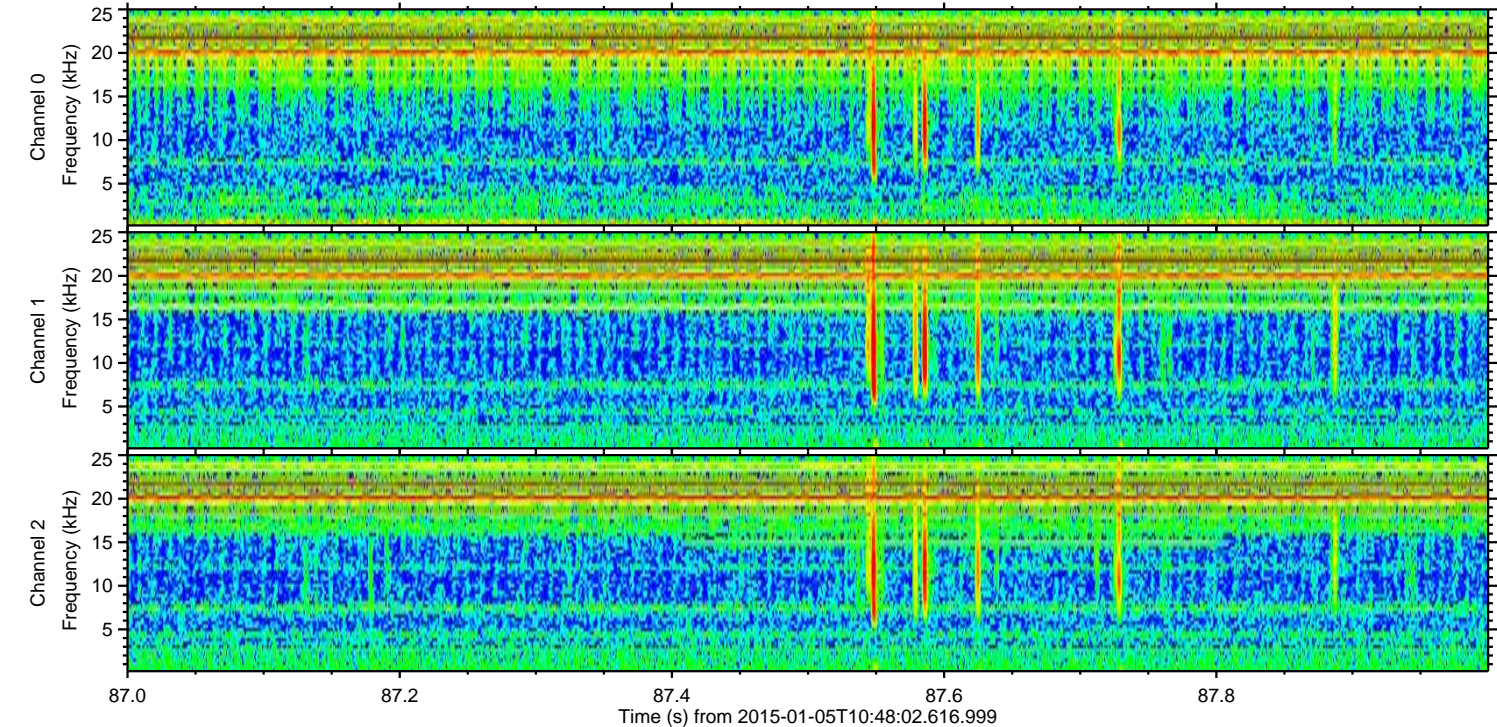
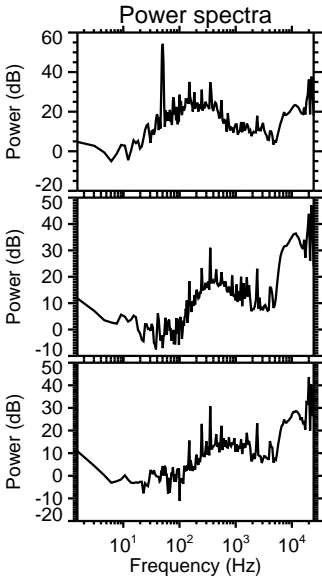
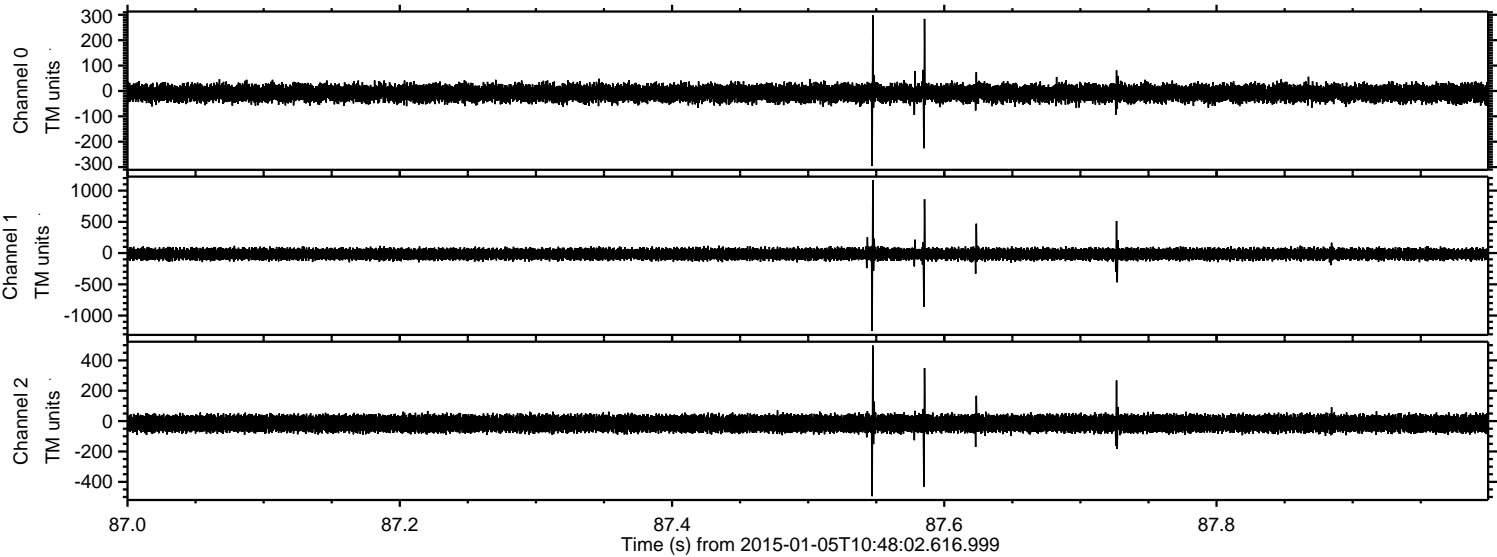
# ELMAVAN 3D WAVEFORMS (Measured data sampled at 50 kHz) 49788 packets of 144 samples from 2015-01-05T10:48:02.616.999.

Processed Mon Jan 5 12:05:55 2015 by ELM ver.2012-10-06 from 001\_\_elm20150105\_104801\_\_dat00.bin





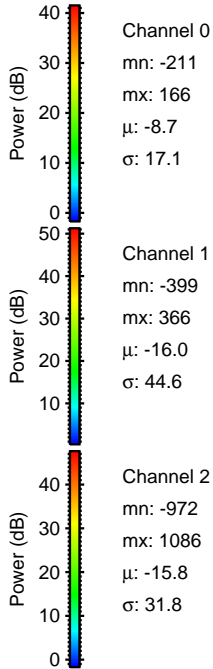
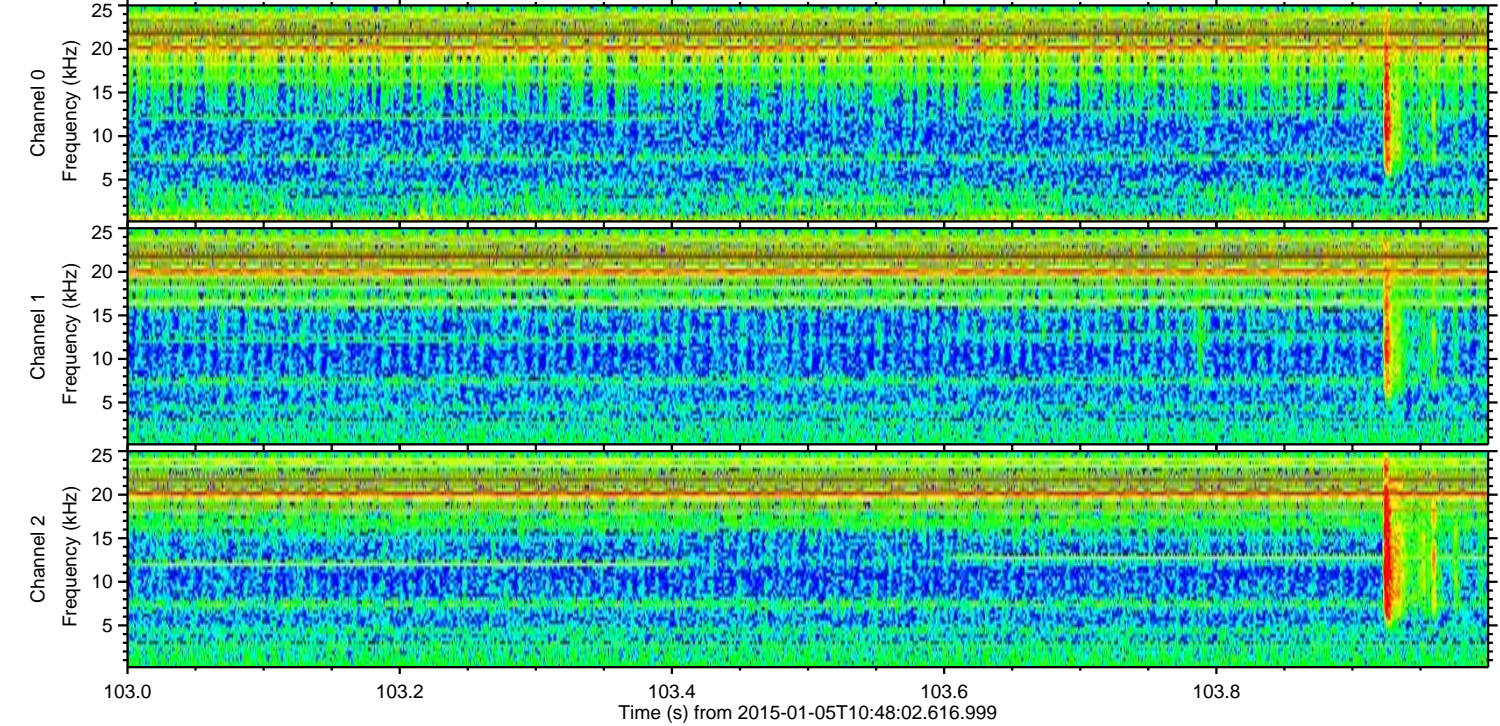
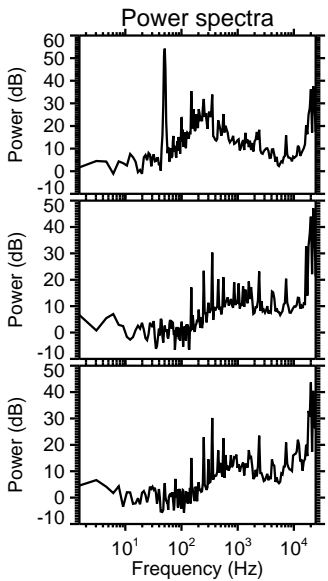
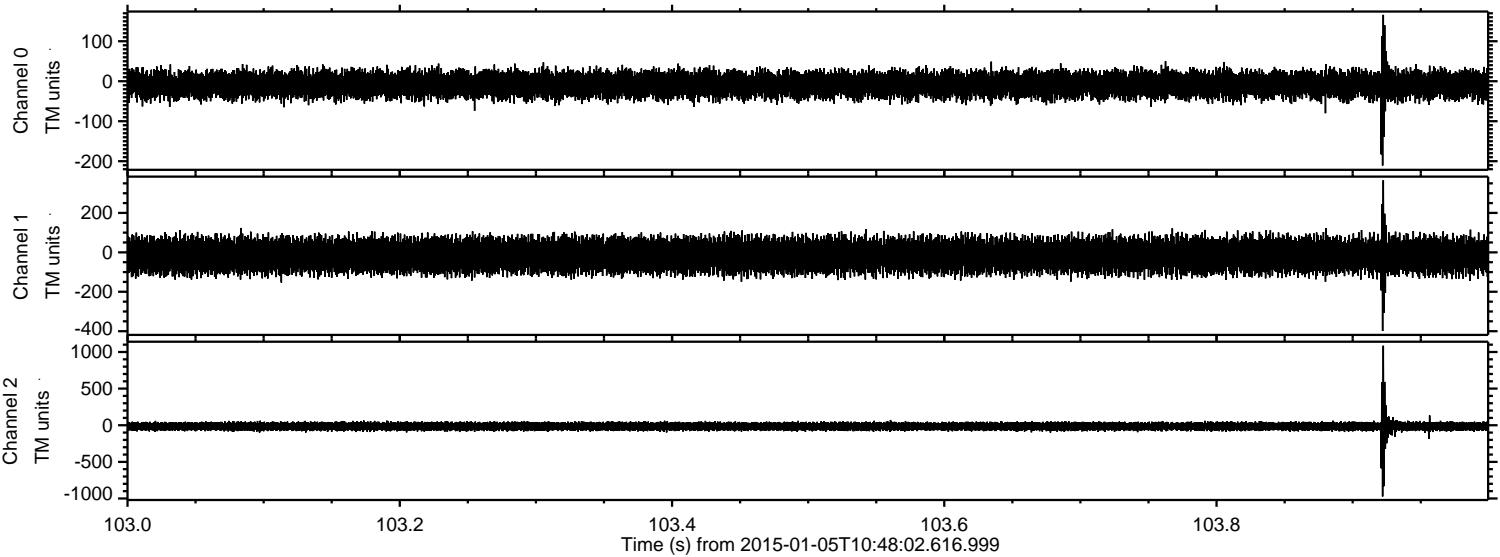
Processed Mon Jan 5 12:06:07 2015 by ELM ver.2012-10-06 from 001\_\_elm20150105\_104801\_\_dat00.bin





ELMAVAN 3D WAVEFORMS (Measured data sampled at 50 kHz) 49788 packets of 144 samples from 2015-01-05T10:48:02.616.999. Part 104/144

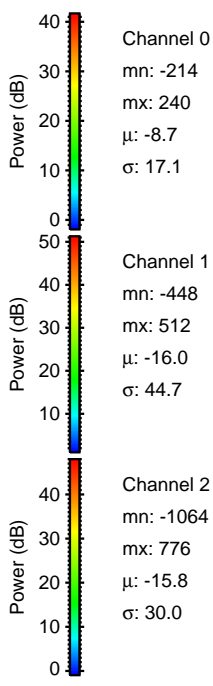
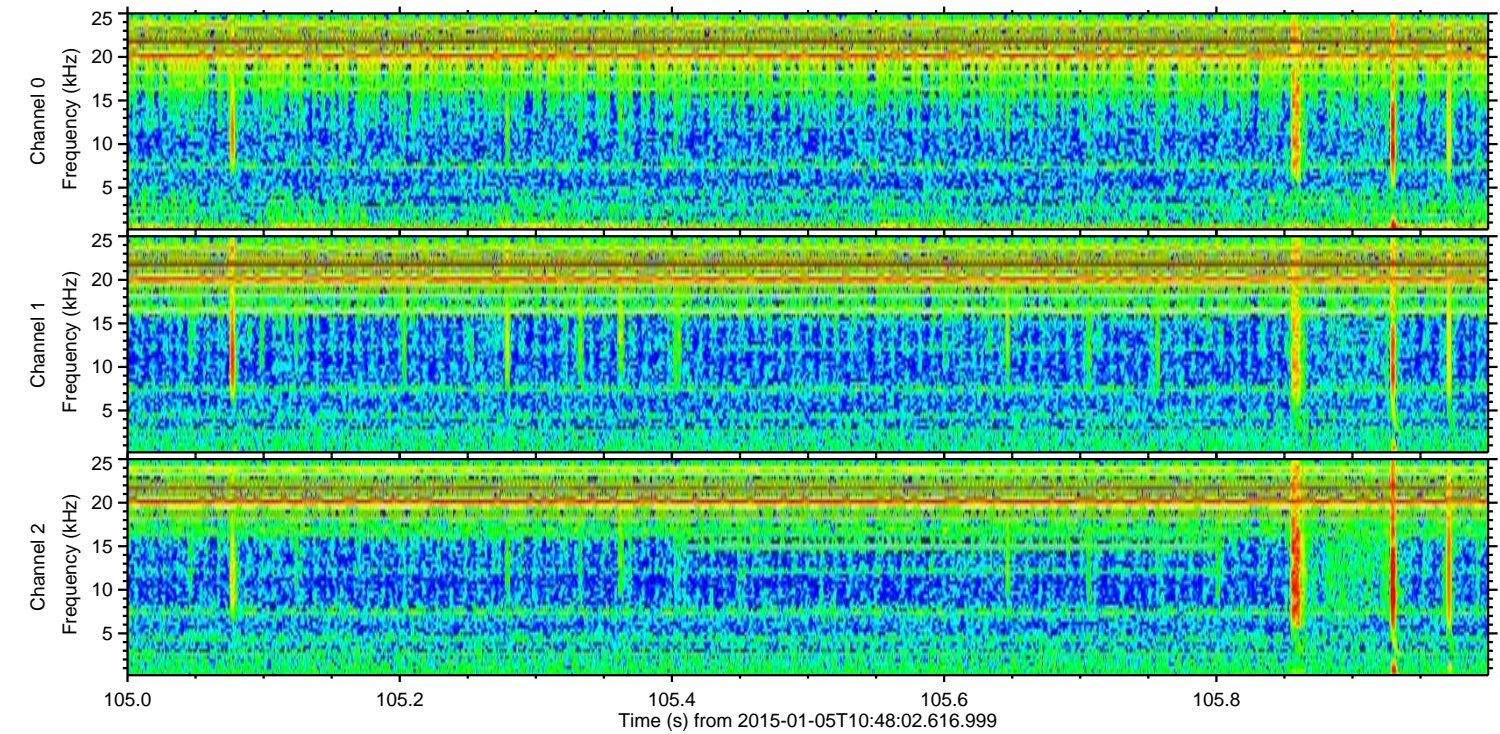
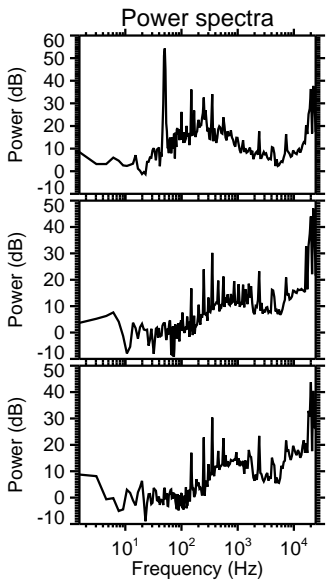
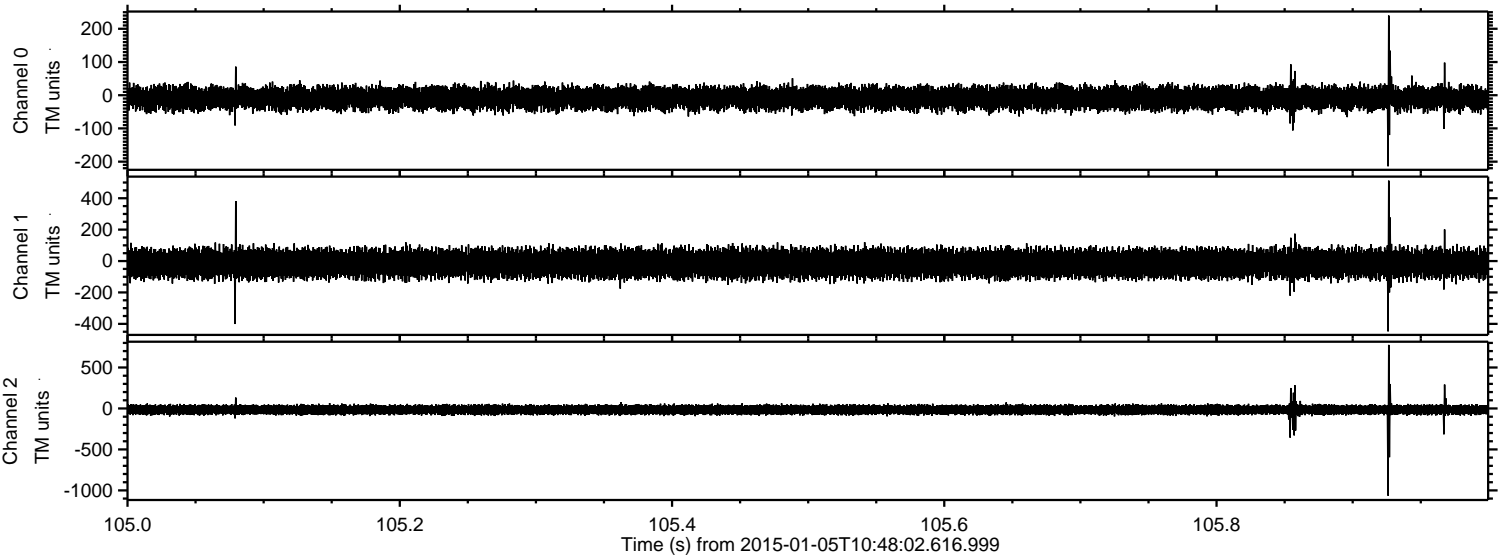
Processed Mon Jan 5 12:06:08 2015 by ELM ver.2012-10-06 from 001\_\_elm20150105\_104801\_\_dat00.bin





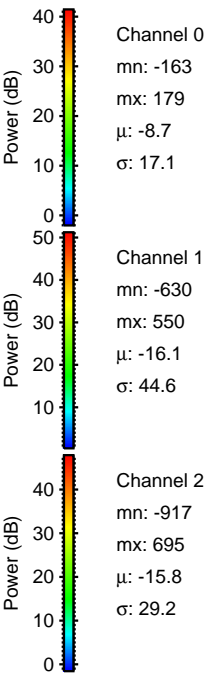
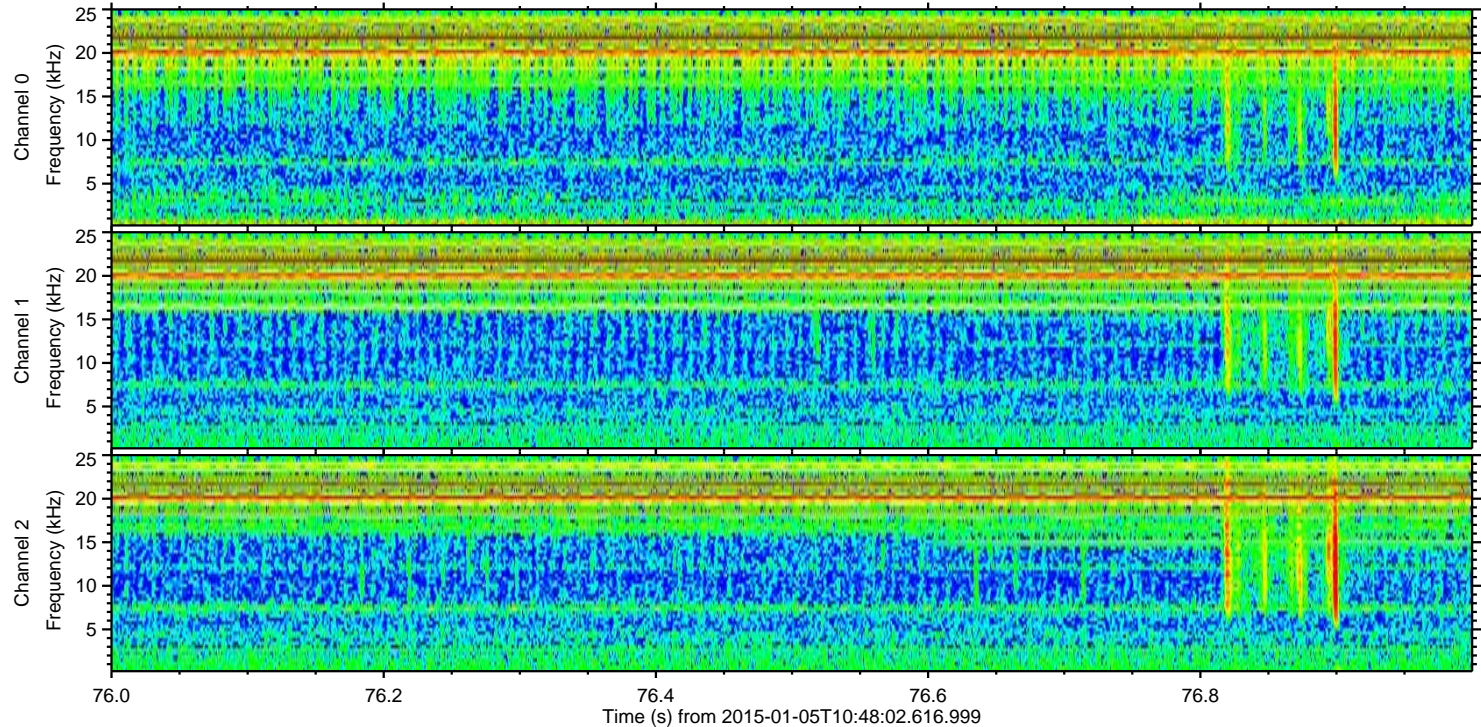
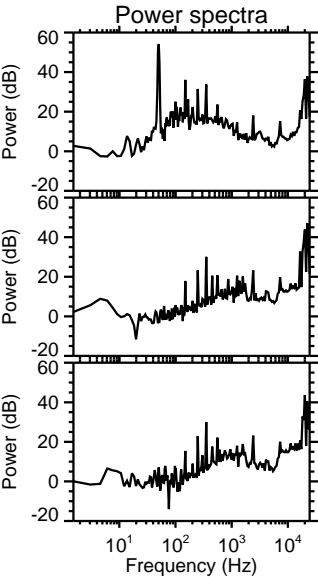
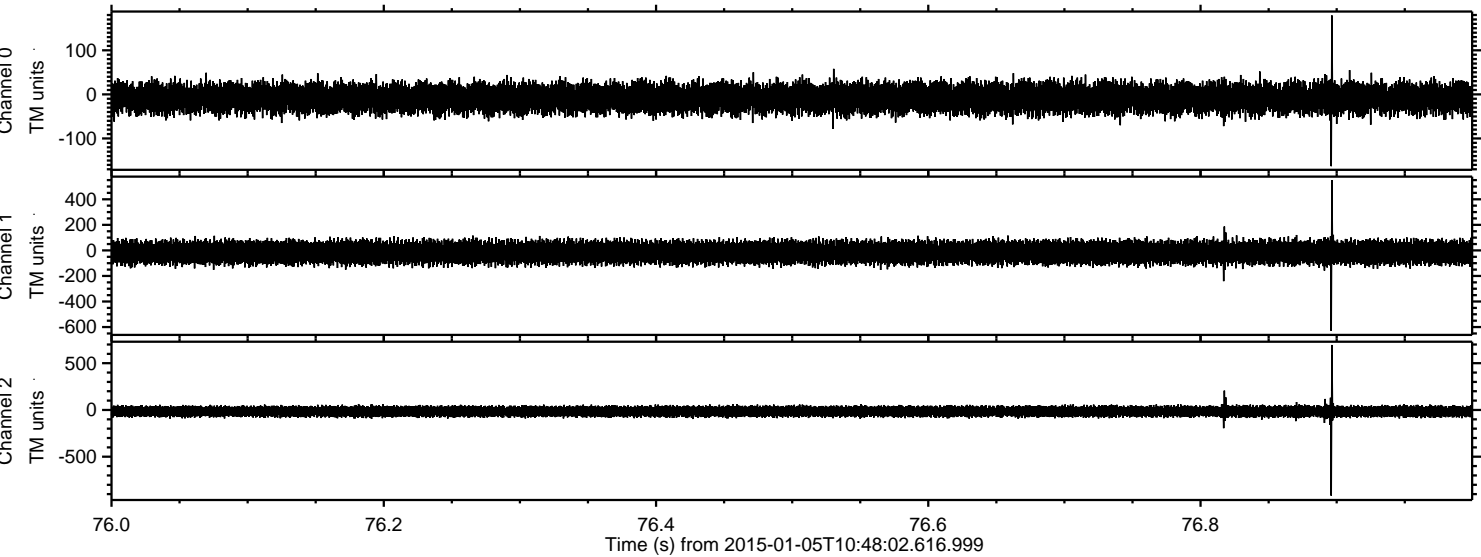
ELMAVAN 3D WAVEFORMS (Measured data sampled at 50 kHz) 49788 packets of 144 samples from 2015-01-05T10:48:02.616.999. Part 106/144

Processed Mon Jan 5 12:06:09 2015 by ELM ver.2012-10-06 from 001\_\_elm20150105\_104801\_\_dat00.bin



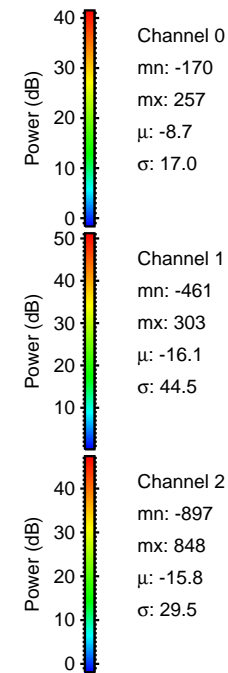
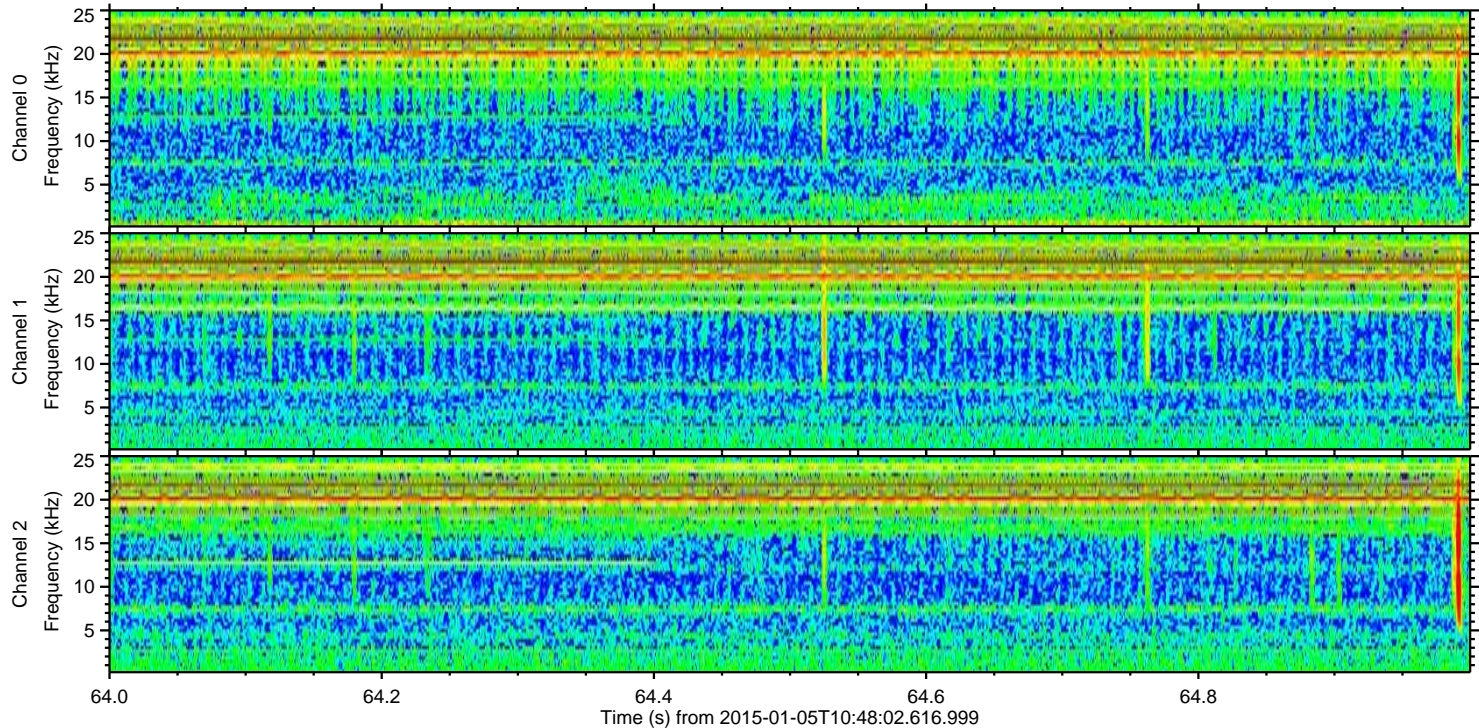
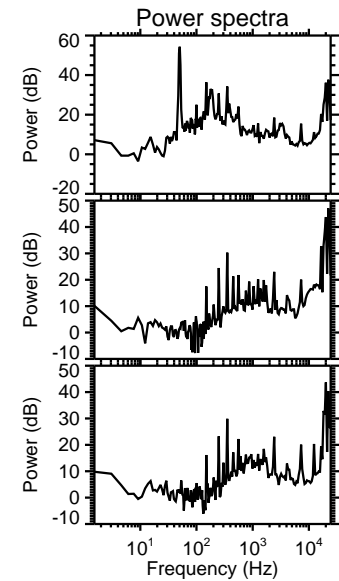
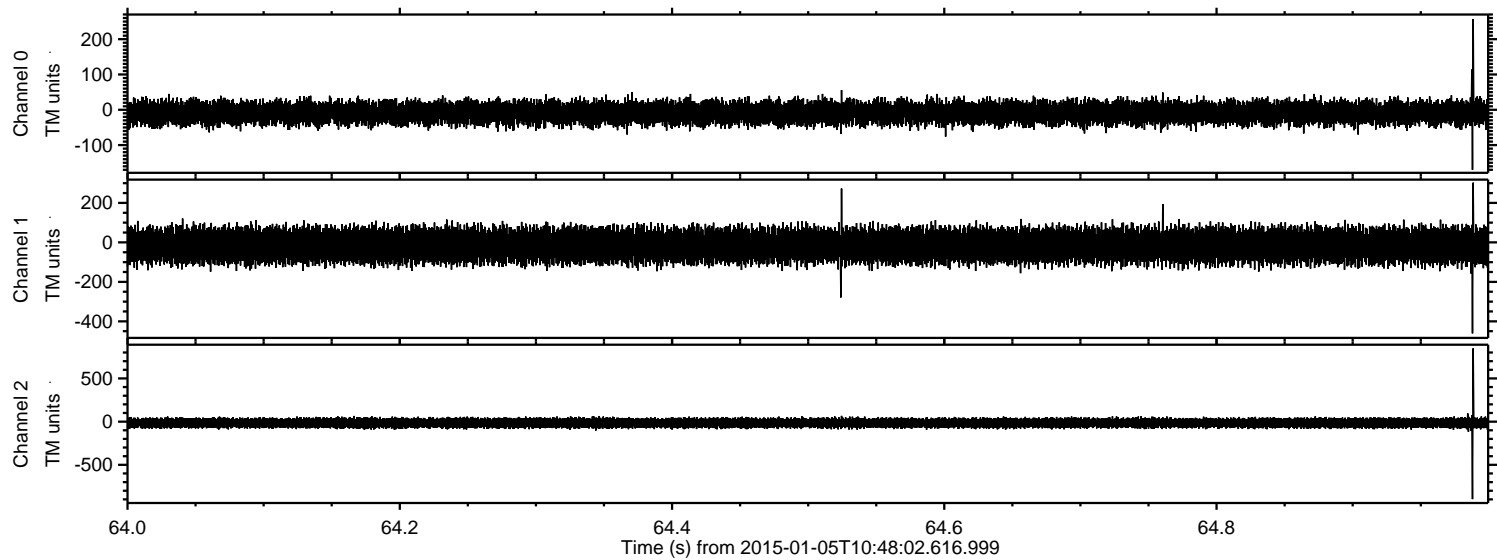


Processed Mon Jan 5 12:06:10 2015 by ELM ver.2012-10-06 from 001\_\_elm20150105\_104801\_\_dat00.bin



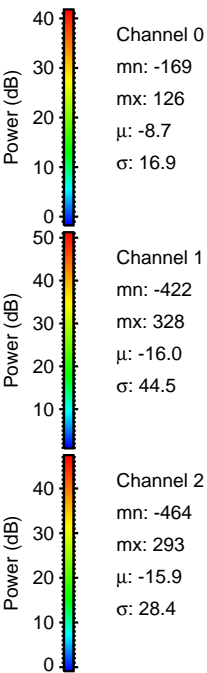
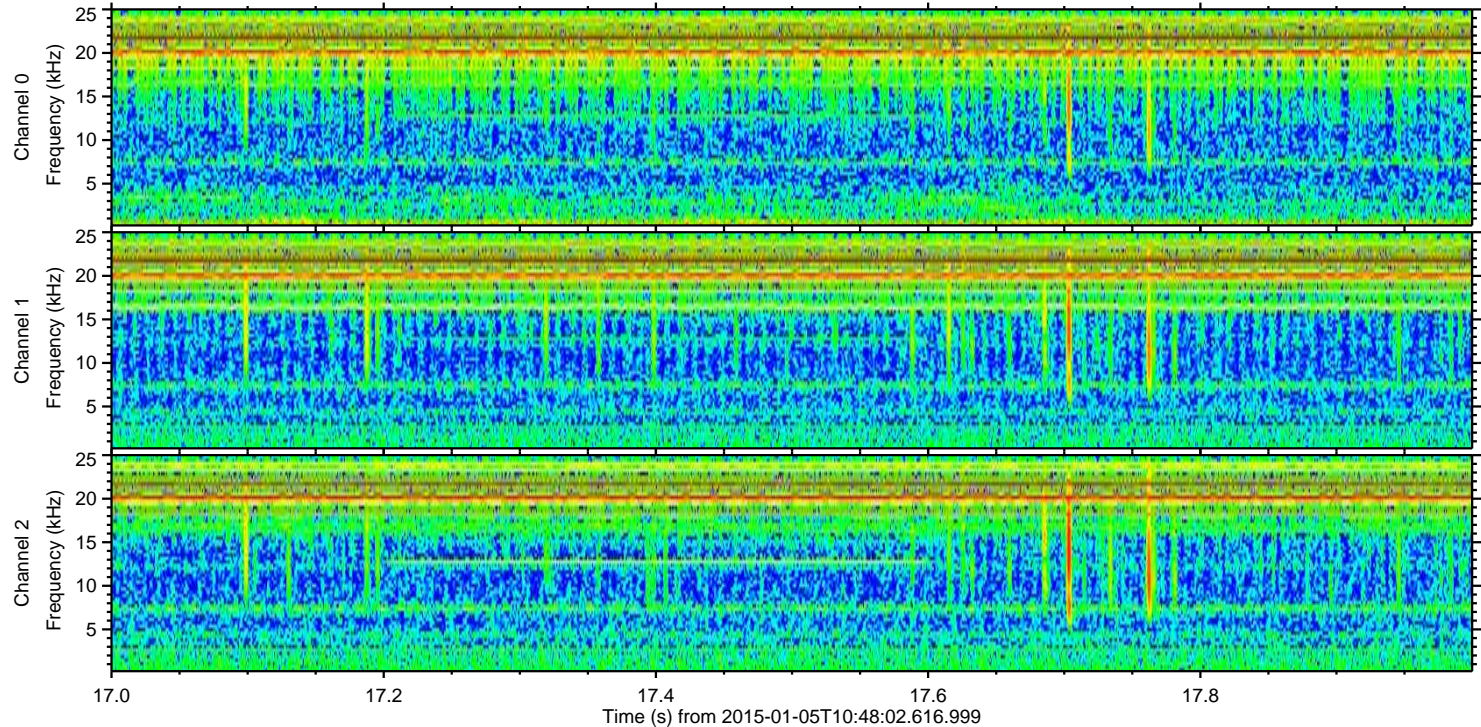
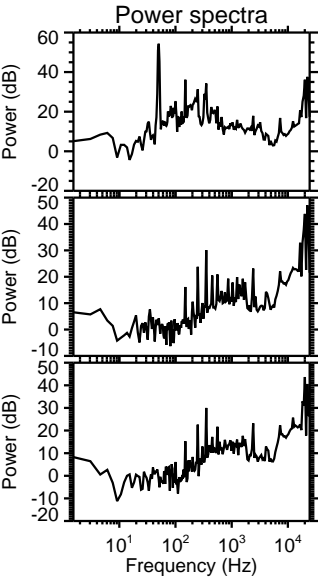
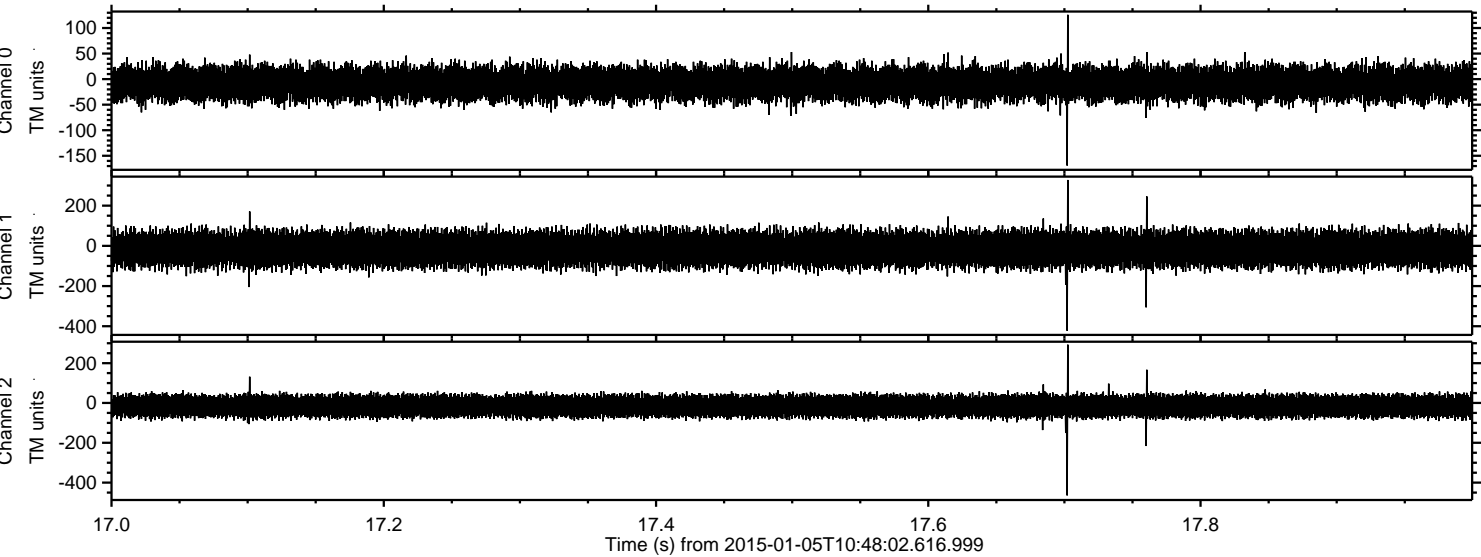


Processed Mon Jan 5 12:06:11 2015 by ELM ver.2012-10-06 from 001\_\_elm20150105\_104801\_\_dat00.bin



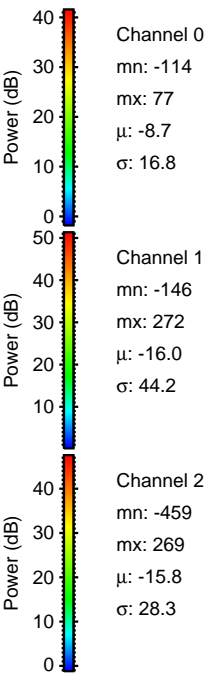
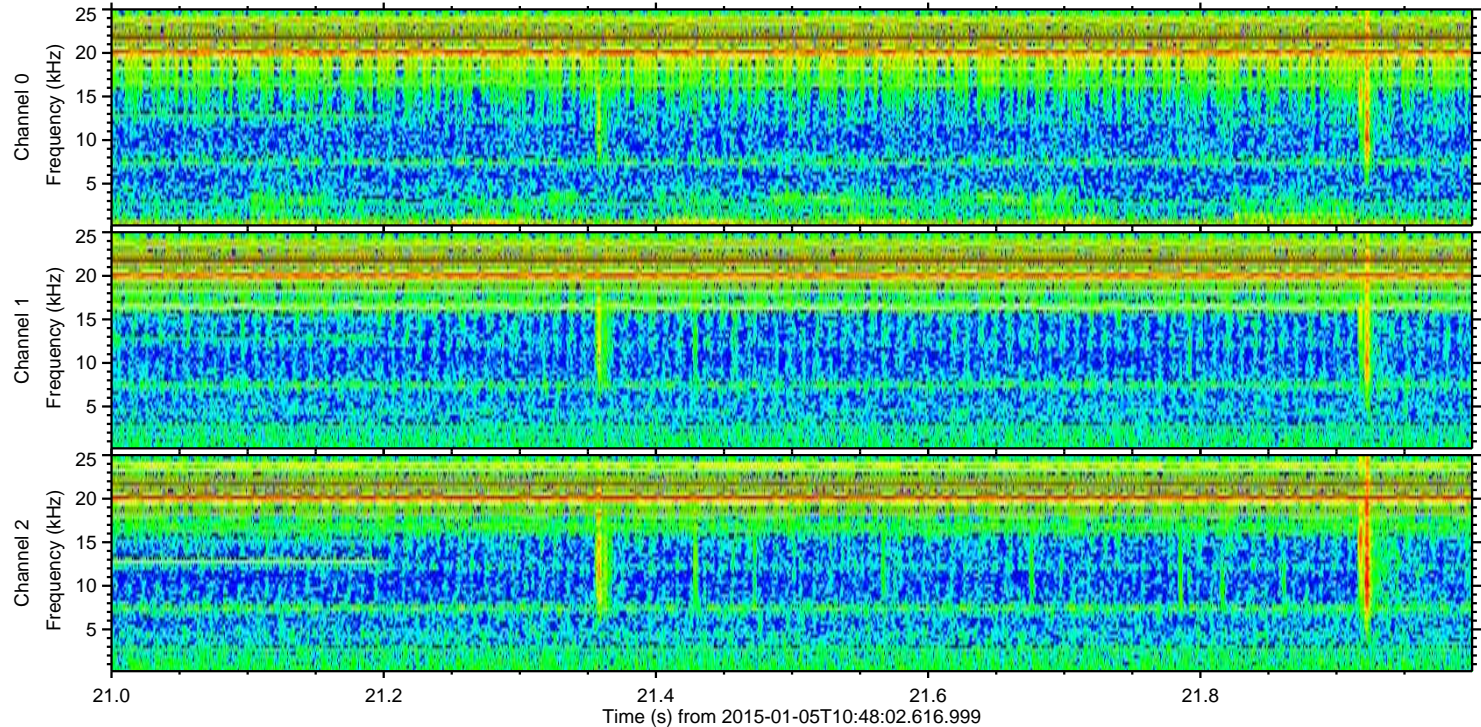
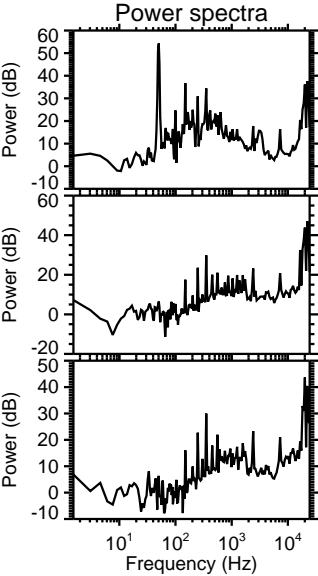
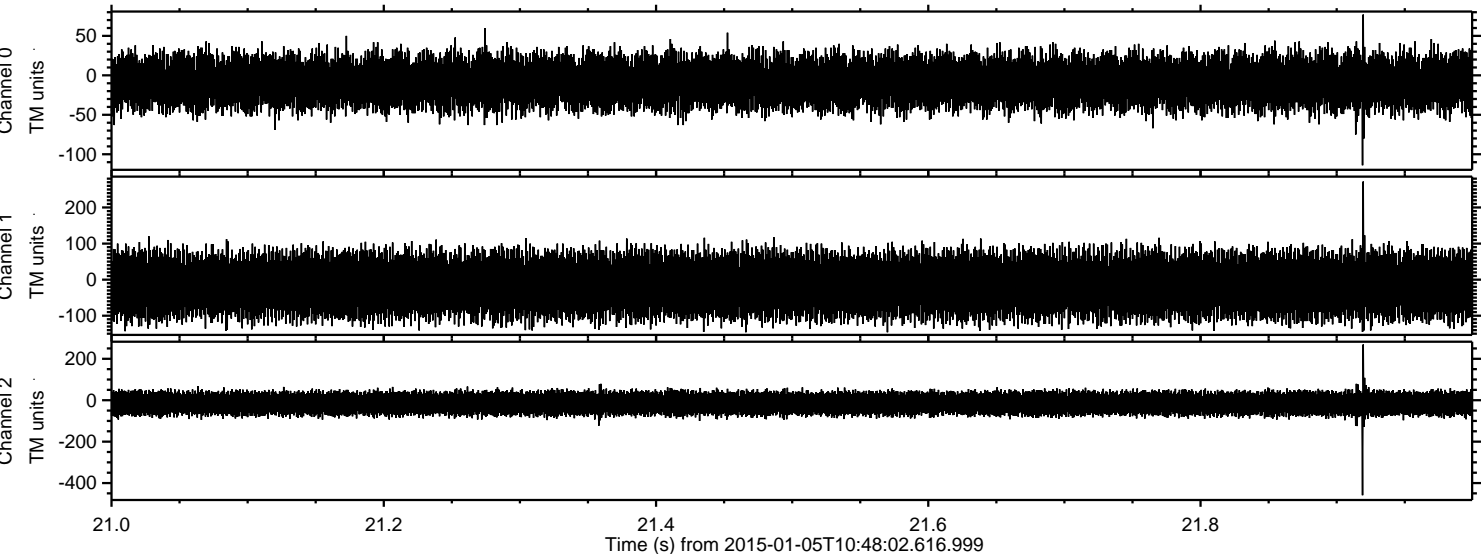


Processed Mon Jan 5 12:06:12 2015 by ELM ver.2012-10-06 from 001\_\_elm20150105\_104801\_\_dat00.bin



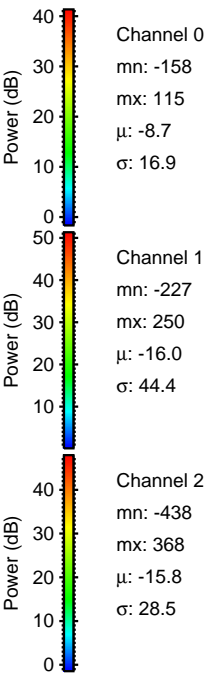
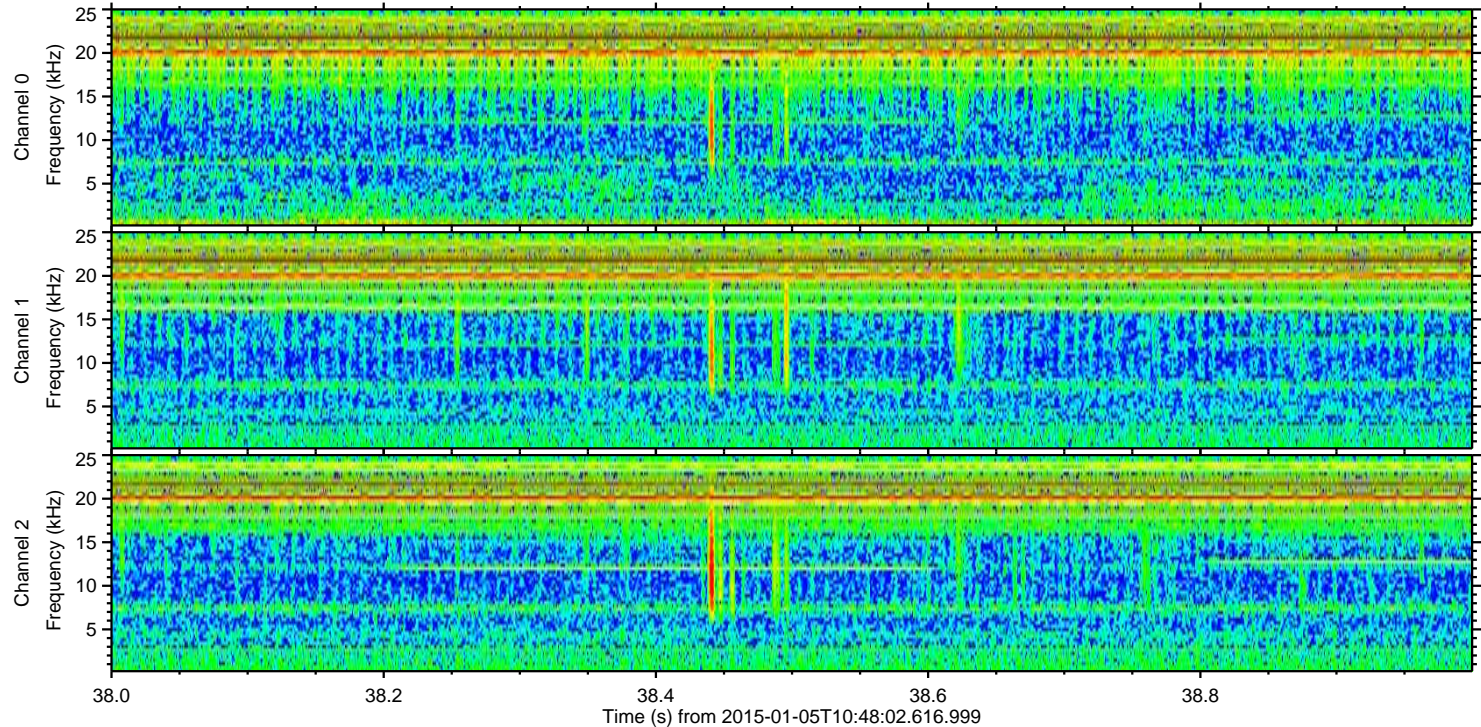
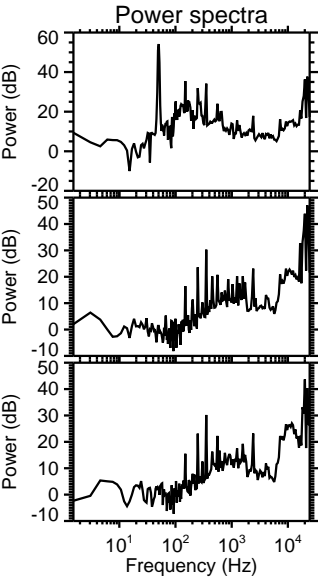
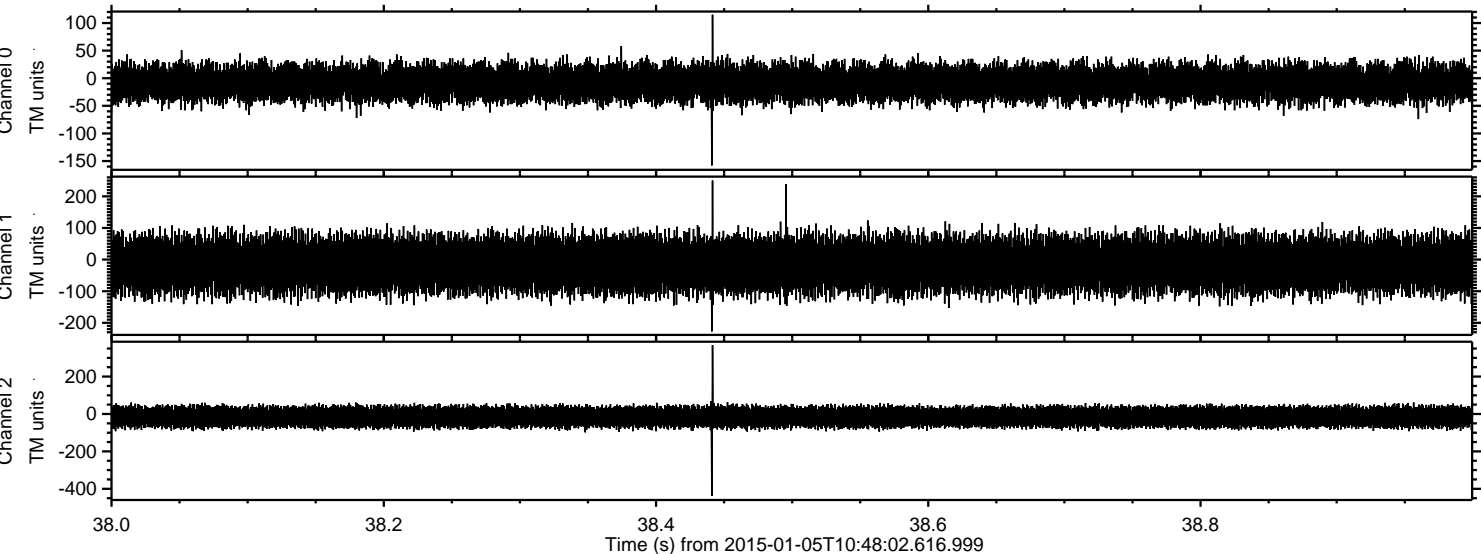


Processed Mon Jan 5 12:06:13 2015 by ELM ver.2012-10-06 from 001\_\_elm20150105\_104801\_\_dat00.bin





Processed Mon Jan 5 12:06:14 2015 by ELM ver.2012-10-06 from 001\_\_elm20150105\_104801\_\_dat00.bin





Processed Mon Jan 5 12:06:15 2015 by ELM ver.2012-10-06 from 001\_\_elm20150105\_104801\_\_dat00.bin

