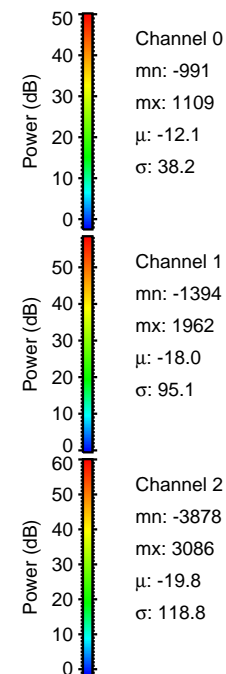
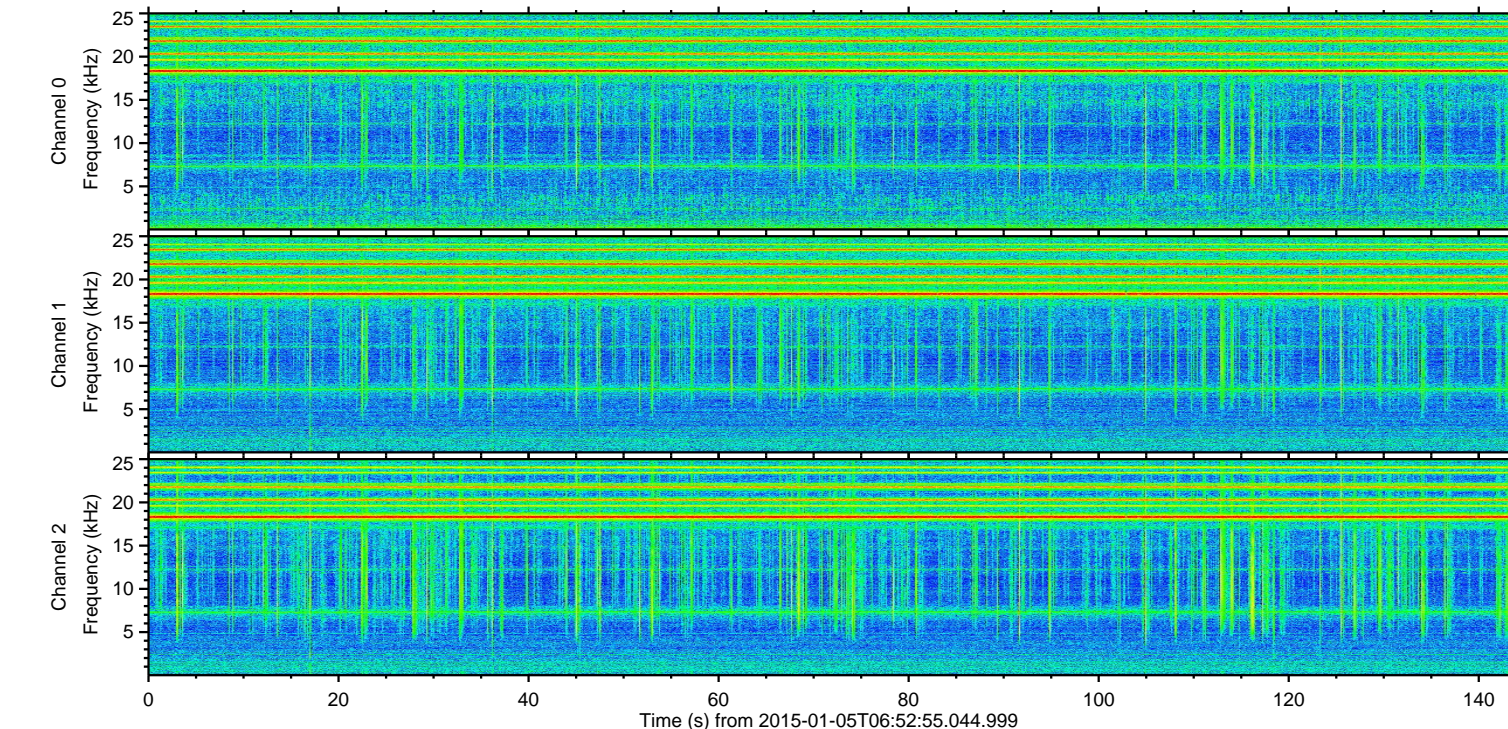
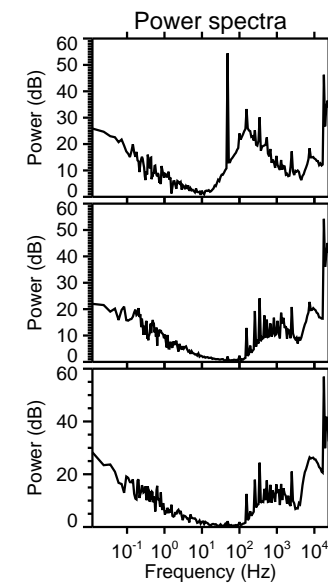
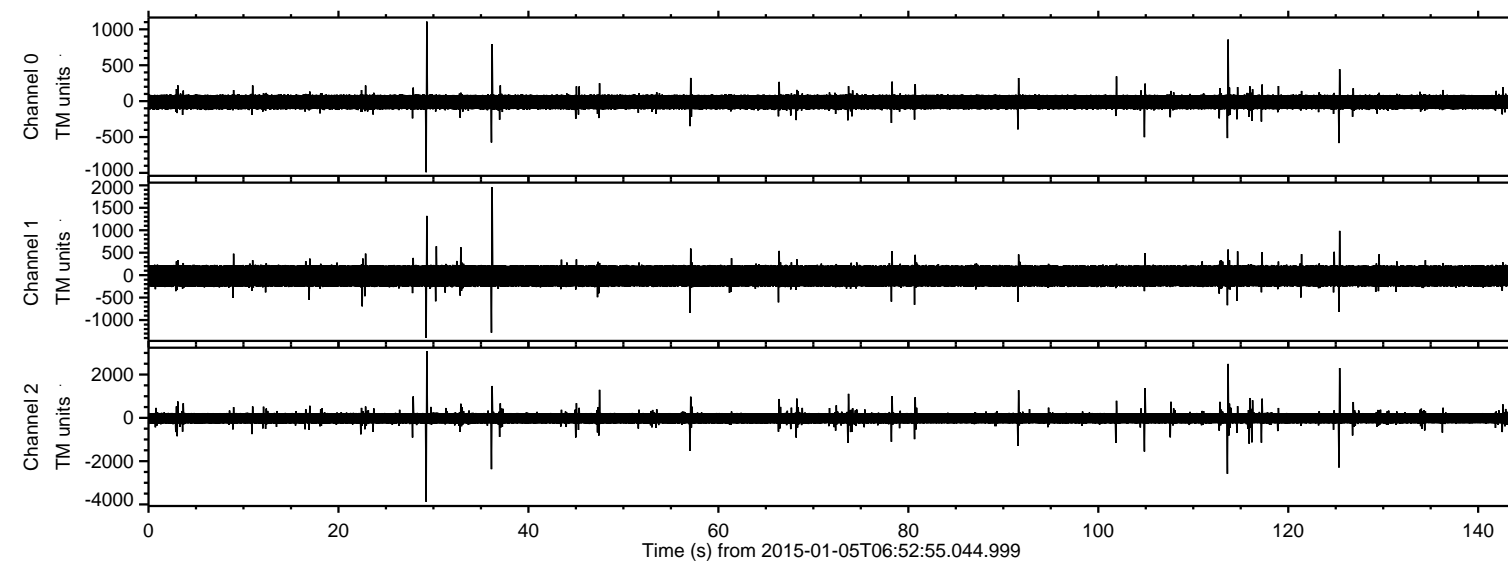
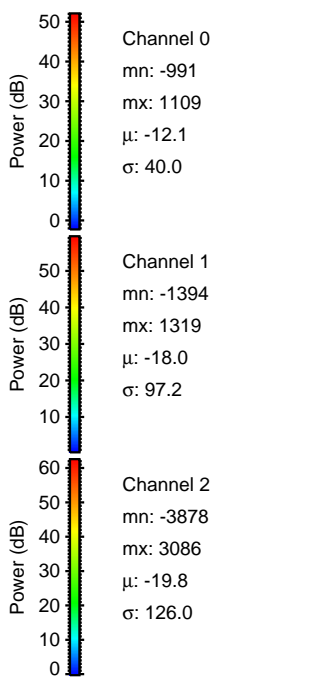
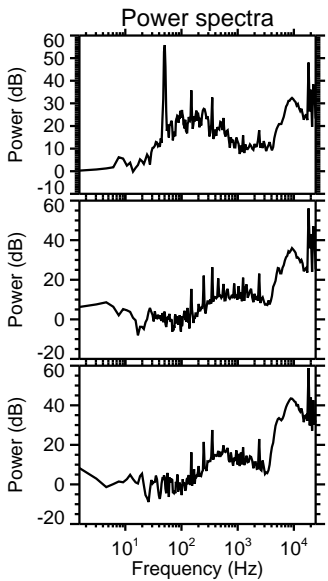
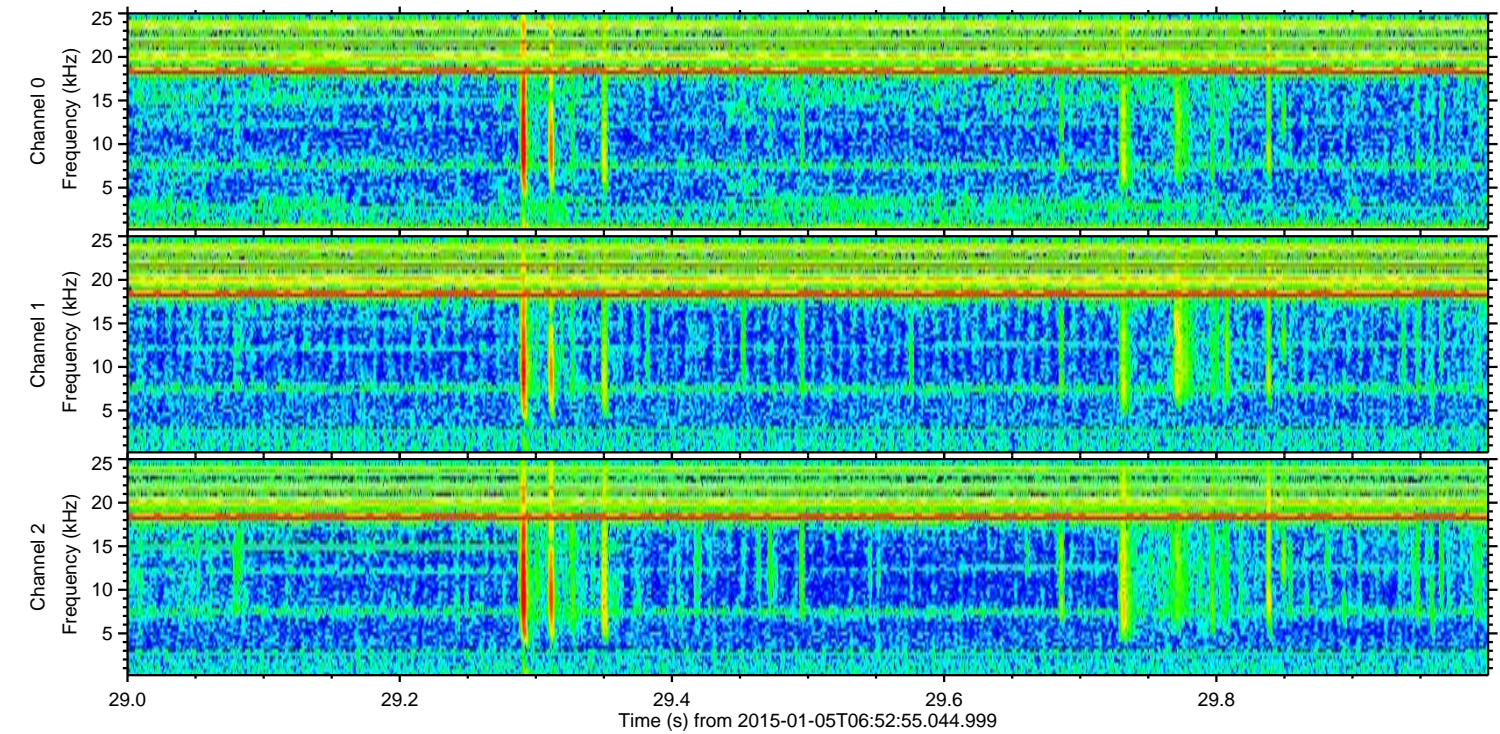
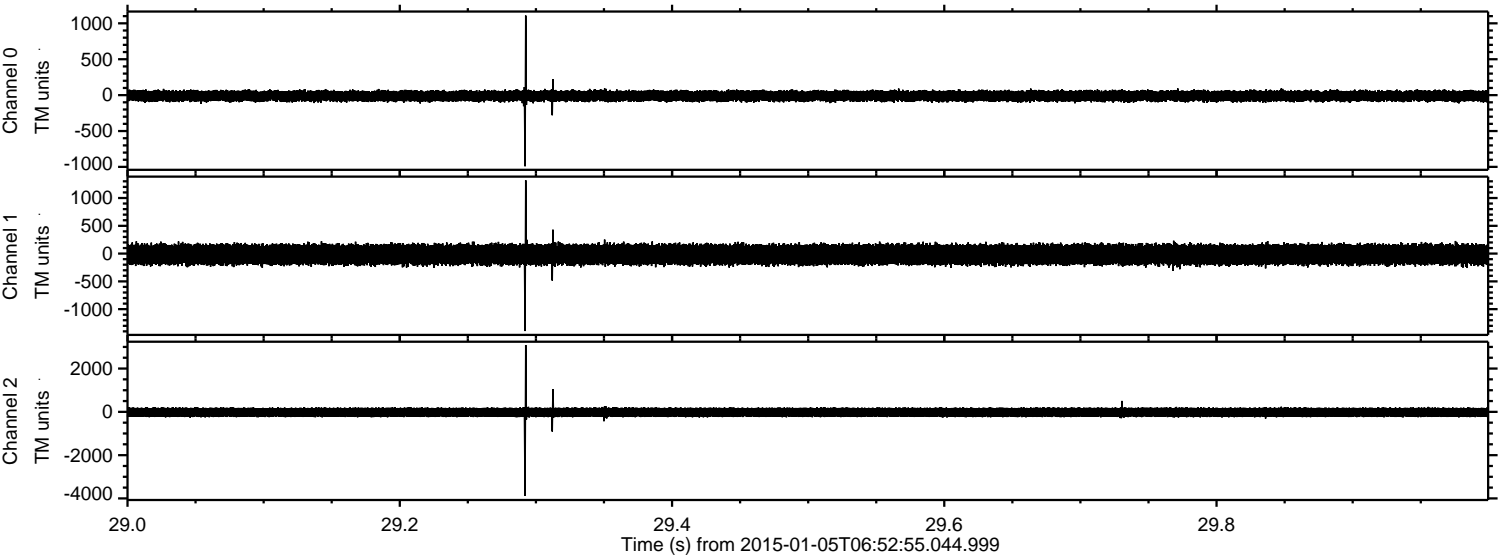


ELMAVAN 3D WAVEFORMS (Measured data sampled at 50 kHz) 49743 packets of 144 samples from 2015-01-05T06:52:55.044.999.

Processed Mon Jan 5 08:01:13 2015 by ELM ver.2012-10-06 from 001__elm20150105_065254__dat00.bin

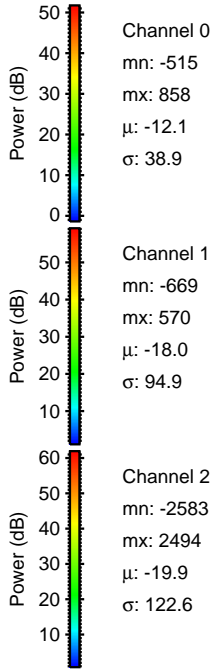
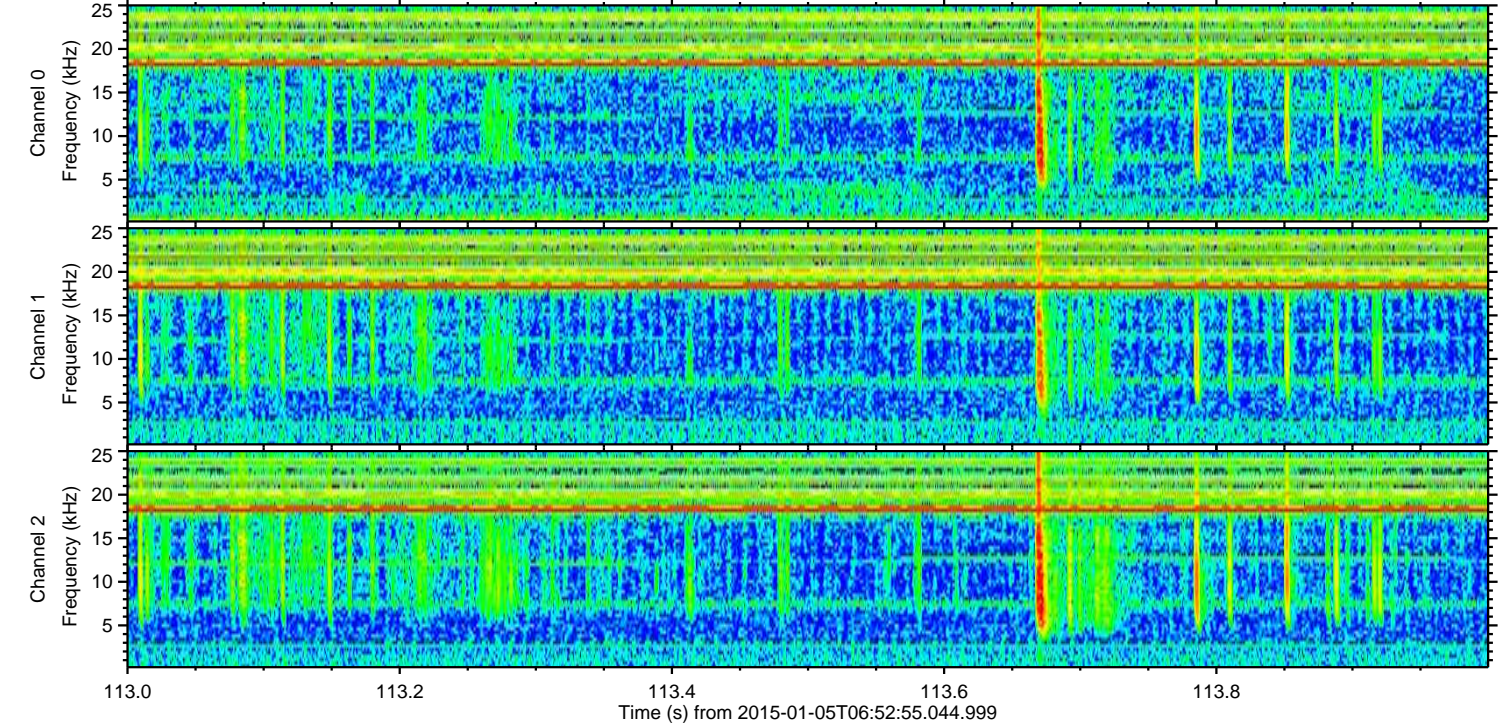
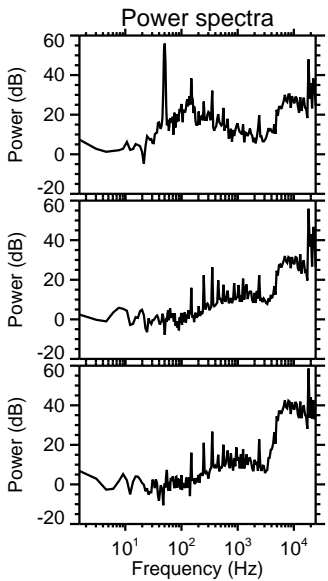
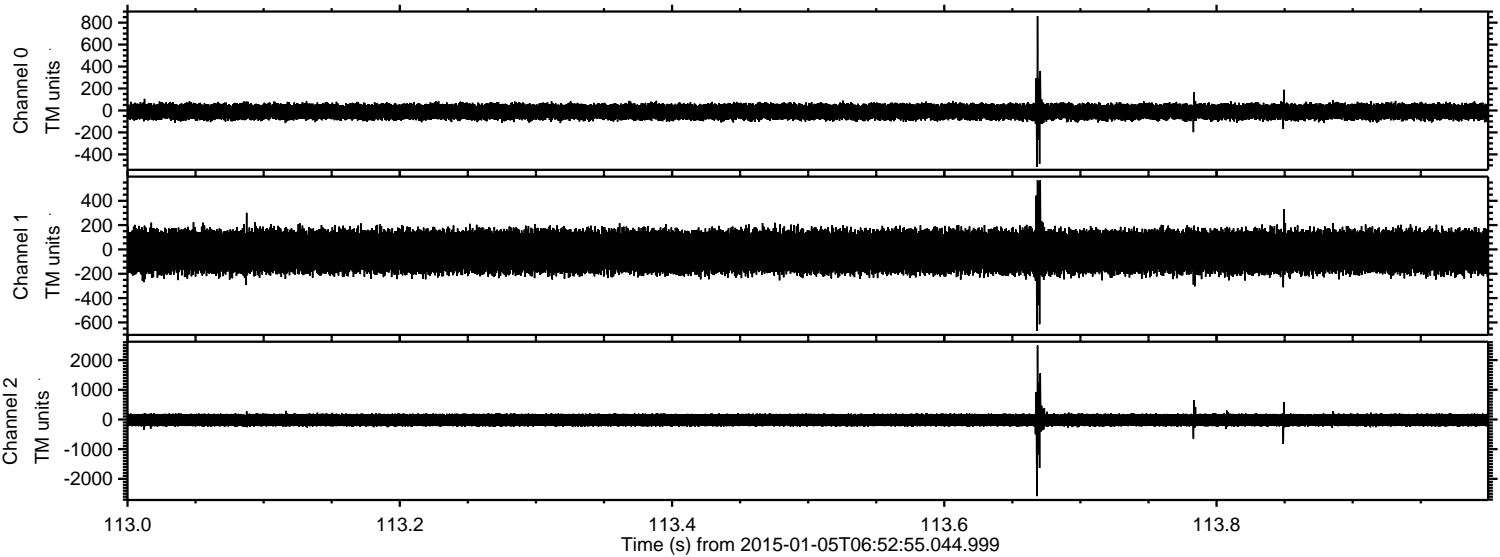


Processed Mon Jan 5 08:01:26 2015 by ELM ver.2012-10-06 from 001__elm20150105_065254__dat00.bin



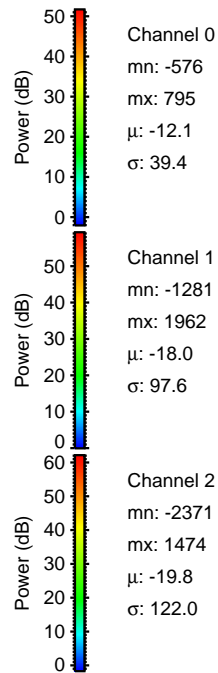
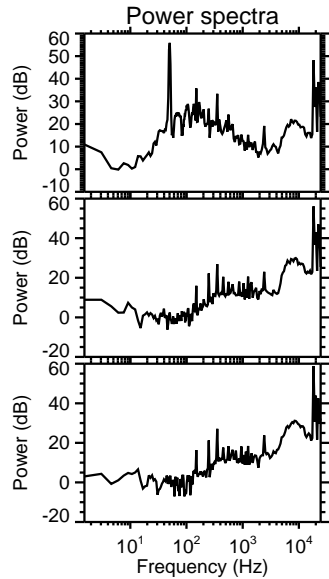
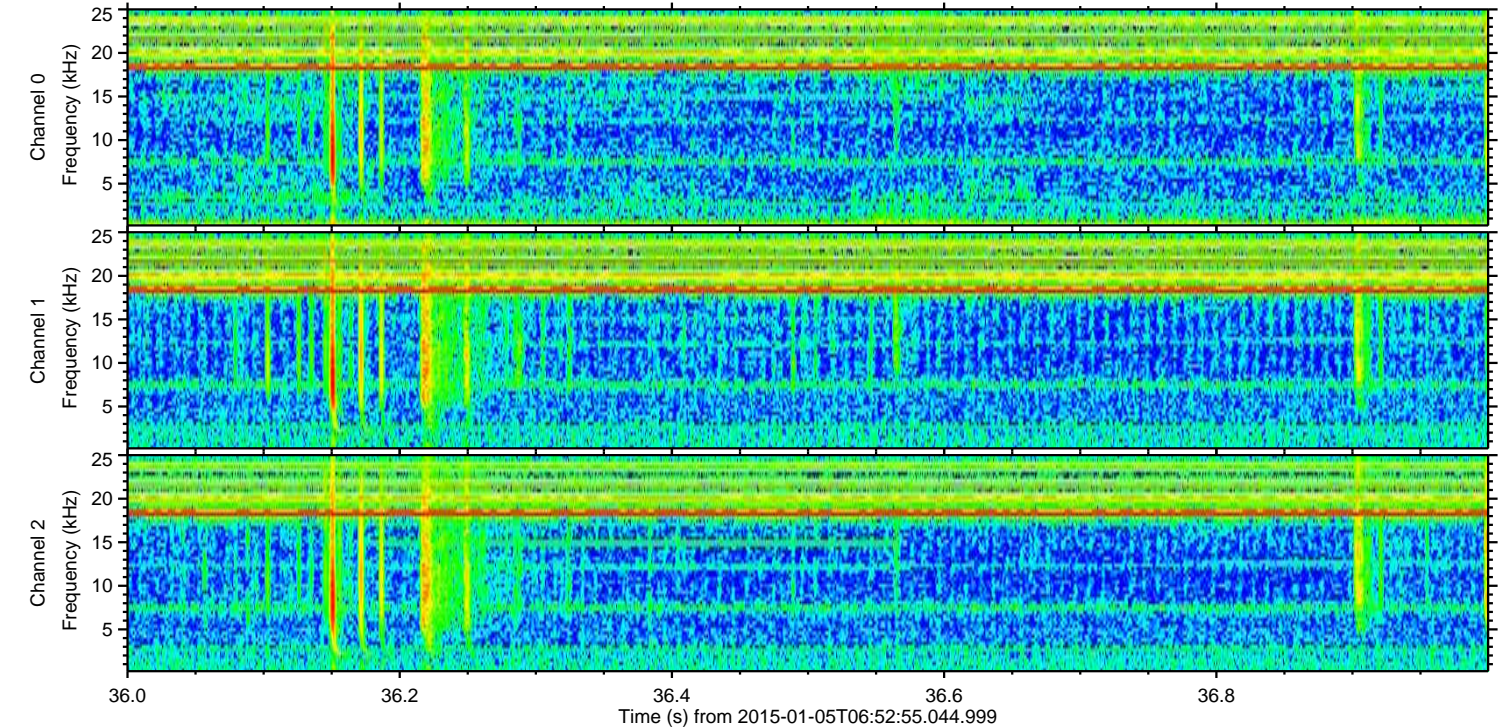
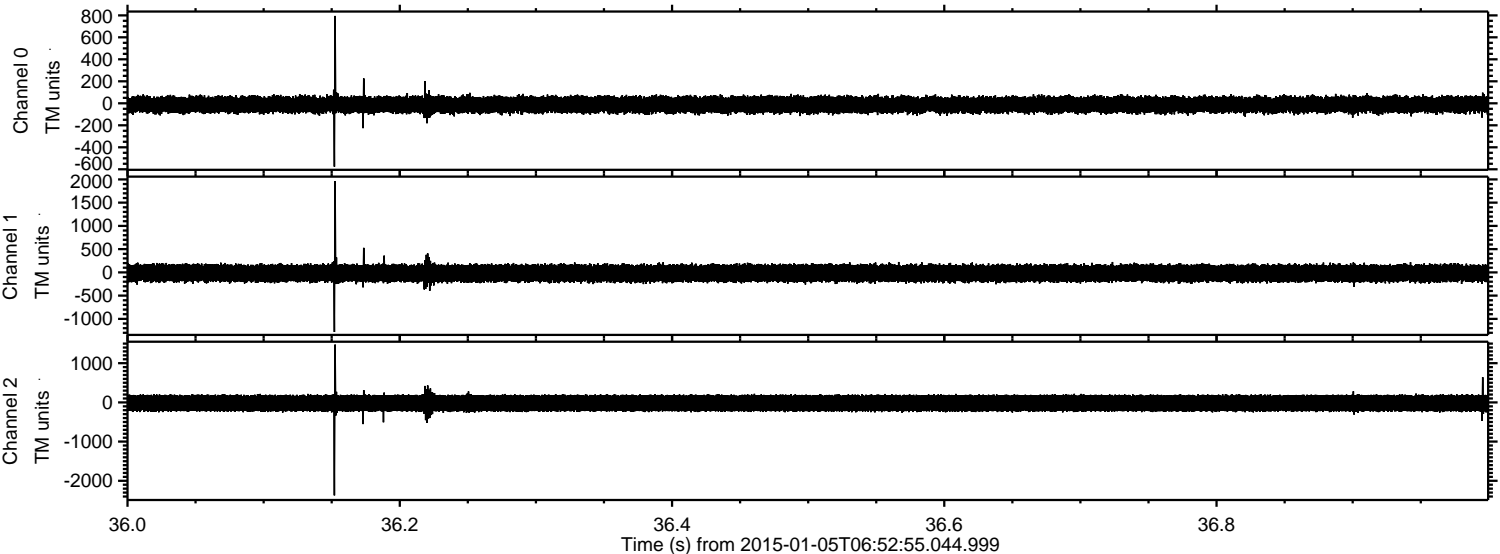
ELMAVAN 3D WAVEFORMS (Measured data sampled at 50 kHz) 49743 packets of 144 samples from 2015-01-05T06:52:55.044.999. Part 114/144

Processed Mon Jan 5 08:01:27 2015 by ELM ver.2012-10-06 from 001__elm20150105_065254__dat00.bin



ELMAVAN 3D WAVEFORMS (Measured data sampled at 50 kHz) 49743 packets of 144 samples from 2015-01-05T06:52:55.044.999. Part 37/144

Processed Mon Jan 5 08:01:27 2015 by ELM ver.2012-10-06 from 001__elm20150105_065254__dat00.bin



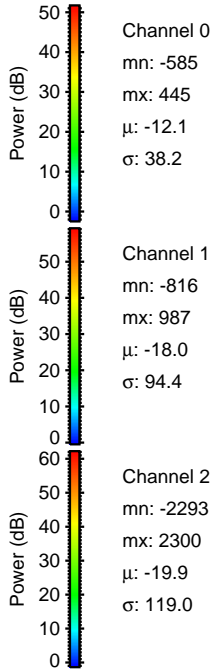
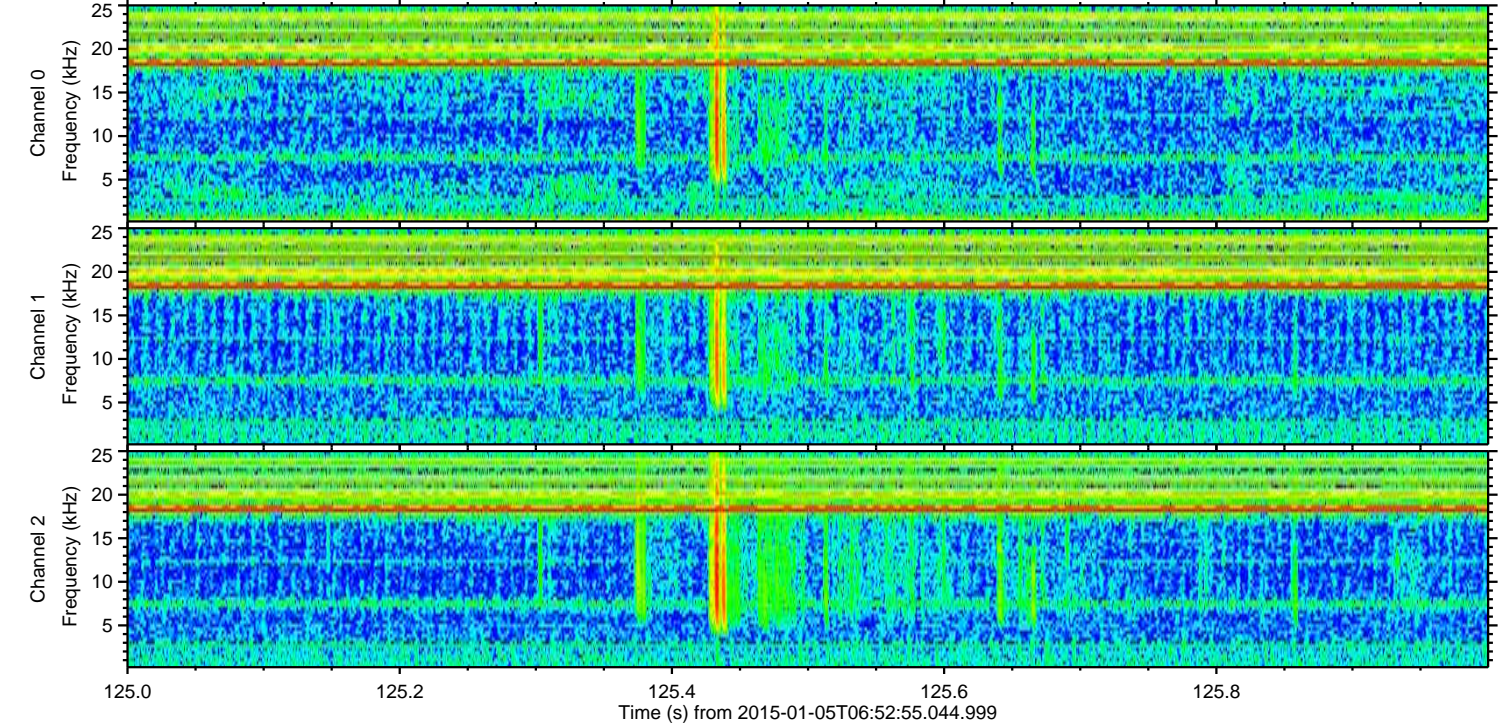
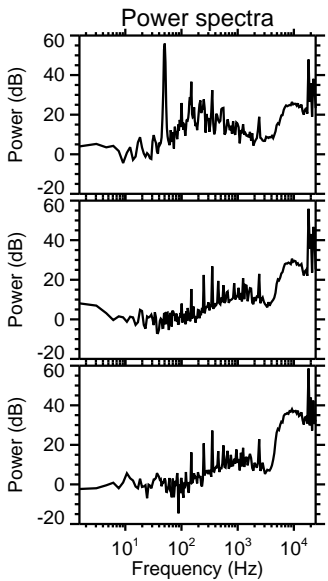
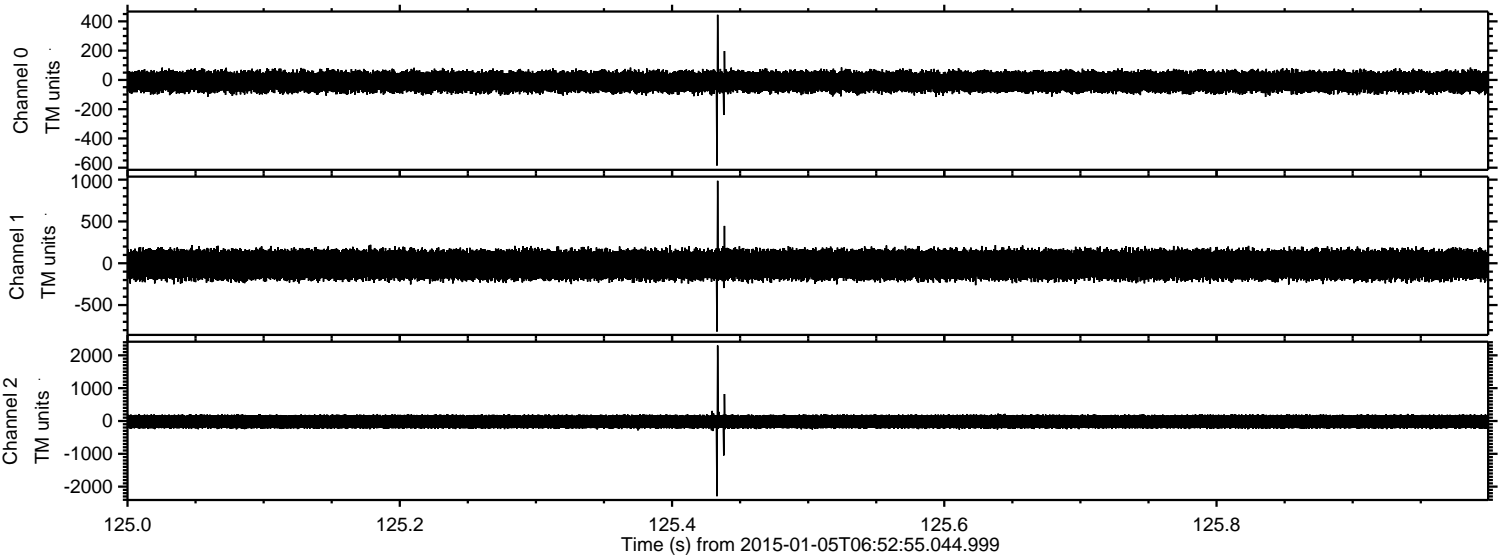
Channel 0
mn: -576
mx: 795
 μ : -12.1
 σ : 39.4

Channel 1
mn: -1281
mx: 1962
 μ : -18.0
 σ : 97.6

Channel 2
mn: -2371
mx: 1474
 μ : -19.8
 σ : 122.0

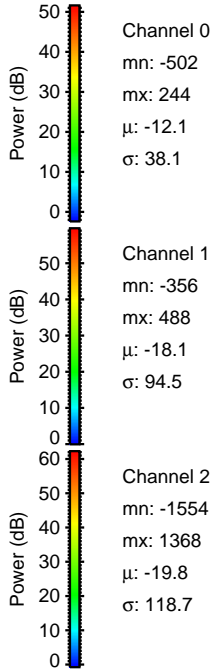
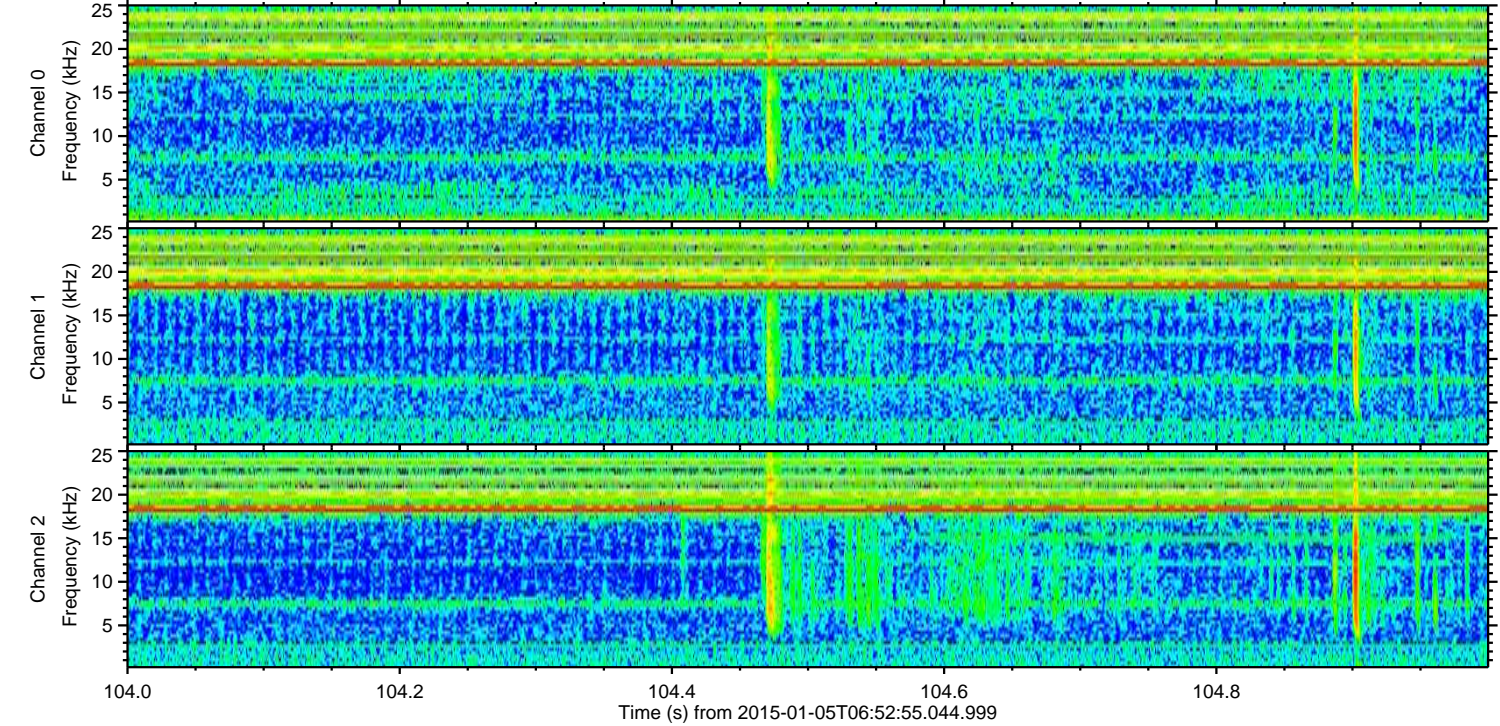
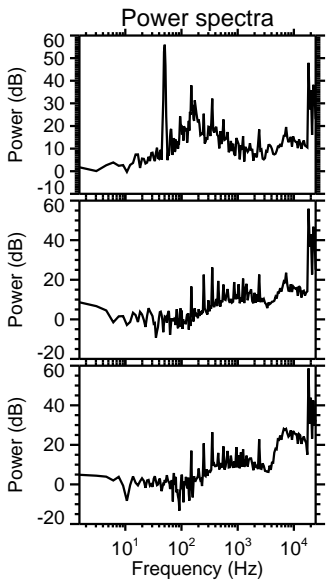
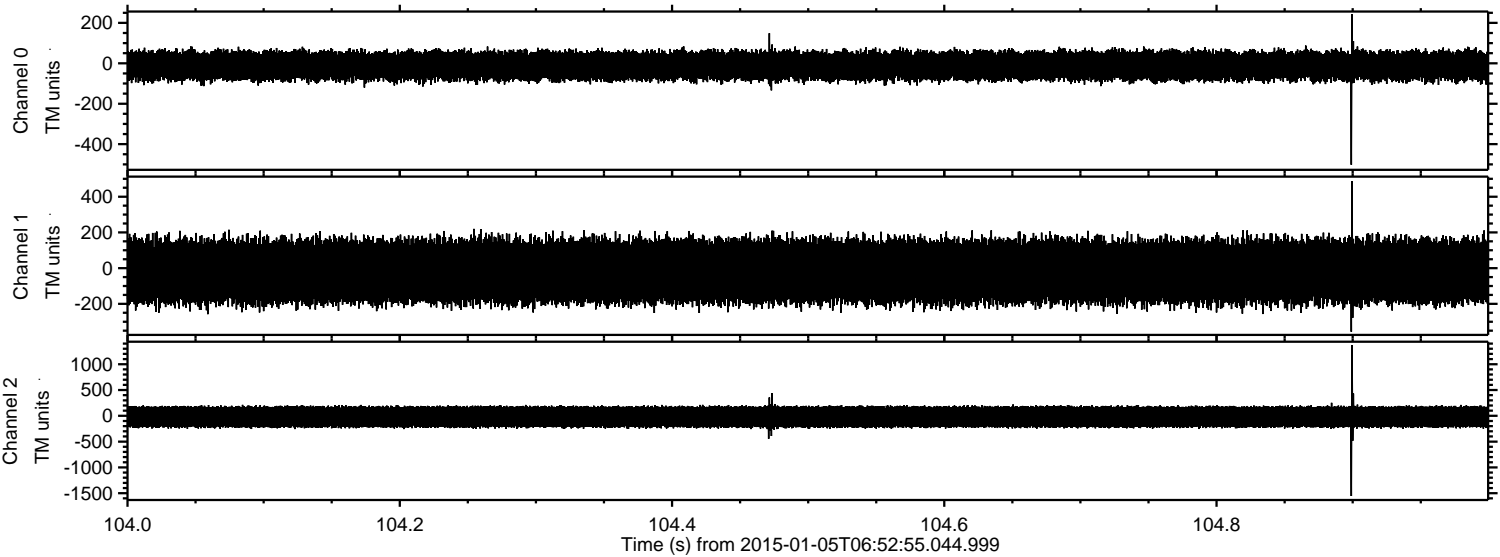
ELMAVAN 3D WAVEFORMS (Measured data sampled at 50 kHz) 49743 packets of 144 samples from 2015-01-05T06:52:55.044.999. Part 126/144

Processed Mon Jan 5 08:01:28 2015 by ELM ver.2012-10-06 from 001__elm20150105_065254__dat00.bin



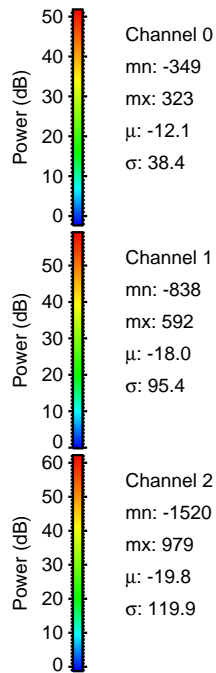
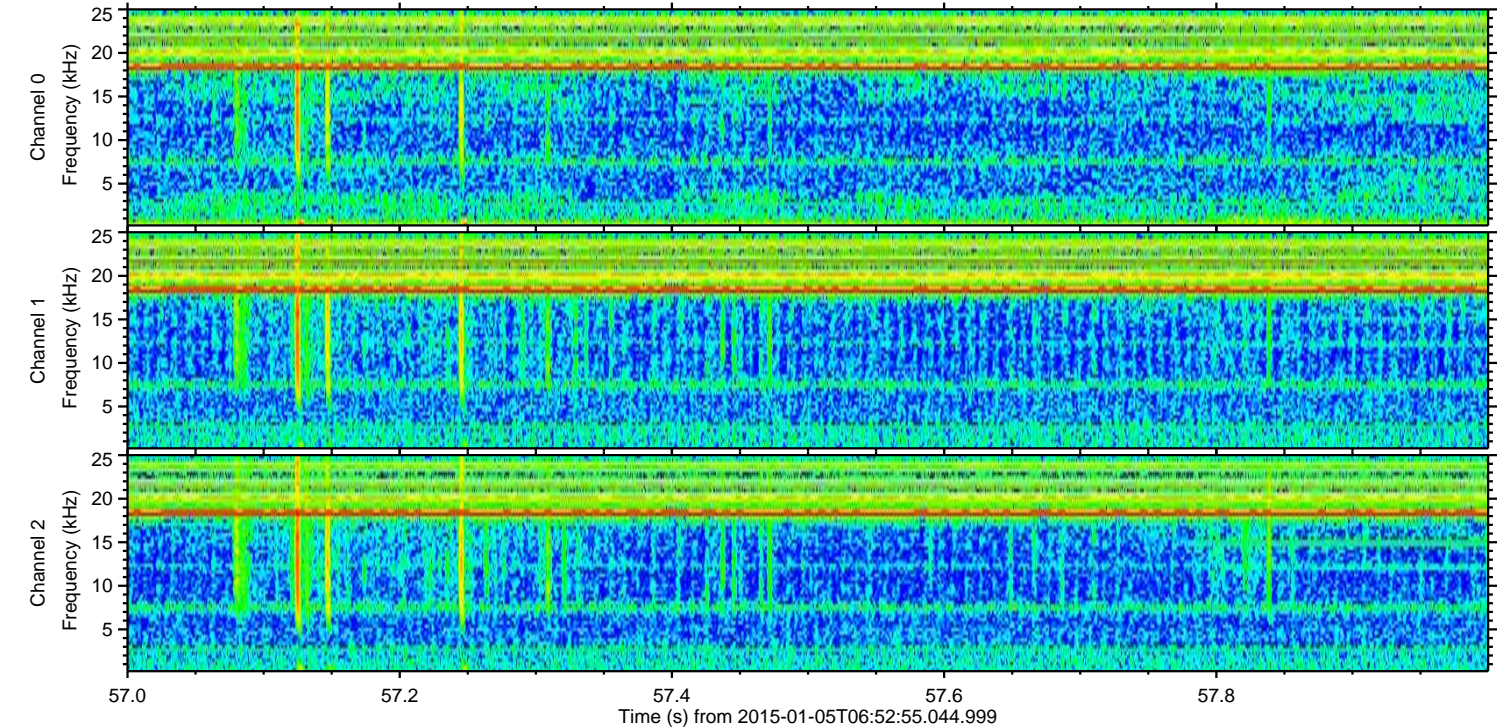
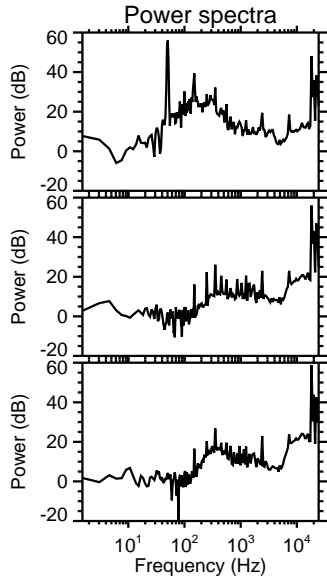
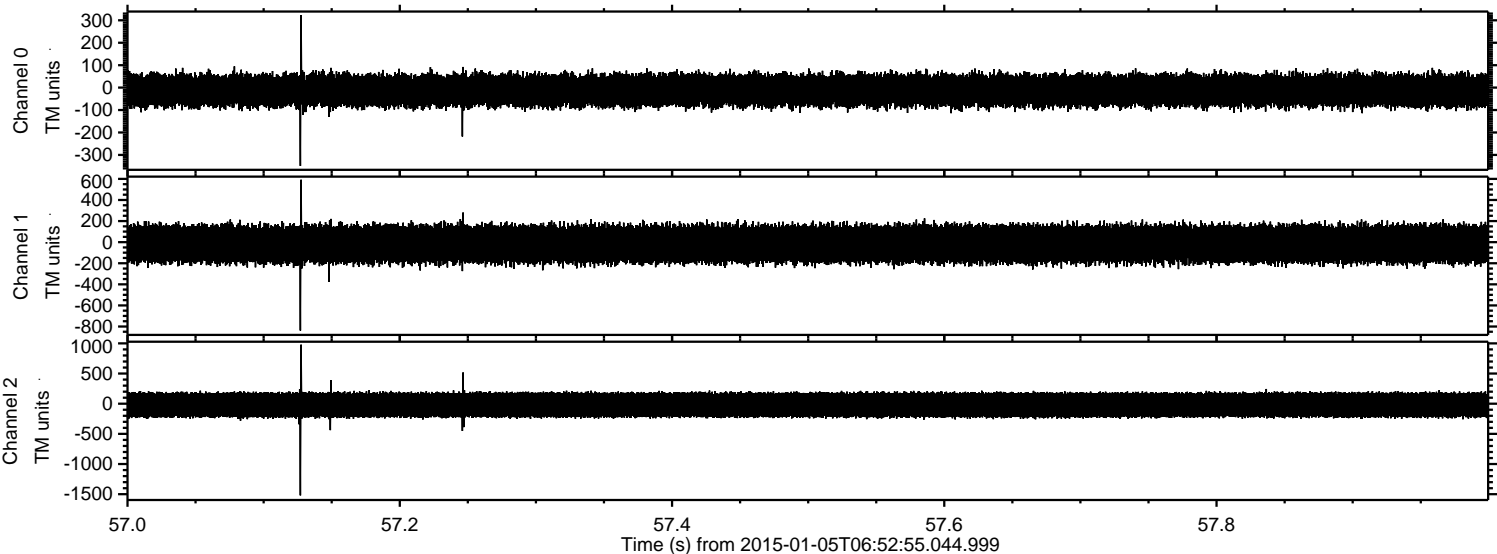
ELMAVAN 3D WAVEFORMS (Measured data sampled at 50 kHz) 49743 packets of 144 samples from 2015-01-05T06:52:55.044.999. Part 105/144

Processed Mon Jan 5 08:01:29 2015 by ELM ver.2012-10-06 from 001__elm20150105_065254__dat00.bin

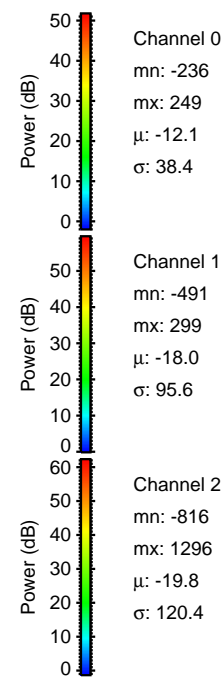
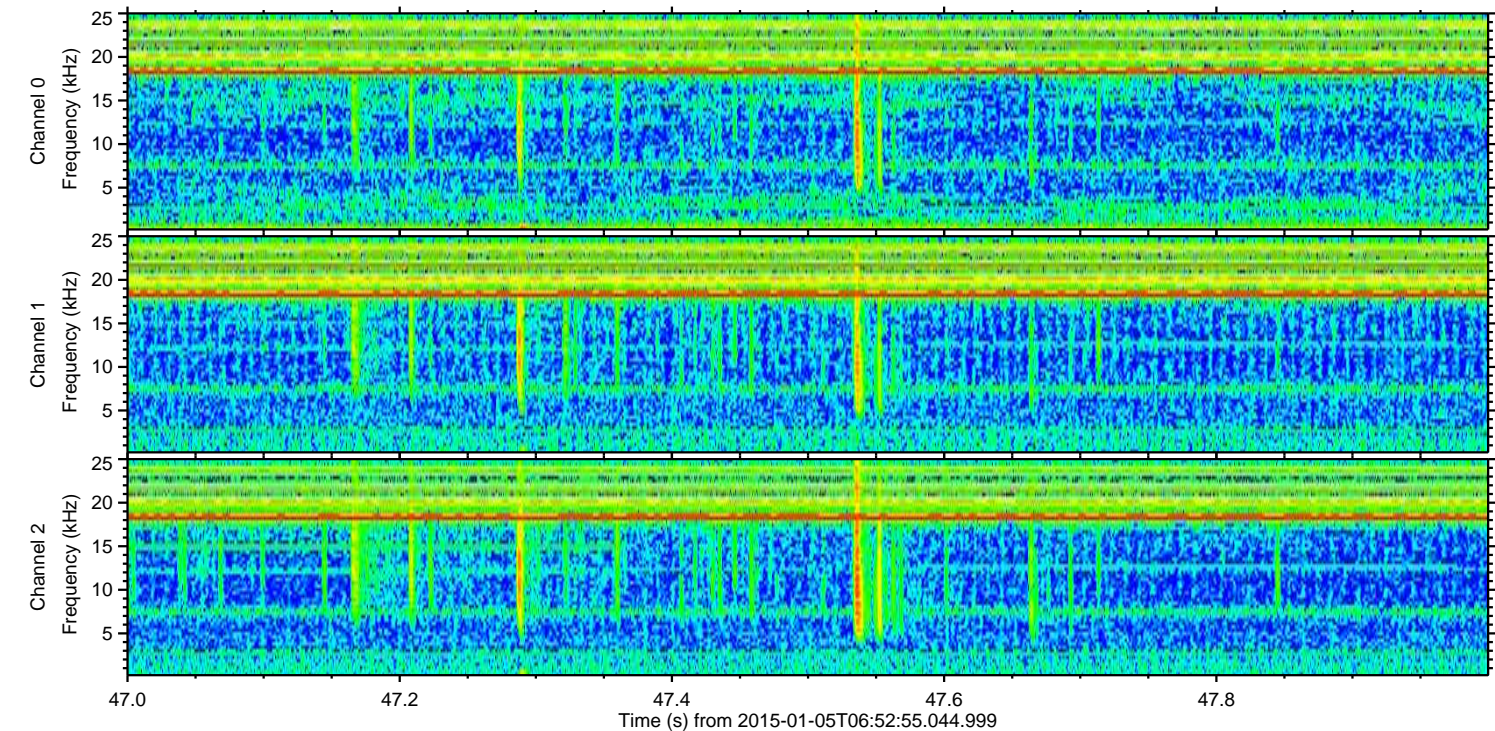
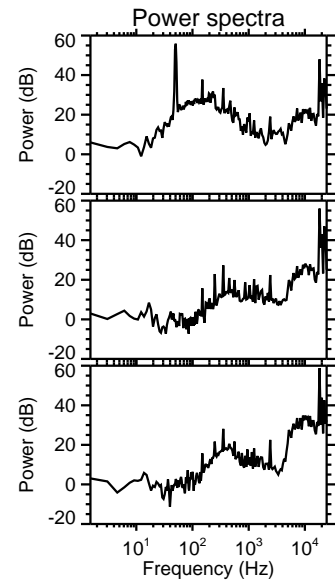
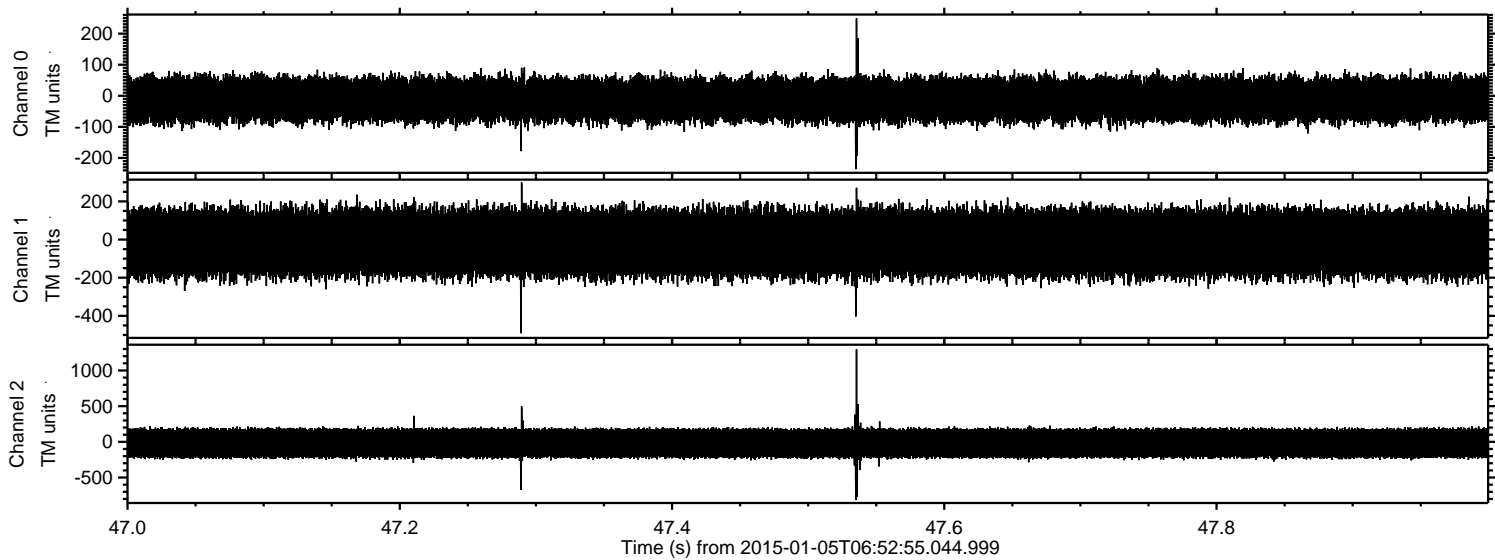


ELMAVAN 3D WAVEFORMS (Measured data sampled at 50 kHz) 49743 packets of 144 samples from 2015-01-05T06:52:55.044.999. Part 58/144

Processed Mon Jan 5 08:01:30 2015 by ELM ver.2012-10-06 from 001__elm20150105_065254__dat00.bin

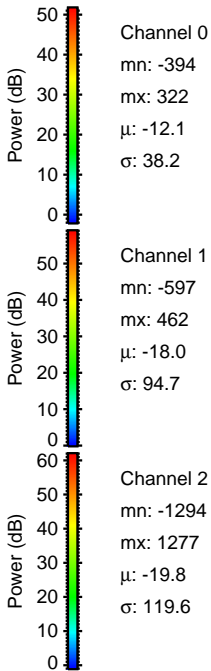
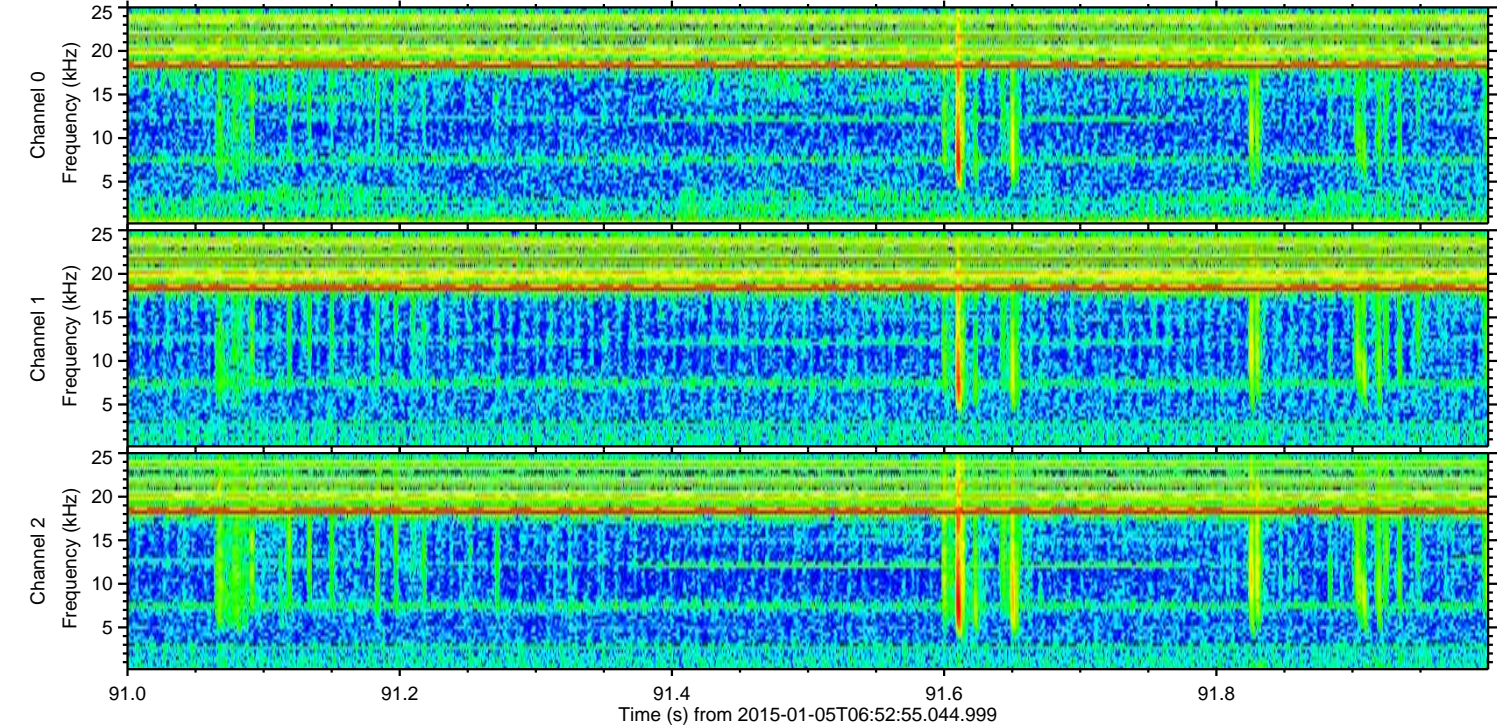
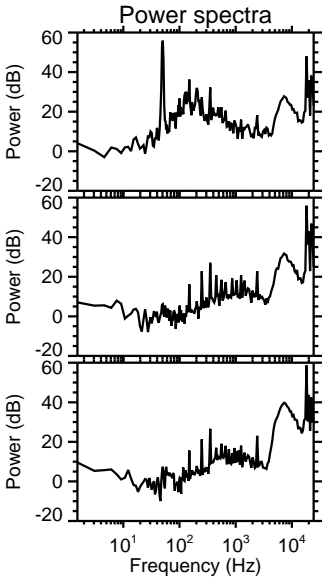
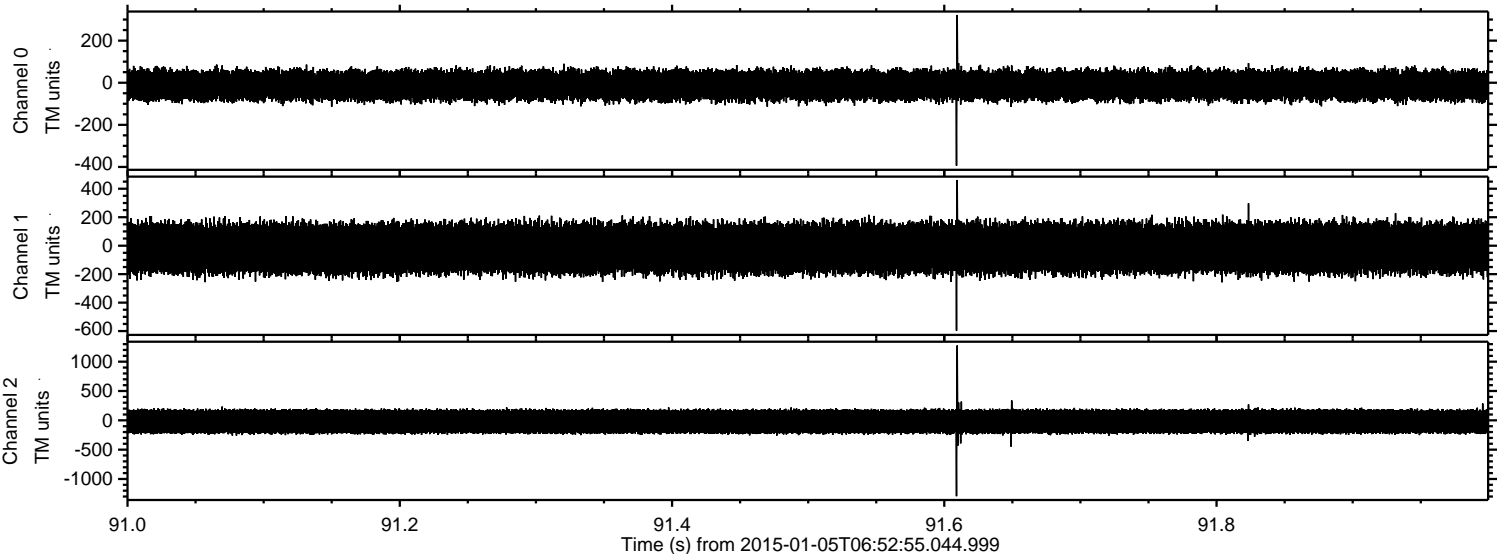


Processed Mon Jan 5 08:01:31 2015 by ELM ver.2012-10-06 from 001__elm20150105_065254__dat00.bin



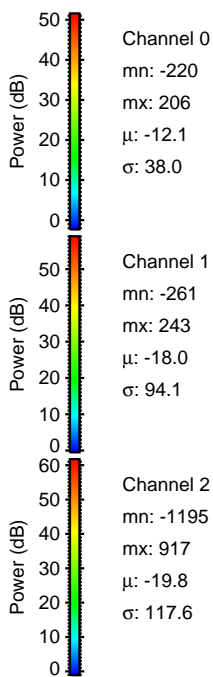
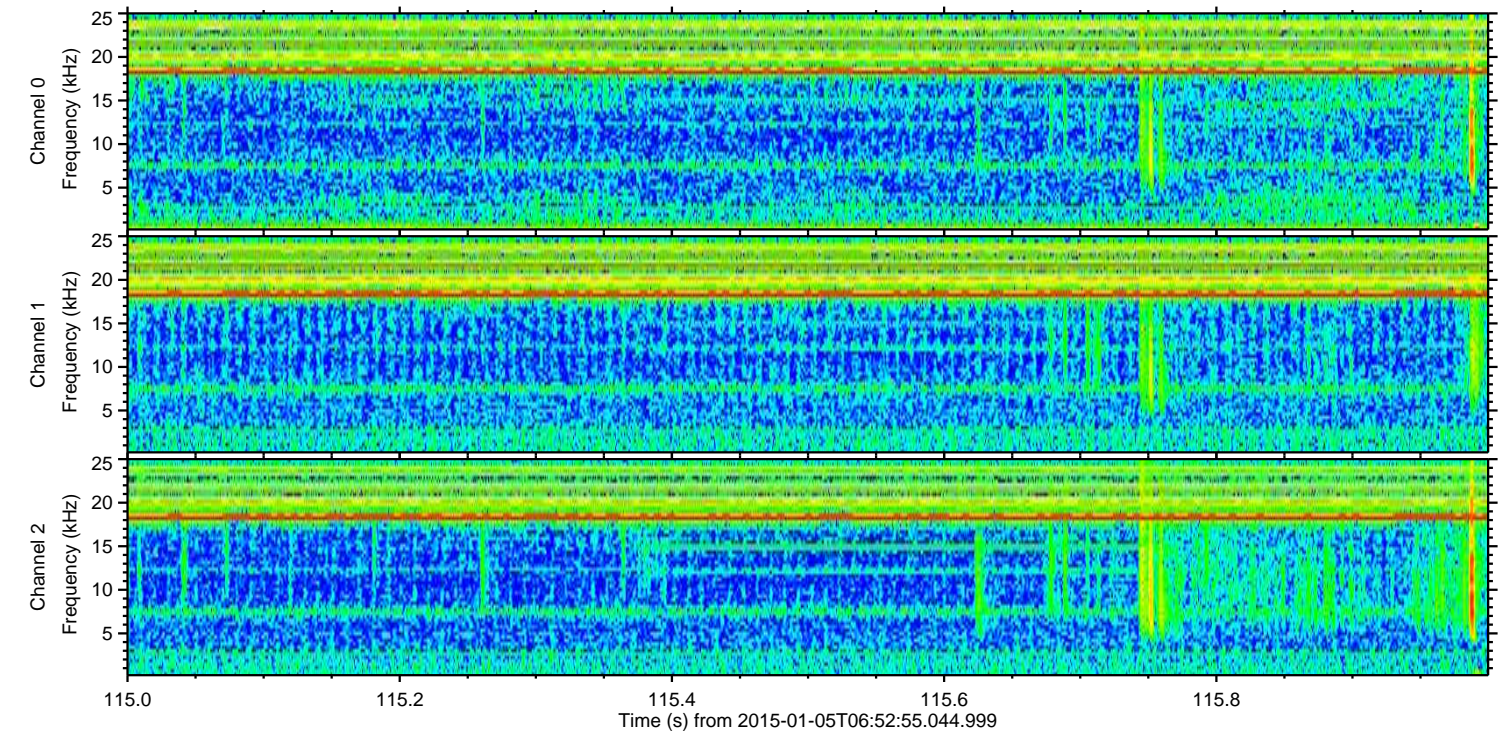
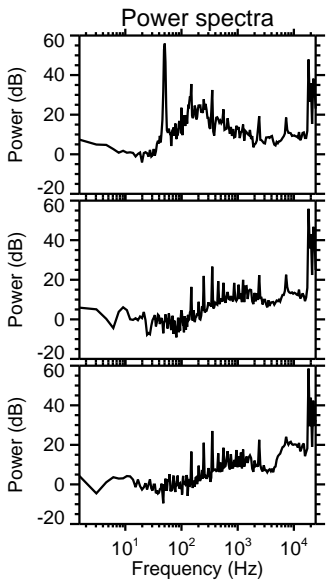
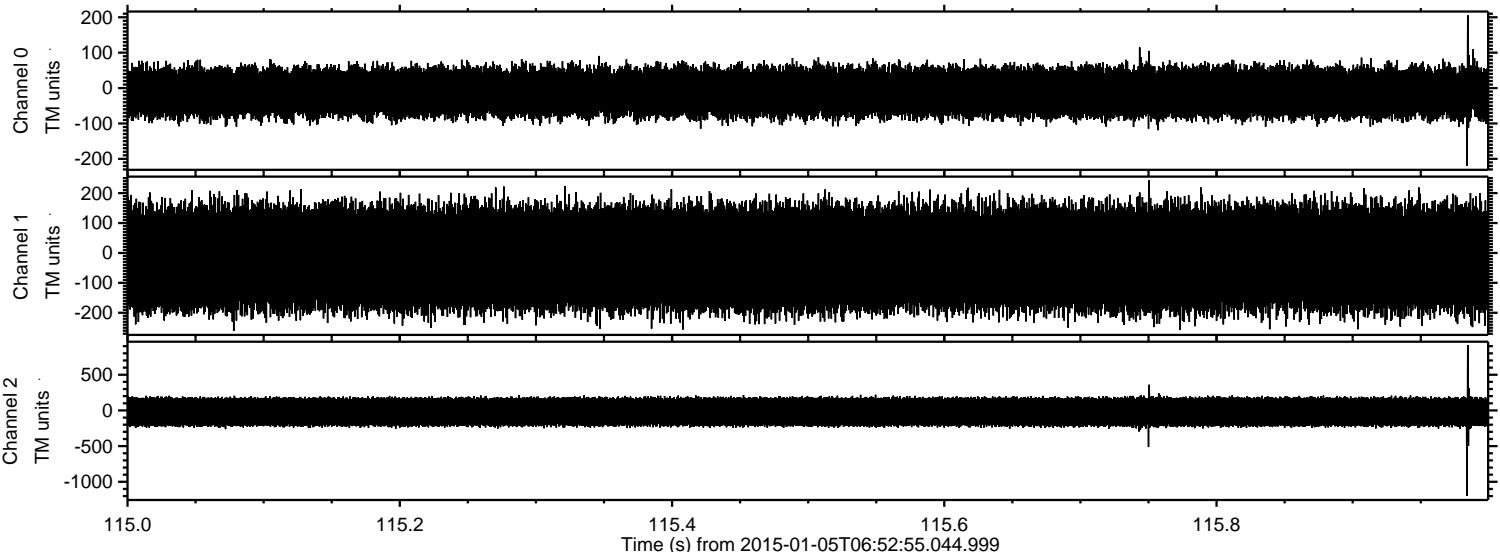
ELMAVAN 3D WAVEFORMS (Measured data sampled at 50 kHz) 49743 packets of 144 samples from 2015-01-05T06:52:55.044.999. Part 92/144

Processed Mon Jan 5 08:01:32 2015 by ELM ver.2012-10-06 from 001__elm20150105_065254__dat00.bin



ELMAVAN 3D WAVEFORMS (Measured data sampled at 50 kHz) 49743 packets of 144 samples from 2015-01-05T06:52:55.044.999. Part 116/144

Processed Mon Jan 5 08:01:34 2015 by ELM ver.2012-10-06 from 001__elm20150105_065254__dat00.bin



Channel 0
mn: -220
mx: 206
 μ : -12.1
 σ : 38.0

Channel 1
mn: -261
mx: 243
 μ : -18.0
 σ : 94.1

Channel 2
mn: -1195
mx: 917
 μ : -19.8
 σ : 117.6

ELMAVAN 3D WAVEFORMS (Measured data sampled at 50 kHz) 49743 packets of 144 samples from 2015-01-05T06:52:55.044.999. Part 139/144

Processed Mon Jan 5 08:01:35 2015 by ELM ver.2012-10-06 from 001__elm20150105_065254__dat00.bin

