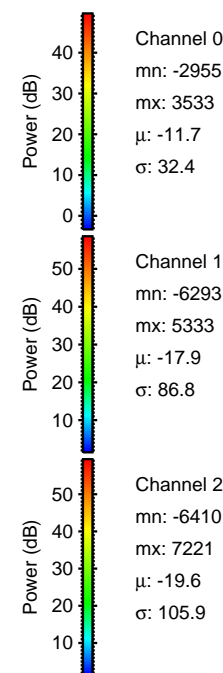
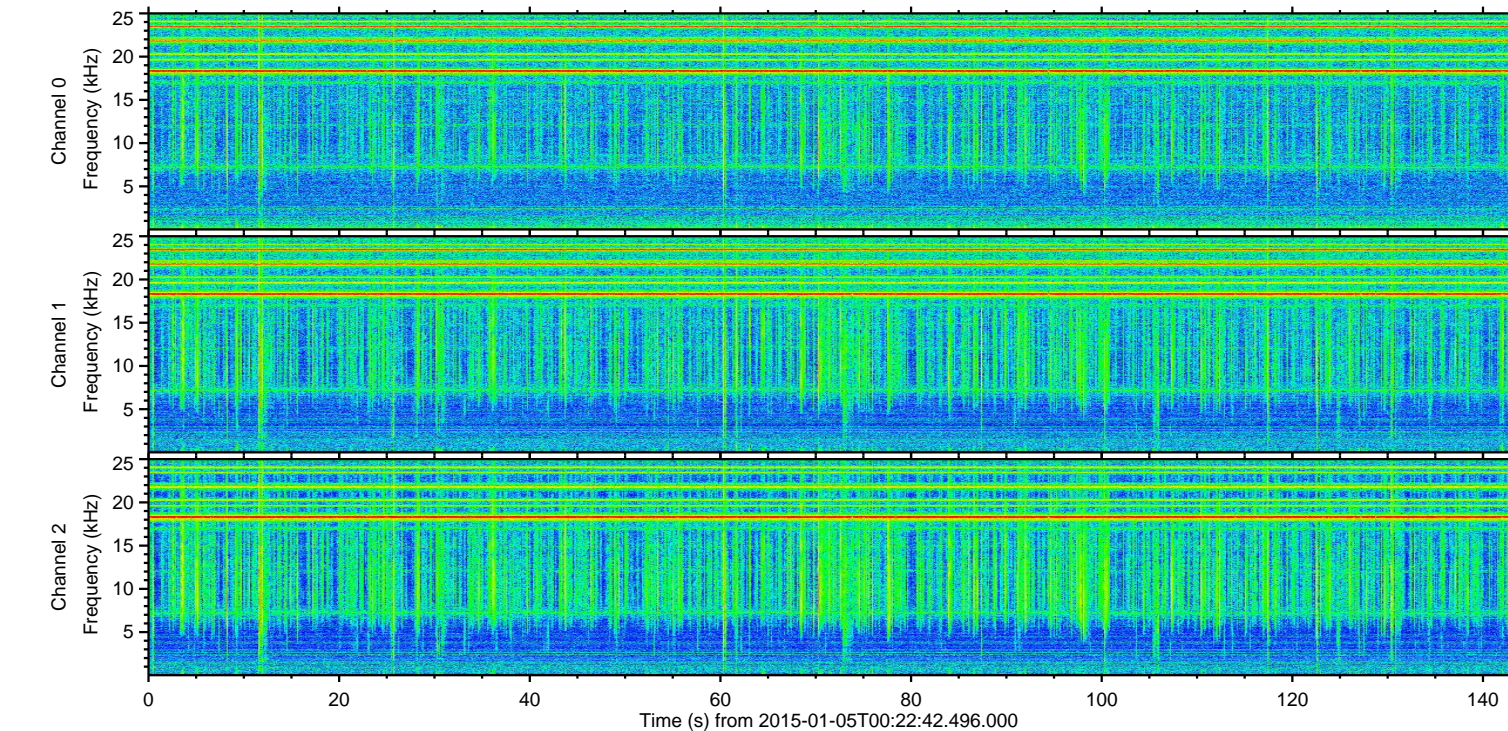
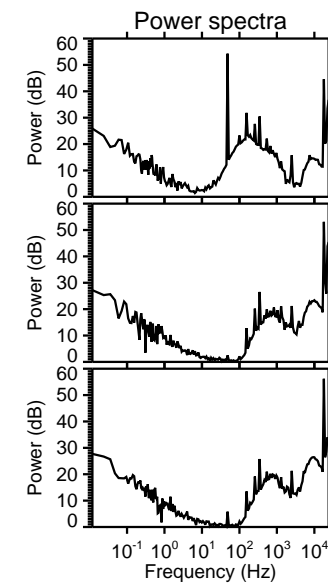
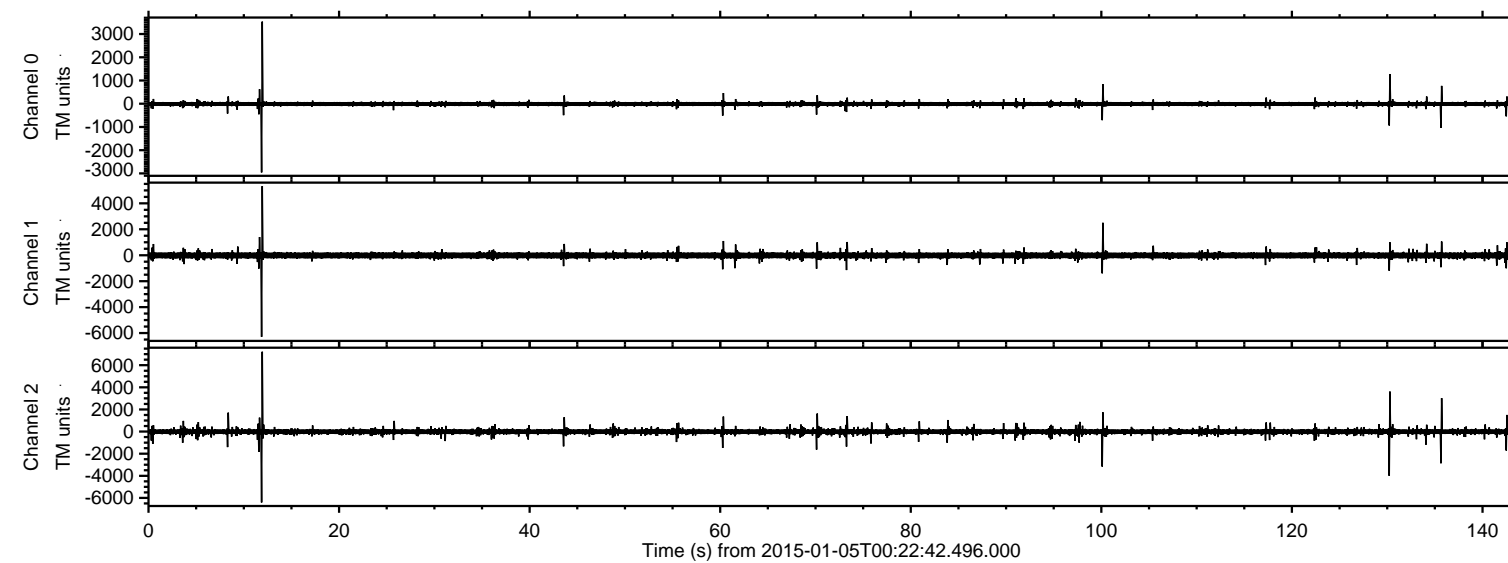


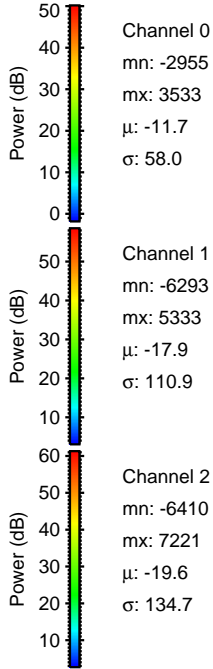
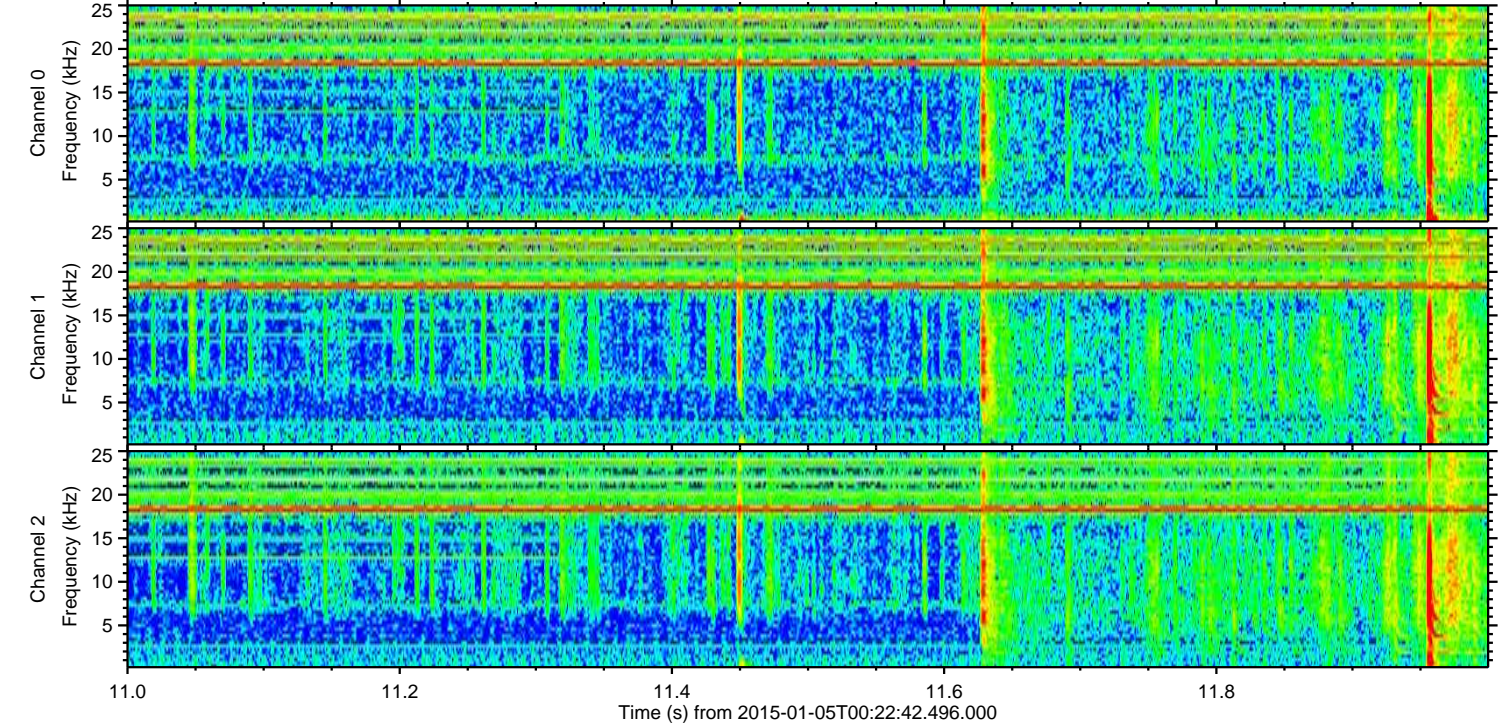
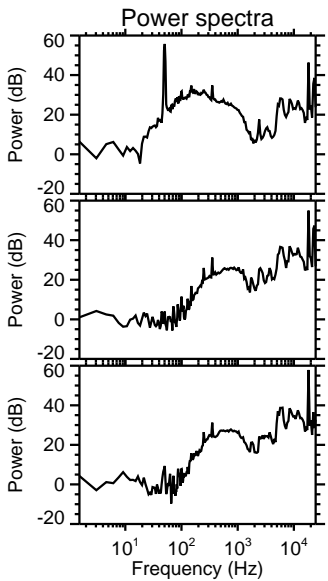
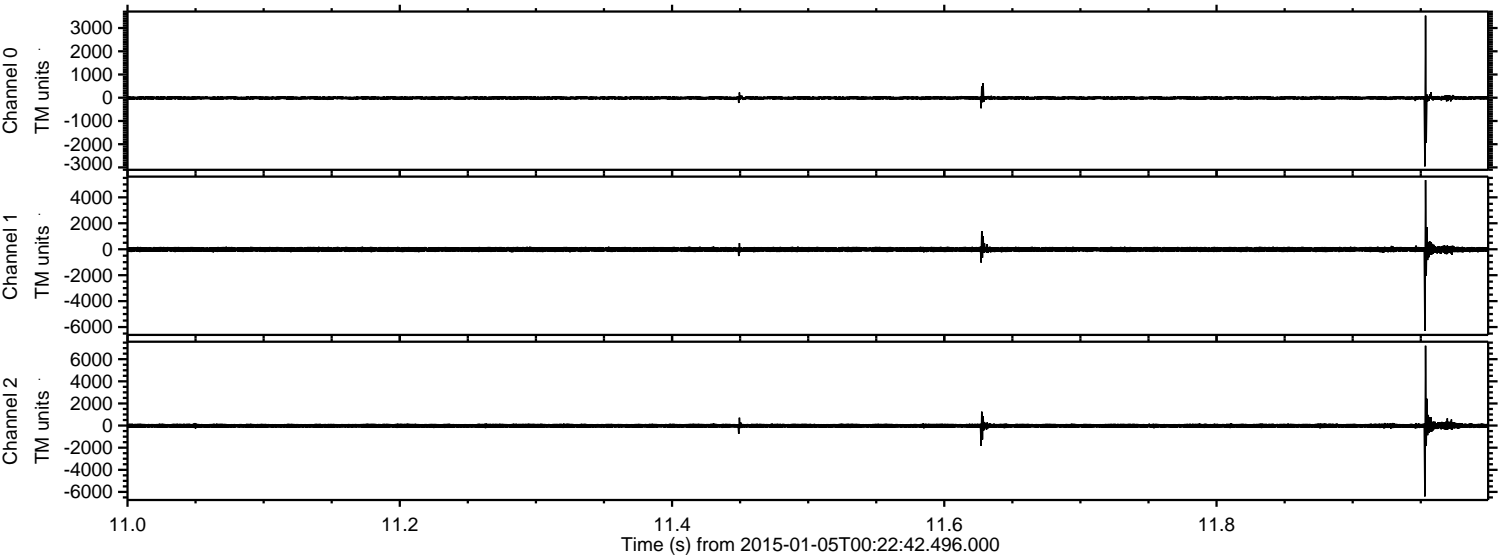
ELMAVAN 3D WAVEFORMS (Measured data sampled at 50 kHz) 49582 packets of 144 samples from 2015-01-05T00:22:42.496.000.

Processed Mon Jan 5 01:31:43 2015 by ELM ver.2012-10-06 from 001__elm20150105_002241__dat00.bin



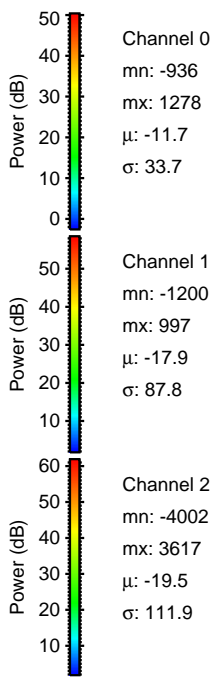
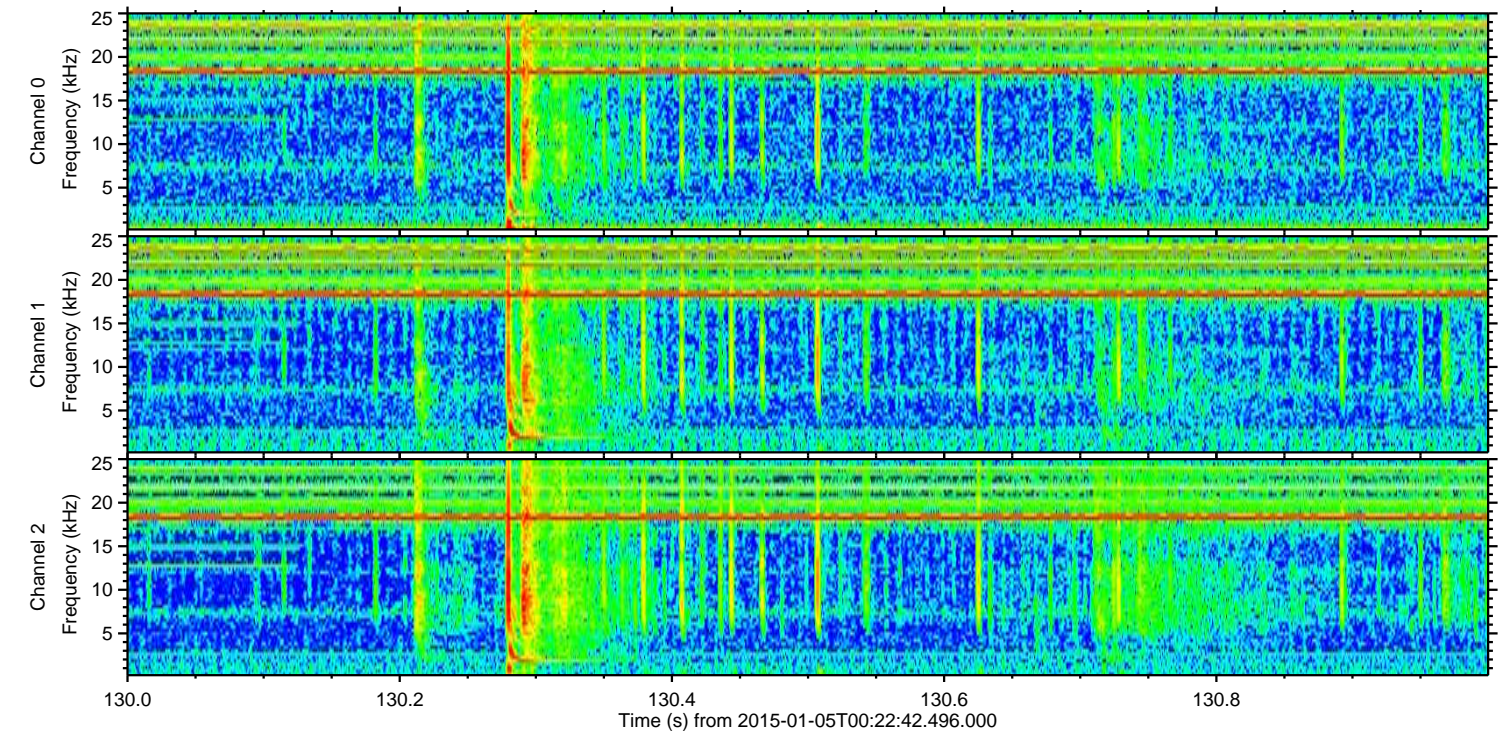
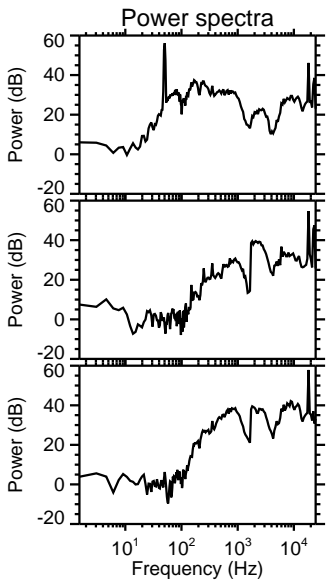
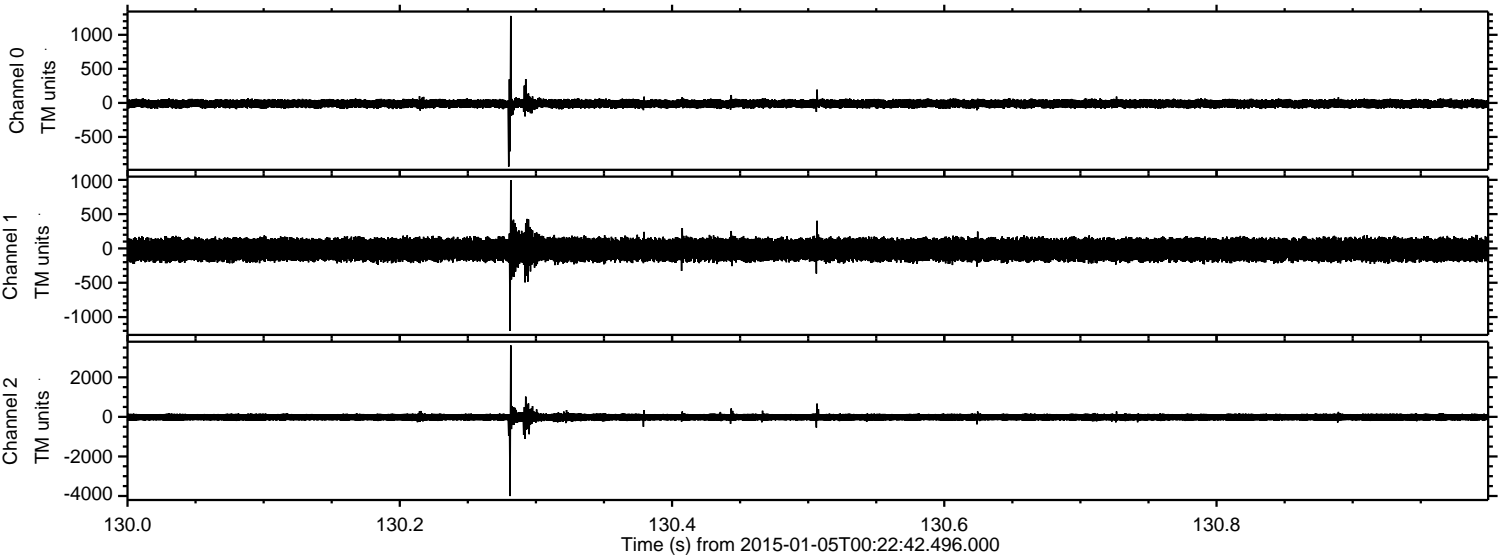
ELMAVAN 3D WAVEFORMS (Measured data sampled at 50 kHz) 49582 packets of 144 samples from 2015-01-05T00:22:42.496.000. Part 12/143

Processed Mon Jan 5 01:31:58 2015 by ELM ver.2012-10-06 from 001__elm20150105_002241__dat00.bin



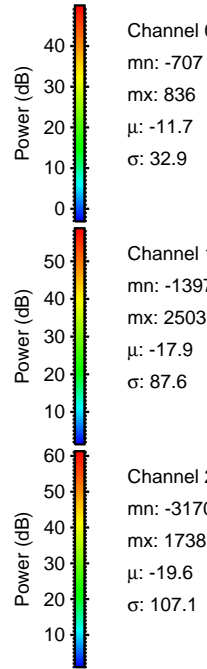
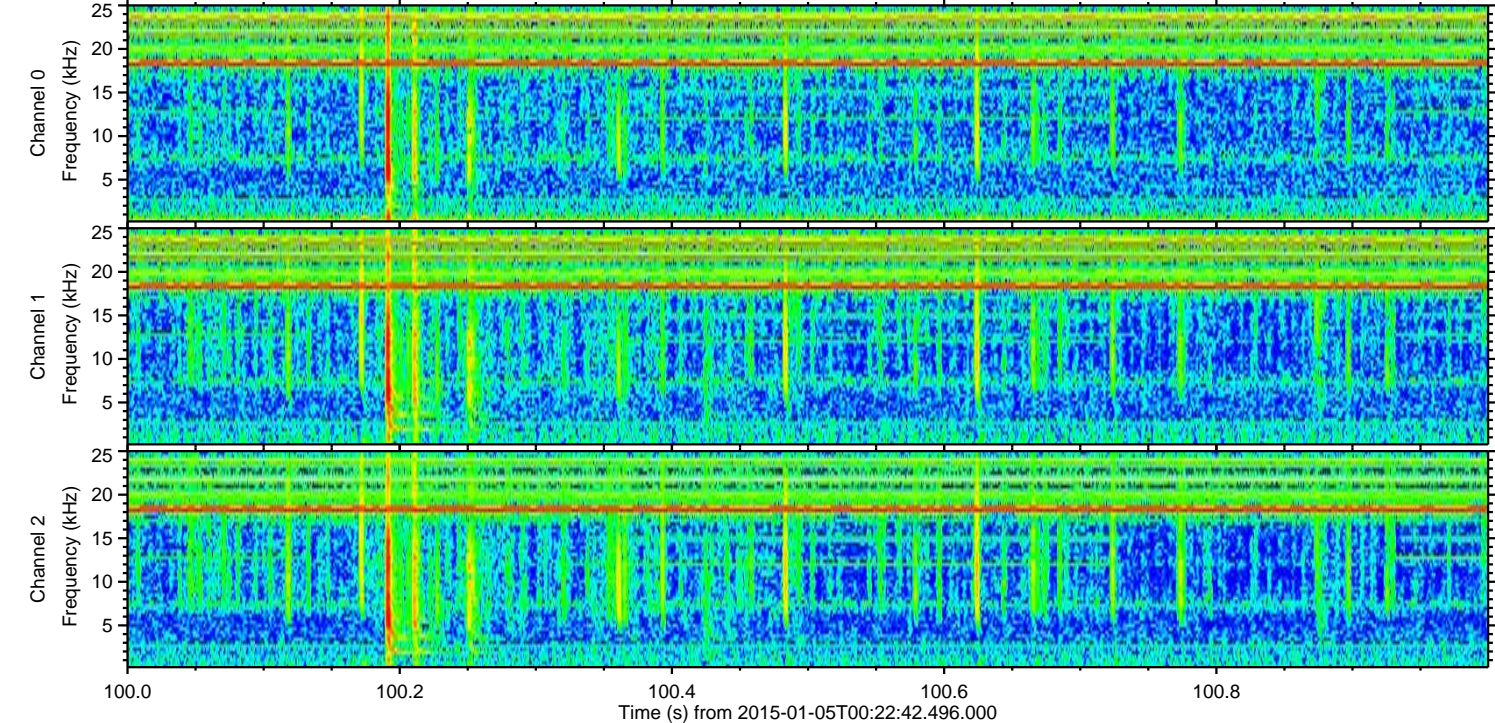
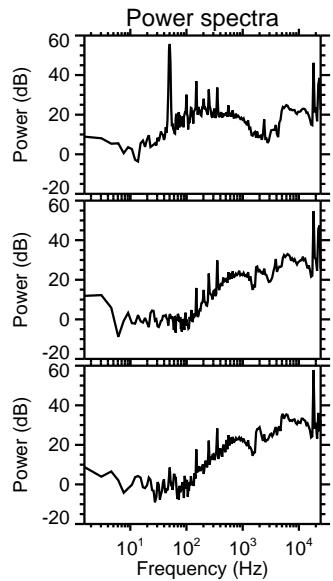
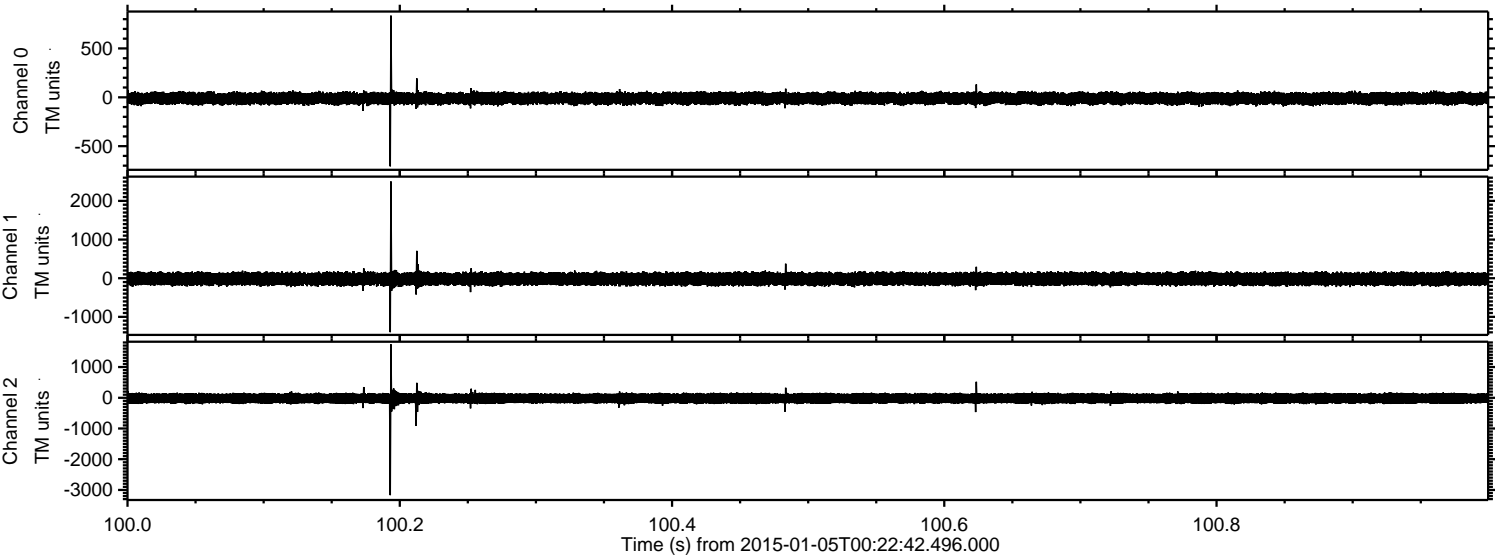
ELMAVAN 3D WAVEFORMS (Measured data sampled at 50 kHz) 49582 packets of 144 samples from 2015-01-05T00:22:42.496.000. Part 131/143

Processed Mon Jan 5 01:31:59 2015 by ELM ver.2012-10-06 from 001__elm20150105_002241__dat00.bin



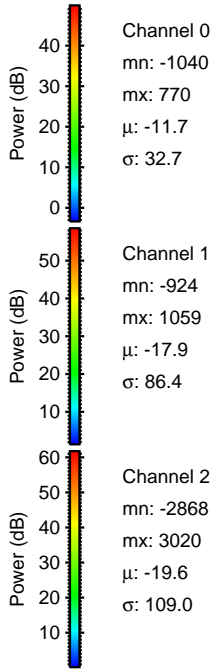
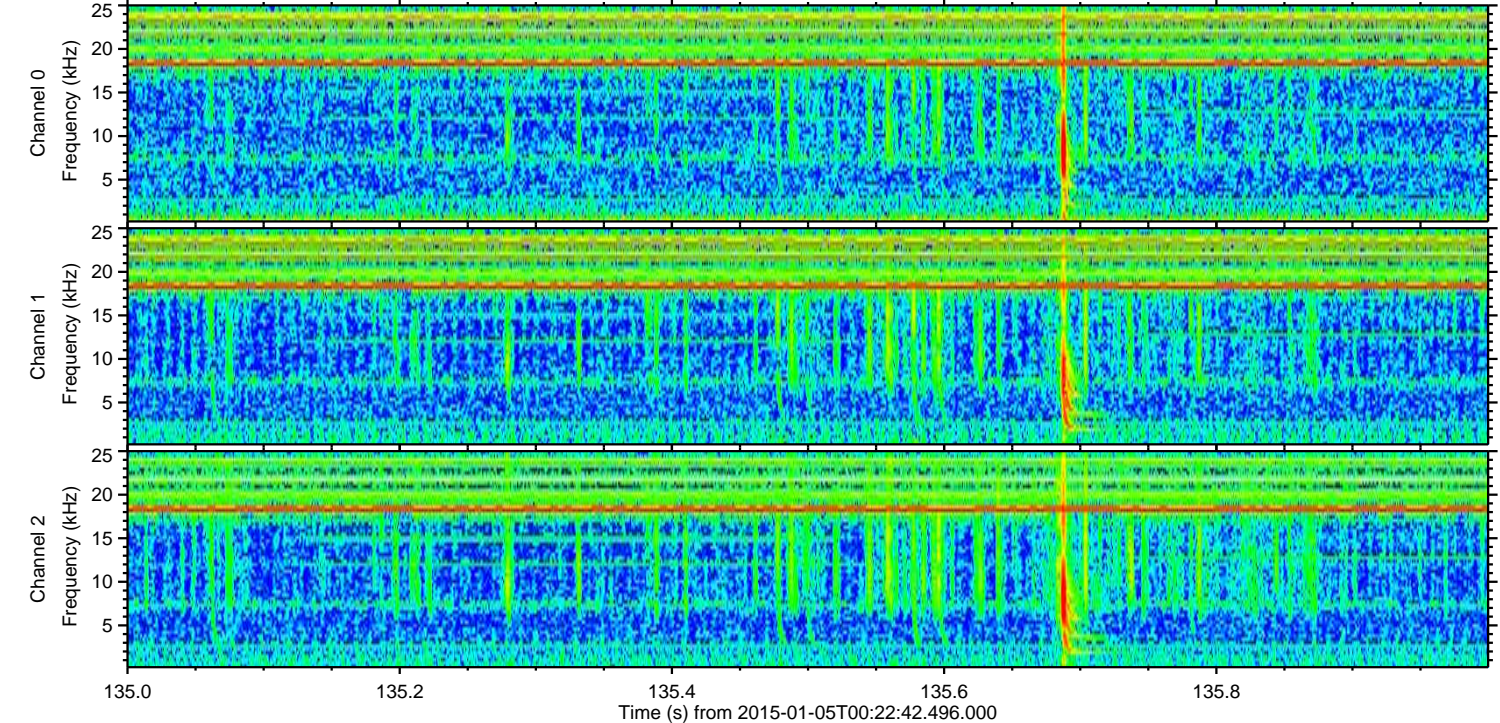
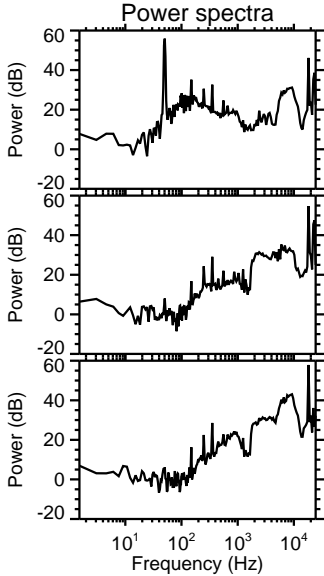
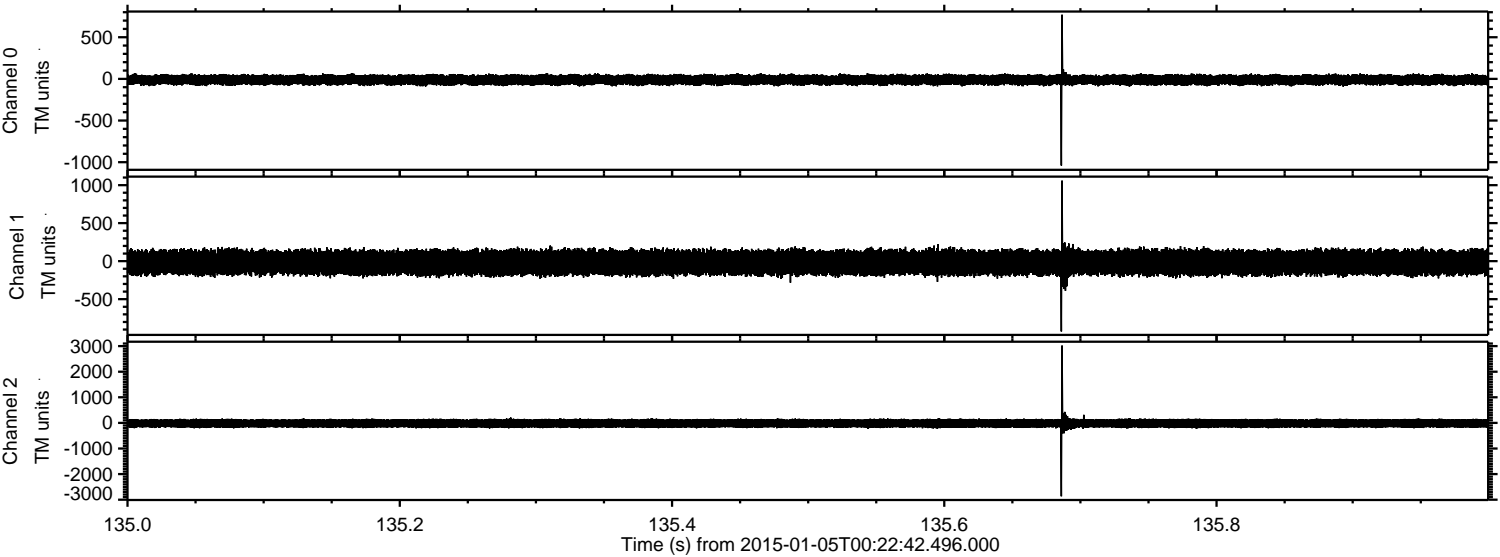
ELMAVAN 3D WAVEFORMS (Measured data sampled at 50 kHz) 49582 packets of 144 samples from 2015-01-05T00:22:42.496.000. Part 101/143

Processed Mon Jan 5 01:32:01 2015 by ELM ver.2012-10-06 from 001__elm20150105_002241__dat00.bin

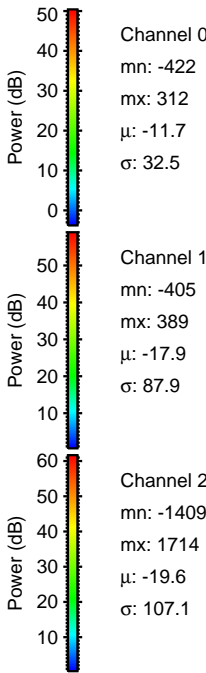
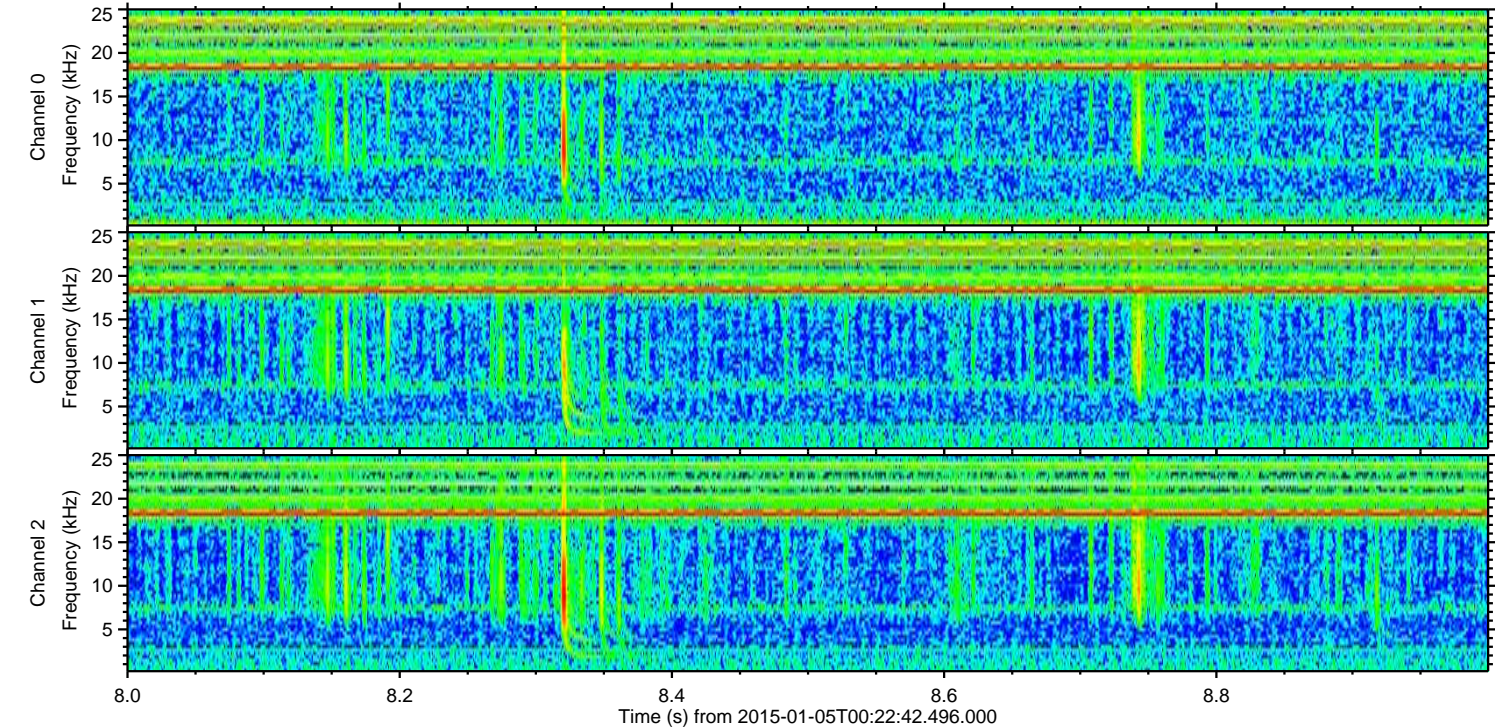
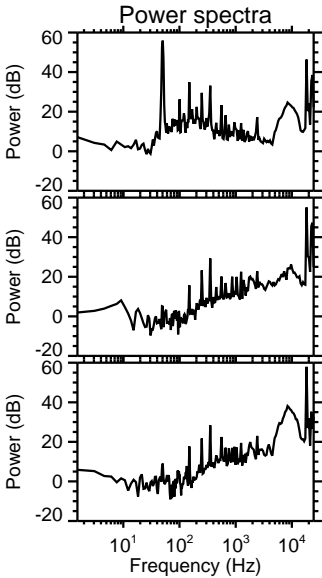
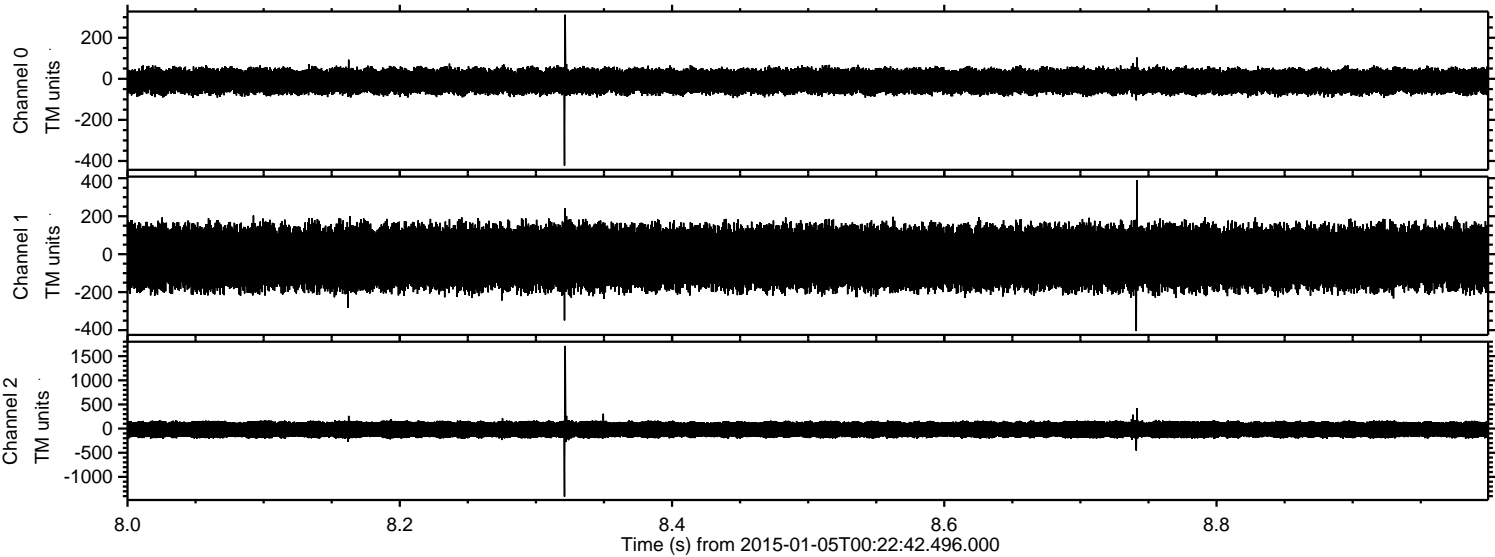


ELMAVAN 3D WAVEFORMS (Measured data sampled at 50 kHz) 49582 packets of 144 samples from 2015-01-05T00:22:42.496.000. Part 136/143

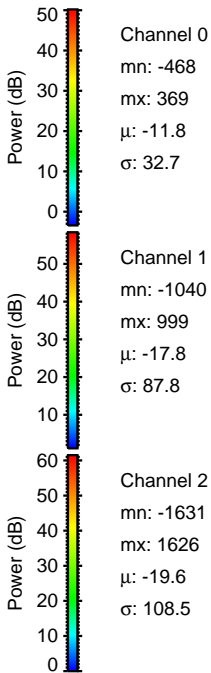
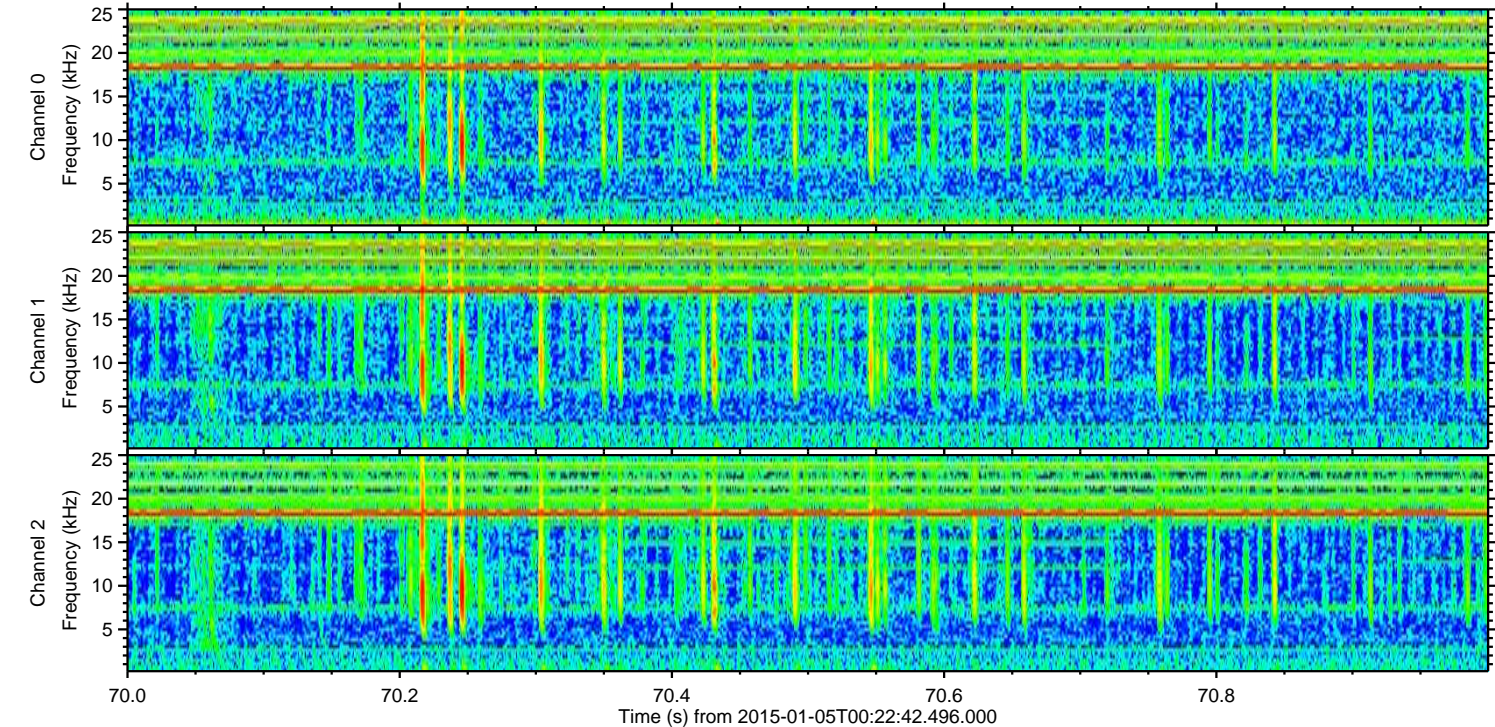
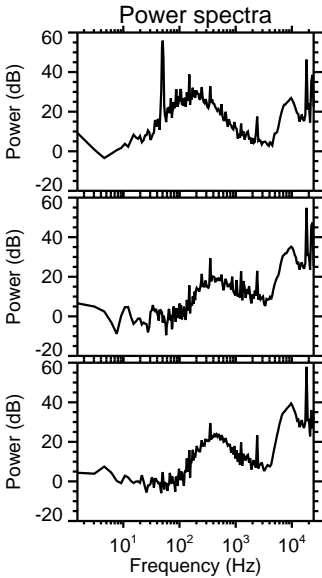
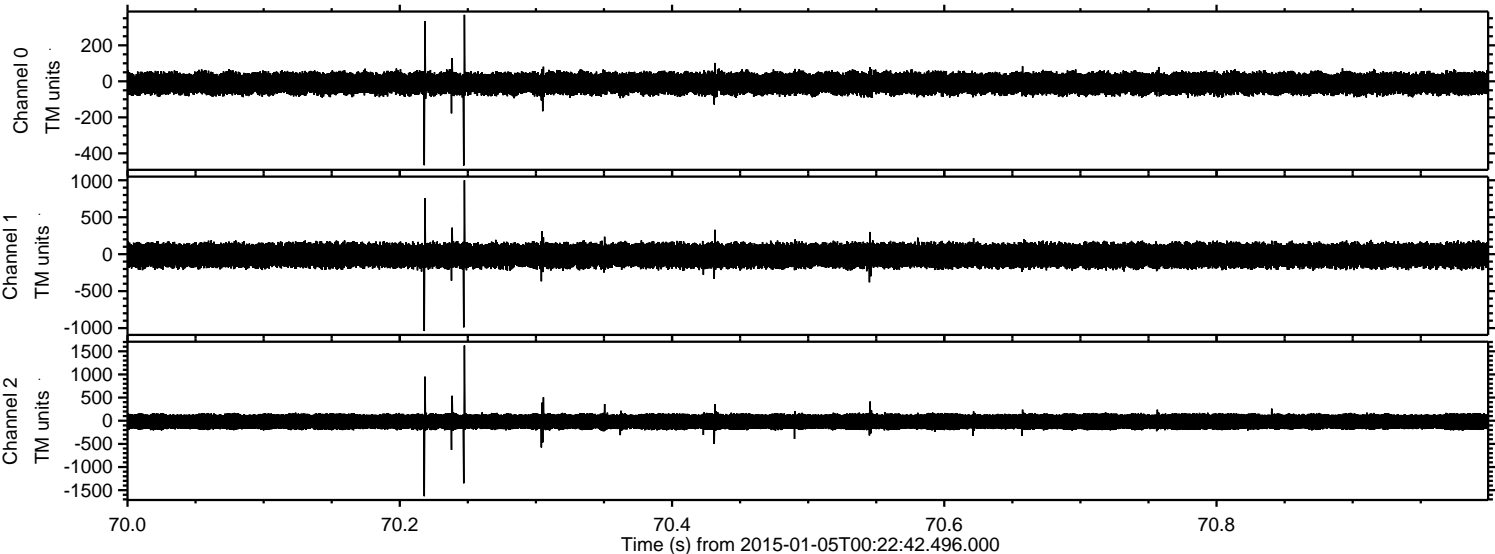
Processed Mon Jan 5 01:32:02 2015 by ELM ver.2012-10-06 from 001__elm20150105_002241__dat00.bin



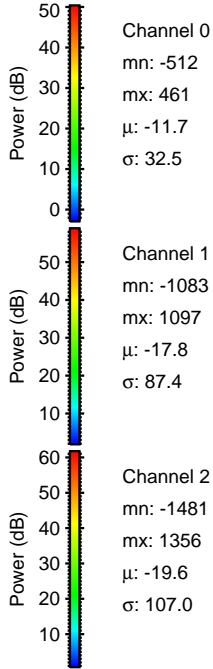
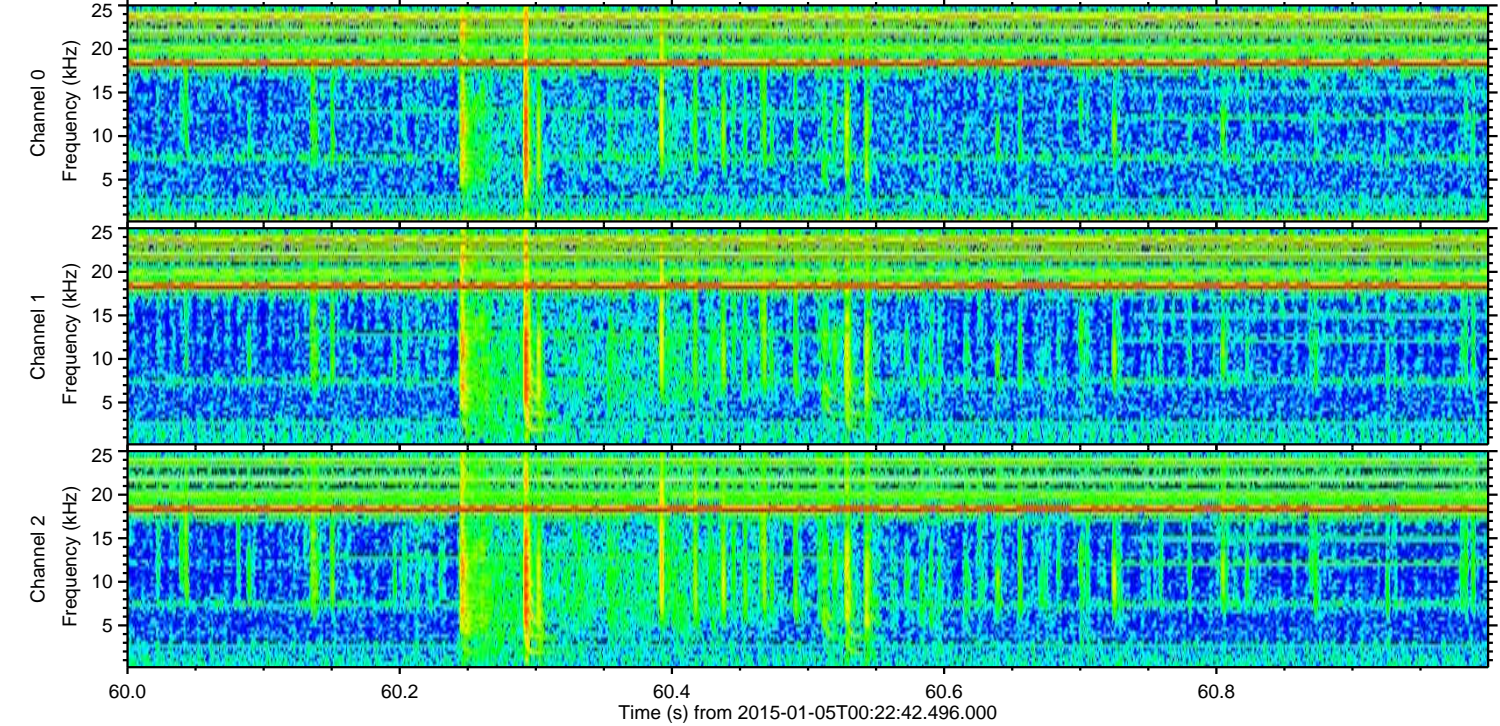
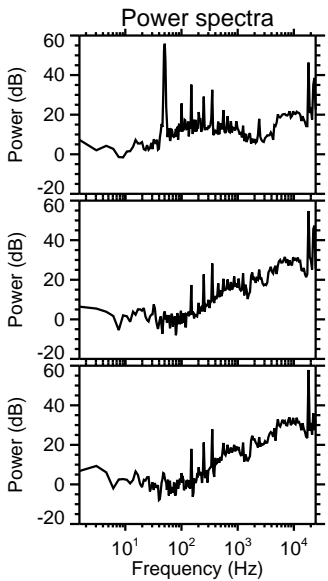
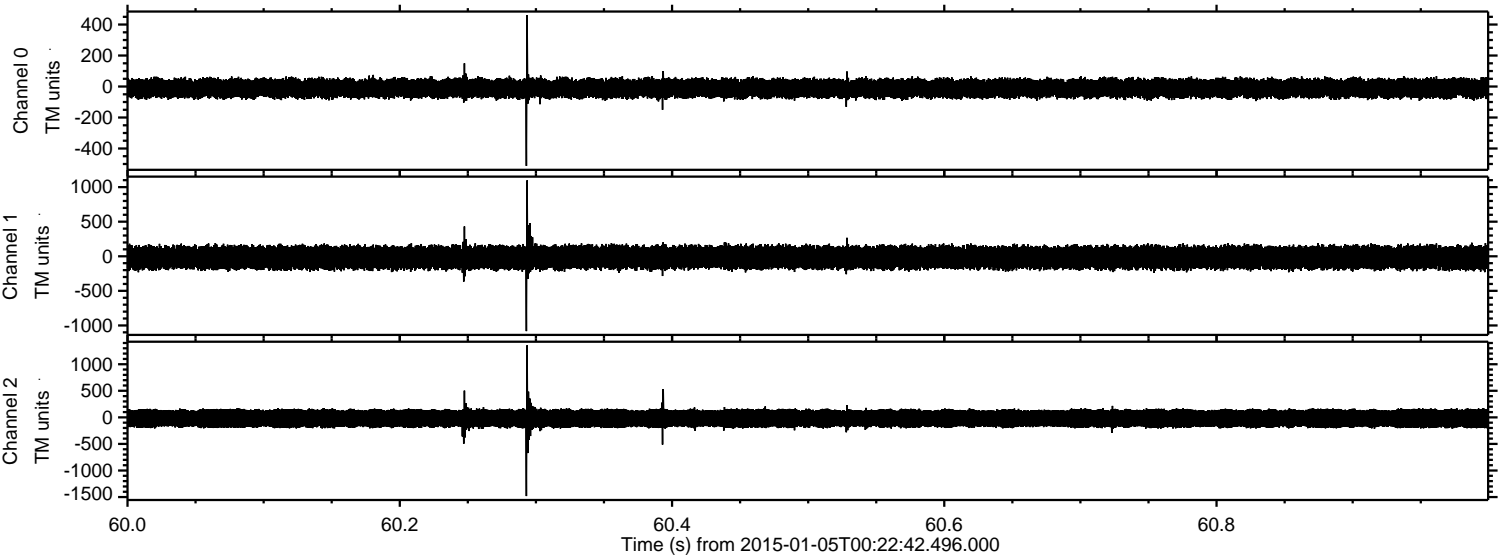
Processed Mon Jan 5 01:32:03 2015 by ELM ver.2012-10-06 from 001__elm20150105_002241__dat00.bin



Processed Mon Jan 5 01:32:04 2015 by ELM ver.2012-10-06 from 001__elm20150105_002241__dat00.bin



Processed Mon Jan 5 01:32:05 2015 by ELM ver.2012-10-06 from 001__elm20150105_002241__dat00.bin

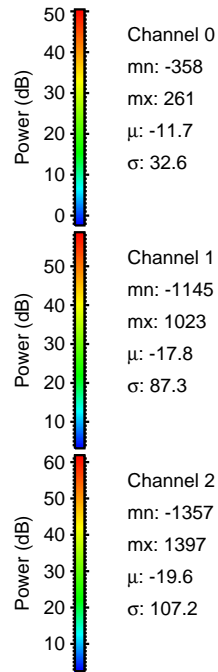
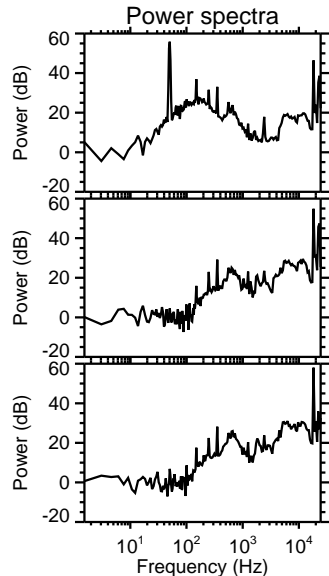
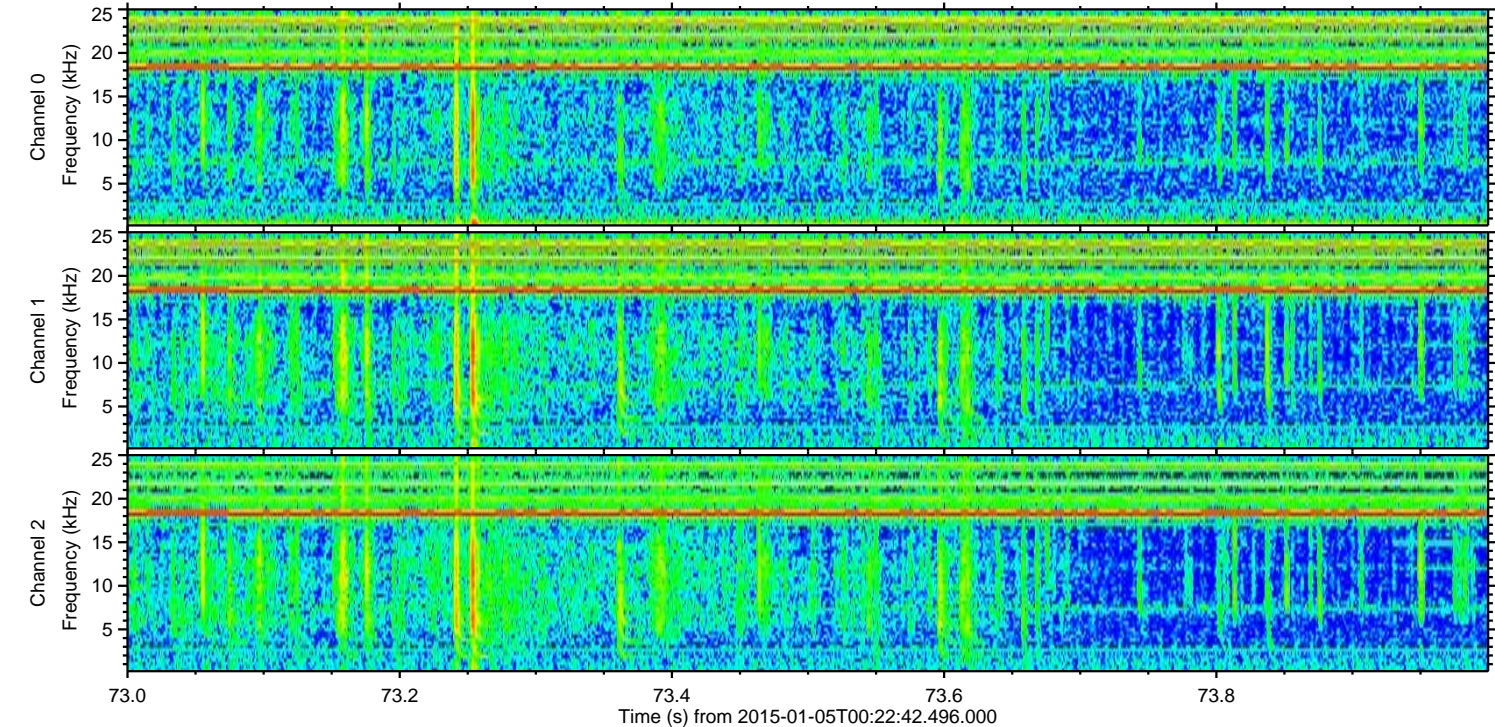
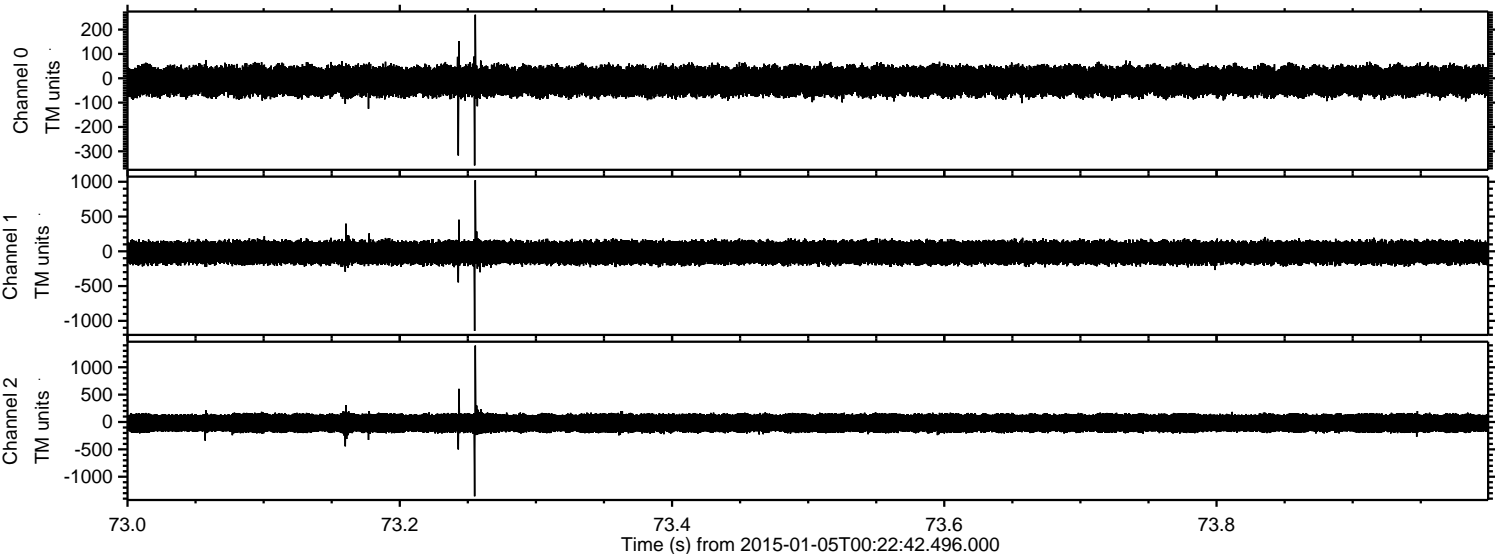


Channel 0
mn: -512
mx: 461
 μ : -11.7
 σ : 32.5

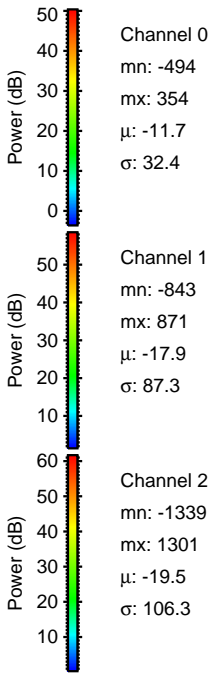
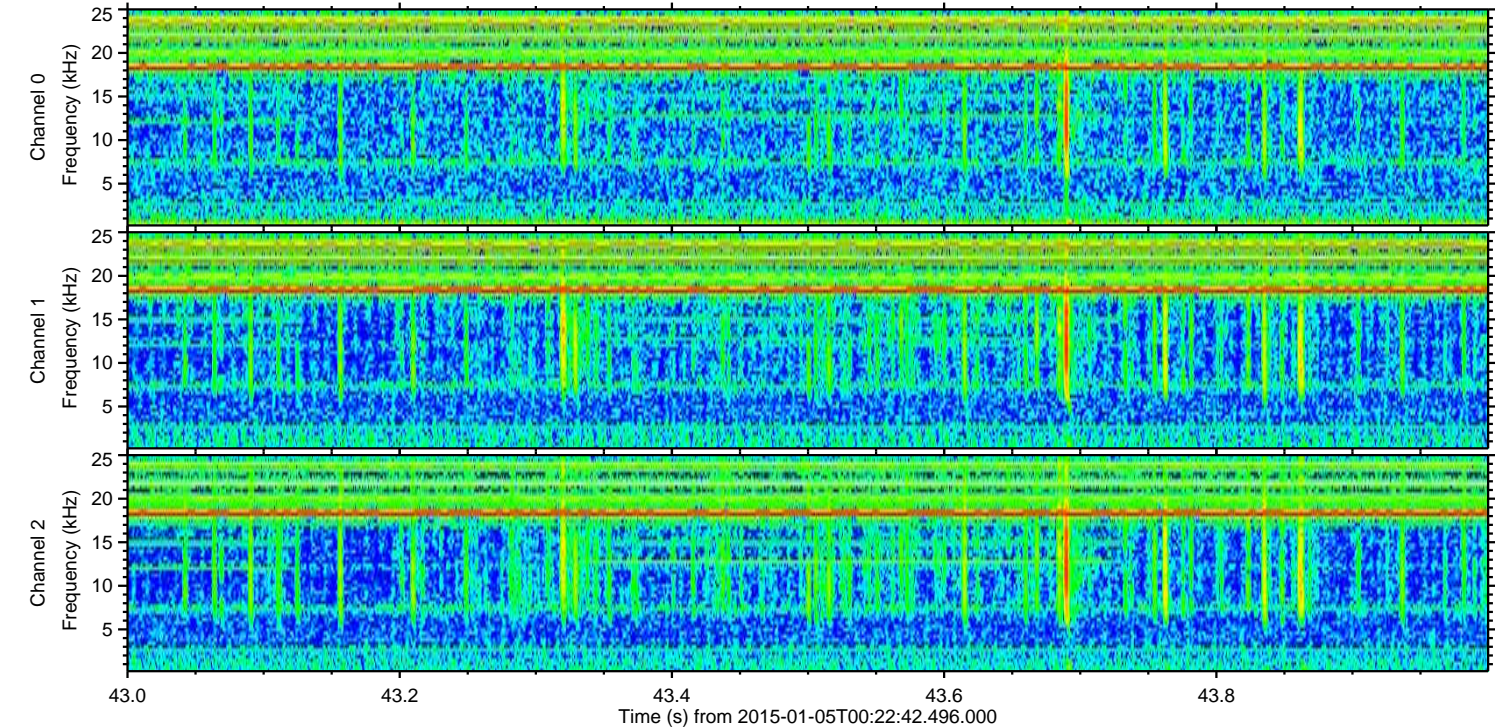
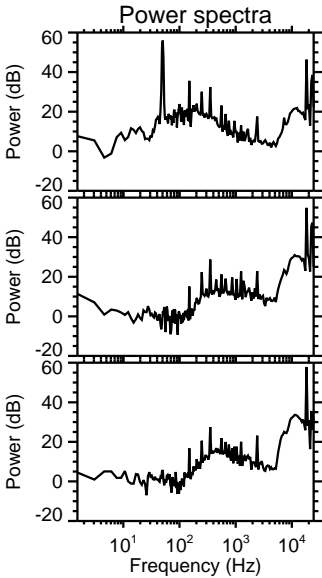
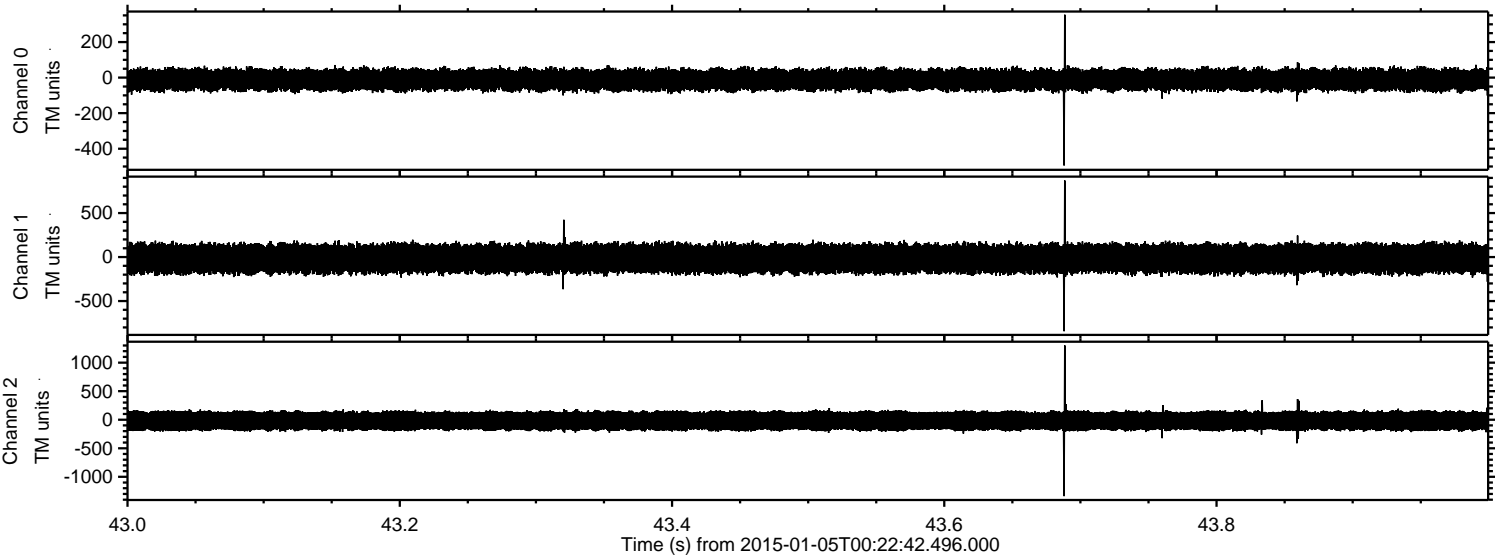
Channel 1
mn: -1083
mx: 1097
 μ : -17.8
 σ : 87.4

Channel 2
mn: -1481
mx: 1356
 μ : -19.6
 σ : 107.0

Processed Mon Jan 5 01:32:06 2015 by ELM ver.2012-10-06 from 001__elm20150105_002241__dat00.bin



Processed Mon Jan 5 01:32:07 2015 by ELM ver.2012-10-06 from 001__elm20150105_002241__dat00.bin



Processed Mon Jan 5 01:32:08 2015 by ELM ver.2012-10-06 from 001__elm20150105_002241__dat00.bin

