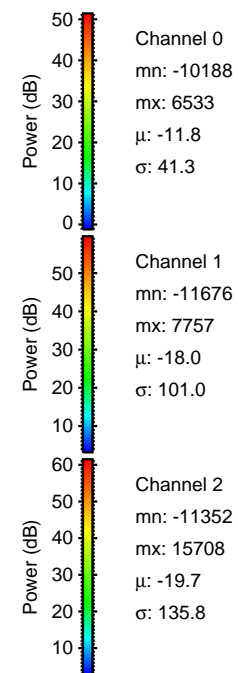
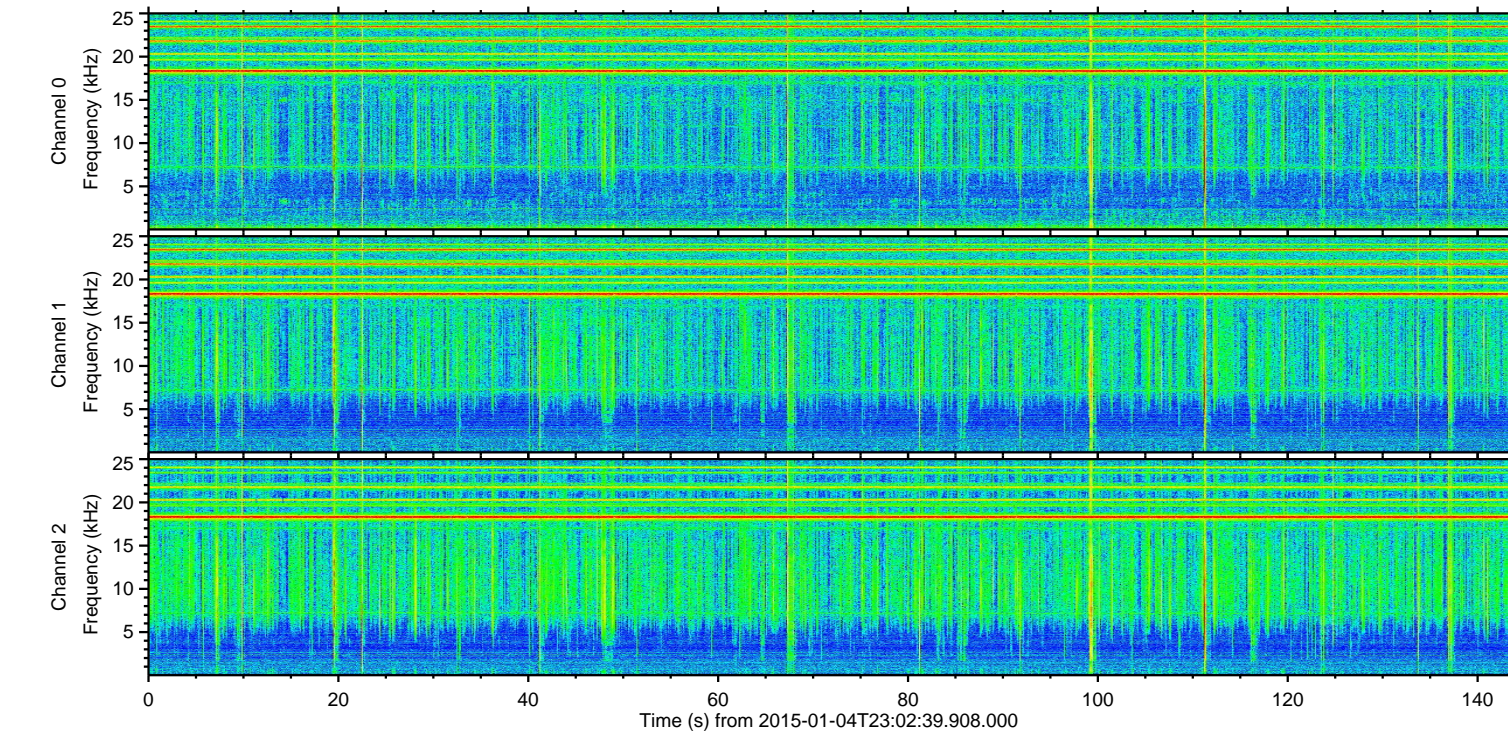
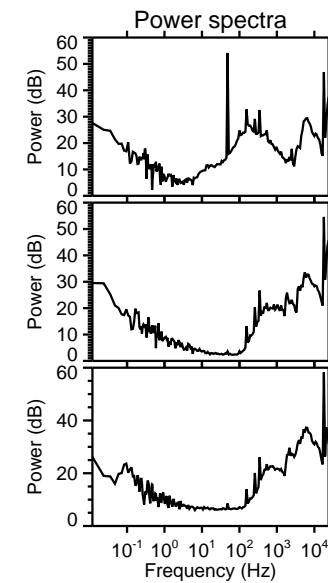
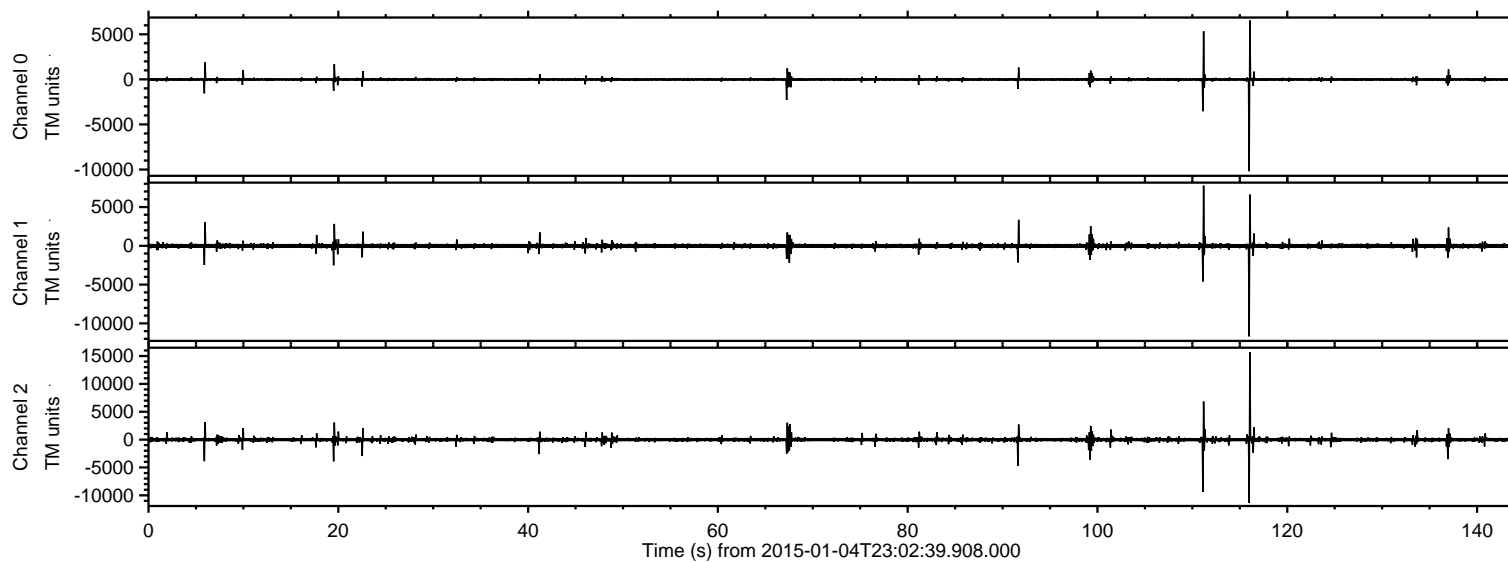


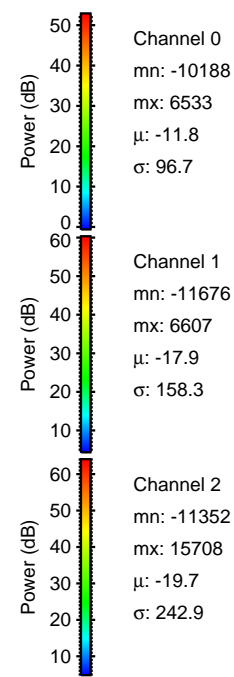
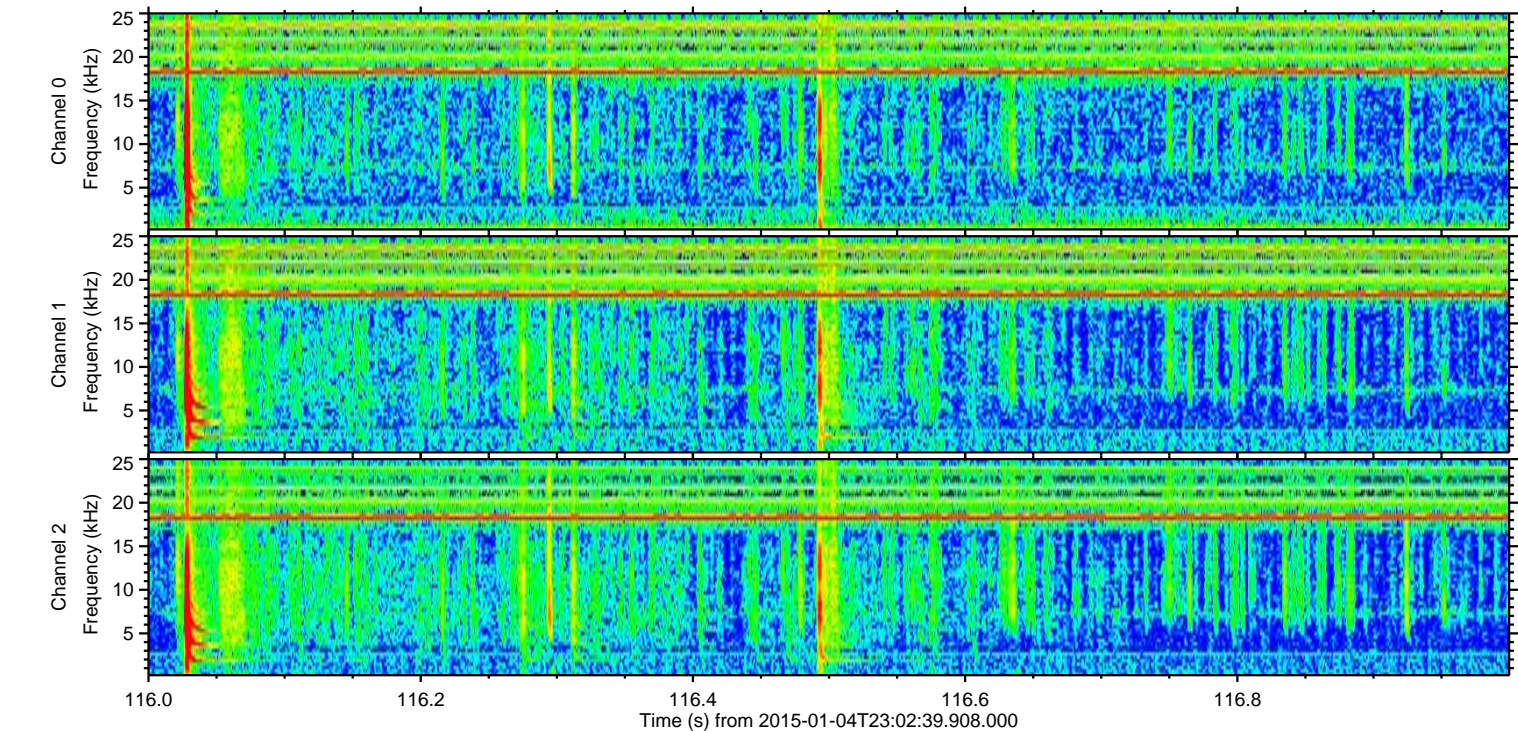
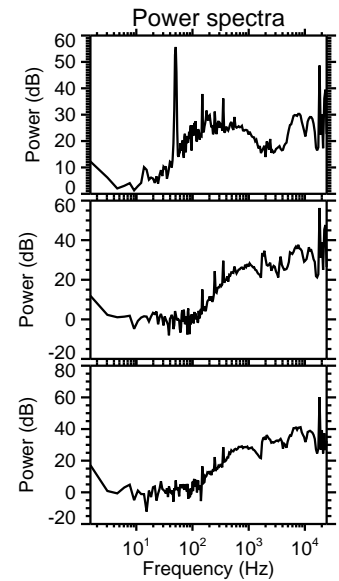
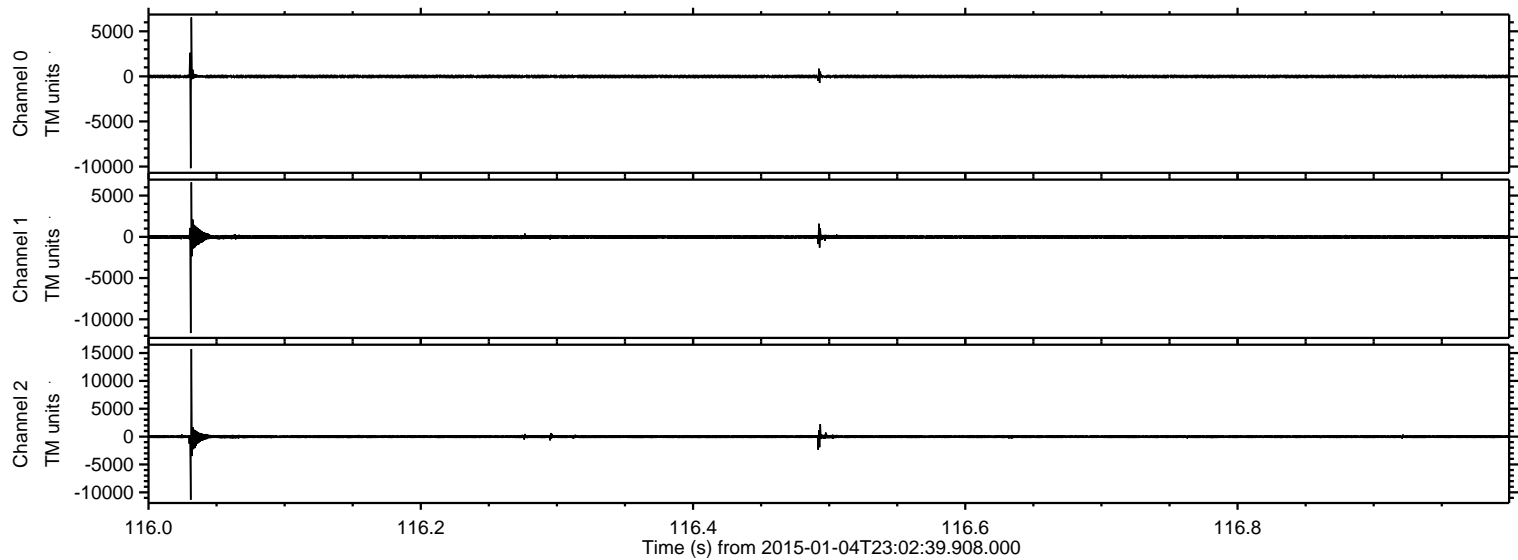
ELMAVAN 3D WAVEFORMS (Measured data sampled at 50 kHz) 49785 packets of 144 samples from 2015-01-04T23:02:39.908.000.

Processed Mon Jan 5 00:10:15 2015 by ELM ver.2012-10-06 from 001__elm20150104_230238__dat00.bin



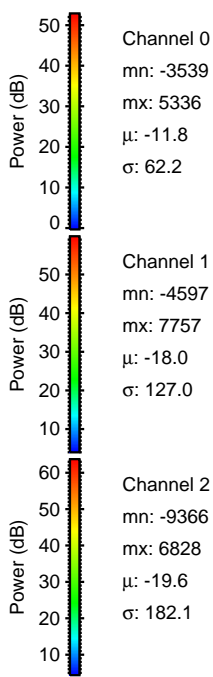
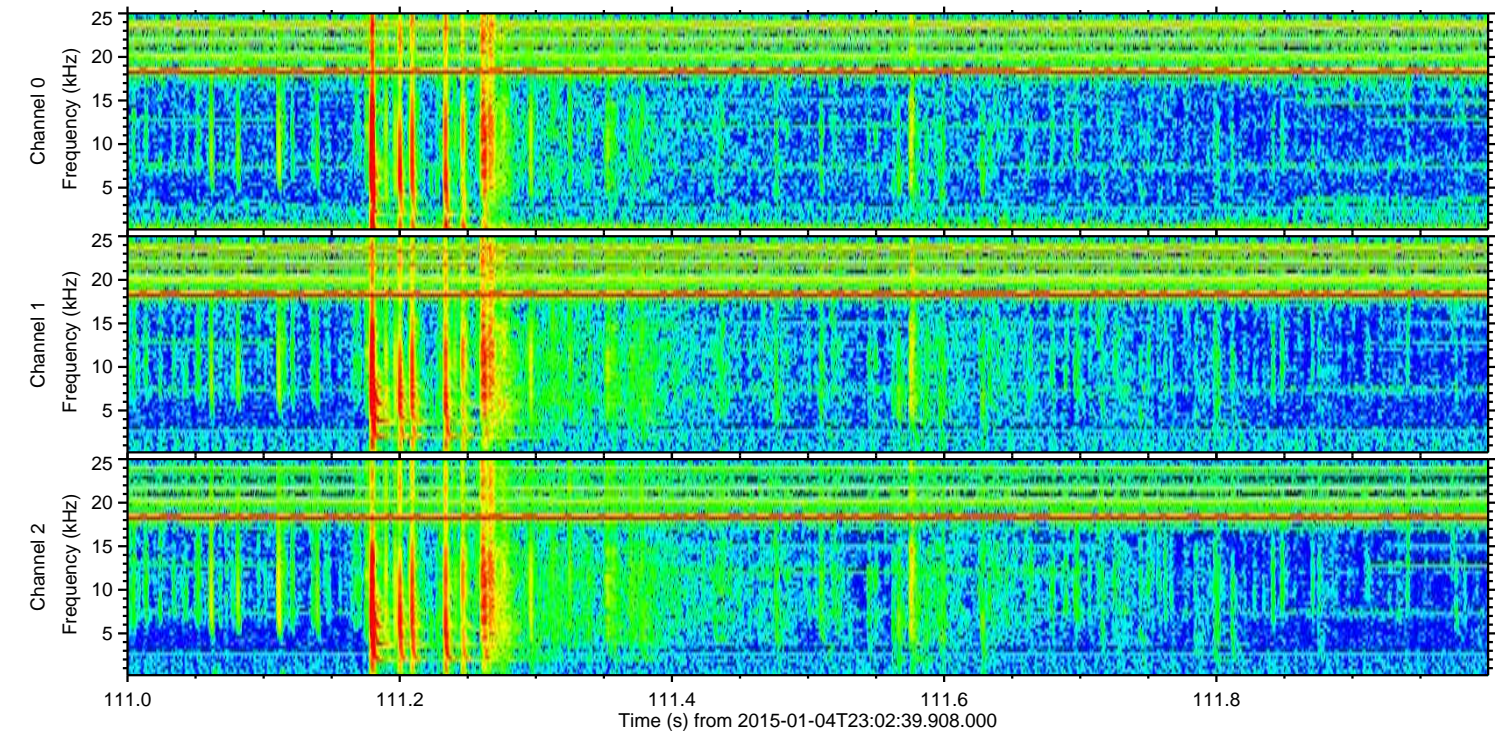
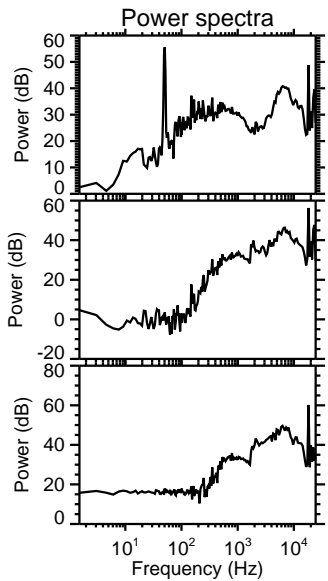
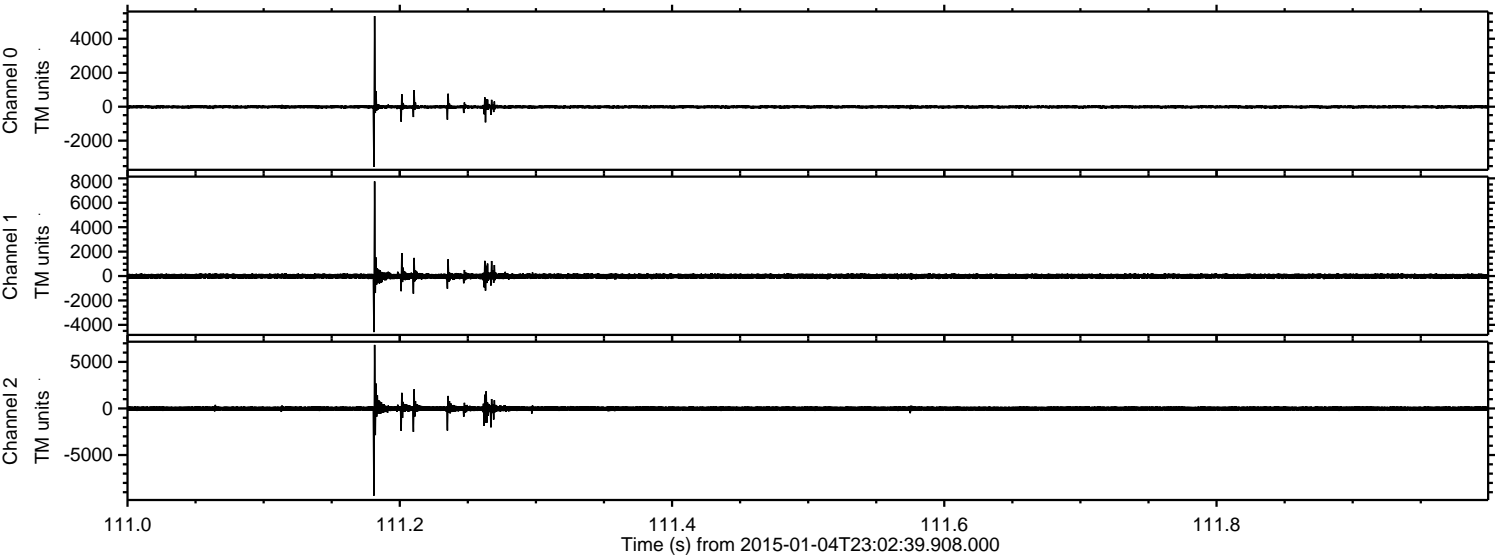
ELMAVAN 3D WAVEFORMS (Measured data sampled at 50 kHz) 49785 packets of 144 samples from 2015-01-04T23:02:39.908.000. Part 117/144

Processed Mon Jan 5 00:10:28 2015 by ELM ver.2012-10-06 from 001__elm20150104_230238__dat00.bin

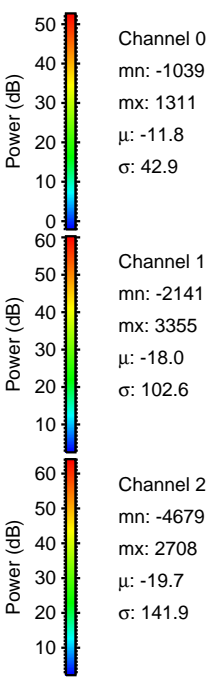
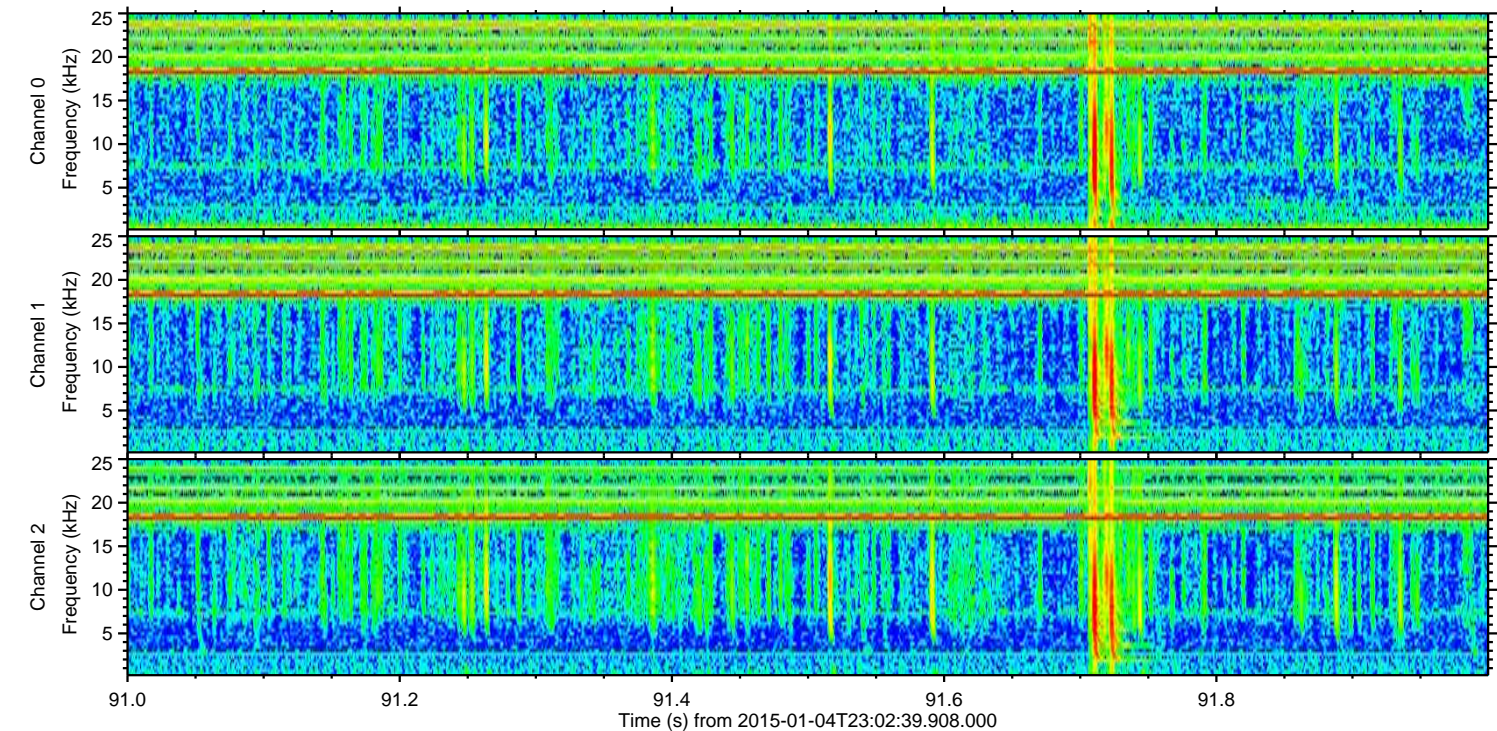
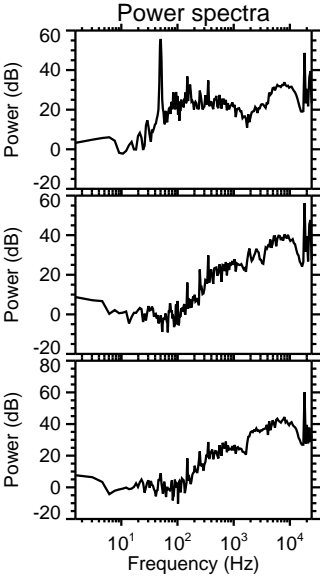
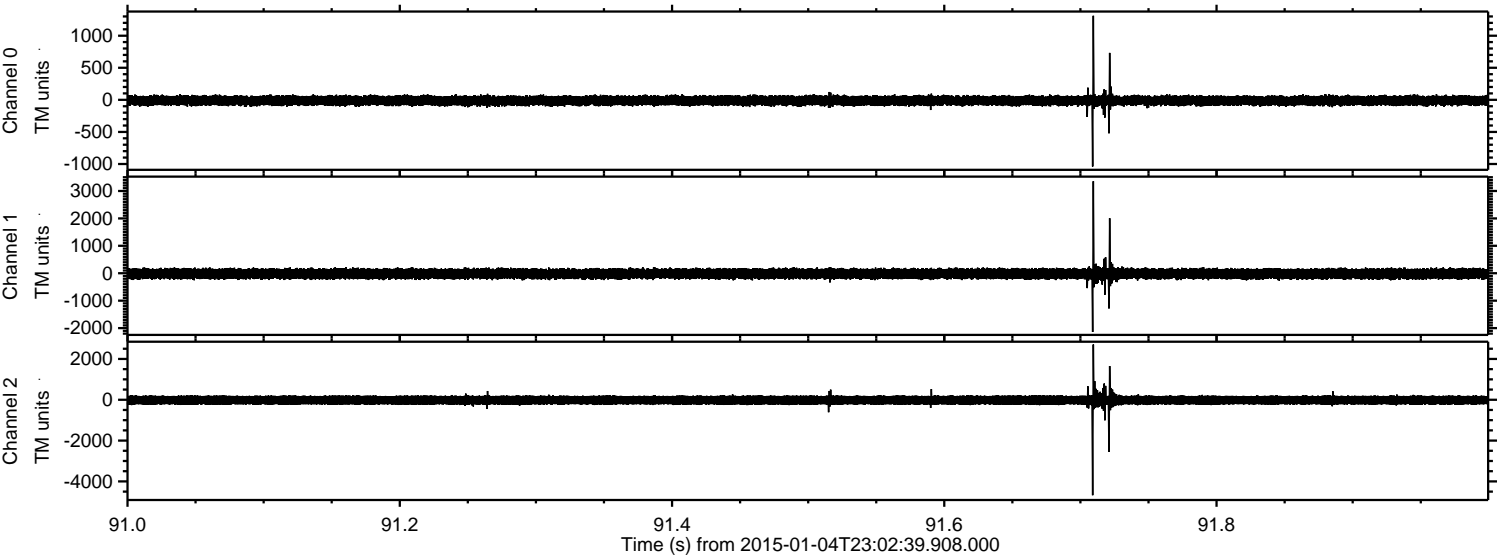


ELMAVAN 3D WAVEFORMS (Measured data sampled at 50 kHz) 49785 packets of 144 samples from 2015-01-04T23:02:39.908.000. Part 112/144

Processed Mon Jan 5 00:10:28 2015 by ELM ver.2012-10-06 from 001__elm20150104_230238__dat00.bin

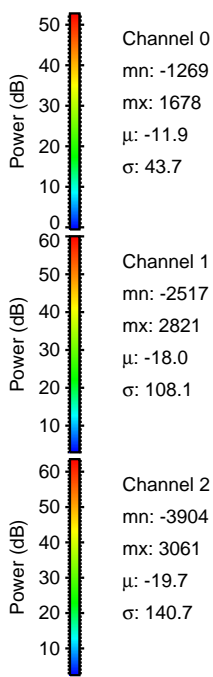
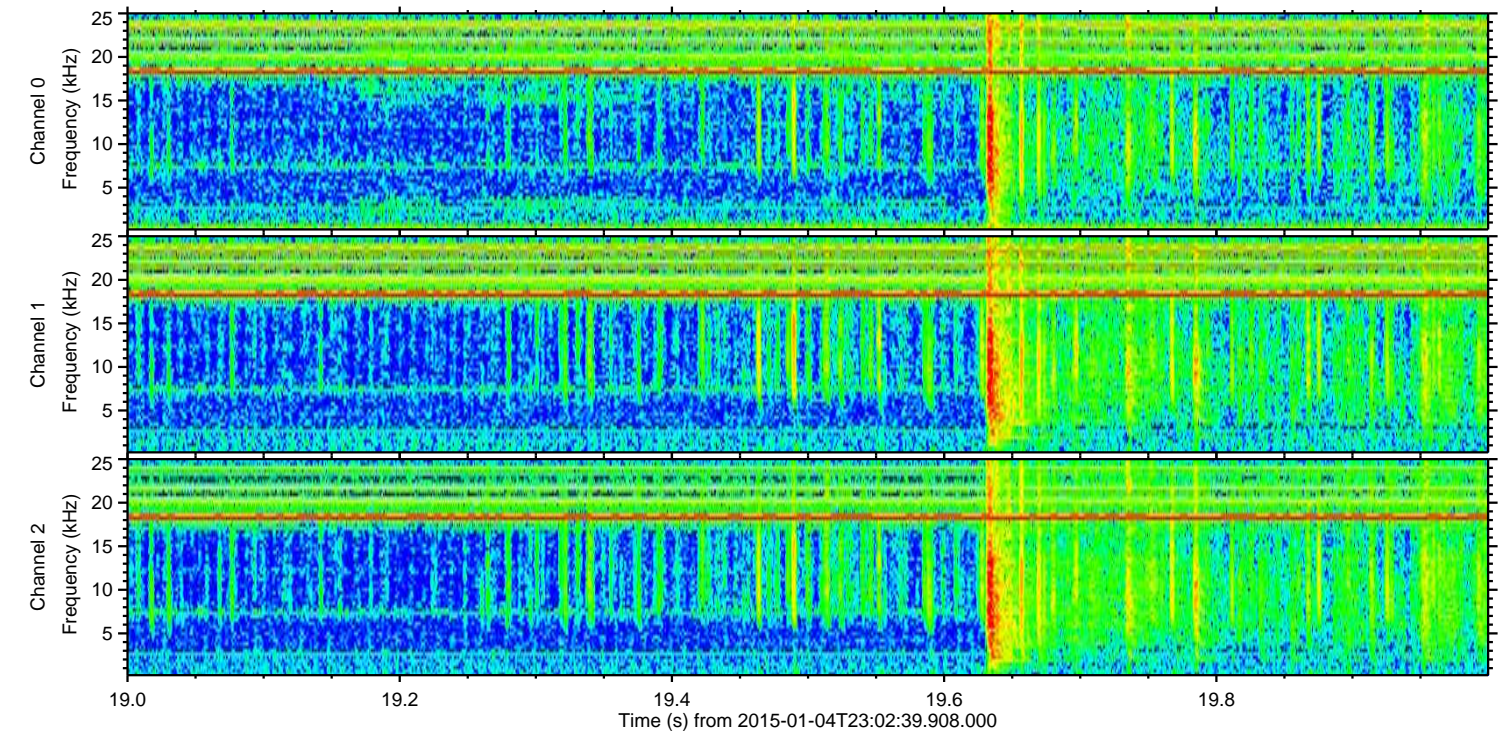
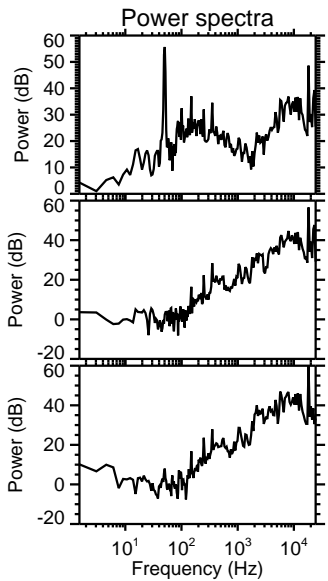
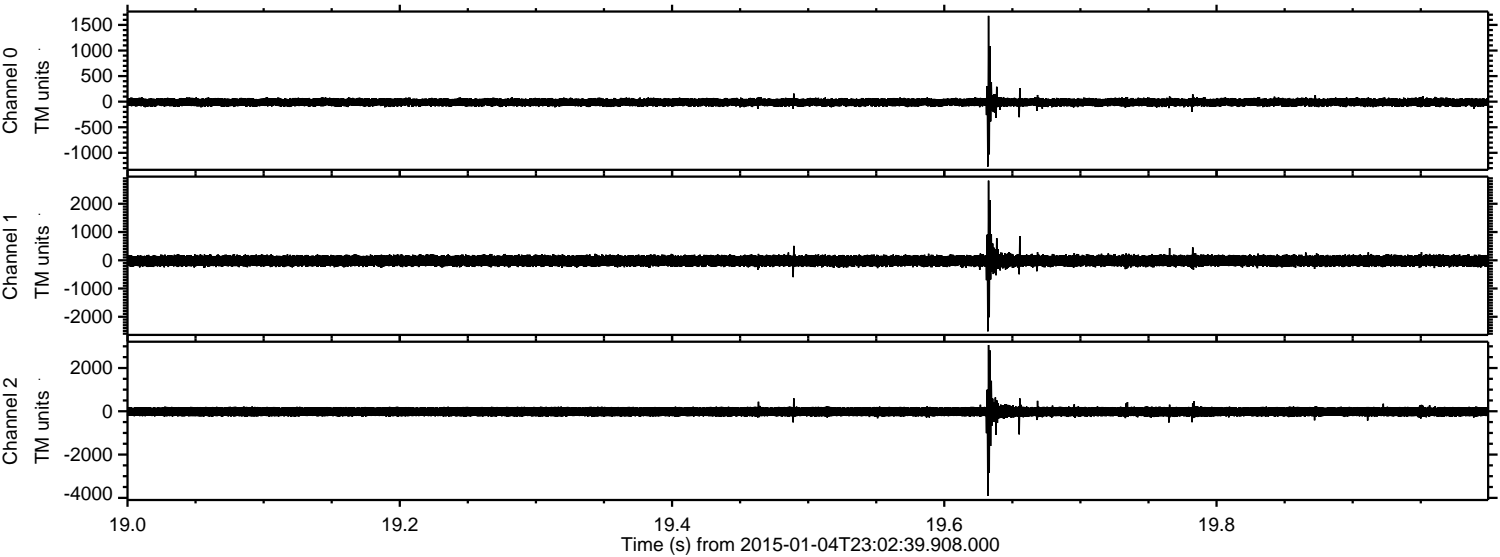


Processed Mon Jan 5 00:10:29 2015 by ELM ver.2012-10-06 from 001__elm20150104_230238__dat00.bin

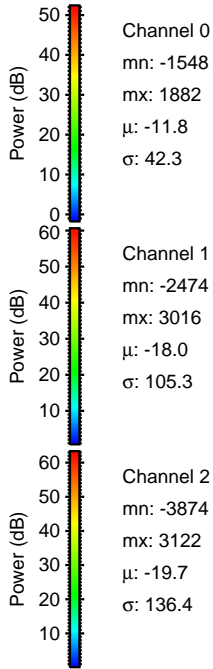
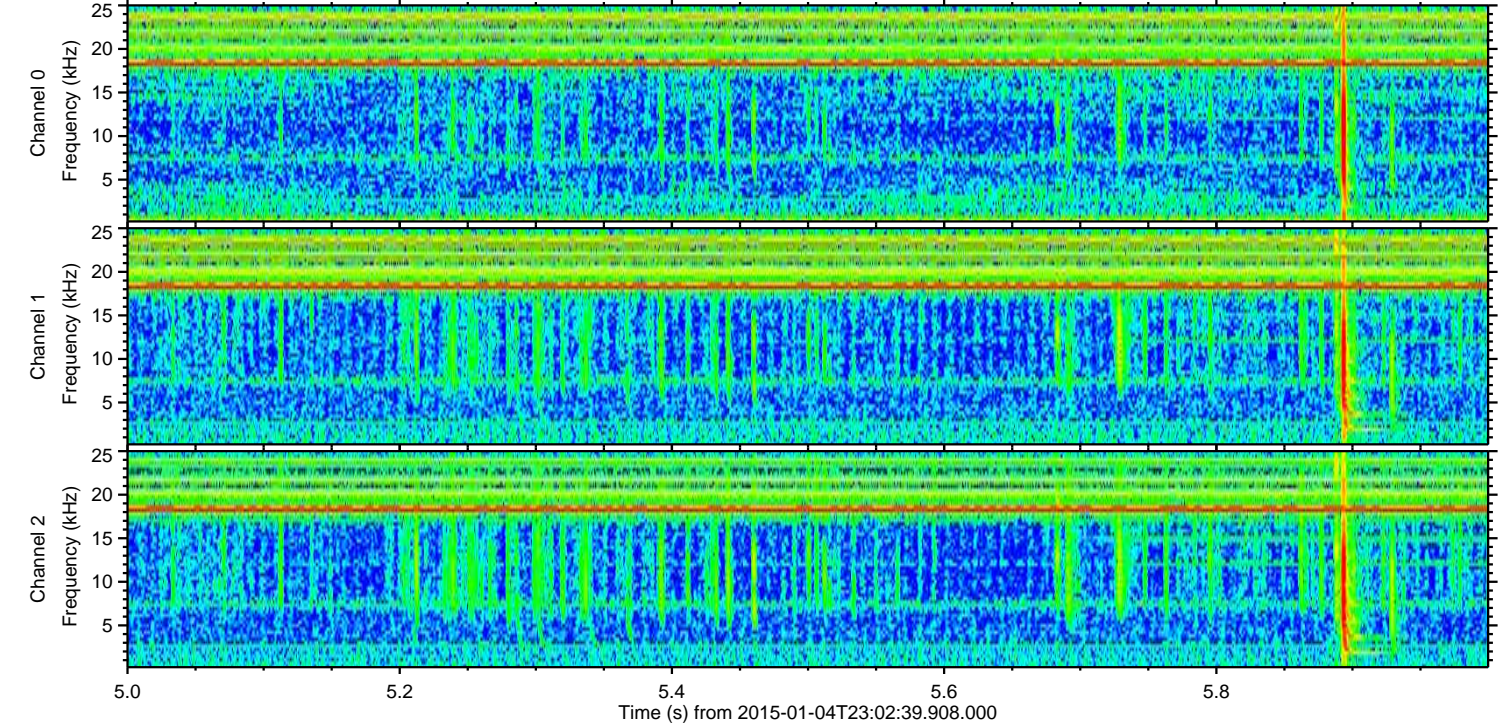
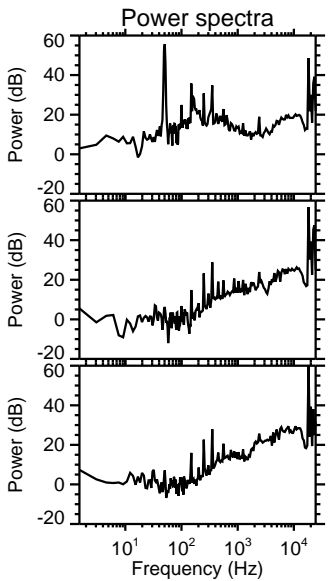
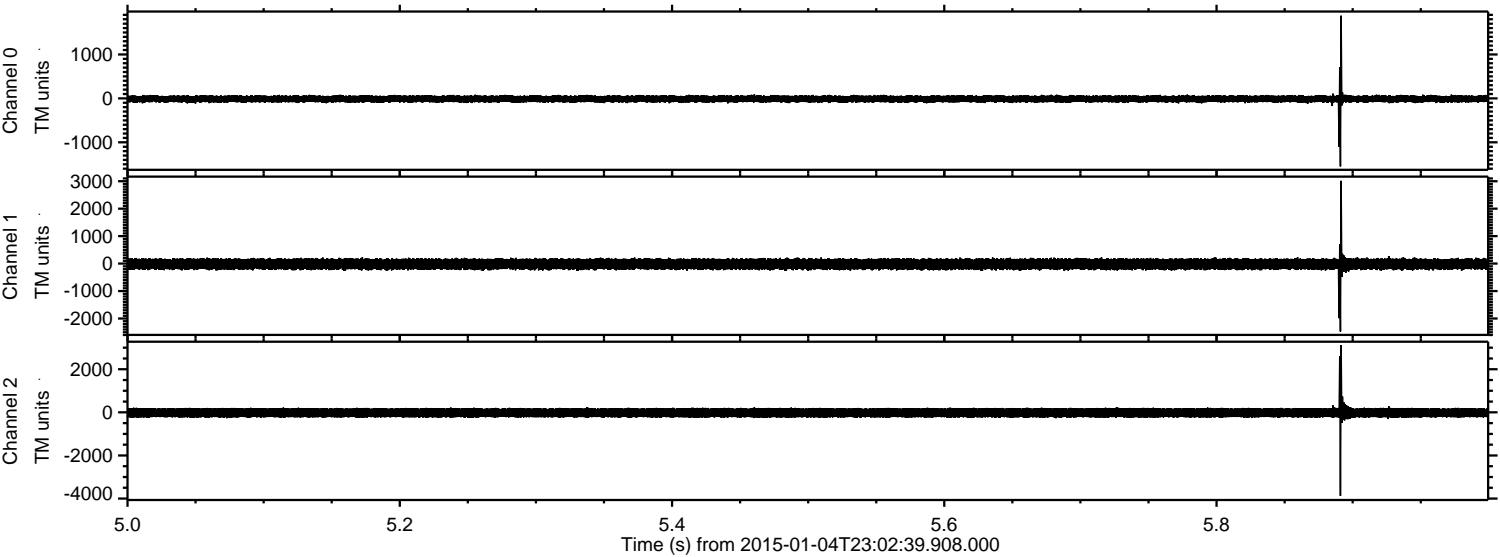


ELMAVAN 3D WAVEFORMS (Measured data sampled at 50 kHz) 49785 packets of 144 samples from 2015-01-04T23:02:39.908.000. Part 20/144

Processed Mon Jan 5 00:10:30 2015 by ELM ver.2012-10-06 from 001__elm20150104_230238__dat00.bin

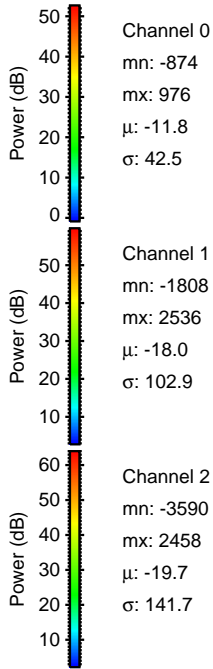
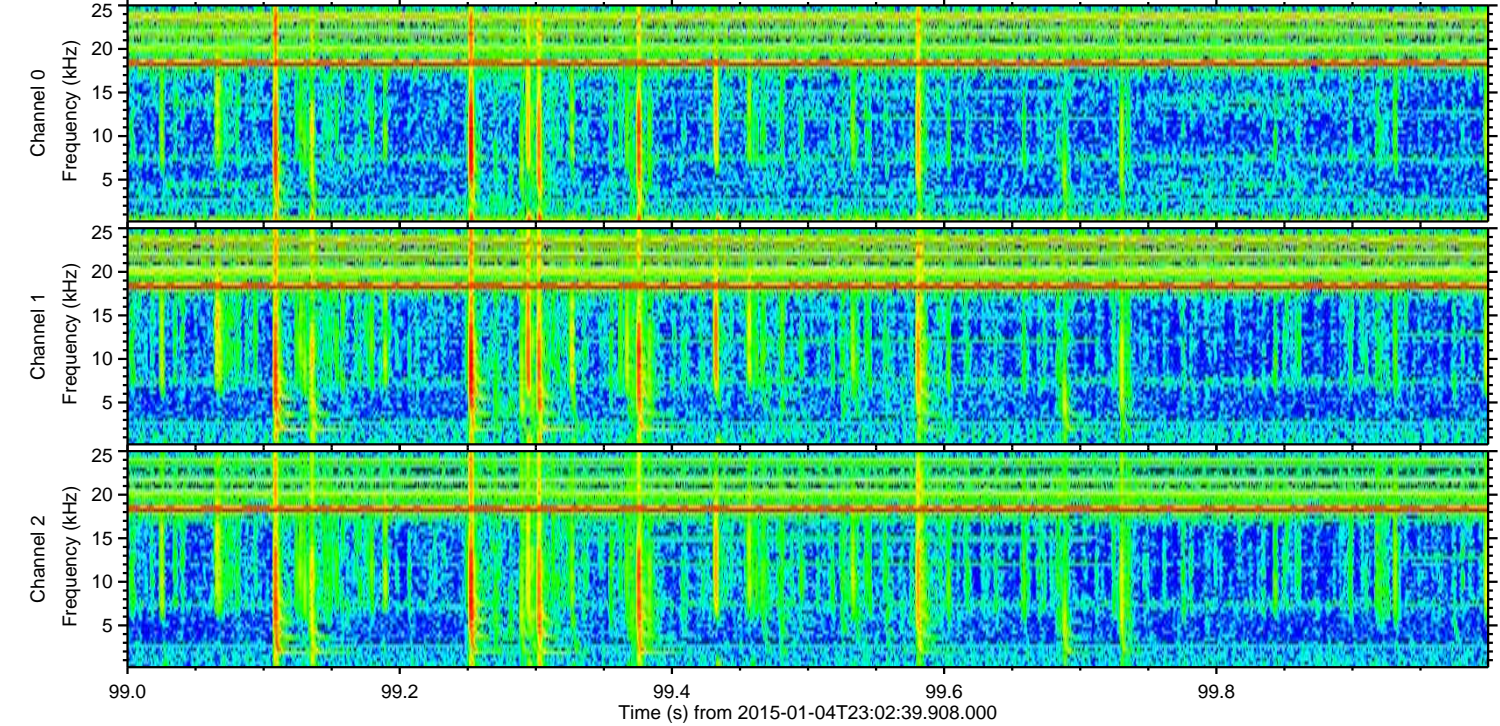
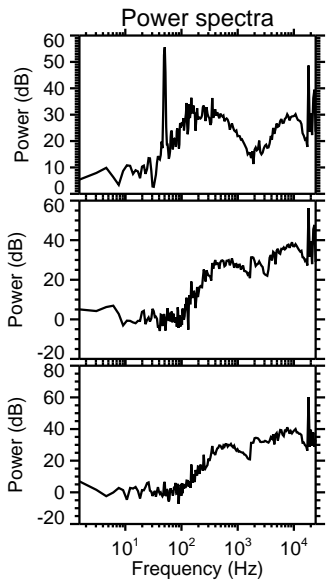
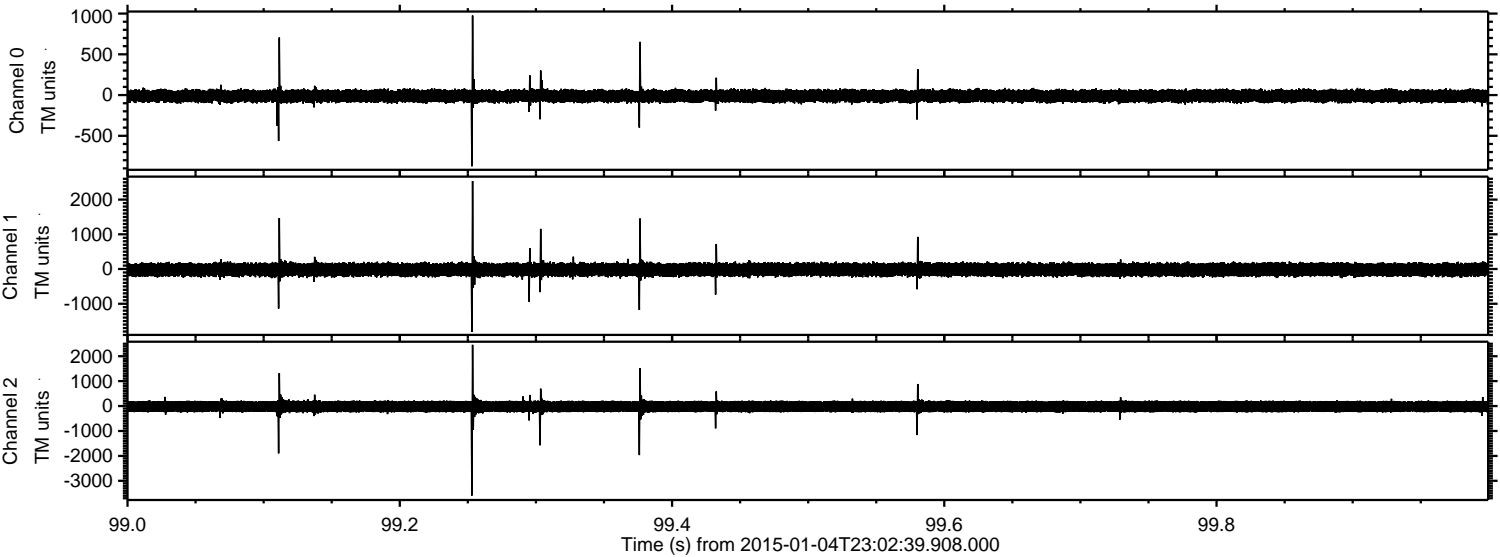


Processed Mon Jan 5 00:10:31 2015 by ELM ver.2012-10-06 from 001__elm20150104_230238__dat00.bin

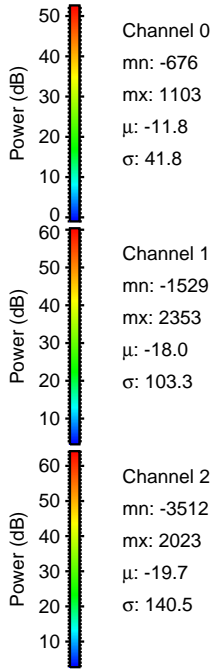
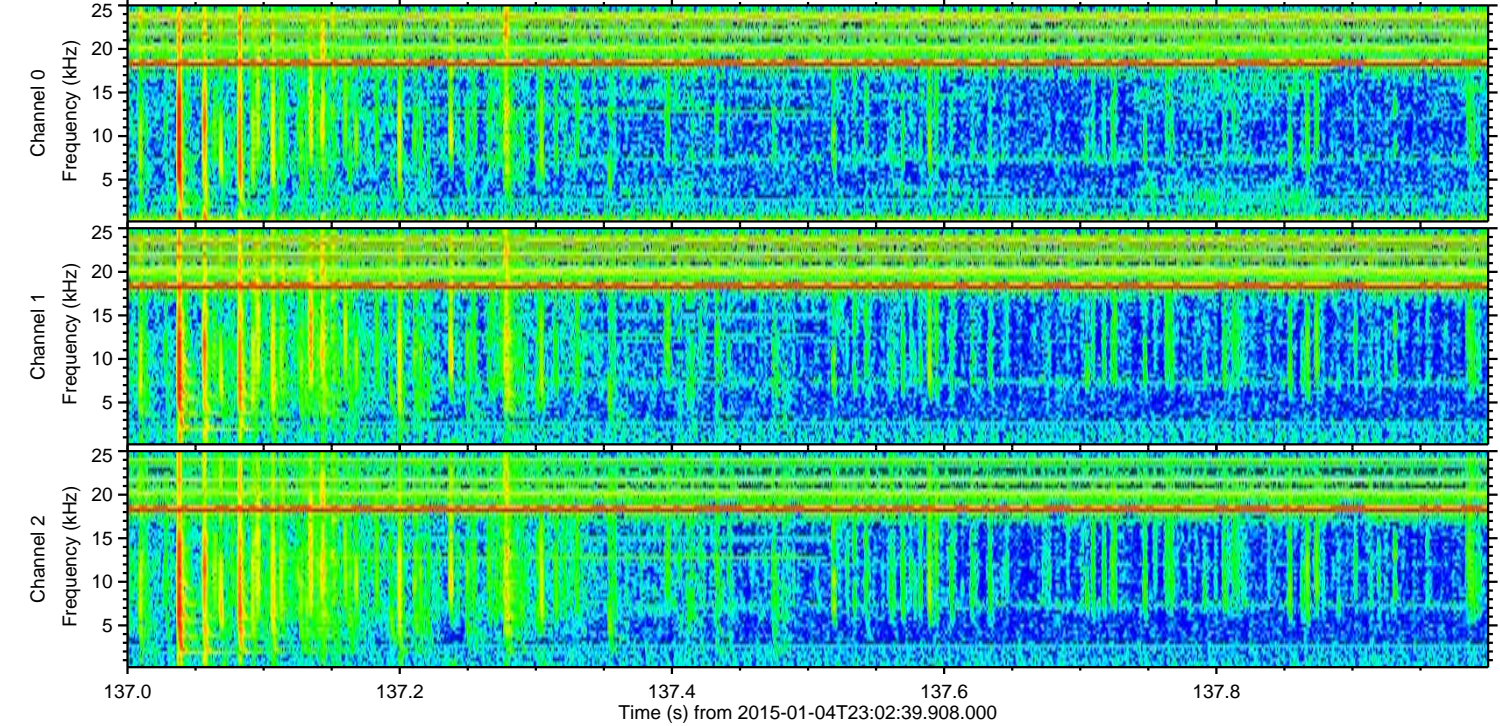
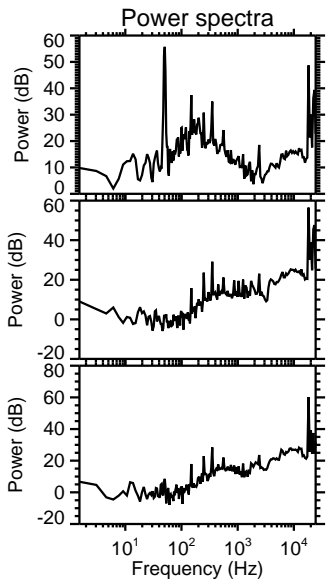
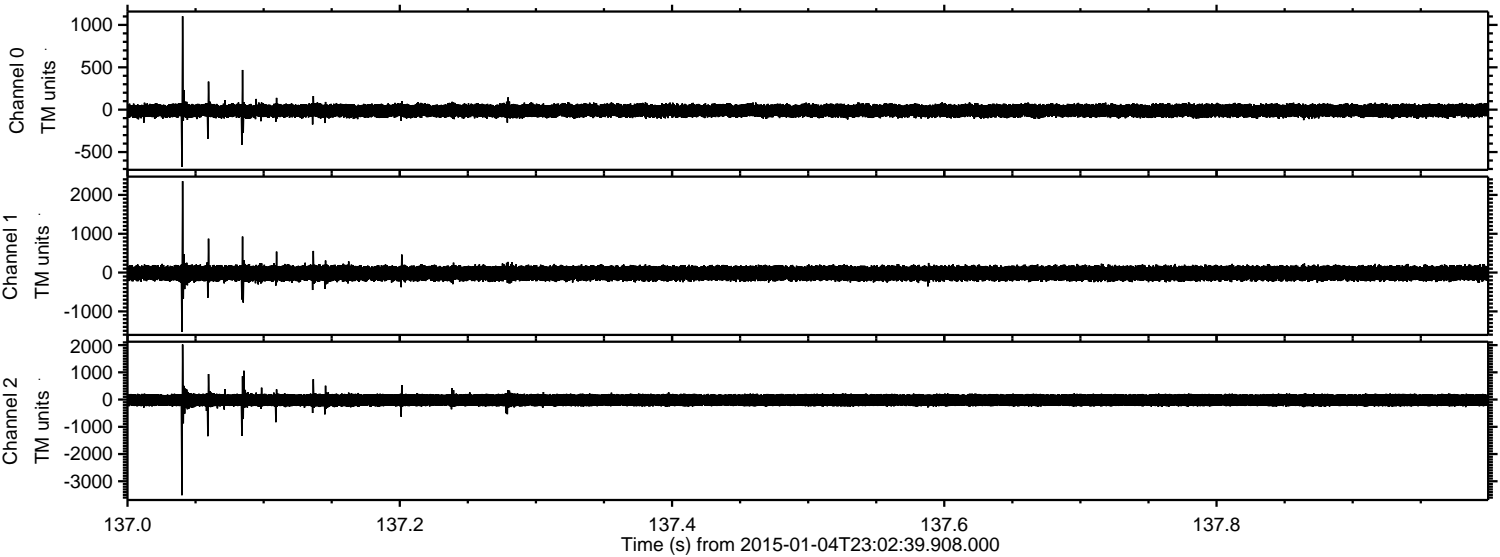


ELMAVAN 3D WAVEFORMS (Measured data sampled at 50 kHz) 49785 packets of 144 samples from 2015-01-04T23:02:39.908.000. Part 100/144

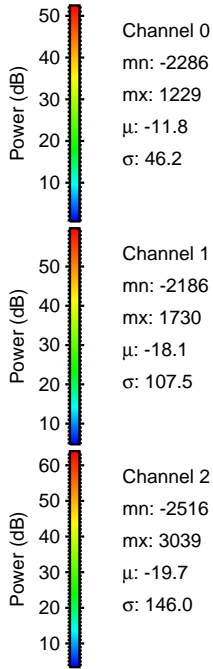
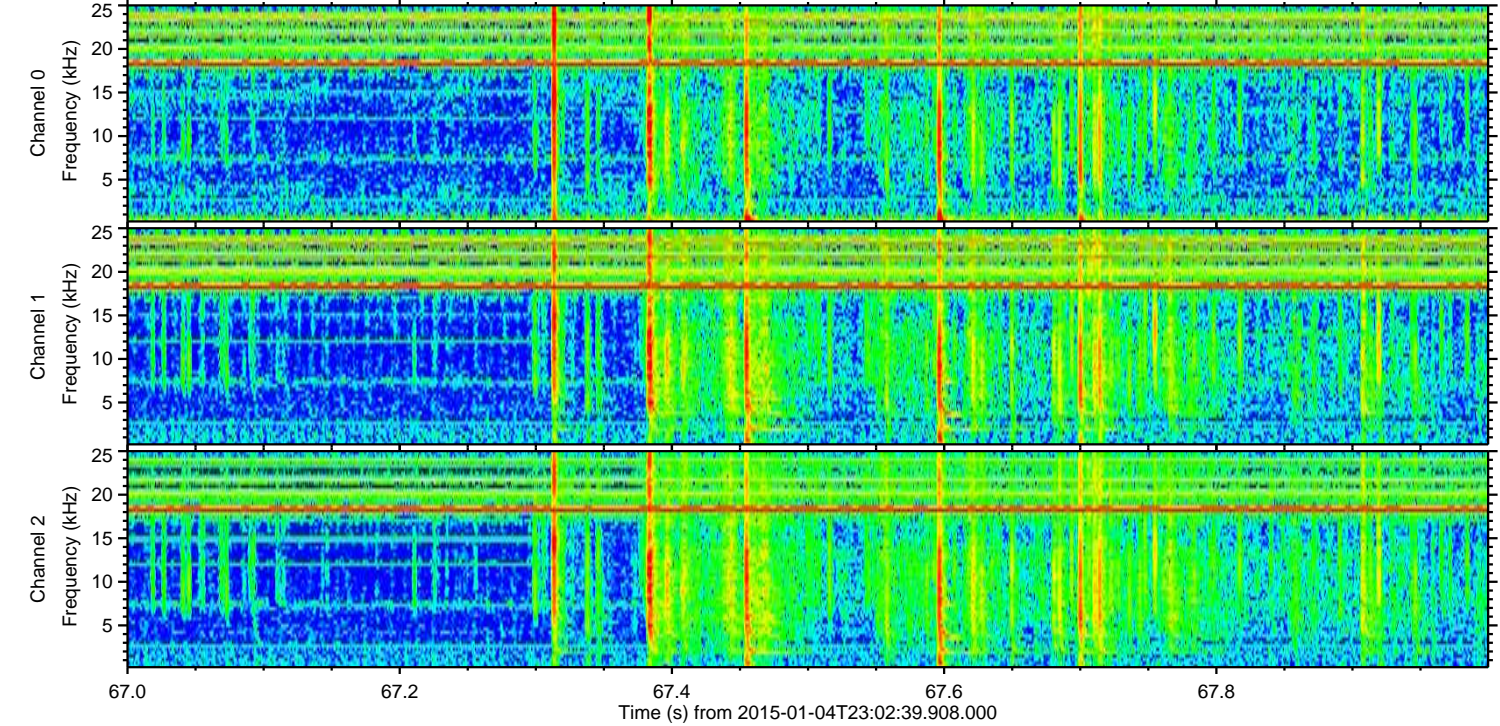
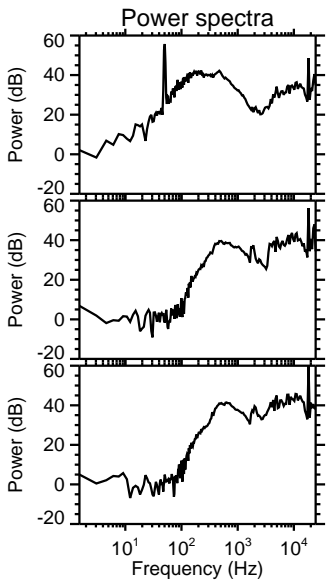
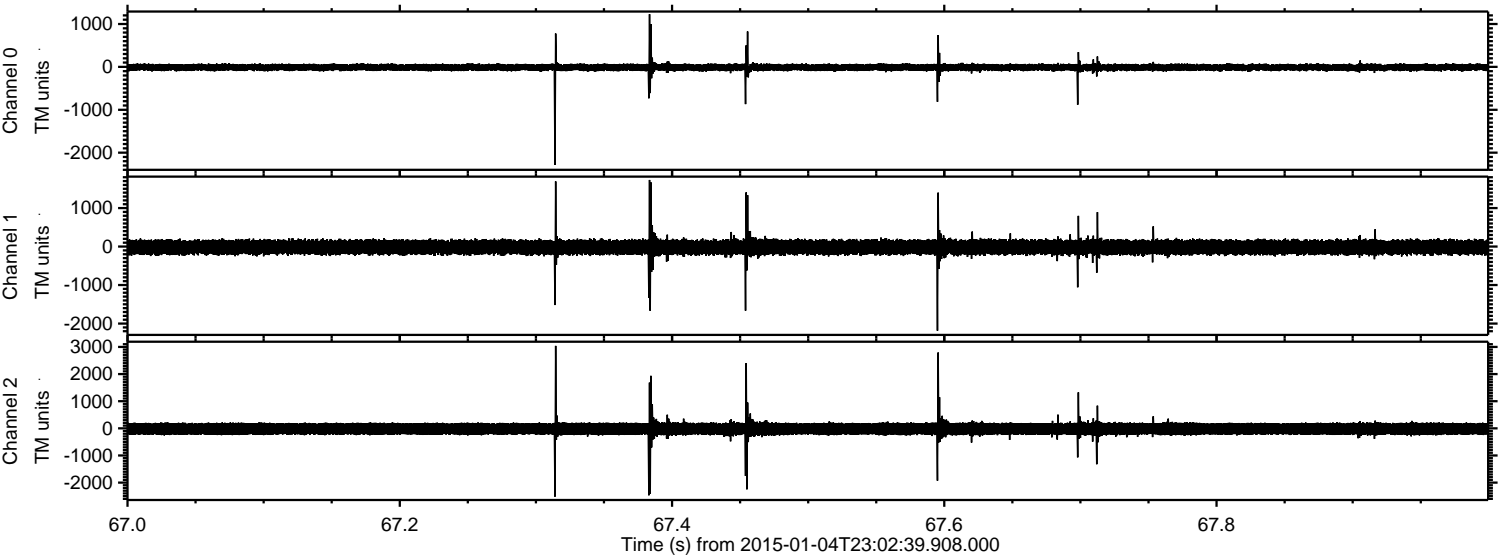
Processed Mon Jan 5 00:10:32 2015 by ELM ver.2012-10-06 from 001__elm20150104_230238__dat00.bin



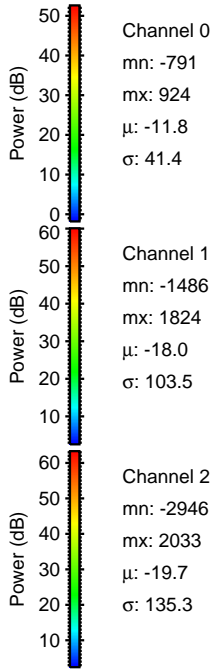
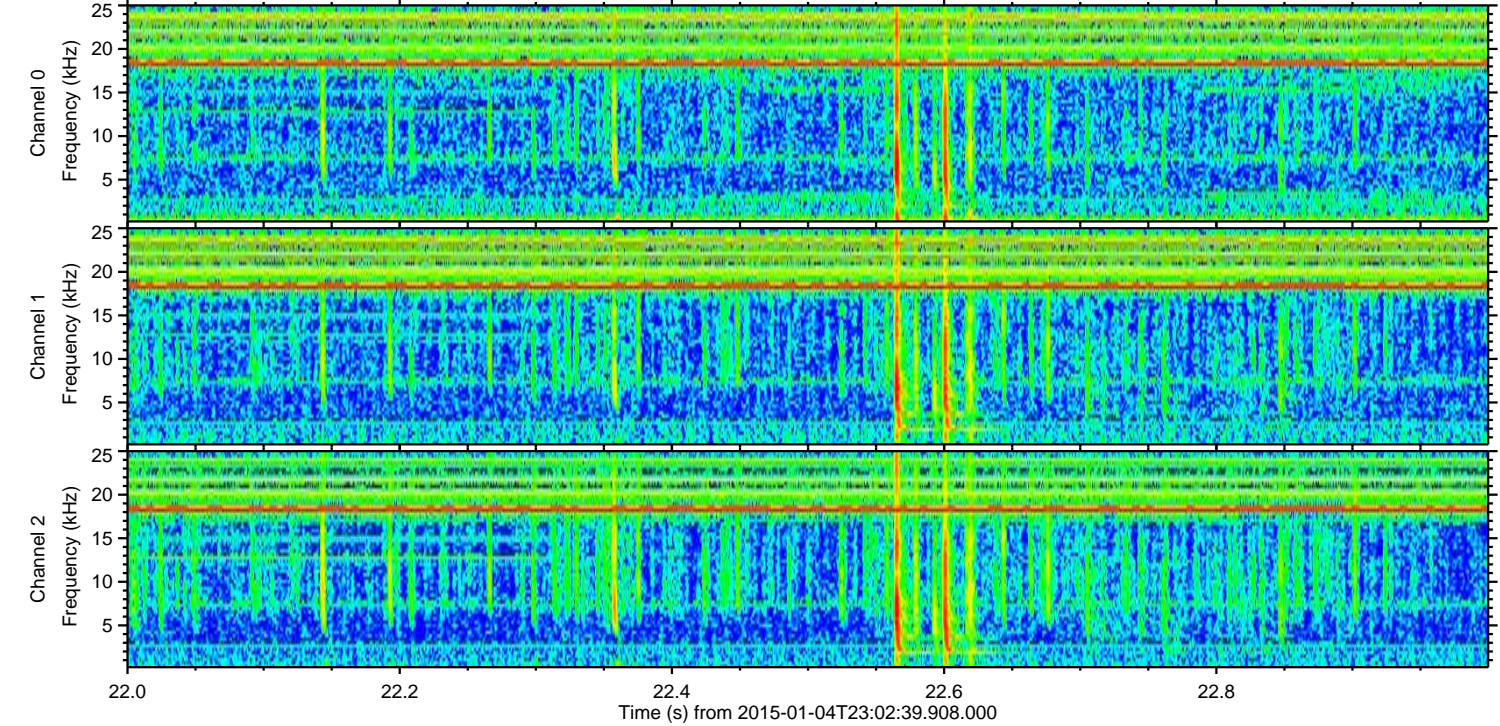
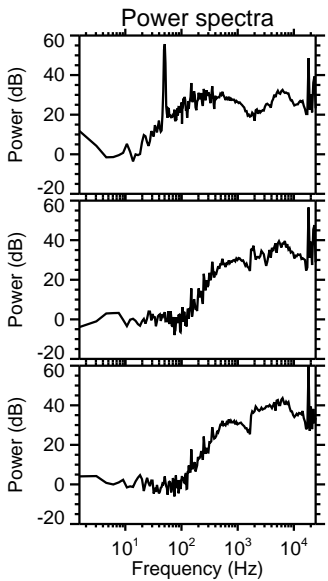
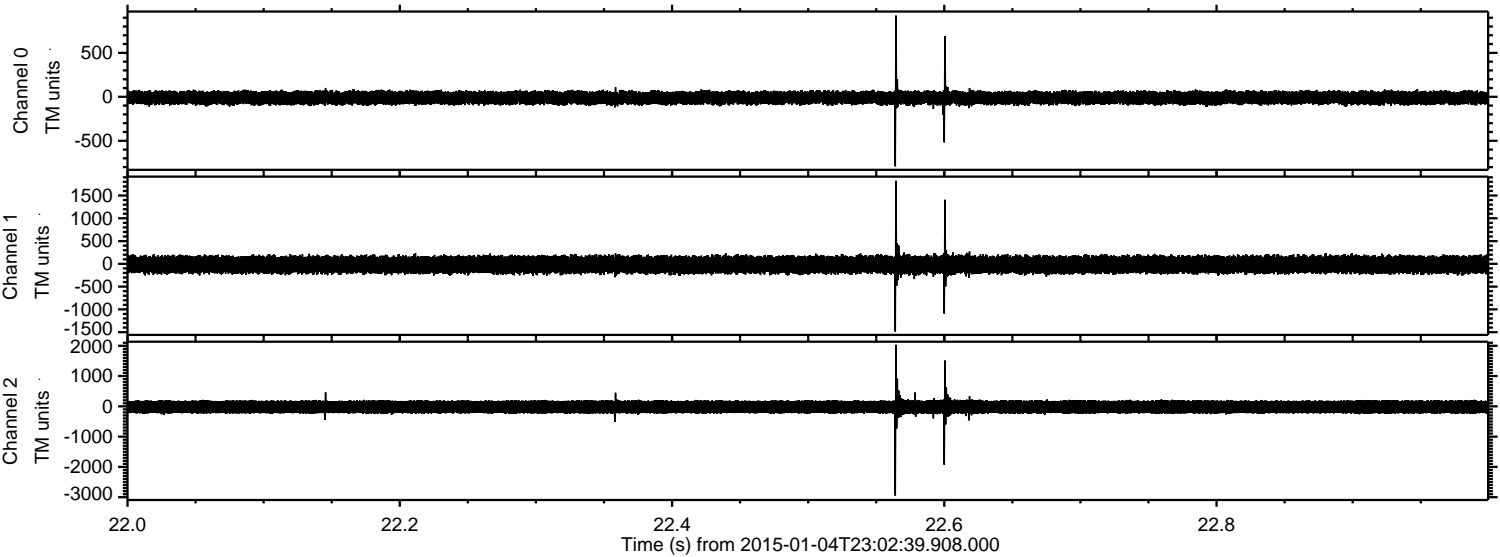
Processed Mon Jan 5 00:10:33 2015 by ELM ver.2012-10-06 from 001__elm20150104_230238__dat00.bin



Processed Mon Jan 5 00:10:34 2015 by ELM ver.2012-10-06 from 001__elm20150104_230238__dat00.bin



Processed Mon Jan 5 00:10:35 2015 by ELM ver.2012-10-06 from 001__elm20150104_230238__dat00.bin



Channel 0
mn: -791
mx: 924
 μ : -11.8
 σ : 41.4

Channel 1
mn: -1486
mx: 1824
 μ : -18.0
 σ : 103.5

Channel 2
mn: -2946
mx: 2033
 μ : -19.7
 σ : 135.3

Processed Mon Jan 5 00:10:36 2015 by ELM ver.2012-10-06 from 001__elm20150104_230238__dat00.bin

